

**Oracle Functional Testing Advanced
Pack for Oracle Utilities**

Installation and Administration Guide

Release 5.0.0

E67843-01

October 2015

Oracle Functional Testing Advanced Pack for Oracle Utilities Installation and Administration Guide, Release 5.0.0

E67843-01

Copyright © 2015 Oracle and/or its affiliates. All rights reserved.

This software and related documentation are provided under a license agreement containing restrictions on use and disclosure and are protected by intellectual property laws. Except as expressly permitted in your license agreement or allowed by law, you may not use, copy, reproduce, translate, broadcast, modify, license, transmit, distribute, exhibit, perform, publish, or display any part, in any form, or by any means. Reverse engineering, disassembly, or decompilation of this software, unless required by law for interoperability, is prohibited.

The information contained herein is subject to change without notice and is not warranted to be error-free. If you find any errors, please report them to us in writing.

If this is software or related documentation that is delivered to the U.S. Government or anyone licensing it on behalf of the U.S. Government, the following notice is applicable:

U.S. GOVERNMENT END USERS: Oracle programs, including any operating system, integrated software, any programs installed on the hardware, and/or documentation, delivered to U.S. Government end users are “commercial computer software” pursuant to the applicable Federal Acquisition Regulation and agency-specific supplemental regulations. As such, use, duplication, disclosure, modification, and adaptation of the programs, including any operating system, integrated software, any programs installed on the hardware, and/or documentation, shall be subject to license terms and license restrictions applicable to the programs. No other rights are granted to the U.S. Government.

This software or hardware is developed for general use in a variety of information management applications. It is not developed or intended for use in any inherently dangerous applications, including applications that may create a risk of personal injury. If you use this software or hardware in dangerous applications, then you shall be responsible to take all appropriate fail-safe, backup, redundancy, and other measures to ensure its safe use. Oracle Corporation and its affiliates disclaim any liability for any damages caused by use of this software or hardware in dangerous applications.

Oracle and Java are registered trademarks of Oracle and/or its affiliates. Other names may be trademarks of their respective owners.

Intel and Intel Xeon are trademarks or registered trademarks of Intel Corporation. All SPARC trademarks are used under license and are trademarks or registered trademarks of SPARC International, Inc. AMD, Opteron, the AMD logo, and the AMD Opteron logo are trademarks or registered trademarks of Advanced Micro Devices. UNIX is a registered trademark of The Open Group.

This software or hardware and documentation may provide access to or information on content, products, and services from third parties. Oracle Corporation and its affiliates are not responsible for and expressly disclaim all warranties of any kind with respect to third-party content, products, and services. Oracle Corporation and its affiliates will not be responsible for any loss, costs, or damages incurred due to your access to or use of third-party content, products, or services.

Contents

Preface	i
Audience	ii
Prerequisite Knowledge.....	ii
Related Documents	ii
Notational Conventions	ii
Chapter 1	
Overview	1-1
Application Architecture	1-1
Chapter 2	
Supported Platforms and Hardware Requirements	2-1
Software and Hardware Considerations.....	2-1
Supported Platforms	2-1
Operating Systems and Application Servers	2-2
Oracle Database Servers.....	2-2
Oracle WebLogic Server Information	2-2
Support for Software Patches and Upgrades	2-2
Chapter 3	
Installing Oracle Functional Testing Advanced Pack for Oracle Utilities	3-3
Installation and Configuration Overview	3-3
Before You Install.....	3-4
Setup Overview and Roles	3-4
System Requirements	3-5
Prerequisites.....	3-6
Installing Oracle Functional Testing Advanced Pack for Oracle Utilities.....	3-6
Extracting OFTAPOU Packages.....	3-6
Installing Components and Flows	3-7
Post-Installation Tasks	3-9
Initial Setup for Administrators	3-11
Appendix A	
Database Connection Pool	A-1
Appendix B	
Prerequisite Patches	B-1

Preface

Welcome to the Oracle Functional Testing Advanced Pack for Oracle Utilities (OFTAPOU) Installation and Administration Guide. This guide explains how to install Oracle Functional Testing Advanced Pack for Oracle Utilities.

Oracle Functional Testing Advanced Pack for Oracle Utilities is a licensed product and requires Oracle Functional Tester (OFT).

The Oracle Functional Testing Advanced Pack for Oracle Utilities media pack comprises the following documentation and installation packages:

- **Documentation Package**
 - Oracle Functional Testing Advanced Pack for Oracle Utilities Release Notes
 - Oracle Functional Testing Advanced Pack for Oracle Utilities Installation and Administration Guide
 - Oracle Functional Testing Advanced Pack for Oracle Utilities User's Guide
 - Oracle Functional Testing Advanced Pack for Oracle Utilities Reference Guide for Oracle Utilities Application Framework
 - Oracle Functional Testing Advanced Pack for Oracle Utilities Reference Guide for Oracle Utilities Mobile Workforce Management and Oracle Real-Time Scheduler
 - Oracle Functional Testing Advanced Pack for Oracle Utilities Reference Guide for Oracle Utilities Customer Care and Billing
 - Oracle Functional Testing Advanced Pack for Oracle Utilities Reference Guide for Oracle Utilities Work and Asset Management
- **Installation Package**
 - Oracle Functional Testing Advanced Pack for Oracle Utilities Multiplatform

This preface includes the following:

- [Audience](#)
- [Prerequisite Knowledge](#)
- [Related Documents](#)
- [Notational Conventions](#)

Audience

This guide is intended for System Administrators installing Oracle Functional Testing Advanced Pack for Oracle Utilities.

You are required to have:

- Experience in installing and configuring application servers and other software
- Administrative privileges on the host where you are installing the software

Prerequisite Knowledge

This guide does require an understanding of software testing concepts. The users must be familiar with Oracle Flow Builder.

Note: *Oracle Flow Builder User's Guide* can be downloaded from Oracle Technology Network (<http://www.oracle.com/technetwork/oem/downloads/index-084446.html>).

Related Documents

For more information, see the following documents in the Oracle Functional Testing Advanced Pack for Oracle Utilities documentation set:

- *Oracle Functional Testing Advanced Pack for Oracle Utilities Release Notes*
- *Oracle Functional Testing Advanced Pack for Oracle Utilities User's Guide*
- *Oracle Functional Testing Advanced Pack for Oracle Utilities Reference Guide for Oracle Utilities Application Framework*
- *Oracle Functional Testing Advanced Pack for Oracle Utilities Reference Guide for Oracle Utilities Mobile Workforce Management and Oracle Real-Time Scheduler*
- *Oracle Functional Testing Advanced Pack for Oracle Utilities Reference Guide for Oracle Utilities Customer Care and Billing*
- *Oracle Functional Testing Advanced Pack for Oracle Utilities Reference Guide for Oracle Utilities Work and Asset Management*

See also:

- *Oracle Flow Builder Documentation Library*

Notational Conventions

The following text conventions are used in this document:

Convention	Meaning
boldface	Boldface type indicates graphical user interface elements associated with an action, or terms defined in text or the glossary.
<i>italic</i>	Italic type indicates book titles, emphasis, or placeholder variables for which you supply particular values.
monospace	Monospace type indicates commands within a paragraph, URLs, code in examples, text that appears on the screen, or text that you enter.

Chapter 1

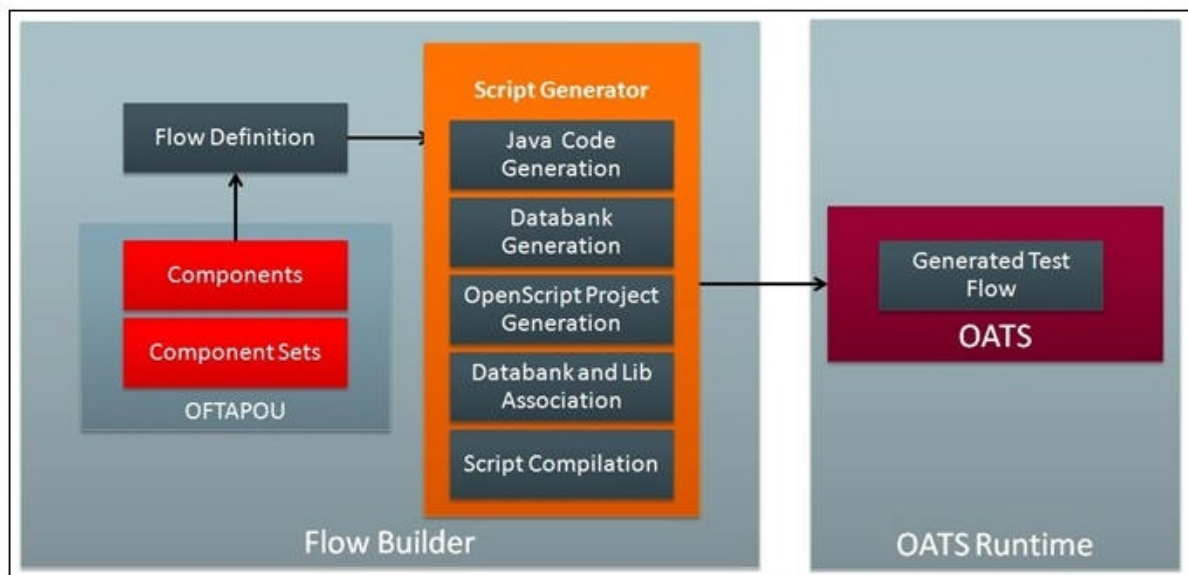
Overview

This chapter introduces the Oracle Functional Testing Advanced Pack for Oracle Utilities application and provides an overview of the application architecture.

- [Application Architecture](#)

Application Architecture

Below is a high-level architecture diagram for Oracle Functional Testing Advanced Pack for Oracle Utilities.



High-Level Architectural Diagram

Components and component sets are defined using metadata in Oracle Flow Builder. Using these components a flow can be assembled and then generated. The generated script, then, can be used and executed using Oracle Functional Tester.

Chapter 2

Supported Platforms and Hardware Requirements

This chapter provides an overview of the tiers on which Oracle Functional Testing Advanced Pack for Oracle Utilities is implemented, and shows each of the operating system/server combinations that the product is certified for.

The chapter includes information about the following:

- [Software and Hardware Considerations](#)
- [Supported Platforms](#)
- [Support for Software Patches and Upgrades](#)

Software and Hardware Considerations

See the Oracle Flow Builder documentation library for factors that can influence software and hardware decisions.

Supported Platforms

The installation has been tested and certified to operate on the following operating system, application server, and database server combinations.

This section includes the following details:

- [Operating Systems and Application Servers](#)
- [Oracle Database Servers](#)
- [Oracle WebLogic Server Information](#)

Operating Systems and Application Servers

The following table details the operating system and application server combinations on which Oracle Functional Testing Advanced Pack for Oracle Utilities has been tested and certified.

Operating System and Web Browser (Client)	Operating System (Server)	Chipset	Application Server	Database
Windows 7	Oracle Linux 6.5 (64-bit)	x86_64	WebLogic 10.3.6	Oracle 11.2.0.3
Firefox 38ESR	Red Hat Enterprise Linux 6.5 (64-bit)			

Oracle Database Servers

Oracle Functional Testing Advanced Pack for Oracle Utilities is supported with Oracle Database Server 11.2.0.3 on all of the operating systems listed in the table above.

The following Oracle Database Server Editions are supported:

- Oracle Database Enterprise Edition
- Oracle Database Standard Edition

Note: Oracle Database Enterprise Edition and the Partitioning and Advanced Compression options are not mandatory but recommended. Standard Edition should only be considered suitable for very small, pilot projects, or development environments where scalability, performance, and database size-on-disk are not important considerations. Oracle Database Enterprise Edition, including the Advanced Compression and Partitioning options, is strongly recommended in all other situations.

The Oracle 11.2.0.1 client is required for the database server 11.2.0.3.

Oracle WebLogic Server Information

The following Oracle WebLogic Server Editions are supported:

- Oracle WebLogic Server Standard Edition 10.3.6
- Oracle WebLogic Server Enterprise Edition 10.3.6 (required if using application clustering)

Support for Software Patches and Upgrades

Due to the ongoing nature of software improvement, vendors will issue patches and service packs for the operating systems, application servers, and database servers on top of specific versions that Oracle Utilities Application Framework has been tested with.

If it is necessary to apply an upgrade, please do so in a test environment that is running on the same platform as your production environment prior to updating the Oracle Functional Testing Advanced Pack for Oracle Utilities production environment.

Always contact Oracle Functional Testing Advanced Pack for Oracle Utilities support prior to applying vendor updates that do not guarantee backward compatibility.

Chapter 3

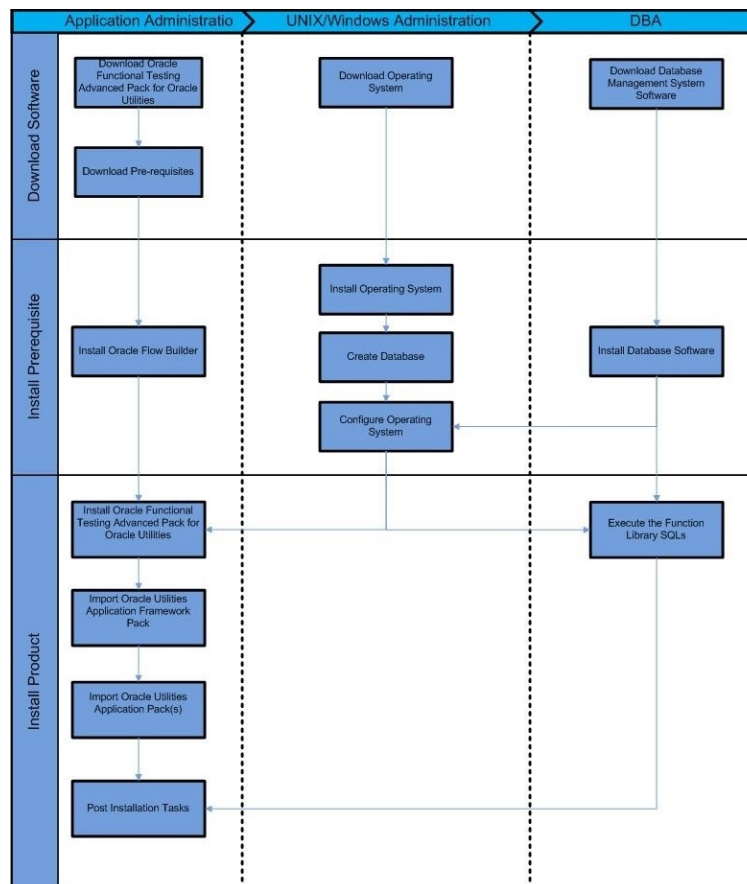
Installing Oracle Functional Testing Advanced Pack for Oracle Utilities

This chapter explains how to install and setup Oracle Functional Testing Advanced Pack for Oracle Utilities. It includes the following sections:

- [Installation and Configuration Overview](#)
- [Before You Install](#)
- [Setup Overview and Roles](#)
- [System Requirements](#)
- [Prerequisites](#)
- [Installing Oracle Functional Testing Advanced Pack for Oracle Utilities](#)

Installation and Configuration Overview

The following diagram shows the steps to be followed to install and configure Oracle Functional Testing Advanced Pack for Oracle Utilities.



Installation Overview

Before You Install

See the *Oracle Functional Testing Advanced Pack for Oracle Utilities Release Notes* for important notes about this product release.

Setup Overview and Roles

The following table provides an overview of the Oracle Functional Testing Advanced Pack for Oracle Utilities application setup tasks.

Step	Task	Role
1	Verify the system requirements. See System Requirements	Administrator
2	Verify the prerequisites have been met. See Prerequisites	Administrator
3	Install Oracle Flow Builder. See <i>Oracle Flow Builder User Guide</i> (http://www.oracle.com/technetwork/oem/downloads/index-084446.html)	Administrator

Step	Task	Role
4	Perform the initial setup for Administrators. See Installing Oracle Functional Testing Advanced Pack for Oracle Utilities	Administrator
5	Install Oracle Functional Testing Advanced Pack for Oracle Utilities. See Installing Oracle Functional Testing Advanced Pack for Oracle Utilities	Administrator
6	Import Oracle Functional Testing Advanced Pack for Oracle Utilities export zip files into Oracle Flow Builder. See Installing Oracle Functional Testing Advanced Pack for Oracle Utilities	Administrator
7	Install OpenScript. See Oracle Functional Testing Advanced Pack for Oracle Utilities User's Guide	User (Developer)
8	Download third party jars. See Oracle Functional Testing Advanced Pack for Oracle Utilities User's Guide	User (Developer)

System Requirements

Note: See the *Oracle Flow Builder User's Guide* for the system requirements and certified platform details for Oracle Flow Builder.

The following table provides the browser, operating system, and database combination details for which this Oracle Functional Testing Advanced Pack for Oracle Utilities release has been certified.

System/Software	Requirement
Browser	Firefox 38ESR
Operating System (Client Admin)	Windows 7 (64-bit)
Operating System (Server)	Oracle Linux 6.5 (64-bit)
Chipset	x86_64
Oracle Application Testing Suite (OATS) OpenScript	12.5.0.2
Database	Oracle Database 11.2.0.3 Enterprise Edition
Oracle Flow Builder (OFB)	12.5.0.2 (Patch 21946302)

Supported Oracle Utilities Products

Test accelerators for the following Oracle Utilities products are provided by this Oracle Functional Testing Advanced Pack for Oracle Utilities release.

Product	Version
Oracle Real-Time Scheduler	2.2.0.3
Oracle Utilities Mobile Workforce Management	2.2.0.3
Oracle Utilities Customer Care and Billing	2.5.0.1
Oracle Utilities Work and Asset Management	2.1.0.0

Prerequisites

The following table provides the prerequisite software details to install Oracle Functional Testing Advanced Pack for Oracle Utilities in the respective machine categories:

Machine Category	Requirement
Prerequisite Software (Server)	Oracle Flow Builder 12.5.0.2 (Patch 21946302)
	Oracle Database 11.2.0.3 Enterprise Edition
Prerequisite Software (Client Admin)	Oracle Database Client 11.2.0.3
Prerequisite Software (Client Admin)	Oracle JDK 1.70+

Note: See the *Oracle Flow Builder User's Guide* for steps about how to install Oracle Flow Builder and its prerequisite software.

Note: Set the database connection pool size (recommended) to 150 or higher, using the WebLogic console. Below is the pseudo format of the URL to access the WebLogic console. See [Appendix B: Database Connection Pool](#) for detailed steps.

http://<OFB_HOST>:<OFB_ADMIN_PORT>/console

Installing Oracle Functional Testing Advanced Pack for Oracle Utilities

This section provides instructions for installing Oracle Functional Testing Advanced Pack for Oracle Utilities and the post-installation checklist. It includes the following:

- [Extracting OFTAPOU Packages](#)
- [Installing Components and Flows](#)
- [Post-Installation Tasks](#)
- [Initial Setup for Administrators](#)

Extracting OFTAPOU Packages

Note: Ensure that the prerequisite software is successfully installed before proceeding with the steps below.

To install the product successfully, follow these steps:

1. Download the Oracle Functional Testing Advanced Pack for Oracle Utilities v5.0.0 Multiplatform part from Oracle Software Delivery Cloud (OSDC) (<https://edelivery.oracle.com/>) onto a Windows desktop.
2. Create the <TEMPDIR> directory.
3. Extract the zip file into the <TEMPDIR> created in the above step.
4. Execute `java -jar <TEMPDIR>\oftapou-5.0_generic.jar`. The **Oracle Universal Installer Welcome** screen is displayed.

Note: Ensure that the Java version used is 1.70+.

5. Click **Next**. The **Specify Home Details** screen is displayed.
6. Enter the **Name** and **Path** details as below:

Name: <Name of the directory where Oracle Functional Testing Advanced Pack for Oracle Utilities should be installed>

Path: <Path where the installation directory should be created>

Note: This directory is referred to in the following sections as <OFTAPOU_HOME>.

7. Click **Next**. The **Summary** screen is displayed.
8. Verify the details (global settings, product languages, space requirements, etc), and then click **Install**.
9. Click **Next**, and then click **Finish**.

This completes the setup process.

Installing Components and Flows

This section provides the steps to install the components and flows for Mobile Workforce Management, Customer Care and Billing, and Work and Asset Management. It includes:

- [Installing Core Components and Flows](#)
- [Installing Components and Flows for Mobile Workforce Management \(v2.2.0.3\)](#)
- [Installing Components and Flows for Customer Care and Billing \(v2.5.0.1\)](#)
- [Installing Components and Flows for Work and Asset Management \(v2.1.0.0\)](#)

Installing Core Components and Flows

This section provides information about installing the core components and flows. It includes:

- [Copying Function Library Files to Oracle Flow Builder Server](#)
- [Importing Core Function Libraries, Components, and Flows](#)

Copying Function Library Files to Oracle Flow Builder Server

To copy the core function library files to Oracle Flow Builder server, follow these steps:

1. Copy the <OFTAPOU_HOME>\OatsouLibrary\modules\oatsou-function-libs\Core\OUAFUILIB directory to <OFB-Install-Folder>/data/function-libraries/outsp-function-libs/Core.

2. Copy the <OFTAPOU_HOME>\OatsouLibrary\modules\oatsou-function-libs\MWM directory to <OFB-Install-Folder>/data/function-libraries/outsp-function-libs/.
3. Copy the <OFTAPOU_HOME>\OatsouLibrary\modules\oatsou-function-libs\CCB directory to <OFB-Install-Folder>/data/function-libraries/outsp-function-libs/.
4. Copy the <OFTAPOU_HOME>\OatsouLibrary\modules\oatsou-function-libs\WAM directory to <OFB-Install-Folder>/data/function-libraries/outsp-function-libs/WAM.

Note: Ensure that the directories and their content under <OFB-Install-Folder>/data/function-libraries/outsp-function-libs have the same file permissions, owner as remaining Oracle Flow Builder directories.

Importing Core Function Libraries, Components, and Flows

After installing Oracle Functional Testing Advanced Pack for Oracle Utilities, perform the following steps:

1. Login to any SQL client (sqlplus or SQLDeveloper, for example) as OFB user.
2. Execute the following script:

```
<OFTAPOU_HOME\OatsouLibrary\modules\sqls\OUAF50_FuncLibrary_Metad
ta.sql
```

3. Commit the sql changes.
4. Import the <OFTAPOU_HOME>\OatsouLibrary\modules\exports\Core\OUAF50_PACK.zip.

See the [Importing Components and Flows into Oracle Flow Builder](#) section for detailed steps to import components and flows into Oracle Flow Builder.

Installing Components and Flows for Mobile Workforce Management (v2.2.0.3)

Important: Ensure to execute the steps in the [Installing Core Components and Flows](#) section.

After installing Oracle Functional Testing Advanced Pack for Oracle Utilities, perform the following steps:

1. Login to any SQL client (sqlplus, for example) as “OFB” user.
2. Execute the following script:

```
<OFTAPOU_HOME\OatsouLibrary\modules\sqls\MWM2203_FuncLibrary_Metad
ata.sql
```

3. Commit the sql changes.
4. Import the <OFTAPOU_HOME>\OatsouLibrary\modules\exports\MWM\MWM2203_PACK.zip.

See the [Importing Components and Flows into Oracle Flow Builder](#) section for detailed steps to import components and flows into Oracle Flow Builder.

Installing Components and Flows for Customer Care and Billing (v2.5.0.1)

Important: Ensure to execute the steps in the [Installing Core Components and Flows](#) section.

After installing Oracle Functional Testing Advanced Pack for Oracle Utilities, perform the following steps:

1. Login to any SQL client (sqlplus, for example) as “OFB” user.
2. Execute the following script for the intended Oracle Utilities product version:

```
<OFTAPOU_HOME\OatsouLibrary\modules\sqls\CCB2501_FuncLibrary_Metad
ata.sql
```

3. Commit the sql changes.
4. Import the
<OFTAPOU_HOME>\OatsouLibrary\modules\exports\CCB\CCB2501_PACK.zip file.

See the [Importing Components and Flows into Oracle Flow Builder](#) section for detailed steps to import components and flows into Oracle Flow Builder.

Installing Components and Flows for Work and Asset Management (v2.1.0.0)

Important: Execute the steps in the [Installing Core Components and Flows](#) section prior to completing these steps.

After installing Oracle Functional Testing Advanced Pack for Oracle Utilities, perform the following steps:

1. Login to any SQL client (sqlplus, for example) as “OFB” user.
2. Execute the following script for the intended Oracle Utilities product version:

```
<OFTAPOU_HOME\OatsouLibrary\modules\sqls\WAM210_FuncLibrary_Metada
ta.sql
```

3. Commit the sql changes.
4. Import the
<OFTAPOU_HOME>\OatsouLibrary\modules\exports\WAM\WAM210_PACK.zipfile.

See the [Importing Components and Flows into Oracle Flow Builder](#) section for detailed steps to import components and flows into Oracle Flow Builder.

Importing Components and Flows into Oracle Flow Builder

To import the components and flows into Oracle Flow Builder, follow these steps:

1. Open the Firefox browser.
2. Navigate to the **Oracle Flow Builder Login** page (the URL would have been provided during the Oracle Flow Builder installation process and is usually in the http://<server>:9090/ofb format).
3. Login as an Administrator using the credentials provided during the Oracle Flow Builder installation.
4. Once the login is successful, the **Home** page is displayed.
5. On the **Administration** tab, navigate to **Tools** and then click **Import**.
6. On the **Import** page, click **Choose File**.
7. Navigate to the components/flows pack and select the pack.

For example: The components/flows pack for Oracle Utilities Work and Asset Management is named as WAM210_PACK.zip.

8. Click **Save**.
9. After the import process is complete, log out from Oracle Flow Builder.

Post-Installation Tasks

Oracle Functional Testing Advanced Pack for Oracle Utilities components and flows require Oracle Utilities' application specific metadata to exist in the environment on which the automation test cases are executed. This metadata includes automation specific Business Objects, Business Scripts, Data Areas, and Web Services.

This section includes the tasks to be performed after installing the components and flows:

- [Modifying the WebLogic Startup Script](#)
- [Importing Application Specific Metadata Bundles](#)
- [Importing Inbound Web Service Bundles](#)
- [Deploying Inbound Web Services](#)
- [Applying Prerequisite Patches](#)

Modifying the WebLogic Startup Script

To modify the WebLogic Startup script, follow these steps:

1. Login to the server hosting the Oracle Utilities application.
2. Switch to the Oracle Utilities application environment and execute the following command:


```
configureEnv.sh -a
```
3. From the menu, select **51**.
4. Modify the **Web Application Additional Options** parameter as follows:


```
Djavax.xml.soap.MessageFactory=com.sun.xml.internal.messaging.saaj
      .soap.ver1_1.SOAPMessageFactory1_1Impl
```
5. Update **Additional Runtime Classpath** with as follows:


```
$WL_HOME/./oracle_common/modules/com.sun.xml.messaging.saaj.saaj-
      impl_1.3.jar
```
6. Enter 'P' to process and save the changes.
7. Restart the environment to apply the modifications.

Importing Application Specific Metadata Bundles

To import metadata bundles into an Oracle Utilities application, follow these steps:

1. Login to the Oracle Utilities Application. (For example: Oracle Utilities Mobile Workforce Management application)
2. Open the application specific IWS bundle located at <OFTAPOU-HOME>\OatsouLibrary\modules\webservices\For example: Open CCB2501_BO.xml and copy the content.
3. Navigate to **Admin > B > Bundle Import > Add**.
4. Provide the **External Reference** and **Detailed Description**.
5. Paste the xml content from Step 2 into the **Bundle Details** field.
6. Click **Save**.
7. On the **Bundle Import** page, check if the status of the bundle is **'Pending'**.

8. Click **Apply**.

The metadata bundle is imported successfully. The **Bundle Import** screen displays the status as **'Applied'**.

Importing Inbound Web Service Bundles

To import the Inbound Web Service bundles into an Oracle Utilities application, follow these steps:

1. Login to the Oracle Utilities Application. (For example: Oracle Utilities Mobile Workforce Management application)
2. Open the application specific IWS bundle located at <OFTAPOU-HOME>\OatsouLibrary\modules\webservices\

For example: Open MWM2203_IWS.xml and copy the content.

3. Navigate to **Admin > B > Bundle Import > Add**.
4. Provide the **External Reference** and **Detailed Description**.
5. Paste the xml content from Step 2 into the **Bundle Details** field.
6. Click **Save**.
7. On the **Bundle Import** page, check if the status of the bundle is **'Pending'**.
8. Click **Apply**.

The metadata bundle is imported successfully. The Bundle Import screen displays the status as **'Applied'**.

Deploying Inbound Web Services

To deploy the Inbound Web Service bundles, follow these steps:

Important: Ensure that the application specific Inbound Web Services bundle is imported successfully into the Oracle Utilities application.

1. Login to the Oracle Utilities application where the Inbound Web Services have to be deployed.
2. Navigate to **Admin > I > Inbound Web Service Deployment**. The Inbound Web Services imported successfully into the application are displayed with the **'Needs Deploy'** status.
3. Click **Deploy** to deploy the services.
4. Click **Refresh** to view the deployment status.

The Inbound Web Services should be deployed before they can be used for automation.

Applying Prerequisite Patches

There are certain Oracle Utilities application specific patches that should be installed in the respective application before executing any automation flows in it.

See [Appendix B: Prerequisite Patches](#) for details about patches.

Initial Setup for Administrators

See the **Initial Setup for Administrators** section in the *Oracle Flow Builder User's Guide* for setup details.

To access the Oracle Functional Testing Advanced Pack for Oracle Utilities application, users should register. See the **Registering User Credentials** section in the *Oracle Flow Builder User's Guide* for more details on how to register.

Appendix A

Database Connection Pool

To increase the maximum capacity of the database connection pool, follow these steps:

1. Login to Oracle Functional Testing Advanced Pack for Oracle Utilities WebLogic console with 'OFB' user (use admin password).
2. On the **Home Page**, navigate to **Domain Configurations > Service > Data Sources**.
3. On the **Summary of JDBC Data Sources** page, click **KWDT Data Source**.
4. On the **Connection Pool** tab, increase the **Maximum Capacity** from default value '15' to a desired value (For example: 150)
5. Click **Save** to save the changes.

Appendix B

Prerequisite Patches

Oracle Utilities application specific patches should be installed in the respective application before executing any automation flows in it.

The patches are listed below:

Bug Fix	Description
Oracle Utilities Mobile Workforce Management (v2.2.0.3)	
21645604	To enable Inbound Web Services to be bundled
21909965	To add Physical BO for ToDo Role
Oracle Utilities Customer Care and Billing (v2.5.0.1)	
21518735	To enable Inbound Web Services to be bundled
21647369	To add Physical BO for ToDo Role
Oracle Utilities Work and Asset Management (v2.1.0.0)	
21653239	To enable Inbound Web Services to be bundled
21879998	To add Physical BO for ToDo Role