

# **Oracle Utilities Work and Asset Management**

Quick Install Guide

Release 2.1.1 Service Pack 1

**E69056-03**

November 2016

Oracle Utilities Work and Asset Management Quick Install Guide for Release 2.1.1 Service Pack 1

Copyright © 2000, 2016 Oracle and/or its affiliates. All rights reserved.

This software and related documentation are provided under a license agreement containing restrictions on use and disclosure and are protected by intellectual property laws. Except as expressly permitted in your license agreement or allowed by law, you may not use, copy, reproduce, translate, broadcast, modify, license, transmit, distribute, exhibit, perform, publish, or display any part, in any form, or by any means. Reverse engineering, disassembly, or decompilation of this software, unless required by law for interoperability, is prohibited.

The information contained herein is subject to change without notice and is not warranted to be error-free. If you find any errors, please report them to us in writing.

If this is software or related documentation that is delivered to the U.S. Government or anyone licensing it on behalf of the U.S. Government, then the following notice is applicable:

U.S. GOVERNMENT END USERS: Oracle programs, including any operating system, integrated software, any programs installed on the hardware, and/or documentation, delivered to U.S. Government end users are "commercial computer software" pursuant to the applicable Federal Acquisition Regulation and agency-specific supplemental regulations. As such, use, duplication, disclosure, modification, and adaptation of the programs, including any operating system, integrated software, any programs installed on the hardware, and/or documentation, shall be subject to license terms and license restrictions applicable to the programs. No other rights are granted to the U.S. Government.

This software or hardware is developed for general use in a variety of information management applications. It is not developed or intended for use in any inherently dangerous applications, including applications that may create a risk of personal injury. If you use this software or hardware in dangerous applications, then you shall be responsible to take all appropriate fail-safe, backup, redundancy, and other measures to ensure its safe use. Oracle Corporation and its affiliates disclaim any liability for any damages caused by use of this software or hardware in dangerous applications.

Oracle and Java are registered trademarks of Oracle and/or its affiliates. Other names may be trademarks of their respective owners.

Intel and Intel Xeon are trademarks or registered trademarks of Intel Corporation. All SPARC trademarks are used under license and are trademarks or registered trademarks of SPARC International, Inc. AMD, Opteron, the AMD logo, and the AMD Opteron logo are trademarks or registered trademarks of Advanced Micro Devices. UNIX is a registered trademark of The Open Group.

This software or hardware and documentation may provide access to or information about content, products, and services from third parties. Oracle Corporation and its affiliates are not responsible for and expressly disclaim all warranties of any kind with respect to third-party content, products, and services unless otherwise set forth in an applicable agreement between you and Oracle. Oracle Corporation and its affiliates will not be responsible for any loss, costs, or damages incurred due to your access to or use of third-party content, products, or services, except as set forth in an applicable agreement between you and Oracle.

---

---

# Contents

<b>Preface</b> .....	<b>i-i</b>
Related Documents.....	i-i
Conventions.....	i-i
Additional Resources.....	i-ii
<b>Chapter 1</b>	
<b>Overview</b> .....	<b>1-1</b>
Product Overview.....	1-1
Installation Overview.....	1-2
Installation Types.....	1-3
Package Contents.....	1-4
Documentation.....	1-4
Installation Packages.....	1-4
<b>Chapter 2</b>	
<b>Supported Platforms and Hardware Requirements</b> .....	<b>2-1</b>
Operating Systems and Application Servers.....	2-1
Hardware Requirements.....	2-2
Application Server Memory Requirements.....	2-2
Additional Notes on Supported Platforms.....	2-3
Support for Software Patches and Upgrades.....	2-3
<b>Chapter 3</b>	
<b>Planning the Installation</b> .....	<b>3-1</b>
Prerequisite Software List.....	3-1
Prerequisite Software for Database Server.....	3-1
Prerequisite Software for Application Server.....	3-1
Web Browser Requirements.....	3-2
Installing Prerequisite Software.....	3-2
Readiness Checklist.....	3-2
<b>Chapter 4</b>	
<b>Installing Oracle Utilities Work and Asset Management- Initial Installation</b> .....	<b>4-1</b>
Initial Installation Procedure.....	4-1
Database Component Installation.....	4-1
Application Components Installation.....	4-1
<b>Chapter 5</b>	
<b>Upgrading Oracle Utilities Work and Asset Management</b> .....	<b>5-1</b>
Upgrade Procedure.....	5-1
Database Component Upgrade.....	5-1
Application Components Upgrade.....	5-1

---

**Chapter 6**

**Installing Oracle Utilities Work and Asset Management -Demo Installation..... 6-1**

- Demo Installation Procedure..... 6-1
- Database Component Installation ..... 6-1
- Application Components Installation..... 6-1

---

---

# Preface

This guide provides an overview of installing Oracle Utilities Work and Asset Management Release 2.1.1 Service Pack 1 and is intended for anyone interested in the process of installing Oracle Utilities Work and Asset Management.

## Related Documents

For more information, refer to the following documents for this release:

### Installation Guides

- Oracle Utilities Work and Asset Management Release Notes
- Oracle Utilities Work and Asset Management Quick Install Guide
- Oracle Utilities Work and Asset Management Installation Guide
- Oracle Utilities Work and Asset Management DBA Guide
- Oracle Utilities Work and Asset Management Licensing Information User Manual

### User Guides

- Oracle Utilities Work and Asset Management and Oracle Utilities Operational Device Management Business User's Guide
- Oracle Utilities Work and Asset Management and Oracle Utilities Operational Device Management Administrative User Guide

### Supplemental Documents

- Oracle Utilities Work and Asset Management Server Administration Guide
- Oracle Utilities Work and Asset Management Security Guide

## Conventions

The following text conventions are used in this document:

Convention	Meaning
<b>boldface</b>	Boldface type indicates graphical user interface elements associated with an action, or terms defined in text or the glossary.
<i>italic</i>	Italic type indicates book titles, emphasis, or placeholder variables for which you supply particular values.

<b>Convention</b>	<b>Meaning</b>
monospace	Monospace type indicates commands within a paragraph, URLs, code in examples, text that appears on the screen, or text that you enter.

## Additional Resources

To contact Oracle support, visit the Oracle Support Web site at:

<http://www.oracle.com/support/index.html>

# Chapter 1

## Overview

This chapter provides an overview of the Oracle Utilities Work and Asset Management product and installation process.

Please refer to the *Business User's Guide* and *Release Notes* for a detailed overview of the business processes and functionality offered by Oracle Utilities Work and Asset Management.

This chapter includes the following sections:

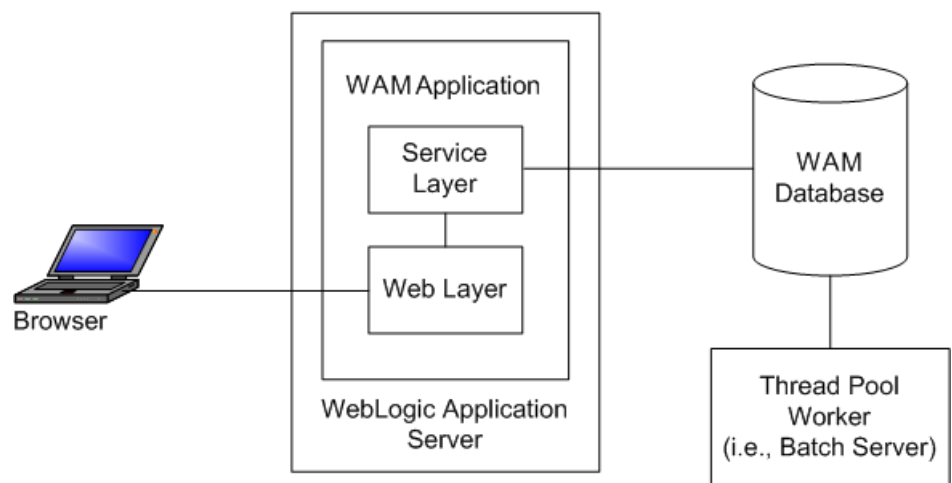
- [Product Overview](#)
- [Installation Overview](#)
- [Installation Types](#)

## Product Overview

Oracle Utilities Work and Asset Management is housed in the Oracle WebLogic J2EE Web Application Server. The system is comprised of two layers: web and service. The application is accessed by using a browser to connect to the web layer.

Oracle Utilities Work and Asset Management data is stored in the Oracle Database. For processing large amounts of data, the system provides a thread pool worker (batch server) which interacts with the same database.

The following figure provides an overview of the Oracle Utilities Work and Asset Management product:

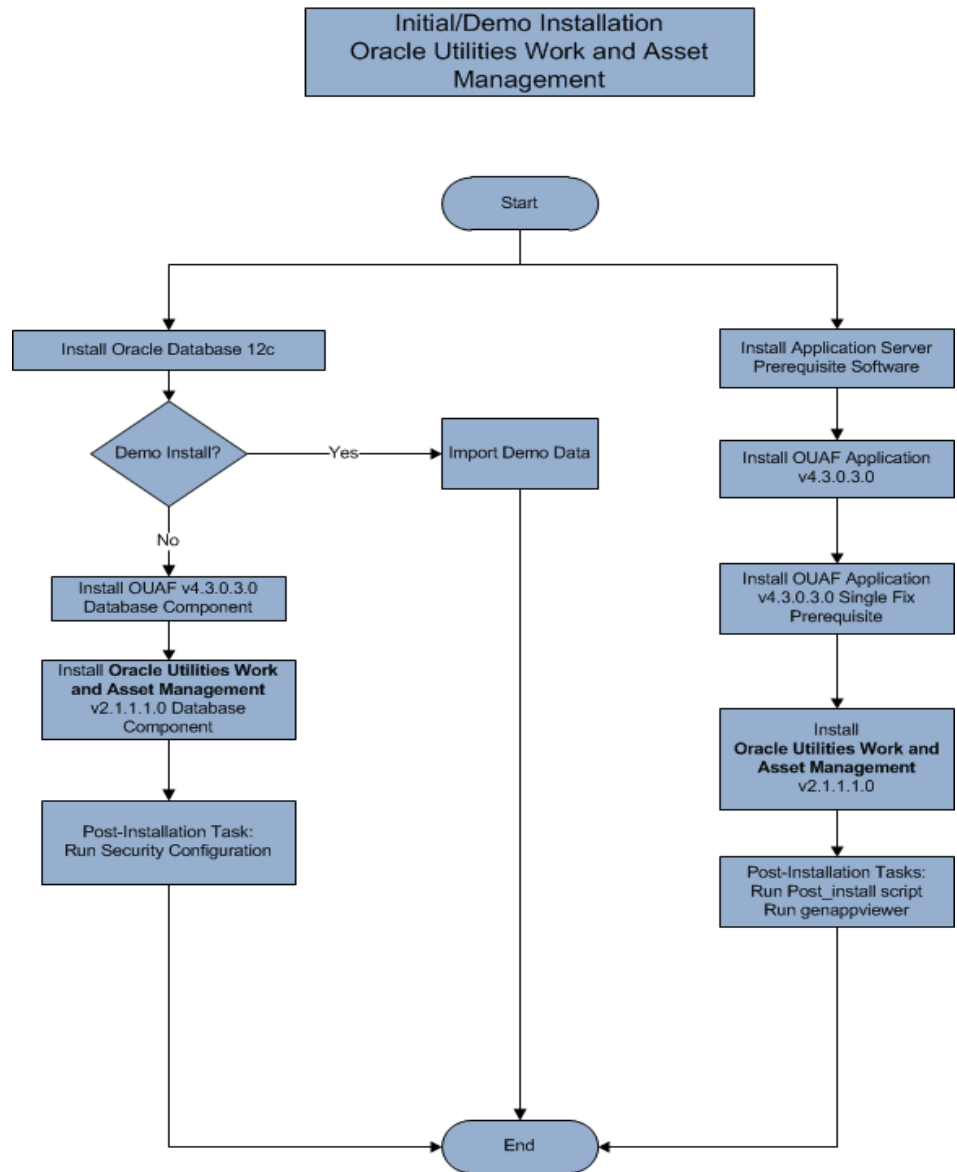


Refer to the *Business User's Guide* for information about the features and functionality in this release.

## Installation Overview

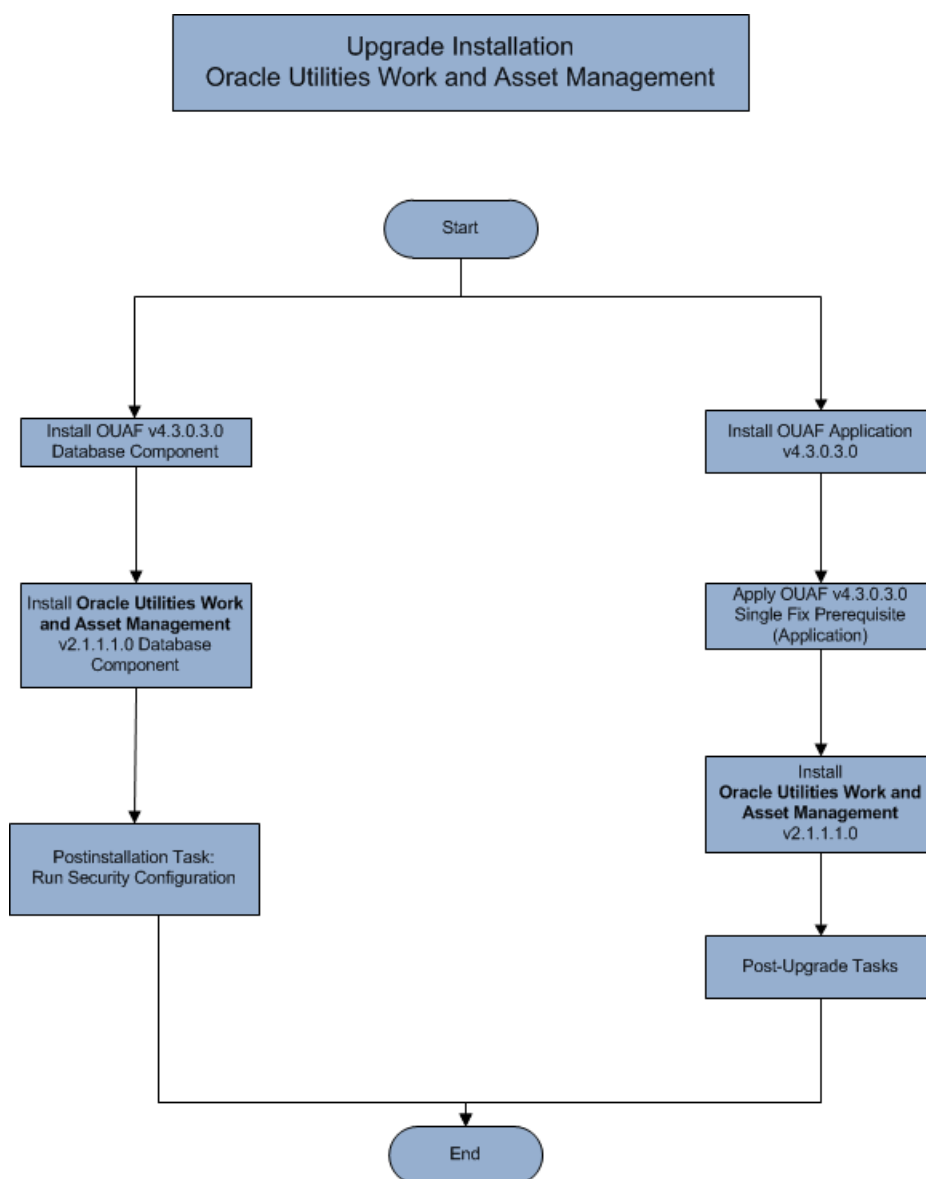
Oracle Utilities Work and Asset Management consists of several components, all of which need to be installed for a successful installation. Certain prerequisite software may need to be installed before installing each of these components.

The following figure details the workflow for the initial and demo installation process.





The following figure details the workflow for the upgrade installation process.



Refer to the [Prerequisite Software List](#) for the list of prerequisite software for each component.

Refer to the [Installation Types](#) section for the list of components comprising the product.

## Installation Types

The first step in the installation procedure is to determine the installation type that meets your business requirements. The following are the possible installation types:

- **Initial Installation** - installing Oracle Utilities Work and Asset Management v2.1.1.1.0 from scratch - a base installation, typically used for a production environment
- **Upgrade Installation** - an upgrade installation from version 2.1.1 to version 2.1.1.1.0
- **Demo Installation** - a base installation with pre-populated demo data, typically used for demonstration or training purposes

---

# Package Contents

The following documentation and installation packages are part of the product package.

This section includes information about:

- [Documentation](#)
- [Installation Packages](#)

## Documentation

### Installation Guides

- Oracle Utilities Work and Asset Management Release Notes
- Oracle Utilities Work and Asset Management Quick Install Guide
- Oracle Utilities Work and Asset Management Installation Guide
- Oracle Utilities Work and Asset Management DBA Guide
- Oracle Utilities Work and Asset Management Licensing Information User Manual

### User Guides

- Oracle Utilities Work and Asset Management and Oracle Utilities Operational Device Management Business User's Guide
- Oracle Utilities Work and Asset Management and Oracle Utilities Operational Device Management Administrative User Guide

### Supplemental Documents

- Oracle Utilities Work and Asset Management Server Administration Guide
- Oracle Utilities Work and Asset Management Security Guide

## Installation Packages

- Oracle Utilities Work and Asset Management v2.1.1.1.0 Release Notes.zip
- Oracle Utilities Work and Asset Management v2.1.1.1.0 Install Documentation.zip
- Oracle Utilities Work and Asset Management v2.1.1.1.0 Quick Install Guide.zip
- Oracle Utilities Work and Asset Management v2.1.1.1.0 User Documentation.zip
- Oracle Utilities Work and Asset Management v2.1.1.1.0 Supplemental Documentation.zip
- Oracle Utilities Work and Asset Management v2.1.1.1.0 Multiplatform.zip
- Oracle Utilities Work and Asset Management v2.1.1.1.0 Oracle Database Multiplatform.zip
- Oracle Utilities Application Framework v4.3.0.3.0 Multiplatform.zip
- Oracle Utilities Application Framework v4.3.0.3.0 Single Fix Prerequisite Rollup for Oracle Utilities Work and Asset Management v2.1.1.1.0.zip
- Oracle Utilities Work and Asset Management v2.1.1.1.0 Reports.zip
- Oracle Utilities Work and Asset Management v2.1.1.1.0 Esri Integration.zip

# Chapter 2

## Supported Platforms and Hardware Requirements

This installation is certified to operate on many operating system, application server and database server combinations. The following sections provide information on the supported platforms and requirements, including information on:

- [Operating Systems and Application Servers](#)
- [Hardware Requirements](#)
- [Application Server Memory Requirements](#)
- [Additional Notes on Supported Platforms](#)
- [Support for Software Patches and Upgrades](#)

### Operating Systems and Application Servers

The following table details the operating system and application server combinations on which this version of Oracle Utilities Work and Asset Management is supported.

Operating System and Web Browser (Client)	Operating System (Server)	Chipset	Application Server	Database
	AIX 7.1 TL1 or 7.2 TLO (64-bit)	Power 64-bit	WebLogic 12.1.3.0+* WebSphere (Basic)/ WebSphere (ND) 8.5.5	Oracle Database 12.1.0.1+
Windows 7, 8.1, 10 (64-bit) (Internet Explorer 11, Firefox ESR 45)	Oracle Enterprise Linux 6.x or 7.x (64-bit)	x86_64	WebLogic 12.1.3.0+*	Oracle Database 12.1.0.1+
	Red Hat Enterprise Linux 6.x or 7.x (64-bit)			
	Oracle Solaris 11 (64-bit)	SPARC 64-bit	WebLogic 12.1.3.0+*	Oracle Database 12.1.0.1+

The platforms listed above are current at the time of release. For the most current supported platforms, please refer to Oracle Utilities Product Matrix on My Oracle Support (MOS) Knowledge Article (Doc ID 1454143.1). Please note the following:

- \* A plus sign (+) after the fourth digit in the version number indicates that this and all higher versions of WebLogic are supported. For example, 12.1.3.0+ means that 12.1.3.0 and any higher 12.1.3.x.x versions are supported.

WebLogic 12.1.3 is currently supported for both embedded and native installations. In future releases of the product, using a later version of WebLogic, for example 12.2.\*, embedded installations will not be supported. Only the native installation will be supported.

- \*\* Oracle Utilities Work and Asset Management is tested and supported on the versions of Oracle Linux specified. Because Oracle Linux is 100% userspace-compatible with Red Hat Enterprise Linux, Oracle Utilities Work and Asset Management also is supported on Red Hat Enterprise Linux for this release.

## Hardware Requirements

### Client Side Hardware Requirements

Configuration	Processor	Memory (RAM)	Monitor (Display)
Minimum	1 GHz or faster 64-bit (x64) processor	2 GB	1280x1024
Recommended*	3 GHz or faster 64-bit (x64) processor	4 GB	1280X1024

\* The Recommended configuration supports better performance of the client.

## Application Server Memory Requirements

For each application server environment a minimum of 4 GB of real memory is required, plus 6 GB of swap space.

### Disk Space Requirements

The approximate disk space requirements in a standard installation are as follows:

Location	Size	Usage
Install_dir Location	10 GB minimum	This location is where the application and Framework get installed. Startup, shutdown and other online log files are stored here. The size and space that is used should be monitored because various debugging options can significantly affect the size of log files.
Log Location	5 GB minimum	This location is used for storing batch log files and output from batch jobs. The size of this space should be influenced by which batches are run and how often, and the amount of debugging information that is collected.

Location	Size	Usage
Location of the application web work files on the web servers	5 GB minimum	This location is used by various web server vendors to expand the application. It should be considered when installing these products. Refer to the individual web server documentation to determine the location of the temporary files.
Installation Temporary Area	4 GB	The application gets installed from this location. You need enough space to uncompress the files and install the application.
Oracle data area	4 GB minimum	This location is where the Oracle database data files are stored. The size of this space should be based on the requirements of the production environment. For an initial or demo database install 4 GB should be sufficient.

## Additional Notes on Supported Platforms

### Oracle Database Server

This version of Oracle Utilities Work and Asset Management is certified on Oracle Database Server 12.1.0.1+ on the operating systems listed in the section above. The following versions of the database are supported:

- Oracle Database Enterprise Edition
- Oracle Database Standard Edition

### Oracle VM Support

This version of Oracle Utilities Work and Asset Management is supported on Oracle VM 3.2.0 and 3.3.1 for supported releases of Oracle Linux and Microsoft Windows operating systems.

### Oracle Support Policy on VMWare

Refer to My Oracle Support knowledge base article 249212.1 for Oracle's support policy on VMWare.

## Support for Software Patches and Upgrades

Due to the ongoing nature of software improvement, vendors will periodically issue patches and service packs for the operating systems, application servers and database servers on top of specific versions that Oracle products have already been tested against.

If it is necessary to apply an upgrade, please do so in a test environment that is running on the same platform as your production environment prior to updating the production environment itself.

The exception from this rule is Hibernate software version 4.1.0. This version should not be upgraded.

Always contact Oracle Support prior to applying vendor updates that do not guarantee backward compatibility.

# Chapter 3

---

## Planning the Installation

This chapter provides information for planning an Oracle Utilities Work and Asset Management installation, including:

- [Prerequisite Software List](#)
- [Installing Prerequisite Software](#)
- [Readiness Checklist](#)

### Before Installation

Refer to My Oracle Support for up-to-date additional information about installing Oracle Utilities Work and Asset Management.

## Prerequisite Software List

Before you install Oracle Utilities Work and Asset Management, you must install prerequisite software.

Refer to the respective installation documentation of the software for instructions on downloading and installing.

### Prerequisite Software for Database Server

The prerequisite software for the database component of Oracle Utilities Work and Asset Management is as follows:

- Oracle Database Server 12.1.0.1+ - This is required for installing the database component. The following versions of the database server are supported:
  - Oracle Database Enterprise Edition
  - Oracle Database Standard Edition

### Prerequisite Software for Application Server

The prerequisite software for the application component of Oracle Utilities Work and Asset Management is as follows:

- Oracle Database 12c Release 1 Client
- Java 8 Update 92+ (64-bit)
- Oracle Web Logic 12c (12.1.3.0+)
- Hibernate 4.1.0 FINAL

---

## Web Browser Requirements

The following operating system / web browser software are supported:

- Windows 7, 8.1, 10 with Internet Explorer 11, Firefox ESR 45

## Installing Prerequisite Software

Refer to the section “**Installing Prerequisite Software**” in the *Oracle Utilities Work and Asset Management Installation Guide* for detailed instructions on installing the prerequisite software.

## Readiness Checklist

The following checklist will guide you through the installation process. The details for each step are presented in the *Oracle Utilities Work and Asset Management Installation Guide*.

1. Confirm recommended hardware is ready. Refer to [Supported Platforms and Hardware Requirements](#) for more details.
2. Install prerequisite software, refer to [Prerequisite Software List](#) for more details.
3. Ensure that you have downloaded the Oracle Utilities Work and Asset Management components from My Oracle Support (<https://support.oracle.com/>) or from the Oracle Software Delivery Cloud.
4. Go through the installation and configuration worksheets from the installation guide to understand the configuration menu.
5. Determine type of the installation and follow detailed instructions mentioned in *Oracle Utilities Work and Asset Management Installation Guide* for each of these types.
  - **Initial** Installation
  - **Upgrade** Installation
  - **Demo** Installation
6. Perform post-installation tasks (as applicable).
7. Install optional products (BI Publisher, Esri Arc GIS Server).

*Note: For Esri integration functionality, you must purchase Esri ArcGIS Server software or online cloud subscription from Esri.*

For more information, refer to the instructions in *Oracle Utilities Work and Asset Management Installation Guide*.

# Chapter 4

---

## Installing Oracle Utilities Work and Asset Management- Initial Installation

This chapter provides an overview of installing Oracle Utilities Work and Asset Management v2.1.1 Service Pack 1 as a new installation.

### Before You Install

Refer to My Oracle Support for up-to-date additional information on Oracle Utilities Work and Asset Management.

### Initial Installation Procedure

The initial installation procedure consists of:

- [Database Component Installation](#)
- [Application Components Installation](#)

### Database Component Installation

Installation of the database component of Oracle Utilities Work and Asset Management must be complete before you can proceed with the following sections. Refer to the chapter “**Installing the Oracle Utilities Work and Asset Management Database- Initial Installation**” of the *Oracle Utilities Work and Asset Management Database Administrator’s Guide*, which provides instructions on installing the database component.

### Application Components Installation

Refer to the chapter “**Oracle Utilities Work and Asset Management Database - Initial Installation**” of the *Oracle Utilities Work and Asset Management Installation Guide*, which provides instructions on installing the application components.



# Chapter 5

---

## Upgrading Oracle Utilities Work and Asset Management

This chapter provides an overview of upgrading Oracle Utilities Work and Asset Management from v2.1.1 to v2.1.1.1.0.

### Before You Upgrade

**Note:** Before you upgrade to Oracle Utilities Work and Asset Management 2.1.1 Service Pack 1, you must have version Oracle Utilities Work and Asset Management v2.1.1 installed on your system.

Review the list of operating system, application server and database server combinations that Oracle Utilities Work and Asset Management is certified to operate on, in the chapter titled [Supported Platforms and Hardware Requirements](#).

For further assistance, contact My Oracle Support before you upgrade.

## Upgrade Procedure

The initial installation procedure consists of:

- [Database Component Upgrade](#)
- [Application Components Upgrade](#)

## Database Component Upgrade

Upgrade of the database component of Oracle Utilities Work and Asset Management must be complete before you can proceed with the following sections. Refer to the chapter “**Upgrading the Oracle Utilities Work and Asset Management Database**” of the *Oracle Utilities Work and Asset Management Database Administrator’s Guide*, which provides instructions on upgrading the database component.

## Application Components Upgrade

To proceed with upgrading to the Service Pack 1 of Oracle Utilities Work and Asset Management (v2.1.1.1.0) follow instructions as detailed in the chapter “**Upgrading Oracle Utilities Work and Asset Management**” of the *Oracle Utilities Work and Asset Management Installation Guide*.

# Chapter 6

---

## Installing Oracle Utilities Work and Asset Management -Demo Installation

This chapter provides an overview of the procedure for setting up an application instance of Oracle Utilities Work and Asset Management which can be used for demonstration or training purposes.

### Before You Install

Refer to My Oracle Support for up-to-date additional information on Oracle Utilities Work and Asset Management.

### Demo Installation Procedure

The demo installation procedure consists of:

- [Database Component Installation](#)
- [Application Components Installation](#)

### Database Component Installation

Installation of the database component of Oracle Utilities Work and Asset Management must be complete before you can proceed with the following sections. Refer to the chapter “**Installing the Oracle Utilities Work and Asset Management Database - Demo Installation**” of the *Oracle Utilities Work and Asset Management Database Administrator’s Guide*, which provides instructions on installing the database component with pre-populated demo data.

### Application Components Installation

Refer to the chapter “**Installing Oracle Utilities Work and Asset Management- Demo Installation**” of the *Oracle Utilities Work and Asset Management Installation Guide*, which provides instructions on installing the application components.