

**Oracle® Hospitality Cruise Shipboard Property
Management**

Seaware User Guide

Release 8.0

F28290-01

February 2020

Copyright ©2020, Oracle and/or its affiliates. All rights reserved.

This software and related documentation are provided under a license agreement containing restrictions on use and disclosure and are protected by intellectual property laws. Except as expressly permitted in your license agreement or allowed by law, you may not use, copy, reproduce, translate, broadcast, modify, license, transmit, distribute, exhibit, perform, publish, or display any part, in any form, or by any means. Reverse engineering, disassembly, or decompilation of this software, unless required by law for interoperability, is prohibited.

The information contained herein is subject to change without notice and is not warranted to be error-free. If you find any errors, please report them to us in writing.

If this software or related documentation is delivered to the U.S. Government or anyone licensing it on behalf of the U.S. Government, then the following notice is applicable:

U.S. GOVERNMENT END USERS: Oracle programs, including any operating system, integrated software, any programs installed on the hardware, and/or documentation, delivered to U.S. Government end users are "commercial computer software" pursuant to the applicable Federal Acquisition Regulation and agency-specific supplemental regulations. As such, use, duplication, disclosure, modification, and adaptation of the programs, including any operating system, integrated software, any programs installed on the hardware, and/or documentation, shall be subject to license terms and license restrictions applicable to the programs. No other rights are granted to the U.S. Government.

This software or hardware is developed for general use in a variety of information management applications. It is not developed or intended for use in any inherently dangerous applications, including applications that may create a risk of personal injury. If you use this software or hardware in dangerous applications, then you shall be responsible to take all appropriate fail-safe, backup, redundancy, and other measures to ensure its safe use. Oracle Corporation and its affiliates disclaim any liability for any damages caused by use of this software or hardware in dangerous applications.

Oracle and Java are registered trademarks of Oracle and/or its affiliates. Other names may be trademarks of their respective owners.

Intel and Intel Xeon are trademarks or registered trademarks of Intel Corporation. All SPARC trademarks are used under license and are trademarks or registered trademarks of SPARC International, Inc. AMD, Opteron, the AMD logo, and the AMD Opteron logo are trademarks or registered trademarks of Advanced Micro Devices. UNIX is a registered trademark of The Open Group.

This software or hardware and documentation may provide access to or information about content, products, and services from third parties. Oracle Corporation and its affiliates are not responsible for and expressly disclaim all warranties of any kind with respect to third-party content, products, and services unless otherwise set forth in an applicable agreement between you and Oracle. Oracle Corporation and its affiliates will not be responsible for any loss, costs, or damages incurred due to your access to or use of third-party content, products, or services, except as set forth in an applicable agreement between you and Oracle.

Contents

- Tables 4**
- Figures 5**
- Preface 6**
 - Audience6
 - Customer Support.....6
 - Documentation.....6
 - Revision History.....6
- Setting up Parameters 7**
 - Location.....7
 - Log Based on the Syn_Operation8

Tables

Table 1 - Log Based on the syn_operation8

Figures

Figure 1 - Refresh Interval Database Parameters Setup.....	7
Figure 2 - XML File Directory Database Parameters Setup	7
Figure 3 - Select the Date Range.....	8
Figure 4 - Activities	8
Figure 5 - Error Message Details	9
Figure 6 - Successfully Extracted	10

Preface

FC Seaware Monitor is a module used in addition to the Seaware integration for Ferry Operations. This module monitors the activities from Oracle Hospitality Cruise (OHC) Shipboard Property management System (SPMS) to Seaware.

Audience

This document is intended for application specialists and users of OHC SPMS.

Customer Support

To contact Oracle Customer Support, access My Oracle Support at the following URL:
<https://support.oracle.com>

When contacting Customer Support, please provide the following:

- Product version and program/module name
- Functional and technical description of the problem (include business impact)
- Detailed step-by-step instructions to re-create
- Exact error message received and any associated log files
- Screen shots of each step you take

Documentation

Oracle Hospitality product documentation is available on the Oracle Help Center at
<http://docs.oracle.com/en/industries/hospitality/cruise.html>

Revision History

Date	Description of Change
February 2020	<ul style="list-style-type: none">• Initial publication

Setting up Parameters

Below are the two (2) parameters needed to set up the Seaware Monitor.

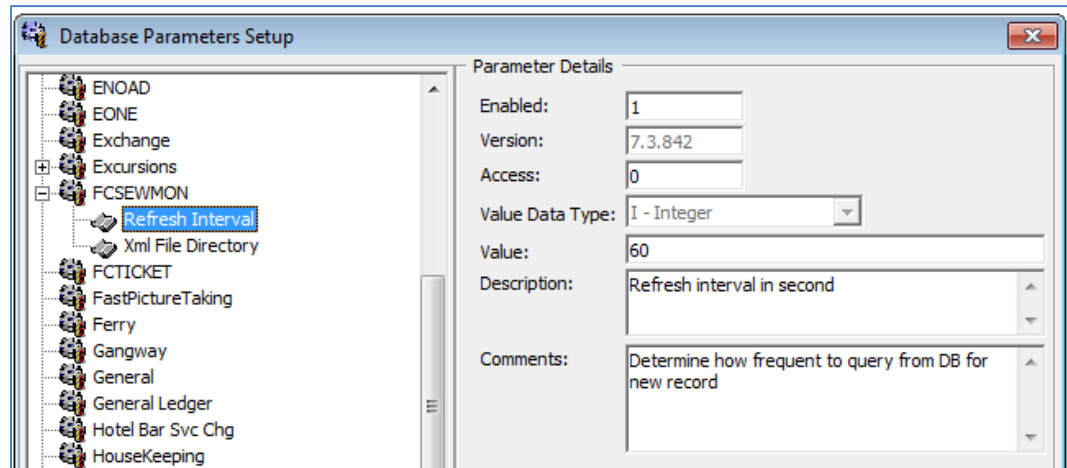


Figure 1 - Refresh Interval Database Parameters Setup

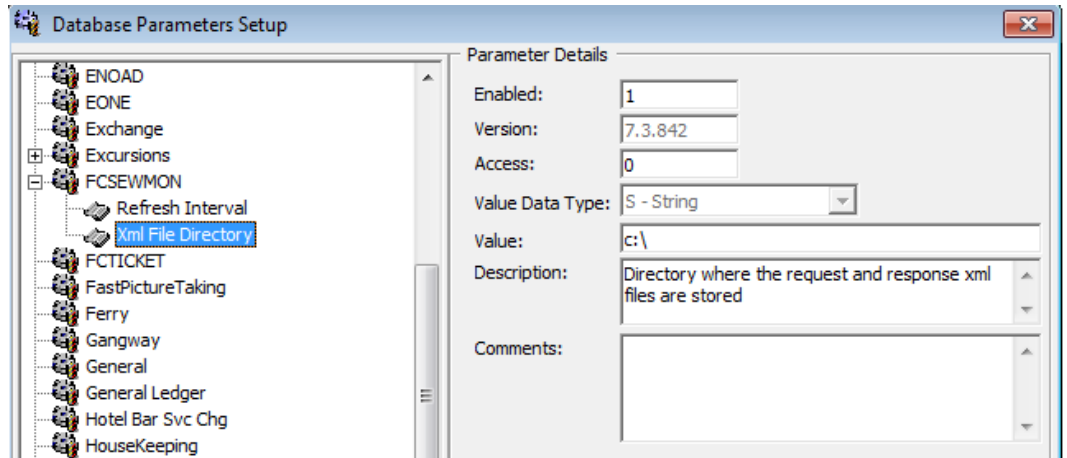


Figure 2 – XML File Directory Database Parameters Setup

Location

The new module OHC Seaware Monitor can be found on the OHC Launch Panel.

1. Double-click to launch the program.

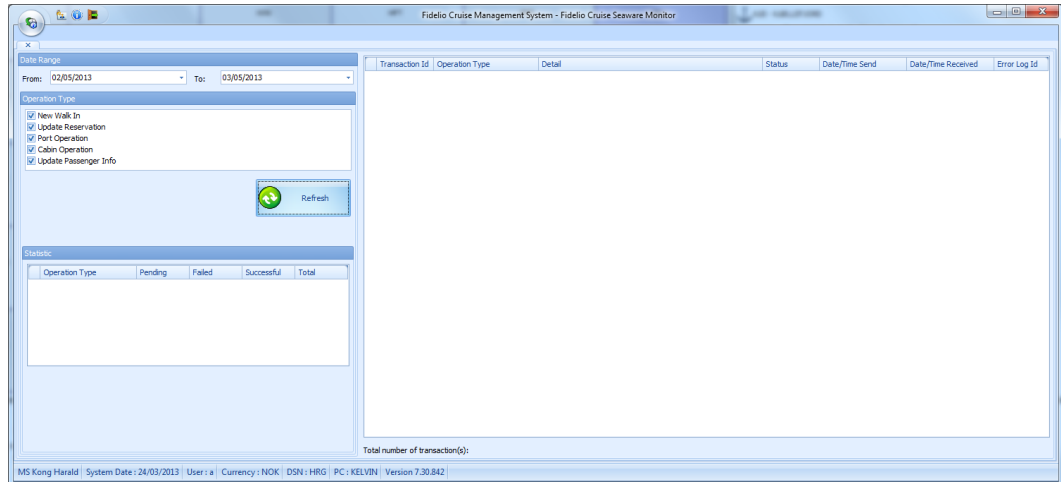


Figure 3 - Select the Date Range

2. Select the date range and then click **Refresh** button.

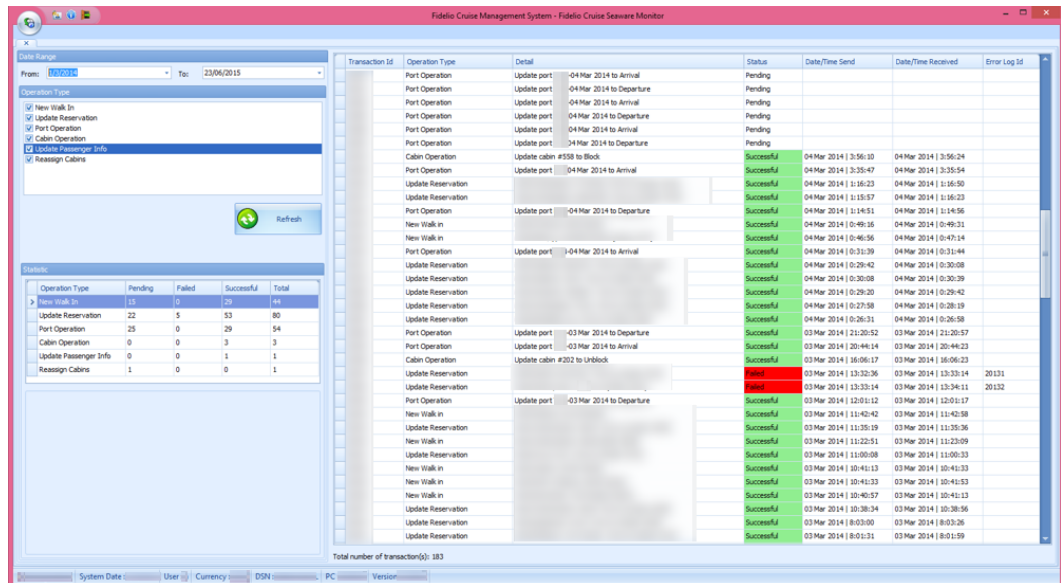


Figure 4 - Activities

3. The Seaware activities are display.

The Pending status refers to the transaction that has not been sent to Seaware for processing. The Successful status refers to transaction that are processed successfully and responded by Seaware. The Failed status refers to the transaction that has been processed but failed after responded by Seaware.

Log Based on the Syn_Operation

Table 1 - Log Based on the syn_operation

Log	Description
1	New reservation

Log	Description
2	Update reservation
3	Port operation
4	Cargo
5	Cabin operation
6	Update Reservation include res_grp
7	Update personal information

Double-click at the failed transaction to view more details

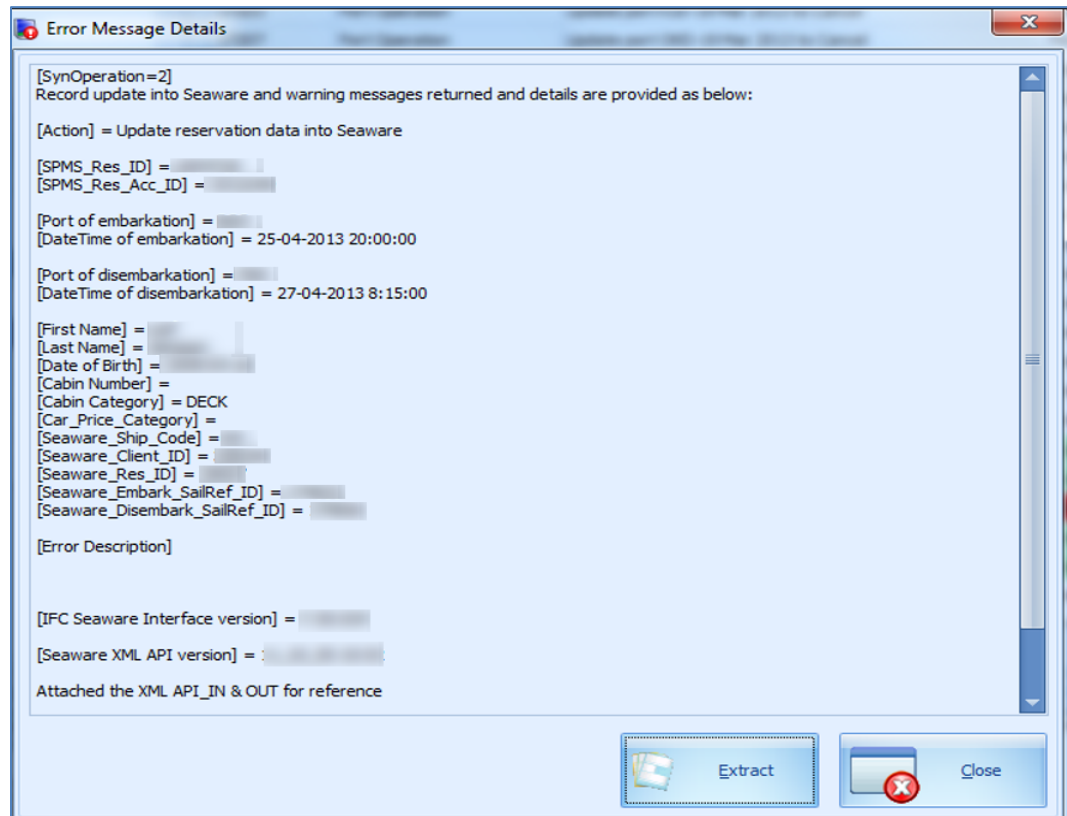


Figure 5 - Error Message Details



NOTE:

The log is store in SEWLOG table.

Click Extract to save the transaction Extensive Markup Language (XML) files to the default save folder on the client Personal Computer (PC).

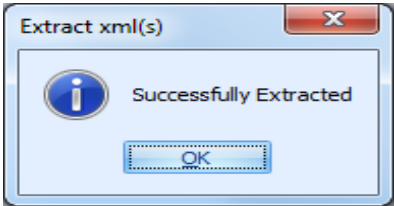
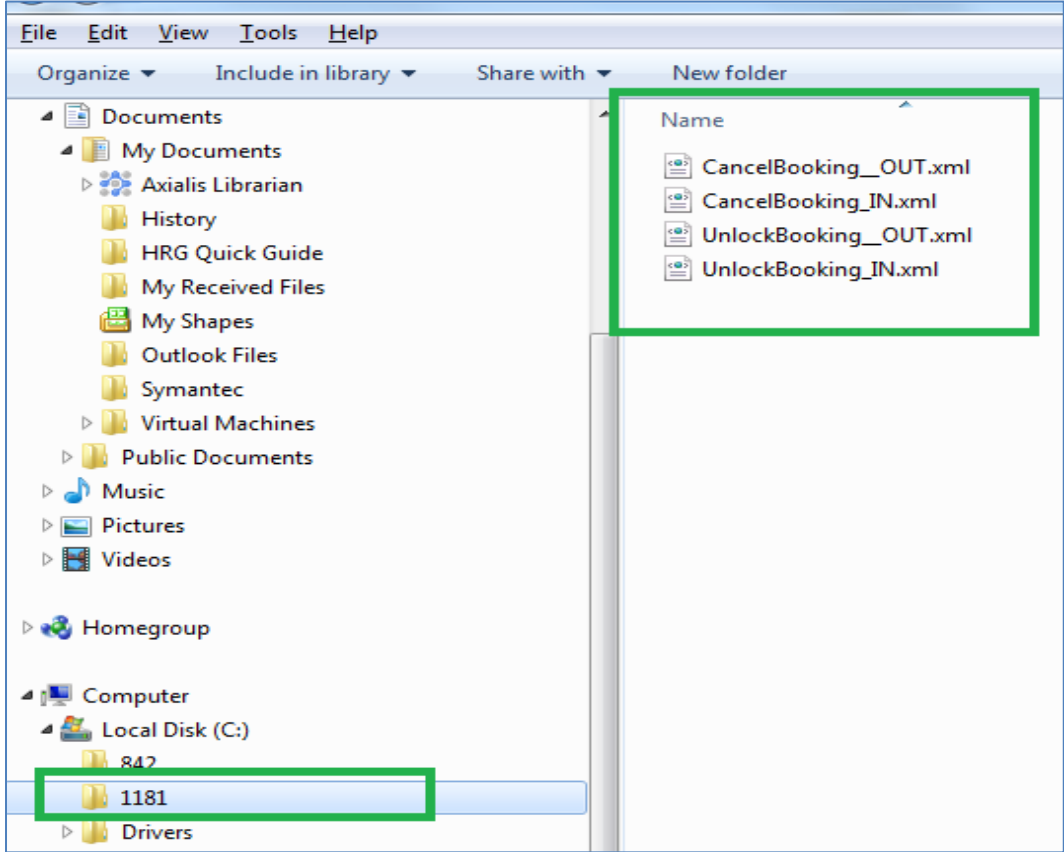


Figure 6 - Successfully Extracted

The transaction XML files are saved and available in the default save folder.



NOTE:
The error attachments are store in SEWLOG_XML table.