

Oracle Utilities Operational Device Management

Installation Guide

Release 2.2.0 Service Pack 1

E91594-02

December 2017
(Revised 2018)

Oracle Utilities Operational Device Management Installation Guide for Release 2.2.0 Service Pack 1

Copyright © 2000, 2017 Oracle and/or its affiliates. All rights reserved.

This software and related documentation are provided under a license agreement containing restrictions on use and disclosure and are protected by intellectual property laws. Except as expressly permitted in your license agreement or allowed by law, you may not use, copy, reproduce, translate, broadcast, modify, license, transmit, distribute, exhibit, perform, publish, or display any part, in any form, or by any means. Reverse engineering, disassembly, or decompilation of this software, unless required by law for interoperability, is prohibited.

The information contained herein is subject to change without notice and is not warranted to be error-free. If you find any errors, please report them to us in writing.

If this is software or related documentation that is delivered to the U.S. Government or anyone licensing it on behalf of the U.S. Government, then the following notice is applicable:

U.S. GOVERNMENT END USERS: Oracle programs, including any operating system, integrated software, any programs installed on the hardware, and/or documentation, delivered to U.S. Government end users are "commercial computer software" pursuant to the applicable Federal Acquisition Regulation and agency-specific supplemental regulations. As such, use, duplication, disclosure, modification, and adaptation of the programs, including any operating system, integrated software, any programs installed on the hardware, and/or documentation, shall be subject to license terms and license restrictions applicable to the programs. No other rights are granted to the U.S. Government.

This software or hardware is developed for general use in a variety of information management applications. It is not developed or intended for use in any inherently dangerous applications, including applications that may create a risk of personal injury. If you use this software or hardware in dangerous applications, then you shall be responsible to take all appropriate fail-safe, backup, redundancy, and other measures to ensure its safe use. Oracle Corporation and its affiliates disclaim any liability for any damages caused by use of this software or hardware in dangerous applications.

Oracle and Java are registered trademarks of Oracle and/or its affiliates. Other names may be trademarks of their respective owners.

Intel and Intel Xeon are trademarks or registered trademarks of Intel Corporation. All SPARC trademarks are used under license and are trademarks or registered trademarks of SPARC International, Inc. AMD, Opteron, the AMD logo, and the AMD Opteron logo are trademarks or registered trademarks of Advanced Micro Devices. UNIX is a registered trademark of The Open Group.

This software or hardware and documentation may provide access to or information about content, products, and services from third parties. Oracle Corporation and its affiliates are not responsible for and expressly disclaim all warranties of any kind with respect to third-party content, products, and services unless otherwise set forth in an applicable agreement between you and Oracle. Oracle Corporation and its affiliates will not be responsible for any loss, costs, or damages incurred due to your access to or use of third-party content, products, or services, except as set forth in an applicable agreement between you and Oracle.

Contents

Preface	i
Related Documents	i
Updates to Documentation	ii
Conventions	ii
Acronyms	ii
Additional Resources	ii
Chapter 1	
Installation Overview	1-1
Product Overview.....	1-1
Installation Overview	1-3
Installation Types.....	1-4
Upgrade Installation.....	1-4
Demo Installation.....	1-4
Package Contents.....	1-5
Documentation.....	1-5
Installation Packages	1-6
Readiness Checklist	1-6
Chapter 2	
Supported Platforms and Hardware Requirements	2-1
Operating Systems and Application Servers.....	2-1
Application Server Operating Systems	2-1
Prerequisite Application Server Software	2-1
Hardware Requirements	2-3
Application Server Memory Requirements	2-3
Support for Software Patches and Upgrades	2-4
Chapter 3	
Planning the Installation	3-1
Installation Considerations.....	3-1
Prerequisite Oracle Utilities Application Framework Patches	3-1
WebLogic Native Installation.....	3-2
Application Server Clustering.....	3-2
Directory Names	3-2
Prerequisite Software List.....	3-2
Prerequisite Software for Database Server.....	3-2
Prerequisite Software for Application Server	3-2
Web Browser Requirements	3-3

Installing Prerequisite Software	3-3
AIX Application Server.....	3-3
Oracle Linux Application Server	3-7
Oracle Solaris Application Server.....	3-10
Additional Prerequisite Software Information.....	3-13
How to use and setup the “Additional JAR Directory”.....	3-13
Special Note for Upgrading from a WebLogic 12.1.3.x Environment.....	3-14

Chapter 4

Installing Oracle Utilities Operational Device Management - Demo Installation.....	4-1
Demo Installation Procedure.....	4-1
Database Component Installation.....	4-1
Application Component Installation.....	4-2
Post Installation Verifications.....	4-11

Chapter 5

Upgrading Oracle Utilities Operational Device Management	5-1
Upgrade Paths.....	5-1
Before You Upgrade.....	5-1
Upgrade Procedure.....	5-2
Database Component Upgrade.....	5-2
Application Component Upgrade	5-2
Post Upgrade Verifications	5-11
Installing Service Packs and Patches.....	5-12

Chapter 6

Additional Tasks	6-1
Importing Self-Signed Certificates	6-1
Customizing Configuration Files	6-2
Customizing Centralized Properties	6-2
Integrating Existing Customer Modifications	6-4
Generating the Application Viewer	6-4
Building Javadocs Indexes.....	6-5
Configuring the Environment for Batch Processing	6-5
Customizing the Logo.....	6-5
Creating WebLogic Domain	6-6
Deploying Inbound WebServices (IWS).....	6-6
Domain Templates	6-8
Database Patching	6-10

Chapter 7

Installing Optional Products	7-1
Oracle BI Publisher.....	7-1
Supported BI Publisher Versions	7-1
About Oracle BI Publisher Enterprise	7-1
Configuring the System to Enable Reports.....	7-2
Sample Reports Supplied with the Product	7-3

Appendix A

Installation Menu Functionality **A-1**
 Installation Menu Functionality Details..... A-1

Appendix B

Installation and Configuration Worksheets..... **B-1**
 Menu Block 1: Environment ID, Roles, Third Party Software Configuration B-1
 Menu Block 2: Keystore Options B-2
 Menu Block 50: Environment Installation Options B-2
 Menu Block 1: Environment Description..... B-3
 Menu Block 2: [WebLogic] Business Application Server Configuration B-3
 Menu Block 3: [WebLogic] Web Application Server Configuration..... B-3
 Menu Block 4 - Database Configuration..... B-4
 Menu Block 5 - General Configuration Options B-5
 Menu Block 6 - OUAF TrustStore Options..... B-5
 Advanced Menu Options..... B-6

Appendix C

Common Maintenance Activities **C-1**

Preface

This guide describes how to install Oracle Utilities Operational Device Management v2.2.0 Service Pack 1 and is intended for anyone interested in the process of installing Oracle Utilities Operational Device Management.

To complete installation you should have:

- Administrative privileges on the host where you are installing the software.
- Experience installing and configuring application servers and other software (preferable).

Related Documents

For more information on this release, refer to the following documents:

Installation Guides

- Oracle Utilities Operational Device Management Release Notes
- Oracle Utilities Operational Device Management Quick Install Guide
- Oracle Utilities Operational Device Management Installation Guide
- Oracle Utilities Operational Device Management Database Administrator (DBA) Guide
- Oracle Utilities Operational Device Management Licensing Information User Manual

User Guides

- Oracle Utilities Work and Asset Management and Oracle Utilities Operational Device Management Business User's Guide
- Oracle Utilities Work and Asset Management and Oracle Utilities Operational Device Management Administrative User Guide

Supplemental Documents

- Oracle Utilities Operational Device Management Server Administration Guide

- Oracle Utilities Operational Device Management Security Guide

Updates to Documentation

Additional and updated information about the product is available from the **Knowledge Base** section of **My Oracle Support** (<http://support.oracle.com>). Please refer to **My Oracle Support** for more information. Documentation updates are also posted on the Oracle Technology Network documentation page as they become available (http://docs.oracle.com/cd/E72219_01/documentation.html).

Conventions

The following text conventions are used in this document:

Convention	Meaning
boldface	Boldface type indicates graphical user interface elements associated with an action, or terms defined in text or the glossary.
<i>italic</i>	Italic type indicates book titles, emphasis, or placeholder variables for which you supply particular values.
monospace	Monospace type indicates commands within a paragraph, URLs, code in examples, text on the screen, or text that you enter.

Acronyms

The following acronyms are used in this document:

- **ODM** – Oracle Utilities Operational Device Management
- **WAM** – Oracle Utilities Work and Asset Management
- **OUIAF** – Oracle Utilities Application Framework

Additional Resources

For more information and support, visit the Oracle Support Web site at: <http://www.oracle.com/support/index.html>

Chapter 1

Installation Overview

This section provides an overview of the Oracle Utilities Operational Device Management (ODM) product and installation process.

This section includes the following:

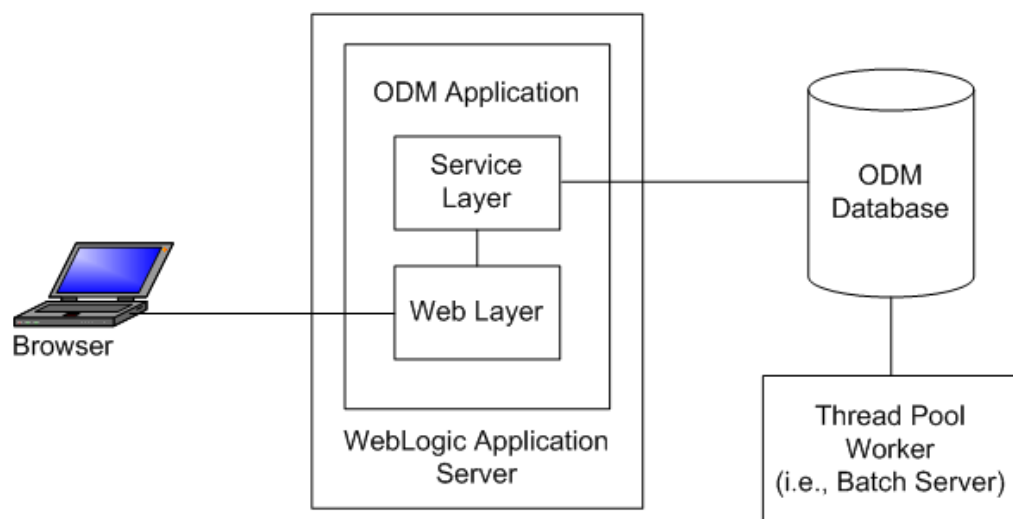
- [Product Overview](#)
- [Installation Overview](#)
- [Installation Types](#)
- [Package Contents](#)
- [Readiness Checklist](#)

Product Overview

Oracle Utilities Operational Device Management is housed in the Oracle WebLogic J2EE Web Application Server. The system is comprised of two layers: web and service. The application is accessed by using a browser to connect to the web layer.

Oracle Utilities Operational Device Management data is stored in the Oracle Database. For processing large amounts of data, the system provides a thread pool worker (batch server) which interacts with the same database.

The following figure provides an overview of the Oracle Utilities Operational Device Management product:

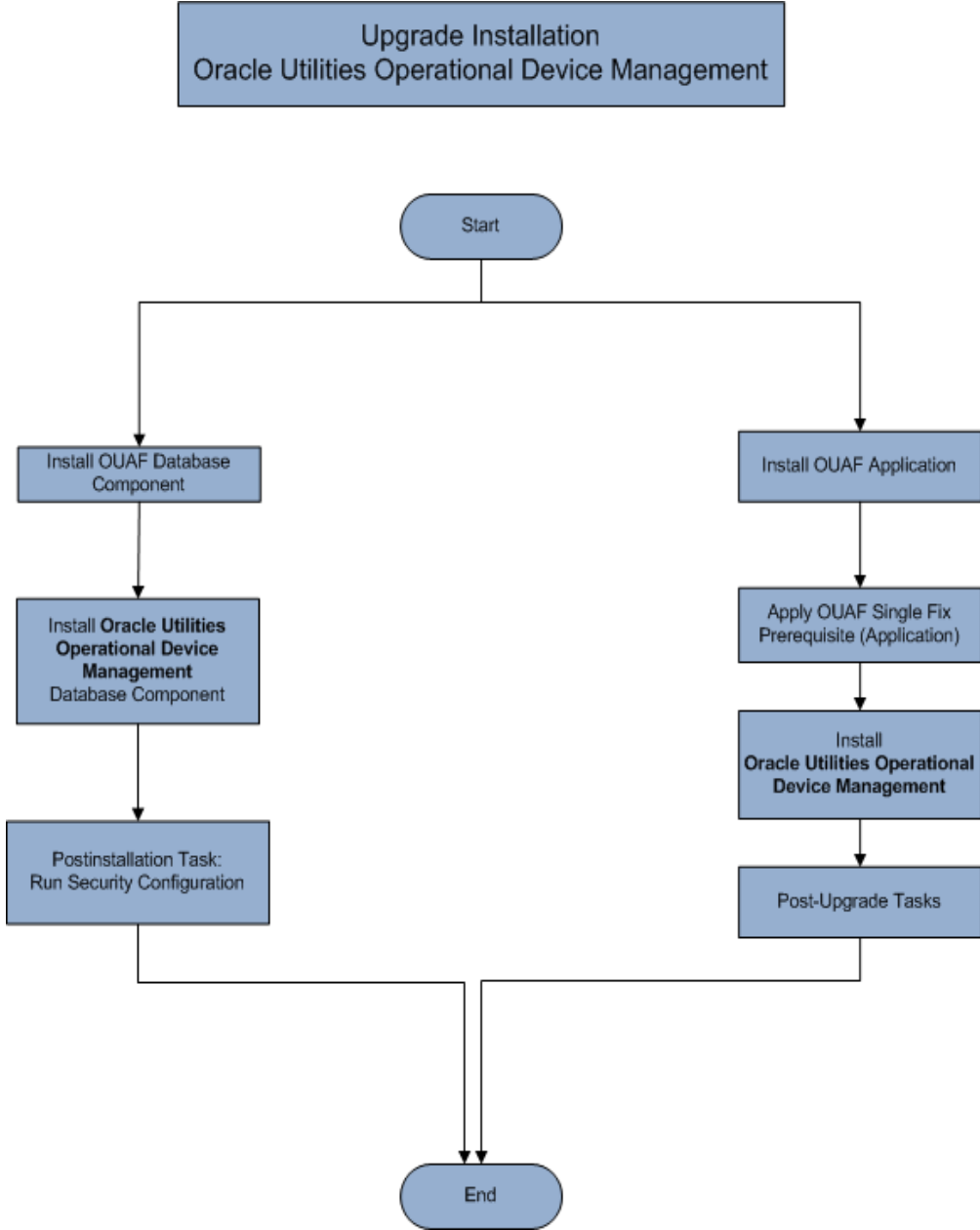


Refer to the *Business User's Guide* for information about the features and functionality in this release.

Installation Overview

Oracle Utilities Operational Device Management consists of several components, all of which need to be installed for a successful installation. Certain prerequisite software may need to be installed before installing each of these components.

The following figure details the workflow for the upgrade installation process.



Refer to the [Prerequisite Software List](#) for the list of prerequisite software.

Installation Types

The first step in the installation procedure is to determine the installation type that meets your business requirements. The following are the possible installation types:

- [Upgrade Installation](#) - An upgrade installation from v2.2.0.0.0 to v2.2.0.1.0
- [Demo Installation](#) - A base installation with pre-populated demo data, typically used for demonstration or training purposes

The following sections describe these installation types in detail.

Upgrade Installation

This installation type is applicable when upgrading Oracle Utilities Operational Device Management from v2.2.0.0.0 to v2.2.0.1.0. Each of the following components should be installed during an upgrade installation:

- Database components:
Refer to the “Upgrade Install” section of the *Oracle Utilities Operational Device Management Database Administrator Guide* for more information.
- Application components:
 - Oracle Utilities Application Framework application
 - Oracle Utilities Application Framework single fix prerequisite rollup
 - Oracle Utilities Operational Device Management application
 - Oracle Utilities Work and Asset Management Reports
 - Oracle Utilities Work and Asset Management ESRI Integration

For detailed steps on installing each of the above components, refer to the [Upgrading Oracle Utilities Operational Device Management](#) section.

Note: Please ignore the “ESRI Integration” installation part for Oracle Utilities Operational Device Management environment.

Demo Installation

This installation type is applicable when installing a demo application of Oracle Utilities Operational Device Management for demonstration or training purposes. For a demo install, you must install all of the following components:

- Demo Database components:
Refer to the “Demo Install” section of the *Oracle Utilities Operational Device Management Database Administrator Guide* for more information.
- Application components:
 - Oracle Utilities Application Framework Application

- Oracle Utilities Application Framework Single Fix Prerequisite Rollup
- Oracle Utilities Operational Device Management Application
- Oracle Utilities Work and Asset Management Reports
- Oracle Utilities Work and Asset Management ESRI Integration

Refer to the [Installing Oracle Utilities Operational Device Management - Demo Installation](#) section for the steps involved in installing each of the above components.

Package Contents

The following documentation and installation packages are part of the product package.

This section includes information about:

- [Documentation](#)
- [Installation Packages](#)

Note: Oracle Utilities Operational Device Management is packaged as part of the **Oracle Utilities Work and Asset Management** media pack.

Customers seeking to download the **Oracle Utilities Operational Device Management** media pack must search for and download the **Oracle Utilities Work and Asset Management** media pack on Oracle Software Delivery Cloud and in My Oracle Support. There is no separate **Oracle Utilities Operational Device Management** package to download.

Documentation

Installation Guides

- Oracle Utilities Operational Device Management Release Notes
- Oracle Utilities Operational Device Management Quick Install Guide
- Oracle Utilities Operational Device Management Installation Guide
- Oracle Utilities Operational Device Management Database Administrator (DBA) Guide
- Oracle Utilities Operational Device Management Licensing Information User Manual

User Guides

- Oracle Utilities Work and Asset Management and Oracle Utilities Operational Device Management Business User's Guide

- Oracle Utilities Work and Asset Management and Oracle Utilities Operational Device Management Administrative User Guide

Supplemental Documents

- Oracle Utilities Operational Device Management Server Administration Guide
- Oracle Utilities Operational Device Management Security Guide

Installation Packages

- Oracle Utilities Operational Device Management v2.2.0.1.0 Release Notes
- Oracle Utilities Operational Device Management v2.2.0.1.0 Install Documentation
- Oracle Utilities Operational Device Management v2.2.0.1.0 Quick Install Guide
- Oracle Utilities Work and Asset Management v2.2.0.1.0 Multiplatform
- Oracle Utilities Work and Asset Management v2.2.0.1.0 Oracle Database Multiplatform
- Oracle Utilities Application Framework v4.3.0.5.0 Multiplatform
- Oracle Utilities Application Framework v4.3.0.5.0 Single Fix Prerequisite Rollup for Oracle Utilities Work and Asset Management v2.2.0.1.0
- Oracle Utilities Work and Asset Management v2.2.0.1.0 Reports

Readiness Checklist

The following checklist provides steps to complete to install Oracle Utilities Operational Device Management. The details for each step are presented in subsequent sections.

1. Confirm that the recommended hardware is ready. Refer to [Supported Platforms and Hardware Requirements](#) for more details.
2. Install prerequisite software. Refer to the [Planning the Installation](#) section for more details.
3. Download the Oracle Utilities Work and Asset Management v2.2.0.1.0 components from Oracle Software Delivery Cloud.
4. Go through the [Installation and Configuration Worksheets](#) to understand the configuration menu.
5. Determine the type of installation then follow the instructions:
 - **Upgrade Installation** - For upgrade installation, follow the instructions in [Upgrading Oracle Utilities Operational Device Management](#)

- **Demo Installation** - For demo installation, follow the instructions in [Installing Oracle Utilities Operational Device Management - Demo Installation](#)
6. Perform post-installation tasks.
 7. Install optional products as described in the [Installing Optional Products](#) section.

Chapter 2

Supported Platforms and Hardware Requirements

This installation is certified to operate on many operating system, application server and database server combinations. The following sections provide information on the supported platforms and requirements, including:

- [Operating Systems and Application Servers](#)
- [Hardware Requirements](#)
- [Application Server Memory Requirements](#)
- [ESRI Integration Supported Versions](#)
- [Support for Software Patches and Upgrades](#)

Operating Systems and Application Servers

This section details the operating system and application server combinations on which this version of Oracle Utilities Operational Device Management is supported.

Application Server Operating Systems

- Oracle Linux 6.x for x86_64
- Oracle Linux 7.x for x86_64
- Oracle Solaris 11.x for SPARC (64-bit)
- IBM AIX 7.1/7.2 TLx for POWER (64-bit)

Prerequisite Application Server Software

- Oracle Database Client 12.1.0.x
- Oracle Java SE Development Kit 1.8.0_121+ (Oracle platforms only)
- IBM 64-bit SDK for AIX 8.0.0.x (IBM platforms only)
- Hibernate ORM 4.1.0 and Hibernate 5.2.3 jars
- Oracle WebLogic 12c (v12.2.1.1+) 64-bit

Notes

- Oracle Linux is 100% user space-compatible with Red Hat Enterprise Linux, therefore, OUAFA is also supported on Red Hat Enterprise Linux.
- Refer to the Framework DBA Guide for the Oracle Database Server Requirements.

Refer to the [Product Support Matrix \(Doc ID 1454143.1\)](#) on Oracle Support to determine if support for newer versions of the listed products have been added.

Please note the following:

- Version numbers marked with a "+" are the MINIMUM version supported. That version and all future 4th digit updates will be supported.

Example: Oracle 12.1.0.2+ means that 12.1.0.2 and any higher 12.1.0.x versions of Oracle are supported.

* An "x" indicates that any version of the digit designed by the "x" is supported.

Example: Linux 7.x indicates that any version of Linux 7 (7.0, 7.1, 7.2 etc) will be supported.

Windows Server

- Windows Server is **not** supported for Production environments. Wherever Windows Server is referenced within this guide, it is supported for Test or Development environments **only**.

WebLogic Server

- Oracle WebLogic Server (Fusion Middleware Infrastructure) 12.2.1.1+

WebLogic Server 12.2.1.1 and any higher versions of Oracle are supported.

- Customers must download Oracle WebLogic Server from the Oracle Software Delivery Cloud.

Prerequisite Database Server Software (on any vendor supported platform where x is vendor supported version):

- Oracle Database Server Enterprise Edition 12.1.0.2+
- Oracle Database Server Standard Edition 2 12.1.0.2+
- Oracle Database Server Enterprise Edition 12.2.0.2+
- Oracle Database Server Standard Edition 2 12.2.0.2+

Oracle VM Support

This version of Oracle Utilities Operational Device Management is supported on Oracle VM Server for x86 for supported releases of Oracle Linux and Microsoft Windows operating systems.

Refer to My Oracle Support knowledge base article 249212.1 for Oracle's support policy on VMWare.

Hardware Requirements

The following section outlines client side hardware requirements for Oracle Utilities Operational Device Management.

Client Side Hardware Requirements

Configuration	Processor	Memory (RAM)	Monitor (Display)
Minimum	1 GHz or faster 64-bit (x64) processor	2 GB	1280x1024
Recommended*	3 GHz or faster 64-bit (x64) processor	4 GB	1280X1024

* The Recommended configuration supports better performance of the client.

Application Server Memory Requirements

For each application server environment a minimum of 4 GB of real memory is required, plus 6 GB of swap space. The approximate disk space requirements in a standard installation are as follows (the size represents the MINIMUM required):

Location	Size	Usage
Install Dir Location	10 GB5 GB minimum	This is the location where the application and Framework get installed. Startup, shutdown and other online log files are stored here. The size and space that is used should be monitored because various debugging options can significantly affect the size of log files. Note: This does not include the size of the edge product.
Log Location	2 GB5 GB minimum	This location is used for storing batch log files and output from batch jobs. The size of this space should be influenced by which batches are run and how often, and the amount of debugging information that is collected.
Location of the application web work files on the web servers	5 GB1.5 GB minimum	This location is used by various web server vendors to expand the application. It should be considered when installing these products. Refer to the individual web server documentation to determine the location of the temporary files.
Installation Temporary Area	4 GB	The application gets installed from this location. You need enough space to uncompress the files and install the application.

Location	Size	Usage
Oracle Data Area	4 GB minimum	This location is where the Oracle database data files are stored. The size of this space should be based on the requirements of the production environment. For an initial or demo database install 4 GB should be sufficient.

Support for Software Patches and Upgrades

Due to the ongoing nature of software improvement, vendors will periodically issue patches and service packs for the operating systems, application servers and database servers on top of specific versions that Oracle products have already been tested against.

If it is necessary to apply an upgrade, please do so in a test environment that is running on the same platform as your production environment prior to updating the production environment itself. The exception to this is Hibernate software 4.1.0 which should not be upgraded.

Always contact Oracle Support prior to applying vendor updates that do not guarantee backward compatibility.

Chapter 3

Planning the Installation

This section provides information for planning an Oracle Utilities Operational Device Management installation, including:

- [Installation Considerations](#)
- [Prerequisite Software List](#)
- [Installing Prerequisite Software](#)
- [Additional Prerequisite Software Information](#)

Before Installation

Refer to My Oracle Support for up-to-date additional information about installing Oracle Utilities Operational Device Management.

Prerequisite Oracle Utilities Application Framework Patches

Oracle Utilities Application Framework patches must be installed prior to installing Oracle Utilities Operational Device Management. This step is included as part of the installation instructions.

Installation Considerations

Please review the following prior to installation.

Prerequisite Oracle Utilities Application Framework Patches

Oracle Utilities Application Framework patches must be installed prior to installing Oracle Utilities Operational Device Management. Refer to the *Oracle Utilities Operational Device Management Release Notes* for more information.

WebLogic Native Installation

With Oracle Utilities Application Framework 4.3.0.5.0, a WebLogic native installation is required. Refer to the *Native Installation Oracle Utilities Application Framework* (Doc ID: 1544969.1) white paper on My Oracle Support.

Application Server Clustering

If you are considering application server clustering, refer to the following whitepaper, available on My Oracle Support, for additional information:

- Implementing Oracle ExaLogic and/or Oracle WebLogic Clustering (Doc ID: 1334558.1)
- Additional information about WebLogic clustering can be found at http://docs.oracle.com/cd/E17904_01/web.1111/e13709/toc.htm.

Directory Names

Directory cannot contain whitespace characters.

Prerequisite Software List

Before you install Oracle Utilities Operational Device Management, you must install prerequisite software. Refer to the respective installation documentation of the software for instructions on downloading and installing.

This section includes information on the following:

- [Prerequisite Software for Database Server](#)
- [Prerequisite Software for Application Server](#)
- [Web Browser Requirements](#)

Prerequisite Software for Database Server

The prerequisite software for the database component of Oracle Utilities Operational Device Management includes:

- Oracle Database Server 12.1.0.1+ Standard or Enterprise Edition
This is required for installing the database component of the Oracle Utilities Operational Device Management product.

Prerequisite Software for Application Server

The prerequisite software for the application component of Oracle Utilities Operational Device Management is as follows:

- Oracle Database Client 12.1.0.x
- Oracle Java SE Development Kit 1.8.0_121+ (Oracle platforms only)

- IBM 64-bit Java SDK 1.8.0 for AIX (IBM platforms only)
- Hibernate ORM 4.1.0 and Hibernate 5.2.3 jars
- Oracle WebLogic 12c (v12.2.1.1+) 64-bit

Web Browser Requirements

The web browsers listed below are supported when used on each of the operating systems indicated:

Browser	Windows Operating System
Internet Explorer 11	Microsoft Windows 7, 8.1, 10 (64-bit)
Firefox ESR 52	Microsoft Windows 7, 8.1, 10 (64-bit)
Google Chrome	Microsoft Windows 7, 8.1, 10 (64-bit)

Installing Prerequisite Software

This section describes the software that needs to be installed for each of the supported operating system and application server combinations, including:

- [AIX Application Server](#)
- [Oracle Linux Application Server](#)
- [Oracle Solaris Application Server](#)

AIX Application Server

This section describes the software requirements for operating the application using the AIX application server including:

- [Web/Application Server Tier](#)
- [IBM Java \(v1.8.0\) Software Development Kit](#)
- [Oracle Client \(v12.1.0.x\)](#)
- [Hibernate 4.1.0 FINAL and hibernate-search-5.2.3.Final-dist](#)
- [Oracle WebLogic Server 12c \(v12.2.1.1+\) 64-bit Oracle Linux Application Server](#)

Web/Application Server Tier

UNIX Administrator User ID

The following user groups and accounts have to be created to install and administer the application

Description	Default Value	Customer Defined Value
Oracle Utilities Operational Device Management Administrator User ID	cissys	
Oracle Utilities Operational Device Management User Group	cisusr	

Note: It is recommended that you change the default values for security reasons.

Throughout this document the administrator user ID is often referred to as the "cissys" user ID. You should substitute that with the customer defined user ID when not using the default value. After the initial install or upgrade, the software should always be managed using that user ID.

By default, the cissys user ID is the only one given access to the installed files.

1. Create a group called cisusr (user group).
2. Create a user called cissys. Primary group cisusr. Set the primary shell for the cissys user to Korn Shell.
3. Set the desired hard/soft limit of the file handler to 4096 or higher.

The shell scripts use the ">" to overwrite shell functionality. Your operating system may be configured to not allow this functionality by default in the users shell.

To avoid file access permission problems when executing scripts, consider placing the following command into cissys profile script:

```
set +o noclobber
```

Security Configuration

Various options exist to secure a system. In this application all files will be created with the minimum permissions required to ensure that group-readable, group-writable and group-executable files will have the correct user groups and to restrict the permissions available to legitimate users. In this way, a low privileged end user cannot directly edit configuration files and thereby bypass application security controls.

The following users and group categories must be defined to implement this security. For demonstration purposes the following users and groups will be used. These users must be created according to industry standards (including password policies). All users should be

created with a default umask of 022 to ensure files created during normal operation have the correct permissions.

Replace these users and groups for your installation defaults:

User	Group	Description
cissys	cisusr	This user will be used to install the application and to apply patches. This user will own all the application files. The same care should be taken with this user ID as if it is 'root'. This user will be able to add, delete and modify and files within the application.
cisadm	cisusr	Administrative and Operation functions will be available to this user. This user will be able to stop and start the application and batch processes, but will not have access to modify any file other than generated log files
cisoper	-----	Low level operator. This user will only be able to read logs files and collect information for debugging and investigative purposes. Care should be taken in production to disable debugging as debugging information could contain potential sensitive data which this user should not have privy to.

Note: The Oracle Client and WebLogic should be installed as the user who will stop and start the application. For example, if you plan to run the application as the install user these components must belong to cissys.

IBM Java (v1.8.0) Software Development Kit

At the time of release, AIX Java 1.8 packages could be obtained from:

<http://www.ibm.com/developerworks/java/jdk/aix/service.html>

The web server requires the 64-bit Java platform in order to function. The main prerequisite for the web server is the version of Java mentioned above.

For the Administrator user ID (cissys), ensure that the environment variable JAVA_HOME is set up, and that "java" can be found in cissys' PATH variable.

Oracle Client (v12.1.0.x)

Install the Oracle Client as described in the Oracle Client installation documentation. Use the cissys account to install the Oracle Client. If another user installs the Oracle Client, make sure the cissys user ID has the proper execute permissions.

For the cissys user ID, ensure that the environment variable ORACLE_CLIENT_HOME is set up, and that ORACLE_CLIENT_HOME/perl/bin is the first Perl listed in the cissys account's PATH variable.

Hibernate 4.1.0 FINAL and hibernate-search-5.2.3.Final-dist

You must install Hibernate before installing the product. Follow these steps to install Hibernate:

1. Create a Hibernate jar external depot:

```
export HIBERNATE_JAR_DIR=<Hibernate 3rd party jars depot>
```

2. Download the hibernate-release-4.1.0.Final.zip file from <http://sourceforge.net/projects/hibernate/files/hibernate4/>
3. Click the “4.1.0.Final” link to download the zip file.
4. Extract the contents of the archive file:

```
unzip hibernate-release-4.1.0.Final.zip
```

Note: You must have Java JDK installed on the machine to use the jar command. Make sure you install the JDK supported for your platform.

5. Copy the jar files to your Hibernate jar directory (\$HIBERNATE_JAR_DIR) using the following commands:

```
cp hibernate-release-4.1.0.Final/lib/optional/ehcache/hibernate-ehcache-4.1.0.Final.jar $HIBERNATE_JAR_DIR
```

```
cp hibernate-release-4.1.0.Final/lib/required/hibernate-commons-annotations-4.0.1.Final.jar $HIBERNATE_JAR_DIR
```

```
cp hibernate-release-4.1.0.Final/lib/required/hibernate-core-4.1.0.Final.jar $HIBERNATE_JAR_DIR
```

```
cp hibernate-release-4.1.0.Final/lib/required/hibernate-jpa-2.0-api-1.0.1.Final.jar $HIBERNATE_JAR_DIR
```

```
cp hibernate-release-4.1.0.Final/lib/required/javassist-3.15.0-GA.jar $HIBERNATE_JAR_DIR
```

```
cp hibernate-release-4.1.0.Final/lib/required/jboss-logging-3.1.0.CR2.jar $HIBERNATE_JAR_DIR
```

```
cp hibernate-release-4.1.0.Final/lib/required/jboss-transaction-api_1.1_spec-1.0.0.Final.jar $HIBERNATE_JAR_DIR
```

6. Download the hibernate-release-5.2.3.Final.zip file from the following link to get the jboss-logging-3.3.0.Final.jar.

<https://sourceforge.net/projects/hibernate/files/hibernate-orm>

7. Click the “5.2.3.Final” link to download the zip file.
8. Extract the contents of the archive file using the following command

```
unzip hibernate-release-5.2.3.Final.zip
```

9. Copy the jboss-logging-3.3.0.Final.jar file to your Hibernate jar directory (\$HIBERNATE_JAR_DIR) using the following command:

```
cp hibernate-release-5.2.3.Final/lib/required/jboss-logging-3.3.0.Final.jar to $HIBERNATE_JAR_DIR
```

Oracle WebLogic Server 12c (v12.2.1.1+) 64-bit

Oracle WebLogic software can be downloaded from the Oracle web site. This application server will run as a 64-bit application.

- Download and install 64-bit Java SDK 1.8 (as documented above) before installing WebLogic.

- Download and install WebLogic Server (Fusion Middleware Infrastructure) 12c (v12.2.1.1+).

Oracle Linux Application Server

This section describes the software requirements for operating the application using the Oracle Linux or Red Hat Linux application server.

- [Web/Application Server Tier](#)
- [Oracle Java SE Development Kit 1.8.0_121+](#)
- [Oracle Client v12.1.0.x](#)
- [Hibernate 4.1.0 FINAL and hibernate-search-5.2.3.Final-dist](#)
- [Oracle WebLogic Server 12c \(v12.2.1.1+\) 64-bit](#)

Web/Application Server Tier

UNIX Administrator User ID

The following user groups and accounts have to be created to install and administer the application:

Description	Default Value	Customer Defined Value
Oracle Utilities Operational Device Management Administrator User ID	cissys	
Oracle Utilities Operational Device Management User Group	cisusr	

Note: It is recommended that you change the default values for security reasons.

Throughout this document the administrator user ID is often referred to as the "cissys" user ID. You should substitute that with the customer defined user ID when not using the default value. After the initial install or upgrade, the software should always be managed using that user ID.

By default, the cissys user ID is the only one given access to the files installed.

1. Create a group called cisusr (user group)
2. Create a user called cissys. Primary group cisusr. Set the primary shell for the cissys user to Korn Shell.
3. Set the desired hard/soft limit of the file handler to 4096 or higher.

The shell scripts use the ">" to overwrite shell functionality. Your operating system may be configured to not allow this functionality by default in the users shell.

To avoid file access permission problems when executing scripts, consider placing the following command into cissys profile script:

```
set +o noclobber
```

Security Configuration

Various options exist to secure a system. In this application all files will be created with the minimum permissions required to ensure that group-readable, group-writable and group-executable files will have the correct user groups and to restrict the permissions available to legitimate users. In this way, a low privileged end user cannot directly edit configuration files and thereby bypass application security controls.

The following users and group categories must be defined to implement this security. For demonstration purposes the following users and groups will be used. These users must be created according to industry standards (including password policies). All users should be created with a default umask of 022 to ensure files created during normal operation have the correct permissions.

Replace these users and groups for your installation defaults:

User	Group	Description
cissys	cisusr	This user will be used to install the application and to apply patches. This user will own all the application files. The same care should be taken with this user ID as if it is 'root'. This user will be able to add, delete and modify files within the application.
cisadm	cisusr	Administrative and Operation functions will be available to this user. This user will be able to stop and start the application and batch processes, but will not have access to modify any file other than generated log files
cisoper	-----	Low level operator. This user will only be able to read logs files and collect information for debugging and investigative purposes. Care should be taken in production to disable debugging as debugging information could contain potential sensitive data which this user should not have privy to.

Note: The Oracle Client and WebLogic should be installed as the user who will stop and start the application. For example, if you plan to run the application as the install user these components must belong to cissys.

Oracle Java SE Development Kit 1.8.0_121+

At the time of release, download and install 64-bit Java 1.8.0_121+x before installing WebLogic. The packages could be obtained from:

<https://support.oracle.com>

The Oracle WebLogic Server requires the 64-bit version. The main prerequisite for the web server is the version of Java mentioned above.

For the user ID cissys, ensure that the environment variable JAVA_HOME is setup, and that java_home/bin and java_home/lib can be found in cissys' PATH variable.

Oracle Client v12.1.0.x

Install the Oracle Client as described in the Oracle Client installation documentation. Use the cissys account to install the Oracle Client. If another user installs the Oracle Client, make sure the cissys user ID has the proper execute permissions.

For the cissys user ID, ensure that the environment variable ORACLE_CLIENT_HOME is set up, and that ORACLE_CLIENT_HOME/perl/bin is the first Perl listed in the cissys account's PATH variable.

Hibernate 4.1.0 FINAL and hibernate-search-5.2.3.Final-dist

You must install Hibernate before installing the product. Follow these steps to install Hibernate:

1. Create a Hibernate jar external depot:

```
export HIBERNATE_JAR_DIR=<Hibernate 3rd party jars depot>
```

2. Download the hibernate-release-4.1.0.Final.zip file from <http://sourceforge.net/projects/hibernate/files/hibernate4/>

3. Click the "4.1.0.Final" link to download the zip file.

4. Extract the contents of the archive file:

```
unzip hibernate-release-4.1.0.Final.zip
```

Note: You must have Java JDK installed on the machine to use the jar command. Make sure you install the JDK supported for your platform.

5. Copy the jar files to your Hibernate jar directory (\$HIBERNATE_JAR_DIR) using the following commands:

```
cp hibernate-release-4.1.0.Final/lib/optional/ehcache/hibernate-ehcache-4.1.0.Final.jar $HIBERNATE_JAR_DIR
```

```
cp hibernate-release-4.1.0.Final/lib/required/hibernate-commons-annotations-4.0.1.Final.jar $HIBERNATE_JAR_DIR
```

```
cp hibernate-release-4.1.0.Final/lib/required/hibernate-core-4.1.0.Final.jar $HIBERNATE_JAR_DIR
```

```
cp hibernate-release-4.1.0.Final/lib/required/hibernate-jpa-2.0-api-1.0.1.Final.jar $HIBERNATE_JAR_DIR
```

```
cp hibernate-release-4.1.0.Final/lib/required/javassist-3.15.0-GA.jar $HIBERNATE_JAR_DIR
```

```
cp hibernate-release-4.1.0.Final/lib/required/jboss-logging-3.1.0.CR2.jar $HIBERNATE_JAR_DIR
```

```
cp hibernate-release-4.1.0.Final/lib/required/jboss-transaction-api_1.1_spec-1.0.0.Final.jar $HIBERNATE_JAR_DIR
```

6. Download the hibernate-release-5.2.3.Final.zip file from the following link to get the jboss-logging-3.3.0.Final.jar.

<https://sourceforge.net/projects/hibernate/files/hibernate-orm>

7. Click the "5.2.3.Final" link to download the zip file.

8. Extract the contents of the archive file using the following command

```
unzip hibernate-release-5.2.3.Final.zip
```

9. Copy the jboss-logging-3.3.0.Final.jar file to your Hibernate jar directory (\$HIBERNATE_JAR_DIR) using the following command:

```
cp hibernate-release-5.2.3.Final/lib/required/jboss-logging-3.3.0.Final.jar to $HIBERNATE_JAR_DIR
```

Oracle WebLogic Server 12c (v12.2.1.1+) 64-bit

Oracle WebLogic software can be downloaded from the Oracle web site. This application server will run as a 64-bit application.

- Download and install 64-bit Java SDK 1.8 (as documented above) before installing WebLogic.
- Download and install WebLogic Server (Fusion Middleware Infrastructure) 12c (v12.2.1.1+).

Oracle Solaris Application Server

This section describes the software requirements for operating the application using the Oracle Solaris 11 application server.

- [Web/Application Server Tier](#)
- [Oracle Java Development Kit Version v1.8.0_121+](#)
- [Oracle Client v12.1.0.x](#)
- [Hibernate 4.1.0 FINAL and hibernate-search-5.2.3.Final-dist](#)
- [Oracle WebLogic Server 12c \(v12.2.1.1+\)](#)

Web/Application Server Tier

UNIX Administrator User ID

The following user groups and accounts have to be created to install and administer the application:

Description	Default Value	Customer Defined Value
Oracle Utilities Operational Device Management Administrator User ID	cissys	
Oracle Utilities Operational Device Management User Group	cisusr	

Note: It is recommended that you change the default values for security reasons.

Throughout this document the administrator user ID is often referred to as the "cissys" user ID. You should substitute that with the customer defined user ID when not using

the default value. After the initial install or upgrade, the software should always be managed using that user ID.

By default, the cissys user ID is the only one given access to the files installed.

1. Create a group called cisusr (user group)
2. Create a user called cissys. Primary group cisusr. Set the primary shell for the cissys user to Korn Shell.
3. Set the desired hard/soft limit of the file handler to 4096 or higher.

The shell scripts use the ">" to overwrite shell functionality. Your operating system may be configured to not allow this functionality by default in the users shell.

To avoid file access permission problems when executing scripts, consider placing the following command into cissys profile script:

```
set +o noclobber
```

Security Configuration

Various options exist to secure a system. In this application all files will be created with the minimum permissions required to ensure that group-readable, group-writable and group-executable files will have the correct user groups and to restrict the permissions available to legitimate users. In this way, a low privileged end user cannot directly edit configuration files and thereby bypass application security controls.

The following users and group categories must be defined to implement this security. For demonstration purposes the following users and groups will be used. These users must be created according to industry standards (including password policies). All users should be created with a default umask of 022 to ensure files created during normal operation have the correct permissions.

Please replace these users and groups for your installation defaults:

User	Group	Description
cissys	cisusr	This user will be used to install the application and to apply patches. This user will own all the application files. The same care should be taken with this user ID as if it is 'root'. This user will be able to add, delete and modify files within the application.
cisadm	cisusr	Administrative and Operation functions will be available to this user. This user will be able to stop and start the application and batch processes, but will not have access to modify any file other than generated log files
cisoper	-----	Low level operator. This user will only be able to read logs files and collect information for debugging and investigative purposes. Care should be taken in production to disable debugging as debugging information could contain potential sensitive data which this user should not have privy to.

Note: The Oracle Client and WebLogic should be installed as the user who will stop and start the application. For example, if you plan to run the application as the install user these components must belong to cissys.

Oracle Java Development Kit Version v1.8.0_121+

This software is only required for Oracle WebLogic installations. At the time of release, the Oracle Java package v1.8.0_121 used in the test cycle was downloaded from:

<http://www.oracle.com/technetwork/java/javase/downloads/jdk8-downloads-2133151.html>

The Oracle WebLogic Server requires the 64-bit version. The main prerequisite for the web server is the version of Java mentioned above.

For the user ID `cissys`, ensure that the environment variable `JAVA_HOME` is setup, and that `java_home/bin` and `java_home/lib` can be found in `cissys`' `PATH` variable.

Oracle Client v12.1.0.x

Install the Oracle Client as described in the Oracle Client installation documentation. Use the `cissys` account to install the Oracle Client. If another user installs the Oracle Client, make sure the `cissys` user ID has the proper execute permissions.

For the `cissys` user ID, ensure that the environment variable `ORACLE_CLIENT_HOME` is set up, and that `ORACLE_CLIENT_HOME/perl/bin` is the first Perl listed in the `cissys` account's `PATH` variable.

Hibernate 4.1.0 FINAL and hibernate-search-5.2.3.Final-dist

You must install Hibernate before installing the product. Follow these steps to install Hibernate:

1. Create a Hibernate jar external depot:

```
export HIBERNATE_JAR_DIR=<Hibernate 3rd party jars depot>
```

2. Download the `hibernate-release-4.1.0.Final.zip` file from <http://sourceforge.net/projects/hibernate/files/hibernate4/>
3. Click the “4.1.0.Final” link to download the zip file.
4. Extract the contents of the archive file:

```
unzip hibernate-release-4.1.0.Final.zip
```

Note: You must have Java JDK installed on the machine to use the `jar` command. Make sure you install the JDK supported for your platform.

5. Copy the jar files to your Hibernate jar directory (`$HIBERNATE_JAR_DIR`) using the following commands:

```
cp hibernate-release-4.1.0.Final/lib/optional/ehcache/
hibernate-ehcache-4.1.0.Final.jar $HIBERNATE_JAR_DIR
```

```
cp hibernate-release-4.1.0.Final/lib/required/hibernate-
commons-annotations-4.0.1.Final.jar $HIBERNATE_JAR_DIR
```

```
cp hibernate-release-4.1.0.Final/lib/required/hibernate-core-
4.1.0.Final.jar $HIBERNATE_JAR_DIR
```

```
cp hibernate-release-4.1.0.Final/lib/required/hibernate-jpa-2.0-api-1.0.1.Final.jar $HIBERNATE_JAR_DIR
```

```
cp hibernate-release-4.1.0.Final/lib/required/javassist-3.15.0-GA.jar $HIBERNATE_JAR_DIR
```

```
cp hibernate-release-4.1.0.Final/lib/required/jboss-logging-3.1.0.CR2.jar $HIBERNATE_JAR_DIR
```

```
cp hibernate-release-4.1.0.Final/lib/required/jboss-transaction-api_1.1_spec-1.0.0.Final.jar $HIBERNATE_JAR_DIR
```

- Download the hibernate-release-5.2.3.Final.zip file from the following link to get the jboss-logging-3.3.0.Final.jar.

<https://sourceforge.net/projects/hibernate/files/hibernate-orm>

- Click the “5.2.3.Final” link to download the zip file.
- Extract the contents of the archive file using the following command

```
unzip hibernate-release-5.2.3.Final.zip
```

- Copy the jboss-logging-3.3.0.Final.jar file to your Hibernate jar directory (\$HIBERNATE_JAR_DIR) using the following command:

```
cp hibernate-release-5.2.3.Final/lib/required/jboss-logging-3.3.0.Final.jar to $HIBERNATE_JAR_DIR
```

Oracle WebLogic Server 12c (v12.2.1.1+)

Oracle WebLogic software can be downloaded from the Oracle web site. This application server will run as a 64-bit application.

- Download and install 64-bit Java SDK 1.8 (as documented above) before installing WebLogic.
- Download and install WebLogic Server (Fusion Middleware Infrastructure) 12c (v12.2.1.1+).

Additional Prerequisite Software Information

This section outlines additional information related to installation of prerequisite software, including:

- [How to use and setup the “Additional JAR Directory”](#)
- [Special Note for Upgrading from a WebLogic 12.1.3.x Environment](#)

How to use and setup the “Additional JAR Directory”

The “Additional JAR Directory” must be populated if the “Web Application Server Home Directory” is not set. For instance if the environment is for Batch only and the server has no WebLogic installed.

In this scenario the “Additional JAR Directory” must be created prior the installation and the following list of WebLogic JARs need to be copied there (full path from original WebLogic location, which must be installed in the Web Server):

```
<Web Application Server Home Directory>/server/lib/
wlthint3client.jar
<Web Application Server Home Directory>/../oracle_common/modules/
org.codehaus.woodstox.woodstox-core-asl.jar
<Web Application Server Home Directory>/../oracle_common/modules/
org.codehaus.woodstox.stax2-api.jar
<Web Application Server Home Directory>/../oracle_common/modules/
org.glassfish.jersey.core.jersey-client.jar
<Web Application Server Home Directory>/../oracle_common/modules/
org.glassfish.jersey.core.jersey-common.jar
<Web Application Server Home Directory>/../oracle_common/modules/
org.glassfish.jersey.bundles.repackaged.jersey-guava.jar
<Web Application Server Home Directory>/../oracle_common/modules/
org.glassfish.jersey.core.jersey-server.jar
<Web Application Server Home Directory>/../oracle_common/modules/
org.glassfish.jersey.media.jersey-media-jaxb.jar
<Web Application Server Home Directory>/../oracle_common/modules/
org.glassfish.jersey.media.jersey-media-multipart.jar
```

If the “Additional JAR Directory” is configured, the initialSetup process will pull those JARs from that directory.

If the “Additional JAR Directory” is not configured, the initialSetup process will pull those JARs from the “Web Application Server Home Directory”.

Special Note for Upgrading from a WebLogic 12.1.3.x Environment

If you are upgrading from an environment which is using WebLogic 12.1.3.x you need to follow the steps below prior the installation:

1. Install Oracle WebLogic Server (Fusion Middleware Infrastructure) 12.2.1.x.
2. Install Oracle Java SE Development Kit 1.8.0_121+ (if not installed yet).
3. Shutdown the Application Server Environment.
4. Take a full backup of the application \$SPLEBASE.
5. Set the environment: splenviron.sh -e <ENV NAME>.
6. Reconfigure the environment in order to point to the new WebLogic and Java (if upgrade Java as well):

Execute: configureEnv.sh -i

Update: “Web Java Home Directory” and “Web Application Server Home Directory”

Type <P> to process (no need to rerun initialSetup.sh).

7. Set the environment again: splenviron.sh -e <ENV NAME>.
8. Upgrade the Oracle Utilities Application Framework to version 4.3.0.5.0 using the installSP.sh script.

Chapter 4

Installing Oracle Utilities Operational Device Management - Demo Installation

This section provides instructions for setting up a demo application of Oracle Utilities Operational Device Management useful for demonstration or training purposes, including:

- [Demo Installation Procedure](#)
- [Post Installation Verifications](#)

Before You Install

Oracle recommends that you do not clone the demonstration environment as a basis for a new production environment. The demonstration environment typically includes transactional data that will be irrelevant to your production environment and can cause unexpected issues if it is not purged correctly. The recommended process is to start a new production environment from a new installation and migrate "clean" system data (such as business objects and algorithms) and administrative data (such as sample activity types or other administrative entities) from the demonstration and/or test or development environments as applicable.

Please refer to the *Oracle Utilities Operational Device Management Administrative User's Guide* for more information or contact Oracle Support.

Demo Installation Procedure

The demo installation procedure consists of:

- [Database Component Installation](#)
- [Application Component Installation](#)

Database Component Installation

Installation of the database component of Oracle Utilities Operational Device Management must be complete before you can proceed with the following sections. Refer to the *Oracle Utilities Operational Device Management Database Administrator Guide*,

which provides instructions on installing the database component with pre-populated demo data.

Application Component Installation

A successful installation consists of the following steps:

- [Installing the Oracle Utilities Application Framework Application Component v4.3.0.5.0](#)
- [Installing Oracle Utilities Application Framework v4.3.0.5.0 Single Fix PreRequisite Rollup](#)
- [Installing the Oracle Utilities Operational Device Management Application Component](#)

Installing the Oracle Utilities Application Framework Application Component v4.3.0.5.0

This section describes how to install the application component of Oracle Utilities Application Framework, including:

- [Copying and Decompressing Install Media for the Oracle Utilities Application Framework Application Component](#)
- [Setting Permissions for the cistab file in UNIX for the Oracle Utilities Application Framework Application Component](#)
- [Installing the Oracle Utilities Application Framework Application Component](#)

Copying and Decompressing Install Media for the Oracle Utilities Application Framework Application Component

The Oracle Utilities Application Framework installation file is delivered in jar format for both UNIX and Windows platforms. If you are planning to install multiple Oracle Utilities Application Framework environments operated by different Oracle Utilities administrator user IDs, you must complete each of the following installation steps for each administrator user ID.

To copy and decompress the install media, follow these steps:

1. Log in to the application server host with the Oracle Utilities Application Framework administrator user ID.
2. Download “Oracle Utilities Application Framework v4.3.0.5.0 Multiplatform” from Oracle Software Delivery Cloud.
3. Create a temporary directory such as c:\ouaf\temp or /ouaf/temp. (Referred to below as <TEMPDIR>.)

Note: This directory must be located outside any current or other working Oracle Utilities application environment. All files that are placed in this directory as a part of the installation can be deleted after completing a successful installation.

4. Copy the file “FW-V4.3.0.5.0-Multiplatform.jar” from the delivered package to the <TEMPDIR>. If you are using FTP to transfer this file, remember to use the BINARY option for the FTP transfer.
5. Decompress the file:

```
cd <TEMPDIR>
jar -xvf FW-V4.3.0.5.0-Multiplatform.jar
```

Note: You will need to have Java JDK installed on the machine used to (un)jar the application server installation package. Please install the JDK that is supported for the install on your platform to be able to use the jar command.

Java packages are located at: <http://www.oracle.com/technetwork/java/archive-139210.html>

A sub-directory named “FW.V4.3.0.5.0-SP5” is created. It contains the installation software for the Oracle Utilities framework application server.

Setting Permissions for the cistab file in UNIX for the Oracle Utilities Application Framework Application Component

Every Oracle Utilities Application Framework environment installed on a server must be registered in the /etc/cistab file located on that server. On UNIX servers, generally only the root user ID has write permissions to the /etc directory. Since the installation process is run by the Oracle administrator user ID (cissys), this user ID may not be able to write to /etc/cistab table.

The install utility checks permissions and if it identifies a lack of the necessary permissions, it generates a script in the <TEMPDIR>/FW-V4.3.0.5.0-SP5 directory named cistab_<SPLENVIRON>.sh. Run the generated script using the root account before continuing with the installation process. The script initializes the cistab file in /etc directory (if it is the first Oracle Utilities Framework application environment on the server) and registers a new environment.

The generated script also changes the owner of /etc/cistab file to the Oracle Utilities Framework administrator user ID, so that the next time a new environment is created by the same Oracle Utilities Framework administrator user ID, you do not need to run the generated script with the root user ID. Instead the install utility itself proceeds with the registration.

If you are reinstalling an existing environment, only the validation of /etc/cistab entry is done by the install utility, no new registration occurs. The install utility interactively instructs you about every step that needs to occur in each specific case.

If you are planning to upgrade an existing environment you should take a backup first. The installation utility does not create an automatic backup of the existing environment.

Installing the Oracle Utilities Application Framework Application Component

This section outlines the steps for installing the application component of Oracle Utilities Application Framework.

1. Login to the Application Server host as administrator user ID (the default is cissys on UNIX) or as a user with administrator privileges (on Windows).
2. Change directory to the <TEMPDIR>/FW.V4.3.0.5.0-SP5 directory.
3. Set the ORACLE_CLIENT_HOME and PATH variables as Oracle Client Perl is required to run the installer.

UNIX

```
export ORACLE_CLIENT_HOME=<ORACLE CLIENT INSTALL LOCATION>
export PERL_HOME=${ORACLE_CLIENT_HOME}/perl
export PATH=${PERL_HOME}/bin:$PATH
export PERL5LIB=${PERL_HOME}/lib:${PERL_HOME}/lib/site_perl:<OUAF
                                Installer Decompressed location/data/bin/
perl>
export PERLLIB=${PERL_HOME}/lib:${PERL_HOME}/lib/site_perl:<OUAF
                                Installer Decompressed location/data/bin/
perl>
export LD_LIBRARY_PATH=${ORACLE_CLIENT_HOME}/lib:$LD_LIBRARY_PATH
```

Windows Server

```
set ORACLE_CLIENT_HOME=<ORACLE CLIENT INSTALL LOCATION>
set PERL_HOME=%ORACLE_CLIENT_HOME%\perl
set PATH=%PERL_HOME%\bin;%PATH%
```

4. Start the application installation utility by executing the appropriate script:

UNIX

```
ksh ./install.sh
```

Windows Server

```
install.cmd
```

5. The Oracle Utilities Application Framework specific menu displays.
6. Follow the messages and instructions that are produced by the application installation utility.
7. Select each menu item to configure the values. For detailed description of the values, refer to the [Installation and Configuration Worksheets](#) section.

The table below lists the mandatory configurable items. Where you see <Mandatory>, enter values suitable to your environment.

You can assign default values to the rest of the menu items.

For [Menu 4](#) related to the TPW usage, there are two options:

- Standalone TPW usage from the Command line - In this, the value of TPWDatasource in the menu should be empty.
- Deploy the threadpool worker “ThreadPoolWorker.ear” in the application domain - Whenever the application is started, its corresponding threadpool worker is also started. For this, TPWDataSource (Web JDBC DataSource Name) parameter should be populated and is **mandatory**.

Another option is to configure TPW for WebLogic domain deployment. For ThreadPool Worker deployment through the Admin console, configure “Web JDBC DataSource Name” as “TPWDatasource” through Admin Console and update the same in the [Menu 4](#) options; also provide the credentials of “JDBC Database UserName/Password” to be the same as Application Server Database UserName/Password. Refer to [Menu 4](#) for more information.

Note: Web JDBC Datasource Name and Credentials are mandatory for Console based TPW deployment only; for Standalone TPW it must be empty.

```

*****
* Environment Installation Options *
*****
1. Environment ID, Roles, Third Party Software Configuration

Environment ID

Server Roles                                batch, online

Oracle Client Home Directory                <Mandatory for Initial Install>

Web Java Home Directory                    <Mandatory for Initial Install>

Hibernate JAR Directory

ONS JAR Directory

Web Application Server Home Directory      <Mandatory for Initial Install>

Additional JAR Directory

ADF Home Directory

OIM OAM Enabled Environment                false

2. Keystore Options

Import Keystore Directory

Store Type                                <Mandatory>

Alias                                     <Mandatory>

Alias Key Algorithm                        AES

Alias Key Size                            128

HMAC Alias                                ouaf.system.hmac

Padding                                   PKCS5Padding

Mode                                       CBC

50. Environment Installation Options

Environment Mount Point                    <Mandatory>

Log Files Mount Point                     <Mandatory>

Environment Name                           <Mandatory>

Install Application Viewer Module          true

Install Demo Generation Cert Script        true

Install Sample CM Source Code              true

```

Each item in the above list should be configured for a successful install.

Choose option (1,2,50, <P> Process, <X> Exit):

8. Once you enter 'P' after entering mandatory input values in the above menu, the system populates another configuration menu.

```

*****
* Environment Configuration *
*****
1. Environment Description
    Environment Description                                <Mandatory>

2. Business Application Server Configuration
    Business Server Host                                <Mandatory> - Hostname on
                                                         which application being
                                                         installed
    Business Server Application Name                    SPLService
    MPL Admin Port Number                               <Mandatory> - Multipurpose
                                                         Listener Port
    MPL Automatic startup                               false

3. Web Application Server Configuration
    Web Server Host                                    <Mandatory>
    WebLogic SSL Port Number                            <Mandatory>
    WebLogic Console Port Number                       <Mandatory>
    Web Context Root                                   ouaf
    WebLogic JNDI User ID                              <Mandatory>
    WebLogic JNDI Password                             <Mandatory>
    WebLogic Server Name                               myserver
    Web Server Application Name                         SPLWeb
    Deploy using Archive Files                          true
    Deploy Application Viewer Module                   true
    Enable The Unsecured Health Check Service          false
    MDB RunAs User ID
    Super User IDs

4. Database Configuration
    Application Server Database User ID                 <Mandatory>

```

Application Server Database Password	<Mandatory>
MPL Database User ID	<Mandatory>
MPL Database Password	<Mandatory>
XAI Database User ID	<Mandatory>
XAI Database Password	<Mandatory>
Batch Database User ID	<Mandatory>
Batch Database Password	<Mandatory>
Web JDBC DataSource Name	
JDBC Database User ID	
JDBC Database Password	<Mandatory>
Database Name	<Mandatory>
Database Server	<Mandatory>
Database Port	1521
ONS Server Configuration	
Database Override Connection String	
Character Based Database	false
Oracle Client Character Set NLS_LANG	AMERICAN_AMERICA.AL32 UTF8

Note: Web JDBC Datasource Name and Credentials are mandatory for Console based TPW deployment only, for Stalone TPW must be empty.

5. General Configuration Options

Batch RMI Port	<mandatory>
RMI Port number for JMX Business	<optional>
RMI Port number for JMX Web	<optional>
JMX Enablement System User ID	<optional>
JMX Enablement System Password	<optional>
Coherence Cluster Name	<mandatory>
Coherence Cluster Address	<mandatory>
Coherence Cluster Mode	prod<Mandatory>
Coherence Cluster Port	<Mandatory>

6. OUAF TrustStore Options

Import TrustStore Directory	
Store Type	JCEKS
Alias	ouaf.system

Alias Key Algorithm	AES
Alias Key Size	128
HMAC Alias	ouaf.system.hmac
Padding	PKCS5Padding
Mode	CBC

Each item in the above list should be configured for a successful install.

Choose option (1,2,3,4,5,6 <P> Process, <X> Exit):

10. When the parameter setup is complete, proceed with the option P. The utility writes the configured parameters and their values into the configuration file.

11. Once the install or upgrade has finished, the installation log location is displayed on the screen. If the log does not list any error messages, the installation of the application component of Oracle Utilities Application Framework is complete.

Installing Oracle Utilities Application Framework v4.3.0.5.0 Single Fix PreRequisite Rollup

Oracle Utilities Application Framework patches must be installed prior to installing Oracle Utilities Operational Device Management. The patches are available as a convenience rollup inside the zip file “Oracle Utilities Application Framework v4.3.0.5.0-SP5 Single Fix Prerequisite Rollup for Oracle Utilities Work and Asset Management v2.2.0.1.0.zip” which is part of the downloaded Media Pack.

Follow these steps for installing the application patches on top of Oracle Utilities Application Framework 4.3.0.5.0:

1. Copy the file, WAM-V22010-FW-PREREQ-Multiplatform.jar, in the delivered package to a <TEMPDIR>.

2. Unjar using the command:

```
jar -xvf WAM-V22010-FW-PREREQ-Multiplatform.jar
```

3. Initialize the Framework environment where you are installing the Oracle Utilities Application Framework patch rollup:

UNIX

```
$SPLEBASE/bin/splenviron.sh -e <YOUR_ENVIRONMENT_NAME>
```

Windows Server

```
%SPLEBASE%\bin\splenviron.cmd -e <YOUR_ENVIRONMENT_NAME>
```

4. Install the Framework Rollup:
 - a. Navigate to the <temp location>/FW-V4.3.0.5.0-Rollup/Application folder.
 - b. Execute the group installation script:

UNIX

```
chmod a+x installSFgroup.sh
chmod a+x FW*/*.sh
./installSFgroup.sh
```

Windows Server

```
installSFgroup.cmd
```

Installing the Oracle Utilities Operational Device Management Application Component

This section describes how to install the application component of Oracle Utilities Operational Device Management, including:

- [Copying and Decompressing Oracle Utilities Operational Device Management Install Media](#)
- [Installing the Oracle Utilities Operational Device Management Application Component](#)
- [Creating WebLogic Domain](#)
- [Creating Users \(WAMUSER and ODMUSER\)](#)

Copying and Decompressing Oracle Utilities Operational Device Management Install Media

The Oracle Utilities Operational Device Management installation file is delivered in jar format for both UNIX and Windows platforms.

To copy and decompress the install media, follow these steps:

1. Log in to the application server host as the administrator user ID (default cissys). This is the same user ID that was used to install the Oracle Utilities Application Framework.
2. Download the Oracle Utilities Work and Asset Management v2.2.0.1 Multiplatform zip file from Oracle Software Delivery Cloud.
3. Create a <TEMPDIR> directory on the host server, which is independent of any current or other working Oracle Utilities Operational Device Management application environment.
This can be the same <TEMPDIR> used during the installation of the Oracle Utilities Application Framework.
4. Copy the file, WAM-V2.2.0.1.0-Multiplatform.jar, in the delivered package to a <TEMPDIR> on your host server. If you are using FTP to transfer this file, remember to use the BINARY option for the FTP transfer.
5. Decompress the file:

```
cd <TEMPDIR>
jar -xvf WAM-V2.2.0.1.0-Multiplatform.jar
```

For Windows installations, include the location of the JDK in your path before you execute the jar command.

A sub-directory named W1.V2.2.0.1.0 is created for both Unix and Windows platforms. The contents of the installation directory are identical for both platforms. The directory contains the install software for the application product.

Installing the Oracle Utilities Operational Device Management Application Component

Follow these steps to install the Oracle Utilities Operational Device Management application component:

1. Log in to the application server host as the administrator user ID (default cissys).
2. Change directory:

```
cd <install_dir>
```

where <install_dir> is the location where the Oracle Utilities Application Framework v4.3.0.5.0 base application component is installed.

3. Initialize the environment by running the appropriate command:

UNIX

```
./splenviron.sh -e <ENV NAME>
```

Windows

```
splenviron.cmd -e <ENV NAME>
```

4. Change to the <TEMPDIR>/W1.V2.2.0.1.0 directory.

Execute the install script:

Note: On **UNIX**, ensure that you have the proper execute permission on install.sh.

UNIX

```
ksh ./install.sh
```

Windows Server

```
install.cmd
```

5. After the installation is complete, initialize the environment by running the appropriate command from “bin” folder.

UNIX

```
./splenviron.sh -e <ENV NAME>
```

Windows Server

```
splenviron.cmd -e <ENV NAME>
```

6. Generate the appviewer by following these steps.

- a. Change the directory.

```
cd <install_dir>/bin
```

where <install_dir> is Oracle Utilities Work and Asset Management Application Component installation directory.

- b. Run the script to generate the appviewer.

UNIX

```
ksh ./genappvieweritems.sh
```

Windows

```
genappvieweritems.cmd
```

Creating WebLogic Domain

Create the WebLogic native domain and deploy the application. For instructions refer to the *Native Installation Oracle Utilities Application Framework* (Doc Id: 1544969.1) white paper on My Oracle Support.

Creating Users (WAMUSER and ODMUSER)

To create WAMUSER and ODMUSER users follow these steps:

Note: These steps must be executed after creating the domain.

1. Login to WebLogic Admin console as a Admin user.
2. Navigate to **Security Realms > myrealm**.
3. Click **Users and Groups**.
4. On the **Users** tab, click **New**.
5. On the **Create a New User** tab, enter the **Name**, **Description**, and **Password** details in the respective fields.
6. Click **OK**.
A new user is created.
7. Click **Groups**.
8. Add the user created in step 6 to **cisusers** group.

Post Installation Verifications

After you complete the installation, verify the following:

1. Verify installation logs created under decompressed installer location for any errors.
2. Confirm installation logs do not contain any errors.
3. Confirm all the configurations are correct.
Refer to the [Installation and Configuration Worksheets](#) section for details.
4. Confirm that the database is ready.
5. Generate appviewer.
6. Start the application server.
For instructions, refer to the [Common Maintenance Activities](#) section.

At this point your installation is complete. Read the *Oracle Utilities Operational Device Management Server Administration Guide* for more information on further configuring and operating the system.

Chapter 5

Upgrading Oracle Utilities Operational Device Management

This section provides instructions for upgrading Oracle Utilities Operational Device Management, including:

- [Upgrade Paths](#)
- [Before You Upgrade](#)
- [Upgrade Procedure](#)
- [Post Upgrade Verifications](#)
- [Installing Service Packs and Patches](#)

Upgrade Paths

- from v2.2.0.0 to v2.2.0.1

Before You Upgrade

Review the list of operating system, application server and database server combinations that this version of Oracle Utilities Operational Device Management is certified to operate on, in the [Supported Platforms and Hardware Requirements](#) section.

For further assistance, contact My Oracle Support before you upgrade.

Note: If you are upgrading a previously installed application server, it is recommended that you make a backup before you start the upgrade procedure. The upgrade installation will remove your existing environment including your configurations.

Upgrade Procedure

The upgrade installation procedure consists of:

- [Database Component Upgrade](#)
- [Application Component Upgrade](#)

Database Component Upgrade

Upgrade of the database component of Oracle Utilities Operational Device Management must be complete before you can proceed with the following sections. Refer to the “Upgrade Install” section in the *Oracle Utilities Operational Device Management Database Administrator Guide*, which provides instructions on upgrading the database component.

Application Component Upgrade

A successful upgrade consists of the following steps:

- [Upgrading the Oracle Utilities Application Framework Application Component](#)
- [Installing Oracle Utilities Application Framework v4.3.0.5.0 Single Fix PreRequisite Rollup](#)
- [Upgrading the Oracle Utilities Operational Device Management Application Component](#)

Upgrading the Oracle Utilities Application Framework Application Component

This section describes how to upgrade the application component of Oracle Utilities Application Framework, including:

- [Copying and Decompressing Install Media for the Oracle Utilities Application Framework Application Component](#)
- [Setting Permissions for the cistab file in UNIX for the Oracle Utilities Application Framework Application Component](#)
- [Upgrading the Oracle Utilities Application Framework Application Component](#)

Copying and Decompressing Install Media for the Oracle Utilities Application Framework Application Component

The Oracle Utilities Application Framework installation file is delivered in jar format for both UNIX and Windows platforms. If you are planning to install multiple Oracle Utilities Application Framework environments operated by different Oracle Utilities administrator user IDs, you must complete each of the following installation steps for each administrator user ID.

To copy and decompress the install media, follow these steps:

1. Log in to the application server host with the Oracle Utilities Application Framework administrator user ID.
2. Download “Oracle Utilities Application Framework v4.3.0.5.0 Multiplatform” from Oracle Software Delivery Cloud.

3. Create a temporary directory such as `c:\ouaf\temp` or `/ouaf/temp`. (Referred to below as `<TEMPDIR>`.)

Note: This directory must be located outside any current or other working Oracle Utilities application environment. All files that are placed in this directory as a part of the installation can be deleted after completing a successful installation.

4. Copy the file “FW-V4.3.0.5.0-Multiplatform.jar” from the delivered package to the `<TEMPDIR>`. If you are using FTP to transfer this file, remember to use the BINARY option for the FTP transfer.
5. Decompress the file:

```
cd <TEMPDIR>
jar -xvf FW-V4.3.0.5.0-Multiplatform.jar
```

Note: You will need to have Java JDK installed on the machine used to (un)jar the application server installation package. Please install the JDK that is supported for the install on your platform to be able to use the jar command.

Java packages are located at: <http://www.oracle.com/technetwork/java/archive-139210.html>

A sub-directory named “FW.V4.3.0.5.0-SP5” is created. It contains the installation software for the Oracle Utilities framework application server.

Setting Permissions for the `cistab` file in UNIX for the Oracle Utilities Application Framework Application Component

Every Oracle Utilities Application Framework environment installed on a server must be registered in the `/etc/cistab` file located on that server. On UNIX servers, generally only the root user ID has write permissions to the `/etc` directory. Since the installation process is run by the Oracle administrator user ID (`cissys`), this user ID may not be able to write to `/etc/cistab` table.

The install utility checks permissions and if it identifies a lack of the necessary permissions, it generates a script in the `<TEMPDIR>/FW-V4.3.0.5.0-SP5` directory named `cistab_<SPLENVIRON>.sh`. Run the generated script using the root account before continuing with the installation process. The script initializes the `cistab` file in `/etc` directory (if it is the first Oracle Utilities Framework application environment on the server) and registers a new environment.

The generated script also changes the owner of `/etc/cistab` file to the Oracle Utilities Framework administrator user ID, so that the next time a new environment is created by the same Oracle Utilities Framework administrator user ID, you do not need to run the generated script with the root user ID. Instead the install utility itself proceeds with the registration.

If you are reinstalling an existing environment, only the validation of `/etc/cistab` entry is done by the install utility, no new registration occurs. The install utility interactively instructs you about every step that needs to occur in each specific case.

If you are planning to upgrade an existing environment you should take a backup first. The installation utility does not create an automatic backup of the existing environment.

Upgrading the Oracle Utilities Application Framework Application Component

This section outlines the steps for upgrading the application component of Oracle Utilities Application Framework.

1. Login to the Application Server host as administrator (the default is `cissys` on **UNIX**) or as a user with Administrator privileges (on Windows).

2. Change directory to the bin folder.

```
cd <install_dir>/bin
```

where `<install_dir>` is the location where the Oracle Utilities Application Framework v4.3.0.5.0 base application component is installed.

3. Initialize the environment by running the appropriate command:

UNIX

```
./splenviron.sh -e <ENV_NAME>
```

Windows

```
splenviron.cmd -e <ENV_NAME>
```

4. Change directory to the `<TEMP_DIR>/FWV4.3.0.5.0-SP5` directory.

NOTE: While installing the FW v4.3.0.5.0 from the previous environment to Oracle Utilities Operational Device Management v2.2.0.1.0 the install utility removes the existing environment and re-creates the environment. Take a backup before you proceed with installing FW v4.3.0.5.0 to retain any configurations for future reference.

UNIX

```
export ORACLE_CLIENT_HOME=<ORACLE CLIENT INSTALL LOCATION> export
PERL_HOME=${ORACLE_CLIENT_HOME}/perl
export PATH=${PERL_HOME}/bin:$PATH
export PERL5LIB=${PERL_HOME}/lib:${PERL_HOME}/lib/site_perl:<OUAF
Installer Decompressed location/data/bin/perl>
export PERLLIB=${PERL_HOME}/lib:${PERL_HOME}/lib/site_perl:<OUAF
Installer Decompressed location/data/bin/perl>
export LD_LIBRARY_PATH=${ORACLE_CLIENT_HOME}/lib:$LD_LIBRARY_PATH
```

Windows Server

```
set ORACLE_CLIENT_HOME=<ORACLE CLIENT INSTALL LOCATION> set
PERL_HOME=%ORACLE_CLIENT_HOME%\perl set
PATH=%PERL_HOME%\bin;%PATH%
```

5. Start the application installation utility by executing the appropriate script:

UNIX

```
ksh ./install.sh
```

Windows Server

```
install.cmd
```

6. The Oracle Utilities Application Framework specific menu displays.
7. Follow the messages and instructions that are produced by the application installation utility.

8. Select each menu item to configure the values. For detailed description of the values, refer to the [Installation and Configuration Worksheets](#) section.

The table below lists the mandatory configurable items. Where you see <Mandatory>, enter values suitable to your environment.

You can assign default values to the rest of the menu items.

For [Menu 4](#) related to the TPW usage, there are two options:

- Standalone TPW usage from the Command line - In this, the value of TPWDatasource in the menu should be empty.
- Deploy the threadpool worker “ThreadPoolWorker.ear” in the application domain - Whenever the application is started, its corresponding threadpool worker is also started. For this, TPWDataSource (Web JDBC DataSource Name) parameter should be populated and is **mandatory**.

Another option is to configure TPW for WebLogic domain deployment. For ThreadPool Worker deployment through the Admin console, configure “Web JDBC DataSource Name” as “TPWDatasource” through Admin Console and update the same in the [Menu 4](#) options; also provide the credentials of “JDBC Database UserName/Password” to be the same as Application Server Database UserName/Password. Refer to [Menu 4](#) for more information.

Note: Web JDBC Datasource Name and Credentials are mandatory for Console based TPW deployment only; for Stanalone TPW it must be empty.

```
*****
* Environment Installation Options *
*****
```

1. Environment ID, Roles, Third Party Software Configuration

```
Environment ID
Server Roles                                batch, online
Oracle Client Home Directory                <Mandatory for Initial Install>
Web Java Home Directory                     <Mandatory for Initial Install>
Hibernate JAR Directory
ONS JAR Directory
Web Application Server Home Directory       <Mandatory for Initial Install>
Additional JAR Directory
ADF Home Directory
OIM OAM Enabled Environment                false
```

2. Keystore Options

```
Import Keystore Directory
Store Type                                <Mandatory>
```


Alias	<Mandatory>
Alias Key Algorithm	AES
Alias Key Size	128
HMAC Alias	ouaf.system.hmac
Padding	PKCS5Padding
Mode	CBC

50. Environment Installation Options

Environment Mount Point	<Mandatory>
Log Files Mount Point	<Mandatory>
Environment Name	<Mandatory>
Install Application Viewer Module	true
Install Demo Generation Cert Script	true
Install Sample CM Source Code	true

Each item in the above list should be configured for a successful install.

Choose option (1,2,50, <P> Process, <X> Exit):

9. Once you enter 'P' after entering mandatory input values in the above menu, the system populates another configuration menu.

```
*****
```

```
* Environment Configuration *
```

```
*****
```

1. Environment Description

Environment Description	<Mandatory>
-------------------------	-------------

2. Business Application Server Configuration

Business Server Host	<Mandatory> - Hostname on which application being installed
Business Server Application Name	SPLService
MPL Admin Port Number	<Mandatory> - Multipurpose Listener Port
MPL Automatic startup	false

3. Web Application Server Configuration

Web Server Host	<Mandatory>
-----------------	-------------

WebLogic SSL Port Number	<Mandatory>
WebLogic Console Port Number	<Mandatory>
Web Context Root	ouaf
WebLogic JNDI User ID	<Mandatory>
WebLogic JNDI Password	<Mandatory>
WebLogic Server Name	myserver
Web Server Application Name	SPLWeb
Deploy using Archive Files	true
Deploy Application Viewer Module	true
Enable The Unsecured Health Check Service	false
MDB RunAs User ID	
Super User IDs	

4. Database Configuration

Application Server Database User ID	<Mandatory>
Application Server Database Password	<Mandatory>
MPL Database User ID	<Mandatory>
MPL Database Password	<Mandatory>
XAI Database User ID	<Mandatory>
XAI Database Password	<Mandatory>
Batch Database User ID	<Mandatory>
Batch Database Password	<Mandatory>
Web JDBC DataSource Name	
JDBC Database User ID	
JDBC Database Password	<Mandatory>
Database Name	<Mandatory>
Database Server	<Mandatory>
Database Port	1521
ONS Server Configuration	
Database Override Connection String	
Character Based Database	false
Oracle Client Character Set NLS_LANG	AMERICAN_AMERICA.AL32 UTF8

Note: Web JDBC Datasource Name and Credentials are mandatory for Console based TPW deployment only, for Stalone TPW must be empty.

5. General Configuration Options

Batch RMI Port	<mandatory>
RMI Port number for JMX Business	<optional>
RMI Port number for JMX Web	<optional>
JMX Enablement System User ID	<optional>
JMX Enablement System Password	<optional>
Coherence Cluster Name	<mandatory>
Coherence Cluster Address	<mandatory>
Coherence Cluster Mode	prod<Mandatory>
Coherence Cluster Port	<Mandatory>

6. OUAF TrustStore Options

Import TrustStore Directory	
Store Type	JCEKS
Alias	ouaf.system
Alias Key Algorithm	AES
Alias Key Size	128
HMAC Alias	ouaf.system.hmac
Padding	PKCS5Padding
Mode	CBC

Each item in the above list should be configured for a successful install.

Choose option (1,2,3,4,5,6 <P> Process, <X> Exit):

10. When the parameter setup is complete, proceed with the option P. The utility writes the configured parameters and their values into the configuration file.

11. Once the install or upgrade has finished, the installation log location is displayed on the screen. If the log does not list any error messages, the installation of the application component of Oracle Utilities Application Framework is complete.

Installing Oracle Utilities Application Framework v4.3.0.5.0 Single Fix PreRequisite Rollup

Oracle Utilities Application Framework patches must be installed prior to installing Oracle Utilities Operational Device Management. The patches are available as a convenience rollup inside the zip file “Oracle Utilities Application Framework v4.3.0.5.0-SP5 Single Fix Prerequisite Rollup for Oracle Utilities Work and Asset Management v2.2.0.1.0.zip” which is part of the downloaded Media Pack.

Follow these steps for installing the application patches on top of Oracle Utilities Application Framework 4.3.0.5.0:

1. Copy the file, WAM-V22010-FW-PREREQ-Multiplatform.jar, in the delivered package to a <TEMPDIR>.

2. Unjar using the command:

```
jar -xvf WAM-V22010-FW-PREREQ-Multiplatform.jar
```

3. Initialize the Framework environment where you are installing the Oracle Utilities Application Framework patch rollup:

UNIX

```
$SPLEBASE/bin/splenvron.sh -e <YOUR_ENVIRONMENT_NAME>
```

Windows Server

```
%SPLEBASE%\bin\splenvron.cmd -e <YOUR_ENVIRONMENT_NAME>
```

4. Install the Framework Rollup:

- a. Navigate to the <temp location>/FW-V4.3.0.5.0-Rollup/Application folder.
- b. Execute the group installation script:

UNIX

```
chmod a+x installSFgroup.sh
chmod a+x FW*/*.sh
./installSFgroup.sh
```

Windows Server

```
installSFgroup.cmd
```

Upgrading the Oracle Utilities Operational Device Management Application Component

This section describes how to install the application component of Oracle Utilities Operational Device Management, including:

- [Copying and Decompressing Oracle Utilities Operational Device Management Install Media](#)
- [Upgrading the Oracle Utilities Operational Device Management Application Component](#)
- [Creating WebLogic Domain](#)
- [Creating Users \(WAMUSER and ODMUSER\)](#)

Copying and Decompressing Oracle Utilities Operational Device Management Install Media

The Oracle Utilities Operational Device Management installation file is delivered in jar format for both UNIX and Windows platforms.

To copy and decompress the install media, follow these steps:

1. Log in to the application server host as the administrator user ID (default cissys). This is the same user ID that was used to install the Oracle Utilities Application Framework.
2. Download the Oracle Utilities Work and Asset Management v2.2.0.1 Multiplatform zip file from Oracle Software Delivery Cloud.

3. Create a <TEMPDIR> directory on the host server, which is independent of any current or other working Oracle Utilities Operational Device Management application environment.
This can be the same <TEMPDIR> used during the installation of the Oracle Utilities Application Framework.
4. Copy the file, WAM-V2.2.0.1.0-Multiplatform.jar, in the delivered package to a <TEMPDIR> on your host server. If you are using FTP to transfer this file, remember to use the BINARY option for the FTP transfer.
5. Decompress the file:

```
cd <TEMPDIR>
jar -xvf WAM-V2.2.0.1.0-Multiplatform.jar
```

For Windows installations, include the location of the JDK in your path before you execute the jar command.

A sub-directory named W1.V2.2.0.1.0 is created for both Unix and Windows platforms. The contents of the installation directory are identical for both platforms. The directory contains the install software for the application product.

Upgrading the Oracle Utilities Operational Device Management Application Component

Follow these steps to upgrade the Oracle Utilities Operational Device Management application component:

1. Log in to the application server host as the administrator user ID (default cissys).
2. Change directory:

```
cd <install_dir>
```

where <install_dir> is the location where the Oracle Utilities Application Framework v4.3.0.5.0 base application component is installed.

3. Initialize the environment by running the appropriate command:

UNIX

```
./splenviron.sh -e <ENV NAME>
```

Windows

```
splenviron.cmd -e <ENV NAME>
```

4. Change to the <TEMPDIR>/W1.V2.2.0.1.0 directory.

Execute the install script:

Note: On **UNIX**, ensure that you have the proper execute permission on install.sh.

UNIX

```
ksh ./install.sh
```

Windows Server

```
install.cmd
```

5. After the installation is complete, initialize the environment by running the appropriate command from “bin” folder.

UNIX

```
./splenviron.sh -e <ENV NAME>
```

Windows Server

```
splenviron.cmd -e <ENV NAME>
```

6. Generate the appviewer by following these steps.

- a. Change the directory.

```
cd <install_dir>/bin
```

where <install_dir> is Oracle Utilities Work and Asset Management Application Component installation directory.

- b. Run the script to generate the appviewer.

UNIX

```
ksh ./genappvieweritems.sh
```

Windows

```
genappvieweritems.cmd
```

Creating WebLogic Domain

Create the WebLogic native domain and deploy the application. For instructions refer to the *Native Installation Oracle Utilities Application Framework* (Doc Id: 1544969.1) white paper on My Oracle Support.

Creating Users (WAMUSER and ODMUSER)

To create WAMUSER and ODMUSER users follow these steps:

Note: These steps must be executed after creating the domain.

1. Login to WebLogic Admin console as a Admin user.
2. Navigate to **Security Realms > myrealm**.
3. Click **Users and Groups**.
4. On the **Users** tab, click **New**.
5. On the **Create a New User** tab, enter the **Name**, **Description**, and **Password** details in the respective fields.
6. Click **OK**.
A new user is created.
7. Click **Groups**.
8. Add the user created in step 6 to **cisusers** group.

Post Upgrade Verifications

After you complete the upgrade, verify the following:

1. Verify installation logs created under decompressed installer location for any errors.
2. Confirm installation logs do not contain any errors.

3. Confirm all the configurations are correct.
Refer to the [Installation and Configuration Worksheets](#) section for details.
4. Confirm that the database is ready.
5. Generate appviewer.
6. Start the application server.
For instructions, refer to the [Common Maintenance Activities](#) section.

At this point your installation is complete. Read the *Oracle Utilities Operational Device Management Server Administration Guide* for more information on further configuring and operating the system.

Installing Service Packs and Patches

Periodically, Oracle Utilities releases a service pack of single fixes for its products. A service pack is an update to an existing release that includes solutions to known problems and other product enhancements. A service pack is not a replacement for an installation, but a pack consisting of a collection of changes and additions for it. The service pack may include changes to be applied to the application server, the database, or both. The service pack includes all files necessary for installing the collection of changes, including installation instructions.

Between services packs, Oracle Utilities releases patches to fix individual bugs. For information on installing patches, refer to knowledge base article ID 974985.1 on My Oracle Support.

Service packs and patches can be downloaded from My Oracle Support (<https://support.oracle.com/>).

Chapter 6

Additional Tasks

This section describes tasks that should be completed after installing Oracle Utilities Operational Device Management, including:

- [Importing Self-Signed Certificates](#)
- [Customizing Configuration Files](#)
- [Customizing Centralized Properties](#)
- [Integrating Existing Customer Modifications](#)
- [Generating the Application Viewer](#)
- [Building Javadocs Indexes](#)
- [Configuring the Environment for Batch Processing](#)
- [Customizing the Logo](#)
- [Creating WebLogic Domain](#)
- [Deploying Inbound WebServices \(IWS\)](#)
- [Domain Templates](#)
- [Database Patching](#)

Importing Self-Signed Certificates

If you are using self-signed certificates and the Inbound Web Services (IWS) feature, then it is necessary to import these certificates into the Oracle Utilities Application Framework truststore file.

Perform the following commands:

1. Start WebLogic.
2. Initialize a command shell and setup the environment by running the following:

UNIX

```
$SPLEBASE/bin/splenviron.sh -e <YOUR_ENVIRONMENT_NAME>
```

For example:

```
/ouaf/TEST_ENVIRON1/bin/splenviron.sh -e TEST_ENVIRON1
```


Windows

```
%SPLEBASE%\bin\splenvron.cmd -e <YOUR_ENVIRONMENT_NAME>
```

For example:

```
D:\ouaf\TEST_ENVIRON1\bin\splenvron.cmd -e TEST_ENVIRON1
```

- Execute the following script to generate all information:

UNIX

```
$$PLEBASE/bin/initialSetup.sh -i
```

Windows

```
%SPLEBASE%\bin\initialSetup.cmd -i
```

Note: This needs to be performed before deploying the IWS application.

Customizing Configuration Files

If you wish to make customer modifications to various configuration files, create a 'CM copy' of the template file or a user exit. This preserves your changes whenever initialSetup is executed; otherwise, your changes to the delivered template files will be lost if it is patched in the future:

For example, to customize hibernate properties of the SPLWeb web application, perform the following:

- Locate the hibernate.properties.template in the \$\$PLEBASE/templates directory.
- Copy the file to cm.hibernate.properties.template.
- Apply your changes to cm.hibernate.properties.template.
- Update application war file with the latest changes by executing the following command:

UNIX

```
$$PLEBASE/bin/initialSetup.sh
```

Windows

```
%SPLEBASE%\bin\initialSetup.cmd
```

Refer to the Oracle Utilities Application Framework SDK documentation for more details.

Customizing Centralized Properties

The template process, which is part of the initialSetup step, will look at the files etc/cm_properties.ini (this can be created as a Customer Customization). If the file exists, the content will be processed for the relevant properties.

NOTE: Product teams might use this file format: etc/
<PROD>_properties.ini (where <PROD> could be one of the list of

installed products included in etc/PRODUCT.txt). If it exists it will be processed as well.

Example cm_properties.ini

The following denote the type of entries that could be included into cm_properties.ini and relevant type of action:

- <PROPERTIES_FILE>:<PROPERTY_NAME>=<VALUE>
 - Override <PROPERTY_NAME> in <PROPERTIES_FILE> with <VALUE> if exists.
 - Insert <PROPERTY_NAME> in <PROPERTIES_FILE> with <VALUE> if it doesn't exist.
- <PROPERTY_NAME>=<VALUE>
 - Override <PROPERTY_NAME> in all property files with <VALUE>, if <PROPERTY_NAME> exists
- <PROPERTIES_FILE>:<PROPERTY_NAME>=[DELETE]
 - Remove <PROPERTY_NAME> from <PROPERTIES_FILE> if exists.
- <PROPERTY_NAME>=[DELETE]
 - Remove <PROPERTY_NAME> from all property files, if <PROPERTY_NAME> exists.

Template example -> hibernate.service.properties.template:

```
hibernate.user = @DBUSER@
hibernate.pass = @DBPASS@
hibernate.ucp.validate_connection = true
```

Sample ENVIRON.INI

The following is an example ENVIRON>INI:

```
DBUSER=cisadm
```

Sample cm_properties.ini

The following is the content of an example cm_properties.ini:

```
hibernate.service.properties.template:hibernate.user=clouduser
hibernate.password=cloudpwd
hibernate.iws.properties.template:hibernate.user=clouduser
hibernate.service.properties.template:hibernate.ucp.validate_connection=[DELETE]
hibernate.service.properties.template:new.property=test
```

Result of hibernate.service.properties generated properties file

The following is a sample result of hibernate.service.properties generated properties file:

```
### The following line was overridden because <PROD>_properties.ini
file setting:
hibernate.user=clouduser
### The following line was overridden because <PROD>_properties.ini
file setting:
hibernate.password=cloudpwd
### The following line was deleted because <PROD>_properties.ini
file setting:
# hibernate.ucp.validate_connection = true
```

```
### The following line was appended because <PROD>_properties.ini
file setting:
new.property = test
```

Result of hibernate.iws.properties generated properties file

The following is a sample result of hibernate.iws.properties generated properties file:

```
### The following line was overridden because <PROD>_properties.ini
file setting:
hibernate.user=clouduser
### The following line was overridden because <PROD>_properties.ini
file setting:
hibernate.password=cloudpwd
```

Integrating Existing Customer Modifications

Existing Customer Modifications (CM) applied to an application server on an earlier release cannot be applied directly to a later version. CM code needs to be applied from an SDK version compatible with this release.

Refer to SDK documentation for more information about migrating CM code.

Generating the Application Viewer

You may extend application viewer capabilities within an environment by generating additional items. These include information about algorithm types, algorithms, maintenance objects and data dictionary information. The Javadoc indexes are also rebuilt.

To generate the additional items in the application viewer, perform the following:

1. Shut down the environment.
2. Initialize a command shell and setup the environment by running the following:

UNIX

```
$SPLEBASE/bin/splenviron.sh -e <YOUR_ENVIRONMENT_NAME>
```

For example:

```
/ouaf/TEST_ENVIRON1/bin/splenviron.sh -e TEST_ENVIRON1
```

Windows

```
%SPLEBASE%\bin\splenviron.cmd -e <YOUR_ENVIRONMENT_NAME>
```

For example:

```
D:\ouaf\TEST_ENVIRON1\bin\splenviron.cmd -e TEST_ENVIRON1
```

3. Execute the following script to generate all information.

UNIX

```
ksh $SPLEBASE/bin/genappvieweritems.sh
```

Windows Server

```
%SPLEBASE%\bin\genappvieweritems.cmd
```

4. Restart your application.

Building Javadocs Indexes

Rebuilding Javadoc indexes is already part of generating application viewer above. However, there are times when you need to run it separately. For example, this is required after customer modifications (CM) have been applied to an environment when it includes Java code.

Perform the following to rebuild the Javadoc indexes.

Windows

```
%SPLEBASE%\bin\buildJavadocsIndex.cmd
```

UNIX

```
ksh $SPLEBASE/bin/buildJavadocsIndex.sh
```

Configuring the Environment for Batch Processing

See the *Server Administration Guide* for information on configuring the environment for batch processing.

Customizing the Logo

To replace the Oracle Utilities logo on the main menu with another image, put the new image <customer_logo_file>.png file into the directory \$SPLEBASE/etc/conf/root/cm and create a new “External” Navigation Key called CM_logoImage. To do that, run the Oracle Utilities application from the browser with the parameters: http://<hostname>:<port>/cis.jsp?utilities=true&tools=true.

From the Admin menu, select Navigation Key.

Add the above Navigation Key with its corresponding URL Override path.

The syntax for the URL path is:

Windows Server

```
http://<host name>:<port>/<Web Context>/cm/<customer_logo_file>.png
```

UNIX:

```
http://<host name>:<port>/<Web Context>/cm/<customer_logo_file>.png
```

The root directory may be deployed in war file format for runtime environment (SPLApp.war). Use provided utilities to incorporate your cm directory into SPLApp.war file.

Creating WebLogic Domain

Create the WebLogic native domain and deploy the application. For instructions refer to the *Native Installation Oracle Utilities Application Framework* (Doc Id: 1544969.1) white paper on My Oracle Support.

Creating Users (WAMUSER and ODMUSER)

To create WAMUSER and ODMUSER users follow these steps:

Note: These steps must be executed after creating the domain.

1. Login to WebLogic Admin console as a Admin user.
2. Navigate to **Security Realms > myrealm**.
3. Click **Users and Groups**.
4. On the **Users** tab, click **New**.
5. On the **Create a New User** tab, enter the **Name**, **Description**, and **Password** details in the respective fields.
6. Click **OK**.
A new user is created.
7. Click **Groups**.
8. Add the user created in step 6 to **cisusers** group.

Deploying Inbound WebServices (IWS)

All existing XAI Inbound Services have been duplicated as Inbound Web Services as the application moves toward deprecation of XAI and full transition to IWS in the next release. The duplicated services are designed to work seamlessly in this release, and customers providing custom services are encouraged to migrate to IWS to take full advantage of the new, more efficient Web service technology.

For more information on migrating from XAI to IWS, please refer to *Migrating from XAI to IWS Oracle Utilities Application Framework* (Doc ID 1644914.1) on My Oracle Support.

Note: This is an optional step for customers using IWS instead of XAI services.

Follow these steps to deploy IWS:

UNIX

1. Enable the Web Services Functionality:
 - a. `cd $SPLEBASE/bin`
 - b. Execute `configureEnv.sh -a`.

Select option 50 and set the option “Enable Web Services Functionality” to true.
Enter “P” to process.

2. Execute `initialSetup.sh`.


```
cd $SPLEBASE/bin
ksh ./initialSetup.sh -i
```
3. Set the classpath.

```
$ CLASSPATH=$WL_HOME/server/lib/weblogic.jar:$CLASSPATH
$ export CLASSPATH
$ cd $SPLEBASE/bin
```

STEP 1: Connect to WebLogic domain:

```
connect('Username', 'Password', "t3s://hostname:PortNo")
```

STEP 2: Store the user config details using the below wlst command after connecting to the WebLogic domain.

```
storeUserConfig(userconfig, userkey)
where userconfig should point to $SPLEBASE/etc/.wlsuserconfig
      userkey should point to $SPLEBASE/etc/.wlsuserkey
```

For more details about storeUserConfig, refer to the *WebLogic Administration Guide* at:

<https://docs.oracle.com/middleware/1221/wls/WLSTC/reference.htm#WLSTC428>

- Exit the WLST connection using the following command:

```
exit()
```

- Execute the command below in \$SPLEBASE/bin.

Please note that the application server should be up before running the command.

```
ksh ./iwsdeploy.sh
```

Windows

- Enable the Web Services Functionality:

```
cd %SPLEBASE%\bin
```

- Execute configureEnv.cmd -a

Select option 50 and set the option “Enable Web Services Functionality” to true. Enter "P" to process.

- Execute initialSetup.cmd:

```
cd %SPLEBASE%\bin initialSetup.cmd -i
```

- Set the classpath:

```
set CLASSPATH=%WL_HOME%\server\lib\weblogic.jar;%CLASSPATH%
$ cd $SPLEBASE/bin
```

STEP 1: Connect to WebLogic domain:

```
connect('Username', 'Password', "t3s://hostname:PortNo")
```

STEP 2: Store the user config details using the below wlst command after connecting to the WebLogic domain.

```
storeUserConfig(userconfig, userkey)
where userconfig should point to $SPLEBASE/etc/.wlsuserconfig
      userkey should point to $SPLEBASE/etc/.wlsuserkey
```

For more details about storeUserConfig, refer to the *WebLogic Administration Guide* at:

<https://docs.oracle.com/middleware/1221/wls/WLSTC/reference.htm#WLSTC428>

- Exit the WLST connection using the following command:

```
exit()
```

- Execute the command below in \$SPLEBASE/bin.
Please note that the application server should be up before running the command.

```
iwsdeploy.cmd
```

Domain Templates

The intended use of the domain templates is for native/clustered installation of the Oracle Utilities Application Framework environment into a Weblogic domain. The domain template(s) defines the core set of resources within a Weblogic domain, including an Administration Server along with the basic configuration information for a Oracle Utilities Application Framework based application. The domain template is a “snapshot” of the delivered embedded “splapp” domain. When working with domain templates you will need to manage the application (stopping, starting, deployment, undeployment) utilizing the Weblogic delivered utilities.

- Install and configure application stack (Oracle Utilities Application Framework and the product application)

Note: Environment will need to be configuring to deploy in ear format.

- Review domain templates (Simple /Complex)
- Execute config.sh and enter the path of the domain template file
- Configure domain
- Complete domain configuration

Note: Configure nodemanager.properties and setDomainEnv.sh

- Update SPLEBASE (ENVIRON.INI)

Detailed Description

The product installation includes a two predefined WebLogic Server Domain templates. The delivered domain templates are located under the SPLEBASE:

\$SPLEBASE/tools/domaintemplates

- Oracle-Utilities-Simple-Unix-12.2.1.1.0.jar (Unix generic)
- Oracle-Utilities-Complex-Unix-12.2.1.1.0.jar (Unix generic)

The Simple Domain Template is for use with one machine and does not include a WebLogic cluster, this domain configuration is similar to current delivered embedded splapp domain, with the exception that there will be two WebLogic servers (utilities_server1 and a “Admin Server”).

The Complex Domain Template is configured for use with a pre-configured WebLogic cluster, with one machine configured, node manager settings, and one managed server configured.

You are able to create a custom domain template from the existing domain by using the Domain Template Builder or the pack command. By using the Domain Template Builder, you can also create a custom domain template from an existing template.

The delivered domain templates defines the full set of resources within an Oracle Utilities Application Framework domain including:

- Demo certificates (the demo certificates will need to be updated for production use)
- Setting of XML Registry Settings
- Setting of Default users and groups
- Machine configuration
- Default Users and Groups
 - Note for 12.2.1: The Users and Groups match the delivered values delivered with the embedded domain.
 - Note for 12.2.1: Set the password for SYSUSR and ouafjndi through the WebLogic console.
- JTA Settings
- Node Manager Settings
- WebLogic Server
- JRF Restricted (Oracle-Utilities-Simple-Unix-12.2.1.1.0.jar only)
- JMS Global Flush Queues (Oracle-Utilities-Simple-Unix-12.2.1.1.0.jar only)

Configure setUserOverrides.sh (12.2.1 Templates Only)

Change environmental variables here, as needed by your implementation.

- Edit setUserOverrides.sh and add the values below to JAVA_OPTIONS:
For AIX, the parameters below also need to be added to JAVA_OPTIONS.
- ```
-
Djavax.xml.transform.TransformerFactory=org.apache.xalan.processor.TransformerFactoryImpl -
Djavax.xml.validation.SchemaFactory:http://www.w3.org/2001/XMLSchema=org.apache.xerces.jaxp.validation.XMLSchemaFactory
```

### Update Domain Home Location

The following update in the configuration indicates if the embedded configuration is being utilized or if the environment is a native installation to WebLogic. When this item is populated in the environment, the delivered base tools will be able to identify that the starting and stopping of the environment are being done under the domain home.

1. Initialize the Environment: splenviron.sh -e <Environment\_Name>.
2. Execute the following command:

```
configureEnv.sh -a
```



3. Select Menu Item: 52. Advanced Web Application Configuration

=====

4. 02. Configuration Option: Domain Home Location

Current Value <ENTER>:

The WebLogic Domain Home location, when this parameter is populated you will need to use the native WebLogic tools for maintenance (starting, stopping, deployment, and undeployment).

Enter Value: <Enter your domain home location>

5. Once the Domain Home location has been completed, enter <P> Process.

## Database Patching

The database patching utility is delivered under SPLEBASE and is Java-based so you are able to create a standalone package to be able to install database patches on a separate server that has Java 7 installed. You can also install database patches using the components that are delivered under SPLEBASE without the need to move the database patching utility to a different server.

The following is an overview of the process to install database patches on a separate server. You will need to create a jar file containing the utilities and supporting files to allow you to run the database patch installer on another server.

To generate the jar file:

1. Initialize a command shell:

The scripts that are provided with the system need to be run from a shell prompt on the machine where you installed the application server. Before such scripts can be run the shell must be "initialized" by running the splenvron script provided with the system.

### UNIX

Log on to your UNIX box as the Oracle Utilities Administrator (default cissys) and open a shell prompt.

In the following example, replace the variables:

- \$SPLEBASE with the Full directory name that you installed the application into.
- <YOUR\_ENVIRONMENT\_NAME> with the name you gave to the environment at installation time.

To initialize the environment, enter:

```
$SPLEBASE/bin/splenvron.sh -e <YOUR_ENVIRONMENT_NAME>
```

For example:

```
/ouaf/DEMO/bin/splenvron.sh -e DEMO
```

### Windows

The command window should be opened on the Windows server that you installed the application on.

In the example below you should replace the following variables:

- %SPLEBASE%: The Full directory name that you installed the application into
- <YOUR\_ENVIRONMENT\_NAME>: The name you gave to the environment at installation time

To initialize the environment, enter the following in your command prompt:

```
%SPLEBASE%\bin\splenviron.cmd -e <YOUR_ENVIRONMENT_NAME>
```

For example:

```
D:\ouaf\DEMO\bin\splenviron.cmd -e DEMO
```

2. Execute the following script to generate the jar file.

### UNIX

```
ksh $SPLEBASE/bin/createDBStandalone.sh
```

### Windows

```
%SPLEBASE%\bin\createDBStandalone.cmd
```

By default, the output jar db\_patch\_standalone.jar is created in SPLEBASE/tools/dbstandalone. You can use the -l option to change the default directory.

3. Transfer the generated jar (db\_patch\_standalone.jar) to the Windows/Unix machine where you want to run the database patching utility.
4. Extract the contents of the archive file:

```
jar -xvf db_patch_standalone.jar
```

You must have Java 7 JDK installed on the machine to use the jar command. Be sure to install the JDK that is supported for your platform.

## Overview of Database Patching Application

The database patching utility requires you have Java 7 JDK installed on the machine to execute the database patch application process.

The patch application process will perform following items to account for executing patch application under SPLEBASE or on a standalone server.

The database patch application utility will look do the following when it is executed:

- Checks to see if the environment variable \$SPLEBASE is set.  
If the \$SPLEBASE variable is set, the utility uses the libraries under \$SPLEBASE to apply the patch.
- When the \$SPLEBASE is not set, the utility checks to see if the TOOLSBIN environment variable is set.  
If the TOOLSBIN is set, the utility uses the libraries under the TOOLSBIN location.
- When both SPLEBASE and TOOLSBIN environment are not set, the utility prompts for the location of the TOOLSBIN.

The TOOLSBIN is the location of the of the application scripts ouafDatabasePatch.sh[cmd].

**Unix example:**

The TOOLS\_BIN location is set to /ouaf/dbpatch/bin.

```
export TOOLS_BIN=/ouaf/dbpatch/bin
```

## Database Patch Application (ouafDatabasePatch.sh)

**Note:** The default permissions (ouafDatabasePatch.sh), may need to be adjusted to be executed by your user and group, when applying database fixes.

- Sample Execution – Passing a Password

```
./ouafDatabasePatch.sh -x ouafadm -p "-t O -d
CISADM_Z1_12C_43040_BLD001,slc041ds:1522:Z143Q12C"
```

- Sample Execution – Prompting for a Password

```
./ouafDatabasePatch.sh -p "-t O -d
CISADM_Z1_12C_43040_BLD001,slc041ds:1522:Z143Q12C"
```

- Sample Execution - passing in the tools bin location

```
/ouafDatabasePatch.sh -u
ouafDatabasePatch.sh [-h] [-u] [-v] [-x] [-t tools dir] [-p
ouafparms]
-h displays help of ouafpatch
-u displays usage of ouafDatabasePatch.sh
-v displays version of ouafpatch
-x password to be passed to ouafpatch
-b location of the tools bin directory
-p parameters directly passed to ouafpatch
must be the last parameter passed and
be enclosed with quotes
```

**WINDOWS example:**

The TOOLS\_BIN location would be set to c:\ouaf\dbpatch\bin.

```
SET TOOLS_BIN=c:\ouaf\dbpatch\bin
```

## Database Patch Application (ouafDatabasePatch.cmd)

- Sample Execution – Passing a Password

```
ouafDatabasePatch.cmd -x password -p "-t O -d
SCHEMA_NAME,DBSERVER:DBPORT:DBSID"
```

- Sample Execution – Prompting for a Password

```
ouafDatabasePatch.cmd -p "-t O -d
SCHEMA_NAME,DBSERVER:DBPORT:DBSID C"
```

- Sample Execution - passing in the tools bin location

```
ouafDatabasePatch.cmd -b "C:\temp\db_patch_standalone\bin" -p
"-t O -d SCHEMA_NAME,DBSERVER:DBPORT:DBSID -c
C:\temp\dbrollup\CDXPatch2\CDXPatch.ini"
```

- Sample Usage

```
ouafDatabasePatch.cmd -u
USAGE:
USAGE:ouafDatabasePatch.cmd[-h] [-u] [-v] [-x] [-b tools dir] [-p
ouafparms]
USAGE: -h displays help of ouafpatch
```

---

```
USAGE: -u displays usage of ouafDatabasePatch.cmd
USAGE: -v displays version of ouafpatch
USAGE: -x password to be passed to ouafpatch
USAGE: -b location of the tools bin directory
USAGE: -p parameters directly passed to ouafpatch
USAGE: must be enclosed with quotes: " "
```

# Chapter 7

---

## Installing Optional Products

This section describes the optional products that can be installed. These should be completed after installing Oracle Utilities Operational Device Management.

- [Oracle BI Publisher](#)

### Oracle BI Publisher

This section describes the steps required to configure Oracle Utilities Operational Device Management and Oracle BI Publisher to support an Oracle BI Publisher reporting solution. This section includes:

- [Supported BI Publisher Versions](#)
- [About Oracle BI Publisher Enterprise](#)
- [Configuring the System to Enable Reports](#)
- [Sample Reports Supplied with the Product](#)

### Supported BI Publisher Versions

At the time of this release BI Publisher 11g (v11.1.1.9) and 12c (v12.2.1.x) are supported on both Windows and Unix/Linux.

### About Oracle BI Publisher Enterprise

Oracle BI Publisher Enterprise provides the tools for:

- Making reports available over the web (establishing the required report server processes)
- Integrating reports with the Oracle Utilities Operational Device Management system
- Scheduling reports to run on a regular basis
- Managing instances of the reports that have been created by a previous run
- Managing user access to the report instances

## Installing Oracle BI Publisher Enterprise

This section assumes that you have already installed Oracle BI Publisher Enterprise such that requests can be pointed to the Oracle BI Publisher Enterprise.

**Note:** If you are running the BI Publisher server on a Linux or Unix server that does not have an X Server installed, reports that contain images may not be properly generated.

To fix this, specify the following property at the java command line:

```
-Djava.awt.headless=true
```

## Configuring the System to Enable Reports

This section describes the steps needed to configure your system to enable reports, including:

- [Configuring the System to Invoke Oracle BI Publisher Enterprise Real-time](#)
- [Interfacing with Oracle BI Publisher Enterprise Batch Scheduler](#)

## Configuring the System to Invoke Oracle BI Publisher Enterprise Real-time

In order to invoke Oracle BI Publisher Enterprise from within Oracle Utilities Operational Device Management, the system must be configured accordingly.

### Specifying Reporting Tool Options

The following information should be defined on Reporting Tool Options table:

- **Reporting Server** is the web server URL where the reporting tool is installed.
- **Reporting Folder** defines the name of the directory on the Oracle BI Publisher server where reports are located. The Oracle Utilities Operational Device Management reporting tool algorithm constructs the URL needed to open Oracle BI Publisher Enterprise based on the information provided on Reporting Options.

The same folder name should be used as a report folder in Oracle BI Publisher Enterprise where reports are published.

### Reporting Tool Algorithm

The base product provides an Installation Options system event called Reporting Tool which should contain an algorithm which invokes the reporting tool in real-time. Oracle Utilities Operational Device Management provides an algorithm type called F1-BIPR-INV, which invokes Oracle BI Publisher Enterprise.

This algorithm relies on information defined in the Reporting Options table: the reporting server and folder names for accessing the reporting tool. The algorithm constructs several strings, for example, the URL of the BI Publisher, information about the report being requested and user info in the format expected by Oracle BI Publisher Enterprise. The Java program returns the correct URL to the browser. The browser then opens a BI Publisher Enterprise window with the appropriate URL.

To use the F1-BIPR-INV algorithm type to invoke Oracle BI Publisher Enterprise, perform the following steps:

1. Create an algorithm for this algorithm type.
2. On the installation options, add an entry to the algorithm collection with an algorithm entity of Reporting Tool and indicate the algorithm created in the previous step.

### **Interfacing with Oracle BI Publisher Enterprise Batch Scheduler**

Presently Oracle Utilities Operational Device Management does not provide support for batch jobs with Oracle BI Publisher. Please use Oracle BI Publisher directly in order to schedule reports to run in batch.

## **Sample Reports Supplied with the Product**

The system provides several sample reports that may be used by your organization as a starting point for creating a new report. The following sections provide instructions on how to set up your implementation environment to use the sample reports.

If you would like to use any of the sample reports, you need to perform some steps to be able to execute them in an implementation environment. This section walks you through the steps needed, including:

- [Unzipping Oracle Utilities Work and Asset Management Report Files](#)
- [Oracle Functions and Packages](#)
- [Publishing the Sample Reports in Oracle BI Publisher Enterprise](#)
- [Preparing Oracle BI Publisher Enterprise Server For integration](#)
- [Copying a Report Definition from the Demonstration Database](#)

### **Unzipping Oracle Utilities Work and Asset Management Report Files**

Unzip the 'Oracle Utilities Work and Asset Management v2.2.0.1.0 Reports.zip' file from the installation media into an empty directory. This directory is referred to as the reports extract folder.

**Note:** By default, the reports provided are read only. You will need to reset the permissions on the files before making any changes, for example, to configure the default data source.

### **Oracle Functions and Packages**

Each report has one or more corresponding database functions and packages that store the business logic to fetch the data from the database. This data is then presented in the report.

The installation media contains the required database functions and packages. These files are in the reports extract folder under `..\WAM-V2.2.0.1.0-Reports\BIPublisher\functions\oracle`.

The prerequisite for Oracle Utilities Operational Device Management reports to work against the target database is setting up of a RPTUSER database user. This user should have read access to all Oracle Utilities Operational Device Management database objects and execution privilege on the stored procedures that the reports access.

The steps involved in setting up the RPTUSER are:

1. Create or refresh the Oracle functions and packages.
  - a. Using SQLPLUS, log in to the target database as the user CISADM. This user owns Oracle Utilities Operational Device Management schema objects.
  - b. Execute the script CDX\_rptfn.sql by entering the following command at the SQL prompt:
 

```
SQL> @CDX_rptfn.sql
```

(“SQL>” denotes the SQL prompt and doesn't need to be typed).
2. Create the RPTUSER.
  - a. Navigate to the Database\Oracle folder.
  - b. Edit the file CDX\_rptuser.sql to match your requirements.
 

Ensure that you review the user password and the default and temporary tablespace names for the user.
  - c. Log in to the target database as a DBA user using SQLPLUS.
  - d. Execute the script by entering following command at SQL prompt:
 

```
SQL> @CDX_rptuser.sql
```
3. Compile the report function.
 

```
SQL> @CDX_compfn.sql
```
4. Configure security.

This involves generating synonyms in RPTUSER and granting it privileges to execute the stored procedures and read the Oracle Utilities Operational Device Management tables. The utility prompts you to answer for the following questions:

- a. Enter the Oracle user that owns the schema (e.g. CISADM): **CISADM**
- b. Enter the password for the CISADM user: **CISADM**
- c. Enter the name of the Oracle Database: *Your\_db*
- d. Enter a comma-separated list of Oracle users in which synonyms need to be created (e.g. cisuser,cisread): **RPTUSER**
- e. Select the following options:
  - (A/a): Generate security for All objects in the Database?
  - (O/o): Generate security for specific Objects inputted in this terminal?
  - (F/f): Generate security for specific objects generated from an input File?

<<<< select A to generate security to all objects >>>>

The utility runs and configures security for the Oracle Utilities Operational Device Management objects.



## Publishing the Sample Reports in Oracle BI Publisher Enterprise

The installation media contains sample reports provided with the system. The report files are in the reports extract folder under `..\WAM-V2.2.0.1.0-Reports\BIPublisher\reportFiles`.

## Configuring Oracle BI Publisher Enterprise

This section assumes that you have already installed Oracle BI Publisher Enterprise.

**Note:** If you install Oracle BI Publisher Enterprise in a location other than the default installation directory, adjust the path descriptions to match your actual install directories.

The first step you need to take in order to use any of the samples is to publish the report in Oracle BI Publisher Enterprise. You need to create a folder in Oracle BI Publisher Enterprise named as defined on Reporting Options table in Oracle Utilities Operational Device Management and publish the report extracted to the reports extract folder.

Create a folder named ODM in the `BI_Repository_Path\Reports` folder. Copy all Oracle BI Publisher sample reports into the ODM folder.

**Note:** To check for the location of your BI repository path, log in to the BI console as an Administrator and go to **Administration, Server Configuration**. If the repository type is File System, the path will be seen in Catalog region. If the repository type is not File System you cannot load the sample reports.

Refer to the *Oracle BI Publisher Enterprise* documentation for more information.

## Preparing Oracle BI Publisher Enterprise Server For integration

The ODM Reporting Options Table should include the following information about Reporting Server and Folder:

- Reporting Folder: ODM
- Reporting Server: URL of reporting server.

For example: `http://sf-ugbu.splwg.com:9704`

If you want to have a different name for your reporting folder, you can rename the ODM folder on the server and put the corresponding value on the Reporting options table.

## Accessing the BI Publisher Enterprise Server

1. Access the BI Publisher Enterprise Server as Administrator.
2. On the Admin tab define a **JDBC Connection** section under **Data Sources**, and add a new data source using **Add Data Source**.

Create a new Data Source named ODM with connection details pointing to the Oracle Utilities Operational Device Management database using the RPTUSER credentials set up in the prior section.

3. Test Connection to make sure the Database connection is successful and save changes using **Apply**.

## Configuring a new group in WebLogic

1. Configure a group within WebLogic for Authentication called “BICustomer”.

2. Create an Application Role called “ODM Reports” to access the BI Publisher reports.
3. Associate the member “BIConsumer” with the “ODM Reports” Application Role. The role will now be visible from within the BI Publisher Enterprise. Within BI Publisher Enterprise, for the Role Name ODM **Reports** you just created, click on **Add Folders** to add the ODM sample reports to the Allowed Folders.

Do the same for Role Name ODM **Reports**. Click on **Add Data Sources** to add the Oracle Utilities Operational Device Management data source to the Allowed Data Sources.

4. To include appropriate Roles for Role Name ODM **Reports**, click on **Add Role**.

### Uploading Reports to BI Publisher

From the BI publisher server console, upload reports to BI Publisher. To do so:

1. Select **Administration, System Maintenance**, and then click **Server Configuration**.
2. Scroll down to the **Catalog** section and verify that the path to the repository folder is correct in the BI Publisher repository field and is pointing to the **WAM** folder to which reports were copied.
3. Click **Upload to BI Presentation Catalog** to upload the reports to BI Publisher.

### Verifying the Data Model Details

From BI publisher server console, verify that the data model details are correct. To do so:

1. From the Reports folder, select the data model of the report.
2. Click **Edit** to edit the data model.
3. Select **Data Model** from the tree on the left.
4. Verify that the following are correct:
  - Default Data Source: Set the data source name created in Step 2 of section [Accessing the BI Publisher Enterprise Server](#).
  - Oracle DB Default Package: Set this to **W1\_BI\_RPT**.
  - XML Output Options: Ensure that the option **Include Parameters Tag** is checked.
5. Verify that the data model is pointing to the correct report. Select a report from the Reports folder and click **Edit**. Hover on the Data Model link to check it is pointing to the correct data model.

To modify the data model, click the magnifying glass icon and select the correct data model.

### Verifying Sample BI Publisher Reports on the Server:

1. Log in to Oracle BI Publisher Server as a user belonging to BIConsumers.
2. Verify that all sample reports provided appear in the ODM folder.

Single-sign-on and more sophisticated security must be tailored to the specific implementation.

## Copying a Report Definition from the Demonstration Database

In order to use one of the sample reports in your Oracle Utilities Operational Device Management region, you must define the meta-data for the report. The demonstration database contains the report definition and all its related data for each sample report.

The data present in the demonstration application should be manually created in the database that is being used by the current Oracle Utilities Operational Device Management application.

1. To copy the data, access the data in Oracle Utilities Operational Device Management demonstration application using the following menu navigation:

Admin > R > Report Definition

2. Click **Search**. In the report code field, enter '%' and click **Search**.

For each report visible in the search results, follow these steps to copy the report definitions:

1. Click on the report to see the report definition details.
2. In the current Oracle Utilities Operational Device Management application, access the same menu navigation to manually create the records.

Admin > R > Report Definition

3. Click **Add**.
4. Enter the same values for the report definition that are present in the report definition details of the Oracle Utilities Operational Device Management demo environment.
5. Click **Save**.

# Appendix A

---

## Installation Menu Functionality

The main configuration menu is structured so that related variables and/or options are grouped together and are associated by a menu item number. To access a particular group of variables and options, enter the menu item number associated with that group. Each option is displayed in turn on the screen, along with a prompt so that you can type the desired value for the option, if it is not the same as the default or current value.

When performing the initial installation you need to go through all menu options. The menu options may have a default value, a list of valid values and a validation check.

On each option prompt you can keep the current value by simply leaving the input line empty. In order to erase a variable value you need to enter one dot (“.”). The leading spaces will be trimmed out on each values entered. The menu includes the following:

- **Valid Values: [ALFANUM]**. This indicates you will need to enter an alphanumeric value in the prompt.
- **Valid Values: [NUM]**. This indicates you will need to enter an numeric value in the prompt.

Please also note the following:

- When all options are set, type <P> at the main menu prompt option. This will save the option values selected throughout the configuration.
- During this processing the global variables are validated and the configuration file <SPLEBASE>/etc/ENVIRON.INI is created or updated. This file contains all the variables inputted and calculated. These are needed by the next part of the installation process.
- To exit the configuration utility without saving any of the values entered, type <X> and press 'Enter'.

### Installation Menu Functionality Details

The Environment Installation Utility requires that Oracle Client Home is set in the path for the user performing the installation.

Prior to running the installation utility you will need to review the supported platforms document to ensure you have all of the Third Party software installed.

In this menu if the variables are set prior to execution, that value will be defaulted by the installation utility when performing the installation.

When the installation has been completed successfully, the values will be written to an ENVIRON.INI file. When splenviron.sh / cmd is executed, it will read from the ENVIRON.INI file to set the environment variables. Refer to the *Oracle Utilities Application Framework Server Administration Guide* for details about configuring these values.

Install the Oracle Client software specified in the <<[Shared All OUAF - Install\\_Supported\\_Platforms\\_OS\\_AS.fm](#)>> section prior to running any of the installation utilities.

The following prompt will appear when executing the installation utility:

```
Enter Oracle Client Home Directory (<ENTER> quit):
```

**Note:** If the environmental variable ORACLE\_CLIENT\_HOME is set, the install script will validate the variable. If it passes the validation you will not be prompted for it. This is needed in order to run Perl installation utilities.

## Encryption Methods

When the application server choice is Oracle WebLogic, the Oracle Utilities Application Framework installation uses the WebLogic API to encrypt the User ID and password that perform admin functions for the WebLogic application servers. Please refer to the WebLogic documentation for further information about the encryption.

The Oracle Utilities Application Framework installation also uses industry standard cryptography to encrypt passwords that are prompted within the installation.

When these passwords are entered in the command line, the input values are not reflected on the screen when performing the installation.

# Appendix B

## Installation and Configuration Worksheets

Refer to the *Server Administration Guide* for additional details (default, valid values, usage, etc.), as applicable.

### Menu Block 1: Environment ID, Roles, Third Party Software Configuration

The Environment ID, Roles, Third Party Software Configuration options include:

| Menu Option                           | Name Used in Documentation | Customer Install Value |
|---------------------------------------|----------------------------|------------------------|
| Environment ID                        | ENVIRONMENT_ID             |                        |
| Server Roles                          | SERVER_ROLES               |                        |
| Oracle Client Home Directory          | ORACLE_CLIENT_HOME         |                        |
| Web Java Home Directory               | JAVA_HOME                  |                        |
| Hibernate JAR Directory               | HIBERNATE_JAR_DIR          |                        |
| **ONS JAR Directory                   | ONS_JAR_DIR                |                        |
| Web Application Server Home Directory | WEB_SERVER_HOME            |                        |
| ***Additional JAR Directory           | WLTHINT3CLIENT_JAR_DIR     |                        |
| * ADF Home Directory                  | ADF_HOME                   |                        |
| OIM OAM Enabled Environment           | OPEN_SPML_ENABLED_ENV      |                        |

\* Denotes optional menu items that may be required for the product installation and variables.

\*\* In order to activate the RAC FCF, the application needs the external ons.jar file, from the ORACLE\_HOME path:

```
ORACLE_HOME/opmn/lib/ons.jar
```

During the installation the relevant option should be populated with the folder location of the ons.jar.

\*\*\* See [How to use and setup the “Additional JAR Directory”](#) for more information.

## Menu Block 2: Keystore Options

The keystore is a set of files used for encryption, decryption and hash generation. The files reside in the following location:

```
<SPLEBASE>/ks/.ouaf_keystore
```

```
<SPLEBASE>/ks/.ouaf_storepass
```

In order to run the application correctly, data encryption, decryption and hash generation of data in the database and on the application server must be performed using the same keystore; otherwise, the application will fail.

Please review the section on configuring the OUAF Keystore in the *Security Guide* for information on setting up the keystore properly.

Keystore options include:

| Menu Option               | Name Used in Documentation | Customer Install Value |
|---------------------------|----------------------------|------------------------|
| Import Keystore Directory | KS_IMPORT_KEYSTORE_FOLDER  |                        |
| Store Type                | KS_STORETYPE               |                        |
| Alias                     | KS_ALIAS                   |                        |
| Alias Key Algorithm       | KS_ALIAS_KEYALG            |                        |
| Alias Key Size            | KS_ALIAS_KEYSIZE           |                        |
| HMAC Alias                | KS_HMAC_ALIAS              |                        |
| Padding                   | KS_PADDING                 |                        |
| Mode                      | KS_MODE                    |                        |

## Menu Block 50: Environment Installation Options

Environment installation options include:

| Menu Option                            | Name Used in Documentation | Customer Install Value |
|----------------------------------------|----------------------------|------------------------|
| Environment Mount Point                | SPLDIR                     |                        |
| Log File Mount Point                   | SPLDIROUT                  |                        |
| Environment Name                       | SPLENVIRON                 |                        |
| Installation Application Viewer Module | WEB_<br>ISAPPVIEWER        |                        |
| Install Demo Generation Cert Script    | CERT_INSTALL_<br>SCRIPT    |                        |

| Menu Option                   | Name Used in Documentation | Customer Install Value |
|-------------------------------|----------------------------|------------------------|
| Install Sample CM Source Code | CM_INSTALL_SAMPLE          |                        |

## Menu Block 1: Environment Description

The environment description menu option includes:

| Menu Option             | Name Used in Documentation | Customer Install Value |
|-------------------------|----------------------------|------------------------|
| Environment Description | DESC                       |                        |

## Menu Block 2: [WebLogic] Business Application Server Configuration

WebLogic Business Application Server configuration options include:

| Menu Option                      | Name Used in Documentation | Customer Install Value |
|----------------------------------|----------------------------|------------------------|
| Business Server Host             | BSN_WLHOST                 |                        |
| Business Server Application Name | BSN_APP                    |                        |
| MPL Admin Port number            | MPLADMINPORT               |                        |
| MPL Automatic Startup            | MPLSTART                   |                        |

## Menu Block 3: [WebLogic] Web Application Server Configuration

WebLogic Web Application Server configuration options include:

| Menu Option                  | Name Used in Documentation | Customer Install Value |
|------------------------------|----------------------------|------------------------|
| Web Server Host              | WEB_WLHOST                 |                        |
| Weblogic SSL Port Number     | WEB_WLSSLPORT              |                        |
| Weblogic Console Port Number | WLS_ADMIN_PORT             |                        |
| Web Context Root             | WEB_CONTEXT_ROOT           |                        |
| WebLogic JNDI User ID        | WEB_WLSYSUSER              |                        |
| WebLogic JNDI Password       | WEB_WLSYSPASS              |                        |



| Menu Option                               | Name Used in Documentation | Customer Install Value |
|-------------------------------------------|----------------------------|------------------------|
| WebLogic Server Name                      | WEB_WLS_SVRNAME            |                        |
| Web Server Application Name               | WEB_APP                    |                        |
| Deploy Using Archive Files                | WEB_DEPLOY_EAR             |                        |
| Deploy Application Viewer Module          | WEB_DEPLOY_APPVIEWER       |                        |
| Enable The Unsecured Health Check Service | WEB_ENABLE_HEALTHCHECK     |                        |
| MDB RunAs User ID                         | WEB_IWS_MDB_RUNAS_USER     |                        |
| Super User Ids                            | WEB_IWS_SUPER_USERS        |                        |

## Menu Block 4 - Database Configuration

The parameters below and in the worksheet are for the database configuration. Note that if changes are made to any of the database menu option items below, thus potentially connecting to a different schema, a warning will be displayed in the screen next to the actual option that has been changed.

| Menu Option                          | Name Used in Documentation | Customer Install Value |
|--------------------------------------|----------------------------|------------------------|
| Application Server Database User ID  | DBUSER                     |                        |
| Application Server Database Password | DBPASS                     |                        |
| MPL Database User ID                 | MPL_DBUSER                 |                        |
| MPL Database Password                | MPL_DBPASS                 |                        |
| XAI Database User ID                 | XAI_DBUSER                 |                        |
| XAI Database Password                | XAI_DBPASS                 |                        |
| Batch Database User ID               | BATCH_DBUSER               |                        |
| Batch Database Password              | BATCH_DBPASS               |                        |
| Web JDBC DataSource Name             | JDBC_NAME                  |                        |
| JDBC Database User ID                | DBUSER_WLS                 |                        |
| JDBC Database Password               | DBPASS_WLS                 |                        |
| Database Name                        | DBNAME                     |                        |
| Database Server                      | DBSERVER                   |                        |
| Database Port                        | DBPORT                     |                        |

| Menu Option                          | Name Used in Documentation | Customer Install Value |
|--------------------------------------|----------------------------|------------------------|
| ONS Server Configuration             | ONSCONFIG                  |                        |
| Database Override Connection String  | DB_OVERRIDE_CONNECTION     |                        |
| Character Based Database             | CHAR_BASED_DB              |                        |
| Oracle Client Character Set NLS_LANG | NLS_LANG                   |                        |

## Menu Block 5 - General Configuration Options

The general configuration options include:

| Menu Option                      | Name Used in Documentation   | Customer Install Value |
|----------------------------------|------------------------------|------------------------|
| Batch RMI Port                   | BATCH_RMI_PORT               |                        |
| RMI Port number for JMX Business | BSN_JMX_RMI_PORT_PERFORMANCE |                        |
| RMI Port number for JMX Web      | WEB_JMX_RMI_PORT_PERFORMANCE |                        |
| JMX Enablement System User ID    | BSN_JMX_SYSUSER              |                        |
| JMX Enablement System Password   | BSN_JMX_SYSPASS              |                        |
| Coherence Cluster Name           | COHERENCE_CLUSTER_NAME       |                        |
| Coherence Cluster Address        | COHERENCE_CLUSTER_ADDRESS    |                        |
| Coherence Cluster Port           | COHERENCE_CLUSTER_PORT       |                        |
| Coherence Cluster Mode           | COHERENCE_CLUSTER_MODE       |                        |

## Menu Block 6 - OUAF TrustStore Options

The OUAF truststore configuration is required for IWS.

| Menu Option                 | Name Used in Documentation | Customer Install Value |
|-----------------------------|----------------------------|------------------------|
| Import TrustStore Directory | TS_IMPORT_KEYSTORE_FOLDER  |                        |
| Store Type                  | TS_STORETYPE               |                        |

| Menu Option         | Name Used in Documentation | Customer Install Value |
|---------------------|----------------------------|------------------------|
| Alias               | TS_ALIAS                   |                        |
| Alias Key Algorithm | TS_ALIAS_KEYALG            |                        |
| Alias Key Size      | TS_ALIAS_KEYSIZE           |                        |
| HMAC Alias          | TS_HMAC_ALIAS              |                        |
| Padding             | TS_PADDING                 |                        |
| Mode                | TS_MODE                    |                        |

## Advanced Menu Options

The advanced menu options are not available during installation. These options can be accessed after installation using the following commands:

### Unix:

```
$SPLEBASE/bin/configureEnv.sh -a
```

### Windows

```
%SPLEBASE%\bin\configureEnv.cmd -a
```

## Menu Block 50 - WebLogic Advanced Environment Miscellaneous Configuration

WebLogic advanced environment miscellaneous configurations include:

| Menu Option                                               | Name Used in Documentation | Customer Value Install |
|-----------------------------------------------------------|----------------------------|------------------------|
| OUAF DBMS Scheduler User                                  | OUAF_DBMS_SCHEDULER_USER   |                        |
| Enter the location of the Application Server Profile Home | WAS_PROFILE_NAME_HOME      |                        |
| Online JVM Batch Server Enabled                           | BATCHENABLED               |                        |
| Online JVM Batch Number of Threads                        | BATCHTHREADS               |                        |
| Online JVM Batch Scheduler Daemon Enabled                 | BATCHDAEMON                |                        |
| Enable Batch Edit Funtionality                            | BATCHEDIT_ENABLED          |                        |
| Batch Online Log Directory                                | BATCH_ONLINE_LOG_DIR       |                        |
| Enable JMS Global Flush for Batch                         | ENABLE_JMS_GLOBAL_FLUSH    |                        |

| Menu Option                                     | Name Used in Documentation    | Customer Value Install |
|-------------------------------------------------|-------------------------------|------------------------|
| Enable Web Services Functionality               | WEBSERVICES_ENABLED           |                        |
| IWS deployment target                           | WLS_CLUSTER_NAME              |                        |
| Web Admin Server Host                           | WEB_ADMIN_SERVER              |                        |
| GIS Service Running on the same Web Server      | GIS                           |                        |
| GIS Service URL                                 | GIS_URL                       |                        |
| GIS WebLogic System User ID                     | GIS_WLSYSUSER                 |                        |
| GIS WebLogic System Password                    | GIS_WLSYSPASS                 |                        |
| Online Display Software Home                    | ONLINE_DISPLAY_HOME           |                        |
| Max Queries To Hold In Cache Across All Threads | XQUERIES_TO_CACHE             |                        |
| Seconds Timeout Flush Cache Completely          | XQUERY_CACHE_FLUSH_TIMEOUT    |                        |
| Cloud Restriction URLs Enable                   | CLOUD_RESTRICTION_URLS_ENABLE |                        |
| Cloud White List Full Path                      | CLOUD_WHITE_LIST_PATH         |                        |
| Cloud Custom White List Full Path               | CLOUD_CUSTOM_WHITE_LIST_PATH  |                        |

## Menu Block 51 - WebLogic Advanced Environment Memory Configuration

WebLogic advanced environment memory configurations include:

| Menu Option                           | Name Used in Documentation | Customer Value Install |
|---------------------------------------|----------------------------|------------------------|
| Global JVM Arguments                  | GLOBAL_JVMARGS             |                        |
| Ant Min Heap Size                     | ANT_OPT_MIN                |                        |
| Ant Max Heap Size                     | ANT_OPT_MAX                |                        |
| Ant Additional Options                | ANT_ADDITIONAL_OPT         |                        |
| Thread Pool Worker Java Min Heap Size | BATCH_MEMORY_OPT_MIN       |                        |
| Thread Pool Worker Java Max Heap Size | BATCH_MEMORY_OPT_MAX       |                        |

| Menu Option                           | Name Used in Documentation   | Customer Install Value |
|---------------------------------------|------------------------------|------------------------|
| Thread Pool Worker Java Max Perm Size | BATCH_MEMORY_OPT_MAXPERMSIZE |                        |
| Thread Pool Worker Additional Options | BATCH_MEMORY_ADDITIONAL_OPT  |                        |
| Additional Runtime Classpath          | ADDITIONAL_RUNTIME_CLASSPATH |                        |

## Menu Block 52 - Advanced Web Application Configuration

Advanced web application configurations include:

| Menu Option                              | Name Used in Documentation          | Customer Install Value |
|------------------------------------------|-------------------------------------|------------------------|
| Web Application Cache Settings           | WEB_I2_CACHE_MODE                   |                        |
| Web Server Port Number                   | WEB_WLPORT                          |                        |
| CSRF Protection For REST Services        | CSRF_PROTECTION                     |                        |
| OWSM Protection For REST Services        | OWSM_PROTECTION_FOR_REST_SERVICES   |                        |
| Domain Home Location                     | WLS_DOMAIN_HOME                     |                        |
| Batch Cluster URL                        | WEB_BATCH_CLUSTER_URL               |                        |
| Strip HTML Comments                      | STRIP_HTML_COMMENTS                 |                        |
| Authentication Login Page Type           | WEB_WLAUTHMETHOD                    |                        |
| Web Form Login Page                      | WEB_FORM_LOGIN_PAGE                 |                        |
| Web Form Login Error Page                | WEB_FORM_LOGIN_ERROR_PAGE           |                        |
| Application Viewer Form Login Page       | WEB_APPVIEWER_FORM_LOGIN_PAGE       |                        |
| Application Viewer Form Login Error Page | WEB_APPVIEWER_FORM_LOGIN_ERROR_PAGE |                        |
| Help Form Login Page                     | WEB_HELP_FORM_LOGIN_PAGE            |                        |
| Help Form Login Error Page               | WEB_HELP_FORM_LOGIN_ERROR_PAGE      |                        |
| Web Security Role                        | WEB_SECURITY_NAME                   |                        |
| Web Principal Name                       | WEB_PRINCIPAL_NAME                  |                        |

| Menu Option                             | Name Used in Documentation   | Customer Install Value |
|-----------------------------------------|------------------------------|------------------------|
| Application Viewer Security Role        | WEB_APPVIEWER_ROLE_NAME      |                        |
| Application Viewer Principal Name       | WEB_APPVIEWER_PRINCIPAL_NAME |                        |
| This is a development environment       | WEB_ISDEVELOPMENT            |                        |
| Preload All Pages on Startup            | WEB_PRELOADALL               |                        |
| Maximum Age of a Cache Entry for Text   | WEB_MAXAGE                   |                        |
| Maximum Age of a Cache Entry for Images | WEB_MAXAGEI                  |                        |
| JSP Recompile Interval (s)              | WEB_wlpageCheckSeconds       |                        |

### Menu Block 53 - OIM Configuration Settings

OIM configurations include:

| Menu Option                | Name Used in Documentation  | Customer Install Value |
|----------------------------|-----------------------------|------------------------|
| SPML SOAP Trace Setting    | OIM_SPML_SOAP_DEBUG_SETTING |                        |
| SPML IDM Schema Name       | OIM_SPML_UBER_SCHEMA_NAME   |                        |
| SPML OIM Name Space        | OIM_SPML_NAME_SPACE         |                        |
| SPML OIM Enclosing Element | OIM_SPML_SOAP_ELEMENT       |                        |

### Menu Block 54 - WebLogic Diagnostics

WebLogic diagnostic options include:

| Menu Option                | Name Used in Documentation     | Customer Install Value |
|----------------------------|--------------------------------|------------------------|
| Diagnostic Context Enabled | WLS_DIAGNOSTIC_CONTEXT_ENABLED |                        |
| Diagnostic Volume          | WLS_DIAGNOSTIC_VOLUME          |                        |
| Built-in Module            | WLS_DIAGNOSTIC_BUILT_IN_MODULE |                        |

## Menu Block 55 - URI, File and URL Related Options

URI, File and URL Related Options include:

| Menu Option                              | Name Used in Documentation                     | Customer Install Value |
|------------------------------------------|------------------------------------------------|------------------------|
| Restriction URLs Enable                  | CLOUD_RESTRICTION_URLS_ENABLE                  |                        |
| Custom SQL Security                      | CUSTOM_SQL_SECURITY                            |                        |
| White List Full Path                     | CLOUD_WHITE_LIST_PATH                          |                        |
| Custom White List Full Path              | CLOUD_CUSTOM_WHITE_LIST_PATH                   |                        |
| Substitution Variable List File Location | CLOUD_SUBSTITUTION_VARIABLE_LIST_FILE_LOCATION |                        |
| Directory For Variable F1_CMA_FILES      | CLOUD_LOCATION_F1_MIGR_ASSISTANT_FILES         |                        |
| URI For Variable F1_OAUTH2_URI           | CLOUD_LOCATION_F1_OAUTH2_URI                   |                        |
| Consolidated Logfile Full Path           | CONSOLIDATED_LOG_FILE_PATH                     |                        |
| Temporary File Location                  | TMP_FILE_LOCATION                              |                        |

## Menu Block 56 - Mobile Security Configuration

Mobile Security configurations include:

| Menu Option                        | Name Used in Documentation       | Customer Install Value |
|------------------------------------|----------------------------------|------------------------|
| Enable Mobile Application          | MOBILE_ENABLED                   |                        |
| Deploy Only Mobile Web Application | MOBILE_APP_ONLY                  |                        |
| Mobile Application Directory       | MOBILE_APPDIR                    |                        |
| Allow Self Signed SSL Certificates | ALLOW_SELFSIGNED_SSL             |                        |
| Force Http Connection              | FORCE_HTTP                       |                        |
| Web Mobile Form Login Page         | WEB_MOBILE_FORM_LOGIN_PAGE       |                        |
| Web Mobile Form Login Error Page   | WEB_MOBILE_FORM_LOGIN_ERROR_PAGE |                        |

# Appendix C

---

## Common Maintenance Activities

This section provides frequently-used commands that you use to perform common maintenance activities, such as starting and stopping the environment and thread pool worker, modifying the configuration items.

Run the following commands to perform these common tasks:

### To Initialize the Environment

1. Go the directory <install\_dir>/bin.
2. Run the following command:

#### UNIX

```
./splenviron.sh -e <Env_Name>
```

#### Windows Server

```
splenviron.cmd -e <Env_Name>
```

### To Start the WebLogic Server

1. Initialize the environment.
2. Navigate to the respective domain's bin folder.
3. Execute the WebLogic Domain Startup command.

### To Stop the WebLogic Server

1. Initialize the environment.
2. Navigate to the respective domain's bin folder.
3. Execute the WebLogic Domain Stop command.

### To Start the Thread Pool Worker

1. Initialize the environment.
2. Run the following command:



**UNIX**

```
$SPLEBASE/bin/threadpoolworker.sh -d Y -p DEFAULT=20 L2OFF=1 -l2
OFF
```

**Windows**

```
%SPLEBASE%\bin\threadpoolworker.cmd -d Y -p DEFAULT=20 L2OFF=1 -l2
OFF
```

**To Stop the Thread Pool Worker**

1. Initialize the environment.
2. Run the following command:

**UNIX**

```
./spl.sh -b stop
```

**Windows**

```
spl.cmd -b stop
```

**To Modify the Configuration Values**

1. Initialize the environment.
2. Run the following command:

**UNIX**

```
configureEnv.sh
```

**Windows**

```
configureEnv.cmd
```

The configuration utility launches menu items. Select any menu option.

3. Change the menu values.
4. After you change the menu values, press **P** to write the changes to the configuration file.
5. To apply changes to the environment, run the initial setup script:

**UNIX**

```
./initialSetup.sh
```

**Windows**

```
initialSetup.cmd
```

**To Modify the Advanced Menu Option Values**

1. Initialize the environment.

The configuration utility launches menu items.

2. Run the following command:

**UNIX**

```
configureEnv.sh -a
```

**Windows**

```
configureEnv.cmd -a
```

3. Select any menu option.
4. Change the menu values.
5. To apply the changes to the environment, run initial setup script:

```
initialSetup.sh
```