

Liquidation
Oracle FLEXCUBE Universal Banking
Release 11.11.0.0.0
[May] [2022]
Part No. F55411-01



Table of Contents

1. ABOUT THIS MANUAL.....	1-1
1.1 INTRODUCTION.....	1-1
1.2 AUDIENCE.....	1-1
1.3 CONVENTIONS USED IN THIS MANUAL.....	1-1
1.4 GLOSSARY OF ICONS.....	1-1
1.5 RELATED DOCUMENTS.....	1-1
2. MAINTENANCE.....	2-1
2.1 INTRODUCTION.....	2-1
2.2 MAINTAINING ONLINE RECEIVABLE/PAYABLE DETAILS.....	2-1
2.2.1 <i>Main Tab</i>	2-2
2.2.2 <i>Advices Tab</i>	2-4
2.2.3 <i>Tracers Tab</i>	2-6
2.2.4 <i>Specifying Events Details</i>	2-6
2.2.5 <i>Assigning MIS Details</i>	2-9
2.2.6 <i>Authorizing Receivable/ Payable Online</i>	2-9
2.3 VIEWING ONLINE RECEIVABLE/PAYABLE DETAILS.....	2-10
2.4 PROCESSING CONSOLIDATED LIQUIDATION.....	2-12
2.4.1 <i>Authorizing Consolidated Liquidation</i>	2-15
2.5 GENERATING LIQUIDATION TRACERS.....	2-17
3. EOD PROCESSING.....	3-1
3.1 INTRODUCTION.....	3-1
3.2 PROCESSING EOD FOR RECEIVABLE/PAYABLE COMPONENTS.....	3-1
3.2.1 <i>LQ EOTI Function</i>	3-1
3.2.2 <i>LQ EOD Function</i>	3-1
4. REPORTS.....	ERROR! BOOKMARK NOT DEFINED.
4.1 INTRODUCTION.....	ERROR! BOOKMARK NOT DEFINED.
4.2 LIQUIDATION DAILY ACTIVITY REPORT.....	ERROR! BOOKMARK NOT DEFINED.
4.2.1 <i>Report Options</i>	<i>Error! Bookmark not defined.</i>
4.2.2 <i>Contents of Report</i>	<i>Error! Bookmark not defined.</i>
4.3 OUTSTANDING ITEMS REPORT.....	ERROR! BOOKMARK NOT DEFINED.
4.3.1 <i>Report Options</i>	<i>Error! Bookmark not defined.</i>
4.3.2 <i>Contents of Report</i>	<i>Error! Bookmark not defined.</i>
5. APPENDIX.....	4-1
5.1 INTRODUCTION.....	4-1
5.2 ADVICES FOR LQ.....	4-1
6. SCREEN GLOSSARY.....	5-1
6.1 FUNCTION ID LIST.....	5-1

1. About this Manual

1.1 Introduction

This manual is essentially designed to guide you through the steps involved in liquidation of contracts maintained in Oracle FLEXCUBE. Liquidation of contracts maintained in BC, CL, FT, LC and PC are covered in this module. Further, you can obtain information specific to a particular field by placing the cursor on the relevant field and striking <F1> on the keyboard.

1.2 Audience

This manual is intended for the following User/User Roles:





Role	Function
Back office clerk	Input functions for contracts
Back office managers/officers	Authorization functions
Product Managers	Product definition and authorization
End of day operators	Processing during end of day/ beginning of day
Financial Controller/Product Managers	Generation of reports

1.3 Conventions Used in this Manual

Important information is preceded with the  symbol.

1.4 Glossary of Icons

This User Manual may refer to all or some of the following icons:

Icons	Function
	Exit
	Add row
	Delete row
	Option List

1.5 Related Documents

For further information on contracts discussed in the manual, refer to the Oracle FLEXCUBE manuals on:

- Bills and Collections
- Retail Lending
- Funds Transfer
- Letters to Credit
- Payments and Collections

2. Maintenance

2.1 Introduction

Whenever you need to collect an ICCF component, avilment amount, or the collateral amount, you debit it from the customer's account. On some occasions, you may have to debit it from an internal receivable/payable GL, to be debited from the customer account at a later date.

The debiting of the receivable or payable account happens at the event for which the commission or charge has to be collected (issue of a contract, amendment of a contract, avilment against an contract, etc.). When the customer account has to be debited at a later date, you have to perform, what is termed as receivable liquidation. There are two related functions associated with liquidation:

- A batch process that reverses the liquidated receivable components, for a contract that is reversed during the day (the LQ EOTI function)
- A batch process that generates the charge and commission claim advice to the party on behalf of whom a charge or commission was debited, from a receivable account during the day (the LQ EOD function)

2.2 Maintaining Online Receivable/Payable Details

You can pass manual entries into LQ Module to maintain additional entries into AR/AP LQ Module in the 'Receivable/Payable Online' screen. You can invoke 'Receivable/Payable Online' screen by typing 'LQDTRONL' in the field at the top right corner of the Application tool bar and clicking on the adjoining arrow button.

The screenshot shows the 'Receivable/Payable Online' application window. The window title is 'Receivable/Payable Online'. The interface includes several input fields and sections:

- Contract Reference:** 0002RLQ11248001N
- Book Date:** (empty)
- Event Code:** (empty)
- Event Description:** (empty)
- Module:** (empty)
- Main | Advice | Tracers** (tabs)
- AR-AP Reference:** 0002RLQ11248001N
- Customer *:** (populated)
- Party Name:** (populated)
- Party Type:** (empty)
- Receivable/Payable:** Receivable, Payable
- Value Date *:** (empty)
- Default:** (button)
- Booking Account:** (empty)
- Booking Branch:** (empty)
- Account Currency:** (empty)
- Offset Account:** (empty)
- Branch:** (empty)
- Currency:** (empty)
- Amount:** (empty)
- AR-AP Code:** (empty)
- GL Code *:** (empty)
- Branch:** (empty)
- Transaction Code *:** (empty)
- Exchange Rate:** (empty)
- Negotiated Rate:** (empty)
- ReCalculate:** (button)
- Charge Claim Advice:** (empty)
- Date:** (empty)
- Outstanding Amount:** (empty)
- Liquidated On:** (empty)
- Liquidation Amount:** (empty)
- Description:** (empty)
- Waive Outstanding Amount:**
- Internal Remarks:** (empty)
- External remarks:** (empty)
- External Remarks Tag72:** (empty)
- External Remarks Tag79:** (empty)
- Events | MIS** (tabs)
- Maker:** (empty)
- Checker:** (empty)
- DateTime:** (empty)
- Auth Status:** (empty)
- Liquidation Status:** (empty)
- Exit:** (button)

You can liquidate the components of a contract that have been put into a receivable account.

Contract Reference

Specify a valid contract reference number you need to mark, to the Track Receivable or Payable process. The adjoining option list displays valid reference numbers of the contracts created in different modules. You can choose the appropriate one.

However, the system displays reference number for AR-AP records created as part transaction initiated in different modules.

Book Date

The system defaults book date to the current date of the system.

Event Code

The system defaults event code to INIT.

Event Description

The system defaults event description to 'Initiation'.

Module

The system defaults module to LQ.

2.2.1 Main Tab

You can maintain the following parameters here:

AR-AP Reference

The system defaults a unique liquidation reference number as AR-AP reference number.

Customer

Specify a valid name of the customer you need to link the AR-AP liquidation. The adjoining option list displays all valid open and authorized customer numbers. You can choose the appropriate one.

Receivable/Payable

Select component type from the options. The following options are available for selection:

- Receivable – Select if you need to maintain the component as receivable.
- Payable – Select if you need to maintain the component as payable.

Component

Component assigned to the specified contract reference is defaulted here, based on the details maintained at contract level.

Component Description

Description of the displayed component is defaulted here.

Party Name

Specify name of the party for which you need to maintain the receivable or payable details.

Party Type

Party type of the specified party name is defaulted here based on the details maintained in the system.

Value Date

Specify a valid value date for the specified contract reference from the adjoining calendar. The system defaults application date as the value date; however you can modify the same.

Click 'Default' button, to default the values maintained at contract level.

AR-AP Code

Specify a valid AR-AP code you need for the specified contract reference. The adjoining option list displays all valid open and authorized AR-AP codes. You can choose the appropriate one.

GL Code

Specify a valid GL code you need to assign to specified AR-AP code. The adjoining option list displays all valid open and authorized Asset or Liability Leaf GLs. You can choose the appropriate one.

If the GL Code is not specified, then the system displays the GL code based on the AR/AP Code maintained at AR-AP Code Maintenance level.

Branch

Code of the current branch is defaulted here.

Account Currency

Specify currency code you need to assign for the account. The adjoining option list displays all valid open and authorized currency codes. You can choose the appropriate one.

AR-AP Amount

Specify a valid amount for the AR-AP account.

Booking Account

Specify a valid booking account to book the receivable or payable amount. The adjoining option list displays all valid Income and Expense Leaf GLs. You can choose the appropriate one.

Booking Branch

Specify branch code of the booking account. The adjoining option list displays all valid branch codes. You can choose the appropriate one.

Account Currency

Specify currency code of the booking account. The adjoining option list displays all valid currency codes. You can select the appropriate one.

Offset Account

Specify offset account for the specified contract, if you want to maintain offset account details at the booking stage. The adjoining option list displays all valid account numbers. You can choose the appropriate one.

Branch

Specify branch code of the offset account, if you want to maintain offset account details at the booking stage. The adjoining option list displays all valid branch codes. You can choose the appropriate one.

Currency

Specify currency code of the offset account, if you want to maintain offset account details at the booking stage. The adjoining option list displays all valid currency codes. You can select the appropriate one.

Transaction Code

Specify transaction code for the specified contract. The adjoining option list displays all valid transaction codes. You can choose the appropriate one.

Exchange Rate

Specify an exchange rate for the specified account currency.

Negotiated Rate

Specify negotiated rate for the account currency, if there is a difference in the exchange rate.

Amount

The system displays amount equivalent to the offset currency, if the offset account currency is different from the AR-AP account and you click 'Recalculate' button.

Charge Claim Advice Date

Specify a valid date when you need to generate Charge Claim Advice from the adjoining calendar.

Outstanding Amount

The system computes the outstanding amount which needs to be liquidated in the AR-AP account currency.

Liquidation On

Specify a valid date when you need to liquidate the specified outstanding amount from the adjoining calendar.

Liquidation Amount

Specify the amount you need to liquidate from the displayed outstanding amount. The system enables partial or complete liquidation of the outstanding amount.

Description

Specify remarks, if any, for the liquidation amount.

Waive Outstanding Amount

Check this box if you need to waive the outstanding amount.

Internal Remarks

Specify internal remarks for the contract, if any.

External Remarks

Specify external remarks for the contract, if any.

External Remarks Tag72

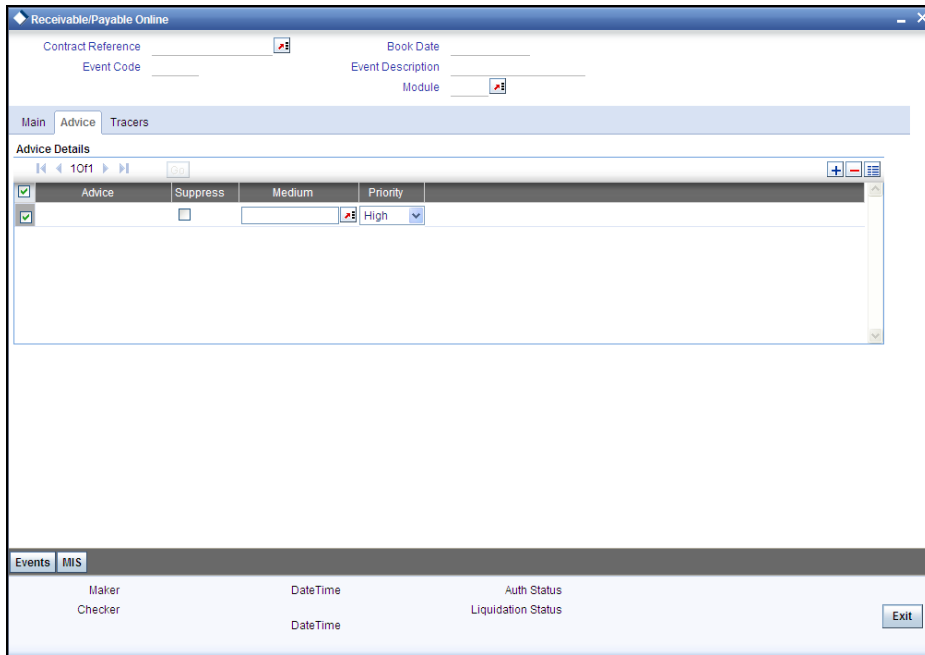
Specify external remarks you want to specify for Tag72 of the message, if any.

External Remarks Tag79

Specify external remarks you want to specify for Tag72 of the message, if any.

2.2.2 Advices Tab

Click 'Advices' tab to maintain advice details.



You can maintain the following parameters here:

Advice Details

The following advice details can be maintained:

Advice

The system defaults the name of the advice that needs to be generated.

Suppress

Check this box if you need to suppress the advice.

Medium

Select the medium through which you need to generate the displayed advice. The adjoining option list displays all valid media. You can choose the appropriate one.

Priority

Select priority in which the advice needs to be generated from the adjoining drop-down list. This list displays the following values:

- High – Select if you need to generate the advice on high priority.
- Medium – Select if you need to generate the advice on medium priority.
- Low – Select if you need to generate the advice on low priority.



Note the following:

- If you are booking a new receivable contract, then the system defaults 'LQCHG_CLAIM_ADV' advice
- If you are booking a new payable contract, then the system defaults 'LQCHG_PAYADV' advice
- If you are liquidating a receivable contract, then the system defaults 'CHG_LIQ_DR_ADV' advice

- If you are liquidating a payable contract, then the system defaults 'CHG_LIQ_CR_ADV' advice

2.2.3 Tracers Tab

Click 'Tracers' tab to maintain tracer details.

You can maintain the following parameters here:

Tracking Event

The following advice details can be maintained:

Required

Check this box if you require to maintain tracking event.

Frequency

Specify the frequency of tracking the events.

Maximum Tracers

Specify the maximum number of tracers allowed for tracking an event.

No of Tracers Sent

The system defaults the number of tracers which were sent.

Medium

Select the medium through which you need to generate the displayed advice. The adjoining option list displays all valid media. You can choose the appropriate one.

Start Days

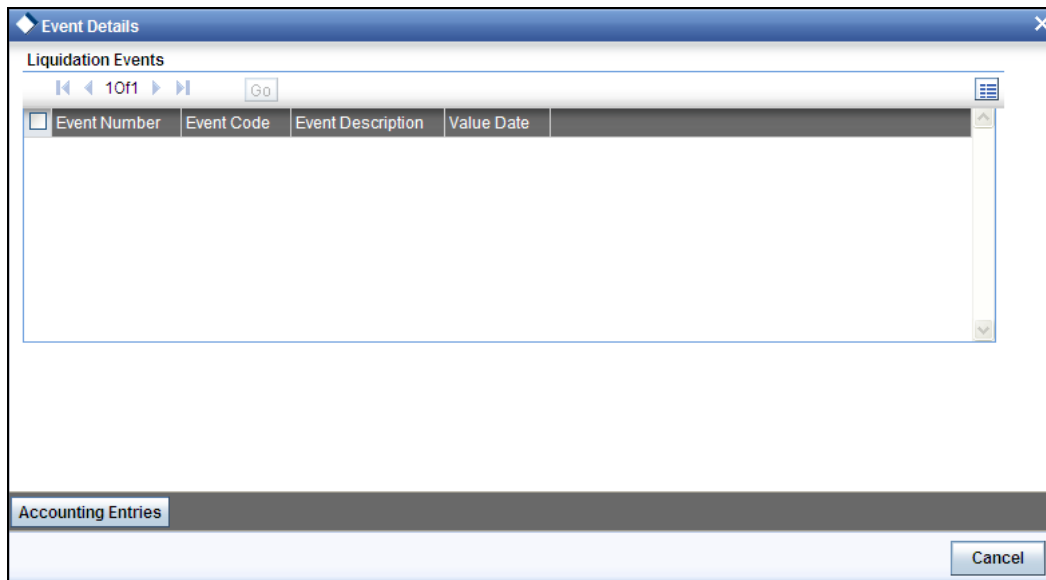
Specify the date from which the tracers has to be sent.

Last Sent Date

The system defaults the last date when the tracking event was sent.

2.2.4 Specifying Events Details

At an event, typically, you would want to post the accounting entries to the appropriate account heads and generate the required advices. When setting up a liquidation contract, you can view the accounting entries that have been posted at the various events. To do this, click 'Events' button in the screen.

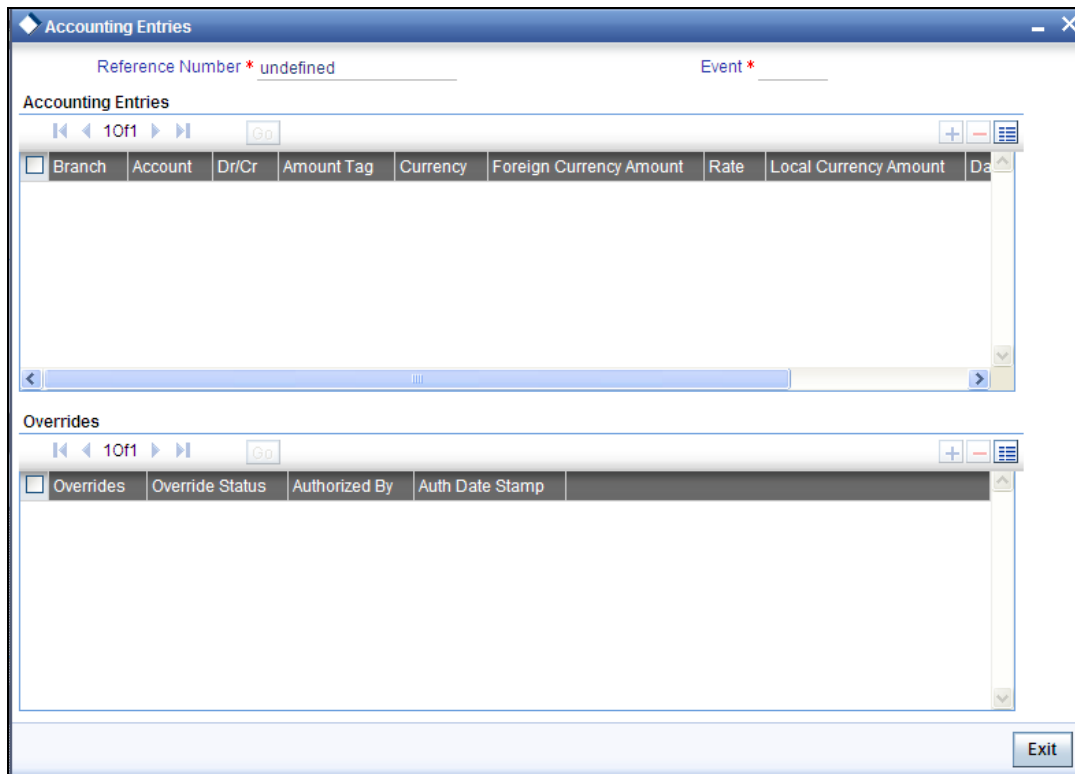


The system displays the following details of the Events associated with the specified contract, which can not be modified:

- Event Number
- Event Code
- Event Description
- Value Date

2.2.4.1 Defining Accounting Entries

To view accounting entries for an event, click 'Accounting Entries' in the 'Events' button of the 'Receivable/Payable Online' screen.



You can view the following parameters:

- Branch
- Account
- Dr/Cr
- Amount Tag
- Currency
- Foreign Currency Amount
- Rate
- Local Currency Amount
- Date
- Value Date
- Code
- Overrides
- Override Status
- Authorized By
- Auth Date Stamp

2.2.4.2 Reversing Liquidation Accounting Entries

You can reverse the authorized accounting entries that were passed, when you liquidated a receivable/payable outstanding component of a contract.

You can reverse the accounting entries, passed for the liquidation of an outstanding component of a contract, through the 'Receivable/Payable Liquidation' screen. Specify the Contract Reference Number

of the contract. All the outstanding components of the contract that were paid from a receivable/payable and income/expense GL account will be displayed. Query the component whose liquidation entries you want to reverse. Click 'Roll-over' icon on the tool bar.

The system will prompt you to indicate whether you want to reverse the liquidation entries passed for the outstanding component or make the component outstanding again.

If you indicate that the entries should be reversed, the accounting entries that were passed earlier will be reversed. However, you will not be able to liquidate the component at a future date.

If you indicate that the component should be made outstanding, the accounting entries that were passed earlier will be reversed and the component will become outstanding again. The component can be liquidated later on.

You can also mark an Outstanding Liquidation Contract as Reversed. This option would be used to waive a particular Receivable/Payable Contract. When an outstanding liquidation contract is reversed, the accounting entries are reversed for the Outstanding Liquidated Amount from the Receivable/Payable GL and the Income/Expense GL. The Income/Expense GL will be derived from the Product Event Accounting Entry Definition for the corresponding Amount Tag and Event Code.

These entries would be passed with the Accounting Reference Number as the AR/AP Reference Number.

2.2.5 Assigning MIS Details

You can associate MIS details with a product in the 'MIS' screen. Click 'MIS' button in the 'Receivable/Payable Online' screen to invoke it.

The system defaults MIS details maintained for the contract.

2.2.6 Authorizing Receivable/ Payable Online

Oracle FLEXCUBE facilitates online authorization of AR-AP account using 'Receivable/Payable Online Authorization' screen. You can invoke 'Receivable/Payable Online Authorization' screen by typing 'LQDTRAUT' in the field at the top right corner of the Application tool bar and clicking on the adjoining

arrow button. This screen can also be viewed when you click on authorize button after maintaining details in the 'Receivable/Payable Online' screen.

The screenshot shows a software window titled "Receivable/Payable Online Authorization". It contains several input fields and a table. The "Contract Details" section includes fields for "Liquidation Reference * Number", "Event Code", and "Event Date", along with an "Input By" field and a "Generate Message" checkbox. The "Contract Overrides" section features a table with two columns: "Confirmed" and "Overrides". The table is currently empty. At the bottom of the window, there are three buttons: "Authorize", "Ok", and "Exit".

You can query unauthorized LQ contracts and authorize the contract after accepting override messages, if any raised at that time of saving.

You can query based on the following criteria:

Liquidation Reference Number

Specify a valid liquidation reference number of AR-AP account. The adjoining option list displays all valid reference numbers. You can choose the appropriate one.

Input By

The system defaults ID of the maker here.

Generate Message

Check this box to generate message.

Contract Overrides

You can specify the following parameters here:

Confirmed

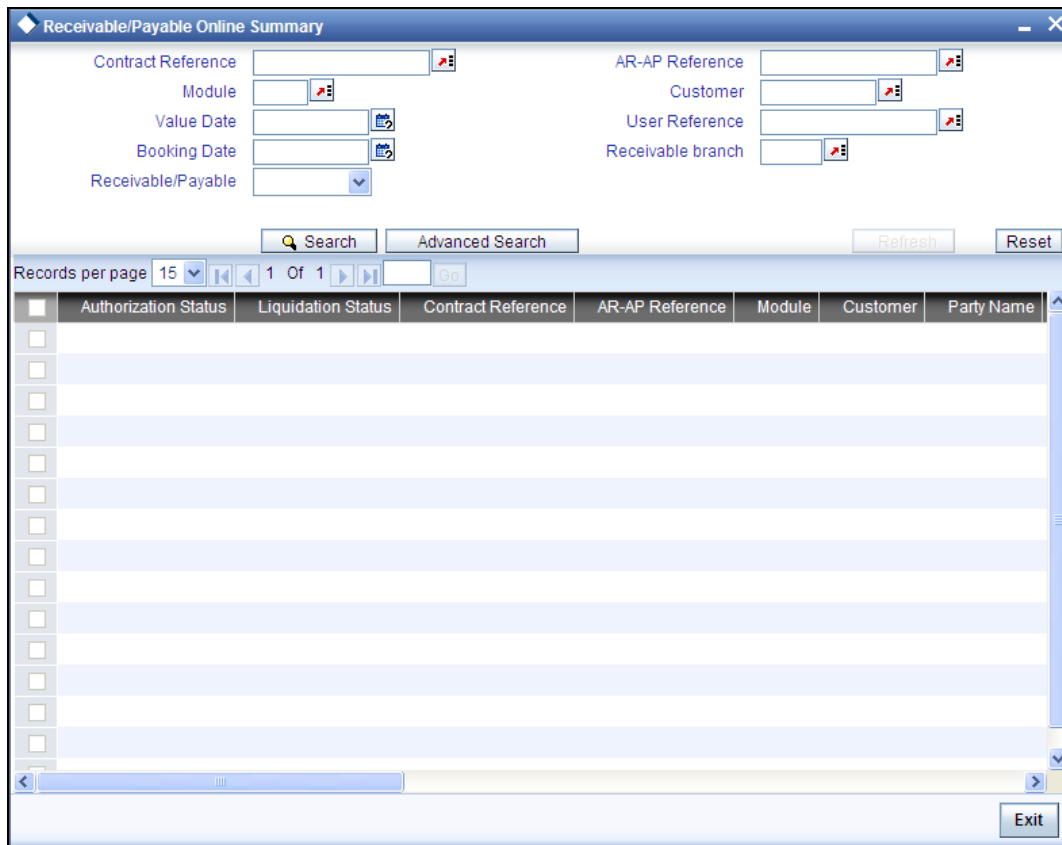
Check this box to confirm override message displayed, if any.

Overrides

System defaults override messages displayed while generating message, if any.

2.3 Viewing Online Receivable/Payable Details

You can view details related to the AR-AP accounts using the 'Receivable/Payable Online Summary' screen. You can invoke 'Receivable/Payable Online Summary' screen by typing 'LQSTRONL' in the field at the top right corner of the Application tool bar and clicking on the adjoining arrow button.



You can search for the AR-AP details based by specifying any or all of the following criteria:

Contract Reference

Specify a valid contract reference number to query based on the contract reference. The adjoining option list displays all valid contract reference numbers. You can choose the appropriate one.

AR-AP Reference

Specify a valid AR-AP reference linked to the contract, to query based on the AR-AP reference. The adjoining option list displays all valid AR-AP reference numbers. You can choose the appropriate one.

Module

Specify a valid module in which the contract was created to query based on the module. The adjoining option list displays all valid available modules. You can choose the appropriate one.

Customer

Specify a valid customer name to query based on the customer. The adjoining option list displays all valid customer names. You can choose the appropriate one.

Value Date

Specify a valid date to query based on the value date of the contract from the adjoining calendar.

User Reference

Specify a user reference number of the contract to query based on the user reference. The adjoining option list displays all valid user reference numbers. You can choose the appropriate one.

Booking Date

Specify a valid date to query based on the booking date of the contract from the adjoining calendar.

Receivable Branch

Specify a branch code of the receivable Bank to query based on the receivable branch. The adjoining option list displays all valid branch codes. You can choose the appropriate one.

Receivable/Payable

Select if the account is a receivable or a payable account to query based on the account type, from the adjoining drop-down list.

Click 'Search' button. The system displays the following details based on the criteria specified:

- Authorization Status
- Liquidation Status
- Contract Reference
- AR-AP Reference
- Module
- Customer
- Party Name
- Amount
- Liquidated Amount
- Receivable Account
- Ac CCY
- Value Date
- Event Code
- Charge Claim Advice Date
- User Reference
- Booking Date
- Receivable Branch
- Booking Branch
- Receivable/Payable

2.4 Processing Consolidated Liquidation

Oracle FLEXCUBE facilitates selecting multiple LQ contracts associated with a single customer and contract and initiating bulk liquidation by viewing all the outstanding receivable or payable contracts for the customer of a branch, for a specified period of time. You can perform the above operation using 'Consolidated Liquidation' screen. You can invoke 'Consolidated Liquidation' screen by typing 'LQDCLIQ' in the field at the top right corner of the Application tool bar and clicking on the adjoining arrow button.

After querying the contract, you can liquidate the contract and add remarks, if any, for each LQ contracts before saving.

You can search for the AR-AP details based by specifying any or all of the following criteria:

Liquidation Batch Reference No

Specify a valid liquidation batch reference number to query based on the liquidation batch reference. The adjoining option list displays all valid liquidation batch reference numbers. You can choose the appropriate one.

Customer ID

Specify a valid customer ID to query based on the customer ID. The adjoining option list displays all valid customer IDs. You can choose the appropriate one

Contract Reference

Specify a valid contract reference number to query based on the contract reference. The adjoining option list displays all valid contract reference numbers. You can choose the appropriate one.

User Reference

Specify a user reference number of the contract to query based on the user reference. The adjoining option list displays all valid user reference numbers. You can choose the appropriate one.

Module

Specify a valid module in which the contract was created to query based on the module. The adjoining option list displays all valid available modules. You can choose the appropriate one.

Value Date

Specify a valid date to query based on the value date of the liquidation batch from the adjoining calendar.

Account Currency

Specify a valid currency of the account to query based on the account currency. The adjoining option list displays all valid currency codes. You can choose the appropriate one.

Receivable/Payable

Select if the account is a receivable or a payable account to query based on the account type, from the adjoining drop-down list.

Booking from Date

Specify a valid date from when the liquidation batch was booked to query based on the booking from date of the batch from the adjoining calendar.

Booking to Date

Specify a valid date till when the liquidation batch was booked to query based on the booking to date of the batch from the adjoining calendar

Receivable/Payable GL Code

Specify GL code of the receivable/payable GL to query based on the GL code. The adjoining option list displays all valid GL codes. You can choose the appropriate one.

Click 'Search' button. The system displays the following details based on the criteria specified:

- AR_AP Reference
- Value Date
- Module
- Booking Date
- User Reference
- AR-AP Code
- Component
- GL Code
- Account Currency
- Amount
- Liquidation Amount
- Outstanding Amount
- Transaction Code
- Exchange Rate
- Offset Amount

Select contracts you need to add to bulk liquidation and maintain the following parameters:

Negotiated Rate

Specify a valid negotiated rate for queried LQ contract, if any.

Remarks

Specify remarks for queried LQ contract, if any.

Offset Account

Specify a valid account you need to set as offset account for liquidation. The adjoining option list displays all valid account number. You can choose the appropriate one.

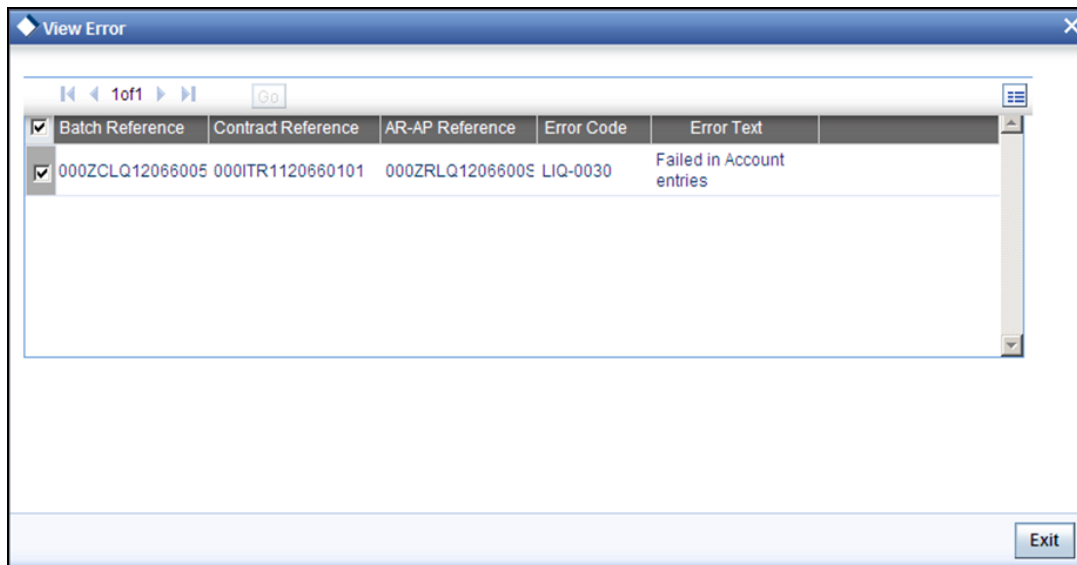
Offset Branch

Specify code of the branch in which the specified offset account is maintained. The adjoining option list displays all valid branch codes. You can choose the appropriate one.

Offset Currency

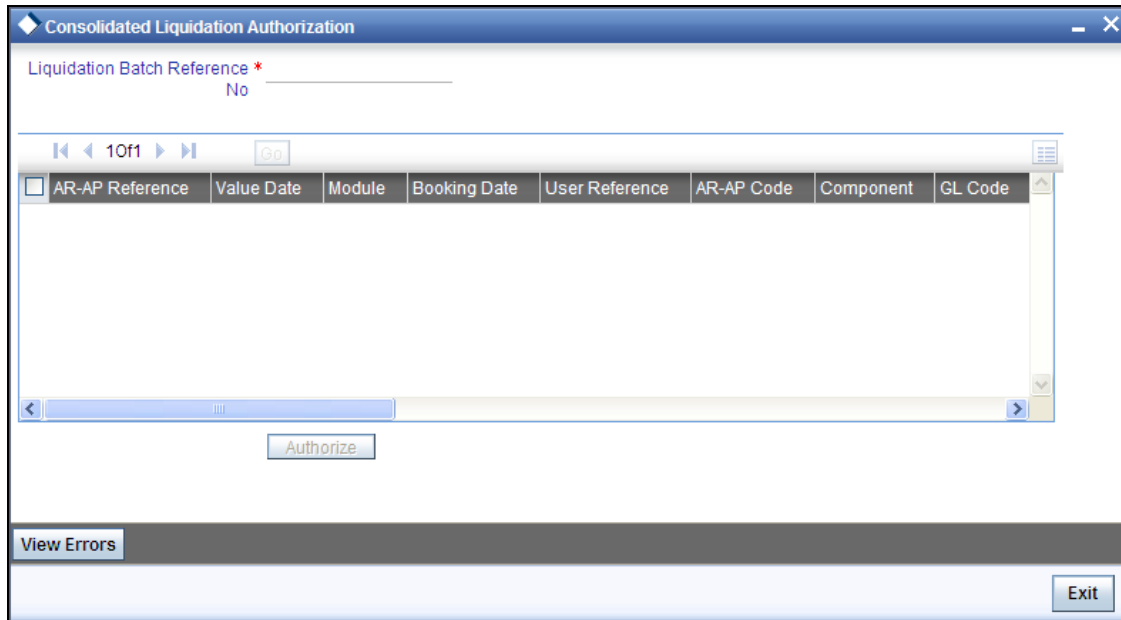
Specify currency you need to assign to the specified offset account. The adjoining option list displays all valid currencies. You can choose the appropriate one.

After processing the Bulk Liquidation, if there are any errors during the Liquidation of an Account Payable or a Receivable Contract, you can click 'View Error' Button to invoke 'View Error' screen which displays the Error code and Error Message for the corresponding Account Payable or a Receivable Contract.



2.4.1 Authorizing Consolidated Liquidation

Oracle FLEXCUBE facilitates querying for unauthorized Receivable or Payable contracts based on Liquidation Batch Reference Number, using 'Consolidated Liquidation Authorization' screen. Only the user with authorization rights to 'Receivable/Payable Online' records can authorize these records; however maker is of the record is not eligible to authorize. You can invoke 'Consolidated Liquidation Authorization' screen by typing 'LQDALIQ' in the field at the top right corner of the Application tool bar and clicking on the adjoining arrow button.



You can query for the record based on the following criteria:

Liquidation Batch Reference No

Specify a valid liquidation batch reference number to query based on the liquidation batch reference. The adjoining option list displays all valid liquidation batch reference numbers. You can choose the appropriate one.

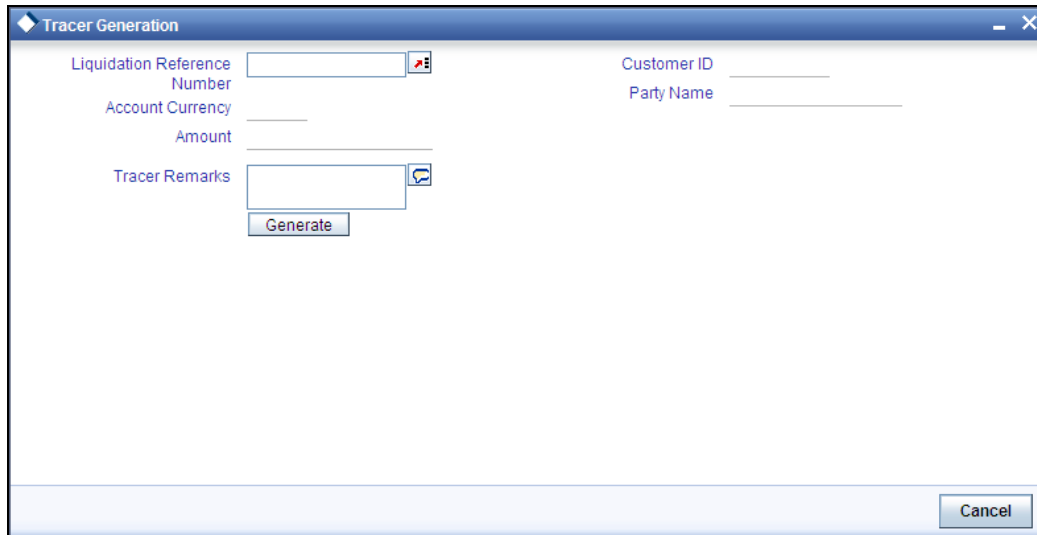
Click 'Search' button. The system displays the following details based on the criteria specified:

- AR_AP Reference
- Value Date
- Module
- Booking Date
- User Reference
- AR-AP Code
- Component
- GL Code
- Account Currency
- Amount
- Liquidation Amount
- Outstanding Amount
- Transaction Code
- Offset Account
- Offset Branch
- Offset Currency
- Exchange Rate
- Negotiated Rate
- Offset Amount

- Remarks

2.5 Generating Liquidation Tracers

The system enables you to generate Charge Claim Tracer manually using 'Tracer Generation' screen. You can invoke 'Tracer Generation' screen by typing 'LQDTRGEN' in the field at the top right corner of the Application tool bar and clicking on the adjoining arrow button.



You can maintain the following parameters here:

Liquidation Reference Number

The system defaults the liquidation reference number maintained at 'AR-AP Liquidation' level.

Customer ID

The system defaults the customer ID maintained at 'AR-AP Liquidation' level.

Party Name

The system defaults the party name maintained at 'AR-AP Liquidation' level.

Account Currency

The system defaults the account currency maintained at 'AR-AP Liquidation' level.

Amount

The system defaults the amount number maintained at 'AR-AP Liquidation' level.

Tracer Remarks

Specify remarks you need to generate for SWIFT or MAIL tracer messages, if any.

3. EOD Processing

3.1 Introduction

This chapter introduces you to the batches maintained for liquidation of Receivable/Payable components at EOD stage. As part of Receivable Liquidation batch,

- For each Receivable entry, a record will be created for 'Charge Claim Advice' in Outgoing Browser. Respective messages will be recorded based on the module.
- For each Payable entry, a record will be created for 'Charge Pay Advice' in Outgoing Browser. Respective messages will be recorded based on the module.

The messages have to be generated manually from Outgoing Browser. Based on the default media of the customer, either MAIL or SWIFT message will be generated.

3.2 Processing EOD for Receivable/Payable Components

The following End of Day processing is done for receivable/payable components:

- A batch process that reverses, the liquidated receivable components, for a contract that is reversed during the day (the LQ EOTI function). This function should be defined as a mandatory program in the pre-EOC stage.
- A batch process that generates the charge and commission claim advice to the party on behalf of whom a charge or commission was debited, from a receivable account during the day (the LQ EOD function). This function should be defined as a mandatory program in the EOC stage.

3.2.1 LQ EOTI Function

There are some occasions when you have to reverse a contract on which a receivable component has been liquidated. The following is an example:

Example

You issue an LC for Gem Granites on 01 January 1998, for which the charges and commission was debited from a receivable account. On 05 January 1998, you liquidate the commission from the customer's account.

Thereafter, say on 07 January 1998, you reverse the LC. All the entries for the LC that were passed when the LC was stored (including the entries passed into the receivable account) will be reversed. However, the entries that were passed to liquidate the commission from the customer's account (which was subsequently done through the liquidation function) will not be reversed. This entry will be reversed by the LQ EOTI of 07 January 1998.

3.2.2 LQ EOD Function

A charge claim advice informs the concerned party, about a component that is outstanding against them. This advice will be generated on the day a contract is booked or when any subsequent amendment for the contract is stored and authorized. The generation of this advice is done by the LQ EOD function. The advices are put in the Outgoing Messaging Browser by this function. You should generate them from the browser.

4. Appendix

4.1 Introduction

This Annexure contains details of the suggested messages that can be generated for the LQ module. The annexure lists details of the suggested messages module wise.

4.2 Advices for LQ

The following is a list of modules, related advices and the description that are supported for LQ Module.

Recording a Receivable

Module	Message Type	Swift Message Type	Description
BC	BCCHG_CLAIM_ADV	MT491	For Collection
LC	LCCHG_CLAIM_ADV	MT791	For LC and Bills under LC
FT	FTCHG_CLAIM_ADV	MT191	Sent to Remitting bank for claiming charges
PC and CL	LQCHG_CLAIM_ADV	MT991	For miscellaneous items captured through the AR/AP Liquidation Screen

Recording a Payable

Module	Message Type	Swift Message Type	Description
BC	BCCHG_PAYADV	MT499	For Collection
LC	LCCHG_PAYADV	MT799	For LC and Bills under LC
FT	FTCHG_PAYADV	MT199	Sent to Receiving bank, informing Credit of Charges
PC and CL	LQCHG_PAYADV	MT999	For miscellaneous items captured through the AR/AP Liquidation Screen

Liquidation of Receivable

Module	Message Type	Swift Message Type	Description
BC, LC, FT, PC and CL	CHG_LIQ_DR_ADV	MT900	Liquidation Debit advice

Liquidation of Payable

Module	Message Type	Swift Message Type	Description
BC, LC, FT, PC and CL	CHG_LIQ_CR_ADV	MT910	Liquidation Credit advice

Liquidation of a Consolidated Receivable

Module	Message Type	Swift Message Type	Description
BC, LC, FT, PC and CL	CHGC_LIQ_DR_ADV	MT900	Consolidated Liquidation Debit advice

Liquidation of a Consolidated Payable

Module	Message Type	Swift Message Type	Description
BC, LC, FT, PC and CL	CHGC_LIQ_CR_ADV	MT910	Consolidated Liquidation Credit advice

5. Screen Glossary

5.1 Function ID List

The following table lists the function id and the function description of the screens covered as part of this User Manual.

Function ID	Function Description
LQDALIQ	Consolidated Liquidation Authorization
LQDCLIQ	Consolidated Liquidation
LQDTRAUT	Receivable/Payable Online Authorization
LQDTRGEN	Tracer Generation
LQDTRONL	Receivable/Payable Online
Error! Reference source not found.	Liquidation Daily Activity Report
Error! Reference source not found.	Outstanding Items Report
LQSTRONL	Receivable/Payable Online Summary



Product
[May] [2022]
Version 11.11.0.0.0

Oracle Financial Services Software Limited
Oracle Park
Off Western Express Highway
Goregaon (East)
Mumbai, Maharashtra 400 063
India

Worldwide Inquiries:
Phone: +91 22 6718 3000
Fax:+91 22 6718 3001
www.oracle.com/financialservices/

Copyright © [2007], [2022], Oracle and/or its affiliates. All rights reserved.

Oracle and Java are registered trademarks of Oracle and/or its affiliates. Other names may be trademarks of their respective owners.

U.S. GOVERNMENT END USERS: Oracle programs, including any operating system, integrated software, any programs installed on the hardware, and/or documentation, delivered to U.S. Government end users are "commercial computer software" pursuant to the applicable Federal Acquisition Regulation and agency-specific supplemental regulations. As such, use, duplication, disclosure, modification, and adaptation of the programs, including any operating system, integrated software, any programs installed on the hardware, and/or documentation, shall be subject to license terms and license restrictions applicable to the programs. No other rights are granted to the U.S. Government.

This software or hardware is developed for general use in a variety of information management applications. It is not developed or intended for use in any inherently dangerous applications, including applications that may create a risk of personal injury. If you use this software or hardware in dangerous applications, then you shall be responsible to take all appropriate failsafe, backup, redundancy, and other measures to ensure its safe use. Oracle Corporation and its affiliates disclaim any liability for any damages caused by use of this software or hardware in dangerous applications.

This software and related documentation are provided under a license agreement containing restrictions on use and disclosure and are protected by intellectual property laws. Except as expressly permitted in your license agreement or allowed by law, you may not use, copy, reproduce, translate, broadcast, modify, license, transmit, distribute, exhibit, perform, publish or display any part, in any form, or by any means. Reverse engineering, disassembly, or decompilation of this software, unless required by law for interoperability, is prohibited.

The information contained herein is subject to change without notice and is not warranted to be error-free. If you find any errors, please report them to us in writing.

This software or hardware and documentation may provide access to or information on content, products and services from third parties. Oracle Corporation and its affiliates are not responsible for and expressly disclaim all warranties of any kind with respect to third-party content, products, and services. Oracle Corporation and its affiliates will not be responsible for any loss, costs, or damages incurred due to your access to or use of third-party content, products, or services.