

SQL*Plus®

Getting Started

Release 8.1.6 for Windows

January, 2000

Part No. A77480-01

ORACLE®

SQL*Plus Getting Started, Release 8.1.6 for Windows

Part No. A77480-01

Copyright © 1996, 2000, Oracle Corporation. All rights reserved.

Contributing Authors: Susan Lee, Simon Watt

Contributors: Riaz Ahmed, Larry Faulks, Joseph Garcia, Alison Holloway, Christopher Jones, Andrei Souleimanian, Jeff Stein, Nicole Sullivan, Martha Woo

The Programs (which include both the software and documentation) contain proprietary information of Oracle Corporation; they are provided under a license agreement containing restrictions on use and disclosure and are also protected by copyright, patent, and other intellectual and industrial property laws. Reverse engineering, disassembly, or decompilation of the Programs is prohibited.

The information contained in this document is subject to change without notice. If you find any problems in the documentation, please report them to us in writing. Oracle Corporation does not warrant that this document is error free. Except as may be expressly permitted in your license agreement for these Programs, no part of these Programs may be reproduced or transmitted in any form or by any means, electronic or mechanical, for any purpose, without the express written permission of Oracle Corporation.

If the Programs are delivered to the U.S. Government or anyone licensing or using the programs on behalf of the U.S. Government, the following notice is applicable:

Restricted Rights Notice Programs delivered subject to the DOD FAR Supplement are “commercial computer software” and use, duplication, and disclosure of the Programs, including documentation, shall be subject to the licensing restrictions set forth in the applicable Oracle license agreement. Otherwise, Programs delivered subject to the Federal Acquisition Regulations are “restricted computer software” and use, duplication, and disclosure of the Programs shall be subject to the restrictions in FAR 52.227-19, Commercial Computer Software - Restricted Rights (June, 1987). Oracle Corporation, 500 Oracle Parkway, Redwood City, CA 94065.

The Programs are not intended for use in any nuclear, aviation, mass transit, medical, or other inherently dangerous applications. It shall be the licensee's responsibility to take all appropriate fail-safe, backup, redundancy, and other measures to ensure the safe use of such applications if the Programs are used for such purposes, and Oracle Corporation disclaims liability for any damages caused by such use of the Programs.

Oracle is a registered trademark, and Net8, Oracle8i, PL/SQL and SQL*Plus are trademarks or registered trademarks of Oracle Corporation. All other company or product names mentioned are used for identification purposes only and may be trademarks of their respective owners.

Contents

Send Us Your Comments	v
Preface.....	vii
1 Introducing SQL*Plus	
Overview	1-2
Basic Concepts.....	1-3
2 Installing SQL*Plus Help and Demonstration Tables	
Installing SQL*Plus.....	2-2
Installing SQL*Plus Online Help.....	2-2
Prerequisites	2-2
Installing SQL*Plus Help.....	2-3
Accessing SQL*Plus Help.....	2-3
Accessing Demonstration Tables.....	2-4
3 Using SQL*Plus	
Using the Command Line Interface	3-2
Using the Graphical User Interface.....	3-3
Using the SQL*Plus Application Window.....	3-4
Using the Mouse Buttons to Copy SQL Commands in the Application Window	3-4
Using the Command Keys	3-5
Using the SQL*Plus Menus.....	3-5
Setting Options and Values, Using the Environment Dialog	3-9

Exiting SQL*Plus	3-10
4 Operating System-Specific References	
Automatic Login.....	4-2
TIMING Command.....	4-2
Interpreting Error Messages	4-2
Setting Up Your SQL*Plus Environment	4-3
Sending Results to a File	4-3
~, @@, and START Commands.....	4-3
HOST Command.....	4-4
SET NEWPAGE Command	4-4
PRODUCT_USER_PROFILE Table.....	4-4
A Customizing Operating System Parameters	
Using the Registry	A-2
SQLPATH Parameter Description	A-2
SQLPLUS Environment Variable	A-3

Index

Send Us Your Comments

SQL*Plus Getting Started, Release 8.1.6 for Windows

Part No. A77480-01

Oracle Corporation welcomes your comments and suggestions on the quality and usefulness of this publication. Your input is an important part of the information used for revision.

- Did you find any errors?
- Is the information clearly presented?
- Do you need more information? If so, where?
- Are the examples correct? Do you need more examples?
- What features did you like most about this manual?

If you find any errors or have any other suggestions for improvement, please indicate the chapter, section, and page number (if available). You can send comments to us in the following ways:

- Electronic mail: sqlplus@us.oracle.com
- FAX: +61 3 9690 0043 Attention: SQL*Plus Documentation Manager
- Postal service:
SQL*Plus Documentation Manager,
Australian Product Development Center,
Oracle Corporation Australia Pty Ltd,
324 St. Kilda Road,
Melbourne, VIC 3004,
Australia

If you would like a reply, please give your name, address, and telephone number.

If you have problems with the software, please contact your local Oracle Support Services.

Preface

*SQL*Plus Getting Started for Windows* provides information about the SQL*Plus product that is *specific* to the Microsoft Windows NT 4.0, Windows 95, and Windows 98 operating system environments.

Notes: Refer to the READMEDOC.HTM file at the top level of the Oracle8i for Windows NT CD-ROM for the most up-to-date information on Oracle8i release 8.1.6 support for Windows 2000.

In the remainder of this guide, SQL*Plus for Windows, will be referred to as SQL*Plus.

Specific topics discussed in this preface are:

- [Prerequisites](#)
- [Intended Audience](#)
- [How This Guide Is Organized](#)
- [Related Documents](#)
- [Obtaining Online Help](#)
- [Documentation and Code Conventions Explained](#)

Prerequisites

This guide assumes that you are familiar with the following:

- SQL*Plus commands and general features. You should refer to the generic SQL*Plus documentation set *before* using this guide. See "[Related Documents](#)" on page ix.
- Commands for deleting and copying files and the concepts of the search path, subdirectories, and path names.
- Fundamentals of the Microsoft Windows NT or Windows 95/98 operating systems.

Intended Audience

This guide is for all users who want to use SQL*Plus in the Windows NT or Windows 95/98 operating environments.

How This Guide Is Organized

This guide is organized as follows:

[Chapter 1, "Introducing SQL*Plus"](#)

[Chapter 2, "Installing SQL*Plus Help and Demonstration Tables"](#)

[Chapter 3, "Using SQL*Plus"](#)

[Chapter 4, "Operating System-Specific References"](#)

[Appendix A, "Customizing Operating System Parameters"](#)

Related Documents

*SQL*Plus Getting Started for Windows* provides information *specific* to SQL*Plus on Windows-based platforms only. For information about SQL*Plus cross-platform support, features, and commands, refer to the generic SQL*Plus documentation set on the product CD-ROM. In addition to the complete documentation for the Oracle Enterprise Edition for Windows product, the following SQL*Plus documentation is available for online viewing:

- *SQL*Plus 8.1.6 Release Bulletin* (for late-breaking information not included in the SQL*Plus documentation)
- *SQL*Plus User's Guide and Reference*
- *SQL*Plus Quick Reference*

Note: Before installing SQL*Plus, refer to the generic SQL*Plus documentation on the CD-ROM, and to the Release Notes and Readme files on the CD-ROM for late-breaking information.

Obtaining Online Help

Online help for using SQL*Plus is available from the SQL*Plus command line during a session. The SQL*Plus help tables must be created and populated by the database administrator first. See "[Installing SQL*Plus Online Help](#)" in Chapter 1 for information about installing SQL*Plus online help.

Documentation and Code Conventions Explained

The following conventions are used in this guide.

Convention	Example	Meaning
All uppercase plain	ALTER DATABASE	Indicates command names, SQL reserved words, and keywords. All uppercase plain is also used for directory names and file names.
Italic	<ul style="list-style-type: none">■ Italic is used to indicate a variable: <i>filename</i>■ Italic is used for emphasis: This section describes new SQL*Plus features <i>specific</i> to Windows NT/95/98.	<p>Indicates a value that you must provide. For example, if a command asks you to type <i>filename</i>, you must type the actual name of the file.</p> <p>Italic is also used for emphasis in the text and to indicate the titles of other guides.</p>
Oracle database		The database component of Oracle8i.
C:\>	<ul style="list-style-type: none">■ This example refers to the default for the first Oracle home in an Optimal Flexible Architecture (OFA)-compliant database. C:\>ORACLE\ORA81	Represents the Windows command prompt of the current hard disk drive. Your prompt can differ and can, at times, reflect the subdirectory in which you are working. Referred to as the <i>MS-DOS command prompt</i> in this guide.
Backslash (\) before a directory name	\ORADATA	Indicates that the directory is a subdirectory of the root directory.

Convention	Example	Meaning
<i>ORACLE_HOME</i> and <i>ORACLE_BASE</i>	Go to the <i>ORACLE_BASE\ORACLE_HOME\ADMIN</i> directory	<p>In previous releases when you installed SQL*Plus, all subdirectories were located under a top level <i>ORACLE_HOME</i> directory, that by default was:</p> <ul style="list-style-type: none"> ■ C:\ORANT for Windows NT ■ C:\ORAWIN95 for Windows 95 ■ C:\ORAWIN98 for Windows 98 <p>or whatever you may have called your Oracle home.</p> <p>With this Optimal Flexible Architecture (OFA)-compliant release, all subdirectories are no longer under a top level <i>ORACLE_HOME</i> directory. There is now a new top level directory called <i>ORACLE_BASE</i>, which by default is C:\ORACLE.</p> <p>For more information about multiple Oracle homes and Optimal Flexible Architecture (OFA), see <i>Oracle8i Administrator's Guide for Windows NT</i>.</p>
<i>HOME_NAME</i>	Oracle <i>HOME_NAME</i> TNSListener	<p>Represents the Oracle home name.</p> <p>The home name can be up to sixteen alphanumeric characters. The only special character allowed in a home name is the underscore.</p>

Convention	Example	Meaning
Symbols	period . comma , hyphen - semicolon ; colon : equal sign = backslash \ single quote ‘ double quote “ parentheses ()	Symbols other than brackets and vertical bars must be entered in commands exactly as shown.

1

Introducing SQL*Plus

This chapter provides introductory information to help you get started with SQL*Plus.

Specific topics discussed are:

- [Overview](#)
- [Basic Concepts](#)

Overview

You can use the SQL*Plus tool with SQL (Structured Query Language) and its procedural language extension, PL/SQL. These database languages allow you to store and retrieve data in Oracle databases. PL/SQL allows you to link several SQL commands through procedural logic.

SQL*Plus enables you to manipulate SQL commands and PL/SQL blocks, and to perform many additional tasks. With SQL*Plus, you can:

- Enter, edit, store, retrieve, and run SQL commands and PL/SQL blocks.
- Format, perform calculations on, store, and print query results in the form of reports.
- List column definitions for any table.
- Access and copy data between databases.
- Send messages to and accept responses from an end user.
- Perform database administration.

SQL*Plus on Windows provides both a command line interface and a graphical user interface (GUI). See [Chapter 3, "Using SQL*Plus"](#) for more information.

Note: Although Server Manager is shipped with this 8.1.6 release, Oracle Corporation recommends that you migrate to SQL*Plus.

Basic Concepts

The following definitions explain concepts central to SQL*Plus:

Concept	Definition
command	An instruction you give to an operating system, or software such as SQL*Plus or Oracle, to perform a particular task.
SQL command	A command to execute SQL statements.
SQL*Plus command	A command to execute SQL*Plus statements.
block	In PL/SQL, a group of SQL and PL/SQL commands related to each other through procedural logic.
table	The basic unit of storage in Oracle.
query	A read only SQL SELECT command that retrieves information from one or more tables.
query results	The data retrieved by a query.
report	Query results formatted by you through SQL*Plus commands.
SQL buffer	A buffer which stores the last SQL command or PL/SQL block that you entered in SQL*Plus.
screen buffer	A buffer to store the data in the SQL*Plus application window.

For definitions of other concepts that are relevant to SQL*Plus, see the glossary in *SQL*Plus User's Guide and Reference*.

Installing SQL*Plus Help and Demonstration Tables

This chapter provides installation information to help you install SQL*Plus components.

Specific topics discussed are:

- [Installing SQL*Plus](#)
- [Installing SQL*Plus Online Help](#)
- [Accessing Demonstration Tables](#)

Installing SQL*Plus

The CD-ROM insert that accompanies your product CD-ROM includes the following information about SQL*Plus:

- System requirements
- Installation instructions

Note: Before installing SQL*Plus, refer to the generic SQL*Plus documentation on the CD-ROM, and to the Release Notes and Readme files on the CD-ROM for late-breaking information.

Installing SQL*Plus Online Help

Online help is available from the command line of either the Graphical User interface or the Command Line interface while you are using SQL*Plus. The database administrator creates the SQL*Plus help tables and populates them with SQL*Plus help data.

Prerequisites

Before you can install SQL*Plus help, ensure that:

- SQL*Plus is installed, otherwise, you cannot create and load the help tables.
- The default tablespace for the SYSTEM user is large enough to accommodate the help system. You must have at least 128K of free disk space.
- The SQL*Plus help script files are available in

`%ORACLE_HOME%\SQLPLUS\ADMIN\HELP\`

The help script files are:

- HELPBLD.SQL – to drop and create new help tables.
- HELPUS.SQL – to populate the help tables with the help data.
- HELPDROP.SQL – to drop existing SQL*Plus help tables.
- The Windows command file, HELPINS.BAT, is available in

`%ORACLE_HOME%\BIN\`

Installing SQL*Plus Help

To install SQL*Plus help:

Select the “Enable InterMedia demos and add SQL*Plus help tables” from the Database Configuration Assistant during installation.

or

1. Set an environment variable, `SYSTEM_PASS`, to hold the `SYSTEM` user login with:

```
SET SYSTEM_PASS=SYSTEM/PASSWORD
```

where `PASSWORD` is the password you have defined for the `SYSTEM` user. The default `SYSTEM` user password is `MANAGER`.

The `HELPINS` utility reads this login from `SYSTEM_PASS` to run successfully.

2. Run the batch file, `HELPINS.BAT`, from a command line prompt with:

```
C:\> %ORACLE_HOME%\BIN\HELPINS US
```

or

1. Run SQL*Plus as the `SYSTEM` user with:

```
C:\> SQLPLUS SYSTEM/PASSWORD
```

where `PASSWORD` is the password you have defined for the `SYSTEM` user.

2. Run the SQL script, `HELPBLD.SQL`, from SQL*Plus with:

```
SQL> @%ORACLE_HOME%/SQLPLUS/ADMIN/HELP/HELPBLD.SQL
```

Accessing SQL*Plus Help

To access SQL*Plus help, enter one of the following commands in SQL*Plus:

```
SQL> HELP
```

or

```
SQL> HELP INDEX
```

or

```
SQL> HELP TOPIC
```

If you know the topic for which you want help, enter the following:

```
SQL> HELP topic
```

where *topic* is a SQL*Plus help topic. For example, enter

```
SQL> HELP COLUMN
```

for help on the Column command.

If you get a response that help is unavailable, check that you have correctly installed SQL*Plus help in the SYSTEM schema.

For more information about the Help command, see Chapter 8, “Command Reference” in the *SQL*Plus User’s Guide and Reference*.

Accessing Demonstration Tables

To load the demonstration tables, start SQL*Plus with the user account that allows you to complete the exercises. *SQL*Plus User’s Guide and Reference* refers to the user name SCOTT with the password TIGER, but you can use any account with the same privileges.

Enter the following command at the SQL*Plus prompt:

```
SQL> @%ORACLE_HOME%\SQLPLUS\DEMO\DEMOBLD.SQL
```

When you finish working through the examples, you can remove the demonstration tables from the database by entering the following command:

```
SQL> @%ORACLE_HOME%\SQLPLUS\DEMO\DEMODROP.SQL
```

Using SQL*Plus

This chapter explains how to start and use SQL*Plus from both the command line interface and the graphical user interface, and describes the menu options.

Specific topics discussed are:

- [Using the Command Line Interface](#)
- [Using the Graphical User Interface](#)

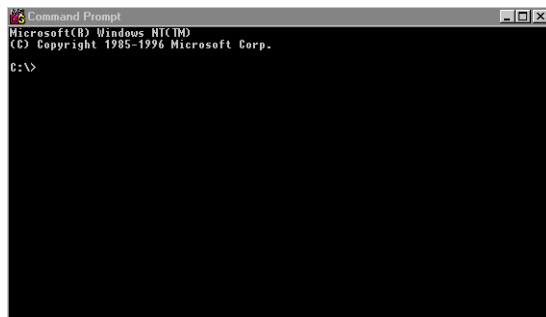
Using the Command Line Interface

The SQL*Plus command line interface is standard on all operating systems.

If you are connecting to a remote Oracle database, make sure your Net8/networking software is installed and working properly. For more information, see the *Net8 Administrator's Guide* and the Appendix, "Net8 Configuration", in the *Oracle8i Administrator's Guide for Windows NT*.

To start the SQL*Plus command line interface:

1. Select **Command Prompt** in the **Start** menu. A Command Prompt window appears.



2. Start SQL*Plus by entering

```
C:\> SQLPLUS
```

You can optionally include your login username and password separated by a slash (/), and a remote database name to connect to, for example:

```
C:\> SQLPLUS username/password@net_service_name
```

Otherwise you will be prompted to enter your username and password.

Interpreting Arguments in Windows

The rules for interpreting arguments in Windows command files are as follows:

- Arguments are delimited by white space.
- A string surrounded by double quotation marks, for example, "this string", is interpreted as a single argument.

- A double quotation mark preceded by a backslash is interpreted as a literal double quotation mark.

For more information about SQL*Plus command line arguments, refer to the *SQL*Plus User's Guide and Reference*.

Using the Graphical User Interface

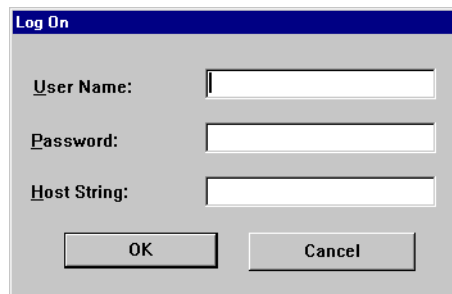
While the command line interface is a standard feature of SQL*Plus on all operating system platforms, the graphical user interface is a feature of SQL*Plus for Windows.

If you are connecting to a remote Oracle database, make sure your Net8/networking software is installed and working properly. For more information, see *Net8 Administrator's Guide* and the Appendix, "Net8 Configuration", in the *Oracle8i Administrator's Guide for Windows NT*.

To start the SQL*Plus graphical user interface:

1. Select **Programs** in the **Start** menu. Then select **Oracle - ORACLE_HOME**, then **Application Development**, and click **SQL Plus**.

The SQL*Plus window appears displaying the *Log On* dialog.



Enter a valid user name and password. If you are connecting to a remote Oracle database, enter the Net8 *net_service_name* in the Host String field. See the *Net8 Administrator's Guide* for more information about configuring and using Net8 *net_service_names*.

2. Click **OK**.

or

1. Select **Command Prompt** in the **Start** menu. A Command Prompt window appears.

2. Enter

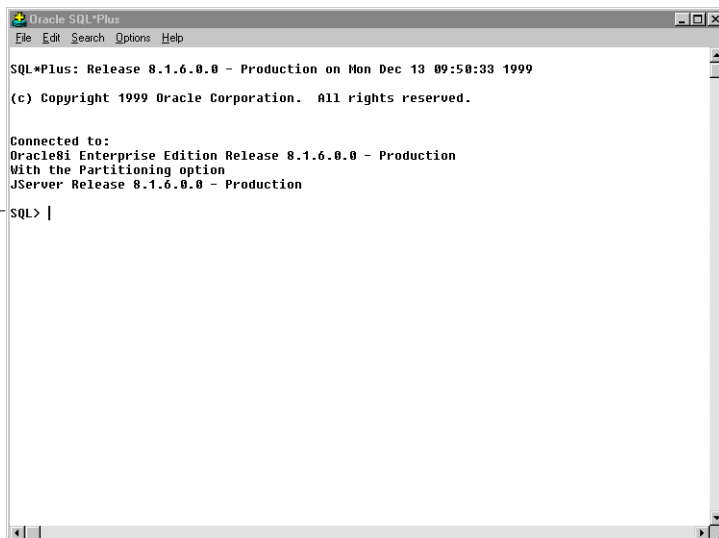
```
C:\> SQLPLUSW
```

The SQL*Plus graphical user interface starts. You can optionally include your login username and password separated by a slash (/), and a remote database name to connect to, for example:

```
C:\> SQLPLUSW username/password@net_service_name
```

Otherwise enter the required information in the login dialog as described above. The Oracle SQL*Plus application window appears.

SQL*Plus
command
prompt



Using the SQL*Plus Application Window

SQL*Plus displays the SQL command prompt in the application window.

To enter SQL and SQL*Plus commands, type each command at the SQL*Plus prompt and press Enter.

Using the Mouse Buttons to Copy SQL Commands in the Application Window

You can use the mouse buttons to copy previously entered SQL commands to the current SQL prompt.

To copy a command, highlight the intended command with the left mouse button. While still holding down the left mouse button, click the right mouse button. SQL*Plus copies the text to the SQL*Plus prompt.

Using the Command Keys

The following command keys have special functions in SQL*Plus:

Key	Function
Home	Top of screen buffer
End	Bottom of screen buffer
Page Up	Previous screen page
Page Down	Next screen page
Ctrl+Page Up	Show page on left of current screen page
Ctrl+Page Down	Show page on right of current screen page
Alt+F3	Find
F3	Find next
Ctrl+C	Cancel an operation running in SQL*Plus.
Ctrl+C	Copies text - when no operations are running in SQL*Plus.
Ctrl+V	Paste text
Shift+Del	Clear the screen and the screen buffer

Using the SQL*Plus Menus

This section describes menus in the SQL*Plus graphical user interface (GUI). Bracketed entries show keyboard shortcuts to that File Menu command.

File Menu

The **File** menu has the following options:

Option	Description of File Menu Option	Command Line
Open	The Open option retrieves a previously stored command file. If you supply no file extension, SQL*Plus looks for command files with the .SQL extension.	GET <i>filename</i>

Option	Description of File Menu Option	Command Line
Save	<p>The Save option has three alternatives: Save Create, Save Replace, and Save Append.</p> <ul style="list-style-type: none"> ■ Save Create saves the contents of the SQL*Plus buffer in a command file. By default, SQL*Plus assigns the .SQL extension to command files. You can specify a different extension in the File name text box. ■ Save Replace replaces the contents of an existing file with the contents of the SQL*Plus buffer. If the file does not exist, SQL*Plus creates the file. ■ Save Append adds the contents of the SQL*Plus buffer to the end of the file you specify. <p>After you save a command file, you can:</p> <ul style="list-style-type: none"> ■ Retrieve the file using the Open option on the File menu. ■ Edit the file using the Editor option on the Edit menu. ■ Run the file using the START or RUN commands from the SQL*Plus command prompt. 	<p>SAVE</p> <p>SAVE <i>filename</i> CREATE</p> <p>SAVE <i>filename</i> REPLACE</p> <p>SAVE <i>filename</i> APPEND</p>
Save As	<p>The Save As option saves the contents of the SQL*Plus buffer in a command file.</p> <p>By default, SQL*Plus assigns the .SQL extension to command files. You can specify a different extension in the File name text box.</p>	SAVE <i>filename</i>
Spool	<p>The Spool option has two alternatives: Spool File and Spool Off.</p> <ul style="list-style-type: none"> ■ Spool File stores query results in a file. By default, SQL*Plus assigns the .LST extension to spool files. You can specify a different extension in the File name text box. You can edit the results with the Editor option on the Edit menu, and print the file from a Windows text editor. ■ Spool Off turns off spooling. 	<p>SPOOL <i>filename</i></p> <p>SPOOL OFF</p>
Run	The Run option lists and executes the SQL command or PL/SQL block currently stored in the SQL buffer.	RUN
Cancel (CTRL+C)	<p>The Cancel option cancels an in-progress operation.</p> <p>This keyboard shortcut is only available when a SQL*Plus operation is running in the SQL*Plus session. When no SQL*Plus operation is running, CTRL+C copies selected text.</p>	Ctrl-C
Exit	The Exit option commits all pending database changes and closes the SQL*Plus application window.	EXIT

Edit Menu

The **Edit** menu has the following options:

Option	Description of Edit Menu Option	Command Line
Copy (CTRL+C)	The Copy option copies selected text to the Clipboard. After you copy text to the Clipboard, you can paste the text into other Windows applications, such as Microsoft Excel and Microsoft Word. This keyboard shortcut is only available when no SQL*Plus operations are running in the SQL*Plus session. When a SQL*Plus operation is running, CTRL+C cancels the running operation.	not applicable
Paste (CTRL+V)	The Paste option pastes the contents of the Clipboard onto the SQL*Plus command line. Note: A maximum of 3625 characters can be pasted from the Clipboard onto the SQL*Plus command line during a single paste operation.	not applicable
Clear (SHIFT+DEL)	The Clear option clears the screen of the SQL*Plus application window and the screen buffer.	CLEAR SCREEN
Editor	The Editor option has two alternatives: Invoke Editor and Define Editor . <ul style="list-style-type: none"> ■ Invoke Editor loads the contents of the SQL*Plus buffer into an editor. By default, SQL*Plus saves the file to AFIEDT.BUF. You can specify a different file name in the editor. ■ Define Editor defines the editor that is invoked. 	EDIT DEFINE_EDITOR = <i>editor name</i>

Search Menu

The **Search** menu has the following options:

Option	Description of Search Menu Option	Command Line
Find (ALT+F3)	The Find option searches for a character, a word, or a group of characters or words in the SQL*Plus application window. Find begins the search at the top of the displayed screen. Note: When Find reaches the end of the displayed screen, it does not wrap and continue searching from the top of the screen buffer.	not applicable
Find Next (F3)	The Find Next option finds the next occurrence of the search text.	not applicable

Options Menu

The **Options** menu has the following options:

Option	Description of Options Menu Option	Command Line
Environment	<p>The Environment option allows you to set system variables to alter the SQL*Plus environment for your current session.</p> <p>This dialog has three areas: Set Options, Value, and Screen Buffer.</p> <p>Note: See "Setting Options and Values, Using the Environment Dialog" on page 3-9 for examples of how these controls interact.</p>	
	<p>Set Options</p> <p>This area has a list of variables you can select to establish aspects of the SQL*Plus environment for your current session, such as:</p> <ul style="list-style-type: none"> ■ Setting the display width for NUMBER data. ■ Setting the display width for LONG data. ■ Enabling or disabling the printing of column headings. ■ Setting the number of lines per page. 	SET <i>variable value</i>
	<p>See the "Command Reference" chapter in <i>SQL*Plus User's Guide and Reference</i> for descriptions of each system variable in the SET command.</p>	
	<p>Value</p> <p>The Value area has four options: Default, Custom, On, and Off.</p> <p>Note: When Custom is selected, the On and Off buttons and the text field may or may not be enabled for user selection. The availability of these fields depends on the item in the Set Option you selected.</p>	SET <i>variable value</i>
	<p>Screen Buffer</p> <p>This area has two text boxes: Buffer Width and Buffer Length.</p> <ul style="list-style-type: none"> • In the Buffer Width text box, you can set the number of characters that SQL*Plus displays on one line. If you enter a number smaller than the length of output data, SQL*Plus truncates the data to match the buffer width you specified. The default value of the Buffer Width parameter is 100 characters. You can specify from 80 to 1000 characters on one line. • In the Buffer Length text box, you can set the number of lines that SQL*Plus displays on the screen. If SQL*Plus displays more lines of data than you specify, the remaining lines of data will "wrap around" to the top of the screen buffer. The default value of the Buffer Length parameter is 1000 lines. You can specify from 100 to 2000 lines on one screen. 	SET <i>variable value</i>

Option	Description of Options Menu Option	Command Line
	Note: When you change the Screen Buffer option, SQL*Plus displays a dialog to alert you that if you shorten the size of your screen buffer, some data may not be displayed on your screen. Click OK to proceed.	

Help Menu

The **Help** menu has the following option:

Option	Description of Help Menu Option	Command Line
About SQL*Plus	Displays the SQL*Plus version number and copyright information. You access SQL*Plus help from the SQL*Plus prompt. See " Accessing SQL*Plus Help " in Chapter 1, Introducing SQL*Plus.	not applicable

Setting Options and Values, Using the Environment Dialog

Choose **Environment** from the **Options** menu to display the Environment dialog which you can use to create a SQL environment statement for the current session.

Choose an item from the **Set Options** list to begin. You can use the default settings, or you can customize the settings by using the other dialog controls. The available controls vary with the options you choose. You can make multiple changes to options and values. When the text box is available, you can enter appropriate text or appropriate numeric values. Click **OK** to commit your settings.

Example 3-1

The `arraysize` is set to 15, the default value. Since the `arraysize` is a numeric variable, the On and Off buttons are not available.

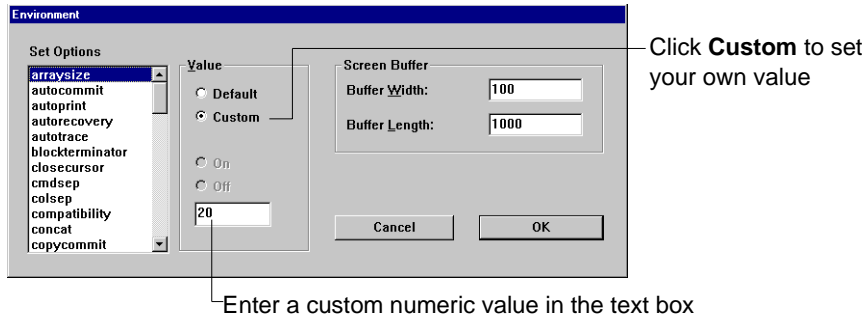
Click the **Default** radio button to use the default value

Because `arraysize` is a numeric value, these buttons are not available

Choose one of these options

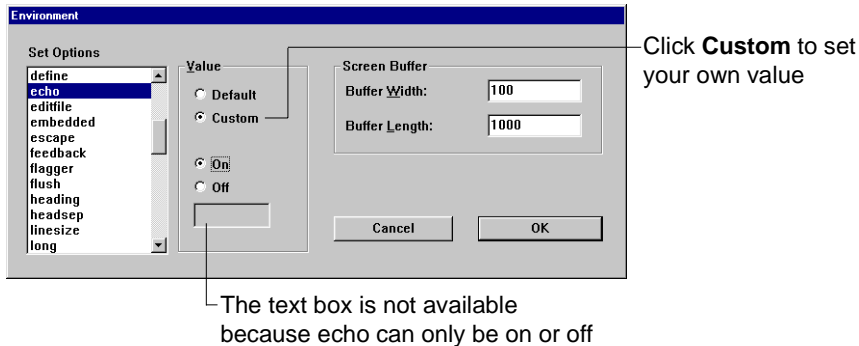
Because Default is chosen, the text box shows the default value. The default setting cannot be changed.

To change the arraysize, click **Custom** and enter the number in the text box.



Example 3-2

The default for echo is off. To change the setting, click **Custom** and then click **On**. Since echo can only be on or off, the text box is not available.



Exiting SQL*Plus

You enter EXIT or QUIT at the SQL*Plus prompt to exit SQL*Plus from the command line interface or from the graphical user interface (GUI).

You return to the Windows Command Prompt when you exit either the command line interface, or the GUI if you started it from the command line with SQLPLUSW.

The GUI closes and you return to Windows when you exit SQL*Plus from the GUI.

Operating System-Specific References

This chapter provides the operating system-specific information that is referenced in *SQL*Plus User's Guide and Reference*.

Specific topics discussed are:

- [Automatic Login](#)
- [TIMING Command](#)
- [Interpreting Error Messages](#)
- [Setting Up Your SQL*Plus Environment](#)
- [Sending Results to a File](#)
- [@, @@, and START Commands](#)
- [HOST Command](#)
- [SET NEWPAGE Command](#)
- [PRODUCT_USER_PROFILE Table](#)

Automatic Login

When connecting to an Oracle database on the same Windows computer, you can set up SQL*Plus to do an automatic login by following these steps:

1. Create an account in the database `<PREFIX>USERX` for every Windows user (`USERX`) who needs access to the database. `<PREFIX>` is the parameter `OS_AUTHENT_PREFIX` in the initialization parameter file for the database (the default is `OPSS`). See the *Oracle8i Reference* and the *Oracle Advanced Security Administrator's Guide* for more information about the `OS_AUTHENT_PREFIX` initialization parameter.
2. After logging on to Windows as `USERX`, you can log in to SQL*Plus using `/` (slash) instead of `username/password`.

See “Shortcuts to Starting SQL*Plus” in Chapter 2 of *SQL*Plus User's Guide and Reference* which refers you to this guide for information about automatically logging on to SQL*Plus when you log on to your operating system.

TIMING Command

The SQL*Plus `TIMING` command displays output in hours, minutes, seconds and hundredths of seconds, for example, `02:31:07.55`, which is 2 hours, 31 minutes and 7.55 seconds.

See “Collecting Timing Statistics on Commands You Run” in Chapter 2 and the sections “`SET`” and “`TIMING`” in Chapter 8 of *SQL*Plus User's Guide and Reference* which discuss how to use the `TIMING` command and the `SET TIMING` command to record timing data for an elapsed period.

Interpreting Error Messages

See “Interpreting Error Messages” in Chapter 2 of the *SQL*Plus User's Guide and Reference* and this guide for information about interpreting error messages. See *Oracle8i Error Messages* to find explanations and actions for error codes beginning with the letters `ORA`.

If you do not find the error code in *Oracle8i Error Messages*, see *Oracle8i Administrator's Guide for Windows NT*.

Setting Up Your SQL*Plus Environment

When you install SQL*Plus, LOGIN.SQL is copied to the DBS subdirectory of your Oracle home directory.

When you install SQL*Plus, GLOGIN.SQL is copied to the SQLPLUS\ADMIN subdirectory of your Oracle home directory.

If you modify LOGIN.SQL or GLOGIN.SQL, make sure you do not add any ANSI escape sequences.

Some Oracle products use a LOGIN file named LOGIN.NEW. If this file exists on your computer, make sure you do not use it with SQL*Plus.

See “Setting Up Your SQL*Plus Environment” in Chapter 3 of *SQL*Plus User’s Guide and Reference*, which describes the LOGIN.SQL and GLOGIN.SQL files.

Sending Results to a File

The SPOOL command is available from the **File** menu in the SQL*Plus graphical user interface. See ["File Menu"](#) on page 3-5 for more information.

When you use the SPOOL command from the graphical user interface or the command line interface, SQL*Plus adds .LST to the file name if you do not specify an extension.

SQL*Plus does not support the use of the SPOOL OUT clause at the command line.

See “Sending Results to a File” in Chapter 4 of *SQL*Plus User’s Guide and Reference*, which describes the SPOOL command.

@, @@, and START Commands

SQL*Plus searches the current default directory for the file name that you specify with the @, @@, or START command. If SQL*Plus cannot find this file, the program searches a path to find the file.

You can specify the path that SQL*Plus searches by modifying the SQLPATH parameter in your registry. For more information about the SQLPATH parameter, see the ["SQLPATH Parameter Description"](#) in Appendix A

See the sections “@ (at sign)”, “@@ (double at sign)”, and “START” in Chapter 8 of *SQL*Plus User’s Guide and Reference*, which describe how SQL*Plus searches for a file when you use the @, @@, or START command.

HOST Command

In SQL*Plus, you can access the Windows command prompt by entering the HOST command or a dollar sign (\$) at the SQL*Plus prompt.

To return to SQL*Plus from the Windows command prompt, enter the EXIT command.

See “HOST” in Chapter 8 of *SQL*Plus User’s Guide and Reference*, which describes how to use the HOST command to execute a host operating system command without leaving SQL*Plus.

SET NEWPAGE Command

The SET NEWPAGE 0 command does not clear the screen between pages. Instead, a black box appears.

See “SET” in Chapter 8 of *SQL*Plus User’s Guide and Reference*, which describes how to set the NEWPAGE system variable, as well as many other system variables.

PRODUCT_USER_PROFILE Table

The PUP table provides product-level security that supplements the user-level security provided by the SQL GRANT and REVOKE commands and user roles.

To create the PUP table

Log in to SQL*Plus as the SYSTEM user and run PUPBLD.SQL which is located in the `ORACLE_HOME\SQLPLUS\ADMIN` directory with:

```
SQL> @%ORACLE_HOME%\SQLPLUS\ADMIN\PUPBLD.SQL
```

or

1. Set an environment variable, SYSTEM_PASS, to hold the SYSTEM user login with:

```
C:\> SET SYSTEM_PASS=SYSTEM/PASSWORD
```

where *PASSWORD* is the password you have defined for the SYSTEM user. The default SYSTEM user password is *MANAGER*.

PUPBLD.BAT reads this login from SYSTEM_PASS to run successfully.

2. Run the batch file, PUPBLD.BAT, from a command line prompt with:

```
C:\> %ORACLE_HOME%\BIN\PUPBLD.BAT
```

If you are using SQL*Plus with a remote database, you may want to install the PRODUCT_USER_PROFILE table on the remote database. To do this, run PUPBLD.SQL on the server directly. Or, you can set the LOCAL parameter in your registry to point to the remote database and then run PUPBLD.SQL.

See the “PRODUCT_USER_PROFILE Table” in Appendix E of the *SQL*Plus User's Guide and Reference* for a description of the PRODUCT_USER_PROFILE (PUP) table.

Customizing Operating System Parameters

This chapter describes how to customize your SQL*Plus configuration by changing the SQLPATH parameter in the registry.

Specific topics discussed are:

- [Using the Registry](#)
- [SQLPLUS Environment Variable](#)

Warning: Editing the registry may affect your application's user interface. Only advanced users should edit the registry.

Using the Registry

When you install Oracle products for Windows, Oracle Universal Installer adds relevant parameters to the registry.

The following table indicates which registry version(s)—REGEDT32.EXE and/or REGEDIT.EXE—you can use for your particular Windows platform:

Windows Platform	REGEDT32.EXE	REGEDIT.EXE
Windows NT 4.0	YES	YES
Windows 95	NO	YES
Windows 98	NO	YES

The HKEY_LOCAL_MACHINE\SOFTWARE\ORACLE subkey contains the Oracle parameters.

See the registry's help system for instructions on how to edit the parameters.

If you change the value of an Oracle parameter or add a parameter to the registry, the change will take effect whenever SQL*Plus executes a procedure that uses the parameter.

SQLPATH Parameter Description

This section describes the SQLPATH registry parameter used by SQL*Plus for Windows.

Subkey: HKEY_LOCAL_MACHINE\SOFTWARE\ORACLE\HOME0

Default Value: \ORACLE\ORA81

Valid Values: any directory on any drive

This parameter specifies the location of SQL scripts. In addition to searching the directory specified by the SQLPATH parameter, SQL*Plus also searches the current directory for SQL scripts.

When you set the SQLPATH parameter, directories can be concatenated with a semicolon (;). For example:

```
C:\ORACLE\ORA81\DATABASE;C:\ORACLE\ORA81\DBS
```

***SQLPLUS* Environment Variable**

The *SQLPLUS* environment variable specifies the location of SQL*Plus message files. This environment variable is set during installation and has a default value of `%ORACLE_HOME%/SQLPLUS/MESG`. You should not modify or set this environment variable.

Index

\$ command, 4-4
@ command, 4-3
@@ command, 4-3

A

accessing sample tables, 2-4
AFIEDT.BUF, 3-7
ANSI escape sequences, warning about, 4-3
audience, SQL*Plus, viii

B

basic concepts, 1-3
block, defined, 1-3
buffer
 clearing your screen, 3-7
 screen, 1-3
 screen area, 3-8
 SQL, 1-3, 3-6

C

cancelling an in-progress operation, 3-6
CD-ROM contents, ix, 2-2
clearing your screen, 3-7
code conventions, used in this guide, x
command files
 opening, 3-5
 saving, 3-6
command keys, SQL*Plus GUI, 3-5
command line interface, 3-2
command, defined, 1-3
connect string, 3-3

copying text, 3-4, 3-7

D

DEMOBLD.SQL file, 2-4
DEMODROP.SQL file, 2-4
demonstration tables, 2-4
documentation
 conventions used in this guide, x

E

Edit menu, 3-7
editor
 defining, 3-7
 invoking, 3-7
environment
 setting up SQL*Plus, 3-8, 4-3
Environment command, 3-8
Environment Variable
 SQLPLUS, A-3
error messages, interpreting, 4-2
exiting SQL*Plus, 3-10
exiting SQL*Plus GUI, 3-6

F

File menu, 3-5
finding text, 3-7

G

GLOGIN.SQL file, 4-3
graphical user interface

menus, 3-5
starting, 3-3

H

help

accessing online help, 2-3
installation prerequisites, 2-2
installing, 2-2
Help menu, 3-9
HOME_NAME, defined, xi
HOST command, 4-4
host string, 3-3

I

installing

SQL*Plus online help, 2-2

L

LOCAL parameter, 4-5
Log On dialog, 3-3
LOGIN.NEW file, warning about, 4-3
LOGIN.SQL file, 4-3

M

menus

graphical user interface, 3-5
mouse, using to copy commands, 3-4
MS-DOS, accessing from SQL*Plus, 4-4
multiple Oracle homes
defined, xi

O

online help

accessing online help, 2-3
installation prerequisites, 2-2
installing, 2-2
obtaining for SQL*Plus, ix, 2-2
operating systems, supported by SQL*Plus, vii
Optimal Flexible Architecture (OFA), xi
Options menu, 3-8
ORA error messages, 4-2

ORACLE_BASE, defined, xi
ORACLE_HOME, defined, xi
overview, 1-2

P

parameter

SQLPATH, 4-3, A-2
pasting text, 3-7
PL/SQL, relation to SQL*Plus, 1-2
Prerequisites
installing online help, 2-2
prerequisites, viii
PRODUCT_USER_PROFILE table, 4-4
PUPBLD.SQL file, 4-4

Q

query results, defined, 1-3
query, defined, 1-3

R

REGEDIT.EXE, A-2
REGEDT32.EXE, A-2
registry, using, A-2
report, defined, 1-3
rules, for Windows arguments, 3-2
Run menu command
lists and executes SQL and PL/SQL, 3-6

S

sample tables, 2-4
saving, command files, 3-6
screen buffer area, 3-8
Search menu, 3-7
security
PRODUCT_USER_PROFILE table, 4-4
sending results to a file, 4-3
SET NEWPAGE command, 4-4
Set Options area, 3-8
SET TIMING command, 4-2
setting up, using LOGIN and GLOGIN, 4-3
shortcuts to starting SQL*Plus, 4-2

SPOOL command, 4-3
spool files, 4-3
spool menu command, 3-6
SPOOL OUT clause, not supported, 4-3
SQL*Plus
 application window, 3-4
 basic concepts, 1-3
 command defined, 1-3
 command line interface, 3-2
 exiting, 3-10
 installing, 2-2
 installing online help, 2-2
 menus, 3-5
 overview, 1-2
 prerequisites, viii
 setting up environment from command line, 4-3
 setting up environment from GUI, 3-8
 shortcuts to starting, 4-2
 using LOGIN and GLOGIN to setup, 4-3
 Windows versions supported, vii
SQLPATH parameter, 4-3, A-2
SQLPLUS Environment Variable, A-3
START command, 4-3
Start menu location, for SQL*Plus, 3-3
starting SQL*Plus, 3-2
starting SQL*Plus GUI, 3-3
subkey, registry, A-2
system requirements, 2-2
system variables, setting, 3-8

T

table, defined, 1-3
tables, sample, 2-4
text editor
 defining, 3-7
 invoking, 3-7
TIMING command, 4-2

V

value
 screen area, 3-8
value area, 3-8

W

Windows Operating Systems
 note on Windows 2000 support, vii
 versions supported, vii

