

# Oracle<sup>®</sup> Service for Communications

Concepts and Procedures

Release 11i

August, 2000

Part No. A86274-01

**ORACLE<sup>®</sup>**

Part No. A86274-01

Copyright © 1996, 2000, Oracle Corporation. All rights reserved.

The Programs (which include both the software and documentation) contain proprietary information of Oracle Corporation; they are provided under a license agreement containing restrictions on use and disclosure and are also protected by copyright, patent, and other intellectual and industrial property laws. Reverse engineering, disassembly, or decompilation of the Programs is prohibited.

The information contained in this document is subject to change without notice. If you find any problems in the documentation, please report them to us in writing. Oracle Corporation does not warrant that this document is error free. Except as may be expressly permitted in your license agreement for these Programs, no part of these Programs may be reproduced or transmitted in any form or by any means, electronic or mechanical, for any purpose, without the express written permission of Oracle Corporation.

If the Programs are delivered to the U.S. Government or anyone licensing or using the programs on behalf of the U.S. Government, the following notice is applicable:

**Restricted Rights Notice** Programs delivered subject to the DOD FAR Supplement are "commercial computer software" and use, duplication, and disclosure of the Programs, including documentation, shall be subject to the licensing restrictions set forth in the applicable Oracle license agreement. Otherwise, Programs delivered subject to the Federal Acquisition Regulations are "restricted computer software" and use, duplication, and disclosure of the Programs shall be subject to the restrictions in FAR 52.227-19, Commercial Computer Software - Restricted Rights (June, 1987). Oracle Corporation, 500 Oracle Parkway, Redwood City, CA 94065.

The Programs are not intended for use in any nuclear, aviation, mass transit, medical, or other inherently dangerous applications. It shall be the licensee's responsibility to take all appropriate fail-safe, backup, redundancy, and other measures to ensure the safe use of such applications if the Programs are used for such purposes, and Oracle Corporation disclaims liability for any damages caused by such use of the Programs.

Oracle is a registered trademark, and Oracle Service for Communications is a trademark or registered trademark of Oracle Corporation. Other names may be trademarks of their respective owners.

---

---

# Contents

<b>Send Us Your Comments .....</b>	<b>vii</b>
<b>Preface.....</b>	<b>ix</b>
Intended Audience .....	ix
Structure.....	x
Related Documents .....	x
 <b>Understanding Oracle Service for Communications</b>	
Overview of Oracle Service for Communications.....	1
Integration with Other Oracle Modules .....	2
Understanding Service Request Management .....	2
Service Requests are Received .....	3
Agents Troubleshoot Customer Trouble Reports .....	3
Third-Party Service Providers are Notified of Problems.....	3
How Customers are Notified of Problem Resolutions.....	4
About the Installed Base .....	4
Relations Tab Shows Product Hierarchies.....	4
Levels of Product Hierarchies.....	5
Parameters in the Installed Base .....	5
Network Configurations .....	6
Overview of Service Requests.....	6
Workflows Monitor the Resolution Process .....	7
The Knowledge Base in Service for Communications .....	7

Types of Service Requests .....	7
Customer Service Request .....	7
Network Service Request .....	8
Service Provider Request .....	8
Optional User-Defined Service Requests .....	8
Overview of Status of Service Requests .....	8
Audit History Log .....	9
About Service Request Linking .....	9
Status Propagation in Linked Service Requests .....	10
Understanding the Test Center .....	11
Work Item Parameters .....	12
About Service Request Workflows.....	12
Customized Response to Service Requests .....	13
Using Oracle Service for Communications .....	13
Creating Service Requests .....	13
Creating Customer Service Requests .....	13
Prerequisites .....	13
Steps .....	14
Reference .....	14
Creating Network Service Requests .....	15
Prerequisites .....	15
Steps .....	15
Reference .....	16
Creating Service Provider Requests .....	16
Prerequisites .....	16
Steps .....	16
Reference .....	17
Viewing and Updating Service Requests .....	17
Prerequisites .....	17
Steps .....	17
References .....	17
Linking Service Requests .....	17
Prerequisites.....	18
Steps .....	18
Guidelines .....	18
References.....	18
Testing Network Elements .....	19
Prerequisites .....	19
Steps .....	19

Guidelines .....	19
Troubleshooting .....	20
<b>Viewing Product Information in the Installed Base .....</b>	<b>20</b>
Prerequisites .....	20
Steps .....	20
References.....	20
<b>Implementing Oracle Service for Communications .....</b>	<b>21</b>
Implementation Overview .....	21
Service Request Status Setup.....	21
Workflow Notifications Setup .....	22
Linking a Workflow to a Service Request Type.....	22
Prerequisites .....	22
Steps .....	22
Profile Options Setup.....	22
Default Service Request Owner Setup.....	23
Resetting the Default Service Request Owner.....	24
Prerequisites.....	24
Steps .....	24
Guidelines.....	24
Defining Test Type Actions .....	25
Prerequisites.....	25
Steps .....	25
Mapping Actions to Work Items for the Test Center .....	25
Prerequisites.....	25
Implementation GuideSteps.....	26



---

---

# Send Us Your Comments

## **Oracle Service for Communications, Release 11i**

### **Part No. A86274-01**

Oracle Corporation welcomes your comments and suggestions on the quality and usefulness of this document. Your input is an important part of the information used for revision.

- Did you find any errors?
- Is the information clearly presented?
- Do you need more information? If so, where?
- Are the examples correct? Do you need more examples?
- What features did you like most?

If you find any errors or have any other suggestions for improvement, please indicate the document title and part number, and the chapter, section, and page number (if available). You can send comments to us via the postal service.

Oracle Corporation  
CRM Content Development Manager  
500 Oracle Parkway  
Redwood Shores, CA 94065  
U.S.A.

If you would like a reply, please give your name, address, telephone number, and (optionally) electronic mail address.

---

---

---

If you have problems with the software, please contact your local Oracle Support Services.





---

---

# Preface

Welcome to the **Oracle Customer Relationship Management, Release 11i**, suite of applications.

This Concepts and Procedures provides information and instructions to help you work effectively with Oracle Service for Communications.

This preface explains how Concepts and Procedures is organized and introduces other sources of information that can help you.

## Intended Audience

This guide is aimed at the following users:

- Technical Service Representatives (TSR)
- Customer Service Representatives (CSR)
- System Administrators (SA), Database Administrators (DBA), and others with similar responsibility.

This guide assumes you have the following pre-requisites:

- Understanding of the company business processes.
- Knowledge of products and Service as defined by your marketing policies.
- Basic understanding of Oracle and Developer/2000.
- Background in SQL, PL/SQL, SQL\* Plus programming.

## Structure

This manual is a compilation of the topics in the online help for Oracle Service for Communications. It contains the following sections:

“Understanding Oracle Service for Communications” provides overviews of the application and its components, explanations of key concepts, features, and functions, as well as the application’s relationships to other Oracle or third-party applications.

“Using Oracle Service for Communications” provides process-oriented, task-based procedures for using the application to perform essential business tasks.

“Implementing Oracle Service for Communications” provides general descriptions of the setup and configuration tasks required to implement the application successfully.

“Administering Oracle Service for Communications” provides task-based procedures for required for ongoing system maintenance and includes information on administration tools and utilities.

## Related Documents

For more information, see the following manuals:

- *Oracle Inventory User’s Guide*
- *Oracle Purchasing User’s Guide*
- *Oracle Assets User’s Guide*
- *Oracle Projects User’s Guide*
- *Oracle Payables User’s Guide*

---

# Understanding Oracle Service for Communications

This topic group provides overviews of Oracle Service for Communications and its components, explanations of key concepts, features, and functions, as well as the application's relationships to other Oracle or third-party applications.

## Overview of Oracle Service for Communications

[Oracle Service for Communications](#) extends the features of Oracle Support and Oracle Service to include the customer care processes in the communications industry. Specifically, it offers features that:

- Maintain a directory of products and services customers have purchased in the [Installed Base](#)
- Log, track, and resolve trouble reports made against installed products and services

---

## Integration with Other Oracle Modules

The primary area of customer care that this application supports is service request management. In addition, this application integrates with the customer service management tools found in the Oracle modules shown in the following table.

Oracle Application	Functionality
Oracle Service Contracts	Creates, updates, and displays service agreements for service contract management.
Oracle Customer Care	Manages customer interaction through the Customer Care Contact Center.  Provides computer-telephony integration necessary for call-centers.
Oracle Field Service	Dispatches field service personnel.
Oracle SDP Provisioning	Provides an environment for diagnostic testing of network elements in the <a href="#">Test Center</a> .
Oracle Sales for Communications	Includes product catalog, order management, and <a href="#">diagnostic test definitions</a> .

## Understanding Service Request Management

Service request management begins when customers call to report trouble with installed products and services. Support agents receive customer trouble reports and enter the information into a service request window.

After a service request is entered, agents and technicians can view the request and track its status. If several service requests are related to one network problem, those related requests can be linked and tracked together.

Service request management includes these tasks:

- Receiving trouble reports from customers or service personnel
- [Service testing](#) through Test Centers
- Determining the cause of trouble reports
- [Creating service requests](#)
- [Viewing and tracking the progress of service requests](#)
- Entering service requests to third-party service providers
- Confirming that a problem has been resolved and notifying the customer

- 
- Closing service requests

For a detailed description of service requests, see [Overview of Service Requests](#).

### **Service Requests are Received**

Agents access Oracle Service for Communications as a stand-alone application. When customers call to report a problem with a product or service, the Customer Care Contact Center immediately displays the caller's account information to the agent via computer-telephony integration.

### **Agents Troubleshoot Customer Trouble Reports**

When customers describe their service problems, agents can quickly perform research and diagnostic tests to immediately resolve simple problems. If the problem cannot be immediately resolved, then agents can gather information that can be relayed to the technician to reduce the amount of time it takes to resolve problems. The application provides the following methods for diagnosing the cause of a problem before the service request is dispatched to a technician:

- Search the Knowledge Base to find similar problems that were resolved in the past.

The Knowledge Base is a history file of previously logged service requests. It contains troubleshooting information that includes which network elements have caused similar problems in the past. See [Knowledge Base](#).

- Use the Test Center to determine whether the network fulfillment element, which provides the service, is working.

The Test Center contains a selection of predefined diagnostic tests that can be applied to elements in the network. See [Test Center](#).

### **Third-Party Service Providers are Notified of Problems**

To provide more comprehensive products and services to their customers, communications service providers often engage in reselling arrangements with third-party service providers. If customer problems are related to faults in the third-party service provider's network, then you must notify that service provider. However, your organization must be the single point of contact for the customer.

You can enter a service provider request to notify the third-party provider. You can track the third-party service provider's external reference number, to keep yourself and your customer informed on the progress of the service request. See [Service Request Types](#).

---

## How Customers are Notified of Problem Resolutions

When customers call to report service problems, a support agent opens a service request. As a result, the customer service request workflow is automatically activated. This workflow ensures that customers are contacted to confirm that a service problem has been resolved to their satisfaction before the service request can be closed. See [Types of Pre-defined Service Requests](#).

## About the Installed Base

The Installed Base is a repository of information about installed products and customers. Agents can view Installed Base data when customers call or when they need to create service requests. For more information, see [Viewing Product Information in the Installed Base](#).

When you use Oracle Service for Communications to review information in the Installed Base, you start in the Product Summaries and Details window. This window has three tabs that are specific to Service for Communications:

- Relations
- Parameters
- Network Configuration

## Relations Tab Shows Product Hierarchies

Use the Relations tab on the Product Summaries and Details window to look at product hierarchies in the Installed Base. The Relations tab shows the product of interest with its immediate Parent and Child products.

Configurable products in a communications service network are related to each other in either a one-to-many or many-to-one relationship. To reflect these relationships, products in the Installed Base are organized into parent-child relationships. These parent-child relationships form the product hierarchy, illustrated in the Product Hierarchy Example diagram.

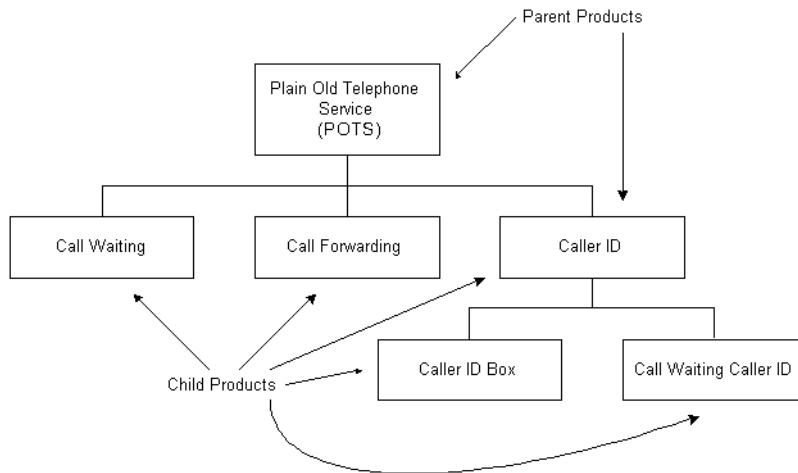
---

**Note:** One product can simultaneously be a parent and a child, as is the case for Caller ID in the Product Hierarchy Example diagram :

---

---

## Product Hierarchy Example



### Levels of Product Hierarchies

Product hierarchies are defined in one of two ways:

- In the Product Catalog that is implemented with Oracle Sales for Communications
- By specific APIs that populate the Installed Base with product information

As necessary, you may add levels to the product hierarchy to accurately represent your product structure. In the above Product Hierarchy Example, for instance, you may add several hierarchical levels between the POTS parent product and the child products to categorize products into market segments, residential versus business, or geographical regions.

Only one level of relative, either a parent or child product, is displayed in the Relations window of the Installed Base module. For more information, see [Viewing Product Information in the Installed Base](#).

### Parameters in the Installed Base

Use the Parameters tab in the Product Summary and Details window to review the attributes of a selected service or product in the Installed Base. The information on the Parameters tab is for viewing only and cannot be edited in the window.

---

**Service Key.** A service key is a number or string of characters that is used to identify a communications product or service sold to a customer. For example, a phone number or an email address may be a service key.

## Network Configurations

Use the Network Configurations tab in the Product Summary and Details window to review the fulfillment elements of a selected product in the Installed Base. The information on this tab can be edited. Access to this tab can be restricted to knowledgeable personnel during implementation.

## Overview of Service Requests

A service request contains details about the customer, product, and problem. Typically, support agents create service requests when they receive reports of network problems from customers, network engineers, or field service personnel.

When setting up user profiles for the application, you determine who has the necessary privileges to create service requests for your organization. See [Default Service Request Owner Setup](#). You can also use application programming interfaces (APIs) to create service requests.

For procedures that describe how to create service requests, see [Creating Service Requests](#).

The following table describes the tabs found in the Service Request main window. Each tab gives access to a function that contributes to the process of managing a service request. The support agent can use these tabs to manage customer information, problem details, problem resolution, service history, and task assignment to assist and sustain a support center.

Tab Name	Function
Product Coverage	View and edit product attributes and service coverage information.
<a href="#">Links</a>	Link two or more related service requests.
Workbench	Post a problem summary note to the Knowledge Base to review support recommendations or provide solution results for other support agents.
Log	View the history of customer contact with your company across all service requests.
Contacts	View and edit customer contact information.



---

Tab Name	Function
Addresses	View and edit customer billing, shipping, and installation address information.
Task	View or assign tasks associated with a service request.
Interactions	View or contribute to the customer contact history of the selected service request.
<a href="#">Test Center</a>	.Communicate with network elements and apply diagnostic tests.

## Workflows Monitor the Resolution Process

The creation of a service request triggers a service request workflow, which monitors the resolution of the problem. When a service request needs attention, the workflow notifies responsible individuals. For more information about workflows, see [About Service Request Workflows](#) and the documentation for Oracle Workflow.

## The Knowledge Base in Service for Communications

Oracle Service for Communications creates a knowledge base of previously reported problems and their resolutions. When responding to a service request, service personnel may search this knowledge base to identify solutions that have worked in the past. As new problems are resolved, you can update the Knowledge Base to include these problems and their resolutions. For more information about the Knowledge Base, see [Using Knowledge Base Search](#).

## Types of Service Requests

Three types of service requests that are specific to the communications industry have been pre-defined and configured during the setup of the application:

- Customer service request
- Network service request
- Service provider request

## Customer Service Request

Use this request to describe a customer problem. As you enter the customer name and product information on the service request form, you can validate details about the customer, the product, and the current service coverage against the [Installed Base](#). If the customer is unknown to the Installed Base, all the information can be collected in a non-verify mode and verified later.

---

## Network Service Request

Use this request to record information about a problem with the network elements in your communications network. You may create a network service request as a result of customer reports, or second-level repair personnel may create one after troubleshooting a customer service request. You can also create a network service request in response to a network problem that may or may not impact customer service.

## Service Provider Request

Use this request to record a problem related to third-party network elements. You may generate service provider requests based on customer service requests or on network service requests. Service providers are pre-defined in the Installed Base.

## Optional User-Defined Service Requests

In addition to the three types of pre-defined service requests, you can define customized service request types to fit your business needs. User-defined service requests are implemented during application setup.

The following are examples of user-defined service request types:

- Request for Information
- Customer Complaint
- Defective Product
- Installation Request
- Preventive Maintenance Visit
- Field Service
- Bug

For information about setting up user-defined service requests, see [Setting Service Request Type](#).

## Overview of Status of Service Requests

The service request status may change at different stages in the process of resolving a problem. Each pre-defined service request status is described in the following table. If you define your own types of request status, you must use Oracle Workflow to re-design the workflows, or processes, that are driven by the user-defined status.

---

---

**Note:** Only a customer service request can have a Clear status.

---

---

Status	Definition
Open	Action has been initiated to resolve a service request.
Clear	The service problem is resolved but the service request is not yet closed. If a Clear customer service request is linked to other service requests that have been closed, the customer must approve of the resolution before the request can be closed.
Closed	The service problem resolution process is complete.

### Audit History Log

Oracle Service for Communications maintains an audit history that records all changes made to service requests. For example, if you change the status of a service request from Queued to Open/Active, then the audit history records the old and new status values, as well as the user who made the change and the date.

### About Service Request Linking

You can link any service request to one or more service requests in a parent-child, or cause-and-affect, relationship. If several customers report the same problem and you discover the problem is occurring in a single network element, then you can link these customer service requests together.

For example, you may have several customer service requests related to voice mail problems. After further diagnosis, you find that the voice mail server is down and you need to open a network service request. You can link the multiple customer service requests as child service requests to the parent network service request.

You may also link two related parent service requests to one or more child requests. For example, you may discover a secondary problem that is unrelated to the original customer service request. However, if it is not resolved, this secondary problem may have an impact on the original customer service request. In this case, you would link the secondary problem as a second parent to the child(ren) service requests. Both parent service requests are resolved in tandem.

For information about how to link service requests to one another, see [Linking Service Requests](#).

---

## Status Propagation in Linked Service Requests

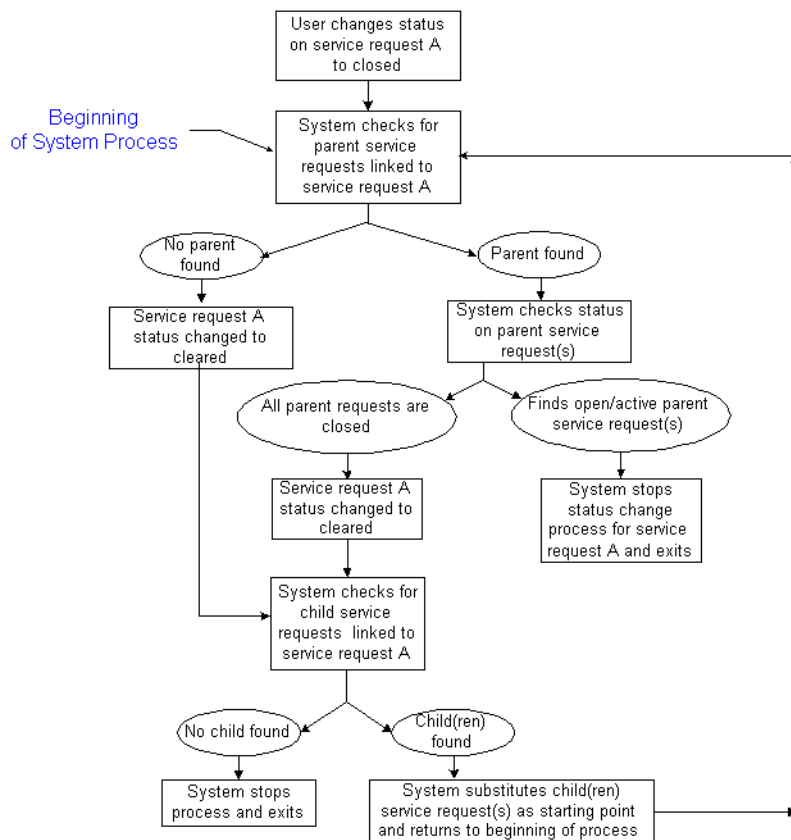
Service requests can have links with other service requests in a one-to-many, one-to-one, many-to-one, or many-to-many relationship. When you link several service requests together in a parent-child relationship, you tie the status of each child service request to the status of the parent.

Status propagation ensures that the status of the parent service request affects the status of all its child requests. When you close a service request, whether it is linked or not, the system automatically checks for dependencies on the closed service request according to the business rules discussed in [About Service Request Linking](#).

For example, a customer service request might be logged against an email service in the Installed Base. If the problem is the result of a server problem, then the network service request for the server is the parent to the child customer service request. As long as the network service request is open, the child service request remains open.

When the server is repaired and the network service request is closed, the associated child service request for the customer is given the Clear status. Customer service requests are the only request that can have a status of Clear.

When the customer service request has a Clear status, the customer is notified of the problem resolution. If the customer is satisfied with the resolution, the status of the customer request becomes Closed. If the customer is not satisfied, the status of the customer service request becomes Open and a notification is sent to the owner of the request.



## Business Rules that Apply to Closing a Linked Service Request

For information about how to link service requests, see [Linking Service Requests](#).

## Understanding the Test Center

The Test Center provides an environment for agents to communicate with network elements and apply diagnostic tests. Often, agents can use the Test Center to quickly resolve customer problems, while customers are still on the line. Or they can perform a simple test and then calling the customer back immediately with the test results.

Set up the tests that you need to use during implementation of this application. To set up the tests, you must map actions that have been defined in Service for

---

Communications to work items that have been associated to parameters of network elements in Oracle SDP Provisioning.

To implement the Test Center, you must integrate Oracle Service for Communications with Oracle SDP Provisioning, which provides the service delivery platform that communicates with your network. In the process of setting up the Test Center, you need to define actions, work items and parameters.

**Actions** An action is an operation performed on a service or product. When you set up Oracle Service for Communications, use the test type of actions to define the actions used in the Test Center. They should include the actions that you perform on products and those that comprise the services you provide. These actions are not predefined in the Test Center. See [Defining Test Type Actions](#).

**Work Items** In Oracle SDP Provisioning, you define work items that describe the subprocedures that can be performed against network elements. When you set up the Test Center in this application, you must map these work items to actions. For more detailed information, see [Work Items in Oracle Provisioning](#).

### **Work Item Parameters**

Each work item that is defined in Oracle SDP Provisioning is associated to parameters. These parameters are the characteristics of the network elements. If you do not define unique parameters in Oracle SDP Provisioning, the parameters use the default values. For more detailed information, see [Defining a New Work Item Parameter](#).

### **About Service Request Workflows**

When you enter a Customer Service Request for that customer, the application uses Oracle Workflow technology to drive the resolution process. A workflow routes information to people inside your enterprise, according to business rules that you can easily modify.

Oracle Service for Communications provides a pre-defined workflow process for each of the pre-defined request types:

- Customer Service Request Workflow
- Network Service Request Workflow
- Service Provider Request Workflow

Each workflow comprises activities required to drive a service request to resolution. Each activity generates information that can be recorded and tracked. You can use

---

Oracle Workflow to create custom workflows for user-defined service requests. Use the Service Request Types setup window to define relationships between request types and workflows.

## **Customized Response to Service Requests**

You can route service requests to individuals or roles in your organization and move them through a workflow-based resolution process tailored to your own unique business requirements. You can implement procedures that:

- Select and notify service personnel
- Facilitate the transfer and automatic escalation of service requests

You can define business rules that identify actions that violate your service standards or response guidelines and then take corrective actions or escalate those requests to the appropriate person. You can analyze the exact routing of each service request to identify and eliminate the bottlenecks in your resolution process. See [Using Field Service](#) for more information about dispatching field service personnel.

## **Using Oracle Service for Communications**

This topic group provides process-oriented, task-based procedures for using the application to perform essential business tasks.

### **Creating Service Requests**

For directions on creating service requests, select the one of the three types of pre-defined service requests:

[Customer Service Requests](#)

[Network Service Requests](#)

[Service Provider Requests](#)

### **Creating Customer Service Requests**

When a customer calls to report a problem, use this procedure to enter information about the problem and the product on a customer service request.

#### **Prerequisites**

Before creating customer service requests, you must:

- Define customer products in the Installed Base.

- 
- Define items in Inventory.
  - Define customer accounts in Accounts Receivable.

### Steps

1. In the Navigator, select **Service Request > Comms Service Requests**.

The fields for Date Opened, Type, Status, Urgency and Owner contain default values.

2. Under Request Information, select Customer Service Request from the Type drop-down menu.

3. Select the appropriate Caller Type and fill in the Last name field.

The fields for First name, Company, Phone, Ext, and Email should contain the appropriate information.

4. Enter Account or select the appropriate account from the drop-down menu.

5. Select the Time Zone from the drop-down menu.

6. Check the Installed Base checkbox and select the Product from the drop-down menu.

The Desc field shows the product description. If applicable, the product Revision, Serial Number, and System number appear. If applicable, information related to the service contract appears.

7. Select the Workbench tab and fill in the required fields to describe the problem and the date a resolution is expected.

8. Select the Test Center tab and select a test name.

The Work Items button becomes available. You may click **Work Items** to see a list of all work items and their parameters.

9. Click **Submit** to run the selected test.

The test name and results are displayed.

10. Click **Save** to save the service request.

The new Customer Service Request is now in the system.

### Reference

For more information on service requests, see [Service Requests](#).

See also [Testing Network Elements](#).



---

## Creating Network Service Requests

When a problem with a communication network occurs, use this procedure to enter a network service request.

### Prerequisites

Define a fulfillment element in Oracle SDP Provisioning that corresponds to the network service.

### Steps

1. In the Navigator, select **Service Request > Comms Service Requests**.  
The fields for Date Opened, Type, Status, Urgency and Owner contain default values.
2. Under Request Information, select Network Service Request from the Type drop-down menu.
3. Select Network Source from the Source list of values.
4. Select employee from the Caller Type drop-down menu and fill in the Last name field.  
The fields for First name, Company, Phone, Ext, and Email should contain the appropriate information.
5. Select the Time Zone from the drop-down menu.
6. Uncheck the Installed Base checkbox and select the Product from the drop-down menu.  
The Desc field shows the product description. If applicable, the product Revision, Serial Number, and System number appear.
7. Select the Workbench tab and fill in the required fields to describe the problem and the date a resolution is expected.
8. Select the Test Center tab and select a test name.  
The Work Items button becomes available. You may click **Work Items** to see a list of all work items and their parameters.
9. Click **Submit** to run the selected test.  
The test name and results are displayed.
10. Select **File > Save** to save the service request.  
The new Network Service Request is now in the system.

---

## Reference

For more information on service requests, see [Service Requests](#).

## Creating Service Provider Requests

When a problem is related to a product or service provided by a third party, use this procedure to enter information into a service provider request.

### Prerequisites

The third-party service provider must exist as an inventory entry in Purchasing. The third-party service provide must generate a reference number through their service request system.

### Steps

1. In the Navigator, select **Service Request > Comms Service Requests**.

The fields for Date Opened, Type, Status, Urgency and Owner contain default values.

2. Under Request Information, select Service Provider Request from the Type drop-down menu.
3. Select the service provider from the drop-down menu and enter the service provider's reference number.
4. Select employee from the Caller Type drop-down menu and fill in the Last name field.

The fields for First name, Company, Phone, Ext, and Email should contain the appropriate information.

5. Select the Time Zone from the drop-down menu.
6. Uncheck the Installed Base checkbox and select the Product from the drop-down menu.

The Desc field shows the product description. If applicable, the product Revision, Serial Number, and System number appear.

7. Select the Workbench tab and fill in the required fields to describe the problem and the date a resolution is expected.
8. Click **Save** to save the service request.

The new Service Provider Request is now in the system.

---

## Reference

For more information on service requests, see [Service Requests](#).

## Viewing and Updating Service Requests

Use this procedure to view and update customer information, product information, and any current or previous service requests. You can search by Customer, Number, Status or other fields of information.

## Prerequisites

None.

## Steps

1. From the Navigator, select **Service Request > View Comms Service Requests**.  
The Find Window opens.
2. Enter information about the service request of interest in one or more fields and click **Find**.  
The Service Request window displays one or more lines of requests that contain the information you entered.
3. Click to select a particular line and view details about that associated request.  
At this point, you may update information about the request.
4. Select **File > Save** to save your changes.

## References

See also:

- [Viewing the Customer Contact Log](#)
- [Recording Customer Contact Phone Numbers](#)
- [Recording Customer Addresses](#)
- [Creating and Updating Tasks from a Service Request](#)
- [Recording and Viewing Customer Contact Interactions](#)

## Linking Service Requests

When a service request is a direct result of another service request, use this procedure to link one or more service requests in a [parent/child relationship](#).

---

## Prerequisites

The product or network described in the requests must be in inventory.

## Steps

1. From the Navigator, select **Service Request > Comms Service Requests**.
2. In the Service Requests window, enter a new service request and select **Find > Save**.

The application inserts a number in the Request field.

3. Select the Links tab.

The lines on the Links tab display all service requests that are associated to this request and the type of link, either parent or child.

4. If you know the request number of the request you want to link to, enter that number on a line.

As an alternative, click **New Association** to open the Find Service Request window.

In the Find Service Request window, enter information in one or more of the fields and click **Find**. Select a service request to return to the Links tab.

5. Select the relationship you want the link to represent, either parent or child.

All other columns on the Links tab are view-only.

6. Click **Save Association** to save the new link.
7. Repeat this procedure for each service request you want to link.

## Guidelines

When you close a service request and change its status to cleared, the application automatically checks for dependencies on the cleared service request. For information about the business rules that apply to closing linked service requests, see [About Service Request Linking](#).

## References

Only customer service requests can have a Clear status. The following table lists which statuses can apply to the three types of service requests.

---

Service Request Type	Allowed Status
Customer Service Request	<ul style="list-style-type: none"><li>■ Open</li><li>■ Clear</li><li>■ Closed</li></ul>
Network Service Request	<ul style="list-style-type: none"><li>■ Open</li><li>■ Closed</li></ul>
Service Provider Request	<ul style="list-style-type: none"><li>■ Open</li><li>■ Closed</li></ul>

## Testing Network Elements

When customers call to report trouble with products and services, use this procedure to run diagnostic tests while the customer waits.

### Prerequisites

Tests must be set up during implementation of this application before you can test products or services. For more information, see [Test Center](#).

### Steps

1. From the Navigator, select **Service Request > Comms Service Requests**.
2. In the Service Requests window, enter the service request information and save your work.
3. Choose the Test Center tab.

The Test Procedures region displays all test Actions that are associated with the products displayed. To view work items that are associated with a test procedure, click **View Workitems** in the Test Procedures region of the Test Center tab window.

4. Select the desired test action and click **Submit** to perform the test.

The Test Results are displayed in a read-only panel for each work item associated to the test action.

### Guidelines

The Test Center tab window is active only when you have entered sufficient information to uniquely identify an active product or service.

---

## Troubleshooting

If no work items have been associated to a test action for the product or service, then the View Workitems button is inactive. To activate it, contact your system administrator to associate work items with the test action item in Oracle SDP Provisioning.

## Viewing Product Information in the Installed Base

The Installed Base contains data about products and services that have already been purchased by customers. Use this procedure to view product information in the Installed Base.

### Prerequisites

None.

### Steps

1. Use the Navigator to open Installed Base > Customer Products.

The Find Product window opens in front of the Product Summary and Details form.

2. Enter information in the blanks on the Find Product window to describe the product or account information you want to view.

Click **Search Account** to open the Search Account Number window for finding account numbers.

3. Click **Find** when one or more blanks in the Find Product window contain information.

One or more lines at the top of the Product Summary and Details form become populated with details about the related product or account.

4. Select a line to see more details about that entry appear in the bottom of the form.
5. Click tabs to review more information about a selected line.

### References

To understand how product information may be organized in the Installed Base, see:

- [About the Installed Base](#)
- [Installed Base Tabs](#)

---

## Implementing Oracle Service for Communications

This topic group provides general descriptions of the setup and configuration tasks required to implement the application successfully.

### Implementation Overview

Before setting up Oracle Service for Communications, you must install and fully implement these Oracle applications or components:

- Oracle Service Installed Base module
- Oracle Support Service Request module
- Oracle Field Service, if you wish to use the dispatching feature
- Oracle SDP Provisioning, if you wish to use the Test Center
- Oracle Sales for Communications

For information regarding the installation and implementation of these applications and components, see the appropriate documentation for each product. The implementation tasks described here are tasks that are necessary to use the additional functionality included with Oracle Service for Communications.

Implementation of this application includes setting up these features and options:

- [Service request statuses](#)
- [Linking workflow notifications to service request types](#)
- [Default service request owner](#)
- [Default service request escalation time](#)
- [Default network service request escalation time](#)
- [Default customer response time](#)
- [Test Center tests](#)

### Service Request Status Setup

Use service request status to indicate where a service request is in the resolution process. This application provides three pre-defined service request status: Open, Clear and Closed. You can define any number of additional statuses to reflect your organization's business processes.

For a description of all of the pre-defined statuses, see [Overview of Service Requests](#).

---

## Workflow Notifications Setup

When a service request is created, the associated Workflow launches, based on the service request type. A service request type may be defined to use a standard or customized workflow. The standard service request types used in this application and their corresponding workflows are listed in the following table.

Service Request Type	Associated Workflow
Customer Service Request	Customer Service Request Workflow
Network Service Request	Network Service Request Workflow
Service Provider Request	Service Provider Request Workflow

## Linking a Workflow to a Service Request Type

For the correct workflow to launch when a service request is created, you must link each workflows to the appropriate service request type. Use the following procedure to link a service request type to a workflow.

### Prerequisites

None

### Steps

1. From the Navigator, select **Setup > Service Requests > Request Types**.
2. Locate the appropriate Service Request Type.
3. Choose the appropriate workflow from the list of values [...].
4. Select **File > Save** to save your work.

## Profile Options Setup

During implementation, the System Administrator assigns a value for each profile option. The values define access privileges and how the application processes data.

The profile options are set at one or more of the following levels: site, application, responsibility, and user. The system administrator sets and updates profile values using the System Profile Options window.

The following table describes the profile options that are unique to Oracle Service for Communications.



---

Profile Option	Description
Service: Default Workflow Customer Service Request Escalation Time	<p>Workflow resolution uses the expected resolution date that is specified in the service request to determine the date of escalation. When no expected resolution date is specified, the escalation time is 3 days.</p> <p>Use the profile to define a default escalation timeframe in hours. The default system profile is set at 72 hours.</p>
Service: Default Workflow Network Service Request Escalation Time	<p>A network service request is more critical than a customer service request because it may impact a significant number of customers. Network service requests should be resolved as quickly as possible and escalation should occur in a shorter timeframe—in a matter of hours instead of days. Use this profile option to define the escalation timeframe in hours.</p> <p>The default escalation time is set at 8 hours. The time count begins as soon as the initial workflow notification is sent. If the notification is forwarded within the timeframe, the new escalation deadline does not extend an additional 8 hours. Instead, escalation must occur within the timeframe specified in the first workflow notification.</p>
Service: Default Customer Response Time	<p>When a service request is resolved, the status changes to cleared. At this point, the agent who created the service request receives a workflow notification to contact the customer and confirm that the problem is resolved. If the customer agrees that the problem is resolved, then the service request is closed.</p> <p>This profile option defines how many days a service request can remain in the cleared state. The default response time is 3 days.</p>

## Default Service Request Owner Setup

The person who receives a workflow notification must be defined in these areas of Oracle Applications:

---

Oracle Human Resources Management System (HRMS)	Individuals must be defined in Oracle HRMS before they can receive a workflow notification. In addition an individual's Assignment, Organization, Job, Position, and their Supervisor must also be defined in Oracle HRMS. The Supervisor must be defined so a workflow escalation notification can be routed to the appropriate management contact. For information about setting up an employee in Oracle HRMS, see the Oracle Human Resources Management System user's documentation.
Application Object Application User	When an application user is created, the user must be linked to the person defined in oracle HRMS, and the appropriate responsibilities must also be assigned. For information about how to create application users, see the Oracle System Administrator user's documentation.

---

## Resetting the Default Service Request Owner

The Service Request window displays the default owner, based on the profile option that is defined at the system or user level. The owner may be changed when the service request is created. However, the default service request owner may be reset as required. Use this procedure to reset the default service request owner.

### Prerequisites

The new default service request owner must be defined in the Oracle Human Resources Management System (HRMS) area of this application.

### Steps

1. From the Navigator in the Oracle Service for Communications responsibility, select **Other > Profile**.
2. Query for the profile option, **Service: Default Service Request Owner**.  
The window displays the default value.
3. Choose the appropriate user from the list of values [...].
4. Select **File > Save** to save your work.

### Guidelines

To reset the default service request owner, submit a request to your system administrator to change this profile option.

---

## Defining Test Type Actions

An action is an operation performed on a service or product. Use the test type of actions to define the actions used in the Test Center. The actions should include the actions that you perform on products as well as the services you provide. Use this procedure to define test type actions.

### Prerequisites

None.

### Steps

1. In the Service for Communications responsibility, navigate to **Setup > Test Center > Item Action Parameters**.

The Organizations window appears.

2. Select your organization from the list of organizations and click **OK**.

The Action Parameters window appears.

3. In the Action Type list of values, choose **Test**.

4. Use the Item field to describe the item being tested. Use the Description field to describe the action.

Leave the fields on the Main and Entity tab blank.

5. Select **File > Save** to save the definitions.

6. Click **Map Work Items** to open the form for mapping the defined action to one or a series of work items.

See [Mapping Actions to Work Items for the Test Center](#)

## Mapping Actions to Work Items for the Test Center

If you want to use the Test Center in Oracle Service for Communications, you must map test type item actions to the work items that are defined in Oracle SDP Provisioning. The application uses these mappings to communicate with network elements and apply diagnostic tests to those elements. Use this procedure to map actions to work items.

### Prerequisites

Before you can map actions to work items, you must define the actions in Oracle Service for Communications. Then you must associate work items to network parameters in Oracle SDP Provisioning. For more information, see [Test Center](#).

---

For detailed information about defining work items, see [Work Items in Oracle Provisioning](#).

### Steps

1. From the Navigator, select **Service Request > Comms Workitems Mapping**.
2. In the Mapping Action to Workitems window, select an Action Name from the list of values by clicking the [...] in the field.

Only test-type action items will display in the list of values.

3. In the Work Items region of the window, select the work items from the list of values in the Name column in the appropriate sequence.

When you select a work item, the parameters that are associated to it are displayed in the read-only Parameters region of the window.

4. Choose **File > Save** to save this mapping association.



