

# Oracle® Supplier Management Portal

Implementation Manual

Release 11i

November 2000

Part No. A87302-01

Part No. A87302-01

Copyright © 1996, 2000, Oracle Corporation. All rights reserved.

Primary Author: John Gilbert Chan

Contributors: Imran Ali, Cecia Call

**The programs are not intended for use in any nuclear, aviation, mass transit, medical, or other inherently dangerous applications. It shall be licensee's responsibility to take all appropriate fail-safe, back up, redundancy and other measures to ensure the safe use of such applications if the Programs are used for such purposes, and Oracle disclaims liability for any damages caused by such use of the Programs.**

This Program contains proprietary information of Oracle Corporation; it is provided under a license agreement containing restrictions on use and disclosure and is also protected by copyright, patent and other intellectual property law. Reverse engineering of the software is prohibited.

The information contained in this document is subject to change without notice. If you find any problems in the documentation, please report them to us in writing. Oracle Corporation does not warrant that this document is error free. No part of this document may be reproduced or transmitted in any form or by any means, electronic or mechanical, for any purpose, without the express written permission of Oracle Corporation

If this Program is delivered to a U.S. Government Agency of the Department of Defense, then it is delivered with Restricted Rights and the following legend is applicable:

**Restricted Rights Legend** Programs delivered subject to the DOD FAR Supplement are "commercial computer software" and use, duplication and disclosure of the Programs shall be subject to the licensing restrictions set forth in the applicable Oracle license agreement. Otherwise, Programs delivered subject to the Federal Acquisition Regulations are "restricted computer software" and use, duplication and disclosure of the Programs shall be subject to the restrictions in FAR 52.227-14, Rights in Data -- General, including Alternate III (June 1987). Oracle Corporation, 500 Oracle Parkway, Redwood City, CA 94065.

Oracle is a registered trademark, and Oracle Applications, Oracle Inventory, Oracle EDI Gateway, Oracle Order Entry/Shipping, Oracle Payables, Oracle Purchasing, Oracle Self-Service Purchasing, Oracle Self-Service Web Applications, and Oracle Internet Procurement are trademarks or registered trademarks of Oracle Corporation. Windows NT is a registered trademark of Microsoft Corporation. All other company or product names mentioned are used for identification purposes only and may be trademarks of their respective owners.

---

---

# Contents

<b>Send Us Your Comments .....</b>	<b>v</b>
<b>Preface.....</b>	<b>vii</b>
<b>Audience for This Guide.....</b>	<b>vii</b>
<b>How To Use This Guide .....</b>	<b>vii</b>
<b>Finding Out What's New.....</b>	<b>viii</b>
<b>Other Information Sources .....</b>	<b>viii</b>
Online Documentation.....	viii
Related User Guides.....	ix
User Guides Related to All Products .....	ix
Reference Manuals .....	xv
Installation and System Administration Guides.....	xvii
Training and Support.....	xviii
<b>Do Not Use Database Tools to Modify Oracle Applications Data.....</b>	<b>xix</b>
 <b>1 Overview of Oracle Supplier Management Portal</b>	
<b>Introduction .....</b>	<b>1-1</b>
 <b>2 Implementation</b>	
<b>Implementation Overview .....</b>	<b>2-2</b>
Related Product Implementation Steps.....	2-2
Implementation Flowchart.....	2-3
Implementation Checklist .....	2-4
Implementation Steps .....	2-4
Function Security .....	2-5
 <b>3 Workflows</b>	
<b>Overview of Supplier Management Portal Workflows .....</b>	<b>3-2</b>
Customizing Supplier Management Portal Workflows .....	3-2

Notifications .....	3-2
Messages .....	3-3
Look upTypes.....	3-3
<b>PO Acknowledgment Workflow .....</b>	<b>3-4</b>
<b>Main Acknowledgment Process .....</b>	<b>3-5</b>
Main Acknowledgment Activities .....	3-6
Summary of the Main Acknowledgment Process .....	3-11
<b>ASN Creation Notification Workflow .....</b>	<b>3-11</b>
Buyer Notification Process .....	3-12
Buyer Notification Process Activities .....	3-12
Supplier Notification Process .....	3-14
Supplier Notification Activities.....	3-14
Summary of ASN Creation Notification Process .....	3-16
<b>Change Promised Date Workflow .....</b>	<b>3-17</b>
<b>Process Promised &amp; Need-by Date Process .....</b>	<b>3-18</b>
Process Promised & Need-By Date Activities .....	3-21
<b>Initialized Workflow Subprocess .....</b>	<b>3-25</b>
Initialize Workflow Activities.....	3-25
<b>Process OSP Item Subprocess .....</b>	<b>3-27</b>
Process OSP Item Activities .....	3-28
Change Promised Date Summary .....	3-31
<b>Capacity Update (ASL) Notification Workflow .....</b>	<b>3-31</b>
Capacity Update (ASL) Notification Process .....	3-32
Capacity Update (ASL) Notification Activities.....	3-32
Capacity Update (ASL) Notifications Summary.....	3-35

## 4    **Web Application Dictionary (WAD) Flows and Regions**

---

---

# Send Us Your Comments

**Oracle Supplier Management Portal Implementation Manual, Release 11i**

**Part No. A87302-01**

Oracle Corporation welcomes your comments and suggestions on the quality and usefulness of this publication. Your input is an important part of the information used for revision.

- Did you find any errors?
- Is the information clearly presented?
- Do you need more information? If so, where?
- Are the examples correct? Do you need more examples?
- What features did you like most about this manual?

If you find any errors or have any other suggestions for improvement, please indicate the chapter, section, and page number (if available). You can send comments to us in the following ways:

- E-mail - [supplier\\_management\\_portal@us.oracle.com](mailto:supplier_management_portal@us.oracle.com)
- FAX - telephone number. Attn: Oracle Supplier Management Portal Implementation Manual.
- Postal service:  
Oracle Corporation  
Oracle Supplier Management Portal Implementation Manual  
Street Address, Mailstop  
City, State Postal Code  
Country

If you would like a reply, please give your name, address, and telephone number below.

---

---

---

If you have problems with the software, please contact your local Oracle Support Services.



## Audience for This Guide

Welcome to Release 11*i* of the Oracle Supplier Management Portal user guide.

This guide assumes you have a working knowledge of the following:

- The principles and customary practices of your business area.
- Oracle Supplier Management Portal

If you have never used Oracle Supplier Management Portal, we suggest you attend one or more of the Oracle Supplier Management Portal training classes available through Oracle University.

- The Oracle Applications graphical user interface.

To learn more about the Oracle Applications graphical user interface, read the *Oracle Applications User Guide*.

See Other Information Sources for more information about Oracle Applications product information.

## How To Use This Guide

This guide contains the information you need to understand and use Oracle Supplier Management Portal.

This preface explains how this user guide is organized and introduces other sources of information that can help you. This guide contains the following chapters:

- Chapter 1 Provides an overview of Supplier Management Portal.
- Chapter 2 Describes how to implement Supplier Management Portal.
- Chapter 3 Describes the workflow processes.
- Chapter 4 Describes the Web Application Dictionary (Flows and Regions).

## Finding Out What's New

From the HTML help window for Oracle Supplier Management Portal, choose the section that describes new features or what's new from the expandable menu. This section describes:

- New features in 11*i*. This information is updated for each new release of Oracle Supplier Management Portal.
- Information about any features that were not yet available when this user guide was printed. For example, if your system administrator has installed software from a mini pack as an upgrade, this document describes the new features.

## Other Information Sources

You can choose from many sources of information, including online documentation, training, and support services, to increase your knowledge and understanding of Oracle Supplier Management Portal.

If this guide refers you to other Oracle Applications documentation, use only the Release 11*i* versions of those guides unless we specify otherwise.

## Online Documentation

All Oracle Applications documentation is available online (HTML and PDF). The technical reference guides are available in paper format only. Note that the HTML documentation is translated into over twenty languages.

The HTML version of this guide is optimized for onscreen reading, and you can use it to follow hypertext links for easy access to other HTML guides in the library. When you have an HTML window open, you can use the features on the left side of the window to navigate freely throughout all Oracle Applications documentation.

- You can use the Search feature to search by words or phrases.
- You can use the expandable menu to search for topics in the menu structure we provide. The Library option on the menu expands to show all Oracle Applications HTML documentation.

You can view HTML help in the following ways:

- From an application window, use the help icon or the help menu to open a new Web browser and display help about that window.
- Use the documentation CD.



- Use a URL provided by your system administrator.

Your HTML help may contain information that was not available when this guide was printed.

## Related User Guides

Oracle Supplier Management Portal shares business and setup information with other Oracle Applications products. Therefore, you may want to refer to other user guides when you set up and use Oracle Supplier Management Portal.

You can read the guides online by choosing Library from the expandable menu on your HTML help window, by reading from the Oracle Applications Document Library CD included in your media pack, or by using a Web browser with a URL that your system administrator provides.

If you require printed guides, you can purchase them from the Oracle store at <http://oraclestore.oracle.com>.

## User Guides Related to All Products

### Oracle Applications User Guide

This guide explains how to navigate the system, enter data, and query information, and introduces other basic features of the GUI available with this release of Oracle Supplier Management Portal (and any other Oracle Applications product).

You can also access this user guide online by choosing *Getting Started and Using Oracle Applications* from the Oracle Applications help system.

### Oracle Alert User Guide

Use this guide to define periodic and event alerts that monitor the status of your Oracle Applications data.

### Oracle Applications Implementation Wizard User Guide

If you are implementing more than one Oracle product, you can use the Oracle Applications Implementation Wizard to coordinate your setup activities. This guide describes how to use the wizard.

### **Oracle Applications Developer's Guide**

This guide contains the coding standards followed by the Oracle Applications development staff. It describes the Oracle Application Object Library components needed to implement the Oracle Applications user interface described in the *Oracle Applications User Interface Standards*. It also provides information to help you build your custom Oracle Developer forms so that they integrate with Oracle Applications.

### **Oracle Applications User Interface Standards**

This guide contains the user interface (UI) standards followed by the Oracle Applications development staff. It describes the UI for the Oracle Applications products and how to apply this UI to the design of an application built by using Oracle Forms.

### **Oracle Applications Demonstration User's Guide**

This guide documents the functional storyline and product flows for Vision Enterprises, a fictional manufacturer of personal computers products and services. As well as including product overviews, the book contains detailed discussions and examples across each of the major product flows. Tables, illustrations, and charts summarize key flows and data elements.

### **Oracle Assets User's Guide**

If you install Oracle Assets, you can use this manual to add assets and cost adjustments directly into Oracle Assets from invoice information in Payables.

### **Oracle Bills of Material User's Guide**

This guide describes how to create various bills of materials to maximize efficiency, improve quality and lower cost for the most sophisticated manufacturing environments. By detailing integrated product structures and processes, flexible product and process definition, and configuration management, this guide enables you to manage product details within and across multiple manufacturing sites.

### **Oracle Business Intelligence System Implementation Guide**

This guide provides information about implementing Oracle Business Intelligence (BIS) in your environment.

## **BIS 11i User Guide Online Help**

This guide is provided as online help only from the BIS application and includes information about intelligence reports, Discoverer workbooks, and the Performance Management Framework.

## **Oracle Capacity User's Guide**

This guide describes how to validate a material plan by verifying that there are resources sufficient to perform the planned work for repetitive and discrete jobs. Using finite capacity planning techniques, you learn how to use rough-cut capacity planning to validate a master schedule and capacity planning to validate the material plan.

## **Oracle Cash Management User's Guide**

This manual explains how you can reconcile your payments with your bank statements.

## **Oracle Cost Management User's Guide**

This guide describes how to use Oracle Cost Management in either a standard costing or average costing organization. Cost Management can be used to cost inventory, receiving, order entry, and work in process transactions. It can also be used to collect transaction costs for transfer to Oracle Projects. Cost Management supports multiple cost elements and multiple subelements. It also provides comprehensive valuation and variance reporting.

## **Oracle e-Commerce Gateway User's Guide**

This guide describes how Oracle e-Commerce Gateway provides a means to conduct business with trading partners via Electronic Data Interchange (EDI). Data files are exchanged in a standard format to minimize manual effort, speed data processing and ensure accuracy.

## **Oracle Engineering User's Guide**

This guide enables your engineers to utilize the features of Oracle Engineering to quickly introduce and manage new designs into production. Specifically, this guide details how to quickly and accurately define the resources, materials and processes necessary to implement changes in product design.

## **Oracle General Ledger User's Guide**

This guide explains how to plan and define your chart of accounts, accounting period types and accounting calendar, functional currency, and set of books. It also describes how to define journal entry sources and categories so you can create journal entries for your general ledger. If you use multiple currencies, use this manual when you define additional rate types, and enter daily rates. This manual also includes complete information on implementing Budgetary Control.

## **Oracle HRMS Documentation Set**

- *Using Oracle HRMS - The Fundamentals* explains how to set up organizations and site locations.
- *Managing People Using Oracle HRMS* explains how to enter and track employee data.
- *Running Your Payroll Using Oracle HRMS* explains how to set up payroll, do withholding, run statutory reports, and pay employees.
- *Managing Compensation and Benefits Using Oracle HRMS* explains how to set up Total Compensation, including 401(k), health, and insurance plans.
- *Customizing, Reporting, and System Administration in Oracle HRMS* explains how to customize to the system and design reports.

## **Oracle Inventory User's Guide**

This guide describes how to define items and item information, perform receiving and inventory transactions, maintain cost control, plan items, perform cycle counting and physical inventories, and set up Oracle Inventory.

## **Oracle Manufacturing Scheduling User's Guide**

This guide describes how to use Oracle Manufacturing Scheduling to view and reschedule single discrete jobs or the entire shop floor. Specifically, this guide details how to easily use the drag and drop functionality to view and reschedule jobs, operations, and resources.

## **Oracle Master Scheduling/MRP and Oracle Supply Chain Planning User's Guide**

This guide describes how to anticipate and manage both supply and demand for your items. Using a variety of tools and techniques, you can create forecasts, load these forecasts into master production schedules, and plan your end-items and their component requirements. You can also execute the plan, releasing and rescheduling planning suggestions for discrete jobs and repetitive schedules.

## **Oracle Order Entry/Shipping User's Guide**

This guide describes how to enter sales orders and returns, copy existing sales orders, schedule orders, release orders, plan departures and deliveries, confirm shipments, create price lists and discounts for orders, and create reports.

## **Oracle Payables User's Guide**

This guide describes how accounts payable transactions are created and entered in Oracle Payables. This guide also contains detailed setup information for Oracle Payables.

## **Oracle Configurator User's Guide**

This guide describes how to improve order taking and fulfillment productivity by eliminating errors in new sales orders and bills of materials. You can use Oracle Configurator to verify product configurations, automatically select configuration options, and generate manufacturing bills of materials according to configuration constraints.

## **Oracle Project Manufacturing User's Guide**

This guide describes the unique set of features Oracle Project Manufacturing provides for a project-based manufacturing environment. Oracle Project Manufacturing can be tightly integrated with Oracle Projects. However, in addition to Oracle Projects functionality, Oracle Project Manufacturing provides a comprehensive set of new features to support project sales management, project manufacturing costing, project manufacturing planning, project manufacturing execution and project quality management.

## **Oracle Projects User's Guide**

This guide explains how to set up projects for use in project manufacturing and project accounting.

## **Oracle Purchasing User's Guide**

This guide describes how to create and approve purchasing documents, including requisitions, different types of purchase orders, quotations, RFQs, and receipts. This guide also describes how to manage your supply base through agreements, sourcing rules and approved supplier lists. In addition, this guide explains how you can automatically create purchasing documents based on business rules through integration with Oracle Workflow technology, which automates many of the key procurement processes.

### **Oracle Quality User's Guide**

This guide describes how Oracle Quality can be used to meet your quality data collection and analysis needs. This guide also explains how Oracle Quality interfaces with other Oracle Manufacturing applications to provide a closed loop quality control system.

### **Oracle Receivables User's Guide**

Use this manual to learn how to implement flexible address formats for different countries. You can use flexible address formats in the suppliers, banks, invoices, and payments windows.

### **Oracle Sales and Marketing Connected Client User's Guide**

This guide describes how to set up your connected client, manage your account information, manage your database of contacts, and how to record, review and add information about an account, contact, or opportunity. This guide also describes how to view pending, current, and past customer orders, to create and track responses to promotional campaigns, track the effectiveness of a promotional program, and how to project your progress towards sales goals.

### **Oracle Sales Compensation User's Guide**

This guide describes how to categorize your sales revenue, how to define the data you need to Oracle Sales Compensation, and where to collect the data from. Each sales organization has different ways of paying compensation; thus each organization needs different types of data to calculate a compensation payment. This guide also explains how to setup and calculate compensation for a salesperson, adjust for sales credits, and view a salesperson's performance against their quota. In addition, this guide also explains how to run a variety of reports for individuals or groups of salespeople.

### **Oracle Self Service Web Applications User's Guide**

This guide describes how Oracle Self Service Web Applications enable companies to provide a self-service and secure web interface for its employees, customers and suppliers. Employees can change their personal status, submit expense reports or request supplies; customers can check on their orders; and suppliers can share production schedules with their trading partners. This guide is available in HTML only.

### **Oracle Release Management User's Guide**

This manual describes how to manage high volume electronic demand by continually incorporating your customers demand into your order and planning processes. By explaining how to validate, archive, manage and reconcile incoming planning, shipping and production sequence schedules with updates to sales orders and forecasts, it enables you to electronically collaborate with your customers to more accurately manage demand. It also describes how to plan, create and manage trading partner layers for trading partner specific customizations.

### **Oracle Supplier Scheduling User's Guide**

This guide describes how you can use Oracle Supplier Scheduling to calculate and maintain planning and shipping schedules and communicate them to your suppliers.

### **Oracle Work in Process User's Guide**

This guide describes how Oracle Work in Process provides a complete production management system. Specifically this guide describes how discrete, repetitive, assemble-to-order, project, flow, and mixed manufacturing environments are supported.

### **Oracle Workflow Guide**

This guide explains how to define new workflow business processes as well as customize existing Oracle Applications-embedded workflow processes. You also use this guide to complete the setup steps necessary for any Oracle Applications product that includes workflow-enabled processes.

## **Reference Manuals**

### **Oracle Technical Reference Manuals**

Each technical reference manual contains database diagrams and a detailed description of database tables, forms, reports, and programs for a specific Oracle Applications product. This information helps you convert data from your existing applications, integrate Oracle Applications data with non-Oracle applications, and write custom reports for Oracle Applications products.

You can order a technical reference manual for any Oracle Applications product you have licensed.

### **Oracle Manufacturing and Distribution Open Interfaces Manual**

This manual contains up-to-date information about integrating with other Oracle Manufacturing applications and with your other systems. This documentation includes open interfaces found in Oracle Manufacturing.

### **Oracle Applications Message Reference Manual**

This manual describes all Oracle Applications messages. This manual is available in HTML format on the documentation CD-ROM for Release 11i.

### **Oracle Project Manufacturing Implementation Manual**

This manual describes the setup steps and implementation for Oracle Project Manufacturing.

### **Oracle Receivables Tax Manual**

This manual provides everything you need to know about calculating tax within Oracle Receivables, Oracle Order Management, Oracle sales, and Oracle Web Customers. It includes information about implementation procedures, setup forms and windows, the Oracle Receivables Tax calculation process, tax reports and listings, and open interfaces.

### **Oracle Self-Service Expenses Implementation Guide**

This guide explains in detail how to configure Oracle Self-Service Expenses and describes its integration with Oracle Payable and Oracle Projects.

### **Oracle Self-Service Web Applications Implementation Manual**

This manual describes the setup steps for Oracle Self-Service Web Applications and the Web Applications dictionary.

### **Oracle Applications Flexfields Guide**

This guide provides flexfields planning, setup, and reference information for the Oracle Supplier Management Portal implementation team, as well as for users responsible for the ongoing maintenance of Oracle Applications product data. This guide also provides information on creating custom reports on flexfields data.



# Installation and System Administration Guides

## Oracle Applications Concepts

This guide provides an introduction to the concepts, features, technology stack, architecture, and terminology for Oracle Applications Release 11*i*. It provides a useful first book to read before an installation of Oracle Applications. This guide also introduces the concepts behind, and major issues, for Applications-wide features such as Business Intelligence (BIS), languages and character sets, and self-service applications.

## Installing Oracle Applications

This guide provides instructions for managing the installation of Oracle Applications products. In Release 11*i*, much of the installation process is handled using Oracle One-Hour Install, which minimizes the time it takes to install Oracle Applications and the Oracle 8*i* Server technology stack by automating many of the required steps. This guide contains instructions for using Oracle One-Hour Install and lists the tasks you need to perform to finish your installation. You should use this guide in conjunction with individual product user guides and implementation guides.

## Upgrading Oracle Applications

Refer to this guide if you are upgrading your Oracle Applications Release 10.7 or Release 11.0 products to Release 11*i*. This guide describes the upgrade process in general and lists database upgrade and product-specific upgrade tasks. You must be at either Release 10.7 (NCA, SmartClient, or character mode) or Release 11.0 to upgrade to Release 11*i*. You cannot upgrade to Release 11*i* directly from releases prior to 10.7.

## Using the AD Utilities

Use this guide to help you run the various AD utilities, such as AutoInstall, AutoPatch, AD Administration, AD Controller, Relink, and others. It contains how-to steps, screenshots, and other information that you need to run the AD utilities.

## Oracle Applications Product Update Notes

Use this guide as a reference if you are responsible for upgrading an installation of Oracle Applications. It provides a history of the changes to individual Oracle Applications products between Release 11.0 and Release 11*i*. It includes new

features and enhancements and changes made to database objects, profile options, and seed data for this interval.

### **Oracle Applications System Administrator's Guide**

This guide provides planning and reference information for the Oracle Applications System Administrator. It contains information on how to define security, customize menus and online help, and manage processing.

### **Oracle Workflow Guide**

This guide explains how to define new workflow business processes as well as customize existing Oracle Applications-embedded workflow processes. You also use this guide to complete the setup steps necessary for any Oracle Applications product that includes workflow-enabled processes.

## **Training and Support**

### **Training**

We offer a complete set of training courses to help you and your staff master Oracle Applications. We can help you develop a training plan that provides thorough training for both your project team and your end users. We will work with you to organize courses appropriate to your job or area of responsibility.

Training professionals can show you how to plan your training throughout the implementation process so that the right amount of information is delivered to key people when they need it the most. You can attend courses at any one of our many Educational Centers, or you can arrange for our trainers to teach at your facility. We also offer Net classes, where training is delivered over the Internet, and many multimedia-based courses on CD. In addition, we can tailor standard courses or develop custom courses to meet your needs.

### **Support**

From on-site support to central support, our team of experienced professionals provides the help and information you need to keep Oracle Supplier Management Portal working for you. This team includes your Technical Representative, Account Manager, and Oracle's large staff of consultants and support specialists with expertise in your business area, managing an Oracle server, and your hardware and software environment.

## Do Not Use Database Tools to Modify Oracle Applications Data

***We STRONGLY RECOMMEND that you never use SQL\*Plus, Oracle Data Browser, database triggers, or any other tool to modify Oracle Applications tables, unless we tell you to do so in our guides.***

Oracle provides powerful tools you can use to create, store, change, retrieve, and maintain information in an Oracle database. But if you use Oracle tools such as SQL\*Plus to modify Oracle Applications data, you risk destroying the integrity of your data and you lose the ability to audit changes to your data.

Because Oracle Applications tables are interrelated, any change you make using an Oracle Applications form can update many tables at once. But when you modify Oracle Applications data using anything other than Oracle Applications forms, you might change a row in one table without making corresponding changes in related tables. If your tables get out of synchronization with each other, you risk retrieving erroneous information and you risk unpredictable results throughout Oracle Applications.

When you use Oracle Applications forms to modify your data, Oracle Applications automatically checks that your changes are valid. Oracle Applications also keeps track of who changes information. But, if you enter information into database tables using database tools, you may store invalid information. You also lose the ability to track who has changed your information because SQL\*Plus and other database tools do not keep a record of changes.

### About Oracle

Oracle Corporation develops and markets an integrated line of software products for database management, applications development, decision support and office automation, as well as Oracle Applications. Oracle Applications provides the E-business Suite, a fully integrated suite of more than 70 software modules for financial management, Internet procurement, business intelligence, supply chain management, manufacturing, project systems, human resources and sales and service management.

Oracle products are available for mainframes, minicomputers, personal computers, network computers, and personal digital assistants, enabling organizations to integrate different computers, different operating systems, different networks, and even different database management systems, into a single, unified computing and information resource.

Oracle is the world's leading supplier of software for information management, and the world's second largest software company. Oracle offers its database, tools,

and application products, along with related consulting, education and support services, in over 145 countries around the world.

### **Your Feedback**

Thank you for using Oracle Supplier Management Portal and this user guide.

We value your comments and feedback. This guide contains a Reader's Comment Form you can use to explain what you like or dislike about Oracle Supplier Management Portal or this user guide. Mail your comments to the following address or call us directly at (650) 506-7000.

Oracle Applications Documentation Manager  
Oracle Corporation  
500 Oracle Parkway  
Redwood Shores, CA 94065  
U.S.A.

Or, send electronic mail to **[appsdoc@us.oracle.com](mailto:appsdoc@us.oracle.com)**.

---

# Overview of Oracle Supplier Management Portal

## Introduction

Oracle Supplier Management Portal enables secure, self-service business transactions between companies and their suppliers through the Internet. Supplier Management Portal is part of Oracle Applications, an integrated suite of e-business solutions designed to transform your business to an e-business.

### **Improve Supplier Relationships Through Information Sharing**

Oracle Supplier Management Portal provides visibility across the procurement-to-pay life cycle, building a collaborative environment where buyers and suppliers become integrated partners as both parties are able to access the same information over the Internet.

Oracle Supplier Management Portal gives suppliers the ability to directly access information and enter business transactions online in a secure, self-service environment.

The self-service web application can be either inquiry or transactional. Inquiry modules read but do not update the Oracle Applications database; transactional modules do update the database.

Suppliers must first register via the "supplier registration" process, then they can inquire across a range of views that include information, such as current purchase orders and supplier agreements. Suppliers can also gauge their performance and efficiency by viewing the following information:

- receipt histories
- purchase order histories
- returns

- n outstanding overdue receipts
- n open delivery schedules
- n on-time delivery performance

Invoice and payment information can also be shared over the Internet, including when invoices were received and when payments were sent. Oracle Supplier Management Portal also enables suppliers to proactively learn about their service level in areas, such as progress against long term agreements, time-critical delivery information, purchase order changes, and request for quotations. All views are shown at a high level but can be drilled down to view the specific documents associated to the inquires. For a list of views, see the Supplier Services table.

### **On-Line Transactions between Supplier and Buyer**

Supplier Management Portal enables on-line transactions between companies and their suppliers. Suppliers can send Advance Shipment Notices, acknowledge purchase orders with an accept or reject action, promise date purchase order, and maintain capacity information on-line. Oracle Supplier Management Portal also provides enhanced collaboration capabilities in outside processing activities.

### **See Also**

Oracle Self-Service Web Applications, Release 11i.

Oracle Applications System Administrator's Guides, Release 11i.

Oracle Purchasing, Release 11i

Oracle Web Applications Dictionary, Release 11i.

---

# Implementation

This section tells you what you need to know about implementing Oracle Supplier Management Portal, including:

- [Implementation Overview](#) on page 2-2.
- [Related Product Implementation Steps](#) on page 2-2.
- [Implementation Flowchart](#) on page 2-3.
- [Implementation Checklist](#) on page 2-4.
- [Implementation Steps](#) on page 2-4.
- [Function Security](#) on page 2-5.

## Implementation Overview

This section contains an overview of each step you need to implement Oracle Supplier Management Portal. For instructions on how to complete each task, see the implementation sections indicated in each step.

### Related Product Implementation Steps

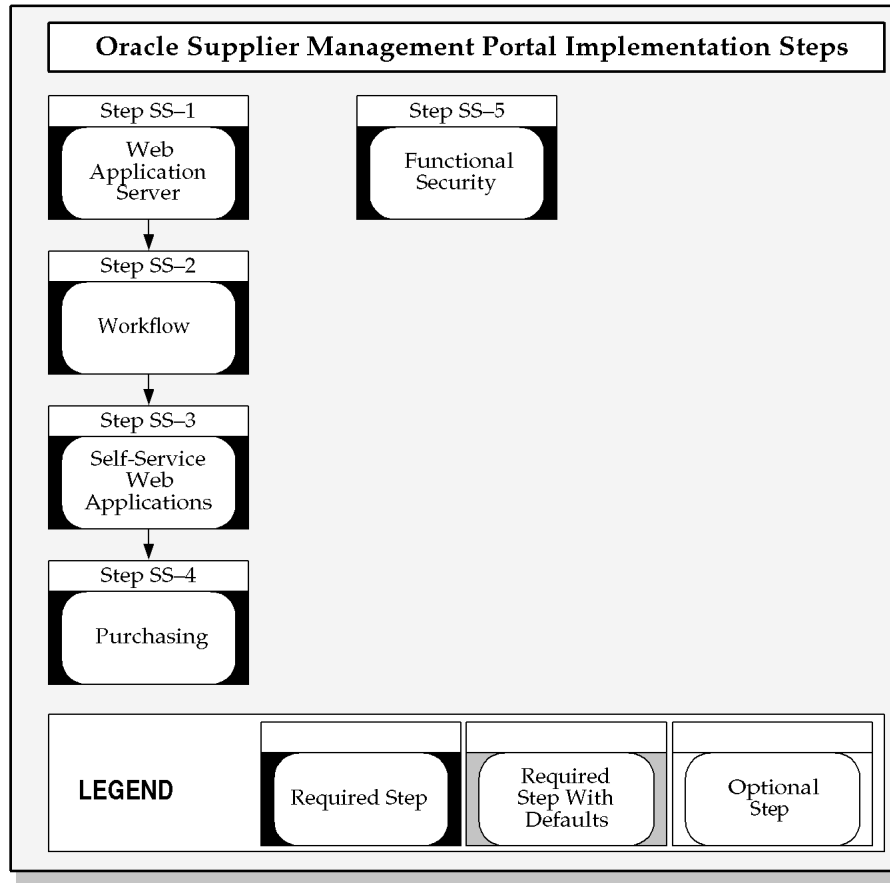
You must complete the following prerequisites before implementing Oracle Supplier Management Portal:

- Oracle Web Application Server
- Oracle Self-Service Web Applications
- Oracle Workflow
- Oracle Purchasing



## Implementation Flowchart

The following flowchart contains implementation steps for Oracle Supplier Management Portal.



## Implementation Checklist

The following table lists implementation steps for Oracle Supplier Management Portal. Each of these steps are described in more detail in the Implementation Steps.

	Step No.	Required	Step
	Step 1	Required	Set up Oracle Web Application Server
	Step 2	Required	Set up Oracle Workflow
	Step 3	Required	Set up Oracle Self-Service Web Applications
	Step 4	Required	Set up Oracle Purchasing
	Step 5	Required	Define Functional Security in Supplier Management Portal

## Implementation Steps

The following lists the necessary steps to implement Supplier Management Portal.

### Set up Oracle Web Application Server (Required)

See Oracle Web Application Server Implementation Manual, Release 11i.

### Set up Oracle Workflow (Required)

See Oracle Workflow, Release 11i.

### Set up Oracle Web Self-Service Applications (Required)

See Oracle Self-Service Web Applications Implementation Manual, Release 11i.

### Set up Oracle Purchasing (Required)

See Oracle Purchasing, Release 11i.

### Define Functional Security in Supplier Management Portal (Required)

Use standard security to control supplier access to the Advance Shipment Notice.

## See Also

Oracle Applications System Administrator's Guide, Release 11i

## Function Security

Use the Web Applications Dictionary to control functional security. See Web Applications Dictionary, *Oracle Self-Service Web Applications* and Data Security, *Oracle Self-Service Web Applications*.

### See Also

See: Users Window, Oracle Applications System Administrator's Guides, Release 11i



---

## Workflows

This chapter tells you what you need to know about Oracle Supplier Management Portal's workflows, including:

- [Overview of Supplier Management Portal Workflows](#) on page 3-2.
- [Customizing Supplier Management Portal Workflows](#) on page 3-2.
- [PO Acknowledgment Workflow](#) on page 3-4.
- [ASN Creation Notification Workflow](#) on page 3-11.
- [Change Promised Date Workflow](#) on page 3-17.
- [Capacity Update \(ASL\) Notification Workflow](#) on page 3-31.

## Overview of Supplier Management Portal Workflows

Oracle Supplier Management Portal uses Oracle Workflow technology to provide guided walk-throughs of all steps required to define project manufacturing contract and indirect projects and to generate notifications for scheduling exceptions.

Oracle Workflow Builder is a graphical tool for creating, viewing, and modifying workflow process definitions. It contains a Navigator window that you use to define the activities in a process window to process a diagram. See Oracle Workflow.

Supplier Management Portal comes with the following workflows:

- [PO Acknowledgment Workflow](#) on page 3-4.
- [ASN Creation Notification Workflow](#) on page 3-11.
- [Change Promised Date Workflow](#) on page 3-17.
- [Capacity Update \(ASL\) Notification Workflow](#) on page 3-31.

## Customizing Supplier Management Portal Workflows

Use the Oracle Workflow builder to customize workflows. When you customize a workflow, only those documents that are submitted for approval *after* you have customized it are affected by the customized workflow.

You can also use the Workflow Builder to create unique approval workflows for each document type in your organization. You associate particular workflows with certain document types in the Document Type window.

## Notifications

All notifications can be modified to meet your individual business needs. However, if the notification has a reply code, make sure that the Result Type of your customized notification matches the transitions in the workflow diagram. See: To Create a Notification Activity, *Oracle Workflow Guide*. See also: Message Result, *Oracle Workflow Guide* and To Create a Message, *Oracle Workflow Guide*.

### Function Activities

You cannot modify any function activity in the Supplier Management Portal workflow. However, you can replace some function activities with function activities of your own. When you replace a function activity, you are modifying the

process in which it is contained. If you substitute default action activities in a process with function activities that you create, you must remember the following:

The result type of your new function activity must match the result type of the default activity. That is, the Result Type of function activity in the Workflow Builder, for example, a Result Type of Yes/No needs to match the result type that you specify in that function activity's corresponding PL/SQL procedure. It also means that if you have, for example two results (such as Yes and No) in your function activity and corresponding PL/SQL procedure, you need to make sure that there are two corresponding transitions in the workflow diagram (one for Yes and one for No). If you alter the result types and transitions in a process, be careful that you aren't deleting or bypassing any special transitions or checks.

## Messages

You can modify all of the messages to meet your individual business needs.

## Look upTypes

You can modify all the lookup types to meet your individual business needs.

---

---

**Note:** If you change a lookup type, make sure that all activities that use the lookup type allow for the change. For example, if you change the lookup type from Yes/No to something else, the activities that use that lookup type should also change their Result Type from Yes/No to whatever new lookup type you created. See: *Lookup Types, Oracle Workflow Guide*.

---

---

## PO Acknowledgment Workflow

The PO Acknowledgment process enables suppliers to record acceptances through Supplier Management Portal. The supplier receives a notification when a new document is created or an acceptance has not been recorded by the acceptance due date. The PO Acknowledgment Workflow contains the following process: Main Acknowledgment.

### Customizing the Main Acknowledgment Process

Processes can be customized, using the Oracle Workflow Builder. When you customize the PO Acknowledgment workflow, only projects defined after you customize it are affected.

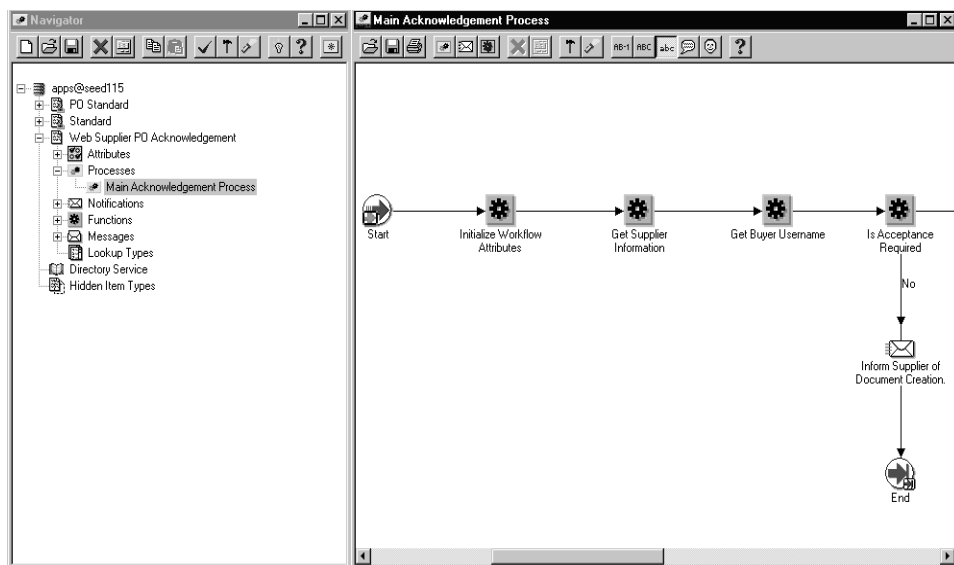
#### ►►To display the workflow in the Oracle Workflow Builder:

1. Choose Open from the File menu, and connect to the database.

See: Opening and Saving Item Types, *Oracle Workflow Builder*

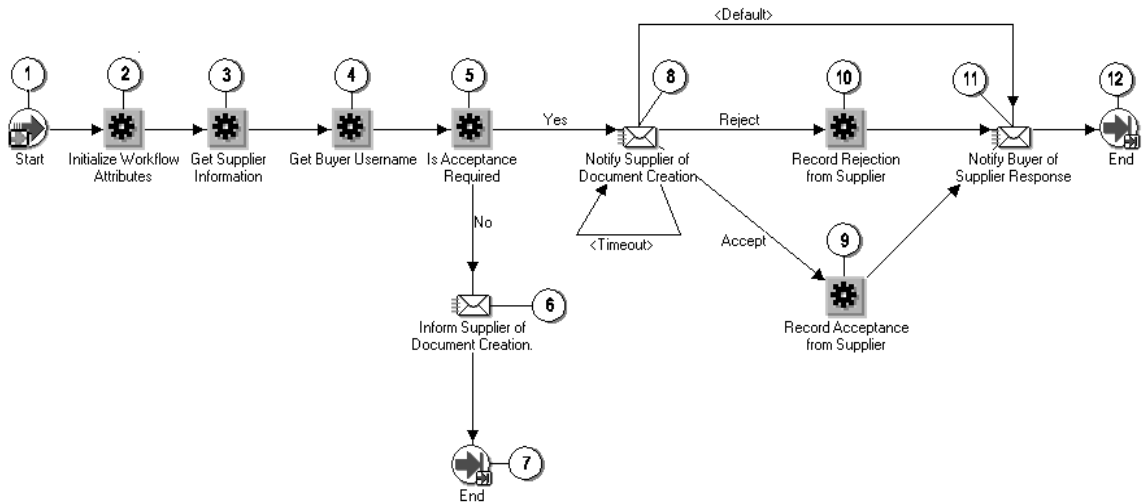
The display name of the workflow is PO Acknowledgment.

2. Expand the data source, then the item type PO Acknowledgment.
3. Expand the Process branch within the PO Acknowledgment branch, then double-click on its process activity to display the diagram.





## Main Acknowledgment Process



The workflow begins at node 1.

Node 2 initializes the workflow attributes. Nodes 3 and 4 get the supplier information and get the buyer username, respectively.

Node 5 checks if the document requires acceptance.

If acceptance is required, node 8 notifies the supplier of document creation and requests supplier acceptance.

If accepted, the supplier records acceptance at node 9 and the buyer is notified of such at node 11.

If rejected, the supplier records rejection at node 10 and the buyer is notified of such at node 11.

If acceptance is not required, node 6 notifies the supplier of document creation.

If the supplier fails to respond to the document, the request for the document timesout and a new request is sent.

## Main Acknowledgment Activities

The following is a description of each activity used in the Main Acknowledgment process, listed by the activity's display name.

### Start (Node 1)

This is a Standard function activity that marks the start of the process.

Function	WF_STANDARD.NOOP
Result Type	None
Required	Yes
Prerequisite Activities	None

### Initialize Workflow Attributes (Node 2)

This function activity initializes the Workflow attributes.

Function	POS_WF_PO_ACKNOWLEDGE.INITIALIZE_ATTRIBUTES
Result Type	None
Required	
Prerequisite Activities	

### Get Supplier Information (Node 3)

This function activity gets supplier information.

Function	POS_WF_PO_COMMON_APIS.GET_SUPPLIER
Result Type	None
Required	
Prerequisite Activities	

### Get Buyer Username (Node 4)

This function activity gets the buyer username.

Function	POS_WF_PO_COMMON_APIS.GET_BUYER_USERNAME
Result Type	None

Required

Prerequisite Activities

**Is Acceptance Required (Node 5)**

This function activity checks if the document requires acceptance.

Function	POS_WF_PO_ACKNOWLEDGE.ACCEPTANCE_REQUIRED
----------	---

Result Type	Yes/No
-------------	--------

Required

Prerequisite Activities

**Inform Supplier of Document Creation (Node 6)**

This function activity informs the supplier of document creation.

Function

Result Type	None
-------------	------

Required

Prerequisite Activities

**Notify Supplier of Document Creation (Node 8)**

This function activity notifies the supplier of document creation.

hFunction

Result Type	None
-------------	------

Required

**Prerequisite Activities Record Acceptance from Supplier (Node 9)**

This function activity records acceptance of supplier response.

Function	POS_WF_PO_ACKNOWLEDGE.REGISTER_ACCEPTANCE
----------	---

Result Type

Required

Prerequisite Activities

**Record Rejection from Supplier (Node 10)**

This function activity records rejection from the supplier.

Function                      POS\_WF\_PO\_ACKNOWLEDGE.REGISTER\_REJECTION  
Result Type                  None  
Required  
Prerequisite Activities

**Notify Buyer of Supplier Response (Node 11)**

This function activity notifies the buyer supplier response.

Function  
Result Type                  None  
Required  
Prerequisite Activities

**End (Nodes 7 and 12)**

This function activity marks the end of the process. Although the activity itself does not have a result type, each node of this activity in the process must have a process result assigned in the property page of the activity node.

Function                      WF\_STANDARD.NOOP  
Result Type                  None  
Required                      Yes  
Prerequisite Activities      None

**Abort Any Outstanding Acceptance Notifications**

---

**Note:** This function activity is currently not being used.

---

**Required Modifications** There are no required modifications for this workflow process.

**Customization Example** You can customize the Main Acknowledgment process by adding or deleting steps to the process, by changing process names and descriptions, and by changing step icons.

**Customizations That Are Not Supported** Each type of customization is supported for the Main Acknowledgment. However, the order of steps must take prerequisites for each form opened into account for the process to operate smoothly.

**Creating a New Custom Process** You can use the Main Acknowledgment process as a basis for developing your own project definition processes.

**Table 3–1 PO Acknowledgment Process Document Item Type Attributes**

<b>Display Name</b>	<b>Description</b>	<b>Type</b>	<b>Length/Format / Lookup Type</b>
Document ID	Document ID	Number	
Document Type	Document Type	Text	80
Buyer User Name	Buyer's user name defined in Oracle Applications	Text	
Buyer Display Name	Buyer's name displayed on the document	Text	60
Supplier	Supplier name	Text	
Supplier ID	Unique identifier for the supplier	Number	80
Supplier User Name	Buyer's user name defined in Oracle Applications	Text	
Supplier Display Name	Supplier's name displayed on the document	Text	60
Open Purchase Order	Open Purchase Order	Form	
Document Number	Document Number	Text	
Acceptance Result	Acceptance Result	Text	
Acceptance Due Date	Acceptance Due Date	Date	
Number of Minutes to Acceptance	Number of Minutes to Acceptance	Number	
Document Type Code	Document Type Code	Text	25
Release Number	Release Number	Number	
Buyer User ID	Unique identifier for the buyer	Number	
Acceptance Required?	Acceptance Required?	Text	
Org ID	Org ID	Number	
PO Details URL	Not available	Document	
Supplier Notification Timeout	Supplier Notification Timeout	Number	5

## Summary of the Main Acknowledgment Process

To view the properties of the PO Acknowledgment workflow, select the process in the navigation tree and choose Properties from the Edit menu.

This process is runnable, indicating that it can be initiated as a top level process to run by making calls to the Workflow Engine *CreateProcess* and *StartProcess* APIs.

## ASN Creation Notification Workflow

When you submit a notification request, Supplier Management Portal uses Oracle Workflow technology in the background to handle the notification process. Workflow defines the approval notification options hierarchy available in the request parameters. You can use the Workflow Builder interface to modify your notification process.

The ASN Creation Notification workflow contains the following processes:

- buyer notification
- supplier notification

### Customizing the ASN Creation Notification Process

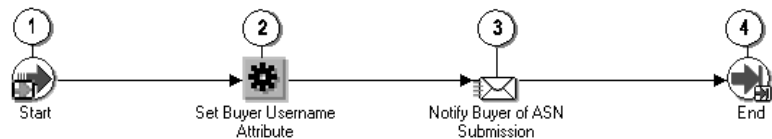
Processes can be customized using the Oracle Workflow Builder. When you customize the ASN Creation Notification workflow, only projects defined after you customize it are affected.

#### ►►To display the process in the Oracle Workflow Builder:

1. Choose Open from the File menu, and connect to the database.  
See: Opening and Saving Item Types, *Oracle Workflow Builder*  
The display name of the workflow is ASN Creation Notification.
2. Expand the data source, then expand the item type ASN Creation Notification.
3. Expand the Process branch, then double-click on its process activity to the display the diagram.

## Buyer Notification Process

This process activity automatically notifies buyers when an ASN has been submitted.



The process begins at node 1.

Node 2 sets the buyer username attribute and node 3 notifies the buyer of ASN submission.

## Buyer Notification Process Activities

The following is a description of each activity used in the Buyer Notification process, listed by the activity's display name.

### Start (Node 1)

This is a Standard function activity that marks the start of the process.

Function WF\_STANDARD.NOOP

Result Type None

Required Yes

Prerequisite Activities None

### Set Buyer Username Attribute (Node 2)

This function activity sets the Buyer Username Attribute.

Function POS\_WF\_PO\_COMMON\_APIS.GET\_BUYER\_USERNAME

Result Type None

Required

Prerequisite Activities



**Notify Buyer of ASN Submission (Node 3)**

This function activity notifies the Buyer of ASN submission.

Function

Result Type                      None

Required

Prerequisite Activities

**End (Node 4)**

This function activity marks the end of the process. Although the activity itself does not have a result type, each node of this activity in the process must have a process result assigned in the property page of the activity node.

Function                              *WF\_STANDARD.NOOP*

Result Type                      None

Required                              Yes

Prerequisite Activities      None

## Supplier Notification Process

This process activity automatically notifies you supplier when ASNs have been verified/rejected.



The workflow begins at node 1.

Node 2 sets the supplier contact username attribute, and node 3 notifies the supplier of ASN Creation.

## Supplier Notification Activities

The following is a description of each activity used in the Supplier Notification process, listed by the activity's display name.

### Start (Node 1)

This is a Standard function activity that marks the start of the process.

Function WF\_STANDARD.NOOP

Result Type None

Required Yes

Prerequisite Activities None

### Set Supplier Contact Username Attribute (Node 2)

This function activity sets the supplier contact username attribute.

Function POS\_WF\_PO\_COMMON\_APIS.GET\_SUPPLIER\_USERNAME

Result Type None

Required

Prerequisite Activities

**Notify Supplier of ASN Creation (Node 3)**

This function activity notifies the supplier of ASN Creation.

Function

Result Type                      None

Required

Prerequisite Activities

**End (Node 4)**

This function activity marks the end of the process. Although the activity itself does not have a result type, each node of this activity in the process must have a process result assigned in the property page of the activity node.

Function                              *WF\_STANDARD.NOOP*

Result Type                      None

Required                              Yes

Prerequisite Activities      None

**Required Modifications**

There are no required modifications for this workflow process.

**Customization Example** You can customize the Supplier Notification process by adding or deleting steps to the process, by changing process names and descriptions, and by changing step icons.

**Customizations That Are Not Supported** Each type of customization is supported for the Supplier Notification process. However, the order of steps must take prerequisites for each form opened into account for the process to operate smoothly.

**Creating a New Custom Process** You can use the Supplier Notification process as a basis for developing your own project definition processes.

## Summary of ASN Creation Notification Process

This process activity is not runnable, indicating that it cannot be initiated as a top-level process to run, but rather can be run only as a subprocess when called by a higher-level process

To view the properties of the ASN Creation Notification workflow, select the process in the navigation tree and choose Properties from the Edit menu.

**Table 3–2    ASN Creation Notification Item Attributes**

Display Name	Description	Type	Length/Format / Lookup Type
Buyer User Name	Buyer's user name defined in Oracle Applications	Text	
Supplier	Supplier name	Text	
Supplier ID	Unique identifier for the supplier	Number	
Supplier User Name	Buyer's user name defined in Oracle Applications	Text	
Supplier Display Name	Supplier's name displayed on the document	Text	
Supplier User ID	Unique identifier for the supplier contact user	Number	
Buyer User ID	Unique identifier for the buyer	Number	
Shipment Number	Shipment Number	Text	
Ship Date	Ship Date	Date	
Expected Receipt Date	Expected Receipt Date	Date	

## Change Promised Date Workflow

The Change Promised Date workflow organizes and launches the application forms needed to change the promised date. The workflow contains the following processes:

- [Process Promised & Need-by Date Process](#)
- [Initialized Workflow Subprocess](#)
- [Process OSP Item Subprocess](#)

### Customizing the Change Promise Date Process

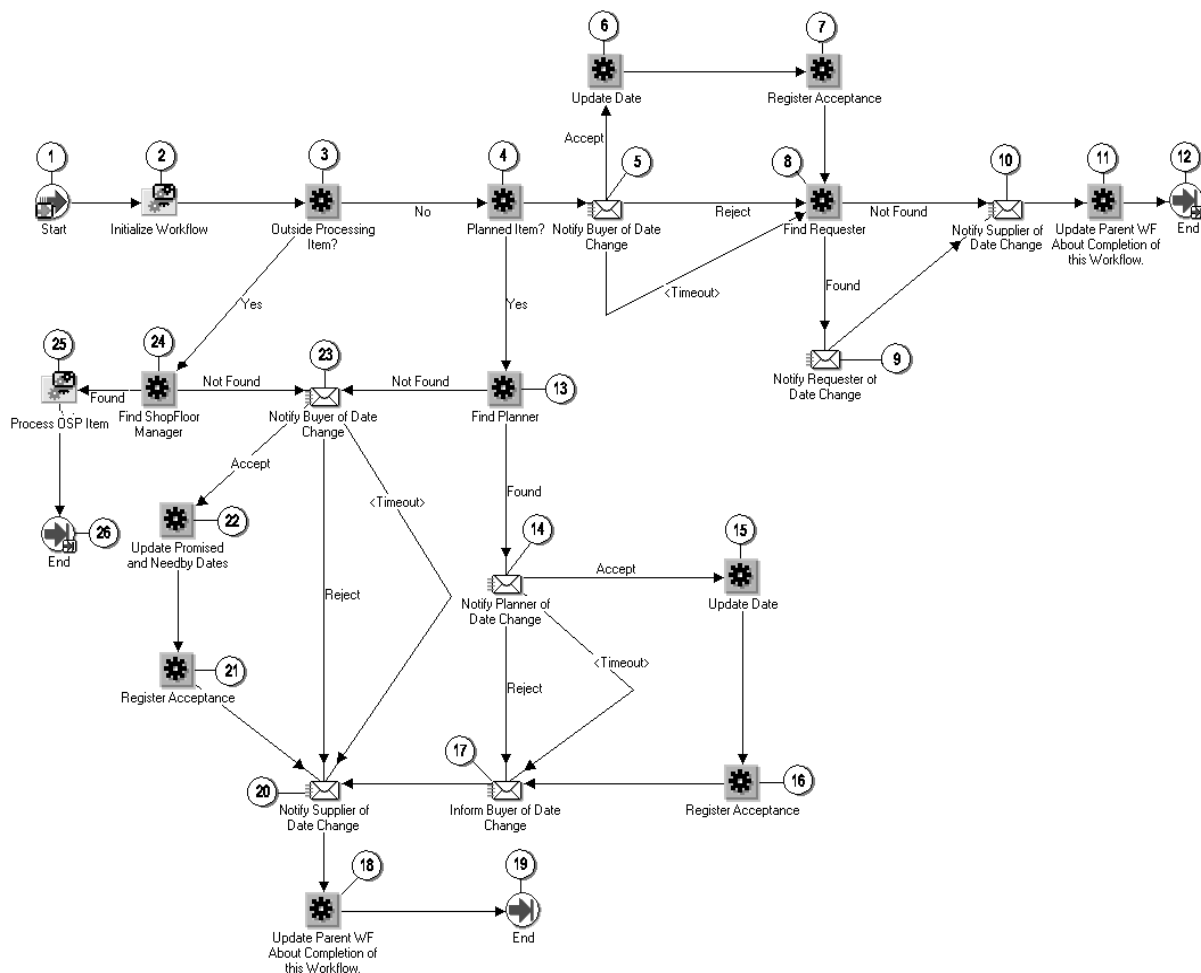
Processes can be customized using the Oracle Workflow Builder. When you customize the Change Promised Date workflow, only projects defined after you customize it are affected.

#### ►►To display the workflow in the Oracle Workflow Builder:

1. Choose Open from the File menu, and connect to the database.  
See: Opening and Saving Item Types, *Oracle Workflow Builder*.  
The display name of the workflow is Changed Promised Date.
2. Expand the data source, then expand the item type Changed Promised Date.
3. Expand the Processes branch within the item type, then double-click on the process activities to display their diagrams.

## Process Promised & Need-by Date Process

The Process Promised & Need-by Date process enables suppliers to communicate changes to promised dates to the buying organization.



The workflow begins at node 1.

Node 2 launches the initialize workflow subprocess.

Node 3 checks if the item requires outside processing. If so, node 24 attempts to find a shopfloor manager.

If found, node 25 launches the Process OSP item subprocess.

If not found, node 23 notifies the buyer that the supplier has requested a date change and checks for buyer's acceptance.

If accepted, the buyer updates the promised and needby dates at node 22, registers acceptance at node 21, and notifies the supplier of date change at node 20. Node 18 updates the Parent WF about completion of this workflow.

If rejected, the buyer notifies the supplier of such at node 20. Node 18 updates the Parent WF about completion of this workflow.

If the buyer fails to respond to the notification at node 23, the workflow times out. The item is recorded as rejected and a notification of such is sent to the supplier at node 20. Node 18 then updates the Parent WF about completion of this workflow.

If the item doesn't required outside processing, node 4 checks if the item is planned.

If the item is not planned, node 5 notifies the buyer of the date change and checks if the buyer has accepted it.

If accepted, the buyer updates the date at node 6 and registers its acceptance at node 7. The buyer then attempts to find the requester at node 8.

If found, the buyer notifies the requester of the date change at node 9. The requester notifies the supplier of the date change at node 10. Node 11 updates the Parent WF about completion of this workflow.

If the requester is not found, the buyer sends a notification of such to the supplier at node 10. Node 11 updates the Parent WF about completion of this workflow.

If the buyer rejects the date change at node 5, the buyer attempts to find the requester at node 8.

If found, node 9 and 10 notify the requester and supplier of buyer's rejection, respectively. Node 11 updates the Parent WF about completion of this workflow.

If not found, the buyer notifies the buyer of such at node 10. Node 11 updates the Parent WF about completion of this workflow.

If node 5 timesout, the item is recorded as rejected.

If the item is planned, node 13 attempts to find a planner.

If found, node 14 notifies the planner of date change and checks if the planner accepts it.

If accepted, the planner updates the date at node 15, register's acceptance at node 16, and informs buyer of date change at node 17. Node 20 notifies the supplier of the date change, and node 18 updates the Parent WF about completion of this workflow.

If the planner rejects the date change, the planner informs the buyer and supplier of such at node 17 and 20, respectively. Node 18 updates the Parent WF about completion of this workflow.

If node 14 timesout, the item is recorded as rejected.

If a planner cannot be found at node 13, node 23 notifies the buyer that the supplier has requested a date change and checks for buyer's acceptance.

If accepted, the buyer updates the promised and needby dates at node 22, registers acceptance at node 21, and notifies the supplier of date change at node 20. Node 18 updates the Parent WF about completion of this workflow.

If rejected, the buyer notifies the supplier of such at node 20. Node 18 updates the Parent WF about completion of this workflow.

If the buyer fails to respond to the notification at node 23, the workflow times out. The item is recorded as rejected and a notification of such is sent to the supplier at node 20. Node 18 updates the Parent WF about completion of this workflow.

**Required Modifications** There are no required modifications for this workflow process.

**Customization Example** You can customize the Change Promised Date process by adding or deleting steps to the process, by changing process names and descriptions, and by changing step icons. For example, you might choose to remove Task Auto Assignment from this process if your organization is at a project control level of task.

**Customizations That Are Not Supported** Each type of customization is supported for the Change Promised Date. However, the order of steps must take prerequisites for each form opened into account for the process to operate smoothly.

**Creating a New Custom Process** You can use the Change Promised Date process as a basis for developing your own project definition processes.



## Process Promised & Need-By Date Activities

The following is a description of each activity used in the Process Promised & Need-By Date process, listed by the activity's display name.

### Start (Node 1)

This is a Standard function activity that marks the start of the process.

Function WF\_STANDARD.NOOP

Result Type None

Required Yes

Prerequisite Activities None

### Outside Processing Item? (Node 3)

This is a Standard function activity checks if the item requires outside processing.

Function POS\_WF\_PO\_UPDATE\_DATES.OSP\_ITEM

Result Type Yes/No

Required

Prerequisite Activities

### Planned Item? (Node 4)

This is a Standard function activity checks if the item is planned.

Function POS\_WF\_PO\_UPDATE\_DATES.PLANNED\_ITEM

Result Type Yes/No

Required

Prerequisite Activities

### Notify Buyer of Date Change (Nodes 5 and 23)

This function activity informs the buyer of date change.

Function

Result Type @@Accept/Reject

Required

#### Prerequisite Activities

##### **Update Date (Nodes 6 and 15)**

This function activity updates the date.

Function POS\_WF\_PO\_UPDATE\_DATES.UPDATE\_DATE

Result Type None

Required

Prerequisite Activities

##### **Register Acceptance (Nodes 7, 16, and 21)**

This function activity registers acceptance of the updated date.

Function POS\_WF\_PO\_UPDATE\_DATES.REGISTER\_ACCEPTANCE

Result Type None

Required

Prerequisite Activities

##### **Find Requester (Node 8)**

This function activity attempts to find the requester.

Function POS\_WF\_PO\_UPDATE\_DATES.FIND\_REQUESTER

Result Type Found/Not Found

Required

Prerequisite Activities

##### **Notify Requester of Date Change (Node 9)**

This function activity notifies the requester of date change.

Function

Result Type None

Required

Prerequisite Activities

**Notify Supplier of Date Change (Node 10 and 20)**

This function activity notifies the supplier of date change.

Function

Result Type                None

Required

Prerequisite Activities

**Update Parent WF About Completion of this Workflow (Nodes 11 and 18)**

Function                    POS\_WF\_PO\_UPDATE\_DATES.UPDATE\_PARENT\_WF

Result Type                None

Required

Prerequisite Activities

**Find Planner (Node 13)**

This function activity finds the planner.

Function                    POS\_WF\_PO\_UPDATE\_DATES.FIND\_PLANNER

Result Type                Found/Not Found

Required

Prerequisite Activities

**Notify Planner of Date Change (Node 14)**

This function activity notifies the planner of date change.

Function

Result Type                None

Required

Prerequisite Activities

**Inform Buyer of Date Change (Node 17)** This function activity informs the buyer date change.

Function

Result Type                None

Required

Prerequisite Activities

**Update Promised and Needby Dates (Node 22)**

This function activity updates the promised and needby dates.

Function                      POS\_WF\_PO\_UPDATE\_DATES.UPDATE\_PROM\_  
NEEDBY\_DATE

Result Type                      None

Required

Prerequisite Activities

**Find ShopFloor Manager (Node 24)**

This function activity finds the shopfloor manager.

Function                      POS\_WF\_PO\_UPDATE\_DATES.FIND\_SHOPFLOOR\_  
MGR

Result Type                      Found/Not Found

Required

Prerequisite Activities

**End (Nodes 12, 19, and 26)**

This function activity marks the end of the process. Although the activity itself does not have a result type, each node of this activity in the process must have a process result assigned in the property page of the activity node.

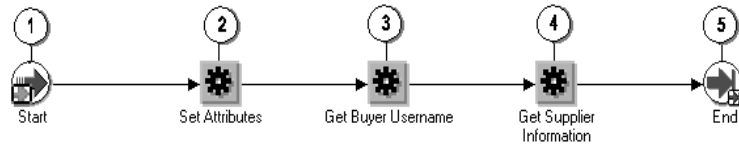
Function                      *WF\_STANDARD.NOOP*

Result Type                      None

Required                      Yes

Prerequisite Activities      None

## Initialized Workflow Subprocess



The subprocess begins at node 1.

Node 2 sets the attributes, node 3 gets the buyer username, and node 4 gets the supplier information.

### Initialize Workflow Activities

The following is a description of each activity used in the Initialize Workflow process, listed by the activity's display name.

#### Start (Node 1)

This is a Standard function activity that marks the start of the process.

Function	WF_STANDARD.NOOP
Result Type	None
Required	Yes
Prerequisite Activities	None

#### Set Attributes (Node 2)

This function activity sets the attributes.

Function	POS_WF_PO_UPDATE_DATES.SET_ATTRIBUTES
Result Type	None
Required	
Prerequisite Activities	

### **Get Buyer Username (Node 3)**

This function activity gets the buyer username.

Function `POS_WF_PO_COMMON_APIS.GET_BUYER_USERNAME`

Result Type `None`

Required

Prerequisite Activities

### **Get Supplier Information (Node 4)**

This function activity gets the supplier information.

Function `POS_WF_PO_COMMON_APIS.GET_SUPPLIER`

Result Type `None`

Required

Prerequisite Activities

### **End (Node 5)**

This function activity marks the end of the process. Although the activity itself does not have a result type, each node of this activity in the process must have a process result assigned in the property page of the activity node.

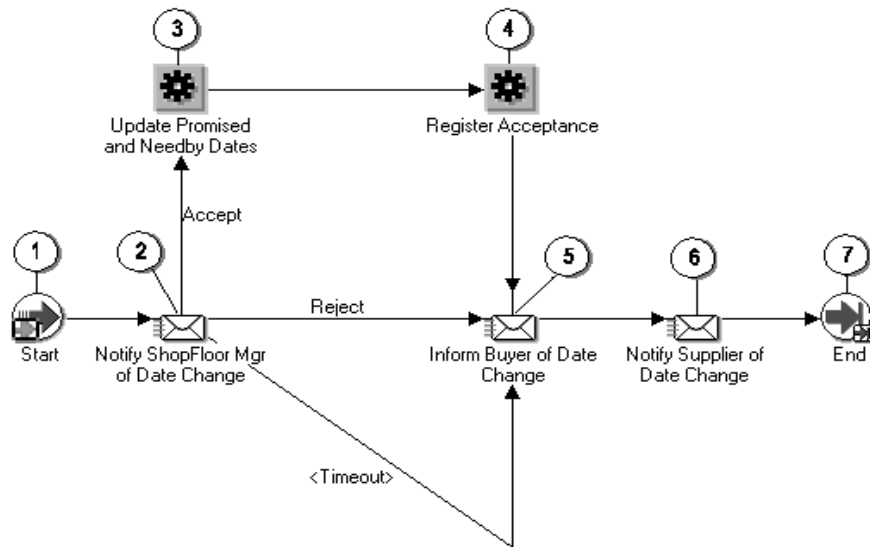
Function `WF_STANDARD.NOOP`

Result Type `None`

Required `Yes`

Prerequisite Activities `None`

## Process OSP Item Subprocess



The subprocess begins at node 1.

Node 2 notifies the shopfloor manager of date change and then checks if the shopfloor manager has accepted the update promised and need dates.

If accepted, the shopfloor manager updates the promised and needby dates at node 3, registers acceptance at node 4, and informs the buyer and supplier of the date change at nodes 5 and 6, respectively.

If rejected, the shopfloor manager informs the buyer and supplier of such at nodes 5 and 6, respectively.

If the notification at node 2 times out, it is recorded as rejected.

## Process OSP Item Activities

The following is a description of each activity used in the Process OSP Item subprocess, listed by the activity's display name.

### Start (Node 1)

This is a Standard function activity that marks the start of the process.

Function	WF_STANDARD.NOOP
Result Type	None
Required	Yes
Prerequisite Activities	None

### Notify ShopFloor Mgr of Date Change (Node 2)

This function activity notifies the shopfloor manager of a date change.

Function	
Result Type	@@accept/reject
Required	
Prerequisite Activities	

### Update Promised and Needby Dates (Node 3)

This function activity updates the promised and needby dates.

Function	POS_WF_PO_UPDATE_DATES.UPDATE_PROM_NEEDBY_DATE
Result Type	None
Required	
Prerequisite Activities	

**Register Acceptance (Node 4)** This function activity registers acceptance of the update promised and needby dates.

Function	POS_WF_PO_UPDATE_DATES.REGISTER_ACCEPTANCE
Result Type	None
Required	



Prerequisite Activities

**Inform Buyer of Date Change (Node 5)**

This function activity informs the buyer of date change.

Function

Result Type                      None

Required

Prerequisite Activities

**Notify Supplier of Date Change (Node 6)**

This function activity notifies the supplier of date change.

Function

Result Type                      None

Required

Prerequisite Activities

**End (Node 7)**

This function activity marks the end of the process. Although the activity itself does not have a result type, each node of this activity in the process must have a process result assigned in the property page of the activity node.

Function                              *WF\_STANDARD.NOOP*

Result Type                      None

Required                              Yes

Prerequisite Activities              None

**Table 3–3 Change Promised Date Document Item Type Attributes**

Display Name	Description	Type	Length/Format/ Lookup Type
Buyer User Name	Buyer's user name defined in Oracle Applications	Text	60
Buyer Display Name	Buyer's name displayed on the document	Text	60
Supplier	Supplier name	Text	80
Supplier User Name	Supplier's user name defined in Oracle Applications	Text	60
Document ID	Document ID	Number	
Document Type	Document Type	Text	80
Document Number	Document Number	Text	20
Requester User Name	Requester User Name	Text	
Planner User Name	Planner User Name	Text	
Item ID	Item ID	Number	
Requester ID	Requester ID	Number	
Document Type Code	Document Type Code	Text	25
Document Subtype	Document Subtype	Text	80
Ship to Organization ID	Ship to Organization ID	Number	
Shipment ID	Shipment ID	Number	
Original Promised Date	Original Promised Date	Date	
New Promised Date	New Promised Date	Date	
Original Needby Date	Original Needby Date	Date	
New Needby Date	New Needby Date	Date	
Supplier User ID	Unique identifier for the Supplier User Name	Number	
Current Distribution for Requester.	Current Distribution for Requester.	Number	
Parent Workflow Itemkey	Parent Workflow Itemkey	Text	
ShopFloor Manager User Name	ShopFloor Manager User Name	Text	
User Response For Update	User Response For Update	Text	
Buyer User ID	Unique identifier for the buyer	Text	

**Table 3–3** *Change Promised Date Document Item Type Attributes*

Display Name	Description	Type	Length/Format/ Lookup Type
Supplier ID	Supplier ID	Text	
Org ID	Org ID	Number	
PO Details URL	no description	Document	

## Change Promised Date Summary

To view the properties of the Change Promised Date workflow, select the process in the navigation tree and choose Properties from the Edit menu.

This process is runnable, indicating that it can be initiated as a top level process to run by making calls to the Workflow Engine *CreateProcess* and *StartProcess* APIs.

## Capacity Update (ASL) Notification Workflow

This workflow enables suppliers to enter and maintain their capacity constraints through Supplier Management Portal.

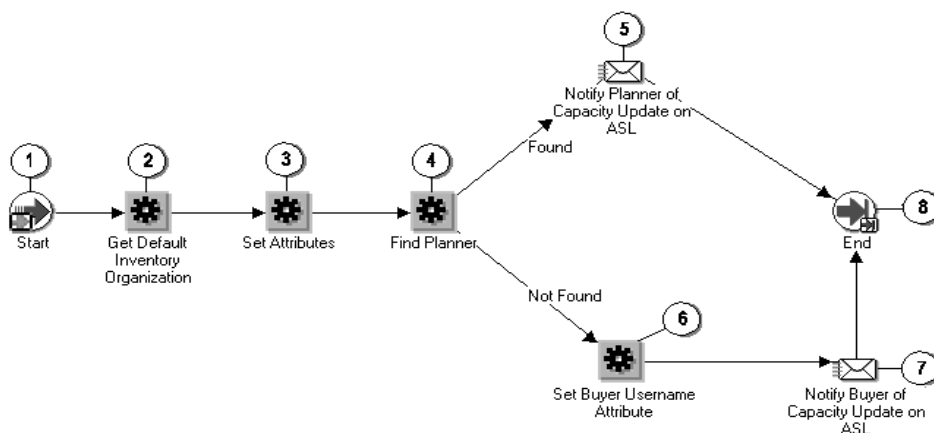
### Customizing the Change Promise Date Process

Processes can be customized using the Oracle Workflow Builder. When you customize the Capacity Update (ASL) Notification workflow, only projects defined after you customize it are affected.

#### ►►To display the workflow in the Oracle Workflow Builder:

1. Choose Open from the File menu, and connect to the database.  
See: Opening and Saving Item Types, *Oracle Workflow Builder*.  
The display name of the workflow is Capacity UPdate (ASL) Notification.
2. Expand the data source, then expand the item type Notification Update (ASL) Notification.
3. Expand the Processes branch within the item type, then double-click on the process activities to the display their diagrams.

## Capacity Update (ASL) Notification Process



The workflow begins at node 1.

Node 2 gets the default inventory organization, node 3 sets attributes, node 4 attempts to find the planner.

If found, the workflow branches to node 5, notifying the planner of the capacity update on the Approved Supplier List (ASL).

If not found, node 6 sets the buyer username. Node 7 notifies the buyer of capacity update on the ASL.

## Capacity Update (ASL) Notification Activities

### Start (Node 1)

This standard function activity marks the start of the process.

Function WF\_STANDARD.NOOP

Result Type None

Required Yes

Prerequisite Activities None

### Get Default Inventory Organization (Node 2)

This function activity gets the default inventory organization.

Function                    POS\_WF\_PO\_COMMON\_APIS.GET\_DEFAULT  
INVENTORY\_ORG

Result Type                None

Required

Prerequisite Activities

**Set Attributes (Node 3)**

This function activity sets the attributes.

Function                    POS\_WF\_PO\_COMMON\_APIS.SET\_ATTRIBUTES

Result Type                None

Required

Prerequisite Activities

**Find Planner (Node 4)**

This function activity finds the planner.

Function                    POS\_WF\_PO\_UPDATE\_DATES.FIND\_PLANNER

Result Type                Found/Not Found

Required

Prerequisite Activities

**Notify Planner of Capacity Update on ASL (Node 5)**

This function activity notifies the planner of capacity update on the approved supplier list (ASL).

Function

Result Type                None

Required

Prerequisite Activities

**Set Buyer Username Attribute (Node 6)**

This function activity sets the buyer username attribute.

Function                      POS\_WF\_PO\_COMMON\_APIS.GET\_BUYER\_USERNAME

Result Type                  None

Required

Prerequisite Activities

**Notify Buyer of Capacity Update on ASL (Node 7)**

This function activity notifies the buyer of capacity update on the approved supplier list.

Function

Result Type                  None

Required

Prerequisite Activities

**End (Node 8)**

This function activity marks the end of the process. Although the activity itself does not have a result type, each node of this activity in the process must have a process result assigned in the property page of the activity node.

Function                      WF\_STANDARD.NOOP

Result Type                  None

Required                      Yes

Prerequisite Activities      None

**Required Modifications** There are no required modifications for this workflow process.

**Customization Example** You can customize the Web Capacity Update (ASL) Notification process by adding or deleting steps to the process, by changing process names and descriptions, and by changing step icons.

**Customizations That Are Not Supported** Each type of customization is supported for the Web Capacity Update (ASL) Notification process. However, the order of steps must

take prerequisites for each form opened into account for the process to operate smoothly.

**Creating a New Custom Process** You can use the Web Capacity Update (ASL) Notification process as a basis for developing your own project definition processes.

**Table 3–4 Capacity Update (ASL) Notifications Item Type Attributes**

Display Name	Description	Type	Length/Format / Lookup Type
Buyer User Name	Buyer's user name defined in Oracle Applications	Text	60
Supplier	Supplier name	Text	80
Buyer User ID	Unique identifier for the buyer	Number	
Planner User Name	Planner User Name	Number	
Item ID	Item ID	Text	
Item	Item	Text	
Supplier Site	Supplier Site	Text	80
Default Inventory Organization	Default Inventory Organization	Number	
ASL Name	ASL Name	Text	

## Capacity Update (ASL) Notifications Summary

To view the properties of the Capacity Update Notification workflow, select the process in the navigation tree and choose Properties from the Edit menu.

This process is runnable, indicating that it can be initiated as a top level process to run by making calls to the Workflow Engine *CreateProcess* and *StartProcess* APIs.





---

## **Web Application Dictionary (WAD) Flows and Regions**

The Web Applications Dictionary is an active data dictionary that stores data used to generate web pages dynamically at runtime. The Web Applications Dictionary stores data pertinent to appearance, language, security requirements, and navigation. Use the Web Applications to define or customize inquiry and transaction applications for web deliver. See Oracle Self-Service Web Applications Implementation Manual, Release 11i.

**Table 4–1**

Region Code	DB View	Object Name	Object Attribute Code
POS_ASN_SEARCH_R	POS_ASN_SEARCH_V	POS_ASN_SEARCH_O	POS_DATE_END
			POS_DATE_START
			POS_ITEM_DESCRIPTION
			POS_ITEM_NUMBER
			POS_PO_NUMBER
			POS_SHIP_TO_LOCATION
			POS_SHIP_TO_LOCATION_ID
			POS_SUPPLIER_ITEM_NUMBER
			POS_VENDOR_SITE_ID
			POS_VENDOR_SITE_NAME

**Table 4–2**

Region Code	DB View	Object Name	Object Attribute Code
POS_ASN_LOCATION_LOV_R	POS_ASN_LOCATION_LOV_V	POS_ASN_LOCATION_LOV_O	POS_SHIP_TO_ADDRESS
			POS_SHIP_TO_LOCATION
			POS_SHIP_TO_LOCATION_ID
			POS_SHIP_TO_ORGANIZATION
			POS_SHIP_TO_ORGANIZATION_ID

**Table 4–3**

Region Code	DB View	Object Name	Object Attribute Code
POS_ASN_SITE_LOV_R	POS_ASN_SITE_LOV_V	POS_ASN_SITE_LOV_O	ICX_SUPPLIER_ORG_ID
			ICX_SUPPLIER_SITE_ID
			POS_VENDOR_ID
			POS_VENDOR_SITE_ADDRESS
			POS_VENDOR_SITE_ID
			POS_VENDOR_SITE_NAME

**Table 4–4**

Region Code	DB View	Object Name	Object Attribute Code
POS_ASN_ADV_SEARCH_R	POS_ASN_SEARCH_V	POS_ASN_SEARCH_O	POS_DATE_END
			POS_DATE_START
			POS_ITEM_DESCRIPTION
			POS_ITEM_NUMBER
			POS_PO_NUMBER
			POS_SHIP_TO_LOCATION
			POS_SHIP_TO_LOCATION_ID
			POS_SUPPLIER_ITEM_NUMBER
			POS_VENDOR_SITE_ID
			POS_VENDOR_SITE_NAME

**Table 4–5**

Region Code	DB View	Object Name	Object Attribute Code
POS_ASN_REVIEW_HEADERS_R	POS_ASN_REVIEW_HEADERS_V	POS_ASN_REV_HEADERS_O	POS_ASN_SHIPMENT_NUM
			POS_ASN_TYPE
			POS_BILL_OF_LADING
			POS_CARRIER_EQUIPMENT
			POS_CARRIER_METHOD
			POS_COMMENTS
			POS_FREIGHT_BILL_NUMBER
			POS_FREIGHT_CARRIER
			POS_FREIGHT_CARRIER_CODE
			POS_FREIGHT_TERM
			POS_GROSS_WEIGHT
			POS_GROSS_WEIGHT_UOM
			POS_INVOICE_DATE
			POS_INVOICE_NUMBER
			POS_NET_WEIGHT
			POS_NET_WEIGHT_UOM
			POS_NET_WEIGHT_UOM_CODE

**Table 4–5**

Region Code	DB View	Object Name	Object Attribute Code
			POS_NUM_OF_CONTAINERS
			POS_PACKAGING_CODE
			POS_PACKING_SLIP
			POS_PAYMENT_TERMS
			POS_SHIP_DATE
			POS_SHIP_TO_ORGANIZATION
			POS_SPECIAL_HANDLING_CODE
			POS_TAR_WEIGHT
			POS_TAR_WEIGHT_UOM
			POS_TAX_AMOUNT
			POS_TAX_NAME
			POS_VENDOR_SITE_NAME
			POS_WAYBILL_AIRBILL_NUM

**Table 4–6**

Region Code	DB View	Object Name	Object Attribute Code
POS_ASN_REVIEW_ INV_HDR_R	POS_ASN_REVIEW_ HEADERS_V	POS_ASN_REV_HEADERS_ O	POS_ASN_SHIPMENT_NUM
			POS_ASN_TRANSACTION_TYPE
			POS_ASN_TYPE
			POS_BILL_OF_LADING
			POS_CARRIER_EQUIPMENT
			POS_CARRIER_METHOD

**Table 4–7**

Region Code	DB View	Object Name	Object Attribute Code
POS_ASN_REVIEW_ INV_HDR_R	POS_ASN_REVIEW_ HEADERS_V	POS_ASN_REV_HEADERS_O	POS_COMMENTS
			POS_EXPECTED_RECEIPT_DATE

**Table 4–7**

Region Code	DB View	Object Name	Object Attribute Code
			POS_FREIGHT_AMOUNT
			POS_FREIGHT_BILL_NUMBER
			POS_FREIGHT_CARRIER
			POS_FREIGHT_CARRIER_CODE
			POS_FREIGHT_TERM
			POS_GROSS_WEIGHT
			POS_GROSS_WEIGHT_UOM
			POS_GROSS_WEIGHT_UOM_CODE
			POS_INVOICE_AMOUNT
			POS_INVOICE_DATE
			POS_INVOICE_NUMBER
			POS_NET_WEIGHT
			POS_NET_WEIGHT_UOM
			POS_NET_WEIGHT_UOM_CODE
			POS_NUM_OF_CONTAINERS
			POS_PACKAGING_CODE
			POS_PACKING_SLIP
			POS_PAYMENT_TERMS
			POS_SHIP_DATE
			POS_SHIP_TO_LOCATION
			POS_SHIP_TO_ORGANIZATION
			POS_SPECIAL_HANDLING_CODE
			POS_TAR_WEIGHT
			POS_TAR_WEIGHT_UOM
			POS_TAR_WEIGHT_UOM_CODE
			POS_TAX_AMOUNT
			POS_TAX_NAME
			POS_VENDOR_NAME
			POS_VENDOR_SITE_NAME

**Table 4–7**

Region Code	DB View	Object Name	Object Attribute Code
			POS_WAYBILL_AIRBILL_NUM

**Table 4–8**

Region Code	DB View	Object Name	Object Attribute Code
POS_ASN_REVIEW_PO_DETAILS_R	POS_ASN_REVIEW_SHIPMENTS_V	POS_ASN_REVIEW_SHIP_O	POS_BARCODE_LABEL
			POS_BILL_OF_LADING
			POS_COMMENTS
			POS_CONTAINER_NUM
			POS_COUNTRY_OF_ORIGIN
			POS_EXPECTED_RECEIPT_DATE
			POS_EXTENDED_PRICE
			POS_FREIGHT_CARRIER
			POS_ITEM_DESCRIPTION
			POS_NUM_OF_CONTAINERS
			POS_PACKING_SLIP
			POS_PO_LINE_NUM
			POS_PO_NUMBER
			POS_PO_SHIPMENT_LINE_NUMBER
			POS_QUANTITY_INVOICED
			POS_QUANTITY_SHIPPED
			POS_REASON_NAME
			POS_SEQ_NUM
			POS_SHIP_TO_LOCATION
			POS_SUPPLIER_ITEM_NUMBER
			POS_TAXABLE_FLAG
			POS_TAX_NAME
			POS_TAX_RATE
			POS_TRUCK_NUM
			POS_UNIT_OF_MEASURE
			POS_UNIT_PRICE

**Table 4–8**

Region Code	DB View	Object Name	Object Attribute Code
			POS_VENDOR_CUM_SHIPPED_QTY
			POS_VENDOR_LOT_NUM
			POS_WAYBILL_AIRBILL_NUM

**Table 4–9**

Region Code	DB View	Object Name	Object Attribute Code
POS_ASN_REVIEW_SHIP_DETAILS_R	POS_ASN_REVIEW_SHIPMENTS_V	POS_ASN_REVIEW_SHIP_O	POS_BARCODE_LABEL
			POS_BILL_OF_LADING
			POS_COMMENTS
			POS_CONTAINER_NUM
			POS_COUNTRY_OF_ORIGIN
			POS_EXPECTED_RECEIPT_DATE
			POS_EXTENDED_PRICE
			POS_FREIGHT_CARRIER
			POS_ITEM_DESCRIPTION
			POS_NUM_OF_CONTAINERS
			POS_PACKING_SLIP
			POS_PO_LINE_NUM
			POS_PO_NUMBER
			POS_PO_SHIPMENT_LINE_NUMBER
			POS_QUANTITY_INVOICED
			POS_QUANTITY_SHIPPED
			POS_REASON_NAME
			POS_SEQ_NUM
			POS_SHIP_TO_LOCATION
			POS_SUPPLIER_ITEM_NUMBER
			POS_TAXABLE_FLAG
			POS_TAX_NAME
			POS_TAX_RATE

**Table 4–10**

Region Code	DB View	Object Name	Object Attribute Code
POS_ASN_REVIEW_INV_	POS_ASN_REVIEW_	POS_ASN_REVIEW_SHIP_O	POS_BARCODE_LABEL
DETAILS_R	SHIPMENTS_V		
			POS_BILL_OF_LADING
			POS_COMMENTS
			POS_CONTAINER_NUM
			POS_COUNTRY_OF_
			ORIGIN
			POS_EXPECTED_RECEIPT_
			DATE
			POS_EXTENDED_PRICE
			POS_FREIGHT_CARRIER
			POS_ITEM_DESCRIPTION
			POS_NUM_OF_
			CONTAINERS
			POS_PACKING_SLIP
			POS_PO_LINE_NUM
			POS_PO_NUMBER
			POS_PO_SHIPMENT_LINE_
			NUMBER
			POS_QUANTITY_INVOICED
			POS_QUANTITY_SHIPPED
			POS_REASON_NAME
			POS_SEQ_NUM
			POS_SHIP_TO_LOCATION
			POS_SUPPLIER_ITEM_
			NUMBER
			POS_TAXABLE_FLAG
			POS_TAX_NAME
			POS_TAX_RATE
			POS_TRUCK_NUM
			POS_UNIT_OF_MEASURE
			POS_UNIT_PRICE
			POS_VENDOR_CUM_
			SHIPPED_QTY



---

**Table 4–10**

Region Code	DB View	Object Name	Object Attribute Code
			POS_VENDOR_LOT_NUM
			POS_WAYBILL_AIRBILL_NUM

**Table 4–11**

Region Code	DB View	Object Name	Object Attribute Code
POS_ASN_REVIEW_ PO_DETAILS_R	POS_ASN_REVIEW_ SHIPMENTS_V	POS_ASN_REVIEW_SHIP_O	POS_BARCODE_LABEL
			POS_BILL_OF_LADING
			POS_COMMENTS
			POS_CONTAINER_NUM
			POS_COUNTRY_OF_ORIGIN
			POS_EXPECTED_RECEIPT_DATE
			POS_EXTENDED_PRICE
			POS_FREIGHT_CARRIER
			POS_ITEM_DESCRIPTION
			POS_NUM_OF_CONTAINERS
			POS_PACKING_SLIP
			POS_PO_LINE_NUM
			POS_PO_NUMBER
			POS_PO_SHIPMENT_LINE_ NUMBER
			POS_QUANTITY_INVOICED
			POS_QUANTITY_SHIPPED
			POS_REASON_NAME
			POS_SEQ_NUM
			POS_SHIP_TO_LOCATION
			POS_SUPPLIER_ITEM_NUMBER
			POS_TAXABLE_FLAG
			POS_TAX_NAME
			POS_TAX_RATE
			POS_TRUCK_NUM
			POS_UNIT_OF_MEASURE
			POS_UNIT_PRICE
			POS_VENDOR_CUM_SHIPPED_ QTY
			POS_VENDOR_LOT_NUM

**Table 4–11**

Region Code	DB View	Object Name	Object Attribute Code
			POS_WAYBILL_AIRBILL_NUM

**Table 4–12**

Region Code	DB View	Object Name	Object Attribute Code
POS_ASN_REVIEW_SHIP_DETAILS_R	POS_ASN_REVIEW_SHIPMENTS_V	POS_ASN_REVIEW_SHIP_O	POS_BARCODE_LABEL
			POS_BILL_OF_LADING
			POS_COMMENTS
			POS_CONTAINER_NUM
			POS_COUNTRY_OF_ORIGIN
			POS_EXPECTED_RECEIPT_DATE
			POS_EXTENDED_PRICE
			POS_FREIGHT_CARRIER
			POS_ITEM_DESCRIPTION
			POS_NUM_OF_CONTAINERS
			POS_PACKING_SLIP
			POS_PO_LINE_NUM
			POS_PO_NUMBER
			POS_PO_SHIPMENT_LINE_NUMBER
			POS_QUANTITY_INVOICED
			POS_QUANTITY_SHIPPED
			POS_REASON_NAME
			POS_SEQ_NUM
			POS_SHIP_TO_LOCATION
			POS_SUPPLIER_ITEM_NUMBER
			POS_TAXABLE_FLAG
			POS_TAX_NAME
			POS_TAX_RATE

**Table 4–13**

Region Code	DB View	Object Name	Object Attribute Code
POS_ASN_REVIEW_SHIP_DETAILS_R	POS_ASN_REVIEW_SHIPMENTS_V	POS_ASN_REVIEW_SHIP_O	POS_TRUCK_NUM
			POS_UNIT_OF_MEASURE
			POS_UNIT_PRICE
			POS_VENDOR_CUM_SHIPPED_QTY
			POS_VENDOR_LOT_NUM
			POS_WAYBILL_AIRBILL_NUM

**Table 4–14**

Region Code	DB View	Object Name	Object Attribute Code
POS_ASN_REVIEW_INV_DETAILS_R	POS_ASN_REVIEW_SHIPMENTS_V	POS_ASN_REVIEW_SHIP_O	POS_BARCODE_LABEL
			POS_BILL_OF_LADING
			POS_COMMENTS
			POS_CONTAINER_NUM
			POS_COUNTRY_OF_ORIGIN
			POS_EXPECTED_RECEIPT_DATE
			POS_EXTENDED_PRICE
			POS_FREIGHT_CARRIER
			POS_ITEM_DESCRIPTION
			POS_NUM_OF_CONTAINERS
			POS_PACKING_SLIP
			POS_PO_LINE_NUM
			POS_PO_NUMBER
			POS_PO_SHIPMENT_LINE_NUMBER
			POS_QUANTITY_INVOICED
			POS_QUANTITY_SHIPPED
			POS_REASON_NAME
			POS_SEQ_NUM

**Table 4–14**

Region Code	DB View	Object Name	Object Attribute Code
			POS_SHIP_TO_LOCATION
			POS_SUPPLIER_ITEM_NUMBER
			POS_TAXABLE_FLAG
			POS_TAX_NAME
			POS_TAX_RATE
			POS_TRUCK_NUM
			POS_UNIT_OF_MEASURE
			POS_UNIT_PRICE
			POS_VENDOR_CUM_SHIPPED_QTY
			POS_VENDOR_LOT_NUM
			POS_WAYBILL_AIRBILL_NUM

**Table 4–15**

Region Code	DB View	Object Name	Object Attribute Code
POS_ASN_HEADERS	POS_ASN_HEADERS_V	POS_ASN_HEADERS	POS_ASN_SHIPMENT_NUM
			POS_BILL_OF_LADING
			POS_CARRIER_EQUIPMENT
			POS_CARRIER_METHOD
			POS_COMMENTS
			POS_EXPECTED_RECEIPT_DATE
			POS_FREIGHT_AMOUNT
			POS_FREIGHT_BILL_NUMBER
			POS_FREIGHT_CARRIER
			POS_FREIGHT_CARRIER_CODE
			POS_FREIGHT_TERM

**Table 4–15**

Region Code	DB View	Object Name	Object Attribute Code
			POS_FREIGHT_TERM_CODE
			POS_GROSS_WEIGHT
			POS_GROSS_WEIGHT_UOM
			POS_GROSS_WEIGHT_UOM_CODE
			POS_INVOICE_AMOUNT
			POS_INVOICE_DATE
			POS_INVOICE_NUMBER

**Table 4–16**

Region Code	DB View	Object Name	Object Attribute Code
POS_ASN_HEADERS	POS_ASN_HEADERS_V	POS_ASN_HEADERS	POS_NET_WEIGHT
			POS_NET_WEIGHT_UOM
			POS_NET_WEIGHT_UOM_CODE
			POS_NUM_OF_CONTAINERS
			POS_PACKAGING_CODE
			POS_PACKING_SLIP
			POS_PAYMENT_TERMS
			POS_SHIP_DATE
			POS_SHIP_TO_LOCATION
			POS_SHIP_TO_ORGANIZATION
			POS_SHIP_TO_ORGANIZATION_ID
			POS_SPECIAL_HANDLING_CODE
			POS_TAR_WEIGHT
			POS_TAR_WEIGHT_UOM
			POS_TAX_AMOUNT
			POS_TAX_NAME

---

**Table 4–16**

Region Code	DB View	Object Name	Object Attribute Code
			POS_VENDOR_NAME
			POS_VENDOR_SITE_NAME
			POS_WAYBILL_AIRBILL_NUM

**Table 4–17**

Region Code	DB View	Object Name	Object Attribute Code
POS_ASN_UOM_LOV_R	POS_ASN_UOM_V	POS_ASN_UOM_LOV_O	POS_ASN_UOM
			POS_UNIT_OF_MEASURE
			POS_UOM_CLASS

**Table 4–18**

Region Code	DB View	Object Name	Object Attribute Code
POS_FREIGHT_TERM_LOV_R	POS_FREIGHT_TERMS_LOV_V	POS_ASN_FGT_TERMS_LOV_O	POS_FREIGHT_TERM
			POS_FREIGHT_TERM_CODE

**Table 4–19**

Region Code	DB View	Object Name	Object Attribute Code
POS_ORG_FREIGHT_LOV_R	POS_ORG_FREIGHT_LOV_V	POS_FGT_CARRIER_LOV_O	POS_FREIGHT_CARRIER
			CODE
			POS_SHIP_TO_ORGANIZATION_ID

**Table 4–20**

Region Code	DB View	Object Name	Object Attribute Code
POS_ASN_SHIPMENTS	POS_ASN_SHIPMENTS_V	POS_ASN_SHIPMENTS	POS_ASN_LINE_ID
			POS_ASN_LINE_SPLIT_ID
			POS_ASN_WIP_JOB
			POS_COMMENTS
			POS_DUE_DATE
			POS_ITEM_DESCRIPTION
			POS_ITEM_ID
			POS_ITEM_NUMBER
			POS_PO_DISTRIBUTION_ID
			POS_PO_LINE_LOCATION_ID
			POS_PO_NUM
			POS_QTY_RECEIVED_TO_DATE
			POS_QUANTITY_ORDERED
			POS_QUANTITY_SHIPPED
			POS_SEQ_NUM
			POS_SUPPLIER_ITEM_NUMBER
			POS_UNIT_OF_MEASURE
			POS_UOM_CLASS
			POS_WIP_ENTITY_ID
			POS_WIP_LINE_ID
			POS_WIP_OPERATION_SEQ_NUM

**Table 4–21**

Region Code	DB View	Object Name	Object Attribute Code
POS_ASN_WIP_JOB	POS_ASN_WIP_JOB_V	POS_ASN_WIP_JOB_LOV_O	POS_ASN_WIP_JOB



**Table 4–21**

Region Code	DB View	Object Name	Object Attribute Code
			POS_PO_DISTRIBUTION_ID
			POS_PO_LINE_LOCATION_ID
			POS_WIP_ENTITY_ID
			POS_WIP_LINE_ID
			POS_WIP_OPERATION_SEQ_NUM

**Table 4–22**

Region Code	DB View	Object Name	Object Attribute Code
POS_ASN_SHIPMENT_DETAILS_PO_R	POS_ASN_SHIPMENT_DETAILS_V	POS_ASN_SHIP_DETAILS	POS_ACTUAL_COST
			POS_ASN_LINE_ID
			POS_BARCODE_LABEL
			POS_BILL_OF_LADING
			POS_CONTAINER_NUM
			POS_COUNTRY_OF_ORIGIN
			POS_COUNTRY_OF_ORIGIN_CODE
			POS_CURRENCY_CODE
			POS_CURRENCY_EXCHANGE_DATE
			POS_CURRENCY_EXCHANGE_RATE
			POS_EXPECTED_RECEIPT_DATE
			POS_EXTENDED_PRICE
			POS_FREIGHT_CARRIER
			POS_FREIGHT_CARRIER_CODE
			POS_ITEM_CATEGORY

**Table 4–23**

Region Code	DB View	Object Name	Object Attribute Code
POS_ASN_SHIPMENT_ DETAILS_PO_R	POS_ASN_SHIPMENT_ DETAILS_V	POS_ASN_SHIP_DETAILS	POS_ITEM_DESCRIPTION
			POS_ITEM_REVISION
			POS_NOTICE_UNIT_PRICE
			POS_NUM_OF_ CONTAINERS
			POS_PACKING_SLIP
			POS_PO_LINE_LOCATION_ ID
			POS_PO_LINE_NUM
			POS_PO_NUMBER
			POS_PO_SHIPMENT_LINE_ NUMBER
			POS_QUANTITY_ INVOICED
			POS_REASON_ID
			POS_REASON_NAME
			POS_RMA_REFERENCE
			POS_SHIP_TO_LOCATION
			POS_SHIP_TO_ ORGANIZATION_ID
			POS_TAXABLE_FLAG
			POS_TAX_NAME
			POS_TAX_RATE
			POS_TRANSFER_COST
			POS_TRANSPORTATION_ ACCOUNT_ID
			POS_TRANSPORTATION_ COST
			POS_TRUCK_NUM
			POS_UNIT_OF_MEASURE
			POS_UNIT_PRICE

**Table 4–23**

Region Code	DB View	Object Name	Object Attribute Code
			POS_VENDOR_CUM_SHIPPED_QTY
			POS_VENDOR_LOT_NUM
			POS_VENDOR_NAME
			POS_VENDOR_SITE_NAME
			POS_WAYBILL_AIRBILL_NUM

**Table 4–24**

Region Code	DB View	Object Name	Object Attribute Code
POS_ASN_DETAILS_INVOICE_R	POS_ASN_SHIPMENT_DETAILS_V	POS_ASN_SHIP_DETAILS	POS_ACTUAL_COST
			POS_ASN_LINE_ID
			POS_BARCODE_LABEL
			POS_BILL_OF_LADING
			POS_CONTAINER_NUM
			POS_COUNTRY_OF_ORIGIN
			POS_COUNTRY_OF_ORIGIN_CODE
			POS_CURRENCY_CODE
			POS_CURRENCY_EXCHANGE_DATE
			POS_EXPECTED_RECEIPT_DATE
			POS_EXTENDED_PRICE
			POS_FREIGHT_CARRIER
			POS_FREIGHT_CARRIER_CODE
			POS_ITEM_CATEGORY
			POS_ITEM_DESCRIPTION
			POS_ITEM_REVISION

**Table 4–24**

Region Code	DB View	Object Name	Object Attribute Code
			POS_NOTICE_UNIT_PRICE
			POS_NUM_OF_CONTAINERS
			POS_PACKING_SLIP
			POS_PO_LINE_LOCATION_ID
			POS_PO_LINE_NUM
			POS_PO_NUMBER
			POS_PO_SHIPMENT_LINE_NUMBER
			POS_QUANTITY_INVOICED
			POS_REASON_ID
			POS_REASON_NAME
			POS_RMA_REFERENCE
			POS_SHIP_TO_LOCATION
			POS_SHIP_TO_ORGANIZATION_ID
			POS_TAXABLE_FLAG
			POS_TAX_NAME
			POS_TAX_RATE
			POS_TRANSFER_COST
			POS_TRANSPORTATION_ACCOUNT_ID
			POS_TRANSPORTATION_COST
			POS_TRUCK_NUM
			POS_UNIT_OF_MEASURE
			POS_UNIT_PRICE
			POS_VENDOR_CUM_SHIPPED_QTY
			POS_VENDOR_LOT_NUM
			POS_VENDOR_NAME
			POS_VENDOR_SITE_NAME

**Table 4–24**

Region Code	DB View	Object Name	Object Attribute Code
			POS_WAYBILL_AIRBILL_NUM

**Table 4–25**

Region Code	DB View	Object Name	Object Attribute Code
POS_ASBN_HEADERS_R	POS_ASN_HEADERS_V	POS_ASN_HEADERS	POS_ASN_SHIPMENT_NUM
			POS_BILL_OF_LADING
			POS_CARRIER_EQUIPMENT
			POS_CARRIER_METHOD
			POS_COMMENTS
			POS_EXPECTED_RECEIPT_DATE
			POS_FREIGHT_AMOUNT
			POS_FREIGHT_BILL_NUMBER
			POS_FREIGHT_CARRIER
			POS_FREIGHT_CARRIER_CODE
			POS_FREIGHT_TERM
			POS_FREIGHT_TERM_CODE
			POS_GROSS_WEIGHT
			POS_GROSS_WEIGHT_UOM

**Table 4–26**

Region Code	DB View	Object Name	Object Attribute Code
POS_ASBN_HEADERS_R	POS_ASN_HEADERS_V	POS_ASN_HEADERS	POS_GROSS_WEIGHT_UOM_CODE
			POS_INVOICE_AMOUNT

**Table 4–26**

Region Code	DB View	Object Name	Object Attribute Code
			POS_INVOICE_DATE
			POS_INVOICE_NUMBER
			POS_NET_WEIGHT
			POS_NET_WEIGHT_UOM
			POS_NET_WEIGHT_UOM_CODE
			POS_NUM_OF_CONTAINERS
			POS_PACKAGING_CODE
			POS_PACKING_SLIP
			POS_PAYMENT_TERMS
			POS_SHIP_DATE
			POS_SHIP_TO_LOCATION
			POS_SHIP_TO_ORGANIZATION
			POS_SHIP_TO_ORGANIZATION_ID
			POS_SPECIAL_HANDLING_CODE
			POS_TAR_WEIGHT
			POS_TAR_WEIGHT_UOM
			POS_TAR_WEIGHT_UOM_CODE
			POS_TAX_AMOUNT
			POS_TAX_NAME
			POS_VENDOR_NAME
			POS_VENDOR_SITE_NAME
			POS_WAYBILL_AIRBILL_NUM

**Table 4–27**

Region Code	DB View	Object Name	Object Attribute Code
POS_ASN_DETAILS_SHIPMENTS_R	POS_ASN_SHIPMENT_DETAILS_V	POS_ASN_SHIP_DETAILS	POS_ACTUAL_COST
			POS_ASN_LINE_ID
			POS_BARCODE_LABEL
			POS_BILL_OF_LADING
			POS_CONTAINER_NUM
			POS_COUNTRY_OF_ORIGIN
			POS_COUNTRY_OF_ORIGIN_CODE
			POS_CURRENCY_CODE
			POS_CURRENCY_EXCHANGE_DATE
			POS_CURRENCY_EXCHANGE_RATE
			POS_EXPECTED_RECEIPT_DATE
			POS_EXTENDED_PRICE
			POS_FREIGHT_CARRIER
			POS_FREIGHT_CARRIER_CODE
			POS_ITEM_CATEGORY
			POS_ITEM_DESCRIPTION
			POS_ITEM_REVISION
			POS_NOTICE_UNIT_PRICE
			POS_NUM_OF_CONTAINERS
			POS_PACKING_SLIP
			POS_PO_LINE_LOCATION_ID
			POS_PO_LINE_NUM
			POS_PO_NUMBER
			POS_PO_SHIPMENT_LINE_NUMBER

**Table 4–27**

Region Code	DB View	Object Name	Object Attribute Code
			POS_QUANTITY_ INVOICED
			POS_REASON_ID
			POS_REASON_NAME
			POS_RMA_REFERENCE
			POS_SHIP_TO_LOCATION
			POS_SHIP_TO_ ORGANIZATION_ID
			POS_TAXABLE_FLAG
			POS_TAX_NAME
			POS_TAX_RATE
			POS_TRANSFER_COST
			POS_TRANSPORTATION_ ACCOUNT_ID
			POS_TRANSPORTATION_ COST
			POS_TRUCK_NUM
			POS_UNIT_OF_MEASURE
			POS_UNIT_PRICE
			POS_VENDOR_CUM_ SHIPPED_QTY
			POS_VENDOR_LOT_NUM
			POS_VENDOR_NAME
			POS_VENDOR_SITE_NAME
			POS_WAYBILL_AIRBILL_ NUM



---

**Table 4–28**

Region Code	DB View	Object Name	Object Attribute Code
POS_ASN_REASONS_LOV_R	POS_REASONS_LOV_V	POS_ASN_REASONS_O	POS_REASON_DESCRIPTION
			POS_REASON_ID

**Table 4–29**

Region Code	DB View	Object Name	Object Attribute Code
POS_COO_LOV_R	POS_COO_LOV	POS_COO_LOV	COO_CODE
			COO_SHORT_NAME

**Table 4–30**

Region Code	DB View	Object Name	Object Attribute Code
POS_ACK_SEARCH_R	POS_ACK_SEARCH_V	POS_ACK_SEARCH_O	POS_ACK_SR_ACC_REQD
			POS_ACK_SR_ACC_REQD_END_DATE
			POS_ACK_SR_ACC_STATUS
			POS_ACK_SR_DOC_TYPE
			POS_ACK_SR_PO_NUMBER
			POS_ACK_SR_ROW_NUM
			POS_ACK_SR_SUPPLIER_SITE_ID

**Table 4–31**

Region Code	DB View	Object Name	Object Attribute Code
POS_ACK_SEARCH_R	POS_ACK_SEARCH_V	POS_ACK_SEARCH_O	POS_ACK_SUPPLIER_SITE

**Table 4–32**

Region Code	DB View	Object Name	Object Attribute Code
POS_ACK_SITE_LOV_R	POS_ACK_SITE_LOV_V	POS_ACK_SITE_LOV_O	ICX_SUPPLIER_ORG_ID
			ICX_SUPPLIER_SITE_ID
			POS_ACK_SR_SITE_ADDRESS
			POS_ACK_SR_SUPPLIER_ID
			POS_ACK_SR_SUPPLIER_SITE_ID
			POS_ACK_SUPPLIER_SITE

**Table 4–33**

Region Code	DB View	Object Name	Object Attribute Code
POS_ACK_EDIT_R	POS_ACK_EDIT_V	POS_ACK_EDIT_O	ICX_SUPPLIER_ORG_ID
			ICX_SUPPLIER_SITE_ID
			POS_ACK_ACCEPT
			POS_ACK_ACC_REQD_BY
			POS_ACK_ACC_REQUIRED
			POS_ACK_ACC_STATUS
			POS_ACK_ACC_TYPE
			POS_ACK_ACC_TYPE_CODE
			POS_ACK_APPROVAL_STATUS
			POS_ACK_BUYER
			POS_ACK_BUYER_ID

**Table 4–33**

Region Code	DB View	Object Name	Object Attribute Code
			POS_ACK_CARRIER
			POS_ACK_COMMENTS
			POS_ACK_CURRENCY
			POS_ACK_DOCUMENT_ TYPE
			POS_ACK_PO_HEADER_ ID
			POS_ACK_PO_NUMBER
			POS_ACK_REJECT
			POS_ACK_RELEASE_ID
			POS_ACK_REVISION_ NUMBER
			POS_ACK_ROW_NUM
			POS_ACK_SHIPTO_LOC
			POS_ACK_SUPPLIER
			POS_ACK_SUPPLIER_SITE
			POS_ACK_TOTAL

**Table 4–34**

Region Code	DB View	Object Name	Object Attribute Code
POS_ACK_ACC_TYPE_LOV_ R	POS_ACK_ACC_TYPE_ LOV_V	POS_ACK_ACC_TYPE_LOV_ O	POS_ACK_ACC_TYPE
			POS_ACK_ACC_TYPE_ CODE
			POS_ACK_ACC_TYPE_ DESC

**Table 4–35**

Region Code	DB View	Object Name	Object Attribute Code
POS_UPD_DATE_PO_SHIP_ R	POS_UPD_DATE_PO_SHIP_ V	POS_UPD_DATE_PO_SHIP_ O	ICX_SUPPLIER_ORG_ID
			ICX_SUPPLIER_SITE_ID
			POS_BUYER_NAME
			POS_CHANGE_REASON
			POS_DUE_DATE
			POS_ITEM_CATEGORY
			POS_ITEM_DESCRIPTION
			POS_ITEM_ID
			POS_ITEM_NUMBER
			POS_ITEM_REVISION
			POS_NEED_BY_DATE
			POS_OLD_PROMISED_ DATE
			POS_PO_HEADER_ID
			POS_PO_LINE_ID
			POS_PO_LINE_LOCATION_ ID
			POS_PO_LINE_NUM
			POS_PO_NUMBER
			POS_PO_RELEASE_ID
			POS_PO_SHIPMENT_LINE_ NUMBER
			POS_PROMISED_DATE
			POS_QUANTITY_ORDERED
			POS_QUANTITY_ RECEIVED
			POS_QUANTITY_SHIPPED
			POS_REVISION_NUM
			POS_SHIP_TO_LOCATION
			POS_SHIP_TO_LOCATION_ ID

**Table 4–35**

Region Code	DB View	Object Name	Object Attribute Code
			POS_SHIP_TO_ORGANIZATION
			POS_SUPPLIER_ID
			POS_SUPPLIER_ITEM_NUMBER
			POS_SUPPLIER_SITE_CODE
			POS_SUPPLIER_SITE_ID
			POS_UNIT_OF_MEASURE

**Table 4–36**

Region Code	DB View	Object Name	Object Attribute Code
POS_UPD_DATE_SEARCH_R	POS_UPD_DATE_SEARCH_V	POS_UPD_DATE_SEARCH_O	POS_DATE_END
			POS_DATE_START
			POS_DUE_DATE
			POS_ITEM_DESCRIPTION
			POS_ITEM_NUMBER
			POS_PO_LINE_LOCATION_ID
			POS_PO_NUMBER
			POS_SUPPLIER_ITEM_NUMBER
			POS_VENDOR_SITE_ID

**Table 4–37**

Region Code	DB View	Object Name	Object Attribute Code
POS_UPD_DATE_SEARCH_R	POS_UPD_DATE_SEARCH_V	POS_UPD_DATE_SEARCH_O	POS_VENDOR_SITE_NAME

**Table 4–38**

Region Code	DB View	Object Name	Object Attribute Code
POS_ASL_SEARCH_R	POS_ASL_SEARCH_V	POS_ASL_SEARCH_O	POS_ASL_ITEM_DESC
			POS_ASL_ITEM_NUM
			POS_ASN_SR_SUPPLIER_SITE
			POS_ASN_SR_SUPPLIER_SITE_ID

**Table 4–39**

Region Code	DB View	Object Name	Object Attribute Code
POS_ASL_ITEM_LOV_R	POS_ASL_ITEM_LOV_V	POS_ASL_ITEM_LOV_O	POS_ASL_ITEM_DESC
			POS_ASL_ITEM_ID
			POS_ASL_ITEM_NUM

**Table 4–40**

Region Code	DB View	Object Name	Object Attribute Code
POS_ASL_ORDER_MODIFIERS_R	POS_ASL_ORDER_MODIFIERS_V	POS_ASL_ORDER_MOD_O	POS_ASL_DELIVERY_CALENDAR
			POS_ASL_FIXED_LOT_MULTIPLE
			POS_ASL_ID
			POS_ASL_MIN_ORDER_QTY
			POS_ASL_PROCESSING_LEAD_TI
			POS_ASL_PURCHASING_UOM

**Table 4–41**

Region Code	DB View	Object Name	Object Attribute Code
POS_SUPPLIER_ITEM_CAPACITY_R	POS_SUPPLIER_ITEM_CAPACITY_V	POS_SUPP_ITEM_CAP_O	POS_AS_L_ID
			POS_SIC_CAPACITY_ID
			POS_SIC_CAPACITY_PER_DAY
			POS_SIC_FROM_DATE
			POS_SIC_TO_DATE
			POS_USING_ORGANIZATION_ID

**Table 4–42**

Region Code	DB View	Object Name	Object Attribute Code
POS_AS_L_TOLERANCE_R	POS_AS_L_TOLERANCE_V	POS_AS_L_TOLERANCE_O	POS_AS_L_ID
			POS_DAYS_IN_ADVANCE
			POS_TOLERANCE
			POS_USING_ORGANIZATION_ID

**Table 4–43**

Region Code	DB View	Object Name	Object Attribute Code
POS_ASN_RESULT_R	POS_ASN_RESULT_V	POS_ASN_RESULT_O	ICX_SUPPLIER_ORG_ID
			ICX_SUPPLIER_SITE_ID
			POS_CATEGORY_ID
			POS_DUE_DATE
			POS_ITEM_CATEGORY
			POS_ITEM_DESCRIPTION
			POS_ITEM_ID
			POS_ITEM_NUMBER

---

**Table 4–43**

			POS_ITEM_REVISION
			POS_PO_HEADER_ID
			POS_PO_LINE_ID
			POS_PO_LINE_NUM
			POS_PO_NUMBER
			POS_PO_RELEASE_ID
			POS_PO_SHIPMENT_ID
			POS_PO_SHIPMENT_LINE_ NUMBER
			POS_QUANTITY_ORDERED
			POS_SESSION_ID
			POS_SHIP_TO_LOCATION
			POS_SHIP_TO_LOCATION_ID
			POS_SHIP_TO_ ORGANIZATION
			POS_SHIP_TO_ ORGANIZATION_ID
			POS_SUPPLIER_ITEM_ NUMBER
			POS_UNIT_OF_MEASURE
			POS_VENDOR_ID
			POS_VENDOR_NAME
			POS_VENDOR_SITE_ID
			POS_VENDOR_SITE_NAME



---

