

Oracle® Process Manufacturing

Oracle Process Manufacturing and Oracle Financials Integration User's Guide

Release 11*i*

February 2001

Part No. A77486-05

ORACLE™

Part No. A77486-05

Copyright © 2001, Oracle Corporation. All rights reserved.

Primary Author: Sudha Seshadri

Contributors: Nancy Cheung

The Programs (which include both the software and documentation) contain proprietary information of Oracle Corporation; they are provided under a license agreement containing restrictions on use and disclosure and are also protected by copyright, patent, and other intellectual and industrial property laws. Reverse engineering, disassembly, or decompilation of the Programs is prohibited.

Program Documentation is licensed for use solely to support the deployment of the Programs and not for any other purpose.

The information contained in this document is subject to change without notice. If you find any problems in the documentation, please report them to us in writing. Oracle Corporation does not warrant that this document is error free. Except as may be expressly permitted in your license agreement for these Programs, no part of these Programs may be reproduced or transmitted in any form or by any means, electronic or mechanical, for any purpose, without the express written permission of Oracle Corporation.

If the Programs are delivered to the U.S. Government or anyone licensing or using the programs on behalf of the U.S. Government, the following notice is applicable:

Restricted Rights Notice Programs delivered subject to the DOD FAR Supplement are "commercial computer software" and use, duplication, and disclosure of the Programs, including documentation, shall be subject to the licensing restrictions set forth in the applicable Oracle license agreement. Otherwise, Programs delivered subject to the Federal Acquisition Regulations are "restricted computer software" and use, duplication, and disclosure of the Programs shall be subject to the restrictions in FAR 52.227-19, Commercial Computer Software - Restricted Rights (June, 1987). Oracle Corporation, 500 Oracle Parkway, Redwood City, CA 94065.

The Programs are not intended for use in any nuclear, aviation, mass transit, medical, or other inherently dangerous applications. It shall be the licensee's responsibility to take all appropriate fail-safe, backup, redundancy, and other measures to ensure the safe use of such applications if the Programs are used for such purposes, and Oracle Corporation disclaims liability for any damages caused by such use of the Programs.

Oracle is a registered trademark of Oracle Corporation. All other company or product names mentioned are used for identification purposes only and may be trademarks of their respective owners. [

Contents

Send Us Your Comments	vii
Preface.....	ix
1 OPM and Oracle Financials Overview	
Oracle Financials and OPM Integration Overview.....	1-2
Oracle Financials and OPM Integration Diagram.....	1-3
Major Features.....	1-5
2 Data Synchronization	
Setting Up Units of Measure and Units of Measure Classes	2-2
OPM Data Synchronization Method	2-2
Data Synchronization Chart for Product Dependency Modification	2-2
Running Immediate Synchronization	2-3
Running Immediate Interface Procedure.....	2-3
Immediate Interface Field Reference	2-3
Immediate Interface - Additional Menu Features	2-5
Running Periodic Interface	2-6
Running Periodic Interface Procedure	2-7
Periodic Interface Field Reference.....	2-7
Periodic Interface Window - Additional Menu Features	2-8
Financials Accounts Receivable Credit/Debit Memo	
Inventory Adjustment Synchronization	2-9
AR Credit/Debit Memo Inventory Adjustment Synchronization - Procedures.....	2-9

Sales Representatives Synchronization	2-10
Invoice Price Synchronization	2-10
Additional Data Synchronization Through Triggers.....	2-10
Purchasing Free On Board Codes Synchronization.....	2-12
Purchasing Term Codes Synchronization.....	2-12
Vendors Synchronization	2-12
Vendor Association Automatic Synchronization.....	2-12
Item Specific UOM Conversions Synchronization	2-13
Item Specific UOM Conversions Synchronization - Procedures	2-13
Inventory Organization/Warehouse Synchronization.....	2-14
Stock Locator and OPM Warehouse Location Synchronization.....	2-15
Items Synchronization	2-15
Items Synchronization - Procedures	2-16
Additional Data Synchronization Through Concurrent Programs.....	2-17
Customer Synchronization.....	2-17
Customer Synchronization - Procedures.....	2-18
One Time Ship-To Address.....	2-20
One Time Ship-To Address - OPM Prerequisite	2-20
One Time Ship-To Address - AR Prerequisites.....	2-20
One Time Ship-To Address - Procedures.....	2-20
AR Update Synchronization	2-21

3 Oracle General Ledger and OPM Integration

Introduction to Oracle General Ledger and OPM Integration	3-2
OPM to General Ledger Update Flow Diagram	3-3
OPM to General Ledger Update Flow Components	3-4
Updating Subsidiary Ledger	3-5
Updating the Oracle General Ledger	3-6
Updating the Oracle General Ledger Procedure	3-6
Start General Ledger Update Process Field Reference.....	3-7
Checking the General Ledger Update Process Status	3-9
Checking the General Ledger Update Process Status Procedure.....	3-9
General Ledger Update Process Status Field Reference	3-9
Aborting/Resetting Updates	3-10
Aborting/Resetting Update Procedure.....	3-11

Viewing Error Messages.....	3-12
Viewing Error Messages Procedure.....	3-12
Error Messages Field Reference.....	3-12
Journal Import	3-12
Exception Report	3-13
Journal Posting	3-13
Journal Inquiry	3-13
OPM Document Number and Journal Voucher Number in GL Journal Voucher	3-14
Account Inquiry and GL Drill down to OPM	3-17

4 Accounts Receivables and OPM Integration

Introduction to the Accounts Receivable and OPM Integration	4-2
Accounts Receivables Update Flow Diagram	4-2
Accounts Receivables Update Flow Components	4-4
Sales Order Entry and Credit Check	4-6
Sales Order Credit Checking	4-6
Sales Order Credit Checking and Recomputing Customer Open Balance Procedure.....	4-9
Update Customer Open Balance Field Reference.....	4-10
Sales Order On Hold.....	4-11
Shipment Release	4-12
Accounts Receivable Update	4-12
Primary Unit of Measure for Billing (AR Update)	4-12
Primary Unit of Measure for Billing Synchronization Procedure	4-13
General Ledger Booking Based on Profit Center	4-13
General Ledger Booking Based on Profit Center Procedure	4-14
OPM Revenue Account Mapping for AR Autoinvoicing.....	4-14
OPM Revenue Account Mapping for AR Autoinvoicing Procedure	4-15
Receivables Autoinvoicing	4-15
OPM and Receivables Autoinvoicing Procedure	4-15
Exception Report	4-16
View Invoice	4-16
Cash Receipts	4-16
Invoice History	4-16

5 Reports

Running View Interface Exception Report	5-2
Submitting the Selected Report Procedure	5-2
Selected Report Parameters.....	5-2

A Navigation Path

Financial Integration Navigator Paths.....	6-2
Setting Financials Integration Profile Options	6-3

Glossary

Index

Send Us Your Comments

Oracle Process Manufacturing and Oracle Financials Integration User's Guide, Release 11i
Part No. A77486-05

Oracle Corporation welcomes your comments and suggestions on the quality and usefulness of this publication. Your input is an important part of the information used for revision.

- Did you find any errors?
- Is the information clearly presented?
- Do you need more information? If so, where?
- Are the examples correct? Do you need more examples?
- What features did you like most about this manual?

If you find any errors or have any other suggestions for improvement, please indicate the chapter, section, and page number (if available). You can send comments to us in the following ways:

- FAX: 650-506-7200 Attn: Oracle Process Manufacturing
- Postal service:
Oracle Corporation
Oracle Process Manufacturing
500 Oracle Parkway
Redwood City, CA 94065
U.S.A.
- Electronic mail message to appsdoc@us.oracle.com

If you would like a reply, please give your name, address, and telephone number below.

If you have problems with the software, please contact your local Oracle Support Services.

Preface

Welcome to the *Oracle Process Manufacturing and Oracle Financials Integration User's Guide*. This user's guide includes the information you need to work with the Oracle Process Manufacturing (OPM) application effectively.

This preface explains how this user's guide is organized and introduces other sources of information that can help you.

Intended Audience

This guide assumes that you have working knowledge of your business area's processes and tools. It also assumes that you are familiar with OPM Financials Integration. If you have never used Financials Integration, we suggest you attend one or more of the Oracle Process Manufacturing training classes available through Oracle World Wide Education.

This guide also assumes that you are familiar with the Oracle Applications graphical user interface. To learn more about Oracle Applications graphical user interface, read the *Oracle Applications User's Guide*.

About This Guide

This guide contains overviews as well as task and reference information. It includes the following:

Name	Description
OPM and Oracle Financials Overview	Explains the OPM and Oracle Financials single Integration solution to financials and manufacturing management for process manufacturing companies.
Data Synchronization	Explains data synchronization methods and various tables that are synchronized between OPM and Oracle Financials.
Oracle General Ledger and OPM Integration	Describes OPM and Oracle General Ledger integration
Accounts Receivables and OPM Integration	Describes OPM and Accounts Receivables integration.
Reports	Describes the available reports in Financials Integration.
Navigation Path	Provides the default navigation path for Manufacturing Accounting Controller setup and MAC profile options.

Information Sources

You can choose from many sources of information, including documentation, training, and support services to increase your knowledge and understanding.

Online Documentation

Oracle Applications documentation is available on CD-ROM, except for technical reference manuals. User's guides are available in HTML format and on paper. Technical reference manuals are available on paper only. Other documentation is available on paper and sometimes in PDF format.

The content of the documentation remains the same from format to format. Slight formatting differences could occur due to publication standards, but such differences do not affect content. For example, page numbers are included on paper, but are not included in HTML.

The HTML documentation is available from all Oracle Applications windows. Each window is programmed to start your web browser and open a specific, context-sensitive section. Once any section of the HTML documentation is open, you can navigate freely throughout all Oracle Applications documentation.

Related Documents

Oracle Process Manufacturing shares business and setup information with other Oracle products. You may find the following Oracle Applications user's guides useful:

- *Oracle Applications User's Guide*
- *Oracle Application's Flexfields Guide*
- *Oracle Workflow User Guide*
- *Oracle Applications System Administrator's Guide*
- *Oracle General Ledger User's Guide*
- *Oracle Payables User's Guide*
- *Oracle Receivables User's Guide*
- *Oracle Human Resources North American User's Guide*
- *Oracle Purchasing User's Guide*

Oracle Process Manufacturing Guides

The following is a list of documentation in each product group for OPM:

Financials

- *Oracle Process Manufacturing Accounting Setup User's Guide*
- *Oracle Process Manufacturing Cost Management User's Guide*
- *Oracle Process Manufacturing Manufacturing Accounting Controller User's Guide*
- *Oracle Process Manufacturing and Oracle Financials Integration User's Guide*

Inventory Control

- *Oracle Process Manufacturing Intrastat Reporting User's Guide*
- *Oracle Process Manufacturing Inventory Management User's Guide*
- *Oracle Process Manufacturing Physical Inventory User's Guide*

Logistics

- *Oracle Process Manufacturing Order Fulfillment User's Guide*
- *Oracle Process Manufacturing Purchase Management User's Guide*

Process Execution

- *Oracle Process Manufacturing Process Operation Control User's Guide*
- *Oracle Process Manufacturing Production Management User's Guide*

Process Planning

- *Oracle Process Manufacturing Capacity Planning User's Guide*
- *Oracle Process Manufacturing Integration with Advanced Planning and Scheduling User's Guide*
- *Oracle Process Manufacturing MPS/MRP and Forecasting User's Guide*

Product Development

- *Oracle Process Manufacturing Formula Management User's Guide*
- *Oracle Process Manufacturing Laboratory Management User's Guide*
- *Oracle Process Manufacturing Quality Management User's Guide*

Regulatory

- *Oracle Process Manufacturing Regulatory Management User's Guide*

System Administration and Technical Reference

- *Oracle Process Manufacturing Implementation Guide*
- *Oracle Process Manufacturing System Administration User's Guide*
- *Oracle Process Manufacturing Technical Reference Manuals*

Training

Oracle offers a complete set of formal training courses to help you master Oracle Process Manufacturing and reach full productivity quickly. We organize these courses into functional learning paths, so you take only those courses appropriate to your area of responsibility.

You have a choice of educational environments. You can attend courses offered by Oracle Education Services at any one of our many Education Centers, or you can arrange for our trainers to teach at your facility. In addition, Oracle Training professionals can tailor standard courses or develop custom courses to meet your needs. For example, you may want to use your organization's structure, terminology, and data as examples in a customized training session delivered at your own facility.

Conventions

The following conventions are used in this guide:

Bolded Text

Buttons, fields, keys, menus, and selections are bolded in procedures only. For example: To access the next window, click **OK**. Otherwise, references to these features appear in regular type.

Additional Menu Options

Only nonstandard menu options are discussed. Standard menu bar options (such as Save) are not discussed. These standard options are described in the *Oracle Applications User's Guide*. Only menu options unique to the use of the specific window are discussed.

Field References

References to fields within procedures are in bold type. References within the body of this guide appear in regular type.

Required Fields

The word Required appears as the last word in the field description of all required fields. When the field is required contingent on the entry in another field, or only in specific situations, "Required if..." is the last sentence of the field description.

Fields Reserved for Future Use

Fields with no current processing implications are referenced by the statement "This field is not currently used" or "Reserved for future use." Do not use these fields for your own reference data, because there are plans to link future functionality to these fields. Fields intended for informational purposes only are referenced by the statement "This field is for informational purposes only."

Pending/Completed Transactions

Discussions about processing transactions that use the words pending and completed refer to the status of a transaction. Pending and completed do not refer to the database tables that are updated as a result of transactions (for example, some completed transactions are stored in the Pending Transactions table).

Procedures

Most topics contain a procedure with numbered steps. Any actions which are subordinate to a step are assigned letters. You can customize your Oracle Application, therefore, all procedures are suggestive only. Navigate to windows and between responsibilities in a way that works best for your particular setup. Also note that fields may appear in a different order than they are discussed.

Use of the Word Character

The word character means an alphanumeric character. Characters that are numeric or alphabetic only are referenced specifically. Depending on your system security profile, you may not have access to all of the windows and functions described in this guide. If you do not see a menu option described in this guide, and you want access to it, contact your System Administrator.

Do Not Use Database Tools to Modify Oracle Applications Data

Oracle Applications tables are interrelated. As a result, any change you make using Oracle Applications can update many tables at once. If you modify the Oracle Applications data using anything other than Oracle Applications, you could change a row in one table without making corresponding changes in related tables. If your tables are not synchronized with each other, you risk retrieving erroneous information and receiving unpredictable results throughout Oracle Applications.

When you use Oracle Applications to modify your data, Oracle Applications automatically checks that your changes are valid. Oracle Applications also track who changes information. If you enter information into database tables using database tools, you could store invalid information. You also lose the ability to track who has changed your information because SQL*Plus and other database tools do not keep a record of changes.

Consequently, we strongly recommend that you never use SQL*Plus or any other tool to modify Oracle Applications data unless otherwise instructed by Oracle Support Services.

About Oracle

Oracle Corporation develops and markets an integrated line of software products for database management, applications development, decision support, and office automation, as well as Oracle Applications, an integrated suite of more than 45 software modules for financial management, supply chain management, manufacturing, project systems, human resources, sales, and service management.

Oracle Products are available for mainframes, minicomputers, personal computers, network computers, and personal digital assistants, allowing organizations to integrate different computers, different operating systems, different networks, and even different database management systems, into a single, unified computing, and information resource.

Oracle is the world's leading supplier of software for information management, and the world's second largest software company. Oracle offers its database, tools, and applications products, along with related consulting, education, and support services in over 140 countries around the world.

Thank You

Thank you for choosing Oracle Process Manufacturing and this user's guide.

We value your comments and feedback. At the beginning of this guide is a Reader's Comment Form that you can use to explain what you like or dislike about this user's guide. Mail your comments to the following address or call us directly at 650-506-7000.

Oracle Applications Documentation Manager
Oracle Corporation
500 Oracle Parkway
Redwood Shores, CA 94065
U.S.A.

Or, send an electronic mail message to appsdoc@us.oracle.com

OPM and Oracle Financials Overview

This topic explains the OPM and Oracle Financials single Integration solution to financials and manufacturing management for process manufacturing companies.

The following topics are covered:

- Oracle Financials and OPM Integration Overview
- Oracle Financials and OPM Integration Diagram
- Major Features

Oracle Financials and OPM Integration Overview

Oracle Financials and OPM provide a single integrated solution to financial and manufacturing management for process manufacturing companies. The integration between Oracle Financials and OPM allows for coordination of processes and the sharing of data through automated open interfaces which are transparent to the user. Both applications automatically share needed information and coordinate processes, so that you do not have to maintain information in more than one place. The processes which enable this integration allow the applications to function seamlessly as a single application. It ensures maximum efficiency by elimination of duplicate functions and processes.

Oracle Financials and OPM were both developed on the Oracle relational database and architected for openness to integrate with third party software. As a result, they integrate quite easily.

With the integration of Oracle Financials and OPM, you are able to:

- Enter information in one application and ensure that the same information is accessible from the other application, without having to perform any extra data entry.
- Maintain shared information in one place - the source module for that information. For example, you are able to maintain currency and exchange rate information in Oracle Financials General Ledger and item or part definitions in OPM.
- Track the flow of information from one module to the other, in either direction, between Oracle Financials and OPM.
- Perform tasks that require the sharing and communication of information from one application to the other, without having to be aware of when or how they are communicating.
- Synchronize shared information between products on a timely basis that fits the functional requirements, as frequently as you require.

Oracle Financials and OPM Integration Diagram

The Oracle Financials and OPM integration includes the following products:

Oracle Financials	Oracle Process Manufacturing
Oracle General Ledger	OPM Inventory OPM Physical Inventory OPM Production Management/OPM Process Operation Control OPM Cost Management OPM Receiving OPM Sales Management
Oracle Receivables	OPM Order Fulfillment
Oracle Purchasing	OPM Receiving

Note: See *Oracle Process Manufacturing Purchase Management Users' Guide* for details on the Common Purchasing and Receiving integration.

This diagram represents the modules and functions involved in the OPM/Oracle Financials interface. It illustrates, at a high level, how Oracle Financials and OPM integrate processes and data flows. OPM modules appears on the left and Oracle Financials modules appears on the right. The remainder of this guide is dedicated to describing in detail how Oracle General Ledger and Oracle Receivables integrate with OPM.

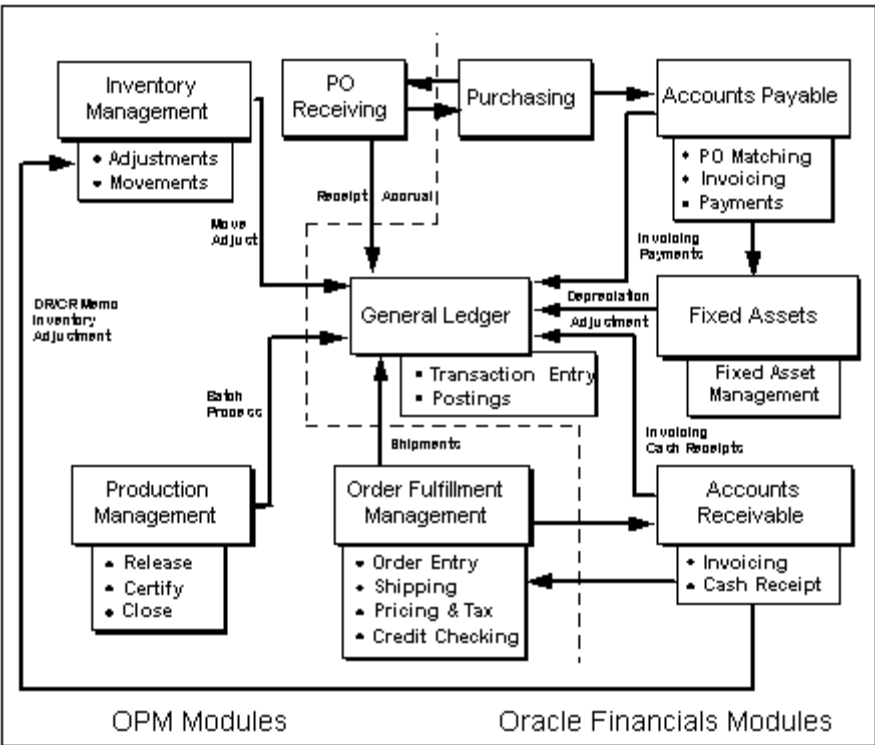


Figure 1-1 Integrated Process and Data Flows

Major Features

This topic describes the major features between the Oracle Financials and OPM integration.

Master File Synchronization

The integration between Oracle Financials and OPM allows the transparent sharing of data. The processes that enable this integration allow the products to function seamlessly as a single application. For example, chart of accounts, vendors, customers, items, currency codes, exchange rates, terms codes, salesrep codes, and free on board codes are shared between Oracle Financials and OPM. There are several methods to synchronize the data in the background, periodically, immediately, or online through database triggers. See Data Synchronization for more details.

Functional Integration

The OPM and Oracle Financials Integration is a seamless integration which provides dynamic credit checking in AR, drill downs, and supports a distributed integration model.

Drill Down Feature

The Drill Down feature in Oracle Financials allows you to easily track a source of information from Oracle General Ledger or Oracle Receivables to its source in OPM. The ability to transfer easily from one application to the other, through an automated process, substantially improves the ease and speed of interaction between the integrated applications. When you use the Drill Down feature from Oracle Financials to OPM, Oracle Financials automatically displays a screen with the requested OPM information. You can also Drill Down from OPM to Oracle Financials.

The following diagram illustrates the drill down capabilities between OPM and Oracle Financials. For example, use the Zoom option from the Oracle General Ledger Account Inquiry screen, to drill down to the OPM source transactions.

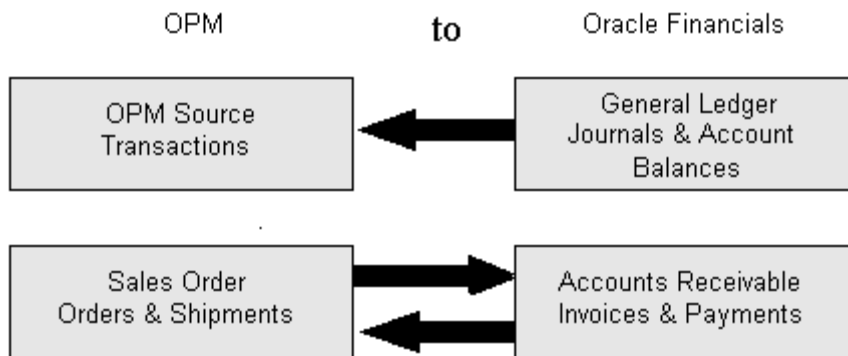


Figure 1–2 Drilldown function Between OPM and Oracle Financials

Multiple Organizations in a Single Installation of Oracle Financials

Oracle Financials Release 11 provides the user with the ability to define multiple organizations and the relationships among them in a single installation of Oracle Applications. These organizations can be Sets of Books, Business Groups, Legal Entities, Operating Units, or Inventory Organizations. The multiple organizations feature allows for more than one Set of Books to be used in the single installation of Oracle Payables and Oracle Receivables. In order to support multiple organizations, any number of OPM companies can be mapped to a Set of Books and an Operating Unit. So if two OPM companies are assigned to the same Operating Unit, then the Data Synchronization process in OPM must be run twice (once for each company) in order to integrate the data between OPM and Financials.

The following diagram shows the organization mapping for the multi-organization OPM and Oracle Financials integration:

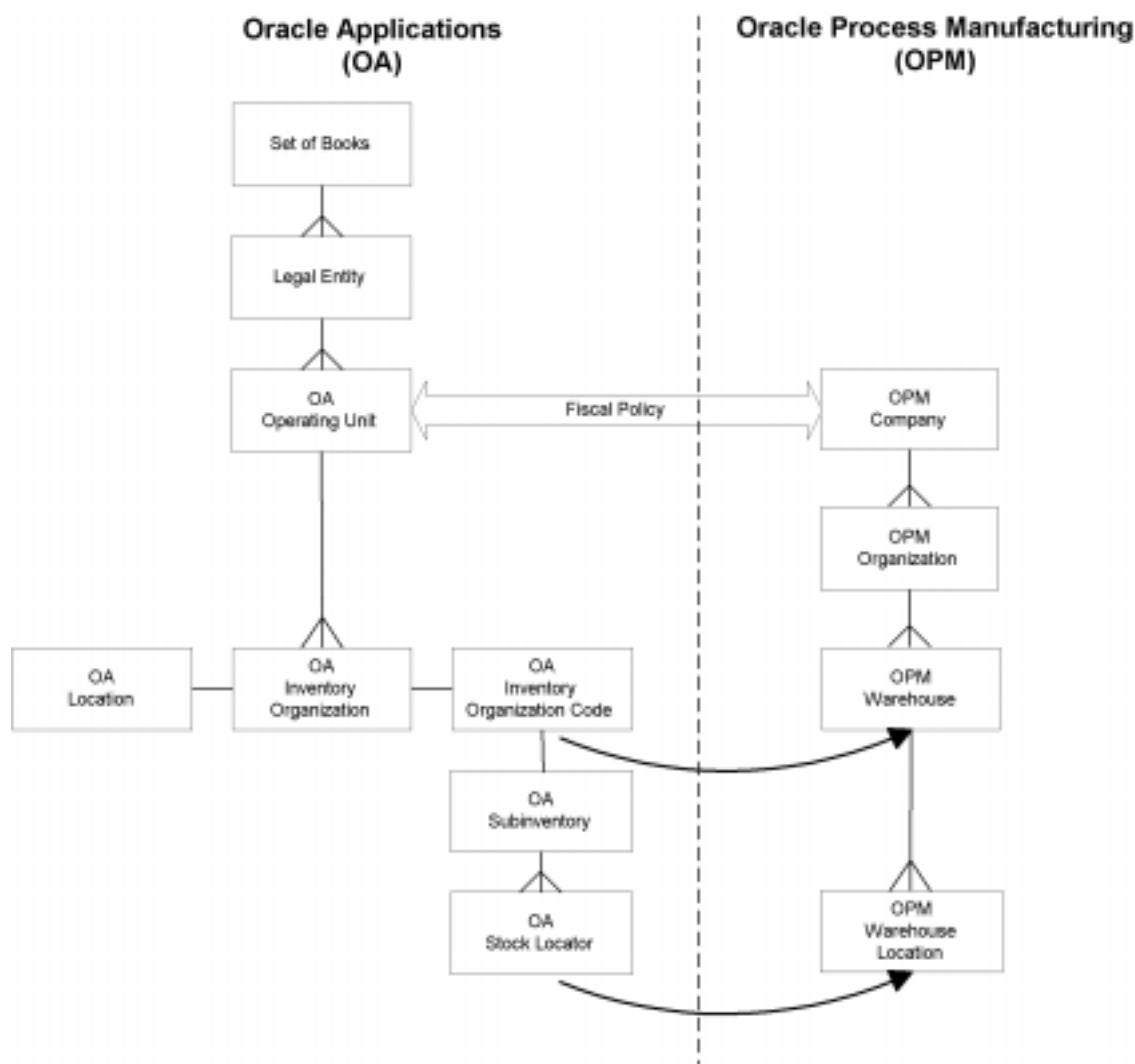


Figure 1–3 Organization Mapping for Multi-Organization

If you are not using the multiple organizations feature in Oracle Financials, then the company is mapped to a Set of Books and the integration works as it did prior to the Release 11i.

Note: See *Oracle Process Manufacturing Manufacturing Accounting Controller User's Guide* for additional information on multiple organizations in a single installation of Oracle Applications.

Data Synchronization

This topic explains data synchronization methods and various tables that are synchronized between OPM and Oracle Financials.

The following topics are covered:

- Setting Up Units of Measure and Units of Measure Classes
- OPM Data Synchronization Method
- One Time Ship-To Address
- Additional Data Synchronization Through Triggers
- Additional Data Synchronization Through Concurrent Programs
- One Time Ship-To Address

Setting Up Units of Measure and Units of Measure Classes

The existing users of OPM do not have to create and synchronize UOMs and UOM types in OPM System Administration. The Unit of Measure Type and Class are now created in Oracle Inventory. See *Oracle Inventory User's Guide* for steps on creating units of measure. The sy_uoms_mst and sy_uoms_typ tables in OPM are replaced with views on Oracle Application's tables.

If you create units of measure in Oracle Inventory of less than or up to four characters long, then the unit of measure itself is populated in the UOM code of sy_uoms_mst_v view in OPM. If you create units of measure of more than four characters long, then the corresponding UOM code from mtl_units_of_measure table is populated in the sy_uoms_mst_v view. When you create a unit of measure class, the UOM class from the mtl_units_classes table is populated as the units measure type field in the sy_uoms_typ_v view.

OPM Data Synchronization Method

There are several tables synchronized between OPM and Financials. OPM provides the following data synchronization methods:

- Immediate Interface that runs in the background
- Periodic Interface that runs in the background

Data Synchronization Chart for Product Dependency Modification

The following chart shows the application dependencies for various data synchronization points from the Data Synchronization form for both Immediate and Periodic synchronization. Based on the installation status of the dependent applications both Source and Target, certain interfaces are either enabled or disabled.

Interface	Application Dependency	
	Source	Target
Sales Rep	AR	None
Invoice Price	PO	None
CR/DR Memo INV	AR	None

Running Immediate Synchronization

OPM provides an immediate update of data in the background between applications whenever you request it. This allows you to perform an update on demand. At the time you request immediate synchronization, the application copies all of the new or updated records for the designated tables. A copy of the table is stored in both OPM and Financials, but you maintain it in only one.

The following is a list of data maintained by this process:

- Credit/Debit Memo Invoice
- Salesreps
- Invoice Price (Interface for Actual Costing)

Running Immediate Interface Procedure

To run the immediate synchronization:

1. Navigate to the **Data Synchronization** window.
2. Select **Immediate Interface** from the Data Synchronization window. The Immediate Interface window displays.
3. Complete the fields as described.
4. Select the appropriate option from the **Actions** menu to process.

Immediate Interface Field Reference

The fields on this window are:

Company

If Financials is set up for multi-organization functionality, then the Company field is displayed. Enter the company for which you are synchronizing data. This field defaults to the company associated with your operator but may be changed.

If Financials is not set up for multi-organization functionality, then the Company field is not displayed.

Software Code

This field identifies the financial software with which OPM is integrated. If your installation is setup for integration to Financials, then the default is ORAFIN.

Synchronization Details

Table Code

This field indicates the element that will be synchronized. You may selectively synchronize elements by placing an 'X' to the left of the element to be synchronized.

Direction

This field indicates the direction that the synchronization process will update. Out indicates that data is going from OPM to Financials. In indicates that data is being received from Financials to OPM.

Status

If you selected an element for synchronization already or if the periodic interface is running for a given element, then this field indicates Running.

Table Class

This field indicates the type of table. For example, Master File or Document. When Master File is identified as the Table Class, then the Master File for the Table Code which is being synchronized is updated. For example, if you are synchronizing the Customers Table Code, then the customer information is updated in the Master File. When Document is identified as the Table Class, then the Document for the Table Code which is being synchronized is updated.

Company

If Financials is set up for multi-organization functionality, then the Company field is displayed. This field indicates the company for which the data is being synchronized. The company is displayed for the salesreps, customers, and AR Update table codes.

If Financials is not set up for multi-organization functionality, then this field is not displayed.

Last Date

This field indicates the date and time the last synchronization occurred. You can tab into this column and scroll the date to see the actual time of the last synchronization of this table.

Immediate Interface - Additional Menu Features

The **Actions** menu consists of the following options:

Starting Immediate Interface

When the Start Immediate Synchronization option is chosen, an incremental synchronization is conducted. Only those tables (which are indicated to be synchronized with an 'X') modified since the last synchronization occurred are updated now. The Start Immediate Synchronization option does not completely refresh all selected tables. If you have a considerable number of discrepancies between Financials and OPM, then see Complete Immediate Synchronization topic for detailed information.

To start the Immediate Synchronization, follow these procedures:

1. Navigate to the **Data Synchronization** window.
2. Select **Immediate Interface**.
3. Select the tables to synchronize activating the first column. You can select one or any number of tables.
4. Select **Start Interface** from the **Action** menu.

Note: Errors may result during the synchronization process. Run the View Interface Exception Report to see the list of these errors for reconciliation. See Reports topic for details.

Completing Immediate Interface

When the Complete Immediate Synchronization option is chosen, all selected tables are completely re-synchronized. This option should be used if there are a considerable number of discrepancies between Financials and OPM. Please be aware that the Complete Interface option may take some time. This option does not perform an incremental synchronization (see Start Interface topic for information on how to perform an incremental synchronization).

To synchronize all data between Financials and OPM, follow these procedures:

1. Navigate to the **Data Synchronization** window.
2. Select **Immediate Interface**.
3. Select the tables to synchronize activating the first column. You can select one or any number of tables.
4. Select **Complete Interface** from the **Actions** menu.

Resetting Immediate Interface

This option resets the status to Not Running in the event there is an unexpected termination of the program.

To reset the Immediate Interface process, follow these procedures:

1. Navigate to the **Data Synchronization** window.
2. Select **Immediate Interface**.
3. Select **Reset Interface** from the **Actions** menu.

Running Periodic Interface

There are several tables shared by both OPM and Financials to which OPM interfaces. OPM provides an automatic method to keep these tables concurrent. The setup for periodic synchronization determines how often tables shared between Financials and OPM are automatically synchronized using this method. You can indicate the frequency as monthly, weekly, daily, hourly, or by the minute for each table. The default frequency is set to once daily.

Once setup, you need to start the synchronization process. From then on, periodic synchronization is performed as indicated in the frequency setting you defined. If necessary, you can stop the automated synchronization at any time.

The following is a list of data maintained by this process:

- Credit/Debit Memo Invoice
- Salesreps
- Invoice Price (Interface for Actual Costing)

Running Periodic Interface Procedure

To run periodic synchronization:

1. Navigate to the **Data Synchronization** window.
2. Select **Periodic Interface** from the **Actions** menu. The **Setup Interface Periods** window is displayed
3. Complete the fields as described.
4. Select the appropriate option from the **Actions** menu to process.

Periodic Interface Field Reference

The fields on this window are:

Company

If Financials is set up for multi-organization functionality, then the Company field is displayed. Enter the company for which you are synchronizing data. This field defaults to the company associated with your operator but may be changed. Required.

If Financials is not set up for multi-organization functionality, then the Company field is not displayed.

Software Code

This field identifies the financial software with which OPM is integrated. If your installation is setup for integration to Financials, then the default is ORAFIN. Required.

Periodic Synchronization Schedule

Frequency

Select an appropriate option to indicate the frequency of periodic synchronization runs. The options are:

- Monthly
- Weekly

- Daily
- Hourly
- Minute

Note: Performing synchronization each minute is not recommended as a regular practice as it consumes CPU resources.

Company

If Financials is set up for multi-organization functionality, then the Company field is displayed. This field indicates the company for which the data is being synchronized.

If Financials is not set up for multi-organization functionality, then this field is not displayed.

Table Code

The name of the data set affected by each of the parameters entered on this line.

Periodic Interface Window - Additional Menu Features

The **Actions** menu consists of the following options:

Starting Periodic Synchronization

Once the frequency is set and saved, you need to start the program. Select this option to begin the automated periodic synchronization for the frequency settings you have chosen.

To start the Periodic Interface Synchronization, follow these procedures:

1. Navigate to the **Data Synchronization** window.
2. Select **Periodic Interface**.
3. Select **Start Interface** from the **Actions** menu.

Warning: Be very careful if you choose to run every minute. There is a cron log file that is written to (every minute) that should be purged occasionally.

Stopping Periodic Synchronization

Select this option to stop the automated periodic synchronization routine. All periodic updates will stop running until you select start interface again.

To stop the Periodic Interface Synchronization, follow these procedures:

1. Navigate to the **Data Synchronization** window.
2. Select **Periodic Interface**.
3. Select **Stop Interface** from the **Actions** menu.

Financials Accounts Receivable Credit/Debit Memo Inventory Adjustment Synchronization

In Accounts Receivable credit/debit memo produces an inventory adjustment in OPM upon running the Data Synchronization process through OPM. This functionality applies to memos created in Accounts Receivable and not Accounts Payable. Debit memos will create negative inventory adjustments and credit memos will create positive inventory adjustments.

Through OPM, the AR Credit/Debit Memo Inventory Adjustment is synchronized by executing the Data Synchronization process for the Cr/Dr Memo Inv table code. See AR Credit/Debit Memo Inventory Adjustment Synchronization - Procedures topic for step-by-step instructions on creating this inventory adjustment.

AR Credit/Debit Memo Inventory Adjustment Synchronization - Procedures

1. Create descriptive flexfields for transaction types and Invoice Line Information (See: *Oracle Process Manufacturing Implementation Guide*).
2. In Accounts Receivable, to activate this feature, create a debit or credit memo transaction type with the Affects Inventory Flexfield set to Yes. Set Class to Credit Memo or Debit Memo. Tab over to the Affect Inventory Flexfield popup and set the field to Yes. Use the credit or debit memo type created when you want to create a transaction that affects inventory.
3. Through Accounts Receivable, enter the credit/debit memos using the transaction type above and enter the OPM organization, Warehouse, and Reason code on the credit lines window.
4. Through OPM, execute the Data Synchronization process for the Cr/Dr Memo Inv table code.

Sales Representatives Synchronization

A sales representative code defines each sales representative's pertinent information including territory and commission plan. Salesreps are maintained in AR and synchronized to OPM.

Invoice Price Synchronization

The Invoice Price is maintained in AP and synchronized to OPM for Actual Costing.

Additional Data Synchronization Through Triggers

In addition to the Immediate and Periodic background data synchronization methods, there is another method through which data is synchronized between OPM and Oracle Financials. These method is referred to as trigger. The Trigger provides transparent synchronization between OPM and Oracle Financials upon saving the data in one application. It reduces the number of steps you must follow for setting up various details within the applications.

The following table indicates what data is being synchronized and its direction (that is whether the data is being synchronized from OPM to Oracle Financials or vice versa):

Data Synchronized	Direction
Item specific unit of measure conversions	OPM to OF
Items	OPM to OF
Freight Bill Methods	OPM to OF
Carriers	OPM to OF
Inventory Organization/Warehouses	OF to OPM
Stock Locator/OPM Warehouse Location	OF to OPM
Exchange Rates	OF to OPM
Exchange Rate Types	OF to OPM
Currencies	OF to OPM
AP FOB Codes	OF to OPM
AP Term Codes	OF to OPM
Vendors	OF to OPM

Validation of all Synchronization Points within OPM and Oracle Application for Product Dependency Changes

As a result of OPM Product Dependency modifications, the execution of these triggers depend on whether you are integrated with Oracle Financials or not. All the validation points are now checked for installation status of required applications to allow or restrict the execution of that function interface. These changes have been implemented in data synchronization form, concurrent programs, evaluating changes for existing database triggers or packages and related source code changes.

The interface triggers (shown in the table) would exist in the database but the execution of these triggers depend on the source and target application installation. If the source and target applications are fully or partially installed depending on the functional requirement, then these triggers will execute otherwise they will come back without doing anything. In the following table you will see the usage of letters S and I. The letter S stands for Shared Install and I stands for Full Install. For example, there can be a case where one application is fully installed and it has other dependent applications installed in shared mode with it.

Trigger Description	Dependency	
	Source	Target
Currencies	None	OPM Financials
Currencies Description	None	OPM Financials
Rate Types	None	OPM Financials
Exchange Rate	None	OPM Financials
FOB Codes	Oracle Purchasing	OPM Logistics
Freight Methods	OPM Logistics	Oracle Purchasing
Carrier Codes	OPM Logistics	Oracle Inventory (S,I)
Sales Order Invoices	Accounts Receivables	OPM Logistics
Items	OPM Inventory	Oracle Inventory (S,I)
Item UOM Conversions	OPM Inventory	Oracle Inventory (S,I)
Terms Code	Oracle Purchasing	OPM Logistics
Terms Codes Lines	Oracle Purchasing	OPM Logistics
Vendors	Oracle Purchasing	None
Vendor Sites	Oracle Purchasing	None

Purchasing Free On Board Codes Synchronization

A free on board code (FOB Code) indicates the point at which the title to goods being shipped to a customer passes from the seller to the buyer. FOB Codes are maintained in AR and synchronized to OPM.

Purchasing Term Codes Synchronization

A term code defines the standard period of time when payment is due from your customers. Term codes also define discounts for customers when payment is received by you within a designated discount period. Term Codes are maintained in AR and synchronized to OPM.

Vendors Synchronization

A vendor code identifies important information about your vendors, such as phone numbers, default currency, vendor type, and remit name. They are synchronized with customers. Vendors are maintained in AP and synchronized to OPM. See Vendor Association Automatic Synchronization topic for detailed information.

Vendor Association Automatic Synchronization

The association which exists between the order-from and remit-to vendor sites in Purchasing is automatically sustained in OPM.

In Purchasing, the type of vendor site is determined by setting the Purchasing Site and Pay Site flags on the Enter Vendor. The Purchasing Site flag indicates whether the vendor site can be ordered-from. The Pay Site flag indicates whether payments can be remitted-to the vendor site.

All addresses are grouped by vendor. As a result, associations are built between all order-from and remit-to sites.

Vendor Association Automatic Synchronization Procedure

To run vendor association automatic synchronization:

1. In Payables, when you create a vendor, an association exists between the order-from and remit-to address.
2. In OPM, execute the Data Synchronization process for the Vendors table code. This step brings the vendor association from Financials into OPM along with the rest of the vendor information. This step is required only if the vendor does not currently exist in OPM.

In OPM, you are able to view the vendor associations through the Purchasing application.

Item Specific UOM Conversions Synchronization

The Item Specific UOM Conversions Synchronization capability reduces the number of steps a user has to make in order to set up item specific UOM conversions for an OPM and Financials integration. Through this synchronization process, when an item specific UOM conversion in OPM is saved, it automatically initiates the creation of the same interclass conversion in Financials.

Item Specific UOM Conversions Synchronization - Procedures

The process for creating an OPM item specific UOM conversion has not changed (See: *Oracle Process Manufacturing Inventory Management User's Guide*). Through the OPM Item/Lot Conversion window, the item specific UOM conversion is defined and maintained. However, synchronization occurs automatically when you modify and save an existing OPM item specific UOM conversion or when a new one is added.

To synchronize an OPM item specific UOM conversion to Financials interclass conversion:

1. Navigate to the **Item/Lot Conversion** from OPM Inventory. The Item Lot/Sublot Std. Conversion window is displayed.
2. Complete this window as described in the *Oracle Process Manufacturing Inventory Management User's Guide*. If the item is lot specific, then the Lot and Sublot fields must be left blank. Financials does not support lot/sublot items.
3. Save the window.

Synchronization occurs when the OPM item specific UOM conversion is saved. At the time of saving, OPM verifies if a corresponding interclass conversion exists in Financials:

- If a corresponding Financials interclass conversion does exist, then it is updated with the new information from OPM.
- If a corresponding Financials interclass conversion does not exist, then the OPM item specific UOM conversion is created in Financials. In Financials, it is referred to as an interclass conversion.

Another alternative for synchronizing OPM item specific UOM conversions and Financials' interclass conversions is for the database administrator to execute the automatic synchronization script. This script synchronizes the existing interclass conversion information in Financials with OPM or adds the OPM item specific UOM conversion to the Financials interclass conversion.

Note: The synchronization between OPM and Financials for item specific UOM conversions is limited to all OPM non-lot controlled items and to the single item conversion for a lot-controlled item in which the OPM lot and subplot fields are left blank.

If changes are made to the Financials interclass conversions, they are **not** updated to the OPM item specific UOM conversions. Synchronization occurs from OPM to Financials.

If OPM item specific UOM conversion is flagged as inactive, then the corresponding Financials interclass conversion will also be rendered as inactive. When the OPM item specific UOM conversion is reactivated, the Financials interclass conversion will also be reactivated.

Inventory Organization/Warehouse Synchronization

When the organization parameters for the organization classified as Inventory Organization is created and saved in the Organization Parameters window, a trigger is initiated. This trigger determines if the Inventory Organization is a process organization by checking the Process Enabled flag. If the flag is enabled, the OPM Warehouse is created using the information entered in the Oracle Application forms.

The organization trigger has been modified to use the HR Organization name for determining the warehouse code. The Organization name must be equal to the warehouse code combined with the warehouse description separated by a colon (:). For example, the following information is entered in the Inventory Organization window:

Organization Name: ABCD:My new ABCD warehouse for OPM

Inv Organization Code: XYZ

Process Enabled: X

Process Organization: OPME

This creates the following warehouse in OPM:

Warehouse Code: ABCD

Description: My new ABCD warehouse for OPM

Inv Org: XYZ

Organization: 1234

See: *OPM Inventory Management User's Guide* for more details on this topic.

When defining HR Location for the process inventory organization, you must use only the "OPM" Address Style. This address style is consistent with the OPM address style. If a different address style is used, the organization trigger may not synchronize the warehouse properly.

Stock Locator and OPM Warehouse Location Synchronization

If the OPM Warehouse is location controlled, then define the Stock Locators in the Oracle Inventory. When the Stock Locator is created, it is triggered over to OPM and is created as a warehouse location. The Stock Locator is captured in a key flexfield within Oracle Applications. If it has to be used to create OPM Warehouse Locations, then define one segment for the stock locator key flexfield, non-validated flexfield of data type "Char" and should not exceed sixteen characters in length. If you define multiple segments for this key flexfield, then ensure that the segment1 of this flexfield is always unique.

Items Synchronization

The Items Synchronization enhancement reduces the number of steps required to set up items for an OPM and Financials integration. Through this synchronization process, when an item is saved in OPM, it automatically initiates the creation of the same item in Financials Inventory Organization (Process Enabled) whose operating unit is tied to an OPM Company in MAC Fiscal Policy. The OPM Item Trigger has been modified to assign the category for all of the functional areas which have the default category set and category defined for them.

The Item Status field now includes a new Item Status called OPM. You must assign this status to the INV:Default Item Status profile option. You can, by defining the profile option, control the type of transactions that can be performed on the OPM items. The default flags for this status is set such that all logistics transactions are allowed and not the production transactions. For example, all the flags are enabled except the BOM Allowed and Build in WIP flags.

The OPM Item trigger now populates items only to the master inventory organizations and not to child inventory organizations.

A new profile option has been created using which the customer can control the synchronization of items to the child inventory organizations that are linked to OPM.

Note: You can use this profile option only at the site level.

The profile option, GMF: Synchronize Items to Child Organizations, can have a value of either Null or:

- **Yes** - Item trigger replicates the items to all inventory organizations linked to OPM and their master organizations.
- **No** - Item trigger replicates the items to only the master organizations of the inventory organizations linked to OPM.

Items Synchronization - Procedures

The process for creating a OPM item has not changed (See: *Oracle Process Manufacturing Inventory Management User's Guide*). Through the OPM Items option, items are defined and maintained. However, synchronization automatically occurs when you modify and save an existing item in OPM or when a new one is added.

To synchronize an item in OPM to Financials:

1. Navigate to **Items** from the OPM Inventory. The Items window is displayed.
2. Complete this window as described in the *Oracle Process Manufacturing Inventory Management User's Guide*.
3. Save the window.

Synchronization occurs when the item in OPM is saved. At the time of saving, OPM verifies if a corresponding item exists in Oracle Financials:

1. If a corresponding Financials item does exist, then it is updated with the new information from OPM.
2. If a corresponding Financials item does not exist, then the OPM item is created in Financials.

Note: If changes are made to an item in Financials, these changes are **not** updated to the OPM items. Synchronization occurs from OPM to Financials.

If an OPM item is flagged as inactive, then the corresponding Financials item is also rendered as inactive. When the OPM item is reactivated, the Financials is also reactivated.

The unit of measure specified when defining the OPM item must also exist in Financials.

Additional Data Synchronization Through Concurrent Programs

In addition to the Immediate, Periodic background data synchronization methods, and triggers you can also use the Concurrent programs to synchronize data between OPM and Oracle Financials. These method is referred to as trigger. You must invoke the corresponding program from the standard request submission form in the OPM Financials responsibility.

Customer Synchronization

The Customer Synchronization process is a concurrent program and it is not submitted through the Data Synchronization form in OPM Financials Integration as it used to be previously. You must invoke the Synchronize Customers program from the standard request submission form in the OPM Financials responsibility. The customer synchronization program allows you to specify:

- Company, for which you want to run the customer synchronization. Leave this field blank in case you have a non-multi organization installation.
- Customer, that represents the customer number if you want to run synchronization for a specific customer. Leave this field blank if you run synchronization for all eligible customers.
- Synchronize All Customers, specify Yes if you want to synchronize all the customers regardless of whether they were synchronized earlier or not. Specify No if you only want to synchronize customers that are new or that have been modified since the last synchronization process was run.

The output of this concurrent program will show you the list of customers that have been synchronized. You can run the View Interface Exception report to see the exceptions.

The Customer Synchronization process synchronizes the Customer Ship From Warehouse, Freight Bill Method, Carrier/Shipper Code, ship-to/bill-to addresses, and customer contacts from Accounts Receivables to OPM Order Fulfillment application.

Customer Synchronization - Procedures

Following are the procedures to synchronize the customers from Accounts Receivables to OPM:

1. Add and define descriptive flexfields to the Customer window as per the *Oracle Process Manufacturing Implementation Guide*.
2. In AR, define a Customer and their contacts through the Enter Customer Information window. Ensure an association exists between the ship-to and bill-to address.
3. Through OPM, synchronize Customers through the Customer Synchronization concurrent program.
4. All locations within a customer are associated to the primary bill-to location. The customer association is established automatically at the time of Customer Synchronization.
5. After the above procedures have been executed, through OPM you are able to view the customer information brought over from Accounts Receivable. For example, use the Sales Order window to create a new sales order.

At the time of customer synchronization, Receivables verifies if a corresponding customer exists in OPM. If a corresponding customer exist in OPM, then it is updated with the modified customer and contact information from Receivables.

With the changes made to accommodate the new functionality for customer and contacts in the Order Fulfillment application, following are a few points to remember:

Customer

In Receivables, on the Enter Customer Information window, there are two customer types, Internal and External. However, in OPM, there are three types. Mapping is as follows:

Internal in Receivables is mapped as Transfer in OPM

External in Receivables is mapped as Normal in OPM

Customer Contact

In Receivables, on the Enter Customer Contact Information window, there is an entry field referred to as Job Title. The Job Title field can be 50 characters. In OPM Order Fulfillment application, the corresponding field on the Contact window is Contact Type. The OPM Contact Type field can be 8 character long. The Receivables Job Title field should be defined in 8 characters only, because it will discard those which are more than 8 characters.

Synchronize Customer Records from the AR Customer Master form

The AR Customer master form contains an option to synchronize single customer record. Modified the OPM.pll custom file to provide this functionality. If you are an OPM user, then the Actions menu with the Synchronize option is enabled on the Customer maintenance window in Oracle Receivables application. Using this option you can synchronize customers directly from the Customer Maintenance window.

The following are the prerequisites for using this functionality:

- OPM is installed, this is verified by checking if the GML application is installed
- The profile option, GMF: Enable Checks on Customer Master, is set to Yes
- The organization ID is specified in the Fiscal Policy

The parameter, Customer Number of the Synchronize Customers concurrent program in OPM Financials, refers to customer number only. This value for this field can be selected from a list of values (LOV). Previously, this field used to be referred to as customer number and location.

Note: See *Oracle Receivable User's Guide* for detailed information about various Receivables forms. See *OPM Order Fulfillment User's Guide* for information about various OPM forms.

One Time Ship-To Address

The One Time Ship-to Address capability allows you to enter a temporary Ship-to address for use in AR. When a Ship-to address is defined through OPM Sales Order and Shipping features, this address may be used for generating invoices in AR.

Note: Please see One Time Ship-To Address - OPM Prerequisite topic and the One Time Ship-To Address - AR Prerequisites topic before proceeding.

One Time Ship-To Address - OPM Prerequisite

In order to have access to a one time Ship-to address, the OPM profile options "GML:Use Shipment Address on Invoice" must be set to 1. Initially, the value of this profile options will be set to 0, driving the customer location address to be used in the invoice. If you wish to use the one time Ship-to address for invoicing, then change the value of this profile options to 1.

One Time Ship-To Address - AR Prerequisites

On the AR Customer Addresses window in the Business Purposes region, the Location field must not specify a reference to One Time.

One Time Ship-To Address - Procedures

Following are instructions for adding a one time Ship-to address for use in AR. These instructions are general in nature and assume that you are familiar with using OPM Sales Order, Shipping, and Data Synchronization forms as well as AR Autoinvoicing feature. See *OPM Order Fulfillment User's Guide* for detailed instructions on the completing a sales order and shipping. See *Oracle Receivables User's Guide* for information on the Customer Import and Autoinvoicing features.

1. Enter and save the one time Ship-to address through either the OPM Sales Order window or the OPM Shipping window. The process for entering an address has not changed.
2. Run the AR Update concurrent program using the standard request submission form in the OPM Financials responsibility.
3. Through the AR Customer Interface feature, the one time Ship-to address is generated such that it can be used in AR. This is the only additional step required to synchronize the OPM one time Ship-to address into AR.

4. Through the Oracle Financials View Requests window, you can verify that the one time Ship-to address was successfully synchronized from OPM into AR.
5. After the one time Ship-to address is successfully synchronized, you will have access to this address when utilizing the Autoinvoicing feature.

Note: In the future, a purge routine will be implemented to delete the one time ship addresses stored in AR.

In order to generate an invoice, the OPM Country Code must be the same as the AR Country Code.

The one time Ship-to address will not be brought back to OPM using Customer Synchronization.

AR Update Synchronization

The AR Update Synchronization is a concurrent program submitted using the standard request submission form in the OPM Financials responsibility. The AR Update process pulls released shipments from the OPM Order Fulfillment application into the Receivables application. This process is used in the Accounts Receivables and OPM Integration section. In OPM, select AR Update by placing an X in the left column and start the Data Synchronization process.

Oracle General Ledger and OPM Integration

This topic explains the OPM and Oracle General Ledger integration.

The following topics are covered:

- Introduction to Oracle General Ledger and OPM Integration
- OPM to General Ledger Update Flow Diagram
- Updating Subsidiary Ledger
- Updating the Oracle General Ledger
- Journal Import
- Exception Report
- Journal Posting
- Journal Inquiry
- Account Inquiry and GL Drill down to OPM

Introduction to Oracle General Ledger and OPM Integration

OPM integrates with Oracle General Ledger. This integration provides relevant information on a timely basis between OPM and Oracle General Ledger.

The integration between OPM and Oracle General Ledger allows exchange of information in regards to the accounting impact of manufacturing and other inventory related transactions. Oracle General Ledger receives this information from OPM and automatically records it in the form of journal entries. This integration provides you with the features needed to satisfy the following basic integration needs:

- Use standard methods to automatically create journal entries from OPM transactions and send them to the Oracle General Ledger.
- Share a definition of your chart of accounts and other setup information such as calendars, currencies, exchange rates and journal entry sources and categories to minimize redundant data entry.
- Easily identify and correct setup and transaction information in OPM which creates invalid journal entries in Oracle General Ledger.
- Reference OPM source document information within Oracle General Ledger journal entry reports.
- Perform drill down queries from Oracle General Ledger to view the source documents for journal entries created from OPM.
- Use OPM with multiple Sets of Books in a single installation of Oracle General Ledger.

OPM to General Ledger Update Flow Diagram

The OPM to General Ledger Update Flow diagram depicts the typical General Ledger update process. Each component of this diagram is described in the General Ledger Update Flow Components topic.

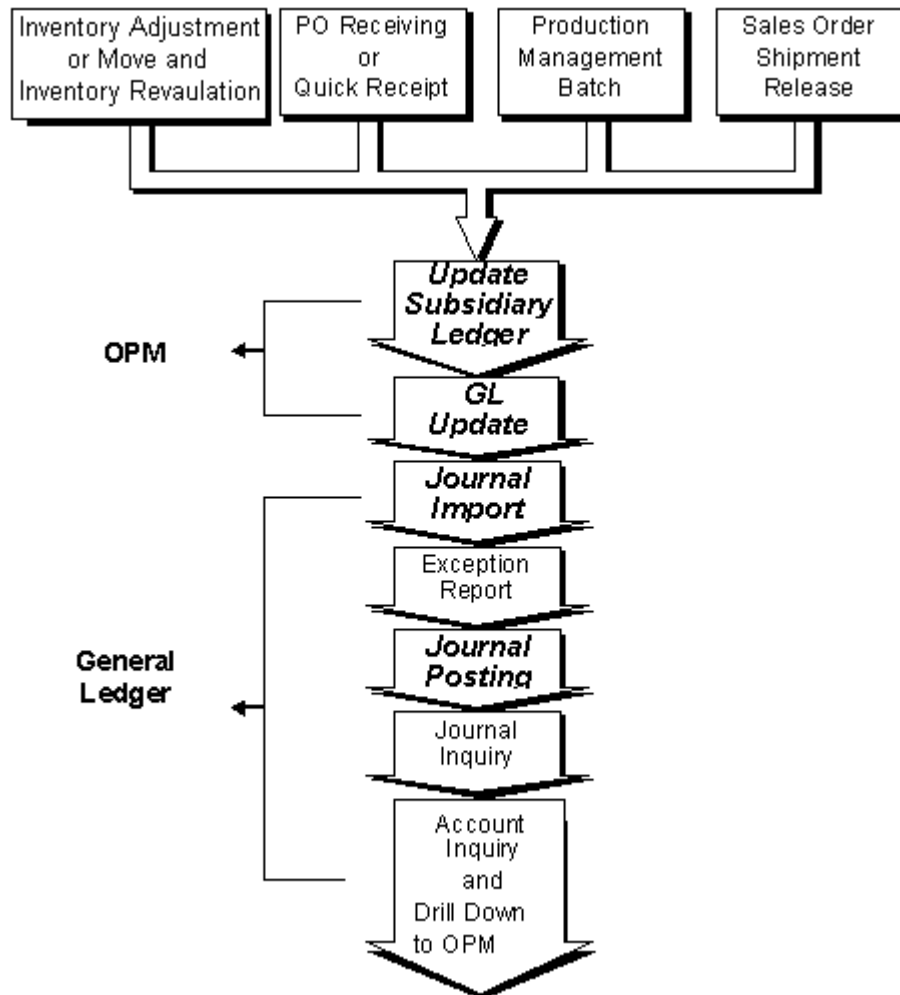


Figure 3–1 OPM to General Ledger Update Flow Diagram

OPM to General Ledger Update Flow Components

Following is a description of each component of the OPM to General Ledger Update Flow diagram:

Source of OPM Transaction

In OPM, the following events have financial implications:

- Inventory Adjustment or Move
- Purchase Order Receiving or Quick Receipt
- Production Management Batch
- Sales Order Shipment Release
- Inventory Cost Revaluation

Subsidiary Ledger Update

In OPM, the Subsidiary Ledger is updated. OPM Costing Standard Costs and OPM MAC Account Mappings are used to create General Ledger Journal Vouchers in the OPM Subsidiary Ledger for transactions that have a financial impact. See *Oracle Process Manufacturing Manufacturing Accounting Controller User's Guide* for detailed information on the Subsidiary Ledger Update feature.

Note: Prior to updating the Subsidiary Ledger, you may want to perform a test run of the subledger update process. The Test Subsidiary Ledger Update option is used for this purpose. The Test Subsidiary Ledger Update process creates the Test Subsidiary Ledger Update report. This report replicates what would have been created had the actual Subsidiary Ledger Update program been run. It is recommended that you review this report prior to updating the Subsidiary Ledger. See *Oracle Process Manufacturing Manufacturing Accounting Controller User's Guide* for detailed information.

GL Update

In OPM, the General Ledger update process passes OPM Subsidiary Ledger Journal Vouchers into the General Ledger interface tables.

Journal Import

Journal Import is the standard GL program that creates journal entries from the information in the General Ledger interface table. The Journal Import can be run for sources CM (Cost Management), IC (Inventory Control), OP (Order Processing), PM (Production Management), and PO (Purchasing) to pass information from OPM to GL. For example, in GL, run the Journal Import for source IC to pass information from OPM to GL for an Inventory Adjustment.

Exception Report

In General Ledger, view the standard Journal Import Exception Report to identify any errors in the Journal Import. After viewing the Journal Import Exception Report, you can make the necessary corrections in General Ledger or OPM. Rerun the Journal Import after the corrections are made.

Journal Posting

In General Ledger, post the Journal Vouchers to update Account Balances.

Journal Inquiry

In General Ledger, inquire on your imported Journal Vouchers. You can inquire on the CM, IC, OP, PM, and PO sources to query on journals associated with OPM transactions. For example, use batch name = 'IC%' to query on journals associated with OPM inventory adjustments.

Account Inquiry and Drill Down to the OPM Source Transaction

In General Ledger, enter from and to periods and the account number. Select the Journal Details button and highlight your journal. Click on the drill-down button to view the OPM source transactions.

Updating Subsidiary Ledger

See *Oracle Process Manufacturing Manufacturing Accounting Controller User's Guide* for details on this topic.

Updating the Oracle General Ledger

This functionality requires Oracle General Ledger to be fully installed. If you are using OPM not integrated with Oracle Financials, and GL is not fully installed, then a warning message displays and you cannot run the GL update.

The GL Update program takes the transaction journal entries from the updated OPM Subsidiary Ledger table and populates the General Ledger interface table, making the data ready for retrieval into the General Ledger module. After this program has run, the Journal Import Program from within the General Ledger must be run to import the journal entries into GL.

The following features are available for the GL Update option:

- Ability to schedule the GL Update for a user-specified date and time.
- View the status of a submitted GL Update.
- Abort a submitted GL Update.
- Display error or warning messages generated during the GL Update process.

Updating the Oracle General Ledger Procedure

To update the interface table:

1. Navigate to the **General Ledger Update Process Status** form.
2. Select **Start** from the **Special** menu. The **Start General Ledger Update Process** form appears. This form allows you to begin the rollup for a specified calendar, period, and cost method.
3. Complete the fields as described in *Start General Ledger Update Process -- Fields* topic.
4. Query on the reference number field.
5. Click **Accept** to begin the rollup process.

Start General Ledger Update Process Field Reference

The fields on this window are:

Selection Criteria

Company

Enter the company for which you are updating the General Ledger (GL). This field defaults to the company associated with your operator code but may be changed to any company valid for your operator code. Required.

Fiscal Year

This field displays the current fiscal year for which the GL will be updated. You may change this field if necessary. Required.

Period

This field defaults to the current fiscal period for which the GL will be updated. You may change this field if necessary. Required.

Start Date

Indicates the date on which the GL Update process will begin.

End Date

Indicates the date on which the GL Update process should terminate.

Selection Range

Source (From, To)

Indicate whether you want to update the GL for a range of sources (for example, CM, IC, OP, PM, and PO).

To indicate a range of sources, enter the first source code (alphabetically) in the range in the Range From field and the last source in the range in the To field.

Event (From, To)

Indicate whether you want to update the GL a range of events or a group of OPM transactions.

To indicate a range of events, enter the first event code (alphabetically) in the range in the range From field and the last event code in the range in the To field.

Sub-Event (From, To)

Indicate whether you want to update the interface table for a range of sub-events or specific OPM transactions.

To indicate a range of sub-events, enter the first sub-event code (alphabetically) in the range in the range From field and the last sub-event code in the range in the To field.

Reference Number

This field displays the unique identification number which is automatically generated and assigned by the General Ledger update process. You may wish to make a note of this reference number for future use.

Start General Ledger Update Process Fields

Start Date

Specify the date and time that the cost rollup process will start. To start the process immediately, click the Now button. The Start Date defaults to the first day of the period of the fiscal year for which the General Ledger update is being performed.

Note: Now must be defined as a profile option, using the profile option "GMA:Now".

To start the rollup on a particular date, click the Specific Date radio button. Enter the date you want the cost rollup to run.

Checking the General Ledger Update Process Status

The Process Status option allows the user to view the status of the General Ledger update process. It can be selected any time during the update process.

Checking the General Ledger Update Process Status Procedure

To view the status of the General Ledger update process:

1. Navigate to the **General Ledger Update Process Status** form.
2. Select **Process Status** from the **Special** menu. The **General Ledger Update Process Status** form appears. This form allows you to begin the rollup for a specified calendar, period, and cost method.
3. Complete the fields as described in the *General Ledger Update Process Status - Fields* topic.
4. Query on the reference number field.

General Ledger Update Process Status Field Reference

The GL Update Process Status form displays a number of fields which were described in detail in the *Updating the Oracle General Ledger - Fields* topic. Following are descriptions of those fields not previously described:

Scheduling Information

Scheduled On

Displays the date and time when the General Ledger update process was began.

Started On

Displays the date when the General Ledger update process began.

Started By

Displays the operator code of the user who requested the General Ledger update.

Ended On

Displays the date when the General Ledger update process finished.

Errors

Posted

Displays the number of errors posted during the General Ledger update. This is the number of unique errors recorded during the General Ledger update.

Found

Displays the number of errors found during the General Ledger update. This is the total number of errors which occurred during the General Ledger update.

Abort Information

On

If the General Ledger update process aborted, then this field displays the date the process terminated.

By

If the General Ledger update process aborted, then this field displays the operator code of the user who requested the abort.

Reason

Displays the reason for aborting the General Ledger update. The reason for the abort was indicated during the time the abort was requested.

General Ledger Update Process Status Field

Rows Posted

Displays the number of rows posted during the General Ledger update. This is the number of rows which were inserted into the General Ledger interface table.

Aborting/Resetting Updates

The Abort/Reset option stops the General Ledger update process. It can be selected any time while the update process is executing or prior to the beginning of a scheduled process.

Aborting/Resetting Update Procedure

To abort or reset the GL update:

1. Navigate to the **General Ledger Update Process** form.
2. Query on Reference Number to abort on process status form.
3. Select **Abort/Reset** from the **Special** menu.
4. In the Aborted Reason field, enter the reason for aborting the GL Update and press **Enter**.
5. Confirm that you wish to proceed with the abort process.

Viewing Error Messages

The Error Messages option allows you to view the error or warning messages generated during the GL Update process.

Viewing Error Messages Procedure

To view error messages:

1. Navigate to the **General Ledger Update Process** form.
2. Select **Viewing Error Messages** from the **Special** menu.
3. Query on the reference number field.

Error Messages Field Reference

The fields on this window are:

Reference Number

Enter the unique identification number which is automatically generated and assigned by the General Ledger update process. Required.

Errors

Line

Displays the unique identifier for each message in the Error Comment field. The Line # is assigned sequentially.

Error Comment

Displays the error or warning message associated with the GL Update.

Journal Import

Journal Import creates Journal Entries from the information in the General Ledger interface table. The Journal Import can be run for sources CM, IC, OP, PM, and PO to pass information from OPM to GL. For example, in GL, run the Journal Import for source 'IC' to pass information from OPM to GL for an Inventory Adjustment.

See *Oracle General Ledger User's Guide* for detailed information.

Exception Report

In General Ledger, view the Journal Import Exception Report to identify any errors in the Journal Import. After viewing the Journal Import Exception Report, you can make the necessary corrections in General Ledger or OPM Manufacturing.

See *Oracle General Ledger User's Guide* for detailed information.

Journal Posting

In General Ledger, post the Journal Vouchers to update Account Balances.

See *Oracle General Ledger User's Guide* for detailed information.

Journal Inquiry

In General Ledger, inquire on your imported OPM journal. You can inquire on the CM, IC, OP, PM, and PO sources to view journals associated with OPM transactions. For example, use batch name = 'IC%' to query on journals associated with OPM Inventory Adjustments.

In Financials, use the Enter Journals screen or the Journal Entry Inquiry screen to view the OPM Document Number and Journal Voucher Number. See *OPM Document Number and Journal Voucher Number* in GL Journal Voucher topic for detailed information.

See *Oracle General Ledger User's Guide* for detailed information on the Journal Inquiry topic.

OPM Document Number and Journal Voucher Number in GL Journal Voucher

The OPM Document Number appears on several Financials Journal Voucher screens to aid you in tying out OPM and Financials transactions. This Document Number appears either in the Reference field or Description field on the GL Enter Journals and the Journal Entry Inquiry screens. In addition to the OPM Document Number, the OPM Voucher Number also appears.

The Document Number is displayed only for non-summarized event documents. On the OPM Event Fiscal Policy form the Summarize Flag field should be changed to 0-Do Not Sum Sub-events for Journal Voucher in order to achieve non-summarized event documents. For summarized events, use the Voucher Number to generate the Detailed Subledger Report in the Manufacturing Accounting Controller module. This report will provide information about all the documents for the specified Voucher Number.

Enter Journals and Journal Entry Inquiry Forms

Following is the format for the Journal Batch Name for OPM Journals (See Batch Name field):

Source Name-Event Code-System Date-Source-Request Id-Actual Flag-Group Id'

Following is an example of the Journal Batch Name for OPM Journals:

PM-BTCH-14-Mar-1999 10:15:25 PM 746: A

In the Journal Entry Header and the Description field in the Journal Entry Lines provide the OPM Document Number. In the following example, the OPM Document Number is FBP1 000050. The Batch Name field provides the origins of the Document Number. For example, the PM and BTCH codes refer to Production and Batch Event Code.

OPM Voucher Number-Subevent-Currency-Rate Type, if applicable-Currency Conversion Rate, if applicable-Currency Conversion Date, Encumbrance Type Id, Budget Version Id.

In the following example, the OPM Voucher Number is 493. See GL Enter Journals and Journal Entry Inquiry forms for field details.

Note: The Document Number will be displayed only for non-summarized event documents. On the OPM Event Fiscal Policy, the Summarize Flag field should be changed to 0-Do Not Sum Sub-events for Journal Voucher in order to achieve non-summarized event documents.

Other Types of Journal Inquiries via General Ledger Reports

The OPM Document Number and Voucher Number appear on the General Ledger report and several journal reports in Financials. These reports are:

- General Ledger
- Journals - Foreign Currency
- Posted Journals
- Unposted Journals
- Journals - Entry
- Journals - Line

Financial Reports - Enhancements

The following table provides detailed information on the enhancements made to the Financials reports. It provides information on only those report columns that have been modified.

Financials Report

Indicates the Financials report which has been enhanced.

Type

Indicates the report type which has been enhanced. For example, there are four types of General Ledger reports - Entry, Line, Source, and Document Number Detail. The Type column indicates which report type has been enhanced.

Column Heading

Indicates the column on the Financials report which has been enhanced. The enhancement will reflect the addition of the OPM voucher number and/or OPM document number.

OPM Number

Indicates the addition of the OPM voucher number or OPM document number.

Financials Report	Type	Column Heading	OPM Number
General Ledger	Line	Line Item Description	Vendor Number Document Number
	Entry	Entry Item Description	Document Number Document Number
	Source	Line Item Description	Voucher Number Document Number
	Document	N/A	N/A
Foreign Currency Journals	Line	Line Item	Voucher Number
	Source	Line Item	Voucher Number
Posted Journals	Line	Line Item Description	Voucher Number Document Number
	Source	Line Item Description	Voucher Number Document Number
Unposted Journals	Line	Line Item Description	Voucher Number Document Number
	Source	Line Item Description	Voucher Number Document Number
Journal Entry	N/A	Entry Description Reference	Voucher Number Document Number Document Number
Journal Line	N/A	Reference Description	Document Number Document Number

Account Inquiry and GL Drill down to OPM

In Financials General Ledger, enter from and to periods, enter the account numbers, select the Show Journal Details, and select your journal. The Zoom option provides you with a drill down from Financials General Ledger to OPM.

See *Oracle General Ledger User's Guide* for detailed information.

Accounts Receivables and OPM Integration

This topic explains OPM and Accounts Receivables integration.

The following topics are covered:

- Introduction to the Accounts Receivable and OPM Integration
- Accounts Receivables Update Flow Diagram
- Sales Order Entry and Credit Check
- Shipment Release
- Accounts Receivable Update
- Receivables Autoinvoicing
- Exception Report
- View Invoice
- Cash Receipts
- Invoice History

Introduction to the Accounts Receivable and OPM Integration

The integration between OPM Order Fulfillment and Oracle Receivables is for the sharing of information related to Sales Order processing and Accounts Receivables. In both cases, data is maintained in one application or the other and the information is shared through synchronization. The Drill down are provided to view information in the other application.

This integration provides you with the features needed to satisfy the following basic integration needs:

- Share customer information so that you can enter it once in AR and automatically use it in both Receivables and OPM Order Fulfillment.
- Share other setup information including Sales Representatives and Invoice Currency (entered in Financials).
- Share Sales Order released Shipments so that you can automatically create Invoices in Receivables.
- Perform drill down queries between Receivables and OPM Order Fulfillment to track the Invoice History of a Sales Order or the Sales Order for an Invoice.

Accounts Receivables Update Flow Diagram

The Accounts Receivable Update Flow diagram depicts the typical Accounts Receivable update process. Each component of this diagram is described in the *Accounts Receivable Update Flow Components* topic.

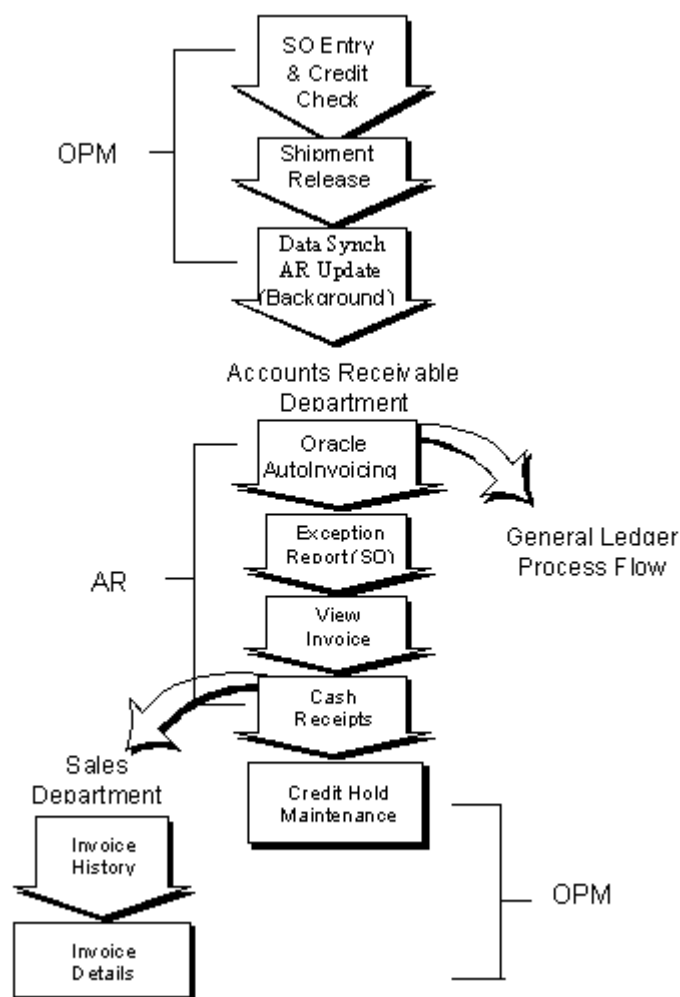


Figure 4-1 Accounts Receivable Update Flow Diagram

Accounts Receivables Update Flow Components

Following is a description of each component of Accounts Receivable Update Flow diagram:

SO Entry & Credit Check

In OPM, enter a Sales Order in the Order Fulfillment application. Credit checking is performed when you save the order. The customer open balance can be initialized by running the Update Customer Balance report.

Shipment Release

In OPM, create Shipments for single or multiple Sales Orders in the Order Fulfillment application. Then release the appropriate shipments to update the inventory information.

Note: If the Sales Order is on hold, then it must be removed from hold (See *Oracle Process Manufacturing Order Fulfillment User's Guide* for detailed information).

Data Synchronization/AR Update

In OPM, select AR Update from the OPM Financials. In the Data Synchronization form, place an X in the left column of AR update will start the Data Synchronization process. This pulls released Shipments from the *OPM Order Fulfillment* application into the Accounts Receivables Interface tables.

Receivables Autoinvoicing

In Accounts Receivable, the Autoinvoicing function imports released OPM Shipments and automatically creates receivable Invoices. After selecting the Autoinvoicing interface for a single request, in the Request Name field, enter or select AutoInvoice Master Program. Define the report parameters as follows, where Invoice Source is GEMMS and Transaction Type is blank or a valid company code with "GMF:Transaction Type Mapping for AR Update" transaction type.

Exception Report

In Accounts Receivable, after the Autoinvoicing concurrent request is complete, select Output to view the Exception Report. Use the Exception Report to review and correct the errors generated during the Import of OPM Invoices. After reviewing and correcting the errors, you may execute another AR Update.

View Invoice

In Accounts Receivables, you can view the invoices generated by autoinvoicing online for your customers.

Cash Receipts

In Accounts Receivables, standard cash application options are available.

Invoice History

View the receivables invoices and payments for a shipment through the OPM Sales to Oracle Receivables drill down.

AR to OPM Drill down

Query on Invoice of choice and select Zoom to view OPM Sales Order and Shipment information.

Sales Order Entry and Credit Check

In OPM, enter a sales order. Credit checking is performed when you save the order.

See the Sales Order Entry and Credit Checking topics, *Oracle Process Manufacturing Order Fulfillment User's Guide* for detailed information.

Sales Order Credit Checking

Credit checking occurs when a Sales Order is saved. To enable OPM Credit Checking, in Customer Profile Transaction of Receivables, change the Credit Check flag to Yes. Also, in Customer Profile Amount Receivables, ensure that the credit limit and order limit are set. In OPM Order Fulfillment, ensure that the Credit Checking flag is enabled for the sales order. The Tolerance field should contain the numeric percent over the credit limit the customer is allowed before triggering the credit hold.

You can define your credit checking amounts in any currency provided an exchange rate exists between base currency and this currency. You can define the credit limit at customer and site levels in different currencies. The base currency is the set of books currency.

You can set credit limits at either customer or site level. The site level credit limits take precedence over customer level credit limits.

In the Amount Limits for Each Currency form on the Profile, define the credit limit in any one currency of the set of books. If you define the credit limit in more than one currency, the credit check results may not be what you desire. The credit checking will use the first currency it finds. The Customer Receivables balance will include invoices for all currencies. Enter the dollar limit for Total Credit Limit and Credit Limit Per Order. These parameters will then be used by OPM Sales Order entries to perform credit checking.

To define credit checking in different currencies for a customer, define two different sites for the customer and then define their site level credit limit in different currencies. The following table illustrates this:

	Cus- tomer	Site	Cur- rency	Per Order Limit	Total Limit	Remarks
1	ABC		USD	15,000	100,000	Customer level credit limit
2		NY	USD	10,000	120,000	Site level credit limit
3		PA	USD			No credit limits are defined at site level
4		GB	GBP	6,000	80,000	Site level credit limit
5		Paris	FRF	30,000	300,000	Site level credit limit1
6			DEM	20,000	150,000	Site level credit limit2

In this example, these are the following ways credit checking is done:

- If you create a sales order in OPM for ABC-NY, credit check is done against amounts defined in item 2 (USD: 10,000 and 120,000.)
- If you create a sales order in OPM for ABC-PA, credit check is done against amounts defined in item 1 (USD: 15,000 and 100,000.)
- If you create a sales order in OPM for ABC-GB, credit check is done against amounts defined in item 4 (GBP: 6,000 and 80,000.)
- If you create a sales order in OPM for ABC-Paris, credit check is done against any one of the items 5 or 6, not sure which one (FRF: 30,000 and 300,00 or DEM: 20,000 and 150,000.)

There are four different hold reason codes being used for credit checking which have been added to the OPM Profiles options. They are predefined with default values for the hold reason for each condition. Although the hold reason codes are predefined, you can change the description and flags or change the values in the Profiles form to agree with the other sales hold reason codes already established:

Description of Hold Reason Code	Profile Options	Hold Reason Codes
Credit Hold	GMF:Hold Code for Customer Hold	CRDH
Credit Check Failed	GML:Hold Code for Unsuccessful Credit Check	CRFL
Credit Limit Per Order Exceeded	GML:Hold Code for Order Limit Exceeded	OLEX
Total Credit Limit Exceeded	GML:Hold Code for Customer Limit Exceeded	CLEX

There will be no hold reason code assigned to sales orders which pass credit checking.

A customer open order balance is maintained in the customer's currency. This open order value is incremented when you save a Sales Order and decremented when the sales order shipment is released. The release makes the shipment eligible to be invoiced by Receivables and is assumed to be an open receivable at this point. A function to recalculate customer open balances has also been added.

This function calculates the customer open order balance in OPM is useful if a currency exchange rate is missing between sales order billing currency and the customer currency. If you save the sales order and the exchange rate is missing, a message is received indicating this. The message also indicates that you should enter the exchange rate in OPM, then recalculate the open sales order balance. If you run the Open Balance Update and OPM still can not find an exchange rate, a report display indicates the exchange rate that is missing. Credit Checking has been modified to use this open customer balance.

The following situations are invoked for customer credit checking on sales order saves:

Credit Check Passes If...

Open Receivables balance (AR) plus Open Customer Sales Order Balance (from OPM) are less than or equal to the Credit Limit (plus the limit tolerance)

Credit Check Fails If...

Open Receivables balance plus Open Customer Sales Order Balance are more than the Credit Limit (plus the limit tolerance)

Note: If released shipment does not become an invoice immediately, the value will not be considered as an open accounts receivable item for the credit check. It will not be reflected in the Customer Open Balance. Also, if there are multi-currency sales orders, you should recalculate the customer open balance for all customers using the Update Customer Balance in OPM at the beginning of an implementation.

Sales Order Credit Checking and Recomputing Customer Open Balance Procedure

To perform a Sales Order Credit Check and then Recompute Customer Open Balance:

1. A credit check is performed when a sales order is saved. See *Oracle Process Manufacturing Order Fulfillment User's Guide* for detailed information on completing the Sales Order form.

However, if this is a new implementation or an error occurred during the above credit checking process, the customer open balance may have to be recomputed. Following are the procedures:

2. Navigate to **Reports**.
3. Select **Run**.
4. Navigate to **Submit Request** form.
5. Select Update Customer Open Balance report in the **Request Name** field.
6. Complete the fields as described in the *Update Customer Open Balance - Fields* topic.

Update Customer Open Balance Field Reference

The fields on this window are:

Company

Enter the company for which you wish to recompute their open balance. This field defaults to the company associated with your operator but may be changed. Only valid companies for your operator code may be entered.

All

The **All** field is used to indicate a Sales Order Credit Check for all customers. To indicate all customers, move the cursor to the All field and enter an 'X'.

One

The **One** field is used to indicate a Sales Order Credit Check for one customer. To indicate one customer, move the cursor to the One field and enter a customer.

Range From and Through

The Range From and Through fields are used to indicate a Sales Order Credit Check for a range of customers. To indicate a range of customers, enter the first customer code of the range in the Range From field and the last customer code of the range in the Through field.

Printer No.

The number of a standard OPM printer. If an error occurs while computing the Customer Open Balance (for example, an exchange rate is missing while converting billing currency to customer currency), then an Exception Report is generated. This Exception Report is printed to the designated OPM printer. Required.

Sales Order On Hold

You can place a hold on a sales order to indicate that commitment, picking, shipping, or invoicing inventory transaction should be prevented. You can do this in situations where there is insufficient stock or where there is a customer credit problem. The degree to which transactions will be prevented depends on the switches you have turned on for the hold code on the Hold Reasons form. None is the default for new sales orders. To place the order on hold, you may enter any valid hold code.

To place a sales order on hold:

1. Start the Order Fulfillment module.
2. Navigate to the **Change Order Hold** form.
3. Complete the fields as described in the *Oracle Process Manufacturing Order Fulfillment User's guide*.
4. Indicate the reason for holding in the Hold Reason field.

Note: Changing the credit limit in AR does not release the order on hold in OPM. You must use the Order Hold Maintenance in OPM.

Shipment Release

In OPM, create shipments for single or multiple sales orders. Then release the appropriate shipments to update the inventory information. Only release shipments will be eligible to be brought into Accounts Receivables.

If the sales order is on hold, then it must be removed from hold.

See *Oracle Process Manufacturing Order Fulfillment User's Guide* for detailed information.

Accounts Receivable Update

In OPM, to start the accounts receivable update process, select Financial Integration Data Synchronization AR Update by placing an X in the left column and start the Data Synchronization process (See: Data Synchronization). This pulls released shipments from the OPM Sales module into Accounts Receivable interface tables.

Note: Use the Exception Report to review and correct the errors generated during the OPM AR Update. After reviewing and correcting the errors, you may execute another AR Update.

There are several options available in the OPM and Receivables integration. These are detailed as follows.

Primary Unit of Measure for Billing (AR Update)

Another option that the AR Update feature offers is the ability to generate accounts receivable invoices in the primary unit of measure as defined in OPM. During the accounts receivable update routine initiated through OPM, the shipment unit of measure is converted to the primary unit of measure and is transferred to AR. If this option is selected, accounts receivable invoices will be generated using the primary unit of measure.

Primary Unit of Measure for Billing Synchronization Procedure

Following are the procedures to bill in the OPM primary unit of measure:

1. In OPM, ensure that the profile option "GMF:Use Ship Unit of Measure for AR Update" value is set to 0.
2. In OPM, enter a Sales Order. Credit checking is performed when you save the order. The customer open balance can be initialized by running Update Customer Balance concurrent program.
3. In OPM, create shipments for single or multiple sales orders.
4. In OPM, release the appropriate shipments to update inventory information.
5. Through OPM, initiate the AR Update by placing an X in the left column and start the interface. This pulls released shipments from OPM Sales module into AR.
6. In OPM, verify that there are no errors.
7. In Accounts Receivable, the Autoinvoicing function imports released OPM Shipments and automatically creates receivable Invoices. After selecting the Autoinvoicing interface for a single request, in the Request Name field, enter or select AutoInvoice Master Program. Define the report parameters as follows, where Invoice Source is GEMMS and Transaction Type is blank or a valid company code with "GMF:Transaction Type Mapping for AR Update" transaction type.
8. In Accounts Receivable Concurrent Request, click the output button to view the exception report when the Autoinvoicing run is complete.
9. In AR, view on-line the invoices generated by Autoinvoicing for your customers to perform AR to OP drill down.
10. In AR, view the unit of measure being used in the Additional Invoice Information Zone on the Enter Invoices screen. The primary unit of measure is used to create invoices.

General Ledger Booking Based on Profit Center

General ledger booking based on profit center in autoinvoicing can now be accomplished by transactions being grouped by Ship-to Customer GL Class. Sales, receivables, and cost of sales are booked to the general ledger based on the profit center that the customer belongs to.

General Ledger Booking Based on Profit Center Procedure

To book a general ledger based on profit center:

1. In OPM, add SHPCLS to the existing string in the profile option value for "GMF:Transaction Type Mapping for AR Update". This represents the Ship-to Customer GL class. Use the Profile Options form to modify the "GMF:Transaction Type Mapping for AR Update" values.
2. In OPM, build your Ship-to Customer GL Classes.
3. In AR, enter the Ship-to Customer GL class for the Custgl Class value on the Enter Customer Information screen or the Customer Location screen. The customer should be the Ship-to customer.
4. Through OPM, execute the customer synchronization process. At this time, the customer is synchronized from AR to OPM. See Data Synchronization topic for detailed information and procedures on this synchronization process.
5. In OPM, create a sales order such that the customer created is the Ship-to customer for this sales order.
6. In OPM, ship the order.
7. In OPM, release the shipment.
8. Ensure that the AR transaction types for the new "GMF:Transaction Type Mapping for AR Update" profile option exists.
9. Through OPM, execute the AR Update synchronization process. See Data Synchronization topic for detailed information and procedures on this synchronization process.
10. Through Accounts Receivable, execute the autoinvoicing program. At this time, the invoice is created in Accounts Receivable. The transaction type on the invoice should be your Customer Ship-to GL Class therefore booking to the appropriate accounts.

OPM Revenue Account Mapping for AR Autoinvoicing

An AR invoice can now contain several items on the same shipment with different Item GL Classes and revenue accounts defined by Item GL Classes without splitting the invoice. Autoinvoicing no longer splits these shipments into several invoices based on different Item GL Classes.

OPM Revenue Account Mapping for AR Autoinvoicing Procedure

The procedures for creating an invoice in AR have not changed. However, there is one modification to the OPM "GMF:Transaction Type Mapping for AR Update" profile option. For an invoice to contain several items on the same shipment with different Item GL Classes in OPM, ensure the profile option for "GMF:Transaction Type Mapping for AR Update" does not contain a reference to ITMCLS. This is no longer supported.

The revenue accounts are mapped in OPM rather than in Accounts Receivable. Set the "GMF:Use Ship To Customer for Revenue Account Mapping on AR Update" profile option to 1 if the Ship to versus the Bill to account is desired for the Revenue Account mapping. All revenue accounts should be mapped to the SAL Account Title in OPM account mapping. The revenue account for each line on a sales order shipment will be sent to Accounts Receivable via the Data Synchronization AR Update process through OPM. However, all other accounts will be obtained from AR.

Receivables Autoinvoicing

In Accounts Receivable, the autoinvoicing function imports released OPM shipments into the Accounts Receivable Interface table and automatically creates AR invoices. The OPM and Financials integration allows for discounts, charges, and allowances at both the detail line and total order level to be synchronized. The synchronization occurs from OPM to Oracle Financials.

The AutoInvoice function is a Submit Single Request concurrent program. In the Request Name field, enter or select AutoInvoice Master Program. Define the report parameters as follows, where Invoice Source is GEMMS and Transaction Type is blank or a valid company code with "GMF:Transaction Type Mapping for AR Update" transaction type.

See *Oracle Receivables User's guide* for detailed information.

OPM and Receivables Autoinvoicing Procedure

1. In Receivables, implement Receivables as per the *Oracle Process Manufacturing Implementation Guide*.
2. In OPM, define the shipping information through the Sales Order module. The procedures for defining the shipping information have not changed (See *OPM Order Fulfillment User's Guide* for a detailed discussion).

3. In OPM, initiate the data synchronization process for the AR Update table code. The OPM shipment data is transferred to Receivables.
4. In Receivables, through autoinvoicing, invoices are created from OPM shipments. See *Oracle Receivables User's Guide* for detailed information on autoinvoicing.

Exception Report

In Accounts Receivable, click the Output button of concurrent request after the Autoinvoicing is complete, enter report in the first column to view the Exception Report. Use the Exception Report to review and correct the errors generated during the OPM AR Update. After reviewing and correcting the errors, you may execute another AR Update.

See *Oracle Receivables User's Guide* for detailed information.

View Invoice

In Accounts Receivables, you can view the invoices generated by autoinvoicing online for your customers.

See *Oracle Receivables User's Guide* for detailed information.

Cash Receipts

In Accounts Receivable, standard receivables cash application options are available.

See *Oracle Receivables User's Guide* for detailed information.

Invoice History

Through the OPM Order Fulfillment module, using the drill down feature, you can view the Accounts Receivable invoices and payments for a shipment. Following are the procedures for drilling down from OPM Order Fulfillment (the graphical user interface version) to Accounts Receivable:

1. Through OPM, complete and accept the Sales Order Selection form. Specify information such as the order number, order date, shipment number, and customer number. See *Oracle Process Manufacturing Order Fulfillment User's Guide* for detailed information.

2. After the Sales Order Selection form has been completed and accepted, the Sales Order List form is displayed. This form provides order and shipment information based on the information specified on the Sales Order Selection form. The information displayed includes the customer, order number, order date, bill customer, currency, and hold reason code. See *Oracle Process Manufacturing Order Fulfillment User's Guide* for detailed information.

To drill down to view the Accounts Receivable invoice and payment information for a shipment, choose an order from the Sales Order List form. You can view such information as the amount of the invoice, currency, terms, balance amount, payment number, applied date, and applied amount for the sales order number and billing customer indicated on the Sales Order List form.

The Financials Integration Reports topic describes the available reports. Reports are available through the Application's Standard Report Submission form.

The following topic is covered:

- Running View Interface Exception Report

Running View Interface Exception Report

Errors may result during the synchronization process. The View Interface Exception Report provides a list of these errors for reconciliation. This report should be reviewed before proceeding. An empty report means there were no errors; all records successfully passed to or from Financials.

Submitting the Selected Report Procedure

To submit the selected report:

1. Navigate to the **Submit Request** form.
2. Enter the name of the report in the **Request Name** field.
3. Complete the fields as described in the *View Interface Exception Report - Parameters* topic and click **OK**.
4. Complete the other fields on the **Submit Request** form and click **Submit Request**.
5. Review any errors and correct the values. Then rerun the synchronization process.

Selected Report Parameters

The fields on this window are:

Software Code

This field identifies the financial software with which OPM is integrated. If your installation is setup for integration to Financials, then the default is ORAFIN. Required.

Company

If Financials is set up for multi-organization functionality, then the Company field is displayed. Enter the company for which you are synchronizing data. This field defaults to the company associated with your operator but may be changed. Required.

If Financials is not set up for multi-organization functionality, then the Company field is not displayed.

From Table Code

This field indicates the table code that will be synchronized. To generate the Exception Report for a range of table codes, enter the first table code in this field.

To Table Code

To indicate a range of table codes, enter the last table code in this field.

Navigation Path

This topic provides the default navigation path for Manufacturing Accounting Controller setup and MAC profile options.

- Financials Integration Navigator Paths
- Setting Financials Integration Profile Options

Financial Integration Navigator Paths

Although your System Administrator may have customized your Navigator, typical navigation paths are described in the following tables. In some cases, there is more than one way to navigate to a form. These tables provide the most typical default path.

Window	Path
Data Synchronization	Financial Integration:Data Synchronization
General Ledger Update Error Messages	Financial Integration:GL Update:Actions:View Error Messages
General Ledger Update Process Status	Financial Integration:GL Update:Actions:Process Status
Immediate Interface	Financial Integration:Data Synchronization:Immediate Interface or Financial Integration:Data Synchronization:Actions:Immediate Interface
Setup Interface Periods	Financial Integration:Data Synchronization:Periodic Interface or Financial Integration:Data Synchronization:Actions:Immediate Interface
Start General Ledger Update Process	Financial Integration:GL Update:Actions:Start
View Interface Exception Report	Financial Integration:Reports:Standard:Run

Setting Financials Integration Profile Options

During your implementation, you set a value for selected profile options to specify how your Financial Integration application controls access to and processes data. Financial Integration uses the listed profile options:

- GMF:Customer Delimiter
- GMF:Enable Checks on Customer Master
- GMF:Synchronize Items to Child Organizations
- GMF:Vendor Delimiter
- GMF:Use OPM Revenue Account for AR Update
- GMF:Use Ship To Customer for Revenue Account Mapping in AR Update
- GMF:Use Ship Unit of Measure for AR Update
- GMF:Log Trigger Errors
- GMF:Transaction Type Mapping for AR Update

You can set up these profile options when you set up other applications prior to your Financial implementation. Refer to the other product user's guides for more details on how these products use these profile options.

Your System Administrator sets user profile options at one or more of the following levels: Site, Application, Responsibility, and User. Use the Personal Profile Options window to view or set your profile options at the user level. You can consult the *Oracle Process Manufacturing Implementation Guide* for a complete description of the profile options listed. Consult your *Oracle Applications System Administrator's Guide* for a list of profile options common to all Oracle Applications.

Glossary

Application Integration

Two or more application modules work together seamlessly in the performance of a business function, whether those modules are developed separately or in concert. Application integration eliminates redundant steps in the performance of business functions.

Applications Open Interfaces

Oracle Financials and Oracle OPM offer their own interfaces through which information flows from one module to the next. These interfaces perform the function of validating incoming data according to the same rules that apply if you entered the data by hand in on-line screens. The interfaces, therefore, ensure that information which comes from an external source is valid according to the business rules defined.

Drill Down

The Drill Down feature in Oracle Financials allows you to easily track a source of information from Oracle General Ledger, Oracle Payables or Oracle Receivables to its source in OPM. The ability to transfer easily from one application to the other, through an automated process, substantially improves the ease and speed of interaction between the integrated applications. When you use the Drill Down feature from Oracle Financials to OPM, Oracle Financials automatically displays a screen with the requested OPM information. You can also Drill Down from OPM to Oracle Financials.

Immediate Synchronization

Immediate synchronization is one of the techniques that Oracle Financials and OPM use to synchronize shared information. Immediate synchronization runs only when

you request it. At the time an immediate synchronization is executed, the tables shared between Oracle Financials and OPM are updated.

Oracle Financials and OPM Integration

Oracle Financials and OPM provide a single integrated solution to financial and manufacturing management for process manufacturing companies. The integration between Oracle Financials and OPM allows for coordination of processes and the sharing of data through automated open interfaces which are transparent to the user. Both applications automatically share needed information and coordinate processes, so that you do not maintain information in more than one place. The processes which enable this integration allow the applications to function seamlessly as a single application. It ensures maximum efficiency by elimination of duplicate functions and processes.

Oracle Financials

Oracle Corporation's Financials suite of application modules is a fully integrated set of modular tables. It resides on the Oracle RDBMS.

When using Oracle Financials integrated with OPM, the OPM Sales Order Processing module is used (instead of Oracle Order Entry) and the OPM Purchasing module is used (instead of Oracle Financials Purchasing modules). These are important distinctions in regards to the location of various master files. For example, Customers are maintained in Oracle Financials Accounts Receivable and synchronized with OPM Sales.

The integration of OPM to Oracle Financials applications uses three Oracle Financials modules - General Ledger, Accounts Payable, Accounts Receivable.

Oracle Process Manufacturing

Global Enterprise Manufacturing Management System (OPM) is an enterprise wide manufacturing planning system that combines leading edge, open systems technology with an international business and process manufacturing environment on a global basis.

Periodic Synchronization

Periodic Synchronization is one of the techniques that Oracle Financials and OPM use to synchronize shared information. Periodic synchronization is an automatic method to update tables shared between Oracle Financials and OPM. You can define different intervals for each set of information you are synchronizing.

Source Code

Each Journal Voucher has a Source Code associated with it that identifies the origin of the Journal Voucher. Source Codes are predefined in the General Ledger. Following are Source Codes which may be referenced:

GL - General Ledger

CM - Cost Management

IC - Inventory Control

OP - Order Processing

PM - Production Management

PO - Purchasing

Transparent Integration

In addition to the immediate and periodic data synchronization methods, triggers and views reduce the number of steps for setting up various details within the applications.

Index

A

abort/reset General Ledger update, 3-10
Account Inquiry, 3-17
Accounts Payable
 Free On Board Codes Synchronization, 2-12
 Term Codes Synchronization, 2-12
Accounts Receivable Exception Report, 4-16
Accounts Receivable update, 4-12
 AR update, 4-4
 cash receipts, 4-5
 Data synchronization, 4-4
 Exception report, 4-4
 flow components, 4-4
 invoice history, 4-5
 receivable autoinvoicing, 4-4
 Sales Order entry and credit check, 4-4
 Shipment release, 4-4
 view invoice, 4-5
Accounts Receivables update
 flow, 4-2
AR Update Synchronization, 2-21
autoinvoicing, 4-14, 4-15

C

Cash receipts, 4-16
cash receipts, 4-5
Credit check, 4-4, 4-6
Credit checking, 4-13
Credit/Debit Memo Inventory Adjustment
 Synchronization, 2-9
Customer Synchronization, 2-17

D

Data Synchronization, 2-2
 Immediate Interface, 2-3
 Periodic Interface, 2-6
Document number and Journal Voucher
 number, 3-14

E

Exception report, 3-5, 3-13, 4-4, 4-16

F

Financial Integration
 navigation paths, 6-2
 setting profile options, 6-3
Free On Board Codes Synchronization, 2-12
frequency of periodic interface, 2-7

G

General Ledger
 booking, 4-13
General Ledger update, 3-4, 3-6
 abort/reset, 3-10
 error messages, 3-12
 process status, 3-9
GL update, 3-4

I

Immediate Interface

- running, 2-3
- start, 2-5

Import

- Journal, 3-12

Inquiry

- Account, 3-17
- Journal, 3-13

Integration

- Oracle Financials and OPM, diagram, 1-3

integration

- Oracle General Ledger and OPM, 3-2

- introducing Oracle General Ledger and OPM integration, 3-2

Inventory Organization/Warehouse

- Synchronization, 2-14

Invoice history, 4-16

invoice history, 4-5

Invoice Image, 4-13

Invoice Price Synchronization, 2-10

Item Specific UOM Conversions

- Synchronization, 2-13

Items Synchronization, 2-15

J

Journal Voucher

- document number, 3-14

Journal Import, 3-5, 3-12

Journal Import Exception Report, 3-13

Journal Inquiry, 3-13

Journal inquiry, 3-5

Journal Posting, 3-13

Journal posting, 3-5

Journal Voucher

- Journal Voucher number, 3-14

M

Multiple-Organizations Feature, 1-6

N

navigator paths

- Financial Integration, 6-2

O

One Time Ship-To Address, 2-20

OPM and General Ledger update flow, 3-3

OPM Revenue Account Mapping for AR

- Autoinvoicing, 4-14

OPM to General Ledger Update Flow

- Components, 3-4

Oracle Financials and OPM Integration

- diagram, 1-3

Oracle Financials and OPM Integration

- Overview, 1-2

Oracle Financials Credit/Debit Memo Inventory

- Adjustment, 2-9

Oracle General Ledger and OPM integration, 3-2

overview

- Oracle Financials and OPM Integration, 1-2

P

Periodic Interface

- frequency, 2-7
- running, 2-6

Posting

- Journal, 3-13

Primary unit of measure for billing (AR

- Update), 4-12

process status

- General Ledger update, 3-9

profile options

- setting, 6-3

R

Receivables Autoinvoicing, 4-15

Recomputing Customer Open Balance, 4-9

Release Shipment, 4-12

report

- Journal Import Exception, 3-13

- View Interface Exception report, 5-2

running

Immediate Interface, 2-3

Periodic Interface, 2-6

S

Sales Order Credit Checking, 4-9

Sales Order entry, 4-4, 4-6

Sales Order entry and credit check, 4-6

Sales Order On Hold, 4-11

Sales Order on hold, 4-11

Sales Representatives Synchronization, 2-10
setting

Financial Integration profile options, 6-3

Setting up

units of measure, 2-2

units of measure classes, 2-2

Shipment Release, 4-12

Shipment release, 4-4

sources of OPM, 3-4

start

Immediate Interface, 2-5

Stock Locator and OPM Warehouse

Synchronization, 2-15

Subsidiary Ledger update, 3-4

Synchronization

Additional data sync through triggers, 2-10,
2-17

AR Update, 2-21

Automatic vendor association, 2-12

Customer, 2-17

Inventory Organization/Warehouse, 2-14

Invoice price, 2-10

Item specific UOM conversions, 2-13

Purchasing term codes, 2-12

Sales representative, 2-10

Stock Locator and OPM Warehouse, 2-15

Vendors, 2-12

Synhronization

AR Credit/Debit memo invenotry
adjustment, 2-9

T

Term Codes Synchronization, 2-12

Triggers

For data synchronization, 2-10, 2-17

U

Units of measure

setting up, 2-2

Units of measure classes

setting up, 2-2

update Accounts Receivable, 4-12

update flow

OPM and Oracle General Ledger, 3-3

update General Ledger, 3-4

updating

General Ledger, 3-6

V

Vendor Association Automatic

Synchronization, 2-12

Vendors Synchronization, 2-12

View Interface Exception report, 5-2 to 5-3

View invoice, 4-16

view invoice, 4-5

viewing

GL update process status, 3-9

Views, 2-10, 2-17

