

Oracle® Reports

Tutorial

10g Release 2 (10.1.2)

B14364-01

July 2005

Oracle Reports Tutorial, 10g Release 2 (10.1.2)

B14364-01

Copyright © 2003, 2005, Oracle. All rights reserved.

Primary Author: Ingrid Snedecor

Contributing Author: Panna Hegde

Contributors: Vinayak Hegde, Rohit Marwaha, Ratheesh Pai, Vinodkumar Pandurangan, Rajesh Ramachandran, Vishal Sharma, Navneet Singh, Puvanenthiran Subbaraj, Philipp Weckerle

The Programs (which include both the software and documentation) contain proprietary information; they are provided under a license agreement containing restrictions on use and disclosure and are also protected by copyright, patent, and other intellectual and industrial property laws. Reverse engineering, disassembly, or decompilation of the Programs, except to the extent required to obtain interoperability with other independently created software or as specified by law, is prohibited.

The information contained in this document is subject to change without notice. If you find any problems in the documentation, please report them to us in writing. This document is not warranted to be error-free. Except as may be expressly permitted in your license agreement for these Programs, no part of these Programs may be reproduced or transmitted in any form or by any means, electronic or mechanical, for any purpose.

If the Programs are delivered to the United States Government or anyone licensing or using the Programs on behalf of the United States Government, the following notice is applicable:

U.S. GOVERNMENT RIGHTS Programs, software, databases, and related documentation and technical data delivered to U.S. Government customers are "commercial computer software" or "commercial technical data" pursuant to the applicable Federal Acquisition Regulation and agency-specific supplemental regulations. As such, use, duplication, disclosure, modification, and adaptation of the Programs, including documentation and technical data, shall be subject to the licensing restrictions set forth in the applicable Oracle license agreement, and, to the extent applicable, the additional rights set forth in FAR 52.227-19, Commercial Computer Software—Restricted Rights (June 1987). Oracle Corporation, 500 Oracle Parkway, Redwood City, CA 94065

The Programs are not intended for use in any nuclear, aviation, mass transit, medical, or other inherently dangerous applications. It shall be the licensee's responsibility to take all appropriate fail-safe, backup, redundancy and other measures to ensure the safe use of such applications if the Programs are used for such purposes, and we disclaim liability for any damages caused by such use of the Programs.

Oracle, JD Edwards, PeopleSoft, and Retek are registered trademarks of Oracle Corporation and/or its affiliates. Other names may be trademarks of their respective owners.

The Programs may provide links to Web sites and access to content, products, and services from third parties. Oracle is not responsible for the availability of, or any content provided on, third-party Web sites. You bear all risks associated with the use of such content. If you choose to purchase any products or services from a third party, the relationship is directly between you and the third party. Oracle is not responsible for: (a) the quality of third-party products or services; or (b) fulfilling any of the terms of the agreement with the third party, including delivery of products or services and warranty obligations related to purchased products or services. Oracle is not responsible for any loss or damage of any sort that you may incur from dealing with any third party.

Contents

Preface	v
Audience	v
Documentation Accessibility	v
Related Documentation	vi
Conventions	vi
Prerequisites	vi
1 Tutorial Overview	
1.1 Tutorial Scenario	1-1
1.2 Summary	1-3
2 Adding Data to a Report	
2.1 Opening the Web Page	2-1
2.2 Using the Data Wizard to Add Data to a Sample Web Page	2-2
2.3 Saving your Report as a JSP File	2-5
2.4 Summary	2-6
3 Reviewing the Source Code of the Web Report	
3.1 Viewing the Web Source in Reports Builder	3-1
3.2 Verifying Your JSP Code	3-2
3.3 Summary	3-2
4 Creating a Report Block for the Web Report	
4.1 Adding a Report Block to Your Web Page	4-1
4.2 Summary	4-3
5 Reviewing the Source Code for the Report Block	
5.1 Viewing the Web Source in Reports Builder	5-1
5.1.1 Reviewing the Header Tag and Body	5-1
5.1.2 Reviewing the rw:foreach Tag and Body	5-1
5.2 Verifying Your JSP Code	5-2
5.3 Summary	5-2

6 Creating a Graph for the Web Report

6.1	Opening the Source for the Report in Reports Builder	6-1
6.2	Creating a Graph Using the Graph Wizard	6-2
6.3	Saving Your Report with the New Graph.....	6-4
6.4	Summary	6-4

7 Reviewing the Source Code for the Graph

7.1	Viewing the Source in Reports Builder.....	7-1
7.2	Reviewing the rw:graph Tag.....	7-1
7.3	Summary	7-3

8 Generating a Paper Report

8.1	Generate a Paper Report Based on Your Data Model	8-1
8.2	Modifying a Report in the Paper Design View	8-3
8.3	Summary	8-4

A Quick Reference Guide

A.1	Entries for the Data Wizard	A-1
A.2	Entries for the Report Block.....	A-1
A.3	Entries for the Graph Wizard.....	A-2
A.4	Entries for the Report Wizard	A-2

B Tool Palette and Toolbar Reference

B.1	Main Toolbar	B-1
B.2	Data Model View Tool Palette	B-2
B.3	Paper Layout View Tool Palette	B-3

Glossary

Index

Preface

This manual will help you get started using Oracle Reports, as well as introduce you to publishing data to the Web and paper.

Audience

This tutorial is intended for users new to Oracle Reports, or for users familiar with Oracle Reports who would like to learn more about building JSP-based Web reports.

Documentation Accessibility

Our goal is to make Oracle products, services, and supporting documentation accessible, with good usability, to the disabled community. To that end, our documentation includes features that make information available to users of assistive technology. This documentation is available in HTML format, and contains markup to facilitate access by the disabled community. Accessibility standards will continue to evolve over time, and Oracle is actively engaged with other market-leading technology vendors to address technical obstacles so that our documentation can be accessible to all of our customers. For more information, visit the Oracle Accessibility Program Web site at

<http://www.oracle.com/accessibility/>

Accessibility of Code Examples in Documentation

Screen readers may not always correctly read the code examples in this document. The conventions for writing code require that closing braces should appear on an otherwise empty line; however, some screen readers may not always read a line of text that consists solely of a bracket or brace.

Accessibility of Links to External Web Sites in Documentation

This documentation may contain links to Web sites of other companies or organizations that Oracle does not own or control. Oracle neither evaluates nor makes any representations regarding the accessibility of these Web sites.

TTY Access to Oracle Support Services

Oracle provides dedicated Text Telephone (TTY) access to Oracle Support Services within the United States of America 24 hours a day, seven days a week. For TTY support, call 800.446.2398.

Related Documentation

For more information about Oracle Reports, refer to the following resources:

- *Oracle Reports Building Reports*
- *Oracle Application Server Reports Services Publishing Reports to the Web*
- *Oracle Reports online Help*, which you can access in two ways:
 - From Reports Builder:
 - Choose **Help > Help Contents**.
 - Click **Help** or press F1 in any dialog box.
 - In the Property Inspector, click a property, then press F1 to display the property's help topic.
 - On the Oracle Technology Network (OTN) Oracle Reports 10g page (<http://www.oracle.com/technology/products/reports/index.html>):
 - Under **Resources**, click **Hosted Online Help** to display the Web-based version of the most recent *Oracle Reports online Help*.
 - Under **News**, click **Oracle Reports Online Help Update** to replace your *Oracle Reports online Help* in Reports Builder with the most recent update. Instructions for replacing your help file are included in the `readme.txt` in the download file.

Conventions

The following text conventions are used in this document:

Convention	Meaning
boldface	Boldface type indicates graphical user interface elements associated with an action, or terms defined in text or the glossary.
<i>italic</i>	Italic type indicates book titles, emphasis, or placeholder variables for which you supply particular values.
monospace	Monospace type indicates commands within a paragraph, URLs, code in examples, text that appears on the screen, or text that you enter.

Prerequisites

The exercises in the tutorial use the Human Resources sample schema provided with the Oracle database and an HTML template. We have also provided a text file containing the SQL you will enter, as well as the JSPs you will create in every chapter.

You can download these files from the Oracle Technology Network (OTN) Oracle Reports 10g page (<http://www.oracle.com/technology/products/reports/index.html>): click **Getting Started with Oracle Reports**. Navigate to the index, then click **Examples**. On the Examples page, you will see a link to Oracle Reports Tutorial. You can also find the files on the Documentation CD that came with the product. It is recommended that you copy the files into a local directory (for example, `d:\Reports_Tutorial`).

Sample Schema

This tutorial relies on the data contained in the Human Resources section of the sample schema. This sample schema is provided with the Oracle database.

Viewing Web Reports

To produce the Web-based report, you must have a Web browser installed on your computer. The minimum and recommended requirements are:

- Microsoft Internet Explorer 4.x or higher

or

- Netscape Communicator 4.x or higher

Viewing the Web Source

Although you can view the Web source for your JSP report in Reports Builder, this tutorial also shows you how to analyze your Web source in a text editor. It is recommended that you use a text editor such as NotePad or UltraEdit.

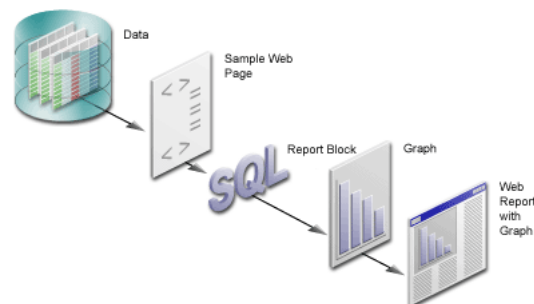
Tutorial Overview

In this tutorial, it is assumed that you are a developer for a company called My Company. You have been asked to publish some content on the company intranet. Human resource managers for each branch should be able to view this content from any location. You must use the company's template (which is an HTML file) to make the data look good on the Web. At the same time, managers must be able to print out a paper version of the report.

In this tutorial, you will build a report for the Web using JavaServer Pages (JSP) that displays the required information about employee salaries in each department. You will also create a graph so that managers can see an overview of the data. At the end of the tutorial, you will learn to generate a paper report based on the same data model.

Figure 1-1 shows an overview of the first part of the tutorial.

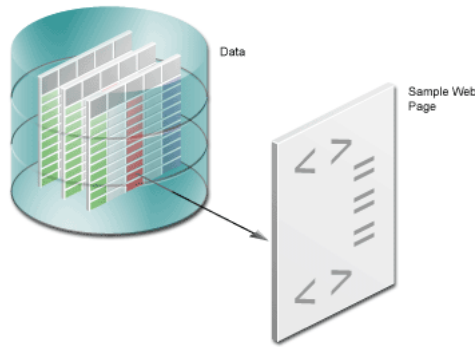
Figure 1-1 Tutorial Overview: Creating the Web Report



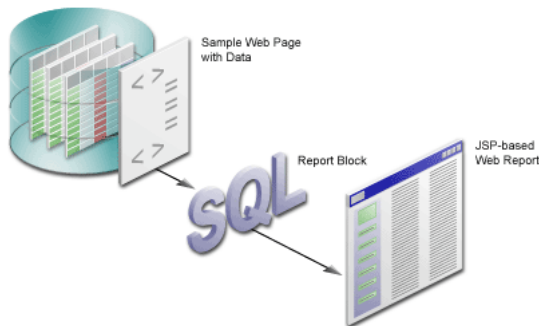
1.1 Tutorial Scenario

In the chapters of this tutorial:

1. You will open the Web page that we have provided for you, which contains some simple HTML, then create a data model for the report, which will pull data from a sample data source into the report ([Chapter 2, "Adding Data to a Report"](#)). This Web page contains the template for My Company's look and feel.

Figure 1–2 Adding Data to an HTML Page

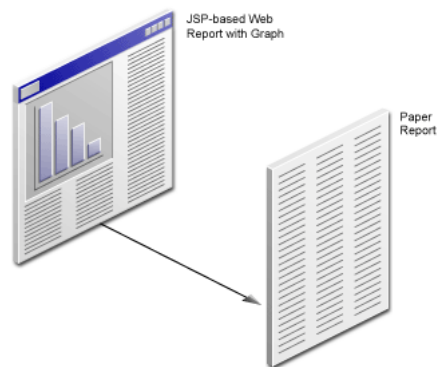
2. In [Chapter 3, "Reviewing the Source Code of the Web Report"](#), you will review the resulting report to analyze what the steps you completed in [Chapter 2, "Adding Data to a Report"](#) did to the sample Web page to help you understand what Reports Builder did to the sample Web page. You can compare the sample Web page we have provided with the resulting JSP-based Web page. Here, you will be able to examine how the data model looks in Reports Builder, and how it looks in XML.
3. In [Chapter 4, "Creating a Report Block for the Web Report"](#), you will use the Report wizard to add a report block to the JSP and generate a simple JSP-based Web report to your Web browser.

Figure 1–3 Creating a Report Block for your JSP-based Web Report

4. In [Chapter 5, "Reviewing the Source Code for the Report Block"](#), you will analyze the Web source of your report to review how the report block was inserted into your JSP-based Web report. Again, you will examine the XML code to see how the source code has changed.
5. In [Chapter 6, "Creating a Graph for the Web Report"](#), you will use the Graph wizard to add a graph to the JSP, then generate the completed JSP report to your Web browser.

Figure 1–4 Adding a Graph to a JSP-based Web Report

6. In [Chapter 7, "Reviewing the Source Code for the Graph"](#), you will review the new code that Reports Builder added to your Web source to produce the graph.
7. In [Chapter 8, "Generating a Paper Report"](#), you will generate a paper report based on the same data model and layout that you created for the JSP-based Web report.

Figure 1–5 Generating a Paper Report from a JSP-based Web Report Data Model

1.2 Summary

Now that you know what this tutorial covers, you can go on to [Chapter 2, "Adding Data to a Report"](#) to learn how to create a data model for your report using the Data Wizard.

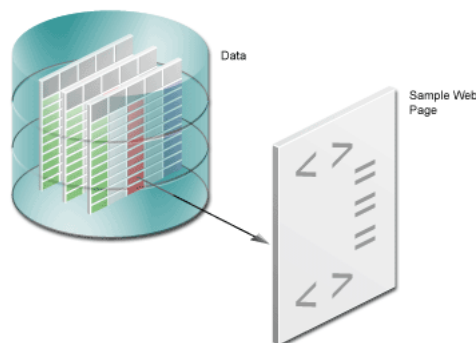
Adding Data to a Report

Estimated completion time: 15 minutes

Consider the scenario where you have to create a Web report for your company's human resources managers. This Web report must display salary information about each employee in a department. You already have an HTML page that matches the company's logo and colors. You need to add the necessary information to this page.

This chapter shows you how to use the Data Wizard in Reports Builder to add data to an existing HTML page as depicted in [Figure 2-1](#). At the end of the chapter, you will have created a data model to make data available for use in a Web report.

Figure 2-1 Adding Data to an HTML Page



2.1 Opening the Web Page

The steps in this section show you how to open the Web page template we have provided, called `emprev.htm`. First, you will open the Web page in your Web browser so that you can see what our template looks like.

Note: If you do not have this file, refer to the [Prerequisites](#) section, in the Preface.

To open the sample HTML page in your Web browser

- In your Web browser (for example, Netscape or Internet Explorer), choose **File > Open**, and navigate to `emprev.htm`. The `emprev.htm` file is the sample file that we have provided in this Tutorial.

To open an existing HTML page in Reports Builder

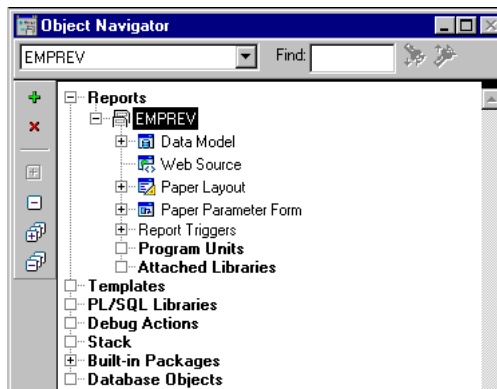
1. Open Reports Builder.

Note: If you are using UNIX, navigate to the directory where Reports Builder is installed, and then execute `runbuilder.sh`.

2. In the Welcome dialog box, click **Open an existing report**, then click **OK**.
3. In the Open dialog box, navigate to the folder where the tutorial sample files are located. For example, `d:\Reports_Tutorial`.
4. Find the `emprev.htm` file and click **Open**.

The EMPREV report is displayed in the Object Navigator.

Figure 2–2 Object Navigator Displaying an Existing HTML Page



2.2 Using the Data Wizard to Add Data to a Sample Web Page

When building a report, you must first build a data model by selecting the data that you want to use in the report.

The steps in this section describe the procedure to use the Data Wizard to build a data model for your Web report. This data model makes the data from the sample schema available to use in your report.

To add data to an existing HTML page

1. Open the Data Wizard to define a layout and add a data model.
 - a. In the Object Navigator, double-click the **Data Model** node.
 - b. In the Data Model view, right-click the canvas, then choose **Data Wizard** from the pop-up menu.
2. If the Welcome page displays, click **Next**.
3. On the Query name page, click **Next** to accept the default name.
4. On the Data Source page, make sure **SQL Query** is selected, then click **Next**.

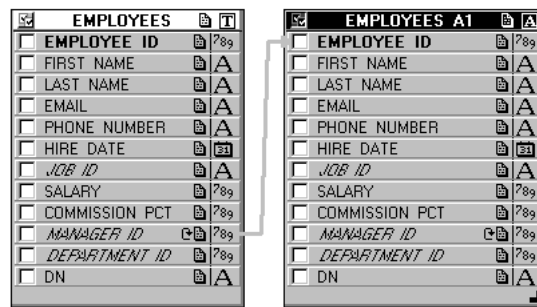
Note: On the Data Source page, you can choose any data source you wish to use in your report. For more information about using pluggable data sources, see *Oracle Reports online Help*.

5. On the Data page, you can do either of the following:
 - Open the `tutorial_sql.txt` file in a text editor, copy the query, and paste it into the SQL Statement box. Then, proceed to Step 16.
 - Learn to use the Query Builder. To do this, follow steps 6 to 15.
6. To use the Query Builder, click **Query Builder**.

Note: If you do not know the connection information for the database that contains the sample schema we have provided, contact your administrator.

7. In the Query Builder, double-click the **EMPLOYEES** table.
8. Double-click the **EMPLOYEES** table again, then click **Close**.

Figure 2-3 Employees Tables Displayed in the Query Builder



The **EMPLOYEES** table displays in the Query Builder as **EMPLOYEES** and **EMPLOYEES A1**. The link between **MANAGER ID** in **EMPLOYEES** and **EMPLOYEE ID** in **EMPLOYEES A1** is automatically created because of the constraints that exist in the **EMPLOYEES** table.

Note: You will notice that some of the column names are bold, and some are italicized. Column names that are in bold are primary keys and column names that are in italics are foreign keys.

9. In the **EMPLOYEES** table, select the check boxes for the following fields (you *must* select the fields in the following order):
 - `EMPLOYEE_ID`
 - `FIRST_NAME`
 - `LAST_NAME`
 - `HIRE_DATE`
 - `JOB_ID`
 - `SALARY`
 - `DEPARTMENT_ID`
10. In the **EMPLOYEES A1** table, select the check boxes for the following fields:
 - `EMPLOYEE_ID`

- FIRST_NAME
- LAST_NAME

11. Click **OK**.

12. The query that Query Builder generates is displayed in the **SQL Query Statement** text box, and should look like the following:

```
SELECT ALL EMPLOYEES.EMPLOYEE_ID
, EMPLOYEES.FIRST_NAME,EMPLOYEES.LAST_NAME
, EMPLOYEES.HIRE_DATE
, EMPLOYEES.SALARY
, EMPLOYEES.DEPARTMENT_ID
, EMPLOYEES_A1.EMPLOYEE_ID
, EMPLOYEES_A1.JOB_ID
, EMPLOYEES_A1.FIRST_NAME, EMPLOYEES_A1.LAST_NAME
FROM EMPLOYEES, EMPLOYEES EMPLOYEES_A1
WHERE (EMPLOYEES.MANAGER_ID = EMPLOYEES_A1.EMPLOYEE_ID)
```

13. To restrict the retrieved data to only the employees in Department 100, add an **AND** clause, so that your query looks like this (new code is in bold text):

```
SELECT ALL EMPLOYEES.EMPLOYEE_ID
, EMPLOYEES.FIRST_NAME,EMPLOYEES.LAST_NAME
, EMPLOYEES.HIRE_DATE
, EMPLOYEES.SALARY
, EMPLOYEES.DEPARTMENT_ID
, EMPLOYEES_A1.EMPLOYEE_ID
, EMPLOYEES_A1.JOB_ID
, EMPLOYEES_A1.FIRST_NAME, EMPLOYEES_A1.LAST_NAME
FROM EMPLOYEES, EMPLOYEES EMPLOYEES_A1
WHERE (EMPLOYEES.MANAGER_ID = EMPLOYEES_A1.EMPLOYEE_ID)
AND EMPLOYEES.DEPARTMENT_ID=100
```

14. Let us make the report look more organized by displaying the employee names with their last names first.

Concatenate the EMPLOYEES.FIRST_NAME and EMPLOYEES.LAST_NAME fields into an alias called emp_name.

The line of the query should now look like this:

```
, EMPLOYEES.LAST_NAME ||', '|| EMPLOYEES.FIRST_NAME emp_name
```

15. Concatenate the EMPLOYEES_A1.FIRST_NAME and EMPLOYEES_A1.LAST_NAME fields into an alias called mgr_name.

The line of the query should now look like this:

```
, EMPLOYEES_A1.LAST_NAME ||', '|| EMPLOYEES_A1.FIRST_NAME mgr_name
```

16. Verify that your query is correct. The entire query should now look like this:

```
SELECT ALL EMPLOYEES.EMPLOYEE_ID,
EMPLOYEES.LAST_NAME||', '|| EMPLOYEES.FIRST_NAME emp_name, EMPLOYEES.HIRE_DATE,
EMPLOYEES.JOB_ID, EMPLOYEES.SALARY, EMPLOYEES.DEPARTMENT_ID, EMPLOYEES_
A1.EMPLOYEE_ID,
EMPLOYEES_A1.LAST_NAME||', '|| EMPLOYEES_A1.FIRST_NAME mgr_name
FROM EMPLOYEES, EMPLOYEES EMPLOYEES_A1
WHERE (EMPLOYEES.MANAGER_ID = EMPLOYEES_A1.EMPLOYEE_ID)
AND EMPLOYEES.DEPARTMENT_ID = 100
```

Note: If you are not sure whether your query is correct, open the `tutorial_sql.txt` file from the example files we provided to you.

17. Click **Next**.

18. Now that we have selected the raw data, let us organize this data into groups by department manager name.

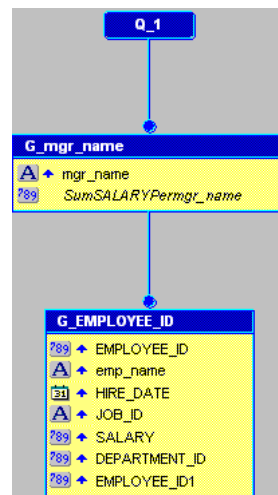
On the Groups page, in the left column, click the **MGR_NAME** field, click the right arrow to move the field to the **Group Fields** list, then click **Next**.

19. Now, let us calculate some of our data. The Totals page displays some of the commonly-used calculations.

On the Totals page, in the left column, click **SALARY**, then click **Sum** to display the sum of the Salary column in the **Totals** list.

20. Click **Finish**.

Figure 2-4 Data Model View for the Report



Note: A report-level summary displays in the upper left-hand section of the Data Model view, but is not shown in this image.

2.3 Saving your Report as a JSP File

In Reports Builder, you can save your report using several formats. Since we are creating a JSP-based Web report, we will save our report in the JSP format.

To save your report as a JSP

1. Select your report in the Object Navigator, then choose **File > Save As**.
2. In the Save dialog box, change the report name to `emprev_your_initials`, change the type to **Reports JSP (.jsp)**, and then click **Save**.

Note: Be sure to include your initials so that you do not overwrite the files we have provided. Since JSP is the primary technology Reports Builder uses to publish reports to the Web, saving your report in the JSP format prepares your report for the later chapters in the tutorial.

3. Choose **File > Close**.

2.4 Summary

Congratulations! You have now created a data model that lets you include a report on your Web page. You now know how to:

- Open an existing Web page (HTML file) in Reports Builder
- Use the Data Wizard to specify data for a report
- Use the Query Builder to select data
- Save your report as a JavaServer Page (JSP)

To review your work, continue to [Chapter 3, "Reviewing the Source Code of the Web Report"](#). Otherwise, skip to [Chapter 4, "Creating a Report Block for the Web Report"](#) to continue building your report.

Reviewing the Source Code of the Web Report

Estimated completion time: 5 minutes

In [Chapter 2, "Adding Data to a Report"](#), you added a data model to your Web page. Here, we show the relationship between the entries you made in the wizard and the data model you created, as well as the JSP and XML code.

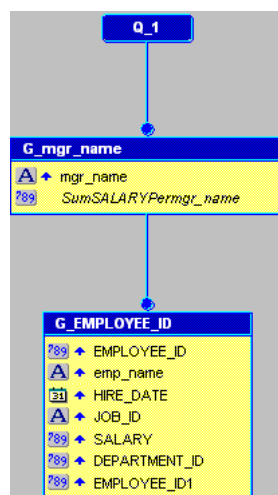
You will also examine the custom JSP tags that Reports Builder inserted into your JSP. These custom JSP tags enable Oracle Reports to add the data you have chosen in the Data Wizard to the JSP-based Web report.

3.1 Viewing the Web Source in Reports Builder

To view the Web source of your report in Reports Builder

1. Make sure the report `emprev_your_initials.jsp` is open in Reports Builder.
2. In the Object Navigator, double-click the **Data Model** node to display the data model for this report. Your data model should look like this:

Figure 3–1 Data Model View for the Report



3. In the Data Model view, click the Web Source button in the toolbar.

Note: You can also double-click the Web Source icon under the report name in the Object Navigator.

The source code displays in the Web Source view. Scroll through the code and note the following items:

- The `@ taglib` line references the reports JSP library for all tags starting with `rw`. The `<% . . . %>` tags mark JSP-relevant tags, and point to the JSP Custom Tag Library.
- Notice the opening `rw:report` tag and the opening and closing `rw:objects` tags.
- The `rw:report` tag appears after the library call. In a report, all Reports Builder JSP tags must appear between an opening and closing `rw:report` tag. If the closing `rw:report` tag comes before the data is used, the report will be empty.
- The `rw:objects` tags appear in the Web Source. Note that you do not see any text between the opening and closing tags. When you save the report to your file system, Reports Builder encodes the data model and other elements in a language called XML, and places the data model between these tags. Reports Builder hides the XML code between these tags to maintain XML integrity.

Note: Unless you are comfortable using XML and JSPs, it is recommended that you do not type anything between the `(rw:objects)` tags in this view.

3.2 Verifying Your JSP Code

If you have gone through this chapter and are still not sure whether your JSP is correct, open the `emprev.jsp` file. This file is located in the tutorial examples directory you created.

3.3 Summary

Congratulations! You have finished reviewing the data you added to your Web report in [Chapter 2, "Adding Data to a Report"](#). You now know how to view the source code in the Reports Builder Web Source view and have learned about these Oracle Reports custom JSP tags:

- `rw:report`
- `rw:object`

Continue to [Chapter 4, "Creating a Report Block for the Web Report"](#) to add a report block and finish your Web report.

For more information on Oracle Reports JSP tags, see the *Oracle Reports online Help*.

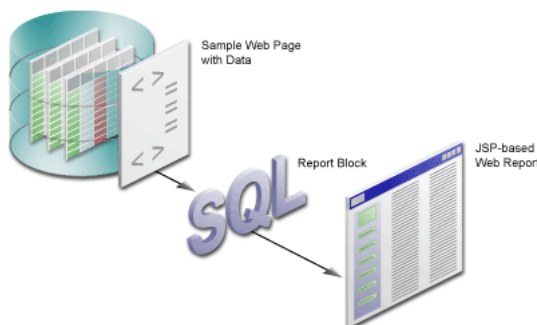
Creating a Report Block for the Web Report

Estimated completion time: 15 minutes

Now that you have created your data set, you need to format the data into your report, and thus provide managers with current information about their employees. To do so, you can create a report block and add it to your report. This report block pulls in the data dynamically using the query you specified in [Chapter 1](#) every time you run the report, and format the data in your report.

The steps in this chapter describe the procedure to add a report block to your Web page as shown in [Figure 4-1](#).

Figure 4-1 *Creating a Report Block for your JSP-based Web Report*



4.1 Adding a Report Block to Your Web Page

If you have performed the steps in [Chapter 3](#), "Reviewing the Source Code of the Web Report", you should already have the source open in Reports Builder. In this case, you can skip Step 1. The steps in this section show you how to use the Report Wizard to format the data you specified in [Chapter 1](#), and dynamically pull in the data into your report.

To add a report block

1. Make sure your report (`emprev_your_initials.jsp`) is open in Reports Builder.

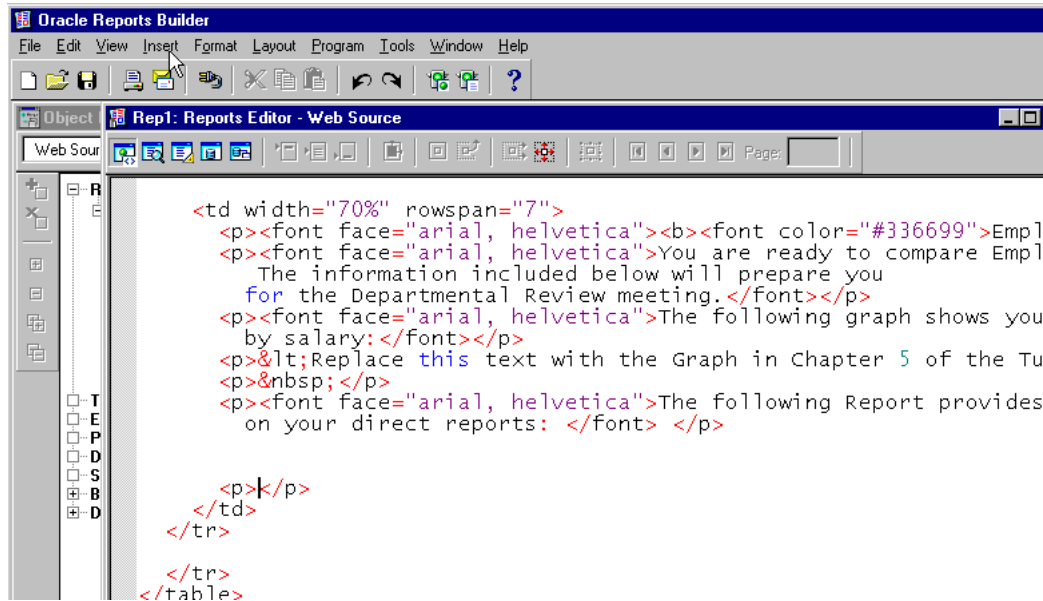
Note: If you did not create `emprev_your_initials.jsp` in [Chapter 1](#), open the `emprev.jsp` file.

2. In the Object Navigator, double-click the Web Source node under *emprev_your initials*.
3. In the Web Source view, choose **Edit > Find and Replace** to find and delete the following text. Note that this text occurs in two places.

Replace this text with the Report block in Chapter 4 of the tutorial.

4. Ensure that your cursor is in the location where you deleted the text, and choose **Insert > Report Block** to display the Report Wizard.

Figure 4–2 Inserting the Report Block into your Web Source



5. On the first page of the wizard, title your report *My Team’s Salaries*.
6. Select the **Group Above** radio button, then click **Next**.
7. Format the data so that the employee names list in a downward column, as follows:

On the Groups page, click **G_EMPLOYEE_ID**, and then click **Down** to move the group to the Displayed Groups list.

Note: If you did not select the fields in the correct order in [Section 2.2, "Using the Data Wizard to Add Data to a Sample Web Page"](#), you may not see this group. If this is the case, copy the SQL text from the `tutorial_sql.txt` file into the Query Statement box.

8. Click **Next**.
9. On the Fields page, click the double arrows (>>) to move all **Available Fields** to the **Displayed Fields** list.
10. In the **Displayed Fields** list, click **EMPLOYEE_ID1**, then click the left arrow (<) to move the field back to the **Available Fields** list, and then click **Next**.
11. On the Labels page, click **Next**.
12. Ensure that **Predefined Templates** is selected on the Templates page.

13. Make sure the *Beige* template is selected, then click *Finish*.

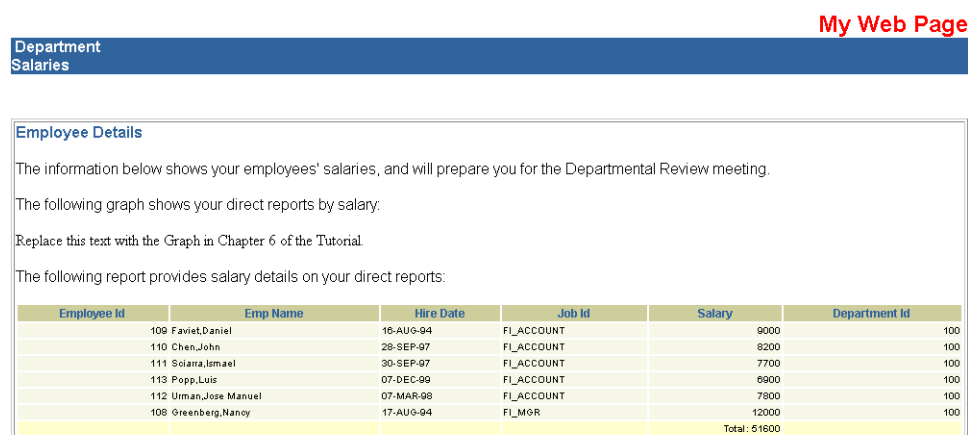
The Report Wizard has now generated the HTML with custom JSP tags to display your formatted data on the Web page.

14. Choose *File > Save As*.**15. In the Save dialog box, change the name to *emprev_your_initials.jsp*, and click *Save*.****16. Click the Run Web Layout button in the toolbar to run and view your report in your Web browser.****Notes:**

- If Netscape 7.0 is your default browser, and the browser does not display, set the registry key `HKEY_CURRENT_USERS\Software\Oracle\Toolkit\Tkbrowser` to the default browser location. Ensure that the `BrowserName` and the `BrowserPath` keys reflect the correct values. For example: `BrowserName=Netscape 7; BrowserPath=C:\Program Files\Netscape\Netscape\Netscp.exe`.
- If Run Web Layout fails with an error related to the major.minor version, you will need to update the environment variables `CLASSPATH` or `REPORTS_CLASSPATH`, as follows: remove the `9.0.x ORACLE_HOME` specification in the `oc4j.jar` file path (the `oc4j.jar` file path should specify only the 10g Release 2 (10.1.2) `ORACLE_HOME`).

Your report should look something like this:

Figure 4–3 JSP-based Web Report with Report Block



Note: You can also run the `empрева.jsp` file by opening the JSP in Reports Builder, and running it to the Web.

4.2 Summary

Congratulations! You have added a report block to a Web report. You now know how to:

- Create a report block
- Add a report block to an HTML page for a JSP-based Web report

To review your results, continue on to [Chapter 5, "Reviewing the Source Code for the Report Block"](#). Otherwise, skip to [Chapter 6, "Creating a Graph for the Web Report"](#) to add a graph to your report.

Reviewing the Source Code for the Report Block

Estimated completion time: 5 minutes

In [Chapter 4, "Creating a Report Block for the Web Report"](#), you added a report block to a JSP-based Web report. This chapter reviews the source code added for the report block.

5.1 Viewing the Web Source in Reports Builder

To view the Web source

- Open the Web source for the `emprev_your_initials.jsp` report you created in [Chapter 4, "Creating a Report Block for the Web Report"](#) by double-clicking the **Web Source** node in the Object Navigator.

5.1.1 Reviewing the Header Tag and Body

1. In the Web Source view, locate the `<!-- Header -->` line.

This HTML code indicates a comment line that helps you locate the report heading information in the file.

2. Locate the `<th>` and `<tr>` tags, which should look something like this:

```
<tr>
<th <rw:id id="HBEMPLOYEEID92" asArray="no" />
class="OraColumnHeader">Employee Id </th>
<th <rw:id id="HBempname92" asArray="no" /> class="OraColumnHeader"> Emp
Name </th>
...
```

5.1.2 Reviewing the `rw:foreach` Tag and Body

The `rw:foreach` tag loops across a group. The layout is repeated for each instance of the specified group.

1. In the Web Source view, locate the `<rw:foreach>` JSP tag and find this line:

```
<rw:foreach id="R_G_EMPLOYEE_ID921" src="G_EMPLOYEE_ID">
```

Here, `R_G_EMPLOYEEID` is a unique identifier for this loop and `G_EMPLOYEE_ID` is the data model group on which the loop repeats.

2. Notice that the `</tbody>` tag that closes the table follows the closing `</rw:foreach>` tag, as shown here:

```
        <td <rw:headers id=HFDEPARTMENTID92" src...>
    </td>
</tr>
</rw:foreach>
</tbody>
```

5.2 Verifying Your JSP Code

If you have gone through this chapter and are still not sure whether your JSP is correct, open the file we have provided, called `emprev.a.jsp`. This file is located in your examples directory.

5.3 Summary

Congratulations! You have finished reviewing the source code for the report block you added in [Chapter 4, "Creating a Report Block for the Web Report"](#). Continue to [Chapter 6, "Creating a Graph for the Web Report"](#) to add a graph to your Web report.

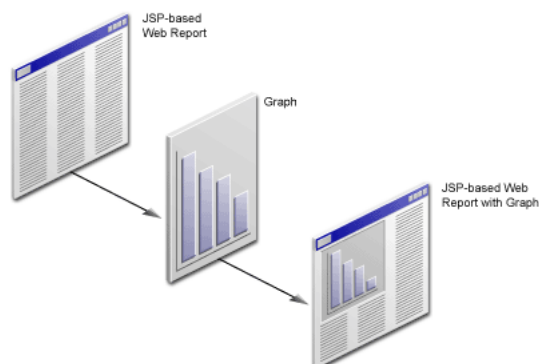
Creating a Graph for the Web Report

Estimated completion time: 15 minutes

This chapter describes how to use the Graph Wizard to create a graph that enables managers to view the salaries of the employees, and where each employee's compensation rate falls within a specific department, as shown in [Figure 6-1](#).

If you already know how to use the Graph Wizard, refer to [Appendix A.3, "Entries for the Graph Wizard"](#) for a quick reference guide.

Figure 6-1 Adding a Graph to a JSP-based Web Report



6.1 Opening the Source for the Report in Reports Builder

To open the Web source in Reports Builder

1. In the Object Navigator, make sure that the `emprev_your_initials.jsp` file is open.

Note: If you have not already created your own JSP-based Web report, open the file that we have provided, named `empreva.jsp`.

2. In the Object Navigator, under the report name, double-click the Web Source icon to display the source code in the Web Source view.
3. In the Web Source view, choose **Edit > Find and Replace** to find and delete the following text:

Replace this text with the Graph in Chapter 6 of the Tutorial.

6.2 Creating a Graph Using the Graph Wizard

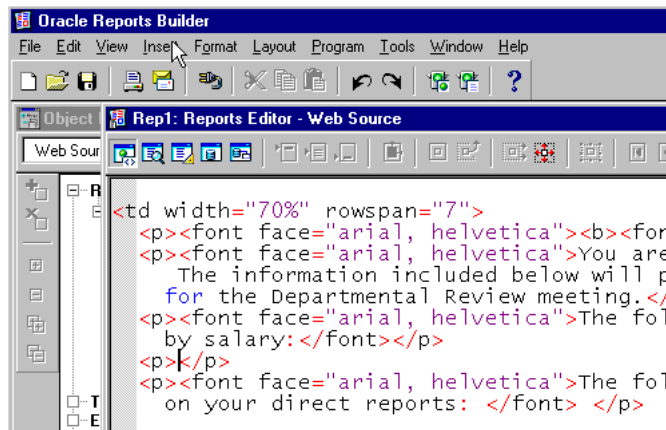
In this section, you will use the Graph Wizard to insert the JSP and XML code for the graph into the Web page for your Web report. The steps show you how to choose the type of graph you want, and the definitions of the X and Y axes. Note that you will base the graph on the query you created in [Section 2.2, "Using the Data Wizard to Add Data to a Sample Web Page"](#).

If you already know how to use the Graph Wizard, refer to [Appendix A, "Quick Reference Guide"](#) for the entries in the Graph Wizard.

To create a graph

1. Make sure your cursor is where you deleted the text, and choose **Insert > Graph** to display the Graph Wizard.

Figure 6–2 Inserting a Graph into your Web Source



2. If the Welcome page displays, click **Next**.
3. On the next page of the Graph Wizard, you can choose from a variety of graph styles. For our simple report, let us choose a Bar graph.
In the Graph Wizard, ensure that the default graph type (Bar) is selected, then click **Next**.
4. Move **EMPLOYEE_ID** to the **X-Axis Categories** list, then click **Next**.
5. Move **SALARY** to the **Y-Axis Data** list, then click **Next**.
6. On the **Layout** page, click and drag the **EMPLOYEE_ID** field from the Groups field to the Bars field, then click **Next**.
7. On the **Graph Titles** page, select **Show Title**, and in the first field, type `Employees by Salary`, then click **Next**.
8. Ensure that **Show Legend** is selected.
9. From the **Location** list, choose **Right**, then click **Next**.
10. In the **Show X-Axis title** field, type `Employees`, then click **Next**.

Note: **Show X-Axis Title** is automatically selected when you type text into the field.

11. In the **Show Y1-Axis title** field, type *Salaries*, then click **Next**.
12. At the bottom of the page in the Graph Wizard, click **Row 1 Color** and choose a different color, for example dark pink.
Choose other colors for the other rows, if required.
13. Click **Finish**.

Note: If you click **Next** instead of **Finish**, you will notice that there is another page in the Graph Wizard where you can add hyperlinks to your graph. Since we are not using graph hyperlinks in this tutorial, you can click **Finish**. If you would like to learn more about using the Graph Wizard and graph hyperlinks, visit *Getting Started with Oracle Reports* and navigate to the Examples page. Here, you can view an example on using graph hyperlinks.

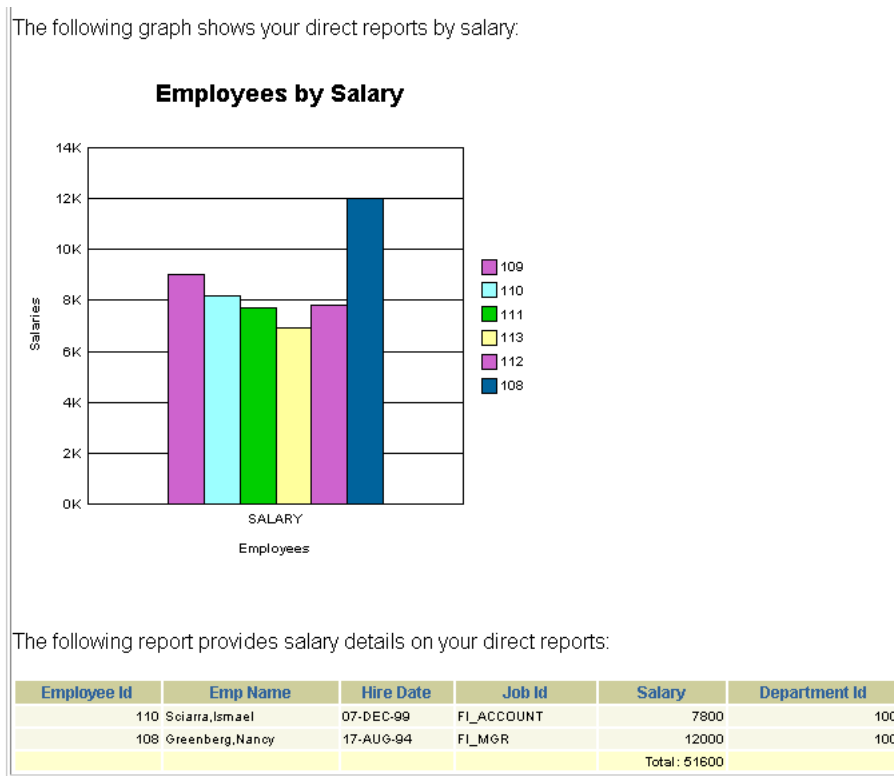
14. Click the Run Web Layout button in the toolbar to preview the report in your Web browser.

Notes:

- If Netscape 7.0 is your default browser, and the browser does not display, set the registry key `HKEY_CURRENT_USERS\Software\Oracle\Toolkit\Tkbrowser` to the default browser location. Ensure that the `BrowserName` and the `BrowserPath` keys reflect the correct values. For example: `BrowserName=Netscape 7; BrowserPath=C:\Program Files\Netscape\Netscape\Netscp.exe`.
 - If Run Web Layout fails with an error related to the `major.minor` version, you will need to update the environment variables `CLASSPATH` or `REPORTS_CLASSPATH`, as follows: remove the `9.0.x ORACLE_HOME` specification in the `oc4j.jar` file path (the `oc4j.jar` file path should specify only the 10g Release 2 (10.1.2) `ORACLE_HOME`).
-
-

The report should look like [Figure 6-3](#).

Figure 6-3 JSP-based Web Report with Graph



6.3 Saving Your Report with the New Graph

Saving your report with a different filename enables you to compare your results with the results that we have provided with the tutorial. This way, you can also roll back to the results of a previous chapter, if necessary.

1. Choose **File > Save As**.
2. In the Save dialog box, change the name to `emprevb_your_initials.jsp` and click **Save**.

6.4 Summary

Congratulations! You have added a graph to a JSP-based Web report. You now know how to use the Graph Wizard to design and add a graph to a Web report.

To review your results, continue to [Chapter 7, "Reviewing the Source Code for the Graph"](#).

For information on adding a JSP parameter form to this Web report, refer to the *Oracle Reports Building Reports manual*. For information on deploying this report to the Web, refer to the *Oracle Application Server Reports Services Publishing Reports to the Web manual*.

Reviewing the Source Code for the Graph

Estimated completion time: 5 minutes

In [Chapter 6, "Creating a Graph for the Web Report"](#), you added a graph to a JSP-based Web report. This chapter reviews the source code added for the graph.

7.1 Viewing the Source in Reports Builder

Open the Web Source view for the report you created in [Chapter 6, "Creating a Graph for the Web Report"](#) called `emprevb_your_initials.jsp`.

7.2 Reviewing the `rw:graph` Tag

The `rw:graph` tag brackets the graph information and links the graph to the data source. It also identifies the categories and the data fields.

1. In the Web Source view, locate the `<rw:graph>` JSP tag.

The code within the `rw:graph` tag is XML.

```
<rw:graph id="graph" src="G_EMPLOYEE_ID" series="EMPLOYEE_ID" dataValues="SALARY">
```

The `series` tag defines the source for the values along the X-axis, and the `dataValues` tag defines the source for the data along the Y-axis. You defined these parameters in [Chapter 6, "Creating a Graph for the Web Report"](#).

2. Locate the `SeriesItems` tag below the `rw:graph` tag:

```
<SeriesItems>
<Series id="0" color="#cc66cc"/>
</SeriesItems>
```

This tag represents the modification to the Row 1 color we made in [Chapter 6, "Creating a Graph for the Web Report"](#). If you chose a different color, you will see a different value for the color tag.

3. Here, you can see that the `#cc66cc` color value is applied to the first bar along the X-axis:

Figure 7-1 Graph with Color on the First Row



- Find the <Title> tag, located here:

```
</SeriesItems>
<Title visible="true" text="Employees by Salary"/>
```

This tag adds the graph title to your Web report, shown here:

Figure 7-2 Graph with Title



- Find the </rw:graph> JSP tag, located here:

```
</Graph>

-->
</rw:graph></p>
  <p></p>
  ...
```

The XML that produces the graph is closed before the </rw:graph> JSP tag is closed.

Note: The Graph Wizard is re-entrant. So, if you want to modify your graph, move your cursor into the XML between the `rw:graph` tags, click **Edit >Settings**. The Graph Wizard displays with the options you chose in [Chapter 6, "Creating a Graph for the Web Report"](#).

7.3 Summary

Congratulations! You have finished reviewing the source code for your new graph. For more information on creating Web reports, adding report blocks and data, and creating graphs, see the *Oracle Reports online Help*.

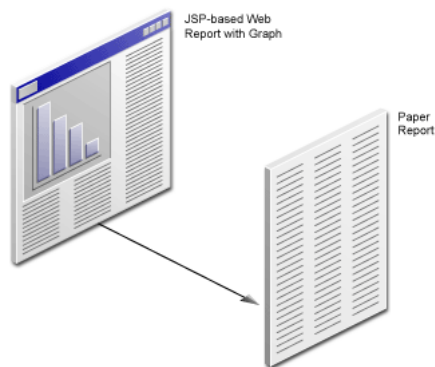
Generating a Paper Report

Estimated Completion Time: 15 minutes

This chapter describes how to create a paper version of the Web report you created, as shown in [Figure 8-1](#). Here, you will use the Report Wizard to create a paper layout using the data model you created in [Chapter 2, "Adding Data to a Report"](#).

If you already know how to use the Report Wizard, refer to [Appendix A.4, "Entries for the Report Wizard"](#) for a quick reference guide.

Figure 8-1 *Generating a Paper Report from a JSP-based Web Report Data Model*



8.1 Generate a Paper Report Based on Your Data Model

In this section, you will learn to generate a paper layout based on the data model you created in [Chapter 2, "Adding Data to a Report"](#).

Note: You must be connected to the same database you used, and access the Human Resources (HR) schema. If you do not know the connection information for the database, contact your database administrator.

To generate a paper report using the Report Wizard

1. In the Object Navigator, ensure that the report you created in [Chapter 6, "Creating a Graph for the Web Report"](#) called `emprevb_your_initials.jsp` is open.

Note: If you don't want to create a JSP-based Web report first, and just want to learn how to generate a paper layout for a JSP-based Web report, open the file we have provided, called `emprevb.jsp`.

2. In the Object Navigator, right-click the report name.
3. From the pop-up menu, choose **Report Wizard**.
4. Let us choose the Paper Layout since we are generating a paper report. We do not need to select a Web Layout since we have already done that in [Chapter 3, "Reviewing the Source Code of the Web Report"](#).

In the Report Wizard, on the Report Type page, select **Create Paper Layout only**.

5. On the Style page, ensure that **Group Above** is selected, and that the title is **My Team's Salaries**.
6. Click the **Data** tab.
The data model you created in [Chapter 2, "Adding Data to a Report"](#) must display in the **SQL Query Statement** field.
7. On the Fields page, move all the fields back to the **Available Fields** list, then move the following fields to the **Displayed Fields** list by selecting the field, then clicking **>**.

- emp_name
- mgr_name
- SALARY
- SumSALARYPermgr_name

8. On the Labels page, in the **Label** field for the emp_name field, type `Employee Name`.
9. In the Label field for the mgr_name field, type `Manager Name`.
10. In the Label field for the SumSALARYPermgr_name field, type `Total Salary`.
11. On the Templates page, ensure that the **Beige** template is selected.
12. Click **Finish**.

The report displays in the Paper Design view, and must look something like this:

Figure 8-2 Final Paper Report

YOUR Inc. COMPANY		My Team's Salaries	
Manager Name Greenberg, Nancy			
Employee Name	Salary		
Faviet, Daniel	9000		
Chen, John	8200		
Sciarra, Ismael	7700		
Popp, Luis	6900		
Urman, Jose Manuel	7800		
Total Salary	39600		
Manager Name Kochharr, Neena			
Employee Name	Salary		
Greenberg, Nancy	12000		
Total Salary	12000		

13. Choose **File > Save As**.
14. Change the name to `emprev_paper_your_initials.rdf`, and ensure that **rdf** is selected.
15. Click **Save**.

8.2 Modifying a Report in the Paper Design View

Reports Builder provides you with numerous tools that you can use in the Paper Design view to modify the look and feel of your report. Because you are editing live data, you can see how the end result of your report will appear. This section describes how to enhance your report using some of the most commonly used formats:

- Aligning columns
- Setting format masks
- Manipulating objects
- Editing text
- Modifying visual attributes
- Highlighting data
- Inserting page numbering
- Inserting current data and time

To modify the appearance of your report in the Paper Design view

1. In the Paper Design view, click **Flex Off** in the toolbar.
2. Align the title with the logo.
Click the **My Team's Salaries** report title and drag it 1.5 inches to the left, and 0.25 inches down.
3. While the object is selected, click **Format**, click **Font**, and then choose **Arial, Bold, 12pt** to format the text.

Tip: If the text does not fit within the object area, click the text object again, and drag one of the black squares to the right.
4. Your report title should now look like this:

Figure 8-3 Formatted Title of the Paper Report



5. Click the number column beneath the Salary label. All the number values are selected.
6. In the toolbar, click **Currency**, click **Commas**, then click **Add Decimal Place** twice.
7. While the number values are selected, click **Align Right** in the toolbar.
8. The Salary column should now look like this:

Figure 8-4 Formatted Numbers in the Salary Column

Salary	
	\$9,000.00
	\$8,200.00
	\$7,700.00
	\$6,900.00
	\$7,800.00
harr,Neena	
Salary	
	\$12,000.00

9. Since the salary numbers are aligned to the right, now align the Salary label to the right.
To do so, click the Salary label, then click **Align Right** in the toolbar.
10. Now, format the Total Salary numbers in the same way you formatted the Salary numbers.
11. Add a space between the Manager label and the manager’s name. To do so, click a manager’s name (for example, Greenberg,Nancy). While the object is selected, use the right arrow on your keyboard to move the field to the right.
Your report should now look something like this:

Figure 8-5 Final Formatted Paper Report

YOUR Inc. COMPANY		My Team's Salaries
Manager Name	Greenberg,Nancy	
Employee Name		Salary
Faviet,Daniel		\$9,000.00
Chen,John		\$8,200.00
Sciarra,Ismael		\$7,700.00
Popp,Luis		\$6,900.00
Urman,Jose Manuel		\$7,800.00
Total Salary		\$39,600.00
Manager Name	Kochharr,Neena	
Employee Name		Salary
Greenberg,Nancy		\$12,000.00
Total Salary		\$12,000.00

8.3 Summary

Congratulations! You have now generated a paper report based on the data model you created for a JSP-based Web report. You now know how to:

- Open the Report Wizard for an existing JSP-based Web report
- Create a paper layout for your report
- Produce a paper version of your Web report
- Format a paper report to make it more readable

For more information on generating a paper report based on an existing data model, see the *Oracle Reports online Help*.

Quick Reference Guide

This appendix contains tables that describe the entries you make into each wizard in Reports Builder. These tables are meant to be a quick reference guide for you to use later, or for you to use if you are familiar with the wizards in Reports Builder.

A.1 Entries for the Data Wizard

Table A-1 lists the entries you made in the Data Wizard in [Chapter 2, "Adding Data to a Report"](#).

Table A-1 Data Wizard Input

Data Wizard Page	Field	Input
Query	Name	Employee Salaries
Data Source	SQL Query	
Data	Query Statement	Paste in SQL from: <example files>/tutorial_sql.txt.
	Connect	Obtain the connection string from your DBA
Group	Group Fields	MGR_NAME
Totals	Total Fields	Sum(SALARY)

A.2 Entries for the Report Block

Table A-2 lists the entries for the report block in [Chapter 4, "Creating a Report Block for the Web Report"](#).

Table A-2 Report Wizard Input for the Report Block

Report Block Wizard Page	Field	Input
Title	Title	Direct Reports by Manager
Type	Group Above	Select
Groups	Available Groups	G_EMPLOYEE_ID, DOWN
Displayed Fields	Available Fields	All fields (move all fields to Displayed)
Totals		None
Templates	Predefined Templates	Beige

A.3 Entries for the Graph Wizard

Table A-3 lists the entries you made to the Graph Wizard in Chapter 6, "Creating a Graph for the Web Report".

Table A-3 Graph Wizard Input

Graph Wizard Page	Field	Input
Type	Type	Bar
X-Axis -Category	Available Columns	Move EMPLOYEE_ID and MGR_NAME to X-Axis Categories
Y-Axis - Data	Available Columns	Move SALARY to Y-Axis Data
Layout	Groups field	Drag EMPLOYEE_ID from the Groups field to the Bars field.
Title	Show Title	Select Show Title and type Salary Comparison
Legend	Show Legend	Select
X-Axis	Show X-Axis Title	Select Show X-Axis Title and type Employees
Y-Axis	Show Y-Axis Title	Select Show Y-Axis Title and type Salaries
Plot Area Options	Row 1 Color	Select a different color

A.4 Entries for the Report Wizard

Table A-4 lists the entries for the Report Wizard in Chapter 8, "Generating a Paper Report".

Table A-4 Report Wizard Input for the Paper Report

Report Wizard Page	Field	Input
Layout	Create Paper Layout Only	Select
Type	Group Above	Select
Groups	Available Groups	(Do not change)
Displayed Fields	Available Fields	emp_name mgr_name SumSALARYPermgr_name SALARY
Totals		(Do not change)
Labels	All labels	Change labels to be meaningful.
Templates	Predefined Templates	Beige

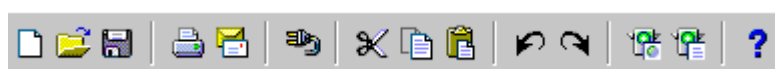
Tool Palette and Toolbar Reference

This appendix contains descriptions of the buttons and tools in the Reports Builder tool palettes and toolbars.

B.1 Main Toolbar

The main toolbar is located at the top of the Reports Builder window, directly beneath the menu bar:

Figure B-1 Main Toolbar



New button. Displays the New Report dialog box.



Open button. Displays the Open dialog box.



Save button. Saves the report. If you haven't saved the report before, the Save As dialog box displays.



Print button. Prints the paper report.



Mail button. Displays the Mail dialog box.



Connect button. Displays the Connect dialog box.



Cut button. Deletes the currently selected item and temporarily places it in the clipboard. Use Paste to paste the selected item.



Copy button. Temporarily places a copy of the selected item in the clipboard. Click the **Paste** button to paste the selected item.



Paste button. Pastes the item in the clipboard in current location of the cursor.



Undo button. Undoes the last action performed.



Redo button. Performs the last action again.



Run Web Layout button. Runs the current report to your Web browser.



Run Paper Layout button. Runs the current report to the Paper Design view in Reports Builder.



Help button. Displays the *Oracle Reports online Help*.

B.2 Data Model View Tool Palette

The Data Model view tool palette is a vertical group of tools located on the left-hand side of the Data Model view.



Select tool. Deselects any selected tool to turn off the current tool.



Magnify tool. Zooms in the view on the clicked object. Use **SHIFT + Magnify** to zoom out.



Summary Column tool. Creates a summary column in the query.



Data Link tool. Creates a link between the columns in the queries.



Formula Column tool. Creates a formula column in the query.

a*b

Cross Product tool. Creates a matrix (cross-product) group.



Placeholder tool. Creates a placeholder column which you can modify later.



SQL Query tool. Displays the SQL Query Statement dialog box where you can enter a SQL query SELECT statement or use Query Builder to create a query.



Ref Cursor tool. Displays the PL/SQL Editor where you can type a ref cursor query.



XML Query tool. Displays the Define XML Query dialog box, where you can specify the XML data definition and data source.



JDBC Query tool. Displays the JDBC Query dialog box, where you can define the SQL or stored procedure to define the data for the query.



Text Query tool. Displays the Text Query dialog box, where you can specify a text data definition and data source.



Express Server Query tool. Displays the Express Server Query dialog box, where you can specify an Oracle Express data definition and data source.

B.3 Paper Layout View Tool Palette

The Paper Layout view tool palette is a vertical group of tools located on the left-hand side of the Paper Layout view.



Select tool. Deselects any selected tool to turn off the current tool.



Magnify tool. Zooms in the view on the clicked object. Use **SHIFT + Magnify** to zoom out.



Frame Select tool. Selects all objects within the selected frame or repeating frame, depending upon their explicit anchors (first click the tool, then the frame).



Reshape tool. Enables you to reshape the selected boilerplate object.



Text tool. Creates a boilerplate text object.



Rotate tool. Enables you to rotate the direction of the selected boilerplate object.



Line tool. Draws a line boilerplate object.



Rectangle tool. Draws a rectangle boilerplate object.



Arc tool. Draws an arc boilerplate image.



Rounded Rectangle tool. Draws a rounded rectangle boilerplate object.



Polyline tool. Draws an open multilined boilerplate object. Use your mouse to create the multiple lines.



Polygon tool. Draws a multisided boilerplate object. The object must be closed, unlike a polyline object.



Freehand tool. Draws a line where you drag your mouse.



Ellipse tool. Draws an ellipse boilerplate object.



Frame tool. Draws a frame.



Repeating Frame tool. Draws a repeating frame.



Graph tool. Displays the Graph Wizard so that you can to define a graph that will be inserted into your layout.



Field tool. Creates a field object.



Anchor tool. Creates an anchor between two objects in your layout.



File Link tool. Creates a link file object that you can use to link an external file to your report.



Report Block tool. Displays the Report Block wizard so that you can add a new report block to your layout.

Glossary

AFM

Acronym for Adobe Font Metrics. AFM and PPD files are supplied by Adobe and by printer vendors. These files contain information about the printer. Along with other parameters, these files are read for the information about the available fonts for the printer, which Oracle Reports will use. For all the fonts listed in the PPD file, Oracle Reports searches for the corresponding AFM file according to the font name and loads all of the fonts for which there is an available AFM.

CGI

Acronym for Common Gateway Interface. A standard for transferring information between a Web server and a CGI program. CGI specifies how to pass arguments to the program as part of the HTTP request, and defines a set of environment variables that are made available to the program. The program then generates output to pass back to the browser. CGI provides server-side processing to allow Web servers to interact dynamically with users.

column

1. A vertical space in a database table that represents a particular domain of data. A column has a column name (for example, ENAME) and a specific datatype (for example, CHAR). For example, in a table of employee information, all of the employees' names would constitute one column. A record group column represents a database column.
2. A data model object created automatically for each column expression in a query's SELECT list, or created manually to perform summaries, formulas, or act as a placeholder.
3. The representation of an attribute of an entity.

data model

A relational model that defines what data should be fetched from the data source(s), what values should be computed, and how data should be ordered in a report. Reports Builder objects that define the data model are queries, groups, columns, parameters, and links.

Data Model view

One of the views of the Report Editor that displays a structural representation of the data in a report. The objects do not appear in the report output, but the structure determines the layout style, and the data objects provide the values that appear in the layout objects.

database

1. A set of dictionary tables and user tables that are treated as a unit.
2. (Oracle Express) A single file (possibly accompanied by extension files) that contains objects that organize, store, and manipulate data. In Express, examples of such objects are variables, dimensions, formulas, models, and programs.

data source

A source for data returned by a query, including database objects such as tables, views, synonyms, snapshots, and queries stored as views. [OracleAS Reports Services](#) enables you to access any data source.

The new pluggable data source (PDS) architecture replaces Oracle Open Client Adapter (OCA), and the Open Database Connectivity (ODBC) drivers are no longer supported in Oracle Reports 10g. However, Java Database Connectivity (JDBC) is one of the pluggable data sources available that can utilize the JDBC-ODBC bridge, allowing access to other data sources.

detail query

When defining a master/detail report, the detail query retrieves all related records for each record retrieved by the master, or parent, query.

dialog box

A partial screen or window that prompts you to enter information necessary to complete an operation.

disabled

An interface element state that means a menu item, button, and so on, cannot be used in the current context (that is, it does not respond to keyboard or mouse input).

editor

See [view](#).

enabled

An interface element state that means that a menu item, button, and so on, can be used in the current context (that is, it responds to keyboard or cursor/mouse input).

field

1. An interface element in which you enter, edit, or delete data.
2. A layout object that defines how the data for a specific query column appears.

foreign key

A value or column in one table that refers to a primary key in another table.

format mask

A setting that defines the appearance of the value of a field. For example, a format mask is used to specify the display of currency amounts and dates.

format trigger

A PL/SQL function that enables you to dynamically change the formatting attributes of an object.

formula column

A user-created column that gets its data from a PL/SQL function or expression, a SQL statement, or a combination of these.

frame

A layout object used to enclose other layout objects and control the formatting, frequency, and positioning of several objects simultaneously.

group

1. In Reports Builder, a data model object that is created automatically to contain all the columns selected by a query, or created by the user to modify the hierarchy of the data appearing in a report; it is used primarily for creating breaks in a report, as well as for resetting computations.
2. An object that is composed of several other objects.

HTML

Acronym for HyperText Markup Language. A tag-based ASCII language used to specify the content and links to other documents on Web servers on the Internet. End users with Web browsers view HTML documents and follow links to display other documents.

HTTP

Acronym for HyperText Transfer Protocol. The protocol used to carry Web traffic between a Web browser computer and the Web server being accessed.

hyperlink

A reference (link) from some point in one document to (some point in) another document or another place in the same document. A Web browser usually displays a hyperlink in some distinguishing way (in a different color, font or style). When users activate hyperlinks (by clicking on them with a mouse) the browser displays the target of the link.

IANA

Acronym for Internet Assigned Numbers Authority. An organization working under the auspices of the Internet Architecture Board (IAB) that is responsible for assigning new Internet-wide IP addresses. IANA-defined character sets refers to those character sets that can be defined for the `charset` tag and may be used in the Internet.

icon

A graphic representation of a window or tool.

image

A bitmapped object that can be stored and loaded into an application. The client cannot modify an imported image.

intranet

An internal TCP/IP network, access to which is restricted (through a firewall) to individuals inside the company or organization. An intranet provides similar services within an organization to those provided by the Internet, but is not necessarily connected to the Internet. A common example of an intranet is when a company sets up one or more Web servers on an internal network for distribution of information or applications within the company.

Java

A computer language that supports programming for the Internet in the form of platform-independent "servlets" or "applets".

JAR

Acronym for Java ARchive. A file used for aggregating many files (Java class files, images, and so on) into one file.

J2EE

Acronym for Java 2 Platform, Enterprise Edition. An environment for developing and deploying enterprise applications in Java consisting of a set of services, application programming interfaces, and protocols that provide for developing multitiered, Web-based applications.

JSP

Acronym for JavaServer Page. JSP technology is an extension to the Java Servlet technology from Sun Microsystems that provides a simple programming vehicle for displaying dynamic content on a Web page. JSP is a server-side technology. A JSP is an HTML page with embedded Java source code that is executed in the Web server or application server. The HTML provides the page layout that is returned to the Web browser, and the Java provides the business logic.

layout

See [Paper Layout view](#).

margin

An optional report region that appears at the top and bottom of each logical page in a report section (Header, Main, or Trailer). The margin may include any layout object, but typically contains boilerplate and fields (for page numbers, page totals, grand totals, and current date and time).

object

1. An item that can be placed on the layout. The following are examples of objects: rectangle, line, ellipse, arc, polygon, polyline, rounded rectangle, freehand, chart, text, symbol, and text field.
2. In an Oracle database, an instance of an object type. An object can be a row in an object table, or the portion of a row contained in a column object in a relational table.

Object Navigator

A hierarchical browsing and editing interface that enables you to locate and manipulate application objects quickly and easily. Features include:

- A hierarchy represented by indentation and expandable nodes (top-level nodes show module types, database objects, and built-in packages), enabling tasks such as creating, editing, renaming, and deleting objects.
- A find field and icons, enabling forward and backward searches for any level of node or for an individual item in a node
- Icons in the horizontal toolbar replicating common File menu functions

Oracle Application Server (OracleAS)

A strategic platform for network application deployment. By moving application logic to application servers and deploying network clients, organizations can realize

substantial savings through reduced complexity, better manageability, and simplified development and deployment. OracleAS provides the only business-critical platform that offers easy database Web publishing and complete legacy integration while transitioning from traditional client/server to network application architectures.

Oracle Developer Suite

Combines leading Oracle application development and business intelligence tools into a single, integrated product. Built on Internet standards such as Java and XML, the suite provides a complete and highly productive development environment for building applications for Oracle Application Server and the Oracle database.

ORACLE_HOME

An alternate name for the top directory in the Oracle directory hierarchy on some directory-based operating systems. An environment variable that indicates the root directory of Oracle products.

You can refer to the directory specified by *ORACLE_HOME* in syntax:

On UNIX: \$ORACLE_HOME

On Windows: %ORACLE_HOME%

OracleAS Portal

A browser-based development tool for building scalable, secure, extensible HTML applications and Web sites. OracleAS Reports Services uses OracleAS Portal to control end user access to reports published on the Web by storing information about report requests, the secured server, and any OracleAS Reports Services printer used to print report output.

OracleAS Reports Services

See [Reports Services](#).

Paper Design view

One of the views of the Report Editor that displays output for paper reports and enables you to make many commonly required, simple modifications to the layout, such as spacing, formatting fields, color, and editing text, without having to open the Paper Layout view.

Paper Layout view

One of the views of the Report Editor that displays the layout objects in a paper report and enables you to make many modifications to any layout object. All layout objects have properties that you can modify using the Property Inspector. The hierarchy of the layout objects is determined by the Data Model.

Paper Parameter Form view

Displays the layout of the Parameter Form that, at runtime, allows user input of parameter values in the [Runtime Parameter Form](#).

PDF

Acronym for Portable Document Format. A file format (native for Adobe Acrobat) for representing documents in a manner that is independent of the original application software, hardware, and operating system used to create the documents. A PDF file can describe documents containing any combination of text, graphics, and images in a device-independent and resolution independent format.

PL/SQL

Oracle's proprietary extension to the SQL language. Adds procedural and other constructs to SQL that make it suitable for writing applications.

PPD

Acronym for PostScript Printer Definition. PPD and [AFM](#) files are supplied by Adobe and by printer vendors. These files contain information about the printer. Along with other parameters, these files are read for the information about the available fonts for the printer, which Oracle Reports will use. For all the fonts listed in the PPD file, Oracle Reports searches for the corresponding AFM file according to the font name and loads all of the fonts for which there is an available AFM.

Property Inspector

A window that enables you to view, locate, and set the properties of the currently selected object(s) in the [Object Navigator](#), [Report Editor](#), and [Template Editor](#). Every Reports Builder object (query, group, frame, parameter, and so on) has associated properties that can be viewed using the Property Inspector. The Property Inspector features:

- expandable and collapsible nodes
- in-place property editing
- search features
- multiselection
- complex property dialogs
- the ability to invoke multiple instances of the Property Inspector

To get help on any property, click the property in the Property Inspector and press F1.

query

A SQL SELECT statement that specifies the data you wish to retrieve from one or more tables or views of a database.

RDF file

A file that contains a single report definition in binary format. .RDF files are used to both run and edit reports.

record

One row fetched by a SQL SELECT statement.

REP file

A file that contains a single report definition in binary format. .REP files are used solely to run reports; you cannot edit a .REP file.

repeating frame

A layout object used to display rows of data that are fetched for a group.

Reports Cache

A component of OracleAS Reports Services that stores completed jobs output.

Reports CGI (`rwcgi`)

Note: With Oracle Reports 10g, Reports CGI (`rwcgi`) is deprecated (maintained only for backward compatibility); instead, use Reports JSPs, `rwervlet` (Reports Servlet), or Reports Web Services.

An Oracle Reports executable, also known as the Common Gateway Interface (CGI) or Reports Web Cartridge, that translates and delivers information between either a Web Server or a J2EE Container (for example, OC4J) and the Reports Server, to run a report dynamically from your Web browser.

Reports Client (`rwclient`)

An Oracle Reports executable that provides a command-line interface to send a report to a remote Reports Server (`rwserver`).

Report Editor

The Reports Builder window that provides different views to help you handle the data objects and layout objects for Web and paper reports. The views are:

- [Data Model view](#)
- [Paper Layout view](#)
- [Paper Design view](#)
- [Paper Parameter Form view](#)
- [Web Source view](#)

Reports Engine

A component of OracleAS Reports Services that fetches data from the data source, formats the report, send output to cache, and notifies the Reports Server that the job is ready.

Reports Builder (`rwbuilder`)

An Oracle Reports executable that provides a design-time user interface to enable report developers to create and maintain report definitions.

Reports Queue Manager (`rwrqm`)

(Windows only) Maintains timestamp and status information about reports jobs managed by the Reports Server (`rwserver`).

Reports Runtime (`rwrun`)

An Oracle Reports executable that runs a report using the OracleAS Reports Services in-process Reports Server.

Reports Server (`rwserver`)

An Oracle Reports executable that provides reporting services to execute, distribute, and publish your reports for enterprise-wide reporting. A component of OracleAS Reports Services that processes client requests, including user authentication, scheduling, caching, and report distribution. Use Oracle Reports clients such as `rwervlet`, Reports JSP, CGI, and `rwclient` send a report to Reports Server.

Reports Services

The runtime environment for Reports Developer applications. OracleAS Reports Services executes, distributes, and publishes your reports for enterprise wide reporting. Using OracleAS Reports Services to deploy your reports results in gains of flexibility, time savings, and processing capacity.

Reports Servlet (*rwServlet*)

A component of OracleAS Reports Services that translates and delivers information between either a Web Server or a J2EE Container (for example, OC4J) and the Reports Server, enabling you to run a report dynamically from your Web browser.

row

One set of field values in a table; for example, the fields representing one employee in the example table EMP.

Runtime Parameter Form

A screen or window appearing optionally at runtime in which a user can modify print options and parameters prior to report execution.

schema

A collection of related database objects, usually grouped by database user ID. Schema objects include tables, views, sequences, stored program units, synonyms, indexes, clusters, and database links.

SELECT statement

A SQL statement that specifies which rows and columns to fetch from one or more tables or views.

servlet

A Java application that runs in a Web server or application server and provides server-side processing, typically to access a database or perform e-commerce processing. Because they are written in Java, servlets are portable between servers and operating systems.

The Reports Servlet (*rwServlet*) and JSP are components of OracleAS Reports Services that process custom (JSP) report tags and deliver information between the Oracle HTTP Server and the Reports Server.

SQL

A standard interface for storing and retrieving information in a relational database. SQL is an acronym for Structured Query Language.

SQL file

A file that contains a query stored in text (for example, ASCII or EBCDIC) format.

SQL script

A file containing SQL statements that you can run to perform database administration quickly and easily. Several SQL scripts are shipped with Oracle products.

SQL statement

A SQL instruction to Oracle. A SELECT statement is one type of SQL statement.

style sheet

HTML extensions that provide powerful formatting flexibility in HTML documents. To view an HTML document that takes advantage of style sheets, display it in a browser that supports style sheets.

table

A named collection of related information, stored in a relational database or server, in a two-dimensional grid that is made up of rows and columns.

tabular

A default layout displaying labels at the top of the page and rows of data underneath the labels.

template

A skeleton definition containing common style and standards, and may include graphics. A template provides a standard format to enable quick and easy development of professional standard look-and-feel reports.

Template Editor

A work area in which you can define objects and formatting properties for your templates. It is similar to the [Paper Layout view](#) of the [Report Editor](#). You can create, delete, and modify objects (for example, page numbers, text, and graphics) in the margin area. You cannot create and delete objects in the body area, but you can modify the properties of body objects in the [Property Inspector](#).

tool

An iconic button used to create and manipulate objects in an application.

tool palette

A collection of tools represented by iconic buttons in the user interface that allow a report developer to perform tasks, such as drawing a rectangle in the [Paper Layout view](#) or creating a query in the [Data Model view](#).

toolbar

A collection of iconic buttons that perform product commands. Usually aligned horizontally along the top, or vertically down the side of a window.

URL

Acronym for Uniform Resource Locator. A compact string representation of the location for a resource that is available through the Internet. It is also the text string format clients use to encode requests to OracleAS.

view

1. In Reports Builder, a work area in which you perform a specific set of tasks, such as defining a report data model, layout, or Parameter Form.
2. A virtual table whose rows do not actually exist in the database, but which is based on a table that is physically stored in the database.

Web browser

A program that end users utilize to read HTML documents and programs stored on a computer (serviced by a Web server).

Web server

A server process (HTTP daemon) running at a Web site which sends out Web pages in response to HTTP requests from remote Web browsers.

Web Source view

One of the views of the Report Editor that displays the HTML or JSP source for a report. You can use this view to add dynamic content to a Web page using the Report Block Wizard and the Graph Wizard. Experienced Java developers can edit the Web source directly in this view.

wizard

A step-by-step interface for commonly performed tasks. The wizards in Reports Builder are:

- Report Wizard: guides you through the steps to create a basic paper or Web report. Each page of the wizard asks you for information to help you create your initial report.
- Data Wizard: helps you quickly define or modify a query for a multiquery data models.
- Graph Wizard: Adds variety of charts and graphs, including true 3-dimensional graphs. Implemented in Reports Builder with the Oracle BI graph bean.
- Report Block Wizard: enables you to add data to a static HTML page.

XML

Acronym for Extensible Markup Language. A metalanguage using SGML to define and structure data. Reports Builder supports XML output to enable Web publishing as well as electronic data exchange with third-party applications. You can also use XML to build report definitions that can be merged with other report definitions at runtime or run separately.

Index

D

- data
 - adding to a report, 2-1
 - adding to a Web report, 2-2
- data model
 - creating, 2-1, 2-2
 - using for Web and paper report, 8-1
- Data Wizard
 - glossary, Glossary-10
 - using, 2-2

G

- graph
 - adding to a JSP, 6-1
 - reviewing the Web source, 7-1
- Graph Wizard
 - glossary, Glossary-10
 - using, 6-2

H

- header tag
 - reviewing, 5-1
- HTML
 - opening a Web page in Reports Builder, 2-1

J

- JavaServer Page, 6-4
 - saving, 2-5
- JSP
 - adding a graph, 6-1
 - saving, 6-4
 - saving a JSP report, 2-5

O

- overview, 1-1

P

- paper report
 - creating, 8-1

R

- report
 - creating a paper report, 8-1
 - saving as a JSP, 2-5
- report block
 - adding, 4-1
 - reviewing the Web source, 5-1
- Report Block Wizard
 - glossary, Glossary-10
- Report Wizard
 - adding a report block, 4-1
 - glossary, Glossary-10
 - using, 8-1
- Reports JSP tags
 - header tag, 5-1
 - rw
 - foreach tag, 5-1
 - graph tag, 7-1
 - seriesitem, 7-1
- rw
 - foreach tag
 - reviewing, 5-1
 - graph tag
 - reviewing, 7-1

S

- saving, 6-4
 - JSP-based Web report
 - saving, 6-4
- scenario, 1-1
- seriesitem tag
 - reviewing, 7-1

T

- table designs
 - FormalKey, A-1, A-2

W

- Web page
 - opening in Reports Builder, 2-1
- Web source
 - reviewing a graph, 7-1
 - reviewing a report block, 5-1

wizard
glossary, Glossary-10