

Retek[®] Merchandising System[™]

10.1.9

Release Notes

Corporate Headquarters:

Retek Inc.
Retek on the Mall
950 Nicollet Mall
Minneapolis, MN 55403
USA
888.61.RETEK (toll free US)
Switchboard:
+1 612 587 5000
Fax:
+1 612 587 5100

European Headquarters:

Retek
110 Wigmore Street
London
W1U 3RW
United Kingdom
Switchboard:
+44 (0)20 7563 4600
Sales Enquiries:
+44 (0)20 7563 46 46
Fax:
+44 (0)20 7563 46 10

The software described in this documentation is furnished under a license agreement, is the confidential information of Retek Inc., and may be used only in accordance with the terms of the agreement.

No part of this documentation may be reproduced or transmitted in any form or by any means without the express written permission of Retek Inc., Retek on the Mall, 950 Nicollet Mall, Minneapolis, MN 55403, and the copyright notice may not be removed without the consent of Retek Inc.

Information in this documentation is subject to change without notice.

Retek provides product documentation in a read-only-format to ensure content integrity. Retek Customer Support cannot support documentation that has been changed without Retek authorization.

Retek[®] Merchandising System[™] is a trademark of Retek Inc. Retek and the Retek logo are registered trademarks of Retek Inc.

This unpublished work is protected by confidentiality agreement, and by trade secret, copyright, and other laws. In the event of publication, the following notice shall apply:

©2004 Retek Inc. All rights reserved.

All other product names mentioned are trademarks or registered trademarks of their respective owners and should be treated as such.

Printed in the United States of America.

Customer Support

Customer Support hours

Customer Support is available 7x24x365 via email, phone, and Web access.

Depending on the Support option chosen by a particular client (Standard, Plus, or Premium), the times that certain services are delivered may be restricted. Severity 1 (Critical) issues are addressed on a 7x24 basis and receive continuous attention until resolved, for all clients on active maintenance. Retek customers on active maintenance agreements may contact a global Customer Support representative in accordance with contract terms in one of the following ways.

Contact Method	Contact Information
----------------	---------------------

E-mail	support@retex.com
--------	-------------------

Internet (ROCS)	rocs.retek.com Retek's secure client Web site to update and view issues
-----------------	---

Phone	+1 612 587 5800
-------	-----------------

Toll free alternatives are also available in various regions of the world:

Australia	+1 800 555 923 (AU-Telstra) or +1 800 000 562 (AU-Optus)
France	0800 90 91 66
Hong Kong	800 96 4262
Korea	00 308 13 1342
United Kingdom	0800 917 2863
United States	+1 800 61 RETEK or 800 617 3835

Mail	Retek Customer Support Retek on the Mall 950 Nicollet Mall Minneapolis, MN 55403
------	---

When contacting Customer Support, please provide:

- Product version and program/module name.
- Functional and technical description of the problem (include business impact).
- Detailed step-by-step instructions to recreate.
- Exact error message received.
- Screen shots of each step you take.

Overview

Please review the enclosed DEFECT documents promptly to establish the impact on your business operations. Retek Customer Support investigates submitted issues assuming that all release patches have been applied. While it is ultimately at the client's discretion as to when to apply patches, delays or lags in their application can complicate the support process. To assist in the patch review, Retek Customer Support provides a system-level assessment by assigning a Priority. In addition, a cross-reference spreadsheet is provided to assist with this research (see 'DEFECT Documentation' below). As listed below, this patch contains both general product fixes and functional enhancements and is considered the RMS 10.1.9 release. Refer to the 'RMS Fixes' and 'RMS Enhancements' sections of this document for more details.

RMS Fixes

As mentioned earlier, RMS 10.1.9 includes general product fixes. Read the provided documents for details. A DEFECT fix is a modification to the base Retek code (e.g. a bug fix, performance enhancement, or functional enhancement). Each DEFECT fix included in this patch has a corresponding DEFECT document in the \doc\defect_doc folder titled <DEFECT#> <module>.doc (e.g. "123456 nxprcno.doc"). DEFECT documents should be fully reviewed before this patch is implemented. To assist with the patch application process, there is also a DEFECT module cross-reference spreadsheet in the same folder (RMS 10.1.9 MODULE XREF.xls) which lists and allows sorting by DEFECT, Program Name, Revision #, Functional Area, Priority, and Defect Description. Description of several noteworthy fixes follows.

Fixes

ALC, Allocations, Audit Trail, Banded Items, Clearance, Complex Deals, Contracts, Cost Change, Cost Management, Current Inventory, Item Maintenance, EDI, Financial Interface, Future Delivery, Invoice Extraction, Inventory Request, Invoice Matching, Item Location, Item Supplier, Location List, Merchandise Hierarchy, Obligation, Organizational Hierarchy, Pack Items, Point of Sale, Price Management, Promotions, Purchase Orders, Receiving, Reclassification, Replenishment, Return to Vendor, Sales Audit, Security, Shipments, Stock Count, Stock Ledger, Stores, Supplier Maintenance, System Variables, Transfers, User Defined Attributes, VAT Warehouse, and other functional areas.

RMS Enhancements

Integration with ReIM 11 – Retek Invoice Matching 11

RMS 10.1.9 is an enhanced version of RMS that provides you with the choice to either continue using Invoice Matching within RMS or to integrate RMS 10.1 with Retek Invoice Matching 11.0 (ReIM) or another Invoice Matching product.

A new variable EXT_INVC_MATCH_IND has been added to the RMS System Options. This system variable determines if RMS is integrated with ReIM 11. This variable is mutually exclusive with INVC_MATCH_IND that indicates Invoice Matching is used within RMS. You cannot have both EXT_INVC_MATCH_IND and INVC_MATCH_IND set to 'Y' at the same time. Both, however, can be set to 'N' at the same time. This variable is displayed on the System Variable GUI whenever RMS is integrated with ReIM otherwise you have no visibility to it.

Retek Merchandising System

A new interface batch program EDIDLINV.PC has been added to RMS to extract all invoice records from RMS to a file that is uploaded to ReIM. This is an ad hoc batch program that you run if RMS is integrated with ReIM.

To configure RMS for integration with ReIM you need to set EXT_INVC_MATCH_IND to 'Y' and set system options appropriately. You MUST install ReIM 11 for this to be done because the ReIM installation configures RMS for integration with ReIM

System Variables (sys_ctrl)

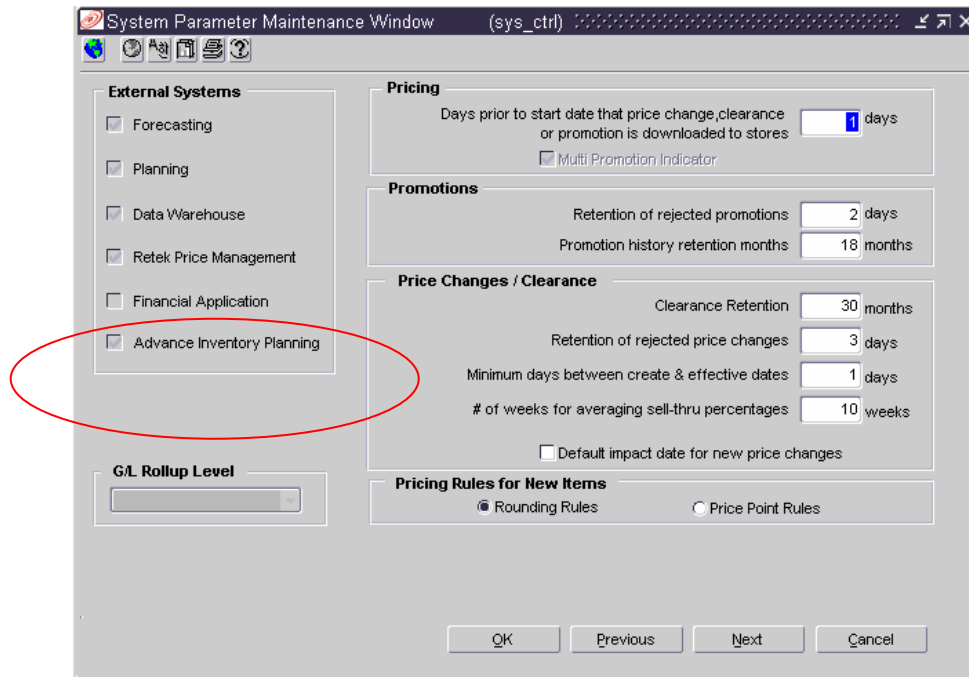
A new indicator has been added to the System Variables form. This checkbox indicates whether or not RMS is integrated with ReIM 11.

The screenshot shows the 'System Parameter Maintenance Window (sys_ctrl)' with the following sections:

- Date and Time**
 - Date Display Format: DD-MON-RR
 - Time Display Format: HH24:MI
 - Date Entry Format: MMDDRR
 - Time Entry Format: HH24MI
 - Today's Date: 10-DEC-03
 - Current Half Number: 20011
 - Current Month Number: 1
 - Normal or 454 calendar: 454
 - First Month of the First Half of the year: 2
- Time Period Detail**
 - Last Unit End of Week Date: 07-DEC-03
 - Next Unit End of Week Date: 14-DEC-03
 - Last Dollar End of Month Date: 18-FEB-01
 - Next Dollar End of Month Date: 25-MAR-01
 - Last Unit End of Month Date: 23-NOV-03
 - Next Unit End of Month Date: 28-DEC-03
 - Last Retail Inventory End of Week Date: 04-MAR-01
- Invoice Matching Options**
 - ☒ External Invoice Matching Indicator
 - ☐ Match Invs to Rpts from other Suppliers
 - ☐ Match Total Quantity
 - Debit Memo Send Days: 3
 - Max Debit Memo Percent: 100.00%
 - Close Open Shipment Days: 3

Buttons at the bottom: OK, Previous, Next, Cancel.

A new indicator has been added to the System Variables window. This checkbox indicates whether or not RMS is integrated with AIP 11. This indicator determines if you have access to the transit times GUI and other Item attributes that are specific to AIP – RMS integration.



Integration with Advance Inventory Planning 11 (AIP)

RMS 10.1.9 is integrated with AIP 11 through RIB. RMS captures the data that AIP requires and publishes it to RIB.

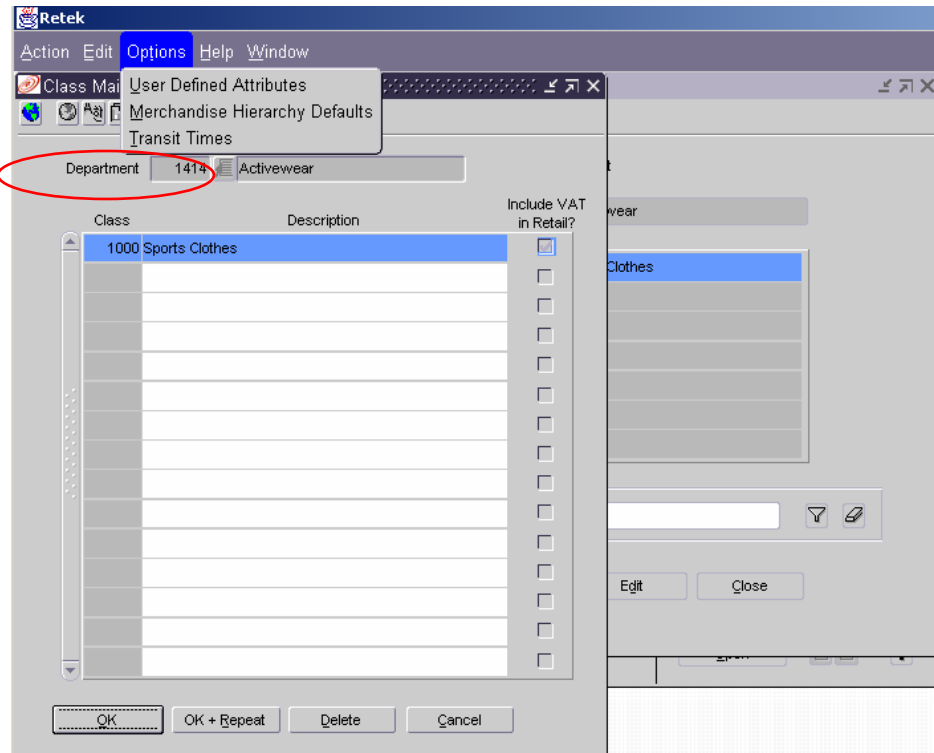
For integration of RMS and AIP 11, the system variable AIP_IND must be set to 'Y'. You need to install AIP for this to happen. The AIP installation also configures RMS system variables as appropriate for integration with AIP.

Transit Times

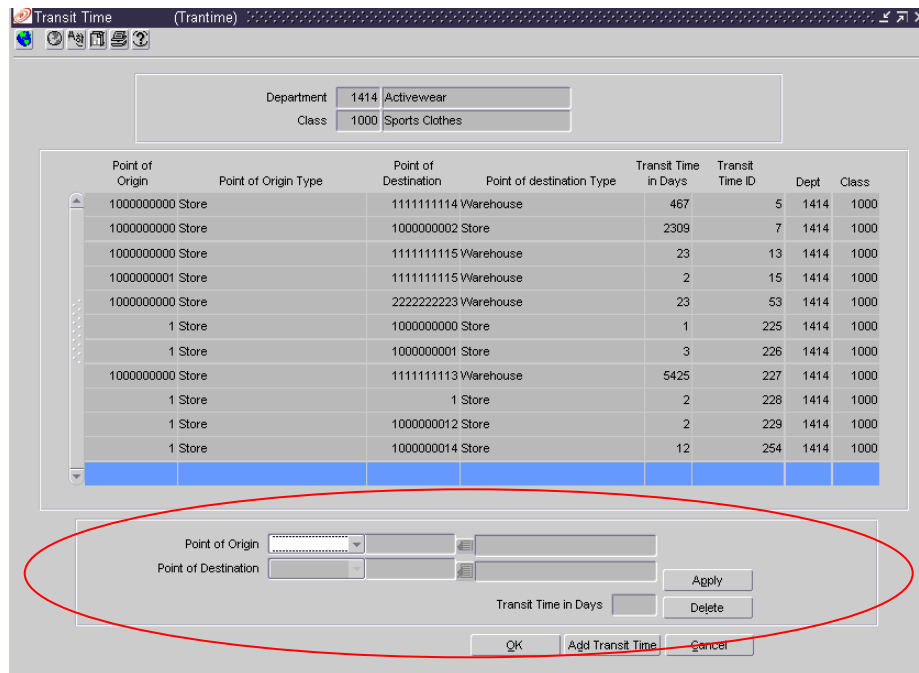
As part of the enhancement, a new GUI interface (Trantime.fmb) has been added to RMS in order to enter the transit time of items from one customer location to another or from a supplier to a customer location.

This new GUI interface is used to enter transit times from supplier to store/warehouse location or from a warehouse to a store for each class. You can access this window through the Class GUI from the Transit Times Menu Option.

Retek Merchandising System



To enter transit times select source and destination type and location in the Apply block; enter the transit time and click the **Apply**. The record will be displayed in the Multi record block. This follows the same look and feel of RMS data entry forms.



RETL Interface Modifications

- RETL pre-maintenance script – Modified to include AIP specific configuration files and to comply with RETL 11.2. This extract creates files that are utilized by the RETL extract processes. These include the class level VAT indicator, domain level, last end of month date, number of days back posting is allowed, multi currency indicator, VAT indicator, primary exchange rate, primary currency code, stock ledger VAT included indicator, current data, and current beginning of month date.
- Warehouse extract - This extract creates three different warehouse files. Two of these files are new and separate the warehouses into either tier 1 or tier 2. These are used exclusively for AIP. The third file that is generated is a full snapshot of warehouses and is used by both AIP and RDF.
- Suppliers extract - This extract pulls all suppliers for RDF and was modified to also interface active suppliers and active suppliers that ship direct to stores in two new files that only AIP will utilize.

New RETL Interfaces

- Item supplier Country – There are two new extracts for this interface. The first produces two output files that only AIP utilizes. The files list item pack sizes for primary supplier and country, and also item pack sizes for all suppliers and the supplier's primary country. The second extract produces a file that shows an items handling temp.
- AIP Item master – This extract pulls all approved items solely for AIP.
- Substitute Items – This is a new extract that pulls all items that have substitute items associated with it for warehouse replenishment and a pre-priced retail type.
- Item/location traits – A new extract exists that supplies AIP with items and their associated shelf life on receipt.
- Banded Items – A new extract exists that interfaces banded items to AIP. Banded items are items such as a Medium Turkey that have a weight range of 5-10 lbs, but it is banded into multiple other items such as Medium Turkey 5-6, and Medium Turkey 6.1-7, which is where inventory is held at but the main banded item (Medium Turkey 5-10) is what is ordered.
- On Sale/Off Sale – Two new extracts were created that provide AIP with suggested ordering dates based on scheduled item maintenance usage in RMS. One extract notifies AIP of future status changes to Active for an item, the other extract notifies AIP of future status changes to Discontinued.
- Future Inventory – Three new extracts were created to supply AIP with future inventory pictures. One extract pulls all future orders that are expected at a supplier, location, item, date level, the second extract pulls future transfers and identifies transfers going out and transfers coming in at the supplier, location, item, date level, and the third identifies allocations going out of a location and coming into a location at a supplier, location, item, date level. A configuration file has been added this interface to allow the ability to filter orders on the “not after date”.
- Current Inventory – Three new extracts were created to provide AIP with a snapshot of the current inventory pictures at stores, tier 1 warehouses, and tier 2 warehouses. A configuration file has been added to this interface to allow the ability to change how the stock on hand is calculated.

Summary

- New RETL transformations were created on the RPAS side to process some of the extract files used by AIP. This includes transformations for item, org hierarchy, items shelf life, substitute items, and future delivery.
- No existing RPAS (RDF) transformations were modified to support AIP.
- AIP and RDF, although both existing under RPAS, have their own transformations, even if the same source files are used.
- All development for new and modified extracts are on RETL 11.2

New RIB Interfaces

- Purchase Orders – A new API was created to accept PO create messages from AIP. This will only create PO's in approved status.
- Transfers – A new API was created to accept Transfer create messages from AIP. This will only create transfers in approved status. Future releases will provide for transfer modifications and deletion.
- The PO and Transfer interfaces are only supported with RIB 11.0. They will not work with RIB 10.x because of infrastructure changes.