



# **Siebel eService Administration Guide Addendum for Industry Applications**

Version 8.0

December 2006

**ORACLE®**

Copyright © 2005, 2006, Oracle. All rights reserved.

The Programs (which include both the software and documentation) contain proprietary information; they are provided under a license agreement containing restrictions on use and disclosure and are also protected by copyright, patent, and other intellectual and industrial property laws. Reverse engineering, disassembly, or decompilation of the Programs, except to the extent required to obtain interoperability with other independently created software or as specified by law, is prohibited.

The information contained in this document is subject to change without notice. If you find any problems in the documentation, please report them to us in writing. This document is not warranted to be error-free. Except as may be expressly permitted in your license agreement for these Programs, no part of these Programs may be reproduced or transmitted in any form or by any means, electronic or mechanical, for any purpose.

**PRODUCT MODULES AND OPTIONS.** This guide contains descriptions of modules that are optional and for which you may not have purchased a license. Siebel's Sample Database also includes data related to these optional modules. As a result, your software implementation may differ from descriptions in this guide. To find out more about the modules your organization has purchased, see your corporate purchasing agent or your Siebel sales representative.

If the Programs are delivered to the United States Government or anyone licensing or using the Programs on behalf of the United States Government, the following notice is applicable:

**U.S. GOVERNMENT RIGHTS.** Programs, software, databases, and related documentation and technical data delivered to U.S. Government customers are "commercial computer software" or "commercial technical data" pursuant to the applicable Federal Acquisition Regulation and agency-specific supplemental regulations. As such, use, duplication, disclosure, modification, and adaptation of the Programs, including documentation and technical data, shall be subject to the licensing restrictions set forth in the applicable Oracle license agreement, and, to the extent applicable, the additional rights set forth in FAR 52.227-19, Commercial Computer Software--Restricted Rights (June 1987). Oracle USA, Inc., 500 Oracle Parkway, Redwood City, CA 94065.

The Programs are not intended for use in any nuclear, aviation, mass transit, medical, or other inherently dangerous applications. It shall be the licensee's responsibility to take all appropriate fail-safe, backup, redundancy and other measures to ensure the safe use of such applications if the Programs are used for such purposes, and we disclaim liability for any damages caused by such use of the Programs.

Oracle, JD Edwards, PeopleSoft, and Siebel are registered trademarks of Oracle Corporation and/or its affiliates. Other names may be trademarks of their respective owners.

The Programs may provide links to Web sites and access to content, products, and services from third parties. Oracle is not responsible for the availability of, or any content provided on, third-party Web sites. You bear all risks associated with the use of such content. If you choose to purchase any products or services from a third party, the relationship is directly between you and the third party. Oracle is not responsible for: (a) the quality of third-party products or services; or (b) fulfilling any of the terms of the agreement with the third party, including delivery of products or services and warranty obligations related to purchased products or services. Oracle is not responsible for any loss or damage of any sort that you may incur from dealing with any third party.

# Contents

## **Chapter 1: What's New in This Release**

## **Chapter 2: Siebel eBanking and Siebel eBrokerage**

About Siebel eBanking	9
About Siebel eBrokerage	11
Other Differences of Siebel eBanking from Siebel eService	12
Administrative Tasks for Siebel eBanking or eBrokerage	12
Purposes of Siebel eBanking and Siebel eBrokerage	13
Data Display for Siebel eBanking and eBrokerage	13
Service Requests in Siebel eBanking and eBrokerage	14
Personalizing Siebel eBanking and eBrokerage	14
About Siebel eBanking and Siebel eBrokerage Pages	15
About the Login Page for Siebel eBanking and eBrokerage	16
About the Home Page for Siebel eBanking and eBrokerage	16
Setting the Display Sequence of Financial Accounts	17
About the Accounts Page for Siebel eBanking and eBrokerage	18
About the Transfers Page for Siebel eBanking and eBrokerage	20
Transferring Funds	21
Transfer Money In/Transfer Money Out Views	21
About the Bill Pay Page for Siebel eBanking and eBrokerage	22
Authorizing and Enrolling a Customer's Accounts	23
Unenrolling a Customer	24
Determining Whether a Customer is Enrolled	24
Reviewing Payees and Payments	24
About the Customer Service Page for Siebel eBanking and eBrokerage	25
About the Relationship Page (Siebel eBrokerage Only)	26
Adding and Editing Holdings	27
Adding and Modifying Investment Interests	28
About the Trades Page (Siebel eBrokerage Only)	29

About My Profile Screen for Siebel eBanking and eBrokerage	34
About Account Download in Siebel eBanking and eBrokerage	35
Adding Account Download File Types	38

### **Chapter 3: Siebel Insurance eService**

About Siebel Insurance eService	41
Features in Siebel Insurance eService User Interface	42
Administrative Tasks for Siebel Insurance eService	45
Creating Roles for Siebel Insurance eService	45
Setting Up Provider Search for Siebel Insurance eService	47
Setting Up Classes and Seminars for Siebel Insurance eService	48
Setting Up Health Club Discounts	48
Setting Up Alternative Medicine Search	49
Setting Up Pharmacy Locator	49
Setting Up Formulary Search	50
Setting Up a Link To Drug Interactions Information	50
Displaying Auto Policy Coverage Comparisons	51
Setting Up Printable Online Documents for Siebel Insurance eService	51
Administering Partner and Claim Center Locators	52
Setting Up Service Provider Search	52
Customer Tasks in Siebel Insurance eService	53

### **Chapter 4: Siebel eEnrollment for Financial Services**

About Siebel eEnrollment	55
Administrative Tasks for Siebel eEnrollment for Financial Services	56
Displaying Product Attributes to eEnrollment Users	56
Setting Up Provider Search for Siebel eEnrollment for Financial Services	56
Siebel eEnrollment for Financial Services User Interface Elements	57
Home Page for Siebel eEnrollment for Financial Services	58
Literature Page for Siebel eEnrollment for Financial Services	60

### **Chapter 5: Siebel eCustomer for Financial Services**

About eCustomer	63
-----------------	----

Home Page for Siebel eCustomer for Financial Services 64

## **Chapter 6: Siebel eService for Siebel Automotive**

About Siebel eService for Automotive 65

Overview of Differences Between Siebel eService and Siebel eService for Automotive 66

Home Page and Global Buttons for Siebel eService for Automotive 66

About the Dealer Locator 67

Activating Vehicle Registration Workflows 68

About Inventory Search for Vehicles 69

The My Account View of Siebel eService for Automotive 70

About Vehicle Registration Automotive 71

The My Vehicles View of Siebel eService for Automotive 71

About Preventive Maintenance 72

    Visibility of Preventive Maintenance Actions to the Customer 72

    Sharing Preventive Maintenance Documents with Customers 73

Service Requests in Siebel eService for Automotive 73

About Service History 74

## **Chapter 7: Siebel eService for Communications, Media, and Energy**

About eService for Communications, Media, and Energy 77

Differences in the Customer Portal for CME 78

Differences in Personalization for CME 79

## **Index**



# 1

## What's New in This Release

This guide describes how to set up and use the features of Oracle's Siebel eService for Industry Applications that are different from the features of Siebel eService. It is meant to be used as a supplement to *Siebel eService Administration Guide*.

The applications described in this book include:

- Siebel eBanking
- Siebel eBrokerage
- Siebel Insurance eService
- Siebel eEnrollment for Financial Services
- Siebel eCustomer for Financial Services
- Siebel Communications, Media, and Energy
- Siebel Automotive

### **What's New in Oracle's Siebel eService Administration Guide Addendum for Industry Applications, Version 8.0**

This guide has been updated to reflect product name changes. It was previously published as *Siebel eService Administration Guide Addendum for Industry Applications, Version 7.5.3*.





# 2

## Siebel eBanking and Siebel eBrokerage

This chapter includes the following topics:

- [About Siebel eBanking](#)
- [About Siebel eBrokerage](#)
- [Other Differences of Siebel eBanking from Siebel eService](#)
- [Administrative Tasks for Siebel eBanking or eBrokerage](#)
- [Purposes of Siebel eBanking and Siebel eBrokerage](#)
- [Data Display for Siebel eBanking and eBrokerage](#)
- [Service Requests in Siebel eBanking and eBrokerage](#)
- [Personalizing Siebel eBanking and eBrokerage](#)
- [About the Login Page for Siebel eBanking and eBrokerage](#)
- [About the Home Page for Siebel eBanking and eBrokerage](#)
- [About the Accounts Page for Siebel eBanking and eBrokerage](#)
- [About the Transfers Page for Siebel eBanking and eBrokerage](#)
- [About the Bill Pay Page for Siebel eBanking and eBrokerage](#)
- [About the Customer Service Page for Siebel eBanking and eBrokerage](#)
- [About the Relationship Page \(Siebel eBrokerage Only\)](#)
- [About the Trades Page \(Siebel eBrokerage Only\)](#)
- [About My Profile Screen for Siebel eBanking and eBrokerage](#)
- [About Account Download in Siebel eBanking and eBrokerage](#)
- [Adding Account Download File Types](#)

### About Siebel eBanking

Oracle's Siebel eBanking, a part of Siebel eService, provides a comprehensive online banking solution for financial institutions serving consumer and small business customers. Siebel eBanking is completely integrated with Siebel Finance Applications, which allows the customer service representative to use a single dashboard for queuing, viewing, and resolving customer issues that are submitted through the Web, through email, or by telephone.

Siebel eBanking provides multiple means for customers to perform financial transactions, inquire about their accounts, and resolve customer service issues on their own while providing multiple channels of communication for customers to request and receive live support from customer service representatives.

Siebel eBanking provides a personalizable portal supporting a comprehensive list of online banking tasks, including:

- **Account inquiry.** Customers can gain access to deposit, loan, and brokerage accounts, including transactions, holdings, and balance histories.
- **Transactions.** Siebel eBanking can serve as the front end for multiple host systems. Siebel eBanking handles funds transfers, wire transfers, electronic bill payments, and requests for bank drafts.
- **Customer service.** Customers can create, track, and resolve customer service requests, including ordering statement copies, extra checks and change of address requests.
- **Communication capabilities.** Customer can use a geocode-based branch locator, and FAQs.
- **Access control.** Siebel eBanking allows for flexible, workflow-driven management of password and logon policies.
- **Web architecture.** Customers can use customization tools, support for single sign on and authentication systems, and integration with existing Web sites.

Siebel eBanking provides these additional features:

- Web pages, views, and applets are configurable to conform to a customer's business model and the look and feel of your Web site.
- A salutation applet greets a registered user on login. This applet can be configured to contain any targeted content such as promotions, service request update information, or a birthday greeting.
- Contact-based login minimizes the number of database accounts required to support all customers receiving Web-based support.
- Customers have contact-based data visibility, so they see only their own data.
- Call center agents have a history of each user readily available that is independent of the channel of communication the user chooses.

## About Siebel eBrokerage

Siebel eBrokerage is a Web-based interface that allows investors to manage their brokerage accounts and resolve service issues with brokerage firms. Investors include both individual investors and large financial institutions such as pension funds, investment funds, and money management groups. Siebel eBrokerage is completely integrated with Siebel Financial Services Applications, making it possible for a call center agent to use a single dashboard for queuing, viewing, and resolving customer issues that are submitted through the Web, email, or telephone.

**NOTE:** Siebel eBrokerage is a customized version of Siebel eBanking that contains the Relationship page, Trades page, and a customized home page.

Siebel eBrokerage contains all of the functionality of Siebel eBanking. In addition, with Siebel eBrokerage, customers can perform the following self-service activities:

- Trade stocks, bonds, mutual funds, and options
- Set up recurring transfers between their banking and brokerage accounts
- Transfer money by wire
- Request that a check drawn on their funds be sent to them
- Perform a full text search of the knowledge base of frequently asked questions (FAQs) to help resolve a service issue

Siebel eBrokerage provides the following channels for customers to get help from call center personnel:

- A customer can create or update a service request. Documents and lengthy descriptions can be attached to help communicate the problem. A service agent can update the service request with solutions or documents relating to the problem. Workflow policies can be activated to notify a customer by email whenever an agent updates a service request.
- A customer can communicate with service agents by email.

Siebel eBrokerage provides these additional features:

- Web pages, views, and applets are configurable to conform to a customer's business model and the look and feel of a customer's Web site.
- A salutation applet greets a registered user on login. This applet can be configured to contain any targeted content such as promotions, service request update information, or a birthday greeting.
- Contact-based login minimizes the number of database accounts required to support all customers receiving Web-based support.
- Business-to-business relationships benefit from the delegated administration feature. Registered users with expanded responsibilities can add new users at their site, reducing the administrative load at the Siebel eBrokerage host company.
- Customers have contact-based data visibility, so they see only their own data.

- Call center agents have a history of each user readily available that is independent of the channel of communication the user chooses.

## Other Differences of Siebel eBanking from Siebel eService

Core functionality not exposed in Siebel eBanking includes:

- Recommended Products
- My Account
- Order Tracking
- Manage Assets
- Service Entitlement
- Anonymous Use
- Customer Satisfaction Survey

**NOTE:** Unless noted otherwise, all references to Siebel eBanking are also relevant for Siebel eBrokerage.

## Administrative Tasks for Siebel eBanking or eBrokerage

Administrative tasks that are consistent across Siebel Financial Services are covered in . The tasks that are specific to Siebel eBanking or Siebel eBrokerage for Financial Services are listed in the following topics.

- [Purposes of Siebel eBanking and Siebel eBrokerage](#)
- [Data Display for Siebel eBanking and eBrokerage](#)
- [Service Requests in Siebel eBanking and eBrokerage](#)
- [Personalizing Siebel eBanking and eBrokerage](#)

## Purposes of Siebel eBanking and Siebel eBrokerage

Siebel eBanking and Siebel eBrokerage are designed to serve as front-end applications to core bank processing systems. Enterprise application integration connects the core bank processing systems to the Siebel applications. [Table 1](#) defines the different purposes of the two applications.

Table 1. Purposes for Siebel eBanking and Siebel eBrokerage

Siebel eBanking Purposes	Core Banking System Purposes
Serve as customer relationship management system, keeping track of customer profiles and interactions.	Serve as system of record for financial accounts balances and transactions.
Request data from bank processing system and display it to the end user, integrating and personalizing it using the customer relationship database.	Maintain financial data and provide data to Siebel eBanking when requested.
Capture financial transaction requests and forward them to bank processing system.	Receive, process, and fulfill financial transaction requests.

## Data Display for Siebel eBanking and eBrokerage

The configurator or system administrator should review the following information carefully to make sure the user interface is consistent with your organization's standards:

- Make sure that you search and sort specifications for all applets. Make sure that any new data elements defined by your organization are properly displayed in existing applets.
- Make sure that bank processing system integration is in place for all data elements displayed to users.
- Make sure that date and time formats are consistent with the representation of such data in the core banking systems.
- If necessary, configure logic to make sure the display of data is consistent. For example, the creation of a funds transfer request in Siebel eBanking and Siebel eBrokerage will not automatically modify financial account balances. Only after new balances have been reloaded into Siebel eBanking from the bank processing system will those values change.
- Make sure any user interface modifications are compatible with the Internet browsers supported by your organization.

## Service Requests in Siebel eBanking and eBrokerage

Siebel eBanking and Siebel eBrokerage allow users to create service requests, such as funds transfers, and save the request as a Service Request record. Preconfigured, Siebel eBanking and Siebel eBrokerage do not provide prebuilt business logic governing the creation of requests, such as limits on data entry or other error checking. The following tasks should be performed by the configurator or system administrator:

- Establish appropriate user responsibilities and visibility to provide only necessary views, applets, or controls.
- Review all applets to make sure they display values relevant for your organization.
- Determine and set required fields at both object and user interface levels.
- Implement field validation logic. Field validation should be configured using the Validation Business Service or by setting object properties in Siebel Tools. For more complex logic, server scripting can be employed. Note that Siebel eBanking and Siebel eBrokerage are considered standard interactivity applications.
- Test the configured application, including integration and boundary conditions to verify business logic and error messages. The system administrator should understand the location of each data element stored during the creation of a service request, at both object and database levels.
- If applicable, confirm that employee users have access to the service request data captured in Siebel eBanking and Siebel eBrokerage.
- If applicable, confirm that service requests created in Siebel eBanking appear to the user in the various Service Request list applets.

## Personalizing Siebel eBanking and eBrokerage

Using Siebel Personalization, you can create personalization rules and apply them to applets and views so that each individual can view personalized content through these applets and views. For example, you can create personalized text messages to alert users to update their user profiles or remind them to review their current open service requests. After users update their user profiles and review the service requests, the personalized messages disappear automatically. The personalization rules can evaluate each user's navigational clicks and can render the appropriate text messages and guide them through the site.

For more information on setting up and implementing Siebel Personalization, see .

## About Siebel eBanking and Siebel eBrokerage Pages

The following section contains descriptions of each Siebel eBanking page and a mapping between the views in the customer application to related views in Siebel Finance (employee application). Note that the view names listed are the display names observed by the end user, and are not the view names found in Siebel Tools. Procedures related to each page are also described.

When users log in to the Siebel eBanking Web site, the home page appears. Registered users see only the tabs appropriate to the responsibilities assigned to them.

- **Home.** The Salutation applet greets each user with personalized phrasing and targeted information. Users can view limited lists of their financial accounts, pending payments, existing service requests, and frequently asked questions (FAQs). With the Search applet, users can perform full text searches of database records to resolve service issues on their own.
- **Accounts.** Users can view all of their financial accounts at a particular financial institution on one page. They can also access account transaction and investment holding details.
- **Transfers.** Users can transfer funds between accounts and check completed transfers.
- **Bill Pay.** Users can schedule one-time or recurring electronic payments, add and modify payees, and check pending and completed payments.
- **Customer Service.** Users can submit service requests, including statement requests, requests for checks drawn on their account, requests for check copies, new check orders, stop payment requests, and other problem reports. Users can check the status of existing service requests, view or download forms, and view frequently asked questions.
- **Relationships (Siebel eBrokerage only).** Users can view the list of contacts at their bank or brokerage that are assigned to serve them (or the company that they are affiliated with), current holdings, securities that they are interested in but do not hold, and activities that are being performed for their company.
- **Trades (Siebel eBrokerage only).** Users can trade stocks, mutual funds, bonds, and options. Users can also look up stock symbols, view open orders, and transfer assets from other institutions.
- **My Profile hyperlink.** Users can edit account nicknames, contact information, and passwords.
- **Help hyperlink.** Users can get help using the application.
- **Contact Us hyperlink.** Users can send messages to service agents
- **Logout hyperlink.** Users click the Logout hyperlink to exit the application.

## About the Login Page for Siebel eBanking and eBrokerage

The Login page [FINS eBanking Home Page View (Anonymous)] or FINS eBrokerage Home Page View (Anonymous) is displayed to all users when they navigate to the Siebel eBanking or Siebel eBrokerage Web site. The status of this page as a login view is indicated by the StartCommand reference in the Siebel Server's SWEApp\bin\apps\_sia.cfg file. The login view must be included in the responsibilities of both anonymous and registered users.

## About the Home Page for Siebel eBanking and eBrokerage

After a customer logs in, the home page of Siebel eBanking or Siebel eBrokerage appears with a different set of applets. Customers can review their entire relationship with their financial institution from this single page.

Table 2 shows a mapping between the views and applets in the customer application to the related views in Siebel Finance (the employee application). The view names listed are the display names observed by the end user; they are not the view names found in Siebel Tools.

Table 2. Mapping Siebel eBanking to Siebel Finance for Home Page

Siebel eBanking View	Siebel eBanking Applets	Related Siebel Finance Screens
Home Page	Salutation	Personalization Administration > Applets Salutation Applet (Siebel eBanking)
Home Page	Special Offers, Announcements	Campaign Administration > Offers and Application Administration > System Preferences
Home Page	Financial Accounts	Financial Accounts Screen
Home Page	Pending Payments	Contacts > Bill Payment > Payments Scheduled
Home Page	Service Requests	Contacts > Service Requests
Home Page	Ask a Question	For information about setup and implementation of Siebel Smart Answer, see <i>Siebel Smart Answer Administration Guide</i>



## Setting the Display Sequence of Financial Accounts

By default, customers see their financial accounts displayed in administrator-defined sequences.

The administrator assigns a display sequence to each financial product within a category of financial products. The categories of financial products are Assets and Liabilities. For example, within the Assets category, the administrator can assign display sequence 1 to the Savings or MMA product so that accounts of that product type display first.

In the Accounts screen's Summary view, the financial accounts in the Deposits and Investments list applet are displayed in the sequence you set for their product types in the Assets category. The accounts in the Credit and Loans list applet are displayed in the sequence you set for the Liabilities category.

The home page Accounts list applet displays financial accounts in both the Assets and Liabilities categories. Accounts are displayed by their sequence number, independent of category.

**NOTE:** Assign separate sequence intervals to categories to group financial accounts by category in list applets that include more than one category. For example, you could assign sequence numbers 0-99 to products in the Assets category and numbers 100-199 to products in the Liabilities category. Assets accounts are then displayed before Liability accounts.

If sorting is available for a particular applet that lists financial accounts, customers can sort financial accounts alphabetically in ascending or descending order. To restore the default sequence, the customer must refresh the page or log out and log in again.

### *To set the default sequence of financial accounts*

- 1 Log in to Siebel Finance.
- 2 From the application-level menu, choose View > Site Map > Product Administration.  
The Product Administration view appears.
- 3 Click Query.  
An empty record appears.
- 4 From the Type drop-down list, select the type of financial products to sequence. You may have to view Columns Displayed to see the Type field.
- 5 Click Go.  
The products in the queried category appear.
- 6 Enter a number in the Display Sequence field for the selected product.  
You may have to view Columns Displayed to see the Display Sequence field.

## About the Accounts Page for Siebel eBanking and eBrokerage

In Siebel eBanking, the term Accounts refers to financial accounts. Accounts can include asset accounts and liability accounts. Some types of asset accounts include demand deposit (checking), savings and money market, certificates of deposit, and investments, among others. Liability accounts include credit cards and loans.

Financial accounts are customers' instances of financial products. For example, a customer's personal savings account has a unique identifying number and is an instance of a savings account product offered by a financial institution. For information about adding or modifying financial accounts, see .

Users can drill down on the Account Number to view additional information about the transaction history. The user can also download account transactions into a spreadsheet application.

Table 3 shows a mapping between the views and applets in the customer application to the related views in Siebel Finance (the employee application). The view names listed are the display names observed by the end user; they are not the view names found in Siebel Tools.

Table 3. Mapping Siebel eBanking to Siebel Finance for Accounts Page

Siebel eBanking View	Siebel eBanking Applets	Related Siebel Finance Screens
Accounts	Summary, Asset, Liabilities	Financial Accounts screen
Accounts	Account Detail Applets	Financial Accounts screen
Accounts	Transaction History Applets	Financial Accounts > Transaction Detail or Investment Transactions

In addition to the tasks described in *Siebel Finance Guide*, additional tasks are required for financial accounts to appear in Siebel eBanking. These attributes of the financial account and underlying product should be confirmed:

- The financial account's Status field must be set to Open.
- Each financial account has an Account Type field. This field is inherited from the Type field on the product associated with the account. The Type field can be viewed in the Product Administration > More Info view. The product's Type must correspond to the filters used in the user interface.
- Each financial account must be associated with at least one contact, and a primary contact should be set.

- In Siebel eBanking, the Alias field in the FINCORP Account Business Component is used to store the account nickname. A nickname is a name defined by the end user and set in the Siebel eBanking My Profile screen.

### Summary View/Current Balance Summary Applet (FINS eBanking Contact Account Balance Form Applet)

The total asset and liability balance fields are calculated in the following manner.

- The underlying business component queries for all financial accounts where the user is a contact on the financial account (user does not have to be the primary contact for the financial account).
- The business component then sums up the asset and liabilities using the following criteria:
  - **Asset.** All accounts where the associated product category = Asset.
  - **Liabilities.** All accounts where the associated product category = Liability.

**NOTE:** The calculation is a simple arithmetic addition of all Current Balance fields and assumes that the currency type on all accounts is the same.

### Summary View/Deposits and Investments List Applet

This list contains all financial accounts where the associated product category = Asset.

**NOTE:** The navigation to the Account Detail view is controlled by the Account Type. There is one Account Detail view for each Account Type. If you are introducing new Account Types, you must also confirm that you have an appropriate Account Detail view corresponding to these new Account Types.

### Summary View/Credit and Loans List Applet

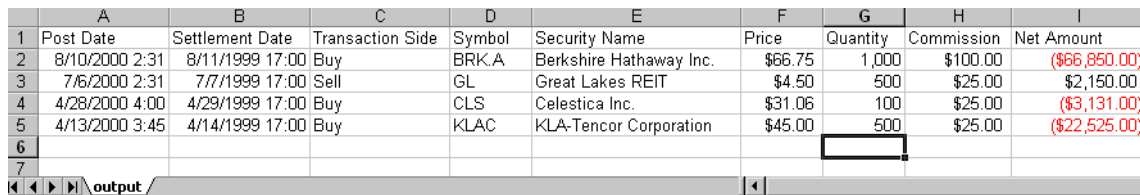
This list contains all financial accounts where the associated product category = Liability.

### Account Detail Views/Account Select Applet

This applet provides quick access to all financial accounts held by the user. Note that this applet will not function properly if the user is not the primary Contact on all financial accounts displayed in Siebel eBanking.

## Account Detail Views/Download

Consumers can download account transaction information for any of their accounts to a comma-delimited (CSV) file. This type of file can be opened and viewed using common spreadsheet applications, as shown in [Figure 1](#).



The image shows a spreadsheet application window with a file named 'output' open. The spreadsheet contains the following data:

	A	B	C	D	E	F	G	H	I
1	Post Date	Settlement Date	Transaction Side	Symbol	Security Name	Price	Quantity	Commission	Net Amount
2	8/10/2000 2:31	8/11/1999 17:00	Buy	BRK.A	Berkshire Hathaway Inc.	\$66.75	1,000	\$100.00	(\$66,850.00)
3	7/6/2000 2:31	7/7/1999 17:00	Sell	GL	Great Lakes REIT	\$4.50	500	\$25.00	\$2,150.00
4	4/28/2000 4:00	4/29/1999 17:00	Buy	CLS	Celestica Inc.	\$31.06	100	\$25.00	(\$3,131.00)
5	4/13/2000 3:45	4/14/1999 17:00	Buy	KLAC	KLA-Tencor Corporation	\$45.00	500	\$25.00	(\$22,525.00)
6									
7									

Figure 1. Example .csv File Opened in a Spreadsheet Application

Before the Download button can be used, you must activate the FINS eBanking Account Download Outbound workflow.

### *To activate a workflow*

- 1 In Siebel Finance, navigate to the Business Process Administration Screen.
- 2 Select the workflow in the Workflow Processes list.
- 3 Click Revise to make a new version of the workflow.
- 4 Click Activate.

If you want to configure Siebel eBanking so your customers can download account information to other file types, see [“Adding Account Download File Types” on page 38](#).

## About the Transfers Page for Siebel eBanking and eBrokerage

Siebel eBanking provides the ability to transfer funds between accounts in a variety of ways. Funds can be transferred between two accounts with the same institution, between institutions, or between institutions through a wire service. All transfers except wire transfers can be set up to recur at a specified interval.

From the Transfers page, users can view a history of their transaction, transfer funds in or out, or transfer funds to another financial institution.

Table 4 shows a mapping between the views and applets in the customer application to the related views in Siebel Finance (the employee application). The view names listed are the display names observed by the end user; they are not the view names found in Siebel Tools.

Table 4. Mapping Siebel eBanking to Siebel Finance for Transfers Page

Siebel eBanking View	Siebel eBanking Applets	Related Siebel Finance Screens
Funds Transfer	Transfer Funds	Service > Account Services > Funds Transfer
Transfer Money In, Transfer Money Out	Transfer Money In, Transfer Money Out	Service > Account Services > Auto Payment / Saver
Wire Transfer	Wire Transfer	Service > Account Services > Wire Transfer

## Transferring Funds

By default, error checking is performed on any request created using the FINS eBanking Service Request Funds Transfer Form applet. The following checks are performed:

- To Account and From Account field must not be null
- To Account and From Account cannot be the same value
- Amount cannot be null, or less or equal to 0
- Amount cannot exceed the From Account's Current Balance value

In some cases, it may be desirable to disable this error checking or replace the checking with a configuration specific to your specific requirements. To do so, the configurator should modify the FINS eBanking Service Request Funds Transfer Form Applet by setting the ErrorCheck Value applet property to False.

## Transfer Money In/Transfer Money Out Views

The Transfer Money In and Transfer Money Out requests allow the user to use a pop-up applet to select a financial institution to transfer funds in and out of. Note that the default behavior is to display the identical list of financial institutions for both transfer money in and out operations.

Once accounts have been established for the financial institutions that money will be transferred to or from, consumers can request a funds transfer into or out of their account with the host institution.

### *To transfer funds into or out of an account*

- 1** From Siebel eBanking or Siebel eBrokerage, click the Transfers tab.
- 2** Select Transfer Money In or Transfer Money Out.  
The Transfer Money In or Transfer Money Out page appears.
- 3** Click Select in the Transfer From Account or Transfer To Account field.  
The Select Account view appears.
- 4** If the account you want to use for transferring money is not listed, click New to add the account.
- 5** Complete the fields and click Submit.  
The Account Information Confirmation view appears.
- 6** Click Submit to confirm the account.  
The Select Account view appears with the new account added to the list.
- 7** Select an account from the list.  
The Transfer Money In or Transfer Money Out view appears with the account selected in the Transfer From or Transfer To Account field.
- 8** Complete the remaining fields and click Submit.  
A service request is submitted for the funds transfer.

## About the Bill Pay Page for Siebel eBanking and eBrokerage

Electronic bill payment allows customers to pay bills from their home computers. Customers can select the accounts that they want to pay, and make single payments or automatic recurring payments at any time.

Before customers can use bill payment, they must contact your company so you can enroll them in this service, which typically requires a fee.

Siebel eBanking supplies the basic user interface for electronic bill payment, but you must complete the configuration and set up integration with a billing service provider (BSP) before your customers can use this feature.

There are six actions relating to electronic bill payment that are initiated by either the customer or a call center agent at your company. These are:

- Enroll
- Unenroll
- Add Payee
- Delete Payee

- Add Payment
- Cancel Payment

Enroll and unenroll are performed in Siebel Finance by a call center agent. The other actions are performed by the customer through the Siebel eBanking Web site.

Customer service agents perform the following procedures relating to bill payment:

- Authorizing an account
- Enrolling a customer
- Unenrolling a customer
- Determining whether a customer is enrolled
- Reviewing payee setup

## Authorizing and Enrolling a Customer's Accounts

When a customer calls and asks to be enrolled in your company's online banking system, the call center agent can select (authorize) which accounts can be used for online banking before enrolling the customer.

### *To authorize and enroll a customer's accounts*

- 1 In Siebel Finance, navigate to the Service Requests screen.
- 2 From the Show drop-down list, select All Service Requests.
- 3 Add a new record in the Service Requests List and complete the necessary fields. Some fields are shown in the following table.

Field	Value
Type	Bank
Area	Bill Pay SignUp
Last Name	Customer's last name

- 4 Click the hyperlink in the SR Number field.  
The FIN Service Request Acct Services Bill Pay SignUp View view appears.
- 5 Click on the Account Services form applet to make it active.
- 6 Click the select button in the Authorized Account field.  
The Financial Accounts dialog box appears. If there are no records in this dialog box, make sure that the service request is associated with a contact and that the contact is associated with one or more financial accounts.

- 7 Click the Bill Pay Enable field to place a check in each account for which Bill Pay is authorized to draw funds.
- 8 Click Close.

## Unenrolling a Customer

Call center agents can unenroll customers.

### *To unenroll a customer*

- 1 In Siebel Finance, navigate to the Service Requests screen.
- 2 From the Show drop-down list, select All Service Requests.
- 3 Select the service request that was used to authorize the customer's accounts.
- 4 Click the hyperlink in the SR Number field.
- 5 From the Show drop-down list, select Bill Pay Log In.
- 6 Click Unenroll.

## Determining Whether a Customer is Enrolled

Call center agents will sometimes need to verify whether a customer is enrolled in your company's electronic bill payment system.

### *To determine whether a customer is enrolled*

- 1 In Siebel Finance, navigate to the Contacts screen.
- 2 In the Contacts list, select the contact.
- 3 In the Contacts form applet, click the show more button. If the Bill Pay Enrolled field is checked, the customer is enrolled.

## Reviewing Payees and Payments

Call center agents can review the list of payees that have been selected by the customer or the payments that have been scheduled.

### *To review a contact's payees*

- 1 In Siebel Finance, navigate to the Contacts screen.
- 2 In the Show drop-down list, select All Contacts.
- 3 In the Contacts list, select a contact.



- 4 Click the Bill Payment view tab.  
The Service Request Acct Services Contact Bill Payees View appears.
- 5 In the Show drop-down box, select Payees or Payments Scheduled. Payments scheduled can be viewed as a list or chart.

## About the Customer Service Page for Siebel eBanking and eBrokerage

A service request is a customer's request for assistance on products or services they have purchased. All service requests include a service request number, a title, a description, and a status.

Examples of service requests include:

- Requests for financial account statements
- Requests for check copies
- Check orders
- Requests for bank checks
- Requests to stop payments
- Other reports of problems

Registered users submit new service requests and check service request status through the views in the Customer Service page.

Service requests can be assigned manually to service agents, or an administrator can create assignment rules to automatically assign service requests to agents by criteria such as product expertise.

From the Customer Service page, users can ask for assistance on products or services they have purchased.

Table 5 shows a mapping between the views and applets in the customer application to the related views in Siebel Finance (the employee application). The view names listed are the display names observed by the end user; they are not the view names found in Siebel Tools.

Table 5. Mapping Siebel eBanking to Siebel Finance for Customer Service Page

Siebel eBanking View	Siebel eBanking Applets	Related Siebel Finance Screens
Summary	Service Requests	Contacts > Service Requests or Service screen
Request a Statement	Request a Statement	Service > Account Services > Statement Copy
Request a Check Copy	Order a Check Copy	Service > Account Services > Check Copy Request
Request a Stop Payment	Request a Stop Payment	Service > Account Services > Stop Payment
Order Checks	Order Checks	Service > Account Services > Check Order
Request a Bank Check	Request Bank Check	Service > Account Services > Bank Check
Report a Problem	Report a Problem	Service screen
Forms	Literature	Document Administration > Literature For more information, see <a href="#">"Literature Page"</a> on page 43
Frequently Asked Questions	Frequently Asked Questions	Solution Administration > Solutions Publish External must be checked

## About the Relationship Page (Siebel eBrokerage Only)

The Relationship page displays a list of user coverages, holdings, interests, and activities. From the Relationship page, users can view their trade history.

Table 6 shows a mapping between the views and applets in the customer application to the related views in Siebel Finance (the employee application). The view names listed are the display names observed by the end user; they are not the view names found in Siebel Tools.

Table 6. Mapping Siebel eBrokerage to Siebel Finance for Relationship Page

Siebel eBrokerage View	Siebel eBrokerage Applets	Related Siebel Finance Screens
Relationship	Coverage	Companies > Coverage Team Contacts > Coverage Team
Relationship	Holdings	Holdings and Interests > Holdings
Relationship	Interests	Holdings and Interests > Interests
Relationship	Activities	Companies > Activities

## Adding and Editing Holdings

The Holdings view on the Relationship page displays a list of investments that are held by the user's Account. To view or add Holdings, a Contact user must be associated with at least one Account, which must be marked as the Primary Account. This relationship can be established in the Contacts screen in Siebel Finance.

**NOTE:** Adding a holding is not the same as making a trade. When a customer adds a holding, it is for tracking purposes, and it is not part of their portfolio with the institution. If they purchase a security through the Trades page, their portfolio will automatically update their holdings accordingly.

### *To add a holding*

- 1 From Siebel eBanking or Siebel eBrokerage, click the Relationship tab.
- 2 Click the Holdings hyperlink.  
The Holdings view appears.
- 3 Click Add New Holding.  
The New Holdings view appears.
- 4 Click Select in the Symbol field.  
The Pick Securities view appears.
- 5 Select a security from the list, or click Search to search for a security if needed.
- 6 Complete the fields and click Save.  
The holding is added to the list.

### *To edit a holding*

1 From Siebel eBanking or Siebel eBrokerage, click the Relationship tab.

2 Click Holdings.

The Holdings view appears.

3 Click the Edit column for the holding you want to edit.

The Edit Holdings view appears.

**NOTE:** If you click the hyperlink in the Symbol column, detailed information about the holding appears.

4 Edit the fields and click Save.

The holding is modified.

**NOTE:** Only the Customer Estimate, Date of Estimate, Estimate % of Portfolio, and Estimate % of Company fields can be modified.

## Adding and Modifying Investment Interests

The Interests view on the Relationship page displays a list of potential investments in which the user has expressed interest.

### *To add an interest*

1 From Siebel eBanking or Siebel eBrokerage, click the Relationship tab.

2 Click Interests.

The Interests view appears.

3 Click Add New Interest.

The New Interests view appears.

4 Click Select in the Symbol field.

The Pick Securities view appears.

5 Select a security from the list, or click Search to search for a security if needed.

6 Complete the fields.

7 Click Save.

The interest is added to the list.

### *To edit an interest*

1 From Siebel eBanking or Siebel eBrokerage, click the Relationship tab.

- 2 Click Interests.  
The Interests view appears.
- 3 Click the Edit column for the interest you want to edit.  
The Edit Interests view appears.
- 4 Edit the fields. Only the Interest Level, Interest Amount, Interest Type, and Interest Price fields can be modified.

## About the Trades Page (Siebel eBrokerage Only)

Through the Trades page, users can buy and sell stocks, mutual funds, bonds, and options. Also, assets from other institutions can be transferred to user accounts. Open orders for stock, bond, mutual fund, and option trades can be viewed and canceled.

From the Trades page, users can view their trade history.

In Siebel Finance, all trades map to the Service Requests screen. There is no direct link to the trade or investment views, as an administrator would configure the workflow processes to monitor for the Service Requests, and then execute a trade from a backend system.

### Trade Cancellation

Trade orders can be canceled by drilling down on a trade number from either the Siebel eBrokerage Home Page, or the Trades Summary screen. To change default trade cancellation behavior, use Siebel Tools to modify the FINS eBrokerage Trade Detail Form Applet. The three applet user properties that govern trade cancellation behavior are described in [Table 7](#).

Table 7. Applet User Properties for Trade Cancellation

Property Name	Default Value	Description
Cancel Trade Confirm Page Sequence	1	This property sets the sequence of the page to display for confirming the trade cancellation. This number must match the sequence number for the page created in Applet Web Templates.
Disable DeleteRecord	Y	If set to Y, trade cancellation will be enabled for all trades with a status of Pending. If set to N trades cannot be canceled.
Disable DeleteRecord GotoView	FINS eBrokerage Open Orders List View	The view to display immediately after the cancellation is confirmed.

## Trade Error Checking

When a user enters a trade order, Siebel eBrokerage validates the order information. Each type of trade has its own validation rules that are configured in Siebel Tools by setting applet user properties for the following applets:

- FINS eBrokerage Stock Trade Form Applet
- FINS eBrokerage Option Trade Form Applet
- FINS eBrokerage Mutual Fund Sale Form Applet
- FINS eBrokerage Mutual Fund Purchase Form Applet
- FINS eBrokerage Bond Trade Form Applet
- FINS eBrokerage Transfer Securities In Applet

Table 8 through Table 13 describe the user properties for each of these applets, their settings, and the type of error checking that is handled by default when a user submits a trade.

Table 8. FINS eBrokerage Stock Trade Form Applet

Property Name	Default Value	Description
Error Type 1 Sequence Number	3	This property sets the sequence of the page to display if a limit order is entered and limit price or stop price is not entered. This number must match the sequence number for the page created in Applet Web Templates.
Error Type 2 Sequence Number	4	This property sets the sequence of the page to display if an order is entered and all the required entry fields are left blank. This number must match the sequence number for the page created in Applet Web Templates.
Error Type 3 Sequence Number	5	This property sets the sequence of the page to display if a market order is entered and the stop price is also entered. This number must match the sequence number for the page created in Applet Web Templates.
Error Type 4 Sequence Number	6	This property sets the sequence of the page to display if a market order is entered and the limit price is entered. This number must match the sequence number for the page created in Applet Web Templates.
Error Type 5 Sequence Number	7	This property sets the sequence of the page to display if a market order is entered and the limit price and stop price is also entered. This number must match the sequence number for the page created in Applet Web Templates.
FINS eBrokerage Type	Stocks Trade	This must not be changed.

Table 9. FINS eBrokerage Option Trade Form Applet

Property Name	Default Value	Description
Error Type 1 Sequence Number	3	This property sets the sequence of the page to display if an order is entered and any of the required fields are left blank. This number must match the sequence number for the page created in Applet Web Templates.
Error Type 2 Sequence Number	4	This property sets the sequence of the page to display if a limit order is entered and the limit price is not entered. This number must match the sequence number for the page created in Applet Web Templates.
Error Type 3 Sequence Number	5	This property sets the sequence of the page to display if a market order is entered and the limit price is also entered. This number must match the sequence number for the page created in Applet Web Templates.
FINS eBrokerage Type	Options Trade	This must not be changed.

Table 10. FINS eBrokerage Mutual Fund Sale Form Applet

Property Name	Default Value	Description
Error Type 1 Sequence Number	3	This property sets the sequence of the page to display if an order is entered and any of the required fields are left blank. This number must match the sequence number for the page created in Applet Web Templates.
FINS eBrokerage Type	Mutual Fund Sale	This must not be changed.



Table 11. FINS eBrokerage Mutual Fund Purchase Form Applet

Property Name	Default Value	Description
Error Type 1 Sequence Number	3	This property sets the sequence of the page to display if an order is entered and any of the required fields are left blank. This number must match the sequence number for the page created in Applet Web Templates.
FINS eBrokerage Type	Mutual Fund Purchase	This must not be changed.

Table 12. FINS eBrokerage Bond Trade Form Applet

Property Name	Default Value	Description
Error Type 1 Sequence Number	3	This property sets the sequence of the page to display if an order is entered and any of the required fields are left blank. This number must match the sequence number for the page created in Applet Web Templates.
Error Type 2 Sequence Number	4	This property sets the sequence of the page to display if a limit order is entered and the limit price is not entered. This number must match the sequence number for the page created in Applet Web Templates.
Error Type 3 Sequence Number	5	This property sets the sequence of the page to display if a market order is entered and the limit price is also entered. This number must match the sequence number for the page created in Applet Web Templates.
FINS eBrokerage Type	Bonds Trade	This must not be changed.

Table 13. FINS eBrokerage Transfer Securities In Applet

Property Name	Default Value	Description
Error Type 1 Sequence Number	3	This property sets the sequence of the page to display if both the entire and partial account transfer is chosen. This number must match the sequence number for the page created in Applet Web Templates.
Error Type 2 Sequence Number	4	This property sets the sequence of the page to display if neither entire or partial account transfer is being chosen. This number must match the sequence number for the page created in Applet Web Templates.
FINS eBrokerage Type	Bonds Trade	This must not be changed.

If the error checking described in these tables is insufficient, the Siebel administrator can use VB Script or Siebel eScript to further customize trade order error checking.

## About My Profile Screen for Siebel eBanking and eBrokerage

Customers maintain personal profile information by clicking Profile from any page. They can add or modify contact preferences, contact addresses, financial account nicknames, and login password. Default contact preferences include phone numbers, email address, best time to call, and preferred language.

Table 14 shows a mapping between the views and applets in the customer application to the related views in Siebel Finance (the employee application). The view names listed are the display names observed by the end user; they are not the view names found in Siebel Tools.

Table 14. Mapping Siebel eBanking to Siebel Finance for My Profiles Screen

Siebel eBanking View	Siebel eBanking Applets	Related Siebel Finance Screens
User Profile	User Profile	Contacts screen
Address Book	Addresses	Contacts screen

Table 14. Mapping Siebel eBanking to Siebel Finance for My Profiles Screen

Siebel eBanking View	Siebel eBanking Applets	Related Siebel Finance Screens
Subscriber Preferences	Subscriber Preferences	Contact screen (note that not all fields are visible in Siebel Finance)
Account Nicknames	Account Nicknames	No corresponding view exists in Siebel Finance for this data.

On the My Profile screen, note the following:

- Contact preference changes are written directly to the customer's contact record.
- Added or modified addresses are logged as service requests of Type = Bank and Area = Customer Address.
- Account nicknames appear in account list applets. A financial account's nickname is the Alias field value in the FINCORP Account business component instance for the financial account.

**NOTE:** Account nicknames can be provided for customers by initializing the Alias field with the Product name when an account is created. A new account then always displays a name in the Account Nickname field. You can automate this task using Siebel Business Process Designer or Siebel Enterprise Integration Manager.

For information about administering login usernames and passwords, see the section on user access in this guide.

For information about automating data import tasks, see .

## About Account Download in Siebel eBanking and eBrokerage

The preconfigured Siebel eBanking and eBrokerage applications allow your customers to download account information to a comma-delimited file that can be opened in a spreadsheet application. If you want your customers to be able to download account data to other file types, you will need to configure Siebel eBanking.

This section explains how account download works in the preconfigured application. Understanding this will make it easier for you to design your configuration.

### Overall Process of Downloading an Account

The method that the customer follows to initiate an account download is slightly different for brokerage accounts and other accounts.

- **Brokerage Accounts.** The customer selects a brokerage account in Siebel eBrokerage and clicks the Download button on the Investment Transactions applet. A File Download dialog box opens asking whether the customer wants to open or save the file. The customer selects Save this file to disk, clicks OK, and follows the Save As dialog box to download a CSV file containing investment transaction records.
- **Other Accounts.** The customer selects a nonbrokerage account in Siebel eBanking or Siebel eBrokerage and clicks the Download button on the Recent Transactions applet. In the Account Download applet, the customer enters the starting and ending dates for the transaction data and selects the CSV file format. The selected dates are used as the search specification for the query. If the customer has performed an account download on this account before, the start date will be predefaulted to the end date of the last download. If no dates are selected, all of the transaction data is downloaded for the account period between the last time data was downloaded and the present. If no file format is selected, the data output is in the form of a Siebel message, which is an XML-formatted message that describes Siebel data. When the customer clicks the Download button, the search specification is sent to the FINS eBanking Account Download Outbound workflow, which then begins.

During the workflow process, a query is used to export the requested data to an instance of a source integration object that uses Siebel format. The Data Transformation Engine converts the data to a format that is consistent with the CSV format and stores it in an instance of a target integration object. The workflow passes the data back to the Account Download applet in the form of a text string. The applet then prompts the user's Web browser to save the text string as a file on the customer's computer.

## Workflow Details

The FINS eBanking Account Download Outbound workflow is shown in [Figure 2](#).

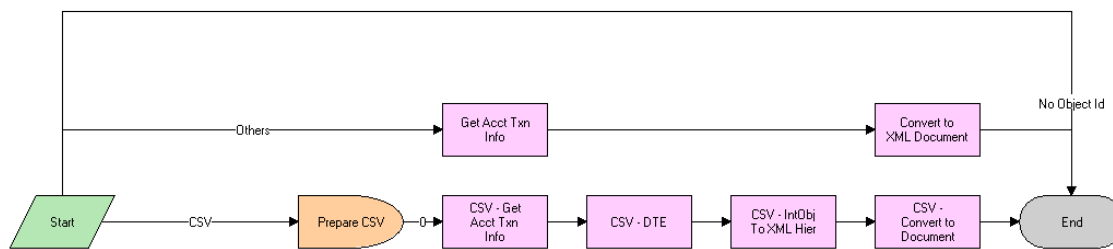


Figure 2. FINS eBanking Account Download Outbound Workflow

The actions performed by the workflow are summarized in [Table 15](#).

Table 15. FINS eBanking Account Download Outbound Workflow Actions

Step	Action
Start	<ul style="list-style-type: none"> <li>■ If the Download button is clicked with no active record (no row Id for the business object's primary business component) the workflow ends.</li> <li>■ If the selected file format is CSV, the lower path of the workflow is followed.</li> <li>■ If the selected file format is not CSV, the upper path of the workflow is followed.</li> </ul>
Prepare CSV	<ul style="list-style-type: none"> <li>■ Specifies FINSAcctDICSVMaPOut as the data map used by the Data Transformation Engine to map Siebel data to the target data format.</li> <li>■ Specifies FINS eBanking Account Download CSV Interface as the target integration object that stores the data after data transformation.</li> </ul>
CSV - Get Acct Txn Info	EAI Siebel Adapter queries the database for the transaction data between the starting and ending dates specified by the customer. The data is stored in memory as an instance of the FINS eBanking Account Download Internal source integration object in Siebel format.
CSV - DTE	The Execute method of the EAI Data Mapping Engine business service moves the data in the FINS eBanking Account Download Internal integration object to the FINS eBanking Account Download CSV integration object, according to the mapping in the FINSAcctDICSVMaPOut data map.
CSV - IntObj To XML Hier	The EAI Integration Object to XML Hierarchy Converter is used to convert the Siebel format to XML by flattening the data hierarchy and removing unneeded metadata tags.
CSV - Convert to Document	The FINS EAI Free Format Hier Converter converts the XML data to the text string that is returned to the Account Download applet. Input arguments in this step are selected to define the format of the output. Optionally, the administrator may add an input parameter to set the user property XMLFormatting of the business service FINS EAI Free Format Hier Converter. By default, this property is False, which implies that text is retained in its original format. When set to True, XML conventions for text handling are used; for example, apostrophes are encoded as &apos; and < is replaced with &l t; .

The upper path in the workflow, which includes the Get Acct Txn Info and Convert to XML Document steps, is not used in the preconfigured Siebel eBanking application. However, you could configure the application so that the workflow is triggered in a way that does not eliminate the possibility that no active record is selected. In this case, the top path would be used to bypass steps that might cause unwanted behavior.

## Adding Account Download File Types

If you want your customers to be able to download account data to other file types, apart from comma-delimited files, you will need to configure Siebel eBanking.

The general process for this configuration is:

- 1 Add a new value to the File Format drop-down list.
- 2 Create an integration object to store data in the format of the new file type.
- 3 Create the data map between the Siebel format integration object and the target integration object created in [Step 2](#).
- 4 Add a new branch to the FINS eBanking Account Download Outbound workflow.

More details are given for each of these steps later in this section.

### Adding a New Value to the File Format Drop-Down List

You must add a new value to the File Format drop-down list that appears in the Siebel eBanking Account Download applet.

#### *To add a new value to the File Format drop-down list*

- 1 Navigate to the Application Administration screen.
- 2 From the Show drop-down list, select List of Values.
- 3 In the List of Values list, query for ACCTDL\_FILE\_TYPE.
- 4 Add a new record, and complete the fields in the following table:

Field	Value
Active	Select the check box
Display Value	The name of the file type that you want to appear in the File Format drop-down list
Language-Independent Code	Can be the same as the Display Value. This value is used for conditional branching
Language Name	English-American

Field	Value
Replication Level	All
Translate	Clear the check box if it is selected
Type	ACCTDL_FILE_TYPE

- 5 Click the menu button and select Save Record.

For more information about lists of values, see *Siebel Applications Administration Guide*.

### Creating an Integration Object for the New File Type

You must create an integration object that describes the format of the new file type (the target format) in Siebel Tools. If you have the DTD (Document Type Definition) file of the target data format, you can use the DTD Wizard in Siebel Tools to build this integration object.

For more information about creating integration objects, see *Siebel Tools Reference*.

### Creating the Data Map

You must create a data map record and then use the Siebel Data Map Editor to create the map that is used by the Data Transformation Engine to change the format and hierarchy of the Siebel format source integration object instance to that of the target integration object instance. Data map records are created in the Data Map view of the Integration Administration screen. The data mapping is performed in the Data Map Editor view of the Integration Administration Screen.

For detailed information about how to create data maps, see *Transports and Interfaces: Siebel Enterprise Application Integration*.

### Modifying the Workflow

You must create a new path from the Start step of the FINS eBanking Account Download Outbound workflow for each new file format that you want to support. The relevant steps should reference the target integration object and data map that you create.





# 3

## Siebel Insurance eService

This chapter includes the following topics:

- [About Siebel Insurance eService](#)
- [Features in Siebel Insurance eService User Interface](#)
- [Administrative Tasks for Siebel Insurance eService](#)
- [Creating Roles for Siebel Insurance eService](#)
- [Setting Up Provider Search for Siebel Insurance eService](#)
- [Setting Up Classes and Seminars for Siebel Insurance eService](#)
- [Setting Up Health Club Discounts](#)
- [Setting Up Alternative Medicine Search](#)
- [Setting Up Pharmacy Locator](#)
- [Setting Up Formulary Search](#)
- [Setting Up a Link To Drug Interactions Information](#)
- [Displaying Auto Policy Coverage Comparisons](#)
- [Setting Up Printable Online Documents for Siebel Insurance eService](#)
- [Administering Partner and Claim Center Locators](#)
- [Setting Up Service Provider Search](#)
- [Customer Tasks in Siebel Insurance eService](#)

### About Siebel Insurance eService

Siebel Insurance eService is a Web site through which customers can resolve service issues and view information related to their insurance policies. Some features described in this chapter are only available to you if your company has also licensed Siebel Insurance or Siebel Healthcare product options.

Siebel Insurance eService provides customers with the ability to:

- View policy data.
- Submit service requests, attaching supporting documents if needed.
- Report and check the status of insurance claims.
- View and download forms.
- View the current cash value of policies.

- Search for and change healthcare providers.
- Perform a full text search of the knowledge base of frequently asked questions (FAQs) to help resolve a service issue.
- Submit a customer satisfaction survey to give feedback about the service they have received.
- Send an email to a service agents.
- Register for health-related classes.
- Locate health clubs that provide discounts for members of health plans.
- Find out whether a particular drug is covered by their health plan policy.
- Locate affiliated pharmacies.
- Research drug interaction information.
- Locate affiliated businesses that will perform work related to an insurance claim.

Siebel Insurance eService provides these additional features:

- Roles, which allow different customers to see different applets on the Siebel Insurance eService Web site.
- Web pages, views, and applets which can be configured to conform to your business model.
- A salutation applet that greets a registered user on login. This applet can be configured to contain any targeted content such as promotions, service request update information, or a birthday greeting.
- Contact-based login, which minimizes the number of database accounts required to support all customers receiving Web-based support.
- Contact-based data visibility for customers, so they see only their own or their own household's data.
- A history of each user that is readily available to the service agent and which is independent of the channel of communication the user chooses.

## Features in Siebel Insurance eService User Interface

This section describes the user interface features that are available in Siebel Insurance eService. For the administrative tasks you will need to perform to set up the Web site, see [“Administrative Tasks for Siebel Insurance eService” on page 45](#).

Siebel Insurance eService includes the following user interface features.

## Home Page

When a customer first opens the Siebel Insurance eService Web site, the Home page that appears includes a login applet. If you decide to implement roles, customers who have been assigned different roles will see different applets after they log in.

The Salutation applet greets each customer with personalized phrasing and targeted information. Customers can view and access their personal policies, their group benefits, and frequently asked questions (FAQs). With the Search applet here and on most screens, customers can perform full text searches of database records to resolve service issues on their own.

## Literature Page

From the Literature page, users can search for and use insurance related literature such as pamphlets and brochures.

A form must meet the following requirements to be displayed in the Literature view or to be a result of a search using the Find Form applet:

- It must reside in the Siebel file system.
- Its record in the Literature table must have an Internal field value of FALSE, thus allowing external publication.
- Its record in the Literature table must have a Literature Type field value of Self-Service Form.

It must be associated with the organization to which the Web site visitor is associated, that is, the organization of the proxy employee through which the user gets data visibility.

## eEvents Page

Customers can view information about future events such as health-related seminars on the eEvents page.

## Personal Policies List

A personal policy is a contract of insurance with an individual, as opposed to a group. Examples are your personal life insurance policy or your individual health insurance policy. A policy is visible to all contacts listed on the policy, both primary insureds and others.

From the Personal Policy/Quotes list, members can:

- Check the insureds on their policies
- View coverage details of their policies
- View primary care provider profiles
- Search for and view profiles of care providers

- Change primary care providers
- Check the status of service requests
- Find the current cash value of their life insurance policies
- Submit requests for withdrawals from their life insurance policies
- View and request loans against their life insurance policies
- View and request financial transfers relating to their life insurance policies
- Submit service requests
- View driver and vehicle information
- Report a claim

### Group Benefits List

A group policy is a contract with a group to provide insurance to its members. Usually the group is an employer and the members are its employees. Once a group policy is established, employees can opt to be covered by the policy by enrolling. Once enrolled, the employees are commonly known as members.

Types of group insurance include group health insurance, group life insurance, and others. Group insurance is often offered to employees through an employer group, so *group benefits* is often used interchangeably with *group insurance*.

Members can perform the following tasks with their group policies:

- Check the members on their policies
- View eligibility and benefits information
- View primary care provider profiles
- Search for and view profiles of care providers
- Change primary care providers
- Check the status of service requests
- Submit service requests

**NOTE:** A policy is visible to all contacts listed on the policy, both primary insureds and others. An exception to this is when a person is a primary member of a group policy but is not an insured member. This person cannot see the policy.

### Claims List

Customers can check the status of existing claims and report new claims from a Siebel Insurance eService Web site. Claims are reported and viewed by clicking the View Claims and Claim Payments hyperlink.

## Service Requests

Customers can submit service requests, check the status of existing service requests, submit a customer satisfaction survey, and view frequently asked questions.

## Contact Us Hyperlink

Customers can send messages to service agents.

## My Profile Hyperlink

Customers can edit contact information and passwords by clicking the My Profile hyperlink.

# Administrative Tasks for Siebel Insurance eService

Administrative tasks that are consistent across Siebel Financial Services are covered in . Tasks that are specific to Siebel Insurance eService for Financial Services are listed in the following sections:

- [Creating Roles for Siebel Insurance eService](#)
- [Setting Up Provider Search for Siebel Insurance eService](#)
- [Setting Up Classes and Seminars for Siebel Insurance eService](#)
- [Setting Up Health Club Discounts](#)
- [Setting Up Alternative Medicine Search](#)
- [Setting Up Pharmacy Locator](#)
- [Setting Up Formulary Search](#)
- [Setting Up a Link To Drug Interactions Information](#)
- [Displaying Auto Policy Coverage Comparisons](#)
- [Setting Up Printable Online Documents for Siebel Insurance eService](#)
- [Administering Partner and Claim Center Locators](#)
- [Setting Up Service Provider Search](#)

## Creating Roles for Siebel Insurance eService

You can use roles to:

- Control the pages and applets that different customers see when they log in to your Siebel eService Web site.
- Guide customers in performing tasks that are relevant to them. This is done by providing a task applet on the home page that has links to the places on the Web site where the customer can complete the tasks. Customers with different roles see different task lists.

Siebel Insurance eService has two preconfigured roles, which are used to create roles-based home pages:

- **Healthcare Member.** Users with the Healthcare Member role will see the Health & Wellness Services applet and the Pharmacy Services applet on the home page. They also see healthcare-specific task links in the Customer Services applet.
- **Insurance Member.** Users with the Insurance Member role will see the Contact Us applet and the Service Your Policy applet on the home page. They also see insurance-specific task links in the Customer Services applet.

Set up roles in your Siebel Financial Services employee application. The general steps for setting up a role, along with information specific to Siebel Insurance eService, are given below. Detailed directions for setting up a new role are given in *Siebel Security Guide*.

- 1 Create a role record.** Create a role record in the Roles list of the Group Administration screen.
- 2 Create tasks for the role.** For each task that you want to appear in the task applet on the home page, create a record that is associated with the role record. Make sure that you use the value Home Page Tasks for the Group field.
- 3 Select applets to display using personalization.** To make an applet display for a user who has a particular role, set a conditional expression for the applet in the Personalization Administration screen. As an example, for the applet FINS FSW Health Wellness Center Links Applet, the conditional expression is `GetProfileAttr ("Primary User Role Name") <> 'Insurance Member'`. This means that users with the Insurance Member role will not see this applet.

You can obtain a list of the applets that are associated with the Insurance Member and Healthcare Member roles by querying for the word Member in the Conditional Expression field of the Applets list.

- 4 Assign users to roles.** Assign users to the new role through the User Administration screen of your employee application. When users log in, they will only see information specific to their role.

## Setting Up Provider Search for Siebel Insurance eService

A user with the role of Healthcare Member can search for providers contracting with the health plan by clicking the Provider Search hyperlink in the Customer Services applet, selecting the enrolled product, and clicking the Find Provider icon. The customer sets search criteria such as specialty or location. The result list includes providers that fit all of the criteria.

Only providers in the database that are listed as contracted providers for a health product are included in the list of providers or in the provider search list for that product.

Criteria that customers enter into text fields should not use quotes. Text strings in a field can use AND, OR, or NOT as connectors. Criteria can contain wildcards. The asterisk (\*) is a wildcard for any string, and the question mark (?) is a wildcard for any character. For example, searching on dat\* will return records containing date, database, data source, and so on. Searching on dat? finds records containing date, data, and so on.

The detailed procedures for setting up provider search are given in *Siebel Healthcare Guide*. The main steps are summarized here, with the addition of information specific to Siebel Insurance eService.

- 1 Add a provider.** Add a provider in the Providers screen of your Siebel Financial Services employee application.
- 2 Add addresses.** Add one or more addresses for the provider in the Addresses view of the Providers screen and click Update Geo Code. If geocode data has been entered in the Zip Code Administration view of the Application Administration screen, the longitude and latitude information will be automatically entered.
- 3 Associate products.** Add one or more contracted products for the provider in the Contracts view of the Providers screen.
- 4 Associate specialty.** Add a specialty for the provider in the Specialties view of the Providers screen.

If you want to add a new type of specialty, you must add a new List of Values record with the Type = FINS\_AGDESG\_HLTHSPEC\_MLOV. For the Order field, select a value between 60–155 for it to display in the Specialty drop-down list. A search specification is set in Siebel Tools for the associated picklist (FINS PickList Health Provider/Facility Specialty).

## Setting Up Classes and Seminars for Siebel Insurance eService

The Health & Wellness Services applet of Siebel Insurance eService has a Classes and Seminars hyperlink that users with the role of Healthcare Member can click to learn about and register for upcoming events. Only future events are listed in the Upcoming Events applet on the Web site.

**NOTE:** A license for Siebel eEvents is required for this functionality.

### *To create a class or seminar event*

- 1 In your Siebel Financial Services employee application, navigate to the Events screen.
- 2 From the Show drop-down list, select All Events.
- 3 Create a new event record, completing all the required fields and making sure that you place a check mark in the External field.
- 4 Click Save.
- 5 Click the Sub-Events view tab.

You will see that subevents are automatically created based on the value you selected for the Sub-Event Frequency field, and the Start and End dates.

- 6 In the Sub-Events list, click a hyperlink in the Name field.
- 7 Enter the appropriate details for each subevent into the More Info form.  
Make sure that you select either In Progress or Executing for the Status field.
- 8 Click Save.

For more information about creating events, see *Siebel Events Management Guide for Financial Services*.

## Setting Up Health Club Discounts

The Health & Wellness Services applet of Siebel Insurance eService has a Health Club Discounts hyperlink that users with the role of Healthcare Member can click to see a list of local health clubs that have reduced rates for members of the healthcare plan.

### *To set up a healthcare discount*

- 1 In your Siebel Financial Services employee application, navigate to the Campaign Administration screen.
- 2 Add a record, complete the necessary fields, and make sure that you use Health Club Discount for the Name field.

For more information about creating a campaign, see *Siebel Marketing Guide*.



- 3 Save the record.
- 4 Navigate to the Application Administration screen.
- 5 From the Show drop-down list, select System Preferences.
- 6 In the System Preferences Name field, query for \*Campaign.
- 7 Verify that the INSeService Discount Campaign has a System Preference Value of Health Club Discount.
- 8 Navigate to the Offers screen.
- 9 In the All Offers list, add a record and complete the necessary fields, making sure that you select Web-Announcements for the Type field and enter a description of the offer.
- 10 In the Campaign Administration screen, select the campaign that you defined in [Step 2](#), and in the Offer's list add the offers that you defined in [Step 9](#).

For more information about creating offers, see *Siebel Marketing Guide*.

## Setting Up Alternative Medicine Search

The Health & Wellness Services applet of Siebel Insurance eService has an Alternative Medicine Search hyperlink that users with the role of Healthcare Member can click to find healthcare providers who practice alternative medicine. This feature uses a version of the Provider Locator.

For information about adding a specialty to the list of values, see [Step 4 on page 47](#).

For more information, see ["Setting Up Provider Search for Siebel Insurance eService" on page 47](#).

## Setting Up Pharmacy Locator

The Pharmacy Services applet of Siebel Insurance eService has a Pharmacy Locator hyperlink that users with the role of Healthcare Member can click to search for a local, affiliated pharmacy.

### *To add a pharmacy to the list of affiliated pharmacies*

- 1 In your Siebel Financial Services employee application, navigate to the Facilities screen.
- 2 From the Show drop-down list, select All Facilities.
- 3 In the Facilities list, add a record and complete the necessary fields, making sure that you select Pharmacy in the Type field and enter the address in the Primary Address field.

- 4 Save the record.
- 5 In the Locations list, add a record, provide a Location Name, and in the Address field, select the address that you entered in [Step 3](#).
- 6 If the Longitude and Latitude values are not automatically populated, set them in the Zip Code Administration view of the Application Administration screen.

## Setting Up Formulary Search

The Pharmacy Services applet of Siebel Insurance eService has a Formulary Search hyperlink that users with the role of Healthcare Member can click to find out whether a particular drug is listed in the formulary of their health insurance plan. If it is listed, the customer's insurance will cover some or all of the cost of the drug. The formulary is a document that the customer can read or search.

When the customer clicks the Formulary Search link, the formulary search applet opens, listing one or more formulary documents. The customer clicks the hyperlink for the appropriate formulary and is given the choice of downloading or opening the document. Once it is opened, the customer can search the document for the drug they are interested in.

### *To set up formulary search*

- 1 In your Siebel Financial Services employee application, navigate to the Document Administration screen.
- 2 From the Show drop-down list, select Literature.
- 3 Add a record and complete the necessary fields, making sure that you select Formulary Literature for the Type field.
- 4 Save the record.

For more information about working with literature, see *Siebel Applications Administration Guide*.

## Setting Up a Link To Drug Interactions Information

The Pharmacy Services applet of Siebel Insurance eService has a Drug Interactions hyperlink that customers with the role of Healthcare Member can click to open a Web site that contains information about drug interactions. The preconfigured Siebel Insurance eService application has a link to the United States' Centers for Disease Control and Prevention Web site.

### *To set the link to a drug interaction Web site*

- 1 In Siebel Tools, select Applet in the Object Explorer.

- 2 Select FINS FSW Pharmacy Center Links Applet.
- 3 Click Control in the Object Explorer.
- 4 Select the ImageDrug record.
- 5 Click Control User Prop in the Object Explorer.
- 6 Set the Value field to the URL of the Web site you want to open when the link is clicked.
- 7 Click Control in the Object Explorer.
- 8 Repeat [Step 3](#) through [Step 6](#) for the LinkDrug control.

## Displaying Auto Policy Coverage Comparisons

In the Coverage and Premium applet of Siebel Insurance eService, customers can see a side-by-side comparison of the insurance premiums and coverage for each of their vehicles.

The information displayed in this applet is the same as the information displayed in the Multi Vehicle Rate Model view form of the Auto Policies screen of your Siebel Financial Services application. The information is added when the employee creates new auto policy records.

For more information about creating auto policies, see *Siebel Insurance Guide*.

## Setting Up Printable Online Documents for Siebel Insurance eService

You can display policy documents on your Siebel Insurance eService Web site to customers who have the role of Insurance Member.

To display an auto policy document, the customer selects the View Personal Policies hyperlink on the home page and clicks the hyperlink for the auto policy. In the Auto Policy applet, the customer clicks the Documents Online hyperlink and a list of auto policy documents is displayed. In the Property policy applet the customer clicks the Documents Online hyperlink and a list of property policy documents is displayed.

Auto and property policy documents are reports created with Siebel Reports Server. To set up this feature, you must enable Siebel Report server for the Insurance eService Object Manager (ENU) server component.

For information about how to enable Siebel Reports Server for the Web Client, see *Siebel Reports Administration Guide*.

## Administering Partner and Claim Center Locators

The Contact Us applet on the home page of Siebel eInsurance has a Locate Nearby Partners hyperlink and a Locate Nearby Claims Centers hyperlink. When users with the role of Insurance Member click one of these links, an applet opens in which they can perform a parametric search using location attributes that they select from drop-down lists.

For information about how to administer the records used in these searches, see *Siebel Insurance Guide*.

## Setting Up Service Provider Search

When creating a self-service claim on a Siebel Insurance eService Web site, a customer can search for a partner business that can rectify the problem relating to the claim. Businesses might include auto body repair shops and electrical contracting companies. The service provider search is based on the Siebel Partner Locator.

To create a claim, the customer clicks the View Claims and Payments hyperlink in the Customer Services applet of the home page. The customer clicks the New button in the Claims applet, completes the necessary fields, and clicks the select button in the Pick Service Provider field. The customer then follows the directions on the Service Providers applet and a list of partner service providers is displayed.

Detailed procedures for how to create a service provider are given in *Siebel Partner Relationship Management Administration Guide*. The main steps are summarized here, with the addition of information specific to Siebel Insurance eService.

- 1 Add a partner.** In your Siebel Financial Services employee application, navigate to the Partners screen, add a record, and complete the necessary fields, making sure that you:
  - Complete the Address field.
  - Select Service Provider for the Partner Type field.
  - Check the Primary check box when selecting the partner type.
- 2 Add a location.** For the new partner record, add a location record in the Locations list, selecting the address that you entered in [Step 1](#).
- 3 Associate an expertise.** For the new partner record, select a value for the Expertise field in the Profile form, and enter other information as required.
- 4 Approve the partner.** In the Partner Administration screen, from the Show drop-down list, select Approved Partners. Select the partner record that you added and click Register. Select the Organization check box, and click Save.

# Customer Tasks in Siebel Insurance eService

The following procedures demonstrate how a customer might use your Siebel Insurance eService Web site.

## *To view personal policy information*

- 1 In the customer services applet of the Siebel Insurance eService Web site, click the View Personal Policies hyperlink.
- 2 Identify the policy that you want to view and click on the link in the Policy #/Quote # field.
- 3 Click different links in the applet on the left of the page to see detailed information.

The name of the applet changes depending on the selected policy.

## *To view information about providers*

- 1 In the Customer Services applet, click the View Personal Policies hyperlink.  
If the link is not visible, see [“Creating Roles for Siebel Insurance eService” on page 45](#).
- 2 In the Personal Policies/Quotes applet, locate the policy record with Health Quote in the Type field.
- 3 Click the hyperlink for the record in the Policy#/Quote# field.
- 4 In the All Benefits for My Household list, click the hyperlink in the Primary Care Provider field.

The Provider Profile applet opens with information about the provider.

## *To change primary care provider (HMO only)*

- 1 In the Customer Services applet, click the Change PCP hyperlink.
- 2 In the Benefits list, click the search icon in the Change Primary Care Provider field for the product that you are interested in.
- 3 Click the edit icon in the Select Primary Care Provider field for the provider that you want to change to.

A note appears telling you that you have changed your provider and the new primary care provider appears in the All Benefits for My Household list applet for the applicable household member.

***To view group benefit information***

- 1** In the Customer Services applet, click the View Group Policies hyperlink.
- 2** In the Group Benefits list, click the link in the Group #/Policy # field for a policy.  
Information about the household's benefits is shown.

# 4

## Siebel eEnrollment for Financial Services

This chapter includes the following topics:

- [About Siebel eEnrollment](#)
- [Administrative Tasks for Siebel eEnrollment for Financial Services](#)
- [Displaying Product Attributes to eEnrollment Users](#)
- [Setting Up Provider Search for Siebel eEnrollment for Financial Services](#)
- [Siebel eEnrollment for Financial Services User Interface Elements](#)
- [Home Page for Siebel eEnrollment for Financial Services](#)
- [Literature Page for Siebel eEnrollment for Financial Services](#)

### About Siebel eEnrollment

Siebel eEnrollment is a Web-based interface that allows group members to enroll themselves and family members in health coverage available under their group's health policy over the Internet.

Siebel eEnrollment provides group members with the following self-service capabilities:

- **Enrollment.** New and current members are guided through an enrollment process based on their status as a new or current member. Current members can view existing coverage and elect to remain under current coverage, or they can change coverage options. Normally, group members can enroll for coverage through Siebel eEnrollment only during designated enrollment periods such as when they join the company, or during open enrollment.
- **Personal Profile Management.** Group members can update information such as name, address, and telephone number for themselves, family members, or their broker.
- **Provider search and assignment.** Group members can search a directory of eligible primary care physicians (PCPs) or physicians within their network. They can add a PCP to their coverage selections at the time of enrollment. PCP searches can be performed using a number of criteria including specialty, language spoken, and location.
- **Beneficiary designation.** Group members can select 401k benefits and add beneficiaries.

## Administrative Tasks for Siebel eEnrollment for Financial Services

There are certain administrative tasks that are consistent across Siebel Financial Services, and many of these screens are covered in . The tasks that are specific to Siebel eEnrollment for Financial Services are listed in the topic, [“Setting Up Provider Search for Siebel eEnrollment for Financial Services”](#) on page 56.

### Displaying Product Attributes to eEnrollment Users

Product attributes that are inherited from the class to which the product belongs are called dynamic attributes. For more information about product attributes, see *Siebel Product Administration Guide*.

By default, these dynamic attributes are not displayed to eEnrollment users. To display them to users, you must select the Display to User checkbox.

#### *To display dynamic product attributes to eEnrollment Users*

- 1 Navigate to Application Administration > Class Administration.
- 2 In the Classes list, select the class whose attributes you want to display to users.
- 3 Click the Dynamic Attributes view tab.
- 4 In the Dynamic Attributes list, select the Display to User checkbox in all records for attributes that you want to display to users.

### Setting Up Provider Search for Siebel eEnrollment for Financial Services

A member of a health plan can search for providers who contract with the health plan that fit user-defined criteria, such as specialty or locale. The member can specify one or more criteria. The result list includes providers that fit all of the criteria.

Only providers in the database that are listed as contracted providers for a member's health product are included in the list of providers or in the provider search list for that product.

Search criteria can be entered in one or more of the ten fields in the Find Provider form applet. The search results include all providers that fit all the criteria.

Text fields in the Find Provider form applet include First Name, Last Name, Street Address, City, and Postal Code.



Criteria in text fields should not use quotes. Text strings in a field can use AND, OR, or NOT as connectors. Criteria can contain wildcards. The asterisk (\*) is a wildcard for any string, and the question mark (?) is a wildcard for any character. For example, searching on dat\* will return records containing date, database, data source, and so on. Searching on dat? finds records containing date, data, and so on.

Fields in the Find Provider form applet are populated by the lists of values in [Table 16](#).

Table 16. Find Provider Form Fields

Field	List of Values Type
Primary Specialty	FINS_HLTH_SPECIALTY
All Specialties	FINS_HLTH_SPECIALTY
State	STATE_ABBREV
Country	COUNTRY
Panel Status	FINS_HLTH_PANEL

For information about modifying a list of values, see .

## Siebel eEnrollment for Financial Services User Interface Elements

In Siebel eEnrollment, users can access the following pages and utilities.

- **Home page.** The Salutation applet greets each user with personalized phrasing and targeted information. With the Search applet here and on most screens, users can perform full text searches of database records to resolve service issues on their own.
- **Literature page.** Users can view and download forms and product information.
- **Contact Us hyperlink.** Users can send messages to service agents.
- **Enrollment list.** Users can enroll in an insurance plan or review existing coverages.
- **Top FAQs list.** Users can select from a list of the most common support questions.
- **Announcements list.** Users can read the latest news and special offers.
- **Help hyperlink.** Users can receive help using the application.
- **Profile hyperlink.** Users can edit contact information and passwords.
- **Logout hyperlink.** Users click the Logout hyperlink to exit the application.

## Home Page for Siebel eEnrollment for Financial Services

The home page is displayed to all users, before and after login. When the user first navigates to the Siebel eEnrollment application, the home page appears with a login applet. A customized home page appears after the user has logged in.

### Enrolling for Insurance Coverage

When a customer logs in to Siebel eEnrollment, a list of policies that are currently available for enrollment appears. Within a policy there can be a number of options that can be selected for enrollment, such as vision, dental, and life insurance coverage in addition to major medical.

Table 17 describes the products and options that customers can specify.

Table 17. Products and Options

Product	Options a customer can specify
All	Members and effective dates
HMO	Primary care physician
PPO	Primary care network (corresponds to Facility in Siebel Financial Services)
Group Life	Beneficiaries
VGL	Beneficiaries, and amount for each covered member
401K	Beneficiaries

The following procedures describe how to enroll for insurance coverage.

#### *To add a family member to the list of enrollable members*

- 1 Click the Home tab.
- 2 Click Begin Enrollment.  
The Policy screen appears.
- 3 In the Family Members list, click New.  
A blank form appears.
- 4 Complete the fields and click Save.

#### *To enroll yourself or a family member for coverage*

- 1 Click the Home tab.

- 2 Click Begin Enrollment.  
The Policy screen appears.
- 3 From the Policies Available for Enrollment list, select a policy.
- 4 Click Select in the Last Name field.  
The list of enrollable members appears. See [“To add a family member to the list of enrollable members” on page 58](#) for information about adding members to this list.
- 5 Select a member to enroll.
- 6 If desired, select a primary care physician (PCP).
- 7 Click Save.

## Designating a Beneficiary

Some types of products, such as 401K accounts and life insurance policies, must have beneficiaries designated for them as part of the enrollment process.

### *To name a beneficiary*

- 1 Click the Home tab.
- 2 Click Review Prior Coverage.  
The Prior Policy screen appears.
- 3 Click Enroll in the Member Selected Products applet for the product you want to enroll in.
- 4 Click New in the Enrollment Elections list.
- 5 Complete the fields and click Save.  
For more information about naming beneficiaries, see [“To enroll yourself or a family member for coverage” on page 58](#).
- 6 Click Add in the Add Beneficiaries field for the member you are enrolling.
- 7 Click Enroll Beneficiary in the Beneficiaries applet.
- 8 Complete the fields.  
See [“To add a family member to the list of enrollable members” on page 58](#) for information about adding members to the list of people who can be named as beneficiaries.  
  
If multiple beneficiaries will share the proceeds, use the Percentage field to indicate the percentage of the proceeds that will go to this beneficiary. The total percentage of all beneficiaries must equal 100%.
- 9 Click Continue.

## Administering Enrollees

Before individuals can enroll themselves in policies for which they are eligible, the primary enrollee must be associated with a group policy that has a Status of Enforce and a Sub Status of Renewal. The value in the Sub Status field is what triggers the availability of the Siebel eEnrollment application for that policy.

Within each organization, someone is designated to enter this information about individuals. In smaller organizations, this typically is an owner or officer. In larger organizations, this typically is a human resources representative.

## Displaying Providers

A provider or contracted provider is a doctor who contracts with a health plan to provide care to its members. A provider can be designated as a primary care provider (PCP) for one or more products offered by the health plan. Typically, a member receives regular health maintenance from their primary provider and consults their primary provider before seeing specialists for a health problem.

Members can perform the following tasks:

- View profile information about providers
- Search for providers based on criteria they provide
- Change their primary care provider

Only providers in the database that are listed as contracted providers for a member's health product are included in the list of providers or in the provider search list for that product.

For information about managing providers, see .

**NOTE:** There are two screens through which you can search for providers. By clicking [Locate Nearby Providers](#) on the Home Page screen, you can search for providers, but you cannot choose them as your primary care physician. You must follow the enrollment process to choose a provider as your primary care physician.

# Literature Page for Siebel eEnrollment for Financial Services

From the Literature page, users can search for and use health insurance-related literature such as pamphlets and brochures.

A form must meet the following requirements to be displayed in the Literature view or to be a result of a search using the Find Form applet:

- It must reside in the Siebel file system.
- Its record in the Literature table must have an Internal field value of FALSE, thus allowing external publication.

- Its record in the Literature table must have a Literature Type field value of Self-Service Form.
- It must be associated with the organization to which the Web site visitor is associated, that is, the organization of the proxy employee through which the user receives data visibility.



# 5

## Siebel eCustomer for Financial Services

This chapter includes the following topics:

- [About eCustomer](#)
- [Home Page for Siebel eCustomer for Financial Services](#)

### About eCustomer

Siebel eCustomer uses a combination of functionality from Siebel eBanking, Siebel eSales, and Siebel Insurance eService. It is designed as a comprehensive online sales and service application for diversified financial institutions that offer a range of product lines.

In Siebel eCustomer for Financial Services, users can access the following user interface features.

- **Home page.** The Salutation applet greets each user with personalized phrasing and targeted information. With the Search applet here and on most screens, users can perform full text searches of database records to resolve service issues on their own.
- **Top FAQs list.** Users can select from a list of the most common support questions.
- **Contact Us list.** Users can send messages to service agents
- **Accounts list.** Users can access their accounts from this list.
- **Personal Policies list.** Customers can view personal policy details, check the status of claims and existing service requests, and submit new service requests.
- **Group Benefits list.** Customers can view group benefit details, search for primary care providers, and change primary care providers.
- **Claims list.** Users can check the status of claims.
- **Service Requests list.** Users can track their service requests.
- **Enrollment list.** Users can enroll in an insurance plan or review existing coverages.
- **Special Offers lists.** Users can view a list of offers.
- **Applications lists.** Users can access applications.
- **Recommended Products lists.** Users can access a customized list of products.
- **Help hyperlink.** Users can receive help using the application.

- **My Account hyperlink.** Users can access personal settings, insurance policies, and related screens. The Tools hyperlink provides access to Siebel eSales SmartScripts and loan calculators. The Applications hyperlink provides access to Siebel eSales applications functionality. The Siebel eBanking hyperlink gives users access to personal settings, insurance policies, and other Siebel eBanking screens.
- **Logout hyperlink.** Users click the Logout hyperlink to exit the application.

## Home Page for Siebel eCustomer for Financial Services

The home page is displayed to all users, before and after login. When the user first navigates to the Siebel eCustomer for Financial Services application, the home page appears with a login applet. A customized home page appears after the user has logged in.



# 6

## Siebel eService for Siebel Automotive

This chapter includes the following topics:

- [About Siebel eService for Automotive](#)
- [Overview of Differences Between Siebel eService and Siebel eService for Automotive](#)
- [Home Page and Global Buttons for Siebel eService for Automotive](#)
- [About the Dealer Locator](#)
- [Activating Vehicle Registration Workflows](#)
- [About Inventory Search for Vehicles](#)
- [The My Account View of Siebel eService for Automotive](#)
- [About Vehicle Registration Automotive](#)
- [The My Vehicles View of Siebel eService for Automotive](#)
- [About Preventive Maintenance](#)
- [Service Requests in Siebel eService for Automotive](#)
- [About Service History](#)

### About Siebel eService for Automotive

In the automotive industry, manufacturers want to develop an ongoing relationship with customers to increase customer satisfaction and loyalty. Siebel eService for Automotive allows vehicle manufacturers to create and maintain a relationship with customers who have purchased their cars by providing the following features:

- **Anonymous browsing.** Unregistered users can view a home page that allows them to contact the manufacturer, view top frequently asked questions, search the knowledge base, troubleshoot problems, view instructions, ask questions in natural language, and view recommended items for sale.
- **Dealer Locator.** Both registered and unregistered users can do a search to locate dealers who are nearest to them.
- **Contact information.** Both registered and unregistered users can contact the OEM in a variety of ways.
- **User registration.** Users can register and enter information about themselves. The information is available to you in the Contacts screen of Siebel Automotive.

- **Vehicle registration.** Customers can register vehicles they own that your company manufactured. The information is available to you in the Vehicle screen of Siebel Automotive, associated with the customer's Contact record.
- **Preventive maintenance.** You can set up preventive maintenance plans for the makes of vehicles that you manufacture, and customers can use Siebel eService for Automotive to see upcoming maintenance actions for their vehicles.
- **Online service requests.** If customers' cars need service, they can enter service requests on line, and they have the option of routing a service request directly to a dealer. A dealer will contact them to make an appointment.
- **Online inventory search.** If customers want to buy a specific make, model and year car, they can search the inventory of your dealers to see which dealers have the car they want.
- **Online service history.** Customers can display their past service history.
- **Online order status.** Customers can check the status of their orders.

## Overview of Differences Between Siebel eService and Siebel eService for Automotive

The most important differences between Siebel eService and Siebel eService for Automotive are:

- **Audience.** *Siebel eService Administration Guide* is aimed generally at any company that provides service through the Web. Siebel eService for Automotive is aimed specifically at *manufacturers* or *OEMs* in the automotive industry.
- **Cross-references.** *Siebel eService Administration Guide* often refers the reader to *Siebel Applications Administration Guide* for more information. For Siebel eService for Automotive, in addition to this book, the reader should see *Siebel Automotive Guide*.
- **Differences in the Siebel eService Portal.** The portal that the customer views has many added and modified features aimed specifically at automobile customers.
- **Differences in Administering Siebel eService.** The added or modified features of the customer portal generally requires added or modified administrative tasks.

## Home Page and Global Buttons for Siebel eService for Automotive

The Siebel eService home page allows new users to register and provides both anonymous and registered users with links to more information. Automotive

The home page of Siebel eService for Automotive has the following differences from Siebel eService:

- **Link to the dealer locator.** The Contact Us applet has a link to the dealer locator instead of a link to the branch locator.
- **Link to register a vehicle.** The My Account applet includes a link to register a vehicle instead of a link to register a product.
- **Link to My Service History.** The home page has a link to My Service History, which is unique to Automotive.
- **Link to My Vehicles.** The home page has a link to My Vehicles, which is unique to Automotive.

Global buttons are visible when the user displays any page of Siebel eService. The following global buttons have different functions in Siebel eService for Automotive: Automotive

- **My Account.** Displays the My Account view. Differences from the My Account view of Siebel eService are discussed in [“The My Account View of Siebel eService for Automotive” on page 70.](#)
- **Contact Us.** Displays the Contact Us view, which lists a number of ways of contacting the OEM, including email, postal mail, fax, and a feedback form, telephone, and direct collaboration with a customer care representative. Differs from Siebel eService because the Contact Us view of Siebel eService for Automotive contains a link to the Dealer Locator, instead of a link to the Branch Locator.
- **Inventory Search.** Displays Inventory Search view, which is unique to Siebel eService for Automotive. This view is discussed in [“Activating Vehicle Registration Workflows” on page 68.](#)

These changes in the home page and global buttons may be important to you if you are configuring Siebel eService.

For more information about configuring Siebel eService, see *Siebel eService Administration Guide. Automotive*

**NOTE:** To make the eService for Automotive home page visible to customers, you must configure the application using Siebel Tools. After you configure the application, this home page will appear when the customer clicks the Service button in eCustomer as well as when the customer logs into eService. For information about making the home page visible to customers, see the *Siebel Release Notes* on Siebel SupportWeb document for your Siebel application.

## About the Dealer Locator

New or existing customers can use the Dealer Locator to find the dealer nearest to them, so they can purchase or get service for a vehicle.

Both anonymous and registered users can use the Dealer Locator by clicking the Locate Nearby Dealer link on the home page or by clicking the Contact Us Global button and then clicking the Locate Nearby Dealer link.

Customers enter the following information:

- **Location.** Customers enter either their ZIP code or their city, state and country.
- **Category.** Customers use the Category drop-down list to specify whether they want a dealer, a service center, or either.
- **Make.** Customers use the Make drop-down list to specify the make of car.
- **Search Range.** Customers use the Distance In (miles or kilometers) and Search Range fields to specify how far from their location the dealer may be.

When the customer clicks Search, the result includes all dealers that meet the criteria that were entered.

The Dealer Locator searches through all the dealers that you have entered in the Dealer Locator Administration view in Automotive.

For more information about entering dealers in the Dealer Locator Administration view, see the section about Siebel Automotive tools in *Siebel Automotive Guide*.

## Activating Vehicle Registration Workflows

Before customers can use Siebel eService for Automotive to register their vehicles, you must activate the vehicle registration workflows. Automotive

### *To activate vehicle registration workflows*

- 1 From the application level menu, choose View > Site Map > Runtime Events Administration > Events.
- 2 Do a query for the value *\*eAuto\*Reg\** in the Object Name field.
- 3 If the query displays any records, delete them all and continue with the next step. If the query does not display any records, continue with the next step.
- 4 From the application level menu, choose View > Site Map > Business Process Administration > Workflow Processes.
- 5 Do a query for the value *eAuto Vehicle-Reg\** in the Business Object field.  
Several records should be displayed.
- 6 Make sure all these records are active by looking at the Status field to see if it has the value Active.
- 7 If any record is not active, select it and click Activate.  
The status of the record is changed to Active.

After the status of every record is Active, customers can proceed with vehicle registration.

## About Inventory Search for Vehicles

Potential customers may find exactly the vehicle that they want by using your Siebel eSales Web site, by looking at your marketing material, or in some other way. Then, because virtually all vehicle sales are through dealers, they will want to see whether any dealers near them have that vehicle in their current inventory.

Both anonymous and registered users can use the Inventory Search view by clicking the Inventory Search global button.

Customers enter the following information:

- **Their location.** If they want the vehicle at the nearest dealer, customers can enter either their ZIP code or their city, state, and country.
- **New/Used Type.** Customers use the drop-down list to specify whether they want a new or used car.
- **From/To Model Year.** If they want a used car, customers use these fields to specify the range of years they are interested in.
- **Make.** Customers use the drop-down list to specify the make of car they are interested in.
- **Model.** Customers use the drop-down list to specify the model of car they are interested in.
- **Trim.** Customers use the drop-down list to specify the trim they are interested in.
- **MSRP Less Than.** Customers enter the maximum price they want to pay. This field applies to both new and used cars. The price is taken from the MSRP field of the Vehicle record.
- **Mileage Less Than.** If they are buying a used car, customers can enter the maximum mileage they want on the car.
- **Search Range.** If they want the vehicle at the nearest dealer, customers can use the Distance In (miles or kilometers) and Search Range fields to specify how far from their location the dealer may be.

When the user clicks Search, the result includes all vehicles that meet the criteria that were entered.

**NOTE:** For inventory search to work properly, you must enter only one location for each dealer in the Dealer Locator Administration screen. If you have multiple locations for one dealer, the inventory search may not function properly, because a vehicle is tied to a dealer, not to a dealer location.

The inventory search uses information that you entered in the Vehicle screen of Automotive. For a vehicle to be available in a dealer's inventory, it must have the following values entered in these fields of the Vehicle form:

- Status field: Available
- Owned By field: Dealer
- Account field: the dealer name

For more information about making a vehicle available in a dealer's inventory, see the section about Siebel Automotive Tools in *Siebel Automotive Guide*.

## The My Account View of Siebel eService for Automotive

The My Account view is a central location with links to all the personalized information of a registered user. Registered users can display it by clicking the My Accounts global button, which is not available to unregistered users. Customers can use the My Account view as a dashboard that lets them access all their information in Siebel eService.

The My Account view is very different in Siebel eService for Automotive than in Siebel eService.

The My Information applet in the My Account view includes the following links:

- **My Vehicles.** Displays the My Vehicles view with a list of all the customer's vehicles, as described in ["The My Vehicles View of Siebel eService for Automotive" on page 71](#).
- **Register New Vehicle.** Allows the customer to register a new vehicle as described in ["About Vehicle Registration Automotive" on page 71](#).
- **My Service Requests.** Displays the My Service Requests view with a list of the customer's service requests, as described in ["Service Requests in Siebel eService for Automotive" on page 73](#).
- **My Service History.** Displays the Service History view as described in ["About Service History" on page 74](#).
- **My Orders.** Displays the customer's pending orders with information about the status of each order.

The My Company's Information applet is similar to the My Information applet. It includes links to My Company's Service Requests and My Company's Orders, which are similar to the corresponding links in the My Information view, except that they display lists of all data associated with the customer's company. A customer can have multiple accounts, so you must choose the appropriate account before you can see the relevant information.

The My Settings applet is similar to the My Settings applet in Siebel eService. It lets customers enter or modify their user profile, address book, and subscriber preferences.

## About Vehicle Registration Automotive

Customers can use Siebel eService for Automotive to register their vehicles. You can find this information about the user in the Contacts screen of Siebel Automotive, and you can use it for follow-up marketing and service.

For more information about working with contacts and associated vehicles, see *Siebel Automotive Guide*.

A registered user of Siebel eService for Automotive can register a new vehicle by:

- Clicking the Register New Vehicle link in the My Accounts View
- Clicking New in the My Vehicles list
- Clicking the Register New Vehicle link in the home page

The user must begin by entering the VIN#. If the entry matches a VIN# in the database, the user can continue. If the entry does not match a VIN# in the database, the user cannot continue, because it is not one of your vehicles.

After the user enters a valid VIN#, the Make, Model, Year, and Trim fields are populated automatically with information from the Vehicle record. The user enters personal information, which is stored in the record of the primary contact associated with that vehicle. If there is already a primary contact for a vehicle, the customer cannot register that vehicle.

**NOTE:** Before customers can use vehicle registration, you must activate registration workflows. For information about activating workflows, see *Siebel Siebel Release Notes* on Siebel SupportWeb document for your Siebel application.

## The My Vehicles View of Siebel eService for Automotive

Users display the My Vehicles view by clicking the My Vehicles link in the My Account view. The My Vehicles view lists all the vehicles for which the user is the primary contact.

My Vehicles view displays a list of all the vehicles registered with the customer as a primary contact. The customer can click on a VIN# in the Vehicles list to display a form applet with information about that vehicle plus three lists:

- **PM Actions list.** Preventive maintenance actions for that vehicle and when each is scheduled discussed in the section [“About Preventive Maintenance”](#) on page 72.

- **Service History list.** The service history for that vehicle discussed in the section [“About Service History”](#) on page 74.
- **Attachments list.** Attachments for that vehicle. The customer can add and view attachments here. The OEM can add and view attachments in the Attachments view of the Vehicle screen of Siebel Automotive.

## About Preventive Maintenance

The OEM can set up regular schedules of preventive maintenance for vehicles.

For example, one make of vehicle might require basic maintenance, such as replacing the oil filter and changing the oil, every 3,000 miles or three months, whichever comes sooner. The vehicle may also require more extensive maintenance, such as replacing spark plugs, at 30,000 miles or three years after purchase and at 60,000 miles or six years after purchase, whichever comes sooner. These schedules may be more frequent if the vehicle is driven in demanding conditions. In addition, the vehicle may require preventive maintenance if its oil pressure is low, its coolant temperature is high, or it has other specific problems.

By default, Siebel eService for Automotive allows customers to view a list of preventive maintenance actions for their vehicles.

The customer displays preventive maintenance actions by going to the My Account view of Siebel eService for Automotive, described previously, and clicking the My Vehicles link. The My Vehicles list appears, and the user can click the VIN# of any vehicle to display a My Vehicles form, with information about that vehicle, and a PM Actions list with all coming preventive maintenance actions for that vehicle. The customer can update the time and odometer reading when he or she has completed the action.

## Visibility of Preventive Maintenance Actions to the Customer

To allow the customer to display preventive maintenance actions, you must: Automotive

- Create preventive maintenance plans.
- Set triggers for preventive maintenance plans.
- Associate the preventive maintenance plan with a vehicle model and with a specific vehicle.

For information about how to do these things, see the chapter about preventive maintenance in *Siebel Automotive Guide*.



## Sharing Preventive Maintenance Documents with Customers

You can share preventive maintenance documents with customers by adding the documents as attachments to preventive maintenance plans in Siebel Automotive. For example, you can create a document with detailed instructions for servicing the automobile, and attach it to the appropriate preventive maintenance plan.

Then, customers who use that preventive maintenance plan can display the document by clicking a preventive maintenance action in the Actions list in Siebel eService for Automotive, to display a form with detailed information about the action and a list of attachments. The customer can click on any attachment in the list to download and display the document.

### *To share a preventive maintenance document with a customer*

- 1 From the application-level menu, choose View > Site Map > Preventive Maintenance > Preventive Maintenance.
- 2 In the Plans list, select the record for the plan that the document applies to.
- 3 Click the Attachments view tab.
- 4 In the Attachments list, click New.  
A new record is added to the list.
- 5 In the Attachment Name field of the new record, click the select button.
- 6 In the Add Attachment dialog box, click the Browse button.
- 7 In the Choose File dialog box, select the file that you want to add as an attachment and click Open.
- 8 In the Add Attachment dialog box, click Add.  
The file is added as an attachment to the plan.

## Service Requests in Siebel eService for Automotive

A service request might involve a problem with a vehicle, such as squeaking brakes, it might be a request to add new accessories to the car, or it might be a request for information.

In the automotive industry, dealers generally handle service requests. Siebel eService for Automotive allows the customer to route service requests directly to a dealer. If the customer does not do this, the OEM must route the service request to the appropriate dealer, so the dealer can contact the customer and make an appointment to fulfill the service request. Certain types of service requests, such as requests for information, can be routed to the appropriate department of the OEM for fulfillment.

Customers can enter service requests by going to the My Account view, clicking the My Service Requests link, and clicking New in the My Service Request list.

Service requests in Siebel eService for Automotive have a number of enhancements that are specific to the automotive industry:

- **VIN#.** While entering the service request, the customer clicks the select button of the VIN# field to select the vehicle that the service request applies to, allowing you to view full information about this vehicle.
- **Mileage.** The customer uses the Current Mileage and Unit fields to enter the mileage of the vehicle and specify whether the unit of measure is miles or kilometers.
- **Dealer.** The customer can click the select button of the Assigned Dealer field to select a dealer that the service request will be assigned to. The customer is not required to make a selection in this field.
- **Services to Be Performed.** The customer can specify the services to be performed as part of this service request.
- **Appointment Time.** Customers can specify the time and date when they want the service to be performed.

You can set up Siebel Assignment Manager to assign service requests based on the type of service request, dealers' locations, the makes of vehicle that dealers handle, dealers' special skills and other criteria. For more information, see *Siebel Assignment Manager Administration Guide*.

For more information about service requests, see the chapter about service requests in *Siebel Automotive Guide*.

## About Service History

To allow customers to keep track of the services performed to their vehicles, Siebel eService for Automotive provides the Service History view as an addition to Siebel eService. Automotive

Customers can click the My Service History link in the My Account view to display the Service History list, which includes all of their past service history. They can also click the VIN# in the My Vehicles view to display a Vehicle form and Service History list for a specific vehicle.

In the Service History list, they can click the SH# field of any service history in the list to display a Service History form with information about that service history and a Services Performed list with all of the actions taken to respond to the service.

Service History records could be imported from the dealer's Dealer Management System (DMS). Alternatively, customers could add the service history themselves, by clicking the New button of the Service History list in Siebel eService for Automotive.

For more information, see the chapter about service history in *Siebel Automotive Guide*.



# 7

## Siebel eService for Communications, Media, and Energy

This chapter includes the following topics:

- [About eService for Communications, Media, and Energy](#)
- [Differences in the Customer Portal for CME](#)
- [Differences in Personalization for CME](#)

### About eService for Communications, Media, and Energy

Siebel eService for Communications, Media, and Energy is a Web portal that allows your customers to:

- Submit and track service requests
- Track the status of orders
- Manage products through their life cycle
- Search a knowledge base for solutions to frequently asked questions and for other information
- Troubleshoot problems using interactive guides
- Locate your nearest retail or service location
- Collaborate with service agents in real time by sharing Web pages, documents, and other desktop information

### Features Specific to Siebel eService for Communications, Media, and Energy

There are several differences in Siebel eService that are related to the complex accounts and complex orders that are used in the communications, media, and energy industries. These differences include:

- [Differences in the Customer Portal for CMEI](#)
- [Differences in Personalization for CME](#)

## Differences in the Customer Portal for CME

*Siebel eService Administration Guide* describes the portal that customers use to access Siebel eService.

The Siebel eService customer portal for Communications, Media, and Energy has a number of differences from the Siebel eService customer portal. The most important differences are:

- Support for complex account management
- Support for complex orders that include products and services

**NOTE:** Service requests are also known as trouble tickets in the Communications industry. The term *trouble ticket* is used in Siebel Communications for internal, agent-facing applications, but the term *service request* is used in the customer portal, because people who use the product through the Web might not be familiar with this industry-specific terminology. Service requests submitted through the customer portal can be viewed in Siebel Communications client by displaying the All Trouble Tickets view.

### Support for Complex Account Management

In the communications, media, and energy industries, it is common for a single customer to have multiple accounts, representing different types of service at different locations. For example, a customer may have accounts for its electric and gas service at a number of locations.

For this reason, Siebel Communications and Siebel Energy allow you to define complex account hierarchies. For example, you might define a parent account for a customer's business, separate child accounts for each utility service at each of the customer's sites, and several billing accounts to be billed for the service at different groups of sites. For more information about account hierarchies, see the section about accounts in *Siebel Communications Guide* or *Siebel Energy Guide*.

**NOTE:** For a contact to have visibility to an account, either the Proxy Employee value specified in the .cfg file for eService, eSales and eCustomer, or the login name specified in the Employee Login Name field in the User list of the User Administration screen must be one of the names in the Account Team field of that account's Account record.

The My Account screen allows customers to work with multiple accounts.

Customers click the current account link of the My Account screen to display the current account view, which includes information about their current account and a Select Account list that includes all of their accounts. They can use this Current Account view to:

- **Change the current account.** Customers can use the Current Account list at the bottom of the screen to select the current account. Siebel eService displays service requests, billing information, and other information for the current account.
- **Select the primary account.** Customers can use the Primary Account list at the bottom of the screen to select the primary account.
- **Add new accounts.** Customers can click the Create New Account button to create and enter information about a new account.
- **Add new addresses.** Customers can click the Add button of the Current Account Address list to add new addresses for the current account.

## Support for Complex Orders Including Products and Services

In the communications, media, and energy industries, it is common for customers to place complex orders, which include products and services. For example, a customer might order a cell phone and cell phone service. The cell phone may have a warranty that expires after a year, while the cell phone service continues until the customer ends it.

For communications, media, and energy, Siebel eService for Siebel Industry Solutions supports these complex bundles of products and services.

For communications, media, and energy, the Siebel eService for Siebel Industry Solutions home page has a link named My Products and Services, instead of the Register My Product link on the Siebel eService home page. There is also a Products and Services applet in the My Account screen. These features allow the customer to view information about the products and services for the account that they are currently logged in under.

## Differences in Personalization for CME

There are some changes in personalization for customer applications to support the fact that a single contact can have multiple accounts in communications, media, and energy.

Any account-specific personalization rules are evaluated using the contact's primary account.

When the contact logs in, the login process loads the contact's primary account's profile into memory. When the contact selects an account, it does not flush the primary account's profile out of memory and load a new one. It only changes the values of four profile attributes, as shown in [Table 18](#).

Table 18. Profile Attributes Changes When a Contact Selects an Account

Attribute Name	Value
SessionAccountId	ROW_ID
SessionAccountName	NAME
CustomerAccountId	MASTER_OU_ID
DefaultPriceListId	CURR_PRI_LST_ID

This behavior cannot be changed, so account-driven personalization rules will always use the contact's primary account.

However, if you want to use a specific field value of the current account for personalization, you can write Siebel VB code to get the field value from the account. When the user selects an account, the system sets two global variables that can be accessed using Siebel VB:

- AccountId
- AccountName

To access these variables, use the InvokeMethod event, and use the SetProfileAttr method to set a dynamic profile attribute.

For more information about personalization, see *Siebel Personalization Administration Guide*.



# Index

## A

- Account Detail view, about navigation control to** 19
- Account Detail Views/Account Select applet, about** 19
- account downloads**
  - about and configuration process 38
  - data map, about creating 39
  - File Format drop-down list, adding a new value to 38
  - integration object, creating for the new file type 39
  - preconfigured application, workflow process 35
  - workflow, modifying 39
- Account Nickname field, displaying name** 35
- account transaction information, about downloading and activating workflow** 20
- AccountId, accessing variable** 80
- AccountName, accessing variable** 80
- Accounts page**
  - about and views 18
  - Account Detail Views/Account Select applet, about 19
  - Account Detail Views/Download, about using 20
  - Summary View/Credit and Loans List applet, about 19
  - Summary View/Deposits and Investments List applet, about 19
  - total asset and liability balance fields, calculation described 19
- Alternative Medicine Search hyperlink, about setting up** 49
- Automotive** 67, 69, 70, 71, 72, 73
  - auto policy coverage comparisons, displaying 51

## B

- beneficiary, designating** 59
- Bill Pay page**
  - about 22
  - contact's payees and payments, reviewing 24
  - customer, determining whether enrolled 24

- customer, unenrolling 24
- customer's accounts, authorizing and enrolling 23

## C

- call center, reviewing contact's payees and payments** 24
- Claims home page tab, about** 44
- Claims Payments hyperlink, about using to report claims** 44
- classes, setting up** 48
- communications, media, and energy (CME)**
  - complex account hierarchies, about support of 78
  - contact, about visibility to an account 78
  - customer portal, differences from eService 78
  - My Account screen, using to work with multiple account 78
  - orders, about placing and example 79
  - personalization, differences in 79
- Contact Us home page tab** 45
- contacts, reviewing payees and payments** 24
- contract provider**
  - See providers
- customer portal, differences between communications, media, and energy (CME) and eService** 78
- Customer Service page**
  - about and types of service requests 25
  - eBanking and Finance, mapping for Customer Service page (table) 25
- customer's accounts**
  - authorizing and enrolling 23
  - unenrolling a customer 24
- customers**
  - enrolled, determining whether 24

## D

- data map, about creating** 39
- doctor**
  - See providers
- download, about account transaction information and activating workflow** 20

**drug interactions information, setting up link to** 50

## E

### eBanking

Account Detail Views/Account Select applet, about 19

Account Detail Views/Download, about and using 20

account download file types, adding 38

Accounts page, about and views 18

Bill Pay page 22

Customer Service page 25

Customer Service page and Finance, mapping for 25

eService, differences from 12

financial accounts, setting default sequence 17

group financial accounts, assigning separate sequence intervals 17

home page, about and views (table) 16

home page, about setting display sequence of financial accounts 17

Login page, about 16

online banking tasks, list of 10

pages, description of 15

personal profiles, managing 34

purpose comparison (table) 13

service requests, about creating 14

Siebel Personalization, about using for 14

Summary View/Credit and Loans List applet, about 19

Summary View/Deposits and Investments List applet, about 19

total asset and liability balance fields, calculation described 19

Transfers page, about and views 20

user interface, about making consistent 13

### eBrokerage

about and functionality 11

features 11

financial accounts, setting default sequence 17

group financial accounts, assigning separate sequence intervals 17

home page, about and views (table) 16

home page, about setting display sequence of financial accounts 17

investment holdings, adding a holding 27

investment holdings, editing a holding 28

investment interests, adding an interest 28

investment interests, editing an interest 28

Login page, about 16

pages, description of 15

purpose comparison (table) 13

Relationship page 26

service requests, about creating 14

Siebel Personalization, about using for 14

Trades page 29

user interface, about making consistent 13

### eCustomer, administering

home page, about 64

user interface features 63

### eEnrollment

beneficiary, designating 59

enrollees, administering 60

family member, adding to list of enrollable members 58

insurance coverage, enrolling for 58

Literature page, form requirements 60

providers, about displaying 60

providers, searching for 60

providers, setting up search 56

user interface elements, list of 57

yourself or family member, enrolling for coverage 58

### eEvents home page tab, about

 43

### electronic bill payment

about 22

contact's payees and payments, reviewing 24

customer, determining whether enrolled 24

customer, unenrolling 24

customer's accounts, authorizing and enrolling 23

### energy

See communications, media, and energy (CME)

### external funds transfers

See transfers

## F

### family member

coverage, enrolling for 58

list of enrollable members, adding to 58

### File Format drop-down list, adding a new value to

 38

### Finance

Customer Service page and eBanking, mapping for 25

Relationship page and eBrokerage, mapping between (table) 26

### financial accounts

assigning separate sequence intervals to group financial accounts 17

display sequence, about setting 17

- display sequence, setting default 17
- financial accounts, about and example** 18
- Find Provider form applet, fields and example** 56
- FINS eBanking Home Page View, about login page** 16
- FINS eBrokerage Home Page View, about login page** 16
- FINS eBrokerage Mutual Fund Sale Form applet, user properties (table)** 32
- FINS eBrokerage Stock Trade Form applet, user properties (table)** 30
- formulary search, setting up** 50
- funds**
  - transferring into or out of an account 21
  - transferring, checks performed 21

## G

- group benefits**
  - home page tab 44
  - information, viewing 53
- group policy, about and group insurance types** 44

## H

- health insurance**
  - alternative medicine search, setting up 49
  - auto policy coverage comparisons 51
  - beneficiary, designating 59
  - class or seminar, setting up 48
  - drug interactions information, setting up link to 50
  - enrollees, administering 60
  - family member adding 58
  - formulary search, setting up 50
  - group benefit information, viewing 53
  - healthcare discount, setting up 48
  - partner and claim center Locators, administering 52
  - personal policy information, viewing 53
  - pharmacy locator, setting up 49
  - primary care provider (HMO only), changing 53
  - printable online documents, setting up 51
  - providers, about displaying 60
  - providers, searching for 60
  - providers, setting up search (eEnrollment) 56
  - providers, setting up search (Siebel Insurance eService) 47
  - providers, viewing information about 53
  - service provider search, setting up 52

- yourself or family member, enrolling for coverage 58

- Healthcare Member preconfigured role, about** 46

### holding

- See investment holding

- Holdings view, adding holding** 27

### home page

- eBanking, about and views (table) 16
- eBrokerage, about and views (table) 16
- eEnrollment 58
- financial accounts, about setting display sequence 17
- roles, using to create roles based 46
- Siebel eCustomer, about 64
- Siebel Insurance eService 43

## I

### insurance

- alternative medicine search, setting up 49
- auto policy coverage comparisons 51
- class or seminar, setting up 48
- drug interactions information, setting up link to 50
- formulary search, setting up 50
- group benefit information, viewing 53
- healthcare discount, setting up 48
- partner and claim center Locators, administering 52
- personal policy information, viewing 53
- pharmacy locator, setting up 49
- primary care provider (HMO only), changing 53
- printable online documents, setting up 51
- providers, setting up search 47
- providers, viewing information about 53
- service provider search, setting up 52

- insurance coverage, enrolling for** 58

- Insurance Member preconfigured role, about** 46

### Interests view

- interests, editing 28
- investment interests, adding a interest 28

### investment holdings

- adding a holding 27
- editing a holding 28
- trade, difference from 27

### investment interests

- interest, adding 28
- interest, editing 28

- InvokeMethod event, using to access global variables** 80

**L**

**Literature page, about** 43  
**literature, form requirements** 60  
**Login page, about** 16

**M****media**

See communications, media, and energy (CME)

**My Account screen, using to work with multiple accounts** 78  
**My Products and Service, about using to place complex orders** 79  
**My Profile screen, about using and mapping eBanking and Finance** 34

**N**

**names/nicknames, in personal profiles** 35

**O****online banking**

See eBanking

**online documents, setting up** 51

**P**

**partner and claim center Locators, administering** 52

**personal policies**

home page tab 43  
 personal policy information, viewing 53

**personal profiles, about using My Profile screen** 34

**Personalization (Siebel Personalization), about using for eBanking and eBrokerage** 14

**pharmacy**

drug interactions information, setting up link to 50  
 formulary search, setting up 50  
 pharmacy locator, setting up 49

**preventive maintenance**

documents, sharing with customers 73

**primary care provider (HMO only), changing** 53

**primary care provider (PCP)**

See providers

**printing, online documents** 51

**Product Administration view, setting the default sequence of financial accounts** 17

**Profile home page tab** 45

**Provider Search tab, using** 60

**providers**

displaying, about 60  
 information, viewing 53  
 search, setting up (eEnrollment) 56  
 search, setting up (Siebel Insurance eService) 47  
 searching for 60

**R**

**Relationship page, about and mapping between eBrokerage and Finance (table)** 26

**roles**

preconfigured, about 46  
 setting up 46  
 using, about 45

**S**

**Salutation applet, about** 43

**searching**

for providers 60  
 formulary search, setting up 50  
 health insurance enrollment, setting up provider search 56  
 health providers, setting up 47

**seminars, setting up** 48

**service history, about and viewing** 74

**service provider search, setting up** 52

**service requests**

eBanking and eBrokerage, about creating for 14  
 Siebel Insurance eService, about submitting 45

**Siebel eBanking**

See eBanking

**Siebel eBrokerage**

See eBrokerage

**Siebel eCustomer, administering**

home page, about 64  
 user interface features 63

**Siebel Insurance eService**

alternative medicine search, setting up 49  
 auto policy coverage comparisons, displaying 51  
 Claims home page tab 44  
 classes and seminars, setting up 48  
 Contact Us hyperlink, about 45  
 drug interactions information, setting up link to 50  
 eEvents home page tab, about 43  
 formulary search, setting up 50  
 group benefit information, viewing 53  
 group benefits home page tab 44

- healthcare discount, setting up 48
- home page, about 43
- Literature page, about 43
- My Profile hyperlink, about 45
- partner and claim center Locators, administering 52
- personal policies, home page tab 43
- personal policy information, viewing 53
- pharmacy locator, setting up 49
- primary care provider (HMO only), changing 53
- printable online documents, setting up 51
- provider search, setting up 47
- providers, viewing information about 53
- roles, about using 45
- roles, preconfigured 46
- roles, setting up 46
- service provider search, setting up 52
- service requests, about submitting 45
- Siebel Personalization, about using for eBanking and eBrokerage 14**
- Sub Status field, triggering availability of enrollment 60**
- Summary View/Credit and Loans List applet, about 19**
- Summary View/Deposits and Investments List applet, about 19**

## T

### Trades page

- about using 29
- cancelling trades, about and changing cancellation behavior 29
- FINS eBrokerage Mutual Funds Sale Form applet, user properties 32
- FINS eBrokerage Stock Trade Form applet, user properties (table) 30
- trade error checking 30

### Transfer Money In/Transfer Money Out view, about and procedure 21

### Transfers page

- about and views 20
- funds, transferring into or out of an account 21
- transferring, checks performed 21

### trouble tickets

- See service requests

## V

### vehicles

- preventive maintenance documents, sharing with customers 73

### View Claims, about using to report claims 44

## W

### workflow, activating (procedure) 20

