

Oracle® Asset Tracking

User Guide

Release 12.1

Part No. E13672-02

April 2009

Oracle Asset Tracking User Guide, Release 12.1

Part No. E13672-02

Copyright © 2006, 2009, Oracle and/or its affiliates. All rights reserved.

Primary Author: Eary Simmons

Oracle is a registered trademark of Oracle Corporation and/or its affiliates. Other names may be trademarks of their respective owners.

This software and related documentation are provided under a license agreement containing restrictions on use and disclosure and are protected by intellectual property laws. Except as expressly permitted in your license agreement or allowed by law, you may not use, copy, reproduce, translate, broadcast, modify, license, transmit, distribute, exhibit, perform, publish or display any part, in any form, or by any means. Reverse engineering, disassembly, or decompilation of this software, unless required by law for interoperability, is prohibited.

The information contained herein is subject to change without notice and is not warranted to be error-free. If you find any errors, please report them to us in writing.

If this software or related documentation is delivered to the U.S. Government or anyone licensing it on behalf of the U.S. Government, the following notice is applicable:

U.S. GOVERNMENT RIGHTS

Programs, software, databases, and related documentation and technical data delivered to U.S. Government customers are "commercial computer software" or "commercial technical data" pursuant to the applicable Federal Acquisition Regulation and agency-specific supplemental regulations. As such, the use, duplication, disclosure, modification, and adaptation shall be subject to the restrictions and license terms set forth in the applicable Government contract, and, to the extent applicable by the terms of the Government contract, the additional rights set forth in FAR 52.227-19, Commercial Computer Software License (December 2007). Oracle USA, Inc., 500 Oracle Parkway, Redwood City, CA 94065.

This software is developed for general use in a variety of information management applications. It is not developed or intended for use in any inherently dangerous applications, including applications which may create a risk of personal injury. If you use this software in dangerous applications, then you shall be responsible to take all appropriate fail-safe, backup, redundancy and other measures to ensure the safe use of this software. Oracle Corporation and its affiliates disclaim any liability for any damages caused by use of this software in dangerous applications.

This software and documentation may provide access to or information on content, products and services from third parties. Oracle Corporation and its affiliates are not responsible for and expressly disclaim all warranties of any kind with respect to third party content, products and services. Oracle Corporation and its affiliates will not be responsible for any loss, costs, or damages incurred due to your access to or use of third party content, products or services.

Contents

Send Us Your Comments

Preface

1 Understanding Oracle Asset Tracking

Overview of Oracle Asset Tracking.....	1-1
About Oracle Asset Tracking.....	1-1
Tracking Internal Products and Assets.....	1-2
About Oracle Installed Base Integration.....	1-2
About Inventory Item and Asset Tracking.....	1-3
About Item Parameters in Oracle Inventory.....	1-4
About the Messaging Architecture.....	1-5

2 Understanding Inventory Integration

Overview of Understanding Inventory Integration.....	2-2
About Item Instance and Transaction Records.....	2-2
Expiring an Association Between a Fixed Asset and Item Instance.....	2-4
About Purchase Order Receipt into Inventory.....	2-5
Receiving Items into Asset Subinventories.....	2-5
About Move Orders.....	2-6
Creating a Move Order	2-7
Transacting a Move Order.....	2-9
Creating Miscellaneous Transactions.....	2-10
About Miscellaneous Receipts.....	2-10
About Miscellaneous Receipts from Projects.....	2-11
About Miscellaneous Receipts from Field Location.....	2-12

Entering a Miscellaneous Receipt Transaction.....	2-12
Entering the Item to Transfer.....	2-13
About Miscellaneous Issues.....	2-14
About Miscellaneous Issues to Projects.....	2-15
About Miscellaneous Issues to Field Location.....	2-15
About Subinventory Transfers.....	2-16
About Inter-Organization Transfers.....	2-17
About Physical Cycle Counts.....	2-19
About Asset Handling for Internal Sales Orders.....	2-19
Explaining Other Inventory Transactions.....	2-21

3 Understanding Asset Deployment

Overview of Understanding Asset Deployment.....	3-1
About Asset Deployment.....	3-1
About Asset Deployment Transactions.....	3-2
About Partial Installation and In-Service Conditions.....	3-3
Selecting the Location for the Item Instance.....	3-4
Using the Item Instance Deployment Page.....	3-4

4 Understanding Field Service Integration

Overview of Understanding Field Service Integration.....	4-1
About Field Service Integration.....	4-1
Viewing Service Request Numbers and Task Numbers.....	4-1

5 Understanding Projects Integration

Overview of Understanding Projects Integration.....	5-1
How Purchase Order Receipts Flow into Project Transactions.....	5-1
Receiving Items Directly into an Oracle Project.....	5-2
About Transaction Sources for Project Import.....	5-4
About Expenditure Inquiry.....	5-4
About Asset Creation.....	5-5
Running the PRC: Generate Asset Lines for a Single Project Program.....	5-6
Running the PRC: Interface Assets to Oracle Asset Program.....	5-6

6 Understanding the Fixed Asset Architecture

Overview of Fixed Asset Architecture.....	6-2
About Asset Processing in Oracle Asset Tracking.....	6-2
About Asset-Related Processes in Oracle Asset Tracking.....	6-3
Running the Create Assets Interface Inventory Transactions to Fixed Asset Program.....	6-4

Running the Create Asset Headers in Oracle Projects - Normal Items Program.....	6-6
Running the Interface Move Transactions to Oracle Assets Program.....	6-8
About Asset Impact of a Miscellaneous Issue.....	6-11
About Asset Impact of Subinventory Transfers.....	6-11
About Asset Impact of Inter-Organizational Transfers.....	6-11
About Asset Impact of Physical Inventory and Cycle Count Adjustments.....	6-12
Case Study.....	6-12
Understanding the CLEI.....	6-15
Overview of Retirements.....	6-16
Associating a Fixed Asset to an Item Instance.....	6-16
Viewing Asset Relationships Graphically.....	6-17

7 Using Oracle Asset Tracking

Overview of Using Oracle Asset Tracking.....	7-2
Submitting a Request.....	7-2
Viewing Request Results.....	7-2
Requesting an Assumed Loss Rate Report.....	7-3
Requesting a Bill of Lading Report.....	7-4
Adjusting the Invoice Price Variance.....	7-5
Running the Interface Invoice Price Variance to Oracle Assets Program.....	7-6
Running the Interface Invoice Price Variance to Oracle Projects Program.....	7-7
Running the Generate Notification - New Fixed Assets for Install Base Tracking Program	7-8
Running the Create Reversal GL Entries for Inventory FA Items Program.....	7-8
Finding Personal Profile Values.....	7-10

8 Using the Google Maps Integration

Google Maps Integration Overview.....	8-1
Google Maps Integration with OAT.....	8-1
Viewing Instances on Google Maps.....	8-3

Index

Send Us Your Comments

Oracle Asset Tracking User Guide, Release 12.1

Part No. E13672-02

Oracle welcomes customers' comments and suggestions on the quality and usefulness of this document. Your feedback is important, and helps us to best meet your needs as a user of our products. For example:

- Are the implementation steps correct and complete?
- Did you understand the context of the procedures?
- Did you find any errors in the information?
- Does the structure of the information help you with your tasks?
- Do you need different information or graphics? If so, where, and in what format?
- Are the examples correct? Do you need more examples?

If you find any errors or have any other suggestions for improvement, then please tell us your name, the name of the company who has licensed our products, the title and part number of the documentation and the chapter, section, and page number (if available).

Note: Before sending us your comments, you might like to check that you have the latest version of the document and if any concerns are already addressed. To do this, access the new Applications Release Online Documentation CD available on My Oracle Support and www.oracle.com. It contains the most current Documentation Library plus all documents revised or released recently.

Send your comments to us using the electronic mail address: appsdoc_us@oracle.com

Please give your name, address, electronic mail address, and telephone number (optional).

If you need assistance with Oracle software, then please contact your support representative or Oracle Support Services.

If you require training or instruction in using Oracle software, then please contact your Oracle local office and inquire about our Oracle University offerings. A list of Oracle offices is available on our Web site at www.oracle.com.

Preface

Intended Audience

Welcome to Release 12.1 of the *Oracle Asset Tracking User Guide*.

See Related Information Sources on page x for more Oracle Applications product information.

TTY Relay Access to Oracle Support Services

To reach AT&T Customer Assistants, dial 711 or 1.800.855.2880. An AT&T Customer Assistant will relay information between the customer and Oracle Support Services at 1.800.223.1711. Complete instructions for using the AT&T relay services are available at <http://www.consumer.att.com/relay/tty/standard2.html>. After the AT&T Customer Assistant contacts Oracle Support Services, an Oracle Support Services engineer will handle technical issues and provide customer support according to the Oracle service request process.

Documentation Accessibility

Our goal is to make Oracle products, services, and supporting documentation accessible to all users, including users that are disabled. To that end, our documentation includes features that make information available to users of assistive technology. This documentation is available in HTML format, and contains markup to facilitate access by the disabled community. Accessibility standards will continue to evolve over time, and Oracle is actively engaged with other market-leading technology vendors to address technical obstacles so that our documentation can be accessible to all of our customers. For more information, visit the Oracle Accessibility Program Web site at <http://www.oracle.com/accessibility/>.

Accessibility of Code Examples in Documentation

Screen readers may not always correctly read the code examples in this document. The conventions for writing code require that closing braces should appear on an otherwise empty line; however, some screen readers may not always read a line of text that consists solely of a bracket or brace.

Accessibility of Links to External Web Sites in Documentation

This documentation may contain links to Web sites of other companies or organizations that Oracle does not own or control. Oracle neither evaluates nor makes any representations regarding the accessibility of these Web sites.

Structure

- 1 Understanding Oracle Asset Tracking**
- 2 Understanding Inventory Integration**
- 3 Understanding Asset Deployment**
- 4 Understanding Field Service Integration**
- 5 Understanding Projects Integration**
- 6 Understanding the Fixed Asset Architecture**
- 7 Using Oracle Asset Tracking**
- 8 Using the Google Maps Integration**

Related Information Sources

Oracle Asset Tracking Implementation Guide

Oracle Assets User Guide

Oracle Field Service User Guide

Oracle Installed Base User Guide

Oracle Installed Base Implementation Guide

Oracle Inventory User's Guide

Oracle Projects Fundamentals

Oracle Projects Implementation Guide

Integration Repository

The Oracle Integration Repository is a compilation of information about the service endpoints exposed by the Oracle E-Business Suite of applications. It provides a complete catalog of Oracle E-Business Suite's business service interfaces. The tool lets users easily discover and deploy the appropriate business service interface for integration with any system, application, or business partner.

The Oracle Integration Repository is shipped as part of the E-Business Suite. As your instance is patched, the repository is automatically updated with content appropriate for the precise revisions of interfaces in your environment.

Do Not Use Database Tools to Modify Oracle Applications Data

Oracle **STRONGLY RECOMMENDS** that you never use SQL*Plus, Oracle Data Browser, database triggers, or any other tool to modify Oracle Applications data unless otherwise instructed.

Oracle provides powerful tools you can use to create, store, change, retrieve, and maintain information in an Oracle database. But if you use Oracle tools such as SQL*Plus to modify Oracle Applications data, you risk destroying the integrity of your data and you lose the ability to audit changes to your data.

Because Oracle Applications tables are interrelated, any change you make using an Oracle Applications form can update many tables at once. But when you modify Oracle Applications data using anything other than Oracle Applications, you may change a row in one table without making corresponding changes in related tables. If your tables get out of synchronization with each other, you risk retrieving erroneous information and you risk unpredictable results throughout Oracle Applications.

When you use Oracle Applications to modify your data, Oracle Applications automatically checks that your changes are valid. Oracle Applications also keeps track of who changes information. If you enter information into database tables using database tools, you may store invalid information. You also lose the ability to track who has changed your information because SQL*Plus and other database tools do not keep a record of changes.

Understanding Oracle Asset Tracking

This chapter covers the following topics:

- Overview of Oracle Asset TrackingOracle Asset Trackingoverview
- About Oracle Asset TrackingOracle Asset Trackingintegration pointsOracle Asset Trackingoverview
- Tracking Internal Products and Assetsassettracking internallyproducttracking internally
- About Oracle Installed Base IntegrationOracle Installed Baseintegration
- About Inventory Item and Asset Trackingassettracking inventory itemsOracle Asset Trackingusage codesOracle Asset Trackingfunctions supported
- About Item Parameters in Oracle InventoryOracle Inventoryitem parametersOracle Inventoryitems, depreciableOracle Inventoryitems, normal
- About the Messaging Architecturemessaging architectureoverview

Overview of Oracle Asset Tracking

This topic group provides overviews of Oracle Asset Tracking and its components, explanations of key concepts, features, and functions, and explanation of the application's relationships to other Oracle or third-party applications.

About Oracle Asset Tracking

Oracle Asset Tracking is a fully integrated solution in the Oracle E-Business suite designed to deploy and track internal products and assets at internal or customer sites, while providing the ability to capture financial transactions with back-office automation.

With Oracle Asset Tracking, you can give users access to tracking information without allowing them access to sensitive processes related to assets and purchasing. You can also track inventory items after they have been installed and link financial transactions

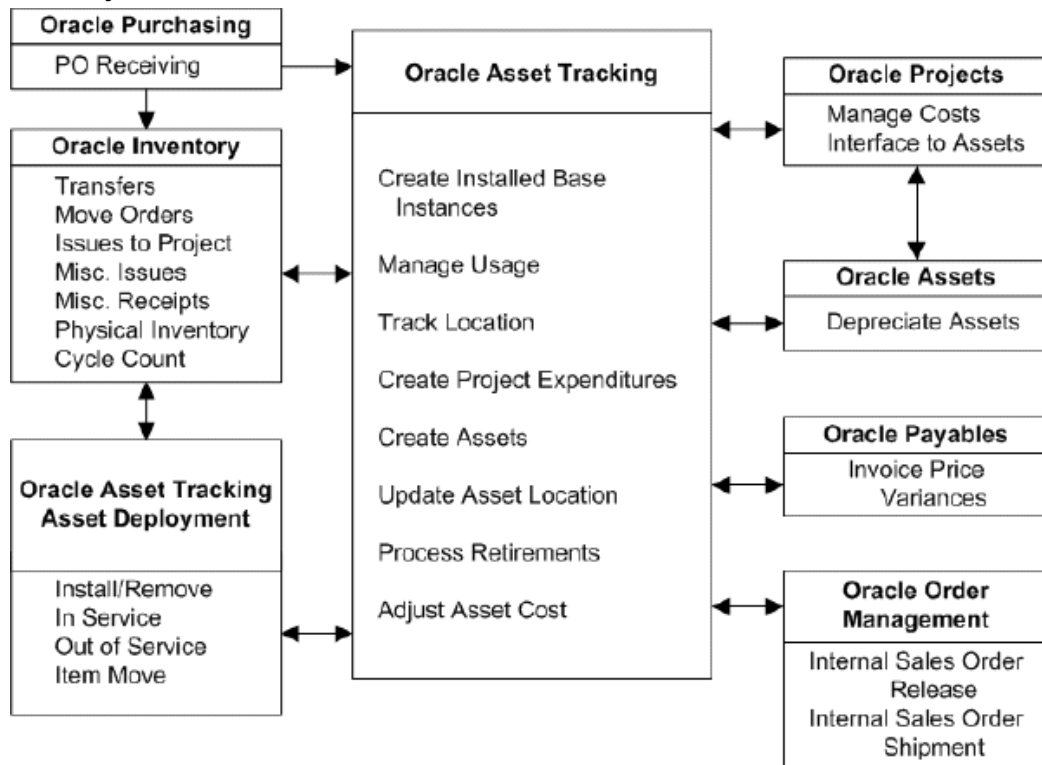
to the physical movement of equipment.

Oracle Asset Tracking integrates with Oracle Inventory, Oracle Purchasing, Oracle Projects with the Capital Resource Logistics (CRL) feature, Oracle Assets, Oracle Payables, and Oracle Installed Base, and stores information collected from them.

Tracking Internal Products and Assets

The following diagram shows a summary of the Oracle application modules and the transactions associated with Oracle Asset Tracking.

Summary of Oracle Processes that Track Internal Products and Assets



About Oracle Installed Base Integration

The Oracle Installed Base platform uses the Service Fulfillment Manager application to integrate Oracle Purchasing, Oracle Payables, Oracle Inventory, CRL Projects, Oracle Assets, and can integrate with legacy systems to synchronize and manage material flow in a company. The Oracle Asset Tracking platform minimizes data entry by using customer-definable business rules to send messages to all other related applications to perform the appropriate update when a business event occurs.

Oracle Asset Tracking utilizes Oracle Installed Base as its data repository. Every transaction that Oracle Asset Tracking tracks is recorded in the Oracle Installed Base

transaction table, and each record affected by such transactions is recorded in the instance and instance history tables.

You can also view asset relationships graphically by using Oracle Asset Tracking and Oracle Installed Base.

All setups are done through windows in Oracle Installed Base or other products, including the setups for locations and parties.

Related Topics

Viewing Asset Relationships Graphically, page 6-17

About Inventory Item and Asset Tracking

To track inventory items and assets, Oracle Asset Tracking must interact with several enterprise resource planning (ERP) applications. It sends to and receives messages from these applications about the status and location of the items that you want to track.

Oracle Asset Tracking provides an enterprise tracking and asset management system where all inventory, project, party, and asset-related material information is stored, providing a 360-degree view of your assets. You can locate materials anywhere in the system—in warehouses, on trucks, installed in the network, or on project sites—facilitating financial transactions using physical movements of material and equipment. In addition, Oracle Asset Tracking can provide a life-cycle history of all activity for that equipment.

An asset comprises a collection of items. The items may be trackable or not trackable. During implementation, items are designated as Oracle Asset Tracking-trackable at the master level in Oracle Inventory. Oracle Asset Tracking tracks the activity of the trackable items through inventory and projects, and into fixed assets.

In Oracle Assets you perform the Mass Additions concurrent process to create assets.

As an example of message flows involving Oracle Asset Tracking, when a field service technician enters a report that equipment has been placed into service, the deployment transaction can send a message to Oracle Asset Tracking. This message updates the status of the equipment to In Service and gives its in-service date to Oracle Assets. The asset is now ready to be created in Oracle Assets.

Functions Supported by Oracle Asset Tracking

This application supports the standard functions found in Oracle Inventory, Oracle Purchasing, Oracle Assets, and Oracle Projects enabled for CRL Financials.

Oracle Asset Tracking supports the following functions:

- Purchase order receipt of items into Inventory
- Purchase order receipt of items into operating projects

- Move orders to issue an item either to a project or directly to a field location
- Miscellaneous issue to a project or field location
- Miscellaneous receipt from a project or field location
- Installation and un-installation of equipment
- In-service/Out-of-service of equipment
- Subinventory transfers
- Inter-organization transfers
- Miscellaneous receipts and issues
- Placement of assets into or out of service
- Retirement and reinstatement of the partial or full cost of an asset
- Asset item moves and asset item transfers
- Physical counts
- Internal sales order shipment

Usage Codes

Oracle Installed Base uses a number of location attributes to track the physical location of an item instance. The following are the values that are meaningful for Oracle Asset Tracking

- In Inventory
- In Process
- In Transit
- Installed
- In Service
- Out of Service

About Item Parameters in Oracle Inventory

Items are created in Oracle Inventory. In order that items can be tracked by Oracle Asset Tracking, you must set some parameters at the time you create the item in Oracle

Inventory.

The main item parameters to set are:

- Track in Install Base

This is a checkbox parameter. When set, it enables items to be tracked by transactions in and related to Oracle Installed Base and Oracle Asset Tracking.

- Create Fixed Asset

This parameter determines if an item is normal or depreciable. The parameter determines how an asset can be created from the item.

If the checkbox is selected, then the item becomes depreciable, and the asset is created upon receipt either in Oracle Inventory or in Oracle Projects.

If the checkbox is left unchecked, then the item is regarded as normal, and the asset is created when put in service through an Oracle Asset Tracking deployment transaction.

Normal Versus Depreciable Inventory Items

For a *normal* item, the asset is created after an item is put in service. The asset is created through Oracle CRL Projects based on standard inventory cost.

For a *depreciable* item, the asset is created when an item is received, either in Oracle Inventory or Oracle Projects. The asset is created by Oracle Asset Tracking with the purchase order cost, which can be adjusted later after the invoice is matched the purchase order.

Oracle Asset Tracking supports the following inventory transaction types for internal sales orders:

- Sales Order Issue
- Internal Order Direct Shipment
- Sales Order Pick
- Internal Order Pick
- Internal Requisition In-Transit Receipt
- Internal Order In-Transit Shipment

About the Messaging Architecture

The messaging architecture receives requests from external publishing systems in XML (eXtensible Markup Language) format. Based on the input requirements, the application updates the status and keeps a history of transactions for the trackable unit.

Subsequently, the application publishes outgoing requests to the subscribing systems for further processing. The publishing and subscribing systems include: Installed Base, Inventory, Purchasing, Payables, Assets, Projects, Workforce Management, and other legacy systems.

Understanding Inventory Integration

This chapter covers the following topics:

- Overview of Understanding Inventory Integration
- About Item Instance and Transaction Recordsitem instancesoverviewtransaction recordsoverviewitem instancesand transaction recordtransaction recordsand item instances
- Expiring an Association Between a Fixed Asset and Item Instanceassociationexpiring fixed assets and item instancesfixed assetsexpiring association with item instancesitem instancesexpiring association with fixed assets
- About Purchase Order Receipt into Inventorypurchase order receiptsinventory
- Receiving Items into Asset Subinventoriessubinventories, assetreceiving itemsreceiving itemsinto asset subinventories
- About Move Ordersmove ordersoverview
- Creating a Move Order move orderscreating
- Transacting a Move Ordermove orderstransacting
- Creating Miscellaneous Transactiontransactions, miscellaneouscreatingmiscellaneous transactionscreating
- About Miscellaneous Receiptsmiscellaneous receiptsoverviewreceipts, miscellaneousoverview
- About Miscellaneous Receipts from Projectsmiscellaneous receiptsfrom Oracle ProjecttransactionsMiscellaneous Receipts from Projects
- About Miscellaneous Receipts from Field Locationmiscellaneous receiptsfrom field locationtransactionsMiscellaneous Receipts from Field LocationMiscellaneous Receipts from Field Locationtransaction processing
- Entering a Miscellaneous Receipt Transactionmiscellaneous receipt transactionsentering
- Entering the Item to Transfertransactions, creatingitem to transferitem to transfer

transactions, entering

- About Miscellaneous Issuesmiscellaneous issuesoverviewissues, miscellaneous
- About Miscellaneous Issues to ProjectsMiscellaneous Issues to ProjectstransactionsMiscellaneous Issues to Projects
- About Miscellaneous Issues to Field LocationMiscellaneous Issues to Field locationoverviewtransactionsMiscellaneous Issues to Field location
- About Subinventory Transferstransferssubinventoryitemsserial numbers
- About Inter-Organization Transferstransfers, inter-organizationtransfers, inter-organizationdirecttransfers, inter-organizationin-transittransfers, inter-organizationinventorytransfers, inter-organizationserial numberstransfers, inter-organizationnon-serial numbers
- About Physical Cycle Countscountsphysical cycle
- About Asset Handling for Internal Sales Ordersasset handlinginternal sales orderssales orders, internalasset handling
- Explaining Other Inventory Transactionstransactionsinventory

Overview of Understanding Inventory Integration

This topic group provides information about interaction between Oracle Asset Tracking and Oracle Inventory and discusses the functionality of transactions in Inventory.

About Item Instance and Transaction Records

When an item is initially received, typically by a purchase order, a receipt transaction occurs. The initial receipt transaction creates an instance record for the item in Oracle Asset Tracking. A receipt transaction record is associated with the item instance record. Subsequent transactions against this item will also be associated with the instance record and will compose the history for that record.

Transaction Types in Oracle Inventory

Oracle Asset Tracking supports the following inventory transactions types, for both normal and depreciable items:

- Purchase order receipt in inventory
- Move order and transact move order
- Miscellaneous issue to a project
- Miscellaneous receipt from a project

- Miscellaneous receipt and miscellaneous issue
- Subinventory transfer
- Inter-organization transfer
- Physical cycle count

Oracle Asset Tracking supports the following inventory transaction types, for normal items only:

- Project Contract Issue
- Return to Vendor
- Account Issue
- Account Alias Issue
- Project Borrow
- Project Transfer
- Project Payback
- Cycle Count Transfer
- Physical Inv Transfer
- Backflush Transfer
- Account Receipt
- WIP Component Return
- Account Alias Receipt
- RMA Receipt
- PO Rcpt Adjust
- Int Req Rcpt Adjust
- Shipment Rcpt Adjust
- WIP Assy Completion
- WIP Assembly Return

- WIP Neg Comp Issue
- WIP Neg Comp Return

For more information, see the *Oracle Installed Base User Guide*.

Item Instance Creation and Update

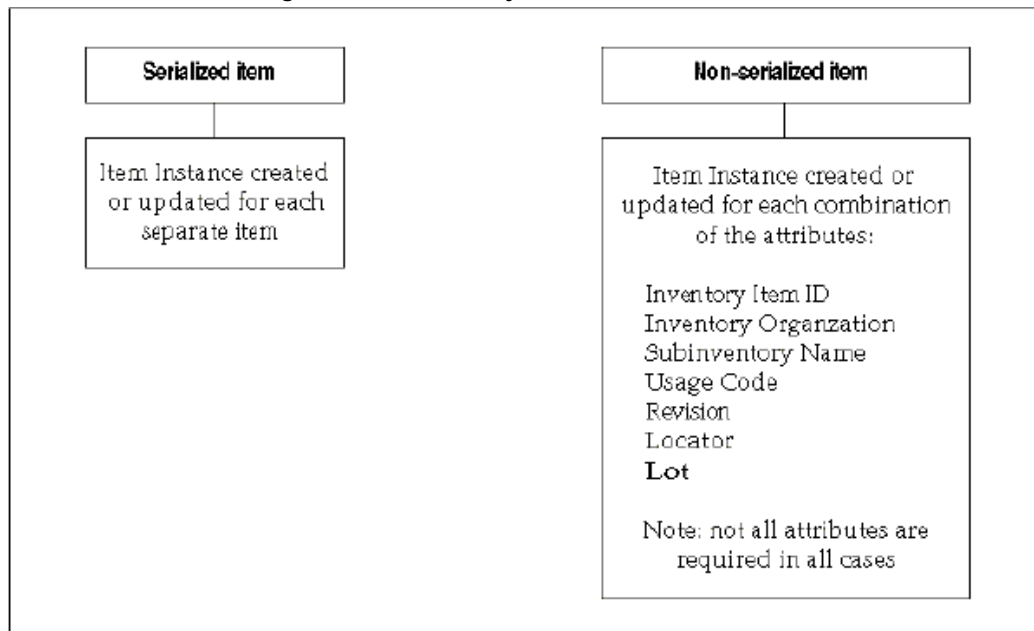
In many transactions, item instances are created or updated. The number of item instances created depends on whether the master item in Oracle Inventory is designated to be a serialized or a non-serialized item.

Item Instance Processing in Oracle Inventory Transactions

If an item is a serialized item, then an item instance is created for each separate item. If an item is a non-serialized item, an item instance is created that depends on a number of item attributes.

The following diagram shows the factors that determine how an item instance is created or updated during the Oracle Inventory transactions that affect Oracle Asset Tracking.

Item Instance Processing in Oracle Inventory Transactions



Expiring an Association Between a Fixed Asset and Item Instance

Use this procedure to expire an association between a fixed asset and item instance.

Prerequisite:

Associate a fixed asset to an item.

To expire an association between a fixed asset and item instance:

1. From the Asset Tracking Super User responsibility, navigate to Assets and then select Item Instances.
2. Query an item instance that has an associated fixed asset.
3. Select an item from the query results.
4. From the Action list, select Assets.
5. Click Go.
6. Select the asset number from which you want to expire the association.
7. Click Expire Assets.

A confirmation message appears indicating that assets updated successfully.

About Purchase Order Receipt into Inventory

Purchase order receipt flow is initiated by the creation of a purchase order. The items are then received into inventory against the purchase order when the shipment arrives from the vendor.

The Receipt into Inventory package validates the data against the Oracle Installed Base repository and creates or update the unit record.

- If an item is serialized, then a new instance will always be created.
- If an item is non-serialized, then Oracle Asset Tracking searches for the existing record. The search criteria are as follows: Inventory Item, Inventory Organization, Subinventory, Units of Measure, Instance Usage Code, Revision, Inventory Locator, Lot Number (if applicable). If the exact record is found, then the record will be updated with the new quantity. If not, then a new instance will be created.
- Every receipt builds transaction history.

Receiving Items into Asset Subinventories

Use the following procedure to receive an item into an asset subinventory. If the item is not received in asset subinventory, then expenditures items will not be created in Oracle Projects

Prerequisites

The following are the prerequisites:

- At least one subinventory must exist
- The item number must be defined in Oracle Inventory.
- The purchase order must exist in Oracle Purchasing with a status of Approved.

To receive items into asset subinventories:

1. From the Inventory responsibility, navigate to Transactions, select Receiving, and then select Receipts.

The Organizations window opens.

2. Choose your organization from the Organizations window, and click Find.
3. In the Find Expected Receipts window, enter criteria that identifies the items that you are receiving, such as the purchase order number.
4. In the Receipt header, enter the packing slip number and any other pertinent information.

5. In the Receipt lines, verify the quantity to be received.

You may receive a partial line quantity.

6. Verify that the destination subinventory entered on the purchase order is not depreciable.
7. Click Lot-Serial.

8. If the item is under lot control, then enter the equipment code (CLEI) in the Lot field.

If the items are under serial control, then enter individual serial numbers or a range of consecutive numbers. You can also enter corresponding vendor serial numbers in the Manufacturing Serial Number field.

9. Save.

About Move Orders

A move order transfers inventory:

- From one stocking location to another
- From a stocking location to a project

To create a move order, you manually create a move order requisition. After the move order requisition is approved, it becomes a move order. If the organization does not require approval, then the manual request automatically becomes a move order.

You must define certain transaction types in Oracle Inventory for move orders, and you can define other transaction types. Two examples of Oracle Inventory transaction types for move orders are as follows:

- **Asset Tracking Move Order Issue to Project:** Creates a document for moving material from inventory to a project.
- **Asset Tracking Move Order Subinventory Transfer:** Creates a document for moving material from one subinventory to another subinventory. For more information, see *About Subinventory Transfers*, page 2-16.

Of the two transaction types shown, the Issue to Project transaction type is a required transaction type, and the Subinventory Transfer is optional.

For more information, see *Define User-definable Transaction Types* in the *Oracle Asset Tracking Implementation Guide*.

Parts of a Move Order

A move order comprises three parts:

- The **Move Order Header** holds the move order number, an optional description of the move order, and information to default to the individual move order lines.
- The **Move Order Lines** are the actual move requests, including the item number, requested quantity, completed quantity, the source, and destination information.
- The **Line Details** are the inventory transactions that occur to fulfill a move order line, including equipment code, serial number, quantity moved, source, and destination details (such as locators).

Move Order Approval Governed by Time-Out and Item Planner

At the organization level, three attributes—Move Order Time-out Period, Time-out Action, and Item Planner item—affect how move order requisitions are approved. If the move order requisition is not approved before the time-out period passes, then Oracle Workflow sends a reminder notice to the item planner. If the move order requisition is still not approved within a second time-out interval, then the requisition is automatically approved or rejected based on the Time-out Action setting. If no item planner is specified for the item, then the requisition line is approved automatically.

Creating a Move Order

Create a move order when you need to transfer inventory across subinventories or into a project account.

Prerequisites

- Inventory setups such as item, subinventory definition must be complete.
- You must have defined transaction types for move orders in Oracle Inventory.
- If you use an Oracle Workflow process to route move order requisitions for approval, then the item must be assigned to an item planner.

To create a move order:

1. From the Inventory responsibility, navigate to Move Orders and then select Move Orders.

2. In the Move Orders window, enter an order number in the Number field.

If you do not insert a value, then the application populates the Number field. You can also enter a description of the order in the Description field.

3. In the Default region, enter the following information:

Transaction Type: Select a transaction type.

This is one of the transaction types for move orders which you defined as user-defined transactions in Oracle Inventory.

Note: The transaction Issue to Project must be Project based.

For more information, see the section "Define User-definable Transaction Types" in the chapter "Dependency Module Setup", in the *Oracle Asset Tracking Implementation Guide*.

Date Required: Enter the requested delivery date. Also enter Ship-to Location, and Source and Destination subinventories.

4. Enter the following information on the lines on each of the tabs:

- **Item:** The item number, item revision (if under revision control), and quantity to move.
- **Project and Task**
- **Source:** Source subinventory (if different from the default value), locator (if locator control is enabled), equipment code (CLEI), and serial numbers. If you do not know from what subinventory the item should be transferred, then click On Hand at the bottom of the window to search for material locations.

Note: You do not have to enter Source details in the Creating a Move Order procedure. If you do not enter Source details in the Creating a Move Order procedure, you must enter them in the

Transacting a Move Order procedure. See Transacting a Move Order, page 2-9.

- **Destination:** The destination subinventory or account, if different from the default value and the destination locator for a subinventory transfer type move order.
- **Control:** The move order transaction type, if different from the default value, a predefined reason code, or alphanumeric reference information.

Note: If approval is required, then the item planner receives a Workflow notification that there are move order requisition order lines awaiting approval. The planner uses Oracle Workflow to approve the orders.

The item planner chooses Approve or Reject for each move order requisition line. If one requisition line on a move order is rejected, then other lines of the same move order can be approved.

Transacting a Move Order

After a move order is approved, you transact the move order by performing the action described on the approved lines. Use this procedure to perform the approved transaction.

Prerequisites

The move order must be approved.

To transact a move order:

1. In the Inventory responsibility, navigate to Move Orders and then select Transact Move Orders.
2. Locate move orders that have been approved.
3. You can query by header, line, source, or destination information.
4. To add details to the move order line, select the check box for each line that you wish to detail, and click Allocate.
5. Information is automatically entered on the transaction lines of the move order, based on the inventory picking rules and transaction defaults defined within the organization.

6. Click View/Update Allocations to view the detailed lines.
7. You can manually update any information that is incorrect. Add missing information, such as equipment code (CLEI) and serial numbers.
8. If you do not require a pick slip, then click Transact to execute the detailed lines.
9. If you need to print a pick slip, then save the transaction at this point. When the pick slip is ready, return to the Transact Move Orders window, select the line or lines to be executed, and click Transact.

Creating Miscellaneous Transactions

Oracle Asset Tracking supports the miscellaneous transactions (receipts and issues) used by Oracle Inventory. Each transaction in Oracle Inventory triggers a message to Oracle Asset Tracking.

In Oracle Inventory, the value of an item quantity can be a negative number, such as when a miscellaneous issue from inventory causes the quantity of an item to fall below zero. For depreciable items, if a transaction causes a negative inventory balance, then Oracle Asset Tracking adjusts asset units in Oracle Assets to zero, but it does not set the value in Oracle Assets to a negative number.

The topics in this section are as follows:

- About Miscellaneous Receipts, page 2-10
- About Miscellaneous Receipts from Projects, page 2-11
- About Miscellaneous Receipts from Field Location, page 2-12
- About Miscellaneous Issues, page 2-14
- About Miscellaneous Issues to Projects, page 2-15
- About Miscellaneous Issues to Field Location, page 2-15

For more information, see *Oracle Inventory User's Guide: Performing Miscellaneous Transactions* and *Oracle Assets User Guide: Defining Locations and Defining Distributions*.

About Miscellaneous Receipts

Use miscellaneous receipts to receive material without a purchase order. In addition, you may also need to enter an equipment code (CLEI) in the Lot field, or a serial number.

- If the item is serialized, then a new instance always is created.

- If the item is non-serialized, then Oracle Asset Tracking searches for the existing record. The search criteria are as follows: Inventory Item, Inventory Organization, Subinventory, Units of Measure, Instance Usage Code, Revision, Inventory Locator, Lot Number (if applicable). If the exact record is found, then the record is updated with the new quantity. If not, then a new instance is created.

The following table summarizes the actions performed during the processing of the Miscellaneous Receipt transaction:

Miscellaneous Receipt Transaction Processing

Serialized item	Non-serialized item
Check if item instance usage is Out of Service. If Yes, update location. If No, create new item instance.	Always create new item instance or update existing item instance.

For a non-serialized item, Oracle Asset Tracking processes a miscellaneous receipt using the same procedures as those for a new receipt.

Note: The Miscellaneous Receipt transaction cannot be used to move the existing non-serialized item instances back to inventory.

About Miscellaneous Receipts from Projects

The Miscellaneous Receipt from Project transaction is used to transfer material from Oracle Projects back to Oracle Inventory.

You must have defined the Miscellaneous Receipt from Project transaction in Oracle Inventory as part of the implementation of Oracle Asset Tracking. For more information, see the section "Define User-definable Transaction Types" in the *Oracle Asset Tracking Implementation Guide*.

The main considerations for the Miscellaneous Receipt from Project transaction are as follows:

- For a serialized item, the instance record is updated. The instance usage code changes to IN INVENTORY.
- For a non-serialized item, a new instance is created with instance code = IN_INVENTORY. If the record exists for the same instance, then that record is updated with the appropriate quantity. The search criteria are as follows: Inventory Item, Inventory Organization, Subinventory, Units of Measure, Instance Usage Code, Revision, Inventory Locator, Lot Number (if applicable).

- Project expenditures are reversed by running the Cost Collection Manager program from Oracle Inventory and the transaction import from Oracle Projects. This reduces the project cost with the transacted item cost.

The following table summarizes the actions performed during the processing of the Miscellaneous Receipt from Project transaction:

Miscellaneous Receipt from Project Transaction Processing

Serialized item	Non-serialized item
Check if item instance is In Process.	Check if item instance is In Process.
If Yes, update location, change usage to In Inventory.	If Yes, and if quantity is sufficient, then deduct quantity + item expenditure from the project item instance, and add quantity to the inventory item instance.
If No, error.	If No, error.

About Miscellaneous Receipts from Field Location

The Miscellaneous Receipt from Field location transaction is used to receive assets from the field location.

You must have defined the Miscellaneous Receipt from Field location transaction in Oracle Inventory as part of the implementation of Oracle Asset Tracking. For more information, see the section "Define User-definable Transaction Types" in the *Oracle Asset Tracking Implementation Guide*.

The main considerations for the Miscellaneous Receipt from Field location transaction are as follows:

- For a serialized item, the instance record is updated. The instance usage code changes to IN_INVENTORY.
- For a non-serialized item, a new instance is created with instance code = IN_INVENTORY. If the record exists for the same instance, then that record is updated with the appropriate quantity. The search criteria are as follows: Inventory Item, Inventory Organization, Subinventory, Units of Measure, Instance Usage Code, Revision, Inventory Locator, Lot Number (if applicable).

Entering a Miscellaneous Receipt Transaction

Use this procedure to enter a miscellaneous receipt transaction.

To enter a miscellaneous receipt transaction:

1. Navigate to the Miscellaneous Transaction window.
2. Enter the date and time of entry for the transaction.

The date you can enter is controlled by the INV: Transaction Date Validation profile option. See: Oracle Inventory Profile Options.
3. Enter a miscellaneous transaction type for the transfer. This should be the transaction you set up to receive assets from field location. See: "Defining Transaction Types" in *Asset Tracking Implementation Guide*.
4. Optionally, enter the source of the transaction type.
5. Optionally, enter the general ledger account against which the material is issued or received.
6. Optionally, indicate if inventory information should be defaulted from the serial number.

Entering the Item to Transfer

Use this procedure to enter the item to transfer.

To enter the item to transfer:

1. Choose Transaction Lines in the Miscellaneous Transaction window. The Transaction Lines Detail folder window appears.
2. Enter the asset item that you want to receive. If you choose to default inventory information from the serial number, enter a serial number.
3. Enter the revision for the item to issue or receive. You must enter a value in this field if the item is under revision control.
4. Enter a subinventory. For an issue transaction, you cannot enter a subinventory that does not have Quantity Tracking turned on.
5. Enter a locator. You must enter a value here if you established locator control for the item.
6. Optionally, enter a lot number for the asset item. If you want to enter multiple lot numbers, complete the remaining steps, then choose the Lot/Serial button to display the Lot Entry window.
7. Enter a unit of measure. This can be the primary unit of measure (the default) or

any valid alternate unit of measure. If you enter an alternate unit of measure, then Oracle Inventory issues the quantity that you specify in this unit of measure. Oracle Inventory also converts the quantity to the primary unit of measure so that it can correctly update the on-hand quantity.

8. Enter the quantity of the asset to receive, based on the unit of measure that you specified.
9. If using average costing, enter the unit cost of the item to receive or issue. Leave this field blank to use the system average cost at the time of the transaction.
10. Enter a location from where you are receiving an asset. You must enter the location field for this transaction type.
11. Optionally, enter a reason code for the transaction. For example, you can use reason codes to allow you to mark exceptional charges to support quality data collection.
12. Optionally, enter text that describe the transaction.
13. Enter a general ledger account for the item to use in the transaction. You can change this account only for miscellaneous issue/receipt or user-defined transaction types.
14. To enter lot or serial number information, choose the Lot/Serial button.
15. Save.

About Miscellaneous Issues

For miscellaneous issues, you can enter a lot number in the Lot field and a serial number for serial-controlled and lot-controlled items.

- If the item is serialized, then the instance record is updated to zero quantity.
- If the item is non-serialized, then Oracle Asset Tracking searches for the existing record. The search criteria are as follows: Inventory Item, Inventory Organization, Subinventory, Units of Measure, Instance Usage Code, Revision, Inventory Locator, Lot Number (if applicable). The record is updated to the appropriate quantity.

The following table summarizes the actions performed during the processing of the Miscellaneous Issue transaction:

Miscellaneous Issue Transaction Processing

Serialized item	Non-serialized item
Set quantity to zero. (Item instance will no longer appear in item instance searches.)	Reduce the on-hand quantity.

About Miscellaneous Issues to Projects

You must have defined the Miscellaneous Issue to Project transaction in Oracle Inventory as part of the implementation of Oracle Asset Tracking. For more information, see the section "Define User-definable Transaction Types" in the *Oracle Asset Tracking Implementation Guide*.

The Miscellaneous Issue to Project transaction works exactly the same way as the standard Move Order.

- For a serialized item, the instance record is updated. The instance usage code changes to IN PROCESS.
- For a non-serialized item, a new instance is created with instance code = IN PROCESS. If the record exists for the same instance, then that record is updated. The search criteria are as follows: Inventory Item, Inventory Organization, Subinventory, Units of Measure, Instance Usage Code, Revision, Inventory Locator, Lot Number (if applicable).

The following table summarizes the actions performed during the processing of the Miscellaneous Issue to Project transaction:

Miscellaneous Issue to Project Transaction Processing

Serialized item	Non-serialized item
Change location. Set usage code to IN PROCESS.	Reduce quantity from the inventory item instance, and increase quantity for the project item instance.

About Miscellaneous Issues to Field Location

Use this transaction to issue item to a field location directly from the warehouse.

Oracle Asset Tracking marks this transaction as an IN SERVICE transaction, and the asset can be created after the transaction is complete. The asset location of the existing assets will be changed after running Interface Move Transactions to Oracle Assets program.

You must have defined the Miscellaneous Issue to Field Location transaction in Oracle Inventory as part of the implementation of Oracle Asset Tracking. For more information, see the section "Define User-Definable Transaction Types" in the *Oracle Asset Tracking Implementation Guide*.

For a serialized item, the instance record is updated. The instance usage code changes to IN SERVICE. For a non-serialized item, a new instance is created with instance code = IN SERVICE. If the record exists for the same instance, then that record is updated.

The search criteria are as follows: Inventory Item, Inventory Organization, Subinventory, Units of Measure, Instance Usage Code, Revision, Inventory Locator, Lot Number (if applicable).

The following table summarizes the actions performed during the processing of the Miscellaneous Issue to Field Location transaction:

Miscellaneous Issue to Field Location Transaction Processing

Serialized Item	Non-Serialized Item
Change location to the specified location.	Reduce quantity from the inventory item instance, and increase quantity for the in-service item instance.
Set usage code to IN SERVICE.	

About Subinventory Transfers

A subinventory transfer moves material inventory between subinventories. A subinventory is a unique physical or logical separation of material inventory, such as raw inventory, finished goods, or defective material. All material within an organization is held in one or more subinventories.

A move order initiates a subinventory transfer. Oracle Asset Tracking handles these transfers in the same manner that Oracle Inventory handles them.

The way Oracle Asset Tracking processes a subinventory transfer is based initially on whether or not the transferred item has a serial number.

About Items with a Serial Number

Oracle Asset Tracking searches the database for the From record associated with the item. This record must have an Oracle Asset Tracking usage code of IN INVENTORY. After Oracle Asset Tracking locates the record, it updates the item's subinventory in the

From record.

About Items without a Serial Number

Oracle Asset Tracking searches the database for the From and To records. These records must have an Oracle Asset Tracking usage code of IN INVENTORY. After Oracle Asset Tracking locates the records, it updates the item's subinventory in both the From and To records.

- The source instance (the subinventory instance record from which the item is transferred) and the destination instance (the subinventory instance record to which the item is transferred) is searched on the following criteria: Inventory Item, Inventory Organization, Subinventory, Units of Measure, Instance Usage Code, Revision, Inventory Locator, Lot Number (if applicable).
- If both source and the destination records are found, then they are updated with transaction quantity. If either of the instance records is not found, then it is created.

For more information on how subinventory transfer are processed, see *Oracle Inventory User's Guide*:

About Inter-Organization Transfers

An inter-organization transfer moves items between organizations. This transfer can be either a direct or an in-transit transaction.

Direct versus In-Transit Transactions

In a **direct transaction**, a shipping organization transfers an item into a subinventory in the receiving organization. For this reason, the application treats a direct inter-organization transfer the same as a subinventory transfer.

For an **in-transit transaction**, the monetary value of the transferred item is deposited in an in-transit account, and the inventory account of the shipping organization receives credit for the item. Upon receipt of the transferred item, the receiving organization must perform a receipt transaction to bring the item into its inventory. The receipt transaction credits the in-transit account and debits the inventory account of the receiving organization.

Inter-Organization Transfers Tied to Oracle Inventory

Oracle Asset Tracking uses the same process that Oracle Inventory uses to transfer materials between organizations. Before items can be transferred, items must be defined and subinventories must be created in Oracle Inventory.

If the organization from which the item is being transferred does not allow negative inventory balances, then it must contain sufficient on-hand inventory for the transaction to occur.

Initial Step to Processing Inter-organization Transfers

If the inter-organization transfer is a direct transaction, then the application treats it the same as a subinventory transfer.

If the inter-organization transfer is an in-transit transaction, then the application searches the database for the From record associated with the item. This record must have a status of In Inventory or In Depreciable Inventory and a transaction status of Complete. If the item fails to meet these conditions, then it generates an error message.

There is no difference, from an Oracle Asset Tracking perspective, between a FOB Shipment or FOB Receipt type transaction.

Inter-Organization Transfers of Items with Serial Numbers

For an in-transit transfer of an item with a serial number from one organization to another, the application follows these steps:

1. In-Transit Shipment

The source record for the From organization and subinventory is located. Then it is updated with the To organization and the Oracle Asset Tracking usage code of IN TRANSIT. The subinventory information is removed from the record. If the transaction is successfully processed, then transaction records are created to store the transaction history

2. In-Transit Receipt

When the item reaches its destination, someone enters a receipt transaction for the item. The IN TRANSIT record with the To organization is located, and it is updated with the usage code IN INVENTORY.

Inter-Organization Transfers of Items without Serial Numbers

For an In-Transit transfer of an item without a serial number from one organization to another, the application follows these steps:

1. In-Transit Shipment

The source record for the From organization and subinventory is located, and the quantity is subtracted by the transaction quantity. An IN TRANSIT record is then created with the destination organization and transaction quantity. No subinventory information is kept in this record. If such a record already exists, then the quantity is increased by the transaction quantity.

2. In-Transit Receipt

When the item reaches its destination, someone enters a receipt transaction for the item. The IN TRANSIT record with the To organization is located. The quantity is subtracted with the transaction quantity. The destination record is located based on

the To organization and subinventory. If the record exists, then the quantity is increased by the transaction quantity. If there is no such record, then a new destination record is created. If the transaction is successfully processed, then transaction records are created to store the transaction history.

To and From Subinventory Type Must Be Compatible

A subinventory may have a type of either asset or expense.

For Oracle Asset Tracking, the only type of item transfer allowed is the following:

- From asset subinventory to asset subinventory

If the type of the From subinventory does not match the type of the To subinventory, then the application generates an error.

About Physical Cycle Counts

A physical inventory occurs when a person verifies that units exist physically and that the quantities match the on-hand records in Oracle Asset Tracking. Based on the results of the physical inventory, Oracle Asset Tracking supports adjustments that you make to your inventory balances. Depending on the type of inventory adjustment necessary, Oracle Asset Tracking treats these adjustments like a miscellaneous transaction. For example, if the item quantity increases after physical count, then there will be miscellaneous receipt transaction.

About Asset Handling for Internal Sales Orders

Oracle Asset Tracking performs cost and unit adjustments to assets when they are moved using internal sales orders. This handling applies to depreciable and normal items that have assets associated with them.

The integration of Oracle Asset Tracking with Oracle Assets supports the following Oracle Inventory transactions. Item definition as Depreciable or Normal must be kept at the master organization level and must not be changed at organization level.

- Direct Inter-Organization Transfers
- In-Transit Inter-Organization Transfers
- Direct Internal Sales Order
- In-Transit Internal Sales Order

In the case of in-transit shipments, item instances are in transit until they are received into a receiving organization. Such in-transit transactions interact with Oracle Assets only upon receipt of the material or item in the receiving inventory organization.

Oracle Asset Tracking does *not* maintain Instance-Asset links for in-transit instances.

Oracle Asset Tracking performs the following updates based on the item definition:

- **Depreciable Items:** Update the fixed asset location if it is different from the source and destination location. If the asset category is different, then update the asset cost and units of the source asset and create or update the destination asset.
- **Normal Items with Assets:** In case of redeployment, serialized normal items have fixed assets associated with them. If any of the inter organization transactions are performed, then these transactions are also required to interact with Oracle Assets. Update the fixed asset location if it is different from the source and destination location. If the asset category is different, then update the asset cost and units of the source asset and create or update the destination asset.

All of the inter-organization transfer and internal sales order transactions are processed by Oracle Asset Tracking-Oracle Assets integration as asset move transactions.

Typically all of the transactions and various scenarios can be broadly categorized as indicated in the following table.

Case #	Shipping Org "Inventory" Usage Code Instance Serialized or Non-Serialized	Receiving Org "Inventory" Usage Code Instance Serialized or Non-Serialized	Actions with Oracle Asset Tracking and Oracle Assets
1	Serialized	Serialized	The application performs an Oracle Assets location change if the source and destination asset locations are different or if the source asset category is different from the destination asset category. Then it retires the source asset and creates a new asset in the destination organization.
2	Serialized	Non-Serialized	The application retires the source serialized instances. Then it creates or updates the destination asset.

Case #	Shipping Org "Inventory" Usage Code Instance Serialized or Non-Serialized	Receiving Org "Inventory" Usage Code Instance Serialized or Non-Serialized	Actions with Oracle Asset Tracking and Oracle Assets
3	Non-Serialized	Serialized	The application performs asset cost and unit adjustment on the source asset and creates serialized destination assets.
4	Non-Serialized	Non-Serialized	The application performs an Oracle Assets location change if the source and destination asset location are different or if the source asset category is different from the destination asset category. Then it performs negative cost adjustment on the source asset and creates or updates the destination asset.

To avoid inventory costing conflicts for assets, receive and store capitalized items in separate expense-type subinventory. In addition, keep the inventory asset flag cleared if you do not wish to create assets upon miscellaneous receipts.

Explaining Other Inventory Transactions

Assets are capitalized either at the time of receipt or after commissioning in-service. They move in and out of inventory for various reasons, such as repairs, re-deployments, or storage. Oracle Asset Tracking supports all inventory transactions for the assets. This includes the Work in Process (WIP) transactions.

If an assembly is built using a WIP standard or non-standard job, then the cost of all the non-capitalized components are collected to a single fixed asset. The capitalized components carry the value in fixed assets. If the non-component is removed from the assembly, then the cost of assembly is reduced by the current inventory cost of a component. As a result, the component is added to the inventory stock with the current inventory value, depending on the costing method used. If a capitalized component is removed then there is no financial effect on the parent or component asset.

The following table describes some inventory transactions and the action to the associated fixed asset:

Inventory Transaction	Item is Depreciable	Asset Has a Fixed Asset	Action to the Associated Fixed Asset
WIP Component Issue WIP Negative Component Return	Yes or No	Yes	Updates the fixed asset location to point to the WIP fixed asset location.
WIP Assembly Completion	Yes	No	Creates fixed asset upon receipt into inventory based on WIP cost of the top assembly. The NBV of capitalized components will not be included in this cost.
WIP Assembly Completion	No	No	No action
WIP Assembly Return	Yes or No	Yes	Updates the fixed asset location of the top assembly to point to the WIP fa location.
WIP Negative Component Issue	Yes or No	Yes	Updates the fixed asset location to point to the inventory fa location.
WIP Negative Component Issue	Yes	No	Creates fixed asset at inventory fa location with inventory cost.
Project Contract Issue Sales Order Issue	Yes or No	Yes	Retires the fixed asset

Project Borrow	Yes or No	Yes	Updates the fixed asset location to point to new sub inventory fa location.
Project Transfer			
Project Payback			
Sales Order Pick			
Cycle Count Transfer			
Cycle Count Adjustments	Yes	Yes	For positive adjustment transactions, performs unit and cost adjustments to the existing fixed assets or if fixed asset does not exists, creates fixed assets.
Internal Requisition Receipt Adjustments			
Shipment Receipt Adjustments			For negative adjustments, performs prorated negative unit and cost adjustments.
Cycle Count Adjustments	No	Yes	For positive adjustment transactions, there is no action.
Internal Requisition Receipt Adjustments			
Shipment Receipt Adjustments			For negative adjustments, performs prorated negative unit and cost adjustments.
Lot Split	Yes or No	Yes	No fixed asset updates are required.
Lot Merge			
RMA Receipt	Yes	No	Creates fixed asset based on inventory cost.
RMA Receipt	No	Yes	Updates fixed asset location to point to inventory location.

RMA Return	Yes or No	Yes	Retires the fixes asset.
------------	-----------	-----	--------------------------

Understanding Asset Deployment

This chapter covers the following topics:

- Overview of Understanding Asset Deployment
- About Asset Deployment
- About Asset Deployment Transactions
- About Partial Installation and In-Service Conditions
- Selecting the Location for the Item Instance
- Using the Item Instance Deployment Pageassets, deploymentstepsassets, deploymentItem Instance Deployment PageItem Instance Deployment Page

Overview of Understanding Asset Deployment

This topic group describes how to deploy assets using Oracle Asset Tracking.

About Asset Deployment

Asset deployment is a capability of Oracle Asset Tracking. The purpose of asset deployment is to signal the completion of operational tasks, to update item statuses in Oracle Installed Base, and to initiate the asset creation and update processes in Oracle Projects and Oracle Assets.

Oracle Asset Tracking can be integrated with external systems. Oracle Asset Tracking provides an interface API as well as the Asset Deployment window for an external workforce management application to transmit transaction parameters to Oracle Asset Tracking.

For an overview of the asset operations and their dependence on Oracle Asset Tracking usage codes, see About Asset Processing for Normal and Depreciable Inventory Items, page 6-2.

From the user's perspective, usage codes no longer appear. The user views operational

status codes.

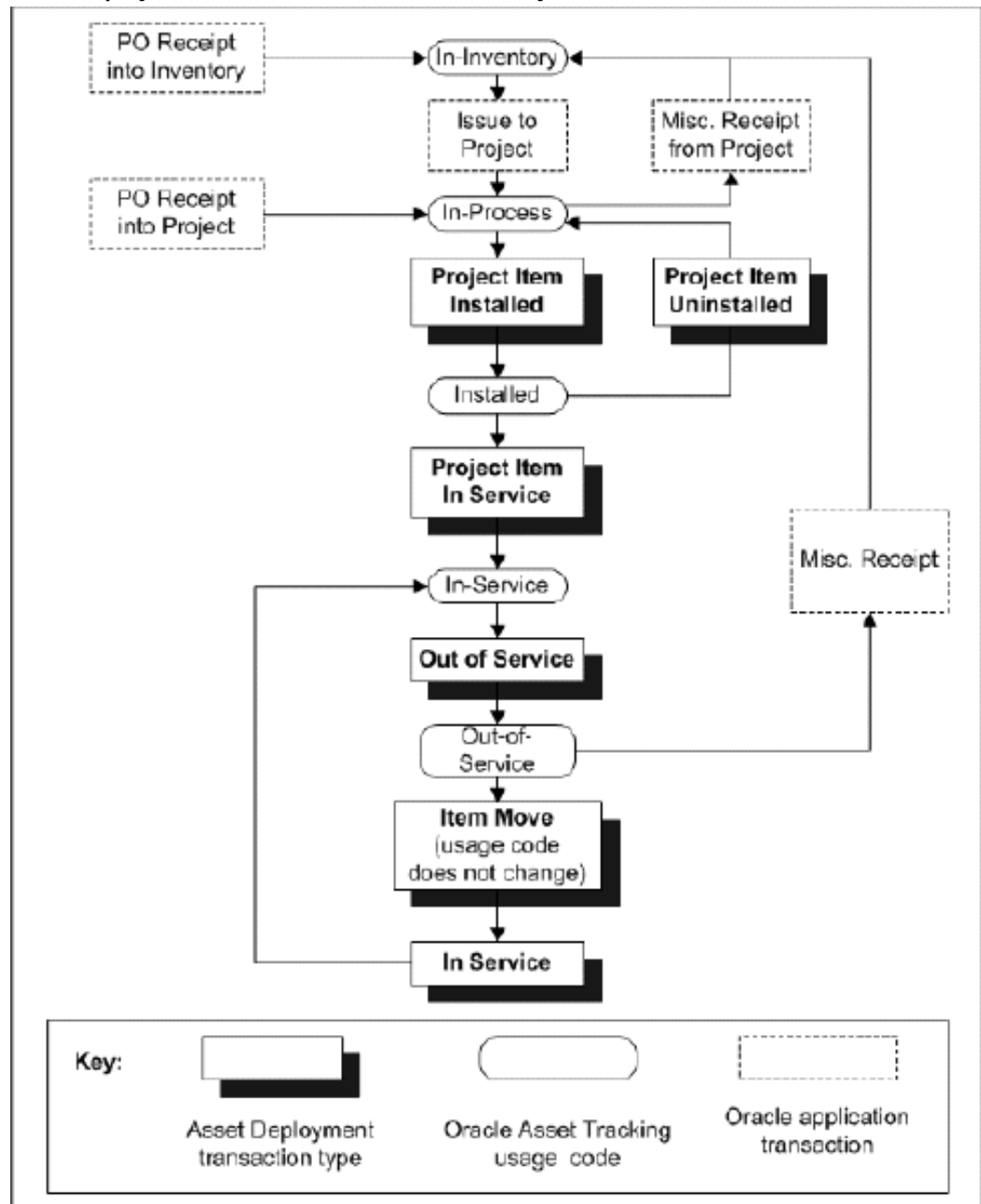
Asset deployment topics are as follows:

- About Asset Deployment Transactions, page 3-1
- About Partial Installation and In-Service Conditions, page 3-3
- Selecting the Location for the Item Instance, page 3-4
- Using the Item Instance Deployment Page, page 3-4

About Asset Deployment Transactions

The diagram that follows shows the life cycle flow of an item instance, with the asset deployment and Oracle application transactions that change the Oracle Asset Tracking usage codes for the item instance. Asset deployment transactions in item instance life cycle flow.

Asset Deployment Actions in Item Instance Life Cycle Flow



About Partial Installation and In-Service Conditions

When material is issued from inventory to a project, a cost expenditure is created in Oracle Projects that includes the quantity and the cost of material. Oracle Asset Tracking creates the appropriate expenditures in Oracle Projects after the equipment is placed in service. Further processing by Oracle Projects programs creates assets based

on these expenditures.

You can capitalize some or all of the material assigned to a project. For example, assume that ten items have been issued to the project. A technician installs five and then places only three items in service. This means that only three (or a cost expenditure equal to 3 times the unit cost) are capitalized immediately. Expenditure will be capitalized only after the associated equipment (asset) is deployed in service.

Selecting the Location for the Item Instance

In all the asset deployment transactions, to accurately track an item instance, you must select the current location of the item instance.

There are a number of options that are common to all the selections for the location of an item instance.

The value for the location can be an internal site or an external party site.

When entering location information, you must first select a Location Type from the following list:

- HZ Location
- Internal Site
- Party Site

If you select either HZ Location or Internal Site for the Location Type, then you must select a location into the Location field. The list of values for the Location field depends on your selection of Location Type:

- If you select HZ Location, then the list of values for the Location field displays the Addresses as set up in the Trading Community Architecture (TCA) locations.
- If you select Internal Site, then the list of values for the Location field shows only locations related to an enterprise organization.

If you select Party Site for the Location Type, then you must select a party into the Party field.

Using the Item Instance Deployment Page

Use this procedure to use the Item Instance Deployment page.

To use the Item Instance Deployment page:

1. Using the Asset Tracking Super User responsibility, navigate to Assets and then select Deployment.

The Item Instance Deployment page appears.

2. Select an action from the list.

You can choose one of the following actions:

- **Install:** You can install material issued to the project at a specific location.
When an instance is issued to a project, the operational status code is Not Used. After you install it, the application updates the operational status code to Installed.
- **Move:** You can move an item instance from one location to another.
The operational status does not change.
- **Project Transfer:** You can transfer an item instance from one project to another if the operational status is Not Used or Installed.
Oracle Projects reverses the expenditure item from the origin project, using the Net Zero Adjustment functionality, and then creates a new expenditure item for the destination project.
- **Put Into Service:** You can put an item in service if it is still in a project (operation status Not Used), Installed, or Out Of Service.
- **Retirement:** You can retire an item instance operationally (the instance is expired), or both operationally and functionally (the corresponding fixed asset is also retired from the books). You can enter the removal costs and the proceeds from sales only if the item instance is capitalized.
- **Take Out Of Service:** You can take an item instance out of service only if the operational status is Not Used or In Service.
- **Un-Install:** You can un-install an asset if the operational status is Installed.

3. Enter your search criteria. You can limit the search results by entering data into the following fields:

- Item Instance
- Item
- Asset Number
- Purchase Order Number
- External Reference
- Serial Number
- Current Location Type

- Operational Status
- System

4. Click the **Go** button.

The search results appear in the lower portion of the page.

Note: If you want to change your search criteria, then click the Clear button and enter the new criteria.

5. To perform an action:

1. Select the associated checkbox for a row in the results table.

Note: You may select more than one.

2. Click the button in the Select Object block.

Note: The button that you see in the Select Object block is tied to the action that you selected for your search. For example, if you selected the action Move, then the Move button appears in the Select Object block.

The page associated with the action that you selected appears. For example, if you selected the action Move, then the Move: Item Instance page appears.

6. Update the fields for the action that you selected. The following provides an overview of each of the action detail pages.

- **Install: Item Instance**

1. Enter a value in the Source Reference Number field.
2. Enter a date in the Source Reference Date field.
3. Update the number in the Transaction Quantity field. The transaction quantity cannot exceed the actual quantity.
4. Select a value from the Location Type LOV.
5. Select a value from the Location LOV.

- **Move: Item Instance**

1. Enter a value in the Source Reference Number field.
 2. Enter a date in the Source Reference Date field.
 3. Update the number in the Transaction Quantity field. The transaction quantity cannot exceed the actual quantity.
 4. Select a value from the Location Type LOV.
 5. Select a value from the Location LOV.
- **Project Transfer: Item Instance**
 1. Enter a value in the Source Reference Number field.
 2. Enter a date in the Source Reference Date field.
 3. Update the number in the Transaction Quantity field. The transaction quantity cannot exceed the actual quantity.
 4. Select a value from the To Project Number LOV.
 5. Select a value from the To Task Number LOV.
 - **Put Into Service: Item Instance**
 1. Enter a value in the Source Reference Number field.
 2. Enter a date in the Source Reference Date field.
 3. Update the number in the Transaction Quantity field. The transaction quantity cannot exceed the actual quantity.
 4. Enter a date in the Placed Into Service field.
 - **Retirement: Item Instance**
 1. Enter a value in the Source Reference Number field.
 2. Enter a date in the Source Reference Date field.
 3. Update the number in the Transaction Quantity field. The transaction quantity cannot exceed the actual quantity.
 4. Enter an amount in the Cost of Removal field.
 5. Enter an amount in the Proceeds of Sale field.

6. Select the Operational check box, if appropriate.
 7. Select the Financial check box, if appropriate.
 8. Select an asset from the Asset Number LOV.
 9. Enter a date in the Retirement Date field.
- **Take Out Of Service: Item Instance**
 1. Enter a value in the Source Reference Number field.
 2. Enter a date in the Source Reference Date field.
 3. Update the number in the Transaction Quantity field. The transaction quantity cannot exceed the actual quantity.
 - **Un-Install: Item Instance**
 1. Enter a value in the Source Reference Number field.
 2. Enter a date in the Source Reference Date field.
 3. Update the number in the Transaction Quantity field. The transaction quantity cannot exceed the actual quantity.
7. Click the **Apply** button.

A confirmation message appears.
 8. Click the **Done** button to return to the Deployment Search page.

Understanding Field Service Integration

Overview of Understanding Field Service Integration

This topic provides an understanding of the interaction between Oracle Asset Tracking and Oracle Field Service, as well as the functionality of Oracle Field Service.

About Field Service Integration

With Oracle Field Service you can create service requests and tasks for internal assets. Oracle Asset Tracking provides Oracle Field Service with the complete service history for both customer and internal assets. When Field Service debrief transactions are captured as part of the item instance transaction history, Oracle Asset Tracking captures the associated service request and task. It also tracks the date and time an asset is in or out of service. In addition, Oracle Asset Tracking can update the operation status of a recovered asset to Out of Service. All Oracle Asset Tracking deployment transactions can be performed from Oracle Field Service. Please refer to the section About Asset Deployment, page 3-1 for more details.

For more information on Oracle Field Service refer to the *Oracle Field Service User Guide*.

Viewing Service Request Numbers and Task Numbers

Use this procedure to view service request numbers and task numbers in the transactions history of Oracle Asset Tracking.

Prerequisite:

You must have an asset with an associated service request or task number.

To view service request numbers and task numbers:

1. From the Asset Tracking Super User responsibility, navigate to Transactions and then select View Transactions.

2. Query the transaction for which you want to view the service request or task number.
3. Find the service request or task number within the query results table:
 - The Source Group Reference Number field contains the service request number.
 - The Source Header Reference Number contains the task number.

Understanding Projects Integration

This chapter covers the following topics:

- Overview of Understanding Projects Integration
- How Purchase Order Receipts Flow into Project Transactions
- Receiving Items Directly into an Oracle Project
- About Transaction Sources for Project Importtransaction sourcesproject import
- About Expenditure Inquiry
- About Asset Creationassetscreatingprograms, runningasset creation
- Running the PRC: Generate Asset Lines for a Single Project Programprograms, runningPRC: Generate Asset Lines for a Single ProjectPRC: Generate Asset Lines for a Single Project programrunningPRC: Generate Asset Lines for a Single Project programoverview
- Running the PRC: Interface Assets to Oracle Asset ProgramPRC: Interface Assets to Oracle Asset programrunningPRC: Interface Assets to Oracle Asset programoverviewprograms, runningPRC: Interface Assets to Oracle Asset

Overview of Understanding Projects Integration

This topic provides an understanding of the interaction between Oracle Asset Tracking and Oracle Projects, as well as the functionality of Oracle Projects.

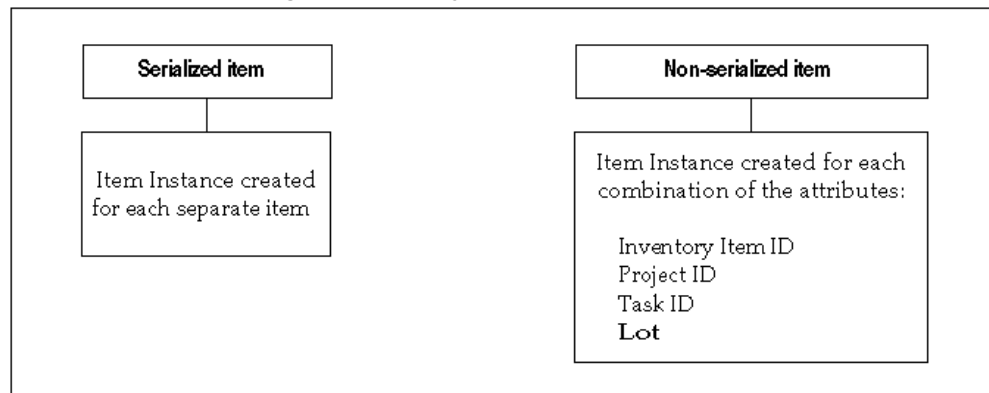
How Purchase Order Receipts Flow into Project Transactions

The flow of purchase order receipts starts with the creation of a purchase order. Items against the purchase order are then received into the project. The Oracle Asset Tracking purchase order receipt package validates the receipt data against the Oracle Installed Base repository and creates or updates the repository instance depending upon the physical attributes of the instance.

- For non-serialized items, physical attributes are combinations of values for Inventory Item, Project ID, Task ID, and Instance Status. If any values of these attributes are different, then the application creates a new instance in Oracle Installed Base. If these attributes match, then the application adds the new receipt to the same instance.
- For serialized items, Oracle Installed Base *always* creates a new instance.

The following figure shows the factors that determine how an item instance is created or updated during the Oracle Projects transactions which affect Oracle Asset Tracking.

Item Instance Processing in Oracle Projects Transactions



- During the process of creating purchase orders for expense items, that is, receipt into project, you must check the Accrue on Receipt flag in the purchase order shipment. Project information can be captured in the distribution record only when the destination type is Expense. Accrual at period end is not supported.
- Run the PRC Transaction Import process to create project expenditures after receipt is complete. Use the Expenditure Inquiry window in Oracle Projects to view the expenditures.
- For a depreciable item, an asset is created upon receipt. Therefore, the cost is transferred from Oracle Assets to Oracle General Ledger and not from Oracle Projects. To create mass additions in Oracle Assets, you must run the Create Assets – Interface Inventory Transactions to Oracle Assets concurrent program.

Receiving Items Directly into an Oracle Project

Use the following procedure to receive an item into an operating project.

Note: A depreciable item can also be received directly into a project.

Prerequisites

The associated purchase order must exist in Oracle Purchasing with a status of Approved. The purchase order line must include:

- The project and task number referenced in the purchase order distribution.
- A purchase order shipment, which is marked as Accrue on Receipt.
- A purchase order distribution with the destination type Expense.
- Items on the purchase order should have an asset category tied to them in the item definition of the organization where they are received. This asset category should be assigned to the Asset Book specified in the profile CSE: Book Type Code.

The item number must be defined in Oracle Inventory. The project must be defined with a status of Active.

To receive items directly into an Oracle Project:

1. From the Inventory responsibility, navigate to Transactions. Select Receiving and then select Receipts.
The Organizations window opens.
2. Choose your organization from the Organizations window, and click Find.
3. In the Find Expected Receipts window, enter any criteria that identify the items that you are receiving such as the purchase order number and the item number, and click Find.

The Receipt Header and Receipt Lines open to display items that match the criteria entered.

4. In Receipt Header, enter the packing slip number and any other pertinent information.
5. Verify that the Receipt line has a value for Deliver-to location.

When project information has been entered on the purchase order, the Deliver-to location is defined and appears on this Receipt line.

Note: The Deliver-to location must be set up in the Oracle Asset Tracking Locations window and have an associated fixed asset location.

6. For serialized items, capture serial numbers in the Lot/Serial window.
7. Click Save to receive the item into the project and commit the receipt transaction.

The application looks for an existing record for the item. If it locates a record and the receipt transaction has processed successfully, then it updates the item record with the quantity received.

If the application does not find an existing record, then it creates one for the receipt. The application sets the Oracle Asset Tracking usage code to In Inventory and its Oracle Installed Base transaction status to Complete.

About Transaction Sources for Project Import

Transaction sources identify the source of external transactions that you import into Oracle Projects using Transaction Import. For example, you can define the transaction source *Payroll* to identify expenditure items imported from an external payroll system. Transaction Import imports the transactions and creates corresponding expenditure records in the Oracle Projects expenditure tables. The following are Oracle Asset Tracking transaction sources:

- CSE_INV_ISSUE: Use this transaction for importing expenditures of type Issue to Project for a normal item
- CSE_INV_ISSUE_DEPR: Use this transaction for importing expenditures of type Issue to Project for a depreciable item
- CSE_IPV_ADJUSTMENT: Use this transaction for cost to be adjusted to the project
- CSE_IPV_ADJUSTMENT_DEPR: Use this transaction for cost to be adjusted to the asset
- CSE_PO_RECEIPT: Use this transaction for type Receipt into Project for a normal item
- CSE_PO_RECEIPT_DEPR: Use this transaction for type Receipt into Project for a depreciable item
- INVENTORY MISC: Use this transaction for miscellaneous transactions such as Miscellaneous Issue and Miscellaneous Receipt

About Expenditure Inquiry

After the expenditure records are created through Transaction Import, use the Expenditure Inquiry window to review a project's expenditure items. You can see the amount and type of expenditure items charged to a project, how much revenue has accrued for an expenditure item, and other information about the project's expenditure items. For normal items that came through inventory, the expenditures are not created until the concurrent process PRC Distribute Usage and Miscellaneous Costs is run.

For more information, see *Oracle Projects Implementation Guide*.

About Asset Creation

After performing the purchase order receipt, the following steps are required to create assets in Oracle Assets:

1. Run the Oracle Projects program PRC: Transaction Import. This program interfaces the PA transaction interface data that was created during the purchase order receipt process and creates expenditure items in the projects application for the project and task specified in the purchase order distribution.
2. Perform an Install transaction for the received item/serial using the Deployment Transactions page. The application captures the installation location information and updates the item instance with the operational status Installed.
3. Perform an In Service transaction for the installed item/serial using the Deployment Transactions page. The application captures the date that the item is placed in service and qualifies this item/serial to be capitalized. The application item instance updates with the operational status of In Service.
4. Verify that the Purchase order receipt transaction is accounted in sub-ledger accounting. Run the Oracle Cost Management program Create Accounting from the Cost Management - SLA responsibility for the process category Receiving.
5. Run the Oracle Asset Tracking program Interface In-Service transactions to Oracle Projects for the project and task. This program reverses the originally created expenditure items using the net-zero adjustment functionality and recreates the expenditure items in PA transaction interface with all the attributes (item, serial, book type, asset category, location and product classification) required by the CRL process to complete the capitalization process.

Note: Oracle Asset Tracking leverages the functionality of CRL Projects to capitalize project related expenses.

6. Run the Oracle Projects program PRC: Transaction Import. This interfaces the newly created PA transaction interface data to expenditure items.
7. Run the Oracle Asset Tracking program Create Asset Headers in Oracle Projects - Normal Items. This program automates the creation of a project asset. After this process is completed, you can navigate to the capital projects form and query up the project to see the project assets that have been created.
8. Run the Oracle Projects program PRC: Interface Assets to Oracle Asset. This program ties the expenditure items that you created in step 6 to the asset headers that you created in step 7 and creates project asset lines. The project asset is ready to be interfaced to Oracle Assets.

9. Run the Oracle Assets request set Post Mass Additions.

This program interfaces the project asset information to Oracle Assets by creating records in FA_MASS_ADDITIONS.

10. Run the Oracle Assets request set Post Mass Additions.

See also About Asset Processing for Normal and Depreciable Inventory Items, page 6-2.

The topics in this section are the following:

- Running PRC: Generate Asset Lines for a Single Project, page 5-6
- Running PRC: Interface Assets to Oracle Asset, page 5-6

Running the PRC: Generate Asset Lines for a Single Project Program

Use this concurrent program to generate summary asset lines for a single project.

To run the PRC: Generate Asset Lines for a Single Project

1. From the CRL 11i Projects responsibility, navigate to Projects and select Other, Requests, and then select Run.
2. Choose to run a single report.
3. In the Name field, choose PRC: Generate Asset Lines for a Single Project
4. Click Submit.
5. The application assigns an ID number to your request. Use the ID number to find your request in the View Request window.

Related Topics

Viewing Request Results, page 7-2

Running the PRC: Interface Assets to Oracle Asset Program

Use this concurrent program to send valid asset lines to Oracle Assets to become fixed assets. The process creates one mass addition line in Oracle Assets for each asset line in Oracle Projects, assigning the asset information you entered for the CIP asset to the mass addition line in Oracle Assets.

To run PRC: Interface Assets to Oracle Asset

1. From the CRL 11i Projects responsibility, navigate to Projects and select Other, Requests, and then select Run.
2. Choose to run a single report.
3. In the Name field, choose PRC: Interface Assets to Oracle Asset.
4. Click Submit.

The application assigns an ID number to your request. Use the ID number to find your request in the View Request window.

Related Topics

Viewing Request Results, page 7-2

Understanding the Fixed Asset Architecture

This chapter covers the following topics:

- Overview of Fixed Asset Architecture
- About Asset Processing in Oracle Asset Tracking
- About Asset-Related Processes in Oracle Asset Tracking
- Running the Create Assets Interface Inventory Transactions to Fixed Asset Program
Create Assets Interface Inventory Transactions to Fixed Asset program
running Create Assets Interface Inventory Transactions to Fixed Asset program
overview programs, running Create Assets Interface Inventory Transactions to Fixed Asset
- Running the Create Asset Headers in Oracle Projects - Normal Items
Program
Create Asset Headers in Oracle Projects - Normal Items
Program
running Create Asset Headers in Oracle Projects - Normal Items
Program
overview programs, running Create Asset Headers in Oracle Projects - Normal Items
- Running the Interface Move Transactions to Oracle Assets Program
programs, running Interface Move Transactions to Oracle Assets
Interface Move Transactions to Oracle Assets Program
running Interface Move Transactions to Oracle Assets Program
overview
- About Asset Impact of a Miscellaneous Issue
- About Asset Impact of Subinventory Transfers
- About Asset Impact of Inter-Organizational Transfers
- About Asset Impact of Physical Inventory and Cycle Count Adjustments
fixed assets
impact of physical inventory and cycle count adjustment
transactions
physical inventory and cycle count adjustments
- Case Study
fixed assets
case study
- Understanding the CLEI
CLEI (Common Language Equipment Identifier)
overview
- Overview of Retirements
asset retirement
overview
retirements
asset

- Associating a Fixed Asset to an Item Instanceitem instancesassociating fixed assetsfixed assetsassociating item instances
- Viewing Asset Relationships Graphicallyassetsviewing relationshipsgraphicallyasset relationshipsviewing

Overview of Fixed Asset Architecture

This topic provides an understanding of the interaction between Oracle Asset Tracking and Oracle Assets.

About Asset Processing in Oracle Asset Tracking

Oracle Asset Tracking can interface assets directly to Oracle Assets by using concurrent programs. After an asset is created, any physical movement to the associated item automatically updates the financial records based on the synchronization flag set for the instance. This reduces the amount of manual intervention required to maintain your financial system.

For example, when a depreciable item is received, run the Create Assets: Interface Inventory Transactions to Fixed Asset program to create an asset. Now the asset is linked with the item. Suppose an item is moved to a different organization. Oracle Asset Tracking checks for necessary changes for asset location, and asset category if applicable. Accordingly, Oracle Asset Tracking makes the necessary changes to the asset, which may involve retiring an existing asset and creating a new asset in the new organization.

Oracle Asset Tracking also maintains the history of all the transactions performed. This gives you total visibility of all items and their related assets.

When Oracle Asset Tracking creates a transaction that has a financial, asset-related impact, the transaction is stored in a transaction table with an Oracle Installed Base status of Pending. Later, a concurrent program reads the transaction log and processes all the transactions in sequence. The Oracle Asset Tracking concurrent program processes each transaction in the transaction table one by one. The program determines the appropriate asset record if applicable, inserts a record into the fixed asset interface table, and then changes the Oracle Installed Base status to Complete. If any of these processes fails, then the status remains at the pending stage.

A user can review the asset records in the asset interface table if necessary before posting them to the asset book. For more information, refer to the section on reviewing mass additions lines in the *Oracle Assets User Guide*. A tieback from Oracle Assets returns the asset ID to the Oracle Asset Tracking business logic or client extension and updates the Oracle Installed Base Instance-Asset assignment table.

About Asset-Related Processes in Oracle Asset Tracking

The following table shows the concurrent programs and request sets in Oracle Asset Tracking that interface with Oracle Assets to make the asset-related changes in Oracle Assets.

Processes to Create and Update Oracle Assets

Name of the Program or Report	Description
Create Assets: Interface Inventory transactions to Fixed Asset	<p>This is a concurrent program with the following features:</p> <ul style="list-style-type: none">• Creates an asset or cost adjustment when a depreciable item is received either in Oracle Inventory or Oracle Projects• Creates an asset or cost adjustment when a normal item is issued to a field location directly without using projects
Create Asset Headers in Oracle Projects - Normal Items Program Note: This program was formerly called Asset Header for Normal Item Report.	<p>This concurrent program creates an asset header for capitalized project expenditures. Asset creation is based on item, serial (if serialized item), asset category, date placed into service, and product classification.</p>
Interface In-Service Transactions to Oracle Projects - Normal Items	<p>This concurrent program should be run after deployment transactions on a project instance. It writes records into the PA interface table PA_TRANSACTIONS_INTERFACE_ALL and changes the status of the In Service transactions to Interfaced to PA</p>
Interface Move Transactions to Oracle Assets Note: This program was formerly called Interface Move and Misc Transactions to Fixed Assets - Report	<p>This concurrent program processes any item moves like subinventory transfer, inter-organization transfer, miscellaneous issues, and physical inventory adjustments for which an asset already exists.</p>

Name of the Program or Report	Description
Interface Unit Adjustments to Oracle Assets - Normal Items	When Oracle Purchasing receives a normal/non-serialized item into a project, a fixed asset is created. When another receipt happens for the same item into the same project this concurrent program ensures the receipt is in sync for both value and quantity. Oracle Asset Tracking and Oracle Projects adjust the existing fixed asset only when the second receipt happens within the same fixed asset accounting period of the first receipt.

The topics in this section are the following:

- Running the Create Assets Interface Inventory Transactions to Fixed Asset Program, page 6-4
- Running the Create Asset Headers in Oracle Projects - Normal Items Program, page 6-6
- Running the Interface Move Transactions to Oracle Assets Program, page 6-8

Running the Create Assets Interface Inventory Transactions to Fixed Asset Program

The Create Assets: Interface Inventory Transactions to Fixed Asset concurrent program processes the following transactions to create an asset for a depreciable item.

Transactions for the Create Assets Program

Installed Base Transaction Source	Description	Installed Base Transaction Status	Meaning
PO_RECEIPT_INTTO_INVENTORY	Receipt of depreciable item into Inventory	PENDING	Needs further fixed asset/project accounting processing
PO_RECEIPT_INTTO_PROJECT	Receipt of depreciable item into Projects	PENDING	Needs further fixed asset/project accounting processing

Installed Base Transaction Source	Description	Installed Base Transaction Status	Meaning
Miscellaneous/Move Order Issue to an HZ Location	Miscellaneous/move order issue to an HZ location	PENDING	Needs further fixed asset/project accounting processing

Perform the following steps after receipt of a depreciable item to create an asset:

To run the Create Assets Interface Inventory Transactions to Fixed Asset Program:

1. Run the Create Assets: Interface Inventory Transactions to Fixed Asset from Oracle Asset Tracking.

Note: Before running this program verify that the subledger accounting program has been run for the transactions.

2. Run Post Mass Additions from Oracle Assets.
 - For project related receipts, the billable flag is already set to NO to prevent account information from going to general ledger and thus avoid double accounting.
 - Because Ship to Location is a mandatory field on a purchase order, the corresponding fixed asset location is used to create an asset. The asset category is extracted from the item definition.
 - The fixed asset book type is used from the Oracle Asset Tracking profile option CSE:FA Book Type Code. You can now set up this profile at two levels: site and organization. This enables different organizations within the site to have their own books. The profile selects the FA book as follows:
 - If there is a different book at the site level and at the organization level, the book at the **organization** level is selected.
 - If there is no book set at the organization level, then the book at the **site** level is selected.

- In the case of serialized item instances, a new asset is always created if the Create Unique Asset For parameter is set to For Each Serialized Instance within the Install Parameters form.

For non-serialized item instances a new asset is created. If one exists already with identical attributes then the application updates the asset.
- If the asset already exists for that category, then the application adjusts the cost and unit.
- After the post mass additions program is complete, the asset number is linked to the item instance.

Running the Create Asset Headers in Oracle Projects - Normal Items Program

The Create Asset Headers in Oracle Projects - Normal Items concurrent program processes the following transactions to create an asset for normal items put in service.

Transactions for the Create Asset Headers in Oracle Projects - Normal Items Program

Installed Base Transaction Source	Description	Installed Base Transaction Status	Meaning
PROJECT_ITEM_IN_SERVICE	Item put in service	INTERFACE_TO_PA	Needs further fixed asset/project accounting processing.

Prerequisite

Perform the following steps to create assets for a normal item that has expenditures imported into projects and has been installed and put into service:

To run the Create Asset Headers in Oracle Projects - Normal Items program:

1. Run the concurrent program Interface In-Service Transactions to Oracle Projects - Normal Items.
2. Run the concurrent program PRC: Transaction Import to reverse already created expenditures and create new ones with attributes captured from deployment.

3. Run the concurrent program Create Asset Headers in Oracle Projects - Normal Items.
4. Run the concurrent program PRC: Generate Asset Lines for a Single Project from Oracle Projects.
5. Run the concurrent program PRC: Interface Asset to Oracle Assets from Oracle Projects.
6. Run the concurrent request set Post Mass Additions from Oracle Assets.
 - An item must be issued to a project or received in the project before installing and putting it in service. Also make sure to create expenditures before installing. This is a prerequisite for asset creation. Expenditures are created by running the PRC: Transaction Import program after an issue or receipt into project that can be capitalized. The details are covered in the Projects Integration section.
 - In the case of serialized item instances, a new asset is not always created. There is a parameter setting in the Install Parameters form called Create Unique Asset For, which controls whether a new asset is created for serialized item instances. The values are Each Serialized Item Instance and Each Item. If you choose Each Serialized Item Instance, then for every serial number received a new fixed asset is created. If you choose Each Item, then serial controlled items are simply treated as non-serialized items. For non-serialized items, a new asset is created based on various attributes such as item, asset category, location, date placed into service, and product classification. Also, for non-serial items and the previously mentioned grouping, receipts made in each fixed asset period are defined in the asset book creating an unique receipt. For every fixed asset period boundary an unique asset appears.
 - If the asset already exists for that category, then the program performs cost adjustment and unit adjustment. The asset can be interfaced to Oracle Assets by running the program Interface Unit Adjustments to Oracle Assets - Normal Items.
 - A fixed asset location corresponding to the install location is used to create an asset. Asset category is extracted from the item definition.
 - The fixed asset book type is used from the Oracle Asset

Tracking profile option CSE:FA Book Type Code. You can now set up this profile at two levels: site and organization. This enables different organizations within the site to have their own books. The profile selects the FA book as follows:

- If there is a different book at the site level and at the organization level, the book at the **organization** is selected.
- If there is no book set at the organization level, then the book at the **site** level is selected.
- After successful completion of Post Mass Additions, the asset is created or updated for the new in-service item instance.

Running the Interface Move Transactions to Oracle Assets Program

The Interface Move Transactions to Oracle Assets concurrent program is generally run after an asset has been created and is used to update the asset-related information associated with Oracle Asset Tracking.

If the program is run, and any assets that it expects to update have not yet been created, then the update transaction information is help pending, so that it can be processed later, after the necessary asset creation program or request set has been run.

The Interface Move Transactions to Oracle Assets concurrent program processes the following transactions for each asset associated with the item instance that is transacted.

Transactions Processed by the Interface Move Transactions to Oracle Assets Program

Installed Base Transaction Source	Description	Installed Base Transaction Status	Meaning
MISC_ISSUE	Miscellaneous issue of item out of inventory	PENDING	Needs further fixed asset/project accounting processing
PROJECT_ITEM_UNSTALLED	Item is Un-installed from the project	PENDING	Needs further fixed asset/project accounting processing

Installed Base Transaction Source	Description	Installed Base Transaction Status	Meaning
MISC_RECEIPT_FROM_PROJECT	Item is moved from Projects into Inventory	PENDING	Needs further fixed asset/project accounting processing
SUBINVENTORY_TRANSFER	Transfer of an item within the organization from one subinventory to another	PENDING	Needs further fixed asset/project accounting processing
INTERORG_TRANSFER	Transfer of an item from one organization to the other	PENDING	Needs further fixed asset/project accounting processing
MOVE_ORDER_ISSUE_TO_PROJECT	Item issued to the project	PENDING	Needs further fixed asset/project accounting processing
PROJECT_ITEM_INSTALLED	Equipment Installed	PENDING	Needs further fixed asset/project accounting processing
PROJECT_ITEM_IN_SERVICE	Equipment In-service	PENDING	Needs further fixed asset/project accounting processing
IN_SERVICE	Asset is put in service	PENDING	Needs further fixed asset/project accounting processing

Installed Base Transaction Source	Description	Installed Base Transaction Status	Meaning
PHYSICAL_INVENTORY_CYCLE_COUNT	Asset adjustment when the item is adjusted in inventory in physical count	PENDING	Needs further fixed asset/project accounting processing
ISO_SHIPMENT	Item is shipped through internal order shipment	PENDING	Needs further fixed asset processing
OM_SHIPMENT	Item is shipped through order management shipment	PENDING	Needs further fixed asset processing
RMA_RECEIPT	Item is returned using order management	PENDING	Needs further fixed asset processing

Prerequisites

Generally, you must have run one of two concurrent processes depending on depreciable or normal item.

To run the Interface Move Transactions to Oracle Assets program:

1. Run the concurrent program Interface Move Transactions to Oracle Assets from Oracle Asset Tracking.
2. Run Post Mass Additions from Oracle Assets.
 - In the case of a depreciable item, the movements listed in Table 5–4 are tracked because an asset is created upon item receipt. For a normal item, only asset item move transactions are tracked.
 - The program checks for any asset updates due to change in location. For example, when item is issued to the project, the location is changed from inventory to project location. If these locations belong to different fixed asset locations, then this change causes different distribution in the asset. Interface Move

transactions to Fixed Asset process this change.

- All the transactions are processed sequentially, because of dependence. If any dependent transaction is pending, then this transaction is skipped

About Asset Impact of a Miscellaneous Issue

For serialized items, when an item is issued out of inventory, the associated asset units and cost are both set to zero.

For non-serialized items, when an item is issued out of inventory, the associated asset units and cost are both reduced by the equivalent values in the transaction. Oracle Asset Tracking retires a field asset while processing a Miscellaneous Issue transaction.

About Asset Impact of Subinventory Transfers

When an item is transferred from one subinventory to another, the program changes fixed asset location which, in turn, changes the fixed asset distributions. The asset, however, remains the same.

In a situation where there exists more than one source record, the First-in-first-out method is adapted. If more than one destination asset record exists, then the asset period is matched to adjust the asset. When searching for the existing asset in the system, the program always looks to see if there exists a similar record under process. If it finds an exact match, then the record is skipped.

In a business rule dictates a change in location with a change in category, then you must modify the client extension. In that case, a new set asset is created for a serialized item. The original asset cost is updated to zero, and you have to retire the asset manually. Similar unit and cost adjustments are done in source and destination assets in the case of non-serialized items.

About Asset Impact of Inter-Organizational Transfers

When an item is transferred from one organization to another, the program changes fixed asset location which, in turn, changes the fixed asset distributions. The asset, however, remains the same. The transactions include IN_SERVICE, MISC_RECEIPT_FROM_PROJECT, PROJECT_ITEM_IN_SERVICE, and ISO_SHIPMENT.

- Intra-asset: If only one source asset exists, and if the destination record has the same asset but the fixed asset location is different, then that is changed.

- **Inter-asset:** If the source asset and the destination assets are different, then the program performs cost and unit adjustment for both assets.
- If there is no destination asset, then the program creates a new asset with the transaction quantity and appropriate cost. Then the cost and unit adjustments are done for the source asset. In the case of serialized items, the asset location and category are updated if it is different in the receiving organization.

In a situation where more than one source record exists, the first-in-first-out method is adapted. If more than one destination asset record exists, then asset year is matched to adjust the asset. When searching for the existing asset in the system, the program always determines if a similar record exists under process. If it finds an exact match, then the record is skipped.

If your business rule dictates a change in location for a change in category, then you must modify the client extension. In that case, a new asset is created for a serialized item. The original asset cost is updated to zero, and you must retire the asset manually. Similar unit and cost adjustments are done in source and destination assets in the case of non-serialized items.

About Asset Impact of Physical Inventory and Cycle Count Adjustments

Depending upon the physical adjustment, a Physical Inventory and Cycle Count Adjustments transaction is treated the same as Miscellaneous Issue or Miscellaneous Receipt. For example, if an item quantity increases after a physical count, then a Miscellaneous Receipt transaction is performed, and the asset is adjusted or created accordingly.

After a Physical Inventory and Cycle Count Adjustments transaction, run the concurrent program **Create Assets: Interface Inventory transactions to Fixed Asset and Interface Move Transactions to Fixed Assets - Report** program. Finally, run the **Post Mass Addition** request set from Oracle Assets to complete the asset information update.

Case Study

The case study scenario consists of a number of item transactions, followed by the processing used to create and update the assets associated with the items.

Case Study Item Transaction Details

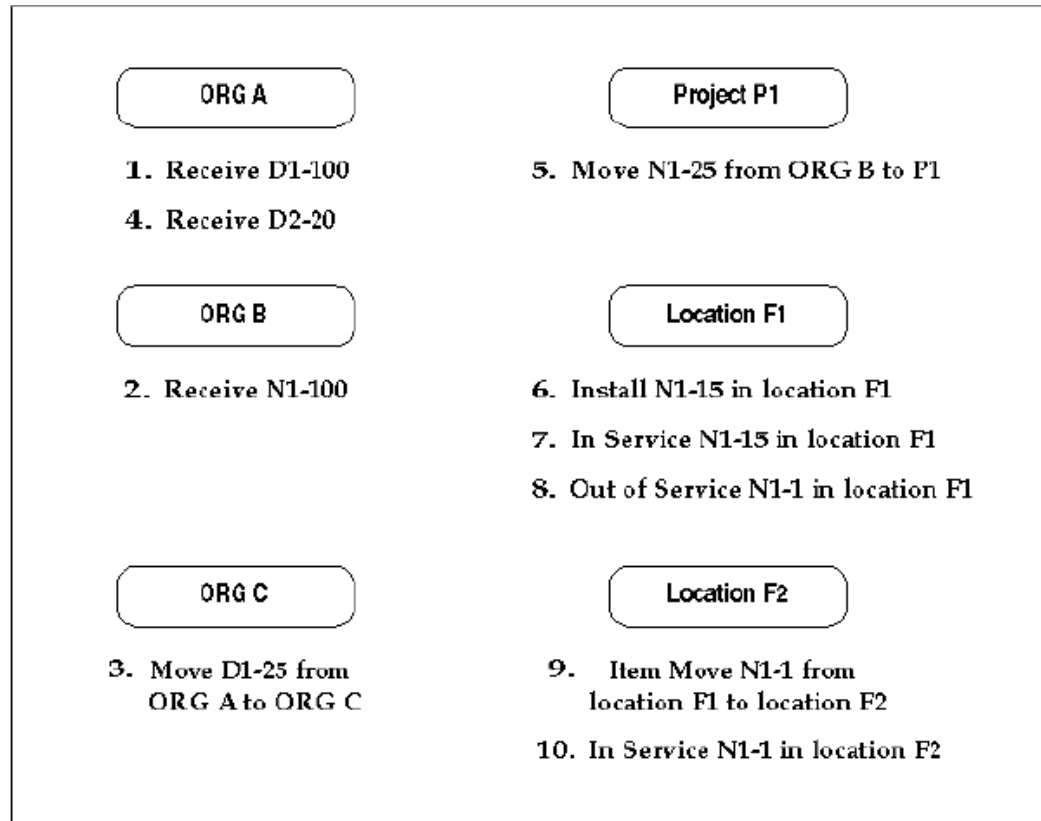
The following table describes the item transactions for this case study.

Case Study Item Transaction Details

Transaction Type	Transaction ID	Quantity	Details
Receipt of Depreciable item D1	1	100	Item D1 in Organization A
Receipt of Normal item N1	2	100	Item N1 in Organization B
Inter-Organization Move	3	25	Item D1 from Org A to Org C
Receipt of Depreciable item D2	4	20	Item D2 in Organization A
Move Order Issue to Project	5	25	Item N1 from Organization B to Project P1
Equipment installed	6	15	Item N1 from Project P1 installed in field location F1
Equipment put in service	7	5	Item N1 put in service in field location F1
Equipment taken out of service	8	1	Item N1 taken out of service at field location F1
Item Move	9	1	Item N1 from field location F1 to field location F2
Equipment put back in service	10	1	Item N1 put in service in field location F2

The following shows the case study transactions related to the item organizations, project, and locations.

Case Study Transactions



Asset Processing Options

Oracle Asset Tracking processes three types of asset transaction, using the following processing units:

- Running the Create Assets Interface Inventory Transactions to Fixed Asset Program, page 6-4
This is a concurrent program which creates an asset.
- Running the Create Asset Headers in Oracle Projects - Normal Items Program, page 6-6
This is a concurrent program which creates an asset header that becomes an asset through CRL concurrent programs for normal items.
- Running the Interface Move Transaction to Fixed Assets - Report Program, page 6-8
This is a concurrent program which performs asset updates, both depreciable and normal, due to physical moves.

Case Study Asset Processing

1. Run the Create Assets: Interface Inventory Transactions to Oracle Assets concurrent program. This selects transactions 1 and 4. It checks if assets already exist for items D1 and D2. If assets already exist for items D1 and D2, then the program performs unit and cost adjustments to the existing assets. Otherwise it creates new assets.
2. Now, if you run the program Interface Move Transaction to Fixed Assets - Report, then only transaction 3 is selected and will be processed to make asset updates, assuming that an asset had been previously successfully created for item D1.

Although transaction 10 is also an asset move, it is not selected this time. This is because Item N1 has not yet become an asset (you cannot create assets from normal items unless the items are issued to a project and put into service; or you can do a miscellaneous issue to HZ location).

3. Run the concurrent programs available for creating assets for normal items. At this point, transaction 7 is selected and the asset header will be created. This will become an asset after running CRL programs for asset creation.
4. Transaction 10, where the normal item N1 was put back in service in location F2, will be selected and processed only when you run the Interface Move Transactions to Fixed Assets Report program subsequently.

To ensure the proper order of the transactions, the program skips all the failed transaction records and their subsequent dependent transaction records.

For example, in the case study, assume that for some reason an asset was not created for item D1 in transaction 1 when the Depreciable Items - Asset Creation concurrent program was run.

Transaction 3 depends on transaction 1. If transaction 1 fails to create an asset, then transaction 3 will not be processed by the program Interface Move Transaction to Fixed Assets - Report.

Transaction 3 will be processed only when you perform the following processing sequence:

1. Run the Depreciable Items - Asset Creation program, and check that you have successfully created an asset for the parent transaction 1.
2. Run the Interface Move Transaction to Fixed Assets - Report program.

Understanding the CLEI

The Common Language Equipment Identifier (CLEI) is a vendor-specific, 10-character code. It is a standard used by the telecommunications industry for identifying and describing equipment. Because Oracle Asset Tracking captures the CLEI code in the lot

field, items that have a CLEI code must be set to full lot control. If an item has no CLEI code, then it does not need lot control.

The supplier usually provides CLEI codes for the items that you purchase. When performing transactions, you can select CLEI codes from a list of values or you can enter new CLEI values directly into the Lot field.

Overview of Retirements

The process that Oracle Asset Tracking uses to retire and reinstate assets is the same as the process used in Oracle Assets. You can retire or reinstate partial or whole assets.

Before you retire an asset, you must first take it out of service. If an asset is retired, then Oracle Asset Tracking updates the status of the Instance-Asset link to Retired.

An asset must have a status of retired before it can be reinstated. An asset reinstatement reverses the operation of the Oracle Asset Tracking retirement logic. For the reinstatement, Oracle Asset Tracking updates the status of the Instance-Asset link to In Service.

Associating a Fixed Asset to an Item Instance

Use this procedure to associate an item instance to a fixed asset.

To associate a fixed asset to an item:

1. From the Asset Tracking Super User responsibility, navigate to Assets and then select Fixed Assets.
2. Query an asset from Search page.
3. Select an asset from the query results.
4. From the Add Item Instances list, choose Select from Existing.

Note: You can also create a new item instance or copy from an existing item instance, by selecting Create or Copy respectively.

5. Click Go.

The Search page appears.

6. Query the item instance that you would like to associate to the fixed asset.
7. Click Associate With Asset.

A confirmation message appears indicating that item instances have been added to the fixed asset successfully.

Note: You can also add an asset to an item instance from the Item Instance page by clicking the Add Assets button, which allows you to search for fixed assets to associate to the item instance.

You can specify whether the item instance should be fully synchronized to the fixed asset by selecting the Enable Auto Update flag. When this flag is set, an item instance transaction creates an automatic update to the fixed asset. Otherwise, the fixed asset is not automatically updated.

Viewing Asset Relationships Graphically

Use this procedure to view asset relationships graphically.

1. From the Asset Tracking Super User responsibility, navigate to Assets, and then select Item Instances.
2. Query an asset from Search page.
3. Select an asset from the query results.
4. Click the View Relationship Graphically link in the Other Item Instance Details grid.

ORACLE® Asset Tracking Home Logout Preferences Diagnostics

Item Instance Counters Fixed Assets Deployment Transactions

Item Instance: Item Instances >

View : Item Instance : 100000

Item: AS54988 System Owner: Imaging Innovations, Inc.
Item Description: Sentinel Standard Desktop Account Number: 1002

General Location Associations Configuration Counters Notes

External Reference
Organization: Seattle Manufacturing
Revision
Instance Name
Quantity: 1
UCM: Each
Item Instance Type
Item Condition
Accounting Classification: Customer Product
Operational Status Code: Not Used

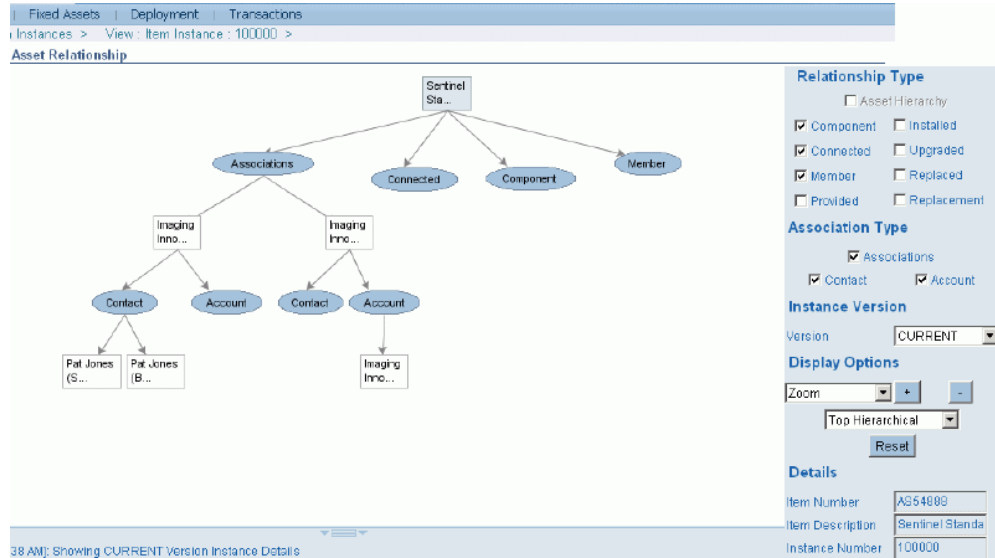
New Version Label
Last Version Label: AS_CREATED
Creation Date: 05-Jun-2003 07:17:23
Status: CREATED
Install Date
Expiration Date
Shipped On Date
Return By Date
Actual Return Date

[Show Instance Flex Fields](#) [Show Additional Attributes](#)

[Return to Instance Search](#)

Other Item Instance Details
[Transaction History](#)
[Item Instance History](#)
[Operating Units](#)
[Contracts](#)
[Orders](#)
[Service Requests](#)
[Repair Orders](#)
[Assets](#)
[Work Orders](#)
[Work Requests](#)
[View Relationship Graphically](#)

5. The Viewer opens, displaying the asset relationship in a graphical format:



Click any of the options on the right to change the graphic:

Adding Child Assets

You can also add child assets to the graphic:

1. Click the Item Instance link at the top of the viewer page.
2. Click the Return to Instance Search link at the bottom of the View Item Instance page.
3. Click the **Asset Update** button for the item to which you want to add assets.

If necessary, requery your results to select a different item.

4. Click the **Add Assets** button.

The Search Assets page appears.

5. Search and select the assets that you want to add.
6. Enter the quantity of the asset to be added.
7. Click the **Apply** button.

Related Topics

Viewing Item Instance and Asset Network Relationships, *Oracle Installed Base User Guide*

Using Oracle Asset Tracking

This chapter covers the following topics:

- Overview of Using Oracle Asset Tracking
- Submitting a Request
- Viewing Request Resultsrequestsviewing results
- Requesting an Assumed Loss Rate ReportAssumed Loss Rate
ReportrequestingreportsAssumed Loss Rate
- Requesting a Bill of Lading Reportbill of lading reportrequestingreportsBill of
LadingBill of Lading Report
- Adjusting the Invoice Price Varianceinvoice price variancesadjustingprice
variancesinvoiceinvoice price variancesoverview
- Running the Interface Invoice Price Variance to Oracle Assets Programprograms,
runningInterface Invoice Price Variance to Oracle AssetsInterface Invoice Price
Variance to Oracle Assets programoverviewInterface Invoice Price Variance to
Oracle Assets programrunning
- Running the Interface Invoice Price Variance to Oracle Projects Programprograms,
runningInterface Invoice Price Variance to Oracle ProjectsInterface Invoice Price
Variance to Oracle Projects programoverviewInterface Invoice Price Variance to
Oracle Projects programrunning
- Running the Generate Notification - New Fixed Assets for Install Base Tracking
Programprograms, runningGenerate Notification - New Fixed Assets for Install
Base TrackingGenerate Notification - New Fixed Assets for Install Base Tracking
programoverviewGenerate Notification - New Fixed Assets for Install Base
Tracking programrunning
- Running the Create Reversal GL Entries for Inventory FA Items Programprograms,
runningCreate Reversal GL Entries for Inventory FA ItemsCreate Reversal GL
Entries for Inventory FA Items programoverviewCreate Reversal GL Entries for
Inventory FA Items programrunning
- Finding Personal Profile Valuespersonal profile valuesfindingvalues, personal

profile

Overview of Using Oracle Asset Tracking

This topic group provides process-oriented, task-based procedures for using the application to perform essential business tasks.

Submitting a Request

Use the Submit Request window to request one of the following reports and concurrent processes in Oracle Asset Tracking:

- Requesting an Assumed Loss Rate Report, page 7-3
- Requesting a Bill of Lading Report, page 7-4

Viewing Request Results

When you request a report, Oracle Asset Tracking assigns a number to your request, runs the request, and stores the report. Use this procedure to view the report that you requested.

Prerequisites

You must request a report and save the request ID number.

To view request results:

1. Using the Asset Tracking Super User responsibility, navigate to Request and then select View.
2. In the Find window, click Specific Request, and enter the ID number of the report that you wish to view.
3. Click Find to retrieve the record.
4. Click View Output to see the report online.
If the report was completed with errors, then choose View Log to see a list of the errors that were encountered when your request was processed.
5. To print the report, in the Menu Bar choose Tools and then select Reprint.
Enter the number of copies to print, the printer, and the print style.
6. Save.

Requesting an Assumed Loss Rate Report

Use this procedure to generate a list of items that have been issued to projects but have never been placed in service.

To request an assumed loss rate report:

1. Using the Asset Tracking Super User responsibility, navigate to Request and then select Run.
2. Choose to run a single report.
3. In the Name field, choose Assumed Loss Rate Report.
4. Choose either Detail or Summary report type.

The Detail type displays all individual transactions that meet your criteria. The Summary type provides only transaction totals.
5. In the Parameters window, enter any needed information in the fields to define your search.
 - If you leave all optional fields blank, then the search returns all records across all organizations in the format that you requested.
 - **Task Number:** Enter the task number to further limit your search results to those items that have been issued to a particular task for a project.
 - **Project Number:** To limit your search results to those items that have been issued to a specific project, enter the project number here.
 - **Organization:** To limit your results to a particular organization, enter that organization here.
 - **Inventory Item:** To limit your search results to records for a specific item, enter the item number here.
6. Click OK to close the Parameters window.
7. Click Submit when you have finished defining the report.
8. The application assigns an ID number to your request. Use the ID number to find your request in the View Request window.

Related Topics

Viewing Request Results, page 7-2

Requesting a Bill of Lading Report

Use this procedure to generate a bill of lading report, which displays the following:

- Move order number
- Transaction request date
- Ship-to location name and address
- Project number
- Task number
- Line item number
- Item number
- Item revision
- Quantity requested and quantity shipped, both with totals for each item number
- CLEI
- Serial number
- Vendor serial number

Follow these steps to generate a bill of lading.

Note: To print a bill of lading for a specific range of dates, enter a date in both the Data Required From and Data Required To fields. If you do not enter any dates in these fields, then the bill of lading report shows all move orders up to the system date.

If you enter a value for Task Number, then enter a corresponding Project Number.

To keep the report results to a manageable length, enter data for as many of the parameter fields as possible.

To request a bill of lading report:

1. Using the Asset Tracking Super User responsibility, navigate to Request and then select Run.
2. Choose to run a single report.

3. In the Name field, choose Bill of Lading Report.

In the Parameters window, enter any necessary information in the fields to define your search.

- If you leave all fields blank, then the report will include all move orders for the current day.
 - **Move Order Number:** To limit the report to a specific move order, enter that number here.
 - **Organization Name:** Limits the report to a specific organization.
 - **Date From:** To limits the report to all move orders generated from a specific date forward, enter that date here.
 - **Date To:** To limit the report to all move orders generated before a specific date, enter that date here.
 - **Project Number:** To limit the report to only those move orders for a specific project, enter that project number here.
 - **Task Number:** To limit the report to only those move orders for a particular project task, enter that task number here.
 - **Location:** To limit the report to only those move orders for a particular physical location, enter that location here.
4. Click OK to close the Parameters window.
 5. Click Submit when you have finished defining the report.
- The application assigns an ID number to your request. Use the ID number to find your request in the View Request form.

Related Topics

Viewing Request Results, page 7-2

Adjusting the Invoice Price Variance

When assets are procured through Oracle Purchasing they are created with purchase order costs.

After the invoice is created, any cost difference must be adjusted in project accounting or fixed asset applications. For the depreciable items, the difference is adjusted in Oracle Assets. For non-depreciable items, the adjustment is done in Oracle Projects.

For both normal and depreciable items, in Oracle Payables, the invoice must be approved, and accounting must be created. Also you need to run an Oracle Payables concurrent program to interface the transaction to Oracle General Ledger before adjusting the invoice price variance.

You need to run a concurrent program to ensure that the construction cost of the project is as close to the actual cost as possible.

Two types of invoice price variance are available:

- **Invoice Price Variance in Oracle Projects**

To adjust the cost from Oracle Payables, you must bring in invoice cost from Oracle Payables into Oracle Projects and then assign attributes to new expenditures. The steps are as follows:

1. Run the program Interface Invoice Price Variance to Oracle Projects. It creates invoice price variance data in project interface table.
2. Run the program PRC: Transaction Import. It creates expenditure lines for the invoice price variance amount in projects.
3. Run the program PRC: Generate Asset Lines.
4. Run the Oracle Assets request set Post Mass Additions for the category book.

- **Invoice Price Variance in Oracle Assets**

To adjust the cost from Oracle Payables, bring the invoice cost from Oracle Payables into Oracle Assets, and then update the Mass Addition table. The steps are as follows:

1. Run the program Interface Invoice Price Variance to Oracle Assets.
2. Run the Oracle Assets request set Post Mass Additions for the category book.

The topics in this section are the following:

- Running the Interface Invoice Price Variance to Oracle Assets Program, page 7-6
- Running the Interface Invoice Price Variance to Oracle Projects Program, page 7-7

Running the Interface Invoice Price Variance to Oracle Assets Program

Prerequisites

In Oracle Payables, first approve the invoice, then create accounting for the invoice.

Run the Oracle Payables program Payables Transfer to General Ledger.

To run the Interface Invoice Price Variance to Oracle Assets program:

1. Using the Asset Tracking Super User responsibility, navigate to Request and then select Run.
2. Choose to run a single report.
3. In the Name field, choose Interface Invoice Price Variance to Oracle Assets program.
4. In the Parameters window, enter the parameters: PO Number, Inventory Item, Organization, Include Zero IPV.
5. Click OK to close the Parameters window.
6. Click Submit when you have finished defining the report.

The application assigns an ID number to your request. Use the ID number to find your request in the View Request window.

Related Topics

Viewing Request Results, page 7-2

Running the Interface Invoice Price Variance to Oracle Projects Program**Prerequisites**

In Oracle Payables, first approve the invoice, then create accounting for the invoice.

Run the Oracle Payables program Payables Transfer to General Ledger.

To run the Interface Invoice Price Variance to Oracle Projects Program:

1. Using the Asset Tracking Super User responsibility, navigate to Request and then select Run.
2. Choose to run a single report.
3. In the Name field, choose Interface Invoice Price Variance to Oracle Projects.
4. In the Parameters window, enter the parameters: Project Number, Task Number, Purchase Order Number, Inventory Item, and Organization.
5. Click OK to close the Parameters window.
6. Click Submit when you have finished defining the report.

The application assigns an ID number to your request. Use the ID number to find your request in the View Request window.

Related Topics

Viewing Request Results, page 7-2

Running the Generate Notification - New Fixed Assets for Install Base Tracking Program

You can run the concurrent program Generate Notification - New Fixed Assets for Install Base Tracking, from the Asset Tracking Super User or Asset Tracking Planner responsibilities. This program generates a workflow notification for all the assets which may need an item instance created. If an asset is created in Oracle Assets and the source of the asset is not Oracle Asset Tracking, then running this program inserts a row in the staging table CSI_FA_TRANSACTIONS and generates a notification. Depending on the setup of Oracle Workflow, an email is sent to users associated to the seeded responsibilities, Asset Tracking Super User or Asset Tracking Planner. The Asset Tracking Planner responsibility has been created to simplify the process of generating and acting on the new assets workflow notifications.

Note: You can also view a notification from the Oracle Workflow worklist.

To run the Generate Notification - New Fixed Assets for Install Base Tracking program:

1. From the Asset Tracking Super User responsibility, navigate to Request and then select Run.
2. Choose to run a single report.
3. In the Name field, choose Generate Notification - New Fixed Assets for Install Base Tracking.
4. Click Submit.

The application assigns an ID number to your request. Use the ID number to find your request in the View Request window.

Running the Create Reversal GL Entries for Inventory FA Items Program

Oracle Asset Tracking enables you to capitalize assets regardless whether they are in inventory. As depreciable assets move in and out of inventory, accounting entries are

generated by the Cost Manager to update the associated inventory value. The Cost Manager has no way to identify these assets as capital assets. To prevent duplication, Oracle Asset Tracking uses the Create Reversal GL Entries for Inventory FA Items program to reverse the accounting entries made by the Cost Manager.

Following is a description of how the Create Reversal GL Entries for Inventory FA Items program works:

1. Finds unprocessed CSI transactions using the 1 value (Pending) of `gl_interface_status_code` column. (The `CSI_TRANSACTIONS` table stores all transactions related to Item Instances.)

If there are no unprocessed transactions, then the program ends.

Otherwise, it gets the corresponding `MTL_MATERIAL_TRANSACTIONS` (MMT) row for each unprocessed CSI transactions. For each inventory transaction of an item instance, a `CSI_TRANSACTIONS` row is created with the MMT transaction id as foreign key.

2. After the MMT record is found, checks to determine whether any item instances are capitalized item instances.

If there is none, the record is not processed.

Otherwise, it will process to find the corresponding SLA entries.

3. To ensure that there will be no other changes before proceeding any further with the SLA entries, the process looks for Final Mode SLA entries.

4. The amount to be reversed is computed using the following formula: (Ledger Amount / quantity in MMT) multiplied by the # of capitalized item instances .

The accounts used to generate reversal entries are the same as the original distribution entry which is being reversed.

5. Inserts reversal entries into `GL_INTERFACE`, to be posted in General Ledger later.

6. Sets the `gl_interface_status_code` of `CSI_TRANSACTIONS` to 2 (Posted). This ensures the transactions are not processed again the next time the program runs. If the program logic derives that the transaction does not need accounting reversal then the `gl_adjustment_process_flag` of `CSI_TRANSACTIONS` is updated to 3 (None). This typically is the case when the distributions are not transferable to general ledger as with some upgrade data.

Note: The process can be initiated any time. However, you must also run it after all your SLA entries have transferred to the GL, and before you close your period.

From the GL side, the Journal Import process can be run to create

journal entries from the GL_INTERFACE records. After reviewing for validity, they can be posted to GL .

To run the Create Reversal GL Entries for Inventory FA Items program:

1. From the Asset Tracking Super User responsibility, navigate to Request and then select Run.
2. Choose to run a single report.
3. In the Name field, choose Create Reversal GL Entries for Inventory FA Items.
4. Click Submit.

The application assigns an ID number to your request. Use the ID number to find your request in the View Request window.

Finding Personal Profile Values

In the Find Personal Profile Values window, you can search for the personal profile values that have already been defined in other Oracle applications. Then use the Personal Profile Values window to display and make changes to your personal settings. Do not enter user values unless you require a setting that is different from the default setting.

Follow these steps to find and edit personal profile values used in the Oracle Asset Tracking application.

Prerequisites

Create profiles.

To find personal profile values:

1. Using the Asset Tracking Super User responsibility, navigate to Setup and then select Profiles.

The Find Personal Profile Values window opens.

2. Click [...] to open the list of values.

The Organizations window appears.

3. Enter any partial search mask, if you want, in the Find field, and click Find.

The Profiles window displays the profiles for Oracle Asset Tracking.

4. Select the profile that you want to edit, and click OK.

The Find Personal Profile Values window displays the name of the selected profile.

5. Click Find.

The Personal Profile Values window opens and displays the selected profile.

6. Enter values in the User Value column to customize the user profile.
7. Save.

Using the Google Maps Integration

This chapter covers the following topics:

- Google Maps Integration Overview
- Google Maps Integration with OAT
- Viewing Instances on Google Maps

Google Maps Integration Overview

Oracle Asset Tracking can integrate with the web-based source map viewer of Google Maps. Oracle Asset Tracking instances can be geocoded and displayed in the map viewer based on user entered search criteria.

Note: Only those instances that have geocode information associated to them will display on the map.

Google Maps Integration with OAT

From the Asset Tracking Super User responsibility, when you select any instance icon on the map viewer using details such as asset number, description, asset group, owning department, the instance location and geocodes will display.. You can also access other pages to perform the following actions:

- Create a work order.
- Create a work request.
- View open work orders.
- View open work requests.
- View the graphical asset hierarchy for the asset.

Entering Geocodes for OAT Assets:

1. Navigate to the Asset Tracking Super User responsibility.

2. Click the Mass Geocode Entry link.

The Mass Asset Geocode Entry page appears.

3. Enter an Item Instance.

ORACLE Asset Tracking

Home Logout Preferences Personalize Page Diagnostics

Item Instance Counters

Item Instances Fixed Assets Deployment Transactions Mass Geocode Entry

Cancel Save Apply

Mass Asset Geocode Entry

Instance Number	Item	Item Description	Address	Latitude				Longitude				Delete
				Degrees	Minutes	Seconds	Direction	Degrees	Minutes	Seconds	Direction	
1021	AS18947	Sentinel Deluxe Desktop	2 High Street,,,Birmingham,,76765,GB									

4. In the Mass Entry Geocode Asset region, enter values such as:

5. Enter values such as:

- Latitude values for the asset:
 - Degrees - Enter a numeric value, do not use decimals, and you can enter a negative value.
 - Minutes - Do not use decimals.
 - Seconds - Enter a numeric value and you can use decimals.
 - Direction - Select N (north) or S (south)
- Longitude values for the asset:
 - Degrees - Enter a numeric value, do not use decimals, and you can enter a negative value
 - Minutes - Do not use decimals.
 - Seconds. Enter a numeric value and you can use decimals.
 - Direction - Select E (east) or W (west)

If the geocode information already exists for the queried instance, the information can be modified or deleted.

Viewing Instances on Google Maps

If a responsibility has the appropriate roles and security, users can view the geospatial locations of OAT instances with the map viewer functionality using Google maps.

To view instances on Google maps:

1. Navigate to the Asset Tracking Super User responsibility, and click the Item Instances link.
2. Enter search criteria such as Item Instance, Item, and so on and click the Go button.
3. Click the Map All button.

The Asset Map page appears, displaying the selected assets on a Google map using a map viewer.
4. Click an instance (balloon) icon to view instance details such as Item Instance, Description, and Item.
5. Click the More>>> link to view additional details such as:
 - Address of where the asset is located
 - Latitude
 - Longitude
6. You can also access these other pages from the More>>> link to perform additional actions for the selected OAT instances:
 - Create Work Order
 - Create Work Request

If the OAT instance is also an EAM asset number, you can also view the following:

- View Open Work Orders
 - View Open Work Requests
 - Graphical Hierarchy - to view the asset hierarchy
7. Optionally, click the Instance Number links at the bottom of the page to view additional instance details, such as latitude and longitude.

Index

A

- asset handling
 - internal sales orders, 2-19
- asset processing, 6-1
- asset relationships
 - viewing, 6-17
- asset retirements
 - overview, 6-16
 - prerequisites, 6-16
- assets
 - creating, 5-5
 - tracking, diagram, 1-2
 - tracking internally, 1-2
 - tracking inventory items, 1-3
 - viewing relationships graphically, 6-17
- assets, deployment
 - Item Instance Deployment Page, 3-4
 - overview, 3-1
 - steps, 3-4
 - transactions, 3-1
- assets, fixed, 6-1
 - processing, 6-1
- associations
 - expiring fixed assets and item instances, 2-4
 - See* prerequisites
 - steps, 2-5
- associations, expiring
 - prerequisites, 2-4
- Assumed Loss Rate Report, 7-1
 - requesting, 7-3

B

- bill of lading report
 - requesting, 7-4
- Bill of Lading Report, 7-4

C

- CLEI (Common Language Equipment Identifier)
 - overview, 6-15
- counts
 - physical cycle, 2-19
- Create Asset Headers in Oracle Projects - Normal Items Program
 - overview, 6-6
 - prerequisites, 6-6
 - running, 6-6
- Create Assets Interface Inventory Transactions to Fixed Asset program
 - overview, 6-4
 - running, 6-4
- Create Reversal GL Entries for Inventory FA Items program
 - overview, 7-8
 - running, 7-8
 - running reversal GL entries, 7-10

F

- field service integration
 - overview, 4-1
 - viewing service request numbers, 4-1
 - viewing task numbers, 4-1
- fixed assets

- architecture, 6-1
- associating item instances, 6-16
- case study, 6-12
- expiring association with item instances, 2-4
- impact of physical inventory and cycle count adjustments, 6-12
- overview, 6-1
- processing, 6-1

G

- Generate Notification - New Fixed Assets for Install Base Tracking program
 - overview, 7-8
 - running, 7-8
- Google Maps integration, 8-1

I

- Interface Invoice Price Variance to Oracle Assets program
 - overview, 7-6
 - running, 7-6
- Interface Invoice Price Variance to Oracle Projects program
 - overview, 7-7
 - running, 7-7
- Interface Move Transactions to Oracle Assets Program
 - overview, 6-8
 - running, 6-8
- inventory transactions
 - processing item instances, 2-4
- inventory transaction types
 - Oracle Asset Tracking, 2-3
- invoice price variances
 - adjusting, 7-1, 7-5
 - in Oracle Assets, 7-6
 - in Oracle Projects, 7-6
 - overview, 7-5
- issues, miscellaneous, 2-14
- Item Instance Deployment Page, 3-4
- item instances
 - and transaction records, 2-2
 - associating fixed assets, 6-16
 - creating, 2-4
 - expiring association with fixed assets, 2-4
 - overview, 2-2

- processing in Oracle Inventory transactions, 2-4
- updating, 2-4

- items
 - serial numbers, 2-16
- item to transfer transactions, entering, 2-13

M

- messaging architecture
 - overview, 1-5
- miscellaneous issues
 - overview, 2-14
 - processing, 2-14
- Miscellaneous Issues to Field location
 - overview, 2-15
 - processing, 2-16
- Miscellaneous Issues to Projects, 2-15
 - processing, 2-15
- miscellaneous receipts
 - from field locations, 2-12
 - from Oracle Projects, 2-11
 - overview, 2-10
 - transaction processing, 2-11
- Miscellaneous Receipts from Field Location
 - transaction processing, 2-12
- miscellaneous receipt transactions
 - entering, 2-12
 - steps, 2-13
- miscellaneous transactions
 - creating, 2-10
- move orders
 - approvals, 2-7
 - creating, 2-7
 - creating, steps, 2-8
 - inventory transaction types, 2-7
 - overview, 2-6
 - prerequisites, 2-8
 - transacting, 2-9, 2-9
 - transacting, steps, 2-9

O

- Oracle Asset Tracking
 - adjusting invoice price variances, 7-1
 - functions supported, 1-3
 - integration points, 1-1
 - overview, 1-1, 1-1, 7-1

- Requesting an Assumed Loss Rate Report, 7-1
- usage codes, 1-3
- viewing asset relationships, 1-3
- viewing requests, 7-1
- Oracle Installed Base
 - integration, 1-2
- Oracle Inventory
 - item parameters, 1-4
 - items, depreciable, 1-4
 - items, normal, 1-4

P

- personal profile values
 - finding, 7-10
- PRC: Generate Asset Lines for a Single Project program
 - overview, 5-6
 - running, 5-6
- PRC: Interface Assets to Oracle Asset program
 - overview, 5-6
 - running, 5-6
- prerequisites
 - asset retirement, 6-16
 - Create Asset Headers in Oracle Projects - Normal Items Program, 6-6
 - finding personal profile values, 7-10
 - Interface Invoice Price Variance to Oracle Assets program, 7-6
 - Interface Invoice Price Variance to Oracle Projects program, 7-7
 - move orders, 2-8
 - receiving items into asset subinventories, 2-5
 - transacting a move order, 2-9
 - viewing request results, 7-2
- price variances
 - invoice, 7-5
 - invoice, adjusting, 7-1
- products
 - tracking internally, 1-2
- programs, running
 - asset creation, 5-5
 - Create Asset Headers in Oracle Projects - Normal Items, 6-6
 - Create Assets Interface Inventory Transactions to Fixed Asset, 6-4
 - Create Reversal GL Entries for Inventory FA

- Items, 7-8
- Generate Notification - New Fixed Assets for Install Base Tracking, 7-8
- Interface Invoice Price Variance to Oracle Assets, 7-6
- Interface Invoice Price Variance to Oracle Projects, 7-7
- Interface Move Transactions to Oracle Assets, 6-8
- PRC: Generate Asset Lines for a Single Project, 5-6
- PRC: Interface Assets to Oracle Asset, 5-6
- Projects integration
 - creating assets, 5-1
 - expenditure inquiries, 5-1
 - item instance processing, 5-1
 - overview, 5-1
 - prerequisites, 5-1
 - purchase order receipts flow, 5-1
 - receiving items, 5-1
 - transaction sources, 5-1
- purchase order receipts
 - inventory, 2-5

R

- receipts, miscellaneous
 - overview, 2-10
- receiving items
 - into asset subinventories, 2-5
- reports
 - Assumed Loss Rate, 7-3
 - Assumed Loss Rate Report, 7-1
 - Bill of Lading, 7-4
 - Bill of Lading Report, 7-1
 - Requesting a Bill of Lading Report, 7-1
- requests
 - viewing results, 7-2
- retirements
 - asset, 6-16

S

- sales orders, internal
 - asset handling, 2-19
- subinventories, asset
 - receiving items, 2-5
 - prerequisites, 2-6

T

- transaction records
 - and item instances, 2-2
 - overview, 2-2
- transactions
 - inventory, 2-21
 - Miscellaneous Issues to Field location, 2-15
 - Miscellaneous Issues to Projects, 2-15
 - Miscellaneous Receipts from Field Location, 2-12
 - Miscellaneous Receipts from Projects, 2-11
 - physical inventory and cycle count
 - adjustments, 6-12
- transactions, creating
 - item to transfer, 2-13
- transactions, miscellaneous
 - creating, 2-10
- transaction sources
 - project import, 5-4
- transaction types
 - Oracle Inventory, 2-2
- transaction types, inventory
 - Oracle Asset Tracking, 2-3
- transfers
 - subinventory, 2-16
- transfers, inter-organization, 2-17
 - direct, 2-17
 - in-transit, 2-17
 - inventory, 2-17
 - non-serial numbers, 2-17
 - serial numbers, 2-17

V

- values, personal profile, 7-10
- variances
 - invoice price, adjusting, 7-1