



**BUSINESS PROCESSES AND RULES:  
SIEBEL eBUSINESS APPLICATION  
INTEGRATION VOLUME IV**

*VERSION 7.5, REV. A  
12-EDWR7R*

*JANUARY 2003*

Siebel Systems, Inc., 2207 Bridgepointe Parkway, San Mateo, CA 94404  
Copyright © 2003 Siebel Systems, Inc.  
All rights reserved.  
Printed in the United States of America

No part of this publication may be stored in a retrieval system, transmitted, or reproduced in any way, including but not limited to photocopy, photographic, magnetic, or other record, without the prior agreement and written permission of Siebel Systems, Inc.

The full text search capabilities of Siebel eBusiness Applications include technology used under license from Fulcrum Technologies, Inc. and are the copyright of Fulcrum Technologies, Inc. and/or its licensors.

Siebel, the Siebel logo, TrickleSync, TSQ, Universal Agent, and other Siebel product names referenced herein are trademarks of Siebel Systems, Inc., and may be registered in certain jurisdictions.

Other product names, designations, logos, and symbols may be trademarks or registered trademarks of their respective owners.

U.S. GOVERNMENT RESTRICTED RIGHTS. Programs, Ancillary Programs and Documentation, delivered subject to the Department of Defense Federal Acquisition Regulation Supplement, are “commercial computer software” as set forth in DFARS 227.7202, Commercial Computer Software and Commercial Computer Software Documentation, and as such, any use, duplication and disclosure of the Programs, Ancillary Programs and Documentation shall be subject to the restrictions contained in the applicable Siebel license agreement. All other use, duplication and disclosure of the Programs, Ancillary Programs and Documentation by the U.S. Government shall be subject to the applicable Siebel license agreement and the restrictions contained in subsection (c) of FAR 52.227-19, Commercial Computer Software - Restricted Rights (June 1987), or FAR 52.227-14, Rights in Data—General, including Alternate III (June 1987), as applicable. Contractor/licensor is Siebel Systems, Inc., 2207 Bridgepointe Parkway, San Mateo, CA 94404.

**Proprietary Information**

Siebel Systems, Inc. considers information included in this documentation and in Siebel eBusiness Applications Online Help to be Confidential Information. Your access to and use of this Confidential Information are subject to the terms and conditions of: (1) the applicable Siebel Systems software license agreement, which has been executed and with which you agree to comply; and (2) the proprietary and restricted rights notices included in this documentation.

# Contents

## Introduction

How This Guide Is Organized . . . . .	2
Additional Resources . . . . .	3
Revision History . . . . .	4

## Chapter 1. Defining Workflows for Siebel eAI

Sample Integration Workflows . . . . .	6
Import Account (File) . . . . .	7
Export Account (File) . . . . .	10
Import Employee (MQSeries) . . . . .	13
Export Employee (MQSeries) . . . . .	16
Testing the Workflow Integration Process . . . . .	20

## Chapter 2. Creating and Using Dispatch Rules

Overview of EAI Dispatch Service . . . . .	24
EAI Dispatch Service Rule Hierarchy . . . . .	25
EAI Dispatch Service Methods . . . . .	26
Search Expression Grammar . . . . .	28
Output Transformation . . . . .	29
EAI Dispatch Service . . . . .	32
Inbound Requests . . . . .	33
Outbound Requests . . . . .	34
Implementing EAI Dispatch Service . . . . .	35
Creating a Workflow . . . . .	36

Defining Rule Sets	37
Defining Rules	37
Defining Transforms	39
Invoking a Workflow Process From an EAI Dispatch Service	40
Testing Your EAI Dispatch Service Using Argument Tracing	41
Differences Between EAI Dispatch Service and Workflow	42
ProcessAggregateRequest Method	43
EAI Dispatch Service Scenarios	45
Outbound Scenario	45
Inbound Scenario	47
Outbound Scenarios Using ProcessAggregateRequest	48
Examples of Search Expression Grammar	52
Examples of Dispatch Output Property Set	56

### **Chapter 3. Data Mapping Using the Siebel Data Mapper**

Siebel Data Mapper Overview	60
EAI Data Mapping Engine	62
EAI Data Mapping Engine Methods	62
Using the EAI Data Mapping Engine	63
The Siebel Data Mapper	64
Integration Object Maps	65
Integration Component Maps	66
Integration Field Maps	66
Creating Data Maps	67
Define Integration Objects	67
Determining Required Maps	68
Creating New Data Maps	68
Creating Integration Component Maps	70
Creating Integration Field Maps	71
Validating the Data Map	71

Examples of Workflow Process . . . . .	71
Outbound Workflow Process . . . . .	72
Inbound Workflow Process . . . . .	76
Executing the Workflow . . . . .	79
EAI Data Mapping Engine Expressions . . . . .	80
Addressing Fields in Components . . . . .	84
Data Mapping Scenario . . . . .	85

## **Chapter 4. Data Mapping Using Scripts**

Overview . . . . .	88
EAI Data Transformation . . . . .	90
DTE Business Service Method Arguments . . . . .	92
Map Functions . . . . .	95
The Data Transformation Functions . . . . .	97
Siebel Message Objects and Methods . . . . .	99
Integration Message Objects . . . . .	99
CSSEAIIntMsgIn . . . . .	99
CSSEAIIntMsgOut . . . . .	102
Integration Object Objects . . . . .	105
CSSEAIIntObjIn . . . . .	105
CSSEAIIntObjOut . . . . .	107
Primary Integration Component Objects . . . . .	108
CSSEAIPrimaryIntCompIn . . . . .	108
CSSEAIPrimaryIntCompOut . . . . .	111
Integration Component Objects . . . . .	115
CSSEAIIntCompIn . . . . .	115
CSSEAIIntCompOut . . . . .	117
MIME Message Objects and Methods . . . . .	121
CSSEAIMimeMsgIn . . . . .	121
CSSEAIMimeMsgOut . . . . .	125

Attachments and Content Identifiers in MIME Messages . . . . . 128

XML Property Set Functions . . . . . 130

    Top-Level Property Set Functions . . . . . 130

    XML Element Accessors . . . . . 132

    Examples . . . . . 138

EAI Value Maps . . . . . 139

    EAIGetValueMap Function . . . . . 140

    EAILookupSiebel Search Function . . . . . 141

    EAILookupExternal Search Function . . . . . 141

    CSSEAIValueMap Translate Method . . . . . 142

    EAIGetValueMap unmappedKeyHandler Argument . . . . . 142

    EAIGetValueMap() Method . . . . . 145

Exception Handling Considerations . . . . . 146

    Error Codes and Error Symbols . . . . . 147

    Data Transformation Error Processing . . . . . 147

    Exception Handling Functions . . . . . 148

Sample Siebel eScript . . . . . 150

**Chapter 5. Troubleshooting Techniques**

Service Arguments Tracing . . . . . 154

**Index**

# Introduction

This guide explains the details of the business procedures and rules—including data transformation, data mapping, and so on—of Siebel eBusiness Application Integration (Siebel eAI).

Although job titles and duties at your company may differ from those listed in the following table, the audience for this guide consists primarily of employees in these categories:

<b>Business Analysts</b>	Persons responsible for analyzing application integration challenges and planning integration solutions at an enterprise.
<b>Database Administrators</b>	Persons who administer the database system, including data loading, system monitoring, backup and recovery, space allocation and sizing, and user account management.
<b>Siebel Application Administrators</b>	Persons responsible for planning, setting up, and maintaining Siebel applications.
<b>Siebel Application Developers</b>	Persons who plan, implement, and configure Siebel applications, possibly adding new functionality.
<b>Siebel Integration Developers</b>	Persons responsible for analyzing a business situation or using the analysis of a business analyst to build the integration solution at an enterprise for Siebel applications.
<b>Siebel System Administrators</b>	Persons responsible for the whole system, including installing, maintaining, and upgrading Siebel applications.
<b>System Integrators</b>	Persons responsible for analyzing a business situation or using an analysis of a business analyst to build the integration solution at an enterprise for specific applications, and or to develop custom solutions.

The audience for this book also needs to have experience in data integration, data transformation (data mapping), scripting or programming, and XML.

# How This Guide Is Organized

This book is organized in a way that presents information on discreet components of the EAI business rules and processes, such as using data transformation, using workflows, and so on as individual chapters. Additional information, as applicable, is provided in the appendices.

This book is Volume 4 of a five-volume set. The full set includes:

- *Overview: Siebel eBusiness Application Integration Volume I*
- *Integration Platform Technologies: Siebel eBusiness Application Integration Volume II*
- *Transports and Interfaces: Siebel eBusiness Application Integration Volume III*
- *Business Processes and Rules: Siebel eBusiness Application Integration Volume IV*
- *XML Reference: Siebel eBusiness Application Integration Volume V*



## Additional Resources

The product documentation set for Siebel eBusiness Applications is provided on the *Siebel Bookshelf* CD-ROM or in the *Online Help*. The following integration related books and online help explain the tools required to implement integration:

- *Siebel Tools Online Help*.
- *Siebel Tools Reference*.
- *Siebel Business Process Designer Administration Guide*.
- *Siebel Enterprise Integration Manager Administration Guide*, if you perform bulk loading or unloading of data.
- *Application Services Interface Reference*.

The Connector books provide specifics on each of the associated connectors.

## Revision History

*eAI Volume IV: Business Processes and Rules, Version 7.5, Rev. A*

### January 2003 Bookshelf

**Table 1. Changes Made in Rev. A for January 2003 Bookshelf**

Topic	Revision
“Siebel Data Mapper Overview”	Updated the label for <a href="#">Figure 8</a> on <a href="#">page 60</a> .
“The Siebel Data Mapper”	Updated the label for <a href="#">Figure 9</a> on <a href="#">page 64</a> .
“Outbound Workflow Process”	Updated outbound workflow process procedure in <a href="#">Chapter 3</a> , “ <a href="#">Data Mapping Using the Siebel Data Mapper</a> .”
“EAIGetValueMap unmappedKeyHandler Argument”	Updated the code regarding EAIGetValueMa in <a href="#">Chapter 4</a> , “ <a href="#">Data Mapping Using Scripts</a> .”
“EAILookupSiebel Search Function”	Added new content describing EAILookupSiebel Search functions in <a href="#">Chapter 4</a> , “ <a href="#">Data Mapping Using Scripts</a> .”
“EAILookupExternal Search Function”	Added new content describing EAILookupExternal Search functions in <a href="#">Chapter 4</a> , “ <a href="#">Data Mapping Using Scripts</a> .”

#### **Additional Changes**

- Changed the first step of all the procedures to reflect the new site map menu.

# Defining Workflows for Siebel eAI

# 1

This chapter explains workflow integration processes and how to use them to develop your integration projects. The chapter depends on several sample workflows that are included in the Sample database. For information on using Siebel Business Process Designer to create workflow processes and workflow policies, see *Siebel Business Process Designer Administration Guide*.

# Sample Integration Workflows

Siebel eAI includes several sample workflows that illustrate how you can receive, process, and send integration messages. This chapter includes four of those samples, along with brief descriptions that are intended to help you understand the workflow elements specific to Siebel eAI. One of the methods of invoking a workflow process is through a workflow policy. To invoke a workflow process that includes steps that call EAI adapters from a workflow policy, you must create a workflow policy action that is based on the Run Integration Process program. For details on Siebel eAI and Run Time Events, see *Integration Platform Technologies: Siebel eBusiness Application Integration Volume II*.

The sample workflows explained in this chapter include:

- Import Account (File), see [“Import Account \(File\)”](#) on page 7.
- Export Account (File), see [“Export Account \(File\)”](#) on page 10.
- Import Employee (MQSeries), see [“Import Employee \(MQSeries\)”](#) on page 13.
- Export Employee (MQSeries), see [“Export Employee \(MQSeries\)”](#) on page 16.

## Import Account (File)

This is a sample workflow process that reads an XML file (c:\account.xml) and imports the account information into the Siebel environment using the EAI XML Read from File business service. The EAI XML Read from File business service converts the data and the EAI Siebel Adapter updates the Siebel Database.

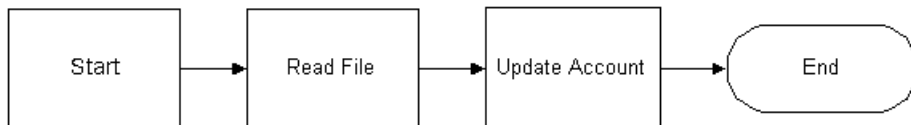
### **To review the sample import Account (File) workflow process**

- 1** From the application-level menu, choose View > Site Map > Business Process Administration > Workflow Processes.
- 2** Query for Import Account (File) workflow process.
- 3** With the Import Account (File) workflow process selected, click the Process Properties tab in the bottom applet to review the process properties for this workflow process.

Workflow process properties are global to the entire workflow. For example, as shown in the following table, the Import Account (File) workflow has several properties. The Account Message is defined to identify the output of the Read File step (a parsed version of the XML Account Message) as a hierarchical structure. The Error Message, Error Code, Object Id, Process Instance Id, and Siebel Operation Object Id properties are included in each workflow by default.

<b>Name</b>	<b>Data Type</b>	<b>In/Out</b>
Account Message	Hierarchy	In/Out
Error Code	String	In/Out
Error Message	String	In/Out
Object Id	String	In/Out
Process Instance Id	String	In/Out
Siebel Operation Object Id	String	In/Out

- Click the Process Designer tab in the bottom applet to review the process design for this workflow process.



- Double-click the first step after Start to review its method and arguments.

This step uses the Read Siebel Message method of the EAI XML Read from File business service to convert XML from a file into an integration object hierarchy, with the following input argument.

Input Arguments	Type	Value
File Names	Literal	c:\account.xml

Note how the path and file name are specified as a string in the Value field of the Input Arguments applet.

Also note the following output property for this step.

Property Name	Type	Output Argument
Account Message	Output Argument	Siebel Message

- 6 Double-click the second step to review its method and arguments.

This step uses the EAI Siebel Adapter business service with the Insert or Update method to read the Siebel Message and update or insert the Account object in the Siebel Database. The EAI Siebel Adapter uses the information in the XML file and the following input argument to accomplish this task.

<b>Arguments</b>	<b>Type</b>	<b>Property Name</b>	<b>Property Data Type</b>
Siebel Message	Process Property	Account Message	Hierarchy

Because the Insert or Update method is specified on the EAI Siebel Adapter business service, this step checks the Siebel Database to see if the Account object defined in the XML file already exists in the database. If the account exists, then it updates the account in the database with the account instance from the XML file; otherwise, it inserts the account into the database.

### **Export Account (File)**

This sample workflow process exports an account to a file in an XML format. This workflow uses the EAI Siebel Adapter and the EAI XML Write to File business service to query the data and then convert the data from the Siebel business object to an XML document.

***To review the Export Account (File) workflow process***

- 1** From the application-level menu, choose View > Site Map > Business Process Administration > Workflow Processes.
- 2** Query for Export Account (File) workflow process.



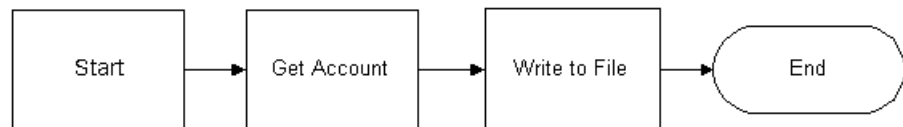
- 3 With the Export Account (File) workflow process selected, click the Process Properties tab to review the process properties for this workflow process.

Workflow process properties are global to the entire workflow. For example, as shown in the following table, the Export Account (File) workflow has several properties. The Account Message is defined to identify the outbound Account as a hierarchical structure. The Error Message, Error Code, Object Id, Process Instance Id, and Siebel Operation Object Id properties are included in each workflow by default.

<b>Name</b>	<b>Data Type</b>	<b>In/Out</b>	<b>Default String</b>
Account Message	Hierarchy	In/Out	-
Error Code	String	In/Out	-
Error Message	String	In/Out	-
Object Id	String	In/Out	1-6
Process Instance Id	String	In/Out	-
Siebel Operation Object Id	String	In/Out	-

Note also how the Object Id process property is set to the account number 1-6, in the Default column. This string identifies an actual account in the Siebel Database by its Row Id. You may set this workflow to use the active account instead of specifying a hard-coded account number. You can accomplish this by creating a button that invokes this workflow from the Account screen, or you can pass the value of the Object Id into the workflow process as an input argument.

- 4 Click the Process Designer tab in the bottom applet to review the process design for this workflow process.



- 5 Double-click the first step after Start to review its arguments.

This step uses the EAI Siebel Adapter business service to query an account from your Siebel Database. The EAI Siebel Adapter uses the following input arguments.

<b>Input Arguments</b>	<b>Type</b>	<b>Value</b>	<b>Property Name</b>	<b>Property Data Type</b>
Output Integration Object Name	Literal	Sample Account	-	-
Object Id	Process Property	-	Object Id	String

Note that Output Integration Object Name of Sample Account is part of the query criteria. The Sample Account integration object describes the structure of the Account business object and was created using the Integration Object Builder. The other part of the query criteria is the Object Id, which is a process property that includes the account number 1-6 defined as a process property before.

Also note the following output property for this step.

<b>Property Name</b>	<b>Type</b>	<b>Output Argument</b>
Account Message	Output Argument	Siebel Message

The output from this step is Account Message. Account Message is a process property that will include the Siebel Message, which is the instance of Account that includes data for account number 1-6. The format is specified by the Sample Account integration object.

- 6** Double-click the second step and review its method and arguments.

This step invokes the EAI XML Write to File business service with the Write Siebel Message method. The EAI XML Write to File uses the following input arguments.

<b>Input Arguments</b>	<b>Type</b>	<b>Value</b>	<b>Property Name</b>	<b>Property Data Type</b>
File Name	Literal	c:\account.xml	-	-
Siebel Message	Process Property	-	Account Message	Hierarchy

The EAI XML Write to File business service converts the hierarchical message to XML and writes the resulting document to the file named in the File Name argument.

## **Import Employee (MQSeries)**

This is a sample workflow process that receives an XML string from an IBM MQSeries queue and updates the Employee instance in the Siebel Database.

### ***To review the import Employee (MQSeries) workflow process***

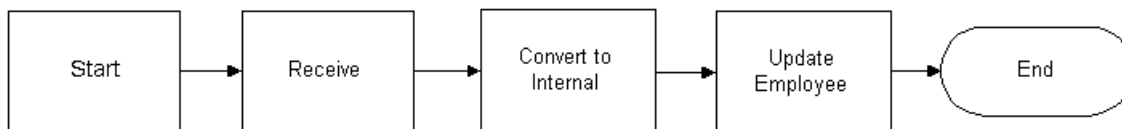
- 1** From the application-level menu, choose View > Site Map > Business Process Administration > Workflow Processes.
- 2** Query for Import Employee (MQSeries) workflow process.

- 3 With the Import Employee (MQSeries) process selected, click the Process Properties tab to review its process properties.

Workflow process properties are global to the entire workflow. For example, as shown in the following table, the Import Employee (MQSeries) workflow has several properties. The Employee Message contains the object as an integration object hierarchy, when converted. The object must be in that format before it can be inserted or updated in the Siebel environment. The Employee XML property defines the MQSeries message as XML recognizable by Siebel applications. The Error Code, Error Message, Object Id, Process Instance Id, and Siebel Operation Object Id properties are included in each workflow by default.

Name	Data Type	
Employee Message	Hierarchy	In/Out
Employee XML	Binary	In/Out
Error Code	String	In/Out
Error Message	String	In/Out
Object Id	String	In/Out
Process Instance Id	String	In/Out
Siebel Operation Object Id	String	In/Out

- 4 Click the Process Designer tab in the bottom applet to review the process design for this workflow process.



---

**NOTE:** When using the MQSeries Receiver, remember the MQ Receiver task will read the message from the queue and pass it into your workflow process in the < Value > field. This means your workflow process does not need to read the message from the MQSeries Queue. To get the XML string that has been read, you need to create a process property and set its default value as follows: Name = MyXMLStringProperty and Default = < Value > . You should use this process property as the input to the EAI XML Converter business service.

---

- 5 Double-click the first step after Start to review its method and arguments.

This step uses the Receive method of the EAI MQSeries Server Transport to get the inbound message from the Employee physical queue named in the Physical Queue Name argument. This step uses the following input arguments.

<b>Input Arguments</b>	<b>Type</b>	<b>Value</b>
Physical Queue Name	Literal	Employee
Queue Manager Name	Literal	Siebel

As shown in the following table, the output from this step is put into the Employee XML process property with the assumption that the inbound message is already in XML format.

<b>Property Name</b>	<b>Type</b>	<b>Output Argument</b>
Employee XML	Output Argument	Message Text

- 6 Double-click the second step and review its method and arguments.

This step uses the XML to Property Set method of the EAI XML Converter to convert the inbound message to the Siebel business object format. The step uses the following input argument.

Input Arguments	Type	Property Name	Property Data Type
XML Document	Process Property	Employee XML	Binary

The output from this step is passed in the Employee Message output argument as described in the following table.

Property Name	Type	Output Argument
Employee Message	Output Argument	Siebel Message

- 7 Double-click the third step and review its method and arguments.

This step uses the EAI Siebel Adapter business service with the Insert or Update method and the following input argument to update the database.

Input Arguments	Type	Property Name	Property Data Type
Siebel Message	Process Property	Employee Message	Hierarchy

The EAI Siebel Adapter checks the Siebel Database for an Employee record that matches the current instance of Employee in the Employee Message property. If an Employee record matching the current instance does not exist in the database, the EAI Siebel Adapter inserts the record into the database; otherwise, it updates the existing record with the instance.

## Export Employee (MQSeries)

This is a sample workflow process that sends an XML string for an employee to an IBM MQSeries queue.

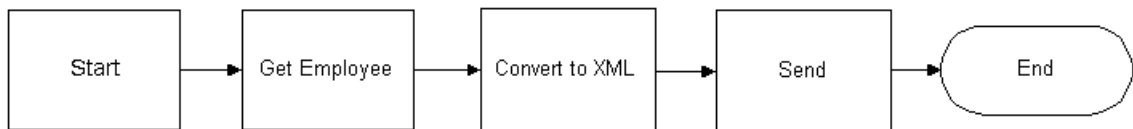
**To review the Export Employee (MQSeries) workflow process**

- 1** From the application-level menu, choose View > Site Map > Business Process Administration > Workflow Processes.
- 2** Query for Export Employee (MQSeries) workflow process.
- 3** With the Export Employee (MQSeries) workflow process selected, click the Process Properties tab to review the process properties defined for this workflow process.

Workflow process properties are global to the entire workflow. For example, as shown in the following table, the Export Employee (MQSeries) workflow has multiple properties. The Employee Message contains the object as an integration object hierarchy, before conversion. The Employee XML property specifies the Siebel object that has been converted to XML. The Error Code, Error Message, Object Id, Process Instance Id, and Siebel Operation Object Id properties are included in each workflow by default.

<b>Name</b>	<b>Data Type</b>	<b>In/Out</b>	<b>Default</b>
Employee Message	Hierarchy	In/Out	-
Employee XML	Binary	In/Out	-
Error Code	String	In/Out	-
Error Message	String	In/Out	-
Object Id	String	In/Out	1-548
Process Instance Id	String	In/Out	-
Siebel Operation Object Id	String	In/Out	-

- 4** Click the Process Designer tab in the bottom applet to review the process design for this workflow process.



- 5 Double-click the first business service after Start to review its method and arguments.

This step uses the Query method of the EAI Siebel Adapter business service, with the following input arguments to get an instance of an Employee record from the Siebel Database. The Sample Employee integration object describes the structure of the Employee business object and was created using the Integration Object Builder wizard. The other part of the query criteria is the Object Id, which is a process property containing value 1-548.

<b>Input Arguments</b>	<b>Type</b>	<b>Value</b>	<b>Property Name</b>	<b>Property Data Type</b>
Output Integration Object Name	Literal	Sample Employee	-	-
Object Id	Process Property	-	Object Id	String

The output from this step is passed in the Employee Message output argument as described in the following table.

<b>Property Name</b>	<b>Type</b>	<b>Output Argument</b>
Employee Message	Output Argument	Siebel Message



- 6** Double-click the second step to review its method and arguments.

This step uses the Property Set to XML method of the EAI XML Converter business service to convert the outbound Siebel Message to XML. The converter stores the outbound Siebel Message in the Employee XML output argument with the following input argument.

<b>Input Arguments</b>	<b>Type</b>	<b>Property Name</b>	<b>Property Data Type</b>
Siebel Message	Process Property	Employee Message	Hierarchy

The output from this step is passed in to the Employee XML output argument as shown in the following table.

<b>Property Name</b>	<b>Type</b>	<b>Value</b>	<b>Output Argument</b>
Employee XML	Output Argument	-	XML Document

- 7** Double-click the third step of the workflow to review its method and arguments.

This step invokes the EAI MQSeries Server Transport business service with the Send method to put the XML message onto the MQSeries queue, Employee. The message is represented by the Message Text argument, as shown in the following table.

<b>Input Arguments</b>	<b>Type</b>	<b>Value</b>	<b>Property Name</b>	<b>Property Data Type</b>
Message Text	Process Property	-	Employee XML	Binary
PhysicalQueueName	Literal	Employee	-	-
QueueManagerName	Literal	Siebel	-	-

The Queue Manager that handles the request is called Siebel. The XML message is put onto the Employee queue, where it remains until another application retrieves it from the queue.

# Testing the Workflow Integration Process

When you have finished defining your workflow integration process, you can use the Workflow Process Simulator to test its behavior.

---

**NOTE:** You can also enable detailed client logging and use the /s option for creating SQL spool scripts. This option provides more detailed information when running the integration workflow process in the Workflow Process Simulator. For details, see *Siebel Remote and Replication Manager Administration Guide*.

---

The Workflow Process Simulator, included in the Workflow Process Manager, allows you to validate your processes before deploying them in production environments.

When you simulate an integration process that performs some external action—for example, the Export Account (File) workflow writes an XML file to a disk location—you can verify the end result by checking if the output object exists, or if a predetermined event has occurred.

### **To test a workflow process**

- 1** From the application-level menu, choose View > Site Map > Business Process Administration > Workflow Processes.
- 2** Query for Export Account (File) workflow process.
- 3** Click the Process Simulator tab.
- 4** Click Start to initiate the process.

The border of the Start shape turns blue to indicate that it is the active element.

- 5** Click Next Step to initiate the next business service.

As you step through the process, the border of each active shape turns blue in turn, unless the simulator encounters an error, in which case it displays an error message alert.

- 6** Click Next Step until the simulator has processed every step and no additional steps have blue borders.

For more information about running the Workflow Process Simulator, reviewing process values, and using Workflow Process Manager and Workflow Batch Manager, see *Siebel Business Process Designer Administration Guide*.

---

**NOTE:** Use the Workflow Process Simulator only for testing purposes. Do not use the Workflow Process Simulator to load data.

---



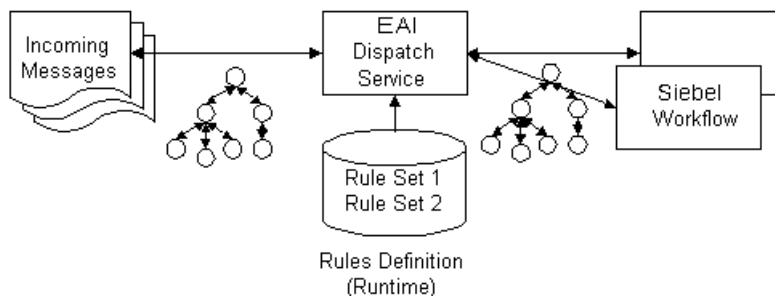
## **Creating and Using Dispatch Rules**

# **2**

This chapter gives an overview on the EAI Dispatch Service, transforming output, and implementing a new dispatch service.

# Overview of EAI Dispatch Service

The EAI Dispatch Service is a rule-based dispatching business service that invokes business services based on the properties of its input property set. The EAI Dispatch Service can execute transformations on an input property set before dispatching it to the target business service. Such transformations can be useful for setting business service arguments or workflow process properties. They can also be used to do limited hierarchy manipulation such as discarding the envelope of an XML document. [Figure 1](#) illustrates the EAI Dispatch Service process.



**Figure 1. EAI Dispatch Service Process**

Although the EAI Dispatch Service is a utility to invoke one business service from another business service based on specified rules, one of its primary uses is to accomplish inbound and outbound integration. The EAI Dispatch Service can be the first business service of the inbound integration to decide which business service should process an incoming document. It can also be the last step of the outbound integration to send the outgoing document to the right transport. The EAI Dispatch Service is similar to the branching in Siebel Workflow. To determine whether to use Siebel Workflow or the EAI Dispatch Service, see [“Differences Between EAI Dispatch Service and Workflow”](#) on page 42.

## EAI Dispatch Service Rule Hierarchy

The EAI Dispatch Service has a three-layer rules hierarchy as illustrated in [Figure 2](#).

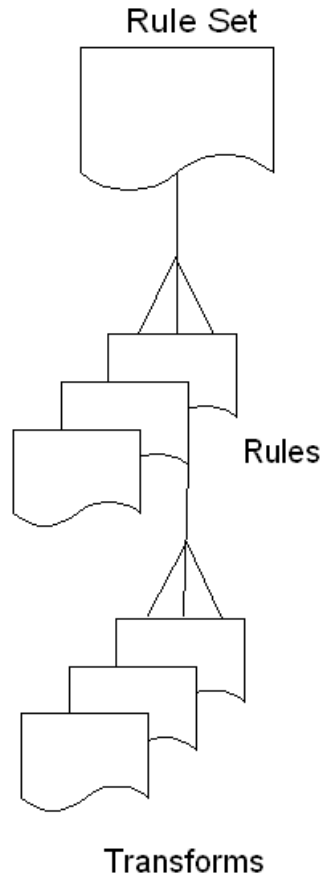


Figure 2. EAI Dispatch Service Rule Hierarchy

### Rule Sets

Rule Sets are sets of rules that you define in a particular sequence. EAI Dispatch Service parses the input document using these rules in sequence until it finds a rule that matches the input.

### Rules

Rules are individual entities in a rule set. Each rule consists of data transformations, search expression grammar, and zero or more rule transforms. You define rules by using search expression grammar to establish how you want an input message to be routed. For details, see [“Search Expression Grammar” on page 28](#).

### Data Transformation

A transform specifies how the intermediate output is going to be generated before it is dispatched to the service and the method you specified in the rule. For details, see [“Output Transformation” on page 29](#).

## EAI Dispatch Service Methods

EAI Dispatch Service uses the methods described in [Table 2](#).

**Table 2. EAI Dispatch Service Methods**

Method	Description
Dispatch	This method parses the input against the rules and dispatches it to the appropriate business service and business service method for further processing.
Lookup	This method returns the intermediate output generation as specified by the rule output properties without dispatching it to any business service. You use this method for debugging purposes, as well as manipulating property sets within business service or workflow.
ProcessAggregateRequest	This method allows multiple invocations of business services in a single request. The output for each request will be combined into a single Siebel property set or XML document. The input to this method is an XML document. For details, see <a href="#">“ProcessAggregateRequest Method” on page 43</a> .
Purge	The Purge method clears any data that has been cached by the EAI Dispatch Service and does not take in any input arguments.



The EAI Dispatch Service executes the following at run time:

- Matches the input with a dispatch rule.
- Evaluates the transforms.
- Dispatches the output to a business service if the method is set to Dispatch.

### Search Expression Grammar

Search expression grammar is used by the EAI Dispatch Service to parse incoming messages and determine the course of action. Search expression grammar is based on the XPath standard. [Table 3](#) presents the definitions you use to construct a search expression.

**Table 3. Definitions for Constructing Search Expressions**

Symbols	Description
/	A forward slash indicates a new level in the hierarchy. The first slash indicates the root of the hierarchy.
@	An at symbol indicates the attribute.
*	An asterisk indicates no specific criteria and that everything matches in the input. Asterisks cannot be used with attributes.
Name	This is the literal value for which the EAI Dispatch Service searches the document.

**NOTE:** See [“Examples of Search Expression Grammar” on page 52](#) for additional information and examples.

## Output Transformation

Before dispatching the incoming hierarchy to the business service, EAI Dispatch Service can be used to perform some transformations to the hierarchy to make it appropriate for the target business service. A transform specifies how the intermediate output, in the memory, is going to be generated before it is dispatched to the service and the method you specified in the rule.

If you do not define any transforms, the EAI Dispatch Service will send the input directly to the business service. However, if you define transforms, the EAI Dispatch Service will create intermediate output based on the values of the transforms before sending the input to the business service you have defined in your rule.

Transforms are specified using one or more of the following targets in permissible combination.

### RootHierarchy

This target creates a new output root hierarchy based on the source expression. The source expression specifies a node in the input hierarchy. The hierarchy rooted at this node is copied as the target root hierarchy. You can use the root hierarchy for minor modifications, such as adding a property, to the input hierarchy.

Only one root hierarchy transform can be specified because this transform always creates a new hierarchy. The root hierarchy transform is always executed before any other transforms in the combination.

---

**NOTE:** For the following targets, if an output hierarchy does not exist at the time of invoking the target, an output hierarchy is first created with just an empty root node before the target is applied.

---

### ChildHierarchy

This target creates a new hierarchy as a child of the current output root hierarchy, based on the source expression. The source expression specifies a node in the input hierarchy. The hierarchy rooted at this node is copied as a new child hierarchy. You can use the child hierarchy for adding service arguments to an incoming document before dispatching to workflow or business service.

### **Type**

This target sets the Type field to Source Expression in the root node of output hierarchy.

### **Value**

This target sets the Value field to Source Expression in the root node of output hierarchy.

### **Property**

This target creates or overwrites a property with name Property Name and value Source Expression in the root node of output hierarchy. You can use property to add business service arguments or workflow process properties.

As described in [Table 4](#), for certain targets, in addition to the dispatch grammar, literal values can be used for the Source Expression property to retrieve the data from the input message.

**Table 4. Literal Values for Source Expression.**

Target	Source Expression	Property Name
Property	Dispatch grammar or a literal value enclosed in quotes to search for a value	Name of the Property
ChildHierarchy	Grammar to search for the hierarchy	N/A
RootHierarchy	Grammar to search for the hierarchy	N/A
Type	Dispatch grammar or Literal value enclosed in quotes to search for a value	N/A
Value	Literal value enclosed in quotes	N/A

**NOTE:** You can combine one or more of the preceding transforms to achieve the desired transformation. The combination should not include more than one Root Hierarchy transform, Type transform, or Value transforms. However, it can include multiple Property transforms, as long as the names of the properties are different. Also if you do not want to transform the input data, but need to add an entry in transform—for example the process name of the dispatching workflow, you have to add another entry to the transform with Target: RootHierarchy, Source Expression: /\*, and no Property Name. If you do not have a RootHierarchy transform, an empty PropertySet will be created and the called dispatching service will receive an invalid hierarchy data.

# EAI Dispatch Service

You can use the EAI Dispatch Service to:

- Respond to a request from an external system. This can be a request to query data or a request to insert data into the Siebel Database. See [“Inbound Requests” on page 33](#).
- Send data to an external system based on an event in Siebel applications. See [“Outbound Requests” on page 34](#).

The EAI Dispatch Service works with the hierarchy in the property set, which may be in some cases different from the hierarchy in your document. When dispatching XML documents, you should use the XML Hierarchy Converter because it generates a hierarchy matching the hierarchy in the XML document.

---

**NOTE:** For details on the XML Hierarchy Converter, see *XML Reference: Siebel eBusiness Application Integration Volume V*.

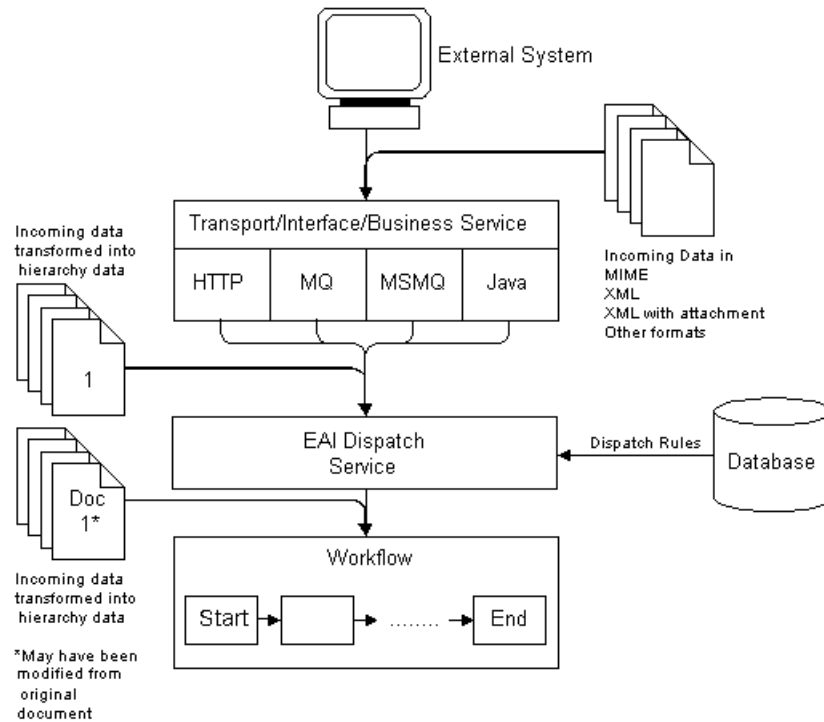
---

Use the business service argument tracing facility provided by the EAI Dispatch Service to understand the input property set hierarchy. This facility dumps the input and the output of the EAI Dispatch Service as XML. For details, see [“Testing Your EAI Dispatch Service Using Argument Tracing” on page 41](#).

## Inbound Requests

The steps for creating an inbound or an outbound EAI Dispatch Service are very similar, as illustrated in the following figures.

Figure 3 illustrates the high-level architecture of an inbound EAI Dispatch Service.



**Figure 3. Inbound EAI Dispatch Service**

## Outbound Requests

The steps for creating an outbound EAI Dispatch Service are the same as the steps for an inbound EAI Dispatch Service with some differences in the workflow.

Figure 4 illustrates the high-level architecture of an outbound Dispatch Service. For details on how to create an outbound workflow, see “Outbound Scenario” on page 45.

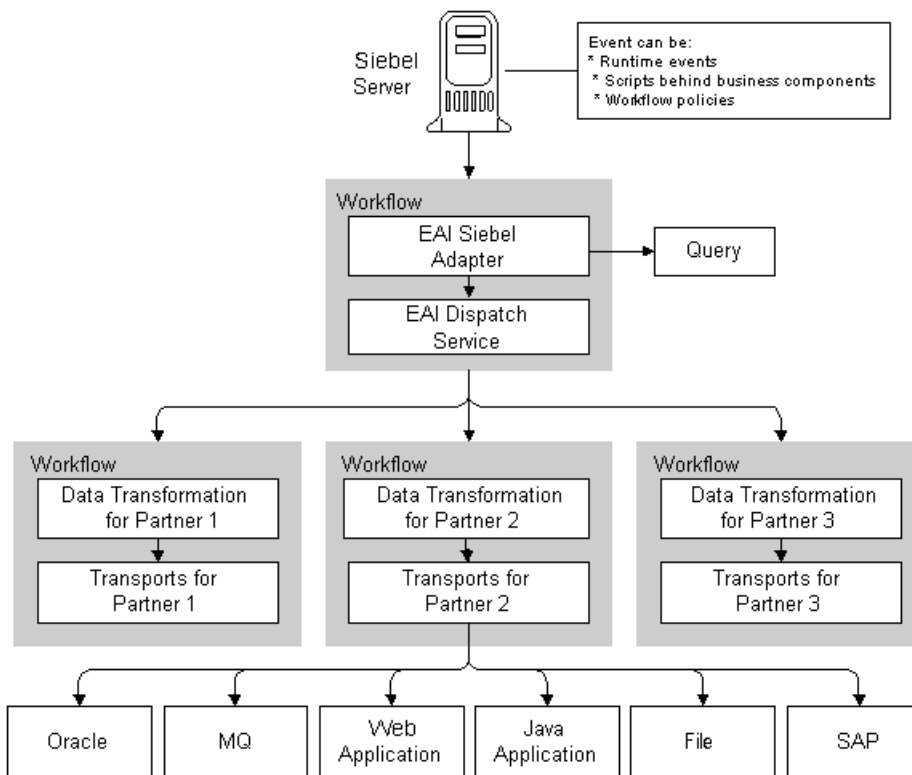


Figure 4. Outbound EAI Dispatch Service



## Implementing EAI Dispatch Service

The following checklist lists the steps you need to take to implement a new EAI Dispatch Service. These steps are the same whether an external system is requesting data from a Siebel application, or inserting data into a Siebel application, or when a Siebel application sends a request to an external system.

### Checklist

---

- Create a workflow to be called by the EAI Dispatch Service.  
For details, see [“Creating a Workflow” on page 36](#).

---

  - Define a Rule Set.  
For details, see [“Defining Rule Sets” on page 37](#).

---

  - Define Rules.  
For details, see [“Defining Rules” on page 37](#).

---

  - Define Transforms.  
For details, see [“Defining Transforms” on page 39](#).

---

  - Set up the EAI Dispatch Service to invoke the workflow.  
For details, see [“Creating a Workflow” on page 36](#).

---

  - Test your EAI Dispatch Service.  
For details, see [“Testing Your EAI Dispatch Service Using Argument Tracing” on page 41](#).
-

### Creating a Workflow

Design a workflow process to be called by EAI Dispatch Service upon receiving a request from an external system.

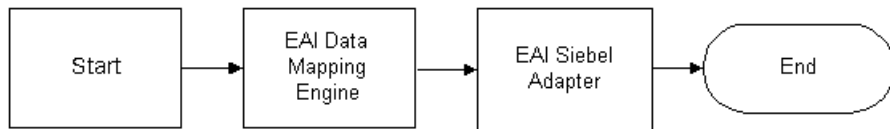
---

**NOTE:** For details on how to use Workflow Process Manager, see *Siebel Business Process Designer Administration Guide*.

---

#### **To design a workflow to receive a request from an external system**

- 1 Navigate to the Workflow Process Designer.
- 2 Set up a workflow process to include the following steps: Start, EAI Data Mapping Engine, EAI Siebel Adapter, End.



- 3 Create process properties to pass incoming data from the EAI Dispatch Service.

Because you have to pass data (as a hierarchy) from the EAI Dispatch Service to the workflow, you need to create a process property of type Hierarchy to receive this data. The name of the property should match the root tag of the hierarchy you are passing. If you use XML Hierarchy Converter with the EAI Dispatch Service, then you use the property XMLHierarchy.

Also, you may want to pass other parameters, such as what data map to use, from the EAI Dispatch Service. Create process properties of type String to receive such parameters. The name of the property should match the Property Name used in your dispatch transform.

## Defining Rule Sets

Rule sets are used by the EAI Dispatch Service to search the incoming data for specific criteria.

### **To define a rule set**

- 1 From the application-level menu, choose View > Site Map > Integration Administration > EAI Dispatch Service View.
- 2 Click New on the Rule Sets list applet to create a new rule set.
- 3 Give this rule set a meaningful name such as AribaAccountToSiebel.
- 4 Save the rule set.

## Defining Rules

### **To define rules**

- 1 Click New on the Rules list applet on the EAI Dispatch Service View.
- 2 Provide the following fields for this record:
  - **Sequence.** Enter a sequence number. This determines the sequence in which the application evaluates the rules.
  - **Search Expression.** Actual logic behind what the rule is looking for in the input. Define the Search Expression using Dispatch Rule Grammar. For details, see [“Search Expression Grammar” on page 28](#).
  - **Property Value (Optional).** Populate this field with the value for the property that the input is to be matched with.
  - **Dispatch Service.** The business service that you want to dispatch the input to. You leave this blank if you intend to use the Lookup method.
  - **Dispatch Method.** Pick a method for the business service you defined in the Dispatch Service field.

**3** Save your rules.

The system validates search expression grammar. If you have not set your rules properly, you will receive an error message. See [Table 6 on page 53](#) for examples of valid search expressions.

## Defining Transforms

### To define transforms

- 1 Click New on the Transforms list applet on the EAI Dispatch Service View to create a new transform.
- 2 Provide the following fields for the new record:
  - **Target.** Defines how the intermediate output is going to be generated before it is dispatched to the service and the method you specified in the rule. For details, see [“Output Transformation” on page 29](#).
  - **Source Expression.** The source expression is used to assign a value to the target. You can either use a search expression pointing to a node in the input hierarchy or a literal value enclosed in quotes. For details, see [“Search Expression Grammar” on page 28](#).
  - **Property Name.** The name of the property to be set. This value is only used when the Target is set to Property. For the other Target types this field is inactive.

---

**NOTE:** See [“EAI Dispatch Service Scenarios” on page 45](#) and [“Examples of Search Expression Grammar” on page 52](#) for more details on these parameters.

---

- 3 Save your transform.

This saves and validates your transform.

### Invoking a Workflow Process From an EAI Dispatch Service

Once you created your workflow, you need to set up your EAI Dispatch Service to invoke it.

#### **To invoke a workflow process with an EAI Dispatch Service**

- 1** From the application-level menu, choose View > Site Map > Integration Administration > EAI Dispatch Service View.
- 2** Select the target Rule Set.
- 3** Select the rule that invokes the workflow process.
- 4** For the selected rule set the following values:
  - **Dispatch Service.** Workflow Process Manager
  - **Dispatch Method.** Execute Process
- 5** For the selected rule insert a new record in the Transforms applet and fill in the following values:
  - **Target.** Property. You can select the Property value from a list of values.
  - **Source Expression.** Name of the workflow process to run. Make sure you include double quotes around the name. For example, "my workflow process".
  - **Property Name.** Process Name. You can select the Property Name value from a list applet.

# Testing Your EAI Dispatch Service Using Argument Tracing

You should use the Business Service Simulator to test your EAI Dispatch Service before using it in your production environment. You can use argument tracing to write the input and the output of the EAI Dispatch Service as XML.

---

**NOTE:** For details on how to use the Business Service Simulator, see *Integration Platform Technologies: Siebel eBusiness Application Integration Volume II*.

---

## To use the EAI dispatch service argument tracing

- 1 Set the server parameter EnableServiceArgTracing to true.
- 2 Set the appropriate event level for EAIDispatchSvcArgTrc on your server component:
  - **Event level 3.** Leads to input arguments being written out when errors occur.
  - **Event level 4.** Leads to both input and output being written out.

If arguments are written out, there will be a trace log entry indicating the filename in the log directory. The filenames will have the following form:

*service name\_input or output\_args\_a big number.dmp*

For example:

EAIDispatchService\_input\_args\_270613751.dmp

---

**NOTE:** To open the file in a XML editor, you can rename the extension to XML.

---

## Differences Between EAI Dispatch Service and Workflow

Although the EAI Dispatch Service is very similar to Siebel Workflow in initiating a task based on a condition, there are some limitations in Siebel Workflow that you can overcome using the EAI Dispatch Service. Siebel Workflow operates on business components as opposed to property sets, so Siebel Workflow can only branch based on fields in a business component. Furthermore, with Siebel Workflow you cannot route incoming documents based on property sets since the workflow decision points cannot search inside of arbitrary property sets.

[Table 5](#) provides some guidance to help you determine the best method for your business requirements.

**Table 5. Siebel EAI Dispatch Methods and Workflow**

Requirements	EAI Dispatch Service	Workflow	Notes
Need to route the incoming document based on its structure or content	✓		The EAI Dispatch Service can route incoming documents based on property sets, whereas workflow can only branch based on fields in a business component.
Multiple dispatch targets	✓		The EAI Dispatch Service is a better choice because writing a workflow to include every branch can be unwieldy, but you can have many EAI Dispatch Service rules.
Need to change input property set before dispatching	✓		The EAI Dispatch Service is the better choice since it has more powerful mapping capabilities than workflow.
Need more complex processing on the input message before dispatching		✓	The EAI Dispatch Service can branch based on the content of the input document, whereas workflow can branch based on business service.
Workflow options are sufficient for your requirements		✓	In this case, Siebel Workflow is the best choice.



## ProcessAggregateRequest Method

The ProcessAggregateRequest method allows you to perform multiple invocations of business services in a single request. The method bundles the output for each request into a single Siebel property set or XML document.

When using the ProcessAggregateRequest method with the EAI Dispatch Service business service, you need to define an input argument called AggregatedServiceRequest, with type Hierarchy for the EAI Dispatch Service to use to store the incoming data.

The following example is the input argument for this method, using XML to represent the PropertySet.

....

```
<PropertySet>
```

```
  <AggregatedServiceRequest>
```

This is the input/output method argument for the ProcessAggregatedRequest method. The EAI Dispatch Service with ProcessAggregateRequest Method looks for this XML tag within the XML document to determine where it needs to start reading the document.

```
    <BusinessServiceWrapper
```

wrapper around the business service. The name of the wrapper has no effect on the EAI Dispatch Service.

```
      BusinessServiceName=...
```

XML tag for business service

```
      BusinessServiceMethod=...>
```

XML tag for business service method

```
    <ArgumentWrapper
```

wrapper around the business service arguments. The name of the wrapper has no effect on the EAI Dispatch Service.

```
      XMLTagArgument1=...
```

XML tag for the first argument. Replace this tag with the correct XML tag for the argument your business service method is using.

```
XMLTagArgument2=...
```

XML tag for the second argument. Replace this tag with the correct XML tag for the argument your business service method is using.

```
.../>
```

```
</BusinessServiceWrapper>
```

---

**NOTE:** For examples, see [“Outbound Scenarios Using ProcessAggregateRequest”](#) on [page 48](#).

---

## EAI Dispatch Service Scenarios

The following business scenarios explain how you might accomplish commonly performed tasks using the EAI Dispatch Service.

### Outbound Scenario

For this scenario, you want to dispatch a service request as soon as it is created. The scenario assumes that:

- You are only interested in service requests logged against eAI.
- You know how to design a workflow that gets triggered as a new service request is created.

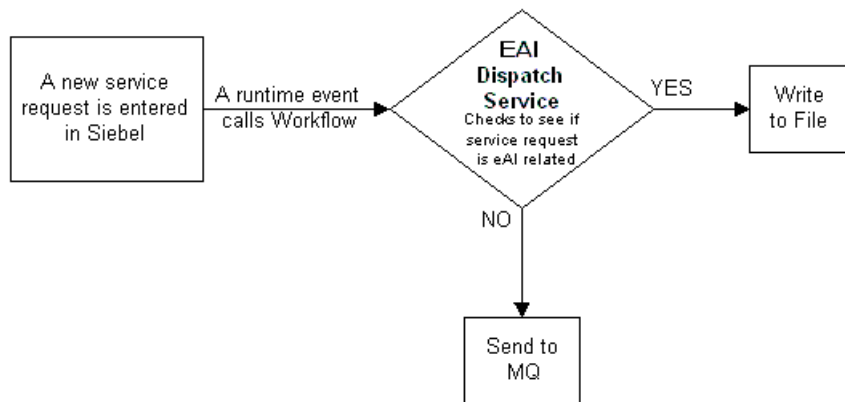
---

**NOTE:** There are number of different ways to trigger a workflow process. For details, see *Siebel Business Process Designer Administration Guide*.

---

- You want the other non-eAI service requests to be sent to an MQSeries.

Figure 5 illustrates this scenario.



**Figure 5. Dispatching Service Request**

**To create this scenario**

- 1** Create a rule set with a search expression to check if the Service Request Area is set to eAI or not.
- 2** Create a workflow that is triggered when the criteria defined in [Step 1](#) is matched.

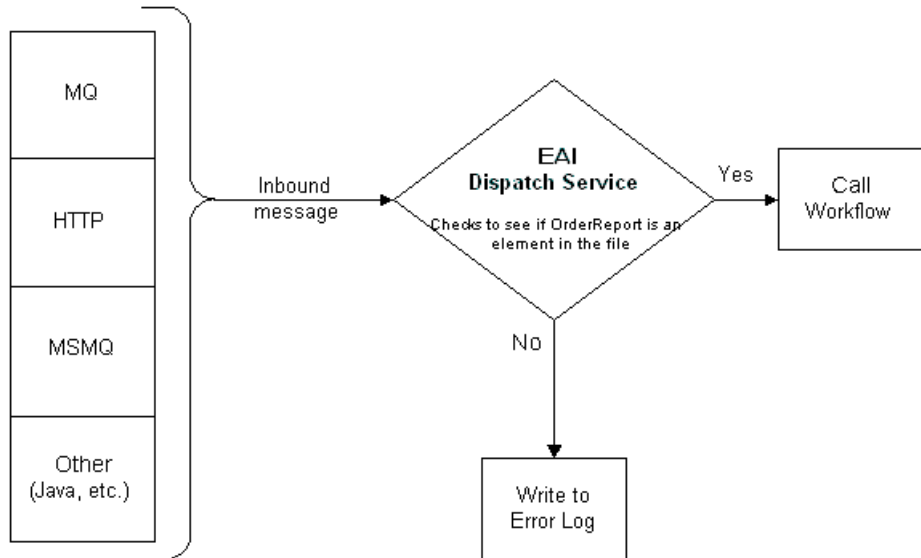
Your workflow should contain the following steps:

- Start
- EAI Dispatch Service
- End

## Inbound Scenario

For this scenario, you want to receive an XML document from an external system through MQ, HTTP, MSMQ, or other means and have the EAI Dispatch Service write to an error file if certain criteria are not met, as illustrated in [Figure 6](#). The scenario assumes that:

- You are only interested in the message if it contains an OrderReport element; otherwise, you want an error written to the error log.
- You know how to create a workflow.



**Figure 6. EAI Dispatching Service Request**

#### **To create this scenario**

- 1** Create a rule set with a rule that searches the message for the OrderReport element.
- 2** Create a workflow that contains the following steps:
  - Start
  - EAI Data Mapping Engine
  - EAI Siebel Adapter
  - End
- 3** Create an EAI Dispatch Service that triggers your workflow, once the criteria in [Step 1](#) are matched.

## **Outbound Scenarios Using ProcessAggregateRequest**

The ProcessAggregateRequest method allows you to have multiple invocation of one or more methods in one or more business services using a single request. The following examples illustrate the use of this method to query account and employee information.

### **Querying the Account Integration Object**

The following example shows how you can invoke multiple business services and setting arguments for each of the services. This is done using simple arguments for the services and by having the aggregate request invoke the QueryPage method of the EAI Siebel Adapter twice, with different searchspecs.

```
<?xml version="1.0" encoding="UTF-8"?>
<?Siebel-Property-Set EscapeNames="true"?>
<PropertySet>
  <AggregatedServiceRequest>
    <BusinessServiceWrapper
      BusinessServiceName="EAI Siebel Adapter"
      BusinessServiceMethod="QueryPage">
```

```
<Argument Wrapper
  PageSize="4"
  StartRowNum="0"
  OutputIntObjectName="Sample Account"
SearchSpec="[Account.Name] LIKE 'Aa*'"/>
</BusinessServiceWrapper>
<BusinessServiceWrapper
  BusinessServiceName="EAI Siebel Adapter"
BusinessServiceMethod="QueryPage">
  <ArgumentWrapper
    PageSize="4"
    StartRowNum="0"
    OutputIntObjectName="Sample Account"
SearchSpec="[Account.Name] LIKE 'Bb*'"/>
  </BusinessServiceRequest>
</AggregatedServiceRequest>
</PropertySet>
```

#### Querying the Employee Integration Object

The following example shows how you can set complex type business service method arguments. The aggregate request invokes the EAI Siebel Adapter twice, and, instead of using searchspec, uses query by example by passing in a SiebelMessage.

---

**NOTE:** All simple arguments are attributes of the ArgumentWrapper element, and the complex argument is a child element.

---

```
<?xml version="1.0" encoding="UTF-8" ?>
<?Siebel-Property-Set EscapeNames="true"?>
<PropertySet>
<AggregatedServiceRequest>
  <BusinessServiceWrapper
    BusinessServiceName="EAI Siebel Adapter"
    BusinessServiceMethod="Query">
    <ArgumentWrapper>
      <SiebelMessage
        MessageType="Integration Object"
        IntObjectName="Sample Employee"
        IntObjectFormat="Siebel Hierarchical">
        <ListOfSampleEmployee>
          <Employee EMailAddr="madams@siebel.com" />
        </ListOfSampleEmployee>
      </SiebelMessage>
    </ArgumentWrapper>
  </BusinessServiceWrapper>
<BusinessServiceWrapper
  BusinessServiceName="EAI Siebel Adapter"
```



```
BusinessServiceMethod="Query">
<ArgumentWrapper>
<SiebelMessage
  MessageType="Integration Object"
  IntObjectName="Sample Employee"
  IntObjectFormat="Siebel Hierarchical">
<ListOfSampleEmployee>
  <Employee FirstName="John" LastName="Doe"/>
</ListOfSampleEmployee>
</SiebelMessage>
</ArgumentWrapper>
</BusinessServiceWrapper>
</AggregatedServiceRequest>
</PropertySet>
```

# Examples of Search Expression Grammar

In the following example, assume that the XML document is a typical document your system receives and that you want to set some rules for the EAI Dispatch Service to use to parse this document.

```
<?xml version="1.0" encoding="UTF-8" ?>
- <cXML payloadID="3223232@ariba.acme.com" timestamp="1999-03-
12T18:39:09-08:00" xml:lang="en-US">
- <Header>
  - <From>
    - <Credential domain="AribaNetworkUserId">
      <Identity>admin@acme.com</Identity>
    </Credential>
    - <Credential domain="AribaNetworkUserId" type="marketplace">
      <Identity>bigadmin@marketplace.org</Identity>
    </Credential>
    - <Credential domain="BT">
      <Identity>2323</Identity>
    </Credential>
  </From>
  - <To>
    - <Credential domain="DUNS">
      <Identity>942888711</Identity>
    </Credential>
  </To>
  - <Sender>
    - <Credential domain="AribaNetworkUserId">
```

```

    <Identity>admin@acme.com</Identity>

    <SharedSecret>abracadabra</SharedSecret>

    </Credential>

    <UserAgent>Ariba.com Network V1.0</UserAgent>

    </Sender>

</Header>

- <Request deploymentMode="test">
    -<OrderRequest>
        - <OrderRequestHeader orderID="D01234" orderDate="1999-03-
12" type="new">
            - <Total>
                <Money currency="USD">12.34</Money>
            </Total>
        - <ShipTo>
            .....
            .....

```

Table 6 provides some valid search expression examples.

**Table 6. Dispatch Rule Grammar**

Search Expression	Description
/*/Header	Go to the second level and look at the type value of each property set and check whether it is of value Header.
/*/*@DeploymentMode	Go to the second level and look at the properties of each property set and check whether any of them has the name (not the value) of DeploymentMode.

**Table 6. Dispatch Rule Grammar**

Search Expression	Description
<code>/*/*/ Request@DeploymentMode</code>	Go to the third level and look at each property set for type of value Request and property of name DeploymentMode.
<code>/cXML/*/*/OrderRequest</code>	Search at the top level for type of value cXML and then upon matching, find a grandchild (not child) of type of value OrderRequest.

Following are examples of invalid rules:

**Rule**     `/*/*@DeploymentMode/Request/SiebelMessage`

**Description**     This is not a valid rule. A search for a property value must be specified at the very end. A correct form would be the following, which will have a different result.

`/*/Request/*@DeploymentMode`

**Rule**     `/*@PayloadID@TimeStamp`

**Description**     This also is not a valid rule. It is not possible to specify more than one property name. The correct form would use two different rules to represent this:

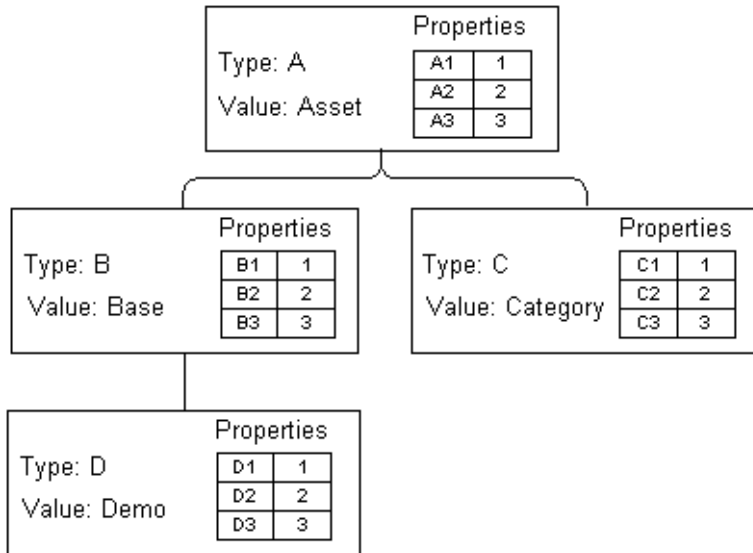
`/*@PayloadID`

and

`/*@TimeStamp`

# Examples of Dispatch Output Property Set

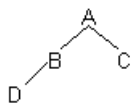
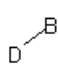
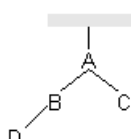

This example shows different output property sets generated by EAI Dispatch Service based on the hierarchy input shown in [Figure 7](#) and certain Target and Source Expression as shown in [Table 7](#).



**Figure 7. A Hierarchy Input**

Table 7 presents the intermediate output based on the value of the Target.

**Table 7. Output Property Generated by EAI Dispatch Service**

Target	Source Expression	Property Name	Output Property Set
RootHierarchy	/*	N/A	
RootHierarchy	*/B	N/A	
RootHierarchy	*/**@C1	N/A	C
ChildHierarchy	/*	N/A	
ChildHierarchy	*/**/D	N/A	
Type	"abc"	N/A	Type : a b c
Type	*/B	N/A	Type : B
Type	*/**@B1	N/A	Type : 1
Value	"abc"	N/A	Value : a b c

## Creating and Using Dispatch Rules

Examples of Dispatch Output Property Set

**Table 7. Output Property Generated by EAI Dispatch Service**

Target	Source Expression	Property Name	Output Property Set
Property	"Any Expression"	Briefing	
Property	/*/*/*@D1	Briefing	

You can also combine different Targets to search the input message as shown on [Table 8](#).

**Table 8. Complex Output Property Generated by EAI Dispatch Service**

Target	Source Expression	Property Name	Output Property
RootHierarchy	/*	N/A	
ChildHierarchy	/*/*/D	N/A	
ChildHierarchy	/*/*/*@C1	N/A	
Type	"demo"	N/A	
Property	"this"	A1	
Property	"that"	f	
ChildHierarchy	/*/*/D	N/A	
ChildHierarchy	/*/*/*@C1	N/A	
Type	"demo"	N/A	
Property	"this"	A1	
Property	"that"	f	



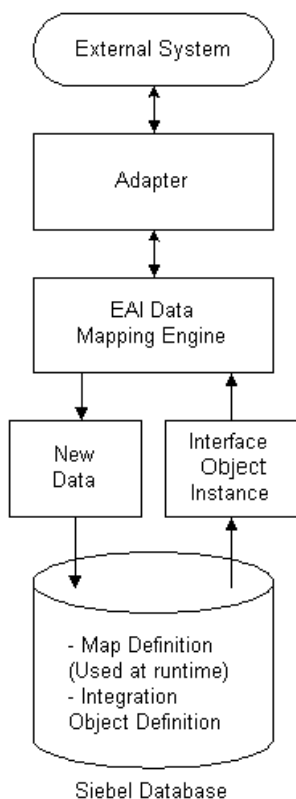
## **Data Mapping Using the Siebel Data Mapper**

# **3**

This chapter describes the process of using the Siebel Data Mapper to convert your external data to the Siebel format and your Siebel data to your external data specifications.

# Siebel Data Mapper Overview

The Siebel Data Mapper provides you with a declarative interface to specify maps for both inbound and outbound data transformation. The maps you set up using the Siebel Data Mapper call the EAI Data Mapping Engine to complete the data transformation. Using the Siebel Data Mapper can often reduce or even eliminate the number of scripts you need to write. [Figure 8](#) illustrates the Siebel Data Mapper architecture.



**Figure 8. Siebel Data Mapper Architecture**

For data mapping within Siebel eBusiness Applications, Siebel applications now support two data mapping solutions, the Siebel Data Mapper and Siebel eScript Data Mapping. The Siebel Data Mapper has a declarative interface and requires no programming skills. The Siebel eScript Data Mapping uses scripts programmed in eScript as data maps. Because the Siebel Data Mapper is based on a declarative interface, it does not have the flexibility that script-based data mapping has. Use Siebel Data Mapper for most of your integration needs, except for complex mapping situations requiring aggregation, joins, or programmatic flow control.

# EAI Data Mapping Engine

In order to use the EAI Data Mapping Engine, you need to enable the following component groups:

- Siebel Workflow
- Siebel eAI

## EAI Data Mapping Engine Methods

The EAI Data Mapping Engine business service has two methods: Execute and Purge.

### Execute

Use the Execute method when your integration requires data transformation. Input and output arguments for the Execute method are shown in [Table 9](#) and [Table 10](#).

**Table 9. Input Arguments for Execute Method**

Input Argument	Description
Map Name	Name of your data map.
Output Integration Object Name (Optional)	The target integration object in your map. If you use this argument you have to match it with the data map.
Siebel Message	The instance of your source integration object.
Map Arguments (Optional)	Used as an argument when you call your map from a workflow.

**Table 10. Output Argument for the Execute Method**

Property Name	Description
Name of the property	The output integration object in Siebel Message format.

## **Purge**

This method is only for development mode. Use the Purge method to purge the database of an existing map. Use this method when you have made a change to a map and you would like to run Execute after these changes. This method does not require any input or output arguments.

## **Using the EAI Data Mapping Engine**

The following checklist outlines the main steps required to use the EAI Data Mapping Engine.

### **Checklist**

---

- Create integration objects.  
For details, see [“Define Integration Objects” on page 67.](#)

---

  - Create data maps.  
For details, see [“Creating New Data Maps” on page 68.](#)

---

  - Validate data maps.  
For details, see [“Validating the Data Map” on page 71.](#)
-

# The Siebel Data Mapper

The Siebel Data Mapper maps one integration object, source, to another integration object, target. Integration objects contain one or more integration components, which in turn contain one or more integration fields. For details on integration objects, see *Integration Platform Technologies: Siebel eBusiness Application Integration Volume II*.

Figure 9 illustrates the Siebel Data Mapping Engine architecture.

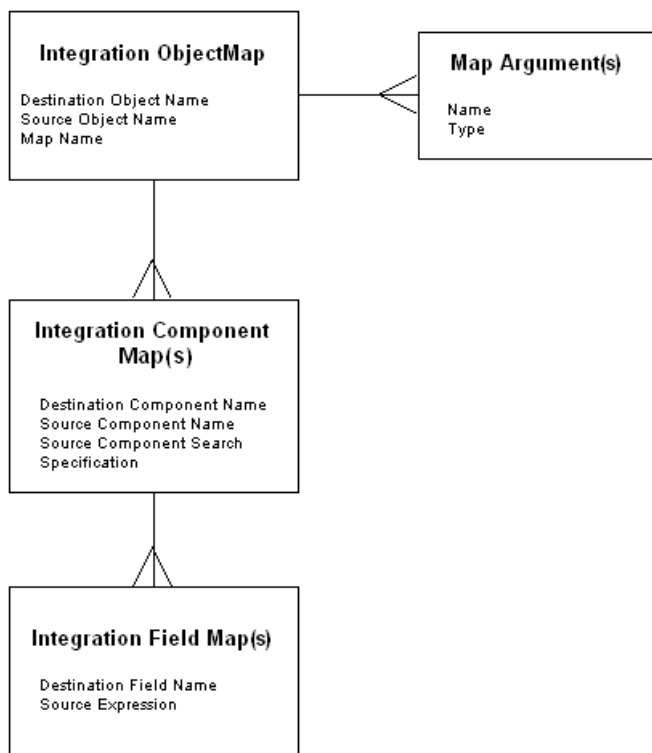


Figure 9. The EAI Data Mapping Engine Architecture

A data map defines the relationship between *source* and *target* object format. The map controls the transformation process. Transformation maps are stored in the Siebel Database as explained in [Table 11](#).

**Table 11. Maps and Data Table Relationship**

Map Type	Siebel Data Table
Integration Object maps	S_INT_OBJMAP
Integration Object Component maps	S_INT_COMPMAP
Integration Object Field maps	S_INT_FLDMAP

## Integration Object Maps

An integration object map is the top-level data map specifying mapping from one integration object to another. An integration object map contains one or more integration component maps and can optionally contain integration map arguments.

### Integration Map Arguments

Data maps can be parameterized using integration map arguments. Map arguments can be referenced in any expression, including the integration field map expression, source search expression, precondition expression, and postcondition expression. For example, you may want to have a field map that creates an Order Number in the target object by prefixing the Order Number in the source object with a constant.

You may want to use this map for orders coming from multiple partners and use a different prefix for each partner. To achieve this with a single data map, you can define an argument Prefix in the Integration Map Argument List, and use this argument Prefix in the field map source expression: [&Prefix] + [Order Number]. Then in the input method arguments in EAI Data Mapping Engine business service, you can specify any value for Prefix.

## Integration Component Maps

Integration component maps specify how integration components in the source object get mapped to integration objects in the target object. For every occurrence of the source component in the source integration object instance, an instance of the target component is created in the target object instance. An integration component map contains one or more integration field maps. For details on integration component maps, see [“Creating Integration Component Maps” on page 70](#).

## Integration Field Maps

Integration field maps specify how fields in the source integration object are mapped to fields in the target integration component. An integration field map target is always a field in the target component of the parent component. An integration field map source can be a constant, a reference to a map argument, a field in the source component, or other legally addressable components such as ancestors of the source component. It can also be a Siebel Query Language expression using one or more of the preceding elements.

---

**NOTE:** For details on integration field maps, see [“Creating Integration Field Maps” on page 71](#). For details on addressing fields in components other than the source component, see [“Addressing Fields in Components” on page 84](#). For details on Source Expression, see [“Source Expression” on page 80](#).

---



## Creating Data Maps

The following checklist provides the high-level steps for creating data maps.

### Checklist

- 
- Define and validate integration objects and determine the required maps.  
For details, see [“Define Integration Objects.”](#)

---

  - List components and fields within the Siebel object to use.  
For details, see [“Define Integration Objects.”](#)

---

  - Create a map between the two integration objects.  
For details, see [“Creating New Data Maps” on page 68.](#)

---

  - Create maps between the components of the objects you mapped.  
For details, see [“Creating Integration Component Maps” on page 70.](#)

---

  - Create maps between individual fields within the components you mapped.  
For details, see [“Creating Integration Field Maps” on page 71.](#)

---

  - Validate the data maps.  
For details, see [“Validating the Data Map” on page 71.](#)
- 

### Define Integration Objects

Before you create a data map, you need to verify that valid integration objects exist for the source and the target data you want to map. For details on creating and validating integration objects, see *Integration Platform Technologies: Siebel eBusiness Application Integration Volume II*.

## Determining Required Maps

The Integration Object Browser lists the existing integration object maps. Use this browser to determine which maps you need to create.

### **To determine which maps to create**

- 1 From the application-level menu, choose View > Site Map > Integration Administration > Data Map Browser.

The Integration Object Map appears.

- 2 Query for the integration objects you want to map.

## Creating New Data Maps

Once you determine what objects you need to map, use the Data Map form to create data maps. See [“Define Integration Objects” on page 67](#).

### **To create a new data map**

- 1 From the application-level menu, choose View > Site Map > Integration Administration > Data Maps.

The Integration Object Map list appears.

- 2 In the Integration Object Map list, click New to create a new map.
- 3 Provide the necessary fields:
  - **Name.** Enter a name for the map you are creating.
  - **Source Object Name.** From the list of values, select the source integration object you want to create the data mapping for.
  - **Target Object Name.** From the list of values, select the target integration object into which you want the data to be transferred.
- 4 Click Save.

## Creating Maps Using Auto-Map

Once you have created your integration object map, you can use the Auto-Map button to have the Siebel application create the necessary mappings between the underlying components. The root components are always mapped by Auto-Map, whether or not they have the same name. Once the root components are mapped, the Auto-Map recursively walks through every component and their fields to map them. If the components have the same name, the Auto-Map continues to map their fields and their children components. However, if the components have different names, the Auto-Map ignores the current components, their fields, and their children components, and moves on to map the next component. In cases where only the field names are different, the Auto-Map only ignores that one field and continues with its recursive mapping.

---

**NOTE:** You can also use the Auto-Map on an existing mapping when you modify the integration object. The Auto-Map does not overwrite your manual mappings.

---

## Defining Arguments for a Data Map (Optional)

After you create a data map, you can define the arguments for your map. You can then use these arguments when you call the map within workflow. To define arguments, use the Integration Map Argument list on the Integration Object Map form.

### *To define integration map arguments*

- 1 Create a new record in the Integration Map Argument list.
- 2 Provide the following fields:
  - **Name.** Enter a name for the argument.
  - **Data Type.** From the list of values, select the Siebel Data Type for the argument.
  - **Display Name.** Enter the name that you want displayed.
- 3 Click Save.

### Creating Integration Component Maps

Once you have defined a data map (see [“Creating New Data Maps” on page 68](#)), you need to set up the mapping between the components and the fields within the objects you have mapped. You do this using the Data Map Editor form. The Integration Object Editor list displays existing object maps and provides views in which you can define maps for components and for fields. You use the Integration Component Map view to create integration component maps.

#### **To define integration component maps**

- 1** From the application-level menu, choose View > Site Map > Integration Administration > Data Map Editor.
- 2** In the Integration Object Map list, select the map for which you want to define integration component maps.
- 3** Create a new record in the Integration Component Map list.
- 4** Provide the following fields.
  - **Name.** Name of the map you are creating.
  - **Source Component Name.** The component where you are getting the data.
  - **Target Component Name.** The component where you want to store the data.
  - **Source Search Specification (optional).** The search criteria based on which the records are filtered. See [“Source Search Specification” on page 81](#) for details.
  - **Parent Component Map Name (optional).** The parent component field is used when there is a mapping to two target components that share multiple parent components. You can exclude data from one of these child objects by choosing a parent component.
  - **Precondition (optional).** See [“Preconditions” on page 82](#) for details.
  - **Postcondition (optional).** See [“Postconditions” on page 82](#) for details.
- 5** Click Save.

## Creating Integration Field Maps

You define the integration field map between your source and target fields using the Integration Field Map form.

### **To define a integration field map**

- 1 Create a new record in the Integration Field Map list.
- 2 Provide the following fields:
  - **Target Field Name.** Name of the field in the Target Component where the value will be assigned.
  - **Source Expression.** An expression that is used to calculate a value for the Destination Field. See [“Source Expression” on page 80](#) for details.
- 3 Click Save.

## Validating the Data Map

Once you have created your data map, you need to validate your data map.

### **To validate your data map**

- 1 From the application-level menu, choose View > Site Map > Integration Administration > Data Maps.
- 2 Select your data map.
- 3 Click Validate to validate your data map.
- 4 Take the necessary actions to fix the problems with your map or the associated integration objects.

## Examples of Workflow Process

Depending on whether you are preparing for an outbound or an inbound data exchange, you need to design different workflow processes as described in the following two procedures.

### Outbound Workflow Process

To execute the map for an outbound process create a workflow process to query the database, purge the data map, execute the data map, and then write the XML into a file. The following examples illustrate integration between contact and employee business objects.

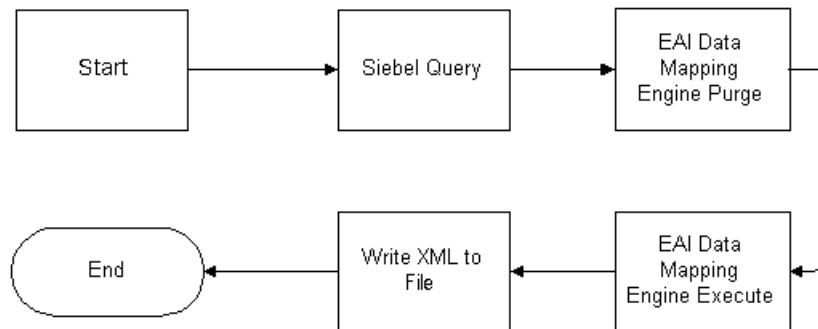
#### To create an outbound workflow process

- 1 Navigate to Workflow Process Designer.
- 2 Create a workflow process consisting of Start, End, and four business services. Set up each business service according to the task it needs to accomplish.

---

**NOTE:** The EAI Data Mapping Engine Purge step should only be used in a development environment.

---



- 3 Define the process properties, using the following table as a guide.

<b>Input Argument</b>	<b>Type</b>
Employee Message	Hierarchy
IntObjName	Hierarchy
Process Instance Id	String
Error Code	String
Error Message	String
Object Id	String
Siebel Operation Object Id	String

- 4 The first business service after Start uses the EAI Siebel Adapter business service with Query method, to query the information from the database. The business service uses the following input and output arguments.

<b>Input Argument</b>	<b>Type</b>	<b>Value</b>
Output Integration Object Name	literal	An Employee
Search Specification	Literal	[Employee.Last Name] LIKE "Peterson"

<b>Property Name</b>	<b>Type</b>	<b>Output Argument</b>
Employee Message	Output Argument	Siebel Message

**NOTE:** For more information on using the EAI Siebel Adapter, see *Integration Platform Technologies: Siebel eBusiness Application Integration Volume II*.

- 5 The second business service purges the map using the EAI Data Mapping Engine business service with the Purge method. This step is only for development mode so that the latest map is picked for the process and should not be used in a production environment. This step does not require any input or output arguments.
- 6 The third business service uses the EAI Data Mapping Engine business service with the Execute method to execute the data map. The business service uses the following input and output arguments.

<b>Input Argument</b>	<b>Type</b>	<b>Value</b>	<b>Property Name</b>	<b>Property Data Type</b>
Map Name	Literal	Outbound DDTE Map	-	-
Output Integration Object Name	Literal	My DTE	-	-
Siebel Message	Process Property	-	Employee Message	Hierarchy

<b>Property Name</b>	<b>Type</b>	<b>Output Argument</b>
IntObjName	Output Argument	Siebel Message



- 7 The last business service uses the EAI XML Write to File business service with the Write Siebel Message method to write the XML into a file. The business service uses the following input and output arguments.

Input Argument	Type	Value	Property Name	Property Data Type
File Name	Literal	c:\emp.xml	-	-
Siebel Message	Process Property	-	IntObjName	Hierarchy

The output argument for this step is optional and can be defined as follows.

Property Name	Type	Value	Output Argument
IntObjName	Output Argument	-	Siebel Message

You can use this argument to put the Siebel Message into a Hierarchy type process property.

- 8 Use the Workflow Process Simulator to test your workflow process.

---

**NOTE:** For details on creating a workflow process and using the Workflow Process Simulator to test your workflow process, see *Siebel Business Process Designer Administration Guide*.

---

### Inbound Workflow Process

To execute the map for an inbound process you need to create a workflow process to read the data from a file, purge the data map, execute the data map, and then write the XML into a file.

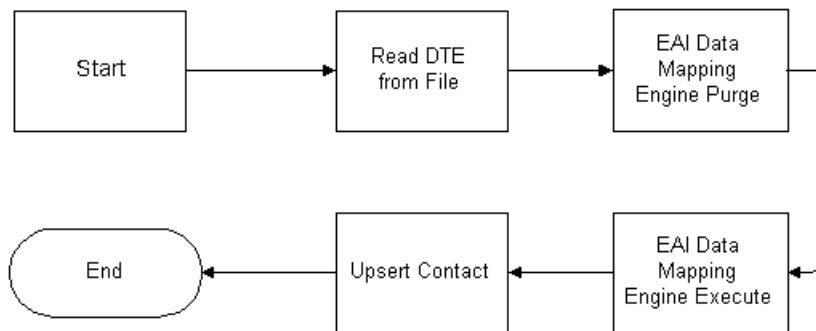
#### To create an inbound workflow process

- 1 Navigate to Workflow Process Designer.
- 2 Create a workflow process consisting of Start, End and four business services. Set up each business service according to the task it needs to accomplish.

---

**NOTE:** The EAI Data Mapping Engine Purge step should only be used in a development environment.

---



- 3 Define the process properties using the following table as a guide.

Name	Data Type
Contact Message	Hierarchy
DTE Message	Hierarchy
Process Instance Id	String
Error Code	String
Error Message	String

<b>Name</b>	<b>Data Type</b>
Object Id	String
Siebel Operation Object Id	String

- 4** The first business service after Start uses the EAI XML Read from File business service with the Read Siebel Message method, to read the information from a file. The business service uses the following input and output arguments.

<b>Input Argument</b>	<b>Type</b>	<b>Value</b>
File Name	Literal	c:\emp.xml

<b>Property Name</b>	<b>Type</b>	<b>Output Argument</b>
DTE Message	Output Argument	Siebel Message

- 5** The second business service purges the map using the EAI Data Mapping Engine business service with the Purge method. This step is only for development mode so that the latest map is picked for the process and should not be used in a production environment. This step does not require any input or output arguments.
- 6** The third business service uses the EAI Data Mapping Engine business service with the Execute method, to execute the data map. The business service uses the following input and output arguments.

<b>Input Argument</b>	<b>Type</b>	<b>Value</b>	<b>Property Name</b>	<b>Property Data Type</b>
Map Name	Literal	Inbound DDTE Map	-	-
Output Integration Object Name	Literal	A Contact	-	-
Siebel Message	Process Property	-	DTE Message	Hierarchy

Property Name	Type	Output Argument
Contact Message	Output Argument	Siebel Message

- 7 The last business service uses the EAI Siebel Adapter business service with Insert or Update method to write the data into the database. This business service uses the following input argument.

Input Argument	Type	Property Name	Property Data Type
Siebel Message	Process Property	Contact Message	Hierarchy

This step does not have any output arguments.

---

**NOTE:** For more information on using the EAI Siebel Adapter, see *Integration Platform Technologies: Siebel eBusiness Application Integration Volume II*.

---

- 8 Use the Workflow Process Simulator to test your workflow process.

---

**NOTE:** For details on creating a workflow process and using the Workflow Process Simulator to test your workflow process, see *Siebel Business Process Designer Administration Guide*.

---

## Executing the Workflow

Once you have designed and tested your workflow, you can run it in your production using Workflow Process Manager Server.

---

**NOTE:** For more details on how to activate and execute a workflow, see *Siebel Business Process Designer Administration Guide*.

---

# EAI Data Mapping Engine Expressions

The EAI Data Mapping Engine uses four categories of expressions:

- Source expressions
- Source search specifications
- Preconditions
- Postconditions

These expressions support Siebel Query Language expressions. These expressions can address fields in the source component, map arguments, and constants. In addition to fields in the source component, fields in certain other components in the source integration object can be addressed. For details, see [“Addressing Fields in Components” on page 84](#). These expressions are just like Siebel Query Language support invocations of predefined functions and custom business services.

---

**NOTE:** For details on the Siebel Query Language, see *Siebel Tools Online Help*.

---

## Source Expression

Source Expression is a required field for every integration field map. The source expression can be a literal or, based on scripting if you need to parse data or query the database for a specific value. The source expression is associated with an instance of the input integration component named in the integration component map, which is the parent of the integration field map that contains the source expression. An example of a source expression is:

```
[First Name] + " " + [Last Name]
```

This expression concatenates the First Name and the Last Name and separates them with a space to be moved into a target field such as Full Name.

---

**NOTE:** Only a subset of Siebel Query Language Expressions that do not require context of a business component, is supported by EAI Data Mapping Engine. You can not use the following Siebel Query Language Expressions that require context of a business component in the Source Expression: BCName(), Count(mvlink), IsPrimary(), Min (mvfield), Max(mvfield), ParentBCName(), ParentFieldValue(field\_name), Sum(mvfield), GetXAVal(), GetXAValAsNum(), GetXAValAsInt(), GetXAValAsDate(), and XAIsClass().

---

### **Source Search Specification**

Source Search Specification is a Boolean expression that is used to determine if a given component instance satisfies given criteria. It may only appear in an integration object map or a integration component map together with an integration component name. Defining a source search specification is optional, and if you do not define it, then it does not apply any criteria and returns True.

If a field in the current integration component has the same name as a field in a parent component, then you can only address the parent component field by using dot ('.') notation. An example of a source search specification is:

```
[Role] = "Billing"
```

The expression returns True only if the current input integration component has the value Billing in the Role field.

---

**NOTE:** If a source search specification is not provided, then every input integration component whose type matches the input component of the integration component map is processed.

---

### Preconditions

You can use preconditions to make sure that a field of the input object has a certain value or otherwise terminate the process. An error is generated if the field in the input object has any other value, or no value. Preconditions are evaluated immediately before their containing integration component map is executed. If the condition is true then the process continues. If the condition is false then the whole transformation is aborted and EAI Data Mapping Engine returns an error to the caller. An example of a precondition is:

```
[Role]="Billing" Or [Role]="Shipping"
```

This precondition makes sure that the field Role of the input object either has a value Billing or a value Shipping before it proceeds with the process of data transformation.

The precondition is only applied to the input components that are selected by the source search specification. The input components that fail to match the source search specification will not be checked against the precondition.

A precondition expression may address any field in the current input component, and any of its parent components. It can also address any service call parameter that has been declared as a map argument.

---

**NOTE:** The default value for the precondition is True. If the precondition is omitted from an integration component map then no constraint is enforced.

---

### Postconditions

Postconditions are evaluated and applied to the newly created objects when you execute the containing integration component map. If the result of the postcondition is true then the process continues. If the result is false, the whole transformation is aborted and EAI Data Mapping Engine returns an error. Here is an example of a postcondition:

```
[Object Id]<>" Or ([First Name]<>" And [Last Name]<>" )
```



This postcondition checks the output component for a value in the Object Id or in the First Name and the Last Name.

---

**NOTE:** Because there is no search specification for output components, the postcondition is applied only once for every output component instantiated because it executes its containing integration component map.

---

The type of the expression may be any type that can be assigned to the Destination Field type either directly or after applying standard conversions to the result of the expression.

## Addressing Fields in Components

You may want to address fields in components other than the source component. This is because your target component may depend on more than one component in the source object. In such cases, you cannot use different component maps with different source components, and the same target component, because each component map creates a different instance of the target component. Data Mapping Engine expressions allow you to use the dot notation to address fields, other than the source component, in source integration object components—for example, [Component Name.Field Name].

---

**NOTE:** The picklist for the source expression in the Data Mapper View does not list fields in components other than the source component. Such fields should be typed in using the dot notation.

---

Addressing fields in other components is legal only if the cardinality of the component is less than or equal to one relative to the source component—that is, only if the component can be uniquely identified from the context of the source component without using any qualifiers other than the component name. If a field in a component that is not legally addressable is used in the source expression then it leads to a runtime error to the effect that such a field does not exist. Any component that is an ancestor of the source component in the integration object hierarchy has a relative cardinality of 1 which means it can always be uniquely identified from the source component. Therefore, fields in ancestor components can always be legally addressed.

Sibling components can be uniquely identified from the context of the source component only if they do not occur multiple times—that is have a cardinality of less than or equal to 1. Only such siblings can be legally addressed. Therefore, it is not legal to address repeated sibling components. Components that are descendants of a sibling component can be legally addressed only if there is no repeated component in the hierarchical path from the sibling component to the component.

Further, components that are descendants of a sibling of some ancestor of a source component can be legally addressed only if there is no multiply-occurring component in the hierarchical path from the sibling-of-ancestor-of-source component to the component.

## **Data Mapping Scenario**

The following scenarios concern an IT developer named Chris Conway, who works for a computing company, PCS Computing. One of his responsibilities is creating and maintaining the data mappings between Siebel and the other applications in use at PCS. He is assigned to create mapping between Siebel applications and the external application they need to integrate with.

### **Mapping Between Siebel and an External Application**

Chris is in charge of integrating PCS's Siebel implementation with a custom in-house application. The purpose is to exchange customer information between the two systems.

After weighing various options, Chris decides to use the Siebel Data Mapper instead of scripts to perform the data mapping. He creates the internal integration object using the Siebel Integration Object Wizard in Siebel Tools. He also creates an external integration object using the external application's DTD.

When Chris is ready to map the two integration objects, he navigates to the Data Mapper and creates a new entry by supplying the name of the map and associating the internal integration object with the external integration object, as explained in [“Creating New Data Maps” on page 68](#). He then uses the Map Editor form to create object, component, and field maps, as explained in [“Creating Integration Component Maps” on page 70](#).

When he finishes creating the map, Chris navigates to the Siebel Workflow Process Designer form to define the integration flow. For one of the workflow steps, he defines an invocation of the Siebel Data Mapper. He supplies the appropriate parameters, including the name of the map, and saves his work.



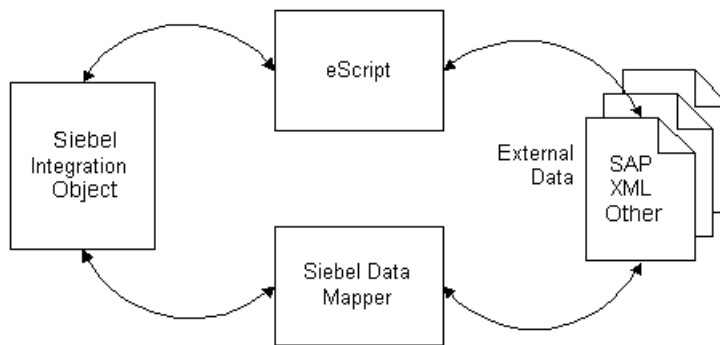
## **Data Mapping Using Scripts**

# **4**

This chapter describes the process of using the Siebel eScript Data Mapping to convert your external data to the Siebel format and your Siebel data to your external data specifications.

# Overview

You can accomplish your data transformation requirements in Siebel eBusiness applications by using the Data Transformation Function or Siebel Data Mapper, as illustrated in [Figure 10](#).



**Figure 10. Data Transformation Options**

For customers who want to do data mapping within Siebel applications, Siebel applications now support two data mapping solutions—Siebel Data Mapper and Siebel eScript Data Mapping. Siebel Data Mapper has a declarative interface and requires no programming skills. Siebel eScript Data Mapping uses scripts programmed in eScript as data maps.

Data maps defined using Siebel Data Mapper are easy to maintain and upgrade. These maps also perform better than eScript Data Maps. Because Siebel Data Mapper is based on a declarative interface, it does not have the full flexibility and power that the data mapping using eScript has. Siebel Data Mapper should suffice for most integration needs except some complex mapping situations requiring aggregation, joins, or programmatic flow control.

The following checklist outlines the main steps required to accomplish your data transformation requirements using the Data Transformation Functions.

### Checklist

---

- Define integration objects in Siebel Tools—one to represent Siebel objects and another to represent external data.  
For details, see *Integration Platform Technologies: Siebel eBusiness Application Integration Volume II*.

---

  - Set up the Data Transformation Map.  
For details, see [“Setting Up a Data Transformation Map” on page 90](#).

---

  - Write the Siebel eScript code to perform the data transformation.  
For details, see [“To write a script for DTE business service” on page 91](#).
-

# EAI Data Transformation

The Siebel Data Transformation Functions are a framework for building data transformation maps. Data transformation maps act as import and export filters, preparing data from an external system for entry into Siebel applications and preparing data in Siebel applications for export.

Data transformation maps are created as business services using Siebel eScript. You invoke them as part of an EAI workflow process.

A data transformation map reads data from an input structure and transfers it to an output structure, transforming it along the way. The map developer creates a custom eScript function to do the transformation. The Data Transformation Functions provide a convenient way to read the input data and generate results. They also provide a framework for invoking your map functions, handling errors, and accessing other eAI resources.

## Setting Up a Data Transformation Map

You create your data transformation map in Siebel Tools in a business service, then you compile it into an .srf file. You can organize your maps in many different ways. Each business service you create can contain one or more maps. You can, in fact, use several business services to organize a large number of maps into logical groups.

### **To define a data transformation business service in Siebel Tools**

- 1 Start Siebel Tools.
- 2 Choose a locked project.
- 3 Create a new business service.
- 4 Choose the CSSEAITEScriptService class for the business service.
- 5 Double-click the Business Services Methods folder and add the method Execute.
- 6 Select the Business Service Method Arg folder and add the arguments for the Execute method. For a list of arguments and their description, see [“DTE Business Service Method Arguments” on page 92](#). The arguments to include are:
  - MapName



- An input argument. Select one of SiebelMessage, XMLHierarchy, or MIMEHierarchy as the argument name, based on the type of input.
- An output argument. Required if the output object is a different type than the input argument. Select one of SiebelMessage, XMLHierarchy, or MIMEHierarchy as the argument name.

---

**NOTE:** If the input and output types are the same then the same argument entry is used for both.

---

- OutputType
- InputType(Optional). This is required only when passing the business service input property set to the map function without interpretation. This is done by specifying the InputType as ServiceArguments.

---

**NOTE:** Most transform maps use SiebelMessage for both the input and output arguments. This is for mapping one integration object to another. For details, see [“DTE Business Service Method Arguments” on page 92](#).

---

Once you have created the business service you need to write the Siebel eScript code to perform the data transformation.

**To write a script for DTE business service**

- 1 Choose the Business Service object and select the business service you want to contain the transformation map.
- 2 Right-click to display the pop-up menu.
- 3 Choose Edit Server Scripts and choose eScripts as the scripting language if you are prompted to select scripting language.
- 4 In the (declarations) procedure of the (general) object, add the line:  

```
#include "eaisiebel.js"
```
- 5 In the Service\_PreInvokeMethod function of the service, change the function to the following:

```
function Service_PreInvokeMethod (MethodName, Inputs, Outputs)
{
    return EAIExecuteMap (MethodName, Inputs, Outputs);
}
```

Your data transformation map is run as a business service invoked from a workflow process. Business service scripts have a standard entry point, `Service_PreInvokeMethod`. Although the script environment provides you with a boilerplate function by this name, you need to modify it, as described in the preceding steps, to include the call to the `EAIExecuteMap` function.

- a** The `MethodName` must be `Execute` and is used by Siebel Workflow. The name of your function is the name you supply for the `MapName` argument to the `Execute` method.
- b** `Inputs` is the input message from workflow containing service arguments—for example, `MapName` and `Output Integration Object Name`—and the integration message to be transformed. `Outputs` is the argument used to return data—for example, `Siebel Message`. `MapName` specifies the map function to be executed and must be the name of one of the functions you defined in the business service. For examples of DTE Business Services, see *Siebel eBusiness Connector for Oracle Guide*.

## DTE Business Service Method Arguments

Table 12 presents the arguments for the `Execute` method of the DTE business services.

**Table 12. DTE Business Service Method Arguments**

Name & Display Name	Data Type	Type	Optional	Storage Type	PickField	PickList
MapName Map Name	String	Input	No	Property	-	-
InputType Input Type	String	Input	No	Property	Value	EAI Message Type PickList
OutputType Output Type	String	Input	No	Property	Value	EAI Message Type PickList

**Table 12. DTE Business Service Method Arguments**

Name & Display Name	Data Type	Type	Optional	Storage Type	PickField	PickList
SiebelMessage Siebel Message	Hierarchy	Input/Output	Yes	Hierarchy	-	-
MIMEHierarchy MIME Hierarchy	Hierarchy	Input/Output	Yes	Hierarchy	-	-
XMLHierarchy XML Hierarchy	Hierarchy	Input/Output	Yes	Hierarchy	-	-

You can set these arguments in Siebel Tools.

**MapName.** The name of the eScript function to call to perform the transformation.

**InputType.** The type of input object to pass to the transformation function. The value will be one of SiebelMessage, MIMEHierarchy, XMLHierarchy, or ServiceArguments. This argument is required only when you use ServiceArguments as the value. When ServiceArguments is used the business service, PropertySet is passed to the map function without interpretation.

**OutputType.** The type of the output object to pass to the transformation function. The types are the same as the ones for Input Type.

**SiebelMessage.** You use this argument when the input or output object or both are SiebelMessage. SiebelMessage is used when converting to or from an integration object, and is the correct choice when mapping one integration object to another. Your map function is passed two objects of type CSSEAIIntMsgIn and CSSEAIIntMsgOut. These objects are for the SiebelMessage that is the input to the transformation and the SiebelMessage that is produced by the transformation, respectively.

**MIMEHierarchy.** You use this argument if either the input or output object or both are MIMEHierarchy. MIMEHierarchy is used when converting to or from MIME Hierarchy objects. Your map function is passed two object types; CSSEAIMimeMsgIn for the MIMEHierarchy that is the input to the transformation and CSSEAIMimeMsgOut for the MIMEHierarchy that is produced by the transformation. MIME Hierarchy objects are defined by the EAI MIME Doc Converter business service. For details on the EAI MIME Doc Converter, see *Integration Platform Technologies: Siebel eBusiness Application Integration Volume II*.

**XMLHierarchy.** You use this argument if either the input or output object or both are XMLHierarchy. XMLHierarchy is used when converting to or from XML Hierarchy objects. Your map function is passed an object of type XML Property Set for both input and output XMLHierarchy. XML Hierarchy objects are defined by the XML Hierarchy Converter business service. For details on XML Hierarchy Converter, see *XML Reference: Siebel eBusiness Application Integration Volume V*.

## Map Functions

A map function has the following signature:

```
function MapFnName (objectIn, objectOut)
```

The function name signified by *MapFnName* is the name of your transformation function. It is the value passed as the *MapName* argument to the business service. The *Input Type* and *Output Type* business service arguments determine the types of the *objectIn* and *objectOut* arguments and default to the type *Integration Message*. You should name these arguments according to type. For example, to use the default values, you would specify a function that transforms one integration object to another as:

```
function MapFnName (intMsgIn, intMsgOut)
```

If you define a function that transforms an XML property set to an integration object, you might specify it as:

```
function MapFnName (xmlPropSetIn, intMsgOut)
```

The arguments to these functions are contained within the input and output arguments to the business service's *Service\_PreInvokeMethod* function. The *EAIExecuteMap* function—called by *Service\_PreInvokeMethod*—interprets the arguments and passes them to *MapFnName*. *MapFnName* reads from the input object and writes to the output object using the appropriate API for each type of object.

If you define a function to access input integration object, you might specify it as:

```
Function myMapFn (ObjectIn, ObjectOut) {  
    inIntObj = ObjectIn.GetIntObj(); //Get Integration Object  
    //Iterate over all Integration Object Instances  
    while (inIntObj.NextInstance()) {  
        //Get the Primary Component which is called "Order Entry -  
        Orders"  
        primaryIntComp = inIntObj.GetPrimaryIntComp("Order Entry -  
        Orders");  
    }  
}
```

```
//Iterate over all instances of Primary Component
while (primaryIntComp.NextRecord()) {
    OrderId = primaryIntComp.GetFieldValue ("Id");
    //Get component "Order Entry - Line Items" which is child
of "Order Entry - Orders"
    comp = primaryIntComp.GetIntComp ("Order Entry - Line
Items");
    //Process component similar to primary component
    while (comp.NextRecord()) {
        OrderItemId = comp. GetFieldValue ("Id");
```

And to define a function to create output integration object, you might specify it as:

```
Function myMapFn (ObjectIn, ObjectOut) {
    outIntObj = ObjectOut.CreateIntObj("Sample Order");
    While (Need new integration object instances) {
        outIntObj.NewInstance();
        //Create Primary Component which is called "Order Entry -
Orders"
        primaryIntComp = inIntObj.CreatePrimaryIntComp("Order Entry -
Orders");
        while (Need new instances of primary int component) {
            primaryIntComp.NewRecord();
            primaryIntComp.SetFieldValue ("Id", OrdertemId);
            //Create component Order Item which is child of Order
            comp = primaryIntComp.CreateIntComp ("Order Entry - Order
Items");
            //Process component similar to primary component
            while (need new instances of component) {
```

```
comp.NewRecord();

comp.SetFieldValue("Id", OrdertemId);
```

## EAIExecuteMap() Method

This method executes a user-defined data transformation function. [Table 13](#) presents the parameters for this method.

**Syntax** EAIExecuteMap(methodName, inputPropSet, outputPropSet)

**Table 13. Parameters for EAIExecuteMap() Method**

Parameter	Description
methodName	The business service method should be Execute.
inputPropSet	Input message and service arguments.
outputPropSet	Output message and service arguments.

**Returns** CancelOperation or ContinueOperation. The Service\_PreInvokeMethod function should return the value returned by the EAIExecuteMap.

**Usage** See [“Setting Up a Data Transformation Map” on page 90](#).

## The Data Transformation Functions

The data transformation API consists of global functions and classes that represent the different parts of input and output data. The data transformation functions are implemented as Siebel eScript. You must use Siebel eScript to create your data transformation maps.

Three different top-level data types are supported:

- **Siebel Messages.** See [“Siebel Message Objects and Methods” on page 99](#).
- **MIME Messages.** See [“MIME Message Objects and Methods” on page 121](#).
- **XML Property Sets.** See [“XML Property Set Functions” on page 130](#).

The data type is determined by the `InputType` and `OutputType` arguments, as described in [“DTE Business Service Method Arguments” on page 92](#).

Siebel Messages are the most common data type. Siebel Messages are a hierarchical type represented at the top level by an Integration Message message. See [“Siebel Message Objects and Methods” on page 99](#).

It is also possible to operate directly on the business service input and output property sets. This is accomplished by specifying the `InputType` or `OutputType` as `ServiceArguments`. In this case the business service property set arguments are passed directly to the map function. The standard property set functions can be used to access them.



## Siebel Message Objects and Methods

A Siebel Message is a message containing the data of individual integration object instances. It is hierarchically structured and composed of several different types of objects.

The data transform API uses several different eScript classes to represent a Siebel Message:

- **An integration message.** This represents the top-level message container. See [“Integration Message Objects” on page 99](#).
- **An integration object.** See [“Integration Object Objects” on page 105](#).
- **A primary integration component.** See [“Primary Integration Component Objects” on page 108](#).
- **Integration components.** See [“Integration Component Objects” on page 115](#).

Each of these parts of a Siebel Message has two classes: one for input and one for output. Each class provides methods for specific purposes.

### Integration Message Objects

The integration message is the top-level piece of a message. The workflow process passes the integration message to the Data Mapping Engine as input. The Data Mapping Engine returns another message as output. The integration message object provides access to workflow arguments, integration message arguments, and the integration object that is contained in the message.

The following integration message objects are provided:

- CSSEAIIntMsgIn
- CSSEAIIntMsgOut

### CSSEAIIntMsgIn

This object represents an integration message that is open for reading. The object provides GetArgument and GetIntObj methods.

### GetArgument() Method

This method gets the value of a business service argument. For example, this could get the name of a map function in the business service. [Table 14](#) presents the parameters for this method.

**Syntax**    GetArgument(name [, defaultIfNull [, defaultIfEmpty]])

**Table 14. Parameters for GetArgument() Method**

Parameter	Description
name	The name of a business service argument.
defaultIfNull	Returned if a service argument of the specified name does not exist.
defaultIfEmpty	Returned if the service argument is set to an empty string.

**Returns**    String or null.

**Usage**      Use this method to get the value of an argument passed to the business service. For example, if the MapName argument passed to the business service is MapExtOrderToOrder, the call:

```
intMsgIn.GetArgument("MapName");
```

returns the name of the map, MapExtOrderToOrder, passed to the business service.

If the named argument does not exist, `null` is returned. If the named argument exists but the value is the empty string, the empty string is returned. You can use the `defaultIfNull` and `defaultIfEmpty` optional arguments to change this behavior.

The arguments `defaultIfNull` and `defaultIfEmpty` are optional; however, if you specify `defaultIfEmpty`, you must also specify the `defaultIfNull` argument.

## GetIntObj() Method

This method returns an instance of the integration object and opens it for reading. [Table 15](#) presents the parameter for this method.

**Syntax** GetIntObj(name)

**Table 15. Parameter for GetIntObj() Method**

Parameter	Description
name	The name of an integration object in the active integration message.

**Returns** CSSEAIIntObjIn Integration Object

**Usage** An integration object instance is always returned even if the integration object does not exist. Call the returned object's Exist method to test for this before calling other methods on the object. An error is raised if an integration object is present but the name is not correct.

---

**NOTE:** Currently an integration message can contain only one integration object.

---

## GetAttachmentCount() Method

This method returns the number of attachments in the input integration message.

**Syntax** GetAttachmentcount()

**Returns** The number of attachments in the input integration message.

## GetAttachment() Method

This method returns the attachment specified by the index. [Table 16](#) presents the parameter for this method.

**Syntax**    GetAttachment(index)

**Table 16. Parameters for GetAttachment() Method**

Parameter	Description
index	The index of the attachment to return.

**Returns**    The attachment (a PropertySet) specified by the index. The index is zero based. Returns null if index is out of bounds.

### **GetAttachmentByCID() Method**

This method retrieves an attachment based on the Content Identifier (CID). [Table 17](#) presents the parameter for this method.

**Syntax**    GetAttachmentByCID(cid)

**Table 17. Parameters for GetAttachmentByCID() Method**

Parameter	Description
cid	The Content Identifier of the attachment.

**Returns**    The attachment (a PropertySet) specified by the CID. Returns null if there is no attachment with the specified CID.

## **CSSEAllIntMsgOut**

This object represents an output integration message that is open for writing. The object provides CreateIntObj and SetArgument methods:

### **CreateIntObj() Method**

This method creates a new integration object. [Table 18](#) presents the parameter for this method.

**Syntax** CreateIntObj(name)

**Table 18. Parameter for CreateIntObj() Method**

Parameter	Description
name	Creates a new integration object and adds it to the integration message.

**Returns** CSSEAIIntObjOut Output Integration Object

**Usage** An integration message can contain only one integration object, so multiple calls to this method on one integration message raises an error. The name must agree with the business service argument OutputIntObjName, if that argument is passed to the service.

### SetArgument() Method

This method sets the value of a business service argument. [Table 19](#) presents the parameters for this method.

**Syntax** SetArgument(name, value)

**Table 19. Parameters for SetArgument() Method**

Parameter	Description
name	The name of an argument in the active business service.
value	The string value corresponding to the argument named by the <i>name</i> parameter.

**Returns** Not applicable

**Usage** You can call the SetArgument method to establish the value of a given output argument for the business service method invocation.

### **SetAttachmentSource() Method**

This method establishes the source object to copy attachment objects from. The source object must be a CSSEAIIntMsgIn, CSSEAIMimeMsgIn, or other object implementing the GetAttachmentByCID method. [Table 20](#) presents the parameter for this method.

**Syntax** SetAttachmentSource(source)

**Table 20. Parameters for SetAttachmentSource() Method**

Parameter	Description
source	The attachment source.

## CopyAttachment() Method

This method copies an attachment from the attachment source to the output integration object. The attachment is referenced by the MIME Content Identifier (CID). The attachment source must be established by calling `CSSEAIIntMsgOut.SetAttachmentSource` before calling this method. [Table 21](#) presents the parameter for this method.

**Syntax** `CopyAttachment(cid)`

**Table 21. Parameters for CopyAttachment() Method**

Parameter	Description
cid	MIME content identifier.

**Returns** The attachment copy is returned as a property set. This method returns null if the attachment source does not contain an attachment with the specified CID.

## Integration Object Objects

The integration object contains one or more integration components. The following integration object objects are provided:

- `CSSEAIIntObjIn`
- `CSSEAIIntObjOut`

## CSSEAIIntObjIn

This object represents an input integration object, open for reading, that is contained in the integration message. The integration object has a name and contains zero or more instances of actual integration objects. Integration object instances are accessed one at a time, similar to accessing database records. Each instance has a primary integration component that contains data and every subordinate integration components. This object provides the `Exists`, `FirstInstance`, `GetPrimaryIntComp`, and `NextInstance` methods.

### Exists() Method

This method checks to see if the integration object is actually present in the input data. It takes no parameters.

**Syntax**   Exists()

**Returns**   Boolean

**Usage**     Call Exists after retrieving the integration object from the integration message. If the integration object was found and is open for reading, the Exists method returns true.

### FirstInstance() Method

This method moves to the first integration object instance and sets it as the active instance.

**Syntax**   FirstInstance()

**Returns**   Boolean

**Usage**     The FirstInstance method returns true if the instance exists, false otherwise.

### GetPrimaryIntComp() Method

This method returns the primary integration component of the active instance of the integration object. [Table 22](#) presents the parameter for this method.

**Syntax**   GetPrimaryIntComp(name)

**Table 22. Parameter for GetPrimaryIntComp() Method**

Parameter	Description
name	The name of a primary integration component in the active integration object instance.

**Returns**   CSSEAIPrimaryIntCompIn Input Primary Integration Component



**Usage** Gets the primary integration component of the active instance of the integration object and opens it for input.

This method always returns an input primary integration component object, even if the component does not exist. Call the Exists method on the returned object to test for this condition. If there is no active instance, a call to this method raises an error.

### NextInstance() Method

This method moves a pointer to the next logical integration object instance in the active integration message.

**Syntax** NextInstance()

**Returns** Boolean

**Usage** Moves to the next integration object instance and makes it the active instance. This method returns true if the instance exists, or false if there are no more instances. If neither the NextInstance or the FirstInstance method has been called previously, the NextInstance method moves to the first instance in the message.

## CSSEAllIntObjOut

This object represents an output integration object, open for writing, that is contained in the integration message. It provides CreatePrimaryIntComp and NewInstance methods as an interface to the output integration object.

### CreatePrimaryIntComp() Method

This method creates a new primary integration component. [Table 23](#) presents the parameter for this method.

**Syntax** CreatePrimaryIntComp(name)

**Table 23. Parameter for CreatePrimaryIntComp() Method**

Parameter	Description
name	Assigned as the name of the Primary Integration Component.

**Returns** CSSEAIPrimaryIntCompOut Primary Integration Component, open for output

**Usage** Use the Exists method to test for existence of the integration object instance, then create a new integration object instance and set it as the active instance, using the NewInstance method. You must perform these tasks before calling the CreatePrimaryIntComp() method.

### **NewInstance() Method**

This method creates a new instance of an integration object and makes it the active instance.

**Syntax** NewInstance()

**Returns** Not applicable

## **Primary Integration Component Objects**

A primary integration component represents the integration component contained within an integration object instance. It has a name and contains records with data from actual integration components. Each record may have fields and subordinate integration components.

The following primary integration component objects are provided:

- CSSEAIPrimaryIntCompIn
- CSSEAIPrimaryIntCompOut

## **CSSEAIPrimaryIntCompIn**

This object represents the input primary integration component, open for reading. Your data transformation maps can use this object's methods to traverse integration components. This object provides Exists, FirstRecord, GetFieldValue, GetIntComp, and NextRecord methods:

### **Exists() Method**

This method checks to see if the primary integration component is actually present in the input data. It takes no parameters.

**Syntax**   Exists()

**Returns**   Boolean

**Usage**    Call Exists after retrieving the primary integration component with the CSSEAIIntObjIn.GetPrimaryIntComp method, and before invoking the primary integration component's other methods.

If the primary integration component was found and is open for reading, the Exists method returns true.

### FirstRecord() Method

This method moves a pointer to the first component record in the primary integration component.

**Syntax**   FirstRecord()

**Returns**   Boolean

**Usage**    Moves to the first integration component record and sets it as the active record. This method returns true if the record exists, false if the integration component has no records.

### GetFieldValue() Method

This method returns the value of the primary integration component field from the active record. [Table 24](#) presents the parameters for this method.

**Syntax**   GetFieldValue(name [, defaultIfNull [, defaultIfEmpty]])

**Table 24. Parameters for GetFieldValue() Method**

Parameter	Description
name	The name of a primary integration component field.
defaultIfNull	Optional. Sets the default value if the field does not exist.
defaultIfEmpty	Optional. Sets the default value if the field is set to an empty string.

**Returns** String or null

**Usage** A null value is returned if the active record does not contain the field. Otherwise, a string containing the value in the field is returned. If there is no active record, this method raises an error.

If the named argument does not exist, null is returned. If the named argument exists but the value is the empty string, the empty string is returned. You can use the `defaultIfNull` and `defaultIfEmpty` optional arguments to change this behavior.

The arguments `defaultIfNull` and `defaultIfEmpty` are optional; however, if you specify `defaultIfEmpty`, you must also specify the `defaultIfNull` argument.

### GetIntComp() Method

This method returns the named integration component from the active record and opens it for input. [Table 25](#) presents the parameter for this method.

**Syntax** `GetIntComp(name)`

**Table 25. Parameter for GetIntComp() Method**

Parameter	Description
name	The name of an integration component in the active record.

**Returns** `CSSEAIIntCompIn` Input Integration Component

**Usage** This method always returns an input integration component object, even if the component does not exist. Call the `Exists` method on the returned object to test for this condition. If there is no active record, a call to this method raises an error.

### NextRecord() Method

This method moves a pointer to the next logical record in the active integration component.

**Syntax** `NextRecord()`

**Returns** Boolean

**Usage** Moves to the next record and makes it the active record. Returns true if the record exists, or false if there are no more records. Moves to the first record if neither the NextRecord method nor the FirstRecord method has been called previously.

## CSSEAIPrimaryIntCompOut

This object represents the output primary integration component. You can use the object's methods to create output integration components and records and to copy input data records to output data records. This object provides CopyFieldValue, CreateIntComp, NewRecord, SetCopySource, and SetFieldValue methods.

### CopyFieldValue() Method

This method sets the value of a field in the active record to the value of a field in the current source record. [Table 26](#) presents the parameters for this method.

**Syntax** CopyFieldValue(targetName, sourceName [, defaultIfNull [, defaultIfEmpty]])

**Table 26. Parameters for CopyFieldValue() Method**

Parameter	Description
targetName	Name of the field to set in the output integration component.
sourceName	Name of the field to retrieve from the input integration component.
defaultIfNull	Optional value that specifies what should be inserted into the target, if the source field does not exist.
defaultIfEmpty	Optional value that specifies what to use as a source value if the source field is empty.

**Returns** Not applicable

**Usage** Use this method to copy a field from an input integration component to the output primary integration component. You could achieve the same results by calling the GetFieldValue method on the input component and the SetFieldValue on the output component; however, using CopyFieldValue is easier.

You must call the `SetCopySource` method first to specify the source integration component. `CopyFieldValue` uses the active records of the input and output components of the active integration component.

If the integration component is not set with the `SetCopySource` method first, a call to the `CopyFieldValue` method raises an error. An error also occurs if either input or output component does not have an active record.

If you set the copy source using the following statement:

```
outIntComp.SetCopySource (inIntComp);
```

the following two statements are equivalent:

```
outIntComp.SetFieldValue("Fld-A", inIntComp.GetFieldValue("X"));  
outIntComp.CopyFieldValue("Fld-A", "X");
```

Using the second convention is convenient if you are copying many fields between the same components.

### CreateIntComp() Method

This method creates a new integration component. [Table 27](#) presents the parameters for this method.

**Syntax** `CreateIntComp(name [, createNow])`

**Table 27. Parameters for CreateIntComp() Method**

Parameter	Description
name	The name of the new integration component.
createNow	Defaults to true. This is an optional parameter. By default, the underlying data object is created in the output data object at the time this method is called. To change this behavior, specify the optional <code>createNow</code> argument as false. If you specify <code>createNow</code> as false, the underlying data object is not created until you make the first <code>NewRecord</code> call on the newly created integration component.

**Returns** `CSSEAllIntCompOut`. Output Integration Component

**Usage** Use this method to create a new integration component, open it for writing, and add it to the active record of the integration component.

---

**NOTE:** This method raises an error if you call it without an active integration component record. Use the `NewRecord` method to create a new record and set the active record.

---

### **NewRecord() Method**

This method creates a new record in a primary integration component.

**Syntax** `NewRecord()`

**Returns** Not applicable

**Usage** This method adds a new primary integration component record and makes it the active record.

### **SetCopySource() Method**

This method establishes the integration component from which a field value will be copied. [Table 28](#) presents the parameter for this method.

**Syntax** `SetCopySource(IntComp)`

**Table 28. Parameter for SetCopySource() Method**

Parameter	Description
<code>IntComp</code>	The integration component object—either <code>CSSEAIPrimaryIntCompIn</code> or <code>CSSEAIIntCompIn</code> .

**Returns** Not applicable

**Usage** Call this method before a call to the `CopyFieldValue` method.

### SetFieldValue() Method

This method sets the value of the named field in the active integration component record. [Table 29](#) presents the parameters for this method.

**Syntax** SetFieldValue(name, value)

**Table 29. Parameters for SetFieldValue() Method**

Parameter	Description
name	The name of a field in the active record of the primary integration component.
value	The string value to be put into the field given in the name parameter.

**Returns** Not applicable

**Usage** Both the name and value arguments should be strings.

The field is not set if the value is `null`. This method provides no return value.

This method raises an error if called while there is no active record.

---

**NOTE:** Siebel eScript automatically converts most types to strings as necessary.

---



## Integration Component Objects

An integration component object represents integration components. The following integration component objects are provided:

- CSSEAIIntCompIn
- CSSEAIIntCompOut

### CSSEAIIntCompIn

This object represents the input integration component, open for reading. You can use the object's methods to traverse actual integration components and to retrieve data from those integration components. This object provides Exists, FirstRecord, GetFieldValue, GetIntComp, and NextRecord methods.

#### Exists() Method

This method checks to see if the integration component is actually present in the input data. It takes no parameters.

**Syntax**   Exists()

**Returns**   Boolean

**Usage**     Call Exists after retrieving the integration component from its parent object using the GetIntComp method, and before invoking the integration component's other methods.

If the integration component is found and is open for reading, the Exists method returns true.

#### FirstRecord() Method

This method moves a pointer to the first component record in the integration component.

**Syntax**   FirstRecord()

**Returns**   Boolean

**Usage** Moves to the first integration component record and sets it as the active record. This method returns true if the record exists, false if the integration component has no records.

### GetFieldValue() Method

This method returns the value of the integration component field from the active record. [Table 30](#) presents the parameters for this method.

**Syntax** GetFieldValue(name [, defaultIfNull [, defaultIfEmpty]])

**Table 30. Parameters for GetFieldValue() Method**

Parameter	Description
name	The name of an integration component field.
defaultIfNull	Optional. Value to return if the field does not exist.
defaultIfEmpty	Optional. Value to return if the field is set to an empty string.

**Returns** String or null

**Usage** A null value is returned if the active record does not contain the field. Otherwise, a string containing the value in the field is returned. If there is no active record, this method raises an error.

If the named argument does not exist, null is returned. If the named argument exists but the value is the empty string, the empty string is returned. You can use the defaultIfNull and defaultIfEmpty arguments to change this behavior.

---

**NOTE:** The arguments defaultIfNull and defaultIfEmpty are optional. However, if you specify defaultIfEmpty, you must also specify the defaultIfNull argument.

---

### GetIntComp() Method

This method returns the integration component from the active record and opens it for input. [Table 31](#) presents the parameter for this method.

**Syntax** GetIntComp(name)

**Table 31. Parameter for GetIntComp() Method**

Parameter	Description
name	The name of an integration component in the active record.

**Returns** CSSEAllIntCompIn Input Integration Component

**Usage** This method always returns an input integration component object, even if the component does not exist. Call the Exists method on the returned object to test for this condition.

---

**NOTE:** If there is no active record, a call to this method raises an error.

---

### NextRecord() Method

This method moves a pointer to the next logical record in the active integration component.

**Syntax** NextRecord()

**Returns** Boolean

**Usage** Moves to the next record and makes it the active record. Returns true if the record exists, or false if there are no more records. Moves to the first record if neither the NextRecord method nor the FirstRecord method has been called previously.

## CSSEAllIntCompOut

This object represents the output integration object, open for writing. You can use this object's methods to create new output integration components and to copy or set actual data in the records of the integration components. This object provides CopyFieldValue, CreateIntComp, NewRecord, SetCopySource, and SetFieldValue methods.

### CopyFieldValue() Method

This method sets the value of a field in the active record to the value of a field in the current source record. [Table 32](#) presents the parameters for this method.

**Syntax** CopyFieldValue(targetName, sourceName [, defaultIfNull [, defaultIfEmpty]])

**Table 32. Parameters for CopyFieldValue() Method**

Parameter	Description
targetName	Name of the field to set in the output integration component.
sourceName	Name of the field to retrieve from the input integration component.
defaultIfNull	Optional value that specifies what should be inserted into the target, if the source field does not exist.
defaultIfEmpty	Optional value that specifies what to use as a source value if the source field is empty.

**Returns** Not applicable

**Usage** Use this method to copy a field from an input integration component to the output integration component. You could achieve the same results by calling the GetFieldValue method on the input component and the SetFieldValue on the output component; however, using CopyFieldValue is easier.

You must call the SetCopySource method first to specify the source integration component. CopyFieldValue uses the active records of the input and output components of the active integration component.

If the integration component is not set with the SetCopySource method first, a call to the CopyFieldValue method raises an error. An error also occurs if either input or output component does not have an active record.

If you set the copy source using the following statement:

```
outIntComp.SetCopySource(inIntComp);
```

the following two statements are equivalent:

```
outIntComp.SetFieldValue("Fld-A", inIntComp.GetFieldValue("X"));
```

```
outIntComp.CopyFieldValue("Fld-A", "X");
```

Using the second convention is convenient if you are copying many fields between the same components.

## CreateIntComp() Method

This method creates a new integration component. [Table 33](#) presents the parameters for this method.

**Syntax** CreateIntComp(name [, createNow])

**Table 33. Parameters for CreateIntComp() Method**

Parameter	Description
name	The name of the new integration component.
createNow	Defaults to true. This is an optional parameter. By default, the underlying data object is created in the output data object at the time this method is called. To change this behavior, specify the optional createNow argument as false. If you specify createNow as false, the underlying data object is not created until you make the first NewRecord call on the newly created integration component.

**Returns** CSSEAIIntCompOut. Output Integration Component

**Usage** Use this method to create a new integration component, open it for writing, and add it to the active record of the integration component.

This method raises an error if you call it without an active integration component record. Use the NewRecord method to create a new record and set the active record.

## SetCopySource() Method

This method establishes the integration component from which a field value will be copied. [Table 34](#) presents the parameter for this method.

**Syntax** SetCopySource(IntComp)

**Table 34. Parameter for SetCopySource() Method**

Parameter	Description
IntComp	The integration component object—either CSSEAIPrimaryIntCompIn or CSSEAIIntCompIn.

**Returns** Not applicable

**Usage** Call this method before calling the CopyFieldValue method.

### SetFieldValue() Method

This method sets the value of the named field in the active integration component record. [Table 35](#) presents the parameters for this method.

**Syntax** SetFieldValue(name, value)

**Table 35. Parameters for SetFieldValue() Method**

Parameter	Description
name	The name of a field in the active record of the integration component.
value	The string value to be put into the field given in the name parameter.

**Returns** Not applicable

**Usage** Both the name and value arguments should be strings.

The field is not set if the value is `null`. This method provides no return value.

This method raises an error if called while there is no active record.

---

**NOTE:** Siebel eScript automatically converts most types to strings as necessary.

---

## MIME Message Objects and Methods

Siebel eAI represents MIME documents using a property set format. This is the format used by the EAI MIME Doc Converter Business Service. The objects and methods described here provide access to this property set format, and are intended for use in conjunction with transforming pieces of the MIME message to and from Siebel Integration Messages.

---

**NOTE:** The EAI MIME Hierarchy Converter Business Service is the preferred method of converting between the property set representation Siebel Messages.

---

The following MIME message objects are provided:

- CSSEAIMimeMsgIn
- CSSEAIMimeMsgOut

### CSSEAIMimeMsgIn

This object represents an input MIME Message, open for reading. The MIME message is in the property set format generated by the EAI MIME Doc Converter. The object consists of a series of MIME parts forming the different pieces of the message.

This object provides `GetArgument`, `GetPartCount`, `GetPart`, `GetPartByCID`, `GetAttachmentByCID`, and `GetXMLRootPart` methods.

#### GetArgument() Method

This method gets the value of a business service argument. For example, this could get the name of a map function in the business service. [Table 36](#) presents the parameters for this method.

**Syntax**    `GetArgument(name [, defaultIfNull [, defaultIfEmpty]])`

**Table 36. Parameters for GetArgument() Method**

Parameter	Description
name	The name of a business service argument.
defaultIfNull	Returned if a service argument of the specified name does not exist.
defaultIfEmpty	Returned if the service argument is set to an empty string.

**Returns**    String or `null`

**Usage**    Use this method to get the value of an argument passed to the business service. For example, if the `MapName` argument passed to the business service is `MapExtOrderToOrder`, the call:

```
intMsgIn.GetArgument("MapName");
```

returns the name of the map, `MapExtOrderToOrder`, passed to the business service.

If the named argument does not exist, `null` is returned. If the named argument exists but the value is the empty string, the empty string is returned. You can use the `defaultIfNull` and `defaultIfEmpty` optional arguments to change this behavior.

The arguments `defaultIfNull` and `defaultIfEmpty` are optional; however, if you specify `defaultIfEmpty`, you must also specify the `defaultIfNull` argument.

### GetPartCount() Method

This method returns the number of parts in the MIME message. [Table 37](#) presents the parameter for this method.

**Syntax**    `GetPartCount()`

**Returns**    This method returns the number of parts in the MIME message.



## GetPart() Method

**Syntax** GetPart(index)

**Table 37. Parameters for GetPart() Method**

Parameter	Description
index	Index of the MIME part to return.

**Returns** Property set. Returns the part, a property set, specified by the index. The index is zero based. Returns null if the index is out of bounds.

## GetPartByCID() Method

Retrieve a MIME part based on the MIME Content Identifier (CID). [Table 38](#) presents the parameter for this method.

**Syntax** GetPartByCID(cid)

**Table 38. Parameters for GetPartByCID() Method**

Parameter	Description
cid	MIME Content Identifier to retrieve.

**Returns** Returns null if there is no part with the specified CID.

### GetAttachmentByCID() Method

The same functionality as `CSSEAIMimeMsgIn.GetPartByCID`. Supports using a `CSSEAIMimeMsgIn` as an attachment source for copying attachments to output objects. [Table 39](#) presents the parameter for this method.

**Syntax** `GetAttachmentByCID(cid)`

**Table 39. Parameters for GetAttachmentByCID() Method**

Parameter	Description
cid	MIME Content Identifier to retrieve.

**Returns** The attachment (a property set) specified by the CID. Returns null if there is no attachment with the specified CID.

### GetXMLRootPart() Method

Finds the first MIME part that is an XML message in property set format and returns the root element of the XML document. The XML message must be in property set format as produced by the XML Hierarchy Converter Business Service. An error is raised if the XML message is not found. The method is intended for use with MIME messages that consist of an XML message and a series of related attachments. The property set returned is consistent with what `XPSGetRootElement` returns, and can be accessed with the XML Property Set functions. See [“XML Property Set Functions” on page 130](#).

**Syntax** `GetXMLRootPart()`

**Returns** MIME body part representing an XML document.

## CSSEAIMimeMsgOut

This object represents an output MIME message, open for writing. This object provides `SetArgument`, `CreateXMLPart`, `SetAttachmentSource`, and `CopyAttachment` methods:

### SetArgument() Method

This method sets the value of a business service argument. [Table 40](#) presents the parameters for this method.

**Syntax** `SetArgument(name, value)`

**Table 40. Parameters for SetArgument() Method**

Parameter	Description
name	The name of an argument in the active business service.
value	The string value corresponding to the argument named by the <i>name</i> parameter.

**Returns** Not applicable

**Usage** You can call the `SetArgument` method to establish the value of a given output argument for the business service method invocation.

### CreateXMLPart() Method

This method is similar to `XPSCreateRootElement`. See “[XPSCreateRootElement\(\)](#)” [on page 130](#). `CreateXMLPart()` Method creates an XML MIME part and adds it to the MIME document. The property set representing the XML root element is returned. The property set returned can be populated using the XML Property Set functions. See “[XML Property Set Functions](#)” [on page 130](#). [Table 41 on page 126](#) presents the parameter for this method.

**Syntax** CreateXMLPart(xmlRootTagName)

**Table 41. Parameters for CreateXMLPart() Method**

Parameter	Description
xmlRootTagName	The name you want to supply as the root element name in the XML document.

**Returns** Property set

### SetAttachmentSource() Method

This method establishes the source object from which to copy attachment objects. The source object must be a CSSEAIIntMsgIn, CSSEAIMimeMsgIn, or other object implementing the GetAttachmentByCID method. [Table 42](#) presents the parameter for this method.

**Syntax** SetAttachmentSource(source)

**Table 42. Parameters for SetAttachmentSource() Method**

Parameter	Description
source	The attachment source.

### CopyAttachment() Method

This method copies an attachment from the attachment source to the output MIME message object. The attachment is referenced by the MIME Content Identifier (CID). The attachment copy, a property set, is returned. The attachment source must be established by calling CSSEAIMimeMsgOut.SetAttachmentSource before calling this method. [Table 43](#) presents the parameter for this method.

**Syntax** CopyAttachment(*cid*)

**Table 43. Parameters for CopyAttachment() Method**

Parameter	Description
cid	MIME Content Identifier of the attachment to copy.

**Returns** Property set. This method returns null if the attachment source does not contain an attachment with the specified CID.

# Attachments and Content Identifiers in MIME Messages

A MIME message contains one or more parts, each representing a separate piece of the message. One common use of multipart MIME messages is to include attachments with a message.

---

**NOTE:** All the examples have to be typed single-spaced and without word wrap.

---

Each MIME body part has an optional Content Identifier (CID) used to identify it. The Content Id is part of the MIME part header, for example:

```
--unique_boundary_123
Content-Type : image/jpeg
Content-ID : <001110.102215@abc.com>
```

Then the CID is 001110.102215@abc.com. The CID is usually referenced from another part of the MIME message. A common scheme is to use an XML document as the main part of the MIME message, and use Content Ids to reference the other attachments in the message. The following is an example of a MIME message with attachment.

```
MIME-Version: 1.0
Content-Type: multipart/related;
    boundary="unique_boundary_123";
    type="application/xml"
Content-Transfer-Encoding: binary
--unique_boundary_123
Content-Type: application/xml; charset="UTF-8"
Content-Transfer-Encoding: binary
<?xml version="1.0" encoding="UTF-8"?>
<!DOCTYPE Memo SYSTEM "Memo.dtd">
<Memo>
```

```
<To>All Employees</To>
<Subject>Map and Directions</Subject>
<Body>Maps to company headquarters are attached.</Body>
<ListOfAttachments>
  <Attachment>
    <URI>cid:001110.102203@siebel.com</URI>
    <Filename>largemap.jpg</Name>
  </Attachment>
  <Attachment>
    <URI>cid:001110.102211@siebel.com</URI>
    <Filename>detailmap.jpeg</Filename>
  </Attachment>
</ListOfAttachment>
</Memo>
--unique_boundary_123
Content-Type: image/jpeg
Content-Transfer-Encoding: binary
Content-ID: <001110.102203@siebel.com>
  [... Raw JPEG Image ...]
--unique_boundary_123
Content-Type: image/jpeg
Content-Transfer-Encoding: binary
Content-ID: <001110.102211@siebel.com>
  [... Raw JPEG Image ...]
--unique_boundary_123-
```

## XML Property Set Functions

Siebel eAI represents XML documents using the property set format. While Siebel eAI does not always require using the property set format, this representation is used by EAI Business Services such as the EAI XML Converter. The functions described in this section provide a simple interface for manipulating XML documents using the property set format.

### Top-Level Property Set Functions

These functions are used to manipulate the top-level property set passed to the Map function.

#### **XPSGetRootElement()**

This function returns the property set representing the root element of the XML document. If the root element is not present, the system raises an error. [Table 44](#) presents the parameter for this function.

**Syntax** XPSGetRootElement(xmlPropSetIn)

**Table 44. Parameter for XPSGetRootElement() Method**

Parameter	Description
xmlPropSetIn	The name of the property set representing the root element of the XML document.

**Returns** Property set

**Usage** Use this function to return the root element of an XML document.

#### **XPSCreateRootElement()**

This function creates the root element in an output XML document and returns the property set representing it. The element tag in the XML document is set to the value of the tagName argument. [Table 45](#) presents the parameters for this function.



**Syntax** XPSCreateRootElement(xmlPropSetOut, tagName)

**Table 45. Parameters for XPSCreateRootElement() Method**

Parameter	Description
xmlPropSetOut	The output property set.
tagName	The name you want to supply as the root element name in the XML document.

**Returns** Property set

**Usage** Use this function to create the root element of an XML document that represents a property set. Because the root element does not directly map to a component in the property set, you can give it any representative name.

As an example of how the “XPSGetRootElement()” and “XPSCreateRootElement()” functions work, consider the following XML document:

```
<?xml version="1.0"?>
<!DOCTYPE LETTER SYSTEM "letter.dtd">
<letter>
  <from>Mary Smith</from>
  <to>Paul Jones</to>
  <text>Hello!</text>
</letter>
```

The root element is <letter>. The property set for the <letter> element can be retrieved from the input property set using EAIXPS\_GetRootElement, or it can be created in the output property set using EAIXPS\_CreateRootElement.

A map function that converts a letter to a memo might start with the following code:

```
function ConvertLetterToMemo (xmlPropSetIn, xmlPropSetOut)
{
  var xmlLetter = XPSGetRootElement (xmlPropSetIn);
  var xmlMemo = XPSCreateRootElement (xmlPropSetOut, "memo");

  ... Code to fill in the 'memo' from the 'letter' ...
}
```

## XML Element Accessors

These functions provide access to elements represented by property sets. [Table 46](#) presents the parameter for this function.

### **XPSGetTagName()**

Retrieves the tag name of an XML element.

**Syntax** XPSGetTagName (xmlPropSet)

**Table 46. Parameter for XPSGetTagName() Method**

Parameter	Description
xmlPropSet	The output property set.

**Returns** String. If xmlPropSet is null, XPSGetTagName returns null.

### **XPSSetTagName()**

This function sets the tag name of an XML element. [Table 47](#) presents the parameters for this function.

**Syntax** XPSSetTagName (xmlPropSet, tagName)

**Table 47. Parameters for XPSSetTagName() Method**

Parameter	Description
xmlPropSet	The property set.
tagName	The name you want to supply as the current element name in the XML document.

**Returns** String

## XPSGetTextValue()

This function returns the text value of an XML element as a string. [Table 48](#) presents the parameters for this function.

**Syntax** XPSGetTextValue (xmlPropSet [, defaultIfNull [, defaultIfEmpty]])

**Table 48. Parameters for XPSGetTextValue() Method**

Parameter	Description
xmlPropSet	The output property set.
defaultIfNull	Specify a value to override the null default value that results if <i>xmlPropSet</i> is null.
defaultIfEmpty	Specify a value to override an empty string ("") contained in <i>xmlPropSet</i> .

**Returns** String or null

**Usage** If *xmlPropSet* is null then null is returned. You can use the optional *defaultIfNull* and *defaultIfEmpty* arguments to override null and empty string ("") return values. An element's text value is the text between an XML element's start and end tags, excluding child elements.

## XPSSetTextValue()

This function sets the text value of an XML element. [Table 49](#) presents the parameters for this function.

**Syntax** XPSSetTextValue (xmlPropSet, text)

**Table 49. Parameters for XPSSetTextValue() Method**

Parameter	Description
xmlPropSet	The property set.
text	A string you want inserted between start and end tags of an XML element.

**Returns** Not applicable

**Usage** The text argument should be a string. An element's text value is the text between the element's start and end tags, excluding child elements.

### **XPSGetAttribute()**

This function retrieves an element's attribute of the given name and returns it as a string. [Table 50](#) presents the parameters for this function.

**Syntax** XPSGetAttribute (xmlPropSet, name [, defaultIfNull [, defaultIfEmpty]])

**Table 50. Parameters for XPSGetAttribute() Method**

Parameter	Description
xmlPropSet	The output property set.
name	The name you want to supply as the root element name in the XML document.
defaultIfNull	Specify a value to override the null default value that results if xmlPropSet is null.
defaultIfEmpty	Specify a value to override an empty string ("") contained in xmlPropSet.

**Returns** String

**Usage** A null value is returned if xmlPropSet is null or the element does not have the named attribute. The optional defaultIfNull and defaultIfEmpty arguments can be used to override null and empty string ("") return values.

### **XPSSetAttribute()**

This function sets an element attribute value. [Table 51](#) presents the parameters for this function.

**Syntax** XPSSetAttribute (xmlPropSet, name, value)

**Table 51. Parameters for XPSSetAttribute() Method**

Parameter	Description
xmlPropSet	The output property set.
name	Attribute name.
value	String value you want to supply as the attribute value.

**Returns** String

**Usage** No action is taken if any of the arguments are null.

### **XPSGetChildCount()**

This function returns the number of children of an element. [Table 52](#) presents the parameter for this function.

**Syntax** XPSGetChildCount(xmlPropSet)

**Table 52. Parameter for XPSGetChildCount() Method**

Parameter	Description
xmlPropSet	The property set.

**Returns** Number

**Usage** All children of an element are also elements.

### **XPSGetChild()**

This function returns the *n*th child element as specified by the index. [Table 53](#) presents the parameters for this function.

**Syntax** XPSGetChild(xmlPropSet, index)

**Table 53. Parameters for XPSGetChild() Method**

Parameter	Description
xmlPropSet	The property set.
index	Number, starting at zero, of child elements of another element in an XML document.

**Returns** Property set

**Usage** Child elements are specified using a zero-based index. A value of `null` is returned if the index is invalid.

**XPSFindChild()**

This function returns the first child element with the *tagName*. [Table 54](#) presents the parameters for this function.

**Syntax** XPSFindChild (xmlPropSet, tagName)

**Table 54. Parameters for XPSFindChild() Method**

Parameter	Description
xmlPropSet	The property set.
tagName	An XML element tag that signifies the first child element of another XML element.

**Returns** Property set.

**Usage** A value of `null` is returned if there is no child with the specified tag name.

**XPSAddChild()**

This function creates a new child element with the *tagName* and appends it to the list of *xmlPropSet*'s children. [Table 55](#) presents the parameters for this function.

**Syntax** XPSAddChild (xmlPropSet, tagName [, textValue])

**Table 55. Parameters for XPSAddChild() Method**

Parameter	Description
xmlPropSet	The property set.
tagName	The name you want to give to the new child element.
textValue	Optional. Sets the text value of the new element.

**Returns** Property set

### Examples

The following example converts a <letter> to a <memo> .

---

**NOTE:** The input letter in this example is slightly different from the previous example.

---

The input XML document is:

```
<letter
  from="Mary Smith"
  to="Paul Jones">
  <text>Hello!</text>
</letter>
```

The conversion function converts this to a memo format, as follows:

```
<memo>
  <type>Interoffice Memo</type>
  <header>
    <from>Mary Smith</from>
    <to>Paul Jones</to>
  </header>
  <body>Hello!</body>
</memo>
```

The map function that performs this conversion is:

```
function ConvertLetterToMemo (xmlPropSetIn, xmlPropSetOut)
{
  var letter = XPSGetRootElement (xmlPropSetIn);
  var memo = XPSCreateRootElement (xmlPropSetOut, "memo");
  XPSAddChild (memo, "type", "Interoffice Memo");
  var header = XPSAddChild (memo, "header");
  XPSAddChild (header, "from", XPSGetAttribute (letter,
"from"));
  XPSAddChild (header, "to", XPSGetAttribute (letter, "to"));
  XPSAddChild (memo, "body", XPSGetTextValue (XPSFindChild
(letter, "text")));
}
```



## EAI Value Maps

EAI Value Maps correlate Siebel data values with external data values.

If you are:

- Sending and receiving data, you can create inbound and outbound maps for the same data
- Receiving data only, you need only to define an inbound map
- Sending data only, you need only to define an outbound map

Consider an example of how EAI Value Maps provide correlations between Siebel applications and the SAP R/3 system. SAP country codes, which are represented as two-character codes, are different from Siebel country codes, represented by the country name spelled out. An EAI Value Map provides a lookup table that lists these two sets of data side by side.

The EAI Value Map entries are stored in the EAI Value Map table. You can view and administer this table from the EAI Value Maps view in the Integration Administration screens in the Siebel client. The Siebel client groups the entries logically based on the Type and Direction columns.

Figure 11 shows the entries form two logical groupings, with entries for the Siebel inbound and Siebel outbound entries.

Direction	Type	Siebel Value	External System Value
Siebel Inbound	Back Office Region	AK	US_AK
Siebel Inbound	Back Office Region	AL	US_AL
Siebel Inbound	Back Office Region	AR	US_AR
Siebel Inbound	Back Office Region	AS	US_AS
Siebel Inbound	Back Office Region	AZ	US_AZ
Siebel Inbound	Back Office Region	CA	US_CA
Siebel Inbound	Back Office Region	CO	US_CO

**Figure 11. EAI Value Maps for Country Codes**

The Direction field determines the direction of the mapping and is either Siebel Outbound or Siebel Inbound. In a Siebel Outbound mapping, the Siebel Value field is the lookup key; the External System Value is the translation. In a Siebel Inbound mapping, the External System Value field is the lookup key; the Siebel Value is the translation.

You can add, remove, or modify entries in the Type group on the EAI Lookup Map view in the Siebel client. The EAI\_LOOKUP\_MAP\_TYPE list of values defines type values. You can modify the list from the Application Administration views in the Siebel client.

---

**NOTE:** You cannot change the values of the Direction field, which must be Siebel Outbound or Siebel Inbound.

---

The data transformation methods include an interface to EAI Value Maps for translating the codes of one database to another. You use the `EAIGetValueMap` function to obtain an interface to the mappings of specific Type-Direction pairs. You use the interface object's Translate method to find specific keys in the Type-Direction map and retrieve the translated values.

## EAIGetValueMap Function

You use the following statement in your Siebel eScript code to return a value map:

```
EAIGetValueMap (type, direction [,unmappedKeyHandler])
```

This object returns a value map for translating lookup keys using the Type-Direction combination.

- The type argument is a string found in the Type field of the EAI Value Map table.
- The direction argument must be either Siebel Inbound or Siebel Outbound string values.

A call to this function returns a `CSSEAIValueMap` object.

You can use the optional `unmappedKeyHandler` argument to control the behavior of the `Translate` method when it gets keys that do not have mappings in the table. The `unmappedKeyHandler` argument can be either a literal value or a function. If you pass a literal value, it is used as the default value. Otherwise, if you pass a function, the method calls that function, then uses the value returned by the function.

The `unmappedKeyHandler` defaults to an empty string (`""`).

## EAIlookupSiebel Search Function

This function returns an EAI Value Map, with inbound direction that has the external value matching the value in the []. The general format for this function is as follows:

```
EAIlookupSiebel ("EAI Value Type", [Source field that lookup will  
be based on]).
```

## EAIlookupExternal Search Function

This function returns an EAI Value Map, with outbound direction that has the Siebel value matching the value in the []. The general format for this function is as follows:

```
EAIlookupExternal ("EAI Value Type", [Source field that lookup  
will be based on]).
```

### CSSEAIValueMap Translate Method

The CSSEAIValueMap object has one method: Translate. The Translate method takes one argument, as follows:

```
Translate (key)
```

The Translate method looks up the key value in the EAI Value Map and returns the translated value. The EAIGetValueMap call establishes the set of mappings for the translation using the type and direction arguments. The call looks for the key in either the Siebel Value column or in the External System Value column, depending on the value of the type argument.

- If the type is Siebel Outbound, the method returns the key found in the Siebel Value column. The translated value is in the External System Value column.
- If the type is Siebel Inbound, the method returns the key found in the External System Value column. The translated value is in the Siebel Value column.
- If key is null then the return value is null.
- If key is an empty string, the lookup is performed.

If there is no mapping, an empty string is returned.

If a nonempty string does not have a mapping, the unmappedKeyHandler value specified in the call to the EAIGetValueMap function is used to determine the translation.

### EAIGetValueMap unmappedKeyHandler Argument

The unmappedKeyHandler provides a flexible mechanism for handling cases where keys are not found in the EAI Value Map. In most situations, you can use literal values for defaults or you can use one of several predefined handler functions. However, you can also provide your own handler function.

The technique you use for handling unmapped values depends on the data being mapped.

Typical strategies include:

- Use the empty string as the translation.

This is the default strategy. It clears the field if the data is being imported into your Siebel application. To follow this approach, omit the `unmappedKeyHandler` argument or pass it as an empty string. For example:

```
var langMap = EAIGetValueMap("SAP Language", "Siebel  
Inbound", "");
```

This example looks up a nonexistent language code and returns an empty string. For example:

```
var translatedValue= langMap.Translate ("ABC"); // returns an  
empty string
```

- Use `null` as the translation.

This technique makes the result unspecified rather than empty. For data imported to Siebel applications, this keeps the existing value from being overridden when performing updates. Use `null` as the `unmappedKeyHandler`—for example:

```
var langMap = EAIGetValueMap("SAP Language", "Siebel Inbound",  
null);
```

- Use a literal string as the translation.

Specify the string as the `unmappedKeyHandler`. For example:

```
var langMap = EAIGetValueMap("SAP Language", "Siebel Inbound",  
"Unknown Language");
```

- Raise an error.

This may be the best strategy if the Value Map should contain mappings for every key. You can use the `EAIValueMap_NoEntry_RaiseError` function. For example:

```
var langMap = EAIGetValueMap ("SAP Language", "Siebel Inbound",  
EAIValueMap_NoEntry_RaiseError);
```

- Use the untranslated value.

The predefined function `EAIValueMap_NoEntry_ReturnLookupKey` implements this strategy. For example:

```
var langMap = EAIGetValueMap ("SAP Language", "Siebel Inbound",  
    EAIValueMap_NoEntry_ReturnLookupKey);
```

Trying to look up a nonexistent language code (for example, ABC) will return the original key. For example:

```
var translatedValue = langMap.Translate ("ABC"); // returns  
"ABC"
```

You can also write a custom handler function. You need to write a function taking three arguments: key, type, and direction. The value your function returns is used as the translation. For example:

```
function MyUnmappedLangHandler (key, type, direction)  
{  
    return ("Unknown Language: " + key);  
}  
  
var langMap = EAIGetValueMap ("SAP Language", "Siebel Inbound",  
    MyUnmappedLangHandler);  
  
// Look up a nonexistent language code.  
  
var translatedValue = langMap.Translate ("ABC"); // returns  
"Unknown Language: ABC"
```

## EAIGetValueMap() Method

This method retrieves objects for the required Type-Direction mapping. [Table 56](#) presents the parameters for this method.

**Syntax** EAIGetValueMap(type, direction [, unmappedKeyHandler])

**Table 56. Parameters for EAIGetValueMap() Method**

Parameter	Description
type	Specifies the type of transformation map.
direction	A string specifying the direction of the message. The possible values are: "Siebel Inbound" "Siebel Outbound"
unmappedKeyHandler	Specifies the value to pass to the map for an unmapped key. Can be an empty string, null, a literal, or the name of a predefined function.

**Returns** An object you can use to access the EAI Value Maps.

**Usage** Use this method at the beginning of a script function to retrieve objects for the required Type-Direction mapping. Then call the object's Translate method to get the translation of a code from the map table as needed within the function.

---

**NOTE:** Providing a Type-Direction pair that does not have an entry in the EAI Value Map raises an error at the first call to the Translate method.

---

# Exception Handling Considerations

There are three categories of errors you might encounter in the data transformation area of your integration. These categories are:

- **Siebel errors.** Errors signaled by the built-in facilities that execute a map; for example, run-time Siebel eScript errors, business service invocation errors, BusComp errors, and errors in the data transformation functions.
  - Siebel errors are fatal, terminating execution of the map immediately.
  - The business service returns an error code other than OK. No specific error code is guaranteed, and they are not intended for workflow branching. Workflow processes can branch on the indication of an error occurrence, but not on a specific code.
  - The CSSService error stack will contain useful error information. In particular, data transformation function errors will generate error stacks describing the particular error.
- **User errors.** Errors signaled in custom maps using the EAIRaiseErrorCode call. These are similar to Siebel Framework errors, except that the map developer selects the error code and uses them for workflow branching.
  - User errors are fatal, terminating execution of the map immediately.
  - The service returns the error code specified in the call to EAIRaiseErrorCode. Your workflow can branch on this code.
  - Available error codes are those in the Workflow generic error set.
  - You specify the entire error text for these generic errors in the call to EAIRaiseErrorCode.
  - You can use the function EAIRaiseError to raise an error without specifying a particular error code.
- **Map status flags.** The map developer can use the SetArgument method to set custom status information in the output property set. For example, you can use the SetArgument method to indicate that a required field is missing. This can be used for workflow branching, if desired. This mechanism is independent of calls made to EAIRaiseError.



## Error Codes and Error Symbols

All errors each have an error code, which is a unique integer. A subset of errors also each have an error symbol. An error symbol is a text string that allows you to reference specific error codes in Siebel Workflow and in Siebel eScript. Errors that do not have an error symbol cannot be used for branch decisions and cannot be raised as user errors.

Error codes returned by a data transformation service may or may not have an associated error symbol. User errors will have error symbols. Currently, errors generated by Data Transformation Functions have error symbols. Errors occurring outside the data transformation framework often will not have error symbols.

## Data Transformation Error Processing

This section describes how the Data Transformation Functions handle errors, and how the top-level error code returned by the data transformation business service invocation is determined.

- **Framework errors occurring outside the Data Transformation Context.** These errors are passed through without change to the CSSService script invocation mechanism. That mechanism takes control and returns an error of its choice. For example, if your map invokes a BusComp and the BusComp signals an error, an exception is thrown that will be ignored by the Data Mapping Engine but passed to the CSSService script invocation mechanism, which sets up the error state and returns an error from the business service invocation.
- **Framework errors generated by Data Transformation Functions.** These are caught by an exception handler that sets up the state in the output PropertySet and passes control to the CSSEAITEScriptService class. CSSEAITEScriptService sets the error code on the business service as in the state, transforming error symbols to error codes in the process. Error symbols are specific to the failure.
- **User errors.** These are processed the same way as errors generated by the Data Transformation Functions, except that you specify the error symbols and error text in your maps.

### Exception Handling Functions

When writing your data transformation scripts, you can use the following functions to handle error conditions:

- `EAIRaiseError`
- `EAIRaiseErrorCode`
- `EAIFormatMessage`

---

**NOTE:** Before proceeding, read [“Exception Handling Considerations” on page 146](#).

---

#### **EAIRaiseError() Method**

This method raises a fatal error and terminates the script. [Table 57](#) presents the parameters for this method.

**Syntax** `EAIRaiseError(msg [, formatParameters])`

**Table 57. Parameters for EAIRaiseError() Method**

Parameter	Description
<code>msg</code>	Error message text from the Data Mapping Engine.
<code>formatParameters</code>	Optional string arguments inserted in the return value in the positions specified by the positional arguments in the <code>msg</code> parameter. A maximum of nine format parameters are allowed.

**Usage** You can provide format parameters to format the message text. For details, see [“EAIFormatMessage\(\) Method” on page 149](#).

#### **EAIRaiseErrorCode() Method**

This method raises a fatal error, terminates the script, and returns an error symbol that it receives from the business service.

**Syntax** `EAIRaiseErrorCode(errorSymbol, msg)`

**Usage** You can use this function when you want to pass an error symbol to a workflow as an indication to branch on an exception. If you are not branching on the specific error code in your workflow, use `EAIRaiseError` instead.

### **EAIFormatMessage() Method**

This method formats strings that have position-independent arguments. [Table 58](#) presents the parameters for this method.

**Syntax** `EAIFormatMessage(msg [, formatParameters])`

**Table 58. Parameters for EAIFormatMessage() Method**

Parameter	Description
<code>msg</code>	A string that contains positional arguments. The substitution operation replaces the percent sign followed by a digit with the corresponding format parameter.
<code>formatParameters</code>	Optional string arguments inserted in the return value in the positions specified by the positional arguments in the <code>msg</code> parameter. A maximum of nine format parameters are allowed.

**Returns** A string of the `formatParameters` argument values in the positions specified by the positional arguments included in the `msg` parameter.

**Usage** You can use this function to generate messages from strings that are translated and whose positions have changed as a result of the translation.

**Example** `EAIFormatMessage("Data: '%2', '%3', '%1'", "A", "B", "C")`

returns the string:

```
"Data: 'B', 'C', 'A'"
```

# Sample Siebel eScript

This section provides a sample Siebel eScript map for transforming data from a Siebel Account to SAP to retrieve an order list. The map is used to convert between the Siebel Account object and the equivalent SAP R/3 objects.

```
function GetSAPOrderStatus_SiebelToBAPI (inputMsg, outputMsg)
{
    /* Input Objects' Integration Components:
    *   Order Object (Order - Get SAP Order Status (Siebel))
    *   Order
    *
    * Output Object's Integration Components:
    *   BAPI Import (Order - Get SAP Order Status (BAPI Input))
    *   Import Parameters
    */

    /*
    * Set up EAI Lookup objects
    */

    /*
    * Set up EAI Input Message objects
    */

    var iOrderObj;    // Siebel Order instance
    var iOrderComp;  // Order

    /*
    * Set up EAI Output Message objects
    */

    var oGSObj;      // BAPI instance
    var oGSImportComp; // Import Parameters

    /*
    * Find and create top-level integration object
    */

    iOrderObj = inputMsg.GetIntObj ("Order - Get SAP Order Status
        (Siebel)");

    oGSObj     = outputMsg.CreateIntObj ("Order - Get SAP Order
        Status
        (BAPI Input)");
}
```

```
/*
 * Read int object instances from EAI message
 */

while (iOrderObj.NextInstance ())
{

/*
 * Create "Get Status" object
 */

    oGSObj.NewInstance ();

/*
 * Read "Order" component
 */

iOrderComp = iOrderObj.GetPrimaryIntComp ("Order");

oGSImportComp = oGSObj.CreatePrimaryIntComp
("Import Parameters");

if (iOrderComp.NextRecord ())
{
    /*
     * Write "Import Parameters" component
     */

    oGSImportComp.NewRecord ();
    oGSImportComp.SetCopySource (iOrderComp);
    oGSImportComp.CopyFieldValue ("SALESDOCUMENT",
        "Integration Id");
}
}
}
```



# Troubleshooting Techniques

# A

This chapter describes troubleshooting techniques to help debugging problems you might encounter while using EAI Siebel Adapter or EAI Dispatcher.

# Service Arguments Tracing

You can export input and output arguments (property sets) in XML format to a file. This facilitates the debugging of problems with the EAI Siebel Adapter and EAI Dispatcher business services.

### To output arguments in XML format

- 1 Set server parameter EnableServiceArgTracing to True.

If you are running in Siebel Dedicated Web Client, add the following to your .cfg file:

```
[EAISubsys]

EnableServiceArgTracing = TRUE
```

This prevents the dump of the arguments when log events is set to ALL.

- 2 Set the appropriate event level on your server component through the server manager on the server or SIEBEL\_LOG\_EVENTS in Siebel Dedicated Web Client. One of the following events should be set.

If you set event to:

- 3, then input arguments will be output when an error happens.
- 4, then input and output arguments will be output to a file.

When arguments are output, there will be a trace log entry that indicates the file name (in the log directory).

```
EAIDispatchSvcArgTrc
EAI SiebAdptSvcArgTrc
```

The filenames will take this form:

```
service name_input or output_args_a big number.dmp
```

For example:

```
EAIDispatchService_input_args_270613751.dmp
```



# Index

## A

ancestor components, addressing 84  
argument tracing 41  
arguments 149  
    See also *individual argument entries*  
    positional 149  
    setting the values of 103, 125  
attachments, MIME sample 128

## B

business scenario, data mapping 85  
Business Service Simulator 41  
business services  
    See also EAI Siebel Adapter  
    arguments, setting value of 103, 125  
    data transformation, defining 90  
    EAI Dispatch Service, overview 24  
    EAI MIME Doc Converter 121  
    EAI MIME Hierarchy Converter 121  
    EAI XML Read from File 8, 77  
    errors in 146  
    mapping directly from 94  
    script entry point 92  
    transforms, role of 29

## C

CancelOperation 97  
child components, addressing 84  
Child Hierarchy target 29  
classes. See *individual class (CSS) entries*  
Content ID, MIME messages 128  
ContinueOperation 97  
CopyAttachment method 126  
CopyFieldValue method 111, 118  
CreateIntComp method 107, 112, 119

CreateIntObj method 102  
CreatePrimaryIntComp method 107  
CSSEAIIDTScriptService class 90  
CSSEAIIntCompIn 115  
CSSEAIIntCompOut 117, 118  
CSSEAIIntMsgIn 99, 100  
CSSEAIIntMsgOut 99, 102  
CSSEAIIntObjIn 105, 106  
CSSEAIIntObjOut 107  
CSSEAIMimeMsgIn 121  
CSSEAIMimeMsgOut 125  
CSSEAIPrimaryIntCompIn 108  
CSSEAIPrimaryIntCompOut  
    about 111  
    methods 111  
CSSEAIValueMap object 140, 142  
CSSEAIValueMap Translate method 142

## D

data mapping  
    architecture diagram 64  
    business scenario 85  
    declarative and programmatic options,  
        compared 61  
    postconditions, use of 82  
    preconditions, use of 82  
data mapping engine. See EAI Data Mapping  
    Engine  
data maps  
    arguments, defining 69  
    component mappings, defining 70  
    creating 68  
    creation process overview 67  
    EAI Value Maps 139  
    field mappings, defining 71

- function of 90
  - inbound Workflow, creating 76
  - integration object maps 65
  - integration object maps, viewing 68
  - map types and storage locations 65
  - outbound Workflow, creating 72
  - performance consideration 61
  - role of 65
  - validating 71
  - data transformation
    - data transformation business service, defining 90
    - declarative and programmatic options, compared 61
    - and empty strings 143
    - errors 146
    - functions 90
    - functions, about 97
    - integration component objects 115
    - literal strings 143
    - methods. *See individual method entries*
    - null values 143
    - options diagram 88
    - output integration objects 117
    - process overview 89
    - raising errors 143
    - Siebel Data Mapper, about 60
    - transformation function 95
    - unspecified results 143
    - untranslated values 144
    - XML property to integration object 95
  - data types
    - conversion to strings 114
    - supported data types, listed 97
  - data, correlating between systems 139
  - debugging. *See troubleshooting*
  - declarative interface. *See data transformation*
  - defaultIfEmpty parameter 100, 111
  - defaultIfNull parameter 100, 111
  - Dispatch method 26
  - dispatch rule grammar
    - example 52
    - search expression symbols 28
  - dispatch service. *See EAI Dispatch Service*
  - DTE business service
    - methods and method arguments 92
    - script, creating 91
- E**
- EAI Data Mapping Engine
    - architecture diagram 60, 64
    - component groups, required 62
    - data map, executing 74
    - Execute method 62
    - expression categories 80
    - inbound data map, executing 77
    - methods 62
    - multiple source components, addressing 84
    - process overview 63
    - Purge method 63
    - purging a development map 77
  - EAI Dispatch Service
    - See also* transforms; hierarchy, incoming; hierarchy, output
    - architecture diagram, inbound dispatch service 33
    - architecture diagram, outbound dispatch service 34
    - argument tracing 41
    - compared to Workflow 42
    - hierarchy diagram 25
    - inbound dispatch workflow, creating 36
    - inbound dispatch, business scenario 47
    - input and output, debugging 41
    - methods used 26
    - outbound dispatch, business scenario 45
    - outbound property set, business scenario 56
    - overview 24
    - process diagram 24
    - process overview 35
    - property sets, about use of 42
    - rule set, creating 37

- rules, defining 37
  - run-time tasks 27
  - Search Expression definitions 28
  - EAI MIME Doc Converter Business Service 121
  - EAI MIME Hierarchy Converter Business Service 121
  - EAI MQSeries Server Transport 15
    - sample 15
  - EAI Siebel Adapter
    - export example query 12, 18
    - importing account information, example 9
    - inbound data map, writing to database 78
    - outbound data maps 73
  - EAI Value Maps
    - about 139
    - accessing 145
  - EAI XML Converter, example 16
  - EAI XML Read from File business service 8, 77
  - EAI XML Write to File adapter, export example 13
  - EAI XML Write to File business service 75
  - EAIDispatchSvcArgTrc 41
  - EAIExecuteMap 97
  - EAIExecuteMap function 92
  - EAIFormatMessage 149
  - EAIFormatMessage method 149
  - EAIGetValueMap 140, 142
  - EAIGetValueMap method 145
  - EAIRaiseError method 148
  - EAIRaiseErrorCode method 148
  - empty strings 143
  - EnableServiceArgTracing parameter 41
  - Error Code property 11
  - Error Message property 11
  - error symbols 148
  - errors
    - capturing 148
    - categories of 146
    - EAIFormatMessage method 149
    - raising 143
    - exception handling, in data transformation scripts 146
    - Execute method 62, 74, 92
    - Exists method 106, 108, 115
    - export example 13
- F**
- fatal errors 148
  - fields
    - copying 113, 118
    - setting a value for 114
    - setting values of 120
  - fields, copying 111
  - FirstInstance method 106
  - FirstRecord method 109, 115
  - formatParameters parameter 149
- G**
- GetArgument method 100, 121
  - GetAttachment method 101
  - GetAttachmentByCID method 102, 124
  - GetAttachmentCount method 101
  - GetFieldValue method 109, 116
  - GetIntComp method 110, 116
  - GetIntObj method 101
  - GetPart method 123
  - GetPartByCID method 123
  - GetPartCount method 122
  - GetPrimaryIntComp Method 106
  - GetXMLRootPart method 124
- H**
- handlers, custom written 144
  - hierarchy diagram, EAI Dispatch Service 25
  - hierarchy, incoming
    - data, passing to workflow 36
    - routing methods, compared 42
    - transforms, role of 29
  - hierarchy, output
    - business service arguments, adding 30

- Child Hierarchy target, about 29
  - Property Name target, about 30
  - root hierarchy target, about 29
  - Source Expression, setting Type field to 30
  - Source Expression, setting Value field to 30
  - workflow process properties, adding to 30
- I**
- import example 8, 9
  - inbound dispatch
    - architecture diagram 33
    - business scenario 47
    - process overview 35
    - rule set, creating 37
    - rules, defining 37
    - workflow, creating 36
  - inbound message
    - converting to business object format, example 16
    - receiving from MQSeries 15
  - #include file 91
  - input integration component, copying fields 111
  - inputPropSet 97
  - Insert method 9
  - integration component
    - creating a new 113, 119
    - primary integration component, opening for input 107
    - setting field value 120
  - integration component maps
    - about 66
    - defining 70
    - parent component field, addressing 81
    - postconditions, use of 82
    - preconditions, use of 82
    - Source Search Specifications, role of 81
  - integration field maps
    - defining 71
    - multiple source components, addressing 84
    - Source Expression example 80
    - validating 71
  - integrating message objects 99
  - integration object maps
    - about 65
    - arguments, about 65
    - arguments, defining 69
    - creating 68
    - Source Search Specifications, role of 81
    - viewing 68
  - integration objects
    - about 105
    - creating a new instance of 108
    - CSSEAIIntObjIn 105
    - CSSEAIIntObjIn, methods 106
    - CSSEAIIntObjOut 107
    - new integration object, method 102
    - output 117
    - role in data mapping process 64
    - transforming from XML property set, specification 95
  - integration process, testing 20
- K**
- key values, translating 142
- L**
- letter to memo conversion, code sample 138
  - letter, converting to memo (map function) 131
  - Lookup method 26
  - lookup tables, accessing 145
- M**
- map function, converting letter to memo 131
  - MapFn function 95
  - MapName argument 92

- memo, converting from a letter, code sample 138
  - message, inbound
    - business object format, converting example 16
    - receiving from MQSeries Server Transport, example 15
  - methodName 97
  - methods
    - CopyAttachment 126
    - CopyAttachmentCID 105
    - CopyFieldValue 111, 118
    - CreateIntComp 112, 119
    - CreateIntObj 102
    - CreatePrimaryIntComp 107
    - Dispatch method 26
    - EAIFormatMessage 149
    - EAIGetValueMap 145
    - EAIRaiseError 148
    - EAIRaiseErrorCode 148
    - Execute 92
    - Execute method 62, 74
    - Exists 106, 108, 115
    - FirstInstance 106
    - FirstRecord 109, 115
    - GetArgument 100, 121
    - GetAttachment 101
    - GetAttachmentByCID 102, 124
    - GetAttachmentCount 101
    - GetFieldValue 109, 116
    - GetIntComp 110, 116
    - GetIntObj 101
    - GetPart 123
    - GetPartByCID 123
    - GetPartCount 122
    - GetPrimaryIntComp 106
    - GetXMLRootPart 124
    - Lookup method 26
    - NewInstance 108
    - NewRecord 113
    - NextInstance 107
    - NextRecord 110, 117
    - Purge method 63, 74, 77
    - Read Siebel Message method 77
    - SetArgument 103
    - SetAttachmentSource 104, 105, 126
    - SetCopySource 113, 119
    - SetFieldValue 114, 120
    - Write Siebel Message method 75
  - MIME
    - about MIME messages 128
    - Content ID 128
    - CSSEAIMimeMsgIn, object and methods 121
    - CSSEAIMimeMsgOut, object and methods 125
    - messages and objects, about 121
    - MIMEHierarchy argument 94
    - sample message with attachment 128
  - MIMEHierarchy argument 94
  - MQSeries
    - export example 17
    - import example 13
    - process properties, exporting example 17
  - msg parameter 149
- N**
- name parameter 100, 101
  - NewInstance method 108
  - NewRecord method 113
  - NextInstance method 107
  - NextRecord method 110, 117
  - null value 110, 143
- O**
- Object Id property 11
  - outbound dispatch
    - architecture diagram 34
    - business scenario 45
    - process overview 35
    - property set, business scenario 56
  - outbound Siebel Messages 19
  - output integration component, copying fields 111

OutputIntObjectName output  
     argument 103  
 outputPropSet 97

## P

parameters. *See individual parameter entries*  
 positional arguments 149  
 postconditions 82  
 preconditions 82  
 primary integration component  
     checking existence of 108  
     creating new record 113  
     defined 108  
     field value, returning 109  
     getting for input 110  
 primary output integration component  
     methods 108  
 process properties  
     export in XML example 11  
     import using MQSeries queue,  
       example 14  
     importing account information,  
       example 7  
     inbound data map, creating 76  
     MQSeries, exporting example 17  
     outbound data maps 73  
     output hierarchy root node, adding to 30  
     passing data to workflow 36  
 Property Name target 30  
 property set format, functions for  
     manipulating 130  
 property sets  
     dispatch method comparison 42  
     root element in output XML,  
       creating 130  
     root element of XML document,  
       returning 130  
     Workflow limitation in use of 42  
 Purge method 63, 74, 77

## Q

Query method, EAI Siebel Adapter 18

## R

Read Siebel Message method 77  
 Receive method, EAI MQSeries Server  
     Transport example 15  
 records, accessing next record 110  
 root hierarchy target 29  
 rules  
     invalid rules 55  
     rule sets, creating 37  
     rules, defining 37

## S

scripts  
     *See also* Siebel eScript  
     for DTE business service 91  
     exception handling 146  
     terminating on error 148  
 search expression grammar  
     expressions, symbols used in 28  
     sample 52  
 Service\_PreInvokeMethod function, data  
     transformation 91  
 ServiceArguments 94  
 SetAttachmentSource method 126  
 SetCopySource method 113, 119  
 SetFieldValue method 114, 120  
 Siebel Data Mapper  
     about 60  
     architecture diagram 64  
     business scenario 85  
     performance 61  
 Siebel Errors, in data transformation  
     scripts 146  
 Siebel eScript  
     *See also* scripts  
     data type conversion 114  
     including eaisiebel.js 91  
     role in data transformation functions 97  
 Siebel Inbound argument 142

- Siebel Message argument 93
- Siebel Messages
  - converting outbound to XML 19
  - CSSEAIIntCompIn, object and methods 115
  - CSSEAIIntCompOut, object and methods 117
  - CSSEAIIntMsgIn integration message object 99
  - CSSEAIIntMsgIn object and methods 99
  - CSSEAIIntMsgOut object and methods 102
  - CSSEAIIntObjIn object and methods 105
  - CSSEAIIntObjOut object and methods 107
  - CSSEAIPrimaryIntCompIn object and methods 108
  - CSSEAIPrimaryIntCompOut object and methods 111
  - integration message objects, about 99
  - objects and methods, overview 99
  - outbound 19
- Siebel Outbound argument 142
- Siebel Tools, data transformation business service, defining 90
- Source Expression
  - example 80
  - Property Name 30
  - Type field, setting to 30
  - Value field, setting to 30
- Source Search Specification
  - postconditions, use of 82
  - preconditions, use of 82
  - sourceName parameter 111
  - strings, data transformation of 143
- T**
  - targetName parameter 111
  - targets. *See* transforms
  - testing, integration processes 20
  - transformation maps. *See* data maps
  - transforms
    - business services 29
    - Child Hierarchy target 29
    - combining transforms 31
    - defining 39
    - overview 29
    - Property Name target 30
    - root hierarchy target 29
    - Type target 30
    - Value target 30
- troubleshooting
  - argument tracing 41
  - dispatch service input and output, debugging 41
  - Lookup method, role of 26
  - Type target 30
- U**
  - unmapped values 142
  - unmappedKeyHandler
    - about 141
    - uses of 142
  - untranslated values 144
  - Update method 9
- V**
  - Value target 30
- W**
  - Workflow
    - compared to EAI Dispatch Service 42
    - data maps, running 92
    - inbound data map, creating
      - Workflow 76
    - inbound dispatch, creating 36
    - integration processes, overview 5
    - outbound data map, creating
      - Workflow 72
    - passing incoming hierarchy to 36
  - workflow examples
    - account information, exporting in XML 10
    - account information, importing 7
    - exporting using MQSeries queue 17

- importing using MQSeries queue 13
- Workflow Process Simulator 20
- Workflow Simulator, testing inbound
  - Workflow 75, 78
- Write Siebel Message method 75
- X**
- XML
  - dispatch input and output,
    - debugging 41
  - element accessor functions 132
  - exporting information, example 10
  - outbound data mapping Workflow
    - example 75
  - Search Expression example 52
  - top-level property set functions 130
  - transforming to integration object,
    - specification 95
- XML functions
  - example 138
  - XPSAddChild 137
  - XPSCreateRootElement 130
  - XPSFindChild 137
  - XPSGetAttribute 134
  - XPSGetChild 135
  - XPSGetChildCount 135
  - XPSGetRootElement 130
  - XPSGetTagName 132
  - XPSGetTextValue 133
  - XPSSetAttribute 134
  - XPSSetTagName 132
  - XPSSetTextValue 133
- XML Hierarchy argument 94
- XPath standard 28
- XPSAddChild function 137
- XPSCreateRootElement function 130
- XPSFindChild function 137
- XPSGetAttribute function 134
- XPSGetChild function 135
- XPSGetChildCount function 135
- XPSGetRootElement function 130
- XPSGetTagName function 132
- XPSGetTextValue function 133
- XPSSetAttribute function 134
- XPSSetTagName function 132
- XPSSetTextValue function 133