

Oracle® Secure Enterprise Search

Installation Guide

10g Release 1 (10.1.8.2) for HP-UX PA-RISC (64-Bit)

E10598-02

April 2008

This document describes how to install Oracle Secure Enterprise Search (SES). It includes the following sections:

- [Installing Oracle Secure Enterprise Search](#)
- [Upgrading Oracle Secure Enterprise Search](#)
- [Restarting Oracle Secure Enterprise Search](#)
- [What to Do Next?](#)
- [Additional Resources](#)
- [Documentation Accessibility](#)

Note: After installing Oracle SES, check to see if there is a patch set or critical patch update (CPU) available. A CPU is a collection of patches for security vulnerabilities. It also includes non-security fixes required (because of interdependencies) by those security patches. CPUs are cumulative, and they are provided quarterly on the Oracle Technology Network. Oracle SES 10.1.8.2 includes the July 2007 CPU for the underlying 10.1.0.5 database. If a later CPU is available, then install that. For more information about CPUs, see:

<http://www.oracle.com/security/critical-patch-update.html>

See Also: Up-to-date Release Notes are posted on Oracle Technology Network (OTN). You must register online before using OTN; registration is free and can be done at

<http://www.oracle.com/technology/membership/>

If you already have a user name and password for OTN, then you can go directly to the documentation section of OTN at

<http://www.oracle.com/technology/documentation>

Installing Oracle Secure Enterprise Search

This section contains the following topics:

- [Pre-Installation Tasks](#)
- [Installation Tasks](#)

- [Silent Installation Tasks](#)
- [Deinstallation Tasks](#)

Pre-Installation Tasks

This section contains the following topics:

- [Oracle SES Certifications](#)
- [General Requirements for Installing Oracle Software](#)
- [Checking the Software Requirements](#)
- [Checking the Hardware Requirements](#)
- [Configuring Kernel Parameters](#)
- [Installing on a Port Number Less Than 1024](#)
- [Changing the Oracle SES Middle Tier Port](#)
- [Checking the Oracle Base Directory](#)
- [Setting the Correct Locale](#)

Oracle SES Certifications

Oracle SES can be installed on the following operating systems:

- HP-UX 11.11
- HP-UX 11.23

These are the only supported distributions and versions. Do not install Oracle SES on other versions of HP-UX.

The Oracle SES administration tool and default query application are certified on the following browsers:

- Firefox 1.0, 1.0.1, 1.0.6, 1.0.7, 1.5, 2.x
- Internet Explorer 6.0, 7.0
- Netscape 7.1, 7.2
- Mozilla 1.7.3

Note: New 10.1.8.2 user interface features (including clustering results, sorting and grouping results, browsing with the tree popup, and customizing the result list) work in Internet Explorer versions 6 and 7 and Firefox versions 1.5 and 2.x only. Existing 10.1.8.1 functionality works on all Oracle SES-supported browsers through the classic user interface:
`http://<host>:<port>/search/query/search-classic.jsp`

The requirements and certifications included in this installation guide were current at the time this guide was published. See the certification matrix on the *OracleMetaLink* Web site for the most up-to-date information.

See Also: ["Oracle Support Services"](#) on page 17

General Requirements for Installing Oracle Software

The following sections describe the general requirements for installing Oracle software:

- [Logging In to the System as root](#)
- [Required Operating System Group and User](#)
- [Oracle Inventory Group](#)
- [Oracle Software Owner User](#)

Logging In to the System as root Before you install Oracle software, you must complete several tasks as the `root` user. To log in as the `root` user, complete one of the following procedures:

Note: Unless you intend to complete a silent installation, you must install the software from an X Window System workstation, an X terminal, or a PC or other system with X server software installed.

- If you are installing the software from an X Window System workstation or X terminal, then:
 1. Start a local terminal session, for example, an X terminal (`xterm`).
 2. If you are not installing the software on the local system, then enter the following command to enable the remote host to display X applications on the local X server:

```
$ xhost fully_qualified_remote_host_name
```
 3. If you are not installing the software on the local system, then use the `ssh`, `rlogin`, or `telnet` command to connect to the system on which you want to install the software:

```
$ telnet remote_host
```
 4. If you are not logged in as the `root` user, then enter the following command to switch user to `root`:

```
$ su - root
```
- If you are installing the software from a PC or other system with X server software installed, then:

Note: If required, refer to your X server documentation for more information about completing this procedure. Depending on the X server software that you are using, you may need to complete the tasks in a different order.

1. Start the X server software.
2. Configure the security settings of the X server software to permit remote hosts to display X applications on the local system.
3. Connect to the remote system on which you want to install the software and start a terminal session on that system, for example, an X terminal (`xterm`).

4. If you are not logged in as the `root` user on the remote system, then enter the following command to switch user to `root`:

```
$ su - root
```

Required Operating System Group and User Depending on whether this is the first time Oracle software is being installed on this system and on the products that you are installing, you may need to create the following operating system group and user:

- Oracle Inventory group (typically, `oinstall`)

You must create the Oracle Inventory group the first time you install Oracle software on the system. The usual name chosen for this group is `oinstall`. This group owns the Oracle inventory, which is a catalog of all Oracle software installed on the system.

Note: If Oracle software is already installed on the system, then the existing Oracle Inventory group must be the primary group of the operating system user that you use to install new Oracle software.

- Oracle software owner user (typically, `oracle`)

You must create the Oracle software owner user the first time you install Oracle software on the system. This user owns all of the software installed during a given installation. This user must have the Oracle Inventory group as its primary group.

Note: In Oracle documentation, the Oracle software owner user is referred to as the `oracle` user.

A single Oracle Inventory group is required for all installations of Oracle software on the system. After the first installation of Oracle software, you must use the same Oracle Inventory group for all subsequent Oracle software installations on that system. However, you can choose to create different Oracle software owner users for different installations.

Note: As an alternative to creating local users and groups, you can create the appropriate users and groups in a directory service. For example, Network Information Services (NIS). Contact your system administrator or refer to your operating system documentation for information about using directory services.

Oracle Inventory Group If Oracle software is already installed on the system, then the existing Oracle Inventory group must be the primary group of the operating system user that you use to install new Oracle software. This section describes how to identify an existing Oracle Inventory group and, if required, to create it.

When you install Oracle software on the system for the first time, Oracle Universal Installer creates the `oraInst.loc` file. This file identifies the name of the Oracle Inventory group and the path of the Oracle Inventory directory. To determine if the Oracle Inventory group exists, enter the following command:

```
more /var/opt/oracle/oraInst.loc
```

If the output of this command shows the `oinstall` group name, then the group already exists.

If the `oraInst.loc` file exists, then the output from this command is similar to the following:

```
inventory_loc=/u01/app/oracle/oraInventory
inst_group=oinstall
```

The `inst_group` parameter shows the name of the Oracle Inventory group, `oinstall`.

To create the Oracle Inventory group: If the `oraInst.loc` file does not exist, then enter the following command to create the `oinstall` group:

```
# /usr/sbin/groupadd oinstall
```

Note: Oracle recommends that you use the group name `oinstall` for the Oracle Inventory group.

Oracle Software Owner User You must create an Oracle software owner user if any of the following conditions is true:

- An Oracle software owner user does not exist; for example, if this is the first installation of Oracle software on the system.
- An Oracle software owner user exists, but you want to use a different operating system user.

Note: In this document, the Oracle software owner user is referred to as `oracle`.

To determine if an Oracle software owner user named `oracle` exists, enter the following command:

```
# id oracle
```

If the `oracle` user exists, then the output from this command is similar to the following:

```
uid=440(oracle) gid=200(oinstall) groups=201(dba),202(oper)
```

If the user exists, then determine whether you want to use the existing user or create a user. If you want to use the existing user, then ensure that the user's primary group is the Oracle Inventory group.

Note: If necessary, contact your system administrator before using or modifying an existing user.

To create an Oracle Software Owner User: If the Oracle software owner user does not exist or if you require a new Oracle software owner user, then create it as follows:

Note: In the following procedure, use the user name `oracle` unless a user with that name already exists.

1. To create the `oracle` user, enter a command similar to the following:

```
# /usr/sbin/useradd -g oinstall[ -G dba] oracle
```

In this command:

- The `-g` option specifies the primary group, which must be the Oracle Inventory group, for example `oinstall`.
- The `-G` option specifies optional secondary groups.

2. Set the password of the `oracle` user as follows:

```
# passwd oracle
```

If the `oracle` user exists, but its primary group is not `oinstall`, then enter a command similar to the following, specifying the primary group using the `-g` option and any required secondary groups using the `-G` option:

```
# /usr/sbin/usermod -g oinstall -G dba oracle
```

Checking the Software Requirements

The system must meet the following minimum software requirements, depending on your HP-UX PA-RISC distribution and version.

The following patches must be installed:

- For HP-UX 11.11:
 - PHCO_28123: cumulative SAM patch
 - PHKL_29198: Psets Enablement Patch; top(1)
 - PHNE_28476: Cumulative STREAMS Patch
 - PHNE_28923: LAN product cumulative patch
 - PHSS_28871: ld(1) and linker tools cumulative patch
 - PHSS_28880: HP aC++ -AA runtime libraries (aCC A.03.50)
 - PHCO_26331: mountall cumulative patch, Dev IDs enabler
 - PHCO_29109: Pthread enhancement and fixes
 - PHKL_25468: eventport (/dev/poll) pseudo driver
 - PHKL_25842: Thread Abort
 - PHKL_25993: thread nostop for NFS, rlimit, Ufalloc fix
 - PHKL_25994: Thread NOSTOP, Psets Enablement, Ufalloc
 - PHKL_25995: ufalloc;VxFS3.5;SPP fragmentation
 - PHKL_26468: Shared synchronization performance support
 - PHKL_28489: copyin EFAULT, LDCD access type

- For HP-UX 11.23:

None required.

To ensure that the system meets these requirements:

1. To determine the version of HP-UX installed, enter the following command:

```
# uname -a
```

```
HP-UX hostname B.11.11 U 9000/800 109444686 unlimited-user license
```

In this example, the version of HP-UX 11i is 11.11.

2. To determine whether the HP-UX 11i Quality Pack is installed, enter the following command:

```
# /usr/sbin/swlist -l bundle | grep GOLD
```

If the Quality Pack is not installed, or if the date is before June 2003, download the latest Quality Pack from the following URL and install it:

http://www.software.hp.com/SUPPORT_PLUS/qpk.html

3. To determine whether a patch is installed, enter a command similar to the following:

```
# /usr/sbin/swlist -l patch | grep PHSS_28880
```

Alternatively, to list all installed patches, enter the following command:

```
# /usr/sbin/swlist -l patch | more
```

If a required patch is not installed, download it from the following URL and install it:

<http://itresourcecenter.hp.com>

Checking the Hardware Requirements

Oracle SES requires a minimum of 3 gigabytes of disk space. This includes 2 gigabytes to install and approximately .5 gigabyte to create the initial Oracle SES index. Additional Oracle SES requirements are based on the amount of data that you need to search. Here are some configuration examples:

To index 100,000 documents:

- 4 gigabytes disk space
- 1 gigabyte RAM

To index 1,000,000 documents:

- 20 gigabytes disk space
- 6 gigabytes RAM

The system must meet the following minimum hardware requirements:

- 512 MB of physical RAM
- 1 GB of swap space (or twice the size of RAM)

On systems with 2 GB or more of RAM, the swap space can be between one and two times the size of RAM.

- 400 MB of disk space in the /tmp directory
- Between 1.5 GB and 3 GB of disk space for the Oracle software, depending on the installation type and platform.

To ensure that the system meets these requirements, perform the following steps:

1. To determine the physical RAM size, enter the following command:

```
# /usr/sbin/dmesg | grep "Physical:"
```

If the size of the physical RAM installed in the system is less than 256 MB, you must install more memory before continuing.

2. To determine the size of the configured swap space, enter the following command:

```
# /usr/sbin/swapinfo -a
```

If necessary, see your operating system documentation for information about how to configure additional swap space.

3. To determine the amount of free disk space available in the /tmp directory, enter the following command:

```
# bdf /tmp
```

If there is less than 400 MB of disk space available in the /tmp directory, complete one of the following steps:

- Delete unnecessary files from the /tmp directory to achieve the required disk space.
 - Set the TEMP and TMPDIR environment variables when setting the oracle user's environment (described later).
 - Extend the file system that contains the /tmp directory. If necessary, contact your system administrator for information about extending file systems.
4. To determine the amount of free disk available on the system, enter the following command:

```
# bdf
```

This command displays the disk space usage on all mounted file systems. To complete the installation, identify a file system with sufficient disk space.

5. To determine whether the system architecture is 64-bit, enter the following command:

```
# /bin/getconf KERNEL_BITS
```

This command should return the following output:

```
64
```

If you do not see the expected output, you cannot install the software on this system.

For installation help, including pre-installation tips, see the Oracle SES tutorial:

<http://st-curriculum.oracle.com/tutorial/SESAdminTutorial/index.htm>

Configuring Kernel Parameters

Verify that the following kernel parameters are set either to the formula shown, or to values greater than or equal to the recommended value shown:

Parameter	Recommended Formula or Value
ksi_alloc_max	(nproc*8)
max_thread_proc	256
maxdsiz	1073741824 (1 GB)

Parameter	Recommended Formula or Value
maxdsiz_64bit	2147483648 (2 GB)
maxssiz	134217728 (128 MB)
maxssiz_64bit	1073741824 (1 GB)
maxswapchunks	16384
maxuprc	$((nproc*9)/10)$
msgmap	$(2+msgmni)$
msgmni	4096
msgseg	32767
msgtql	4096
ncsize	$(ninode+vx_ncsize)$
nfile	$(15*nproc+2048)$
nflocks	4096
ninode	$(8*nproc+2048)$
nkthread	$((nproc*7)/4)+16)$
nproc	4096
semmap	$(semmni+2)$
semmni	4096
semmns	$(semmni*2)$
semmnu	$(nproc-4)$
semvmx	32767
shmmax	The size of physical memory (0X40000000) or 1073741824, whichever is greater.
shmmni	512
shmseg	120
vps_ceiling	64

Note:

- If the current value for any parameter is higher than the value listed in this table, then do not change the value of that parameter.
 - maxswapchunks, semmap, and vx_ncsize are deprecated in HP-UX 11.23.
-
-

To view the current value or formula specified for these kernel parameters, and to change them if necessary, follow these steps:

1. Optionally, set the DISPLAY environment variable to specify the display of the local system:
 - Bourne, Bash, or Korn shell:

```
$ DISPLAY=local_host:0.0 ; export DISPLAY
```

- C shell:

```
% setenv DISPLAY local_host:0.0
```

2. Start System Administration Manager (SAM):

```
# /usr/sbin/sam
```

3. Choose the **Kernel Configuration** area, then choose the **Configurable Parameters** area.

4. Check the value or formula specified for each of these parameters and, if necessary, modify that value or formula.

If necessary, see the SAM online help for more information about completing this step.

5. Exit from SAM.

If you modified the value specified for any static parameter, you must rebuild the kernel and reboot the system.

6. If necessary, when the system restarts, log in and switch user to root.

Installing on a Port Number Less Than 1024

Oracle SES must be installed by a non-root user. However, Linux and UNIX operating systems require that only root users can bind to ports less than 1024. Follow these steps to install Oracle SES on a port number less than 1024:

1. During installation, specify a port greater than or equal to 1024 (for example, 7777).
2. After the installation is complete, follow the instructions in the following section, ["Changing the Oracle SES Middle Tier Port"](#), to change to a port number less than 1024 (for example, 80).

Changing the Oracle SES Middle Tier Port

To change the Oracle SES middle tier port, follow these steps:

1. Shutdown the middle tier with the following command:

```
$ORACLE_HOME/bin/searchctl stop
```

2. Edit the value for the port attribute in `$ORACLE_HOME/oc4j/j2ee/OC4J_SEARCH/config/http-web-site.xml`. (Make sure that the new port is not already in use.)

3. To change to a port less than 1024:

- a. As the root user, run the following:

```
chgrp -R root $ORACLE_HOME/jdk
```

- b. Log on as the root user and perform step 5.

4. To change from a port that was less than 1024 to a port that is greater than or equal to 1024:

- a. Log on as the root user.

- b. Run the following:

```
chown -R <user> $ORACLE_HOME/search/opmn  
$ORACLE_HOME/oc4j/j2ee/OC4J_SEARCH/persistence
```

where *<user>* is the user that installed Oracle SES

- c. Log off from root user and log on as the user that installed Oracle SES.

5. Start the middle tier with the following command:

```
$ORACLE_HOME/bin/searchctl start
```

Note: \$ORACLE_HOME represents the directory where Oracle SES was installed.

Starting, Stopping, and Restarting Oracle SES The tool for starting and stopping the search engine is `searchctl`. Follow these guidelines to start, stop, or restart Oracle SES on a port number less than 1024:

To start Oracle SES:

- The `searchctl startall` command must be run by the user who installed Oracle SES.
- The `searchctl start` command must be run by the root user.

To stop Oracle SES:

- The `searchctl stopall` command can be run by either the root user or the user who installed Oracle SES.

To restart Oracle SES:

- The `searchctl restartall` command must be run by the user who installed Oracle SES.
- The `searchctl start` command must be run by the root user.

Note: If you have shut down both the backend and the middle tier with the `searchctl stopall` command, then to successfully start them both, first run `searchctl startall` and then run `searchctl start`.

See Also: ["Restarting Oracle Secure Enterprise Search"](#) on page 16

Checking the Oracle Base Directory

The Oracle home directory generally is a subdirectory of the Oracle base directory. Before installing Oracle SES, check to see if the `ORACLE_BASE` environment variable is set. If it is, then make sure that you have write permission to that location. It is not recommended to put `ORACLE_BASE` under other user's account/location.

Setting the Correct Locale

The correct environment parameter (`LANG`, `NLS_LANG` and `LC_ALL`) should be set before Oracle SES is installed.

For file sources to successfully crawl and display multibyte environments, the locale of the machine that starts the Oracle SES server must be the same as the target file system. This way, the Oracle SES crawler can "see" the multibyte files and paths.

If the locale is different in the installation environment, then Oracle SES needs to be reinstalled from the environment with the correct locale. For example, for a Korean environment, either set `LC_ALL` to `ko_KR` or set both `LC_LANG` and `LANG` to `ko_KR.KSC5601`. Then run `searchctl restartall` from an xterm.

Installation Tasks

For easy instructions on installing Oracle SES, see the Installation Tips tutorial:

<http://st-curriculum.oracle.com/tutorial/SESAdminTutorial/index.htm>

In the following instructions, the disc mount point is referred to as `/SD_DVDROM`. If your mount point is different, then substitute the correct mount point name for all references to `/SD_DVDROM`.

To start the installer:

1. Ensure that you have checked all the minimum requirements, as described in "[Pre-Installation Tasks](#)" on page 2.
2. Log on to the computer as the user who will install Oracle SES. (Oracle SES must be installed by a non-root user.)
3. Insert the Oracle Secure Enterprise Search DVD.
4. If your computer does not have automount, then see "[Mounting the DVD-ROM](#)" on page 13 for steps on mounting the DVD-ROM manually.
5. Start up the installer:

```
cd
/SD_DVDROM/runInstaller
```

This launches Oracle Universal Installer.

Note: Do not run the installer from the mount point directory. The `cd` command changes your current directory to your home directory, so you do not start the installer from the mount point.

In the Oracle Universal Installer, the only value that you must specify is the administrative password. The remaining values are set to a default, but they can be overridden. Following is the list of the installation parameters:

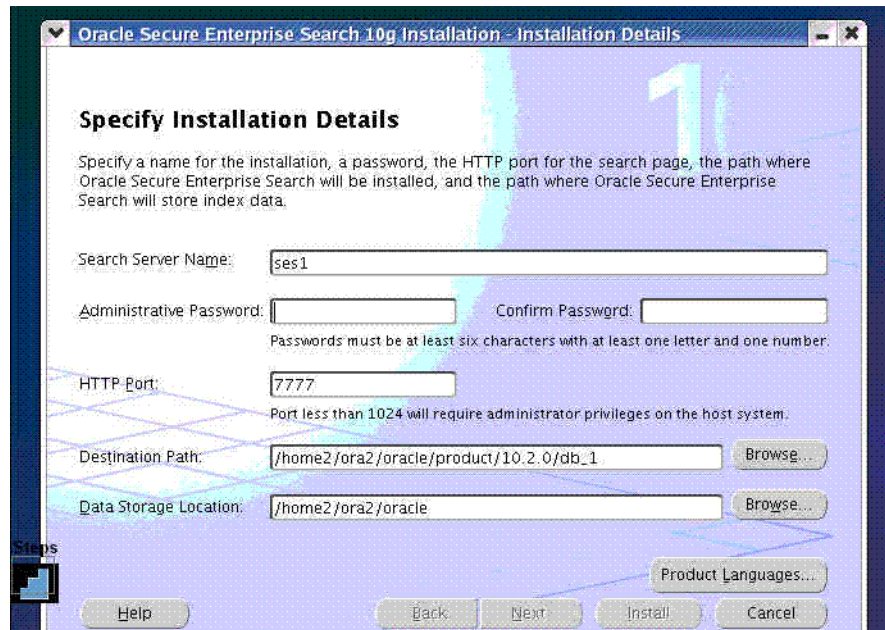
- **Search Server Name:** Name for your search server. To connect multiple Oracle SES instances to the same directory (authorization) server, each instance must have a distinct name.
- **Administrative Password:** The password that you will later use to log on to the administration tool.
- **HTTP Port:** The port on which the Oracle SES middle tier will listen. For example, if you installed Oracle SES on host `myhost.oracle.com` and you specify port 7890, then your search page URL will be `http://myhost.oracle.com:7890/search/query/search`.

See Also: "[Installing on a Port Number Less Than 1024](#)" on page 10

- **Destination Path:** The location where Oracle SES software is installed.

- **Data Storage Location:** The location where Oracle SES will store its data.

The following screenshot shows the Oracle Universal Installer screen.



This is a screenshot of the installation page.

The following URLs indicate a successful installation:

- Search: `http://host:port/search/query/search`
- Administration tool: `http://host:port/search/admin/index.jsp`
(Log on using the password specified during installation.)

Installing on a System with an Existing Oracle SES Installation

You can install this release (or previous releases) of Oracle SES more than once on the same system as long as each installation is installed in a separate Oracle home directory. Use different values for the **Search Server Name**, **HTTP Port**, and **Destination Path** parameters.

You cannot install products from one release of Oracle SES into an Oracle home directory of a different release. For example, you cannot install release 10.1.8.2 software into an existing 10.1.6 Oracle home directory. If you attempt to install this release into an Oracle home directory that contains software from an earlier Oracle release, then the installation fails.

Mounting the DVD-ROM

Follow these steps if your computer does not automount the DVD-ROM:

1. Place the DVD in the DVD drive.
2. Log in as the root user and create a DVD mount point directory, if one does not already exist, by using the following commands:

```
$ su -root
/usr/bin/mkdir /SD_DVDROM
```

Note: Use the following command to determine the device name:

```
$ iocscan -fun -C disk
```

The output is similar to the following:

```
disk 10 10/12/5.2.0 sdisk CLAIMED DEVICE TOSHIBA DVD-ROM XM-5701TA
/dev/dsk/c0t6d0 /dev/rdisk/c0t6d0
```

If there is no entry in the `/etc/pfs_fstab` file for your DVD device, then you must add one. As the root user, use a system editor to add a line to the `/etc/pfs_fstab` file following this format:

```
device_file mount_point filesystem_type
```

In the preceding format, the first entry is the DVD device and the second entry indicates the mount point. The *device_file* in this example is `/dev/dsk/c0t6d0`. For a DVD device with the path `/dev/dsk/c0t6d0`, enter the following:

```
/dev/dsk/c0t6d0 /SD_DVDROM pfs-rrip xlat=unix 1 0
```

3. Mount the DVD by entering the following command:

```
# /usr/sbin/mount -F cdfs -o rr /dev/dsk/cxdydz /SD_DVDROM
```

In the preceding example, `/SD_DVDROM` is the disc mount point directory and `/dev/dsk/cxdydz` is the device name for the disc device, for example `/dev/dsk/c0d6t0`.

4. Log out of the root account.

```
# exit
```

Silent Installation Tasks

A silent installation has no graphical output and no input by the user. It is accomplished by supplying Oracle Universal Installer with a response file and specifying the `-silent` flag on the command line. Use silent installation when you want similar installations on more than one computer. Additionally, you can use silent installation when performing the Oracle SES installation from a remote location using the command line.

Selecting a Response File

Before performing a silent installation, you must provide information specific to your installation in a response file. The installer will fail if you attempt an installation using a response file that is not configured correctly. Response files are text files that you can create or edit in a text editor.

Response files (`server.rsp`) are located in the `/response` directory on Disk 1 of the Oracle SES DVD. You must edit the response file according to your requirements for silent installation.

To use a response file, first copy it from the DVD to your system. For example:

1. Go to the `/response` directory

2. Copy the `server.rsp` file to your system hard drive:

```
# cp server.rsp /private/ses/response/server.rsp
```

Editing the Response File

Use any text editor to edit the response file to include information specific for your system. You must specify values for variables in your response file. Each variable listed in the response file is associated with a comment, which identifies the variable type. For example:

```
string = "Sample Value"
Boolean = True or False
Number = 1000
StringList = {"StringValue 1", "String Value 2"}
```

The values that are given as `<Value Required>` must be specified for silent installation. Remove the comment from the variable values in the response file before starting the Oracle SES installation.

Specifying a Response File and Starting the Installation

Before you specify a response file, ensure that all the values in the response file are correct.

To make Oracle Universal Installer use the response file at installation time, specify the location of the response file as a parameter when starting Oracle Universal Installer. To perform a silent installation, use the `-silent` parameter:

```
# ./runInstaller -silent -responseFile <absolute_path_and_filename>
```

WARNING: During installation, response files may be copied to subdirectories in the Oracle home. When the installation completes successfully, these copies are removed. If the installation fails, however, these copies may not be removed. If you have provided passwords or other sensitive information in your response files, then delete any copies of the response files that remain in your file system.

The success or failure of silent installations is logged in the `installActions.log` file. Additionally, the silent installation creates the `silentInstall.log` file. The log files are created in the `$ORACLE_HOME/oraInventory/logs` directory.

The `silentInstall<Date_Time>.log` file contains the following line if the installation was successful:

```
The installation of Oracle Secure Enterprise Search was successful.
```

The corresponding `installActions<Date_Time>.log` file contains specific information regarding installation.

Security Tips for Silent Installations

The response file contains the installation password in clear text. To minimize security issues, follow these guidelines:

- Set the permissions on the response files so that they are readable only by the operating system user performing the silent installation.

- If possible, remove the response files from the system after the silent installation is completed.

Error Handling

Values for variables that are of the wrong context, format, or type are treated as if no value were specified. Variables that are outside any section are ignored.

If you attempt a silent installation with an incorrect or incomplete response file, or if Oracle Universal Installer encounters an error, such as insufficient disk space, the installation fails.

Deinstallation Tasks

To uninstall Oracle SES, perform the following tasks:

1. Shut down the middle tier and database.
2. Run `$ORACLE_HOME/install/deinstall_ses` as the user who installed Oracle SES.

During installation, the `oradata` directory (which includes data files, control files, and log files) is created one directory level up from the Oracle home for Oracle SES. During uninstallation, the Oracle home is deleted, but the `oradata` directory (if it still exists outside of the Oracle home) is not deleted.

Note: If the Oracle SES instance was bound to a port less than 1024 and the middle tier ran as root user, then after deinstallation there could be files left under `$ORACLE_HOME`. After the deinstall completes, log on as the root user and delete those files.

Upgrading Oracle Secure Enterprise Search

There is no direct upgrade support to release 10.1.8.2.

To upgrade to Oracle SES release 10.1.8.2, you must first upgrade to release 10.1.8.1 and then install the patch set for release 10.1.8.2.

See Also: *Oracle Secure Enterprise Search Patch Set Readme* for 10.1.8.2

Restarting Oracle Secure Enterprise Search

The tool for starting and stopping the search engine is `searchctl`. To restart Oracle SES after rebooting, navigate to the `$ORACLE_HOME/bin` directory where Oracle SES is installed and run `searchctl restartall`. Users are prompted for a password when running `searchctl` commands on Linux and UNIX platforms.

For detailed steps, see the Startup / Shutdown lesson in the Oracle SES tutorial:

<http://st-curriculum.oracle.com/tutorial/SESAdminTutorial/index.htm>

What to Do Next?

To become familiar with Oracle Secure Enterprise Search, Oracle suggests that you complete the following tasks:

- Follow the Oracle Secure Enterprise Search tutorial:
<http://st-curriculum.oracle.com/tutorial/SESAdminTutorial/index.htm>
- Log on to the Oracle SES administration tool, using the user name and password set in the installation. With the administration tool, you can:
 - Define sources to search
 - Configure and schedule the crawling of the sources
 - Monitor the status and performance of crawling and searchClick the **Help** link in the top right corner of any page in the administration tool for context-sensitive help.
- In a production environment, where a load balancer or other monitoring tools are used to ensure system availability, Oracle SES can also be easily monitored through the following URL: <http://host:port/monitor/check.jsp>. The URL should return the following message: **Oracle Secure Enterprise Search instance is up.**

Note: This message is not translated to other languages, because system monitoring tools may need to byte-compare this string.

If Oracle Secure Enterprise Search is not available, then the URL returns either a connection error or the HTTP error code 503.

Additional Resources

To download free release notes, installation documentation, white papers, or other collateral, visit Oracle Technology Network (OTN). You must register online before using OTN; registration is free and can be done at

<http://www.oracle.com/technology/membership/>

If you already have a user name and password for OTN, then you can go directly to the documentation section of OTN at

<http://www.oracle.com/technology/documentation>

Oracle Support Services

If you purchased Oracle Product Support, you can call Oracle Support Services for assistance. Oracle Support Services include phone assistance, version updates, and access to our service offerings. You have access to phone support 24 hours a day, 7 days a week. In the U.S.A., you can call Product Support at **1-800-223-1711**.

Make sure you have your CSI (CPU Support Identifier) number ready when you call. Keep the CSI number for your records, because it is your key to Oracle Support Services. The Oracle Store sends the CSI number to you in an e-mail alert when it processes your order. If you do not have your CSI number and you are in the U.S.A., you can look up your CSI number by accessing our online Order Tracker, which provides detailed order information. Go to the Oracle Store and click on Order Tracker located above the top navigation bar.

For Oracle Support Services locations outside the U.S.A., call your local support center for information about how to access support. To find the local support center in your country, visit the Support Web Center at

<http://www.oracle.com/support>

At the Support Web Center you will find information on Oracle Support Services, such as:

- Contact information
- Instructions on how to access electronic services
- Helpful Web sites
- Support resources
- Oracle Support Portfolio
- Oracle Support Services news

With Oracle Product Support, you have round-the-clock access to *OracleMetaLink*, the Oracle Support Services premier Web support offering. *OracleMetaLink* offers you access to installation assistance, product documentation, and a technical solution knowledge base.

It has technical forums, where you can post questions about your Oracle products and receive answers from Oracle Technical Support Analysts and other Oracle users. The questions and answers remain posted for the benefit of all users.

OracleMetaLink options include:

- Service Request (SR) access
- Patch downloads
- Bug database query access
- Product life-cycle information

You can access *OracleMetaLink* at

<https://metalink.oracle.com>

Quick Reference

Resource	Contact Information or Web Site
<i>OracleMetaLink</i>	https://metalink.oracle.com
Purchase additional products, full-use licenses, version updates, and documentation in the U.S.A.	http://oraclestore.oracle.com
Access technical resources for developers	http://www.oracle.com/technology/index.html
Access information about technical support	http://www.oracle.com/support
Locate local Oracle Support Centers outside the U.S.A.	http://www.oracle.com/support
Locate local Oracle offices outside the U.S.A	http://www.oracle.com/global/index.html

Resource	Contact Information or Web Site
Call Client Relations in the U.S.A.	1-800-223-1711
Speak with your sales representative in the U.S.A.	1-800-ORACLE-1
Obtain TTY access to technical support in the U.S.A.	1-800-446-2398

Documentation Accessibility

Our goal is to make Oracle products, services, and supporting documentation accessible, with good usability, to the disabled community. To that end, our documentation includes features that make information available to users of assistive technology. This documentation is available in HTML format, and contains markup to facilitate access by the disabled community. Accessibility standards will continue to evolve over time, and Oracle is actively engaged with other market-leading technology vendors to address technical obstacles so that our documentation can be accessible to all of our customers. For more information, visit the Oracle Accessibility Program Web site at <http://www.oracle.com/accessibility/>.

Accessibility of Code Examples in Documentation

Screen readers may not always correctly read the code examples in this document. The conventions for writing code require that closing braces should appear on an otherwise empty line; however, some screen readers may not always read a line of text that consists solely of a bracket or brace.

Accessibility of Links to External Web Sites in Documentation

This documentation may contain links to Web sites of other companies or organizations that Oracle does not own or control. Oracle neither evaluates nor makes any representations regarding the accessibility of these Web sites.

TTY Access to Oracle Support Services

Oracle provides dedicated Text Telephone (TTY) access to Oracle Support Services within the United States of America 24 hours a day, 7 days a week. For TTY support, call 800.446.2398. Outside the United States, call +1.407.458.2479.

Oracle Secure Enterprise Search Installation Guide, 10g Release 1 (10.1.8.2) for HP-UX PA-RISC (64-Bit)
E10598-02

Copyright © 2006, 2008, Oracle. All rights reserved.

The Programs (which include both the software and documentation) contain proprietary information; they are provided under a license agreement containing restrictions on use and disclosure and are also protected by copyright, patent, and other intellectual and industrial property laws. Reverse engineering, disassembly, or decompilation of the Programs, except to the extent required to obtain interoperability with other independently created software or as specified by law, is prohibited.

The information contained in this document is subject to change without notice. If you find any problems in the documentation, please report them to us in writing. This document is not warranted to be error-free. Except as may be expressly permitted in your license agreement for these Programs, no part of these Programs may be reproduced or transmitted in any form or by any means, electronic or mechanical, for any purpose.

If the Programs are delivered to the United States Government or anyone licensing or using the Programs on behalf of the United States Government, the following notice is applicable:

U.S. GOVERNMENT RIGHTS Programs, software, databases, and related documentation and technical data delivered to U.S. Government customers are "commercial computer software" or "commercial technical data" pursuant to the applicable Federal Acquisition Regulation and agency-specific supplemental regulations. As such, use, duplication, disclosure, modification, and adaptation of the Programs, including documentation and technical data, shall be subject to the licensing restrictions set forth in the applicable Oracle license agreement, and, to the extent applicable, the additional rights set forth in FAR 52.227-19, Commercial Computer Software--Restricted Rights (June 1987). Oracle USA, Inc., 500 Oracle Parkway, Redwood City, CA 94065.

The Programs are not intended for use in any nuclear, aviation, mass transit, medical, or other inherently dangerous applications. It shall be the licensee's responsibility to take all appropriate fail-safe, backup, redundancy and other measures to ensure the safe use of such applications if the Programs are used for such purposes, and we disclaim liability for any damages caused by such use of the Programs.

Oracle, JD Edwards, PeopleSoft, and Siebel are registered trademarks of Oracle Corporation and/or its affiliates. Other names may be trademarks of their respective owners.

The Programs may provide links to Web sites and access to content, products, and services from third parties. Oracle is not responsible for the availability of, or any content provided on, third-party Web sites. You bear all risks associated with the use of such content. If you choose to purchase any products or services from a third party, the relationship is directly between you and the third party. Oracle is not responsible for: (a) the quality of third-party products or services; or (b) fulfilling any of the terms of the agreement with the third party, including delivery of products or services and warranty obligations related to purchased products or services. Oracle is not responsible for any loss or damage of any sort that you may incur from dealing with any third party.