

# **Oracle® Retail Point-of-Service**

Installation Guide

Release 12.0.12

**E35774-01**

November 2012

Copyright © 2012, Oracle and/or its affiliates. All rights reserved.

Primary Author: Bernadette Goodman

This software and related documentation are provided under a license agreement containing restrictions on use and disclosure and are protected by intellectual property laws. Except as expressly permitted in your license agreement or allowed by law, you may not use, copy, reproduce, translate, broadcast, modify, license, transmit, distribute, exhibit, perform, publish, or display any part, in any form, or by any means. Reverse engineering, disassembly, or decompilation of this software, unless required by law for interoperability, is prohibited.

The information contained herein is subject to change without notice and is not warranted to be error-free. If you find any errors, please report them to us in writing.

If this software or related documentation is delivered to the U.S. Government or anyone licensing it on behalf of the U.S. Government, the following notice is applicable:

U.S. GOVERNMENT END USERS: Oracle programs, including any operating system, integrated software, any programs installed on the hardware, and/or documentation, delivered to U.S. Government end users are "commercial computer software" pursuant to the applicable Federal Acquisition Regulation and agency-specific supplemental regulations. As such, use, duplication, disclosure, modification, and adaptation of the programs, including any operating system, integrated software, any programs installed on the hardware, and/or documentation, shall be subject to license terms and license restrictions applicable to the programs. No other rights are granted to the U.S. Government.

This software or hardware is developed for general use in a variety of information management applications. It is not developed or intended for use in any inherently dangerous applications, including applications that may create a risk of personal injury. If you use this software or hardware in dangerous applications, then you shall be responsible to take all appropriate fail-safe, backup, redundancy, and other measures to ensure its safe use. Oracle Corporation and its affiliates disclaim any liability for any damages caused by use of this software or hardware in dangerous applications.

Oracle and Java are registered trademarks of Oracle and/or its affiliates. Other names may be trademarks of their respective owners.

Intel and Intel Xeon are trademarks or registered trademarks of Intel Corporation. All SPARC trademarks are used under license and are trademarks or registered trademarks of SPARC International, Inc. AMD, Opteron, the AMD logo, and the AMD Opteron logo are trademarks or registered trademarks of Advanced Micro Devices. UNIX is a registered trademark of The Open Group.

This software or hardware and documentation may provide access to or information on content, products, and services from third parties. Oracle Corporation and its affiliates are not responsible for and expressly disclaim all warranties of any kind with respect to third-party content, products, and services. Oracle Corporation and its affiliates will not be responsible for any loss, costs, or damages incurred due to your access to or use of third-party content, products, or services.

## Value-Added Reseller (VAR) Language

### Oracle Retail VAR Applications

The following restrictions and provisions only apply to the programs referred to in this section and licensed to you. You acknowledge that the programs may contain third party software (VAR applications) licensed to Oracle. Depending upon your product and its version number, the VAR applications may include:

(i) the **MicroStrategy** Components developed and licensed by MicroStrategy Services Corporation (MicroStrategy) of McLean, Virginia to Oracle and imbedded in the MicroStrategy for Oracle Retail Data Warehouse and MicroStrategy for Oracle Retail Planning & Optimization applications.

(ii) the **Wavelink** component developed and licensed by Wavelink Corporation (Wavelink) of Kirkland, Washington, to Oracle and imbedded in Oracle Retail Mobile Store Inventory Management.

(iii) the software component known as **Access Via**™ licensed by Access Via of Seattle, Washington, and imbedded in Oracle Retail Signs and Oracle Retail Labels and Tags.

(iv) the software component known as **Adobe Flex**™ licensed by Adobe Systems Incorporated of San Jose, California, and imbedded in Oracle Retail Promotion Planning & Optimization application.

You acknowledge and confirm that Oracle grants you use of only the object code of the VAR Applications. Oracle will not deliver source code to the VAR Applications to you. Notwithstanding any other term or condition of the agreement and this ordering document, you shall not cause or permit alteration of any VAR Applications. For purposes of this section, "alteration" refers to all alterations, translations, upgrades, enhancements, customizations or modifications of all or any portion of the VAR Applications including all reconfigurations, reassembly or reverse assembly, re-engineering or reverse engineering and recompilations or reverse compilations of the VAR Applications or any derivatives of the VAR Applications. You acknowledge that it shall be a breach of the agreement to utilize the relationship, and/or confidential information of the VAR Applications for purposes of competitive discovery.

The VAR Applications contain trade secrets of Oracle and Oracle's licensors and Customer shall not attempt, cause, or permit the alteration, decompilation, reverse engineering, disassembly or other reduction of the VAR Applications to a human perceivable form. Oracle reserves the right to replace, with functional equivalent software, any of the VAR Applications in future releases of the applicable program.



---

---

# Contents

<b>Send Us Your Comments .....</b>	<b>xi</b>
<b>Preface .....</b>	<b>xiii</b>
Audience.....	xiii
Documentation Accessibility .....	xiii
Related Documents .....	xiv
Customer Support .....	xiv
Review Patch Documentation .....	xiv
Oracle Retail Documentation on the Oracle Technology Network .....	xiv
Conventions .....	xv
 <b>1 Pre-Installation Tasks</b>	
Patch Contents .....	1-1
Check for the Current Version of the Installation Guide.....	1-1
Check Oracle Retail Merchandise Operations Management Version .....	1-2
Check Supported Software.....	1-2
Supported Software for Clients (Registers).....	1-2
Supported Hardware and Software for Store Servers .....	1-2
Check Supported Hardware.....	1-3
Basic Computer Specifications .....	1-3
Peripheral Devices for Clients.....	1-3
Supported Hardware for Clients .....	1-3
Supported Hardware for Store Servers.....	1-4
ISD Authorization Transaction Testing .....	1-4
 <b>2 Installation on the Oracle Stack using Windows</b>	
Installing Point-of-Service.....	2-1
Determining Tier Type .....	2-1
Installing the Database .....	2-2
Required Settings for the Database .....	2-3
Installing Point-of-Service on Machines .....	2-3
Updating Device Configuration.....	2-3
Expanding the Point-of-Service Distribution .....	2-9
Obtaining Third-Party Library Files Required by Point-of-Service .....	2-9

Running the Point-of-Service Application Installer .....	2-9
Resolving Errors Encountered During Application Installation .....	2-9
Creating the Point-of-Service Database Schema .....	2-10
Creating with Oracle Retail Back Office .....	2-10
Creating without Oracle Retail Back Office .....	2-10
Configuring for Offline Data Updates .....	2-10
Results of a Point-of-Service Installation .....	2-11
Running Point-of-Service .....	2-11
Creating a Custom Installation .....	2-12

### **3 Installation on the IBM Stack using Linux**

Installing Point-of-Service .....	3-1
Determining Tier Type .....	3-1
Installing the Database .....	3-2
Required Settings for the Database .....	3-3
Installing Point-of-Service on Machines .....	3-3
Updating Device Configuration .....	3-3
Expanding the Point-of-Service Distribution .....	3-9
Obtaining Third-Party Library Files Required by Point-of-Service .....	3-9
Running the Point-of-Service Application Installer .....	3-10
Resolving Errors Encountered During Application Installation .....	3-10
Creating the Point-of-Service Database Schema .....	3-11
Creating with Oracle Retail Back Office .....	3-11
Creating without Oracle Retail Back Office .....	3-11
Configuring for Offline Data Updates .....	3-11
Results of a Point-of-Service Installation .....	3-12
Running Point-of-Service .....	3-12
Creating a Custom Installation .....	3-13

### **A Appendix: Point-of-Service Application Installer Screens**

### **B Appendix: Installer Silent Mode**

### **C Appendix: URL Reference**

JDBC URL for a Database .....	C-1
-------------------------------	-----

### **D Appendix: Common Installation Errors**

"Pos installer finished with errors" .....	D-1
"Dispatcher.main, Exception: java.security.AccessControlException: access denied (java.util.PropertyPermission * read,write)" .....	D-1
"java.lang.NullPointerException" .....	D-2

### **E Appendix: Troubleshooting Problems on the Oracle Stack**

jndi.properties File Name .....	E-1
Performing a Manual Integration .....	E-1
Client Configuration .....	E-1

Store Server Configuration ..... E-2

**F    Appendix: Troubleshooting Problems on the IBM Stack**

jndi.properties File Name..... F-1

Performing a Manual Integration ..... F-1

    Client Configuration ..... F-1

    Store Server Configuration ..... F-3

Point-of-Service Installer Fails to Launch on SLEPOS 11 ..... F-6

## List of Figures

A-1	Introduction .....	A-1
A-2	Previous POS Install .....	A-2
A-3	License Agreement .....	A-2
A-4	Tier Type .....	A-3
A-5	Installation Location .....	A-3
A-6	Default Locale.....	A-4
A-7	Supported Locales.....	A-5
A-8	Store Server Details.....	A-6
A-9	Store ID .....	A-7
A-10	Where is JRE 1.4.2 located? .....	A-7
A-11	JRE Vendor.....	A-8
A-12	Application Server Type .....	A-9
A-13	Websphere Application Server: Third Party Jars .....	A-10
A-14	Derby Jars .....	A-11
A-15	OracleRetailStore Database Type .....	A-12
A-16	Database Configuration for Oracle 10g .....	A-12
A-17	Database Configuration for DB2.....	A-14
A-18	OracleRetailStore Database Server .....	A-15
A-19	Transaction Retrieval Location .....	A-16
A-20	Transaction Retrieval Jar Locations.....	A-17
A-21	Scratchpad Database Information .....	A-18
A-22	RMI Timeout.....	A-19
A-23	Journal Options .....	A-20
A-24	Logging Options .....	A-20
A-25	Logging Detail .....	A-21
A-26	RTLog Options .....	A-22
A-27	Register Number .....	A-22
A-28	Platform and Devices .....	A-23
A-29	Client Journal Options.....	A-24
A-30	Parameter Distribution Information .....	A-25
A-31	Central Office/Back Office Server Information.....	A-26
A-32	Tender Authorization.....	A-27
A-33	Enter Data for ISD Tender Authorizer .....	A-28
A-34	Value-Added Tax (VAT).....	A-29
A-35	User Interface Type.....	A-29
A-36	Pre-Installation Summary .....	A-30
A-37	Install Complete .....	A-30



## List of Tables

1-1	Client Software Requirements .....	1-2
1-2	Store Server Hardware and Software Requirements.....	1-2
1-3	Client Hardware Requirements.....	1-3
1-4	Store Server Hardware Requirements .....	1-4
1-5	ISD Authorization Transaction Set Tested .....	1-4
2-1	Server Tier Logical Components .....	2-1
2-2	Database Configuration Settings .....	2-2
2-3	<POS_install_directory> Subdirectories.....	2-11
2-4	<POS_install_directory>\pos Subdirectories.....	2-11
3-1	Server Tier Logical Components .....	3-1
3-2	Database Configuration Settings .....	3-2
3-3	<POS_install_directory> Subdirectories.....	3-12
3-4	<POS_install_directory>/pos Subdirectories .....	3-12



---

---

## Send Us Your Comments

Oracle Retail Point-of-Service Installation Guide, Release 12.0.12

Oracle welcomes customers' comments and suggestions on the quality and usefulness of this document.

Your feedback is important, and helps us to best meet your needs as a user of our products. For example:

- Are the implementation steps correct and complete?
- Did you understand the context of the procedures?
- Did you find any errors in the information?
- Does the structure of the information help you with your tasks?
- Do you need different information or graphics? If so, where, and in what format?
- Are the examples correct? Do you need more examples?

If you find any errors or have any other suggestions for improvement, then please tell us your name, the name of the company who has licensed our products, the title and part number of the documentation and the chapter, section, and page number (if available).

---

---

**Note:** Before sending us your comments, you might like to check that you have the latest version of the document and if any concerns are already addressed. To do this, access the Online Documentation available on the Oracle Technology Network Web site. It contains the most current Documentation Library plus all documents revised or released recently.

---

---

Send your comments to us using the electronic mail address: [retail-doc\\_us@oracle.com](mailto:retail-doc_us@oracle.com)

Please give your name, address, electronic mail address, and telephone number (optional).

If you need assistance with Oracle software, then please contact your support representative or Oracle Support Services.

If you require training or instruction in using Oracle software, then please contact your Oracle local office and inquire about our Oracle University offerings. A list of Oracle offices is available on our Web site at <http://www.oracle.com>.



---

---

# Preface

This Installation Guide describes the requirements and procedures to install this Oracle Retail Point-of-Service release.

## Audience

This Installation Guide is for the following audiences:

- System administrators and operations personnel
- Database administrators
- System analysts and programmers
- Integrators and implementation staff personnel

## Documentation Accessibility

Our goal is to make Oracle products, services, and supporting documentation accessible to all users, including users that are disabled. To that end, our documentation includes features that make information available to users of assistive technology. This documentation is available in HTML format, and contains markup to facilitate access by the disabled community. Accessibility standards will continue to evolve over time, and Oracle is actively engaged with other market-leading technology vendors to address technical obstacles so that our documentation can be accessible to all of our customers. For information about Oracle's commitment to accessibility, visit the Oracle Accessibility Program website at <http://www.oracle.com/pls/topic/lookup?ctx=acc&id=docacc>.

### Accessibility of Code Examples in Documentation

Screen readers may not always correctly read the code examples in this document. The conventions for writing code require that closing braces should appear on an otherwise empty line; however, some screen readers may not always read a line of text that consists solely of a bracket or brace.

### Accessibility of Links to External Web Sites in Documentation

This documentation may contain links to Web sites of other companies or organizations that Oracle does not own or control. Oracle neither evaluates nor makes any representations regarding the accessibility of these Web sites.

### Access to Oracle Support

Oracle customers have access to electronic support through My Oracle Support. For information, visit

<http://www.oracle.com/pls/topic/lookup?ctx=acc&id=info> or visit <http://www.oracle.com/pls/topic/lookup?ctx=acc&id=trs> if you are hearing impaired.

## Related Documents

For more information, see the following document in the Oracle Retail Point-of-Service Release 12.0.12 documentation set:

- *Oracle Retail Point-of-Service Release Notes*

## Customer Support

To contact Oracle Customer Support, access My Oracle Support at the following URL:

<https://support.oracle.com>

When contacting Customer Support, please provide the following:

- Product version and program/module name
- Functional and technical description of the problem (include business impact)
- Detailed step-by-step instructions to re-create
- Exact error message received
- Screen shots of each step you take

## Review Patch Documentation

When you install the application for the first time, you install either a base release (for example, 12.0) or a later patch release (for example, 12.0.12). If you are installing the base release, additional patch, and bundled hot fix releases, read the documentation for all releases that have occurred since the base release before you begin installation. Documentation for patch and bundled hot fix releases can contain critical information related to the base release, as well as information about code changes since the base release.

## Oracle Retail Documentation on the Oracle Technology Network

Documentation is packaged with each Oracle Retail product release. Oracle Retail product documentation is also available on the following Web site:

[http://www.oracle.com/technology/documentation/oracle\\_retail.html](http://www.oracle.com/technology/documentation/oracle_retail.html)

(Data Model documents are not available through Oracle Technology Network. These documents are packaged with released code, or you can obtain them through My Oracle Support.)

Documentation should be available on this Web site within a month after a product release.

# Conventions

The following text conventions are used in this document:

Convention	Meaning
<b>boldface</b>	Boldface type indicates graphical user interface elements associated with an action, or terms defined in text or the glossary.
<i>italic</i>	Italic type indicates book titles, emphasis, or placeholder variables for which you supply particular values.
<code>monospace</code>	Monospace type indicates commands within a paragraph, URLs, code in examples, text that appears on the screen, or text that you enter.





---

## Pre-Installation Tasks

This chapter defines supported products for client and server systems in the Oracle Retail Point-of-Service system.

---

**Note:** The Oracle stack and IBM stack are the configurations that were tested for this release. The components required for each stack are listed in this chapter. For each component, the product and the version that were used for testing are included. While Point-of-Service may work in other configurations, these are the configurations that are supported for this release.

---

### Patch Contents

Patch releases include all defect fixes that have been released through bundled hot fix releases since the last patch release. Patch releases may also include new defect fixes and enhancements that have not previously been included in any bundled hot fix release. This patch release contains all fixes from the following bundled hot fix releases:

- Oracle Retail Point-of-Service 12.0.11.1
- Oracle Retail Point-of-Service 12.0.11.2
- Oracle Retail Point-of-Service 12.0.11.3
- Oracle Retail Point-of-Service 12.0.11.4
- Oracle Retail Point-of-Service 12.0.11.5

### Check for the Current Version of the Installation Guide

Corrected versions of Oracle Retail installation guides may be published whenever critical corrections are required. For critical corrections, the rerelease of an installation guide may not be attached to a release; the document will simply be replaced on the Oracle Technology Network Web site.

Before you begin installation, check to be sure that you have the most recent version of this installation guide. Oracle Retail installation guides are available on the Oracle Technology Network at the following URL:

[http://www.oracle.com/technology/documentation/oracle\\_retail.html](http://www.oracle.com/technology/documentation/oracle_retail.html)

An updated version of an installation guide is indicated by part number, as well as print date (month and year). An updated version uses the same part number, with a higher-numbered suffix. For example, part number E123456-02 is an updated version of an installation guide with part number E123456-01.

If a more recent version of this installation guide is available, that version supersedes all previous versions. Only use the newest version for your installation.

## Check Oracle Retail Merchandise Operations Management Version

The integration with Oracle Retail Merchandise Operations Management requires version 12.0.12 of the following products:

- Oracle Retail Merchandising System
- Oracle Retail Price Management
- Oracle Retail Sales Audit

## Check Supported Software

This section lists the software which has been tested for this release.

### Supported Software for Clients (Registers)

[Table 1–1](#) lists the general software requirements for a client and the versions tested for this release.

**Table 1–1 Client Software Requirements**

Component	Oracle Stack	IBM Stack
Operating System	Windows Embedded for Point of Service (WEPOS), Version 1.1	SLEPOS 11 SP1
JDK/JRE	IBM Java 1.6 or later within the Java 1.6 code line	IBM Java 1.6 or later within the Java 1.6 code line
Persistent Storage	Apache Derby 10.2.2	Apache Derby 10.2.2

### Supported Hardware and Software for Store Servers

[Table 1–2](#) lists the general hardware and software requirements for the store server and the versions tested for this release.

**Table 1–2 Store Server Hardware and Software Requirements**

Component	Oracle Stack	IBM Stack
Hardware	x86-32 bit	x86-32 bit
Operating System	Microsoft Windows 2003 Server R2 Standard Edition	SLES 11 SP1
Database	Oracle RDBMS 10g R2 (10.2.0.2)	IBM DB2 v9.7
JDK/JRE	Oracle Java 6 or later within the Java 6 code line	IBM Java 1.6 or later within the Java 1.6 code line

## Check Supported Hardware

This section lists the hardware which has been tested for this release.

### Basic Computer Specifications

Specific hardware requirements for the machines running Oracle Retail Point-of-Service depend on several variables including the number of users and other applications running on the same machine.

Please note the following about the minimum hardware requirements:

- The server and client CPU requirements can vary based on the operating system and middleware selected.
- Memory performance can vary based on the number of active promotions and best deal calculations. If advanced pricing will be used frequently, 512MB may be required for the client memory.
- Disk size can vary based on the operating system and middleware requirements as well as the amount of data storage needed. Data storage can vary based on the number of items and promotions defined, data retention period, and so forth.

### Peripheral Devices for Clients

JavaPOS is the industry standard for Java compatibility for retail-oriented devices. A committee of prominent retail vendors and end users maintains the standard. Some of the more common devices used with point-of-sale applications include bar code scanners, cash drawers, printers, keyboards, magnetic stripe readers (MSR), wedge keyboards, hard totals, and magnetic ink check readers (MICR). Any JavaPOS-compliant peripheral devices should work with Oracle Retail Point-of-Service; some may require software modifications to work properly.

### Supported Hardware for Clients

Table 1–3 lists the general hardware requirements for a client and the versions tested for this release. Mice are not supported for Point-of-Service. A touch screen may be used, but a keyboard is required for some functions. The tested configuration included touch screens.

**Table 1–3 Client Hardware Requirements**

Component	Oracle Stack	IBM Stack
Register	SurePOS 741/742	SurePOS 741/742
Cash drawer	IBM cashdrawer	IBM cashdrawer
Pole Display	IBM pole display	IBM pole display
Keyboard	IBM keyboard	IBM keyboard
Scanner	Symbol Scanner	Symbol Scanner
PIN Pad	Ingenico eNTouch 1000	Ingenico eNTouch 1000
Credit Card Reader	Ingenico Device Number 3380	Ingenico Device Number 3380
Receipt Reader	IBM printer	IBM printer

## Supported Hardware for Store Servers

Table 1–4 lists the general hardware requirements for the store server and the versions tested for this release.

**Table 1–4 Store Server Hardware Requirements**

Component	Oracle Stack and IBM Stack
CPU	x86-32 bit

## ISD Authorization Transaction Testing

ISD authorization transaction testing was done with Web Sentry version 249. The capture method used was terminal capture. The following applications were tested:

- ISD Host Switch version 6.2.1.0015
- ISD Store and Forward module version 6.2.1.001

---

**Note:** Host capture is not supported.

---

Table 1–5 shows the transaction types and messages that were tested.

**Table 1–5 ISD Authorization Transaction Set Tested**

Transaction Type	Transaction Type Message Sent from ISD to Point-of-Service
Check Tender	<ul style="list-style-type: none"> <li>■ Check Sale Approval</li> <li>■ Check Sale Authorization Offline</li> <li>■ Check Sale Decline</li> <li>■ Check Sale Referral</li> </ul>
Credit Card Tender	<ul style="list-style-type: none"> <li>■ Credit Card Sale Approval</li> <li>■ Credit Card Sale Authorization Offline</li> <li>■ Credit Card Sale Decline</li> <li>■ Credit Card Sale Referral</li> </ul>
Debit Card Tender	<ul style="list-style-type: none"> <li>■ Debit Sale Approval</li> <li>■ Debit Sale Authorization Offline</li> <li>■ Debit Sale Decline</li> </ul>
Gift Card Issue	<ul style="list-style-type: none"> <li>■ Gift Card Issue Approval</li> <li>■ Gift Card Issue Authorization Offline</li> <li>■ Gift Card Issue Decline</li> </ul> <p><b>Note:</b> The testing for Gift Card Tender was done using an ISD Simulator.</p>
Gift Card Reload	<ul style="list-style-type: none"> <li>■ Gift Card Reload Approval</li> <li>■ Gift Card Reload Authorization Offline</li> <li>■ Gift Card Reload Decline</li> </ul> <p><b>Note:</b> The testing for Gift Card Tender was done using an ISD Simulator.</p>

**Table 1–5 (Cont.) ISD Authorization Transaction Set Tested**

Transaction Type	Transaction Type Message Sent from ISD to Point-of-Service
Gift Card Tender	<ul style="list-style-type: none"><li>■ Gift Card Sale Approval</li><li>■ Gift Card Sale Authorization Offline</li><li>■ Gift Card Sale Decline</li><li>■ Gift Card Sale Post Void</li><li>■ Gift Card Sale Referral</li><li>■ Gift Card Sale Refund</li></ul> <p><b>Note:</b> The testing for Gift Card Tender was done using an ISD Simulator.</p>



---

## Installation on the Oracle Stack using Windows

This chapter provides information about the installation procedures for Oracle Retail Point-of-Service on the Oracle Stack using Windows.

Oracle Retail provides an installer for Point-of-Service, but customer installations typically develop custom procedures. Note that the installer is not appropriate for all installations. Oracle Retail expects implementation teams to develop custom procedures for actual register installations, which may or may not be based on the installer described here. For guidelines, see ["Creating a Custom Installation"](#).

### Installing Point-of-Service

To establish an initial Oracle Retail Point-of-Service installation or to create a demonstration system, use the Point-of-Service installer as described in this section.

### Determining Tier Type

Machines and logical components of the Oracle Retail Point-of-Service application are defined in [Table 2-1](#):

**Table 2-1** Server Tier Logical Components

Machine	Description
Store Server	The machine that runs the server component of Oracle Retail Point-of-Service. There is at least one store server for each store. This component runs as a service. This machine may also house the Back Office Server and other Oracle Retail Strategic Store Solutions components such as the OracleRetailStore database and Mobile Point-of-Service.
Point-of-Service Clients	The machines that execute the Point-of-Service transactions; they are typically cash registers.
Database Server	The machine that houses the OracleRetailStore databases. This machine may or may not be the same as the store server.
JMS Server	The machine that houses the JMS server software.

When you run the installer, it asks you to specify a Tier Type. The following types are available:

- N-Tier Client—Choose this when installing the client component.
- N-Tier Store Server—Choose this when installing the store server component.

## Installing the Database

Oracle Retail products such as Point-of-Service and Back Office use the OracleRetailStore database. One OracleRetailStore database is typically installed in each store. Data stored in the OracleRetailStore database includes employee names, logon information, transaction data, and the inventory database. The database can be located on the store server or on a separate machine acting as the database server. The database must be installed before Point-of-Service can be installed.

If you are using Centralized Transaction Retrieval, an additional database called the Scratchpad database is used. This database holds retrieved transactions. For more information on Centralized Transaction Retrieval, see the Oracle Retail Point-of-Service Operations Guide.

Table 2–2 shows the database configuration information that is needed during installation.

**Table 2–2 Database Configuration Settings**

Installer Screen	Required Data
Transaction Retrieval Location	Choose the location for retrieving transactions. When using Centralized Transaction Retrieval, choose either the <b>Central</b> or <b>Central, Local Failover</b> option.  Note: You must choose the same location for both the store server and client installations.
Database Configuration	Enter the following information for the database: <ul style="list-style-type: none"> <li>■ JDBC driver path</li> <li>■ Driver class name</li> <li>■ Database URL</li> <li>■ Jar name</li> <li>■ Database user ID and password</li> </ul>
Scratchpad Database Configuration	Enter the following information for the Scratchpad database: <ul style="list-style-type: none"> <li>■ JDBC driver path</li> <li>■ Driver class name</li> <li>■ Database URL</li> <li>■ Jar name</li> <li>■ Database user ID and password</li> </ul>
Logging Options	Choose how the log is exported. When using Centralized Transaction Retrieval, choose the <b>Data Replication Export</b> option.
Central Office/Back Office Server Information	Enter the host names and port numbers of the machines where the Central Office instance and the Back Office instance for this store server are located.

To complete the installation, you must know the database location:

- If you install Point-of-Service on the same machine as the database, the installer asks for the database directory location.
- If you install Point-of-Service on a different machine from the database, the installer asks for the hostname or IP address and RMI port number of the machine running the database.

The Point-of-Service installation process installs scripts to build the tables and insert a minimal data set. Steps for running these scripts are included later in this chapter.



## Required Settings for the Database

The following settings must be made during database creation:

- The database must be set to UTF8.
- When using the Oracle 10g database server, make the following changes to the system settings:

```
ALTER SYSTEM SET NLS_NUMERIC_CHARACTERS = '.,-' SCOPE=SPFILE;
ALTER SYSTEM SET NLS_DATE_FORMAT = 'YYYY-MM-DD' SCOPE=SPFILE;
ALTER SYSTEM SET NLS_TIMESTAMP_FORMAT = 'YYYY-MM-DD HH24:MI:SS.FF'
SCOPE=SPFILE;
```

## Installing Point-of-Service on Machines

If a previous version of Point-of-Service is installed on a machine, uninstall it by deleting the installation directory (the default directory is c:\OracleRetailStore) or choose a different installation directory from the default.

Run the installer one time for each machine in the Server Tier and once for each register.

The installer performs the following steps. Not all steps apply to client and server installations.

- Installs Foundation, Retail Domain, and Oracle Retail Point-of-Service jar files.
- Installs database build scripts and start-up files.
- Defines Server Tier in the conduit script that starts Point-of-Service for the given machine.
- Defines hostnames or IP addresses and port numbers for the Store Server and database server.
- Defines device availability.
- Defines application properties for Store ID and Register Number.

## Updating Device Configuration

Update the jpos.xml file to reflect the devices used on the machine. The typical location for this file is C:\POS\IBMJPOS\jpos.xml.

1. To configure the default scanner, replace the existing entry or add the following entry to the jpos.xml file:

```
JposEntry logicalName="defaultScanner">

    <creation
factoryClass="com.extendyourstore.jpos.CrsJposServiceInstanceFactory"
serviceClass="com.extendyourstore.jpos.Scanner.Simple3"/>
    <vendor name="360Commerce" url="http://www.360commerce.com"/>
    <jpos category="Scanner" version="1.5"/>
    <product description="360Commerce Serial Scanner"/>

    <!--Other non JavaPOS required property (mostly vendor properties and
bus specific properties i.e. RS232 )-->

    <prop name="parity" type="String" value="0"/>
    <prop name="dataBits" type="String" value="7"/>
    <prop name="baudRate" type="String" value="9600"/>
    <prop name="stopBits" type="String" value="1"/>
```

```

    <prop name="suffix" type="String" value="13"/>
    <prop name="debug" type="String" value="false"/>
    <prop name="port" type="String" value="COM2"/>

```

```
</JposEntry>
```

2. To configure the Ingenico device for signature capture, replace the existing entry or add the following entry to the `jpos.xml` file. Change `<pos_install_directory>`, shown in bold in the following example, to your installation directory for Point-of-Service:

```

<JposEntry logicalName="defaultSignatureCapture">
    <creation factoryClass="services.IngenicoServiceInstanceFactory"
        serviceClass="services.etlk.sigcap.SignatureCaptureService"/>
    <vendor name="Ingenico" url="http://www.ingenico-us.com"/>
    <jpos category="SignatureCapture" version="1.5.2"/>
    <product description="ET1K POS Signature Capture JavaPOS Service
from Ingenico, Inc."
        name="Ingenico ET1K Signature Capture Service for JavaPOS(TM)
Standard"
        url="http://www.ingenico-us.com"/>
    <!--Other non JavaPOS required property (mostly vendor properties
and bus specific properties i.e. RS232 )-->
    <prop name="stopBits" value="1"/>
    <prop name="portName" value="COM1"/>
    <prop name="dataBits" value="8"/>
    <prop name="timeOut" value="5000"/>
    <prop name="baudRate" value="9600"/>
    <prop name="parity" value="0"/>
    <prop name="TestForm" value="sigtest.icf"/>
    <prop name="SigCompression" value="2byte"/>
    <prop name="ConfigPath" value=
"<pos_install_directory>/pos/config/device/ingenico/"/>
    <prop name="debug" value="ON"/>
</JposEntry>

```

3. To configure the Ingenico device for the screens used within the Point-of-Service application, replace the existing entry or add the following entry to the `jpos.xml` file. Change `<pos_install_directory>`, shown in bold in the following example, to your installation directory for Point-of-Service:

```

<JposEntry logicalName="defaultForm">
    <creation factoryClass="services.IngenicoServiceInstanceFactory"
        serviceClass="services.etlk.form.FormService"/>
    <vendor name="Ingenico" url="http://www.ingenico-us.com"/>
    <jpos category="Form" version="1.5.2"/>
    <product description="ET1K POS Form JavaPOS Service from Ingenico,
Inc."
        name="Ingenico ET1K Form Service for JavaPOS(TM) Standard"
        url="http://www.ingenico-us.com"/>
    <!--Other non JavaPOS required property (mostly vendor properties
and bus specific properties i.e. RS232 )-->
    <prop name="stopBits" value="1"/>
    <prop name="portName" value="COM1"/>
    <prop name="dataBits" value="8"/>
    <prop name="baudRate" value="9600"/>
    <prop name="parity" value="0"/>
    <prop name="timeOut" value="5000"/>
    <prop name="clear" value="clear.icf"/>
    <prop name="ItemsForm" value="scrollingtext.icf"/>

```

```

        <prop name="SigCapForm" value="sigtest.icf"/>
        <prop name="ScrollingText" value="scrollingtext.icf"/>
        <prop name="Graphic" value="scan.icf"/>
        <prop name="Survey" value="type.icf"/>
        <prop name="Scripts" value="sigtest.icf"/>
        <prop name="Logo" value="360logo.icf"/>
        <prop name="SigCompression" value="2byte"/>
        <prop name="TwoButtons" value="2buttons.icf"/>
        <prop name="ThreeButtons" value="3buttons.icf"/>
        <prop name="FourButtons" value="4buttons.icf"/>
        <prop name="ConfigPath" value=
"pos_install_directory">/pos/config/device/ingenico/">
    </JposEntry>

```

4. To configure the Ingenico PIN pad, replace the existing entry or add the following entry to the `jpos.xml` file:

```

<JposEntry logicalName="defaultPINPad">

    <creation factoryClass="services.IngenicoServiceInstanceFactory"
serviceClass="services.etlk.pinpad.PINPadService"/>
    <vendor name="Ingenico" url="http://www.ingenico-us.com"/>
    <jpos category="SignatureCapture" version="1.5.2"/>

    <product description="ET1K POS PINPad JavaPOS Service from Ingenico,
Inc." name="Ingenico ET1K PINPad Service for JavaPOS(TM) Standard"
url="http://www.ingenico-us.com"/>

    <!--Other non JavaPOS required property (mostly vendor properties and
bus specific properties i.e. RS232 )-->

    <prop name="stopBits" value="1"/>
    <prop name="portName" value="COM1"/>
    <prop name="dataBits" value="8"/>
    <prop name="baudRate" value="9600"/>
    <prop name="parity" value="0"/>
    <prop name="timeOut" value="5000"/>
    <prop name="debug" value="ON"/>

</JposEntry>

```

5. To configure the Ingenico MSR device, replace the existing entry or add the following entry to the `jpos.xml` file:

```

<JposEntry logicalName="ingenicoMSR">

    <creation factoryClass="services.IngenicoServiceInstanceFactory"
serviceClass="services.etlk.msr.MSRService"/>

    <vendor name="Ingenico" url="http://www.ingenico-us.com"/>
    <jpos category="MSR" version="1.5.2"/>
    <product description="ET1K POS MSR JavaPOS Service from Ingenico, Inc."
name="Ingenico ET1K MSR Service for JavaPOS(TM) Standard"
url="http://www.ingenico-us.com"/>

    <!--Other non JavaPOS required property (mostly vendor properties and
bus specific properties i.e. RS232 )-->

    <prop name="stopBits" value="1"/>
    <prop name="portName" value="COM1"/>
    <prop name="timeOut" value="5000"/>

```

```

    <prop name="dataBits" value="8"/>
    <prop name="baudRate" value="9600"/>
    <prop name="parity" value="0"/>
    <prop name="debug" value="ON"/>

```

```

</JposEntry>

```

6. To configure the default printer, replace the existing entry or add the following entry to the `jpos.xml` file:

```

<JposEntry logicalName="defaultPrinter">
    <creation
factoryClass="com.ibm.jpos.services.IBMJposServiceInstanceFactory"/>
serviceClass="com.ibm.jpos.services.SdiIBM4610EPOSPrinter"/>
        <vendor name="IBM" url="http://www.ibm.com"/>
        <jpos category="POSPrinter" version="1.9.3"/>
        <product description="IBM JavaPOS(TM) POSPrinter RS485 Service for IBM
4610 TI2/3/4/5/8/9 TM/F 6/7 Printer" name="IBM JavaPOS for Linux/Windows
Version 1.9.3" url="http://www.pc.ibm.com/store/">

            <prop name="deviceBus" type="String" value="RS485"/>
            <prop name="com.ibm.posj.bus.rs485.sioDeviceNumber" type="String"
value="0x35"/>
            <prop name="com.ibm.posj.bus.rs485.sioPortNumber" type="String"
value="0x11"/>
            <prop name="com.ibm.posj.bus.rs485.sioSlotNumber" type="String"
value="0x01"/>
            <prop name="abstractionClass" type="String"
value="com.ibm.jpos.services.SdiIBM4610EPOSPrinter"/>
            <prop name="impClass" type="String"
value="com.ibm.jpos.services.sdi.IBM4610PrinterServiceImp"/>
            <prop name="com.ibm.posj.bus.deviceNumber" type="String" value="0"/>
        </product>
    </creation>
</JposEntry>

```

7. To configure the default MICR device, replace the existing entry or add the following entry to the `jpos.xml` file:

```

<JposEntry logicalName="defaultMICR">
    <creation
factoryClass="com.ibm.jpos.services.IBMJposServiceInstanceFactory"
serviceClass="com.ibm.jpos.services.IBM4610MICR"/>
        <vendor name="IBM" url="http://www.ibm.com"/>
        <jpos category="MICR" version="1.9.3"/>
        <product description="IBM JavaPOS(TM) MICR RS485 Service for IBM 4610
TI2/4/8/9 Printer" name="IBM JavaPOS for Linux/Windows Version 1.9.3"
url="http://www.pc.ibm.com/store/">

            <prop name="deviceBus" type="String" value="RS485"/>
            <prop name="abstractionClass" type="String"
value="com.ibm.jpos.services.IBM4610MICR"/>
            <prop name="impClass" type="String"
value="com.ibm.jpos.services.sdi.MICRServiceImp"/>
            <prop name="com.ibm.posj.bus.deviceNumber" type="String" value="0"/>
            <prop name="com.ibm.posj.bus.rs485.sioSlotNumber" type="String"
value="0x01"/>
            <prop name="com.ibm.posj.bus.rs485.sioPortNumber" type="String"
value="0x11"/>
            <prop name="com.ibm.posj.bus.rs485.sioDeviceNumber" type="String"
value="0x35"/>
            <prop name="com.ibm.jpos.sdi.config.MICR.exceptionTableFile"
type="String" value="[file-path-goes-here]"/>
        </product>
    </creation>
</JposEntry>

```

```

        <prop name="com.ibm.jpos.sdi.config.MICR.exceptionTable4" type="String"
value="B778899001D154R"/>
        <prop name="com.ibm.jpos.sdi.config.MICR.exceptionTable3" type="String"
value="B667788990D153R"/>
        <prop name="com.ibm.jpos.sdi.config.MICR.exceptionTable2" type="String"
value="P123456780AAAAAXSSS"/>
        <prop name="com.ibm.jpos.sdi.config.MICR.exceptionTable1" type="String"
value="B445566778D151R"/>
        <prop name="com.ibm.jpos.sdi.config.MICR.exceptionTable0" type="String"
value="B334455667D150R"/>
        <prop name="com.ibm.jpos.sdi.config.MICR.stripAccountDashes"
type="String" value="false"/>
        <prop name="com.ibm.jpos.sdi.config.MICR.stripTransitDashes"
type="String" value="false"/>
        <prop name="com.ibm.jpos.sdi.config.MICR.switchTransitDashToSpace"
type="String" value="false"/>
</JposEntry>

```

8. To configure the default keyboard, replace the existing entry or add the following entry to the `jpos.xml` file:

```

<JposEntry logicalName="defaultPOSKeyboard">
    <creation
factoryClass="com.ibm.jpos.services.IBMJposServiceInstanceFactory"
serviceClass="com.ibm.jpos.services.IBMPOSKeyboard"/>
        <vendor name="IBM" url="http://www.ibm.com"/>
        <jpos category="POSKeyboard" version="1.9.3"/>
        <product description="IBM JavaPOS(TM) POSKeyboard PS2 Service for IBM
4820/ANKPOS/CANPOS/NANPOS/SureONE Keyboards" name="IBM JavaPOS for
Linux/Windows Version 1.9.3" url="http://www.pc.ibm.com/store"/>

        <prop name="com.ibm.jpos.sdi.config.POSKeyboard.Click" type="Byte"
value="0"/>
        <prop name="com.ibm.posj.bus.poskbd.functionNumber" type="String"
value="0"/>
        <prop name="com.ibm.jpos.sdi.config.POSKeyboard.Typematic"
type="Boolean" value="true"/>
        <prop name="com.ibm.jpos.sdi.config.POSKeyboard.ExtendedKeyMapping"
type="Boolean" value="true"/>
        <prop name="abstractionClass" type="String"
value="com.ibm.jpos.services.IBMPOSKeyboard"/>
        <prop name="impClass" type="String"
value="com.ibm.jpos.services.sdi.POSKeyboardServiceImp"/>
        <prop name="com.ibm.posj.bus.poskbd.keyboardNumber" type="String"
value="0"/>
        <prop name="deviceBus" type="String" value="Proprietary"/>
        <prop name="com.ibm.posj.bus.ProprietaryBusSubType" type="String"
value="PosKbd"/>
        <prop name="com.ibm.jpos.sdi.config.POSKeyboard.KbdScanning"
type="Boolean" value="true"/>
</JposEntry>

```

9. To configure the default MSR, replace the existing entry or add the following entry to the `jpos.xml` file:

```

<JposEntry logicalName="defaultMSR">
    <creation
factoryClass="com.ibm.jpos.services.IBMJposServiceInstanceFactory" name="Ingenic
o ET1K Form Service for JavaPOS(TM) Standard"
        url="http://www.ingenico-us
serviceClass="com.ibm.jpos.services.IBMMSR"/>

```

```

        <vendor name="IBM" url="http://www.ibm.com"/>
        <jpos category="MSR" version="1.9.3"/>
        <product description="IBM JavaPOS(TM) MSR PS2 Service for IBM
ANKPOS/NANPOS/CANPOS/SureONE Keyboards" name="IBM JavaPOS for Linux/Windows
Version 1.9.3" url="http://www.pc.ibm.com/store"/>

        <prop name="deviceBus" type="String" value="Proprietary"/>
        <prop name="com.ibm.posj.bus.ProprietaryBusSubType" type="String"
value="PosKbd"/>
        <prop name="com.ibm.posj.bus.poskbd.functionNumber" type="String"
value="0"/>
        <prop name="com.ibm.posj.bus.poskbd.keyboardNumber" type="String"
value="0"/>
        <prop name="abstractionClass" type="String"
value="com.ibm.jpos.services.IBMMSR"/>
        <prop name="impClass" type="String"
value="com.ibm.jpos.services.sdi.MSRServiceImp"/>
    </JposEntry>

```

- 10.** To configure the default cash drawer, replace the existing entry or add the following entry to the `jpos.xml` file:

```

<JposEntry logicalName="defaultCashDrawer">
    <creation
factoryClass="com.ibm.jpos.services.IBMJposServiceInstanceFactory"
serviceClass="com.ibm.jpos.services.IBMCashDrawer"/>
        <vendor name="IBM" url="http://www.ibm.com"/>
        <jpos category="CashDrawer" version="1.9.3"/>
        <product description="IBM JavaPOS(TM) CashDrawer Service for IBM
SurePOS 300/72x/74x/78x-A" name="IBM JavaPOS for Linux/Windows Version 1.9.3"
url="http://www.pc.ibm.com/store"/>

        <prop name="deviceBus" type="String" value="Proprietary"/>
        <prop name="com.ibm.posj.bus.ProprietaryBusSubType" type="String"
value="Embedded"/>
        <prop name="abstractionClass" type="String"
value="com.ibm.jpos.services.IBMCashDrawer"/>
        <prop name="impClass" type="String"
value="com.ibm.jpos.services.sdi.CashDrawerServiceImp"/>
        <prop name="com.ibm.posj.bus.deviceNumber" type="String" value="0"/>
    </JposEntry>

```

- 11.** To configure the default line display, replace the existing entry or add the following entry to the `jpos.xml` file:

```

<JposEntry logicalName="defaultLineDisplay">
    <creation
factoryClass="com.ibm.jpos.services.IBMJposServiceInstanceFactory"
serviceClass="com.ibm.jpos.services.LineDisplayLCVFD"/>
        <vendor name="IBM" url="http://www.ibm.com"/>
        <jpos category="LineDisplay" version="1.9.3"/>
        <product description="IBM JavaPOS(TM) LineDisplay USB Service for IBM
Vaccum Fluorescent Display (VFD)-A" name="IBM JavaPOS for Linux/Windows Version
1.9.3" url="http://www.pc.ibm.com/store"/>

        <prop name="com.ibm.posj.bus.hid.usageId" type="String"
value="0x2400"/>
        <prop name="deviceBus" type="String" value="HID"/>
        <prop name="abstractionClass" type="String"
value="com.ibm.jpos.services.LineDisplayLCVFD"/>
        <prop name="impClass" type="String"

```

```
value="com.ibm.jpos.services.sdi.LineDisplayServiceImp"/>
    <prop name="com.ibm.posj.bus.hid.usagePage" type="String"
value="0xFF45"/>
    <prop name="com.ibm.posj.bus.deviceNumber" type="String" value="0"/>
</JposEntry>
```

## Expanding the Point-of-Service Distribution

To extract the Point-of-Service files:

1. Extract the ORPOS-12.0.12.zip file from the Point-of-Service distribution.
2. Copy or upload ORPOS-12.0.12.zip to the installation directory and extract its contents. In this installation guide, `<INSTALL_DIR>` is used for that directory.

## Obtaining Third-Party Library Files Required by Point-of-Service

The Point-of-Service application uses specific files from Apache. Get the required files for the Derby database. You can get the download at the Web site under the lib distribution:

<http://db.apache.org/derby/releases/release-10.2.2.0.html>

Extract the following files:

- derby.jar
- derbytools.jar

## Running the Point-of-Service Application Installer

This installer will configure and deploy the Point-of-Service application.

---

---

**Note:** To see details on every screen and field in the application installer, see [Appendix A](#).

---

---

1. Change to the `<INSTALL_DIR>` directory.
2. Set the JAVA\_HOME environment variable to the location of your jdk, for example, C:\j2sdk1.6. The variable must be set to the location of the jdk and not the jre.

---

---

**Note:** The installer is not compatible with versions of Java earlier than 1.6.

---

---

3. Run the posinst.exe script. This will launch the installer. After installation is complete, a detailed installation log file is created at `<POS_install_directory>\pos\logs\installer_log.txt`

## Resolving Errors Encountered During Application Installation

If the application installer encounters any errors, you can read them in the above mentioned log file.

For a list of common installation errors, see [Appendix D](#).

## Creating the Point-of-Service Database Schema

The scripts that create the Point-of-Service database schema can be run from the installed `pos/bin` directory. The database server can be on the same system as the application server or on a different system.

### Creating with Oracle Retail Back Office

When Point-of-Service will be used with Back Office, create the database schema during the Back Office installation. See the Oracle Retail Back Office Installation Guide for information.

Then, as part of this installation, if **Central** or **Central, Local Failover** was selected for the Transaction Retrieval Location, run `scratchpad.bat` to create the Scratchpad database.

### Creating without Oracle Retail Back Office

When Point-of-Service is being installed without Back Office, perform the following steps to create the Point-of-Service database schema.

1. Create a user in the database:

```
create role APP_ROLE;
```

```
grant CREATE TABLE, CREATE VIEW, CREATE SEQUENCE, CREATE SYNONYM, CREATE  
CLUSTER, CREATE DATABASE LINK, ALTER SESSION to APP_ROLE;
```

```
grant CONNECT, RESOURCE, APP_ROLE, SELECT_CATALOG_ROLE to <db_user>;
```

2. Change to the `<INSTALL_DIR>\pos\bin` directory.
3. Set the `JAVA_HOME` and `ANT_HOME` environment variables.
4. Add `$JAVA_HOME\bin` and `$ANT_HOME\bin` to the front of the `PATH` environment variable.

```
PATH=$JAVA_HOME/bin:$ANT_HOME/bin:$PATH; export PATH
```

5. Run one of the available `dbbuild.bat` targets to create the database schema, load data, and load the procedures for purging aged data in the database. For information on the purge procedures, see the Point-of-Service Operations Guide.

- `seed_data`: loads seed data
- `test_data`: loads test data
- `load_purge_procedures`: loads database purge procedures

For example, `dbbuild seed_data`

6. If **Central** or **Central, Local Failover** was selected for the Transaction Retrieval Location, run `scratchpad.bat` to create the Scratchpad database.

## Configuring for Offline Data Updates

Point-of-Service provides the capability to automatically update offline data to clients. The scheduling of the updates can be configured. This configuration involves updating parameters and the `ServiceContent.xml` file. For more information on offline data updates and how to configure the updates, see the Oracle Retail Point-of-Service Operations Guide.



## Results of a Point-of-Service Installation

The default root directory for OracleRetailStore applications on Windows for the store server is `c:\OracleRetailStore\Server`. For the client, the default directory is `c:\OracleRetailStore\Client`. In this guide, these directories are referred to as `<POS_install_directory>`. The subdirectories listed in [Table 2–3](#) are created:

**Table 2–3** `<POS_install_directory>` Subdirectories

Name	Contents
360common	Files shared by multiple Oracle Retail Strategic Store Solutions applications including Foundation or 360Platform, Domain, and third party jar files
databases	Resources for various database types
jre	Contains the Java runtime environment
pos	Point-of-Service files
mpos	Mobile Point-of-Service files (if the Oracle Retail Mobile Point-of-Service product is installed)

Important subdirectories of the `\pos` directory is shown in [Table 2–4](#):

**Table 2–4** `<POS_install_directory>\pos` Subdirectories

Name	Contents
bin	Startup batch files and shell scripts
lib	Point-of-Service application and resource jar files
lib\locales	Text bundles for localization <b>Note:</b> The only language currently supported is United States English.
3rdparty	Third party source files used by Point-of-Service only
config	XML configuration files, <code>.properties</code> files, and <code>.dat</code> files
logs	Log files (additional log files are in the <code>bin</code> directory)
UninstallerData	Files for uninstalling Oracle Retail Point-of-Service

## Running Point-of-Service

You run the Oracle Retail Point-of-Service system by executing batch files or shell scripts, found in your installation's `bin` directory, to launch various components.

---

**Note:** For each command, a Windows batch file (such as `dbstart.bat`) exists.

---

To run Point-of-Service:

1. Start the store server:

`StoreServerConduit.bat`

When the message `TierManager Started` appears, the server has started. The server component does not have a user interface.

2. Start the registers.

For each of the Point-of-Service registers, execute the conduit script that starts the Point-of-Service client component. Use the following command:

```
ClientConduit.bat
```

3. Verify the installation on each register by logging in to Point-of-Service with the default username (pos) and password (pos).

If the login is successful and the status bar indicates the database is online, the installation is complete.

## Creating a Custom Installation

A custom installation of Point-of-Service can use one of several approaches:

- Install Point-of-Service using the installer on a reference machine, and copy the resulting installation to other machines.
  - With this method, you can change the configuration settings of the installation as described in the Oracle Retail Point-of-Service Operations Guide until the installation works as desired, then propagate those configurations to other machines.
  - You can copy just the installation directory to a new machine, or if the hardware is sufficiently similar, you can copy the entire hard drive image to the machine. Copying the entire hard drive retains the JavaPOS installation as well as any other customizations.
  - You must change the WorkstationID value for the target machines to a unique number. This value can be found in  
`<POS_install_directory>\pos\config\application.properties.`
- Create a custom installer which allows for various hardware options but specifies the software choices your company has chosen.

---

**Note:** By default, installation of a register requires certain IBM Install Set parameters to have specific values:

- Hard Total must be Off.
  - Ingenico must be On.
-

---

## Installation on the IBM Stack using Linux

---

This chapter provides information about the installation procedures for Oracle Retail Point-of-Service on the IBM stack using Linux.

Oracle Retail provides an installer for Point-of-Service, but customer installations typically develop custom procedures. Note that the installer is not appropriate for all installations. Oracle Retail expects implementation teams to develop custom procedures for actual register installations, which may or may not be based on the installer described here. For guidelines, see ["Creating a Custom Installation"](#).

### Installing Point-of-Service

To establish an initial Oracle Retail Point-of-Service installation or to create a demonstration system, use the Point-of-Service installer as described in this section.

### Determining Tier Type

Machines and logical components of the Oracle Retail Point-of-Service application are defined in [Table 3–1](#):

**Table 3–1** *Server Tier Logical Components*

Machine	Description
Store Server	The machine that runs the server component of Oracle Retail Point-of-Service. There is at least one store server for each store. This component runs as a service. This machine may also house the Back Office Server and other Oracle Retail Strategic Store Solutions components such as the OracleRetailStore database and Mobile Point-of-Service.
Point-of-Service Clients	The machines that execute the Point-of-Service transactions; they are typically cash registers.
Database Server	The machine that houses the OracleRetailStore databases. This machine may or may not be the same as the store server.
JMS Server	The machine that houses the JMS server software.

When you run the installer, it asks you to specify a Tier Type. The following types are available:

- N-Tier Client—Choose this when installing the client component.
- N-Tier Store Server—Choose this when installing the store server component.

## Installing the Database

Oracle Retail products such as Point-of-Service and Back Office use the OracleRetailStore database. One OracleRetailStore database is typically installed in each store. Data stored in the OracleRetailStore database includes employee names, logon information, transaction data, and the inventory database. The database can be located on the store server or on a separate machine acting as the database server. The database must be installed before Point-of-Service can be installed.

If you are using Centralized Transaction Retrieval, an additional database called the Scratchpad database is used. This database holds retrieved transactions. For more information on Centralized Transaction Retrieval, see the Oracle Retail Point-of-Service Operations Guide.

Table 3–2 shows the database configuration information that is needed during installation.

**Table 3–2 Database Configuration Settings**

Installer Screen	Required Data
Transaction Retrieval Location	Choose the location for retrieving transactions. When using Centralized Transaction Retrieval, choose either the <b>Central</b> or <b>Central, Local Failover</b> option.  Note: You must choose the same location for both the store server and client installations.
Database Configuration	Enter the following information for the database: <ul style="list-style-type: none"> <li>■ JDBC driver path</li> <li>■ Driver class name</li> <li>■ Database URL</li> <li>■ Jar name</li> <li>■ Database user ID and password</li> </ul>
Scratchpad Database Configuration	Enter the following information for the Scratchpad database: <ul style="list-style-type: none"> <li>■ JDBC driver path</li> <li>■ Driver class name</li> <li>■ Database URL</li> <li>■ Jar name</li> <li>■ Database user ID and password</li> </ul>
Logging Options	Choose how the log is exported. When using Centralized Transaction Retrieval, choose the <b>Data Replication Export</b> option.
Central Office/Back Office Server Information	Enter the host names of the machines where the Central Office and Back Office instances for this store server are located.

To complete the installation, you must know the database location:

- If you install Point-of-Service on the same machine as the database, the installer asks for the database directory location.
- If you install Point-of-Service on a different machine from the database, the installer asks for the hostname or IP address and RMI port number of the machine running the database.

The Point-of-Service installation process installs scripts to build the tables and insert a minimal data set. Steps for running these scripts are included later in this chapter.

## Required Settings for the Database

The following settings must be made during database creation:

- The database must be set to UTF8.
- When using the Oracle 10g database server, make the following changes to the system settings:

```
ALTER SYSTEM SET NLS_NUMERIC_CHARACTERS = '.,-' SCOPE=SPFILE;
ALTER SYSTEM SET NLS_DATE_FORMAT = 'YYYY-MM-DD' SCOPE=SPFILE;
ALTER SYSTEM SET NLS_TIMESTAMP_FORMAT = 'YYYY-MM-DD HH24:MI:SS.FF'
SCOPE=SPFILE;
```

## Installing Point-of-Service on Machines

If a previous version of Point-of-Service is installed on a machine, uninstall it by deleting the installation directory (the default directory is /opt/OracleRetailStore) or choose a different installation directory from the default.

Run the installer one time for each machine in the Server Tier and once for each register.

The installer performs the following steps. Not all steps apply to client and server installations.

- Installs Foundation, Retail Domain, and Oracle Retail Point-of-Service jar files.
- Installs database build scripts and start-up files.
- Defines Server Tier in the conduit script that starts Point-of-Service for the given machine.
- Defines hostnames or IP addresses and port numbers for the Store Server and database server.
- Defines device availability.
- Defines application properties for Store ID and Register Number.

## Updating Device Configuration

The devices used on the machine are defined in the `jpos.xml` file.

---

**Note:** IBM devices can be configured using the auto-config option. If problems are encountered using auto-config, turn off the auto-config option and configure the devices manually.

---

To turn off auto-config, update the `jpos.properties` file. The typical location for this file is /opt/ibm/javapos/etc/jpos/jpos.properties. Replace the existing entries with the following:

```
#jpos.config.regPopulatorClass=com.ibm.jpos.tools.autoconfig.SDIPopulator

jpos.config.populator.class.0=jpos.config.simple.xml.SimpleXmlRegPopulator
jpos.config.populator.class.1=jpos.config.simple.SimpleRegPopulator
```

Update the `jpos.xml` file to reflect the devices used on the machine. The typical location for this file is /opt/ibm/javapos/etc/jpos.xml.

1. To configure the default scanner, replace the existing entry or add the following entry to the `jpos.xml` file:

```
JposEntry logicalName="defaultScanner">

    <creation
factoryClass="com.extendyourstore.jpos.CrsJposServiceInstanceFactory"
serviceClass="com.extendyourstore.jpos.Scanner.Simple3"/>
    <vendor name="360Commerce" url="http://www.360commerce.com"/>
    <jpos category="Scanner" version="1.5"/>
    <product description="360Commerce Serial Scanner"/>

    <!--Other non JavaPOS required property (mostly vendor properties and
bus specific properties i.e. RS232 )-->

    <prop name="parity" type="String" value="0"/>
    <prop name="dataBits" type="String" value="7"/>
    <prop name="baudRate" type="String" value="9600"/>
    <prop name="stopBits" type="String" value="1"/>
    <prop name="suffix" type="String" value="13"/>
    <prop name="debug" type="String" value="false"/>
    <prop name="port" type="String" value="COM2"/>

</JposEntry>
```

2. To configure the Ingenico device for signature capture, replace the existing entry or add the following entry to the `jpos.xml` file. Change `<pos_install_directory>`, shown in bold in the following example, to your installation directory for Point-of-Service:

```
<JposEntry logicalName="defaultSignatureCapture">
    <creation factoryClass="services.IngenicoServiceInstanceFactory"
        serviceClass="services.etlk.sigcap.SignatureCaptureService"/>
    <vendor name="Ingenico" url="http://www.ingenico-us.com"/>
    <jpos category="SignatureCapture" version="1.5.2"/>
    <product description="ET1K POS Signature Capture JavaPOS Service
from Ingenico, Inc."
        name="Ingenico ET1K Signature Capture Service for JavaPOS(TM)
Standard"
        url="http://www.ingenico-us.com"/>
    <!--Other non JavaPOS required property (mostly vendor properties
and bus specific properties i.e. RS232 )-->
    <prop name="stopBits" value="1"/>
    <prop name="portName" value="COM1"/>
    <prop name="dataBits" value="8"/>
    <prop name="timeOut" value="5000"/>
    <prop name="baudRate" value="9600"/>
    <prop name="parity" value="0"/>
    <prop name="TestForm" value="sigtest.icf"/>
    <prop name="SigCompression" value="2byte"/>
    <prop name="ConfigPath" value=
"<pos_install_directory>/pos/config/device/ingenico/"/>
    <prop name="debug" value="ON"/>
</JposEntry>
```

3. To configure the Ingenico device for the screens used within the Point-of-Service application, replace the existing entry or add the following entry to the `jpos.xml` file. Change `<pos_install_directory>`, shown in bold in the following example, to your installation directory for Point-of-Service:

```
<JposEntry logicalName="defaultForm">
```

```

        <creation factoryClass="services.IngenicoServiceInstanceFactory"
            serviceClass="services.etlk.form.FormService"/>
        <vendor name="Ingenico" url="http://www.ingenico-us.com"/>
        <jpos category="Form" version="1.5.2"/>
        <product description="ET1K POS Form JavaPOS Service from Ingenico,
Inc."
            name="Ingenico ET1K Form Service for JavaPOS(TM) Standard"
            url="http://www.ingenico-us.com"/>
        <!--Other non JavaPOS required property (mostly vendor properties
and bus specific properties i.e. RS232 )-->
        <prop name="stopBits" value="1"/>
        <prop name="portName" value="COM1"/>
        <prop name="dataBits" value="8"/>
        <prop name="baudRate" value="9600"/>
        <prop name="parity" value="0"/>
        <prop name="timeOut" value="5000"/>
        <prop name="clear" value="clear.icf"/>
        <prop name="ItemsForm" value="scrollingtext.icf"/>
        <prop name="SigCapForm" value="sigtest.icf"/>
        <prop name="ScrollingText" value="scrollingtext.icf"/>
        <prop name="Graphic" value="scan.icf"/>
        <prop name="Survey" value="type.icf"/>
        <prop name="Scripts" value="sigtest.icf"/>
        <prop name="Logo" value="360logo.icf"/>
        <prop name="SigCompression" value="2byte"/>
        <prop name="TwoButtons" value="2buttons.icf"/>
        <prop name="ThreeButtons" value="3buttons.icf"/>
        <prop name="FourButtons" value="4buttons.icf"/>
        <prop name="ConfigPath" value=
"<b>pos_install_directory</b>/pos/config/device/ingenico"/>
    </JposEntry>

```

4. To configure the Ingenico PIN pad, replace the existing entry or add the following entry to the `jpos.xml` file:

```

<JposEntry logicalName="defaultPINPad">

    <creation factoryClass="services.IngenicoServiceInstanceFactory"
serviceClass="services.etlk.pinpad.PINPadService"/>
    <vendor name="Ingenico" url="http://www.ingenico-us.com"/>
    <jpos category="SignatureCapture" version="1.5.2"/>

    <product description="ET1K POS PINPad JavaPOS Service from Ingenico,
Inc." name="Ingenico ET1K PINPad Service for JavaPOS(TM) Standard"
url="http://www.ingenico-us.com"/>

    <!--Other non JavaPOS required property (mostly vendor properties and
bus specific properties i.e. RS232 )-->

    <prop name="stopBits" value="1"/>
    <prop name="portName" value="COM1"/>
    <prop name="dataBits" value="8"/>
    <prop name="baudRate" value="9600"/>
    <prop name="parity" value="0"/>
    <prop name="timeOut" value="5000"/>
    <prop name="debug" value="ON"/>

</JposEntry>

```

5. To configure the Ingenico MSR device, replace the existing entry or add the following entry to the `jpos.xml` file:

```
<JposEntry logicalName="ingenicoMSR">

    <creation factoryClass="services.IngenicoServiceInstanceFactory"
serviceClass="services.et1k.msr.MSRService" />

    <vendor name="Ingenico" url="http://www.ingenico-us.com" />
    <jpos category="MSR" version="1.5.2" />
    <product description="ET1K POS MSR JavaPOS Service from Ingenico, Inc."
name="Ingenico ET1K MSR Service for JavaPOS(TM) Standard"
url="http://www.ingenico-us.com" />

    <!--Other non JavaPOS required property (mostly vendor properties and
bus specific properties i.e. RS232 )-->

    <prop name="stopBits" value="1" />
    <prop name="portName" value="COM1" />
    <prop name="timeOut" value="5000" />
    <prop name="dataBits" value="8" />
    <prop name="baudRate" value="9600" />
    <prop name="parity" value="0" />
    <prop name="debug" value="ON" />

</JposEntry>
```

6. To configure the default printer, replace the existing entry or add the following entry to the `jpos.xml` file:

```
<JposEntry logicalName="defaultPrinter">
    <creation
factoryClass="com.ibm.jpos.services.IBMJposServiceInstanceFactory" />
serviceClass="com.ibm.jpos.services.SdiIBM4610EPOSPrinter" />
    <vendor name="IBM" url="http://www.ibm.com" />
    <jpos category="POSPrinter" version="1.9.3" />
    <product description="IBM JavaPOS(TM) POSPrinter RS485 Service for IBM
4610 TI2/3/4/5/8/9 TM/F 6/7 Printer" name="IBM JavaPOS for Linux/Windows
Version 1.9.3" url="http://www.pc.ibm.com/store/" />

    <prop name="deviceBus" type="String" value="RS485" />
    <prop name="com.ibm.posj.bus.rs485.sioDeviceNumber" type="String"
value="0x35" />
    <prop name="com.ibm.posj.bus.rs485.sioPortNumber" type="String"
value="0x11" />
    <prop name="com.ibm.posj.bus.rs485.sioSlotNumber" type="String"
value="0x01" />
    <prop name="abstractionClass" type="String"
value="com.ibm.jpos.services.SdiIBM4610EPOSPrinter" />
    <prop name="impClass" type="String"
value="com.ibm.jpos.services.sdi.IBM4610PrinterServiceImp" />
    <prop name="com.ibm.posj.bus.deviceNumber" type="String" value="0" />
</JposEntry>
```

7. To configure the default MICR device, replace the existing entry or add the following entry to the `jpos.xml` file:

```
<JposEntry logicalName="defaultMICR">
    <creation
factoryClass="com.ibm.jpos.services.IBMJposServiceInstanceFactory"
serviceClass="com.ibm.jpos.services.IBM4610MICR" />
```



```

        <vendor name="IBM" url="http://www.ibm.com"/>
        <jpos category="MICR" version="1.9.3"/>
        <product description="IBM JavaPOS(TM) MICR RS485 Service for IBM 4610
TI2/4/8/9 Printer" name="IBM JavaPOS for Linux/Windows Version 1.9.3"
url="http://www.pc.ibm.com/store/" />

        <prop name="deviceBus" type="String" value="RS485"/>
        <prop name="abstractionClass" type="String"
value="com.ibm.jpos.services.IBM4610MICR"/>
        <prop name="impClass" type="String"
value="com.ibm.jpos.services.sdi.MICRServiceImp"/>
        <prop name="com.ibm.posj.bus.deviceNumber" type="String" value="0"/>
        <prop name="com.ibm.posj.bus.rs485.sioSlotNumber" type="String"
value="0x01"/>
        <prop name="com.ibm.posj.bus.rs485.sioPortNumber" type="String"
value="0x11"/>
        <prop name="com.ibm.posj.bus.rs485.sioDeviceNumber" type="String"
value="0x35"/>
        <prop name="com.ibm.jpos.sdi.config.MICR.exceptionTableFile"
type="String" value="[file-path-goes-here]"/>
        <prop name="com.ibm.jpos.sdi.config.MICR.exceptionTable4" type="String"
value="B778899001D154R"/>
        <prop name="com.ibm.jpos.sdi.config.MICR.exceptionTable3" type="String"
value="B667788990D153R"/>
        <prop name="com.ibm.jpos.sdi.config.MICR.exceptionTable2" type="String"
value="P123456780AAAAAXSSS"/>
        <prop name="com.ibm.jpos.sdi.config.MICR.exceptionTable1" type="String"
value="B445566778D151R"/>
        <prop name="com.ibm.jpos.sdi.config.MICR.exceptionTable0" type="String"
value="B334455667D150R"/>
        <prop name="com.ibm.jpos.sdi.config.MICR.stripAccountDashes"
type="String" value="false"/>
        <prop name="com.ibm.jpos.sdi.config.MICR.stripTransitDashes"
type="String" value="false"/>
        <prop name="com.ibm.jpos.sdi.config.MICR.switchTransitDashToSpace"
type="String" value="false"/>
</JposEntry>

```

8. To configure the default keyboard, replace the existing entry or add the following entry to the `jpos.xml` file:

```

<JposEntry logicalName="defaultPOSKeyboard">
    <creation
factoryClass="com.ibm.jpos.services.IBMJposServiceInstanceFactory"
serviceClass="com.ibm.jpos.services.IBMPOSKeyboard"/>
        <vendor name="IBM" url="http://www.ibm.com"/>
        <jpos category="POSKeyboard" version="1.9.3"/>
        <product description="IBM JavaPOS(TM) POSKeyboard PS2 Service for IBM
4820/ANKPOS/CANPOS/NANPOS/SureONE Keyboards" name="IBM JavaPOS for
Linux/Windows Version 1.9.3" url="http://www.pc.ibm.com/store/" />

        <prop name="com.ibm.jpos.sdi.config.POSKeyboard.Click" type="Byte"
value="0"/>
        <prop name="com.ibm.posj.bus.poskbd.functionNumber" type="String"
value="0"/>
        <prop name="com.ibm.jpos.sdi.config.POSKeyboard.Typematic"
type="Boolean" value="true"/>
        <prop name="com.ibm.jpos.sdi.config.POSKeyboard.ExtendedKeyMapping"
type="Boolean" value="true"/>
        <prop name="abstractionClass" type="String"
value="com.ibm.jpos.services.IBMPOSKeyboard"/>

```

```

        <prop name="impClass" type="String"
value="com.ibm.jpos.services.sdi.POSKeyboardServiceImp"/>
        <prop name="com.ibm.posj.bus.poskbd.keyboardNumber" type="String"
value="0"/>
        <prop name="deviceBus" type="String" value="Proprietary"/>
        <prop name="com.ibm.posj.bus.ProprietaryBusSubType" type="String"
value="PosKbd"/>
        <prop name="com.ibm.jpos.sdi.config.POSKeyboard.KbdScanning"
type="Boolean" value="true"/>
</JposEntry>

```

9. To configure the default MSR, replace the existing entry or add the following entry to the `jpos.xml` file:

```

<JposEntry logicalName="defaultMSR">
    <creation
factoryClass="com.ibm.jpos.services.IBMJposServiceInstanceFactory" name="Ingenic
o ET1K Form Service for JavaPOS(TM) Standard"
        url="http://www.ingenico-us
serviceClass="com.ibm.jpos.services.IBMMSR"/>
        <vendor name="IBM" url="http://www.ibm.com"/>
        <jpos category="MSR" version="1.9.3"/>
        <product description="IBM JavaPOS(TM) MSR PS2 Service for IBM
ANKPOS/NANPOS/CANPOS/SureONE Keyboards" name="IBM JavaPOS for Linux/Windows
Version 1.9.3" url="http://www.pc.ibm.com/store/">

        <prop name="deviceBus" type="String" value="Proprietary"/>
        <prop name="com.ibm.posj.bus.ProprietaryBusSubType" type="String"
value="PosKbd"/>
        <prop name="com.ibm.posj.bus.poskbd.functionNumber" type="String"
value="0"/>
        <prop name="com.ibm.posj.bus.poskbd.keyboardNumber" type="String"
value="0"/>
        <prop name="abstractionClass" type="String"
value="com.ibm.jpos.services.IBMMSR"/>
        <prop name="impClass" type="String"
value="com.ibm.jpos.services.sdi.MSRServiceImp"/>
</JposEntry>

```

10. To configure the default cash drawer, replace the existing entry or add the following entry to the `jpos.xml` file:

```

<JposEntry logicalName="defaultCashDrawer">
    <creation
factoryClass="com.ibm.jpos.services.IBMJposServiceInstanceFactory"
serviceClass="com.ibm.jpos.services.IBMCashDrawer"/>
        <vendor name="IBM" url="http://www.ibm.com"/>
        <jpos category="CashDrawer" version="1.9.3"/>
        <product description="IBM JavaPOS(TM) CashDrawer Service for IBM
SurePOS 300/72x/74x/78x-A" name="IBM JavaPOS for Linux/Windows Version 1.9.3"
url="http://www.pc.ibm.com/store/">

        <prop name="deviceBus" type="String" value="Proprietary"/>
        <prop name="com.ibm.posj.bus.ProprietaryBusSubType" type="String"
value="Embedded"/>
        <prop name="abstractionClass" type="String"
value="com.ibm.jpos.services.IBMCashDrawer"/>
        <prop name="impClass" type="String"
value="com.ibm.jpos.services.sdi.CashDrawerServiceImp"/>
        <prop name="com.ibm.posj.bus.deviceNumber" type="String" value="0"/>
</JposEntry>

```

11. To configure the default line display, replace the existing entry or add the following entry to the `jpos.xml` file:

```
<JposEntry logicalName="defaultLineDisplay">
  <creation
    factoryClass="com.ibm.jpos.services.IBMJposServiceInstanceFactory"
    serviceClass="com.ibm.jpos.services.LineDisplayLCVFD"/>
    <vendor name="IBM" url="http://www.ibm.com"/>
    <jpos category="LineDisplay" version="1.9.3"/>
    <product description="IBM JavaPOS(TM) LineDisplay USB Service for IBM
Vaccum Fluorescent Display (VFD)-A" name="IBM JavaPOS for Linux/Windows Version
1.9.3" url="http://www.pc.ibm.com/store"/>

    <prop name="com.ibm.posj.bus.hid.usageId" type="String"
value="0x2400"/>
    <prop name="deviceBus" type="String" value="HID"/>
    <prop name="abstractionClass" type="String"
value="com.ibm.jpos.services.LineDisplayLCVFD"/>
    <prop name="impClass" type="String"
value="com.ibm.jpos.services.sdi.LineDisplayServiceImp"/>
    <prop name="com.ibm.posj.bus.hid.usagePage" type="String"
value="0xFF45"/>
    <prop name="com.ibm.posj.bus.deviceNumber" type="String" value="0"/>
</JposEntry>
```

## Expanding the Point-of-Service Distribution

To extract the Point-of-Service files:

1. Extract the `ORPOS-12.0.12.zip` file from the Point-of-Service distribution.
2. Copy or upload `ORPOS-12.0.12.zip` to the installation directory and extract its contents. In this installation guide, `<INSTALL_DIR>` is used for that directory.

## Obtaining Third-Party Library Files Required by Point-of-Service

The Point-of-Service application uses specific files from IBM and Apache. To obtain the necessary files:

1. Some WebSphere specific files are needed to make use of JMS. Extract the required files from the following locations:
  - `<WAS_INSTALL_DIR>/plugins/com.ibm.ws.runtime_6.1.0.jar`
  - `<WAS_INSTALL_DIR>/runtimes/com.ibm.ws.admin.client_6.1.0.jar`
  - `<MQ_INSTALL_DIR>/java/lib/jms.jar`
  - `<WAS_INSTALL_DIR>/lib/WMQ/java/lib/com.ibm.mqjms.jar`
  - `<WAS_INSTALL_DIR>/lib/WMQ/java/lib/com.ibm.mq.jar`
  - `<WAS_INSTALL_DIR>/lib/WMQ/java/lib/dhbc.jar`

2. Get the required files for the Derby database. You can get the download at the Web site under the lib distribution:

<http://db.apache.org/derby/releases/release-10.2.2.0.html>

Extract the following files:

- derby.jar
- derbytools.jar

3. Download the db2\_db2driver\_for\_jdbc\_sqlj.zip file from the IBM Web site: <http://www.ibm.com/software/data/db2/java/>. You need an IBM ID, which you can request from the Sign in screen, in order to log in to this Web site. Once logged in, download the latest version of the IBM Data Server Driver for JDBC and SQLJ.

---

---

**Note:** Oracle Retail Point-of-Service supports IBM DB2v9.1. If you download a later version and encounter any problems, contact IBM support.

---

---

4. Extract the db2jcc.jar and db2jcc\_license\_cu.jar files from the db2\_db2driver\_for\_jdbc\_sqlj subdirectory in the db2\_db2driver\_for\_jdbc\_sqlj.zip file. Copy db2jcc.jar and db2jcc\_license\_cu.jar into <INSTALL\_DIR>/external-lib/.

## Running the Point-of-Service Application Installer

This installer will configure and deploy the Point-of-Service application.

---

---

**Note:** To see details on every screen and field in the application installer, see [Appendix A](#).

---

---

1. Change to the <INSTALL\_DIR> directory.
2. Set the JAVA\_HOME environment variable to the location of your jdk, for example, /opt/j2sdk1.6. The variable must be set to the location of the jdk and not the jre.

---

---

**Note:** The installer is not compatible with versions of Java earlier than 1.6.

---

---

3. Change the mode of posinst.bin to executable.
4. Run posinst.bin. After installation is complete, a detailed installation log file is created at <POS\_install\_directory>/pos/logs/installer\_log.txt.

## Resolving Errors Encountered During Application Installation

If the application installer encounters any errors, you can read them in the above mentioned log file.

For a list of common installation errors, see [Appendix D](#).

## Creating the Point-of-Service Database Schema

The scripts that create the Point-of-Service database schema can be run from the installed `pos/bin` directory. The database server can be on the same system as the application server or on a different system.

### Creating with Oracle Retail Back Office

When Point-of-Service will be used with Back Office, create the database schema during the Back Office installation. See the Oracle Retail Back Office Installation Guide for information.

Then, as part of this installation, if **Central** or **Central, Local Failover** was selected for the Transaction Retrieval Location, run `scratchpad.bat` to create the Scratchpad database.

### Creating without Oracle Retail Back Office

When Point-of-Service is being installed without Back Office, perform the following steps to create the Point-of-Service database schema.

1. Create a user in the database:

```
create role APP_ROLE;

grant CREATE TABLE, CREATE VIEW, CREATE SEQUENCE, CREATE SYNONYM, CREATE
CLUSTER, CREATE DATABASE LINK, ALTER SESSION to APP_ROLE;

grant CONNECT, RESOURCE, APP_ROLE, SELECT_CATALOG_ROLE to <db_user>;
```

2. Change to the `<POS_install_directory>/pos/bin` directory.
3. Set the `JAVA_HOME` and `ANT_HOME` environment variables.
4. Add `$JAVA_HOME/bin` and `$ANT_HOME/bin` to the front of the `PATH` environment variable.

```
PATH=$JAVA_HOME/bin:$ANT_HOME/bin:$PATH; export PATH
```

5. Run one of the available `dbbuild.bat` targets to create the database schema, load data, and load the procedures for purging aged data in the database. For information on the purge procedures, see the Point-of-Service Operations Guide.
  - `seed_data`: loads seed data
  - `test_data`: loads test data
  - `load_purge_procedures`: loads database purge procedures

For example, `dbbuild seed_data`

6. If **Central** or **Central, Local Failover** was selected for the Transaction Retrieval Location, run `scratchpad.bat` to create the Scratchpad database.

## Configuring for Offline Data Updates

Point-of-Service provides the capability to automatically update offline data to clients. The scheduling of the updates can be configured. This configuration involves updating parameters and the `ServiceContent.xml` file. For more information on offline data updates and how to configure the updates, see the Oracle Retail Point-of-Service Operations Guide.

## Results of a Point-of-Service Installation

The default root directory for OracleRetailStore applications on Linux is `opt/OracleRetailStore`. In this guide, this directory is referred to as `<POS_install_directory>`. The subdirectories listed in [Table 3–3](#) are created:

**Table 3–3** `<POS_install_directory>` Subdirectories

Name	Contents
360common	Files shared by multiple Oracle Retail Strategic Store Solutions applications including Foundation or 360Platform, Domain, and third party jar files
databases	Resources for various database types
jre	Contains the Java runtime environment
pos	Point-of-Service files
mpos	Mobile Point-of-Service files (if the Oracle Retail Mobile Point-of-Service product is installed)

Important subdirectories of the `/pos` directory is shown in [Table 3–4](#):

**Table 3–4** `<POS_install_directory>/pos` Subdirectories

Name	Contents
bin	Startup batch files and shell scripts
lib	Point-of-Service application and resource jar files
lib/locales	Text bundles for localization <b>Note:</b> The only language currently supported is United States English.
3rdparty	Third party source files used by Point-of-Service only
config	XML configuration files, <code>.properties</code> files, and <code>.dat</code> files
logs	Log files (additional log files are in the bin directory)
UninstallerData	Files for uninstalling Oracle Retail Point-of-Service

## Running Point-of-Service

You run the Oracle Retail Point-of-Service system by executing the shell scripts, found in your installation's `bin` directory, to launch various components.

To run Point-of-Service:

1. Start the store server:

```
StoreServerConduit.sh
```

When the message `TierManager Started` appears, the server has started. The server component does not have a user interface.

2. Start the registers.

For each of the Point-of-Service registers, execute the conduit script that starts the Point-of-Service client component. Use the following command:

```
ClientConduit.sh
```

3. Verify the installation on each register by logging in to Point-of-Service with the default username (pos) and password (pos).

If the login is successful and the status bar indicates the database is online, the installation is complete.

## Creating a Custom Installation

A custom installation of Point-of-Service can use one of several approaches:

- Install Point-of-Service using the installer on a reference machine, and copy the resulting installation to other machines.
  - With this method, you can change the configuration settings of the installation as described in the Oracle Retail Point-of-Service Operations Guide until the installation works as desired, then propagate those configurations to other machines.
  - You can copy just the installation directory to a new machine, or if the hardware is sufficiently similar, you can copy the entire hard drive image to the machine. Copying the entire hard drive retains the JavaPOS installation as well as any other customizations.
  - You must change the WorkstationID value for the target machines to a unique number. This value can be found in  
`<POS_install_directory>/pos/config/application.properties`.
- Create a custom installer which allows for various hardware options but specifies the software choices your company has chosen.

---

---

**Note:** By default, installation of a register requires certain IBM Install Set parameters to have specific values:

- Hard Total must be Off.
  - Ingenico must be On.
- 
-





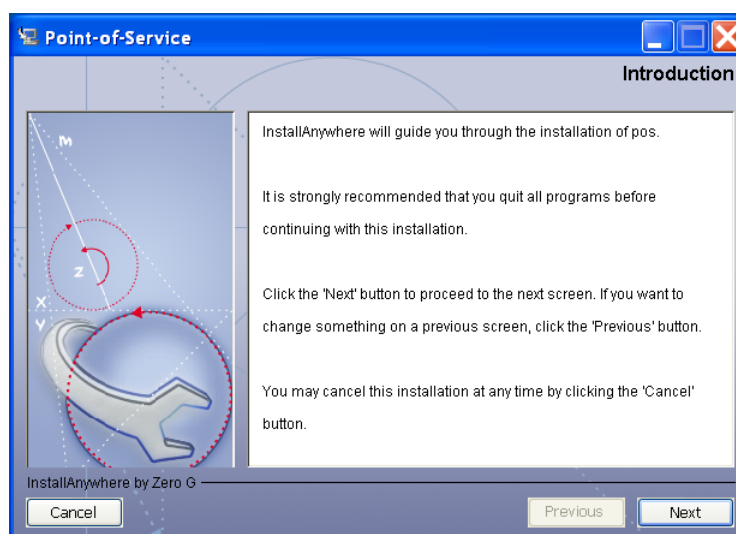
---

## Appendix: Point-of-Service Application Installer Screens

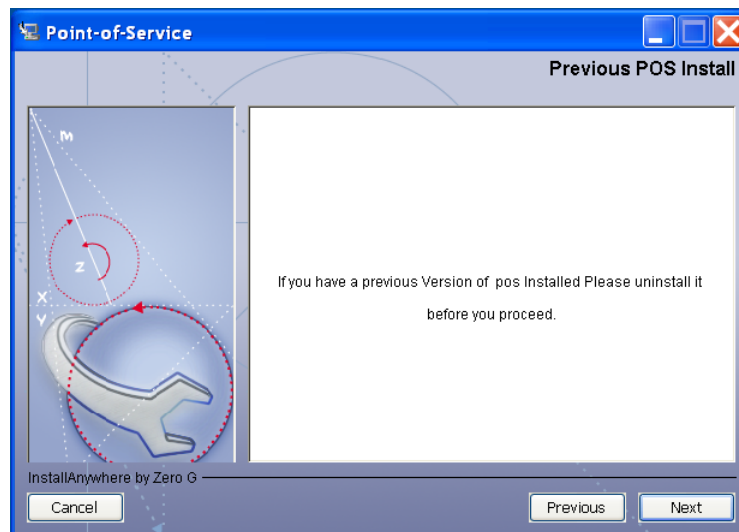
You need the following details about your environment for the installer to successfully install the Point-of-Service application. Depending on the Tier Type and options you select, you may not see some screens or fields.

For each field on a screen, a table is included in this appendix that describes the field. If you want to document any specific information about your environment for any field, a Notes row is provided in each table for saving that information.

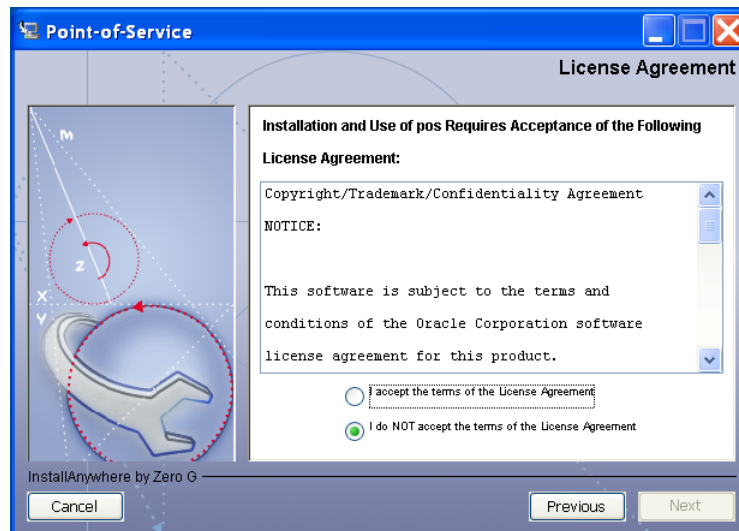
**Figure A-1** Introduction



**Figure A–2 Previous POS Install**



**Figure A–3 License Agreement**

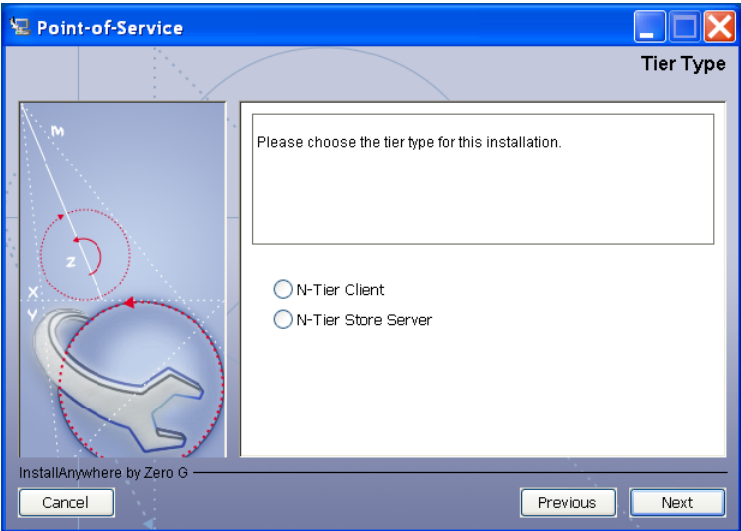


---

**Note:** You must choose to accept the terms of the license agreement in order for the installation to continue.

---

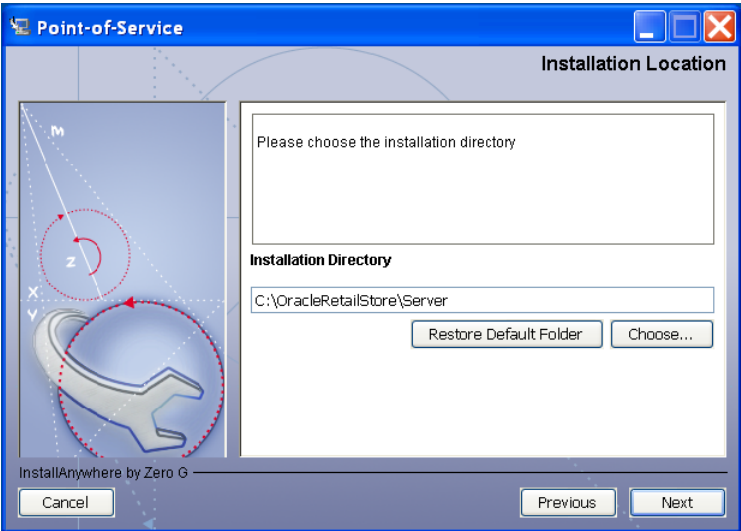
Figure A-4 Tier Type



The field on this screen is described in the following table.

Field Title	Tier Type
Field Description	<p>Choose the server tier type for this installation. For more information, see <a href="#">"Determining Tier Type"</a> in <a href="#">Chapter 2</a>.</p> <ul style="list-style-type: none"><li>■ To run the N-tier version of the client, choose <b>N-Tier Client</b>.</li><li>■ To run the N-tier version of the store server, choose <b>N-Tier Store Server</b>.</li></ul>
Example	N-Tier Store Server
Notes	

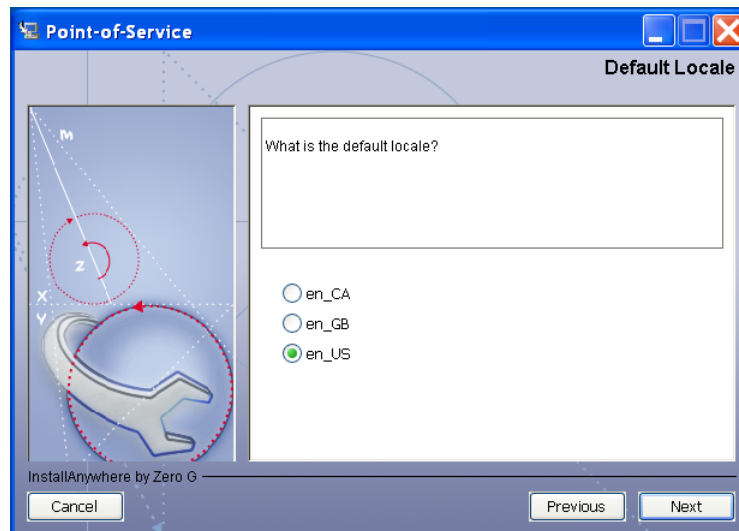
Figure A-5 Installation Location



The field on this screen is described in the following table.

Field Title	Installation Directory
Field Description	<p>The directory into which the Point-of-Service files are copied. The default for the first directory in the path is OracleRetailStore. This directory should be the same for all Oracle Retail Strategic Store Solutions products.</p> <p>When installing for Windows and <b>N-Tier Store Server</b> is selected for the Tier Type, the default installation directory is OracleRetailStore/Server. When <b>N-Tier Client</b> is selected for the Tier Type, the default installation directory is OracleRetailStore/Client.</p> <p>Note: The server and the client must not be installed into the same directory.</p> <p>When installing for Linux, the default directory is OracleRetailStore.</p> <p>In this guide, <i>&lt;POS_install_directory&gt;</i> refers to the selected installation directory for the server or client.</p> <p>Files specific to Point-of-Service are copied to the /pos subdirectory of <i>&lt;POS_install_directory&gt;</i>.</p>
Example	C:\OracleRetailStore\Server
Notes	

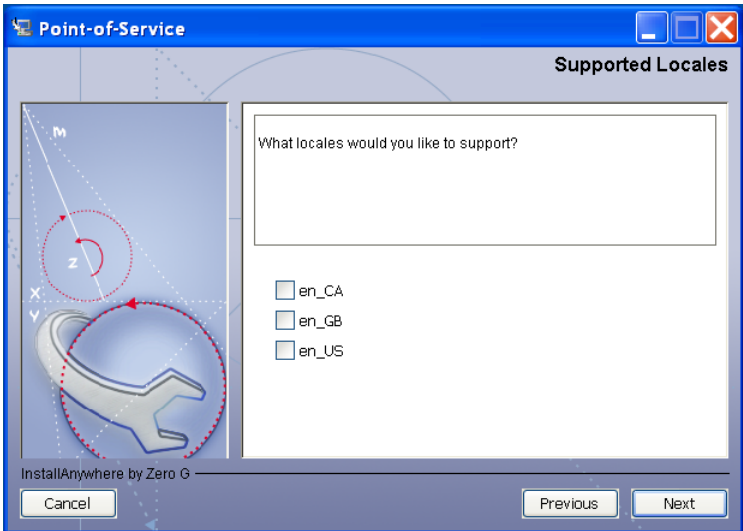
**Figure A-6 Default Locale**



The field on this screen is described in the following table.

Field Title	What is the default locale?
Field Description	<p>Limited locale support in Point-of-Service enables the date, time, currency, and calendar to be displayed in the format for the selected default locale.</p> <ul style="list-style-type: none"> <li>■ To select the locale for Canada, choose en_CA.</li> <li>■ To select the locale for Great Britain, choose en_GB.</li> <li>■ To select the local for the United States, choose en_US.</li> </ul> <p><b>Note:</b> The only language currently supported is United States English.</p>
Example	en_US
Notes	

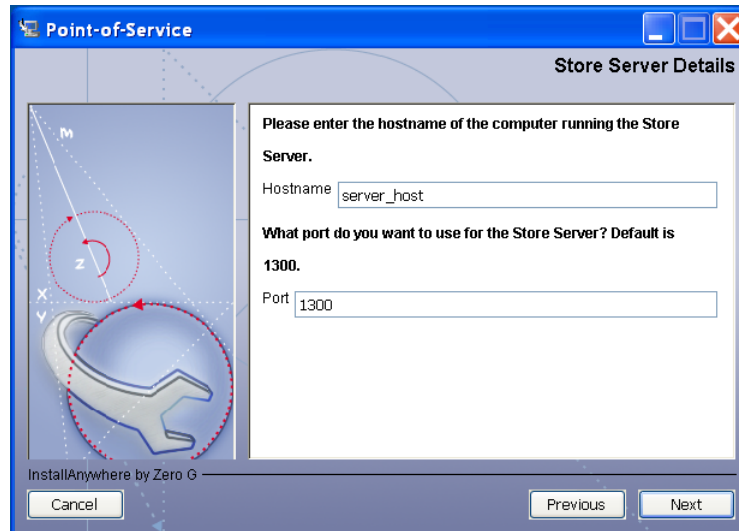
**Figure A-7 Supported Locales**



The field on this screen is described in the following table.

Field Title	What locales would you like to support?
Field Description	<p>In addition to the default locale, additional locales can be supported. Limited locale support in Point-of-Service enables the date, time, currency, and calendar to be displayed in the format for the selected locale.</p> <ul style="list-style-type: none"> <li>■ To select the locale for Canada, choose en_CA.</li> <li>■ To select the locale for Great Britain, choose en_GB.</li> <li>■ To select the local for the United States, choose en_US.</li> </ul> <p><b>Note:</b> The only language currently supported is United States English.</p>
Example	en_US
Notes	

**Figure A–8 Store Server Details**

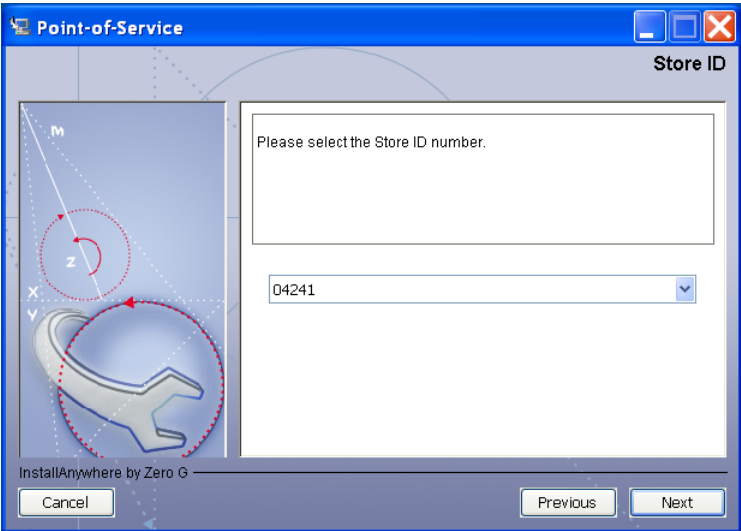


The fields on this screen are described in the following tables.

Field Title	Hostname
Field Description	Host name of the store server.
Example	server_host
Notes	

Field Title	Port
Field Description	Port number of the store server used for the communication between the store server and the host computer.
Example	1300
Notes	

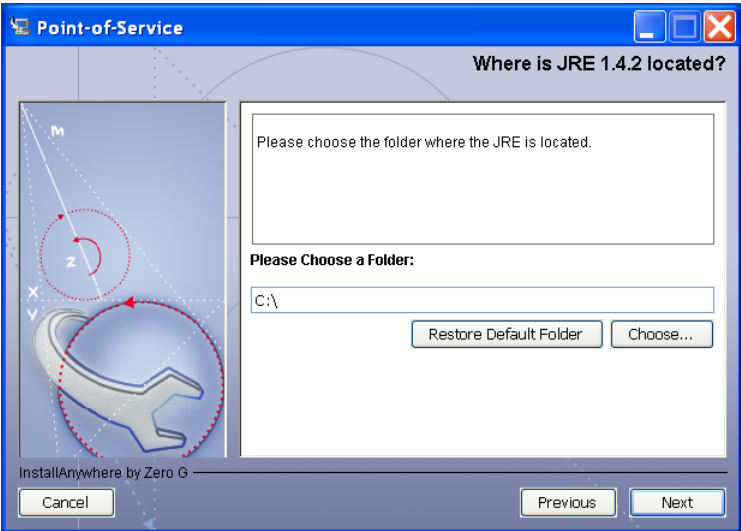
**Figure A-9 Store ID**



The field on this screen is described in the following table.

Field Title	Store ID
Field Description	Choose the store ID from the menu.
Example	04241
Notes	

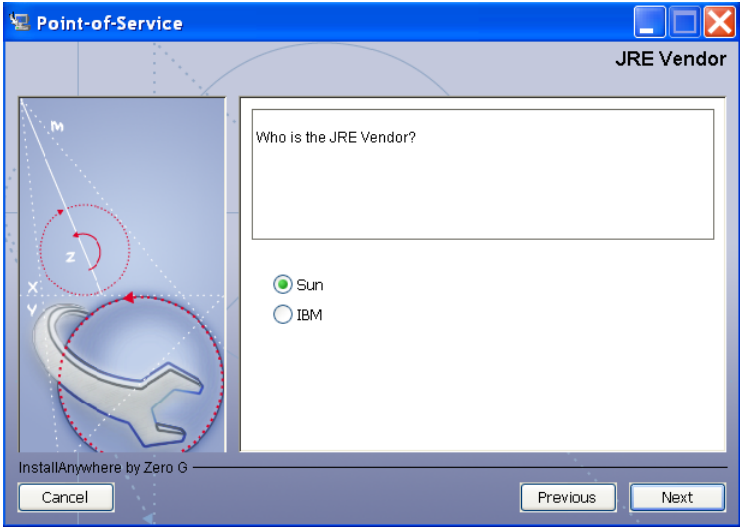
**Figure A-10 Where is JRE 1.4.2 located?**



The field on this screen is described in the following table.

Field Title	Folder
Field Description	Choose the location of JRE 1.4.2.
Example	C:\j2sdk1.4.2_13\jre
Notes	

Figure A–11 JRE Vendor

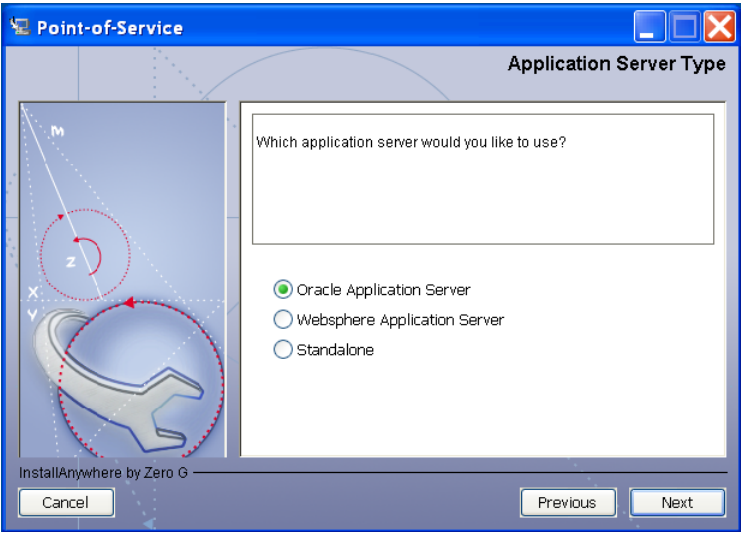


The field on this screen is described in the following table.

Field Title	Who is the JRE Vendor?
Field Description	Select the vendor for the JRE entered on the previous screen: <ul style="list-style-type: none"> <li>■ Sun</li> <li>■ IBM</li> </ul>
Example	Sun
Notes	



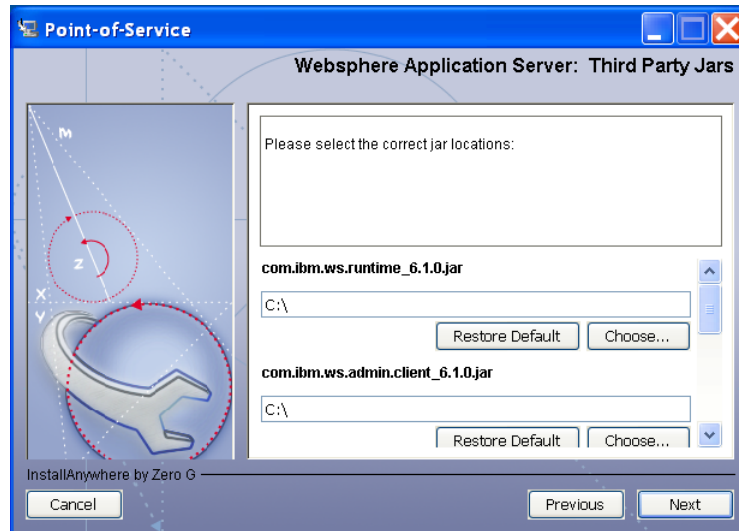
Figure A-12 Application Server Type



This screen is only displayed if **N-Tier Store Server** is selected for the Tier Type. The field on this screen is described in the following table.

Field Title	Which application server would you like to use?
Field Description	<div>Select the application server to be used for the store server.</div> <div><div><div>■</div><div>Oracle Application Server</div></div><div><div>■</div><div>Websphere Application Server</div></div><div><div>■</div><div>Standalone</div></div></div> <div><b>Note:</b> Standalone is intended only for demonstration or development purposes. Do not select Standalone if you are running Point-of-Service on the IBM stack.</div>
Example	Oracle Application Server
Notes	

**Figure A-13 Websphere Application Server: Third Party Jars**



This screen is only displayed if **WebSphere Application Server** is selected for the Application Server Type. The fields on this screen are described in the following tables.

Field Title	com.ibm.ws.runtime_6.1.0.jar
Field Description	Choose the location of the com.ibm.ws.runtime_6.1.0.jar file.
Example	WAS_install/WebSphere/AppServer/plugins/ com.ibm.ws.runtime_6.1.0.jar
Notes	

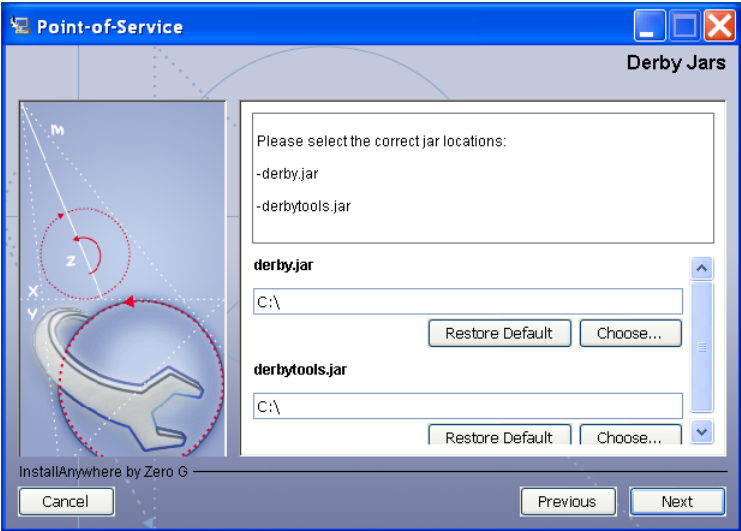
Field Title	com.ibm.ws.admin.client_6.1.0.jar
Field Description	Choose the location of the com.ibm.ws.admin.client_6.1.0.jar file.
Example	WAS_install/WebSphere/AppServer/runtime/ com.ibm.ws.admin.client_6.1.0.jar
Notes	

Field Title	com.ibm.mqjms.jar
Field Description	Choose the location of the com.ibm.mqjms.jar file.
Example	MQ_install/java/lib/com.ibm.mqjms.jar
Notes	

Field Title	dhbcore.jar
Field Description	Choose the location of the dhbcore.jar file.
Example	WAS_install/lib/WMQ/java/lib/dhbcore.jar
Notes	

<b>Field Title</b>	<b>com.ibm.mq.jar</b>
<b>Field Description</b>	Choose the location of the <code>com.ibm.mq.jar</code> file.
<b>Example</b>	<code>WAS_install/lib/WMQ/java/lib/com.ibm.mq.jar</code>
<b>Notes</b>	

**Figure A-14 Derby Jars**

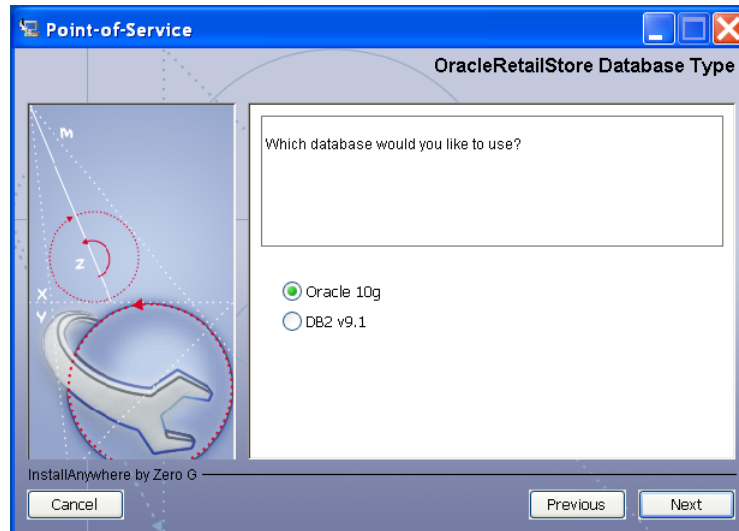


This screen is only displayed if **N-Tier Client** is selected for the Tier Type. The fields on this screen are described in the following tables.

<b>Field Title</b>	<b>derby.jar</b>
<b>Field Description</b>	Choose the location of the <code>derby.jar</code> file.
<b>Example</b>	<code>C:\thirdparty\apache-derby-10.2.2\derby.jar</code>
<b>Notes</b>	

<b>Field Title</b>	<b>derbytools.jar</b>
<b>Field Description</b>	Choose the location of the <code>derbytools.jar</code> file.
<b>Example</b>	<code>C:\thirdparty\apache-derby-10.2.2\derbytools.jar</code>
<b>Notes</b>	

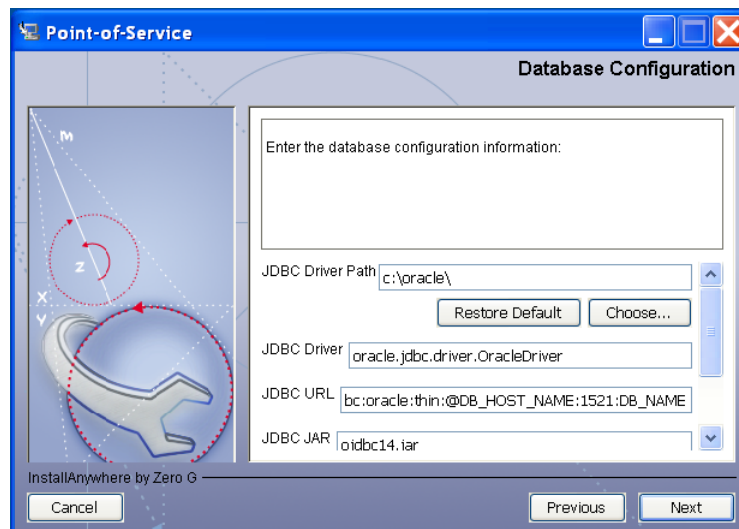
**Figure A–15 OracleRetailStore Database Type**



This screen is only displayed if **N-Tier Store Server** is selected for the Tier Type. The field on this screen is described in the following table.

Field Title	Database Type
Field Description	Choose the database provider that is used for the OracleRetailStore database.
Example	Oracle 10g
Notes	

**Figure A–16 Database Configuration for Oracle 10g**



This screen is only displayed if **N-Tier Store Server** is selected for the Tier Type and **Oracle 10g** is selected for the Database Type. The fields on this screen are described in the following tables.

---

Field Title	JDBC Driver Path
Field Description	Path to the jar containing the database driver.
Example	C:/oracle
Notes	

---

Field Title	JDBC Driver
Field Description	Database driver class name.
Example	oracle.jdbc.driver.OracleDriver
Notes	

---

Field Title	JDBC URL
Field Description	URL used by the Point-of-Service application to access the database schema. For the expected syntax, see <a href="#">Appendix C</a> .
Example	jdbc:oracle:thin:@myhost:1521:mydatabase
Notes	

---

Field Title	JDBC Jar
Field Description	Name of the jar containing the database driver.
Example	ojdbc14.jar
Notes	

---

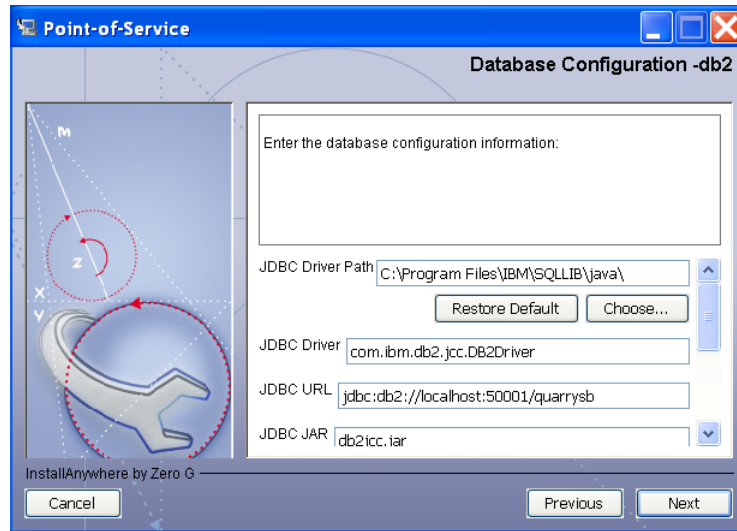
Field Title	Database User Name
Field Description	Database schema user used by the Point-of-Service application.
Example	DBUSER
Notes	

---

Field Title	Database Password
Field Description	Password for the database schema user used by the Point-of-Service application.
Example	DB_PASSWORD
Notes	

---

**Figure A-17 Database Configuration for DB2**



This screen is only displayed if **N-Tier Store Server** is selected for the Tier Type and **DB2** is selected for the Database Type. The fields on this screen are described in the following tables.

Field Title	JDBC Driver Path
Field Description	Path to the jar containing the database driver.
Example	C:\Program Files\IBM\SQLLIB\java\
Notes	

Field Title	JDBC Driver
Field Description	Database driver class name.
Example	com.ibm.db2.jcc.DB2Driver
Notes	

Field Title	JDBC URL
Field Description	URL used by the Point-of-Service application to access the database schema. For the expected syntax, see <a href="#">Appendix C</a> .
Example	jdbc:db2://localhost:500001/quarrysb
Notes	

Field Title	JDBC Jar
Field Description	Path to the jar containing the database driver.
Example	db2jcc.jar
Notes	

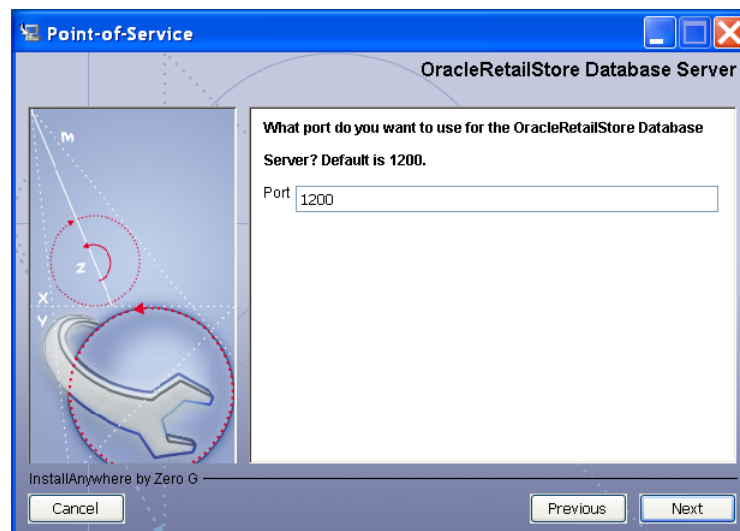
Field Title	JDBC Jar 2
Field Description	Path to the jar containing license information.
Example	db2jcc_license_cisuz.jar
Notes	

Field Title	JDBC Jar 3
Field Description	Path to the jar containing license information.
Example	db2jcc_license_cu.jar
Notes	

Field Title	Database User Name
Field Description	Database schema user used by the Point-of-Service application.
Example	db2admin
Notes	

Field Title	Database Password
Field Description	Password for the database schema user used by the Point-of-Service application.
Example	Passw0rd
Notes	

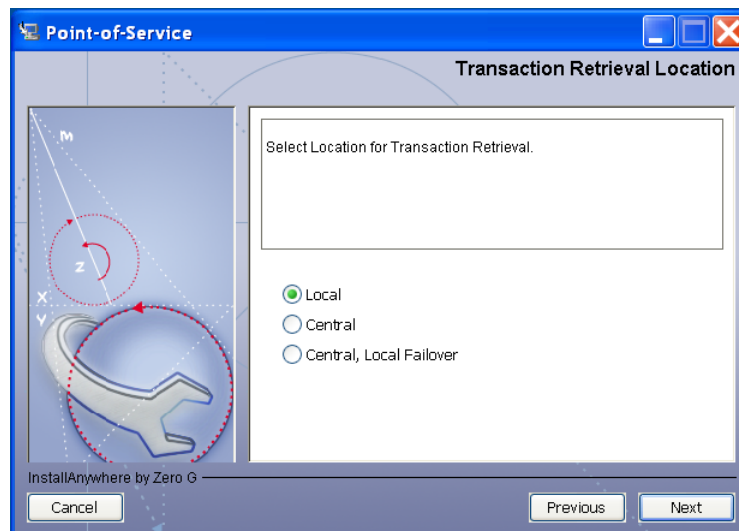
**Figure A-18 OracleRetailStore Database Server**



The field on this screen is described in the following table.

Field Title	Port
Field Description	Port number for connecting to the database server.
Example	1200
Notes	

**Figure A–19 Transaction Retrieval Location**

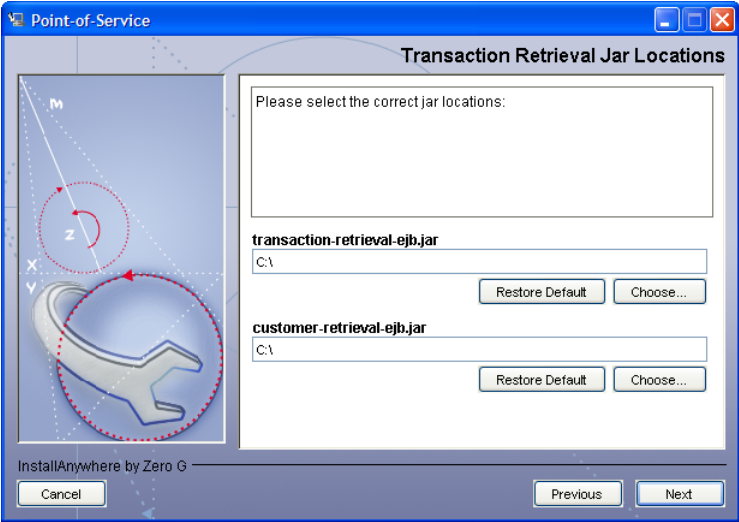


The field on this screen is described in the following table.

Field Title	Transaction retrieval location
Field Description	<p>Choose the location for retrieving transactions.</p> <ul style="list-style-type: none"> <li>■ If transactions should only be retrieved from the store database, choose <b>Local</b>.</li> <li>■ If transactions should only be retrieved from the corporate database, choose <b>Central</b>.</li> <li>■ If transactions should be retrieved from the corporate database, and if not found, then retrieved from the store database, choose <b>Central, Local Failover</b>.</li> </ul> <p>Note: You must choose the same location for both the store server and client installations.</p>
Example	Local
Notes	



Figure A-20 Transaction Retrieval Jar Locations



This screen is only displayed if **Websphere Application Server** is selected for the Application Server Type, **Central** or **Local**, **Central Failover** is selected for the Transaction Retrieval Location, and **N-Tier Store Server** is selected for the Tier Type. The fields on this screen are described in the following tables.

---

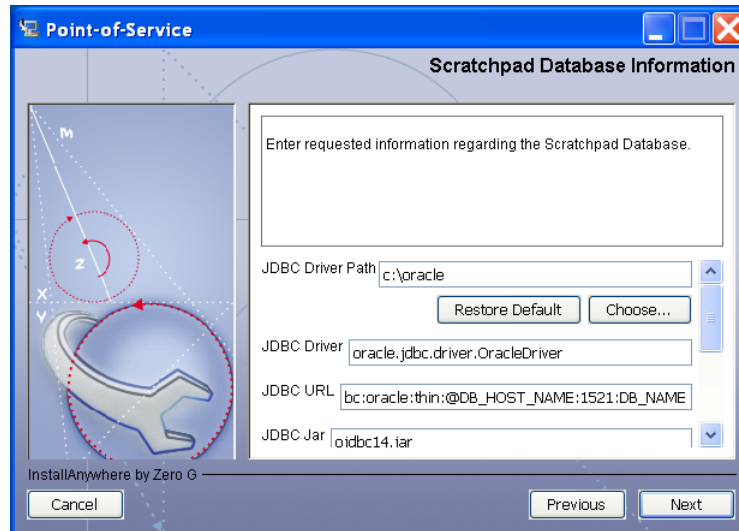
**Note:** These jar files are created during the deployment of Oracle Retail Central Office on WebSphere. These files must be available for the Point-of-Service installation. For additional information, see ["Store Server Configuration"](#) in [Appendix F](#).

---

Field Title	transaction-retrieval-ejb.jar
Field Description	Choose the location of the transaction-retrieval-ejb.jar file.
Example	c:\tmp\orpos-120\transaction-retrieval-ejb.jar
Notes	

Field Title	customer-retrieval-ejb.jar
Field Description	Choose the location of the customer-retrieval-ejb.jar file.
Example	c:\tmp\orpos-120\customer-retrieval-ejb.jar
Notes	

**Figure A-21 Scratchpad Database Information**



This screen is only displayed if **Central** or **Local, Central Failover** is selected for the Transaction Retrieval Location and **N-Tier Store Server** is selected for the Tier Type. The fields on this screen are described in the following tables.

Field Title	JDBC Driver Path
Field Description	Path to the jar containing the database driver.
Example	C:/oracle
Notes	

Field Title	JDBC Driver
Field Description	Database driver class name.
Example	oracle.jdbc.driver.OracleDriver
Notes	

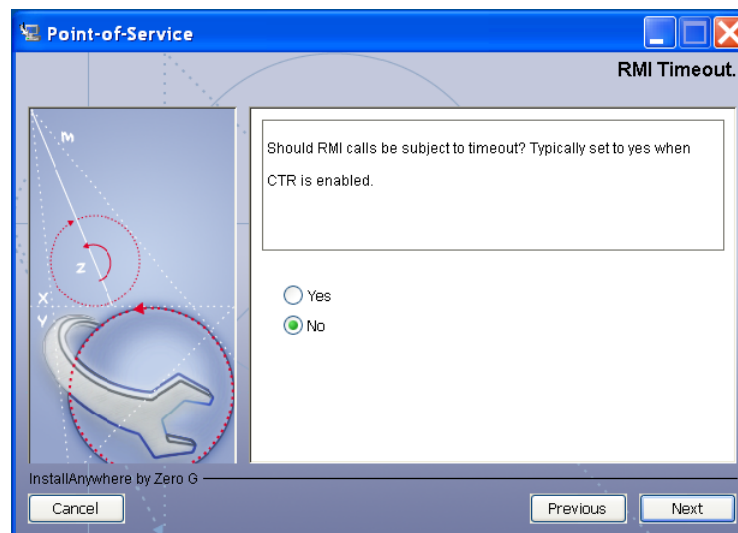
Field Title	JDBC URL
Field Description	URL used by the Point-of-Service application to access the database schema. For the expected syntax, see <a href="#">Appendix C</a> .
Example	jdbc:oracle:thin:@myhost:1521:mydatabase
Notes	

Field Title	JDBC Jar
Field Description	Path to the jar containing the database driver.
Example	ojdbc14.jar
Notes	

Field Title	Database User Name
Field Description	Database schema user used by the Point-of-Service application.
Example	DBUSER
Notes	

Field Title	Database Password
Field Description	Password for the database schema user used by the Point-of-Service application.
Example	DB_PASSWORD
Notes	

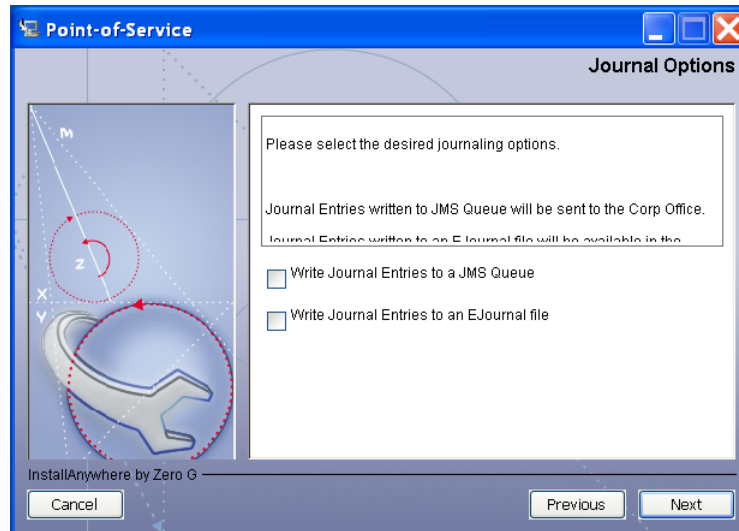
**Figure A–22 RMI Timeout**



This screen is only displayed if **Central** or **Local, Central Failover** is selected for the Transaction Retrieval Location and **N-Tier Client** is selected for the Tier Type. The field on this screen is described in the following table.

Field Title	RMI timeout
Field Description	Choose whether RMI calls are subject to time out. Note: For information on setting the RMI timeout interval, see the Oracle Retail Point-of-Service Operations Guide.
Example	No
Notes	

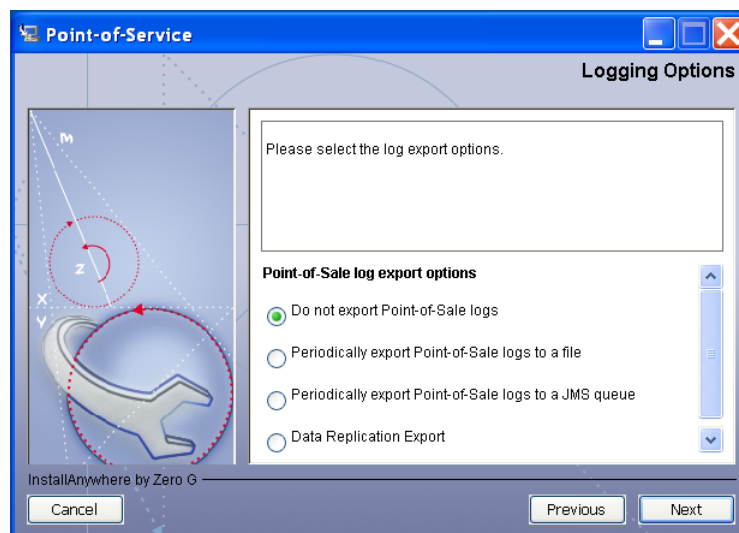
**Figure A-23 Journal Options**



This screen is only displayed if **N-Tier Store Server** is selected for the Tier Type. The field on this screen is described in the following table.

Field Title	Journal options
Field Description	Choose where journal entries will be sent. <ul style="list-style-type: none"> <li>■ If you want the journal entries sent to a the JMS queue, choose <b>Write Journal Entries to a JMS Queue</b>.</li> <li>■ If you want the journal entries written to the EJournal file, choose <b>Write Journal Entries to an EJournal File</b>.</li> </ul>
Example	Write Journal Entries to a JMS Queue
Notes	

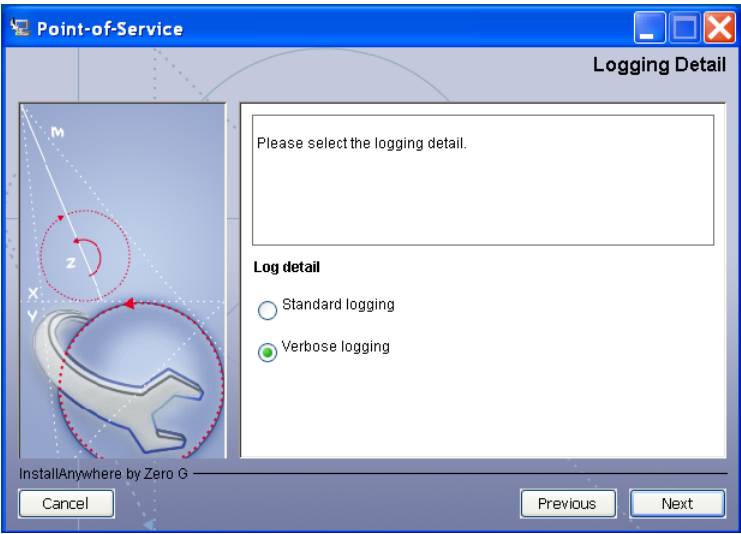
**Figure A-24 Logging Options**



This screen is only displayed if **N-Tier Store Server** is selected for the Tier Type. The field on this screen is described in the following table.

Field Title	Point-of-Sale log export options
Field Description	<p>Choose how the log is to be exported.</p> <ul style="list-style-type: none"><li>■ To not generate any logs, choose <b>Do not export Point-of-Sale logs</b>.</li><li>■ To export the logs to a file, choose <b>Periodically export Point-of-Sale logs to a file</b>.</li><li>■ To export the logs to a JMS queue, choose <b>Periodically export Point-of-Sale logs to a JMS queue</b>.</li><li>■ To have the data pushed from the store to the corporate database using replication, choose <b>Data Replication Export</b>.</li></ul> <p>Note: If you are using Centralized Transaction Retrieval, you must select <b>Data Replication Export</b>.</p>
Example	Periodically export Point-of-Sale logs to a JMS queue
Notes	

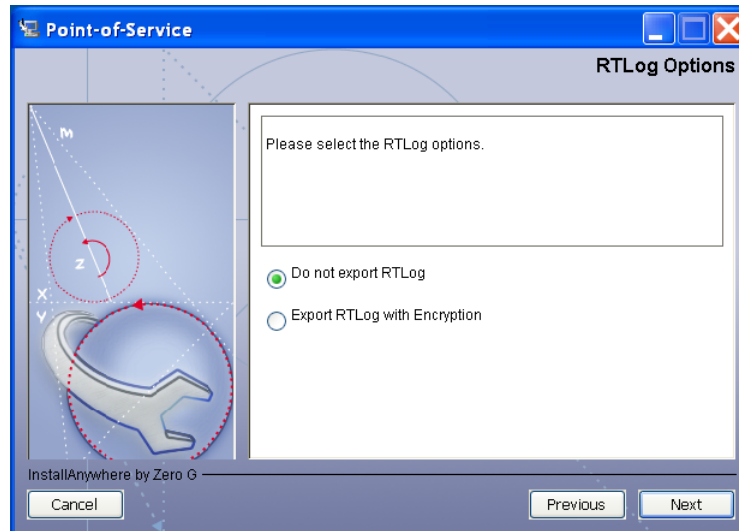
**Figure A–25** *Logging Detail*



The field on this screen is described in the following table.

Field Title	Log detail
Field Description	<p>Choose the level of client logging.</p> <ul style="list-style-type: none"><li>■ To only log some of the messages, choose <b>Standard Logging</b>.</li><li>■ To log all of the messages, choose <b>Verbose Logging</b>.</li></ul>
Example	Standard logging
Notes	

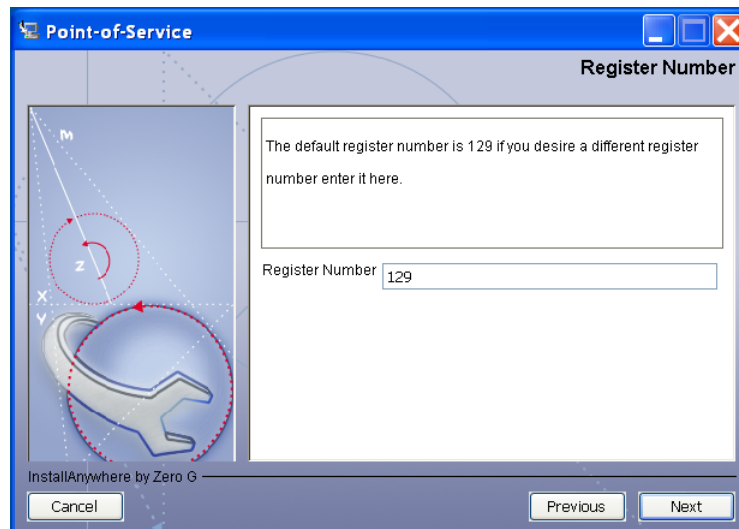
**Figure A–26 RTLog Options**



This screen is only displayed if **N-Tier Store Server** is selected for the Tier Type. The field on this screen is described in the following table.

Field Title	RTLog Export Options
Field Description	Choose how the RTLog is to be exported. <ul style="list-style-type: none"> <li>To not export the log, choose <b>Do not export RTLog</b>.</li> <li>To export the log, choose <b>Export RTLog with Encryption</b>.</li> </ul>
Example	Do not export RTLog
Notes	

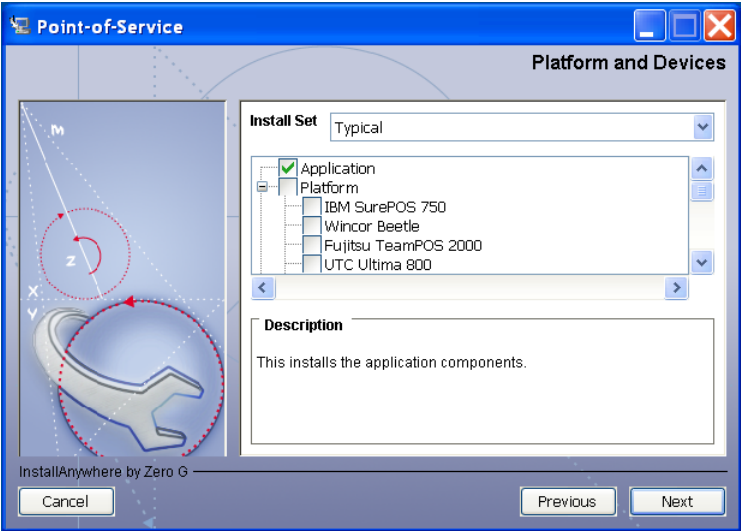
**Figure A–27 Register Number**



This screen is only displayed if **N-Tier Client** is selected for the Tier Type. The field on this screen is described in the following table.

Field Title	Register Number
Field Description	Register number for the client installation.
Example	129
Notes	

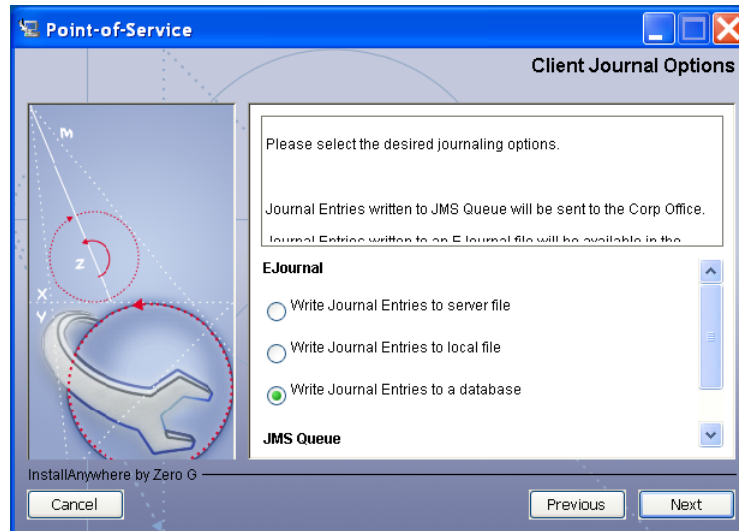
**Figure A-28 Platform and Devices**



The field on this screen is described in the following table.

Field Title	Install Set
Field Description	<p>Choose the install set from the menu. Choose the platforms and devices for the installation.</p> <ul style="list-style-type: none"> <li>For a client install, choose the type of register or machine from the platforms.</li> <li>For a client install with devices, also choose the devices to be attached to the client register.</li> </ul>
Example	Typical
Notes	

**Figure A–29 Client Journal Options**

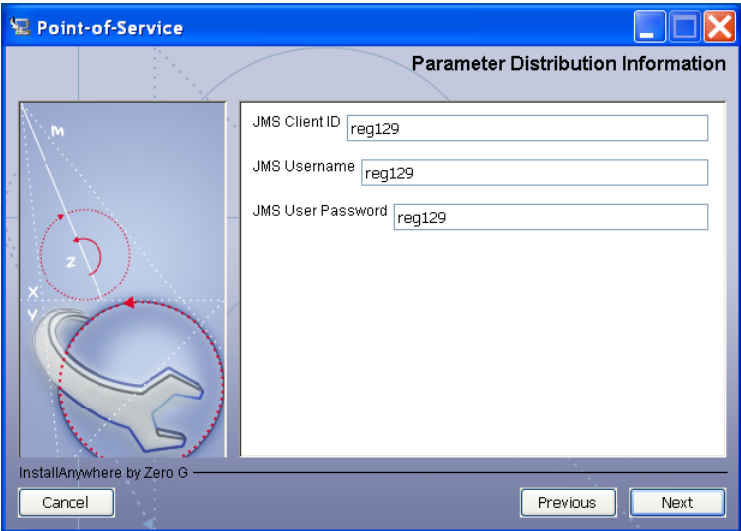


This screen is only displayed if **N-Tier Client** is selected for the Tier Type. The field on this screen is described in the following table.

Field Title	Ejournal
Field Description	<p>Choose where the journal entries are to be written.</p> <ul style="list-style-type: none"> <li>■ To write journal entries to a server file, choose <b>Write Journal Entries to server file</b>.</li> <li>■ To write journal entries to a local file, choose <b>Write Journal Entries to local file</b>.</li> <li>■ To write journal entries to a database, choose <b>Write Journal Entries to a database</b>.</li> <li>■ To put journal entries on a JMS queue, choose <b>Write Journal Entries to a JMS queue</b>.</li> </ul>
Example	Write Journal Entries to a JMS queue
Notes	



Figure A-30 Parameter Distribution Information



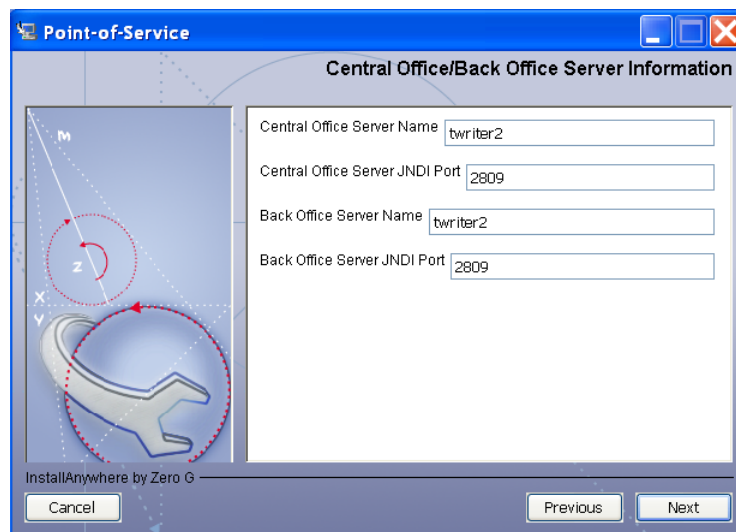
This screen is only displayed if **N-Tier Client** is selected for the Tier Type. The fields on this screen are described in the following tables.

Field Title	JMS Client ID
Field Description	Identifier of the JMS client used for receiving parameter updates.
Example	reg129
	<b>Note:</b> When <b>Websphere Application Server</b> is selected for the Application Server Type, the value of <code>clientID</code> must match the <code>WorkstationID</code> specified in the <code>application.properties</code> file.
Notes	

Field Title	JMS Username
Field Description	Identifier of the JMS user for receiving parameter updates.
Example	oc4jadmin (default for the Oracle stack) reg129 (default for the IBM stack)
	<b>Note:</b> When <b>Websphere Application Server</b> is selected for the Application Server Type, you must create a UNIX user on the host where Back Office is installed and add that user to the <code>mqm</code> group.  On the register, you must also create the <code>mqm</code> group, the UNIX user, and add that user to the <code>mqm</code> group. Copy the encrypted password for this user from the <code>/etc/shadow</code> file on the Back Office host into the corresponding shadow file on the register.  The values for <code>jmsID</code> and <code>jmsPassword</code> specified in the Password Technician definition must match the values for the UNIX user and password.
Notes	

Field Title	JMS Password
Field Description	Password of the JMS user receiving parameter updates.
Example	oc4jadmin (default for the Oracle stack) reg129 (default for the IBM stack)
Notes	

**Figure A–31 Central Office/Back Office Server Information**



To find the JNDI port numbers:

- If **Oracle Application Server** was selected for the Application Server Type, the information is available in `<Oracle Application Server install>/opmn/conf/opmn.xml`. Locate the Central Office or Back Office instance. The port number is defined in the `port id="rmi"` entry.
- If **WebSphere Application Server** was selected for the Application Server Type, the information is available in `<WebSphere Application Server install>/profiles/<profile name>/logs/About this profile.txt`. `BOOTSTRAP_ADDRESS` is the port number.

The fields on this screen are described in the following tables.

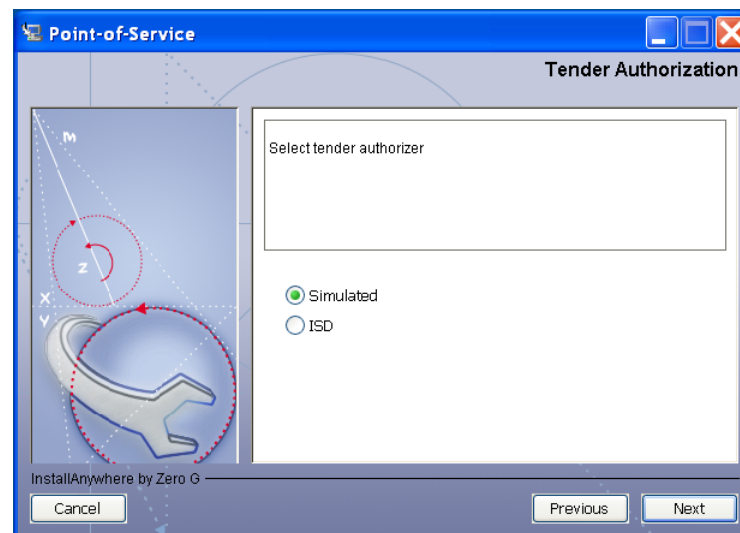
Field Title	Central Office Server Name
Field Description	Enter the host name for the Central Office application.
Example	twriter2
Notes	

Field Title	Central Office Server JNDI Port
Field Description	Enter the port number for the Central Office application.
Example	2809
Notes	

Field Title	Back Office Server Name
Field Description	Enter the host name for the Back Office application.
Example	twriter2
Notes	

Field Title	Back Office Server JNDI Port
Field Description	Enter the port number for the Back Office application.
Example	2809
Notes	

**Figure A-32 Tender Authorization**



The field on this screen is described in the following table.

Field Title	Select Tender Authorizer
Field Description	<p>Choose where tender authorizations are sent.</p> <ul style="list-style-type: none"> <li>■ If approvals do not leave the store server and are based on values and certain numbers, choose <b>Simulated</b>.</li> <li>■ If approvals are sent to a third party system to approve the authorizations, choose <b>ISD</b>.</li> </ul> <p>Note: Demo installations should use the Simulated option.</p>
Example	Simulated
Notes	

**Figure A-33 Enter Data for ISD Tender Authorizer**

Point-of-Service

Enter Data For ISD Tender Authorizer

Please enter the following for the ISD Tender Authorizer

Host Name

Host Port

Merchant Number

InstallAnywhere by Zero G

Cancel Previous Next

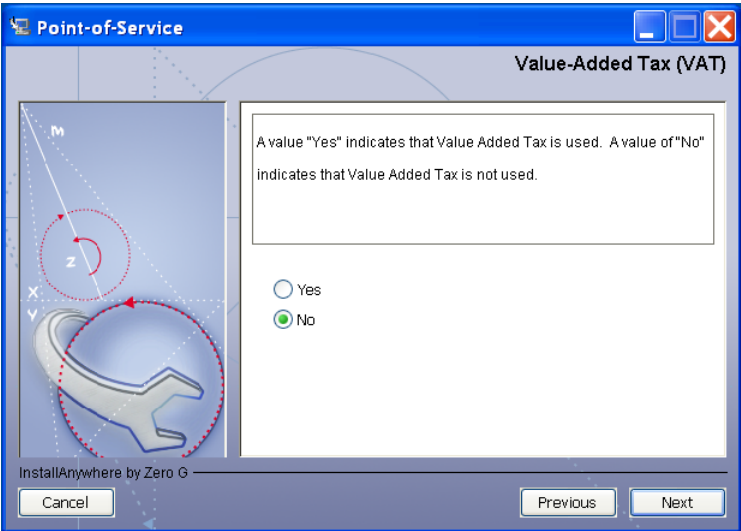
This screen is only displayed if **ISD** is selected for the Tender Authorization. The fields on this screen are described in the following tables.

Field Title	Host Name
Field Description	Host name of the tender authorizer.
Example	www.isdwhq.com
Notes	

Field Title	Host Port
Field Description	Port number used for the communication between the store server and the tender authorizer.
Example	15713
Notes	

Field Title	Merchant Number
Field Description	Number used by the tender authorizer to identify the merchant that requested the authorization.
Example	0001
Notes	

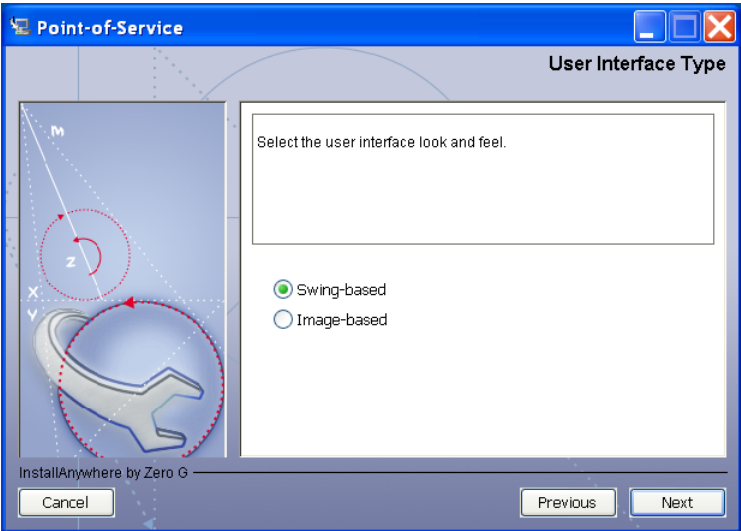
Figure A-34 Value-Added Tax (VAT)



The field on this screen is described in the following table.

Field Title	Value-Added Tax
Field Description	Choose whether Value-Added Tax is used.
Example	Yes
Notes	

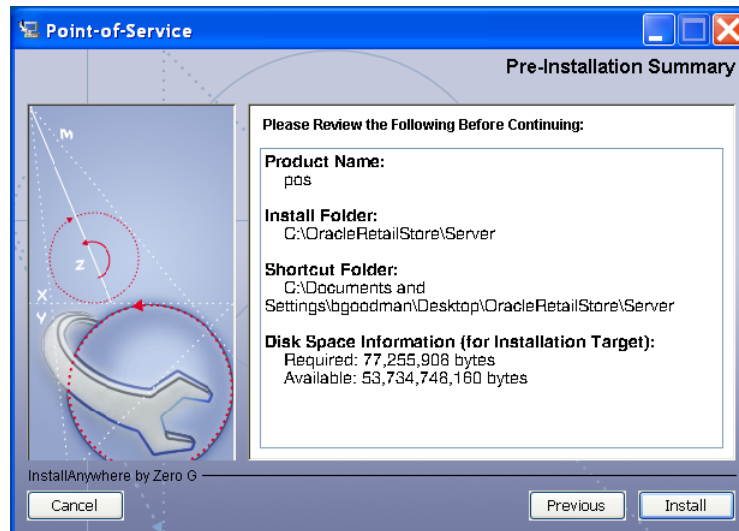
Figure A-35 User Interface Type



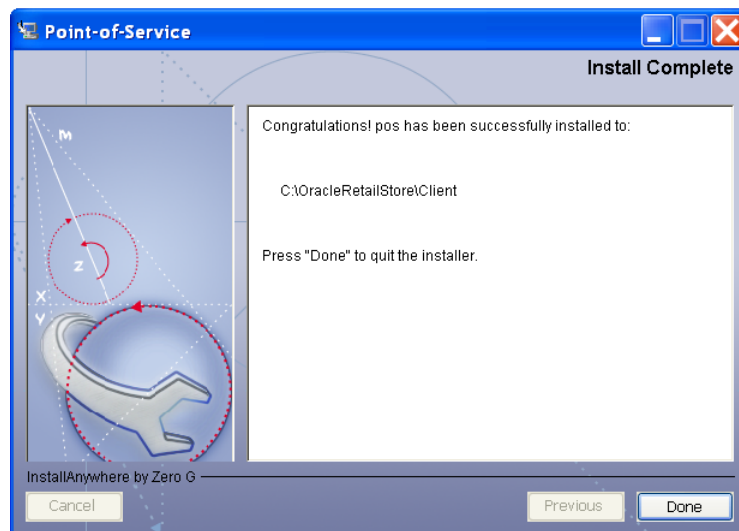
This screen is only displayed if **N-Tier Client** is selected for the Tier Type. The field on this screen is described in the following table.

Field Title	User Interface Type
Field Description	Choose the user interface look and feel. <ul style="list-style-type: none"> <li>To use a standard swing interface, choose <b>Swing-based</b>.</li> <li>To use custom images for buttons and other graphics, choose <b>Image-based</b>.</li> </ul>
Example	Swing-based
Notes	

**Figure A–36 Pre-Installation Summary**



**Figure A–37 Install Complete**



---

## Appendix: Installer Silent Mode

In addition to the GUI interface of the Point-of-Service installer, there is a silent mode that can be run. This mode is useful if you wish to run a repeat installation without reentering the settings you provided in the previous installation.

During installation, the `installvariables.properties` file is created with the settings that were provided during installation. The contents of this file are used as input when installing in silent mode.

To run the installer in silent mode, follow these instructions:

1. Locate the properties file at `<POS_INSTALL_DIRECTORY>/pos/UninstallerData/installvariables.properties`.
2. Copy the file to a different directory.
3. Edit the copy of the `installvariables.properties` file to use the settings that you want. You must add the following statement in order for the silent install to work:

```
INSTALL_UI=silent
```

---

**Note:** Be certain that the statement you add matches the case shown here exactly.

---

4. Run the installer.

```
<INSTALL_DIR>/posinst.bin -f <updated properties file>
```





---

## Appendix: URL Reference

Both the database schema and application installers for the Point-of-Service product will ask for several different URLs. These include the following.

### JDBC URL for a Database

Used by the Java application and by the installer to connect to the database.

Syntax: `jdbc:oracle:thin:@<host>:<port>:<sid>`

- `<host>`: hostname of the database server
- `<port>`: database listener port
- `<sid>`: system identifier for the database

For example, `jdbc:oracle:thin:@myhost:1521:mysid`



---

## Appendix: Common Installation Errors

This appendix describes some common errors encountered during installation of Point-of-Service.

### "Pos installer finished with errors"

If you see this error message, there could be some settings incorrectly set or problems with the installer itself. For more information, check the  
<POS\_install\_directory>/pos/logs/installer\_log.txt file.

### "Dispatcher.main, Exception: java.security.AccessControlException: access denied (java.util.PropertyPermission \* read,write)"

#### Symptom:

The application dies when starting up:

```
[java] Dispatcher.main, Exception: java.security.AccessControlException: access
denied (java.util.PropertyPermission * read,write)
[java] java.security.AccessControlException: access denied
(java.util.PropertyPermission * read,write)
[java]     at java.security.AccessControlContext.checkPermission(Unknown
Source)
[java]     at java.security.AccessController.checkPermission(Unknown Source)
[java]     at java.lang.SecurityManager.checkPermission(Unknown Source)
[java]     at java.lang.SecurityManager.checkPropertiesAccess(Unknown Source)
[java]     at java.lang.System.getProperties(Unknown Source)
[java]     at
com.extendyourstore.foundation.tour.conduit.Dispatcher.<init>(Dispatcher.java:461)
[java]     at
com.extendyourstore.foundation.tour.conduit.Dispatcher.getDispatcher(Dispatcher.ja
va:1301)
[java]     at
com.extendyourstore.foundation.tour.conduit.Dispatcher.main(Dispatcher.java:2439)
[java]     at
com.extendyourstore.foundation.config.TierLoader.main(TierLoader.java:359)
```

#### Solution:

This error usually occurs because the JRE that you are pointing to does not contain the updated java.security and java.policy files.

## "java.lang.NullPointerException"

### Symptom:

The application dies when starting up. Check the `<POS_install_directory>/pos/logs/installer_log.txt` file. In the log file, search for **Database 'offlinedb' not found**.

```
ERROR 2007-07-29 15:54:49,608 4938
```

```
(main:com.extendyourstore.foundation.manager.data.JdbcDataConnection):
```

```
[com.extendyourstore.foundation.manager.data.JdbcDataConnection.logSQLException  
(JdbcDataConnection.java:1355)] Get Connection failed :Database 'offlinedb' not  
found.
```

### Solution:

This error occurs the first time the client is started after it is installed. The server was unable to establish a connection to the database. This prevented the offlinedb database from being created.

This error usually occurs because incorrect information was entered on the Database Configuration screen during the install. Reinstall the server with the correct database configuration information. Check that the IDDI folder was created for the server in `<POS_install_directory>/pos/bin`.

---

## Appendix: Troubleshooting Problems on the Oracle Stack

This appendix contains information that may be useful if you encounter errors running Point-of-Service for the first time after an install.

The configuration steps enable Point-of-Service to communicate with Back Office and Central Office in order to receive parameter updates and to send EJournal and POSLogs up to Central Office. If you have problems, you may want to ensure the steps were successfully completed by the installer.

### jndi.properties File Name

On the Central Office/Back Office Server Information screen, you enter the host name for the Central Office server. In the `<POS_install_directory>\pos\config` directory, there is a `jndi.properties` file for Central Office. When this file is created during installation, the name of the file includes the host name you entered for the Central Office server.

For example, if you enter `centraloffice` for the host name, the name of the created file is `centraloffice.jndi.properties`.

### Performing a Manual Integration

The following steps need to be completed for Point-of-Service to communicate with Back Office and Central Office. These steps enable Point-of-Service to receive parameter updates and to send EJournal and POSLogs up to Central Office.

### Client Configuration

To configure the client:

1. Verify the following class path entries in the

`<POS_install_directory>\pos\bin\posenv.bat` file.

```
SET CLASSPATH=%CLASSPATH%;%_360COMMON_PATH%\common\build\oc4j-internal.jar
SET CLASSPATH=%CLASSPATH%;%_360COMMON_PATH%\common\build\javax77.jar
SET CLASSPATH=%CLASSPATH%;%_360COMMON_PATH%\common\build\jta.jar
SET CLASSPATH=%CLASSPATH%;%_360COMMON_PATH%\common\build\jms.jar
SET CLASSPATH=%CLASSPATH%;%_360COMMON_PATH%\common\build\optic.jar
```

2. Change the `<POS_install_directory>\pos\bin\jndi.properties` file to point to Back Office.

```
java.naming.provider.url=
ormi://<Back Office Server Name>:<Back Office Port Number>
java.naming.factory.initial=com.evermind.server.rmi.RMIInitialContextFactory
java.naming.security.principal=oc4jadmin
java.naming.security.credentials=oc4jadmin
```

3. Add the Back Office queue and topic connection factory entries to the `<POS_install_directory>\pos\bin\comm.properties` file.

```
comm.jms.topicConnectionFactory.name=jms/ApplicationTCF
comm.jms.queueConnectionFactory.name=jms/ApplicationQCF
```

4. Edit `ParameterTechnician` in the `<POS_install_directory>\pos\config\conduit\ClientConduit.xml` file.

```
<TECHNICIAN name="ParameterTechnician" class = "ParameterTechnician"
    package = "com.extendyourstore.foundation.manager.parameter"
    export = "Y" >
    <PROPERTY propname="paramScript"

propvalue="classpath://config/manager/PosParameterTechnician.xml"/>
    <PROPERTY propname="JmsProviderTopicName"

propvalue="jms/parameters"/>
    <PROPERTY propname="listenForUpdates" propvalue="Y"/>
    <PROPERTY propname="clientID" propvalue="reg129"/>
    <PROPERTY propname="jmsID" propvalue="oc4jadmin"/>
    <PROPERTY propname="jmsPassword" propvalue="oc4jadmin"/>
</TECHNICIAN>
```

## Store Server Configuration

To configure the store server:

1. Verify the following class path entries in the `<POS_install_directory>\pos\bin\posenv.bat` file.

```
SET CLASSPATH=%CLASSPATH%;%_360COMMON_PATH%\common\build\oc4j-internal.jar
SET CLASSPATH=%CLASSPATH%;%_360COMMON_PATH%\common\build\javax77.jar
SET CLASSPATH=%CLASSPATH%;%_360COMMON_PATH%\common\build\jta.jar
SET CLASSPATH=%CLASSPATH%;%_360COMMON_PATH%\common\build\jms.jar
SET CLASSPATH=%CLASSPATH%;%_360COMMON_PATH%\common\build\optic.jar
```

2. Change the `<POS_install_directory>\pos\config\backoffice.jndi.properties` and `<POS_install_directory>\pos\bin\jndi.properties` files to point to Back Office.

```
java.naming.provider.url=
ormi://<Back Office Server Name>:<Back Office Port Number>
java.naming.factory.initial=com.evermind.server.rmi.RMIInitialContextFactory
java.naming.security.principal=oc4jadmin
java.naming.security.credentials=oc4jadmin
```

3. Change the `<POS_install_directory>\pos\config\  
<Central Office Server Name>.jndi.properties` file to point to Central Office.

- This creates access to the POSLog and EJournalImport queues only:

```
java.naming.provider.url=
    ormi://<Central Office Server Name>:<Central Office Port Number>
java.naming.factory.initial=
    com.evermind.server.rmi.RMIInitialContextFactory
java.naming.security.principal=oc4jadmin
java.naming.security.credentials=oc4jadmin
```

- To enable Centralized Transaction Retrieval to access the EJBs and POSLog and EJournalImport queues:

```
java.naming.provider.url=ormi:
    //<Central Office host name>:<Central Office Port Number>/CentralOffice
java.naming.factory.initial=
    com.evermind.server.rmi.RMIInitialContextFactory
java.naming.security.principal=pos
java.naming.security.credentials=pos
```

4. Add the Back Office and Central Office queue and topic connection factory entries to the

`<POS_install_directory>\pos\bin\comm.properties` file.

```
comm.jms.topicConnectionFactory.name=jms/ApplicationTCF
comm.jms.queueConnectionFactory.name=jms/ApplicationQCF
comm.jms.topicConnectionFactory.name.<Central Office Server Name>=
   .jms/ApplicationTCF
comm.jms.queueConnectionFactory.name.<Central Office Server Name>=
   .jms/ApplicationQCF
```

5. Delete the `comm.properties` file from  
`<POS_install_directory>\pos\config`.
6. Edit the log export configuration in the `<POS_install_directory>  
\pos\config\conduit\StoreServerConduit.xml` file by changing only one of the following sections.

- To use data replication, edit the `DataReplicationDaemonTechnician` section.

```
<TECHNICIAN name="DataReplicationDaemonTechnician"
    class="DataReplicationDaemonTechnician"
    package="com.extendyourstore.domain.manager.datareplication"
    export="Y">
    <PROPERTY propname="daemonClassName"

propvalue="com.extendyourstore.domain.manager.datareplication.DataReplicati
onExportDaemonThread"/>
    <PROPERTY propname="sleepInterval"
        propvalue="15"/>
    <PROPERTY propname="logWriterClass"

propvalue="com.extendyourstore.domain.manager.datareplication.JMSDataReplic
ationWriter"/>

    <PROPERTY propname="extractorConfigurationFileName"
        propvalue="config/ReplicationExportConfig.xml"/>
    <PROPERTY propname="queueHostName"
```

```

        propvalue="<Central Office Server Name>" />
    <PROPERTY propname="maximumTransactionsToExport"
        propvalue="2" />
    <PROPERTY propname="queueName"
        propvalue="jms/POSLog" />
</TECHNICIAN>

```

- To use the POSLog, edit the PosLogDaemonTechnician section. Edit the version that exports to a JMS queue.

```

TECHNICIAN name="POSLogDaemonTechnician"
    class="POSLogDaemonTechnician"
    package="com.extendyourstore.domain.manager.export"
    export="Y">
    <PROPERTY propname="daemonClassName"

propvalue="com.extendyourstore.domain.manager.export.POSLogExportDaemonThre
ad" />
    <PROPERTY propname="sleepInterval"
        propvalue="5" />
    <PROPERTY propname="logWriterClass"

propvalue="com.extendyourstore.domain.ixretail.log.POSLogWriter" />
    <PROPERTY propname="queueHostName"
        propvalue="<Central Office Server Name>" />
    <PROPERTY propname="queueName"
        propvalue="jms/POSLog" />
    <PROPERTY propname="logWriterClass"

propvalue="com.extendyourstore.domain.ixretail.log.JMSPOSLogWriter" />
</TECHNICIAN>

```

The queueHostName must be changed to *<Central Office Server Name>* as shown in this example. This will allow the POSLog Export Daemon to use the *<POS\_install\_directory>\pos\config\<Central Office Server Name>.jndi.properties* file. Delete the *<POS\_install\_directory>\pos\config\<Central Office Server Name>.jndi.properties* file.

7. Edit JMSJournalTechnician in the *<POS\_install\_directory>\pos\config\conduit\StoreServerConduit.xml* file.

```

<TECHNICIAN name="JMSJournalTechnician"
    class="JMSJournalTechnician"
    package="com.extendyourstore.foundation.manager.journal"
    export="Y">
    <PROPERTY propname="journalFormatterClass"

propvalue="com.extendyourstore.pos.manager.journal.POSJournalFormatter" />
    <PROPERTY propname="journalHandlerClass"

propvalue="com.extendyourstore.pos.manager.journal.POSJMSJournalHandler" />
    <PROPERTY propname="queueName" propvalue="jms/EJournal" />
    <PROPERTY propname="consolePrintable" propvalue="N" />
</TECHNICIAN>

```



**8. Edit MessageCenterDaemonTechnician in the****<POS\_install\_directory>****\pos\config\conduit\StoreServerConduit.xml file.**

```

<TECHNICIAN name="MessageCenterDaemonTechnician"
    class="MessageCenterDaemonTechnician"
    package="com.extendyourstore.domain.manager.messagecenter"
    export="Y">
    <PROPERTY propname="daemonClassName"

propvalue="com.extendyourstore.domain.manager.messagecenter.MessageCenterDaemon
Thread"/>
    <PROPERTY propname="senderQueueName"
        propvalue="jms/EJournalImport"/>
    <PROPERTY propname="senderBrokerName"
        propvalue="<Central Office Server Name>"/>
    <PROPERTY propname="receiverQueueName"
        propvalue="jms/EJournal"/>
    <PROPERTY propname="receiverBrokerName"
        propvalue=" "/>
</TECHNICIAN>

```

---

**Note:** The value set for the queueName property for the JMSJournalTechnician and the value set for the receiverQueueName property for the MessageCenterDaemonTechnician must be the same.

---



---

## Appendix: Troubleshooting Problems on the IBM Stack

This appendix contains information that may be useful if you encounter errors running Point-of-Service for the first time after an install.

The configuration steps enable Point-of-Service to communicate with Back Office and Central Office in order to receive parameter updates and to send EJournal and POSLogs up to Central Office. If you have problems, you may want to ensure the steps were successfully completed by the installer.

### jndi.properties File Name

On the Central Office/Back Office Server Information screen, you enter the host name for the Central Office server. In the `<POS_install_directory>/pos/config` directory, there is a `jndi.properties` file for Central Office. When this file is created during installation, the name of the file includes the host name you entered for the Central Office server.

For example, if you enter `centraloffice` for the host name, the name of the created file is `centraloffice.jndi.properties`.

### Performing a Manual Integration

The following steps need to be completed for Point-of-Service to communicate with Back Office and Central Office. These steps enable Point-of-Service to receive parameter updates and to send EJournal and POSLogs up to Central Office.

### Client Configuration

To configure the client:

1. If the host names of the Back Office and Central Office servers are not available on a DNS server, update the `/etc/hosts` file with the IP address and host name where Point-of-Service is installed. This step is required for JMS messaging to work properly.
2. Remove the following class path entries from the `<POS_install_directory>/pos/bin/posenv.sh` file.

```
SET CLASSPATH=$CLASSPATH:$_360COMMON_PATH/common/build/oc4j-internal.jar
SET CLASSPATH=$CLASSPATH:$_360COMMON_PATH/common/build/javax77.jar
SET CLASSPATH=$CLASSPATH:$_360COMMON_PATH/common/build/jms.jar
SET CLASSPATH=$CLASSPATH:$_360COMMON_PATH/common/build/optic.jar
SET CLASSPATH=$CLASSPATH:jboss-4.0.2/lib/jboss-common.jar
```

```
SET CLASSPATH=$CLASSPATH:jboss-4.0.2/client/jboss-j2ee.jar
SET CLASSPATH=$CLASSPATH:jboss-4.0.2/client/jbossmq-client.jar
SET CLASSPATH=$CLASSPATH:jboss-4.0.2/client/jnp-client.jar
```

3. Add the following class path entries to the

<POS\_install\_directory>/pos/bin/posenv.sh file.

```
CP=$CP:<WAS_INSTALL_DIR>/WebSphere/AppServer/plugins/
com.ibm.ws.runtime_6.1.0.jar
CP=$CP:<WAS_INSTALL_DIR>/WebSphere/AppServer/runtimes/
com.ibm.ws.admin.client_6.1.0.jar
CP=$CP:<MQ_INSTALL_DIR>/java/lib/jms.jar
CP=$CP:<WAS_INSTALL_DIR>/lib/WMQ/java/lib/com.ibm.mqjms.jar
CP=$CP:<WAS_INSTALL_DIR>/lib/WMQ/java/lib/com.ibm.mq.jar
CP=$CP:<WAS_INSTALL_DIR>/lib/WMQ/java/lib/dhbc.jar
```

4. Change the <POS\_install\_directory>/pos/bin/jndi.properties file to point to Back Office.

```
java.naming.provider.url=
corbaloc:iiop:<Back Office Server Name>:<Back Office Port Number>
```

5. Add the Back Office queue and topic connection factory entries to the <POS\_install\_directory>/pos/bin/comm.properties file.

```
comm.jms.topicConnectionFactory.name=jms/ApplicationTCF
comm.jms.queueConnectionFactory.name=jms/ApplicationQCF
```

6. Delete the comm.properties file from

<POS\_install\_directory>/pos/config.

7. Edit ParameterTechnician in the <POS\_install\_directory>/pos/config/conduit/ClientConduit.xml file.

```
<TECHNICIAN name="ParameterTechnician" class = "ParameterTechnician"
    package = "com.extendyourstore.foundation.manager.parameter"
    export = "Y" >
    <PROPERTY propname="paramScript"
propvalue="classpath://config/manager/PosParameterTechnician.xml"/>
    <PROPERTY propname="JmsProviderTopicName"
propvalue="jms/parameters"/>
    <PROPERTY propname="listenForUpdates" propvalue="Y"/>
    <PROPERTY propname="clientId" propvalue="reg129"/>
    <PROPERTY propname="jmsID" propvalue="<UNIX user>"/>
    <PROPERTY propname="jmsPassword" propvalue="<password>"/>
</TECHNICIAN>
```

---

---

**Note:** The value of `clientId` must match the WorkstationID specified in the `application.properties` file.

---

---

---

---

**Note:** You must create a UNIX user on the host where Back Office is installed and add that user to the `mqm` group. The values for `jmsID` and `jmsPassword` specified in the Password Technician definition must match the values for the UNIX user and password.

---

---

## Store Server Configuration

To configure the store server:

1. Update the `/etc/hosts` file with the IP address and host name where Point-of-Service is installed. This step is required for JMS messaging to work properly.
2. Update the `/etc/group` file with the user ID that will be used to run the store server. Add that user ID to the `mqm` group. The user ID must be part of the `mqm` group in order to use JMS.
3. Remove the following class path entries from the `<POS_install_directory>/pos/bin/posenv.sh` file.
 

```
SET CLASSPATH=$CLASSPATH:$_360COMMON_PATH\common\build\oc4j-internal.jar
SET CLASSPATH=$CLASSPATH:$_360COMMON_PATH\common\build\javax77.jar
SET CLASSPATH=$CLASSPATH:$_360COMMON_PATH\common\build\jms.jar
SET CLASSPATH=$CLASSPATH:$_360COMMON_PATH\common\build\optic.jar
SET CLASSPATH=$CLASSPATH:jboss-4.0.2/lib/jboss-common.jar
SET CLASSPATH=$CLASSPATH:jboss-4.0.2/client/jboss-j2ee.jar
SET CLASSPATH=$CLASSPATH:jboss-4.0.2/client/jbossmq-client.jar
SET CLASSPATH=$CLASSPATH:jboss-4.0.2/client/jnp-client.jar
```
4. Add the following class path entries to the `<POS_install_directory>/pos/bin/posenv.sh` file.
 

```
CP=$CP:<WAS_INSTALL_DIR>/AppServer/plugins/com.ibm.ws.runtime_6.1.0.jar
CP=$CP:<WAS_INSTALL_DIR>/AppServer/runtimes/com.ibm.ws.admin.client_6.1.0.jar
CP=$CP:<MQ_INSTALL_DIR>/java/lib/jms.jar
CP=$CP:<WAS_INSTALL_DIR>/lib/WMQ/java/lib/com.ibm.mqjms.jar
CP=$CP:<WAS_INSTALL_DIR>/lib/WMQ/java/lib/com.ibm.mq.jar
CP=$CP:<WAS_INSTALL_DIR>/lib/WMQ/java/lib/dhbc.jar
```
5. Change the `<POS_install_directory>/pos/config/backoffice.jndi.properties` and `<POS_install_directory>/pos/bin/jndi.properties` files to point to Back Office.
 

```
java.naming.provider.url=
corbaloc:iiop:<Back Office Server Name>:<Back Office Port Number>
```
6. To use Centralized Transaction Retrieval, there are jar files that must be copied into the Point-of-Service directory.

---

**Note:** Oracle Retail Central Office must be installed and deployed on WebSphere before these jar files can be copied into the Point-of-Service directory. These files are created during the deployment.

---

Copy the following jar files to `<POS_install_directory>/360common/lib`:

- `<WAS_INSTALL_DIR>/profiles/<AppSrvNN>/installedApps/<hostnameNodeNNCell>/CentralOffice.ear/transaction-retrieval-ejb.jar`
- `<WAS_INSTALL_DIR>/profiles/<AppSrvNN>/installedApps/<hostnameNodeNNCell>/CentralOffice.ear/customer-retrieval-ejb.jar`

7. Change the `<POS_install_directory>`  
`/pos/config/centraloffice.jndi.properties` file to point to Central Office. This creates access to the POSLog and EJJournalImport queues and enables Centralized Transaction Retrieval to access the EJBs and POSLog and EJJournalImport queues.

```
java.naming.provider.url=  
corbaloc:iiop:<Central Office Server Name>:<Central Office Port Number>
```

8. Add the Back Office and Central Office queue and topic connection factory entries to the `<POS_install_directory>/pos/bin/comm.properties` file.

```
comm.jms.topicConnectionFactory.name=jms/ApplicationTCF  
comm.jms.queueConnectionFactory.name=jms/ApplicationQCF  
comm.jms.topicConnectionFactory.name.<Central Office Server Name>=  
jms/ApplicationTCF  
comm.jms.queueConnectionFactory.name.<Central Office Server Name>=  
jms/ApplicationQCF
```

9. Delete the `comm.properties` file from  
`<POS_install_directory>/pos/config`.
10. Edit the log export configuration in the `<POS_install_directory>`  
`/pos/config/conduit/StoreServerConduit.xml` file by changing only one of the following sections.

- To use data replication, edit the `DataReplicationDaemonTechnician` section.

```
<TECHNICIAN name="DataReplicationDaemonTechnician"  
    class="DataReplicationDaemonTechnician"  
    package="com.extendyourstore.domain.manager.datareplication"  
    export="Y">  
    <PROPERTY propname="daemonClassName"  
propvalue="com.extendyourstore.domain.manager.datareplication.DataReplicati  
onExportDaemonThread" />  
    <PROPERTY propname="sleepInterval"  
propvalue="50" />  
    <PROPERTY propname="logWriterClass"  
propvalue="com.extendyourstore.domain.manager.datareplication.JMSDataReplic  
ationWriter" />  
    <PROPERTY propname="extractorConfigurationFileName"  
propvalue="config/ReplicationExportConfig.xml" />  
    <PROPERTY propname="queueHostName"  
propvalue="<Central Office Server Name>" />  
    <PROPERTY propname="maximumTransactionsToExport"  
propvalue="2" />  
    <PROPERTY propname="queueName"  
propvalue="jms/POSLog" />  
</TECHNICIAN>
```

- To use the POSLog, edit the `PosLogDaemonTechnician` section. Edit the version that exports to a JMS queue.

```
TECHNICIAN name="PosLogDaemonTechnician"  
    class="PosLogDaemonTechnician"  
    package="com.extendyourstore.domain.manager.export"  
    export="Y">  
    <PROPERTY propname="daemonClassName"  
propvalue="com.extendyourstore.domain.manager.export.PosLogExportDaemonThre  
ad" />  
    <PROPERTY propname="sleepInterval"
```

```

        propvalue="60"/>
        <PROPERTY propname="logWriterClass"
propvalue="com.extendyourstore.domain.ixretail.log.POSLogWriter"/>
        <PROPERTY propname="queueHostName"
        propvalue="<Central Office Server Name>"/>
        <PROPERTY propname="queueName"
        propvalue="jms/POSLog"/>
        <PROPERTY propname="logWriterClass"
propvalue="com.extendyourstore.domain.ixretail.log.JMSPOSLogWriter"/>
    </TECHNICIAN>

```

11. Edit JMSJournalTechnician in the <POS\_install\_directory>  
/pos/config/conduit/StoreServerConduit.xml file.

```

<TECHNICIAN name="JMSJournalTechnician"
    class="JMSJournalTechnician"
    package="com.extendyourstore.foundation.manager.journal"
    export="Y">
    <PROPERTY propname="journalFormatterClass"
propvalue="com.extendyourstore.pos.manager.journal.POSJournalFormatter"/>
    <PROPERTY propname="journalHandlerClass"
propvalue="com.extendyourstore.pos.manager.journal.POSJMSJournalHandler"/>
    <PROPERTY propname="queueName" propvalue="jms/EJournal"/>
    <PROPERTY propname="consolePrintable" propvalue="N"/>
</TECHNICIAN>

```

12. Edit MessageCenterDaemonTechnician in the <POS\_install\_directory>  
/pos/config/conduit/StoreServerConduit.xml file.

```

<TECHNICIAN name="MessageCenterDaemonTechnician"
    class="MessageCenterDaemonTechnician"
    package="com.extendyourstore.domain.manager.messagecenter"
    export="Y">
    <PROPERTY propname="daemonClassName"
propvalue="com.extendyourstore.domain.manager.messagecenter.MessageCenterDaemon
Thread"/>
    <PROPERTY propname="senderQueueName"
        propvalue="jms/EJournalImport"/>
    <PROPERTY propname="senderBrokerName"
        propvalue="<Central Office Server Name>"/>
    <PROPERTY propname="receiverQueueName"
        propvalue="jms/EJournal"/>
    <PROPERTY propname="receiverBrokerName"
        propvalue=""/>
</TECHNICIAN>

```

---

**Note:** The value set for the queueName property for the JMSJournalTechnician and the value set for the receiverQueueName property for the MessageCenterDaemonTechnician must be the same.

---

## Point-of-Service Installer Fails to Launch on SLEPOS 11

The environment variable `LD_ASSUME_KERNEL`, with the value 2.2.5, is set into the Point-of-Service installer by InstallAnywhere 6.1 when the installer is built. But since SLEPOS 9, this environment variable can only be set to a value greater than 2.6.4. See the following Web site for more information:

[http://www.novell.com/developer/ndk/suse\\_linux\\_porting\\_advisories.html](http://www.novell.com/developer/ndk/suse_linux_porting_advisories.html)

To modify the installer:

1. `cp posinst.bin posinst.bak`
2. `cat posinst.bak | sed "s/export LD_ASSUME_KERNEL/#xport LD_ASSUME_KERNEL/" > posinst.bin`
3. `rm posinst.bak`