

**Oracle® Retail Merchandising System**  
Operations Guide, Volume 3 - Back End Configuration and  
Operations  
Release 13.1.1

July 2009

Copyright © 2009, Oracle. All rights reserved.

Primary Author: Nathan Young

The Programs (which include both the software and documentation) contain proprietary information; they are provided under a license agreement containing restrictions on use and disclosure and are also protected by copyright, patent, and other intellectual and industrial property laws. Reverse engineering, disassembly, or decompilation of the Programs, except to the extent required to obtain interoperability with other independently created software or as specified by law, is prohibited.

The information contained in this document is subject to change without notice. If you find any problems in the documentation, please report them to us in writing. This document is not warranted to be error-free. Except as may be expressly permitted in your license agreement for these Programs, no part of these Programs may be reproduced or transmitted in any form or by any means, electronic or mechanical, for any purpose.

If the Programs are delivered to the United States Government or anyone licensing or using the Programs on behalf of the United States Government, the following notice is applicable:

U.S. GOVERNMENT RIGHTS Programs, software, databases, and related documentation and technical data delivered to U.S. Government customers are "commercial computer software" or "commercial technical data" pursuant to the applicable Federal Acquisition Regulation and agency-specific supplemental regulations. As such, use, duplication, disclosure, modification, and adaptation of the Programs, including documentation and technical data, shall be subject to the licensing restrictions set forth in the applicable Oracle license agreement, and, to the extent applicable, the additional rights set forth in FAR 52.227-19, Commercial Computer Software—Restricted Rights (June 1987). Oracle Corporation, 500 Oracle Parkway, Redwood City, CA 94065

The Programs are not intended for use in any nuclear, aviation, mass transit, medical, or other inherently dangerous applications. It shall be the licensee's responsibility to take all appropriate fail-safe, backup, redundancy and other measures to ensure the safe use of such applications if the Programs are used for such purposes, and we disclaim liability for any damages caused by such use of the Programs.

Oracle, JD Edwards, PeopleSoft, and Siebel are registered trademarks of Oracle Corporation and/or its affiliates. Other names may be trademarks of their respective owners.

The Programs may provide links to Web sites and access to content, products, and services from third parties. Oracle is not responsible for the availability of, or any content provided on, third-party Web sites. You bear all risks associated with the use of such content. If you choose to purchase any products or services from a third party, the relationship is directly between you and the third party. Oracle is not responsible for: (a) the quality of third-party products or services; or (b) fulfilling any of the terms of the agreement with the third party, including delivery of products or services and warranty obligations related to purchased products or services. Oracle is not responsible for any loss or damage of any sort that you may incur from dealing with any third party.

## Value-Added Reseller (VAR) Language

### Oracle Retail VAR Applications

The following restrictions and provisions only apply to the programs referred to in this section and licensed to you. You acknowledge that the programs may contain third party software (VAR applications) licensed to Oracle. Depending upon your product and its version number, the VAR applications may include:

(i) the software component known as **ACUMATE** developed and licensed by Lucent Technologies Inc. of Murray Hill, New Jersey, to Oracle and imbedded in the Oracle Retail Predictive Application Server – Enterprise Engine, Oracle Retail Category Management, Oracle Retail Item Planning, Oracle Retail Merchandise Financial Planning, Oracle Retail Advanced Inventory Planning, Oracle Retail Demand Forecasting, Oracle Retail Regular Price Optimization, Oracle Retail Size Profile Optimization, Oracle Retail Replenishment Optimization applications.

(ii) the **MicroStrategy** Components developed and licensed by MicroStrategy Services Corporation (MicroStrategy) of McLean, Virginia to Oracle and imbedded in the MicroStrategy for Oracle Retail Data Warehouse and MicroStrategy for Oracle Retail Planning & Optimization applications.

(iii) the **SeeBeyond** component developed and licensed by Sun Microsystems, Inc. (Sun) of Santa Clara, California, to Oracle and imbedded in the Oracle Retail Integration Bus application.

(iv) the **Wavelink** component developed and licensed by Wavelink Corporation (Wavelink) of Kirkland, Washington, to Oracle and imbedded in Oracle Retail Mobile Store Inventory Management.

(v) the software component known as **Crystal Enterprise Professional and/or Crystal Reports Professional** licensed by SAP and imbedded in Oracle Retail Store Inventory Management.

(vi) the software component known as **Access Via**<sup>TM</sup> licensed by Access Via of Seattle, Washington, and imbedded in Oracle Retail Signs and Oracle Retail Labels and Tags.

(vii) the software component known as **Adobe Flex**<sup>TM</sup> licensed by Adobe Systems Incorporated of San Jose, California, and imbedded in Oracle Retail Promotion Planning & Optimization application.

(viii) the software component known as **Style Report**<sup>TM</sup> developed and licensed by InetSoft Technology Corp. of Piscataway, New Jersey, to Oracle and imbedded in the Oracle Retail Value Chain Collaboration application.

(ix) the software component known as **DataBeacon**<sup>TM</sup> developed and licensed by Cognos Incorporated of Ottawa, Ontario, Canada, to Oracle and imbedded in the Oracle Retail Value Chain Collaboration application.

You acknowledge and confirm that Oracle grants you use of only the object code of the VAR Applications. Oracle will not deliver source code to the VAR Applications to you. Notwithstanding any other term or condition of the agreement and this ordering document, you shall not cause or permit alteration of any VAR Applications. For purposes of this section, "alteration" refers to all alterations, translations, upgrades, enhancements, customizations or modifications of all or any portion of the VAR Applications including all reconfigurations, reassembly or reverse assembly, re-engineering or reverse engineering and recompilations or reverse compilations of the VAR Applications or any derivatives of the VAR Applications. You acknowledge that it shall be a breach of the agreement to utilize the relationship, and/or confidential information of the VAR Applications for purposes of competitive discovery.

The VAR Applications contain trade secrets of Oracle and Oracle's licensors and Customer shall not attempt, cause, or permit the alteration, decompilation, reverse engineering, disassembly or other reduction of the VAR Applications to a human perceivable form. Oracle reserves the right to replace, with functional equivalent software, any of the VAR Applications in future releases of the applicable program.



---

---

# Contents

|                                                                   |           |
|-------------------------------------------------------------------|-----------|
| <b>Preface .....</b>                                              | <b>ix</b> |
| Audience .....                                                    | ix        |
| Related Documents.....                                            | ix        |
| Customer Support.....                                             | x         |
| Review Patch Documentation.....                                   | x         |
| Oracle Retail Documentation on the Oracle Technology Network..... | x         |
| Conventions.....                                                  | x         |
| <b>1 Introduction .....</b>                                       | <b>1</b>  |
| What's in this Volume.....                                        | 1         |
| <b>2 Pro*C Restart and Recovery.....</b>                          | <b>3</b>  |
| Table Descriptions and Definitions .....                          | 3         |
| restart_control .....                                             | 4         |
| restart_program_status .....                                      | 5         |
| restart_program_history .....                                     | 6         |
| restart_bookmark.....                                             | 7         |
| v_restart_x.....                                                  | 8         |
| Restart and Recovery Data Model Design.....                       | 8         |
| Physical Set-Up.....                                              | 8         |
| Table and File-Based Restart/Recovery.....                        | 9         |
| API Functional Descriptions.....                                  | 11        |
| restart_init.....                                                 | 11        |
| restart_file_init .....                                           | 12        |
| restart_commit .....                                              | 12        |
| restart_file_commit.....                                          | 12        |
| restart_close .....                                               | 13        |
| parse_array_args.....                                             | 13        |
| restart_file_write .....                                          | 13        |
| restart_cat.....                                                  | 13        |
| Restart Headers and Libraries.....                                | 14        |
| Updated Restart Headers and Libraries .....                       | 15        |
| New Restart/Recovery Functions .....                              | 16        |
| Query-Based Commit Thresholds .....                               | 18        |
| <b>3 Pro*C Multi-Threading.....</b>                               | <b>19</b> |
| Threading Description .....                                       | 19        |
| Threading Function for Query-Based .....                          | 20        |
| Restart View for Query-Based.....                                 | 20        |
| Thread Scheme Maintenance .....                                   | 22        |
| File-Based .....                                                  | 22        |
| Query-Based .....                                                 | 23        |
| Batch Maintenance.....                                            | 23        |

|                                                                       |           |
|-----------------------------------------------------------------------|-----------|
| Scheduling and Initialization of Restart Batch.....                   | 24        |
| Pre- and Post-Processing.....                                         | 24        |
| <b>4 Pro*C Array Processing .....</b>                                 | <b>25</b> |
| <b>5 Pro*C Input and Output Formats.....</b>                          | <b>27</b> |
| General Interface Discussion .....                                    | 27        |
| Standard File Layouts .....                                           | 27        |
| Detail-Only Files .....                                               | 27        |
| Master and Detail Files.....                                          | 28        |
| Electronic Data Interchange (EDI).....                                | 30        |
| <b>6 RETL Program Overview for RMS/ReSA Extractions for RDW .....</b> | <b>31</b> |
| Overview.....                                                         | 31        |
| Architectural Design.....                                             | 31        |
| RMS Extraction Architecture.....                                      | 32        |
| ReSA Extraction Architecture .....                                    | 32        |
| Configuration .....                                                   | 33        |
| RETL .....                                                            | 33        |
| RETL User and Permissions .....                                       | 33        |
| Environment Variables .....                                           | 33        |
| dwi_config.env Settings.....                                          | 33        |
| Program Features .....                                                | 35        |
| Program Status Control Files .....                                    | 35        |
| Restart and Recovery.....                                             | 36        |
| Bookmark File .....                                                   | 36        |
| Message Logging .....                                                 | 36        |
| Daily Log File .....                                                  | 37        |
| Format .....                                                          | 37        |
| Program Error File.....                                               | 38        |
| RMSE Reject Files.....                                                | 38        |
| Schema Files .....                                                    | 39        |
| Resource Files.....                                                   | 39        |
| Command Line Parameters.....                                          | 39        |
| Multi-Threading For RMSE ReSA Modules.....                            | 40        |
| Typical Run and Debugging Situations .....                            | 40        |
| Running the Time 454 Extract Module .....                             | 41        |
| <b>7 RETL Program Overview for the RMS-RPAS Interface .....</b>       | <b>43</b> |
| Oracle Retail ETL Architecture .....                                  | 43        |
| RETL Program Overview .....                                           | 44        |
| Configuration .....                                                   | 44        |
| Program Return Code .....                                             | 47        |
| Program Status Control Files.....                                     | 47        |
| File Naming Conventions.....                                          | 47        |
| Restart and Recovery.....                                             | 47        |

|                                                                                                       |           |
|-------------------------------------------------------------------------------------------------------|-----------|
| Message Logging .....                                                                                 | 48        |
| Daily Log File .....                                                                                  | 48        |
| Format .....                                                                                          | 48        |
| Program Error File .....                                                                              | 48        |
| RMSE Reject Files .....                                                                               | 49        |
| Schema Files Overview .....                                                                           | 49        |
| Command Line Parameters .....                                                                         | 49        |
| rmse_rpas_config.env .....                                                                            | 49        |
| RMSE I/O File Names .....                                                                             | 51        |
| Typical Run and Debugging Situations .....                                                            | 51        |
| RPAS/AIP Configuration .....                                                                          | 52        |
| RETL Program Overview for the RMS-Time-Phased Inventory Planning Tool<br>Interface .....              | 52        |
| Configuration .....                                                                                   | 53        |
| Program Return Code .....                                                                             | 53        |
| Program Status Control Files .....                                                                    | 54        |
| Message Logging .....                                                                                 | 55        |
| RMSE and Transformation Reject Files .....                                                            | 56        |
| Schema Files Overview .....                                                                           | 56        |
| Command Line Parameters .....                                                                         | 56        |
| Typical Run and Debugging Situations .....                                                            | 58        |
| <b>8 Internationalization .....</b>                                                                   | <b>61</b> |
| Translation .....                                                                                     | 61        |
| RMS Client Language Settings .....                                                                    | 62        |
| Key RMS Tables Related to Internationalization .....                                                  | 62        |
| FORM_ELEMENTS .....                                                                                   | 62        |
| FORM_ELEMENTS_LANGS .....                                                                             | 62        |
| MENU_ELEMENTS .....                                                                                   | 63        |
| MENU_ELEMENTS_LANGS .....                                                                             | 63        |
| FORM_MENU_LINK .....                                                                                  | 63        |
| CODE_DETAIL_TRANS .....                                                                               | 63        |
| <b>9 Custom Post Processing .....</b>                                                                 | <b>65</b> |
| <b>10 Integrating RMS with Oracle Retail Workspace .....</b>                                          | <b>67</b> |
| <b>11 RMS – Oracle E-Business Suite Integration Using the Integration Accelerator<br/>Patch .....</b> | <b>69</b> |
| Integration Accelerator Patch .....                                                                   | 70        |
| Architecture .....                                                                                    | 71        |
| Oracle E-Business Suite–Oracle Retail Outbound Process Flow .....                                     | 71        |
| Oracle Retail–Oracle E-Business Suite Inbound Process Flow .....                                      | 73        |
| RMS Business Processes Configuration .....                                                            | 73        |
| Organization Units .....                                                                              | 74        |
| Currency Exchange Rates .....                                                                         | 74        |

|                                                                                                   |           |
|---------------------------------------------------------------------------------------------------|-----------|
| Supplier Address Types.....                                                                       | 74        |
| Country Codes .....                                                                               | 74        |
| VAT Codes.....                                                                                    | 74        |
| RMS General Ledger Setup .....                                                                    | 74        |
| Suppliers .....                                                                                   | 74        |
| Freight Terms, Payment Terms, Currency Exchange Rates, and General Ledger Chart of Accounts ..... | 74        |
| Oracle E-Business Suite Org Units and Site IDs .....                                              | 75        |
| System Parameter Maintenance.....                                                                 | 75        |
| General Ledger Cross-Reference .....                                                              | 75        |
| General Ledger Account Maintenance .....                                                          | 75        |
| RMS Stock Ledger.....                                                                             | 75        |
| ReSA Sales Information.....                                                                       | 76        |
| Design Overview .....                                                                             | 76        |
| Data Mapping.....                                                                                 | 76        |
| General Ledger Chart of Accounts Mapping.....                                                     | 76        |
| Supplier Mapping.....                                                                             | 78        |
| Supplier Address Mapping .....                                                                    | 82        |
| Currency Rates Mapping.....                                                                       | 84        |
| Freight Terms Mapping .....                                                                       | 85        |
| Payment Terms Mapping .....                                                                       | 86        |
| Stock Ledger, Sales Journal, Miscellaneous Payments .....                                         | 87        |
| <b>12 Setting up Oracle Business Intelligence Publisher.....</b>                                  | <b>93</b> |
| Setting up your JDBC Connection.....                                                              | 93        |
| Verifying BI Publisher URLs .....                                                                 | 95        |



---

---

# Preface

This operations guide serves as an Oracle Retail Merchandising System (RMS) solution reference to explain 'backend' processes and configuration.

## Audience

Anyone who has an interest in better understanding the inner workings of the Retail Merchandising System can find valuable information in this guide. There are three audiences in general for whom this guide is written:

- System analysts and system operation personnel:
  - Who are looking for information about Retail Merchandising System processes internally or in relation to the systems across the enterprise
  - Who operate the Retail Merchandising System on a regular basis
- Integrators and implementation staff who have the overall responsibility for implementing the Retail Merchandising System in their enterprise
- Business analysts who are looking for information about processes and interfaces to validate the support for business scenarios within the Retail Merchandising System and other systems across the enterprise

## Related Documents

For more information, see the following documents:

- *Oracle Retail Merchandising System Data Model*
- *Oracle Retail Merchandising System Installation Guide*
- *Oracle Retail Merchandising System Online Help*
- *Oracle Retail Merchandising System Operations Guide volumes 1 and 2*
- *Oracle Retail Merchandising System Release Notes*
- *Oracle Retail Merchandising System Reports User Guide*
- *Oracle Retail Merchandising System User Guide*
- *Oracle Retail Sales Audit User Guide*
- *Oracle Retail Trade Management User Guide*

See also:

- *Oracle Retail Merchandising Batch Schedule*
- *Oracle Retail Merchandising Implementation Guide*
- Oracle Retail Integration Bus documentation
- Oracle Retail Service Layer documentation
- Oracle Retail Extract, Transform, and Load documentation

## Customer Support

To contact Oracle Customer Support, access My Oracle Support at the following URL:

<https://metalink.oracle.com>

When contacting Customer Support, please provide the following:

- Product version and program/module name
- Functional and technical description of the problem (include business impact)
- Detailed step-by-step instructions to re-create
- Exact error message received
- Screen shots of each step you take

## Review Patch Documentation

If you are installing the application for the first time, you install either a base release (for example, 13.0) or a later patch release (for example, 13.0.2). If you are installing a software version other than the base release, be sure to read the documentation for each patch release (since the base release) before you begin installation. Patch documentation can contain critical information related to the base release and code changes that have been made since the base release.

## Oracle Retail Documentation on the Oracle Technology Network

In addition to being packaged with each product release (on the base or patch level), all Oracle Retail documentation is available on the following Web site (with the exception of the Data Model which is only available with the release packaged code):

[http://www.oracle.com/technology/documentation/oracle\\_retail.html](http://www.oracle.com/technology/documentation/oracle_retail.html)

Documentation should be available on this Web site within a month after a product release. Note that documentation is always available with the packaged code on the release date.

## Conventions

**Navigate:** This is a navigate statement. It tells you how to get to the start of the procedure and ends with a screen shot of the starting point and the statement “the Window Name window opens.”

---

---

**Note:** This is a note. It is used to call out information that is important, but not necessarily part of the procedure.

---

---

This is a code sample  
It is used to display examples of code

[A hyperlink appears like this.](#)

---

---

# Introduction

## What's in this Volume

This volume describes the important features that are necessary to run the Pro\*C programs and the RETL programs associated with RMS. Additional RMS configuration and operations information is also included in this volume. Topics include:

- Pro\*C Restart and Recovery
- Pro\*C Multi-Threading
- Pro\*C Array Processing
- Pro\*C Input and Output Formats
- RETL Program Overview for RMS/ReSA Extractions
- RETL Program Overview for the RMS-RPAS Interface
- Internationalization
- Custom Post Processing
- Integrating RMS with Oracle Retail Workspace
- Setting up Oracle Business Intelligence Publisher



## Pro\*C Restart and Recovery

RMS has implemented a restart/recovery process in most of its batch architecture. The general purpose of restart/recovery is to:

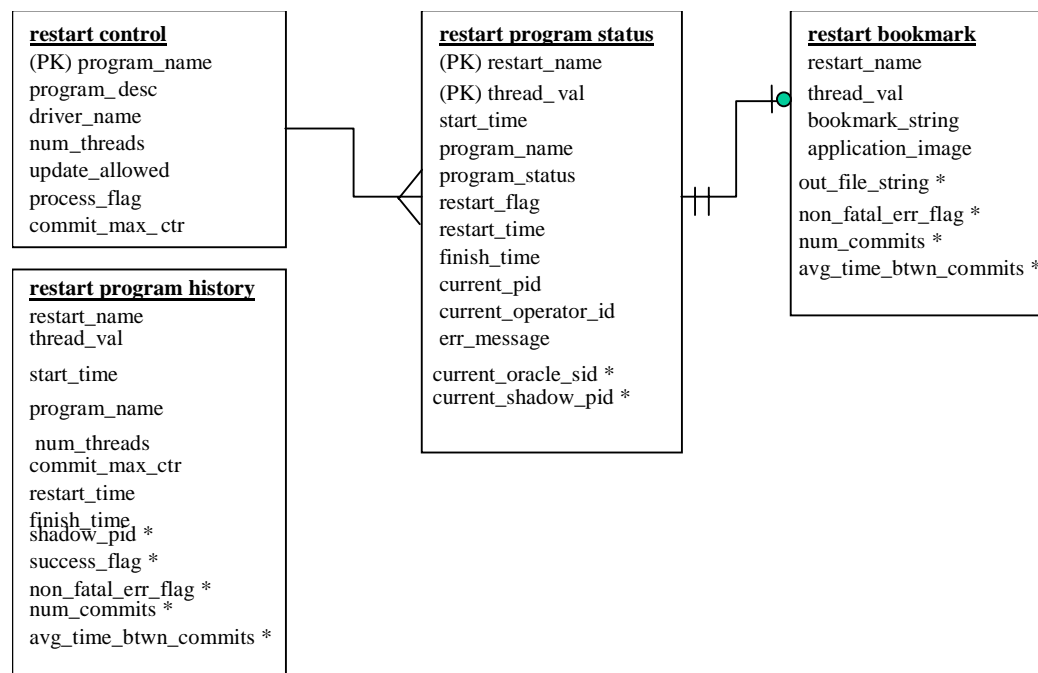
- Recover a halted process from the point of failure
- Prevent system halts due to large numbers of transactions
- Allow multiple instances of a given process to be active at the same time

Further, the RMS restart/recovery tracks batch execution statistics and does not require DBA authority to execute.

The restart capabilities revolve around a program's logical unit of work (LUW). A batch program processes transactions, and commit points are enabled based on the LUW. LUWs consist of a relatively unique transaction key (such as sku/store) and a maximum commit counter. Commit events take place after the number of processed transaction keys meets or exceeds the maximum commit counter. For example, every 10,000 sku/store combinations, a commit occurs. At the time of the commit, key data information that is necessary for restart is stored in the restart tables. In the event of a handled or un-handled exception, transactions will be rolled back to the last commit point, and upon restart the key information will be retrieved from the tables so that processing can continue from the last commit point.

### Table Descriptions and Definitions

The RMS restart/recovery process is driven by a set of four tables. Refer to the diagram for the entity relationship diagram, followed by table descriptions.



**Entity Relationship**

---



---

**Note:** The fields with asterisks (\*) are only used by new batch programs of release 9.0 or later.

---



---

## restart\_control

The restart\_control table is the master table in the restart/recovery table set. One record exists on this table for each batch program that is run with restart/recovery logic in place. The restart/recovery process uses this table to determine:

- Whether the restart/recovery is table-based or file-based
- The total number of threads used for each batch program
- The maximum records that will be processed before a commit event takes place
- The driver for the threading (multi-processing) logic.

---

### restart\_control

|                      |          |    |                                                                              |
|----------------------|----------|----|------------------------------------------------------------------------------|
| (PK)<br>program_name | varchar2 | 25 | Batch program name                                                           |
| program_desc         | varchar2 | 50 | A brief description of the program function                                  |
| driver_name          | varchar2 | 25 | Driver on query, for example, department (non-updatable)                     |
| num_threads          | num      | 10 | Number of threads used for current process                                   |
| update_allowed       | varchar2 | 2  | Indicates whether user can update thread numbers or if done programmatically |
| process_flag         | varchar2 | 1  | Indicates whether process is table-based (T) or file-based (F)               |
| commit_max_ctr       | num      | 6  | Numeric maximum value for counter before commit occurs                       |

---

## restart\_program\_status

The restart\_program\_status table is the table that holds record keeping information about current program processes. The number of rows for a program on the status table will be equal to its num\_threads value on the restart\_control table. The status table is modified during restart/recovery initialization and close logic. For table-based processing, the restart/recovery initialization logic will assign the next available thread to a program based on the program status and restart flag. For file-based processing, the thread value is passed in from the input file name. Once a thread has been assigned the program\_status is updated to prevent the assignment of that thread to another process. Information will be logged on the current status of a given thread, as well as record keeping information such as operator and process timing information.

---

**Setup Note:** Allow row level locking and 'dirty reads' (do not wait for rows to be unlocked for table read).

---



---

### restart\_program\_status

---

|                     |          |     |                                                                                                                                                                     |
|---------------------|----------|-----|---------------------------------------------------------------------------------------------------------------------------------------------------------------------|
| (PK)restart_name    | varchar2 | 50  | Program name                                                                                                                                                        |
| (PK)thread_val      | num      | 10  | Thread counter                                                                                                                                                      |
| start_time          | date     |     | dd-mon-yy hh:mi:ss                                                                                                                                                  |
| program_name        | varchar2 | 25  | Program name                                                                                                                                                        |
| program_status      | varchar2 | 25  | Started, aborted, aborted in init, aborted in process, aborted in final, completed, ready for start                                                                 |
| restart_flag        | varchar2 | 1   | Automatically set to 'N' after abnormal end, must be manually set to 'Y' for program to restart                                                                     |
| restart_time        | date     |     | dd-mon-yy hh:mi:ss                                                                                                                                                  |
| finish_time         | date     |     | dd-mon-yy hh:mi:ss                                                                                                                                                  |
| current_pid         | num      | 15  | Starting program id                                                                                                                                                 |
| current_operator_id | varchar2 | 20  | Operator that started the program                                                                                                                                   |
| err_message         | varchar2 | 255 | Record that caused program abort & associated error message                                                                                                         |
| current_oracle_sid  | num      | 15  | Oracle SID for the session associated with the current process                                                                                                      |
| current_shadow_pid  | num      | 15  | O/S process ID for the shadow process associated with the current process. It is used to locate the session trace file when a process is not finished successfully. |

---

**restart\_program\_history**

The restart\_program\_history table will contain one record for every successfully completed program thread with restart/recovery logic. Upon the successful completion of a program thread, its record on the restart\_program\_status table will be inserted into the history table. Table purgings will be at user discretion.

---

**restart\_program\_history**

---

|                       |          |    |                                                                                                                                    |
|-----------------------|----------|----|------------------------------------------------------------------------------------------------------------------------------------|
| restart_name          | varchar2 | 50 | Program name                                                                                                                       |
| thread_val            | Num      | 10 | Thread counter                                                                                                                     |
| start_time            | Date     |    | dd-mon-yy hh:mi:ss                                                                                                                 |
| program_name          | varchar2 | 25 | Program name                                                                                                                       |
| num_threads           | Num      | 10 | Number of threads                                                                                                                  |
| commit_max_ctr        | num      | 6  | Numeric maximum value for counter before commit occurs                                                                             |
| restart_time          | date     |    | dd-mon-yy hh:mi:ss                                                                                                                 |
| finish_time           | date     |    | dd-mon-yy hh:mi:ss                                                                                                                 |
| shadow_pid            | num      | 15 | O/S process ID for the shadow process associated with the process. It is used to locate the session trace file.                    |
| success_flag          | varchar2 | 1  | Indicates whether the process finished successfully (reserved for future use)                                                      |
| non_fatal_err_flag    | varchar2 | 1  | Indicates whether non-fatal errors have occurred for the process                                                                   |
| num_commits           | num      | 12 | Total number of commits for the process. The possible last commit when restart/recovery is closed is not counted.                  |
| avg_time_btwn_commits | num      | 12 | Accumulated average time between commits for the process. The possible last commit when restart/recovery is closed is not counted. |

---



## restart\_bookmark

When a restart/recovery program thread is currently active, its state is started or aborted, and a record for it exists on the restart\_bookmark table. Restart/recovery initialization logic inserts the record into the table for a program thread. The restart/recovery commit process updates the record with the following restart information:

- A concatenated string of key values for table processing
- A file pointer value for file processing
- Application context information such as counters and accumulators

The restart/recovery closing process will delete the program thread record if the program finishes successfully. In the event of a restart, the program thread information on this table will allow the process to begin from the last commit point.

---

### restart\_bookmark

|                       |          |      |                                                                                                                                                                                                                                                             |
|-----------------------|----------|------|-------------------------------------------------------------------------------------------------------------------------------------------------------------------------------------------------------------------------------------------------------------|
| (PK) restart_name     | varchar2 | 50   | Program name                                                                                                                                                                                                                                                |
| (PK) thread_val       | num      | 10   | Thread counter                                                                                                                                                                                                                                              |
| bookmark_string       | varchar2 | 255  | Character string of key of last committed record.                                                                                                                                                                                                           |
| application_image     | varchar2 | 1000 | application parameters from the last save point.                                                                                                                                                                                                            |
| out_file_string       | varchar2 | 255  | Concatenated file pointers (UNIX sometimes refers to these as stream positions) of all the output files from the last commit point of the current process. It is used to return to the right restart point for all the output files during restart process. |
| non_fatal_err_flag    | varchar2 | 1    | Indicates whether non-fatal errors have occurred for the current process.                                                                                                                                                                                   |
| num_commits           | num      | 12   | Number of commits for the current process. The possible last commit when restart/recovery is closed is not counted.                                                                                                                                         |
| avg_time_btwn_commits | num      | 12   | Average time between commits for the current process. The possible last commit when restart/recovery is closed is not counted.                                                                                                                              |

---

## v\_restart\_x

Restart views will be used for query-based programs that require multi-threading. Separate views will be created for each threading driver, for example, department or store. A join will be made to a view based on threading driver to force the separation of discrete data into particular threads. Please see the threading discussion for more details.

---

### v\_restart\_x

---

|              |          |                                                                   |
|--------------|----------|-------------------------------------------------------------------|
| driver_name  | varchar2 | - example dept, store, region, etc.                               |
| num_threads  | number   | total number of threads in set (defined on restart control)       |
| driver_value | number   | - will be the numeric value of the driver_name                    |
| thread_val   | number   | thread value defined for driver_value and num_threads combination |

---

## Restart and Recovery Data Model Design

The restart\_program\_status and restart\_bookmark are separate tables. This is because the initialization process needs to fetch all of the rows associated with restart\_name/schema, but will only update one row. The commit process will continually lock a row with a specific restart\_name and thread\_val. The data involved with these two processes is separated into two tables to reduce the number of hangs that could occur due to locked rows. Even if you allow 'dirty reads' on locked rows, a process will still hang if it attempts to do an update on a locked row. The commit process is only interested in a unique row, so if we move the commit process data to a separate table with row level (not page level) locking, there will not be contention issues during the commit. With the separate tables, the initialization process will now see fewer problems with contention because rows will only be locked twice, at the beginning and end of the process.

## Physical Set-Up

The restart/recovery process needs to be as robust as possible in the event of database related failure. The costs outweigh the benefits of placing the restart/recovery tables in a separate database. The tables should, however, be set up in a separate, mirrored table space with a separate rollback segment.

## Table and File-Based Restart/Recovery

The restart/recovery process works by storing all the data necessary to resume processing from the last commit point. Therefore, the necessary information will be updated on the `restart_bookmark` table before the processed data is committed. Query-based and file-based modules will store different information on the restart tables, and will therefore call different functions within the restart/recovery API to perform their tasks.

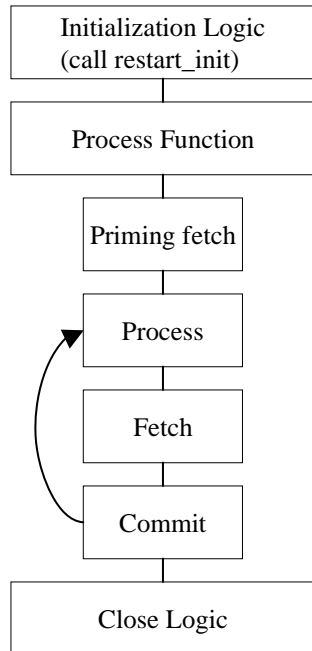
When a program's process is query-based, that is, a module is driven by a driving query that processes the retrieved rows, then the information that is stored on the `restart_bookmark` table is related to the data retrieved in the driving query. If the program fails while processing, the information that is stored on the restart-tables can be used in the conditional where-clause of the driving query to only retrieve data that has yet to be processed since the last commit event.

File-based processing, however, simply needs to store the file location at the time of the last commit point. This file's byte location is stored on the `restart_bookmark` table and will be retrieved at the time of a restart. This location information will be used to seek forward in the re-opened file to the point at which the data was last committed.

Because there is different information being saved to and retrieved from the `restart_bookmark` table for each of the different types of processing, different functions will need to be called to perform the restart/recovery logic. The query-based processing will call the `restart_init` or `retek_init` and `restart_commit` or `retek_commit` functions while the file-based processing will call the `restart_file_init` and `restart_file_commit` functions.

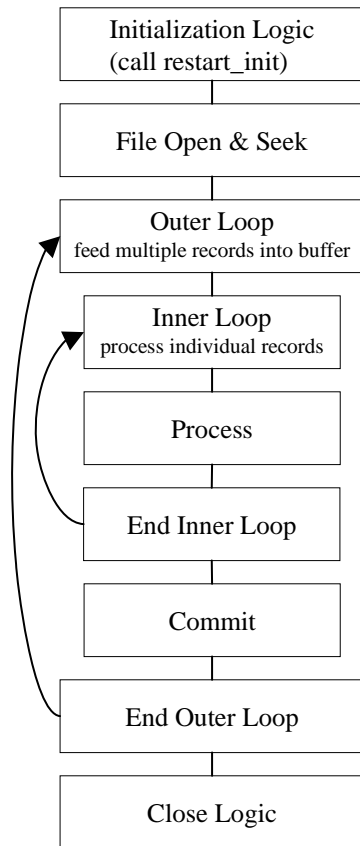
In addition to the differences in API function calls, the batch processing flow of the restart/recovery will differ between the files. Table-based restart/recovery will need to use a priming fetch logical flow, while the file-based processing will usually read lines in a batch. Table-based processing requires its structure to ensure that the LUW key has changed before a commit event can be allowed to occur, while the file-based processing does not need to evaluate the LUW, which can typically be thought of as the type of transaction being processed by the input file.

The following diagram depicts *table*-based Restart/Recovery program flow:



**Table-Based Restart/Recovery Program Flow**

The following diagram depicts *file*-based Restart/Recovery program flow



**File-based Restart/Recovery Program Flow**

Initialization logic:

- Variable declarations
- File initialization
- Call `restart_init()` or `restart_file_init()` function - will determine start or restart logic
- First fetch on driving query

Start logic: initialize counters/accumulators to start values

Restart logic:

- Parse `application_image` field on bookmark table into counters/accumulators
- Initialize counters/accumulators to values of parsed fields

Process/commit loop:

- Process updates and manipulations
- Fetch new record
- Create varchar from counters/accumulators to pass into `application_image` field on `restart_bookmark` table
- Call `restart_commit()` or `restart_file_commit()`

Close logic:

- Reset pointers
- Close files/cursors
- Call `restart_close()`

## API Functional Descriptions

### `restart_init`

An initialization function for table-based batch processing.

The process gathers information from the restart control tables

- Total number of threads for a program and thread value assigned to current process.
- Number of records to loop through in driving cursor before commit (LUW).
- Start string - bookmark of last commit to be used for restart or a null string if current process is an initial start and initializes the restart record-keeping (`restart_program_status`).
- Program status is changed to 'started' for the first available thread.
- Operational information is updated: operator, process, `start_time`, etc. and bookmarking (`restart_bookmark`) tables.
- On an initial start, a record is inserted.
- On restart, the start string and application context information from the last commit is retrieved.

## restart\_file\_init

An initialization function for file-based batch processing. It is called from program modules.

1. The process gathers information from the restart control tables:
  - number of records to read from file for array processing and for commit cycle
  - file start point- bookmark of last commit to be used for restart or 0 for initial start
2. The process initializes the restart record-keeping (restart\_program\_status):
  - program status is changed to 'started' for the current thread
  - operational information is updated: operator, process, start\_time, etc.
3. The process initializes the restart bookmarking (restart\_bookmark) tables:
  - on an initial start, a record is inserted
  - on restart, the file starting point information and application context information from the last commit is retrieved

## restart\_commit

A function that commits the processed transaction for a given number of driving query fetches. It is called from program modules.

The process updates the restart\_bookmark start string and application image information if a commit event has taken place:

- the current number of driving query fetches is greater than or equal to the maximum set in the restart\_program\_status table (and fetched in the restart\_init function)
- the bookmark string of the last processed record is greater than or equal to the maximum set in the restart\_program\_status table (and fetched in the restart\_init function)
- the bookmark string increments the counter
- the bookmark string sets the current string to be the most recently fetched key string

## restart\_file\_commit

A function that commits processed transactions after reading a number of lines from a flat file. It is called from program modules.

The process updates the restart\_bookmark table:

- start\_string is set to the file pointer location in the current read of the flat file
- application image is updated with context information

## restart\_close

A function that updates the restart tables after program completion.

The process determines whether the program was successful. If the program finished successfully:

- the restart\_program\_status table is updated with finish information and the status is reset
- the corresponding record in the restart\_bookmark table is deleted
- the restart\_program\_history table has a copy of the restart\_program\_status table record inserted into it
- the restart\_program\_status is re-initialized

If the program ends with errors

- the transactions are rolled back
- the program\_status column on the restart\_program\_status table is set to 'aborted in \*' where \* is one of the three main functions in batch: init, process or final
- the changes are committed

## parse\_array\_args

This function parses a string into components and places results into multidimensional array. It is only called within API functions and will never be called in program modules.

The process is passed a string to parse and a pointer to an array of characters.

The first character of the passed string is the delimiter.

## restart\_file\_write

This function will append output in temporary files to final output files when a commit point is reached. It is called from program modules.

## restart\_cat

This function contains the logic that appends one file to another. It is only called within the restart/recovery API functions and will never be called directly in program modules.

## Restart Headers and Libraries

The `restart.h` and the `std_err.h` header files are included in `retex.h` to utilize the restart/recovery functionality.

### **restart.h**

This library header file contains constant, macro substitutions, and external global variable definitions as well as restart/recovery function prototypes.

The global variables that are defined include:

- the thread number assigned to the current process
- the value of the current process's thread maximum counter
  - for table-based processing, it is equal to the number of iterations of the driving query before a commit can take place
  - for file-based processing, it is equal to the number of lines that will be read from a flat file and processed using a structured array before a commit can take place
- the current count of driving query iterations used for table-based processing or the current array index used in file-based processing
- the name assigned to the program/logical unit of work by the programmer. It is the same as the `restart_name` column on the `restart_program_status`, `restart_program_history`, and `restart_bookmark` tables

### **std\_rest.h**

This library header file contains standard restart variable declarations that are used visible in program modules.

The variable definitions that are included are:

- the concatenated string value of the fetched driving query key that is currently being processed
- the concatenated string value of the fetched driving query key that is next to be processed
- the error message passed to the `restart_close` function and updated to `restart_program_status`
- concatenated string of application context information, for example, counters & accumulators
- the name of the threading driver, for example, department, store, warehouse, etc.
- the total number of threads used by this program
- the pointer to pass to initialization function to retail number of threads value



## Updated Restart Headers and Libraries

Restart/recovery performs the following, among other capabilities:

- Organizes global variables associated with restart recovery
- Allows the batch developer full control of restart recovery variables parameter passing during initialization
- Removes temporary write files to speed up the commit process
- Moves more information and processing from the batch code into the library code
- Adds more information into the restart recovery tables for tuning purposes

### retek\_2.h

This library header file is included by all C code within Retek and serves to centralize system includes, macro defines, globals, function prototypes, and, especially, structs for use in the new restart/recovery library.

The globals used by the old restart/recovery library are all discarded. Instead, each batch program declares variables needed and calls `retek_init()` to get them populated from restart/recovery tables. Therefore, only the following variables are declared:

- `gi_no_commit`: flag for NO\_COMMIT command line option (used for tuning purposes)
- `gi_error_flag`: fatal error flag
- `gi_non_fatal_err_flag`: non-fatal error flag

In addition, a `rtk_file` struct is defined to handle all file interfaces associated with restart/recovery. Operation functions on the file struct are also defined.

```
#define NOT_PAD          1000 /* Flag not to pad thread_val */
#define PAD              1001 /* Flag to pad thread_val at the end */
#define TEMPLATE        1002 /* Flag to pad thread_val using filename template */
#define MAX_FILENAME_LEN 50
typedef struct
{
    FILE* fp; /* File pointer */
    char filename[MAX_FILENAME_LEN + 1]; /* Filename */
    int pad_flag; /* Flag whether to pad thread_val to filename */
} rtk_file;

int set_filename(rtk_file* file_struct, char* file_name, int pad_flag);
FILE* get_FILE(rtk_file* file_struct);
int rtk_print(rtk_file* file_struct, char* format, ...);
int rtk_seek(rtk_file* file_struct, long offset, int whence);
```

The parameters `retek_init()` needs to populate are required to be passed in using a format known to `retek_init()`. A struct is defined here for this purpose. An array of parameters of this struct type is needed at each batch program. Other requirements are:

Need to be initialized at each batch program.

- The lengths of name, type and sub\_type should not exceed the definitions here.
- Type can only be: "int", "uint", "long", "string", or "rtk\_file".
- For type "int", "uint" or "long", use "" as sub\_type.
- For type "string", sub\_type can only be "S" (start string) unless the string is the thread value or number of threads, in which case use "" as sub\_type or "I" (image string).
- For type "rtk\_file", sub\_type can only be "I" (input) or "O" (output).

```
#define NULL_PARA_NAME      51
#define NULL_PARA_TYPE     21
#define NULL_PARA_SUB_TYPE  2
typedef struct
{
    char name[NULL_PARA_NAME];
    char type[NULL_PARA_TYPE];
    char sub_type[NULL_PARA_SUB_TYPE];
} init_parameter;
```

## New Restart/Recovery Functions

Starting from release 9.0, all new batch programs are coded using the new restart/recovery functions. Batch programs using the old restart/recovery API functions are still in use. Therefore, Oracle Retail is currently maintaining two sets of restart/recovery libraries.

### **int retek\_init(int num\_args, init\_parameter \*parameter, ...)**

retek\_init initializes restart/recovery (for both table- and file-based):

1. Pass in num\_args as the number of elements in the init\_parameter array, then the init\_parameter array, then variables a batch program needs to initialize in the order and types defined in the init\_parameter array. Note that all int, uint and long variables need to be passes by reference.
2. Get all global and module level values from databases.
3. Initialize records for RESTART\_PROGRAM\_STATUS and RESTART\_BOOKMARK.
4. Parse out user-specified initialization variables (variable arg list).
5. Return NO\_THREAD\_AVAILABLE if no qualified record in RESTART\_CONTROL or RESTART\_PROGRAM\_STATUS.
6. Commit work.

**int retek\_commit(int num\_args, ...)**

retek\_commit checks and commits if needed (for both table- and file-based):

1. Pass in num\_args, then variables for start\_string first, and those for image string (if needed) second. The num\_args is the total number of these two groups. All are string variables and are passed in the same order as in retek\_init();
2. Concatenate start\_string either from passed in variables (table-based) or from ftell of input file pointers (file-based);
3. Check if commit point reached (counter check and, if table-based, start string comparison);
4. If reached, concatenated image\_string from passed in variables (if needed) and call internal\_commit() to get out\_file\_string and update RESTART\_BOOKMARK;
5. If table-based, increment pl\_current\_count and update ps\_cur\_string.

**int commit\_point\_reached(int num\_args, ...)**

commit\_point\_reached checks if the commit point has been reached (for both table- and file-based). The difference between this function and the check in retek\_commit() is that here the pl\_current\_count and ps\_cur\_string are not updated. This checking function is designed to be used with retek\_force\_commit(), and the logic to ensure integrity of LUW exists in user batch program. It can also be used together with retek\_commit() for extra processing at the time of commit.

1. Pass in num\_args, then all string variables for start\_string in the same order as in retek\_init(). The num\_args is the number of variables for start\_string. If no start\_string (as in file-based), pass in NULL.
2. For table-based, if pl\_curren\_count reaches pl\_max\_counter and if newly concatenated bookmark string is different from ps\_cur\_string, return 1; otherwise return 0.
3. For file-based, if pl\_curren\_count reaches pl\_max\_counter return 1; otherwise return 0.

**int retek\_force\_commit(int num\_args, ...)**

retek\_force\_commit always commits (for both table- and file-based):

1. Pass in num\_args, then variables for start\_string first, and those for image string (if needed) second. The num\_args is the total number of these two groups. All are string variables and are passed in the same order as in retek\_init().
2. Concatenate start\_string either from passed in variables (table-based) or from ftell of input file pointers (file-based).
3. Concatenated image\_string from passed in variables (if needed) and call internal\_commit() to get out\_file\_string and update RESTART\_BOOKMARK.
4. If table-based, increment pl\_current\_count and update ps\_cur\_string.

**int retek\_close(void)**

retек\_close closes restart/recovery (for both table- and file-based):

1. If gi\_error\_flag or NO\_COMMIT command line option is TRUE, rollback all database changes.
2. Update RESTART\_PROGRAM\_STATUS according to gi\_error\_flag.
3. If no gi\_error\_flag, insert record into RESTART\_PROGRAM\_HISTORY with information fetched from RESTART\_CONTROL, RESTART\_PROGRAM\_BOOKMARK and RESTART\_PROGRAM\_STATUS tables.
4. If no gi\_error\_flag, delete RESTART\_BOOKMARK record.
5. Commit work.
6. Close all opened file streams.

**Int retek\_refresh\_thread(void)**

Refreshes a program's thread so that it can be run again.

1. Updates the RESTART\_PROGRAM\_STATUS record for the current program's PROGRAM\_STATUS to be 'ready for start'.
2. Deletes any RESTART\_BOOKMARK records for the current program.
3. Commits work.

**void increment\_current\_count(void)**

increment\_current\_count increases pl\_current\_count by 1.

---

---

**Note:** This is called from get\_record() of intrface.pc for file-based I/O.

---

---

**int parse\_name\_for\_thread\_val(char\* name)**

parse\_name\_for\_thread\_val parses thread value from the extension of the specified file name.

**int is\_new\_start(void)**

is\_new\_start checks if current run is a new start; if yes, return 1; otherwise 0.

## Query-Based Commit Thresholds

The restart capabilities revolve around a program's logical unit of work (LUW). A batch program processes transactions and enables commit points based on the LUW. An LUW is comprised of a transaction key (such as item-store) and a maximum commit counter. Commit events occur after a given number of transaction keys are processed. At the time of the commit, key data information that is necessary for restart is stored in the restart table. In the event of a handled or un-handled exception, transactions will be rolled back to the last commit point. Upon restart the restart key information will be retrieved from the tables so that processing can resume with the unprocessed data.

---

---

## Pro\*C Multi-Threading

Processing multiple instances of a given program can be accomplished through “threading”. This requires driving cursors to be separated into discrete segments of data to be processed by different threads. This will be accomplished through stored procedures that will separate threading mechanisms (for example, departments or stores) into particular threads given value (for example, department 1001) and the total number of threads for a given process.

File-based processing will not truly “thread” its processing. The same data file will never be acted upon by multiple processes. Multi-threading will be accomplished by dividing the data into separate files each of which will be acted upon by a separate process. The thread value is related to the input file. This is necessary to ensure that the appropriate information can be tied back to the relevant file in the event of a restart.

RMS has a store length of ten digits. Therefore, thread values, which can be based upon the store number, should allow ten digits as well. Due to the thread values being declared as ‘C’ variables of type int (long), the system is restricting thread values to nine digits.

This does not mean that you cannot use ten digit store numbers. It means that if you do use ten digit store numbers you cannot use them as thread values.

### Threading Description

The use of multiple threads or processes in Oracle Retail batch processing will increase efficiency and decrease processing time. The design of the threading process has allowed maximum flexibility to the end user in defining the number of processes over which a program should be divided.

Originally, the threading function was going to be used directly in the driving queries. This was found, however, to be unacceptably slow. Instead of using the function call directly in the driving queries, the designs call for joining driving query tables to a view (for example, v\_restart\_store) that includes the function.

## Threading Function for Query-Based

A stored procedure has been created to determine thread values. `Restart_thread_return` returns a thread value derived from a numeric driver value, such as department number, and the total number of threads in a given process. Retailers should be able to determine the best algorithm for their design, and if a different means of segmenting data is required, then either the `restart_thread_return` function can be altered, or a different function can be used in any of the views in which the function is contained.

Currently the `restart_thread_return` function is a very simple modulus routine:

```
CREATE OR REPLACE FUNCTION RESTART_THREAD_RETURN(in_unit_value NUMBER,
                                                in_total_threads NUMBER)
RETURN NUMBER IS
    ret_val NUMBER;
BEGIN
    ret_val := MOD(ABS(in_unit_value), in_total_threads) + 1;
    RETURN ret_val;
END;
```

## Restart View for Query-Based

Each restart view will have four elements:

- the name of the threading mechanism, `driver_name`
- the total number of threads in a grouping, `num_threads`
- the value of the driving mechanism, `driver_value`
- the thread value for that given combination of `driver_name`, `num_threads`, and driver value, `thread_val`

The view will be based on the `restart_control` table and an information table such as `DEPS` or `STORES`. A row will exist in the view for every driver value and every total number of threads value. Therefore, if a retailer were to always use the same number of threads for a given driver (dept, store, etc.), then the view would be relatively small. As an example, if all of a retailer's programs threaded by department have a total of 5 threads, then the view will contain only one value for each department. For example, if there are 10 total departments, 10 rows will exist in `v_restart_dept`. However, if the retailer wants to have one of the programs to have ten threads, then there will be 2 rows for every department: one for five total threads and one for ten total threads (for example, if 10 total departments, 20 rows will exist in `v_restart_dept`). Obviously, retailers should be advised to keep the number of total thread values for a thread driver to a minimum to reduce the scope of the table join of the driving cursor with the view.

Below is an example of how the same driver value can result in differing thread values. This example uses the `restart_thread_return` function as it currently is written to derive thread values.

| <b>Driver_name</b> | <b>num_threads</b> | <b>driver_val</b> | <b>thread_val</b> |
|--------------------|--------------------|-------------------|-------------------|
| DEPT               | 1                  | 101               | 1                 |
| DEPT               | 2                  | 101               | 2                 |
| DEPT               | 3                  | 101               | 3                 |
| DEPT               | 4                  | 101               | 2                 |
| DEPT               | 5                  | 101               | 2                 |
| DEPT               | 6                  | 101               | 6                 |
| DEPT               | 7                  | 101               | 4                 |

Below is an example of what a distribution of stores might look like given 10 stores and 5 total threads:

| <b>Driver_name</b> | <b>num_threads</b> | <b>driver_val</b> | <b>thread_val</b> |
|--------------------|--------------------|-------------------|-------------------|
| STORE              | 5                  | 1                 | 2                 |
| STORE              | 5                  | 2                 | 3                 |
| STORE              | 5                  | 3                 | 4                 |
| STORE              | 5                  | 4                 | 5                 |
| STORE              | 5                  | 5                 | 1                 |
| STORE              | 5                  | 6                 | 2                 |
| STORE              | 5                  | 7                 | 3                 |
| STORE              | 5                  | 8                 | 4                 |
| STORE              | 5                  | 9                 | 5                 |
| STORE              | 5                  | 10                | 1                 |

View syntax:

The following is an example of the syntax needed to create the view for the multi-threading join, created with script (see threading discussion for details on `restart_thread_return` function):

```
create or replace view v_restart_store as
  select rc.driver_name driver_name,
         rc.num_threads num_threads,
         s.store driver_value,
         restart_thread_return(s.store, rc.num_threads) thread_val
  from restart_control rc, store s
  where rc.driver_name = 'STORE'
```

There is a different threading scheme used within Oracle Retail Sales Audit (ReSA). Because ReSA needs to run 24 hours a day and seven days a week, there is no batch window. This means that there may be batch programs running at the same time that there are online users. ReSA solved this concurrency problem by creating a locking mechanism for data that is organized by store days. These locks provide a natural threading scheme. Programs that cycle through all of the store day data attempt to lock the store day first. If the lock fails, the program simply goes on to the next store day. This has the affect of automatically balancing the workload between all of the programs executing.

## Thread Scheme Maintenance

All program names will be stored on the `restart_control` table along with a functional description, the query driver (dept, store, class, etc.) and the user-defined number of threads associated with them. Users should be able to scroll through all programs to view the name, description, and query driver, and if the `update_allowed` flag is set to true, to modify the number of threads (update is set to true).

### File-Based

File based processing does not truly “multi-thread” and therefore the number of threads defined on `restart_control` will always be one. However, a `restart_program_status` record will need to be created for each input file that is to be processed for the program module. Further, the thread value that is assigned should be part of the input file name. The `restart_parse_name` function that is included in the program module will parse the thread value from the program name and use that to determine the availability and restart requirements on the `restart_program_status` table.

Refer to the beginning of this multi-threading section for a discussion of limits on using large (greater than nine digits) thread values.



## Query-Based

When the number of threads is modified in the restart\_control table, the form should first validate that no records for that program are currently being processed in the restart\_program\_status\_table (that is, all records = 'Completed'). The program should insert or delete rows depending on whether the new thread number is greater than or less than the old thread number. In the event that the new number is less than the previous number, all records for that program\_name with a thread number greater than the new thread number will be deleted. If the new number is greater than the old number, new rows will be inserted. A new record will be inserted for each restart\_name/thread\_val combination.

For example if the batch program SALDLY has its number of processes changed from 2 to 3, then an additional row (3) will be added to the restart\_program\_status table. Likewise, if the number of threads was reduced to 1 in this example, rows 2 and 3 would be deleted.

Original restart\_program\_status table:

| row # | restart name | thread val | program name etc... |
|-------|--------------|------------|---------------------|
| 1     | SALDLY       | 1          | SALDLY ...          |
| 2     | SALDLY       | 2          | SALDLY ...          |

restart\_program\_status table after insert:

| row # | restart name | thread val | program name etc... |
|-------|--------------|------------|---------------------|
| 1     | SALDLY       | 1          | SALDLY ...          |
| 2     | SALDLY       | 2          | SALDLY ...          |
| 3     | SALDLY       | 3          | SALDLY ...          |

restart\_program\_status table after delete:

| row # | restart name | thread val | program name etc... |
|-------|--------------|------------|---------------------|
| 1     | SALDLY       | 1          | SALDLY ...          |

Users should also be able to modify the commit\_max\_ctr column in restart\_program\_status table. This will control the number of iterations in driving query or the number of lines read from a flat file that determine the logical unit of work (LUW).

## Batch Maintenance

Users should be able to view the status of all records in restart\_program\_status table. This is where the user will come to view error messages from aborted programs, and statistics and histories of batch runs. The only fields that will be modifiable will be program\_status and restart\_flag. The user should be able to reset the restart\_flag to 'Y' from 'N' on records with a status of aborted, started records to aborted in the event of an abend (abnormal termination), and all records in the event of a restore from tape/re-run of all batch.

## Scheduling and Initialization of Restart Batch

Before any batch with restart/recovery logic is run, an initialization program should be run to update the status in the restart\_program\_status table. This program should update the program\_status to 'ready for start' wherever a record's program\_status is 'completed.' This will leave unchanged all programs that ended unsuccessfully in the last batch run.

## Pre- and Post-Processing

Due to the nature of the threading algorithm, individual programs might need a pre or a post program run to initialize variables or files before any of the threads have run or to update final data once all the threads are run. The decision was made to create pre-programs and post-programs in these cases rather than let the restart/recovery logic decide whether the currently processed thread is the first thread to start or the last thread to end for a given program.

---

---

## Pro\*C Array Processing

Oracle Retail batch architecture uses array processing to improve performance wherever possible. Instead of processing SQL statements using scalar data, data is grouped into arrays and used as bind variables in SQL statements. This improves performance by reducing the server/client and network traffic.

Array processing is used for select, insert, delete, and update statements. Oracle Retail typically does not statically define the array sizes, but uses the restart maximum commit variable as a sizing multiple. Users should keep this in mind when defining the system's maximum commit counters.

An important factor to keep in mind when using array processing is that Oracle does not allow a single array operation to be performed for more than 32000 records in one step. The Oracle Retail restart/recovery libraries have been updated to define macros for this value: `MAX_ORACLE_ARRAY_SIZE`.

All batch programs that use array processing need to limit the size of their array operations to `MAX_ORACLE_ARRAY_SIZE`.

If the commit max counter is used for array processing size, check it after the call to `restart_init()` and, if necessary, reset it to the maximum value if greater. If `retek_init()` is used to initialize, check the returned commit max counter and reset it to the maximum size if it is greater. In case of `retek_init()`, reset the library's internal commit max counter by calling `extern int limit_commit_max_ctr(unsigned int new_max_ctr)`.

If some other variable is used for sizing the array processing, the actual array-processing step will have to be encapsulated in a calling loop that performs the array operation in sub segments of the total array size where each sub-segment is at most `MAX_ORACLE_ARRAY_SIZE` large. Currently all Oracle Retail batch programs are implemented this way.



---



---

## Pro\*C Input and Output Formats

Oracle Retail batch processing will utilize input from both tables and flat files. Further, the outcome of processing can both modify data structures and write output data. Interfacing Oracle Retail with external systems is the main use of file based I/O.

### General Interface Discussion

To simplify the interface requirements, Oracle Retail requires that all in-bound and out-bound file-based transactions adhere to standard file layouts. There are two types of file layouts, detail-only and master-detail, which are described below.

An interfacing API exists within Oracle Retail to simplify the coding and the maintenance of input files. The API provides functionality to read input from files, ensure file layout integrity, and write and maintain files for rejected transactions.

### Standard File Layouts

The RMS interface library supports two standard file layouts; one for master/detail processing, and one for processing detail records only. True sub-details are not supported within the RMS base package interface library functions.

A 5-character identification code or record type identifies all records within an I/O file, regardless of file type. Valid record type values include the following:

- FHEAD—File Header
- FDETL—File Detail
- FTAIL—File Tail
- THEAD—Transaction Header
- TDETL—Transaction Detail
- TTAIL—Transaction Tail

Each line of the file must begin with the record type code followed by a 10-character record ID.

### Detail-Only Files

File layouts have a standard file header record, a detail record for each transaction to be processed, and a file trailer record. Valid record types are FHEAD, FDETL, and FTAIL.

Example:

```
FHEAD0000000001STKU1996010100000019960929
FDETL0000000002SKU100000040000011011
FDETL0000000003SKU100000050003002001
FDETL0000000004SKU100000050003002001
FTAIL00000000050000000003
```

## Master and Detail Files

File layouts will have a standard file header record, a set of records for each transaction to be processed, and a file trailer record. The transaction set will consist of a transaction set header record, a transaction set detail for detail within the transaction, and a transaction trailer record. Valid record types are FHEAD, THEAD, TDETL, TTAIL, and FTAIL.

Example:

```
FHEAD0000000001RTV 19960908172000
THEAD00000000020000000000000119960909120200000000003R
TDETL000000000300000000000001000001SKU10000012
TTAIL0000000004000001
THEAD00000000050000000000002199609091202001215720131R
TDETL00000000060000000000002000001UPC400100002667
TDETL000000000700000000000020000021UPC400100002643 0
TTAIL0000000008000002
FTAIL0000000009000000007
```

| Record Name        | Field Name                     | Field Type | Default Value                | Description                                         |
|--------------------|--------------------------------|------------|------------------------------|-----------------------------------------------------|
| File Header        | File Type Record Descriptor    | Char(5)    | FHEAD                        | Identifies file record type                         |
|                    | File Line Identifier           | Number(10) | Specified by external system | Line number of the current file                     |
|                    | File Type Definition           | Char(4)    | n/a                          | Identifies transaction type                         |
|                    | File Create Date               | Date       | Create date                  | Date file was written by external system            |
| Transaction Header | File Type Record Descriptor    | Char(5)    | THEAD                        | Identifies file record type                         |
|                    | File Line Identifier           | Number(10) | Specified by external system | Line number of the current file                     |
|                    | Transaction Set Control Number | Char(14)   | Specified by external system | Used to force unique transaction check              |
|                    | Transaction Date               | Char(14)   | Specified by external system | Date the transaction was created in external system |
| Transaction Detail | File Type Record Descriptor    | Char(5)    | TDETL                        | Identifies file record type                         |
|                    | File Line Identifier           | Number(10) | Specified by external system | Line number of the current file                     |
|                    | Transaction Set Control Number | Char(14)   | Specified by external system | Used to force unique transaction check              |

| Record Name         | Field Name                    | Field Type | Default Value                | Description                                                       |
|---------------------|-------------------------------|------------|------------------------------|-------------------------------------------------------------------|
|                     | Detail Sequence Number        | Char(6)    | Specified by external system | Sequential number assigned to detail records within a transaction |
| Transaction Trailer | File Type Record Descriptor   | Char(5)    | TTAIL                        | Identifies file record type                                       |
|                     | File Line Identifier          | Number(10) | Specified by external system | Line number of the current file                                   |
|                     | Transaction Detail Line Count | Number(6)  | Sum of detail lines          | Sum of the detail lines within a transaction                      |
| File Trailer        | File Type Record Descriptor   | Char(5)    | FTAIL                        | Identifies file record type                                       |
|                     | File Line Identifier          | Number(10) | Specified by external system | Line number of the current file                                   |
|                     | Total Transaction Line Count  | Number(10) | Sum of all transaction lines | All lines in file less the file header and trailer records        |

## Electronic Data Interchange (EDI)

Starting with release 7.0, EDI files used or created by RMS are in a generic format: RMS no longer supports particular EDI standards. By processing EDI output and input in a generic format, RMS is no longer limited to a single standard, which allows Oracle Retail customers to better utilize any and all standards they choose to use. Translating EDI input and output files into any format from any format by third-party software is an industry "best practice".

Formerly, EDI transactions in RMS conformed to ASC X12/VICS (version 3040) and ANA/TRADACOMS standards. EDI transactions are now expected to be in a format that adheres to the RMS file interfacing standards. Both in-bound and out-bound files are written in a fixed field layout with standard file header and trailer records. Transaction information is included in master/detail or detail-only records. The layouts are consistent with interface files used elsewhere in the RMS.

RMS EDI batch processes write out-bound transaction files into the generic layout format, which are then translated by the third-party software into the standard required by each trading partner. The post-translated versions are transmitted to the trading partner. In-bound transactions should be formatted by the trading partner in a predetermined standard, transmitted, and then translated by the Oracle Retail retailer's translation software into the generic file layout. The generic file is used as the input file for RMS EDI batch processing.

It is impractical for Oracle Retail to continue to maintain code that supports any particular EDI standard. There are multiple viable standards that are utilized by vendors and retailers. Further, those standards have multiple versions. Most retailers are already using software to map and translate EDI transactions into the required standard or version. There are excellent third-party software packages, such as Sterling Software's Gentran™ translator, that effectively translate in-bound and out-bound transactions into the necessary formats. The use of third-party translation software is not only the common business practice, but also the best business practice of today's retailer.



---

---

# RETL Program Overview for RMS/ReSA Extractions for RDW

This chapter summarizes the configuration, architecture and features for many RETL programs utilized in RMS/ReSA extractions. These extractions were initially designed for Oracle Retail Data Warehouse (RDW) and can be used for some other application in the retailer's enterprise.

For information about RMS RETL extractions for an application such as Advanced Inventory Planning (AIP), see the RMS 10.1.9 Addendum to the Operations Guide.

For more information about the RETL tool, see the latest RETL Programmer's Guide.

## Overview

RMS works in conjunction with the RETL framework. This architecture optimizes a high performance data processing tool that allows database batch processes to take advantage of parallel processing capabilities.

The RETL framework runs and parses through the valid operators composed in XML scripts.

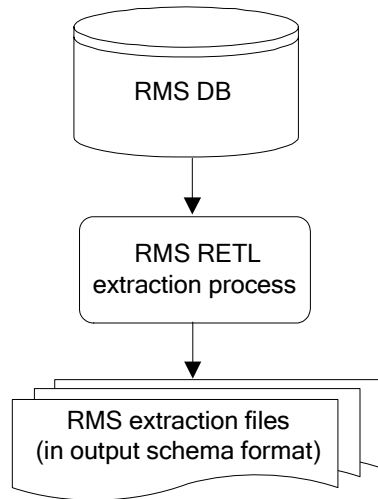
## Architectural Design

The diagrams below illustrate the extraction processing architecture for RMS and for ReSA. Instead of managing the change captures as they occur in the source system during the day, the process involves extracting the current data from the source system. The extracted data is output to flat files. These flat files are then available for consumption by a product such as RDW.

The target system, (RDW, for example), has its own way of completing the transformations and loading the necessary data into its system, where it can be used for further processing in the environment.

## RMS Extraction Architecture

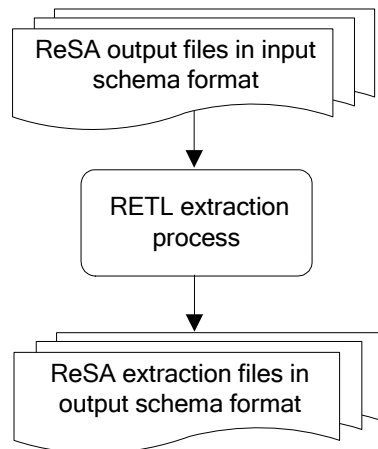
The architecture relies upon the use of well-defined flows specific to the RMS database. The resulting output is comprised of data files written in a well-defined schema file format. This extraction includes no destination specific code.



**RETL Extraction Processing for RMS**

## ReSA Extraction Architecture

The architecture relies upon the use of well-defined flows specific to ReSA input schema files. The resulting output is comprised of data files written in a well-defined schema file format. This extraction includes no destination specific code.



**RETL Extraction Processing for ReSA**

## Configuration

### RETL

Before trying to configure and run RMS ETL, install RETL version 12.0 or later, which is required to run RMS RETL. Run the 'verify\_retl' script (included as part of the RETL installation) to ensure that RETL is working properly before proceeding.

### RETL User and Permissions

RMS ETL is installed and run as the RETL user. Additionally, the permissions are set up as per the RETL Programmer's Guide. RMS ETL reads data, creates, deletes, and updates tables. If these permissions are not set up properly, extractions fail.

### Environment Variables

See the RETL Programmer's Guide for RETL environment variables that must be set up for your version of RETL. You will need to set MMHOME to your base directory for RMS RETL. This is the top level directory that you selected during the installation process. In your .kshrc, you should add a line such as the following:

```
export MMHOME=<base directory for RMS ETL>\dwi12.0\dev
```

### dwi\_config.env Settings

Make sure to review the environmental parameters in the dwi\_config.env file before executing batch modules. There are several variables you must change depending upon your local settings:

For example:

```
export DENAME=int9i
export RMS_OWNER=steffej_rms1011
export BA_OWNER=rmsint1011
export ORACLE_PORT="1524"
export ORACLE_HOST="mspdev38"
export CONN_TYPE="thin"
```

You must set up the environment variable PASSWORD in dwi\_config.env. In the example below, adding the line to the dwi\_config.env causes the password 'mypasswd' to be used to log into the database:

```
export PASSWORD=mypasswd
```

### Steps to Configure RETL

1. Log in to the UNIX server with a UNIX account that will run the RETL scripts.
2. Change directories to `$MMHOME/rfx/etc`.
3. Modify the `dwi_config.env` script:
  - `DBNAME` refers to the name of the RMS database.
  - `RMS_OWNER` refers to the username of the RMS schema owner.
  - `BA_OWNER` refers to the username of the RMSE batch user.
  - `ORACLE_HOST` refers to the database server name.
  - `ORACLE_PORT` refers to the database port number.
  - `MAX_NUM_COLS` refers to the maximum number of columns from which RETL selects records.
  - `CONN_TYPE` refers to the driver type used in RMS connection to the database.
    - `CONN_TYPE=thin`: Lighter weight, Java only driver.
    - `CONN_TYPE=oci`: Oracle Client Interface (OCI) driver. To be used for Real Application Clusters (RAC) implementations.
  - `LOAD_TYPE` refers to the SQL\*Loader method used to load data to the database. Direct load can be used when you have a large amount of data to load quickly. A direct path load can quickly load and index large amounts of data. It can also load data into either an empty or non-empty table. Conventional, not direct load, is the Oracle and RMS default. There are restrictions on when direct load can be used. Before using direct load, clients should research direct vs conventional load, and the restrictions to using direct load.
    - `LOAD_TYPE=conventional`: loads the data using the conventional SQL-loader method for Oracle.
    - `LOAD_TYPE=direct`: loads the data using the direct SQL\_loader method for Oracle.
  - `IM_PROCESS` refers to the method used to process item dimensional data. A number of factors determine which method performs best, including the volume of items a client has and how often changes are made to items. The higher the ratio of item changes to total items, the more likely one would benefit from the full snapshot method. Clients should test the methods to see what performs best for them. The default value for this setting is full snapshot.
    - `IM_PROCESS=D`: process the data using delta mode, which will process item data based on daily changed data only.
    - `IM_PROCESS=F`: process the data using snapshot mode, which will process items based on a full snapshot of all data.
  - `ISCL_PROCESS` refers to the method used to process item supplier location dimension data. A number of factors determine which method performs best, including the volume of item location and supplier combinations a client has and how often changes are made to those. The higher the ratio of changes to the combinations, the more likely one would benefit from the full snapshot method. Clients should test the methods to see what performs best for them. The default value for this setting is full snapshot.
    - `ISCL_PROCESS=D`: process the data using delta mode, which will process item supplier location data based on daily changed data only.
  - `ISCL_PROCESS=F`: process the data using snapshot mode, which will process item supplier location data based on a full snapshot of all data.

- LANGUAGE refers to which language is to be used. The default is set to 'en' for English.
  - LANGUAGE=bpt: Brazilian Portuguese
  - LANGUAGE=zhs: Chinese (Simplified)
  - LANGUAGE=zht: Chinese (Traditional)
  - LANGUAGE=en: English
  - LANGUAGE=fr: French
  - LANGUAGE=de: German
  - LANGUAGE=ja: Japanese
  - LANGUAGE=ko: Korean
  - LANGUAGE=es: Spanish

## Program Features

RETL programs use one return code to indicate successful completion. If the program successfully runs, a zero (0) is returned. If the program fails, a non-zero is returned.

## Program Status Control Files

To prevent a program from running while the same program is already running against the same set of data, the RMSE code utilizes a program status control file. At the beginning of each module, `dwi_config.env` is run. It checks for the existence of the program status control file. If the file exists, then a message stating, '`{PROGRAM_NAME}` has already started', is logged and the module exits. If the file does not exist, a program status control file is created and the module executes.

If the module fails at any point, the program status control file is not removed, and the user is responsible for removing the control file before re-running the module.

### File Naming Conventions

The naming convention of the program status control file allows a program whose input is a text file to be run multiple times at the same time against different files.

The name and directory of the program status control file is set in the configuration file (`dwi_config.env`). The directory defaults to `$MMHOME/error`. The naming convention for the program status control file itself defaults to the following dot separated file name:

- The program name
- The first filename, if one is specified on the command line
- 'status'
- The business virtual date for which the module was run

For example, the program status control file for the `invildex` program would be named as follows for the `VDATE` of March 21, 2004:

```
$MMHOME/error/invildex.invilddm.txt.status.20040321
```

## Restart and Recovery

Because RETL processes all records as a set, as opposed to one record at a time, the method for restart and recovery must be different from the method that is used for Pro\*C. The restart and recovery process serves the following two purposes:

1. It prevents the loss of data due to program or database failure.
2. It increases performance when restarting after a program or database failure by limiting the amount of reprocessing that needs to occur.

Most modules use a single RETL flow and do not require the use of restart and recovery. If the extraction process fails for any reason, the problem can be fixed, and the entire process can be run from the beginning without the loss of data. For a module that takes a text file as its input, the following two choices are available that enable the module to be re-run from the beginning:

1. Re-run the module with the entire input file.
2. Re-run the module with only the records that were not processed successfully the first time and concatenate the resulting file with the output file from the first time.

To limit the amount of data that needs to be re-processed, more complicated modules that require the use of multiple RETL flows utilize a bookmark method for restart and recovery. This method allows the module to be restarted at the point of last success and run to completion. The bookmark restart/recovery method incorporates the use of a bookmark flag to indicate which step of the process should be run next. For each step in the process, the bookmark flag is written to and read from a bookmark file.

---

---

**Note:** If the fix for the problem causing the failure requires changing data in the source table or file, then the bookmark file must be removed and the process must be re-run from the beginning in order to extract the changed data.

---

---

## Bookmark File

The name and directory of the restart and recovery bookmark file is set in the configuration file (dwi\_config.env). The directory defaults to \$MMHOME/rfx/bookmark. The naming convention for the bookmark file itself defaults to the following 'dot'-separated file name:

- The program name
- The first filename, if one is specified on the command line
- 'bkm'
- The business virtual date for which the module was run

The example below illustrates the bookmark flag for the invildex program run on the VDATE of January 5, 2004:

```
$MMHOME/rfx/bookmark/invildex.invilddm.txt.bkm.20040105
```

## Message Logging

Message logs are written daily in a format described in this section.

## Daily Log File

Every RETL program writes a message to the daily log file when it starts and when it finishes. The name and directory of the daily log file is set in the configuration file (`dwi_config.env`). The directory defaults to `$MMHOME/log`. All log files are encoded UTF-8.

The naming convention of the daily log file defaults to the following 'dot' separated file name:

- The business virtual date for which the modules are run
- `.log`

For example, the location and the name of the log file for the business virtual date (VDATE) of March 21, 2004 would be the following:

```
$MMHOME/log/20040321.log
```

## Format

As the following examples illustrate, every message written to a log file has the name of the program, a timestamp, and either an informational or error message:

```
invidex 16:22:52: Program starting...
invidex 16:22:52: Step1 - process current day data change
invidex 16:22:59: Analyze table rmsint110buser1.GET_ITEM_MASTER_TEMP
invidex 16:22:59: Step2 - Stock-on-hand and in-transit info
invidex 16:23:04: Analyze table rmsint110buser1.GET_ITEM_LOC_TEMP
invidex 16:23:04: Step3 - process on-order quantity and unit cost
invidex 16:23:12: Analyze table rmsint110buser1.FINAL_COMP_ITEM_ON_ORDER_TEMP
invidex 16:23:12: Step4 - Process on-order and original item/loc information
invidex 16:23:18: Drop table rmsint110buser1.GET_ITEM_LOC_TEMP
invidex 16:23:19: Drop table rmsint110buser1.GET_ITEM_MASTER_TEMP
invidex 16:23:19: Drop table rmsint110buser1.FINAL_COMP_ITEM_ON_ORDER_TEMP
invidex 16:23:19: Number of records in /projects/dwi11.0/dev/data/inviddm.txt =
37
invidex 16:23:19: Program completed successfully
```

If a program finishes unsuccessfully, an error file is usually written that indicates where the problem occurred in the process. There are some error messages written to the log file, such as 'No output file specified', that require no further explanation written to the error file.

## Program Error File

In addition to the daily log file, each program also writes its own detail flow and error messages. Rather than clutter the daily log file with these messages, each program writes out its errors to a separate error file unique to each execution.

The name and directory of the program error file is set in the configuration file (`dwi_config.env`). The directory defaults to `$MMHOME/error`. All errors and *all routine processing messages* for a given program on a given day go into this error file (for example, it will contain both the `stderr` and `stdout` from the call to RETL). All error files are encoded UTF-8.

The naming convention for the program's error file defaults to the following 'dot' separated file name:

- The program name
- The first filename, if one is specified on the command line
- The business virtual date for which the module was run

For example, all errors and detail log information for the `invildex` program would be placed in the following file for the batch run of March 21, 2004:

```
$MMHOME/error/invildex.invilddm.txt.20040321
```

## RMSE Reject Files

RMSE extract modules may produce a reject file if they encounter data related problems, such as an inability to find data on required lookup tables. The module tries to process all data and then indicates that records were rejected so that all data problems can be identified in one pass and corrected; then, the module can be re-run to successful completion. If a module does reject records, the reject file is *not* removed, and the user is responsible for removing the reject file before re-running the module.

The records in the reject file contain an error message and key information from the rejected record. The following example illustrates a record that is rejected due to problems within the currency conversion library:

```
Unable to convert currency for LOC_IDNT, DAY_DT|3|20011002
```

The name and directory of the reject file is set in the configuration file (`dwi_config.env`). The directory defaults to `$MMHOME/data`.

---

---

**Note:** A directory specific to reject files can be created. The `dwi_config.env` file would need to be changed to point to that directory.

---

---



## Schema Files

RETL uses schema files to specify the format of incoming or outgoing datasets. The schema file defines each column's data type and format, which is then used within RETL to format/handle the data. For more information about schema files, see the latest RETL Programmer's Guide. Schema file names are hard-coded within each module since they do not change on a day-to-day basis. All schema files end with ".schema" and are placed in the "\$MMHOME/rfx/schema" directory.

## Resource Files

RMSE Kornshell programs use resource files so that the same RETL programs can run in various language environments. For each language, there is one resource file.

Resource files contain hard-coded strings that are used by extract programs. The name and directory of the resource file is set in the configuration file (dwi\_config.env). The default directory is \${MMHOME}/rfx/include.

The naming convention for the resource file follows the two-letter ISO code standard abbreviation for languages (for example, en for English, fr for French, ja for Japanese, es for Spanish, de for German, and so on).

## Command Line Parameters

A module handles command line parameters in one of the three ways described in this section.

---



---

**Note:** For some modules, default output file names and schema names correspond to RDW program names.

---



---

### Modules That Do Not Require Parameters

Some RMSE extraction modules do not require passing in any parameters. The output path/filename defaults to \$DATA\_DIR/(RDW program name).txt. Similarly, the schema format for the records in these files are specified in the file - \$SCHEMA\_DIR/(RDW program name).schema.

### Non-File Based Modules That Require Parameters

In order for some non-file based RETL modules to run, command line parameters need to be passed in at the UNIX command line. These RMSE modules require an output\_file\_path and output\_file\_name to be passed in. These modules may allow the operator to specify more than one output file.

For example:

```
invaldex.ksh output_file_path/output_file_name
```

### ReSA Ffile-Based Modules That Require Parameters

In order for some file-based RETL modules to run, command line parameters need to be passed in at the UNIX command line. ReSA file-based modules require the following to be passed in:

- output\_file\_path and output\_file\_name
- input\_file\_path and input\_file\_name

For example:

```
lptotldex output_file_path/output_file_name input_file_path/input_file_name
```

## Multi-Threading For RMSE ReSA Modules

In contrast to the way in which multi-threading is defined in UNIX, RMSE modules use 'multi-threading' to refer to the running of a single RETL program multiple times on separate groups of data simultaneously. Multi-threading is only available for RMSE ReSA extraction modules that take a text file as input. Depending upon how it is implemented, multi-threading can reduce the total amount of processing time.

File-based extraction modules have to be run once for each input file. A different output file must be specified for each input file. It is the responsibility of the client to set up, as part of the daily batch operation, a process to combine all the resulting text files into one file using the UNIX concatenation ('cat') command.

The example below represents a scenario in which the lptotldex.ksh module is run three times for three input files.

```
lptotldex ${MMHOME}/data/lptotlddm.1000000009
${MMHOME}/data/RDWS_1000000009_20020310_20020311
lptotldex ${MMHOME}/data/lptotlddm.1000000010
${MMHOME}/data/RDWS_1000000010_20020310_20020311
lptotldex ${MMHOME}/data/lptotlddm.1000000011
${MMHOME}/data/RDWS_1000000011_20020310_20020311
```

To concatenate the three output files, run the following command in the \${MMHOME}/data directory:

```
cat lptotlddm.1000000009 lptotlddm.1000000010 lptotlddm.1000000011 > lptotlddm.txt
```

In this example, lptotlddm.txt becomes the combined text file.

## Typical Run and Debugging Situations

The following examples illustrate typical run and debugging situations for types of programs. The log, error, and so on file names referenced below assume that the module is run on the business virtual date of March 9, 2004. See the previously described naming conventions for the location of each file.

For example:

To run invildex.ksh:

1. Change directories to \$MMHOME/rfx/src.
2. At a UNIX prompt enter:

```
%invildex.ksh $MMHOME/data/invilddm.txt
```

If the module runs successfully, the following results:

1. **Log file:** Today's log file, 20040309.log, contains the messages "Program started ..." and "Program completed successfully" for invildex.ksh.
2. **Data:** The invilddm.txt file exists in the \$MMHOME/data directory and contains the extracted records.
3. **Error file:** The program's error file, invildex.invilddm.txt.20040309, contains the standard RETL flow (ending with "All threads complete" and "Flow ran successfully") and no additional error messages.
4. **Program status control:** The program status control file, invildex.invilddm.txt.status.20040309, does not exist.
5. **Reject file:** The reject file, invildex.invilddm.txt.rej.20040309, does not exist.

If the module does *not* run successfully, the following results:

1. **Log file:** Today's log file, 20040309.log, does not contain the "Program completed successfully" message for invildex.ksh.
2. **Data:** The invilddm.txt file may exist in the data directory but may not contain all the extracted records.
3. **Error file:** The program's error file, invildex.invilddm.txt.20040309, may contain an error message.
4. **Program status control:** The program status control file, invildex.invilddm.txt.status.20040309, exists.
5. **Reject file:** The reject file, invildex.invilddm.txt.rej.20040309, does not exist because this module does not reject records.
6. **Bookmark file (in certain conditions):** The bookmark file, invildex.invilddm.txt.bkm.20040309, exists because this module contains more than one flow. The error occurred after the first flow (for example, during the second flow).

To re-run a module from the beginning, perform the following actions:

1. Determine and fix the problem causing the error.
2. Remove the program's status control file.
3. Remove the bookmark file from \$MMHOME/rfx/bookmark
4. Change directories to \$MMHOME/rfx/src. At a UNIX prompt, enter:  
%invildex.ksh \$MMHOME/data/invilddm.txt

---

**Note:** To understand how to engage in the restart and recovery process, see the section, 'Restart and recovery' earlier in this chapter.

---

## Running the Time 454 Extract Module

The time 454 extract module requires the steps below to run successfully:

1. Log in to the RMS database server as RMS RETL-specific database user. Run the profile and verify that the MMUSER and PASSWORD variables are set to the RETL-specific database user, and the appropriate password. Verify the RETL executable is in the path of your UNIX session by typing:  
%which rfx
2. Change directories to \$MMHOME/install.
3. Modify the variable l\_path in the extract\_time.sql script to reference the UTL\_FILE directory specified in the RMS database parameter file.
4. At the UNIX prompt enter:  
%extract\_time.ksh  
This script generates three files called time\_454\*.txt, wkday\*.txt, and start\_of\_half\_month\*.txt located in the utl\_file\_dir directory specified in your RMS database parameter file.
5. Change directories on the UNIX server to \$MMHOME/log. Review the log file that was created or modified.
6. Change directories on the UNIX server to \$MMHOME/error. Review the error files that were created.
7. Move the three output files to \$MMHOME/install directory.



---

---

# RETL Program Overview for the RMS-RPAS Interface

## Oracle Retail ETL Architecture

RMS works in conjunction with the Oracle Retail Extract Transform and Load (RETL) framework. This architecture utilizes a high performance data processing tool that allows database batch processes to take advantage of parallel processing capabilities.

The RETL framework runs and parses through the valid operators composed in XML scripts.

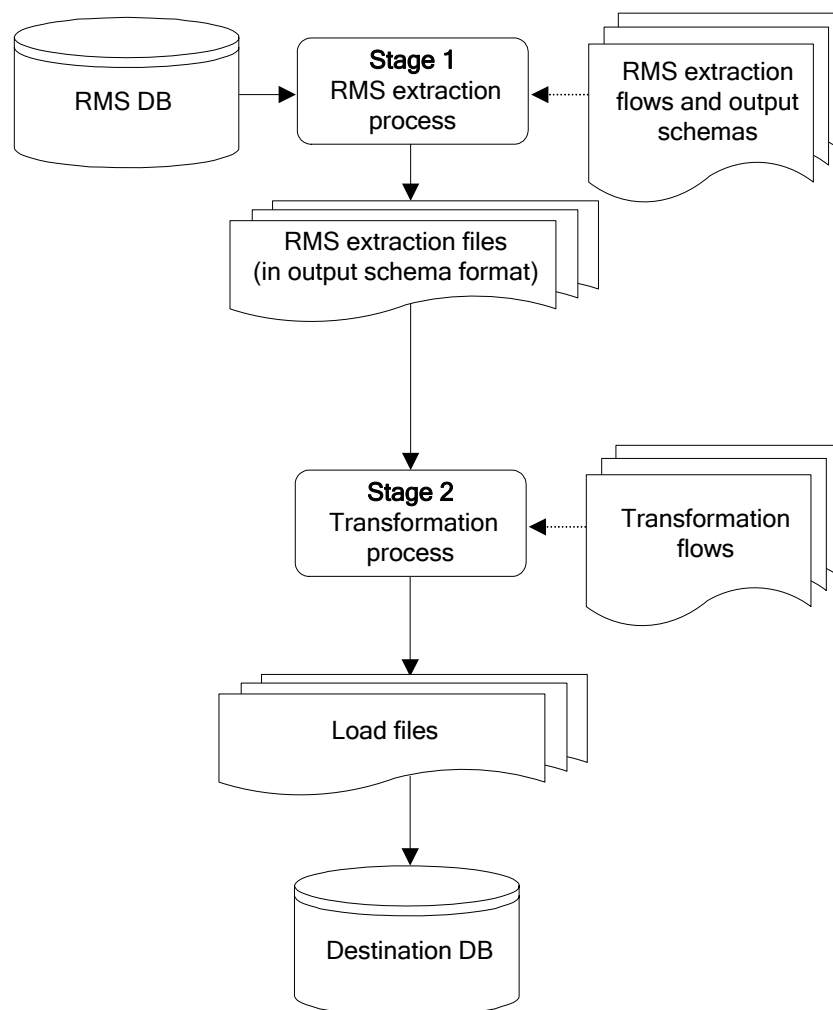
More information about the RETL tool is available in the latest RETL Programmer's Guide.

The diagram below illustrates the extraction processing architecture. Instead of managing the change captures as they occur in the source system during the day, the process involves extracting the current data from the source system. The extracted data is output to flat files. These flat files are then available for consumption by products such as RPAS.

The target system has its own way of completing the transformations and loading the necessary data into its system, where it can be used for further processing in the environment. See RPAS documentation for information related to transformations and loadings.

The architecture relies upon two distinct stages, shown in the diagram below. Stage 1 is the extraction from the RMS database using well-defined flows specific to the RMS database. The resulting output is comprised of data files written in a well-defined schema file format. This stage includes no destination specific code.

Stage 2 introduces a flow specific to the destination. In this case, flows for RPAS are designed to transform the data so that RPAS can import the data properly.



The two stages of RETL processing

## RETL Program Overview

This section summarizes the RETL program features utilized in the RMS extractions and loads. Installation information about the RETL tool is available in the latest RETL Programmer’s Guide.

### Configuration

#### Version of RETL

Before trying to configure and run RMS RETL, install RETL version 12.0 or later, which is required to run RMS RETL. See the latest RETL Programmer’s Guide for thorough installation information.

#### RETL User and Permissions

The permissions are set up as per the RETL Programmer’s Guide. RMS RETL reads and writes data files and creates, deletes, updates and inserts into tables. If these permissions are not set up properly, extractions fail.

## Environment Variables

See the RETL Programmer's Guide for RETL environment variables that must be set up for your version of RETL. You will need to set RDF\_HOME to your base directory for RMS RETL. This is the top level directory that you selected during the installation process. In .profile, you should add a line such as the following:

```
export RDF_HOME=<base directory for RMS RETL>
```

## rmse\_rpas\_config.env Settings for RPAS

There are several constants that must be set in rmse\_rpas\_config.env depending upon a retailer's preferences and the local environment. These are summarized in the following table.

| Constant Name          | Default Value | Alternate Value         | Description                                                                                                                                   |
|------------------------|---------------|-------------------------|-----------------------------------------------------------------------------------------------------------------------------------------------|
| DATE_TYPE              | vdate         | current_date            | Determines whether the date used in naming the error, log, and status files is the current date or the VDATE value found in the PERIOD table. |
| DBNAME                 | rtkdev01      | Depends on installation | The database schema name.                                                                                                                     |
| RMS_OWNER              | RPASINT       | Depends on installation | The username of the RMS database schema owner.                                                                                                |
| BA_OWNER               |               | Depends on installation | The username of the RMS batch user (not currently used by RMS-RPAS).                                                                          |
| CONN_TYPE              | thin          | oci                     | The way in which RMS connects to the database.                                                                                                |
| DBHOST                 | mspdev17      | Depends on installation | The computer hardware node name.                                                                                                              |
| DBPORT                 | 1524          | Depends on installation | The port on which the database listener resides.                                                                                              |
| LOC_ATTRIBUTES_ACTIVE  | False         | True                    | Determines whether rmse_rpas_attributes.ksh is run or not.                                                                                    |
| PROD_ATTRIBUTES_ACTIVE | False         | True                    | Determines whether rmse_rpas_attributes.ksh is run or not.                                                                                    |
| DIFF_ACTIVE            | True          | False                   | Determines whether rmse_rpas_merchhier.ksh generates data files that contain diff allocation information.                                     |

| Constant Name | Default Value                                       | Alternate Value                            | Description                                                                                                                                                              |
|---------------|-----------------------------------------------------|--------------------------------------------|--------------------------------------------------------------------------------------------------------------------------------------------------------------------------|
| ISSUES_ACTIVE | True                                                | False                                      | If set to 'True', rmse_rpas_stock_on_hand also extracts stock at the warehouse level. If set to 'False', rmse_rpas_stock_on_hand extracts stock at the store level only. |
| LOAD_TYPE     | CONVENTIONAL                                        | DIRECT                                     | Data loading method to be used by SQL*Loader (Direct may be faster than conventional.)                                                                                   |
| DB_ENV        | ORA                                                 | DB2, TERA                                  | Database type (Additional changes to the software may be needed if a database other than Oracle is selected.)                                                            |
| NO_OF_CPUS    | 4                                                   | Depends on installation                    | Used in parallel database query hints to improve performance.                                                                                                            |
| LANGUAGE      | en                                                  | Various                                    | En = English                                                                                                                                                             |
| REFX_OPTIONS  | -c \$RDF_HOME/<br>rfx/etc/rfx.conf<br>-s SCHEMAFILE | -c \$RDF_<br>HOME/<br>rfx/etc/rfx<br>.conf | Processing speed may be increased for some extractions if the -s SCHEMAFILE option is omitted                                                                            |

You must also set up the environment variable `PASSWORD` in the `rmse_rpas_config.env`, `.kshrc` or some other location that can be referenced. In the example below, adding the line to the `rmse_rpas_config.env` causes the password 'mypasswd' to be used to log into the database:

```
export PASSWORD=myspasswd
```

Be sure to review the environmental parameters in the `rmse_rpas_config.env` file before executing batch modules.

### Steps to Configure RETL

1. Log in to the UNIX server with a UNIX account that will run the RETL scripts.
2. Change directories to `<base_directory>/rfx/etc`.
3. Modify the constants from the table above in the `rmse_rpas_config.env` script as needed.



## Program Return Code

RETL programs use a return code to indicate successful completion. If the program successfully runs, a zero (0) is returned. If the program fails, a non-zero is returned.

## Program Status Control Files

To prevent a program from running while the same program is already running against the same set of data, the code utilizes a program status control file. At the beginning of each module, `rmse_rpas_config.env` is run. This script checks for the existence of the program status control file. If the file exists, then a message stating, '`{PROGRAM_NAME}` has already started', is logged and the module exits. If the file does not exist, a program status control file is created and the module executes.

If the module fails at any point, the program status control file is not removed, and the user is responsible for removing the control file before re-running the module.

## File Naming Conventions

The name and directory of the program status control file is set in the configuration script (`rmse_rpas_config.env`). The directory defaults to `$RDF_HOME/error`. The naming convention for the program status control file itself defaults to the following dot separated file name:

- The program name
- 'status'
- The business virtual date for which the module was run

For example, a program status control file for the `rmse_rpas_daily_sales.ksh` program would be named as follows for a batch run on the business virtual date of January 5, 2001:

```
$RDF_HOME/error/rmse_rpas_daily_sales.status.20010105
```

## Restart and Recovery

Because RETL processes all records as a set, as opposed to one record at a time, the method for restart and recovery must be different from the method that is used for Pro\*C. The restart and recovery process serves the following two purposes:

1. It prevents the loss of data due to program or database failure.
2. It increases performance when restarting after a program or database failure by limiting the amount of reprocessing that needs to occur.

The RMS extract (RMSE) modules extract from a source transaction database or text file and write to a text file. The RMS load module imports data from flat files, performs transformations if necessary, and then loads the data into the applicable RMS table.

Most modules use a single RETL flow and do not require the use of restart and recovery. If the extraction process fails for any reason, the problem can be fixed, and the entire process can be run from the beginning without the loss of data. No RMS to RPAS extraction programs have any restart/recovery capability. The single RMS load program, `rmsl_rpas_forecast.ksh`, takes a text file as its input, and the following two choices are available that enable the program to complete the load in the event of an error:

- Re-run the program with the entire input file.
- Re-run the program with only the input records that were not processed successfully the first time.

## Message Logging

Message logs are written daily in a format described in this section.

### Daily Log File

Every RETL program writes a message to the daily log file when it starts and when it finishes. In some cases, progress messages are also written. The name and directory of the daily log file is set in the configuration script (`rmse_rpas_config.env`). The directory defaults to `$RDF_HOME/log`. All log files are encoded UTF-8.

The naming convention of the daily log file defaults to the following “dot” separated file name:

- The business virtual date for which the modules are run
- `.log`

For example, the location and the name of the log file for the business virtual date of January 5, 2001 would be the following:

```
$RDF_HOME/log/20010105.log
```

### Format

As the following examples illustrate, every message written to a log file has the name of the program, a timestamp, and either an informational or error message. For example:

```
rmse_rpas_item_retail 17:09:07: Program started ...  
rmse_rpas_item_retail 17:09:12: Program completed successfully
```

Some error messages are also written to the log file, such as `'No output file specified'`.

### Program Error File

In addition to the daily log file, each program also writes its own detailed flow and error messages. Rather than clutter the daily log file with these messages, each program writes out its errors to a separate error file unique to each execution.

If a program finishes unsuccessfully, a message is usually written in the error file that indicates where the problem occurred in the process.

The name and directory of the program error file is set in the applicable configuration file (`rmse_rpas_config.env`). The directory defaults to `$RDF_HOME/error`. All errors and *all routine processing messages* for a given program on a given day go into this error file (for example, it will contain both the `stderr` and `stdout` produced during execution of the program).

The naming convention for the program's error file defaults to the following “dot” separated file name:

- The program name
- The business virtual date for which the module was run

For example, all errors and detailed log information for the `rms_item_master.ksh` program would be placed in the following file for the batch run on the business virtual date of January 5, 2001:

```
$MMHOME/error/rms_item_master.20010105
```

## RMSE Reject Files

RMSE extract modules may produce a reject file if they encounter data related problems, such as the inability to find data on required lookup tables. The module tries to process all data and then indicates that records were rejected so that all data problems can be identified in one pass and corrected; then, the module can be re-run to successful completion. If a module does reject records, the reject file is *not* removed, and the user is responsible for removing the reject file before re-running the module. The records in the reject file consist of the rejected records.

The name and directory of the reject file are defined in the applicable configuration script (`rmse_rpas_config.env`). The directory defaults to `$RDF_HOME/data`.

---

**Note:** A directory specific to reject files can be created. The `rmse_rpas_config.env` script would need to be changed to define the reject directory constant such that it would point to that directory.

---

The naming convention for the reject file defaults to the following “dot” separated file name:

- The program name
- The first filename, if one is specified on the command line
- ‘rej’
- The business virtual date for which the module was run

## Schema Files Overview

RETL uses schema files to specify the format of incoming or outgoing datasets. The schema file defines each column’s data type and format, which is then used within RETL to format/handle the data. For more information about schema files, see the latest RETL Programmer’s Guide. Schema file names are hard-coded within each module because they do not change on a day-to-day basis. All schema files end with “.schema” and are placed in the “`$RDF_HOME/rfx/schema`” directory.

## Command Line Parameters

The only programs or scripts that allow command line parameters (or arguments) are the `rmse_rpas_config.env` script and the `pre_rmse_rpas.ksh` and `rmse_rpas.ksh` programs. All of the command line parameters for these modules are optional and are described below (the square brackets indicate that the parameter is optional):

### `rmse_rpas_config.env`

Usage: `$RDF_HOME/rfx/etc/rmse_rpas_config.env [-t $*] [-r $*] [-s $*] [-v $* | -c $*]`

#### Description of Command Line Options

---

**Note:** See the end of this description for an explanation of the need for the ‘\$\*’ that appears after each command line option.

---

- `-t`: This option causes `rmse_rpas_config.env` to skip the initializing of the environment variables that obtain their values from the ‘.txt’ files, except for `VDATE`

which is initialized with the date found in the vdate.txt file. This option is utilized by pre\_rmse\_rpas.ksh, rmse\_rpas.ksh, rdft.ksh and outage.ksh when they call rmse\_rpas\_config.env.

- -r: This option prevents the redirection of all output (stdout and stderr) to the error file. This can be useful during debugging and maintenance. This option can also be utilized by rmse\_rpas.ksh, rdft.ksh and outage.ksh when they call rmse\_rpas\_config.env.
- The '-t' and '-r' options must be followed by '\$\*' on the line which invokes this script. This step is necessary in order to preserve the command line arguments or options that may have been present on the command line for the RETL script that invokes this script. However, the '\$\*' should only appear once if both options are used.
- -s: This option causes rmse\_rpas\_config.env to skip the STATUS\_FILE test. This is also useful during maintenance and debugging.
- -v: If DATE\_TYPE (in rmse\_rpas\_config.env) is set to 'vdate', this option prevents the normal exit with an error message when the vdate.txt file is empty or non-existent; instead, it will use the current date to derive FILE\_DATE. However, if DATE\_TYPE is set to 'vdate', and vdate.txt actually does exist and is non-empty, the date in vdate.txt continues to be used even if this option is set. If DATE\_TYPE is set to 'current\_date', this option has no effect.
- -c: This option overrides the DATE\_TYPE switch setting and causes the current date to be used to derive FILE\_DATE regardless of what DATE\_TYPE is set to. This option is utilized by pre\_rmse\_rpas.ksh when it calls rmse\_rpas\_config.env, if it is run with the -c option on its command line. The '-c' option is normally only used when rmse\_rpas\_config.env is called from pre\_rmse\_rpas.ksh.
- If only one command line option is used, it must be followed by '\$\*'. But if more than one option is specified, then '\$\*' must be entered on the command line only once after all options have been entered. The '\$\*' is necessary in order to preserve the command line arguments or options (if there are any) that are present on the command line that is used to execute the RETL script which invokes this script.
- If more than one option is specified, options must appear on the command line in the same order as shown on the "Usage" line, above.

pre\_rmse\_rpas.ksh

- Usage: pre\_rmse\_rpas.ksh [-c]
- The '-c' option is used to specify what option is to be placed on the rmse\_rpas\_config.env command line when it is called by this program. It is usually used the first time that pre\_rmse\_rpas.ksh is run at a new installation or if the state of the vdate.txt file is unknown. This option is passed directly to rmse\_rpas\_config.env when it is called by pre\_rmse\_rpas.ksh. No other use is made of this parameter by pre\_rmse\_rpas.ksh.
- This option causes rmse\_rpas\_config.env to use the current date to initialize FILE\_DATE instead of possibly setting it to VDATE, which is obtained from the vdate.txt file. (FILE\_DATE is the date that is used to name the error, log, and status files.)
- The current date is used regardless of how DATE\_TYPE is set in rmse\_rpas\_config.env. By using the '-c' option, there is no need to manually set up the vdate.txt file before running this script.
- The normal mode for pre\_rmse\_rpas.ksh (without the -c option) is that when it calls rmse\_rpas\_config.env, FILE\_DATE is set to VDATE or the current date, depending on how DATE\_TYPE is set in rmse\_rpas\_config.env. If DATE\_TYPE is set to 'vdate',

and if the vdate.txt file does not exist or is empty, rmse\_rpas\_config.env (and this program) exits with an error message.

- The use of this option does not affect what date is used by any of the other RETL scripts that run after this script is done. After pre\_rmse\_rpas.ksh has run, when the other RETL scripts are run, they call rmse\_rpas\_config.env with no options on the command line, and their files are named using VDATE or the current date, depending on how DATE\_TYPE is set in rmse\_rpas\_config.env.

rmse\_rpas.ksh:

- Usage: rmse\_rpas.ksh [-c]
- The presence of the '-c' option causes FILE\_DATE in rmse\_rpas\_config.env to be set to the current date instead of possibly using VDATE (which gets its value from the vdate.txt file), but only when it is called by rmse\_rpas.ksh and pre\_rmse\_rpas.ksh (pre\_rmse\_rpas.ksh is invoked by rmse\_rpas.ksh). It has no effect when other extract programs call rmse\_rpas\_config.env, at the time that they are invoked by rmse\_rpas.ksh. This option is passed directly to rmse\_rpas\_config.env and pre\_rmse\_rpas.ksh when they are called by rmse\_rpas.ksh. No other use is made of this parameter by rmse\_rpas.ksh.

## RMSE I/O File Names

Most of the output path/filenames have the format, \$DATA\_DIR/(RMSE\_RPAS\_program name).dat. Similarly, the schema format for the records in these files are specified in the file - \$SCHEMA\_DIR/(RMSE\_RPAS\_program name).schema.

## Typical Run and Debugging Situations

The following examples illustrate typical run and debugging situations for programs. The log, error, etc. file names referenced below assume that the module is run on the business virtual date of March 9, 2001. See the previously described naming conventions for the location of each file.

For example:

To run rmse\_rpas\_stores.ksh:

1. Change directories to \$RDF\_HOME/rfx/src.
2. At a UNIX prompt (\$) enter:

```
$rmse_rpas_stores.ksh
```

If the module runs successfully, the following results:

1. **Log file:** Today's log file, 20010309.log, contains the messages "Program started ..." and "Program completed successfully" for rmse\_rpas\_stores.
2. **Data:** The rmse\_rpas\_stores.dat file exists in the data directory and contains the extracted records.
3. **Schema:** The rmse\_rpas\_stores.schema file exists in the schema directory and contains the definition of the data file in #2 above.
4. **Error file:** The program's error file, rmse\_rpas\_stores.20010309, contains the standard RETL flow (ending with "All threads complete" and "Flow ran successfully") and no error messages.
5. **Program status control:** The program status control file, rmse\_rpas\_stores.status.20010309, will not exist.
6. **Reject file:** The reject file, rmse\_rpas\_stores.rej.20010309, will not exist.

If the module does *not* run successfully, the following results:

1. **Log file:** Today's log file, 20010309.log, does not contain the "Program completed successfully" message for rmse\_rpas\_stores.
2. **Data:** The rmse\_rpas\_stores.dat file may exist in the data directory but may not contain all the extracted records.
3. **Schema:** The rmse\_rpas\_stores.schema file exists in the schema directory and contains the definition of the data file in #2 above.
4. **Error file:** The program's error file, rmse\_rpas\_stores.20010309, may contain one or more error messages.
5. **Program status control:** The program status control file, rmse\_rpas\_stores.status.20010309, exists.
6. **Reject file:** The reject file, rmse\_rpas\_stores.status.20010309, does not exist because this module does not reject records.

To re-run the module, perform the following actions:

1. Determine and fix the problem causing the error.
2. Remove the program's status control file.
3. Change directories to \$RDF\_HOME/rfx/src. At a UNIX prompt, enter:

```
$rmse_rpas_stores.ksh
```

## RPAS/AIP Configuration

### RETL Program Overview for the RMS-Time-Phased Inventory Planning Tool Interface

This chapter summarizes the RETL program features utilized in the RMS Extractions (RMSE) for the RMS-time-phased inventory planning tool integration. Starting with RMS version 11, the RMS extract for a time-phased inventory planning tool is separate from the RMS extracts for RPAS. In prior RMS version, time-phased inventory planning tool and RPAS had common RETL extracts.

More installation information about the RETL tool is available in the latest RETL Programmer's Guide.

---

---

**Note:** In this section, some examples refer to RETL programs that are not related to RMS or are related to other versions of RMS than this document addresses. Such examples are included for illustration purposes only.

---

---

#### Installation

Select a directory where you would like to install RMS ETL. This directory (also called MMHOME) is the location from which the RMS ETL files are extracted.

The following code tree is utilized for the RETL framework during the extractions, transformations, and loads and is referred to in this documentation.

```
<base directory (MMHOME)>
  /data
  /error
  /log
  /rfx
  /bookmark
  /etc
  /lib
  /schema
  /src
```

## Configuration

### RETL

Before trying to configure and run RMS ETL, install RETL version 11.3 or later, which is required to run RMS ETL. See the latest RETL Programmer's Guide for thorough installation information.

### RETL user and permissions

RMS ETL is installed and run as the RETL user. Additionally, the permissions are set up as per the RETL Programmer's Guide. RMS ETL reads data, creates, deletes and updates tables. If these permissions are not set up properly, extractions fail.

### Environment Variables

See the RETL Programmer's Guide for RETL environment variables that must be set up for your version of RETL. You will need to set MMHOME to your base directory for RMS RETL. This is the top level directory that you selected during the installation process (see the section, 'Installation', above). In your .kshrc, you should add a line such as the following:

```
export MMHOME=<base directory for RMS ETL>
```

### rmse\_aip\_config.env Settings for IP

There are variables you must change depending upon your local settings:

For example:

```
export DBNAME=int9i
export RMS_OWNER=steffej_rms1011
export BA_OWNER=rmsint1011
```

You must set up the environment variable PASSWORD in the rmse\_aip\_config.env or some other location that can be referenced. In the example below, adding the line to the rmse\_aip\_config.env causes the password 'mypasswd' to be used to log into the database:

```
export PASSWORD=mypasswd
```

Make sure to review the environmental parameters in the rmse\_aip\_config.env file file before executing batch modules.

### Steps to Configure RETL

1. Log in to the UNIX server with a UNIX account that will run the RETL scripts.
2. Change directories to <base\_directory>/rfx/etc.
3. Modify the rmse\_aip\_config.env script.

For example:

- a. Change the DBNAME variable to the name of the RMS database.
- b. Change the RMS\_OWNER variable to the username of the RMS schema owner.
- c. Change the BA\_OWNER variable to the username of the RMSE batch user.

## Program Return Code

RETL programs use one return code to indicate successful completion. If the program successfully runs, a zero (0) is returned. If the program fails, a non-zero is returned.

## Program Status Control Files

To prevent a program from running while the same program is already running against the same set of data, the code utilizes a program status control file. At the beginning of each module, `rmse_aip_config.env` is run. These files check for the existence of the program status control file. If the file exists, then a message stating, '`{PROGRAM_NAME}` has already started', is logged and the module exits. If the file does not exist, a program status control file is created and the module executes.

If the module fails at any point, the program status control file is not removed, and the user is responsible for removing the control file before re-running the module.

### File Naming Conventions

The naming convention of the program status control file allows a program whose input is a text file to be run multiple times at the same time against different files.

The name and directory of the program status control file is set in the applicable configuration file (`rmse_aip_config.env`). The directory defaults to `$MMHOME/error`. The naming convention for the program status control file itself defaults to the following dot separated file name:

- The program name
- 'status'
- The business virtual date for which the module was run

For example, a program status control file for one program would be named as follows for the batch run of January 5, 2001:

```
$MMHOME/error/rmse_aip_banded_item.status.20010105
```

### Restart and Recovery

Because RETL processes all records as a set, as opposed to one record at a time, the method for restart and recovery must be different from the method that is used for Pro\*C. The restart and recovery process serves the following two purposes:

1. It prevents the loss of data due to program or database failure.
2. It increases performance when restarting after a program or database failure by limiting the amount of reprocessing that needs to occur.

The RMS Extract (RMSE) modules extract from a source transaction database or text file and write to a text file. The RMS Load (RMSL) modules import data from flat files, perform transformations if necessary and then load the data into the applicable RMS tables.

Most modules use a single RETL flow and do not require the use of restart and recovery. If the extraction process fails for any reason, the problem can be fixed, and the entire process can be run from the beginning without the loss of data. For a module that takes a text file as its input, the following two choices are available that enable the module to be re-run from the beginning:

1. Re-run the module with the entire input file.
2. Re-run the module with only the records that were not processed successfully the first time and concatenate the resulting file with the output file from the first time.

To limit the amount of data that needs to be re-processed, more complicated modules that require the use of multiple RETL flows utilize a bookmark method for restart and recovery. This method allows the module to be restarted at the point of last success and run to completion. The bookmark restart/recovery method incorporates the use of a bookmark flag to indicate which step of the process should be run next. For each step in the process, the bookmark flag is written to and read from a bookmark file.



---

**Note:** If the fix for the problem causing the failure requires changing data in the source table or file, then the bookmark file must be removed and the process must be re-run from the beginning in order to extract the changed data.

---

## Message Logging

Message logs are written daily in a format described in this section.

### Daily Log File

Every RETL program writes a message to the daily log file when it starts and when it finishes. The name and directory of the daily log file is set in the configuration file (`rmse_aip_config.env`). The directory defaults to `$MMHOME/log`. All log files are encoded UTF-8.

The naming convention of the daily log file defaults to the following “dot” separated file name:

- The business virtual date for which the modules are run
- `.log`

For example, the location and the name of the log file for the business virtual date of January 5, 2001 would be the following:

```
$MMHOME/log/20010105.log
```

### Format

As the following examples illustrate, every message written to a log file has the name of the program, a timestamp, and either an informational or error message:

```
aipt_item 17:07:43: Program started ...
aipt_item 17:07:50: Program completed successfully
rmse_aip_item_master 17:08:53: Program started ...
rmse_aip_item_master 17:08:59: Program completed successfully
rmse_item_retail 17:09:07: Program started ...
rmse_item_retail 17:09:12: Program completed successfully
```

If a program finishes unsuccessfully, an error file is usually written that indicates where the problem occurred in the process. There are some error messages written to the log file, such as `'No output file specified'`, that require no further explanation written to the error file.

### Program Error File

In addition to the daily log file, each program also writes its own detail flow and error messages. Rather than clutter the daily log file with these messages, each program writes out its errors to a separate error file unique to each execution.

The name and directory of the program error file is set in the applicable configuration file (`rmse_aip_config.env`). The directory defaults to `$MMHOME/error`. All errors and *all routine processing messages* for a given program on a given day go into this error file (for example, it will contain both the `stderr` and `stdout` from the call to RETL). All error files are encoded UTF-8.

The naming convention for the program's error file defaults to the following “dot” separated file name:

- The program name
- The business virtual date for which the module was run

For example, all errors and detail log information for the `rms_aip_item_master` program would be placed in the following file for the batch run of January 5, 2001:

```
$MMHOME/error/rms_aip_item_master.20010105
```

## RMSE and Transformation Reject Files

RMSE extract and transformation modules may produce a reject file if they encounter data related problems, such as the inability to find data on required lookup tables. The module tries to process all data and then indicates that records were rejected so that all data problems can be identified in one pass and corrected; then, the module can be re-run to successful completion. If a module does reject records, the reject file is *not* removed, and the user is responsible for removing the reject file before re-running the module.

The records in the reject file contain an error message and key information from the rejected record. The following example illustrates a record that is rejected due to problems within the currency conversion library:

```
Currency Conversion Failed|101721472|20010309
```

The following example illustrates a record that is rejected due to problems looking up information on a source table:

```
Unable to find item_master record for Item|101721472
```

The name and directory of the reject file is set in the applicable configuration file (`rmse_config.env` or `config.env`). The directory defaults to `$MMHOME/data`.

---

---

**Note:** A directory specific to reject files can be created. The `rmse_config.env` and/or `config.env` file would need to be changed to point to that directory.

---

---

The naming convention for the reject file defaults to the following “dot” separated file name:

- The program name
- The first filename, if one is specified on the command line
- ‘rej’
- The business virtual date for which the module was run

For example, all rejected records for the `slsildmex` program would be placed in the following file for the batch run of January 5, 2001:

```
$MMHOME/data/slsildmex.slsildmdm.txt.rej.20010105
```

## Schema Files Overview

RETL uses schema files to specify the format of incoming or outgoing datasets. The schema file defines each column’s data type and format, which is then used within RETL to format/handle the data. For more information about schema files, see the latest RETL Programmer’s Guide. Schema file names are hard-coded within each module since they do not change on a day-to-day basis. All schema files end with “.schema” and are placed in the “rfx/schema” directory.

## Command Line Parameters

In order for each RETL module to run, the input/output data file paths and names may need to be passed in at the UNIX command line.

### RMSE and Transformation

Most RMSE and transformation modules do not require the passing in of any parameters. The output path/filename defaults to `$DATA_DIR/(RMSE and transfer program name).dat`. Similarly, the schema format for the records in these files are specified in the file - `$SCHEMA_DIR/(RMSE program name).schema`

**Scripts that need Parameter to Run**

The scripts below are run on a full snapshot basis. The parameter is F (for full snapshot).

- rmse\_aip\_store\_cur\_inventory.ksh
- rmse\_aip\_wh\_cur\_inventory.ksh

## Typical Run and Debugging Situations

The following examples illustrate typical run and debugging situations for types of programs. The log, error, and so on file names referenced below assume that the module is run on the business virtual date of March 9, 2001. See the previously described naming conventions for the location of each file.

For example:

To run `rmse_aip_store.ksh`:

1. Change directories to `$MMHOME/rfx/src`.
2. At a UNIX prompt enter:

```
%rmse_aip_store.ksh
```

If the module runs successfully, the following results:

3. **Log file:** Today's log file, `20010309.log`, contains the messages "Program started ..." and "Program completed successfully" for `rmse_aip_store`.
4. **Data:** The `rmse_aip_store.dat` file exists in the data directory and contains the extracted records.
5. **Schema:** The `rmse_aip_store.schema` file exists in the schema directory and contains the definition of the data file in #2 above.
6. **Error file:** The program's error file, `rmse_aip_store.20010309`, contains the standard RETL flow (ending with "All threads complete" and "Flow ran successfully") and no additional error messages.
7. **Program status control:** The program status control file, `rmse_aip_store.status.20010309`, does not exist.
8. **Reject file:** The reject file, `rmse_aip_store.rej.20010309`, does not exist because this module does not reject records.

If the module does *not* run successfully, the following results:

9. **Log file:** Today's log file, `20010309.log`, does not contain the "Program completed successfully" message for `rmse_stores`.
10. **Data:** The `rmse_aip_store.dat` file may exist in the data directory but may not contain all the extracted records.
11. **Schema:** The `rmse_aip_store.schema` file exists in the schema directory and contains the definition of the data file in #2 above.
12. **Error file:** The program's error file, `rmse_aip_store.20010309`, may contain an error message.
13. **Program status control:** The program status control file, `rmse_aip_store.status.20010309`, exists.
14. **Reject file:** The reject file, `rmse_aip_store.status.20010309`, does not exist because this module does not reject records.

To re-run the module, perform the following actions:

- 15.** Determine and fix the problem causing the error.
- 16.** Remove the program's status control file.
- 17.** Change directories to \$MMHOME/rfx/src. At a UNIX prompt, enter:  
`%rmse_aip_store.ksh`



---

---

## Internationalization

Internationalization is the process of creating software that is able to be translated more easily. Changes to the code are not specific to any particular market. RMS has been internationalized to support multiple languages.

This section describes configuration settings and features of the software that ensure that the base application can handle multiple languages.

### Translation

Translation is the process of interpreting and adapting text from one language into another. Although the code itself is not translated, components of the application that are translated include the following:

- Graphical user interface (GUI)
- Error messages

The user interface for RMS has been translated into:

- German
- French
- Spanish
- Japanese
- Traditional Chinese
- Simplified Chinese
- Korean
- Brazilian Portuguese
- Russian
- Italian

The following components are not translated:

- Documentation (Online Help, Release Notes, Installation Guide, User Guide, Operations Guide)
- Batch programs and messages
- Log files
- Configuration Tools
- Reports
- Demo data
- Training Materials

## RMS Client Language Settings

The client sets up the user's language preferences. RMS determines the user's language setting and displays the code string associated with it. RMS has a fail/safe mechanism built into the code. If the user's preference language string is not found, then RMS rolls back to English.

---

**Note:** A retailer has the two options below regarding internationalization when installing the application. See the *RMS Installation Guide* for the procedures related to each.

- English and multiple secondary languages
  - Install English first and then update with a translated language (fully translated non-English installation)
- 

## Key RMS Tables Related to Internationalization

Several tables handle displayable text that can also be translated.

If the retailer creates a new form, a new menu, or a new object on a form, then the retailer will need to populate these tables with the corresponding information. If the retailer customizes the information in any of the tables `FORM_ELEMENTS`, `FORM_ELEMENTS_LANGS`, `MENU_ELEMENTS`, or `MENU_ELEMENTS_LANGS`, the `base_ind` field in customized records must contain 'N'. Any record with `BASE_IND=N` will be preserved in a temp table during future patches.

### FORM\_ELEMENTS

This table is used for screen display and holds the master list of items for all forms whose labels/prompts are translated. This information will always be in English. The `BASE_IND=Y` means that the item is part of the base Oracle Retail code set. `BASE_IND=N` indicates that the item was added as part of retailer customization. Anything with the `BASE_IND=N` will be preserved at upgrade time on the `FORM_ELEMENTS_TEMP`, but the retailer is responsible for moving the data back to `FORM_ELEMENTS`.

### FORM\_ELEMENTS\_LANGS

This table is used for screen display. This table holds translated values for labels/prompts on forms. This information will be in a language that is defined on the `lang` column of the `user_attrib` table. All users see data from this table, as the retailer may customize the text of a given field. The access key for a button is defined by filling in the `LANG_ACCESS_KEY/LANG_LABEL_PROMPT` field. At runtime, that character will be marked in the string, and function as the access key. Any time the retailer changes the `LANG_ACCESS_KEY/LANG_LABEL_PROMPT` or `LANG_ACCESS_KEY/LANG_LABEL_PROMPT`, the `BASE_IND` should be updated to N because it is not part of the base language translations provided by Oracle Retail. Anything with the `BASE_IND=N` will be preserved at upgrade time on the `FORM_ELEMENTS_LANGS_TEMP`, but the retailer is responsible for moving the data back to `FORM_ELEMENTS_LANGS`.



## **MENU\_ELEMENTS**

This table is used for screen display. This table holds the master list for all menus whose items are translated. This information will always be in English. The access key for a menu option is defined by using the ampersand (&) before the character that is the access key in the default description. The `BASE_IND=Y` means that the item is part of the base Oracle Retail code set. `BASE_IND=N` indicates that the item was added as part of retailer customization. Anything with the `BASE_IND=N` will be preserved at upgrade time on the `MENU_ELEMENTS_TEMP`, but the retailer is responsible for moving the data back to `MENU_ELEMENTS`.

## **MENU\_ELEMENTS\_LANGS**

This table is used for screen display. This table holds the values for all menus whose items are translated. This information will be in a language that is defined on the `lang` table. Even English language users see data from this table, as the retailer may customize the text of a given menu option. Any time the retailer changes the `LANG_LABEL`, the `BASE_IND` should be updated to `N` because it is not part of the base language translations provided by Oracle Retail. Anything with the `BASE_IND=N` will be preserved at upgrade time on the `MENU_ELEMENTS_LANGS_TEMP`, but the retailer is responsible for moving the data back to `MENU_ELEMENTS_LANGS`.

## **FORM\_MENU\_LINK**

This table is used for screen display. This table holds the intersection of form and menu files, mapping each form to the menu that it displays.

## **CODE\_DETAIL\_TRANS**

This table holds non-primary language descriptions of code types defined on the `CODE_DETAIL` table. The retailer has a multi-language option.



---

---

## Custom Post Processing

RMS has an optional method of handling unwanded cartons for customer post processing. This only applies to stock order receiving. An unwanded carton occurs when a carton was not scanned when the stock order was shipped, but is scanned at the time of the receipt. These cartons do not contain any shipment records in RMS.

Since the carton contains items that did not go through the appropriate transfer out procedure, the inventory for those items will not be accurate. As a result, the message which contains the unwanded (unscanned) carton is rejected by RMS to the RIB error hospital at the time of receiving. RMS will then publish to the warehouse management system via the RIB of the unwanded cartons in the RcptAdjustDesc message. The warehouse management system will then send RMS a shipment message containing the appropriate BOL and the carton ID. RMS will process the message and create or update the shipment records. The next time RMS tries to process the rejected receipt message with the unwanded carton, RMS will be able to process it.

The client's warehouse management system must be able to support the processing of the RcptAdjustDesc message above in order for this functionality of unwanded carton to work successfully.



---

---

# Integrating RMS with Oracle Retail Workspace

---

---

**Note:** Prior to integrating RMS with Oracle Retail Workspace, it is recommended that you set up RMS for single sign-on. See *Configuring RMS for Single Sign-on* in the *Oracle Retail Merchandising Implementation Guide* for additional details.

---

---

The Oracle Retail Workspace installer prompts you to enter the URL for your supported Oracle Retail applications. However, if a client installs a new application after Oracle Retail Workspace is installed, the `retail-workspace-page-config.xml` file needs to be edited to reflect the new application.

The file as supplied comes with all appropriate products configured, but the configurations of non-installed products have been "turned off". Therefore, when "turning on" a product, locate the appropriate entry, set "rendered" to "true", and enter the correct URL and parameters for the new application.

The entry consists of the main URL string plus one parameter named "config". The value of the config parameter is inserted by the installer. Somewhere in the installer property files there is a value for the properties "deploy.retail.product.rms.url" and "deploy.retail.product.rms.config".

For example, suppose RMS was installed on `mycomputer.mycompany.com`, port `7777`, using a standard install and rms configured with the application name of "rms121sedevhpsso". If you were to access RMS directly from your browser, you would type in:

```
http://mycomputer.mycompany.com:7777/forms/frmservlet?config=rms121sedevhpsso
```

The entry in the `retail-workspace-page-config.xml` after installation would resemble the following:

```
<url>http://mycomputer.mycompany.com:7777/forms/frmservlet</url>
  <parameters>
    <parameter name="config">
      <value>rms121sedevhpsso</value>
    </parameter>
  </parameters>
```



---

---

## RMS – Oracle E-Business Suite Integration Using the Integration Accelerator Patch

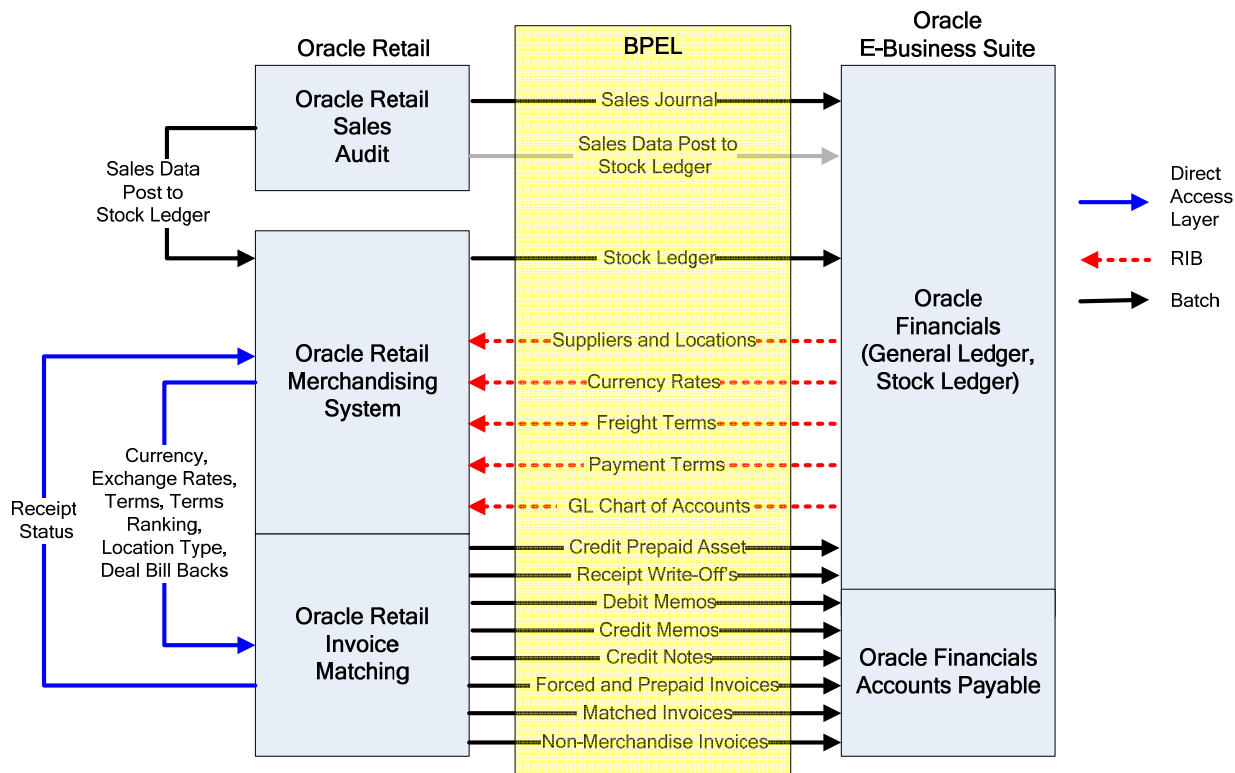
RMS, Oracle Retail Sales Audit (ReSA) and Oracle Retail Invoice Matching (ReIM) can be integrated with Oracle E-Business Suite 12.0.4. This integration allows RMS to obtain the following data from Oracle E-Business Suite:

- General ledger accounting data
- Supplier and supplier site data
- Currency rates
- Freight terms
- Payment terms

From Oracle Retail applications, inventory and sales accounting information can be sent to Oracle E-Business Suite.

The financial integration solution is delivered through middleware via a publish-subscribe model. Financial reference data is published from Oracle E-Business Suite (financial applications). Oracle Retail then subscribes to these processes through its own middleware architecture.

On the outbound transactional flows, the middleware populates financial staging tables. These staging tables are then polled and used to populate the standard financial open interface capabilities in Oracle General Ledger (GL) and Accounts Payable (AP).



Oracle Retail and Oracle Financials Integration—Logical View

## Integration Accelerator Patch

For integration with Oracle E-Business Suite, an Oracle Retail integration accelerator patch is available for download. This patch enables the integration between Oracle E-Business Suite and some Oracle Retail applications.

For support in implementing this patch, contact Oracle Customer Support and follow all typical Oracle Retail processes.

The integration accelerator patch provides the following functional enhancements for integration:

- Oracle Retail applications support multiple sets of books. For data downloaded from Oracle E-Business Suite, the multiple sets of books in RMS can be mapped to the corresponding ledger IDs in Oracle E-Business Suite.
- Oracle Retail applications support supplier and supplier site associations. Key control parameters for a supplier, such as freight and payment terms, are maintained at the supplier site level.
- A supplier created in Oracle E-Business Suite is transferred to RMS as a supplier, but there is no supplier parent information for this record. When a supplier site is created in Oracle E-Business Suite, it is passed to RMS as another supplier, but this record has a Supplier Parent field that contains the ID of the supplier with which this supplier site is associated.



## Architecture

The integration solution is managed using these middleware components:

- Oracle BPEL (Business Process Execution Language) Process Manager
- Oracle Retail Integration Bus (RIB)

The applications integrated are as follows:

- Oracle General Ledger (GL)
- Oracle Accounts Payable (AP)
- Oracle Retail Merchandising System (RMS)
- Oracle Retail Invoice Matching (ReIM)
- Oracle Retail Sales Audit (ReSA)

Oracle BPEL Process Manager is a Java-based solution that runs on Oracle Application Server. Oracle BPEL Process Manager uses database adapters to connect to data sources in Oracle E-Business Suite.

RIB is an asynchronous message bus that subscribes to messages created and published by BPEL processes, to inject the message payload data elements into the RMS database. These Oracle Retail applications use Java Message Service (JMS) adapters to connect to RIB:

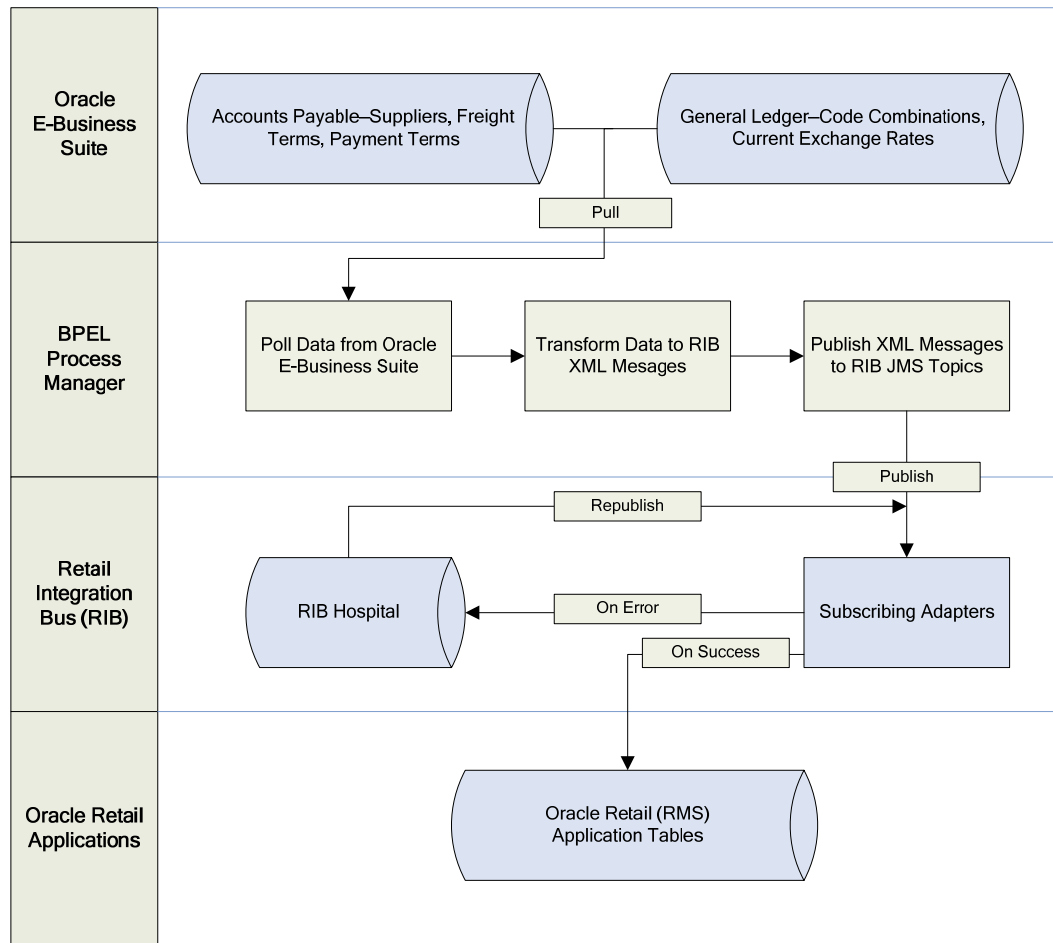
- Oracle Retail Management System (RMS)
- Oracle Retail Invoice Matching (ReIM)
- Oracle Retail Sales Audit (ReSA)

The BPEL and RIB middleware components are used to link and transform data as follows:

- Outbound data from Oracle E-Business Suite is sent on a net change basis to RIB. This data is processed within Oracle Retail applications, and the appropriate tables are updated.
- Summarized financial transactions from Oracle Retail applications are staged to financial tables. These tables are processed by BPEL processes to extract the data and populate the financial open interfaces in GL and AP. From that point, standard open interface processing is adopted.

### Oracle E-Business Suite–Oracle Retail Outbound Process Flow

The following figure shows the outbound reference data flows that are supported for Oracle E-Business Suite through Oracle BPEL Process Manager.



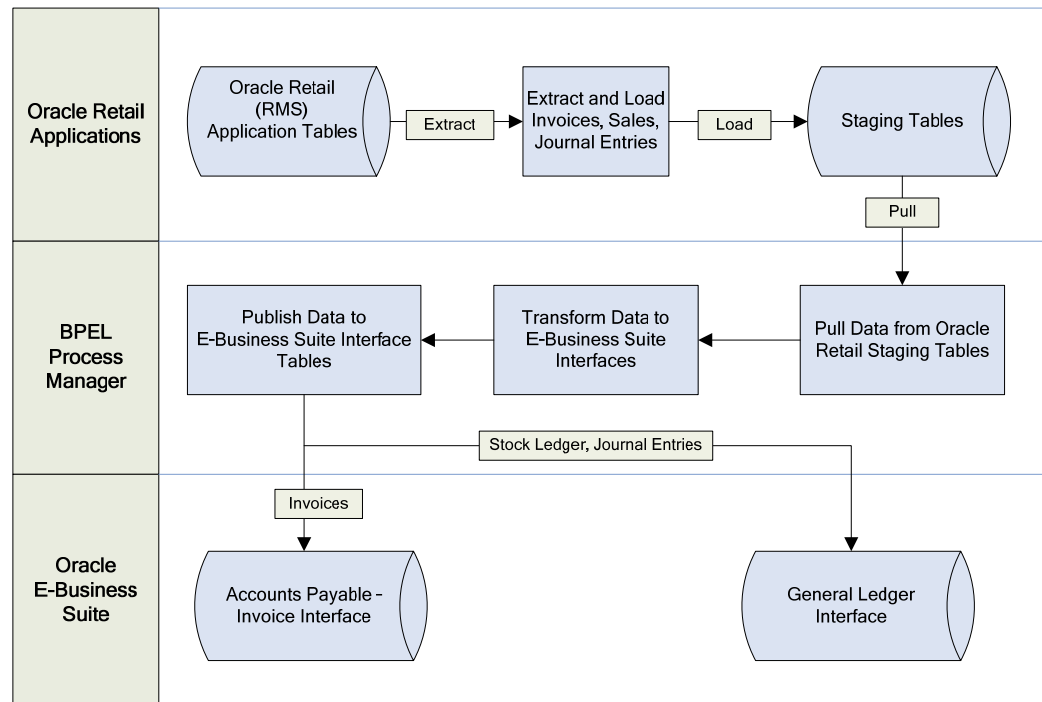
**Outbound Process Flow**

The outbound process flow is as follows:

1. From Oracle General Ledger account code combinations, suppliers, currency rates, freight terms, and payment terms are retrieved on a net change basis. All records added or changes are processed on a scheduled basis.
2. BPEL processes extract these records and perform data transformations to XML record formats that are compatible with RIB topics.
3. The XML messages are published to RIB. The subscribing RIB adapter attempts to update the appropriate business data object, based on message topic and action (create, modify, or delete). On success, the message is dropped from the JMS topic. On error, the message is written to RIB Error Hospital for manual review or automatic republication to the adapter.

## Oracle Retail–Oracle E-Business Suite Inbound Process Flow

The following figure shows the inbound transactional data flows that are supported for Oracle E-Business Suite through Oracle BPEL Process Manager.



### Inbound Process Flow

The inbound process flow is as follows:

- The Oracle Retail business process extracts data objects to the standard financial integration staging tables. These tables are:
  - Matched purchase order receipts (new invoices)
  - Debit and credit memos
  - Inventory movements (stock ledger)
  - Sales audit (sales journal)
- BPEL processes read the financial staging tables directly. These processes extract the details and perform data transformation to populate the standard GL or AP open interfaces.
- After the standard open interface tables are populated, normal import and error management processes are performed in Oracle E-Business Suite.

## RMS Business Processes Configuration

### RMS System Options

As part of the RMS system options setup script, set the following options as indicated:

- `FINANCIAL_AP = O`  
A value of the letter 'O' indicates that the financial system to which RMS is interfaced is Oracle E-Business Suite.

## Organization Units

Use the Organizational Unit window to define organizational units in RMS that match those being set up in Oracle E-Business Suite. When an organizational unit is entered in RMS, the valid operating units are those that are associated with the set of books that is being used for the general ledger interface.

## Currency Exchange Rates

Determine the Exchange Type being sent by Oracle (for example, 'Corporate') that you want RMS to use. Then use the Currency Exchange Type Mapping Window to map that External Exchange Type being sent by Oracle E-Business Suite to the RMS Exchange Type, 'Consolidation' (the RMS system option for Consolidation needs to be set).

## Supplier Address Types

When defining valid address types in RMS, set the EXTERNAL\_ADDR\_IND to 'Y' for the order and remittance address types. For all other address types, leave this value as the default 'N'. Address types that are designated as 'External' do not allow maintenance through the RMS Supplier dialog.

## Country Codes

When country codes are defined and seeded in RMS, only two character codes should be used, because Oracle E-Business Suite uses two character country codes by default.

## VAT Codes

If a client is using both Oracle E-Business Suite and RMS, then the VAT codes defined in Oracle E-Business Suite need to observe the RMS limitations (that is, VAT codes cannot contain lower case characters and can be no more than six characters in length).

## RMS General Ledger Setup

The RMS table FIF\_GL\_SETUP holds the Oracle E-Business Suite set of books ID to which it links. This requires manual setup after the set of books is determined. The FIF\_GL\_SETUP table holds multiple records, one for each set of books.

For information about RMS's GL batch programs, see the General Ledger (GL) Batch chapter of the RMS Operations Guide Volume 1 - Batch Overviews and Designs for additional details.

## Suppliers

Suppliers are created in Oracle E-Business Suite and exported to RMS. However, after the supplier exists in RMS, all data values for the supplier (except supplier name and status) continue to be updated using the RMS forms. (Functionality for partners' data is not affected.)

## Freight Terms, Payment Terms, Currency Exchange Rates, and General Ledger Chart of Accounts

This data is created and updated in Oracle E-Business Suite and exported to RMS.

See the following sections of the RMS Operations Guide Volume 2 - Message Publication and Subscription Designs for additional details:

- Freight Terms Subscription API

- Payment Terms Subscription API
- Currency Exchange Rates Subscription API
- GL Chart of Accounts Subscription API

## Oracle E-Business Suite Org Units and Site IDs

The data concepts of Org Units and Site IDs are used in RMS to mirror data maintained in Oracle E-Business Suite. RMS forms manage and view Oracle Org Units and Site IDs, and each store and warehouse is assigned to an Org Unit.

## System Parameter Maintenance

Where SYSTEM\_OPTIONS.FINANCIAL\_AP is 'O', disable auto generate supplier / partner numbers and associated check boxes.

## General Ledger Cross-Reference

**Navigate:** RMS main menu > Finance > GL Cross Reference. The General Ledger Search window opens.

Associate general ledger accounts with Department, Location.

Where SYSTEM\_OPTION\_FINANCIAL\_AP is 'O', disable debit and credit account IDs.

## General Ledger Account Maintenance

**Navigate:** ReSA main menu > Action > Sales Audit > Control > Setup > GL Account Maintenance. The General Ledger Search Form window opens.

Where SYSTEM\_OPTIONS.FINANCIAL\_AP is 'O', the form requires valid CC\_IDs to be entered. The user can select segments and labels from the table FIF\_GL\_ACCT.

Turn off the debit and credit account CC\_IDs.

## RMS Stock Ledger

RMS tracks all inventory movements within the system through its stock ledger. Daily and period-based financial information transfers can be scheduled to Oracle General Ledger.

RMS allows three different levels to interface stock ledger information to Oracle General Ledger:

- Monthly
- Daily by subclass, class, or department
- Daily by transaction

The daily summarized interface and the monthly interface do not provide any access to detailed reference information.

For each interface (daily detail, daily summary, and monthly summary), specific transaction types can be included or excluded in the interface. This is determined in the general ledger cross-reference mapping. One interface, or a combination of interfaces, can be run to provide stock ledger data to Oracle General Ledger. Care must be taken to capture all necessary data, without duplicating any data.

This program summarizes stock ledger data from the monthly stock ledger table (MONTH\_DATA), based on the level of information required, and writes the data to the financial general ledger staging table. The transactions extracted are determined by the code\_type 'GLRT' (general ledger rolled transactions). The data written is then sent to the

financial applications for general ledger purposes. Stock ledger information can be rolled up at department, class, or subclass level. The level at which information is rolled up is determined by the `gl_rollup` field in the `SYSTEM_OPTIONS` table.

See the Stock Ledger Batch chapter of the RMS Operations Guide Volume 1 - Batch Overviews and Designs for additional details.

## ReSA Sales Information

Oracle Retail Sales Audit (ReSA) allows summarized sales information to be forwarded to Oracle General Ledger for the sales journal. High-volume sales details can be aggregated by item, store and day, and transaction type. The retailer decides the aggregation level.

Interfacing data directly from ReSA to Oracle General Ledger is an optional process. Sales data from ReSA is also posted directly to the RMS stock ledger, and it can be interfaced to Oracle General Ledger through the stock ledger to general ledger interface. The decision to interface directly from ReSA to Oracle General Ledger is the retailer's decision. Setup steps are required to interface this data accurately to Oracle General Ledger without duplicating data.

## Design Overview

The Oracle Retail SAEXPGL batch module posts all properly configured user-defined ReSA totals to Oracle General Ledger. Totals without errors are posted to the appropriate accounting ledger, as defined in the ReSA cross-reference user module. Depending on the ReSA system option Unit of Work, the data is sent at either the store/day or individual total level. Newly-revised totals that are already posted to the ledger have their previous revision reversed, and the new totals are posted to the appropriate accounts. Transactions from previous periods are posted to the current period.

See the Oracle Retail Sales Audit Batch chapter of the RMS Operations Guide Volume 1 - Batch Overviews and Designs for additional details.

## Data Mapping

The following tables describe the data mappings between Oracle E-Business Suite and RMS.

### General Ledger Chart of Accounts Mapping

The following table describes the mapping of chart of accounts data mapping from the Oracle E-Business Suite General Ledger Chart of Accounts to Oracle Retail Management System (RMS).

| Field Passed from Oracle E-Business Suite | Oracle Retail RIB - GLCOADesc | API Create | API Update | Oracle Retail Database - FIF_GL_ACCT |
|-------------------------------------------|-------------------------------|------------|------------|--------------------------------------|
| code-combination-id                       | PRIMARY_ACCOUNT               | (Key)      | (Key)      | PRIMARY_ACCOUNT                      |
| segment1                                  | ATTRIBUTE1                    | Pass       | Pass       | ATTRIBUTE1                           |
| segment2                                  | ATTRIBUTE2                    | Pass       | Pass       | ATTRIBUTE2                           |
| segment3                                  | ATTRIBUTE3                    | Pass       | Pass       | ATTRIBUTE3                           |
| segment4                                  | ATTRIBUTE4                    | Pass       | Pass       | ATTRIBUTE4                           |

| Field Passed from Oracle E-Business Suite | Oracle Retail RIB - GLCOADesc | API Create | API Update | Oracle Retail Database - FIF_GL_ACCT |
|-------------------------------------------|-------------------------------|------------|------------|--------------------------------------|
| segment5                                  | ATTRIBUTE5                    | Pass       | Pass       | ATTRIBUTE5                           |
| segment6                                  | ATTRIBUTE6                    | Pass       | Pass       | ATTRIBUTE6                           |
| segment7                                  | ATTRIBUTE7                    | Pass       | Pass       | ATTRIBUTE7                           |
| segment8                                  | ATTRIBUTE8                    | Pass       | Pass       | ATTRIBUTE8                           |
| segment9                                  | ATTRIBUTE9                    | Pass       | Pass       | ATTRIBUTE9                           |
| segment10                                 | ATTRIBUTE10                   | Pass       | Pass       | ATTRIBUTE10                          |
| segment11                                 | ATTRIBUTE11                   | Default    | Ignore     | ATTRIBUTE11                          |
| segment12                                 | ATTRIBUTE12                   | Default    | Ignore     | ATTRIBUTE12                          |
| segment13                                 | ATTRIBUTE13                   | Default    | Ignore     | ATTRIBUTE13                          |
| segment14                                 | ATTRIBUTE14                   | Default    | Ignore     | ATTRIBUTE14                          |
| segment15                                 | ATTRIBUTE15                   | Default    | Ignore     | ATTRIBUTE15                          |
| Segment_attribute 1                       | DESCRIPTION1                  | Default    | Ignore     | DESCRIPTION1                         |
| Segment_attribute 2                       | DESCRIPTION2                  | Default    | Ignore     | DESCRIPTION2                         |
| Segment_attribute 3                       | DESCRIPTION3                  | Default    | Ignore     | DESCRIPTION3                         |
| Segment_attribute 4                       | DESCRIPTION4                  | Default    | Ignore     | DESCRIPTION4                         |
| Segment_attribute 5                       | DESCRIPTION5                  | Default    | Ignore     | DESCRIPTION5                         |
| Segment_attribute 6                       | DESCRIPTION6                  | Default    | Ignore     | DESCRIPTION6                         |
| Segment_attribute 7                       | DESCRIPTION7                  | Default    | Ignore     | DESCRIPTION7                         |
| Segment_attribute 8                       | DESCRIPTION8                  | Default    | Ignore     | DESCRIPTION8                         |
| Segment_attribute 9                       | DESCRIPTION9                  | Default    | Ignore     | DESCRIPTION9                         |
| Segment_attribute 10                      | DESCRIPTION10                 | Default    | Ignore     | DESCRIPTION10                        |
| Segment_attribute 11                      | DESCRIPTION11                 | Default    | Ignore     | DESCRIPTION11                        |
| Segment_attribute 12                      | DESCRIPTION12                 | Default    | Ignore     | DESCRIPTION12                        |
| Segment_attribute 13                      | DESCRIPTION13                 | Default    | Ignore     | DESCRIPTION13                        |
| Segment_attribute 14                      | DESCRIPTION14                 | Default    | Ignore     | DESCRIPTION14                        |
| Segment_attribute 15                      | DESCRIPTION15                 | Default    | Ignore     | DESCRIPTION15                        |
| Chart_of_accounts_ID                      | SET_OF_BOOKS_ID               | (Key)      | (Key)      | SET_OF_BOOKS_ID                      |

## Supplier Mapping

The following table describes the mapping of supplier data from Oracle E-Business Suite Accounts Payable to Oracle Retail Management System (RMS).

| Field Passed from Oracle E-Business Suite                                             | Oracle Retail RIB - VendorHdrDesc | API Create | API Update | Oracle Retail Database - SUPS | Window Edit (supvwedt) | Comments                                                                                                                                                                                                                                       |
|---------------------------------------------------------------------------------------|-----------------------------------|------------|------------|-------------------------------|------------------------|------------------------------------------------------------------------------------------------------------------------------------------------------------------------------------------------------------------------------------------------|
| ap_suppliers.segment1                                                                 | SUPPLIER                          | (Key)      | (Key)      | SUPPLIER                      | (Key)                  |                                                                                                                                                                                                                                                |
| ap_suppliers.vendor_name<br>ap_supplier_sites_all.vendor_site_code                    | SUP_NAME                          | Pass       | Pass       | SUP_NAME                      | Disable                |                                                                                                                                                                                                                                                |
| NULL                                                                                  |                                   |            |            | SUP_NAME_SECONDARY            |                        |                                                                                                                                                                                                                                                |
| NULL for Supplier.<br>Mandatory for Supplier Site (ap_suppliers.segment1)             |                                   |            |            | SUPPLIER_PARENT               |                        |                                                                                                                                                                                                                                                |
| (One occurrence)<br>ap_supplier_contacts.first_name<br>ap_supplier_contacts.last_name | CONTACT_NAME                      | Pass       | Ignore     | CONTACT_NAME                  | Normal                 | Oracle E-Business Suite stores this data at either the supplier or supplier site level. One occurrence is sent, which is used in Oracle Retail for create only. After that, any updates are done by the user through the Oracle Retail window. |
| (One occurrence)<br>Ap_supplier_contacts.area_code<br>ap_supplier_contacts.phone      | CONTACT_PHONE                     | Pass       | Ignore     | CONTACT_PHONE                 | Normal                 | See note for CONTACT_NAME.                                                                                                                                                                                                                     |
| (One occurrence)<br>Ap_supplier_contacts.fax_area_code<br>ap_supplier_contacts.fax    | CONTACT_FAX                       | Pass       | Ignore     | CONTACT_FAX                   | Normal                 | See note for CONTACT_NAME.                                                                                                                                                                                                                     |



| Field Passed from Oracle E-Business Suite                           | Oracle Retail RIB - VendorHdrDesc | API Create | API Update | Oracle Retail Database - SUPS | Window Edit (supvwedt) | Comments                                                                                                                                                                                                                                                                                                       |
|---------------------------------------------------------------------|-----------------------------------|------------|------------|-------------------------------|------------------------|----------------------------------------------------------------------------------------------------------------------------------------------------------------------------------------------------------------------------------------------------------------------------------------------------------------|
| NULL                                                                | CONTACT_PAGER                     | Default    | Ignore     | CONTACT_PAGER                 | Normal                 |                                                                                                                                                                                                                                                                                                                |
| (Derived)<br>ap_suppliers                                           | SUP_STATUS                        | (See note) | (See note) | SUP_STATUS                    | (See note)             | For API: see information in the functional specification.<br>For window: Disable this field unless the client uses VAT and current status is inactive. In that case, if the user tries to change the status to active, invoke the standard edit that the VAT region must be valued to change status to active. |
| Default: Y                                                          | QC_IND                            | Default    | Ignore     | QC_IND                        | Normal                 |                                                                                                                                                                                                                                                                                                                |
| Default: 10                                                         | QC_PCT                            | Default    | Ignore     | QC_PCT                        | Normal                 |                                                                                                                                                                                                                                                                                                                |
| Default: 1                                                          | QC_FREQ                           | Default    | Ignore     | QC_FREQ                       | Normal                 |                                                                                                                                                                                                                                                                                                                |
| Default: N                                                          | VC_IND                            | Default    | ignore     | VC_IND                        | Normal                 |                                                                                                                                                                                                                                                                                                                |
| Default: N                                                          | VC_PCT                            | Default    | Ignore     | VC_PCT                        | Normal                 |                                                                                                                                                                                                                                                                                                                |
|                                                                     | VC_FREQ                           | Default    | Ignore     | VC_FREQ                       | Normal                 |                                                                                                                                                                                                                                                                                                                |
| (One occurrence)<br>ap_supplier_sites_all.<br>invoice_currency.code | CURRENCY_CODE                     | Pass       | Ignore     | CURRENCY_CODE                 | Normal                 | See note for CONTACT_NAME.                                                                                                                                                                                                                                                                                     |
| (One occurrence)<br>ap_supplier_sites_all.<br>language              | LANG                              | Pass       | Ignore     | LANG                          | Normal                 | See note for CONTACT_NAME.                                                                                                                                                                                                                                                                                     |
| (One occurrence)<br>ap_supplier_sites_all.terms_id                  | TERMS                             | Pass       | Ignore     | TERMS                         | Normal                 | See note for CONTACT_NAME.                                                                                                                                                                                                                                                                                     |

| Field Passed from Oracle E-Business Suite                           | Oracle Retail RIB - VendorHdrDesc | API Create | API Update | Oracle Retail Database - SUPS | Window Edit (supvwedt) | Comments                   |
|---------------------------------------------------------------------|-----------------------------------|------------|------------|-------------------------------|------------------------|----------------------------|
| (One occurrence)<br>ap_supplier_sites_all.freight_terms_lookup_code | FREIGHT_TERMS                     | Pass       | Ignore     | FREIGHT_TERMS                 | Normal                 | See note for CONTACT_NAME. |
| Default: N                                                          | RET_ALLOW_IND                     | Default    | Ignore     | RET_ALLOW_IND                 | Normal                 |                            |
| Default: N                                                          | RET_AUTH_REQ                      | Default    | Ignore     | RET_AUTH_REQ                  | Normal                 |                            |
| ---                                                                 | RET_MIN_DOL_AMT                   | Default    | Ignore     | RET_MIN_DOL_AMT               | Normal                 |                            |
| ---                                                                 | RET_COURIER                       | Default    | Ignore     | RET_COURIER                   | Normal                 |                            |
| ---                                                                 | HANDLING_PCT                      | Default    | Ignore     | HANDLING_PCT                  | Normal                 |                            |
| Default: N                                                          | EDI_PO_IND                        | Default    | Ignore     | EDI_PO_IND                    | Normal                 |                            |
| Default: N                                                          | EDI_PO_CHG                        | Default    | Ignore     | EDI_PO_CHG                    | Normal                 |                            |
| Default: N                                                          | EDI_PO_CONFIRM                    | Default    | Ignore     | EDI_PO_CONFIRM                | Normal                 |                            |
| Default: N                                                          | EDI_ASN                           | Default    | Ignore     | EDI_ASN                       | Normal                 |                            |
| ---                                                                 | EDI_SALES_RPT_FREQ                | Default    | Ignore     | EDI_SALES_RPT_FREQ            | Normal                 |                            |
| Default: Y                                                          | EDI_SUPP_AVAILABLE_IND            | Default    | Ignore     | EDI_SUPP_AVAILABLE_IND        | Normal                 |                            |
| Default: N                                                          | EDI_CONTRACT_IND                  | Default    | Ignore     | EDI_CONTRACT_IND              | Normal                 |                            |
| Default: N                                                          | EDI_INVC_IND                      | Default    | Ignore     | EDI_INVC_IND                  | Normal                 |                            |
| ---                                                                 |                                   | Default    | N/A        | EDI_CHANNEL_ID                | Normal                 |                            |
| ---                                                                 | COST_CHG_PCT_VAR                  | Default    | Ignore     | COST_CHG_PCT_VAR              | Normal                 |                            |
| ---                                                                 | COST_CHG_AMT_VAR                  | Default    | Ignore     | COST_CHG_AMT_VAR              | Normal                 |                            |
| Default: N                                                          | REPLEN_APPROVAL_IND               | Default    | Ignore     | REPLEN_APPROVAL_IND           | Normal                 |                            |
| ---                                                                 | SHIP_METHOD                       | Default    | Ignore     | SHIP_METHOD                   | Normal                 |                            |

| Field Passed from Oracle E-Business Suite | Oracle Retail RIB - VendorHdrDesc | API Create | API Update | Oracle Retail Database - SUPS | Window Edit (supvwedt) | Comments                                                  |
|-------------------------------------------|-----------------------------------|------------|------------|-------------------------------|------------------------|-----------------------------------------------------------|
| ---                                       | PAYMENT_METHOD                    | Default    | Ignore     | PAYMENT_METHOD                | Normal                 |                                                           |
| ---                                       | CONTACT_TELEX                     | Default    | Ignore     | CONTACT_TELEX                 | Normal                 |                                                           |
| ap_supplier_contacts.email_address        | CONTACT_EMAIL                     | Pass       | Ignore     | CONTACT_EMAIL                 | Normal                 | See note for CONTACT_NAME.                                |
| Default: E                                | SETTLEMENT_CODE                   | Default    | Ignore     | SETTLEMENT_CODE               | Normal                 |                                                           |
| Default: N                                | PRE_MARK_IND                      | Default    | Ignore     | PRE_MARK_IND                  | Normal                 |                                                           |
| Default: N                                | AUTO_APPR_INVC_IND                | Default    | Ignore     | AUTO_APPR_INVC_IND            | Normal                 |                                                           |
| ---                                       | DBT_MEMO_CODE                     | Default    | Ignore     | DBT_MEMO_CODE                 | Normal                 |                                                           |
| Default: Y                                | FREIGHT_CHARGE_IND                | Default    | Ignore     | FREIGHT_CHARGE_IND            | Normal                 |                                                           |
| Default: N                                | AUTO_APPR_DBT_MEMO_IND            | Default    | Ignore     | AUTO_APPR_DBT_MEMO_IND        | Normal                 |                                                           |
| Default: N                                | PREPAY_INVC_IND                   | Default    | Ignore     | PREPAY_INVC_IND               | Normal                 |                                                           |
| Default: N                                | BACKORDER_IND                     | Default    | Ignore     | BACKORDER_IND                 | Normal                 |                                                           |
| Default: 1000<br>(See note)               | VAT_REGION                        | (See note) | Ignore     | VAT_REGION                    | Normal                 | For API: see information in the functional specification. |
| ---                                       | INV_MGMT_LVL                      | Default    | Ignore     | INV_MGMT_LVL                  | Normal                 |                                                           |
| Default: N                                | SERVICE_PERF_REQ_IND              | Default    | Ignore     | SERVICE_PERF_REQ_IND          | Normal                 |                                                           |
| ---                                       | INVC_PAY_LOC                      | Default    | Ignore     | INVC_PAY_LOC                  | Normal                 |                                                           |
| ---                                       | INVC_RECEIVE_LOC                  | Default    | Ignore     | INVC_RECEIVE_LOC              | Normal                 |                                                           |
| ---                                       | ADDINVC_GROSS_NET                 | Default    | Ignore     | ADDINVC_GROSS_NET             | Normal                 |                                                           |
| Default: NDD                              | DELIVERY_POLICY                   | Default    | Ignore     | DELIVERY_POLICY               | Normal                 |                                                           |

| Field Passed from Oracle E-Business Suite | Oracle Retail RIB - VendorHdrDesc | API Create | API Update | Oracle Retail Database - SUPS | Window Edit (supvwedt) | Comments |
|-------------------------------------------|-----------------------------------|------------|------------|-------------------------------|------------------------|----------|
| ---                                       | COMMENT_DESC                      | Default    | Ignore     | COMMENT_DESC                  | Normal                 |          |
| ---                                       | DEFAULT_ITEM_LEAD_TIME            | Default    | Ignore     | DEFAULT_ITEM_LEAD_TIME        | Normal                 |          |
| ---                                       | DUNS_NUMBER                       | Default    | Ignore     | DUNS_NUMBER                   | Normal                 |          |
| ---                                       | DUNS_LOC                          | Default    | Ignore     | DUNS_LOC                      | Normal                 |          |
| Default: N                                | BRACKET_COSTING_IND               | Default    | Ignore     | BRACKET_COSTING_IND           | Normal                 |          |
| ---                                       | VMI_ORDER_STATUS                  | Default    | Ignore     | VMI_ORDER_STATUS              | Normal                 |          |
| Default: Y                                | DSD_SUPPLIER_IND                  | Default    | Ignore     | DSD_IND                       | Normal                 |          |
| ---                                       | END_DATE_ACTIVE                   | Ignore     | Ignore     | N/A                           | N/A                    |          |
|                                           |                                   |            |            | SCALE_AIP_ORDERS              |                        |          |

## Supplier Address Mapping

The following table describes the mapping of address and site ID data from Oracle E-Business Suite Accounts Payable to Oracle Retail Management System (RMS).

**Note:** Records in Oracle E-Business Suite are sent to Oracle Retail applications when the following fields are populated in Oracle E-Business Suite: address\_line1, city, and zip.

| Field Passed from Oracle E-Business Suite | Oracle Retail RIB - VendorAddrDesc | API Create | API Update | Oracle Retail Database - ADDR | Window Edit (addr) | Comments                                  |
|-------------------------------------------|------------------------------------|------------|------------|-------------------------------|--------------------|-------------------------------------------|
| ap_supplier_sites_all.vendor_site_id      |                                    | (Key)      | (Key)      | ADDR_KEY                      | N/A                |                                           |
| (literal)                                 | MODULE                             | (Key)      | (Key)      | MODULE                        | N/A                | This should always be the literal 'SUPP'. |
| ap_supplier.segment1                      | KEY_VALUE_1                        | (Key)      | (Key)      | KEY_VALUE_1                   | N/A                | This is the supplier number.              |
| Null                                      | KEY_VALUE_2                        | Default    | Ignore     | KEY_VALUE_2                   | N/A                |                                           |
| Default: 1                                | SEQ_NO                             | Generate   | Ignore     | SEQ_NO                        | N/A                |                                           |

| Field Passed from Oracle E-Business Suite                                                      | Oracle Retail RIB - VendorAddrDesc | API Create | API Update | Oracle Retail Database - ADDR | Window Edit (addr) | Comments                                                                        |
|------------------------------------------------------------------------------------------------|------------------------------------|------------|------------|-------------------------------|--------------------|---------------------------------------------------------------------------------|
| (Derived)<br>ap_supplier_sites_all.purchasing_site_flag<br>ap_supplier_sites_all.pay_site_flag | ADDR_TYPE                          | (See note) | (See note) | ADDR_TYPE                     | N/A                |                                                                                 |
| Default: N                                                                                     | PRIMARY_ADDR_IND                   | Generate   | Generate   | PRIMARY_ADDR_IND              | Normal             | Logic in API determines.                                                        |
| ap_supplier_sites_all.address_line_1                                                           | ADD_1                              | Pass       | Pass       | ADD_1                         | Disable            |                                                                                 |
| ap_supplier_sites_all.address_line_2                                                           | ADD_2                              | Pass       | Pass       | ADD_2                         | Disable            |                                                                                 |
| ap_supplier_sites_all.address_line_3                                                           | ADD_3                              | Pass       | Pass       | ADD_3                         | Disable            |                                                                                 |
| ap_supplier_sites_all.city                                                                     | CITY                               | Pass       | Pass       | CITY                          | Disable            |                                                                                 |
| ap_supplier_sites_all.state                                                                    | STATE                              | Pass       | Pass       | STATE                         | Disable            |                                                                                 |
| ap_supplier_sites_all.country                                                                  | COUNTRY_ID                         | Pass       | Pass       | COUNTRY_ID                    | Disable            |                                                                                 |
| ap_supplier_sites_all.zip                                                                      | POST                               | Pass       | Pass       | POST                          | Disable            |                                                                                 |
| (One occurrence)<br>ap_supplier_contacts.first_name<br>ap_supplier_contacts.last_name          | CONTACT_NAME                       | Pass       | Ignore     | CONTACT_NAME                  | Normal             | Oracle E-Business Suite passes the first contact name for each address created. |
| (One occurrence)<br>ap_supplier_contacts.area_code<br>ap_supplier_contacts.phone               | CONTACT_PHONE                      | Pass       | Ignore     | CONTACT_PHONE                 | Normal             | Oracle E-Business Suite passes the first contact name for each address created. |
| Null                                                                                           | CONTACT_TELEX                      | Default    | Ignore     | CONTACT_TELEX                 | Normal             |                                                                                 |

| Field Passed from Oracle E-Business Suite                                                      | Oracle Retail RIB - VendorAddrDesc | API Create | API Update | Oracle Retail Database - ADDR | Window Edit (addr) | Comments                                                                        |
|------------------------------------------------------------------------------------------------|------------------------------------|------------|------------|-------------------------------|--------------------|---------------------------------------------------------------------------------|
| (One occurrence)<br>ap_supplier_cont<br>acts.fax_area_co<br>de<br>ap_supplier_cont<br>acts.fax | CONTACT_FAX                        | Pass       | Ignore     | CONTACT_<br>FAX               | Normal             | Oracle E-Business Suite passes the first contact name for each address created. |
| (One occurrence)<br>ap_supplier_cont<br>acts.email_<br>address                                 | CONTACT_<br>EMAIL                  | Pass       | Ignore     | CONTACT_<br>EMAIL             | Normal             | Oracle E-Business Suite passes the first contact name for each address created. |
| N/A                                                                                            | N/A                                | Default    | N/A        | EDI_ADDR_<br>CHG              | N/A                |                                                                                 |
| N/A                                                                                            | N/A                                | Default    | N/A        | COUNTY                        | N/A                |                                                                                 |
| N/A                                                                                            | N/A                                | Default    | N/A        | PUBLISH_IND                   | N/A                |                                                                                 |
| <b>Multiple occurrences of information at lower level:</b>                                     |                                    |            |            |                               |                    |                                                                                 |
| ORG_ID                                                                                         | ORACLE_ORG_<br>UNIT_ID             | Pass       | Pass       | ORACLE_<br>ORG_<br>UNIT_ID    | N/A                |                                                                                 |

## Currency Rates Mapping

The following table describes the mapping of currency rates data from Oracle E-Business Suite to Oracle Retail Management System (RMS).

| Field Passed from Oracle E-Business Suite | Oracle Retail RIB - CurrRateDesc | API Create                | API Update                | Oracle Retail Database - Currency Rates | Window Edit - Currency Exchange Rates | Comments                                                                           |
|-------------------------------------------|----------------------------------|---------------------------|---------------------------|-----------------------------------------|---------------------------------------|------------------------------------------------------------------------------------|
| from-currency                             | FROM_<br>CURRENCY                | (Key)                     | (Key)                     | CURRENCY_<br>CODE                       | Allow view only                       |                                                                                    |
| conversion-date                           | CONVERSION_<br>DATE              | (Key)                     | (Key)                     | EFFECTIVE_<br>DATE                      | Allow view only                       |                                                                                    |
| conversion-type                           | USER_<br>CONVERSION_<br>TYPE     | Translate and use for key | Translate and use for key | EXCHANGE_<br>TYPE                       | Allow view only                       | Read the FIF-CURRENCY-XREF table to translate incoming value to rms-exchange-type. |

| Field Passed from Oracle E-Business Suite | Oracle Retail RIB - CurrRateDesc | API Create     | API Update     | Oracle Retail Database - Currency Rates | Window Edit - Currency Exchange Rates | Comments                                                                                                                |
|-------------------------------------------|----------------------------------|----------------|----------------|-----------------------------------------|---------------------------------------|-------------------------------------------------------------------------------------------------------------------------|
| conversion-rate                           | CONVERSION_RATE                  | Pass           | Pass           | EXCHANGE_RATE                           | Allow view only                       |                                                                                                                         |
| to-currency                               | TO_CURRENCY                      | Use for filter | Use for filter | N/A                                     | N/A                                   | Check this value against the currency-code field in the system-options table. If they do not match, ignore this record. |

### Freight Terms Mapping

The following table describes mapping of freight terms data from Oracle E-Business Suite to Oracle Retail Management System (RMS).

| Field Passed from Oracle E-Business Suite | Oracle Retail RIB - FrtTermDesc | API Create | API Update | Oracle Retail Database - FREIGHT_TERMS |
|-------------------------------------------|---------------------------------|------------|------------|----------------------------------------|
| lookup-code                               | FREIGHT_TERMS                   | (Key)      | (Key)      | FREIGHT_TERMS                          |
| meaning                                   | TERM_DESC                       | Pass       | Pass       | TERM_DESC                              |
| start_date_active                         | START_DATE_ACTIVE               | Pass       | Pass       | START_DATE_ACTIVE                      |
| end_date_active                           | END_DATE_ACTIVE                 | Pass       | Pass       | END_DATE_ACTIVE                        |
| enabled-flag                              | ENABLED_FLAG                    | Pass       | Pass       | ENABLED_FLAG                           |

## Payment Terms Mapping

The following table describes mapping of payment terms data from Oracle E-Business Suite to Oracle Retail Management System (RMS).

**Note:** In the table, an asterisk ( \* ) indicates that this field is maintained at header level in Oracle E-Business Suite.

| Field Passed from Oracle E-Business Suite  | Oracle Retail RIB - PayTermDesc? | Oracle Retail RIB - PayTermDt!? | API Create | API Update | Oracle Retail Database TERMS_HEADER |
|--------------------------------------------|----------------------------------|---------------------------------|------------|------------|-------------------------------------|
| AP_TERMS_TL(AT)<br>AP_TERMS_LINES (ATL)    |                                  |                                 |            |            |                                     |
| <b>Oracle Retail Database TERMS_HEAD</b>   |                                  |                                 |            |            |                                     |
| AT.Term_Id                                 | TERMS                            |                                 | (Key)      | (Key)      | TERMS                               |
| AT.Name                                    | TERMS_CODE                       |                                 | Pass       | Pass       | TERMS_CODE                          |
| AT.Description                             | TERMS_DESC                       |                                 | Pass       | Pass       | TERMS_DESC                          |
| AT.Rank                                    | RANK                             |                                 | Pass       | pass       | RANK                                |
| Default NULL                               | DUE_DAYS                         |                                 |            |            |                                     |
| Derived (AT)                               | ENABLED_FLAG                     |                                 |            |            |                                     |
| AT.Start_Date_Active                       | START_DATE_ACTIVE                |                                 |            |            |                                     |
| AT.End_Date_Active                         | END_DATE_ACTIVE                  |                                 |            |            |                                     |
| Default NULL                               | DISCDAYS                         |                                 |            |            |                                     |
| Default NULL                               | DISCDAYS                         |                                 |            |            |                                     |
| <b>Oracle Retail Database TERMS_DETAIL</b> |                                  |                                 |            |            |                                     |
| AT.Term-id                                 | TERMS                            |                                 | (Key)      | (Key)      | TERMS                               |
| ATL.sequence-num                           |                                  | TERMS_SEQ                       | (Key)      | (Key)      | TERMS_SEQ                           |
| ATL.due-days                               |                                  | DUE_DAYS                        | Pass       | Pass       | DUEDAYS                             |
| ATL.due-amount                             |                                  | DUE_MAX_AMOUNT                  | Pass       | Pass       | DUE_MAX_AMOUNT                      |
| due-day-of-month                           |                                  | DUE_DOM                         | Pass       | Pass       | DUE_DOM                             |
| ATL.due-months-forward                     |                                  | DUE_MM_FWD                      | Pass       | Pass       | DUE_MM_FWD                          |
| ATL.discount-days                          |                                  | DISCDAYS                        | Pass       | Pass       | DISCDAYS                            |



| Field Passed from Oracle E-Business Suite  | Oracle Retail RIB - PayTermDesc? | Oracle Retail RIB - PayTermDtl? | API Create | API Update | Oracle Retail Database TERMS_HEADER |
|--------------------------------------------|----------------------------------|---------------------------------|------------|------------|-------------------------------------|
| AP_TERMS_TL(AT)<br>AP_TERMS_LINES<br>(ATL) |                                  |                                 |            |            |                                     |
| ATL.discount-percent                       |                                  | PERCENT                         | Pass       | Pass       | PERCENT                             |
| ATL.discount-day-of-month                  |                                  | DISC_DOM                        | Pass       | Pass       | DISC_DOM                            |
| ATL.discount-months-forward                |                                  | DISC_MM_FWD                     | Pass       | Pass       | DISC_MM_FWD                         |
| ATL.fixed-date                             |                                  | FIXED_DATE                      | Pass       | Pass       | FIXED_DATE                          |
| Derived (ATL)                              |                                  | ENABLED_FLAG                    | Pass       | Pass       | ENABLED_FLAG                        |
| ATL.start-date-active*                     |                                  | START_DATE_ACTIVE               | Pass       | Pass       | START_DATE_ACTIVE                   |
| ATL.end-date-active*                       |                                  | END_DATE_ACTIVE                 | Pass       | Pass       | END_DATE_ACTIVE                     |
| ATL.due-cutoff-day*                        |                                  | CUTOFF_DAY                      | Pass       | Pass       | CUTOFF_DAY                          |

### Stock Ledger, Sales Journal, Miscellaneous Payments

The following table describes the mapping of Oracle Retail stock ledger, sales journal, and miscellaneous payments data to Oracle E-Business Suite.

| Column Name           | Data Type    | Column Name           | Data Type    | Req'd | Remarks                                                                                   |
|-----------------------|--------------|-----------------------|--------------|-------|-------------------------------------------------------------------------------------------|
| STATUS                | VARCHAR2(50) | STATUS                | VARCHAR2(50) | Yes   | Straight mapping.                                                                         |
| SET_OF_BOOKS_ID       | NUMBER(15)   | SET_OF_BOOKS_ID       | NUMBER(15)   | Yes   | Straight mapping. Oracle Retail sends a valid value.                                      |
| ACCOUNTING_DATE       | DATE         | ACCOUNTING_DATE       | DATE         | Yes   | Straight mapping.                                                                         |
| CURRENCY_CODE         | VARCHAR2(15) | CURRENCY_CODE         | VARCHAR2(15) | Yes   | Straight mapping. Oracle Retail synchronizes reference data with Oracle E-Business Suite. |
| DATE_CREATED          | DATE         | DATE_CREATED          | DATE         | Yes   | Straight mapping.                                                                         |
| CREATED_BY            | NUMBER(15)   | CREATED_BY            | NUMBER(15)   | Yes   |                                                                                           |
| ACTUAL_FLAG           | VARCHAR2(1)  | ACTUAL_FLAG           | VARCHAR2(1)  | Yes   | Straight mapping.                                                                         |
| USER_JE_CATEGORY_NAME | VARCHAR2(25) | USER_JE_CATEGORY_NAME | VARCHAR2(25) | Yes   | Straight mapping. Oracle Retail sends a valid value.                                      |
| USER_JE_SOURCE_NAME   | VARCHAR2(25) | USER_JE_SOURCE_NAME   | VARCHAR2(25) | Yes   | Straight mapping. Oracle Retail sends a valid value.                                      |

| Column Name              | Data Type    | Column Name                   | Data Type    | Req'd | Remarks                                                                                                                                                                |
|--------------------------|--------------|-------------------------------|--------------|-------|------------------------------------------------------------------------------------------------------------------------------------------------------------------------|
| CURRENCY_CONVERSION_DATE | DATE         | CURRENCY_CONVERSION_DATE      | DATE         |       | Straight mapping.                                                                                                                                                      |
| CURRENCY_CONVERSION_TYPE | VARCHAR2(30) | USER_CURRENCY_CONVERSION_TYPE | VARCHAR2(30) |       | The only valid values are 'Corporate' and 'Spot'.                                                                                                                      |
|                          |              | CURRENCY_CONVERSION_RATE      | NUMBER       |       | Not sent by Oracle Retail. Conversion rate is derived from the GL_DAILY_RATES table based on conversion date, conversion type, currency_code, and functional currency. |
| ACCT_SEGMENT1            | VARCHAR2(25) | SEGMENT1                      | VARCHAR2(25) |       | Not sent by Oracle Retail because the code_combination_id is sent.                                                                                                     |
| ACCT_SEGMENT2            | VARCHAR2(25) | SEGMENT2                      | VARCHAR2(25) |       | Not sent by Oracle Retail because the code_combination_id is sent.                                                                                                     |
| ACCT_SEGMENT3            | VARCHAR2(25) | SEGMENT3                      | VARCHAR2(25) |       | Not sent by Oracle Retail because the code_combination_id is sent.                                                                                                     |
| ACCT_SEGMENT4            | VARCHAR2(25) | SEGMENT4                      | VARCHAR2(25) |       | Not sent by Oracle Retail because the code_combination_id is sent.                                                                                                     |
| ACCT_SEGMENT5            | VARCHAR2(25) | SEGMENT5                      | VARCHAR2(25) |       | Not sent by Oracle Retail because the code_combination_id is sent.                                                                                                     |
| ACCT_SEGMENT6            | VARCHAR2(25) | SEGMENT6                      | VARCHAR2(25) |       | Not sent by Oracle Retail because the code_combination_id is sent.                                                                                                     |
| ACCT_SEGMENT7            | VARCHAR2(25) | SEGMENT7                      | VARCHAR2(25) |       | Not sent by Oracle Retail because the code_combination_id is sent.                                                                                                     |
| ACCT_SEGMENT8            | VARCHAR2(25) | SEGMENT8                      | VARCHAR2(25) |       | Not sent by Oracle Retail because the code_combination_id is sent.                                                                                                     |

| Column Name         | Data Type    | Column Name              | Data Type     | Req'd | Remarks                                                                      |
|---------------------|--------------|--------------------------|---------------|-------|------------------------------------------------------------------------------|
| ACCT_SEGMENT9       | VARCHAR2(25) | SEGMENT9                 | VARCHAR2(25)  |       | Not sent by Oracle Retail because the code_combination_id is sent.           |
| ACCT_SEGMENT10      | VARCHAR2(25) | SEGMENT10                | VARCHAR2(25)  |       | Not sent by Oracle Retail because the code_combination_id is sent.           |
| ENTERED_DR_AMOUNT   | NUMBER(20,4) | ENTERED_DR               | NUMBER        |       | Straight mapping and truncation per Oracle Retail column sizing constraints. |
| ENTERED_CR_AMOUNT   | NUMBER(20,4) | ENTERED_CR               | NUMBER        |       | Straight mapping and truncation per Oracle Retail column sizing constraints. |
|                     |              | ACCOUNTED_DR             | NUMBER        |       | Not sent. This is derived during GL import from the GL Daily Rates table.    |
|                     |              | ACCOUNTED_CR             | NUMBER        |       | Not sent. This is derived during GL import from the GL Daily Rates table.    |
| TRANSACTION_DATE    | DATE         | TRANSACTION_DATE         | DATE          |       | Straight mapping.                                                            |
| REFERENCE1          | VARCHAR2(20) | REFERENCE21              | VARCHAR2(100) |       | Straight mapping.                                                            |
| REFERENCE2          | VARCHAR2(20) | REFERENCE22              | VARCHAR2(240) |       | Straight mapping.                                                            |
| REFERENCE3          | VARCHAR2(20) | REFERENCE23              | VARCHAR2(100) |       | Straight mapping.                                                            |
| REFERENCE4          | VARCHAR2(20) | REFERENCE24              | VARCHAR2(100) |       | Straight mapping.                                                            |
| REFERENCE5          | VARCHAR2(20) | REFERENCE25              | VARCHAR2(240) |       | Straight mapping.                                                            |
|                     |              | JE_BATCH_ID              | NUMBER(15)    |       | Do not map.                                                                  |
| PERIOD_NAME         | VARCHAR2(15) | PERIOD_NAME              | VARCHAR2(15)  |       | Straight mapping. The period names are manually synchronized.                |
|                     |              | JE_HEADER_ID             | NUMBER(15)    |       | Leave null. For internal use only.                                           |
|                     |              | JE_LINE_NUM              | NUMBER(15)    |       | Do not map.                                                                  |
|                     |              | CHART_OF_ACCOUNTS_ID     | NUMBER(15)    |       | Do not map.                                                                  |
|                     |              | FUNCTIONAL_CURRENCY_CODE | VARCHAR2(15)  |       | Do not map.                                                                  |
| CODE_COMBINATION_ID | NUMBER(15)   | CODE_COMBINATION_ID      | NUMBER(15)    |       | Straight mapping.                                                            |

| Column Name | Data Type     | Column Name              | Data Type     | Req'd | Remarks                    |
|-------------|---------------|--------------------------|---------------|-------|----------------------------|
| ATTRIBUTE1  | VARCHAR2(20)  | ATTRIBUTE1               | VARCHAR2(150) |       | Do not pull these columns. |
| ATTRIBUTE2  | VARCHAR2(20)  | ATTRIBUTE2               | VARCHAR2(150) |       | Do not pull these columns. |
|             |               | GL_SL_LINK_ID            | NUMBER        |       | Leave these null.          |
|             |               | GL_SL_LINK_TABLE         | VARCHAR2(30)  |       | Leave these null.          |
| ATTRIBUTE3  | VARCHAR2(20)  | ATTRIBUTE3               | VARCHAR2(150) |       | Do not pull these columns. |
| ATTRIBUTE4  | VARCHAR2(20)  | ATTRIBUTE4               | VARCHAR2(150) |       | Do not pull these columns. |
| ATTRIBUTE5  | VARCHAR2(20)  | ATTRIBUTE5               | VARCHAR2(150) |       | Do not pull these columns. |
| ATTRIBUTE6  | VARCHAR2(20)  | ATTRIBUTE6               | VARCHAR2(150) |       | Do not pull these columns. |
|             |               | CONTEXT                  | VARCHAR2(150) |       | Do not pull these columns. |
|             |               | CONTEXT2                 | VARCHAR2(150) |       | Do not pull these columns. |
|             |               | INVOICE_DATE             | DATE          |       | Do not map.                |
|             |               | TAX_CODE                 | VARCHAR2(15)  |       | Do not map.                |
|             |               | INVOICE_IDENTIFIER       | VARCHAR2(20)  |       | Do not map.                |
|             |               | INVOICE_AMOUNT           | NUMBER        |       | Do not map.                |
|             |               | CONTEXT3                 | VARCHAR2(150) |       | Do not map.                |
|             |               | USSGL_TRANSACTION_CODE   | VARCHAR2(30)  |       | Do not map.                |
|             |               | DESCR_FLEX_ERROR_MESSAGE | VARCHAR2(240) |       | Do not map.                |
|             |               | JGZZ_RECON_REF           | VARCHAR2(240) |       | Do not map.                |
|             |               | REFERENCE_DATE           | DATE          |       | Do not map.                |
| PGM_NAME    | VARCHAR2(100) |                          |               |       | Do not map.                |
|             |               | ENCUMBRANCE_TYPE_ID      | NUMBER        |       | Do not map.                |
|             |               | BUDGET_VERSION_ID        | NUMBER        |       | Do not map.                |

| Column Name | Data Type | Column Name                    | Data Type     | Req'd | Remarks     |
|-------------|-----------|--------------------------------|---------------|-------|-------------|
|             |           | AVERAGE_ JOURNAL_ FLAG         | VARCHAR2(1)   |       | Do not map. |
|             |           | ORIGINATING_ BAL_SEG_ VALUE    | VARCHAR2      |       | Do not map. |
|             |           | SEGMENT11-30                   | VARCHAR2(25)  |       | Do not map. |
|             |           | REFERENCE1,3,4,6 -9            | VARCHAR2(100) |       | Do not map. |
|             |           | REFERENCE10,2,5                | VARCHAR2(240) |       | Do not map. |
|             |           | REFERENCE11-20                 | VARCHAR2(100) |       | Do not map. |
|             |           | REFERENCE26-30                 | VARCHAR2(240) |       | Do not map. |
|             |           | DATE_CREATED_ IN_GL            | DATE          |       | Do not map. |
|             |           | WARNING_ CODE                  | VARCHAR2(4)   |       | Do not map. |
|             |           | STATUS_ DESCRIPTION            | VARCHAR2(240) |       | Do not map. |
|             |           | STAT_AMOUNT                    | NUMBER        |       | Do not map. |
|             |           | GROUP_ID                       | NUMBER(15)    |       | Do not map. |
|             |           | REQUEST_ID                     | NUMBER(15)    |       | Do not map. |
|             |           | SUBLEDGER_ DOC_ SEQUENCE_ID    | NUMBER        |       | Do not map. |
|             |           | SUBLEDGER_ DOC_SEQUENCE_ VALUE | NUMBER        |       | Do not map. |



---

---

# Setting up Oracle Business Intelligence Publisher

RMS uses Oracle Business Intelligence (BI) Publisher for publishing reports. Prior to accessing reports in BI Publisher, you must create the BI Publisher JDBC connection for your database and verify that BI Publisher URLs are set correctly on your Oracle Application Server.

---

---

**Note:** Oracle Retail recommends that retailers access the reports with the Guest user with no password. This is so RMS can access the reports without authentication. Guest with no password is a default user in BIP.

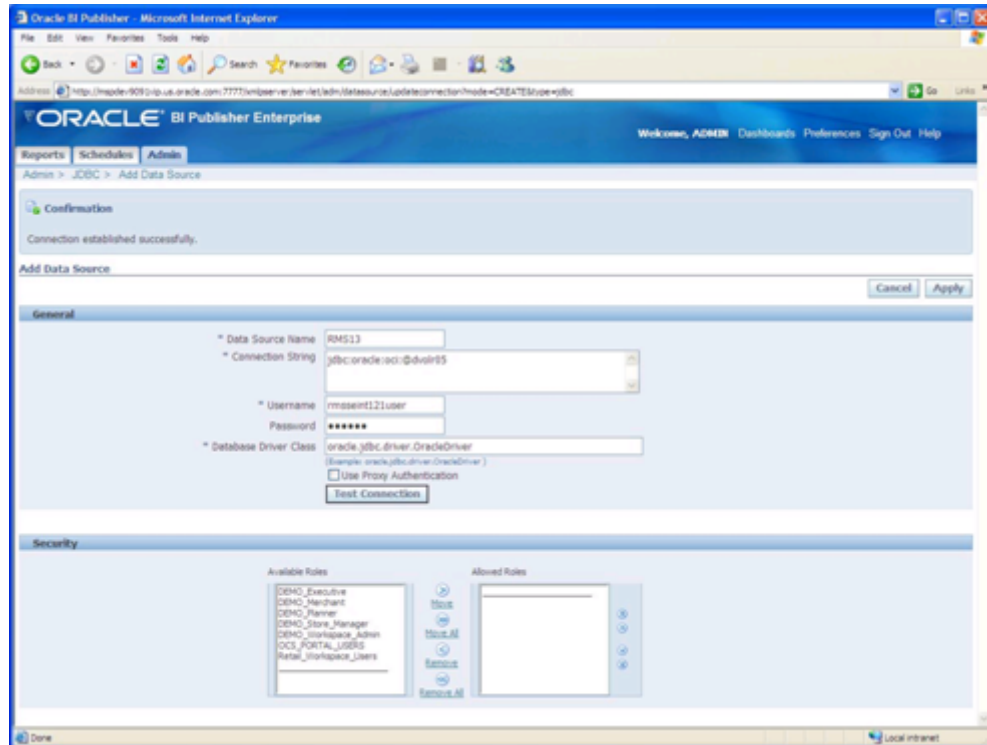
---

---

## Setting up your JDBC Connection

Use the following procedure to create your JDBC connection for either a RAC database or a thin connection to a database.

1. Access your BIP repository.  
/home/BIP/
2. Log into BI Publisher as the administrator.
3. Under Data Sources, select JDBC Connections.
4. Create the BIP JDBC Connection.
  - If you are using JDBC for a RAC database, verify that the Data Source Name is set to RMS13.



**Example of a valid JDBC for a RAC database**

- If you are using a thin connection to a database, the Connection String should look similar to the following:  
jdbc:oracle:thin:@<DB\_Server>:<DB\_listener\_port>:<\${ORACLE\_SID}>  
For example:  
jdbc:oracle:thin:@mspdev38.us.oracle.com:1525:cs0110g



