

**Oracle® Retail Merchandising**

Batch Schedule

Release 13.2.5

October 2012

Copyright © 2012, Oracle. All rights reserved.

Primary Author: Nathan Young

This software and related documentation are provided under a license agreement containing restrictions on use and disclosure and are protected by intellectual property laws. Except as expressly permitted in your license agreement or allowed by law, you may not use, copy, reproduce, translate, broadcast, modify, license, transmit, distribute, exhibit, perform, publish, or display any part, in any form, or by any means. Reverse engineering, disassembly, or decompilation of this software, unless required by law for interoperability, is prohibited.

The information contained herein is subject to change without notice and is not warranted to be error-free. If you find any errors, please report them to us in writing.

If this software or related documentation is delivered to the U.S. Government or anyone licensing it on behalf of the U.S. Government, the following notice is applicable:

U.S. GOVERNMENT END USERS: Oracle programs, including any operating system, integrated software, any programs installed on the hardware, and/or documentation, delivered to U.S. Government end users are "commercial computer software" pursuant to the applicable Federal Acquisition Regulation and agency-specific supplemental regulations. As such, use, duplication, disclosure, modification, and adaptation of the programs, including any operating system, integrated software, any programs installed on the hardware, and/or documentation, shall be subject to license terms and license restrictions applicable to the programs. No other rights are granted to the U.S. Government.

This software or hardware is developed for general use in a variety of information management applications. It is not developed or intended for use in any inherently dangerous applications, including applications that may create a risk of personal injury. If you use this software or hardware in dangerous applications, then you shall be responsible to take all appropriate fail-safe, backup, redundancy, and other measures to ensure its safe use. Oracle Corporation and its affiliates disclaim any liability for any damages caused by use of this software or hardware in dangerous applications.

Oracle and Java are registered trademarks of Oracle and/or its affiliates. Other names may be trademarks of their respective owners.

Intel and Intel Xeon are trademarks or registered trademarks of Intel Corporation. All SPARC trademarks are used under license and are trademarks or registered trademarks of SPARC International, Inc. AMD, Opteron, the AMD logo, and the AMD Opteron logo are trademarks or registered trademarks of Advanced Micro Devices. UNIX is a registered trademark of The Open Group.

This software or hardware and documentation may provide access to or information on content, products, and services from third parties. Oracle Corporation and its affiliates are not responsible for and expressly disclaim all warranties of any kind with respect to third-party content, products, and services. Oracle Corporation and its affiliates will not be responsible for any loss, costs, or damages incurred due to your access to or use of third-party content, products, or services.

## Value-Added Reseller (VAR) Language

### Oracle Retail VAR Applications

The following restrictions and provisions only apply to the programs referred to in this section and licensed to you. You acknowledge that the programs may contain third party software (VAR applications) licensed to Oracle. Depending upon your product and its version number, the VAR applications may include:

(i) the **MicroStrategy** Components developed and licensed by MicroStrategy Services Corporation (MicroStrategy) of McLean, Virginia to Oracle and imbedded in the MicroStrategy for Oracle Retail Data Warehouse and MicroStrategy for Oracle Retail Planning & Optimization applications.

(ii) the **Wavelink** component developed and licensed by Wavelink Corporation (Wavelink) of Kirkland, Washington, to Oracle and imbedded in Oracle Retail Mobile Store Inventory Management.

(iii) the software component known as **Access Via**<sup>TM</sup> licensed by Access Via of Seattle, Washington, and imbedded in Oracle Retail Signs and Oracle Retail Labels and Tags.

(iv) the software component known as **Adobe Flex**<sup>TM</sup> licensed by Adobe Systems Incorporated of San Jose, California, and imbedded in Oracle Retail Promotion Planning & Optimization application.

You acknowledge and confirm that Oracle grants you use of only the object code of the VAR Applications. Oracle will not deliver source code to the VAR Applications to you. Notwithstanding any other term or condition of the agreement and this ordering document, you shall not cause or permit alteration of any VAR Applications. For purposes of this section, "alteration" refers to all alterations, translations, upgrades, enhancements, customizations or modifications of all or any portion of the VAR Applications including all reconfigurations, reassembly or reverse assembly, re-engineering or reverse engineering and recompilations or reverse compilations of the VAR Applications or any derivatives of the VAR Applications. You acknowledge that it shall be a breach of the agreement to utilize the relationship, and/or confidential information of the VAR Applications for purposes of competitive discovery.

The VAR Applications contain trade secrets of Oracle and Oracle's licensors and Customer shall not attempt, cause, or permit the alteration, decompilation, reverse engineering, disassembly or other reduction of the VAR Applications to a human perceivable form. Oracle reserves the right to replace, with functional equivalent software, any of the VAR Applications in future releases of the applicable program.



---

---

# Contents

|   |            |
|---|------------|
| <b>Send Us Your Comments</b> .....                                | <b>vii</b> |
| <b>Preface</b> .....  | <b>ix</b>  |
| Audience .....  | ix         |
| Related Documents.....  | ix         |
| Customer Support.....   | ix         |
| Review Patch Documentation.....                                   | x          |
| Oracle Retail Documentation on the Oracle Technology Network..... | x          |
| Conventions.....  | x          |
| <b>1 Introduction to Merchandising Batch Processing</b> .....     | <b>1</b>   |
| Batch Processing.....   | 1          |
| Types of Batch Programs .....                                     | 1          |
| Batch Window .....  | 2          |
| Batch Schedule and Phases.....                                    | 2          |
| Merchandising Batch Schedule .....                                | 3          |
| Program List .....  | 3          |
| Batch Schedule Diagram .....                                      | 5          |
| RMS, ReIM, RTM Section .....                                      | 5          |
| ReSA Section.....   | 6          |
| RPM Section.....  | 6          |
| Notations in the Batch Schedule Diagram.....                      | 7          |
| prepost Program .....   | 8          |
| Modifications to the Batch Schedule .....                         | 9          |
| <b>2 Program List</b> .....                                       | <b>11</b>  |
| <b>3 Batch Schedule Diagram</b> .....                             | <b>17</b>  |
| <b>4 Interface Diagrams for RMS and RPAS</b> .....                | <b>19</b>  |
| RMS Pre/Post Extract Diagrams .....                               | 20         |
| RMS Foundation Data Extract Diagrams .....                        | 21         |
| RMS Fact Data Extract Diagrams.....                               | 23         |
| RPAS-RMS Fact Load Diagram .....                                  | 24         |
| <b>5 Interface Diagrams for RMS and MFP</b> .....                 | <b>25</b>  |
| RMS Pre/Post Extract Diagrams .....                               | 26         |
| RMS Foundation Data Extract Diagrams .....                        | 27         |
| RMS Fact Data Extract Diagrams.....                               | 29         |
| <b>6 Interface Diagrams for RMS and AIP</b> .....                 | <b>31</b>  |
| RMS Pre/Post Extract Diagrams .....                               | 33         |
| RMS Foundation Data Extract Diagrams .....                        | 34         |



---

---

# Send Us Your Comments

Oracle Retail Merchandising Batch Schedule, Release 13.2.5

Oracle welcomes customers' comments and suggestions on the quality and usefulness of this document.

Your feedback is important, and helps us to best meet your needs as a user of our products. For example:

- Are the implementation steps correct and complete?
- Did you understand the context of the procedures?
- Did you find any errors in the information?
- Does the structure of the information help you with your tasks?
- Do you need different information or graphics? If so, where, and in what format?
- Are the examples correct? Do you need more examples?

If you find any errors or have any other suggestions for improvement, then please tell us your name, the name of the company who has licensed our products, the title and part number of the documentation and the chapter, section, and page number (if available).

---

---

**Note:** Before sending us your comments, you might like to check that you have the latest version of the document and if any concerns are already addressed. To do this, access the new Applications Release Online Documentation CD available on My Oracle Support and [www.oracle.com](http://www.oracle.com). It contains the most current Documentation Library plus all documents revised or released recently.

---

---

Send your comments to us using the electronic mail address: [retail-doc\\_us@oracle.com](mailto:retail-doc_us@oracle.com)

Please give your name, address, electronic mail address, and telephone number (optional).

If you need assistance with Oracle software, then please contact your support representative or Oracle Support Services.

If you require training or instruction in using Oracle software, then please contact your Oracle local office and inquire about our Oracle University offerings. A list of Oracle offices is available on our Web site at [www.oracle.com](http://www.oracle.com).





---

---

# Preface

This batch schedule document details the integrated cyclical processing schedules for the Oracle Retail Merchandising applications:

- Oracle Retail Merchandising System (RMS)
- Oracle Retail Fiscal Management (ORFM)
- Oracle Retail Invoice Matching (ReIM)
- Oracle Retail Price Management (RPM)
- Oracle Retail Sales Audit (ReSA)
- Oracle Retail Trade Management (RTM)
- Oracle Retail Allocation

---

---

**Note:** Although Oracle Retail Allocation is a Merchandising application, it is not represented in this batch schedule because it does not have any batch programs to run. All Allocation processing is online processing.

---

---

This guide describes the periodic and ad hoc phases of batch processing, as well as pre- and post-processing dependencies.

## Audience

The audiences for this guide are as follows:

- Systems analysts and system operations personnel who need information about Merchandising processes, internally or in relation to systems across the enterprise
- Integrators and implementation staff who have the overall responsibility for implementing the Merchandising applications in their enterprise

## Related Documents

For more information, see the following documents for the Oracle Retail Merchandising products:

- *Oracle Retail Invoice Matching Operations Guide*
- *Oracle Retail Merchandising System Operations Guide*
- *Oracle Retail Price Management Operations Guide*
- *Oracle Retail Fiscal Management/RMS Brazil Localization Implementation Guide*

## Customer Support

To contact Oracle Customer Support, access My Oracle Support at the following URL:  
<https://support.oracle.com>

When contacting Customer Support, please provide the following:

- Product version and program/module name
- Functional and technical description of the problem (include business impact)
- Detailed step-by-step instructions to re-create
- Exact error message received
- Screen shots of each step you take

## Review Patch Documentation

When you install the application for the first time, you install either a base release (for example, 13.2) or a later patch release (for example, 13.2.3). If you are installing the base release and additional patch and bundled hot fix releases, read the documentation for all releases that have occurred since the base release before you begin installation.

Documentation for patch and bundled hot fix releases can contain critical information related to the base release, as well as information about code changes since the base release.

## Oracle Retail Documentation on the Oracle Technology Network

Documentation is packaged with each Oracle Retail product release. Oracle Retail product documentation is also available on the following Web site:

[http://www.oracle.com/technology/documentation/oracle\\_retail.html](http://www.oracle.com/technology/documentation/oracle_retail.html)

(Data Model documents are not available through Oracle Technology Network. These documents are packaged with released code, or you can obtain them through My Oracle Support.)

Documentation should be available on this Web site within a month after a product release.

## Conventions

**Navigate:** This is a navigate statement. It tells you how to get to the start of the procedure and ends with a screen shot of the starting point and the statement “the Window Name window opens.”

This is a code sample

It is used to display examples of code

---

---

# Introduction to Merchandising Batch Processing

This chapter is a brief introduction to Oracle Retail batch processing. It defines basic terms and concepts, describes batch processing phases, and explains how to interpret the batch schedule diagram and program list.

## Batch Processing

Batch processing is the execution of a group of batch programs (jobs). The results are returned without user intervention. Batch programs are commonly used for the following reasons:

- To process large volumes of transaction data
- To interface with external systems
- To perform internal maintenance

Batch programs can process very large quantities of data quickly and efficiently. Batch programs can perform some updates that could be performed through online transactions, but much more quickly and with less impact on system performance. Batch processing is usually scheduled for times when systems are idle or least busy.

Batch programs can be run automatically using batch scheduler software. The batch scheduler allows batch jobs to be set up in a specific order, with restrictions attached to any program as needed. If an error occurs with a batch program, an administrator must correct the error and manually rerun the batch program that failed.

## Types of Batch Programs

Oracle Retail batch programs are of several types:

- Upload programs bring data from external systems into the Oracle Retail database. For example, the `posupld` program uploads daily transactions that occur at the point of sale (POS) for processing by the Oracle Retail Management System (RMS).
- Download programs extract data from RMS and format it so it can be used by external systems. For example, the `posdnld` program extracts new and changed information about an item/location for downloading to the point of sale.
- System maintenance programs perform tasks such as updating the system date. For example, the `dtesys` program increments the system date at the end of each batch cycle.
- Functional maintenance programs process data specific to a functional area. For example, the `storeadd` program updates a number of tables to create entries for a new store.

## Batch Window

Because of the impact on production systems, it is not always possible to run batch programs during business hours; however, there is a window of opportunity during each day or night when online systems are not being used. This time frame is the *batch window*. For example, a retailer with stores throughout the continental U.S. might require its online systems to be available from 8 AM Eastern Standard Time, when its East Coast offices open, until 9 PM Pacific Standard Time, when its West Coast stores close. This allows an eight-hour batch window for processing all batch jobs.

## Batch Schedule and Phases

Order is critical when running batch programs. Some tasks need to be performed before others. A batch schedule ensures that every time batch processing is performed, the correct tasks are performed in the proper order.

The batch schedule is a diagram that represents all batch programs and how they are sequenced. For each individual user, the schedule is a suggested starting point for the installation. Some programs are specific to products that may not be installed, so these programs may not be used at all.

The total batch schedule is divided into phases. Each phase must be completed before the next phase can begin. Within a phase, there may also be programs that depend on the completion of another program within that phase, so programs within each phase may need to be run in a particular order.

## Merchandising Batch Schedule

The integrated Merchandising batch schedule combines the batch schedules of all Merchandising applications into a single schedule diagram. The diagram (later in this document) shows the batch dependencies among the Merchandising applications.

The integrated Merchandising batch schedule combines the batch modules for the following applications:

- Oracle Retail Merchandising System (RMS)
- Oracle Retail Trade Management (RTM)
- Oracle Retail Sales Audit (ReSA)
- Oracle Retail Fiscal Management (ORFM)

---

**Note:** Additional batches are required to be run when Brazil localization is enabled in RMS.

---

- Oracle Retail Invoice Matching (ReIM)
- Oracle Retail Price Management (RPM)

---

**Note:** Although Oracle Retail Allocation is a Merchandising application, it is not represented in this batch schedule because it does not have any batch programs to run. All Allocation processing is online processing.

---

## Program List

The columns of the program list provide details about each batch program, as follows:

| Column                     | Description  |
|----------------------------|--|
| Program name               | Name of the program or script  |
| Functional area            | Functional area of the application for which the batch program is run      |
| Threaded                   | Whether the program is threaded (Y/N)                                      |
| Driver                     | Program driver   |
| Phase                      | Phase during which the program is run (see the batch schedule diagram)     |
| Pre-dependency             | Programs that must be completed before the program can be run              |
| Post-dependency            | Programs that must be run after the program completes successfully         |
| Timing                     | How often the program is run (for example, daily, weekly, monthly, ad hoc) |
| Restart/Recovery           | Whether the program uses restart/recovery (R=Yes, N=No)                    |
| Run Parameters for Program | Command syntax to run the program  |

For example, the following shows the information in the program list about an RMS phase 3 program named dealday:

|                  |  |
|------------------|--|
| Program Name     | dealday                                |
| Functional Area  | Deals                                  |
| Threaded         | Y                                      |
| Driver           | Location                               |
| Phase            | 3                                      |
| Pre-dependency   | dealinc, dealfinc, prepost dealday pre |
| Post-dependency  | prepost dealday post, salmnth          |
| Timing           | Monthly                                |
| Restart/Recovery | R                                      |
| Usage            | dealday userid/passwd                  |

The program list is grouped in the following order:

- RMS, RTM, and ReSA programs
- RPM programs
- ReIM programs
- RMS extracts for Retail Predictive Application Server (RPAS)

The extracts for RPAS are programs that are part of the RMS application.

## Batch Schedule Diagram

The batch schedule diagram illustrates the program list pre- and post-dependency details. The layout and notations of the diagram also illustrate required sequences and other processing details. Executing the Merchandising batch processing in the manner diagrammed ensures that all critical dependencies are met.

For ease of setting up a schedule at client site, and also based on logical application dependencies, the diagram is divided into three main sections:

- RMS, RTM, ReIM
- ReSA
- RPM

Later chapters of this document show data flow diagrams for other batch processes:

- Chapter 4 shows the Retail Extract, Transform, and Load (RETL) data flows for the extracts from RMS to RPAS.
- Chapter 5 shows the Retail Extract, Transform, and Load (RETL) data flows for the extracts from RMS to MFP.
- Chapter 6 shows the RETL data flows for the extracts from RMS to Oracle Retail Advanced Inventory Planning (AIP).

### RMS, ReIM, RTM Section

The first section diagrams the RMS, ReIM, and RTM programs and their dependencies. This section is further divided into phases 0 through 7, ad hoc, and date set batch.

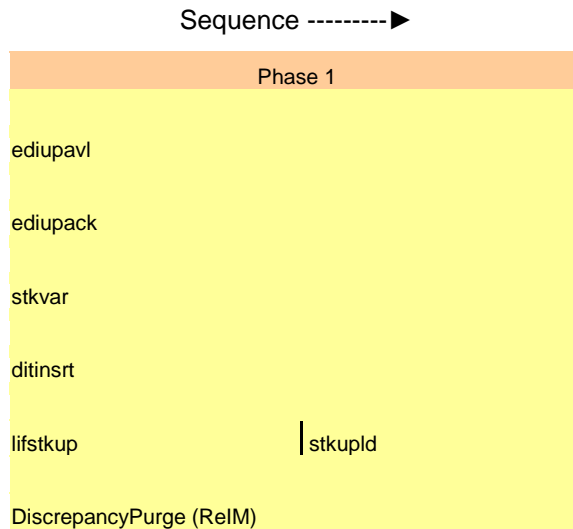
Each phase must be completed before the next phase can begin. Also, a phase may contain programs that depend on other programs within the phase. Programs within each phase may need to run in a particular sequence.

The following are brief descriptions of the Merchandising batch processing phases. Depending on your implementation, some programs and phases may not apply.

| Phase   | Description   |
|---------|---|
| Phase 0 | The first phase performs essential table maintenance including: <ul style="list-style-type: none"> <li>▪ Daily purges</li> <li>▪ Updates to currency exchange rates</li> <li>▪ Updates to value-added tax (VAT) data</li> </ul> |
| Phase 1 | This phase prepares the tables for interfacing with external systems in Phase 2. Among other programs, the stock variance (stkvar) batch program is run to update stock counts.   |
| Phase 2 | During this phase, information is uploaded from external interfaces, including point of sale (POS) data (posupld batch program).  |
| Phase 3 | In this phase, the main RMS processing programs are run for purchasing, ordering, stock ledger, deals, and replenishment.   |
| Phase 4 | This phase pushes data to external sources. Changed system information is rebuilt. Open to buy (OTB) data is updated. Information is sent to the forecasting system.  |
| Phase 5 | This phase consists of ReIM process upload programs.  |

| Phase    | Description  |
|----------|--|
| Phase 6  | This phase consists of ReIM process roll-up programs.  |
| Phase 7  | This phase consists of ReIM process download programs.   |
| Ad Hoc   | Ad hoc batch programs can be run at any time. The ad hoc programs have no phase dependencies.  |
| Date Set | The Date Set phase increments the system date and updates other calendar dates.<br><b>Note:</b> The date set phase should be the very last phase to run. Even the ad hoc programs should be run before the date set program. |

Read the batch schedule diagram from left to right. In the following example, any of the programs (ediupavl, ediupack, stkvar, ditinsrt, lifstkup, DiscrepancyPurge) can start at the same time; however, the stkupld program cannot start until the lifstkup program is successfully completed.



## ReSA Section

This section diagrams the ReSA programs and their dependencies.

## RPM Section

This section diagrams the RPM programs and their dependencies.



## Notations in the Batch Schedule Diagram

### Pipes

Pipes are vertical bars ( | ) that represent the dependencies within a phase. Reading left to right, a pipe indicates that one or more programs to the right depend upon completion of one or more programs to the left.

In the following example, the stkupld module depends on the lifstkup module; that is, the stkupld module can be run only after successful completion of the lifstkup module.

|          |         |
|----------|---------|
| lifstkup | stkupld |
|----------|---------|

In the following example, both of the modules cntrorldb and reqext are dependent on ociroq. Neither cntrorldb nor reqext can be run until the ociroq module has completed successfully.

|        |                     |
|--------|---------------------|
| ociroq | cntrorldb<br>reqext |
|--------|---------------------|

In the following example, the ibcalc module is dependent on both ibexpl and cntrprss. The ibcalc module cannot be run until both ibexpl and cntrprss have completed successfully.

|                    |        |
|--------------------|--------|
| ibexpl<br>cntrprss | ibcalc |
|--------------------|--------|

### Abbreviations

In the diagram, abbreviations in parentheses that follow program names have the following meanings:

| Abbreviation     | Meaning   |
|------------------|---|
| (perl)           | The module is a Perl script.                                      |
| (FIF)            | The module is related to the Financials application.              |
| (sqlldr)         | There is a sqlloader process to load/ftp the output files.        |
| (rebuild all)    | There is a rebuild process inside the application.                |
| (IM)             | The module is related to Invoice Matching but owned by RMS.       |
| (RMS)            | The module belongs to RMS.  |
| <b>(RMS)</b>     | (Bold type) The RMS module is executed externally to that phase.  |
| (ReSA)           | The module belongs to ReSA.                                       |
| <b>(ReSA)</b>    | (Bold type) The ReSA module is executed externally to that phase. |
| (ReIM)           | The module belongs to ReIM.                                       |
| (RTM)            | The module belongs to RTM.  |
| (Weekly)         | The module is executed weekly.                                    |
| (Monthly)        | The module is executed monthly.                                   |
| (Forms Auditing) | This is an online forms auditing process related to ReSA.         |

### Footnotes

Footnote symbols (\*, \*\*, †, ‡) refer to footnotes that appear below that phase or section of the diagram.

## prepost Program

The prepost program facilitates multi-threading by allowing general system administration functions (such as table deletions or mass updates) to be completed after all threads of a particular program have been processed. The prepost program must be run before, after, or both before and after, programs that require specific processing to run or complete successfully.

In the batch schedule diagram, the prepost program is indicated by “pre” and “post” entries, as in the following examples.

In the following example, preprocessing is required before running the ociroq program.

|            |               |
|------------|---------------|
| <b>pre</b> | <b>ociroq</b> |
|------------|---------------|

In the following example, preprocessing is required before running the stkupd program. Also, post-processing is required after successful completion of the stkupd program.

|            |               |             |
|------------|---------------|-------------|
| <b>pre</b> | <b>stkupd</b> | <b>post</b> |
|------------|---------------|-------------|

In the following example, post-processing is required after successful completion of the scext program.

|              |             |
|--------------|-------------|
| <b>scext</b> | <b>post</b> |
|--------------|-------------|

## Modifications to the Batch Schedule

The integrated Merchandising batch schedule shows the dependencies for all the programs that *could* be run by a retailer. Based on many factors, there will always be some programs that a retailer does not run. Determining which programs, or groups of programs, are not required is a job that should be performed at implementation time.

One major factor involves the applications that the retailer has purchased and wants to install:

- For example, a retailer may have purchased RMS, but not ReIM; in this case, the ReIM programs would not be run.
- Another example is that a retailer may not want to use some functionality within an application. Perhaps a retailer purchased RMS but did not purchase the MFP application. In this case, the retailer may not want to run the programs that extract RMS data to be used later by the MFP application.

These major configuration choices also affect whether some programs are used:

- Whether the Retail Integration Bus (RIB) is used  
For more information about configuring the RIB for Merchandising applications, see “Configuring RPM without the RIB” in the “Backend System Administration and Configuration” chapter of the *Oracle Retail Price Management Operations Guide*.
- Whether full-featured or simplified Retail Price Management (RPM) is used  
For more information about configuring simplified RPM, see the “Backend System Administration and Configuration” chapter in the *Oracle Retail Price Management Operations Guide*.
- Whether full-featured or simplified RTM is used  
For more information about configuring simplified RTM, see the “Oracle Retail Trade Management Batch” chapter in Volume 1 of the *Oracle Retail Merchandising System Operations Guide*.



**RMS,RTM,ReSA Program Dependency and Scheduling Details**

| Program Name             | Functional Area                      | Threaded | Driver                  | Phase    | Pre-dependency  | Post-dependency   | Timing        | Uses Restart/Recovery                             | Run Parameters for Programs   |
|--------------------------|--------------------------------------|----------|-------------------------|----------|---|---|---------------|---|---|
| auditprg                 | Audit                                | N        | N/A                     | N/A      | N/A   | N/A   | daily         | N   | auditprg /@Batch_Alias_Name   |
| auditsys                 | Audit                                | N        | N/A                     | ad hoc   | N/A   | N/A   | daily         | N   | auditsys /@Batch_Alias_Name   |
| batch_alloctupd.ksh      | Cost Component Updates               | Y        | Allocation and Transfer | 2        | batch_compeffupd.ksh  | If none of the Cost Component Updates batch are to be run then, prepost batch_costcompupd post.   | daily         | N   | batch_alloctupd.ksh [-p <# parallel threads>] <-connect> <-# parallel threads> is the number of threads to run in parallel. The default is the value on RESTART_CONTROL_NUM_THREADS.      |
| batch_compeffupd.ksh     | Cost Component Updates               | N        | NA                      | 2        | NA  | If none of the Cost Component Updates batch are to be run then, prepost batch_costcompupd post.   | daily         | N   | batch_compeffupd.ksh <-connect>   |
| batch_depchrgupd.ksh     | Cost Component Updates               | N        | N/A                     | 2        | batch_compeffupd.ksh  | If none of the Cost Component Updates batch are to be run then, prepost batch_costcompupd post.   | daily         | N   | batch_depchrgupd.ksh <-connect>   |
| batch_expprofupd.ksh     | Cost Component Updates               | N        | N/A                     | 2        | batch_compeffupd.ksh  | If none of the Cost Component Updates batch are to be run then, prepost batch_costcompupd post.   | daily         | N   | batch_expprofupd.ksh <-connect>   |
| batch_lmcostcompupd.ksh  | Cost Component Updates               | N        | Location, Supplier      | 2        | batch_compeffupd.ksh  | If none of the Cost Component Updates batch are to be run then, prepost batch_costcompupd post.   | daily         | N   | batch_lmcostcompupd.ksh [-p <# parallel threads>] <-connect> <-# parallel threads> is the number of threads to run in parallel. The default is the value on RESTART_CONTROL_NUM_THREADS.  |
| batch_ordcostcompupd.ksh | Cost Component Updates               | Y        | Order                   | 2        | batch_compeffupd.ksh, prepost batch_ordcostcompupd pre  | prepost batch_ordcostcompupd post   | daily         | N   | batch_ordcostcompupd.ksh [-p <# parallel threads>] <-connect> <-# parallel threads> is the number of threads to run in parallel. The default is the value on RESTART_CONTROL_NUM_THREADS. |
| batch_orpos_extract.ksh  | Point of Sale Interface              | Y        | Store                   | 4        | poscndid (only if generic POS extract is used) prepost poscndid post  | poscndid (only if generic POS extract is used) prepost poscndid post  | daily         | N   | batch_orpos_extract.ksh /@Batch_Alias_Name [-p <no. of threads>] [DIR - location where extracts are to be generated]  |
| ccprg                    | Costing                              | N        | N/A                     | ad hoc   | RPMtoCRPOS/PublishExport.sh'  | prepost poscndid post   | monthly       | N   | ccprg /@Batch_Alias_Name  |
| cednid                   | Trade Management                     | Y        | Broker                  | 2        | N/A   | N/A   | daily         | R   | cednid /@Batch_Alias_Name broker file_name  |
| cmprg                    | Pricing                              | N        | N/A                     | ad hoc   | N/A   | N/A   | daily         | N   | cmprg /@Batch_Alias_Name  |
| cmpupgd                  | Pricing                              | N        | N/A                     | ad hoc   | All RPM batch modules   | ad hoc  | R             | cmpupgd /@Batch_Alias_Name input_file reject_file |   |
| cntrmain                 | Contracting                          | N        | N/A                     | 0        | N/A   | All Replenishment modules   | daily         | R   | cntrmain /@Batch_Alias_Name   |
| cntrordb                 | Contracting                          | Y        | Contract                | 3        | rplact  | prepost cntrordb post   | daily         | R   | cntrordb /@Batch_Alias_Name   |
| cntrpsa                  | Contracting                          | Y        | Dept                    | 3        | rplact  | rplact  | daily         | R   | cntrpsa /@Batch_Alias_Name  |
| costeventprg.pc          | Real Time Costing                    | N        | Event Type              | 0        | N/A   | N/A   | daily         | R   | costeventprg /@Batch_Alias_Name   |
| cremhierdy               | Reclassification                     | N        | N/A                     | 4        | salstage  | reclsdy   | daily         | R   | cremhierdy /@Batch_Alias_Name   |
| deact                    | Deals                                | Y        | Deal Id                 | 3        | prepost deact_nor pre   | N/A   | daily         | R   | deact /@Batch_Alias_Name  |
| deactc                   | Deals                                | N        | N/A                     | 3        | prepost deact_sales pre   | N/A   | daily         | R   | deactc /@Batch_Alias_Name   |
| dealdy                   | Deals                                | Y        | Location                | 3        | prepost deactc post   | salnmth   | monthly       | R   | dealdy /@Batch_Alias_Name   |
| dealfct                  | Deals                                | Y        | Deal Id                 | 3        | prepost dealdy pre  | dealcnc   | daily         | R   | dealfct /@Batch_Alias_Name [Y/N - EOM processing ind]   |
| dealfnc                  | Deals                                | Y        | Deal Id                 | 3        | prepost dealfct pre   | salnmth   | weekly/ad hoc | R   | dealfnc /@Batch_Alias_Name  |
| dealcnc                  | Deals                                | Y        | Deal Id                 | 3        | deact   | deact   | monthly       | R   | dealcnc /@Batch_Alias_Name [Y/N - EOM processing ind]   |
| dealprg                  | Deals                                | N        | N/A                     | ad hoc   | prepost dealinc pre   | salnmth (if monthly)  | monthly       | R   | dealprg /@Batch_Alias_Name  |
| dealupdt                 | Deals                                | Y        | File-based              | 0        | N/A   | N/A   | daily         | R   | dealupdt /@Batch_Alias_Name input_file reject_file  |
| dftbld                   | Item Maintenance                     | Y        | Dept                    | 3        | (This program is the first one in Deals batch) (This program will likely be run after sales information is uploaded into Oracle Retail) | (SQL Load the output file)  | daily         | R   | dftbld /@Batch_Alias_Name outfile   |
| discotbaply              | OTB                                  | Y        | Dept                    | 4        | ordscnt   | N/A   | daily         | R   | discotbaply /@Batch_Alias_Name  |
| dstrocpub                | Pricing/Transfers/Allocation Publish | Y        | Store                   | 4        | PriceEventExecutionBatch(RPM)   | N/A   | daily         | R   | dstrocpub /@Batch_Alias_Name  |
| dtinrst                  | Deals                                | N        | N/A                     | 1        | N/A   | ordscnt   | daily         | R   | dtinrst /@Batch_Alias_Name (P or S) (supplier/partner). P or S = program is either run for deals  |
| dyprg                    | Maintenance                          | N        | N/A                     | 0        | N/A   | (All other batch programs)  | daily         | N   | dyprg /@Batch_Alias_Name  |
| dcclose                  | Receiving                            | N        | N/A                     | ad hoc   | N/A   | N/A   | daily         | R   | dcclose /@Batch_Alias_Name  |
| dteys                    | Calendar                             | N        | N/A                     | date_set | (This program should run at the end of the batch cycle)   | prepost dteys post  | daily         | N   | dteys /@Batch_Alias_Name [date--YYYYMMDD format]  |
| dummyscn                 | Receiving                            | N        | N/A                     | ad hoc   | N/A   | N/A   | daily         | N   | dummyscn /@Batch_Alias_Name   |
| ediadd                   | Maintenance                          | N        | N/A                     | ad hoc   | N/A   | N/A   | ad hoc        | N   | ediadd /@Batch_Alias_Name ediadd_output ediadd_catalog  |
| edidcon                  | Contracting                          | N        | N/A                     | ad hoc   | N/A   | N/A   | ad hoc        | N   | edidcon /@Batch_Alias_Name edidcon_outfile  |
| edidinv                  | Invoice Matching                     | Y        | Location                | 4        | N/A   | N/A   | daily         | R   | edidinv /@Batch_Alias_Name output_filename  |
| edidord                  | Ordering                             | N        | N/A                     | 4        | (and after replenishment batch)   | N/A   | ad hoc        | R   | edidord /@Batch_Alias_Name filename   |
| edidprd                  | EDI Interface - Sales and Inventory  | N        | N/A                     | 4        | prepost edidprd pre   | prepost edidprd post  | daily         | R   | edidprd /@Batch_Alias_Name filename   |
| ediprg                   | EDI Interface - Purge                | N        | N/A                     | ad hoc   | (Towards the end of the batch cycle)  | N/A   | monthly       | R   | ediprg /@Batch_Alias_Name   |
| edupadd                  | Maintenance                          | N        | File-based              | 2        | N/A   | N/A   | daily         | N   | edupadd /@Batch_Alias_Name input_file reject_file   |
| edupack                  | EDI Interface - ordering             | N        | N/A                     | 1        | N/A   | N/A   | ad hoc        | R   | edupack /@Batch_Alias_Name data_file reject_file  |
| edupavi                  | EDI Interface - Contracts            | N        | File-based              | 1        | N/A   | N/A   | daily         | R   | edupavi /@Batch_Alias_Name input_file reject_file   |
| edupact                  | EDI Interface - Suppliers            | N        | File-based              | ad hoc   | N/A   | N/A   | daily         | R   | edupact /@Batch_Alias_Name edi_data_file error_file   |
| elcexprg                 | Cost Component Updates               | N        | N/A                     | 2        | N/A   | N/A   | ad hoc        | N   | elcexprg /@Batch_Alias_Name   |
| fcsec                    | Real Time Costing                    | Y        | Cost Event Process Id   | 2        | fcsthreadexec   | N/A   | daily/ad hoc  | N   | fcsec /@Batch_Alias_Name  |
| fcsthreadexec            | Real Time Costing                    | Y        | Cost Event Process Id   | 2        | prepost fcsec pre   | N/A   | daily/ad hoc  | N   | fcsthreadexec /@Batch_Alias_Name  |
| fcstprg                  | Forecasting                          | Y        | Domain Id               | ad hoc   | batch_lmcostcompupd.ksh   | N/A   | daily         | N   | fcstprg /@Batch_Alias_Name domain   |
| fcstbrld                 | Forecasting                          | Y        | Domain Id               | 3        | N/A   | prepost fcstprg post  | weekly        | R   | fcstbrld /@Batch_Alias_Name   |
| fcstbrld_sbc             | Forecasting                          | Y        | Domain Id               | 3        | prepost fcstbrld post   | N/A   | weekly        | R   | fcstbrld_sbc /@Batch_Alias_Name   |
| figidn1                  | Financial Interface                  | Y        | Dept                    | 3        | salstage  | salapnd   | daily         | R   | figidn1 /@Batch_Alias_Name  |
| figidn2                  | Financial Interface                  | Y        | Dept                    | 3        | salstage  | salapnd   | daily         | R   | figidn2 /@Batch_Alias_Name  |
| figidn3                  | Financial Interface                  | Y        | Store/Wh                | 3        | salnmth   | N/A   | monthly       | R   | figidn3 /@Batch_Alias_Name  |
| fmrednd                  | Planning System Interface            | N        | N/A                     | ad hoc   | N/A   | N/A   | ad hoc        | R   | fmrednd /@Batch_Alias_Name  |
| gcpuld                   | Misc Interface - Taxcode             | N        | N/A                     | ad hoc   | N/A   | N/A   | ad hoc        | R   | gcpuld <username>password@environment <-infile> <-outfile>  |
| genpriss                 | Ordering                             | Y        | Supplier                | Y        | N/A   | N/A   | ad hoc        | R   | genpriss /@Batch_Alias_Name   |
| gradupld                 | Forecasting                          | N        | File-based              | ad hoc   | N/A   | N/A   | ad hoc        | R   | gradupld /@Batch_Alias_Name input_file rej_file   |
| hstbld                   | Sales                                | Y        | Location                | 3        | posupld   | prepost hstbld post   | weekly        | R   | hstbld /@Batch_Alias_Name level(weekly/rebuild)   |
| hstbld_diff              | Sales                                | N        | N/A                     | ad hoc   | hstbld  | prepost hstbld post   | ad hoc        | N   | hstbld_diff /@Batch_Alias_Name  |
| hstbldmth                | Sales                                | Y        | Dept                    | 3        | posupld   | prepost hstbldmth post  | monthly       | R   | hstbldmth /@Batch_Alias_Name level(monthly/rebuild)   |
| hstbldmth_diff           | Sales                                | N        | N/A                     | ad hoc   | N/A   | (Run SQL Loader using the control file hstbldmth.ctd to load data from the output file written by HSTBTHUPD.PC for non-existent records on ITEM_LOC_HIST_MTH) | ad hoc        | N   | hstbldmth_diff /@Batch_Alias_Name   |
| hstmthupd                | Sales                                | Y        | Location                | 3        | (The program should be run on the last day of the month.)   | prepost hstmthupd post  | monthly       | R   | hstmthupd /@Batch_Alias_Name (out_file)   |
| hstrg                    | Sales                                | N        | N/A                     | ad hoc   | N/A   | N/A   | monthly       | N   | hstrg /@Batch_Alias_Name  |
| hstrg_diff               | Sales                                | N        | N/A                     | ad hoc   | N/A   | N/A   | weekly        | N   | hstrg_diff /@Batch_Alias_Name   |
| hstwkupd                 | Sales                                | Y        | Store/Wh                | 3        | N/A   | Run SQL Loader using the control file hstwkupd.ctd to load data from the output file written by HSTWKUPD.PC for non-existent records on ITEM_LOC_HIST         | weekly        | R   | hstwkupd /@Batch_Alias_Name (out_file)  |

|                    |                           |   |                  |            |   |   |  |       |  |  |
|--------------------|---------------------------|---|------------------|------------|---|---|--|-------|--|--|
| htsupld            | Trade Management          | Y | File-based       | ad hoc     | Hts240_to_2400 (perl script)<br>Ushs2zms (perl script)<br>prepost htsupld pre<br>ibexpl | N/A   | ad hoc                                     | R     | htsupld /@Batch_Alias_Name input_file reject_file country_id ; perl hts_240_to_2400 inputfile outputfile ; perl ushs2zms inputfile outputfile rejectfile   |  |
| ibcalc             | Investment Buy            | Y | Dept             | 3          | prepost ibcalc pre  | rplbid  | daily                                      | R     | ibcalc /@Batch_Alias_Name  |  |
| ibexpl             | Investment Buy            | N | N/A              | 3          | rplex   | ibcalc  | daily                                      | N     | ibexpl /@Batch_Alias_Name  |  |
| invaprg            | Inventory Adjustments     | N | N/A              | ad hoc     | N/A   | N/A   | monthly                                    | N     | invaprg /@Batch_Alias_Name   |  |
| invchdp            | Invoice Matching          | N | N/A              | 2          | N/A   | N/A   | daily                                      | N     | invchdp /@Batch_Alias_Name   |  |
| invprg             | Invoice Matching          | N | N/A              | ad hoc     | ondprg  | N/A   | monthly                                    | R     | invprg /@Batch_Alias_Name  |  |
| icadnid            | Letter of Credit          | N | N/A              | 4          | lcm700 (perl script)  | N/A   | daily                                      | R     | icadnid /@Batch_Alias_Name output_file   |  |
| icidbid            | Maintenance - Location    | N | N/A              | ad hoc     | storeadd  | N/A   | monthly                                    | R     | icidbid /@Batch_Alias_Name   |  |
| lcmnid             | Letter of Credit          | N | N/A              | 4          | lcm707 (perl script)  | N/A   | daily                                      | R     | lcmnid /@Batch_Alias_Name  |  |
| lcup798            | Letter of Credit          | N | N/A              | 2          | lcm798 (perl script)  | N/A   | daily                                      | R     | lcup798 /@Batch_Alias_Name input_file rej_file   |  |
| lcupld             | Letter of Credit          | N | N/A              | 2          | lcm730 (perl script)  | N/A   | daily                                      | R     | lcupld /@Batch_Alias_Name input_file rej_file  |  |
| lfskup             | Stock Ledger              | N | File-based       | 1          | inv_bal_upload.sh (warehouse mgmt program)  | stksupld  | daily                                      | N     | lfskup /@Batch_Alias_Name input_file output_file   |  |
| likestore          | Maintenance - Location    | Y | Dept             | ad hoc     | storeadd  | prepost likestore post  | daily                                      | R     | likestore /@Batch_Alias_Name   |  |
| mrt                | Mass Return Transfers     | Y | Warehouse        | 2          | N/A   | mrttrv  | daily                                      | R     | mrt /@Batch_Alias_Name   |  |
| mrtprg             | Mass Return Transfers     | Y | Warehouse        | ad hoc     | N/A   | mrtupd  | ad hoc                                     | R     | mrtprg /@Batch_Alias_Name  |  |
| mrttrv             | Mass Return Transfers     | Y | Warehouse        | 2          | mrt   | mrtupd  | daily                                      | R     | mrttrv /@Batch_Alias_Name  |  |
| mrtupd             | Mass Return Transfers     | Y | Warehouse        | 2          | mrttrv  | N/A   | daily                                      | R     | mrtupd /@Batch_Alias_Name  |  |
| nppurge            | Stock Ledger              | N | N/A              | ad hoc     | N/A   | N/A   | ad hoc                                     | N     | nppurge /@Batch_Alias_Name   |  |
| nppyearend         | Stock Count               | Y | Location         | 4          | run on last day of year   | N/A   | yearly                                     | R     | nppyearend /@Batch_Alias_Name  |  |
| ociroq             | Replenishment             | N | N/A              | 3          | prepost ociroq pre  | repladj   | daily                                      | R     | ociroq /@Batch_Alias_Name  |  |
| onictext           | Planning System Interface | Y | Transfer         | 4          | onordext  | N/A   | weekly                                     | R     | onictext /@Batch_Alias_Name  |  |
| onordnid           | Planning System Interface | Y | Store/Wh         | 4          | onordext  | onordnid  | daily                                      | R     | onordnid /@Batch_Alias_Name  |  |
| onordext           | Planning System Interface | Y | Order            | 4          | prepost onordext pre  | onictext  | daily                                      | R     | onordext /@Batch_Alias_Name datefile   |  |
| ordautcl           | Ordering                  | N | N/A              | ad hoc     | N/A   | N/A   | daily                                      | N     | ordautcl /@Batch_Alias_Name  |  |
| ordscnt            | Deals                     | Y | Supplier         | 4          | reclsdly  | discotbapply  | daily                                      | R     | ordscnt /@Batch_Alias_Name   |  |
| ordinvupld         | Inventory Adjustments     | Y | File-based       | 2          | saordinvexp   | N/A   | daily                                      | R     | ordinvupld /@Batch_Alias_Name input_file reject_file lock_file   |  |
| ordprg             | Ordering                  | N | N/A              | ad hoc     | N/A   | invpbg  | monthly                                    | N     | ordprg /@Batch_Alias_Name  |  |
| ordrev             | Ordering                  | N | N/A              | 4          | ordscnt   | edddord   | daily                                      | R     | ordrev /@Batch_Alias_Name  |  |
| ordupd             | Ordering                  | N | N/A              | 4          | soext   | otbdid  | daily                                      | N     | ordupd /@Batch_Alias_Name  |  |
| otbdord            | OTB                       | N | N/A              | 4          | (After RPM pricing change extraction batch)   | otbdord   | daily                                      | R     | otbdord /@Batch_Alias_Name output_file   |  |
| otbdisal           | OTB                       | N | N/A              | 4          | ordupd  | N/A   | daily                                      | R     | otbdisal /@Batch_Alias_Name output_file  |  |
| otbdnid            | OTB                       | N | N/A              | 4          | ordupd  | N/A   | daily                                      | R     | otbdnid /@Batch_Alias_Name output_file   |  |
| otbprg             | OTB                       | N | N/A              | ad hoc     | N/A   | N/A   | monthly                                    | N     | otbprg /@Batch_Alias_Name  |  |
| otbupwd            | OTB                       | Y | File-based       | ad hoc     | N/A   | N/A   | daily                                      | R     | otbupwd /@Batch_Alias_Name input_file reject_file  |  |
| otbupld            | OTB                       | Y | File-based       | ad hoc     | N/A   | N/A   | daily                                      | R     | otbupld /@Batch_Alias_Name input_file reject_file  |  |
| poscndid           | Point of Sale Interface   | N | N/A              | 4          | posndid   | prepost poscndid post   | daily                                      | R     | poscndid /@Batch_Alias_Name outputfile   |  |
| posndid            | Point of Sale Interface   | Y | Store            | ad hoc     | N/A   | prepost posndid post  | daily                                      | R     | posndid /@Batch_Alias_Name outputfile  |  |
| posgdld            | Point of Sale Interface   | N | N/A              | 4          | reclsdly  | N/A   | daily                                      | R     | posgdld /@Batch_Alias_Name output_file   |  |
| posrefresh         | Inventory                 | N | N/A              | ad hoc     | N/A   | N/A   | ad hoc                                     | R     | posrefresh /@Batch_Alias_Name output_file store  |  |
| posupld            | Sales                     | Y | File-based       | 2          | saespmr(ReSA)   | prepost posupld post  | daily                                      | R     | posupld /@Batch_Alias_Name infile rejfile vattile itemfile lockfile  |  |
| prchsprg           | Pricing                   | Y | N/A              | ad hoc     | N/A   | N/A   | daily                                      | R     | prchsprg /@Batch_Alias_Name  |  |
| prepost            | Pre/post functionality    | N | N/A              | all phases | N/A   | N/A   | daily                                      | N     | prepost /@Batch_Alias_Name program pre_or_post   |  |
| reclsdly           | Item Maintenance          | Y | Reclass no       | 4          | reclshierdy   | prepost reclsdly post   | daily                                      | R     | reclsdly /@Batch_Alias_Name process_mode   |  |
| refmvolprimaddr    | Maintenance - Location    | N | N/A              | ad hoc     | N/A   | N/A   | ad hoc                                     | N     | refmvolprimaddr /@Batch_Alias_Name   |  |
| refmvl1Onenthy     | Maintenance - Location    | N | N/A              | ad hoc     | N/A   | N/A   | ad hoc                                     | N     | refmvl1Onenthy /@Batch_Alias_Name  |  |
| repladj            | Replenishment             | Y | Dept             | 3          | rplatusd  | reqext  | daily                                      | R     | repladj /@Batch_Alias_Name   |  |
| replsizeprofile    | Replenishment             | N | N/A              | ad hoc     | prepost replsizeprofile pre   | N/A   | ad hoc                                     | N     | replsizeprofile /@Batch_Alias_Name Y/N. (Y/N indicator indicates if allocations is installed or not. If installed pre job for this program has to be run prepost replsizeprofile pre)                                      |  |
| reqext             | Replenishment             | Y | Partition (Item) | 3          | prepost reqext pre  | prepost reqext post   | daily                                      | R     | reqext /@Batch_Alias_Name partition_position (May use the batch_reqext.ksh for launching this program as it is created based on performance considerations)  |  |
| rlmaint            | Replenishment             | Y | Location         | 3          | storeadd<br>soext<br>rplatusd<br>rplspllt   | prepost rlmaint post<br>repladj   | daily                                      | R     | rlmaint username/password  |  |
| rplapprv           | Replenishment             | N | N/A              | 3          | suponstr<br>prepost rplapprv pre  | batch_rplapprvgtax  | daily                                      | R     | rplapprv /@Batch_Alias_Name<br>batch_rplapprvgtax.ksh [-p <# parallel threads>] <connect><br><# parallel threads> is the number of threads to run in parallel.<br>The default is the value on RESTART_CONTROL.NUM_THREADS. |  |
| batch_rplapprvgtax | Replenishment             | Y | Order            | 3          | rplapprv  | N/A   | daily                                      | N     | rplapprvgtax /@Batch_Alias_Name (This batch may be run only if repl_attr_hist_retention_weeks in system_options table is set)  |  |
| rplathistprg       | Replenishment             | N | N/A              | ad hoc     | N/A   | N/A   | ad hoc                                     | N     |  |  |
| rplatusd           | Replenishment             | Y | Location         | 3          | prepost rplatusd pre  | prepost rplatusd post<br>repladj<br>reqext                                | daily                                      | R     | rplatusd /@Batch_Alias_Name  |  |
| rplbid             | Replenishment             | Y | Supplier         | 3          | ibcalc<br>rplex<br>ontprss<br>vrplbid<br>ibexpl<br>supsplit<br>prepost rpl pre          | suponstr  | daily                                      | R     | rplbid username/password   |  |
| rplbid             | Replenishment             | Y | Supplier         | 3          | rplatusd<br>rlmaint<br>repladj<br>reqext<br>citrord                                     | prepost rplex post<br>contracting is used,<br>otherwise run ...<br>ibexpl | supsplit<br>ctrprss(if<br>ibexpl<br>rplbid | daily | R  | rplbid /@Batch_Alias_Name dept (May use the batch_rplex.ksh for launching this program as it is created based on performance considerations) |
| rplex              | Replenishment             | Y | Dept             | 3          | citrord   | ibcalc  | daily                                      | R     | rplex /@Batch_Alias_Name dept (May use the batch_rplex.ksh for launching this program as it is created based on performance considerations)  |  |
| rplprg             | Replenishment             | N | N/A              | ad hoc     | N/A   | N/A   | daily                                      | N     | rplprg /@Batch_Alias_Name  |  |
| rplprg_month       | Replenishment             | N | N/A              | ad hoc     | N/A   | N/A   | monthly                                    | N     | rplprg_month /@Batch_Alias_Name  |  |
| rplspllt           | Replenishment             | Y | Supplier         | 3          | suponstr  | rplapprv  | daily                                      | R     | rplspllt /@Batch_Alias_Name  |  |
| rpmovavg           | Pricing                   | Y | Store            | 3          | N/A   | N/A   | daily                                      | R     | rpmovavg /@Batch_Alias_Name business_date(YYYYMMDD) store(optional)  |  |
| rvprg              | RTV                       | N | N/A              | ad hoc     | N/A   | N/A   | monthly                                    | N     | rvprg /@Batch_Alias_Name   |  |
| sacrypt            | Sales Audit               | Y | Store/Day        | SA         | sagetref<br>satotals  | N/A   | daily                                      | N     | sacrypt /@Batch_Alias_Name infile outfile key_file e/d (Encryption/Decryption indicator)<br>Note: outfile generated by batch is infile for saimplog.   |  |
| saescheat          | Sales Audit               | N | N/A              | SA         | saesules<br>satotals<br>sarules   | saexpim   | monthly                                    | R     | saescheat /@Batch_Alias_Name   |  |
| saexpach           | Sales Audit               | N | N/A              | SA         | sapreexp<br>satotals  | N/A   | daily                                      | R     | saexpach /@Batch_Alias_Name  |  |
| saexpgl            | Sales Audit               | N | N/A              | SA         | sarules<br>sapreexp   | N/A   | daily                                      | R     | saexpgl /@Batch_Alias_Name   |  |
| saexpim            | Sales Audit               | N | N/A              | SA         | sapreexp<br>saescheat   | N/A   | daily                                      | R     | saexpim /@Batch_Alias_Name   |  |

|               |                          |   |                     |           |   |   |             |       |  |                                      |
|---------------|--------------------------|---|---------------------|-----------|---|---|-------------|-------|--|--------------------------------------|
| saexpdw       | Sales Audit              | Y | Store               | SA        | sapreexp  | res2dw(per script)  | daily       | R     | saexpdw / @Batch_Alias_Name ; perl res2dw inputfile outputfile   |                                      |
| saexpms       | Sales Audit              | Y | Store               | SA        | sapreexp  | saprepost saexpms post  | daily       | R     | saexpms / @Batch_Alias_Name  |                                      |
| saexpuar      | Sales Audit              | N | N/A                 | SA        | sapreexp  | N/A   | daily       | R     | saexpuar / @Batch_Alias_Name   |                                      |
| sagetref      | Sales Audit              | N | N/A                 | SA        | sastdycr  | saimptlog   | daily       | R     | sagetref / @Batch_Alias_Name itemfile wastefile ref_itemfile prim_variantfile varupcfile storedayfile codestfile errorfile ccsavfile storeposfile tendertypefile merchcodestfile partnerfile supplierfile employefile banoverfile currencyfile promptfile (To prevent a file from being written, place a '*' in its place. Note: Item files must all be written together). |                                      |
| saimpadj      | Sales Audit              | N | N/A                 | SA        | saimptlogfn   | satotals  | daily       | R     | saimpadj / @Batch_Alias_Name input_file rej_   |                                      |
| saimptlog     | Sales Audit              | Y | Store/Day           | SA        | saprepost   | saimptlog post (Use sq Loader to load data into ReSA tables)  | daily       | N     | saimptlog user/pw/infile/batchfile itemfile wastefile primvariantfile varupcfile storedayfile promfile codestfile errorfile ccsavfile storeposfile tendertypefile merchcodestfile partnerfile supplierfile employefile bannerfile  |                                      |
| saimptlogfn   | Sales Audit              | N | N/A                 | SA        | saimptlog   | satotals  | daily       | R     | saimptlogfn / @Batch_Alias_Name store_day_file   |                                      |
| salapnd       | Stock Ledger             | N | N/A                 | 3         | fflgdn1   | N/A   | daily       | R     | salapnd / @Batch_Alias_Name  |                                      |
| saldly        | Stock Ledger             | Y | Store/Wk            | 3         | salstage  | salweek   | daily       | R     | saldly / @Batch_Alias_Name   |                                      |
| salech        | Stock Ledger             | Y | Dept                | 3         | salmth  | N/A   | half yearly | N     | salech / @Batch_Alias_Name   |                                      |
| salins        | Sales                    | N | N/A                 | 0         | N/A   | N/A   | daily       | R     | salins / @Batch_Alias_Name   |                                      |
| salmaint      | Stock Ledger             | N | N/A                 | ad hoc    | N/A   | N/A   | half yearly | N     | salmaint / @Batch_Alias_Name pre_or_post   |                                      |
| salmth        | Stock Ledger             | Y | Dept                | 3         | salweek   | N/A   | monthly     | R     | salmth / @Batch_Alias_Name   |                                      |
| salprg        | Stock Ledger             | N | N/A                 | ad hoc    | N/A   | N/A   | daily       | N     | salprg / @Batch_Alias_Name   |                                      |
|               |                          |   |                     |           |   | saldly  |             |       |  |                                      |
|               |                          |   |                     |           |   | salapnd   | salweek     |       |  |                                      |
|               |                          |   |                     |           |   | dealtct   | fflgdn1     |       |  |                                      |
|               |                          |   |                     |           |   | rpmovavg  |             |       |  |                                      |
|               |                          |   |                     |           |   | fflgdn2   |             |       |  |                                      |
| salstage      | Stock Ledger             | N | N/A                 | 3         | posupld   |   | daily       | N     | salstage / @Batch_Alias_Name   |                                      |
|               |                          |   |                     |           |   | saldly  |             |       |  |                                      |
|               |                          |   |                     |           |   | stkdy   |             |       |  |                                      |
|               |                          |   |                     |           |   | salapnd   |             |       |  |                                      |
|               |                          |   |                     |           |   | prepost salweek pre   |             |       |  |                                      |
|               |                          |   |                     |           |   | dealtct   |             |       |  |                                      |
|               |                          |   |                     |           |   | dealinc   |             |       |  |                                      |
|               |                          |   |                     |           |   | vendinv   |             |       |  |                                      |
| salweek       | Stock Ledger             | Y | Dept                | 3         | prepost   | salweek post  | weekly      | R     | salweek / @Batch_Alias_Name  |                                      |
| saordinvexp   | Sales Audit              | Y | Store               | 2         | N/A   | N/A   | daily       | R     | saordinvexp / @Batch_Alias_Name  |                                      |
| sapreexp      | Sales Audit              | N | N/A                 | SA        | SA audit process                                      | (Before any SA export process)  | daily       | R     | sapreexp / @Batch_Alias_Name   |                                      |
| saprepost     | Sales Audit              | N | N/A                 | SA        | N/A   | N/A   | daily       | N     | saprepost / @Batch_Alias_Name program pre_or_post  |                                      |
|               |                          |   |                     |           |   | saprepost sapurge pre   |             |       |  |                                      |
|               |                          |   |                     |           |   | (This program should be run as the last program in the ReSA batch schedule)                               |             |       |  |                                      |
| sapurge       | Sales Audit              | Y | Store               | SA        | satotals  | saprepost sapurge post  | daily       | R     | sapurge / @Batch_Alias_Name deleted_items_file [optional list of store days to be deleted]   |                                      |
| sarules       | Sales Audit              | N | N/A                 | SA        | satotals  | sapreexp  | saescheat   | daily | R  | sarules / @Batch_Alias_Name store_no |
|               |                          |   |                     |           |   | (It should run before the DTESYS batch program and before the next store/day's transactions are received) |             |       |  |                                      |
| sastdycr      | Sales Audit              | N | N/A                 | date_set  | dteysy  |   | daily       | R     | sastdycr / @Batch_Alias_Name [YYYYMMDD]  |                                      |
| satotals      | Sales Audit              | N | N/A                 | SA        | satotals  |   | daily       | R     | satotals / @Batch_Alias_Name store_no  |                                      |
| savouch       | Sales Audit              | N | N/A                 | SA        | saimptlogfn   |   | daily       | R     | savouch / @Batch_Alias_Name infile refline tendertype_file   |                                      |
| scost         | Costing                  | Y | Cost change         | 3         | prepost   | scost post  | daily       | R     | scost / @Batch_Alias_Name  |                                      |
| schedprg      | Organizational Hierarchy | N | N/A                 | ad hoc    | N/A   | N/A   | monthly     | R     | schedprg / @Batch_Alias_Name   |                                      |
| stmain        | Item Maintenance         | N | N/A                 | ad hoc    | lclbrld   |   | ad hoc      | R     | stmain / @Batch_Alias_Name   |                                      |
| soudndid      | Forecasting              | Y | Domain Id           | 4         | N/A   | N/A   | daily       | R     | soudndid / @Batch_Alias_Name   |                                      |
| stkdy         | Stock Ledger             | Y | Dept                | 3         | stkw  | salweek   | daily       | R     | stkdy / @Batch_Alias_Name  |                                      |
| stkpgr        | Stock Ledger             | N | N/A                 | ad hoc    | N/A   | prepost stkpgr post   | monthly     | N     | stkpgr / @Batch_Alias_Name   |                                      |
| stkschedxpld  | Stock Ledger             | Y | Location            | 0         | N/A   | stkpdxpld   | daily       | R     | stkschedxpld / @Batch_Alias_Name   |                                      |
| stskupd       | Stock Ledger             | Y | Location            | 3         | prepost   | stskupd pre   | daily       | R     | stskupd / @Batch_Alias_Name  |                                      |
| stskupld      | Stock Ledger             | Y | Dept                | 1         | stskup  | N/A   | daily       | R     | stskupld / @Batch_Alias_Name input_file reject_file  |                                      |
| stskvar       | Stock Ledger             | Y | Dept                | 1         | N/A   | N/A   | daily       | R     | stskvar / @Batch_Alias_Name [ report_file_name ]   |                                      |
| stskxpld      | Stock Ledger             | Y | Dept                | 3         | wasteadj  | stskupd   | daily       | R     | stskxpld / @Batch_Alias_Name   |                                      |
| stlgnld       | Stock Ledger             | Y | Dept                | 4         | N/A   | stlgnld   | weekly      | R     | stlgnld / @Batch_Alias_Name input_file   |                                      |
| storeadd      | Maintenance - Location   | N | N/A                 | ad hoc    | N/A   | prepost storeadd post   | daily       | R     | storeadd / @Batch_Alias_Name   |                                      |
| suponstr      | Replenishment            | N | N/A                 | 3         | rpblid  |   | daily       | R     | suponstr / @Batch_Alias_Name   |                                      |
| supmth        | Stock Ledger             | Y | Dept                | 3         | N/A   | prepost supmth post   | monthly     | R     | supmth / @Batch_Alias_Name   |                                      |
| supsplit      | Replenishment            | Y | Item                | 3 / Adhoc | rpblid  | prepost supsplit pre  | daily       | R     | supsplit / @Batch_Alias_Name   |                                      |
| tampcrctn     | Receiving                | N | N/A                 | ad hoc    | N/A   | N/A   | ad hoc      | N     | tampcrctn / @Batch_Alias_Name  |                                      |
| taxndid       | Tax                      | Y | Store               | ad hoc    | N/A   | N/A   | ad hoc      | R     | taxndid / @Batch_Alias_Name output_filename  |                                      |
| taxevnprg     | Tax                      | N | N/A                 | ad hoc    | N/A   | N/A   | ad hoc      | N     | taxevnprg / @Batch_Alias_Name no. of days  |                                      |
| tkctndid      | Maintenance              | N | N/A                 | ad hoc    | N/A   | N/A   | daily       | R     | tkctndid / @Batch_Alias_Name filename print_online_ind days_in_advance [location]  |                                      |
| tfposdn       | Sales Tax                | N | N/A                 | 4         | trpoxdn   | prepost tfposdn post  | daily       | R     | tfposdn / @Batch_Alias_Name output_file  |                                      |
| tranupld      | Trade Management         | Y | File-based          | ad hoc    | N/A   | N/A   | daily       | R     | tranupld / @Batch_Alias_Name infile  |                                      |
| tsfclose      | Transfers                | Y | Transfer            | ad hoc    | N/A   | N/A   | daily       | R     | tsfclose / @Batch_Alias_Name   |                                      |
| tsfprg        | Transfers                | N | N/A                 | ad hoc    | prepost   | tsfprg pre  | monthly     | R     | tsfprg / @Batch_Alias_Name   |                                      |
| trxpoadn      | Point of Sale Interface  | N | N/A                 | 4         | N/A   | trxpoadn  | daily       | R     | trxpoadn / @Batch_Alias_Name   |                                      |
| wfmsng        | Sales Tax                | N | N/A                 | 4         | N/A   | N/A   | ad hoc      | R     | wfmsng / @Batch_Alias_Name input_file reject_file  |                                      |
| vatdxpl       | Maintenance - VAT        | Y | Vat Region          | 0         | N/A   | prepost vatdxpl post  | daily       | R     | vatdxpl / @Batch_Alias_Name  |                                      |
|               |                          |   |                     |           |   | dealtct   |             |       |  |                                      |
|               |                          |   |                     |           |   | salstage(f daily)   |             |       |  |                                      |
|               |                          |   |                     |           |   | prepost vendinv pre   |             |       |  |                                      |
| vendinv       | Deals                    | Y | Deal Id             | 3         | prepost   | vendinv post  | daily       | R     | vendinv / @Batch_Alias_Name  |                                      |
|               |                          |   |                     |           |   | salstage(f weekly)  |             |       |  |                                      |
|               |                          |   |                     |           |   | prepost vendinv pre   |             |       |  |                                      |
| vendinvf      | Deals                    | Y | Deal Id             | 3         | prepost   | vendinvf post   | daily       | R     | vendinvf / @Batch_Alias_Name   |                                      |
| vrplbid       | Replenishment            | Y | Supplier            | 2         | edupack   | prepost vrplbid post  | daily       | R     | vrplbid / @Batch_Alias_Name  |                                      |
|               |                          |   |                     |           |   | stkpdxpl  | stskupd     | daily | R  |                                      |
| wasteadj      | Stock Ledger             | Y | Store               | 3         | N/A   | stkpdxpl  | stskupd     | daily | R  |                                      |
| wfordcs       | Ordering                 | Y | Wholesale Order ID  | ad hoc    | N/A   | wfordprg  | daily       | R     | wfordcs / @Batch_Alias_Name  |                                      |
| wfordprg      | Ordering                 | Y | Wholesale Order ID  | ad hoc    | wfordds   | N/A   | daily       | R     | wfordprg / @Batch_Alias_Name   |                                      |
| wfordupld.ksh | Ordering                 | Y | CustomerRefId       | ad hoc    | N/A   | N/A   | ad hoc      | R     | wfordupld.ksh / @Batch_Alias_Name input_file_directory output_file_directory number_of_threads   |                                      |
| wftrng        | Ordering                 | Y | Wholesale Return ID | ad hoc    | N/A   | N/A   | daily       | R     | wftrng / @Batch_Alias_Name   |                                      |
| whadd         | Maintenance - Location   | N | N/A                 | ad hoc    | N/A   | prepost whadd post  | daily       | R     | whadd / @Batch_Alias_Name  |                                      |
| whstrag       | Maintenance - Location   | N | N/A                 | 3         | (Must be run after all replenishment batch programs). | prepost whstrag post  | daily       | R     | whstrag / @Batch_Alias_Name  |                                      |

### RPM Dependency and Scheduling Details

| Program Name              | Functional Area              | Threaded | Driver        | Phase | Pre-dependency                  | Post-dependency                             | Timing       | Uses Restart/Recovery | Run Parameters for Programs   |
|---------------------------|------------------------------|----------|---------------|-------|---------------------------------|---|--------------|-----------------------|---|
| ItemReclassBatch          | Future Retail                | N        | N/A           | N/A   | NewItemLocBatch                 | NewItemLocBatch                             | daily/ad hoc | N                     | ItemReclassBatch.sh rpm-batch-user-alias                              |
| NewItemLocBatch           | Future Retail                | N        | N/A           | N/A   | storeadd(RMS), ItemReclassBatch | LocationMoveBatch                           | daily/ad hoc | N                     | NewItemLocBatch.sh rpm-batch-user-alias [status [error-commit-count]] |
| LocationMoveScheduleBatch | Zone Structure/Future Retail | Y        | Location move | N/A   | NewItemLocBatch                 | LocationMoveBatch, PriceEventExecutionBatch | daily, adhoc | N                     | locationMoveScheduleBatch.sh rpm-batch-user-alias                     |

|   |                                  |   |                        |     |                             |                               |              |   |   |
|---|----------------------------------|---|------------------------|-----|-----------------------------|-------------------------------|--------------|---|---|
| LocationMoveBatch                             | Zone Structure/Future Retail     | Y | Location move          | N/A | NewItemLocBatch             | PriceEventExecutionBatch      | daily        | N | locationMoveBatch.sh rpm-batch-user-alias   |
| PriceEventExecutionBatch                      | Price Change/Clearance/Promotion | Y | Pricing event          | N/A | LocationMoveBatch           | PriceEventExecutionRMSBatch   | daily        | N | priceEventExecutionBatch.sh rpm-batch-user-alias  |
| PriceEventExecutionRMSBatch                   | Price Change/Clearance/Promotion | Y | Pricing event          | N/A | PriceEventExecutionBatch    | PriceEventExecutionDealsBatch | daily        | N | priceEventExecutionRMSBatch.sh rpm-batch-user-alias   |
| PriceEventExecutionDealsBatch                 | Price Change/Clearance/Promotion | Y | Pricing event          | N/A | PriceEventExecutionRMSBatch | MerchExtractKickOffBatch      | daily        | N | priceEventExecutionDealsBatch.sh rpm-batch-user-alias   |
| PriceStrategyCalendarBatch                    | Price Strategy                   | N | Price strategy         | N/A | N/A                         | MerchExtractKickOffBatch      | daily        | N | priceStrategyCalendarBatch.sh rpm-batch-user-alias  |
| WorksheetAutoApproveBatch                     | Pricing Worksheet                | Y | Price strategy         | N/A | N/A                         | MerchExtractKickOffBatch      | daily        | N | worksheetAutoApproveBatch.sh rpm-batch-user-alias   |
| MerchExtractKickOffBatch                      | Pricing Worksheet                | Y | Price strategy         | N/A | PriceEventExecutionBatch    | storeadd (RMS)                | daily        | N | merchExtractKickOffBatch.sh rpm-batch-user-alias  |
| PurgeBulkConflictCheckArtifacts               | Conflict Checking                | N | N/A                    | N/A | WorksheetAutoApproveBatch   | PriceStrategyCalendarBatch    | daily        | N | purgeBulkConflictCheckArtifacts.sh rpm-batch-user-alias   |
| RPMtoORPOSPublishBatch.sh                     | Price Change/Clearance/Promotion | N | N/A                    | N/A | WorksheetAutoApproveBatch   | PriceStrategyCalendarBatch    | daily        | N | ksh RPMtoORPOSPublishBatch.sh </@trns-user-name> <log path> -error path>                                  |
| RPMtoORPOSPublishExport.sh                    | Price Change/Clearance/Promotion | Y | Location               | N/A | WorksheetAutoApproveBatch   | PriceStrategyCalendarBatch    | daily        | N | ksh RPMtoORPOSPublishExport.sh </@trns-user-name> <Numberof slots> <logpath> -error path> <Export path>   |
| RegularPriceChangePublishBatch                | Regular Price Changes            | N | Price event (Item/loc) | N/A | WorksheetAutoApproveBatch   | PriceStrategyCalendarBatch    | daily/ad hoc | N | regularPriceChangePublishBatch.sh rpm-batch-user-alias  |
| RegularPriceChangePublishExport               | Regular Price Changes            | N | Price event (Item/loc) | N/A | WorksheetAutoApproveBatch   | PriceStrategyCalendarBatch    | daily/ad hoc | N | regularPriceChangePublishExport.sh @trns-user-name [export-path]  |
| ClearancePriceChangePublishBatch              | Clearances                       | Y | Price event (Item/loc) | N/A | WorksheetAutoApproveBatch   | PriceStrategyCalendarBatch    | daily/ad hoc | N | clearancePriceChangePublishBatch.sh rpm-batch-user-alias  |
| ClearancePriceChangePublishExport             | Clearances                       | N | Price event (Item/loc) | N/A | WorksheetAutoApproveBatch   | PriceStrategyCalendarBatch    | daily/ad hoc | N | clearancePriceChangePublishExport.sh @trns-user-name [export-path]  |
| PromotionPriceChangePublishBatch              | Promotions                       | Y | Price event (Item/loc) | N/A | WorksheetAutoApproveBatch   | PriceStrategyCalendarBatch    | daily/ad hoc | N | promotionPriceChangePublishBatch.sh rpm-batch-user-alias  |
| PromotionPriceChangePublishExport             | Promotions                       | N | Price event (Item/loc) | N/A | WorksheetAutoApproveBatch   | PriceStrategyCalendarBatch    | daily/ad hoc | N | promotionPriceChangePublishExport.sh @trns-user-name [export-path]  |
| PriceChangeAutoApproveResultsPurgeBatch       | Purge                            | N | N/A                    | N/A | WorksheetAutoApproveBatch   | PriceStrategyCalendarBatch    | daily        | N | priceChangeAutoApproveResultsPurgeBatch.sh rpm-batch-user-alias   |
| PriceChangePurgeBatch                         | Purge                            | N | N/A                    | N/A | WorksheetAutoApproveBatch   | PriceStrategyCalendarBatch    | daily        | N | priceChangePurgeBatch.sh rpm-batch-user-alias   |
| PriceChangePurgeWorkspaceBatch                | Purge                            | N | N/A                    | N/A | WorksheetAutoApproveBatch   | PriceStrategyCalendarBatch    | daily        | N | priceChangePurgeWorkspaceBatch.sh rpm-batch-user-alias  |
| PromotionArchiveBatch.sh                      | Promotion                        | N | N/A                    | N/A | WorksheetAutoApproveBatch   | PriceStrategyCalendarBatch    | daily        | N | promotionArchiveBatch.sh rpm-batch-user-alias   |
| PromotionPurgeBatch                           | Purge                            | N | N/A                    | N/A | WorksheetAutoApproveBatch   | PriceStrategyCalendarBatch    | daily        | N | promotionPurgeBatch.sh rpm-batch-user-alias   |
| PurgeExpiredExecutedOrApprovedClearancesBatch | Purge                            | N | N/A                    | N/A | WorksheetAutoApproveBatch   | PriceStrategyCalendarBatch    | daily        | N | purgeExpiredExecutedOrApprovedClearancesBatch.sh rpm-batch-user-alias                                     |
| PurgeUnusedAndAbandonedClearancesBatch        | Purge                            | N | N/A                    | N/A | WorksheetAutoApproveBatch   | PriceStrategyCalendarBatch    | daily        | N | purgeUnusedAndAbandonedClearancesBatch.sh rpm-batch-user-alias  |
| PurgeLocationMovesBatch                       | Purge                            | N | N/A                    | N/A | WorksheetAutoApproveBatch   | PriceStrategyCalendarBatch    | daily        | N | purgeLocationMovesBatch.sh rpm-batch-user-alias   |
| ZoneFutureRetailPurgeBatch                    | Purge                            | N | N/A                    | N/A | WorksheetAutoApproveBatch   | PriceStrategyCalendarBatch    | daily        | N | zoneFutureRetailPurgeBatch.sh rpm-batch-user-alias  |
| ItemLocDeleteBatch                            | Purge                            | N | N/A                    | N/A | WorksheetAutoApproveBatch   | PriceStrategyCalendarBatch    | daily        | N | itemLocDeleteBatch.sh rpm-batch-user-alias  |
| PriceChangeAreaDifferentialBatch              | Price Change                     | Y | N/A                    | N/A | WorksheetAutoApproveBatch   | PriceStrategyCalendarBatch    | ad hoc       | N | priceChangeAreaDifferentialBatch rpm-batch-user-alias   |
| InjectorPriceEventBatch                       | Price Change/Clearance/Promotion | Y | Item/Location          | N/A | WorksheetAutoApproveBatch   | PriceStrategyCalendarBatch    | ad hoc       | N | injectorPriceEventBatch.sh rpm-batch-user-alias password [status=estatus] [event_type=evtype]             |
| refreshPosDataBatch                           | Price Event                      | Y | N/A                    | N/A | WorksheetAutoApproveBatch   | PriceStrategyCalendarBatch    | ad hoc       | N | refreshPosDataBatch.sh <rpm-batch-user-alias> <location> [date='YYYYMMDD']                                |
| purgePayloadsBatch                            | purge                            | N | Price event            | N/A | WorksheetAutoApproveBatch   | PriceStrategyCalendarBatch    | ad hoc       | N | purgePayloadsBatch </@trns-user-name> <publish-status>  |
| processPendingChunksBatch                     | Price Change/Clearance/Promotion | Y | N/A                    | N/A | WorksheetAutoApproveBatch   | PriceStrategyCalendarBatch    | ad hoc       | N | processPendingChunksBatch.sh <rpm-batch-user-alias> [-Y/N]  |
| FutureRetailRollUpBatch                       | Future Retail                    | Y | N/A                    | N/A | WorksheetAutoApproveBatch   | PriceStrategyCalendarBatch    | ad hoc       | N | FutureRetailRollUpBatch.sh <username> <password> [dept=deptid] class=classid subclass=subclassid]         |
| GenerateFutureRetailRollUpBatch               | Future Retail                    | Y | N/A                    | N/A | WorksheetAutoApproveBatch   | PriceStrategyCalendarBatch    | ad hoc       | N | GenerateFutureRetailRollUpBatch.sh <username> <password> [dept=deptid] class=classid subclass=subclassid] |
| primaryZoneModificationsBatch                 | Future Retail                    | Y | PZG definition updates | N/A | WorksheetAutoApproveBatch   | PriceStrategyCalendarBatch    | ad hoc       | N | primaryZoneModificationsBatch <userid>password@sid <log path> -error path>                                |
| priceEventPayloadPopulationBatch              | Payload                          | Y | Price Event            | N/A | WorksheetAutoApproveBatch   | PriceStrategyCalendarBatch    | ad hoc       | N | priceEventPayloadPopulationBatch.sh <userid>password@sid <slots> <status> <logpath> <empath>              |

**ReIM Dependency and Scheduling Details**

| Program Name              | Functional Area         | Threaded | Driver | Phase | Pre-dependency                      | Post-dependency                     | Timing | Uses Restart/Recovery | Run Parameters for Programs   |
|---------------------------|-------------------------|----------|--------|-------|-------------------------------------|-------------------------------------|--------|-----------------------|---|
| reimaccountworkspacepurge | Invoice Matching (ReIM) | N        | N/A    | N/A   | N/A                                 | N/A                                 | ad hoc | R                     | batch-user-alias  |
| reimautomatch             | Invoice Matching (ReIM) | Y        | N/A    | 6     | N/A                                 | reimrollup                          | daily  | R                     | batch-user-alias  |
| reimpurge                 | Invoice Matching (ReIM) | N        | N/A    | 0     | N/A                                 | reimposting                         | daily  | R                     | batch-user-alias  |
| reimcomplexdealupload     | Invoice Matching (ReIM) | Y        | N/A    | 5     | vendinv(RMS), vendinv(RMS)          | reimautomatch                       | daily  | R                     | batch-user-alias BlockSize [PartitionNo]                                |
| reimcrednoteautomatch     | Invoice Matching (ReIM) | Y        | N/A    | 6     | N/A                                 | reimrollup                          | daily  | R                     | batch-user-alias  |
| reimdiscrepancypurge      | Invoice Matching (ReIM) | N        | N/A    | 1     | N/A                                 | reimposting                         | daily  | R                     | batch-user-alias  |
| reimeditinvupload         | Invoice Matching (ReIM) | Y        | N/A    | 5     | editinv(RMS)                        | reimautomatch,reimcrednoteautomatch | daily  | R                     | batch-user-alias "EDI input file with path" "EDI reject file with path" |
| reimeditdownload          | Invoice Matching (ReIM) | N        | N/A    | 7     | reimposting                         | N/A                                 | daily  | R                     | batch-user-alias  |
| reimfixddesupload         | Invoice Matching (ReIM) | Y        | N/A    | 5     | vendinv(RMS), vendinv(RMS)          | reimautomatch                       | daily  | R                     | batch-user-alias BlockSize [PartitionNo]                                |
| reimrollup                | Invoice Matching (ReIM) | N        | N/A    | 6     | reimautomatch,reimcrednoteautomatch | reimposting                         | daily  | R                     | batch-user-alias  |
| reimreceiptwrtfwd         | Invoice Matching (ReIM) | N        | N/A    | 6     | reimautomatch                       | N/A                                 | daily  | R                     | batch-user-alias  |
| reimposting               | Invoice Matching (ReIM) | N        | N/A    | 6     | reimrollup                          | N/A                                 | daily  | R                     | batch-user-alias  |

**RMS to RPAS RETL Extracts Dependency and Scheduling Details (EXTRACTS FOR RPAS)**

| Program Name                  | Functional Area                    | Threaded | Driver | Phase | Pre-dependency  | Post-dependency                | Timing | Uses Restart/Recovery | Run Parameters for Programs                                |
|-------------------------------|------------------------------------|----------|--------|-------|---|--------------------------------|--------|-----------------------|--|
| pre_rms_rpas.ksh              | Planning/Forecast System Interface | N        | N/A    | N/A   | N/A. This is a pre setup script                                   | N/A                            | daily  | N                     | N/A  |
| rmse_rpas.ksh                 | Planning/Forecast System Interface | N        | N/A    | N/A   | pre_rms_rpas.ksh. (This is the launch script to run the extracts) | Refer to RPAS Operations guide | daily  | N                     | N/A  |
| rmse_rpas_attributes.ksh      | Planning/Forecast System Interface | N        | N/A    | N/A   | pre_rms_rpas.ksh  | Refer to RPAS Operations guide | daily  | N                     | N/A  |
| rmse_rpas_daily_sales.ksh     | Planning/Forecast System Interface | N        | N/A    | N/A   | pre_rms_rpas.ksh  | Refer to RPAS Operations guide | daily  | N                     | N/A  |
| rmse_rpas_domain.ksh          | Planning/Forecast System Interface | N        | N/A    | N/A   | pre_rms_rpas.ksh  | Refer to RPAS Operations guide | daily  | N                     | N/A  |
| rmse_rpas_item_master.ksh     | Planning/Forecast System Interface | N        | N/A    | N/A   | pre_rms_rpas.ksh  | Refer to RPAS Operations guide | daily  | N                     | N/A  |
| rmse_rpas_merchtier.ksh       | Planning/Forecast System Interface | N        | N/A    | N/A   | pre_rms_rpas.ksh  | Refer to RPAS Operations guide | daily  | N                     | N/A  |
| rmse_rpas_orghier.ksh         | Planning/Forecast System Interface | N        | N/A    | N/A   | pre_rms_rpas.ksh  | Refer to RPAS Operations guide | daily  | N                     | N/A  |
| rmse_rpas_stock_on_hand.ksh   | Planning/Forecast System Interface | N        | N/A    | N/A   | pre_rms_rpas.ksh  | Refer to RPAS Operations guide | daily  | N                     | N/A  |
| rmse_rpas_store.ksh           | Planning/Forecast System Interface | N        | N/A    | N/A   | pre_rms_rpas.ksh  | Refer to RPAS Operations guide | daily  | N                     | N/A  |
| rmse_rpas_suppliers.ksh       | Planning/Forecast System Interface | N        | N/A    | N/A   | pre_rms_rpas.ksh  | Refer to RPAS Operations guide | daily  | N                     | N/A  |
| rmse_rpas_weekly_sales.ksh    | Planning/Forecast System Interface | N        | N/A    | N/A   | pre_rms_rpas.ksh  | Refer to RPAS Operations guide | daily  | N                     | N/A  |
| rmse_rpas_wh.ksh              | Planning/Forecast System Interface | N        | N/A    | N/A   | pre_rms_rpas.ksh  | Refer to RPAS Operations guide | daily  | N                     | N/A  |
| rml_rpas_forecast.ksh         | Planning/Forecast System Interface | N        | N/A    | N/A   | pre_rms_rpas.ksh  | Refer to RPAS Operations guide | daily  | N                     | rml_rpas_forecast.ksh daily or weekly                      |
| rml_rpas_update_retl_date.ksh | Planning/Forecast System Interface | N        | N/A    | N/A   | After all RMS/Planning System Integration RETL scripts are run    | Refer to RPAS Operations guide | daily  | N                     | rml_rpas_update_retl_date.ksh CLOSED_ORDER or RECEIVED_QTY |



**RMS to AIP RETL Extracts Dependency and Scheduling Details (EXTRACTS FOR AIP)**

| Program Name                       | Functional Area | Threaded | Driver   | Phase   | Pre-dependency | Post-dependency                                 | Timing | Uses Restart/Recovery | Run Parameters for Programs   |
|------------------------------------|-----------------|----------|--|---|----------------|---|--------|-----------------------|---|
| pre_rmse_aip.ksh                   | AIP Interface   | N        | N/A  | AIP RETL Extracts   |                | Refer to AIP Operations and Installation Guides | daily  | N                     | N/A   |
| rmse_aip_alloc_in_well.ksh         | AIP Interface   | N        | N/A  | AIP RETL Extracts pre_rmse_aip.ksh  |                | Refer to AIP Operations and Installation Guides | daily  | N                     | N/A   |
| rmse_aip_banded_item.ksh           | AIP Interface   | N        | N/A  | AIP RETL Extracts pre_rmse_aip.ksh, dlyprg  |                | Refer to AIP Operations and Installation Guides | daily  | N                     | N/A   |
| rmse_aip_cl_po.ksh                 | AIP Interface   | N        | N/A  | AIP RETL Extracts pre_rmse_aip.ksh  |                | Refer to AIP Operations and Installation Guides | daily  | N                     | N/A   |
| rmse_aip_future_delivery_alloc.ksh | AIP Interface   | N        | N/A  | AIP RETL Extracts pre_rmse_aip.ksh  |                | Refer to AIP Operations and Installation Guides | daily  | N                     | N/A   |
| rmse_aip_future_delivery_order.ksh | AIP Interface   | N        | N/A  | AIP RETL Extracts pre_rmse_aip.ksh, vripblid, cntrordb  |                | Refer to AIP Operations and Installation Guides | daily  | N                     | N/A   |
| rmse_aip_future_delivery_tsf.ksh   | AIP Interface   | N        | N/A  | AIP RETL Extracts pre_rmse_aip.ksh, reqext  |                | Refer to AIP Operations and Installation Guides | daily  | N                     | N/A   |
| rmse_aip_item_loc_traits.ksh       | AIP Interface   | N        | N/A  | AIP RETL Extracts pre_rmse_aip.ksh, dlyprg  |                | Refer to AIP Operations and Installation Guides | daily  | N                     | N/A   |
| rmse_aip_item_master.ksh           | AIP Interface   | N        | N/A  | AIP RETL Extracts pre_rmse_aip.ksh, recsldly  |                | Refer to AIP Operations and Installation Guides | daily  | N                     | N/A   |
| rmse_aip_item_retail.ksh           | AIP Interface   | N        | N/A  | AIP RETL Extracts pre_rmse_aip.ksh, dlyprg  |                | Refer to AIP Operations and Installation Guides | daily  | N                     | N/A   |
| rmse_aip_item_sale.ksh             | AIP Interface   | N        | N/A  | AIP RETL Extracts pre_rmse_aip.ksh, silmain   |                | Refer to AIP Operations and Installation Guides | daily  | N                     | N/A   |
| rmse_aip_item_supp_country.ksh     | AIP Interface   | N        | N/A  | AIP RETL Extracts pre_rmse_aip.ksh, dlyprg  |                | Refer to AIP Operations and Installation Guides | daily  | N                     | N/A   |
| rmse_aip_merchier.ksh              | AIP Interface   | N        | N/A  | AIP RETL Extracts pre_rmse_aip.ksh, dlyprg  |                | Refer to AIP Operations and Installation Guides | daily  | N                     | N/A   |
| rmse_aip_orghier.ksh               | AIP Interface   | N        | N/A  | AIP RETL Extracts pre_rmse_aip.ksh, dlyprg  |                | Refer to AIP Operations and Installation Guides | daily  | N                     | N/A   |
| rmse_aip_rec_qty.ksh               | AIP Interface   | N        | N/A  | AIP RETL Extracts pre_rmse_aip.ksh, vripblid, cntrordb, reqext  |                | Refer to AIP Operations and Installation Guides | daily  | N                     | N/A   |
| rmse_aip_store.ksh                 | AIP Interface   | N        | N/A  | AIP RETL Extracts pre_rmse_aip.ksh, storeadd, likestore, dlyprg                                       |                | Refer to AIP Operations and Installation Guides | daily  | N                     | N/A   |
| rmse_aip_substitute_items.ksh      | AIP Interface   | N        | N/A  | AIP RETL Extracts pre_rmse_aip.ksh  |                | Refer to AIP Operations and Installation Guides | daily  | N                     | N/A   |
| rmse_aip_suppliers.ksh             | AIP Interface   | N        | N/A  | AIP RETL Extracts pre_rmse_aip.ksh  |                | Refer to AIP Operations and Installation Guides | daily  | N                     | N/A   |
| rmse_aip_tsf_in_well.ksh           | AIP Interface   | N        | N/A  | AIP RETL Extracts pre_rmse_aip.ksh, reqext  |                | Refer to AIP Operations and Installation Guides | daily  | N                     | N/A   |
| rmse_aip_wh.ksh                    | AIP Interface   | N        | N/A  | AIP RETL Extracts pre_rmse_aip.ksh, whadd and dlyprg  |                | Refer to AIP Operations and Installation Guides | daily  | N                     | N/A   |
| rmse_store_cur_inventory.ksh       | AIP Interface   | Y        | Item_loc_soh (number of AIP RETL Extracts reqext, posupld) | pre_rmse_aip.ksh, stivcr, wasteadj, salstage, rmse_store_cur_inventory.ksh (if running delta extract) |                | Refer to AIP Operations and Installation Guides | daily  | N                     | D - single -threaded delta extract<br>F - multi-threaded full extract if ITEM_LOC is partitioned; single-threaded full extract if ITEM_LOC is not partitioned |
| rmse_wh_cur_inventory.ksh          | AIP Interface   | Y        | Warehouse  | AIP RETL Extracts extract, silkvar, wasteadj, salstage, reqext  |                | Refer to AIP Operations and Installation Guides | daily  | N                     | D - single -threaded delta extract<br>F - multi-threaded full extract if ITEM_LOC is partitioned; single-threaded full extract if ITEM_LOC is not partitioned |

**Allocation Program Dependency and Scheduling Details**

| Program Name            | Functional Area      | Threaded | Driver | Phase | Pre-dependency | Post-dependency | Timing | Uses Restart/Recovery | Run Parameters for Programs |
|-------------------------|----------------------|----------|--------|-------|----------------|-----------------|--------|-----------------------|-----------------------------|
| AllocSchedulerBatch.ksh | Scheduled Allocation | Y        | N/A    | N/A   | None           | None            | daily  | N                     | batch-user-alias            |

**RMS to MFP RETL Extracts Dependency and Scheduling Details**

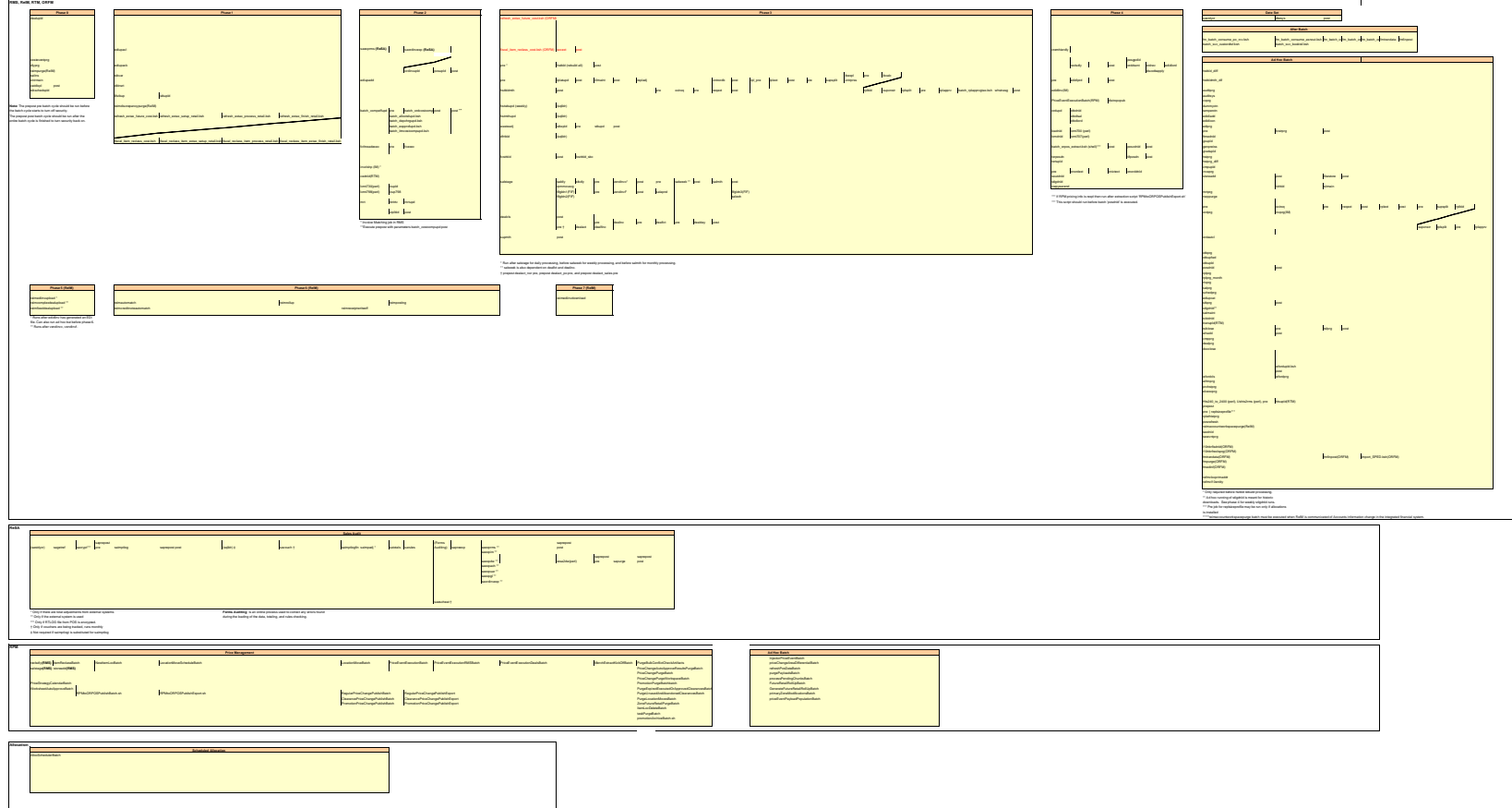
| Program Name              | Functional Area                    | Threaded | Driver | Phase  | Pre-dependency                               | Post-dependency                | Timing | Uses Restart/Recovery | Run Parameters for Programs  |
|---------------------------|------------------------------------|----------|--------|--------|--|--------------------------------|--------|-----------------------|--|
| pre_rmse_rpas.ksh         | Planning/Forecast System Interface | N        | N/A    | N/A    | N/A- This is a pre setup script              | N/A                            | daily  | N                     | N/A  |
| lmednid                   | Planning System Interface          | N        | N/A    | ad hoc | N/A  | N/A                            | ad hoc | N                     | lmednid / @Batch_Alias_Name  |
| rmse_rpas_merchier.ksh    | Planning/Forecast System Interface | N        | N/A    | N/A    | pre_rmse_rpas.ksh, recsldly, dlyprg          | Refer to RPAS Operations guide | daily  | N                     | N/A  |
| rmse_rpas_item_master.ksh | Planning/Forecast System Interface | N        | N/A    | N/A    | pre_rmse_rpas.ksh, silmain, recsldly, dlyprg | Refer to RPAS Operations guide | daily  | N                     | N/A  |
| rmse_rpas_orghier.ksh     | Planning/Forecast System Interface | N        | N/A    | N/A    | pre_rmse_rpas.ksh, storeadd, dlyprg          | Refer to RPAS Operations guide | daily  | N                     | N/A  |
| rmse_rpas_store.ksh       | Planning/Forecast System Interface | N        | N/A    | N/A    | pre_rmse_rpas.ksh, whadd, dlyprg             | Refer to RPAS Operations guide | daily  | N                     | N/A  |
| rmse_rpas_wh.ksh          | Planning/Forecast System Interface | N        | N/A    | N/A    | pre_rmse_rpas.ksh, whadd, dlyprg             | Refer to RPAS Operations guide | daily  | N                     | N/A  |
| rmse_mfp_onorder.ksh      | MFP System Interface               | N        | N/A    | N/A    | pre_rmse_rpas.ksh                            | Refer to MFP Operations guide  | Weekly | N                     | N/A  |
| rmse_mfp_inventory.ksh    | MFP System Interface               | N        | N/A    | N/A    | pre_rmse_rpas.ksh                            | Refer to MFP Operations guide  | Weekly | N                     | mse_mfp_inventory.ksh 1 or W<br>Note:<br>1 - Initial load<br>W-Weekly load |

**ORFM Program Dependency and Scheduling Details**

| Program Name                     | Functional Area                    | Threaded | Driver | Phase       | Pre-dependency                   | Post-dependency                  | Timing | Uses Restart/Recovery | Run Parameters for Programs  |
|----------------------------------|------------------------------------|----------|--------|-------------|----------------------------------|----------------------------------|--------|-----------------------|--|
| fm_batch_consume_po_rcv.ksh      | 24x7 NF Entry                      | Y        | N/A    | after batch | end_batch_post                   | None                             | daily  | N                     | fm_batch_consume_po_rcv.ksh [-p <# parallel threads>] / @Batch_Alias_Name  |
| fm_batch_consume_asnout.ksh      | 24x7 NF Entry                      | Y        | N/A    | after batch | fm_batch_consume_po_rcv.ksh      | None                             | daily  | N                     | fm_batch_consume_asnout.ksh [-p <# parallel threads>] / @Batch_Alias_Name  |
| fm_batch_consume_rtv.ksh         | 24x7 NF Entry                      | Y        | N/A    | after batch | fm_batch_consume_asnout.ksh      | None                             | daily  | N                     | fm_batch_consume_rtv.ksh [-p <# parallel threads>] / @Batch_Alias_Name   |
| fm_batch_consume_tsf_rcv.ksh     | 24x7 NF Entry                      | Y        | N/A    | after batch | fm_batch_consume_rtv.ksh         | None                             | daily  | N                     | fm_batch_consume_tsf_rcv.ksh [-p <# parallel threads>] / @Batch_Alias_Name   |
| fm_batch_consume_invadj.ksh      | 24x7 NF Entry                      | Y        | N/A    | after batch | fm_batch_consume_tsf_rcv.ksh     | None                             | daily  | N                     | fm_batch_consume_invadj.ksh [-p <# parallel threads>] / @Batch_Alias_Name  |
| lfrandata                        | ORFM Transaction Postings          | Y        | N/A    | N/A         | None                             | None                             | ad hoc | Y                     | lfrandata / @Batch_Alias_Name  |
| lfrmpost                         | ORFM Transaction Postings          | Y        | N/A    | N/A         | lfrandata                        | None                             | ad hoc | Y                     | lfrmpost / @Batch_Alias_Name   |
| lfrport_SPED.ksh                 | ORFM SPED                          | N        | N/A    | N/A         | lfrmpost                         | None                             | ad hoc | N                     | lfrport_SPED / @Batch_Alias_Name   |
| lfrpurge                         | ORFM Purge                         | Y        | N/A    | ad hoc      | None                             | None                             | ad hoc | Y                     | lfrpurge / @Batch_Alias_Name   |
| lfrmedinf                        | ORFM EDI                           | Y        | N/A    | ad hoc      | None                             | None                             | ad hoc | Y                     | lfrmedinf / @Batch_Alias_Name  |
| lfrnbfrcdpsrg                    | ORFM fiscal reclassification purge | N        | N/A    | ad hoc      | None                             | None                             | ad hoc | N                     | lfrnbfrcdpsrg / @Batch_Alias_Name no. of days  |
| lfrnbfrcsld                      | ORFM fiscal attribute download     | N        | N/A    | ad hoc      | None                             | None                             | ad hoc | N                     | lfrnbfrcsld / @Batch_Alias_Name lfrnbfrcsld  |
| refresh_extax_future_cost.ksh    | RFM                                | N        | N/A    | 1           | None                             | refresh_extax_setup_retail.ksh   | ad hoc | N                     | refresh_extax_future_cost.ksh -connect-<br>refresh_extax_setup_retail.ksh [-p <# thread size>] -connect-<br><# thread size> is the number of mtr_stg rows to process per thread in extax_process.ksh.<br>The default is 10000. |
| refresh_extax_setup_retail.ksh   | RFM                                | N        | N/A    | 1           | refresh_extax_future_cost.ksh    | refresh_extax_process_retail.ksh | ad hoc | N                     | refresh_extax_process_retail.ksh [-p <# parallel threads>] -connect-<br><# parallel threads> is the number of threads to run in parallel. The default is 1.  |
| refresh_extax_process_retail.ksh | RFM                                | Y        | N/A    | 1           | refresh_extax_setup_retail.ksh   | refresh_extax_finish_retail.ksh  | ad hoc | N                     | refresh_extax_process_retail.ksh [-p <# parallel threads>] -connect-<br><# parallel threads> is the number of threads to run in parallel. The default is 1.  |
| refresh_extax_finish_retail.ksh  | RFM                                | N        | N/A    | 1           | refresh_extax_process_retail.ksh | None                             | ad hoc | N                     | refresh_extax_finish_retail.ksh -connect-  |

|   |     |   |     |   |  |   |       |   |  |
|---|-----|---|-----|---|--|---|-------|---|--|
| fiscal_item_reclass_cost.ksh                | RFM | N | N/A | 1 | None                                       | fiscal_reclass_item_extax_setup_retail.ksh  | daily | N | fiscal_item_reclass_cost.ksh <connect>   |
| fiscal_reclass_item_extax_setup_retail.ksh  | RFM | N | N/A | 1 | fiscal_item_reclass_cost.ksh               | fiscal_reclass_item_process_retail.ksh      | daily | N | fiscal_reclass_item_extax_setup_retail.ksh [-p <# thread size>] <connect><br><# thread size> is the number of mtr_stg rows to process per thread in extax_process.ksh. The default is 10000. |
| fiscal_reclass_item_process_retail.ksh      | RFM | Y | N/A | 1 | fiscal_reclass_item_extax_setup_retail.ksh | fiscal_reclass_item_extax_finish_retail.ksh | daily | N | fiscal_reclass_item_process_retail.ksh [-p <# parallel threads>] <connect>   |
| fiscal_reclass_item_extax_finish_retail.ksh | RFM | N | N/A | 1 | fiscal_reclass_item_process_retail.ksh     | None  | daily | N | <# parallel threads> is the number of threads to run in parallel. The default is 1.<br>fiscal_reclass_item_extax_finish_retail.ksh <connect>   |

Integrated Merchandising Batch Schedule





---

---

## Interface Diagrams for RMS and RPAS

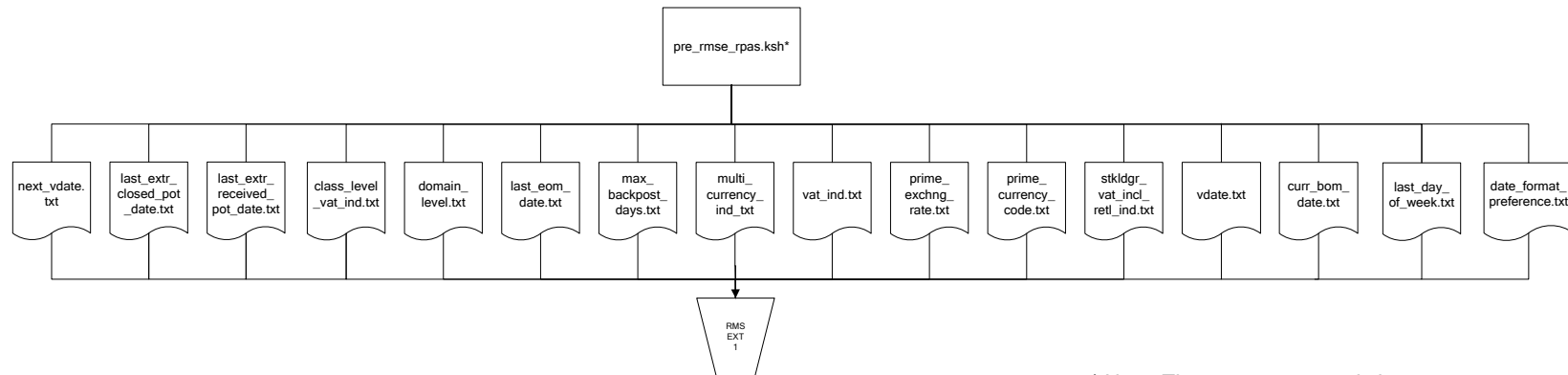
Because RMS is the retailer's central merchandising transactional processing system, it is the principle source of the foundation data needed in some of the Oracle Retail suite of products. RMS provides foundation data to RPAS, and RPAS provides planning data to RMS.

This chapter presents flow diagrams for data processing from sources. The source system's program or output file is illustrated, along with the program or process that interfaces with the source. After initial interface processing of the source, the diagrams illustrate the flow of the data.

Before setting up a program schedule, familiarize yourself with the functional and technical constraints associated with each program. Refer to the *Oracle Retail Merchandising System Operations Guide* for more information about these interface programs.

## RMS Pre/Post Extract Diagrams

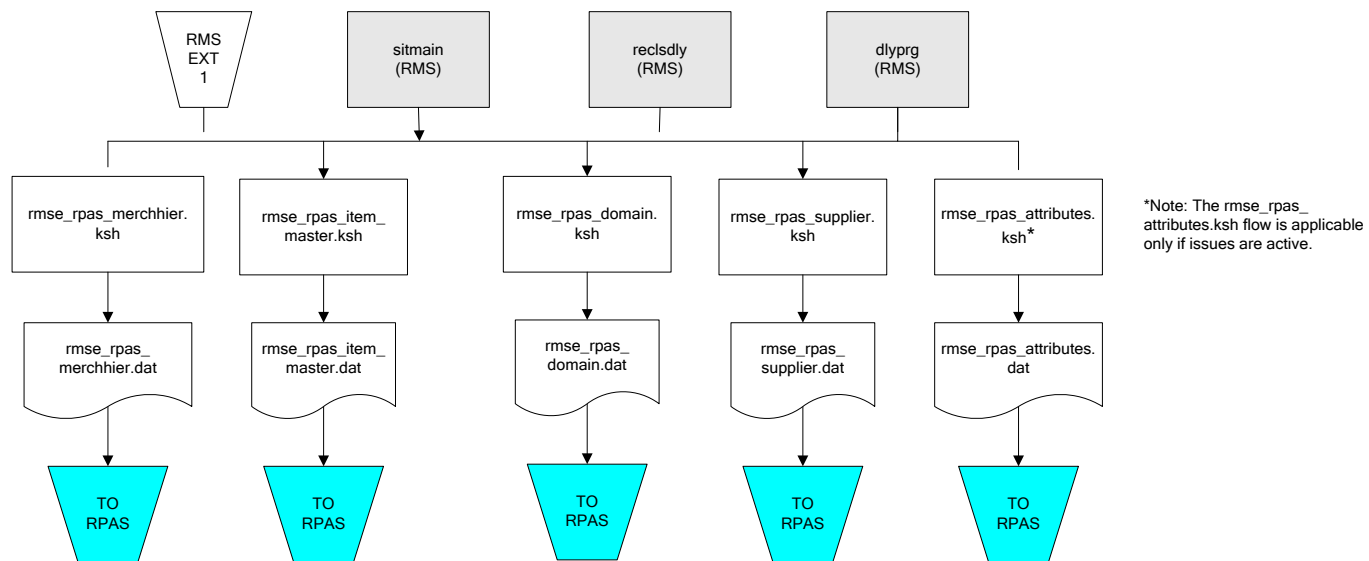
### RMS Pre RETL Extract Maintenance



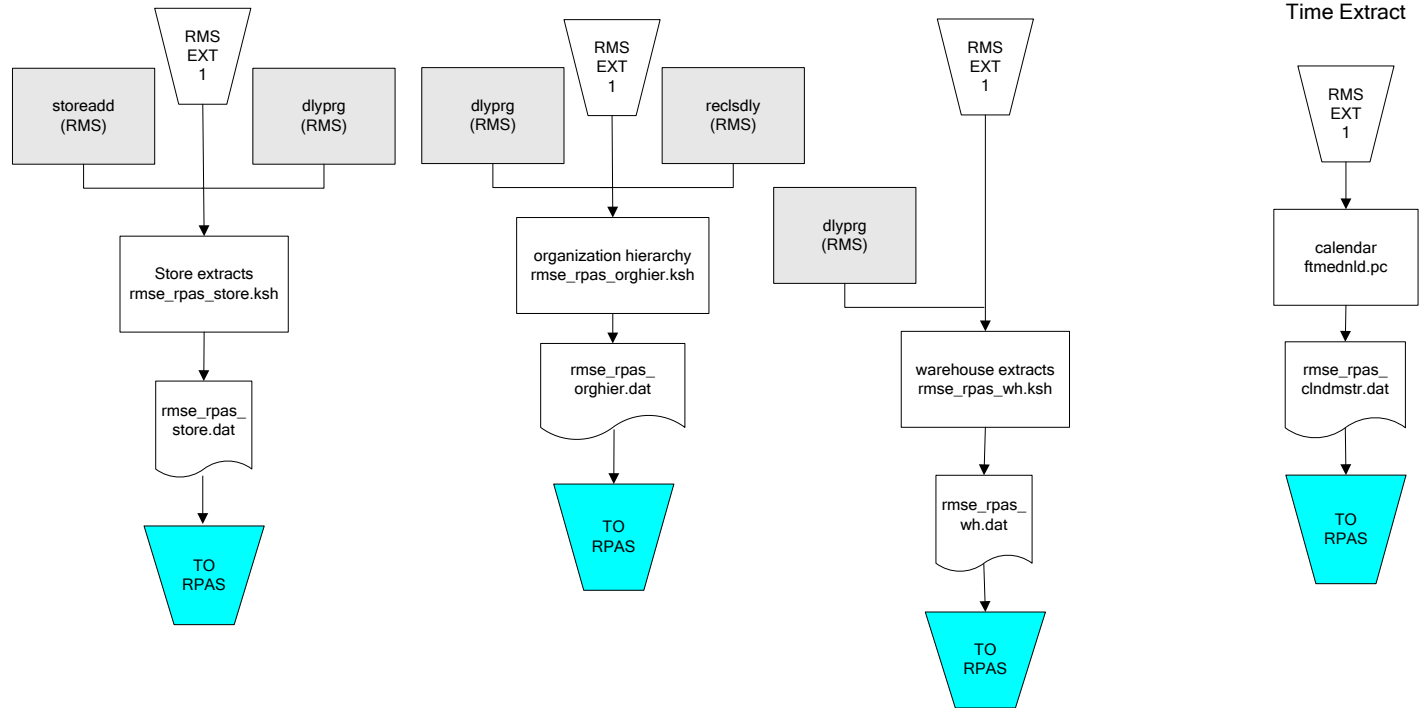
\* Note: The `pre_rmse_rpas.ksh` program checks for existing .txt output files. Because of this validation, retailers running the program for the first time should include an optional `-c` parameter. This parameter allows the program to run successfully without pre-existing .txt output files.

## RMS Foundation Data Extract Diagrams

Merchandise Hierarchy for RPAS

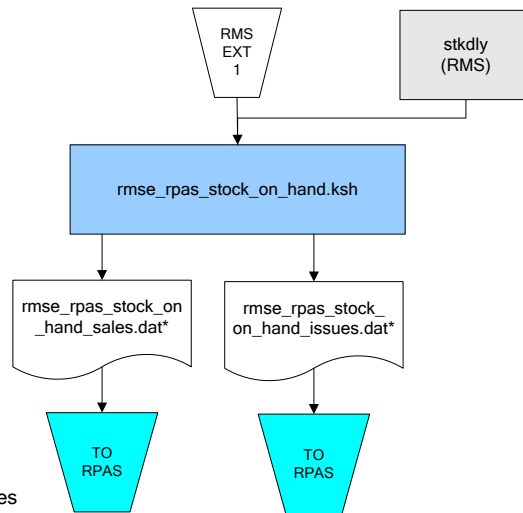


### Organization Hierarchy for RPAS





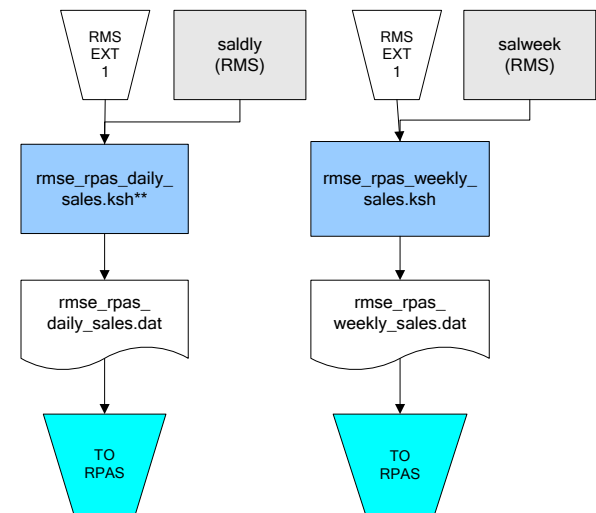
## RMS Fact Data Extract Diagrams



\* Note:  
 If issues are active, the following two files result from the  
 rmse\_rpas\_stock\_on\_hand.ksh flow:  
 rmse\_rpas\_stock\_on\_hand\_issues.dat  
 rmse\_rpas\_stock\_on\_hand\_sales.dat

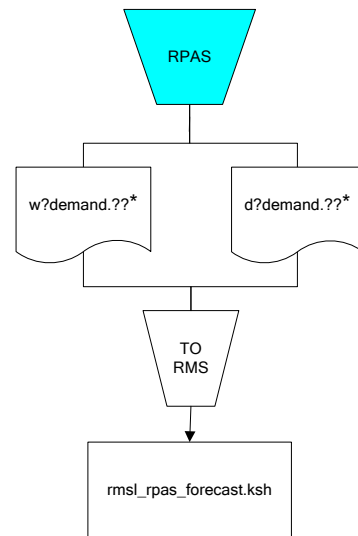
If issues are not active, the following file results from the  
 rmse\_rpas\_stock\_on\_hand.ksh flow:  
 rmse\_rpas\_stock\_on\_hand\_sales.dat

## Sales Extracts For RPAS



\*\* Note:  
 Depending upon the configuration of  
 rmse\_rpas\_daily\_sales.ksh,  
 the data can be pulled from  
 TRAN\_DATA\_HISTORY or  
 TRAN\_DATA.

## RPAS-RMS Fact Load Diagram



\*Note:

? can represent the following:

- i (for issues)
- s (for stores)

?? represents domain 01-99.

---

---

## Interface Diagrams for RMS and MFP

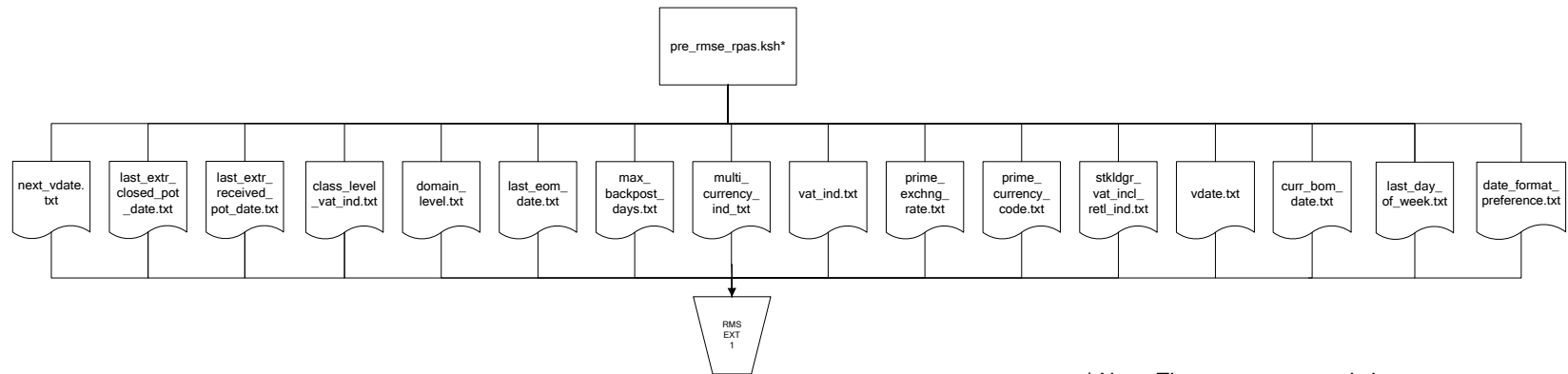
Because RMS is the retailer's central merchandising transactional processing system, it is the principle source of the foundation data needed in some of the Oracle Retail suite of products. RMS provides foundation data to RPAS, and RPAS provides planning data to RMS.

This chapter presents flow diagrams for data processing from sources. The source system's program or output file is illustrated, along with the program or process that interfaces with the source. After initial interface processing of the source, the diagrams illustrate the flow of the data.

Before setting up a program schedule, familiarize yourself with the functional and technical constraints associated with each program. Refer to the *Oracle Retail Merchandising System Operations Guide* for more information about these interface programs.

## RMS Pre/Post Extract Diagrams

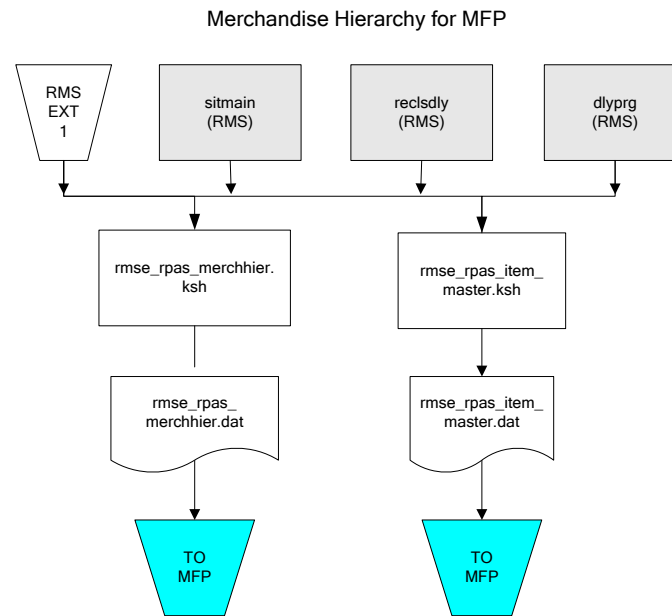
### RMS Pre RETL Extract Maintenance



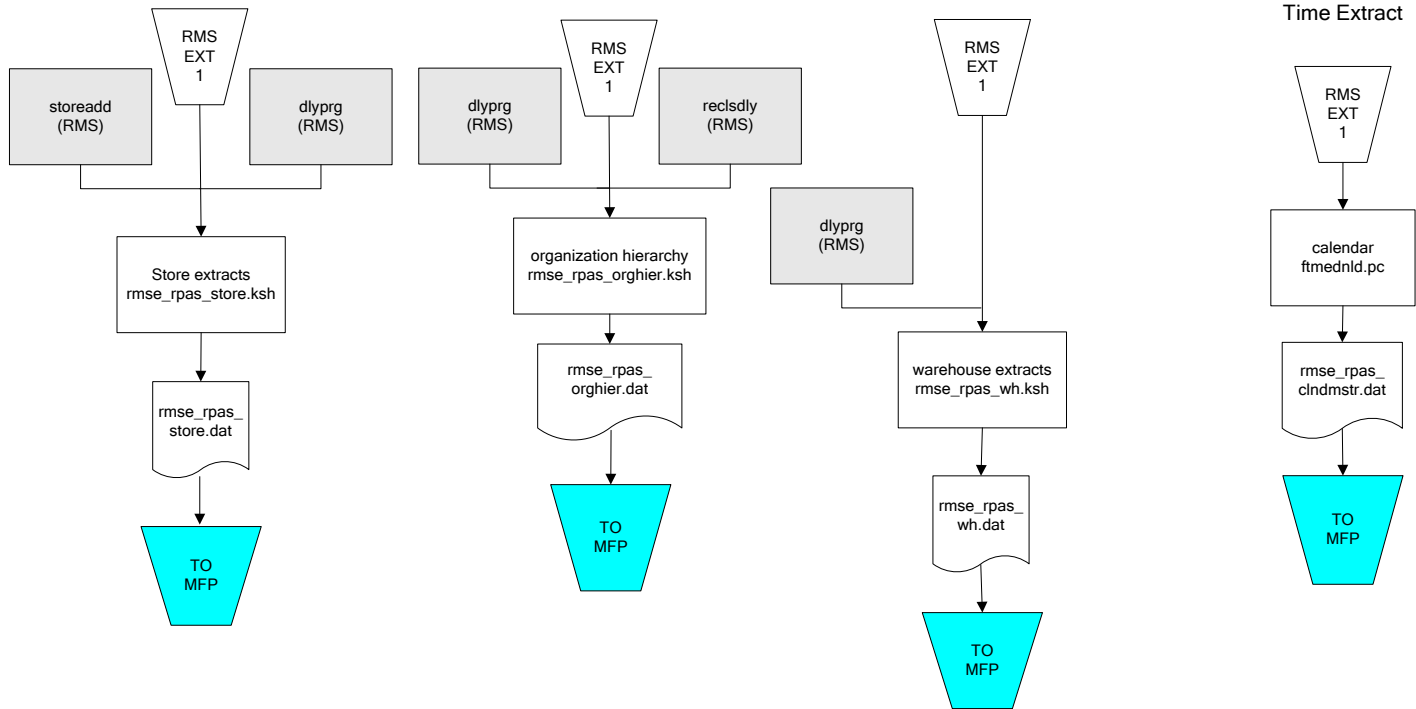
\* Note: The pre\_rmse\_rpas.ksh program checks for existing .txt output files. Because of this validation, retailers running the program for the first time should include an optional -c parameter. This parameter allows the program to run successfully without pre-existing .txt output files.

---

## RMS Foundation Data Extract Diagrams



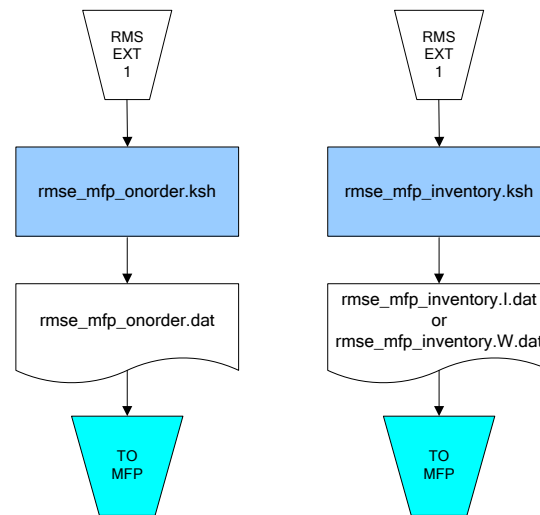
### Organization Hierarchy for MFP



---

## RMS Fact Data Extract Diagrams

### Integration Extracts for MFP



Note:  
I is for initial load and W is  
for weekly load..





---

---

## Interface Diagrams for RMS and AIP

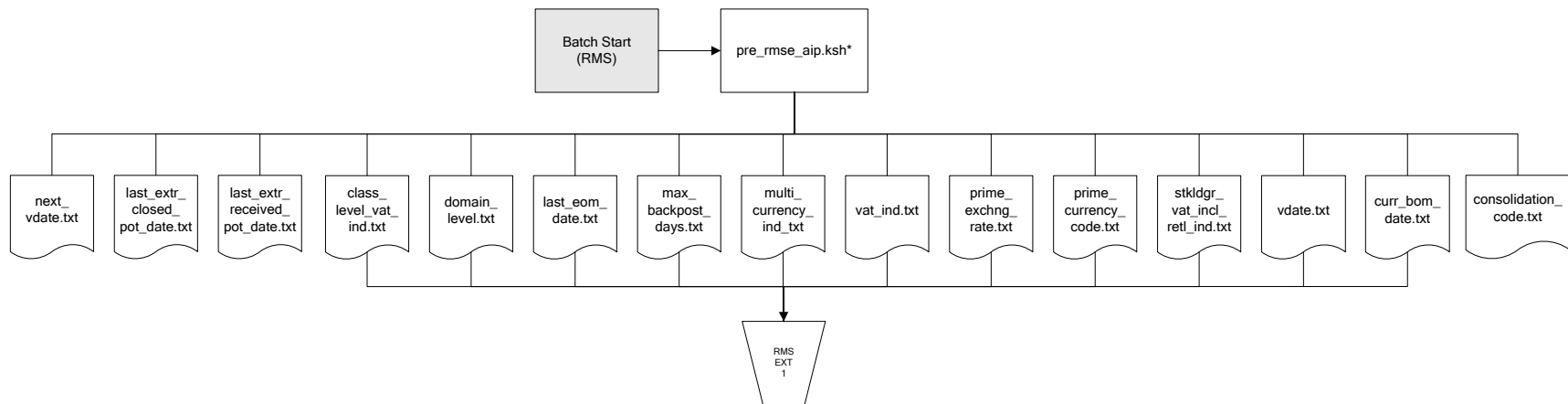
This chapter presents flow diagrams for RETL extract data processing from RMS to AIP. The RMS program or output file is illustrated, along with the program or process that interfaces with the source. The diagrams illustrate the flow of the data after initial interface processing of the source.

Before setting up a program schedule, familiarize yourself with the functional and technical constraints associated with each program. See the *Oracle Retail Merchandising System Operations Guide Volume 1—Batch Overviews and Designs* for more information about the modules shown in the following diagrams.

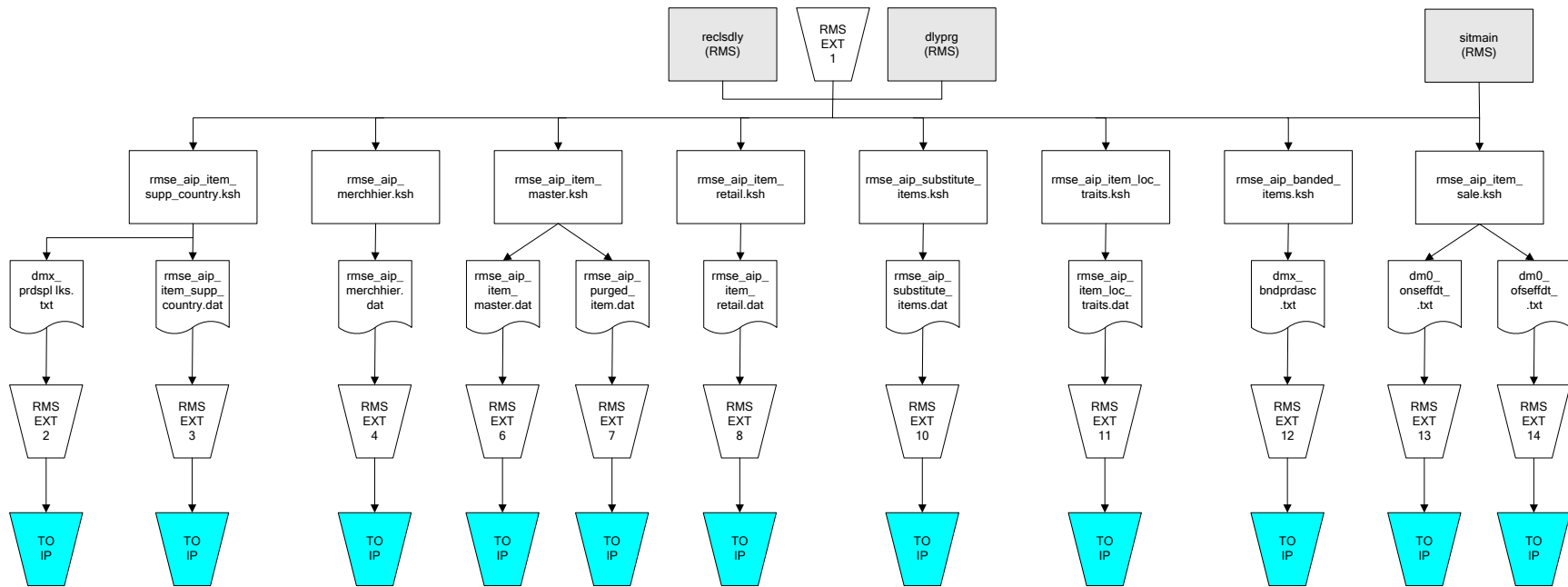


## RMS Pre/Post Extract Diagrams

### RMS Pre RETL Extract Maintenance

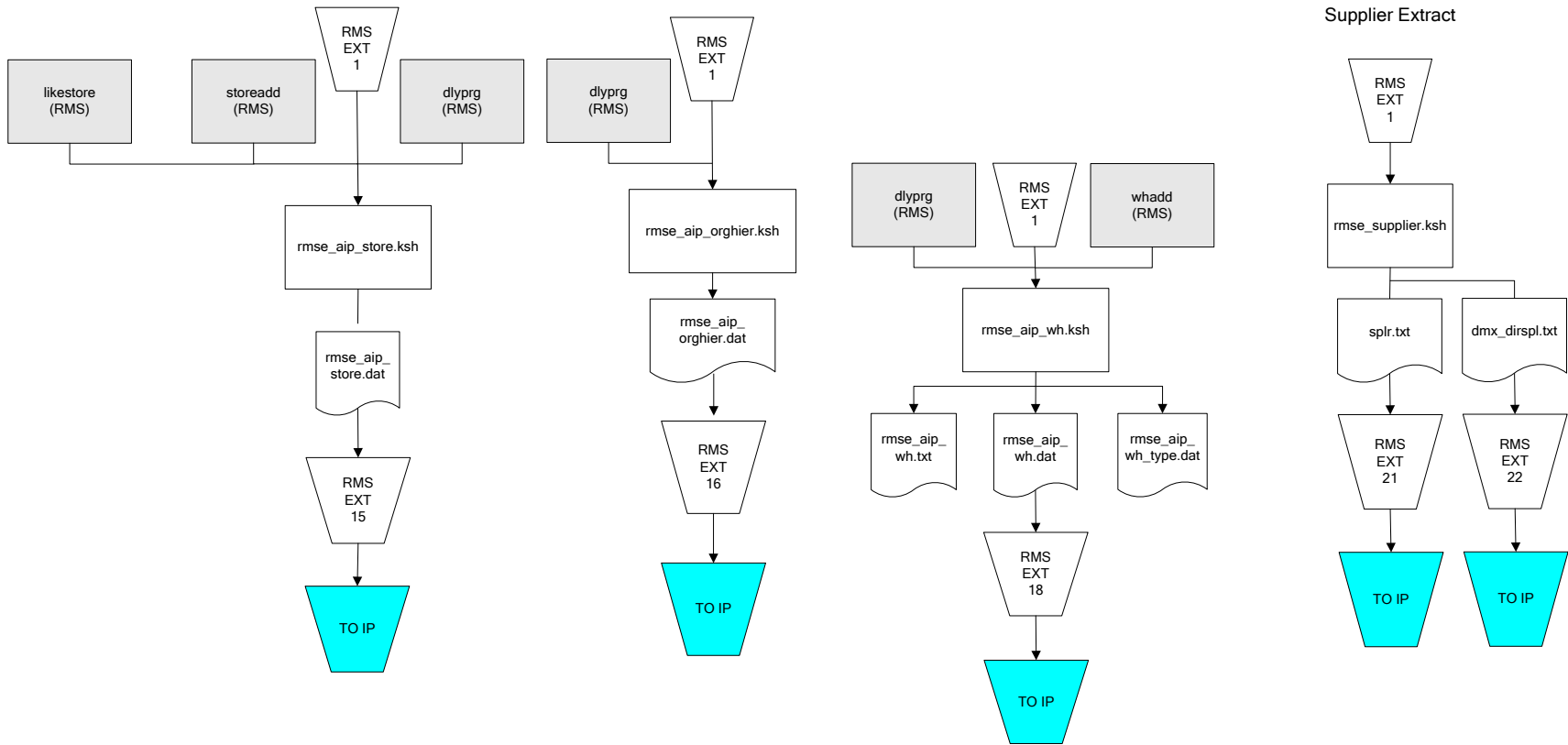


## RMS Foundation Data Extract Diagrams

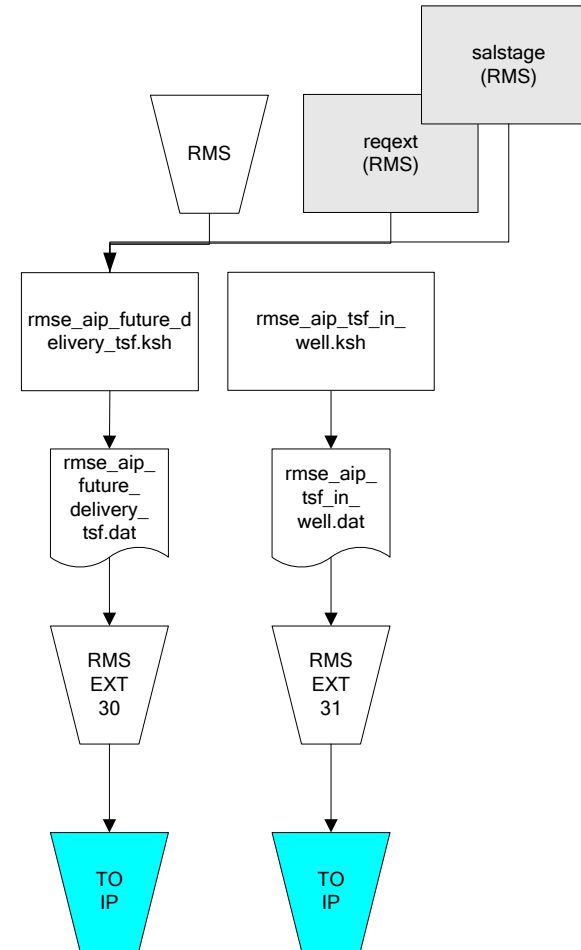
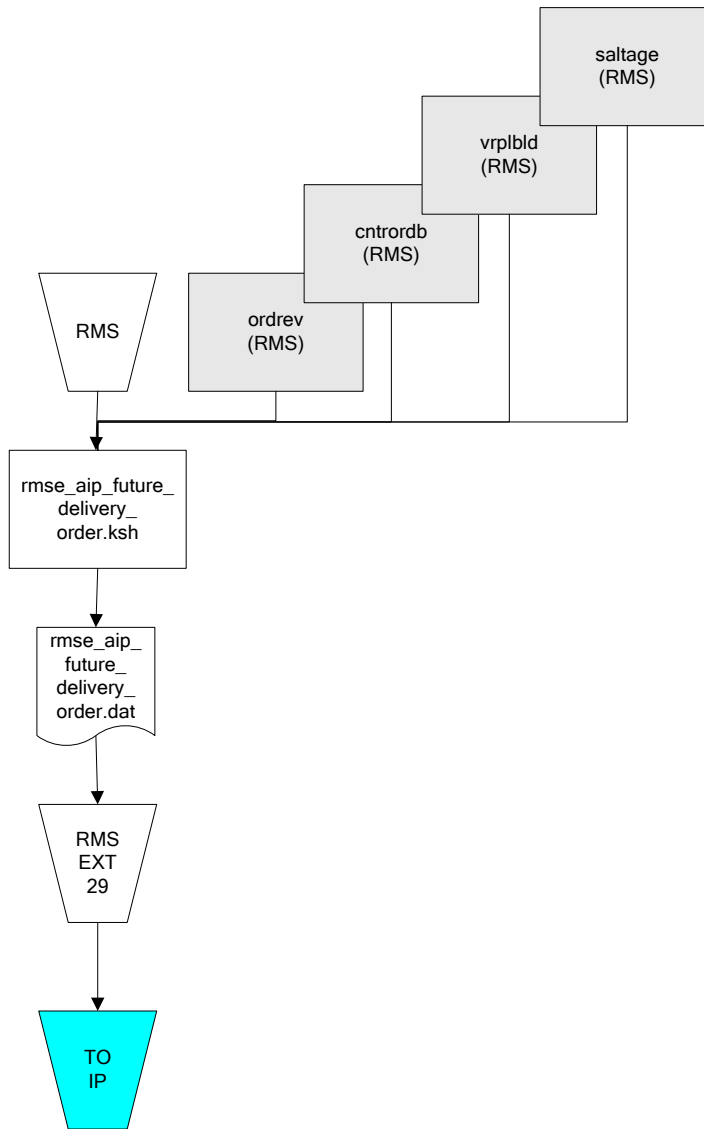


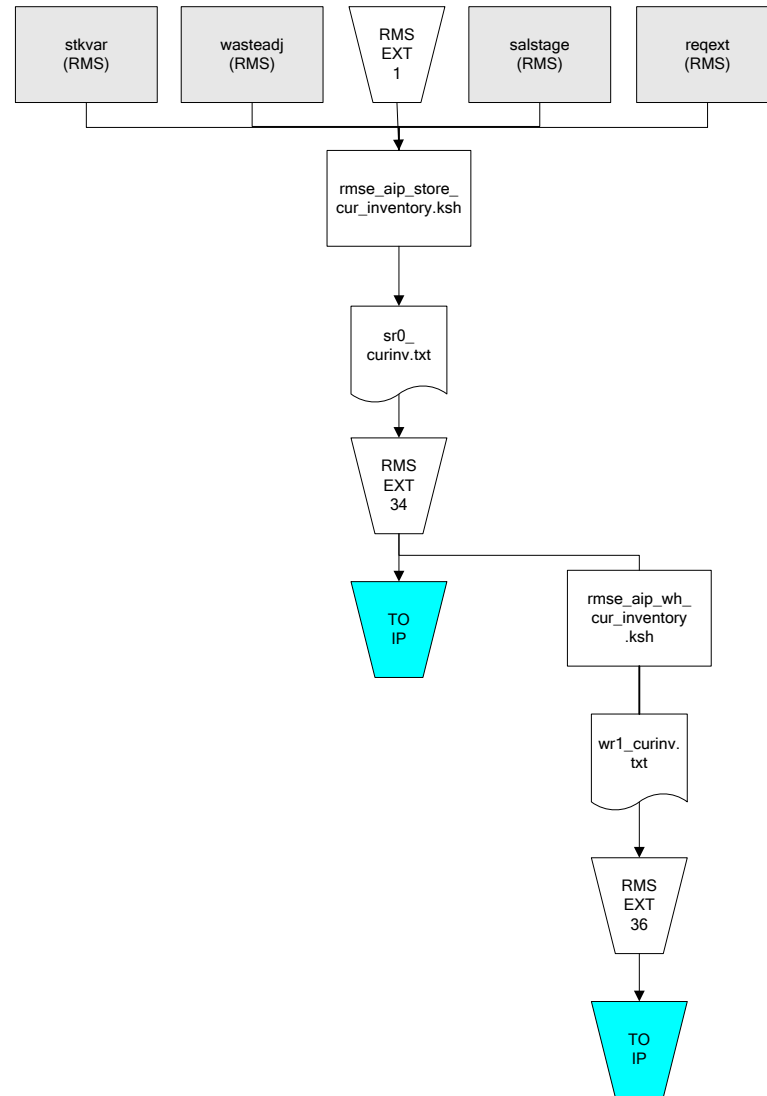
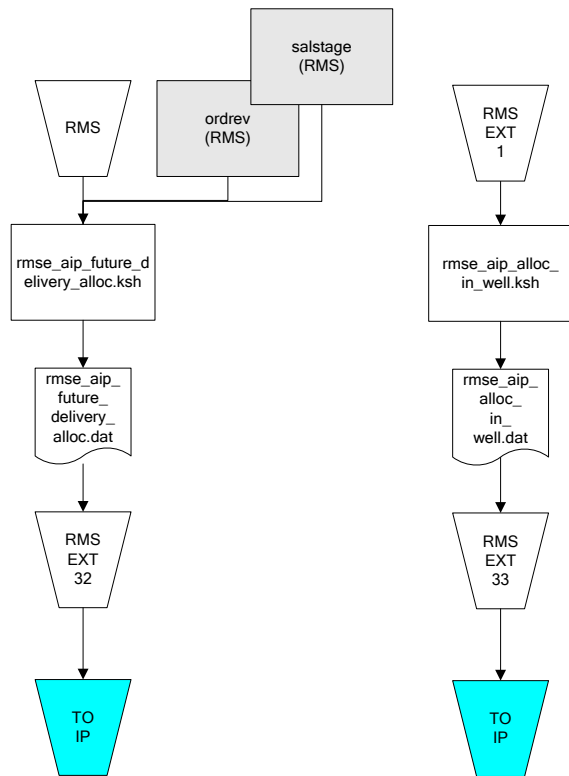
IP = Time-phased inventory planning tool

Organization Hierarchy for IP

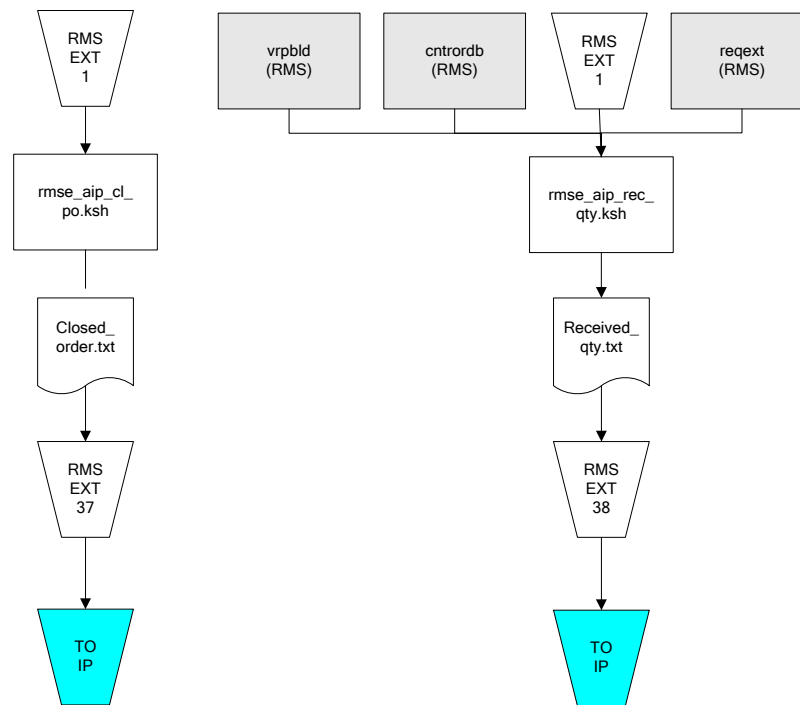


IP = Time-phased inventory planning tool





IP = Time-phased inventory planning tool



IP = Time-phased inventory planning tool