

Oracle® Retail Merchandise Financial Planning
Installation Guide
Release 13.0

April 2008

Copyright © 2008, Oracle. All rights reserved.

Primary Author: Gary O'Hara

The Programs (which include both the software and documentation) contain proprietary information; they are provided under a license agreement containing restrictions on use and disclosure and are also protected by copyright, patent, and other intellectual and industrial property laws. Reverse engineering, disassembly, or decompilation of the Programs, except to the extent required to obtain interoperability with other independently created software or as specified by law, is prohibited.

The information contained in this document is subject to change without notice. If you find any problems in the documentation, please report them to us in writing. This document is not warranted to be error-free. Except as may be expressly permitted in your license agreement for these Programs, no part of these Programs may be reproduced or transmitted in any form or by any means, electronic or mechanical, for any purpose.

If the Programs are delivered to the United States Government or anyone licensing or using the Programs on behalf of the United States Government, the following notice is applicable:

U.S. GOVERNMENT RIGHTS Programs, software, databases, and related documentation and technical data delivered to U.S. Government customers are "commercial computer software" or "commercial technical data" pursuant to the applicable Federal Acquisition Regulation and agency-specific supplemental regulations. As such, use, duplication, disclosure, modification, and adaptation of the Programs, including documentation and technical data, shall be subject to the licensing restrictions set forth in the applicable Oracle license agreement, and, to the extent applicable, the additional rights set forth in FAR 52.227-19, Commercial Computer Software—Restricted Rights (June 1987). Oracle Corporation, 500 Oracle Parkway, Redwood City, CA 94065

The Programs are not intended for use in any nuclear, aviation, mass transit, medical, or other inherently dangerous applications. It shall be the licensee's responsibility to take all appropriate fail-safe, backup, redundancy and other measures to ensure the safe use of such applications if the Programs are used for such purposes, and we disclaim liability for any damages caused by such use of the Programs.

Oracle, JD Edwards, PeopleSoft, and Siebel are registered trademarks of Oracle Corporation and/or its affiliates. Other names may be trademarks of their respective owners.

The Programs may provide links to Web sites and access to content, products, and services from third parties. Oracle is not responsible for the availability of, or any content provided on, third-party Web sites. You bear all risks associated with the use of such content. If you choose to purchase any products or services from a third party, the relationship is directly between you and the third party. Oracle is not responsible for: (a) the quality of third-party products or services; or (b) fulfilling any of the terms of the agreement with the third party, including delivery of products or services and warranty obligations related to purchased products or services. Oracle is not responsible for any loss or damage of any sort that you may incur from dealing with any third party.

Value-Added Reseller (VAR) Language

- (i) the software component known as **ACUMATE** developed and licensed by Lucent Technologies Inc. of Murray Hill, New Jersey, to Oracle and imbedded in the Oracle Retail Predictive Application Server – Enterprise Engine, Oracle Retail Category Management, Oracle Retail Item Planning, Oracle Retail Merchandise Financial Planning, Oracle Retail Advanced Inventory Planning and Oracle Retail Demand Forecasting applications.
- (ii) the **MicroStrategy** Components developed and licensed by MicroStrategy Services Corporation (MicroStrategy) of McLean, Virginia to Oracle and imbedded in the MicroStrategy for Oracle Retail Data Warehouse and MicroStrategy for Oracle Retail Planning & Optimization applications.
- (iii) the **SeeBeyond** component developed and licensed by Sun Microsystems, Inc. (Sun) of Santa Clara, California, to Oracle and imbedded in the Oracle Retail Integration Bus application.
- (iv) the **Wavelink** component developed and licensed by Wavelink Corporation (Wavelink) of Kirkland, Washington, to Oracle and imbedded in Oracle Retail Store Inventory Management.
- (v) the software component known as **Crystal Enterprise Professional and/or Crystal Reports Professional** licensed by Business Objects Software Limited (“Business Objects”) and imbedded in Oracle Retail Store Inventory Management.
- (vi) the software component known as **Access Via**TM licensed by Access Via of Seattle, Washington, and imbedded in Oracle Retail Signs and Oracle Retail Labels and Tags.
- (vii) the software component known as **Adobe Flex**TM licensed by Adobe Systems Incorporated of San Jose, California, and imbedded in Oracle Retail Promotion Planning & Optimization application.
- (viii) the software component known as **Style Report**TM developed and licensed by InetSoft Technology Corp. of Piscataway, New Jersey, to Oracle and imbedded in the Oracle Retail Value Chain Collaboration application.
- (ix) the software component known as **WebLogic**TM developed and licensed by BEA Systems, Inc. of San Jose, California, to Oracle and imbedded in the Oracle Retail Value Chain Collaboration application.
- (x) the software component known as **DataBeacon**TM developed and licensed by Cognos Incorporated of Ottawa, Ontario, Canada, to Oracle and imbedded in the Oracle Retail Value Chain Collaboration application.

Contents

Preface	vii
Audience	vii
Related Documents	vii
Customer Support	vii
Review Patch Documentation	viii
Oracle Retail Documentation on the Oracle Technology Network	viii
Conventions	viii
1 Installing Merchandise Financial Planning	1
Before You Begin	1
Installing Merchandise Financial Planning in UNIX Environments	1
Preparation	1
Installation Package	2
Installation Instructions	2

Preface

Oracle Retail Installation Guides contain the requirements and procedures that are necessary for the retailer to install Oracle Retail products.

Audience

This document provides detailed instructions on how to install a Merchandise Financial Planning (MFPlan) domain using a configuration created via the RPAS Configuration Tools. This document does not describe how to create the actual configuration.

Supplemental installations guides are referenced in this document. The *RPAS Installation Guide* and *RPAS Configuration Tools User Guide* must be obtained prior to beginning the installation process. Read these documents in their entirety before beginning the installation.

This Installation Guide is written for the following audiences:

- Database administrators (DBA)
- System analysts and designers
- Integrators and implementation staff

Related Documents

For more information, see the following documents:

- *Oracle Retail Merchandise Financial Planning Release Notes*
- *Oracle Retail Merchandise Financial Planning Cost User Guide*
- *Oracle Retail Merchandise Financial Planning Retail User Guide*
- *Oracle Retail ChannelPlan Cost User Guide*
- Oracle Retail Predictive Application Server documentation

Customer Support

- <https://metalink.oracle.com>

When contacting Customer Support, please provide:

- Product version and program/module name.
- Functional and technical description of the problem (include business impact).
- Detailed step-by-step instructions to recreate.
- Exact error message received.
- Screen shots of each step you take.

Review Patch Documentation

For a base release (".0" release, such as 13.0), Oracle Retail strongly recommends that you read all patch documentation before you begin installation procedures. Patch documentation can contain critical information related to the base release, based on new information and code changes that have been made since the base release.

Oracle Retail Documentation on the Oracle Technology Network

In addition to being packaged with each product release (on the base or patch level), all Oracle Retail documentation is available on the following Web site:

http://www.oracle.com/technology/documentation/oracle_retail.html

Documentation should be available on this Web site within a month after a product release. Note that documentation is always available with the packaged code on the release date.

Conventions

Navigate: This is a navigate statement. It tells you how to get to the start of the procedure and ends with a screen shot of the starting point and the statement “the Window Name window opens.”

Note: This is a note. It is used to call out information that is important, but not necessarily part of the procedure.

This is a code sample
It is used to display examples of code

A hyperlink appears like this.

Installing Merchandise Financial Planning

Before You Begin

This document provides instructions on installing Oracle Retail Merchandise Financial Planning. It provides detailed instructions on how to install a Merchandise Financial Planning (MFPlan) domain using a configuration created via the RPAS Configuration Tools. This document does not describe how to create the actual configuration.

Supplemental installations guides are referenced in this document. The *RPAS Installation Guide* and *RPAS Configuration Tools User Guide* must be obtained prior to beginning the installation process. Read these documents in their entirety before beginning the installation.

Read through this document completely before performing the installation steps.

Installing Merchandise Financial Planning in UNIX Environments

The installation of the server-side RPAS components on UNIX operating systems is accomplished using Java-based installation programs that are included with the installation package.

The RPAS Installer automates the following:

- Installation of the RPAS server
- Installation of Configuration Tools on the server
- Definition of DomainDaemon port

The MFPlan Installer automates the following:

- Installation of the ChannelPlan mock install configuration
- Installation of the Cost Plan mock install configuration
- Installation of the Retail Plan mock install configuration
- Creation of sample Channel, Cost, and Retail domains

This document assumes that the RPAS Installer process (from the *RPAS Installation Guide*) has been completed prior to using the MFPlan Installer.

Preparation

The RPAS components included in this installation process are available inside the media pack of the solution downloaded from Oracle's E-Delivery web site. There are 2 RPAS archives inside the media pack of the MFPlan solution that is downloaded, one RPAS archive for each supported platform.

If you are installing any RPAS 12.1 or above solution on HP Itanium, you need to set the 64-bit Configuration Tools environment variable for Java as shown below:

```
export RIDE_OPTIONS=-d64
```

Environment Variable Setup Script

Before running the solution installer, run the **retaillogin.ksh** script. The script is located in the root of the base directory where RPAS was installed unless the default was overwritten when specifying directory paths.

Source the script from inside the directory where the script is located:

```
../retaillogin.ksh
```

OR

Include the full path after the period “.”:

```
./<base_directory>/retaillogin.ksh
```

Note: The preceding period and space (“.”) must be included at the beginning of the command when executing the script.

Note: Include this path and script in the .profile in your home directory (~/.profile) if you want to have this environment setup script run during login.

This script will set up environment variables, such as RPAS_HOME and RIDE_HOME, which are required for RPAS to run properly.

Installation Package

Create an installation directory from which the MFPlan installation routine will be run. This directory will be referred to as [MFPlan Installation].

After downloading the package from Oracle E-Delivery and transferring archive to the [MFPlan Installation] directory on the target server via FTP, use binary mode to transfer the archive.

Extract the package to the [MFPlan Installation] directory.

```
cd [MFPlan Installation]
unzip MFPlan-13.0.zip
```

Installation Instructions

1. Begin the Installer by first changing to the root of the [MFPlan Installation] directory and running the below command:

```
./install.sh
```

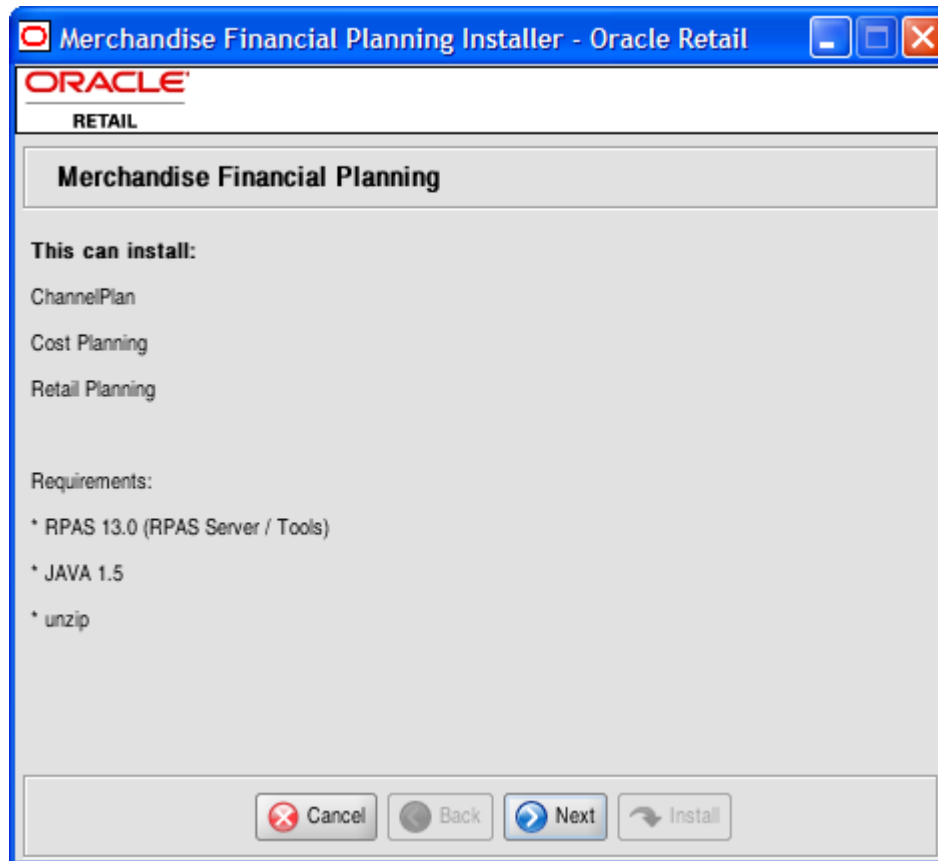
Note: The command must be executed with the preceding period and forward slash.

If this process is being run on an X-Windows emulator (such as Exceed) you will be presented with a graphical user interface to the Installer. If you are running in console mode through a terminal emulator, you will be presented with the text interface to the installer.

In both cases, the requested information will be identical but displayed differently. In the GUI you may be shown a checkbox to signal whether you want a component installed; in text mode you will be prompted for a response of "true" or "false".

Note: In text mode, the default value will appear in square brackets. To use the default value and continue, simply hit the **Enter** key. If you wish to use a different value, enter the new value. When prompted to create a directory respond with "y" or "yes" and hit the **Enter** key.

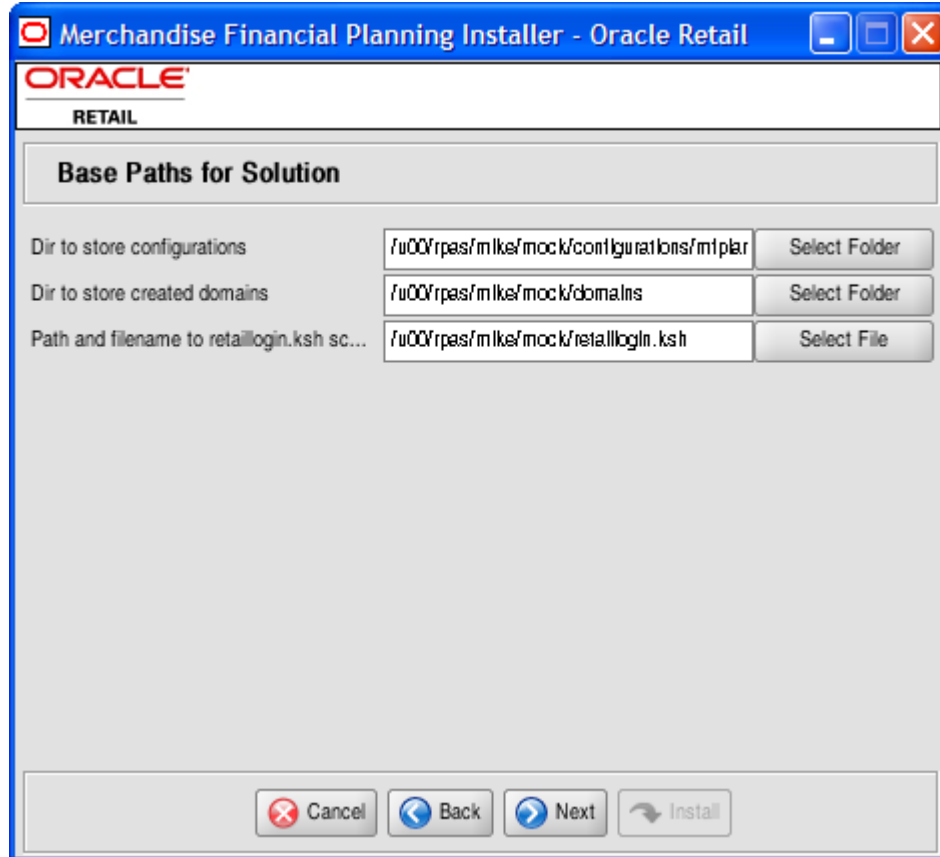
2. The Merchandise Financial Planning Installer screen appears. This screen shows the components that will be installed during installation process and the required components. Click **Next** to continue.



Merchandise Financial Planning Installer Screen

The Base Paths for Solution screen appears.

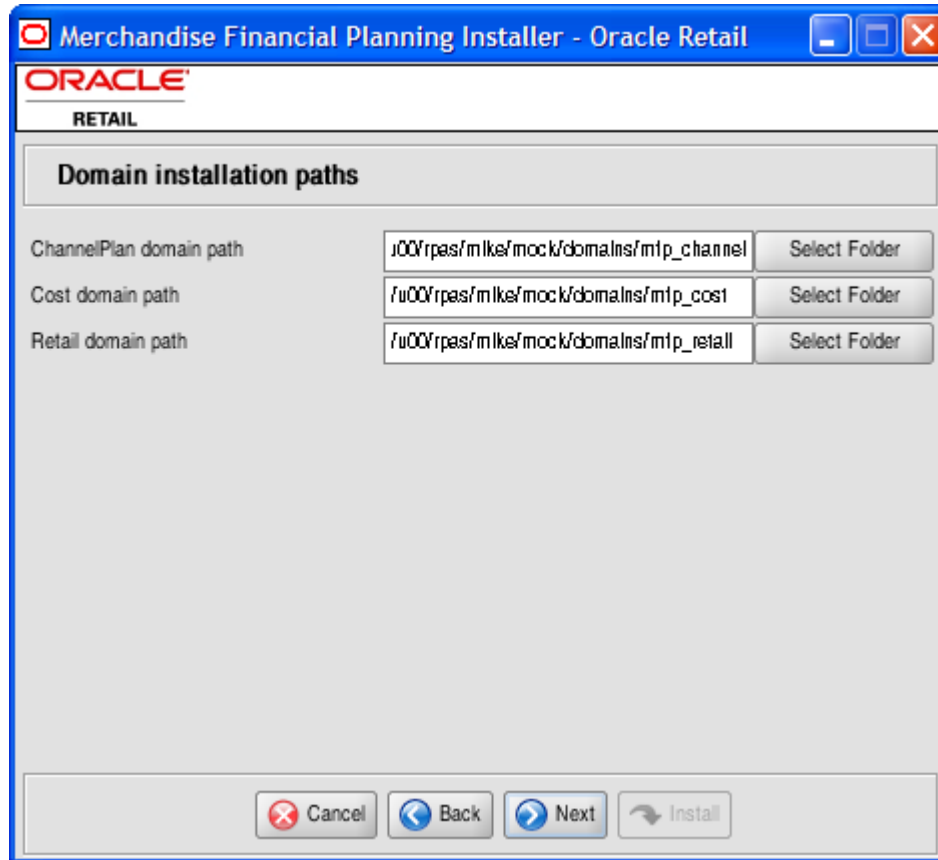
3. Enter the following and click **Next** when ready:
 - Directories to store the configurations
 - Directory to store created domains
 - Path and file name to the retaillogin.ksh script created during RPAS installation



Base Paths for Solution Screen

The Domain Installation Paths screen appears.

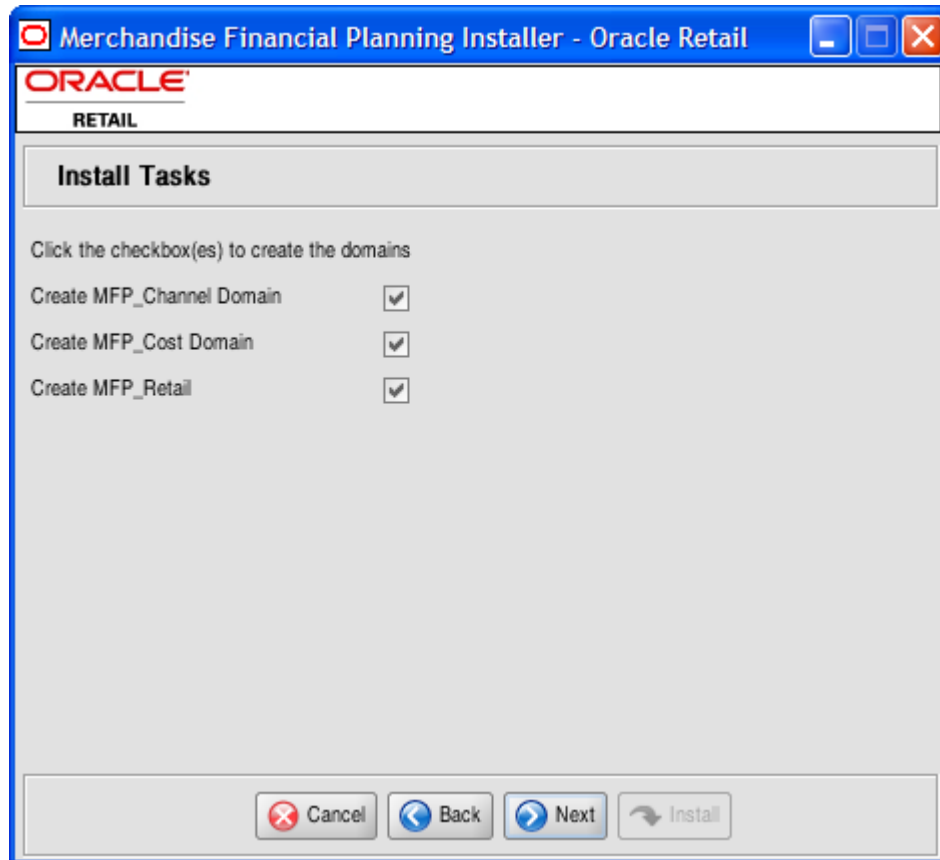
4. Enter the paths to the MFplan domains to be created. Click **Next** to continue.



Domain Installation Paths Screen

The Install Tasks screen appears.

5. Select the appropriate check boxes to create the MFPlan domains. By deselecting any checkboxes, all required components to support any MFPlan domain are installed; however, those domains are not created. Click **Next** to continue.



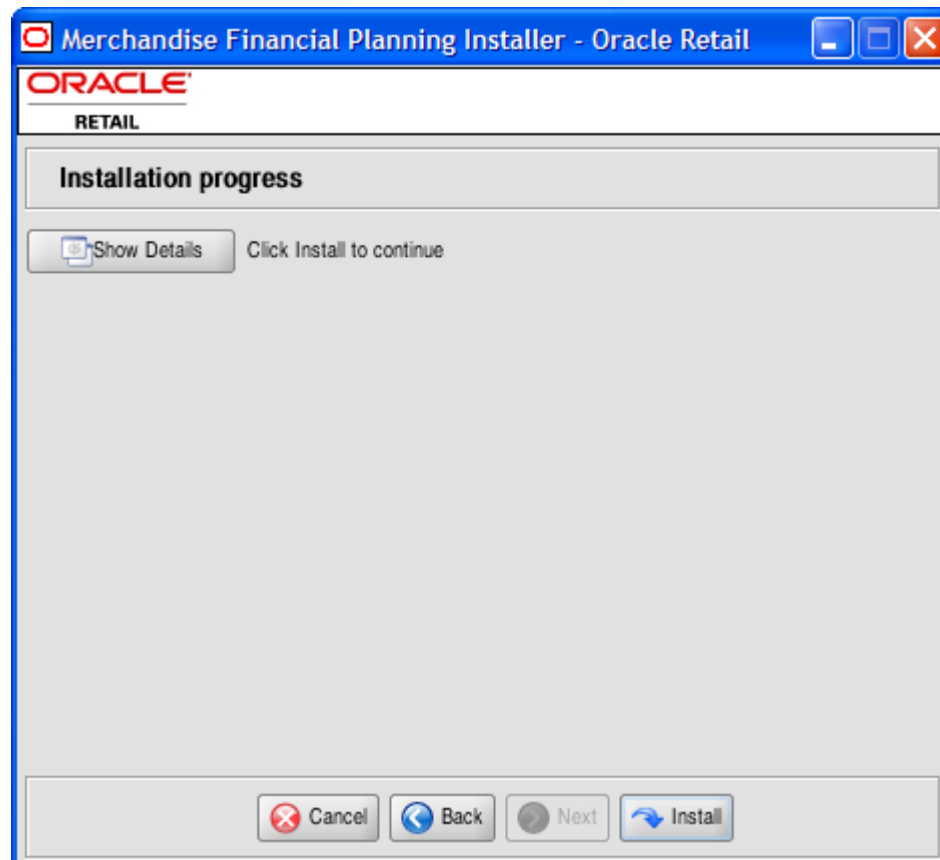
Install Tasks Screen

6. Once you are ready to begin installation, click **Install**.

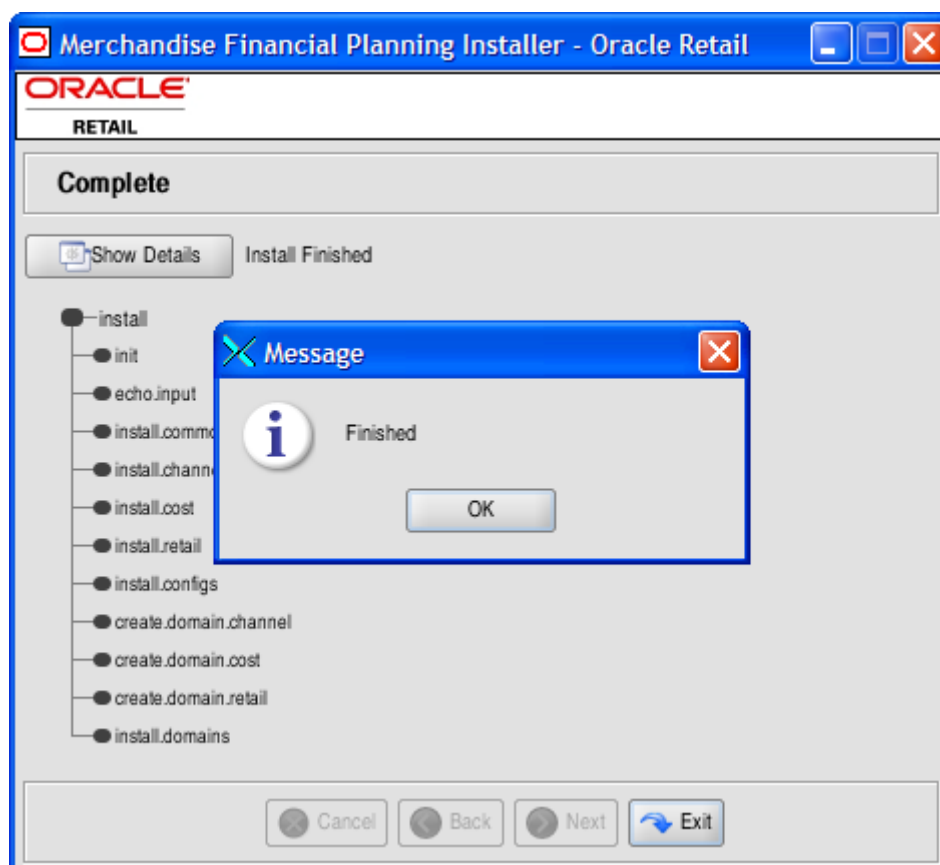
The Installation Progress screen appears. This screen will show the progress of the installation. Select **Show Details** if you wish to view the log output as the installation is completed. If you select not to view the details, you will be shown a graphical representation of the installation steps. As each is completed, the color will change to show you the progress.

You can toggle between detailed mode at any time during or after the installation.

Warning: If you chose to create the ChannelPlan, Cost, and/or Retail domains, installation time might take 30 to 60+ minutes depending on server environment.



7. The system will notify you when the installation process is finished. Click **OK**.
 - If you viewed the installation via the graphical progress, you can now click **Show Details** to view the logs.
 - Once you are finished reviewing the installation, you can click **Exit** to close the installer application.
 - If you wish to view the log again at a later date, a text copy was saved in the directory you initiated the installation from ([MFPlan Installation]). The log file will be named based on the product and a timestamp, followed by the ".log" extension.



Created as part of this process are three "make_domain.<config> files, one located in each [Configurations Install Dir] entered previously. The files are named "make_domain.channel", "make_domain.cost", and "make_domain.retail". These files contain all of the required parameters needed to support the domain installs. If necessary these file may be modified if the default parameters are not desired for your particular environments.

Note: The domain install process also includes post-install data loading scripts specific to these configurations. These scripts may also be modified.

Note: For additional instructions on installing RPAS domains manually, please refer to the *RPAS Installation Guide*.
