

**Oracle® Retail Merchandise Financial Planning
Cost**
Installation Guide
Release 13.0.2

December 2008

Copyright © 2008, Oracle. All rights reserved.

Primary Author: Melody Crowley

The Programs (which include both the software and documentation) contain proprietary information; they are provided under a license agreement containing restrictions on use and disclosure and are also protected by copyright, patent, and other intellectual and industrial property laws. Reverse engineering, disassembly, or decompilation of the Programs, except to the extent required to obtain interoperability with other independently created software or as specified by law, is prohibited.

The information contained in this document is subject to change without notice. If you find any problems in the documentation, please report them to us in writing. This document is not warranted to be error-free. Except as may be expressly permitted in your license agreement for these Programs, no part of these Programs may be reproduced or transmitted in any form or by any means, electronic or mechanical, for any purpose.

If the Programs are delivered to the United States Government or anyone licensing or using the Programs on behalf of the United States Government, the following notice is applicable:

U.S. GOVERNMENT RIGHTS Programs, software, databases, and related documentation and technical data delivered to U.S. Government customers are "commercial computer software" or "commercial technical data" pursuant to the applicable Federal Acquisition Regulation and agency-specific supplemental regulations. As such, use, duplication, disclosure, modification, and adaptation of the Programs, including documentation and technical data, shall be subject to the licensing restrictions set forth in the applicable Oracle license agreement, and, to the extent applicable, the additional rights set forth in FAR 52.227-19, Commercial Computer Software—Restricted Rights (June 1987). Oracle Corporation, 500 Oracle Parkway, Redwood City, CA 94065

The Programs are not intended for use in any nuclear, aviation, mass transit, medical, or other inherently dangerous applications. It shall be the licensee's responsibility to take all appropriate fail-safe, backup, redundancy and other measures to ensure the safe use of such applications if the Programs are used for such purposes, and we disclaim liability for any damages caused by such use of the Programs.

Oracle, JD Edwards, PeopleSoft, and Siebel are registered trademarks of Oracle Corporation and/or its affiliates. Other names may be trademarks of their respective owners.

The Programs may provide links to Web sites and access to content, products, and services from third parties. Oracle is not responsible for the availability of, or any content provided on, third-party Web sites. You bear all risks associated with the use of such content. If you choose to purchase any products or services from a third party, the relationship is directly between you and the third party. Oracle is not responsible for: (a) the quality of third-party products or services; or (b) fulfilling any of the terms of the agreement with the third party, including delivery of products or services and warranty obligations related to purchased products or services. Oracle is not responsible for any loss or damage of any sort that you may incur from dealing with any third party.

Value-Added Reseller (VAR) Language

Oracle Retail VAR Applications

The following restrictions and provisions only apply to the programs referred to in this section and licensed to you. You acknowledge that the programs may contain third party software (VAR applications) licensed to Oracle. Depending upon your product and its version number, the VAR applications may include:

- (i) the software component known as **ACUMATE** developed and licensed by Lucent Technologies Inc. of Murray Hill, New Jersey, to Oracle and imbedded in the Oracle Retail Predictive Application Server – Enterprise Engine, Oracle Retail Category Management, Oracle Retail Item Planning, Oracle Retail Merchandise Financial Planning, Oracle Retail Advanced Inventory Planning and Oracle Retail Demand Forecasting applications.
- (ii) the **MicroStrategy** Components developed and licensed by MicroStrategy Services Corporation (MicroStrategy) of McLean, Virginia to Oracle and imbedded in the MicroStrategy for Oracle Retail Data Warehouse and MicroStrategy for Oracle Retail Planning & Optimization applications.
- (iii) the **SeeBeyond** component developed and licensed by Sun Microsystems, Inc. (Sun) of Santa Clara, California, to Oracle and imbedded in the Oracle Retail Integration Bus application.
- (iv) the **Wavelink** component developed and licensed by Wavelink Corporation (Wavelink) of Kirkland, Washington, to Oracle and imbedded in Oracle Retail Store Inventory Management.
- (v) the software component known as **Crystal Enterprise Professional and/or Crystal Reports Professional** licensed by Business Objects Software Limited (“Business Objects”) and imbedded in Oracle Retail Store Inventory Management.
- (vi) the software component known as **Access Via**TM licensed by Access Via of Seattle, Washington, and imbedded in Oracle Retail Signs and Oracle Retail Labels and Tags.
- (vii) the software component known as **Adobe Flex**TM licensed by Adobe Systems Incorporated of San Jose, California, and imbedded in Oracle Retail Promotion Planning & Optimization application.
- (viii) the software component known as **Style Report**TM developed and licensed by InetSoft Technology Corp. of Piscataway, New Jersey, to Oracle and imbedded in the Oracle Retail Value Chain Collaboration application.
- (ix) the software component known as **DataBeacon**TM developed and licensed by Cognos Incorporated of Ottawa, Ontario, Canada, to Oracle and imbedded in the Oracle Retail Value Chain Collaboration application.

Contents

Preface	vii
Audience	vii
Related Documents	vii
Customer Support	vii
Review Patch Documentation.....	viii
Oracle Retail Documentation on the Oracle Technology Network.....	viii
Conventions	viii
1 Installing Merchandise Financial Planning Cost	1
Before You Begin	1
Hardware and Software Requirements	1
2 Installing Merchandise Financial Planning Cost on UNIX Environments.....	3
Preparation	3
Downloading and Extracting the Merchandise Financial Planning Cost Media Pack	4
Installing Merchandise Financial Planning Cost.....	4

Preface

Oracle Retail Installation Guides contain the requirements and procedures that are necessary for the retailer to install Oracle Retail products.

Audience

This document provides detailed instructions on how to install a Merchandise Financial Planning (MFPlan) domain using a configuration created via the RPAS Configuration Tools. This document does not describe how to create the actual configuration.

Supplemental installations guides are referenced in this document. The *RPAS Installation Guide* and *RPAS Configuration Tools User Guide* must be obtained prior to beginning the installation process. Read these documents in their entirety before beginning the installation.

This Installation Guide is written for the following audiences:

- Database administrators (DBA)
- System analysts and designers
- Integrators and implementation staff

Related Documents

For more information, see the following documents in the Oracle Retail Merchandise Financial Planning Cost Release 13.0.2 documentation set:

- *Oracle Retail Merchandise Financial Planning Release Notes*
- *Oracle Retail Merchandise Financial Planning Retail Installation Guide*
- *Oracle Retail Merchandise Financial Planning Cost User Guide*
- *Oracle Retail Merchandise Financial Planning Retail User Guide*
- *Oracle Retail Merchandise Financial Planning Operations Guide*

For more information on the Fashion Planning Bundle applications, see the following documents:

- Oracle Retail Assortment Planning documentation
- Oracle Retail Item Planning documentation
- Oracle Retail Item Planning Configured for COE documentation
- Oracle Retail Clearance Optimization Engine documentation
- Oracle Retail Size Profile Optimization documentation

Customer Support

- <https://metalink.oracle.com>

When contacting Customer Support, please provide:

- Product version and program/module name.
- Functional and technical description of the problem (include business impact).
- Detailed step-by-step instructions to recreate.
- Exact error message received.
- Screen shots of each step you take.

Review Patch Documentation

If you are installing the application for the first time, you install either a base release (for example, 13.0) or a later patch release (for example, 13.0.2). If you are installing a software version other than the base release, be sure to read the documentation for each patch release (since the base release) before you begin installation. Patch documentation can contain critical information related to the base release and code changes that have been made since the base release.

Oracle Retail Documentation on the Oracle Technology Network

In addition to being packaged with each product release (on the base or patch level), all Oracle Retail documentation is available on the following Web site:

http://www.oracle.com/technology/documentation/oracle_retail.html

Documentation should be available on this Web site within a month after a product release. Note that documentation is always available with the packaged code on the release date.

Conventions

Navigate: This is a navigate statement. It tells you how to get to the start of the procedure and ends with a screen shot of the starting point and the statement “the Window Name window opens.”

Note: This is a note. It is used to call out information that is important, but not necessarily part of the procedure.

This is a code sample
It is used to display examples of code

A hyperlink appears like this.

Installing Merchandise Financial Planning Cost

Before You Begin

This document provides instructions on installing Oracle Retail Merchandise Financial Planning Cost. It provides detailed instructions on how to install a Merchandise Financial Planning Cost (MFPlan) domain using a configuration created via the RPAS Configuration Tools. This document does not describe how to create the actual configuration.

Supplemental installations guides are referenced in this document. The *RPAS Installation Guide* and *RPAS Configuration Tools User Guide* must be obtained prior to beginning the installation process. Read these documents in their entirety before beginning the installation.

Read through this document completely before performing the installation steps.

Hardware and Software Requirements

The following table provides information about the current release.

Release Information	Details Regarding This Release
Code Cut Off Date	December 8, 2008
Supported OS, Server and Compilers	Sun Solaris 9: gcc 4.1.1 Sun Solaris 10: gcc 4.2.3 AIX 5.3 (TL5 or greater): gcc 4.1.1 HP-UX 11.23 (Itanium): aCC 6.15 Oracle Enterprise Linux 4: gcc4.1.1
Supported OS, Client	Windows NT, XP, 2000
Required 3rd Party Software	JRE 1.5 (installed on client and server machines)

Installing Merchandise Financial Planning Cost on UNIX Environments

The installation of the server-side RPAS components on UNIX operating systems is accomplished using Java-based installation programs that are included with the installation package.

The Merchandise Financial Planning Cost Installer automates the following:

- Installation of the Merchandise Financial Planning Cost mock install configuration
- Creation of a sample Merchandise Financial Planning Cost domain

This document assumes that the RPAS Installer process (from the *RPAS Installation Guide*) has been completed prior to using the Merchandise Financial Planning Cost Installer.

Preparation

The RPAS server components required prior to this installation process are available from Oracle's E-Delivery web site (<http://edelivery.oracle.com>).

Environment Variable Setup Script

Before running the solution installer, source your **retaillogin.ksh** script. The script is located in the root of the base directory where RPAS was installed unless the default was overwritten when specifying directory paths.

Source the script from inside the directory where the script is located:

```
../retaillogin.ksh
```

OR

Include the full path after the period ".":

```
./<base_directory>/retaillogin.ksh
```

Note: The preceding period and space (". ") must be included at the beginning of the command when executing the script.

Note: Include this path and script in the .profile in your home directory (~/.profile) if you want to have this environment setup script run during login.

This script will set up environment variables, such as RPAS_HOME and RIDE_HOME, which are required for RPAS to run properly.

Downloading and Extracting the Merchandise Financial Planning Cost Media Pack

The following procedure provides information about extracting the Merchandise Financial Planning Cost Media Pack and its contents.

1. Create a directory to store the Merchandise Financial Planning Cost Media Pack and download the media pack to this location. This directory will be referred to as [SPO Installation].
2. Extract the media pack to this location. Once extracted, two directories appear, CDROM and DOCS.

The CDROM folder contains the following ZIP files:

- MFPCost.zip – This file contains the Merchandise Financial Planning Cost solution.

The DOCS folder contains the Merchandise Financial Planning Cost documentation. Within the DOCS you will find the following structure:

- Installation Guide – This folder contains the *Merchandise Financial Planning Cost Installation Guide*.
- Release Notes – This folder contains the *Merchandise Financial Planning Cost Release Notes*.
- User Guide – This folder contains the *Merchandise Financial Planning Cost User Guide*.

Installing Merchandise Financial Planning Cost

The following procedure provides information about extracting the Merchandise Financial Planning Cost Media Pack and installing Merchandise Financial Planning Cost.

1. Create a directory to store the Merchandise Financial Planning Cost Media Pack on the target server. This directory will be referred to as [MFPlan Installation]. It is the location where the Merchandise Financial Planning Cost installation routine is run.
2. Using FTP in binary mode, transfer the Merchandise Financial Planning Cost Media Pack to the [MFPlan Installation] directory on the target server.
3. Extract the package to the [MFPlan Installation] directory.

```
cd [MFPlan Installation]
unzip MFPlan.zip
```
4. Extract the Merchandise Financial Planning Cost Installer.

```
cd CDROM
unzip MFPCost.zip
```
5. Change directories to the root of the [MFPCost Installation] directory and run the Merchandise Financial Planning Cost Installer:

```
cd mfpcost
./install.sh
```

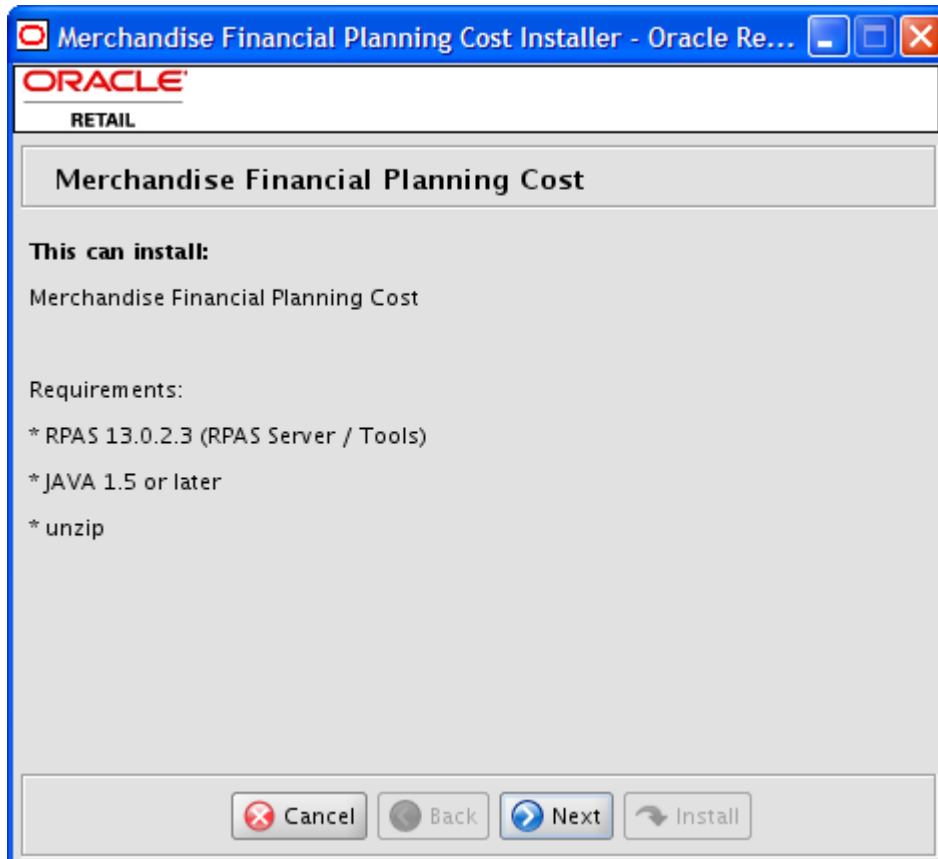
Note: The command must be executed with the preceding period and forward slash (. /).

If this process is being run on an X-Windows emulator (such as Exceed), graphical user interface to the Installer appears. If you are running in console mode through a terminal emulator, the text interface to the Installer appears.

In both cases, the requested information is identical. In the GUI, you may be shown a checkbox to signal whether you want a component installed; in text mode, you will be prompted for a response of "true" or "false".

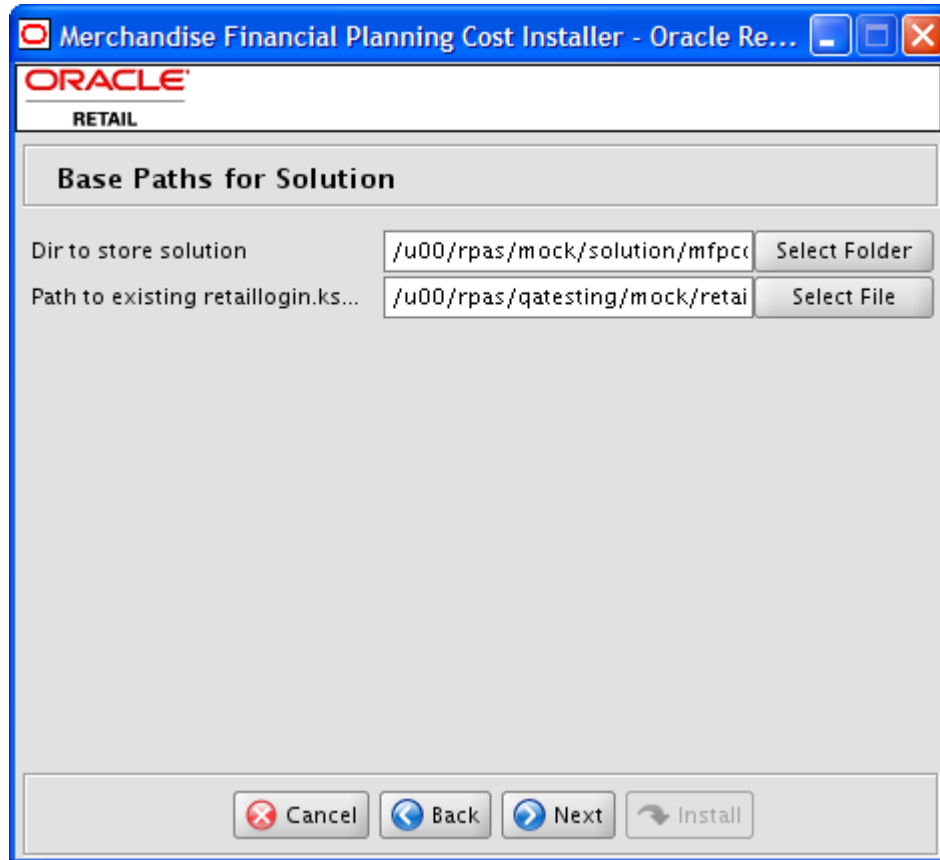
Note: In text mode, the default value will appear in square brackets []. To use the default value and continue, simply hit the Enter key. If you wish to use a different value, enter the new value. When prompted to create a directory, respond with "y" or "yes" and press the Enter key.

The Merchandise Financial Planning Cost Installer screen appears and displays the components that will be installed during installation process and the required components.



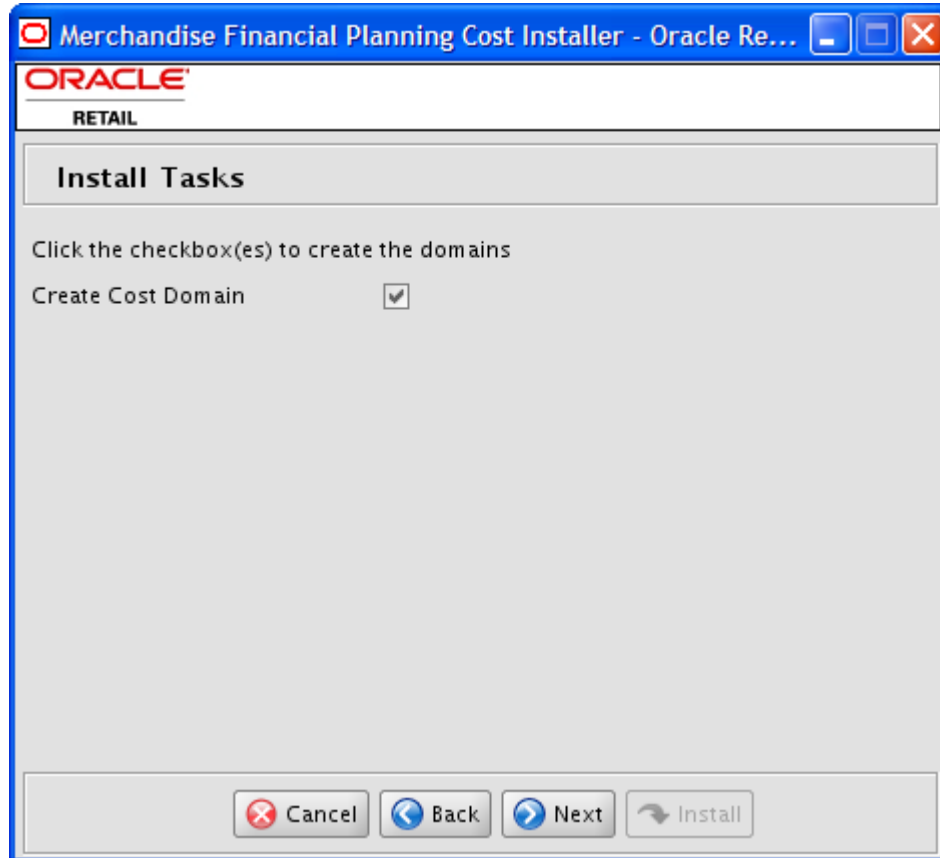
Merchandise Financial Planning Cost Installer Screen

6. Click **Next** to continue. The Base Paths for Solution screen appears.



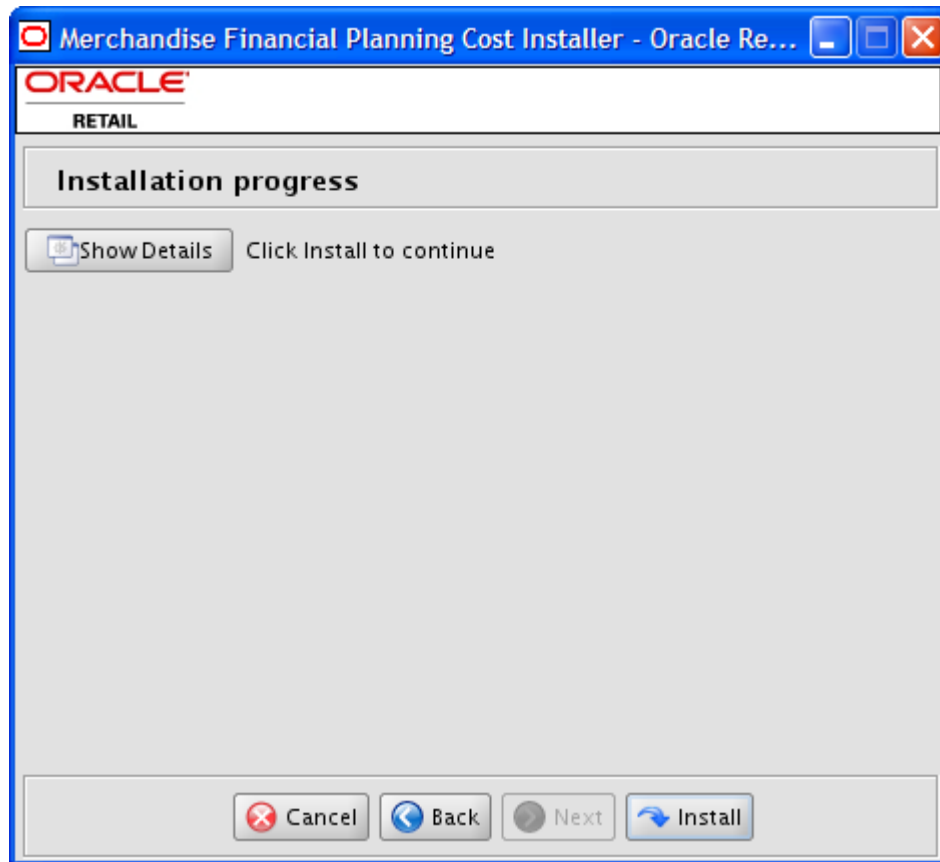
Base Paths for Solution Screen

7. Enter the following and click **Next** to continue:
 - **Dir to store solution** – Enter the directory path where your solution will be stored.
 - **Directory and filename for Retail login script** – Enter the path and file name to the retaillogin.ksh script created during RPAS installation.
8. The Install Tasks screen appears.



Install Tasks Screen

9. Select **Create Cost Domain** option, which is selected by default, to create the Merchandise Financial Planning Cost domain. Deselect this option to have all required components to support a Cost domain installed without creating the domain. Click **Next** to continue. The Installation Progress screen appears.



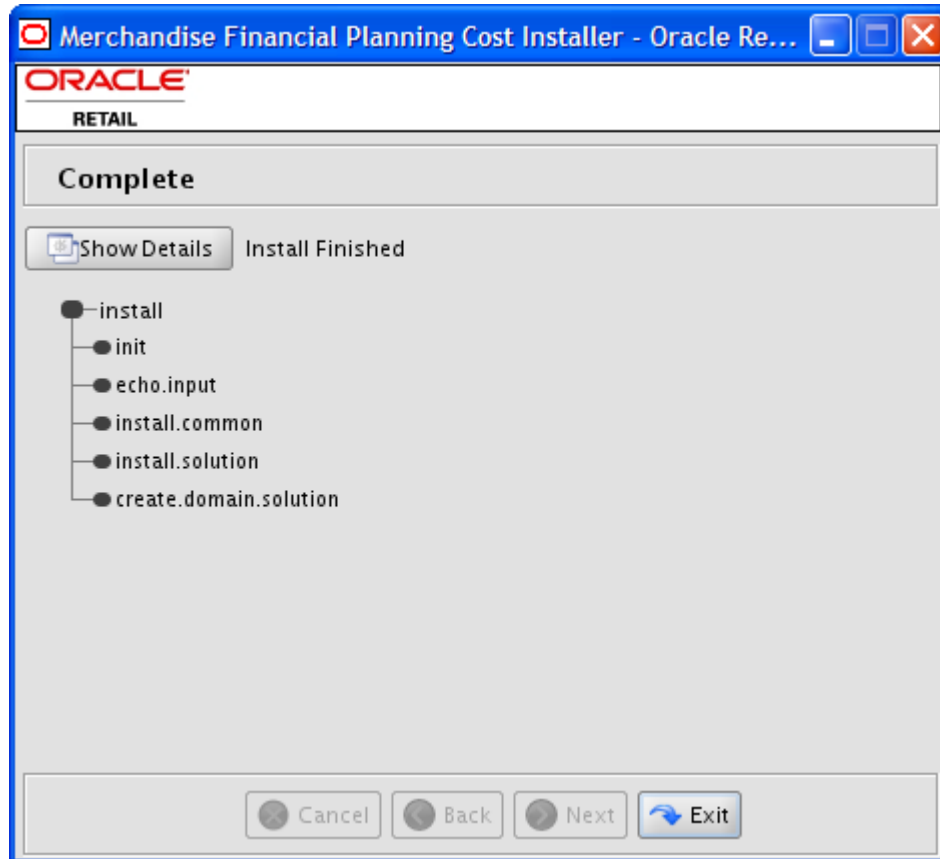
Installation Progress Screen

10. Once you are ready to begin installation, click the **Install** button.

This screen displays the progress of the installation routine. Select **Show Details** to view the log output as the installation is performed. If you do not select to view the details, a graphical representation of the installation steps appears. As each step is completed, the color will change to show you the progress.

You can toggle between detailed mode at any time during or after the installation.

When the installation has finished, the Complete screen appears.



Complete Screen

11. To view the installation details, select the **Show Details** button. The screen displays two tabs, the Output tab and the Error tab. It is recommended that you review these tabs for any issues that may have occurred during the installation process.

If you wish to view the log again at a later date, a text copy was saved in the directory [MFPCost Installation]. The log file will be named based on the product, rpa, platform, and a timestamp, followed by the ".log" extension.

Created as part of this process is the "make_domain.mfpcost" file located in [Solution Install Dir] entered previously. This file contains all of the required parameters needed to support the domain installation. If necessary, this file may be modified if the default parameters are not appropriate for your particular environment.

Note: The domain install process may also include post-installation data loading scripts specific to the Merchandise Financial Planning Cost configuration. These scripts, if present, may also be modified.

Note: For additional information on installing RPAS domains manually, please refer to the *RPAS Installation Guide*.

12. Click **Exit** to close the Installer.

Note: Before starting the DomainDaemon, you must first source the solution's environment.ksh script. This will load all environment variables required by RPAS to interact with your solution's workbooks. To do this, either in shell or with an addition to your .profile, add ". [Solution Install Dir]/bin/environment.ksh".
