

**Oracle® Retail Merchandise Financial Planning
Retail**

Installation Guide

Release 13.2.2.4

E22465-01

April 2011

Copyright © 2011, Oracle and/or its affiliates. All rights reserved.

Primary Author: Barrett Gaines

This software and related documentation are provided under a license agreement containing restrictions on use and disclosure and are protected by intellectual property laws. Except as expressly permitted in your license agreement or allowed by law, you may not use, copy, reproduce, translate, broadcast, modify, license, transmit, distribute, exhibit, perform, publish, or display any part, in any form, or by any means. Reverse engineering, disassembly, or decompilation of this software, unless required by law for interoperability, is prohibited.

The information contained herein is subject to change without notice and is not warranted to be error-free. If you find any errors, please report them to us in writing.

If this software or related documentation is delivered to the U.S. Government or anyone licensing it on behalf of the U.S. Government, the following notice is applicable:

U.S. GOVERNMENT RIGHTS Programs, software, databases, and related documentation and technical data delivered to U.S. Government customers are "commercial computer software" or "commercial technical data" pursuant to the applicable Federal Acquisition Regulation and agency-specific supplemental regulations. As such, the use, duplication, disclosure, modification, and adaptation shall be subject to the restrictions and license terms set forth in the applicable Government contract, and, to the extent applicable by the terms of the Government contract, the additional rights set forth in FAR 52.227-19, Commercial Computer Software License (December 2007). Oracle USA, Inc., 500 Oracle Parkway, Redwood City, CA 94065.

This software is developed for general use in a variety of information management applications. It is not developed or intended for use in any inherently dangerous applications, including applications which may create a risk of personal injury. If you use this software in dangerous applications, then you shall be responsible to take all appropriate fail-safe, backup, redundancy, and other measures to ensure the safe use of this software. Oracle Corporation and its affiliates disclaim any liability for any damages caused by use of this software in dangerous applications.

Oracle is a registered trademark of Oracle Corporation and/or its affiliates. Other names may be trademarks of their respective owners.

This software and documentation may provide access to or information on content, products, and services from third parties. Oracle Corporation and its affiliates are not responsible for and expressly disclaim all warranties of any kind with respect to third-party content, products, and services. Oracle Corporation and its affiliates will not be responsible for any loss, costs, or damages incurred due to your access to or use of third-party content, products, or services.

Licensing Note: This media pack includes a Restricted Use license for Oracle Retail Predictive Application Server (RPAS) - Enterprise Engine to support Oracle® Retail Merchandise Financial Planning only.

Value-Added Reseller (VAR) Language

Oracle Retail VAR Applications

The following restrictions and provisions only apply to the programs referred to in this section and licensed to you. You acknowledge that the programs may contain third party software (VAR applications) licensed to Oracle. Depending upon your product and its version number, the VAR applications may include:

(i) the **MicroStrategy** Components developed and licensed by MicroStrategy Services Corporation (MicroStrategy) of McLean, Virginia to Oracle and imbedded in the MicroStrategy for Oracle Retail Data Warehouse and MicroStrategy for Oracle Retail Planning & Optimization applications.

(ii) the **Wavelink** component developed and licensed by Wavelink Corporation (Wavelink) of Kirkland, Washington, to Oracle and imbedded in Oracle Retail Mobile Store Inventory Management.

(iii) the software component known as **Access Via**[™] licensed by Access Via of Seattle, Washington, and imbedded in Oracle Retail Signs and Oracle Retail Labels and Tags.

(iv) the software component known as **Adobe Flex**[™] licensed by Adobe Systems Incorporated of San Jose, California, and imbedded in Oracle Retail Promotion Planning & Optimization application.

You acknowledge and confirm that Oracle grants you use of only the object code of the VAR Applications. Oracle will not deliver source code to the VAR Applications to you. Notwithstanding any other term or condition of the agreement and this ordering document, you shall not cause or permit alteration of any VAR Applications. For purposes of this section, "alteration" refers to all alterations, translations, upgrades, enhancements, customizations or modifications of all or any portion of the VAR Applications including all reconfigurations, reassembly or reverse assembly, re-engineering or reverse engineering and recompilations or reverse compilations of the VAR Applications or any derivatives of the VAR Applications. You acknowledge that it shall be a breach of the agreement to utilize the relationship, and/or confidential information of the VAR Applications for purposes of competitive discovery.

The VAR Applications contain trade secrets of Oracle and Oracle's licensors and Customer shall not attempt, cause, or permit the alteration, decompilation, reverse engineering, disassembly or other reduction of the VAR Applications to a human perceivable form. Oracle reserves the right to replace, with functional equivalent software, any of the VAR Applications in future releases of the applicable program.

Contents

Send Us Your Comments	vii
Preface	ix
Audience	ix
Documentation Accessibility	ix
Related Documentation	x
Customer Support	xi
Review Patch Documentation	xi
Oracle Retail Documentation on the Oracle Technology Network	xi
Conventions	xi
1 Introduction	
About This Document	1-1
Hardware and Software Requirements	1-2
Supported Oracle Integration Technologies	1-2
Supported Oracle Retail Products	1-3
Road Map for Installing Merchandise Financial Planning Retail	1-3
2 Full Installation: UNIX Environments	
Preparation	2-1
Environment Variable Setup	2-1
For HP-UX Itanium	2-2
Downloading and Extracting the MFP Media Pack	2-2
Installing MFP Retail	2-2
Postinstallation Configuration	2-10
Environment Variables	2-10
Online Help File	2-10
Configuration Files for the RPAS Fusion Client	2-11
Configuring the RPAS Fusion Client for MFP Retail	2-12
3 Patch Installation	
Upgrade Prerequisites	3-1
Upgrade Process 1	3-2
For the PC	3-2

For the Server.....	3-2
RMS Integration Update	3-3
Required Location Hierarchy Conversion Process	3-3

A Appendix: Installation Order

Enterprise Installation Order	A-1
-------------------------------------	-----

Send Us Your Comments

Oracle Retail Merchandise Financial Planning Retail Installation Guide, Release 13.2.2.4

Oracle welcomes customers' comments and suggestions on the quality and usefulness of this document.

Your feedback is important, and helps us to best meet your needs as a user of our products. For example:

- Are the implementation steps correct and complete?
- Did you understand the context of the procedures?
- Did you find any errors in the information?
- Does the structure of the information help you with your tasks?
- Do you need different information or graphics? If so, where, and in what format?
- Are the examples correct? Do you need more examples?

If you find any errors or have any other suggestions for improvement, then please tell us your name, the name of the company who has licensed our products, the title and part number of the documentation and the chapter, section, and page number (if available).

Note: Before sending us your comments, you might like to check that you have the latest version of the document and if any concerns are already addressed. To do this, access the Online Documentation available on the Oracle Technology Network Web site. It contains the most current Documentation Library plus all documents revised or released recently.

Send your comments to us using the electronic mail address: retail-doc_us@oracle.com

Please give your name, address, electronic mail address, and telephone number (optional).

If you need assistance with Oracle software, then please contact your support representative or Oracle Support Services.

If you require training or instruction in using Oracle software, then please contact your Oracle local office and inquire about our Oracle University offerings. A list of Oracle offices is available on our Web site at <http://www.oracle.com>.

Preface

Oracle Retail Installation Guides contain the requirements and procedures that are necessary for the retailer to install Oracle Retail products.

Audience

This Installation Guide is for the following audiences:

- Database administrators
- System analysts and designers
- Integrators and implementation staff

Documentation Accessibility

Our goal is to make Oracle products, services, and supporting documentation accessible to all users, including users that are disabled. To that end, our documentation includes features that make information available to users of assistive technology. This documentation is available in HTML format, and contains markup to facilitate access by the disabled community. Accessibility standards will continue to evolve over time, and Oracle is actively engaged with other market-leading technology vendors to address technical obstacles so that our documentation can be accessible to all of our customers. For more information, visit the Oracle Accessibility Program Web site at <http://www.oracle.com/accessibility/>.

Accessibility of Code Examples in Documentation

Screen readers may not always correctly read the code examples in this document. The conventions for writing code require that closing braces should appear on an otherwise empty line; however, some screen readers may not always read a line of text that consists solely of a bracket or brace.

Accessibility of Links to External Web Sites in Documentation

This documentation may contain links to Web sites of other companies or organizations that Oracle does not own or control. Oracle neither evaluates nor makes any representations regarding the accessibility of these Web sites.

Access to Oracle Support

Oracle customers have access to electronic support through My Oracle Support. For information, visit <http://www.oracle.com/support/contact.html> or visit <http://www.oracle.com/accessibility/support.html> if you are hearing impaired.

Related Documentation

For more information, see the following documents in the Oracle Retail Merchandise Financial Planning Release 13.2.2.4 documentation set:

- *Oracle Retail Merchandise Financial Planning Release Notes*
- *Oracle Retail Merchandise Financial Planning Cost Installation Guide*
- *Oracle Retail Merchandise Financial Planning Operations Guide*

For more information about the Fashion Planning Bundle applications see the following documentation sets:

- Oracle Retail Item Planning documentation
- Oracle Retail Item Planning Configured for COE documentation
- Oracle Retail Clearance Optimization Engine documentation
- Oracle Retail Assortment Planning documentation
- Oracle Retail Size Profile Optimization documentation

For more information about RPAS and the ODI Enabled Integration, see the following documentation sets:

- Oracle Retail ODI Enabled Integration documentation
- Oracle Data Integrator documentation
- Oracle Retail Predictive Application Server documentation

Supplemental Documentation on My Oracle Support

The following supplemental documentation is also available in the My Oracle Support Knowledge Base.

My Oracle Support Note ID 1132783.1 – Oracle Retail Fashion Planning Bundle Reports Documentation

The Oracle Retail Fashion Planning Bundle Reports package includes role-based Oracle Business Intelligence (BI) Enterprise Edition (EE) reports and dashboards that provide an illustrative overview highlighting the Fashion Planning Bundle solutions. These dashboards can be leveraged out-of-the-box or can be used along with other dashboards and reports that may have already been created to support a specific solution or organizational needs. This package includes dashboards for the Assortment Planning, Item Planning, Item Planning Configured for COE, Merchandise Financial Planning Retail Accounting, and Merchandise Financial Planning Cost Accounting applications.

The Oracle Retail Fashion Planning Bundle Reports documentation set includes the following documents that describe how you can install and use the reports and dashboards:

- *Oracle Retail Fashion Planning Bundle Reports Installation Guide* – This guide describes how you can download and install the Fashion Planning Bundle reports. This guide is intended for system administrators and assumes that you are familiar with the Oracle Retail Predictive Application Server (RPAS) and Oracle BI EE.
- *Oracle Retail Fashion Planning Bundle Reports User Guide* – This guide describes the reports and dashboards included for the Oracle Retail Fashion Planning Bundle solutions.

Customer Support

To contact Oracle Customer Support, access My Oracle Support at the following URL:

<https://support.oracle.com>

When contacting Customer Support, please provide the following:

- Product version and program/module name
- Functional and technical description of the problem (include business impact)
- Detailed step-by-step instructions to re-create
- Exact error message received
- Screen shots of each step you take

Review Patch Documentation

When you install the application for the first time, you install either a base release (for example, 13.2) or a later patch release (for example, 13.2.1). If you are installing the base release, additional patch, and bundled hot fix releases, read the documentation for all releases that have occurred since the base release before you begin installation. Documentation for patch and bundled hot fix releases can contain critical information related to the base release, as well as information about code changes since the base release.

Oracle Retail Documentation on the Oracle Technology Network

Documentation is packaged with each Oracle Retail product release. Oracle Retail product documentation is also available on the following Web site:

http://www.oracle.com/technology/documentation/oracle_retail.html

(Data Model documents are not available through Oracle Technology Network. These documents are packaged with released code, or you can obtain them through My Oracle Support.)

Documentation should be available on this Web site within a month after a product release.

Conventions

The following text conventions are used in this document:

Convention	Meaning
boldface	Boldface type indicates graphical user interface elements associated with an action, or terms defined in text or the glossary.
<i>italic</i>	Italic type indicates book titles, emphasis, or placeholder variables for which you supply particular values.
monospace	Monospace type indicates commands within a paragraph, URLs, code in examples, text that appears on the screen, or text that you enter.

Introduction

This document provides instructions on installing Oracle Retail Merchandise Financial Planning Retail. It provides detailed instructions on how to install a Merchandise Financial Planning Retail (MFPlan) domain using a configuration created with the RPAS Configuration Tools. This document does not describe how to create the actual configuration.

Supplemental installation guides are referenced in this document. The *RPAS Installation Guide* and *RPAS Configuration Tools User Guide* must be obtained prior to beginning the installation process. Read these documents in their entirety before beginning the installation.

About This Document

This document contains information for full and patch installations:

- [Chapter 2, "Full Installation: UNIX Environments"](#). Refer to this section if you are performing a full installation.
- [Chapter 3, "Patch Installation"](#). Refer to this section if you are performing a patch installation.

Please read this entire guide before beginning the installation process to ensure you understand the installation process and have all the necessary documentation, hardware, and software available.

Hardware and Software Requirements

The following table provides information about the current release.

Table 1–1 Hardware and Software Requirements

Requirement	Details
Supported RPAS Version	13.2.2.4
Supported OS, Server and Compilers	<ul style="list-style-type: none"> ■ Oracle Solaris 10 (SPARC): GCC 4.2.3 (32 bit) ■ AIX 5.3 (POWER) - TL12 SP1: GCC 4.1.1 (32 bit) ■ AIX 6.1 (POWER) -TL4: GCC 4.3.3 (32 bit) ■ HP-UX Itanium 11.31, Sept. 2010 Quality Pack: ACC 6.20 (64 bit) ■ Oracle Linux 5, Update 3 (5.3): GCC 4.1.2 (64 bit) ■ Red Hat Enterprise Linux 5.3: GCC 4.1.2 (64 bit) <p>Notes:</p> <p>After the 13.2.2.4 release, the following components will no longer be supported:</p> <ul style="list-style-type: none"> ■ Linux 5.3. Linux 5.5 is in development as a replacement. ■ 32 bit compilation on Solaris 10, AIX 5.3, and AIX 6.1 platforms. All custom extensions must be recompiled in the 64 bit mode on these platforms. Customers must also migrate to 64 bit Java on these platforms. ■ GCC compiler on Solaris 10. The Oracle Solaris Studio 12.2 compiler is in development as a replacement for the GCC compiler. Customers on Solaris 10 who have custom extensions must recompile their extensions using this compiler.
Supported OS, Client	<ul style="list-style-type: none"> ■ Microsoft Windows XP ■ Microsoft Windows Vista
Required 3rd Party Software	<ul style="list-style-type: none"> ■ Oracle Java Runtime Environment (JRE) 1.6 ■ Oracle Java Runtime Environment (JRE) 1.5 - For AIX, the JRE version must be the 32-bit version of Java 1.5 SR1 or higher. <p>Notes:</p> <ul style="list-style-type: none"> ■ After the 13.2.2.4 release, JRE 1.5 will no longer be supported. Only JRE 1.6 will remain supported. ■ When installing Java, avoid enabling AutoUpdate because it may update the Java version without prompting. ■ If using MFP Retail on the RPAS Fusion Client and if the Fusion Client is installed on a WebLogic server that resides on the same system as the RPAS server, you must use Java 1.6.

Supported Oracle Integration Technologies

Oracle Data Integrator 10.1.3.5

Supported Oracle Retail Products

MFP is part of the Oracle Retail Fashion Planning Bundle. The Fashion Planning Bundle is the integration of Item Planning (IP), Clearance Optimization Engine (COE), Assortment Planning (AP), Merchandise Financial Planning (MFP), and Size Profile Optimization (SPO) as a full-suite planning solution for fashion retailers.

The following Oracle Retail products are supported:

Table 1–2 Supported Oracle Retail Products

Product	Version
Oracle Retail Assortment Planning (AP)	13.2.2.4
Oracle Retail Item Planning (IP)	13.2.2.4
Oracle Retail Item Planning Configured for COE (IP COE)	13.2.2.4
Oracle Retail Merchandising System (RMS)	13.2
Oracle Retail Analytics	13.2

Road Map for Installing Merchandise Financial Planning Retail

This guide explains how you can install and set up the MFP Retail application. In order to install MFP Retail for production, you must perform the following tasks in a sequence:

Task	Description
<i>Pre-installation Tasks</i>	
1.	Install and set up the RPAS Infrastructure. For more information, refer to the <i>Oracle Retail Predictive Application Server Installation Guide</i> .
2.	Install and set up the RPAS Client. RPAS Release 13.2.2.4 includes the RPAS Classic Client and RPAS Fusion Client. For more information, refer to the <i>Oracle Retail Predictive Application Server Installation Guide</i> .
<i>Installation Task</i>	
3.	Access the MFP Retail installation software and install the application. For more information, see Chapter 2, "Full Installation: UNIX Environments" .

Note: The MFP Retail installation software enables you to install the taskflow and online help files for the RPAS Fusion Client. In order to install the taskflow files, the RPAS Fusion Client must already be installed.

Full Installation: UNIX Environments

The installation of the server-side RPAS components on UNIX operating systems is accomplished using Java-based installation programs that are included with the installation package.

The Merchandise Financial Planning Retail Installer automates the following:

- Installation of the MFP Retail mock install configuration.
- Installation of the Merchandise Financial Planning configuration for the RPAS Fusion Client. For more information on installing the RPAS Fusion Client, refer to the *Oracle Retail Predictive Application Server Installation Guide*.
- Creation of a sample Merchandise Financial Planning Retail domain.

This document assumes that the RPAS Installer process (from the *Oracle Retail Predictive Application Server Installation Guide*) has been completed prior to using the Merchandise Financial Planning Retail Installer.

Preparation

The RPAS server components required prior to this installation process are available from Oracle's E-Delivery web site, <http://edelivery.oracle.com>, and My Oracle Support, <https://support.oracle.com>.

Environment Variable Setup

Before running the solution installer, source the `retaillogin.ksh` script. The script is located in the root of the base directory where RPAS was installed unless the default was overwritten when specifying directory paths.

Source the script from inside the directory where the script is located:

```
. ./retaillogin.ksh
```

Or, include the full path after the period ".":

```
. /<base_directory>/retaillogin.ksh
```

Notes:

- The preceding period and space (". ") must be included at the beginning of the command when executing the script.
 - Include this path and script in the `.profile` in your home directory (`~/profile`) if you want to have this environment setup script run during login.
-
-

This script sets up environment variables, such as `RPAS_HOME` and `RIDE_HOME`, which are required for RPAS to run properly.

For HP-UX Itanium

If you are installing any RPAS solution on HP-UX Itanium, you need to set the 64-bit Configuration Tools environment variable for Java as shown below:

```
export RIDE_OPTIONS=-d64
```

Downloading and Extracting the MFP Media Pack

The following procedure provides information about extracting the Merchandise Financial Planning media pack and its contents.

1. Create a directory to store the Merchandise Financial Planning media pack and download the media pack to this location. This directory is referred to in this guide as [MFP Installation].
2. Download and extract the media pack to this location. Once extracted, two directories appear, CDROM and DOCS.

The CDROM folder contains the following ZIP files:

- `mfpcost.zip` - This file contains the Merchandise Financial Planning Cost solution.
- `mfpetail.zip` - This file contains the Merchandise Financial Planning Retail solution.

The DOCS folder contains the Merchandise Financial Planning documentation.

Installing MFP Retail

Perform the following steps to install MFP Retail.

1. Extract the MFP Retail Installer from the [MFP Installation] directory.

```
cd CDROM
unzip mfpetail.zip
```

2. From the [MFP Installation]/CDROM directory, run the following commands to run the MFP Retail installer:

```
cd mfpetail
./install.sh
```

Note: The command must be executed with the preceding period and forward slash (`./`).

If this process is being run on an X-Windows emulator (such as Exceed), graphical user interface to the Installer appears. If you are running in console mode through a terminal emulator, the text interface to the Installer appears.

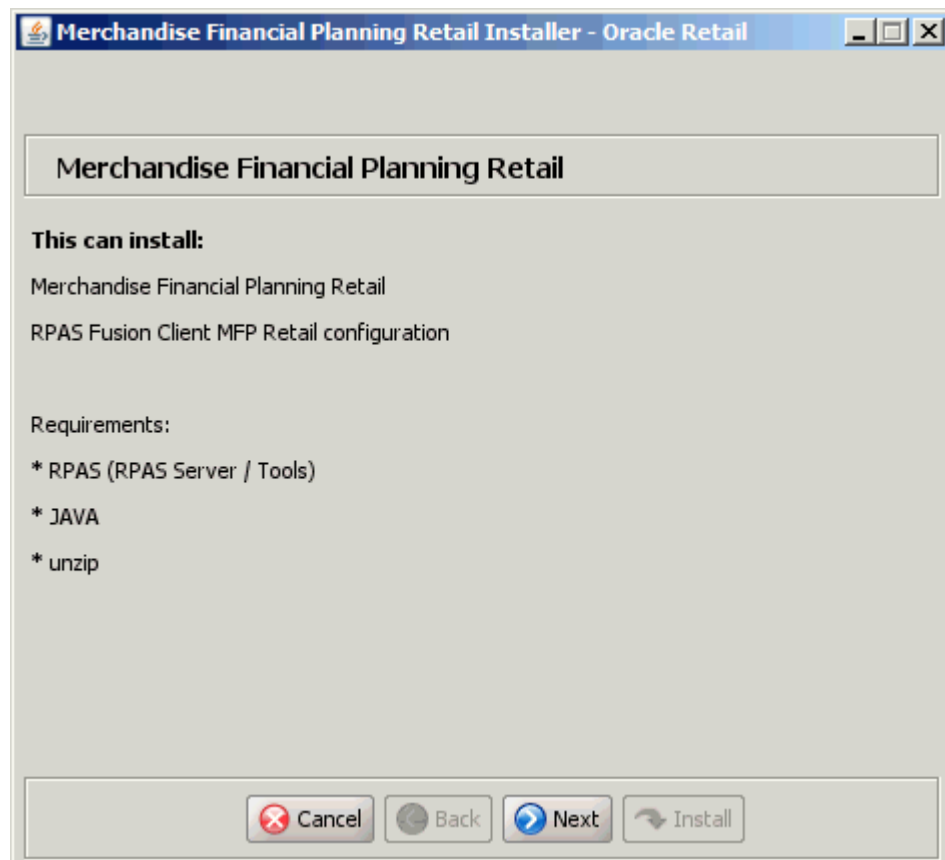
In both cases, the requested information is identical. In the GUI, you may be shown a check box to signal whether you want a component installed; in text mode, you are prompted for a response of **true** or **false**.

Note: In text mode, the default value appears in square brackets []. To use the default value and continue, press **Enter**. If you want to use a different value, enter the new value. When prompted to create a directory, respond with **y** or **yes** and press **Enter**.

3. The Merchandise Financial Planning Retail Installer screen appears and displays the components that are installed during installation process and the required components.

Click **Next** to continue.

Figure 2–1 Merchandise Financial Planning Retail Installer Screen



4. The Choose Components to Install screen appears.

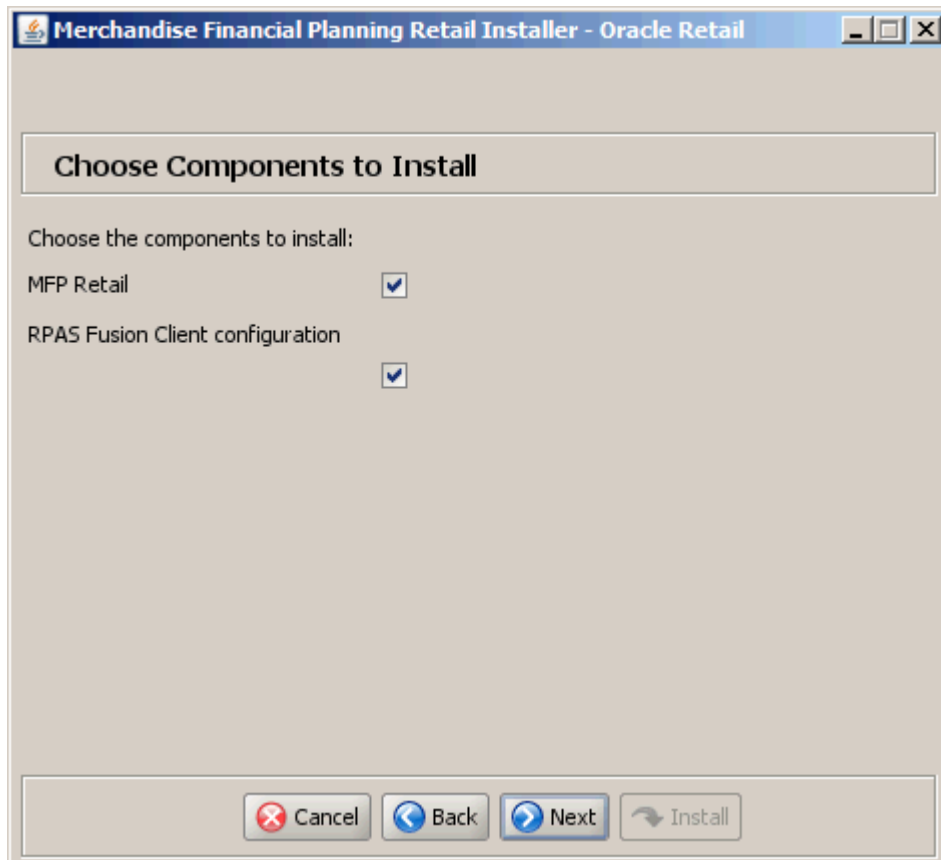
Select one or both of the following options:

- **MFP Retail** – Select this option to install the MFP Retail server with the domain.
- **RPAS Fusion Client configuration** – Select this option to install the RPAS Fusion Client configuration for MFP Retail. For more information on the configuration files included for the RPAS Fusion Client, see [Configuration Files for the RPAS Fusion Client](#).

Note: If you do not want to install the RPAS Fusion Client configuration, clear this check box and skip steps 7 and 8.

Click **Next** to continue.

Figure 2–2 Choose Components to Install Screen



6. The Install Tasks screen appears.
 - If you want to create the MFP Retail domain, select the **Create Retail Domain** option, which is selected by default.

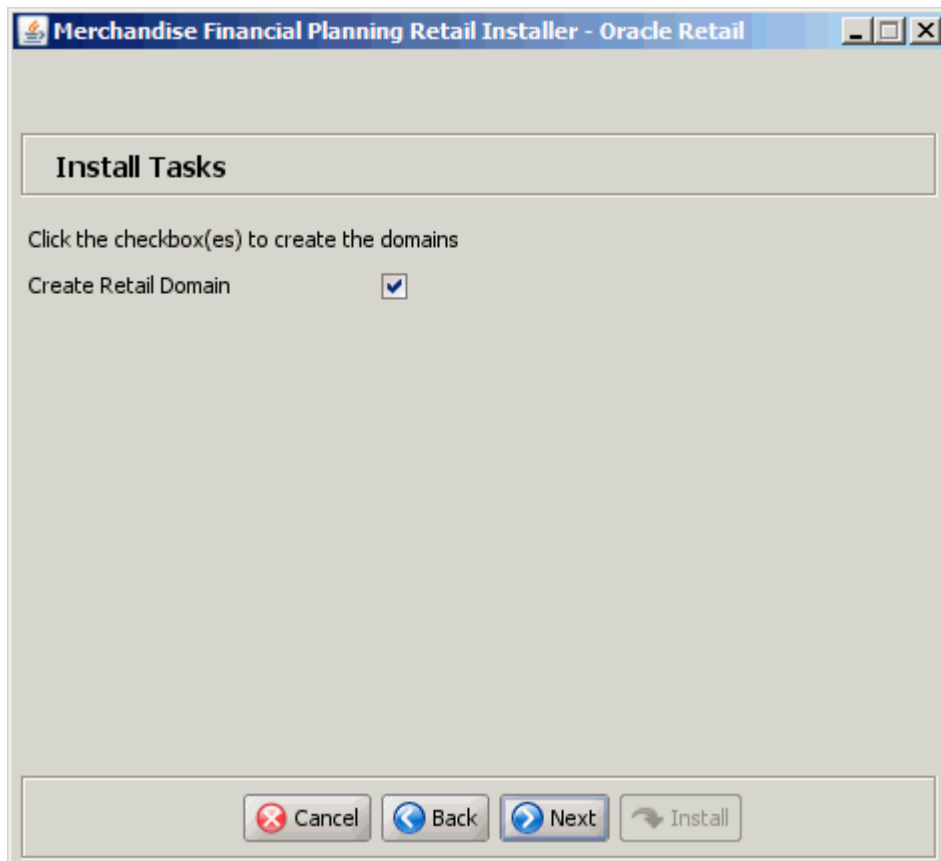
Note: Domain builds use the environment specified in the retaillogin.ksh environment setup script. If you change any environment details, edit the retaillogin.ksh script and any subsequent scripts called by retaillogin.ksh.

For more information about the retaillogin.ksh script, see the [Environment Variable Setup](#) section.

- If you want to install all required components to support the MFP Retail domain, but not create the actual domain, clear the check box.

Click **Next** to continue.

Figure 2–4 *Install Tasks Screen*



7. The Fusion Location Information screen appears.
 - Enter the number of servers running the RPAS Fusion Client where you want to install the MFP Retail configuration. If the RPAS Fusion Client is running on a single server, enter 1. If you have a clustered installation, you can enter up to four servers.
 - Enter the host name and port number of the RPAS server.

Click **Next** to continue.

Note: The Fusion Location Information screens appear when you select the RPAS Fusion Client configuration check box on the [Choose Components to Install Screen](#) screen.

If you are not installing the RPAS Fusion Client configuration, proceed to step 9.

Figure 2–5 Fusion Location Information Screen

The screenshot shows a window titled "Merchandise Financial Planning Retail Installer - Oracle Retail". The main content area is titled "Fusion Location Information". It contains three input fields with labels:

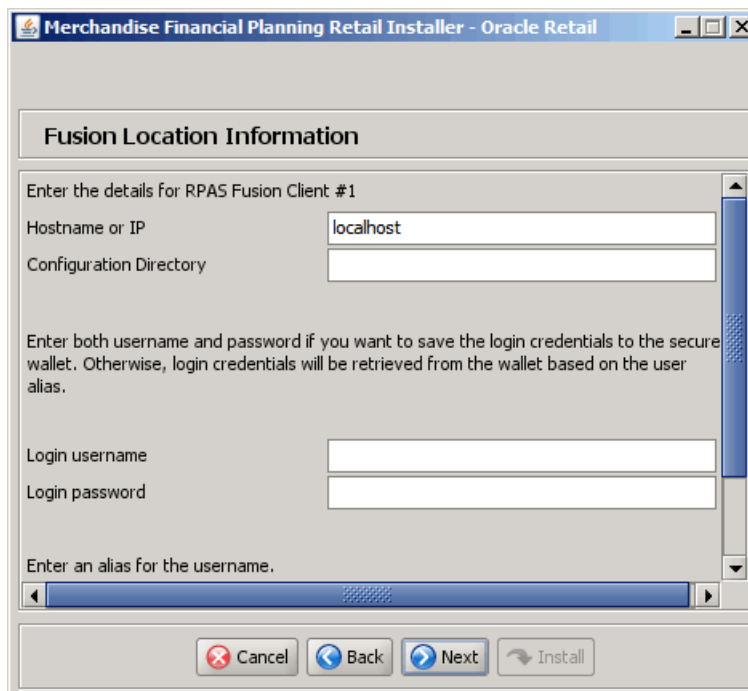
- "Enter the number of RPAS Fusion Client servers to install these configurations on: (1-4)" with the value "1" entered.
- "Enter the RPAS server hostname:" with the value "localhost" entered.
- "Enter the RPAS server port:" with the value "55555" entered.

At the bottom of the window, there are four buttons: "Cancel", "Back", "Next", and "Install".

8. Based on the number of servers you entered, the Fusion Location Information screen appears with the following set of fields for each server configuration:
 - **Hostname or IP** – enter the host name or IP address of the server where the RPAS Fusion Client is installed.
 - **Configuration Directory** – enter the location of the config directory available at the location where the RPAS Fusion Client is installed.
 - **Login username** – enter the user name to log on to the server where the RPAS Fusion Client is installed.
 - **Login password** – enter the password associated with the user name.
 - **Login username alias** – specify an alias name for the administrative user. Specifying an alias name for the administrative user enhances the security for the application. When left blank, the alias name defaults to the administrative user name.

Click **Next** to continue.

Figure 2–6 Fusion Location Information Screen



The screenshot shows a window titled "Merchandise Financial Planning Retail Installer - Oracle Retail". The main area is titled "Fusion Location Information". Below this, there is a section "Enter the details for RPAS Fusion Client #1". It contains four input fields: "Hostname or IP" (with "localhost" entered), "Configuration Directory" (empty), "Login username" (empty), and "Login password" (empty). Below these fields is a text box for "Enter an alias for the username." (empty). A scroll bar is visible on the right side of the input fields. At the bottom of the window, there are four buttons: "Cancel", "Back", "Next", and "Install".

Note: As part of the Oracle Software Security Assurance, sensitive information such as user credentials for the RPAS Fusion Client are encrypted and stored in a secure location in the application installation directory. This location is called the Oracle Wallet.

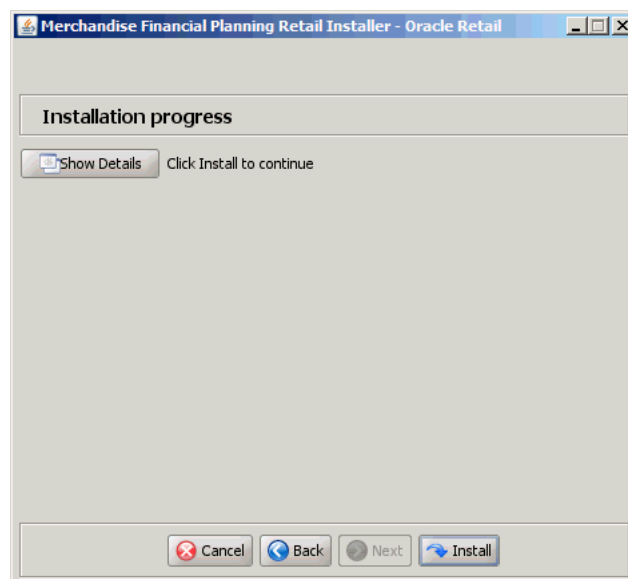
When the installation starts, the administrative user credentials will be retrieved from the Oracle Wallet based on the alias name specified in this screen.

9. The Installation Progress screen appears. To start the installation, click **Install**.

This screen also displays the progress of the installation routine. Select **Show Details** to view the log output as the installation is performed. If you do not select to view the details, a graphical representation of the installation steps appears. As each step is completed, the color changes to show you the progress.

You can toggle between detailed mode at any time during or after the installation.

Figure 2–7 Installation Progress Screen



10. When the installation has finished, the **Finished** message appears. Click **OK**.
11. To view the installation details, select the **Show Details** button. The screen displays two tabs, the Output tab and the Error tab. It is recommended that you review these tabs for any issues that may have occurred during the installation process.

If you want to view the log again at a later date, a text copy is saved in the directory [MFP Installation]. The log file is named based on the product and timestamp, followed by the .log extension.

Created as part of this process is the `make_domain.mfpretail` file located in [Solution Install Dir] entered previously. This file contains the required parameters needed to support the domain installation. If necessary, this file may be modified if the default parameters are not appropriate for your particular environment.

Notes:

- The domain install process may also include postinstallation data loading scripts specific to the Merchandise Financial Planning Retail configuration. These scripts, if present, may also be modified.
 - For additional information on installing RPAS domains manually, see to the *RPAS Installation Guide*.
-
-

12. Click **Exit** to close the Installer.

Postinstallation Configuration

Before starting the DomainDaemon, you must first set the following environment variables and online help files.

Environment Variables

Set your MFP_HOME environment variable and source the solution's environment.ksh script. This loads environment variables required by RPAS to interact with your solution's workbooks.

To do this, either in shell or with additions to your .profile, add:

```
export MFP_HOME=[Solution Install Dir]
. [Solution Install Dir]/bin/environment.ksh
```

Online Help File

If you have re-installed Merchandise Financial Planning, you must edit a help file to use the MFP online help in the RPAS Fusion Client.

Manually edit the rgbu_planning_home/Help/ohwconfig.xml file by removing the following duplicate line:

```
<helpSet xmlns="" id="<shortProductName>"
location="<shortProductName>/<shortProductName>-help.hs" />
```

Caution: If this duplicate line is not removed, a "500 Page Not Found" error occurs when attempting to access the online help in the RPAS Fusion Client.

Configuration Files for the RPAS Fusion Client

This section describes the optional installation method that involves setting up the RPAS Fusion Client configuration and online help for the MFP configuration. If you chose to install the Fusion Client configuration files using the MFP installer, you can skip this section.

Note: Before proceeding, ensure that you have appropriate access privileges on the server running the RPAS Fusion Client.

Along with the files to install the MFP solution and domain, the MFP installation media pack also includes the RPAS Fusion Client configuration and online help files that you must install if you want to use MFP Retail on the RPAS Fusion Client.

These files are available at the following location within the [MFP Installation] directory:

```
[MFP Installation]/mfpretail/fusion  
<server-name>{RPAServerName}</server-name>
```

During the MFP Retail installation, these files are automatically copied over to the configuration directory where the RPAS Fusion Client is installed. The installation also ensures that the following RPAS Fusion Client configuration files are updated to reflect the MFP Retail installation:

- ProfileList.xml - Located in the [RPAS Fusion Client Installation]/config/rpas directory, this XML file includes the domain configuration available for use with the RPAS Fusion Client.
- ohwconfig.xml - Located in the [RPAS Fusion Client Installation]/config/Help directory, this XML file includes the online help configuration for the RPAS Fusion Client.

In case you did not install the Fusion Client configuration files during the MFP Retail installation, you can choose to do one of the following tasks:

- Run the MFP Retail installer again, and select to install only the RPAS Fusion Client configuration.
- Run the RPAS Fusion Client installer again, and specify the MFP Retail domain configuration. For more information on the RPAS Fusion Client installation, refer to the *Oracle Retail Predictive Application Server Installation Guide*.
- Configure the RPAS Fusion Client for MFP Retail manually. For more information, see [Configuring the RPAS Fusion Client for MFP Retail](#).

Configuring the RPAS Fusion Client for MFP Retail

This section describes the manual configuration method of setting up the RPAS Fusion Client with the MFP configuration. If you chose to install the Fusion Client configuration files using the MFP installer, you can skip this section.

Note: Before proceeding, ensure that you have appropriate access privileges on the server running the RPAS Fusion Client.

To manually set up an additional domain connection, perform the following steps:

1. After you have the MFP Retail domain set up, navigate to the following location in the RPAS Fusion Client installation directory:

```
<RPAS_Fusion_Client_Installation>/config/rpas/
```

2. In a text editor, edit the ProfileList.xml file, and append a connection specification for your domain in the following syntax:

```
<connection-spec name="{DomainConnectionName}">
  <server-name>{RPASServerName}</server-name>
    <daemon-port>{Port Number}</daemon-port>
    <domain>
      <domain-name>{DomainName}</domain-name>
      <domain-path>{Location where the domain is installed}</domain-path>
    </domain>
</connection-spec>
```

Note: In the example above, placeholders have been used as values for the parameters. Ensure that you replace the placeholders with the relevant values.

Where,

- `connection-spec name` – Name for the connection specification. This will match the name for the taskflow configuration and resource files. Each must have a unique name.
- `server-name` – The host where the RPAS Server is installed and the DomainDaemon process is running.
- `daemon-port` – The port specified when starting the DomainDaemon.
- `domain-name` – The name that will be displayed to the user on the login screen
- `domain-path` – Location where the domain is installed.

Note: Multiple domains on the same server can use the same configuration.

3. Save and close the ProfileList.xml file.
4. In the `<RPAS_Fusion_Client_Installation>/config` directory, create a new folder and specify the `domainConnectionName` or `connection-spec name` as the folder name.

5. Navigate to the fusionClient directory located within the directory where the domain is installed. This folder contains the following files that define the taskflow configuration:

- taskflowBundle.properties
- taskflow.xml

When you created the domain using the rpasInstall script, these files were generated based on the taskflow configuration you set up in the RPAS Configuration Tool. For more information on the taskflow configuration, refer to the *RPAS Configuration Tools User Guide*.

6. Copy the two files to the domain name folder you created in step 4.
7. Rename the Taskflow.xml file to include the domain name. The new file name must now read as Taskflow_<domainConnectionName>.xml. Where <domainConnectionName> is the domain connection name or connection-spec name.
8. Create a resources subfolder within this location and move the taskflowBundle.properties file to the resources subfolder.
9. In the resources subfolder, rename the taskflowBundle.properties file to include the domain name. The new file name must now read as <domainConnectionName>Bundle.properties. Where <domainConnectionName> is the domain connection name or connection-spec name.
10. For the changes to take effect, restart the RPAS and WebLogic servers.

Patch Installation

This chapter describes how to upgrade MFP Retail from a previous release to 13.2.2.4.

Note: If using the standard integration between RMS and MFP, you must perform an additional location hierarchy conversion process if upgrading from MFP 13.2.1.10 or prior versions. See the [RMS Integration Update](#) section for more information.

Upgrade Prerequisites

In order to upgrade MFP Retail, first verify the following criteria for the RPAS system:

- Verify that RPAS is currently installed.
- Verify that the UNIX operating system is updated to the currently supported version, which can be found in the [Hardware and Software Requirements](#) section.
- Verify that the environment variables are correctly set for both the server and PC; if they are not, follow these instructions to set them:
 - Change directories to the original RPAS installation directory (such as the one created by the most recent installer), and execute `retaillogin.ksh` to set all environment variables. For example:

```
$ cd /retail
$ . ./retaillogin.ksh
```

Notes:

- After you have run the script, verify that the environment variables all point to the correct locations on your environment.
 - If you have updated Java since the last installation of RPAS, verify that the `JAVA_HOME` path is correct. If not, update your `retaillogin.ksh` script and source it again as outlined above.
-
-

Upgrade Process 1

The following process outlines how to upgrade MFP Retail to the new version using the RPAS Configuration Tools.

For the PC

1. Open RPAS Configuration Tools.
2. In RPAS Configuration Tools, load your previous configuration of MFP Retail:
 - a. From the Configuration Tools File menu, select **Open**.
 - b. From the Open window, locate the configuration file and click **Open**.
3. If your configuration requires updating, dialog boxes will prompt you to upgrade. Follow the instructions given in the dialog boxes.
4. In the RPAS Configuration Tools File menu, click **Save** to save the configuration.
5. Zip the configuration in MKS KornShell and transfer the .zip file to the RPAS server.

For the Server

1. Upgrade the RPAS Fusion Client configuration by running the installer:
 - a. Begin the installer as described in the [Installing MFP Retail](#) section.
 - b. Complete steps 1-5.
 - c. At step 6, the [Install Tasks Screen](#), uncheck the **Create Retail Domain** option.
 - d. Finish the remaining steps of the installer.
2. Unzip the updated configuration and note where it is saved.
3. Upgrade your MFP Retail domain to a 13.2.2.4 domain. For upgrading instructions, see the "Upgrading and Patching Domains" section in the *RPAS Administration Guide for the Classic Client* or *RPAS Administration Guide for the Fusion Client*.

Note: Whether or not you are taking the latest configuration, a configuration patch must be run over the domain to ensure compatibility with the latest RPAS version.

RMS Integration Update

In MFP 13.2.1.11, positions in the location hierarchy were renamed to ensure unique position names based on the RMS data. Due to these location hierarchy changes, customers upgrading from MFP 13.2.1.10 or prior versions who use the standard integration between RMS and MFP must use the location hierarchy conversion process before integrating with RMS.

Use this conversion process if you are

- Upgrading from MFP version 13.2.1.10 or prior versions
- Using the standard integration between MFP and RMS

Note: If upgrading from MFP version 13.2.1.10 or prior versions, you must follow this process. In the future, if you are already on 13.2.1.11 or later, you do not need to follow this process again.

Required Location Hierarchy Conversion Process

Follow the steps below to rename the positions in the location hierarchy. No data is lost in this process; only internal positions names are changed. This process allows you to maintain and use your existing MFP domain while conforming to the new position names.

Caution: You must perform this process before integrating with RMS, or the integration will not work.

1. Point environment variable `RPAS_HOME` to the new `RPAS_HOME`.
2. Run `migrateData.ksh` with the `-a n` flag to produce the position rename file and run `renamePositions` without actually applying the changes.
3. Examine the log file `mfp_LocRename.log` for errors.
4. When you are ready, run the `migrateData.ksh` script without the `-a y` flag to apply the changes.

Appendix: Installation Order

This section provides a guideline for the order in which the Oracle Retail applications should be installed. If a retailer has chosen to use only some of the applications, the order is still valid, less the applications not being installed.

Note: The installation order is not meant to imply integration between products.

Enterprise Installation Order

1. Oracle Retail Merchandising System (RMS), Oracle Retail Trade Management (RTM), Oracle Retail Sales Audit (ReSA), Optional: Oracle Retail Fiscal Management (ORFM)

Note: ORFM is an optional application for RMS if you are implementing Brazil localization.

2. Oracle Retail Service Layer (RSL)
3. Oracle Retail Extract, Transform, Load (RETL)
4. Oracle Retail Active Retail Intelligence (ARI)
5. Oracle Retail Warehouse Management System (RWMS)
6. Oracle Retail Allocation
7. Oracle Retail Invoice Matching (ReIM)
8. Oracle Retail Price Management (RPM)

Note: During installation of RPM, you are asked for the RIBforRPM provider URL. Since RIB is installed after RPM, make a note of the URL you enter. If you need to change the RIBforRPM provider URL after you install RIB, you can do so by editing the `remote_service_locator_info_ribserver.xml` file.

9. Oracle Retail Central Office (ORCO)
10. Oracle Retail Returns Management (ORRM)
11. Oracle Retail Back Office (ORBO) or Back Office with Labels and Tags (ORLAT)

12. Oracle Retail Store Inventory Management (SIM)

Note: During installation of SIM, you are asked for the RIB provider URL. Since RIB is installed after SIM, make a note of the URL you enter. If you need to change the RIB provider URL after you install RIB, you can do so by editing the `remote_service_locator_info_ribserver.xml` file.

- 13. Oracle Retail Predictive Application Server (RPAS)
- 14. Oracle Retail Demand Forecasting (RDF)
- 15. Oracle Retail Category Management (CM)
- 16. Oracle Retail Replenishment Optimization (RO)
- 17. Oracle Retail Analytic Parameter Calculator Replenishment Optimization (APC RO)
- 18. Oracle Retail Regular Price Optimization (RPO)
- 19. Oracle Retail Merchandise Financial Planning (MFP)
- 20. Oracle Retail Size Profile Optimization (SPO)
- 21. Oracle Retail Assortment Planning (AP)
- 22. Oracle Retail Item Planning (IP)
- 23. Oracle Retail Item Planning Configured for COE (IP COE)
- 24. Oracle Retail Advanced Inventory Planning (AIP)
- 25. Oracle Retail Integration Bus (RIB)
- 26. Oracle Retail Point-of-Service (ORPOS)
- 27. Oracle Retail Markdown Optimization (MDO)
- 28. Oracle Retail Clearance Optimization Engine (COE)
- 29. Oracle Retail Analytic Parameter Calculator for Markdown Optimization (APC-MDO)
- 30. Oracle Retail Analytic Parameter Calculator for Regular Price Optimization (APC-RPO)
- 31. Oracle Retail Promotion Intelligence and Promotion Planning and Optimization (PI-PPO)
- 32. Oracle Retail Workspace (ORW)