

Oracle® Enterprise Repository
Compliance Templates Guide
10g Release 3 (10.3)

July 2009

Oracle Enterprise Repository Compliance Templates Guide, 10g Release 3 (10.3)

Copyright © 2008, 2009, Oracle. All rights reserved.

Primary Author: Vimika Dinesh

Contributing Author: Jeff Schieli, Sharon Fay

The Programs (which include both the software and documentation) contain proprietary information; they are provided under a license agreement containing restrictions on use and disclosure and are also protected by copyright, patent, and other intellectual and industrial property laws. Reverse engineering, disassembly, or decompilation of the Programs, except to the extent required to obtain interoperability with other independently created software or as specified by law, is prohibited.

The information contained in this document is subject to change without notice. If you find any problems in the documentation, please report them to us in writing. This document is not warranted to be error-free. Except as may be expressly permitted in your license agreement for these Programs, no part of these Programs may be reproduced or transmitted in any form or by any means, electronic or mechanical, for any purpose.

If the Programs are delivered to the United States Government or anyone licensing or using the Programs on behalf of the United States Government, the following notice is applicable:

U.S. GOVERNMENT RIGHTS Programs, software, databases, and related documentation and technical data delivered to U.S. Government customers are "commercial computer software" or "commercial technical data" pursuant to the applicable Federal Acquisition Regulation and agency-specific supplemental regulations. As such, use, duplication, disclosure, modification, and adaptation of the Programs, including documentation and technical data, shall be subject to the licensing restrictions set forth in the applicable Oracle license agreement, and, to the extent applicable, the additional rights set forth in FAR 52.227-19, Commercial Computer Software--Restricted Rights (June 1987). Oracle USA, Inc., 500 Oracle Parkway, Redwood City, CA 94065.

The Programs are not intended for use in any nuclear, aviation, mass transit, medical, or other inherently dangerous applications. It shall be the licensee's responsibility to take all appropriate fail-safe, backup, redundancy and other measures to ensure the safe use of such applications if the Programs are used for such purposes, and we disclaim liability for any damages caused by such use of the Programs.

Oracle, JD Edwards, PeopleSoft, and Siebel are registered trademarks of Oracle Corporation and/or its affiliates. Other names may be trademarks of their respective owners.

The Programs may provide links to Web sites and access to content, products, and services from third parties. Oracle is not responsible for the availability of, or any content provided on, third-party Web sites. You bear all risks associated with the use of such content. If you choose to purchase any products or services from a third party, the relationship is directly between you and the third party. Oracle is not responsible for: (a) the quality of third-party products or services; or (b) fulfilling any of the terms of the agreement with the third party, including delivery of products or services and warranty obligations related to purchased products or services. Oracle is not responsible for any loss or damage of any sort that you may incur from dealing with any third party.

Oracle Enterprise Repository

Compliance Templates Guide

Table of Contents

- [Overview](#)
- [Creating a Compliance Template Type](#)
- [Creating a Compliance Template](#)
- [Apply a Compliance Template to a Project](#)
- [Using Assets Associated with Compliance Templates \(Prescribed Assets\)](#)
- [Running a Project Compliance Report](#)

Overview

The term **Compliance Template** describes a particular family of Oracle Enterprise Repository artifacts. Compliance Templates are only available in some product configurations. Examples of specific compliance template types include:

- **Project Profiles**
- **Architecture Blueprints**

Compliance Templates are used to communicate asset requirements or asset solution sets to internal or outsourced project teams. Project Profiles are usually created for individual projects, whereas Architecture Blueprints are reusable solution sets that can be leveraged by multiple projects.

Compliance Templates are typically generated by individuals or teams responsible for asset and project portfolios:

- **Project Planners** might generate a **Project Profile** for each project in the portfolio, outlining the planning and estimating assumptions.
- **Project Architects** might generate a **Project Profile** to identify assets that fulfill a project's business requirements.
- **Enterprise Architects** might generate an **Architecture Blueprint** that specifies the standard frameworks and servers that are to be used by new projects.
- Those responsible for **Service Oriented Architectures** might generate an **Architecture Blueprint** to identify the services that orchestrate a particular business function.
- **Product Line Architects** might generate an **Architecture Blueprint** that specifies the assets that are to be used on a specific product line.

If upgrading from earlier product versions, compliance templates and examples may be obtained by installing the appropriate datapacks using the Import/Export Tool. For more information about the Import/Export tool, see [Oracle Enterprise Repository Import/Export Tool Guide](#). Project Profiles are included in the **Compliance Template and Policy Management Datapack**. Architecture Blueprints are included in the **Enterprise Architecture Solution Pack**.

Creating a Compliance Template Type

This procedure is performed in the **Type Manager**, which is only available in some product configurations.

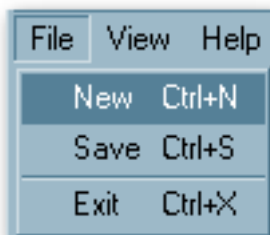
This example illustrates the creation of a **Project Profile** compliance template type.

Caution: Adding a compliance template constitutes a permanent change to the Oracle Enterprise Repository system.

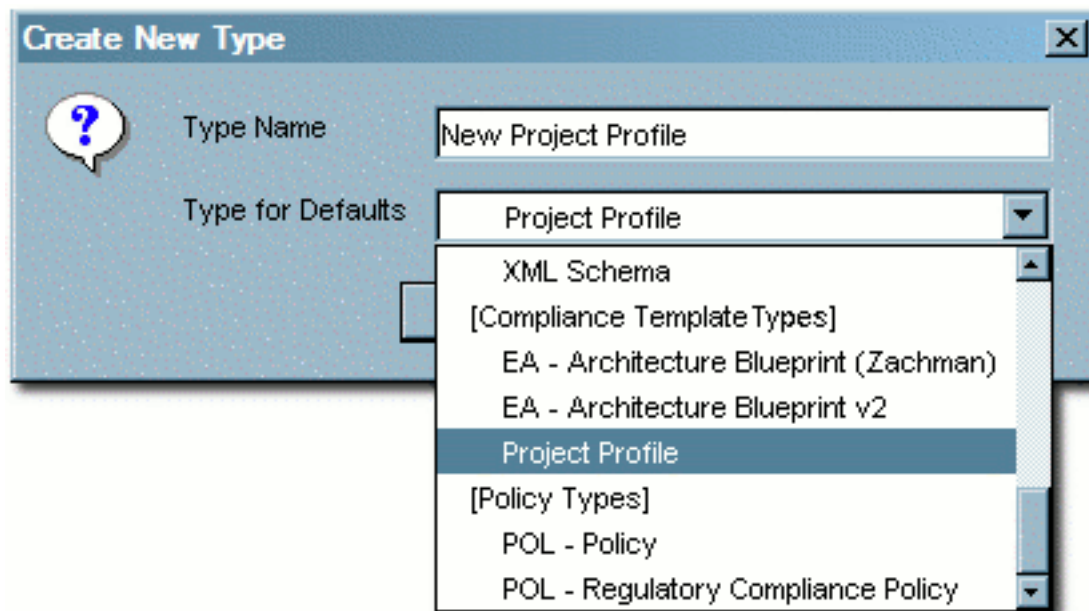
In order to preserve database integrity, only **Compliance Templates** to which no assets are currently associated may be deleted.

If a Compliance Template Type is available in the Type Manager:

1. Select **New** in the **File** menu.



The **Create New Type** pop-up opens.



2. Enter the appropriate information in the **Type Name** text box.
3. In the **Type for Defaults** drop-down, select a **Compliance Template Type** from the list.
4. Click **OK**.

The **Create New Type** pop-up closes and the new **Type** appears in the tree in the **Type Manager** sidebar.



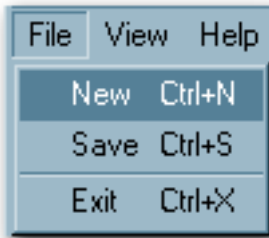
If no **Compliance Template Type** is available in the **Type Manager**:

Compliance templates and examples may be obtained by installing the appropriate datapacks using the **Import/Export Tool**. Project Profiles are included in the **Compliance Template and Policy Management Datapack**. Architecture Blueprints are included in the **Enterprise Architecture Solution Pack**.

If an alternative method is preferred, a new **Compliance Template Type** may be

manually generated:

1. Select **New** in the **File** menu.

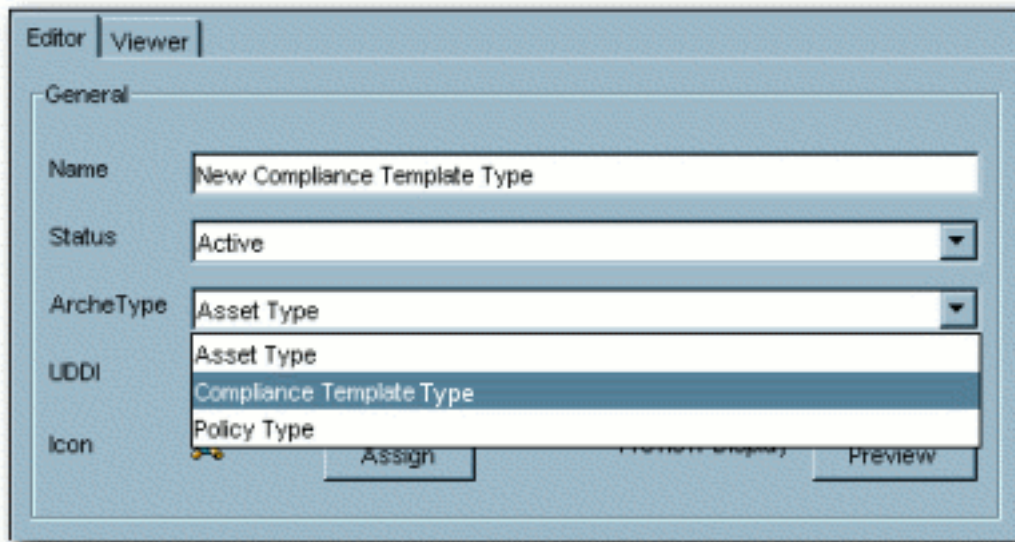


The **Create New Type** pop-up opens.

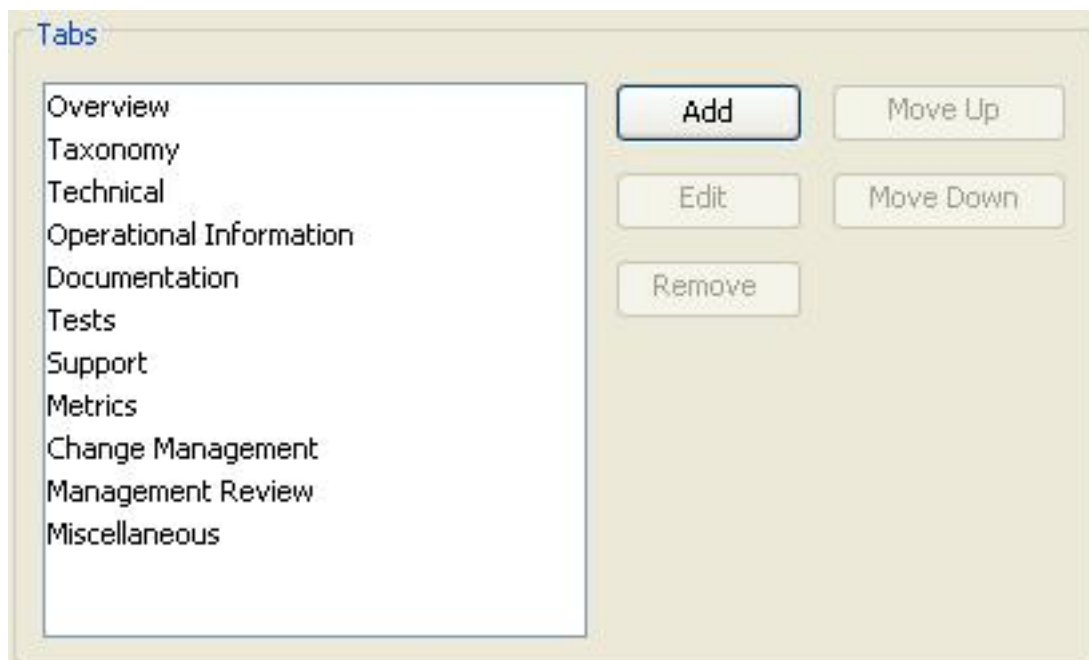
2. Enter the appropriate information in the **Type Name** text box.
3. In the **Type for Defaults** drop-down, select any **Type** from the list.
4. Click **OK**.

The **Create New Type** pop-up closes and the new **Type** appears in the tree in the **Type Manager** sidebar.

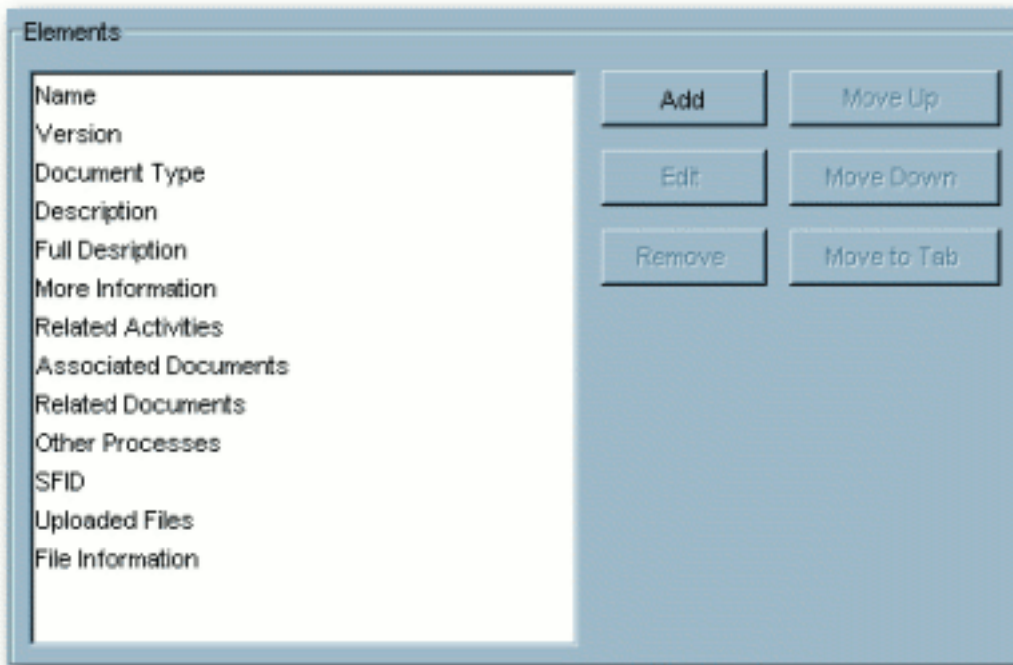
5. Open the new compliance template type in the **Type Manager**.
6. Click the **Editor** tab of new compliance template type.
7. Select **Compliance Template Type** in the **Archetype** drop-down in the **General** section of the **Editor** tab.



8. Click **Save** in the **File** menu.
9. Select one of the of the tabs listed in the **Tabs** section.

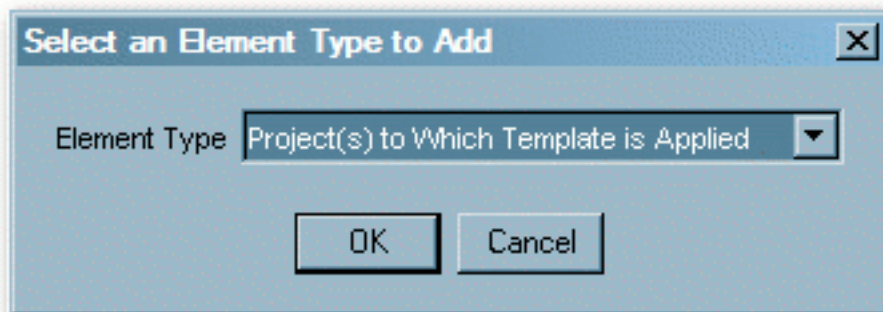


The elements assigned to that tab appear in the list in the **Elements** section.



10. Click the **Add** button in the **Elements** section.

The **Select an Element Type to Add** pop-up opens.

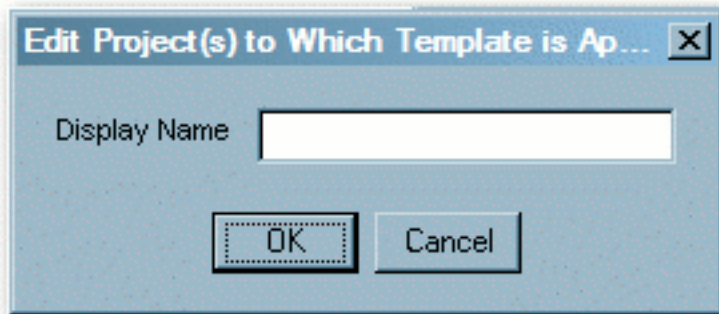


11. Select **Project(s) to Which Template is Applied** from the drop-down in the **Select an Element Type to Add** pop-up.

12. Click **OK**.

The **Select an Element Type to Add** closes.

13. Follow the prompt to enter a label for the new element.



14. Click **OK**.

The new element appears in the list in the **Elements** section.

15. Click **Save** in the **File** menu.

16. Click the **Viewer** tab of new compliance template type.

17. Locate the new element in the list of **Hidden Elements**.



18. Select (single-click) the new element.

19. Click the **Display in Group** button.

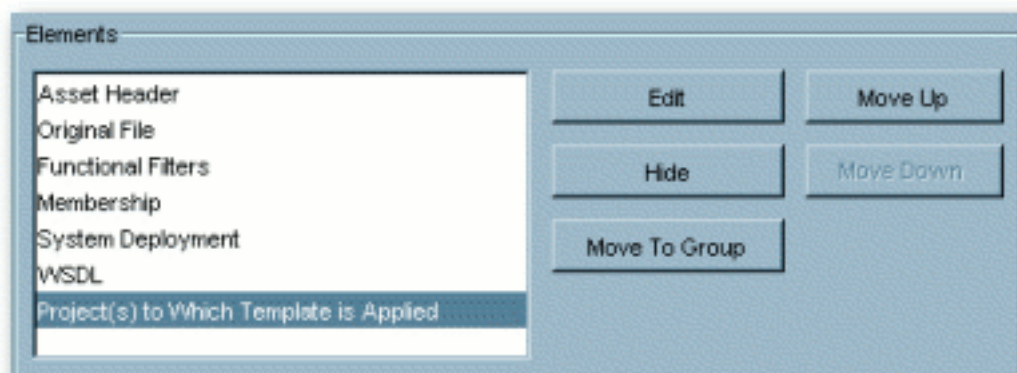
The **Move Element** pop-up opens.



20. Use the drop-down in the **Move Element** pop-up to select a location for the new element.

21. Click **OK**.

The new element appears in the list in the Elements section of the **Viewer** tab.

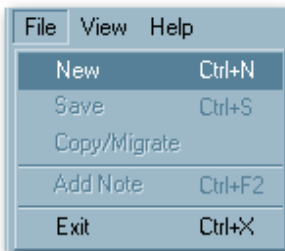


22. Click **Save** in the **File** menu.

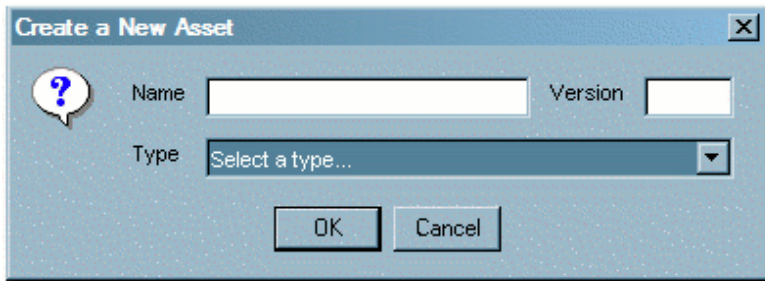
Creating a Compliance Template

This procedure is performed in the **Asset Editor**, and is very similar to **Advanced Asset Submission**, as described in the [Oracle Enterprise Repository User Guide](#).

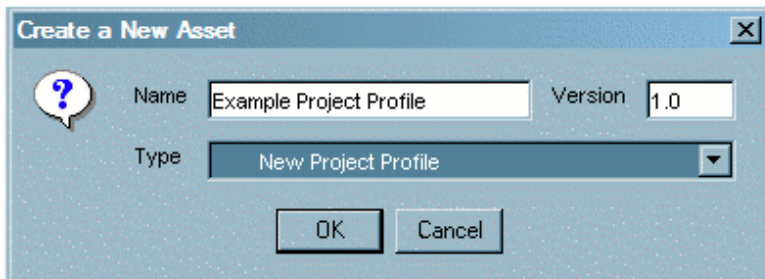
1. Select **New** in the **File** menu.



The **Create a New Asset** pop-up opens.

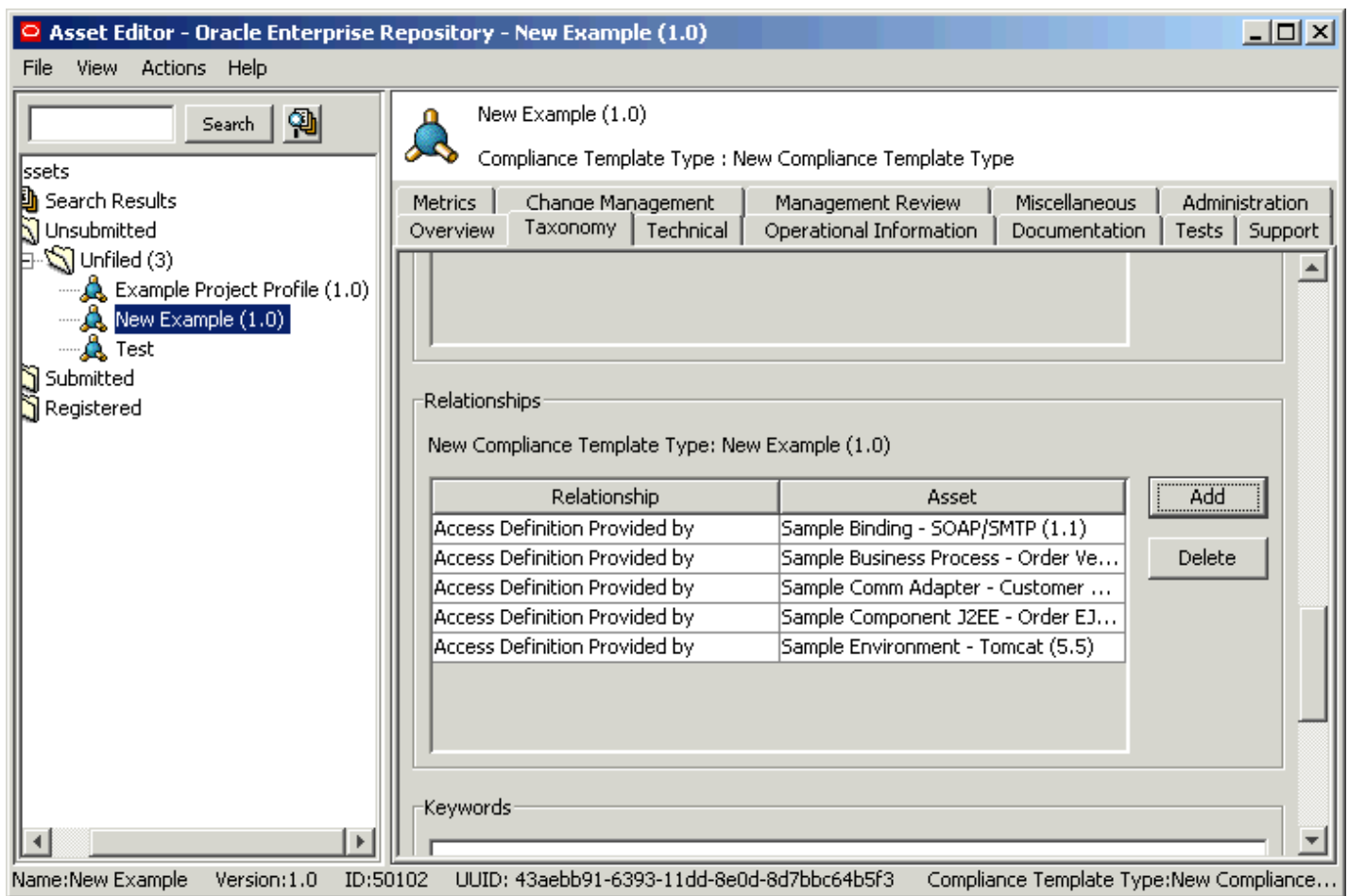


2. Enter the appropriate information in the **Name** and **Version** text boxes.

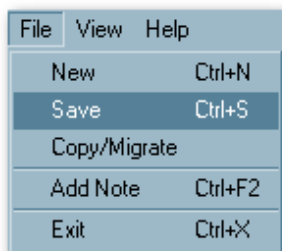


3. Select the appropriate **Type** template from the drop-down.
4. Click **OK**.

The new compliance template appears in the **Asset Editor**.



5. Click the **Taxonomy** tab, and under Relationships section, click **Add** to add relationships.
6. Select the assets that are required to be used by the project.
7. Assign the appropriate relationships: **Prescribed Assets**, **Prescribed Processes**, and **Prescribed Environments**, as appropriate.
8. Click **Save** in the **File** menu in the **Asset Editor**.




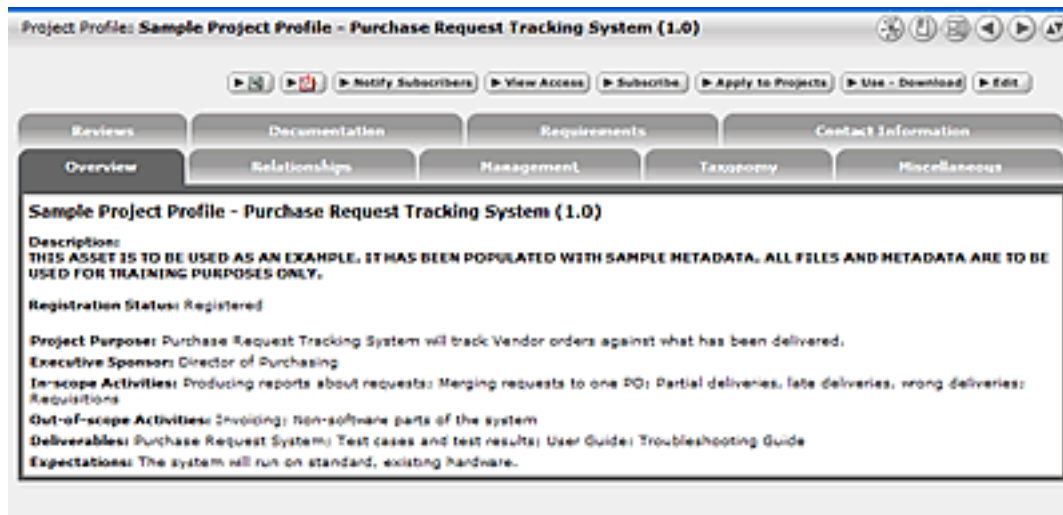
The asset is submitted for review and registration. (See **The Registration Process** in the [Oracle Enterprise Repository Registrar Guide](#).)

Follow this procedure to create **Project Profiles**, **Architecture Blueprints**, or other variations of the **Compliance Template**.

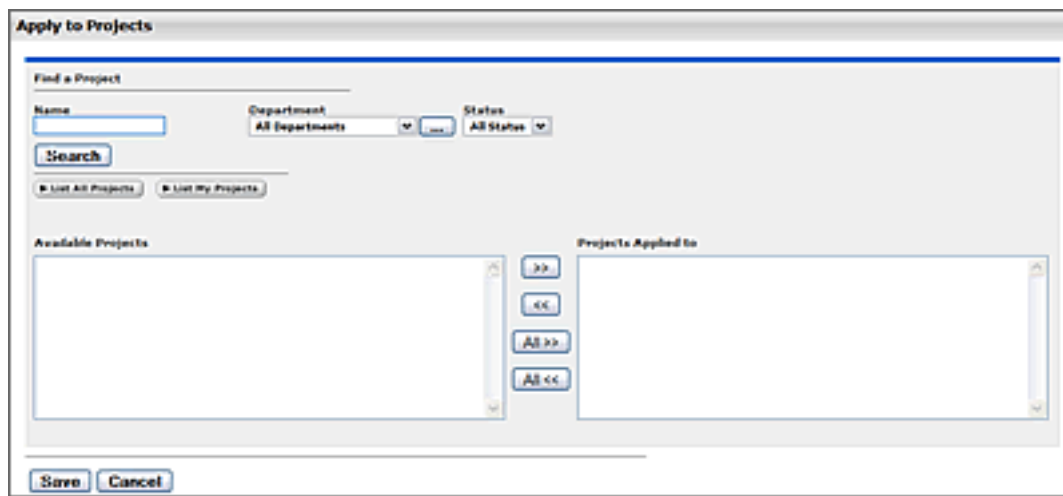
Apply a Compliance Template to a Project

This procedure begins on the Oracle Enterprise Repository **Assets** screen.

1. Use **Search** or other means to locate the compliance template to be applied to the project. (Select the desired compliance template in the **Type** drop-down in the **Search** section to filter search results.)
2. Click .




The **Apply to Projects** pop-up opens.



3. Click **List All Projects** or use **Search** to locate the project to which the profile will be applied.

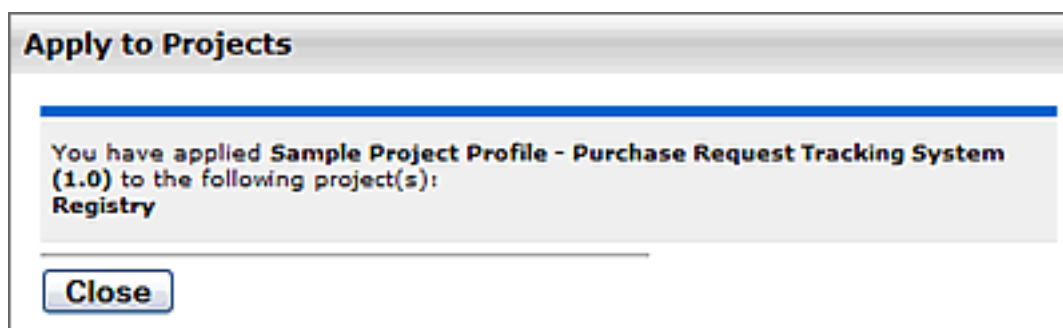
A list appears in the **Available Projects** column.

4. Select (highlight) the project to which the profile will be applied.
5. Click  to move the project from the **Available Projects** column to the **Projects Applied to** column.

The project moves from **Available Projects** to **Projects Applied to**.

6. Click **Save**.

A confirmation pop-up opens.

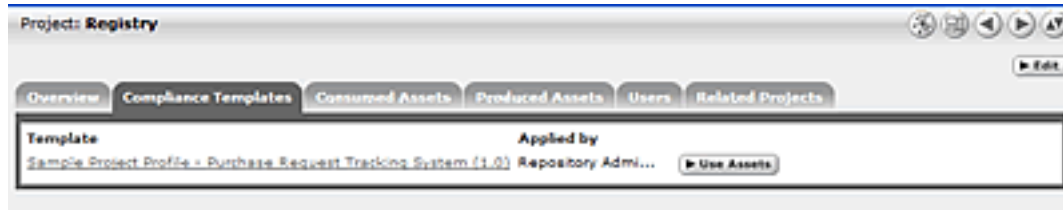


7. Click **Close**.
8. Click the **Projects** link in the Oracle Enterprise Repository menu bar.

The **Projects** screen opens.

9. Use **Search** or other means to locate the project to which the project profile was applied.
10. Click the **Compliance Templates** tab in the **Project Detail**.

The applied compliance template is listed in the **Compliance Templates** tab.



Note: If the enterprise repository plugin for Eclipse or .Net is installed, the assets identified in the compliance templates will also appear in the project's development environment.

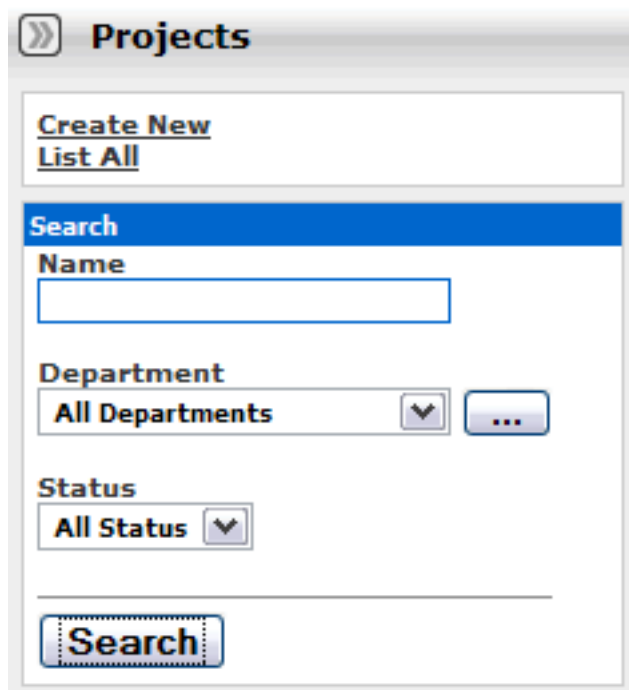
Using Assets Associated with Compliance Templates (Prescribed Assets)

Overview

A Compliance Template may be used to prescribe specific assets for use in any projects to which the compliance template is applied. This document outlines the process for consuming prescribed assets.

This procedure begins on the Oracle Enterprise Repository **Projects** screen.

1. Use **Search** or other means to locate the project.



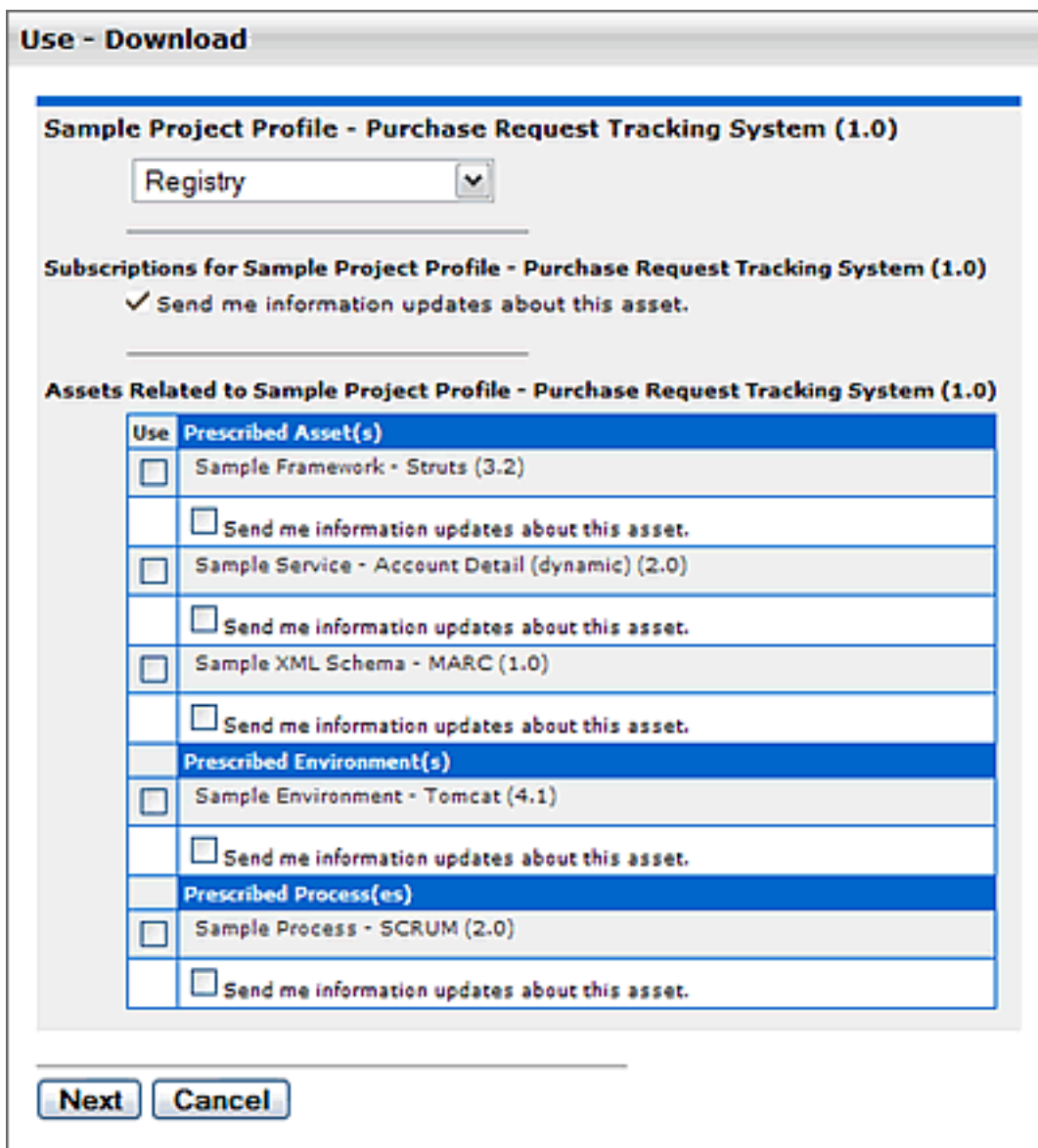
The screenshot shows the Oracle Enterprise Repository **Projects** screen. At the top, there is a header with a double arrow icon and the word **Projects**. Below the header, there are two links: [Create New](#) and [List All](#). A blue bar with the word **Search** is positioned above the search filters. The search filters include a text input field for **Name**, a dropdown menu for **Department** currently set to **All Departments** with a search icon, and another dropdown menu for **Status** currently set to **All Status**. A **Search** button is located at the bottom of the search section.

2. Any compliance templates applied to the project will be listed in the **Compliance Templates** section of the project detail.



3. Click **Use Assets** to the right of the name of the listed compliance template.
 - o **Note:** The **Use Assets** button will appear only to users who are assigned to the project.

The **Use / Download** pop-up opens.



4. Use the checkboxes in the **Use** column to select the assets to be downloaded.




5. Click the **Next** button.

The **Use / Download** pop-up confirms the asset selections.


Use - Download


You have selected the following items for use in **Registry**. After you evaluate these items, please remember to update their usage status in My Stuff.



Listed below are the downloadable files associated with your asset usage.


Sample Framework - Struts (3.2)		Get File
Struts - Struts binaries - UNIX		—
Struts - Struts Library Distribution		—
Struts - Struts binaries - WINTEL		—

Sample Service - Account Detail (dynamic) (2.0)		Get File
This asset does not contain any downloadable files.		

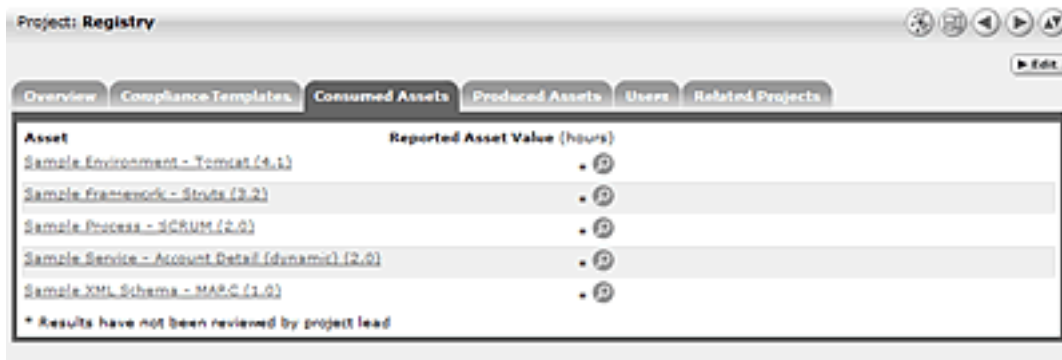
Sample XML Schema - MARC (1.0)		Get File
MARC21slim.xsd - MARC21 XML Schema		—

Sample Environment - Tomcat (4.1)		Get File
jakarta-tomcat-4.1-YYYYMMDD.zip - Tomcat 4.0 Binary Distribution for Windows or Unix		—

Sample Process - SCRUM (2.0)		Get File
SCRUM Methodology - describes the SCRUM process		—
SCRUM Process - Overview of the SCRUM process and how to get started		—

1. Click  to download the payloads for the selected assets.
2. Click **Close** when finished.

The downloaded assets are listed on the **Consumed Assets** section of the project detail.



The screenshot shows a web interface for 'Project: Registry'. At the top, there are navigation icons and an 'Edit' button. Below is a tabbed menu with 'Consumed Assets' selected. The main content area displays a table with two columns: 'Asset' and 'Reported Asset Value (hours)'. The table lists five assets, each with a value of 0 hours. A note at the bottom states 'Results have not been reviewed by project lead'.

Asset	Reported Asset Value (hours)
Sample Environment - Tomcat (4.1)	• 0
Sample Framework - Struts (2.2)	• 0
Sample Process - SCRUM (2.0)	• 0
Sample Service - Account Detail (dynamic) (2.0)	• 0
Sample XML Schema - MAPC (1.0)	• 0

* Results have not been reviewed by project lead

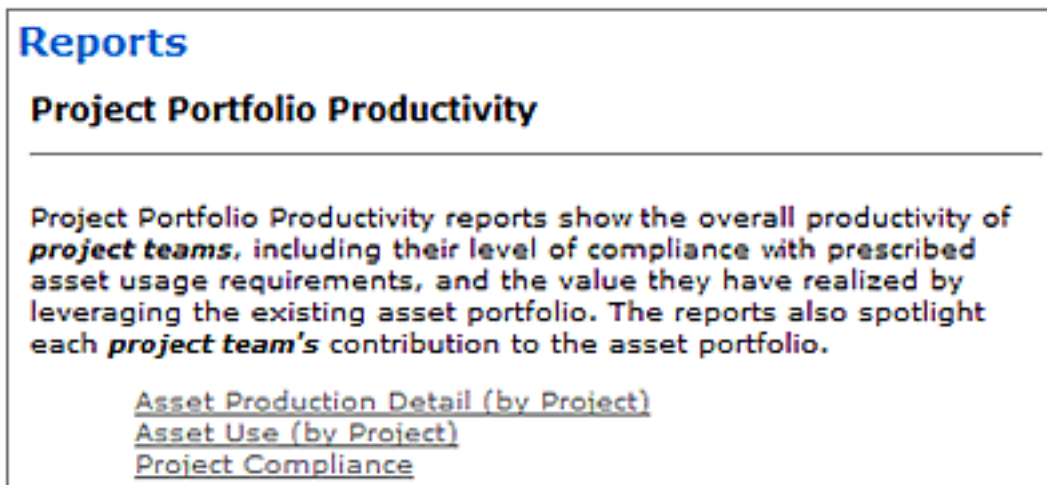
Running a Project Compliance Report

Overview

Project Compliance reports, if enabled in your product configuration, provide the means for verifying project adherence to the assets prescribed for use in compliance templates.

This procedure is performed on the Oracle Enterprise Repository **Reports** screen.

1. Click the **Project Compliance** link in the **Reports** sidebar.



The **Project Compliance** report form opens in the main pane.

Project Compliance

This report shows the Compliance Templates applied to projects and whether the project is compliant with the Template rules.
*Date Range is based on the date the projects were created.

Date Range* :

From

To

Sort Order:

Output Format:

2. Use the **Date Range**, **Sort Order**, and **Output Format** drop-downs to set the report parameters.

NOTE: Date Range is based on the project creation date.

3. Click the **Run Report** button.

The report appears in the selected format, listing each project, and indicating compliance templates in use, prescribed assets, usage status of prescribed assets, and any additional assets consumed by the project.

Project Compliance

Use Date : 2006-10-01 - 2006-10-17

Sort : Project Name

Project Name : Example Project

Start Date:

Project Status : Open

Closed Date:

Compliance Template in use : Sample Project Profile - Purchase Request Tracking System (1.0)

REQUIRED ASSETS	INITIAL USE DATE	REJECTED?	ASSET IN USE?	
Prescribed Asset(s)				
Another Sample Service (1.0)	2006-10-17	NO	YES	2006-10-17
Sample Framework - Struts (3.2)	2006-10-17	NO	YES	2006-10-17
Sample Service - Account Detail (dynamic) (2.0)	2006-10-17	NO	YES	2006-10-17
Sample XML Schema - MARC (1.0)	2006-10-17	NO	YES	2006-10-17
Prescribed Environment(s)				
Sample Environment - Tomcat (4.1)	2006-10-17	NO	YES	2006-10-17
Prescribed Process(es)				
Sample Process - SCRUM (2.0)	2006-10-17	NO	YES	2006-10-17

*Denotes Asset in Progress

Number of Required Assets : 6
Number of Required Assets in use : 6
Number of Required Assets not in use : 0
Number of Additional Assets in use : 0

Number of Projects returned : 1

©2006 BEA Systems, Inc. All rights reserved.
Powered by BEA AquaLogic® Enterprise Repository