



# BEA AquaLogic® Enterprise Repository

## Import/Export Tool Guide

Version 3.0 RP1  
Revised: February, 2008



## Table of Contents

- **Overview**
- **Starting the Tool**
  - **Launching From AquaLogic Enterprise Repository**
  - **Launching From Command Line**
  - **Initial Startup**
- **Exporting Items from ALER**
- **Importing Items into ALER**

## Overview

The ALER Import/Export Tool is designed to allow the interchange of assets and related metadata between instances of ALER.

Archives must be completely self-contained. That is, all dependent data required to fully describe all exported items will also be exported. The dependencies are as follows:

- Assets, Compliance Templates, and Policies rely on Types
- Asset Types, Compliance Template Types, and Policy Types rely on Categorization Types and Relationship Types

For example, when exporting a single Asset, the resultant archive will contain that Asset, its associated Asset Type, and any Categorization Types and Relationship Types on which that Asset Type depends. When importing, all data contained within the archive will be imported into the destination instance of ALER. Conflicts resulting from the existence of items with the same name are resolved in the following manner:

- Assets, Compliance Templates, Policies, and their respective Types must have unique names within the system. When an imported item has the same name as an item already in the destination ALER instance, "v2" will be appended to the name of the new (imported) item. Each iteration of this occurrence will result in a new version of the item: "v3," "v4," and so on. If the name of an imported item is already appended with a "Vn" designation, "v2" will be further appended to that name.
- Categorization Types merge data in the event of a destination Categorization Type of the same name. Categorizations in the source archive that are not present on the destination system will be added to the existing (destination) Categorization Type.
- Source and destination Relationship Types sharing the same name and type are ignored; existing descriptive text is retained on the destination system. When source and destination Relationship Types share the same name, but are of different types, the name of the source Relationship type is appended with "v2," as described above, upon import to the destination system.

**Note:** If your instance of ALER is or will be configured to be secured by Siteminder, you will need to configure the policy server to ignore (or unprotect) the following URL to allow the Import/Export tool to function properly

- `http://appserver.example.com/aler/services/`

## Starting the Tool

The **Import/Export Tool** can be run as a stand-alone client or launched from within ALER from the **Admin** screen. The Import/Export Tool requires JDK 1.4.2 or later.

### Launching From ALER

To enable launching from the **Admin** Tab, a new property must be configured and added and set to **True**:

- `cmee.importexport.enabled`

This will enable an Import/Export section in ALER. Due to the nature of the Import/Export Tool and the amount of data required for a comprehensive backup, the tool is restricted to users who are assigned the **Admin** role, such as the built-in *aler* user. The link to launch the Import/Export Tool is visible only to users with the **Admin** role.

- **Note:**
  - Since Import/Export is a self-contained tool utilizing the ALER OpenAPI, you will be required to log in again after launching it from ALER.

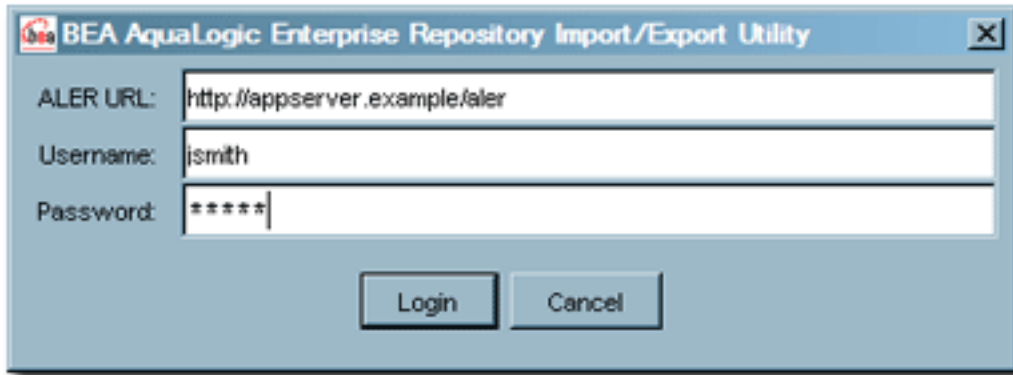
### Launching From Command-line

Ensure that the JDK (1.4.2 or later) is on the command path and that JAVA\_HOME is set. Copy the `impexp/` directory from the install media and execute the following:

- **Win32 Platforms**
  - `impexp.bat`
- **Unix/Linux Platforms**
  - `sh ./impexp.sh`

### Initial Startup

Upon launching the Import/Export Tool, the user is prompted to enter connection information for ALER.



- **Registry URL**
  - Path to the ALER installation, usually the same as the servlet path, as defined in the system settings. Example: `http://appserver.example.com/aler/`
- **Username**
  - Name of a user who has been granted the **Admin** role within ALER.
- **Password**
  - Password for the user specified above.

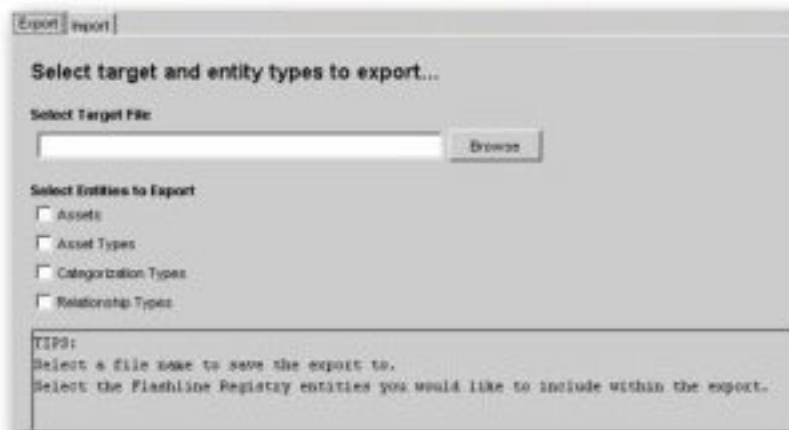
## Exporting Items from ALER

This procedure is performed on the ALER **Admin** screen.

1. Click **Import Export** in the **Admin** sidebar.
2. Click **Import / Export Client**.

The **Import / Export Client** launches.

3. Click the **Export** Tab.



4. Enter the appropriate filename in the **Select Target File** text box or click **Browse** to select the target file for the export.
5. Use the **Select Entities to Export** checkboxes to identify the entities to be exported. This selection determines the specific behavior of the export client in subsequent steps.
6. Click **Next**.

The **Select** pop-up appears, as determined by the selection in **Step 5**.



7. Use **Search** or click **List all** to display a list of items in the **Available** column.
8. Use the **<<** and **>>** buttons to move selected items between the **Available** and the **Selected** columns.
9. Click **Next**.

If more than one selection was made in **Step 5 (Select Entities to Export)**, repeat **Step 7** and **Step 8** in the next **Select** pop-up to select the next group of items for export.

10. Click **Next**.

A list of the files to be exported appears in the **Ready to perform export** pop-up.



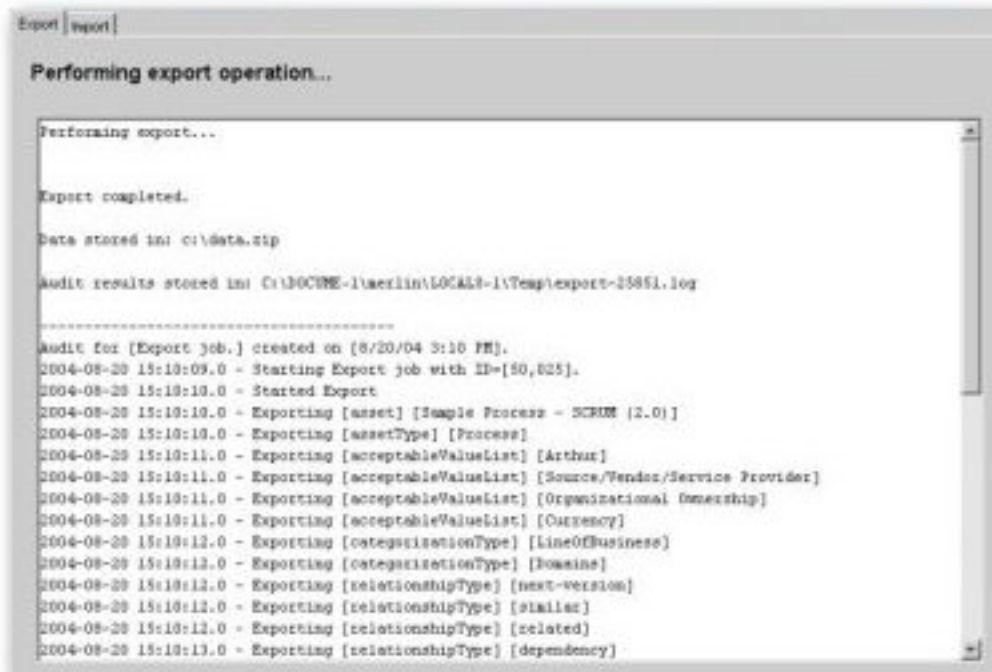


11. Click **Next**.

A progress bar indicates the status of the export process.

**Note:** Variations in the size and complexity of the exported items will affect the speed of this process and the behavior of the progress bar.

A summary of the export is displayed on completion.



On Microsoft Windows platforms, Windows Explorer will open to the folder where the archive was saved (assuming system permissions allow shell execution from the application).

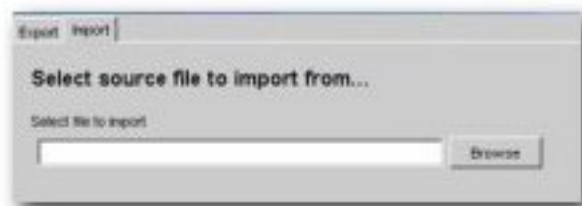
## Importing Items into ALER

This procedure is performed on the ALER **Admin** screen.

1. Click **Import Export** in the **Admin** sidebar.
2. Click **Import / Export Client**.

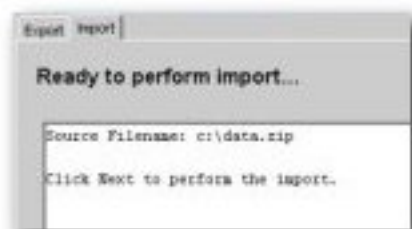
The **Import / Export Client** launches.

3. Click the **Import** tab.
4. Enter the appropriate filename in the **Select file to import** text box or click **Browse** to select the source file for the import.



5. Click **Next**.

The selected source file is listed in the **Ready to perform import** pop-up.



6. Click **Next**.

A progress bar indicates the status of the import process. Variations in the size and complexity of the imported items will affect the speed of this process and the behavior of the progress bar.

A summary of the import is displayed on completion.

```
Export Import
Performing import operation...

Performing import...

Import completed.

Audit results stored to:

C:\DOCUME~1\userin\LOCALS~1\Temp\import-15853.log

-----
Audit for [Export job.] created on [8/20/04 3:21 PM].
2004-08-20 15:21:21.0 - Starting Import job with ID=[50,526].
2004-08-20 15:21:24.0 - Started Import
2004-08-20 15:21:25.0 - Found relationshipType named next-version
2004-08-20 15:21:25.0 - Found relationshipType named slider
2004-08-20 15:21:25.0 - Found relationshipType named related
2004-08-20 15:21:25.0 - Found relationshipType named dependency
2004-08-20 15:21:26.0 - Found relationshipType named SpecificationsUsed
```