



BEA AquaLogic Enterprise Security™®

Installing the Administration Server

Version: 2.5
Document Revised: December 2006

Copyright

Copyright © 1995-2006 BEA Systems, Inc. All Rights Reserved.

Restricted Rights Legend

This software is protected by copyright, and may be protected by patent laws. No copying or other use of this software is permitted unless you have entered into a license agreement with BEA authorizing such use. This document is protected by copyright and may not be copied photocopied, reproduced, translated, or reduced to any electronic medium or machine readable form, in whole or in part, without prior consent, in writing, from BEA Systems, Inc.

Information in this document is subject to change without notice and does not represent a commitment on the part of BEA Systems. THE DOCUMENTATION IS PROVIDED “AS IS” WITHOUT WARRANTY OF ANY KIND INCLUDING WITHOUT LIMITATION, ANY WARRANTY OF MERCHANTABILITY OR FITNESS FOR A PARTICULAR PURPOSE. FURTHER, BEA SYSTEMS DOES NOT WARRANT, GUARANTEE, OR MAKE ANY REPRESENTATIONS REGARDING THE USE, OR THE RESULTS OF THE USE, OF THE DOCUMENT IN TERMS OF CORRECTNESS, ACCURACY, RELIABILITY, OR OTHERWISE.

Trademarks and Service Marks

Copyright © 1995-2006 BEA Systems, Inc. All Rights Reserved. BEA, BEA JRocket, BEA WebLogic Portal, BEA WebLogic Server, BEA WebLogic Workshop, Built on BEA, Jolt, JoltBeans, SteelThread, Top End, Tuxedo, and WebLogic are registered trademarks of BEA Systems, Inc. BEA AquaLogic, BEA AquaLogic Data Services Platform, BEA AquaLogic Enterprise Security, BEA AquaLogic Interaction, BEA AquaLogic Interaction Analytics, BEA AquaLogic Interaction Collaboration, BEA AquaLogic Interaction Content Services, BEA AquaLogic Interaction Data Services, BEA AquaLogic Interaction Integration Services, BEA AquaLogic Interaction Process, BEA AquaLogic Interaction Publisher, BEA AquaLogic Interaction Studio, BEA AquaLogic Service Bus, BEA AquaLogic Service Registry, BEA Builder, BEA Campaign Manager for WebLogic, BEA eLink, BEA Kodo, BEA Liquid Data for WebLogic, BEA Manager, BEA MessageQ, BEA SALT, BEA Service Architecture Leveraging Tuxedo, BEA WebLogic Commerce Server, BEA WebLogic Communications Platform, BEA WebLogic Enterprise, BEA WebLogic Enterprise Platform, BEA WebLogic Enterprise Security, BEA WebLogic Express, BEA WebLogic Integration, BEA WebLogic Java Adapter for Mainframe, BEA WebLogic JDriver, BEA WebLogic Log Central, BEA WebLogic Mobility Server, BEA WebLogic Network Gatekeeper, BEA WebLogic Personalization Server, BEA WebLogic Personal Messaging API, BEA WebLogic Platform, BEA WebLogic Portlets for Groupware Integration, BEA WebLogic Real Time, BEA WebLogic RFID Compliance Express, BEA WebLogic RFID Edge Server, BEA WebLogic RFID Enterprise Server, BEA WebLogic Server Process Edition, BEA WebLogic SIP Server, BEA WebLogic WorkGroup Edition, BEA Workshop for WebLogic Platform, BEA Workshop JSP, BEA Workshop JSP Editor, BEA Workshop Struts, BEA Workshop Studio, Dev2Dev, Liquid Computing, and Think Liquid are trademarks of BEA Systems, Inc. Accelerated Knowledge Transfer, AKT, BEA Mission Critical Support, BEA Mission Critical Support Continuum, and BEA SOA Self Assessment are service marks of BEA Systems, Inc.

All other names and marks are property of their respective owners.

Contents

1. Introduction and Roadmap

Document Scope and Audience	1-1
Guide to this Document	1-2
Related Documentation	1-2
Contact Us!	1-3

2. Overview

Introduction	2-1
Installation Overview	2-2
Product Distribution	2-4
Web Distribution	2-4
CD-ROM Distribution	2-4

3. Prerequisites

System Requirements	3-1
Apache Tomcat Requirements	3-4
Tomcat with JDK 1.4	3-4
Tomcat with JDK 1.5	3-4
Database Pre-Installation Tasks	3-5
Configuring a User Account in an Oracle Policy Database	3-5
Configuring a User Account in a Sybase Policy Database	3-6
General Information on PointBase and Microsoft SQL Server Support	3-7
Pre-installation Tasks for Microsoft SQL Server 2000	3-7

Microsoft SQL Server JDBC Driver Information	3-8
Microsoft SQL Server Database and User Creation Instructions	3-8
Pre-installation Tasks for PointBase 5.1	3-14
Location of PointBase Server in WebLogic Server 9.x	3-14
PointBase 5.1 JDBC Driver Information	3-14
PointBase SQL Server Database and User Creation Instructions	3-15
Licensing	3-16
Requirements for Reinstalling the Administration Server	3-16

4. Installing

Before You Begin	4-1
Selecting Directories for the Installation	4-2
BEA Home Directory	4-2
Product Installation Directory	4-3
System Security and BEA AquaLogic Enterprise Security	4-3
Which Users Can Install the Administration Server and SSMSs?	4-3
Secure Usernames and Passwords	4-4
Generating a Verbose Installation Log	4-6
Starting the Installation Program on Windows Platforms	4-7
Starting the Installation Program on a Sun Solaris Platform	4-8
Starting the Installation Program on a Linux Platform	4-10
Running the Installation Program	4-11
What's Next	4-18
Upgrading from ALES 2.1 and 2.2	4-18
Installing in Silent Mode	4-19
Installing a Secondary Administration Server	4-22

5. Post Installation Tasks

Installing the Policy Database Schema	5-1
Installing the Policy Database Schema on Windows	5-2
Installing the Policy Database Schema on Sun Solaris	5-3
Installing the Policy Database Schema on Linux	5-3
Starting and Stopping Processes	5-4
Logging into the Administration Console	5-4
What's Next?	5-5

6. Uninstalling

Uninstalling the Administration Server on Windows	6-1
Additional Steps	6-2
Uninstalling the Administration Server on Solaris or Linux	6-2

A. Setting Up and Administering the Database

Setting Up and Administering the Oracle Database	A-2
Before you Begin the Oracle Database Setup	A-2
Overview of the Oracle Client/Server Architecture	A-2
Oracle Database System Requirements	A-4
Installing and Configuring the Oracle Database	A-4
Installing the Oracle Database	A-5
Configuring the Oracle Database Listener for Remote Connections	A-8
Creating an Instance of an Oracle Database	A-9
Configuring an Oracle Policy Database	A-9
Administering an Oracle Policy Database	A-10
Using the Database Administration Utilities with Oracle	A-10
Backing Up an Oracle Database	A-11
Setting Up and Administering the Sybase Database	A-12

Before you Begin the Sybase Database Setup	A-12
Overview of the Sybase Client/Server Architecture.	A-12
Sybase Database System Requirements	A-14
Installing and Configuring the Sybase Adaptive Server	A-14
Installing the Sybase Database	A-15
Creating Sybase Database Devices.	A-15
Creating and Configuring a Sybase Policy Database	A-19
Administering the Sybase Policy Database	A-21
Using the Database Administration Utilities with Sybase	A-22
Backing Up a Sybase Database	A-23

Introduction and Roadmap

This section describes the contents and organization of this guide—*Installing the Administration Server*.

- [“Document Scope and Audience”](#) on page 1-1
- [“Guide to this Document”](#) on page 1-2
- [“Related Documentation”](#) on page 1-2
- [“Contact Us!”](#) on page 1-3

Document Scope and Audience

This document is a resource for system administrators, database administrators, or software developers who need to install and configure the BEA AquaLogic Enterprise Security™ Administration Application.

The topics in this document are relevant during the design, staging, and production deployment phases of a software project. For links to other AquaLogic Enterprise Security documentation and resources, see [“Related Documentation”](#) on page 1-2.

It is assumed that readers understand Web technologies and have a general understanding of the Microsoft Windows or UNIX operating system being used. Prior to using this document, you should have a general understanding of the principal components and architecture of BEA AquaLogic Enterprise Security. Read the [Introduction to BEA AquaLogic Enterprise Security](#) for conceptual information that is helpful in understanding how the product works.

Additionally, BEA AquaLogic Enterprise Security includes many terms and concepts that you need to understand. These terms and concepts, which you will encounter throughout the documentation, are defined in the *Glossary*.

Guide to this Document

This document provides the information needed to install the BEA AquaLogic Enterprise Security™ Administration Server. The document is organized as follows:

- [Chapter 2, “Overview,”](#) provides an overview of the Administration Server installation process.
- [Chapter 3, “Prerequisites,”](#) discusses system requirements (software and hardware) that you need to ensure are met before installing the Administration Server.
- [Chapter 4, “Installing,”](#) provides detailed procedures for installing the BEA AquaLogic Enterprise Security Administration Server.
- [Chapter 5, “Post Installation Tasks,”](#) provides detailed procedures for tasks you need to perform after the installation, including loading the policy database schema into the database, starting and stopping services, and logging into the Administration Console.
- [Chapter 6, “Uninstalling,”](#) describes the procedures for uninstalling the BEA AquaLogic Enterprise Security Administration Server.

Related Documentation

This document contains information about installing and configuring the AquaLogic Enterprise Security Administration Server.

For information about installing and configuring AquaLogic Enterprise Security Service Modules, see *Installing Security Service Modules*.

For information about other aspects of AquaLogic Enterprise Security, see the following documents:

- *Introduction to BEA AquaLogic Enterprise Security*—This document provides overview, conceptual, and architectural information for AquaLogic Enterprise Security.
- *Administration and Deployment Guide*—This document provides a complete overview of the product and includes step-by-step instructions on how to perform various administrative tasks.

- *Integrating ALES with Application Environments*—This document describes post-installation integration tasks to configure ALES for use with BEA WebLogic Server, BEA WebLogic Portal, BEA AquaLogic Data Services Platform, BEA AquaLogic Service Bus, Apache Web Server, Microsoft IIS web server and Web Services.
- *Policy Managers Guide*—This document defines the policy model used by BEA AquaLogic Enterprise Security, and describes how to generate, import and export policy data.
- *Programming Security for Java Applications*—This document describes how to implement security in Java applications. It includes descriptions of the security service Application Programming Interfaces and programming instructions.
- *Programming Security for Web Services*—This document describes how to implement security in web servers. It includes descriptions of the Web Services Application Programming Interfaces.
- *Developing Security Providers for BEA AquaLogic Enterprise Security*—This document provides security vendors and security and application developers with the information needed to develop custom security providers.
- *Javadocs for Java API*—This document provides reference documentation for the Java Application Programming Interfaces that are provided with and supported by this release of BEA AquaLogic Enterprise Security.
- *Wsdldocs for Web Services API*—This document provides reference documentation for the Web Services Application Programming Interfaces that are provided with and supported by this release of BEA AquaLogic Enterprise Security.
- *Javadocs for Security Service Provider Interfaces*—This document provides reference documentation for the Security Service Provider Interfaces that are provided with and supported by this release of BEA AquaLogic Enterprise Security.
- *Javadocs for BLM API*—This document provides reference documentation for the Business Logic Manager (BLM) Application Programming Interfaces that are provided with and supported by this release of BEA AquaLogic Enterprise Security.

Contact Us!

Your feedback on BEA documentation is important to us. Send us e-mail at docsupport@bea.com if you have questions or comments. Your comments will be reviewed directly by the BEA professionals who create and update the documentation.

In your e-mail message, please indicate the software name and version you are using, as well as the title and date of your documentation. If you have any questions about this version of BEA AquaLogic Enterprise Security, or if you have problems installing and running BEA AquaLogic Enterprise Security products, contact BEA Customer Support through BEA WebSupport at <http://www.bea.com>. You can also contact Customer Support by using the contact information provided on the Customer Support Card, which is included in the product package.

When contacting Customer Support, be prepared to provide the following information:

- Your name, e-mail address, phone number, and fax number
- Your company name and company address
- Your machine type and authorization codes
- The name and version of the product you are using
- A description of the problem and the content of pertinent error messages

Overview

This section covers the following topics:

- “Introduction” on page 2-1
- “Installation Overview” on page 2-2
- “Product Distribution” on page 2-4

Introduction

The AquaLogic Enterprise Security Administration Server is one of several separate components of AquaLogic Enterprise Security. To understand these components and how the installation of the ALES Administration Server fits into the overall installation and configuration process, see [ALES Architecture](#) in the *Administration and Deployment Guide*.

The AquaLogic Enterprise Security Administration Server runs in a servlet container, either WebLogic Server or Apache Tomcat, and provides several administrative utilities, including the Administration Console, a Service Control Manager, a Security Service Module, the Business Logic Manager (BLM), the Policy Importer, and the Policy Exporter. You can use the Administration Console or the BLM to manage and configure security providers, to write and manage authorization and role mapping policies, and to distribute the security configurations and policies to local or remote Security Service Modules.

This guide describes how to install the Administration Server and how to install and configure a database server that the Administration Server uses for the policy store. It also lists the system requirements and prerequisites, including hardware and software requirements. This guide does not include information for installing the Security Service Modules that are used to protect

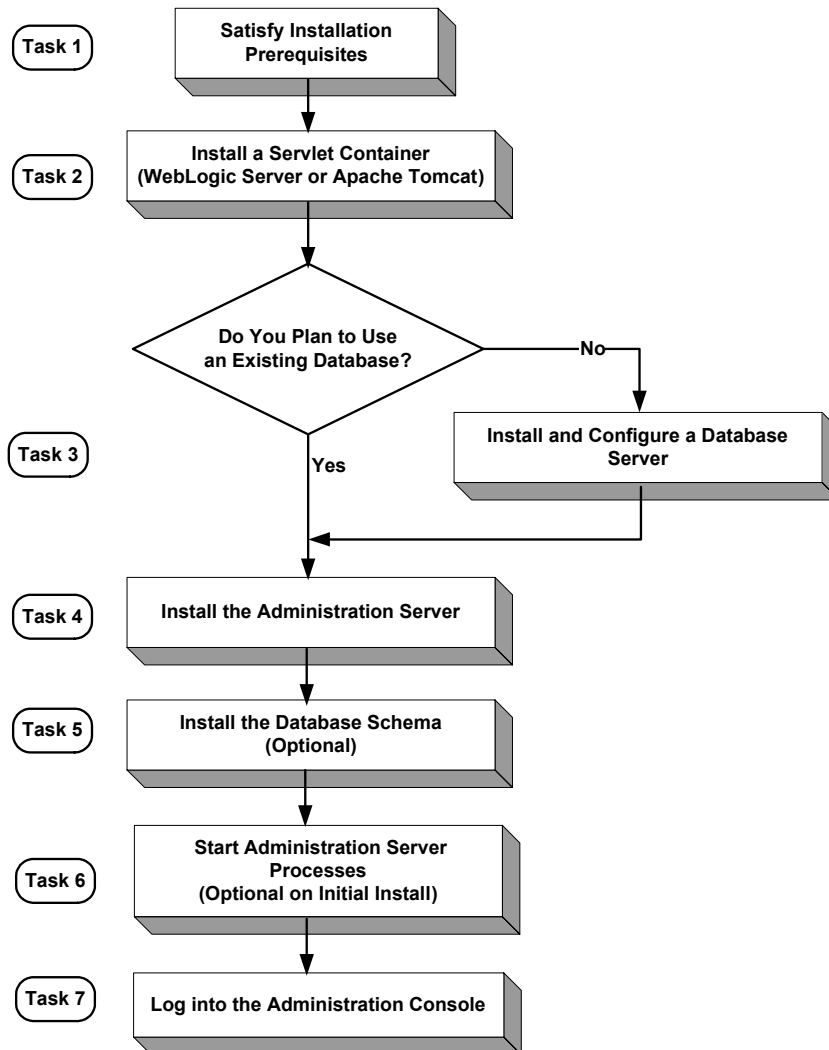
enterprise application resources. That information is provided in *Installing Security Service Modules*, included in this documentation set.

Installation Overview

To install the Administration Server, perform the following tasks (see [Figure 2-1](#)):

1. Ensure that the installation prerequisites are met. For prerequisites, see [“System Requirements” on page 3-1](#).
2. Install the servlet container of choice, either BEA WebLogic Server or Apache Tomcat. For installation instructions, see the documentation for those products.
3. Obtain a user account on a database server or, if you cannot obtain a user account, install and configure the database server of choice.
4. Install the BEA AquaLogic Enterprise Security Administration Server. For instructions, see [“Installing” on page 4-1](#).
5. Install policy database schema (optional). This task is optional because you are given the option of having the installer program install the policy database schema. For instructions, see [“Installing the Policy Database Schema” on page 5-1](#).
6. Start the Administration Server processes (optional on initial install). This task is optional on the initial install because, if you elect to have the installer program install the database schema, the installer program also starts the server processes. However, for all subsequent restarts, it is necessary to start server processes. For instructions, see [“Starting and Stopping Processes” on page 5-4](#).
7. Log into the Administration Console. For instructions, see [“Logging into the Administration Console” on page 5-4](#).

Figure 2-1 Installation Process Overview



Product Distribution

BEA AquaLogic Enterprise Security products are distributed and installed using the BEA Installation and Distribution System, which provides a complete framework for the following:

- Distribution of BEA products by download from the BEA web site
- Installation and uninstallation of the BEA AquaLogic Enterprise Security Administration Server including documentation

BEA AquaLogic Enterprise Security is distributed on both the BEA web site and on CD-ROM.

Web Distribution

If you want to install the product by downloading it from the BEA web site, contact BEA Sales at <http://www.bea.com/framework.jsp?CNT=sales1.htm&FP=/content/about/contact/> and request a download.

The package installer downloads a stand-alone version of the installation program that contains the complete Administration Server. Depending on your operating system, the package installer is approximately 150 - 200 MB.

Documentation is available from the product documentation home page. Be sure to download the most up-to-date information from the BEA web site at:

<http://e-docs.bea.com/ales/docs25/download.html>.

CD-ROM Distribution

If you purchased BEA AquaLogic Enterprise Security from your local sales representative, you will find the following items in the product box:

Two CD-ROMs:

- Disk 1 of 2 contains the following BEA AquaLogic Enterprise Security products:
 - ALES Administration Server software for Microsoft Windows platforms
 - ALES Security Service Modules software for Microsoft Windows platforms
 - Documentation in both PDF and HTML format
- Disk 2 of 2 contains the following BEA AquaLogic Enterprise Security products:
 - ALES Administration Server software for Linux and Sun Solaris
 - ALES Security Service Modules software for Linux, Sun Solaris, and IBM AIX

The following printed documents:

- BEA Software License and Limited Warranty pamphlet
- Customer Support Quick Reference and Other Important Information card

Overview

Prerequisites

This section describes the prerequisites needed to install the BEA AquaLogic Enterprise Security Administration Server, including system requirements, and prerequisite software and hardware. It does not include information for installing a Security Service Module, for which see *Installing Security Service Modules*.

The Administration Server requires certain software components to operate properly. Review these requirements carefully before installing the product.

- “System Requirements” on page 3-1
- “Database Pre-Installation Tasks” on page 3-5
- “Licensing” on page 3-16
- “Requirements for Reinstalling the Administration Server” on page 3-16

System Requirements

Table 3-1 lists the system requirements for the Administration Server.

Note: The machine on which you install the Administration Server must have a static IP address. The IP address is used by the Security Service Modules and Service Control Manager for connectivity. Also, on a Windows platform, the file system must be configured for NTFS and not FAT.

Table 3-1 System Requirements

Use	Component and Version
Servlet Container	<p>AquaLogic Enterprise Security Administration Server requires that you install one of the following servlet containers prior to installing the product:</p> <ul style="list-style-type: none"> • BEA WebLogic Server 9.2, 9.1, or 8.1 with Service Pack 4 or 5. You can download WebLogic Server from: http://commerce.bea.com/showallversions.jsp?family=WLS <p>Note: Install BEA WebLogic Server in <i>BEA_HOME</i>.</p> <ul style="list-style-type: none"> • Apache Tomcat 5.5.15. You can download Apache Tomcat from: http://tomcat.apache.org/download-55.cgi. <p>The servlet container requires a Java VM:</p> <ul style="list-style-type: none"> • Sun Java 2 SDK 1.4.2_08 on WebLogic Server 8.1 • Sun Java 2 JDK 5.0 (JDK 1.5) on WebLogic Server 9.1 or 9.2 • BEA JRockit 1.4.2_08 SDK on WebLogic Server 8.1, on Windows or Linux • BEA JRockit 5.0 (JDK 1.5) on WebLogic Server 9.1 or 9.2, on Windows or Linux • See “Apache Tomcat Requirements” on page 3-4 for information about special requirements for Tomcat.
Java Runtime Environment (JRE)	<p>The installation program requires a JRE, which is installed as needed by the servlet container.</p> <p>Note: The installation process sets <code>JAVA_HOME</code> and related variables to point to the JRE directory. All scripts installed use <code>JAVA_HOME</code> by default.</p>
Policy Store (Database Storage)	<ul style="list-style-type: none"> • Oracle 9i Release 2 (9.2.0.5) • Oracle 10g Release 1 (10.1.2, 10.2.0.1) • Sybase Adaptive Server Enterprise, Version 12.5.2 • MS-SQL 2000 and 2005 • PointBase 5.1

Table 3-1 System Requirements (Continued)

Use	Component and Version
Platforms Supported	<p>The BEA AquaLogic Enterprise Security Administration Server runs on any of the following platforms:</p> <ul style="list-style-type: none"> • Intel Pentium compatible with Microsoft Windows 2000 SP4 Professional • Intel Pentium compatible with Microsoft Windows 2003 SP1 Professional • Intel Pentium compatible with Microsoft Windows 2000 SP4 Server/Advanced Server • Intel Pentium compatible with Microsoft Windows 2003 SP1 Server/Advanced Server • Sun Microsystems Sparc with Solaris, versions 8, 9, and 10 • Linux Red Hat Advanced Server, version 3.0
Web Browser	<p>Microsoft Internet Explorer, Version 6.0 or later. In addition, the Java Plug-in for Internet Explorer from the Java Runtime Environment (JRE) 1.4.1 or greater is required for the 8.1 console. For the 9.x console, the Java Plug-in for Internet Explorer from the Java Runtime Environment (JRE) 5.0 or greater is required.</p>
Display Resolution	<p>A display resolution of 1024 x 768 or higher is recommended when running the Administration Console.</p>
Memory	<p>256 MB of RAM minimum, 512 MB or more is recommended. Each user session requires approximately 5 MB of memory.</p>
Hard Disk Space	<p>About 100 MB free storage space for the installed product (this does not include WebLogic Server or Apache Tomcat storage space). Refer to the database installation instructions for recommendations on database storage allocation.</p>

Table 3-1 System Requirements (Continued)

Use	Component and Version
Certificates and Keystores	BEA AquaLogic Enterprise Security uses an implementation of the Transport Layer Security (TLS) 1.0 specification (see TLS Protocol). The server hosting the AquaLogic Enterprise Security Administration Server supports TLS on a dedicated listen port that defaults to 7010. To establish a secure connection, a Web browser connects to the Administration Server by supplying the listen port and the secure address (HTTPS) in the connection URL, for example, <code>https://myserver:7010</code> .
Reporting	Optionally, you can use Log4j to configure a reporting application to support auditing features. For further information on how to use Log4j with the Administration Server, see: http://jakarta.apache.org/log4j/docs/ .

Apache Tomcat Requirements

If you are using Apache Tomcat, the user performing the AquaLogic Enterprise Security installation must have permission to access the Apache Tomcat directory. Therefore, when you install the Apache Tomcat, you should specify this user as the User Name on the Apache Tomcat Setup: Configuration Options page or assign access permission to this user.

You can use Apache Tomcat with JDK 1.4 or JDK 1.5. Note the following:

Tomcat with JDK 1.4

If you use Tomcat with JDK 1.4, you must also install the JDK 1.4 Compatibility Package, which is required by Tomcat 5.5 and which you can find on the [Tomcat 5.5 download page](#).

Tomcat with JDK 1.5

If you use Tomcat with JDK 1.5, then you need to edit the

`BEA_HOME/ales25-admin/config/WLESTomcat.conf` file to add the following parameter:

```
-Djavax.xml.transform.TransformerFactory=com.sun.org.apache.xalan.internal.xsltc.trax.TransformerFactoryImpl
```

Otherwise Tomcat will use the `org.apache.xalan.processor.TransformerFactoryImpl` class, resulting in an exception when you attempt to log in to the AquaLogic Enterprise Security Administration Console.

Database Pre-Installation Tasks

This section describes pre-installation tasks for using the Oracle, Sybase, Microsoft SQL Server, or PointBase databases with AquaLogic Enterprise Security. Follow the instructions for your chosen database.

Oracle Policy Database and User Creation Instructions

To configure an Oracle policy database, you must create the policy database, create a security role and a user account, and grant the security role and user access. The user account is necessary so that the policy for the instance of the Administration Server managed by this user can have a dedicated storage area allocated in the database instance.

Note: To perform this procedure, you must log into the Oracle database server as a database administrator.

To set up a policy database and a new user account, perform these steps:

1. To login to the Oracle database server, type:

```
sqlplus dba/password@ASERVER
```

where:

dba is the username you use to access the database.

password is your database administrator password.

ASERVER is the name of the Oracle service (as defined in your `tnsnames.ora` file).

2. To configure the policy database, enter the following commands at the SQL> prompt:

```
SQL>connect sys as sysdba
```

```
SQL>create tablespace DATA datafile 'C:/Oracle/oradata/ASI/data.dbf'
size 10M autoextend on next 1M MAXSIZE 250M;
```

3. To create a new role in the database server, type:

```
SQL> create role asi_role;
```

```
SQL> grant create session to asi_role;
```

```
SQL> grant create table to asi_role;
```

```
SQL> grant create sequence to asi_role;
```

```
SQL> grant create trigger to asi_role;
```

where: *asi_role* is the new role.

Prerequisites

The following example uses the default tablespaces generated when the Oracle database was first installed, although you can specify any tablespaces.

4. To set up a new database user account, type:

Note: In this example, you use the default tablespaces generated when you created and configured the Oracle database instance, however, you can specify any tablespaces.

```
SQL> create user username identified by password
SQL> default tablespace DATA quota unlimited on DATA;
```

where:

username is the name to assign to the new user account.

password is the password to assign to the new user account.

unlimited is size of the tablespace (shown here as set to unlimited).

5. To grant the role with the necessary privileges to the user, at the command prompt, type:

```
conn sys as sysdba;
grant asi_role to username;
commit;
```

In this case, you grant `SELECT` permission to the user you created in step 3. The Oracle database server does not allow you to grant the permission to the `asi_role`. BEA AquaLogic Enterprise Security uses this dynamic view to check whether one of its tables is currently being accessed. Therefore, the `SELECT` permission is required.

6. Exit SQLplus.

Sybase Policy Database and User Creation Instructions

This section describes how to configure a Sybase policy database. You must create the policy database, create a security role and a user account, and grant the security role and user access. The user account is necessary so that the policy for the instance of the Administration Server managed by this user can have a dedicated storage area allocated in the database instance.

To set up the user account, create the login to the Adaptive Server Enterprise database, create the user for policy database, and grant the user privileges to manipulate the policy schema.

Note: BEA strongly recommends that you not use the `dbo` of the policy database as the policy owner. While it is possible to do so, it requires additional database configuration that is beyond the scope of this guide.

Please refer to “[Creating Sybase Database Devices](#)” on page A-14 if you have not already created the required database devices `asi_data_dev` and `asi_log_dev` as shown in this section.

To set up a policy database and a new user account, perform these steps:

1. Log in as the System Administrator.

2. At the command prompt, type:

```
isql -Usa -S server_name
```

where: `server_name` is the database server name.

3. Enter the following commands:

```
1>use master
2>go
1>create database sspolicy on asi_data_dev = 250
log on asi_log_dev = 250
2>go
```

where: `sspolicy` is the name of the database. The name `sspolicy` is used only for the purpose of the example. You can assign any name to the database. In this example, the minimum database sizes, 250 MB, are used. If you choose to use other sizes, enter those sizes instead.

`asi_data_dev` and `asi_log_dev` are the names of the two devices.

4. To create the ASI Database Login ID, at the `isql` command prompt, type the following commands:

```
1>use master
2>go
1>sp_addlogin asi, password, sspolicy, null, "asi login"
2>go
```

where: `password` must be at least six alphanumeric characters or other characters allowed by Sybase and `sspolicy` is the name of the default database. If an `asi login` already exists, you must use the `sp_modifylogin` command to set its default database to `sspolicy`.

5. To create the ASI database user ID, at the `isql` command prompt, type the following commands:

```
1>use sspolicy
2>go
1>sp_adduser asi
2>go
```

6. To grant permissions to the ASI database user ID, at the `isql` command prompt, type the following commands:

```
1>use sspolicy
2>go
1>grant all to asi
2>go
```

General Information on PointBase and Microsoft SQL Server Support

The PointBase and Microsoft SQL Server JDBC drivers are not shipped as part of AquaLogic Enterprise Security 2.5. If you plan to use either the PointBase or Microsoft SQL Server databases, you need to acquire the JDBC drivers before beginning the AquaLogic Enterprise Security 2.5 installation. The drivers are needed so that AquaLogic Enterprise Security 2.5 can populate the database with the tables and default data during installation.

The Oracle and Sybase drivers do ship with AquaLogic Enterprise Security 2.5.

AquaLogic Enterprise Security 2.5 uses Kodo 4.0.1 for database operations. The Kodo documentation is available at <http://edocs.bea.com/kodo/docs40/index.html>.

Pre-installation Tasks for Microsoft SQL Server 2000

This section describes pre-installation tasks for MSSQL Server 2000.

Microsoft SQL Server JDBC Driver Information

AquaLogic Enterprise Security 2.5 uses the MSSQL 2005 JDBC driver for connectivity to both MSSQL 2000 and MSSQL 2005. The JDBC driver is 100% compatible between both SQL server versions.

You can find the Microsoft SQL 2005 Driver by using the following URL:

<http://www.microsoft.com/downloads/details.aspx?FamilyId=6D483869-816A-44CB-9787-A866235EFC7C&displaylang=en>

Microsoft SQL Server Database and User Creation Instructions

In the instructions that follow, the Microsoft SQL Enterprise Manager Utility is used to create a database to store AquaLogic Enterprise Security 2.5 policy data, create a user for AquaLogic Enterprise Security 2.5 database connectivity, and to assign database permissions to the user.

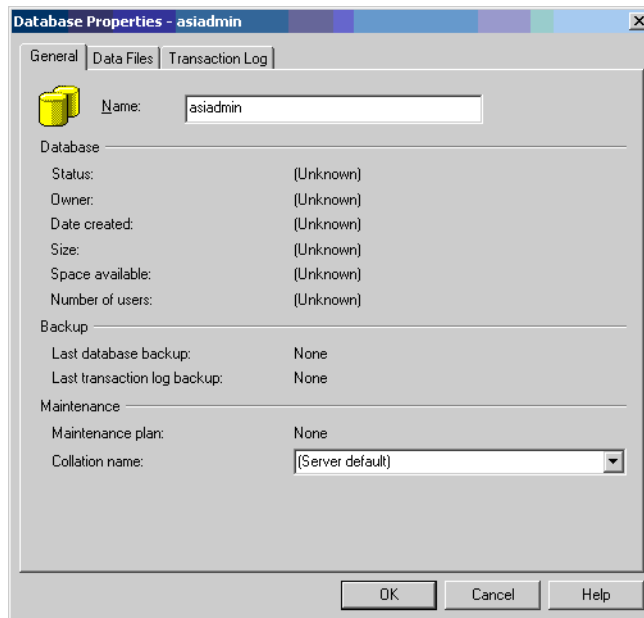
The Enterprise Manager can be launched from Programs->Microsoft SQL Server-> Enterprise Manager

1. Create a database that can store AquaLogic Enterprise Security policy data. To create the database, go to Action->New Database in the Enterprise Manager's file menu.

Set the name for the database

Figure 3-1 shows that a database named asiadmin has been created.

Figure 3-1 Adding a Microsoft SQL Database

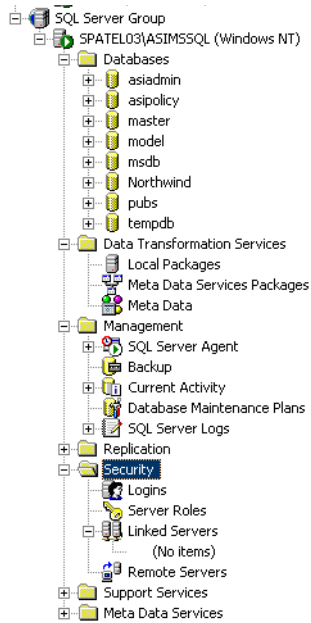


2. Create an AquaLogic Enterprise Security 2.5 database user. This user is used to query and persist data to the policy store.

To create a User, select the "Security Folder" in the left pane of the Enterprise Manager and select "Logins." Right-click on "Logins" and select "New Login..." from the context menu. Figure 3-2 shows the location of the Security folder.

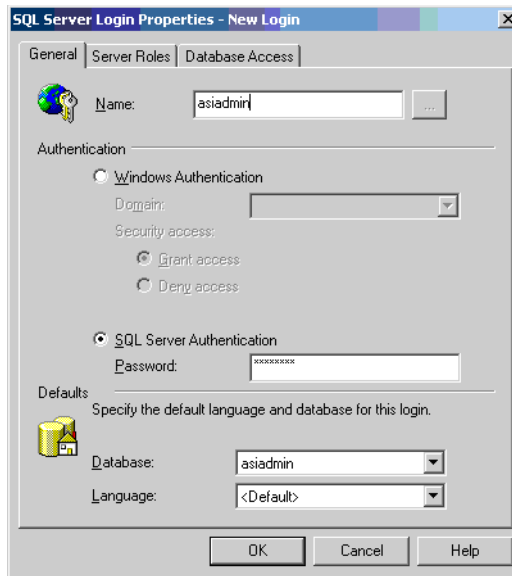
Prerequisites

Figure 3-2 Security Folder Location



3. After selecting "New Login..." the Login Properties dialog box shown in [Figure 3-3](#) appears:

Figure 3-3 Login Properties Dialog Box

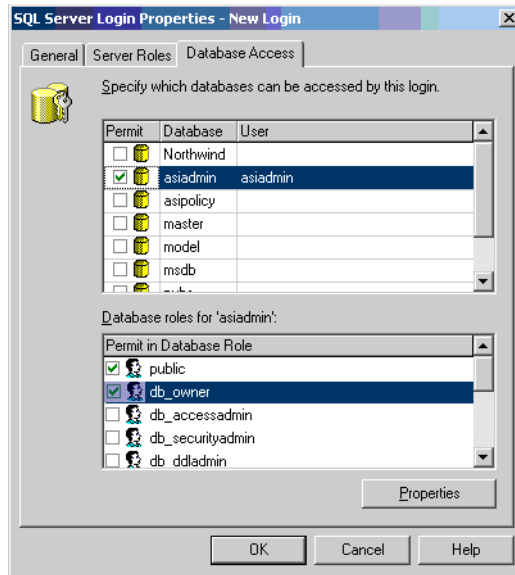


Perform the following actions:

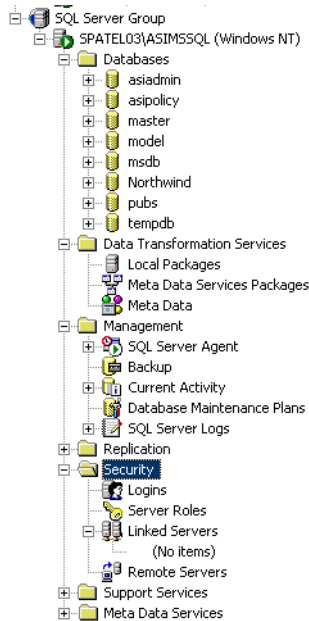
- a. Set the name of the user
- b. Select the SQL Server Authentication radio button
- c. Create a password for the user
- d. Select the database name that was created in Step 1 from the "Database:" combo box

Click on the "Database Access" tab and find the database that was created in Step, as shown in [Figure 3-4](#). Set the "Permit" column for the database in the "Specify which databases can be accessed by this login" table and set the role for the user as "db_owner" in the "Database roles for 'asiadmin'" table.

Figure 3-4 Database Access Dialog Box

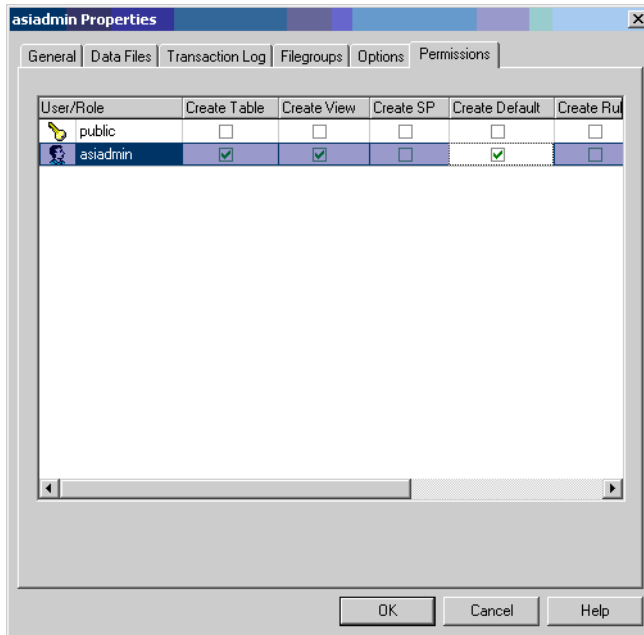


4. Select the database that was created in Step 1 from the left pane of the Enterprise Security Manger. The database will be located under the "Database" folder. Right-click on the database and select Properties from the context menu. The "database" folder is surrounded by a blue rectangle, as shown in [Figure 3-5](#).

Figure 3-5 Selecting the New Database

5. Select the permissions tab from the dialog box as shown in [Figure 3-6](#) and make sure the user has the proper permissions on the database (Create table, Create View, and Create Default):

Figure 3-6 Database Permissions



Pre-installation Tasks for PointBase 5.1

This section describes pre-installation tasks for PointBase 5.1.

Location of PointBase Server in WebLogic Server 9.x

WebLogic Server 9.x ships with a version of PointBase 5.1, which is available in `weblogic_Home/common/eval/pointbase`.

Scripts to start PointBase 5.1 and the PointBase Console are available in `weblogic_Home/common/eval/pointbase/tools`.

Only PointBase 5.1 is supported. The PointBase version (4.x) that ships as part of WebLogic Server 8.1 is not supported and will not work.

PointBase 5.1 JDBC Driver Information

The JDBC driver for PointBase is bundled with the PointBase server.

If the PointBase Sever that ships as part of WebLogic Server 9.x is used as the database for AquaLogic Enterprise Security 2.5, the JDBC driver is available in *Weblogic_Home/common/eval/pointbase/lib/pbclient51.jar*.

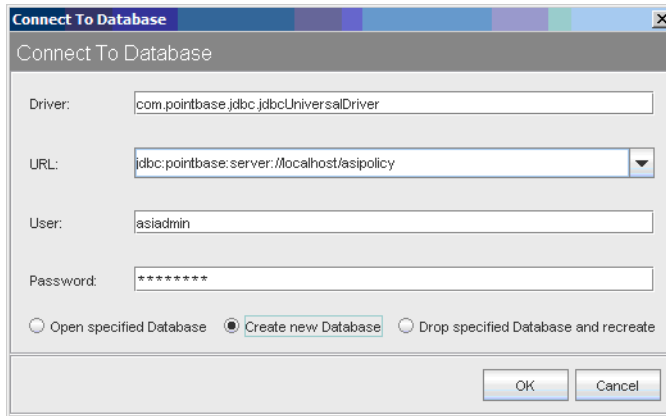
PointBase SQL Server Database and User Creation Instructions

To configure a policy database, perform the following steps:

1. Start the PointBase database. The database can be started using the *startPointbase.cmd/sh* script located in *Weblogic_Home/common/eval/pointbase/tools*.
2. Start the PointBase Console. The console can be started by invoking the *startPoinyBaseConsole.cmd/sh* script located in: *Weblogic_Home/common/eval/pointbase/tools*.
3. In the "Connect to Database" dialog box, do the following:
 - a. Modify the URL to have the appropriate database name. The URL must be in the following format:
`jdbc:pointbase:server://<server>/<database_name>`
 - b. Enter a user name: asiadmin
 - c. Enter a password for the user : password
 - d. Select the "Create new database" radio button. This will automatically create a database and user.

The dialog box should look as shown in [Figure 3-7](#).

Figure 3-7 Confirming the PointBase Configuration Settings



- e. Press the "OK" button. The database is created, and can be used by AquaLogic Enterprise Security.
- f. Make sure that the database is up when running the AquaLogic Enterprise Security installer, because the installer connects to the database and installs AquaLogic Enterprise Security-related tables.

Licensing

The product software cannot be used without a valid license. When you install the Administration Server, the installation program creates an evaluation license that expires in 90 days.

To use the Administration Server in a production environment, you must purchase a license. For information about purchasing a license, contact your BEA Sales Representative.

Requirements for Reinstalling the Administration Server

If you are installing the Administration Server on a computer on which the Administration Server was previously installed, refer to [“Uninstalling” on page 6-1](#) and make sure all of the uninstall steps were completed; otherwise the installation may fail.

Installing

The following sections describe how to install the ALES Administration Server on either Windows or UNIX platforms:

- “Before You Begin” on page 4-1
- “Starting the Installation Program on Windows Platforms” on page 4-7
- “Starting the Installation Program on a Sun Solaris Platform” on page 4-8
- “Starting the Installation Program on a Linux Platform” on page 4-10
- “Running the Installation Program” on page 4-11
- “Upgrading from ALES 2.1 and 2.2” on page 4-18
- “Installing in Silent Mode” on page 4-19
- “Installing a Secondary Administration Server” on page 4-22

Before You Begin

Before you begin this installation procedure, make sure to do the following:

- Download and read the Release Notes from:
<http://e-docs.bea.com/ales/docs25/download.html>
- Ensure that your computer meets all the prerequisites described in [Chapter 3](#), “Prerequisites.” Pay particular attention to the instructions for setting up the Microsoft SQL Server and PointBase databases if you plan to use either of these database types.

- Install the servlet container for the Administration Server. You can use WebLogic Server 9.2, 9.1, or 8.1 (with Service Pack 4 or Service Pack 5) or Apache Tomcat 5.5.15 as the servlet container.
- Do one of the following to acquire a user account on a database server that will provide a policy data store for the Administration Server:
 - If you plan to use an existing database, get a user account on that database.
 - If you plan to install a database, install and configure a database server and set up a user account. The ALES Administration Server installation includes an example and documentation that can help you with installing and configuring the policy database. This example is located at `BEA_HOME/ales25-admin/examples/DBSetupKit`.
- Obtain secure usernames and passwords. For more information on usernames and passwords, see [“System Security and BEA AquaLogic Enterprise Security” on page 4-3](#).

The following topics provide additional information to assist you in preparing for an installation:

- [“Selecting Directories for the Installation” on page 4-2](#)
- [“System Security and BEA AquaLogic Enterprise Security” on page 4-3](#)
- [“Secure Usernames and Passwords” on page 4-4](#)
- [“Generating a Verbose Installation Log” on page 4-6](#)

Selecting Directories for the Installation

During installation, you need to specify locations for the following directories:

- [“BEA Home Directory” on page 4-2](#)
- [“Product Installation Directory” on page 4-3](#)

BEA Home Directory

During installation, you are prompted to choose an existing BEA Home (`BEA_HOME`) directory. If you are using WebLogic Server as your servlet container, you should specify the same BEA Home directory that you specified when you installed WebLogic Server. If you are using Apache Tomcat as your servlet container, then the BEA Home directory is a repository for common files that are used by multiple BEA products installed on the same machine. For this reason, the BEA Home directory can be considered a central support directory for the BEA products installed on your system. The files in the BEA Home directory are essential to ensuring that BEA software operates correctly on your system. They perform the following types of functions:

- Ensure that licensing works correctly for the installed BEA products
- Facilitate checking of cross-product dependencies during installation

The files and directories in the BEA Home (`BEA_HOME`) directory are described in your WebLogic documentation. Although it is possible to create more than one BEA Home directory, BEA recommends that you avoid doing so. In almost all situations, a single BEA Home directory is sufficient. There may be circumstances, however, in which you prefer to maintain separate development and production environments on a single machine, each containing a separate product stack. With two directories, you can update your development environment (in a BEA Home directory) without modifying the production environment until you are ready to do so.

Product Installation Directory

The product installation directory contains all the software components used to administer BEA AquaLogic Enterprise Security. During installation, you are prompted to choose a product installation directory. If you accept the default, the software is installed in the following directory:

- `c:\bea\ales25-admin` (Windows)
- `/opt/bea/ales25-admin` (Sun Solaris and Linux)

where `c:\bea` or `/opt/bea` is the `BEA_HOME` directory and `ales25-admin` is the product installation directory. You can specify any name and location on your system for your product installation directory and there is no requirement that you name the directory `ales25-admin` or create it under the BEA Home directory.

System Security and BEA AquaLogic Enterprise Security

Like any component running on a system, the infrastructure it provides is only as secure as the operating environment where it is installed. When BEA AquaLogic Enterprise Security is installed on a system, it makes use of that system's security infrastructure to lock itself down and integrate with the security of its environment. Through the use of user, group, and file system permissions, BEA AquaLogic Enterprise Security allows limited access to many operations depending upon these permissions.

Which Users Can Install the Administration Server and SSMs?

As of version 2.2 of ALES, the user who installs the Administration Server and SSMs does not require administrator privileges on a Windows platform, or root access on a Sun Solaris or Linux platform. The installation procedures set the file and directory permissions based on the user who runs the installer.

This means that if the user who installs the Administration Server is not the same user who installed the servlet container (WebLogic Server or Apache Tomcat), you can potentially introduce file permission problems. For example, consider that on a Windows platform the WebLogic Server requires access to the `BEA_HOME\ales25-admin\set-wls-env.bat` file. In this case, you will need to update the file permissions manually or make sure that both users belong to the same user groups.

Note: Unlike prior versions of AquaLogic Enterprise Security, as of version 2.2 the Administration Server installation does not create or require special users or groups, such as the previously default values of `asiadmin`, `asiadgrp`, `scmuser`, or `asiusers`.

Secure Usernames and Passwords

AquaLogic Enterprise Security implements a sophisticated username and password schema to protect the application itself and to ensure secure communications. Understanding this schema is important to installing the product and ensuring that it operates properly in either a development or production environment.

There are two levels of password protection:

- passwords for keystores (secure communication between components)
- a password to protect the private keys (the Certificate Authority)

Understanding your enterprise and how responsibilities in your organization are separated is essential to establishing a secure environment. For example, the person who maintains the database is usually not the person who designs and implements security. The person who deploys applications is usually not the person who administers system usernames and passwords. And, while you may not be as concerned with a more formal authorization scheme in your development environment, your production environment needs to be firmly secured and responsibilities clearly defined.

Usernames and passwords are required to access the components listed and described in [Table 4-1](#).

Table 4-1 Usernames and Passwords

Component	Description	Default
Database Server	A database server account used to connect to the database server where the policy data is stored, and update policy data using the policy import and export tools.	none
Certificate Authority	Sets the password for the private key for the Certificate Authority. All trust within the enterprise domain originates from this authority.	Randomly generated
Identity Key Passwords (Keystore Passwords)	<p>You also need to supply private key passwords for each of the following identities:</p> <ul style="list-style-type: none"> • Service Control Manager • Security Service Module • Administration Application <p>Private key passwords validate process authenticity by using the Certificate Authority chain of trust. Identities with invalid or untrusted keys cannot participate in the trust relationships in the enterprise domain.</p>	Randomly generated
Configure Keystores	<p>You need to supply keystore passwords for each of the Identity, Peer and Trust keystores.</p> <p>Identity Keystore - stores and protects the private keys that represent the processes identity or identities.</p> <p>Peer Keystore - stores and protects the public keys for all trusted identities within the installed component (Administration Application, Security Service Module or Service Control Manager).</p> <p>Trust Keystore - stores and protects public keys for Certificate Authorities that originate the chain of trust.</p>	Randomly generated

BEA recommends following these guidelines:

- **Development Environment**—In a development environment, you can either use the default values generated during the installation process or you can assign your own usernames and passwords to protect your public and private keys.
- **Production Environment**—In a production environment, you must choose all passwords explicitly. These passwords may be needed for future maintenance of the public key

infrastructure (PKI), for example, in the case of a failure. Make sure to write down all password information and retain it in a secure location.

Note: BEA does not recommend the use of randomly generated passwords, as the generation mechanism for these passwords is *not* secure. In a production environment, BEA does not recommend installing Security Service Modules on the same machine as the Administration Server.

Generating a Verbose Installation Log

If you start the installation process from the command line or from a script, you can specify the `-log` option to generate a verbose installation log. The installation log lists messages about events that occur during the installation process, including informational, warning, error, and fatal messages. This can be especially useful for silent installations.

Note: You may see some warning messages in the installation log. However, unless there is a fatal error, the installation program completes the installation successfully. The installation user interface indicates the success or failure of the installation, and the installation log file includes an entry indicating that the installation was successful.

To create a verbose log file during installation, use the following command lines or scripts:

- For Windows platforms:

```
ales250admin_win32.exe -log=D:\bea\logs\ales_install.log  
-log_priority=debug
```

- For the Sun Solaris platform:

```
ales250admin_solaris32.bin -log=/bea/logs/ales_install.log  
-log_priority=debug
```

- For the Linux Red Hat Advanced Server platform:

```
ales250admin_rhas3_IA32.bin -log=/bea/logs/ales_install.log  
-log_priority=debug
```

Note: The `-log` parameter is optional. By default, the installation log is put in the log directory where you install the Administration Server. If for some reason, the installer fails, use this switch to generate an even more verbose output: `-log_priority=debug`.

The path must be the full path to a file name. If the file does not exist, all folders in the path must exist before you execute the command or the installation program does not create the log file.

Starting the Installation Program on Windows Platforms

Note: Do *not* install the software from a network drive. Download the software to a local drive on your machine and install it from there.

To install the application in a Microsoft Windows environment:

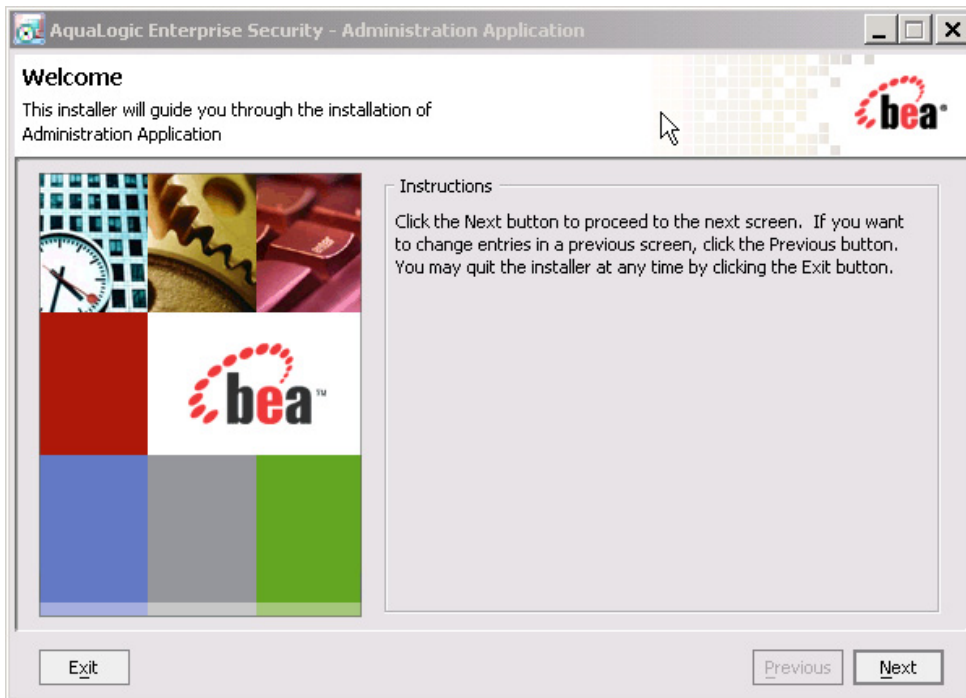
1. Shut down any programs that are running.
2. Log in to the machine. Administrator privilege is not required. As of version 2.2 ALES sets the ownership of all files based on the user who runs the installer.
3. If you are installing from a CD-ROM, go to step 4. If you are installing by downloading from the BEA web site:
 - a. Contact BEA Sales at <http://www.bea.com/framework.jsp?CNT=sales1.htm&FP=/content/about/contact/> and request a download.
 - b. Go to the directory where you downloaded the installation file and double-click `ales250admin_win32.exe`.

The AquaLogic Enterprise Security - Administration Application window appears as shown in [Figure 4-1](#).
4. If you are installing from a CD-ROM:
 - a. Insert Disk 1 into the CD-ROM drive.

If the installation program does not start automatically, open Windows Explorer and double-click the CD-ROM icon.
 - b. From the installation CD, run `ales250admin_win32.exe`.

The AquaLogic Enterprise Security - Administration Application window appears as shown in [Figure 4-1](#).
5. Proceed to [“Running the Installation Program” on page 4-11](#).

Figure 4-1 AquaLogic Enterprise Security Administration Server Installer Window



Starting the Installation Program on a Sun Solaris Platform

To run graphical-mode installation, your console must support a Java-based GUI. If the installation program determines that your system cannot support a Java-based GUI, the installation program automatically starts console-mode installation.

Before running the installer, ensure the following two things are done.

- Ensure the `PATH` is set correctly.

It is also important to add the `/bin` directory to `PATH` and the `/lib` directory to `LD_LIBRARY_PATH`. If these settings are changed, you must reboot before the changes become available to processes running as services (which is how the Administration Server initializes itself).

Note: BEA recommends setting these variables in `/etc/profile` so they are available to all processes starting from `init`.

- Ensure that the location into which you do the install is accessible to all users at both the parent and the child directory levels. As of version 2.2 of ALES, the user who installs the Administration Server and SSMs does not require administrator privileges on a Windows platform, or root access on a Sun Solaris or Linux platform. The installation procedures set the file and directory permissions based on the user who runs the installer.

For example, if the installation directory is `/opt/beahome/ales25-admin` and the `/opt/` directory is only accessible by root, post installation scripts that run as a user other than root cannot access the directory where they reside. Therefore, the directory into which you do the install (for example, `/opt/beahome/ales25-admin`) must have execute permissions for `other`. Run the following command to reset the permissions:

```
chmod o+x /opt/
```

The `beahome` and `ales25-admin` directories already have permissions set appropriately.

To install the application on a Sun Solaris platform:

1. Log in to the machine.
2. Set your `DISPLAY` variable if needed.
3. If you are installing from a CD-ROM, go to step 4. If you are installing by downloading from the BEA web site:
 - a. Contact BEA Sales at <http://www.bea.com/framework.jsp?CNT=sales1.htm&FP=/content/about/contact/> and request a download.

- b. Go to the directory where you downloaded the file and change the protection on the install file:

```
chmod u+x ales250admin_solaris32.bin
```

- c. Start the installation: `./ales250admin_solaris32.bin`

The AquaLogic Enterprise Security - Administration Application window appears as shown in [Figure 4-1](#).

4. If you are installing from a CD-ROM:
 - a. Insert Disk 2 into the CD-ROM drive.
 - b. From the installation CD, execute `ales250admin_solaris32.bin` .

The AquaLogic Enterprise Security - Administration Application window appears as shown in [Figure 4-1](#).

5. Proceed to [“Running the Installation Program”](#) on page 4-11.

Starting the Installation Program on a Linux Platform

To run graphical-mode installation, your console must support a Java-based GUI. If the installation program determines that your system cannot support a Java-based GUI, the installation program automatically starts console-mode installation.

Before running the installer, ensure the following two things are done.

- Ensure the `PATH` is set correctly.

It is also important to add the `/bin` directory to `PATH` and the `/lib` directory to `LD_LIBRARY_PATH`. If these settings are changed, you must reboot before the changes become available to processes running as services (which is how the Administration Server initializes itself).

Note: BEA recommends setting these variables in `/etc/profile` so they are available to all processes starting from `init`.

- Ensure that the location into which you do the install is accessible to all users at both the parent and the child directory levels. As of version 2.2 of ALES, the user who installs the Administration Server and SSMs does not require administrator privileges on a Windows platform, or root access on a Sun Solaris or Linux platform. The installation procedures set the file and directory permissions based on the user who runs the installer.

For example, if the installation directory is `/opt/beahome/ales25-admin` and the `/opt/` directory is only accessible by root, post installation scripts that run as a user other than root cannot access the directory where they reside. Therefore, the directory into which you do the install (for example, `/opt/beahome/ales25-admin`) must have execute permissions for `other`. Run the following command to reset the permissions:

```
chmod o+x /opt/
```

The `beahome` and `ales25-admin` directories already have permissions set appropriately.

To install the application on a Linux platform:

1. Log in to the machine.
2. Set your `DISPLAY` variable if needed.

3. If you are installing from a CD-ROM, go to step 4. If you are installing by downloading from the BEA web site:
 - a. Contact BEA Sales at <http://www.bea.com/framework.jsp?CNT=sales1.htm&FP=/content/about/contact/> and request a download.
 - b. Go to the directory where you downloaded the file and change the protection on the file:


```
chmod u+x ales250admin_linux32.bin
```
 - c. Start the installation: `./ales250admin_linux32.bin`

The AquaLogic Enterprise Security - Administration Application window appears as shown in [Figure 4-1](#).
4. If you are installing from a CD-ROM:
 - a. Insert Disk 2 into the CD-ROM drive.
 - b. From the installation CD, execute `ales250admin_linux32.bin` .

The AquaLogic Enterprise Security - Administration Application window appears as shown in [Figure 4-1](#).
5. Proceed to “[Running the Installation Program](#)” on page 4-11.

Running the Installation Program

The installation program prompts you to enter specific information about your system and configuration, as described in [Table 4-2](#).

Note: You must install the Administration Server before installing any Security Service Modules. BEA does not recommend installing Security Service Modules on the same machine as the Administration Server in a production environment.

To complete this procedure you need the following information:

- Name of the BEA HOME directory
- Name of the product directory
- Database connection information (see your database administrator).

Table 4-2 Administration Server Installation

In this Window:	Perform this Action:
Welcome	Click Next to proceed or cancel the installation at any time by clicking Exit .
BEA License Agreement	Read the BEA Software License Agreement, and then select Yes to indicate your acceptance of the terms of the agreement. To continue with the installation, you must accept the terms of the license agreement, click Yes , and then click Next .
Choose BEA Home Directory	Specify the BEA Home directory that serves as the central support directory for all BEA products installed on the target system. If you already have a BEA Home directory on your system, you can select that directory (recommended) or create a new BEA Home directory. If you choose to create a new directory, the installer program automatically creates the directory for you.
Choose Product Directory	Specify the directory in which to install the Administration Server software. You can accept the default product directory (<code>ales25-admin</code>) or create a new product directory. If you choose to create a new directory, the installation program automatically creates the directory for you, if necessary. Click Next to continue.
Choose Service Control Manager Directory	Specify the directory in which to install the Service Control Manager. You can accept the default directory (<code>ales25-scm</code>) or you can create a new one. Click Next to continue.
Choose the Web Server to install the administration application	Specify the type of servlet container (WebLogic Server or Tomcat) and the directory in which it is installed. Click Next to continue.
Choose Network Interfaces	Select the network interfaces to which to bind the Service Control Manager. This is the IP address used to listen for requests to distribute policy and configuration data. Note: If you are installing the Administration Server in a production environment with more than one network card, you want to select a protected (internal) interface; you do not want to expose the Service Control Manager through a public address. Click Next to continue.

Table 4-2 Administration Server Installation (Continued)

In this Window:	Perform this Action:
Configure Administration Application	<p data-bbox="462 392 723 418">Enterprise Domain Name</p> <p data-bbox="498 430 1237 569">Enter the name to assign to this domain. The Enterprise Domain represents the collection of Security Service Modules administered by this BEA AquaLogic Enterprise Security Administration Server. Make a note of the Enterprise Domain Name you entered as you will need this to install any subsequent Security Service Modules.</p> <p data-bbox="462 595 1237 649">Note: The Enterprise Domain Name <i>must</i> be entered in all lower case; and may not contain any spaces or punctuation marks.</p>
Configure Administration Application (Continued)	<p data-bbox="462 678 744 704">Administration Application</p> <p data-bbox="498 716 686 743">HTTP Port (7000)</p> <p data-bbox="498 755 1214 808">Enter the HTTP port number for the Administration Console of the servlet container to use.</p> <p data-bbox="498 821 663 847">SSL Port (7010)</p> <p data-bbox="498 859 1237 1060">Enter the HTTPS port number for the Administration Server to use. When you enter the SSL port number, make sure that at least five consecutive port numbers are also available. These port numbers are used by services required by the BEA AquaLogic Enterprise Security Administration Server to operate properly, and the Administration Server always runs on a secure connection using these ports. The installer checks during installation to see if any of the ports are used, skips those that are used, and selects the next available port.</p> <p data-bbox="462 1086 1214 1168">Note: The installer is not be able to detect a port already assigned to another process that is currently not running. Hence there may be a port bind problem if two process try to use the same port.</p>
Configure Administration Application (Continued)	<p data-bbox="498 1194 892 1220">Certificate Authority Duration (years)</p> <p data-bbox="498 1232 1184 1315">Enter the number of years the security certificate remains in effect. The Certificate Authority is used to generate and sign certificates for other components in the BEA AquaLogic Enterprise Security system.</p> <p data-bbox="498 1328 723 1354">Click Next to continue.</p>

Table 4-2 Administration Server Installation (Continued)

In this Window:	Perform this Action:
Configure Database Connection	<p>Database</p> <p>Select the type and version of database you are using.</p> <p>Database Connection</p> <p>For Oracle:</p> <p>Oracle Service Name</p> <p>Local service name (Oracle System Identifier SID).</p> <p>Database JDBC URL</p> <p>Change the <SID> and <SERVER> name to complete the JDBC URL:</p> <pre>jdbc:oracle:thin:@<SERVER>:1521:<SID></pre> <p>Database JDBC Driver</p> <p>The Oracle driver to use by default:</p> <pre>oracle.jdbc.driver.OracleDriver</pre>

Table 4-2 Administration Server Installation (Continued)

In this Window:	Perform this Action:
Configure Database Connection (Continued)	<p>Database Connection</p> <p>For Sybase:</p> <p>Sybase Host Name Sybase server entry you configured in this local machine, used to connect to Sybase database server running elsewhere.</p> <p>Sybase Database Name Name of the Sybase database—the name of policy database.</p> <p>Database JDBC URL Change the <hostname_or_IP> and <databaseName> name to complete the JDBC URL, assuming the Sybase server is running on port 4100: The <hostname_or_IP> is the hostname or IP address of the machine running Sybase server, and <databaseName> is the policy database name. You may need to change port number if necessary. The Sybase server usually listens on port 5000 on the Windows platform and 4100 on other platforms: jdbc:sybase:Tds:<hostname_or_IP>:4100/<databaseName> or jdbc:sybase:Tds:<hostname_or_IP>:4100 You can use the latter URL format when the default database for Login ID is set to the policy database.</p> <p>Database JDBC Driver The Sybase driver to use by default: com.sybase.jdbc2.jdbc.SybDriver</p>

Table 4-2 Administration Server Installation (Continued)

In this Window:	Perform this Action:
Configure Database Connection (Continued)	<p>Database Client MS SQL Server 2000</p> <p>Database Name <host name of the server that MSSQL is running on></p> <p>JDBC URL jdbc:sqlserver://<host-name>:1433</p> <p>JDBC Driver Location Location of the MSSQL database driver</p> <p>Login ID The user created in step 2 of the pre-installation tasks</p> <p>Password The password created in step 2 of the pre-installation tasks</p> <p>Note: ALES does not include the JDBC driver for MS SQL and PointBase. If you want to use MS SQL or PointBase for your database, you must download the appropriate JDBC driver. You must use the latest MS SQL 2005 JDBC driver with all versions of MS SQL.</p>
Configure Database Connection (Continued)	<p>Database Client PointBase 5.1</p> <p>JDBC URL jdbc:pointbase:server://<server>/<database_name></p> <p>JDBC Driver Location Location of the PointBase database driver</p> <p>Login ID The user created in step 3 of the pre-installation tasks</p> <p>Password The password created in step 3 of the pre-installation tasks</p> <p>Click Next to continue.</p>

Table 4-2 Administration Server Installation (Continued)

In this Window:	Perform this Action:
Configure Database Connection (Continued)	<p>If you want to install the policy database schema now, check the Install Database Schema check box.</p> <p>There are two situations where you should not elect to the install the policy database schema:</p> <ul style="list-style-type: none"> • If you previously installed the policy database schema for the Administration Server and made modifications, you should not reinstall it again because your modifications will be lost. • If you are installing a failover server for backup and failover purposes, you must not install the database schema again, because the failover server uses the same database schema.
Random Key Password Selection	<p>You can direct the installer to randomly generate passwords for all keys. If you are installing the product in a production environment, BEA recommends using secure user names and passwords, and not those that are randomly generated. If you choose to use randomly generated passwords, the next step in the installation process is Installation Complete.</p>
Configure Certificate Authority	<p>The Certificate Authority is used to generate and sign certificates for other components in the BEA AquaLogic Enterprise Security system.</p> <p>Key Password</p> <p>You can either choose to use a randomly generated password or you can specify the private key password. You must confirm the password.</p> <p>Note: You should write down or remember all passwords and store them in a safe location should you ever need to use them again. For example, if you plan to install redundant servers, you need to use the same keystore and key passwords.</p> <p>Click Next to continue.</p>
Configure Keys	<p>Enter the following key passwords to secure communications of internal processes. These are components of the Administration Server. Private key passwords are used to validate process authenticity by using the Certificate Authority chain of trust. Identities with invalid or untrusted keys cannot participate in the trust relationships of the enterprise domain.</p> <ul style="list-style-type: none"> • Service Control Manager • Security Service Module • Administration Application

Table 4-2 Administration Server Installation (Continued)

In this Window:	Perform this Action:
Configure Keystores	<p>You may supply keystore passwords for each of the Identity, Peer and Trust Certificate Authority keystores or accept the randomly generated passwords.</p> <p>Identity Keystore—stores and protects the private keys that represent the processes identity or identities.</p> <p>Peer Keystore—stores and protects the public keys for all trusted identities within the installed component (Administration Application, Security Service Module or Service Control Manager).</p> <p>Trust Certificate Authorities Keystore—stores and protects public keys for Certificate Authorities that originate the chain of trust.</p>
Installation Complete	<p>This page indicates the Administration Server completed successfully.</p> <p>Note: Be sure to write down the Administration Server URL. You will need this URL when you are installing additional components.</p> <p>Click Done to complete the installation.</p>

What's Next

Now that you have installed the necessary software, you must start the necessary services. For additional instructions, see [“Post Installation Tasks” on page 5-1](#). If you want to install a second Administration Server to use as a backup, see [“Installing a Secondary Administration Server” on page 4-22](#).

Upgrading from ALES 2.1 and 2.2

ALES 2.5 includes a utility to help you upgrade from AquaLogic Enterprise Security 2.1 or 2.2. If you have an existing installation of ALES 2.1 or 2.2, follow this upgrade procedure to upgrade the Administration Server. For information about upgrading SSMs, see [Upgrading from ALES 2.1 or 2.2](#) in *Installing Security Service Modules*. Note that no upgrade is available for Apache and Microsoft IIS Web Server SSM instances.

1. Make sure you have read and delete permission for the ALES 2.1 or 2.2 files. You must be logged in as a member of `r` whatever group you used when installing ALES 2.1 or 2.2.
2. Stop the ALES 2.1 or 2.2 processes, including the Administration Server, SCM, and SSM instances. For more information, see [Starting and Stopping ALES Components](#) in the *Administration and Deployment Guide*.

3. If you have installed the ALES 2.1 or 2.2 Administration Server on the same machine on which you have installed one or more ALES 2.1 or 2.2 SSMs, be sure to upgrade the Administration Server before you upgrade any SSMs.
4. Run the ALES 2.5 Administration Server installer on the machine on which your ALES 2.1 or 2.2 Administration Server is installed. The ALES 2.5 Administration Server installer detects the ALES 2.1 or 2.2 installation and uses its configuration information.
5. Run the `upgrade` script, which is located in `BEA_HOME/ales25-admin/upgrade`.

Installing in Silent Mode

You can run the Administration Server installation in silent mode. Silent installation mode allows you to run the installer once on one machine and then use the configuration of that machine to duplicate installation on multiple machines. When you run the installation program in silent mode, the installation program reads the configuration information it needs from an XML file that you specify in the command that launches the installation program.

When you run the installation program not in silent mode, it creates an XML file, located at `BEA_HOME/ales25-admin/config/silent_install_admin.xml`. You can edit this XML file and use it when you run the installation program in silent mode. You need to edit the `silent_install_admin.xml` file to set the values described in [Table 4-3](#). Each installation parameter is specified in the XML file as the value of a `<data-value>` element, as in the following example:

```
<data-value name="USER_INSTALL_DIR" value="C:\bea\ales25-admin" />
```

The values you set in the `<data-value>` elements correspond generally to the responses you enter when you run the installation program not in silent mode, which are described in [Table 4-2](#).

Table 4-3 Silent Installation Configuration File

Data Element Name	Description	Default or Sample Value
BEAHOME	BEA_HOME directory in which to install the Administration Server	C:\bea
USER_INSTALL_DIR	Directory within BEA_HOME directory in which to install the Administration Server	C:\bea\ales25-admin
SCM_INSTALL_DIR	Directory within BEA_HOME directory in which to install the Service Control Manager	C:\bea\ales25-scm

Table 4-3 Silent Installation Configuration File (Continued)

Data Element Name	Description	Default or Sample Value
WEB_SERVER_TYPE	Servlet container that will host the Administration Server. Valid values are <code>weblogic</code> or <code>tomcat</code> .	<code>weblogic</code>
WEB_SERVER_DIR	Directory in which the servlet container is installed	<code>C:\bea\weblogic81</code>
ADMIN_APP_PORT	Port for the Administration Server	<code>7000</code>
ADMIN_APP_SSL_PORT	SSL port for the Administration Server	<code>7010</code>
ENTERPRISE_DOMAIN_NAME	The name to assign to this domain. Must be all lower case; and may not contain any spaces or punctuation marks.	<code>asi</code>
CERTIFICATE_DURATION	The number of years the security certificate remains in effect.	<code>10</code>
DATABASE_CLIENT	The type of database you are using.	Possible values are <code>ORACLE92,ORACLE90,ORACLE81,</code> and <code>SYBASE125</code>
SYBASE_DATABASE_HOSTNAME	Optional. For Sybase database only. The Sybase server entry you configured in this local machine, used to connect to Sybase database server running elsewhere.	
SYBASE_DATABASE_NAME	Optional. For Sybase database only. The name of the policy database.	
ORACLE_SERVICE_NAME	For Oracle database only. Local service name (Oracle System Identifier SID).	
MSSQL_DATABASE_HOSTNAME	Optional. For MS SQL database only. The name of the database host.	
MSSQL_DATABASE_NAME	Optional. For MS SQL database only. The name of the policy database.	

Table 4-3 Silent Installation Configuration File (Continued)

Data Element Name	Description	Default or Sample Value
MSSQL_DB_DRIVER_LOC	The location of the MS SQL JDBC driver. This driver is not supplied by AquaLogic Enterprise Security, and you provide the location.	
POINTBASE_DB_DRIVER_LOC	The location of the PointBase JDBC driver. This driver is not supplied by AquaLogic Enterprise Security, and you provide the location.	
JDBC_URL	URL on which to reach the database	jdbc:oracle:thin: @host:port:SID
JDBC_DRIVER	Java classname of the database driver.	oracle.jdbc.driver. OracleDriver
DATABASE_LOGIN_ID	Username to access the database.	
DATABASE_LOGIN_PASS	Password to access the database	
CA_KEY_PASS	Optional. Will be generated by the installer if not specified.	
IDENTITY_KEY_PASS	Password for identity keystore. Optional. Will be generated by the installer if not specified.	
PEER_KEY_PASS	Password for all trusted identities within the installed component (Administration Application, Security Service Module or Service Control Manager). Optional. Will be generated by the installer if not specified.	
TRUSTED_CA_KEY_PASS	Password for public keys for Certificate Authorities that originate the chain of trust. Optional. Will be generated by the installer if not specified.	

Table 4-3 Silent Installation Configuration File (Continued)

Data Element Name	Description	Default or Sample Value
SCM_KEY_PASS	Key password for Service Control Manager. Optional. Will be generated by the installer if not specified.	
SSM_KEY_PASS	Key password for Security Service Module. Optional. Will be generated by the installer if not specified.	
ADMIN_KEY_PASS	Key password for Administration Server. Optional. Will be generated by the installer if not specified.	
INSTALL_DB_SCHEMA	Specify whether or not to install the policy database schema.	no
SCM_INTERFACE_LIST	A comma-separated list of IP addresses of the network interfaces to which to bind the Service Control Manager.	169.254.25.129

To run the Administration Server installation in silent mode, use one of the following commands:

- For Windows platforms:

```
ales250admin_win32.exe -mode=silent -silent_xml=<path_to_silent.xml>
```

- For the Sun Solaris platform:

```
ales250admin_solaris32.bin -mode=silent  
-silent_xml=<path_to_silent.xml>
```

- For the Red Hat Advanced Server Linux platform:

```
ales250admin_linux32.bin -mode=silent -silent_xml=<path_to_silent.xml>
```

Installing a Secondary Administration Server

You may want to install and configure a second Administration Server on a separate machine to support failover. For information about this, see [Setting up Administration Servers for Failover](#) in the *Administration and Deployment Guide*.

Installing

Post Installation Tasks

This section discusses the steps you need to take after installing the Administration Server.

- [“Installing the Policy Database Schema” on page 5-1](#)
- [“Starting and Stopping Processes” on page 5-4](#)
- [“Logging into the Administration Console” on page 5-4](#)
- [“What’s Next?” on page 5-5](#)

Installing the Policy Database Schema

The installer program offers you the option of installing the policy database schema as part of the installation procedure. There are two situations in which you should not install the database schema again:

- If you installed the database schema during a previous installation of the Administration Server and you have made modifications, the modifications will be lost if you install it again.
- If you are installing a secondary Administration Server for purposes of failover, you should not install the database schema because failover server will use the same database schema as the primary Administration Server.

If you have not installed the policy database schema, you must do so now; otherwise, you will not be able to start the Administration Server processes.

Note: In this release, the database-specific schema installation files (`install_schema_oracle`, `install_schema_mssql`, `install_schema_pointbase`, and `install_schema_sybase`) internally call the `install_ales_schema` file. You can specify a database-specific schema installation file, or specify `install_ales_schema.bat` directly. There is no operational difference.

For instructions for installing the database schema, see the following topics:

- [“Installing the Policy Database Schema on Windows” on page 5-2](#)
- [“Installing the Policy Database Schema on Sun Solaris” on page 5-3](#)
- [“Installing the Policy Database Schema on Linux” on page 5-3](#)

Installing the Policy Database Schema on Windows

To install the policy database schema in a Microsoft Windows environment, perform the following steps:

1. Change to the active directory in which to install the database schema, for example:

```
cd \bea\ales25-admin\bin
```

2. To install the database schema, type:

```
install_ales_schema.bat <db-user-name> <db-password>
```

Where:

- *db-user-name*—The username to use to access the database; the username for the database administrator. Owner of the policy database (optional, defaults to the user login, usually the same as the *username*). The policy owner is a database username or user ID that controls the database schema in the database instance.
- *db-password*—Password to use to access the database; the password for the database administrator.

For more information on the database schema installation, examine the `install_ales_schema.log` in the log directory.

Installing the Policy Database Schema on Sun Solaris

To install the policy database schema in a Sun Solaris platform, perform the following steps:

1. Change to the active directory in which to install the database schema, for example:

```
cd /bea/ales25-admin/bin
```

2. Locate the script `install_ales_schema.sh`

Important: Make sure all scripts in this directory have execute permission.

3. To install the policy database schema, type:

```
install_ales_schema.sh <db-user-name> <db-password>
```

Where:

- *db-user-name*—The username to use to access the database; the username for the database administrator. Owner of the policy database (optional, defaults to the user login, usually the same as the *username*). The policy owner is a database username or user ID that controls the set of database schema in the database instance.
- *db-password*—The password to use to access the database; the password for the database administrator.

For more information on the database schema installation, examine the `install_ales_schema.log` in the `log` directory.

Installing the Policy Database Schema on Linux

To install the policy database schema in a Linux platform:

1. Change to the active directory in which to install the database schema, for example:

```
cd /bea/ales25-admin/bin
```

2. Locate the script `install_ales_schema.sh`

Important: Make sure all scripts in this directory have execute permission.

3. To install the policy database schema, type:

```
install_ales_schema.sh <db-user-name> <db-password>
```

Where:

- *db-user-name*—The username to use to access the database; the username for the database administrator. Owner of the policy database (optional, defaults to the user

login, usually the same as the *username*). The policy owner is a database username or user ID that controls the set of database schema in the database instance.

- *db-password*—The password to use to access the database; the password for the database administrator.

For more information on the database schema installation, examine the `install_ales_schema.log` in the log directory.

Starting and Stopping Processes

After you have installed the Administration Server, you must start the necessary processes by running the appropriate batch or shell scripts. On UNIX, run `WLESadmin.sh start` or `WLESadmin.sh console`. On Windows, you can start the `WLESadmin start` or `WLESadmin console` processes as services from the Programs menu or as commands from a console window.

For more detailed instructions on how to start and stop the required processes, see [Starting and Stopping Processes](#) in the *Administration and Deployment Guide*.

Logging into the Administration Console

At this time, you can log into the Administration Console and check that all the components are working correctly. For descriptions of the processes that are running, see [Starting and Stopping Processes](#) in the *Administration and Deployment Guide*.

To log into the Administration Console:

1. Open Internet Explorer.

To ensure that your transactions are securely encrypted, the Administration Console uses two-way Secure Socket Layers (SSL) to communicate with your Administration Server.

2. Enter the URL for the Administration Console:

```
https://hostname:port/asi
```

Where:

`hostname` is the Domain Name Server (DNS) name or IP address of the Administration Server.

`port` is the port number through which the Administration Server is connected.

`asi` is the name of the Enterprise Domain (that you assigned during the installation procedure).

3. When the login page appears, enter the username and the password granted to one of the security roles that has a login privilege and click Sign In. If you are using the default username and password, enter `system` (username) and `weblogic` (password). This is the default administrator configured on install and should only be used for the initial login.
4. Several security certificate verification dialog boxes appear. Check OK on each one. If you do not have the proper version of the JRE installed, then on the first attempt, the console prompts you to install it.
5. Once you have started the console, you should set up additional administrative users or configure an Authentication provider to authenticate console users to an external authentication source such as LDAP or Microsoft Windows NT and update the administration policy accordingly, as described in [“What's Next?”](#)

Note: The Administration Console allows administrators to edit configurations or perform other operations based on security roles granted by the administration policy. If your security roles do not permit editing of configuration data, the data is displayed in the Administration Console but is not editable. If you try to perform an operation that is not permitted, the Administration Console displays an `Access Denied`.

What's Next?

Now that you have successfully installed the Administration Server, you are ready to install your Security Service Modules and configure and deploy your security configurations and policies.

For instructions on installing Security Service Modules (SSMs), see [Installing Security Service Modules](#).

Note: In a production environment, BEA recommends that you install your Security Service Modules on machines other than the machine on which the Administration Server is installed.

For instructions on how to write and deploy policies to SSMs to protect resources, see the [Policy Managers Guide](#). This document describes how to define resources, identities, and roles, and how to write authorization policies and role mapping policies. It also describes how to create policy data files that you can use to import policy data into the Administration Server and how import and export policy data.

Post Installation Tasks

Uninstalling

The following sections describe how to uninstall the Administration Server from both Windows and UNIX platforms:

- [“Uninstalling the Administration Server on Windows”](#) on page 6-1
- [“Uninstalling the Administration Server on Solaris or Linux”](#) on page 6-2

Notes: If you have entered policy and security configuration information in the Administration Console and you want to save it, you must export it, uninstall the Administration Server, re-install the Administration Server, and import the policy and security configuration information. For instructions on exporting and importing policy and configuration information, see *Importing and Exporting Policy* in the *Policy Managers Guide*.

Uninstalling the Administration Server on Windows

This procedure removes the Administration Server, which includes the Administration Console and all scripts that relate to management tasks.

To uninstall the Administration Server, do the following:

1. Shut down any servers and services that are running.
2. In Windows, click Start and select Programs > BEA AquaLogic Enterprise Security > Uninstall Administration Application.

The Uninstall Welcome window appears.

3. Click Next.

The Choose Components window appears.

4. Be sure the check boxes are checked, and click Next.

The Uninstall Options window appears and presents the following options:

- Uninstall the SCM instance
- Uninstall the SCM instance and delete its directory
- Delete the admin directory

5. Select the desired options, and click Next.

Note: If the directories contain user generated files that you want to save (for example, files in the `/log` or `/ssl` directories), do not delete the directories.

The BEA Uninstaller - Administration Server window appears and the uninstall process begins.

As the uninstall process runs, a checklist is displayed, listing the uninstallation tasks as they complete. After the Administration Server is removed, the "uninstall complete" message appears.

Note: Make sure to check the Uninstall SCM box also. If you do not do this, you will have to delete these product files manually.

6. Click Done.

You have successfully removed Administration Server from your computer.

This procedure does not remove the servlet container software. You must remove that software according to the servlet container product documentation. For additional instructions for completely removing the product, see [“Additional Steps” on page 6-2](#).

Additional Steps

To remove the ActiveX controls, open the Control Panel > Add or Remove Programs and uninstall the ActiveX control named "BEA ALES Administration Console". You need to do this on each Windows system previously used to connect to an Administration Server.

Uninstalling the Administration Server on Solaris or Linux

To run the graphical mode uninstallation program, your console must support a Java-based GUI. If the uninstallation program determines that your system cannot support a Java-based GUI, the uninstallation program automatically starts in console mode.

To uninstall the Administration Server software:

1. Log in to the machine.
2. Shut down any servers and services that are running.
3. Open a command shell and go to the directory where you installed the product, for example:

```
BEA_HOME/ales25-admin/uninstall
```

where *BEA_HOME* represents the directory in which you installed product.

4. At the command prompt, type `uninstall.sh`.

The BEA Uninstaller - Administration Server window appears and the uninstall process begins.

Note: If your system supports a graphical user interface, the uninstall program starts in graphical mode. If your system does not support a graphical user interface, the uninstall program starts in console mode.

5. Respond to the prompts to uninstall the product.

Uninstalling

Setting Up and Administering the Database

This section provides information and guidelines to assist you in installing, configuring, and managing an Oracle or Sybase database server to use with the AquaLogic Enterprise Security Administration Server.

Note: As of ALES version 2.5, additional database types such as MS-SQL and PointBase are also supported. These other supported database servers are not covered in this section.

This information is not meant to replace or supersede in any way the database documentation provided by Oracle and Sybase for their database server and client products. Also, the information provided here assumes that you are familiar with the Oracle database documentation.

Note: In prior versions of ALES, if you installed the Administration Server on a machine other than the machine on which you installed the database, you must have also installed and configured the respective Oracle or Sybase client on that machine.

As of version 2.5, the database runtime client is not required; only the JDBC Driver is required in this release.

BEA AquaLogic Enterprise Security stores all policy and configuration data used by the Administration Server and Security Service Modules in the policy database. You can use either an Oracle database or a Sybase database for your policy data storage. You must install and configure the database server software before you install the Administration Server.

Note: To perform a database installation and setup, you must be a database administrator with a database administrator username and password and permission to create a new instance. In addition, you should be knowledgeable about the operating system you are working with and be adept at database installations and configuration issues. If you do not feel

comfortable performing any of these tasks, ask your database administrator for assistance.

This section covers the following topics:

- [“Setting Up and Administering the Oracle Database” on page A-2](#)
- [“Setting Up and Administering the Sybase Database” on page A-11](#)

Setting Up and Administering the Oracle Database

This section contains the procedures for setting up and administering an Oracle database. It covers the following topics:

- [“Before you Begin the Oracle Database Setup” on page A-2](#)
- [“Installing and Configuring the Oracle Database” on page A-4](#)
- [“Administering an Oracle Policy Database” on page A-9](#)

Before you Begin the Oracle Database Setup

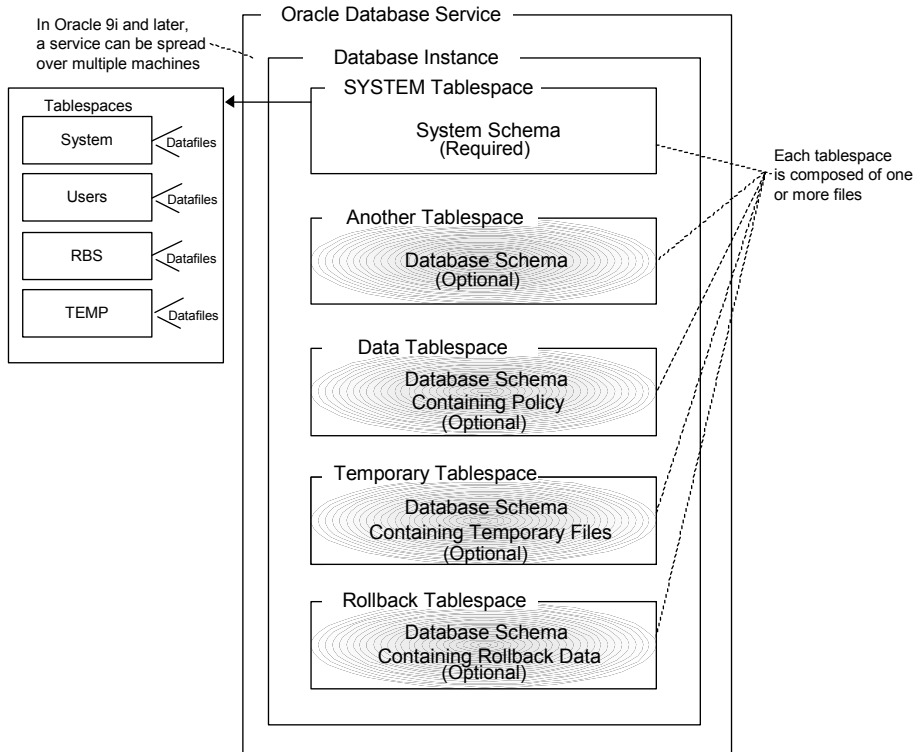
Before you install and set up your Oracle database, review the following topics to better understand Oracle database configuration requirements:

- [“Overview of the Oracle Client/Server Architecture” on page A-2](#)
- [“Oracle Database System Requirements” on page A-4](#)

Overview of the Oracle Client/Server Architecture

Each Oracle service is identified by a global database name and an Oracle system identifier referred to as the `SID` (see [Figure A-1](#)). The Oracle global database name is the full name of a database that uniquely differentiates it from any other databases in your network domain. One global database name can represent several database instances. The global database name is also known as the service name. The `SID` distinguishes the database instance from any other database instances on the same machine.

Figure A-1 Oracle Database Setup



An Oracle instance is a running Oracle database made up of memory structures and background processes. Each instance is associated with an `SID`. With the Oracle Parallel Server, multiple instances can exist on different machines for a single database.

The policy database is a set of database schemas in which all data are stored. A database schema is a collection of objects associated with a particular schema name. The objects include tables, views, domains, constraints, assertions, privileges, and so on.

A datafile is an Oracle term for a file that contains the contents of logical database structures, such as tables and indexes. One or more datafiles form a logical unit of storage called a tablespace. A datafile is associated with only one tablespace and only one database.

A tablespace is a logical portion of a database used to allocate storage for table and index data. Each tablespace corresponds to one or more physical datafiles. Every Oracle database has a

tablespace called `SYSTEM` and may have additional tablespaces. A tablespace is used to group related logical structures. The database username or user `TD` is a login that is given permission by the database administrator to access a specific database instance. This user is also called the schema owner, that is, the owner of the schema objects such as tables, views and triggers that are created.

Oracle Database System Requirements

Table 0-1, “Oracle Setup Requirements,” on page A-4 describes the minimum requirements for the system on which the Oracle database server is installed.

Table 0-1 Oracle Setup Requirements

Requirement	Description
Software version	Oracle database server: <ul style="list-style-type: none"> Version 9i Release 2 (9.2.x) Version 10g Release 1 (10.1.0.4)
Server platform	Any platform supported by Oracle.
Memory	As required by Oracle server installation (64 MB minimum).
Disk space for the starter database	As required by Oracle server installation, plus space required to store policy data; 500 MB recommended.
Disk space for Oracle software	Refer to your installation guide for the Oracle Database Server.
Disk space for policy database	Minimum of one tablespace with 250 MB of free space is required.

Installing and Configuring the Oracle Database

This section provides additional instructions for installing and configuring an Oracle database for use with the AquaLogic Enterprise Security Administration Server.

To install and configure the database, perform the following tasks:

- “Installing the Oracle Database” on page A-5—Use this procedure only if you are going to install the Oracle database software and create and configure an instance of the database.

- [“Configuring the Oracle Database Listener for Remote Connections” on page A-8](#)—Use this procedure only if you intend to install the AquaLogic Enterprise Security Administration Server on a machine that is remote to the machine on which you install the Oracle database.
- [“Creating an Instance of an Oracle Database” on page A-9](#)—Use this procedure only if the Oracle database software is already installed and you want to create another instance of the database.

Installing the Oracle Database

This section provides recommendations for installing the Oracle database and creating a database instance. When you run the Oracle installation program, it automatically starts the Database Configuration Assistant, which you use to create an instance of the database. If the Oracle database is already installed on the database host machine, you can skip this procedure and go to [“Creating an Instance of an Oracle Database” on page A-9](#).

To install the Oracle database and create a database instance, perform these steps:

1. Ensure that the system requirements are satisfied as defined in [Table 0-1](#) and install the Oracle database according to instructions in the *Oracle Database Installation Guide*. When the Oracle Universal installer runs, select the install options as specified in [Table 0-2](#). For other installer options, accept the default settings or set them as you desire.

Table 0-2 Recommended Selections in the Oracle Universal Installer

Installer Option	Recommended Selections
Available Products	Oracle 9i Database 9.2.x
Installation Types	Enterprise Edition
Database Configuration	General Purpose
Oracle MTS Recovery Service Configuration Port Number	Accept the default setting.
Global Database Name (For Oracle 10g only)	The full Oracle database name that distinguishes the database from any other databases in your network domain, for example <code>asi.ales</code> , where <code>asi</code> is the database name and <code>ales</code> is the domain.

Table 0-2 Recommended Selections in the Oracle Universal Installer

Installer Option	Recommended Selections
Database System Identifier (For Oracle 10g only)	The Oracle system identifier (SID). The SID distinguishes the database instance from any other database instances on the same machine, for example <code>asi</code> ,
Passwords (For Oracle 10g only)	The install program creates four user accounts, SYS, SYSTEM, SYSMAN, and DBSNMP and assigns default passwords. During the installation, you are prompted to change these passwords. For security reasons, Oracle recommends that you specify new passwords for these user accounts when you install the database software. Be sure to record your password settings as you will need them later.

- For Oracle 9i, when the Database Configuration Assistant starts, step through the screens and use the settings specified in [Table 0-3](#).

Note: For Oracle 10g, the Database Configuration Assistant is run after the installer program (just as it is with Oracle 9i), however, for 10g, it does not prompt you for input.

Table 0-3 Oracle 9.1.2 Database Configuration Assistant Settings

Database Configuration Assistant Screen	Recommended Setting
Step 1 of 8: Operations	Select Create a database, and click Next.
Step 2 of 8: Templates	Select New Database, and click Next Note: This selection specifies the template to use to create the instance of the database.
Step 3 of 8: Database Identification	Specify the Global Database Name, for example <code>asi.ales</code> . Specify the SID, for example <code>asi</code> , and click Next.
Step 4 of 8: Database Features	Set these check boxes to on: Oracle spatial, Oracle Ultra Search, Oracle Data Mining, Oracle OLAP, Example Schemas and all check boxes below, and click Next.
Step 5 of 8: Database Connection Options	Select Dedicated Server Mode, and click Next

Table 0-3 Oracle 9.1.2 Database Configuration Assistant Settings

Database Configuration Assistant Screen	Recommended Setting
Step 6 of 8: Initialization Parameters	Select the Memory tab, click the Custom radio button, and set the parameters as follows: <ul style="list-style-type: none"> • Shared Pool: 69 Mbytes • Buffer Cache: 24 Mbytes • Java Pool: 32 Mbytes • Large Pool: 8 Mbytes • PGA: 24 Mbytes Click Next.
Step 7 of 8: Database Storage	Click Next. The Database Assistant creates the database.
Database Configuration Assistant	Set passwords for the SYS and SYSTEM accounts and record these passwords as you will need them later. Click Exit. The Database Assistant completes.
End of Installation	Click Exit.

- For Oracle 9i, do one of the following to set your system PATH environment variables:
 - For Windows systems, set the environment variables as shown in [Listing 0-1](#).
 - For Solaris and Linux systems, refer to the *Oracle Installation Guide Release 2 (9.2.0.1.0) for UNIX systems* for instructions.

Listing 0-1 Oracle 9i System PATH Environment Variable Settings for Windows

```
<drive>:\oracle\ora920\bin;
C:\Program Files\Oracle\jre\1.3.1\bin;
C:\Program Files\Oracle\jre\1.1.8\bin;
```

Where <drive> is the hard drive on which the Oracle database is installed.

- For Oracle 10g, do one of the following to set environment variables:
 - On Microsoft Windows, the installer program sets the environment variables for you.

- On Solaris, refer to the *Oracle Database Installation Guide* 10g release 1 (10.1.0.4) for Solaris.
 - On Linux, refer to the *Oracle Database Installation Guide* 10g release 1 (10.1.0.4) for Linux.
5. If you want to allow remote connections to this database instance, proceed to “[Configuring the Oracle Database Listener for Remote Connections](#)” on page A-8.

Configuring the Oracle Database Listener for Remote Connections

To configure the Oracle database to accept remote connections from the Administration Server, you must configure an Oracle listener. This would only be necessary if you intend to install the Administration Server on a machine other than the machine on which the Oracle data is installed.

To configure an Oracle listener, perform the following steps:

1. Start the Oracle Net Configuration Assistant and respond to the assistant screens as directed in [Table 0-4](#).

Table 0-4 Oracle Listener Setting

Assistant Screen	Setting
Welcome	Select Listener configuration, and click Next.
Listener	Select Add, and click Next.
Listener Name	Enter listener name, for example, <i>asi</i> , and click Next.
Select Protocols	Select TCP, and click Next.
TCP/IP Protocol	Select the standard port 1521, and click Next.

2. To verify that the listener is configured, open a command window on a remote system and enter this command: `SQLplus system/password@listenername`.
 where *password* is the password you assigned to the `SYSTEM` account upon installation and *listenername* is the name you assigned to the Oracle listener, for example *asi*.

Creating an Instance of an Oracle Database

This section describes how to create and configure an instance of an Oracle database. It assumes that the Oracle database software was installed.

Note: You should only perform this procedure when you want to create and configure instances of the database in addition to the instance that was created when the database software was installed.

Perform the following steps to create an instance of an Oracle database:

Note: The section provides guidance to assist you, but it does not supersede the documentation provided by Oracle.

1. To start the Oracle Database Configuration Assistant, click Start>Programs>Oracle-<*OraHome*>Configuration and Migration Tools>Database Configuration Assistant, where *OraHome* indicates the version of the software. The Database Configuration Assistant starts.
2. When the Database Configuration Assistant starts, step through the screens and select settings as specified in [Table 0-3](#).

Administering an Oracle Policy Database

This section covers the following topics:

- [“Using the Database Administration Utilities with Oracle” on page A-9](#)
- [“Backing Up an Oracle Database” on page A-10](#)

Using the Database Administration Utilities with Oracle

lists and describes the batch and shell files provided for database administration. The files are located in the following directory:

```
bea\ales25-admin\bin\
```

where:

- `bea` is the `BEA_HOME` directory.
- `ales25-admin` is the installation directory for the Administration Server.

Table 0-5 Oracle Database Administration Utilities

File Name	Used to:
policyexporter.bat policyexporter.sh	Exports policy data. See the <i>BEA AquaLogic Enterprise Security Policy Managers Guide</i> for information on how to export policy. The <i>dbtype</i> is the type of database, Sybase or Oracle.
install_ales_schema.bat install_ales_schema.sh	Installs the policy database schema. See “Installing the Policy Database Schema” on page 5-1 for information on how to install the database schema.
uninstall_ales_schema.bat uninstall_ales_schema.sh	Uninstall the policy database schema from the database server. The parameters for this script are the same as the <code>install_ales_schema</code> script.

Before running these scripts with an Oracle database, you need to ensure the following setup steps are completed:

- The current path (.) is in your `PATH` environment.
- For Windows, ensure that the `PATH` includes the `BIN` and `DLL` directory of Oracle installation.
- For Solaris, ensure that the environmental variable `ORACLE_HOME` is set, `$ORACLE_HOME/bin` is in the `PATH`, and `$ORACLE_HOME/lib` in the `LD_LIBRARY_PATH`.
- Ensure that you can connect to the Oracle database server using command `sqlplus` (the Net Service Name, login ID and password).

Backing Up an Oracle Database

BEA strongly recommends that you backup your original policy database regularly. A database backup is always recommended before you uninstall or re-install the policy database. You may need to contact your database or system administrator to assist with this process. Backups should be done on a regularly scheduled basis.

For instructions on backing up your Oracle database, see the *Oracle Backup and Recovery Guide* that comes with your Oracle documentation.

Setting Up and Administering the Sybase Database

This section contains the procedures for setting up and administering an Sybase database. It covers the following topics:

- [“Before you Begin the Sybase Database Setup” on page A-11](#)
- [“Installing and Configuring the Sybase Adaptive Server” on page A-13](#)
- [“Administering the Sybase Policy Database” on page A-18](#)

Before you Begin the Sybase Database Setup

Before you begin to set up your Sybase database, review the following topics to better understand Sybase database configuration requirements:

- [“Overview of the Sybase Client/Server Architecture” on page A-11](#)
- [“Sybase Database System Requirements” on page A-13](#)

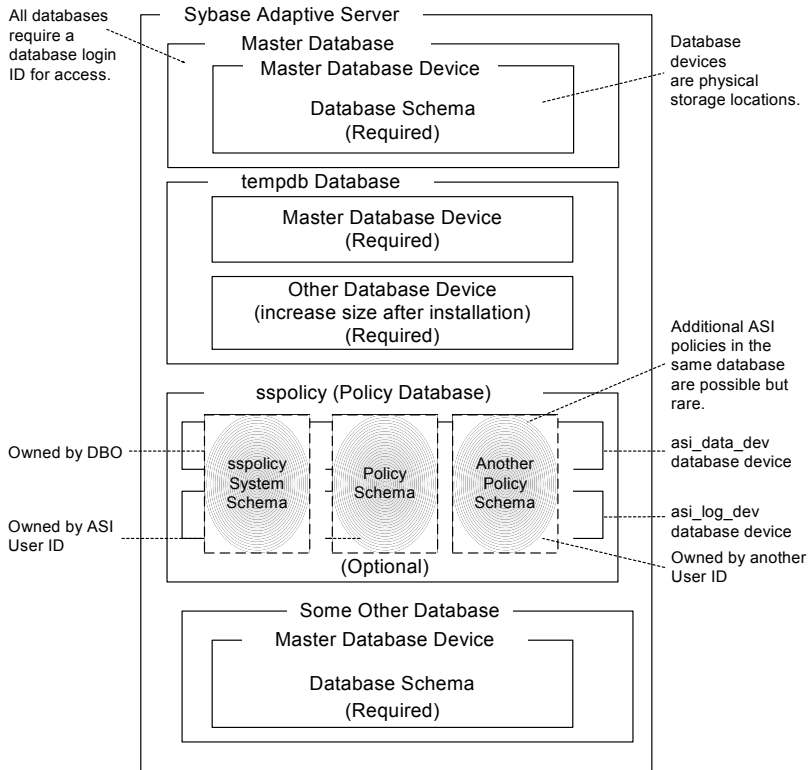
Overview of the Sybase Client/Server Architecture

The Sybase Adaptive Server is the server in the Sybase client/server architecture (see [Figure A-2](#)). It manages multiple databases and multiple users, keeps track of the actual location of data on disks, maintains mapping of logical data description to physical data storage, and maintains data and procedure caches in memory.

The policy database is a set of database schemas in which all data are stored. The Sybase database contains a set of related data tables and other database objects organized and presented to serve a specific purpose.

A database device is a Sybase term that represents the portion of a device (a portion of a hard drive, such as a partition) that is dedicated to holding database data. When creating the database device, you can choose either a raw partition or an existing file system. Choosing a raw partition can increase the performance of the database server.

Figure A-2 Sybase Adaptive Server Setup



The Database Login ID is a login created by a system administrator to log onto the Adaptive Server. Each Database Login has a password and a default database to access. A login is valid if the Adaptive Server has an entry for that user in the system table `syslogins`.

The Database Administrator (DBA) has a special database login ID that can access all databases in the Adaptive Server. The DBA is also referred to as the system administrator. In fact, the name of the DBA login is `sa` (for System Administrator).

The Database Owner (DBO) is a special database login with permission to perform all actions on a policy database. Usually, the login that creates the database automatically becomes the DBO. The Database User ID is `dbo` (lowercase), which is different from its Database Login ID. For your policy database, you can use any Database Login ID as the DBO.

The Database User ID pertains to one specific database and is a login given permission by the DBO or DBA (system administrator) to access that one database. In most cases, the database user ID is the same as the Database Login ID. However, in some cases, they may be different, as with the special dbo user ID.

A database schema is a collection of objects associated with a particular schema name. The objects include tables, views, domains, constraints, assertions, privileges, and so on.

The policy owner is a Database User ID that controls the set of database schema in the database. BEA recommends that you not use dbo as a policy owner because it requires special administration. The AquaLogic Enterprise Security architecture allows multiple policy owners in its database, each owning a policy different from the other policies.

Sybase Database System Requirements

[Table 0-6](#) describes the minimum requirements for the system on which the Sybase Adaptive Server is installed.

Table 0-6 Sybase Database Minimum Requirements

Requirement	Description
Software Version	Sybase Adaptive Server Enterprise 12.5.2.
Server Platform	Any platform supported by Sybase.
Memory	As required by Sybase server installation (42 MB minimum).
Disk Space for the default database	As required by Sybase server installation.
Disk Space for Sybase software	Refer to the <i>Sybase Adaptive Server Enterprise Installation Guide</i> for details.
Disk Space for the Policy Database	A minimum of two database devices is required, each having 250 MB.

Installing and Configuring the Sybase Adaptive Server

This section provides instructions for installing and configuring a Sybase database for use with the AquaLogic Enterprise Security Administration Server.

For guidance on installing and configuring the database, see the following topics:

- [“Installing the Sybase Database” on page A-14](#)—Use this procedure only if you have to install and configure the Sybase database software.
- [“Creating Sybase Database Devices” on page A-14](#)—Use this procedure if the Sybase database software is already installed and you only need to set the configuration parameters as required by AquaLogic Enterprise Security policy database.
- [“Creating Sybase Database Devices” on page A-14](#)—Use this procedure to create Sybase database devices. The database devices must be created before you can create and configure the policy database.

Installing the Sybase Database

This section provides recommendations for installing and configuring the Sybase database software. If the Sybase database is already installed on the database host machine, you can skip this procedure and go to [“Creating Sybase Database Devices” on page A-14](#).

To install the Sybase Adaptive Server, perform these steps:

1. To install a Sybase Adaptive Server database software, follow the Sybase installation instructions in the *Sybase Adaptive Server Enterprise Installation Guide*. When the Sybase Installer displays the Configure New Server screen, select the Configure new Adaptive Server and Configure new XP Server check boxes and proceed with the installation.
2. When the final installer screen appears, select the Yes, restart my computer radio button and click Finish.

Note: By default SYBASE names your database server based on your machine name.

3. After the machine restarts, start the SYBASE Server (Sybase SQLServer) manually.

Creating Sybase Database Devices

The policy database requires at least two database devices, each having at least 250 MB of free space. The first device stores policy data and the other stores the transaction log. You must create these two database devices before you create and configure the policy database.

Note: For better performance, BEA recommends a raw partition as the best configuration for the database device. Obviously, you must allocate sufficient disk space to ensure that the database meets your performance requirements.

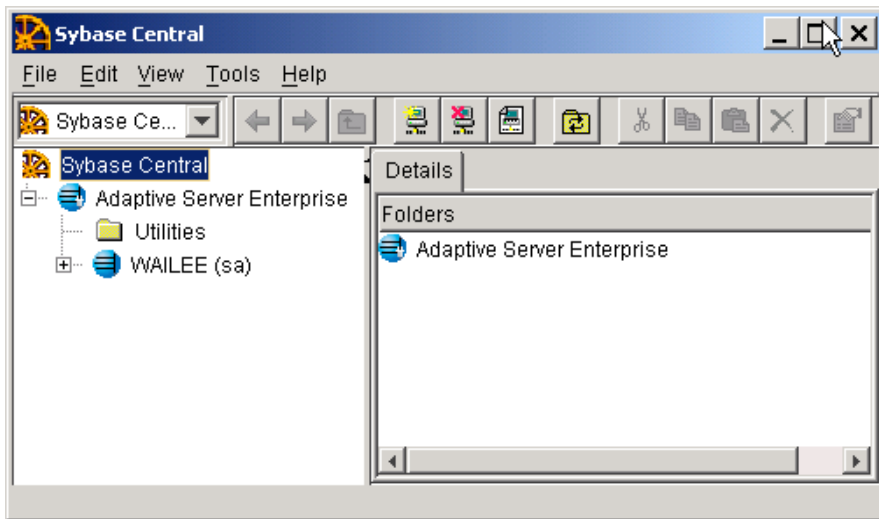
To Create Sybase Database devices on the Windows platform, perform the following steps:

1. To start the Sybase Central tool, click Start-->Programs-->Sybase-->Sybase Central Java Edition. The Sybase Central tool opens.

2. Click Tools, select Connect and log in as user `sa` (no password is required). The Sybase Central screen appears as shown in [Figure A-3](#).

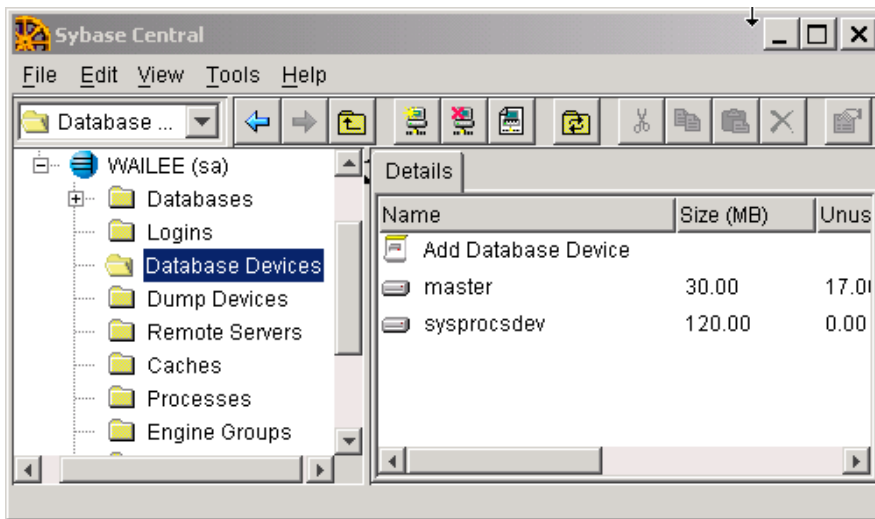
Note: The user `sa` does not have a password by default.

Figure A-3 Sybase Central



3. Expand the Sybase Database server node in the left pane (shown as WAILEE in [Figure A-3](#), but your server is displayed instead) and click Database Devices. Add Device Database appears in the right pane (see [Figure A-4](#)).

Figure A-4 Add Database Device Screen

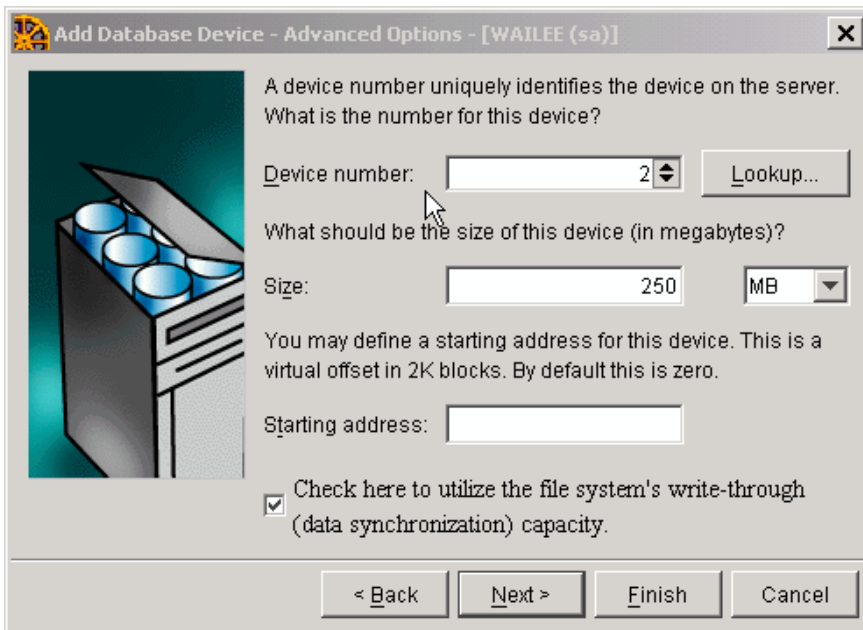


4. Double click Add Database Devices. The Specify the Name and Path screen appears (see [Figure A-5](#)).

Figure A-5 Database Device Name and Path Screen

5. Specify the path (for example `C:\Sybase\data\asi_data_dev.dat`) and the device name (for example `asi_data_dev`), and click Next. The Add Database Device - Advanced Options screen appears (see [Figure A-6](#)).

Figure A-6 Sybase Add Database Device - Advanced Options Screen



6. Set the Device number to 2, Size to 250 MB, click the check box to on, and click Finish.
7. To add database device `asi_log_dev`, repeat steps 4. to 6., but set the database device name to `asi_log_dev` instead of `asi_data_dev`, and click Finish.

Note: For instructions for creating Sybase database devices on Solaris and Linux platforms, see the Chapter “Managing Adaptive Server Databases” in the *Sybase Adaptive Server Enterprise Configuration Guide* for the particular platform.

Administering the Sybase Policy Database

This section covers the following database administration topics:

- “Using the Database Administration Utilities with Sybase” on page A-19
- “Backing Up a Sybase Database” on page A-20

Using the Database Administration Utilities with Sybase

Table 0-7 lists and describes the batch and shell files provided for database administration. The files are located in the following directory:

```
bea\ales25-admin\bin\
```

where:

- `bea` is the `BEA_HOME` directory.
- `ales25-admin` is the installation directory for the Administration Server.

Table 0-7 Database Administration Utilities

File Name	Used to:
policyexporter.bat policyexporter.sh	Exports policy data. See the <i>BEA AquaLogic Enterprise Security Policy Managers Guide</i> for information on how to export policy. The <i>dbtype</i> is the type of database, Sybase or Oracle.
install_ales_schema.bat install_ales_schema.sh	Installs the policy database schema. See “Installing the Policy Database Schema” on page 5-1 for information on how to install the database schema.
uninstall_ales_schema.bat uninstall_ales_schema.sh	Uninstall the policy database schema from the database server. The parameters for this script are the same as the <code>install_ales_schema</code> script.

Before running these scripts with a Sybase database, you need to ensure the following setup steps are completed:

- The current path (`.`) is in your `PATH` environment.
- Ensure that the `SYBASE` environmental variable is set.
- In Windows, ensure that `PATH` includes `%SYBASE%\OCS-12_5\bin` and `%SYBASE%\OCS-12_5\dll`.
- In Solaris, ensure that `PATH` includes `$SYBASE/OCS-12_5/bin` and that `LD_LIBRARY_PATH` includes `$SYBASE/OCS-12_5/lib`.
- Ensure you can connect to the Sybase database server using the `isql` command (the name of the database server, login ID and password).

Backing Up a Sybase Database

BEA strongly recommends that you backup your original policy database regularly. A database backup is always recommended before you uninstall or re-install the policy database. You may need to contact your database or system administrator to assist with this process. Backups should be done on a regularly scheduled basis.

If you have an existing backup procedure in place, you may choose to run it. Otherwise, follow these steps:

1. Login to your Sybase database server as the system administrator, database operator, or database owner.

The database owner is not the same as the policy owner.

2. Backup the transaction log by using the Sybase `dump transaction` command.
3. Backup the database by using the Sybase `dump database` command.

Note: See your Sybase documentation for further information on using these commands.