



BEA AquaLogic Service Bus™

Installation Guide

Contents

About This Document

What You Need to Know	-viii
Product Documentation on the e-docs Web Site.	-viii
Related Information	-viii
Contact Us!	-viii
Documentation Conventions.	-ix

Preparing for Your Installation

Installation Overview	1-1
WebLogic Express Support	1-2
Installation Modes	1-2
Graphical mode.	1-2
Console mode	1-3
Silent Mode.	1-3
Installable Product Components	1-3
WebLogic Server	1-4
BEA Workshop for WebLogic Platform	1-4
AquaLogic Service Bus	1-5
BEA JRockit JDK	1-6
Product Distribution Methods.	1-7
Web Distribution	1-7
DVD Distribution.	1-7

Installation Prerequisites	1-7
System Requirements	1-8
Temporary Disk Space Requirements	1-9
Administrator Privileges	1-10
Selecting Directories for Your Installation	1-10
Choosing a BEA Home Directory	1-11
Understanding the Functions of the BEA Home Directory	1-12
Choosing Product Installation Directory	1-14
Choosing the Type of Installation	1-15
Complete	1-15
Custom	1-15
About Installing Node Manager as a Windows Service	1-16
Generating a Verbose Installation Log	1-18
Where to Find Upgrade Information	1-18

Starting the Installation Program

Before You Start.	2-1
Starting the Installation Program on Windows Platforms	2-2
Starting the Installation in Graphical Mode	2-2
Starting the Installation in Console Mode.	2-3
Starting the Installation in Silent Mode	2-4
Starting the Installation Program on Unix Platforms	2-6
Using Installers with Filenames Ending in .bin	2-6
Starting the Installation in Graphical Mode	2-6
Starting the Installation in Console Mode.	2-7
Starting the Installation in Silent Mode	2-8
Using Installers with Filenames Ending in .jar	2-10
Starting the Installation in Graphical Mode	2-10

Starting the Installation in Console Mode	2-11
Starting the Installation in Silent Mode	2-12

Running the Installation Program in Graphical Mode

Windows	3-1
Installing Using the Graphical Mode.	3-1
UNIX	3-10
Installers with Filenames Ending in .bin	3-10
Installers with Filenames Ending in .jar	3-11
What's Next	3-11

Running the Installation in the Console Mode

Windows	4-1
To Install Using the Console Mode	4-1
UNIX	4-13
Installers with Filenames Ending in .bin	4-13
Installers with Filenames Ending in .jar	4-13
What's Next	4-13

Running the Installation in the Silent Mode

What Is Silent-Mode Installation?	5-1
Using Silent-Mode Installation	5-2
Important Considerations for Silent-Mode Installation	5-2
Creating a silent.xml File for Silent-Mode Installation	5-3
Guidelines for Component Selection	5-5
Sample silent.xml File for Silent-Mode Installation	5-6
Returning Exit Codes to the Console	5-8
What's Next?	5-9

Post-Installation Information

- Using QuickStart 6-1
- Using an Alternate Database 6-2
- Determining Which JDK Version You Are Using 6-2
- Understanding the Windows Shortcuts 6-3
- Understanding the Product Directory Structure 6-4

Uninstalling the Software

- About the Uninstallation Program 7-1
- Uninstalling Your Software in Graphical Mode 7-2
- Uninstalling Your Software in Console Mode 7-4
- Uninstalling Your Software in Silent Mode 7-5
- Reinstalling Your Software 7-6

About This Document

This document explains how to use the BEA Products installation program on both Windows and UNIX platforms.

It is organized as follows:

- [Chapter 1, “Preparing for Your Installation,”](#) provides the basic information you need to know before installing your BEA software.
- [Chapter 2, “Starting the Installation Program,”](#) describes how to start the installation program in graphical, console, and silent modes on Windows and UNIX platforms.
- [Chapter 3, “Running the Installation Program in Graphical Mode,”](#) describes how to install your BEA software on Windows and UNIX platforms using a Java-based graphical user interface (GUI).
- [Chapter 4, “Running the Installation in the Console Mode,”](#) discusses how to install your BEA software on Windows and UNIX platforms using a text-based interface.
- [Chapter 5, “Running the Installation in the Silent Mode,”](#) describes how to install your BEA software without user intervention by using an XML properties file to specify the installation options.
- [Chapter 6, “Post-Installation Information,”](#) explains what you should do after you install the software.
- [Chapter 7, “Uninstalling the Software,”](#) provides procedures for uninstalling your BEA software in graphical, console, and silent modes.

What You Need to Know

This document is intended for system administrators or application developers who are installing BEA Products software. It is assumed that readers are familiar with Web technologies and have a general understanding of Windows and UNIX platforms.

Product Documentation on the e-docs Web Site

BEA product documentation is available from the BEA e-docs Web site at <http://e-docs.bea.com>

To view the documentation for a particular product, select the product and the appropriate release from the list on the e-docs page. The home page for the complete documentation set for the product and release you have selected is displayed.

Related Information

Other BEA documents that you may find helpful when installing the software are:

- *Introduction to WebLogic Server and WebLogic Express*
- *Creating WebLogic Domains Using the Configuration Wizard*
- *WebLogic Platform Online Documentation*
- *Workshop for WebLogic Platform online Documentation*

Contact Us!

Your feedback on the BEA Products documentation is important to us. Send us e-mail at docsupport@bea.com if you have questions or comments. Your comments will be reviewed directly by the BEA professionals who create and update the BEA AquaLogic Service Bus documentation.

In your e-mail message, please indicate which release of the BEA AquaLogic Service Bus documentation you are using.

If you have any questions about these versions of the BEA software, or if you have problems installing and running the software, contact BEA Customer Support at <http://support.bea.com> You can also contact Customer Support by using the contact information provided on the quick reference sheet titled “BEA Customer Support,” which is included in the product package.

When contacting Customer Support, be prepared to provide the following information:

- Your name, e-mail address, phone number, and fax number
- Your company name and company address
- Your machine type and authorization codes
- The name and version of the product you are using
- A description of the problem and the content of pertinent error messages

Documentation Conventions

The following documentation conventions are used throughout this document.

Convention	Item
Ctrl+Tab	Indicates that you must press two or more keys simultaneously.
<i>italics</i>	Indicates emphasis or book titles.
monospace text	Indicates <i>user input</i> , as shown in the following examples: Filenames: <code>config.xml</code> Pathnames: <code>BEAHOME/config/examples</code> Commands: <code>java -Dbea.home=BEA_HOME</code> Code: <code>public TextMsg createTextMsg(</code>
	Indicates <i>computer output</i> , such as error messages, as shown in the following example: <code>Exception occurred during event dispatching: java.lang.ArrayIndexOutOfBoundsException: No such child: 0</code>
monospace text	Identifies significant words in code. <i>Example:</i> <code>void commit ()</code>
<i>monospace italic text</i>	Identifies variables in code. <i>Example:</i> <code>String <i>expr</i></code>
{ }	Indicates a set of choices in a syntax line. The braces themselves should never be typed.

Convention	Item
[]	Indicates optional items in a syntax line. The brackets themselves should never be typed. <i>Example:</i> <code>java utils.MulticastTest -n name [-p portnumber]</code>
	Separates mutually exclusive choices in a syntax line. The symbol itself should never be typed. <i>Example:</i> <code>java weblogic.deploy [list deploy update]</code>
...	Indicates one of the following in a command line: That an argument can be repeated several times in a command line That the statement omits additional optional arguments That you can enter additional parameters, values, or other information The ellipsis itself should never be typed. <i>Example:</i> <code>buildobjclient [-v] [-o name] [-f "file1.cpp file2.cpp file3.cpp ..."]</code>
.	Indicates the omission of items from a code example or from a syntax line. The vertical ellipsis itself should never be typed.

Preparing for Your Installation

The following sections provide information that you need to know before installing your BEA software:

- [“Installation Overview”](#) on page 1-1
- [“Installable Product Components”](#) on page 1-3
- [“Product Distribution Methods”](#) on page 1-7
- [“Installation Prerequisites”](#) on page 1-7
- [“Selecting Directories for Your Installation”](#) on page 1-10
- [“Choosing the Type of Installation”](#) on page 1-15
- [“About Installing Node Manager as a Windows Service”](#) on page 1-16
- [“Generating a Verbose Installation Log”](#) on page 1-18
- [“Where to Find Upgrade Information”](#) on page 1-18

Installation Overview

The BEA Products installation program provides a complete framework for the installation and uninstallation of your entire BEA software product, or individual components, as desired. You can install AquaLogic Service Bus using one of the following options:

- **Complete:** Select this option to install BEA WebLogic Server, Workshop for WebLogic, and AquaLogic Service Bus.
- **Custom:** Select this option to install BEA WebLogic Server, AquaLogic Service Bus and deselect Workshop for WebLogic.

Note: Both programs provide the same functionality; all installation procedures described in this document apply to both versions of the installation program.

The following sections provide an overview on:

- [“WebLogic Express Support” on page 1-2](#)
- [“Installation Modes” on page 1-2](#)

WebLogic Express Support

You can use either of the two BEA Products installation programs to install BEA WebLogic Express™. WebLogic Express is a cost-effective entry point to the WebLogic product family, creating a productive ramp for you to begin using BEA’s market-leading application server technology. From WebLogic Express, you can easily upgrade to other products in the WebLogic family, which allows you to take advantage of a wide variety of enterprise-level functionality.

For additional information about WebLogic Express, see the WebLogic Express documentation at the following URL:

<http://e-docs.bea.com/wls/docs92/wlx.html>

Installation Modes

You can use the BEA Products installation program in one of the following modes:

- [“Graphical mode” on page 1-2](#)
- [“Console mode” on page 1-3](#)
- [“Silent Mode” on page 1-3](#)

Graphical mode

Graphical-mode installation is an interactive, GUI-based method for installing your software. It can be run on both Windows and UNIX systems. For installation procedures, see [Chapter 3, “Running the Installation Program in Graphical Mode.”](#)

If you want to run graphical-mode installation, the console attached to the machine on which you are installing the software must support a Java-based GUI. All consoles for Windows systems support Java-based GUIs, but not all consoles for UNIX systems do.

Note: If you attempt to start the installation program in graphical mode on a system that cannot support a graphical display, the installation program automatically starts console-mode installation.

Console mode

Console-mode installation is an interactive, text-based method for installing your software from the command line, on either a UNIX system or a Windows system. For instructions for using this method, see [Chapter 4, “Running the Installation in the Console Mode.”](#)

Silent Mode

Silent-mode installation is a noninteractive method of installing your software that requires the use of an XML properties file for selecting installation options. You can run silent-mode installation in either of two ways: as part of a script or from the command line. Silent-mode installation is a way of setting installation configurations only once and then using those configurations to duplicate the installation on many machines. For information on running the installation program in the silent mode, see [Chapter 5, “Running the Installation in the Silent Mode.”](#)

Installable Product Components

Using the BEA Products installation program, you can install the following components on your system:

- [“WebLogic Server” on page 1-4](#)
- [“BEA Workshop for WebLogic Platform” on page 1-4](#)
- [“AquaLogic Service Bus” on page 1-5](#)
- [“BEA JRockit JDK” on page 1-6](#)

If you are using the BEA Products installation program for BEA WebLogic Server, only the WebLogic Server components are available for installation.

For additional information about:

- the features and capabilities of WebLogic Server, see Introduction to WebLogic Server and WebLogic Express at <http://e-docs.bea.com/wls/docs92/intro/index.html>
- the features and capabilities of AquaLogic Service Bus, see Concepts and Architecture at <http://e-docs.bea.com/alsb/docs26/concepts/index.html>
- the features and capabilities of BEA JRockit, see Introduction to JRockit JDK at <http://e-docs.bea.com/jrockit/geninfo/genintro/index.html>

Operating systems and hardware supported by your software, see BEA Products Supported Configurations at <http://e-docs.bea.com/platform/supponfigs/index.html>

WebLogic Server

BEA WebLogic Server[®] provides the core services that ensure reliability, high availability, scalability, and high-performing execution environment for your application. It includes Apache Beehive, a cross-container framework that provides a consistent, abstract, and easily toolable programming model, providing a way for developers to build applications more productively.

WebLogic Server consists of the following subcomponents that can be installed on your system:

- **Server**—WebLogic Server program files that contain the core Java 2 Enterprise Edition (J2EE) features and Apache Beehive.
- **Server Examples**—WebLogic Server and MedRec example domain and sample applications. These servers and sample applications demonstrate a variety of J2EE features. Resources are provided to help you build, configure, and run each of the sample applications. You must install the Server subcomponent to install and use the Server Examples.
- **Web Server Plug-ins**—Modules used to enable WebLogic Server to communicate with applications deployed on Apache HTTP Server, Netscape Enterprise Server, or Microsoft Internet Information Server (IIS).

Note: You must choose Custom installation to install the Web Server plug-ins. They are not installed by default in a complete installation.

BEA Workshop for WebLogic Platform

BEA Workshop for WebLogic Platform[™] provides a unified development environment that enables you to develop web applications and Web services regardless of your experience in developing applications using J2EE. It includes a suite of tools for developing, debugging, and deploying sophisticated enterprise applications.

Workshop for WebLogic Platform is an integrated development environment for building enterprise-class J2EE applications on the WebLogic Platform. WebLogic Workshop provides an intuitive programming model that enables you to focus on building the business logic of your application rather than on complex implementation details. Whether you are an application developer with a business problem to solve or a J2EE expert building business infrastructure, Workshop for WebLogic Platform makes it easy to design, test, and deploy enterprise-class applications.

Workshop for WebLogic Platform consists of two parts: an Integrated Development Environment (IDE) and a standards-based run-time environment. The purpose of the IDE is to remove the complexity in building applications for the entire WebLogic platform. Applications you build in the IDE are constructed from high-level components rather than low-level API calls. Best practices and productivity are built into both the IDE and run time. Workshop for WebLogic Platform also includes the workshop examples to help you to get acquainted with the product.

You can use Workshop for WebLogic Platform to:

- Develop Web applications.
- Create sophisticated business processes.
- Present new functionality in user portals.
- Make services available within a global Web community via Web services.
- Create custom combinations of Web applications, Web services, and Portal services.

AquaLogic Service Bus

BEA AquaLogic Service Bus™ combines intelligent message brokering with service monitoring and administration to provide a unified software product for implementing and deploying your Service-Oriented Architecture (SOA). This converged approach adds a scalable, dynamic routing and transformation layer to your enterprise infrastructure, with service lifecycle management capabilities for service registration, service usage, and Service Level Agreement (SLA) enforcement.

AquaLogic Service Bus relies on WebLogic Server run-time facilities. It leverages WebLogic Server capabilities to deliver functionality that is highly available, scalable, and reliable.

AquaLogic Service Bus consists of the following subcomponents that can be installed on your system:

- Service Bus Server: Core program files for AquaLogic Service Bus.

- **Data Transformation Tools:** Tools for AquaLogic Service Bus. Includes the BEA XQuery Mapper plug-in for Eclipse and Format Builder.
- **Service Bus Examples:** Samples that demonstrate key features of AquaLogic Service Bus and help you get started using the AquaLogic Service Bus Console to design and configure AquaLogic Service Bus resources and services.

BEA JRockit JDK

The BEA JRockit[®] JDK provides tools, utilities, and a complete run-time environment for developing and running applications using the Java programming language. The BEA JRockit JDK includes the BEA JRockit Java Virtual Machine (JVM) and BEA JRockit Mission Control. The BEA JRockit JVM is developed uniquely for server-side applications and optimized for Intel architectures to ensure reliability, scalability, and manageability for Java applications. BEA JRockit Mission Control is a tool set developed to monitor, manage, profile, and eliminate memory leaks in your Java applications.

The BEA JRockit JDK is fully integrated with the BEA Products installation kit for Windows and Linux 32-bit platforms. It is also available as a standalone JDK. Although BEA JRockit JDK is optimized for server-side applications, you may use it for client-side as well. The Sun JDK is also supported as an alternative for both client side and server side applications.

For more information about the BEA JRockit JDK, see the JRockit documentation at <http://e-docs.bea.com/jrockit/webdocs/index.html>

The BEA JRockit 5.0 JDK is certified to be compatible with Sun Java 2 Standard Edition (J2SE) version 5.0.

BEA JRockit Mission Control

The BEA JRockit Mission Control tools suite consists of the following components:

- **BEA JRockit Management Console**—used to monitor and manage multiple JRockit instances.
- **BEA JRockit Runtime Analyzer**—an on-demand ‘flight recorder’ that produces detailed recordings about the JVM and the application it is running.
- **BEA JRockit Memory Leak Detector**—used to detect, and find the cause for memory leaks.

For more information about BEA JRockit Mission Control, see “BEA JRockit Mission Control” in “Understanding BEA JRockit” in Introduction to JRockit JDK at the following URL:

<http://edocs.bea.com/jrockit/geninfo/genintro/understa.html>

Mercury Profiling Tools

The Mercury profiling tools, which are provided as part of this JRockit installation, can be used by Java and J2EE developers in a development environment to profile application performance. During the installation process, you are presented with the option to install the Mercury profiling tools. For more information about these tools, see

<http://www.mercury.com/us/products/diagnostics/>

Product Distribution Methods

Your BEA software is distributed on both the BEA Web site and DVD.

Web Distribution

You can download your software from the BEA Web site at

<http://commerce.bea.com>

In the left panel click on BEA AquaLogic to go to the download page of BEA AquaLogic Product Family. Click on BEA AquaLogic Service Bus from the list of AquaLogic products. From the drop down list choose the appropriate operating system and click **select**.

Note: You are to register before you can download the installer.

DVD Distribution

If you purchased your software from your local sales representative, you will find the following items in the product box:

- DVDs containing the product software for Windows, Solaris, HP-UX, and Linux
- The following printed documents:
 - *Customer Support Quick Reference and Other Important Information*
 - A list of URLs for the online documentation for each product

Installation Prerequisites

The following sections specify the installation prerequisites:

- “System Requirements” on page 1-8

- “Temporary Disk Space Requirements” on page 1-9
- “Administrator Privileges” on page 1-10

System Requirements

The system requirements for your installation are given in the following table.

Table 1-1 System Requirements

Component	Requirement
Platform configuration	<p>A supported configuration of hardware, operating system, JDK, and database is required. See Supported Configurations at http://e-docs.bea.com/platform/suppconfigs/configs/supported_configs.html</p> <p>The Supported Configurations documentation specifies other prerequisites and recommendations, such as recommended versions of the JDK.</p>
Processor	1-GHz CPU recommended
Hard Disk Drive	<p>A complete installation requires approximately 1.2GB of disk space.</p> <p>Note: This does not include the space required to create new domains.</p>
Memory	A minimum of 2 GB RAM
Color bit depth display and size	<p>For graphical user interface (GUI) mode installation, 8-bit color depth (256 colors) is required.</p> <p>For console-mode and silent-mode installation, there is no color bit depth requirement.</p>
JDK	<p>The BEA Products installation program requires a Java run-time environment (JRE) to run. A JRE is bundled in the Windows installation program and in some UNIX installation programs (those with filenames ending in . bin). For other UNIX platforms, the installation program does not install a JDK. Filenames for these installation programs end in . jar. To run the . jar installation programs, you must have the appropriate version of the JDK installed on your system, and include the bin directory of the JDK at the beginning of the PATH variable definition. It is important that you use a JDK because the installation process assigns values to JAVA_HOME and related variables to point to the JDK directory.</p>

Temporary Disk Space Requirements

The BEA installation program uses a temporary directory into which it extracts the files necessary to install the software on the target system. During the installation process, your temporary directory must contain sufficient space to accommodate the compressed Java run-time environment (JRE) bundled with the installation program and an uncompressed copy of the JRE that is expanded into the temporary directory. The extracted files are deleted from the temporary directory at the end of the installation process. As a general rule, installation programs require approximately 2.5 times the amount of temporary space that is ultimately required by the installed files.

By default, the installation program uses the following temporary directories:

- Windows platforms—directory referenced by the TMP system variable
- UNIX platforms—system-dependent temporary directory

Note: If you do not have enough temporary space to run the installation program, you are prompted to specify an alternate directory or exit the installation program.

To make sure that you have adequate temporary space, you may want to allocate an alternate directory for this purpose. To do so, follow the instructions provided in the following table.

Platform	To allocate more space in the temp folder
Windows	<p>Do one of the following:</p> <ul style="list-style-type: none"> • Set the TMP system variable to a directory of your choice. • If starting the installation program from the command line, include the <code>-Djava.io.tmpdir=tmpdirpath</code> option, replacing <i>tmpdirpath</i> with the full path of the directory that you want to designate as a temporary storage area for the BEA Products installation program. For example: <pre>alsb260_wls921_win32.exe -mode=console -Djava.io.tmpdir=D:\Temp</pre>
Unix	<p>Enter the following option on the command line when you start the installation program:</p> <pre>-Djava.io.tmpdir=tmpdirpath</pre> <p>Here, <i>tmpdirpath</i> is the full path of the directory that you want to designate as a temporary storage area for the BEA Products installation program.</p>

Administrator Privileges

On Windows systems, Administrator privileges are required to do the following:

- To install the Node Manager as a Windows service.

You must have Administrator privileges to install the Node Manager as a Windows service. When the Node Manager is installed as a Windows service, it starts at the completion of the installation process, and again, automatically, each time you boot your Windows system.

For more information, see [“About Installing Node Manager as a Windows Service” on page 1-16](#).

- To create Start menu shortcuts in the All Users folder.

When you are installing the software as a user with Administrator privileges, you are presented with the option to create the Start menu shortcuts in the All Users folder, or in the Local user’s Start menu folder. The following table describes the options available.

If you select.....	The following occurs....
All Users	All users registered on the machine are provided with access to the installed software. Subsequently, if users without Administrator privileges use the Configuration Wizard from this installation to create domains, Start menu shortcuts to the domains are not created. In this case, users can manually create shortcuts in their local Start menu folders, if required.
Local Users	Other users registered on this machine will not have access to the Start menu entries for this installation.

If a user without Administrator privileges installs the software, the Start menu entries are created in the user’s local Start menu folder.

Selecting Directories for Your Installation

During the installation process, you need to specify locations for the following directories:

- [“Choosing a BEA Home Directory” on page 1-11](#)
- [“Choosing Product Installation Directory” on page 1-14](#)

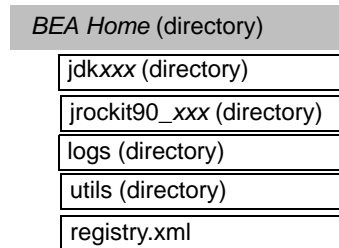
Choosing a BEA Home Directory

During the installation of the BEA software, you are prompted to specify a BEA Home directory. This directory serves as a repository for common files that are used by various BEA products installed on the same machine. For this reason, the BEA Home directory can be considered a central support directory for all the BEA products installed on your system.

The files in the BEA Home directory are essential to ensuring that BEA software operates correctly on your system. These files:

- Facilitate checking of cross-product dependencies during installation
- Facilitate Service Pack installation

The following illustration shows the structure of a sample BEA Home directory, on a Windows platform, which includes both the Sun and BEA JRockit JDKs.



This illustration depicts only the files and directories required in the BEA Home directory. If you choose the default product installation directory, however, you will see additional directories in the BEA Home directory, such as `weblogic92` and `workshop92`. Although the default location for the product installation directory is within the BEA Home, you can select a different location outside the BEA Home directory.

Notes:

- On some UNIX platforms, the installation program does not install the JDK. During installation of your BEA software, you are prompted to choose an existing BEA Home directory or specify a path to create a new BEA Home directory. If you choose to create a new directory, the installation program automatically creates it for you.
- BEA recommends that you do not exceed a maximum of 12 characters when naming your BEA Home directory. If the name of this directory has more than 12 characters, or if there are spaces in the directory name, the `CLASSPATH` may not be

resolved properly. You can install only one instance of each version of a BEA product in a single BEA Home directory. For example, you can install only one instance of WebLogic Server 9.2 in a BEA Home directory, but that BEA Home directory may also contain an instance of WebLogic Server 9.0.

- If the BEA Home directory is populated and it does not contain `registry.xml`, or if any of the other installation directories are not empty, the following messages will be displayed. You will then be prompted to continue installation, or return to the directory selection task with the one of the error message as shown in [Listing 1-1](#):

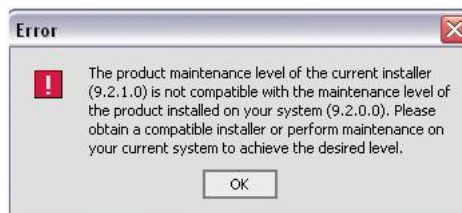
Listing 1-1

```
For BEA Home directory selection task: BEA_HOME directory is not empty.  
Proceed with installation?
```

```
For product installation directories selection task:One or more installation  
directories are not empty. Proceed with installation?
```

- The product maintenance level of the current installer (9.2.1.0) must be compatible with the maintenance level of the product already installed. The error message as shown in [Figure 1-1](#) is displayed.

Figure 1-1 Incompatible Maintenance Levels—Error Message



You must obtain the compatible installer or perform maintenance in order to achieve compatibility.

Understanding the Functions of the BEA Home Directory

The files and directories in the BEA Home directory are described in the following table.

Table 1-2 Understanding BEA Home Directory

Folder	Description
jdkxxx directory	Contains the software for the Sun JDK if it is installed with your software. The JDK provides the Java run-time environment (JRE) and tools for compiling and debugging Java applications. In this directory name, xxx indicates the version of the Sun JDK installed on your system, for example jdk150_04.
jrockit90_xxx directory (Windows and Linux only)	Contains the software for the BEA JRockit JDK installed with your software. The JDK provides the Java run-time environment (JRE) and tools for compiling and debugging Java applications. In this directory name, xxx indicates the version of the JRockit JDK installed on your system, such as jrockit_150_04.
logs directory	Contains a history file of installation and uninstallation for the BEA Home directory.
weblogic92	This directory contains the following directories: <ul style="list-style-type: none"> • beehive • common • javelin • platform • samples • server • uninstall • workshop
workshop92	This directory contains Eclipse v 3.1.2 to ensure the tight coupling between workshop and Eclipse. BEA does not support the Eclipse IDE.

Table 1-2 Understanding BEA Home Directory

Folder	Description
utils directory	Contains utilities that are used to support the installation of all BEA products installed in this BEA Home directory.
registry.xml file	<p>A registry file that contains a persistent record of all BEA products installed on the target system. This registry contains product-related information, such as version number, service pack number, and location of the installation directory.</p> <p>Note: Do not edit this file manually. Doing so may cause operating problems for the currently installed BEA products, or result in installation problems when future BEA products or maintenance upgrades are installed.</p> <p>For more information about the BEA registry file, see “Using the BEA Registry API” in ISV Partners’ Guide at the following URL:</p> <p>http://e-docs.bea.com/common/docs92/isv/detect.html</p>

Creating Multiple BEA Home Directories

Although it is possible to create more than one BEA Home directory, BEA recommends that you avoid doing so. In almost all situations, a single BEA Home directory is sufficient. There may be circumstances, however, in which you prefer to maintain separate development and production environments, with a separate product stack for each. With two directories, you can update your development environment (in a BEA Home directory) without modifying the production environment until you are ready to do so.

Choosing Product Installation Directory

The product installation directory contains all the software components that you choose to install on your system, including program files and examples. You are prompted during your initial installation to choose a product installation directory. If you accept the default on a Windows system, for example, your software is installed in the following directory:

```
C:\bea\weblogic92
```

where, C:\bea is the BEA Home directory and weblogic92 is the product installation directory for the WebLogic Server 9.2 software. However, you can specify any name and location on your system for your product installation directory; you need not name the directory weblogic92 or create it under the BEA Home directory. You must also create a product installation directory for workshop for weblogic. The default location for the workshop is C:\bea\workshop92

The installation program installs the software components in a product installation directory represented by the `WL_HOME` variable. You are not prompted for a product installation directory during the installation, if you are adding a component to the existing installation. The installation program detects the `WL_HOME` directory and installs the additional products under it.

A description of the BEA Products directory structure is provided in [“Understanding the Product Directory Structure” on page 6-4](#)

Choosing the Type of Installation

The BEA Products installation program provides two types of installation:

- [“Complete” on page 1-15](#)
- [“Custom” on page 1-15](#)

Complete

If you choose a `Complete` installation type, following components are installed:

- WebLogic Server program files and related sample files
- AquaLogic Service Bus program files, data transformation tools, including the BEA XQuery mapper plug-in for Eclipse and Format Builder, and the Service Bus samples.
- Sample domains, preconfigured for use with the PointBase database, which allow you to start running the samples as soon as the installation is complete.
- On Windows systems, two JDKs namely BEA JRockit JDK and the Sun JDK.
- Workshop for WebLogic Platform. This includes the following sub-components:
 - Workshop
 - Workshop Examples

The following components are not installed if you choose the `Complete` installation type:

- WebLogic Server Node Manager as a Windows service
- Web Server plug-ins

Custom

In a `Custom` installation type, you have the following options:

- You can choose which software components to install on your system. For a description of the software components provided with your product distribution, see [“Installable Product Components” on page 1-3](#). Sample domains preconfigured to use the PointBase database are created only for the installed components.
- You must choose Custom installation to install the Web Server Plug-ins.

You can choose whether to install the WebLogic Server Node Manager as a Windows Service. See [“About Installing Node Manager as a Windows Service” on page 1-16](#).

On Windows systems only, two JDKs are installed: the BEA JRockit 5.0 JDK and the Sun JDK 5.0. For more information, see [“BEA JRockit JDK” on page 1-6](#).

About Installing Node Manager as a Windows Service

When installing your software on a Windows platform, you can optionally install WebLogic Server Node Manager as a Windows service. The WebLogic Server Node Manager is used to:

- Start and stop server instances—both Administration Servers and Managed Servers—remotely.
- Monitor the self-reported health of servers and automatically kill server instances whose health state is “failed.”
- Migrate servers in a WebLogic Server cluster.
- Automatically restart servers that have the “failed” health state, or have shut down unexpectedly due to a system crash or reboot.

In a multi-machine environment, you must install Node Manager on each machine that hosts Managed Server and Administration Server instances of WebLogic Server.

Notes:

- You must have Administrator privileges to install Node Manager as a Windows service.

In a custom installation, you can optionally install Node Manager as a Windows service. If you select Yes, Node Manager is installed as a Windows service to Listen Port 5556. To avoid port contention, you can specify an alternate Listen Port if desired. If the Listen Port number you specify is currently being used by a running application, the installation program prompts you to enter a different Node Manager Listen Port number. At the completion of the installation process, Node Manager is started using the port specified.

- You are prompted to install Node Manager as a Windows service only during an initial installation. If you install additional product components during a subsequent installation, you are not prompted to install Node Manager as a Windows service.

To install Node Manager as a Windows service in silent mode, you need to specify the appropriate values in the silent.xml file. For more information, see [“Creating a silent.xml File for Silent-Mode Installation” on page 5-3](#).

You can also install and uninstall Node Manager as a Windows service using the following scripts that are provided when you install WebLogic Server:

```
WL_HOME\server\bin\installNodeMgrSvc.cmd
```

```
WL_HOME\server\bin\uninstallNodeMgrSvc.cmd
```

In these pathnames, WL_HOME is the product installation directory in which you installed WebLogic Server, typically C:\bea\weblogic92.

Additional Considerations for Node Manager

Following are some additional considerations for installing the node manager as a Windows service:

- When you install Node Manager as a Windows service, it is registered with the product installation directory in which you are installing the software, for example, C:\bea\weblogic92. Node Manager can be used to manage communication with all domains associated with that installation directory.

If you install additional instances of WebLogic Server 9.2 on a machine, in different BEA Home directories, you can install a Node Manager instance as a Windows service for each installation. Each Node Manager instance will manage the domains associated with the relevant installation.

- When you install Node Manager as a Windows service during the installation process, the Node Manager listen port is specified in the BEA registry file, registry.xml, located in the BEA Home directory associated with the installation, typically c:\bea.

Note: Do not edit this file manually. Doing so may cause operating problems for the currently installed BEA products, or result in installation problems when future BEA products or maintenance upgrades are installed. Changing the Node Manager listen port value in the registry.xml does not change the port for the installed service.

- When you uninstall WebLogic Server, the Node Manager service registered with the product installation directory from which you are uninstalling the product is uninstalled

also. For more information about the product installation directory, see “[Choosing Product Installation Directory](#)” on page 1-14.

For more information about Node Manager, including instructions for installing it on a UNIX system, see “Using Node Manager to Control Servers” in Managing Server Startup and Shutdown at http://e-docs.bea.com/wls/docs92/server_start/nodemgr.html

Generating a Verbose Installation Log

If you launch the installation from the command line or from a script, you can specify the `-log` option to generate a verbose installation log. The installation log stores messages about events that occur during the installation process, including informational, warning, error, and fatal messages. This type of file can be especially useful for silent installations.

Note: You may see some warning messages in the installation log. However, unless a fatal error occurs, the installation program completes the installation successfully. The installation user interface indicates the success or failure of each installation attempt, and the installation log file includes an entry indicating that the installation was successful.

Syntax

To create a verbose log file during installation, include the `-log=full_path_to_log_file` option in the command line. For example:

```
alsb260_wls921_win32.exe -log=C:\logs\server_install.log
```

The path must specify a file. You cannot create a folder simply by including a name for it in a pathname; your path should specify only existing folders. If your path includes a nonexistent folder when you execute the command, the installation program does not create the log file.

Where to Find Upgrade Information

For information about upgrading your software with maintenance patches and service packs, if available, see Installing Maintenance Updates and Service Packs at http://e-docs.bea.com/common/docs92/smart_update/index.html

For information about upgrading your application environments from a previous release, see Roadmap for Upgrading WebLogic and AquaLogic Application Environments at <http://e-docs.bea.com/common/docs92/interm/upgrade.html>

If you are installing WebLogic Server 9.2 into an existing BEA Home directory that contains an installation of WebLogic Server 7.0 or 8.1 or 9.2, all custom security providers that reside in the default location, `WL_HOME\server\lib\mbeantypes`, where `WL_HOME` specifies the root

directory of the pre-9.2 installation, are upgraded automatically. If all of your custom security providers reside in the default location, then the security provider upgrade step is complete, and you do not have to perform any of the additional steps in “Upgrading a Security Provider” in Upgrading WebLogic Application Environments at

http://e-docs.bea.com/common/docs92/upgrade/upgrade_sp.html

You can verify that a custom security provider has been upgraded by locating the upgraded security provider, *security_provider_name_Upgraded*, in the `WL_HOME\server\lib\mbeantypes` directory, where `WL_HOME` specifies the root directory of the 9.2 installation and *security_provider_name* specifies the name of the security provider.

Preparing for Your Installation

Starting the Installation Program

The following sections describe how to start the installation program on Windows and UNIX platforms:

- “Before You Start” on page 2-1
- “Starting the Installation Program on Windows Platforms” on page 2-2
- “Starting the Installation Program on Unix Platforms” on page 2-6

Before You Start

Before you start installing the software, please review the following information:

- Make sure your system meets the hardware and the software requirements before you install the BEA products software. A complete list of documents that describe the configurations supported by BEA can be found at <http://e-docs.bea.com/platform/suppconfigs/index.html>
- You cannot reinstall any BEA product on top of a previously installed version of the same product—in the same BEA Home directory or in the same file location. You can, however, add products and product components to an existing installation. For example, you can install WebLogic Server during one installation, and AquaLogic Service Bus during a later installation. However, to reinstall the same version of one of the products, you must first uninstall the previous installation, as described in [Chapter 7, “Uninstalling the Software.”](#)
- If you are adding components to an existing installation of WebLogic Server, you should shut down any running servers before starting the installation.

Notes:

- If you are installing the software on a Windows system that supports more than one monitor, you must disable all but one monitor before starting the installation program.
- If you want to install Node Manager as a Windows service, you must have Administrator privileges. For more information, see [“About Installing Node Manager as a Windows Service”](#) on page 1-16.

Starting the Installation Program on Windows Platforms

This section describes how to start the installation program on Windows Platforms:

- [“Starting the Installation in Graphical Mode”](#) on page 2-2
- [“Starting the Installation in Console Mode”](#) on page 2-3
- [“Starting the Installation in Silent Mode”](#) on page 2-4

Starting the Installation in Graphical Mode

To start the graphical-mode installation process on a Windows platform, perform the following steps:

1. Log into the Windows system.
2. Double click the installation file. Complete the appropriate procedure as in the following table.

If you are installing from...	Do This...
Web download	Go to the directory to which you have downloaded the installation program.
DVD	<ol style="list-style-type: none"> 1. Insert the software DVD into the DVD-ROM drive. 2. If the installation program does not start automatically, open Windows Explorer and double-click the DVD-ROM icon. 3. Navigate to the folder for the Windows installation. Navigate to the directory that contains the installation program for your platform.

3. Enter the following command to start the installation:

```
filename.exe [-log=full_path_to_log_file] (BEA Products installation program for AquaLogic Service Bus and WebLogic Server).
```

For example:

```
alsb260_wls921_win32.exe [-log=full_path_to_log_file]
```

Note:

- `-log=full_path_to_log_file` is optional. By default the installer starts in the graphical mode.
- You can also start the installer by double clicking the file.

The installation begins.

4. To continue the installation in the Graphical mode on Windows, see [“Installing Using the Graphical Mode” on page 3-1](#).

Starting the Installation in Console Mode

To start the console-mode installation process on a Windows platform, perform the following steps:

1. Log into the target Windows system.
2. Complete the appropriate procedure as in the following table:

If you are installing from...	Do This...
Web download	1. Open an MS-DOS command prompt window. 2. Go to the directory to which you have downloaded the installation program.
DVD	1. Insert the software DVD into the DVD-ROM drive. Note: If auto-run is enabled, the installation program may start automatically in graphical mode. You must exit the installation program to use console-mode installation. 2. Open an MS-DOS command prompt window. 3. Go to the DVD-ROM directory and navigate to the folder for the Windows installation program.

3. Launch the installation by entering one of the following commands:

```
filename.exe -mode=console
```

For example

```
alsb260_wls921_win32.exe -mode=console (BEA Products installation program for AquaLogic Service Bus and WebLogic Server)
```

Note: You can also include the `-log=full_path_to_log_file` option in the command line to create a verbose installation log. For example:

```
alsb260_wls921_win32 -mode=console -log=C:\logs\server_install.log
```

For more information on generating a verbose log, see [“Generating a Verbose Installation Log” on page 1-18](#).

After a few moments, a BEA Installer window opens and the installation program begins to install the software.

4. To continue the installation in the Console mode on Windows, see [“To Install Using the Console Mode” on page 4-1](#).

Starting the Installation in Silent Mode

For details about silent-mode installation, see [“What Is Silent-Mode Installation?” on page 5-1](#)

To start the installation in silent-mode follow these steps:

1. Log into the Windows system.
2. Create a `silent.xml` file that defines the configuration settings normally entered by a user during an interactive installation process, such as graphical-mode or console-mode installation. For information about creating a `silent.xml` file, see [“Creating a silent.xml File for Silent-Mode Installation” on page 5-3.](#)

Note: Incorrect entries in the `silent.xml` file can cause installation failures. To help you determine the cause of a failure, BEA recommends that you create a log file when you start the installation.

3. Complete the appropriate procedure as in the following table.

If you are installing from...	Do This...
Web download	<ol style="list-style-type: none"> 1. Open an MS-DOS command prompt window. 2. Go to the directory to which you have downloaded the installation program.
DVD	<ol style="list-style-type: none"> 1. Insert the software DVD into the DVD-ROM drive. 2. Open an MS-DOS command prompt window. 3. Go to the DVD-ROM directory and navigate to the folder for the Windows installation program.

4. Launch the installation by entering the following command:

```
filename.exe -mode=silent -silent_xml=path_to_silent.xml
```

Here, `filename.exe` is the name of the BEA software installation file, and `path_to_silent.xml` is the full pathname of the `silent.xml` file.

Note: You can also include the `-log=full_path_to_log_file` option in the command line to create a verbose installation log. For example:

```
alsb260_wls921_win32.exe -mode=silent -silent_xml=C:\silent.xml
-log=C:\logs\server_install.log
```

For more information, see [“Generating a Verbose Installation Log” on page 1-18.](#)

A BEA Installer window is displayed, indicating that the files are being extracted. No other prompt or text is displayed.

For more information, see [Chapter 5, “Running the Installation in the Silent Mode.”](#)

Starting the Installation Program on Unix Platforms

The BEA Products installation program requires a Java run-time environment (JRE) to run. A JRE is bundled in the Windows installation program, and in some UNIX installation programs (those with filenames ending in `.bin`). For other UNIX platforms, the installation program does not include a JRE. Filenames for these installation programs end in `.jar`. To run the `.jar` installation programs, you must have an appropriate version of a JDK installed on your system, and include the `bin` directory of the JDK at the beginning of your `PATH` system variable.

Note: It is important that you use a JDK because the installation process assigns values to `JAVA_HOME` and related variables to point to this directory. All scripts installed by your installation program use this JDK by default, including scripts to start sample applications, the Configuration Wizard, and other development tools.

To run graphical-mode installation, your console must support a Java-based GUI. If the installation program determines that your system cannot support a Java-based GUI, it automatically starts running in console mode. For details, see [Chapter 5, “Running the Installation in the Silent Mode.”](#) The section describes how to start the installation using the following types of installers:

- [“Using Installers with Filenames Ending in `.bin`” on page 2-6](#)
- [“Using Installers with Filenames Ending in `.jar`” on page 2-10](#)

Using Installers with Filenames Ending in `.bin`

The following sections describe how to start the installation program on UNIX platforms using filenames that end in `.bin`:

- [“Starting the Installation in Graphical Mode” on page 2-6](#)
- [“Starting the Installation in Console Mode” on page 2-7](#)
- [“Starting the Installation in Silent Mode” on page 2-8](#)

Starting the Installation in Graphical Mode

To start the graphical-mode installation process using the installation files with names ending in `.bin`, do the following:

1. Log into the target UNIX system.

2. Complete the appropriate procedure as in the following table.

If you are installing from...	Do This...
Web download	Go to the directory to which you have downloaded the installation program.
DVD	<ol style="list-style-type: none"> 1. Insert the software DVD into the DVD drive and go to the DVD directory. 2. Navigate to the directory that contains the installation program for your platform.

3. To change the permissions of the file enter the following command:

```
chmod a+x filename.bin
```

For example,

```
chmod a+x alsb260_wls921_solaris32.bin.
```

Note: You can also include the `-log=full_path_to_log_file` option in the command line to create a verbose installation log. For example:

```
alsb260_wls921_solaris32.bin -log=/home/logs/BEA_install.log
```

For more information, see [“Generating a Verbose Installation Log”](#) on page 1-18.

To continue the installation in the graphic mode, see [Running the Installation Program in Graphical Mode](#)

Starting the Installation in Console Mode

To start the console-mode installation process for installation files with names ending in `.bin`, follow these steps:

1. Log into the target UNIX system.
2. Complete the appropriate procedure as in the following table:

If you are installing from...	Do this...
Web download	Go to the directory to which you have downloaded the installation program.
DVD	<ol style="list-style-type: none"><li data-bbox="460 493 1026 548">1. Insert the software DVD into the DVD-ROM drive and go to the DVD-ROM directory.<li data-bbox="460 560 1026 614">2. Navigate to the directory that contains the installation program for your platform.

3. Launch the installation by entering the following commands:

```
chmod a+x filename.bin
./filename.bin -mode=console
```

Here `filename.bin` is the name of the installation program specific to your platform, for example,

```
chmod a+x alsb260_wls921_solaris32.bin.
```

Note: You can also include the `-log=full_path_to_log_file` option in the command line to create a verbose installation log. For example:

```
alsb260_wls921_solaris32.bin -mode=console
-log=/home/logs/BEA_install.log
```

For more information on generating a verbose log, see [“Generating a Verbose Installation Log” on page 1-18.](#)

4. To continue the installation in the console mode, see [Chapter 4, “Running the Installation in the Console Mode.”](#)

Starting the Installation in Silent Mode

For details about silent-mode installation, see [“What Is Silent-Mode Installation?” on page 5-1.](#)

To start the silent-mode installation process for installation files with names ending in `.bin`, follow these steps:

1. Log into the target UNIX system.

2. Create a `silent.xml` file that defines the configuration settings normally entered by a user during an interactive installation process, such as graphical-mode or console-mode installation.

For information about creating a `silent.xml` file, see [“Creating a silent.xml File for Silent-Mode Installation” on page 5-3](#)

Note: Incorrect entries in the `silent.xml` file can cause installation failures. To help you determine the cause of a failure, BEA recommends that you create a log file when you start the installation.

3. Complete the appropriate procedure as in the following table.

If you are installing from...	Do this...
Web download	Go to the directory to which you have downloaded the installation program.
DVD	<ol style="list-style-type: none"> 1. Insert the software DVD into the DVD-ROM drive and go to the DVD-ROM directory. 2. Navigate to the directory that contains the installation program for your platform.

4. Launch the installation program by entering the following command:

```
chmod a+x filename
```

```
./filename.bin -mode=silent -silent_xml=/path_to_silent.xml
```

Here `filename.bin` is the name of the installation file, for example,

```
chmod a+x alsb260_wls921_solaris32.bin
```

and `path_to_silent.xml` is the full pathname of the `silent.xml` template file.

Note: You can also include the `-log=full_path_to_log_file` option in the command line to create a verbose installation log. For example:

```
alsb260_wls921_solaris32.bin -mode=silent -silent_xml=/home/silent.xml
-log=/home/logs/BEA_install.log
```

For more information on generating a verbose log, see [“Generating a Verbose Installation Log” on page 1-18](#).

A BEA Installer window is displayed, indicating that the files are being extracted. No other prompt or text is displayed.

For more information on Silent-Mode installation, see [Chapter 5, “Running the Installation in the Silent Mode.”](#)

Using Installers with Filenames Ending in .jar

The following sections describe how to start the installation program on UNIX platforms using filenames that end in .jar:

- [“Starting the Installation in Graphical Mode” on page 2-10](#)
- [“Starting the Installation in Console Mode” on page 2-11](#)
- [“Starting the Installation in Silent Mode” on page 2-12](#)

Starting the Installation in Graphical Mode

To start the graphical-mode installation process for installation files with names ending in .jar, follow these steps:

1. Log into the target UNIX system.
2. Add the bin directory of the appropriate JDK to the beginning of the PATH variable definition on the target system. For example:

```
PATH=<JAVA_HOME>/bin:$PATH
export PATH
```

Here <JAVA_HOME> represents the full path to the JDK directory.

3. Complete the appropriate procedure as in the following table.

If you are installing from...	Do this...
Web download	Go to the directory to which you have downloaded the installation program.
DVD	<ol style="list-style-type: none">1. Insert the software DVD into the DVD-ROM drive and go to the DVD-ROM directory.2. Navigate to the directory that contains the installation program for your platform.

4. Launch the installation program by entering the following command:

```
java -jar filename.jar
```

Note: You can also include the `-log=full_path_to_log_file` option in the command line to create a verbose installation log. For example:

```
alsb260_wls921_generic.jar -log=/home/logs/BEA_install.log
```

For more information on generating a verbose log, see [“Generating a Verbose Installation Log” on page 1-18](#).

The installation program begins the graphical mode.

5. To continue the installation in the graphical mode, see [“Installers with Filenames Ending in .jar” on page 3-11](#).

Starting the Installation in Console Mode

To start the installation in the console mode using the installation files with names ending in `.jar`, follow these steps:

1. Log into the target UNIX system.
2. Add the bin directory of the appropriate JDK to the beginning of the PATH variable definition on the target system. For example:

```
PATH=<JAVA_HOME>/bin:$PATH
```

```
export PATH
```

where, `<JAVA_HOME>` represents the full path to the JDK directory.

3. Complete the appropriate procedure as in the following table.

If you are installing from...	Do this...
Web download	Go to the directory to which you have downloaded the installation program.
DVD	<ol style="list-style-type: none"> 1. Insert the software DVD into the DVD-ROM drive and go to the DVD-ROM directory. 2. Navigate to the directory that contains the installation program for your platform.

Starting the Installation Program

4. Launch the installation by entering the following command:

```
java -jar filename.jar -mode=console
```

where, `filename.jar` is the name of the BEA Products installation file, for example,

```
alsb260_wls921_generic.jar.
```

Note: You can also include the `-log=full_path_to_log_file` option in the command line to create a verbose installation log. For example:

```
java -jar alsb260_wls921_generic.jar -mode=console  
-log=/home/logs/BEA_install.log
```

For more information on generating a verbose log, see [“Generating a Verbose Installation Log” on page 1-18](#).

5. To continue the installation in the console mode, see [“Installers with Filenames Ending in .jar” on page 4-13](#)

Starting the Installation in Silent Mode

For details about silent-mode installation, see [“What Is Silent-Mode Installation?” on page 5-1](#). To start the silent-mode installation process for installation files with names ending in `.jar`, follow these steps:

1. Log into the target UNIX system.
2. Create a `silent.xml` file that defines the configuration settings normally you specify in an interactive installation process, such as graphical-mode or console-mode installation. For information about creating a `silent.xml` file, see [“Creating a silent.xml File for Silent-Mode Installation” on page 5-3](#).

Note: Incorrect entries in the `silent.xml` file can cause installation failures. To help you determine the cause of a failure, BEA recommends that you create a log file when you start the installation.

3. Add the bin directory of the appropriate JDK to the beginning of the `PATH` variable definition on the target system. For example:

```
PATH=<JAVA_HOME>/bin:$PATH  
export PATH
```

where, `<JAVA_HOME>` is the full path of the JDK directory.

If you are installing from...	Do this...
Web download	Go to the directory to which you have downloaded the installation program.
DVD	<ol style="list-style-type: none"> <li data-bbox="525 482 1112 534">1. Insert the software DVD into the DVD-ROM drive and go to the DVD-ROM directory. <li data-bbox="525 548 1112 604">2. Navigate to the directory that contains the installation program for your platform.

4. Launch the installation by entering the following command:

```
java -jar filename.jar -mode=silent -silent_xml=/path_to_silent.xml
```

where, `filename.jar` is the name of the BEA Products installation file for example,

```
alsbxxx_wlsxxx_generic.jar
```

where, `XXX` represents the version number of the software you are installing and `path_to_silent.xml` is the full path to the `silent.xml` file.

Note: You can also include the `-log=full_path_to_log_file` option in the command line to create a verbose installation log. For example:

```
alsb260_wls921_generic.jar -mode=silent
-silent_xml=/home/silent.xml -log=/home/logs/BEA_install.log
```

For more information on generating a verbose log, see [“Generating a Verbose Installation Log” on page 1-18](#).

A BEA Installer window is displayed, indicating that the files are being extracted. No other prompt or text is displayed.

For more information on silent-mode installation, see [Chapter 5, “Running the Installation in the Silent Mode.”](#)

What’s Next?

For details about running the installation program, see one of the following, depending on your selected installation mode:

- To run the installation program in graphical mode, see [Chapter 3, “Running the Installation Program in Graphical Mode.”](#)

Starting the Installation Program

- To run the installation program in console mode, see [Chapter 4, “Running the Installation in the Console Mode.”](#)
- To run the installation program in silent mode, see [Chapter 5, “Running the Installation in the Silent Mode.”](#)

Running the Installation Program in Graphical Mode

This section describes how to continue the installation program in the graphical mode on following platforms:

- [“Windows” on page 3-1](#)
- [“UNIX” on page 3-10](#)

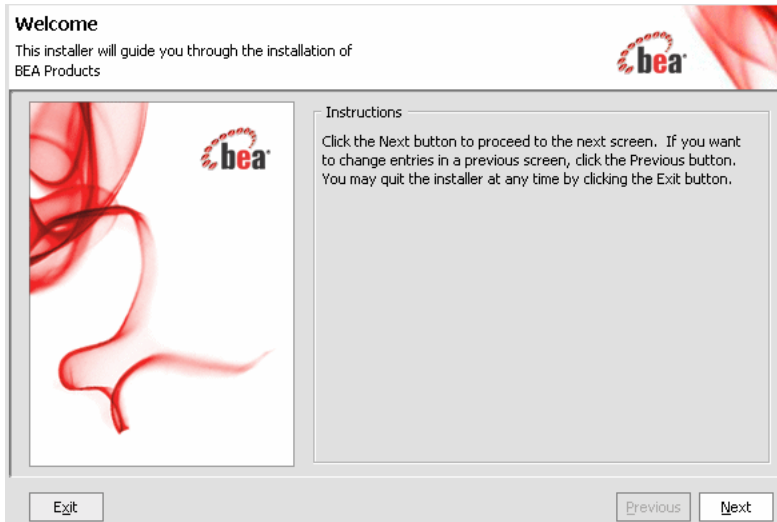
Windows

Before you start the installation of the AquaLogic Service Bus in the graphical mode, you should start the installation in graphical mode as described in [“Starting the Installation in Graphical Mode” on page 2-2](#).

Installing Using the Graphical Mode

1. The installation program prompts you to enter specific information about your system and the configuration. When the installer starts up in the graphical mode, the Welcome window is displayed as shown in following figure:

Figure 3-1 Welcome Screen



2. Click **Next** to proceed to the window displaying the BEA Licence Agreement (see [Figure 3-2](#)). Click **Yes** to accept and click **Next** to proceed. The Choose BEA Home Directory (see [Figure 3-3](#)) window is displayed.

Note: You must accept the licence agreement before you can proceed.

Figure 3-2 Licence Agreement

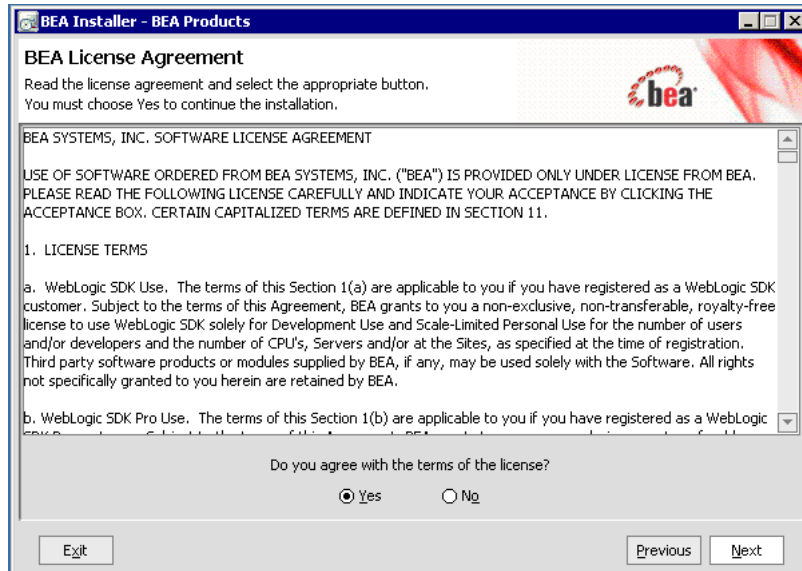
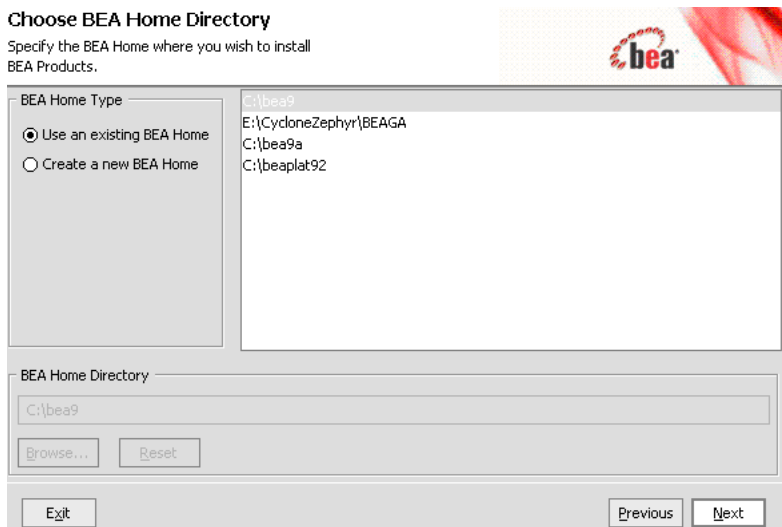


Figure 3-3 Choose BEA Home Directory



3. Specify the BEA Home directory that will serve as the central support directory for all BEA products installed on the target system. If a BEA Home directory exists on your system, you

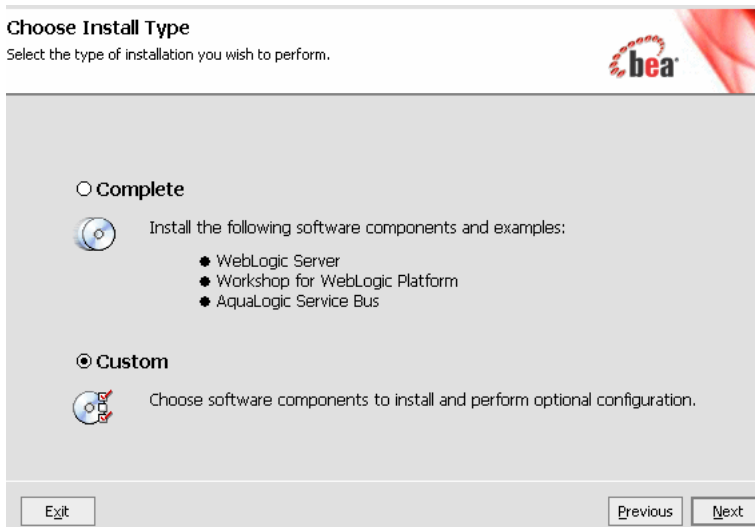
can select that directory. If you choose to create a new directory, the installation program automatically creates one for you. For details about the BEA Home directory, see [“Choosing a BEA Home Directory” on page 1-11.](#)

Click **Next** to proceed. The Choose Install Type (see [Figure 3-4](#)) window is displayed.

Note: If you choose to use the existing directory and you have the products installed in it, you must uninstall the product before you can proceed with the installation.

4. Click on the option to select the type of installation you want to perform:

Figure 3-4 Choose Install Type

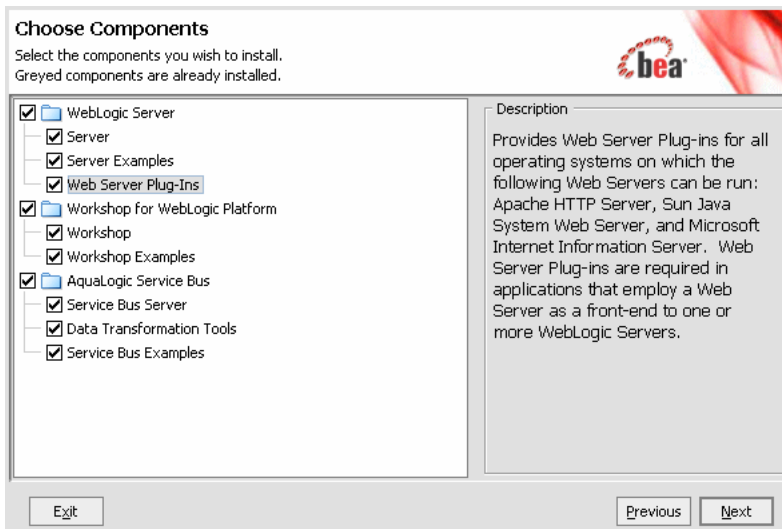


- **Complete:** All the software components included in your installation program, except the WebLogic Server Plug-ins, are installed on your system. Sample domains are preconfigured for use with the PointBase database during installation, allowing you to execute the samples when the installation is complete.
- **Custom:** You can select the software components to be installed. On Windows systems, you also have the option to install WebLogic Server Node Manager as a Windows service

Note: You must select Custom installation to install the Web Server Plug-ins or to add components to an existing installation. For more information, see [“Choosing the Type of Installation” on page 1-15](#)

Click **NEXT**. The Choose Components (see [Figure 3-5](#)) window is displayed. This displayed only if you select Custom installation type.

Figure 3-5 Choose Components



This window displays a tree-view of all the components available for installation. Specify the components to be installed by selecting or clearing the appropriate check boxes.

Note: In an initial installation, only the Web Server Plug-ins are not selected; all other components are selected by default. You must select the Web Server Plug-ins check box if you want the plug-ins to be installed on your system.

When you select or clear a component at the folder level, all subcomponents are selected or cleared accordingly. If any components are already installed on your system, the check boxes for them are grayed out.

Note: When you select or deselect components to install, the installation program checks for dependencies between components and automatically modifies the list of selected components accordingly. For example, if you clear the WebLogic Server component check box, the boxes for the remaining components are cleared because the other components cannot be run without WebLogic Server.

For details about the components available for installation on your system, see [“Installable Product Components” on page 1-3](#).

Click **NEXT** to continue. The installer displays the Optional Tools (see [Figure 3-6](#)) window.

5. In the Optional Tools window, specify whether you want to install the Mercury profiling tools. Clear the check box for this option if you do not want to install these tools. For more information about the Mercury profiling tools, see [“BEA JRockit JDK” on page 1-6](#).

Figure 3-6 Optional Tools



Note: This window is displayed only on platforms that support BEA JRockit.

Click `Next` to continue.

6. Select `Yes` and click `Next` to continue. **Choose Product Directory** window (see [Figure 3-7](#)) is displayed.
7. Specify the directory in which you want to install the software and click `Next`. You can accept the default product directory for the WebLogic Server(weblogic92) and Workshop for WebLogic or create a new product directory. If you choose to create a new directory, the installation program will automatically create one for you. For additional information, see [“Choosing Product Installation Directory” on page 1-14](#). This window is not displayed if you are adding components to an existing installation. Instead, you are prompted to confirm the product installation directory. If you do so, the selected components are installed in the product installation directory you specified during the initial installation.

Figure 3-7 Choose Product Directory

Choose Product Installation Directories

Provide the directories where you wish to install BEA Products.

BEA Home Directory
C:\bea2613a

Product Installation Directories

The Default Product Home will contain WebLogic Server, any other products and components for which unique directories are not set, and shared utilities.

Default Product Home:
C:\bea2613a\weblogic92

Workshop for WebLogic Platform:
C:\bea2613a\workshop92

Click **Next** to continue. The **Install Windows Service** window is displayed (see [Figure 3-8](#)).

Figure 3-8 Configuring Node Manager As Windows Service

Install Windows Service

Install Windows Service to make indicated functionality available after machine reboot.

Node Manager Service

Yes
Install now. This enables remote start and health monitoring of Managed Servers.
Node Manager Listen Port:

No
Do not install now. See product documentation for post-install registration of Node Manager as a Service.

8. Choose whether you want to install the Windows services indicated, specifically the WebLogic Server Node Manager service. Node Manager is used to monitor, start, and stop server instances in a domain.

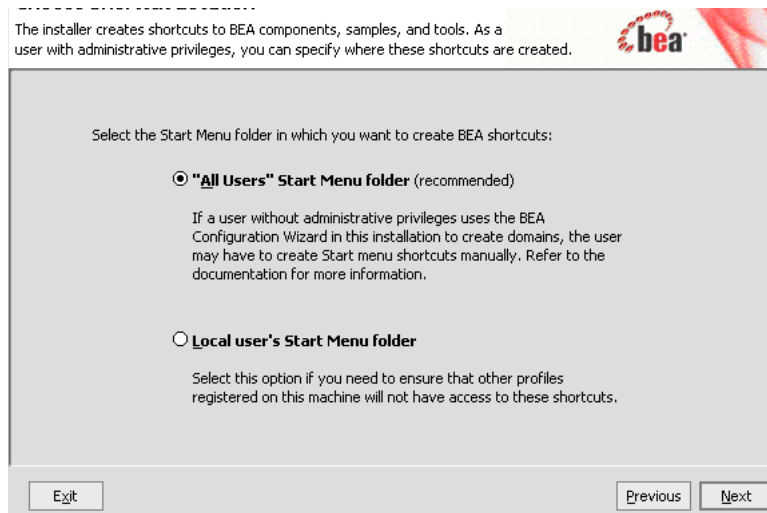
If you select Yes, enter the Node Manager Listen Port in the appropriate field. The default is 5556.

If the Listen Port number you specify is currently being used by a running application, the installation program prompts you to enter a different Node Manager Listen Port number. For more information, see [“About Installing Node Manager as a Windows Service” on page 1-16](#).

Note: This window is displayed only if you have Administrator privileges on Windows platform you are performing an initial installation.

Click **Next** to go to the **Choose Shortcut Location** window.

9. In the **Choose Shortcut Location** window (see [Figure 3-9](#)) specify the **Start** menu folder in which you want the **Start** menu shortcuts created. You can select from the following options:
 - **All Users Start menu folder:** Selecting this option provides all users registered on the machine with access to the installed software. However, only users with Administrator privileges can create shortcuts in the All Users folder. Therefore, if a user without Administrator privileges uses the Configuration Wizard to create domains, Start menu shortcuts to the domains are not created. In this case, users can manually create shortcuts in their local Start menu folders, if desired.
 - **Local user’s Start menu folder:** Selecting this option ensures that other users registered on this machine will not have access to the Start menu entries for this installation.

Figure 3-9 Choose Shortcut Location

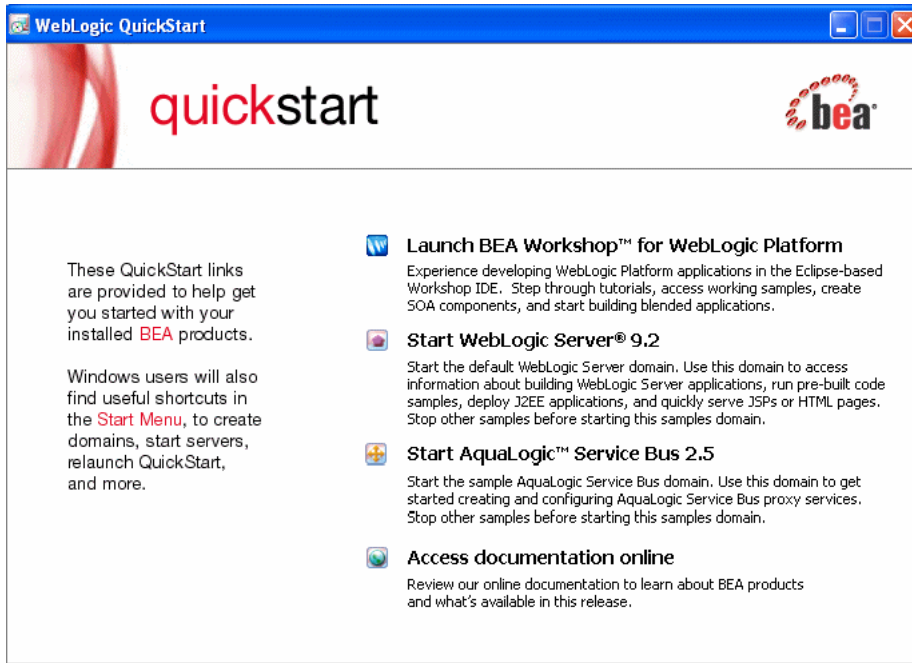
Note: This window is displayed only under the following if you have Administrator privileges on the Windows Platform and you are performing an initial installation.

Click **Next** to start the installation.

After a successful installation you can specify whether you want to run the QuickStart (see [Figure 3-10](#)) application. QuickStart is designed to assist first-time users in evaluating, learning, and using the software, provides quick access to the sample domains, information for upgrading your applications, and the online documentation. Clear the check box for this option if you do not want to launch QuickStart.

Click **Done** to exit the installation program and launch QuickStart, if selected.

Figure 3-10 Quick Start



UNIX

This section describes the installation using the graphical mode on UNIX platforms. The following sections describe the installation using:

- “Installers with Filenames Ending in .bin” on page 3-10
- “Installers with Filenames Ending in .jar” on page 3-11

Installers with Filenames Ending in .bin

Complete the pre-installation tasks as described in section “Using Installers with Filenames Ending in .bin” on page 2-6.

To start the installation, complete the steps as described in “Starting the Installation in Graphical Mode” on page 2-6

By default, the installation in the graphical mode begins. For details on the installation of the product, see [step 1](#) to [step 7](#) of “Installing Using the Graphical Mode” on page 3-1

Installers with Filenames Ending in .jar

Complete the pre-installation tasks as described in section “Using Installers with Filenames Ending in .jar” on page 2-10 of Chapter 2, “Starting the Installation Program.”

To start the installation, complete the procedure as described in “Starting the Installation in Graphical Mode” on page 2-10

By default the installation in the graphical mode begins. For details on the installation of the product, see [step 1](#) to [step 7](#) of “Installing Using the Graphical Mode” on page 3-1

Notes: For both .bin and .jar file installers:

- Skip [step 8](#) of installing the node manager.
- Skip [step 9](#) of choosing the location of the shortcut.

Once the installation is successful you can specify whether you want to run the QuickStart application. QuickStart is designed to assist first-time users in evaluating, learning, and using the software. It provides quick access to the sample domains, information for upgrading your applications, and the online documentation.

Clear the check box for this option if you do not want to launch QuickStart.

What's Next

BEA recommends that you run the QuickStart application to familiarize yourself with the software, and execute the samples provided. For additional information, see [Chapter 6](#), “Post-Installation Information.”

QuickStart is not invoked automatically for console-mode or silent-mode installations. You can launch QuickStart from the Start Menu (Windows) or from the command line (Windows and UNIX). For instructions, see “Using QuickStart” on page 6-1.

For specific information about your software release, see the appropriate release notes:

- BEA WebLogic Server® and WebLogic Express™ Release Notes at <http://e-docs.bea.com/wls/docs92/notes/index.html>
- BEA AquaLogic Service Bus™ Release Notes at <http://e-docs.bea.com/alsb/docs26/relnotes/index.html>
- BEA Products Installation and Configuration Release Notes at <http://e-docs.bea.com/common/docs92/relnotes/index.html>

Running the Installation Program in Graphical Mode

Running the Installation in the Console Mode

The section describes how to run the installation program in the console mode on the following platforms:

- “Windows” on page 4-1
- “UNIX” on page 4-13

Windows

Before you start the installation of AquaLogic Service Bus in the console mode, perform the pre-installation tasks as described in [“Starting the Installation Program on Windows Platforms” on page 2-2](#)

Note: To complete the console-mode installation process, respond to the prompts in each section by entering the number associated with your choice or by pressing `Enter` to accept the default. To exit the installation process, enter `exit` (or `x`, for short) in response to any prompt. To review or change your selection, enter `previous` (or `p`, for short) at the prompt. To proceed to the following prompt, enter `Next` (or `n`, for short).

To Install Using the Console Mode

For information on how to start the installation in the console mode, see [“Starting the Installation in Console Mode” on page 2-3](#). When you start the installation in the console mode you will see a welcome screen as in [Listing 4-1](#).

Listing 4-1 Welcome Screen in the Console Mode

```
<-----BEA Installer-BEA Products----->
Welcome
This installer will guide you through the installation of the BEA
Products. Type "Next" or enter to proceed to the next prompt. If you
want to change data entered previously, type "Previous". You may quit
the installer at any time by typing "Exit".

Enter [Exit][Next]Next
```

1. At the Welcome prompt, type `Next` (or `n` for short) or press `Enter` to continue with the installation process.
2. Type `1` and press `Enter` .
The Choose BEA Home Directory prompt is displayed.
3. Specify the BEA Home directory that will serve as the central support directory for all BEA products installed on the target system. For details about the BEA Home directory, see ["Choosing a BEA Home Directory" on page 1-11](#).
One of the following is displayed on your system:

Listing 4-2 Choosing the BEA Home Directory

```
<-----BEA Installer-BEA Products----->
Choose BEA Home Directory:
-----
->1|* Create a new BEA Home
   2|C:\bea_ga
Enter index number to select OR [Exit][Previous][Next]> 1
```

If BEA Home directories exist on your system, a list of the directories is displayed, as shown in the [Listing 4-2](#):

- To use an existing BEA Home directory, type the number associated with the desired BEA Home directory.
- To create a new BEA Home directory, type `1` or press `Enter`.

If there are no BEA Home directories on your system, or you have selected to create a new BEA Home, the installation program displays the prompt as in [Listing 4-3](#):

Listing 4-3 Create a BEA Home

```
<----- BEA Installer - BEA Products ----->
Choose BEA Home Directory:
-----
      "BEA Home" = [Enter new value or use default "C:\bea"]
Enter new BEA Home OR [Exit][Previous][Next]>
```

Do one of the following:

- To use the default BEA Home directory, type `Next` (or `n` for short), or press `Enter`.
- To create a new BEA Home directory, enter the full path of the BEA Home directory, for example `C:\beahome2`. If you specify a directory that does not exist, the installation program creates it for you.

The installation program displays the BEA Home directory you have specified, as shown in [Listing 4-4](#):

Listing 4-4 Accept BEA Home Directory

```
<----- BEA Installer - BEA Products ----->
Choose BEA Home Directory:
-----
"BEA Home" = [C:\bea1]
Use above value or select another option:
      1 - Enter new BEA Home
      2 - Change to default [C:\bea]
Enter option number to select OR [Exit][Previous][Next]> Next
```

4. Press `Enter` to accept your selection. Otherwise, type `1` or `2` to return to the Choose BEA Home Directory panel, where you can modify your entry.

After you have selected your BEA Home directory and confirmed your selection, type `Next` or press `Enter`. One of the following occurs:

- If you are adding components to an existing installation, the Choose Components to install panel is displayed. Go to step 5.
- If you are performing an initial installation, the Choose Install Type (see [Listing 4-5](#)) prompt is displayed.

Listing 4-5 Choose the Install Type

```
<----- BEA Installer - BEA Products ----->
Choose Install Type:
-----
Select the type of installation you wish to perform.
->1|Complete
    | Install the following software components and examples:
    | - WebLogic Server
    | - Workshop for WebLogic Platform
    | - AquaLogic Service Bus
2|Custom
    | Choose software components to install and perform optional
    | configuration.
Enter index number to select OR [Exit][Previous][Next]> 2
```

5. Specify the type of installation you want to perform by entering the number associated with the install type, as shown in the [Listing 4-5](#):
 - Type `1` or press `Enter` to choose a `Complete` installation type. Proceed to [step 6](#).
 - Type `2` to choose a `Custom` installation type. The Choose Components to install prompt is displayed.

For more information about complete and custom installations, see [“Choosing the Type of Installation” on page 1-15](#).

6. If you choose the Custom type installation, select the components you want to install. The available components are displayed as shown in [Listing 4-6](#).

Listing 4-6 Choose Components to Install

```

<----- BEA Installer - BEA Products ----->
Choose Components to install:
-----
Release 9.2.0.0

+----WebLogic Server [1] v
|   +----Server [1.1] v
|   +----Server Examples [1.2] v
|   +----Web Server Plug-Ins [1.3]
+----Workshop for WebLogic Platform [2] v
|   +----Workshop [2.1] v
|   +----Workshop Examples [2.2] v
+----AquaLogic Service Bus [3] v
      +----Service Bus Server [3.1] v
      +----Data Transformation Tools [3.2] v
      +----Service Bus Examples [3.3] v

Enter number exactly as it appears in brackets to toggle selection OR
[Exit][Previous][Next]> 1.3

```

Note: In a Complete installation, only the Web Server Plug-ins are not selected; all other components are selected by default as indicated by the “x” (on UNIX systems) or “v” (on Windows systems) at the end of each line. Selected components will be installed on your system. If, however, you want Web Server Plug-ins installed on your system, you must manually enter “1.3”. To deselect a component, type the numeric code for it on the command line, exactly as it is displayed within the brackets. For example, if

you do not want to install the Server Examples, type 1.2 on the command line. Press enter. The screen displays the selected list (see [Listing 4-7](#)).

Listing 4-7 Selected Components

```
<----- BEA Installer - BEA Products ----->
```

```
Choose Components to install:
```

```
-----
```

```
Release 9.2.0.0
```

```
+----WebLogic Server [1] v
|   +----Server [1.1] v
|   +----Server Examples [1.2] v
|   +----Web Server Plug-Ins [1.3] v
+----Workshop for WebLogic Platform [2] v
|   +----Workshop [2.1] v
|   +----Workshop Examples [2.2] v
+----AquaLogic Service Bus [3] v
     +----Service Bus Server [3.1] v
     +----Data Transformation Tools [3.2] v
     +----Service Bus Examples [3.3] v
```

```
Enter number exactly as it appears in brackets to toggle selection OR
[Exit][Previous][Next]> Next
```

The word Installed is shown in brackets for any components you have already installed on your system.

When you select or deselect components to install, the installation program checks for dependencies between components and automatically modifies the list of selected components. For example, if you deselect the WebLogic Server component, the remaining components are also deselected, since they require WebLogic Server to run.

When you have selected the components, press `Enter` or type `Next` (or `n` for short). The `Optional Tools` prompt is displayed (see [Listing 4-8](#))

Listing 4-8 Optional Tools

```
<----- BEA Installer - BEA Products ----->
Optional Tools
Do you want to install Mercury profiling tools (development
environment only)?
    1 - Yes, install Mercury profiling tools.
    2 - No, do not install.
Enter a number or [Exit][Previous][Next]> 1
```

7. Specify whether you want to install the Mercury profiling tools.

8. If you do not want to install Mercury Profiling tools, the `Choose Product Directory` prompt is displayed (see [Listing 4-9](#))

Listing 4-9 Choose Product Installation Directory

```
<----- BEA Installer - BEA Products ----->
Choose Product Installation Directories:
-----
BEA Home Directory: [C:\bea1]
Product Installation Directories:
    1|Default Product Home: [C:\bea1\weblogic92]
    2|Workshop for WebLogic Platform: [C:\bea1\workshop92]
Enter index number to select OR [Exit][Previous][Next]>1
```

Specify the directory in which you want to install the software. You can accept the default product directory (`bea_home\weblogic92`) or create a new product directory.

If you are adding components to an existing installation, you are prompted to confirm the product installation directory.

If you specify a new directory, the installation program automatically creates it for you.

The following [Listing 4-10](#) shows the choices displayed in this section:

Listing 4-10 Product Home for WebLogic Server

```
<----- BEA Installer - BEA Products ----->
Choose Product Installation Directories:
-----
"Default Product Home" = [Enter new value or use default
"C:\bea1\weblogic92"]
Enter new Default Product Home OR [Exit][Previous][Next]> C:\beahome26
```

9. To specify the directory for WebLogic Server do one of the following:

- Press Enter or type Next (or n for short) to accept the current selection.
- Enter the full path to the directory in which you want to install the software, and press Enter.

The installer asks you to confirm your selection.

Listing 4-11 Confirm Product Home

```
<----- BEA Installer - BEA Products ----->
Choose Product Installation Directories:
-----
"Default Product Home" = [C:\beaweblogic]
Use above value or select another option:
    1 - Enter new Default Product Home
    2 - Change to default [C:\bea1\weblogic92]
Enter option number to select OR [Exit][Previous][Next]> Next
```

Verify your entry and type Next and press Enter to proceed with the installation. Otherwise, do one of the following:

- Type 1 and press `Enter` to change the product installation directory for the WebLogic server.
- Type 2 and press `Enter` to change accept the default directory

Modify your entry, confirm it. Type `Next`, Press `Enter`. Now the you have choose the directory for the Workshop for WebLogic.

Listing 4-12 Choose Product Home for Workshop for WebLogic

```
<----- BEA Installer - BEA Products ----->
Choose Product Installation Directories:
-----
BEA Home Directory: [C:\bea]
Product Installation Directories:
  1|Default Product Home: [C:\beaweblogic]
  2|Workshop for WebLogic Platform: [C:\bea\workshop92]
Enter index number to select OR [Exit][Previous][Next]>
```

10. To specify the directory location for Workshop for WebLogic do one of the following:

- Enter 1 to accept the default directory for the Workshop for WebLogic.
- Enter 2 to set the directory for the Workshop for WebLogic. The prompt to enter the directory name is displayed (see [Listing 4-13](#))

Listing 4-13 Enter New Home for Workshop for WebLogic

```
<----- BEA Installer - BEA Products ----->
Choose Product Installation Directories:
-----
"Workshop for WebLogic Platform" = [Enter new value or use default
"C:\bea\workshop92"]
Enter new Workshop for WebLogic Platform OR [Exit][Previous][Next]>
C:\workshop
```

The installer asks you to confirm your entry (see [Listing 4-14](#))

Listing 4-14 Confirm Home for Workshop for WebLogic

```
<----- BEA Installer - BEA Products ----->
Choose Product Installation Directories:
-----
"Workshop for WebLogic Platform" = [C:\workshop]
Use above value or select another option:
    1 - Enter new Workshop for WebLogic Platform
    2 - Change to default [C:\bea1\workshop92]
Enter option number to select OR [Exit][Previous][Next]> Next
```

Verify your entry and type `Next` and press `Enter` to proceed with the installation.
Otherwise, do one of the following:

- Type 1 and press `Enter` to change the product installation directory for the WebLogic server.
- Type 2 and press `Enter` to change accept the default directory

Modify your entry, confirm it. Type `Next`, Press `Enter`.

Enter your choice to confirm. Enter `Next` to go to install the Node Manager as a Windows service (see [Listing 4-15](#))

Listing 4-15 Installing Node Manager as a Windows Service

```
<----- BEA Installer - BEA Products ----->
Install Node Manager as a Windows Service

    1 - Yes, install now.
    2 - No, do not install now. See product documentation for post-install
        registration of Node Manager as a Windows Service.
```

Enter a number or [Exit][Previous][Next]>

11. To install the node manager as a Windows service, do one of the following:

- Enter 1 to install Node Manager as a Windows Service.
- Enter 2 to defer the installation of the Node Manager.

If you choose to install Node Manager as a Windows Service you will be prompted to do one of the following:

- At the prompt, enter the Node Manager Listen Port
- Press Enter to accept the default (5556).

If the Listen Port number you specify is currently being used by a running application, the installation program prompts you to enter a different Node Manager Listen Port number. You are prompted to confirm your selection.

Note: Node Manager is used to monitor, start, and stop server instances in a domain. See [“About Installing Node Manager as a Windows Service” on page 1-16](#) for more information.

Enter Next to set the location for the Shortcut.

12. The locations for Shortcut prompt is displayed (see [Listing 4-16](#)).

Listing 4-16 Location for the Shortcut

```

<----- BEA Installer - BEA Products ----->
Choose Shortcut Location:
-----

*The installer creates shortcuts to BEA components, samples, and tools. As
  *a user with administrative privileges, you can specify where these
  *shortcuts are created.

->1|"All Users" Start Menu folder (recommended)

  |If a user without administrative privileges uses the BEA Configuration
  |Wizard in this installation to create domains, the user may have to

```

Running the Installation in the Console Mode

```
|create Start Menu shortcuts manually. Refer to the documentation for
|more information.
2|Local user's Start Menu folder
|Select this option if you need to ensure that other profiles registered
|on this machine will not have access to these shortcuts.
Enter index number to select OR [Exit][Previous][Next]>1
Confirm your choice for the location of the shortcut (see Listing 4-17).
```

Listing 4-17 Confirm the Location for the Shortcut

```
<----- BEA Installer - BEA Products ----->
Choose Shortcut Location:
-----
*Are you sure you wish to create the shortcuts in the selected location?
  * *"All Users" Start Menu folder (recommended)
  *If a user without administrative privileges uses the BEA Configuration
  *Wizard in this installation to create domains, the user may have to
  create
  *Start Menu shortcuts manually. Refer to the documentation for more
  information.
->1|Yes.
  2|No, Go back to the previous screen and make another choice.
Enter index number to select OR [Exit][Previous][Next]>
```

Installation starts and you can see the progress of the installation at the prompt.

Note: It is normal for the installation program to pause for a fairly long time, especially toward the end. The installation program is still working when this occurs.

When the installation is complete, the Installation Complete panel is displayed.

Press Enter or type Exit to exit the installation program.

UNIX

This section describes the installation using the console mode on the UNIX platforms. Following sections describe the installation using:

- [“Installers with Filenames Ending in .bin” on page 4-13](#)
- [“Installers with Filenames Ending in .jar” on page 4-13](#)

Installers with Filenames Ending in .bin

To complete the pre-installation tasks using the installers with filename ending in `.bin`, see [Using Installers with Filenames Ending in .bin in Chapter 2, “Starting the Installation Program.”](#)

For information on how to start the installation, complete the steps as described in [“Starting the Installation in Console Mode” on page 2-7](#). For details on the installation of the product, see [step 1 to step 10 of “To Install Using the Console Mode” on page 4-1](#).

Installers with Filenames Ending in .jar

To start the installation in the console mode using the installers, which have the extension `.jar`, see [“Using Installers with Filenames Ending in .jar” on page 2-10](#).

To start the installation, complete the steps as described in [“Starting the Installation in Console Mode” on page 2-11](#). The installation in the console mode begins. For details on the installation of the product, see [step 1 to step 10 of “To Install Using the Console Mode” on page 4-1](#).

Notes: For installation on UNIX systems

- Skip [step 11](#) of installing the node manager.
- Skip [step 12](#) of choosing the location of the shortcut.

What’s Next

BEA recommends that you run the QuickStart application to familiarize yourself with the software, and execute the samples provided. For more information on post installation tasks, see [Chapter 6, “Post-Installation Information.”](#)

Running the Installation in the Console Mode

QuickStart is not invoked automatically for console-mode or silent-mode installations. You can launch QuickStart from the Start Menu (Windows) or from the command line (Windows and UNIX). For instructions, see **“Using QuickStart” on page 6-1**.

For specific information about your software release, see the appropriate release notes:

- BEA WebLogic Server® and WebLogic Express™ Release Notes at <http://e-docs.bea.com/wls/docs92/notes/index.html>
- BEA AquaLogic Service Bus™ Release Notes at <http://e-docs.bea.com/alsb/docs26/relnotes/index.html>
- BEA Products Installation and Configuration Release Notes at <http://e-docs.bea.com/common/docs92/relnotes/index.html>

Running the Installation in the Silent Mode

The following sections describe how to run the installation program in silent mode:

- [“What Is Silent-Mode Installation?”](#) on page 5-1
- [“Using Silent-Mode Installation”](#) on page 5-2
- [“Creating a silent.xml File for Silent-Mode Installation”](#) on page 5-3
- [“Sample silent.xml File for Silent-Mode Installation”](#) on page 5-6
- [“Returning Exit Codes to the Console”](#) on page 5-8
- [“What’s Next?”](#) on page 5-9

What Is Silent-Mode Installation?

Silent-mode installation is a way of setting installation configurations once and then using these configurations to duplicate the installation on many machines. During installation in silent mode, the installation program reads the settings for your configuration from an XML file that you create prior to beginning the installation. The installation program does not display any configuration options during the installation process. Silent-mode installation works on both Windows and UNIX systems.

It is assumed that you have already acquired the installation program, either on DVD or from the BEA Web site. For more information on different modes of product distribution, see [“Product Distribution Methods”](#) on page 1-7.

Using Silent-Mode Installation

The silent-mode installation process has two primary steps:

1. Creating a `silent.xml` file that defines the configuration settings normally entered by a user during an interactive installation process, such as graphical-mode or console-mode installation. For example, values for the BEA Home directory, the product directory, and the components to be installed are supplied in a `silent.xml` file.

For a detailed procedure, see [“Creating a silent.xml File for Silent-Mode Installation” on page 5-3](#). For a sample `silent.xml` file, see [“Sample silent.xml File for Silent-Mode Installation” on page 5-6](#).

2. Starting the silent-mode installation process using the values specified in the `silent.xml` file. For more information on starting an installation, see [Chapter 2, “Starting the Installation Program.”](#)

Important Considerations for Silent-Mode Installation

When you are performing an installation in silent mode, keep in mind the following considerations:

- Silent-mode installation requires the same amount of temporary disk space and uses the same temporary storage directories as a standard installation. For more information, see [“Temporary Disk Space Requirements” on page 1-9](#). The installation program does not alert you if there is insufficient space in the temporary directory.
- A silent-mode installation takes the same amount of time as a standard installation. At the beginning of a silent-mode installation, an initial installation program window or message is displayed briefly, indicating that the installation has started. No messages are displayed to indicate that the installation is in progress or has been completed successfully.
- Incorrect entries in the `silent.xml` file can cause installation failures. To help you determine the cause of a failure, BEA recommends that you create a log file when you start the installation. For more information on generating a verbose log, see [“Generating a Verbose Installation Log” on page 1-18](#).
- The XML definition (`<?xml version="1.0" encoding="ISO-8859-1" ?>`) must be at the very beginning of the `silent.xml` file. There cannot be any spaces or line breaks before the XML definition.
- You cannot reinstall any BEA product on top of a previously installed version of the same product—in the same BEA Home directory or in the same file location. You can, however, add products and product components to an existing installation. For example, you can install WebLogic Server during one installation, and AquaLogic Service Bus during a later installation. However, to reinstall the same version of one of the products, you must first

uninstall the previously installed instance of it, as described in [Chapter 7, “Uninstalling the Software,”](#) or install the new instance in another location.

Creating a silent.xml File for Silent-Mode Installation

When you install your BEA software in silent mode, the installation program uses an XML file (`silent.xml`) to determine which installation options should be implemented. Therefore, before you can run the installation program in silent mode, you must first create a `silent.xml` file in which you specify the installation options that you want to invoke.

Incorrect entries in the `silent.xml` file can cause installation to fail. To help you determine the cause of a failure, BEA recommends that you create a log file when you start the installation.

To create a `silent.xml` file for use in the silent-mode installation process, follow these steps:

1. In a supported browser, view the sample `silent.xml` file for silent-mode installation. The sample file is available at

<http://e-docs.bea.com/common/docs92/install/scripts/silent.xml>

This sample `silent.xml` file is also presented in this section. See [“Sample silent.xml File for Silent-Mode Installation” on page 5-6.](#)

2. Save the sample XML file, with the name `silent.xml`, in the same directory that contains the installation program.

Note: The XML definition (`<?xml version="1.0" encoding="ISO-8859-1" ?>`) must be at the very beginning of the `silent.xml` file. There should not be any spaces or line breaks before the XML definition.

3. In the `silent.xml` file that you saved on your system, edit the values for the keywords shown in [Table 5-1](#) to reflect your configuration.

Note: You must follow XML guidelines for characters when modifying values. That is, do not use characters reserved for use in XML, such as `<`, `>`, `[`, and `]`.

Table 5-1 Parameters for Silent.xml

For this data-value name...	Enter the following value...
BEAHOME	The full path for the BEA Home directory of your choice. For details about the BEA Home directory, see “Choosing a BEA Home Directory” on page 1-11.

Table 5-1 Parameters for Silent.xml

USER_INSTALL_DIR	The full path for the directory where you want to install your WebLogic Server product directory. For details, see “Choosing Product Installation Directory” on page 1-14.
WLW_INSTALL_DIR	The full path for the directory where you want to install your workshop for WebLogic Platform product directory. For details, see “Choosing Product Installation Directory” on page 1-14.
INSTALL_NODE_MANAGER_SERVICE (Windows platforms only)	<ul style="list-style-type: none">• <code>yes</code> to install the WebLogic Server Node Manager as a Windows service. For information, see “About Installing Node Manager as a Windows Service” on page 1-16• <code>no</code> to skip the installation of the WebLogic Server Node Manager as a Windows service. The default is <code>no</code>.
Notes: <ul style="list-style-type: none">• You must have Administrator privileges to install Node Manager as a Windows service.• When you are installing AquaLogic Service Bus on UNIX based platforms, this parameter is ignored.	
NODEMGR_PORT	<p>The Node Manager listen port.</p> <p>If you do not specify a port number, the installer uses the default port 5556.</p> <p>If the port number is in use, the installer scans for the next available port and assigns it to the Node Manager.</p> <p>Note: The <code>INSTALL_NODE_MANAGER_SERVICE</code> option must be set to <code>yes</code>.</p> <p>At the completion of the installation process, the Node Manager is started using the port specified.</p>
INSTALL_MERCURY_PROFILING_TOOLS	<ul style="list-style-type: none">• <code>true</code>, or <code>yes</code>, to install the Mercury profiling tools. The default is <code>true</code>.• <code>false</code>, or <code>no</code>, to skip the installation of the tools. <p>For more information about the Mercury profiling tools, see “BEA JRockit JDK” on page 1-6.</p>

Table 5-1 Parameters for Silent.xml

INSTALL_SHORTCUT_IN_ALL_USERS_FOLDER	<ul style="list-style-type: none"> • true, or yes, to create the shortcuts in the All Users folder. The default is true. • false, or no, to create the shortcuts in the local users folder. <p>The user performing the installation must have Administrator privileges to install the Start menu shortcuts in the All Users folder. For more information, see “Administrator Privileges” on page 1-10.</p>
COMPONENT_PATHS	<p>Specify the components and subcomponents you want to install on your system:</p> <ul style="list-style-type: none"> • To install WebLogic Server, use the following values: WebLogic Server Server Server Examples Web Server Plug-Ins <p>Note: The Web Server Plug-Ins subcomponent is not installed by default with WebLogic Server. You must specify the component/subcomponent combination to install them.</p> <ul style="list-style-type: none"> • To install AquaLogic Service Bus, use the following values: AquaLogic Service Bus Service Bus Server Data Transformation Tools Service Bus Examples • To install Workshop for WebLogic Platform, use the following values: Workshop for WebLogic Platform Workshop Workshop Examples <p>For more information about entering these values, see “Guidelines for Component Selection” on page 5-5.</p>

Guidelines for Component Selection

Use the following guidelines when you specify values for the COMPONENT_PATHS data-value name:

- When you specify a product component to be installed, all subcomponents that are installed by default in a complete installation are also installed. For example, the following entry in `silent.xml` installs both WebLogic Server and the examples:

```
<data-value name="COMPONENT_PATHS" value="WebLogic Server" />
```

The Web Server Plug-Ins subcomponent is not installed by default. You must specify the component/subcomponent combination to install them.

- To install multiple components, separate the components with a bar (`|`). Do not leave a space before or after the bar. For example, to install WebLogic Server, AquaLogic Service Bus, and the subcomponents that are installed by default, enter the following line in the `silent.xml` file:

```
<data-value name="COMPONENT_PATHS" value="WebLogic Server|AquaLogic Service Bus" />
```

- To specify subcomponents, you must specify a component/subcomponent combination for each entry. For example, to install all of the subcomponents of WebLogic Server, including the Web Server Plug-Ins, use the following entry:

```
<data-value name="COMPONENT_PATHS" value="WebLogic Server/Server|WebLogic Server/Server Examples|WebLogic Server/Web Server Plug-Ins" />
```

Note: You can include the component/subcomponent of the products you want to install.

- If you do not include the `COMPONENT_PATHS` data-value name in the `silent.xml` file, the “complete” WebLogic Server, Workshop for WebLogic Platform and AquaLogic Service Bus products are installed. The Web Server Plug-ins, which is a subcomponent of WebLogic Server is not installed by default.

Note: The installation program performs dependency checking to ensure that all components that provide functionality on which other components depend for proper operation are installed. These dependencies are visible during graphical and console mode installations. The same dependencies are enforced during silent installation: components on which other components depend are installed even if they are not explicitly referenced in a silent script.

Sample silent.xml File for Silent-Mode Installation

Listing 5-1 Sample XML File

```
<?xml version="1.0" encoding="ISO-8859-1"?>
```

Sample silent.xml File for Silent-Mode Installation

```
<!-- Silent installer option: -mode=silent -silent_xml=C:\bea\silent.xml
-->

<!-- Specify values for each data-value name as follows:

BEAHOME Complete pathname to the BEA Home directory that will contain
this installation.

USER_INSTALL_DIR Complete pathname to the product installation
directory in which to install the software.

INSTALL_MERCURY_PROFILING_TOOLS

Optional install Mercury profiling tools.
Possible values are "true","yes","false"
and "no". The default is "true".

INSTALL_NODE_MANAGER_SERVICE Install Node Manager as a Windows
service. The default is "no".
Requires Administrator privileges.

NODEMGR_PORT Node Manager listen port number. If none specified,
installer uses default port 5556.
INSTALL_NODE_MANAGER_SERVICE must be set to "yes"

COMPONENT_PATHS Components and subcomponents to be installed.
To install multiple components, separate the
components with a bar (|). To install subcomponents,
specify a component/subcomponent combination.
For example, to install Web Server Plug-Ins, use
"WebLogic Server/Web Server Plug-Ins".

INSTALL_SHORTCUT_IN_ALL_USERS_FOLDER

The Windows Start menu folder in which you want the
Start menu shortcuts created. The user performing the
installation must have Administrator privileges to
install the shortcuts in the All Users folder. Possible
values: true/yes The shortcuts are created in the All
Users folder (default) false/no. The shortcuts are
created in the local user's folder. See the Installation
Guide for more information.

-->
```

Running the Installation in the Silent Mode

```
<bea-installer>
  <input-fields>
    <data-value name="BEAHOME" value="C:\bea" />
  <data-value name="USER_INSTALL_DIR" value="C:\bea\weblogic92" />
  <data-value name="WLW_INSTALL_DIR" value="c:\bea\workshop92" />
    <data-value name="INSTALL_MERCURY_PROFILING_TOOLS" value="true" />
    <data-value name="INSTALL_NODE_MANAGER_SERVICE" value="yes" />
    <data-value name="NODEMGR_PORT" value="5559" />
  <data-value name="COMPONENT_PATHS" value="WebLogic Server/Server|WebLogic
  Server/Server Examples|WebLogic Server/Web Server Plug-Ins|Workshop for
  Weblogic Platform /Workshop|Workshop for Weblogic Platform/Workshop
  Examples|AquaLogic Service Bus/Service Bus Server|AquaLogic Service Bus/
  Data Transformation Tools|AquaLogic Service Bus/ Service Bus Examples" />
  <data-value name="INSTALL_SHORTCUT_IN_ALL_USERS_FOLDER" value="yes" />
    </input-fields>
  </bea-installer>
```

For more information on launching the installation in silent mode, see [Chapter 2, “Starting the Installation Program.”](#)

Returning Exit Codes to the Console

When run in silent mode, the installation program generates exit codes that indicate the success or failure of the installation. These exit codes are shown in the following table.

Code	Description
0	Installation Completed Successfully.
1	Installation failed due to a fatal error.
2	Installation failed due to an internal XML parsing error.

If you are launching the silent-mode installation process from a script, you can choose to have these exit codes displayed on the console. [Listing 5-2](#) provides a sample command file that invokes the installation program in silent mode and echoes the exit codes to the console from which the script is executed.

Listing 5-2 Sample Command File Displaying Silent-Mode Exit Codes

```
rem Execute the installer in silent mode
@echo off
alsb260_wls921_win32.exe -mode=silent -silent_xml=C:\downloads\silent.xml
-log=C:\logs\products_silent.log
@rem Return an exit code to indicate success or failure of installation
set exit_code=%ERRORLEVEL%
@echo.
@echo Exitcode=%exit_code%
@echo.
@echo Exit Code Key
@echo -----
@echo 0=Installation completed successfully
@echo -1=Installation failed due to a fatal error
@echo -2=Installation failed due to an internal XML parsing error
@echo.
```

What's Next?

BEA recommends that you run the QuickStart application to familiarize yourself with the software and execute the samples provided. For additional information, see [Chapter 6](#), “Post-Installation Information.”

Note: QuickStart is not invoked automatically for console-mode or silent-mode installations. You can launch QuickStart from the Start Menu (Windows), or from the command line (Windows and UNIX). For instructions, see “Using QuickStart” on page 6-1.

For specific information about your software release, see the appropriate release notes:

Running the Installation in the Silent Mode

- BEA WebLogic Server® and WebLogic Express™ Release Notes at <http://e-docs.bea.com/wls/docs92/notes/index.html>.
- BEA AquaLogic Service Bus™ Release Notes at <http://e-docs.bea.com/alsb/docs26/relnotes/index.html>
- BEA Products Installation and Configuration Release Notes at <http://e-docs.bea.com/common/docs92/relnotes/index.html>

Post-Installation Information

This section covers the following topics:

- [“Using QuickStart” on page 6-1](#)
- [“Using an Alternate Database” on page 6-2](#)
- [“Determining Which JDK Version You Are Using” on page 6-2](#)
- [“Understanding the Windows Shortcuts” on page 6-3](#)
- [“Understanding the Product Directory Structure” on page 6-4](#)

Using QuickStart

When the product installation is completed using graphical-mode installation, the QuickStart application is launched automatically, by default. If you do not want to run QuickStart at the completion of the installation process, you can clear the Run QuickStart check box in the Install Complete window. QuickStart is not invoked automatically after console-mode or silent-mode installations.

QuickStart is designed to help first-time users evaluate, learn, and use BEA Products software. If you installed your software using a complete installation, or if you used a custom installation to install the examples, the sample domains that are installed are automatically configured to run with the PointBase database, a database that is installed with WebLogic Server. QuickStart provides quick access to sample domains, upgrade information, and online documentation.

After installation, you can launch QuickStart as follows:

- On Window systems, choose Start→Programs→BEA Products→QuickStart.
- On UNIX systems, perform the following steps:
 - a. Log into the target UNIX system.
 - b. Go to the `/common/bin` subdirectory of your BEA Products installation. For example:

```
cd /home/bean/weblogic92/common/bin
```

- c. Enter the following command:

```
sh quickstart.sh
```

Using an Alternate Database

When you install WebLogic Platform, all sample domains are preconfigured to use the PointBase database. However, you may want to use another supported database, such as Oracle. To use the domain with a database other than PointBase, you need to configure a new domain and initialize the new database. For details about configuring a domain with a different database, see [How Do I: Create an AquaLogic Service Bus Domain Using an Alternate Database?](#) in *Creating WebLogic Domains Using the Configuration Wizard*.

For information about databases supported on your platform and any associated restrictions or limitations, see [Supported Database Configurations in Supported Configurations for WebLogic Platform 9.2](#).

Determining Which JDK Version You Are Using

You can determine which version of the JDK you are using by issuing a command, as follows:

1. Go to the appropriate directory:
 - On Windows in command prompt:

```
WL_HOME\server\bin
```
 - In the UNIX terminal:

```
WL_HOME/server/bin
```

In both pathnames, `WL_HOME` represents the directory in which you installed your BEA software.

2. Verify that your environment is set up properly by entering the following command at the prompt:

- On Windows execute the following command:

```
setWLSenv.cmd
```

- On Unix execute the following command:

```
setWLSenv.sh
```

3. Enter the following command at the prompt:

```
java -version
```

If you are using BEA JRockit, BEA JRockit® is displayed in the output.

Understanding the Windows Shortcuts

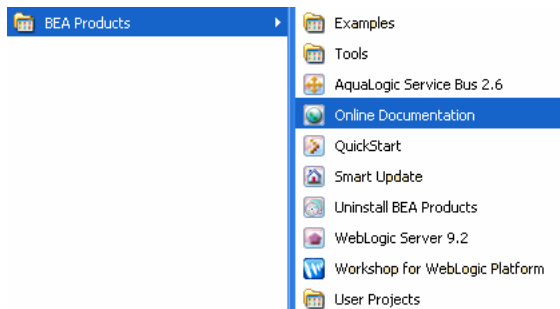
When you install BEA Products on a Windows system, the installation program automatically creates shortcut entries on the Start Menu.

If the user performing the installation has Administrator privileges, the shortcut entries can be created in the All Users Start menu folder or in the user's local Start menu folder. For more information, see [“Administrator Privileges” on page 1-10](#).

Options on the Start Menu vary, according to the components you choose to install.

The BEA Products folder (Start→Programs→BEA Products) contains the shortcut files shown in the following figure.

Figure 6-1 BEA Products Start Menu



- *Examples*: contains a folder for each component installed on your system that contains shortcuts for launching the examples and associated tools for the component.

- *Tools*: contains shortcuts for launching the Configuration Wizard, Domain Template Builder, Domain Upgrade Wizard, Format Builder, Node Manager, WebLogic Scripting Tool, and XQuery Mapper.
- *AquaLogic Service Bus 2.6*: contains a shortcut for launching the default AquaLogic Service Bus domain. This domain allows you to run pre-built AquaLogic Service Bus samples. You can also use this domain to get started creating and configuring AquaLogic Service Bus proxy services.
- *Online Documentation*: provides a link to the online documentation on the e-docs Web site.
- *QuickStart*: starts the QuickStart application designed to assist first-time users in evaluating, learning, and using the BEA Products.
- *Smart Update*: launches the Smart Update program, which checks for any updates available for the BEA products already installed, and installs the updates as required.
- *Uninstall BEA Products*: launches the uninstallation program. For more information, see [Chapter 7, “Uninstalling the Software.”](#)
- *WebLogic Server 9.2*: contains a shortcut for launching the default WebLogic Server domain. This domain allows you to run the built in WebLogic Server code samples, deploy J2EE applications, and quickly serve JSPs or HTML pages. You can also use this domain as a place to test your applications during development.

Understanding the Product Directory Structure

During the product installation, you are prompted to select or create a BEA Home directory and a product installation directory. For information about the BEA Home directory, see [“Choosing a BEA Home Directory” on page 1-11](#). For a complete installation, the installation program creates a dedicated directory structure for the BEA Products. The product directory may reside inside or outside the BEA Home directory. [Figure 6-2](#) shows the directory tree structure for a complete product installation.

Figure 6-2 Product Directory Structure



Table 6-1 describes the contents of each directory.

The installation program does not create directories for components that are not installed. For example, if you performed a complete installation using the BEA Products installation program for BEA WebLogic Server, the integration and servicebus directories are not created.

Table 6-1 Product Directory Structure

Directory	Contents
weblogic92	Folders for files shared by all product components.
beehive	Apache Beehive program files, including samples and user documentation.
common	Files shared by product components, including scripts used for setting environment attributes common to all WebLogic domains running on the machine, template JAR files used by the Configuration Wizard and WLST offline when creating domains, and evaluation software from third-party vendors.
integration	WebLogic Integration program files required by AquaLogic Service Bus. They include the Format Builder tool and database scripts to support the AquaLogic Service Bus monitoring and reporting framework. This directory also contains the Eclipse plug-in files required by AquaLogic Service Bus.
javelin	A 100% Java/JSP compiler that is used by the component products for compiling .java and other source files generated by development tools.
samples	Sample code, resources, and preconfigured sample domains designed to help you learn how to develop your own applications using the product software. Sample domains are organized by components installed on the system. For example, the server folder contains the source code for examples and a sample application called MedRec.

Table 6-1 Product Directory Structure

Directory	Contents
<code>server</code>	WebLogic Server program files.
<code>servicebus</code>	AquaLogic Service Bus program files.
<code>uninstall</code>	Code required to uninstall the BEA Products software.

Uninstalling the Software

The following sections provide procedures for uninstalling and reinstalling the software:

- [“About the Uninstallation Program” on page 7-1](#)
- [“Uninstalling Your Software in Graphical Mode” on page 7-2](#)
- [“Uninstalling Your Software in Console Mode” on page 7-4](#)
- [“Uninstalling Your Software in Silent Mode” on page 7-5](#)
- [“Reinstalling Your Software” on page 7-6](#)

About the Uninstallation Program

The following sections describe how to uninstall your BEA software on Windows and UNIX systems. You can uninstall the software using graphical, console, or silent mode. To run the graphical-mode uninstallation program, your console must support a Java-based GUI. If the uninstallation program determines that your system does not support a Java-based GUI, it automatically starts running in console mode.

You can uninstall individual components of your product distribution, or the entire installation. Dependency checking in the uninstaller ensures that the appropriate components are uninstalled.

The uninstallation program does not remove the BEA Home directory associated with the installation, the JDK, or any user-created domains. Only the components that were installed by the installation program can be removed. If you choose to uninstall the entire installation, the

Uninstalling the Software

uninstallation program also removes the product directory associated with the installation unless one of the following is true:

- The product directory contains user-created configuration or application files—*the uninstallation program does not delete user-created configuration files, application files, or domains.*
- The complete installation was not uninstalled. If an individual component is uninstalled, only the installation directory for that component is removed; the installation directories for other components are unaffected.
- The uninstallation program was invoked from within the product directory structure—specifically, from within the `weblogic92` directory.

Uninstalling Your Software in Graphical Mode

Use the following procedure to uninstall the all the product components, or individual components, in graphical mode:

1. Shut down any servers that are running. If any one of these servers is configured as a Windows service, you should stop the service(s) before uninstalling the software.
2. Start the uninstallation program as described in [Table 7-1](#).

Tip:

Table 7-1 Starting the uninstallation program in the Graphical mode

To start the uninstallation program on...	Do this...
Windows	<ol style="list-style-type: none"> From the Windows Start menu, choose Start→ Programs→ BEA Products→ Uninstall BEA Products. The BEA Products Uninstaller Welcome window is displayed. Proceed to step 3.
UNIX	<ol style="list-style-type: none"> Go to the following directory: WL_HOME/uninstall where, WL_HOME represents the directory in which you installed your WebLogic Server software. Type <code>uninstall.sh</code> at the prompt and press ENTER. The BEA Products Uninstaller Welcome window is displayed. proceed to step 3. <p>Note: If your system supports a graphical user interface, the uninstallation program starts in graphical mode. If your system does not support a graphical user interface, the uninstallation program starts in console mode. If console mode is started, see “Uninstalling Your Software in Console Mode” on page 7-4 for instructions.</p>

- Click Next to start the uninstall program.

The Choose Components window is displayed.

- Select the components to uninstall by selecting or clearing the appropriate check boxes, and click Next. By default, all installed components are selected, indicating that they will be uninstalled.
- Optionally, click Details to view the log file that lists the uninstalled components.
- Click Done in the Uninstalling BEA Products window to exit the uninstallation program.

Uninstalling Your Software in Console Mode

Use the following procedure to uninstall the complete product installation, or individual components, using the command-line interface:

1. Shut down any servers that are running. If any of these servers is configured as a Windows service, you should stop the service(s) before uninstalling the software.
2. Start the uninstallation program as described in [Table 7-2](#).

Table 7-2 Starting the Installation Program in the Console Mode

To start the uninstallation program on...	Do this...
Windows	<ol style="list-style-type: none">1. Go to the <code>uninstall</code> directory in the product directory (<code>weblogic92</code>) of the <code>BEA_Home</code> in the command prompt. Type <code>uninstall.cmd</code> and press Enter.2. The BEA Products Uninstaller Welcome window is displayed. Proceed to step 3.
UNIX	<ol style="list-style-type: none">1. Go to the following directory: <code>WL_HOME/uninstall</code> where, <code>WL_HOME</code> represents the directory in which you installed your WebLogic Server software.2. Type <code>uninstall.sh</code> at the prompt and press enter. Proceed to step 3. The BEA Products Uninstaller Welcome window is displayed. <p>Note: If your system supports a graphical user interface, the uninstallation program starts in graphical mode. If your system does not support a graphical user interface, the uninstallation program starts in console mode.</p>

3. Press Enter or type next to proceed to the next panel of the uninstallation program.

Note: Instead of typing complete words when you want to enter `[Exit]`, `[Previous]`, and `[Next]`, you can use the following one-letter shortcuts: `x`, `p`, and `n`, respectively.

The Choose Components to uninstall pane is displayed.

4. Select the components you want to uninstall. The available components are displayed.

5. Enter number exactly as it appears in brackets to toggle selection OR [Exit][Previous][Next]>
6. By default, all installed components are selected, indicating that they will be removed. If you installed your software using the BEA Products installation program for BEA WebLogic Server, only the WebLogic Server components are displayed. To leave a component installed on your system, type the numeric code for that component on the command line, exactly as it appears within the brackets. For example, to uninstall only the Server Examples and the Web Server Plug-ins, and keep the Server installed on your system, enter 1.1 on the command line. The check mark (Windows systems) or x (UNIX systems) beside the entry for Server is cleared, indicating that it will not be uninstalled. Choose the components you want to uninstall. Dependency checking is performed to ensure that you do not uninstall a component that is required by another component.
7. Press Enter or type next to proceed with the uninstallation process.
8. When the uninstallation process is complete, press Enter or type exit to complete the uninstallation and exit the uninstallation program.

Uninstalling Your Software in Silent Mode

When you uninstall your BEA Products software in silent mode, the complete installation of your software is uninstalled. You cannot use silent-mode uninstallation to roll back to a previous service pack or to uninstall individual WebLogic Platform components.

When you run the uninstallation program in silent mode, it leaves behind the same files and directories as when you run the uninstallation program in graphical and console modes, including:

- The BEA Home directory, including the logs and utils subdirectories
- The JDK, if it was installed with your BEA product installation
- Domain directories, including those in user_projects
- Any other file created or modified after your BEA software was installed

You can manually delete these files.

Although you can use silent-mode uninstallation to manually uninstall your software, silent-mode uninstall is intended for use in scripts. You can adapt the steps in Table 8-3 for use in scripts.

Use the following procedure to uninstall your BEA Products software in silent mode:

1. Shut down any servers that are running. If you configured any of the servers as a Windows service, you must stop the service(s) before uninstalling the software.
2. Start the uninstallation program as described in [Table 7-3](#).

Table 7-3 Starting the Uninstalling Program in the Silent Mode

To start the uninstallation program on this platform...	Perform the following steps...
Window	<ol style="list-style-type: none"> 1. Open a Command Prompt window and go to the following directory: <code>WL_HOME\uninstall</code> Here <code>WL_HOME</code> represents the directory in which you installed your WebLogic Server software, typically <code>C:\bea\weblogic92</code>. 2. Execute the following command at the prompt: <code>uninstall -mode=silent</code>
UNIX	<ol style="list-style-type: none"> 1. Go to the following directory: <code>WL_HOME/uninstall</code> Here <code>WL_HOME</code> represents the directory in which you installed WebLogic Server. 2. At the prompt, enter the following command: <code>sh uninstall.sh -mode=silent</code>

Note: When you run the uninstallation program in silent mode, no messages are displayed indicating the uninstallation is in progress or has completed successfully, even if errors are encountered.

You can also include the `-log=full_path_to_log_file` option in the command line to create a verbose installation log. For example:

```
uninstall -mode=silent -log=C:\logs\weblogic_uninstall.log
```

For more information, see [“Generating a Verbose Installation Log”](#) on page 1-18.

Reinstalling Your Software

You cannot reinstall the same version of any BEA product on top of a previously installed version of the same product—in the same BEA Home directory or in the same file location. You can, however, add products and product components to an existing installation. For example, you can

install WebLogic Server during one installation, and AquaLogic Service Bus during a separate installation.

To reinstall the same version of one of the product components or the entire BEA Products distribution in the same location, you must first uninstall the previous installation.

If you try to install a complete copy of the BEA Products software in a BEA Home directory that already contains a complete installation, an error message is displayed. Click or type OK to return to the Choose BEA Home directory prompt.

At the prompt, choose one of the following options:

- To continue installing the software using a different BEA Home directory, select an existing BEA Home directory that does not contain a previous installation, or create a new BEA Home directory.
- Exit the installation program. If you want to reinstall your BEA Products software in the same BEA Home, you must uninstall the previous installation. You can invoke the uninstall program appropriate for your platform, as described in one of the following sections:
 - [“Uninstalling Your Software in Graphical Mode”](#) on page 7-2
 - [“Uninstalling Your Software in Console Mode”](#) on page 7-4
 - [“Uninstalling Your Software in Silent Mode”](#) on page 7-5

Then reinstall the software as described in [Chapter 2, “Starting the Installation Program.”](#)

Uninstalling the Software