



CollabraSuite, BEA Edition™

Installation Guide

Version 5.0

Copyright

Copyright © 1995-2006 BEA Systems, Inc. All Rights Reserved.

Restricted Rights Legend

This software is protected by copyright, and may be protected by patent laws. No copying or other use of this software is permitted unless you have entered into a license agreement with BEA authorizing such use. This document is protected by copyright and may not be copied photocopied, reproduced, translated, or reduced to any electronic medium or machine readable form, in whole or in part, without prior consent, in writing, from BEA Systems, Inc.

Information in this document is subject to change without notice and does not represent a commitment on the part of BEA Systems. THE DOCUMENTATION IS PROVIDED “AS IS” WITHOUT WARRANTY OF ANY KIND INCLUDING WITHOUT LIMITATION, ANY WARRANTY OF MERCHANTABILITY OR FITNESS FOR A PARTICULAR PURPOSE. FURTHER, BEA SYSTEMS DOES NOT WARRANT, GUARANTEE, OR MAKE ANY REPRESENTATIONS REGARDING THE USE, OR THE RESULTS OF THE USE, OF THE DOCUMENT IN TERMS OF CORRECTNESS, ACCURACY, RELIABILITY, OR OTHERWISE.

Trademarks and Service Marks

Copyright © 1995-2006 BEA Systems, Inc. All Rights Reserved. BEA, BEA JRockit, BEA WebLogic Portal, BEA WebLogic Server, BEA WebLogic Workshop, Built on BEA, Jolt, JoltBeans, SteelThread, Top End, Tuxedo, and WebLogic are registered trademarks of BEA Systems, Inc. BEA AquaLogic, BEA AquaLogic Data Services Platform, BEA AquaLogic Enterprise Security, BEA AquaLogic Interaction, BEA AquaLogic Interaction Analytics, BEA AquaLogic Interaction Collaboration, BEA AquaLogic Interaction Content Services, BEA AquaLogic Interaction Data Services, BEA AquaLogic Interaction Integration Services, BEA AquaLogic Interaction Process, BEA AquaLogic Interaction Publisher, BEA AquaLogic Interaction Studio, BEA AquaLogic Service Bus, BEA AquaLogic Service Registry, BEA Builder, BEA Campaign Manager for WebLogic, BEA eLink, BEA Kodo, BEA Liquid Data for WebLogic, BEA Manager, BEA MessageQ, BEA Salt, BEA WebLogic Commerce Server, BEA WebLogic Communications Platform, BEA WebLogic Enterprise, BEA WebLogic Enterprise Platform, BEA WebLogic Enterprise Security, BEA WebLogic Express, BEA WebLogic Integration, BEA WebLogic Java Adapter for Mainframe, BEA WebLogic JDriver, BEA WebLogic Log Central, BEA WebLogic Mobility Server, BEA WebLogic Network Gatekeeper, BEA WebLogic Personalization Server, BEA WebLogic Personal Messaging API, BEA WebLogic Platform, BEA WebLogic Portlets for Groupware Integration, BEA WebLogic Real Time, BEA WebLogic RFID Compliance Express, BEA WebLogic RFID Edge Server, BEA WebLogic RFID Enterprise Server, BEA WebLogic Server Process Edition, BEA WebLogic SIP Server, BEA WebLogic WorkGroup Edition, BEA Workshop for WebLogic Platform, BEA Workshop JSP, BEA Workshop JSP Editor, BEA Workshop Struts, BEA Workshop Studio, Dev2Dev, Liquid Computing, and Think Liquid are trademarks of BEA Systems, Inc. Accelerated Knowledge Transfer, AKT, BEA Mission Critical Support, BEA Mission Critical Support Continuum, and BEA SOA Self Assessment are service marks of BEA Systems, Inc.

All other names and marks are property of their respective owners.

Contents

Introduction

Prerequisites	1-2
-------------------------	-----

Installing CollabraSuite, BEA Edition

Install CollabraSuite, BEA Edition	2-1
Uninstalling CollabraSuite, BEA Edition	2-6

Configuring CollabraSuite, BEA Edition

Create the Domain	3-1
Extend the Domain	3-2
WebLogic 8.1 Domain	3-2
WebLogic 9.x Domain	3-15
Finish Extending the Domain	3-25
Create the Collaborative Environment	3-28
Create the Portal	3-29
Extend the Portal	3-29
WebLogic 8.1 Portal	3-29
WebLogic 9.2 Portal	3-30
WebLogic 9.2 GroupSpace Portal	3-31
AquaLogic User Interaction (ALUI) Portal	3-32

Appendices

WebLogic Domain Extension Summary	4-1
---------------------------------------------	-----

WebLogic Portal Extension Summary	4-2
Upgrading CollabraSuite	4-4
Clustering Configuration	4-5
Supported Configurations	4-6
Special PointBase Instructions	4-6
WebLogic 8.1	4-6
Special MySQL Instructions	4-7
WebLogic 8.1	4-7
WebLogic 9	4-7

Introduction

CollabraSuite, BEA Edition software offers a metaphorical representation of a physical workplace. The virtual environment is made up of rooms, which can be arranged into a virtual floor of unlimited rooms, thus allowing for the grouping of like rooms by functionality or other common means. The floors can then be arranged within a virtual building, and numerous buildings can be grouped to create a virtual campus. Within this campus and its encompassing buildings, floors, and rooms, users can communicate seamlessly. CollabraSuite, BEA Edition provides a means of hosting private meetings, group communications, or seminar style conferences for an entire enterprise.

When a user logs into the CollabraSuite, BEA Edition system, they are entering a virtual room where they can meet other users, chat with users and share documents. Not only can users collaborate with others in their current room, but presence awareness capabilities enable them to see users working in other virtual rooms. Users can instantly join other users in any room by simply clicking a button. As users move around the collaborative environment, they can bring their virtual briefcase with them—a portable repository filled with documents that only they can see. Documents in a user's briefcase can easily be shared with other users by dropping a document into a room filecabinet. In addition to storing private documents in a user's briefcase, CollabraSuite, BEA Edition provides the ability to store public documents in virtual file cabinets. These documents can then be viewed by users within the room the file cabinet is located.

The metaphorical representation of a physical workspace provided by CollabraSuite, BEA Edition software also offers security aspects of the physical environment. Strong security features make it possible to permit or deny access to all areas of the collaborative environment and its contents. Individual rooms can be locked with Access Control Lists (ACLs). Read and write ACLs control access to documents stored in rooms as well. The CollabraSuite, BEA Edition

environment provides the flexibility and the security of the physical work environment, all while having the freedom to connect users in any location.

CollabraSuite, BEA Edition is developed completely in Java utilizing the Java 2 Enterprise Edition (J2EE) application model, making it deployable to multiple J2EE servers, existing applications or system frameworks such as portals or other suite products as a complementary technology. CollabraSuite, BEA Edition components can be deployed using a flexible HTTP-style interface or by using the CollabraSuite, BEA Edition custom tag library.

This version of CollabraSuite, BEA Edition is specifically designed for deployment to a BEA WebLogic Server®. However the media does contain all of the necessary software and scripts to deploy to other application servers. CollabraSpace recommends that you deploy CollabraSuite, BEA Edition in a development domain prior to performing a deployment into an existing production environment.

The rest of this document will guide you through the process of installing the CollabraSuite, BEA Edition software. If you are upgrading an existing installation of CollabraSuite, BEA Edition, see the appendix Upgrading CollabraSuite. It is assumed that the installer has some familiarity with J2EE applications and the BEA Weblogic application server.

For additional assistance and information visit us at www.collabraspace.com

Prerequisites

The following prerequisites must be satisfied before installing CollabraSuite, BEA Edition. Please refer to the Supported Configurations Guide for supported versions of WebLogic and database systems.

- Install WebLogic Server or WebLogic Platform.
- Install a database accessible by the WebLogic server machine.
- Create a database user for CollabraSuite, BEA Edition that has permissions to connect to the database and create tables and indexes.
- Install AquaLogic User Interaction (ALUI), if CollabraSuite, BEA Edition is to be integrated into an ALUI environment.

Installing CollabraSuite, BEA Edition

The CollabraSuite, BEA Edition software installs as a component inside of the WebLogic install directory.

Install CollabraSuite, BEA Edition

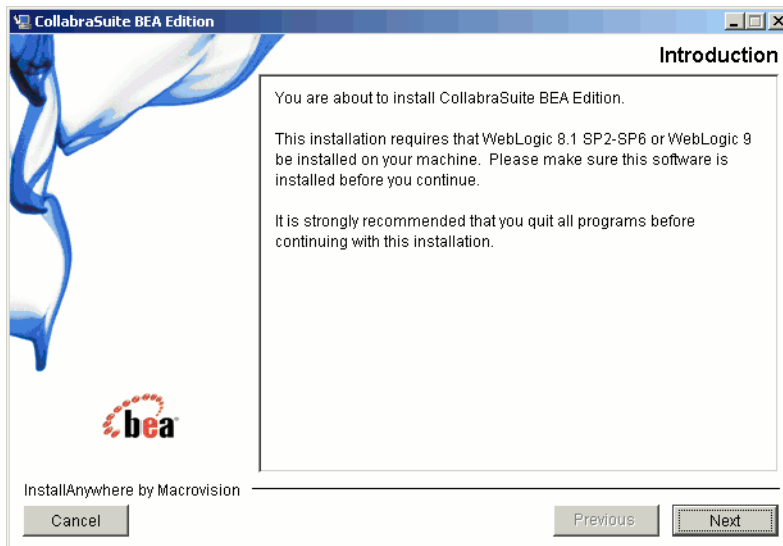
Begin by running the installer. If upgrading from a previous version of CollabraSuite, first uninstall the previous version before installing the new version of CollabraSuite. The installer should start automatically when the installation CD is placed in a Windows machine. If the installer does not launch or you are running on a different platform, the installer can be started manually:

- For Windows, run `installer\WebLogic\CollabraSuite-500-windows.exe`.
- For Solaris, run `installer/WebLogic/CollabraSuite-500-solaris.bin`.
- For Linux, run `installer/WebLogic/CollabraSuite-500-linux.bin`.

Note: On Linux and Solaris, the installer can also be run in text mode by appending `-i console` to the command line parameters.

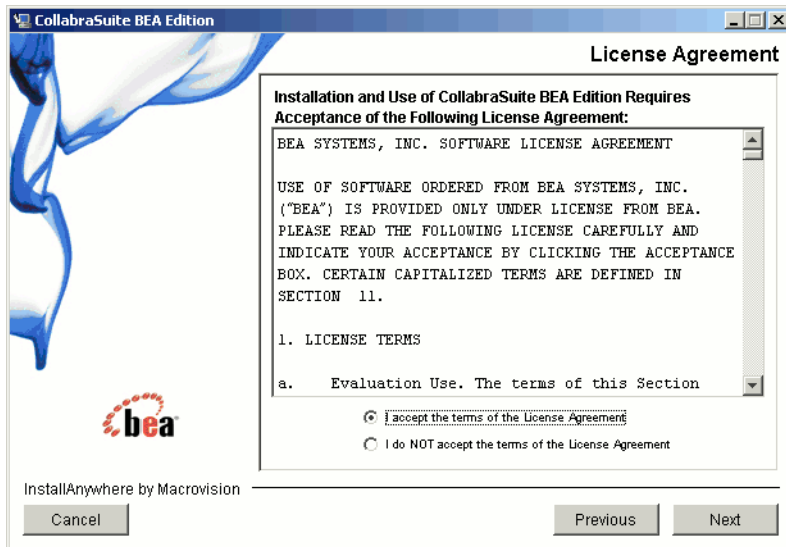
1. Launch the installer and click **Next** on the Introduction Page.

Figure 2-1 Introduction



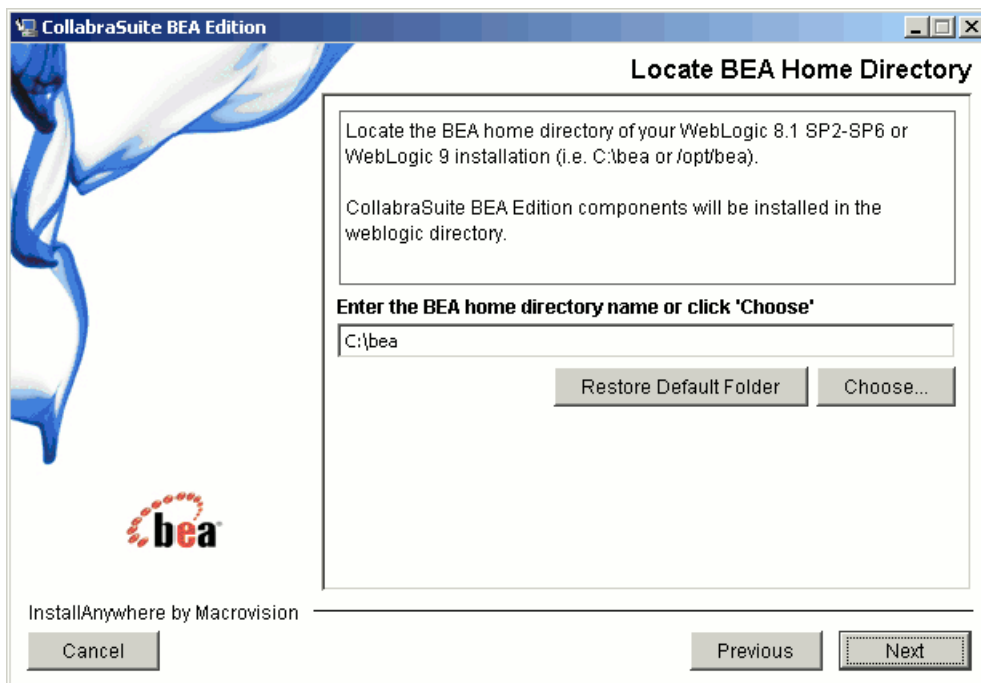
2. Read and accept the terms of the license agreement and click **Next**.

Figure 2-2 License Agreement



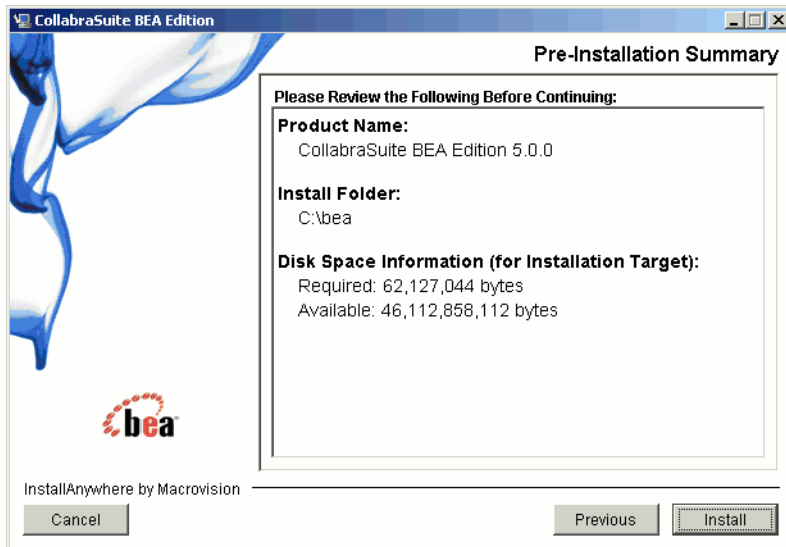
3. Choose the BEA home directory and click **Next**. For example: C:\bea or /opt/bea.

Figure 2-3 Locate BEA Home



4. Review the pre-installation summary and click **Install**.

Figure 2-4 Pre-Install Summary



5. At this point the CollabraSuite, BEA Edition software has been successfully installed in the WebLogic home directory. Click **Done** to exit the installer.

Figure 2-5 Install Complete



Uninstalling CollabraSuite, BEA Edition

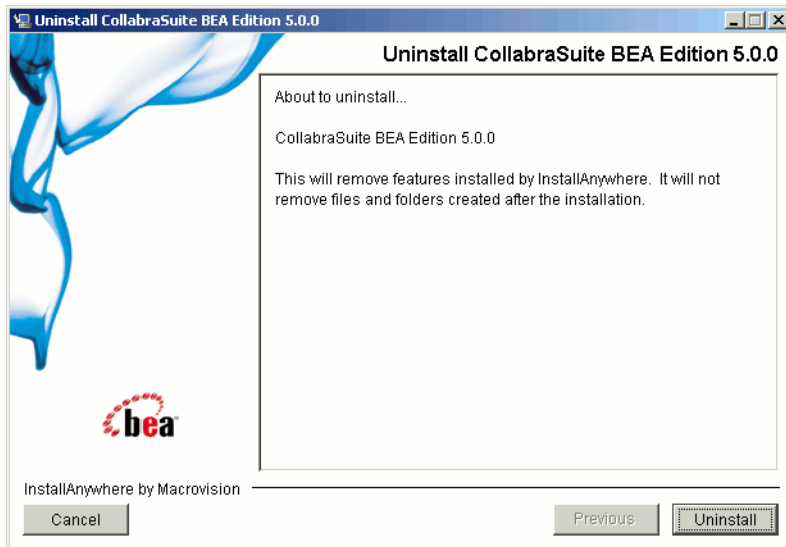
Uninstalling CollabraSuite, BEA Edition removes the software from the WebLogic installation directory. It does not affect any WebLogic domains containing CollabraSuite, BEA Edition. Uninstalling CollabraSuite, BEA Edition can be accomplished by running the following scripts:

- For Windows, run `WL_HOME\collabrasuite-500\uninstall\Uninstall CollabraSuite 500.exe`.
- For Solaris, run `WL_HOME/collabrasuite.500\uninstall\Uninstall CollabraSuite 500`
- For Linux, run `WL_HOME/collabrasuite.500\uninstall\Uninstall CollabraSuite 500`

Note: On Linux and Solaris, the uninstaller can also be run in text mode by appending `-i console` to the command line parameters.

1. Launch the uninstaller and click **Uninstall** on the Confirmation Page.

Figure 2-6 Uninstall



2. The software will be uninstalled.

Installing CollabraSuite, BEA Edition

Configuring CollabraSuite, BEA Edition

Create the Domain

While CollabraSuite, BEA Edition may be successfully deployed into any type of WebLogic domain, a portal domain is required if CollabraSuite, BEA Edition is to be deployed inside a WebLogic Portal. If a WebLogic domain has not yet been created at your site, use the WebLogic Configuration Wizard to create one.

In this document, the directory where WebLogic is installed will be referred to as `WL_HOME`. For example, `WL_HOME=C:\bea\weblogic81`

The WebLogic domain directory will be referred to as `DOMAIN_HOME`. For example, `DOMAIN_HOME=C:\bea\user_projects\domains\portalDomain`

WebLogic 8.1

For WebLogic 8.1, domains must first be created and later extended with CollabraSuite, BEA Edition. Consult BEA's website for directions on [Creating a New WebLogic 8.1 Domain](http://edocs.bea.com/platform/docs81/configwiz/newdom.html). (<http://edocs.bea.com/platform/docs81/configwiz/newdom.html>).

WebLogic 9.2

In WebLogic 9.2, CollabraSuite, BEA Edition can be installed into a domain at creation time, or added later by extending the domain. Refer to the section **Extend WebLogic 9 Domain** below for instructions on configuring CollabraSuite, BEA Edition when creating or extending the domain.

Consult BEA's website for directions on [Creating a New WebLogic 9 Domain](http://edocs.bea.com/common/docs92/configwiz/newdom.html).
(<http://edocs.bea.com/common/docs92/configwiz/newdom.html>)

Extend the Domain

CollabraSuite, BEA Edition is installed into a WebLogic server instance by adding the appropriate configuration to the server's domain. This domain configuration is automated using an extension template containing the CollabraSuite, BEA Edition software. The template can also be used to create the necessary database tables for CollabraSuite, BEA Edition. If you're upgrading an existing installation of CollabraSuite, BEA Edition, refer to the **Upgrading CollabraSuite** appendix.

Be sure to shut down WebLogic and backup your entire domain directory before applying the extension template to an existing domain. The Configuration Wizard will overwrite all scripts in the domain, removing any local modifications. One strategy for updating an existing domain with local customizations is to first make a copy of the domain. You can then apply the extension template to the copy. When finished with the template, copy the `config.xml` and the `CollabraSuite.ear` file back into the original domain. This will allow you to update a domain with CollabraSuite, BEA Edition while preserving any local modifications.

WebLogic 8.1 Domain

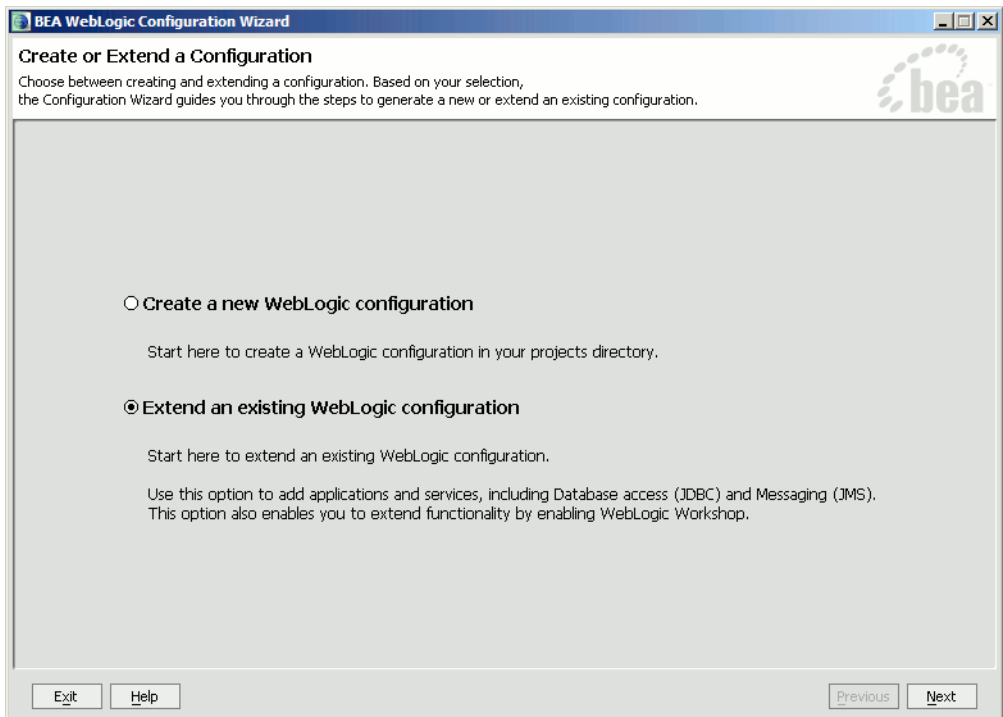
The following section describes extending a WebLogic 8.1 domain. If you are using WebLogic 9, skip this section and refer to the next section titled Extend WebLogic 9 Domain.

1. Run the BEA WebLogic Configuration Wizard.
 - a. In Windows, you can use the Start menu to run the Configuration Wizard. For other platforms, you can execute the Configuration Wizard script located in the WebLogic installation directory:

```
% cd $WL_HOME/common/bin
% ./config.sh &
```

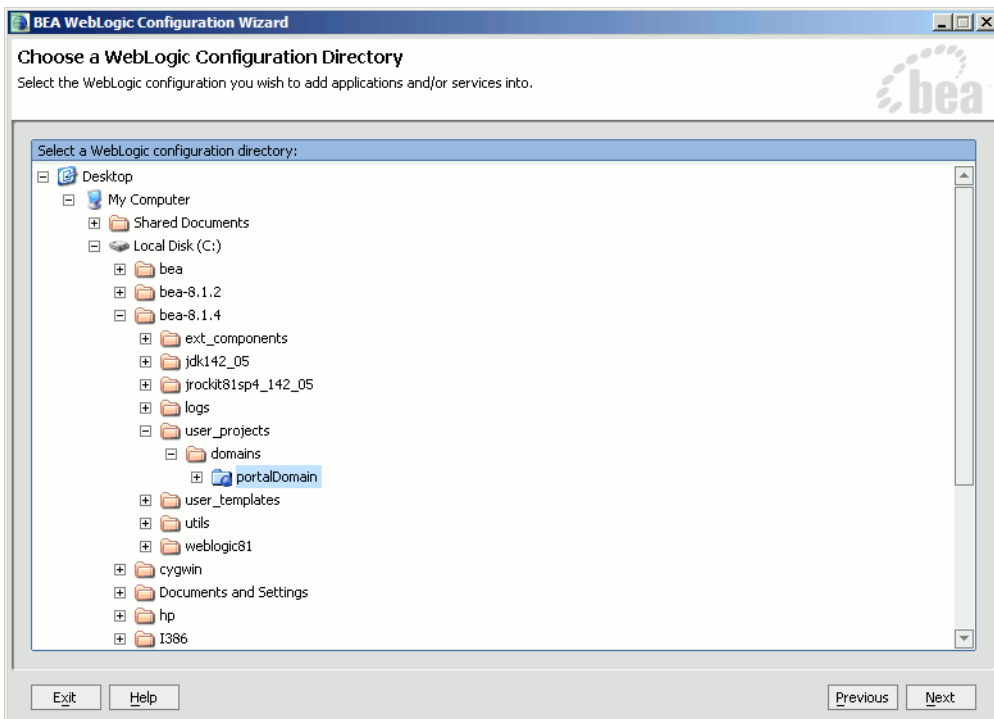

2. Extend an existing WebLogic configuration.
 - a. Choose **Extend an existing WebLogic configuration**.
 - b. Click **Next**.

Figure 3-1 Create or Extend Domain



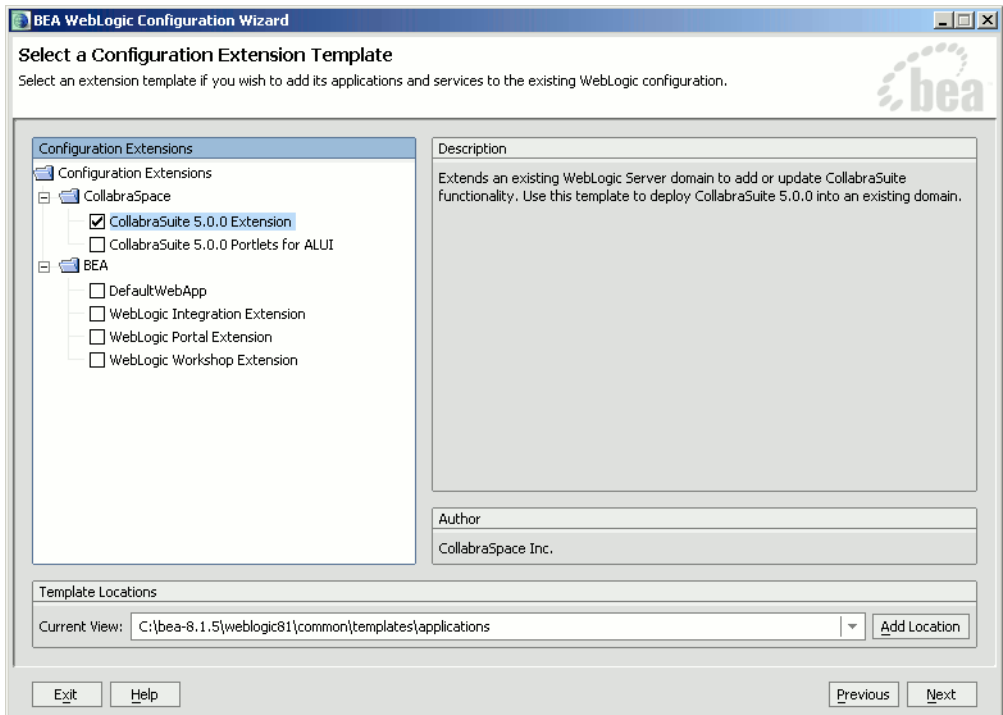
3. Select the configuration.
 - a. Use the tree to select the top level directory of domain you wish to extend with CollabraSuite, BEA Edition functionality.
 - b. Click **Next**.

Figure 3-2 Choose Configuration Directory



4. Select the CollabraSuite, BEA Edition extension template.
 - a. Check **CollabraSuite Extension** under Configuration Extensions. Click **Next**.

Figure 3-3 Select Template

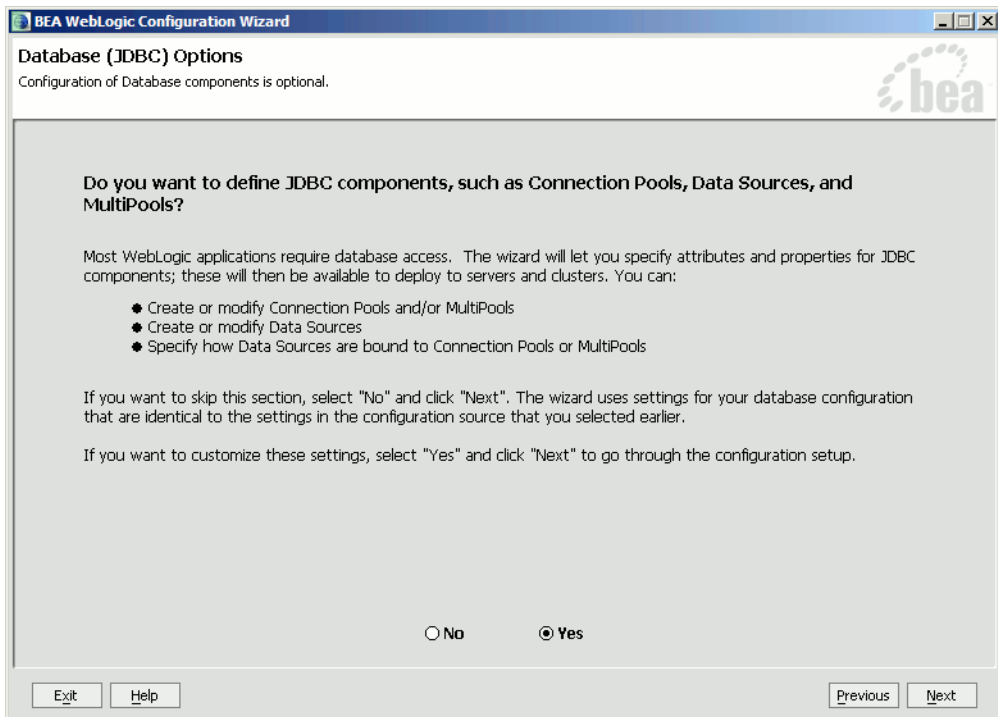


5. Define JDBC Components.
 - a. Click **Yes** when asked to define JDBC components.

b. Click **Next**.

Note: If using Pointbase, see the **Special PointBase Instructions for WebLogic 8.1**. If using MySQL, see the **Special MySQL Instructions**.

Figure 3-4 Database Options



c. The template provides example CollabraSuite, BEA Edition JDBC connection pools for Pointbase, Oracle, Sybase, MS SQL Server and MySQL. Choose the CollabraSuite, BEA Edition connection pool for the database you will be using and delete the remaining CollabraSuite, BEA Edition pools (those beginning with csuite).

Note: If they exist, cgPool, cgJMSPool-nonXA and the portalPool should not be deleted.

- d. Fill in the correct values for **DBMS name**, **DBMS host**, **User name** and **User password**. **Supports Local Transactions** should not be checked.
- e. Click **Next**.

Figure 3-5 Connection Pools

BEA WebLogic Configuration Wizard

Configure JDBC Connection Pools

A JDBC connection pool contains a group of JDBC connections. Your application borrows a connection from the connection pool, uses it, then returns it to the connection pool by closing it.

*Name:

*Vendor:

*Driver:

*Class name:

*DBMS name:

*DBMS host:

*DBMS port:

*JDBC URL:

*User name:

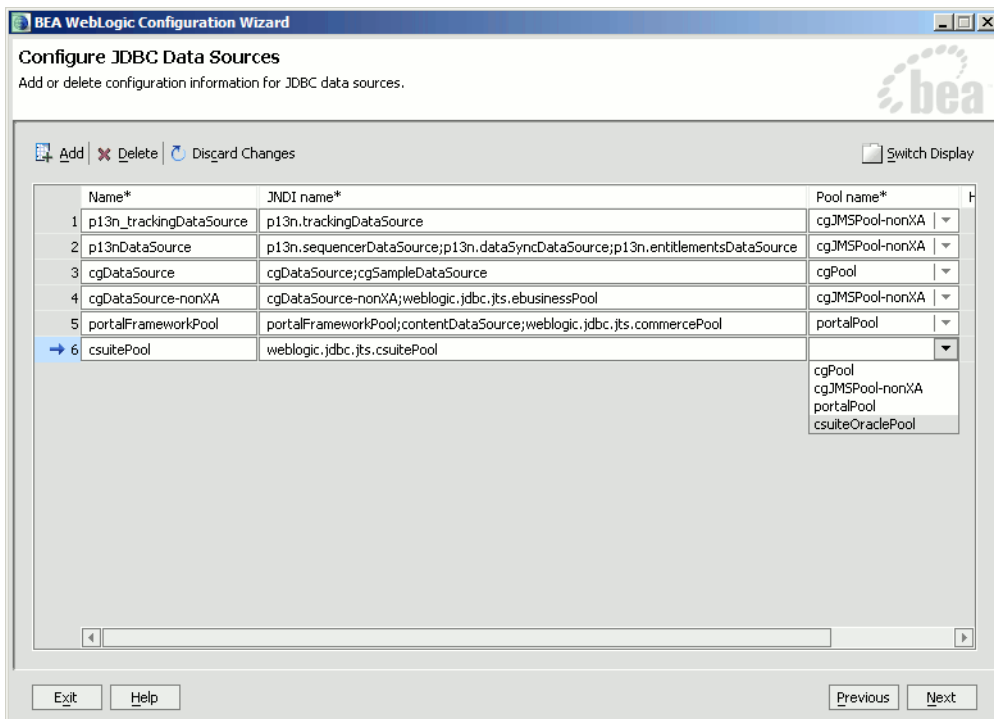
*User password:

*Confirm user password:

Known properties:

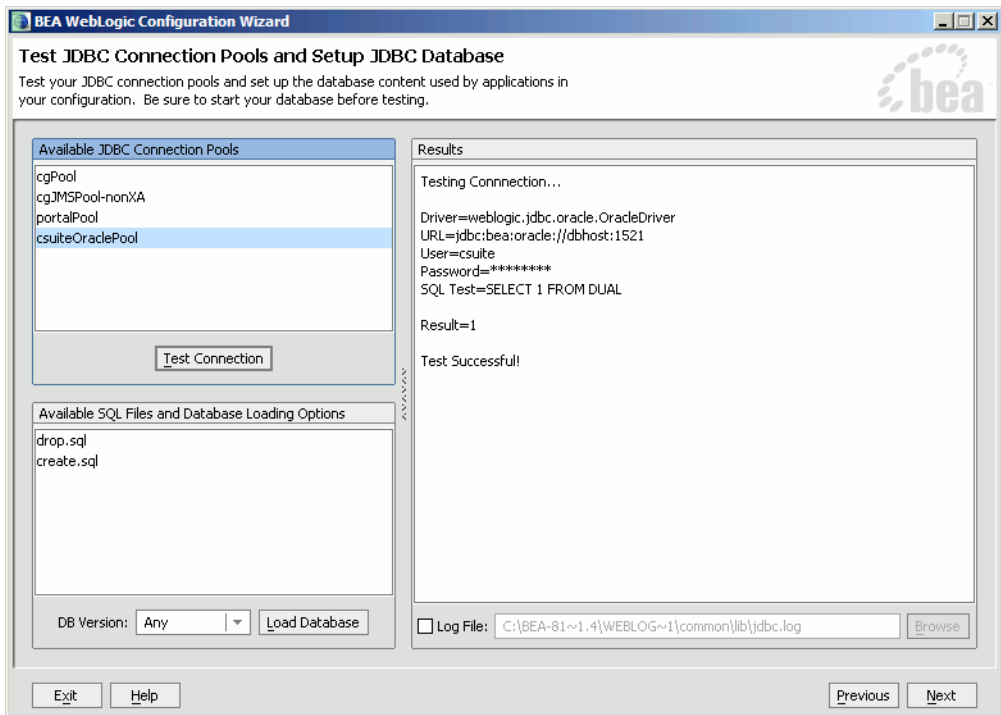
- f. Click **Next** to skip the Configure JDBC MultiPools page.
- g. For the csuitePool Data Source, select the csuite Connection Pool from the drop down menu.
- h. Click **Next**.

Figure 3-6 Data Sources



6. Test JDBC Connection Pools and Settings.
 - a. To test the pool, select the csuite Connection Pool and click **Test Connection**. You should see a successful connection test in the right hand panel.

Figure 3-7 Setup Database



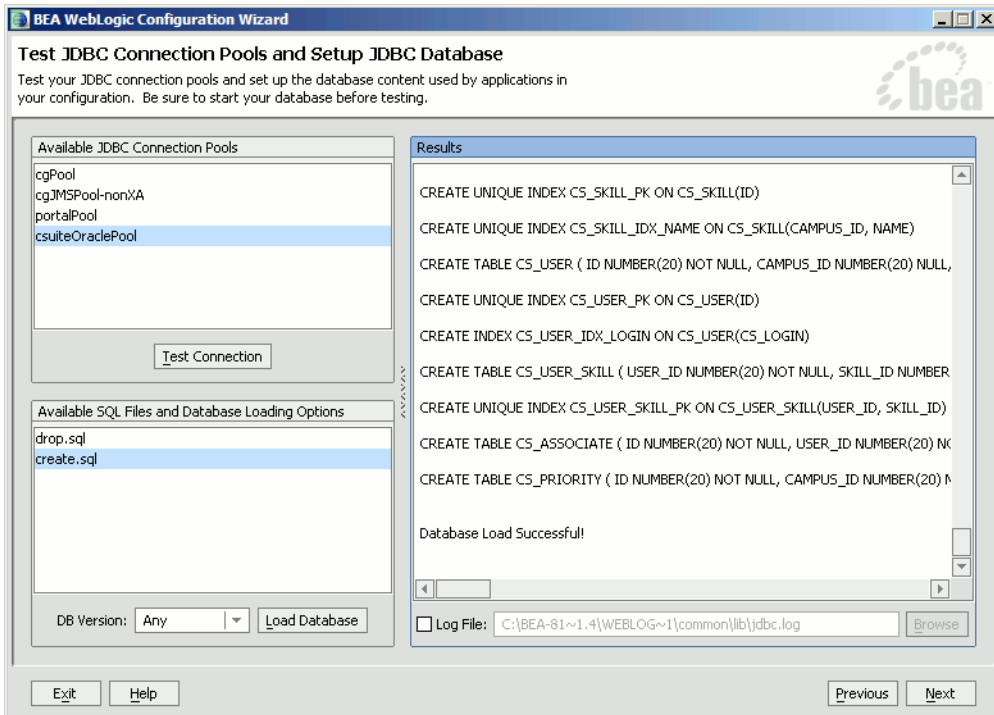
7. Create the CollabraSuite, BEA Edition Database Schema
 - a. If the database schema does not already exist, click on **Load Database**.

Note: In WebLogic 8.1, all database scripts are run contrary to the BEA documentation. This will result in any existing CollabraSuite, BEA Edition tables being dropped and recreated, removing any previous CollabraSuite, BEA Edition environment. If

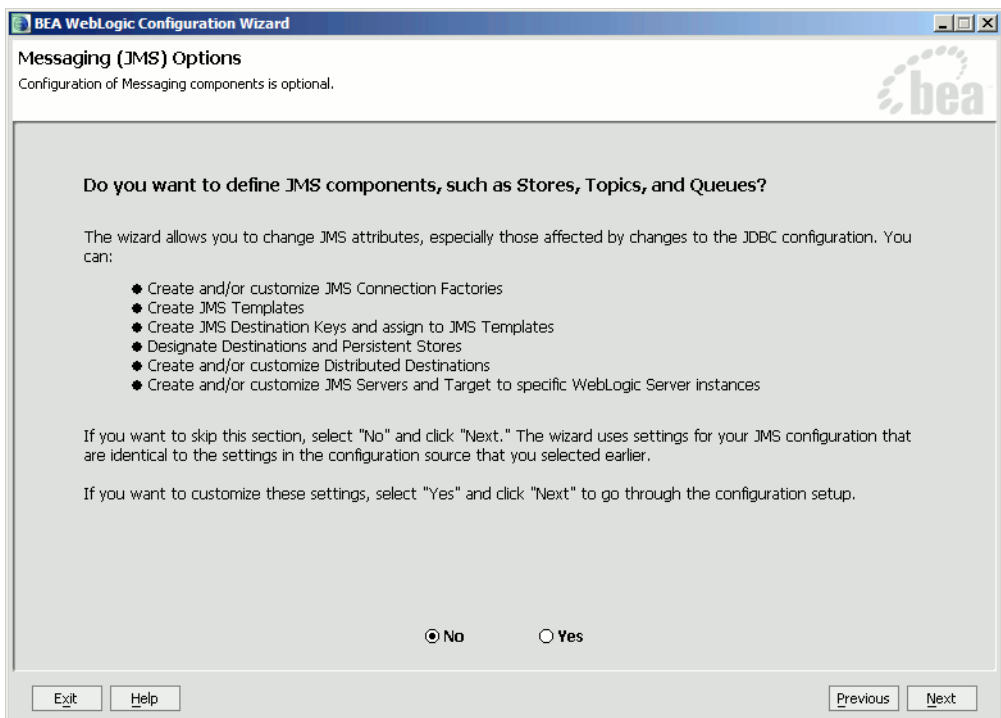
upgrading an existing CollabraSuite, BEA Edition environment, please refer to the **Upgrading CollabraSuite** appendix.

- b. Click **Next**.

Figure 3-8 Setup Database



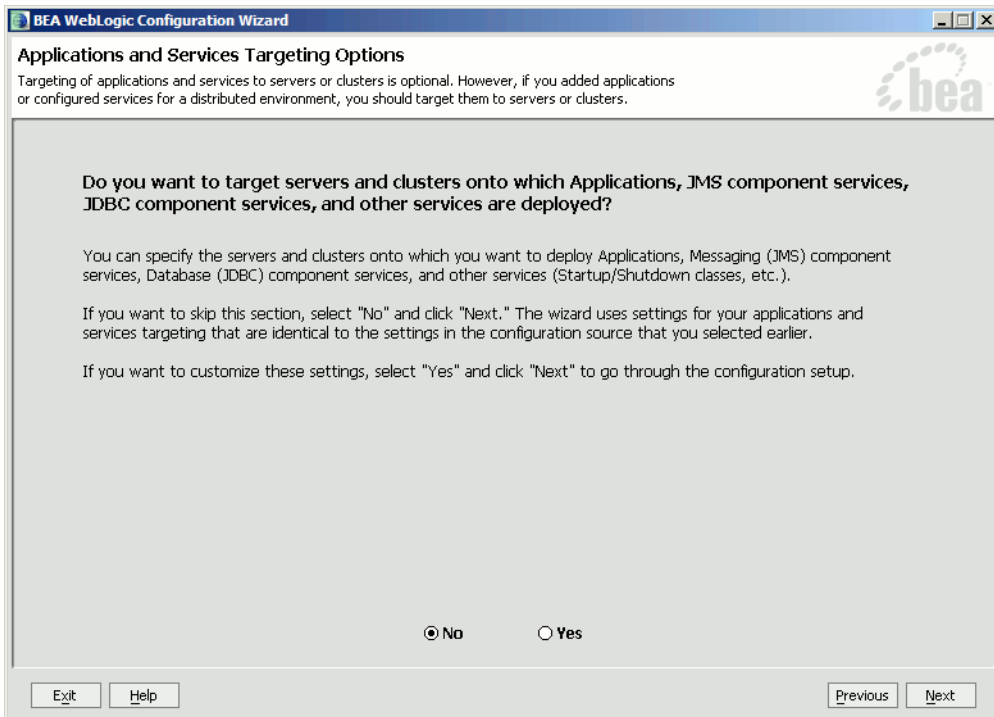
8. Define JMS Components.
 - a. Click **No** when asked to define JMS components. The JMS configuration should not have to be modified.
 - b. Click **Next**.

Figure 3-9 Messaging Options

9. Target Components to Servers.

- a. Click **No** when asked to target components to servers. The components will be targeted to the server.
- b. Click **Next**.

Figure 3-10 Target Options



10. Configure Application Security.

- a. Click **No** when asked to configure the application's security. The correct groups and roles have already been defined.
- b. Click **Next**.

Figure 3-11 Security Options



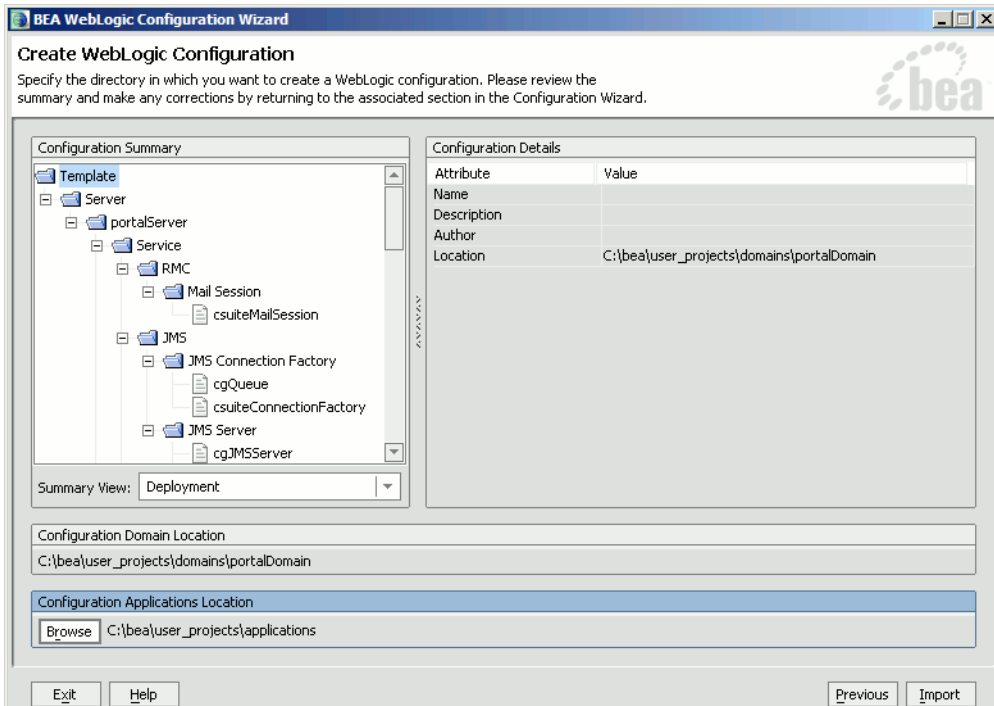
11. Extend the configuration.

- a. If desired, use **Browse** to select the directory to place the CollabraSuite.ear.

Note: If you want to place the EAR under the applications directory located in the domain you may have to create the directory first.

- b. Click **Import**.

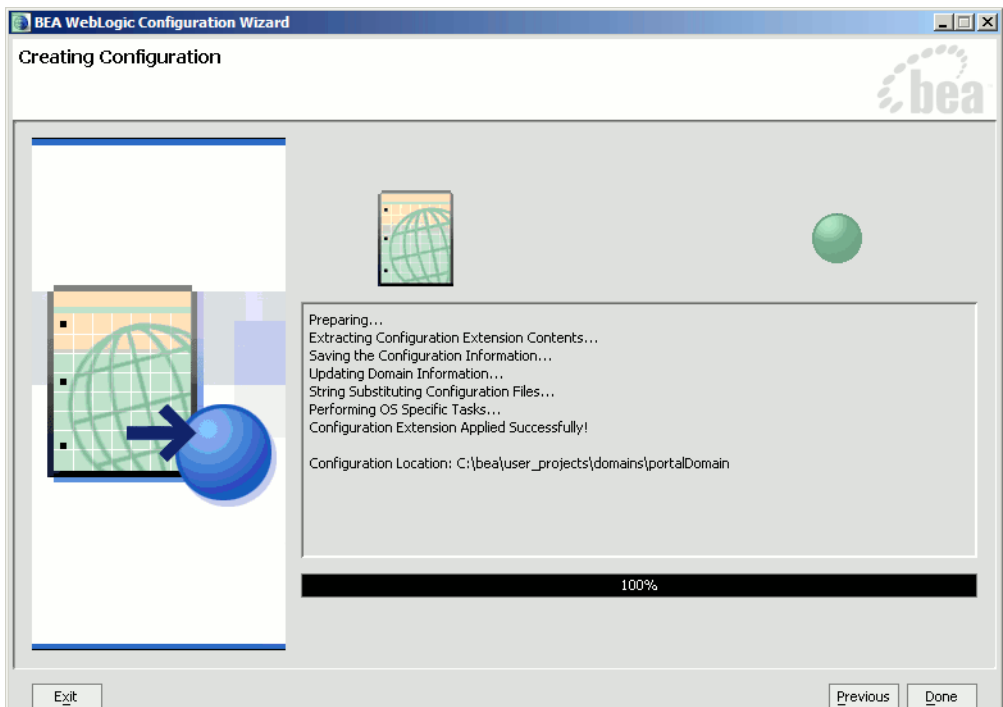
Figure 3-12 WebLogic Configuration



12. A successful import is indicated in the screen below.

- a. Click **Done** to exit the Configuration Wizard.

Figure 3-13 Creating Configuration



WebLogic 9.x Domain

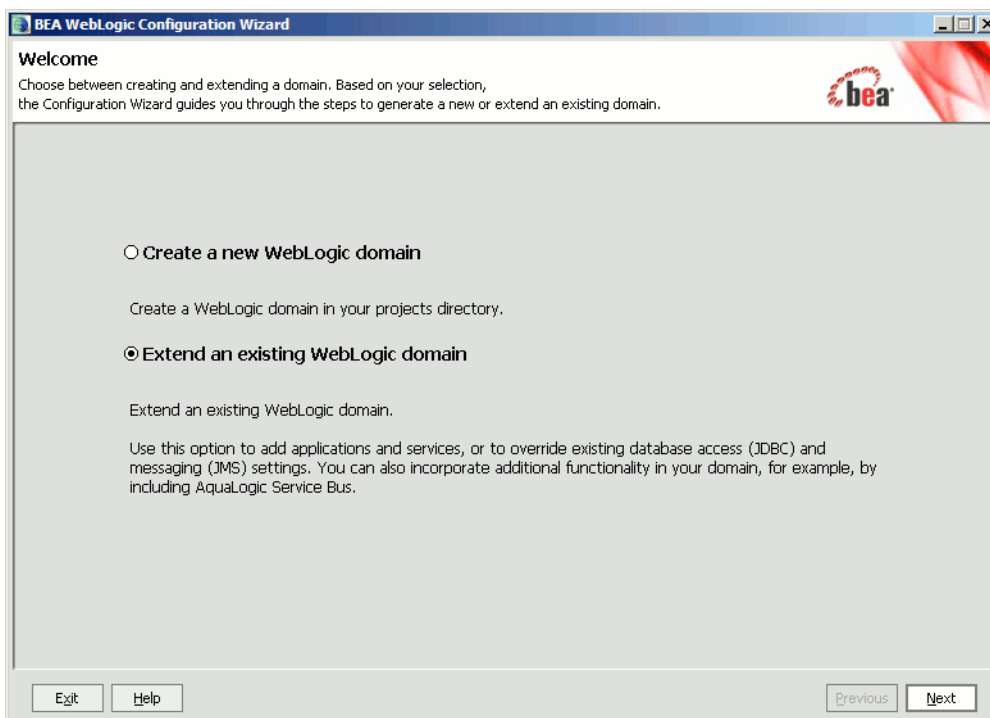
This section describes extending a WebLogic 9.x domain. If you are using WebLogic 8.1, skip this section and proceed to the next section titled **Finish Extending the Domain**.

1. Run the BEA WebLogic Configuration Wizard.
 - a. In Windows, you can use the Start menu to run the Configuration Wizard. For other platforms, you can execute the Configuration Wizard script located in the WebLogic installation directory:

```
% cd $WL_HOME/common/bin
% ./config.sh &
```

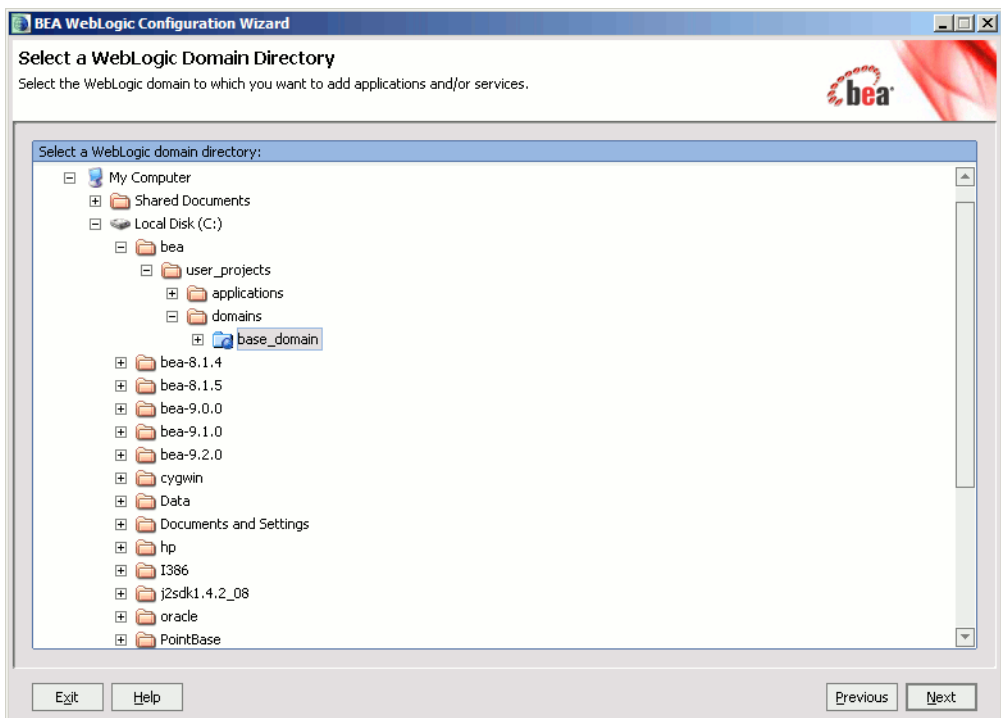
2. Extend an existing WebLogic domain.
 - a. Choose **Extend an existing WebLogic domain**.
 - b. Click **Next**.

Figure 3-14 Create or Extend Domain



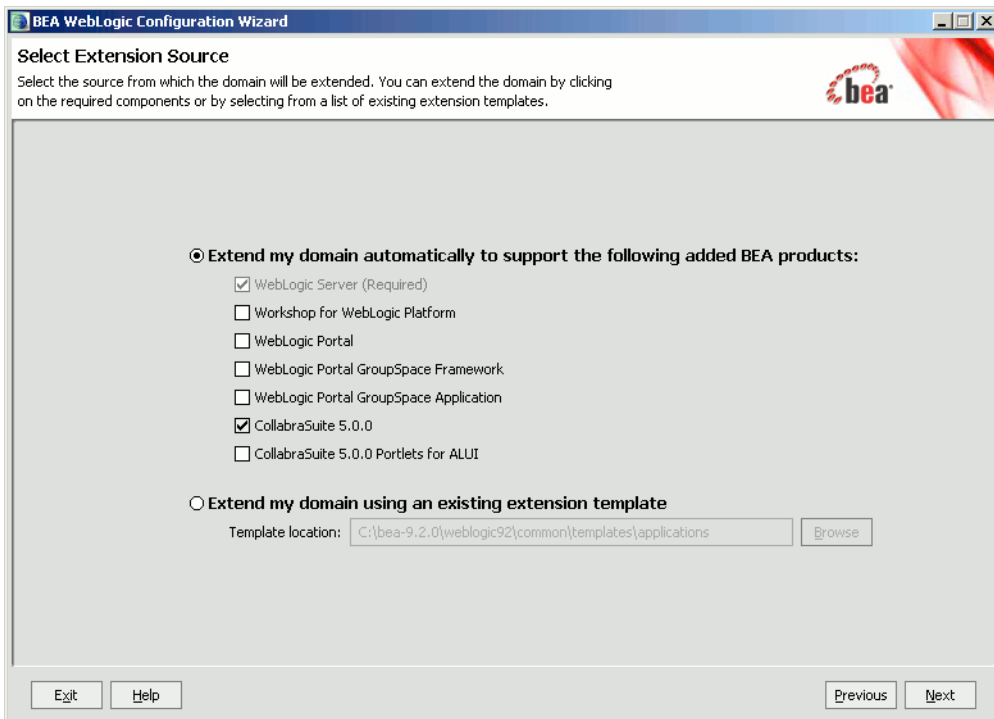
3. Select the existing configuration.
 - a. Use the tree to select the top level directory of the domain you wish to extend with CollabraSuite, BEA Edition functionality.
 - b. Click **Next**.

Figure 3-15 Choose Domain



4. Select the extension source.
 - a. Select the appropriate CollabraSuite, BEA Edition template. Choose the **CollabraSuite, BEA Edition for ALUI** if CollabraSuite, BEA Edition is to be used with AquaLogic User Interaction (ALUI)
 - b. Click **Next**.

Figure 3-16 Select Extensions

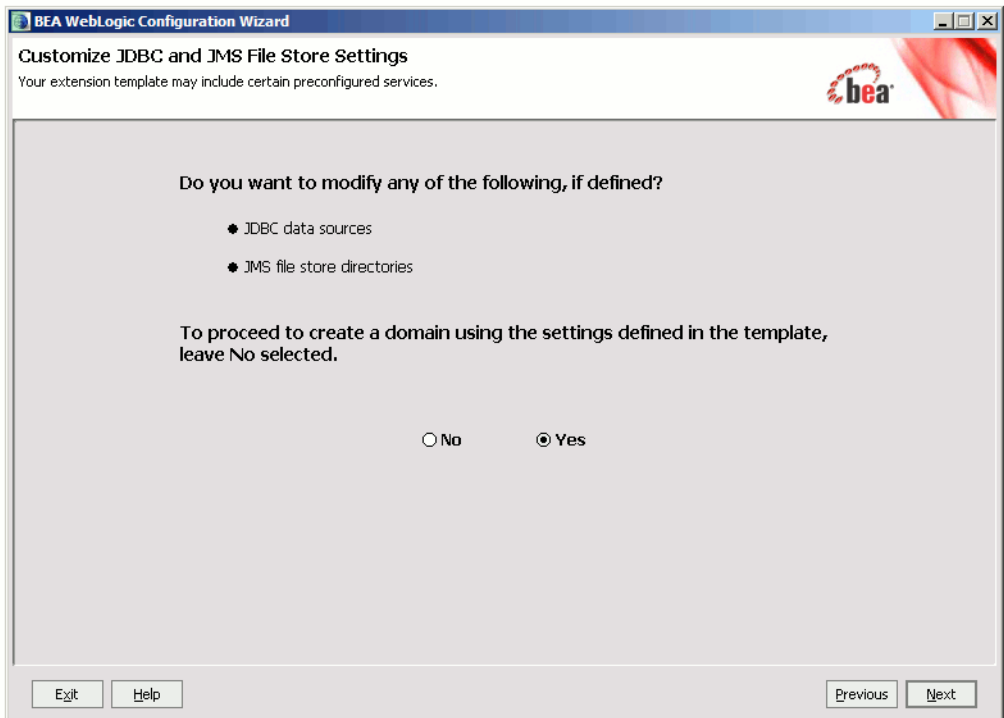


5. Customize JDBC Settings
 - a. Click **Yes** when asked to modify JDBC data sources.

b. Click **Next**.

Note: If using MySQL, see the **Special MySQL Instructions**.

Figure 3-17 Customize JDBC



6. Configure JDBC Data Sources.

a. Leave the **Name** and **JNDI name** fields unchanged.

b. Fill in the appropriate **Database type** and **Driver**.

Note: Refer to the **Supported Configurations Guide** for supported databases and drivers.

c. Fill in the appropriate values for **DBMS name**, **DBMS host**, **DBMS port**, **User name** and **User password**.

d. Check **Supports global transactions**, then select **Emulate two phase commit**.

Figure 3-18 Data Source

BEA WebLogic Configuration Wizard

Configure JDBC Data Sources

Edit the configuration information for the JDBC data sources. A data source contains a pool of database connections. Your application looks up a data source in the JNDI tree, requests a connection, uses it, then returns it to the connection pool in the data source.

Disard Changes Test Connections

csuiteDataSource

*Name: csuiteDataSource

JNDI name: weblogic.jdbc.jts.csuitePool

*Database type: Oracle

*Driver: *BEA's Oracle Driver (Type 4) Versions:9.0.1,9.2.0,10

*Class name: weblogic.jdbc.oracle.OracleDriver

Supports global transactions

Two phase commit

Logging last resource

Emulate two phase commit

One phase commit

*DBMS name: databasename

*DBMS host: databasehost

*DBMS port: 1521

*User name: csuite

*User password: *****

*Confirm user password: *****

*JDBC URL: jdbc:bea:oracle://databasehost:1521

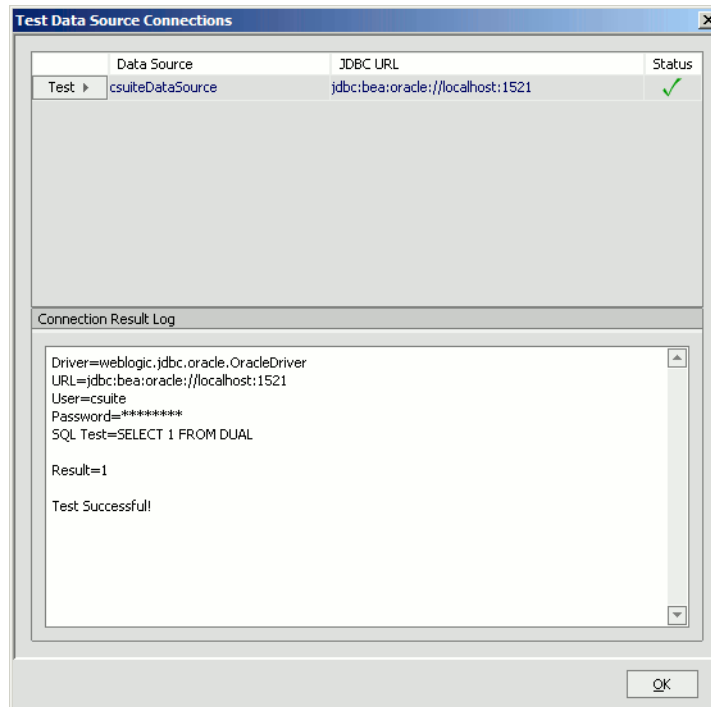
Known properties: user=csuite;portNumber=1521;SID=databasename;serverName=databasehost

Additional properties:

Exit Help Previous Next

- e. Test the data source by clicking **Test Connections**.
- f. In the **Test Data Source Connections** dialog, click the **Test** button next to the csuiteDataSource. You should see a successful connection test in the lower panel.
- g. Click **OK** to dismiss the dialog.
- h. Click **Next**.

Figure 3-19 Test Data Source



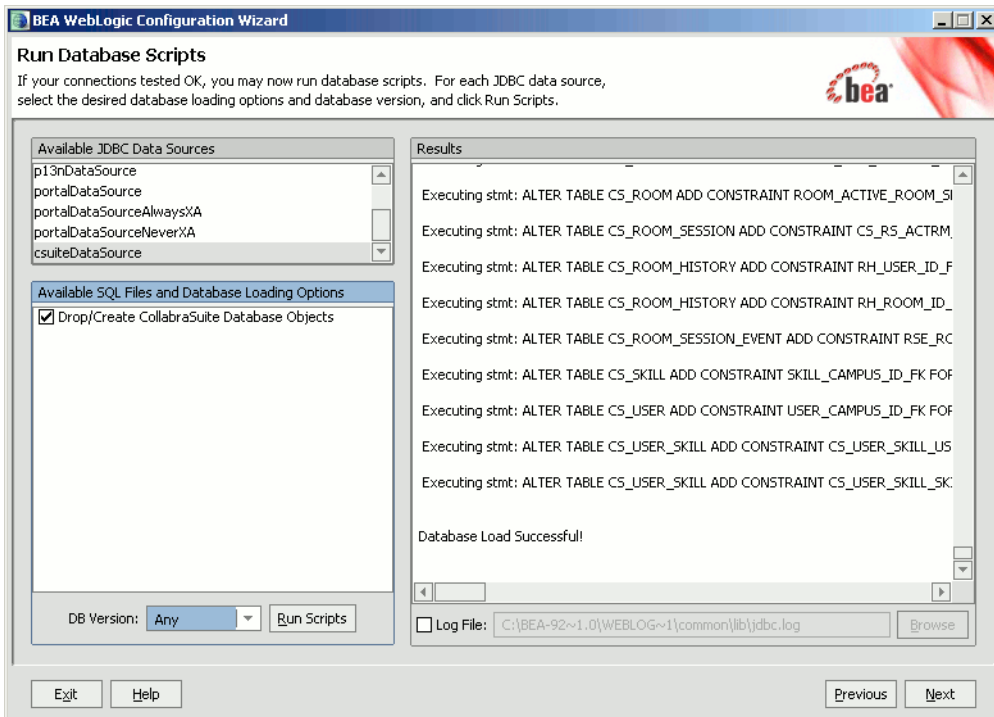
7. Run Database Scripts

- a. If the CollabraSuite, BEA Edition database schema does not already exist, click **Run Scripts**.

Note: Any existing CollabraSuite, BEA Edition tables will be dropped and recreated, removing any previous CollabraSuite, BEA Edition environment. If upgrading CollabraSuite, BEA Edition, please refer to the Upgrading CollabraSuite appendix.

- b. Click **Next**.

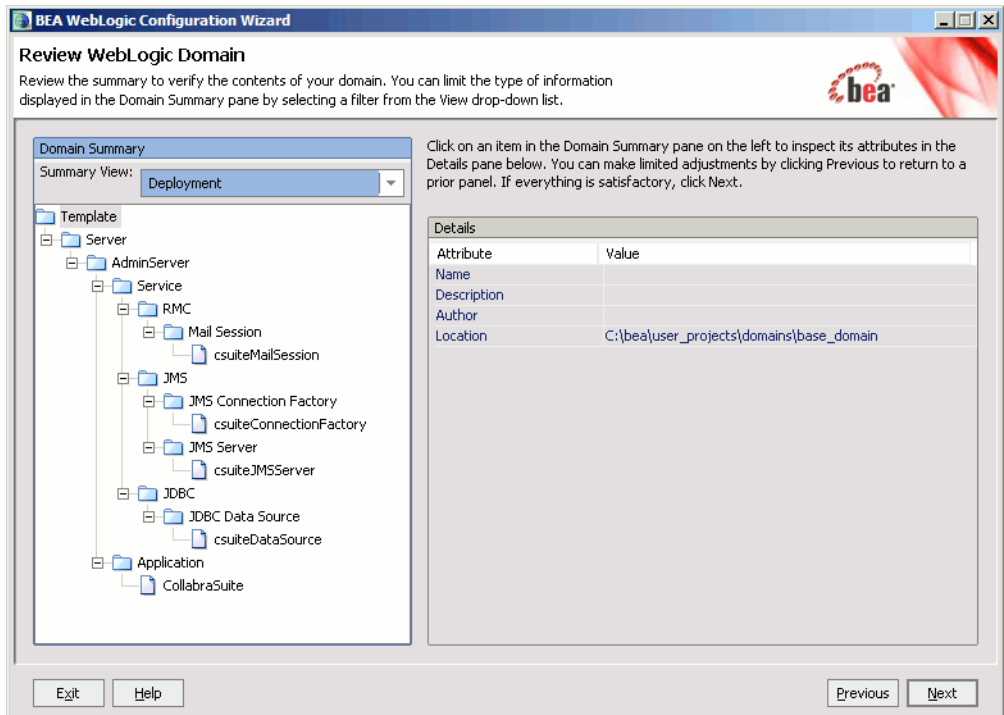
Figure 3-20 Setup Database



8. Review WebLogic Domain.

- a. Click **Next**.

Figure 3-21 Review Domain



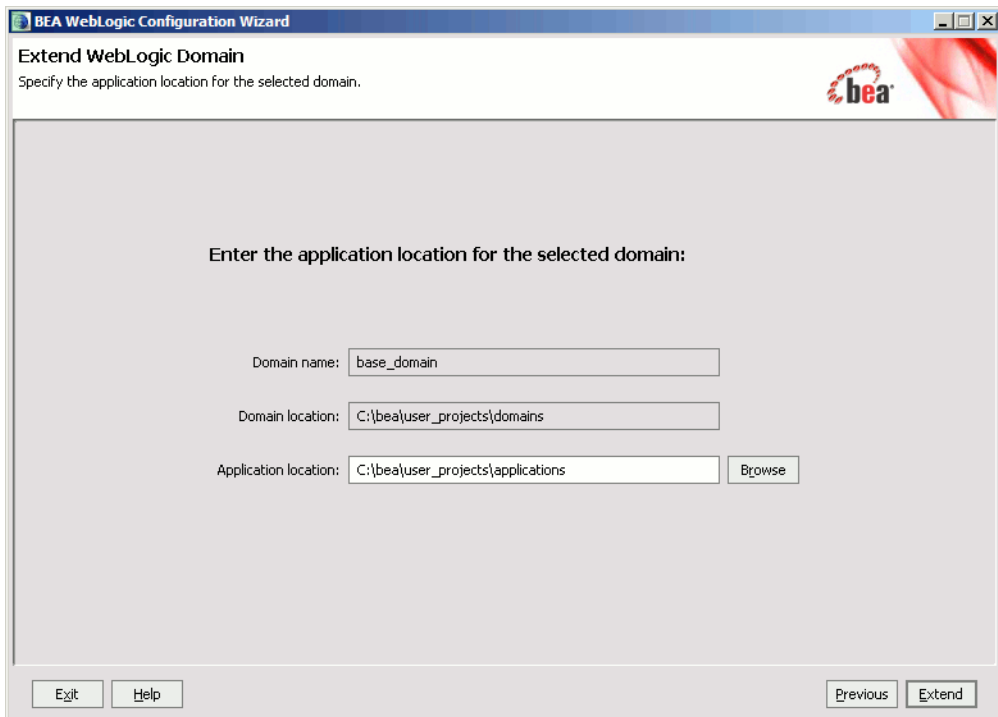
9. Extend WebLogic Domain.

- a. Select the desired Application location. This is where the `CollabraSuite.ear` file will be installed.

Note: If you want to place the EAR file under the applications directory in the domain you may have to create the directory first.

- b. Click **Extend**.

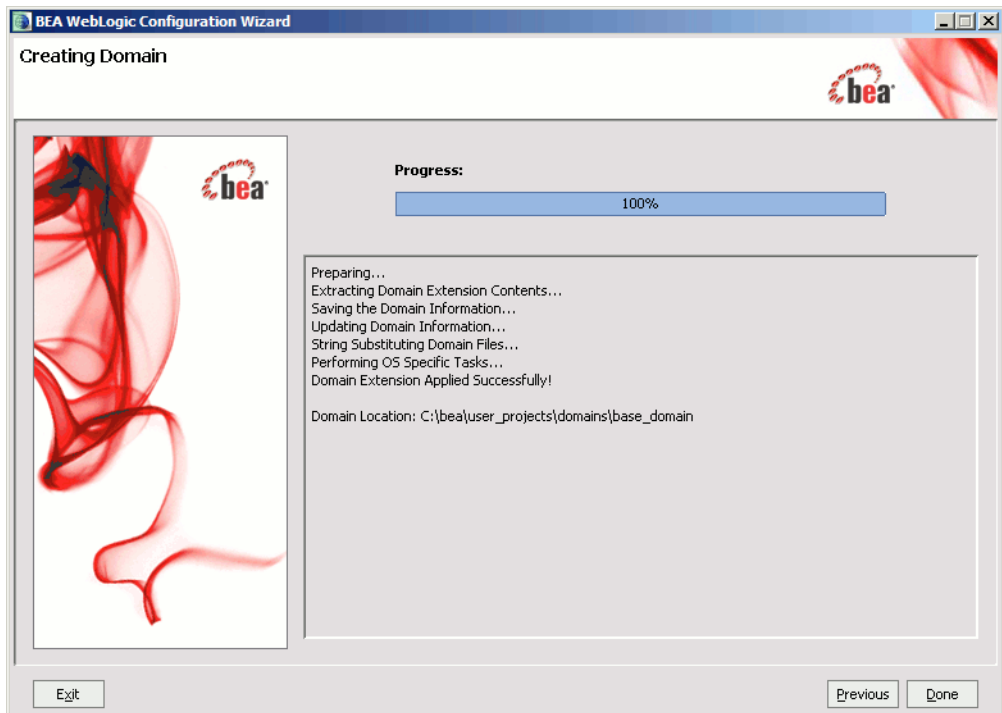
Figure 3-22 Extend the Domain



10. A successful domain extension is displayed in the screen below.

- a. Click **Done** to exit the Configuration Wizard.

Figure 3-23 Create Domain



Finish Extending the Domain

After extending a WebLogic 8.1 or 9 domain, complete the installation via the WebLogic console.

1. Start the WebLogic server

For Windows:

```
> cd %DOMAIN_HOME%
> startWebLogic.cmd
```

For Unix:

```
% cd $DOMAIN_HOME
% ./startWebLogic.sh
```

Note: Startup will take some time because the CollabraSuite, BEA Edition JSPs are precompiled the first time the server is started after CollabraSuite, BEA Edition has been deployed.

2. Verify the following groups exist; creating the groups if they are not present:

- CollabraSuiteAdministrators
- CollabraSuiteUsers
- CollabraSuiteRemote

Note: If using an LDAP, create the groups in the LDAP and add users to the appropriate groups within the LDAP manually.

3. Add any existing WebLogic users to the appropriate CollabraSuite groups:

- Users must belong to the CollabraSuiteUsers group in order to login to the CollabraSuite environment.

Note: Users belonging to the ‘wls_customer’ and ‘users’ groups also have access to CollabraSuite.

- Users belonging to the CollabraSuiteAdministrators group can create a new CollabraSuite campus and administer any existing campus.

Note: Users belonging to the ‘Administrators’ and ‘PortalSystemAdministrators’ groups also belong to the CollabraSuiteAdministrators group.

- Users must belong to the CollabraSuiteRemote group in order to initialize and interact using the connection between two remote campuses. This is the user listed on the **Remote Campus Admin Details** page.

Note: Prior to the 4.2 release, the group names were CollabraSuiteGroup, CollabraSuiteAdmin, and CollabraSuiteRemoteAPI. These group names are still supported in later releases, though new installations will use the updated group names.

4. Increase the size of the Default Execute Queue if necessary. CollabraSuite, BEA Edition requires an available thread for every user logged in concurrently. Threads are also consumed by remote campus connections, depending on the settings in the **Remote Campus Details** page. The Default Execute Queue can be modified in the WebLogic Administration Console under **Servers->ServerName->Configuration->General->Advanced Options->Configure Execute Queues**. Select the default execute queue and modify the **Thread Count** setting as appropriate.

5. Modify the mail settings.
 - a. Some CollabraSuite, BEA Edition components generate email and therefore require a Mail Session. The mail session is created by the template and can be edited from the WebLogic Administration Console under **Services->Mail->csuiteMailSession**. Important properties of the mail session include:
 - **mail.host**: SMTP mail server hostname; default=localhost
 - **mail.user**: The user name used to connect to the mail server; default=empty
 - **mail.from**: The return email address used when the sending user has not filled in their email address; default=collabraSuite@localhost

Note: For further details on the JavaMail API, refer to <http://java.sun.com/products/javamail>.
 - b. Advanced Mail options: CollabraSuite, BEA Edition contains advanced mail formatting options that can configure email headers and footers; a bcc recipient list to be used; and a standard from address to be used. In order to configure these advanced mail settings, the `ejb-jar.xml` file within the `csuite-obj.jar` in `CollabraSuite.ear` must be updated and the jars repackaged. The individual options are documented within the `ejb-jar.xml` file.
6. Configure Virtual Content Repository (VCR) support if necessary:
 - a. Enable Library Services in the VCR to enable support for versioning documents. This can be modified via the Portal Administration console.
 - b. Modify the VCR data source (named `portalDataSource` by default) to **Support Global Transactions** using **Logging Last Resource**. This can be modified via the WebLogic Administration console under `Services->JDBC->Data Sources->portalDataSource->Configuration->Transaction`.
 - c. Users need to have permission to write into the VCR. Adding the users to the **Administrators** group addresses this.
7. Verify the HTTP timeouts. CollabraSuite, BEA Edition requires an HTTP timeout of at least 30 seconds.
 - a. The WebLogic default of 10 minutes is well within the requirements for CollabraSuite, BEA Edition. If necessary, this setting can be modified from the WebLogic Administration Console under `Servers->ServerName->Tuning->Stuck Thread Max Time`.

- b. This timeout also applies to any HTTP proxies between the client and WebLogic. The HTTP proxy timeout must be greater than or equal to WebLogic's timeout. Again, most defaults are much larger than 30 seconds, so these settings should not have to be modified to accommodate CollabraSuite, BEA Edition.
8. CollabraSuite, BEA Edition is licensed via the BEA license. License files must be obtained from BEA. An evaluation license is available on the CollabraSuite, BEA Edition download page. The existing BEA license should be updated via the BEA UpdateLicense tool (UpdateLicense “NEWLICENSEFILE”)

Create the Collaborative Environment

Once the CollabraSuite, BEA Edition software has been successfully installed, all other documentation and administration capabilities are available via the deployed CollabraSuite, BEA Edition application. An list of all available documentation and links to the documents can be found deployed in the WebLogic server at `http://host:port/csuite/docs`

1. Create the initial collaborative environment by using the CollabraSuite, BEA Edition administration web application.
 - a. If necessary, create a CollabraSuite, BEA Edition administration user in WebLogic that belongs to the CollabraSuiteAdministrators group.
 - b. Bring up the CollabraSuite, BEA Edition administration web application at `http://host:port/csuite/ria/admin` and log in as an administrative user.
 - c. Create the desired campus, buildings, floors, and rooms.
 - d. Create the desired users
 - e. In a portal environment, create corresponding WebLogic users in the Portal Administration. Otherwise, create the WebLogic users in the WebLogic Administration Console. The WebLogic user name must match the CollabraSuite, BEA Edition user login ID. Alternatively, you can use the `<setUserInfo>` JSP tag inside a portlet to automatically create a CollabraSuite user that corresponds to the WebLogic user. See `CollabraSuite.jspf` in the sample portlets for an example of using the `<setUserInfo>` JSP tag.

Note: Refer to the **CollabraSuite, BEA Edition Administration Guide** for more information on creating a collaborative environment.

Create the Portal

CollabraSuite can run inside either a WebLogic Portal or ALUI environment. If a portal already exists or is not needed, creating the portal may be skipped.

For details on creating a WebLogic Portal application, consult BEA's website on [Getting Started with Portal Development](http://edocs.bea.com/wlp/docs81/startdev/index.html). (<http://edocs.bea.com/wlp/docs81/startdev/index.html>)

For details on creating an ALUI portal, consult [BEA's ALUI Documentation](http://edocs.bea.com/alui/index.html) (<http://edocs.bea.com/alui/index.html>)

Extend the Portal

The following sections describe integrating CollabraSuite, BEA Edition into a portal environment. They can be skipped when portal integration is not required.

WebLogic 8.1 Portal

This section describes CollabraSuite, BEA Edition integration with WebLogic Portal 8.1.

1. Start BEA WebLogic Workshop.
2. Open an existing portal application or create a new one via **File->New->Application...**
3. Select an existing web project or create a new one via **File->New->Project...**
4. Right-click on the web project in the left-hand tree and select **Install->CollabraSuite**
5. Sample CollabraSuite, BEA Edition portlets are available in the Data Palette. Simply select a portal page and drag the portlets onto the page in the desired location.
6. CollabraSuite, BEA Edition provides a JSP tag library for creating custom CollabraSuite, BEA Edition portlets. The CollabraSuite, BEA Edition tags are available under the JSP Palette in WebLogic Workshop.
7. Edit the `portlets/CollabraSuite/collabrasuite.jspf` file as necessary:
 - a. Set the `campusName` variable to the correct campus name.
 - b. Uncomment the `<setuserinfo>` JSP tag to automatically create CollabraSuite, BEA Edition user accounts if desired.

Note: This requires Auto Account Creation to be enabled on the campus. See the CollabraSuite, BEA Edition Administration Guide for details.

WebLogic 9.2 Portal

This section describes CollabraSuite, BEA Edition integration with WebLogic Portal 9.2.

1. Start BEA WebLogic Workshop.
2. Open an existing portal EAR project or create a new one via **File->New->Portal EAR Project...**
3. Select an existing portal WAR project or create a new one via **File->New->Portal Web Project...**
 - a. Select the following project facets:
 - CollabraSuite->CollabraSuite Taglibs
 - WebLogic Portal Collaboration->CollabraSuite Portlets
 - b. Choose to “Use Shared J2EE Libraries.”
4. Create a new Portal by right clicking on the portal webproject and selecting **New->Portal**

Note: There is a known issue in WebLogic 9.2 concerning the proper ordering of library modules. As a workaround, open the `WebContent/WEB-INF/weblogic.xml` file in the web project and re-order the library module references so that the first two library modules are: **collabrasuite-portlets-web-lib** and **collabrasuite-web-lib** in that order.

5. Sample CollabraSuite, BEA Edition portlets are available in the Data Palette. Simply select a portal page and drag them onto the page in the desired location.
6. CollabraSuite, BEA Edition provides a JSP tag library for creating custom CollabraSuite, BEA Edition portlets. The CollabraSuite, BEA Edition tags are available under the JSP Design Palette in WebLogic Workshop.
7. Edit the `portlets/CollabraSuite/collabrasuite.jspf` file as necessary:
 - a. Set the `campusName` variable to the correct campus name.
 - b. Uncomment the `<setuserinfo>` JSP tag to automatically create CollabraSuite, BEA Edition user accounts if desired.

Note: This requires Auto Account Creation to be enabled on the campus. See the CollabraSuite, BEA Edition Administration Guide for details.

WebLogic 9.2 GroupSpace Portal

This section describes CollabraSuite, BEA Edition integration with WebLogic 9.2 GroupSpace portals. Please refer to the [GroupSpace Guide](http://edocs.bea.com/wlp/docs92/groupspace/index.html) (<http://edocs.bea.com/wlp/docs92/groupspace/index.html>) for details on creating a GroupSpace portal.

When creating a domain, select the following products:

- Workshop for WebLogic Platform
- WebLogic Portal
- WebLogic Portal GroupSpace Framework
- CollabraSuite, BEA Edition

1. Start BEA WebLogic Workshop.
 2. Open an existing portal EAR project or create a new one via **File->New->Portal EAR Project...**
 - a. In addition to the **WebLogic Portal** and **WebLogic Portal Collaboration** facets, select the **CollabraSuite GroupSpace Library Support** facet.
 3. Select an existing portal WAR project or create a new one via **File->New->Portal Web Project...**
 - a. In addition to the **WebLogic Portal** and **WebLogic Portal Collaboration** facets, select the following:
 - CollabraSuite/CollabraSuite Taglibs
 - WebLogic Portal Collaboration/CollabraSuite GroupSpace Support
 - WebLogic Portal Collaboration/CollabraSuite Portlets
 - b. Choose to “Use Shared J2EE Libraries”
- Note:** There is a known issue in WebLogic 9.2 concerning the proper ordering of library modules. As a workaround, open the `WebContent/WEB-INF/weblogic.xml` file in the web project and re-order the library module references so that the first three library modules are: **collabrasuite-groupspace-web-lib**, **collabrasuite-portlets-web-lib** and **collabrasuite-web-lib** in that order.

Note: Once the CollabraSuite GroupSpace Support facet has been applied to a Web Project, that Web Project can only be used for GroupSpace portals. However, there can be multiple Web Projects deployed into a single domain, some of which support GroupSpace and some that do not.

4. Publish the EAR to the WebLogic server.
5. Open the portal administration console.
6. Create a community template based on the `groupspace.ctmeta` file.

Note: There are other ways to create a community such as directly from a `.community` file. However, the only way currently supported is via a template based on the `groupspace.ctmeta` file.

7. Create an initial community based on the template created in the previous step.

AquaLogic User Interaction (ALUI) Portal

This section describes CollabraSuite, BEA Edition integration with BEA's ALUI product.

When using WebLogic 8.1, the domain must first be extended using the **CollabraSuite, BEA Edition** template as described above in the **Extend the Domain** section. The WebLogic Configuration Wizard must be run again to extend the domain with the **CollabraSuite, BEA Edition for ALUI** template.

When using WebLogic 9.2, both templates can be applied at the same time, either during domain creation, or later by extending the domain.

1. Update the CollabraSuite_ALUI_Portlets deployment descriptors.
 - a. In order to automatically create WebLogic users corresponding to ALUI users, the name of a WebLogic administrative user is contained in the `weblogic.xml` file of the `csALUI` web application. The default username is `weblogic`. If the `weblogic` user doesn't exist in the domain or it is not in the Administrators group, the `weblogic.xml` must be modified. Change the following XML in

```
BEA_HOME\collabrasuite-XXX\ALUI\CollabraSuite_ALUI_Portlets.ear\csALUIWeb.war\WEB-INF\weblogic.xml
```

 to reflect the name of an administrative user in your domain:

```
<security-role-assignment>
  <role-name>SSO_ROLE</role-name>
  <principal-name>weblogic</principal-name>
</security-role-assignment>
```

```

<run-as-role-assignment>
  <role-name>SSO_ROLE</role-name>
  <run-as-principal-name>weblogic</run-as-principal-name>
</run-as-role-assignment>

```

- b. By default, CollabraSuite, BEA Edition will create new users with the same user name that is used to log into ALUI, with a default homeroom of SampleCampus/SampleBuilding/SampleFloor/SampleRoom. If you would like to change any of these defaults, you need to modify the Servlet parameters in the CollabraSuite_ALUI_Portlets EAR. These are found in the web.xml file of the csALUI web application.
- Note:** Remember to redeploy this EAR if you make any modifications to the deployment descriptors.
2. Import the sample CollabraSuite, BEA Edition portlets
 - a. If necessary, start up the server that is running the ALUI application.
 - b. Navigate to `http://host:port/portal/server.pt`
 - c. Log in as the Administrator. The default is 'Administrator' with no password.
 - d. Click on the **Administration** tab.
 - e. Under the **Select Utility...** tab, choose **Migration - Import**.
 - f. Click **Browse...** under File Path, and select the following file:
`<BEA_HOME>/collabrasuite-version/ALUI/QuickStart/csALUISample.pte`
 - g. Click **Load Package**.
 - h. Click **Finish** in the upper-right-hand corner of the window, and then click **OK** to confirm the migration.
 - i. You now have a sample ALUI Experience Definition that contains all of the CollabraSuite, BEA Edition portlets, as well as a sample default page to log into that contains two CollabraSuite, BEA Edition portlets.
 3. Modify Remote Server Properties. The migration in the previous step created a remote server object, which should point to the CollabraSuite_ALUI_Portlets application that was deployed by the extension template. To change the default of localhost as the server host and 7001 as the server port:

- a. Make sure that the server running the ALUI application is running.
 - b. Log into the ALUI application as the Administrator.
 - c. Click on the **Administration** tab.
 - d. Click on the **CollabraSuite Experience Definition** link.
 - e. Click on the **Remote Server** link, then click on the **CS Remote Server** link.
 - f. Change the host and port in the **Base URL** text field.
 - g. Click **Finish** in the upper-right-hand corner of the window.
 - h. Log out of the ALUI application.
4. Modify CollabraSuite, BEA Edition Campus settings in the CollabraSuite, BEA Edition Administration tool.
 - a. Make sure that the server running CollabraSuite, BEA Edition is running.
 - b. Log into the CollabraSuite, BEA Edition admin tool using the CollabraSuite, BEA Edition admin account. The URL is `http://host:port/csuite/ria/admin`.
 - c. Make sure that the **Auto-Account Creation** checkbox is checked. If not, check this box and click **Save**.
 - d. Log out of the CollabraSuite, BEA Edition admin tool.
5. Configure ALUI timeout and authentication.
 - a. Verify the following values are set in the `<PLUMTREE_INSTALL_DIR>/settings/portal/portalconfig.xml` file
 - `ImageServerConnectionURLTimeout: -1`
 - `CaptureBasicAuthenticationForPortlets: 1`

Appendices

WebLogic Domain Extension Summary

CollabraSuite, BEA Edition J2EE components require specific services and security to be configured and deployed. The following table summarizes the configuration created by the CollabraSuite, BEA Edition Domain Extension Template:

Table 4-1 Domain Extension Summary

Component	Settings
JDBC Connection Pool	Name: csuiteConnectionPool
JDBC Data Source	Name: csuitePool JNDI Name: weblogic.jdbc.jts.csuitePool
JMS Server	Name: csuiteJMSServer JNDI Name: weblogic.jms.csuiteEventTopic
JMS Connection Factory	Name: csuiteConnectionFactory JNDI Name: weblogic.jms.csuiteConnectionFactory
JMS Topic	Name: csuiteEventTopic JNDI Name: weblogic.jms.csuiteEventTopic
JMS Topic	Name: csuiteRemoteEventTopic JNDI Name: weblogic.jms.csuiteRemoteEventTopic

Table 4-1 Domain Extension Summary

Component	Settings
Mail Session	Name: csuiteMailSession JNDI Name: csuiteMail
Admin User	Name: csadmin Default Password: password Member of: CollabraSuiteUsers, CollabraSuiteAdministrators
User Group	Name: CollabraSuiteUsers
Admin Group	Name: CollabraSuiteAdministrators
Remote Group	Name: CollabraSuiteRemote

WebLogic Portal Extension Summary

Integrating CollabraSuite, BEA Edition J2EE components into a WebLogic portal requires specific files to be configured and deployed into the portal application. The following summarizes the configuration performed by the CollabraSuite, BEA Edition Portal Extension Template:

- The following files are copied into `<portalApplication>/<portalProject>/WEB-INF/lib`. They can be found on the distribution CD under the lib directory.

- csuite-taglib.jar
- common-server.jar
- csuite-client.jar
- csuite-ejb-client.jar
- csuite-i9n-client.jar
- csuite-ria-common.jar
- csuite-ria-client.jar

- The following taglib is added to `<portalApplication>/<portalProject>/WEB-INF/web.xml`:


```
<taglib>
  <taglib-uri>csuite-taglib.tld</taglib-uri>
```

```

    <taglib-location>/WEB-INF/lib/csuite-taglib.jar</taglib-location>
</taglib>

```

- The following ejb-refs are added to

```
<portalApplication>/<portalProject>/WEB-INF/web.xml:
```

```

<ejb-ref>
    <ejb-ref-name>ejb/CSuiteAdmin</ejb-ref-name>
    <ejb-ref-type>Session</ejb-ref-type>
    <home>com.collabrapace.csuite.server.i9n.interfaces.CSuiteAdminRemoteHome</home>
    <remote>com.collabrapace.csuite.server.i9n.interfaces.CSuiteAdminRemote</remote>
</ejb-ref>
<ejb-ref>
    <ejb-ref-name>ejb/CSuiteCollaboration</ejb-ref-name>
    <ejb-ref-type>Session</ejb-ref-type>
    <home>com.collabrapace.csuite.server.i9n.interfaces.CSuiteCollaborationRemoteHome</home>
    <remote>com.collabrapace.csuite.server.i9n.interfaces.CSuiteCollaborationRemote</remote>
</ejb-ref>

```

- The following ejb-refs are added to

```
<portalApplication>/<portalProject>/WEB-INF/weblogic.xml:
```

```

<ejb-reference-description>
    <ejb-ref-name>ejb/CSuiteAdmin</ejb-ref-name>
    <jndi-name>ejb/CSuiteAdmin</jndi-name>
</ejb-reference-description>
<ejb-reference-description>
    <ejb-ref-name>ejb/CSuiteCollaboration</ejb-ref-name>
    <jndi-name>ejb/CSuiteCollaboration</jndi-name>
</ejb-reference-description>

```

- Sample CollabraSuite portlets are installed under

```
<portalApplication>/<portalProject>/portlets/CollabraSuite.
```

Upgrading CollabraSuite

The process of upgrading an existing installation of CollabraSuite is similar to the process of creating a new installation.

1. Be sure to shut down WebLogic and backup your entire domain directory before applying the extension template to an existing domain. The Configuration Wizard will overwrite all scripts in the domain, removing any local modifications. One strategy for updating an existing domain with local customizations is to first make a copy of the domain. You can then apply the extension template to the copy. When finished with the template, copy the `config.xml` and the `CollabraSuite.ear` file back into the original domain. This will allow you to update a domain with CollabraSuite, BEA Edition while preserving any local modifications.
2. With WebLogic running, delete the CollabraSuite, BEA Edition application via the WebLogic Administration Console under Deployments/Applications.
3. Shutdown the WebLogic server.
4. Connect to the database configured for CollabraSuite, BEA Edition and run the necessary upgrade SQL scripts. These scripts can be found under the CollabraSuite, BEA Edition installation sql directory and they should be run in order. For example, to upgrade from CollabraSuite, BEA Edition 3.4.5 to CollabraSuite, BEA Edition 3.6.0, run `alter320to350.sql` and then run `alter350to360.sql`.
5. Extend the domain.
 - For WebLogic 8.1, perform the steps 1-6 and 8-11 from Extending the Domain, extending the copy of the domain. Be sure to skip step 7, which creates the CollabraSuite, BEA Edition database schema. In step 11, point to the applications directory in the original domain, rather than the copy of the domain.
 - For WebLogic 9, perform the steps 1-6 and 8-10 from Extending the Domain, extending the copy of the domain. Be sure to skip step 7, which creates the CollabraSuite, BEA Edition database schema.
6. Choose to replace the existing configurations and Apply that choice to all future choices.
7. Copy the `config.xml` file from the copied domain into the original domain
8. If upgrading a WebLogic 8.1 portal, copy the following jars into `<portalApplication>/<portalProject>/WEB-INF/lib`. They can be found on the distribution CD under the lib directory.
 - `csuite-taglib.jar`
 - `common-server.jar`

- csuite-client.jar
 - csuite-ejb-client.jar
 - csuite-i9n-client.jar
 - csuite-ria-common.jar
 - csuite-ria-client.jar
9. If upgrading a WebLogic 9.2 portal, upgrade is supported only when using J2EE library modules. In this case, find any files that have been copied into the project from a CollabraSuite, BEA Edition library module. Remove and then re-copy them into the local project applying any local customizations.
 10. Start the WebLogic server.
 11. Perform all steps in **Finish Extending the Domain**.

Clustering Configuration

This section discusses deployment of CollabraSuite into a WebLogic cluster. This section can safely be skipped for single server installations.

Note: Clustering is not supported with the PointBase database.

Use the WebLogic Domain Configuration wizard to extend a cluster domain as described in the **Extend the Domain** section of this guide.

In WebLogic 8.1 SP4 or later, the CollabraSuite components will automatically be targeted to the cluster. In earlier versions you may have to target the CollabraSuite components to the cluster manually.

Confirm the following configuration for the CollabraSuite JMS Connection factory:

- **General** -> '**Server Affinity Enabled**' is checked
- **Transactions** -> '**XA Connection Factory Enabled**' is checked

When running in a cluster, the system clocks of all server nodes must be synchronized by using Network Timing Protocol (NTP) or some similar means of clock synchronization. When system clocks are not synchronized, incorrect event timestamps will occur and CollabraSuite users may be disconnected from the application.

Supported Configurations

Please see the **Supported Configurations Guide** for supported platforms and known limitations associated with particular configurations.

Special PointBase Instructions

WebLogic 8.1

When using PointBase with WebLogic 8.1, take the following special steps when extending a domain:

- Before step 5, start PointBase:

For Windows:

```
> cd %DOMAIN_DIR%
> setDomainEnv.cmd
> %WL_HOME%\common\bin\startPointBase.cmd -port=9093
-ini=%DOMAIN_DIR%\pointbase.ini
```

For Unix:

```
% cd $DOMAIN_DIR
% . setDomainEnv.sh
% ${WL_HOME}/common/bin/startPointBase.sh -port=9093
-ini=${DOMAIN_DIR}/pointbase.ini
```

- After step 7, stop PointBase:

For Windows:

```
> cd %DOMAIN_DIR%
> setDomainEnv.cmd
> %WL_HOME%\common\bin\stopPointBase.cmd -port=9093 -name=workshop
```

For Unix:

```
% cd $DOMAIN_DIR
% . setDomainEnv.sh
% ${WL_HOME}/common/bin/stopPointBase.sh -port=9093 -name=workshop
```

Special MySQL Instructions

WebLogic 8.1

When using MySQL with WebLogic, some documentation states that the MySQL JDBC driver JAR file should be placed in the JDK's `jre/lib/ext` directory. However, this causes errors when deploying J2EE applications in WebLogic. Instead, follow these steps to deploy with MySQL:

1. Create a `WL_HOME/server/ext/jdbc/mysql` directory in the WebLogic installation and place the MySQL JDBC driver JAR file in it. For this example, the MySQL JDBC driver JAR file is `mysql-connector-java-3.1.12-bin.jar`.
2. Add the MySQL JDBC driver to the CLASSPATH:
 - a. For Windows, edit the `WL_HOME\common\bin\commEnv.cmd` script and add the following lines to the bottom of the file:

```
SET DATABASE_CLASSPATH=
%WL_HOME%\server\ext\jdbc\mysql\mysql-connector-java-3.1.12-bin.jar
SET WEBLOGIC_CLASSPATH=%WEBLOGIC_CLASSPATH%;%DATABASE_CLASSPATH%
```

- b. For UNIX, edit the `WL_HOME/common/bin/commEnv.sh` script and add the following lines to the bottom of the file:

```
DATABASE_CLASSPATH=
${WL_HOME}/server/ext/jdbc/mysql/mysql-connector-java-3.1.12-bin.jar
export DATABASE_CLASSPATH
WEBLOGIC_CLASSPATH=${WEBLOGIC_CLASSPATH}:${DATABASE_CLASSPATH}
```

WebLogic 9

When using MySQL with WebLogic, some documentation states that the MySQL JDBC driver JAR file should be placed in the JDK's `jre/lib/ext` directory. However, this causes errors when deploying J2EE applications in WebLogic. Instead, follow these steps to deploy with MySQL:

1. Follow the instructions above for WebLogic 8.1.
2. For Windows, edit the following lines at the bottom of `WL_HOME\common\bin\config.cmd` and add the text in bold:

```
IF "%ARGUMENTS%" == "" (
    %JAVA_HOME%\bin\javaw %MEM_ARGS%
    -Xbootclasspath/a:%DATABASE_CLASSPATH% -jar configwiz.jar %ARGUMENTS%
```

Appendices

```
) ELSE (  
    %JAVA_HOME%\bin\java %MEM_ARGS%  
    -Xbootclasspath/a:%DATABASE_CLASSPATH% -jar configwiz.jar %ARGUMENTS%  
)
```

3. For UNIX, edit the following line at the bottom of `WL_HOME\common\bin\config.sh` and add the text in bold:

```
"${JAVA_HOME}/bin/java" ${MEM_ARGS}  
-Xbootclasspath/a:${DATABASE_CLASSPATH} -jar configwiz.jar ${ARGUMENTS}
```

Note: See the Known Limitations section of the **Supported Configurations Guide** for the compatible versions of MySQL.

Index

C

- Clustering Configuration 4-5
- Collaborative Environment 3-28
- CollabraSuite 1-1
- Configuration clustering 4-5
- Create Collaborative Environment 3-28
- Create Domain 2-6, 3-1
- Create Portal 3-29

D

- Domain Configure 4-1
- Domain extend 3-2

E

- Extend Domain 3-2

I

- Install CollabraSuite 2-1
- Integrate Portal 3-29
- Introduction 1-1
- introduction to WebLogic Portal 1-1, 2-1, 3-1

L

- Limitations 4-6

M

- MySQL Instructions 4-7

P

- Pointbase Instructions 4-6
- Portal Create 3-29
- Portal Extension 3-29
- Prerequisites 1-2

U

- Upgrading CollabraSuite 4-4

W

- WebLogic Cluster 4-5
- WebLogic Domain 2-6, 3-1
- WebLogic Portal
 - introduction 1-1, 2-1, 3-1

