



BEAProducts

Creating Templates Using the Domain Template Builder

WebLogic Server® 9.2
WebLogic Integration™ Version 9.2
BEA Workshop for WebLogic Platform™ Version 9.2
WebLogic Portal® Version 9.2
Document Revised: January 2007

Copyright

Copyright © 1995-2007 BEA Systems, Inc. All Rights Reserved.

Restricted Rights Legend

This software is protected by copyright, and may be protected by patent laws. No copying or other use of this software is permitted unless you have entered into a license agreement with BEA authorizing such use. This document is protected by copyright and may not be copied photocopied, reproduced, translated, or reduced to any electronic medium or machine readable form, in whole or in part, without prior consent, in writing, from BEA Systems, Inc.

Information in this document is subject to change without notice and does not represent a commitment on the part of BEA Systems. THE DOCUMENTATION IS PROVIDED “AS IS” WITHOUT WARRANTY OF ANY KIND INCLUDING WITHOUT LIMITATION, ANY WARRANTY OF MERCHANTABILITY OR FITNESS FOR A PARTICULAR PURPOSE. FURTHER, BEA SYSTEMS DOES NOT WARRANT, GUARANTEE, OR MAKE ANY REPRESENTATIONS REGARDING THE USE, OR THE RESULTS OF THE USE, OF THE DOCUMENT IN TERMS OF CORRECTNESS, ACCURACY, RELIABILITY, OR OTHERWISE.

Trademarks and Service Marks

Copyright © 1995-2007 BEA Systems, Inc. All Rights Reserved. BEA, BEA JRockit, BEA WebLogic Portal, BEA WebLogic Server, BEA WebLogic Workshop, Built on BEA, Jolt, JoltBeans, SteelThread, Top End, Tuxedo, and WebLogic are registered trademarks of BEA Systems, Inc. BEA AquaLogic, BEA AquaLogic Data Services Platform, BEA AquaLogic Enterprise Security, BEA AquaLogic Service Bus, BEA AquaLogic Service Registry, BEA Builder, BEA Campaign Manager for WebLogic, BEA eLink, BEA Liquid Data for WebLogic, BEA Manager, BEA MessageQ, BEA WebLogic Commerce Server, BEA WebLogic Communications Platform, BEA WebLogic Enterprise, BEA WebLogic Enterprise Platform, BEA WebLogic Enterprise Security, BEA WebLogic Express, BEA WebLogic Integration, BEA WebLogic Java Adapter for Mainframe, BEA WebLogic JDriver, BEA WebLogic Log Central, BEA WebLogic Network Gatekeeper, BEA WebLogic Personalization Server, BEA WebLogic Personal Messaging API, BEA WebLogic Platform, BEA WebLogic Portlets for Groupware Integration, BEA WebLogic Server Process Edition, BEA WebLogic SIP Server, BEA WebLogic WorkGroup Edition, Dev2Dev, Liquid Computing, and Think Liquid are trademarks of BEA Systems, Inc. BEA Mission Critical Support, BEA Mission Critical Support Continuum, and BEA SOA Self Assessment are service marks of BEA Systems, Inc.

All other names and marks are property of their respective owners.

Contents

1. Starting the WebLogic Domain Template Builder

Starting the Domain Template Builder on Windows Platforms	1-1
Starting the Domain Template Builder on UNIX Platforms	1-2

2. Introduction

Overview of the Domain Template Builder.	2-3
About Domain and Extension Templates	2-5
Overview of Creating Domain Templates Using the Domain Template Builder	2-5
Overview of Creating Extension Templates Using the Domain Template Builder.	2-7
Additional Tools for Creating Templates and Domains	2-9

3. Creating Domain Templates Using the Domain Template Builder

Create a New Template	3-2
Select a Template Domain Source.	3-2
Describe the Template	3-3
Add or Omit Applications	3-4
Add Files	3-6
Add SQL Scripts	3-7
Configure the Administration Server.	3-9
Specifying Listen Addresses.	3-12
Specifying Listen Ports.	3-13
Configure an Administrator Username and Password.	3-13

Configure Users, Groups, and Global Roles	3-14
Assign Users to Groups	3-16
Assign Groups to Groups	3-17
Assign Users and Groups to Global Roles	3-17
Specify Start Menu Entries	3-18
Prepare Scripts and Files with Replacement Variables	3-19
Replacement Variable Definitions	3-21
Review the Domain Template	3-22
Create Your Domain Template	3-23

4. Creating Extension Templates Using the Domain Template Builder

Create a New Extension Template	4-2
Select a Template Domain Source for Your Extension Template	4-2
Describe Your Extension Template	4-4
Add or Omit Applications in Your Extension Template	4-4
Add Files to Your Extension Template	4-5
Add SQL Scripts to Your Extension Template	4-6
Configuring Security Options in Your Extension Template	4-6
Prepare Scripts and Files When Creating Extension Templates	4-8
Review the Extension Template Settings	4-8
Create Your Extension Template	4-8

5. How Do I . . . ?

How Do I: Create a Custom Domain Template?	5-1
How Do I: Create a Custom Extension Template?	5-7

Starting the WebLogic Domain Template Builder

This section describes how to invoke the WebLogic Domain Template Builder. The Domain Template Builder can be invoked only in graphical mode. If you prefer to work in a non-graphical mode, you can create templates from the command line using the `pack` and `unpack` commands. For more information, see *Creating Domains and Templates Using the pack and unpack Commands* at the following URL:

<http://e-docs.bea.com/common/docs92/pack/index.html>

Topics include:

- [Starting the Domain Template Builder on Windows Platforms](#)
- [Starting the Domain Template Builder on UNIX Platforms](#)

Starting the Domain Template Builder on Windows Platforms

To start the Domain Template Builder on a Windows platform, do one of the following:

- From the Start Menu, choose:
Start→ Programs→ BEA Products→ Tools→ Domain Template Builder
- From a command prompt window:
 - a. Go to the `\common\bin` subdirectory of the product installation directory. For example:

```
cd c:\bea\weblogic92\common\bin
```

<~runChNum>

- b. Enter the following command:

```
config_builder.cmd
```

Starting the Domain Template Builder on UNIX Platforms

Note: In graphical mode, the console attached to the machine on which you are running the Domain Template Builder must support a Java-based GUI.

1. Log in to the target system.
2. Open a command shell.
3. Go to the `common/bin` subdirectory of the product installation directory. For example:

```
cd BEA_HOME/weblogic92/common/bin
```

4. Invoke the following script:

```
sh config_builder.sh
```

Introduction

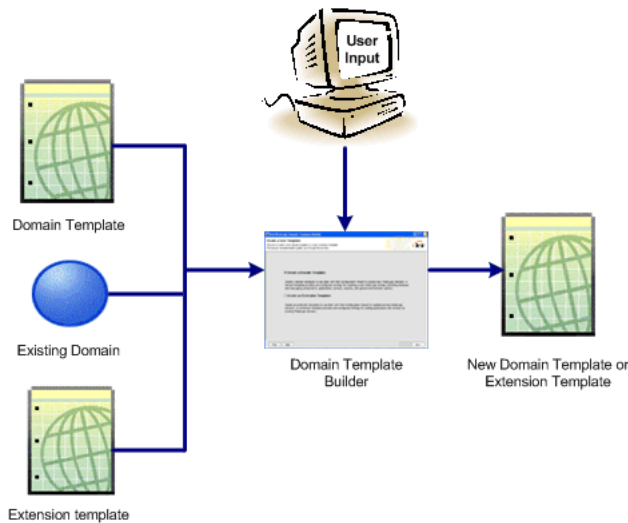
This section provides an overview of how to create templates using the Domain Template Builder.

Topics include:

- [Overview of the Domain Template Builder](#)
- [About Domain and Extension Templates](#)
- [Overview of Creating Domain Templates Using the Domain Template Builder](#)
- [Overview of Creating Extension Templates Using the Domain Template Builder](#)
- [Additional Tools for Creating Templates and Domains](#)

Overview of the Domain Template Builder

One method of creating domains in WebLogic Server is to use domain and extension templates that contain the main attributes and files required for building or extending a domain. To simplify the process of creating templates, BEA provides the Domain Template Builder, a stand-alone Java application that guides you through the process of creating custom domain and extension templates. This process is illustrated in [Figure 2-1](#).

Figure 2-1 Domain Template Builder

The Domain Template Builder is designed to be used off-line, in graphical mode only. It is not supported in console mode. Therefore, the console attached to the machine on which you are using the Domain Template Builder must support a Java-based GUI. All consoles for Windows systems support Java-based GUIs; only a subset of UNIX-based consoles support Java-based GUIs.

BEA delivers a set of predefined domain and extension templates with your product installation that you can use to create domains. This set of templates includes the base WebLogic Server domain template, and various extension templates that allow you to add product component functionality and samples to the base domain. For more information about the templates provided by BEA, see *Domain Template Reference* at the following URL:

<http://e-docs.bea.com/common/docs92/tempref/index.html>

After you create your domain and add new resources and applications to it, you can use the Domain Template Builder to create a custom domain template. You can also use the Domain Template Builder to customize an existing template. For example, you may want to remove applications or add SQL scripts for additional databases. To do so, select the existing domain or template as the source for your new custom template. When your custom domain templates are complete, you can start using them to create domains using the Configuration Wizard, WLST Offline, or the `unpack` command. For more information about these tools, see [“Additional Tools for Creating Templates and Domains” on page 2-9](#).

About Domain and Extension Templates

When you are using the Domain Template Builder, the term *template* refers to a Java Archive (JAR) file that contains the files and scripts required to create or extend a domain. With the Domain Template Builder, you can create the following types of templates:

- *Domain template*—defines the full set of resources within a domain, including infrastructure components, applications, services, security options, and general environment and operating system parameters. You can create a domain template from an existing template or from a domain. A domain template is used to create a new domain.

As part of your product distribution, BEA provides a Base WebLogic Server domain template. This template defines the core set of resources within a domain, including an Administration Server and basic configuration information, infrastructure components, and general environment and operating system options. It does not include sample applications. You use this template to create a basic WebLogic Server domain that you can then extend using an extension template that contains applications and services, or additional product component functionality.

- *Extension template*—defines applications and services that can provide additional product component functionality, such as Apache Beehive, product sample applications, or JDBC or JMS components. This type of template can be used to extend an existing domain.

Overview of Creating Domain Templates Using the Domain Template Builder

To create a custom domain template using the Domain Template Builder, select the domain or domain template from which you want to create your new domain template. You then have the option of modifying the following:

- Basic template information
- Application and domain directory contents
- SQL scripts for database configuration
- Administration Server and user configuration
- Basic security configuration, such as creating users, groups, and global roles and their assignments
- Start menu entries (Windows systems only)

- Customized scripts and variables

Table 2-1 summarizes the steps necessary to create a domain template using the Domain Template Builder.

Table 2-1 Steps for Creating a Domain Template Using the Domain Template Builder

In this step...	You...
Create a New Template	Choose Create a Domain Template to create a new domain template.
Select a Template Domain Source	Select the domain template or the directory of the domain from which you want to create a new domain template.
Describe the Template	Specify a description of the template.
Add or Omit Applications	Review and modify, if desired, the list of applications to be included in the template.
Add Files	Review and modify, if desired, the files to be included in the template.
Add SQL Scripts	Add SQL scripts for each database that you expect to be used with the domains created from this template and specify the order in which the scripts are executed.
Configure the Administration Server	Define parameters for the Administration Server, a designated server from which the domain is managed.
Configure an Administrator Username and Password	Specify a user name and password to be used for starting the Administration Server. Optionally, you can also configure additional security features by defining users and groups and assigning them to global security roles.
Specify Start Menu Entries	Optionally, define entries for the Windows Start Menu.
Prepare Scripts and Files with Replacement Variables	Replace specific paths, filenames, and other domain environment settings with replacement variables in text files contained in the template. The Configuration Wizard later replaces the variables with exact strings to set up a specific WebLogic domain.
Review the Domain Template	Review the settings defined in your template.
Create Your Domain Template	Specify the name and directory for the domain template, and launch the process that creates it.

Overview of Creating Extension Templates Using the Domain Template Builder

The process used to create an extension template is virtually the same as the process used to create a domain template except that you are not prompted to configure the Administration Server, assign an administrator username and password, or specify Start menu entries, since these domain settings are defined in the domain to be extended.

To create an extension template using the Domain Template Builder, you select a domain or extension template to use as the basis for your template which you can then modify to suit your needs. When creating an extension template, you have the option of modifying the following:

- Basic template information, such as name and description
- Application directory contents and location
- Files to be included in the template
- SQL scripts for database configuration
- Additional security, such as creating users, groups, and global roles
- Customized scripts and variables

The Domain Template Builder creates an extension template (JAR file) that can be used to extend an existing domain. [Table 2-2](#) summarizes the steps for creating an extension template using the Domain Template Builder.

Table 2-2 Steps for Creating Extension Templates Using the Domain Template Builder

In this step . . .	You . . .
Create a New Extension Template	Choose Create an Extension Template to create a new extension template.
Select a Template Domain Source for Your Extension Template	Choose an extension template or a domain directory from which you want to create a domain template.
Describe Your Extension Template	Enter a description of the template. If you selected an existing template as your source, the description for that template is displayed. Review and modify the description if necessary.

Table 2-2 Steps for Creating Extension Templates Using the Domain Template Builder

In this step . . .	You . . .
Add or Omit Applications in Your Extension Template	Review and modify, if desired, the list of applications to be included in your extension template.
Add Files to Your Extension Template	Review and modify, if desired, the list of files to be included in your extension template.
Add SQL Scripts to Your Extension Template	Add SQL scripts for each database that you expect to be used with the domains created from this template and specify the order in which the scripts are executed.
Configuring Security Options in Your Extension Template	Optionally, create users, groups, and roles, then assign them to groups and global roles.
Prepare Scripts and Files When Creating Extension Templates	Replace specific paths, filenames, and other environment-specific strings with replacement variables in text files contained in the template. Later, when a specific WebLogic domain is being created, the Configuration Wizard replaces these variables with exact strings.
Review the Extension Template Settings	Review the settings defined in your templates.
Create Your Extension Template	Enter a name and directory for the extension template, and launch the process that creates it.

Additional Tools for Creating Templates and Domains

Your product installation includes several tools for creating templates and domains: the Domain Template Builder, the `pack` and `unpack` commands, WLST Offline, and the Configuration Wizard. As described previously, you can use the Domain Template Builder to create custom domain and extension templates using a graphical user interface. The other tools are described in the following table.

Table 2-3 Additional Tools for Creating Templates and Domains

To perform the following task . . .	Use the following tools . . .
Create a template	<ul style="list-style-type: none"><code>pack</code>—command that enables you to create a template archive (.jar) file that contains a snapshot of either an entire domain or a subset of a domain. You can use a template that contains a subset of a domain to create a Managed Server domain directory hierarchy on a remote machine. For more information, see <i>Creating Templates and Domains Using the pack and unpack Commands</i> at the following URL: http://e-docs.bea.com/common/docs92/pack/index.html

Table 2-3 Additional Tools for Creating Templates and Domains

To perform the following task . . .	Use the following tools . . .
	<ul style="list-style-type: none"> • WLST Offline—command-line scripting interface used to create a new domain or update an existing domain without connecting to a running instance of WebLogic Server. The writeTemplate functionality of WLST Offline provides the same capability for creating a template as the pack command. For more information, see "Creating a Domain Template (Offline)" in <i>WebLogic Scripting Tool</i> at the following URL: http://e-docs.bea.com/wls/docs92/config_scripting/domains.html#create_template
Create a new domain or extend an existing domain	<ul style="list-style-type: none"> • Configuration Wizard—stand-alone Java application that guides you through the process of creating or extending a domain. When creating a domain, you can choose to accept the default settings or to customize the domain to more closely match your particular environment. To customize your domain, you can add and configure Managed Servers, clusters, and machine definitions, and/or customize predefined JDBC data sources and JMS file store directories. You can also use the Configuration Wizard to extend an existing domain by adding predefined applications and services, or product component functionality. For more information, see <i>Creating WebLogic Domains Using the Configuration Wizard</i> at the following URL: http://e-docs.bea.com/common/docs92/configwiz/index.html • WLST Offline—command-line scripting interface used to create a new domain or update an existing domain without connecting to a running instance of WebLogic Server. WLST Offline supports the same functionality as the Configuration Wizard. For more information, see <i>WebLogic Scripting Tool</i> at the following URL: http://e-docs.bea.com/wls/docs92/config_scripting/index.html • unpack—command that enables you to create a new domain by using a template compatible with your current installation. To create a Managed Server domain, use the unpack command with a Managed Server templates cannot use unpack to extend an existing domain. For more information, see <i>Creating Domains and Templates Using the pack and unpack Commands</i> at the following URL: http://e-docs.bea.com/common/docs92/pack/index.html

Creating Domain Templates Using the Domain Template Builder

The following topics describe each step required to create a new domain template:

- [Create a New Template](#)
- [Select a Template Domain Source](#)
- [Describe the Template](#)
- [Add or Omit Applications](#)
- [Add Files](#)
- [Add SQL Scripts](#)
- [Configure the Administration Server](#)
- [Configure an Administrator Username and Password](#)
- [Configure Users, Groups, and Global Roles](#)
- [Specify Start Menu Entries](#)
- [Prepare Scripts and Files with Replacement Variables](#)
- [Review the Domain Template](#)
- [Create Your Domain Template](#)

Create a New Template

The **Create a New Template** window prompts you to choose the type of template you want to create: a domain template or an extension template.


Table 3-1 Directories and Files in the Installation-Level Patch Directory

Choose this option . . .	When you want to . . .
Create a Domain Template	Create a template that defines the full set of resources within a domain, including infrastructure components, applications, services, security options, and general environment and operating system parameters. You can then use this template as input to the Configuration Wizard, WLST Offline, or the unpack command to create a new domain. \
Create an Extension Template	Create a template that defines applications and services that can be used to extend an existing dominies applications and services stored in the selected extension templates are imported into an existing domain using the Configuration Wizard. To learn more about creating an extension template, see Chapter 4, “Creating Extension Templates Using the Domain Template Builder.”

Select a Template Domain Source

The **Select a Template Domain Source** window prompts you to choose the domain or domain template from which you want to create a domain template.

To choose a domain as the source for your template:

1. Select the **Select a Domain** tab.
2. Navigate to the directory of the domain from which you want to create a domain template.
Valid domain directories are indicated by a  icon.
3. Click **Next** to proceed to the next configuration window.

The Domain Template Builder verifies that the directory you selected contains a valid domain. If it does not, an error message is displayed.

To choose a domain template as the source for your template:

1. Select the **Select a Template** tab.

2. Review the list of templates displayed in the **Templates** pane. The templates displayed for selection reside in the directory specified in the **Locate Additional Templates** field. If you need to select an alternate directory:
 - a. Click **Browse** to invoke a dialog box called **Select a Template Directory**.
 - b. In the dialog box, navigate to the appropriate directory or manually enter its pathname in the **Location** field.
 - c. Click **OK** to return to the **Select a Template Domain Source** window.

A list of the domain templates available in the selected directory is displayed in the **Templates** pane. Templates are organized by category. For example, the predefined domain templates provided with your product installation are listed together under the heading **BEA**.
3. Select a domain template from the list.
4. Click **Next** to proceed to the next configuration window.

Describe the Template

The **Describe the Template** window prompts you to provide a description that will be displayed in the **Select a Template** area of the **Select a Template Domain Source** window.

To enter template description information:

1. Do one of the following:
 - If you selected a *domain directory* in the previous window, enter the information required for your domain, as described in the following table, and click **Next**.
 - If you selected a *template* in the previous window, the information from the selected template is displayed here. Review the information, and modify it, if necessary, to meet the requirements of your domain, as described in the following table. Then click **Next**.

Table 3-2 Describe the Template

Choose this option . . .	When you want to . . .
Note: Fields marked with * are required.	
Name*	Enter a valid name for the domain template. A valid name consists of string of characters that can include spaces.

Table 3-2 Describe the Template (Continued)

Choose this option . . .	When you want to . . .
Author	<p>Enter the name of the author of the template. A valid name consists of a string of characters that can include spaces.</p> <p>For example, the name "BEA Systems, Inc." is displayed in the Author field of the default templates provided by BEA.</p>
Category	<p>Enter the name of the category in which you want this template to be displayed. A valid name consists of a string of characters that can include spaces.</p> <p>For example, the default templates provided by BEA are grouped together in the category BEA in the Select a Template area of the Select a Template Domain Source window.</p>
Description	<p>Enter a description of the domain template. A valid description consists of a string of characters that can include spaces.</p> <p>For example, the description provided for the Basic WebLogic Server Domain template provided by BEA contains the following text:</p> <p>Create a basic WebLogic Server domain without installing sample applications.</p>

Add or Omit Applications

Note: The **Add or Omit Applications** window is displayed if applications are included in the template or domain selected in [“Select a Template Domain Source” on page 3-2](#).

The **Add or Omit Applications** window allows you to:

- Review the list of applications that are currently defined in your template source
- Review the pathnames of the current and imported applications
- If necessary, change the relative path for the directory into which applications are imported
- If necessary, omit applications from the list of files to be imported

By default, the Domain Template Builder includes applications from the domain or template you specified as the source for the template you are creating. For example:

- If you selected an existing template as the source for your new template and the source template has a separately defined applications directory, all the application files defined in the applications directory are included by default.

- If you selected a domain as the source for your new template, any application files defined in the `config.xml` file using the `app-deployment` element that are not considered internal applications in your product installation are included by default.

Note: If you create a template that contains applications with application-scoped JDBC and/or JMS resources, and subsequently use the template as input to the Configuration Wizard or WLST Offline to create or extend a clustered domain, you may need to perform additional steps (after the domain is created or extended) to make sure that the application and its application-scoped resources are targeted and deployed properly in a clustered environment. For more information on the targeting and deployment of application-scoped modules, see “Deploying Applications and Modules” in *Deploying Applications to WebLogic Server* at the following URL:

<http://e-docs.bea.com/wls/docs92/deployment/deploy.html>

To add or omit applications in the template:

1. In the **Applications** pane, review the list of applications to be included in your template. By default, all applications are checked, indicating that they will be included.

The applications displayed reside in the directory specified in the **Current Application Path** field. The applications are copied into your template from this location.

2. To change the relative path of the directory into which an application will be imported, do the following:
 - a. Select the application in the **Applications** pane.
 - b. In the **Imported Application Path** field, enter the relative path you want to use after the application is imported into your template.

Note: Some of the applications listed in the **Applications** pane may be provided with your WebLogic software. You cannot change the relative paths for these applications. When you select these applications in the **Applications** pane, the **Imported Application Path** field is replaced by an **Internal Application Path**. Because these files are installed on your system during your product installation, they are not copied into the template at template creation time. When you create a domain using this template, this path will point to the application files contained in your product installation directory.

3. Clear the check box for any application that you do not want to include in the template.
4. Click **Next** to proceed to the next configuration window.

Add Files

By default, the Domain Template Builder includes files from the domain or template you specified as the source for the template you are creating. For example:

- If you selected an existing template as the source for your new template, all files from the source template are automatically included. If the existing template defines a separate applications directory, the applications in the template are listed under the **Applications Root Directory** in the **Current Template View** pane.
 - If you selected a domain as the source for your new template, the following files and directories are included by default:
 - All files in the root directory with the following extensions: `.cmd`, `.sh`, `.xml`, `.properties`, and `.ini`.
 - Any files with the `.pem` extension defined in the SSL configuration for your domain
 - `bin` directory
 - `lib` directory
 - All files in the `security` directory that are not created automatically during domain creation. For example in WebLogic, `XACMLRoleMapperInit.ldift` is not created automatically, and therefore is included in the template by default when creating a template. The `XACMLAuthenticatorInit.ldift` file is included by default while creating a domain in AquaLogic Service Bus.
 - All files and subdirectories in the `config` directory that are *not* included by the Template Builder automatically during template creation. For example, `config.xml` and any JDBC and JMS resources defined in `config.xml` are not displayed in the **Current Template View** pane by default because the Template Builder includes them in the template, automatically, during template creation.
- Note:** The `servers` directory is *not* included in the template by default. If you have configured additional security data such as users, groups, or roles, through the WebLogic Server Administration Console or other online tools, it has been stored in the LDAP server and will not be included in the template. You will need to export the data first and then import it into the target domain.

You may also need to include other files from your domain or file system that are required by the applications.

The **Add Files** window prompts you to review, add, or remove files in the template. To add files into the template you are creating:

1. To view the current list of files in your template, expand the Domain Root Directory and Applications Root Directory in the **Current Template View** pane.
2. To add or remove files, perform the following steps:
 - To add a file, navigate to the file within the **File System View** pane and select **Add File**. You can limit the files displayed in this pane by using the filters available in the **Show File Types** drop-down list. For example, to display only files with the `.cmd` extension, select `*.cmd` from the drop-down list.
 - To remove a file, select the file that you want to delete from the **Current Template View** pane, and select **Remove File**.

Notes:

You cannot remove files shown in red or their parent directories as they comprise the applications defined in the `config.xml` file in the template source. These files will be included by default in the template being created. If you do not want these files included in your template, you must remove the application with which they are associated. To do so, click **Previous** to return to the **Add or Omit Applications** window and clear the appropriate check box for the application.

If you attempt to add a file that is created automatically by the Configuration Wizard at domain creation time, an error message is displayed.

3. Repeat steps 1 and 2 for each file that you want to add or remove.
4. Click **Next** to proceed to the next configuration window.

Add SQL Scripts

SQL scripts that are created by the user can be added to your template. Adding SQL scripts to your template is optional. You can add SQL scripts that you have created to the template, so that they are available when you create a domain using the template.

Note: SQL scripts that are provided by the product do not need to be added to the template. An example of SQL scripts provided by WebLogic Portal, are located in `weblogic_home/portal/db`. Since you can access these scripts as part of the product installation, you do not need to include the scripts inside the template.

The **Add SQL Scripts** window prompts you to add SQL scripts for each database that you expect to be used with the domains created from this template. You can also specify the order in which the scripts are executed. When you create a domain using this template, the databases and associated SQL scripts that you include are displayed in the **Run Database Scripts** window of the Configuration Wizard.

Note: If you are using a template as your template source, any SQL files that are included in the template source are displayed in the **Selected Database Scripts** pane, organized by database type. If desired, you can remove specified SQL scripts. For instructions, see [“To remove SQL scripts from your template:” on page 3-8](#).

To add SQL scripts to your template:

1. In the **Database Type and Version** pane, select a database from the **Type** drop-down list.
2. Select the database version from the **Version** drop-down list or enter a version number directly in the field.
3. Click **Add SQL File**.

The Add SQL File(s) dialog box is displayed.

4. In the **Add SQL File(s)** dialog box, navigate to the directory that contains the SQL scripts for the selected database.
5. Select the SQL files to be added.
6. Click **Add SQL File(s)**.

The SQL files that you added are displayed in the **Selected SQL Files** list and the **Selected Database Scripts** pane of the **Add SQL Scripts** window. The **Selected Database Scripts** pane displays a tree-view of all the databases and associated SQL scripts included in the template.

7. To specify the order in which SQL files are executed, select a file from the **Selected SQL Files** list and use the up and down arrows to change the order of the files in the list.

The specified sequence is reflected in the **Selected Database Scripts** pane. When you create a domain based on this template, this information is displayed in the **Run Database Scripts** window of the Configuration Wizard.

8. Repeat steps 1 through 7 for each database for which you want to include SQL files.
9. Click **Next** to proceed to the next configuration window.

To remove SQL scripts from your template:

1. From the **Type** drop-down list in the **Database Type and Version** pane, select the database from which you want to remove SQL scripts.
2. Select the database version from the **Version** drop-down list or enter a version number directly in the field.

The SQL scripts for the selected database displayed in the **Selected Database Scripts** pane are listed in the **Selected SQL Files** pane.

3. In the **Selected SQL Files** pane, select the SQL file to be removed and click **Remove SQL File**.
4. Repeat steps 1 through 3 for each database for which you want to remove SQL files.
5. Click **Next** to proceed to the next configuration window.

Note: If you are creating an extension template, the next configuration window displayed is **Security Configuration Options**. For more information, see [“Configuring Security Options in Your Extension Template” on page 4-6](#).

Configure the Administration Server

In every domain, one server must be designated the Administration server: the central point from which the whole domain is managed. The **Configure the Administration Server** window prompts you to define configuration information for the Administration Server. This information is used to access the Administration Server in the domain.

Servers can be reached using the following URL:

protocol://listen-address:listen-port

In this URL, *protocol* can be any of the following:

- t3
- t3s
- http
- https

listen-address and *listen-port* are defined in the **Configure the Administration Server** window.

To configure the Administration Server:

Review the values displayed in the window and modify them as necessary, using the guidelines provided in the following table. When you finish updating your settings, click **Next**.

Table 3-3 Configure the Administration Server - Fields

Choose this option . . .	When you want to . . .
Note: Fields marked with * are required.	
Name*	<p>Enter a valid server name: a string of characters that can include spaces.</p> <p>Each server instance in your product environment must have a unique name, regardless of the domain or cluster in which it resides, and regardless of whether it is an Administration Server or a Managed Server. In addition, the name of the Administration Server must be unique among all component names within the domain.</p> <p>This value is specified for identification purposes only; it is not used as part of the URL for applications that are deployed on the server. The server name is displayed in the WebLogic Server Administration Console. In addition, if you use WebLogic Server command-line utilities or APIs, you must specify this name to identify the server.</p>
Listen Address	<p>From the drop-down list, select a value for the listen address. Valid values for the listen address are as follows:</p> <p>All Local Addresses (default)</p> <p>IP address of the computer that hosts the server</p> <p>DNS name that resolves to the host</p> <p>localhost (valid only for requests that are issued from the computer on which the server is running)</p> <p>If you identify the listen address for a server instance as localhost, non-local processes cannot connect to the server instance. Only processes on the machine that hosts the server instance can connect to the server instance. If the server instance must be accessible as localhost (for example, if you create administrative scripts that connect to localhost), and it must also be accessible by remote processes, select All Local Addresses. The server instance determines the address of the machine and listens on it.</p> <p>To learn more about Listen Addresses, see “Specifying Listen Addresses” on page 3-12</p>

Table 3-3 Configure the Administration Server - Fields (Continued)

Choose this option . . .	When you want to . . .
Listen Port	<p>Enter a valid value for the listen port to be used for regular, non-secure requests (via protocols such as HTTP and T3). The default value is 7001. If you leave this field blank, the default value is used.</p> <p>Any number between 1 and 65535 is a valid value.</p> <p>For more information, see “Specifying Listen Ports” on page 3-13</p>
SSL Port	<p>Enter a valid value to be used for secure requests (via protocols such as HTTPS and T3S). The default value is 7002. If you leave this field blank, the default value is used.</p> <p>Any number between 1 and 65535 is a valid value.</p> <p>Note: By default, a server instance uses demonstration certificates to authenticate requests from a secure port. In a production environment, you must configure SSL to use certificates from a certificate authority. For more information, see “Configuring SSL” in <i>Securing WebLogic Server</i> at http://e-docs.bea.com/wls/docs92/secmanage/ssl.html.</p> <p>For more information, see “Specifying Listen Ports” on page 3-13.</p>
SSL enabled	<p>Select the check box in this field to enable the SSL listen port. By default, the SSL is disabled for all new servers.</p>

Specifying Listen Addresses

If you want to limit the valid listen address for a server, use the guidelines for specifying listen addresses provided in the following table. [“Specifying Listen Addresses” on page 3-12](#)

Table 3-4 Specifying Listen Address

If the listen address is set to . . .	Then the following is true . . .
All Local Addresses or DNS name	On multi-homed Windows machines, a server instance binds to all available IP addresses.
IP Address or DNS name	<div><ul style="list-style-type: none">• To connect to the server instance, processes can specify either the IP address or the corresponding DNS name.• Processes that specify localhost fail to connect.• You must update existing processes that use localhost to connect to the server instance.• For connections that specify the IP address for the listen address and a secured port for the listen port, host name verification must be disabled.<div>Note: To resolve a DNS name to an IP address, WebLogic Server must be able to contact an appropriate DNS server or obtain the IP address mapping locally. Therefore, if you specify a DNS name for the listen address, you must either leave a port open long enough for the WebLogic Server instance to connect to a DNS server and cache its mapping or you must specify the IP address mapping in a local file. If you specify an IP address for the listen address and then a client request specifies a DNS name, WebLogic Server will attempt to resolve the DNS name, but if it cannot access DNS name mapping, the request will fail.</div></div>
localhost	<div>Processes must specify localhost to connect to the server instance.</div> <div>Only processes that reside on the machine that hosts the server instance (local processes) will be able to connect to the server instance.</div>

Specifying Listen Ports

Refer to the following guidelines when specifying listen ports and secure listen ports:

- Although you can specify any valid port number, if you specify port 80, you can omit the port number from the HTTP request used to access resources over HTTP. For example, if you define port 80 as the listen port, you can use the URL
`http://hostname/myfile.html` instead of
`http://hostname:portnumber/myfile.html`.
- On some operating systems, port 80 can be accessed only by processes run under a privileged user or group ID. In this case, you can assign the server instance to a UNIX machine on which a Post-Bind UID or GID is defined.
- In a development environment, you might want to run multiple instances of WebLogic Server on a single computer. If you do so, each instance must use a unique listen port/listen address combination. On a multi-homed computer, you can use the same listen port but you must configure each server to use a unique IP address as its listen address. If your computer does not support multiple IP addresses, you must use a different listen port for each active instance.

Configure an Administrator Username and Password

When you create a domain template, the administrator username and password from the original domain or template are included in your new template. You can modify this username and password if desired. In addition, you can provide extra security for application resources using the following security features:

- Users and groups—Classification of individuals and collections of individuals who may be granted a security role. Typically, a group is a collection of users who share a role or function within a company, such as working in the same department.
- Global security roles—Dynamically computed privileges that are used to restrict access to WebLogic resources. These privileges are granted to or withheld from users according to which roles they are assigned.

To modify the administrator username and password:

1. Specify a valid username in the **Username** field by clicking within the field and modifying the string displayed there. This name is used to boot the Administration Server and connect to it.

Do not use commas or any characters in the following comma-separated list: \t, < >, #, |, &, ?, (), { }. User names are case sensitive.

2. Specify a valid password in the **User password** field by clicking within the field and modifying the string displayed there. A valid password must contain *at least* 8 case-sensitive characters. The password value is encrypted.
Note: Do not use the password=weblogic in a production environment.
3. Reenter the password in the **Confirm user password** field.
4. Optionally, enter a login description for this username.
5. If you want to configure additional users, groups, and global roles, select **Yes** at the bottom of the window.
6. Click **Next** to proceed to the next configuration window.

Configure Users, Groups, and Global Roles

The **Configure Users, Groups and Global Roles** window is displayed in the Domain Template Builder in the following circumstances:

- You are creating a domain template and you selected the option to configure users, groups, and global roles in the **Configuring an Administrative Username and Password** window.
- You are creating an extension template and you selected **Yes** in the **Security Configurations Option** window.

Users, groups, and global roles are defined as follows:

- A user is an entity that can be authenticated. It can be a person or a software entity, such as a Java client. Each user is given a unique identity within a security realm.
- A group is a collection of users who usually have something in common, such as working in the same department in a company.
- A security role is a privilege granted to users or groups based on specific conditions. Like groups, security roles allow you to restrict access to WebLogic resources for multiple users simultaneously. A security role that applies to all WebLogic resources deployed within a security realm (and, thus, within the entire WebLogic Server domain) is called a *global role*.

The **Configure Users, Groups and Global Roles** window prompts you to define users, groups, and roles for authentication purposes. You must define at least one user.

Depending on the template or domain selected, one or more users, groups, and/or roles may be defined already. In addition, WebLogic Server defines a default set of groups and roles. For a list of the default groups and roles defined in WebLogic Server, see “Users, Groups, and Security Roles” in *Securing WebLogic Resources* at the following URL:

<http://e-docs.bea.com/wls/docs92/secwlrsecroles.html>

To configure users, groups, and global roles:

1. Select the **User** tab and review the current list of user configurations. Add or modify entries as required by your domain, using the guidelines provided in the following table. To delete a user, click in one of its fields and click **Delete**.
2. Select the **Group** tab and review the current list of group configurations. Add or modify the entries required by your domain, using the guidelines provided in the following table. To delete a group, click in one of its fields and click **Delete**. When you finish updating your settings, click **Next**.
3. Select the **Role** tab and review the current list of role configurations. The predefined list of WebLogic Server global security roles is shown. Add or modify the entries required by your domain using the guidelines provided in the following table. To delete a role, click in one of its fields and click **Delete**. When you finish updating your settings, click **Next**.

Warning: Do not make the default global security roles for Administrative and Server resources more restrictive. If you eliminate any existing security roles, you risk degrading WebLogic Server operation. You can, however, make the default security roles more inclusive (for example, by adding new security roles).

Table 3-5 Configure Users, Groups and Global Roles

If the listen address is set to . . .	Then the following is true . . .
--	---

Note: Fields marked with an asterisk are required.

Table 3-5 Configure Users, Groups and Global Roles

If the listen address is set to . . .	Then the following is true . . .
Name*	<p>Enter a valid name for the role. Do not use blank spaces, commas, hyphens, or any characters in the following comma-separated list: \t, < >, #, , &, ~, ?, (), { }.</p> <p>Security role names are case sensitive.</p> <p>The default value in this field is <code>new_Role_n</code>, where <i>n</i> specifies a numeric value that is used to differentiate among all default role names; the value of <i>n</i> for the first role is 1. The value is incremented by 1 for each role that is added.</p>
Description	Enter a description of the role to be used for informational purposes only

Related Topics

“Users, Groups, and Security Roles” in *Securing WebLogic Resources* at the following URL:

<http://e-docs.bea.com/wls/docs92/secwlrres/secroles.html>

Assign Users to Groups

The **Assign Users to Groups** window prompts you to assign users to groups. BEA recommends adding users to groups because by managing groups you can manage multiple users simultaneously.

To assign users to groups:

1. In the **Group** pane, select the group to which you want to assign users.

The current assignments for the selected group are displayed in the left pane.

2. In the left pane, do one of the following:

- To assign a user to the selected group, select the check box for the user.
- To remove a user from the selected group, clear the check box for the user.

To select all users in the list, choose **Select All**. To unselect all users in the list, choose **Unselect All**.

The list of groups associated with each user is updated to reflect your changes.

3. Repeat steps 1 and 2 for each user that you want to assign to a group. You can assign a user to more than one group.

4. Click **Next** to proceed to the next configuration window.

Assign Groups to Groups

The **Assign Groups to Groups** window prompts you to designate one group as a subgroup of another group, as a means of refining the management of security for your domain.

Note: You should not assign groups recursively. For example, do not assign `groupA` as a subgroup of `groupB` and `groupB` as a subgroup of `groupA`. WebLogic Server does not support this type of recursion.

To assign groups to other groups:

1. In the **Group** pane, select the group to which you want to assign a subgroup.

The current assignments for the selected group are displayed in the left pane.

2. In the left pane, do one of the following:

- To assign a group, as a subgroup, to the selected group, select the check box for the group.
- To remove a subgroup from the selected group, clear the check box for the group.

To select all groups in the list, choose **Select All**. To unselect all groups in the list, choose **Unselect All**.

The list of subgroups associated with each group is updated to reflect your changes.

3. Repeat steps 1 and 2 for each group that you want to designate a subgroup. You can make a group a subgroup of more than one group.
4. Click **Next** to proceed to the next configuration window.

Assign Users and Groups to Global Roles

The **Assign Users and Groups to Global Roles** window prompts you to assign users and groups to the global security roles defined by WebLogic Server. For a list of the default roles and the privileges that users or groups in these security roles are granted, see “Default Global Roles” in “Users, Groups, and Security Roles” in *Securing WebLogic Server* at http://e-docs.bea.com/wls/docs92/secwlrsec/secroles.html#default_roles.

Note: You must assign one or more users or groups (containing one or more users) to the Administrator role to ensure that there is at least one user who can boot WebLogic Server.

To assign users and groups to global security roles:

1. In the **Role** pane, select the global role to which you want to assign users and groups.

The current assignments for the selected role are displayed in the left pane.

2. In the left pane, do one of the following:
 - To assign a user or group to the selected role, select the associated check box.
 - To remove a user or group from the selected role, clear the associated check box.

To select all users and groups in the list, choose **Select All**. To unselect all users and groups in the list, choose **Unselect All**.

The **Role** list corresponding to each user and group is updated to reflect the global roles to which the user and group are assigned.

3. Repeat steps 1 and 2 for each user or group that you want to assign to a global role. You can assign a user or group to more than one global role.
4. Click **Next** to proceed to the next configuration window.

Note: If you are creating an extension template, the next configuration window displayed is **Prepare Scripts and Files with Replacement Variables**. For more information, see [“Prepare Scripts and Files with Replacement Variables” on page 3-19](#).

Related Topics

“Users, Groups, and Security Roles” in *Securing WebLogic Resources* at <http://e-docs.bea.com/wls/docs92/secwlrres/secroles.html>

Specify Start Menu Entries

The **Specify Start Menu Entries** window prompts you to create items to be added to the Windows Start Menu. How you proceed depends on what you have chosen as the source for your custom template.

- If you selected a *domain directory* as the source for your custom template, Start Menu entries are not defined. To create Start Menu entries for your domain, enter the required information and click **Next**. The required information is defined in the following table.
- If you selected a *template* as the source for your custom template, the Start Menu entries from the selected template are displayed here. Review the information, and modify it, if necessary, to meet the requirements of your domain, as described in the following table.

To specify Start Menu entries:

Add, modify, or delete entries as required by your domain, using the guidelines provided in the following table. To delete an entry, click the tab for the Start Menu entry and click **Delete**. When you finish updating your settings, click **Next**.

Prepare Scripts and Files with Replacement Variables

Table 3-6 Specify Start Menu Entries Window Fields

In this field. . .	Do the following. . .
Shortcut link name	Enter a valid name for the shortcut to be displayed in the Start menu. The name must be a string of characters and it may include the space character.
Program	<p>Specify the program to be run when the shortcut is selected. A list of the programs defined by the template source is shown in the drop-down list. To use a predefined program, select it from the drop-down list.</p> <p>To specify an alternate program, enter the relative path to it in this field. To ensure that the template is portable, you can use variables such as <code>\$USER_INSTALL_DIR\$</code> and <code>\$DOMAIN_DIRECTORY\$</code> to specify your program path. For example: <code>\$USER_INSTALL_DIR\$\server\bin\installNodeMgrSvc.cmd</code>.</p> <p>Note: Do not specify any executable or script that does not reside in your BEA Home directory.</p>
Argument	Enter any parameter that you want to pass to the shortcut program.
Working Directory	<p>Enter the pathname of the directory from which the shortcut will be executed. If you have selected a program from the drop-down list in the Program field, this field is not available.</p> <p>Note: By default, the working directory is the directory that contains the executable or script. In most cases, you do not need this field.</p>
Shortcut	Enter a description for the shortcut.

When you are creating a template, you want the scripts and files that you are packaging with your template to be free of local domain environment settings and ready for use by the Configuration Wizard. The Domain Template Builder automatically updates any standard scripts included in a template, such as start scripts, by replacing hard-coded values for various domain environment settings with replacement variables. The Configuration Wizard can later replace these variables with new hard-coded values during the configuration of a new domain.

The **Prepare Scripts and Files with Replacement Variables** window allows you to replace hard-coded strings with replacement variables in files that have not been updated by the Domain Template Builder.

Note: The check boxes of files that were automatically updated by the Domain Template Builder contain a check.

To insert replacement variables into your files:

1. Open the file in one of the following ways:
 - Double-click the appropriate filename in the **Select File** list
 - Select the appropriate filename in the list and click **Edit**

The **Instructions** pane is replaced by an **Edit File** pane, in which the contents of the file are displayed. An editing toolbar is provided at the top of the window.

2. To insert a replacement variable:
 - a. Select the string to be replaced.
 - b. Click the right mouse button; a list of replacement variables is displayed.
 - c. Select the desired variable.

The replacement variable replaces the selected string. The Configuration Wizard later substitutes literal strings for the replacement variables to set up a specific WebLogic domain. For definitions of the available replacement variables, see [“Replacement Variable Definitions” on page 3-21](#).

3. Repeat steps 1 and 2 for each string for which you want to substitute a variable.
4. Review your changes and click **Save**, to preserve your changes, or **Revert**, to replace the current version of the file with the last version saved. If you have edited the file since the last time you saved it, you are prompted to confirm the revert operation.

Note: You can also click **Reset** within the Select File area to revert to the saved version of the file.

5. If you saved the edited file, select the check box next to the filename in the **Select File** pane.
6. Repeat steps 1 through 5 for each file in which you want to insert replacement variables.
7. Click **Next** to proceed to the next configuration window.

Replacement Variable Definitions

The following table defines the replacement variables most commonly used in files.

Table 3-7 List of Replacement Variables

Variable	Definition
BEAHOME	BEA Home directory in which the BEA products associated with the domain are installed. On a Windows system, the default pathname for this directory is C:\bea.
WL_HOME	Root directory of your WebLogic Server installation. By default, this directory is defined as BEA_HOME \weblogic92.
JAVA_HOME	Location of the JDK used to start WebLogic Server.
DOMAIN_NAME	Name of the domain.
DOMAIN_USER	Administration username required to start the server.
SERVER_NAME	Name of the server to be started.
SAMPLES_HOME	Directory containing the samples provided with your product installation. By default, the pathname for this directory is BEA_HOME \weblogic92\samples.
USERDOMAIN_HOME	Directory containing the user domains created with the Configuration Wizard. By default, the pathname for this directory is BEA_HOME \user_projects\domains.
STARTMODE	Mode in which the server is started: development or production.
PRODUCTION_MODE	Mode in which the server is started. If this variable is set to true, the server starts in production mode; if set to false, the server starts in development mode.
ADMIN_SERVER_URL	URL specifying the listen address (host name or IP address) and port number of the Administration Server for the domain.
JAVA_VM	Mode in which you want the JVM to run, such as -jrockit, -server, -hotspot.
JAVA_VENDOR	Vendor of the JVM, for example, BEA, HP, IBM, and Sun.

Table 3-7 List of Replacement Variables

Variable	Definition
DOCSWEBROOT	The URL specifying the location of the product documentation on the BEA Web site.
SERVER_HOST	Name or address of the machine hosting the server.
SERVER_PORT	Port to be used to listen for regular, non-secure requests (via protocols such as HTTP and T3). The default value is 7001.
DOMAIN_HOME	Directory in which the domain resides.
APPLICATIONS_DIRECTORY	Directory containing the applications required by the domain. By default, the pathname for this directory is BEA_HOME \user_projects\applications\ domain .
LISTEN_PORT	Port to be used to listen for regular, non-secure requests (via protocols such as HTTP and T3). The default value is 7001.
SSL_PORT	Port to be used to listen for secure requests (via protocols such as HTTPS and T3S). The default value is 7002.

Review the Domain Template

The **Review WebLogic Domain Template** window allows you to review a detailed specification for your domain template before you start creating it.

To review the domain template settings:

1. Select an item in the **Template Summary** pane on the left and review the associated details in the **Details** pane on the right. If you need to modify any information that you defined in previous windows, select **Previous** to return to the desired configuration window.

Note: You can limit the type of information displayed in the **Template Summary** window by selecting a filter from the **View** drop-down list.

2. Click **Next** to proceed to the next configuration window.

Create Your Domain Template

The **Create a Template** window prompts you to specify the name and directory for the domain template, and launch the process that creates it.

To create your domain template:

1. Specify a name for the template JAR file in the **Template jar name** field by clicking within the field and modifying the string displayed there.
2. Make sure that the **Template location** field contains the name of the directory in which you want the template to reside. If you need to change the value in this field:
 - a. Click **Browse**.
 - b. In the dialog box, navigate to the appropriate directory or manually enter the pathname for it in the **Location** field and click **OK**.

The template directory can be located anywhere on your system. By default, it resides in `BEA_HOME\user_templates`, where `BEA_HOME` is the directory that contains the product installation (by default, this directory is `c:\bea` on Windows).

3. After you verify the information displayed in the window, click **Create**.

The **Creating Template** window is opened to display status messages during the template creation process. The Domain Template Builder generates a JAR file that contains all the components required to generate a new domain, including the template settings that you provided.

4. Click **Done** in the **Creating Template** window.

Note: The files included in a template vary, depending on the domain or template on which the template is based. For example, if you specify any Start Menu entries using the **Specify Start Menu Entries** window, a `startmenu.xml` file that contains the specified entries is included in your template. When you create your domain using this template, Start Menu entries are created using the values specified in this file. For more information, see “Files Typically Included in a Template” in *Domain Template Reference* at the following URL:

<http://e-docs.bea.com/common/docs92/tempref/tempref.html>

Creating Domain Templates Using the Domain Template Builder

Creating Extension Templates Using the Domain Template Builder

The process used to create an [extension template](#) is virtually the same as the process used to create a domain template except that you are not prompted to configure the Administration Server, assign an Administrator username and password, or specify Start menu entries, because these domain settings are already defined in the domain to be extended.

The following topics describe the steps you use to create an extension template:

- [Create a New Extension Template](#)
- [Select a Template Domain Source for Your Extension Template](#)
- [Describe Your Extension Template](#)
- [Add or Omit Applications in Your Extension Template](#)
- [Add Files to Your Extension Template](#)
- [Add SQL Scripts to Your Extension Template](#)
- [Configuring Security Options in Your Extension Template](#)
- [Prepare Scripts and Files When Creating Extension Templates](#)
- [Review the Extension Template Settings](#)
- [Create Your Extension Template](#)

Create a New Extension Template

The **Create a New Template** window prompts you to choose the type of template you want to create: a domain template or an extension template. To create an extension template, choose **Create an Extension Template**.

Table 4-1 Create a New Extension Template Window - Fields

Choose this option...	When you want to...
Create a Domain Template	Create a template that defines the full set of resources within a domain, including infrastructure components, applications, services, security options, and general environment and operating system parameters. You can then use this template to create a new domain. To learn more about creating a domain template, see Chapter 4, “Creating Extension Templates Using the Domain Template Builder.”
Create an Extension Template	Create a template in which you define applications and services that can be used to extend an existing domain.

Select a Template Domain Source for Your Extension Template

The **Select a Template Domain Source** window prompts you to choose the application template or domain directory from which you want to create an extension template.

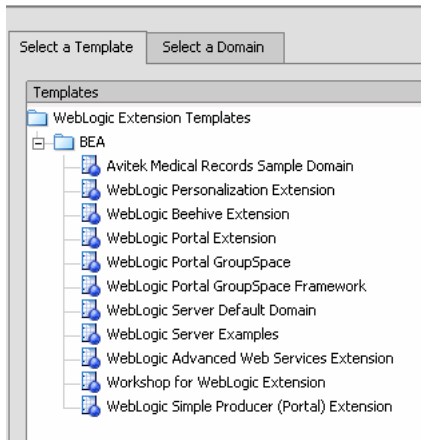
To select an extension template as your extension template source:

1. Select the **Select a Template** tab.

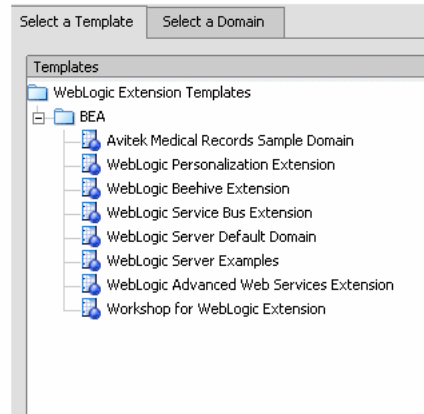
A list of the extension templates available in the directory specified in the **Locate Additional Templates** field is displayed. Templates are organized by category. For example, the predefined extension templates provided with the product installation are listed together under the heading *BEA*.

If you need to change directories:
 - a. Click **Browse** to invoke the **Select a Template Directory** dialog box.
 - b. In the dialog box, navigate to the appropriate directory or manually enter the pathname of the directory in the **Location** field and click **OK**.
2. Select an extension template from the Template list. Available templates include:

Figure 4-1 List of Templates in the Select a Template Domain Source dialog box



WebLogic - List of Templates




AquaLogic Service Bus- List of Templates

Information about the selected template will be displayed in the **Description** and **Author** fields.

3. Click **Next** to proceed to the next configuration window.

To select a domain as your extension template source:

1. Select the **Select a Domain** tab.
2. Navigate to the domain directory from which you want to create an extension template and select the desired domain.

Valid domain directories are indicated by a  icon.

3. Click **Next** to proceed to the next configuration window.

Describe Your Extension Template

The **Describe the Template** window prompts you to provide a description that will be displayed in the **Select a Template** area of the **Select a Template Domain Source** window.

To enter template description information, do one of the following:

- If you selected a *template* in the **Select a Template Domain Source** window, the information from the selected template is displayed here. Review the information and, if necessary, modify it to meet the needs of your extension template, as described in [“Describe the Template” on page 3-3](#). Then click **Next**.
- If you selected a *domain directory* in the **Select a Template Domain Source** window, enter the information required for your extension template, as described in [“Describe the Template” on page 3-3](#). Then click **Next**.

Add or Omit Applications in Your Extension Template

The **Add or Omit Applications** window prompts you to:

- Review the list of applications that are currently defined in your template source
- Review the pathnames of the current and imported applications
- If necessary, change the relative directory into which applications are imported
- If necessary, omit applications from the list of files to be imported

For more information, see [“Add or Omit Applications” on page 3-4](#).

Add Files to Your Extension Template

By default, the Domain Template Builder includes files from the domain or extension template you specified as the source for the extension template you are creating. For example:

- If you select an existing extension template as the source for your new extension template, all files from the source template are automatically included. If the existing template has a separately defined applications directory, the applications contained in the template are listed under the **Applications Root Directory** in the **Current Template View** pane.
 - If you select an existing domain as the source for your new extension template, the following files and directories are included by default:
 - All files in the root directory with the following extensions: `.cmd`, `.sh`, `.xml`, `.properties`, and `.ini`.
 - Any files with the `.pem` extension defined in the SSL configuration for your domain
 - `bin` directory
 - `lib` directory
 - All files in the `security` directory that are not created automatically during domain creation. For example in WebLogic, `XACMLRoleMapperInit.ldif` is not created automatically, and therefore is included in the template by default when creating a template. The `XACMLAuthenticatorInit.ldif` file is included by default while creating a domain in AquaLogic Service Bus.
 - All files and subdirectories in the `config` directory that are *not* included automatically by the Template Builder during template creation. For example, `config.xml` and any JDBC and JMS resources defined in `config.xml` are not displayed in the **Current Template View** pane by default because the Template Builder includes them in the template, automatically, during template creation.
- Note:** The `servers` directory is *not* included in the template by default. If you have configured additional security data such as users, groups, or roles, through the WebLogic Server Administration Console or other online tools, it has been stored in the LDAP server and will not be included in the template. You will need to export the data first and then import it into the target domain.

You may also want to include other files from your system or network, as required by your application. The **Add Files** window prompts you to review, add, or remove files in the template.

To add files to the template you are creating:

1. To view a list of files that currently reside in your template, expand the Domain Root Directory and Applications Root Directory in the **Current Template View** pane.
2. To add or remove files, perform the following steps:
 - In the **Current Template View**, select the destination directory to which you want to add a file.
 - To add a file, navigate to the file within the **File System View** area and select **Add File**. You can limit the files displayed in this view by selecting a filter from the **Show File Types** drop-down list. For example, to display only files with the .cmd extension, select *.cmd from the drop-down list.
 - To remove a file, select the file that you want to delete from the **Current Template View** pane, and select **Remove File**.
3. Repeat steps 1 and 2 for each file that you want to add or remove.
4. Click **Next** to proceed to the next configuration window.

Add SQL Scripts to Your Extension Template

The **Add SQL Scripts** window prompts you to add SQL scripts for each database that you expect to be used with the domains that you extend using this template. You can also specify the order in which the scripts should be executed. For more information, see [“Add SQL Scripts” on page 3-7](#).

Configuring Security Options in Your Extension Template

Optionally, you can configure security parameters for your application—specifically, for the application resources within the domain. You can provide security for an application resource using the following security features:

- Users and groups—Classification of individuals and collections of individuals who may be granted a security role. Typically, a group is a collection of users who share a role or function within a company, such as working in the same department.
- Global security roles—Dynamically computed privileges that are used to restrict access to WebLogic resources. These privileges are granted to or withheld from users according to which roles they are assigned.

For example, to leverage individual skills, many Web development teams divide system administration responsibilities into distinct roles. A team may then assign a different level of permission to each role. Each project might give only one or two team members

permission to deploy components, but allow all team members to view the WebLogic Server configuration.

WebLogic Server supports such role-based development by providing four default global roles that determine access privileges for system administration operations: Admin, Deployer, Operator, and Monitor.

Warning: Do not make the default global security roles for Administrative and Server resources more restrictive. If you eliminate any existing security roles, you risk degrading WebLogic Server operation. You can, however, make the default security roles more inclusive (for example, by adding new security roles).

The **Security Configuration Options** window prompts you to set security options for your application. If you choose **No**, the security settings in the extension template that is created match those defined in the template or domain on which it is based. If you choose **Yes**, you are prompted, in subsequent windows, to configure the security as described in the following table.

Table 4-2 Security Configuration Options Window - Parameters

Task	Description
Configure Users, Groups, and Global Roles	Define users, groups, and global roles for authentication purposes. For instructions, see “Configure Users, Groups, and Global Roles” on page 3-14 .
Assign Users to Groups	Assign users to groups. Groups allow you to manage a number of users at the same time. This is generally more efficient than managing each user individually. For instructions, see “Assign Users to Groups” on page 3-16 .
Assign Groups to Groups	Designate a group as a subgroup of another group, to add further granularity to security management. For instructions, see “Assign Groups to Groups” on page 3-17 .
Assign Users and Groups to Global Roles	Assign users and groups to predefined WebLogic Server global security roles. For instructions, see “Assign Users and Groups to Global Roles” on page 3-17 .

Prepare Scripts and Files When Creating Extension Templates

The Domain Template Builder automatically updates any standard scripts included in a template, such as start scripts, by replacing hard-coded values for various domain environment settings with variables. The Configuration Wizard can later replace these variables with new hard-coded values during the configuration of a new domain.

If you like, you can prepare additional files that are included with your template by manually inserting replacement variables. For more information, see [“Prepare Scripts and Files with Replacement Variables” on page 3-19](#).

Review the Extension Template Settings

The **Review WebLogic Domain Template** window allows you to review the details for your extension template before you initiate its creation.

To review the extension template settings:

1. Select an item in the **Domain Summary** pane on the left and review the associated details in the **Details** pane on the right. If you need to modify any information, select **Previous** to return to the desired configuration window.

Note: You can limit the type of information displayed in the **Domain Summary** window by selecting a filter from the **View** drop-down list

2. Click **Next** to proceed to the next configuration window.

Create Your Extension Template

The **Create an Extension Template** window prompts you to specify the name and directory for the extension template, and launch the process that creates it.

To create your extension template:

1. Specify a name for the template JAR file in the **Template Jar Name** field by clicking within the field and modifying the string displayed there.
2. Make sure that the **Template Location** field contains the name of the directory in which you want the extension template to reside. If you need to change the value in this field:
 - a. Click **Browse** to invoke the **Select the Template Creation Directory** dialog box.
 - b. In the dialog box, navigate to the appropriate directory or manually enter the pathname for it in the **Location** field and click **OK**.

The template directory can be located anywhere on your system. By default, it resides in *BEA_HOME*\user_templates, where *BEA_HOME* is the directory that contains the product installation (by default, this directory is c:\bea on Windows).

3. Click **Create**.

The **Creating Template** window is opened to display status messages during the template creation process. The Domain Template Builder generates a JAR file that contains only the applications and services specified in the extension template.

4. Click **Done** in the **Creating Template** window.

Creating Extension Templates Using the Domain Template Builder

How Do I . . . ?

This section provides information and examples for some common template creation tasks:

- [How Do I: Create a Custom Domain Template?](#)
- [How Do I: Create a Custom Extension Template?](#)

How Do I: Create a Custom Domain Template?

The following example explains how to create a custom domain template using the Avitek Medical Records Sample Domain. A domain template defines the full set of resources within a domain, including infrastructure components, applications, services, security options, and general environment and operating system parameters. Once you have created this sample domain, you can then use this template as input to the Configuration Wizard to create a new Medical Records sample domain.

Note: This example is based on the assumption that you installed the WebLogic Server samples during your product installation. For information about installing the samples, see the *Installation Guide* at the following URL:

<http://e-docs.bea.com/common/docs92/install/index.html>

1. Start the Domain Template Builder.

– On Windows:

Start→ Programs→ BEA Products→ Tools→ Domain Template Builder

- On UNIX:

Go to the `/common/bin` subdirectory of the product installation directory. For example:
`cd $BEAHOME/weblogic92/common/bin`

Enter `sh config_builder.sh`

2. In the **Create a New Template** window, select **Create a Domain Template** and click **Next**.
3. In the **Select a Template Domain Source** window, do the following:
 - a. Click the **Select a Domain** tab if it is not already selected.
 - b. Go to the following directory:
`WL_HOME\samples\domains`
In this pathname, *WL_HOME* represents the directory in which you installed your WebLogic software, typically `C:\bea\weblogic92`.
 - c. Select the **medrec** domain.
 - d. Click **Next**.
4. In the **Describe the Template** window, enter a descriptive name for your template. If the template you are creating will be used as the source for a new template, the information you provide in this window will be displayed in the **Select a Template** area of the **Select a Template Domain Source** window.

For this example, enter the following information and click **Next**.

Name: Avitek Medical Records Sample Domain

Author: BEA Systems, Inc

Category: BEA

Description: Create the Avitek Medical Records domain in a directory outside of the installed kit. The Avitek Medical Records is a WebLogic Server sample application suite that concisely demonstrates all aspects of the J2EE platform.

5. In the **Add or Omit Applications** window, you have the option to omit applications from the template and, if applicable, change the relative path of the directory into which applications are imported. By default, all the applications contained in the domain are selected, indicating that they will be added to the template.

Since the applications in this domain were included with your WebLogic software, you cannot change the relative path of the directory into which they are imported. Because these applications already reside on your system, they are not copied into the template.

For this example, leave all applications selected and click **Next**.

6. In the **Add Files** window, you can add or remove files from the template. By default, the following files and directories are included in your template:
 - All files in the root directory with the following extensions: `.cmd`, `.sh`, `.xml`, `.properties`, and `.ini`.
 - `bin` directory
 - `lib` directory
 - All files in the `security` directory that are not created automatically during domain creation. For example, `XACMLAuthenticatorInit.ldif` and `XACMLRoleMapperInit.ldif` are not included by default.
 - All files and subdirectories in the `config` directory that are not included automatically by the Template Builder during template creation. For example, `config.xml` and any JDBC and JMS resources defined in `config.xml` are not displayed in the **Current Template View** pane by default because the Template Builder includes them in the template, automatically, during template creation.

Note: Because the applications to be included in this template are provided with your product installation, they will not be copied into the template. Therefore, they are not listed under **Applications Root Directory** in the **Current Template View** pane.

If other files exist on your system that are needed by deployed applications, you can add them using this window.

For this example, we need to add a patient data file that is not included by default. To add the required file, do the following:

- a. In the **File System View** pane, select the following directory:


```
medrec\incoming
```
- b. In the **Current Template View** pane, select **Domain Root Directory**.
- c. Click **Add File**.

The directory is added under the **Domain Root Directory**.
- d. Click **Next** to proceed to the **Add SQL Scripts** window.

7. In the **Add SQL Scripts** window, you have the option to add SQL scripts for each database that you expect to use with the domains created from this template.

Because the Medical Records sample uses the default PointBase demo database included with your product installation, you do not need to add SQL scripts in this example.

However, you may want to use the Medical Records sample with other databases, such as Oracle or MySQL. To do so, you need to add the appropriate database scripts, as follows:

- a. In the **Database Type and Version** pane, select `Oracle` from the **Type** drop-down list, and `Any` from the **Version** drop-down list.

- b. Click **Add SQL File**.

- c. In the **Add SQL File(s)** dialog box, navigate to the following directory:

`WL_HOME\samples\server\medrec\setup\db`

In this pathname, *WL_HOME* represents the directory in which you installed WebLogic Server, typically `C:\bea\weblogic92`.

- d. From the **Type** drop-down list, select **All Files**.

- e. Shift-click to select the following two files:

`medrec_oracle.dll`

`medrec_oracle_data.sql`

- f. Click **Add SQL File(s)**.

The names of the files that you added are displayed in the **Selected SQL Files** list and the **Selected Database Scripts** pane.

To add database files for MySQL, complete the following procedure.

- a. In the **Database Type and Version** pane, select `MySQL` from the **Type** drop-down list, and `Any` from the **Version** drop-down list.

- b. Click **Add SQL File**.

- c. In the **Add SQL File(s)** dialog box, navigate to the following directory:

`WL_HOME\samples\server\medrec\setup\db`

- d. From the **Type** drop-down list, select **All Files**.

- e. Shift-click to select the following two files:

`medrec_mysql.dll`
`medrec_mysql_data.sql`

- f. Click **Add SQL File(s)**.

The names of the files that you added are displayed in the **Selected SQL Files** list and the **Selected Database Scripts** pane.

Click **Next**.

8. In the **Configure the Administration Server** window, define the configuration information for the Administration Server, including:

- Administration Server name
- Listen address
- Nonsecure and secure (optional) listen ports

Servers can be reached through the following URL:

protocol://listen-address:listen-port

For more information, see [“Configure the Administration Server” on page 3-9](#).

To configure the Administration Server in this example, leave the default values selected and Click **Next**.

9. In the **Configure Administrator Username and Password** window, you can specify a valid username and password to be used to boot the Administration Server and connect to it.

By default, the username/password combination for the Medical Records domain is `weblogic/weblogic`. You also have the option to configure additional users, groups, and global roles.

For this example, accept the defaults defined and click **Next**.

10. In the **Specify Start Menu Entries** window, you can create entries for the Windows start menu. For this example, you create entries to start and stop the Medical Records server.

To create the Start Menu entry to use to start the Medical Records server:

- a. Click **Add**.
- b. In the **Shortcut link name** field, enter `Start Medical Records Server`.
- c. From the **Program** field drop-down list, select `bin/startWebLogic.cmd`. It is not necessary to complete the remaining fields for this example.

To create the Start Menu entry to use to stop the Medical Records server:

- a. Click **Add**.
 - b. In the **Shortcut link name** field, enter `Stop Medical Records Server`.
 - c. From the **Program** field drop-down list, select `bin/stopWebLogic.cmd`. It is not necessary to complete the remaining fields for this example.
 - d. Click **Next**.
11. In the **Prepare Scripts and Files with Replacement Variables** window, you can replace hard-coded strings with replacement variables in files that have not been updated by the Domain Template Builder. The Domain Template Builder automatically updates any standard scripts included in a template, such as start scripts, by replacing hard-coded values for various domain environment settings with replacement variables. The Configuration Wizard can later replace these variables with new hard-coded values during the configuration of a new domain.

In this example, it is not necessary to edit any additional scripts or files. Click **Next** to proceed to the **Review WebLogic Domain Template** window.

12. In the **Review WebLogic Domain Template** window, review the details for your domain template before you create it. If you need to make changes to any configuration information that you specified previously, click **Previous** to return to the desired configuration window.

Click **Next** to proceed to the **Create a Template** window.

13. In the **Create a Template** window, you enter a name for the template and specify a location for the template directory.

For this example, enter `my_medrec_template` in the **Template jar name** field.

By default, the template is created in `BEA_HOME\user_templates`, where `BEA_HOME` is the directory that contains the product installation. You do not need to change the default in this example.

Click **Create**.

14. In the **Creating Template** window, status messages are displayed during the template creation process. Click **Done** to close the Domain Template Builder.

How Do I: Create a Custom Extension Template?

The following example shows how to create a custom extension template by modifying the Avitek Medical Records Sample Domain extension template provided with your product installation. An extension template defines applications and services that can be used to extend an existing domain. The process used to create an extension template is virtually the same as the process used to create a domain template except that you are not prompted to configure the Administration Server, assign an Administrator username and password, or specify Start menu entries because these domain settings are already defined in the domain to be extended.

In this example, you create a customized MedRec extension template in which you will add support for an additional Medical Records user. Once you have created the sample extension template, you can extend an existing WebLogic domain with the Medical Records sample domain functionality by specifying your new extension template as input to the Configuration Wizard.

To create a customized MedRec extension template, complete the following procedure:

1. Start the Domain Template Builder.

- On Windows:

Start→ Programs→ BEA Products→ Tools→ Domain Template Builder

- On UNIX:

Go to the `/common/bin` subdirectory of the product installation directory. For example:
`cd $BEAHOME/weblogic92/common/bin`

Enter `sh config_builder.sh`

2. In the **Create a New Template** window, select **Create an Extension Template** and click **Next**.
3. In the **Select a Template Domain Source** window, select an existing extension template or a domain from which to create a new extension template. In this example, you will create an extension template using the Avitek Medical Records extension template provided with your product installation. To do so:
 - a. Click the **Select a Template** tab if it is not already selected.
 A list of the predefined extension templates provided with your product installation is displayed in the **Templates** pane under the heading **BEA**.
 - b. Select the **Avitek Medical Records Sample Domain** extension template from the list.
 - c. Click **Next**.

4. In the **Describe the Template** window, enter a descriptive name for your extension template. Because you are using an existing template as the source for your custom template, the information from the Avitek Medical Records Sample Domain extension template is displayed here.

For this example, you do not need to modify the description.

Click **Next** to proceed to the **Add or Omit Applications** window.

5. In the **Add or Omit Applications** window, you have the option to omit applications from the extension template and change the relative path of the directory into which applications are imported. By default, all the applications included in the source are selected, indicating that they will be added to your custom template.

For this example, you do not need to add or omit any applications.

Click **Next**.

6. In the **Add Files** window, you can add or remove files from the extension template. Because you selected an existing template as the source for your custom template, all files from the source template are also included, automatically.

In this example, the Avitek Medical Records Sample Domain extension template includes a separately defined applications directory. Therefore the applications contained in the template are listed under **Applications Root Directory** in the **Current Template View** pane.

Click **Next** to proceed to the **Add SQL Scripts** window.

7. In the **Add SQL Scripts** window, you have the option to add SQL scripts for each database that you expect to use with the domains created from this template. Database scripts for PointBase, Oracle, and MySQL are included in the template by default.

For this example, you do not need to add any database scripts.

Click **Next**.

8. In the **Security Configurations Options** window, you have the option to customize any security settings that are already defined in either your domain or the extension template serving as the source for your extension template.

Because you are going to define an additional user in this example, select **Yes** and click **Next**.

9. In the **Configure Users, Groups, and Global Roles** window, you are prompted to define users, groups, and roles for authentication purposes. The users, groups, and roles defined in the template are listed. You can select the **Users**, **Groups**, and **Roles** tabs to view the current definitions.

In this example, you are going to define a new physician and assign the physician to an existing group. To do so:

- a. Make sure the **Users** tab is selected.
- b. Click **Add**.
- c. Enter the following values:

User Name: joe@md.com

User Password: weblogic

Description: MedRec Physician

By default, the new user is assigned to the `Administrators` group. In the next window you clear this assignment and assign `joe@md.com` to the `MedRec Physicians` group.

- d. Click **Next**.

10. In the **Assign Users to Groups** window, you are prompted to assign users to groups. BEA recommends adding users to groups because by managing groups you can manage multiple users simultaneously.

In this example, you need to remove `joe@md.com` from the `Administrators` group and assign him to the group `MedRecPhysicians`. To do so:

- a. In the **Group** pane, make sure the `Administrators` group is selected.

A list of current assignments for the `Administrators` group is displayed in the left pane.

- b. In the left pane, clear the check box for `joe@md.com`.

- c. In the **Group** pane, select the group `MedRecPhysicians`.

A list of current assignments for the `MedRec Physicians` group is displayed in the left pane.

- d. In the left pane, select the check box for `joe@md.com`. The list of groups associated with `joe@md.com` is updated to reflect the change.
 - e. Click **Next**.
11. In the **Assign Groups to Groups** window, you can designate one group as a member of another group. In this example you do not need to change the default assignments.
- Click **Next**.
12. In the **Assign Users and Groups to Global Roles** window, you can assign users and groups to the global security roles defined by WebLogic Server. In this example you do not need to change the default assignments.
- Click **Next**.
13. In the **Prepare Scripts and Files with Replacement Variables** window, you can replace hard-coded strings with replacement variables in files that have not been updated by the Domain Template Builder. The Domain Template Builder automatically updates any standard scripts included in a template, such as start scripts, by replacing hard-coded values for various domain environment settings with replacement variables. The Configuration Wizard can later replace these variables with new hard-coded values during the configuration of a new domain.
- In this example, it is not necessary to edit any additional scripts or files. Click **Next** to proceed to the **Review WebLogic Domain Template** window.
14. In the **Review WebLogic Domain Template** window, review the details for your extension template before you create it. If you need to modify any of the information that you defined previously, click **Previous** to return to the desired configuration window.
- Click **Next**.
15. In the **Create an Extension Template** window, enter a name for the extension template and specify a location for the template directory.
- For this example, enter `my_medrec_ext_template` in the **Template jar name** field.
- By default, the template is created in `BEA_HOME\user_templates`, where `BEA_HOME` is the directory that contains the product installation. You do not need to change the default in this example.
- Click **Create**.
16. In the **Creating Template** window, status messages are displayed during the template creation process. Click **Done**.

How Do I: Create a Custom Extension Template?