



BEA eLink

Business Process Option

Client Installation Guide

BEA eLink Business Process Option 1.2
Document Edition 1.2
February 2000

Copyright

Copyright © 2000 BEA Systems, Inc., 2315 North First Street, San Jose, California 95131 U.S.A. All Rights Reserved.

Portions © 2000 Microsoft Corporation.

Restricted Rights Legend

This software and documentation is subject to and made available only pursuant to the terms of the BEA Systems License Agreement and may be used or copied only in accordance with the terms of that agreement. It is against the law to copy the software except as specifically allowed in the agreement. This document may not, in whole or in part, be copied photocopied, reproduced, translated, or reduced to any electronic medium or machine readable form without prior consent, in writing, from BEA Systems, Inc.

Use, duplication or disclosure by the U.S. Government is subject to restrictions set forth in the BEA Systems License Agreement and in subparagraph (c)(1) of the Commercial Computer Software-Restricted Rights Clause at FAR 52.227-19; subparagraph (c)(1)(ii) of the Rights in Technical Data and Computer Software clause at DFARS 252.227-7013, subparagraph (d) of the Commercial Computer Software--Licensing clause at NASA FAR supplement 16-52.227-86; or their equivalent.

Information in this document is subject to change without notice and does not represent a commitment on the part of BEA Systems. THE SOFTWARE AND DOCUMENTATION ARE PROVIDED "AS IS" WITHOUT WARRANTY OF ANY KIND INCLUDING WITHOUT LIMITATION, ANY WARRANTY OF MERCHANTABILITY OR FITNESS FOR A PARTICULAR PURPOSE. FURTHER, BEA Systems DOES NOT WARRANT, GUARANTEE, OR MAKE ANY REPRESENTATIONS REGARDING THE USE, OR THE RESULTS OF THE USE, OF THE SOFTWARE OR WRITTEN MATERIAL IN TERMS OF CORRECTNESS, ACCURACY, RELIABILITY, OR OTHERWISE.

Trademarks or Service Marks

BEA, ObjectBroker, TOP END, and TUXEDO are registered trademarks of BEA Systems, Inc. BEA Builder, BEA Connect, BEA Manager, BEA MessageQ, Jolt, M3, and WebLogic Enterprise are trademarks of BEA Systems, Inc.

All other company names may be trademarks of the respective companies with which they are associated.

eLink Business Process Option Client Installation Guide

Document Edition	Part Number	Date	Software Version
Edition 1.2	870-001018-001	February 2000	Version 1.2

Contents

System Requirements for Client Environments1
Microsoft Windows NT Installation Instructions.....2

1 Installing the eLink Process Design Assistant

You install the eLink Process Design Assistant on client machines. The following sections describe how to install the Process Design Assistant software and online documentation:

- ◆ System Requirements for Client Environments
- ◆ Microsoft Windows NT Installation Instructions

System Requirements for Client Environments

Before you begin installing client components, check that your client environments meet the minimum network, space, and swap space requirements.

All eLink Business Process Option client machines must meet the following hardware and software requirements:

- ◆ Pentium-based PC running Windows NT 4.0 with Service Pack 5
- ◆ 32 MB of memory (64 MB recommended)

- ◆ CD ROM drive
- ◆ Network interface card
- ◆ Microsoft Exchange client for receiving mail triggers
- ◆ TCP/IP Networking installed and configured
- ◆ Netscape Communicator (or Navigator) 4.x or Microsoft Internet Explorer 4.x.

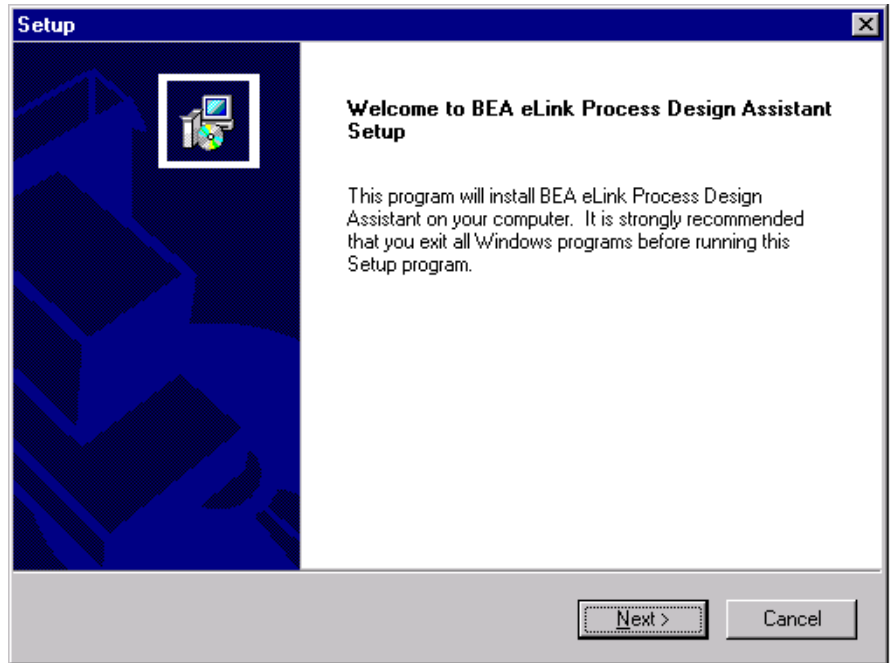
Microsoft Windows NT Installation Instructions

Insert the **Business Process Option** CD-ROM into the CD-ROM drive. (This release consists of two CD-ROMs; the Business Process Engine CD-ROM and the Business Process Option CD-ROM. For the client installation process, you must use the Business Process Option CD-ROM.)

After you insert the Business Process Option CD-ROM, locate and double-click the `setup.exe` folder on the CD to start the installation process. The setup provides a set of step-by-step installation windows to help you quickly install your product. These windows are self-explanatory. You can cancel the installation at any time.

1. When you see the **Welcome** window shown in Figure 1-1, click the **Next** button to proceed with the installation.

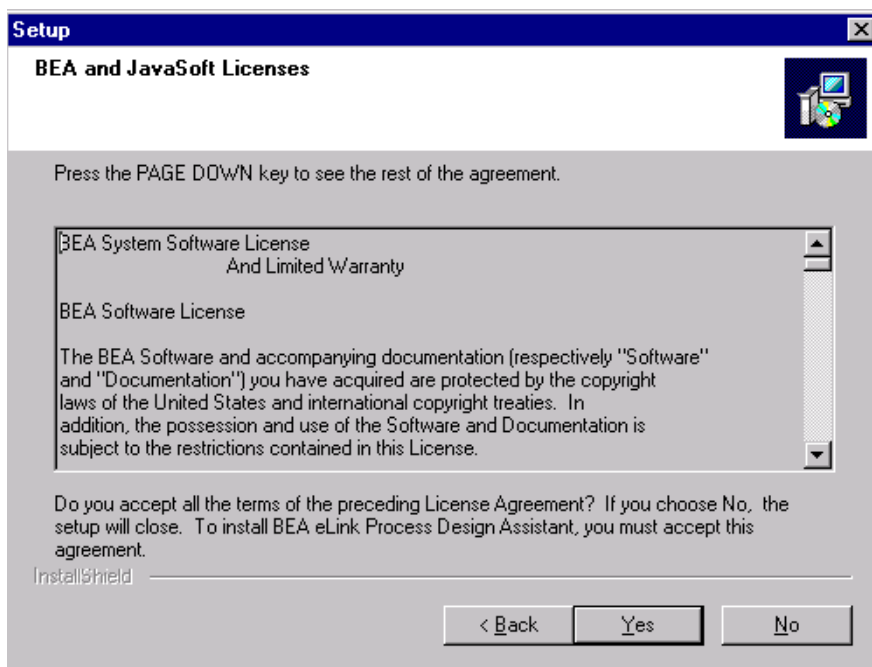
Figure 1-1 Welcome Window



2. The next window that appears is the **Software License Agreement** (Figure 1-2). Use the scroll bar or the **Page Down** key to read the Software License Agreement.

To continue with the installation, you must accept the terms of the license agreement. If you accept the terms, click the **Yes** button to continue with the installation. If you do not accept the terms, click the **No** button and the installation stops.

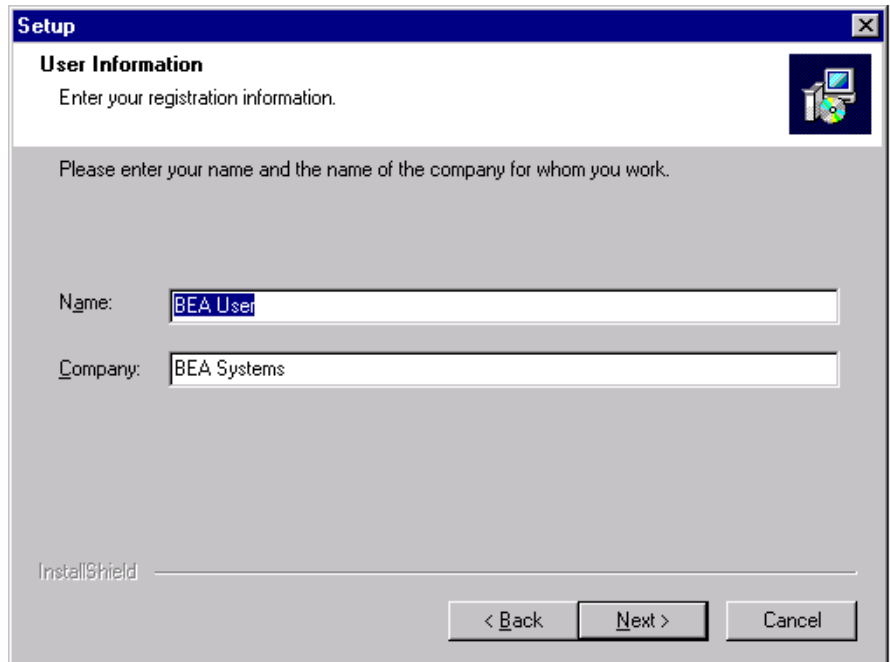
Figure 1-2 Software License Agreement Window



1 *Installing the eLink Process Design Assistant*

3. The **User Information** window appears. Enter your name and your company name in the space provided and click the **Next** button.

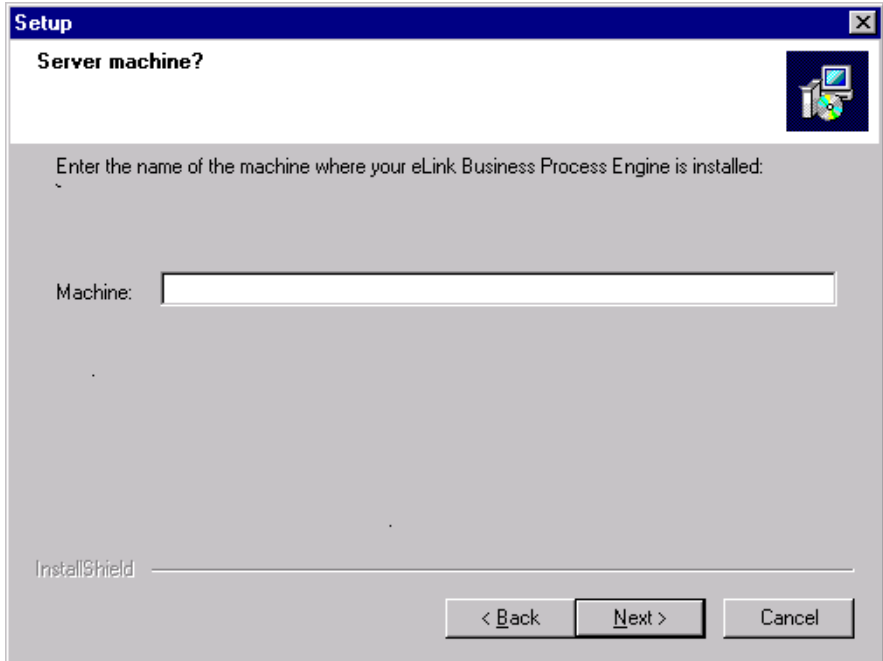
Figure 1-3 User Information Window



4. The Setup program next asks you to enter the name of the machine where your eLink Business Process Engine is installed, as shown in the **Server Machine Name** window, Figure 1-4.

Click on the **Next** button to continue.

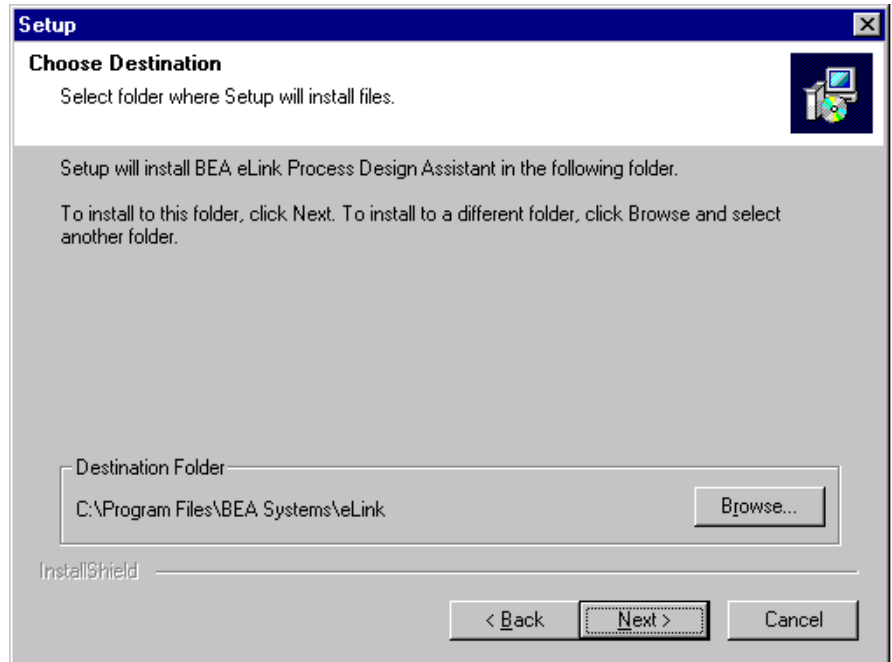
Figure 1-4 Server Machine Name Window



5. The **Choose Destination** window displays the directory where the eLink Process Design Assistant will be installed. To change the directory, click the **Browse** button and type the directory path.

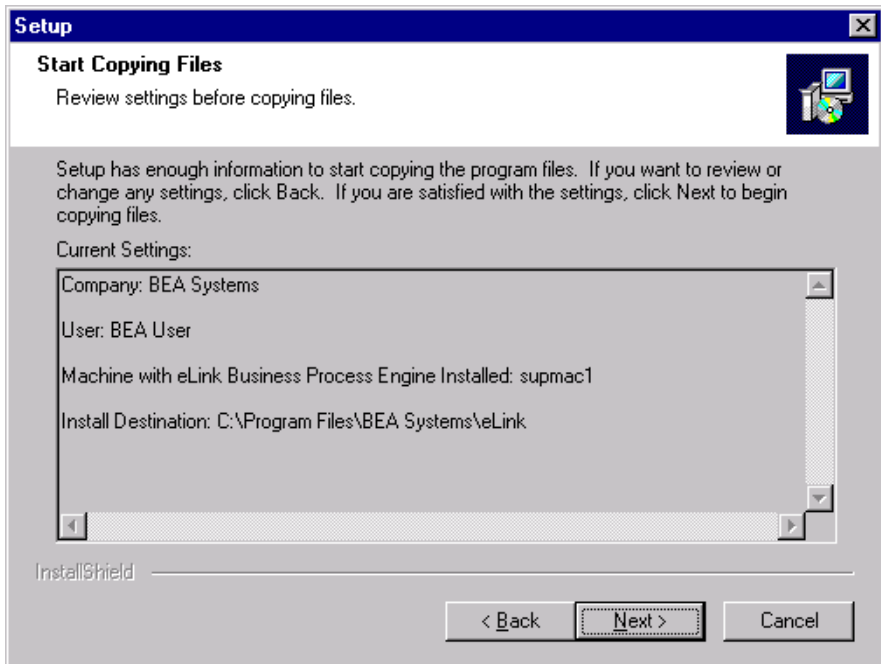
Click the **Next** button to continue with the installation.

Figure 1-5 The Choose Destination Window



- The **Start Copying Files** window appears and displays the settings you selected. To change the settings, click the **Back** button and make the necessary changes. To accept the settings, click the **Next** button to continue.

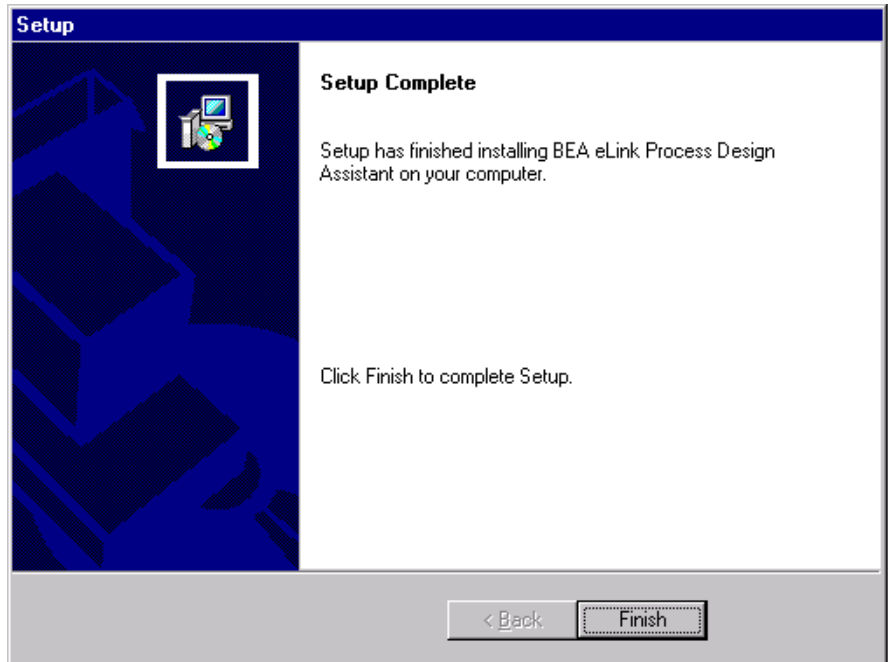
Figure 1-6 Start Copying Files Window



1 *Installing the eLink Process Design Assistant*

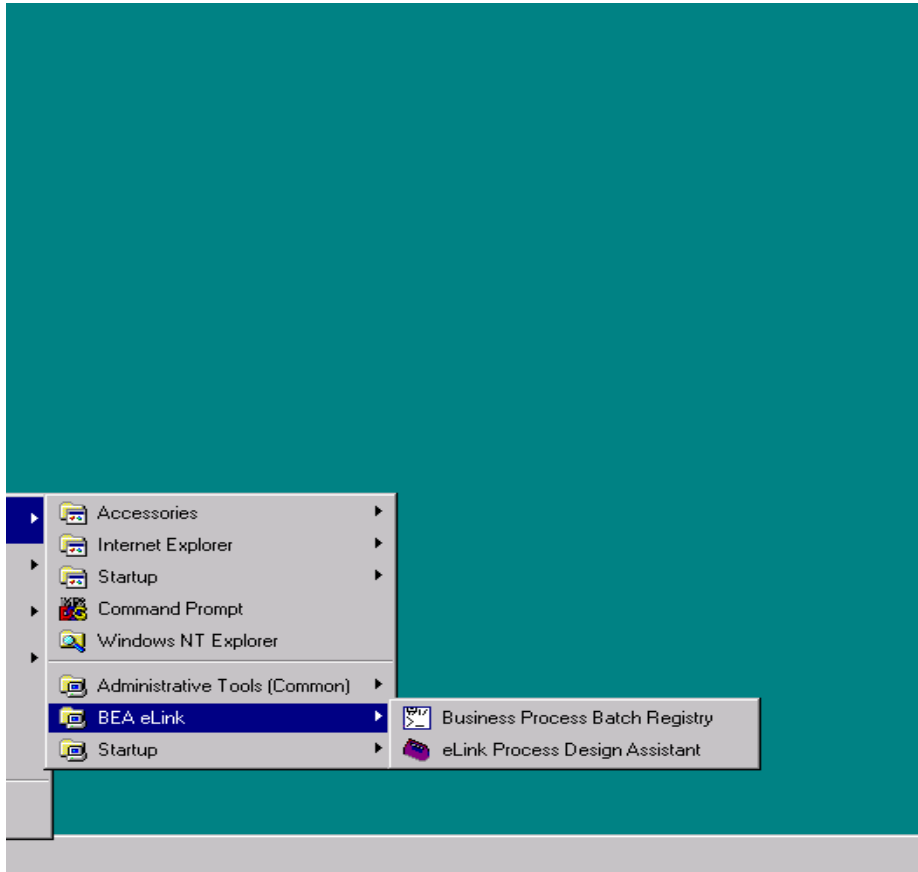
7. The installation program begins copying your files to the directory you specified. The Setup Status Progress Indicator displays your progress.
8. When all files are installed, the **Setup Complete** (Figure 1-7) window is displayed.
Click the **Finish** button. Your eLink Process Design Assistant is installed.

Figure 1-7 Setup Complete Window



9. After the installation is complete, to start the eLink Process Design Assistant from a client machine, select **Start** —>**Programs**—>**BEA eLink**—>**eLinkProcess Design Assistant** from your NT menu bar (see Figure 1-8). The Business Interface window appears. Refer to the *eLink Business Process Option User's Guide* for information on how to use the program.

Figure 1-8 BEA eLink Start Menu Option



1 *Installing the eLink Process Design Assistant*

Index

C

configuration 1

I

installation 1

NT 2

online documentation 1

Windows NT 2

L

license agreement 4

O

online documentation

installation 1

W

Windows NT

installation 2