



# BEA eLink OSI TP

## Installation Guide

BEA eLink OSI TP Version 4.0  
Document Edition 4.0  
December 2000

## Copyright

Copyright © 2000 BEA Systems, Inc. All Rights Reserved.

## Restricted Rights Legend

This software and documentation is subject to and made available only pursuant to the terms of the BEA Systems License Agreement and may be used or copied only in accordance with the terms of that agreement. It is against the law to copy the software except as specifically allowed in the agreement. This document may not, in whole or in part, be copied photocopied, reproduced, translated, or reduced to any electronic medium or machine readable form without prior consent, in writing, from BEA Systems, Inc.

Use, duplication or disclosure by the U.S. Government is subject to restrictions set forth in the BEA Systems License Agreement and in subparagraph (c)(1) of the Commercial Computer Software-Restricted Rights Clause at FAR 52.227-19; subparagraph (c)(1)(ii) of the Rights in Technical Data and Computer Software clause at DFARS 252.227-7013, subparagraph (d) of the Commercial Computer Software--Licensing clause at NASA FAR supplement 16-52.227-86; or their equivalent.

Information in this document is subject to change without notice and does not represent a commitment on the part of BEA Systems. THE SOFTWARE AND DOCUMENTATION ARE PROVIDED "AS IS" WITHOUT WARRANTY OF ANY KIND INCLUDING WITHOUT LIMITATION, ANY WARRANTY OF MERCHANTABILITY OR FITNESS FOR A PARTICULAR PURPOSE. FURTHER, BEA Systems DOES NOT WARRANT, GUARANTEE, OR MAKE ANY REPRESENTATIONS REGARDING THE USE, OR THE RESULTS OF THE USE, OF THE SOFTWARE OR WRITTEN MATERIAL IN TERMS OF CORRECTNESS, ACCURACY, RELIABILITY, OR OTHERWISE.

## Trademarks or Service Marks

BEA, WebLogic, Tuxedo, and Jolt are registered trademarks of BEA Systems, Inc. How Business Becomes E-Business, BEA WebLogic E-Business Platform, BEA Builder, BEA Manager, BEA eLink, BEA WebLogic Commerce Server, BEA WebLogic Personalization Server, BEA WebLogic Process Integrator, BEA WebLogic Collaborate, BEA WebLogic Enterprise, and BEA WebLogic Server are trademarks of BEA Systems, Inc.

All other product names may be trademarks of the respective companies with which they are associated.

## BEA eLink OSI TP Installation Guide

---

<b>Document Edition</b>	<b>Part Number</b>	<b>Date</b>	<b>Software Version</b>
4.0	870-001048-001	December 2000	BEA eLink OSI TP Version 4.0

---

---

# Contents

## About This Document

What You Need to Know .....	v
e-docs Web Site .....	v
How to Print the Document .....	vi
Related Information .....	vi
BEA eLink OSI TP Documentation .....	vi
BEA Tuxedo Release 7.1 Information .....	vi
BEA Tuxedo Release 6.5 Information .....	vii
Other Publications .....	vii
Customer Support .....	viii
SURETY Support Services .....	viii
Unisys Customer Support .....	viii
Support Online .....	viii
Client Support Centers .....	ix
Tech Advantage .....	ix
Reporting a Software Problem with a User Communication Form .....	x
VAR Customer Support .....	x
Documentation Support .....	xi
Documentation Conventions .....	xi

## 1. Installing the BEA eLink OSI TP Product

Pre-Installation Considerations .....	1-1
Configuring the Environment to Install eLink OSI TP .....	1-2
Upgrading BEA eLink OSI TP to Version 4.0 .....	1-2
Installing BEA eLink OSI TP on a UNIX-Based Operating System .....	1-3
Distribution Libraries and Executables for AIX .....	1-6
Distribution Libraries and Executables for HP-UX .....	1-7
Distribution Libraries and Executables for Solaris .....	1-8

---

Installing BEA eLink OSI TP on Windows NT .....	1-9
Distribution Libraries and Executables for Windows NT .....	1-17
Uninstalling eLink OSI TP Product on Windows NT.....	1-18

## **Index**

# About This Document

The BEA eLink™ OSI TP product (hereafter referred to as eLink OSI TP) is a gateway connectivity feature that enables application programs on BEA Tuxedo® systems to perform various transactional and non-transactional tasks with application programs that reside on different kinds of computers.

This document provides information about how to upgrade and install the software for your operating system in the following section: [Installing the BEA eLink OSI TP Product](#).

## What You Need to Know

This information is intended for system administrators who will install the eLink OSI TP software.

## e-docs Web Site

BEA Tuxedo product documentation is available on the BEA corporate Web site. From the BEA Home page, click on Product Documentation or go directly to the “e-docs” Product Documentation page at <http://edocs.bea.com/>.

---

# How to Print the Document

A PDF version of this document is available on the OSI TP documentation Home page on the e-docs Web site (and also on the installation CD). You can open the PDF in Adobe Acrobat Reader and print the entire document (or a portion of it) in book format. To access the PDFs, open the OSI TP documentation Home page, click the PDF files button and select the document you want to print.

If you do not have the Adobe Acrobat Reader, you can get it for free from the Adobe Web site at <http://www.adobe.com/>.

## Related Information

Various other related documentation is available to help you understand eLink OSI TP, Tuxedo, and OLTP technology. Refer to the documentation sources listed in the following sections for additional information about BEA products and OLTP technology.

## BEA eLink OSI TP Documentation

The eLink OSI TP documentation consists of the following items:

- *BEA eLink OSI TP Installation Guide*
- *BEA eLink OSI TP User Guide*
- *BEA eLink OSI TP Release Notes*

## BEA Tuxedo Release 7.1 Information

The following BEA Tuxedo information is available on the BEA Tuxedo Online Documentation web site at <http://edocs.bea.com/Tuxedo/tux71/index.htm>:

- *Installation*
- *Getting Started*
- *Administration*
- *Programming*
- *Platforms*
- *Reference*
- *Messages*

## BEA Tuxedo Release 6.5 Information

The following BEA Tuxedo information is available on the BEA Tuxedo Online Documentation web site at <http://edocs.bea.com/Tuxedo/tux65/index.htm>:

- *BEA Tuxedo Administering the BEA Tuxedo System*
- *BEA Tuxedo Application Development Guide*
- *BEA Tuxedo FML Programmer's Guide*
- *BEA Tuxedo Programmer's Guide*
- *BEA Tuxedo Reference Manual*

## Other Publications

For more information about OLTP technology, refer to the following books:

- *The Tuxedo System* (Andrade, Carges, Dwyer, Felts)
- *Tuxedo: An Open Approach to OLTP* (Primatesta)
- *Building Client/Server Applications Using Tuxedo* (Hall)

---

# Customer Support

BEA eLink OSI TP is a product jointly developed by BEA Systems, Inc. and Unisys Corporation. Support services and contacts are described in the following sections.

## SURETY Support Services

A SURETY service agreement gives you easy access to Unisys Support Online or Unisys Client Support Centers. These services are described below.

## Unisys Customer Support

Unisys customer support gives clients easy access, on the World Wide Web or by telephone, to these service options:

- Support Online
- Client Support Centers
- Tech Advantage

Clients with valid support agreements can visit an electronic database of reported problems and solutions. They can also use e-mail or telephone to contact our product specialists with technical questions. Clients are eligible to receive updates to a product when critical problems have been fixed.

### Support Online

Unisys has a World Wide Web site available to customers who have support agreements. If you have any questions or problems with a Unisys product, your first source of information is Support Online, an online technical resource available through the World Wide Web at <http://www.support.unisys.com>.



This technical resource is available 24 hours a day, 7 days a week. It offers a wealth of information about Unisys hardware and software systems. Take some time to explore Support Online and discover the services available to you.

## Client Support Centers

Unisys clients with valid support agreements can also access Client Support Centers. If you have unresolved questions or problems concerning Unisys product installation or operation (after referring to the documentation or your system administrator), call the appropriate Client Support Center:

Within the continental United States or Canada, call one of the following toll-free numbers:

1-800-328-0440 (prompt 4) - United States

1-800-387-6181 - Canada

1-800-361-8097 - French Canada

Outside the continental United States, obtain a support center telephone number from your local Unisys customer support representative.

To expedite your request, please have the following information ready before contacting Unisys.

- The name of the hardware (for example, SUN, HP, AIX, UNIXWARE or PC)
- The name and release level of the operating environment (for example UNIX 7.1, or Windows NT 4.0)
- The BEA Tuxedo release level, the BEA eLink OSI TP release level, and the patch levels of both.

## Tech Advantage

In addition, Unisys Client Support Centers offer Tech Advantage, a full complement of technical service packages that provide you with cost-effective, fast-cycle support. Tech Advantage services can help you solve your most difficult problems or maximize the effectiveness of your system, regardless of your product choice.

Here are some ways to put Tech Advantage to work for you:

- 
- **System Generation**-Assist in generating or installing system software upgrades and enhancements.
  - **Operating System Migration**-Plan and optimize your system migrations.
  - **Performance Review**-Evaluate existing systems and networks and provide tuning recommendations.
  - **Communications Systems Enhancements**-Assist in configuring, generating, and installing communications systems.
  - **Database Management Consulting**-Confirm that systems and database backup procedures are optimized to promote data recovery.

For more information on Tech Advantage, visit the Support Online Web page and follow the link to Tech Advantage or call your Client Support Center.

## Reporting a Software Problem with a User Communication Form

A customer representative may provide instructions or solutions from the Client Support Center database. If this help is insufficient, provide your representative with a full description of the problem, including any relevant error messages, and, if possible, a full description of the function you were attempting and your actions immediately prior to the error. The representative will then submit an electronic User Communication Form (UCF) to Unisys on your behalf, and give you the following information:

- A UCF registration number
- Instructions for submitting supporting materials, such as configurations, logs, traces, and dumps

## VAR Customer Support

All clients of Unisys resellers should contact their Value Added Resellers (VARs) for support access details.

## Documentation Support

Your feedback on the BEA eLink OSI TP documentation is important to us. Send us e-mail at [docsupport@bea.com](mailto:docsupport@bea.com) if you have questions or comments. Your comments will be reviewed directly by the BEA professionals who create and update the OSI TP documentation.

In your e-mail message, please indicate that you are using the documentation for the BEA OSI TP 4.0 release.

## Documentation Conventions

The following documentation conventions are used throughout this document.

Convention	Item
<a href="#">blue text</a>	Indicates a hypertext link in PDF or HTML
<i>italics</i>	Indicates emphasis or book titles or variables.
"string with quotes"	Indicates a string entry that requires quote marks.
UPPERCASE TEXT	Indicates generic file names, device names, environment variables, and logical operators. <i>Examples:</i> LPT1 SIGNON OR

---

<b>Convention</b>	<b>Item</b>
monospace text	<p>Indicates code samples, commands and their options, data structures and their members, data types, directories, and file names and their extensions. Monospace text also indicates text that you must enter from the keyboard.</p> <p><i>Examples:</i></p> <pre>#include &lt;iostream.h&gt; void main ( ) the pointer psz chmod u+w * \tux\data\ap .doc tux.doc BITMAP float</pre>
<b>monospace boldface text</b>	<p>Identifies significant words in code.</p> <p><i>Example:</i></p> <pre>void <b>xa_commit</b> ( )</pre>
{ }	<p>Indicates a set of choices in a syntax line. The braces themselves should never be typed.</p>
[ ]	<p>Indicates optional items in a syntax line. The brackets themselves should never be typed.</p> <p><i>Example:</i></p> <pre>buildclient [-v] [-o name ] [-f file-list]... [-l file-list]...</pre>
	<p>Separates mutually exclusive choices in a syntax line. The symbol itself should never be typed.</p>
...	<p>Indicates one of the following in a command line:</p> <ul style="list-style-type: none"> <li>■ That an argument can be repeated several times in a command line</li> <li>■ That the statement omits additional optional arguments</li> <li>■ That you can enter additional parameters, values, or other information</li> </ul> <p>The ellipsis itself should never be typed.</p> <p><i>Example:</i></p> <pre>buildclient [-v] [-o name ] [-f file-list]... [-l file-list]...</pre>

---

Convention	Item
monospace text	<p>Indicates code samples, commands and their options, data structures and their members, data types, directories, and file names and their extensions. Monospace text also indicates text that you must enter from the keyboard.</p> <p><i>Examples:</i></p> <pre>#include &lt;iostream.h&gt; void main ( ) the pointer psz chmod u+w * \tux\data\ap .doc tux.doc BITMAP float</pre>
<b>monospace boldface text</b>	<p>Identifies significant words in code.</p> <p><i>Example:</i></p> <pre>void <b>xa_commit</b> ( )</pre>
{ }	<p>Indicates a set of choices in a syntax line. The braces themselves should never be typed.</p>
[ ]	<p>Indicates optional items in a syntax line. The brackets themselves should never be typed.</p> <p><i>Example:</i></p> <pre>buildclient [-v] [-o name ] [-f file-list]... [-l file-list]...</pre>
	<p>Separates mutually exclusive choices in a syntax line. The symbol itself should never be typed.</p>
...	<p>Indicates one of the following in a command line:</p> <ul style="list-style-type: none"> <li>■ That an argument can be repeated several times in a command line</li> <li>■ That the statement omits additional optional arguments</li> <li>■ That you can enter additional parameters, values, or other information</li> </ul> <p>The ellipsis itself should never be typed.</p> <p><i>Example:</i></p> <pre>buildclient [-v] [-o name ] [-f file-list]... [-l file-list]...</pre>

---

<b>Convention</b>	<b>Item</b>
-------------------	-------------

---

- |   |  |
|---|--|
| . | Indicates the omission of items from a code example or from a syntax line. |
| . | The vertical ellipsis itself should never be typed.                        |
| . |  |
-

# 1 Installing the BEA eLink OSI TP Product

This section covers the following information:

- [Pre-Installation Considerations](#)
- [Upgrading BEA eLink OSI TP to Version 4.0](#)
- [Installing BEA eLink OSI TP on a UNIX-Based Operating System](#)
- [Installing BEA eLink OSI TP on Windows NT](#)

## Pre-Installation Considerations

Complete the following tasks prior to installing the eLink OSI TP product:

- Read the BEA eLink OSI TP *Release Notes* for supported platform information
- Install and verify the operation of the BEA Tuxedo product with the most recent patch level

**Warning:** If you fail to install the correct patch level of Tuxedo, the application may not work correctly. Refer to the BEA eLink OSI TP *Release Notes* for information on the correct patch level.

# Configuring the Environment to Install eLink OSI TP

Before installing the eLink OSI TP product, you must ensure that the BEA Tuxedo system is installed and configured properly for your environment. Refer to your Tuxedo documentation for more information about setting the Tuxedo environment variables. In addition to the Tuxedo environment variables, the BEA eLink OSI TP system requires an additional environment variable, `OSIRUNDIR`, before you can boot the gateway or run the `osiadmin` utility. Refer to the *BEA eLink OSI TP User Guide* for more information about the `osiadmin` utility. If you do not set the `OSIRUNDIR` environment variable before you boot the gateway, you will receive a message telling you to set `OSIRUNDIR`. This environment variable specifies the path that the eLink gateway uses for runtime files. You can set the `OSIRUNDIR` environment variable through a script, a command line entry, or, for Windows NT operating systems, through the Windows System Properties in the Control Panel. The variable value should include the path and directory as appropriate for your operating system. If the directory does not exist, the system creates it for you.

# Upgrading BEA eLink OSI TP to Version 4.0

If you are upgrading from a previous version of BEA eLink OSI TP to Version 4.0, you must modify your existing `dmconfig` file to a `udmconfig` file after installing eLink OSI TP. The `osiadmin` utility performs this upgrade automatically with the `importcfg` command. It is recommended that you use the `osiadmin` utility, but you may also upgrade by manually editing your `dmconfig` file. Refer to the *BEA eLink OSI TP User Guide* for more information about using the `osiadmin` utility and about manually editing the `dmconfig` file.

When you are upgrading from a previous release of the eLink OSI TP product, you must shut down all Domain administrative and gateway servers within an application domain, particularly the following:

- GWOSI TP
- GWADM
- DMADM



**Warning:** Do *not* run `dmadmin`, `dmloadcf`, or `dmunloadcf` commands until the installation is complete.

The eLink OSI TP product is a full replacement for previous releases. To upgrade, we recommend that you uninstall the prior version of eLink OSI TP and the Unisys OSI TP protocol stack.

# Installing BEA eLink OSI TP on a UNIX-Based Operating System

This section explains how to install the BEA eLink OSI TP product on the following execution platforms:

- AIX 4.3
- HP-UX 11.00
- Solaris 7

To install the eLink OSI TP product, you run the `install.sh` script. This script installs all the necessary software components.

**Warning:** For UNIX-based operating systems, the BEA Tuxedo system should be installed first and the eLink OSI TP product should be installed within the same directory. If you install the eLink OSI TP product outside of the Tuxedo directory, you need to copy the files into the Tuxedo directory for processing of data mapping service requests.

Perform the following steps to install the eLink OSI TP product on a supported UNIX platform:

1. Log on to your UNIX platform and access the CD-ROM device.

```
# ls -l /dev/cdrom
total 0
brw-rw-rw-    1 root    sys      22,    0 January 5 10:55 c1b0t010
```

# 1 *Installing the BEA eLink OSI TP Product*

---

2. Mount the CD-ROM with the following mount instruction if you are installing on AIX or Solaris operating systems:

```
# mount -r -F cdfs /dev/cdrom/c1b0t010 /mnt
```

Use the following mount instruction if you are installing on an HP-UX operating system:

```
# mount -r -F cdfs -o cdcase /dev/cdrom/c1b0t010 /mnt
```

3. Change the directory to your CD-ROM device.

```
# cd /mnt
```

4. List the CD-ROM contents.

```
# ls
install.sh hp
```

5. Execute the installation script.

```
# sh ./install.sh
```

6. The installation script runs and prompts you for responses.

## **Listing 1-1 Install.sh Script Prompts for an AIX Installation**

---

```
sh install.sh

01) hp/hpux11          02) ibm/aix43          03) sun5x/sol7

Install which platform's files? [01- 3, q to quit, l for list]: 2

** You have chosen to install from ibm/aix43 **

BEA eLink OSI TP Release 4.0

This directory contains BEA eLink OSI TP for
AIX 4.3 on RS/6000.

Is this correct? [y,n,q]: y
/cmhome/dist/bionic-6/ibm/aix43

To terminate the installation at any time
press the interrupt key,
typically <del>, <break>, or <ctrl+c>.
```

## Installing BEA eLink OSI TP on a UNIX-Based Operating System

---

The following packages are available:

```
1      OSI TP          BEA eLink OSI TP
```

```
Select the package(s) you wish to install (default: 1) [?,??,q]: 1
/cmhome/dist/bionic-6/ibm/aix43/OSI TP
```

```
BEA eLink OSI TP
(rs6000) Release 4.0
Copyright (c) 2000 BEA Systems, Inc.
All Rights Reserved.
Distributed under license by BEA Systems, Inc.
BEA eLink is a trademark of BEA Systems, Inc.
```

```
Directory where OSI TP files are to be installed
(Enter your Tuxedo directory path) [?,q]: /work/cmadm/tux71
```

```
Using /work/cmadm/tux71 as the OSI TP base directory
```

```
Determining if sufficient space is available ...
10992 blocks are required
25231536 blocks are available to /work/cmadm/tux71
```

```
Unloading /cmhome/dist/bionic-6/ibm/aix43/OSI TP/OSI TPT71.Z ...
10940 blocks
bin/GWOSI TP
bin/UDMADM
bin/lic.sh
bin/osiadmin
bin/osiltmain
bin/portproxy
bin/prdebuginfo
bin/setPROXYpriv
bin/udmloadcf
lib/libgwo.so
lib/libnwunisis.so
lib/libtasn1.so
locale/C/LIBGWO.text
locale/C/LIBGWO_CAT
locale/C/libnwunisis.cat
... finished
```

The \$TUXDIR/bin/portproxy executable listens on privileged ports < 1024) on behalf of GWOSI TP. The script \$TUXDIR/bin/setPROXYpriv is used to set the appropriate permissions.

```
If you know the root password, you may run setPROXYpriv now.
Run the setPROXYpriv script? [y/n]: y
root's Password:
```

# 1 Installing the BEA eLink OSI TP Product

---

```
Owner for /work/cmadm/tux71/bin/portproxy changed to root.  
Mode for /work/cmadm/tux71/bin/portproxy changed to 4555.
```

```
Changing file permissions...  
... finished
```

```
If your license file is accessible, you may install it now.  
Install license file? [y/n]: n
```

```
Please don't forget to use lic.sh located in your product bin  
directory to install the license file from the enclosed floppy.  
Refer to your product Release Notes for details on how to do this.
```

```
Installation of BEA eLink OSI TP was successful
```

```
Please don't forget to fill out and send in your registration card
```

---

## Distribution Libraries and Executables for AIX

The eLink OSI TP CD-ROM contains the following libraries and executable programs for the AIX 4.3.3 operating system:

Directory	Files
/bin	getulogfx GWOSI TP osiadmin osiltmain portproxy prdebuginfo setPROXYpriv UDMADM udmloadcf
/lib	libgwo.so libnwunisis.so libtasn1.so
/locale/C	LIBGWO.text LIBGWO_CAT libnwunisis.cat

## Distribution Libraries and Executables for HP-UX

The eLink OSI TP CD-ROM contains the following libraries and executable programs for HP-UX 11 operating system:

<b>Directory</b>	<b>Files</b>
/bin	getulogfx GWOSI TP osiadmin osiltmain portproxy prdebuginfo setPROXYpriv UDMADM udmloadcf
/lib	libgwo.sl libnwunisisys.sl libtasn1.sl
/locale/C	LIBGWO.text LIBGWO_CAT libnwunisisys.cat

## Distribution Libraries and Executables for Solaris

The eLink OSI TP CD-ROM contains the following libraries and executable programs for Solaris 7 operating system:

<b>Directory</b>	<b>Files</b>
/bin	getulogfx GWOSI TP osiadmin osiltmain portproxy prdebuginfo setPROXYpriv UDMADM udmloadcf
/lib	libgwo.so libnwunisis.so libtasn1.so
/locale/C	LIBGWO.text LIBGWO_CAT libnwunisis.cat

# Installing BEA eLink OSI TP on Windows NT

**Caution:** Be sure to review the [Upgrading BEA eLink OSI TP to Version 4.0](#) section before you start your installation if you are upgrading to the BEA eLink OSI TP Version 4.0 product from an older version of the eLink OSI TP product.

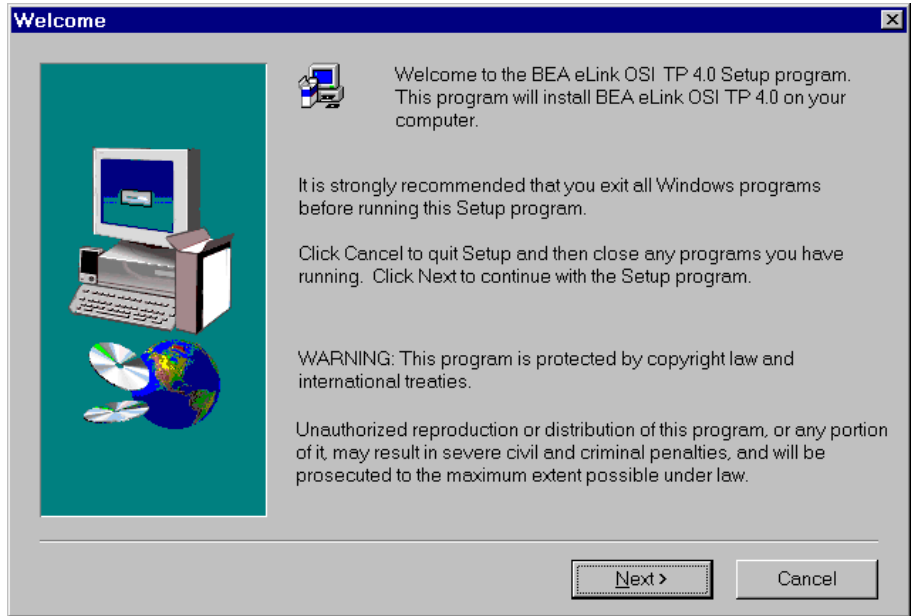
Perform the following steps to install the eLink OSI TP product on a Windows NT operating system:

**Warning:** For Windows NT operating systems, the BEA Tuxedo system should be installed first and the eLink OSI TP product should be installed within the same directory. If you install the eLink OSI TP product outside of the Tuxedo directory, you need to copy the files into the Tuxedo directory for processing of data mapping service requests.

1. Insert the eLink OSI TP product CD-ROM in your CD-ROM drive and click the **Run** option from the **Start menu**. The **Run** window displays. Click the **Browse** button to select the CD-ROM drive. Select the `winnt` directory and select the `Setup.exe` program. Click **OK** to run the executable and begin the installation. Setup searches to make sure the Tuxedo product is installed on your system and also notifies you if a prior version of the eLink OSI TP product installed. If a prior version of the eLink OSI TP product is detected, you are asked if you want to continue with Setup. Click **Yes** and the **Welcome** window displays as shown in [Figure 1-1](#). Click **Next** to continue with the installation.

**Note:** If the Tuxedo product is NOT already installed on your system, an **Error** pop-up window displays. Click **OK** on the pop-up window to terminate the installation process. Install the Tuxedo product on your system and reinitiate the installation process.

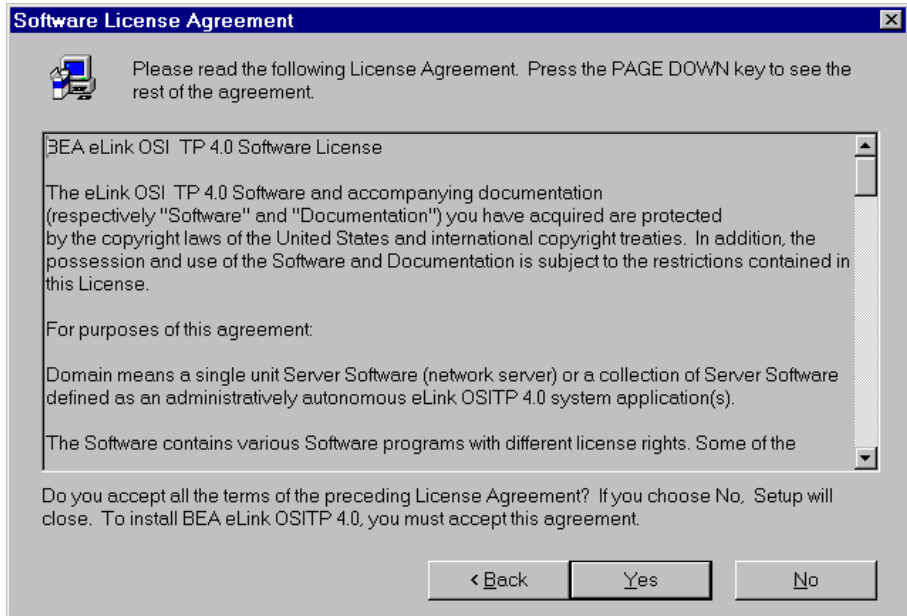
**Figure 1-1** Welcome Window





2. The **License Agreement** window displays as shown in [Figure 1-2](#). Read the license agreement information, and click **Yes** to continue with the installation.

**Figure 1-2 License Agreement Window**

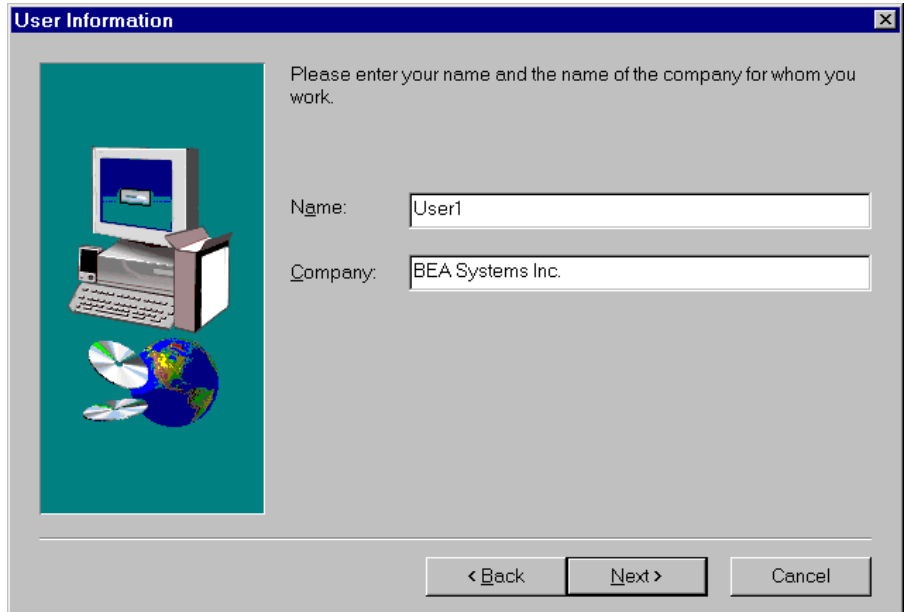


# 1 *Installing the BEA eLink OSI TP Product*

---

3. The **User Information** window displays as shown in [Figure 1-3](#). Enter your name in the **Name** field. Enter the name of your company in the **Company** field. Click **Next** to continue with the installation.

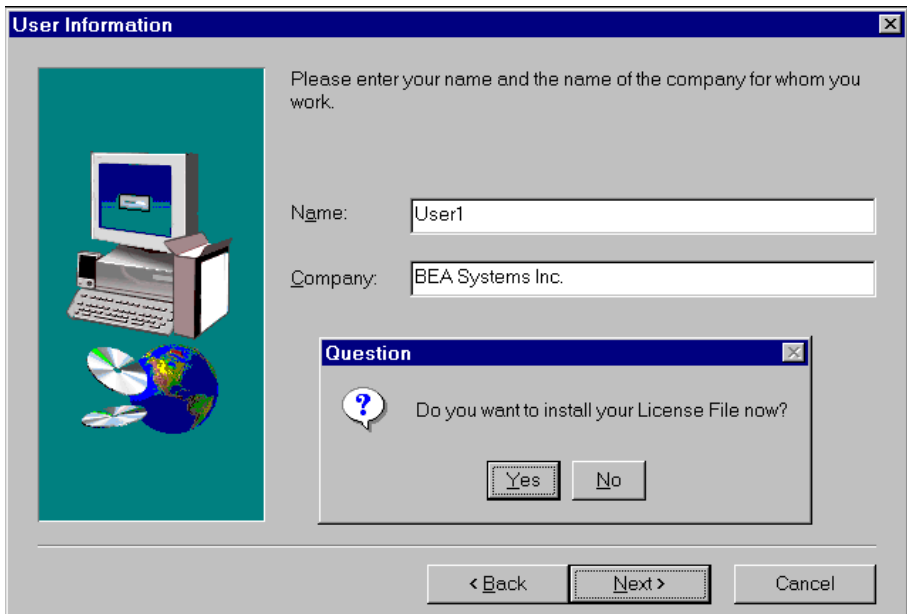
**Figure 1-3 User Information Window**



- The install license file **Question** pop-up window displays as shown in [Figure 1-4](#). Click **Yes** to install your License File now.

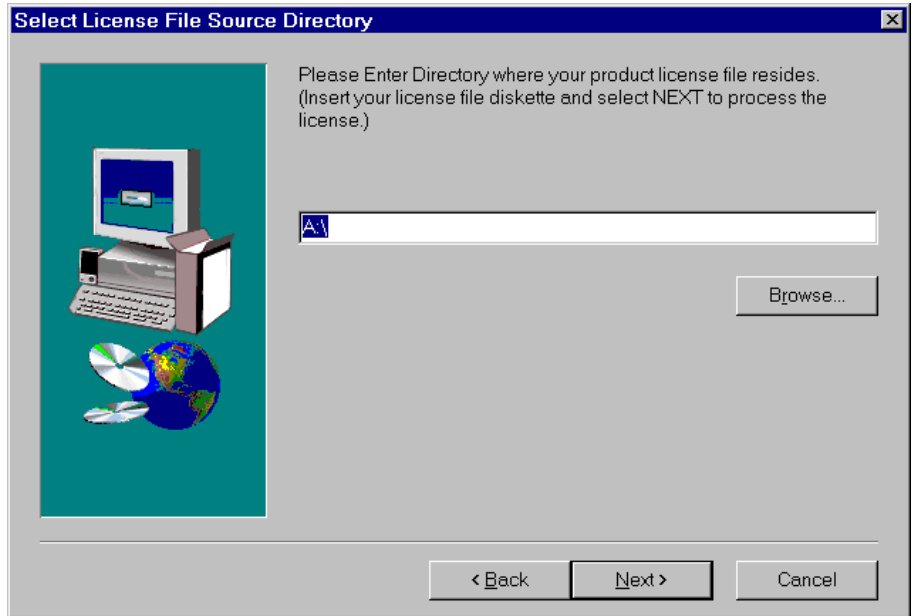
**Note:** If you click **Yes**, the BEA eLink OSI TP license file is appended to the existing Tuxedo license file, `$TUXDIR\udataobj\lic.txt`. If you click **No**, you will need to manually add the eLink OSI TP license to the end of the `lic.txt` file.

**Figure 1-4 Install License File Question**



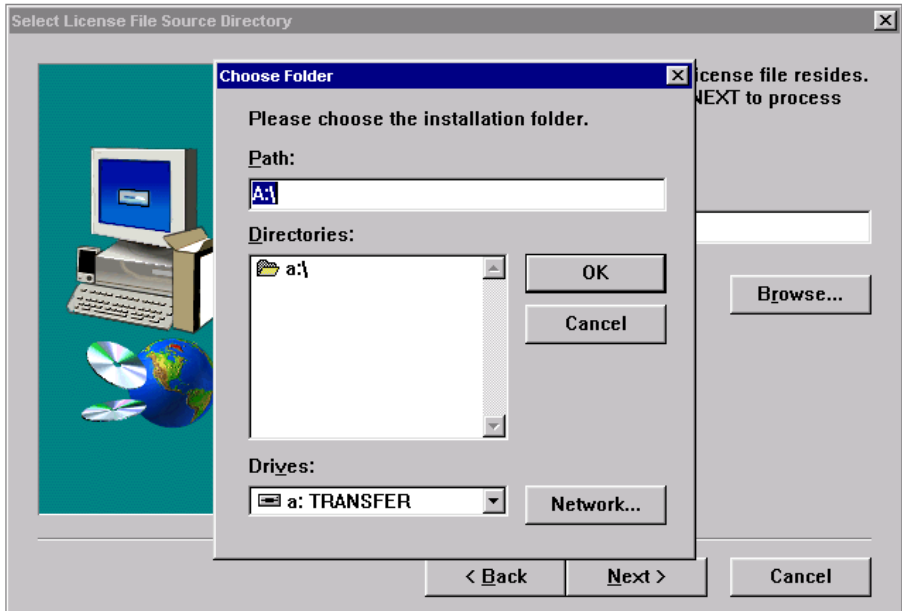
5. When you click **Yes** to install the License File, the **Select License File Source Directory** window displays as shown in [Figure 1-5](#).
  - a. Enter the Directory and Path or click the **Browse** button to display the **Choose Folder** pop-up window as shown in [Figure 1-6](#)

**Figure 1-5 Select License File Source Directory Window**



- b. If you clicked **Browse**, locate the License file and click **OK** to return to the **Select License File Source Directory** window. Then click **Next** to continue with the installation process.

**Figure 1-6 Choose Folder Pop-up Window**



# 1 Installing the BEA eLink OSI TP Product

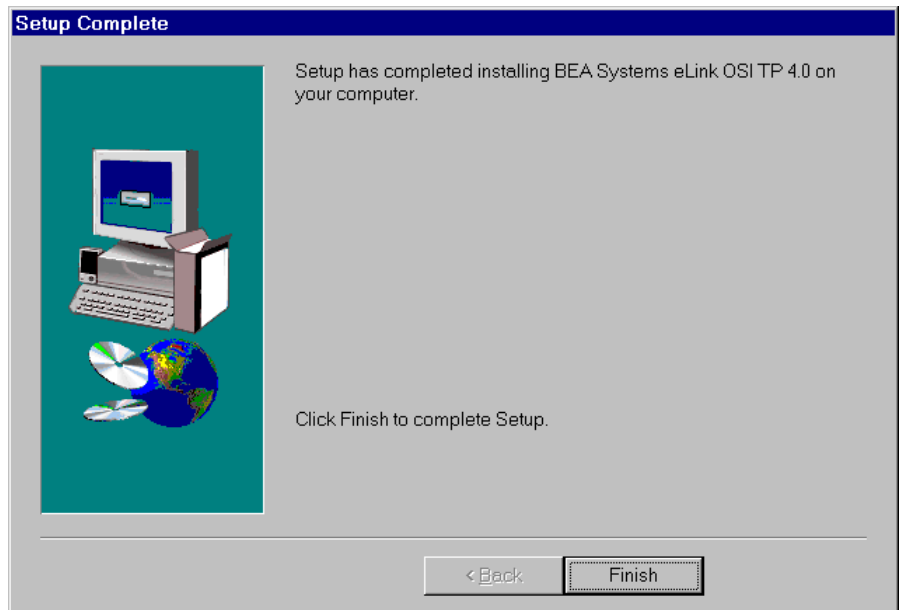
---

6. The installation begins and a progress bar displays the status. The eLink OSI TP components install into the Tuxedo directory. You may abort the installation process anytime prior to completion by clicking the Cancel button.

**Note:** During the eLink OSI TP installation, the `$TUXDIR\udataobj\DMTYPE` file is updated to include an OSI TP entry if one is not already there.

7. The **Setup Complete** window, as shown in [Figure 1-7](#) notifies you that the eLink OSI TP product is installed on your system. Click **Finish** to complete the setup process.

**Figure 1-7 Setup Complete**



## Distribution Libraries and Executables for Windows NT

The eLink OSI TP CD-ROM contains the following libraries and executable programs. After installing the eLink OSI TP product, verify that these files and programs are installed on your system.

<b>Directory</b>	<b>Files</b>
/bin	DbgHelp.dll gwo.dll GWOSI TP.exe libtasn1.dll nwunisys.dll osiltmain.exe osiadmin.exe osiltpp.dll osimsg.dll osilt.dll osiltppmain.exe Psapi.dll UDMADM.exe udmloadcf.exe
/locale/C	LIBGWO.text LIBGWO_CAT

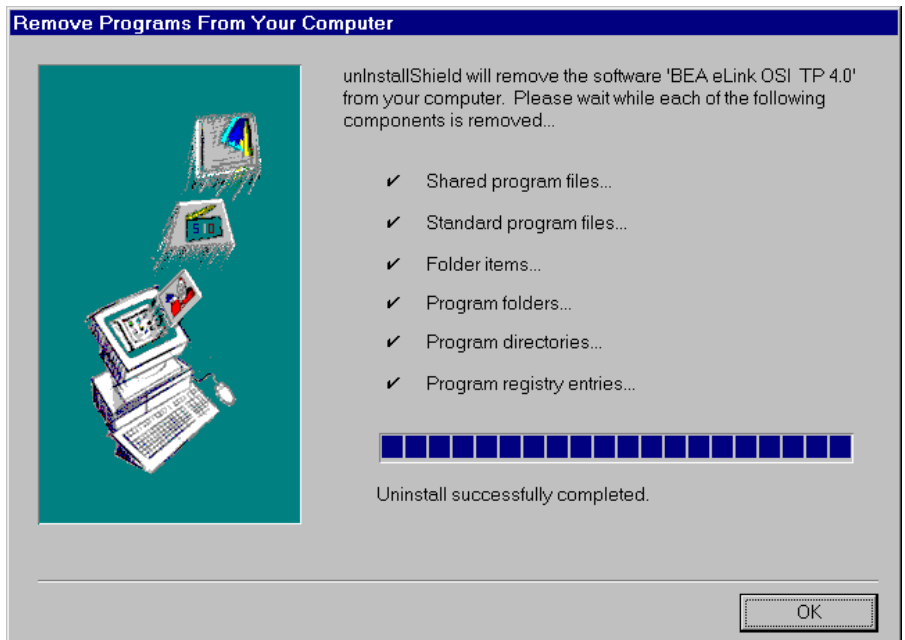
## Uninstalling eLink OSI TP Product on Windows NT

Perform the following steps to uninstall eLink OSI TP on a Windows NT system:

**Note:** Make sure that BEA eLink OSI TP is shut down before you uninstall.

1. Click the **Start** button, and then point to **Settings**. Point to the folder that contains **Control Panel**, and then click **Control Panel**.
2. Double click on the **Add/Remove Programs** option from the **Control Panel** listings to access the **Add/Remove Programs** properties window.
3. In the **Add/Remove Programs Properties** window, select eLink OSI TP from the program list and click the **Add/Remove** button.
4. The uninstall process for eLink OSI TP begins. The **Remove Programs From Your Computer** screen displays. Click **OK** to complete the uninstall process.

**Figure 1-8 Remove Programs From Your Computer Screen**





---

# Index

## B

BEA eLink OSI TP documentation vi

## C

Client Support Centers ix  
customer support viii

## D

distribution libraries  
    AIX 1-6  
    HP-UX operating system 1-7  
    Solaris 1-8  
DMTYPE 1-16  
documentation  
    BEA eLink OSI TP vi  
    conventions xi  
    other publications vii  
    support xi  
    where to find it v

## E

e-docs Web Site v  
environment  
    configuring 1-2  
environment variables  
    setting 1-2  
executables  
    AIX 1-6  
    HP-UX operating system 1-7

Solaris 1-8

## I

installation  
    UNIX-based Platform 1-3  
    Windows NT Platform 1-9

## L

libraries 1-17  
license installation 1-13

## O

OSIRUNDIR, 1-2

## P

pre-installation 1-1  
    configuration 1-2  
printing product documentation vi

## R

related information vi  
reporting a software problem x

## S

support viii  
    Client Support Centers ix  
    documentation xi

---

online viii  
SURETY viii  
Tech Advantage ix  
technical viii  
Unisys Customer Support viii  
VAR Customer x  
SURETY Support Services viii

## **T**

Tech Advantage ix  
technical support viii

## **U**

uninstall 1-18  
Unisys Customer Support viii  
UNIX-based platform, installation 1-3  
upgrade prerequisites 1-2  
upgrading eLink OSI TP 1-2

## **V**

VAR Customer Support x