



# BEA eLink™ OSI TP

## Installation Guide

Version 4.1  
Document Date: October 2001

## Copyright

Copyright © 2001 BEA Systems, Inc. All Rights Reserved.

## Restricted Rights Legend

This software and documentation is subject to and made available only pursuant to the terms of the BEA Systems License Agreement and may be used or copied only in accordance with the terms of that agreement. It is against the law to copy the software except as specifically allowed in the agreement. This document may not, in whole or in part, be copied photocopied, reproduced, translated, or reduced to any electronic medium or machine readable form without prior consent, in writing, from BEA Systems, Inc.

Use, duplication or disclosure by the U.S. Government is subject to restrictions set forth in the BEA Systems License Agreement and in subparagraph (c)(1) of the Commercial Computer Software-Restricted Rights Clause at FAR 52.227-19; subparagraph (c)(1)(ii) of the Rights in Technical Data and Computer Software clause at DFARS 252.227-7013, subparagraph (d) of the Commercial Computer Software--Licensing clause at NASA FAR supplement 16-52.227-86; or their equivalent.

Information in this document is subject to change without notice and does not represent a commitment on the part of BEA Systems. THE SOFTWARE AND DOCUMENTATION ARE PROVIDED "AS IS" WITHOUT WARRANTY OF ANY KIND INCLUDING WITHOUT LIMITATION, ANY WARRANTY OF MERCHANTABILITY OR FITNESS FOR A PARTICULAR PURPOSE. FURTHER, BEA Systems DOES NOT WARRANT, GUARANTEE, OR MAKE ANY REPRESENTATIONS REGARDING THE USE, OR THE RESULTS OF THE USE, OF THE SOFTWARE OR WRITTEN MATERIAL IN TERMS OF CORRECTNESS, ACCURACY, RELIABILITY, OR OTHERWISE.

## Trademarks or Service Marks

BEA, Jolt, Tuxedo, and WebLogic are registered trademarks of BEA Systems, Inc. BEA Builder, BEA Campaign Manager for WebLogic, BEA eLink, BEA Manager, BEA WebLogic Commerce Server, BEA WebLogic E-Business Platform, BEA WebLogic Enterprise, BEA WebLogic Express, BEA WebLogic Integration, BEA WebLogic Personalization Server, BEA WebLogic Portal, BEA WebLogic Server and How Business Becomes E-Business are trademarks of BEA Systems, Inc.

All other trademarks are the property of their respective companies.

### **BEA eLink OSI TP Installation Guide**

<b>Part Number</b>	<b>Date</b>	<b>Software Version</b>
870-001048-002	October 2001	4.1

---

# Contents

## About This Document

What You Need to Know .....	v
e-docs Web Site .....	v
How to Print the Document .....	vi
Related Information .....	vi
BEA eLink OSI TP Documentation .....	vi
BEA Tuxedo Release 8.0 Information .....	vi
Other Publications .....	vii
Customer Support .....	vii
SURETY Support Services .....	vii
Unisys Customer Support .....	viii
Reporting a Software Problem with a User Communication Form .....	x
VAR Customer Support .....	x
Documentation Support .....	x
Documentation Conventions .....	xi

## 1. Installing the BEA eLink OSI TP Product

Pre-Installation Considerations .....	1-1
Configuring the Environment to Install eLink OSI TP .....	1-2
Upgrading from eLink OSI TP 1.3 .....	1-2
Upgrading from eLink OSI TP 4.0 .....	1-3
Installing BEA eLink OSI TP on a UNIX-Based Operating System .....	1-3
Distribution Libraries and Executables for AIX .....	1-7
Distribution Libraries and Executables for HP-UX .....	1-8
Distribution Libraries and Executables for Solaris .....	1-9
Distribution Libraries and Executables for UnixWare .....	1-10
Installing BEA eLink OSI TP on Windows NT or Windows 2000 .....	1-12

---

Distribution Libraries and Executables for Windows NT or Windows 2000.....	1-20
Uninstalling eLink OSI TP Product on Windows 2000 .....	1-21

# About This Document

BEA eLink™ OSI TP (hereafter referred to as eLink OSI TP) is a gateway connectivity product that enables application programs on BEA Tuxedo® systems to perform various transactional and non-transactional tasks with application programs that reside on different kinds of computers.

This document provides information about how to upgrade and install the software for your operating system in the following section:

- [“Installing the BEA eLink OSI TP Product”](#)

## What You Need to Know

This information is intended for system administrators who will install the eLink OSI TP software.

## e-docs Web Site

BEA Tuxedo product documentation is available on the BEA corporate Web site. From the BEA Home page, click on Product Documentation or go directly to the “e-docs” Product Documentation page at <http://edocs.bea.com/>.

---

# How to Print the Document

A PDF version of this document is available on the OSI TP documentation Home page on the e-docs Web site (and also on the installation CD). You can open the PDF in Adobe Acrobat Reader and print the entire document (or a portion of it) in book format. To access the PDFs, open the OSI TP documentation Home page, click the PDF files button and select the document you want to print.

If you do not have the Adobe Acrobat Reader, you can get it for free from the Adobe Web site at <http://www.adobe.com/>.

## Related Information

Various other related documentation is available to help you understand eLink OSI TP, Tuxedo, and OLTP technology. Refer to the documentation sources listed in the following sections for additional information about BEA products and OLTP technology.

## BEA eLink OSI TP Documentation

The eLink OSI TP documentation consists of the following items:

- *BEA eLink OSI TP Installation Guide*
- *BEA eLink OSI TP User Guide*
- *BEA eLink OSI TP Release Notes*

## BEA Tuxedo Release 8.0 Information

The following BEA Tuxedo information is available on the BEA Tuxedo Online Documentation web site at <http://edocs.bea.com/Tuxedo/tux80/index.htm>:

- *Installation*
- *Getting Started*
- *Administration*
- *Programming*
- *Platforms*
- *Reference*
- *Messages*

## Other Publications

For more information about OLTP technology, refer to the following books:

- *The Tuxedo System* (Andrade, Carges, Dwyer, Felts)
- *Tuxedo: An Open Approach to OLTP* (Primatesta)
- *Building Client/Server Applications Using Tuxedo* (Hall)

## Customer Support

BEA eLink OSI TP is a product jointly developed by BEA Systems, Inc. and Unisys Corporation. Support services and contacts are described in the following sections.

## SURETY Support Services

A SURETY service agreement gives you easy access to Unisys Support Online or Unisys Client Support Centers. These services are described below.

---

# Unisys Customer Support

Unisys customer support gives clients easy access, on the World Wide Web or by telephone, to these service options:

- Support Online
- Client Support Centers
- Tech Advantage

Clients with valid support agreements can visit an electronic database of reported problems and solutions. They can also use e-mail or telephone to contact our product specialists with technical questions. Clients are eligible to receive updates to a product when critical problems have been fixed.

## Support Online

Unisys has a World Wide Web site available to customers who have support agreements. If you have any questions or problems with a Unisys product, your first source of information is Support Online, an online technical resource available through the World Wide Web at <http://www.support.unisys.com>.

This technical resource is available 24 hours a day, 7 days a week. It offers a wealth of information about Unisys hardware and software systems. Take some time to explore Support Online and discover the services available to you.

## Client Support Centers

Unisys clients with valid support agreements can also access Client Support Centers. If you have unresolved questions or problems concerning Unisys product installation or operation (after referring to the documentation or your system administrator), call the appropriate Client Support Center:

Within the continental United States or Canada, call one of the following toll-free numbers:

1-800-328-0440 (prompt 4) - United States

1-800-387-6181 - Canada

1-800-361-8097 - French Canada



Outside the continental United States, obtain a support center telephone number from your local Unisys customer support representative.

To expedite your request, please have the following information ready before contacting Unisys.

- The name of the hardware (for example, Sun, HP, AIX, UnixWare or PC)
- The name and release level of the operating environment (for example UnixWare 7.1, or Windows 2000)
- The BEA Tuxedo release level, the BEA eLink OSI TP release level, and the patch levels of both.

## Tech Advantage

In addition, Unisys Client Support Centers offer Tech Advantage, a full complement of technical service packages that provide you with cost-effective, fast-cycle support. Tech Advantage services can help you solve your most difficult problems or maximize the effectiveness of your system, regardless of your product choice.

Here are some ways to put Tech Advantage to work for you:

- **System Generation**-Assist in generating or installing system software upgrades and enhancements.
- **Operating System Migration**-Plan and optimize your system migrations.
- **Performance Review**-Evaluate existing systems and networks and provide tuning recommendations.
- **Communications Systems Enhancements**-Assist in configuring, generating, and installing communications systems.
- **Database Management Consulting**-Confirm that systems and database backup procedures are optimized to promote data recovery.

For more information on Tech Advantage, visit the Support Online Web page and follow the link to Tech Advantage or call your Client Support Center.

---

## Reporting a Software Problem with a User Communication Form

A customer representative may provide instructions or solutions from the Client Support Center database. If this help is insufficient, provide your representative with a full description of the problem, including any relevant error messages, and, if possible, a full description of the function you were attempting and your actions immediately prior to the error. The representative will then submit an electronic User Communication Form (UCF) to Unisys on your behalf, and give you the following information:

- A UCF registration number
- Instructions for submitting supporting materials, such as configurations, logs, traces, and dumps

## VAR Customer Support

All clients of Unisys resellers should contact their Value Added Resellers (VARs) for support access details.

## Documentation Support

Your feedback on the BEA eLink OSI TP documentation is important to us. Send us e-mail at **docsupport@bea.com** if you have questions or comments. Your comments will be reviewed directly by the BEA professionals who create and update the OSI TP documentation.

In your e-mail message, please indicate that you are using the documentation for the BEA OSI TP 4.1 release.

# Documentation Conventions

The following documentation conventions are used throughout this document.

Convention	Item
<a href="#">blue text</a>	Indicates a hypertext link in PDF or HTML
<i>italics</i>	Indicates emphasis or book titles or variables.
"string with quotes"	Indicates a string entry that requires quote marks.
UPPERCASE TEXT	Indicates generic file names, device names, environment variables, and logical operators. <i>Examples:</i> LPT1 SIGNON OR
monospace text	Indicates code samples, commands and their options, data structures and their members, data types, directories, and file names and their extensions. Monospace text also indicates text that you must enter from the keyboard. <i>Examples:</i> #include <iostream.h> void main ( ) the pointer psz chmod u+w * \tux\data\ap .doc tux.doc BITMAP float
<b>monospace boldface text</b>	Identifies significant words in code. <i>Example:</i> void <b>xa_commit</b> ( )
{ }	Indicates a set of choices in a syntax line. The braces themselves should never be typed.

---

<b>Convention</b>	<b>Item</b>
[ ]	<p>Indicates optional items in a syntax line. The brackets themselves should never be typed.</p> <p><i>Example:</i></p> <pre>buildclient [-v] [-o name ] [-f file-list]... [-l file-list]...</pre>
	<p>Separates mutually exclusive choices in a syntax line. The symbol itself should never be typed.</p>
...	<p>Indicates one of the following in a command line:</p> <ul style="list-style-type: none"> <li>■ That an argument can be repeated several times in a command line</li> <li>■ That the statement omits additional optional arguments</li> <li>■ That you can enter additional parameters, values, or other information</li> </ul> <p>The ellipsis itself should never be typed.</p> <p><i>Example:</i></p> <pre>buildclient [-v] [-o name ] [-f file-list]... [-l file-list]...</pre>
.	<p>Indicates the omission of items from a code example or from a syntax line. The vertical ellipsis itself should never be typed.</p>

---

# 1 Installing the BEA eLink OSI TP Product

This section covers the following information:

- [“Pre-Installation Considerations”](#)
- [“Installing BEA eLink OSI TP on a UNIX-Based Operating System”](#)
- [“Installing BEA eLink OSI TP on Windows NT or Windows 2000”](#)

## Pre-Installation Considerations

Complete the following tasks prior to installing the eLink OSI TP product:

- Read the *BEA eLink OSI TP Release Notes* for supported platform information.
- Install and verify the operation of the BEA Tuxedo product with the most recent patch level.

**Warning:** If you fail to install the correct patch level of Tuxedo, the application may not work correctly. Refer to the *BEA eLink OSI TP Release Notes* for information on the correct patch level.

- On a UNIX operating system, if you are upgrading to Tuxedo 8.0 from a previous version of Tuxedo, you must remove the old version of Tuxedo before you install Tuxedo 8.0 or you must install Tuxedo 8.0 in a different directory. Do not overwrite the old version of Tuxedo.

# Configuring the Environment to Install eLink OSI TP

Before installing the eLink OSI TP product, you must ensure that the BEA Tuxedo system is installed and configured properly for your environment. Refer to your Tuxedo documentation for more information about setting the Tuxedo environment variables. In addition to the Tuxedo environment variables, the BEA eLink OSI TP system requires an additional environment variable, `OSIRUNDIR`, before you can boot the gateway or run the `osiadmin` utility. Refer to the *BEA eLink OSI TP User Guide* for more information about the `osiadmin` utility. If you do not set the `OSIRUNDIR` environment variable before you boot the gateway, you will receive a message telling you to set `OSIRUNDIR`. This environment variable specifies the path that the eLink gateway uses for runtime files. You can set the `OSIRUNDIR` environment variable through a script, a command line entry, or, for Windows 2000 operating systems, through the Windows System Properties in the Control Panel. The variable value should include the path and directory as appropriate for your operating system.

## Upgrading from eLink OSI TP 1.3

If you are upgrading from eLink OSI TP 1.3 to 4.1, you must modify your existing `dmconfig` file to be compatible with the eLink OSI TP 4.1 format. The `osiadmin` utility performs this upgrade automatically with the `importcfg` command. It is recommended that you use the `osiadmin` utility, but you may also upgrade by manually editing your `dmconfig` file. Refer to the *BEA eLink OSI TP User Guide* for more information about using the `osiadmin` utility and about manually editing the `dmconfig` file.

BEA eLink OSI TP 4.1 is a full replacement for eLink OSI TP 1.3 and the Unisys Protocol Stack (OSI TP and ULS). ULS on UNIX-based systems and eLink OSI TP 4.1 both use port 102 by default. Consider this default setting when configuring the port number of your version 4.1 `dmconfig` file. Beginning with eLink OSI TP 4.1, you can configure a port number other than 102. This option allows you to run your eLink OSI TP 1.3 gateway while you are upgrading. If you will be using port 102 in your version 4.1 `dmconfig` file, you must shutdown ULS before attempting to `tmboot` eLink OSI TP 4.1. If you are running eLink OSI TP 1.3, uninstall eLink OSI TP and the Unisys OSI TP protocol stack including the Unisys Upper Layer Services.

When you are upgrading from a previous release of the eLink OSI TP product, you must shut down all Domain administrative and gateway servers within an application domain, particularly the following:

- GWOSITP
- GWADM
- DMADM

## Upgrading from eLink OSI TP 4.0

If you are upgrading from eLink OSI TP 4.0, you need not modify your `udmconfig` input file. Perform a `dmloadcf` of the `udmconfig` file to create the `dmconfig` binary file, `BDMCONFIG`. If you are running eLink OSI TP 4.0, uninstall eLink OSI TP 4.0

**Note:** Beginning with eLink OSI TP 4.1, the version 4.0 `udmloadcf` utility, the `BUDMCONFIG` binary file and the eLink OSI TP Administrative Server `UDADM` no longer exist. The function performed by the version 4.0 `udmloadcf` command is now done by the version 4.1 `dmloadcf` command. The information contained in the version 4.0 `BUDMCONFIG` file is now incorporated within the version 4.1 `BDMCONFIG` file. If your `ubbconfig` contains the `UDMADM` Server, delete it and perform a `tmloadcf` of the modified `ubbconfig` file.

## Installing BEA eLink OSI TP on a UNIX-Based Operating System

This section explains how to install the BEA eLink OSI TP product on the following execution platforms:

- AIX 4.3.3
- HP-UX 11.00

# 1 *Installing the BEA eLink OSI TP Product*

---

- Solaris 7 or 8
- UnixWare 7.1.1

To install the eLink OSI TP product, you run the `install.sh` script. This script installs all the necessary software components.

**Warning:** For UNIX-based operating systems, if you are installing in silent mode the BEA Tuxedo system should be installed first and the eLink OSI TP product should be installed within the same directory. Use the `mkdir` command to create the directory where you wish to install BEA Tuxedo and the eLink OSI TP product **BEFORE** you perform your installations. If you do not create the directory first, you will receive an Installation Complete message after you install BEA Tuxedo, but Tuxedo will not be installed. Make sure that you have installed the Tuxedo 8 license before you install the eLink OSI TP product.

Perform the following steps to install the eLink OSI TP product on a supported UNIX platform:

1. Log on to your UNIX platform and access the CD-ROM device.

```
# ls -l /dev/cdrom
total 0
brw-rw-rw-  1 root   sys    22,  0 January 5 10:55 clb0t010
```

2. Mount the CD-ROM with the following mount instruction if you are installing on an AIX operating system. The CD-ROM mounts automatically on Solaris.

```
# mount -r -F cdfs /dev/cdrom/clb0t010 /mnt
```

Use the following mount instruction if you are installing on an HP-UX operating system:

```
# mount -r -F cdfs -o cdcase /dev/cdrom/clb0t010 /mnt
```

3. Change the directory to your CD-ROM device.

```
# cd /mnt
```

4. List the CD-ROM contents.

```
# ls
install.sh  hp  ibm  sun5x  uw  windows
```

5. Execute the installation script.



```
# sh ./install.sh
```

6. The installation script runs and prompts you for responses.

### Listing 1-1 Install.sh Script Prompts for an AIX Installation

---

```
sh install.sh

01) hp/hpux11  02) ibm/aix43  03) sun5x/sol8  04) uw/uw7

Install which platform's files? [01- 3, q to quit, l for list]: 2

** You have chosen to install from ibm/aix43 **

BEA eLink OSI TP Release 4.1

This directory contains BEA eLink OSI TP for
AIX 4.3 on RS/6000.

Is this correct? [y,n,q]: y

To terminate the installation at any time
press the interrupt key,
typically <del>, <break>, or <ctrl+c>.

The following packages are available:

    1      ositp          BEA eLink OSI TP

Select the package(s) you wish to install (default: 1) [?,??,q]: 1

BEA eLink OSI TP
(rs6000) Release 4.1
Copyright (c) 2001 BEA Systems, Inc.
All Rights Reserved.
Distributed under license by BEA Systems, Inc.
BEA eLink is a trademark of BEA Systems, Inc.

Directory where OSI TP files are to be installed
(Enter your Tuxedo directory path) [?,q]: /work/cmadm/tux8

Using /work/cmadm/tux8 as the OSI TP base directory

Determining if sufficient space is available ...
9904 blocks are required
1865988 blocks are available to /work/cmadm/tux8
```

# 1 *Installing the BEA eLink OSI TP Product*

---

```
Unloading /mnt/sun5x/sol8/ositp/OSITPT80.Z ...
bin/GWOSITP
bin/getulogpfx
bin/lic.sh
bin/osiadmin
bin/osiltmain
bin/portproxy
bin/prdebuginfo
bin/setPROXYpriv
lib/libgwo.so
lib/libnwunisys.so
lib/libtasn1.so
locale/C/LIBGWO.text
locale/C/LIBGWO_CAT
locale/C/libnwunisys.cat
udataobj/gbebc2u.fld
udataobj/jbis82u.fld
udataobj/ksc2u.fld
udataobj/u2gbebc.fld
udataobj/u2jbis8.fld
udataobj/u2ksc.fld
9760 blocks
... finished
```

The `$TUXDIR/bin/portproxy` executable listens on privileged ports (< 1024) on behalf of GWOSI TP. The script `$TUXDIR/bin/setPROXYpriv` is used to set the appropriate permissions.

```
If you know the root password, you may run setPROXYpriv now.
Run the setPROXYpriv script? [y/n]: y
root's Password:
Owner for /work/cmadm/tux8/bin/portproxy changed to root.
Mode for /work/cmadm/tux8/bin/portproxy changed to 4555.
```

```
Changing file permissions...
... finished
```

```
If your license file is accessible, you may install it now.
Install license file? [y/n]: n
```

Please don't forget to use `lic.sh` located in your product `bin` directory to install the license file from the enclosed floppy. Refer to your product Release Notes for details on how to do this.

Installation of BEA eLink OSI TP was successful

Please don't forget to fill out and send in your registration card

---

**Note:** The following message may also appear during installation on HP machines:

### Listing 1-2 Warning Message

---

```
=====
You do NOT HAVE required HP Patches for Tuxedo 8
Please refer to the Tuxedo 8 Installation Guide
or http://edocs.bea.com/tuxedo/tux80/install/inspds.htm#1318335
for more information.

Continue Installation? [y/n]:
```

---

If you receive this warning, enter **n** to exit installation and refer to your *Tuxedo 8.0 Installation Guide* for more information.

## Distribution Libraries and Executables for AIX

The eLink OSI TP CD-ROM contains the following libraries and executable programs for the AIX 4.3.3 operating system:

Directory	Files
/bin	dmloadcf getulogfx GWOSITP osiadmin osiltmain portproxy prdebuginfo setPROXYpriv
/lib	libgwo.so libnwunisis.so libtasn1.so
/locale/C	LIBGWO.text LIBGWO_CAT libnwunisis.cat

# 1 *Installing the BEA eLink OSI TP Product*

---

<b>Directory</b>	<b>Files</b>
/udataobj	gbebc2u.fld jbis82u.fld ksc2u.fld u2gbebc.fld u2jbis8.fld u2ksc.fld
\$TUXDIR/eLink/osi/ samples/simpapp	dmconfig.txt ubbsimple.txt

## **Distribution Libraries and Executables for HP-UX**

The eLink OSI TP CD-ROM contains the following libraries and executable programs for the HP-UX 11 operating system:

<b>Directory</b>	<b>Files</b>
/bin	dmloadcf getulogfx GWOSITP osiadmin osiltmain portproxy prdebuginfo setPROXYpriv
/lib	libgwo.sl libnwunisis.sl libtasn1.sl
/locale/C	LIBGWO.text LIBGWO_CAT libnwunisis.cat

<b>Directory</b>	<b>Files</b>
/udataobj	gbebc2u.fld jbis82u.fld ksc2u.fld u2gbebc.fld u2jbis8.fld u2ksc.fld
\$TUXDIR/eLink/osi/ samples/simpapp	dmconfig.txt ubbsimple.txt

## **Distribution Libraries and Executables for Solaris**

The eLink OSI TP CD-ROM contains the following libraries and executable programs for the Solaris 7 or Solaris 8 operating system:

<b>Directory</b>	<b>Files</b>
/bin	dmloadcf getulogfx GWOSITP osiadmin osiltmain portproxy prdebuginfo setPROXYpriv
/lib	libgwo.so libnwunisis.so libtas1.so
/locale/C	LIBGWO.text LIBGWO_CAT libnwunisis.cat

# 1 *Installing the BEA eLink OSI TP Product*

---

<b>Directory</b>	<b>Files</b>
/udataobj	gbebc2u.fld jbis82u.fld ksc2u.fld u2gbebc.fld u2jbis8.fld u2ksc.fld
\$TUXDIR/eLink/osi/ samples/simpapp	dmconfig.txt ubbsimple.txt

## **Distribution Libraries and Executables for UnixWare**

The eLink OSI TP CD-ROM contains the following libraries and executable programs for the UnixWare 7.1.1 operating system:

<b>Directory</b>	<b>Files</b>
/bin	dmloadcf getulogfx GWOSITP osiadmin osiltmain portproxy prdebuginfo setPROXYpriv
/lib	libgwo.so libnwunsys.so libtasn1.so
/locale/C	LIBGWO.text LIBGWO_CAT libnwunsys.cat

## Installing BEA eLink OSI TP on a UNIX-Based Operating System

---

<b>Directory</b>	<b>Files</b>
/udataobj	gbebc2u.fld jbis82u.fld ksc2u.fld u2gbebc.fld u2jbis8.fld u2ksc.fld
\$TUXDIR/eLink/osi/ samples/simpapp	dmconfig.txt ubbsimple.txt

# Installing BEA eLink OSI TP on Windows NT or Windows 2000

**Caution:** Be sure to review the “[Pre-Installation Considerations](#)” section before you start your installation of the BEA eLink OSI TP Version 4.1 product.

Perform the following steps to install the eLink OSI TP product on a Windows NT or Windows 2000 operating system:

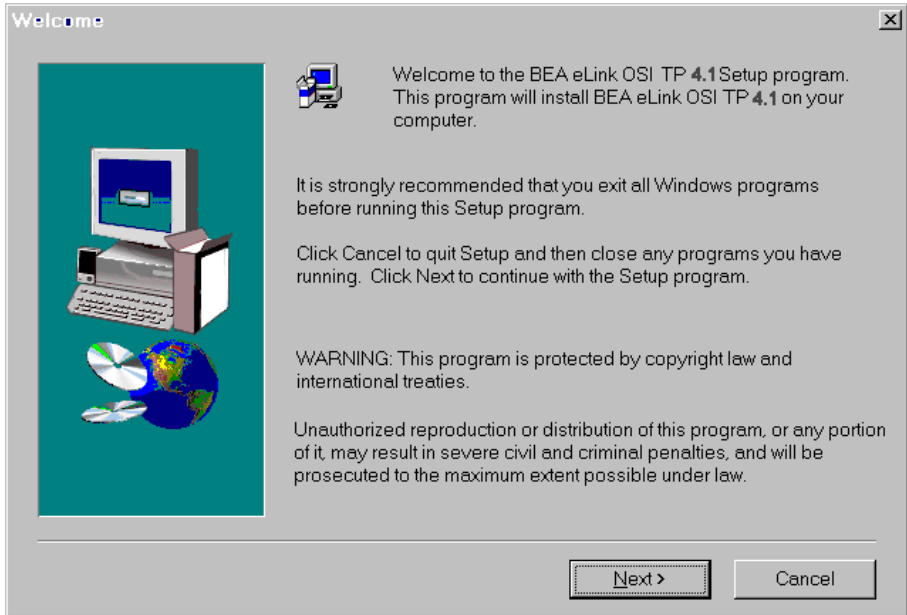
**Warning:** For Windows operating systems, the BEA Tuxedo system should be installed first and the eLink OSI TP product should be installed within the same directory.

1. Insert the eLink OSI TP product CD-ROM in your CD-ROM drive. The Installation program should automatically start. If it does not start automatically, perform the following steps to begin the installation:
  - a. Click the **Start** button, and select the **Run** option. The **Run** window displays.
  - b. Click the **Browse** button to select the CD-ROM drive.
  - c. Select the `windows` directory and select the `Setup.exe` program.
  - d. Click **OK** to run the executable and begin the installation. Setup searches to make sure the Tuxedo product is installed on your system.

**Note:** If the Tuxedo product is NOT already installed on your system, an **Error** pop-up window displays. Click **OK** on the pop-up window to terminate the installation process. Install the Tuxedo product on your system and reinitiate the installation process.
2. Setup also notifies you if a prior version of the eLink OSI TP product installed. If a prior version is detected, you are asked if you want to continue with Setup. Click **Yes** and the **Welcome** window displays as shown in [Figure 1-1](#).



Figure 1-1 Welcome Window

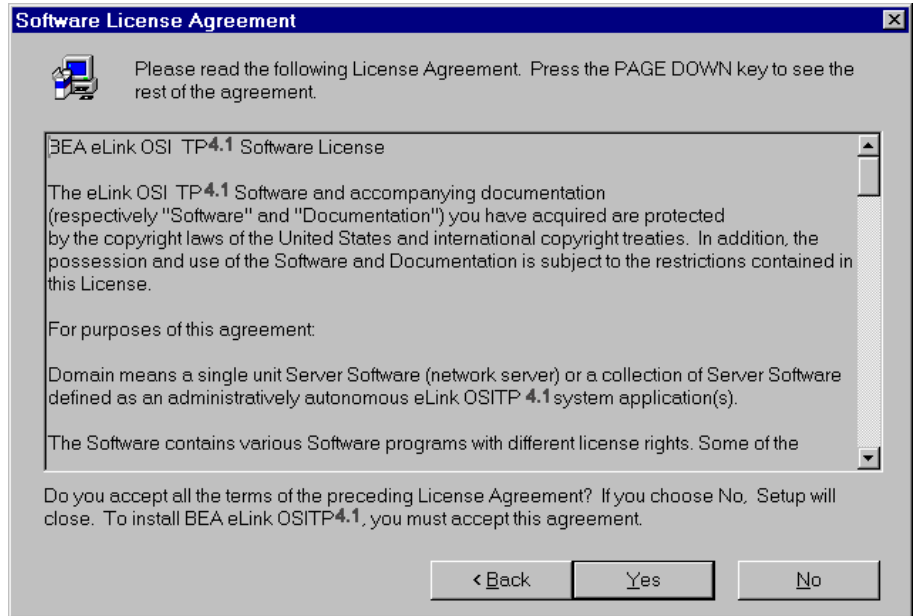


# 1 Installing the BEA eLink OSI TP Product

---

3. Click **Next** to continue with the installation. The **License Agreement** window displays as shown in [Figure 1-2](#).

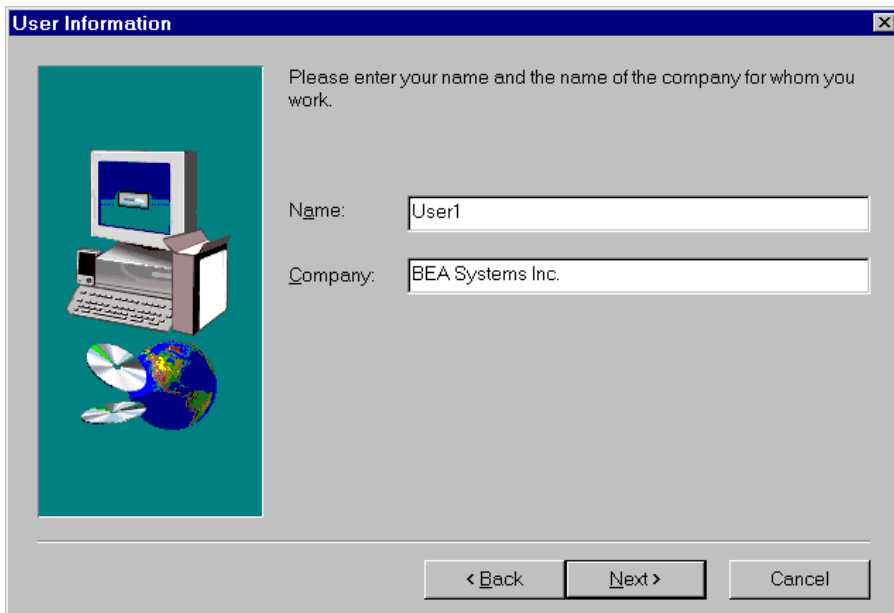
**Figure 1-2 License Agreement Window**



4. Read the license agreement information, and click **Yes** to continue with the installation.

5. The **User Information** window displays as shown in [Figure 1-3](#). Enter your name in the **Name** field. Enter the name of your company in the **Company** field. Click **Next** to continue with the installation.

**Figure 1-3 User Information Window**

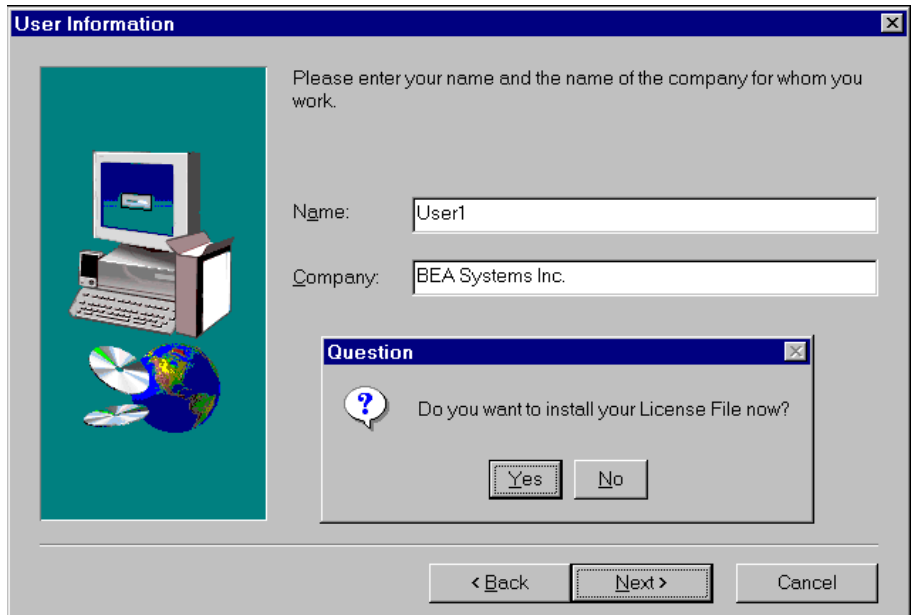


# 1 Installing the BEA eLink OSI TP Product

6. The install license file **Question** pop-up window displays as shown in [Figure 1-4](#). Click **Yes** to install your License File now.

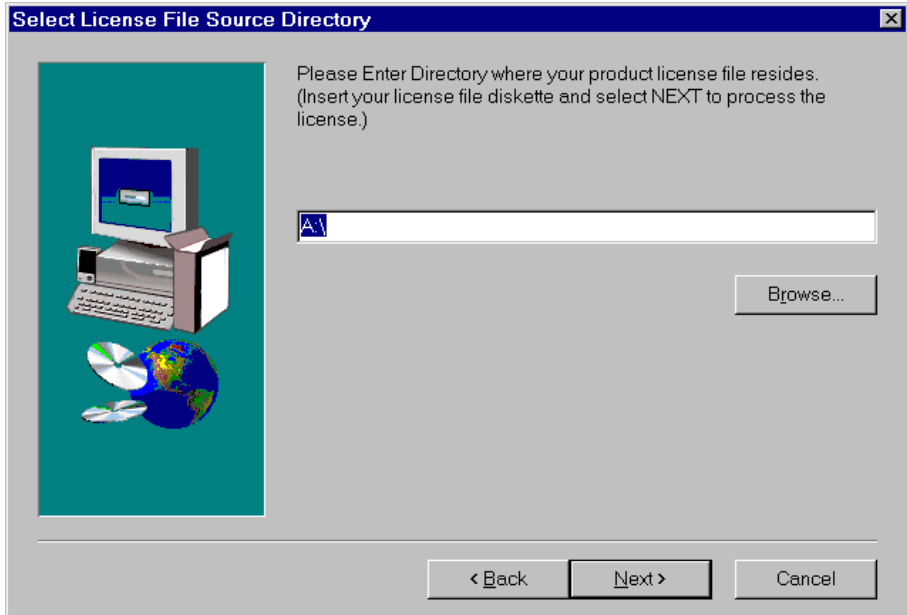
**Note:** If you click **Yes**, the BEA eLink OSI TP license file is appended to the existing Tuxedo license file, `$TUXDIR\udataobj\lic.txt`. If you click **No**, you will need to manually add the eLink OSI TP license to the end of the `lic.txt` file.

**Figure 1-4 Install License File Question**



7. When you click **Yes** to install the License File, the **Select License File Source Directory** window displays as shown in [Figure 1-5](#).
  - a. Enter the Directory and Path or click the **Browse** button to display the **Choose Folder** pop-up window as shown in [Figure 1-6](#)

**Figure 1-5 Select License File Source Directory Window**

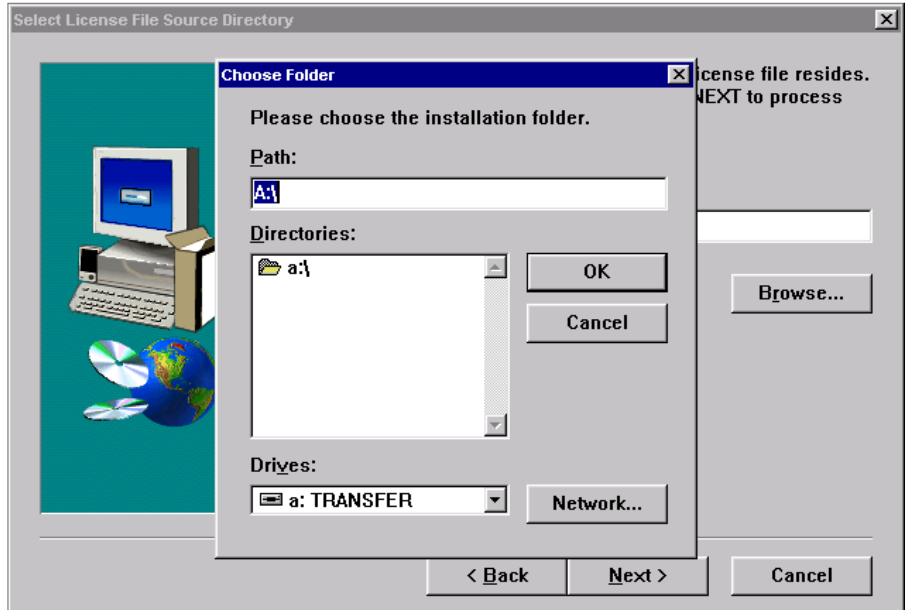


# 1 Installing the BEA eLink OSI TP Product

---

- b. If you clicked **Browse**, locate the License file and click **OK** to return to the **Select License File Source Directory** window. Then click **Next** to continue with the installation process.

**Figure 1-6 Choose Folder Pop-up Window**

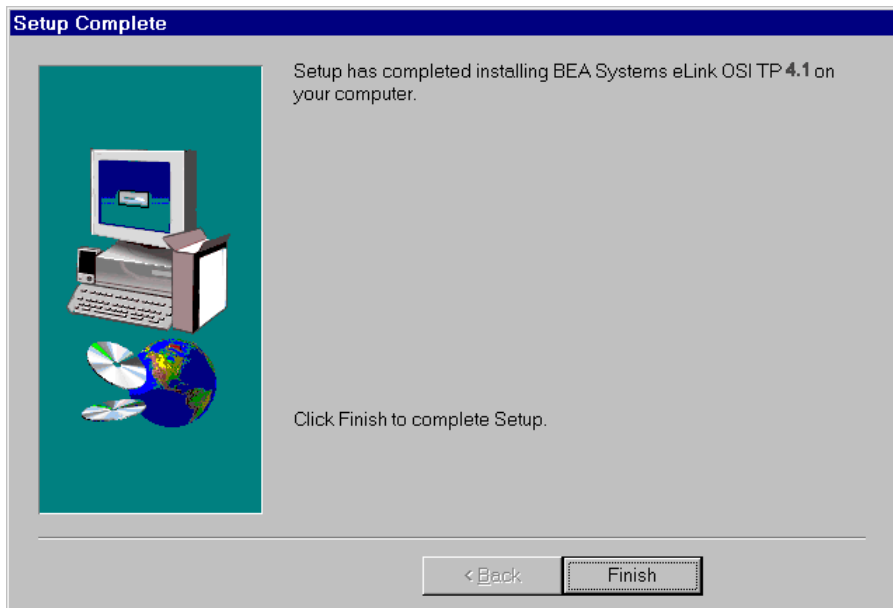


8. The installation begins and a progress bar displays the status. The eLink OSI TP components install into the Tuxedo directory. You may abort the installation process anytime prior to completion by clicking **Cancel**.

**Note:** During the eLink OSI TP installation, the `$TUXDIR\udataobj\DMTYPE` file is updated to include an OSITPX entry if one is not already there.

9. The **Setup Complete** window, as shown in [Figure 1-7](#) notifies you that the eLink OSI TP product is installed on your system. Click **Finish** to complete the setup process.

**Figure 1-7 Setup Complete**



# Distribution Libraries and Executables for Windows NT or Windows 2000

The eLink OSI TP CD-ROM contains the following libraries and executable programs for Windows operating systems. After installing the eLink OSI TP product, verify that these files and programs are installed on your system.

<b>Directory</b>	<b>Files</b>
/bin	DbgHelp.dll gwo.dll GWOSITP.exe nwunisis.dll osiadmin.exe osilt.dll osiltmain.exe osiltpp.dll osiltppmain.exe osimsg.dll Psapi.dll tasn1.dll
/locale/C	LIBGWO.text LIBGWO_CAT
/udataobj	gbebc2u.fld jbis82u.fld ksc2u.fld u2gbebc.fld u2jbis8.fld u2ksc.fld
\$TUXDIR/eLink/osi/ samples/simpapp	dmconfig.txt ubbsimple.txt



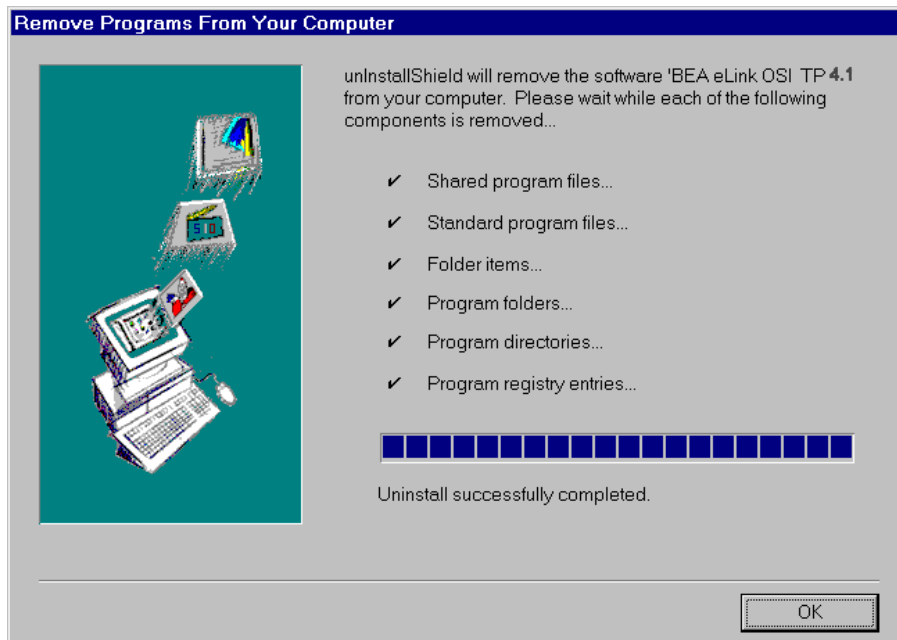
## Uninstalling eLink OSI TP Product on Windows 2000

Perform the following steps to uninstall eLink OSI TP on a Windows NT system:

**Note:** Make sure that BEA eLink OSI TP is shut down before you uninstall.

1. Click the **Start** button, and then point to **Settings**. Point to the folder that contains **Control Panel**, and then click **Control Panel**.
2. Double click on the **Add/Remove Programs** option from the **Control Panel** listings to access the **Add/Remove Programs** properties window.
3. In the **Add/Remove Programs Properties** window, select eLink OSI TP from the program list and click the **Add/Remove** button.
4. The uninstall process for eLink OSI TP begins. The **Remove Programs From Your Computer** screen displays. Click **OK** to complete the uninstall process.

Figure 1-8 Remove Programs From Your Computer Screen



# **1** *Installing the BEA eLink OSI TP Product*

---