



BEA WebLogic Mobility Server™
Sample Workshop Mobility Project Guide

Version 3.5
September 2006

Copyright

Copyright © 1995-2006 BEA Systems, Inc. All Rights Reserved.

Restricted Rights Legend

This software is protected by copyright, and may be protected by patent laws. No copying or other use of this software is permitted unless you have entered into a license agreement with BEA authorizing such use. This document is protected by copyright and may not be copied, photocopied, reproduced, translated, or reduced to any electronic medium or machine readable form, in whole or in part, without prior consent, in writing, from BEA Systems, Inc.

Information in this document is subject to change without notice and does not represent a commitment on the part of BEA Systems. THE DOCUMENTATION IS PROVIDED "AS IS" WITHOUT WARRANTY OF ANY KIND INCLUDING WITHOUT LIMITATION, ANY WARRANTY OF MERCHANTABILITY OR FITNESS FOR A PARTICULAR PURPOSE. FURTHER, BEA SYSTEMS DOES NOT WARRANT, GUARANTEE, OR MAKE ANY REPRESENTATIONS REGARDING THE USE, OR THE RESULTS OF THE USE, OF THE DOCUMENT IN TERMS OF CORRECTNESS, ACCURACY, RELIABILITY, OR OTHERWISE.

Trademarks and Service Marks

Copyright © 1995-2006 BEA Systems, Inc. All Rights Reserved. BEA, BEA JRockit, BEA WebLogic Portal, BEA WebLogic Server, BEA WebLogic Workshop, Built on BEA, Jolt, JoltBeans, SteelThread, Top End, Tuxedo, and WebLogic are registered trademarks of BEA Systems, Inc. BEA AquaLogic, BEA AquaLogic Data Services Platform, BEA AquaLogic Enterprise Security, BEA AquaLogic Service Bus, BEA AquaLogic Service Registry, BEA Builder, BEA Campaign Manager for WebLogic, BEA eLink, BEA Liquid Data for WebLogic, BEA Manager, BEA MessageQ, BEA WebLogic Commerce Server, BEA WebLogic Communications Platform, BEA WebLogic Enterprise, BEA WebLogic Enterprise Platform, BEA WebLogic Enterprise Security, BEA WebLogic Express, BEA WebLogic Integration, BEA WebLogic Java Adapter for Mainframe, BEA WebLogic JDriver, BEA WebLogic Log Central, BEA WebLogic Network Gatekeeper, BEA WebLogic Personalization Server, BEA WebLogic Personal Messaging API, BEA WebLogic Platform, BEA WebLogic Portlets for Groupware Integration, BEA WebLogic Server Process Edition, BEA WebLogic SIP Server, BEA WebLogic WorkGroup Edition, Dev2Dev, Liquid Computing, and Think Liquid are trademarks of BEA Systems, Inc. BEA Mission Critical Support, BEA Mission Critical Support Continuum, and BEA SOA Self Assessment are service marks of BEA Systems, Inc.

All other names and marks are property of their respective owners.

Contents

About This Manual.....	1
Pre-Requisites.....	2
BEA WebLogic Workshop with the Mobility Extension	3
Summary of the Mobility Extension Features	3
Mobility Menu.....	11
Mobilization Methodology	12
Device Classes.....	12
Mobilize Content.....	12
Begin Mobilization of the Sample Project.....	13
Step 1: Enable the restaurantWeb Project for Multi-Channel.....	15
Step 2: Start the WebLogic Server	16
Step 3: Set Up the Page for Mobilization	17
Step 4: Group the Content	19
Step 5: Add Layouts for Handheld Devices	24
Manipulate Groups	28
Configure Groups on Menu-Driven Devices.....	30
Deliver the Correct Images to Handheld Devices	32
Optimize the Header Group.....	32
Optimize the Horoscope Group.....	37
Optimize the Menu Group.....	40
Optimize the Timetable	42
Optimize the Restaurant Search	47
Navigation Styling on Menu-Driven Devices	48
Automatic Navigation for PDA Layouts	53
Summary	60
Appendix A - Enable Runtime Image Conversion	61

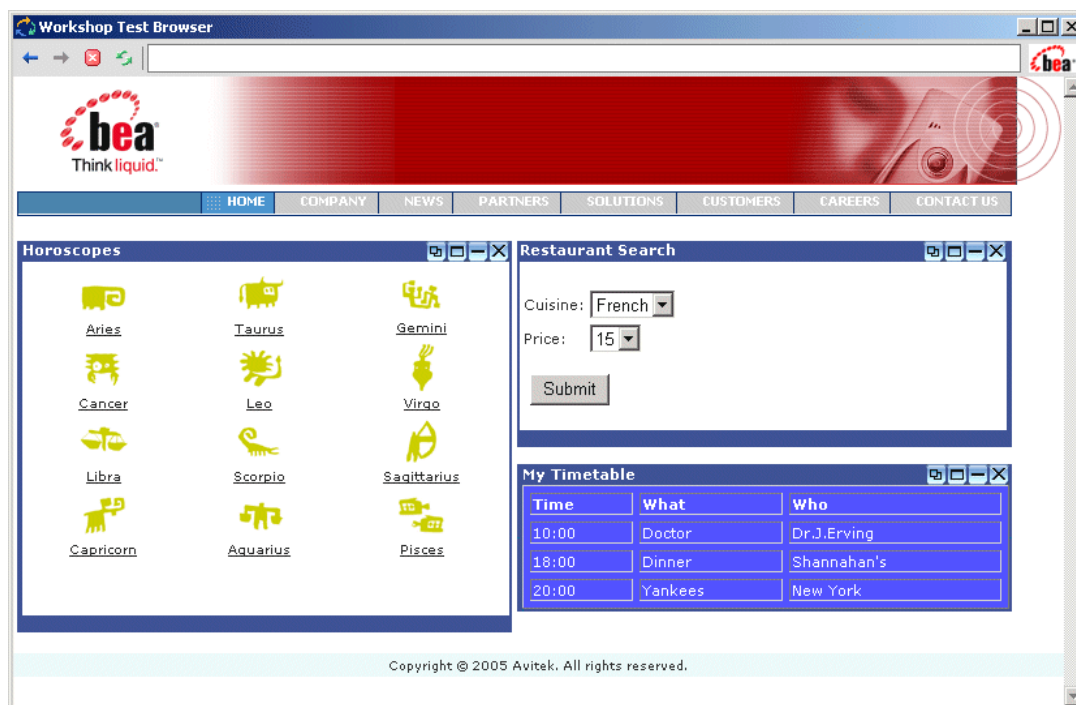
About This Manual

The installer for BEA WebLogic Mobility Server™ installed a sample mobility project for BEA WebLogic Workshop 8.1 along with the Mobility Extension for BEA WebLogic Workshop. The *BEA WebLogic Mobility Server Installation Guide* document described the steps to import the mobility project, *restaurantWeb*, into a newly created domain and application in BEA WebLogic Workshop.

This document takes you through the step-by-step process of mobilizing this web application for mobile devices using the Mobility toolbars and features that have been integrated into BEA WebLogic Workshop by the Mobility Extension.

As this is only a demonstration project to get you started mobilizing content in Workshop, some of the links have been left inactive intentionally. Once you have learned the mobility basics by following the steps in this document, you are free to extend and modify the demonstration project for further practice.

The sample application in the Workshop Test Browser



The sample project is an example of a typical web page, containing three different features: horoscopes, a restaurant search, and a personal timetable. It has currently only been optimized for full browser (PC) display. Run the sample in either a phone or PDA emulator and you can see how the display becomes distorted or too wide in these smaller mobile device screens.

By using the Mobility Extension for BEA WebLogic Workshop, developers can quickly make their applications "mobile-ready". Follow the steps in the next sections to mobilize the sample *restaurantWeb* project.

Note: The steps and images on the following pages are taken from a BEA WebLogic Workshop 8.1 installation and will vary somewhat from a BEA Workshop for WebLogic Platform 9.X installation.

Pre-Requisites

Before using this guide, the following steps must have been completed as described in the *BEA WebLogic Mobility Server Installation Guide*:

1. Install BEA WebLogic Platform Version 8.1 SP2 - SP6.
2. Install and configure BEA WebLogic Mobility Server and the Mobility Extension for BEA WebLogic Workshop.
3. Create a “WebLogic Workshop Domain” using the BEA Configuration Wizard.
4. Create an “Empty Application” in Workshop.
5. Configure device emulators.
6. Import the `restaurantWeb` sample project as a web project.

BEA WebLogic Workshop with the Mobility Extension

After installing WebLogic Mobility Server, including the Mobility Extension for BEA WebLogic Workshop (see the installation guide), the BEA WebLogic Workshop Integrated Development Environment can be used for creating multi-channel applications and extending existing applications to wireless.

Summary of the Mobility Extension Features

This section provides an overview of the Mobility Extension features, including:

- Enable Multi-Channel for new or existing projects
- Mobility Palette, for easy Access to Mobility Tags
- Mobility Toolbar, including:
 - Design Preview icons for the different device classes
 - Emulator Launch icons for the different device classes
 - Launch Mobility Tools icon
- IDE Properties additions, including:
 - Mobility pane, for setup and configuration
 - Emulators Pane, for configuring Device Emulators
- Mobility Menu under Tools, including:
 - Launch Emulator options
 - Launch Mobility tools

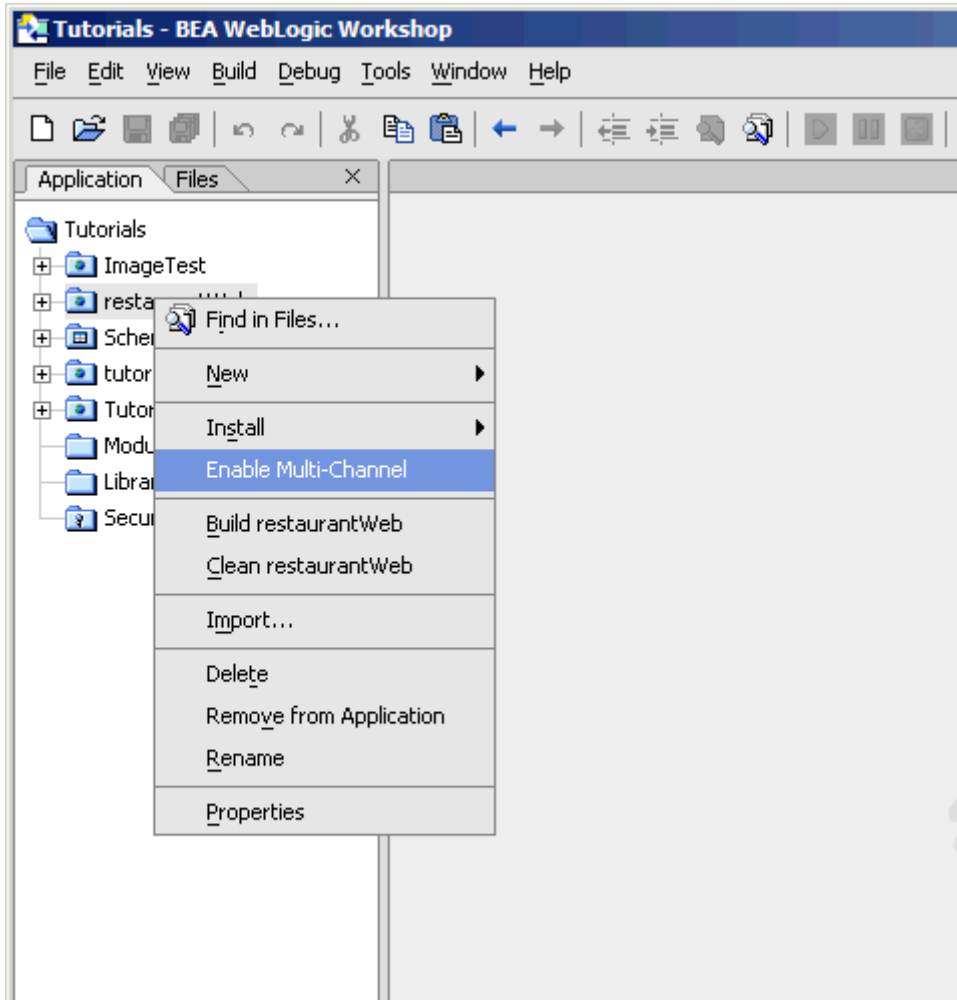
These features are described in more detail in the “Enable Multi-Channel” section.

Note: The large xml-format device repository file may cause problems when a project is opened in WebLogic Workshop. Please use the compressed madr-format repository to avoid these problems. The Enable Multi-Channel function automatically adds the ".madr" version of the file to your project.

Enable Multi-Channel

Any application project can be configured for multi-channel delivery by choosing the **Enable Multi-Channel** menu-option for the highlighted project. Choosing this option configures the application project to deploy and use WebLogic Mobility Server.

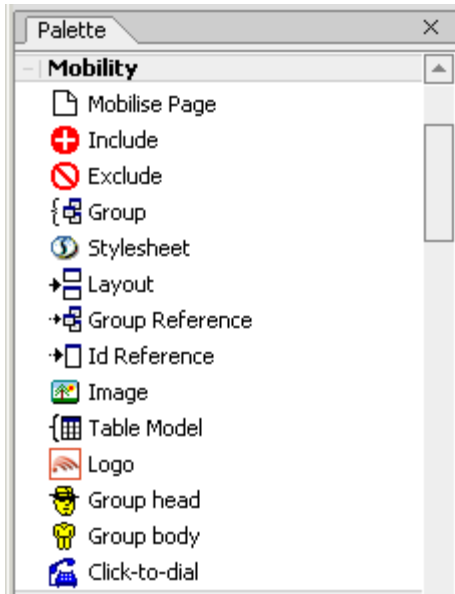
Enable multi-channel



Mobility Palette

Using a “drag & drop” technique, mobility meta-data can be applied to any NetUI-defined interface to enable delivery to mobile devices. This includes support for wizard-based generation of layouts for different device categories, click-to-dial for embedding telephony commands in applications, multi-device image handling, and device-category styling.

The Mobility Palette

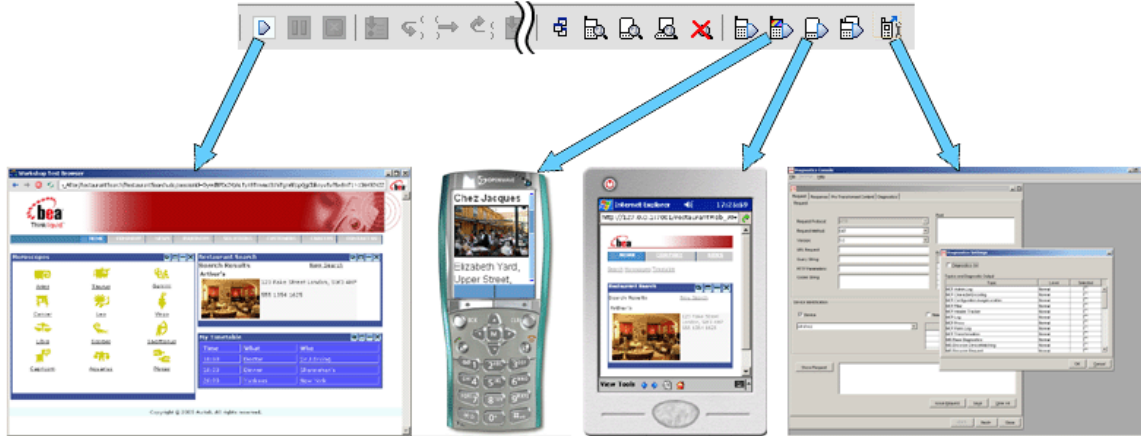


For more details on each of these mobility tags, please see the *BEA WebLogic Mobility Server User Guide*.

Mobility Toolbar

This is a toolbar extension that enables launching of device emulators for smart phones and PDAs in addition to the Workshop test browser. The Mobility Toolbar also provides a diagnostics application that enables the simulation of advanced mobile requirements for detailed testing of applications.

The Mobility Toolbar features



The Mobility Toolbar additionally provides the capability to manage target devices from within Workshop, enabling addition/removal of devices in the device repository and device profile configuration for optimization of NetUI for different device types.

Viewing Content with Emulators

The Mobility Extension installation adds a toolbar to Workshop that makes it easy to view and troubleshoot mobilized content. Once your emulators have been configured as described in the installation instructions, you will have an extra toolbar in Workshop, the Mobility Toolbar.

The Mobility Toolbar



The first icon simplifies the management of groups of content that have been created on the page that is open in the Edit Pane.

Manage Groups



The next four icons allow you to see the mark-up for a particular device. Content groups that have been excluded for a particular device will not appear in the window when that device's button is pressed. The groups that are to be delivered to the device will be expanded so that you can see approximately how they would look.

These four icons are as follows:

Preview WAP Content



Preview PDA Content



Preview Full Browser (PC) Content



View All Contents and Mobility Mark-up



The next four icons let you launch the particular device emulator to see the results of the mobility markup, as it would appear in the actual device.

They are, in order:

Launch Configured WAP 1.x Emulator



Launch Configured WAP 2.x Emulator



Launch Configured PDA Emulator



Launch Other Configured Emulators / Browsers



The sample project, when viewed in a menu-driven (for example smart phones) or a PDA device, demonstrates the types of issues that can arise when sending PC web content to handheld devices. As the code is mobilized, you will be able to see how WebLogic Mobility Server can manipulate the content to make it look good on all types of devices.

The final icon on the toolbar gives access to additional WebLogic Mobility Server tools:

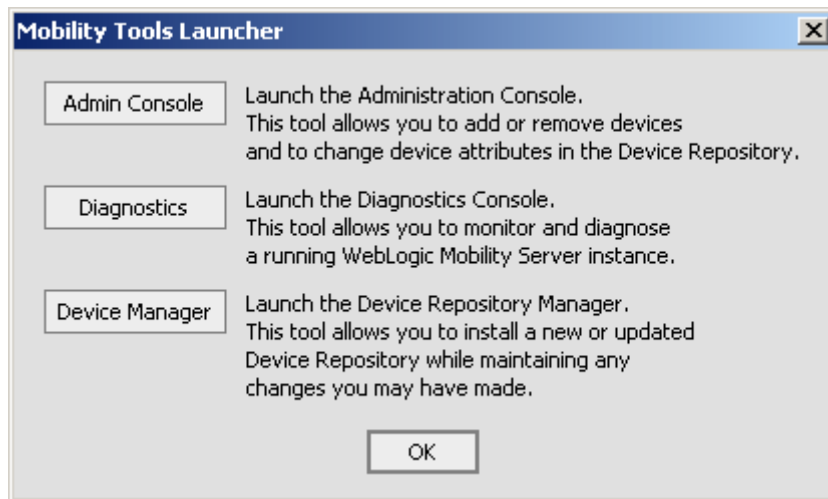
- Administration Console for managing devices and their attributes
- Diagnostics Console for diagnostic output and troubleshooting
- Device Repository Manager for managing the Device Repository

Mobility Tools



Clicking on this icon will open the Mobility Tools Launcher dialog box for these tools (see the following graphic). The tools can also be launched directly from the Mobility Menu.

Mobility Tools Launcher



IDE Properties Additions

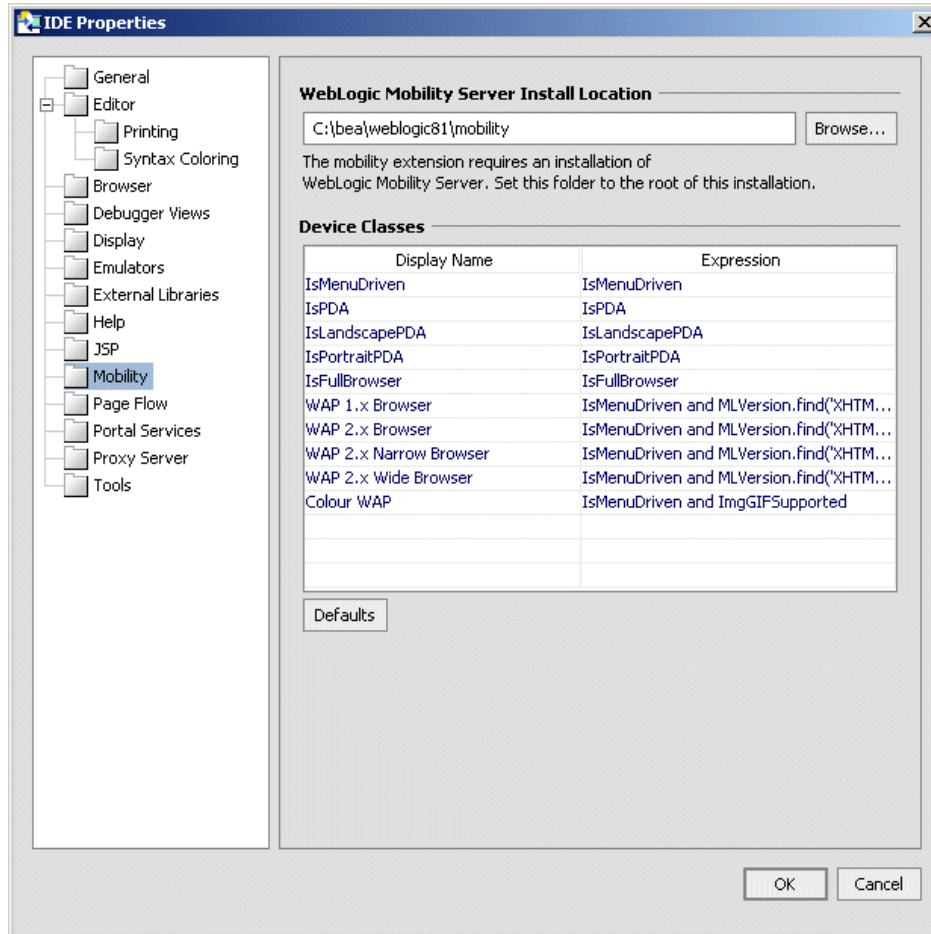
Two additional panes have been added to the IDE Properties dialog:

- Mobility pane
- Emulators pane

Mobility Pane

The “Mobility” pane allows the user to set the Install Location property.

Additions to IDE Properties Dialog



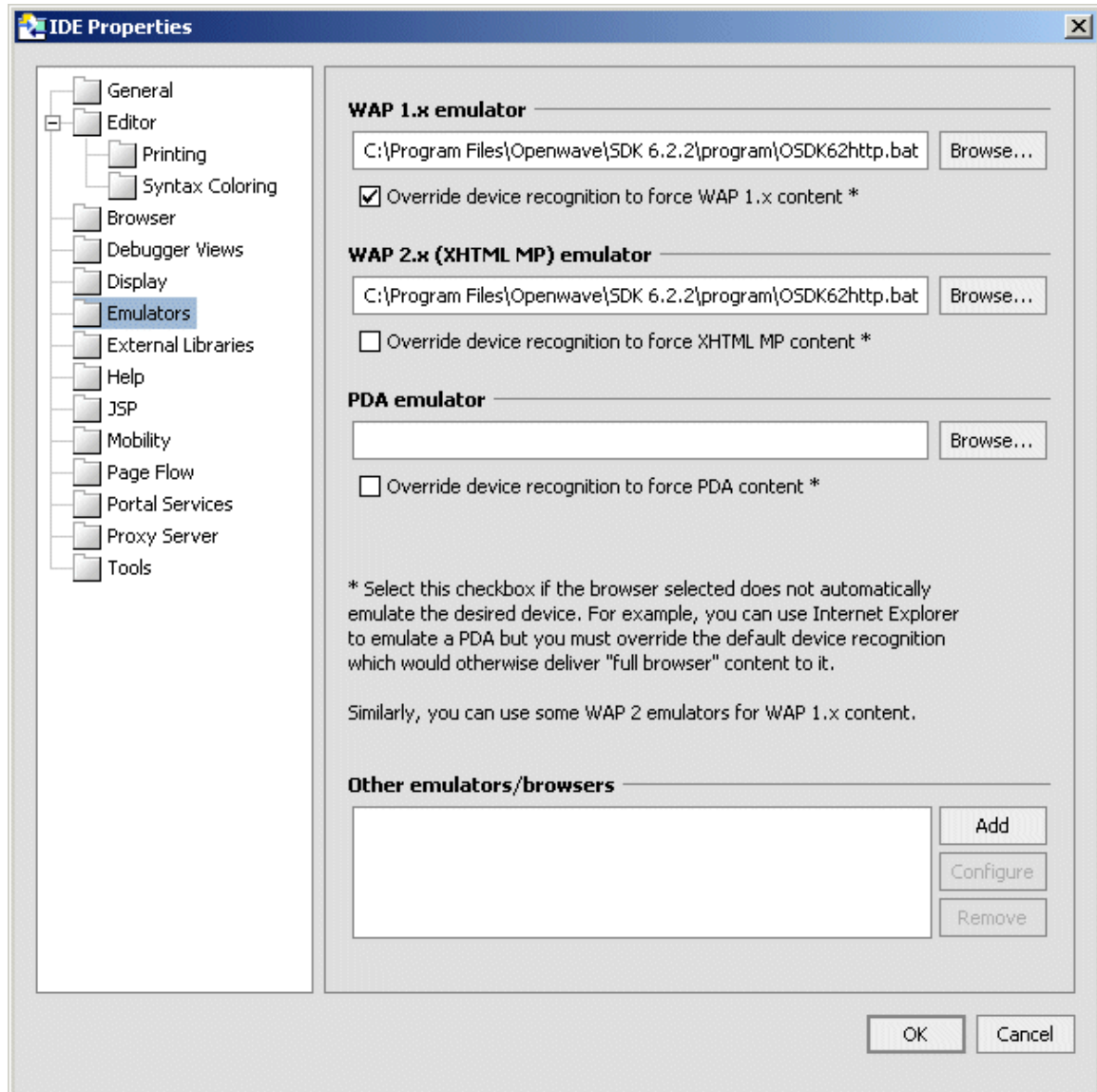
The “Device Classes” section provides a drop down list of configured device classes when using the Mobility Tags. Developers can specify frequently used “where” expressions for inclusion in the drop down list. See the *BEA WebLogic Mobility Server User Guide* for a detailed explanation of the Mobility Tags and “where” expressions.

To add a new item to the drop down list, insert the frequently used expression in the “Expression” column and an easily identifiable “Display Name” to be associated with it. Subsequent usage of the Mobility Tags will allow the user to select this “Display Name” resulting in the automatic insertion of the defined “Expression”.

Emulators Pane

The “Emulators” pane enables configuration of different emulators for testing the application appearance and flow on a range of devices.

Emulators Pane



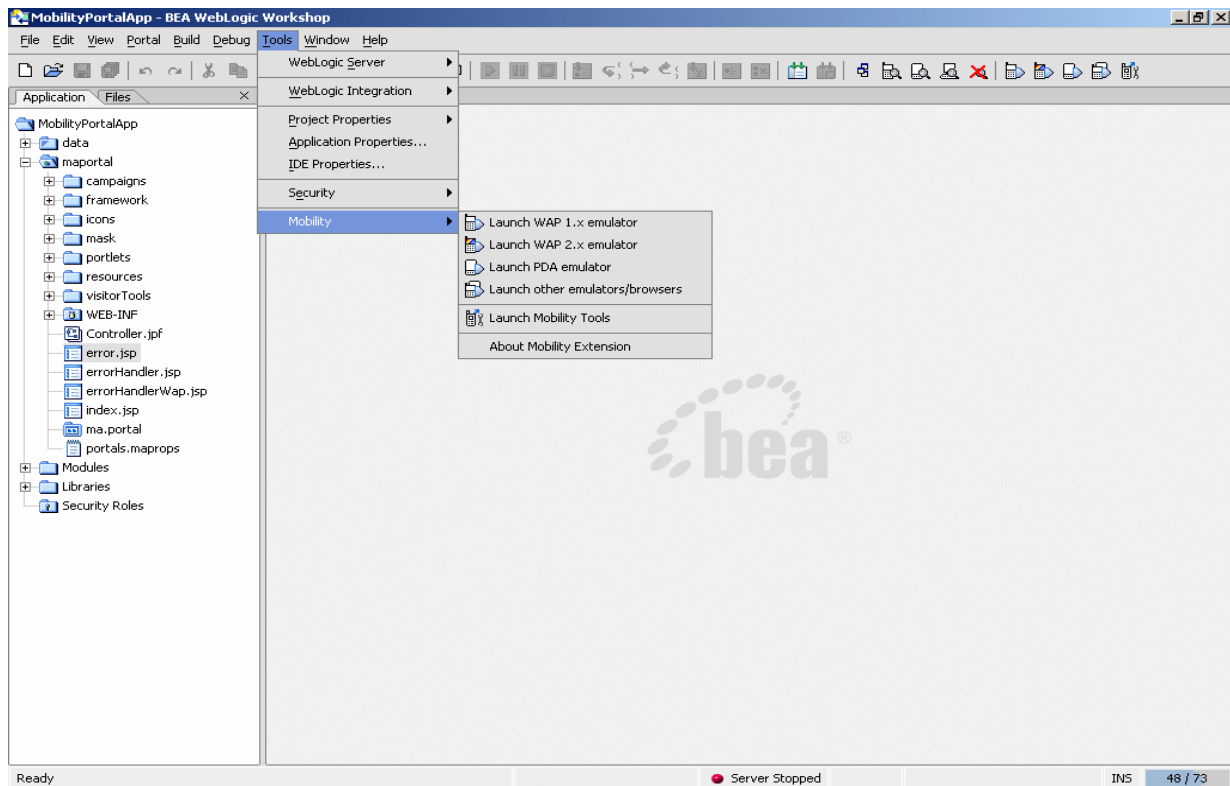
For more information on configuring these emulators refer to “Configuring the Device Emulators” in the *BEA WebLogic Mobility Server Installation Guide*.

Mobility Menu

The Mobility Menu contains links to the following:

- Launch WAP 1.x emulator
- Launch WAP 2.x emulator
- Launch PDA emulator
- Launch other emulators/browsers
- Launch Mobility Tools

Mobility Menu



Mobilization Methodology

This section gives a brief overview of the mobilization process using Mobility Tags. For a detailed description, please refer to the *BEA WebLogic Mobility Server User Guide*.

Once a page of content has been mobilized, it can be delivered by WebLogic Mobility Server to a range of devices from PDA's to PCs to WAP devices and smartphones.

Device Classes

To simplify the developer's task of catering for all devices, the devices are broadly grouped into three main categories:

1. FullBrowser: Typically PC Browsers, Tablet PCs and other large screen HTML devices
2. PDA: Typically PDAs, PDA-sized smartphones, and other HTML 3.2 devices
3. MenuDriven: Typically WAP 1.x and WAP 2.x devices, or for limited capability devices.

WebLogic Mobility Server recognizes devices as they access content and transforms the content appropriately based on device profile characteristics retrieved from the Device Repository. The device profile includes information such as the appropriate mark-up language (for example WML, XHTML-MP, and so on) for each device, as well as device display capabilities such as image handling capabilities, screen size, WAP decksize, and whether javascript or tables are supported.

With this information, WebLogic Mobility Server can optimally transform and deliver content in the correct format to the device, including paginating the content and adding navigation links automatically if necessary.

Developers can also refine their content beyond these initial device classes.

Mobilize Content

Before mobilizing content, you must first indicate that a page is to be transformed. You do this by adding the "Mobilize Page" tag to the content (this will be demonstrated in the next section).

Next, to mobilize the page, there are 2 main steps:

- Grouping the Content.
- Defining the Presentation.

Grouping

A detailed page of HTML content would be too complex to send directly to WAP or PDA device. To overcome this, the page is split into logical groups.

Presentation

Once the content is logically split into groups, you can decide which groups should be sent to particular device classes and how they will be displayed.

Grouping and presentation of content will also be demonstrated in the next section.

Begin Mobilization of the Sample Project

Notes

- You should have followed the steps in the *BEA WebLogic Mobility Server Installation Guide* to import the `restaurantWeb` sample project. If you have not already done so, please refer to the installation guide and import the sample `restaurantWeb` Project.
- The following sample makes extensive use of the Design View in BEA Workshop for WebLogic. “Design View” is only available in the Microsoft Windows version of BEA Workshop for WebLogic as it makes use of Internet Explorer features. Whilst you will still be able to complete the exercise on other environments, such as Linux, you will have to complete tasks in “Source View”

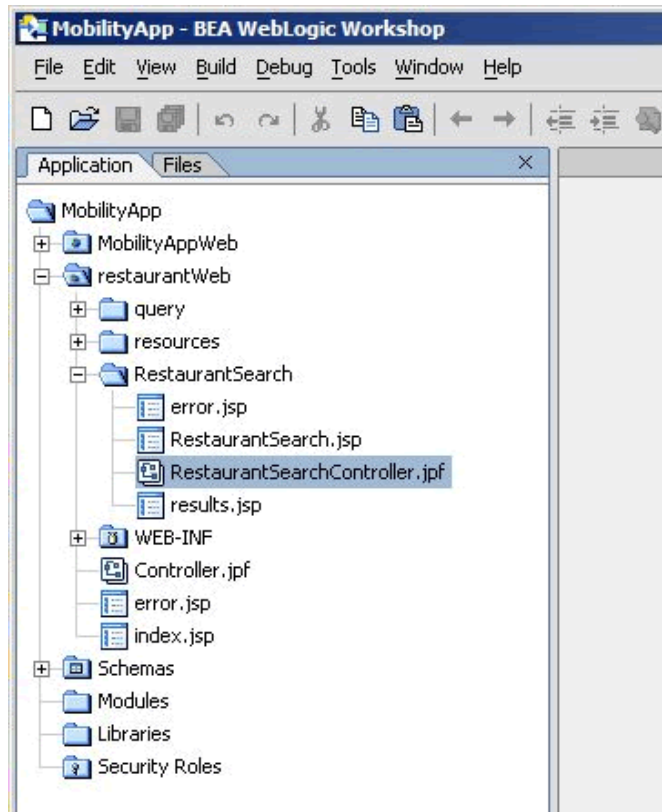
After following the installation steps you will have a Workshop Application called “MobilityApp”, which will contain a Web Project called “restaurantWeb”.

Open BEA WebLogic Workshop 8.1 and open the “MobilityApp” application—choose **File** → **Open** → **Application**, then browse to the **MobilityApp** folder.

In this tutorial, you will be mobilizing a pageFlow.

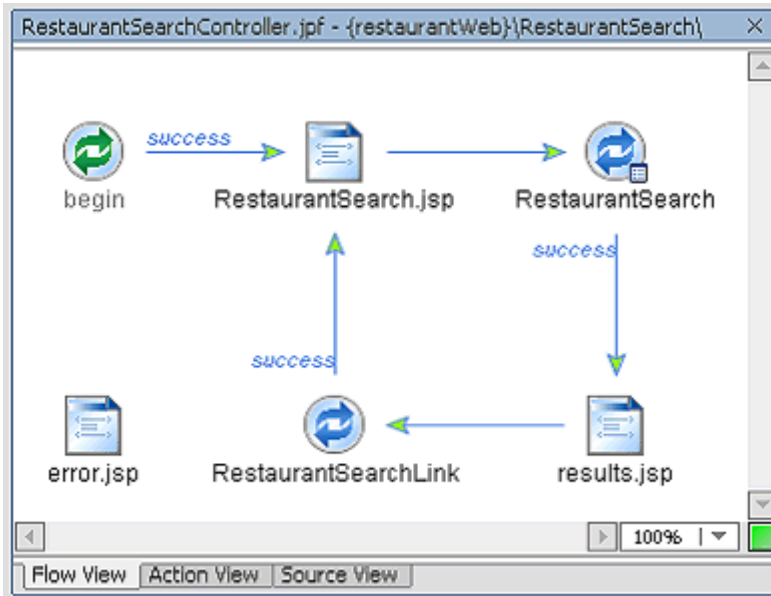
The pageFlow for the sample project is called `RestaurantSearchController.jspf` and is located in the **RestaurantSearch** directory. It has two jsp pages for displaying content, called `RestaurantSearch.jsp` and `results.jsp`.

Restaurant Search Directory



Begin Mobilization of the Sample Project

RestaurantSearchController.jspf



Both of these pages use a Template called *TemplateMA.jsp*, which is located in the directory **\resources\jsp**. This is the page that you will be mobilizing.

Step 1: Enable the restaurantWeb Project for Multi-Channel

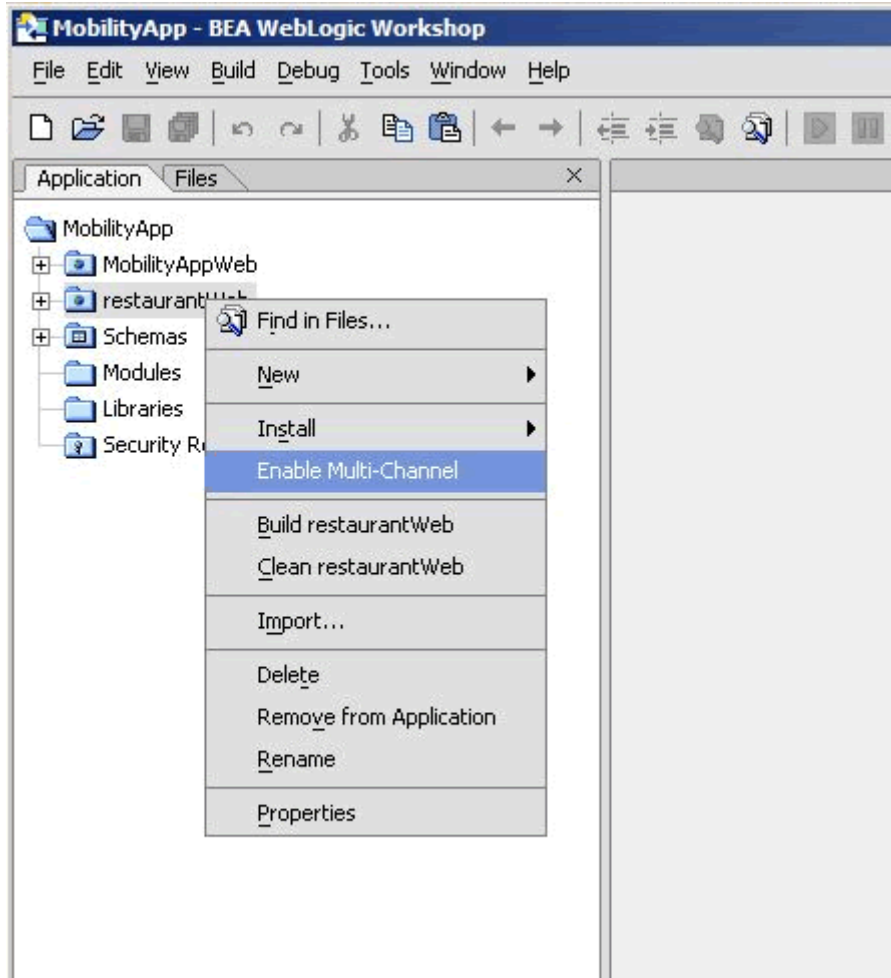
The pageFlow to be mobilized is in the default Web Project called `restaurantWeb`, which first must be enabled for multi-channel.

Note: The "Enable Multi-Channel" functionality will overwrite a number of files (for example, "mis.properties" and "oscache.properties") if they are present in the application being mobilized. If there is information in these files which you wish to maintain, you should back up the files, and then manually merge the required information into the property files installed by the "Enable Multi-Channel" process.

To do this, right-click on the project name, "restaurantWeb" and choose **Enable Multi-Channel** from the menu that displays.

This will deploy WebLogic Mobility Server into the project as well as the necessary libraries to enable content transformation for the different device classes.

Enable Multi-Channel

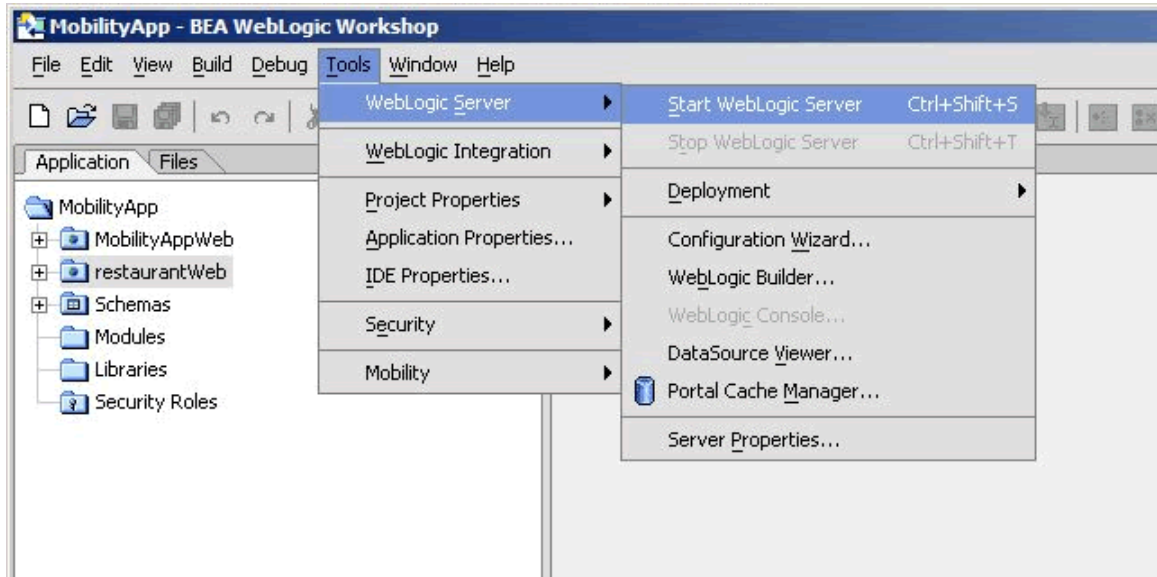


Step 2: Start the WebLogic Server

Now that you have enabled the project for multi-channel, you should start the WebLogic server for this domain

1. Choose **Tools** → **WebLogic Server** → **Start WebLogic Server**.

Start WebLogic Server

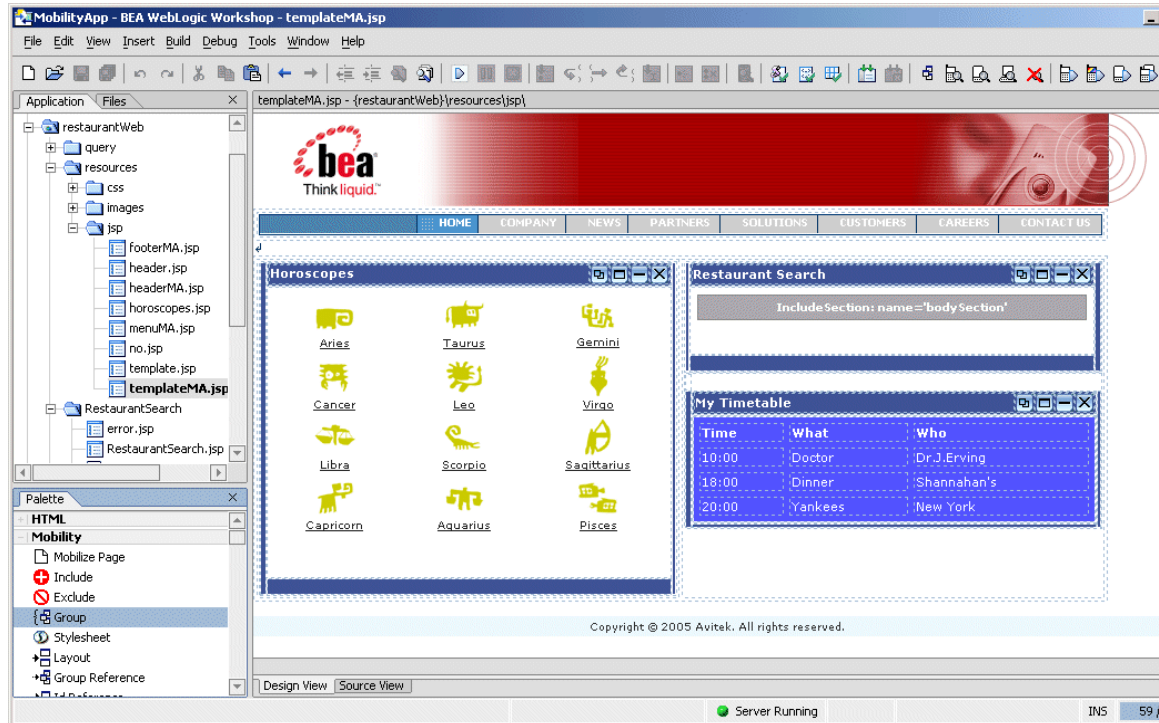


Step 3: Set Up the Page for Mobilization

You are now going to mobilize the *templateMA.jsp* page.

Open `restaurantWeb\resources\jsp\templateMA.jsp` in Design View (on Windows installations).

Design View for templateMA.jsp

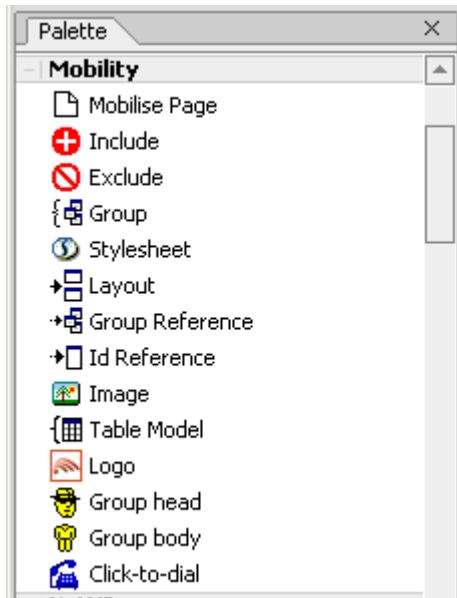


As described in the “Mobilize Content” section, you must indicate that this page is to be transformed by WebLogic Mobility Server. To indicate this, add the “Mobilize Page” tag to the page you are mobilizing as follows:

1. Go to the Palette and expand the **Mobility** tab to see the Mobility items that have been added to speed the mobilization of the web application.

Note: This tab will be referred to as the Mobility Palette throughout this document.

The Mobility Palette



2. Prepare the page for mobilization by selecting “Mobilize Page” on the Mobility Palette and dragging it onto the Edit Pane.

Note: The Edit pane is the centre pane of Workshop, and shows the current file. There are 2 options for viewing a jsp page: Design View and Source View. These options are selected by clicking on the appropriate tab at the end of the Edit pane.

Note: Design View is only available on Windows installations.

3. Before proceeding further, you should view the project for the first time using the Workshop Test Browser to see how it would look on a PC browser.

Open `RestaurantSearchController.jspf` in the **RestaurantSearch** directory.

Note: To view the page, be sure to launch `RestaurantSearchController.jspf` and not the `templateMA.jsp` file directly.

4. To view the project, select the “Debug” menu and choose **Start** or simply click the “Play” button on the toolbar (clicking “Play” also will automatically save your changes).

The Play Button



Step 4: Group the Content

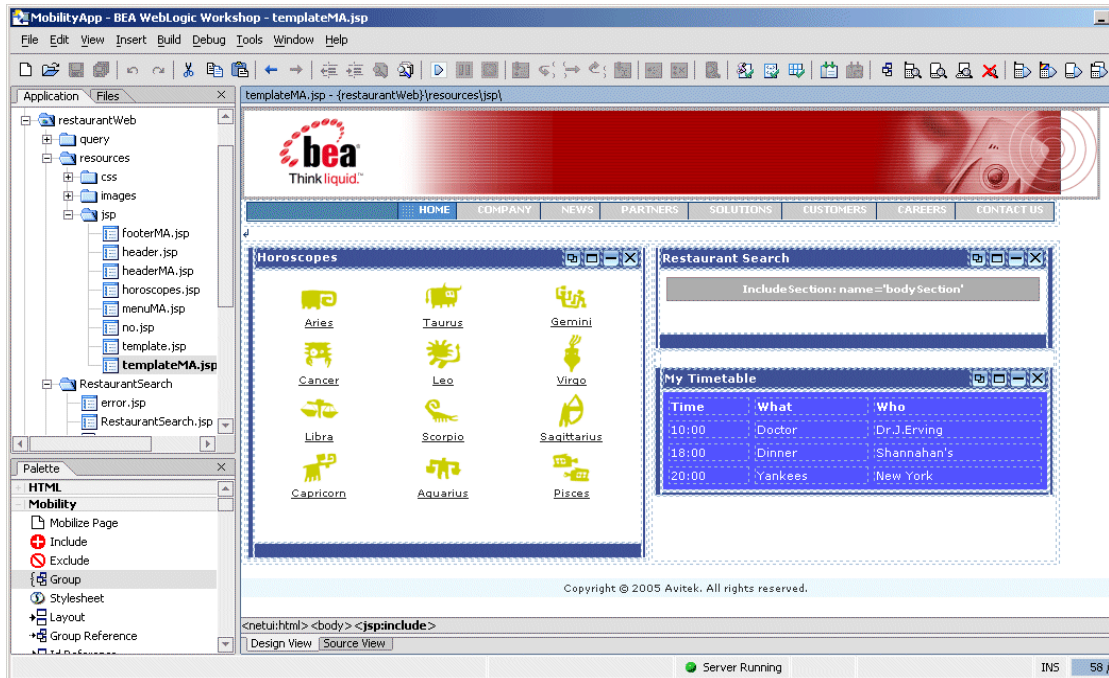
The next step in mobilizing the page is to group the major sections of content. The “restaurantWeb” sample project has six main content sections:

1. Header (or image banner).
2. Menu bar.
3. Horoscopes.
4. Restaurant Search.
5. Timetable.
6. Footer (or copyright notice).

Each of these sections must be labelled as an individual group. To do this:

1. From the Application tree view pane, go to **restaurantWeb\resources\jsp** and double-click on *templateMA.jsp* to open it in the Edit Pane (you should already have this file open from the previous step). This file is the basic template file for the sample application. Look at the file in Design View (Design View is only available on Windows installations).
2. Click on the header to highlight the banner image. This will select a `<jsp:include>` as can be seen from the selection information at the end of the Edit pane.

Select Banner Image



3. Select “Group” in the Mobility Palette and drag it onto the Edit Pane over the banner image that you have highlighted. An insert wizard named “Wrapping options” will be displayed.

Begin Mobilization of the Sample Project

4. Select **Wrap selected <jsp:include> with a new <mm:group>** and enter “header” into the **Group ID** and **Group Title** fields and click **OK**.

Wrapping Options



5. Now you will need to group the remaining sections of the page in a similar fashion.
Note: If you make a mistake in adding a group, see the “Remove a Group” section.

Make sure that all of the content of each group has been highlighted before grouping them. Use the tag list underneath the Edit Pane in Design View to confirm the correct content is highlighted (Design View is only available on Windows installations).

Note: You can also directly click tags in the tag list to change the selected tags or confirm your selection by switching to the Source View.

Using the Tag List to Highlight the Correct Part of the Page



As each group is added, you will be able to see the grouping in the Design View.

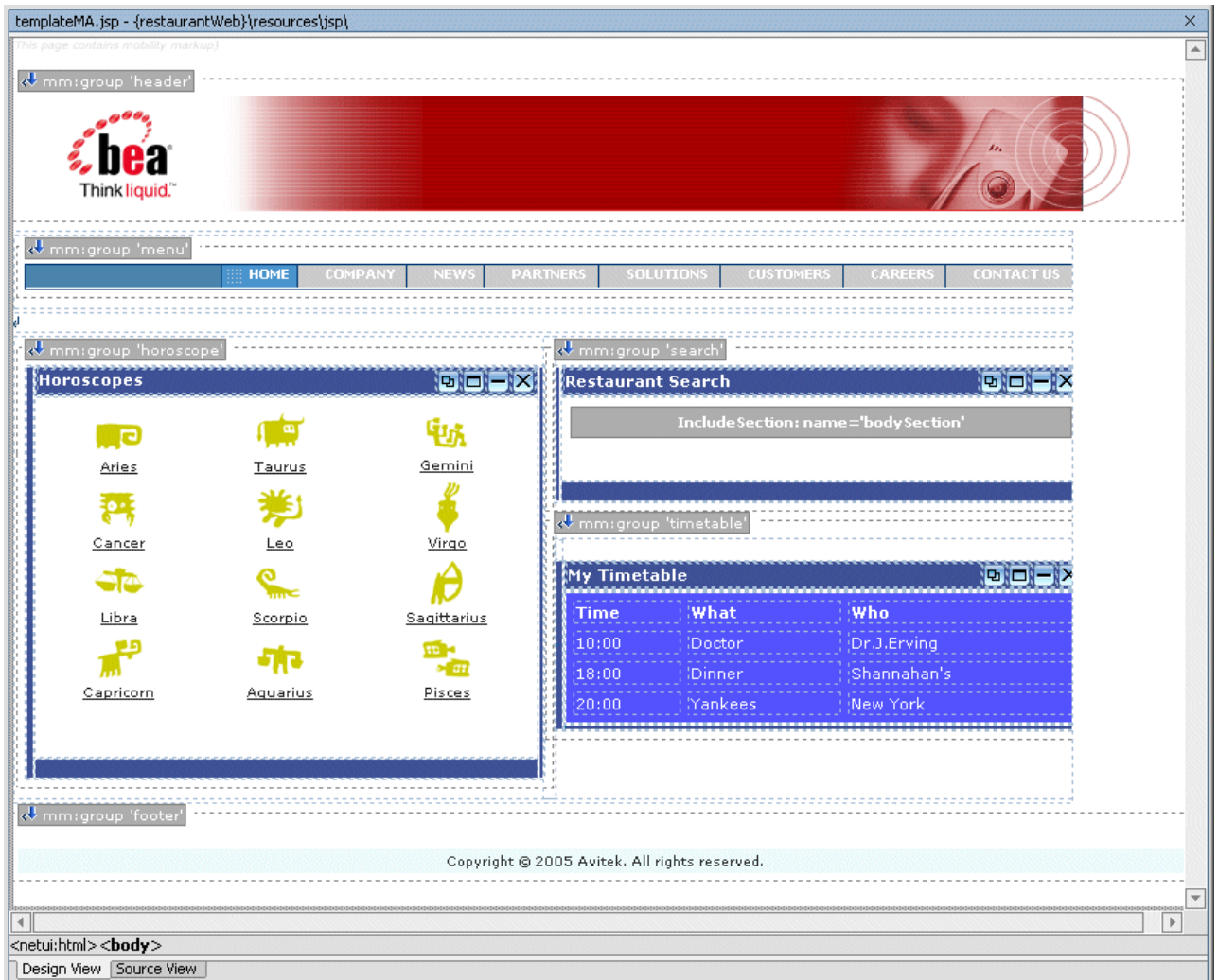
6. Create the “menu” group, ensuring that you only group the <jsp:include> and not the surrounding table.
 - a. Select “Group” in the Mobility Palette and drag it onto the Edit Pane over the “menu” that you have highlighted.
 - b. Enter “menu” into the **Group ID** and **Group Title** fields in the dialog box and click **OK**.
7. For the “horoscope” group:
 - c. Select the <table> surrounding the <jsp:include>.
 - d. Select “Group” in the Mobility Palette and drag it onto the Edit Pane over the “horoscope” that you have highlighted.

- e. Enter “horoscope” into the **Group ID** and **Group Title** fields in the dialog box and click **OK**.

Note: Make sure when selecting a table that the entire table is selected, not just a table cell.

8. For the “timetable” group:
 - f. Select the <table> surrounding the whole timetable, including the title bar.
 - g. Select “Group” in the Mobility Palette and drag it onto the Edit Pane over the “timetable” that you have highlighted.
 - h. Enter “timetable” into the **Group ID** and **Group Title** fields in the dialog box and click **OK**.
9. For the “search” group:
 - i. Select the table surrounding the <netui-template:includeSection>.
 - j. Select “Group” in the Mobility Palette and drag it onto the Edit Pane over the “search” area that you have highlighted.
 - k. Enter “search” into the **Group ID** and **Group Title** fields in the dialog box and click **OK**.
10. For the “footer” group:
 - l. Select the <jsp:include> for the copyright notice.
 - m. Select “Group” in the Mobility Palette and drag it onto the Edit Pane over the “footer” that you have highlighted.
 - n. Enter “footer” into the **Group ID** and **Group Title** fields in the dialog box and click **OK**.

After Grouping the templateMA.jsp Components



If your groups are not as shown in the preceding graphic, you should remove the incorrect group selections and re-group them using the correct content.

Remove a Group

To remove a group, right-click on the particular “mm:group” icon in the Design View (Windows installations), and choose **Remove mm:group tag**.

Removing a Group



Now, re-group the correct content as described in the section “Step 4: Group the Content”.

11. Save *templateMA.jsp*.

You have now completed the grouping phase of the content mobilization process. The next step is to design the presentation (look & feel) for the different device classes.

Step 5: Add Layouts for Handheld Devices

Layouts have to be created for the smaller handheld devices such as PDAs and WAP devices.

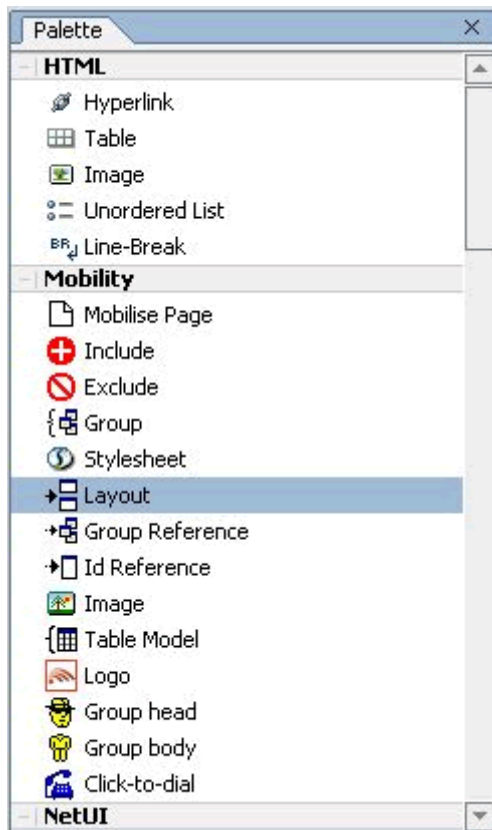
The content groups that have been created in the previous section must be properly organized to suit the smaller screen sizes and bandwidth limitations of these handheld devices.

Add a Layout for Menu-Driven Devices

To add a layout:

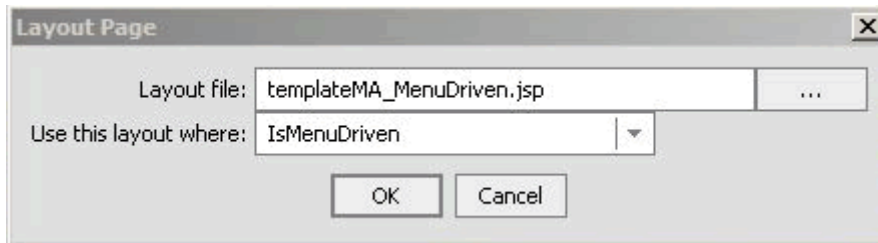
1. On the Mobility Palette, select “Layout” and drag it anywhere onto the *templateMA.jsp*.

Selecting Layout on the Mobility Palette



2. A “Layout Page” insert wizard will be displayed. Select “IsMenuDriven” under “Use this layout where” and click **OK**.

Selecting a Layout for Menu-Driven Devices



This will create a new file called, by default, *templateMA_MenuDriven.jsp* that will contain instructions on how to organize content for menu-driven devices (for example smart-phones, web-enabled phones, and so on).

TemplateMA_MenuDriven.jsp

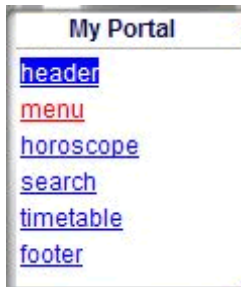


3. Save the *templateMA.jsp* file in preparation for viewing the content from an emulator.

Begin Mobilization of the Sample Project

4. Open the Java pageFlow controller page `RestaurantSearchController.jspf` from the directory `\restaurantWeb\RestaurantSearch\`.
5. Now launch your menu-driven device emulator from the Mobility Toolbar. The groups that have been created have been reduced to a list of links. Each link points to the content of the associated group (although, this content has yet to be optimized at this point).

Groups Displayed as List of Links



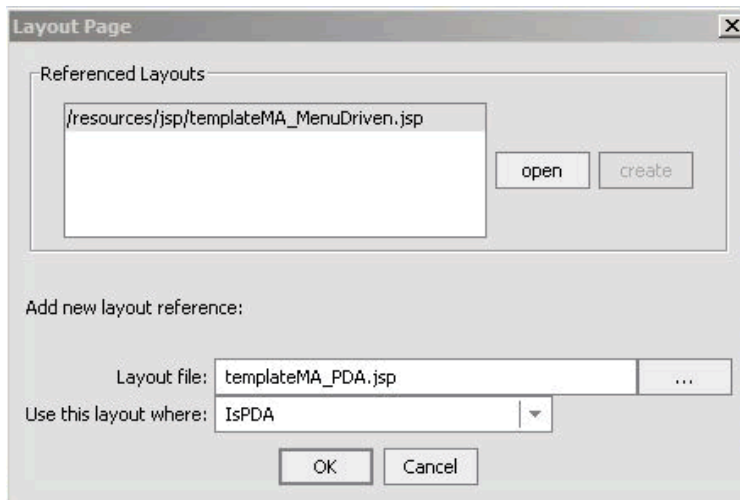
Add a Layout for PDA Devices

To facilitate optimization of the content for PDAs, you need to add another layout.

1. Open the `templateMA.jsp` file again.
2. Using the same method as described in the “Add a Layout for Menu-Driven Devices” section, create a layout for PDAs. Select the mobility tag “Layout” from the Mobility Palette and drag it onto `templateMA.jsp`.

Note: The “Layout Page” insert wizard has an extra pane showing the layouts you have already added.

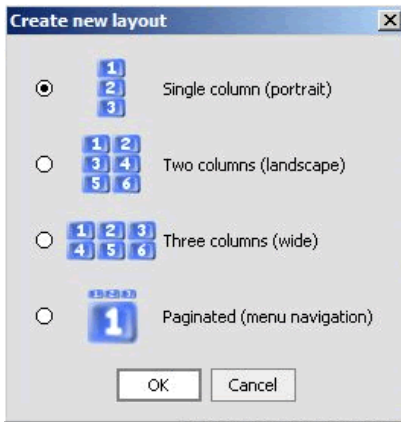
The Layout Page for PDA devices



3. Follow the same steps as described in the “Adding a Layout for Menu-Driven Devices” section, except select “IsPDA” from the **Use this layout where** drop-down field.

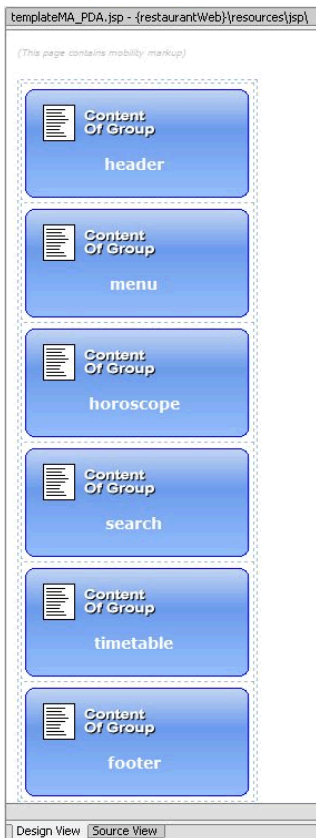
4. A second insert wizard called “Create new layout” will allow you to select the type of layout for PDA devices..

Create New Layout dialog



5. Choose the **Single column** layout and click **OK**
6. A file called *templateMA_PDA.jsp* will be created containing the organizational schema for PDA devices.

templateMA_PDA.JSP Design View



Begin Mobilization of the Sample Project

7. Save the *templateMA.jsp* file in preparation for viewing the content from an emulator.
8. Open the Java pageFlow controller page `RestaurantSearchController.jspf` from the directory `\restaurantWeb\RestaurantSearch\`.
9. Now launch your PDA device emulator from the Mobility Toolbar and you will see the content in a single column as you defined in the layout.

Manipulate Groups

Once the groups have been placed in layout files, they can easily be rearranged. Go to *templateMA_MenuDriven.jsp*. Clicking and dragging a group from one place within the structure to another changes the order of the groups.

Note: Save your changes after each manipulation and view the results in the emulators.

Deleting a Group

A group can be deleted from a menu-driven layout. To do this, right click on the group to be deleted in the Edit Pane's Design View (on Windows installations) and select "Cut" from the menu or simply select the group and press the Delete key.

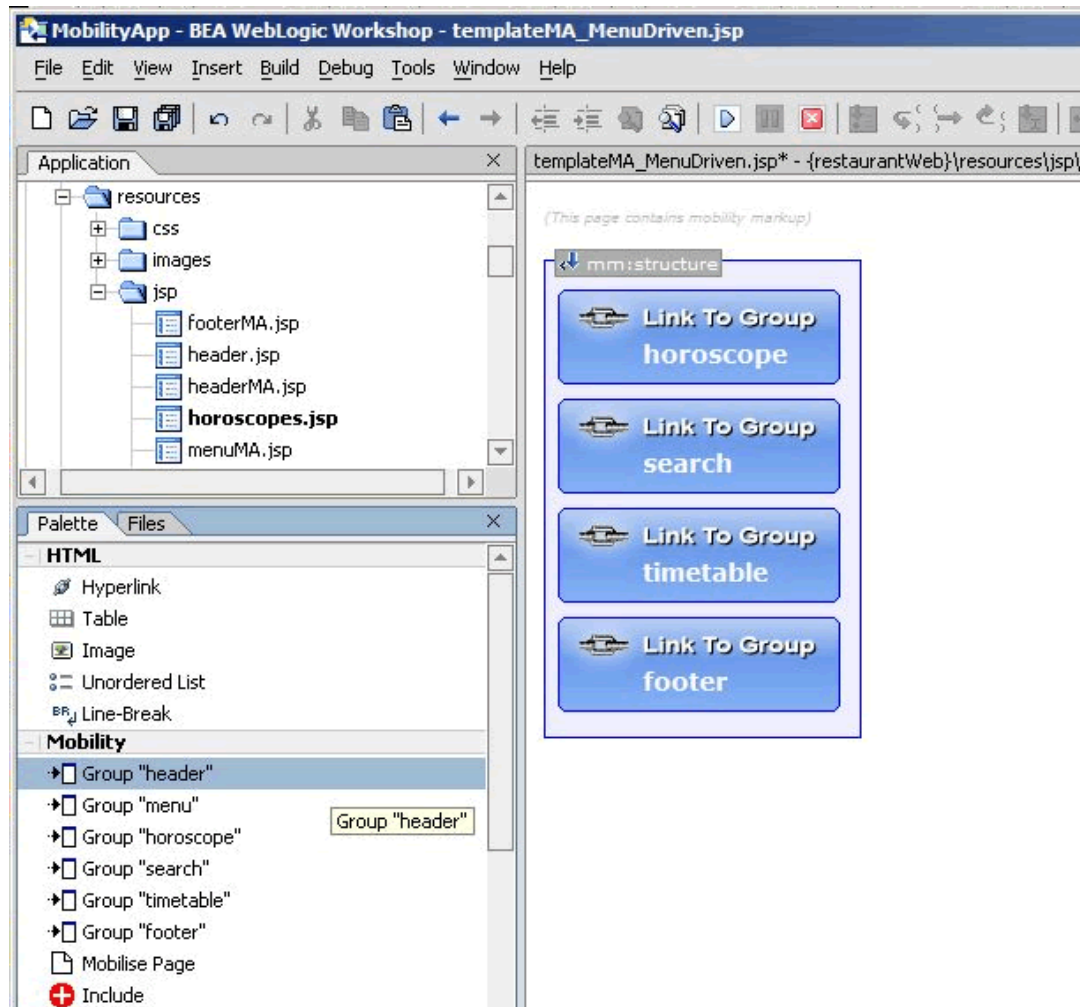
Example: Delete the header and menu groups from *templateMA_MenuDriven.jsp*, save your changes (Ctrl-S will typically save all files) and refresh the page in the menu-driven emulator.

Adding a Group

To add a group:

1. Highlight the desired group in the list of groups in the Mobility Palette and drag it onto the Edit Pane.

Adding Groups from the Mobility Palette



2. Add the header that you just deleted back in. Drag it to the top of the list of groups.
3. Save your changes and refresh the page in the menu-driven emulator again.

Move a Group

You can change the order of groups in the layout file by dragging and dropping them in Design View (Design View is only available on Windows installations).

Move the “search” group so that it appears before the “horoscopes” group. Save your changes and refresh the page in the emulator again.

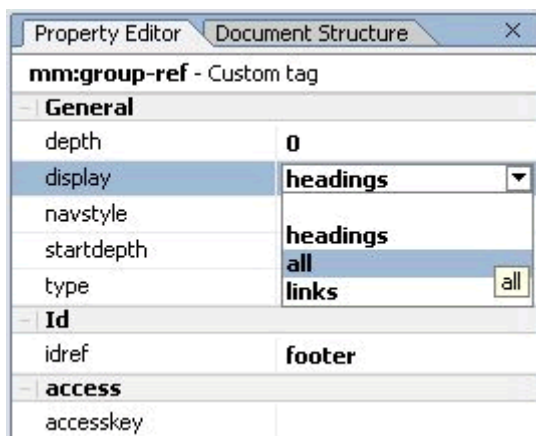
Configure Groups on Menu-Driven Devices

To streamline the information sent to menu-driven devices, this example currently shows only headings in the menu. You can change the display by modifying the “display” attribute in the Property Editor for the group.

In *templateMA_MenuDriven.jsp*:

1. Select the “footer” group in Design View (available on Windows installations).
2. In the Property Editor, change the value of the “display” attribute from “headings” to “all”. The “all” option has the effect of showing the entire content of the group, where “headings” only shows a link to the group’s content.

Property Editor “display” Headings



Design View with Footer Display=All



3. Save your changes and view again in your menu-driven browser.

Note: Notice that the footer text now appears at the end.

Footer Displayed on Emulator



4. Now make the same change for the “header” group, save, and view again.

Deliver the Correct Images to Handheld Devices

One of the main issues involved with mobilizing content is the delivery of images to mobile devices. Different devices have different screen widths and graphical capabilities. Some of the older mobile devices cannot render GIF or JPEG images. Some are only capable of handling small WBMP images. The real-time Image Conversion Tool can be deployed with WebLogic Mobility Server to render images in the appropriate size and format for a given device. The Image Conversion Tool has not been used for the purposes of this sample application, but can be found in the <WLMS_install_directory>\weblogic81\mobility\tools\media directory during the WebLogic Mobility Server install for your own experimentation.

For this sample project, images of different types and formats have been supplied in the \restaurantWeb\resources\images folder.

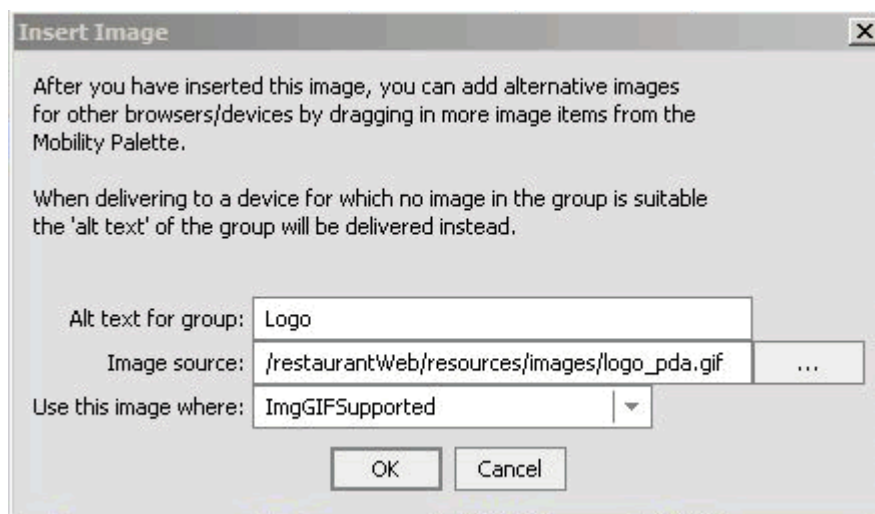
The following sections will show how to manipulate the header banner images and zodiac sign graphics so that the correct image is delivered to the requesting device.

Optimize the Header Group

To change the header for the different devices:

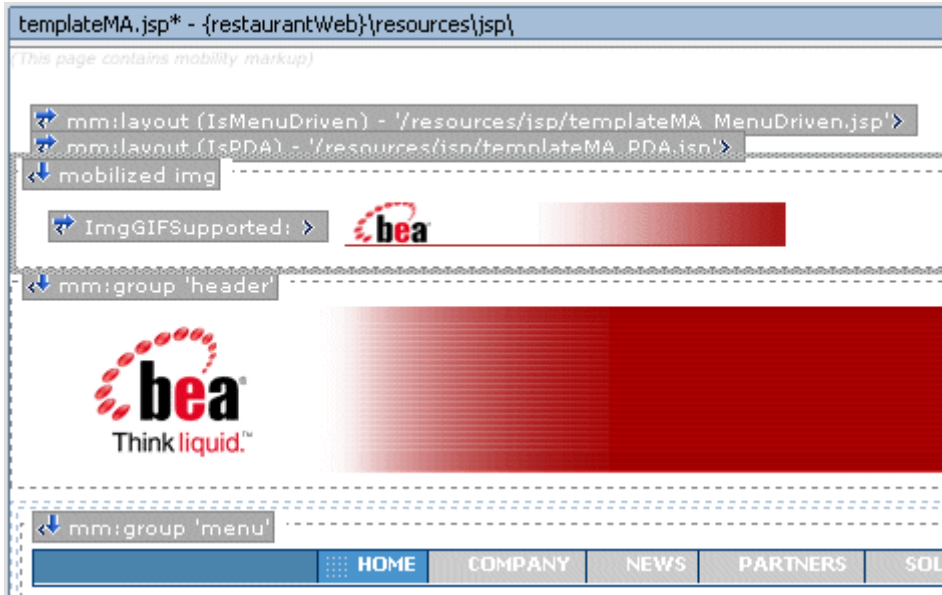
1. Open *templateMA.jsp*.
2. To add an appropriately scaled image for PDA display:
 - a. Highlight the “header” group in the Design View (Design View is only available on Windows installations) (make sure you haven’t highlighted only the image). Select “Image” tag from the Mobility Palette and drag it onto the highlighted “header” group.
Note: Do not confuse this with the “Image” tag on the HTML Palette.
 - b. In the “Insert Image” insert wizard, enter “Logo” in the **Alt text for group** field and enter “ImgGIFSupported” in the **Use this image where** field.
 - c. To select an appropriate image, browse to the \restaurantWeb\resources\images folder and select *logo_pda.gif* and click **OK**.

Insert Image Insert Wizard



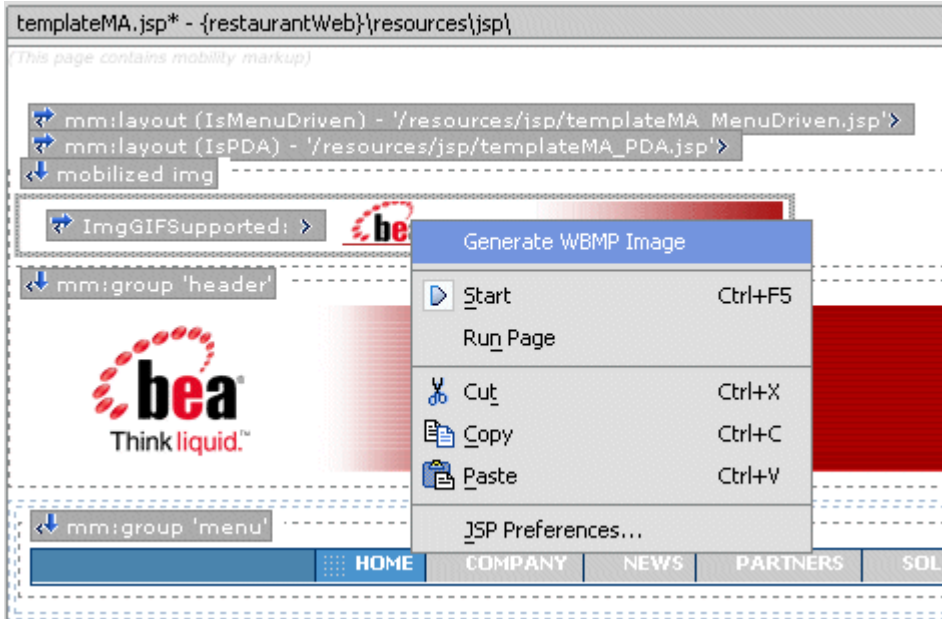
- In the Design View (on Windows installations), you can see that the PDA image has been placed inside a mobilized img (media-group) that can hold several image formats. The proper image will be selected from this group depending on the requesting device type.

Insert Image Design View

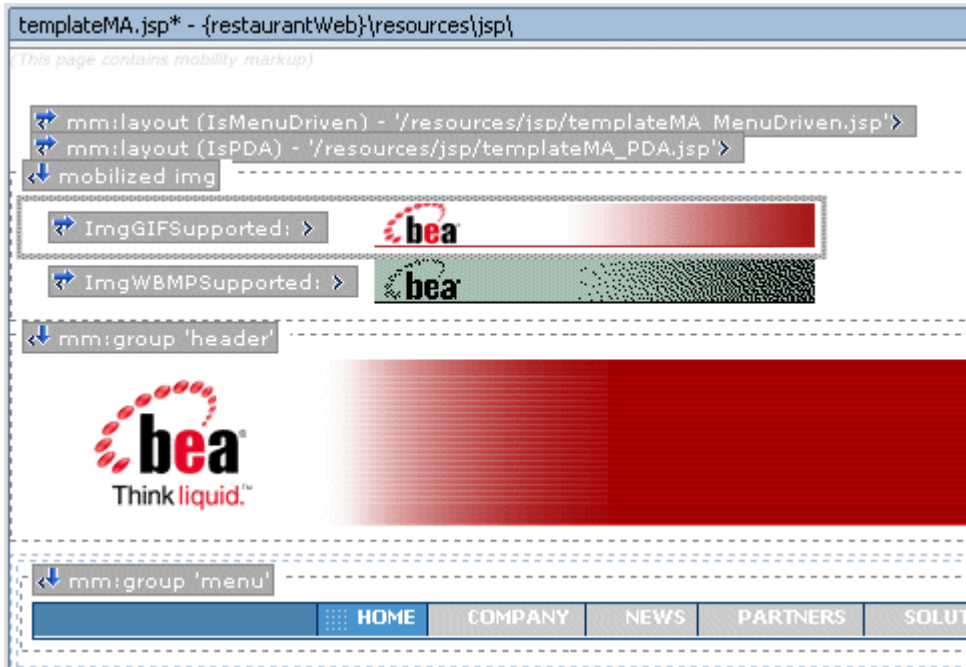


- Now highlight the image that you've just inserted. Right-click on it and select **Generate wbmp image** from the drop-down list. This will launch the WBMP image conversion tool. You can adjust the image using this tool if desired, or simply save it. The new image will then be added to the media-group.

Generate WBMP Image



WBMP Image Added to Media Group



5. Because these two images are for menu-driven and PDA devices only, exclude the media-group for PCs:
 - d. Highlight the “mobilized img” in the Edit Pane.
 - e. Select “Exclude” from the Mobility Palette and drag it onto the highlighted mobilized img.

- f. In the “Wrapping options” insert wizard, select **Wrap selected <mm:media-group> with a new <mm:exclude>**.
- g. Select **IsFullBrowser** from the drop-down list and then click **OK**.

Wrapping Media Group With an Exclude



6. The original banner is outside the media-group. As it is really only appropriate for full browser display, you should:
 - a. Highlight the header image in the Design View pane (on Windows installations), select an “Include” tag from the Mobility Palette and drag it onto the header image.
 - b. In the “Wrapping options” insert wizard, select “Wrap selected <jsp:include> with new <mm:include>”.
 - c. Select “IsFullBrowser” from the dropdown list and then click **OK**.

Note: Including a section of content for a particular device class will automatically exclude it from all other device classes.

Begin Mobilization of the Sample Project

Including the Header Image for Full Browser



7. Save the file and see how the sample project looks in your PDA emulator.

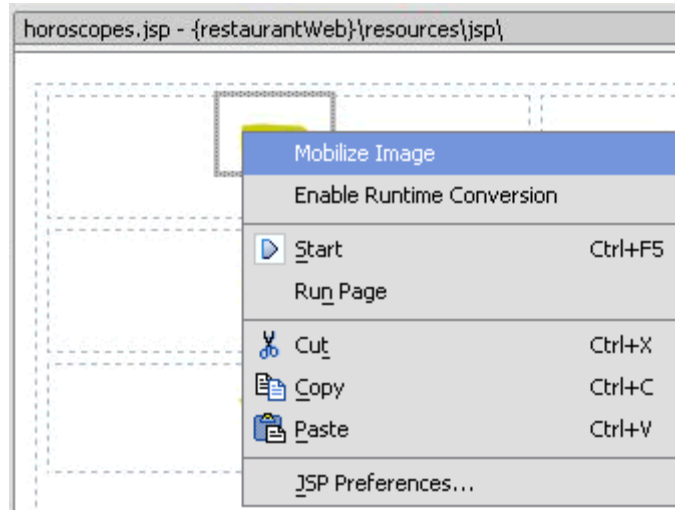
Optimized Header on PDA



Optimize the Horoscope Group

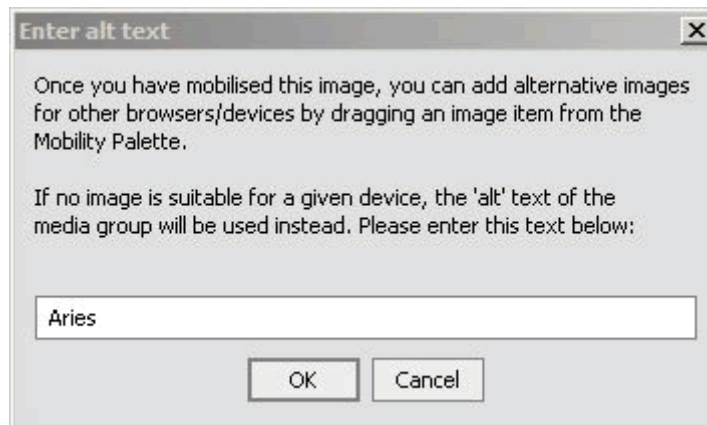
1. Open *horoscopes.jsp* in Design View (Windows installations) in the Edit Pane. This file is in the **resources\jsp** directory.
2. Right click on the “Aries” image and select “Mobilize Image” from the drop-down menu.

Using Mobilize Image on the Aries Image



3. In the “Enter alt text” insert wizard, enter ‘Aries’ for the image alt text.

Enter Alt Text Insert Wizard

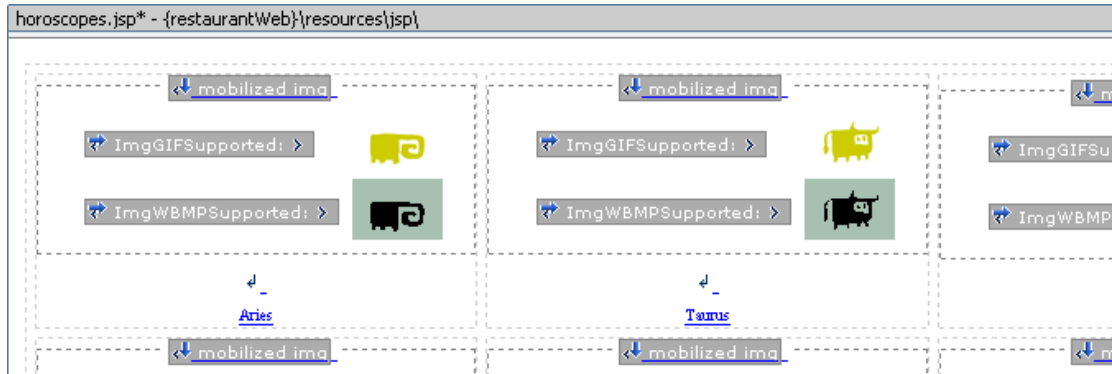


4. If a comparable image exists (that is, either an image with the same name but a different extension, or one that has been created earlier by mobilizing this image), a pop-up will tell you of the existence of the image and ask if you want to add it to the group. Click **OK** and it will be added to the media-group.

If a comparable image does not exist, you will be asked if you want to generate an image. If you agree, the Pic2WBMP conversion tool will be launched. The new image will then be added to the media-group.

5. Follow the same process for each of the other 11 zodiac sign images.

Mobilizing the Horoscope Images

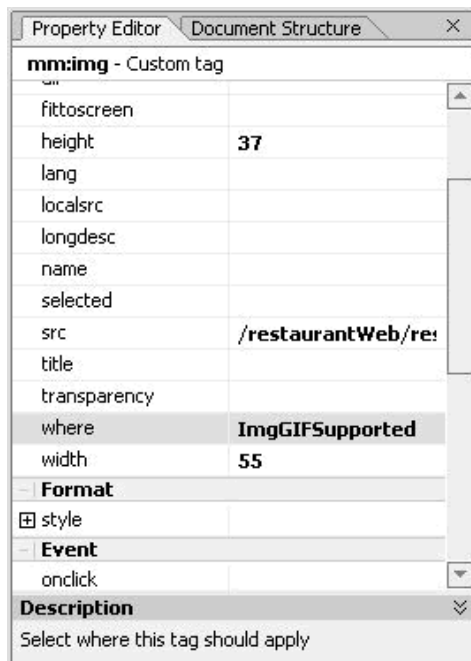


As you can see in the preceding graphic, a GIF image will be delivered to devices that support GIF Images and a WBMP will be delivered to menu-driven devices that do not support GIF images as denoted by “ImgGifSupported” and “ImgWBMPSupported”, which are set as the “where” clauses for those images. If the source image had been a JPG format image, the “where” clause would have automatically been set to “ImgJPGProgressiveSupported”.

To change the default image settings:

1. Click on the “Aries” GIF Image.
2. In the Properties Editor, change the “where” clause on the GIF image appropriately.

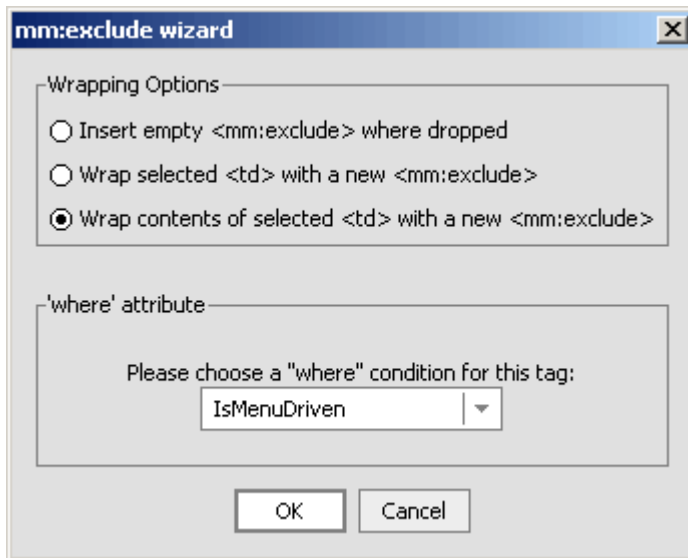
Modify Image Properties



To further tidy the “horoscope” group, you can change the “horoscopes” title bar so it will not appear when the content is delivered to menu-driven devices:

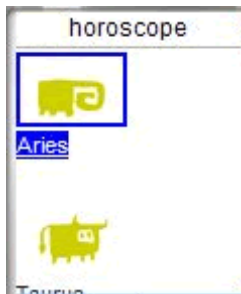
1. Highlight the table cell in *templateMA.jsp* that contains the title bar table and drag an “Exclude” into it.
2. Select “Wrap contents of selected <td> with a new <mm:exclude>”.
3. Select “IsMenuDriven” in the insert wizard.

Exclude Horoscope Header Title for Menu-Driven Devices



4. Save your changes and view the horoscope in the WML emulator.

Horoscope with No Header Title



Optimize the Menu Group

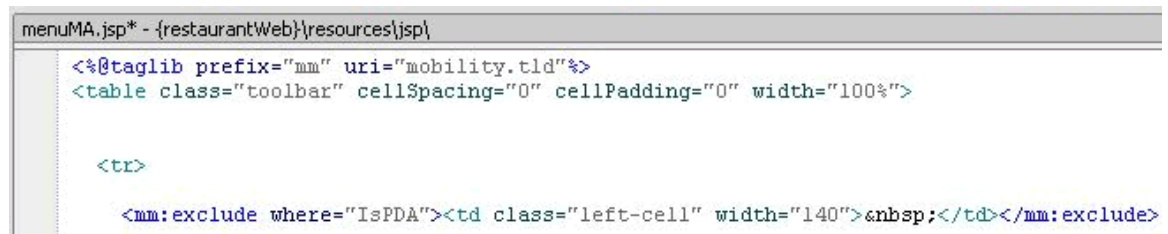
The menu bar has been deleted from the layout for menu-driven devices, so no optimization for this type of device is necessary.

For PDAs, the menu is too long in its current form for the size of most PDA screens. To correct this, you could exclude the first cleared cell and the last five menu items from PDA, leaving just three links to form a shorter menu. This will leave Home, Company, and News for the PDA display.

To do this:

1. Open *menuMA.jsp*, which is found in the **resources\jsp** directory.
2. Open Source View and highlight the first <td> cell. This is the 140 pixel-wide clear cell that appears on full browsers. Select “Exclude” from the Mobility Palette and drag it onto the selected code.
3. Select “IsPDA” in the dialog box and click **OK**.

Exclude First Table Cell



```
menuMA.jsp* - {restaurantWeb}\resources\jsp\
<%@taglib prefix="mm" uri="mobility.tld"%>
<table class="toolbar" cellspacing="0" cellpadding="0" width="100%">

  <tr>

    <mm:exclude where="IsPDA"><td class="left-cell" width="140">&nbsp;</td></mm:exclude>
```

4. Follow the same steps for each of the last five menu items (one at a time).
Note: Notice how the <mm:exclude> tag wraps around the selected content.
5. Save the files and look at the results in both a PDA emulator and the Workshop test browser. Notice the menu bar is unaffected in the full browser display.

Note: WebLogic Mobility Server may have cached the content. This can result in changes not being visible when the emulator is refreshed while pointing at a particular page. If the changes do not appear in the emulator:

1. Close the emulator.
2. Open *RestaurantSearchController.jspf* in Workshop.

3. Re-launch the desired emulator from the Mobility Toolbar.

Updated Menu on PDA Emulator



Optimize the Timetable

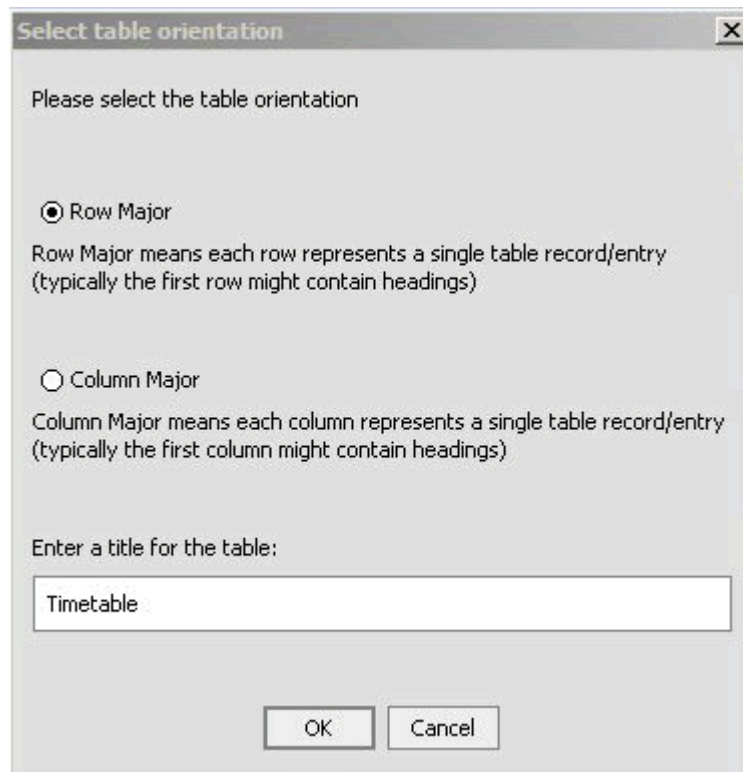
Tables can cause a number of issues when they are delivered to handheld devices. Many older devices do not support tables at all. WebLogic Mobility Server enables developers to customize the way that tables are delivered to different device types so that the information is properly displayed on each type of device.

1. View the Timetable using the WAP 2.x menu-driven device emulator. To launch the WAP 2.x emulator click on the Launch WAP 2.x emulator icon in the toolbar.
2. Click on the timetable link to see the timetable.
3. Notice how the table has been stripped out and the data elements appear in a single column.

To change this:

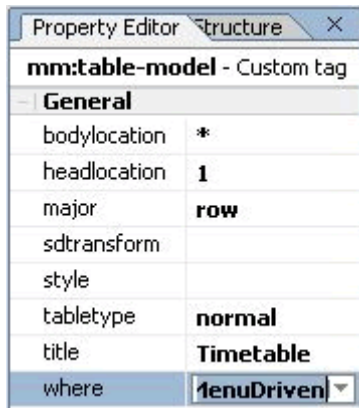
1. Open *templateMA.jsp* in Design View in the Edit Pane (Windows installations).
2. Select “Table Model” from the Mobility Palette and drag it onto the middle of the timetable.
3. In the “Select table orientation” insert wizard, select “Row Major” (this is selected by default), enter ‘Timetable’ for the title of the table and click **OK**.

Table Orientation Insert Wizard



4. By default, this Table Model will apply to menu-driven and PDA devices. In this case, we want to restrict it to menu-driven devices only. To achieve this, in the property editor for the Table Model set the where attribute to “IsMenuDriven”.

Table Model Property Editor

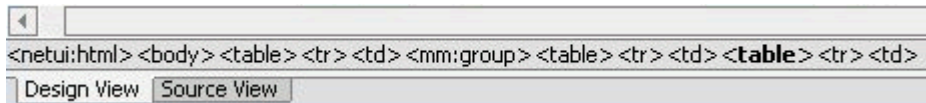


Note: The timetable contains nested tables. The table of interest is the timetable itself, which is nested inside an outer table that includes the title.

In order to display the most relevant timetable content on all device types:

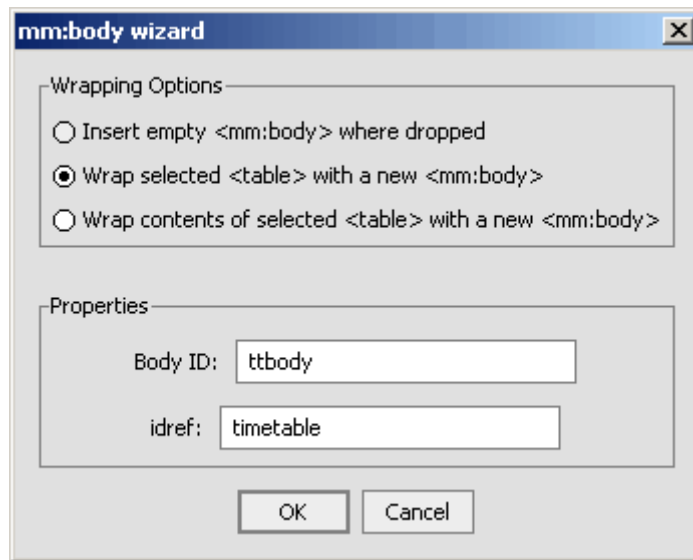
1. Select the inner table, and drag on “Group Body” from the Mobility Palette. To do this, click on the table and then use the netui tag display to select the appropriate table as shown in the following graphic.

Selecting the inner table



2. In the “Wrapping options” insert wizard, select the **Wrap selected <table> with a new <mm:body>** option, enter “tbody” for the Body ID, and enter “timetable” for the idref.

Wrapping the Table Model

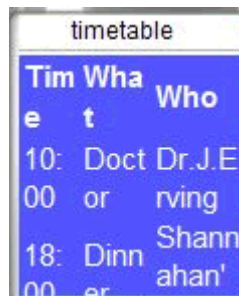


3. Save the files and view the table with the WAP 2.x device emulator.

Note: Due to caching, you may need to switch to the `RestaurantSearchController.jspf` project and then press the Emulator button again, in order to view your changes.

4. Notice how the device tries to render the table, but because of the reduced screen size, the data wraps excessively.

Timetable With Wrapped Data

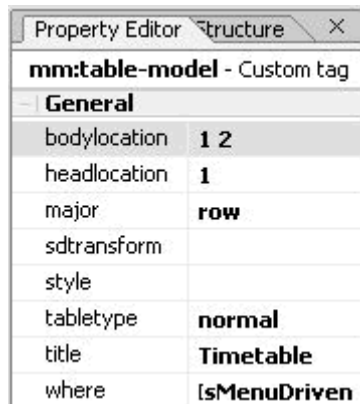


timetable	
Tim Wha	Who
e t	
10: Doct	Dr.J.E
00 or	rving
18: Dinn	Shann
00 er	ahan'

There are several options for delivering a better table to this device:

1. Deliver only part of the table. To do this:
 - a. Select the `<mm:table-model>`.
 - b. In the Property Editor, replace the asterisk under “bodylocation” with “1 2” (with a space between). This means only deliver the first two columns in a Row Major table.

Updating the Bodylocation



- c. Save the file and view on the emulator.

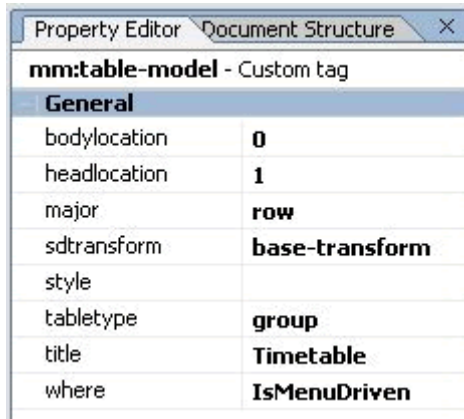
Note: Due to caching, you may need to switch to the `RestaurantSearchController.jpif` project and then press the Emulator button again, in order to view your changes.

Updated Timetable

Time	What
10:00	Doctor
18:00	Dinner
20:00	Yankees

2. Group and flatten the table elements. To do this:
 - a. Change the “bodylocation” attribute in the Property Editor back to an asterisk “*”. (This means all table cells will be displayed.)
 - b. Change the “tabletype” attribute from “normal” to “group”.
 - c. Change the “sdtransform” attribute to “base-transform”.

Update Table Model for Tabletype Group

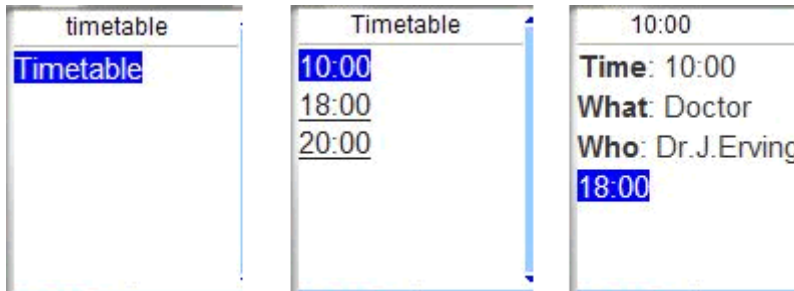


The screenshot shows a 'Property Editor' window with a 'Document Structure' tab. The main content is a table for the 'mm:table-model' custom tag. The table has two columns: a property name and its value. The 'tabletype' property is set to 'group', and the 'title' property is set to 'Timetable'.

mm:table-model - Custom tag	
General	
bodylocation	0
headlocation	1
major	row
sdtransform	base-transform
style	
tabletype	group
title	Timetable
where	IsMenuDriven

- d. Save the file and view on the emulator.
- e. Notice that only one row of table data is shown at a time. If you click on the first row in the timetable, you will see the details of the 10:00 appointment and a link to the next appointment.

Updated Timetable With Links



Optimize the Restaurant Search

The Restaurant Search section of this project sends data using a form. Depending on the values selected in the dropdown boxes, a different results page will be displayed when you click the “Submit” button.

For menu-driven devices, some JSP code needs to be added to facilitate navigation with form processing. This will show the full contents of the results page at the top, followed by the other links (Horoscopes and Timetable). The results page will have a link inside itself that can take you back to the first restaurant page to make another search.

1. Add code to the page flow action implementations in `RestaurantSearchController.jspf` to set a flag in the request when the group should be expanded. Open the file in Source View and add the bold/italics lines as seen here.

```
public Forward RestaurantSearch( RestaurantSearchForm aForm )
    throws Exception
    {
        java.lang.String var = myControl.RestaurantSearch( aForm.cuisine,
aForm.price );
        getRequest().setAttribute( "results", var );
        getRequest().setAttribute( "focus_group", "search" );

        return new Forward( "success" );
    }

public Forward RestaurantSearchLink()
    throws Exception
    {
        getRequest().setAttribute( "focus_group", "search" );
        return new Forward( "success" );
    }
```

2. Then, in the `templateMA_MenuDriven.jsp` layout, add JSP code under the `@page` and `@taglib` declarations in Source View to detect this flag. Add the following code:

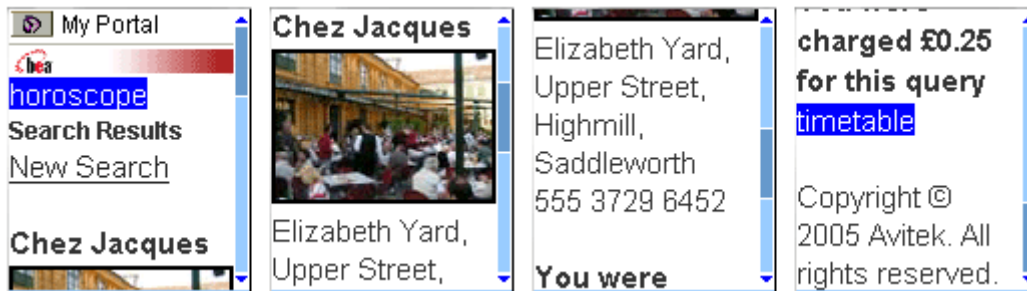
```
<%
String searchDisplay;
if ( "search".equals(request.getAttribute("focus_group"))) {
    searchDisplay="all";
} else {
    searchDisplay="headings";
}
%>
```

3. In this same file, change the “display” attribute of the Search `<mm:group-ref>` as follows:

```
<mm:group-ref display="<%=searchDisplay%>" idref="search" depth="0" />
```

4. Now, remove the restaurant search title bar for menu-driven devices by highlighting the table element in `templateMA.jsp` that contains the title bar (be sure to select the `<table>` tag from the netui tag display), selecting “Exclude” from the Mobility Palette and dragging it onto the table element, and then selecting “IsMenuDriven” in the insert wizard.
5. Save your files again and view the changes in the emulators. On the WML Emulator, the Search Results will be displayed in place of the “search” link as shown in the following graphic. Scroll down in the emulator to see the rest of the page.

Updated Search Results



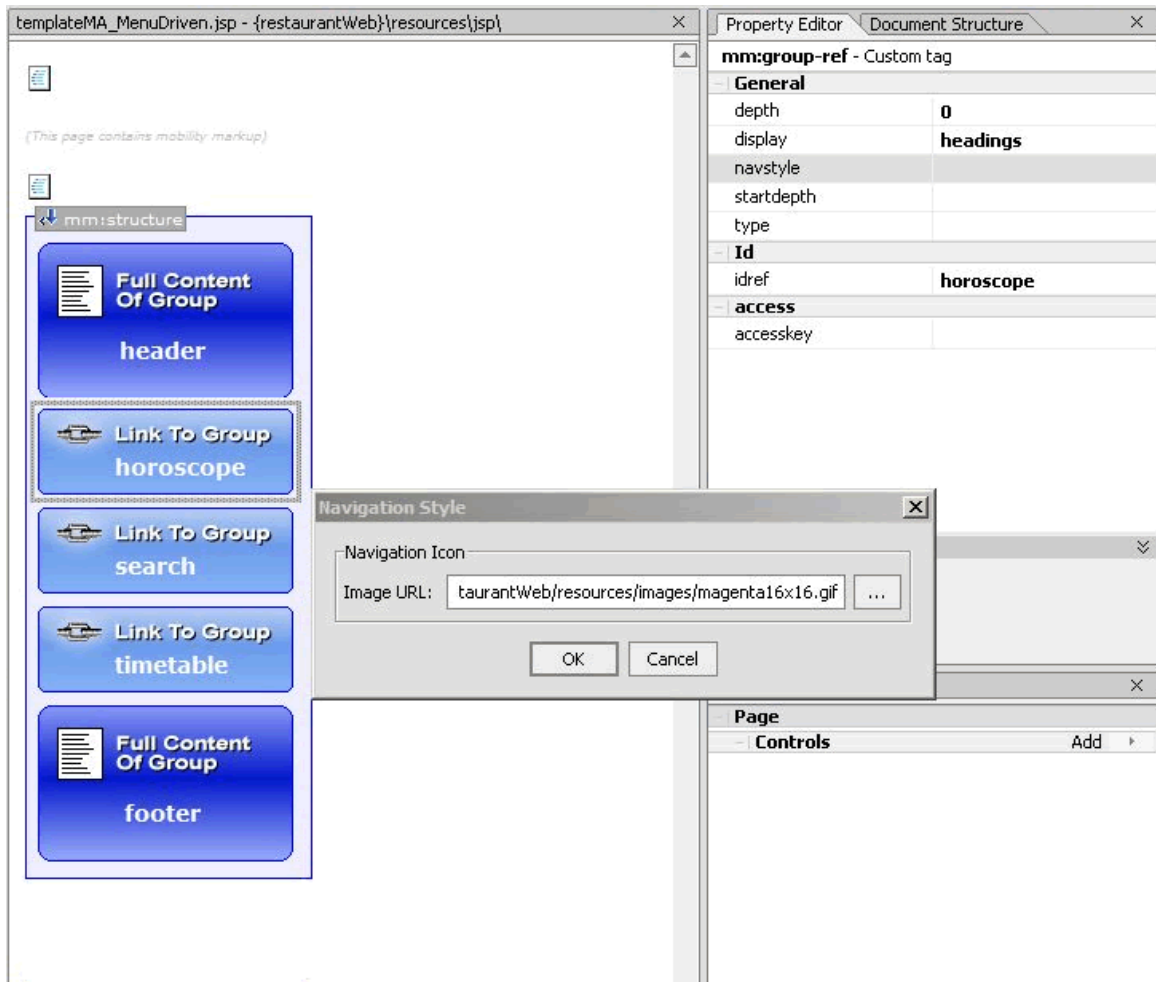
Navigation Styling on Menu-Driven Devices

To improve the look of menu-driven navigation, the Mobility Extension for BEA WebLogic Workshop lets you easily add images to menu links.

To do this:

1. Open *templateMA_MenuDriven.jsp*.
2. Click on the “horoscope” group in Design View.
3. Go to the Property Editor and use the ‘...’ button to browse and select the image file next to the “navstyle” property. For this example, choose one of the three icon images that can be found in the **restaurantWeb\resources\images** folder and click **OK**:
 - *magenta16x16.gif*
 - *yellow16x16.gif*
 - *green16x16.gif*

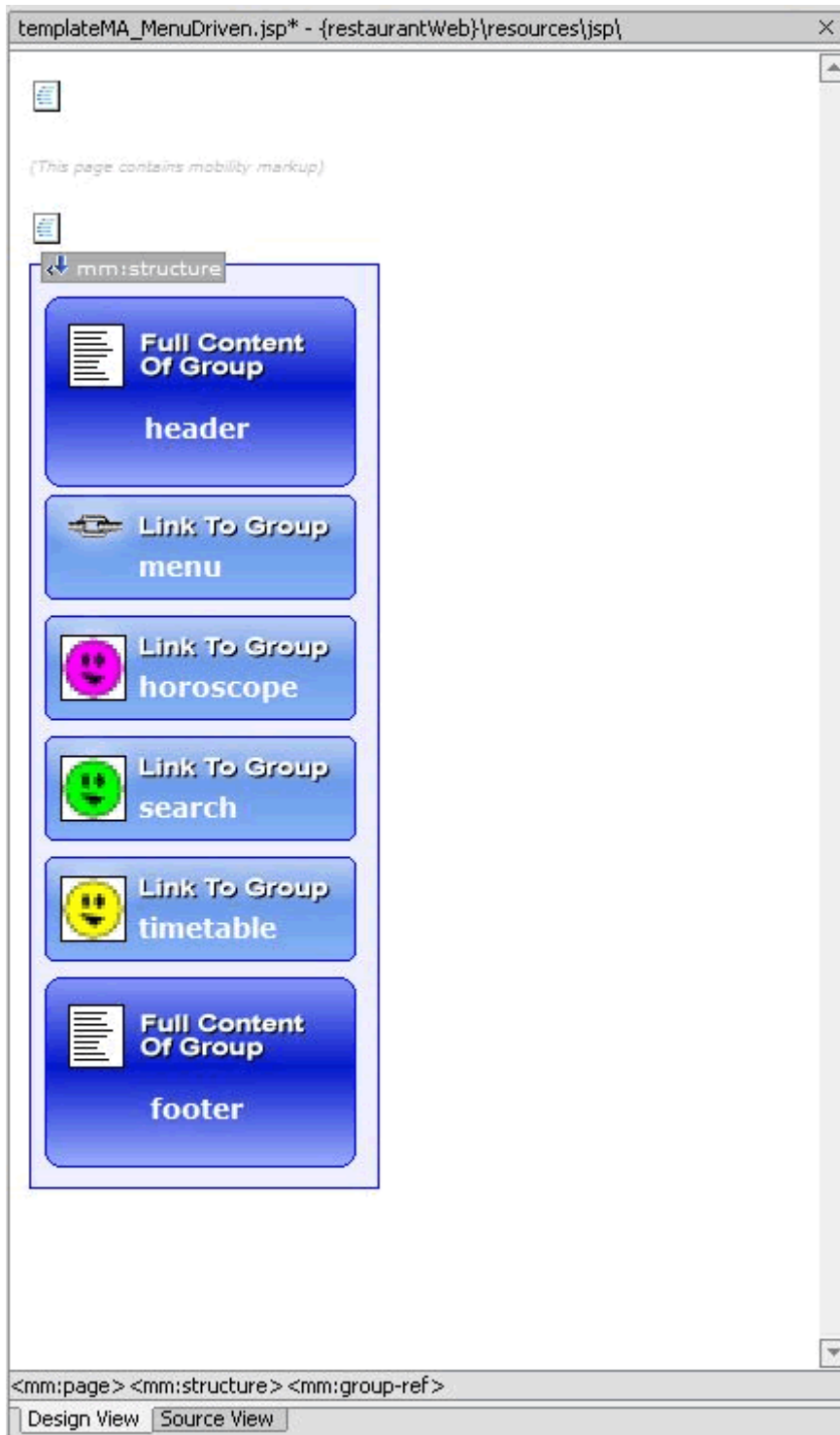
Navigation Style Image Selection



4. Do the same for the “search” and “timetable” groups using another of these three images.

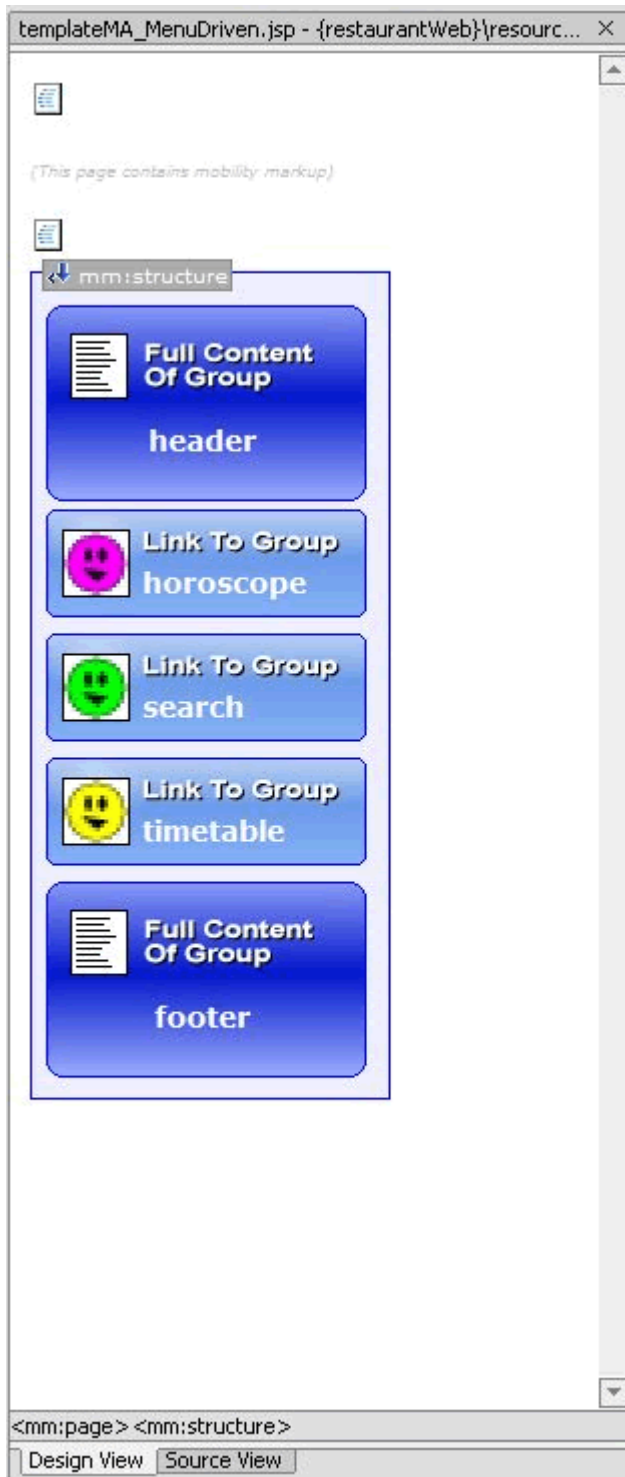
Begin Mobilization of the Sample Project

After Assigning Navigation Style Images



5. Save your changes and view again from the emulators.

Navigation Menu Displayed with Images



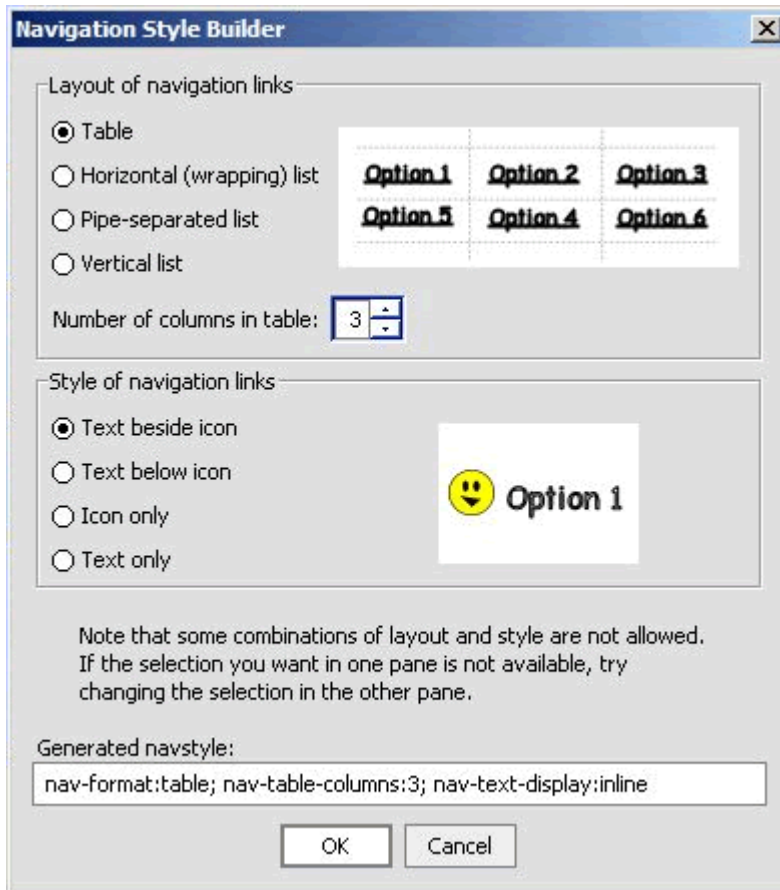
The menu list itself can be styled by setting the “navstyle” attribute value on the <mm:structure> itself.

Begin Mobilization of the Sample Project

As an example:

1. With *templateMA_MenuDriven.jsp* open, highlight the “structure” in the Design View of the Edit Pane.
2. Click on “navstyle” box in the Property Editor and then on the ‘...’. The “Navigation Style Builder” insert wizard will be displayed. You can select the navigational styling that best suits the links.

Navigation Style Builder Insert Wizard



3. Change the combinations, saving and refreshing your emulator each time.

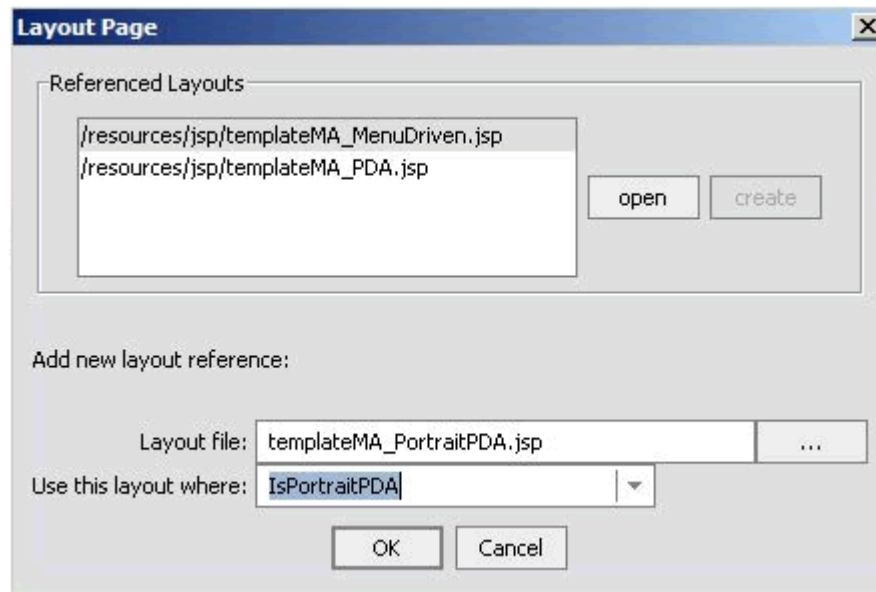
Automatic Navigation for PDA Layouts

The Mobility Extension for BEA WebLogic Workshop offers a way of displaying content on PDAs other than the default navigation list created from the groups.

After dragging “Layout” from the Mobility Palette into the *templateMA.jsp* page and selecting PDA, the “Create new layout” insert wizard appears with four options. The earlier example demonstrated how the single column layout looks on a PDA - each group is placed one on top of the other. The user must scroll down the page to see all of the content. This example will demonstrate how the “Paginated” option works by breaking up the content into smaller pages that can be navigated using the generated menu.

1. Open *templateMA.jsp* in the Edit Pane and drag and drop a “Layout” from the Mobility Palette.
2. In the “Layout Page” insert wizard, select “IsPortraitPDA” in the “Use this layout file where” dropdown box and click **OK**. (Selecting “IsPortraitPDA” will allow you to see the results of Pagination in your PDA emulator without deleting the “IsPDA” layout that you have already created. The selection of layout is a top down search and the first eligible layout will be selected for the device.)

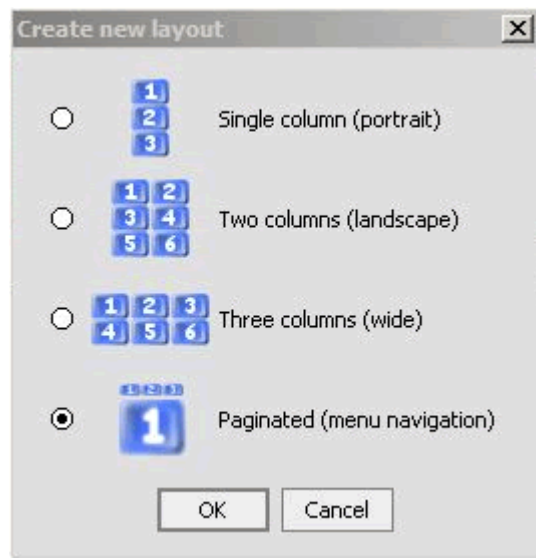
Portrait PDA Layout Insert Wizard



3. In the “Create new layout” insert wizard, select “Paginated” and click **OK**.

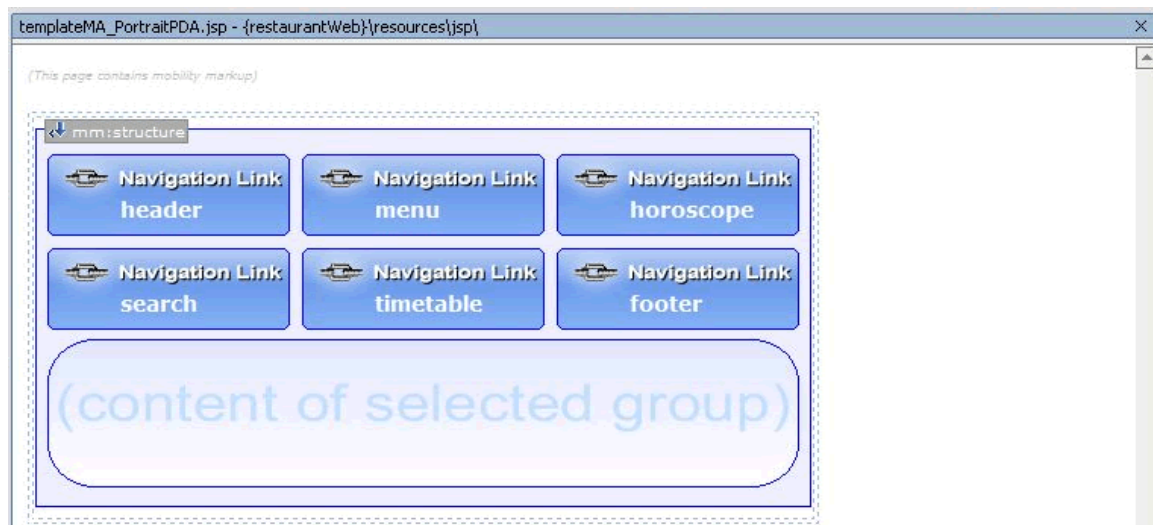
Begin Mobilization of the Sample Project

Create New Paginated Layout



This will create and open a *templateMA_PortraitPDA.jsp* file. You can see that all of the groups that were created in the *templateMA.jsp* page have been placed in a structure.

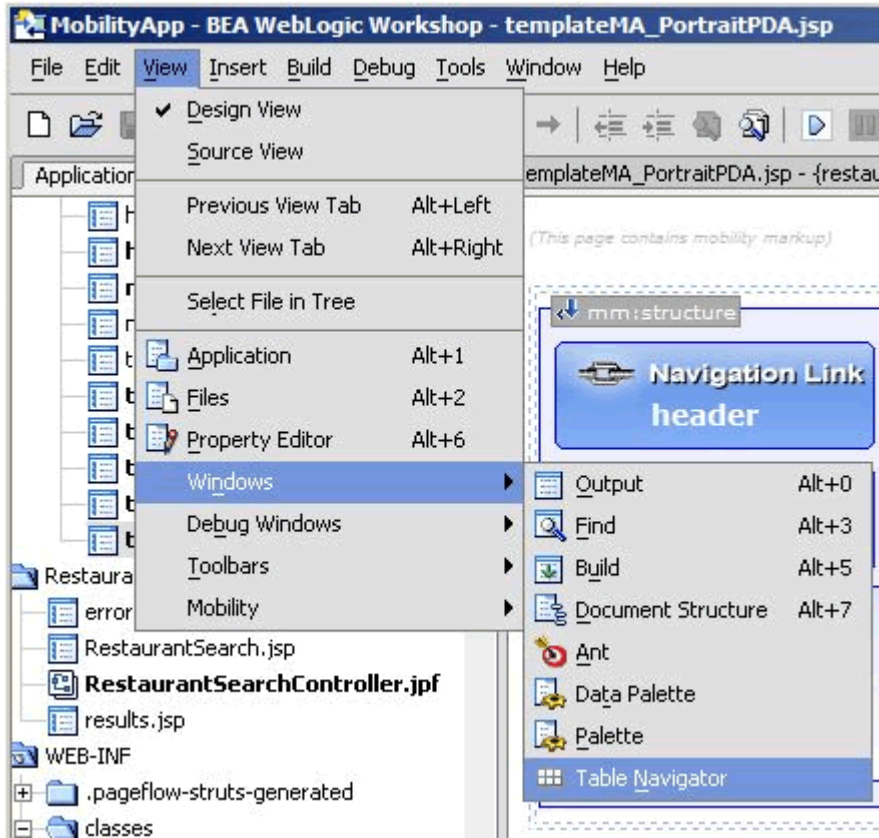
TemplateMA_PortraitPDA.jsp Design View



The header, footer and menu need to be taken out of this structure so that they can be expanded and not just appear as links. In order to do this, three rows must be created outside the structure. Each row will provide a space to place the header, footer and menu.

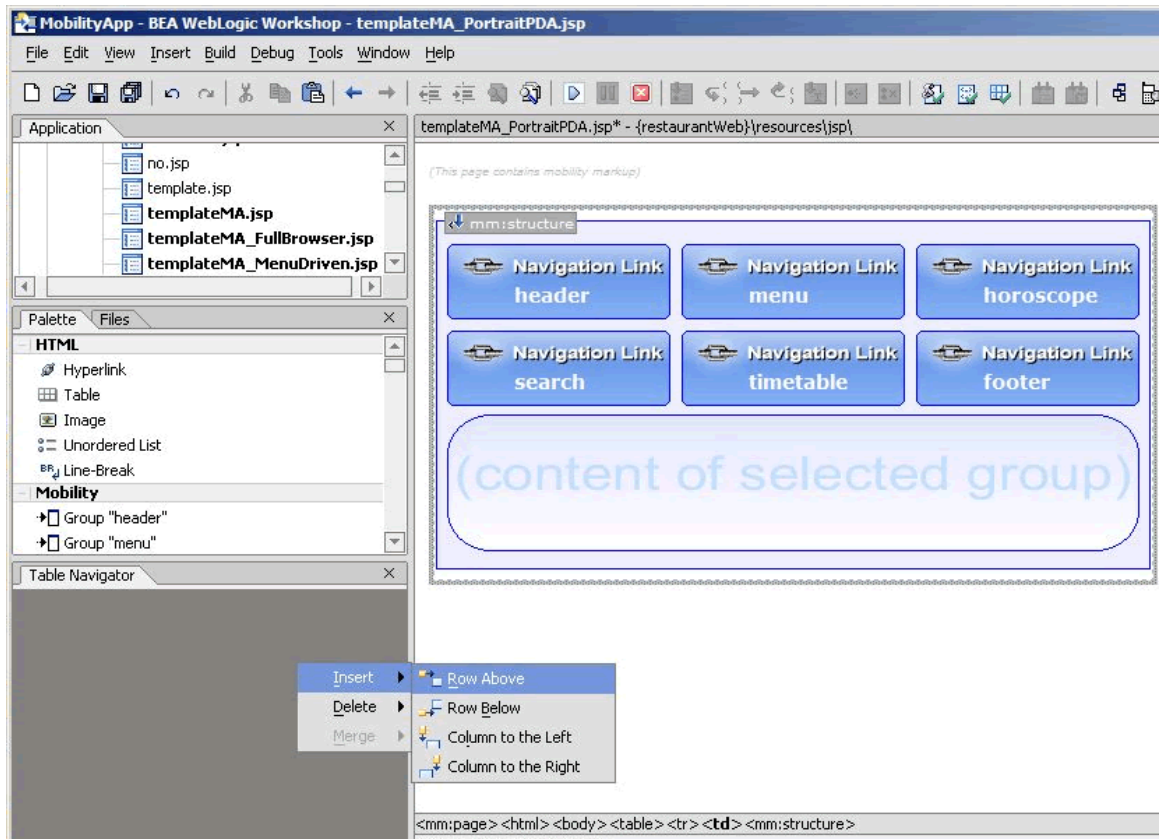
1. Select the `<mm:structure>` and highlight the `<tr>` element in the netui tag display area.
2. Go to the Workshop Table Navigator (**View → Windows → Table Navigator**) and follow these steps:
 - a. Right click on the Table Navigator and insert a row above. The Table Navigator will now visually indicate that the table has 2 rows.

Select Workshop Table Navigator



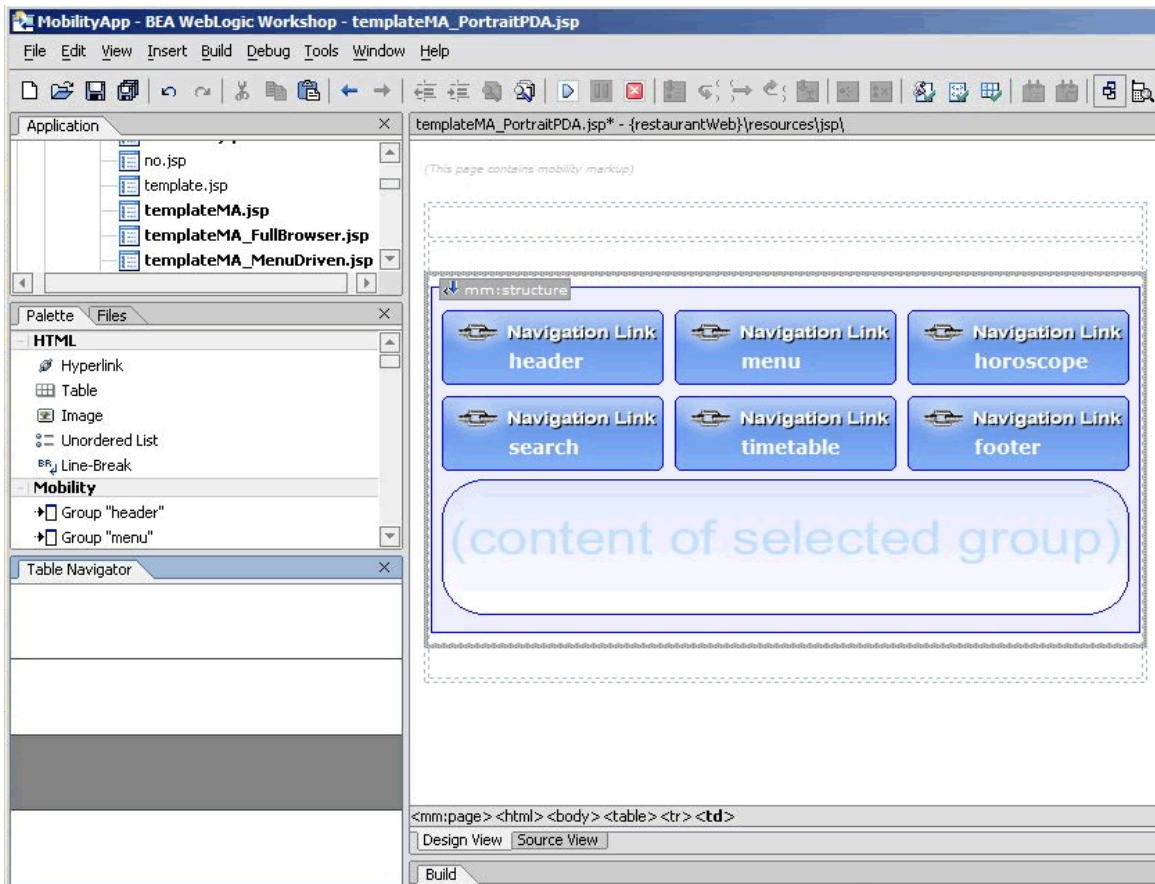
Begin Mobilization of the Sample Project

Insert Table Row Above



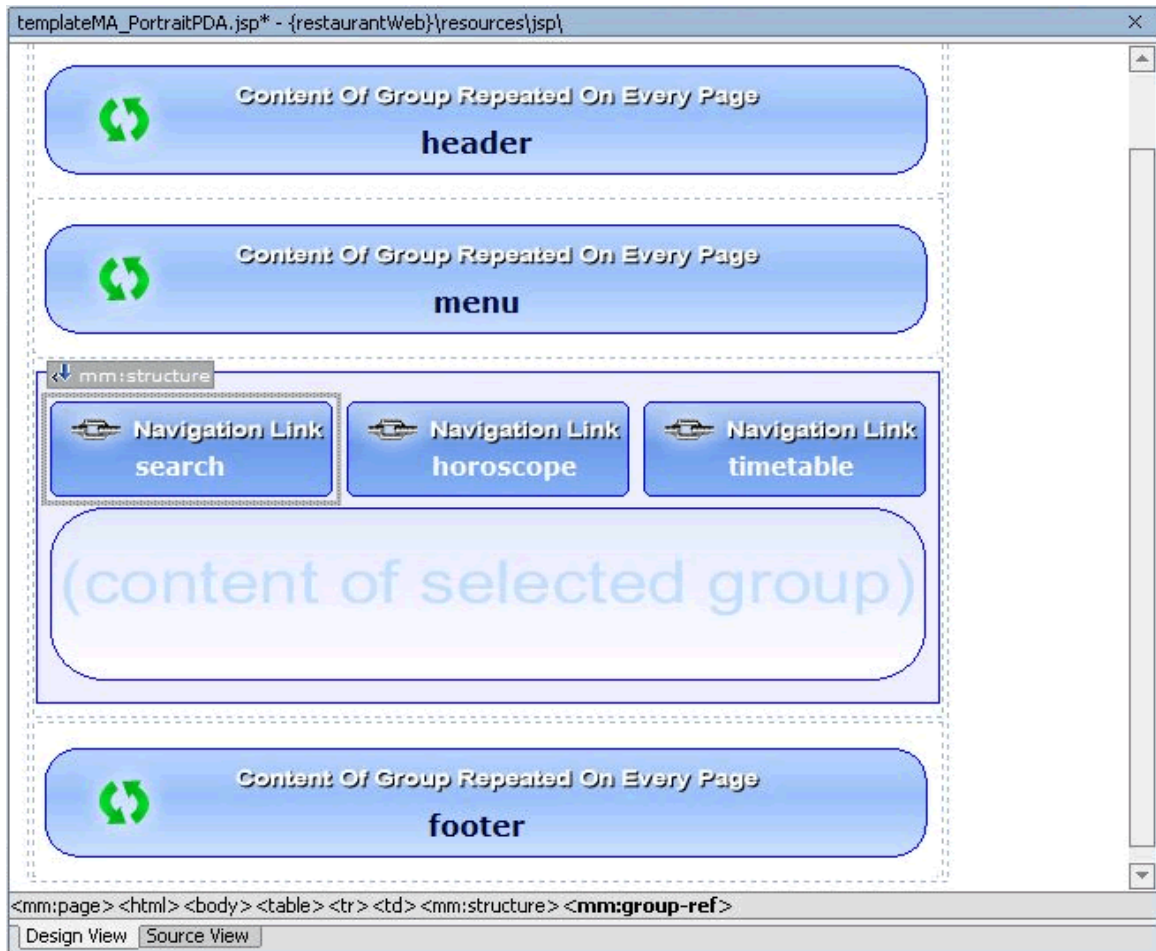
- b. Right click again and insert another row above. You will now have two rows above the structure.
- c. Now right click on the lower row and insert a row underneath.

Design View After Inserting Rows



3. Delete the header, footer and menu from their current position in the structure.
4. Go to the Mobility Palette and drag "header" onto the first row, drag "menu" onto the second row and drag "footer" onto the last row.
5. Finally, give the Restaurant Search more prominence by moving the "search" group to the left of the "horoscope" group inside the structure.

Updated PDA Structure



6. Save your changes and view from the PDA emulator. As can be in the following graphic, the groups in the structure appear on separate pages. The header, menu and footer are persistent and appear on all pages. The automatically created navigation menu (Search, Timetable, Horoscopes) allows you to scroll between groups.

Updated PDA Emulator View – Main Page



Begin Mobilization of the Sample Project

Updated PDA Emulator View – Timetable



Summary

Congratulations! You have now mobilized the “restaurantWeb” project. You can refer to the mobilized sample “restaurantWeb_After” project to compare your mobilization effort with the provided one.

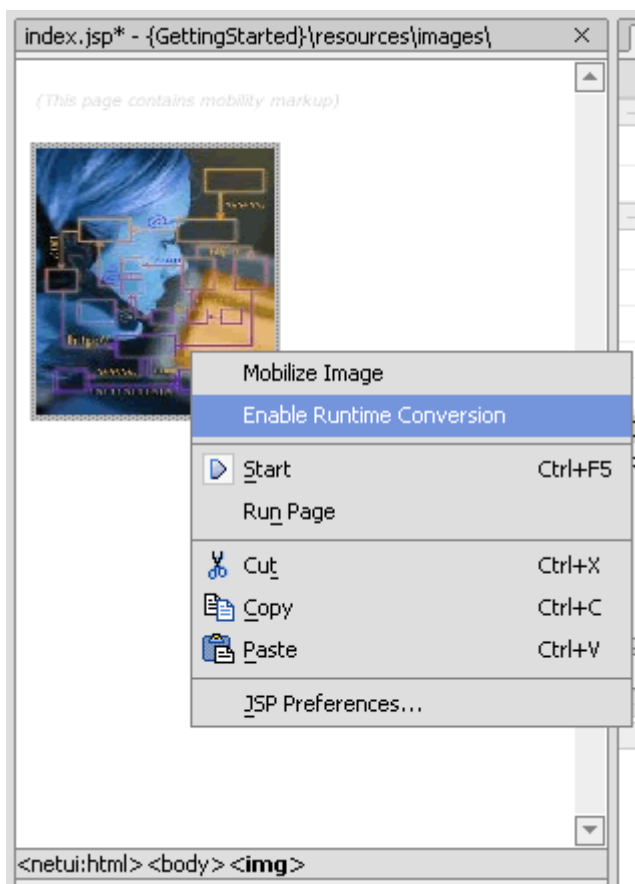
Appendix A - Enable Runtime Image Conversion

The Mobility Extension for BEA WebLogic Workshop offers a mechanism for enabling images for Runtime Image Conversion. This means that instead of creating or sourcing all of the necessary renditions of each image you want in a given application, you can simply include a single source image and rely on the Image Converter to generate appropriate sized renditions of the source image as required. Images will be cached as they are created so that future requests for the same size image will not necessitate regeneration of an already converted image.

To do this:

1. Right-click on an image in the Design View and choose **Enable Runtime Conversion**.

Selecting Enable Runtime Conversion for an Image



2. On the Image Conversion Setup screen, select the **Standard** tab at the end of the pane to use predefined image sizes and formats for the image conversion setup. Select the **Custom** tab to define the image sizes and formats that should be configured.
3. On the Standard Image Conversion Setup screen, select whether the image should be rendered as a “screen-width image” or as an “icon image”. Selecting “screen-width image” will result in an `<mm:media-group>` being added to the page that will be automatically configured to convert the source image into screen-width image sizes based on the screen

Begin Mobilization of the Sample Project

width of the device accessing the content. Selecting “icon image” will result in an <mm:media-group> being added to the page that will be automatically configured to convert the source image into images suitable for use as clickable image icons. You will see a preview of the images sizes to be produced in the lower half of the window. Click **Convert** to complete the Standard Image Conversion configuration.

Image Conversion Setup – Standard Screen-width Preview

The screenshot shows a dialog box titled ".mobileaware.mmimg - {GettingStarted}\WEB-INF\" with a close button (X) in the top right corner. The dialog is divided into two main sections for image type selection:

- Screen-width image.** This section is selected with a radio button. It includes the text: "Use this option to scale the image to the width of the requesting device." and a small image of the Mona Lisa on a mobile device screen.
- Icon image.** This section is unselected. It includes the text: "Use this option to scale the image to a size suitable for icons on the requesting device." and a small image of a green circle on a mobile device screen.

Below these options, a line of text reads: "Select the image type above, then click Convert to update page 'index.jsp' with the mobilized image." Below this text are two buttons: "Convert" (highlighted in green) and "Info...".

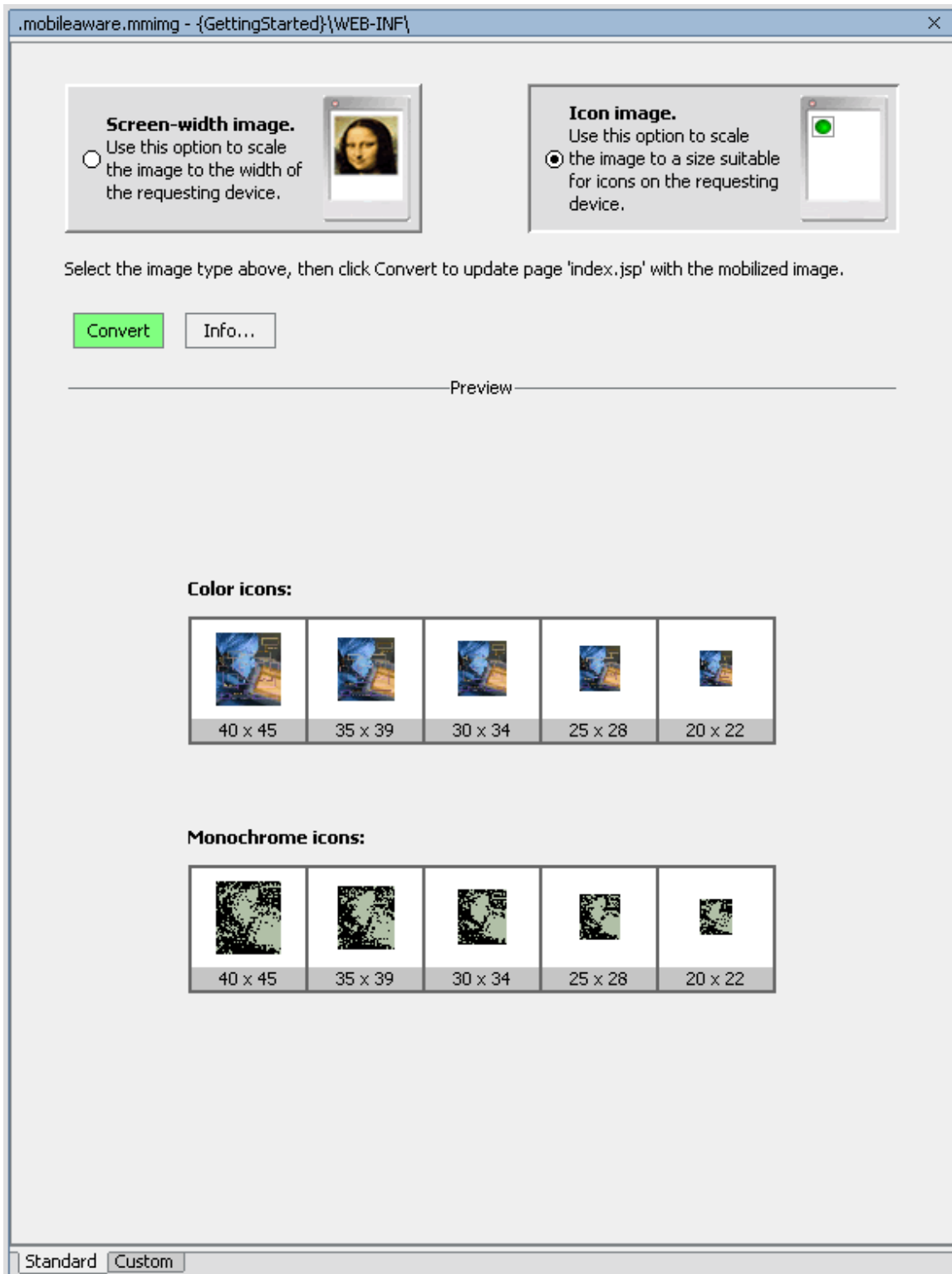
A horizontal line separates the configuration from the preview section, which is labeled "Preview". Below the line is a checkbox labeled "preview monochrome (wbmp) images", which is currently unchecked.

The preview section displays five images of a complex technical diagram (a face with overlaid circuitry) at different sizes, each with its dimensions listed below it:

- 200 x 224
- 165 x 184
- 124 x 139
- 96 x 107
- 84 x 94

At the bottom of the dialog, there are two tabs: "Standard" (selected) and "Custom".

Image Conversion Setup – Standard Icon Preview



4. On the Custom Image Conversion Screen, you can configure specific “where” expressions for each configured image setting, along with the image width to use in the conversion and the

Begin Mobilization of the Sample Project

format that should be generated. The following graphic illustrates an example custom image conversion configuration.

Note: The first expression that returns true will determine which image rendition gets delivered. The up and down buttons can be used to change the order of the expressions. The middle button ('X') will delete a selected expression. Click **Add New Category** to add a new expression row into the setup screen.

- To save the parameter settings you have defined so they can be used with other images, Click **Store Parameters**. Enter a filename and click **OK**.
- To retrieve and use a previously stored custom configuration file, click **Retrieve Parameters**, select the file from the list shown and click **OK**.
- Once you have satisfied with the configuration settings, click **Convert**. This will result in an <mm:media-group> being added to the page that will be automatically configured to convert the source image into the custom sizes as they have been defined a device accesses the content.

Custom Image Conversion Setup Screen

'Where' expression for category	Width	Type
ImgGIFSupported and UsableWidthPixels >= 200	200	gif
ImgWBMPSupported and UsableWidthPixels >= 200	200	wbmp
ImgGIFSupported and UsableWidthPixels >= 165	165	gif
ImgWBMPSupported and UsableWidthPixels >= 165	165	wbmp
ImgGIFSupported and UsableWidthPixels >= 128	124	gif
ImgWBMPSupported and UsableWidthPixels >= 128	124	wbmp
ImgGIFSupported and UsableWidthPixels >= 96	96	gif
ImgWBMPSupported and UsableWidthPixels >= 96	96	wbmp
ImgGIFSupported	84	gif
ImgWBMPSupported	84	wbmp