



# BEA MessageQ

## LU6.2 Services for OpenVMS Installation Guide

BEA MessageQ LU6.2 Services for OpenVMS V4.0A  
Document Edition 4.0A  
February 1999

# Copyright

Copyright © 1999 BEA Systems, Inc. All Rights Reserved.

## Restricted Rights Legend

This software and documentation is subject to and made available only pursuant to the terms of the BEA Systems License Agreement and may be used or copied only in accordance with the terms of that agreement. It is against the law to copy the software except as specifically allowed in the agreement. This document may not, in whole or in part, be copied photocopied, reproduced, translated, or reduced to any electronic medium or machine readable form without prior consent, in writing, from BEA Systems, Inc.

Use, duplication or disclosure by the U.S. Government is subject to restrictions set forth in the BEA Systems License Agreement and in subparagraph (c)(1) of the Commercial Computer Software-Restricted Rights Clause at FAR 52.227-19; subparagraph (c)(1)(ii) of the Rights in Technical Data and Computer Software clause at DFARS 252.227-7013, subparagraph (d) of the Commercial Computer Software--Licensing clause at NASA FAR supplement 16-52.227-86; or their equivalent.

Information in this document is subject to change without notice and does not represent a commitment on the part of BEA Systems. THE SOFTWARE AND DOCUMENTATION ARE PROVIDED "AS IS" WITHOUT WARRANTY OF ANY KIND INCLUDING WITHOUT LIMITATION, ANY WARRANTY OF MERCHANTABILITY OR FITNESS FOR A PARTICULAR PURPOSE. FURTHER, BEA Systems DOES NOT WARRANT, GUARANTEE, OR MAKE ANY REPRESENTATIONS REGARDING THE USE, OR THE RESULTS OF THE USE, OF THE SOFTWARE OR WRITTEN MATERIAL IN TERMS OF CORRECTNESS, ACCURACY, RELIABILITY, OR OTHERWISE.

## Trademarks or Service Marks

BEA, ObjectBroker, TOP END, and TUXEDO are registered trademarks of BEA Systems, Inc. BEA Builder, BEA Connect, BEA Manager, BEA MessageQ, Jolt and M3 are trademarks of BEA Systems, Inc.

All other company names may be trademarks of the respective companies with which they are associated.

### **BEA MessageQ LU6.2 Services for OpenVMS Installation Guide**

---

<b>Document Edition</b>	<b>Part Number</b>	<b>Date</b>	<b>Software Version</b>
4.0A	850-001024-001	February 1999	BEA MessageQ LU6.2 Services for OpenVMS, V4.0A

---

---

# Contents

## Preface

Purpose of This Document .....	v
Who Should Read This Document .....	v
How This Document Is Organized .....	v
How to Use This Document .....	vi
Opening the Document in a Web Browser .....	vi
Printing from a Web Browser .....	viii
Documentation Conventions .....	viii
Related Documentation .....	x
BEA MessageQ LU6.2 Services for OpenVMS Documentation .....	x
BEA Publications .....	x
Contact Information .....	xi
Documentation Support .....	xi
Customer Support .....	xi

## • Installing BEA MessageQ LU6.2 Services

Preparing to Install LU6.2 Services for OpenVMS .....	1
Prerequisite Software .....	2
Creating a BEA MessageQ Group .....	2
Required Privileges .....	3
VMSINSTAL Requirements .....	4
Backing Up Your System Disk .....	4
Transferring Files and Changing File Attributes .....	5
Installing LU6.2 Services for OpenVMS .....	6
General Information .....	6
The Installation Procedure .....	7
Step 1: Log In to a Privileged Account .....	7

---

Step 2: Invoke VMSINSTAL.....	7
Step 3: Respond to Prompts for Purging Files and Performing an IVP.....	8
Step 4: Specify the Location of the LU6.2 Directory Tree .....	8
Step 5: Specify the Queue Number for the LU6.2 User Callback .....	8
Step 6: Specify the queue number for the LU6.2 Port Server .....	9
Step 7: Specify Whether to Add LU6.2 Message Structures .....	9
Step 8: Specify Whether to Add LU6.2 Definitions to This Group.....	9
Step 9: Read Informational Messages .....	9
Step 10: End the Installation Procedure .....	9
Error Recovery .....	10
Testing the Installation .....	11
Preparing to Test.....	11
Running the Test.....	12
Reinstalling LU6.2 Services for OpenVMS .....	14
Sample VAX Installation Session .....	15
Sample Alpha Installation Session .....	17

## Index

---

# Preface

## Purpose of This Document

This document describes how to install the BEA MessageQ LU6.2 Services for OpenVMS product. Installation procedures are provided for OpenVMS VAX and OpenVMS Alpha platforms.

## Who Should Read This Document

This document is intended for system administrators and network administrators interested in installing the BEA MessageQ LU6.2 Services for OpenVMS system.

## How This Document Is Organized

The *BEA MessageQ LU6.2 Services for OpenVMS Installation Guide* is organized as follows:

- ◆ “Installing BEA MessageQ LU6.2 Services” provides preinstallation requirements, detailed installation instructions, and instructions for installation testing for the BEA MessageQ LU6.2 Services for OpenVMS product.

---

# How to Use This Document

This document, *BEA MessageQ LU6.2 Services for OpenVMS Installation Guide*, is designed primarily as an online, hypertext document. If you are reading this as a paper publication, note that to get full use from this document you should install and access it as an online document via a Web browser.

The following sections explain how to view this document online, and how to print a copy of this document.

## Opening the Document in a Web Browser

To access the online version of this document, open the following HTML file in a Web browser:

```
/beadir/doc/bmq/lu62_40a/instalgd/index.htm
```

**Note:** The online documentation requires a Web browser that supports HTML version 3.0. Netscape Navigator version 4.0 or Microsoft Internet Explorer version 4.0 or later are recommended.

Figure 1 shows the online document with the clickable navigation bar and table of contents.

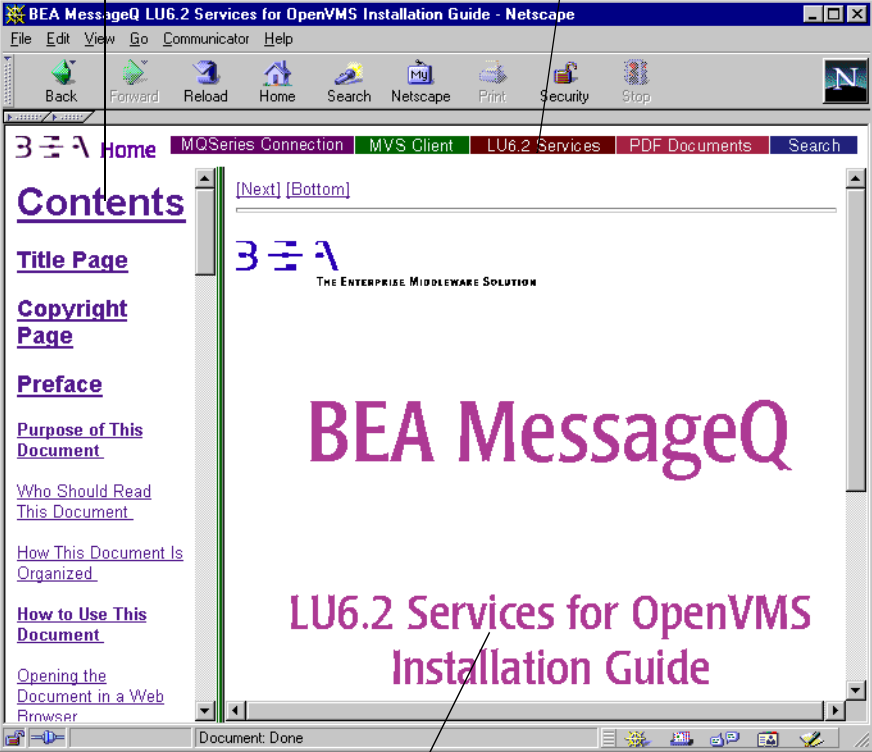
Figure 1 Online Document Displayed in a Netscape Web Browser

Table of Contents

Navigation Bar

Click a topic to view it.

Click a button to view a main topic.



Document Display Area

---

# Printing from a Web Browser

You can print a copy of this document, one file at a time, from the Web browser. Before you print, make sure that the chapter or appendix you want is displayed and *selected* in your browser. (To select a chapter or appendix, click anywhere inside the chapter or appendix you want to print. If your browser offers a Print Preview feature, you can use the feature to verify which chapter or appendix you are about to print.)

The BEA MessageQ Online Documentation CD also includes Adobe Acrobat PDF files of all of the online documents. You can use the Adobe Acrobat Reader to print all or a portion of each document.

## Documentation Conventions

The following documentation conventions are used throughout this document.

Convention	Item
<b>boldface text</b>	Indicates terms defined in the glossary in the <i>BEA MessageQ Introduction to Message Queuing</i> .
Ctrl+Tab	Indicates that you must press two or more keys.
<i>italics</i>	Indicate emphasis or book titles.
monospace text	Indicates code samples, commands and their options, data structures and their members, data types, directories, and file names and their extensions. Monospace text also indicates text that you must enter from the keyboard. <i>Examples:</i> #include stdio pams_attach_q \bmq\lu62_40a\include .htm bmq.doc BITMAP float



---

<b>Convention</b>	<b>Item</b>
<b>monospace</b> <b>boldface</b> <b>text</b>	Identifies significant words in code. <i>Example:</i> <code>put_msg(msg_ptr, <b>class</b>, type)</code>
<i>monospace</i> <i>italic</i> <i>text</i>	Identifies variables in code. <i>Example:</i> String <i>expr</i>
UPPERCASE TEXT	Indicates device names, environment variables, and logical operators. <i>Examples:</i> LPT1 PATH OR
{ }	Indicates a set of choices in a syntax line. The braces themselves should never be typed.
[ ]	Indicates optional items in a syntax line. The brackets themselves should never be typed. <i>Example:</i> <code>int32 pams_get_msg (msg_area, priority ... [-sel_filter] [psb] [show_buffer]...)</code>
	Separates mutually exclusive choices in a syntax line. The symbol itself should never be typed.
...	Indicates one of the following in a command line: <ul style="list-style-type: none"> <li>◆ That an argument can be repeated several times in a command line</li> <li>◆ That the statement omits additional optional arguments</li> <li>◆ That you can enter additional parameters, values, or other information</li> </ul> The ellipsis itself should never be typed. <i>Example:</i> <code>int32 pams_get_msg (msg_area, priority ... [-sel_filter] [psb] [show_buffer]...)</code>
.	Indicates the omission of items from a code example or from a syntax line. The vertical ellipsis itself should never be typed.

---

---

# Related Documentation

The following sections list the documentation provided with the BEA MessageQ software, and other publications related to messaging-oriented middleware technology.

## BEA MessageQ LU6.2 Services for OpenVMS Documentation

The BEA MessageQ LU6.2 Services for OpenVMS information set consists of the following documents:

*BEA MessageQ LU6.2 Services for OpenVMS User's Guide*

*BEA MessageQ LU6.2 Services for OpenVMS Release Notes*

**Note:** The BEA MessageQ Online Documentation CD also includes Adobe Acrobat PDF files of all of the online documents. You can use the Adobe Acrobat Reader to print all or a portion of each document.

## BEA Publications

The following BEA publications are also available:

*BEA MessageQ Introduction to Message Queuing*

*BEA MessageQ Programmer's Guide*

*BEA MessageQ Installation and Configuration Guide for OpenVMS*

*BEA MessageQ Client for OpenVMS User's Guide*

*BEA MessageQ for OpenVMS Release Notes for Version 4.0A*

---

# Contact Information

The following sections provide information about how to obtain support for the documentation and software.

## Documentation Support

If you have questions or comments on the documentation, you can contact the BEA Information Engineering Group by e-mail at **docsupport@beasys.com**. (For information about how to contact Customer Support, refer to the following section.)

## Customer Support

If you have any questions about this version of BEA MessageQ LU6.2 Services for OpenVMS, or if you have problems installing and running BEA MessageQ LU6.2 Services for OpenVMS, contact BEA Customer Support through BEA WebSupport at [www.beasys.com](http://www.beasys.com). You can also contact Customer Support by using the contact information provided on the Customer Support Card, which is included in the product package.

When contacting Customer Support, be prepared to provide the following information:

- ◆ Your name, e-mail address, phone number, and fax number
- ◆ Your company name and company address
- ◆ Your machine type and authorization codes
- ◆ The name and version of the product you are using
- ◆ A description of the problem and the content of pertinent error messages



---

# Installing BEA MessageQ LU6.2 Services

This book describes the preinstallation requirements, installation procedures, and postinstallation test procedures for BEA MessageQ LU6.2 Services for OpenVMS, Version 4.0A.

## Preparing to Install LU6.2 Services for OpenVMS

This section discusses the prerequisites and preparations required before installing the BEA MessageQ LU6.2 Services for OpenVMS, Version 4.0A product.

Your product kit contains a hardcopy version of the *BEA MessageQ LU6.2 Services for OpenVMS Release Notes*. We strongly recommend that you read the release notes before proceeding with the installation.

## Prerequisite Software

Before you install LU6.2 Services for OpenVMS, verify that the following software is already installed on your system:

- ◆ OpenVMS Version 6.2 (or higher)
- ◆ BEA MessageQ for OpenVMS VAX and Alpha, Version 4.0A with at least RP2 (rolling patch 2)
- ◆ DECnet/SNA OpenVMS APPC/LU6.2 Version 2.2 or higher

See the documentation specific to each product for information about installing the prerequisite software.

## Creating a BEA MessageQ Group

Before you install LU6.2 Services for OpenVMS, you must perform one of two tasks:

- ◆ create a new BEA MessageQ group and set the BEA MessageQ name table to point to that group, or
- ◆ set the BEA MessageQ name table to point to an existing group

The BEA MessageQ group does not have to be running, but the associated logical names must be defined. Listing 1 illustrates creating a group and defining logical names for that group where *bbbb* is the bus number and *gggg* is the group number of the new group. The value *N* is supplied for the `start_servers_flag` parameter of the `dmq$startup` command so that the logical name table is set up without starting the BEA MessageQ group.

### Listing 1 Creating a BEA MessageQ Group and Defining Logical Names

---

```
$ set def device:[DMQ$V40.EXE]
$ @dmq$create_group bbbb gggg
$ @dmq$startup bbbb gggg 30 N
```

---

Listing 2 illustrates using an existing BEA MessageQ group that is not currently running where *bbbb* is the bus number and *gggg* is the group number.

### Listing 2 Using a Stopped BEA MessageQ Group

---

```
$ set def device:[DMQ$V40.EXE]  
$ @dmq$startup bbbb gggg 30 N
```

---

Listing 3 illustrates using an existing BEA MessageQ group that is currently running where *bbbb* is the bus number and *gggg* is the group number.

### Listing 3 Using a Running BEA MessageQ Group

---

```
$ set def device:[DMQ$V40.EXE]  
$ @dmq$set_lnm_table bbbb gggg
```

---

**Note:** Refer to the *BEA MessageQ Installation and Configuration Guide for OpenVMS* for detailed instructions on creating groups and defining logical names.

## Required Privileges

To install LU6.2 Services for OpenVMS, you must be logged in to an account that has SETPRV, or at least the following privileges:

- ◆ CMKRNL
- ◆ WORLD
- ◆ SYSPRV

## VMSINSTAL Requirements

When you invoke `VMSINSTAL`, it verifies the following:

- ◆ The default device and directory are set to `SYS$UPDATE`.
- ◆ The installation is being performed from a privileged account.
- ◆ There are adequate quotas for the installation.
- ◆ DECnet is running.
- ◆ There is user activity on the system.

`VMSINSTAL` requires that the following minimum quotas have been set for the account from which the installation is being performed:

- ◆ `ASTLM = 24`
- ◆ `BIOLM = 18`
- ◆ `BYTLM = 18,000`
- ◆ `DIOLM = 18`
- ◆ `ENQLM = 30`
- ◆ `FILLM = 20`

If `VMSINSTAL` detects any problems during the installation, it notifies you and asks if you want to continue the installation. In some instances, you can enter `YES`. To stop the installation process and correct the problem, enter `NO`. Then, correct the problem and restart the installation.

## Backing Up Your System Disk

At the beginning of the installation, `VMSINSTAL` asks if you have backed up your system disk. We recommend that you back up the system disk before installing any software.



Use the backup procedures that are established at your site. For details on performing a system disk backup, see the section on the Backup Utility in the System Management documentation subkit for your OpenVMS system.

## Transferring Files and Changing File Attributes

The LU6.2 Services for OpenVMS software cannot be installed directly from the product CD-ROM. Prior to installation, you must copy the files to your OpenVMS system, rename files, and change the file attributes of the software kits.

The LU6.2 Services for OpenVMS Version 4.0A software requires BEA MessageQ for OpenVMS V4.0A with at least RP2 (rolling patch 2) installed. RP8 has been included on the media and should be installed prior to the installation of LU6.2 Services for OpenVMS.

The LU6.2 Services for OpenVMS Version 4.0A kit and the BEA MessageQ for OpenVMS Version 4.0A RP8 Patch kit provided on this media must be copied to the OpenVMS platform and the file attributes changed before they can be installed on the system. Perform the following procedure, substituting either *AXP* or *VAX* in the filenames, depending on your OpenVMS platform.

1. From a UNIX or Windows NT system use FTP, with a file type of image, to copy the file into a temporary directory on the OpenVMS system.

On a VMS system use *COPY* to move the files into a temporary directory.

2. Rename the file *MVLU62V4.xxx* to *MQLU62xxxA040.A* where *xxx* is either *AXP* or *VAX*. For example:

```
$rename MVLU62V4.VAX MQLU62VAXA040.A
```

3. Rename the file *MQ40ARP8.BCK* to *MQ-V40A-RP8.BCK*.
4. Rename the file *MQ40ARP8.TXT* to *MQ-V40A-RP8.TXT*.

5. Reset the file attributes using the following *SET FILE* command, substituting either *VAX* or *AXP* for *xxx*:

```
$set file/attribute=(rfm:fix,rat:none,lrl:9216)
MQLU62xxxA040.A
```

```
$set file/attribute=(rfm:fix,rat:none,lrl:32256)
MQ-V40A-RP8.BCK
```

6. Refer to the MQ-V40A-RP8.TXT file for instructions on how to apply the RP8 patch to your BEA MessageQ for OpenVMS Version 4.0A installation.

## Installing LU6.2 Services for OpenVMS

This section describes how to install the LU6.2 Services for OpenVMS software. During the installation procedure, both the LU6.2 Port Server interface and the LU6.2 User Callback interface are installed.

### General Information

This section presents information helpful to you during the LU6.2 Services for OpenVMS installation procedure:

- ◆ Installation time requirements

It takes approximately 5 minutes to install the LU6.2 Services for OpenVMS software on a VAXstation 4000-90 system. However, the installation time may vary depending on the type of media you use, your system configuration, and other system activities.

- ◆ VMSINSTAL Utility conventions

- ◆ An asterisk (\*) before a text line indicates a question that requires an answer.
- ◆ Information enclosed in brackets ([ . . . ]) is the default response. Press Return to accept the default response.
- ◆ Use the physical names (rather than the logical names) of devices and directories.

- ◆ Getting help

Help is available during the installation procedure. Enter a question mark (?) for help any time you cannot answer a question or respond to a prompt.

- ◆ Aborting the installation procedure

To abort the procedure, press Ctrl+Y at any point during the installation procedure. All files created up to that point are deleted and you are returned to DCL level. To retry the installation, proceed from Step 2 in “The Installation Procedure.”

## The Installation Procedure

The procedure provided in this section is valid for both VAX and Alpha platforms:

### Step 1: Log In to a Privileged Account

You must be logged in to a privileged account, such as the SYSTEM account, to invoke VMSINSTAL.

### Step 2: Invoke VMSINSTAL

To start the installation program, enter one of the following commands:

```
$ @SYS$UPDATE:VMSINSTAL MQLU62VAXA040 device OPTIONS (N)
or
$ @SYS$UPDATE:VMSINSTAL MQLU62AXPA040 device OPTIONS (N)
```

where:

*device* is the device on which the LU6.2 Services for OpenVMS software will be mounted.

As installation begins, the following system messages are displayed:

```
OpenVMS VAX Software Product Installation Procedure V6.2
It is 06-JAN-1999 at 10:45.
Enter a question mark (?) at any time for help.
* Are you satisfied with the backup of your system disk [YES]?
```

If you are satisfied with the backup of your system disk, press Return. The following messages are displayed:

```
The following products will be processed:
MQLU62VAXA V4.0
```

```
Beginning installation of MQLU62VAXA V4.0 at 10:48
```

%VMSINSTAL-I-RESTORE, Restoring product saveset A ...

### Step 3: Respond to Prompts for Purging Files and Performing an IVP

The following prompts are displayed:

\* Do you want to purge files replaced by this installation [YES]:

\* Do you want to run the IVP after the installation [YES]:

We recommend purging. To perform file purging, press Return after the prompt; the default (YES) will be used.

Because installation procedures on IBM systems vary widely, the LU6.2 Services for OpenVMS product does not have an Installation Verification Procedure (IVP). To verify or test your LU6.2 installation, run the DMQLU62\_TEST program using APPC/LU6.2 partner programs on your IBM systems. See “Testing the Installation” in this manual, and the *BEA MessageQ LU6.2 Services for OpenVMS User’s Guide* for further information about testing your LU6.2 installation.

### Step 4: Specify the Location of the LU6.2 Directory Tree

The following prompt is displayed:

\* Where do you want the MessageQ LU6.2 Directory Tree built  
[DMQ\$DISK]:

Enter the name of the directory in which you want to install the LU6.2 directory tree or press Return to use the default directory (DMQ\$DISK).

### Step 5: Specify the Queue Number for the LU6.2 User Callback

The following message and prompt are displayed:

MessageQ LU6.2 is installed by default at Queue  
Number 62. This may not be acceptable at your site.

\* What Queue Number should be used for the MessageQ LU6.2 User  
Callback [62]:

Enter the queue number to use for the LU6.2 User Callback process or press Return to use the default queue number (62).

## **Step 6: Specify the queue number for the LU6.2 Port Server**

The following message and prompt are displayed:

```
The MessageQ LU6.2 Port Server is installed by default
at Queue Number 63. This may not be acceptable at your site.
```

```
* What Queue Number should be used for the MessageQ LU6.2 Port
Server [63]:
```

Enter the queue number to use for the LU6.2 Port Server process or press Return to use the default queue number (63).

## **Step 7: Specify Whether to Add LU6.2 Message Structures**

The following prompt is displayed:

```
* Do you want to add the MessageQ LU6.2 message structures to the
CDD [Y]?
```

If your site uses the Common Data Dictionary (CDD) to store message structures, press Return to add BEA MessageQ LU6.2 message structures to your common data dictionary.

## **Step 8: Specify Whether to Add LU6.2 Definitions to This Group**

The following prompt is displayed:

```
* Do you want to add the MessageQ LU6.2 Definitions to this Group
[Y]?
```

Press Return to have definitions of message queues and message types automatically added to the BEA MessageQ group that is running.

## **Step 9: Read Informational Messages**

The installation procedure displays several messages about the progress of the installation. No further questions are asked.

## **Step 10: End the Installation Procedure**

The following messages indicate that the installation is complete.

```
Installation of MQLU62VAXA V4.0 completed at 11:10
```

```
VMSINSTAL procedure done at 11:17
```

```
$ LOGOUT
```

```
SYSTEM logged out at 06-JAN-1999 11:19:29.91
```

When these messages are displayed, log out of the privileged account.

During the installation procedure, some entries in the process symbol tables are deleted or modified. If you want to restore the original values of these symbols, you must be logged in as the system administrator. Even if you intend to do so, you must log out of the privileged account as the final step of the installation procedure. To continue working from the privileged account, log out to end the installation, then log in again.

**Note:** Refer to “Sample VAX Installation Session” and “Sample Alpha Installation Session” for samples of installation logs.

## Error Recovery

If errors occur during the installation, VMSINSTAL displays the following failure message:

```
%VMSINSTAL-E-INSFAIL, The installation of MQLU62AVAX Version 4.0 has failed.
```

Errors can occur during the installation if any of the following conditions exist:

- ◆ The operating system version is incorrect.
- ◆ A prerequisite software version is incorrect.
- ◆ Quotas necessary for successful installation are insufficient.
- ◆ System parameter values for successful installation are insufficient.
- ◆ Prerequisite software logical names are not defined.

For descriptions of the error messages generated by these conditions, see the OpenVMS documentation on system messages, recovery procedures, and OpenVMS software installation. If you are notified that any of these conditions exist, you should take the appropriate action as described in the message. For information about installation requirements, see “Preparing to Install LU6.2 Services for OpenVMS” at the beginning of this book.

---

# Testing the Installation

The `DMQLU62_TEST` program lets you test LU6.2 connections using the low-level services in the LU6.2 User Callback. The `DMQLU62_TEST` program provides a way to validate SNA Gateway, VTAM, and CICS or IMS parameters and object names before configuring an LU6.2 Port Server.

To complete the testing process successfully, you need to work closely with the individuals responsible for VTAM and CICS or IMS at your site. Ask these individuals about the partner applications you can use for testing before you begin.

## Preparing to Test

The next step is to test your installation. Before you start, prepare your system by completing the following procedure.

1. Make sure you have a video terminal supported by the Open VMS Screen Management (`SMG$`) facility. (The `DMQLU62_TEST` program uses the `SMG$` facility to manage the display of prompts and messages.)
2. Restart the customized BEA MessageQ group where LU6.2 Services for OpenVMS is installed, if it is not already running. This is the same BEA MessageQ group you created and started running as part of the preinstallation tasks described in “Preparing to Install LU6.2 Services for OpenVMS.” See the *BEA MessageQ Installation and Configuration Guide for OpenVMS* for detailed instructions on creating and starting groups.
3. To establish the BEA MessageQ LU6.2 Services for OpenVMS environment, create the `LU_CONFIG.TXT` and `TARGET_CONFIG.TXT` configuration files and issue the startup command. For the postinstallation test, the configuration files may be empty. To create the configuration files and start the BEA MessageQ LU6.2 Services for OpenVMS software, issue the following commands. In this example, *device* is the name of the device where the LU6.2 Services software is installed, and *xxx* is either VAX or AXP for the OpenVMS platform type.

```
$ set def device:[DMQLU62.V40-XXX.DMQLU62_SERVER.EXE]
$ create LU_CONFIG.TXT
$ Ctrl+Z
$ create TARGET_CONFIG.TXT
```

```
$ Ctrl+Z
$ @DMQLU62_SERVER_STARTUP
```

## Running the Test

1. Run the DMQLU62\_TEST program by entering the following command:

```
$ RUN DMQLU62$DIR:DMQLU62_TEST
```

When the test program is executed, the current window is cleared and a menu of LU6.2 operations (shown in Listing 4) is displayed on the left-hand side.

### Listing 4 LU6.2 Test Menu

---

```
-----
1 DEFINE INBOUND LU
2 DELETE LU
3 ALLOCATE CONVERSATION
4 SEND DATA
5 REQUEST CONFIRMATION
6 REQUEST CONFIRMATION AND GO TO RECEIVE
7 WAIT FOR A MESSAGE
8 SEND CONFIRMATION
9 SEND ERROR
10 DEALLOCATE CONVERSATION
11 DISPLAY ACTIVE CONVERSATIONS
12 DISPLAY LUs
13 DEFINE OUTBOUND LU
14 DEFINE LOCAL TP
15 ACTIVATE SESSION
16 ISSUE REQ TO SEND
17 DEALLOCATE (ABEND)
18 ISSUE FLUSH

99 EXIT
-----
```

The following steps test basic LU6.2 connectivity.



2. Define a logical unit by selecting option 1 from the LU6.2 operations menu and providing the following information after the appropriate prompts:

- ◆ An arbitrary logical unit (LU) name (such as “TEST”)
- ◆ The SNA Gateway node name
- ◆ The access name at the gateway
- ◆ The session number at the gateway

Accept the defaults for all other values by pressing Return after the appropriate prompts.

You will know that the definition is complete when you see the message

```
LU xxxx DEFINED
```

(where *xxxx* is your LU name) in a pop-up window labeled *Last Message Displayed*.

**Note:** The `DMQLU62_TEST` program displays messages in pop-up windows. To remove a pop-up window from your screen, press the space bar.

3. Allocate a conversation by selecting option 3 from the LU6.2 operations menu and providing the following information after the appropriate prompts:

- ◆ The LU to be used in allocation (that is, the name you provided in your LU definition in Step 1)
- ◆ The Transaction Program Name (TPN) to be used in allocation (that is, the TPN of the application on the IBM system)
- ◆ Security information (user name, password, and profile) if security has been implemented at your site
- ◆ The `SYNC_LEVEL` to be used (0 or 1, depending on the IBM application with which you will be communicating)

You will know that conversation allocation is complete when you see a message to that effect in a pop-up window labeled *Last Message Received*.

4. Send data by selecting option 4 from the LU6.2 operations menu and providing the following, after the appropriate prompts:

- ◆ The name of the LU to be used (that is, the name you provided in your LU definition in Step 1)
- ◆ Data to be transmitted (up to 20 bytes)

5. Request confirmation:
  - a. Select option 6 from the LU6.2 operations menu
  - b. After the prompt, enter the name of the LU to be used (that is, the name you provided in your LU definition in Step 1)

When you select option 6, you will force your message data across the communication path specified in the previous definitions. The results of this operation tell you whether your communication path is valid and, if not, where the errors occurred. Depending on the results, choose one of the following actions:

- ◆ If your communication path is valid, continue to Step 6 of this procedure.
  - ◆ If your communication path is invalid, correct the error(s) and repeat this procedure (Steps 1-5) until you receive notice that the communication path is valid.
6. Send a confirmation by selecting option 8 from the LU6.2 operations menu. No response is required.
  7. Deallocate the conversation:
    - a. Select option 10 from the LU6.2 operations menu.
    - b. After the prompt, enter the name of the LU to be used (that is, the name you provided in your LU definition in Step 1).

Because the `DMQLU62_TEST` program lets you execute many permutations of APPC operations, you can continue the testing process until the proper set of resources for your site has been identified.

## Reinstalling LU6.2 Services for OpenVMS

The procedure for reinstalling LU6.2 Services for OpenVMS is the same as the one you followed for the original installation. It is provided in “The Installation Procedure,” earlier in this book. The LU6.2 Services for OpenVMS software can be reinstalled without damaging site-specific configuration information.

# Sample VAX Installation Session

This section contains a sample installation of LU6.2 Services for OpenVMS on a VAX platform on which the LU6.2 Services for OpenVMS product has never been installed.

In the sample installation, we assume that no users are logged in to the system.

```
$ @dka200:[dmq$V40.exe]dmq$set_lnm_table 30 333
```

```
%DMQ-S-SETLNM, Set to MessageQ LNM table DMQ$LNM_0030_00333  
$ @sys$update:vmsinstal MQLU62VAXA040 DKA400:[DMQVAXA040.KIT]
```

VAX/VMS Software Product Installation Procedure V6.2

It is 06-JAN-1999 at 14:21.

Enter a question mark (?) at any time for help.

\* Are you satisfied with the backup of your system disk [YES]? y

The following products will be processed:

MQLU62VAXA V4.0

Beginning installation of MQLU62AXP V4.0 at 14:21

%VMSINSTAL-I-RESTORE, Restoring product save set A ...

%VMSINSTAL-I-REMOVED, Product's release notes have been moved to SYS\$HELP.

```
*****  
*  
*      BEA MessageQ for OpenVMS VAX LU6.2 Services V4.0A      *  
*  
*  
*  
*          Installation Procedure          *  
*  
*  
*          Copyright BEA Systems, Inc. 1999.          *  
*          All rights reserved.          *  
*  
*  
* Restricted Rights: Use, duplication, or disclosure by the *  
* U.S. Government is subject to restrictions as set forth in *  
* subparagraph (c)(1)(ii) of DFARS 252.227-7013, or in FAR *  
* 52.227-19, or in FAR 52.227-14 Alt. III, as applicable.    *
```

## Installing BEA MessageQ LU6.2 Services

---

```
*
* This software is proprietary to and embodies the
* confidential technology of BEA Systems, Inc.
* Possession, use, or copying of this software and media is
* authorized only pursuant to a valid written license from
* BEA Systems, Inc. or an authorized sublicensor.
*
*****

%QMLU62VAXA-I-DMQOK, MessageQ is present on this system
* Do you want to purge files replaced by this installation [YES]?
* Do you want to run the IVP after the installation [YES]?
* Where do you want the MessageQ LU6.2 Directory Tree built [DMQ$DISK:]

    MessageQ LU6.2 is installed by default at Queue Number 62.
    This may not be acceptable at your site.

* Queue Number for the MessageQ LU6.2 User Callback [62]:

    The MessageQ LU6.2 Port Server is installed by default at Queue
    Number 63. This may not be acceptable at your site.

* Queue Number for the MessageQ LU6.2 Port Server [63]:
%QMLU62VAXA-I-CDDOK, CDD or CDD-Plus is present on this system
* Do you want to add the MessageQ LU6.2 message structures to the CDD [Y]? n

    A MessageQ Customized User Area has been found in the
    current MessageQ Group

* Do you want to add the MessageQ LU6.2 Definitions to this Group [Y]?
%QMLU62VAXA-I-CHECKLU62, Checking for previous MessageQ LU6.2 installation...
%QMLU62VAXA-I-CHECKLU62, ...ignore any SEARCH-I-NOMATCH messages.

=====
All questions regarding the installation of MessageQ for OpenVMS VAX
LU6.2 Services have now been asked. The installation will continue for
approximately 20-90 minutes, depending on load, CPU type and kit media.
=====

*
* MessageQ for OpenVMS LU6.2 Services
*
PAMS_LU62          62 1000000 1000 None . . . . . L N
LU62_SERVER       62 1000000 1000 None . . . . . L N
*
    DMQ_LU62 has been found in DMQ$USER:DMQ$INIT.TXT. MessageQ LU6.2 may have
    already been included in this group. Queue definitions for MessageQ LU6.2
    Version 4.0A can be found in
```

```
DMQLU62$DIR:DMQLU62_INIT.TXT
```

You may need to manually edit DMQ\$USER:DMQ\$INIT.TXT to include the updated definitions.

```
%MQLU62VAXA-I-LINKTEST, Linking the DMQLU62_TEST program
SYMBOL=PAMSLU62_UCB_ADDRESS, 62
SYS$SHARE:SNALU62SH/SHARE
%MQLU62VAXA-I-LINKSERVER, Linking the DMQLU62_SERVER program
%MQLU62VAXA-I-LINKCONTROL, Linking the DMQLU62_CONTROL program
%VMSINSTAL-I-MOVEFILES, Files will now be moved to their target directories...
```

Since IBM installations vary widely, MessageQ LU6.2 does not have an IVP.

You can use the DMQLU62\_TEST program to verify your LU6.2 installation using LU6.2-APPC partner programs on your IBM systems.

Installation of MQLU62VAXA V4.0A completed at 14:26

VMSINSTAL procedure done at 14:26

\$

## Sample Alpha Installation Session

This section contains a sample installation of LU6.2 Services for OpenVMS on an Alpha platform on which the LU6.2 Services for OpenVMS product has never been installed.

In this sample installation, we assume that no users are logged in to the system.

```
$ @dka300:[dmq$v40.exe]dmq$set_lnm_table 30 444
```

```
%DMQ-S-SETLNM, Set to MessageQ LNM table DMQ$LNM_0030_00444
$ @sys$update:vmsinstal MQLU62AXPA040
```

OpenVMS ALPHA Software Product Installation Procedure V6.2

It is 06-JAN-1999 at 14:43.

Enter a question mark (?) at any time for help.

## Installing BEA MessageQ LU6.2 Services

---

\* Are you satisfied with the backup of your system disk [YES]?

The following products will be processed:

MQLU62AXPA V4.0

Beginning installation of MQLU62AXPA V4.0 at 14:43

%VMSINSTAL-I-RESTORE, Restoring product save set A ...

%VMSINSTAL-I-REMOVED, Product's release notes have been moved to SYS\$HELP.

```
*****
*
*          BEA MessageQ for OpenVMS AXP LU6.2 Services V4.0A          *
*
*
*          Installation Procedure                                     *
*
*
*          Copyright BEA System, Inc., 1999.                         *
*          All rights reserved.                                       *
*
*
* Restricted Rights: Use, duplication, or disclosure by the          *
* U.S. Government is subject to restrictions as set forth in        *
* subparagraph (c)(1)(ii) of DFARS 252.227-7013, or in FAR         *
* 52.227-19, or in FAR 52.227-14 Alt. III, as applicable.          *
*
* This software is proprietary to and embodies the                  *
* confidential technology of BEA Systems, Inc.                       *
* Possession, use, or copying of this software and media is        *
* authorized only pursuant to a valid written license from         *
* BEA Systems, Inc. or an authorized sublicensor.                  *
*
*****
```

%MQLU62AXPA-I-DMQOK, MessageQ is present on this system

\* Do you want to purge files replaced by this installation [YES]?

\* Do you want to run the IVP after the installation [YES]?

\* Where do you want the MessageQ LU6.2 Directory Tree built [DMQ\$DISK:]:

MessageQ LU6.2 is installed by default at Queue Number 62.

This may not be acceptable at your site.

\* Queue Number for the MessageQ LU6.2 User Callback [62]:

The MessageQ LU6.2 Port Server is installed by default at Queue  
Number 63. This may not be acceptable at your site.

\* Queue Number for the MessageQ LU6.2 Port Server [63]:

A MessageQ Customized User Area has been found in the current MessageQ Group

\* Do you want to add the MessageQ LU6.2 Definitions to this Group [Y]?  
%MQLU62AXPA-I-CHECKLU62, Checking for previous MessageQ LU6.2 installation...  
%MQLU62AXPA-I-CHECKLU62, ...ignore any SEARCH-I-NOMATCH messages.  
%SEARCH-I-NOMATCHES, no strings matched

```
=====
All questions regarding the installation of MessageQ for OpenVMS AXP
LU6.2 Services have now been asked. The installation will continue for
approximately 5-10 minutes, depending on load, CPU type and kit media.
=====
```

\*  
\* MessageQ for OpenVMS LU6.2 Services  
\*  
PAMS\_LU62                   62 1000000 1000 None . . . . . L N  
LU62\_SERVER                62 1000000 1000 None . . . . . L N  
\*  
75           \*   Sample Queues  
74

```
-----
DKA100:[SYS0.SYSUPD.DMQLU62AXP030]DMQ$INIT.TXT;2 207 lines
[EOB]
%MQLU62AXPA-I-LINKTEST, Linking the DMQLU62_TEST program
SYMBOL=PAMSLU62_UCB_ADDRESS, 62
SYS$SHARE:SNALU62SH/SHARE
%MQLU62AXPA-I-LINKSERVER, Linking the DMQLU62_SERVER program
%MQLU62AXPA-I-LINKCONTROL, Linking the DMQLU62_CONTROL program
%VMSINSTAL-I-MOVEFILES, Files will now be moved to their target directories...
```

Since IBM installations vary widely, MessageQ LU6.2 does not have an IVP.

You can use the DMQLU62\_TEST program to verify your LU6.2 installation using LU6.2-APPC partner programs on your IBM systems.

Installation of MQLU62AXPA V4.0 completed at 14:50

Adding history entry in VMI\$ROOT:[SYSUPD]VMSINSTAL.HISTORY

Creating installation data file: VMI\$ROOT:[SYSUPD]MQLU62AXPA040.VMI\_DATA

VMSINSTAL procedure done at 14:50

```
$ log  
SYSTEM      logged out at 06-JAN-1999 15:14:48.65
```



---

# Index

## A

- aborting installation 6
- APPC/LU6.2
  - version 2

## B

- BEA MessageQ
  - version 2

## C

- Common Data Dictionary (CDD) 9
- conversation
  - allocating 13

## D

- DMQLU62\_TEST program 11

## E

- error recovery 10

## H

- help 6

## I

- installation
  - aborting 6

- completion 9
- time required 6
- installing LU6.2 Services 6–10

## M

- message queue definitions 9
- message type definitions 9

## O

- operating system
  - version 2

## P

- preinstallation 1–6
- privileges required 3
- purging files 8

## Q

- queue number
  - LU6.2 Port Server 9
  - User Callback 8
- quotas
  - minimum 4

## R

- reinstallation 14

---

## **S**

sample installation

    Alpha platform 17

    VAX platform 15

security information 13

support

    technical xi

SYNC\_LEVEL 13

## **T**

testing installation 11

Transaction Program Name (TPN) 13

## **V**

VMSINSTAL Utility 4

    conventions 6