



BEA MessageQ

System Messages Manual

BEA MessageQ Version 5.0
Document Edition 1.0
October 1998

Copyright

Copyright © 1998 BEA Systems, Inc. All Rights Reserved.

Restricted Rights Legend

This software and documentation is subject to and made available only pursuant to the terms of the BEA Systems License Agreement and may be used or copied only in accordance with the terms of that agreement. It is against the law to copy the software except as specifically allowed in the agreement. This document may not, in whole or in part, be copied photocopied, reproduced, translated, or reduced to any electronic medium or machine readable form without prior consent, in writing, from BEA Systems, Inc.

Use, duplication or disclosure by the U.S. Government is subject to restrictions set forth in the BEA Systems License Agreement and in subparagraph (c)(1) of the Commercial Computer Software-Restricted Rights Clause at FAR 52.227-19; subparagraph (c)(1)(ii) of the Rights in Technical Data and Computer Software clause at DFARS 252.227-7013, subparagraph (d) of the Commercial Computer Software--Licensing clause at NASA FAR supplement 16-52.227-86; or their equivalent.

Information in this document is subject to change without notice and does not represent a commitment on the part of BEA Systems. THE SOFTWARE AND DOCUMENTATION ARE PROVIDED "AS IS" WITHOUT WARRANTY OF ANY KIND INCLUDING WITHOUT LIMITATION, ANY WARRANTY OF MERCHANTABILITY OR FITNESS FOR A PARTICULAR PURPOSE. FURTHER, BEA Systems DOES NOT WARRANT, GUARANTEE, OR MAKE ANY REPRESENTATIONS REGARDING THE USE, OR THE RESULTS OF THE USE, OF THE SOFTWARE OR WRITTEN MATERIAL IN TERMS OF CORRECTNESS, ACCURACY, RELIABILITY, OR OTHERWISE.

Trademarks or Service Marks

BEA, BEA Builder, BEA Connect, BEA Jolt, BEA Manager, and BEA MessageQ are trademarks of BEA Systems, Inc. BEA ObjectBroker is a registered trademark of BEA Systems, Inc. TUXEDO is a registered trademark in the United States and other countries.

All other company names may be trademarks of the respective companies with which they are associated.

BEA MessageQ System Messages Manual

Document Edition	Date	Software Version
1.0	October 1998	BEA MessageQ, Version 5.0

Contents

Preface

Purpose of This Document	v
How to Use This Document	vi
Related Documentation	xi
Contact Information.....	xii

1. Message Queuing Bridge MESSAGES

MESSAGES 1600-1699	1-1
MESSAGES 3000-3099	1-6

2. CMDFML MESSAGES

CMDFML MESSAGES 1-99.....	2-1
---------------------------	-----

3. LIBFML MESSAGES

LIBFML MESSAGES 1-99	3-1
----------------------------	-----



Preface

Purpose of This Document

This document provides reference information about BEA MessageQ / BEA TUXEDO Messaging Bridge and Field Manipulation Language (FML) system messages. For information about return codes generated by the PAMS API, see the *BEA MessageQ Programmer's Guide*.

Who Should Read This Document

This document is intended for applications designers and developers who are interested in designing, developing, building, and running BEA MessageQ applications

How This Document Is Organized

BEA MessageQ System Messages Manual is organized as follows:

- ◆ Chapter 1, “Message Queuing Bridge MESSAGES,” lists and describes system messages generated through the use of MessageQ API functions or MessageQ applications with the MessageQ/TUXEDO message queuing bridge.
- ◆ Chapter 2, “CMDFML MESSAGES,” lists and describes system messages generated through the use of FML commands.
- ◆ Chapter 3, “LIBFML MESSAGES,” lists and describes system messages generated through the use of FML libraries.

System messages are presented in the following format:

- ◆ Message -- the message number of the entry, the severity level, and the message text. Severity levels are:
 - ◆ Error: Immediate corrective action required as processing can no longer continue.
 - ◆ Warn: Corrective action may need to be taken to ensure accuracy, but is not immediately required.
 - ◆ Info: Informational only, no action need be taken.
- ◆ Description -- an expansion of the message text. Descriptions use a `monospace font` for command names, function names, options, and environment variables. An *italic font* is used to distinguish substitutable arguments.
- ◆ Action -- suggests possible corrective actions to take.
- ◆ See Also -- refers to related information. References in the form name(3) or name(5) refer to reference pages. *Italics* are used for titles of manuals.

How to Use This Document

This document, BEA MessageQ System Messages Manual, is designed primarily as an online, hypertext document. If you are reading this as a paper publication, note that to get full use from this document you should access it as an online document via the BEA MessageQ Online Documentation CD.

The following sections explain how to view this document online, and how to print a copy of this document.

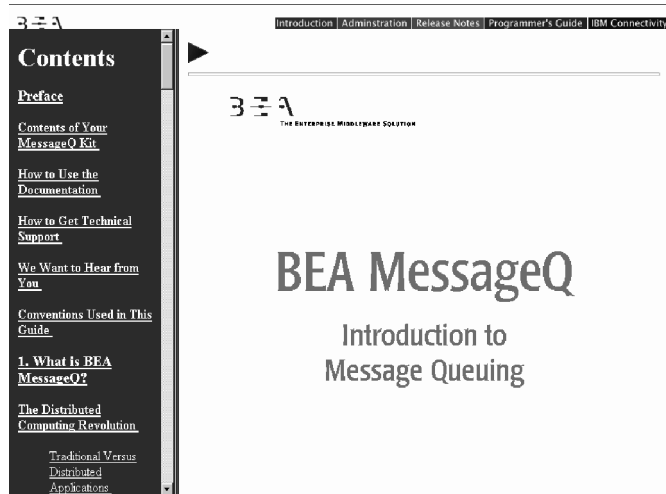
Opening the Document in a Web Browser

To access the online version of this document, open the `index.htm` file in the top-level directory of the BEA MessageQ Online Documentation CD. On the main menu, click the Introduction to Message Queuing button.

Note: The online documentation requires a Web browser that supports HTML version 3.0. Netscape Navigator version 3.0 or Microsoft Internet Explorer version 3.0 or later are recommended.

Figure 1 shows the online document with the clickable navigation bar and table of contents.

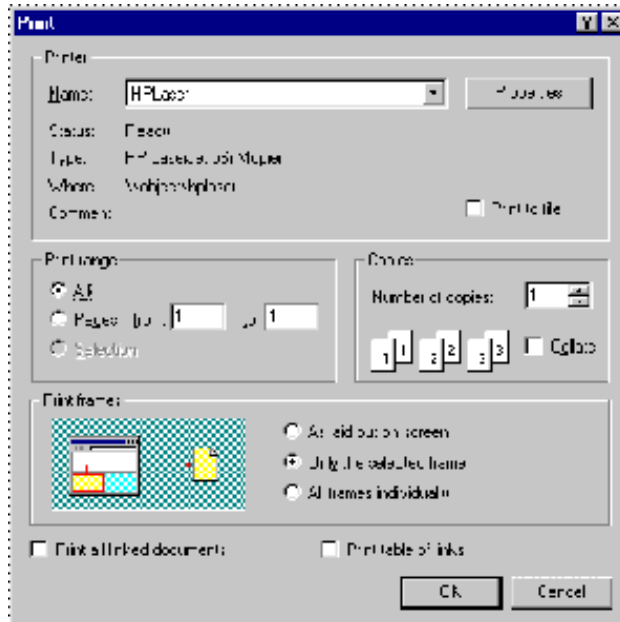
Figure 1 Online Document Displayed in a Netscape Web Browser



Printing from a Web Browser

You can print a copy of this document, one file at a time, from the Web browser. Before you print, make sure that the chapter or appendix you want is displayed and *selected* in your browser.

To select a chapter or appendix, click anywhere inside the chapter or appendix you want to print. If your browser offers a Print Preview feature, you can use the feature to verify which chapter or appendix you are about to print. If your browser offers a Print Frames feature, you can use the feature to select the frame containing the chapter or appendix you want to print. For example:



The BEA MessageQ Online Documentation CD also includes Adobe Acrobat PDF files of all of the online documents. You can use the Adobe Acrobat Reader to print all or a portion of each document. On the CD's main menu, click the Bookshelf button. On the Bookshelf, scroll to the entry for the BEA M3 document you want to print and click the PDF option.

Documentation Conventions

The following documentation conventions are used throughout this document.

Convention	Item
boldface text	Indicates terms defined in the glossary.
Ctrl+Tab	Indicates that you must press two or more keys simultaneously.
<i>italics</i>	Indicates emphasis or book titles.

Convention	Item
monospace text	<p>Indicates code samples, commands and their options, data structures and their members, data types, directories, and file names and their extensions. Monospace text also indicates text that you must enter from the keyboard.</p> <p><i>Examples:</i></p> <pre>#include <iostream.h> void main () the pointer psz chmod u+w * \tux\data\ap .doc tux.doc BITMAP float</pre>
monospace boldface text	<p>Identifies significant words in code.</p> <p><i>Example:</i></p> <pre>void commit ()</pre>
<i>monospace italic text</i>	<p>Identifies variables in code.</p> <p><i>Example:</i></p> <pre>String <i>expr</i></pre>
UPPERCASE TEXT	<p>Indicates device names, environment variables, and logical operators.</p> <p><i>Examples:</i></p> <pre>LPT1 SIGNON OR</pre>
{ }	<p>Indicates a set of choices in a syntax line. The braces themselves should never be typed.</p>
[]	<p>Indicates optional items in a syntax line. The brackets themselves should never be typed.</p> <p><i>Example:</i></p> <pre>buildobjclient [-v] [-o name] [-f <i>file-list</i>]... [-l <i>file-list</i>]...</pre>
	<p>Separates mutually exclusive choices in a syntax line. The symbol itself should never be typed.</p>

Convention	Item
...	Indicates one of the following in a command line: <ul style="list-style-type: none">◆ That an argument can be repeated several times in a command line◆ That the statement omits additional optional arguments◆ That you can enter additional parameters, values, or other information The ellipsis itself should never be typed. <i>Example:</i> <code>buildobjclient [-v] [-o name] [-f file-list]... [-l file-list]...</code>
. . . .	Indicates the omission of items from a code example or from a syntax line. The vertical ellipsis itself should never be typed.

Related Documentation

The following sections list the documentation provided with the MessageQ software, related BEA publications, and other publications related to the technology.

MessageQ Documentation

The MessageQ information set consists of the following documents:

BEA MessageQ Programmer's Guide

BEA MessageQ Introduction to Message Queuing

BEA MessageQ Installation and Configuration for UNIX

BEA MessageQ Installation and Configuration for Windows NT

BEA MessageQ Client for UNIX User's Guide

BEA MessageQ Client for Windows User's Guide

BEA MessageQ FML Programmer's Guide

BEA MessageQ Reference Manual

Note: The BEA MessageQ Online Documentation CD also includes Adobe Acrobat PDF files of all of the online documents. You can use the Adobe Acrobat Reader to print all or a portion of each document.

BEA TUXEDO Documentation

Some MessageQ system messages associated with the exchange of messages between BEA MessageQ and BEA TUXEDO refer to system messages or reference pages in the following TUXEDO documents:

BEA TUXEDO LIBQM System Messages

BEA TUXEDO Reference Manual

Contact Information

The following sections provide information about how to obtain support for the documentation and software.

Documentation Support

If you have questions or comments on the documentation, you can contact the BEA Information Engineering Group by e-mail at **docsupport@beasys.com**. (For information about how to contact Customer Support, refer to the following section.)

Customer Support

If you have any questions about this version of BEA MessageQ, or if you have problems installing and running BEA MessageQ, contact BEA Customer Support through BEA WebSupport at www.beasys.com. You can also contact Customer Support by using the contact information provided on the Customer Support Card, which is included in the product package.

When contacting Customer Support, be prepared to provide the following information:

- ◆ Your name, e-mail address, phone number, and fax number
- ◆ Your company name and company address
- ◆ Your machine type and authorization codes
- ◆ The name and version of the product you are using
- ◆ A description of the problem and the content of pertinent error messages



1 Message Queuing Bridge MESSAGES

MESSAGES 1600-1699

1600 ERROR: Memory allocation failure	
Description	The TMQFORWARD_BMQ process failed to allocate initial memory for storing the queue list.
Action	Ensure that the operating system parameters are set correctly for the amount of memory on the machine and the amount of memory that can be used by a process. Reduce the memory usage on the machine or increase the amount of physical memory on the machine.
See Also	mc(1), malloc(3) in UNIX system reference manuals
1601 ERROR: realloc() failed	
Description	The TMQFORWARD_BMQ process failed to allocate additional memory for storing the queue list.
Action	Ensure that the operating system parameters are set correctly for the amount of memory on the machine and the amount of memory that can be used by a process. Reduce the memory usage on the machine or increase the amount of physical memory on the machine.
See Also	mc(1), realloc(3) in UNIX system reference manuals
1602 ERROR: -b option not specified	

	Description	The -b option is a required option for both TMQUEUE_BMQ and TMQFORWARD_BMQ servers and was not specified in the command line options. The server will not boot.
	Action	Change the server command line options, CLOPT, for either TMQUEUE_BMQ or TMQFORWARD_BMQ to include -b option with a valid BEA MessageQ Bus ID.
	See Also	TMQFORWARD_BMQ(5), TMQUEUE_BMQ(5), <i>BEA MessageQ Installation and Configuration for UNIX</i> , <i>BEA MessageQ Installation and Configuration for Windows NT</i>
<hr/> 1603 ERROR: -g option not specified <hr/>		
	Description	The -g option is a required option for both TMQUEUE_BMQ and TMQFORWARD_BMQ servers and was not specified in the command line options. The server will not boot.
	Action	Change the server command line options, CLOPT, for either TMQUEUE_BMQ or TMQFORWARD_BMQ to include -g option with a valid BEA MessageQ Group ID.
	See Also	TMQFORWARD_BMQ(5), TMQUEUE_BMQ(5), <i>BEA MessageQ Installation and Configuration for UNIX</i> , <i>BEA MessageQ Installation and Configuration for Windows NT</i> .
<hr/> 1604 ERROR: -i option ignored as argument must be numeric <hr/>		
	Description	See <i>BEA TUXEDO System Message Manual</i> , Vol. 2, LIBQM 1604.
	Action	See <i>BEA TUXEDO System Message Manual</i> , Vol. 2, LIBQM 1604.
	See Also	TMQFORWARD(5)
<hr/> 1605 ERROR: -i option ignored as argument is too large <hr/>		
	Description	See <i>BEA TUXEDO System Message Manual</i> , Vol. 2, LIBQM 1605.
	Action	See <i>BEA TUXEDO System Message Manual</i> , Vol. 2, LIBQM 1605.
	See Also	TMQFORWARD(5)
<hr/> 1606 WARN: Invalid command line argument 'opt' ignored <hr/>		

	Description	See <i>BEA TUXEDO System Message Manual</i> , Vol. 2, LIBQM 1606
	Action	See <i>BEA TUXEDO System Message Manual</i> , Vol. 2, LIBQM 1606
	See Also	TMQFORWARD_BMQ(5)
1607	ERROR: -q option not specified	
	Description	The -q option is a required option for the TMQFORWARD_BMQ server and was not specified in the command line options. The server will not boot.
	Action	Change the server command line options, CLOPT, for the TMQFORWARD_BMQ to include -q option with a list of one or more BEA MessageQ queue identifiers or queue names for which the server will forward queued messages.
	See Also	TMQFORWARD_BMQ(5), <i>BEA MessageQ Installation and Configuration for UNIX</i> , <i>BEA MessageQ Installation and Configuration for Windows NT</i> .
1612	ERROR: Must not advertise services	
	Description	See <i>BEA TUXEDO System Message Manual</i> , Vol. 2, LIBQM 1612
	Action	See <i>BEA TUXEDO System Message Manual</i> , Vol. 2, LIBQM 1612
	See Also	TMQFORWARD(5), buildserver(1), tmconfig(1), ubbconfig(1)
1615	WARN: Dropping message received	
	Description	See <i>BEA TUXEDO System Message Manual</i> , Vol. 2, LIBQM 1615
	Action	See <i>BEA TUXEDO System Message Manual</i> , Vol. 2, LIBQM 1615
	See Also	TMQFORWARD(5), tmdadmin(1)
1618	ERROR: tpalloc() failed - server exiting	
	Description	See <i>BEA TUXEDO System Message Manual</i> , Vol. 2, LIBQM 1618
	Action	See <i>BEA TUXEDO System Message Manual</i> , Vol. 2, LIBQM 1618
	See Also	TMQFORWARD(5)
1619	ERROR: tprealloc() failed - server exiting	

	Description	See <i>BEA TUXEDO System Message Manual</i> , Vol. 2, LIBQM 1619
	Action	See <i>BEA TUXEDO System Message Manual</i> , Vol. 2, LIBQM 1619
	See Also	TMQFORWARD(5)
1620	ERROR: _tpalloc() failed - server exiting	
	Description	See <i>BEA TUXEDO System Message Manual</i> , Vol. 2, LIBQM 1620
	Action	See <i>BEA TUXEDO System Message Manual</i> , Vol. 2, LIBQM 1620
	See Also	TMQFORWARD(5)
1622	WARN: Unable to enqueue failure message, diagnostic	
	Description	See <i>BEA TUXEDO System Message Manual</i> , Vol. 2, LIBQM 1622
	Action	See <i>BEA TUXEDO System Message Manual</i> , Vol. 2, LIBQM 1622
	See Also	TMQFORWARD(5)
1627	WARN: Invalid command line argument 'opt' ignored	
	Description	See <i>BEA TUXEDO System Message Manual</i> , Vol. 2, LIBQM 1627
	Action	See <i>BEA TUXEDO System Message Manual</i> , Vol. 2, LIBQM 1627
	See Also	TMQUEUE_BMQ(5)
1631	WARN: TMQUEUE_BMQ received the wrong buffer type - type	
	Description	See <i>BEA TUXEDO System Message Manual</i> , Vol. 2, LIBQM 1631
	Action	See <i>BEA TUXEDO System Message Manual</i> , Vol. 2, LIBQM 1631
	See Also	TMQUEUE(5), tpcall(3), tpconnect(3), tpdequeue(3), tpenqueue(3)
1632	ERROR: WARN: [TMQUEUE_BMQ received a buffer for other than ENQUEUE or DEQUEUE, opcode opcode]	
	Description	See <i>BEA TUXEDO System Message Manual</i> , Vol. 2, LIBQM 1632
	Action	See <i>BEA TUXEDO System Message Manual</i> , Vol. 2, LIBQM 1632
	See Also	TMQUEUE(5)

1633	ERROR: [Failed to get field <i>fieldname</i> from operation message]
Description	See <i>BEA TUXEDO System Message Manual, Vol. 2, LIBQM 1633</i>
Action	See <i>BEA TUXEDO System Message Manual, Vol. 2, LIBQM 1633</i>
See Also	qmadmin(1)
1634	ERROR: WARN: [Failed to set field <i>fieldname</i> in operation message]
Description	See <i>BEA TUXEDO System Message Manual, Vol. 2, LIBQM 1634</i>
Action	See <i>BEA TUXEDO System Message Manual, Vol. 2, LIBQM 1634</i>
See Also	TMQUEUE(5), tpdequeue(3), tpenqueue(3)
1636	ERROR: tprealloc() failed - server exiting
Description	See <i>BEA TUXEDO System Message Manual, Vol. 2, LIBQM 1636</i>
Action	See <i>BEA TUXEDO System Message Manual, Vol. 2, LIBQM 1636</i>
See Also	TMQUEUE(5)
1637	ERROR: TMQUEUE_BMQ cannot be a conversational server
Description	See <i>BEA TUXEDO System Message Manual, Vol. 2, LIBQM 1637</i>
Action	See <i>BEA TUXEDO System Message Manual, Vol. 2, LIBQM 1637</i>
See Also	TMQUEUE(5), tmconfig(1), ubbconfig(5)
1646	ERROR: Unable to determine license level
Description	See <i>BEA TUXEDO System Message Manual, Vol. 2, LIBQM 1646</i>
Action	See <i>BEA TUXEDO System Message Manual, Vol. 2, LIBQM 1646</i>
See Also	
1647	ERROR: No license for /Q
Description	See <i>BEA TUXEDO System Message Manual, Vol. 2, LIBQM 1647</i>
Action	See <i>BEA TUXEDO System Message Manual, Vol. 2, LIBQM 1647</i>
See Also	

1648 ERROR: Unable to determine license level	
Description	See <i>BEA TUXEDO System Message Manual, Vol. 2</i> , LIBQM 1648
Action	See <i>BEA TUXEDO System Message Manual, Vol. 2</i> , LIBQM 1648
See Also	
1649 ERROR: No license for /Q	
Description	See <i>BEA TUXEDO System Message Manual, Vol. 2</i> , LIBQM 1649
Action	See <i>BEA TUXEDO System Message Manual, Vol. 2</i> , LIBQM 1649
See Also	
1653 ERROR: Can not resize a Composite Buffer	
Description	The TMQFORWARD_BMQ process failed to allocate additional memory for expanding TUXEDO message buffer.
Action	Ensure that the operating system parameters are set correctly for the amount of memory on the machine and the amount of memory that can be used by a process. Reduce the memory usage on the machine or increase the amount of physical memory on the machine.
See Also	mc(1), realloc(3) in UNIX system reference manuals

MESSAGES 3000-3099

3000 ERROR: BEA MessageQ can not send message larger than <i>nbyte</i> bytes	
---	--

	Description	The message size is larger than the smaller of the BEA MessageQ absolute maximum message size which is 4M bytes or the current configured maximum message size defined in the BEA MessageQ group initialization file.
	Action	If message size is smaller than 4M then re-configure the current configured maximum message size defined in the BEA MessageQ group initialization file.
	See Also	<i>BEA MessageQ Installation and Configuration for UNIX, BEA MessageQ Installation and Configuration for Windows NT.</i>

3001	ERROR: Can not get group detail info from BEA MessageQ, local group id <i>group_id</i>	
	Description	TMQUEUE_BMQ or TMQFORWARD_BMQ can not get the detailed info about the local BEA MessageQ group from dmqqcp process.
	Action	Verify in the <code>ubbconfig</code> file the BEA MessageQ Bus ID and the BEA MessageQ Group ID is set correctly in the <code>CLOPT</code> field for the server and then check if the local BEA MessageQ group is running or not.
	See Also	<i>TMQUEUE_BMQ(5), TMQFORWARD_BMQ(5), BEA MessageQ Installation and Configuration for UNIX, BEA MessageQ Installation and Configuration for Windows NT</i>

3003	ERROR: BEA MessageQ (pams_put_msg) returned PAMS status info <i>errno</i>, local group id <i>group_id</i>, group id <i>group_id</i>, queue id <i>queue_id</i>	
	Description	TMQUEUE_BMQ or TMQFORWARD_BMQ received returned status other than PAMS__SUCCESS when issuing BEA MessageQ API (<code>pams_put_msg</code>).
	Action	If problem persists, examine relevant log files.
	See Also	<i>BEA MessageQ Programmer's Guide</i>

3004	ERROR: BEA MessageQ (pams_put_msg) returned PAMS status info <i>errno</i>, local group id <i>group_id</i>, group id <i>group_id</i>, queue id <i>queue_id</i>	
-------------	--	--

	Description	TMQUEUE_BMQ or TMQFORWARD_BMQ received returned status of PAMS__SUCCESS but an unsuccessful status from the PAMS Status Block when issuing BEA MessageQ API (pams_put_msg).
	Action	If problem persists, examine relevant log files.
	See Also	<i>BEA MessageQ Programmer's Guide</i>
<hr/>		
3005	ERROR: UNKNOWN data type received from BEA MessageQ, local group id <i>group_id</i>	
	Description	TMQUEUE_BMQ or TMQFORWARD_BMQ received message with an Unknown type in the Show Buffer. The current known types are PSYM_BIG_ENDIAN, PSYM_LITTLE_ENDIAN, and PSYM_FML
	Action	Contact BEA Customer Support through BEA WebSupport at www.beasys.com .
	See Also	<i>BEA MessageQ Programmer's Guide</i>
<hr/>		
3006	ERROR: BEA MessageQ (pams_get_msg[w]) returned PAMS status <i>info_errno</i>, local group id <i>group_id</i>	
	Description	TMQUEUE_BMQ or TMQFORWARD_BMQ received returned status other than PAMS__SUCCESS or PAMS__NOMOREMSG or PAMS__TIMEOUT when issuing BEA MessageQ API (pams_get_msg[w]).
	Action	Check whether or not the local BEA MessageQ group is running or the receiving queue is stopped and then contact BEA Customer Support through BEA WebSupport at www.beasys.com .
	See Also	<i>BEA MessageQ Programmer's Guide</i>
<hr/>		
3009	ERROR: Can not initialize the internal data cache	
	Description	TMQUEUE_BMQ or TMQFORWARD_BMQ can not recover from initializing the internal data cache
	Action	Contact BEA Customer Support through BEA WebSupport at www.beasys.com .
	See Also	

3010	ERROR: BEA MessageQ (pams_put_msg) returned PAMS status <i>info errno</i>, local group id <i>group_id</i>, group id <i>group_id</i>, queue id <i>queue_id</i>
Description	TMQUEUE_BMQ or TMQFORWARD_BMQ received returned status other than PAMS__SUCCESS when issuing BEA MessageQ API (pams_put_msg).
Action	If problem persists, examine relevant log files.
See Also	<i>BEA MessageQ Programmer's Guide</i>

3011	ERROR: BEA MessageQ (pams_get_msgw) returned PAMS status <i>info errno</i>, local group id <i>group_id</i>, group id <i>group_id</i>, queue id <i>queue_id</i>
Description	TMQUEUE_BMQ or TMQFORWARD_BMQ received returned status other than PAMS__SUCCESS when issuing BEA MessageQ API (pams_get_msgw).
Action	Ensure that the local BEA MessageQ group is running. If the error persists, contact BEA Customer Support through BEA WebSupport at www.beasys.com .
See Also	<i>BEA MessageQ Programmer's Guide</i>

3012	ERROR: BEA MessageQ (pams_locate_q) returned PAMS status <i>info errno</i>, local group id <i>group_id</i>, queue name <i>queue_name</i>
Description	TMQUEUE_BMQ or TMQFORWARD_BMQ received returned status other than PAMS__SUCCESS when issuing BEA MessageQ API (pams_locate_q).
Action	Ensure that the local BEA MessageQ group is running. If the error persists, contact BEA Customer Support through BEA WebSupport at www.beasys.com .
See Also	<i>BEA MessageQ Programmer's Guide</i>

3013	ERROR: Can not attach to BB
-------------	------------------------------------

	Description	TMQUEUE_BMQ or TMQFORWARD_BMQ did not attach to BEA TUXEDO Bulletin Board
	Action	Check the TUXEDO userlog for earlier messages indicating the cause of the failure and then contact BEA Customer Support through BEA WebSupport at www.beasys.com .
	See Also	
<hr/>		
3014	ERROR: Can not get authentication info	
	Description	TMQUEUE_BMQ or TMQFORWARD_BMQ received an error when calling <code>tpchkauth()</code> .
	Action	
	See Also	<code>tpchkauth(3)</code>
<hr/>		
3016	ERROR: -U Username is required in TUXEDO security environment	
	Description	The -U option is a required option for the TMQFORWARD_BMQ and TMQUEUE_BMQ servers when BEA TUXEDO is running in "TPAPPAUTH" security mode.
	Action	Change the server command line options, <code>CLOPT</code> , for the TMQFORWARD_BMQ and/or TMQUEUE_BMQ to include -U option with a valid user name.
	See Also	<code>TMQFORWARD_BMQ(5)</code> , <code>TMQUEUE_BMQ(5)</code> , <code>ubbconfig(5)</code> , <code>tpaddusr(1)</code>
<hr/>		
3018	ERROR: Can not locate BEA MessageQ queue name <i>queue_name</i>	
	Description	TMQFORWARD_BMQ can not translate <code>qname</code> into its BEA MessageQ queue identifier in the BEA MessageQ process cache, group cache and global name space respectively.
	Action	Check BEA MessageQ group initialization file for naming configuration
	See Also	<code>TMQFORWARD_BMQ(5)</code> , <i>BEA MessageQ Installation and Configuration for UNIX</i> , <i>BEA MessageQ Installation and Configuration for Windows NT</i>
<hr/>		
3019	ERROR: BEA MessageQ Q(<i>queue name</i>) <i>group_id.queue_id</i> is not on the local GROUP(<i>group_id</i>)	

	Description TMQFORWARD_BMQ can not attach to queue name which is belonging to the remove BEA MessageQ group group_id.
	Action Check BEA MessageQ group initialization file for naming configuration
	See Also TMQFORWARD_BMQ(5), ubbconfig(5), <i>BEA MessageQ Installation and Configuration for UNIX</i> , <i>BEA MessageQ Installation and Configuration for Windows NT</i>
3020	ERROR: Received an unknown BEA MessageQ group detail message, local group id group_id
	Description TMQQUEUE_BMQ or TMQFORWARD_BMQ expected to receive an BEA MessageQ group detail message and instead it received an unknown message.
	Action Contact BEA Customer Support through BEA WebSupport at www.beasys.com .
	See Also
3021	ERROR: Can not attach to BEA MessageQ Q(queue name) group_id.queue_id
	Description TMQFORWARD_BMQ can not attach to the queue identified by the queue name in the queue list
	Action Check the BEA MessageQ group initialization file for queue name error or queue configuration error and then check if the local BEA MessageQ group is running and then contact BEA Customer Support through BEA WebSupport at www.beasys.com .
	See Also <i>BEA MessageQ Installation and Configuration for UNIX</i> , <i>BEA MessageQ Installation and Configuration for Windows NT</i> .
3023	ERROR: BEA MessageQ (pams_attach_q) returned PAMS status info errno, local group id group_id, queue id/name queue_id_or_name

Description	TMQUEUE_BMQ or TMQFORWARD_BMQ received returned status other than PAMS__SUCCESS when issuing BEA MessageQ API (pams_attach_q).
Action	Check the BEA MessageQ group initialization file for queue name error or queue configuration error and then check if the local BEA MessageQ group is running and then contact BEA Customer Support through BEA WebSupport at www.beasys.com .
See Also	<i>BEA MessageQ Programmer's Guide, BEA MessageQ Installation and Configuration for UNIX, BEA MessageQ Installation and Configuration for Windows NT</i>
3024 ERROR: Can not get appkey	
Description	The user name and/or group name in the command line options, CLOPT, for the TMQUEUE_BMQ and TMQFORWARD_BMQ servers can not translate into a valid TUXEDO application key when TUXEDO is running in TPAPPAUTH mode.
Action	Check the TUXEDO user and group files.
See Also	tpusradd(1), tpgrpadd(1), AUTHSVR(5), TUXEDO Administration Guide.
3025 ERROR: TMQUEUE_BMQ can not be in transaction	
Description	TMQUEUE_BMQ does not support transaction
Action	Set TPNOTRAN in flags of tpenqueue() and tpdequeue()
See Also	TMQUEUE_BMQ(5)
3027 ERROR: Queue name length can not exceed 15 characters	
Description	The maximum length for the queue name is 15 characters
Action	Reduce the queue name length to lesser than 16 characters
See Also	tpenqueue(3), tpdequeue(3)
3028 ERROR: Memory allocation failure	

	Description TMQUEUE_BMQ or TMQFORWARD_BMQ process failed to allocate initial memory for storing internal cache.
	Action Ensure that the operating system parameters are set correctly for the amount of memory on the machine and the amount of memory that can be used by a process. Reduce the memory usage on the machine or increase the amount of physical memory on the machine.
	See Also mc(1), malloc(3) in UNIX system reference manuals
3029	ERROR: Memory allocation failure
	Description TMQUEUE_BMQ or TMQFORWARD_BMQ process failed to allocate initial memory for storing internal cache.
	Action Ensure that the operating system parameters are set correctly for the amount of memory on the machine and the amount of memory that can be used by a process. Reduce the memory usage on the machine or increase the amount of physical memory on the machine.
	See Also mc(1), malloc(3) in UNIX system reference manuals
3030	ERROR: Can not re-allocate memory
	Description The TMQFORWARD_BMQ process failed to allocate additional memory for storing the internal cache.
	Action Ensure that the operating system parameters are set correctly for the amount of memory on the machine and the amount of memory that can be used by a process. Reduce the memory usage on the machine or increase the amount of physical memory on the machine.
	See Also mc(1), realloc(3) in UNIX system reference manuals
3032	ERROR: It is not the local BEA MessageQ queue, local group id <i>group_id</i>, group id <i>group_id</i>, queue id <i>queue_id</i>
	Description TMQUEUE_BMQ can not detach from queue which is belonging to the remove BEA MessageQ group.
	Action Contact BEA Customer Support through BEA WebSupport at www.beasys.com .
	See Also
3033	ERROR: BEA MessageQ (pams_detach_q) returned PAMS status <i>info errno</i>

	<table> <tr> <td>Description</td><td>TMQFORWARD_BMQ or TMQUEUE_BMQ received returned status other than PAMS__SUCCESS when issuing BEA MessageQ API (pams_detach_q).</td></tr> <tr> <td>Action</td><td>If problem persists, examine relevant log files.</td></tr> <tr> <td>See Also</td><td><i>BEA MessageQ Programmer's Guide</i></td></tr> </table>	Description	TMQFORWARD_BMQ or TMQUEUE_BMQ received returned status other than PAMS__SUCCESS when issuing BEA MessageQ API (pams_detach_q).	Action	If problem persists, examine relevant log files.	See Also	<i>BEA MessageQ Programmer's Guide</i>
Description	TMQFORWARD_BMQ or TMQUEUE_BMQ received returned status other than PAMS__SUCCESS when issuing BEA MessageQ API (pams_detach_q).						
Action	If problem persists, examine relevant log files.						
See Also	<i>BEA MessageQ Programmer's Guide</i>						
3034	ERROR: BEA MessageQ does not support TPQTIME_ABS and TPQTIME_REL						
	<table> <tr> <td>Description</td><td>BEA MessageQ does not support TPQTIME_ABS and TPQTIME_REL</td></tr> <tr> <td>Action</td><td>If possible, avoid the use of unsupported values for the <i>flags</i> parameter of the <code>tpqctl_t</code> structure for <code>tpenqueue</code></td></tr> <tr> <td>See Also</td><td><code>tpenqueue(3)</code>, <code>TMQUEUE_BMQ(5)</code>, <code>TMQFORWARD_BMQ(5)</code></td></tr> </table>	Description	BEA MessageQ does not support TPQTIME_ABS and TPQTIME_REL	Action	If possible, avoid the use of unsupported values for the <i>flags</i> parameter of the <code>tpqctl_t</code> structure for <code>tpenqueue</code>	See Also	<code>tpenqueue(3)</code> , <code>TMQUEUE_BMQ(5)</code> , <code>TMQFORWARD_BMQ(5)</code>
Description	BEA MessageQ does not support TPQTIME_ABS and TPQTIME_REL						
Action	If possible, avoid the use of unsupported values for the <i>flags</i> parameter of the <code>tpqctl_t</code> structure for <code>tpenqueue</code>						
See Also	<code>tpenqueue(3)</code> , <code>TMQUEUE_BMQ(5)</code> , <code>TMQFORWARD_BMQ(5)</code>						
3035	ERROR: BEA MessageQ does not support TPQBEFOREMSGID						
	<table> <tr> <td>Description</td><td>BEA MessageQ does not support TPQBEFOREMSGID</td></tr> <tr> <td>Action</td><td>If possible, avoid the use of unsupported values for the <i>flags</i> parameter of the <code>tpqctl_t</code> structure for <code>tpenqueue</code></td></tr> <tr> <td>See Also</td><td><code>tpenqueue(3)</code>, <code>TMQUEUE_BMQ(5)</code>, <code>TMQFORWARD_BMQ(5)</code></td></tr> </table>	Description	BEA MessageQ does not support TPQBEFOREMSGID	Action	If possible, avoid the use of unsupported values for the <i>flags</i> parameter of the <code>tpqctl_t</code> structure for <code>tpenqueue</code>	See Also	<code>tpenqueue(3)</code> , <code>TMQUEUE_BMQ(5)</code> , <code>TMQFORWARD_BMQ(5)</code>
Description	BEA MessageQ does not support TPQBEFOREMSGID						
Action	If possible, avoid the use of unsupported values for the <i>flags</i> parameter of the <code>tpqctl_t</code> structure for <code>tpenqueue</code>						
See Also	<code>tpenqueue(3)</code> , <code>TMQUEUE_BMQ(5)</code> , <code>TMQFORWARD_BMQ(5)</code>						
3036	ERROR: BEA MessageQ does not support TPQTOP						
	<table> <tr> <td>Description</td><td>BEA MessageQ does not support TPQTOP</td></tr> <tr> <td>Action</td><td>If possible, avoid the use of unsupported values for the <i>flags</i> parameter of the <code>tpqctl_t</code> structure for <code>tpenqueue</code></td></tr> <tr> <td>See Also</td><td><code>tpenqueue(3)</code>, <code>TMQUEUE_BMQ(5)</code>, <code>TMQFORWARD_BMQ(5)</code></td></tr> </table>	Description	BEA MessageQ does not support TPQTOP	Action	If possible, avoid the use of unsupported values for the <i>flags</i> parameter of the <code>tpqctl_t</code> structure for <code>tpenqueue</code>	See Also	<code>tpenqueue(3)</code> , <code>TMQUEUE_BMQ(5)</code> , <code>TMQFORWARD_BMQ(5)</code>
Description	BEA MessageQ does not support TPQTOP						
Action	If possible, avoid the use of unsupported values for the <i>flags</i> parameter of the <code>tpqctl_t</code> structure for <code>tpenqueue</code>						
See Also	<code>tpenqueue(3)</code> , <code>TMQUEUE_BMQ(5)</code> , <code>TMQFORWARD_BMQ(5)</code>						
3037	ERROR: BEA MessageQ does not support selection by TPQGETBYMSGID and TPQGETBYCORRID						
	<table> <tr> <td>Description</td><td>BEA MessageQ does not support selection by TPQGETBYMSGID and TPQGETBYCORRID</td></tr> <tr> <td>Action</td><td>If possible, avoid the use of unsupported values for the <i>flags</i> parameter of the <code>tpqctl</code> structure for <code>tpdequeue</code></td></tr> <tr> <td>See Also</td><td><code>tpdequeue(3)</code></td></tr> </table>	Description	BEA MessageQ does not support selection by TPQGETBYMSGID and TPQGETBYCORRID	Action	If possible, avoid the use of unsupported values for the <i>flags</i> parameter of the <code>tpqctl</code> structure for <code>tpdequeue</code>	See Also	<code>tpdequeue(3)</code>
Description	BEA MessageQ does not support selection by TPQGETBYMSGID and TPQGETBYCORRID						
Action	If possible, avoid the use of unsupported values for the <i>flags</i> parameter of the <code>tpqctl</code> structure for <code>tpdequeue</code>						
See Also	<code>tpdequeue(3)</code>						

3038	ERROR: TMQFORWARD_BMQ got message from UNKNOWN queue name, local group id <i>group_id</i>, group id <i>group_id</i>, queue id <i>queue_id</i>
Description	TMQFORWARD_BMQ received a message from a queue which is not among the queue from the queue list
Action	Contact BEA Customer Support through BEA WebSupport at www.beasys.com .
See Also	
3039	ERROR: BEA MessageQ Queue ID exceeds maximum user queue number
Description	BEA MessageQ Queue ID exceeds maximum user queue number
Action	Check the queue name format
See Also	
3040	ERROR: It is not the local BEA MessageQ queue, local group id <i>group_id</i>, group id <i>group_id</i>, queue id <i>queue_id</i>
Description	MQFORWARD_BMQ or TMQUEUE_BMQ can not attach to a queue which is belonging to the remove BEA MessageQ group.
Action	Check BEA MessageQ group initialization file for naming configuration
See Also	TMQUEUE_BMQ(50), TMQFORWARD_BMQ(5), <code>ubbconfig(5)</code> , <i>BEA MessageQ Installation and Configuration for UNIX</i> , <i>BEA MessageQ Installation and Configuration for Windows NT</i>
3041	ERROR: BEA MessageQ (pams_set_select) returned PAMS status <i>info_errno</i>, local group id <i>group_id</i>
Description	TMQFORWARD_BMQ received returned status other than PAMS__SUCCESS when issuing BEA MessageQ API (<code>pams_set_select</code>).
Action	If problem persists, examine relevant log files.
See Also	<i>BEA MessageQ Programmer's Guide</i>
3042	ERROR: BEA MessageQ (pams_set_select) returned PAMS status <i>info_errno</i>, local group id <i>group_id</i>

Description	TMQUEUE_BMQ received returned status other than PAMS__SUCCESS when issuing BEA MessageQ API (pams_set_select).
Action	If problem persists, examine relevant log files.
See Also	BEA MessageQ Programmer's Guide
3043 ERROR: Can not allocate memory	
Description	TMQUEUE_BMQ or TMQFORWARD_BMQ process failed to allocate memory for storing incoming message.
Action	Ensure that the operating system parameters are set correctly for the amount of memory on the machine and the amount of memory that can be used by a process. Reduce the memory usage on the machine or increase the amount of physical memory on the machine.
See Also	mc(1), malloc(3) in UNIX system reference manuals
3044 ERROR: -R option ignored as argument must be numeric	
Description	The argument for the -R option on the command line for TMQFORWARD_BMQ is non-numeric and is ignored. The default retry value is 0.
Action	Change the server command line options, CLOPT, for the TMQFORWARD_BMQ server such that the argument for the -R is a numeric value indicating the number of retry time the TMQFORWARD_BMQ will send the message to the TUXEDO server.
See Also	TMQFORWARD_BMQ(5)
3045 ERROR: -R option ignored as argument is too large	
Description	The numeric argument for the -R option on the command line for TMQFORWARD_BMQ is too large and is ignored. The default retry value is 0.
Action	Change the server command line options, CLOPT, for the TMQFORWARD_BMQ server such that the argument for the -R option is a numeric value less than 2147483648.
See Also	TMQFORWARD_BMQ(5)

3046 WARN: Convert TUXEDO message type from type <type> and subtype <subtype> into CARRAY

Description For a TUXEDO message which has a buffer type other than FML32 and CARRAY, TMQUEUE_BMQ and TMQFORWARD_BMQ will convert it into a TUXEDO CARRAY message if the sending machine has different machine type than the receiving machine in the TUXEDO ubbconfig file.

Action

See Also

3047 ERROR: BEA MessageQ (pams_attach_q) returned PAMS status info errno, local group id group_id

Description TMQUEUE_BMQ or TMQFORWARD_BMQ received returned status other than PAMS__SUCCESS when issuing BEA MessageQ API (pams_attach_q).

Action Check the BEA MessageQ group initialization file for queue name error or queue configuration error and then check if the local BEA MessageQ group is running and then contact BEA Customer Support through BEA WebSupport at www.beasys.com.

See Also *BEA MessageQ Programmer's Guide, BEA MessageQ Installation and Configuration for UNIX, BEA MessageQ Installation and Configuration for Windows NT*

3048 ERROR: Queue name length can not exceed 15 characters

Description The maximum length for the queue name is 15 characters

Action Reduce the queue name length to lesser than 16 characters

See Also tpenqueue(3), tpdequeue(3)

3049 ERROR: BEA MessageQ Queue ID exceeds maximum user queue number

Description BEA MessageQ Queue ID exceeds maximum user queue number

Action Check the queue name format

See Also

3050 ERROR: TMQUEUE_BMQ can not be in transaction

1 MESSAGE QUEUING BRIDGE MESSAGES

Description	TMQUEUE_BMQ does not support transaction
Action	Set TPNOTRAN in flags of tpenqueue() and tpdequeue()
See Also	TMQUEUE_BMQ(5)

2 CMTDFML MESSAGES

CMTDFML MESSAGES 1-99

<hr/>	
2	ERROR: Cannot find file <i>filename</i>
<hr/>	
Description	When executing <code>mkfldhdr</code> , the specified file, <i>filename</i> , could not be found. <code>mkfldhdr</code> looks for the file relative to the current directory, if the file name was specified on the command line or if the <code>FLDTBLDIR</code> environment variable is not set, and in the directories specified by <code>FLDTBLDIR</code> otherwise.
<hr/>	
Action	Check that the file name is correct and that the <code>FLDTBLDIR</code> environment variable is set correctly.
<hr/>	
See Also	<code>mkfldhdr(1)</code> , <code>field_tables(5)</code>
<hr/>	
3	ERROR: Cannot open input file <i>filename</i>
<hr/>	
Description	<code>mkfldhdr</code> failed to open the specified input file, <i>filename</i> , for reading.
<hr/>	
Action	Check that the input file exists and has read permission.
<hr/>	
See Also	<code>mkfldhdr(1)</code>
<hr/>	

4	ERROR: Cannot open output file <i>filename</i>
Description	mkfldhdr failed to create and open the specified output file, <i>filename</i> , for writing.
Action	Check that the directory for the output file exists and has write and execute permissions set correctly, and that the file does not already exist or has write permissions set correctly.
See Also	mkfldhdr(1)
5	ERROR: Invalid line ignored in file <i>filename</i>: <i>line</i>
Description	While processing a field table file, <i>filename</i> , with mkfldhdr, an invalid line was encountered and ignored. The contents of the line is printed.
Action	The field table file will be processed but the invalid line is ignored. Normally, the field table should be corrected and the command re-executed.
See Also	field_tables(5)
6	ERROR: Invalid type, <i>field_type</i>, in file <i>filename</i>; line ignored
Description	While processing a field table file, <i>filename</i> , with mkfldhdr, a line with an invalid field type, <i>field_type</i> , was encountered and ignored.
Action	The field table file will be processed but the invalid line is ignored. Correct the field type and re-execute the command.
See Also	field_tables(5)
7	ERROR: Invalid field number, <i>field_number</i>, in file <i>filename</i>; line ignored
Description	While processing a field table file, <i>filename</i> , with mkfldhdr, a line with an invalid field number, <i>field_number</i> , was encountered and ignored.
Action	The field table file will be processed but the invalid line is ignored. Correct the field number and re-execute the command.
See Also	field_tables(5)

8	ERROR: Invalid base number, <i>base_number</i>, in file <i>filename</i>; line ignored
Description	While processing a field table file, <i>filename</i> , with <code>mkfldhdr</code> , a line with an invalid base number, <i>base_number</i> , was encountered and ignored.
Action	The field table file will be processed but the invalid line is ignored. Correct the base number and re-execute the command.
See Also	<code>field_tables(5)</code>

3 LIBFML MESSAGES

LIBFML MESSAGES 1-99

1	ERROR: Fielded buffer not aligned
Description	An FML function was called with a fielded buffer that is not properly aligned. Most machines require half-word alignment.
Action	Use <code>Falloc</code> to get back a dynamically allocated, properly aligned buffer.
See Also	<code>Falloc(3fml)</code>
2	ERROR: Buffer not fielded
Description	A buffer was passed to an FML function that is not a fielded buffer, that is, that has not been properly initialized.
Action	Use <code>Finit</code> to initialize a buffer allocated directly by the application, or use <code>Falloc</code> dynamically to allocate and initialize a fielded buffer.
See Also	<code>Falloc(3fml)</code> , <code>Finit(3fml)</code>

3	ERROR: No space in fielded buffer
Description	An attempt was made to add a field to a buffer, change a field to a larger value within a buffer, merge two buffers, or otherwise modify a buffer, and not enough space is available to complete the operation.
Action	Use <code>Frealloc</code> dynamically to allocate a larger buffer or use <code>Fcpy</code> to copy the buffer to a larger buffer, and retry the operation.
See Also	<code>Fcpy(3fml)</code> , <code>Frealloc(3fml)</code>
4	ERROR: Field not present
Description	When trying to find, change, or delete a field, the specified field identifier and/or field occurrence did not exist in the fielded buffer.
Action	Check your request to make sure you have specified a field that is in the buffer.
See Also	<code>Fchg(3fml)</code> , <code>Fdelete(3fml)</code> <code>Ffind(3fml)</code>
5	ERROR: Unknown field number or type
Description	An invalid field identifier was specified for an FML function, or an invalid field number (0 or greater than 8192) was specified, or <code>Fname</code> could not find the associated field identifier for the specified name.
Action	Most of the FML functions can return this error; see the manual page associated with the function that returned this error. Check your code to make sure the field specified is valid.
6	ERROR: Invalid field type
Description	An invalid (unknown) field type was specified to an FML function, or an invalid type was specified for a particular operation (for example, a non-string field was specified for a string operation).
Action	Specify the proper field type or field identifier.
See Also	<code>Fmkfldid(3fml)</code> , <code>Ftypcvt(3fml)</code> , <code>Ftype(3fml)</code> , <code>Fvall(3fml)</code> , <code>Fvals(3fml)</code>

7 ERROR: UNIX system call error	
Description	An error occurred during a UNIX system call when opening a field table file or view description file, or when reading or writing an FML buffer.
Action	Check that the environment variables are set correctly for the field table and view files, and that the files have read permission.
See Also	Fread(3fml), Fwrite(3fml), Fextread(3fml), field_tables(5)
8 ERROR: Unknown field name	
Description	A field name could not be mapped into a field identifier.
Action	Check that the environment variables are set correctly for the field table files and that the files have read permission.
See Also	Fldid(3fml),Fextread (3fml),field_tables (5)
9 ERROR: Memory allocation failed	
Description	An attempt dynamically to allocate memory from the operating system using malloc () failed.
Action	Make sure the operating system parameters are set correctly for the amount of memory on the machine and the amount of memory that can be used by a process. Reduce the memory usage on the machine or increase the amount of physical memory on the machine.
10 ERROR: Bad syntax in boolean expression	
Description	The syntax of a boolean expression passed to Fboolco is invalid. This message is also generated on failure to evaluate the boolean expression in Fboolev and Ffloatev and indicates that an invalid or corrupted value was passed to these functions. It is also generated when an invalid input format is read by Fextread .
Action	Correct the format of the boolean expression being processed by Fboolco or the external FML buffer format being processed by Fextread .
See Also	Fboolco(3fml), Fextread(3fml)

11 ERROR: Cannot find or open field table	
Description	When processing the field tables, one of the field tables was not found.
Action	Check that the environment variables are set correctly for the field table files and that the files have read permission.
See Also	field_tables(5)
13 ERROR: Invalid argument to function	
Description	An invalid argument (other than an invalid fielded buffer, field identifier, or field type) was passed to an FML function. This can be a NULL parameter where a non-NULL parameter was expected, invalid buffer sizes, etc.
Action	See the manual page associated with the error return for the correct parameter values.
14 ERROR: Destructive concurrent access to field table	
Description	While reading the FML field tables, the program detected a concurrent change to the tables by another process.
Action	Re-execute the program after the FML field tables have been updated.