



BEA MessageQ

MQSeries Connection Installation Guide

BEA MessageQ MQSeries Connection V4.0A, V5.0
Document Edition 5.0
February 1999

Copyright

Copyright © 1999 BEA Systems, Inc. All Rights Reserved.

Restricted Rights Legend

This software and documentation is subject to and made available only pursuant to the terms of the BEA Systems License Agreement and may be used or copied only in accordance with the terms of that agreement. It is against the law to copy the software except as specifically allowed in the agreement. This document may not, in whole or in part, be copied photocopied, reproduced, translated, or reduced to any electronic medium or machine readable form without prior consent, in writing, from BEA Systems, Inc.

Use, duplication or disclosure by the U.S. Government is subject to restrictions set forth in the BEA Systems License Agreement and in subparagraph (c)(1) of the Commercial Computer Software-Restricted Rights Clause at FAR 52.227-19; subparagraph (c)(1)(ii) of the Rights in Technical Data and Computer Software clause at DFARS 252.227-7013, subparagraph (d) of the Commercial Computer Software--Licensing clause at NASA FAR supplement 16-52.227-86; or their equivalent.

Information in this document is subject to change without notice and does not represent a commitment on the part of BEA Systems. THE SOFTWARE AND DOCUMENTATION ARE PROVIDED "AS IS" WITHOUT WARRANTY OF ANY KIND INCLUDING WITHOUT LIMITATION, ANY WARRANTY OF MERCHANTABILITY OR FITNESS FOR A PARTICULAR PURPOSE. FURTHER, BEA Systems DOES NOT WARRANT, GUARANTEE, OR MAKE ANY REPRESENTATIONS REGARDING THE USE, OR THE RESULTS OF THE USE, OF THE SOFTWARE OR WRITTEN MATERIAL IN TERMS OF CORRECTNESS, ACCURACY, RELIABILITY, OR OTHERWISE.

Trademarks or Service Marks

BEA, ObjectBroker, TOP END, and TUXEDO are registered trademarks of BEA Systems, Inc. BEA Builder, BEA Connect, BEA Manager, BEA MessageQ, Jolt and M3 are trademarks of BEA Systems, Inc.

All other company names may be trademarks of the respective companies with which they are associated.

BEA MessageQ MQSeries Connection Installation Guide

Document Edition	Part Number	Date	Software Version
5.0	850-001022-001	February 1999	BEA MessageQ MQSeries Connection, V4.0A, V5.0

Contents

Preface

Purpose of This Document	v
Who Should Read This Document	v
How This Document Is Organized	v
How to Use This Document	vi
Opening the Document in a Web Browser	vi
Printing from a Web Browser	vii
Documentation Conventions	viii
Related Documentation	x
BEA MessageQ MQSeries Connection Documentation	x
BEA Publications	x
Other Publications	xi
Contact Information	xi
Documentation Support	xi
Customer Support	xi

. Installing BEA MessageQ MQSeries Connection

Installation Prerequisites	1
Checking the Software Distribution Kit	2
Installation Requirements	2
System Backup	3
Overview of Installation Options	3
Installing MQSeries Connection on Windows NT Systems	4
Choosing Components to Install	5
Installing MQSeries Connection	5
Installing MQSeries Connection on UNIX Systems	8
Stopping the Installation	9

Installing MQSeries Connection	9
Recovering from Errors During Installation.....	13

Index

Preface

Purpose of This Document

This document gives instructions for installing the BEA MessageQ MQSeries Connection software.

Who Should Read This Document

This document is intended for BEA MessageQ MQSeries Connection software installers and system administrators.

How This Document Is Organized

The *BEA MessageQ MQSeries Connection Installation Guide* provides installation prerequisites, procedures for installing MQSeries Connection software on Windows NT and UNIX systems, and information on how to recover from errors during installation.

How to Use This Document

This document, *BEA MessageQ MQSeries Connection Installation Guide*, is designed primarily as an online, hypertext document. If you are reading this as a paper publication, note that to get full use from this document you should install and access it as an online document via a Web browser.

The following sections explain how to view this document online, and how to print a copy of this document.

Opening the Document in a Web Browser

To access the online version of this document, open the following HTML file in a Web browser:

```
/doc/bmq/mqsc/instalgd/index.htm
```

Note: The online documentation requires a Web browser that supports HTML version 3.0. Netscape Navigator version 3.0 or Microsoft Internet Explorer version 3.0 or later is recommended.

Figure 1 shows the online document with the clickable navigation bar and table of contents.

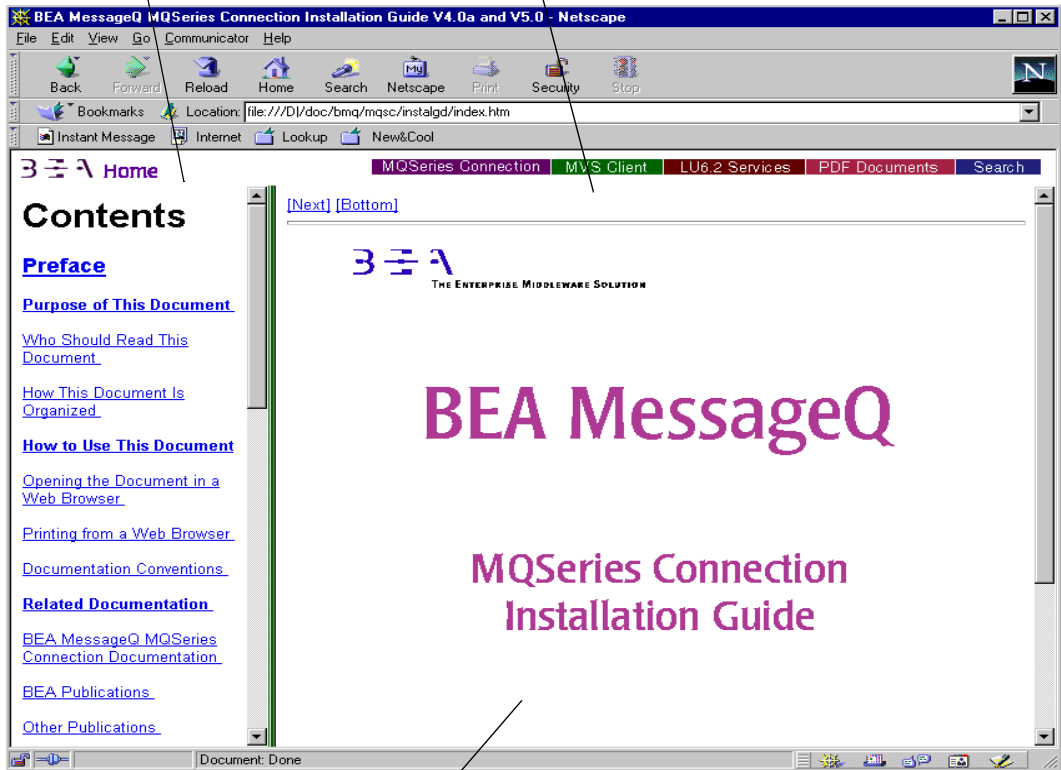
Figure 1 Online Document Displayed in a Netscape Web Browser

Table of Contents

Click a topic to view it.

Navigation Bar

Click a button to view a main topic.



Document Display Area

Printing from a Web Browser

You can print a copy of this document, one file at a time, from the Web browser. Before you print, make sure that the chapter or appendix you want is displayed and *selected* in your browser. (To select a chapter or appendix, click anywhere inside the chapter or appendix you want to print. If your browser offers a Print Preview feature, you can use the feature to verify which chapter or appendix you are about to print.)

The BEA MessageQ Online Documentation CD and the BEA MessageQ MQSeries Connection product CD also include Adobe Acrobat PDF files of all of the online documents. You can use the Adobe Acrobat Reader to print all or a portion of each document.

Documentation Conventions

The following documentation conventions are used throughout this document.

Convention	Item
boldface text	Indicates terms defined in the glossary in the <i>BEA MessageQ Introduction to Message Queuing</i> .
Ctrl+Tab	Indicates that you must press two or more keys sequentially.
<i>italics</i>	Indicate emphasis or book titles.
monospace text	<p>Indicates code samples, commands and their options, data structures and their members, data types, directories, and file names and their extensions. Monospace text also indicates text that you must enter from the keyboard.</p> <p><i>Examples:</i></p> <pre>#include <stdio> pams_attach_q \\bmq\lu62_40a\include .htm bmq.doc BITMAP float</pre>
monospace boldface text	<p>Identifies significant words in code.</p> <p><i>Example:</i></p> <pre>put_msg(msg_ptr, class, type)</pre>
<i>monospace italic text</i>	<p>Identifies variables in code.</p> <p><i>Example:</i></p> <pre>String expr</pre>

Convention	Item
UPPERCASE TEXT	Indicates device names, environment variables, and logical operators. <i>Examples:</i> LPT1 PATH OR
{ }	Indicates a set of choices in a syntax line. The braces themselves should never be typed.
[]	Indicates optional items in a syntax line. The brackets themselves should never be typed. <i>Example:</i> <pre>int32 pams_get_msg (msg_area, priority ... [sel_filter] [psb] [show_buffer]...)</pre>
	Separates mutually exclusive choices in a syntax line. The symbol itself should never be typed.
...	Indicates one of the following in a command line: <ul style="list-style-type: none">◆ That an argument can be repeated several times in a command line◆ That the statement omits additional optional arguments◆ That you can enter additional parameters, values, or other information The ellipsis itself should never be typed. <i>Example:</i> <pre>int32 pams_get_msg (msg_area, priority ... [sel_filter] [psb] [show_buffer]...)</pre>
.	Indicates the omission of items from a code example or from a syntax line. The vertical ellipsis itself should never be typed.

Related Documentation

The following sections list the documentation provided with the BEA MessageQ MQSeries Connection software.

BEA MessageQ MQSeries Connection Documentation

The BEA MessageQ MQSeries Connection information set consists of the following documents:

BEA MessageQ MQSeries Connection Installation Guide

BEA MessageQ MQSeries Connection User's Guide

BEA MessageQ MQSeries Connection and MVS Client Release Notes, Versions 4.0A and 5.0

Note: The BEA MessageQ Online Documentation CD also includes Adobe Acrobat PDF files of all of the online documents. You can use the Adobe Acrobat Reader to print all or a portion of each document.

BEA Publications

You may find the following documentation helpful when using BEA MessageQ MQSeries Connection. The following manuals describe the BEA MessageQ product:

BEA MessageQ Introduction to Message Queuing

BEA MessageQ Programmer's Guide

BEA MessageQ Installation and Configuration for Windows NT

BEA MessageQ Installation and Configuration for UNIX

BEA MessageQ System Messages

BEA MessageQ FML Programmer's Guide

BEA MessageQ Reference Manual

BEA MessageQ Client for Windows User's Guide

BEA MessageQ Client for UNIX User's Guide

Other Publications

You may also find the MQSeries documentation helpful. For information on IBM MQSeries, see the IBM MQSeries Version 5.0 documentation set.

Contact Information

The following sections provide information about how to obtain support for the documentation and software.

Documentation Support

If you have questions or comments on the documentation, you can contact the BEA Information Engineering Group by e-mail at **docsupport@beasys.com**. (For information about how to contact Customer Support, refer to the following section.)

Customer Support

If you have any questions about this version of BEA MessageQ MQSeries Connection, or if you have problems installing and running BEA MessageQ MQSeries Connection, contact BEA Customer Support through BEA WebSupport at www.beasys.com. You can also contact Customer Support by using the contact information provided on the Customer Support Card, which is included in the product package.

When contacting Customer Support, be prepared to provide the following information:

- ◆ Your name, e-mail address, phone number, and fax number
- ◆ Your company name and company address
- ◆ Your machine type and authorization codes
- ◆ The name and version of the product you are using
- ◆ A description of the problem and the content of pertinent error messages

Installing BEA MessageQ MQSeries Connection

This book describes how to install BEA MessageQ MQSeries Connection, Versions 4.0A and 5.0. Specifically, it covers the following topics:

- ◆ Installation Prerequisites
- ◆ Overview of Installation Options
- ◆ Installing MQSeries Connection on Windows NT Systems
- ◆ Installing MQSeries Connection on UNIX Systems
- ◆ Recovering from Errors During Installation

Installation Prerequisites

This section describes the preparations you must make before installing BEA MessageQ MQSeries Connection. To ensure that the installation runs smoothly, complete the following preparation requirements:

- ◆ Check the Contents of the Distribution Kit

- ◆ Comply with the Hardware, Software, and Disk Space Requirements
- ◆ Back Up Your System Disk

Checking the Software Distribution Kit

Use the bill of materials (BOM) to check the contents of your software distribution kit. The kit contains the following items:

- ◆ Media

Your kit contains a CD-ROM in industry-standard ISO 9660 format.

- ◆ Documentation

Your kit contains the *BEA MessageQ MQSeries Connection and MVS Client Release Notes, Versions 4.0A and 5.0*, and this guide, *BEA MessageQ MQSeries Connection Installation Guide, Versions 4.0A and 5.0*. Additional documentation is supplied for other BEA MessageQ IBM Connectivity products.

Installation Requirements

BEA MessageQ MQSeries Connection cannot be installed unless you meet specific hardware and software prerequisites. BEA MessageQ MQSeries Connection requires the following disk space:

- ◆ Windows NT systems: 528KB
- ◆ UNIX systems: 1.5MB

BEA MessageQ MQSeries Connection requires that BEA MessageQ, Version 4.0A or 5.0 is already installed on the target system.

BEA MessageQ MQSeries Connection, Version 4.0A requires the following software:

- ◆ The appropriate operating system for each platform:
 - ◆ AIX Version 4.1, 4.2.1, or 4.3 (RS/6000, SP2)
 - ◆ HP-UX Version 10.2 (HP 9000-700/800 processors)
 - ◆ Sun Solaris 2.5.1 or 2.6 (Sparc)

- ◆ BEA MessageQ, Version 4.0A

- ◆ IBM MQSeries, Version 5.0

BEA MessageQ MQSeries Connection, Version 5.0 requires the following software:

- ◆ The appropriate operating system for each platform:

- ◆ AIX Version 4.1, 4.2.1, or 4.3 (RS/6000, SP2)

- ◆ HP-UX Version 10.2 (HP 9000-700/800 processors)

- ◆ Sun Solaris 2.5.1 or 2.6 (Sparc)

- ◆ Windows NT 4.0 (Intel)

- ◆ BEA MessageQ, Version 5.0

- ◆ IBM MQSeries, Version 5.0

System Backup

We recommend that you back up your system disk before installing any software. For details on performing a system disk backup, see your operating system documentation.

Overview of Installation Options

This version of BEA MessageQ MQSeries Connection comprises two parts that you can install on your system:

- ◆ Program Files—Software and programming examples

- ◆ Online Documentation—Manuals and guides with hypertext linking for easy reference

The installation program lets you create your own configuration from these parts (and their respective components) during installation. You can install:

- ◆ All program files and all online documentation

- ◆ Only program files
- ◆ Selected program files and selected online documentation

Whichever configuration you choose, you must install the BEA MessageQ MQSeries Connection product on a licensed system that will be used to develop a BEA MessageQ MQSeries application.

Installing MQSeries Connection on Windows NT Systems

This section describes the tasks you must complete to install the MQSeries Connection software on Windows NT systems:

- ◆ Choosing Components to Install
- ◆ Installing MQSeries Connection

The amount of time required to install the MQSeries Connection product can vary, depending on the type of media from which you are installing and your system configuration. You can stop the installation procedure at any time by clicking Exit or Cancel in the currently active dialog box. When you interrupt the installation, files created up to that point are not deleted automatically; you must delete them manually.

The MQSeries Connection software is installed over an existing installation of the BEA MessageQ product. You are not prompted for an installation path. The installation process retrieves the installation directory of BEA MessageQ V5.0 from the Windows NT registry and installs MQSeries Connection in the same directory.

Note: On Windows NT systems, the BEA MessageQ MQSeries Connection software can be installed only over Version 5.0 of the BEA MessageQ product. If you attempt to install MQSeries Connection over BEA MessageQ V4.0A on a Windows NT system, the installation fails and a system message requests that you install the appropriate version of BEA MessageQ.

Choosing Components to Install

The MQSeries Connection installation program displays a list of options from which you can choose the product components to be installed on your system.

Table 1 lists these options and describes the product components installed with each option.

Table 1 BEA MessageQ MQSeries Connection Installation Options for Windows NT Systems

Installation Option	Description
Typical	Installs: <ul style="list-style-type: none">◆ All Program Files◆ All Online Documentation We recommend this option for most users.
Compact	Installs all Program Files (and no Online Documentation). This option provides the minimum product installation required to run MQSeries Connection.
Custom	This option lets you choose the components of the MQSeries Connection product to be installed on your system. Specifically, you can choose components from both: <ul style="list-style-type: none">◆ Program Files◆ Online Documentation

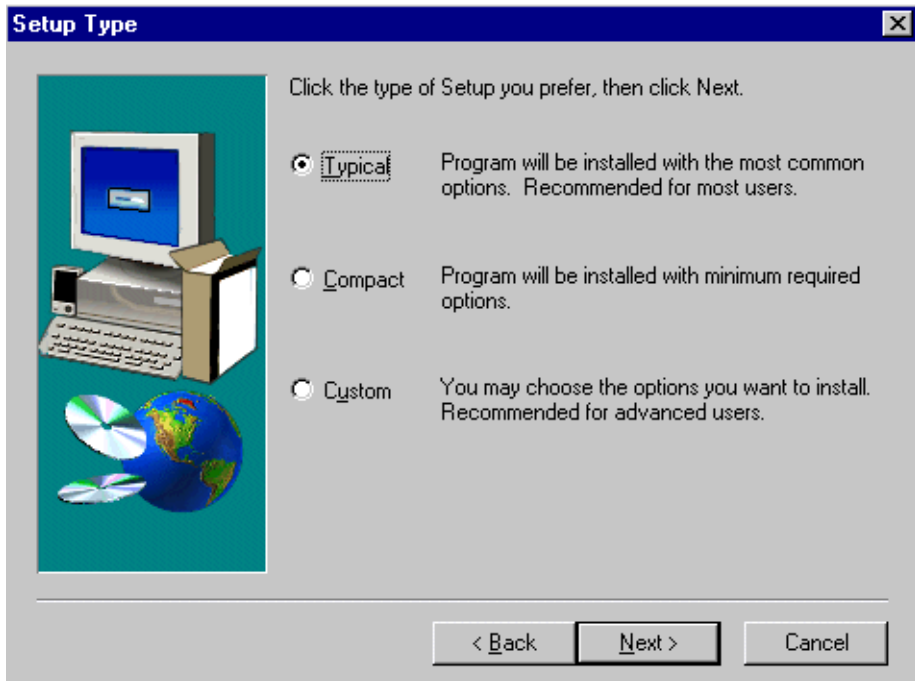
Note: The choice of an installation option is not irrevocable. If you change your mind after choosing an installation option, you can cancel your selection. The installation program then re-displays the list of installation options so you can make a new selection.

Installing MQSeries Connection

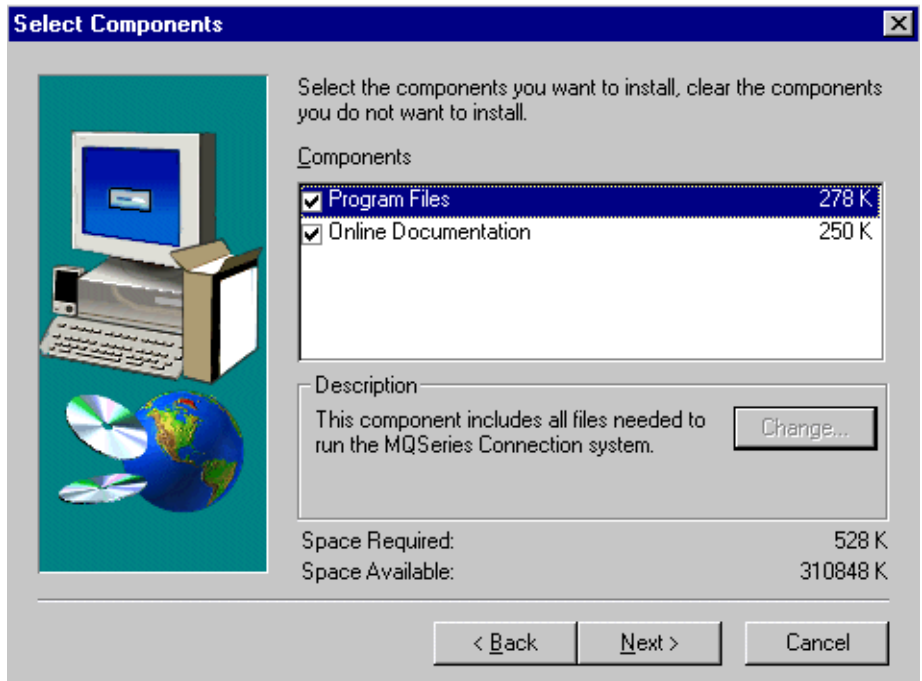
Complete the following procedure to install MQSeries Connection software on a Windows NT system.

Note: You can stop the installation procedure at any time by clicking Exit in the Installation Options dialog box. You can also return to the previous dialog box by clicking Back.

1. Log in to the Administrator account.
2. Load the BEA MessageQ IBM Connectivity CD-ROM into the CD-ROM drive.
3. Open Windows Explorer or click on the My Computer icon and select the CD-ROM drive.
4. Double-click the `mqsc` (MQSeries Connection) folder.
5. Double-click the `winnt` (Windows NT) folder.
6. Double-click `setup.exe` to start the installation.
7. Click Next after the SETUP utility displays the dialog box that welcomes you to the MessageQ software installation.
8. Choose one of three types of installation (Typical, Compact, or Custom) and click Next.



9. If you select a Custom installation, you are prompted to select the components you want to install. Make your selections and click Next. The Select Components box displays a description of the selected component and lists the amount of space required and the amount of space available.



10. After all files are transferred to your system, click Finish to complete the installation.

Installing MQSeries Connection on UNIX Systems

A typical installation on a UNIX system takes between five and ten minutes, depending on the system configuration. An installation performed over a network may take longer. If the network is not active, you should expect the installation to take roughly the same amount of time as a local installation.

This section describes the following tasks, which are associated with installation:

- ◆ Stopping the Installation
- ◆ Installing MQSeries Connection

Stopping the Installation

You can stop the installation procedure at any time by using the terminal interrupt key sequence for your operating system. See the documentation for your operating system for a description of the interrupt key.

When you interrupt the installation, any files and links created up to that point are not automatically deleted—you must delete them manually.

Installing MQSeries Connection

To install the BEA MessageQ MQSeries Connection from your CD-ROM, follow these steps:

1. Mount the CD-ROM media.

Place the CD-ROM media in the CD-ROM tray and close the door. If your system automatically mounts your CD-ROM media when the door is closed, you may proceed to the next step.

Depending on your system, you may have to mount the CD-ROM media manually. You may be required to log in as root (superuser) before the system will allow you to do this. If you must log in as root to mount the CD-ROM media, do so now.

If you do not have a standard procedure or tool for mounting CD-ROM media, use the appropriate command line from the following table:

AIX	<code>mount -v cdrfs -r device_directory</code>
HP-UX	<code>mount -F cdfs -r device_directory</code>
Solaris	<code>mount -t hsfs -r device_directory</code>

2. Run the installation script.

Note that it is not necessary to be logged in as root (superuser) to install BEA MessageQ MQSeries Connection as long as you have permission to write to the directory in which you direct the installation script to install the software.

Before you run the installation script, move to the directory in which the CD-ROM media is mounted. For example, assume you have mounted the CD-ROM media in a directory called `/cdrom`. To move to that directory, issue the following command:

```
%cd /cdrom
```

(If your CD-ROM media was automatically mounted, or if you used a tool or process other than the ones described in the previous step, you may have to move to a subdirectory of the mount point in order to install BEA MessageQ MQSeries Connection.)

After you have moved to the appropriate directory, determine whether the name of the installation script is shown in upper or lower case. The case used depends on which options or tools you used to mount your CD-ROM media. You are looking for a file named `install.sh` or `INSTALL.SH`. Issue the following command to determine whether the script name is lower case or upper case:

```
%ls
```

◆ If the script name is shown in lower case, issue the following command:

```
% sh ./install.sh
```

◆ If the script name is shown in upper case, issue the following command:

```
% sh ./INSTALL.SH
```

A list of supported platforms (operating system and machine or processor type) is displayed.

```
01) aix41/rs6000      02) aix42/rs6000      03) aix43/rs6000
04) hpux10/hppa       05) sol251/sparc      06) sol26/sparc
```

The following table provides detailed platform information.

aix41/rs6000	IBM AIX 4.1.4, RS/6000 SP2
aix42/rs6000	IBM AIX 4.2.1, RS/6000 SP2
aix43/rs6000	IBM AIX 4.3, RS/6000 SP2
hpux10/hppa	HP HP-UX 10.2, HPPA

sol251/sparc	Sun Solaris 2.5.1, SPARC
sol26/sparc	Sun Solaris 2.6, SPARC

3. Enter the number beside the appropriate platform:

```
Install which platform's files? [01- 6, q to quit, l for list]:  
5  
  
** You have chosen to install from sol251/sparc **
```

4. Confirm your choice of platform:

```
BEA MQ Series Connection 5.0  
  
This directory contains the BEA MQ Series Connection for  
Solaris on Sparc.  
  
Is this correct? [y,n,q]: y  
  
The following BEA MessageQ MQSeries Connection packages are listed.  
  
1    mqsc          BEA MQ Series Connection  
2    mqscdoc       BEA MQ Series Connection Online Documentation
```

5. Select the packages you wish to install:

```
Select the package(s) you wish to install (or 'all' to install  
all packages) (default: all) [?,??,q]: all
```

Copyright and trademark information is displayed:

```
BEA MQ Series Connection  
(sparc) Release 5.0  
Copyright (c) 1998 BEA Systems, Inc.  
Portions * Copyright 1986-1998 RSA Data Security, Inc.  
All Rights Reserved.  
Distributed under license by BEA Systems, Inc.  
MessageQ is a registered trademark of BEA Systems, Inc.  
TUXEDO is a registered trademark.
```

6. Select one of the following connectivity options in respect to other BEA Systems products:

The following connectivity options are available:

```
1    MQ40A          Install On Top Of BEA MessageQ V4.0A  
2    MQ50           Install On Top Of BEA MessageQ V5.0
```

```
Select an option (default: none) [?,??,q]: 2
```

7. Select the directory in which the MQSeries Connection program files are to be installed:

```
Directory where MessageQ files are to be installed [?,q]:  
/usr/kits
```

The MQSeries Connection files are installed by default in the existing installation directory for BEA MessageQ as defined by the environment variable `BEADIR`. The system determines whether sufficient space is available in the installation directory, unloads the files for the selected installation options, and sets file permissions:

```
Determining if sufficient space is available ...  
976 blocks are required  
251262 blocks are available to /usr/kits
```

```
Using /usr/kits as the installation base directory  
Unloading /cdrom/messageqibmconn/mqsc/sol251/sparc/mqsc/mqsc.z  
...  
.  
.  
.  
.. finished
```

```
Changing file permissions...  
.. finished
```

Installation of BEA MQ Series Connection was successful

At this point, the online documentation is installed.

```
BEA MQ Series Connection Online Documentation  
(sparc) Release 5.0  
Copyright (c) 1998 BEA Systems, Inc.  
Portions * Copyright 1986-1998 RSA Data Security, Inc.  
All Rights Reserved.  
Distributed under license by BEA Systems, Inc.  
MessageQ is a registered trademark of BEA Systems, Inc.  
TUXEDO is a registered trademark.
```

```
Base directory for documentation installation (default:  
/usr/kits) [?,q]:
```

```
Determining if sufficient space is available ...  
530 blocks are required  
249948 blocks are available to /usr/kits
```

```
Using /usr/kits for the documentation base directory
```

```
Installing documentation...  
.  
.
```



```
•
Changing file permissions...
... finished

Installation of BEA MQ Series Connection Online Documentation was
successful

Please don't forget to fill out and send in your registration
card
```

8. Move out of the `/cdrom` directory.

```
% cd /
```

9. Unmount your CD-ROM media.

```
% umount /cdrom
```

Note: If you do not move out of the `/cdrom` directory before you unmount your CD-ROM media, you will get a message that the `/cdrom` device is busy.

Now that the software is installed, you are ready to configure BEA MessageQ MQSeries Connection. For configuration and application development information, see the BEA MessageQ MQSeries Connection User's Guide.

Recovering from Errors During Installation

If errors occur during the installation procedure, review the installation requirements (listed earlier in this book) to ensure that the correct versions of prerequisite software have been installed. Errors can occur during installation if the following conditions exist:

- ◆ The version of the operating system is not supported by BEA MessageQ MQSeries Connection.
- ◆ Not enough disk space was available on the target drive.
- ◆ Some files are unreadable or missing from the kit.

For descriptions of the error messages generated by these conditions, see the documentation for the operating system you are using. If an error occurs while installing BEA MessageQ MQSeries Connection, and you believe the error is caused by a problem with BEA MessageQ MQSeries Connection, contact BEA Systems, Inc. using the information found in the preface of this manual.

Index

D

- Disk space requirements 2
- Documentation 2

E

- Error recovery
 - installation 13

I

- Installation
 - choosing installation options, Windows NT 5
 - error recovery during 13
 - prerequisites 1
 - procedure, UNIX systems 8
 - procedure, Windows NT systems 4
 - requirements 2
 - stopping, UNIX systems 9

M

- MQSeries Connection
 - installation requirements 2
 - installation, UNIX systems 9
 - introduction 1

S

- Software distribution kit 2
- Software requirements 2, 3

- support
 - technical xi

U

- UNIX systems
 - installing MQSeries Connection 8

W

- Windows NT
 - installing MQSeries Connection 4

