



# **BEA Tuxedo®** Mainframe Adapter for OSI TP

## **Installation Guide**

Version 9.1  
Document Revised: September 30, 2006

# Copyright

Copyright © 1995-2006 BEA Systems, Inc. All Rights Reserved.

## Restricted Rights Legend

This software is protected by copyright, and may be protected by patent laws. No copying or other use of this software is permitted unless you have entered into a license agreement with BEA authorizing such use. This document is protected by copyright and may not be copied photocopied, reproduced, translated, or reduced to any electronic medium or machine readable form, in whole or in part, without prior consent, in writing, from BEA Systems, Inc.

Information in this document is subject to change without notice and does not represent a commitment on the part of BEA Systems. THE DOCUMENTATION IS PROVIDED “AS IS” WITHOUT WARRANTY OF ANY KIND INCLUDING WITHOUT LIMITATION, ANY WARRANTY OF MERCHANTABILITY OR FITNESS FOR A PARTICULAR PURPOSE. FURTHER, BEA SYSTEMS DOES NOT WARRANT, GUARANTEE, OR MAKE ANY REPRESENTATIONS REGARDING THE USE, OR THE RESULTS OF THE USE, OF THE DOCUMENT IN TERMS OF CORRECTNESS, ACCURACY, RELIABILITY, OR OTHERWISE.

## Trademarks and Service Marks

Copyright © 1995-2006 BEA Systems, Inc. All Rights Reserved. BEA, BEA JRocket, BEA WebLogic Portal, BEA WebLogic Server, BEA WebLogic Workshop, Built on BEA, Jolt, JoltBeans, SteelThread, Top End, Tuxedo, and WebLogic are registered trademarks of BEA Systems, Inc. BEA AquaLogic, BEA AquaLogic Data Services Platform, BEA AquaLogic Enterprise Security, BEA AquaLogic Interaction, BEA AquaLogic Interaction Analytics, BEA AquaLogic Interaction Collaboration, BEA AquaLogic Interaction Content Services, BEA AquaLogic Interaction Data Services, BEA AquaLogic Interaction Integration Services, BEA AquaLogic Interaction Process, BEA AquaLogic Interaction Publisher, BEA AquaLogic Interaction Studio, BEA AquaLogic Service Bus, BEA AquaLogic Service Registry, BEA Builder, BEA Campaign Manager for WebLogic, BEA eLink, BEA Kodo, BEA Liquid Data for WebLogic, BEA Manager, BEA MessageQ, BEA SALT, BEA Service Architecture Leveraging Tuxedo, BEA WebLogic Commerce Server, BEA WebLogic Communications Platform, BEA WebLogic Enterprise, BEA WebLogic Enterprise Platform, BEA WebLogic Enterprise Security, BEA WebLogic Express, BEA WebLogic Integration, BEA WebLogic Java Adapter for Mainframe, BEA WebLogic JDriver, BEA WebLogic Log Central, BEA WebLogic Mobility Server, BEA WebLogic Network Gatekeeper, BEA WebLogic Personalization Server, BEA WebLogic Personal Messaging API, BEA WebLogic Platform, BEA WebLogic Portlets for Groupware Integration, BEA WebLogic Real Time, BEA WebLogic RFID Compliance Express, BEA WebLogic RFID Edge Server, BEA WebLogic RFID Enterprise Server, BEA WebLogic Server Process Edition, BEA WebLogic SIP Server, BEA WebLogic WorkGroup Edition, BEA Workshop for WebLogic Platform, BEA Workshop JSP, BEA Workshop JSP Editor, BEA Workshop Struts, BEA Workshop Studio, Dev2Dev, Liquid Computing, and Think Liquid are trademarks of BEA Systems, Inc. Accelerated Knowledge Transfer, AKT, BEA Mission Critical Support, BEA Mission Critical Support Continuum, and BEA SOA Self Assessment are service marks of BEA Systems, Inc.

All other names and marks are property of their respective owners.

# Contents

## Installing the BEA Tuxedo Mainframe Adapter for OSI TP Product

Pre-Installation Considerations . . . . .	-1
Configuring the Environment to Install TMA OSI TP . . . . .	-2
Upgrading from eLink OSI TP 1.3 . . . . .	-2
Upgrading from eLink OSI TP 4.0 . . . . .	-3
Installing BEA TMA OSI TP on a UNIX-Based Operating System . . . . .	-3
Distribution Libraries and Executables for AIX . . . . .	-8
Distribution Libraries and Executables for HP-UX . . . . .	-8
Distribution Libraries and Executables for Solaris . . . . .	-9
Installing BEA Tuxedo Mainframe Adapter for OSI TP on Windows 2003 Advanced Server . . . . .	-10
Distribution Libraries and Executables for Windows 2003 Advanced Server . . . . .	-16
Uninstalling BEA Tuxedo Mainframe Adapter for OSI TP Product on Windows 2003 Advanced Server . . . . .	-17



# Installing the BEA Tuxedo Mainframe Adapter for OSI TP Product

This section covers the following information:

- [“Pre-Installation Considerations”](#)
- [“Installing BEA TMA OSI TP on a UNIX-Based Operating System”](#)
- [“Installing BEA Tuxedo Mainframe Adapter for OSI TP on Windows 2003 Advanced Server”](#)

## Pre-Installation Considerations

Complete the following tasks prior to installing the TMA OSI TP product:

- Read the BEA Tuxedo Mainframe Adapter for OSI TP *Release Notes* for supported platform information.
- Install and verify the operation of the BEA Tuxedo product with the most recent patch level.

**WARNING:** If you fail to install the correct patch level of Tuxedo, the application may not work correctly. Refer to the BEA Tuxedo Mainframe Adapter for OSI TP *Release Notes* for information on the correct patch level.

- On a UNIX operating system, if you are upgrading to Tuxedo 9.0 or 9.1 from a previous version of Tuxedo, you must remove the old version of Tuxedo before you install Tuxedo 9.0 or 9.1 or you must install Tuxedo 9.0 or 9.1 in a different directory. Do not overwrite the old version of Tuxedo.

## Configuring the Environment to Install TMA OSI TP

Before installing the TMA OSI TP product, you must ensure that the BEA Tuxedo system is installed and configured properly for your environment. Refer to your Tuxedo documentation for more information about setting the Tuxedo environment variables. In addition to the Tuxedo environment variables, the TMA OSI TP system requires an additional environment variable, `OSIRUNDIR`, before you can boot the gateway or run the `osiadmin` utility. Refer to the BEA Tuxedo Mainframe Adapter for OSI TP *User Guide* for more information about the `osiadmin` utility. If you do not set the `OSIRUNDIR` environment variable before you boot the gateway, you will receive a message telling you to set `OSIRUNDIR`. This environment variable specifies the path that the TMA gateway uses for runtime files. You can set the `OSIRUNDIR` environment variable through a script, a command line entry, or, for Windows 2003 operating systems, through the Windows System Properties in the Control Panel. The variable value should include the path and directory as appropriate for your operating system.

## Upgrading from eLink OSI TP 1.3

If you are upgrading from eLink OSI TP 1.3 to BEA Tuxedo Mainframe Adapter for OSI TP 9.1, you must modify your existing `dmconfig` file to be compatible with the new format. The `osiadmin` utility performs this upgrade automatically with the `importcfg` command. It is recommended that you use the `osiadmin` utility, but you may also upgrade by manually editing your `dmconfig` file. Refer to the BEA Tuxedo Mainframe Adapter for OSI TP *User Guide* for more information about using the `osiadmin` utility and about manually editing the `dmconfig` file.

BEA Tuxedo Mainframe Adapter for OSI TP 9.1 is a full replacement for eLink OSI TP 1.3 and the Unisys Protocol Stack (OSI TP and ULS). ULS on UNIX-based systems and BEA Tuxedo Mainframe Adapter for OSI TP 9.1 both use port 102 by default. Consider this default setting when configuring the port number of your updated `dmconfig` file. Beginning with eLink OSI TP 4.1, you can configure a port number other than 102. This option allows you to run your eLink OSI TP 1.3 gateway while you are upgrading. If you will be using port 102 in your TMA OSI TP 9.1 `dmconfig` file, you must shutdown ULS before attempting to `tmbboot` TMA OSI TP 9.1. If you are running eLink OSI TP 1.3, uninstall eLink OSI TP and the Unisys OSI TP protocol stack including the Unisys Upper Layer Services.

When you are upgrading from a previous release of the eLink OSI TP product, you must shut down all Domain administrative and gateway servers within an application domain, particularly the following:

- GWOSITP

- GWADM
- DMADM

## Upgrading from eLink OSI TP 4.0

If you are upgrading from eLink OSI TP 4.0, you do not need to modify your `udmconfig` input file. Perform a `dmloadcf` of the `udmconfig` file to create the `dmconfig` binary file, `BDMCONFIG`. If you are running eLink OSI TP 4.0, uninstall eLink OSI TP 4.0

**Note:** Beginning with eLink OSI TP 4.1, the version 4.0 `udmloadcf` utility, the `BUDMCONFIG` binary file and the eLink OSI TP Administrative Server `UDADM` no longer exist. The function performed by the version 4.0 `udmloadcf` command is now done by the `dmloadcf` command. The information contained in the version 4.0 `BUDMCONFIG` file is now incorporated within the `BDMCONFIG` file. If your `ubbconfig` contains the `UDMADM` Server, delete it and perform a `tmloadcf` of the modified `ubbconfig` file.

## Installing BEA TMA OSI TP on a UNIX-Based Operating System

This section explains how to install the BEA Tuxedo Mainframe Adapter for OSI TP product. For a listing of supported platforms, see [Supported Platforms](#) in the *BEA Tuxedo Mainframe Adapter for OSI TP Release Notes*.

To install the TMA OSI TP product, you run the `install.sh` script. This script installs all the necessary software components.

**WARNING:** For UNIX-based operating systems, if you are installing in silent mode the BEA Tuxedo system should be installed first and the TMA OSI TP product should be installed within the same directory. Use the `mkdir` command to create the directory where you wish to install BEA Tuxedo and the TMA OSI TP product **BEFORE** you perform your installations. If you do not create the directory first, you will receive an Installation Complete message after you install BEA Tuxedo, but Tuxedo will not be installed. Make sure that you have installed the Tuxedo 9.0 or 9.1 license before you install the TMA OSI TP product.

Perform the following steps to install the TMA OSI TP product on a supported UNIX platform:

1. Log on to your UNIX platform and access the CD-ROM device.

```
# ls -l /dev/cdrom
total 0
```

```
brw-rw-rw-    1 root    sys    22,    0 January 5 10:55 c1b0t010
```

2. Mount the CD-ROM with the following mount instruction if you are installing on an AIX operating system. The CD-ROM mounts automatically on Solaris.

```
# mount -r -F cdfs /dev/cdrom/c1b0t010 /mnt
```

Use the following mount instruction if you are installing on an HP-UX operating system:

```
# mount -r -F cdfs -o cdcase /dev/cdrom/c1b0t010 /mnt
```

3. Change the directory to your CD-ROM device.

```
# cd /mnt
```

4. List the CD-ROM contents.

```
# ls
install.sh  hp  ibm  sun5x  uw  windows
```

5. Execute the installation script.

```
# sh ./install.sh
```

6. The installation script runs and prompts you for responses.

### Listing 1 Install.sh Script Prompts for an AIX Installation

---

```
[lcsol113]:/nfs/vol1/homes1/tkumar/TMAOSITP9/unix>sh install.sh
```

```
01) hp/hpux1123      02) ibm/aix53      03) sun5x/sol10
```

```
Install which platform's files? [01-      3, q to quit, 1 for list]: 3
```

```
** You have chosen to install from sun5x/sol10 **
```

```
BEA Tuxedo Mainframe Adapter OSI TP 9.1
```

```
This directory contains BEA Tuxedo Mainframe Adapter TMA OSI TP 9.1 for
SunOS 5.10 (Solaris) on SPARC.
```

```
Is this correct? [y,n,q]: y
```



## Installing BEA TMA OSI TP on a UNIX-Based Operating System

To terminate the installation at any time  
press the interrupt key,  
typically <del>, <break>, or <ctrl+c>.

The following packages are available:

```
1      ositp      BEA Tuxedo Mainframe Adapter TMA OSI TP 9.1
```

Select the package(s) you wish to install (default: 1) [?,??,q]: 1

```
BEA Tuxedo Mainframe Adapter TMA  OSI TP 9.1
(sparc) Release 9.1
Copyright (c) 2006 BEA Systems, Inc.
All Rights Reserved.
Distributed under license by BEA Systems, Inc.
BEA is a registered trademark of BEA Systems, Inc.
```

Directory where OSI TP files are to be installed

```
(Enter your Tuxedo directory path) [?,q]:
/nfs/vol1/homes1/tkumar/tux91/sol9/tux
edo9.1
```

```
Using /nfs/vol1/homes1/tkumar/tux91/sol9/tuxedo9.1 as the OSI TP base
directory
PREREQ_SFX = T91
```

```
Determining if sufficient space is available ...
10544 blocks are required
421303040 blocks are available to
/nfs/vol1/homes1/tkumar/tux91/sol9/tuxedo9.1
```

Unloading

/nfs/vol1/homes1/tkumar/TMAOSITP9/unix/sun5x/sol10/ositp/OSITPT91.Z ..

TMA/osi/samples/simpapp/dmconfig

TMA/osi/samples/simpapp/tailor.txt

TMA/osi/samples/simpapp/ubbsimple

bin/GWOSITP

bin/getulogpfx

bin/lic.sh

bin/osiadmin

bin/osiltmain

bin/portproxy

bin/prdebuginfo

bin/setPROXYpriv

lib/libgwo.so

lib/libnwunisys.so

lib/libtasn1.so

locale/C/LIBGWO.text

locale/C/LIBGWO\_CAT

locale/C/libnwunisys.cat

udataobj/gbebc2u.fld

udataobj/jbis82u.fld

udataobj/ksc2u.fld

udataobj/u2gbebc.fld

udataobj/u2jbis8.fld

udataobj/u2ksc.fld

10370 blocks

... finished

The \$TUXDIR/bin/portproxy executable listens on privileged ports (< 1024) on behalf of GWOSITP. The script \$TUXDIR/bin/setPROXYpriv is used to set the appropriate permissions.

If you know the root password, you may run setPROXYpriv now.

Run the setPROXYpriv script? [y/n]: n

## Installing BEA TMA OSI TP on a UNIX-Based Operating System

Remember to run `$TUXDIR/bin/setPROXYpriv` later.

```
Changing file permissions...  
... finished
```

If your license file is accessible, you may install it now.  
Install license file? [y/n]: n

Please don't forget to use `lic.sh` located in your product bin directory to install the license file from the enclosed floppy.  
Refer to your product Release Notes for details on how to do this.

Installation of BEA Tuxedo Mainframe Adapter TMA OSI TP 9.1 was successful.

Please don't forget to fill out and send in your registration card

---

**Note:** The following message may also appear during installation on HP machines:

### Listing 2 Warning Message

---

```
=====  
You do NOT HAVE required HP Patches for Tuxedo 9.1  
Please refer to the Tuxedo 9.1 Installation Guide  
or http://edocs.bea.com/tuxedo/tux90/install/inspds.htm#1318335  
for more information.
```

Continue Installation? [y/n]:

---

If you receive this warning, enter **n** to exit installation and refer to your *Tuxedo 9.1 Installation Guide* for more information.

## Distribution Libraries and Executables for AIX

The TMA OSI TP CD-ROM contains the following libraries and executable programs for the AIX 5.3 operating system:

**Table 1 TMA OSI TP Distribution Libraries for AIX 5.3**

Directory	Files
/bin	getulogpfx GWOSITP osiadmin osiltmain portproxy prdebuginfo setPROXYpriv
/lib	libgwo.so libnwunisys.so libtasn1.so
/locale/C	LIBGWO.text LIBGWO_CAT libnwunisys.cat
/udataobj	gbebc2u.fld jbis82u.fld ksc2u.fld u2gbebc.fld u2jbis8.fld u2ksc.fld
\$TUXDIR/tma/osi/ samples/simpapp	dmconfig ubbsimple tailor.txt

## Distribution Libraries and Executables for HP-UX

The TMA OSI TP CD-ROM contains the following libraries and executable programs for the HP-UX 11.23 operating system:

**Table 2 TMA OSI TP Distribution Libraries for HP-UX 11.23**

<b>Directory</b>	<b>Files</b>
/bin	getulogpfx GWOSITP osiadmin osiltmain portproxy prdebuginfo setPROXYpriv
/lib	libgwo.sl libnwunisis.sl libtas1.sl
/locale/C	LIBGWO.text LIBGWO_CAT libnwunisis.cat
/udataobj	gbebc2u.fld jbis82u.fld ksc2u.fld u2gbebc.fld u2jbis8.fld u2ksc.fld
\$TUXDIR/tma/osi/ samples/simpapp	dmconfig ubbsimple tailor.txt

## Distribution Libraries and Executables for Solaris

The TMA OSI TP CD-ROM contains the following libraries and executable programs for the Solaris operating system:

**Table 3 TMA OSI TP Distribution Libraries for Solaris**

Directory	Files
/bin	getulogpfx GWOSITP osiadmin osiltmain portproxy prdebuginfo setPROXYpriv
/lib	libgwo.so libnwunisisys.so libtasn1.so
/locale/C	LIBGWO.text LIBGWO_CAT libnwunisisys.cat
/udataobj	gbebc2u.fld jbis82u.fld ksc2u.fld u2gbebc.fld u2jbis8.fld u2ksc.fld
\$TUXDIR/tma/osi/ samples/simpapp	dmconfig ubbsimple tailor.txt

## Installing BEA Tuxedo Mainframe Adapter for OSI TP on Windows 2003 Advanced Server

**Caution:** Be sure to review the “[Pre-Installation Considerations](#)” section before you start your installation of the BEA Tuxedo Mainframe Adapter for OSI TP Version 9.1 product.

Perform the following steps to install the TMA OSI TP product on a Windows 2003 operating system:

**WARNING:** For Windows 2003 operating systems, the BEA Tuxedo system should be installed first and the TMA OSI TP product should be installed within the same directory.

1. Insert the TMA OSI TP product CD-ROM in your CD-ROM drive. The Installation program should automatically start. If it does not start automatically, perform the following steps to begin the installation:
  - a. Click the **Start** button, and select the **Run** option. The **Run** window displays.
  - b. Click the **Browse** button to select the CD-ROM drive.
  - c. Select the `windows` directory and select the `Setup.exe` program.
  - d. Click **OK** to run the executable and begin the installation. Setup searches to make sure the Tuxedo product is installed on your system.

**Note:** If the Tuxedo product is NOT already installed on your system, an **Error** pop-up window displays. Click **OK** on the pop-up window to terminate the installation process. Install the Tuxedo product on your system and re-instate the installation process.

2. Setup also notifies you if a prior version of the TMA OSI TP product is installed. If a prior version is detected, you are asked if you want to continue with Setup. Click **Yes** and the **Welcome** window displays as shown in [Figure 1](#).

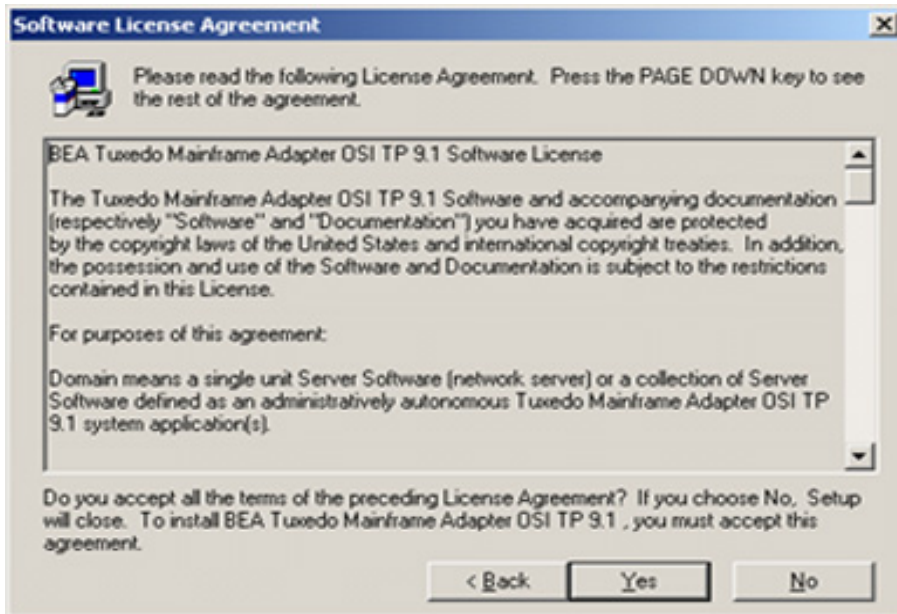
Figure 1 Welcome Window



3. Click **Next** to continue with the installation. The **License Agreement** window displays as shown in [Figure 2](#).

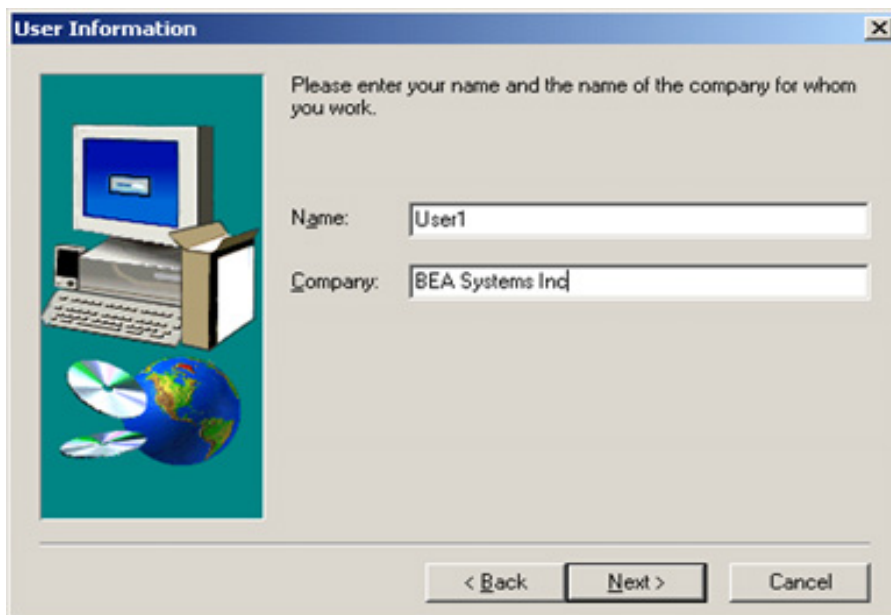


Figure 2 License Agreement Window



4. Read the license agreement information, and click **Yes** to continue with the installation.
5. The **User Information** window displays as shown in [Figure 3](#). Enter your name in the **Name** field. Enter the name of your company in the **Company** field. Click **Next** to continue with the installation.

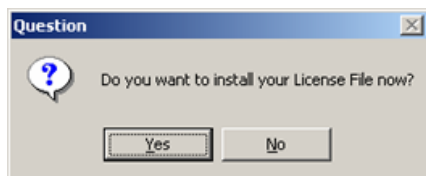
Figure 3 User Information Window



6. The install license file **Question** pop-up window displays as shown in [Figure 4](#). Click **Yes** to install your License File now.

**Note:** If you click **Yes**, the BEA Tuxedo Mainframe Adapter for OSI TP license file is appended to the existing Tuxedo license file, `$TUXDIR\udataobj\lic.txt`. If you click **No**, you will need to manually add the TMA OSI TP license to the end of the `lic.txt` file.

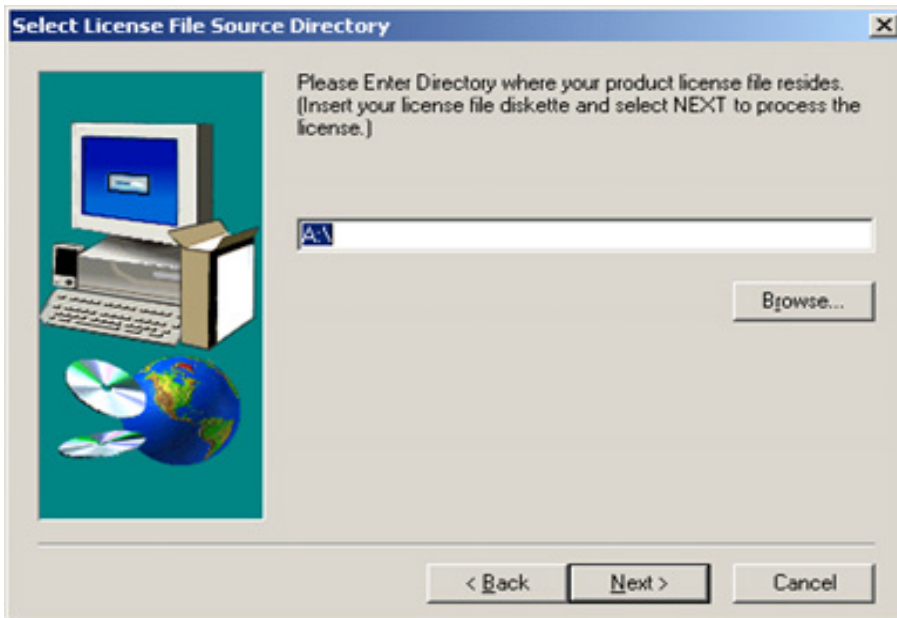
Figure 4 Install License File Question



7. When you click **Yes** to install the License File, the **Select License File Source Directory** window displays as shown in [Figure 5](#).

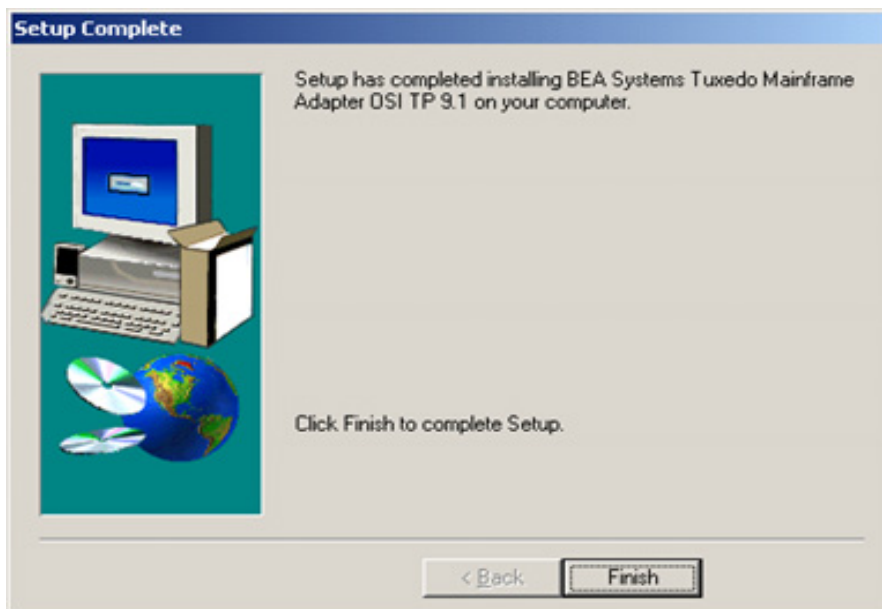
- a. Enter the Directory and Path or click the Browse button to display the Choose Folder pop-up window.

**Figure 5 Select License File Source Directory Window**



- b. If you clicked **Browse**, locate the License file and click **OK** to return to the **Select License File Source Directory** window. Then click **Next** to continue with the installation process.
8. The installation begins and a progress bar displays the status. The TMA OSI TP components install into the Tuxedo directory. You may abort the installation process anytime prior to completion by clicking **Cancel**.  
**Note:** During the TMA OSI TP installation, the `$TUXDIR\udataobj\DMTYPE` file is updated to include an OSITPX entry if one is not already there.
9. The **Setup Complete** window, as shown in [Figure 6](#) notifies you that the TMA OSI TP product is installed on your system. Click **Finish** to complete the setup process.

**Figure 6 Setup Complete**



## Distribution Libraries and Executables for **Windows 2003 Advanced Server**

The TMA OSI TP CD-ROM contains the following libraries and executable programs for Windows 2003 operating systems. After installing the TMA OSI TP product, verify that these files and programs are installed on your system.

**Table 1 TMA OSI TP Distribution Libraries for Windows 2003 Advanced Server**

Directory	Files
/bin	DbgHelp.dll gwo.dll GWOSITP.exe nwunisys.dll osiadmin.exe osilt.dll osiltmain.exe osiltpp.dll osiltppmain.exe osimsg.dll Psapi.dll tasn1.dll
/locale/C	LIBGWO.text LIBGWO_CAT
/udataobj	gbebc2u.fld jbis82u.fld ksc2u.fld u2gbebc.fld u2jbis8.fld u2ksc.fld
\$TUXDIR/tma/osi/ samples/simpapp	dmconfig ubbsimple tailor.txt

## Uninstalling BEA Tuxedo Mainframe Adapter for OSI TP Product on Windows 2003 Advanced Server

Perform the following steps to uninstall TMA OSI TP on a Windows 2003 system:

**Note:** Make sure that TMA OSI TP is shut down before you uninstall.

1. Click the **Start** button, and then point to **Settings**. Point to the folder that contains **Control Panel**, and then click **Control Panel**.
2. Double click on the **Add/Remove Programs** option from the **Control Panel** listings to access the **Add/Remove Programs** properties window.

3. In the **Add/Remove Programs Properties** window, select BEA Tuxedo Mainframe Adapter for OSI TP from the program list and click the **Add/Remove** button.
4. The uninstall process for TMA OSI TP begins. The **Remove Programs From Your Computer** screen displays. Click **OK** to complete the uninstall process.

**Figure 7 Remove Programs From Your Computer Screen**

