



BEA Tuxedo™ Mainframe Adapter for TCP

Installation Guide

Version 8.1
Document Revised: November 14, 2003
Part Number: 825-001007-004

Copyright

Copyright © 2003 BEA Systems, Inc. All Rights Reserved.

Restricted Rights Legend

This software and documentation is subject to and made available only pursuant to the terms of the BEA Systems License Agreement and may be used or copied only in accordance with the terms of that agreement. It is against the law to copy the software except as specifically allowed in the agreement. This document may not, in whole or in part, be copied, photocopied, reproduced, translated, or reduced to any electronic medium or machine readable form without prior consent, in writing, from BEA Systems, Inc.

Use, duplication or disclosure by the U.S. Government is subject to restrictions set forth in the BEA Systems License Agreement and in subparagraph (c)(1) of the Commercial Computer Software-Restricted Rights Clause at FAR 52.227-19; subparagraph (c)(1)(ii) of the Rights in Technical Data and Computer Software clause at DFARS 252.227-7013, subparagraph (d) of the Commercial Computer Software--Licensing clause at NASA FAR supplement 16-52.227-86; or their equivalent.

Information in this document is subject to change without notice and does not represent a commitment on the part of BEA Systems. THE SOFTWARE AND DOCUMENTATION ARE PROVIDED "AS IS" WITHOUT WARRANTY OF ANY KIND INCLUDING WITHOUT LIMITATION, ANY WARRANTY OF MERCHANTABILITY OR FITNESS FOR A PARTICULAR PURPOSE. FURTHER, BEA Systems DOES NOT WARRANT, GUARANTEE, OR MAKE ANY REPRESENTATIONS REGARDING THE USE, OR THE RESULTS OF THE USE, OF THE SOFTWARE OR WRITTEN MATERIAL IN TERMS OF CORRECTNESS, ACCURACY, RELIABILITY, OR OTHERWISE.

Trademarks or Service Marks

BEA, Jolt, Tuxedo, and WebLogic are registered trademarks of BEA Systems, Inc. BEA Builder, BEA Campaign Manager for WebLogic, BEA eLink, BEA Liquid Data for WebLogic, BEA Manager, BEA WebLogic Commerce Server, BEA WebLogic Enterprise, BEA WebLogic Enterprise Platform, BEA WebLogic Express, BEA WebLogic Integration, BEA WebLogic Personalization Server, BEA WebLogic Platform, BEA WebLogic Portal, BEA WebLogic Server, BEA WebLogic Workshop and How Business Becomes E-Business are trademarks of BEA Systems, Inc.

All other trademarks are the property of their respective companies.

Contents

About This Document

What You Need to Know	vii
e-docs Web Site	viii
How to Print the Document	viii
Related Information	viii
Contact Us	viii
Documentation Conventions	ix

1. Installing BEA Tuxedo Mainframe Adapter for TCP Gateway

Preparing to Install	1-1
Installing TMA TCP Gateway	1-2
Installing on UNIX Platforms in Console Mode	1-2
Installing on Windows or UNIX Platforms in Graphics Mode	1-7
Uninstalling Tuxedo Mainframe Adapter for TCP Gateway	1-15
Uninstalling on UNIX Platforms in Console Mode 1-16	
Uninstalling on Windows Platforms	1-17
Distribution Libraries and Executables	1-18
HP-UX 11.00	1-19
Solaris 8	1-19
AIX	1-20
Windows 2000	1-21

2. Installing BEA Tuxedo Mainframe Adapter for TCP (IMS)

Preparing to Install	2-1
Installing TMA TCP for IMS	2-1
Task 1: Allocate OS/390 Datasets	2-2
Task 2: Unload the Distribution Files	2-6
Task 3: Link-Edit TMA TCP for IMS	2-6
Sample JCL for Linking TMA TCP for IMS	2-7
Task 4: Define TMA TCP for IMS to MVS	2-8
OTMA Definition	2-8
Task 5: Create an TMA TCP for IMS Configuration File	2-8
SYSTEM Statement Definition	2-9
Local Gateways Definition	2-9
Remote Gateways Definition	2-10
Remote Services Definition	2-10
Local Services and IMS Host Systems Definition	2-11
Task 6: Create JCL to Run TMA TCP for IMS	2-11
JCL for OTMA Clients	2-12
Task 7: Start BEA TMA TCP for IMS	2-12
Task 8: Test the Installation	2-13
Distribution Libraries and Executables	2-13

3. Installing BEA Tuxedo Mainframe Adapter for TCP (CICS)

Preparing for Installation	3-1
Task 1: Verify System Requirements	3-1
Task 2: Check Pre-Installation Considerations	3-2
Installing TMA TCP for CICS	3-2
Task 1: Allocate Temporary Data Sets	3-2
Task 2: Transfer the Installation JCL	3-3

Task 3: Create the PDS Libraries	3-4
Task 4: Upload the Distribution Files.	3-6
Task 5: Define the CICS VSAM Files	3-11
Task 6: Verify Contents of PROCS	3-13
Task 7: Change Resource Names (Optional)	3-13
Task 8: Define the CICS Table Entries.	3-13
Task 9: Build TMA TCP for CICS Executables	3-14
Pre-Link/Link TMA TCP for CICS	3-14
Linking without the C 370 Compiler	3-16
Task 10: Verify the CICS Setup	3-16
Task 11: Assemble and Link the CICS DCT	3-17
Task 12: Modify the CICS Startup JCL	3-17
List of Distribution Files and Members.	3-20
BEATCPC.DIST.CONTROL	3-20
BEATCPC.DIST.JCL	3-21
BEATCPC.DIST.SOURCE	3-22
BEATCPC.DIST.INCLUDE	3-22
BEATCPC.DIST.PLKED	3-23
BEATCPC.DIST.OBJECT.	3-24

A. Changing Resource Names

Contents of SOURCE(BEACFGSV)	A-1
Changing Resource Names for SOURCE(BEACFGSV).	A-2
Contents of CONTROL(CSDU)	A-3
Changing Resource Names for CONTROL(CSDU)	A-4

Index

About This Document

The BEA Tuxedo Mainframe Adapter for TCP (hereafter referred to as TMA TCP) is a gateway connectivity application that enables applications on BEA Tuxedo systems to perform various non-transactional tasks with applications that reside on different kinds of computers

This document provides the following topics on installing TMA TCP software:

- [“Installing BEA Tuxedo Mainframe Adapter for TCP Gateway”](#) provides information for installing the TMA TCP Gateway component on a UNIX, OS/390, z/OS, or Windows 2000 system.
- [“Installing BEA Tuxedo Mainframe Adapter for TCP \(IMS\)”](#) provides information for installing the TMA TCP for IMS component.
- [“Installing BEA Tuxedo Mainframe Adapter for TCP \(CICS\)”](#) provides information for installing the TMA TCP for CICS component.

What You Need to Know

This document is primarily for system administrators who install and configure the TMA TCP product.

System administrators who work with TMA TCP should be familiar with TCP/IP networking. Programmers and system administrators who work with TMA TCP should be familiar with the concept of distributed multi-tier client/server processing.

Readers of this document should also be familiar with the operating system and BEA Tuxedo software.

e-docs Web Site

BEA product documentation is available on the BEA corporate Web site. From the BEA Home page, click on Product Documentation or go directly to the “e-docs” Product Documentation page at <http://edocs.bea.com/>.

How to Print the Document

A PDF version of this document is available on the TMA TCP documentation Home page on the e-docs Web site (and also on the installation CD). You can open the PDF in Adobe Acrobat Reader and print the entire document (or a portion of it) in book format. To access the PDFs, open the TMA TCP documentation Home page, click the PDF files button, and select the document you want to print.

If you do not have the Adobe Acrobat Reader, you can get it for free from the Adobe Web site at <http://www.adobe.com/>.

Related Information

The following BEA publications are available for TMA TCP:

- *BEA Tuxedo Mainframe Adapter for TCP Release Notes*
- *BEA Tuxedo Mainframe Adapter for TCP Installation Guide*
- *BEA Tuxedo Mainframe Adapter for TCP Gateway User Guide*
- *BEA Tuxedo Mainframe Adapter for TCP IMS User Guide*
- *BEA Tuxedo Mainframe Adapter for TCP CICS User Guide*

Contact Us

Your feedback on the BEA Tuxedo Mainframe Adapter for TCP documentation is important to us. Send us e-mail at docsupport@bea.com if you have questions or comments. Your comments will be reviewed directly by the BEA professionals who create and update the Tuxedo Mainframe Adapter for TCP documentation.

In your e-mail message, please indicate that you are using the documentation for the BEA Tuxedo Mainframe Adapter for TCP 8.1 release.

If you have any questions about this version of TMA TCP, or if you have problems installing and running TMA TCP, contact BEA Customer Support through BEA WebSupport at

www.bea.com. You can also contact Customer Support by using the contact information provided on the Customer Support Card that is included in the product package.

When contacting Customer Support, be prepared to provide the following information:

- Your name, e-mail address, phone number, and fax number
- Your company name and company address
- Your machine type and authorization codes
- The name and version of the product you are using
- A description of the problem and the content of pertinent error messages

Documentation Conventions

The following documentation conventions are used throughout this document.

Convention	Item
blue text	Indicates a hypertext link in PDF or HTML
<i>italics</i>	Indicates emphasis or book titles or variables.
"string with quotes"	Indicates a string entry that requires quote marks.
UPPERCASE TEXT	Indicates generic file names, device names, environment variables, and logical operators. <i>Examples:</i> LPT1 SIGNON OR

Convention	Item
monospace text	<p>Indicates code samples, commands and their options, data structures and their members, data types, directories, and file names and their extensions. Monospace text also indicates text that you must enter from the keyboard.</p> <p><i>Examples:</i></p> <pre>#include <iostream.h> void main () the pointer psz chmod u+w * \tux\data\ap .doc tux.doc BITMAP float</pre>
monospace boldface text	<p>Identifies significant words in code.</p> <p><i>Example:</i></p> <pre>void xa_commit ()</pre>
{ }	<p>Indicates a set of choices in a syntax line. The braces themselves should never be typed.</p>
[]	<p>Indicates optional items in a syntax line. The brackets themselves should never be typed.</p> <p><i>Example:</i></p> <pre>buildclient [-v] [-o name] [-f file-list]... [-l file-list]...</pre>
	<p>Separates mutually exclusive choices in a syntax line. The symbol itself should never be typed.</p>

Convention	Item
...	<p data-bbox="408 361 884 378">Indicates one of the following in a command line:</p> <ul data-bbox="408 395 1119 491" style="list-style-type: none"> <li data-bbox="408 395 1085 413">• That an argument can be repeated several times in a command line <li data-bbox="408 430 975 447">• That the statement omits additional optional arguments <li data-bbox="408 465 1119 482">• That you can enter additional parameters, values, or other information <p data-bbox="408 508 796 526">The ellipsis itself should never be typed.</p> <p data-bbox="408 552 498 569"><i>Example:</i></p> <pre data-bbox="408 595 1025 638">buildclient [-v] [-o name] [-f file-list]... [-l file-list]...</pre>
. . .	<p data-bbox="408 670 1119 687">Indicates the omission of items from a code example or from a syntax line.</p> <p data-bbox="408 704 874 722">The vertical ellipsis itself should never be typed.</p>

Installing BEA Tuxedo Mainframe Adapter for TCP Gateway

The installation procedure for BEA Tuxedo Mainframe Adapter for TCP Gateway is slightly different for each platform on which the product can be installed. Follow the directions for the appropriate platform. The following information assists you in successfully installing this product:

- [Preparing to Install](#)
- [Installing TMA TCP Gateway](#)
 - [Installing on UNIX Platforms in Console Mode](#)
 - [Installing on Windows or UNIX Platforms in Graphics Mode](#)
- [Uninstalling Tuxedo Mainframe Adapter for TCP Gateway](#)
- [Distribution Libraries and Executables](#)

Note: To upgrade from previous releases of eLink for Mainframe TCP, refer to *BEA Tuxedo Mainframe Adapter for TCP Release Notes*.

Preparing to Install

The TMA TCP Gateway product runs on UNIX-based and Windows 2000 platforms. Complete the following tasks prior to installing the TMA TCP Gateway software:

- Review the platform support and software requirements sections of the *BEA Tuxedo Mainframe Adapter for TCP Release Notes* and make sure that the computer upon which you are installing satisfies the listed requirements.

- Install and verify the operation of one of the following:
 - BEA Tuxedo 8.1
- Verify the installation of one of the following:
 - Java Software Development Kit (JDK), Standard Edition, v 1.3.0
 - Java Runtime Environment (JRE), International Version, v 1.3.0

A JDK is required by the InstallAnywhere installation product to install Tuxedo Mainframe Adapter for TCP. A JDK is installed with Tuxedo 8.1. Verify that the system PATH environment variable is set to the correct version of the JDK. If the JDK version displayed is lower than the required version, you will need to configure your PATH environment variable to use the required JDK that is installed with Tuxedo 8.1.

- Install and verify the TCP/IP stack software

Installing TMA TCP Gateway

The TMA TCP Gateway product runs on Unix-based platforms and Windows 2000. Refer to the appropriate platform sections for installation instructions.

Installing on UNIX Platforms in Console Mode

Perform the following steps to install the Tuxedo Mainframe Adapter for TCP Gateway software in console mode on a certified UNIX platform:

1. Log on as root.

```
$ su -
Password:
```

2. Access the CD-ROM device.

```
# ls -l /dev/cdrom
total 0
brw-rw-rw-    1 root    sys      22,    0 July 1 10:55 c1b0t010
```

3. Mount the CD-ROM. Mount commands vary depending on your system configuration. Refer to your System Administrator for the specific command for your system. Use a command similar to the following command to mount the CD-ROM on any UNIX system, **except HP-UX**.

```
# mount -r -F cdfs /dev/cdrom/c1b0t010 /mnt
```

If you are installing on an HP-UX system, use a command similar to the following command:

```
# mount -r -F cdfs -o cdcase /dev/cdrom/c1b0t010 /mnt
```

4. Change the directory to the `unix` directory on your CD-ROM device. For example,

```
# cd /mnt
```

5. List the CD-ROM contents.

```
# ls
```

```
tmatcp81_Aix.bin
```

```
tmatcp81_Win.exe
```

```
tmatcp81_Hp.bin
```

```
tmatcp81_Sol8.bin
```

6. Execute the installation program in character-based mode by selecting the appropriate file for your platform from the listed files. For example, for the AIX platform, select:

```
# sh tmatcp81_Aix.bin -i console
```

7. The installation program runs and prompts you for responses (see [Listing 1-1](#) for an example).

Listing 1-1 UNIX Console Mode Installation Example

```
Preparing to install...
```

```
Preparing CONSOLE Mode Installation...
```

```
=====
BEA Tuxedo Mainframe Adapter TCP 8.1(created with InstallAnywhere by Zero G)
-----
```

```
=====
Introduction
-----
```

```
This installer will guide you through the installation of 'Tuxedo Mainframe
Adapter for TCP'. On each step, answer the questions provided. Type "quit"
```

at any time to exit the installer.

PRESS <ENTER> TO CONTINUE: <ENTER>

=====

License Agreement

Please read before installing:

BEA Tuxedo Mainframe Adapter for TCP 8.1 Software License

The Tuxedo Mainframe Adapter for TCP 8.1 Software and accompanying documentation (respectively "Software" and "Documentation")...

.
. .
.

BEA reserves all rights not expressly granted to you.

General Terms

Term. This License will become effective on the date you acquire the Software and will remain in force until terminated. You may terminate this License at any time by destroying the Documentation and Software together with all copies and adaptations. This License shall also automatically terminate if you breach any of the terms or conditions. You agree to destroy the original and all copies of the Software and Documentation, or to return them to BEA upon termination of this License.

Governing Law. Except as otherwise restricted by law, this License shall be

PRESS <ENTER> TO CONTINUE: <ENTER>

governed by, and interpreted in accordance with, the laws of the State of California of the United States of America, without regard...

.

.
.
Severability. If any provision in this License is invalid or unenforceable,

PRESS <ENTER> TO CONTINUE: **<ENTER>**

that provision shall be construed, limited, modified or, if necessary, severed, to the extent necessary, to eliminate its invalidity or unenforceability, and the other provisions of this License shall remain unaffected.

...

.
.
.

BEA is a registered trademark of BEA Systems, Inc.
BEA Tuxedo is a registered trademark of BEA Systems, Inc. in the US and other countries
Copyright 2003, BEA Systems, Inc. All Rights Reserved.

DO YOU AGREE WITH THE TERMS OF THE LICENSE? (Y/N): **Y**

=====
Choose BEA Home Directory

- 1- Create a New BEA Home
- 2- Use Existing BEA Home

Enter a number: **1**

Specify a new BEA Home: **/usr/boa**

```
=====
Installing...
-----

[=====|=====|=====|=====]
[-----|-----|-----|-----]

=====...
      .
      .
      .
```

```
=====
License Selection Option
-----

1- Copy License File Now
2- Copy License File Later
Enter a number: 1
Specify a Path to your License File:
...
      .
      .
      .
```

```
Install Complete
-----

Congratulations. 'Tuxedo Mainframe Adapter for TCP' has been successfully
installed to:
```

```
/usr/bea/tuxedo8.1
```

PRESS <ENTER> TO EXIT THE INSTALLER: <ENTER>

Installing on Windows or UNIX Platforms in Graphics Mode

Perform the following steps to install the Tuxedo Mainframe Adapter for TCP Gateway software on a Windows platform or on a UNIX platform in Graphics Mode:

1. Insert the Tuxedo Mainframe Adapter for TCP Gateway CD-ROM.
2. Do one of the following, depending on your platform:

On Windows:

When installing on a Windows platform, Install Anywhere should start automatically when you load the CD. Proceed to Step 3.

If it does not, complete the following steps:

- a. Choose Start—Run. The Run dialog displays.
- b. Click Browse to navigate to the CD-ROM drive.
The following files should be located in root:
 - tmatcp81_Aix.bin
 - tmatcp81_Hp.bin
 - tmatcp81_Win.exe
 - tmatcp81_Sol8.bin
- c. Select tmatcp81_Win.exe.
- d. Click Open.
- e. Install Anywhere runs and the Introduction screen ([Figure 1-1](#)) is displayed.
- f. Proceed to Step 3.

On UNIX:

- a. Log on as root to install the Tuxedo Mainframe Adapter for TCP Gateway software.

```
$ su -  
Password:
```

- b. Access the CD-ROM device.

```
> ls -l /dev/cdrom  
total 0  
brw-rw-rw- 1 root sys 22, 0 July 1 10:55 c1b0t010
```

- c. Mount the CD-ROM. Mount commands vary depending on your system configuration. Refer to your System Administrator for the specific command for your system. Use a command similar to the following command to mount the CD-ROM on any UNIX system, *except* HP-UX.

```
> mount -r -F cdfs /dev/cdrom/c1b0t010 /mnt
```

If you are installing on an HP-UX system, use a command similar to the following command:

```
> mount -r -F cdfs -o cdcase /dev/cdrom/c1b0t010 /mnt
```

- d. Change the directory to the top-level directory on your CD-ROM device. For example,
- ```
> cd /mnt/
```
- e. List the CD-ROM contents.

The following files should be located in root:

```
tmatcp81_Aix.bin
tmatcp81_Hp.bin
tmatcp81_Win.exe
tmatcp81_Sol8.bin
```

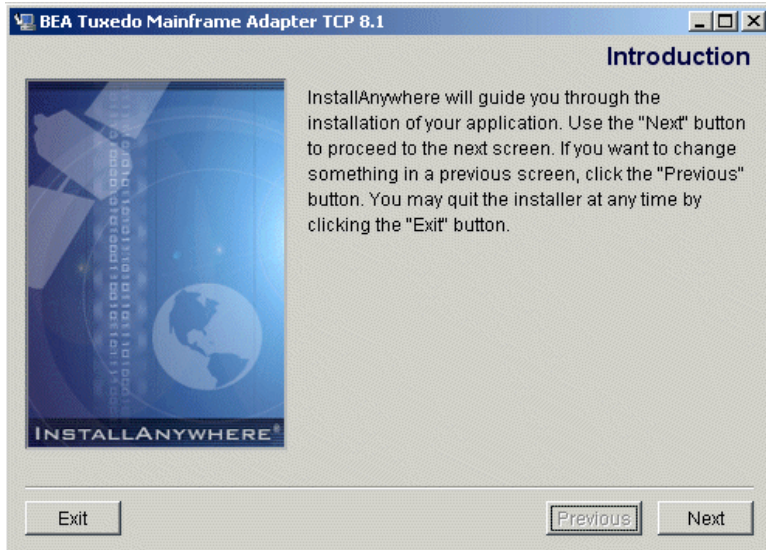
- f. Execute the installation program.

```
/mnt> sh tmatcp81_<platform>.bin
```

The Introduction screen (see [Figure 1-1](#)) is displayed.

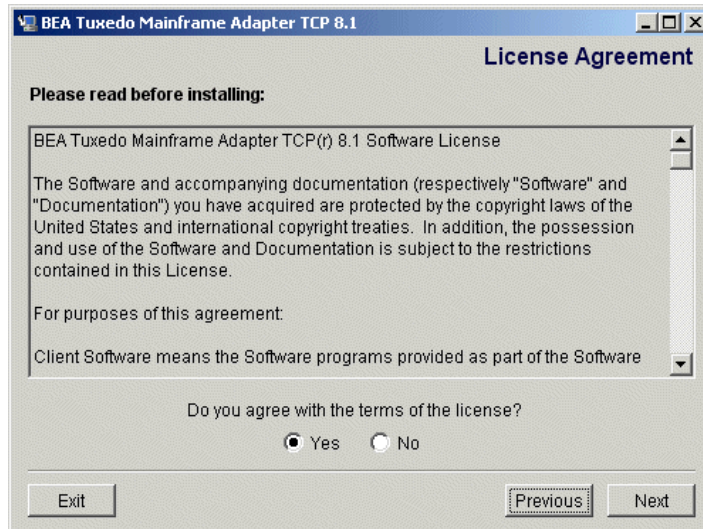
- g. Proceed to Step 3.

Figure 1-1 Introduction Screen



3. Click Next to continue with the installation. The License Agreement screen is displayed (Figure 1-2).

Figure 1-2 License Agreement Screen

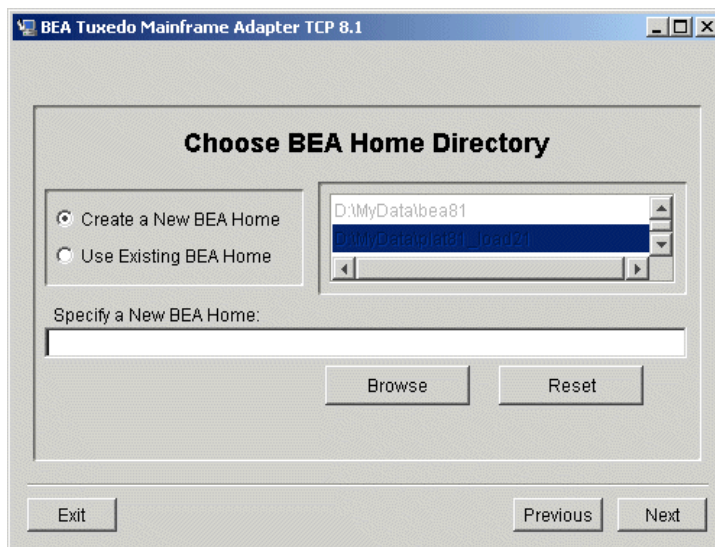


- Click the Yes option button to accept the license agreement; then click Next to proceed with the installation. The Choose Install Set screen is displayed. This screen appears in Windows installations only.

**Note:** If you click the No option button, you will not be able to continue with the installation. You must either exit the installation or go back to the Introduction screen.

- Click Next to proceed with the installation. The Choose BEA Home Directory screen is displayed (see [Figure 1-3](#)).

**Figure 1-3 Choose BEA Home Directory Screen**



- Create or select a BEA Home directory (the default for Windows is `c:\bea`; the default for UNIX is `$HOME/bea`). The BEA Home directory is the root directory in which you install all BEA products.

If you do not already have a BEA Home directory, you can create one by following these steps:

- Select the Create a New BEA Home option button.
- Accept the default location for your BEA Home directory or click Browse to specify a different location. If you accept the default location, it will be your BEA Home directory and your Tuxedo Mainframe Adapter for TCP Gateway software will install in the corresponding Tuxedo directory. If you do not want to install Tuxedo Mainframe Adapter

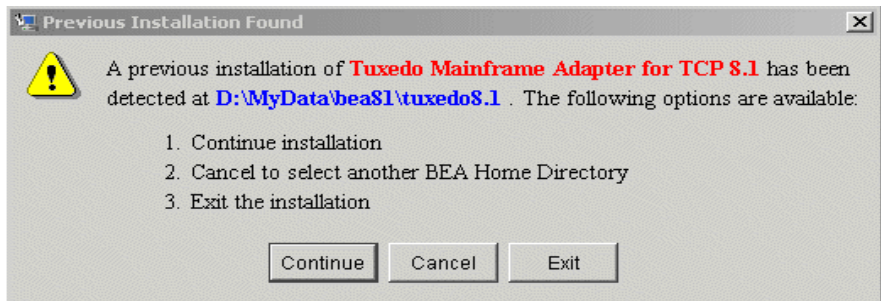
for TCP Gateway in this default location, you will have the opportunity, in Step 7, to choose another directory in which to install the software.

- c. Click Next to proceed with the installation.

If you already have one or more BEA Home directories on your system, you can use one of those directories as follows:

- a. Select the Use Existing BEA Home option button.
  - b. Select a BEA Home directory from the list displayed to the right of the option buttons. All valid BEA Home directories are displayed in this list. Valid BEA Home directories are directories where BEA products have been installed using the standard installation program.
  - c. Click Next to proceed with the installation.
7. If the installation program encounters a previous version of Tuxedo Mainframe Adapter for TCP in the selected BEA Home directory, the Previous Installation Found message box displays (Figure 1-4).

**Figure 1-4 Previous Installation Found Message Box**

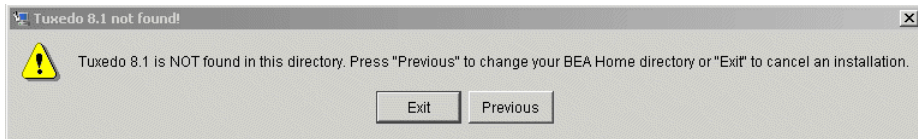


From this message box, do one of the following:

- Click Continue to install over the previous version.
- Click Cancel to return to the Choose BEA Home Directory Screen and select another directory.
- Click Exit to exit the installation program.

8. If you do not have a successful installation of Tuxedo 8.1 in the BEA Home directory, the Tuxedo 8.1 Not Installed message box displays (Figure 1-5).

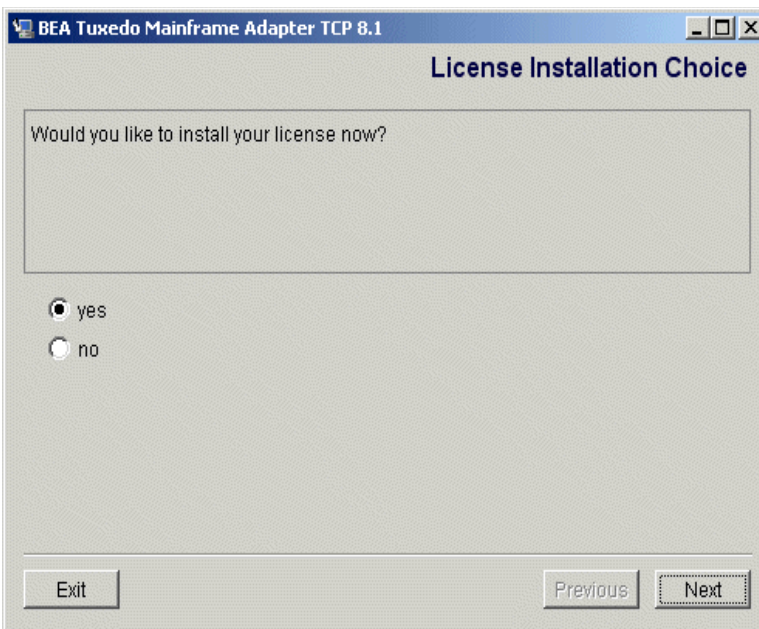
**Figure 1-5 Tuxedo 8.1 Not Installed Message Box**



From this message box, do one of the following:

- Click Exit to exit the installation program.
  - Click Previous to return to the Choose BEA Home Directory Screen and select another directory.
9. If the installation process continues, the License Installation Choice screen displays. To install the license now, select yes. To install the license later, select no.

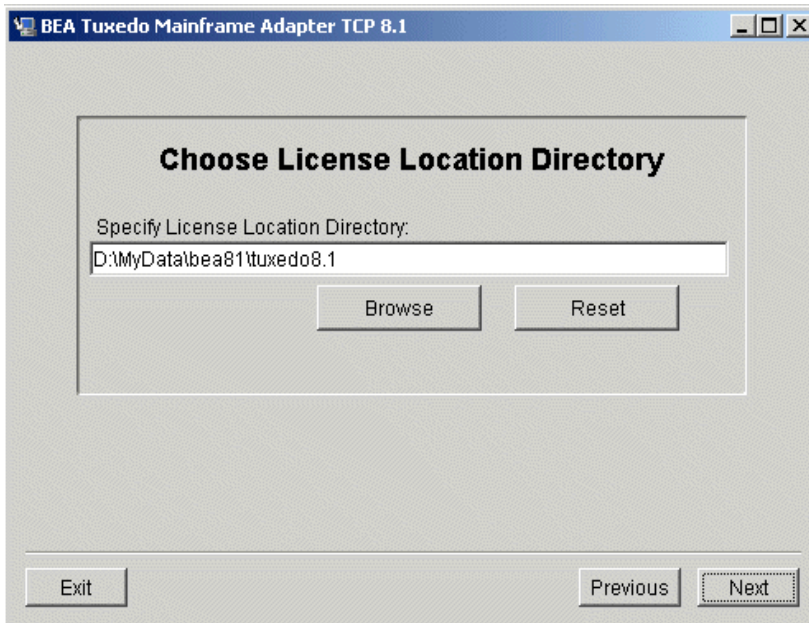
**Figure 1-6 License Installation Choice Screen**





- If you select yes, the Choose License Location Directory screen will display. Type in the directory where the license is located or click on Browse to select a directory. Click Next to complete the installation process.

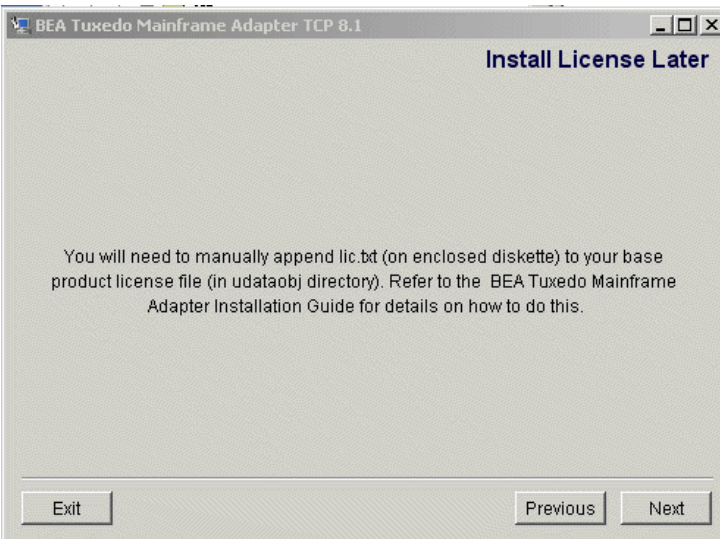
**Figure 1-7 Choose License Location Directory Screen**



- If you click No, the Install License Later screen will display. Click Next to complete the Installation process.

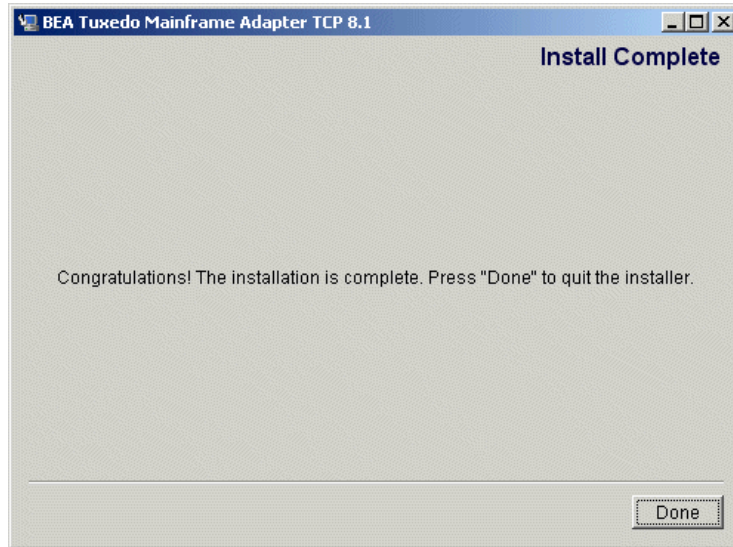
To install the license later, refer to the “Installing the License” section in the *BEA Tuxedo Mainframe Adapter for TCP Release Notes*.

**Figure 1-8 Install License Later Screen**



10. Upon installation completion, the Install Complete screen is displayed (Figure 1-9). Click Done to exit the installation program.

**Figure 1-9 Install Complete Screen**



## Uninstalling Tuxedo Mainframe Adapter for TCP Gateway

This section provides instructions for uninstalling the Tuxedo Mainframe Adapter for TCP Gateway component. The following topics are discussed:

- [Uninstalling on UNIX Platforms in Console Mode](#)
- [Uninstalling on Windows Platforms](#)

# Uninstalling on UNIX Platforms in Console Mode

To uninstall Tuxedo Mainframe Adapter for TCP Gateway on a UNIX platform:

1. Change directories to your `uninstaller_TMATCP` directory with the following command:

```
> cd <bea/home>/tuxedo8.1/uninstaller_TMATCP
```

2. Start the uninstallation program with the following command:

```
<bea/home> sh UninstallTMATCP -i console
```

[Listing 1-2](#) displays a Tuxedo Mainframe Adapter for TCP Gateway component uninstallation.

**Note:** The single-dash bar just beneath the double-dash bar in [Listing 1-2](#) is a progress indicator. When the single-dash bar becomes the same length as the double-dash bar, uninstallation is complete.

## Listing 1-2 UNIX Uninstallation Example

---

```
Preparing CONSOLE Uninstall...
=====
BEA Tuxedo Mainframe Adapter TCP (InstallAnywhere Uninstaller by Zero G)

About to uninstall...

 BEA Tuxedo Mainframe Adapter TCP

This will completely remove all components installed by InstallAnywhere. It
will not remove files and folders created after the installation.

PRESS <ENTER> TO BEGIN THE UNINSTALL, OR 'QUIT' TO EXIT THE UNINSTALLER:
<ENTER>
=====
Uninstall...

[===== | ===== | ===== | =====]
[----- | ----- | ----- | -----]
=====
```

Uninstall Complete

-----

All items were successfully uninstalled.

PRESS <ENTER> TO EXIT THE UNINSTALLER: <ENTER>

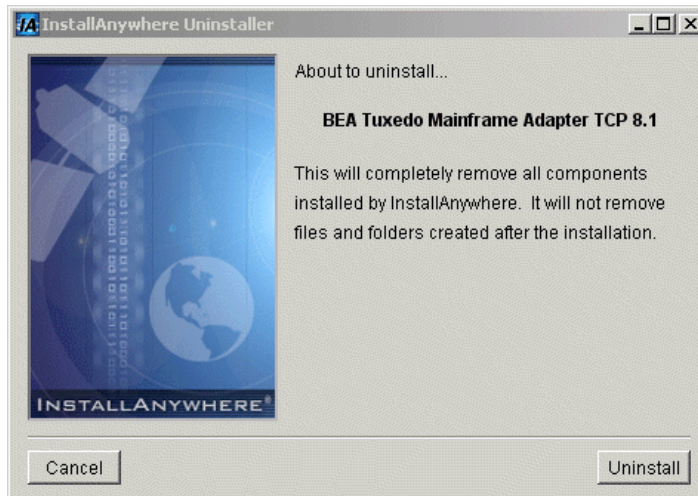
---

## Uninstalling on Windows Platforms

Perform the following steps to uninstall the Tuxedo Mainframe Adapter for TCP Gateway software on a Windows platform:

1. Choose Start—Programs—BEA WebLogic E-Business Platform—Tuxedo Mainframe Adapter for TCP 8.1—Uninstall BEA Tuxedo Mainframe Adapter for TCP from the Start menu. The Tuxedo Mainframe Adapter for TCP Uninstaller screen is displayed (Figure 1-10).

**Figure 1-10 Tuxedo Mainframe Adapter for TCP Uninstaller Screen**



2. Click Uninstall to start uninstalling TMA TCP. When the process is complete, the screen shown in [Figure 1-11](#) is displayed.

**Figure 1-11 Tuxedo Mainframe Adapter for TCP Uninstallation Complete Screen**



3. Click Exit to complete the uninstallation.

## Distribution Libraries and Executables

The Tuxedo Mainframe Adapter for TCP CD-ROM contains the following libraries and executable programs. After installing the TMA TCP software, verify that these libraries and programs are installed on your system.

## HP-UX 11.00

Verify that the following files are installed by TMA TCP Gateway.

| Directory          | Files                                                                                                                                                                |
|--------------------|----------------------------------------------------------------------------------------------------------------------------------------------------------------------|
| /bin               | GWIDOMAIN                                                                                                                                                            |
| /lib               | ConvMVS.sl<br>ConvMVSC.sl<br>libctxcp_10.sl<br>WrapTPS.sl<br>WrapTPSD.sl                                                                                             |
| /locale/C          | LIBGWI_CAT<br>LIBGWI.text                                                                                                                                            |
| /udataobj/codepage | 00819x00037<br>00819x00273<br>00819x00278<br>00819x00284<br>00819x00285<br>00819x00297<br>00819x00500<br>00819x00860<br>00819x01047<br>00912x00870<br>none<br>tuxedo |

## Solaris 8

Verify that the following files are installed by TMA TCP Gateway.

| Directory | Files                                                                                |
|-----------|--------------------------------------------------------------------------------------|
| /bin      | GWIDOMAIN                                                                            |
| /lib      | ConvMVS.so.60<br>ConvMVSC.so.60<br>libctxcp_10.so<br>WrapTPS.so.60<br>WrapTPSD.so.60 |

| <b>Directory</b>   | <b>Files</b>                                                                                                                                                         |
|--------------------|----------------------------------------------------------------------------------------------------------------------------------------------------------------------|
| /locale/C          | LIBGWI_CAT<br>LIBGWI.text                                                                                                                                            |
| /udataobj/codepage | 00819x00037<br>00819x00273<br>00819x00278<br>00819x00284<br>00819x00285<br>00819x00297<br>00819x00500<br>00819x00860<br>00819x01047<br>00912x00870<br>none<br>tuxedo |

## AIX

Verify that the following files are installed by TMA TCP Gateway.

| <b>Directory</b> | <b>Files</b>                                                                         |
|------------------|--------------------------------------------------------------------------------------|
| /bin             | GWIDOMAIN                                                                            |
| /lib             | ConvMVS.so.60<br>ConvMVSC.so.60<br>libctxcp_10.so<br>WrapTPS.so.60<br>WrapTPSD.so.60 |



| Directory          | Files                                                                                                                                                                |
|--------------------|----------------------------------------------------------------------------------------------------------------------------------------------------------------------|
| /locale/C          | LIBGWI_CAT<br>LIBGWI.text                                                                                                                                            |
| /udataobj/codepage | 00819x00037<br>00819x00273<br>00819x00278<br>00819x00284<br>00819x00285<br>00819x00297<br>00819x00500<br>00819x00860<br>00819x01047<br>00912x00870<br>none<br>tuxedo |

## Windows 2000

Verify that the following files are installed by TMA TCP Gateway.

| Directory | Files                                                                                                     |
|-----------|-----------------------------------------------------------------------------------------------------------|
| /bin      | GWIDOMAIN.exe<br>ConvMVS.dll<br>ConvMVSC.dll<br>ctxcp_10.dll<br>libgwi.dll<br>WrapTPS.dll<br>WrapTPSD.dll |

---

| <b>Directory</b>   | <b>Files</b>                                                                                                                                                         |
|--------------------|----------------------------------------------------------------------------------------------------------------------------------------------------------------------|
| /locale/C          | LIBGWI_CAT<br>LIBGWI.text                                                                                                                                            |
| /udataobj/codepage | 00819x00037<br>00819x00273<br>00819x00278<br>00819x00284<br>00819x00285<br>00819x00297<br>00819x00500<br>00819x00860<br>00819x01047<br>00912x00870<br>none<br>tuxedo |

---

# Installing BEA Tuxedo Mainframe Adapter for TCP (IMS)

Installing BEA Tuxedo Mainframe Adapter for TCP (IMS) (hereafter referenced as TMA TCP for IMS) consists of the following basic tasks.

- [Preparing to Install](#)
- [Installing TMA TCP for IMS](#)

**Note:** To upgrade from previous releases of eLink for Mainframe TCP, refer to *BEA Tuxedo Mainframe Adapter for TCP Release Notes*.

## Preparing to Install

Complete the following tasks prior to installing the TMA TCP for IMS software:

- Read the *BEA Tuxedo Mainframe Adapter for TCP Release Notes*
- Verify the TCP/IP stack software is installed and configured as part of your operating system installation.

## Installing TMA TCP for IMS

To install TMA TCP for IMS, complete the following tasks:

- [Task 1: Allocate OS/390 Datasets](#)
- [Task 2: Unload the Distribution Files](#)
- [Task 3: Link-Edit TMA TCP for IMS](#)

- [Task 4: Define TMA TCP for IMS to MVS](#)
- [Task 5: Create an TMA TCP for IMS Configuration File](#)
- [Task 6: Create JCL to Run TMA TCP for IMS](#)
- [Task 7: Start BEA TMA TCP for IMS](#)
- [Task 8: Test the Installation](#)

## Task 1: Allocate OS/390 Datasets

The directory structures on the TMA TCP for IMS software CD include the following partitioned datasets:

| Partitioned Datasets (PDS)  | Format | Contents                                                                      |
|-----------------------------|--------|-------------------------------------------------------------------------------|
| CONTROL                     | ASCII  | Sample IMS definitions, sample BEA TMA TCP for IMS configuration files        |
| INCLUDE                     | ASCII  | C header files, COBOL copybooks for use by IMS Client and Server transactions |
| JCL                         | ASCII  | Job Control Language for linking and executing BEA TMA TCP for IMS            |
| SOURCE                      | ASCII  | Sample IMS Client and Server transactions for use with BEA TMA TCP for IMS    |
| OBJECT                      | BINARY | Object component files of BEA TMA TCP for IMS                                 |
| MSGCAT (sequential dataset) | BINARY | File containing runtime messages that TMA TCP for IMS issue                   |

1. FTP the JCL file `INSTALL` from the JCL subdirectory.
2. Execute this job to allocate datasets using high-level qualifiers appropriate to your installation (`hlq1` and `hlq2` are dataset name high-level qualifiers appropriate to your installation).

The following datasets are allocated to receive the Tuxedo Mainframe Adapter for TCP file distribution.

### Listing 2-1 Allocating OS/390 Datasets

---

```
DSNAME: hlq1.hlq2.CONTROL
DSORG: PO
DIRBLKS: 10
RECFM: FB
LRECL: 80
BLKSIZE: 23440 (or other valid blocksize)
SPACE: 2 tracks
Usage: IMS sample definitions, sample configuration file

DSNAME: hlq1.hlq2.INCLUDE
DSORG: PO
DIRBLKS: 10
RECFM: FB
LRECL: 80
BLKSIZE: 23440 (or other valid blocksize)
SPACE: 2 tracks
Usage: C header file, COBOL copybooks

DSNAME: hlq1.hlq2.JCL
DSORG: PO
DIRBLKS: 10
RECFM: FB
LRECL: 80
BLKSIZE: 23440 (or other valid blocksize)
SPACE: 2 tracks
Usage: Sample LINK and execute JCL

DSNAME: hlq1.hlq2.MSGCAT
DSORG: PS
DIRBLKS: 10
RECFM: FB
LRECL: 100
BLKSIZE: 32000 (or other valid blocksize)
```

SPACE: 2 tracks  
 Usage: Message text  
  
 DSNAME: *hlq1.hlq2*.OBJECT  
 DSORG: PO  
 DIRBLKS: 10  
 RECFM: FB  
 LRECL: 80  
 BLKSIZE: 3200  
 SPACE: 1 cylinder  
 Usage: Pre-linked object files  
  
 DSNAME: *hlq1.hlq2*.SOURCE  
 DSORG: PO  
 DIRBLKS: 10  
 RECFM: FB  
 LRECL: 80  
 BLKSIZE: 23440 (or other valid blocksize)  
 SPACE: 1 track  
 Usage: Sample IMS client and server transactions

---

The following runtime datasets are also allocated.

| <b>Runtime Datasets</b> | <b>Format</b> | <b>Contents</b>                                                |
|-------------------------|---------------|----------------------------------------------------------------|
| LOAD                    | Binary        | Load library for BEA TMA TCP for IMS                           |
| CONFIG                  | ASCII         | Configuration file for BEA TMA TCP for IMS                     |
| MSGLOG                  | ASCII         | Message log for BEA TMA TCP for IMS                            |
| SVRLOG                  | ASCII         | A log file containing server responses for BEA TMA TCP for IMS |

**Listing 2-2 Allocating Runtime Datasets**

---

```
DSNAME: hlq1.hlq2.LOAD
DSORG: PO
DIRBLKS: 10
RECFM: U
LRECL: 0
BLKSIZE: 6133 (or other valid blocksize)
SPACE: 1 cylinder
Usage: Load library

DSNAME: hlq1.hlq2.CONFIG
DSORG: PS
RECFM: FB
LRECL: 80
BLKSIZE: 23440 (or other valid blocksize)
SPACE: 1 track
Usage: Configuration File

DSNAME: hlq1.hlq2.MSGLOG
DSORG: PS
RECFM: VB
LRECL: 1028
BLKSIZE: 6144 (or other valid blocksize)
SPACE: 1 cylinder
Usage: Message Log

DSNAME: hlq1.hlq2.SVRLOG
DSORG: PS
RECFM: VB
LRECL: 32756
BLKSIZE: 32760 (Note: required blocksize)
SPACE: 1 cylinder
Usage: Server Response Log
```

---

## Task 2: Unload the Distribution Files

The TMA TCP for IMS product is distributed on a single CD-ROM (with other members of the Tuxedo Mainframe Adapter for TCP product). The TMA TCP for IMS distribution files are grouped under one of the following directory structures:

- For UNIX, the directory is `/cdrom/unixmf`.

In this directory structure, `/cdrom` is the directory where the drive is mounted.

- For Windows 2000, the directory is `D:\ntmf`.

In this directory structure, `D:` is the CD-ROM drive.

Because the distribution files are located on a CD-ROM, you probably use a UNIX-based system or a PC-based system to access the files on the CD-ROM and file transfer them to OS/390.

Transfer the contents of each subdirectory to the corresponding distribution library on the OS/390 system. Use a file transfer program (such as FTP) or any other mechanism that allows you to transfer files to your OS/390 system. The file transfer program must be able to:

- Properly transfer both text and binary files
- Properly create members in a target library (PDS)

The IBM File Transfer Program (FTP, distributed as part of TCP/IP for OS/390) satisfies both of these requirements.

Each file in each subdirectory on the distribution CD-ROM corresponds to a member of the associated target library. For example, file `BEATCPI` in the `JCL` subdirectory corresponds to member `BEATCPI` in the `JCL` distribution library.

**Note:** All files in the `CONTROL`, `INCLUDE`, `JCL`, and `SOURCE` subdirectories are text files; be sure to specify text (or ASCII) mode when you transfer these files from the CD-ROM to their corresponding OS/390 distribution library members.

The `MSGCAT` file and all files in the `OBJECT` subdirectory are binary files; specify binary (or image) mode when you transfer these files from the CD-ROM to the corresponding OS/390 distribution library members.

## Task 3: Link-Edit TMA TCP for IMS

The TMA TCP for IMS program is delivered as a pre-linked object file. Use the `LNKBEA34` JCL file for linking with IBM's TCP/IP.



Tailor the JCL as required to match your installation's standards and naming conventions. Review the following items and make the necessary changes before you submit the job.

1. Supply an appropriate Job Card for the job.
2. Change the names of product datasets as required to match those in your particular installation, including LE/370 datasets (for example, SYS1.SCEELKED), TCP/IP for OS/390 datasets (for example, SYS1.SEZACMTX), and IMS (for example, IMSV5R1.RESLIB).
3. Change the names of TMA TCP for IMS datasets as required to match those you allocated in Step 1 (for example, BEATCPI.DIST.OBJECT).
4. Change the name of the link-editor (HEWL) as required to match the name used by your installation.

**Note:** The link job references components supplied by LE/370, TCP/IP for OS/390, and IMS. When the job completes successfully, you receive a return code of 0 from the link-edit steps and an executable load module is placed into the specified target load library. The load module should have attributes of AMODE=31, RMODE=24. There should be no unresolved external references.

## Sample JCL for Linking TMA TCP for IMS

[Listing 2-3](#) is JCL to link the distributed object files into an executable load module.

### Listing 2-3 Sample JCL for Linking Distributed Object Files

---

```
//JOBNAME JOB ETC.
//LKED EXEC PGM=HEWL,COND=(4,LT),
// REGION=2M,PARM='AMODE=31,MAP,XREF'
//SYSLIB DD DSNAME=SYS1.SCEELKED,DISP=SHR
// DD DSNAME=SYS1.SEZACMTX,DISP=SHR
//SYSPRINT DD SYSOUT=*
//SYSLMOD DD DISP=SHR,DSNAME=BEATCPI.DIST.LOAD
//SYSUT1 DD UNIT=VIO,SPACE=(TRK,(10,10))
//RESLIB DD DISP=SHR,DSN=IMSV5R1.RESLIB
//SYSLIN DD DISP=OLD,DSN=BEA.HLQ.OBJECT(PREBEA34)
// DD *
INCLUDE RESLIB(DFSLI000)
ENTRY CEESTART
NAME BEATCPI(R)
```

```
/*
//
```

---

## Task 4: Define TMA TCP for IMS to MVS

To integrate TMA TCP for IMS into your IMS environment, you must properly define it to MVS.

### OTMA Definition

To use OTMA to integrate TMA TCP for IMS into your OS/390 environment, you must properly define it in the program property table (PPT). [Listing 2-4](#) is a sample program entry for the Tuxedo Mainframe Adapter for TCP product. Also, you must link the program to an APF authorized library.

#### Listing 2-4 Sample Program Property Table

---

```
PPT PGMNAME (BEATCP34) /* PROGRAM NAME = BEATCP34 */
 CANCEL /* PROGRAM CAN BE CANCELED */
 KEY (7) /* PROTECT KEY ASSIGNED IS 7 */
 SWAP /* PROGRAM IS SWAPPABLE */
 NOPRIV /* PROGRAM IS NOT PRIVILEGED */
 DSI /* REQUIRES DATA SET INTEGRITY */
 PASS /* CANNOT BYPASS PASSWORD PROTECTION */
 SYST /* PROGRAM IS A SYSTEM TASK */
 AFF (NONE) /* NO CPU AFFINITY */
 NOPREF /* NO PREFERRED STORAGE FRAMES */
```

---

## Task 5: Create an TMA TCP for IMS Configuration File

BEA TMA TCP for IMS makes use of a text configuration file which is read and processed during initialization to establish the configuration. Any text editor (such as the ISPF Editor) can be used to create the configuration file. `CONFIGOT`, the OTMA sample in the `CONTROL` distribution library is a sample configuration file which you may use as a starting point for creating configuration files tailored to your particular installation.

Place your completed configuration file in the configuration dataset allocated in the [“Task 1: Allocate OS/390 Datasets”](#) section. A configuration file includes the following basic sections:

- `SYSTEM` Statement Definition
- Local Gateways Definition
- Remote Gateways Definition
- Remote Services Definition
- Local Services and IMS Host Systems Definition

**Note:** You must define local services and IMS host systems if running OTMA.

For detailed information about syntax and parameter definitions for the configuration file, refer to the BEA Tuxedo Mainframe Adapter for TCP IMS User Guide.

## SYSTEM Statement Definition

`SYSTEM` parameters control the overall operational environment of BEA TMA TCP for IMS. Because TMA TCP for IMS cannot “wait” on the IMS Message Queue, the queue is periodically interrogated (polled) to determine if any new work has arrived (for example, IMS Client requests or Server responses). Set the `SleepTime` parameter to specify the amount of time that TMA TCP for IMS “sleeps” (waits) during idle periods before checking the IMS Message Queue for work.

## Local Gateways Definition

You must provide at least one `GATEWAY TYPE=LOCAL` statement to define access to your local (IMS) gateway by remote systems. In this statement, specify the following:

- The IP Address that remote systems use to establish TCP/IP connections with this gateway.
- The IP Address should be that of the OS/390 machine on which BEA TMA TCP for IMS is running.
- The Port Number that remote systems use to establish TCP/IP connections with this gateway.
- You should specify a Port Number that is not a well-known port number and one that is not used by any other TCP/IP application.
- The Account ID and Password (if used) that must be supplied by remote systems to successfully establish an inbound session with this gateway

- The maximum number of concurrent inbound sessions (TCP/IP connections initiated by remote systems) that is accepted via the specified port

Make sure that remote systems are correctly configured with the corresponding IP Address, Port Number, Account ID (if used), and Password (if used). Otherwise, attempts by remote systems to connect to this gateway fail.

## Remote Gateways Definition

`GATEWAY TYPE=REMOTE` statements define access to remote systems by the IMS gateway. In particular, each `GATEWAY TYPE=REMOTE` statement specifies:

- The IP Address to use to establish a TCP/IP connection (that is, connect) with the remote gateway
- The Port Number to use to establish a TCP/IP connection (that is, connect) with the remote gateway
- The Account ID and Password (if used) that must be supplied to establish an outbound session with the remote gateway
- The minimum and maximum number of concurrent, outbound sessions that are established with the remote gateway
- If you specify a value other than zero for the minimum number of sessions, TMA TCP for IMS attempts to establish the specified number of outbound sessions with the remote system during initialization.

The IP Address, Port Number, Account ID, and Password must match the configuration of the remote system. Otherwise, attempts to establish an outbound session with the remote system fails.

## Remote Services Definition

`SERVICE TYPE=REMOTE` statements define remote services to which TMA TCP for IMS has access. Each statement specifies:

- The corresponding local and remote service names
- The Local Service Name is the name used by an IMS Client transaction to request the service. The Remote Service Name is the name of the service as defined on the remote system. These need not be the same, but note that the Remote Service Name *must* match the configuration of the remote system.
- The remote system (Logical Machine ID) that offers the service

- The remote system offering the service is identified by a Logical Machine ID, which must correspond to the Logical Machine ID specified in a `GATEWAY TYPE=REMOTE` statement.
- A time limit for processing the request
- The Time Limit (in seconds) specifies how long TMA TCP for IMS “waits” for a response to a request sent to a remote system before assuming that the request has “timed out” and that no response is forthcoming. Specify a value that makes a reasonable allowance for network latency and overall system load. Small values should be avoided because they may result in requests timing out under otherwise normal circumstances.

**Note:** It is permissible to have more than one `SERVICE TYPE=REMOTE` statement for the same (local) service name. When this is the case, each statement must identify a different remote Logical Machine ID. This allows TMA TCP for IMS to “spread” requests for a particular service among multiple remote systems offering the service, thus balancing the load and improving overall throughput.

## Local Services and IMS Host Systems Definition

`SERVICE TYPE=LOCAL` statements define local services offered by a local IMS host. There can be multiple `SERVICE TYPE=LOCAL` statements and multiple statements defining the same service, provided each specifies a different local `IMSID`. Each statement requires the following information:

- The corresponding local and remote service names

The Local Service Name is the name used by an IMS Client transaction to request the service. The Remote Service Name is the name of the service as defined on the remote system.

**Note:** The local and remote service names can be different; however, the Remote Service Name *must* match the configuration of the remote system.

- The `IMSID` (Logical IMS ID) that offers the service

The `IMSID` is a symbolic name that uniquely identifies an IMS system definition. This name must match a logical IMS ID (`IMSID`) specified in a `HOST, TYPE=IMS` statement.

## Task 6: Create JCL to Run TMA TCP for IMS

You must create JCL to run the BEA TMA TCP for IMS product. The following section specifies how to create JCL for running as an OTMA client.

## JCL for OTMA Clients

When running the product as an OTMA client, TMA TCP for IMS runs in its own address space under OS/390 as a started task or long running job. Member `RUNOTM` in the JCL distribution library is a sample job for executing TMA TCP for IMS.

When tailoring the JCL for your OTMA installation, pay particular attention to the following:

- You need to supply an appropriate Job Card for the job. The job card should specify `TIME=1440`, since TMA TCP for IMS executes as a non-ending job.
- TMA TCP for IMS is written in the C language and requires access to the LE/370 runtime environment. Add DD cards to the `STEPLIB` for the LE/370 runtime datasets, including `SYS1.SCEERUN` and `SYS1.SCEELKED`. Use whatever dataset names are appropriate for your installation.
- For diagnostic purposes, you may wish to add DD cards for `SYSUDUMP` and/or `CEEDUMP`. In the event of an abnormal termination (`ABEND`), LE/370 writes a formatted dump to `CEEDUMP`.
- Add a DD card for `SYSTCPD` pointing to the TPC/IP Data file (for example, `TCPIP.V3R1.DATA` – change the dataset name as necessary to conform to your installation). This dataset is used by TCP/IP in the TMA TCP for IMS address space (when using IBM TCP/IP).
- If you want to preserve messages from previous executions of TMA TCP for IMS, code `DISP=MOD` in the `MSGLOG` DD statement; new messages are appended to the end of the dataset (existing messages are preserved). If you want the Message Log to be overwritten with each new execution of TMA TCP for IMS, code `DISP=OLD` (or `DISP=SHR`) in the `MSGLOG` DD statement; existing messages are lost.

## Task 7: Start BEA TMA TCP for IMS

Before you attempt to start TMA TCP for IMS the first time, make sure that the proper IMS definitions are in place.

If you are using RACF for security, you must set up a `FACILITY` Class Profile in RACF of `IMSXCF.group.client`. You can configure the `group` and `client` names for TMA TCP for IMS.

Start TMA TCP for IMS by submitting the JCL prepared in the “[Task 6: Create JCL to Run TMA TCP for IMS](#)” section.

For additional information on operating this product, refer to the BEA Tuxedo Mainframe Adapter for TCP IMS User Guide.

## Task 8: Test the Installation

When you start TMA TCP for IMS for the first time, you should do so in a controlled environment, using a small, simple configuration to methodically test the system to verify your installation and the configuration. For additional information on using this product, refer to the BEA Tuxedo Mainframe Adapter for TCP IMS User Guide.

## Distribution Libraries and Executables

The Tuxedo Mainframe Adapter for TCP CD-ROM contains the following libraries and executable programs. After installing the TMA TCP for IMS software, verify that these libraries and programs are installed on your system.

| Directory | Files                                                                           |
|-----------|---------------------------------------------------------------------------------|
| (top)     | msgcat                                                                          |
| CONTROL   | beacrp01<br>beacrq01<br>beacrr01<br>beasvr01<br>beatcpi<br>configbp<br>configot |
| INCLUDE   | beatcpi<br>client<br>server                                                     |
| JCL       | install<br>lnkbea31<br>lnkbea34<br>runotm                                       |

---

| <b>Directory</b> | <b>Files</b>                                                                   |
|------------------|--------------------------------------------------------------------------------|
| OBJECT           | prebea31<br>prebea34                                                           |
| SOURCE           | beacrp01<br>beacrq01<br>beacrr01<br>beactm<br>beasvr01<br>dfsydru0<br>dfsyprx0 |

---



# Installing BEA Tuxedo Mainframe Adapter for TCP (CICS)

Installing BEA Tuxedo Mainframe Adapter for TCP (CICS) (hereafter referenced as TMA TCP for CICS) consists of the following basic tasks and topics.

- [Preparing for Installation](#)
- [Installing TMA TCP for CICS](#)

**Note:** To upgrade from previous releases of eLink for Mainframe TCP, refer to *BEA Tuxedo Mainframe Adapter for TCP Release Notes*.

## Preparing for Installation

Before you install TMA TCP for CICS, complete the following tasks.

- [Task 1: Verify System Requirements](#)
- [Task 2: Check Pre-Installation Considerations](#)

### Task 1: Verify System Requirements

Prior to beginning the installation, verify hardware and software requirements. For system requirements, refer to the *BEA Tuxedo Mainframe Adapter for TCP Release Notes*. Ensure that your installation workstation is connected to OS/390 through TCP/IP, and is capable of running FTP.

## Task 2: Check Pre-Installation Considerations

Verify that all block sizes in the supplied JCL are appropriate for the device types being used. By default, 3380 is assumed.

## Installing TMA TCP for CICS

Complete the following tasks to install BEA TMA TCP for CICS

- [Task 1: Allocate Temporary Data Sets](#)
- [Task 2: Transfer the Installation JCL](#)
- [Task 3: Create the PDS Libraries](#)
- [Task 4: Upload the Distribution Files](#)
- [Task 5: Define the CICS VSAM Files](#)
- [Task 6: Verify Contents of PROCS](#)
- [Task 7: Change Resource Names \(Optional\)](#)
- [Task 8: Define the CICS Table Entries](#)
- [Task 9: Build TMA TCP for CICS Executables](#)
- [Task 10: Verify the CICS Setup](#)
- [Task 11: Assemble and Link the CICS DCT](#)
- [Task 12: Modify the CICS Startup JCL](#)

## Task 1: Allocate Temporary Data Sets

Allocate a temporary data set on OS/390 direct access storage device (DASD) for the installation job as shown in the following example.

**Note:** Specify either the Volume Serial parameter or the Generic Unit parameter, but not both.

### Listing 3-1 Allocating the Install Data Set

---

```
Data Set Name:YOURHLQ.TEMP.INSTALL
Volume serial:nnnnn (Blank for authorized default volume)
```

```

Generic unit: (Generic group name or unit address)
Space units: TRACK (BLKS, TRKS, CYLS, KB, MB or BYTES)
Primary quantity:1 (In above units)
Secondary quantity:1 (In above units)
Directory blocks:0 (Zero for sequential data set)
Record format:FB
Record length:80
Block size:6160
Expiration date: (YY/MM/DD, YYYY/MM/DD YY.DDD,
 YYYY.DDD in Julian form DDDD for
 retention period in days or blank)

Enter "/" to select option
Allocate Multiple Volumes

```

---

## Task 2: Transfer the Installation JCL

The TMA TCP for CICS product is distributed on a single CD-ROM (with other members of the BEA TMA TCP product). The TMA TCP for CICS distribution files are grouped under one of the following directory structures:

- To FTP from UNIX to the mainframe, the distribution files are in:

```
/cdrom/unixmf/cics directory,
```

```
/cdrom is the directory where the drive is mounted.
```

- To FTP from Windows 2000 to the mainframe, the distribution files are in:

```
D:\ntmf\cics
```

```
D: is the CD-ROM drive.
```

FTP the file called `INSTALL` to the temporary data set created in the “[Task 1: Allocate Temporary Data Sets](#)” section. Listing 3-2 is the process for downloading the `INSTALL` file using FTP.

### Listing 3-2 Uploading Distribution Files

---

```

% ftp os390-node-name
Connected to os390-node-name.
Name (os390-node-name:unix-id): tso-id
331 Send password please.

```

```

Password: tso-password
230 tso-id is logged on.
Remote system type is OS/390.
ftp> quot site rec=fb
ftp> quot site lr=80
ftp> put INSTALL 'data set name allocated'
200 Port request OK.
125 Storing data set 'data set name allocated'
2749 bytes sent in 0.00 seconds (555.12 Kbytes/s)
ftp> quit
221 Quit command received. Goodbye.

```

---

## Task 3: Create the PDS Libraries

Tailor the JCL as required to match your installation’s standards and naming conventions. Review the following items and make the necessary changes before you submit the job.

**Note:** This is an instream PROC; the variables are at the end of the PROC.

1. Modify the JOBCARD to your standards.
2. Modify the variable “YOURHLQ.” If you intend to rename them, modify the variables JCL, OBJECT, and SOURCE.
3. Submit the revised INSTALL JCL. This JCL creates six partitioned data sets based on the “high-level-qualifier” you have specified as the value of the JCL parameter (&HLQ) in the JCL.

The INSTALL JCL includes the name BEATCPC as part of the data set name. For example.

### Listing 3-3 Sample INSTALL JCL

---

```

//JDOE1 JOB (INSTALL), 'J DOE',NOTIFY=&SYSUID,
// CLASS=C,MSGCLASS=X,MSGLEVEL=(1,1),TIME=1440
//*
//INSTALL PROC HLQ=, ** YOUR HIGH LEVEL QUALIFIER
// DASD=, ** DASD DEVICE TYPE
// VOLUME=, ** SERIAL NUMBER OF TARGER VOLUME
// BLKFB=6160, ** BLKSIZE FOR FIXED BLOCK FILE
//*=====
//* THESE JCL WILL CREATE THE PDS FILES REQUIRED FOR
//* THE INSTALLATION OF BEA TMA TCP FOR CICS
//*=====

```

```

// PDESCNTL= 'CONTROL' , ** 'YOURHLQ'.BEATCPC.CONTROL
// PDSINCL= 'INCLUDE' , ** 'YOURHLQ'.BEATCPC.INCLUDE
// PDSJCL= 'JCL' , ** 'YOURHLQ'.BEATCPC.JCL
// PDSOBS= 'OBJECT' , ** 'YOURHLQ'.BEATCPC.OBJECT
// PDSLKED= 'PLKED' , ** 'YOURHLQ'.BEATCPC.PLKED
// PDSSRCE= 'SOURCE' , ** 'YOURHLQ'.BEATCPC.SOURCE
// PDSLKED= 'PLKED' , ** 'YOURHLQ'.BEATCPC.PLKED
// PDSSRCE= 'SOURCE' , ** 'YOURHLQ'.BEATCPC.SOURCE
//*-----
//* WE RECOMMEND THAT YOU KEEP THE NODE 'BEATCPC' IN THE data set NAMES
//*-----
//EXEC PGM=IEFBR14
//PDESCNTL DD DSNNAME=&HLQ..BEATCPC.&PDESCNTL.,DISP=(NEW,CATLG,DELETE) ,
// DCB=(DSORG=PO,RECFM=FB,LRECL=80,BLKSIZE=&BLKFB) ,
// UNIT=&DASD,VOL=SER=&VOLUME,SPACE=(CYL,(1,1,5))
//*
//PDSJCL DD DSNNAME=&HLQ..BEATCPC.&PDSJCL.,DISP=(NEW,CATLG,DELETE) ,
// DCB=(DSORG=PO,RECFM=FB,LRECL=80,BLKSIZE=&BLKFB) ,
// UNIT=&DASD,VOL=SER=&VOLUME,SPACE=(CYL,(1,1,5))
//*
//PDSINCL DD DSNNAME=&HLQ..BEATCPC.&PDSINCL.,DISP=(NEW,CATLG,DELETE) ,
// DCB=(DSORG=PO,RECFM=FB,LRECL=80,BLKSIZE=&BLKFB) ,
// UNIT=&DASD,VOL=SER=&VOLUME,SPACE=(CYL,(1,1,5))
//*
//PDSOBS DD DSNNAME=&HLQ..BEATCPC.&PDSOBS.,DISP=(NEW,CATLG,DELETE) ,
// DCB=(DSORG=PO,RECFM=FB,LRECL=80,BLKSIZE=3200) ,
// UNIT=&DASD,VOL=SER=&VOLUME,SPACE=(CYL,(3,1,5))
//*
//PDSLKED DD DSNNAME=&HLQ..BEATCPC.&PDSLKED.,DISP=(NEW,CATLG,DELETE) ,
// DCB=(DSORG=PO,RECFM=FB,LRECL=80,BLKSIZE=&BLKFB) ,
// UNIT=&DASD,VOL=SER=&VOLUME,SPACE=(CYL,(3,1,5))
//*
//PDSSRCE DD DSNNAME=&HLQ..BEATCPC.&PDSSRCE.,DISP=(NEW,CATLG,DELETE) ,
// DCB=(DSORG=PO,RECFM=FB,LRECL=80,BLKSIZE=&BLKFB) ,
// UNIT=&DASD,VOL=SER=&VOLUME,SPACE=(CYL,(1,1,5))
//*
// PEND
//*-----
//* CUSTOMIZE THE PARAMETER ACCORDING TO YOUR INSTALLATION
//*-----
// EXEC PROC=INSTALL,
// DASD=3390,** YOUR DEVICE TYPE
// VOLUME=MVS201,** YOUR VOLUME SERIAL NUMBER
// HLQ='PRODUCTS.BEA.TMA',** YOUR HIGH LEVEL QUALIFIER
// PDESCNTL='CONTROL',** BEATCPC CONTROL
// PDSINCL='INCLUDE',** BEATCPC INCLUDE
// PDSJCL='JCL',** BEATCPC JCL
// PDSOBS='OBJECT',** BEATCPC OBJECT

```

```
// PDSLKED='PLKED',** BEATCPC PLKED
// PDSSRCE='SOURCE'** BEATCPC SOURCE
```

---

## Task 4: Upload the Distribution Files

Upload all the files on the distribution medium to the partitioned data sets allocated by the job `INSTALL` in the “[Task 3: Create the PDS Libraries](#)” section.

The TMA TCP for CICS distribution files are grouped under one of the following directory structures:

- To FTP the distribution files from UNIX to the mainframe, the files are in:

```
/cdrom/unixmf/cics
```

`/cdrom` is the directory where the drive is mounted.

- To FTP files from Windows 2000 to the mainframe, the files are in:

```
D:\ntmf\cics
```

`D:` is the CD-ROM drive.

The previous directory structures include the following partitioned data sets.

**Table 3-1 Partitioned Data Sets**

| From                   | To                                                                                         |
|------------------------|--------------------------------------------------------------------------------------------|
| <code>./control</code> | Your PDS for <code>CONTROL</code> ( <code>YOURHLQ.BEATCPC.CONTROL</code> )<br>(ASCII mode) |
| <code>./jcl</code>     | Your PDS for <code>JCL</code> ( <code>YOURHLQ.BEATCPC.JCL</code> )<br>(ASCII mode)         |
| <code>./source</code>  | Your PDS for <code>SOURCE</code> ( <code>YOURHLQ.BEATCPC.SOURCE</code> )<br>(ASCII mode)   |
| <code>./include</code> | Your PDS for <code>INCLUDE</code> ( <code>YOURHLQ.BEATCPC.INCLUDE</code> )<br>(ASCII mode) |

| From     | To                                                            |
|----------|---------------------------------------------------------------|
| ./object | Your PDS for OBJECT (YOURHLQ.BEATCPC.OBJECT)<br>(Binary mode) |
| ./plked  | Your PDS for PLKED (YOURHLQ.BEATCPC.PLKED)<br>(Binary mode)   |

---

#### Listing 3-4 Uploading Distribution Files Using FTP

---

```
% ftp os390-node-name
Connected to os390-node-name.
Name (beavs:tso-id):
331 Send password please.
Password: tso-password
230 tso-id is logged on.
Remote system type is OS/390.
ftp> prompt off
Interactive mode off
ftp> quot site rec=fb
200 SITE command was accepted
ftp> quot site lr=80
200 SITE command was accepted
```

---

Upload the CONTROL files.

**Note:** You must set ASCII mode on.

---

#### Listing 3-5 Upload control Files

---

```
ftp> lcd /cdrom/unixmf/cics/control
Local directory now /cdrom/unixmf/cics/control
ftp> cd 'YOURHLQ.BEATCPC.CONTROL'
250 "'YOURHLQ.BEATCPC.CONTROL'" partitioned data set is working directory
ftp>ascii
200 Representation type is Ascii
```

```
ftp> mput *
local: CSDU remote: CSDU
200 Port request OK.
125 Storing data set "YOURHLQ".BEATCPC.CONTROL(CSDU)
250 Transfer completed successfully.
5740 bytes sent in 0.01 seconds (747.10 Kbytes/s)
.
.
.
```

---

Upload the JCL files.

**Note:** You must set ASCII mode on.

### Listing 3-6 Uploading JCL Files

---

```
ftp> lcd /cdrom/unixmf/cics/jcl
Local directory now /cdrom/unixmf/cics/jcl
ftp> cd 'YOURHLQ.BEATCPC.JCL'
250 "'YOURHLQ.BEATCPC.JCL'" partitioned data set is working directory.
ftp>ascii
200 Representation type is Ascii
ftp> mput *
local: BLDVSAM remote: BLDVSAM
200 Port request OK.
125 Storing data set "YOURHLQ".BEATCPC.JCL(BLDVSAM)
250 Transfer completed successfully.
2214 bytes sent in 0.00 seconds (563.49 Kbytes/s)
.
.
.
```

---



Upload the SOURCE files.

**Note:** You must set ASCII mode on.

---

### Listing 3-7 Uploading SOURCE Files

---

```
ftp> lcd /cdrom/unixmf/cics/source
Local directory now /cdrom/unixmf/cics/source
ftp> cd 'YOURHLQ.BEATCPC.SOURCE'
250 "'YOURHLQ.BEATCPC.SOURCE'" partitioned data set is working directory.
ftp>ascii
200 Representation type is Ascii
ftp> mput *
local: BEACCLN1 remote: BEACCLN1
200 Port request OK.
125 Storing data set YOURHLQ.BEATCPC.SOURCE (BEACCLN1)
250 Transfer completed successfully.
10578 bytes sent in 0.01 seconds (1013.85 Kbytes/s)
.
.
.
```

---

Upload the INCLUDE files.

**Note:** You must set ASCII mode on.

---

### Listing 3-8 Uploading INCLUDE Files

---

```
ftp> ascii
ftp> lcd /cdrom/unixmf/cics/include
ftp> cd '"YOURHLQ".BEATCPC.INCLUDE'
250 "'YOURHLQ.BEATCPC.INCLUDE'" partitioned data set is working directory
ftp>ascii
200 Representation type is Ascii
ftp> mput *
```

```
200 Port request OK.
125 Storing data set "YOURHLQ".BEATCPC.INCLUDE' (CLIENT)
250 Transfer completed successfully.
local: CLIENT remote: CLIENT
3736 bytes sent in 0.0081 seconds (4.5e+02 Kbytes/s)
.
.
.
```

---

Upload the OBJECT files.

**Note:** You must set binary mode on.

### Listing 3-9 Uploading OBJECT Files

---

```
ftp> binary
200 Representation type is IMAGE.
ftp> lcd /cdrom/unixmf/cics/object
Local directory now /cdrom/unixmf/cics/object
ftp> cd 'YOURHLQ.BEATCPC.OBJECT'
250 "'YOURHLQ.BEATCPC.OBJECT'" partitioned data set is working directory.
ftp>binary
200 Representation type is Image
ftp> mput *
local: BEACFGSV remote: BEACFGSV
200 Port request OK.
125 Storing data set "YOURHLQ".BEATCPC.OBJECT(BEACFGSV)
250 Transfer completed successfully.
6240 bytes sent in 0.00 seconds (1466.96 Kbytes/s)
.
.
.
```

---

Upload the `PLKED` files.

**Note:** You must set binary mode on.

---

### Listing 3-10 Uploading `PLKED` Files

---

```
ftp> binary
200 Representation type is Image
ftp> lcd /cdrom/unixmf/plked
ftp> cd ' "YOURHLQ".BEATCPC.PLKED '
250 " "YOURHLQ.BEATCPC.PLKED" " partitioned data set is working directory
ftp>binary
200 Representation type is Image
ftp> mput *
200 Port request OK.
125 Storing data set "YOURHLQ.BEATCPC.PLKED(BEACIC00)
250 Transfer completed successfully.
local: BEACIC00 remote: BEACIC00
64560 bytes sent in 0.7 seconds (90 Kbytes/s)
.
.
.
```

---

Verify that the distribution libraries were uploaded. For the listing of files that should be on your system, refer to the [“List of Distribution Files and Members”](#) section.

## Task 5: Define the CICS VSAM Files

Define the CICS VSAM files (Connections, Requesters, Service Names, User Connection, Inbound Service).

1. Modify `DELETE/DEFINE` control cards `VCON`, `VREQ`, `VSVC`, `VUSR`, and `VISN` in the PDS `"YOURHLQ".BEATCPC.CONTROL`. Listing 3-13 is an example of a modified `DELETE/DEFINE`.

### Listing 3-11 Sample DELETE/DEFINE Control Card

---

```
DELETE YOURHLQ.BEATCPC.BEAVSVC -
 CLUSTER PURGE -
DEFINE CLUSTER (-
 NAME (YOURHLQ.BEATCPC.BEAVSVC) -
 SHAREOPTIONS (2 3) -
 KEYS (16 0) -
 CISZ (1024) -
 TRACKS (5 1) -
 VOLUMES (CICS01) -
DATA (-
 RECORDSIZE (56, 56) -
 NAME (YOURHLQ.BEATCPC.BEAVSVC.DATA) -
INDEX (-
 NAME (YOURHLQ.BEATCPC.BEAVSVC.INDEX) -
```

---

Change all instances of `YOURHLQ.BEATCPC.BEAVSVC` to a physical data set name that meets your standards. Change the `TRACKS` and `VOLUMES` parameters to appropriate values for your installation. The provided value for the `TRACKS` parameter works for most installations, but this value can be increased if necessary.

2. For the `BLDVSAM JCL`, complete the following steps.
  - a. Modify the `JOB CARD` to your standards.
  - b. Modify `YOURHLQ.BEATCPC.XXXX`, where `XXXX` is `BEAVCON`, `BEAVREQ`, `BEAVSVC`, `BEAVUSR`, and `BEAVISN`.
  - c. Submit `BLDVSAM`.
3. Verify the results. There should be three data sets in `YOURHLQ.BEATCPC` corresponding to each of the five `VSAM` files. The three data sets are as follows:
  - One data set has no extension
  - One data set has `DATA` as the extension
  - One data set has `INDEX` as the extension

**Note:** A condition code of 8 is acceptable on DELETE steps. If you receive condition codes other than zero for DEFINE steps, you should evaluate this for potential problems.

## Task 6: Verify Contents of PROCS

Before you go on to the next step, we recommend that you check the following items in PROCS CMPBC, CMPLMAP, CMPLKED, and LNKIBM in the PDS YOURHLQ.BEATCPC.JCL.

You may need to modify them to meet your standards. You will need to review the following:

- All references to CICS and TCP/IP data set names.
- The data set names associated with the STEPLIB, SYSMSGS, SYSXMSCS, SYSPATH, and SYSLIB DD names.
- Unit = references.

## Task 7: Change Resource Names (Optional)

The default names for BEA TMA TCP for CICS Mapsets, Programs, Transids, and VSAM data sets are listed in Appendix A, “Changing Resource Names.” If you want to use a different naming convention, use the procedure for changing names included after each table.

**Note:** You must have the C 370 compiler to customize resource names.

## Task 8: Define the CICS Table Entries

1. Verify the CICS table entry definitions (PCTs, PPTs, FCTs) in CSDU (from the PDS "YOURHLQ".BEATCPC.CONTROL).
2. Modify the group and list name in CSDU (from the PDS "YOURHLQ".BEATCPC.CONTROL).
3. In the JCL in CSDUPD (from the PDS "YOURHLQ".BEATCPC.JCL), complete the following steps.
  - a. Modify the JOBCARD to your standards.
  - b. Modify the STEPLIB and DFHCSD data set names.
  - c. Modify the SYSIN DSN=YOURHLQ.BEATPC.CONTROL.
  - d. Submit CSDUPD.
  - e. Verify the results.

**Note:** A "COND CODE 0004" may result due to the DELETE commands for non-existent CSD objects.

## Task 9: Build TMA TCP for CICS Executables

To build the executables for BEA TMA TCP for CICS, you need to complete the following tasks.

1. If there is not a PDS allocated where the executables for your CICS region reside, allocate such a PDS before running any JCL that builds executables.
2. Link the CICS Admin maps (MainMenu, Connection, Requester, Outbound Service Name, Inbound Service Name, User Connection Account, Handler Configuration). In the JCL in MAKLMAP (from the PDS "YOURHLQ".BEATCPC.JCL"), complete the following steps.
  - a. Modify the JOBCARD to your standards.
  - b. Modify the PROCS JCLLIB card with the correct HLQ.
  - c. Modify the variables YOURHLQ, PDSOBS and LNKLIB for your PDS.

**Note:** LNKLIB is where your CICS region executable binary files reside.
  - d. Modify the variable PROG, if you renamed mapsets.
  - e. Submit MAKLMAP.
  - f. Verify the results.
3. Complete one of the following procedures depending on your compiler:
  - [Pre-Link/Link TMA TCP for CICS](#)
  - [Linking without the C 370 Compiler](#)

### Pre-Link/Link TMA TCP for CICS

The following sections explain the procedures for linking programs and mapsets prior to running the BEA TMA TCP for CICS product.

**Note:** The following sections apply for a C 370 compiler.

#### Linking the CICS Admin Programs

Pre-Link/Link the CICS Admin Programs (MainMenu, Connection, Requester, Outbound Service Name, Inbound Service Name, User Connection Account, Handler Configuration). In the JCL in MAKL1 (from the PDS "YOURHLQ".BEATCPC.JCL"), complete the following steps.

1. Modify the JOBCARD to your standards.
2. Modify the PROCS JCLLIB card with the correct HLQ.
3. Modify the variables YOURHLQ, PDSOBS, TCPLIB and LNKLIB for your PDS.  
**Note:** LNKLIB is where your CICS region executable binary files reside.
4. Modify the LKED.SYSIN program names, if you renamed programs.
5. Submit MAKL1.
6. Verify the results.

**Note:** A "COND CODE = 004" is normal.

### Linking the CICS Utility Programs

Pre-Link/Link the CICS utility Programs (Pre-Requester, Application Handler, Shutdown, and Configuration Converter). In the JCL in MAKLO (from the PDS "YOURHLQ".BEATCPC.JCL"), complete the following steps.

1. Modify the JOBCARD to your standards.
2. Modify the PROCS JCLLIB card with the correct HLQ.
3. Modify the variables YOURHLQ, PDSOBS, TCPLIB and LNKLIB for your PDS.  
**Note:** LNKLIB is where your CICS region executable binary files reside.
4. Modify the LKED.SYSIN program names, if you renamed programs.
5. Submit MAKLO.
6. Verify the results.

**Note:** A "COND CODE = 004" is normal.

### Linking the CICS TCP Programs

Pre-Link/Link the CICS TCP Programs (Requester and Handler). In the JCL in MAKL3 (from the PDS "YOURHLQ".BEATCPC.JCL"), complete the following steps.

1. Modify the JOBCARD to your standards.
2. Modify the variables YOURHLQ, PDSOBS, TCPLIB and LNKLIB for your PDS.  
**Note:** LNKLIB is where your CICS region executable binary file resides.

3. Modify the `INCLUDE OBJECT` program name, if you renamed programs.
4. Modify the `LKED.SYSIN` program names, if you renamed programs.
5. Submit `MAKL3`.
6. Verify the results.

**Note:** A `"COND CODE = 004"` is normal.

## Linking without the C 370 Compiler

If you do NOT have the C 370 compiler, use the following procedure to Linkedit the PreLinked objects. Link the Prelinked objects of the following programs.

- CICS TCP Programs (Requester and Handler).
- CICS Utility Programs (Pre-Requester, Application Handler, Shutdown, and Configuration Converter).
- CICS Admin Programs (MainMenu, Connection, Requester, Service Name).

In the JCL in `MAKLKED` (from the PDS `"YOURHLQ.BEATCPC.JCL"`), complete the following steps.

1. Modify the `JOB`CARD to your standards.
2. Modify the variables `YOURHLQ`, `TCPLIB` and `LNKLIB` for your PDS.

**Note:** `LNKLIB` is where your CICS region executable binary file resides.

3. Submit `MAKLKED`.
4. Verify the results.

## Task 10: Verify the CICS Setup

Log on to your CICS region to install and verify the components you set up for BEA TMA TCP for CICS.

- `CEDA INSTALL GROUP (_____)`

This is the group name you used in `CSDU`

- `CEMT INQUIRE PROG (_____)`

Verify the mapsets and programs

- `CEMT INQUIRE TRAN (_____)`



Verify the transids

- CEMT INQUIRE FILE (\_\_\_\_)

Verify the VSAM files

## Task 11: Assemble and Link the CICS DCT

**Note:** Recent releases of CICS allow this task to be with CSD instead of this method.

1. Add the following entries to the CICS DCT.

| Entry                     |
|---------------------------|
| BEALOG DFHDCT TYPE=SDSCI, |
| DSCNAME=BEALOG,           |
| BLKSIZE=136,              |
| RECSIZE=132,              |
| RECFORM=VARUNB,           |
| TYPEFLE=OUTPUT,           |
| BUFNO=1                   |
| BEAL DFHDCT TYPE=EXTRA,   |
| DESTID=BEAL,              |
| DSCNAME=BEALOG            |

2. Assemble and link the DCT.

## Task 12: Modify the CICS Startup JCL

1. Add the BEA Tuxedo Mainframe Adapter load library (LNKLIB) to the DFHRPL concatenation.
2. Add the following DD statement to CICS file concatenation.

```
//BEALOG DD SYSOUT=*,DCB=(DSORG=PS,RECFM=V,BLKSIZE=136)
```

3. Add DD statement to make the connection between the logical names of the VSAM files and the DSN.

**Note:** If DSN statements were added to the CSDU, this step is not necessary.

The following is an example of a CICS startup JCL.

### Listing 3-12 Sample CICS Startup JCL with TMA TCP additions

---

```
//CICSREG JOB
//CICSCNTL EXEC PGM=IDCAMS,REGION=1M
//SYSPRINT DD SYSOUT=*
//SYSIN DD DISP=SHR,DSN=CICS22.SYSIN(DFHRCYES)
//DTCNTL EXEC PGM=IDCAMS,REGION=1M
//SYSPRINT DD SYSOUT=*
//SYSIN DD DISP=SHR,DSN=CICS22.SYSIN(DFHRCNO)
//*
//CICS EXEC PGM=DFHSIP, REGION=32M, TIME=1439, COND=(1,NE,CICSCNTL),
// =START=COLD, SYSIN, SEC=NO, GRPLIST=ETPLIST
//STEPLIB DD DISP=SHR,DSN=CICS22.SVTSC.SDFHAUTH
// DD DISP=SHR,DSN=CICS22.SDFHAUTH
// DD DISP=SHR,DSN=MASTCAT.MQM112.SCSQAUTH
// DD DISP=SHR,DSN=COB2140.COB2CICS.MODLIB
// DD DISP=SHR,DSN=C370.SEDCLINK
// DD DISP=SHR,DSN=ADLE370.V1R3M0.SCEECICS
// DD DISP=SHR,DSN=ADLE370.V1R3M0.SCEERUN
//DFHRPL DD DISP=SHR,DSN=CICS22.SVTSC.SDFHLOAD
// DD DISP=SHR,DSN=CICS22.SDFHLOAD
// DD DISP=SHR,DSN=BEA.BEA100.BEALOAD
// DD DISP=SHR,DSN=TCPIP.V3R1.SEZALINK
// DD DISP=SHR,DSN=TCPIP.V3R1.SEZATCP
// DD DISP=SHR,DSN=MQM112.SCSQCICS
// DD DISP=SHR,DSN=MQM112.SCSQLOAD
// DD DISP=SHR,DSN=COB2140.COB2CICS
// DD DISP=SHR,DSN=MASTCAT.COB2140.COB2LIB
// DD DISP=SHR,DSN=MASTCAT.PLI230.PLILINK
// DD DISP=SHR,DSN=C370.SEDCLINK
// DD DISP=SHR,DSN=ERW121.SERWLOAD
// DD DISP=SHR,DSN=ADLE370.V1R3M0.SCEECICS
// DD DISP=SHR,DSN=ADLE370.V1R3M0.SCEERUN
//SYSIN DD DISP=SHR,DSN=CICS22.CICS.SYSIN(TCICS)
//DFHCSD DD DISP=SHR,DSN=CICS22.DFHCSD
//DFHCMACD DD DISP=SHR,DSN=CICS22.DFHCMACD
//DFHJ01A DD DISP=SHR,DSN=CICS22.CICS.DFHJ01A
//DFHJ01B DD DISP=SHR,DSN=CICS22.CICS.DFHJ01B
//DFHJ01X DD DISP=SHR,DSN=CICS22.CICS.DFHJ01X
//DFHAUXT DD DISP=SHR, DSN=CICS22.CICS.DFHAUXT,
```

```

//DFHBUXT DD DISP=SHR, DSN=CICS22.CICS.DFHBUXT,
//DFHDMPA DD DISP=SHR,DSN=CICS22.CICS.DFHDMPA
//DFHDMPB DD DISP=SHR,DSN=CICS22.CICS.DFHDMPB
//DFHRSD DD DISP=SHR,DSN=CICS22.CICS.DFHRSD
//DFHGCD DD DISP=SHR,DSN=CICS22.CICS.DFHGCD
//DFHLCD DD DISP=SHR,DSN=CICS22.CICS.DFHLCD
//DFHXMSG DD DISP=SHR, DSN=CICS22.CNTL.CICS.DFHXRMSG
//DFHXCTL DD DISP=SHR,DSN=CICS22.CNTL.CICS.DFHXRCTL
//DFHTEMP DD DISP=SHR,DSN=CICS22.CNTL.CICS.DFHTEMP
//DFHINTRA DD DISP=SHR,DSN=CICS22.CNTL.CICS.DFHINTRA
//DFHJACD DD DISP=SHR,DSN=CICS22.CICS.DFHJACD
//DFHJPDS DD DISP=SHR,DSN=CICS22.DFHJPDS
//DFHJOUT DD SYSOUT=(A,INTRDR)
//DFHCXRF DD SYSOUT=X
//MQMMSG DD SYSOUT=*
//LOGUSR DD SYSOUT=*, DCB=(DSORG=PS,RECFM=V, BLKSIZE=136)
//MSGUSR DD SYSOUT=*, DCB=(DSORG=PS,RECFM=V, BLKSIZE=136)
//TCPDATA DD SYSOUT=*, DCB=(DSORG=PS,RECFM=V, BLKSIZE=136)
//BEALOG DD SYSOUT=*, DCB=(DSORG=PS,RECFM=V, BLKSIZE=136) ** BEA Connect
//COUT DD SYSOUT=*, DCB=(DSORG=PS,RECFM=V, BLKSIZE=137)
//PLIMSG DD SYSOUT=*, DCB=(DSORG=PS,RECFM=V, BLKSIZE=137)
//COUT DD SYSOUT=*, DCB=(DSORG=PS,RECFM=V, BLKSIZE=137)
//SYSABEND DD SYSOUT=*
//TRACEOUT DD SYSOUT=*
//PRINTER DD SYSOUT=*,DCB=BLKSIZE=121
//*
//PRTDMPA EXEC PGM=DFHDUP, PARM=SINGLE, REGION=0M, COND=(1,NE,DTCNTL)
//STEPLIB DD DSN=CICS22.SDFHLOAD,DISP=SHR
//SYSIN DD DUMMY
//DFHDMPDS DD DISP=SHR,DSN=CICS22.CICS.DFHDMPA
//DFHTINDX DD SYSOUT=*
//SYSPRINT DD SYSOUT=*
//DFHPRINT DD SYSOUT=*
//*
//PRTDMPB EXEC PGM=DFHDUP, PARM=SINGLE, REGION=0M, COND=(1,NE,DTCNTL)
//STEPLIB DD DSN=CICS22.SDFHLOAD,DISP=SHR
//SYSIN DD DUMMY
//DFHDMPDS DD DISP=SHR,DSN=CICS22.CICS.DFHDMPB
//DFHTINDX DD SYSOUT=*
//SYSPRINT DD SYSOUT=*
//DFHPRINT DD SYSOUT=*
//*
//* PRTAUXT EXEC PGM=DFHTUP, REGION=0M, COND=(1,NE,DTCNTL)
//* STEPLIB DD DSN=CICS22.SDFHLOAD,DISP=SHR
//* DFHAUXT DD DISP=OLD,DSN=CICS22.CICS.DFHAUXT
//* DFHAXPRT DD SYSOUT=*
//* DFHAXPRM DD DUMMY
//*
//PRTBUXT EXEC PGM=DFHTUP, REGION=0M, COND=(1,NE,DTCNTL)

```

```
//STEPLIB DD DSN=CICS22.SDFHLOAD,DISP=SHR
//DFHAUXT DD DISP=SHR,DSN=CICS22.CICS.DFHBUXT
//DFHAXPRT DD SYSOUT=*
//DFHAXPRM DD DUMMY
```

---

## List of Distribution Files and Members

The following tables list and describe the members that make up each distribution partitioned data set.

### BEATCPC.DIST.CONTROL

Verify that the following members are installed by BEA TMA TCP for CICS.

| <b>Member</b> | <b>Description</b>                             |
|---------------|------------------------------------------------|
| CSDU          | Del/Def Parameters for (PCTs, PPTs, FCTs)      |
| VCON          | Del/Def Parameters for (VSAM Connections)      |
| VISN          | Del/Def Parameters for (VSAM Inbound Services) |
| VREQ          | Del/Def Parameters for (VSAM Requesters)       |
| VSVC          | Del/Def Parameters for (VSAM Service Names)    |
| VUSR          | Del/Def Parameters for (VSAM User Connections) |

## BEATCPC.DIST.JCL

Verify that the following members are installed by BEA TMA TCP for CICS.

| <b>Member</b> | <b>Description</b>                                                      |
|---------------|-------------------------------------------------------------------------|
| BLDVSAM       | Jcl to Del/Def VSAM files (BEAVCON, BEAVREQ, BEAVSVC, BEAVUSR, BEAVISN) |
| CMPBC         | Proc to Compile/link C program (Configuration)                          |
| CMPLKED       | Proc to Link the PreLinked PLKED                                        |
| CMPLMAP       | Proc to Link CICS Mapsets(TCP Admin)                                    |
| CSDUPD        | Jcl to Del/Def CICS (PCTs, PPTs, FCTs)                                  |
| LNKIBM        | Proc to PreLink/Link Pgm objects                                        |
| MAKBC         | Jcl to Compile/link C program (Configuration)                           |
| MAKL0         | Jcl to PreLink/Link Pgm objects(PreRequester, Shutdown)                 |
| MAKL1         | Jcl to PreLink/Link Pgm objects(TCP Admin)                              |
| MAKL3         | Jcl to PreLink/Link Pgm objects(Requester, Handler)                     |
| MACLKED       | Jcl to Link the PreLinked PLKED                                         |
| MAKLMAP       | Jcl to Link CICS Mapsets(TCP Admin)                                     |

## BEATCPC.DIST.SOURCE

Verify that the following members are installed by BEA TMA TCP for CICS.

| <b>Member</b> | <b>Description</b>                                       |
|---------------|----------------------------------------------------------|
| BEACCLN1      | Program Sample Test Client                               |
| BEACSVR1      | Program Sample Test Server                               |
| BEACFGSV      | Program Name Configuration (Files, Maps, Programs, Trns) |

## BEATCPC.DIST.INCLUDE

Verify that the following members are installed by BEA TMA TCP for CICS.

| <b>Member</b> | <b>Description</b>                                               |
|---------------|------------------------------------------------------------------|
| BEACFGSV      | Include for the name configuration (Files, Maps, Programs, Trns) |
| CLIENT        | Copybook for COBOL CICS Client Request/Response Header           |
| CLIENTH       | Include for C CICS Client Request/Response Header                |
| TWACOPY       | Copybook for COBOL CICS Server TWA Message size                  |
| TWAINCL       | Include for C CICS Server TWA Message size                       |

## BEATCPC.DIST.PLKED

Verify that the following members are installed by BEA TMA TCP for CICS.

| <b>Member</b> | <b>Description</b>                                 |
|---------------|----------------------------------------------------|
| BEAAPPLC      | Prelinked object of Application Handler            |
| BEACIC00      | Prelinked object of Handler                        |
| BEAPCON       | Prelinked object of Admin Connections              |
| BEAPISN       | Prelinked object of Admin(Inbound Service Names)   |
| BEAPMNU       | Prelinked object of Admin(Main Menu)               |
| BEAPREQ       | Prelinked object of Admin(Requesters)              |
| BEAPRERQ      | Prelinked object of Pre-Requester                  |
| BEAP SVC      | Prelinked object of Admin(Outbound Service Names)  |
| BEAPUSR       | Prelinked object of Admin(User Connection Account) |
| BEAREQST      | Prelinked object of Requester                      |
| BEASHUT       | Prelinked object of Shutdown                       |
| CNVTISNC      | Prelinked object of Configuration Converter        |

## BEATPC.DIST.OBJECT

Verify that the following members are installed by BEA TMA TCP for CICS:

- BEAAPPLC
- BEACFGSV
- BEACIC00
- BEAERRNO
- BEAEVT2
- BEALOGC
- BEAMCON
- BEAMMNU
- BEAMREQ
- BEAMSUB
- BEAMSVC
- BEAMUSR
- BEAMISN
- BEAPCON
- BEAPMNU
- BEAPREQ
- BEAPRERQ
- BEAPSVL
- BEAPSVL
- BEAPUSR
- BEAPISN
- BEAREQST
- BEARQSUB



- BEASHUT
- EBCASC
- BEASUBS
- BEAGHBN
- BEASKIBM
- BEASKVAR
- CNVTISNC



# Changing Resource Names

The default names for BEA TMA TCP for CICS Mapsets, Programs, Transids, and VSAMs are listed in the following sections. If you want to use a different naming convention, use the procedure for changing names included after each table.

**Note:** You must have the C 370 compiler to customize resource names.

## Contents of SOURCE(BEACFGSV)

The names in the following table are located in PDS "YOURHLQ".BEATCPC.SOURCE(BEACFGSV)

| Name    | Type    | Description               |
|---------|---------|---------------------------|
| BEAM    | Transid | Main Menu                 |
| BEAPMNU | Program | Main Menu                 |
| BEAMMNU | Mapset  | Main Menu                 |
| BEAC    | Transid | Connection Administration |
| BEAPCON | Program | Connection Administration |
| BEAMCON | Mapset  | Connection Administration |
| BEAR    | Transid | Requester Administration  |
| BEAPREQ | Program | Requester Administration  |

| <b>Name</b> | <b>Type</b> | <b>Description</b>             |
|-------------|-------------|--------------------------------|
| BEAMREQ     | Mapset      | Requester Administration       |
| BEAS        | Transid     | Service Name Administration    |
| BEAP SVC    | Program     | Service Name Administration    |
| BEAM SVC    | Mapset      | Service Name Administration    |
| BEAU        | Transid     | User Connection Administration |
| BEAPUSR     | Program     | User Connection Administration |
| BEAMUSR     | Mapset      | User Connection Administration |
| BEAI        | Transid     | Inbound Service Administration |
| BEAPISN     | Program     | Inbound Service Administration |
| BEAMISN     | Mapset      | Inbound Service Administration |
| BEAVCON     | VSAM        | Connection Table               |
| BEAVREQ     | VSAM        | Requester Table                |
| BEAVSVC     | VSAM        | Service Name Table             |
| BEAVUSR     | VSAM        | User Connection Table          |
| BEAVISN     | VSAM        | Inbound Service Table          |
| BEAPRERQ    | Program     | Pre-requester                  |
| BREQ        | Transid     | To start Requester             |
| BEAL        | TDQid       | Log Message TD Queue           |
| BEAA        | Transid     | Application Handler Transid    |
| BEAHBDWN    | TSQid       | Handler Shutdown TS Queue      |

## Changing Resource Names for SOURCE(BEACFGSV)

To change any of the default names shown in the previous table, complete the following steps.

1. Modify Program (BEACFGSV) located in PDS "YOURHLQ".BEATCPC.SOURCE

2. For the JCL (MAKBC) located in PDS "YOURHLQ".BEATCPC.JCL, complete the following steps.
  - a. Modify the JOBCARD to your standards.
  - b. Modify "YOURHLQ.BEATCPC.SOURCE" and "YOURHLQ.BEATCPC.OBJECT".
  - c. Submit MAKBC.
3. Verify the results.

## Contents of CONTROL(CSDU)

The names in the following table are located in PDS "YOURHLQ".BEATCPC.CONTROL(CSDU)

| Name     | Type        | Description                     |
|----------|-------------|---------------------------------|
| BEAPCON  | Program     | Connection administration       |
| BEAPMNU  | Program     | Main menu                       |
| BEAPREQ  | Program     | Requester administration        |
| BEAPSVC  | Program     | Outbound service administration |
| BEAPUSR  | Program     | User connection administration  |
| BEAPISN  | Program     | Inbound service administration  |
| BEASHUT  | Program     | Shutdown                        |
| BEAPRERQ | Program     | Pre-Requester                   |
| BEAREQST | Program     | Requester                       |
| BEACIC00 | Program     | Handler                         |
| BEAAPPLC | Program     | Application Handler             |
| BEAC     | Transaction | Connection administration       |
| BEAM     | Transaction | Main menu                       |
| BEAR     | Transaction | Requester administration        |
| BEAS     | Transaction | Outbound service administration |

| <b>Name</b> | <b>Type</b> | <b>Description</b>              |
|-------------|-------------|---------------------------------|
| BEAU        | Transaction | User connection administration  |
| BEAI        | Transaction | Inbound service administration  |
| BDWN        | Transaction | Shutdown                        |
| BREQ        | Transaction | Requester                       |
| BEAH        | Transaction | Handler                         |
| BEAA        | Transaction | Application Handler             |
| BEAMCON     | Mapset      | Connection administration       |
| BEAMMNU     | Mapset      | Main menu                       |
| BEAMREQ     | Mapset      | Requester administration        |
| BEAMSVC     | Mapset      | Outbound service administration |
| BEAMUSR     | Mapset      | User connection administration  |
| BEAMISN     | Mapset      | Inbound service administration  |
| BEAVCON     | File        | Connection table                |
| BEAVREQ     | File        | Requester table                 |
| BEAVSVC     | File        | Outbound service table          |
| BEAVUSR     | File        | User connection table           |
| BEAVISN     | File        | Inbound service table           |

## Changing Resource Names for CONTROL(CSDU)

After changing resource names in BEACFGSV, you need to modify the file (CSDU) located in PDS "YOURHLQ".BEATCPC.CONTROL.

Changes to the CSDU member must correspond to changes in the BEACFGSV member.

You can also change the names of the BDWN and BEAH transactions. If the name of the BEAH transaction changes, the CICSHAND parameter in the GWICONFIG file of the BEA TMA TCP Gateway must also reflect the change.

# Index

## A

ABEND 2-12  
allocating OS/390 datasets 2-2

## B

BEA Home  
    creating a new one 1-10  
    using an existing one 1-11  
BEAAPPLC 3-23, 3-24  
BEACCLN1 3-22  
BEACFGSV 3-22, 3-24  
BEACIC00 3-23, 3-24  
BEACSVR1 3-22  
BEAERRNO 3-24  
BEAEVTC 3-24  
BEAGHBN 3-25  
BEALOGC 3-24  
BEAMCON 3-24  
BEAMISN 3-24  
BEAMMNU 3-24  
BEAMREQ 3-24  
BEAMSUB 3-24  
BEAMSVC 3-24  
BEAMUSR 3-24  
BEAPCON 3-23, 3-24  
BEAPISN 3-23, 3-24  
BEAPMNU 3-23, 3-24  
BEAPREQ 3-23, 3-24  
BEAPRERQ 3-23, 3-24  
BEAPSVL 3-23, 3-24  
BEAPUSR 3-23, 3-24  
BEAREQST 3-23, 3-24

BEARQSUB 3-24  
BEASHUT 3-23, 3-25  
BEASKIBM 3-25  
BEASKVAR 3-25  
BEASUBS 3-25  
BEATCPC.DIST.CONTROL 3-20  
BEATCPC.DIST.INCLUDE 3-22  
BEATCPC.DIST.JCL 3-21  
BEATCPC.DIST.OBJECT 3-24  
BEATCPC.DIST.PLKED 3-23  
BEATCPC.DIST.SOURCE 3-22  
BLDVSAM 3-21

## C

C language 2-12  
CLIENT 3-22  
CLIENTH 3-22  
CMPBC 3-21  
CMPLKED 3-21  
CMPLMAP 3-21  
CNVTISNC 3-23, 3-25  
configuration  
    file 2-8  
CSDU 3-20  
CSDUPD 3-21  
customer support ix  
customer support contact information viii

## D

datasets  
    renaming 2-7  
DD cards 2-12

- defining TMA TCP for IMS to IMS 2-8
- distribution
  - files 3-20
  - partitioned datasets 3-20
- distribution files
  - directory structure on CD-ROM 2-6, 3-3, 3-6
  - unloading 2-6, 3-3, 3-6
- distribution libraries 1-18
- Distribution Libraries and Executables
  - IMS 2-13
  - TMA TCP Gateway 1-18
- documentation
  - conventions ix
  - where to find it viii

## E

- EBCASC 3-25
- e-docs Web Site viii
- executables 1-18

## F

- file transfer
  - programs 2-6
  - to OS/390 system 2-6
- FTP 2-6

## G

- GATEWAY TYPE=LOCAL statements 2-9

## H

- hardware requirements
  - host 3-2

## I

- IBM
  - LE/370 2-12

## IMS

- Message Queue 2-9
- inbound
  - sessions
    - maximum number of concurrent 2-10
- Install
  - preparing 1-1
  - Preparing to install TMA TCP for IMS 2-1
  - TMA TCP for IMS 2-1
  - TMA TCP Gateway 1-2
    - UNIX platforms in console mode 1-2
    - Window or UNIX platforms in graphics mode 1-7
- installation 3-2
  - allocating OS/390 datasets 2-2
  - creating a configuration file 2-8
  - creating JCL 2-11
  - defining TMA TCP for IMS to IMS 2-8
  - IMS 2-1
  - link-editing 2-6
  - testing 2-13
  - unloading distribution files 2-6, 3-3, 3-6
- IP address 2-9

## J

- JCL
  - creating 2-11
  - customizing 2-12
- Job Card 2-7, 2-12

## L

- LE/370 2-12
- link-editing 2-6
- link-editor, renaming 2-7
- LNKIBM 3-21
- local services
  - names 2-10, 2-11



## M

- MAKBC 3-21
- MAKL0 3-21
- MAKL1 3-21
- MAKL3 3-21
- MAKCLKED 3-21
- MAKLMAP 3-21
- messages
  - preserving 2-12

## O

- OS/390
  - datasets, allocating 2-2
  - transferring files to 2-6

## P

- port number 2-9
- printing product documentation viii
- product datasets, renaming 2-7

## R

- related information viii
- remote services
  - names 2-10, 2-11
- requirements
  - for starting TMA TCP for IMS 2-12
  - host hardware 3-2
  - runtime environment 2-12
  - system 3-1

## S

- SERVICE TYPE=LOCAL statements 2-11
- SERVICE TYPE=REMOTE statements 2-10
- SleepTime parameter 2-9
- stack
  - TCP/IP 1-2, 2-1
- starting TMA TCP for IMS 2-12
- support

- technical viii, ix

## T

- TCP for CICS
  - See TMA TCP for CICS
- technical support ix
- testing the installation 2-13
- TMA TCP for CICS
  - directory structure on CD-ROM 3-6
  - distribution files 3-6
  - installing 3-2
- TMA TCP for IMS
  - creating a configuration file 2-8
  - creating JCL for 2-11
  - datasets, renaming 2-7
  - directory structure on CD-ROM 2-6, 3-3
  - distribution files 2-6, 3-3
  - installing 2-1
  - messages
    - preserving 2-12
  - starting 2-12
  - transferring files to OS/390 system 2-6
- TWACOPY 3-22
- TWAINCL 3-22

## U

- Uninstall
  - TMA TCP Gateway 1-15
- unloading distribution files 2-6, 3-3, 3-6

## V

- VCON 3-20
- VISN 3-20
- VREQ 3-20
- VSVC 3-20
- VUSR 3-20

