



BEA Application Explorer

Installation and Configuration Guide

Release: 8.1.0
Document Date: July 2003

Copyright

Copyright © 2003 BEA Systems, Inc. All Rights Reserved.

Copyright © 2003 iWay Software. All Rights Reserved.

Restricted Rights Legend

This software and documentation is subject to and made available only pursuant to the terms of the BEA Systems License Agreement and may be used or copied only in accordance with the terms of that agreement. It is against the law to copy the software except as specifically allowed in the agreement. This document may not, in whole or in part, be copied photocopied, reproduced, translated, or reduced to any electronic medium or machine readable form without prior consent, in writing, from BEA Systems, Inc.

Use, duplication or disclosure by the U.S. Government is subject to restrictions set forth in the BEA Systems License Agreement and in subparagraph (c)(1) of the Commercial Computer Software-Restricted Rights Clause at FAR 52.227-19; subparagraph (c)(1)(ii) of the Rights in Technical Data and Computer Software clause at DFARS 252.227-7013, subparagraph (d) of the Commercial Computer Software--Licensing clause at NASA FAR supplement 16-52.227-86; or their equivalent.

Information in this document is subject to change without notice and does not represent a commitment on the part of BEA Systems. THE SOFTWARE AND DOCUMENTATION ARE PROVIDED "AS IS" WITHOUT WARRANTY OF ANY KIND INCLUDING WITHOUT LIMITATION, ANY WARRANTY OF MERCHANTABILITY OR FITNESS FOR A PARTICULAR PURPOSE. FURTHER, BEA Systems DOES NOT WARRANT, GUARANTEE, OR MAKE ANY REPRESENTATIONS REGARDING THE USE, OR THE RESULTS OF THE USE, OF THE SOFTWARE OR WRITTEN MATERIAL IN TERMS OF CORRECTNESS, ACCURACY, RELIABILITY, OR OTHERWISE.

Trademarks or Service Marks

BEA, Jolt, Tuxedo, and WebLogic are registered trademarks of BEA Systems, Inc. BEA Builder, BEA Campaign Manager for WebLogic, BEA eLink, BEA Liquid Data for WebLogic, BEA Manager, BEA WebLogic Commerce Server, BEA WebLogic Enterprise, BEA WebLogic Enterprise Platform, BEA WebLogic Express, BEA WebLogic Integration, BEA WebLogic Personalization Server, BEA WebLogic Platform, BEA WebLogic Portal, BEA WebLogic Server, BEA WebLogic Workshop and How Business Becomes E-Business are trademarks of BEA Systems, Inc.

All other trademarks are the property of their respective companies.

Contents

About This Document

What You Need to Know	vi
Related Information	vii
Contact Us!	viii
Documentation Conventions	ix

Installing the BEA Application Explorer

Key Features of the BEA Application Explorer	1-2
Before You Install	1-2
Installing the BEA Application Explorer Software	1-3
Installing on a Windows System	1-3
Installing on a UNIX System	1-6
Uninstalling the BEA Application Explorer Software	1-7
Uninstalling the Software on a Windows System	1-7
Uninstalling the Software on a UNIX System	1-7

Configuring the BEA Application Explorer

Starting the BEA Application Explorer	2-1
Starting the BEA Application Explorer on Windows	2-1
Starting the BEA Application Explorer on UNIX	2-2
Configuring a Session Directory for Metadata Storage	2-4
Obtaining and Installing EIS files	2-5
Where to Go From Here	2-5

Index

About This Document

This document explains how to install the BEA Application Explorer, which can be used with WebLogic Integration to create the schemas required to build application view services and events. This document is organized as follows:

- [Chapter 1, “Installing the BEA Application Explorer,”](#) directs users to the information they need before installing the BEA Application Explorer and provides step-by-step installation and uninstallation instructions for UNIX and Windows operating systems.
- [Chapter 2, “Configuring the BEA Application Explorer,”](#) describes how to start the BEA Application Explorer and configure the storage directory for creating the schemas required to build services and events in application views.

What You Need to Know

This document is written for system integrators responsible for installing and configuring the BEA Application Explorer and for building the metadata required by the BEA WebLogic Adapters for WebLogic Integration. It is assumed that readers know Web technologies and have a general understanding of Microsoft Windows and UNIX systems as well as:

- General product knowledge of the application system being explored.
- General environment knowledge, such as how to access the individual business and data objects in the application system.
- Business application knowledge in a specific application area.
- Knowledge of the business processes and data models in the application area.
- General knowledge of client/server concepts.

Extensive knowledge of the BEA WebLogic Adapters for WebLogic Integration is not required but may be helpful in building the appropriate metadata.

Related Information

The following documents provide additional information for the associated software components:

- *BEA Application Explorer Release Notes*
<http://edocs.bea.com/wlapters/docs81/index.html>
- BEA WebLogic Adapter documentation
<http://edocs.bea.com/wlapters/docs81/index.html>
- *Introduction to the BEA WebLogic Adapters for WebLogic Integration*
<http://edocs.bea.com/wlapters/docs81/index.html>
- BEA WebLogic Adapters 8.1 Dev2Dev Product Documentation
<http://dev2dev.bea.com/products/product.jsp?highlight=wla>
- *Introducing Application Integration*
<http://edocs.bea.com/wli/docs81/aiover/index.html>
- *Using the Application Integration Design Console*
<http://edocs.bea.com/wli/docs81/aiuser/index.html>
- BEA WebLogic Integration documentation
<http://edocs.bea.com/wli/docs81/index.html>
- BEA WebLogic Platform documentation
<http://edocs.bea.com/platform/docs81/index.html>

Contact Us!

Your feedback on the BEA Application Explorer documentation is important to us. Send us e-mail at docsupport@bea.com if you have questions or comments. Your comments will be reviewed directly by the BEA professionals who create and update the BEA Application Explorer documentation. In your e-mail message, please indicate that you are using the documentation for the BEA Application Explorer with the WebLogic Integration 8.1 Beta release.

If you have any questions about this version of BEA Application Explorer, or if you have problems installing and running BEA Application Explorer, contact BEA Customer Support through BEA WebSupport at www.bea.com. You can also contact Customer Support by using the contact information provided on the Customer Support Card that is included in the product package.

When contacting Customer Support, be prepared to provide the following information:

- Your name, e-mail address, phone number, and fax number
- Your company name and company address
- The name and version of the product you are using
- A description of the problem and the content of pertinent error messages

Documentation Conventions

The following documentation conventions are used throughout this document.

Convention	Item
boldface text	Indicates terms defined in the glossary.
Ctrl+Tab	Indicates that you must press two or more keys simultaneously.
<i>italics</i>	Indicates emphasis or book titles.
monospace text	Indicates code samples, commands and their options, data structures and their members, data types, directories, and file names and their extensions. Monospace text also indicates text that you must enter from the keyboard. <i>Examples:</i> <pre>#include <iostream.h> void main () the pointer psz chmod u+w * \tux\data\ap .doc tux.doc BITMAP float</pre>
monospace boldface text	Identifies significant words in code. <i>Example:</i> <pre>void commit ()</pre>
<i>monospace italic text</i>	Identifies variables in code. <i>Example:</i> <pre>String <i>expr</i></pre>
UPPERCASE TEXT	Indicates device names, environment variables, and logical operators. <i>Examples:</i> <pre>LPT1 SIGNON OR</pre>
{ }	Indicates a set of choices in a syntax line. The braces themselves should never be typed.

Convention	Item
[]	<p>Indicates optional items in a syntax line. The brackets themselves should never be typed.</p> <p><i>Example:</i></p> <pre>buildobjclient [-v] [-o name] [-f file-list]... [-l file-list]...</pre>
	<p>Separates mutually exclusive choices in a syntax line. The symbol itself should never be typed.</p>
...	<p>Indicates one of the following in a command line:</p> <ul style="list-style-type: none"> • That an argument can be repeated several times in a command line • That the statement omits additional optional arguments • That you can enter additional parameters, values, or other information <p>The ellipsis itself should never be typed.</p> <p><i>Example:</i></p> <pre>buildobjclient [-v] [-o name] [-f file-list]... [-l file-list]...</pre>
.	<p>Indicates the omission of items from a code example or from a syntax line. The vertical ellipsis itself should never be typed.</p>

Installing the BEA Application Explorer

This section directs you to the information you need before installing the BEA Application Explorer and provides step-by-step installation instructions for UNIX and Windows operating systems. It includes the following topics:

- [Key Features of the BEA Application Explorer](#)
- [Before You Install](#)
- [Installing the BEA Application Explorer Software](#)
- [Uninstalling the BEA Application Explorer Software](#)

Key Features of the BEA Application Explorer

The BEA Application Explorer incorporates in-depth knowledge of application system environments to query for metadata on specific business objects. It uses that metadata to generate the schemas required to build application view services and events. These schemas are used in conjunction with application views and the BEA WebLogic Adapters for WebLogic Integration. The schema generation encompasses the request and response schema for services and the event schema for application view events. BEA WebLogic Integration uses the generated schemas to integrate with enterprise application systems.

Key features of the BEA Application Explorer include:

- Use of metadata from application systems to build application view services and events (XML schemas for database events and SQL requests and responses). The application view services and events can then be used in business processes created in WebLogic Workshop.
- Point-and-click process for generating application view schemas.
- Ability to connect to and explore the application system regardless of the availability of the BEA WebLogic Integration environment.

For an overview of the application integration solutions using the BEA WebLogic Adapters for WebLogic Integration in conjunction with the BEA Application Explorer, refer to *Introduction to the BEA WebLogic Adapters for WebLogic Integration* at the following URL:

<http://edocs.bea.com/wladapters/docs81/index.html>

Before You Install

Before you install the BEA Application Explorer, you must review the BEA Application Explorer *Release Notes* to ensure that the required software is properly installed on your system. The BEA Application Explorer *Release Notes* are available at the following URL:

<http://edocs.bea.com/wladapters/docs81/index.html>

Note: The BEA Application Explorer does not need to reside on the same system as the application system being accessed. However, network access is required.

Installing the BEA Application Explorer Software

The following topics provide instructions for installing the BEA Application Explorer on your system:

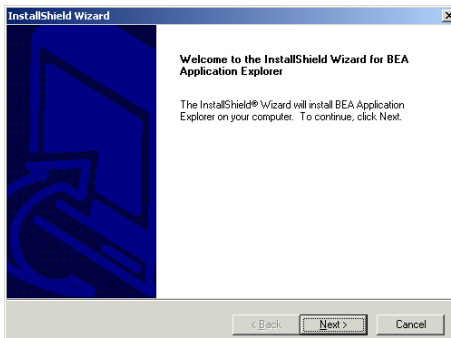
- [Installing on a Windows System](#)
- [Installing on a UNIX System](#)

Installing on a Windows System

To install the BEA Application Explorer on a Windows system:

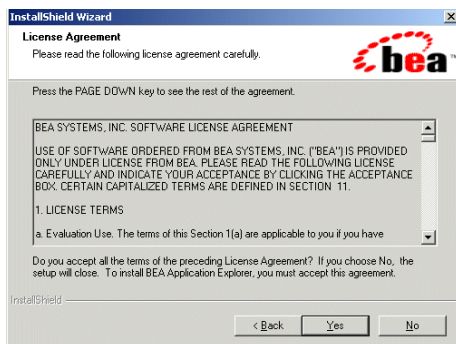
1. Download the distribution file (BEABSE.EXE) from the following URL:
http://commerce.bea.com/products/weblogicadapters/wl_adapter_home.jsp
2. Execute the BEABSE.EXE file.

The InstallShield Wizard for the BEA Application Explorer initializes and displays the Welcome window.



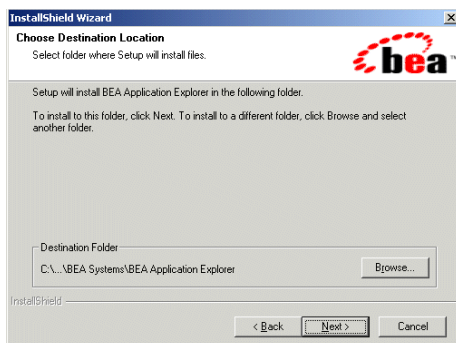
3. Click Next to continue.

The License Agreement window opens.



4. Read the license agreement and click Yes if you agree to the terms. If not, click No, which terminates the installation procedure.

If you clicked Yes, the Choose Destination Location window prompts you for the location in which to install the BEA Application Explorer.

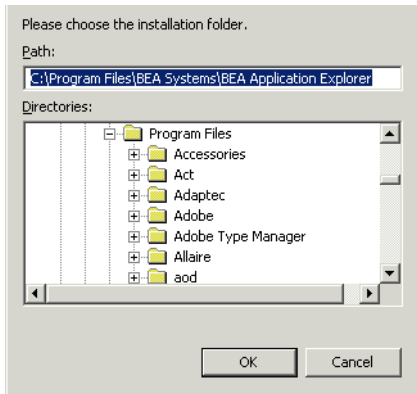


The default location is:

C:\Program Files\BEA Systems\BEA Application Explorer

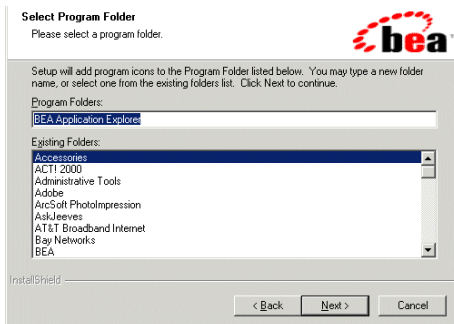
5. To accept the default location, click Next and proceed to Step 6. If you select this location and the directory does not exist, the program creates it for you.

To select a location other than the default, click Browse. The Choose Folder window opens.



6. Choose the folder and click OK. Clicking Cancel leaves the installation location unchanged.
7. Click Next.

The Select Program Folder window opens.



By default, the installation procedure creates a program folder named BEA Application Explorer. You can enter a different name, but it is recommended that you use the default name.

8. Click Next to continue.

The installation program copies the files to the target directory. When the installation is complete, the InstallShield Wizard Complete window opens.

9. Click Finish to exit the installation program.
10. Proceed to [Chapter 2, “Configuring the BEA Application Explorer,”](#) to configure this installation of the BEA Application Explorer.

Installing on a UNIX System

To install the BEA Application Explorer on a UNIX system:

1. Download `beabse.tar`, the file for the BEA Application Explorer.
2. Copy the `.tar` file to a local directory for installation.
3. Create a root directory for the files to be expanded to, for example, `/BEA/BAE`.
4. Issue the `tar` command.

```
tar -xvf beabse.tar
```

The following is a sample result of the `tar` process:

```
$ tar -xvf beabse.tar
x hpux/bin/adapters.xml, 71 bytes, 1 media blocks.
x hpux/bin/datatypes.dtd, 6861 bytes, 14 media blocks.
x hpux/bin/xdr-xsd-converter.xslt, 31730 bytes, 62 media blocks.
x hpux/bin/XMLSchema.dtd, 16207 bytes, 32 media blocks.
x hpux/lib/hpux/librfccm.o, 7281990 bytes, 14223 media blocks.
x hpux/lib/hpux/libsapjcorfc.o, 577121 bytes, 1128 media blocks.
x hpux/lib/hpux/sapjco.jar, 152597 bytes, 299 media blocks.
x hpux/lib/bea-ae.jar, 402409 bytes, 786 media blocks.
x hpux/lib/classes12.zip, 1931357 bytes, 3773 media blocks.
x hpux/lib/SiebAdapter.jar, 33626 bytes, 66 media blocks.
x hpux/lib/SiebelJI_Common.jar, 404777 bytes, 791 media blocks.
x hpux/lib/SiebelJI_enu.jar, 156003 bytes, 305 media blocks.
x hpux/lib/xalan.jar, 906248 bytes, 1771 media blocks.
x hpux/lib/xercesImpl.jar, 933730 bytes, 1824 media blocks.
x hpux/lib/xml-apis.jar, 108484 bytes, 212 media blocks.
x hpux/lib/xmlParserAPIs.jar, 78440 bytes, 154 media blocks.
```

See the appropriate operating system manual for more information on the `tar` command for that system.

5. Proceed to [Chapter 2, “Configuring the BEA Application Explorer,”](#) to configure this installation of the BEA Application Explorer.

Uninstalling the BEA Application Explorer Software

The BEA Application Explorer can be easily uninstalled according to the directions in the following topics:

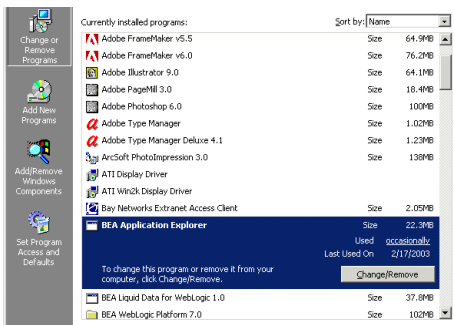
- [Uninstalling the Software on a Windows System](#)
- [Uninstalling the Software on a UNIX System](#)

Uninstalling the Software on a Windows System

To uninstall the BEA Application Explorer on a Windows system:

1. Choose Start→Settings→Control Panel.
2. Double-click Add/Remove Programs.
3. Click BEA Application Explorer.

BEA Application Explorer is selected, as shown in the following example.



4. Click Change/Remove.

The Confirm File Deletion window opens.

5. Click OK.

The BEA Application Explorer is removed from the system.

Uninstalling the Software on a UNIX System

To uninstall the BEA Application Explorer on a UNIX system, simply delete the installation directory created during the installation.

Configuring the BEA Application Explorer

This section explains how to start the BEA Application Explorer and how to configure a storage directory for metadata associated with one or more of the BEA WebLogic Adapters for WebLogic Integration. It includes the following topics:

- [Starting the BEA Application Explorer](#)
- [Configuring a Session Directory for Metadata Storage](#)
- [Where to Go From Here](#)

Starting the BEA Application Explorer

The following topics provide instructions for starting the BEA Application Explorer on your system:

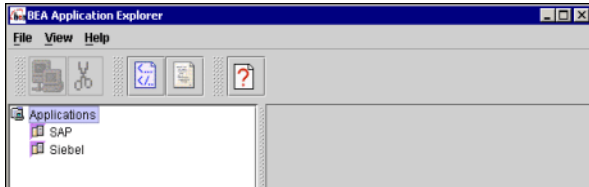
- [Starting the BEA Application Explorer on Windows](#)
- [Starting the BEA Application Explorer on UNIX](#)

Starting the BEA Application Explorer on Windows

To start the BEA Application Explorer:

1. Before you start, verify that an instance of the Java Virtual Machine (JVM) is installed and running on the target system.
2. From the Windows Start menu, choose Programs→BEA Application Explorer.

After the BEA Application Explorer starts, the initialization pane opens. When initialization is complete, the BEA Application Explorer opens.



Starting the BEA Application Explorer on UNIX

To start the BEA Application Explorer:

1. Go to the `bin` directory created during the installation process.

```
/installation_directory/operating_system/bin
```

For example:

```
/BEA/BAE/hpux/bin
```

2. If it is not already included, add the JDK to your `PATH` variable by executing the command appropriate for your system. For example,

```
PATH=BEA_HOME/jdk131_03/bin:$PATH  
export PATH
```

3. Run the `ae` shell script. For example, on HP-UX, use the following command for the `bin` directory:

```
./ae
```

Note: The `ae` shell script cannot be run as root. Furthermore, the `ae` shell script does not have executable permissions by default. On UNIX, you can either change permission by executing `chmod 755` or start `ae` in a new shell by executing `sh ae`.

The following is the content of the `ae` shell script.

Listing 2-1 ae Shell Script

```
#!/bin/sh  
  
if [ "$BSE_HOME" = "" ] ; then  
    BSE_HOME=${PWD}/..  
fi
```

```

# Allow .antrc to specify flags to java cmd
if [ "$JAVACMD" = "" ] ; then
    JAVACMD=java
fi

LOCALCLASSPATH=`echo $BSE_HOME/lib/*.zip | tr ' ' ':'`
LOCALCLASSPATH=`echo $BSE_HOME/lib/*.jar | tr ' ' ':'`:$LOCALCLASSPATH

if [ "$CLASSPATH" != "" ] ; then
    LOCALCLASSPATH=$CLASSPATH:$LOCALCLASSPATH
fi

osname=`uname`
if [ "$osname" = "HP-UX" ] ; then
    chmod a+x $BSE_HOME/lib/hpux/*
    LOCALCLASSPATH=$LOCALCLASSPATH:$BSE_HOME/lib/hpux/jCO.jar
    SHLIB_PATH=$SHLIB_PATH:$BSE_HOME/lib/hpux
elif [ "$osname" = "AIX" ] ; then
    chmod a+x $BSE_HOME/lib/aix/*
    LOCALCLASSPATH=$LOCALCLASSPATH:$BSE_HOME/lib/aix/jCO.jar
    LIBPATH=$LIBPATH:$BSE_HOME/lib/aix
elif [ "$osname" = "SunOS" ] ; then
    chmod a+x $BSE_HOME/lib/solaris/*
    LOCALCLASSPATH=$LOCALCLASSPATH:$BSE_HOME/lib/solaris/jCO.jar
    LD_LIBRARY_PATH=$LD_LIBRARY_PATH:$BSE_HOME/lib/solaris
elif [ "$osname" = "Linux" ] ; then
    chmod a+x $BSE_HOME/lib/linux/*
    LOCALCLASSPATH=$LOCALCLASSPATH:$BSE_HOME/lib/linux/jCO.jar
    LD_LIBRARY_PATH=$LD_LIBRARY_PATH:$BSE_HOME/lib/linux
fi

if [ "$JAVA_HOME" != "" ] ; then
    if test -f $JAVA_HOME/lib/tools.jar ; then
        LOCALCLASSPATH=$LOCALCLASSPATH:$JAVA_HOME/lib/tools.jar
    fi

    if test -f $JAVA_HOME/lib/classes.zip ; then

```

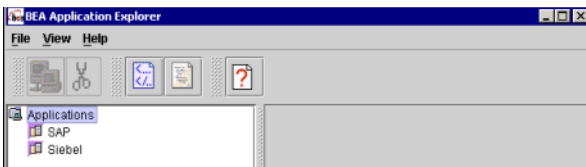
```

LOCALCLASSPATH=$LOCALCLASSPATH:$JAVA_HOME/lib/classes.zip
fi
fi

$JAVACMD -classpath $LOCALCLASSPATH com.ibi.bse.gui.BseFlashScreen $@

```

The BEA Application Explorer opens.



4. Proceed to the following section, “[Configuring a Session Directory for Metadata Storage](#).”

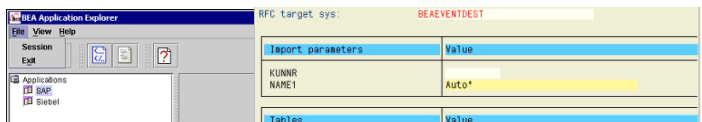
Configuring a Session Directory for Metadata Storage

When the BEA Application Explorer generates metadata for use with one of the BEA Adapters for WebLogic Integration, it stores the metadata in the file system based on the session setting.

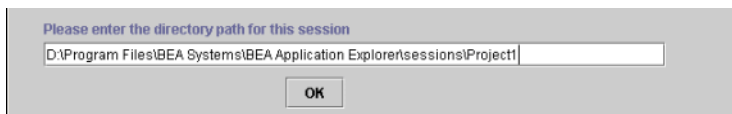
To set up a session directory for storing metadata:

1. From the File menu, choose Session.

Note: In this section, directory locations and representations are provided for a Windows environment. Please specify the appropriate information for your platform.



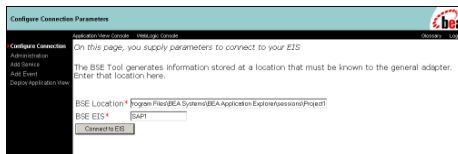
The BEA Application Explorer prompts you to enter the session directory path.



2. Change the default session directory.
3. Click OK.

The session directory establishes the directory structure for storing the generated metadata. Once the session directory is set, you can explore an application system for metadata. The individual adapters contain a `.JSP` page that points to the directory specified.

For example, the following is a sample `.JSP` page for the BEA WebLogic Adapter for SAP:



For more information on how a particular adapter uses the session directory path, refer to the adapter's *User Guide* at the following URL:

<http://edocs.bea.com/wlapters/docs81/index.html>

Obtaining and Installing EIS files

In order to work with the BEA Application Explorer, some EISes require that you install certain files in the BEA Application Explorer directory tree. If your EIS requires these files and you do not have them installed properly, you cannot use the BEA Application Explorer with your EIS. To learn more about these files, see the documentation for your adapter at the following URL:

<http://edocs.bea.com/wlapters/docs81/index.html>

Where to Go From Here

After you have configured the BEA Application Explorer, you can begin using it to generate schemas for your adapter. The BEA Application Explorer is used with the following adapters:

- BEA Adapter for Oracle Applications
- BEA Adapter for PeopleSoft 8
- BEA Adapter for SAP
- BEA Adapter for Siebel

For instructions on how to use the BEA Application Explorer for a particular adapter, refer to the adapter's *User's Guide* at the following URL:

<http://edocs.bea.com/wlapters/docs81/index.html>

Index

B

before you install 1-2

C

configuring the session directory 2-4
customer support viii

E

EISes, using BEA Application Explorer with 2-5

F

features 1-2

I

installing
 EIS files 2-5
 UNIX 1-6
 Windows 1-3
installing the software 1-3

K

key features 1-2

M

metadata, directory for 2-4

P

prerequisite knowledge vi

product support viii

R

related information vii

S

session directory, configuring 2-4
starting
 UNIX 2-2
 Windows 2-1
support viii

T

technical support viii

U

uninstalling
 UNIX 1-7
 Windows 1-7
uninstalling the software 1-7
UNIX
 installing 1-6
 starting 2-2
 uninstalling 1-7

W

Windows
 installing 1-3
 starting 2-1

uninstalling 1-7