



# **BEA WebLogic Adapter for MQSeries®**

## **Installation and Configuration Guide for WebLogic Integration 7.0**

# Copyright

Copyright © 2002 BEA Systems, Inc. All Rights Reserved.

Copyright © 2002 iWay Software. All Rights Reserved.

## Restricted Rights Legend

This software and documentation is subject to and made available only pursuant to the terms of the BEA Systems License Agreement and may be used or copied only in accordance with the terms of that agreement. It is against the law to copy the software except as specifically allowed in the agreement. This document may not, in whole or in part, be copied photocopied, reproduced, translated, or reduced to any electronic medium or machine readable form without prior consent, in writing, from BEA Systems, Inc.

Use, duplication or disclosure by the U.S. Government is subject to restrictions set forth in the BEA Systems License Agreement and in subparagraph (c)(1) of the Commercial Computer Software-Restricted Rights Clause at FAR 52.227-19; subparagraph (c)(1)(ii) of the Rights in Technical Data and Computer Software clause at DFARS 252.227-7013, subparagraph (d) of the Commercial Computer Software--Licensing clause at NASA FAR supplement 16-52.227-86; or their equivalent.

Information in this document is subject to change without notice and does not represent a commitment on the part of BEA Systems. THE SOFTWARE AND DOCUMENTATION ARE PROVIDED “AS IS” WITHOUT WARRANTY OF ANY KIND INCLUDING WITHOUT LIMITATION, ANY WARRANTY OF MERCHANTABILITY OR FITNESS FOR A PARTICULAR PURPOSE. FURTHER, BEA Systems DOES NOT WARRANT, GUARANTEE, OR MAKE ANY REPRESENTATIONS REGARDING THE USE, OR THE RESULTS OF THE USE, OF THE SOFTWARE OR WRITTEN MATERIAL IN TERMS OF CORRECTNESS, ACCURACY, RELIABILITY, OR OTHERWISE.

## Trademarks or Service Marks

BEA, Jolt, Tuxedo, and WebLogic are registered trademarks of BEA Systems, Inc. BEA Builder, BEA Campaign Manager for WebLogic, BEA eLink, BEA Manager, BEA WebLogic Commerce Server, BEA WebLogic Enterprise, BEA WebLogic Enterprise Platform, BEA WebLogic Express, BEA WebLogic Integration, BEA WebLogic Personalization Server, BEA WebLogic Platform, BEA WebLogic Portal, BEA WebLogic Server, BEA WebLogic Workshop and How Business Becomes E-Business are trademarks of BEA Systems, Inc.

All other trademarks are the property of their respective companies.

### BEA WebLogic Adapter for MQSeries Installation and Configuration Guide for WebLogic Integration 7.0

Part Number	Date	Release
N/A	December 2002	7.0

---

# Table of Contents

## About This Document

Audience.....	v
Related Information.....	vi
Contact Us!.....	vi
Documentation Conventions .....	vii

## 1. Installing the Adapter With WebLogic Integration 7.0

Before Installing the Adapter .....	1-2
Before Using the Adapter to Interact with MQSeries .....	1-2
Understanding the Representation of Paths.....	1-3
Step 1. Obtaining the BEA WebLogic Adapter for MQSeries .....	1-4
Step 2. Configuring the Domain.....	1-4
Step 3. Adjusting the Classpath.....	1-5
Adjusting the Classpath for Windows.....	1-5
Adjusting the Classpath for UNIX.....	1-6
Step 4. Updating the BEA License.....	1-8
Step 5. Deploying the Adapter Using the WebLogic Server Console .....	1-9
Step 6. Creating or Updating the Adapter Group .....	1-17
Creating the Adapter Group .....	1-18
Adding the User Name to the Adapter Group.....	1-19
Next Steps.....	1-20



---

# About This Document

This document explains how to install the BEA WebLogic Adapter for MQSeries, which is used to develop client-server interfaces between MQSeries and other Web applications. It describes how to install the BEA WebLogic Adapter for MQSeries with WebLogic Integration 7.0.

This document is organized as follows:

- [Chapter 1, “Installing the Adapter With WebLogic Integration 7.0,”](#) provides the information you need before installing the BEA WebLogic Adapter for MQSeries, and describes how to install the adapter with WebLogic Integration 7.0.

## Audience

This document is written for system integrators who develop client interfaces between MQSeries and other Web applications. It describes how to install the BEA WebLogic Adapter for MQSeries to develop application environments with a specific focus on message integration. It is assumed that readers know Web technologies and have a general understanding of Microsoft Windows and UNIX systems.

## Related Information

The BEA corporate Web site provides all documentation for WebLogic Server and WebLogic Integration. For information about these products, go to <http://e-docs.bea.com>. Documents that you may find helpful when installing the BEA WebLogic Adapter for MQSeries are:

- *BEA WebLogic Adapter for MQSeries User Guide*
- *BEA WebLogic Adapter for MQSeries Release Notes*
- BEA WebLogic Platform 7.0 installation and user documentation, which is available at the following URL:

<http://edocs.bea.com/platform/docs70/index.html>

## Contact Us!

Your feedback on the BEA WebLogic Adapter for MQSeries documentation is important to us. Send us e-mail at [docsupport@bea.com](mailto:docsupport@bea.com) if you have questions or comments. Your comments will be reviewed directly by the BEA professionals who create and update the BEA WebLogic Adapter for MQSeries documentation.

In your e-mail message, please indicate which version of the BEA WebLogic Adapter for MQSeries documentation you are using.

If you have any questions about this version of the BEA WebLogic Adapter for MQSeries, or if you have problems installing and running the BEA WebLogic Adapter for MQSeries, contact BEA Customer Support through BEA WebSupport at [www.bea.com](http://www.bea.com). You can also contact Customer Support by using the contact information provided on the Customer Support Card, which is included in the product package.

When contacting Customer Support, be prepared to provide the following information:

- Your name, e-mail address, phone number, and fax number
- Your company name and company address

- 
- Your machine type and authorization codes
  - The name and version of the adapter you are using
  - The version of WebLogic Integration you are using
  - A description of the problem and the content of pertinent error messages

## Documentation Conventions

The following documentation conventions are used throughout this document.

Convention	Item
<b>boldface text</b>	Indicates terms defined in the glossary.
Ctrl+Tab	Indicates that you must press two or more keys simultaneously.
<i>italics</i>	Indicates emphasis or book titles.
monospace text	Indicates code samples, commands and their options, data structures and their members, data types, directories, and file names and their extensions. Monospace text also indicates text that you must enter from the keyboard. <i>Examples:</i> #include <iostream.h> void main ( ) the pointer psz chmod u+w * \tux\data\ap .doc tux.doc BITMAP float
<b>monospace boldface text</b>	Identifies significant words in code. <i>Example:</i> void <b>commit</b> ( )

Convention	Item
<i>monospace</i> <i>italic</i> <i>text</i>	Identifies variables in code. <i>Example:</i> String <i>expr</i>
UPPERCASE TEXT	Indicates device names, environment variables, and logical operators. <i>Examples:</i> LPT1 SIGNON OR
{ }	Indicates a set of choices in a syntax line. The braces themselves should never be typed.
[ ]	Indicates optional items in a syntax line. The brackets themselves should never be typed. <i>Example:</i> buildobjclient [-v] [-o name ] [-f file-list]... [-l file-list]...
	Separates mutually exclusive choices in a syntax line. The symbol itself should never be typed.
...	Indicates one of the following in a command line: <ul style="list-style-type: none"><li>■ That an argument can be repeated several times in a command line</li><li>■ That the statement omits additional optional arguments</li><li>■ That you can enter additional parameters, values, or other information</li></ul> The ellipsis itself should never be typed. <i>Example:</i> buildobjclient [-v] [-o name ] [-f file-list]... [-l file-list]...
.	Indicates the omission of items from a code example or from a syntax line. The vertical ellipsis itself should never be typed.



# 1 Installing the Adapter With WebLogic Integration 7.0

This section provides instructions for installing the BEA WebLogic Adapter for MQSeries with WebLogic Integration 7.0. It includes the following topics:

- [Before Installing the Adapter](#)
- [Understanding the Representation of Paths](#)
- [Step 1. Obtaining the BEA WebLogic Adapter for MQSeries](#)
- [Step 2. Configuring the Domain](#)
- [Step 3. Adjusting the Classpath](#)
- [Step 4. Updating the BEA License](#)
- [Step 5. Deploying the Adapter Using the WebLogic Server Console](#)
- [Step 6. Creating or Updating the Adapter Group](#)
- [Next Steps](#)

# Before Installing the Adapter

Before you install the BEA WebLogic Adapter for MQSeries, you must review the *BEA WebLogic Adapter for MQSeries Release Notes* to ensure that you have the required prerequisite software installed. The release notes are available at the following URL:

<http://edocs.bea.com/wlapters/doc70/mqseries.html>

## Before Using the Adapter to Interact with MQSeries

To interact with IBM MQSeries (now known as WebSphere MQ) you must first install MQSeries or MQSeries Client on the machine where the BEA WebLogic Adapter for MQSeries will be installed. Additionally, you must install the classes required to develop MQSeries applications in Java through the following Java-based APIs:

- MQSeries classes for Java
- MQSeries classes for Java Message Service (JMS)

If you are using MQSeries 5.1 or 5.2, the required classes are provided in the MA88 SupportPac, which is available at the following URL:

<http://www-3.ibm.com/software/ts/mqseries/txppacs/ma88.html>

If you are using WebSphere MQ 5.3, the MQSeries classes for Java and JMS are installed in the `java/lib` directory when you select the JAVA Messaging Component during installation.

# Understanding the Representation of Paths

Because the location of files in the WebLogic Integration environment depends on options selected during installation and configuration, the conventions that follow are used throughout to represent paths.

- *BEA\_HOME* represents the BEA Home directory specified for your WebLogic installation.

For example, if you install the product in the default location on a Windows system, *BEA\_HOME* represents `c:\bea`.

- *WLI\_HOME* represents the root of your WebLogic Integration installation.

For example, if you install WebLogic Integration 7.0 in the default location on a Windows system, *WLI\_HOME* represents `c:\bea\weblogic700\integration`.

- *domain* is used to indicate the name of a domain.

In WebLogic Integration 7.0, the Configuration Wizard, is used to create custom user domains. When you use the Configuration Wizard to set up the domain configuration stored on the administration server, you are prompted to assign a domain name, *domain*, and to specify the location to which the *domain* directory will be installed. The files required by the administration server are installed in the *domain* directory under the specified location.

For additional information, see *Using the Configuration Wizard* which is available at the following URL:

`http://edocs.bea.com/platform/docs70/configwiz/index.html`

For example, if you accept the Configuration Wizard default location, *BEA\_HOME\user\_projects*, the files required by the administration server are installed in the following directory:

`BEA_HOME\user_projects\domain`

- *DOMAIN\_HOME* represents the complete path to the root of a domain.

For example, if you use the WebLogic Integration 7.0 Configuration Wizard to create a domain in the default location on a Windows system, *DOMAIN\_HOME* represents `c:\bea\weblogic700\user_projects\domain`.

**Note:** *WLI\_HOME* and *BEA\_HOME* (italicized) also represent the corresponding Windows and UNIX environment variables. For example, the literal interpretation of *WLI\_HOME* is %WLI\_HOME% for Windows and \$WLI\_HOME for UNIX.

Unlike *WLI\_HOME* and *BEA\_HOME*, *DOMAIN\_HOME* is not an environment variable that is set by default in the WebLogic Integration environment.

# Step 1. Obtaining the BEA WebLogic Adapter for MQSeries

The BEA WebLogic Adapter for MQSeries software is packaged as an EAR file (*BEA\_MQSERIES\_1\_0\_70.ear*). You can obtain the software on CD or download it from [www.bea.com](http://www.bea.com).

# Step 2. Configuring the Domain

The adapter can only be deployed in a domain that includes support for Application Integration functionality. If you have not already done so, use the Configuration Wizard to create the domain, and select one of the following domain templates:

- Enterprise application integration (EAI) domain template.
- WebLogic Integration domain template.
- Platform domain template.

For the information you need to configure a fully functional domain based on the template, see the appropriate section of the *Configuration Wizard Template Reference*:

- For the EAI domain template, see the following URL:  
<http://edocs.bea.com/platform/docs70/template/eaidomain.html>
- For the WebLogic Integration domain template, see the following URL:

<http://edocs.bea.com/platform/docs70/template/wlidomain.html>

- For the platform domain template, see the following URL:

<http://edocs.bea.com/platform/docs70/template/platjar.html>

For general information about using the Configuration Wizard, see *Using the Configuration Wizard* at the following URL:

<http://edocs.bea.com/platform/docs70/configwiz/index.html>

When you use the Configuration Wizard to create a domain that includes support for Application Integration, a domain-specific version of the Database Wizard is installed in the `DOMAIN_HOME` directory. You must run the Database Wizard for the domain to initialize the database repository with the required tables and system data. For additional information, see “Configuring the Database for a Domain” in *Starting, Stopping and Customizing BEA WebLogic Integration*, at the following URL:

<http://edocs.bea.com/wli/docs70/config/index.htm>

## Step 3. Adjusting the Classpath

Set the classpath using the procedure appropriate for your system:

- [Adjusting the Classpath for Windows](#)
- [Adjusting the Classpath for UNIX](#)

**Note:** The following procedures reference files that must be obtained from the MA88 SupportPac (if you are using MQSeries 5.1 or 5.2) or from your WebSphere MQ 5.3 distribution. For additional information, see “[Before Using the Adapter to Interact with MQSeries](#)” on page 1-2. Be sure you know the location of the required files.

## Adjusting the Classpath for Windows

To adjust the classpath on Windows, complete the following steps:

1. Go to the root directory for your domain:

# 1 *Installing the Adapter With WebLogic Integration 7.0*

---

```
cd DOMAIN_HOME
```

**Note:** You must choose a domain that supports application integration functionality.

2. Find the `SetDomainTypeData.cmd` file.

Here, *DomainType* is the type of the domain. For example, if your domain is configured to support the development of solutions that employ the full range of WebLogic Integration functionality, it contains the `SetwliDomainData.cmd` file.

3. Update the SVRCP environment variable settings in the `SetDomainTypeData.cmd` file.

**Note:** The SVRCP environment variable is used in the `SetDomainTypeData` script to set the classpath for the java executable.

After the following line:

```
set SVRCP=%SVRCP%;%PBCOMMONCP%
```

add the following JAR files:

```
REM ===== Libraries for MQSeries =====
set SVRCP=%SVRCP%;"D:\Program Files\MQSeries\Java\lib\com.ibm.mq.iiop.jar"
set SVRCP=%SVRCP%;"D:\Program Files\MQSeries\Java\lib\com.ibm.mq.jar"
set SVRCP=%SVRCP%;"D:\Program Files\MQSeries\Java\lib\com.ibm.mqbind.jar"

REM ===== Native Libraries and Localized Properties =====
set SVRCP=%SVRCP%;"D:\Program Files\MQSeries\Java\lib"
```

Here, `D:\Program Files\MQSeries\Java\lib` is a sample directory in which the required MQSeries classes for Java and JMS are located. For additional information, see [“Before Using the Adapter to Interact with MQSeries” on page 1-2](#).

**Note:** Depending on the version of the MA88 SupportPac or MQ distribution, the `com.ibm.mq.iiop.jar` file may be named `com.ibm.mqjms.jar`.

## Adjusting the Classpath for UNIX

To adjust the classpath on UNIX, complete the following steps:

**Note:** This procedure references files in the MA88 SupportPac. For more information on the MA88 SupportPac, see [“Before Using the Adapter to Interact with MQSeries” on page 1-2](#). Be sure you know the location of the files that are included in the MA88 SupportPac.

1. Go to the root directory for your domain:

```
cd DOMAIN_HOME
```

**Note:** You must choose a WebLogic Integration domain that supports application integration functionality.

2. Find the `SetDomainTypeData.cmd` file.

Here, *DomainType* is the type of the domain. For example, if your domain is configured to support the development of solutions that employ the full range of WebLogic Integration functionality, it contains the `SetwliDomainData.cmd` file.

3. Update the `SVRCP` environment variable settings in the `SetDomainTypeData.cmd` file.

**Note:** The `SVRCP` environment variable is used in the `SetDomainTypeData` script to set the classpath for the java executable.

After the following line:

```
SVRCP=%SVRCP%;%PBCOMMONCP%
```

add the following JAR files:

```
# ===== Libraries for MQSeries =====
SVRCP=$SVRCP:/usr/MQSeries/Java/lib/com.ibm.mq.iiop.jar
SVRCP=$SVRCP:/usr/MQSeries/Java/lib/com.ibm.mq.jar
SVRCP=$SVRCP:/usr/MQSeries/Java/lib/com.ibm.mqbind.jar

# ===== Native Libraries and Localized Properties =====
SVRCP=$SVRCP:/usr/MQSeries/Java/lib
```

Here, `/usr/MQSeries/Java/lib` is a sample directory in which the required MQSeries classes for Java and JMS are located. For additional information, see [“Before Using the Adapter to Interact with MQSeries” on page 1-2](#).

**Note:** Depending on the version of the MA88 SupportPac or MQ distribution, the `com.ibm.mq.iiop.jar` file may be named `com.ibm.mqjms.jar`.

# Step 4. Updating the BEA License

The BEA WebLogic Adapter for MQSeries cannot be used without a valid software license. If you have downloaded the adapter for evaluation, you must obtain an evaluation license as described on the adapter download page. If you have purchased a license for the adapter, the license file is typically sent to you as an e-mail attachment.

When you have obtained a valid license for the adapter, update your `license.bea` file by completing the following steps:

1. Save the license file that you obtained with a name other than `license.bea`, in the `BEA_HOME` directory. For example, save the file as `mqseries_adapter_license.bea`. Use this file as the *license\_update\_file* in step 4 of this procedure.

**Warning:** Do not overwrite or change the name of the existing `license.bea` file.

2. Perform the step appropriate for your platform:
  - On a Windows system, open an MS-DOS session and go to the `BEA_HOME` directory.
  - On a UNIX system, go to the `BEA_HOME` directory.
3. If it is not already included, add the JDK to your `PATH` variable by executing the command appropriate to your system:

- On a Windows system:

```
set PATH=BEA_HOME\jdk131_03\bin;%PATH%
```

- On a UNIX system:

```
PATH=BEA_HOME/jdk131_03/bin:$PATH
export PATH
```



4. Merge the license update file into your existing license by executing the command appropriate to your system:
  - On a Windows system:

```
UpdateLicense license_update_file
```
  - On a UNIX system:

```
sh UpdateLicense.sh license_update_file
```

Here, *license\_update\_file* is the name to which you saved the license update file in step 1.
5. Save a copy of your updated `license.bea` file in a safe place outside the WebLogic Integration and application installation directories.

# Step 5. Deploying the Adapter Using the WebLogic Server Console

After the BEA WebLogic Adapter for MQSeries is installed, it must be deployed to your domain. To configure and deploy an adapter using the WebLogic Server Administration Console, complete the following steps:

1. Start WebLogic Server.
2. Start the WebLogic Server Administration Console in a browser using the following URL:

```
http://host:port/console/
```

Here, *host* represents the machine on which WebLogic Server is running and *port* represents the listening port.

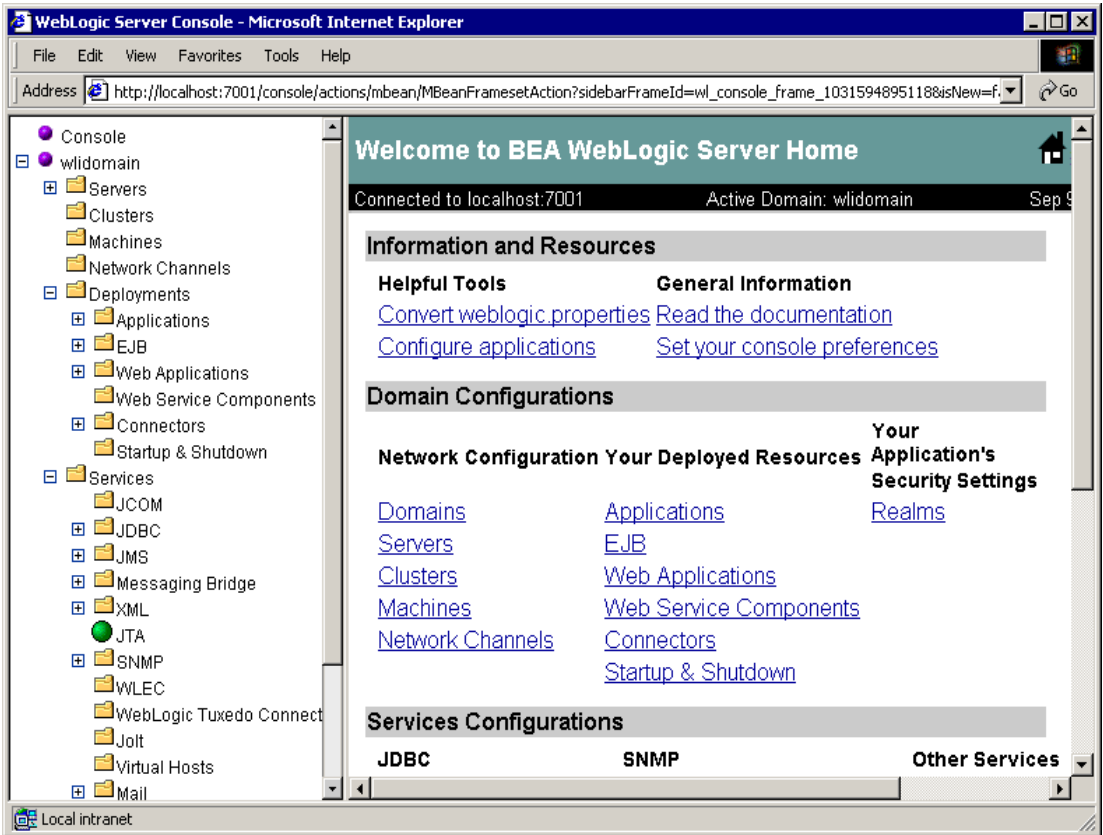
For example, `http://localhost:7001/console/`

3. When prompted, enter the user name and password for the server.

The WebLogic Server Administration Console opens.

**Figure 1-1 WebLogic Server Console**

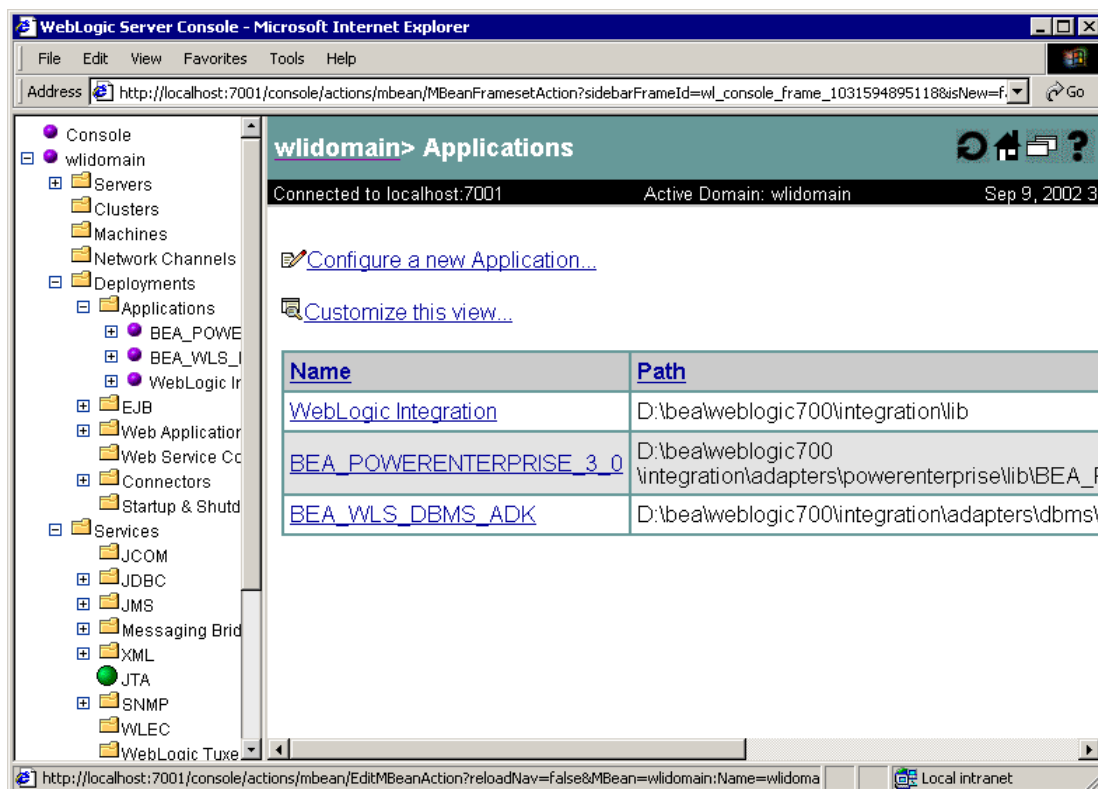
# 1 *Installing the Adapter With WebLogic Integration 7.0*



4. In the left pane, choose Deployments and then Applications from the navigation tree.

The console displays the Applications window.

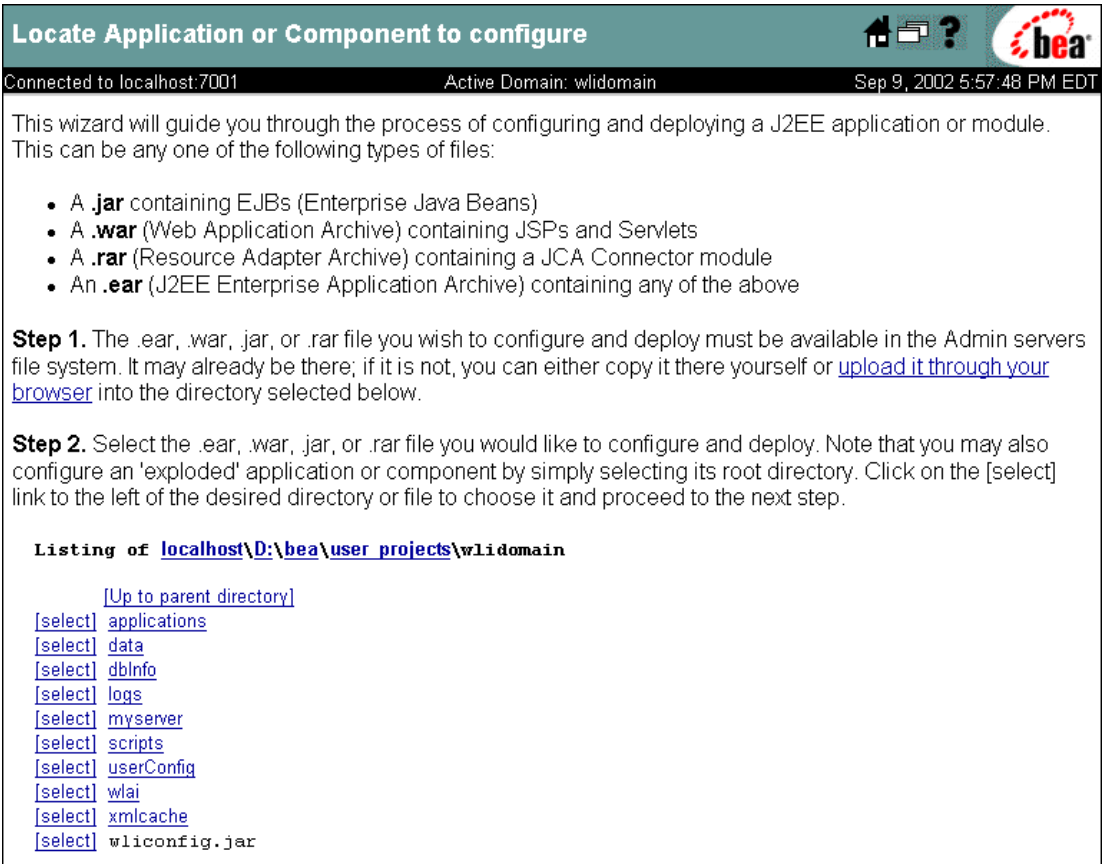
Figure 1-2 Applications Window



5. Click the Configure a new Application link.

The console displays the Locate Application or Component to configure window.

**Figure 1-3 Locate Application or Component to Configure Window**



6. Do one of the following:

If you copied the BEA\_MQSERIES\_1\_0\_70.ear file to a directory on the administrative server, navigate to that directory. For example, if you copied the file to the D:\bea\AdapterEars directory, select the directory as shown in the following figure.

**Figure 1-4 Locating the Adapter EAR File**

**Listing of [localhost\D:\bea\AdapterEars](#)**

[\[Up to parent directory\]](#)  
[\[select\]](#) BEA\_MQSERIES\_1\_0\_70.ear

If you have not copied the BEA\_MQSERIES\_1\_0\_70.ear file to a directory on the administrative server, do the following:

- a. Navigate to the directory to which the file will be uploaded.

For example, to upload the adapter from your local machine to the D:\bea\AdapterEars directory on the administrative server, select the directory as shown in the following figure.

**Figure 1-5 Selecting the Target Directory**

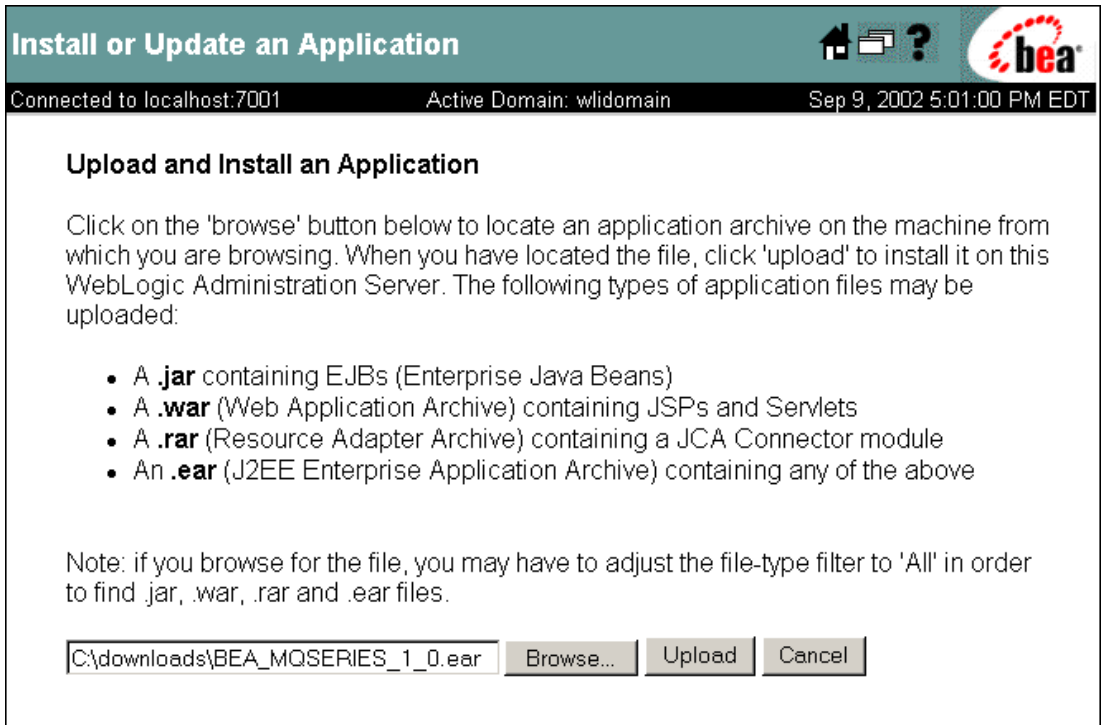
**Listing of [localhost\D:\bea\AdapterEars](#)**

[\[Up to parent directory\]](#)

- b. Click the upload it through your browser link to display the Install or Update an Application window.
- c. Click Browse to display the Choose File dialog box.
- d. In the Choose File dialog box, locate the file and then click Open.

The console displays the selected location.

**Figure 1-6 Install or Update an Application Window**



e. Click Upload.

The browser status bar indicates upload progress. When the upload is complete, you are returned to the Locate Application or Component to configure window. The uploaded file now resides in the directory selected in step a.

**Figure 1-7 Adapter EAR File Uploaded to Administrative Server**

**Listing of [localhost\D:\bea\AdapterEars](#)**

[\[Up to parent directory\]](#)

[\[select\]](#) BEA\_MQSERIES\_1\_0\_70.ear

- Click the [select] link to the left of the adapter EAR file.

The console displays the Configure Application or Component window.

**Figure 1-8 Configure Application or Component Window**

**Configure Application or Component**

Connected to localhost:7001      Active Domain: wlidomain      Sep 9, 2002 5:33:42 PM EDT

**Step 3.** You have chosen to configure

D:\bea\AdapterEars\BEA\_MQSERIES\_1\_0\_70.ear

Select the Servers and/or Clusters on which you would like to deploy this application initially.  
(You can reconfigure deployment targets later if you wish).

Available Servers		Target Servers
myserver	→	
	←	

**Step 4.** Enter a name for this application.

BEA\_MQSERIES\_1\_0\_70

**Step 5.** Press 'Configure and Deploy' to configure and deploy the application, or 'Cancel' to leave the Domain unchanged.

Configure and Deploy      Cancel

- Select the servers or clusters on which to deploy the adapter by using the arrow buttons to move entries from the available list to the target list.

- You must change the application name from BEA\_MQSERIES\_1\_0\_70 to BEA\_MQSERIES\_1\_0.

**Note:** If you do not change the application name, the adapter will not be available to application views.

## 1 *Installing the Adapter With WebLogic Integration 7.0*

The following figure shows a configured application.

**Figure 1-9 Configured Application**

**Configure Application or Component**

Connected to localhost:7001      Active Domain: wlidomain      Sep 9, 2002 5:33:42 PM EDT

**Step 3.** You have chosen to configure  
D:\bea\AdapterEars\BEA\_MQSERIES\_1\_0\_70.ear

Select the Servers and/or Clusters on which you would like to deploy this application initially.  
(You can reconfigure deployment targets later if you wish).

Available Servers		Target Servers
	➡	myserver
	⬅	

**Step 4.** Enter a name for this application.  
BEA\_MQSERIES\_1\_0

**Step 5.** Press 'Configure and Deploy' to configure and deploy the application, or 'Cancel' to leave the Domain unchanged.

Configure and Deploy      Cancel

10. Click Configure and Deploy.

The console displays the deployment status, which includes a description, status, begin time, and end time for the deployed adapter.



## Step 6. Creating or Updating the Adapter Group

Before you create an application view that uses the events or services supported by an adapter, the following requirements must be met:

- The user group, `adapter`, must be defined.
- The administrative server user name must be a member of the `adapter` group.

The action required to complete the configuration depends on which domain template you selected when you created the domain. See the following table for guidelines.

**Table 1-1 Configuration Requirements**

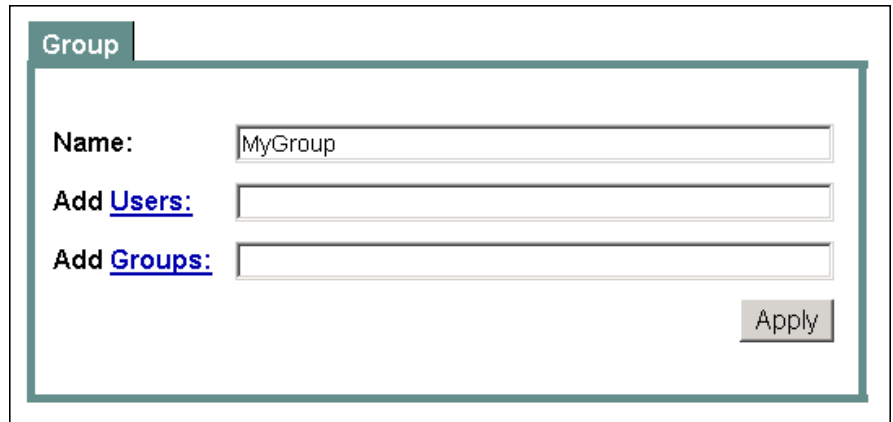
If you created a domain based on the ...	And the administrative server user name is ...	Then ...
Platform domain template	Any value	Create the adapter group and add the administrative user name to it as described in <a href="#">“Creating the Adapter Group” on page 1-18</a> .
WLI or EAI domain template	<code>system</code>	The adapter group is already defined. This group includes the <code>system</code> user name by default. No further configuration is required.
WLI or EAI domain template	A value other than <code>system</code>	The adapter group is already defined. Add the user name to the group as described in <a href="#">“Adding the User Name to the Adapter Group” on page 1-19</a> .

# Creating the Adapter Group

To create the adapter group and add the administrative server user name to it, complete the following steps:

1. In the left pane of the WebLogic Server Administration Console, choose Compatibility Security, and then choose Groups from the navigation tree.
2. Click the Create a New Group link to display the Group window.

**Figure 1-10 Group Window**



The screenshot shows a web-based form titled "Group". It contains three input fields: "Name:" with the value "MyGroup", "Add Users:" which is empty, and "Add Groups:" which is also empty. The "Users" and "Groups" labels are underlined in blue. An "Apply" button is positioned at the bottom right of the form area.

3. Enter adapter in the Name field.
4. Enter the administrative server user name in the Add Users field.
5. Click Apply.

The Group window is updated as shown in the following figure.

Figure 1-11 Group Window

**Group**

**Name:** adapter

**Members:** ☐ [username](#)  
(Select to remove)

**Add [Users:](#)**

**Add [Groups:](#)**

**Apply**

## Adding the User Name to the Adapter Group

To add the administrative server user name to the `adapter` group, complete the following steps:

1. In the left pane of the WebLogic Server Administration Console, choose Compatibility Security and then Groups from the navigation tree.  
The console displays the groups currently defined for the domain.
2. Locate and click the link for the `adapter` group to display the group definition.

Figure 1-12 Group Definition

The screenshot shows a web browser window with the address bar displaying `mydomain> Realms> myRealm> Groups`. The status bar at the top indicates "Connected to localhost:7001", "Active Domain: mydomain", and the date/time "Sep 10, 2002 5:41:32 PM EDT". The BEA logo is in the top right corner. The main content area has a "Group" tab selected. Inside the tab, the "Name:" field is set to "adapter". The "Members:" section, with the instruction "(Select to remove)", lists several users with checkboxes: ☐ [admin](#), ☐ [wlcSamplesUser](#), ☐ [joe](#), ☐ [wlisystem](#), ☐ [hub](#), ☐ [system](#), ☐ [mary](#), and ☐ [guest](#). Below this are two empty text input fields labeled "Add [Users](#):" and "Add [Groups](#):". An "Apply" button is located in the bottom right corner of the form area.

3. If the administrative server user name is not included in the Members list, enter the user name in the Add Users field.
4. Click Apply to add the user name to the group.  
The name is added to the Members list.

## Next Steps

When you have successfully installed and deployed the adapter, you can log on to the WebLogic Integration Application View Console to create application views that employ events and services supported by the BEA WebLogic Adapter for MQSeries. For more information, see the *BEA WebLogic Adapter for MQSeries User Guide*.