



BEA WebLogic Adapter for MQSeries®

Installation and Configuration Guide for WebLogic Integration 2.1

Copyright

Copyright © 2003 BEA Systems, Inc. All Rights Reserved.

Copyright © 2003 iWay Software. All Rights Reserved.

Restricted Rights Legend

This software and documentation is subject to and made available only pursuant to the terms of the BEA Systems License Agreement and may be used or copied only in accordance with the terms of that agreement. It is against the law to copy the software except as specifically allowed in the agreement. This document may not, in whole or in part, be copied photocopied, reproduced, translated, or reduced to any electronic medium or machine readable form without prior consent, in writing, from BEA Systems, Inc.

Use, duplication or disclosure by the U.S. Government is subject to restrictions set forth in the BEA Systems License Agreement and in subparagraph (c)(1) of the Commercial Computer Software-Restricted Rights Clause at FAR 52.227-19; subparagraph (c)(1)(ii) of the Rights in Technical Data and Computer Software clause at DFARS 252.227-7013, subparagraph (d) of the Commercial Computer Software--Licensing clause at NASA FAR supplement 16-52.227-86; or their equivalent.

Information in this document is subject to change without notice and does not represent a commitment on the part of BEA Systems. THE SOFTWARE AND DOCUMENTATION ARE PROVIDED “AS IS” WITHOUT WARRANTY OF ANY KIND INCLUDING WITHOUT LIMITATION, ANY WARRANTY OF MERCHANTABILITY OR FITNESS FOR A PARTICULAR PURPOSE. FURTHER, BEA Systems DOES NOT WARRANT, GUARANTEE, OR MAKE ANY REPRESENTATIONS REGARDING THE USE, OR THE RESULTS OF THE USE, OF THE SOFTWARE OR WRITTEN MATERIAL IN TERMS OF CORRECTNESS, ACCURACY, RELIABILITY, OR OTHERWISE.

Trademarks or Service Marks

BEA, Jolt, Tuxedo, and WebLogic are registered trademarks of BEA Systems, Inc. BEA Builder, BEA Campaign Manager for WebLogic, BEA eLink, BEA Manager, BEA WebLogic Commerce Server, BEA WebLogic Enterprise, BEA WebLogic Enterprise Platform, BEA WebLogic Express, BEA WebLogic Integration, BEA WebLogic Personalization Server, BEA WebLogic Platform, BEA WebLogic Portal, BEA WebLogic Server, BEA WebLogic Workshop and How Business Becomes E-Business are trademarks of BEA Systems, Inc.

All other trademarks are the property of their respective companies.

BEA WebLogic Adapter for MQSeries Installation and Configuration Guide for WebLogic Integration 2.1

Part Number	Date
N/A	April 2003

Table of Contents

About This Document

What You Need to Know	v
Related Information.....	vi
Contact Us!	vi
Documentation Conventions	vii

1. Installing the BEA WebLogic Adapter for MQSeries

Before Installing the Adapter	1-2
Before Using the Adapter to Interact with MQSeries	1-2
Understanding the Representation of Paths.....	1-3
Step 1. Obtaining the BEA WebLogic Adapter for MQSeries	1-4
Step 2. Extracting JARs and Adjusting the Classpath.....	1-4
Extracting JARs and Adjusting the Classpath for Windows.....	1-5
Extracting JARs and Adjusting the Classpath for UNIX.....	1-6
Connecting to MQSeries in Binding Mode.....	1-8
Step 3. Configuring the WebLogic Integration Database for the Domain	1-8
Step 4. Replacing the xmltoolkit.jar File.....	1-9
Step 5. Updating the BEA License.....	1-10
Step 6. Deploying the Adapter Using the WebLogic Server Console	1-12
Step 7. Adding the Administrative Server User Name to the Adapter Group	1-15
Next Steps.....	1-16



About This Document

This document explains how to install the BEA WebLogic Adapter for MQSeries, which is used to develop client-server interfaces between MQSeries and other Web applications. It describes how to install the BEA WebLogic Adapter for MQSeries within WebLogic Integration 2.1.

This document is organized as follows:

- [Chapter 1, “Installing the BEA WebLogic Adapter for MQSeries,”](#) provides the information you need before installing the WebLogic Integration, and describes how to install the adapter with WebLogic Integration 2.1.

What You Need to Know

This document is written for system integrators who develop client interfaces between MQSeries and other Web applications. It describes how to install the BEA WebLogic Adapter for MQSeries to develop application environments with a specific focus on message integration. It is assumed that readers know Web technologies and have a general understanding of Microsoft Windows and UNIX systems.

Related Information

The BEA corporate Web site provides all documentation for WebLogic Server and WebLogic Integration. For information about these products, go to <http://e-docs.bea.com>. Documents that you may find helpful when installing the BEA WebLogic Adapter for MQSeries are:

- *BEA WebLogic Adapter for MQSeries Release Notes*
- *BEA WebLogic Adapter for MQSeries User Guide*
- BEA WebLogic Server 6.1 installation and user documentation, which is available at the following URL:

<http://edocs.bea.com/wls/docs61/index.html>

- BEA WebLogic Integration 2.1 installation and user documentation, which is available at the following URL:

http://edocs.bea.com/wlintegration/v2_1sp/index.html

Contact Us!

Your feedback on the BEA WebLogic Adapter for MQSeries documentation is important to us. Send us e-mail at docsupport@bea.com if you have questions or comments. Your comments will be reviewed directly by the BEA professionals who create and update the BEA WebLogic Adapter for MQSeries documentation.

In your e-mail message, please indicate which version of the BEA WebLogic Adapter for MQSeries documentation you are using.

If you have any questions about this version of the BEA WebLogic Adapter for MQSeries, or if you have problems installing and running the BEA WebLogic Adapter for MQSeries, contact BEA Customer Support through BEA WebSupport at www.bea.com. You can also contact Customer Support by using the contact information provided on the Customer Support Card, which is included in the product package.

When contacting Customer Support, be prepared to provide the following information:

- Your name, e-mail address, phone number, and fax number
- Your company name and company address
- Your machine type and authorization codes
- The name and version of the adapter you are using
- The version of WebLogic Integration you are using
- A description of the problem and the content of pertinent error messages

Documentation Conventions

The following documentation conventions are used throughout this document.

Convention	Item
boldface text	Indicates terms defined in the glossary.
Ctrl+Tab	Indicates that you must press two or more keys simultaneously.
<i>italics</i>	Indicates emphasis or book titles.
monospace text	<p>Indicates code samples, commands and their options, data structures and their members, data types, directories, and file names and their extensions. Monospace text also indicates text that you must enter from the keyboard.</p> <p><i>Examples:</i></p> <pre>#include <iostream.h> void main () the pointer psz chmod u+w * \tux\data\ap .doc tux.doc BITMAP float</pre>

Convention	Item
monospace boldface text	Identifies significant words in code. <i>Example:</i> void commit ()
<i>monospace</i> <i>italic</i> <i>text</i>	Identifies variables in code. <i>Example:</i> String <i>expr</i>
UPPERCASE TEXT	Indicates device names, environment variables, and logical operators. <i>Examples:</i> LPT1 SIGNON OR
{ }	Indicates a set of choices in a syntax line. The braces themselves should never be typed.
[]	Indicates optional items in a syntax line. The brackets themselves should never be typed. <i>Example:</i> buildobjclient [-v] [-o name] [-f file-list]... [-l file-list]...
	Separates mutually exclusive choices in a syntax line. The symbol itself should never be typed.
...	Indicates one of the following in a command line: <ul style="list-style-type: none">■ That an argument can be repeated several times in a command line■ That the statement omits additional optional arguments■ That you can enter additional parameters, values, or other information The ellipsis itself should never be typed. <i>Example:</i> buildobjclient [-v] [-o name] [-f file-list]... [-l file-list]...
.	Indicates the omission of items from a code example or from a syntax line. The vertical ellipsis itself should never be typed.

1 Installing the BEA WebLogic Adapter for MQSeries

This section provides instructions for installing the BEA WebLogic Adapter for MQSeries with WebLogic Integration 2.1. It includes the following topics:

- [Before Installing the Adapter](#)
- [Understanding the Representation of Paths](#)
- [Step 1. Obtaining the BEA WebLogic Adapter for MQSeries](#)
- [Step 2. Extracting JARs and Adjusting the Classpath](#)
- [Step 3. Configuring the WebLogic Integration Database for the Domain](#)
- [Step 4. Replacing the xmltoolkit.jar File](#)
- [Step 5. Updating the BEA License](#)
- [Step 6. Deploying the Adapter Using the WebLogic Server Console](#)
- [Step 7. Adding the Administrative Server User Name to the Adapter Group](#)
- [Next Steps](#)

Before Installing the Adapter

Before you install the BEA WebLogic Adapter for MQSeries, you must review the *BEA WebLogic Adapter for MQSeries Release Notes* to ensure that you have the required prerequisite software installed. The *BEA WebLogic Adapter for MQSeries Release Notes* is available at the following URL:

<http://edocs.bea.com/wladders/doc703/mqseries.html>

Before Using the Adapter to Interact with MQSeries

To interact with IBM MQSeries (now known as WebSphere MQ) you must first install MQSeries or MQSeries Client on the machine where the BEA WebLogic Adapter for MQSeries will be installed. Additionally, you must install the classes required to develop MQSeries applications in Java through the following Java-based APIs:

- MQSeries classes for Java
- MQSeries classes for Java Message Service (JMS)

If you are using MQSeries 5.1 or 5.2, the required classes are provided in the MA88 SupportPac, which is available at the following URL:

<http://www-3.ibm.com/software/ts/mqseries/txppacs/ma88.html>

If you are using WebSphere MQ 5.3, the MQSeries classes for Java and JMS are installed in the `java/lib` directory when you select the JAVA Messaging Component during installation.

Understanding the Representation of Paths

Because the location of files in the WebLogic Integration environment depends on options selected during installation and configuration, the conventions that follow are used throughout to represent paths.

- *BEA_HOME* represents the BEA Home directory specified for your WebLogic installation.

For example, if you install the product in the default location on a Windows system, *BEA_HOME* represents `c:\bea`.

- *WLI_HOME* represents the root of your WebLogic Integration installation.

For example, if you install WebLogic Integration 2.1 in the default location on a Windows system, *WLI_HOME* represents `c:\bea\wlintegration2.1`.

- *domain* is used to indicate the name of a domain.

In WebLogic Integration 2.1, preconfigured domains (`bpmdomain`, `eaideomain`, `wldomain`, and `samples`) are created as subdirectories of the *WLI_HOME*\config directory. Therefore, *domain* may be used to represent the root of a preconfigured WebLogic Integration 2.1 domain as follows:

WLI_HOME\config\domain

- *DOMAIN_HOME* represents the complete path to the root of a domain.

For example, if you install WebLogic Integration 2.1 in the default location on a Windows system, *DOMAIN_HOME* represents `c:\bea\wlintegration2.1\config\domain`.

Step 1. Obtaining the BEA WebLogic Adapter for MQSeries

The BEA WebLogic Adapter for MQSeries is packaged as an EAR file (BEA_MQSERIES_1_0.ear). You can obtain the software on CD or download it from www.bea.com.

Note: At the time of publication of this document, WebLogic Server 6.1 is unable to explode RAR files (BEA Support CASE number 333672). Use an extraction tool (such as WinZip) to extract the contents of the adapter EAR file, BEA_MQSERIES_1_0.ear, and add the location of the unpackaged objects to the server's classpath (see [Step 2. Extracting JARs and Adjusting the Classpath](#)).

Step 2. Extracting JARs and Adjusting the Classpath

Set the classpath using the procedure appropriate for your system:

- [Extracting JARs and Adjusting the Classpath for Windows](#)
- [Extracting JARs and Adjusting the Classpath for UNIX](#)

Note: The following procedures reference files that must be obtained from the MA88 SupportPac (if you are using MQSeries 5.1 or 5.2) or from your WebSphere MQ 5.3 distribution. For additional information, see [“Before Using the Adapter to Interact with MQSeries” on page 1-2](#). Be sure you know the location of the required files.

Extracting JARs and Adjusting the Classpath for Windows

To unzip the adapter JAR files and adjust the classpath on Windows, complete the following steps:

1. Use WinZip (or another similar extracting product) to extract the `BEA_MQSERIES_1_0.ear` file to a directory of your choice (for example, `BEA_HOME\ear\lib\mqseries`).

2. Go to the root directory for your domain:

```
cd DOMAIN_HOME
```

Note: You must choose a WebLogic Integration domain that supports Application Integration functionality.

3. Find the `SetDomainTypeData.cmd` file.

Here, *DomainType* is the type of the domain. For example, if your domain is configured to support the development of solutions that employ the full range of WebLogic Integration functionality, it contains the `SetwliDomainData.cmd` file.

4. Update the following `SVRCP` environment variable settings to the `SetDomainTypeData.cmd` file for the domain to include all the JAR files included in the EAR file.

Note: The `SVRCP` environment variable is used in the `SetDomainTypeData` script to set the classpath for the java executable.

After the following line:

```
set SVRCP=%SVRCP%;%WLI_DOMAIN_HOME%\wlai
```

add the following JAR files, which are listed in the order required for the classpath:

```
REM ===== General Adapter Java Libraries =====
set SVRCP=%SVRCP%;BEA_HOME\ear\lib\mqseries\ibi-edaqm.jar
set SVRCP=%SVRCP%;BEA_HOME\ear\lib\mqseries\xercesImpl.jar
set SVRCP=%SVRCP%;BEA_HOME\ear\lib\mqseries\xmlParserAPIs.jar
set SVRCP=%SVRCP%;BEA_HOME\ear\lib\mqseries\jdom.jar
set SVRCP=%SVRCP%;BEA_HOME\ear\lib\mqseries\dtddparser.jar
set SVRCP=%SVRCP%;BEA_HOME\ear\lib\mqseries\engine.jar
set SVRCP=%SVRCP%;BEA_HOME\ear\lib\mqseries\iwexcel.jar
```

1 Installing the BEA WebLogic Adapter for MQSeries

```
set SVRCP=%SVRCP%;BEA_HOME\ear\lib\mqseries\mq\BEA_MQSERIES_1_0.jar
set SVRCP=%SVRCP%;BEA_HOME\ear\lib\mqseries\xmltoolkit.jar

REM ===== Libraries for MQSeries =====
set SVRCP=%SVRCP%;"D:\Program Files\MQSeries\Java\lib\com.ibm.mq.iiop.jar"
set SVRCP=%SVRCP%;"D:\Program Files\MQSeries\Java\lib\com.ibm.mq.jar"
set SVRCP=%SVRCP%;"D:\Program Files\MQSeries\Java\lib\com.ibm.mqbind.jar"

REM ===== Native Libraries and Localized Properties =====
set SVRCP=%SVRCP%;"D:\Program Files\MQSeries\Java\lib"
```

Here, *BEA_HOME\ear\lib\HL7* is the directory specified in step 1, and *D:\Program Files\MQSeries\Java\lib* is a sample directory in which the required MQSeries classes for Java and JMS are located. For additional information, see [“Before Using the Adapter to Interact with MQSeries” on page 1-2](#).

Note: Depending on the version of the MA88 SupportPac or MQ distribution, the *com.ibm.mq.iiop.jar* file may be named *com.ibm.mqjms.jar*.

Extracting JARs and Adjusting the Classpath for UNIX

To extract the adapter JAR files and adjust the classpath on UNIX, complete the following steps:

Note: This procedure references files in the MA88 SupportPac. For more information on the support pac, see [“Before Using the Adapter to Interact with MQSeries” on page 1-2](#). Be sure you know the location of the files that are included in the MA88 SupportPac.

1. Use jar (or another similar extracting product) to extract *BEA_MQSERIES_1_0.ear* to a directory of your choice (for example, *BEA_HOME/ear/lib/mqseries*).

2. Go to the root directory for your domain:

```
cd DOMAIN_HOME
```

Note: You must choose a WebLogic Integration domain that supports application integration functionality.

3. Find the *SetDomainTypeData.cmd* file.

Here, *DomainType* is the type of the domain. For example, if your domain is configured to support the development of solutions that employ the full range of

WebLogic Integration functionality, it contains the `SetwliDomainData.cmd` file.

4. Update the following SVRCP environment variable settings to the `SetDomainTypeData.cmd` file for the domain to include all the JAR files included in the EAR file.

Note: The SVRCP environment variable is used in the `SetDomainTypeData` script to set the classpath for the java executable.

After the following line:

```
SVRCP=$SVRCP:$WLI_DOMAIN_HOME/wlai
```

add the following JAR files, which are listed in the order required for the classpath:

```
# ===== General Adapter Java Libraries =====
SVRCP=$SVRCP:BEA_HOME/ear/lib/mqseries/ibi-edaqm.jar
SVRCP=$SVRCP:BEA_HOME/ear/lib/mqseries/xercesImpl.jar
SVRCP=$SVRCP:BEA_HOME/ear/lib/mqseries/xmlParserAPIs.jar
SVRCP=$SVRCP:BEA_HOME/ear/lib/mqseries/mqseries/jdom.jar
SVRCP=$SVRCP:BEA_HOME/ear/lib/mqseries/dtdparser.jar
SVRCP=$SVRCP:BEA_HOME/ear/lib/mqseries/engine.jar
SVRCP=$SVRCP:BEA_HOME/ear/lib/mqseries/iwexcel.jar
SVRCP=$SVRCP:BEA_HOME/ear/lib/mqseries/BEA_MQSERIES_1_0.jar
SVRCP=$SVRCP:BEA_HOME/ear/lib/mqseries/xmltoolkit.jar

# ===== Libraries for MQSeries =====
SVRCP=$SVRCP:/usr/MQSeries/Java/lib/com.ibm.mq.iiop.jar
SVRCP=$SVRCP:/usr/MQSeries/Java/lib/com.ibm.mq.jar
SVRCP=$SVRCP:/usr/MQSeries/Java/lib/com.ibm.mqbind.jar

# ===== Native Libraries and Localized Properties =====
SVRCP=$SVRCP:/usr/MQSeries/Java/lib
```

Here, `BEA_HOME/ear/lib/HL7` is the directory specified in step 1, and `/usr/MQSeries/Java/lib` is a sample directory in which the required MQSeries classes for Java and JMS are located. For additional information, see [“Before Using the Adapter to Interact with MQSeries” on page 1-2](#).

Note: Depending on the version of the MA88 SupportPac or MQ distribution, the `com.ibm.mq.iiop.jar` file may be named `com.ibm.mqjms.jar`.

Connecting to MQSeries in Binding Mode

When MQSeries and WebLogic Integration are running on the same machine, you can configure events and services using the MQSeries adapter to connect to MQSeries in binding mode.

To do so, you must add the following lines to the `setDomainTypeData` script (the following example is for Windows):

```
set MQ_INSTALL_PATH=d:\apps\MQSeries
set MQ_JAVA_INSTALL_PATH=d:\apps\MQSeries\java
set MQ_JAVA_LIB_PATH=%MQ_JAVA_INSTALL_PATH%\lib
set MQ_PATH=%MQ_INSTALL_PATH%\bin;%MQ_JAVA_INSTALL_PATH%\bin;%MQ_JAVA_LIB_PATH%
set PATH=%MQ_PATH%;%PATH%
```

Step 3. Configuring the WebLogic Integration Database for the Domain

If you have not already done so, you must create the WebLogic Integration database tables for your domain. For detailed instructions, see “Configuring the Database for a Domain” in *Starting, Stopping and Customizing BEA WebLogic Integration*, which is available at the following URL:

http://edocs.bea.com/wlintegration/v2_1sp/config/index.htm

Step 4. Replacing the xmltoolkit.jar File

The BEA WebLogic Adapters include a new `xmltoolkit.jar` file. You must replace your existing WebLogic Integration `xmltoolkit.jar` file with the new JAR file.

To configure the new `xmltoolkit.jar` file, follow these steps:

1. Rename your original `xmltoolkit.jar` file to `xmltoolkit.jar.old` by entering the commands appropriate for your operating system:

- On a Windows system:

```
cd WLI_HOME\lib
rename xmltoolkit.jar xmltoolkit.jar.old
```

- On a UNIX system:

```
cd WLI_HOME/lib
mv xmltoolkit.jar xmltoolkit.jar.old
```

2. Extract the `xmltoolkit.jar` file from the adapter EAR file into a temporary directory.
3. Copy the new `xmltoolkit.jar` file (extracted in step 2) to the `WLI_HOME\lib` directory for Windows or the `WLI_HOME/lib` directory for UNIX.

Caution: Simply replacing the `xmltoolkit.jar` file is not sufficient; you must also make changes to the `setenv` and `SetDomainTypeData` scripts as described in the following steps.

4. Edit the top-level `setenv` script and make the appropriate changes for your operating system:

- On a Windows system, edit the `WLI_HOME\setenv.cmd` script.

Replace the line:

```
set WLICOMMONCP=
```

with

```
set WLICOMMONCP=%WLI_HOME%\lib\xmltoolkit.jar
```

- On a UNIX system, edit the `WLI_HOME/setenv.sh` script.

Replace the line:

```
WLICOMMONCP=$WLI_LIB/wlicommon.jar
```

with

```
WLICOMMONCP=$WLI_LIB/wlicommon.jar:$WLI_HOME/lib/xmltoolkit.jar
```

5. Edit the `SetDomainTypeData` script.

Here, *DomainType* is the type of the domain. For example, depending on the configuration of your domain, locate and edit the `SetwliDomainData.cmd` or `SeteaiDomainData.cmd` file.

- On a Windows system:

For example, edit the `DOMAIN_HOME\SetwliDomainData.cmd` script.

Replace the line:

```
set SVRCP=%WLISERVERCP%;%CMNCP%
```

with

```
set  
SVRCP=%WLI_HOME%\lib\xmltoolkit.jar;%WLISERVERCP%;%CMNCP%
```

- On a UNIX system:

For example, edit the `DOMAIN_HOME/SetwliDomainData` script.

Replace the line:

```
SVRCP=$WLISERVERCP:$CMNCP
```

with

```
SVRCP=$WLI_HOME/lib/xmltoolkit.jar:$WLISERVERCP:$CMNCP
```

Step 5. Updating the BEA License

The BEA WebLogic Adapter for MQSeries cannot be used without a valid software license. If you have downloaded the adapter for evaluation, you must obtain an evaluation license as described on the adapter download page. If you have purchased a license for the adapter, the license file is typically sent to you as an e-mail attachment.

When you have obtained a valid license for the adapter, update your `license.bea` file by completing the following steps:

1. Save the license file that you obtained with a name other than `license.bea`, in the `BEA_HOME` directory. For example, save the file as `mqseries_adapter_license.bea`. Use this file as the *license_update_file* in step 4 of this procedure.

Warning: Do not overwrite or change the name of the existing `license.bea` file.

2. Perform the step appropriate for your platform:
 - On a Windows system, open an MS-DOS session and go to the `BEA_HOME` directory.
 - On a UNIX system, go to the `BEA_HOME` directory.
3. If it is not already included, add the JDK to your `PATH` variable by executing the command appropriate to your system:

- On a Windows system:

```
set PATH=BEA_HOME\jdk131_03\bin;%PATH%
```

- On a UNIX system:

```
PATH=BEA_HOME/jdk131_03/bin:$PATH
export PATH
```

4. Merge the license update file into your existing license by executing the command appropriate to your system:

- On a Windows system:

```
UpdateLicense license_update_file
```

- On a UNIX system:

```
sh UpdateLicense.sh license_update_file
```

Here, *license_update_file* is the name to which you saved the license update file in step 1.

5. Save a copy of your updated `license.bea` file in a safe place outside the WebLogic Integration and application installation directories.

Step 6. Deploying the Adapter Using the WebLogic Server Console

After the BEA WebLogic Adapter for MQSeries is installed, it must be deployed to WebLogic Server for your domain (for example, `wl1domain`). To configure and deploy an adapter using the WebLogic Server Administration Console, complete the following steps:

1. Start WebLogic Server.
2. Start the WebLogic Server Administration Console in a browser using the following URL:

`http://localhost:port/console/`

Here, *localhost* represents the machine on which WebLogic Server is running and *port* represents the listening port.

For example, `http://localhost:7001/console/`

3. When prompted, enter the user name and password for the server.

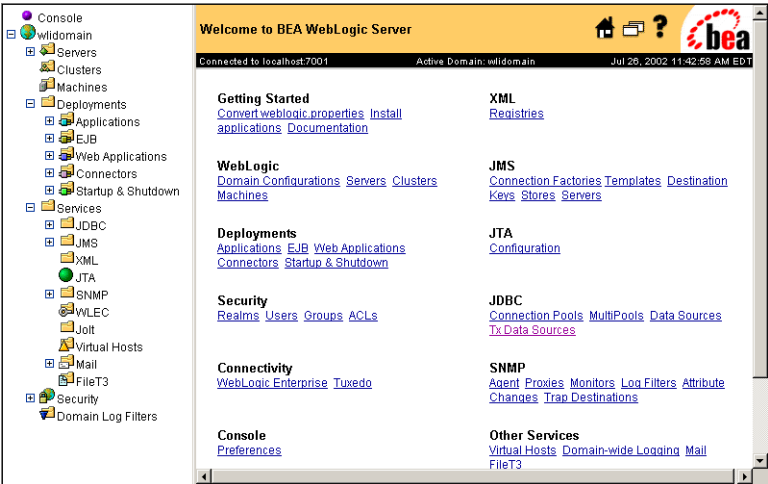
Note: If you have not updated the default login, see “WebLogic Integration Users and Passwords” in *Starting, Stopping, and Customizing WebLogic Integration* at the following URL:

`http://edocs.bea.com/wlintegration/v2_1sp/config/getstart.htm`

The WebLogic Server Administration Console opens.

Step 6. Deploying the Adapter Using the WebLogic Server Console

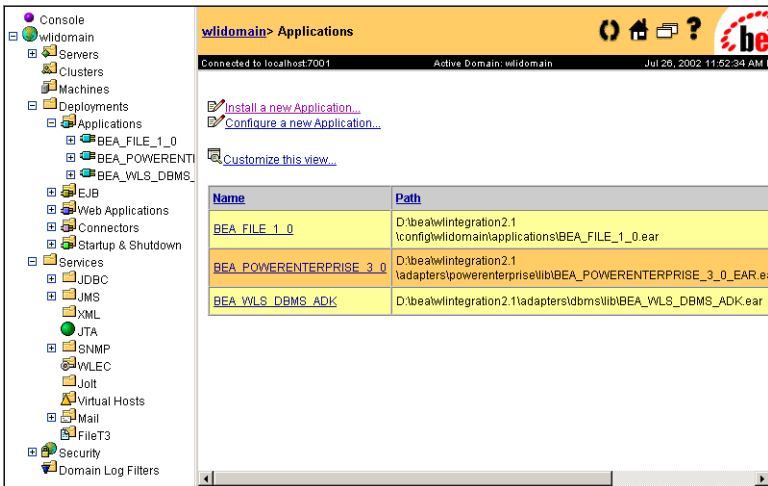
Figure 1-1 WebLogic Server Console



4. In the left pane, choose Deployments and then Applications from the navigation tree.

The console displays the Applications window.

Figure 1-2 Applications Window

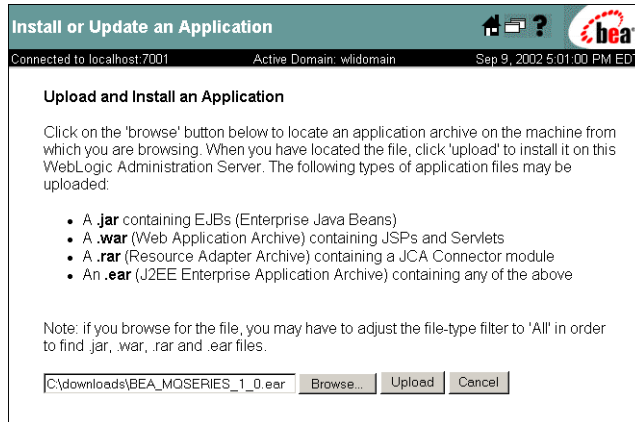


5. Click the Install a new Application link.

The console displays the Install or Update an Application window.

6. Click Browse to locate the application archive you selected during installation (BEA_MQSERIES_1_0.ear).

Figure 1-3 Locating the Application Archive Window



7. Click Upload to upload the BEA_MQSERIES_1_0.ear file.

The console displays the application files currently installed to indicate that the upload is complete and the adapter file is deployed to WebLogic Server.

8. You can verify deployment by viewing the adapter configuration, as follows:
 - a. Choose Deployments and then Applications from the navigation tree.
 - b. Click the BEA_MQSERIES_1_0.ear file link.

Step 7. Adding the Administrative Server User Name to the Adapter Group

A user group, `adapter`, is defined in each domain that supports application integration functionality. Before you create an application view that employs the events or services supported by an adapter, you must add the user name defined for the administrative server to the `adapter` group.

Note: By default, the `adapter` group includes the user `system`. If the user name defined for the administrative server is `system`, skip this step. For example, if you are starting the server in a preconfigured domain, and you have not modified the default administrative server login, you can skip this step.

To add the administrative server user name to the `adapter` group, complete the following steps:

1. In the left pane of the WebLogic Server Administration Console, choose Security and then Groups from the navigation tree.

The console displays groups currently defined for the domain.

1 Installing the BEA WebLogic Adapter for MQSeries

2. Locate and click the link for the adapter group to display the group definition.

Figure 1-4 Group Definition

The screenshot shows the BEA WebLogic Administration Console interface. The breadcrumb navigation at the top reads: [eaidomain](#) > [Realms](#) > [myRealm](#) > [Groups](#). The status bar indicates "Connected to localhost:7001", "Active Domain: eaidomain", and the date/time "Sep 10, 2002 7:18:19 PM EDT". The BEA logo is in the top right corner. The main content area is titled "Group" and shows the definition for the "adapter" group. The "Name:" field contains "adapter". The "Members:" section, with the instruction "(select to remove)", lists several users with checkboxes: ☐ joe, ☐ system, ☐ guest, ☐ hub, ☐ wlpsystem, ☐ mary, ☐ wlcsystem, ☐ admin, and ☐ wlcSamplesUser. Below this are two text input fields: "Add Users:" and "Add Groups:". An "Apply" button is located in the bottom right corner of the form.

3. If the administrative server user name is not included in the Members list, enter the user name in the Add Users field.
4. Click Apply to add the user name to the group.

The name is added to the Members list.

Next Steps

When you have successfully installed and deployed the adapter, you can log on to the WebLogic Integration Application View Console to create application views that employ events and services supported by the BEA WebLogic Adapter for MQSeries. For more information, see the *BEA WebLogic Adapter for MQSeries User Guide*.