



# BEA WebLogic Adapter for PeopleSoft® 8

## Installation and Configuration Guide for WebLogic Integration 7.0

# Copyright

Copyright © 2002 BEA Systems, Inc. All Rights Reserved.

Copyright © 2002 iWay Software. All Rights Reserved.

## Restricted Rights Legend

This software and documentation is subject to and made available only pursuant to the terms of the BEA Systems License Agreement and may be used or copied only in accordance with the terms of that agreement. It is against the law to copy the software except as specifically allowed in the agreement. This document may not, in whole or in part, be copied photocopied, reproduced, translated, or reduced to any electronic medium or machine readable form without prior consent, in writing, from BEA Systems, Inc.

Use, duplication or disclosure by the U.S. Government is subject to restrictions set forth in the BEA Systems License Agreement and in subparagraph (c)(1) of the Commercial Computer Software-Restricted Rights Clause at FAR 52.227-19; subparagraph (c)(1)(ii) of the Rights in Technical Data and Computer Software clause at DFARS 252.227-7013, subparagraph (d) of the Commercial Computer Software--Licensing clause at NASA FAR supplement 16-52.227-86; or their equivalent.

Information in this document is subject to change without notice and does not represent a commitment on the part of BEA Systems. THE SOFTWARE AND DOCUMENTATION ARE PROVIDED “AS IS” WITHOUT WARRANTY OF ANY KIND INCLUDING WITHOUT LIMITATION, ANY WARRANTY OF MERCHANTABILITY OR FITNESS FOR A PARTICULAR PURPOSE. FURTHER, BEA Systems DOES NOT WARRANT, GUARANTEE, OR MAKE ANY REPRESENTATIONS REGARDING THE USE, OR THE RESULTS OF THE USE, OF THE SOFTWARE OR WRITTEN MATERIAL IN TERMS OF CORRECTNESS, ACCURACY, RELIABILITY, OR OTHERWISE.

## Trademarks or Service Marks

BEA, Jolt, Tuxedo, and WebLogic are registered trademarks of BEA Systems, Inc. BEA Builder, BEA Campaign Manager for WebLogic, BEA eLink, BEA Manager, BEA WebLogic Commerce Server, BEA WebLogic Enterprise, BEA WebLogic Enterprise Platform, BEA WebLogic Express, BEA WebLogic Integration, BEA WebLogic Personalization Server, BEA WebLogic Platform, BEA WebLogic Portal, BEA WebLogic Server, BEA WebLogic Workshop and How Business Becomes E-Business are trademarks of BEA Systems, Inc.

All other trademarks are the property of their respective companies.

## BEA WebLogic Adapter for PeopleSoft 8 Installation and Configuration Guide for WebLogic Integration 7.0

Part Number	Date
N/A	October, 2002

---

# Table of Contents

## About This Document

Audience.....	v
Related Information.....	vi
Contact Us!.....	vii
Documentation Conventions .....	viii

## 1. Installing the Adapter for WebLogic Integration 7.0

Before Installing the Adapter .....	1-2
Understanding the Representation of Paths.....	1-2
Step 1. Obtaining the BEA WebLogic Adapter for PeopleSoft 8 .....	1-3
Step 2. Configuring the Domain.....	1-4
Step 3. Extracting JARs and Adjusting the Classpath.....	1-5
Extracting JARs and Adjusting the Classpath for Windows.....	1-5
Extracting JARs and Adjusting the Classpath for UNIX.....	1-7
Step 4. Updating the BEA License.....	1-8
Step 5. Deploying the Adapter Using the WebLogic Server Console .....	1-10
Step 6. Creating or Updating the Adapter Group.....	1-18
Creating the Adapter Group .....	1-19
Adding the User Name to the Adapter Group.....	1-20
Next Steps.....	1-21

## 2. Installing and Compiling the Component Interfaces

BEA WebLogic Adapter for PeopleSoft 8 Component Interfaces.....	2-2
Step 1. Making Component Interfaces Available to PeopleSoft 8 .....	2-2
Importing Project BEA_CI_81 or BEA_CI_84 to PeopleSoft 8.....	2-3
Step 2. Configuring Component Interface Security .....	2-14
Step 3. Testing the Component Interfaces.....	2-21

---

Step 4. Modifying the Classpath of the Machine that Runs BEA Application Explorer .....	2-27
---	------

### **3. Installing and Configuring the BEA TCP/IP Message Router**

Installing BEA TCP/IP Handler for PeopleSoft Release 8.1 .....	3-1
Step 1. Extract and Install the BEA TCP/IP Handler .....	3-2
Step 2. Configure the BEA TCP/IP Handler on the PeopleSoft 8 Gateway Server .....	3-3
Installing BEA TCP/IP Target Connector for PeopleSoft Release 8.4 and Higher .....	3-10
How to Create a Gateway .....	3-11

---

# About This Document

This document explains how to install, configure, and deploy the BEA WebLogic Adapter for PeopleSoft 8 for WebLogic Integration 7.0, which is used to develop online connections to PeopleSoft 8 applications.

This document is organized as follows:

- [Chapter 1, “Installing the Adapter for WebLogic Integration 7.0,”](#) directs users to the information they need before installing the BEA WebLogic Adapter for PeopleSoft 8 and describes how to install the adapter.
- [Chapter 2, “Installing and Compiling the Component Interfaces,”](#) describes how to install and compile the component interfaces.
- [Chapter 3, “Installing and Configuring the BEA TCP/IP Message Router,”](#) describes how to install and configure the BEA TCP/IP Handler to enable PeopleSoft 8 event functionality.

## Audience

This document is written for system integrators who develop client interfaces between PeopleSoft 8 and other applications. It describes how to install and deploy the BEA WebLogic Adapter for PeopleSoft 8 and how to use it with WebLogic Integration and adapter tools to develop online connections to PeopleSoft applications. It is assumed that readers know Web technologies and have a general understanding of Microsoft Windows and UNIX systems as well as:

- General knowledge of the PeopleSoft environment, including Application Designer and PeopleTools.

- 
- General knowledge of PeopleSoft Application Messaging and PeopleSoft Component Interface.
  - Business application knowledge in some specific application area.
  - Knowledge of PeopleSoft 8 processes and data model for the required application area.
  - General knowledge of WebLogic Integration architecture.
  - General knowledge of client-server concepts.

## Related Information

The BEA corporate Web site ([www.bea.com](http://www.bea.com)) provides all documentation for WebLogic Server and WebLogic Integration. For information about these products, go to <http://e-docs.bea.com>. Documents that you may find helpful when installing the BEA WebLogic Adapter for PeopleSoft 8 are:

- *BEA WebLogic Adapter for PeopleSoft 8 User Guide*
- *BEA Application Explorer Installation Guide*
- BEA WebLogic Platform 7.0 installation and user documentation, which is available at the following URL:  
  
<http://edocs.bea.com/platform/docs70/index.html>
- PeopleSoft 8 Documentation, available online or on CD-ROM. The following components are applicable:
  - *PeopleSoft Component Interface*
  - *PeopleSoft Internet Architecture Administration*
  - *PeopleSoft Application Messaging*

---

# Contact Us!

Your feedback on the BEA WebLogic Adapter for PeopleSoft 8 documentation is important to us. Send us e-mail at [docsupport@bea.com](mailto:docsupport@bea.com) if you have questions or comments. Your comments will be reviewed directly by the BEA professionals who create and update the BEA WebLogic Adapter for PeopleSoft 8 documentation.

In your e-mail message, please indicate which version of the BEA WebLogic Adapter for PeopleSoft 8 documentation you are using.

If you have any questions about this version of BEA WebLogic Adapter for PeopleSoft 8, or if you have problems installing and running BEA WebLogic Adapter for PeopleSoft 8, contact BEA Customer Support through BEA WebSupport at [www.bea.com](http://www.bea.com). You can also contact Customer Support by using the contact information provided on the Customer Support Card, which is included in the product package.

When contacting Customer Support, be prepared to provide the following information:

- Your name, e-mail address, phone number, and fax number
- Your company name and company address
- Your machine type and authorization codes
- The name and version of the product you are using
- A description of the problem and the content of pertinent error messages

---

# Documentation Conventions

The following documentation conventions are used throughout this document.

Convention	Item
<b>boldface text</b>	Indicates terms defined in the glossary.
Ctrl+Tab	Indicates that you must press two or more keys simultaneously.
<i>italics</i>	Indicates emphasis or book titles.
monospace text	Indicates code samples, commands and their options, data structures and their members, data types, directories, and file names and their extensions. Monospace text also indicates text that you must enter from the keyboard. <i>Examples:</i> #include <iostream.h> void main ( ) the pointer psz chmod u+w * \tux\data\ap .doc tux.doc BITMAP float
<b>monospace boldface text</b>	Identifies significant words in code. <i>Example:</i> void <b>commit</b> ( )
<i>monospace italic text</i>	Identifies variables in code. <i>Example:</i> String <i>expr</i>
UPPERCASE TEXT	Indicates device names, environment variables, and logical operators. <i>Examples:</i> LPT1 SIGNON OR



---

Convention	Item
{ }	Indicates a set of choices in a syntax line. The braces themselves should never be typed.
[ ]	Indicates optional items in a syntax line. The brackets themselves should never be typed. <i>Example:</i> buildobjclient [-v] [-o name ] [-f file-list]... [-l file-list]...
	Separates mutually exclusive choices in a syntax line. The symbol itself should never be typed.
...	Indicates one of the following in a command line: <ul style="list-style-type: none"><li>■ That an argument can be repeated several times in a command line</li><li>■ That the statement omits additional optional arguments</li><li>■ That you can enter additional parameters, values, or other information</li></ul> The ellipsis itself should never be typed. <i>Example:</i> buildobjclient [-v] [-o name ] [-f file-list]... [-l file-list]...
. . . .	Indicates the omission of items from a code example or from a syntax line. The vertical ellipsis itself should never be typed.



# 1 Installing the Adapter for WebLogic Integration 7.0

This section provides instructions for installing the BEA WebLogic Adapter for PeopleSoft 8 with WebLogic Integration. It includes the following topics:

- [Before Installing the Adapter](#)
- [Understanding the Representation of Paths](#)
- [Step 1. Obtaining the BEA WebLogic Adapter for PeopleSoft 8](#)
- [Step 2. Configuring the Domain](#)
- [Step 3. Extracting JARs and Adjusting the Classpath](#)
- [Step 4. Updating the BEA License](#)
- [Step 5. Deploying the Adapter Using the WebLogic Server Console](#)
- [Step 6. Creating or Updating the Adapter Group](#)
- [Next Steps](#)

# Before Installing the Adapter

Before you install the BEA WebLogic Adapter for PeopleSoft 8, you must review the BEA WebLogic Adapter for PeopleSoft 8 *Release Notes* to ensure that you have the required prerequisite software installed. The BEA WebLogic Adapter for PeopleSoft 8 *Release Notes* is available at the following URL:

<http://edocs.bea.com/wladders/doc70/index.html>

# Understanding the Representation of Paths

Because the location of files in the WebLogic Integration environment depends on options selected during installation and configuration, the conventions that follow are used throughout to represent paths.

- *BEA\_HOME* represents the BEA Home directory specified for your WebLogic installation.

For example, if you install the product in the default location on a Windows system, *BEA\_HOME* represents `c:\bea`.

- *WLI\_HOME* represents the root of your WebLogic Integration installation.

For example:

- If you install WebLogic Integration 7.0 in the default location on a Windows system, *WLI\_HOME* represents `c:\bea\weblogic700\integration`.
- *domain* is used to indicate the name of a domain.
  - In WebLogic Integration 7.0, a new tool, the Configuration Wizard, is used to create custom user domains. When you use the Configuration Wizard to set up the domain configuration stored on the administration server, you are prompted to assign a domain name, *domain*, and to specify the location to which the *domain* directory will be installed. The files required by the administration server are installed in the *domain* directory under the specified location.

## Step 1. Obtaining the BEA WebLogic Adapter for PeopleSoft 8

---

For additional information, see *Using the Configuration Wizard* which is available at the following URL:

<http://edocs.bea.com/platform/docs70/configwiz/index.html>

For example, if you accept the Configuration Wizard default location, *BEA\_HOME\user\_projects*, the files required by the administration server are installed in the following directory:

*BEA\_HOME\user\_projects\domain*

- *DOMAIN\_HOME* represents the complete path to the root of a domain.

For example:

- If you use the WebLogic Integration 7.0 Configuration Wizard to create a domain in the default location on a Windows system, *DOMAIN\_HOME* represents *c:\bea\weblogic700\user\_projects\domain*.

**Note:** *WLI\_HOME* and *BEA\_HOME* (italicized) also represent the corresponding Windows and UNIX environment variables. For example, the literal interpretation of *WLI\_HOME* is *%WLI\_HOME%* for Windows and *\$WLI\_HOME* for UNIX.

Unlike *WLI\_HOME* and *BEA\_HOME*, *DOMAIN\_HOME* is not an environment variable that is set by default in the WebLogic Integration environment.

## Step 1. Obtaining the BEA WebLogic Adapter for PeopleSoft 8

The BEA WebLogic Adapter for PeopleSoft 8 software is packaged as an EAR file (*BEA\_PEOPLESOFT\_1\_0\_70.ear*). You can obtain the software on CD or download it from [www.bea.com](http://www.bea.com).

# Step 2. Configuring the Domain

The adapter can only be deployed in a domain that includes support for application integration functionality. If you have not already done so, use the Configuration Wizard to create the domain and select one of the following domain templates:

- Enterprise application integration (EAI) domain template
- WebLogic Integration (WLI) domain template
- Platform domain template

For the information you need to configure a fully functional domain based on the template, see the appropriate section of the *Configuration Wizard Template Reference*:

- For the EAI domain template, see the following URL:

`http://edocs.bea.com/platform/docs70/template/eaidomain.html`

- For the WLI domain template, see the following URL:

`http://edocs.bea.com/platform/docs70/template/wlidomain.html`

- For the platform domain template, see the following URL:

`http://edocs.bea.com/platform/docs70/template/platjar.html`

For general information about using the Configuration Wizard, see *Using the Configuration Wizard* at the following URL:

`http://e-docs.bea.com/platform/docs70/configwiz/index.html`

When you use the Configuration Wizard to create a domain based on the WLI or EAI domain template, a domain-specific version of the Database Wizard is installed in the `DOMAIN_HOME` directory. You must run the Database Wizard for the domain to initialize the database repository with the required tables and system data. For additional information, see “Configuring the Database for a Domain” in *Starting, Stopping and Customizing BEA WebLogic Integration*, at the following URL:

`http://edocs.bea.com/wli/docs70/config/index.htm`

## Step 3. Extracting JARs and Adjusting the Classpath

Set the classpath using the procedure appropriate for your system:

- [Extracting JARs and Adjusting the Classpath for Windows](#)
- [Extracting JARs and Adjusting the Classpath for UNIX](#)

### Extracting JARs and Adjusting the Classpath for Windows

To unzip the adapter JAR files and adjust the classpath on Windows, complete the following steps:

1. Use WinZip (or another similar extracting product) to extract the `BEA_PEOPLESOFT_1_0_70.ear` file to a directory of your choice (for example, `BEA_HOME\lib\PeopleSoft`).
2. Copy the `psjoa.jar` from your `PS_HOME` Web directory to the directory into which you extracted the `BEA_PEOPLESOFT_1_0_70.ear` file (for example, `BEA_HOME\lib\PeopleSoft`).

The `psjoa.jar` file is the Java Object Adapter (JOA) shipped with your PeopleSoft application. This file is required by both WebLogic Server and the BEA Application Explorer. It can be found in your `PS_HOME` Web directory.

**Note:** The `psjoa.jar` file is release-specific. Each time you upgrade your Peopletools release, you must obtain the current version of `psjoa.jar`, shut down WebLogic Server, and replace the old `psjoa.jar` with the current version.

3. If you are using PeopleSoft release 8.1x, copy the `pstools.properties` file (which is also found in your `PS_HOME` Web directory) to the same directory as the `psjoa.jar` file.

# 1 *Installing the Adapter for WebLogic Integration 7.0*

---

4. Go to the root directory for your domain:

```
cd DOMAIN_HOME
```

**Note:** You must choose a WebLogic Integration domain that supports application integration functionality.

5. Find the `SetDomainTypeData.cmd` file.

Here, *DomainType* is the type of the domain. For example, if your domain is configured to support the development of solutions that employ the full range of WebLogic Integration functionality, it contains the `SetwliDomainData.cmd` file.

6. Update the SVRCP environment variable settings in the `SetDomainTypeData.cmd` file.

**Note:** The SVRCP environment variable is used in the `SetDomainTypeData` script to set the classpath for the java executable.

After the following line:

```
set SVRCP=%SVRCP%;%WLI_DOMAIN_HOME%\applications\DefaultWebApp_myserver\WEB-INF\classes
```

add the following JAR files:

```
REM Set PeopleSoft 8 Adapter classpath
SET SVRCP=%SVRCP%;BEA_HOME\lib\PeopleSoft\psjoa.jar

REM For PS 8.1x, use PS_BEA_CI81.jar.
REM For PS 8.4x, use PS_BEA_CI84.jar.

SET SVRCP=%SVRCP%;BEA_HOME\lib\PeopleSoft\PS_BEA_CInn.jar

REM For PS 8.1x, add the location of
REM the pstools.properties file
SET SVRCP=%SVRCP%;BEA_HOME\lib\PeopleSoft
```

Here, `BEA_HOME\lib\PeopleSoft\` represents the directory specified in step 1.



## Extracting JARs and Adjusting the Classpath for UNIX

To extract the adapter JAR files and adjust the classpath on UNIX, complete the following steps:

1. Use jar (or another similar extracting product) to extract `BEA_PEOPLESOFT_1_0_70.ear` to a directory of your choice (for example, `BEA_HOME/lib/PeopleSoft`).
2. Copy the `psjoa.jar` from your `PS_HOME` Web directory to the directory into which you extracted the `BEA_PEOPLESOFT_1_0_70.ear` file (for example, `BEA_HOME/lib/PeopleSoft`).

The `psjoa.jar` file is the Java Object Adapter (JOA) shipped with your PeopleSoft application. This file is required by both WebLogic Server and the BEA Application Explorer. It can be found in your `PS_HOME` Web directory.

**Note:** The `psjoa.jar` file is release-specific. Each time you upgrade your Peopletools release, you must obtain the current version of `psjoa.jar`, shut down WebLogic Server, and replace the old `psjoa.jar` with the current version.

3. If you are using PeopleSoft release 8.1x, copy the `pstools.properties` file (which is also found in your `PS_HOME` Web directory) to the same directory as the `psjoa.jar` file.
4. Go to the root directory for your domain:

```
cd DOMAIN_HOME
```

**Note:** You must choose a WebLogic Integration domain that supports application integration functionality.

5. Find the `SetDomainTypeData.cmd` file.

Here, *DomainType* is the type of the domain. For example, if your domain is configured to support the development of solutions that employ the full range of WebLogic Integration functionality, it contains the `SetwliDomainData.cmd` file.

6. Update the `SVRCP` environment variable settings in the `SetDomainTypeData.cmd` file.

**Note:** The `SVRCP` environment variable is used in the `SetDomainTypeData` script to set the classpath for the java executable.

After the following line:

```
set SVRCP=$SVRCP:$WLI_DOMAIN_HOME/applications/DefaultWebApp_myserver/WEB-INF/classes
```

add the following JAR files, which are listed in the order required for the classpath:

```
# Set PeopleSoft 8 Adapter classpath
SET SVRCP=$SVRCP:BEA_HOME/lib/PeopleSoft/psjoa.jar

# For PS 8.1x, use PS_BEA_CI81.jar.
# For PS 8.4x, use PS_BEA_CI84.jar.

SET SVRCP=$SVRCP:BEA_HOME/lib/PeopleSoft/PS_BEA_CInn.jar

# For PS 8.1x, add the location of
# the pstools.properties file

SET SVRCP=$SVRCP:BEA_HOME\lib\PeopleSoft
```

Here, *BEA\_HOME/lib/PeopleSoft* is the directory specified in step1.

## Step 4. Updating the BEA License

The BEA WebLogic Adapter for PeopleSoft 8 cannot be used without a valid software license. If you have downloaded the adapter for evaluation, you must obtain an evaluation license as described on the adapter download page. If you have purchased a license for the adapter, the license file is typically sent to you as an e-mail attachment.

When you have obtained a valid license for the adapter, update your `license.bea` file by completing the following steps:

1. Save the license file that you obtained with a name other than `license.bea`, in the *BEA\_HOME* directory. For example, save the file as `peoplesoft_adapter_license.bea`. Use this file as the *license\_update\_file* in step 4 of this procedure.

**Warning:** Do not overwrite or change the name of the existing `license.bea` file.

2. Perform the step appropriate for your platform:
  - On a Windows system, open an MS-DOS session and go to the *BEA\_HOME* directory.
  - On a UNIX system, go to the *BEA\_HOME* directory.
3. If it is not already included, add the JDK to your PATH variable by executing the command appropriate to your system:
  - On a Windows system:

```
set PATH=BEA_HOME\jdk131_03\bin;%PATH%
```
  - On a UNIX system:

```
PATH=BEA_HOME/jdk131_03/bin:$PATH
export PATH
```
4. Merge the license update file into your existing license by executing the command appropriate to your system:
  - On a Windows system:

```
UpdateLicense license_update_file
```
  - On a UNIX system:

```
sh UpdateLicense.sh license_update_file
```

Here, *license\_update\_file* is the name to which you saved the license update file in step 1.
5. Save a copy of your updated *license.bea* file in a safe place outside the WebLogic Integration and application installation directories.

# Step 5. Deploying the Adapter Using the WebLogic Server Console

After the BEA WebLogic Adapter for PeopleSoft 8 is installed, it must be deployed to your domain. To configure and deploy an adapter using the WebLogic Server Administration Console, complete the following steps:

1. Start WebLogic Server.
2. Start the WebLogic Server Administration Console in a browser using the following URL:

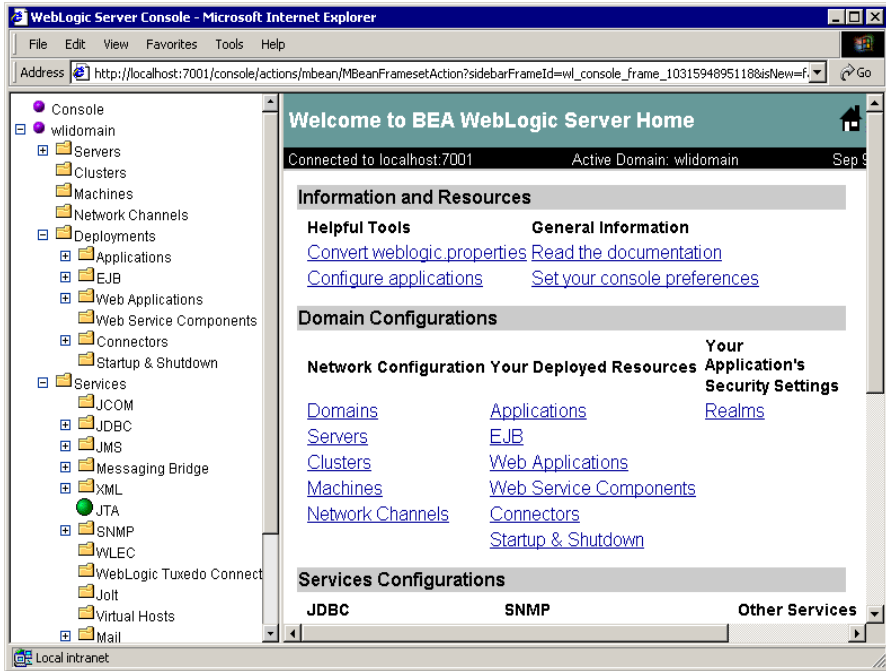
`http://host:port/console/`

Here, *host* represents the machine on which WebLogic Server is running and *port* represents the listening port.

For example, `http://localhost:7001/console/`

3. When prompted, enter the user name and password for the server.  
The WebLogic Server Administration Console opens.

**Figure 1-1 WebLogic Server Console**

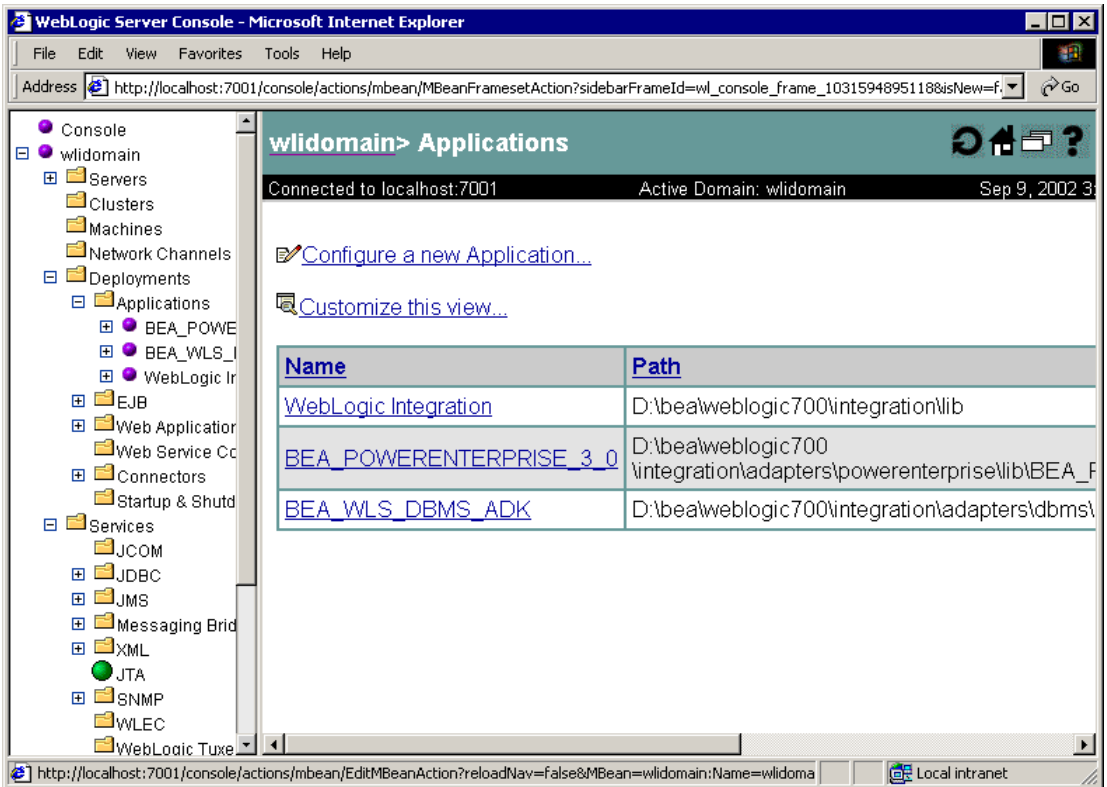


4. In the left pane, choose Deployments and then Applications from the navigation tree.

The console displays the Applications window.

# 1 *Installing the Adapter for WebLogic Integration 7.0*

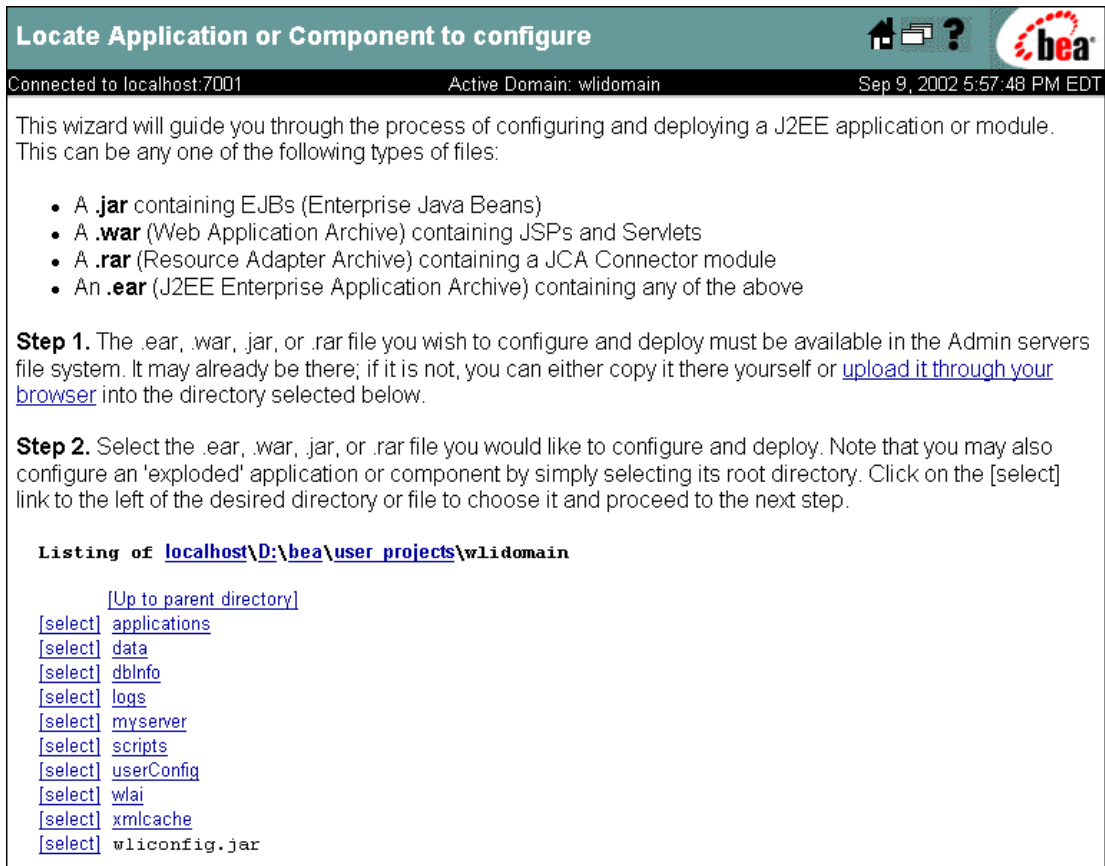
**Figure 1-2 Applications Window**



5. Click the Configure a new Application link.

The console displays the Locate Application or Component to configure window.

**Figure 1-3 Locate Application or Component to Configure Window**



6. Do one of the following:

If you copied the `BEA_PEOPLESOFT_1_0_70.ear` file to a directory on the administrative server, navigate to that directory. For example, if you copied the file to the `D:\bea\AdapterEars` directory, select the directory as shown in the following figure.

**Figure 1-4 Locating the Adapter EAR File**

**Listing of [localhost\D:\bea\AdapterEars](#)**

[\[Up to parent directory\]](#)  
[\[select\]](#) BEA\_PEOPLESOFT\_1\_0\_70.ear

If you have not copied the BEA\_PEOPLESOFT\_1\_0\_70.ear file to a directory on the administrative server, do the following:

- a. Navigate to the directory to which the file will be uploaded.

For example, to upload the adapter from your local machine to the D:\bea\AdapterEars directory on the administrative server, select the directory as shown in the following figure.

**Figure 1-5 Selecting the Target Directory**

**Listing of [localhost\D:\bea\AdapterEars](#)**

[\[Up to parent directory\]](#)

- b. Click the upload it through your browser link to display the Install or Update an Application window.
- c. Click Browse to display the Choose File dialog box.
- d. In the Choose File dialog box, locate the file and then click Open.

The console displays the selected location.



**Figure 1-6 Install or Update an Application Window**

**Install or Update an Application**

Connected to localhost:7001      Active Domain: wldomain      Sep 9, 2002 5:01:00 PM EDT

**Upload and Install an Application**

Click on the 'browse' button below to locate an application archive on the machine from which you are browsing. When you have located the file, click 'upload' to install it on this WebLogic Administration Server. The following types of application files may be uploaded:

- A **.jar** containing EJBs (Enterprise Java Beans)
- A **.war** (Web Application Archive) containing JSPs and Servlets
- A **.rar** (Resource Adapter Archive) containing a JCA Connector module
- An **.ear** (J2EE Enterprise Application Archive) containing any of the above

Note: if you browse for the file, you may have to adjust the file-type filter to 'All' in order to find .jar, .war, .rar and .ear files.

C:\downloads\BEA\_PEOPLESOFT\_1\_0.e    Browse...    Upload    Cancel

e. Click Upload.

The browser status bar indicates upload progress. When the upload is complete, you are returned to the Locate Application or Component to configure window. The uploaded file now resides in the directory selected in step a.

**Figure 1-7 Adapter EAR File Uploaded to Administrative Server**

**Listing of localhost\D:\bea\AdapterEars**

[\[Up to parent directory\]](#)  
[\[select\]](#) BEA\_PEOPLESOFT\_1\_0\_70.ear

7. Click the [select] link to the left of the adapter EAR file.

The console displays the Configure Application or Component window.

**Figure 1-8 Configure Application or Component Window**

**Configure Application or Component**

Connected to localhost:7001      Active Domain: wldomain      Sep 9, 2002 5:33:42 PM EDT

**Step 3.** You have chosen to configure

D:\bea\AdapterEars\BEA\_PEOPLESOFT\_1\_0\_70.ear

Select the Servers and/or Clusters on which you would like to deploy this application initially.  
(You can reconfigure deployment targets later if you wish).

Available Servers		Target Servers
myserver	↓	
	↑	

**Step 4.** Enter a name for this application.

BEA\_PEOPLESOFT\_1\_0\_70

**Step 5.** Press 'Configure and Deploy' to configure and deploy the application, or 'Cancel' to leave the Domain unchanged.

Configure and Deploy      Cancel

8. Select the servers or clusters on which to deploy the adapter by using the arrow buttons to move entries from the available list to the target list.

9. You must change the application name from BEA\_PEOPLESOFT\_1\_0\_70 to BEA\_PEOPLESOFT\_1\_0.

**Note:** If you do not change the application name, the adapter will not be available to application views.

## Step 5. Deploying the Adapter Using the WebLogic Server Console

The following figure shows a configured application.

**Figure 1-9 Configured Application**



**Configure Application or Component**

Connected to localhost:7001      Active Domain: wlidomain      Sep 9, 2002 5:33:42 PM EDT

**Step 3.** You have chosen to configure

D:\bea\AdapterEars\BEA\_PEOPLESOFT\_1\_0\_70.ear

Select the Servers and/or Clusters on which you would like to deploy this application initially.  
(You can reconfigure deployment targets later if you wish).

Available Servers		Target Servers
	 	myserver

**Step 4.** Enter a name for this application.

BEA\_PEOPLESOFT\_1\_0

**Step 5.** Press 'Configure and Deploy' to configure and deploy the application, or 'Cancel' to leave the Domain unchanged.

10. Click Configure and Deploy.

The console displays the deployment status, which includes a description, status, begin time, and end time for the deployed adapter.

## Step 6. Creating or Updating the Adapter Group

Before you create an application view that uses the events or services supported by an adapter, the following requirements must be met:

- The user group, `adapter`, must be defined.
- The administrative server user name must be a member of the `adapter` group.

The action required to complete the configuration depends on which domain template you selected when you created the domain. See the following table for guidelines.

**Table 1-1 Configuration Requirements**

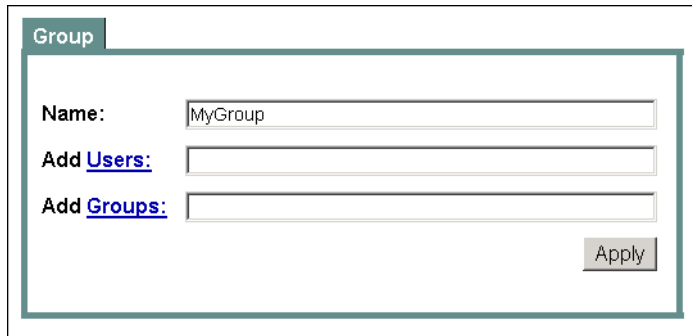
If you created a domain based on the . . .	And the administrative server user name is . . .	Then . . .
Platform domain template	Any value	Create the adapter group and add the administrative user name to it as described in <a href="#">“Creating the Adapter Group”</a> on page 1-19.
WLI or EAI domain template	<code>system</code>	The adapter group is already defined. This group includes the <code>system</code> user name by default. No further configuration is required.
WLI or EAI domain template	A value other than <code>system</code>	The adapter group is already defined. Add the user name to the group as described in <a href="#">“Adding the User Name to the Adapter Group”</a> on page 1-20.

## Creating the Adapter Group

To create the adapter group and add the administrative server user name to it, complete the following steps:

1. In the left pane of the WebLogic Server Administration Console, choose Compatibility Security and then Groups from the navigation tree.
2. Click the Create a New Group link to display the Group window.

**Figure 1-10 Group Window**



Group

Name:

Add [Users](#):

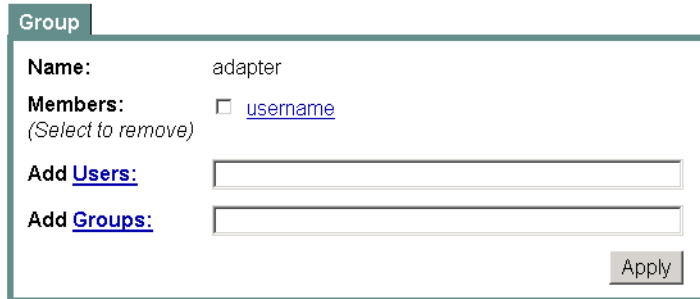
Add [Groups](#):

Apply

3. Enter adapter in the Name field.
4. Enter the administrative server user name in the Add Users field.
5. Click Apply.

The Group window is updated as shown in the following figure.

**Figure 1-11 Group Window**



Group

Name: adapter

Members: ☐ [username](#)  
(Select to remove)

Add [Users](#):

Add [Groups](#):

Apply

## Adding the User Name to the Adapter Group

To add the administrative server user name to the `adapter` group, complete the following steps:

1. In the left pane of the WebLogic Server Administration Console, choose Compatibility Security and then Groups from the navigation tree.

The console displays the groups currently defined for the domain.

2. Locate and click the link for the `adapter` group to display the group definition.

Figure 1-12 Group Definition

mydomain > Realms > myRealm > Groups

Connected to localhost:7001      Active Domain: mydomain      Sep 10, 2002 5:41:32 PM EDT

**Group**

**Name:** adapter

**Members:**  
(Select to remove)

☐ admin   ☐ wlcSamplesUser   ☐ joe   ☐ wlisystem   ☐ hub  
☐ system   ☐ mary   ☐ guest

**Add Users:**

**Add Groups:**

Apply

3. If the administrative server user name is not included in the Members list, enter the user name in the Add Users field.
4. Click Apply to add the user name to the group.

The name is added to the Members list.

## Next Steps

If you have not already installed the BEA Application Explorer, install it now. See the *BEA Application Explorer Installation and Configuration Guide*.

When you have successfully deployed the adapter and installed the BEA Application Explorer, you can log on to the WebLogic Integration Application View Console to create application views that employ events and services supported by the BEA WebLogic Adapter for PeopleSoft 8. For more information, see the *BEA WebLogic Adapter for PeopleSoft 8 User Guide*.





# 2 Installing and Compiling the Component Interfaces

This section describes how to install and compile the component interfaces. It includes the following topic and installation steps:

- [BEA WebLogic Adapter for PeopleSoft 8 Component Interfaces](#)
- [Step 1. Making Component Interfaces Available to PeopleSoft 8](#)
- [Step 2. Configuring Component Interface Security](#)
- [Step 3. Testing the Component Interfaces](#)
- [Step 4. Modifying the Classpath of the Machine that Runs BEA Application Explorer](#)

**Note:** For more information about the BEA Application Explorer, see the *BEA Application Explorer User Guide*.

# BEA WebLogic Adapter for PeopleSoft 8 Component Interfaces

BEA delivers two component interfaces as part of the BEA WebLogic Adapter for PeopleSoft 8. These component interfaces are used in conjunction with the BEA Application Explorer to facilitate the creation of schemas for events and services. The BEA Application Explorer uses the delivered components for metadata information to build schemas.

For the delivered component interfaces, you must perform the following steps:

1. Make the delivered component interfaces available to PeopleSoft 8.
2. Configure the component interface security.
3. Test the component interfaces.
4. Modify the classpath of the machine that runs BEA Application Explorer.

## Step 1. Making Component Interfaces Available to PeopleSoft 8

The supplied component interfaces are delivered via a PeopleSoft project. For PeopleSoft release 8.1x, the project is called BEA\_CI\_81 and is contained within file, BEA\_CI\_81.zip. For PeopleSoft release 8.4x, the project and file name are BEA\_CI\_84 and BEA\_CI\_84.zip, respectively. The zip files are located within the BEA\_PEOPLESOFT\_1\_0.ear file. You can extract it using any extraction software.

## **Importing Project BEA\_CI\_81 or BEA\_CI\_84 to PeopleSoft 8**

The following steps describe how to import the BEA\_CI\_81 or BEA\_CI\_84 project to PeopleSoft 8.

1. Unzip the BEA\_CI\_81.zip or BEA\_CI\_84.zip file to a directory of your choice.

The unzip process will create its own subdirectory.

For example, if you extract it to c:\temp, a subdirectory called BEA\_CI\_81 or BEA\_CI\_84 is created in c:\temp.

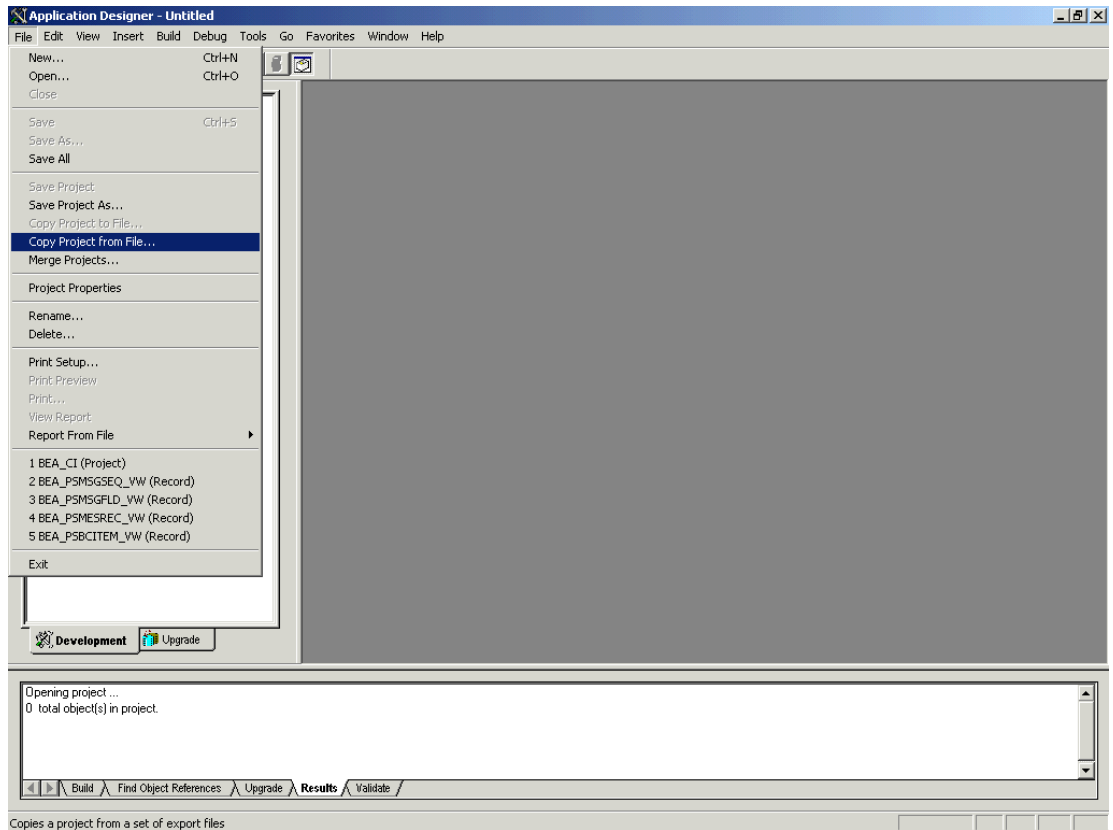
2. Launch the PeopleSoft 8 Application Designer in two-tier mode.
3. From the File menu, choose Copy Project from File.

**Note:** In PeopleSoft release 8.4 or higher, from the Tools menu, you must choose Copy Project→From File.

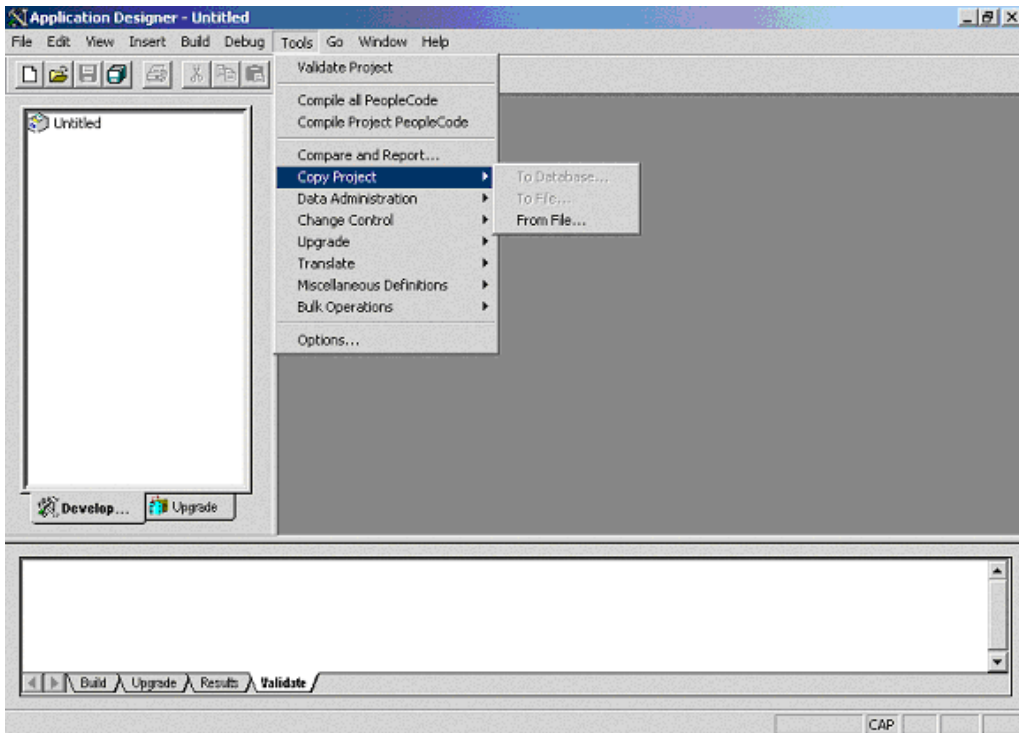
4. Navigate to the original directory to which you unzipped the file.

## 2 *Installing and Compiling the Component Interfaces*

**Figure 2-1 Application Designer Window - Release 8.1**



**Figure 2-2 Application Designer Window - Release 8.4**



The Application Designer displays the Copy Project From File dialog box.

## 2 *Installing and Compiling the Component Interfaces*

**Figure 2-3 Copy Project From File Dialog Box - Release 8.1**

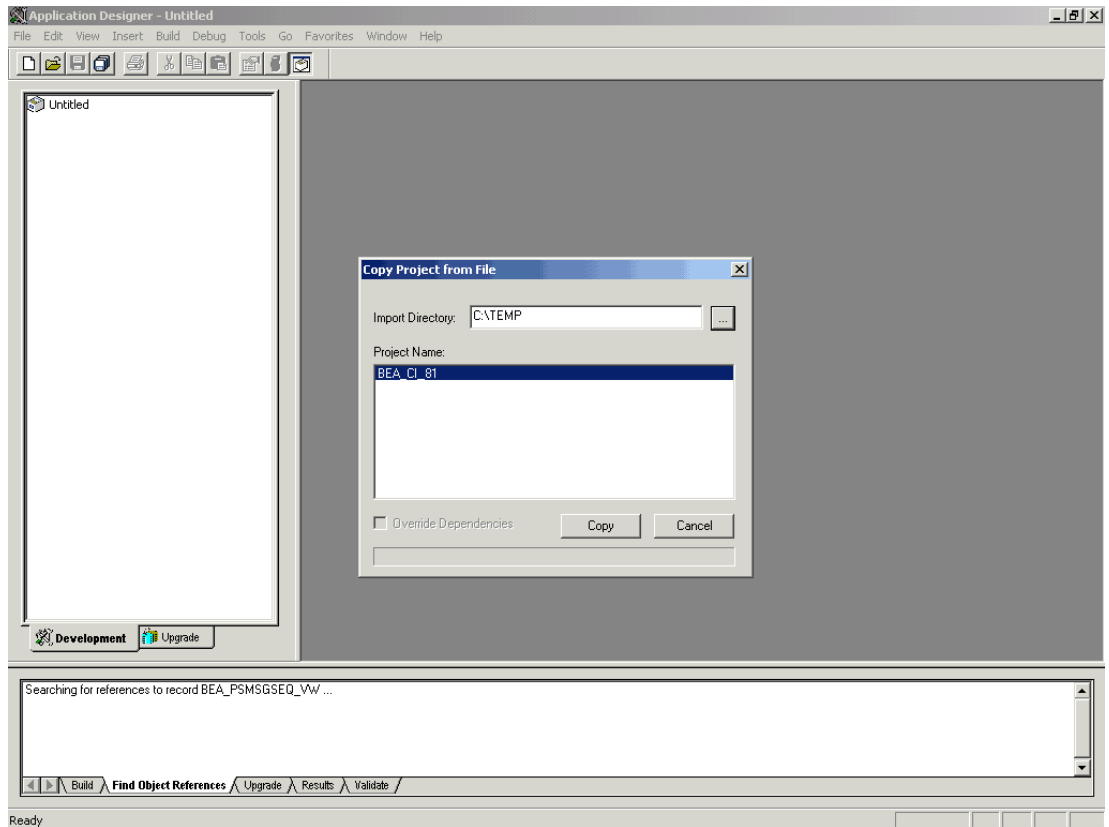
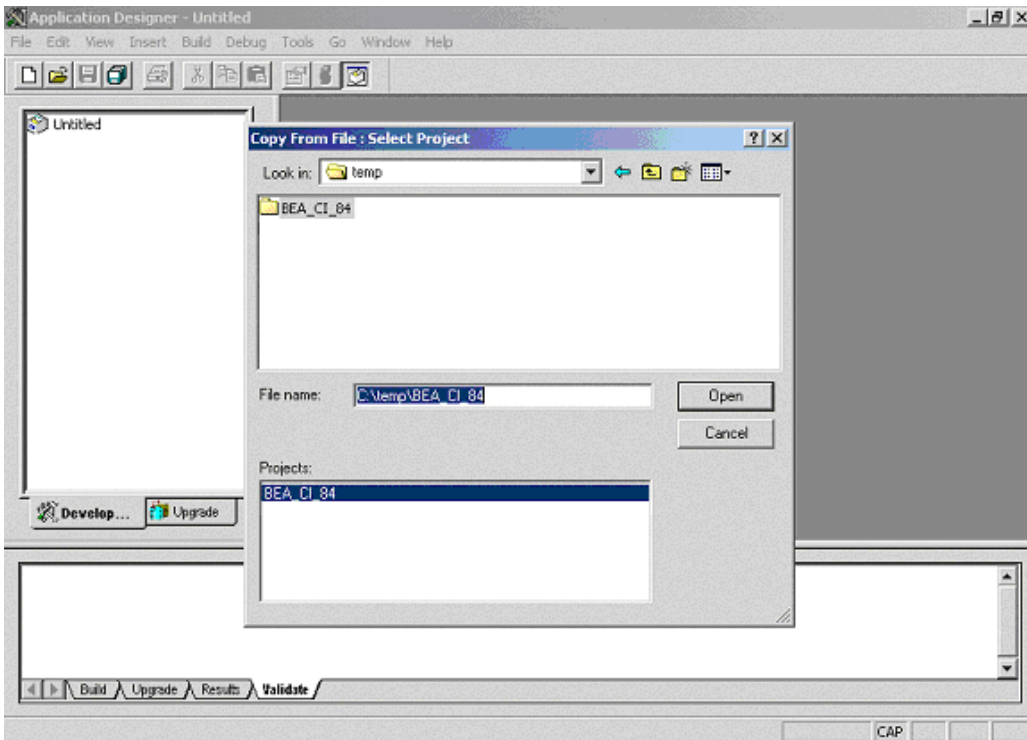


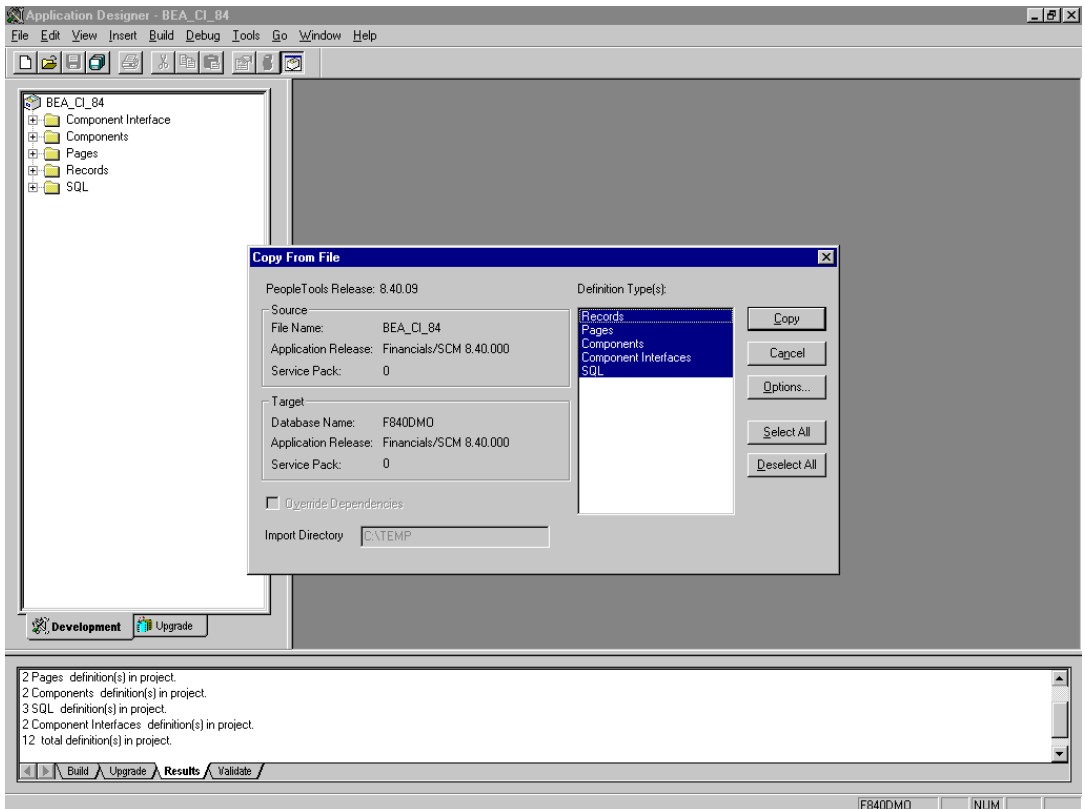
Figure 2-4 Copy From File: Select Project Dialog Box - Release 8.4



5. Click Copy (in release 8.1) or Open (in release 8.4) to open the Copy dialog box.

**Note:** Although the following figures illustrate PeopleSoft release 8.4, the corresponding steps are accurate for releases 8.1 and 8.4.

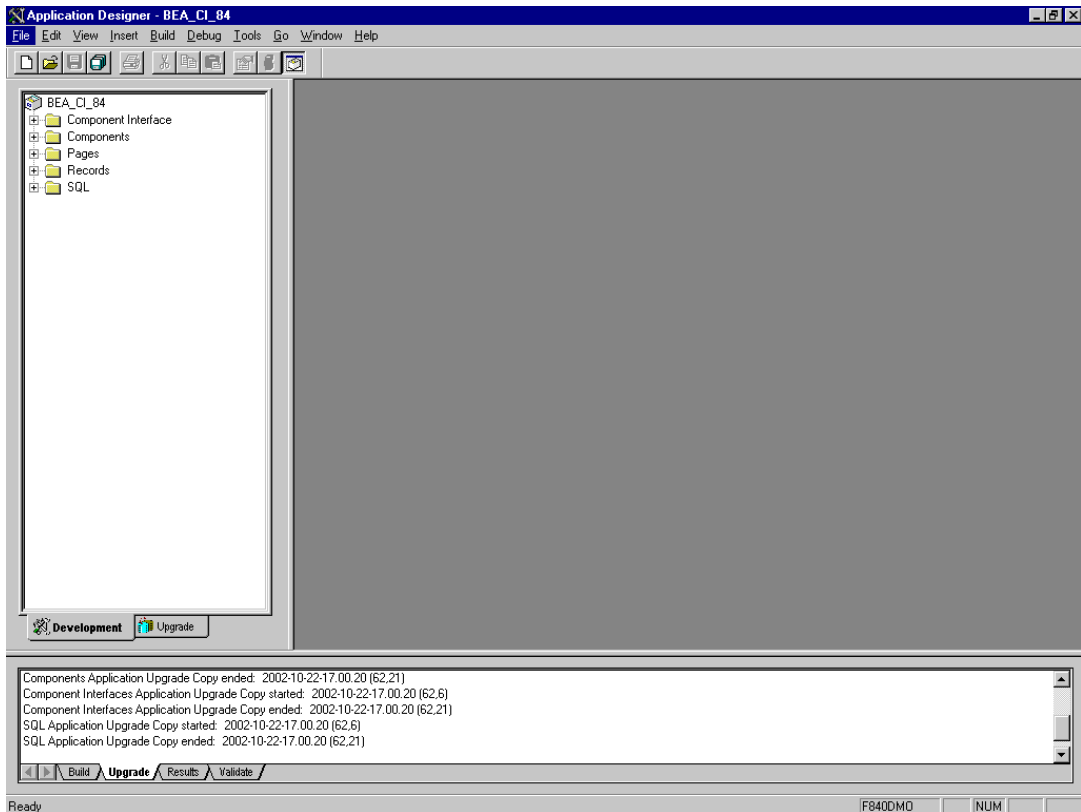
**Figure 2-5 Application Designer - Copy From File Dialog Box**



6. Make sure that all the objects listed under Object Types are highlighted and click Copy. The Application Designer displays a copy ended message to indicate successful completion.



**Figure 2-6 Application Designer - Copy Ended Message**

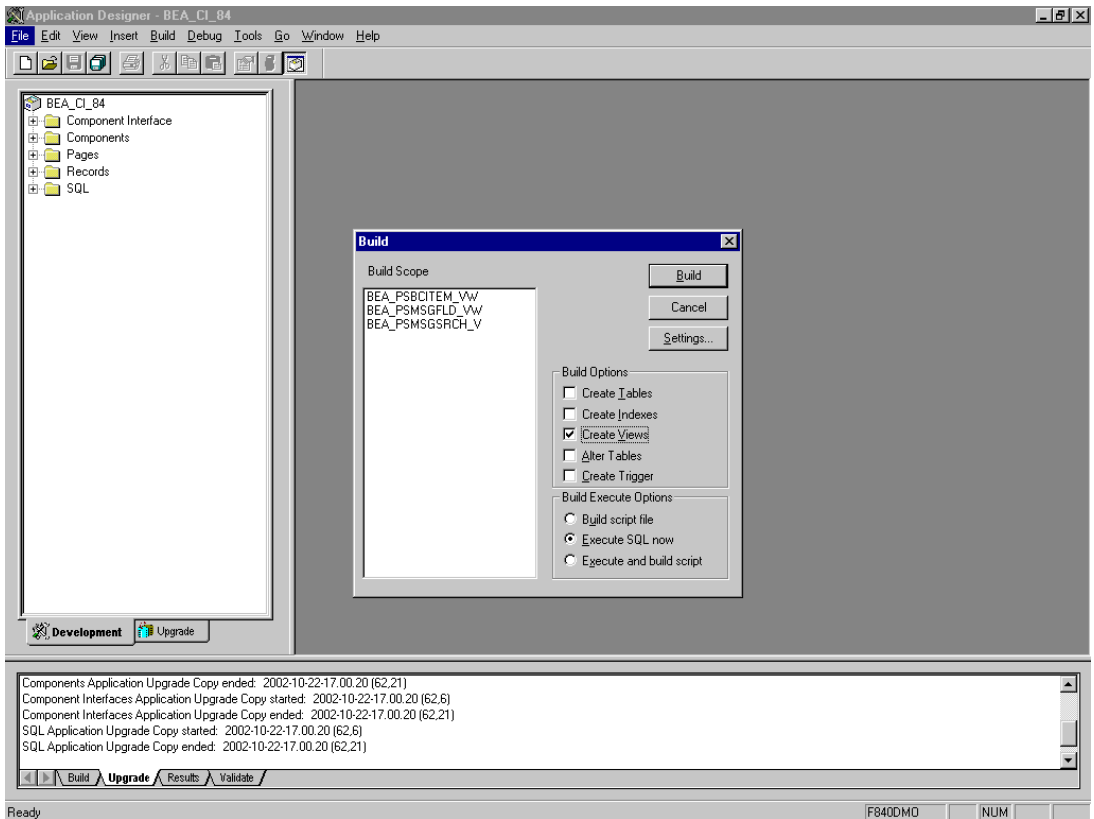


7. Build the views in the project by choosing Build→Project.

The Build dialog box opens.

## 2 *Installing and Compiling the Component Interfaces*

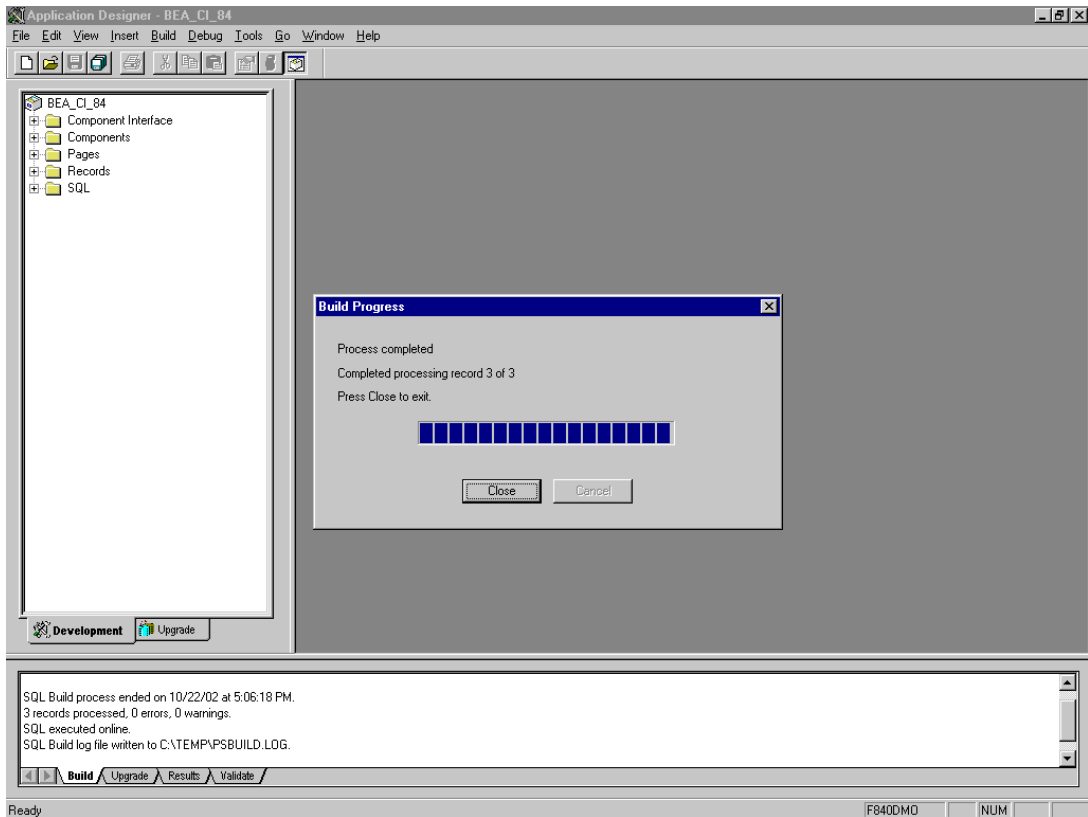
**Figure 2-7 Application Designer - Build Dialog Box**



8. Select Create Views in Build Options. Select your site's customary option in Build Execute Options. (In the previous figure, we have selected Execute SQL now.)
9. Click Build.

The Application Designer displays a Build Progress status window.

**Figure 2-8 Application Designer - Build Progress Dialog Box**



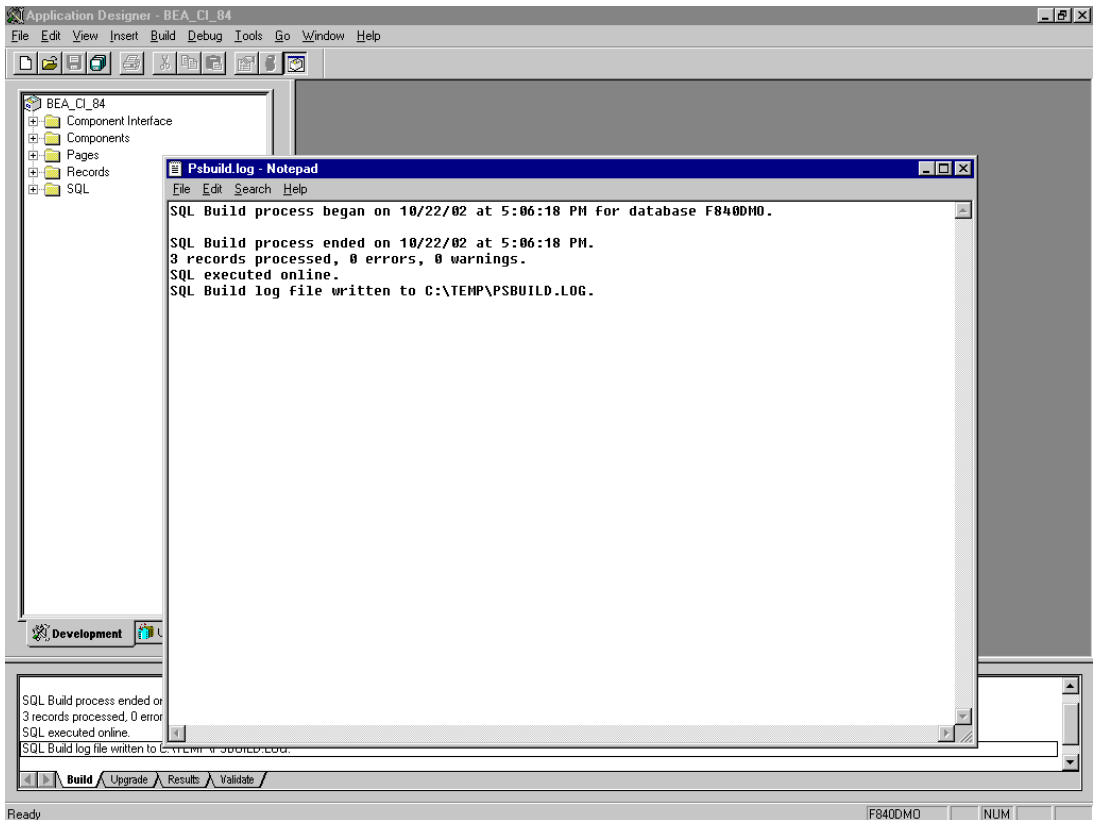
Notice that there are zero errors and zero warnings.

You may use your native SQL Tool to view the records from the generated view to ensure that they have been created correctly.

10. If the view has not been generated correctly, click Close and double-click the SQL Build log statement.

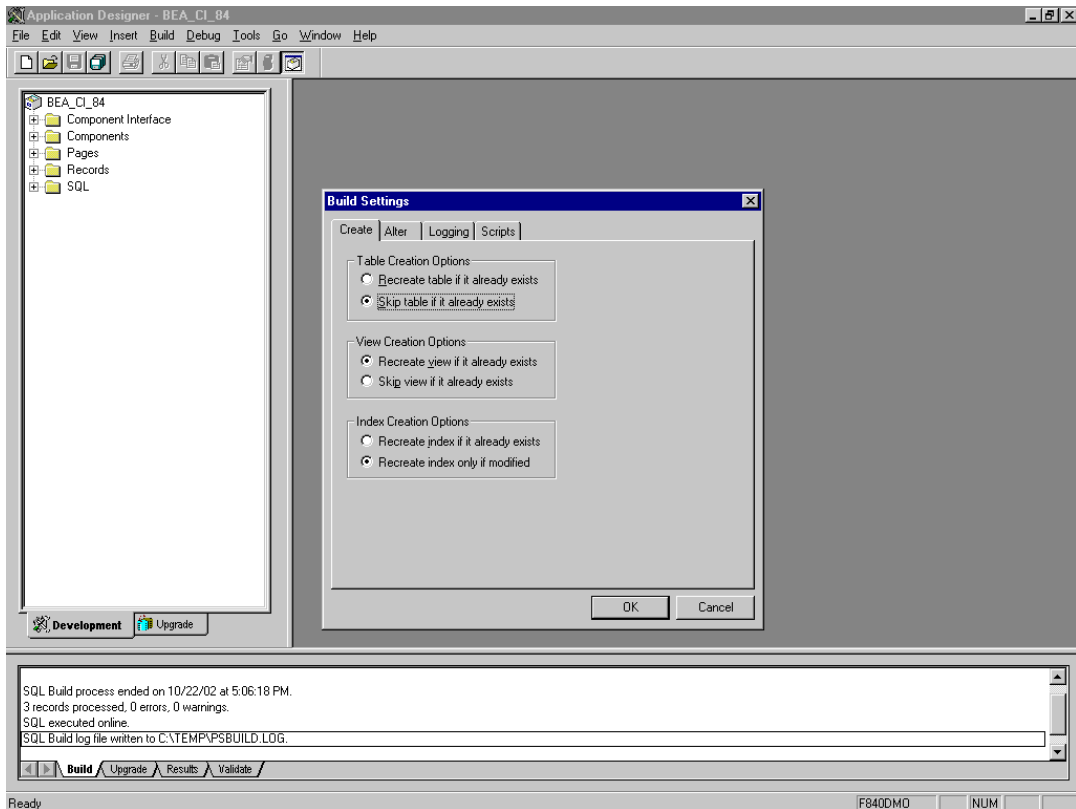
The PSBUILD log file displays.

**Figure 2-9 Application Designer - PSBUILD Process Log File**



11. If you encounter problems, check the Build settings options by choosing Build→Settings.

**Figure 2-10 Application Designer - Build Settings Dialog Box**



Depending on the application server database for PeopleSoft 8, some databases may require the Tablespace name. Consult your PeopleSoft 8 database administrator for more information regarding this function.

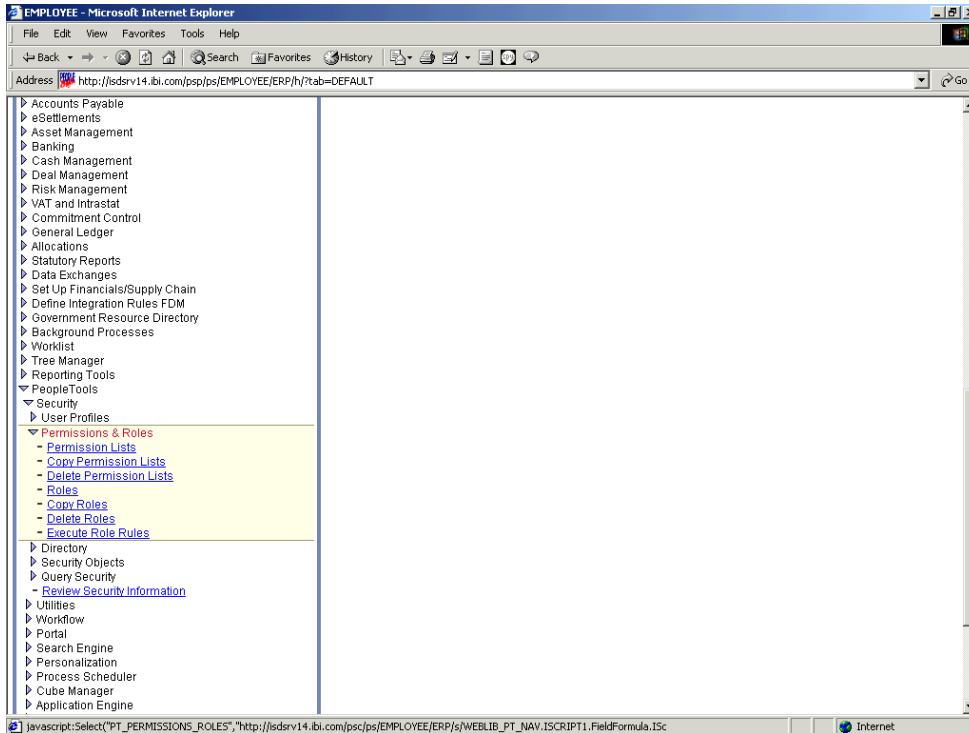
# Step 2. Configuring Component Interface Security

Before the delivered component interfaces can be used, security for each component interface must be set. Component interface security should be set for each distinct Permission List belonging to users who are going to use the product being installed.

You must set the security for all delivered component interfaces in the project. In PeopleSoft release 8.1, you may set security in 2, 3, or 4-tier mode; in release 8.4 and higher, you may set security 4-tier mode. Regardless of your release level or interface, you must follow the same steps. The figures in the following steps show how to configure component interface security for PeopleSoft release 8.4 in 4-tier mode.

1. Choose PeopleTools→Security→User Profiles→Permissions & Roles→Permission Lists.

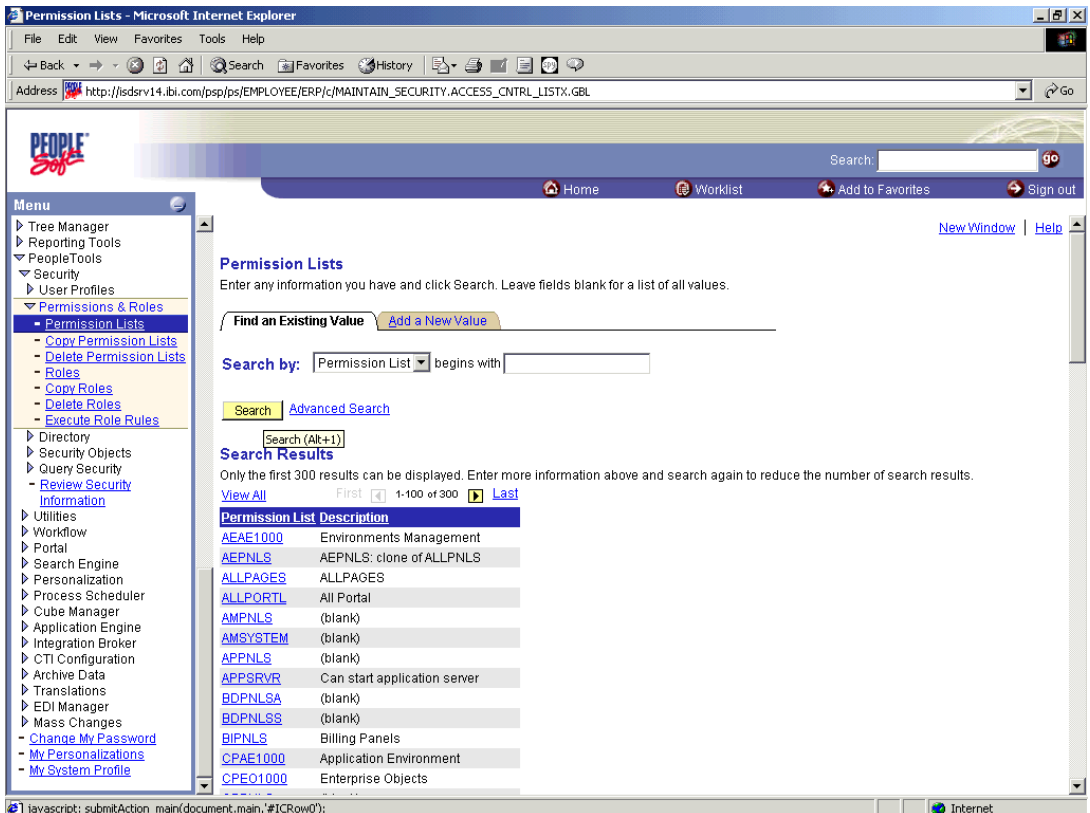
**Figure 2-11 Permission Lists Window**



## 2 Installing and Compiling the Component Interfaces

2. Click Search and select the relevant Permission List.

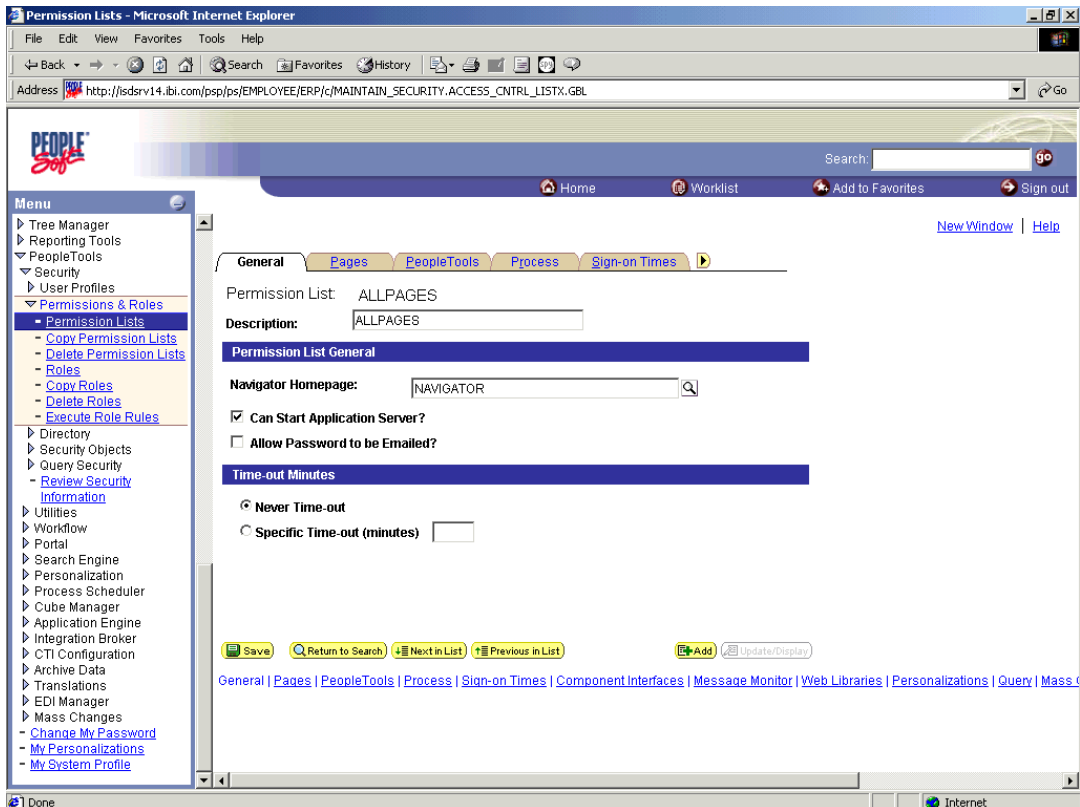
**Figure 2-12 Searching for Permission Lists**



3. Click the right arrow next to the Sign-on Times tab to display the Component Interfaces tab.



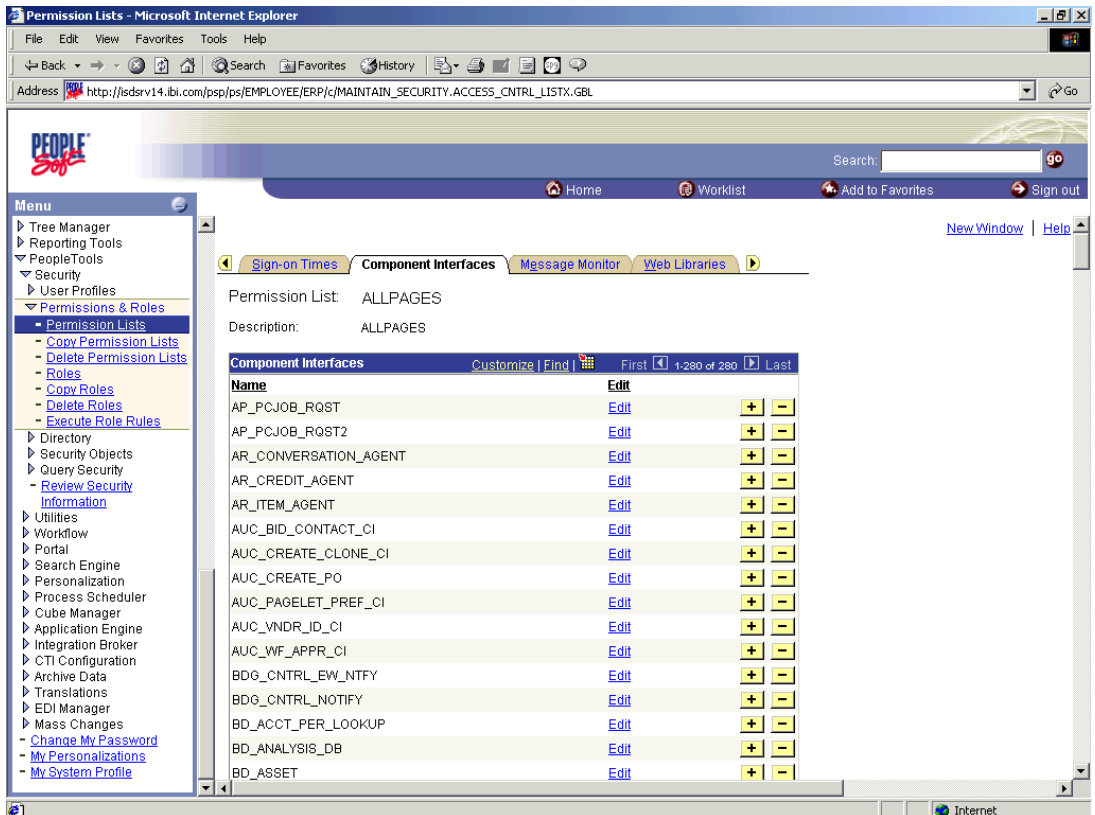
**Figure 2-13 Finding the Component Interfaces tab**



4. Click the Component Interfaces tab.

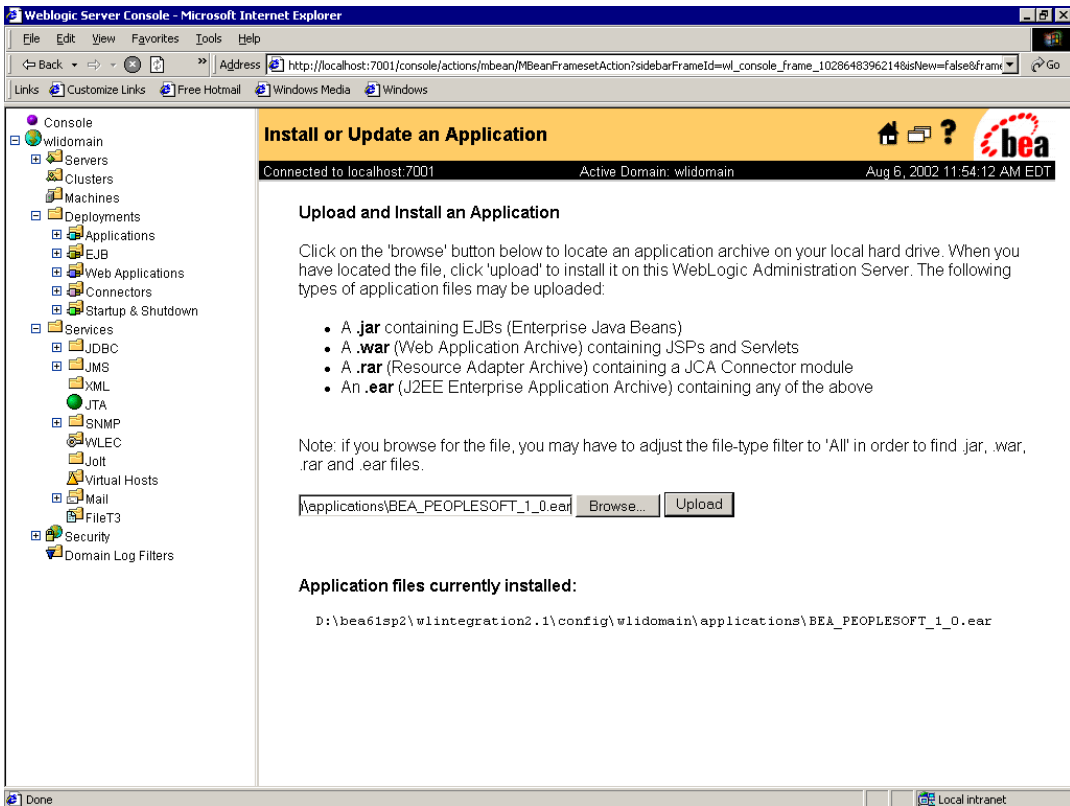
## 2 Installing and Compiling the Component Interfaces

Figure 2-14 Component Interfaces Window



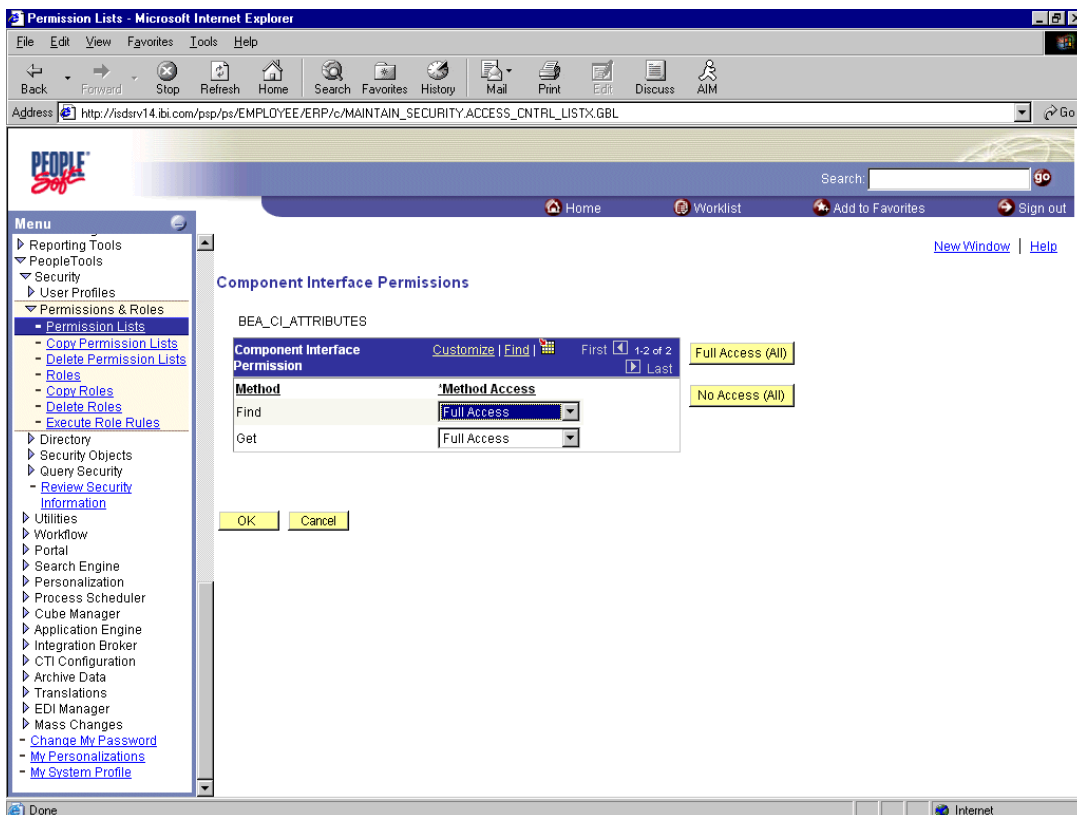
5. Click the + button to add a new row to the Component Interfaces list.

Figure 2-15 Component Interfaces List



6. Enter or select the `BEA_CI_ATTRIBUTES` component interface and click Edit.

**Figure 2-16** Component Interface Permissions Window



7. Click Full Access (All) to set the Get and Find methods to Full Access.
8. Click OK.

9. Repeat steps 5 through 8 for the BEA\_CI\_MESSAGES component interface.
10. Scroll down to the bottom of the Component Interfaces window and click Save.

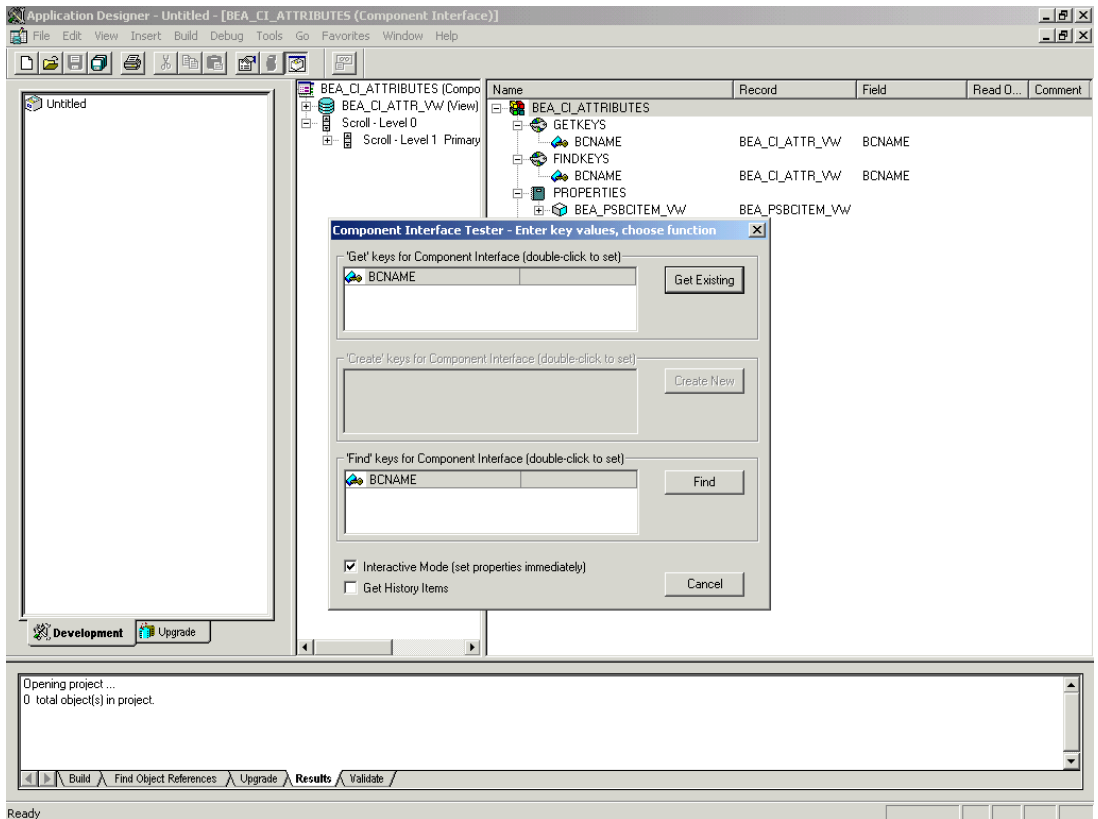
## **Step 3. Testing the Component Interfaces**

All BEA delivered component interfaces must be tested individually before continuing. Using Application Designer, open each component interface individually and test the component interfaces BEA\_CI\_ATTRIBUTES and BEA\_CI\_MESSAGES by executing the Find and Get methods.

1. Open the BEA\_CI\_ATTRIBUTES Component Interface.
2. Choose Tools→Test Component Interface.

The Component Interface Tester dialog box opens.

**Figure 2-17 Component Interface Tester Dialog Box**

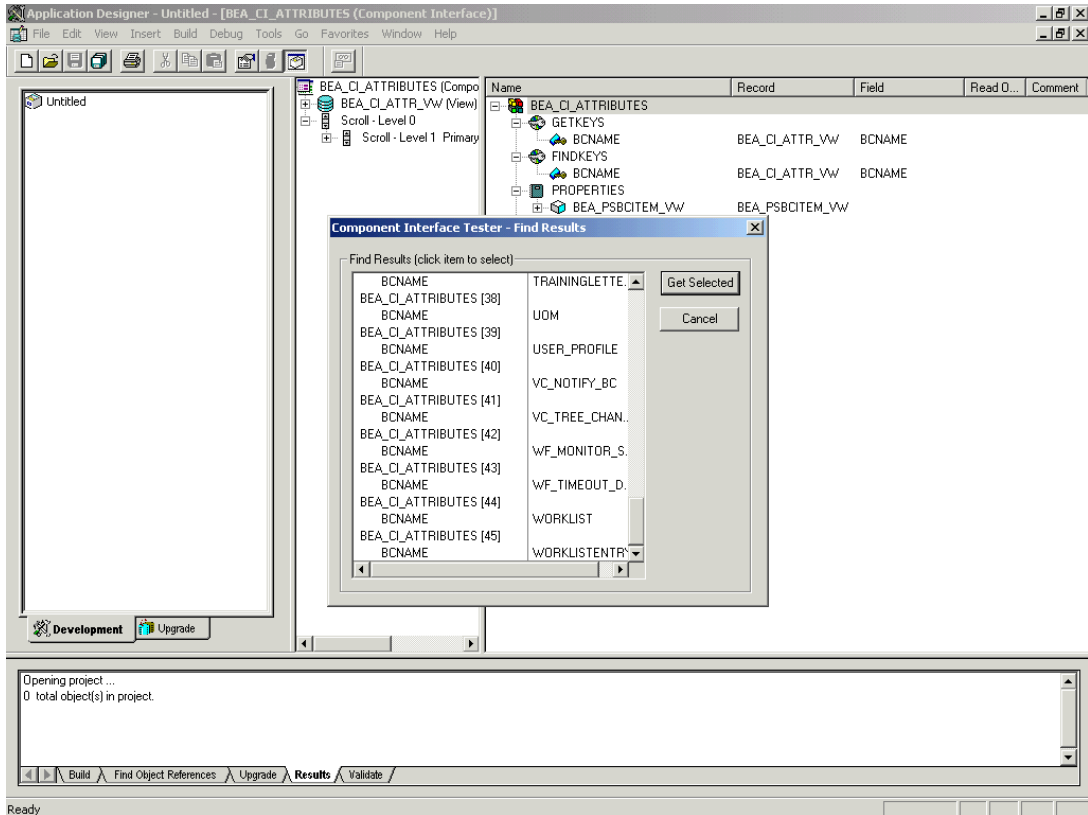


Note that the Create New option is disabled. This is because the Add method is not applicable to this component interface.

3. Click the Find button. Entries for the underlying component are displayed.

A message may appear stating that display is limited to a certain number of entries; this is not a problem.

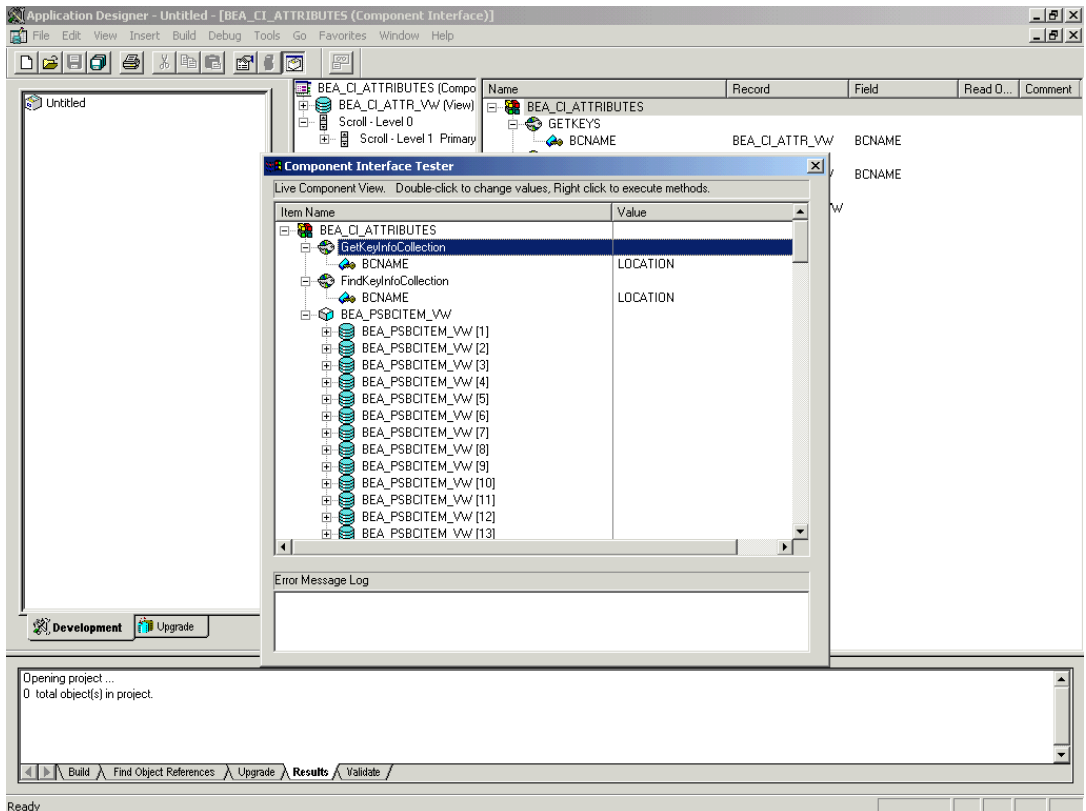
**Figure 2-18 Component Interface Tester - Find Results Window**



4. Highlight one of the lines with its corresponding key in the Find Results window and click the Get Selected button.

The relevant data for the selected key is displayed.

**Figure 2-19 Component Interface Tester Window**

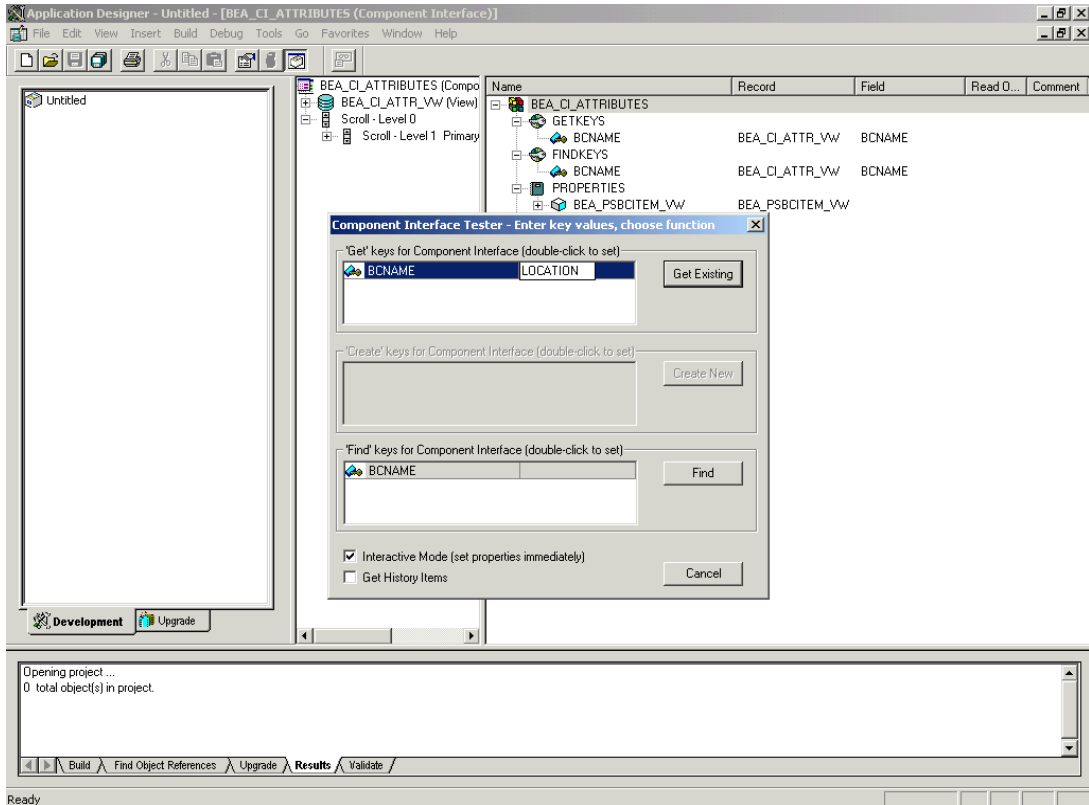


If this window is displayed, the component interface has been successfully tested for the Find method.

5. Click the Get button. For the Get method, an existing key must be entered.

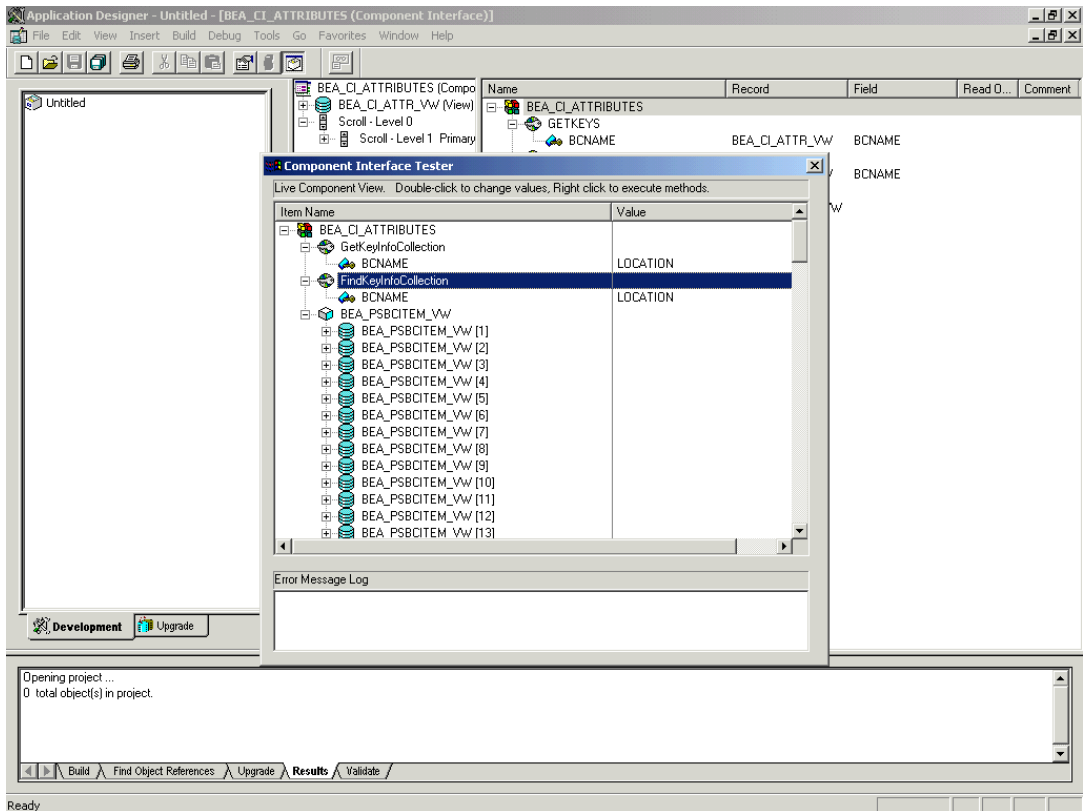


Figure 2-20 Component Interface Tester Window



The exposed properties for the key that is entered are returned.

**Figure 2-21 Component Interface Tester - Results Window**



If this window is displayed, the component interface has been successfully tested for the Get method.

6. Repeat this process for each of the delivered component interfaces.

## **Step 4. Modifying the Classpath of the Machine that Runs BEA Application Explorer**

The BEA Application Explorer requires the same set of jar files as required by the WebLogic Integration Server. These are the jar files that were extracted in [Step 3. Extracting JARs and Adjusting the Classpath](#) in [Chapter 1, “Installing the Adapter for WebLogic Integration 7.0,”](#) and put in the classpath in the SetDomainTypeData.cmd file.

However, unlike the WebLogic Integration Server, no changes in command files are required. It is sufficient to simply place these files in the lib directory of the BEA Application Explorer. These files include the PeopleSoft Java Object Adapter file (psjoa.jar) and pstools.properties (for release 8.1)

The psjoa.jar and the pstools.properties change with each release. For information on replacing these files, see the warning at the end of the section called [Step 3. Extracting JARs and Adjusting the Classpath](#) in [Chapter 1, “Installing the Adapter for WebLogic Integration 7.0.”](#)

## **2**    *Installing and Compiling the Component Interfaces*

---

# 3 Installing and Configuring the BEA TCP/IP Message Router

To enable PeopleSoft 8 to send an XML event document to the WebLogic environment using TC/PIP, you must load the required software on the PeopleSoft 8 system and configure the PeopleSoft 8 application gateway. This section describes how to do so, and includes the following topics:

- [Installing BEA TCP/IP Handler for PeopleSoft Release 8.1](#)
- [Installing BEA TCP/IP Target Connector for PeopleSoft Release 8.4 and Higher](#)

## Installing BEA TCP/IP Handler for PeopleSoft Release 8.1

This topic provides instructions for installing the BEA TCP/IP Handler for PeopleSoft release 8.1. It includes the following steps:

- [Step 1. Extract and Install the BEA TCP/IP Handler](#)
- [Step 2. Configure the BEA TCP/IP Handler on the PeopleSoft 8 Gateway Server](#)

## Step 1. Extract and Install the BEA TCP/IP Handler

The BEA TCP/IP Handler software for PeopleSoft release 8.1 is in the `TCPIPHandler81.jar` file and is located within the `BEA_PEOPLESOFT_1_0.ear` archive. To extract the `.jar` file from the `.ear` archive, use WinZip or a similar extraction tool. Once extracted, you must port the file to the platform where the PeopleSoft 8 gateway Web server is located, place it in the `servletclasses` directory under the PeopleSoft Web server, and extract the embedded `class` files.

The following example illustrates an installation on a UNIX SUN/Solaris machine where the PeopleSoft 8 application server is running:

1. Log on to the UNIX machine with the proper PeopleSoft 8 ID and permissions.
2. Navigate to the PeopleSoft 8 Web servlets directory. This may vary between releases and may change according to your Web Server, but typically it is:  
  
`$PS_HOME/webserv/servletclasses`
3. Issue the `jar` command to extract the class files required by PeopleSoft.

This is a sample command:

```
jar -xvf /tmp/TCPIPHandler81.jar
```

The following output would be displayed:

```
$ jar -xvf /tmp/TCPIPHandler81.jar
  created: META-INF/
extracted: META-INF/MANIFEST.MF
extracted: psft/pt8/tcphandler/TCPIPHandler81$Entry.class
extracted:
psft/pt8/tcphandler/TCPIPHandler81$HandlerEntry.class
extracted:
psft/pt8/tcphandler/TCPIPHandler81$PublicationHandler.class
extracted: psft/pt8/tcphandler/TCPIPHandler81.class
$
```

Notice that the files are placed in a new directory, `tcphandler`, under the `psft/pt8` directory structure.

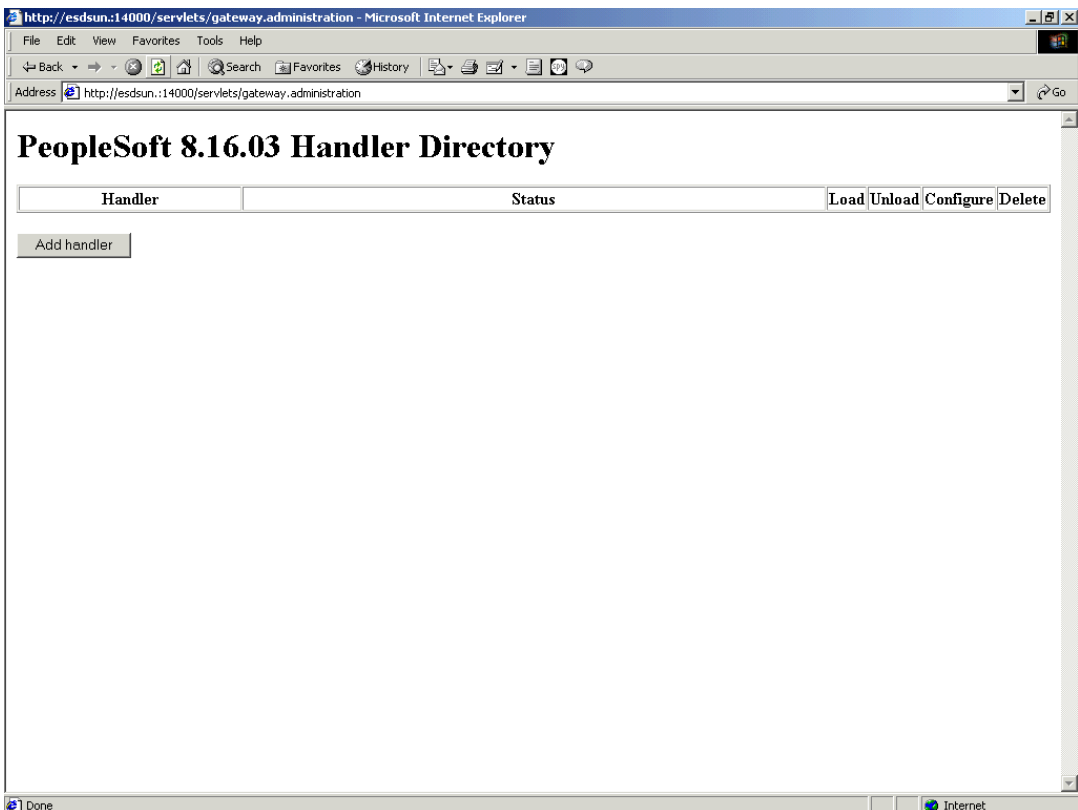
## Step 2. Configure the BEA TCP/IP Handler on the PeopleSoft 8 Gateway Server

To configure the BEA TCP/IP Handler software, perform the following steps:

1. Launch the PeopleSoft 8 configuration servlet interface (server gateway). This is typically under:

`http://serverURL/servlets/gateway.administration`

**Figure 3-1 PeopleSoft 8.16.03 Handler Directory Window**



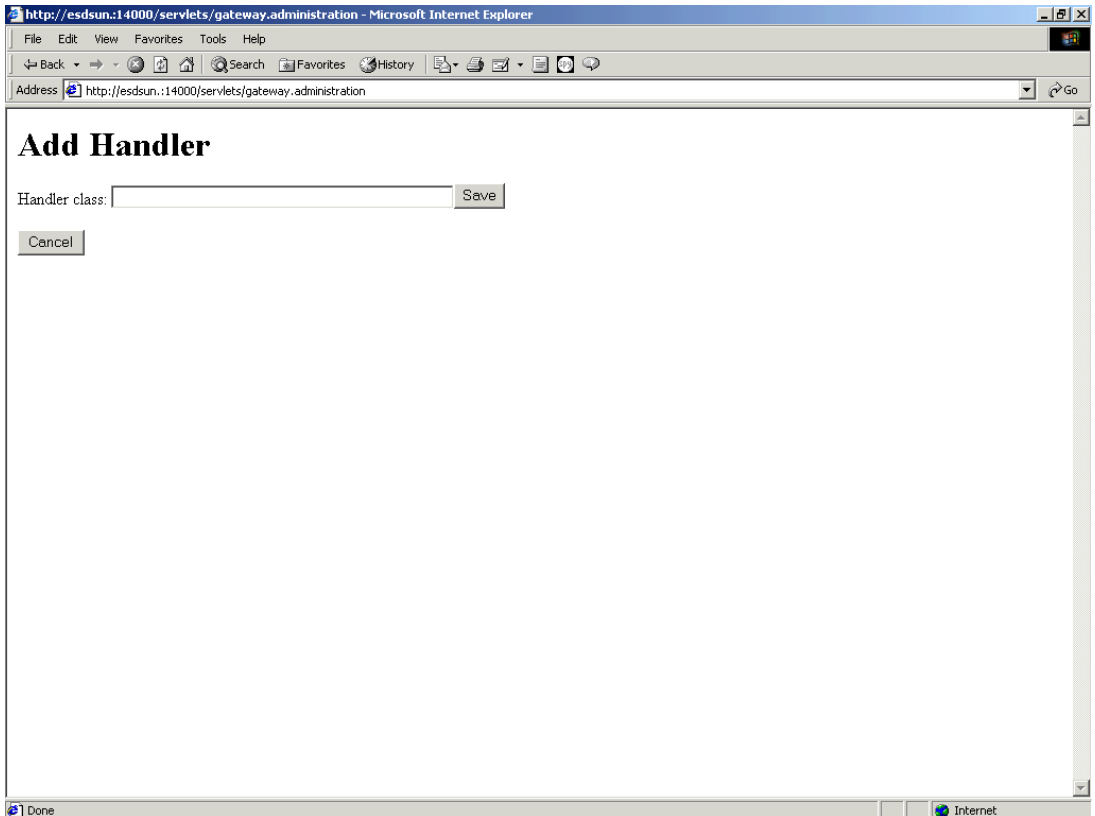
2. Click the Add handler button.

### 3 *Installing and Configuring the BEA TCP/IP Message Router*

---

The Add Handler window opens.

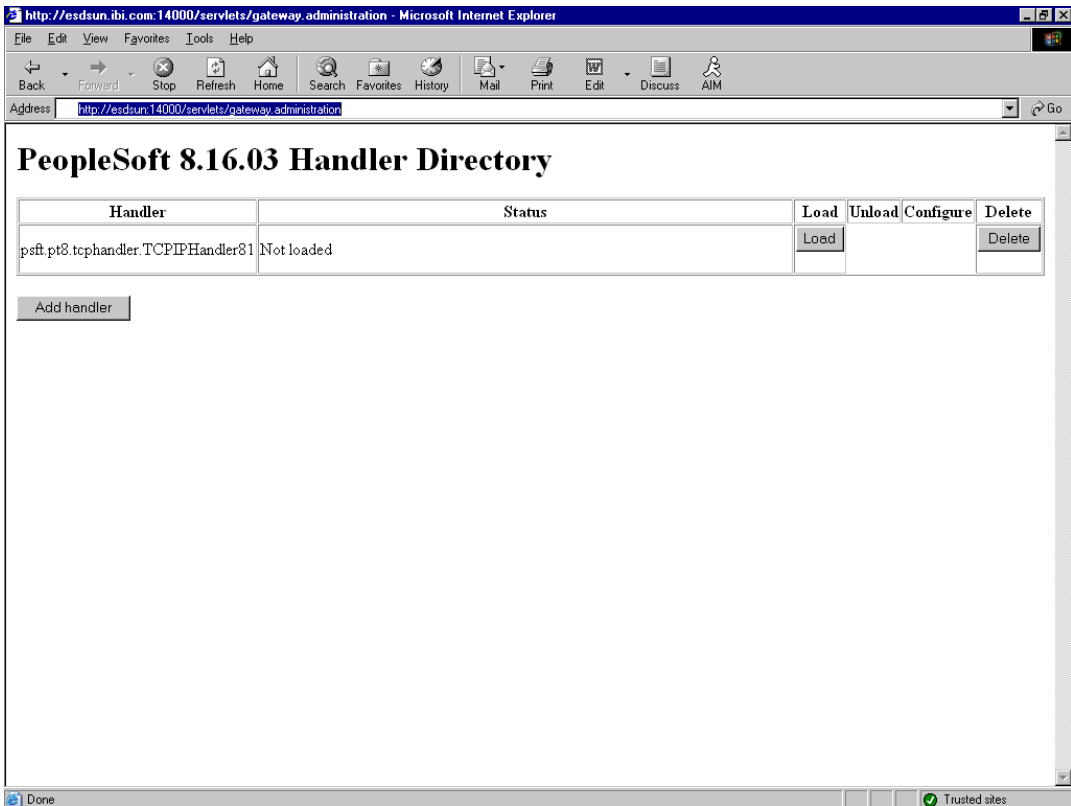
**Figure 3-2 Add Handler Window**



3. In the Handler class field, enter the name of the BEA PeopleSoft 8 handler class:  
`psft.pt8.tcphandler.TCPIPHandler81`
4. Click Save. The Handler displays the following status window:



Figure 3-3 Handler Status Window



The handler appears in the Handler directory list, but the Status reads Not loaded.

5. Click Load to activate that handler. Once loaded, the gateway servlet loads the specified Java class in memory after searching the machine Classpath.

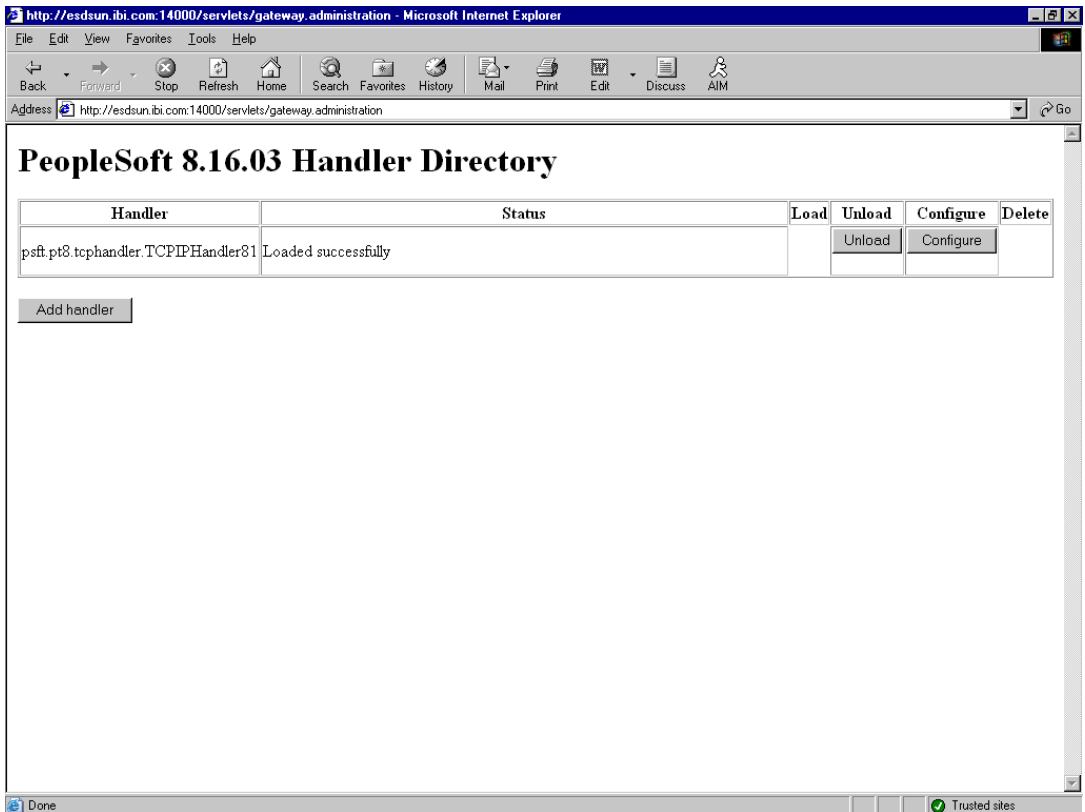
The Status column should read Loaded successfully. If you receive a `ClassNotFoundException` error as the status, the gateway servlet did not find the particular Java class you indicated. Make sure that the Classpath is correct. If necessary, you may need to restart your Web server.

### 3 *Installing and Configuring the BEA TCP/IP Message Router*

During production, you may want to temporarily deactivate a handler. To deactivate a handler, click the Unload button. This removes the particular handler from the list of active registered handlers to which the gateway servlet can publish messages.

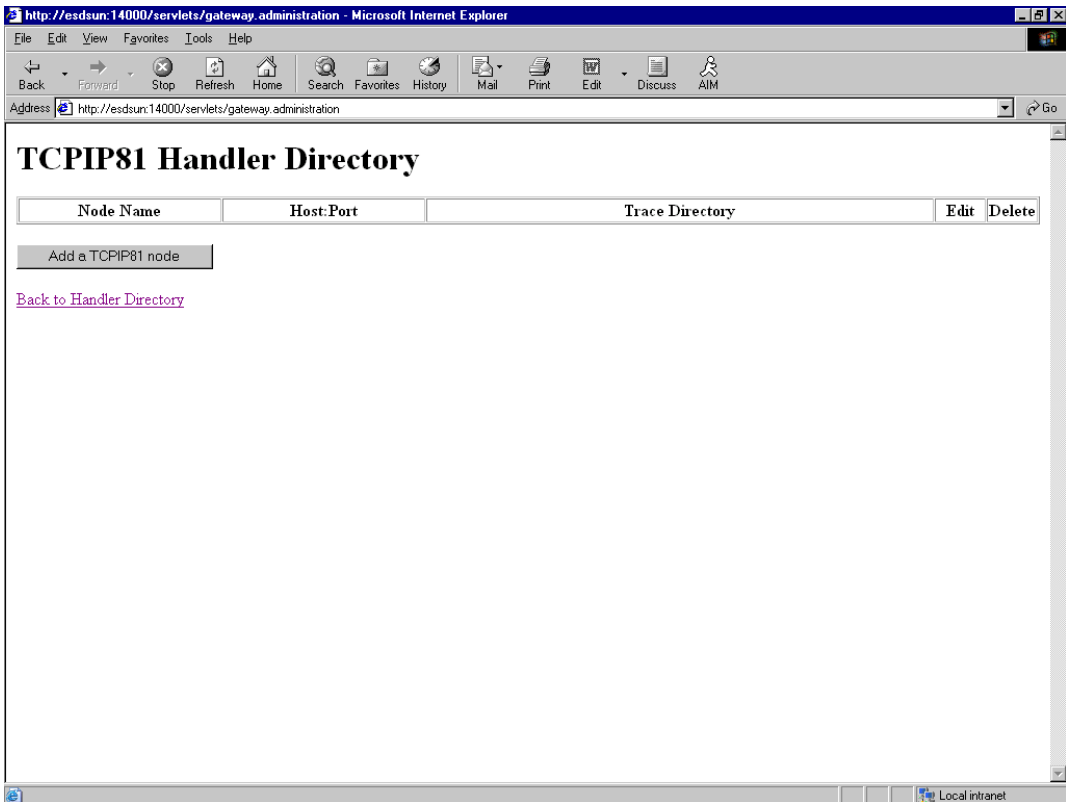
If the .jar file was placed in the correct PeopleSoft 8 application directory on the correct application server, the following screen opens:

**Figure 3-4 Load Handler Window**



6. Click the Configure button to switch to the lookup table view.

**Figure 3-5 TCPIP81 Handler Directory Window**



7. Click the Add a TCPIP81 node button.

The TCPIP81 Handler window opens.

8. In the Node Name field, enter the name of the node you want to add, such as BEA\_MSGNODE.
9. In the Host Name field, enter the name of the host machine of the WebLogic Integration server.
10. In the Port field, enter the TCP port that was entered during the adding of the application view event.

### 3 *Installing and Configuring the BEA TCP/IP Message Router*

11. In the Trace Directory field, enter the directory where the trace file should be created in case the handler experiences some problem with the message delivery.

**Figure 3-6 Add TCPIP81 Handler Window**

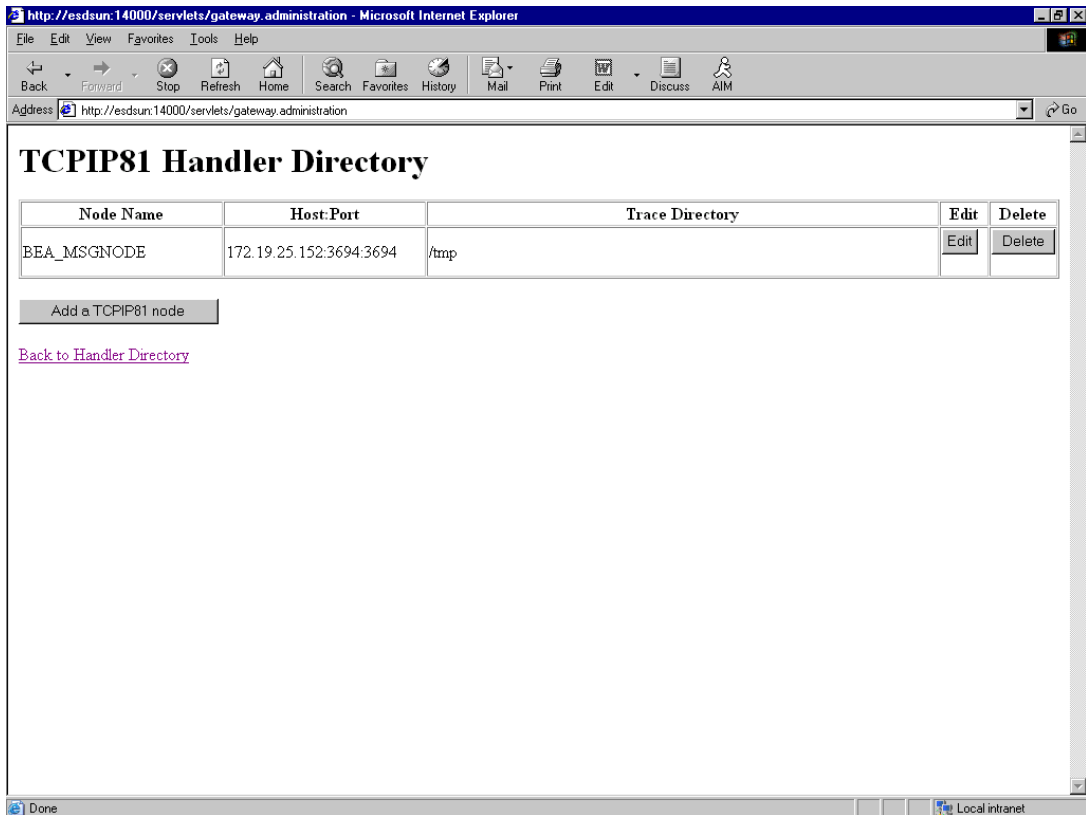
Node Name	Host Name	Port	Trace Directory
BEA_MSGNODE	172.19.25.152:3694	3694	/tmp

Save

Cancel

12. Click Save. The BEA Handler Directory window opens.

**Figure 3-7 TCPIP81 Handler Directory Window With Node**



The BEA TCP/IP Handler configuration is now complete.

## Installing BEA TCP/IP Target Connector for PeopleSoft Release 8.4 and Higher

The BEA TCP/IP Target Connector software for PeopleSoft release 8.4 is in the `TCPIPTARGET84.class` file and is located within the `BEA_PEOPLESOFT_1_0.ear` archive. To extract the `.class` file from the `.ear` archive, use WinZip or a similar extraction program. Once extracted, you must port the file to the platform where the PeopleSoft 8 gateway Web server is located and place it in the PS server target connector directory. This will be located in different places depending on your web server. Typically, these will be:

- For WebLogic,

```
c:\bea\wlserver6.1\config\peoplesoft\applications\PSIGW\Web-inf\
classes\com\peoplesoft\pt\integrationgateway\targetconnector
```

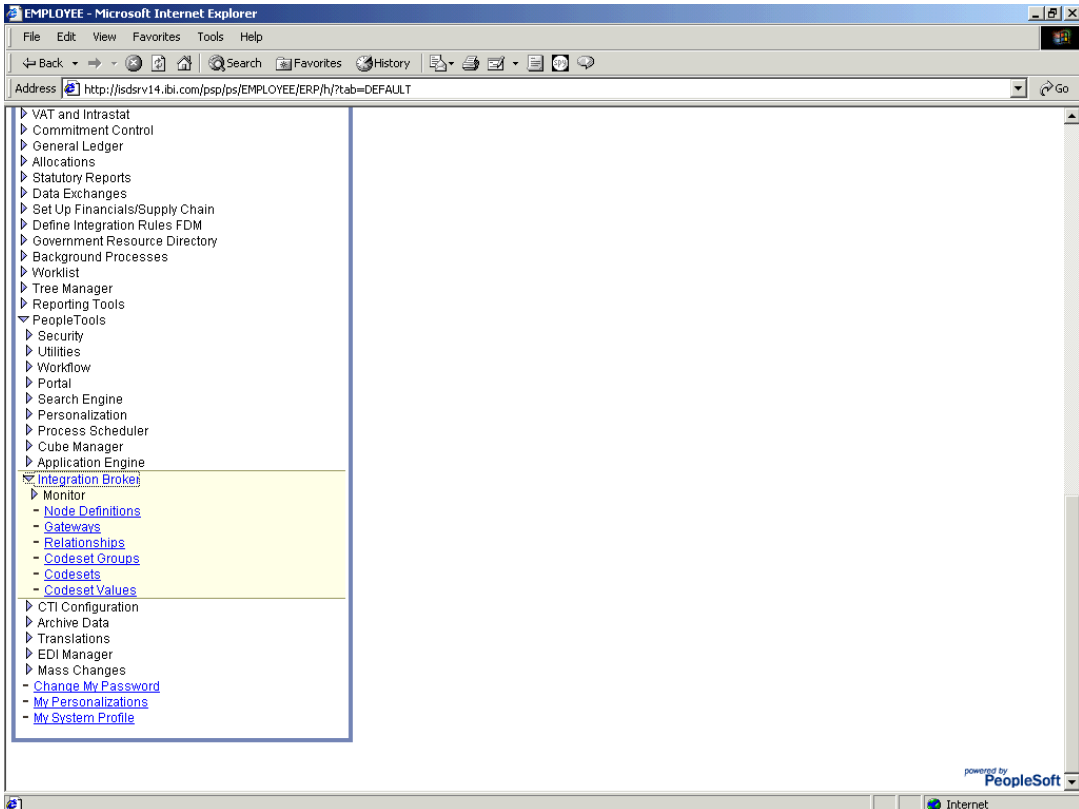
- For WebSphere,

```
c:\websphere\AppServer\installedApps\peoplesoft\PSIGW\Web-inf\
classes\com\peoplesoft\pt\integrationgateway\targetconnector
```

## How to Create a Gateway

1. Click PeopleTools → Integration Broker → Gateways.

**Figure 3-8 Gateways Window**

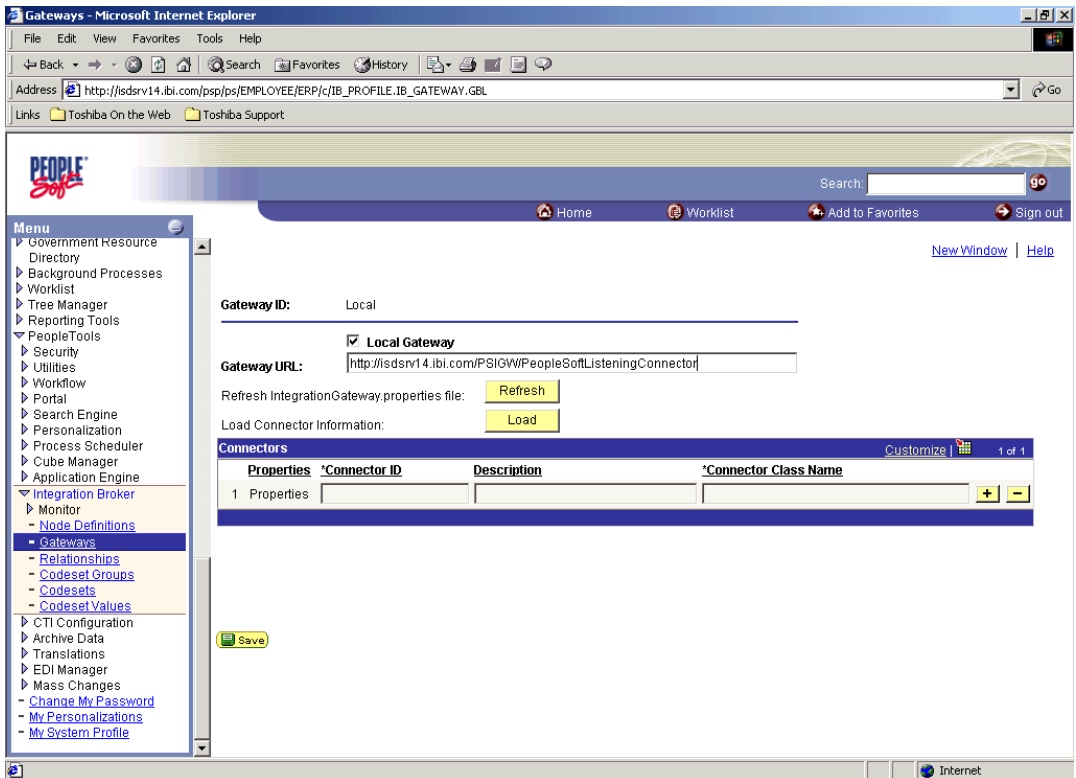


2. Find the Local Gateway and enter the URL in the Gateway URL field.

This URL is usually set during installation.

### 3 Installing and Configuring the BEA TCP/IP Message Router

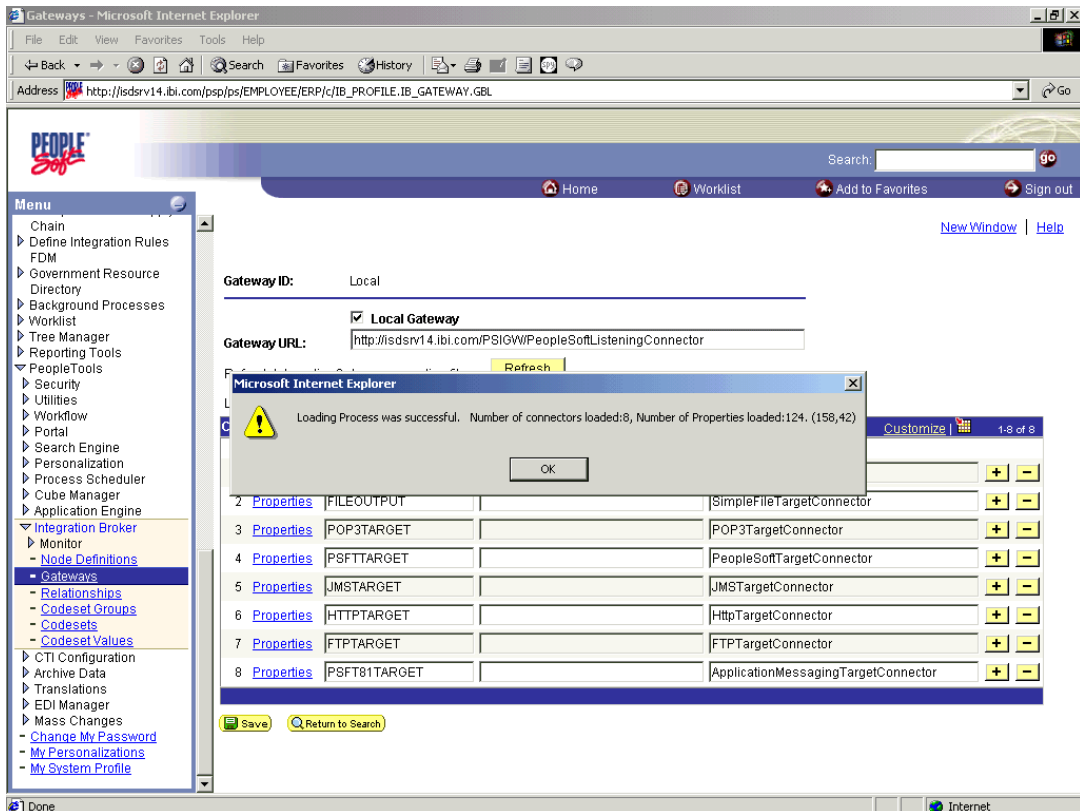
Figure 3-9 Gateway URL Window



3. Click the Load button. The Connector Properties are displayed. These are predefined during the Integration Broker installation.



**Figure 3-10 Connector Properties Window**

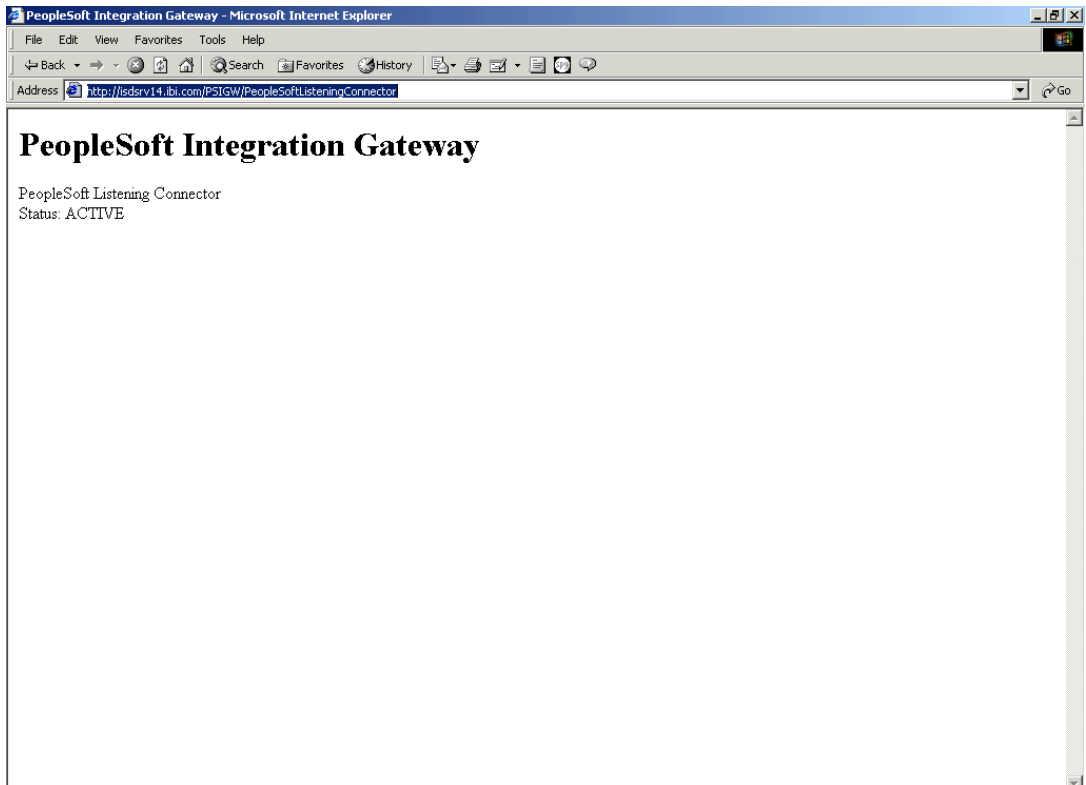


4. Click OK. The TCPIPTARGET84 connector is included in the Connectors list.
5. Enter the Gateway URL. The following window opens.

### 3 *Installing and Configuring the BEA TCP/IP Message Router*

---

**Figure 3-11 PeopleSoft Integration Gateway Window**



The Gateway is now configured.