



# BEA WebLogic Adapter for RDBMS

## Installation and Configuration Guide for WebLogic Integration 2.1

# Copyright

Copyright © 2003 BEA Systems, Inc. All Rights Reserved.

## Restricted Rights Legend

This software and documentation is subject to and made available only pursuant to the terms of the BEA Systems License Agreement and may be used or copied only in accordance with the terms of that agreement. It is against the law to copy the software except as specifically allowed in the agreement. This document may not, in whole or in part, be copied, photocopied, reproduced, translated, or reduced to any electronic medium or machine-readable form without prior consent, in writing, from BEA Systems, Inc.

Use, duplication or disclosure by the U.S. Government is subject to restrictions set forth in the BEA Systems License Agreement and in subparagraph (c)(1) of the Commercial Computer Software-Restricted Rights Clause at FAR 52.227-19; subparagraph (c)(1)(ii) of the Rights in Technical Data and Computer Software clause at DFARS 252.227-7013, subparagraph (d) of the Commercial Computer Software--Licensing clause at NASA FAR supplement 16-52.227-86; or their equivalent.

Information in this document is subject to change without notice and does not represent a commitment on the part of BEA Systems. THE SOFTWARE AND DOCUMENTATION ARE PROVIDED "AS IS" WITHOUT WARRANTY OF ANY KIND INCLUDING WITHOUT LIMITATION, ANY WARRANTY OF MERCHANTABILITY OR FITNESS FOR A PARTICULAR PURPOSE. FURTHER, BEA Systems DOES NOT WARRANT, GUARANTEE, OR MAKE ANY REPRESENTATIONS REGARDING THE USE, OR THE RESULTS OF THE USE, OF THE SOFTWARE OR WRITTEN MATERIAL IN TERMS OF CORRECTNESS, ACCURACY, RELIABILITY, OR OTHERWISE.

## Trademarks or Service Marks

BEA, Jolt, Tuxedo, and WebLogic are registered trademarks of BEA Systems, Inc. BEA Builder, BEA Campaign Manager for WebLogic, BEA eLink, BEA Manager, BEA WebLogic Commerce Server, BEA WebLogic Enterprise, BEA WebLogic Enterprise Platform, BEA WebLogic Express, BEA WebLogic Integration, BEA WebLogic Personalization Server, BEA WebLogic Platform, BEA WebLogic Portal, BEA WebLogic Server, BEA WebLogic Workshop and How Business Becomes E-Business are trademarks of BEA Systems, Inc.

All other trademarks are the property of their respective companies.

### ***BEA WebLogic Adapter for RDBMS***

### ***Installation and Configuration Guide for WebLogic Integration 2.1***

Part Number	Date
N/A	June 2003

---

# Contents

## About This Document

What You Need to Know .....	v
e-docs Web Site .....	vi
Related Information .....	vi
Contact Us! .....	vi
Documentation Conventions .....	vii

## 1. Installing the BEA WebLogic Adapter for RDBMS

Supported Versions .....	1-1
Understanding the Representation of Paths .....	1-2
Before Installing the Adapter for RDBMS .....	1-3
Review Release Notes .....	1-3
Configure Connection .....	1-3
Preparing to Install the Adapter for RDBMS .....	1-4
Installing the Adapter for RDBMS with WebLogic Integration .....	1-6
Step 1. Obtain the BEA WebLogic Adapter for RDBMS .....	1-6
Step 2. Configure the WebLogic Integration Database for the Domain ....	1-7
Step 3. Extract the JARs and Adjust the CLASSPATH .....	1-7
Step 4. Update the BEA License .....	1-9
Step 5. Deploy the Adapter for RDBMS Using the WebLogic Server Console	1-10
Step 6. Create an Adapter Administrative User .....	1-12
Next Steps .....	1-15

## Index



---

# About This Document

This document explains how to install the BEA WebLogic Adapter for Relational Database Management Systems (RDBMS) for WebLogic Integration 2.1, which is used to develop client-server interfaces between an RDBMS and other Web applications.

It is organized as follows:

Chapter 1, “Installing the BEA WebLogic Adapter for RDBMS,” provides the information you need before installing the BEA WebLogic Adapter for RDBMS, and describes how to install the adapter with WebLogic Integration 2.1.

## What You Need to Know

This document is written for system integrators who develop client interfaces between an RDBMS and third-party Enterprise Information System (EIS) applications. It describes how to use adapter tools to develop connections between a WebLogic Integration client and an RDBMS.

It is assumed that you know Web technologies and have a general understanding of Microsoft Windows and UNIX systems, in addition to the following:

- Some experience installing EIS and integration products and an understanding of RDBMS and SQL products with which this software will be integrating.
- Knowledge of the specific business application and data models for the required application
- General knowledge of BEA WebLogic Integration architecture
- General knowledge of XML concepts

---

Extensive internal knowledge of the specific SQL environment is not required, but may be helpful in learning about the BEA WebLogic Adapter for RDBMS.

## e-docs Web Site

BEA product documentation is available on the BEA corporate Web site. From the BEA Home page, click on Product Documentation or go directly to the e-docs product documentation page at <http://e-docs.beasys.com>.

## Related Information

The following documents contain information that is relevant to using this product:

- *BEA WebLogic Adapter for RDBMS User Guide and Release Notes* at <http://edocs.bea.com/wladapters/rdbms/docs71/index.html>
- BEA WebLogic Server 6.1 installation and user documentation, at <http://edocs.bea.com/wls/docs61/index.html>
- BEA WebLogic Integration 2.1 installation and user documentation, at [http://edocs.bea.com/wlintegration/v2\\_1sp/index.html](http://edocs.bea.com/wlintegration/v2_1sp/index.html)
- Specific RDBMS installation and user documentation

## Contact Us!

Your feedback on the BEA WebLogic Adapter for RDBMS documentation is important to us. Send us e-mail at [docsupport@beasys.com](mailto:docsupport@beasys.com) if you have questions or comments. Your comments will be reviewed directly by the BEA professionals who create and update the BEA WebLogic Adapter for RDBMS documentation.

---

In your e-mail message, please indicate that you are using the documentation for the BEA WebLogic Adapter for RDBMS 7.1 release.

If you have any questions about this version of BEA WebLogic Adapter for RDBMS, or if you have problems installing and running the product, contact BEA Customer Support through BEA WebSupport at [www.beasys.com](http://www.beasys.com). You can also contact Customer Support by using the contact information provided on the Customer Support Card, which is included in the product package.

When contacting Customer Support, be prepared to provide the following information:

- Your name, e-mail address, phone number, and fax number
- Your company name and company address
- Your machine type and authorization codes
- The name and version of the product you are using
- A description of the problem and the content of pertinent error messages

## Documentation Conventions

The following documentation conventions are used throughout this document.

Convention	Item
<b>boldface text</b>	Indicates terms defined in the glossary.
Ctrl+Tab	Indicates that you must press two or more keys simultaneously.
<i>italics</i>	Indicates emphasis or book titles.

Convention	Item
monospace text	Indicates code samples, commands and their options, data structures and their members, data types, directories, and filenames and their extensions. Monospace text also indicates text that you must enter from the keyboard. <i>Examples:</i> #include <iostream.h> void main ( ) the pointer psz chmod u+w * \tux\data\ap .doc tux.doc BITMAP float
<b>monospace boldface text</b>	Identifies significant words in code. <i>Example:</i> void <b>commit</b> ( )
<i>monospace italic text</i>	Identifies variables in code. <i>Example:</i> String <i>expr</i>
UPPERCASE TEXT	Indicates device names, environment variables, and logical operators. <i>Examples:</i> LPT1 SIGNON OR
{ }	Indicates a set of choices in a syntax line. The braces themselves should never be typed.
[ ]	Indicates optional items in a syntax line. The brackets themselves should never be typed. <i>Example:</i> buildobjclient [-v] [-o name] [-f <i>file-list</i> ]... [-l <i>file-list</i> ]...
	Separates mutually exclusive choices in a syntax line. The symbol itself should never be typed.



---

Convention	Item
...	Indicates one of the following in a command line: <ul style="list-style-type: none"><li>■ That an argument can be repeated several times in a command line</li><li>■ That the statement omits additional optional arguments</li><li>■ That you can enter additional parameters, values, or other information</li></ul> The ellipsis itself should never be typed. <p><i>Example:</i></p> <pre>buildobjclient [-v] [-o name] [-f file-list]... [-l file-list]...</pre>
.	Indicates the omission of items from a code example or from a syntax line.
.	The vertical ellipsis itself should never be typed.
.	

---



# 1 Installing the BEA WebLogic Adapter for RDBMS

This section provides instructions for installing the BEA WebLogic Adapter for RDBMS with WebLogic Integration 2.1. It includes the following topics:

- Supported Versions
- Understanding the Representation of Paths
- Before Installing the Adapter for RDBMS
- Installing the Adapter for RDBMS with WebLogic Integration
- Next Steps

## Supported Versions

The following RDBMS versions are supported:

- Oracle 8i
- Oracle 9i
- SQL Server 2000

- DB2 UDB V7

**Note:** Additional RDBMS certifications are underway, including Sybase and Informix. Please check with BEA Customer Support for the latest information on supported environments for the BEA WebLogic Integration Adapters.

# Understanding the Representation of Paths

Because the location of files in the WebLogic Integration environment depends on options selected during installation and configuration, the conventions that follow are used throughout to represent paths.

- *BEA\_HOME* represents the BEA Home directory specified for your WebLogic installation.

For example: If you install the product in the default location on a Windows system, *BEA\_HOME* represents `C:\bea`.

- *WLI\_HOME* represents the root of your WebLogic Integration installation.

For example: If you install WebLogic Integration 2.1 in the default location on a Windows system, *WLI\_HOME* represents `C:\bea\wlintegration2.1`.

- *domain* is used to indicate the name of a domain.

In WebLogic Integration 2.1, preconfigured domains (bpmdomain, eaidomain, wlidomain, and samples) are created as subdirectories of the *WLI\_HOME\config* directory. Therefore, *domain* may be used to represent the root of a preconfigured WebLogic Integration 2.1 domain as follows:  
*WLI\_HOME\config\domain*

- *DOMAIN\_HOME* represents the complete path to the root of a domain.

For example: If you install WebLogic Integration 2.1 in the default location on a Windows system, *DOMAIN\_HOME* represents  
`C:\bea\wlintegration2.1\config\domain`

**Note:** *WLI\_HOME* and *BEA\_HOME* also represent the corresponding Windows and UNIX environment variables. For example, the literal interpretation of *WLI\_HOME* is `%WLI_HOME%` for Windows and `$WLI_HOME` for UNIX.

Unlike *WLT\_HOME* and *BEA\_HOME*, *DOMAIN\_HOME* is not an environment variable that is set by default in the WebLogic Integration environment.

- *localhost* represents the IP address of the machine running the WebLogic Server.

## Before Installing the Adapter for RDBMS

This section describes the preliminary actions you must take before installing the Adapter for RDBMS. It includes the following topics:

- Review Release Notes
- Configure Connection
- Preparing to Install the Adapter for RDBMS

### Review Release Notes

Before you install the BEA WebLogic Adapter for RDBMS, you must review the *BEA WebLogic Adapter for RDBMS Release Notes* to ensure that you have the prerequisite software installed. The *BEA WebLogic Adapter for RDBMS Release Notes* is available at the following URL: <http://edocs.bea.com/wladapters/rdbms/docs71/index.html>

### Configure Connection

A connection to a database requires a JDBC 2.1 compliant driver for the RDBMS you are using.

**Note:** For details on commonly used drivers with which the Adapter for RDBMS has been tested, see “Commonly Used Drivers,” in the *BEA WebLogic Adapter for RDBMS User Guide*, available at the following URL:  
<http://edocs.bea.com/wladapters/rdbms/docs71/index.html>

## 1 *Installing the BEA WebLogic Adapter for RDBMS*

---

Obtain a JDBC 2.1 compliant driver for the RDBMS you are using, start the server, and configure a connection pool and data source.

1. Place the JAR files that constitute the driver in any folder.
2. Do one of the following:
  - For Windows: Edit the `WLI_HOME\setenv.cmd` file to include the driver files in `WLISERVERCP`, the WebLogic Server `CLASSPATH`.
  - For UNIX: Edit the `WLI_HOME/setenv.sh` file to include the driver files in `WLISERVERCP`, the WebLogic Server `CLASSPATH`.
3. Do one of the following:
  - For Windows: Edit the `WLI_HOME\bin\setenv.cmd` to include the driver files in `WLISERVERCP`, the WebLogic Server `CLASSPATH`.
  - For UNIX: Edit the `WLI_HOME/bin/setenv.sh` to include the driver files in `WLISERVERCP`, the WebLogic Server `CLASSPATH`.
4. Start the WebLogic Server.
5. Configure a connection pool and data source. For instructions, see the *BEA WebLogic Adapter for RDBMS User Guide* at the following URL:  
<http://edocs.bea.com/wlapters/rdbms/docs71/index.html>

## Preparing to Install the Adapter for RDBMS

Before installing the adapter, you must extract the `EventPollingMetaData` script, execute the `EventPollingMetadatasetupdb` command, and execute the `CreateEventTables` script on the EIS you have selected.

To prepare to install the adapter:

1. Obtain the Adapter for RDBMS. For more information, see “Step 1. Obtain the BEA WebLogic Adapter for RDBMS” on page 1-6.
2. Extract the contents of the `BEA_RDBMS_7_1_21.zip` file packaged with the source into any folder.
3. Do one of the following:

- For Windows: From the `Script\RDBMS` folder within, copy the `CreateRDBMSEventPollingMetadata.sql` file for your database and place it in the `WLI_HOME\dbscripts\RDBMS` folder.
- For UNIX: From the `Script/RDBMS` folder within, copy the `CreateRDBMSEventPollingMetadata.sql` file for your database and place it in the `WLI_HOME/dbscripts/RDBMS` folder.

**Note:** *RDBMS* represents the default database that you have selected for the domain.

For example, for Oracle, on Windows, copy the `CreateOracleEventPollingMetadata.sql` from the `Script\Oracle` folder, and place it in `WLI_HOME\dbscripts\oracle`.

4. Do one of the following:

- For Windows: From the `Script` folder, copy the `EventPollingMetadatasetupdb.cmd` file, and place it in any folder.
- For UNIX: From the `Script` folder, copy the `EventPollingMetadatasetupdb.sh` file, and place it in any folder.

5. Do one of the following:

- For Windows: Edit the `EventPollingMetadatasetupdb.cmd` file to modify the location of `setEnv.cmd`. Execute `EventPollingMetadatasetupdb.cmd`.
- For UNIX: Edit the `EventPollingMetadatasetupdb.sh` file to modify the location of `setEnv.sh`. Execute `EventPollingMetadatasetupdb.sh`.

**Note:** If the default database for your domain is Cloudscape, stop the WebLogic Server before executing the `EventPollingMetadatasetupdb` command. This applies to both Windows and UNIX.

6. Do one of the following:

- For Windows: From the `Script\EIS` folder, extract the `CreateRDBMSEventTables.sql` file and run it on the EIS you have selected.
- For UNIX: From the `Script/EIS` folder, extract the `CreateRDBMSEventTables.sql` file and run it on the EIS you have selected.

**Note:** *EIS* represents the folder corresponding to the EIS you have selected. The EIS could be any of the following: Oracle 8i, SQL Server 2000, DB2 UDB V7.

For example, for Oracle, on Windows, extract `CreateOracleEventTables.sql` from the `Script\Oracle` folder, and run it on Oracle.

# Installing the Adapter for RDBMS with WebLogic Integration

This section provides instructions for installing the BEA WebLogic Adapter for RDBMS with WebLogic Integration 2.1. It includes the following topics:

- Step 1. Obtain the BEA WebLogic Adapter for RDBMS
- Step 2. Configure the WebLogic Integration Database for the Domain
- Step 3. Extract the JARs and Adjust the CLASSPATH
- Step 4. Update the BEA License
- Step 5. Deploy the Adapter for RDBMS Using the WebLogic Server Console
- Step 6. Create an Adapter Administrative User

## Step 1. Obtain the BEA WebLogic Adapter for RDBMS

You can obtain the BEA WebLogic Adapter for RDBMS software by software download (at <http://www.bea.com>) or on CD media. If you download the adapter, it is in the form of a single `.zip` file, which contains the adapter file (`BEA_RDBMS_7_1.ear`), as well as support files, such as scripts. You can extract the files from the distribution `.zip` file using an unzip utility such as WinZIP. If you obtain the adapter on CD, all files are included and organized in subdirectories.



**Note:** Check the release notes to determine if there are required patches for WebLogic Platform that are specific to your configuration. Contact BEA Customer Support to obtain patches. For information on contacting customer support, see the *BEA WebLogic Adapter for RDBMS Release Notes* at the following URL: <http://edocs.bea.com/wladapters/rdbms/docs71/index.html>

## Step 2. Configure the WebLogic Integration Database for the Domain

If you have not already done so, you must create the WebLogic Integration database tables for your domain. For detailed instructions, see “Configuring the Database for a Domain” in *Starting, Stopping, and Customizing BEA WebLogic Integration*, at the following URL:

[http://e-docs.bea.com/wlintegration/v2\\_1sp/config/getstart.htm#1079719](http://e-docs.bea.com/wlintegration/v2_1sp/config/getstart.htm#1079719)

## Step 3. Extract the JARs and Adjust the CLASSPATH

You should extract the adapter JAR files from the EAR file packaged with the source, and adjust the CLASSPATH for the domain to include all the JAR files included in the EAR file.

To unzip the adapter JAR files and adjust the CLASSPATH, do the following:

1. Extract the `BEA_RDBMS_7_1.ear` file from the `BEA_RDBMS_7_1.zip` file packaged with the source.
  - For Windows: Use WinZip (or another similar extracting product) to extract the `BEA_RDBMS_7_1.ear` file to a directory of your choice (for example, `BEA_HOME\AdapterEars`).
  - For UNIX: Use JAR (or another similar extracting product) to extract the `BEA_RDBMS_7_1.ear` file to a directory of your choice (for example, `BEA_HOME/ear/lib/RDBMS`).
2. Extract the `BEA_RDBMS_7_1.jar` from the `BEA_RDBMS_7_1.ear` file.
3. Go to the root directory for your domain:

# 1 Installing the BEA WebLogic Adapter for RDBMS

---

```
cd DOMAIN_HOME
```

**Note:** You must choose a WebLogic Integration domain that supports application integration functionality.

4. Do one of the following:

- For Windows, find the *SetDomainTypeData.cmd* file.
- For UNIX, find the *SetDomainTypeData* file.

Here, *DomainType* is the type of the domain. For example, if your domain is configured to support the development of solutions that employ the full range of WebLogic Integration functionality, it contains the *SetwliDomainData.cmd* file.

5. Update the following SVRCP environment variable settings in the *SetDomainTypeData.cmd* file for the domain to include all the JAR files included in the EAR file.

**Note:** The SVRCP environment variable is used in the *SetDomainTypeData* script to set the CLASSPATH for the java executable.

- For Windows:

After the following line:

```
set SVRCP=%SVRCP%;%WLI_DOMAIN_HOME%\wlai
```

add the following JAR file:

```
SET SVRCP=%SVRCP%;BEA_HOME\AdapterEars\BEA_RDBMS_7_1.jar
```

Here, *BEA\_HOME\AdapterEars* is the directory specified in step 1.

- For UNIX:

After the following line:

```
SVRCP=$SVRCP:$WLI_DOMAIN_HOME/wlai
```

add the following JAR file:

```
SVRCP=$SVRCP:BEA_HOME/ear/lib/RDBMS/BEA_RDBMS_7_1.jar
```

Here, *BEA\_HOME/ear/lib/RDBMS* is the directory specified in step 1.

## Step 4. Update the BEA License

The BEA WebLogic Adapter for RDBMS cannot be used without a valid software license. If you have downloaded the adapter for evaluation, you must obtain an evaluation license as described on the adapter download page. If you have purchased a license for the adapter, the license file is typically sent to you as an e-mail attachment.

When you have obtained a valid license for the adapter, update your `license.bea` file by completing the following steps:

1. Save the license file that you obtained with a name other than `license.bea`, in the `BEA_HOME` directory. For example, save the file as `utility_adapter_license.bea`. Use this file as the *license\_update\_file* in step 4. of this procedure.

**Warning:** Do not overwrite or change the name of the existing `license.bea` file.

2. Perform the step appropriate for your platform:
  - On a Windows system, open an MS-DOS session and go to the `BEA_HOME` directory.
  - On a UNIX system, go to the `BEA_HOME` directory.
3. If it is not already included, add the JDK to your `PATH` variable by executing the command appropriate to your system:

- On a Windows system:

```
set PATH=BEA_HOME\jdkversion\bin;%PATH%
```

- On a UNIX system:

```
PATH=BEA_HOME/jdkversion/bin:$PATH
export PATH
```

**Note:** Here, *version* refers to the JDK version according to which the folder will be named.

4. Merge the license update file into your existing license by executing the command appropriate to your system:
  - On a Windows system:  
`UpdateLicense license_update_file`
  - On a UNIX system:

```
sh UpdateLicense.sh license_update_file
```

Here, *license\_update\_file* is the name to which you saved the license update file in step 1.

5. Save a copy of your updated `license.bea` file in a safe place outside the WebLogic Integration and application installation directories.
6. Restart the WebLogic Server.

## Step 5. Deploy the Adapter for RDBMS Using the WebLogic Server Console

After the BEA WebLogic Adapter for RDBMS is installed, it must be deployed to your domain (for example, `wl1domain`). To configure and deploy an adapter using the WebLogic Server Administration Console, do the following:

1. Start the WebLogic Server.
2. Start the WebLogic Server Administration Console in a browser using the following URL:

```
http://localhost:port/console/
```

Here, *localhost* represents the IP address of the machine running the WebLogic Server, and *port* represents the listening port.

For example, `http://localhost:7001/console/` or  
`http://172.19.138.44:7001/console/`

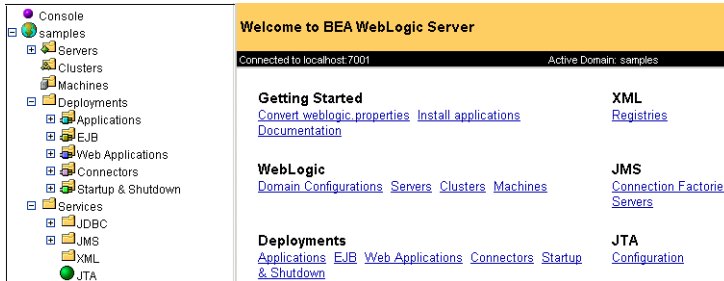
3. When prompted, enter the user name and password for the server.

**Note:** If you have not updated the default login, see “WebLogic Integration Users and Passwords” in *Starting, Stopping, and Customizing WebLogic Integration* at the following URL:

[http://edocs.bea.com/wlintegration/v2\\_1sp/config/getstart.htm](http://edocs.bea.com/wlintegration/v2_1sp/config/getstart.htm)

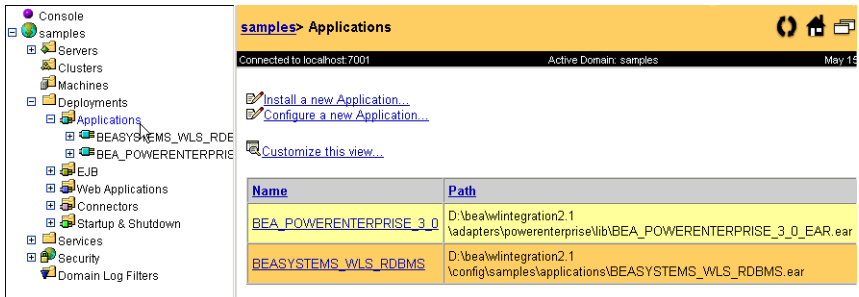
The WebLogic Server Administration Console appears.

**Figure 1-1 WebLogic Server Console**



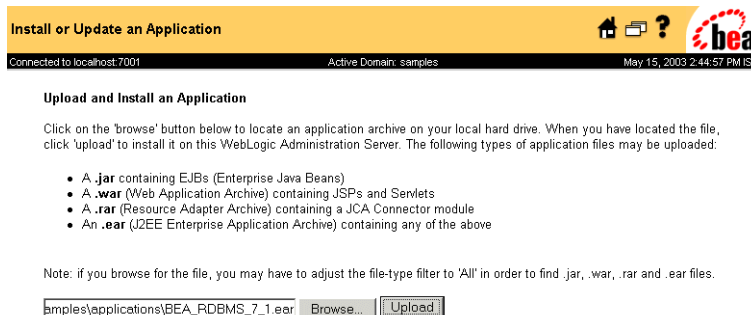
4. In the left pane, choose Deployments→Applications. The console displays the Applications page.

**Figure 1-2 Applications**



5. Click the Install a new Application link. The console displays the Install or Update an Application page.

**Figure 1-3 Install or Update an Application**



6. Click Browse to locate the application archive you selected during installation (BEA\_RDBMS\_7\_1.ear).

7. Click Upload to upload the `BEA_RDBMS_7_1.ear` file. The console displays the application files currently installed, with `BEA_RDBMS_7_1.ear` in it, to indicate that the upload is complete and the adapter file is deployed to the WebLogic Server.

**Figure 1-4 Application Files Currently Installed**

Application files currently installed:

```
D:\bea\wintegration2.1\config\samples\applications\BEASYSTEMS_WLS_RDBMS.ear
D:\bea\wintegration2.1\config\samples\applications\BEA_RDBMS_7_1.ear
D:\bea\wintegration2.1\config\samples\applications\lwcWebApp.war
D:\bea\wintegration2.1\config\samples\applications\wlisWebApp.war
D:\bea\wintegration2.1\config\samples\applications\WLPF_sample.war
```

**Note:** You can verify deployment by viewing the adapter configuration, as follows:

- a. In the left pane, choose Deployments→Applications.
- b. Click the `BEA_RDBMS_7_1.ear` link. The corresponding configuration details appear.

## Step 6. Create an Adapter Administrative User

A user group, `adapter`, is defined in each domain that supports application integration functionality. Before you create an application view that employs the events or services supported by an adapter, you must add the user name defined for the administrative server to the `adapter` group.

By default, the `adapter` group includes the user `system`. If the user name defined for the administrative server is `system`, skip this step. For example, if you are starting the server in a preconfigured domain, and you have not modified the default administrative server login, you can skip this step. Otherwise, create the administrative server user name and then add it to the `adapter` group.

This section contains the following topics:

- Create the Administrative Server User Name
- Add the Administrative Server User Name to the Adapter Group

### Create the Administrative Server User Name

To create the administrative server user name, do the following:

1. In the left pane of the WebLogic Server Administration Console, choose Security→Users. The console displays the Users page, showing the users currently defined for the domain.

**Figure 1-5 Users**

**Users**

Connected to localhost:7001 Active Domain: wlidomain Jun 10, 2003 5:31:46 PM IST

**Create a New User**

Name:

Password:

Confirm Password:

**Delete a User**

Name:

[Unlock Users...](#)

Users [joe](#), [system](#), [guest](#), [hub](#), [wlpisystem](#), [mary](#), [wlcsystem](#), [wlcSamplesUser](#)

2. Enter Name, Password, and Confirm Password. Click Create. The newly created user is added to the Users list below.

## Add the Administrative Server User Name to the Adapter Group

To add the administrative server user name to the `adapter` group, do the following:

1. In the left pane of the WebLogic Server Administration Console, choose Security→Groups. The console displays the groups currently defined for the domain.

**Figure 1-6 Groups**

[Create a new Group...](#)

Name	Members	
<a href="#">ConfigureComponents</a>	joe, mary, wlcssystem, guest, wlpisystem	
<a href="#">wlpUsers</a>	joe, system, mary, guest, wlcssystem, wlpisystem	
<a href="#">MonitorInstance</a>	joe, mary, wlcssystem, guest, wlpisystem	
<a href="#">ExecuteTemplate</a>	joe, mary, wlcssystem, guest, wlpisystem	
<a href="#">everyone</a>	joe, system, guest, hub, wlpisystem, mary, wlcssystem, admin, wlcSamplesUser	
<a href="#">CustomerServiceCDE</a>		
<a href="#">Role2Org2</a>	joe, mary	
<a href="#">Role2Org1</a>	joe, mary	
<a href="#">CreateTemplate</a>	joe, mary, wlcssystem, guest, wlpisystem	
<a href="#">adminGroup</a>	joe, mary	
<a href="#">DeleteTemplate</a>	joe, mary, wlcssystem, guest, wlpisystem	
<a href="#">AccountingCDE</a>	joe	
<a href="#">adapter</a>	joe, system, guest, hub, wlpisystem, mary, wlcssystem, wlcSamplesUser	

2. Locate and click the link for the adapter group to display the group definition. The definition page, with existing members if any, appears as shown in the following figure.

**Figure 1-7 Group Definition**

Group

Name:

adapter

Members:

☐ joe ☐ system ☐ guest ☐ hub ☐ wlpisystem ☐ mary ☐ wlcssystem

(select to remove) ☐ wlcSamplesUser ☐ admin

Add Users:

Add Groups:

Apply

3. If the administrative server user name is not included in the Members list, enter the user name in the Add Users field.  
**Note:** You should already have created the administrative server user name.
4. Click Apply to add the user name to the group. The name is added to the Members list.



## Next Steps

After you have successfully deployed the adapter, you can log on to the WebLogic Integration Application View Console to create application views that employ events and services supported by the BEA WebLogic Adapter for RDBMS.

For more information, see the *BEA WebLogic Adapter for RDBMS User Guide*, available at the following URL:

<http://edocs.bea.com/wlapters/rdbms/docs71/index.html>



---

# Index

## A

- about this document v
- Adapter for RDBMS
  - after installing 1-15
  - before installing 1-3
  - deploying 1-10
  - EAR file 1-6
  - installing 1-6
  - obtaining 1-6
  - supported versions 1-1

## B

- BEA
  - contacting vi
  - Product Documentation vi
  - WebSupport vii

## C

- classpath, adjusting 1-7
- conventions, documentation vii

## D

- documentation conventions vii
- domain, configuring the database 1-7

## E

- e-docs web site vi

## G

- groups
  - adapter 1-12
  - adding user name 1-12
  - creating user name 1-12

## I

- installation
  - after installing 1-15
  - before installing 1-3
  - steps 1-6

## J

- JARs, extracting 1-7

## R

- related documents vi
- release notes, reviewing 1-3
- representation of paths, understanding 1-6

## S

- support, technical vii

## V

- versions, supported 1-1

## W

- WebLogic Server Console 1-10
- WLI database, configuring 1-7

