



BEA WebLogic Collaborate Enabler for RosettaNet Installation Guide

BEA WebLogic Collaborate Enabler for RosettaNet 1.0
Document Edition 1.0
February 2001

Copyright

Copyright © 2001 BEA Systems, Inc. All Rights Reserved.

Restricted Rights Legend

This software and documentation is subject to and made available only pursuant to the terms of the BEA Systems License Agreement and may be used or copied only in accordance with the terms of that agreement. It is against the law to copy the software except as specifically allowed in the agreement. This document may not, in whole or in part, be copied photocopied, reproduced, translated, or reduced to any electronic medium or machine readable form without prior consent, in writing, from BEA Systems, Inc.

Use, duplication or disclosure by the U.S. Government is subject to restrictions set forth in the BEA Systems License Agreement and in subparagraph (c)(1) of the Commercial Computer Software-Restricted Rights Clause at FAR 52.227-19; subparagraph (c)(1)(ii) of the Rights in Technical Data and Computer Software clause at DFARS 252.227-7013, subparagraph (d) of the Commercial Computer Software--Licensing clause at NASA FAR supplement 16-52.227-86; or their equivalent.

Information in this document is subject to change without notice and does not represent a commitment on the part of BEA Systems. THE SOFTWARE AND DOCUMENTATION ARE PROVIDED "AS IS" WITHOUT WARRANTY OF ANY KIND INCLUDING WITHOUT LIMITATION, ANY WARRANTY OF MERCHANTABILITY OR FITNESS FOR A PARTICULAR PURPOSE. FURTHER, BEA Systems DOES NOT WARRANT, GUARANTEE, OR MAKE ANY REPRESENTATIONS REGARDING THE USE, OR THE RESULTS OF THE USE, OF THE SOFTWARE OR WRITTEN MATERIAL IN TERMS OF CORRECTNESS, ACCURACY, RELIABILITY, OR OTHERWISE.

Trademarks or Service Marks

BEA, WebLogic, Tuxedo, and Jolt are registered trademarks of BEA Systems, Inc. How Business Becomes E-Business, BEA WebLogic E-Business Platform, BEA Builder, BEA Manager, BEA eLink, BEA WebLogic Commerce Server, BEA WebLogic Personalization Server, BEA WebLogic Process Integrator, BEA WebLogic Collaborate, BEA WebLogic Enterprise, and BEA WebLogic Server are trademarks of BEA Systems, Inc.

All other product names may be trademarks of the respective companies with which they are associated.

BEA WebLogic Collaborate Enabler for RosettaNet Installation Guide

Document Edition	Part Number	Date	Software Version
1.0	870-001050-001	January 2001	1.0

Contents

What You Need to Know	v
How to Print the Document.....	vi
Related Information.....	vi
Documentation Conventions	viii

1. Installation Overview

Your Software Package	1-1
The WebLogic Collaborate Enabler for RosettaNet	
Web Distribution.....	1-2
The WebLogic Collaborate Enabler for RosettaNet	
CD ROM Distribution.....	1-2
Platform Support	1-3
Installation Procedure.....	1-4
Installing the Prerequisites	1-4
Installing the WebLogic Collaborate Enabler for RosettaNet Software	1-4
Installing the Software License	1-5

2. WebLogic Collaborate Enabler for RosettaNet Installation on Windows Systems

Installing the Prerequisites	2-1
C-Enabler for RosettaNet Only Installation	2-2
Full Installation	2-2
Installing the WebLogic Collaborate Enabler for RosettaNet Software	2-4
Installing the Software License	2-12
Uninstalling the WebLogic Collaborate Enabler for RosettaNet Software.....	2-14

3. WebLogic Collaborate Enabler for RosettaNet Installation on UNIX Systems

Installing the Prerequisites.....	3-2
C-Enabler for RosettaNet Only Installation	3-2
Full Installation.....	3-3
Installing the WebLogic Collaborate Enabler for RosettaNet Software	3-5
Using the BEA Installation Program on Solaris Systems	3-6
Using the Console-Mode Installation on UNIX Systems.....	3-13
Installing the Software License	3-16
Customizing the Run-Time Environment.....	3-17
Uninstalling the WebLogic Collaborate Enabler for RosettaNet Software.....	3-18

Index

About This Document

This document explains how to install the BEA WebLogic Collaborate Enabler for RosettaNet™ 1.0 software on Windows NT and UNIX systems.

This document is organized as follows:

- Chapter 1, “Installation Overview,” describes the components of the WebLogic Collaborate Enabler for RosettaNet product, provides a quick reference to the installation procedure, and explains how to install the software license.
- Chapter 2, “WebLogic Collaborate Enabler for RosettaNet Installation on Windows Systems,” explains how to install the WebLogic Collaborate Enabler for RosettaNet software on Windows NT systems.
- Chapter 3, “WebLogic Collaborate Enabler for RosettaNet Installation on UNIX Systems,” explains how to install the WebLogic Collaborate Enabler for RosettaNet software on UNIX systems.

What You Need to Know

It is assumed that you have a working knowledge of BEA WebLogic Collaborate, BEA WebLogic Server, XML, Enterprise JavaBeans, and Java programming.

The WebLogic Collaborate Enabler for RosettaNet software is a c-enabler for RosettaNet that enhances the WebLogic Collaborate XOCP c-enabler with the ability to send and receive RosettaNet messages according to the protocol described in the *RosettaNet Implementation Framework (RNIF) version 1.1*. In addition, the c-enabler for RosettaNet extends the basic WebLogic Process Integrator™ functionality with features that allow WebLogic Process Integrator workflows to participate in RosettaNet Partner Interface Processes (PIPs).

How to Print the Document

You can print a copy of this document from a Web browser, one file at a time, by using the File—>Print option on your Web browser.

A PDF version of this document is available on the BEA WebLogic Collaborate Enabler for RosettaNet documentation CD. You can open the PDF in Adobe Acrobat Reader and print the entire document, or a portion of it, in book format. To access the PDFs, open the BEA WebLogic Collaborate Enabler for RosettaNet documentation Home page, click the PDF Files button, and select the document you want to print.

If you do not have Adobe Acrobat Reader installed, you can download it for free from the Adobe Web site at <http://www.adobe.com/>.

Related Information

For more information about WebLogic Collaborate and WebLogic Server, see the BEA documentation Web site:

<http://e-docs.bea.com>

Contact Us!

Your feedback on the WebLogic Collaborate Enabler for RosettaNet documentation is important to us. Send us e-mail at **docsupport@bea.com** if you have questions or comments. Your comments will be reviewed directly by the BEA professionals who create and update the WebLogic Collaborate Enabler for RosettaNet documentation.

In your e-mail message, please indicate that you are using the documentation for the WebLogic Collaborate Enabler for RosettaNet 1.0 release.

If you have questions about this version of WebLogic Collaborate Enabler for RosettaNet, or if you have problems installing and running WebLogic Collaborate Enabler for RosettaNet, contact BEA Customer Support at <http://www.bea.com>. You can also contact Customer Support by using the contact information provided on the Customer Support Card, which is included in the product package.

When contacting Customer Support, be prepared to provide the following information:

- Your name, e-mail address, phone number, and fax number
- Your company name and company address
- Your machine type and authorization codes
- The name and version of the product you are using
- A description of the problem and the content of pertinent error messages

Documentation Conventions

The following documentation conventions are used throughout this document.

Convention	Item
Ctrl+Tab	Indicates that you must press two or more keys simultaneously.
<i>italics</i>	Indicates emphasis or book titles.
monospace text	Indicates code samples, commands and their options, data structures and their members, data types, directories, and filenames and their extensions. Monospace text also indicates text that you must enter from the keyboard. <i>Examples:</i> <pre>#include <iostream.h> void main () the pointer psz chmod u+w * \tux\data\ap .doc tux.doc BITMAP float</pre>
<i>monospace italic text</i>	Identifies variables in code. <i>Example:</i> <i>String expr</i>
UPPERCASE TEXT	Indicates device names, environment variables, and logical operators. <i>Examples:</i> LPT1 SIGNON OR
{ }	Indicates a set of choices in a syntax line. The braces themselves should never be typed.

Convention	Item
[]	Indicates optional items in a syntax line. The brackets themselves should never be typed. <i>Example:</i> <code>buildobjclient [-v] [-o name] [-f file-list]... [-l file-list]...</code>
	Separates mutually exclusive choices in a syntax line. The symbol itself should never be typed.
...	Indicates one of the following in a command line: <ul style="list-style-type: none">■ That an argument can be repeated several times in a command line■ That the statement omits additional optional arguments■ That you can enter additional parameters, values, or other information The ellipsis itself should never be typed. <i>Example:</i> <code>buildobjclient [-v] [-o name] [-f file-list]... [-l file-list]...</code>
. . . .	Indicates the omission of items from a code example or from a syntax line. The vertical ellipsis itself should never be typed.



1 Installation Overview

The following sections describe the contents of the BEA WebLogic Collaborate Enabler for RosettaNet™ 1.0 package and contain a summary of the installation steps.

- Your Software Package
- Platform Support
- Installation Procedure
 - Installing the Prerequisites
 - Installing the WebLogic Collaborate Enabler for RosettaNet Software
 - Installing the Software License

For detailed information about the installation procedure, see Chapter 2, “WebLogic Collaborate Enabler for RosettaNet Installation on Windows Systems,” and Chapter 3, “WebLogic Collaborate Enabler for RosettaNet Installation on UNIX Systems.”

Your Software Package

The BEA WebLogic Collaborate Enabler for RosettaNet 1.0 software is available for download from the BEA Web site and from the software CD ROM.

The WebLogic Collaborate Enabler for RosettaNet Web Distribution

The downloadable distribution is available for Windows and UNIX systems from the BEA Web site, and contains the following:

- The installation script for your Windows or UNIX system
- An evaluation license file that you must install on your machine. For more information about installing the WebLogic Collaborate Enabler for RosettaNet software license, see the section “Installing the Software License” on page 1-5.
- The following documentation:
 - *BEA WebLogic Collaborate Enabler for RosettaNet Installation Guide*
 - *BEA WebLogic Collaborate Enabler for RosettaNet Release Notes*

Note: You can access the WebLogic Collaborate Enabler for RosettaNet 1.0 and the WebLogic Collaborate 1.0 documentation at the following URL:

http://edocs.bea.com/wlcollab/v1_0/index.html

The WebLogic Collaborate Enabler for RosettaNet CD ROM Distribution

The CD ROM is part of a distribution package that has the following components:

- WebLogic Collaborate Enabler for RosettaNet software CD
- WebLogic Collaborate Enabler for RosettaNet documentation CD

The documentation CD contains the following documents:

- *WebLogic Collaborate Enabler for RosettaNet Installation Guide*
- *WebLogic Collaborate Enabler for RosettaNet User Guide*
- Javadoc API

Note: 1. The Javadoc for the WebLogic Collaborate Enabler for RosettaNet API is also automatically installed as part of the WebLogic Collaborate Enabler

for RosettaNet installation. You can access the Javadoc by opening the `index.html` file from the following directory in your Web browser.

```
<WLC_HOME>/rosettanet/classdocs
```

where `<WLC_HOME>` is the WebLogic Collaborate product directory on your system.

2. You do not need to install the WebLogic Collaborate Enabler for RosettaNet documentation CD. You can either browse the contents of the CD directly, or copy the contents onto your hard drive and then browse the local copy. Access the top level HTML file (`index.htm`) to browse the contents of the CD.

■ Hardcopy documentation:

- *BEA WebLogic Collaborate Enabler for RosettaNet Installation Guide*
- *BEA WebLogic Collaborate Enabler for RosettaNet Release Notes*

Note: You will receive a license by email when you purchase the WebLogic Collaborate Enabler for RosettaNet software. For more information about installing the license, see the section “Installing the Software License” on page 1-5.

Platform Support

WebLogic Collaborate Enabler for RosettaNet is available on the following platforms.

Platform	Version
Microsoft Windows NT	4.0 with Service Pack 6
Microsoft Windows	2000
Sun Solaris	2.7
IBM AIX	4.3.3
Hewlett-Packard HP-UX	11.0

Installation Procedure

The following sections provide an overview of the procedure you must follow to install the WebLogic Collaborate Enabler for RosettaNet package:

- Installing the Prerequisites
- Installing the WebLogic Collaborate Enabler for RosettaNet Software
- Installing the Software License

Installing the Prerequisites

Make sure your machine has the required hardware and software configurations.

- For Windows systems see “Installing the Prerequisites” on page 2-1
- For UNIX systems see “Installing the Prerequisites” on page 3-2

Installing the WebLogic Collaborate Enabler for RosettaNet Software

You can install WebLogic Collaborate Enabler for RosettaNet as a full installation (if you do not have WebLogic Collaborate 1.0 installed on your system), or a WebLogic Collaborate Enabler for RosettaNet Only installation (if you already have WebLogic Collaborate 1.0 installed on your system).

- For full installation, the installation procedure installs the entire WebLogic Collaborate 1.0 package including the WebLogic Collaborate Enabler for RosettaNet software.

Note: Your license is valid only for WebLogic Collaborate Enabler for RosettaNet and the integrated WebLogic Process Integrator software.

- For a WebLogic Collaborate Enabler for RosettaNet Only installation, the installation procedure creates a `rosettanet` subdirectory in your existing

WebLogic Collaborate 1.0 product directory, and installs the WebLogic Collaborate Enabler for RosettaNet software there.

To install the software, invoke the `install.exe` or `install.bin` script. (Locate the script in the WebLogic Collaborate Enabler for RosettaNet distribution downloaded from <http://www.bea.com>, or in the Windows folder on your WebLogic Collaborate Enabler for RosettaNet software CD.)

See the following sections for detailed instructions to install the software:

- For Windows systems see “Installing the WebLogic Collaborate Enabler for RosettaNet Software” on page 2-4
- For UNIX systems see “Installing the WebLogic Collaborate Enabler for RosettaNet Software” on page 3-5

Installing the Software License

Your WebLogic Collaborate Enabler for RosettaNet distribution requires a valid license to run.

If you download WebLogic Collaborate Enabler for RosettaNet from the BEA Web site, an evaluation license is included with the distribution.

If you purchase WebLogic Collaborate Enabler for RosettaNet on a CD, you will receive a license by email from BEA. How you install the license file depends on your method of installation:

- Full Installation
- WebLogic Collaborate Enabler for RosettaNet Only Installation

Full Installation

Copy the `rosettanet_license.bea` file into the `<WLC_HOME>/license` directory and name the file `license.bea`

where

- `rosettanet_license.bea` is the license you received for the WebLogic Collaborate Enabler for RosettaNet software

- `<WLC_HOME>` is the product directory where WebLogic Collaborate is installed on your system

WebLogic Collaborate Enabler for RosettaNet Only Installation

The following procedure assumes that you have a `license.bea` file in your existing `<WLC_HOME>/license` directory (where `<WLC_HOME>` is the product directory where WebLogic Collaborate is installed on your system).

1. Change directory to the WebLogic Collaborate product directory; for example, `D:\bea\wlcollaborate1.0`.

2. Prepare the environment by running the `setenv` script:

Windows: `prompt> setenv.cmd`

UNIX: `prompt> . ./setenv.sh`

Note: In UNIX, you must run the `setenv.sh` script in a Bourne or Korn shell. If you use a `csh`, change to the Korn shell by typing `ksh` at your UNIX prompt.

3. Run the license update utility to merge the WebLogic Collaborate Enabler for RosettaNet license with the existing WebLogic Collaborate (`license.bea`) file:

`prompt> cd license`

Windows: `prompt> UpdateLicense.cmd rosettanet_license.bea`

UNIX: `prompt> . ./UpdateLicense.sh rosettanet_license.bea`

where `rosettanet_license.bea` is the license you received for the WebLogic Collaborate Enabler for RosettaNet software.

2 WebLogic Collaborate Enabler for RosettaNet Installation on Windows Systems

The following sections describe how to install and uninstall the WebLogic Collaborate Enabler for RosettaNet software on Windows systems:

- Installing the Prerequisites
- Installing the WebLogic Collaborate Enabler for RosettaNet Software
- Installing the Software License
- Uninstalling the WebLogic Collaborate Enabler for RosettaNet Software

Installing the Prerequisites

You can install WebLogic Collaborate Enabler for RosettaNet as a Full Installation (if you do not have WebLogic Collaborate 1.0 installed on your system), or a C-Enabler for RosettaNet Only installation (if you already have WebLogic Collaborate 1.0 installed on your system).

Before you install the WebLogic Collaborate Enabler for RosettaNet software, make sure you have the software and hardware prerequisites as described in the following sections:

- C-Enabler for RosettaNet Only Installation
- Full Installation

C-Enabler for RosettaNet Only Installation

Installation prerequisites include:

- WebLogic Server 5.1 Service Pack 8 or higher

Note: If you installed WebLogic Collaborate 1.0 with WebLogic Server 5.1 Service Pack 7, you must upgrade to WebLogic Server 5.1 Service Pack 8 (or higher). You must edit the `setenv.cmd` (or `setenv.sh`) file in the WebLogic Collaborate product directory to change occurrences of `weblogic510sp7boot.jar` and `weblogic510sp7.jar` to `weblogic510sp8boot.jar` and `weblogic510sp8.jar`, respectively.
- WebLogic Collaborate 1.0
- WebLogic Collaborate 1.0 Service Pack 1

Full Installation

Installation prerequisites include:

- WebLogic Server 5.1 Service Pack 8 or higher
- Hardware and software requirements for WebLogic Collaborate 1.0 on Microsoft Windows systems as described in Table 2-1.

Note: See the Download area on the <http://www.bea.com> Web site for Service Packs.

Table 2-1 WebLogic Collaborate 1.0 Hardware and Software Requirements

Operating System	Windows 2000 or Windows NT with Service Pack 6
WebLogic Server Platform	BEA WebLogic Server 5.1
JDK	Java 2 SDK, Standard Edition, v1.2.2.
Hardware and Disk Space	<ul style="list-style-type: none"> ■ Intel Pentium II processor or later ■ 400 MHz recommended ■ 100 MB free disk space ■ 256 MB RAM recommended (512 MB preferable).
Databases	<p>One of the following databases:</p> <ul style="list-style-type: none"> ■ Cloudscape 3.5.0 <p>BEA ships the Cloudscape software—a pure-Java relational database management system (RDBMS)—with WebLogic Server. If you installed WebLogic Server before October 1, 2000, you should update your Cloudscape database with the 3.5.0 version. You can download Cloudscape 3.5.0 from the WebLogic Server 5.1.0 Service Packs section at the following URL: http://commerce.bea.com/downloads/weblogic_server.jsp#wlssp.</p> <ul style="list-style-type: none"> ■ Oracle 8i (8.1.5) <p>The Oracle 8.1.5 client libraries must be installed on the machine running WebLogic Server 5.1. You must also have access to an Oracle 8.1.5 or 8.1.6 server. WebLogic Collaborate uses the WebLogic jDriver for Oracle, which is bundled with your WebLogic Server distribution and installed with WebLogic Server. A valid license entry for WebLogic jDriver for Oracle is needed in your WebLogic Server license file.</p> <p>For more information about configuring Oracle with WebLogic Server, see http://www.weblogic.com/docs51/install/install_jdbc.html.</p> <ul style="list-style-type: none"> ■ Microsoft SQL Server 7.0 <p>You must also install the WebLogic jDriver for Microsoft SQL Server JDBC driver (MSSQLServer4 Kit Version 7), available for downloading from the BEA Web site. A valid license entry for WebLogic jDriver for SQLServer 7.0 is needed in your WebLogic Server license file.</p> <p>For more details about using the JDBC specification for database access, see http://www.weblogic.com/docs51/classdocs/jdbcdrivers.html.</p>

Miscellaneous	<ul style="list-style-type: none">■ A CD reader (if you are installing WebLogic Collaborate Enabler for RosettaNet from the CD ROM distribution),■ A network connection■ A Web browser (Microsoft Internet Explorer 5.x or above, Netscape Navigator 4.7 or above)
---------------	--

Notes: 1. To avoid Java errors, modify `PATH` so that `%JAVA_HOME%\bin` is first in your `PATH`:

```
prompt> PATH=%JAVA_HOME%\bin;%PATH%
```

2. To use an Oracle database, the following variables should be defined in the user you create for WebLogic Collaborate Enabler for RosettaNet. Contact your Oracle Database Administrator for more information.

```
ORACLE_HOME=directory_where_Oracle_is_installed
PATH=%PATH%;%ORACLE_HOME%\bin
LD_LIBRARY_PATH=%LD_LIBRARY_PATH%;%ORACLE_HOME%\lib
```

For more details about using the JDBC specification for database access, see <http://www.weblogic.com/docs51/classdocs/jdbcdrivers.html>.

Installing the WebLogic Collaborate Enabler for RosettaNet Software

The WebLogic Collaborate Enabler for RosettaNet installation procedure installs the components as described in Table 2-2. During the installation procedure you are prompted to choose the install set, that is, either the Full installation or the WebLogic Collaborate Enabler for RosettaNet Only installation.

Table 2-2 The WebLogic Collaborate Enabler for RosettaNet Installation Package

Installation Mode	Installed Components
Full Installation	<ul style="list-style-type: none">■ WebLogic Collaborate 1.0 software (including WebLogic Collaborate Service Pack 1)■ WebLogic Collaborate Enabler for RosettaNet software (in the <code>rosettanet</code> directory under the WebLogic Collaborate product directory)
WebLogic Collaborate Enabler for RosettaNet Only Installation	WebLogic Collaborate Enabler for RosettaNet software in a <code>rosettanet</code> directory under the existing WebLogic Collaborate product directory.
Note: See “Installing the Software License” on page 2-12 for licensing details.	

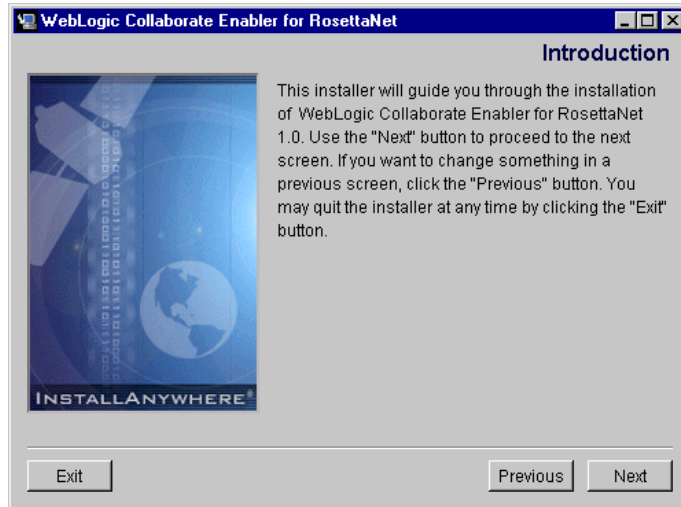
To install the WebLogic Collaborate Enabler for RosettaNet software, complete the following steps:

1. Confirm that your system has all of the prerequisites as described in “Installing the Prerequisites” on page 2-1.
2. Download the WebLogic Collaborate Enabler for RosettaNet `install.exe` distribution from <http://www.bea.com>, or locate the `install.exe` program in the Windows folder on your WebLogic Collaborate Enabler for RosettaNet software CD.
3. Double-click the `install.exe` program to display the Setup screen.

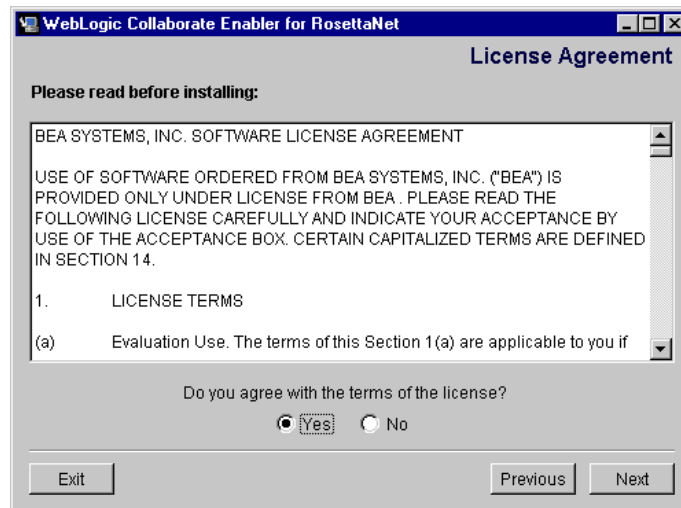


4. Click OK to continue the WebLogic Collaborate Enabler for RosettaNet installation.

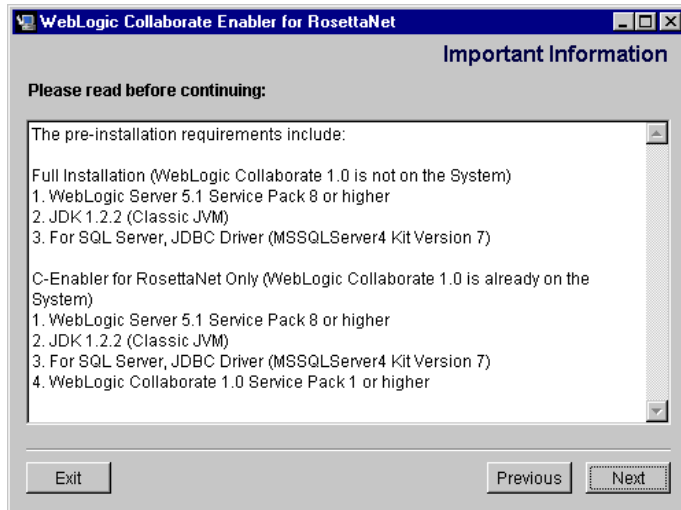
The WebLogic Collaborate Enabler for RosettaNet Introduction screen is displayed.



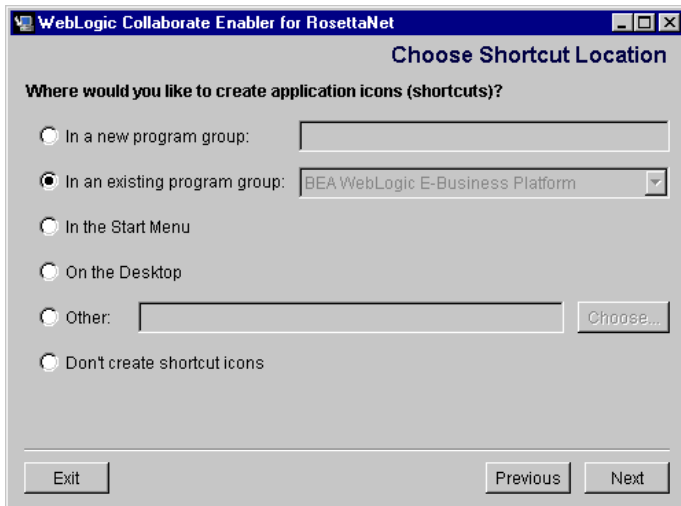
5. Click Next to display the Software License Agreement screen.



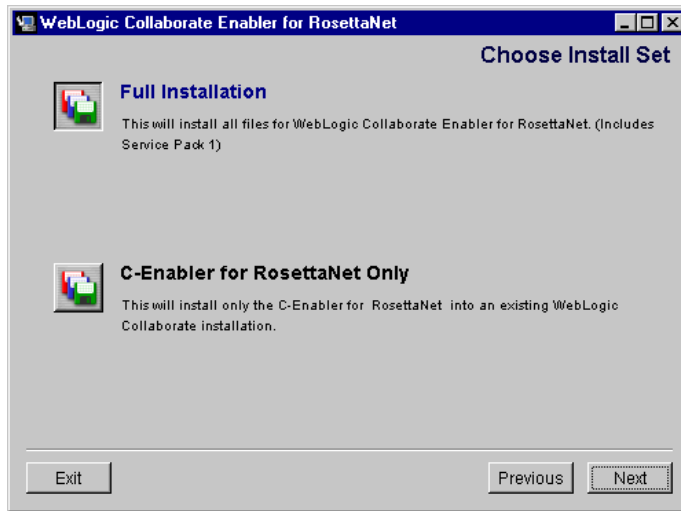
6. Select Yes to accept the software license agreement. Then click Next to display a list of the installation prerequisites.



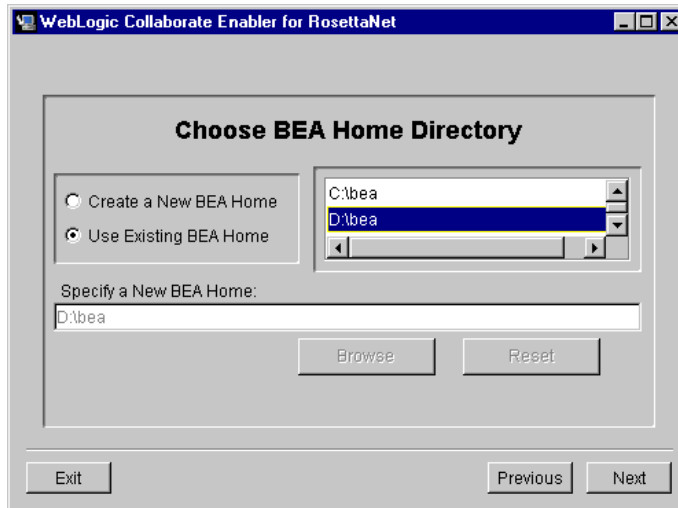
7. Click Next to display the Choose Shortcut Location dialog box, which prompts you to specify a shortcut location for BEA WebLogic Collaborate Enabler for RosettaNet.



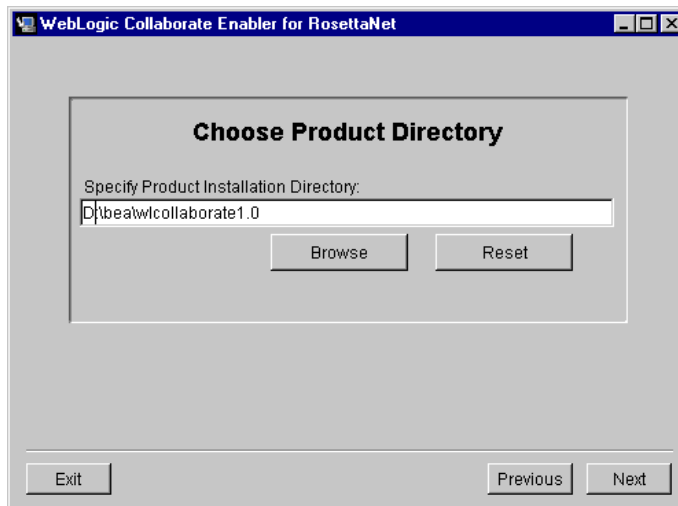
8. Click Next to display a screen that prompts you to choose an install set:
 - Full Installation (if you do not have WebLogic Collaborate 1.0 already installed on your system)
 - C-Enabler for RosettaNet Only (if you already have WebLogic Collaborate 1.0 installed on your systems)



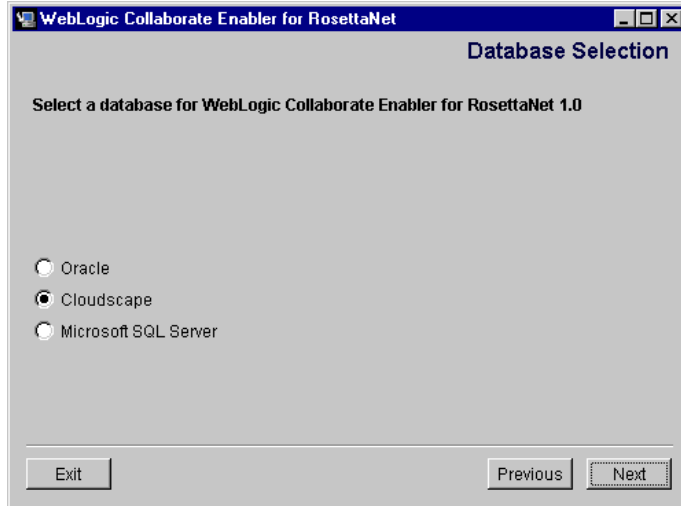
9. Choose an install set, and click Next to display a dialog box that prompts you to choose a home directory.



10. Create a new BEA home directory or choose an existing one. Click Next to display a dialog box that prompts you to choose a product directory.



11. Specify the product installation directory, and click Next to display a dialog box that prompts you to select a database.



Select a database and click Next.

The next screen displayed in the installation process depends on the database you selected.

- If you selected the Cloudscape database, the installation begins.
- If you selected the Oracle database or the Microsoft SQL Server database, a database configuration dialog box is displayed before the WebLogic Collaborate Enabler for RosettaNet installation begins.

The configuration dialog box prompts you to enter Oracle or SQL Server access configuration information.

The screenshot shows a Windows-style window titled "WebLogic Collaborate Enabler for RosettaNet". Inside the window is a smaller dialog box titled "Oracle Database Configuration". This dialog box contains three text input fields: "Oracle Service Name:" with the placeholder text "<ServiceName>", "Oracle User:" with the placeholder text "<User>", and "Oracle Password:" with the placeholder text "<Password>". Below these fields is a "Reset" button. At the bottom of the main window, there are three buttons: "Exit", "Previous", and "Next".

To configure the Oracle database, enter the Oracle Service name, User, and Password in the appropriate fields and click Install.

To configure the Microsoft SQL Server database, enter the Microsoft SQL Server host name, User, and Password in the appropriate fields, and click Next.

12. When the installation begins, a screen showing the status of the installation process is displayed.



After all WebLogic Collaborate Enabler for RosettaNet components are installed, the Install Complete screen is displayed, indicating that the installation procedure is complete.

13. Click Done to exit the installer.
14. Install the software license as described in “Installing the Software License” on page 2-12.

Installing the Software License

If you download WebLogic Collaborate Enabler for RosettaNet from the BEA Web site, an evaluation license is included with the distribution.

If you purchase WebLogic Collaborate Enabler for RosettaNet on a CD, you will receive a license by email from BEA. How you install the license file depends on which installation set you chose:

- Full Installation
- C-Enabler for RosettaNet Only Installation

Full Installation

Copy the `rosettanet_license.bea` file into the `<WLC_HOME>\license` directory, and name the file `license.bea`

where

- `rosettanet_license.bea` is the license you received for the WebLogic Collaborate Enabler for RosettaNet software
- `<WLC_HOME>` is the product directory where WebLogic Collaborate is installed on your system

C-Enabler for RosettaNet Only Installation

The following procedure assumes that you have a `license.bea` file in your existing `<WLC_HOME>\license` directory (where `<WLC_HOME>` is the product directory where WebLogic Collaborate is installed on your system).

1. Open a command window and change directory to the WebLogic Collaborate product directory; for example, `D:\bea\wlcollaborate1.0`.

2. Prepare the environment by running the `setenv` script:

```
prompt> setenv.cmd
```

3. Run the license update utility (`UpdateLicense.cmd`) to merge the WebLogic Collaborate Enabler for RosettaNet license with the existing WebLogic Collaborate (`license.bea`) file:

```
prompt> cd license
```

```
prompt> UpdateLicense.cmd rosettanet_license.bea
```

where `rosettanet_license.bea` is the license you received for the WebLogic Collaborate Enabler for RosettaNet software.

Uninstalling the WebLogic Collaborate Enabler for RosettaNet Software

The options available to uninstall WebLogic Collaborate Enabler for RosettaNet depend on the install set you chose when you installed the software. To remove the WebLogic Collaborate Enabler for RosettaNet software from your system, invoke the uninstall process using one of the procedures described in the following table.

Install Set	Uninstalling the WebLogic Collaborate Enabler for RosettaNet software
Full Installation	<p>If you chose the Full Installation when you installed WebLogic Collaborate Enabler for RosettaNet (that is, you did not have WebLogic Collaborate 1.0 installed on your system), you can uninstall the software by invoking the uninstall script using one of the following methods:</p> <ul style="list-style-type: none">■ Open a command window and execute the following command: <code>prompt>%WLC_HOME%\UninstallerDataRosettaNet\uninstallrosettanet.exe</code>■ From the Microsoft Windows Task Bar choose Uninstall from the WebLogic Collaborate product folder. <p>For example, Start—>Programs—>BEA WebLogic E-Business Platform—>WebLogic Collaborate 1.0 —>Uninstall.</p> <p>The entire WebLogic Collaborate product directory and all its components are uninstalled from your system.</p>

Install Set	Uninstalling the WebLogic Collaborate Enabler for RosettaNet software
C-Enabler for RosettaNet Only Installation	<p>If you chose to install the C-Enabler for RosettaNet Only (that is, you already had WebLogic Collaborate 1.0 installed on your system), you can uninstall the C-Enabler for RosettaNet component of the software by invoking the uninstall script from the <WLC_HOME>\UninstallerDataRosettaNet directory (where <WLC_HOME> is the product directory where you installed the software). Use one of the following methods:</p> <ul style="list-style-type: none">■ Open a command window and execute the following command: prompt> %WLC_HOME%\UninstallerDataRosettaNet\uninstallrosettanet.exe■ From the Microsoft Windows Task Bar choose Uninstall C-Enabler for RosettaNet from the WebLogic Collaborate Enabler for RosettaNet folder. For example, Start—>Programs—>BEA WebLogic E-Business Platform—>WebLogic Collaborate 1.0 —>C-Enabler for RosettaNet—>Uninstall C-Enabler for RosettaNet. <p>The rosettanet directory and all the WebLogic Collaborate Enabler for RosettaNet components are uninstalled from your system.</p> <p>Note: To uninstall the entire WebLogic Collaborate product, it is recommended that you uninstall the RosettaNet software component first, as described above, and subsequently remove the WebLogic Collaborate product as follows:</p> <pre>prompt> %WLC_HOME%\UninstallerData\uninstall.exe</pre> <p>Alternatively, on the Microsoft Windows Task Bar choose Start—>Programs—>BEA WebLogic E-Business Platform—>WebLogic Collaborate 1.0 —>Uninstall.</p>

When you invoke the Uninstall script, a screen prompting you to confirm the removal of the software is displayed.



1. Click Uninstall to continue.

The WebLogic Collaborate Enabler for RosettaNet software is uninstalled from your system. A screen showing the status of the process is displayed.



When the uninstall process is complete, a screen is displayed to indicate that it was successful.

2. Click Exit.

The WebLogic Collaborate Enabler for RosettaNet product is removed from your system and from the Windows Registry.

3 WebLogic Collaborate Enabler for RosettaNet Installation on UNIX Systems

The following sections describe BEA WebLogic Collaborate Enabler for RosettaNet installation procedures for a UNIX system:

- Installing the Prerequisites
- Installing the WebLogic Collaborate Enabler for RosettaNet Software
 - Using the BEA Installation Program on Solaris Systems
 - Using the Console-Mode Installation on UNIX Systems
- Installing the Software License
- Customizing the Run-Time Environment
- Uninstalling the WebLogic Collaborate Enabler for RosettaNet Software

Installing the Prerequisites

You can install WebLogic Collaborate Enabler for RosettaNet as either a Full Installation (if you do not have WebLogic Collaborate 1.0 installed on your system), or a C-Enabler for RosettaNet Only Installation (if you already have WebLogic Collaborate 1.0 installed on your system).

Before you install the WebLogic Collaborate Enabler for RosettaNet software, make sure you have the software and hardware prerequisites for your installation as described in the following sections:

- C-Enabler for RosettaNet Only Installation
- Full Installation

C-Enabler for RosettaNet Only Installation

Installation prerequisites include:

- WebLogic Server 5.1 Service Pack 8 or higher
 - Note:** If you installed WebLogic Collaborate 1.0 with WebLogic Server 5.1 Service Pack 7, you must upgrade to WebLogic Server 5.1 Service Pack 8 (or higher). You must edit the `setenv.cmd` (or `setenv.sh`) file in the WebLogic Collaborate product directory to change occurrences of `weblogic510sp7boot.jar` and `weblogic510sp7.jar` to `weblogic510sp8boot.jar` and `weblogic510sp8.jar`, respectively.
- WebLogic Collaborate 1.0
- WebLogic Collaborate 1.0 Service Pack 1

Full Installation

Installation prerequisites include:

- WebLogic Server 5.1 Service Pack 8 or higher
- Hardware and software requirements for WebLogic Collaborate 1.0 as described in Table 3-1

Note: See the Download area on the <http://www.bea.com> Web site for Service Packs.

Table 3-1 WebLogic Collaborate 1.0 Hardware and Software Requirements

Sun Solaris 2.7	
WebLogic Server Platform	BEA WebLogic Server 5.1
JDK	<p>Java 2 SDK, Standard Edition, v1.2.2_05a.</p> <p>The Solaris Operating System patches for Java 2 JDK, including the Solaris OpenWindows Motif patches (if you install the software using the GUI installation procedure).</p> <p>See the following URL for up-to-date information about Solaris patches: http://java.sun.com/products/jdk/1.2/install-solaris-patches.html</p>
Hardware and Disk Space	<ul style="list-style-type: none"> ■ UltraSparc 5 or later ■ Sparc 168 MHz or faster ■ 100 MB free disk space
Databases	One of the following databases: Cloudscape 3.5.0, Oracle 8i (8.1.5). See Table 3-2.
Hewlett-Packard HP-UX 11.0	
WebLogic Server Platform	BEA WebLogic Server 5.1
JDK	Java 2 SDK, Standard Edition, v1.2.2_05 HotSpot VM.
Hardware and Disk Space	<ul style="list-style-type: none"> ■ HP 9000 PA RISC ■ 100 MHz or higher ■ 100 MB free disk space
Databases	One of the following databases: Cloudscape 3.5.0, Oracle 8i (8.1.5). See Table 3-2.

3 *WebLogic Collaborate Enabler for RosettaNet Installation on UNIX Systems*

IBM AIX 4.3.3

WebLogic Server Platform	BEA WebLogic Server 5.1
--------------------------	-------------------------

JDK	Java 2 SDK, Standard Edition, v1.2.2 Classic VM.
-----	--

Hardware and Disk Space	<ul style="list-style-type: none">■ RS/6000■ 200 MHz or higher■ 100 MB free disk space
-------------------------	--

Databases	One of the following databases: Cloudscape 3.5.0, Oracle 8i (8.1.5). See Table 3-2.
-----------	---

Notes: 1. To avoid Java errors, modify PATH so that \$JAVA_HOME/bin is first in your PATH:

```
prompt> PATH=$JAVA_HOME/bin:$PATH
```

2. Additional installation prerequisites include access to a CD reader (if you are installing WebLogic Collaborate Enabler for RosettaNet from the CD ROM distribution), a network connection, and a Web browser (Netscape Navigator 4.7 or above).

Table 3-2 Database Support

Cloudscape 3.5.0

BEA ships the Cloudscape software—a pure-Java relational database management system (RDBMS)—with WebLogic Server. If you installed WebLogic Server before October 1, 2000, you should update your Cloudscape database with the 3.5.0 version. You can download Cloudscape 3.5.0 from the WebLogic Server 5.1.0 Service Packs section at the following URL:

http://commerce.bea.com/downloads/weblogic_server.jsp#wlssp.

Oracle 8i (8.1.5)

The Oracle 8.1.5 client libraries must be installed on the machine running WebLogic Server 5.1. You must also have access to an Oracle 8.1.5 or 8.1.6 server. WebLogic Collaborate uses the WebLogic jDriver for Oracle, which is bundled with your WebLogic Server distribution and installed with WebLogic Server. A valid license entry for WebLogic jDriver for Oracle is needed in your WebLogic Server license file.

For more information about configuring Oracle with WebLogic Server, see

http://www.weblogic.com/docs51/install/install_jdbc.html.

Note: To use an Oracle database, the following variables should be defined in the user you create for WebLogic Collaborate Enabler for RosettaNet. Contact your Oracle Database Administrator for more information.

```
ORACLE_HOME=directory_where_Oracle_is_installed
PATH=$PATH:$ORACLE_HOME/bin
LD_LIBRARY_PATH=$LD_LIBRARY_PATH:$ORACLE_HOME/lib
```

For more details about using the JDBC specification for database access, see <http://www.weblogic.com/docs51/classdocs/jdbcdrivers.html>.

Installing the WebLogic Collaborate Enabler for RosettaNet Software

During the installation procedure you are prompted to choose the install set, that is, either the Full installation or the C-Enabler for RosettaNet Only installation. The WebLogic Collaborate Enabler for RosettaNet installation procedure installs the components as described in Table 3-3.

Table 3-3 The WebLogic Collaborate Enabler for RosettaNet Installation Package

Installation Mode	Installed Components
Full Installation	<ul style="list-style-type: none">■ WebLogic Collaborate 1.0 software (including WebLogic Collaborate Service Pack 1)■ A <code>rosettanet</code> directory under the WebLogic Collaborate product directory which contains the WebLogic Collaborate Enabler for RosettaNet software (
C-Enabler for RosettaNet Only Installation	A <code>rosettanet</code> directory under the existing WebLogic Collaborate product directory in which the WebLogic Collaborate Enabler for RosettaNet software is installed.
	Note: See “Installing the Software License” on page 3-16 for licensing details.

The following sections describe how you can install the WebLogic Collaborate Enabler for RosettaNet software on UNIX systems:

- On Solaris—Using the BEA Installation Program on Solaris Systems
- On all UNIX platforms—Using the Console-Mode Installation on UNIX Systems

Using the BEA Installation Program on Solaris Systems

You can install WebLogic Collaborate Enabler for RosettaNet on Solaris systems using either a graphical installation program or a text-based installation program. To use the text-based installation program, refer to “Using the Console-Mode Installation on UNIX Systems” on page 3-13.

To install WebLogic Collaborate Enabler for RosettaNet on a Solaris system using the graphical installation program, complete the following procedure:

1. Confirm that your system has all of the prerequisites as described in “Installing the Prerequisites” on page 3-2.
2. Log on to the system with administrative privileges.
3. It is recommended that you create a UNIX user such as `wlc` to install WebLogic Collaborate Enabler for RosettaNet. This allows you to control access to the distribution and to set permissions for your WebLogic Collaborate Enabler for RosettaNet software. You may also want to create a group that has permissions to access the software.
4. Log in as the WebLogic Collaborate Enabler for RosettaNet user you created in step 3.
5. Download the WebLogic Collaborate Enabler for RosettaNet `install.bin` distribution from <http://www.bea.com>, or locate the `install.bin` program in the `unix` directory on your WebLogic Collaborate Enabler for RosettaNet CD.

Consult your UNIX documentation for information about mounting and unmounting CDs.

Note: The Solaris Volume Management software automatically mounts CDs on `/cdrom/cdrom0/`. It is not necessary to unmount CDs on Solaris systems.

However, to open the CD reader, you need to issue an `eject` command from the `root` directory.

6. Invoke the `install.bin` command to start the installation procedure. The setup screen is displayed.

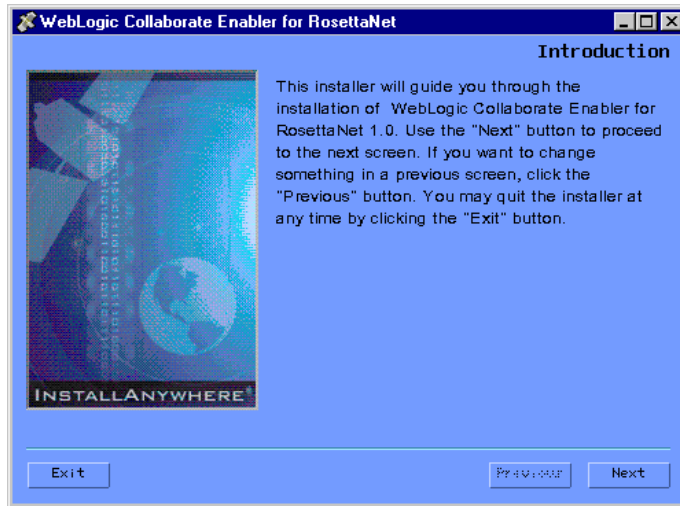
Warning: The installation fails if `$JAVA_HOME/bin` is not in your `PATH`. If necessary, update your `PATH` as follows:

```
prompt> PATH=$JAVA_HOME/bin:$PATH
```

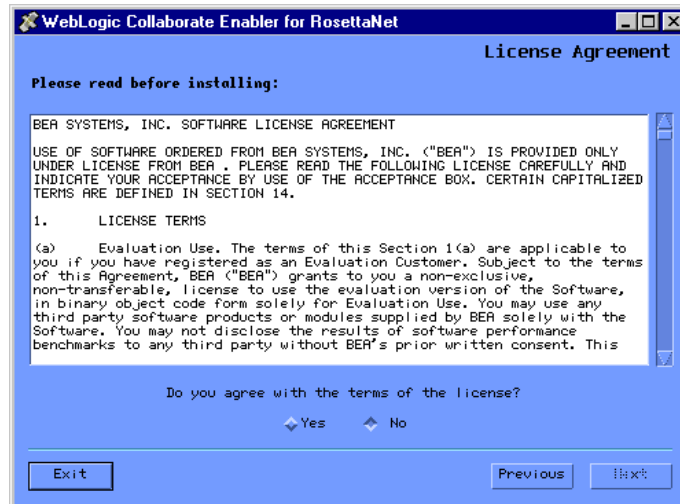


7. Click OK to continue the WebLogic Collaborate Enabler for RosettaNet installation and display the WebLogic Collaborate Enabler for RosettaNet Introduction screen.

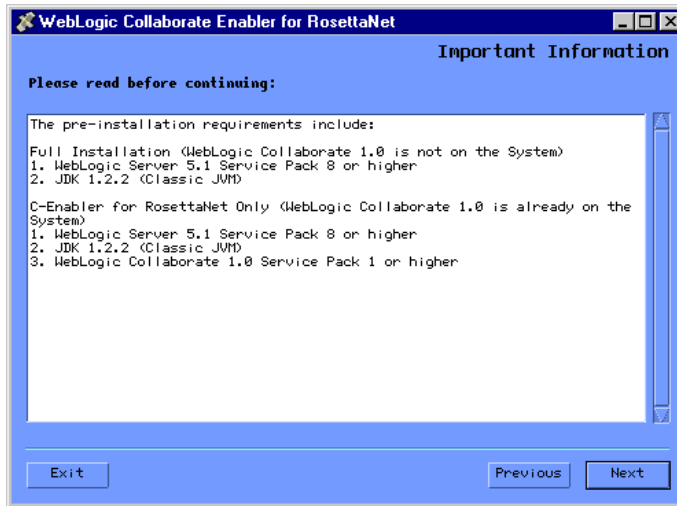
3 WebLogic Collaborate Enabler for RosettaNet Installation on UNIX Systems



8. Click Next to display the Software License Agreement screen.

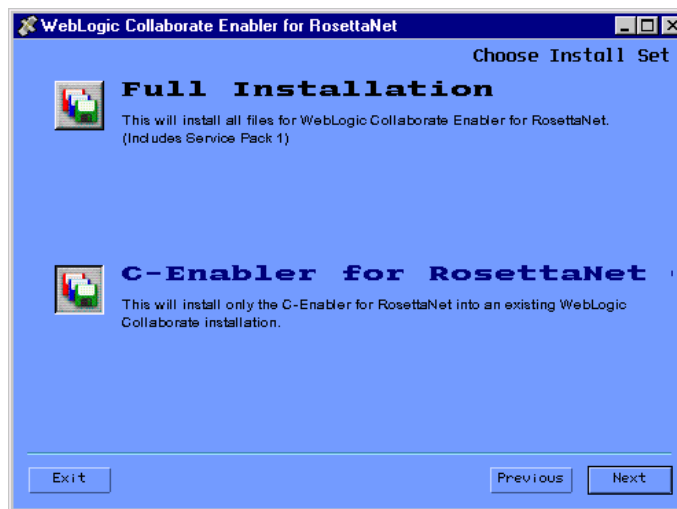


9. Select Yes to accept the software license agreement. Then click Next to display a list of the installation prerequisites.



10. Click Next to display a screen that prompts you to choose an install set:

- Full Installation (if you do not have WebLogic Collaborate 1.0 already installed on your system)
- C-Enabler for RosettaNet Only (if you already have WebLogic Collaborate 1.0 installed on your systems)



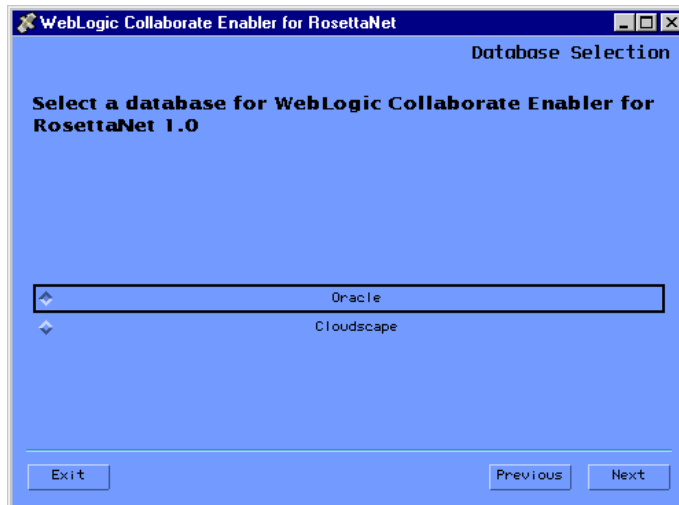
11. Choose an install set and click Next to display a dialog box that prompts you to specify a BEA product directory. The BEA product directory serves as the root directory for all BEA products.



12. Select your BEA home directory and click Next to display a dialog box that prompts you to specify a BEA product directory.
Note: When the product is installed, the bea home directory is created under \$HOME. A beahomelist file which contains a list of known BEA home directories for the current user is created in the bea directory.



13. Specify the product installation directory and click Next to display a dialog box that prompts you to select a database.

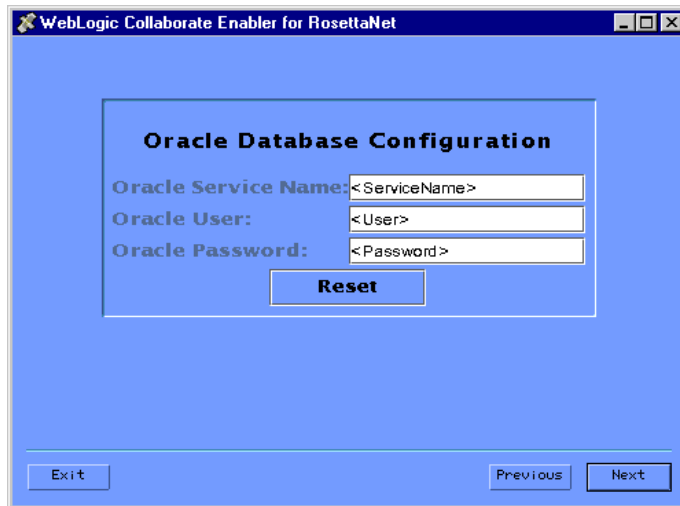


14. Select a database and click Next.

The next screen displayed in the installation process depends on the database you selected.

3 *WebLogic Collaborate Enabler for RosettaNet Installation on UNIX Systems*

- If you select the Cloudscape database, the installation begins.
- If you select the Oracle database, a database configuration dialog box is displayed before the WebLogic Collaborate Enabler for RosettaNet installation begins.



The screenshot shows a window titled "WebLogic Collaborate Enabler for RosettaNet". Inside the window is a dialog box titled "Oracle Database Configuration". The dialog box contains three text input fields: "Oracle Service Name:" with a placeholder "<ServiceName>", "Oracle User:" with a placeholder "<User>", and "Oracle Password:" with a placeholder "<Password>". Below these fields is a "Reset" button. At the bottom of the window, there are three buttons: "Exit", "Previous", and "Next".

To configure the Oracle database, enter the Oracle Service name, user, and password in the appropriate fields and click Install.

When the installation begins, a screen showing the status of the installation process is displayed.



After you install all the WebLogic Collaborate Enabler for RosettaNet components, the Install Complete screen is displayed, indicating that the installation procedure is finished.

15. Click Done to exit the installer.
16. Install the software license as described in "Installing the Software License" on page 3-16.
17. Set the environment variables as described in "Customizing the Run-Time Environment" on page 3-17.

Using the Console-Mode Installation on UNIX Systems

Console-mode installation provides a method to install WebLogic Collaborate Enabler for RosettaNet using a text-based installation program that offers the same capabilities as the graphics-based installation program. You can install WebLogic Collaborate Enabler for RosettaNet on Solaris, HP-UX, and AIX operating systems using the console mode.

1. Confirm that your system has all the prerequisites as described in “Installing the Prerequisites” on page 3-2.
2. Log on to the system with administrative privileges.
3. It is recommended that you create a UNIX user, such as `wlc`, to install WebLogic Collaborate Enabler for RosettaNet. This allows you to control access to the distribution and to set permissions for your WebLogic Collaborate Enabler for RosettaNet software. You may also want to create a group that has permissions to access the software.
4. Log in as the WebLogic Collaborate Enabler for RosettaNet user you created in step 3.
5. Download the WebLogic Collaborate Enabler for RosettaNet `install.bin` distribution from <http://www.bea.com>, or locate the `install.bin` program in the `unix` directory on your WebLogic Collaborate Enabler for RosettaNet CD.

Consult your AIX, HP-UX, or Solaris documentation for information on mounting and unmounting CDs.

Note: The Solaris Volume Management software automatically mounts CDs on `/cdrom/cdrom0/`. It is not necessary to unmount CDs on Solaris systems. However, to open the CD reader, you need to issue an `eject` command from the `root` directory.

6. Invoke the installation procedure:

```
prompt> sh install.bin -i console
```

A series of prompts is displayed.

Warning: The installation fails if `$JAVA_HOME/bin` is not in your `PATH`. If necessary, update your `PATH` as follows:

```
prompt> PATH=$JAVA_HOME/bin:$PATH
```

7. Respond to the prompts by entering the number associated with your choice, or by pressing Enter to accept the default. To exit the installation process, enter `quit` in response to any prompt. The console-based installation process is divided into sections outlined in the following table.

Section	Action to perform
Choose Locale	Specify the language in which you want the text of the installation program to be displayed by entering the number associated with that language.
Introduction	Press Enter to continue.
License Agreement	Read the BEA Software License Agreement and indicate your acceptance or rejection of the terms of the agreement by entering Y or N, respectively, at the prompt. To review the entire agreement, you must press Enter several times. To proceed with the installation, you must agree with the terms of the license. If you enter N, the installation process terminates.
Choose BEA Home Directory	Enter 1 to create a new BEA home directory, or 2 to use an existing home directory. Use the full pathname when specifying the name of the BEA Home directory. The BEA Home directory is the root directory in which you want to install all BEA products.
Choose Product Directory	Enter 1 to modify or 2 to use a default selection.
Select a Database	Enter 1 to choose Oracle, or 2 to choose Cloudscape.
Enter Database Configurations	If you use an Oracle database, enter the Oracle Service Name, User ID, and Password. The Oracle Service Name is defined in the Oracle client <code>tnsnames.ora</code> file and is usually the Oracle system ID.
Install Complete	Press Enter to exit the installation program.

8. Install the software license as described in “Installing the Software License” on page 3-16.
9. Set the environment variables as described in “Customizing the Run-Time Environment” on page 3-17.

Installing the Software License

If you download WebLogic Collaborate Enabler for RosettaNet from the BEA Web site, an evaluation license is included with the distribution.

If you purchase WebLogic Collaborate Enabler for RosettaNet on a CD, you will receive a license by email from BEA.

How you install the license file depends on which installation set you chose:

- Full Installation
- C-Enabler for RosettaNet Only Installation

Full Installation

Copy the `rosettanet_license.bea` file into the `<WLC_HOME>/license` directory, and name the file `license.bea`

where

- `rosettanet_license.bea` is the license you received for the WebLogic Collaborate Enabler for RosettaNet software
- `<WLC_HOME>` is the product directory where WebLogic Collaborate is installed on your system

C-Enabler for RosettaNet Only Installation

The following procedure assumes that you have a `license.bea` file in your existing `<WLC_HOME>/license` directory (where `<WLC_HOME>` is the product directory where WebLogic Collaborate is installed on your system).

1. Change directory to the WebLogic Collaborate product directory; for example, `/usr/local/beanlcollaborate1.0`.

2. Prepare the environment by running the `setenv` script:

```
prompt> . ./setenv.sh
```

Note: You must run the `setenv.sh` script in a Bourne or Korn shell. If you use a `csh`, change to the Korn shell by typing `ksh` at your UNIX prompt.

3. Run the license update utility to merge the WebLogic Collaborate Enabler for RosettaNet license with the existing WebLogic Collaborate (`license.bea`) file:

```
prompt> cd license
```

```
prompt> . UpdateLicense.sh rosettanet_license.bea
```

where `rosettanet_license.bea` is the license you received for the WebLogic Collaborate Enabler for RosettaNet software.

Customizing the Run-Time Environment

The installation procedure configures some of your WebLogic Collaborate Enabler for RosettaNet system. Before you proceed to use the software, confirm the environment variables in the `setenv.sh` script as follows:

1. Change to the root directory in which the BEA WebLogic Collaborate Enabler for RosettaNet software was installed; for example,
`/usr/local/beanlcollaborate1.0/rosettanet`.
2. Open the `setenv.sh` file in a text editor and set the following variables to match your environment:

- `JAVA_HOME`

This environment variable should be set to the location of the Java 2 SDK 1.2.2 software on your machine, for example:

```
set JAVA_HOME=/usr/local/jdk1.2.2
```

- `WL_HOME`

This environment variable should be set to the location of the WebLogic Server 5.1 software on your machine, for example:

```
set WL_HOME=/usr/local/weblogic51
```

- `WLC_HOME`

This environment variable should be set to the location of the WebLogic Collaborate Enabler for RosettaNet software on your machine, for example:

```
set WLC_HOME=/usr/local/beanlcollaborate1.0
```

3. Save, close, and execute the `setenv.sh` script.

Uninstalling the WebLogic Collaborate Enabler for RosettaNet Software

Your WebLogic Collaborate Enabler for RosettaNet product directory structure is dependent on how you installed the software, that is whether you chose the Full Installation (you did not have WebLogic Collaborate 1.0 installed on your system) or the C-Enabler for RosettaNet Only installation option (you already had WebLogic Collaborate 1.0 installed on your system). You can uninstall the product as follows:

- If you installed the software using the Full Installation option, the installation process installed the entire WebLogic Collaborate product directory (which includes a `rosettanet` subdirectory). Remove the WebLogic Collaborate Enabler for RosettaNet software from your system by deleting the entire WebLogic Collaborate product directory.

Alternatively, you can invoke an uninstall script by opening a command window and executing the following command:

```
prompt> $WLC_HOME/UninstallerDataRosettaNet/uninstallrosettanet
```

The entire WebLogic Collaborate product directory and all its components are uninstalled from your system.

- If you installed the software using the C-Enabler for RosettaNet Only option, the installation process placed the C-Enabler for RosettaNet software in a `rosettanet` directory under your existing WebLogic Collaborate root directory. Remove the WebLogic Collaborate Enabler for RosettaNet software from your system by deleting the `rosettanet` directory.

Alternatively, you can invoke an uninstall script by opening a command window and executing the following command:

```
prompt> $WLC_HOME/UninstallerDataRosettaNet/uninstallrosettanet
```

The `rosettanet` directory and all the WebLogic Collaborate Enabler for RosettaNet components are uninstalled from your system.

Index

C

C-Enabler only installation 1-4
See Also full installation
Cloudscape. *See* databases.
customer support vi

D

databases
 selecting (Solaris) 3-11
 selecting (Windows) 2-8
 supported (UNIX) 3-3
 supported (Windows) 2-2
disk space requirements
 UNIX 3-3
 Windows 2-3

E

environment variables
 JAVA_HOME (UNIX) 3-4
 JAVA_HOME (Windows) 2-4
 UNIX 3-17
 Windows 2-13

F

full installation 1-4
See Also C-Enabler only installation

H

hardware requirements
 memory (UNIX) 3-3
 memory (Windows) 2-2

I

installation
 console mode (UNIX) 3-13
 graphical mode (UNIX) 3-6
 graphical mode (Windows) 2-4
 prerequisites (UNIX) 3-2
 prerequisites (Windows) 2-1

J

Java 2 SDK
 JAVA_HOME (UNIX) 3-17
 JAVA_HOME (Windows) 2-4
 required (UNIX) 3-2
 required (Windows) 2-1
Java environment
 UNIX 3-4
 Windows 2-4
JAVA_HOME
 UNIX 3-4
 Windows 2-4
JDK. *See* Java 2 SDK

L

- license merging
 - UNIX 3-16
 - Windows 2-13
- licensing 1-5

M

- memory requirements
 - UNIX 3-3
 - Windows 2-2
- merging licenses
 - UNIX 3-16
 - Windows 2-13

P

- printing product documentation vi

R

- related information vi
- run-time environment,
 - customizing (UNIX) 3-17

S

- setenv.sh script
 - UNIX 3-17
 - Windows 2-13
- support, technical vii

U

- uninstall
 - UNIX 3-18
 - Windows 2-14
- UNIX, installation requirements 3-3
- UpdateLicense utility
 - UNIX 3-16
 - Windows 2-13

V

- variables, environment
 - UNIX 3-17
 - Windows 2-13

W

- WebLogic Collaborate Enabler for RosettaNet
 - contents of software package 1-1
 - installation options 1-4
 - installation prerequisites (UNIX) 3-2
 - installation prerequisites (Windows) 2-1
 - licensing 1-5
 - uninstalling (UNIX) 3-18
 - uninstalling (Windows) 2-14
- Windows, installation requirements 2-1