



BEA WebLogic Personal Messaging API™

Weblogic Domino Service Setup Guide

Copyright

Copyright © 1995-2006 BEA Systems, Inc. All Rights Reserved.

Restricted Rights Legend

This software is protected by copyright, and may be protected by patent laws. No copying or other use of this software is permitted unless you have entered into a license agreement with BEA authorizing such use. This document is protected by copyright and may not be copied, photocopied, reproduced, translated, or reduced to any electronic medium or machine readable form, in whole or in part, without prior consent, in writing, from BEA Systems, Inc.

Information in this document is subject to change without notice and does not represent a commitment on the part of BEA Systems. THE DOCUMENTATION IS PROVIDED "AS IS" WITHOUT WARRANTY OF ANY KIND INCLUDING WITHOUT LIMITATION, ANY WARRANTY OF MERCHANTABILITY OR FITNESS FOR A PARTICULAR PURPOSE. FURTHER, BEA SYSTEMS DOES NOT WARRANT, GUARANTEE, OR MAKE ANY REPRESENTATIONS REGARDING THE USE, OR THE RESULTS OF THE USE, OF THE DOCUMENT IN TERMS OF CORRECTNESS, ACCURACY, RELIABILITY, OR OTHERWISE.

Trademarks and Service Marks

Copyright © 1995-2006 BEA Systems, Inc. All Rights Reserved. BEA, BEA JRockit, BEA WebLogic Portal, BEA WebLogic Server, BEA WebLogic Workshop, Built on BEA, Jolt, JoltBeans, SteelThread, Top End, Tuxedo, and WebLogic are registered trademarks of BEA Systems, Inc. BEA AquaLogic, BEA AquaLogic Data Services Platform, BEA AquaLogic Enterprise Security, BEA AquaLogic Service Bus, BEA AquaLogic Service Registry, BEA Builder, BEA Campaign Manager for WebLogic, BEA eLink, BEA Liquid Data for WebLogic, BEA Manager, BEA MessageQ, BEA WebLogic Commerce Server, BEA WebLogic Communications Platform, BEA WebLogic Enterprise, BEA WebLogic Enterprise Platform, BEA WebLogic Enterprise Security, BEA WebLogic Express, BEA WebLogic Integration, BEA WebLogic Java Adapter for Mainframe, BEA WebLogic JDriver, BEA WebLogic Log Central, BEA WebLogic Network Gatekeeper, BEA WebLogic Personalization Server, BEA WebLogic Personal Messaging API, BEA WebLogic Platform, BEA WebLogic Portlets for Groupware Integration, BEA WebLogic Server Process Edition, BEA WebLogic SIP Server, BEA WebLogic WorkGroup Edition, Dev2Dev, Liquid Computing, and Think Liquid are trademarks of BEA Systems, Inc. BEA Mission Critical Support, BEA Mission Critical Support Continuum, and BEA SOA Self Assessment are service marks of BEA Systems, Inc.

All other names and marks are property of their respective owners.

Table of Contents

Installation

- Installation Prerequisites 1-1
 - Installation Methods 1-2
- Installing Using Graphical-Mode Installation 1-2
 - Starting the Installation Program in Graphical Mode on Windows 1-2
 - Starting the Installation Program in Graphical Mode on UNIX Platforms 1-3
 - Running the Installation Program 1-3
- Installing Using Console-Mode Installation 1-5
 - Start Console-Mode Installation on Windows 1-5
 - Start Console-Mode Installation on UNIX 1-6
 - Running the Console-Mode Installation 1-6
- Verifying the Installation 1-9
- Configuring the Lotus Domino Server 1-10

Administration

- Access Control List and Permissions 2-1
- Read/Unread Marker Support 2-2
- Domino Service Configuration Database 2-3

About This Guide

This guide is intended for Lotus Domino administrators who need to install the WebLogic Domino Service onto a Lotus Domino server. A basic understanding of Lotus Domino administration is assumed.

This chapter contains the following sections:

- [Prerequisite Software](#)
- [Documentation Conventions](#)

Prerequisite Software

Before you install the WebLogic Domino Service, perform the following steps:

1. Uninstall and remove any previous installed version of the WebLogic Domino Service. This ensures that a clean install will occur.

2. Install Lotus Domino server.

Note: Refer to the *BEA WebLogic Personal Messaging API Supported Configurations Guide* for more information on specific platform and OS combinations.

3. Ensure that the Lotus Domino server is registered within the Notes domain.

Documentation Conventions

The Windows convention of “\” as a path separator is used wherever necessary.

Also, since system software and configurations can vary from one system to another, portions of the command syntax displayed in this document may include sample parameters or variables that represent the actual command syntax you would need to enter. These entries are indicated by parameters in uppercase placed between percent signs (%PARAMETER%), as shown in the following table

Parameter	Definition
%BEA_HOME%	The complete directory specification for the product. For example, d:\bea.
%BEA_WLPMAPI_HOME%	The complete directory specification for the BEA WebLogic Personal Messaging API. For example, d:\bea\wlpmapi43
%BEA_DOMINO_SERVICE_HOME%	The complete directory specification for the WebLogic Domino Service. For example, d:\bea\wlpmapi43\domino_service.
%LOTUS_DOMINO_HOME%	The complete directory specification for the Lotus Domino program directory. For example, c:\Lotus\Domino.
%LOTUS_DOMINO_DATA%	The complete directory specification for the Lotus Domino data directory. For example, c:\Lotus\Domino\Data.

Installation

This chapter describes how to install the WebLogic Domino Service on the various supported platforms.

This chapter contains the following sections:

- [Installation Prerequisites](#)
- [Installing Using Graphical-Mode Installation](#)
- [Installing Using Console-Mode Installation](#)
- [Verifying the Installation](#)
- [Configuring the Lotus Domino Server](#)

Note: The `%BEA_HOME%` directory refers to the directory where products are installed and the `%BEA_DOMINO_SERVICE_HOME%` directory refers to the directory where the WebLogic Domino Service is installed.

Installation Prerequisites

The WebLogic Domino Service is a component of the WebLogic Personal Messaging API. The WebLogic Domino Service installer is a component and included as part of the WebLogic Personal Messaging API install bundle.

Installation Methods

The BEA installation program supports the following methods for installing the WebLogic Domino Service software:

- Graphical mode

Graphical-mode installation is an interactive, GUI-based method for installing WebLogic Domino Service. For instructions for using this method, see [“Installing Using Graphical-Mode Installation” on page 1-2](#).

Note: If you want to run graphical-mode installation, the console attached to the machine on which you are installing the software must support a Java-based GUI. All consoles for Windows systems support Java-based GUIs, but not all consoles for UNIX systems do. If you attempt to start the installation program in graphical mode on a system that cannot support a graphical display, the installation program automatically starts console-mode installation.

- Console mode

Console-mode installation is an interactive, text-based method for installing WebLogic Domino Service, from the command line, on either a UNIX system or a Windows system. For instructions for using this method, see [“Installing Using Console-Mode Installation” on page 1-5](#).

Installing Using Graphical-Mode Installation

Perform the following steps to install the WebLogic Domino Service using the Graphical-Mode Installation. You can install on either Windows or UNIX.

- [Starting the Installation Program in Graphical Mode on Windows](#)
- [Starting the Installation Program in Graphical Mode on UNIX Platforms](#)
- [Running the Installation Program](#)

Starting the Installation Program in Graphical Mode on Windows

Note: If you are installing WebLogic Domino Service on a Windows system that supports more than one monitor, you must disable all but one monitor before starting the installation program.

To start the installation in graphical mode on a Windows system:

1. Log in to the Windows system.
2. Obtain the WebLogic Domino Service installer. This installer is available from the WebLogic Personal Messaging API product bundle.
3. Double-click the installation file: `wl_domino_service_setup-XX.exe`
Here, *XX* represents the version number of the software you are installing. The installation program begins to install WebLogic Domino Service.
4. Proceed to [Running the Installation Program](#).

Starting the Installation Program in Graphical Mode on UNIX Platforms

To run the graphical-mode installation, your console must support a Java-based GUI. If the installation program determines that your system cannot support a Java-based GUI, it automatically starts running in console-mode. For details, see [Installing Using Console-Mode Installation](#).

Complete the following steps to start the installation in graphical mode:

1. Log in to the target UNIX system.
2. Obtain the WebLogic Domino Service installer. This installer is available from the WebLogic Personal Messaging API product bundle.
3. Launch the installation by entering the following commands:

```
chmod a+x filename.bin  
./filename.bin
```

Here, *filename.bin* is the name of the WebLogic Domino Service installation program specific to your platform. The installer filename is `wl_domino_service_setup-XX.bin`, where *XX* represents the version number of the software you are installing.

The installation program begins to install WebLogic Domino Service.

4. Proceed to [Running the Installation Program](#).

Running the Installation Program

The installation program prompts you to enter specific information about your system and configuration. For instructions on responding to the prompts during installation, see [Table 1-1](#).

Table 1-1 Console Installation Prompts

In this window...	Perform the following action...
Welcome	Click Next to proceed with the installation. You may cancel the installation at any time by clicking Exit .
BEA License Agreement	Read the BEA Software License Agreement and indicate your acceptance of the terms of the agreement by selecting Yes . To continue with the installation, you must accept the terms of the license agreement and then click Next .
Choose BEA Home Directory	<p>Specify the BEA Home directory that will serve as the central support directory for all BEA products installed on the target system. If you already have a BEA Home directory on your system, you can select that directory (recommended) or create a new BEA Home directory. If you choose to create a new directory, the WebLogic Domino Service installation program automatically creates the directory for you.</p> <p>The files in the BEA Home directory are essential to ensuring that BEA software operates correctly on your system such as ensuring that licensing works correctly for the installed BEA products.</p>
Choose Install Type	<p>Select the option button for the type of installation you want to perform:</p> <ul style="list-style-type: none"> • Complete-all the software components provided with WebLogic Domino Service, including sample files, are installed on your system. • Custom-you select software components to be installed.
Choose Components	<p>Note: This window is displayed only if you selected Custom installation in the Choose Install Type window.</p> <p>Specify the components to be installed by selecting or clearing the appropriate check boxes.</p> <p>This window displays a tree-view of all the components available for installation. In an initial installation, all components are selected.</p>
Choose Product Directory	<p>Specify the directory in which you want to install the WebLogic Domino Service software and click Next. You can accept the default product directory (<code>wlpmapi43</code>) or create a new product directory.</p> <p>If you choose to create a new directory, the installation program automatically creates the directory for you.</p>
Choose Lotus Domino Program Directory	Specify the directory in which your Lotus Domino server is installed.

Table 1-1 Console Installation Prompts

In this window...	Perform the following action...
Choose Lotus Domino Data Directory	Specify the directory in which your Lotus Domino server data is installed.
Choose Shortcut Location	Specify the location for the shortcuts to BEA product components.
Status	Read the information displayed about BEA products and services.
Installation Complete	Click Done to exit the installation program.

Installing Using Console-Mode Installation

Perform the following steps to install the WebLogic Domino Service using the Console-Mode Installation. You can install on either Windows or UNIX.

- [Start Console-Mode Installation on Windows](#)
- [Start Console-Mode Installation on UNIX](#)
- [Running the Console-Mode Installation](#)

Start Console-Mode Installation on Windows

To start the installation in console mode on a Windows system:

1. Log in to the target Windows system.
2. Open an MS-DOS command prompt window.
3. Obtain the WebLogic Domino Service installer. This installer is available from the WebLogic Personal Messaging API product bundle.

```
wl_domino_service_setup-XX.exe -mode=console
```

Here, *xx* represents the version number of the software you are installing.

The installation program begins to install WebLogic Domino Service.

4. Proceed to [Running the Console-Mode Installation](#).

Start Console-Mode Installation on UNIX

Complete the following steps to start the installation in console mode:

1. Log in to the target UNIX system.
2. Obtain the WebLogic Domino Service installer. This installer is available from the WebLogic Personal Messaging API product bundle.

3. Launch the installation by entering the following commands:

```
chmod a+x filename.bin
./filename.bin -mode=console
```

Here, *filename.bin* is the name of the WebLogic Domino Service installation program specific to your platform. The installer filename is `wl_domino_service_setup-XX.bin`, where *XX* represents the version number of the software you are installing.

4. The installation program begins to install WebLogic Domino Service.
5. Proceed to [Running the Console-Mode Installation](#).

Running the Console-Mode Installation

To complete the console-mode installation process, respond to the prompts in each section by entering the number associated with your choice or by pressing `Enter` to accept the default. To exit the installation process, press `exit` (or `x`, for short) in response to any prompt. To review or change your selection, enter `previous` (or `p`, for short) at the prompt. To proceed to the following window, enter `next` (or `n`, for short).

Note: The sample console text and directory pathnames in this section use Windows conventions (backslashes) for pathnames, for example `C:\bea\wlpmapl43`. When entering pathnames on a UNIX system, use the UNIX convention (forward slashes) in pathnames, for example, `/home1/bea/wlpmapl43`.

The following procedure steps you through the installation program. Use this procedure after you have started the installation program in console mode as described in the previous sections.

1. At the Welcome prompt, type `next` (or `n` for short) or press `Enter` to continue with the installation process.

The BEA Systems License Agreement prompt is displayed.

2. Read the Agreement and indicate your acceptance or rejection of its terms by doing one of the following at the prompt:

- Type 1 to indicate your agreement with the terms of the license and proceed with the installation. To review the entire agreement, press `Enter` or type `Down` several times. Type `Up` to scroll back through sections previously displayed.
- Type 2 if you do not agree with the terms of the license. If you type 2, the installation process terminates.

The Choose BEA Home directory prompt is displayed.

3. Specify the BEA Home directory that will serve as the central support directory for all BEA products installed on the target system.

The installation program displays the following prompt:

```
Choose BEA Home Directory:
-----
*BEA home choice
1|Create a new BEA Home [C:\bea]
->2|Use an existing BEA Home [D:\beahome1]
Enter index number to select OR [Exit] [Previous] [Next]>
```

Note: Instead of typing complete words when you want to enter [Exit], [Previous], and [Next], you can use the following one-letter shortcuts: x, p, and n, respectively.

4. Do one of the following:
 - To use an existing BEA Home directory, type 2 or next (or n for short), or press `Enter`. If you have more than one BEA Home directory on your system, an additional prompt will display the directories. Type the number associated with the desired BEA Home directory.
 - To create a new BEA Home directory, type 1, then at the prompt, enter the full path of the BEA Home directory, for example `C:\beahome2`. If you specify a directory that does not exist, the installation program creates it for you.
5. Whether you accept the existing BEA Home directory or choose to create a new BEA Home directory, you are prompted to confirm your selection, as shown in the following sample:

```
Choose BEA Home Directory:
-----
*BEA home choice
->1|Yes, Use this BEA home directory [C:\bea]
```

Installation

```
2|No, return to BEA home directory selection
Enter index number to select OR [Exit] [Previous] [Next]>
```

6. On the command line, type 1 or press Enter to accept your selection. Otherwise, type 2 to return to the Choose BEA Home Directory panel where you can modify your entry.
7. After you have selected your BEA Home directory and confirmed your selection, the Choose Install Type prompt is displayed.
8. Specify the type of installation you want to perform by entering the number associated with the install type, as shown in the following text:

```
Choose Install Type:
```

```
-----
```

```
->1|Complete
```

```
2|Custom Installation
```

9. Do one of the following:
 - Type 1 or press Enter to choose a complete installation.
 - Type 2 to choose a custom installation. The Choose Components prompt is displayed.
9. Specify the directory in which you want to install the WebLogic Domino Service software. Select the default product directory (BEA_HOME\wlpmapi43) or create a new product directory. If you specify a new directory, the installation program automatically creates it for you.

The choices displayed in this section are as follows:

```
Choose Product Directory:
```

```
-----
```

```
Product Installation Directory= [C:\bea\wlpmapi43]
```

```
Input new Product Installation Directory OR [Exit] [Previous] [Next]>
```

10. Do one of the following:
 - Press Enter or type next (or n for short) to accept the current selection.
 - Enter the full path to the directory in which you want to install the WebLogic Domino Service software and press Enter.
11. You are prompted to confirm your selection as shown in the following text:

```
Choose Product Directory:
```



```
-----
->1| Yes, use this product directory [C:\bea\wlpmpi43]
2| No, select another product directory
Enter index number to select OR [Exit] [Previous] [Next] >\
Verify that your entry is correct, then type 1 or press Enter to proceed with the
installation. Otherwise, type 2 to return to the Choose Product Directory panel where you
can modify your entry.
```

12. Specify the Lotus Domino Program directory where your Lotus Domino server is installed.
13. Specify the Lotus Domino Data directory where your Lotus Domino server exists.
14. Specify the location for the shortcuts to BEA product components, samples and tools.
15. Press `Enter` or type `Exit` to exit the installation program.

Verifying the Installation

Check the following items to verify that the WebLogic Domino Service was installed:

The following files were added to the `%LOTUS_DOMINO_HOME%` directory:

- On Windows:
 - `czdo.dll`
 - `czdo_service.dll`
- On UNIX:
 - `libczdo.dll`
 - `libczdo_service.dll`

The following Notes database and template was added to the `%LOTUS_DOMINO_DATA%` directory:

- `bea_config.nsf`
- `bea_config.ntf`

Configuring the Lotus Domino Server

Perform the following steps to configure the Lotus Domino server that will host the WebLogic Domino Service:

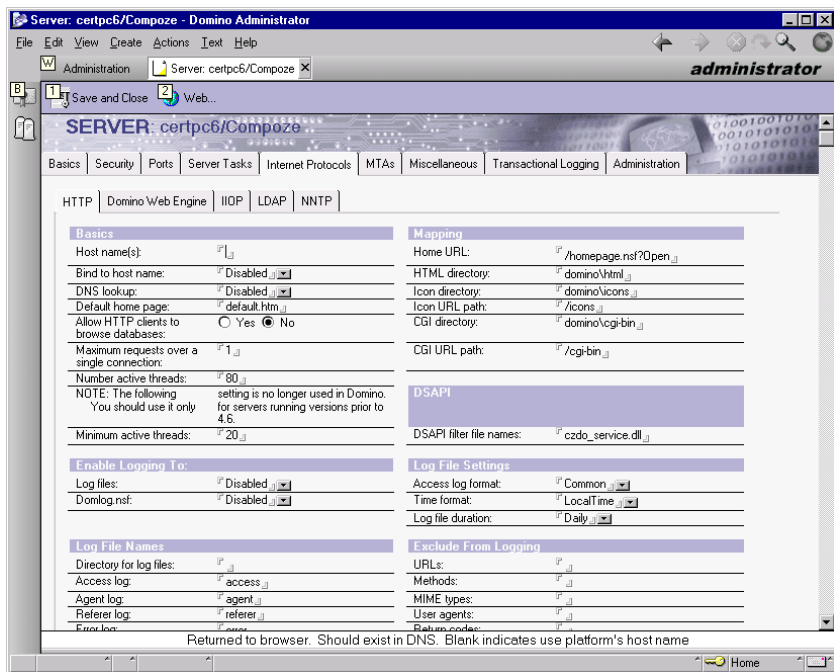
Installation

1. Open the Lotus Administrator client application and open the server where the WebLogic Domino Service is installed.
2. Edit the server document for the server where the WebLogic Domino Service is installed.
3. Select **Internet Protocols > HTTP** tab.
4. Under the **DSAPI** section, add the WebLogic Domino Service to the **DSAPI filter file names** field.

For Windows, add `czdo_service.dll`.

For UNIX, add `libczo_service.so`.

Note: If entries exist in this field, append WebLogic Domino Service to the end, separated by a semicolon (;), with no carriage returns or whitespaces. For example, `ndolextn.dll;czdo_service.dll`



5. Save the server document.
6. If the Lotus Domino server is started, enter the following `tell` commands from the Lotus Domino server console to restart the HTTP task:

```
tell http quit  
load http
```

If the Lotus Domino server is not started, start the server.

Note: Replication of server document to the Lotus Domino server might be needed to ensure that the WebLogic Domino Service is installed correctly.

7. To verify the WebLogic Domino Service was installed and configured correctly, you should see the following message from within the Lotus Domino server console:

```
10/09/2003 04:19:27 PM JVM: Java Virtual Machine initialized  
10/09/2003 04:19:28 PM HTTP Server: Java Virtual machine loaded  
10/09/2003 04:19:28 PM BEA Domino Service (version x.x.x): loaded  
10/09/2003 04:19:28 PM HTTP Server: DSAPI BEA WebLogic Domino Service  
Loaded successfully  
10/09/2003 04:19:29 PM HTTP Server: Started
```

Installation

Administration

This chapter describes administration and configuration of the Lotus Domino server as related to the WebLogic Domino Service.

This chapter contains the following section:

- [Access Control List and Permissions](#)
- [Read/Unread Marker Support](#)
- [Domino Service Configuration Database](#)

Access Control List and Permissions

The WebLogic Domino Service runs and connects to other Domino servers in the same Notes domain where the server is running. Therefore, the Lotus Domino server running the WebLogic Domino Service must have permissions to access a mail database in order to retrieve data from that mail database. This is accomplished by the Lotus Domino server being a member of the `LocalDomainServers` group and with that group having permissions to access the mail

database. At a minimum, the `LocalDomainServers` group (or the specified server) must have the ACL permissions described in [Table 2-1](#) in order to read a mail database:

Table 2-1 Required Permissions

Permission	Description	Required
Create Documents	Allows the user to create documents, such as memos, appointments, and tasks.	Yes
Delete Documents	Allows the user to delete documents.	Yes
Read Public Documents	Allows the user to read documents.	Yes
Write Public Documents	Allows the user to write documents.	Yes
Create Personal folders/view	Allows the user to create views.	Yes
Create Shared folders/views	Allows the user to create folders for mail.	Yes

Note: These permissions correspond to the `Editor` Access Level *without* the following: Create Personal agents and Create LotusScript/Java agent.

When connecting as a specific user, the Java caller specifies a user's name and Internet password to create a session. The WebLogic Domino Service authenticates the user using the Internet password and authorization against the ACL is performed. The WebLogic Domino Service authorizes the user by examining the ACL permissions available on the mail database for that user. If the user meets the minimum user permissions, as described above, regardless of Access Level, the user is granted access; otherwise, an invalid user and password exception is thrown.

Note: The Lotus Domino user's Internet password is checked for authentication. If the Lotus Domino user is using the Domino feature **More Secure Internet Password** and you are running on Lotus Domino R5, this feature must be disabled in order to authenticate a user.

Read/Unread Marker Support

Before the WebLogic Domino Service updates a read/unread marker on a document, it checks if the database **Do not mark modified documents as Unread** property is enabled on the user's mail

database. Setting this property is equivalent to opening the user's mail database in Notes and toggling the setting found at:

File > Database > Properties > Design

The WebLogic Domino Service will enable this property if it is not enabled. Enabling this property eliminates inconsistencies in the read/unread state between two Lotus Domino mail clients.

Domino Service Configuration Database

Configuration and logging for the WebLogic Domino Service is stored in a database called `bea_config.nsf`. This configuration database is copied to `%LOTUS_DOMINO_DATA%\bea_config.nsf` during installation of the WebLogic Domino Service.

The database contains the views shown in [Table 2-2](#).

Table 2-2 Database Views

Parameter	Description
BEA Domino Service Configuration	Contains the Configuration document that stores configurable properties for the Domino Service. “WebLogic Domino Service Configuration” on page 2-4.
All Events > By Date	Events categorized by date.
All Events > By Date & Method Name	Events categorized by date and Domino Service method.
All Events > By Date & Session	Events categorized by date and session.
All Events > By Server & Date	Events categorized by Domino Service server and date.
All Events > By Session ID and Thread ID	Events categorized by session ID and HTTP task thread ID.

Table 2-2 Database Views (Continued)

Parameter	Description
All Events > By Thread ID	Events categorized by HTTP task thread ID.
Login by User & Date	Logins by user and date.

Additionally, the database template `bea_config.ntf` is installed at `%LOTUS_DOMINO_DATA%\db`.

This section contains the following topics:

- [Replication](#)
- [WebLogic Domino Service Configuration](#)
- [Maintaining Service Logs](#)
- [Netegrity SiteMinder](#)

Replication

The configuration database can be replicated and information shared across other WebLogic Domino Service installations. This database is set to disable replication by default.

Perform the following steps to enable replications:

1. Browse to **Database properties > Replication Settings... > Other**.
2. Uncheck **Temporarily disable replication for this replica**.
3. This step is optional: replicate only the configuration options (not the log documents), by browsing to **Database properties > Replication Settings... > Space Savers**, checking **Documents in specified views or folders** and selecting the **BEA Domino Service Configuration** view.

Note: Do not replicate this database if you plan to have the **Log Level** set to **Debug** due of the high amount of logging.

WebLogic Domino Service Configuration

The WebLogic Domino Service Configuration database view contains the configuration document. This document contains the fields for configuring the WebLogic Domino Service

execution. This document is only read when the Domino HTTP task starts. The Domino HTTP needs to be stopped and restarted for WebLogic Domino Service configuration changes to take effect.

See [Table 2-3](#) for settings.

Table 2-3 Domino Service Configuration Settings

Parameter	Description
Attachment Size Limit (in bytes)	The maximum size of attachments allowed in bytes. The default is 500000.
Attachment Temp Directory	The location used by the service to temporarily transfer attachments. The default is the <code>D:\temp</code> directory.
Session Timeout (in seconds)	The inactivity in seconds when a session will automatically close. The default is 300.
Log Level	The amount of information written to the log. The level Debug is used to track individual requests and it provides the most information. Use Info for tracking user sessions. Use Warning for tracking basic Domino errors. Use Error for the least amount of information or only startup and fatal errors. The default setting is Info .
Skip Authentication?	A flag to indicate whether to use Domino user authentication. This parameter is used when integrating the Domino Service with Netegrity SiteMinder. “Netegrity SiteMinder” on page 2-6.
User Id Header	Name of header attribute to contain the user Id when running with Netegrity SiteMinder. “Netegrity SiteMinder” on page 2-6.

Maintaining Service Logs

Because the `bea_config.nsf` contains log entries, this database can grow very large. This is particularly true if the **Log Level** is set to **Debug**. For this reason, the `bea_config.nsf` is configured by default with **Remove documents not modified in the last: 15 days**. This configuration can be changed depending on your development or production requirements. This setting is available from a Notes client at **Database properties > Replication Settings... > Space Savers**.

Netegrity SiteMinder

The WebLogic Domino Service supports integration with the Netegrity SiteMinder for single sign on.

Perform the following steps to configure SiteMinder support:

1. Set **Skip Authentication** to **Yes**.
2. Confirm that **User Id Header** matches the header attribute that will contain the **user Id** supplied by the SiteMinder webagent. For example, **DominoUID**.
3. Configure the SiteMinder webagent as follows:
 - Set `SkipDominoAuth` = `no`
 - Set `DominoUseHeader` = `DominoUID`
 - Set `DominoLookupHeaderForLogin` = `yes`
 - Create a user attribute response with variable name **DominoUID** set to the user profile for the Domino username.