



# BEA WebLogic Process Integrator

## Installation and Configuration Guide

BEA WebLogic Process Integrator Release 1.2  
Document Edition 1.2  
December 2000

# Copyright

Copyright © 2000 BEA Systems, Inc. All Rights Reserved.

## Restricted Rights Legend

This software and documentation is subject to and made available only pursuant to the terms of the BEA Systems License Agreement and may be used or copied only in accordance with the terms of that agreement. It is against the law to copy the software except as specifically allowed in the agreement. This document may not, in whole or in part, be copied photocopied, reproduced, translated, or reduced to any electronic medium or machine readable form without prior consent, in writing, from BEA Systems, Inc.

Use, duplication or disclosure by the U.S. Government is subject to restrictions set forth in the BEA Systems License Agreement and in subparagraph (c)(1) of the Commercial Computer Software-Restricted Rights Clause at FAR 52.227-19; subparagraph (c)(1)(ii) of the Rights in Technical Data and Computer Software clause at DFARS 252.227-7013, subparagraph (d) of the Commercial Computer Software--Licensing clause at NASA FAR supplement 16-52.227-86; or their equivalent.

Information in this document is subject to change without notice and does not represent a commitment on the part of BEA Systems. THE SOFTWARE AND DOCUMENTATION ARE PROVIDED "AS IS" WITHOUT WARRANTY OF ANY KIND INCLUDING WITHOUT LIMITATION, ANY WARRANTY OF MERCHANTABILITY OR FITNESS FOR A PARTICULAR PURPOSE. FURTHER, BEA Systems DOES NOT WARRANT, GUARANTEE, OR MAKE ANY REPRESENTATIONS REGARDING THE USE, OR THE RESULTS OF THE USE, OF THE SOFTWARE OR WRITTEN MATERIAL IN TERMS OF CORRECTNESS, ACCURACY, RELIABILITY, OR OTHERWISE.

## Trademarks or Service Marks

BEA, WebLogic, Tuxedo, and Jolt are registered trademarks of BEA Systems, Inc. How Business Becomes E-Business, BEA WebLogic E-Business Platform, BEA Builder, BEA Manager, BEA eLink, BEA WebLogic Commerce Server, BEA WebLogic Personalization Server, BEA WebLogic Process Integrator, BEA WebLogic Collaborate, BEA WebLogic Enterprise, and BEA WebLogic Server are trademarks of BEA Systems, Inc.

All other product names may be trademarks of the respective companies with which they are associated.

### BEA WebLogic Process Integrator Installation and Configuration Guide

Document Edition	Part Number	Date	Software Version
1.2	870-001045-003	December 2000	1.2

---

# Contents

## About This Document

e-docs Web Site .....	v
How to Print the Document.....	vi
Related Information.....	vii
Contact Us! .....	vii
Documentation Conventions .....	viii

## 1. Getting Started

BEA WebLogic Process Integrator Software Package .....	1-2
Installation Prerequisites .....	1-2
Installed Components .....	1-5

## 2. Installing BEA WebLogic Process Integrator

Installing the BEA WebLogic Process Integrator Software Package .....	2-2
Installing Your Software License .....	2-14
Uninstalling BEA WebLogic Process Integrator .....	2-15

## 3. Configuring and Starting BEA WebLogic Process Integrator

Creating Database Tables .....	3-2
Customizing and Starting BEA WebLogic Process Integrator .....	3-3
Customizing and Starting the BEA WebLogic Process Integrator Server. 3-3	
Step 1. Editing the weblogic.properties File .....	3-3
Step 2. Configuring the Mail Session Properties for the Workflow Processor EJBs.....	3-4
Step 3. Starting the BEA WebLogic Process Integrator Server.....	3-6
Starting the BEA WebLogic Process Integrator Studio and Worklist .....	3-7
Starting the BEA WebLogic Process Integrator Studio .....	3-7

---

Starting the BEA WebLogic Process Integrator Worklist .....	3-8
Stopping BEA WebLogic Process Integrator .....	3-10
Stopping the BEA WebLogic Process Integrator Studio or Worklist .....	3-10
Stopping the BEA WebLogic Process Integrator Server Application.....	3-10

## **A. BEA WebLogic Process Integrator Sample Configuration Files**

weblogic.properties.....	A-3
rdbmsrealm.properties .....	A-6
Configuring BEA WebLogic Server Security Realm for BEA WebLogic Process Integrator.....	A-9
setwlpiserverenv.cmd (setwlpiserverenv.sh) .....	A-10
setwlpiclientenv.cmd (setwlpiclientenv.sh).....	A-12

## **Index**

---

# About This Document

This document explains how to install BEA WebLogic Process Integrator™ and how to configure a database server and BEA WebLogic Server™ to run the BEA WebLogic Process Integrator application. This document is organized as follows:

- Chapter 1, “Getting Started,” provides an overview of package contents and hardware and software requirements for BEA WebLogic Process Integrator.
- Chapter 2, “Installing BEA WebLogic Process Integrator,” provides instructions for installing BEA WebLogic Process Integrator.
- Chapter 3, “Configuring and Starting BEA WebLogic Process Integrator,” provides instructions for configuring and starting the BEA WebLogic Process Integrator server, studio, and worklist components.
- Appendix A, “BEA WebLogic Process Integrator Sample Configuration Files,” provides sample configuration files for BEA WebLogic Process Integrator. It also includes a description of how these files are automatically modified during installation.

## e-docs Web Site

BEA product documentation is available on the BEA corporate Web site. From the BEA Home page, click on Product Documentation or go directly to the “e-docs” Product Documentation page at <http://e-docs.bea.com>.

---

# How to Print the Document

You can print a copy of this document from a Web browser, one file at a time, by using the File—>Print option on your Web browser.

A PDF version of this document is available on the BEA WebLogic Process Integrator documentation Home page on the e-docs Web site (and also on the documentation CD). You can open the PDF in Adobe Acrobat Reader and print the entire document (or a portion of it) in book format. To access the PDFs, open the BEA WebLogic Process Integrator documentation Home page, click the PDF files button, and select the document you want to print.

If you do not have the Adobe Acrobat Reader, you can get it for free from the Adobe Web site at <http://www.adobe.com/>.

---

# Related Information

The following BEA WebLogic Process Integrator documents contain information that is relevant to using this product.

- *BEA WebLogic Process Integrator Tutorial*
- *BEA WebLogic Process Integrator Studio User Guide*
- *BEA WebLogic Process Integrator Worklist User Guide*
- *BEA WebLogic Process Integrator Javadoc*
- *BEA WebLogic Process Integrator Release Notes*

# Contact Us!

Your feedback on the BEA WebLogic Process Integrator documentation is important to us. Send us e-mail at **docsupport@bea.com** if you have questions or comments. Your comments will be reviewed directly by the BEA professionals who create and update the BEA WebLogic Process Integrator documentation.

In your e-mail message, please indicate which release of the BEA WebLogic Process Integrator documentation you are using.

If you have any questions about this version of BEA WebLogic Process Integrator, or if you have problems installing and running BEA WebLogic Process Integrator, contact BEA Customer Support through BEA WebSupport at **www.bea.com**. You can also contact Customer Support by using the contact information provided on the Customer Support Card, which is included in the product package.

When contacting Customer Support, be prepared to provide the following information:

- Your name, e-mail address, phone number, and fax number
- Your company name and company address
- Your machine type and authorization codes

- 
- The name and version of the product you are using
  - A description of the problem and the content of pertinent error messages

# Documentation Conventions

The following documentation conventions are used throughout this document.

Convention	Item
Ctrl+Tab	Indicates that you must press two or more keys simultaneously.
<i>italics</i>	Indicates emphasis or book titles.
monospace text	Indicates code samples, commands and their options, data structures and their members, data types, directories, and filenames and their extensions. Monospace text also indicates text that you must enter from the keyboard. <i>Examples:</i> <pre>#include &lt;iostream.h&gt; void main ( ) the pointer psz chmod u+w * \tux\data\ap .doc tux.doc BITMAP float</pre>
<i>monospace italic text</i>	Identifies variables in code. <i>Example:</i> <i>String expr</i>
UPPERCASE TEXT	Indicates device names, environment variables, and logical operators. <i>Examples:</i> LPT1 SIGNON OR



---

Convention	Item
{ }	Indicates a set of choices in a syntax line. The braces themselves should never be typed.
[ ]	Indicates optional items in a syntax line. The brackets themselves should never be typed. <i>Example:</i> buildobjclient [-v] [-o name ] [-f file-list]... [-l file-list]...
	Separates mutually exclusive choices in a syntax line. The symbol itself should never be typed.
...	Indicates one of the following in a command line: <ul style="list-style-type: none"><li>■ That an argument can be repeated several times in a command line.</li><li>■ That the statement omits additional optional arguments.</li><li>■ That you can enter additional parameters, values, or other information.</li></ul> The ellipsis itself should never be typed. <i>Example:</i> buildobjclient [-v] [-o name ] [-f file-list]... [-l file-list]...
.	Indicates the omission of items from a code example or from a syntax line.
.	The vertical ellipsis itself should never be typed.
.	



# 1 Getting Started

The following sections describe what you need to know before you install and run BEA WebLogic Process Integrator:

- BEA WebLogic Process Integrator Software Package
- Installation Prerequisites
- Installed Components

# BEA WebLogic Process Integrator Software Package

The BEA WebLogic Process Integrator package includes the following:

■ Software CD

The software CD contains the following BEA WebLogic Process Integrator components:

- BEA WebLogic Process Integrator Server
- BEA WebLogic Process Integrator Studio Client Application
- BEA WebLogic Process Integrator Worklist Client Application

■ Documentation CD

The documentation CD contains the following documents:

- *BEA WebLogic Process Integrator Tutorial*
- *BEA WebLogic Process Integrator Studio User Guide*
- *BEA WebLogic Process Integrator Worklist User Guide*
- *BEA WebLogic Process Integrator Javadoc*

■ Hard Copy Documentation

- BEA WebLogic Process Integrator *Installation and Configuration Guide* (this document)
- *BEA WebLogic Process Integrator Release Notes*

## Installation Prerequisites

Before you install the components included on the BEA WebLogic Process Integrator software CD, make sure you have the following software and hardware configuration for your machine:

- For a Windows NT installation, a computer with a Pentium processor or better running Windows NT 4.0 with Service Pack 5 or later.
- For Windows 2000 installation, a computer with a Pentium processor or better running Windows 2000 Professional or Server.
- For a UNIX installation (server application only in version 1.2, see Release Notes for more detailed requirements information):
  - Solaris—UltraSparc running Sun Microsystems Solaris 2.7. Use the system patches recommended by Sun on the

<http://java.sun.com/products/jdk/1.2/install-solaris-patches.html>  
Web page.

- HP-UX—PA-RISC 100 MHz or higher computer running Hewlett-Packard HP-UX 11.
- AIX—RS/6000 PowerPC-604 200 MHz or higher computer with Performance Pack running IBM AIX 4.3.3.

**Note:** For up-to-date information about platform support for BEA WebLogic Process Integrator, go to

<http://www.bea.com/products/weblogic/integrator/datasheet.shtml>

- A minimum of 256 MB of RAM
- 100 MB of free disk space
- A network connection
- Access to a CD reader
- BEA WebLogic Process Integrator installation CD and a valid BEA WebLogic Process Integrator license
- BEA WebLogic Server 5.1 with Service Pack 6
- Java 2 SDK, Standard Edition, v1.2.2

- One of the following supported databases:

- Oracle 8.1.5
- Microsoft SQL Server 7.0
- Sybase System 11
- Cloudscape 3.5.0

BEA ships the Cloudscape software—a pure-Java relational database management system (RDBMS)—with BEA WebLogic Server. An evaluation copy of Cloudscape 3.5.0 (no expiration) is shipped with recent versions of BEA WebLogic Server 5.1. If you have an older version of Cloudscape, replace it with the 3.5.0 version by downloading the latest full WebLogic Server 5.1 distribution.

**Note:** To upgrade your version of Cloudscape, you must download the latest full WebLogic Server 5.1 distribution from <http://www.bea.com>. Downloading the latest Service Pack alone does not replace the evaluation copy of the Cloudscape software.

BEA WebLogic Process Integrator must have access to a database server that is installed on the local network. You must also have a database server account with sufficient privileges to create a database with tables.

- JDBC drivers for your database server.
  - **Oracle:** The Oracle thin driver is a Type-4 JDBC driver distributed by Oracle. Obtain `classes12_01.zip` and `nls_charset12_01.zip` (the Oracle thin driver zip files) from Oracle, then copy them to the `<WebLogic Server Home>\lib` directory. These two driver zip files can be downloaded from <http://otn.oracle.com/software/> by registered Oracle customers.
  - **Microsoft SQL Server:** BEA's WebLogic `jdbcDriver` for SQL Server is a pure Java Type-4 JDBC driver that provides connectivity to the Microsoft SQL Server. You can download this driver from the BEA Web site. The driver is available in two versions: one for SQL Server version 6.5 and another for version 7. Refer to the BEA download site for installation instructions.
  - **Sybase:** The `jConnect` Type-4 driver from Sybase is now bundled with your BEA WebLogic Server distribution. This driver is provided for your use without charge. Refer to the BEA download site for installation instructions.

- **Cloudscape:** The Cloudscape driver is bundled with your BEA WebLogic Server distribution and installed with BEA WebLogic Server. The Cloudscape driver consists of the `cloudscape.jar` file.

**Note:** Refer to <http://www.weblogic.com/docs51/classdocs/jdbcdrivers.html> for updated information about JDBC drivers for BEA WebLogic Process Integrator.

## Installed Components

The BEA WebLogic Process Integrator installation procedure installs the following components:

- BEA WebLogic Process Integrator Server
- BEA WebLogic Process Integrator Studio
- BEA WebLogic Process Integrator Worklist
- Apache Xerces 1.2.0
- Apache Xalan 1.1





# 2 Installing BEA WebLogic Process Integrator

The following sections describe installing BEA WebLogic Process Integrator on Windows and UNIX:

- Installing the BEA WebLogic Process Integrator Software Package
- Installing Your Software License
- Uninstalling BEA WebLogic Process Integrator

# Installing the BEA WebLogic Process Integrator Software Package

The following procedures explain how to install BEA WebLogic Process Integrator on Windows and UNIX. After installation, you must perform certain configuration tasks before certain features of the product can work properly. For instructions, refer to Chapter 3, “Configuring and Starting BEA WebLogic Process Integrator.”

### **On Windows:**

To install BEA WebLogic Process Integrator on Windows:

1. Insert the BEA WebLogic Process Integrator CD in the CD tray.
2. Choose Start—>Programs—>Windows NT (or 2000) Explorer from the Start menu.
3. Click on the CD drive and navigate to the NT folder.
4. Double-click `Setup.exe` to start the installation process. The BEA WebLogic Process Integrator Splash screen is displayed (see Figure 2-1) for a few seconds. Then, the Introduction screen (see Figure 2-2) is displayed. Proceed to Step 5.

### **On UNIX:**

To install the BEA WebLogic Process Integrator on UNIX:

1. Insert the BEA WebLogic Process Integrator CD in the CD tray. If the `daemon /usr/sbin/vold` is running, the CD should be mounted in the `/cdrom` directory. If `vold` is not running, consult your UNIX administration documentation to mount the CD.
2. Change directories to `unix`:  

```
> cd unix
```
3. Start the installation by typing `setup.bin` at the prompt:  

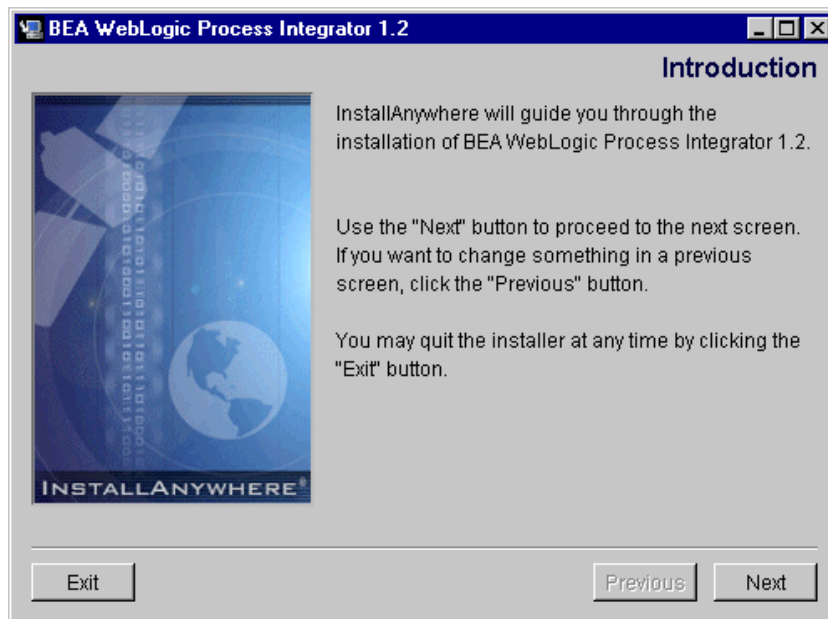
```
unix> setup.bin
```

4. Press the **ENTER** key. The BEA WebLogic Process Integrator Splash screen is displayed (see Figure 2-1) for a few seconds. Then, the Introduction screen (see Figure 2-2) is displayed.

**Figure 2-1 BEA WebLogic Process Integrator Splash Screen**



**Figure 2-2 Introduction Screen**



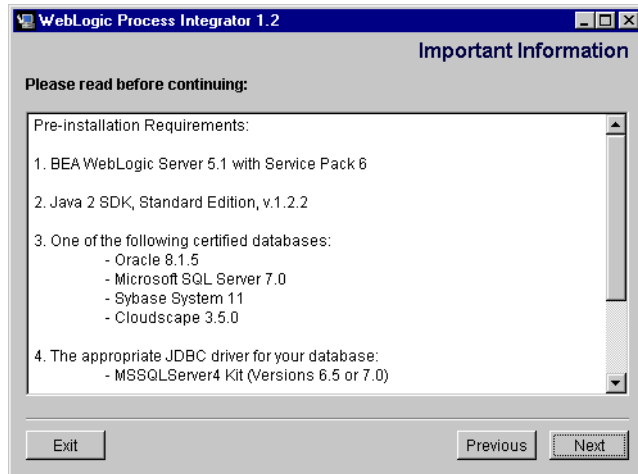
5. Click **Next** on the Introduction screen to display the License Agreement screen (Figure 2-3).

**Figure 2-3 License Agreement Screen**



6. Click the **Yes** radio button to accept the license agreement, then click **Next** to proceed to the Important Information (Application Requirements) screen (Figure 2-4).

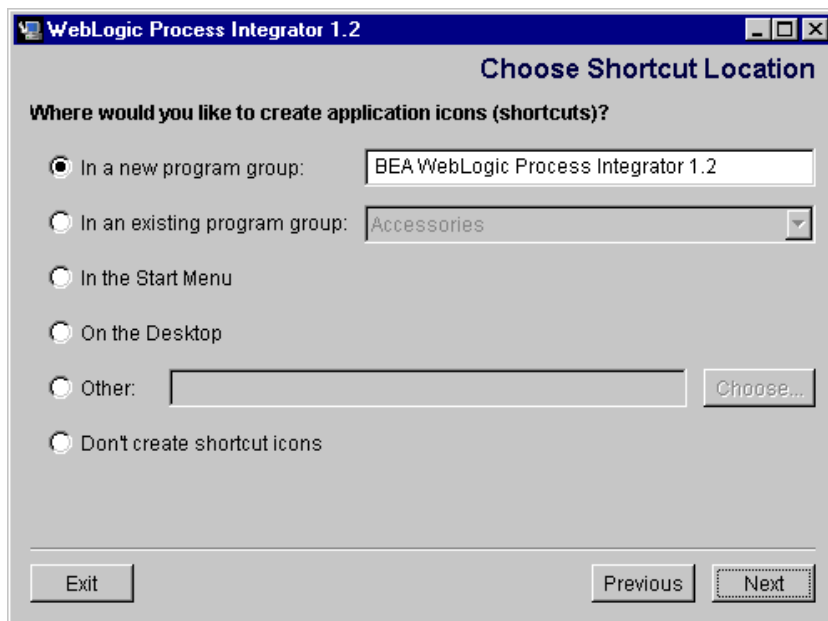
**Figure 2-4 Important Information (Application Requirements) Screen**



7. Click **Next** to acknowledge that you have read and understood the requirements for BEA WebLogic Process Integrator and display the Target Program Group screen (Figure 2-5).

**Note:** The Target Program Group screen (Figure 2-5) and the Choose Install screen (Figure 2-6) will only be displayed during Windows installations. They do not apply to UNIX installations.

Figure 2-5 Target Program Group Screen



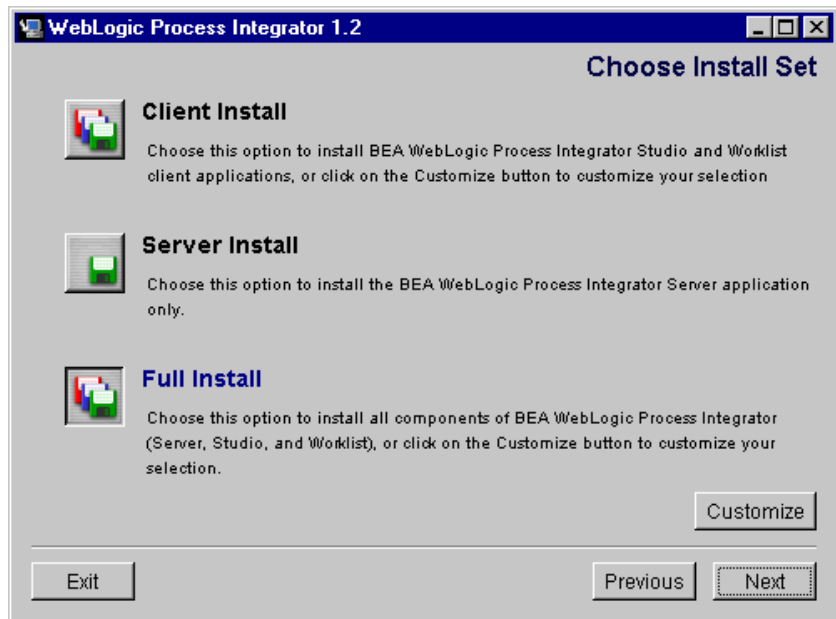
8. Select the location where you would like to create shortcuts to the BEA WebLogic Process Integrator software, then click **Next**. You can select from the following option buttons (**NOTE**: This step only applies to Windows installations):
  - In a new program group. You can enter a name of your choice in the text box or use the default. The shortcut icons are created in the selected Program group accessible from the Start menu.
  - In an existing program group. To add the BEA WebLogic Process Integrator shortcuts to an existing program group, select the desired Program group from the drop-down list.
  - In the Start Menu. The BEA WebLogic Process Integrator shortcuts are added directly to the Start Menu and are not included in a Program group.
  - On the Desktop. The BEA WebLogic Process Integrator shortcuts are added to your Desktop and are not accessible from the Start Menu.
  - Other. You can enter a folder name in the text box or click Choose and select an existing folder on your system. The shortcuts are placed in the specified

folder. You can access them through My Computer or using the Windows Explorer.

- Don't create shortcut icons. If you choose this option, you will only be able to access the software using scripts or commands.

The screen in Figure 2-6 displays.

**Figure 2-6 Choose Install Set Screen**



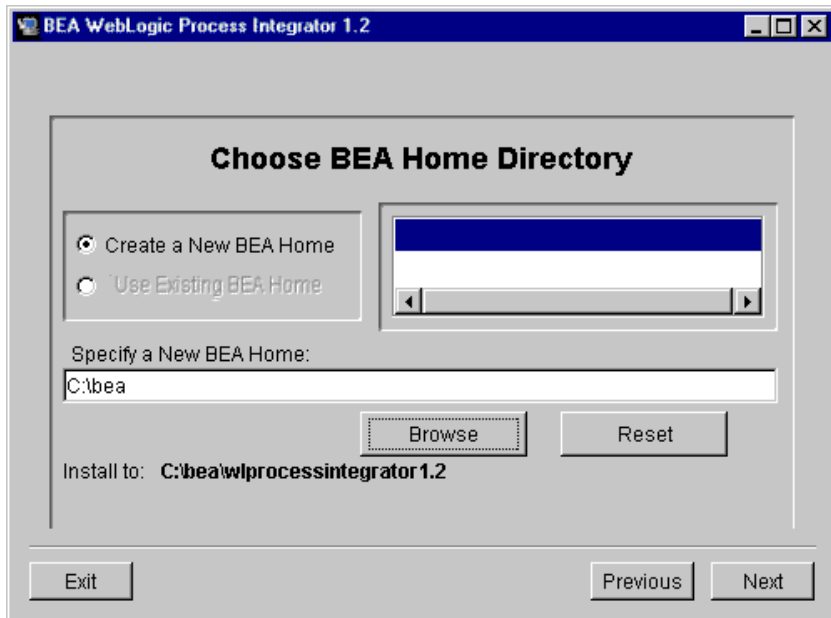
9. Select the components that you want to install on your system. You can select from the following options (**NOTE:** This step only applies to Windows installations):
  - **Client Install:** This option installs both BEA WebLogic Process Integrator client applications, Studio and Worklist.
  - **Server Install:** This option installs the BEA WebLogic Process Integrator Server application.
  - **Full Install:** This option installs both the client and server applications.
  - **Customize:** This option installs any combination of BEA WebLogic Process Integrator Server, Studio, or Worklist that you choose.



**Note:** If you chose the Client (only) install set or install a customized install set that does not include the Server application, you will still perform Step 10 (see Figure 2-7), where you choose a BEA Home directory and Step 11 (if applicable, see Figure 2-8), where you deal with previous installations of BEA WebLogic Process Integrator. However, you will bypass Step 12, where you select and configure your database (see Figure 2-9 and Figure 2-10) and proceed directly to the installation of the product (Figure 2-11).

Click **Next** to proceed to the Choose BEA Home Directory screen (see Figure 2-7).

**Figure 2-7 Choose BEA Home Directory Screen**



10. Create or select a BEA Home directory. The BEA Home directory is the root directory in which you install all BEA products. If you do not already have a BEA Home directory (default is `c:\bea`), you will have the option of creating a new BEA Home directory. You can create a new BEA Home directory as follows:
  - a. Select the **Create a New BEA Home** radio button.

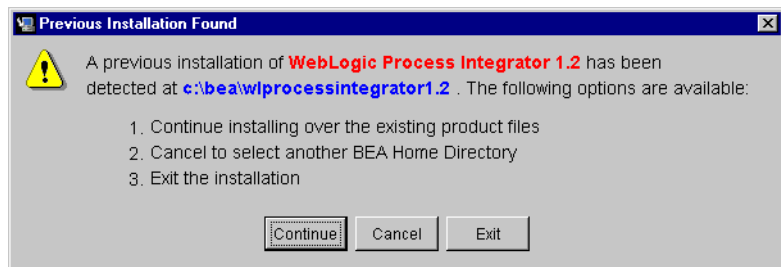
- b. Accept the default location for your BEA Home directory or click **Browse** to specify a different location. If you accept the default location, your BEA Home directory will be `c:\bea`, and your BEA WebLogic Process Integrator software will be installed in the `c:\bea\wlprocessintegrator1.2` directory. Click **Next** to proceed to the Database Selection screen (see Figure 2-9).

If you already have one or more BEA Home directories on your system, you can use one of those directories as follows:

- a. Click on the **Use Existing BEA Home** radio button.
- b. Select a BEA Home directory from the scrolling list displayed to the right of the radio buttons. All of the valid BEA Home directories will be displayed in the scrolling list, and only valid BEA Home directories can be used to install BEA WebLogic Process Integrator 1.2. Valid BEA Home directories are directories where BEA products have been installed using BEA's standard installation program. Click **Next** to proceed to the Database Selection screen (see Figure 2-9).

**Note:** If you already have a version of BEA WebLogic Process Integrator 1.2 installed on your system, the Previous Installation Found dialog box (Figure 2-8) is displayed before the Database Selection screen (Figure 2-9).

**Figure 2-8 Previous Installation Found Dialog Box**

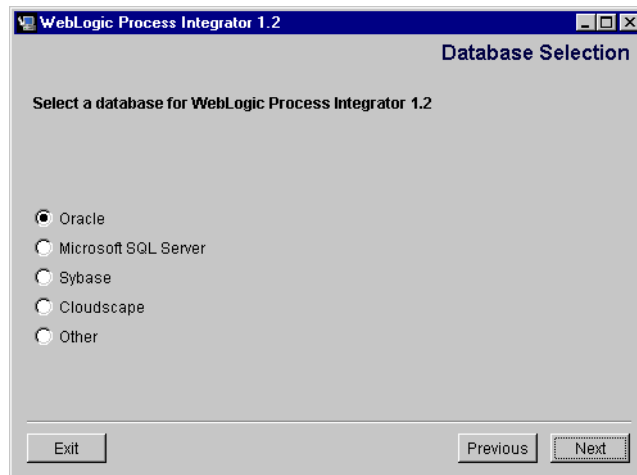


11. If a previous version of BEA WebLogic Process Integrator 1.2 was found on your system, you must select an option for dealing with it. You will not see this dialog box if you have installed versions previous to Version 1.2 of BEA WebLogic Process Integrator because the BEA Standard Installation, which uses the BEA Home directory as a directory under which all BEA products are to be installed, was introduced with the 1.2 release. The following are the explanations of the options presented in this dialog box and the implications of their use:

- **Continue:** If you select this option, all of your BEA WebLogic Process Integrator files will be overwritten, including your `license.bea` file. Therefore, **any changes made to these files on the previous installation will be lost!** If you have changed any of the BEA WebLogic Process Integrator files, you may want to copy them into a temporary directory before proceeding with this option.
- **Cancel:** This option will return you to the Choose BEA Home Directory screen (Figure 2-7). This will allow you to select another BEA Home directory (or create a new BEA Home directory) in which to place your installation.
- **Exit:** This option allows you to exit the installation without making any changes to system.

Click **Continue** to proceed to the Database Selection screen (see Figure 2-9).

**Figure 2-9 Database Selection Screen**

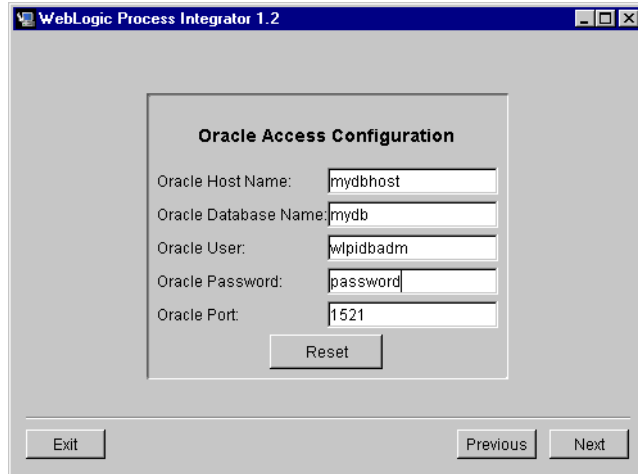


12. Select a database, then click **Next**. A database configuration dialog box will be displayed. For example, the dialog box displayed in Figure 2-10 is the Oracle configuration dialog box. If you select **Other**, the installation program will not configure your database connections. Also, see the following note:

**Note:** Oracle, Microsoft SQL Server, Sybase, and Cloudscape are the only database platforms that are currently certified with BEA WebLogic Process Integrator version 1.2. If you want to use a database platform other

than the four listed, you will then have to configure the BEA WebLogic Process Integrator database connections manually and supply the drivers necessary to use the database of your choice. For information on how these files might be modified, see the configuration files listed in Appendix A, “BEA WebLogic Process Integrator Sample Configuration Files.”

**Figure 2-10 Oracle Configuration Dialog Box**



The screenshot shows a window titled "WebLogic Process Integrator 1.2". Inside the window is a dialog box titled "Oracle Access Configuration". The dialog box contains five text input fields with the following labels and sample values:

- Oracle Host Name: mydbhost
- Oracle Database Name: mydb
- Oracle User: wlpidbadm
- Oracle Password: password
- Oracle Port: 1521

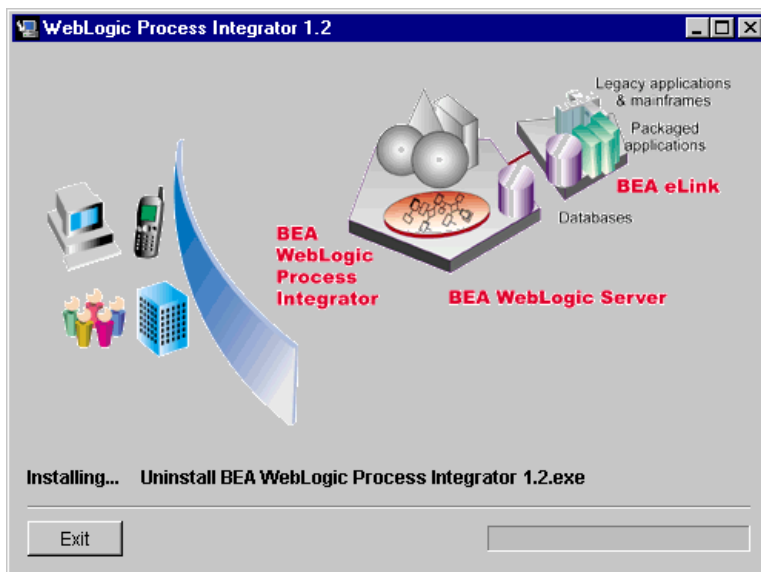
Below the input fields is a "Reset" button. At the bottom of the dialog box are three buttons: "Exit", "Previous", and "Next".

Provide the `HostName`, `Database Name`, `User`, `Password`, and `PortNumber` in the appropriate fields to configure the database of your choice. Sample values have been entered into the dialog box shown in Figure 2-10. To see examples of configuration files that display these values, see Appendix A, “BEA WebLogic Process Integrator Sample Configuration Files.”

If you do not know the information required by the database configuration dialog box for your particular RDBMS platform, ask the database administrator who set up the database that you will use with BEA WebLogic Process Integrator.

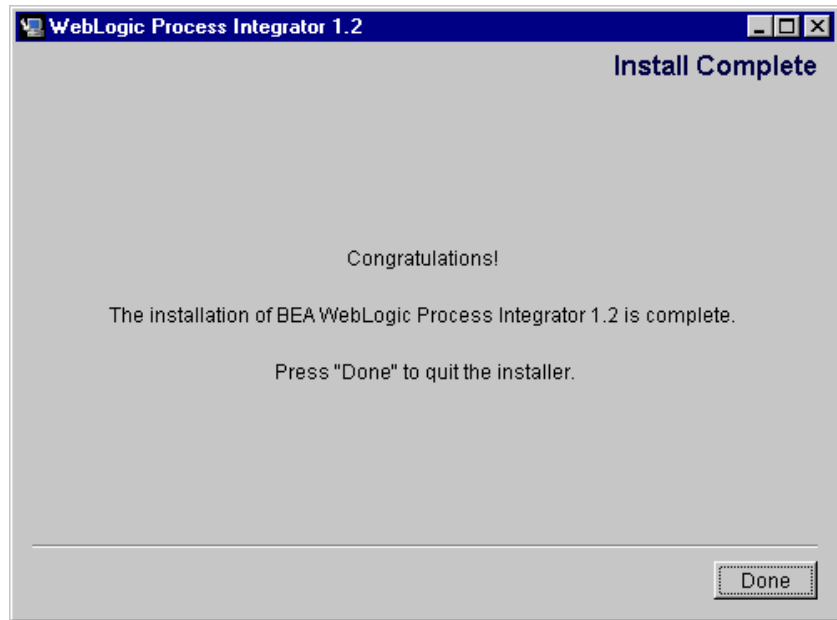
Click **Next** to proceed with the installation. The dialog box in Figure 2-11 shows the status of the installation process.

**Figure 2-11 Setup Status Screen**



After the installation process has completed, the Install Complete screen displays (see Figure 2-12).

**Figure 2-12 Install Complete Screen**



13. Click **Done** to complete the installation.

If you installed to the default BEA HOME directory (`c:\bea`), the installation process creates a root directory for BEA WebLogic Process Integrator named `c:\bea\wlprocessintegrator1.2`.

## Installing Your Software License

The BEA WebLogic Process Integrator requires a software license in order to use the product. To install the software license, copy `license.bea` to the BEA Home directory (`c:\bea` is the default).

# Uninstalling BEA WebLogic Process Integrator

To uninstall BEA WebLogic Process Integrator:

## On Windows:

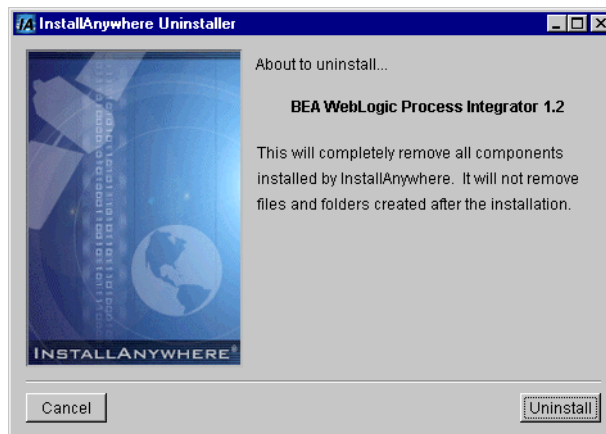
To uninstall BEA WebLogic Process Integrator on Windows:

1. Choose Start—>Programs—>BEA WebLogic Process Integrator 1.2—>Uninstall BEA WebLogic Process Integrator 1.2 from the Start menu.

**Note:** This is how you would uninstall BEA WebLogic Process Integrator if you used the default program group (BEA WebLogic Process Integrator 1.2) displayed in Figure 2-5.

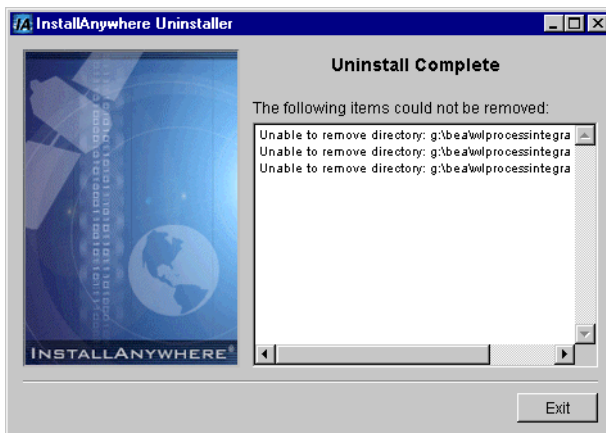
The screen in Figure 2-13 is displayed.

**Figure 2-13 BEA WebLogic Process Integrator Uninstall Start Screen**



2. Click on **Uninstall** to start uninstalling BEA WebLogic Process Integrator. When the uninstallation of BEA WebLogic Process Integrator is complete, Figure 2-14 is displayed.

**Figure 2-14** BEA WebLogic Process Integrator Uninstallation Complete Screen



3. Click **Exit** to exit the uninstallation program.

### **On UNIX:**

To uninstall BEA WebLogic Process Integrator on UNIX:

1. Change directories to the UninstallerData directory (default is /bea/wlpi/UninstallerData).
2. Type `Uninstall WebLogic Process Integrator`.
3. Press **ENTER**.

When uninstallation is complete, the message **Uninstall Complete** will be displayed.



# 3 Configuring and Starting BEA WebLogic Process Integrator

The following sections explain how to configure and start the BEA WebLogic Process Integrator Server, Studio client application, and Worklist client application:

- Creating Database Tables
- Customizing and Starting BEA WebLogic Process Integrator
- Stopping BEA WebLogic Process Integrator

## Creating Database Tables

In order to run BEA WebLogic Process Integrator, you must first create the required database tables. The <BEA WebLogic Process Integrator Root>\ddl directory (default is c:\bea\wlprocessintegrator1.2\ddl) contains SQL Data Definition Language (DDL) files to create the required tables. Use your database administrator tool to execute the appropriate DDL file.

- Oracle 8.1.5—use `wlpi_oracle.ddl`
- Microsoft SQL Server 7.0—use `wlpi_mssql.ddl`
- Sybase System 11—use `wlpi_sybase.ddl`
- Cloudscape 3.5.0—use `wlpi_cloudscape.ddl`

# Customizing and Starting BEA WebLogic Process Integrator

Before you can use BEA WebLogic Process Integrator to define workflows that include send e-mail actions, you need to customize the run-time environment by changing certain settings in BEA WebLogic Process Integrator. The following sections explain how to change these settings and start the BEA WebLogic Process Integrator components:

- Customizing and Starting the BEA WebLogic Process Integrator Server
- Starting the BEA WebLogic Process Integrator Studio and Worklist

## Customizing and Starting the BEA WebLogic Process Integrator Server

The following steps explain how to customize the BEA WebLogic Process Integrator Server run-time environment and start the server.

**Note:** If you need to define workflows that include send e-mail actions, you must perform Step 1. Editing the `weblogic.properties` File and Step 2. Configuring the Mail Session Properties for the Workflow Processor EJBs. If you do not need to define workflows that include send e-mail actions, you may skip Step 1 and Step 2.

### Step 1. Editing the `weblogic.properties` File

To edit the `weblogic.properties` file:

1. Navigate to the `weblogic.properties` file in the root directory of the BEA WebLogic Process Integrator installation.
  - On Windows, navigate to the directory where the BEA WebLogic Process Integrator is installed. The default is `c:\bea\wlprocessintegrator1.2`
  - On UNIX, change directories to the `bea/wlpi` directory:

### 3 *Configuring and Starting BEA WebLogic Process Integrator*

---

```
cd bea/wlpi
```

2. Use a text editor to open the `weblogic.properties` file.
3. Scroll down to the “WLPI Specific Settings” section.
4. Edit the `MailSession` property `mail.host` using the value shown in Listing 3-1.

#### **Listing 3-1 Mail Session Property**

---

```
# Mail session
weblogic.resource.MailSession.com.bea.wlpi.MailSession=\
    mail.from=user@host,\
    mail.host=<smtp or outgoing mail host name>
```

---

Listing 3-2 provides an example.

#### **Listing 3-2 Mail Session Property Example**

---

```
# Mail session
weblogic.resource.MailSession.com.bea.wlpi.MailSession=\
    mail.from=user@host,\
    mail.host=xyz.bea.com
```

---

5. Save your changes and close the file.

## **Step 2. Configuring the Mail Session Properties for the Workflow Processor EJBs**

To configure the mail-session properties:

1. Run the BEA WebLogic EJB Deployer Tool.

#### **On Windows:**

- a. Navigate to the `bin` directory (default is `c:\bea\wlprocessintegrator1.2\bin`) using Windows Explorer.

- b. Double-click `DeployerTool.cmd` to start the BEA WebLogic EJB deployer tool.

### On UNIX:

- a. Change directories to the `bea/wlpi/bin` directory:

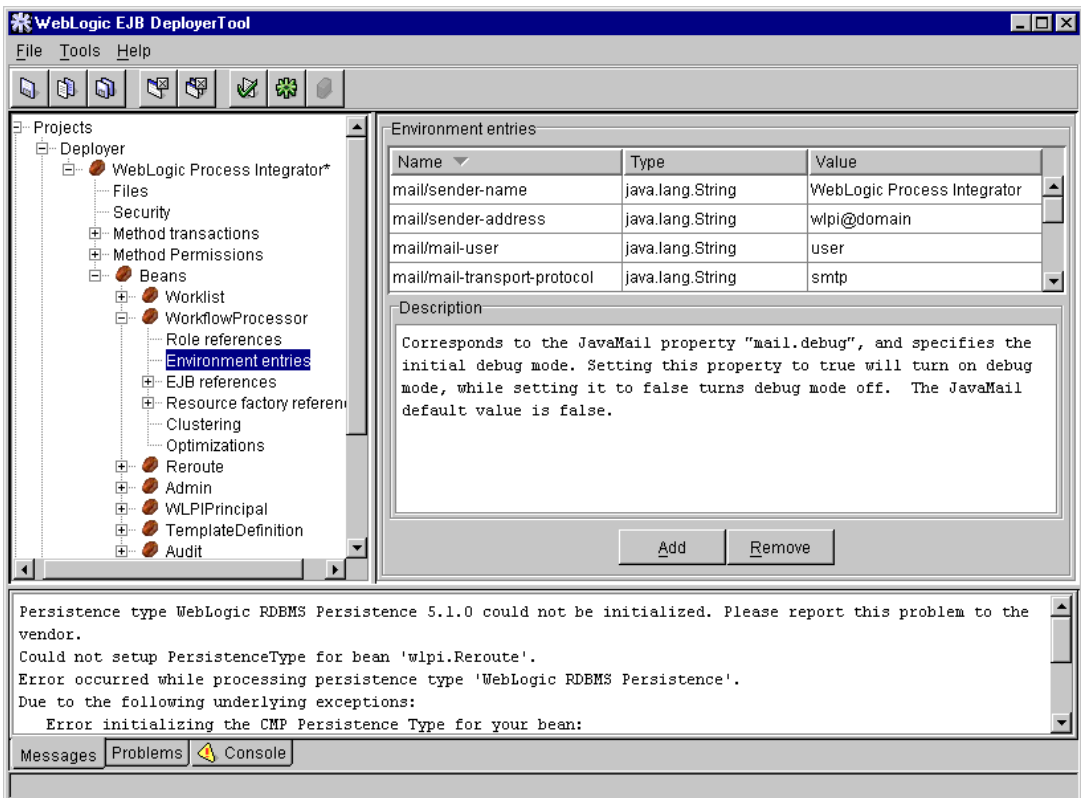
```
cd bea/wlpi/bin
```

- b. Run the BEA WebLogic EJB Deployer Tool:

```
./deployertool.sh
```

2. Navigate to Deployer —> BEA WebLogic Process Integrator —> Beans —> WorkflowProcessor —> Environment Entries. The environment entries for the Workflow Processor EJB are displayed in the upper-right panel (see Figure 3-1).

**Figure 3-1 BEA WebLogic EJB Deployer Tool Showing Environment Entries**



3. Define the following mail-session properties by double-clicking in the text field you want to edit and typing the appropriate value (use the values shown in Figure 3-1 as a guide):
  - mail/sender-name
  - mail/sender-address
  - mail/mail-user
  - mail/mail-transport-protocol
  - mail/mail-host
  - mail/mail-from
  - mail/mail-debug
  - mail/authenticator-password
  - mail/authenticator-id
4. Select File —> Save to save your changes and exit.

For more information, see *Deploying EJBs with the Deployer Tool* at

[http://www.weblogic.com/docs51/classdocs/API\\_ejb/EJB\\_deploy.html](http://www.weblogic.com/docs51/classdocs/API_ejb/EJB_deploy.html)

## Step 3. Starting the BEA WebLogic Process Integrator Server

To start the BEA WebLogic Process Integrator Server:

### On Windows:

Choose Start —> Programs —> BEA WebLogic E-Business Platform —> WebLogic Process Integrator 1.2 —> Start Server from the Windows Start menu.

**Note:** This is how you would start the BEA WebLogic Process Integrator Server if you used the default program group (BEA WebLogic Process Integrator 1.2) displayed in Figure 2-5.

### On UNIX:

1. Change directories to the bea/wlpi/bin directory:

```
cd bea/wlpi/bin
```

2. Run the script wlpi.sh:

```
. ./wlpi.sh
```

# Starting the BEA WebLogic Process Integrator Studio and Worklist

The following steps explain how to start the BEA WebLogic Process Integrator Studio and Worklist.

## Starting the BEA WebLogic Process Integrator Studio

To start the BEA WebLogic Process Integrator Studio:

### On Windows:

1. Choose Start —> Programs —> BEA WebLogic E-Business Platform —> WebLogic Process Integrator 1.2 —> Start Studio from the Windows Start menu. The Logon dialog box shown in Figure 3-2 will be displayed in front of the BEA WebLogic Process Integrator Studio application window.

**Note:** This is how you would start the BEA WebLogic Process Integrator Studio if you used the default program group (BEA WebLogic Process Integrator 1.2) displayed in Figure 2-5.

**Figure 3-2** BEA WebLogic Process Integrator Studio Logon Dialog Box



2. Enter one of the default database user names with the user name's corresponding password in the appropriate fields. The default users admin, system, wlpisystem, mary, and joe were set up to use your database when your

database administrator created the database tables required by BEA WebLogic Process Integrator (see Creating Database Tables for more information). If you do not know how to determine the password for a particular default user, contact your database administrator.

In the **Server [:port]** field, enter the computer name or IP address of the system that is running the BEA WebLogic Process Integrator Server application in the position shown as follows:

```
t3://<computer name or IP address>:7001
```

localhost can be used in place of <computer name or IP address> if the Server is running on the same computer as the Client application.

## Starting the BEA WebLogic Process Integrator Worklist

To start the BEA WebLogic Process Integrator Worklist:

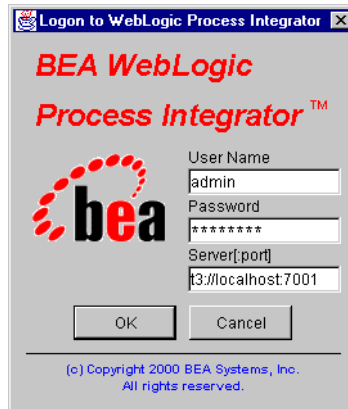
### On Windows:

1. Choose Start —> Programs —> BEA WebLogic E-Business Platform —> WebLogic Process Integrator 1.2 —> Start Worklist from the Windows Start menu. The Logon dialog shown in Figure 3-3 will be displayed in front of the BEA WebLogic Process Integrator Worklist application window.

**Note:** This is how you would start the BEA WebLogic Process Integrator Worklist if you used the default program group (BEA WebLogic Process Integrator 1.2) displayed in Figure 2-5.



Figure 3-3 BEA WebLogic Process Integrator Worklist Logon Dialog Box



2. Enter one of the default database user names with the user name's corresponding password in the appropriate fields. The default users `admin`, `system`, `wlpisystem`, `mary`, and `joe` were set up to use your database when your database administrator created the database tables required by BEA WebLogic Process Integrator (see *Creating Database Tables* for more information). If you do not know how to determine the password for a particular default user, contact your database administrator.

In the **Server [:port]** field, enter the computer name or IP address of the system that is running the BEA WebLogic Process Integrator Server application in the position shown as follows:

```
t3://<computer name or IP address>:7001
```

`localhost` can be used in place of `<computer name or IP address>` if the Server is running on the same computer as the Client application.

# Stopping BEA WebLogic Process Integrator

The following sections provide instructions in stopping the BEA WebLogic Process Integrator applications.

## Stopping the BEA WebLogic Process Integrator Studio or Worklist

To stop the BEA WebLogic Process Integrator Studio or Worklist:

1. Choose File —> Logoff from the application window.
2. Choose File —> Exit from the application window.

## Stopping the BEA WebLogic Process Integrator Server Application

To stop the BEA WebLogic Process Integrator Server application:

1. Activate the Server Application (command prompt) window.
2. Press **Ctrl+C**. The prompt “Terminate batch job (Y/N)?” appears.
3. Press **Y** in response to prompt. The Server application (command prompt) window disappears, and the Server application stops.

# A BEA WebLogic Process Integrator Sample Configuration Files

This section provides system administrators with sample configuration files for the BEA WebLogic Process Integrator. During installation, these files are automatically customized, so they will work on your computer system/network. They are provided here with an explanation of what they should contain. The specific settings that are changed by the installer are marked **bold**, and an explanation of those changes is made after the code block. The following sample configuration files are provided:

- `weblogic.properties`
- `rdbmsrealm.properties`
- `setwlpiserverenv.cmd` (`setwlpiserverenv.sh`)
- `setwlpiclientenv.cmd` (`setwlpiclientenv.sh`)

This section should also be used as reference for any manual configurations that are required after the initial installation of BEA WebLogic Process Integrator. Examples:

- Change of database and/or database connection pool information
- Change of JDBC drivers
- Change of installation directory path of BEA WebLogic Process Integrator or other applications associated with it (e.g., BEA WebLogic Server, JDK, JDBC drivers)

A section entitled “Configuring BEA WebLogic Server Security Realm for BEA WebLogic Process Integrator” has been included after the “`rdbmsrealm.properties`” section. This section provides instructions to those BEA WebLogic Process Integrator users who want to configure a particular BEA WebLogic Server security realm to work with BEA WebLogic Process Integrator.

# weblogic.properties

This is the WLPI Specific Settings section of the specialized BEA WebLogic Process Integrator version of the BEA WebLogic Server weblogic.properties file. It is located near the end of the file. It is installed into the root directory of BEA WebLogic Process Integrator (the default root directory is c:\bea\wlprocessintegrator1.2).

---

**Listing A-1 Sample WLPI Specific Settings Section of weblogic.properties**

---

```
# *****
#                               WLPI Specific Settings                               *
# *****

# Security realm
weblogic.security.realmClass=com.bea.wlpi.rdbmsrealm.RDBMSRealm
#weblogic.security.realm.debug=true

# *****
#                               Information stored in the RDBMS realm
# If you want to use WebLogic Process Integrator with the Weblogic
# Properties Realm simply comment out the line
# "weblogic.security.realmClass=..." and
# un-comment the following lines.
# NOTE: any information added to the RDBMS realm after the initial
# installation will not be reflected here automatically - you must
# add it manually.
# *****

# WLPI users
#weblogic.password.admin=security
#weblogic.password.system=security
#weblogic.password.wlpisystem=wlpisystem
#weblogic.password.joe=password
#weblogic.password.mary=password

# WLPI groups
#weblogic.security.group.wlpiUsers=system,joe,mary,admin
#weblogic.security.group.wlpiAdministrators=wlpisystem,system,adm
in,joe,mary

# WLPI orgs
#weblogic.security.group.WLPIOrg@ORG1=joe,mary,admin
#weblogic.security.group.WLPIOrg@ORG2=joe,mary,admin
```

```
# WLPI roles
#weblogic.security.group.WLPIRole@Role1+ORG1=joe,mary,admin
#weblogic.security.group.WLPIRole@Role1+ORG2=joe,mary,admin
#weblogic.security.group.WLPIRole@Role2+ORG1=joe,mary,admin
#weblogic.security.group.WLPIRole@Role2+ORG2=joe,mary,admin

# ACLs and permissions.
weblogic.allow.list.weblogic.jndi.weblogic=everyone
weblogic.allow.list.weblogic.jndi.weblogic.ejb=everyone
weblogic.allow.create.weblogic.jms.ServerSessionPool=everyone
weblogic.allow.execute.weblogic.servlet.containerManaged=everyone
weblogic.allow.reserve.weblogic.jdbc.connectionPool.wlpiPool=ever
yone
weblogic.allow.reset.weblogic.jdbc.connectionPool.wlpiPool=guest,
admin
weblogic.allow.shrink.weblogic.jdbc.connectionPool.wlpiPool=guest
,admin

#####
# WEBLOGIC EJB PROPERTIES
# -----
# CLUSTER USERS: Note that ALL EJB deployment should be done in the
# *per-cluster* properties file ONLY.

# Workaroud for WebLogic session bean timeout 'feature'.
weblogic.rmi.dgc.idlePeriodsUntilTimeout=1000

# Deploy enterprise JavaBeans.
weblogic.ejb.deploy=./lib/wlpi-ejb.jar,./lib/pobean.jar

# Connection pool for MS SQL Server 7.0 using Type 4 jDriver.
##MSSQL##weblogic.jdbc.connectionPool.wlpiPool=\
##MSSQL##
url=jdbc:weblogic:mssqlserver4:<MSSQL_DBNAME>@<MSSQL_HOSTNAME>:<M
SQL_PORT>?sql7=true,\
##MSSQL##      driver=weblogic.jdbc.mssqlserver4.Driver,\
##MSSQL##      loginDelaySecs=1,\
##MSSQL##      initialCapacity=1,\
##MSSQL##      maxCapacity=2,\
##MSSQL##      capacityIncrement=1,\
##MSSQL##      allowShrinking=true,\
##MSSQL##      shrinkPeriodMins=15,\
##MSSQL##      refreshTestMinutes=10,\
##MSSQL##      props=user=<MSSQL_USER>;password=<MSSQL_PASSWORD>

# Connection pool for Oracle using Type 4 (thin) JDBC driver. (1)
weblogic.jdbc.connectionPool.wlpiPool=\
    url=jdbc:oracle:thin:@mydbhost:1521:mydb,\ #(2)
```

```
driver=oracle.jdbc.driver.OracleDriver,\
loginDelaySecs=1,\
initialCapacity=1,\
maxCapacity=3,\
capacityIncrement=1,\
allowShrinking=true,\
shrinkPeriodMins=15,\
refreshTestMinutes=10,\
props=user=wlpidbadm;password=password;\ # (3)

# Connection pool to Sybase using jConnect JDBC driver.
##SYBASE##weblogic.jdbc.connectionPool.wlpiPool=\
##SYBASE##
url=jdbc:sybase:Tds:<SYBASE_HOSTNAME>:<SYBASE_PORT>/<SYBASE_DBNAM
E>,\
##SYBASE## driver=com.sybase.jdbc.SybDriver,\
##SYBASE## loginDelaySecs=1,\
##SYBASE## initialCapacity=1,\
##SYBASE## maxCapacity=3,\
##SYBASE## capacityIncrement=1,\
##SYBASE## allowShrinking=true,\
##SYBASE## shrinkPeriodMins=15,\
##SYBASE## refreshTestMinutes=10,\
##SYBASE## props=user=<SYBASE_USER>;password=<SYBASE_PASSWORD>,\

# Connection pool to CLOUDSCAPE
##CLOUDSCAPE## weblogic.jdbc.connectionPool.wlpiPool=\
##CLOUDSCAPE## url=jdbc:cloudscape:<CLOUDSCAPE_DBNAME>,\
##CLOUDSCAPE## driver=COM.cloudscape.core.JDBCdriver,\
##CLOUDSCAPE## initialCapacity=1,\
##CLOUDSCAPE## maxCapacity=2,\
##CLOUDSCAPE## capacityIncrement=1,\
##CLOUDSCAPE## props=user=none;password=none;server=none

# DataSource setup
weblogic.jdbc.TXDataSource.com.bea.wlpi.TXDataSource=wlpiPool
# JMS topic connection factory. For persistent JMS, set
DeliveryMode=persistent
weblogic.jms.connectionPool=wlpiPool
weblogic.jms.connectionFactoryName.wlpiFactory=com.bea.wlpi.Topic
ConnectionFactory
weblogic.jms.connectionFactoryArgs.wlpiFactory=DeliveryMode=non_p
ersistent
# JMS topics
weblogic.jms.topic.wlpiAudit=com.bea.wlpi.AuditTopic
weblogic.jms.topic.wlpiError=com.bea.wlpi.ErrorTopic
weblogic.jms.topic.wlpiEvent=com.bea.wlpi.EventTopic
weblogic.jms.topic.wlpiTimer=com.bea.wlpi.TimerTopic
weblogic.jms.topic.wlpiNotify=com.bea.wlpi.NotifyTopic
```

```
# Mail session
weblogic.resource.MailSession.com.bea.wlpi.MailSession=\
    mail.from=user@host,\
    mail.host=xyz.bea.com #(4)
.
.
.
```

---

1. The JDBC driver section for your database was uncommented by removing the pound (#) characters. In this sample, the Oracle JDBC driver section was uncommented.
2. Your database name, host server, and port were specified in the line beginning with `url=`. In this sample, the host server is `mydbhost` (by @ sign), the port is `1521` (which is the default), and the database name is `mydb`. The installation program retrieves these values from the database configuration dialog box that is displayed during installation. The Oracle version of this dialog box showing these same sample settings is shown in Figure 2-10.
3. The settings `user=` and `password=` are set to an account with create/update/delete privileges on the database server. In this sample, the user is `wlpidbadm`, and the password is `password`. The installation program retrieves these values from the database configuration dialog box that is displayed during installation. The Oracle version of this dialog box showing these same sample settings is shown in Figure 2-10.
4. This is an optional setting and the only setting that is made manually with a text editor. `mail.host` must be set to your outgoing mail or SMTP server. For more detailed instructions, see Step 1. Editing the `weblogic.properties` File in Chapter 3, “Configuring and Starting BEA WebLogic Process Integrator.”

## rdbmsrealm.properties

This is the command (or sh) file that sets the environment variables for the database connections to BEA WebLogic Process Integrator. It is installed into the root directory of BEA WebLogic Process Integrator (the default directory is the root directory, `c:\bea\wlprocessintegrator1.2`).



## Listing A-2 Sample rdbmsrealm.properties File

```
#####
# - - - - - MS SQL Server 7.0 - - - - -
##MSSQL##driver=weblogic.jdbc.mssqlserver4.Driver
##MSSQL##dbURL=jdbc:weblogic:mssqlserver4:<MSSQL_DBNAME>@<MSSQL_H
OSTNAME>:<MSSQL_PORT>?sql7=true
##MSSQL##dbUser=<MSSQL_USER>
##MSSQL##dbPassword=<MSSQL_PASSWORD>

# - - - - - ORACLE Thin - - - - - # (1)
driver=oracle.jdbc.driver.OracleDriver
dbURL=jdbc:oracle:thin:@mydbhost:1521:mydb # (2)
dbUser=wlpidbadm
dbPassword=password # (3)

getGroupNewStatement=false

# - - - - - SYBASE using jConnect - - - - -
##SYBASE##dbURL=jdbc:sybase:Tds:<SYBASE_HOSTNAME>:<SYBASE_PORT>/<
SYBASE_DBNAME>
##SYBASE##driver=com.sybase.jdbc.SybDriver
##SYBASE##useMultipleConnections=true
##SYBASE##dbUser=<SYBASE_USER>
##SYBASE##dbPassword=<SYBASE_PASSWORD>

# - - - - - CLOUDSCAPE - - - - -
##CLOUDSCAPE##dbURL=jdbc:cloudscape:<CLOUDSCAPE_DBNAME>;create=tr
ue;autocommit=false
##CLOUDSCAPE##driver=COM.cloudscape.core.JDBCdriver
##CLOUDSCAPE##getGroupNewStatement=true
##CLOUDSCAPE##dbUser=
##CLOUDSCAPE##dbPassword=
##CLOUDSCAPE##getGroupNewStatement=true

# Prepared statements for querying

getUser=SELECT U_NAME, U_PASSWORD FROM users WHERE U_NAME = ?
getGroupMembers=SELECT GM_GROUP, GM_MEMBER from groupmembers WHERE
GM_GROUP = ?
getAclEntries=SELECT A_NAME, A_PRINCIPAL, A_PERMISSION FROM
aclentries WHERE A_NAME = ? ORDER BY A_PRINCIPAL
getUsers=SELECT U_NAME, U_PASSWORD FROM users
getGroups=SELECT GM_GROUP, GM_MEMBER FROM groupmembers ORDER BY
GM_GROUP
getAcls=SELECT A_NAME, A_PRINCIPAL, A_PERMISSION FROM aclentries
```

```
ORDER BY A_NAME, A_PRINCIPAL
getPermissions=SELECT DISTINCT A_PERMISSION FROM aclentries
getPermission=SELECT DISTINCT A_PERMISSION FROM aclentries WHERE
A_PERMISSION = ?

# Prepared statements for insertions

newUser=INSERT INTO users VALUES ( ? , ? )
addGroupMember=INSERT INTO groupmembers VALUES ( ? , ? )

# Prepared statements for deletions

removeGroupMember=DELETE FROM groupmembers WHERE GM_GROUP = ? AND
GM_MEMBER = ?
removeLastGroupMember=UPDATE groupmembers SET GM_MEMBER = '' WHERE
GM_GROUP = ? AND GM_MEMBER = ?
deleteUser1=DELETE FROM users WHERE U_NAME = ?
deleteUser2=DELETE FROM groupmembers WHERE GM_MEMBER = ?
deleteUser3=DELETE FROM aclentries WHERE A_PRINCIPAL = ?
deleteGroup1=DELETE FROM groupmembers WHERE GM_GROUP = ?
deleteGroup2=DELETE FROM aclentries WHERE A_PRINCIPAL = ?
```

---

1. The JDBC driver section for your database was uncommented by removing the pound (#) characters. In this sample, the Oracle JDBC driver section was uncommented.
2. Your database name, host server, and port were specified in the line beginning with `dbURL=`. In this sample, the host server is `mydbhost` (by @ sign), the port is 1521 (which is the default), and the database name is `mydb`. The installation program retrieves these values from the database configuration dialog box that is displayed during installation. The Oracle version of this dialog box showing these same sample settings is shown in Figure 2-10.
3. The settings `dbUser=` and `dbPassword=` are set to an account with create/update/delete privileges on the database server. The installation program retrieves these values from the database configuration dialog box that is displayed during installation. In this sample, `dbUser` is set to `wlpidbadm`, and `dbPassword` is set to `password`. The Oracle version of this dialog box showing these same sample settings is shown in Figure 2-10.

# Configuring BEA WebLogic Server Security Realm for BEA WebLogic Process Integrator

This section provides instructions to those BEA WebLogic Process Integrator users who want to configure a particular BEA WebLogic Server security realm to work with BEA WebLogic Process Integrator.

User, role, and organization information within BEA WebLogic Process Integrator is maintained in BEA WebLogic Server security realms. Creating a new user, role, or organization within BEA WebLogic Process Integrator means adding those entities to the BEA WebLogic Server security realm. Therefore, the functions of creating and deleting users, roles, and organizations are accessible only if a manageable realm is used and detected by BEA WebLogic Process Integrator.

An example of configuring a BEA WebLogic Server security realm for BEA WebLogic Process Integrator can be found in the `weblogic.properties` file and is repeated at the beginning of Listing A-1. The file `weblogic.properties` uses the `realmClass com.bea.wlpi.rdbmsrealm.RDBMSRealm` to configure BEA WebLogic Process Integrator security.

Your security realm needs to be implemented within BEA WebLogic Server and must follow certain guidelines:

- The realm's group names need to accept the "@" symbol as well as the "+" symbol.
- BEA WebLogic Process Integrator users are BEA WebLogic Server users.
- You must create the following three users:
  - `wlpisystem`
  - `admin`
  - `system`
- You must create the following two groups:
  - `wlpiUsers`
  - `wlpiAdministrators`
- The users `system` and `admin` need to belong to the `wlpiUsers` group.

- The users `wlpisystem`, `system`, and `admin` need to belong to the `wlpiAdministrators` group.
- WLPI organizations are BEA WebLogic Server groups.
- The organization name should be `WLPIOrg@OrgName`.
  - For example, to create an organization called `ORG1`, you must create the BEA WebLogic Server group `WLPIOrg@ORG1`.
- To make the users belong to the `ORG1` organization, you need to add them to the `WLPIOrg@ORG1` group.
- BEA WebLogic Process Integrator Roles are BEA WebLogic Server groups.
- The group name should be `WLPIRole@RoleName+OrgName`.
  - For example, to create a Role called `Role1` within the `ORG1` organization, you must create the BEA WebLogic Server group `WLPIRole@Role1+ORG1`.
- To make the users belong to the `Role1` role, you need to add them to the `WLPIRole@Role1+ORG1` group.

Once your realm is populated (using the above guidelines), you can use the BEA WebLogic Process Integrator Studio to create users, roles, and organizations without having to use the above syntax.

# setwlpiserverenv.cmd (setwlpiserverenv.sh)

This is the command (or sh) file that sets the environment variables for the BEA WebLogic Process Integrator server. It is installed into the `bin` directory under the root directory of BEA WebLogic Process Integrator (the default directory is `c:\bea\wlprocessintegrator1.2\bin`).

### **Listing A-3 Sample `setwlpiserverenv.cmd` (`setwlpiserverenv.sh`) file**

---

```
@rem Copyright (c) 2000 BEA Systems, Inc. All rights reserved.
@rem setWLPISEnv.cmd - establish WebLogic Process Integrator
Server runtime environment.
@echo off
```

```
rem Set JAVA_HOME to the directory containing your Java 2 runtime
environment.
set JAVA_HOME=c:\jdk1.2.2 (1)

rem Set WL_HOME to the directory containing WebLogic Server 5.1.
set WL_HOME=c:\weblogic (2)

rem Set JDBC_DRIVER to a classpath entry for the JDBC driver you
are using.
rem Classpath entries can be directories, zip files, or jar files.
Multiple entries
rem must be semicolon separated. You must install the JDBC driver
yourself.
rem Supported databases include:
rem Microsoft SQL Server
rem ##MSSQL## set JDBC_DRIVER=%WL_HOME%\mssqlserver4\classes
rem Oracle 8.1.5
set JDBC_DRIVER=%WL_HOME%\lib\classes12_01.zip;%WL_HOME%\lib\
nls_charset12_01.zip (3)
rem Sybase System 11
rem ##SYBASE## set JDBC_DRIVER=%WL_HOME%\jConnect-4_2\classes
rem Cloudscape
rem ##CLOUDSCAPE## set
JDBC_DRIVER=%WL_HOME%\eval\cloudscape\lib\cloudscape.jar

rem Set WLPI_HOME to the directory containing WebLogic Process
Integrator.
set WLPI_HOME=c:\bea\wlprocessintegrator1.2 (4)

rem Set BEA_HOME to the directory containing WebLogic Process
Integrator license.
set BEA_HOME=c:\bea (5)
```

---

1. **JAVA\_HOME:** This variable represents the root of the Java run-time environment (for example, `c:\jdk1.2.2`). BEA WebLogic Process Integrator expects to find a Java archive called `jre\lib\rt.jar` in the subdirectory of this path.
2. **WL\_HOME:** This variable represents the root of the BEA WebLogic Server installation directory (for example, `c:\weblogic`).
3. **JDBC\_DRIVER:** This variable represents the directory path containing the JDBC driver classes, `.jar`, or `.zip`. This variable is set similar to the following values based on your database.

4. **WLPI\_HOME**: This variable represents the root of the BEA WebLogic Process Integrator installation directory (default is `c:\bea\wlprocessintegrator1.2`).
5. **BEA\_HOME**: This variable represents the BEA Home directory (default is `c:\bea`). Starting with the 1.2 release of BEA WebLogic Process Integrator, all BEA products will be installed under this directory, and there will be one `license.bea` file for all BEA products installed under the BEA Home directory.

# setwlpiclientenv.cmd (setwlpiclientenv.sh)

This is the command (or sh) file that sets the environment variables for the BEA WebLogic Process Integrator client. The BEA WebLogic Process Integrator clients are the Studio and the Worklist. The `setwlpiclientenv` file is installed into the `bin` directory under the root directory of BEA WebLogic Process Integrator (the default directory is `c:\bea\wlprocessintegrator1.2\bin`).

## **Listing A-4 Sample setwlpiclientenv.cmd (setwlpiclientenv.sh) File**

---

```
@rem Copyright (c) 2000 BEA Systems, Inc. All rights reserved.

@rem SetWLPIClientEnv.cmd - establish WebLogic Process Integrator
client runtime environment.

@echo off

rem Set JAVA_HOME to the location of your Java 2 runtime
environment.

set JAVA_HOME=c:\jdk1.2.2 # (1)

rem Set WLPI_HOME to the directory containing WebLogic Process
Integrator.

set WLPI_HOME=c:\bea\wlprocessintegrator1.2 # (2)
```

---

1. **JAVA\_HOME**: This variable represents the root of the Java run-time environment (for example, `c:\jdk1.2.2`). BEA WebLogic Process Integrator expects to find a Java archive called `jre\lib\rt.jar` in the subdirectory of this path.

2. WLPI\_HOME: This variable represents the root of the BEA WebLogic Process Integrator installation directory (for example, `c:\bea\wlprocessintegrator1.2`).





---

# Index

## A

application requirements 2-5

## B

BEA Home

    creating a new one 2-9

    using an existing one 2-10

BEA Home directory 2-9

## C

Client-only installation 2-8

Cloudscape

    certified version 1-4

    JDBC driver required 1-5

Cloudscape see also database 2-11

configuring

    client A-12

    database 2-12

    mail-session properties 3-4

    server A-10

creating database tables 3-2

customer support contact information vii

## D

database

    certified 1-4

    configuration 2-11

    configuring 2-12

    creating tables 3-2

dbPassword A-8

dbURL A-8

dbUser A-8

host server A-6, A-8

name 2-12, A-6, A-8

password 2-12, A-6

port 2-12, A-6, A-8

selecting one to use 2-11

selection screen 2-11

user 2-12, A-6

database tables

    creating 3-2

dbPassword setting A-8

dbURL setting A-8

dbUser setting A-8

DDL 3-2

DeployerTool 3-5

documentation conventions viii

## E

e-docs web site v

EJB

    Workflow Processor 3-5

e-mail actions

    send 3-3

environment variable

    JAVA\_HOME A-11, A-12

    JDBC\_DRIVER A-11

    WL\_HOME A-11

    WLPI\_HOME A-12, A-13

---

## H

host server A-6, A-8

## I

installation

Client-only 2-8

installation prerequisites 1-2

## J

JAVA\_HOME setting A-11, A-12

JDBC drivers 1-4, A-4, A-6, A-8, A-11

certified 1-4

Type-4 1-4

JDBC\_DRIVER setting A-11

## L

License Agreement 2-4, 2-5

license.bea 2-14

logging on 3-7, 3-8

## M

mail.host 3-4

mail-session properties

configuring 3-4

MailSession property 3-4

Microsoft SQL Server JDBC driver 1-4

## O

Oracle

certified version 1-4

JDBC driver required 1-4

## P

password

database A-6

port

database A-8

pre-installation see also requirements 1-2

prerequisite

installation 1-2

JDBC 1-4

JDBC drivers 1-4

Previous Installation Found dialog box 2-10

printing product documentation vi

program group 2-7

## R

RDBMS 2-11

related information vii

requirements

application 2-5

database 1-4

JDBC drivers 1-4

security realms, WebLogic Server A-9

system 1-2

## S

screen

application requirements 2-5

Choose BEA Home Directory 2-9

Choose Install Set 2-8

Database Selection 2-11

Install Complete 2-14

License Agreement 2-5

Setup Status 2-13

Target Program Group 2-7

Welcome 2-4

selecting database 2-11

send e-mail actions 3-3

server

host A-8

setting

dbPassword A-8

dbURL A-8

dbUser A-8

---

- JAVA\_HOME A-11, A-12
- JDBC\_DRIVER A-11
- WL\_HOME A-11
- WLPI\_HOME A-12, A-13
- Setup.exe 2-2
- setwlpclientenv A-12
- setwlpserverenv A-10
- shortcuts 2-7
- SQL Server
  - certified version 1-4
  - JDBC driver required 1-4
- SQL Server see also database 2-11
- support
  - technical vii
- Sybase
  - certified version 1-4
  - JDBC driver required 1-4
- Sybase JDBC Driver 1-4
- Sybase see also database 2-11
- system requirements 1-2

## **T**

- Type-4 JDBC driver 1-4

## **U**

- user
  - database A-6

## **W**

- weblogic.properties A-3
- WL\_HOME setting A-11
- WLPI\_HOME setting A-12, A-13