



BEA WebLogic Server™ and WebLogic Express™

Installation Guide

Release 8.1 Beta
Document Revised: December 9, 2002

Copyright

Copyright © 2002 BEA Systems, Inc. All Rights Reserved.

Restricted Rights Legend

This software and documentation is subject to and made available only pursuant to the terms of the BEA Systems License Agreement and may be used or copied only in accordance with the terms of that agreement. It is against the law to copy the software except as specifically allowed in the agreement. This document may not, in whole or in part, be copied photocopied, reproduced, translated, or reduced to any electronic medium or machine readable form without prior consent, in writing, from BEA Systems, Inc.

Use, duplication or disclosure by the U.S. Government is subject to restrictions set forth in the BEA Systems License Agreement and in subparagraph (c)(1) of the Commercial Computer Software-Restricted Rights Clause at FAR 52.227-19; subparagraph (c)(1)(ii) of the Rights in Technical Data and Computer Software clause at DFARS 252.227-7013, subparagraph (d) of the Commercial Computer Software--Licensing clause at NASA FAR supplement 16-52.227-86; or their equivalent.

Information in this document is subject to change without notice and does not represent a commitment on the part of BEA Systems. THE SOFTWARE AND DOCUMENTATION ARE PROVIDED "AS IS" WITHOUT WARRANTY OF ANY KIND INCLUDING WITHOUT LIMITATION, ANY WARRANTY OF MERCHANTABILITY OR FITNESS FOR A PARTICULAR PURPOSE. FURTHER, BEA Systems DOES NOT WARRANT, GUARANTEE, OR MAKE ANY REPRESENTATIONS REGARDING THE USE, OR THE RESULTS OF THE USE, OF THE SOFTWARE OR WRITTEN MATERIAL IN TERMS OF CORRECTNESS, ACCURACY, RELIABILITY, OR OTHERWISE.

Trademarks or Service Marks

BEA, Jolt, Tuxedo, and WebLogic are registered trademarks of BEA Systems, Inc. BEA Builder, BEA Campaign Manager for WebLogic, BEA eLink, BEA Manager, BEA WebLogic Commerce Server, BEA WebLogic Enterprise, BEA WebLogic Enterprise Platform, BEA WebLogic Express, BEA WebLogic Integration, BEA WebLogic Personalization Server, BEA WebLogic Platform, BEA WebLogic Portal, BEA WebLogic Server, BEA WebLogic Workshop and How Business Becomes E-Business are trademarks of BEA Systems, Inc.

All other trademarks are the property of their respective companies.

Installation Guide

Part Number	Date	Software Version
TBD	December 9, 2002	BEA WebLogic Server Version 8.1 Beta

Contents

About This Document

e-docs Web Site.....	viii
How to Print the Document.....	viii
Related Information.....	viii
Contact Us!.....	ix
Documentation Conventions.....	ix

1. Preparing to Install WebLogic Server

Audience.....	1-2
About the BEA WebLogic Server Installation Program.....	1-2
WebLogic Express Support.....	1-3
Installation Methods.....	1-3
WebLogic Server Distribution Methods.....	1-4
Web Distribution of Service Packs and Rolling Patches.....	1-4
Installation Prerequisites.....	1-5
System Requirements.....	1-5
Temporary Storage Space Requirements.....	1-6
Administrator Privileges.....	1-7
Licensing and Encryption.....	1-8
About 128-Bit Encryption.....	1-8
Selecting Directories for the WebLogic Server Installation.....	1-8
BEA Home Directory.....	1-9
Understanding the Functions of the BEA Home Directory.....	1-10
Creating Multiple BEA Home Directories.....	1-11
Product Installation Directory.....	1-12
Choosing the Type of Installation.....	1-12
Choosing a JVM.....	1-13

Installing the Node Manager as a Windows Service	1-15
Where to Find Upgrade and Migration Information.....	1-16
Introducing Smart Update	1-17
2. Installing WebLogic Server Using Graphical-Mode Installation	
Before You Start	2-2
Starting the Installation Program in Graphical Mode on Windows Platforms ..	2-3
Starting the Installation Program in Graphical Mode on a UNIX Platform.....	2-3
Starting Graphical-Mode Installation for .bin Installation Files	2-4
Starting Graphical-Mode Installation for .jar Installation Files	2-4
Running the Installation Program.....	2-5
Configuring Domains, Servers, and Clusters with the Configuration Wizard ..	2-8
Configuration Options	2-9
What's Next?	2-10
3. Installing WebLogic Server Using Console-Mode Installation	
Before You Start	3-1
Starting Console-Mode Installation on Windows Systems	3-2
Starting Console-Mode Installation on UNIX Systems	3-3
Starting Console-Mode Installation for .bin Installation Files	3-4
Starting Console-Mode Installation for .jar Installation Files	3-4
Running Console-Mode Installation.....	3-5
What's Next?	3-11
4. Installing WebLogic Server Using Silent-Mode Installation	
What Is Silent-Mode Installation?	4-2
Before You Start	4-2
Using Silent-Mode Installation: Main Steps	4-3
Creating a Silent-Mode Installation Template File	4-3
Sample Silent-Mode Installation Template File	4-8
Starting the Silent-Mode Installation Process on a Windows System.....	4-11
Starting the Silent-Mode Installation Process on a UNIX System.....	4-13
Starting Silent-Mode Installation for .bin Installation Files.....	4-13
Starting Silent-Mode Installation for .jar Installation Files.....	4-14

5. Installing and Updating a WebLogic Server License

About the WebLogic Server License	5-1
Evaluation Licenses.....	5-2
Development and Production Licenses	5-2
Updating Your license.bea File	5-2
Enabling 128-Bit Encryption.....	5-4
Upgrading Licenses from WebLogic Server 6.x and 7.x	5-5

6. Installing WebLogic Server Service Packs and Rolling Patches

About WebLogic Server Service Packs and Rolling Patches	6-1
Installing Service Packs and Rolling Patches Using Smart Update	6-2
Installing Service Packs and Rolling Patches with a Downloadable Installer ..	6-5
Installing a Service Pack Upgrade Using Graphical Mode.....	6-6
Installing a Service Pack Upgrade Using Console Mode	6-8

7. Performing Post-Installation Tasks

Understanding the WebLogic Server Windows Shortcuts	7-1
Understanding the WebLogic Server Directory Structure	7-4
Files and Directories Installed.....	7-4
Domain Directories	7-6
Starting the Examples and MedRec Servers	7-6
Starting the Examples Server on a Windows System	7-7
Starting the Examples Server on a UNIX System.....	7-7
Starting the MedRec Server on a Windows System	7-8
Starting the MedRec Server on a UNIX System.....	7-8
Starting the Administration Console	7-9

8. Uninstalling WebLogic Server

About the Uninstallation Program.....	8-1
Uninstalling WebLogic Server in Graphical Mode.....	8-2
Uninstalling WebLogic Server in Console Mode	8-4
Uninstalling Service Packs and Rolling Patches with the Uninstallation Program.	8-6
Uninstalling a WebLogic Server Service Pack or Rolling Patch in Graphical	
Mode	8-7
Uninstalling a WebLogic Server Service Pack or Rolling Patch in Console	

Mode.....	8-8
Uninstalling a Service Pack or Rolling Patch with Smart Update	8-9
Reinstalling WebLogic Server.....	8-10

About This Document

This document explains how to install BEA WebLogic Server™ on both Windows and UNIX systems.

This document is organized as follows:

- [Chapter 1, “Preparing to Install WebLogic Server,”](#) provides the basic information you need to know before installing WebLogic Server.
- [Chapter 2, “Installing WebLogic Server Using Graphical-Mode Installation,”](#) describes how to install the WebLogic Server software on Windows and UNIX systems using a Java-based graphical user interface (GUI).
- [Chapter 3, “Installing WebLogic Server Using Console-Mode Installation,”](#) discusses how to install WebLogic Server on Windows and UNIX systems using a text-based interface.
- [Chapter 4, “Installing WebLogic Server Using Silent-Mode Installation,”](#) describes how to install WebLogic Server without user intervention by using a template file during the installation process.
- [Chapter 5, “Installing and Updating a WebLogic Server License,”](#) explains how to install and update your WebLogic Server license file.
- [Chapter 6, “Installing WebLogic Server Service Packs and Rolling Patches,”](#) describes how to launch Smart Update and check for available service packs.
- [Chapter 7, “Performing Post-Installation Tasks,”](#) provides information about Windows shortcuts and files and folders installed with WebLogic Server, and how to start the Examples and Pet Store servers and the Administration Console.
- [Chapter 8, “Uninstalling WebLogic Server,”](#) explains how to uninstall WebLogic Server in graphical and console mode.

e-docs Web Site

BEA product documentation is available on the BEA corporate Web site. From the BEA Home page, click on Product Documentation or go directly to the “e-docs” Product Documentation page at <http://e-docs.bea.com>.

How to Print the Document

You can print a copy of this document from a Web browser, one main topic at a time, by using the File—>Print option on your Web browser.

A PDF version of this document is available on the WebLogic Server documentation Home page on the e-docs Web site (and also on the documentation CD). You can open the PDF in Adobe Acrobat Reader and print the entire document (or a portion of it) in book format. To access the PDFs, open the WebLogic Server documentation Home page, click Download Documentation, and select the document you want to print.

Adobe Acrobat Reader is available at no charge from the Adobe Web site at <http://www.adobe.com>.

Related Information

The BEA corporate Web site provides all documentation for WebLogic Server. Other WebLogic Server documents that you may find helpful when installing the WebLogic Server software are:

- [Introduction to BEA WebLogic Server at <http://e-docs.bea.com/wls/docs81b/intro/index.html>](http://e-docs.bea.com/wls/docs81b/intro/index.html)
- [Administration Guide at <http://e-docs.bea.com/wls/docs81b/adminguide/index.html>](http://e-docs.bea.com/wls/docs81b/adminguide/index.html)

-
- [Developing WebLogic Server Applications at http://e-docs.bea.com/wls/docs81b/programming/index.html](http://e-docs.bea.com/wls/docs81b/programming/index.html)

Introduction to BEA WebLogic Server includes a description of the BEA WebLogic Express™ software, which incorporates the presentation and database access services from WebLogic Server.

Contact Us!

Your feedback on BEA documentation is important to us. Send us e-mail at docsupport@bea.com if you have questions or comments. Your comments will be reviewed directly by the BEA professionals who create and update the documentation.

In your e-mail message, please indicate the software name and version you are using, as well as the title and document date of your documentation. If you have any questions about this version of BEA WebLogic Server, or if you have problems installing and running BEA WebLogic Server, contact BEA Customer Support through the BEA Customer Support Web site at <http://support.bea.com>. You can also contact Customer Support by using the contact information provided on the Customer Support Card, which is included in the product package.

When contacting Customer Support, be prepared to provide the following information:

- Your name, e-mail address, phone number, and fax number
- Your company name and company address
- Your machine type and authorization codes
- The name and version of the product you are using
- A description of the problem and the content of pertinent error messages

Documentation Conventions

The following documentation conventions are used throughout this document.

Convention	Usage
Ctrl+Tab	Keys you press simultaneously.
<i>italics</i>	Emphasis and book titles.
monospace text	Code samples, commands and their options, Java classes, data types, directories, and filenames and their extensions. Monospace text also indicates text that you enter from the keyboard. <i>Examples:</i> <pre>import java.util.Enumeration; chmod u+w * config/examples/applications .java config.xml float</pre>
<i>monospace italic text</i>	Variables in code. <i>Example:</i> <pre>String CustomerName;</pre>
UPPERCASE TEXT	Device names, environment variables, and logical operators. <i>Examples:</i> <pre>LPT1 BEA_HOME OR</pre>
{ }	A set of choices in a syntax line.
[]	Optional items in a syntax line. <i>Example:</i> <pre>java utils.MulticastTest -n name -a address [-p portnumber] [-t timeout] [-s send]</pre>
	Separates mutually exclusive choices in a syntax line. <i>Example:</i> <pre>java weblogic.deploy [list deploy undeploy update] password {application} {source}</pre>

Convention	Usage
-------------------	--------------

- | | |
|-----|---|
| ... | Indicates one of the following in a command line: <ul style="list-style-type: none">■ An argument can be repeated several times in the command line.■ The statement omits additional optional arguments.■ You can enter additional parameters, values, or other information |
|-----|---|

-
- | | |
|---|--|
| . | Indicates the omission of items from a code example or from a syntax line. |
| . | |
| . | |
-



1 Preparing to Install WebLogic Server

BEA WebLogic Server™ implements J2EE 1.4 technologies, Web services, and other leading Internet standards to provide a reliable framework for highly available, scalable, and secure applications.

The following sections provide information that you need to know before installing WebLogic Server:

- [“Audience” on page 1-2](#)
- [“About the BEA WebLogic Server Installation Program” on page 1-2](#)
- [“WebLogic Server Distribution Methods” on page 1-4](#)
- [“Installation Prerequisites” on page 1-5](#)
- [“Selecting Directories for the WebLogic Server Installation” on page 1-8](#)
- [“Choosing the Type of Installation” on page 1-12](#)
- [“Choosing a JVM” on page 1-13](#)
- [“Installing the Node Manager as a Windows Service” on page 1-15](#)
- [“Where to Find Upgrade and Migration Information” on page 1-16](#)
- [“Introducing Smart Update” on page 1-17](#)

Audience

This document is written for system administrators or application developers who are installing the latest version of WebLogic Server software. It is assumed that readers know Web technologies and have a general understanding of Windows and UNIX systems.

If you are upgrading to WebLogic Server 8.1 from WebLogic Server 7.0 or earlier, see the *WebLogic Server 8.1 Upgrade Guide* at

<http://e-docs.bea.com/wls/docs81b/upgrade/index.html>.

About the BEA WebLogic Server Installation Program

BEA WebLogic Server is distributed and installed using the BEA Installation and Distribution System, which provides a complete framework for the following:

- Simplified distribution of BEA products via download from the BEA Web site.
- Installation and uninstallation of the entire WebLogic Server product, or individual components as desired.
- Simplified mechanism for obtaining and installing product upgrades using Smart Update.
- Ability to create WebLogic domains using a Configuration Wizard that can be invoked at the end of the installation process. For full details on the Configuration Wizard, see [Creating Domains and Servers](#) in the *WebLogic Server Administration Console Online Help* at <http://e-docs.bea.com/wls/docs81b/ConsoleHelp/createdomain.html>

WebLogic Express Support

You can also use the BEA installation program to install the BEA WebLogic Express™ solution, which is the entry-level Web application server offered by BEA. For additional information about WebLogic Express, see [Introduction to BEA WebLogic Server at](#) <http://e-docs.bea.com/wls/docs81b/intro/index.html>.

Installation Methods

The BEA installation program supports the following methods for installing the BEA WebLogic Server software:

- *Graphical mode*

Graphical-mode installation is an interactive, GUI-based method for installing WebLogic Server. It can be run on both Windows and UNIX systems.

Note: To run graphical-mode installation, the console attached to the machine on which you are installing the software must support a Java-based GUI. All consoles for Windows systems support Java-based GUIs, but not all consoles for UNIX systems do. If you attempt to start the installation program in graphical mode on a system that cannot support a graphical display, the installation program automatically starts console-mode installation.

See [Chapter 2, “Installing WebLogic Server Using Graphical-Mode Installation.”](#)

- *Console mode*

Console-mode installation is an interactive, text-based method for installing WebLogic Server on both Windows and UNIX systems. See [Chapter 3, “Installing WebLogic Server Using Console-Mode Installation.”](#)

- *Silent mode*

Silent-mode installation is a non-interactive method of installing WebLogic Server that uses an XML properties file for selecting installation options. You can run silent-mode installation as part of a script or from the command line. See [Chapter 4, “Installing WebLogic Server Using Silent-Mode Installation.”](#)

WebLogic Server Distribution Methods

Note: The WebLogic Server 8.1 Beta release is available only as a package installer available as a download from the BEA Web site. A package installer is a standalone version of the installation program that contains all of the WebLogic Server software components: server and server samples (approximately 195 to 250 MB, depending on your hardware platform).

Contact your WebLogic Server Beta representative for the download URL.

Web Distribution of Service Packs and Rolling Patches

Service Packs and rolling patches, if any, are included in the latest distributions of WebLogic Server, which are available as described in “[WebLogic Server Distribution Methods](#)” on page 1-4. If you have not already installed WebLogic Server, you should install the latest distribution.

If you already have WebLogic Server installed *and* if you have a BEA eSupport account, you can upgrade your software in one of the following ways:

- Use the Smart Update feature to search for, download, and install software updates from the BEA Web server. Smart Update downloads only the updates for the components currently installed in the target BEA Home directory.
- Download the package upgrade installer from the BEA Customer Support Web site at <http://support.bea.com>.

Details about installing WebLogic Server service packs and rolling patches are provided in [Chapter 6, “Installing WebLogic Server Service Packs and Rolling Patches.”](#)

If you do *not* have a BEA eSupport account, you can register for one at on the BEA Customer Support Web site at <http://support.bea.com>.

Installation Prerequisites

Review these requirements before installing WebLogic Server:

- “System Requirements” on page 1-5
- “Temporary Storage Space Requirements” on page 1-6
- “Administrator Privileges” on page 1-7
- “Choosing a JVM” on page 1-13
- “Licensing and Encryption” on page 1-8

System Requirements

Table 1-1 lists the system requirements for WebLogic Server.

Table 1-1 WebLogic Server System Requirements

Component	Requirement
Certified server platform	<p>A certified WebLogic Server platform. See the <i>Supported Configurations</i> page at http://e-docs.bea.com/wls/certifications/certifications/index.html. This page includes the recommended Java run-time environment versions and, when appropriate, other prerequisites or recommendations, such as operating system patches, kernel configuration values, and performance packs.</p> <p>For more information about performance packs, see “Using WebLogic Server Performance Packs” in the <i>Performance and Tuning Guide</i> at http://e-docs.bea.com/wls/docs81b/perform/WLSTuning.html#wlstuning-PerformPacks.</p>

Table 1-1 WebLogic Server System Requirements

Component	Requirement
Hard disk drive	<p>For a WebLogic Server 8.1 installation on a Windows system—about 195 MB* free storage space for the installed product and about 180 MB of temporary storage space required by the installer (for either the net installer or the package installer).</p> <p>For a WebLogic Server 8.1 installation on a UNIX system—about 250 MB** free storage space for the installed product and about 180 MB of temporary storage space required by the installer.</p>
Memory	For a Windows or UNIX system, 256 MB of RAM minimum; 512 MB or more is recommended.
Color bit depth display	<p>For graphical-mode installation, 8-bit color depth (256 colors).</p> <p>For console-mode and silent-mode installation, there is no color bit depth requirement.</p>

* Includes 47 MB for the JVM and 27 MB for examples and samples.
** Includes 81 MB for the Java 2 SDK and 50 MB for examples and samples.

Temporary Storage Space Requirements

The BEA installation program uses a temporary directory in which it extracts the files necessary to install WebLogic Server on the target system. During the installation process, your temporary directory must contain sufficient space to accommodate the compressed Java Runtime Environment (JRE) bundled with the installation program and an uncompressed copy of the JRE that is expanded into the temporary directory. The extracted files are deleted from the temporary directory at the end of the installation process. As a general rule, installation programs require approximately 2.5 times the amount of temporary space the installed files require.

By default, the installation program uses the following temporary directories:

- Windows platforms—Directory referenced by the `TMP` system variable
- UNIX platforms—/`tmp` directory

Note: If there is not enough temporary space to run the installation program, you are prompted to specify an alternate directory or exit the installation program.

To ensure there is adequate temporary space, you may want to allocate an alternate directory for use as a temporary directory for the installation. To do so, follow the instructions provided in [Table 1-2](#).

Table 1-2 Meeting Temporary Space Requirements

On this platform . . .	Perform this step . . .
Windows	Do one of the following: <ul style="list-style-type: none"> ■ Set the TMP system variable to a directory of your choice. ■ If starting the installation program from the command line, enter the <code>-Djava.io.tmpdir=tmpdirpath</code> option on the command line. In this option, <i>tmpdirpath</i> is the full path of the directory that you want to use to temporarily store files used by the WebLogic Server installation program.
UNIX	Enter the following option on the command line when you start the installation program: <code>-Djava.io.tmpdir=tmpdirpath</code> Where <i>tmpdirpath</i> is the full path of the directory that you want to use to temporarily store files used by the WebLogic Server installation program.

Administrator Privileges

During installation, the installer optionally installs the WebLogic Server Node Manager as a Windows service. When the Node Manager is installed as a Windows service, it starts automatically each time you boot your Windows system. You must have *Administrator* privileges to install the Node Manager as a Windows service.

Also, if you choose to run the Configuration Wizard to create user domains, you can install the server as a Windows service. When a server is installed as a Windows service, it starts automatically each time you boot your Windows system. You must have *Administrator* privileges to install the server as a Windows service.

For additional information, see “[Setting Up a WebLogic Server as a Windows Service](#)” in the *BEA WebLogic Server Administration Guide* at

<http://e-docs.bea.com/wls/docs81b/adminguide/winservice.html>.

Licensing and Encryption

The WebLogic Server software cannot be used without a valid license. When you install WebLogic Server, the installation program creates a 90-day evaluation license with access for up to 20 client connections. After the 90-day trial period, you can purchase a development or production license.

Licenses for pre-8.1 versions of WebLogic Server will not work with WebLogic Server 8.1. You must upgrade your license to an 8.1 `license.bea` format. Procedures for upgrading a license file and installing permanent licenses are provided in [Chapter 5, “Installing and Updating a WebLogic Server License.”](#)

About 128-Bit Encryption

Secure sockets layer (SSL) encryption software is available with two levels of encryption: 56-bit and 128-bit. Licenses for the 128-bit client version of SSL are available in the United States and Canada. With proper authorization, customers outside the United States and Canada may also acquire licenses with 128-bit encryption enabled.

A WebLogic Server license comes with 56-bit encryption enabled by default. Enabling 128-bit encryption for SSL requires that a 128-bit encryption license be present in the `license.bea` file of the target BEA Home directory *before* you install the WebLogic Server software.

For instructions about how to install the 128-bit encryption license, see [“Enabling 128-Bit Encryption” on page 5-4.](#)

Selecting Directories for the WebLogic Server Installation

During installation of WebLogic Server, you need to specify locations for the following directories:

- [BEA Home Directory](#)

- [Product Installation Directory](#)

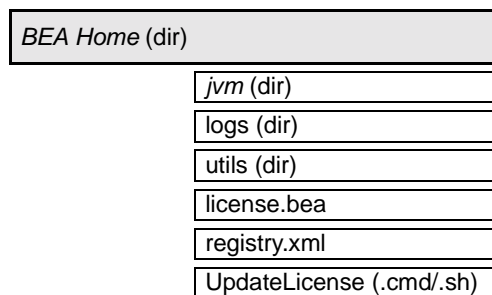
BEA Home Directory

When you install WebLogic Server, you are prompted to specify a BEA Home directory. The BEA Home directory is a repository for common files that are used by multiple BEA products installed on the same machine. For this reason, the BEA Home directory can be considered a “central support directory” for the BEA products installed on your system.

The files in the BEA Home directory are essential to ensuring that BEA software operates correctly on your system. They perform the following types of functions:

- Ensure that licensing works correctly for the installed BEA products
- Facilitate checking of cross-product dependencies during installation
- Facilitate Service Pack installation

The structure of a sample BEA Home directory created by the WebLogic Server installer program is shown in the following illustration.



This illustration depicts only the files and directories required in the BEA Home directory. If you choose the default product installation directory, you will see additional directories in the BEA Home directory, such as `weblogicxxx` (the WebLogic Server installation directory, where `xxx` represents the product version number) and `user_projects` (a folder for WebLogic domains that you create). Although the default location for the WebLogic Server installation directory is within the BEA Home directory, you can select a different location outside the BEA Home directory. See [“Understanding the WebLogic Server Directory Structure”](#) on page 7-4.

1 Preparing to Install WebLogic Server

Note: For some UNIX platforms, the WebLogic Server installation program does *not* install the JVM.

During installation of WebLogic Server, you are prompted to choose an existing BEA Home directory or specify a path to create a new BEA Home directory. If you choose to create a new directory, the WebLogic Server installation program automatically creates the directory for you.

Note: For a BEA Home directory, you are allowed to install only one instance of each version of a BEA product that uses the BEA Home directory convention. For example, you can install only one instance of WebLogic Server 8.1 in a BEA Home directory, but that BEA Home directory may also contain an instance of WebLogic Server 7.0.

Understanding the Functions of the BEA Home Directory

The files and directories in the BEA Home directory are described in [Table 1-3](#).

Table 1-3 BEA Home Directory Description

Component	Description
<code>jvm</code> directory	Contains the software for the JVM installed with WebLogic Server. The JVM provides the Java run-time environment (the JRE) and tools for compiling and debugging Java applications. Options include: <ul style="list-style-type: none">■ <code>jdk141</code>—(the default) the 1.4.1 version of the Java 2 Software Development Kit (J2SDK)■ <code>jrockitxxx</code>—The WebLogic JRockit JVM. JVM options vary by hardware platform. For some UNIX platforms, the WebLogic Server installation program does <i>not</i> include a JVM.
<code>logs</code> directory	Contains a history file of installation and uninstallation for the BEA Home directory.
<code>utils</code> directory	Contains utilities that support the installation of all BEA WebLogic Platform products. The <code>utils.jar</code> file contains code that supports the <code>UpdateLicense</code> utility.

Table 1-3 BEA Home Directory Description

Component	Description
<code>license.bea</code> file	<p>An XML-format license file that contains the license keys for all BEA WebLogic Platform products installed on your system that use the BEA Home directory convention.</p> <p>The format of this license has changed in WebLogic Server 8.1. To convert a pre-8.1 <code>license.bea</code> file to a WebLogic Server 8.1 <code>license.bea</code> file, refer to the procedures in “Upgrading Licenses from WebLogic Server 6.x and 7.x” on page 5-5. To add a non-expiring (permanent) license or to update a license file for additional functionality, you must update the <code>license.bea</code> file using the <code>UpdateLicense</code> utility. For details, see “Updating Your license.bea File” on page 5-2.</p> <p>Note: Do not edit this file manually. Doing so may cause operating problems for the currently installed BEA products, or result in installation problems when installing future BEA products or maintenance upgrades.</p>
<code>registry.xml</code> file	<p>A registry file that contains a persistent record of all BEA products installed on the target system. This registry contains product-related information, such as version number, Service Pack number, and installation directory.</p> <p>Note: Do not edit this file manually. Doing so may cause operating problems for the currently installed BEA products, or result in installation problems when installing future BEA products or maintenance upgrades.</p>
<code>UpdateLicense</code> (<code>.cmd/.sh</code>)	<p>A command file (Windows) or a shell script (UNIX) that updates the current <code>license.bea</code> file with new license information. For details about using the <code>UpdateLicense</code> utility, see “Updating Your license.bea File” on page 5-2.</p>

Creating Multiple BEA Home Directories

Although it is possible to create more than one BEA Home directory, BEA recommends that you avoid doing so. In almost all situations, a single BEA Home directory is sufficient. There may be circumstances, however, in which you prefer to maintain separate development and production environments, each containing a

separate product stack. With two directories, you can update your development environment (in a BEA Home directory) without modifying the production environment until you are ready to do so.

Product Installation Directory

The product installation directory contains all the software components that you choose to install on your system, including program files and examples. During installation, you are prompted to choose a product installation directory. If you accept the default, the WebLogic Server software is installed in the following directory:

```
c:\bea\weblogicXXX
```

where `c:\bea` is the BEA Home directory and `weblogicXXX` is the product installation directory. (`XXX` refers to the version of WebLogic Server that you are installing and varies from release to release.) However, you can specify any name and location on your system for your product installation directory; there is no requirement that you name the directory `weblogicXXX`, or create it under the BEA Home directory.

The installer uses the product installation directory as the `WL_HOME` directory and installs the software components under this directory. See [“Files and Directories Installed” on page 7-4](#) for more information.

Choosing the Type of Installation

The WebLogic Server installation program provides two types of installation:

- Typical Installation

In a typical installation, the following components are automatically installed:

- WebLogic Server program files and software samples
- The default JVM, which varies by operating system. See [Table 1-4, “Default JVM, by Operating System,” on page 1-14](#).
- WebLogic Server Node Manager as a Windows Service (Windows platforms only)

- Custom Installation

In a custom installation, you can choose the following options:

- Which software components to install:

Server—This component contains the WebLogic Server program files which include the core Java™ 2, Enterprise Edition (J2EE) features.

Server Examples—This component contains the WebLogic Server examples and the MedRec example servers and sample applications. These servers and sample applications demonstrate a variety of J2EE features using WebLogic Server. Resources are provided to help you build, configure, and run each of the sample applications.

- Which JVM to install. See “[Choosing a JVM](#)” on page 1-13.
- Whether to install the WebLogic Server Node Manager as a Windows Service. See “[Installing the Node Manager as a Windows Service](#)” on page 1-15.

Choosing a JVM

In a custom installation (see “[Custom Installation](#)” on page 1-13), the WebLogic Server installation program prompts you to select a Java virtual machine (JVM) to install with the WebLogic Server software. WebLogic Server runs on the JRE in the JVM that you select. The following options are displayed. Options vary by the hardware platform on which you are installing.

- Install JRockit—Select this option to install Weblogic JRockit. A list of available versions of JRockit is displayed. If the version of JRockit that you select to install is already installed in the target BEA home directory, the installer will use the JVM already installed. It will not reinstall the JVM. This option is not available on all hardware platforms.

For more information about WebLogic JRockit, see the *[JRockit for Windows and Linux User Guide](#)* at

<http://e-docs.bea.com/wls/docs81b/jrockit/index.html>.

- Install Other JVM —Select this option to install another JVM that is packaged in the installation program. A list of available JVMs is displayed. The current

1 Preparing to Install WebLogic Server

release includes one option: Sun SDK 1.4.1. If the JVM that you select to install is already installed in the target BEA home directory, the installer will use the software already installed. It will not reinstall the JVM.

- **Use Existing JVM in your BEA Home**—Select this option if you are installing a new version of WebLogic Server in an existing BEA Home directory that already contains a JVM. Make sure WebLogic Server is certified on the JVM on your hardware platform. See the *Supported Configurations* page at <http://e-docs.bea.com/wls/certifications/certifications/index.html>. If you are using a Sun SDK, the version must be 1.4.1 or later.
- **Specify JVM Location**—Select this option if you already have a supported JVM installed on the server and you want WebLogic Server to run on that JVM. If you choose this option, make sure WebLogic Server is certified on the JVM on your hardware platform. See the *Supported Configurations* page at <http://e-docs.bea.com/wls/certifications/certifications/index.html>.

Table 1-4 lists the JVM installed by default on various operating systems. If you choose the typical installation, the installation program installs the JVM listed. In a custom installation, the JVM listed is selected by default.

Table 1-4 Default JVM, by Operating System

Operating System	Default JVM
Windows	Sun Java 2 SDK 1.4.1
Solaris	Sun Java 2 SDK 1.4.1
Linux	WebLogic JRockit 8.1 Beta
HP-UX	Sun Java 2 SDK 1.4.1

By default, WebLogic Server runs on the JRE in the JVM that you select. You can change the JVM on Which WebLogic Server runs. For details, see “[Changing the JVM That Runs a WebLogic Server Instance](#)” in the WebLogic Server *Administration Console Online Help* at http://e-docs.bea.com/wls/docs81b/ConsoleHelp/startstop.html#Using_a_Non_Default_JVM_with_WebLogic_Server.

For some UNIX platforms, the WebLogic Server installation program does *not* include a JVM in the installation program (filenames ending in `.jar`). To run these installation programs, you must first include the `bin` directory of a supported JVM installed on your system at the beginning of your `PATH` variable definition. After installation, WebLogic Server will run on this JVM.

Installing the Node Manager as a Windows Service

When installing WebLogic Server on a Windows platform, you can optionally install the WebLogic Server Node Manager as a Windows service. The WebLogic Server Node Manager is used to start and stop managed servers in a domain; monitor the self-reported health of managed servers and automatically kill server instances whose health state is “failed”; and automatically restart managed servers that have the “failed” health state, or have shut down unexpectedly due to a system crash or reboot.

In a typical installation (see [“Typical Installation” on page 1-12](#)), the WebLogic Server installer installs the Node Manager as a Windows service. In a custom installation (see [“Custom Installation” on page 1-13](#)), you can optionally install the Node Manager as a Windows Service. In a production environment, you usually install the Node Manager only on server machines that host managed server instances of WebLogic Server.

The Node Manager is installed as a Windows service only under the following conditions:

- You are installing on a Windows platform.
- The Node Manager for the current version of WebLogic Server is not already installed on the server.

After you install the Node Manager as a Windows service, the service is started after the next time you reboot the system. You can also manually start the service from the Windows Services control panel.

When you uninstall WebLogic Server, the service is uninstalled, too.

Note: The BEA Node Manager service is linked to a BEA Home directory. If you have multiple BEA Home directories on your server and you uninstall WebLogic Server in the BEA Home linked to the Node Manager service, the uninstaller will uninstall the service. If you have other instances of WebLogic Server that rely on the Node Manager, you must manually start the Node Manager or reinstall the Node Manager service. See “[Configuring, Starting, and Stopping Node Manager](http://e-docs.bea.com/wls/docs81b/adminguide/confignodemgr.html)” in *Configuring and Managing WebLogic Server* at <http://e-docs.bea.com/wls/docs81b/adminguide/confignodemgr.html>.

If you uninstall an instance of WebLogic Server that is not in the BEA Home linked to the Node Manager service, the uninstallation program does not uninstall the Node Manager service.

For more information about the Node Manager and for instructions for installing it on a UNIX server, see “[Overview of Node Manager](http://e-docs.bea.com/wls/docs81b/adminguide/nodemgr.html)” at <http://e-docs.bea.com/wls/docs81b/adminguide/nodemgr.html> and “[Configuring, Starting, and Stopping Node Manager](http://e-docs.bea.com/wls/docs81b/adminguide/confignodemgr.html)” at <http://e-docs.bea.com/wls/docs81b/adminguide/confignodemgr.html>.

Where to Find Upgrade and Migration Information

Information about upgrading your WebLogic Server installation with the latest service pack is provided in [Chapter 6, “Installing WebLogic Server Service Packs and Rolling Patches.”](#)

Information about upgrading and migrating from a previous release of WebLogic Server is provided in [Upgrade Guide for BEA WebLogic Server 8.1](http://e-docs.bea.com/wls/docs81b/upgrade/index.html) at <http://e-docs.bea.com/wls/docs81b/upgrade/index.html>.

Introducing Smart Update

The Smart Update feature enables you to quickly and easily upgrade your WebLogic Server software with service packs, software patches (sometimes referred to as rolling patches), and subsequent releases of the software.

When you start Smart Update, either from the Windows Start menu or from the command line, it checks the version of products installed (associated with the current BEA Home directory), and then connects to the BEA Web site to check for available updates. If an update for an installed product is available, the Smart Update window opens with directions for installing available upgrades. If no upgrades are available, a message displays indicating that no maintenance is available.

For details about using Smart Update, see [Chapter 6, “Installing WebLogic Server Service Packs and Rolling Patches.”](#)

1 *Preparing to Install WebLogic Server*

2 Installing WebLogic Server Using Graphical-Mode Installation

The following sections describe how to install WebLogic Server using the graphical user interface (GUI) mode installation on both Windows and UNIX systems:

- [“Before You Start” on page 2-2](#)
- [“Starting the Installation Program in Graphical Mode on Windows Platforms” on page 2-3](#)
- [“Starting the Installation Program in Graphical Mode on a UNIX Platform” on page 2-3](#)
- [“Running the Installation Program” on page 2-5](#)
- [“Configuring Domains, Servers, and Clusters with the Configuration Wizard” on page 2-8](#)
- [“What’s Next?” on page 2-10](#)

Before You Start

Before you start the WebLogic Server installation, please review the following information:

- Make sure you are installing the product on a supported platform. A complete list of supported platforms can be found at <http://e-docs.bea.com/wls/certifications/certifications/index.html>.
- You should read all of [Chapter 1, “Preparing to Install WebLogic Server,”](#) specifically the following sections:
 - [“Installation Prerequisites”](#) on page 1-5
 - [“Choosing the Type of Installation”](#) on page 1-12
 - [“Selecting Directories for the WebLogic Server Installation”](#) on page 1-8
- You cannot re-install WebLogic Server in the same location as a previously installed version. You must first uninstall the WebLogic Server installation, as described in [Chapter 8, “Uninstalling WebLogic Server,”](#) or install in another location. You can, however, install additional Weblogic Platform components, such as the WebLogic Server examples, in the same location without uninstalling existing components.
- All WebLogic Platform components installed in a BEA product directory (for example, `c:\bea\weblogicXXX`) must be at the same version level. If you attempt to install additional components at a higher version than those that are already installed in that directory, the installation program prompts you to upgrade your existing components before you can proceed with the installation. For example, if you installed WebLogic Server 8.1 (the GA release), and later attempt to install WebLogic Portal 8.1 Service Pack 1, you are required to upgrade WebLogic Server to Service Pack 1 before you can install WebLogic Portal. For details on upgrading your installation, see [Chapter 6, “Installing WebLogic Server Service Packs and Rolling Patches.”](#)

Starting the Installation Program in Graphical Mode on Windows Platforms

To start the GUI-mode installation process on a Windows system, follow these steps:

1. Log in to the Windows system.
2. Download the WebLogic Server installation file for your platform from the URL that your Beta representative supplied.
3. Go to the directory where you downloaded the installation file and double-click the installation file:

```
weblogic81b_win32.exe
```

The installation program begins to install WebLogic Server.

4. Proceed to [“Running the Installation Program” on page 2-5](#).

Starting the Installation Program in Graphical Mode on a UNIX Platform

The WebLogic Server installation program for some UNIX platforms includes a JVM bundled in the installation program (filenames ending in `.bin`). The WebLogic Server installation program uses the bundled JVM to install WebLogic Server and then installs the JVM for use with WebLogic Server. For other UNIX platforms, the WebLogic Server installation program does *not* include the JVM in the installation program (filenames ending in `.jar`). To run these installation programs, you must first include the `bin` directory of a JVM installed on your system at the beginning of the `PATH` variable definition.

Note: To run graphical-mode installation, your console must support a Java-based GUI. If the installation program determines that your system cannot support a Java-based GUI, the installation program automatically starts console-mode installation. For details, see [Chapter 3, “Installing WebLogic Server Using Console-Mode Installation.”](#)

Starting Graphical-Mode Installation for .bin Installation Files

If you have an installation program file that ends in `.bin`, follow these steps to start the installation program in graphical mode on a UNIX system:

1. Log in to the target UNIX system.
2. Download the WebLogic Server installation file for your platform from the URL that your Beta representative supplied.
3. Open a command-line shell and go to the directory where you downloaded the installation file.
4. Start the installation program by entering the following commands:

```
chmod a+x filename
./filename.bin
```

where `filename.bin` is the name of the WebLogic Server installation program specific to your platform.

The installation program begins to install WebLogic Server.

5. Proceed to [“Running the Installation Program” on page 2-5.](#)

Starting Graphical-Mode Installation for .jar Installation Files

To start the graphical-mode installation process for installation files ending in `.jar`, follow these steps:

1. Log in to the target UNIX system.
2. Open a command-line shell.
3. Include the `bin` directory of a JVM at the beginning of the `PATH` variable on the target system. For example:

```
PATH=$JAVA_HOME/bin:$PATH
export PATH
```

Where `JAVA_HOME` is the full path to the JVM root directory.

4. Start the installation program by entering the following command:

```
java -jar filename.jar
```

where `filename.jar` is the name of the WebLogic Server installation file, for example `pj_serverXXX_generic.jar`.

Note: You can also include the `-log=/full_path_to_log_file` option on the command line to create a log file during installation. For example:

```
java -jar filename.jar -log=/nfs/home1/logs/wls_install.log
```

The installation program creates a verbose installation log.

5. Proceed to [Running the Installation Program](#).

Running the Installation Program

The installation program prompts you to enter specific information about your system and configuration.

Table 2-1 Running the Installation Program

In this window . . .	Perform the following action . . .
Welcome	Click the Next button to proceed or cancel the installation at any time by clicking Exit.
BEA License Agreement	Read the BEA Software License Agreement and indicate your acceptance of the terms of the agreement by selecting Yes. To continue with the installation, you must accept the terms of the license agreement and then click Next.

2 Installing WebLogic Server Using Graphical-Mode Installation

Table 2-1 Running the Installation Program

In this window . . .	Perform the following action . . .
Choose BEA Home Directory	Specify the BEA Home directory that will serve as the central support directory for all BEA products installed on the target system. If you already have a BEA Home directory on your system, you can select that directory (recommended) or create a new BEA Home directory. If you choose to create a new directory, the WebLogic Server installer program automatically creates the directory for you. For details about the BEA Home directory, see “BEA Home Directory” on page 1-9 .
Choose Install Type	<p>Select the option button for the type of installation you want to perform:</p> <ul style="list-style-type: none">■ Typical—In a typical installation, all software components in the distribution are installed on your system. Sample domains are preconfigured for use with the PointBase database during installation allowing you to execute the samples when the installation is complete.■ Custom—In a custom installation, you can select the software components and the JVM you want to install and optionally choose not to install the WebLogic Server Node Manager as a Windows service (Windows platforms only). <p>For additional information about installation types, see “Choosing the Type of Installation” on page 1-12.</p> <p>If you are using the typical installation option, go to the Choose Product Directory window.</p>
Choose Components	<p>Select the components to install by selecting or clearing the appropriate check boxes.</p> <p>This window displays a tree-view of all the components available for installation. In an initial installation, all components are checked.</p> <p>The check boxes for components already installed on your system appear as a greyed-check box.</p> <p>Note: When you select or deselect components to install, the installation program checks for dependencies between components and automatically modifies the list of selected components.</p>

Table 2-1 Running the Installation Program

In this window . . .	Perform the following action . . .
Select Java Virtual Machine	<p>Select the JVM that you want to use to install and then run WebLogic Server. Options vary by hardware platform.</p> <ul style="list-style-type: none"> ■ Install JRockit—Select this option to install Weblogic JRockit. ■ Install Other JVM (the default)—Select this option to install the Sun Java 2 SDK 1.4.1. ■ Use Existing JVM in your BEA Home—Select this option if you are installing a new version of WebLogic Server in an existing BEA Home directory that already contains a JVM. ■ Specify JVM Location—Select this option if you already have a supported JVM installed on the server and you want WebLogic Server to run on that JVM. <p>See “Choosing a JVM” on page 1-13 for more details.</p>
Choose Product Directory	<p>Specify the directory in which you want to install the WebLogic Server software and click Next. You can accept the default product directory (<code>weblogicXXX</code>, where <code>XXX</code> represents the version number of WebLogic Server that you are installing) or create a new product directory.</p> <p>For additional information and a description of the resulting directory structure, see “Product Installation Directory” on page 1-12.</p> <p>If you choose to create a new directory, the installation program automatically creates the directory for you, if necessary.</p> <p>When you click Next, the installation program begins copying the components you specified to your system.</p> <p>Note: This window is not displayed if you are performing a Custom installation and you have selected the same BEA Home directory that contains previously installed WebLogic Server components. In that case, the selected components are installed in the Product Directory you specified during the initial installation.</p>

Table 2-1 Running the Installation Program

In this window . . .	Perform the following action . . .
Install Node Manager as a Windows Service Note: This window is displayed only if you are installing on a Windows platform and if you select Custom installation in the Choose Install Type window.	Indicate whether you want to install the WebLogic Server Node Manager as a Windows service. The Node Manager is used to monitor and start and stop managed servers in a domain. See “ Installing the Node Manager as a Windows Service ” on page 1-15 for more information.
Status	Read the information displayed about BEA products and services and click Next when the installation program has finished copying the specified files to your system.
Installation Complete	Select the Run the Configuration Wizard check box (selected by default) if you want to run the Configuration Wizard to create an application domain. Click Done to exit the installation program. If you opted to run the Configuration Wizard, proceed to Configuring Domains, Servers, and Clusters with the Configuration Wizard .

Configuring Domains, Servers, and Clusters with the Configuration Wizard

At the end of the WebLogic Server installation process, you can run the Configuration Wizard to create and configure WebLogic domains. A WebLogic domain is an interrelated set of WebLogic Server resources that are managed as a unit. A domain includes one or more WebLogic Servers, and may also include WebLogic Server clusters. You can also start the Configuration Wizard from the Start menu or the command line. For complete details, refer to [Creating Domains and Servers](#) in the *WebLogic Server Administration Console Online Help* at <http://e-docs.bea.com/wls/docs81b/ConsoleHelp/createdomain.html>.

The Configuration Wizard uses pre-configured domain templates that you use to create a domain for the target environment. WebLogic Server 8.1 includes the following templates:

- **WLS Domain**—The basic, full-featured template for creating WebLogic domains for WebLogic Server.
- **WLS Examples**—A template used for updating the WebLogic Server examples domain when you install a service pack.

Configuration Options

Based on the pre-configured domain template that you choose when running the Configuration Wizard, you are prompted to supply certain types of information for each domain. The following list offers a sampling of the type of information you need to provide. Complete details are provided in [Creating Domains and Servers](#) in the *WebLogic Server Administration Console Online Help* at <http://e-docs.bea.com/wls/docs81b/ConsoleHelp/createdomain.html>.

- Server Type, such as a Single standalone server, or an Administration Server with Managed Servers or clustered Managed Servers.
- A domain directory in which to create the domain. By default, this directory is created in `bea_home\user_projects`, where `bea_home` is the BEA Home directory containing the support information for this installation. If the directory does not exist, the Configuration Wizard creates the directory for you.

Note: On UNIX systems, do not use spaces in the domain name.

- Configuration information for the server, such as Server Name, Listen Address, Listen Port, and SSL Listen Port. Default values are provided for most values.

Note: On UNIX systems, do not use spaces in the server name.

- A system user name and password. WebLogic Server user names and passwords can contain any character from the JDK supported character sets, including international characters. Characters should also be valid XML data characters, which excludes the following characters: `<`, `>`, `[`, and `]`.
- An option to configure the server as a Windows service. If you choose to do so, the server starts automatically each time you boot your Windows system. You must have *Administrator* privileges to the install the server as a Windows

service. For complete details about installing and running WebLogic Server as a Windows service, see [Setting Up a WebLogic Server as a Windows Service](#) in *Configuring and Managing WebLogic Server* at <http://e-docs.bea.com/wls/docs81b/aminguide/winservice.html>.

Note: You must follow XML guidelines for characters when specifying values in the Configuration Wizard. That is, you cannot use characters reserved for use in XML, such as <, >, [, and].

What's Next?

To learn more about WebLogic Server, view the following files:

- `about_wls.html`

Summarizes new features in this version of WebLogic Server and provides pointers to useful related information.

On a Windows system, access this file by using the About WebLogic Server shortcut on the Start Menu. On both Windows and UNIX systems, access the `about_wls.html` file at `WL_HOME\server\about_wls.html`, where `WL_HOME` represents the top-level installation directory for the WebLogic Server software.

- `readme.txt`

A text-only file that contains similar information as `ABOUT_WLS.HTML`. Access the `readme.txt` file at `WL_HOME\server\readme.txt`, where `WL_HOME` represents the top-level installation directory for the WebLogic Server software.

3 Installing WebLogic Server Using Console-Mode Installation

The following sections describe how to install WebLogic Server using console-mode installation:

- [“Before You Start” on page 3-1](#)
- [“Starting Console-Mode Installation on Windows Systems” on page 3-2](#)
- [“Starting Console-Mode Installation on UNIX Systems” on page 3-3](#)
- [“Running Console-Mode Installation” on page 3-5](#)
- [“What’s Next?” on page 3-11](#)

Before You Start

Before you start the WebLogic Server installation, please review the following information:

- Make sure you are installing the product on a certified platform. A complete list of certified platforms can be found at <http://e-docs.bea.com/wls/certifications/certifications/index.html>.
- You should read all of [Chapter 1, “Preparing to Install WebLogic Server,”](#) specifically the following sections:
 - “[Installation Prerequisites](#)” on page 1-5
 - “[Choosing the Type of Installation](#)” on page 1-12
 - “[Selecting Directories for the WebLogic Server Installation](#)” on page 1-8
- You cannot re-install WebLogic Server in the same location as a previously installed version. You must first uninstall the WebLogic Server installation, as described in [Chapter 8, “Uninstalling WebLogic Server,”](#) or install in another location. You can, however, install additional Weblogic Platform components, such as the WebLogic Server examples, in the same location without uninstalling existing components.
- All WebLogic Platform components installed in a BEA product directory (for example, `/bea/weblogicXXX`) must be at the same version level. If you attempt to install additional components at a higher version than those that are already installed in that directory, the installation program prompts you to upgrade your existing components before you can proceed with the installation. For example, if you installed WebLogic Server 8.1 (the GA release), and later attempt to install WebLogic Portal 8.1 Service Pack 1, you are required to upgrade WebLogic Server to Service Pack 1 before you can install WebLogic Portal. For details on upgrading your installation, see [Chapter 6, “Installing WebLogic Server Service Packs and Rolling Patches.”](#)

Starting Console-Mode Installation on Windows Systems

To start the installation in console mode on a Windows system, follow these steps:

1. Log in to the Windows system and open an MS-DOS command prompt window.

2. Go to the directory where you downloaded the installation program and invoke the installation procedure by entering the following command:

```
weblogicXXX_win32.exe -mode=console
```

where `xxx` is the version number of the software you are installing.

Note: To create a verbose log file during installation, include the `-log=/full_path_to_log_file` option in the command line. For example:

```
weblogicXXX_win32 -mode=console  
-log=d:\logs\weblogic_install.log
```

The path can be to a file or folder. All folders in the path must exist before you execute the command or the installation program will not create the log file.

3. Proceed to [“Running Console-Mode Installation” on page 3-5](#).

Starting Console-Mode Installation on UNIX Systems

The WebLogic Server installation program for some UNIX platforms includes JVM options bundled in the installation program (filenames ending in `.bin`). The WebLogic Server installation program uses the bundled JVM to install WebLogic Server and then installs the JVM for use with WebLogic Server. For other UNIX platforms, the WebLogic Server installation program does *not* include a JVM in the installation program (filenames ending in `.jar`). To run these installation programs, you must first include the `bin` directory of a supported JVM installed on your system at the beginning of your `PATH` variable definition.

Starting Console-Mode Installation for .bin Installation Files

To start the console-mode installation process for installation files ending in `.bin`, follow these steps:

1. Log in to the target UNIX system and open a command-line shell.
2. Go to the directory where you downloaded the installation program and invoke the installation procedure by entering the following commands:

```
chmod a+x filename.bin
./filename.bin -mode=console
```

where `filename.bin` is the name of the WebLogic Server installation file.

Note: To create a verbose log file during installation, include the `-log=/full_path_to_log_file` option in the command line. For example:

```
./weblogicXXX_solaris32.bin -mode=console
-log=/nfs/home1/logs/wls_install.log
```

The path can be to a file or folder. All folders in the path must exist before you execute the command or the installation program will not create the log file.

3. Proceed to [“Running Console-Mode Installation” on page 3-5](#).

Starting Console-Mode Installation for .jar Installation Files

To start the console-mode installation process for installation files ending in `.jar`, follow these steps:

1. Log in to the target UNIX system and open a command-line shell.
2. Include the `bin` directory of a supported JVM at the beginning of the `PATH` variable on the target system. For example:

```
PATH=$JAVA_HOME/bin:$PATH
export PATH
```

Where *JAVA_HOME* is the full path to the `j2sdk1.4.1` directory.

3. Go to the directory where you downloaded the installation program and invoke the installation procedure by entering the following commands:

```
java -jar filename.jar -mode=console
```

Note: To create a verbose log file during installation, include the `-log=/full_path_to_log_file` option in the command line. For example:

```
java -jar filename.jar -mode=console
-log=/nfs/home1/logs/wls_install.log
```

The path can be to a file or folder. All folders in the path must exist before you execute the command or the installation program will not create the log file.

4. Proceed to [Running Console-Mode Installation](#).

Running Console-Mode Installation

The console mode installer displays a series of text panels that correspond to the windows in the graphical installer. To complete the console-mode installation process, respond to the prompts in each panel by entering the number associated with your choice or by pressing Enter to accept the default. To exit the installation process, enter `exit` in response to any prompt. To review or change your selection or to go back to a previous panel, enter `previous` at the prompt.

Note: The sample console text and directory pathnames in this section use UNIX conventions (forward slashes) in pathnames, for example, `/home1/bea/weblogicXXX`. When entering pathnames on a Windows system, use the Windows convention (backslashes) for pathnames, for example `c:\bea\weblogicXXX`.

The following procedure steps you through the installation program. Use this procedure after you have started the installation program in console mode as described in the previous sections.

3 Installing WebLogic Server Using Console-Mode Installation

1. In the Welcome panel, type `next` or press `Enter` to continue with the installation process.

The License Agreement panel is displayed.

2. Read the BEA Software License Agreement and indicate your acceptance or rejection of the terms of the agreement by typing `yes` or `no`, respectively. To review the entire agreement, press `Enter` or type `more` several times. If you type `no`, the installation process terminates. To proceed with the installation, type `yes` to indicate your agreement with the terms of the license.

The Choose BEA Home directory panel is displayed.

3. Specify the BEA Home directory that will serve as the central support directory for all BEA products installed on the target system. For details about the BEA Home directory, see [“BEA Home Directory” on page 1-9](#).

The installation program displays the following text:

```
Choose BEA Home Directory:
-----
```

```
BEA Home = [/home/bea]
```

```
Input new BEA Home Directory OR [Exit][Previous][Next]>
/nfs/homes/dcabelus/bea_load10
```

Do one of the following:

- To use the default BEA Home directory, type `next` or press `Enter`.
- To create a new BEA Home directory, enter the *full path* to the BEA Home directory, for example `/home/beahome2`. If you specify a directory that does not exist, the installation program creates it for you.

Whether you accept the default BEA Home directory or choose to create a new BEA Home directory, you are prompted to confirm your selection, as shown in the following sample:

```
*BEA Home Choice:
```

```
->1| Yes, Use this BEA home directory [/home/bea]
    2| No, return to BEA home directory selection
```

```
Enter index number to select OR [Exit][Previous][Next]>
```

On the command line, type 1 or press Enter to accept your selection. Otherwise, type 2 to return to the Choose BEA Home Directory panel where you can modify your entry.

After you have selected your BEA Home directory and confirmed your selection, the Choose Install Type panel is displayed.

4. Specify the type of installation you want to perform by entering the number associated with the install type, as shown in the following text:

```
Choose Install Type:
```

```
-----
```

```
->1|Typical Installation
   |Install all software components, including program files and
   |examples.
   |
   |2|Custom Installation
   |Choose software components to install and optionally create
   |custom application domains. Recommended for advanced
   |users.
```

```
Enter index number to select OR [Exit][Previous][Next]>
```

Do one of the following:

- Type 1 or press Enter to choose a Typical installation.

In a typical installation:

- All software components provided with WebLogic Server, including sample files, are installed on your system.

- Sample domains are preconfigured for use with the PointBase database during installation allowing you to execute the samples when the installation is complete.

- The default JVM is installed.

- The WebLogic Server Node Manager is installed as a Windows service, if you are installing on a Windows platform.

If you select the Typical option, the Choose Product Directory panel is displayed. Go to step 6.

- Type 2 to choose a Custom installation. In a custom installation, you can select the software components you want to install, select a JVM to install and use to run WebLogic Server, and specify whether you want to install the Node Manager as a Windows service.

3 Installing WebLogic Server Using Console-Mode Installation

The Choose Components prompt is displayed.

For more information about typical and custom installations, see [“Choosing the Type of Installation” on page 1-12](#).

5. Select the components you want to install. The available components are displayed as follows:

```
Choose Components:
```

```
-----
```

```
Release 8.1.0.0
|___WebLogic Server [0] x
|   |___Server [0.0] x
|   |___Server Examples [0.1] x
```

Enter number exactly as it appears in brackets to select OR [Exit][Previous][Next]>

By default, all components are selected as indicated by the x (UNIX systems), or check mark (Windows systems), at the end of each line. To deselect a component, type the numeric code for the component on the command line exactly as it appears within the brackets. For example, if you do not want to install the Server Examples for WebLogic Server, type 0.1.

When you are finished selecting components, press Enter or type `next`. You are prompted to confirm your selection. Type 1 or press Enter to accept your selection. Otherwise, type 2 to return to the Choose Components panel where you can modify your selections.

Note: When you select or deselect components to install, the installation program checks for dependencies between components and automatically modifies the list of selected components.

6. In the Select Java Virtual Machine panel, you select the JVM that you want to use to install and then run WebLogic Server. Options vary by hardware platform.

```
Select Java Virtual Machine:
```

```
-----
```

```
1|Install JRockit
->2|Install Other JVM
3|Specify JVM Location
```


Enter index number to select OR [Exit][Previous][Next]>

Type the number of the option you want to select:

- Install JRockit—Select this option to install Weblogic JRockit.
- Install Other JVM (the default)—Select this option to install the Sun Java 2 SDK 1.4.1.
- Specify JVM Location—Select this option if you already have a supported JVM installed on the server and you want WebLogic Server to run on that JVM.

See [“Choosing a JVM” on page 1-13](#) for more details.

After you make a JVM selection, you are prompted to make a selection within the category of JVMs that you selected. For example, if you selected Install Other JVM, the following text is displayed:

```
Select Java Virtual Machine:
```

```
-----
```

```
->1|Sun SDK 1.4.1
```

```
** Please specify the other type of JVM to install.
```

```
Enter index number to select OR [Exit][Previous][Next]>
```

Press Enter to continue. You are then prompted to confirm your selection. Press Enter to continue.

7. In the Choose product Directory panel, you specify the directory in which you want to install the WebLogic Server software. The following text is displayed:

```
Choose Product Directory:
```

```
-----
```

```
Product Installation Directory = [/home/bea/weblogicXXX]
```

```
Input new Product Installation Directory OR
```

```
[Exit][Previous][Next]>
```

Press Enter to select the default product directory (*bea_home/weblogicXXX*) or enter the *full path* to a new product directory. If you specify a new directory, the installation program automatically creates the directory for you.

The following text is displayed:

3 *Installing WebLogic Server Using Console-Mode Installation*

Choose Product Directory:

```
->1| Yes, use this product directory [/home/bea/weblogicXXX]
    2| No, select another product directory
```

Enter index numbers to select OR [Exit][Previous][Next]>

Verify that your entry is correct, then type 1 or press Enter to proceed with the installation. Otherwise, type 2 to return to the Choose Product Directory panel where you can modify your entry.

8. If you are installing on a Windows platform, the Install Node Manager as a Windows Service panel is displayed. The Node Manager is used to monitor and start and stop managed servers in a domain.

The following text is displayed:

```
Install Node Manager as a Windows Service
```

```
->1 - Yes, install now.
    2 - No, do not install now. See product documentation for
      post-install registration of Node Manager as a Windows
      Service.
```

Enter a number or [Exit][Previous][Next]>

Enter 1 or press Enter to install the Node Manager as a Windows Service. See [“Installing the Node Manager as a Windows Service” on page 1-15](#) for more information. Enter 2 if you do not want to install the Node Manager as a Windows service.

9. The WebLogic Server installation program installs the software and displays the following progress indicators:

```
<----- WebLogic Server 8.1 ----->
```

```
Installing files..
```

```
0%          25%          50%          75%          100%
```

```
[-----|-----|-----|-----]
```

```
[*****]
```

```
Copying JDK...
```

```
<----- WebLogic Server 8.1 Beta ----->
```

```
Installing JDK...
```

```

0%           25%           50%           75%           100%
[-----|-----|-----|-----]
[*****]

```

10. When the WebLogic Server installation is complete, the following text is displayed:

```

Installation Complete

->1 - Run the Configuration Wizard
   2 - Exit Installation

Enter a number or [Exit][Previous][Next]>

```

Press Enter or type 1 to launch the Configuration Wizard. Type 2 or next to skip the Configuration Wizard.

You use the Configuration Wizard to create and configure custom WebLogic domains. A WebLogic domain is an interrelated set of WebLogic Server resources that are managed as a unit. A domain includes one or more WebLogic Servers, and may also include WebLogic Server clusters.

For more information about the Configuration Wizard, see [“Configuring Domains, Servers, and Clusters with the Configuration Wizard”](#) on page 2-8.

What's Next?

To learn more about WebLogic Server, view the following files:

- `about_wls.html`

Summarizes new features in this version of WebLogic Server and provides pointers to useful related information.

You can access the `about_wls.html` file at `WL_HOME/server/about_wls.html`, where `WL_HOME` represents the top-level installation directory for the WebLogic Server software.

- `readme.txt`

3 *Installing WebLogic Server Using Console-Mode Installation*

A text-only file that contains similar information as `ABOUT_WLS.HTML`. Access the `README.TXT` file at `WL_HOME/server/readme.txt`, where `WL_HOME` represents the top-level installation directory for the WebLogic Server software.

4 Installing WebLogic Server Using Silent-Mode Installation

The following sections describe how to install WebLogic Server using the installation program in silent mode on both Windows and UNIX systems:

- [“What Is Silent-Mode Installation?” on page 4-2](#)
- [“Before You Start” on page 4-2](#)
- [“Using Silent-Mode Installation: Main Steps” on page 4-3](#)
- [“Creating a Silent-Mode Installation Template File” on page 4-3](#)
- [“Sample Silent-Mode Installation Template File” on page 4-8](#)
- [“Starting the Silent-Mode Installation Process on a Windows System” on page 4-11](#)
- [“Starting the Silent-Mode Installation Process on a UNIX System” on page 4-13](#)

What Is Silent-Mode Installation?

Silent-mode installation is a way of setting installation configurations only once and then using those configurations to duplicate the installation on many machines. During installation in silent mode, the installation program reads the settings for your configuration from an XML file that you create prior to beginning the installation. The installation program does not display any configuration options during the installation process. Silent-mode installation works on both Windows and UNIX systems.

Note: Using silent-mode installation implies your consent to the BEA License Agreement. You neither see a copy of the BEA Software License Agreement nor have any means to accept the terms of the agreement.

The instructions in this section assume that you have already acquired the installation program, either on CD or from the Web. For more information, see “[WebLogic Server Distribution Methods](#)” on page 1-4.

Note: Silent-mode installation is not supported with the net installer. Filenames for the net installer version of the installation program are preceded by `net_`, for example `net_platformXXX_solaris.bin`. Do not attempt to use installation programs with filenames beginning with `net_` for silent-mode installation.

Before You Start

Before you start the WebLogic Server installation, ensure you are installing the product on a supported platform. A complete list of supported platforms can be found at <http://e-docs.bea.com/wls/certifications/certifications/index.htm> 1. You should also read all of [Chapter 1, “Preparing to Install WebLogic Server.”](#)

Note: You cannot re-install WebLogic Server in the same location as a previously installed version. You must first uninstall the WebLogic Server installation, as described in [Chapter 8, “Uninstalling WebLogic Server,”](#) or install in another location.

Using Silent-Mode Installation: Main Steps

The silent-mode installation process has two primary steps:

1. Create a template file that contains the configuration settings, such as BEA Home directory, product directory, and options for the Configuration Wizard.

For the detailed procedure, see [“Creating a Silent-Mode Installation Template File” on page 4-3](#). For a sample template file, see [“Sample Silent-Mode Installation Template File” on page 4-8](#).

2. Start the silent-mode installation process and use the values specified in the template file.

For the detailed procedure, see [“Starting the Silent-Mode Installation Process on a Windows System” on page 4-11](#) and [“Starting the Silent-Mode Installation Process on a UNIX System” on page 4-13](#).

Creating a Silent-Mode Installation Template File

When you install WebLogic Server in silent mode, the installation program uses an XML file (`silent.xml`) to determine the installation options. Before you run the installation program in silent mode, you must create the `silent.xml` file with your installation options.

Note: During silent-mode installation, the installation program does not validate entries in the `silent.xml` file. If there are errors in the `silent.xml` file, the installation will fail.

To create a template file for use in the silent-mode installation process, follow these steps:

1. Display the sample silent-mode installation template file in a supported browser. The sample template is available at the following location:

4 Installing WebLogic Server Using Silent-Mode Installation

<http://e-docs.bea.com/wls/docs81b/install/instsil.html#template>

The sample template is also available later in this chapter. See “[Sample Silent-Mode Installation Template File](#)” on page 4-8.

2. Copy the contents of the template file and save it as a text file named `silent.xml` in the directory containing the WebLogic Server installer.
3. In the `silent.xml` file, modify the values for the keywords shown in the following table to create your desired configuration.

Note: You must follow XML guidelines for characters when modifying values. That is, you cannot use characters reserved for use in XML, such as `<`, `>`, `[`, and `]`.

Table 4-1 Silent-mode Installation Template Values

For this data-value name. . .	Enter the following value . . .
BEAHOME	The full pathname for the BEA Home directory of your choice. For details about the BEA Home directory, see “ BEA Home Directory ” on page 1-9.
USER_INSTALL_DIR	The full pathname for the directory where you want to install the WebLogic Platform software. For details, see “ Product Installation Directory ” on page 1-12.
INSTALL_NODE_MANAGER_SERVICE	yes to install the WebLogic Node Manager as a Windows Service, no to skip it. See “ Installing the Node Manager as a Windows Service ” on page 1-15.
JVM_TYPE	The JVM to install or use: <ul style="list-style-type: none">■ other—install the Sun SDK bundled in the installer.■ jrockit—install WebLogic JRockit. See “ Choosing a JVM ” on page 1-13. Note: If you set <code>STATIC_JAVA_HOME</code> , <code>JVM_TYPE</code> is ignored.
STATIC_JAVA_HOME	The full path to the root directory (<code>JAVA_HOME</code>) of the JVM you want to use to run WebLogic Server.

Table 4-1 Silent-mode Installation Template Values

For this data-value name. . .	Enter the following value . . .
RUN_DOMAIN_WIZARD	<p><code>true</code> to run the Configuration Wizard, <code>false</code> to skip it. If you choose to run the Configuration Wizard, you must specify values for the appropriate data-values as listed in the following rows in this table. For more information about the Configuration Wizard, see Creating Domains and Servers in the <i>Administration Console Online Help</i> at http://e-docs.bea.com/wls/docs81b/ConsoleHelp/createdomain.html.</p>
<i>The remaining values apply to options for the Configuration Wizard.</i>	
<code>domain.directory</code>	<p>The full path to the domain directory. The domain directory should be named the same name as the domain.</p> <p>Note: On UNIX systems, do not include spaces in the path to the domain directory.</p>
<code>C_domainName</code>	<p>Name of the domain to create. The name must match the directory name specified for <code>domain.directory</code>.</p> <p>Note: On UNIX systems, do not include spaces in the domain name.</p>
<code>C_serverName</code>	<p>Name of the server to configure, used as the server name for stand-alone servers and as the Administration Server for domains with Managed Servers and clustered servers.</p> <p>Note: Do not include spaces in the server name.</p>
<code>C_username</code>	<p>An administrative user name to start the server and access the Administration Console. Do not use spaces or XML reserved characters.</p>
<code>C_password</code>	<p>A password for the administrative user that contains at least eight characters but no more than 20 characters. Do not use spaces or XML reserved characters.</p>
<code>C_serverListenAddress</code>	<p>The system IP address or DNS name for the server. You can leave this blank if you want to use <code>localhost</code> and the server IP address to access the server and the Administration Console.</p>

4 Installing WebLogic Server Using Silent-Mode Installation

Table 4-1 Silent-mode Installation Template Values

For this data-value name . . .	Enter the following value . . .
<code>C_serverListenPort=</code>	A dedicated TCP/IP port number for the Administration Server. This number specifies the port at which the server listens for connections. Typically, 7001. The port number can be any integer from 1 to 65535.
<code>C_serverSSLListenPort=</code>	A dedicated secure listen port number for the Administration Server. The secure listen port number is used for secure Web connections based on the secure sockets layer (SSL) protocol. Typically, 7002. The port number can be any integer from 1 to 65535 and cannot be the same port as the <code>C_serverListenPort</code> .
<code>ClusterName</code>	Name of the cluster to create, if applicable. Note: Do not include spaces in the cluster name.
<code>ClusterPort</code>	The MultiCast port that the Administration Server uses to communicate with clustered servers. Typically, 7777.
<code>ClusterMCAddr</code>	The cluster MultiCast IP address that the Administration Server uses to communicate with clustered servers. Typically, 237.0.0.1. Valid MultiCast addresses begin with 237, 238, or 239.
<code>ADMIN_HOST_NAME_OR_IP</code>	The Administration Server name or IP address. Used when configuring a Managed Server.
<code>ADMIN_LISTEN_PORT</code>	The port at which the Administration Server listens. Used when configuring a Managed Server.
<code>MANAGED_SERVER_REGISTERED_NAME_IN_ADMIN</code>	The machine or server name as registered with the Administration Server. Used when configuring a Managed Server.
<code>SERVER-RUN-AS</code>	Determines the server configuration that the Configuration Wizard creates: Single Server (Standalone Server), Admin Server with Managed Server(s), Admin Server with Clustered Managed Server(s), or Managed Server (with owning Admin Server configuration).

Table 4-1 Silent-mode Installation Template Values

For this data-value name. . .	Enter the following value . . .
<code>selectedJar</code>	The full path to the template JAR file that the Configuration Wizard uses to create the domain and configure servers.
<code>INSTALL_NT_SERVICE</code> (Windows systems only)	<p><code>yes</code> to install the configured server as a Windows service; <code>no</code> to skip installing the configured server as a Windows service.</p> <p>Note: This data-value pair is only used if the selected template supports installing the server as a Windows service. If not, the value is ignored.</p> <p>This value is ignored on UNIX systems.</p>
<code>INSTALL_WINDOWS_STARTUP_MENU</code>	<p><code>yes</code> to add an option to the Windows Start menu to start the server; <code>no</code> (the default value) to skip the Start menu option.</p> <p>Note: This data-value pair is only used if the selected template supports installing Start menu options. If not, the value is ignored.</p> <p>This value is ignored on UNIX systems.</p>
<code>managedServers</code> data group	<p>Determines the configuration of the group of Managed Servers in the domain. This data group applies only when you select "Admin Server with Managed Server(s)" as the value for <code>SERVER-RUN-AS</code>.</p> <p>For each Managed Server in your configuration, specify the following:</p> <ul style="list-style-type: none"> ■ <code>managedServerRegName</code>—name of the server as registered with the Administration Server. Alphanumeric characters only; no spaces. ■ <code>managedServerHostIP</code>—IP address or DNS name of the machine on which the server is installed. ■ <code>managedServerListenPort</code>—server listen port. ■ <code>managedServerSSLListenPort</code>—secure listen port for the server.

4 Installing WebLogic Server Using Silent-Mode Installation

Table 4-1 Silent-mode Installation Template Values

For this data-value name . . .	Enter the following value . . .
<code>clusterServers</code> data group	<p>Determines the configuration of the group of clustered Managed Servers in the domain. This data group applies only when you select "Admin Server with Clustered Managed Server(s)" as the value for <code>SERVER-RUN-AS</code>.</p> <p>For each server in the cluster, specify the following:</p> <ul style="list-style-type: none">■ <code>clusterServerRegName</code>—name of the server as registered with the Administration Server. Alphanumeric characters only; no spaces.■ <code>clusterServerHostIP</code>—IP address or DNS name of the machine on which the server is installed.■ <code>clusterServerListenPort</code>—server listen port.■ <code>clusterServerSSLListenPort</code>—secure listen port for the server.

See [Creating Domains and Servers](http://e-docs.bea.com/wls/docs81b/ConsoleHelp/createdomain.html) in the *Administration Console Online Help* at <http://e-docs.bea.com/wls/docs81b/ConsoleHelp/createdomain.html> for more information about how the Configuration Wizard works and the options you can select.

Sample Silent-Mode Installation Template File

Modify the following template text according to [Table 4-1](#) and save it as a file named `silent.xml`. You can then use the file as a template file when installing WebLogic Server in silent mode.

```
<?xml version="1.0" encoding="UTF-8"?>
<domain-template-descriptor>
<input-fields>
  <data-value name="BEAHOME" value="C:\bea" />
```

Sample Silent-Mode Installation Template File

```
<data-value name="USER_INSTALL_DIR"           value="C:\bea\weblogicXXX" />
<data-value name="INSTALL_NODE_MANAGER_SERVICE" value="no" />

<!--*** Set JVM_TYPE==other or leave it unset to install the other(Sun) JVM *** -->
<!-- <data-value name="JVM_TYPE"               value="other" /> -->

<!-- *** Set JVM_TYPE==jrockit to install the jrockit JVM *** -->
<!-- <data-value name="JVM_TYPE"               value="jrockit" /> -->

<!-- *** To use an existing JDK set STATIC_JAVA_HOME to its location. (note:
JVM_TYPE will be ignored) *** -->
<!-- <data-value name="STATIC_JAVA_HOME"        value="C:\jdk1.4.1" /> -->

<data-value name="RUN_DOMAIN_WIZARD"          value="false" />

<!--The following values are used by the Configuration Wizard to create and
configure a domain.-->

<data-value name="domain.directory"           value="C:\bea\user_domains\mydomain" />
<data-value name="C_domainName"               value="mydomain" />
<data-value name="C_serverName"               value="myserver" />
<data-value name="C_username"                 value="system" />
<data-value name="C_password"                 value="weblogic" />
<data-value name="C_serverListenAddress"      value="" />
<data-value name="C_serverListenPort"        value="7001" />
<data-value name="C_serverSSLListenPort"      value="7002" />
<data-value name="ClusterName"                value="mycluster" />
<data-value name="ClusterPort"                value="7777" />

<!--The following value, ClusterMCAddr, must be a class D IP address-->
<data-value name="ClusterMCAddr"              value="237.0.0.1" />
<data-value name="ADMIN_HOST_NAME_OR_IP"      value="adminserver" />
<data-value name="ADMIN_LISTEN_PORT"          value="7001" />
<data-value name="MANAGED_SERVER_REGISTERED_NAME_IN_ADMIN" value="ms1" />

<!--The SERVER-RUN-AS value determines the server configuration that the
Configuration Wizard creates. There are four options as indicated by the
following lines. Comment out the three options you do not want to use.-->

<data-value name="SERVER-RUN-AS" value="Single Server (Standalone Server)" />
<!-- <data-value name="SERVER-RUN-AS"          value="Admin Server with Managed
Server(s)" /> -->
<!-- <data-value name="SERVER-RUN-AS"          value="Admin Server with Clustered
Managed Server(s)" /> -->
<!-- <data-value name="SERVER-RUN-AS"          value="Managed Server (with owning
Admin Server configuration)" /> -->

<!--The selectedJar value determines the template that the Configuration Wizard
uses to create a domain and configure servers.-->
```

4 Installing WebLogic Server Using Silent-Mode Installation

```
<data-value name="selectedJar"
value="C:\bea\weblogicXXX\common\templates\domains\wls.jar" />

<!--The following four data-values depend on options enabled in the
Configuration Wizard template specified above. If the related options are not
enabled in the template, the values for the following four data-values are
ignored.-->

    <data-value name="INSTALL_NT_SERVICE"           value="no" />
    <data-value name="INSTALL_WINDOWS_STARTUP_MENU" value="no" />
    <data-value name="DB_EMAIL_HOST"               value="myserver" />
    <data-value name="DB_EMAIL_ADDRESS"            value="name@bea.com" />

<!--The managedServers data group determines the configuration of the group of
managed servers in the domain. This data group applies only when you select "Admin
Server with Managed Server(s)" as the value for SERVER-RUN-AS. To use this data
group, uncomment all applicable lines.-->

<!--    <data-group name="managedServers"> -->
<!--        <data-element> -->
<!--            <data-value name="managedServerRegName"       value="managed1" /> -->
<!--The following value can be an IP address or a DNS name-->
<!--            <data-value name="managedServerHostIP"        value="host1" /> -->
<!--            <data-value name="managedServerListenPort"    value="1001" /> -->
<!--            <data-value name="managedServerSSLListenPort" value="1002" /> -->
<!--        </data-element> -->
<!--        <data-element> -->
<!--            <data-value name="managedServerRegName"       value="managed2" /> -->
<!--            <data-value name="managedServerHostIP"        value="host2" /> -->
<!--            <data-value name="managedServerListenPort"    value="2001" /> -->
<!--            <data-value name="managedServerSSLListenPort" value="2002" /> -->
<!--        </data-element> -->
<!--        <data-element> -->
<!--            <data-value name="managedServerRegName"       value="managed3" /> -->
<!--            <data-value name="managedServerHostIP"        value="host3" /> -->
<!--            <data-value name="managedServerListenPort"    value="3001" /> -->
<!--            <data-value name="managedServerSSLListenPort" value="3002" /> -->
<!--        </data-element> -->
<!--        <data-element> -->
<!--            <data-value name="managedServerRegName"       value="managed4" /> -->
<!--            <data-value name="managedServerHostIP"        value="host4" /> -->
<!--            <data-value name="managedServerListenPort"    value="4001" /> -->
<!--            <data-value name="managedServerSSLListenPort" value="4002" /> -->
<!--        </data-element> -->
<!--    </data-group> -->

<!--The clusterServers data group determines the configuration of the group of
managed clustered servers in the domain. This data group applies only when you
select "Admin Server with Clustered Managed Server(s)" as the value for
SERVER-RUN-AS. To use this data group, uncomment all applicable lines.-->
```

```
<!-- <data-group name="clusterServers"> -->
<!-- <data-element> -->
<!-- <data-value name="clusterServerRegName" value="cluster1" /> -->
<!--The following value can be an IP address or a DNS name-->
<!-- <data-value name="clusterServerHostIP" value="host1" /> -->
<!-- <data-value name="clusterServerListenPort" value="1001" /> -->
<!-- <data-value name="clusterServerSSLListenPort" value="1002" /> -->
<!-- </data-element> -->
<!-- <data-element> -->
<!-- <data-value name="clusterServerRegName" value="cluster2" /> -->
<!-- <data-value name="clusterServerHostIP" value="host2" /> -->
<!-- <data-value name="clusterServerListenPort" value="2002" /> -->
<!-- <data-value name="clusterServerSSLListenPort" value="2003" /> -->
<!-- </data-element> -->
<!-- <data-element> -->
<!-- <data-value name="clusterServerRegName" value="cluster3" /> -->
<!-- <data-value name="clusterServerHostIP" value="host3" /> -->
<!-- <data-value name="clusterServerListenPort" value="3003" /> -->
<!-- <data-value name="clusterServerSSLListenPort" value="3004" /> -->
<!-- </data-element> -->
<!-- <data-element> -->
<!-- <data-value name="clusterServerRegName" value="cluster4" /> -->
<!-- <data-value name="clusterServerHostIP" value="host4" /> -->
<!-- <data-value name="clusterServerListenPort" value="4004" /> -->
<!-- <data-value name="clusterServerSSLListenPort" value="4005" /> -->
<!-- </data-element> -->
<!-- </data-group> -->

</input-fields>

</domain-template-descriptor>
```

Starting the Silent-Mode Installation Process on a Windows System

Installing the software using silent-mode installation takes the same amount of time as a standard installation. During silent-mode installation, an initial installation program window appears briefly, indicating that the installation has started. No other messages are displayed indicating the installation is in progress or has completed successfully, even if errors are encountered.

4 Installing WebLogic Server Using Silent-Mode Installation

Note: During silent-mode installation, the installation program does not validate entries in the `silent.xml` file. If there are errors in the `silent.xml` file, the installation will fail.

To start the silent-mode installation process on a Windows system, follow these steps:

1. Log in to the Windows system.

If you want to install WebLogic Server as a Windows service, you must have Administrator privileges. For information about installing WebLogic Server as a Windows service, see “[Setting Up a WebLogic Server as a Windows Service](#)” in the *BEA WebLogic Server Administration Guide* at <http://e-docs.bea.com/wls/docs81b/adminguide/winservice.html>.

2. Open a command-line shell.
3. Go to the directory that contains the installation file and start the installation procedure by entering the following command, making sure to specify the *full* pathname of the `silent.xml` template file:

```
filename.exe -mode=silent -silent_xml=path_to_silent.xml
```

where *filename* is the name of the WebLogic Server installation file, and *path_to_silent.xml* is the *full* path to the `silent.xml` template file.

Note: To create a verbose log file during installation, include the `-log=/full_path_to_log_file` option in the command line. For example:

```
serverXXX_win32.exe -mode=silent -silent_xml=D:\silent.xml  
-log=D:\logs\wls_install.log
```

The path can be to a file or folder. All folders in the path must exist before you execute the command or the installation program will not create the log file.

Starting the Silent-Mode Installation Process on a UNIX System

The WebLogic Server installation program for some UNIX platforms includes JVM options bundled in the installation program (filenames ending in `.bin`). The WebLogic Server installation program uses the bundled JVM to install WebLogic Server and then installs the JVM for use with WebLogic Server. For other UNIX platforms, the WebLogic Server installation program does *not* include a JVM in the installation program (filenames ending in `.jar`). To run these installation programs, you must first include the `bin` directory of a supported JVM installed on your system at the beginning of your `PATH` variable definition.

Installing the software using silent-mode installation takes the same amount of time as a standard installation. During silent-mode installation, an “Extracting . . .” message appears, indicating that the installation has started. No other messages are displayed indicating the installation is in progress or has completed successfully, even if errors are encountered.

Starting Silent-Mode Installation for `.bin` Installation Files

Note: During silent-mode installation, the installation program does not validate entries in the `silent.xml` file. If there are errors in the `silent.xml` file, the installation will fail.

To start the silent-mode installation process using installation files ending in `.bin`, follow these steps:

1. Log in to the target UNIX system.
2. Open a command-line shell.
3. Go to the directory that contains the installation file and start the installation procedure by entering the following command, making sure to specify the *full* pathname of the `silent.xml` template file:

```
chmod a+x filename
./filename -mode=silent -silent_xml=/path_to_silent.xml
```

where *filename* is the name of the WebLogic Server installation file, and *path_to_silent.xml* is the *full* path to the *silent.xml* template file.

Note: To create a verbose log file during installation, include the `-log=/full_path_to_log_file` option in the command line. For example:

```
serverXXX_solaris.bin -mode=silent -silent_xml=/home/silent.xml
-log=/logs/wls_install.log
```

The path can be to a file or folder. All folders in the path must exist before you execute the command or the installation program will not create the log file.

Starting Silent-Mode Installation for .jar Installation Files

Note: During silent-mode installation, the installation program does not validate entries in the *silent.xml* file. If there are errors in the *silent.xml* file, the installation will fail.

To start the silent-mode installation process for installation files ending in `.jar`, follow these steps:

1. Log in to the target UNIX system.
2. Open a command-line shell.
3. Include the `bin` directory of the JVM at the beginning of the `PATH` variable on the target system. For example:

```
PATH=$JAVA_HOME/bin:$PATH
export PATH
```

Where *JAVA_HOME* is the full path to the JVM directory.

4. Go to the directory that contains the installation file and start the installation procedure as described in [Table 4-2](#), making sure to specify the *full* pathname of the `silent.xml` template file.

Table 4-2 Commands to Start WebLogic Server Installation in Silent Mode

If you are ...	Enter the following command ...
Using JDK 1.4.1	<pre>java -jar <i>filename.jar</i> -mode=silent -silent_xml=<i>/path_to_silent.xml</i></pre>
Using a JDK other than 1.4.1	<pre>java -jar -Djdk.check.override=true <i>filename.jar</i> -mode=silent -silent_xml=<i>/path_to_silent.xml</i></pre>
Installing on an AIX platform	<pre>java -Djdk.check.override=true -classpath <i>filename.jar</i> com.bea.installer.BEAINstallController -mode=silent -silent_xml=<i>/path_to_silent.xml</i></pre>

For all commands, `filename.jar` is the name of the WebLogic Server installation file (for example `pj_serverXXX_generic.jar`) and `path_to_silent.xml` is the *full* path to the `silent.xml` template file.

Note: To create a verbose log file during installation, include the `-log=/full_path_to_log_file` option in the command line. For example:

```
java -jar filename.jar -mode=silent
-silent_xml=/home/silent.xml -log=/logs/wls_install.log
```

The path can be to a file or folder. All folders in the path must exist before you execute the command or the installation program will not create the log file.

5 Installing and Updating a WebLogic Server License

WebLogic Server requires a valid product license to run. The following sections explain how to acquire, install, and update a WebLogic Server license:

- [“About the WebLogic Server License” on page 5-1](#)
- [“Updating Your license.bea File” on page 5-2](#)
- [“Enabling 128-Bit Encryption” on page 5-4](#)
- [“Upgrading Licenses from WebLogic Server 6.x and 7.x” on page 5-5](#)

About the WebLogic Server License

WebLogic Server uses an XML-format license file called `license.bea`. This license file, stored in the BEA Home directory, is used for the BEA WebLogic products installed on the target system. For details about the BEA Home directory, see [“BEA Home Directory” on page 1-9](#).

Evaluation Licenses

The first time you download and install a BEA WebLogic product, the installation program installs a 90-day evaluation license so that you can start using the product immediately. Subsequently, when you download and install additional BEA products that contain a `license.bea` file as part of the distribution, the installer program automatically adds the new evaluation product licenses to the `license.bea` file, but does not extend the evaluation period.

To use WebLogic Server beyond the 90-day evaluation period, contact your salesperson about extending the evaluation period or purchasing a development or production license.

All WebLogic Server evaluation products are licensed for use on a single server machine and allow up to 20 connections to the server.

Development and Production Licenses

When you purchase a WebLogic Server development or production license, you receive a license through e-mail to replace the evaluation license installed with WebLogic Server. After installing the WebLogic Server software and receiving the development or production license, you must update the existing `license.bea` file with the license file you received. See [“Updating Your license.bea File” on page 5-2](#).

Updating Your license.bea File

You must update your `license.bea` file if at least one of the following is true:

- You applied for and received an extension to your 90-day evaluation period of WebLogic Server.
- You purchased additional BEA WebLogic software.
- You obtained a new distribution that includes new products.

- You possess a license file for an earlier release of WebLogic Server and you want to upgrade to the current version of WebLogic Server. After downloading WebLogic Server from the BEA Web site, you must convert the license to a license for the current version. To do so, see [“Upgrading Licenses from WebLogic Server 6.x and 7.x” on page 5-5](#).

In each case, you receive a license update file in an e-mail attachment. You then update your `license.bea` file by performing the following procedure:

Note: Enabling 128-bit encryption requires that the 128-bit encryption license be present in the `license.bea` file *before* you install the WebLogic Server software. For details, see [“Enabling 128-Bit Encryption” on page 5-4](#).

1. Save the license update file that you received through e-mail with a name other than `license.bea`, in the target BEA Home directory. For example, save the file as `platform_license.bea`. Use this file as the `license_update_file` in step 4 of this procedure.

Warning: Do not overwrite or change the name of the existing `license.bea` file.

2. Open a command shell and go to the target BEA Home directory.
3. If it is not already included, add the JVM to your `PATH` variable by entering the following commands:

- On a Windows system:

```
set PATH=BEA_HOME\jdk141\bin;%PATH%
```

- On a UNIX system:

```
PATH=BEA_HOME/jdk141/bin:$PATH
export PATH
```

Note: If you are using a JVM other than the Sun Java 2 SDK 1.4.1, modify the commands above to fit your environment.

4. Merge the license update file into your existing license by entering one of the following commands:

- On a Windows system:

```
UpdateLicense license_update_file
```

- On a UNIX system:

```
sh UpdateLicense.sh license_update_file
```

`license_update_file` is the name to which you saved the license update file in step 1.

5. Save a copy of your updated `license.bea` file in a safe place outside the WebLogic Integration and application installation directories.

Although no one else can use your license file, you should save it in a place that is protected from both malicious and innocent tampering.

Enabling 128-Bit Encryption

Two levels of secure sockets layer (SSL) encryption are available for WebLogic Server: 56-bit and 128-bit. An evaluation license comes with only 56-bit encryption enabled, whereas a developer or production license may be purchased with either 56-bit or 128-bit encryption enabled.

The installer program must find the 128-bit encryption license in the `license.bea` file *before* the installer enables 128-bit encryption for the WebLogic Server installation. If the installer program does not find a WebLogic Server license in the `license.bea` file, or finds only a 56-bit encryption license for WebLogic Server in the `license.bea` file, the installer includes 56-bit SSL plug-ins in the WebLogic Server installation. If the installer program finds a 128-bit encryption license for WebLogic Server in the `license.bea` file, the installer includes both 56-bit *and* 128-bit SSL plug-ins in the WebLogic Server installation.

Note: A 128-bit license is required to be available *before* installation due to United States Export control laws. BEA is not allowed, by U.S. law, to install 128-bit capable code on any machine that does not have the appropriate license. If you already installed WebLogic Server without the 128-bit encryption license and you want 128-bit encryption, you need to uninstall the software, place the 128-bit encryption license for WebLogic Server in the BEA Home directory, and then reinstall WebLogic Server.

When creating a brand new BEA Home directory for a WebLogic Server installation intended for 128-bit encryption, proceed as follows:

1. Acquire a 128-bit encryption license for WebLogic Server.

For details, contact BEA Sales at <http://www.bea.com/contact>.

2. Create a new directory that you want use as a BEA home directory and place the 128-bit encryption license in the new directory. The license file must be named `license.bea`.
3. Install the WebLogic Server software.

For instructions, see one of the following installation procedures:

- “Installing WebLogic Server Using Graphical-Mode Installation” on page 2-1
- “Installing WebLogic Server Using Console-Mode Installation” on page 3-1
- “Installing WebLogic Server Using Silent-Mode Installation” on page 4-1

Upgrading Licenses from WebLogic Server 6.x and 7.x

The format of the `license.bea` file changes with each release of WebLogic Server. To convert a `license.bea` file from a previous release of a WebLogic Server component product to a license for the current version, complete the following steps. Be sure the `license.bea` license file from the previous release is available on the machine on which you perform this procedure.

For information about upgrading your WebLogic Server installation, see the [Upgrade Guide](http://e-docs.bea.com/wls/docs81b/upgrade/index.html) at <http://e-docs.bea.com/wls/docs81b/upgrade/index.html>.

1. Log in to the BEA Customer Support Web site at <http://support.bea.com>.
Note: You need a BEA eSupport account to log in to this Web site. If you do *not* have a BEA eSupport account click the Register link on the Customer Support site to register for an account.
2. Go to the Product Update and License Key Forms section. You may need to scroll down.
3. Click the appropriate link to update your WebLogic Server license.

5 *Installing and Updating a WebLogic Server License*

4. Browse and select the license files to be converted, or enter the pathname in the box provided. Then click I Accept to agree to the terms listed and to submit license files for conversion.
5. You will receive the converted license file through e-mail. To update the `license.bea` file on your system, see [“Updating Your license.bea File”](#) on page 5-2.

6 Installing WebLogic Server Service Packs and Rolling Patches

You can upgrade your WebLogic Server installation by using one of two methods: Smart Update or a downloadable upgrade installer. The following sections describe how to upgrade your software using either method:

- [“About WebLogic Server Service Packs and Rolling Patches” on page 6-1](#)
- [“Installing Service Packs and Rolling Patches Using Smart Update” on page 6-2](#)
- [“Installing Service Packs and Rolling Patches with a Downloadable Installer” on page 6-5](#)

About WebLogic Server Service Packs and Rolling Patches

Periodically, BEA releases a service pack or a rolling patch for WebLogic Server. A service pack is an update to an existing release that includes fixes to known issues and other product enhancements. Service packs typically do not replace an installation of WebLogic Server, but rather change and add to the installation. A rolling patch provides bug fixes between service pack updates.

Note: Service pack and rolling patch updates are available for registered support customers only from a password-protected Web site. You must log in to the BEA Customer Support Web site to download the updates. If you do not have an eSupport account, you can register for one at <http://support.bea.com>.

You can install service packs and rolling patches using the following methods:

- Use Smart Update to search for, download, and install software updates from the BEA Web site. Smart Update downloads only the updates for the software components currently installed in the target BEA Home directory. For instructions, see “[Installing Service Packs and Rolling Patches Using Smart Update](#)” on page 6-2.
- Download the package upgrade installer from the BEA Customer Support Web site at <http://support.bea.com>. The upgrade installation program supports graphical and console modes of installation. For instructions, see “[Installing Service Packs and Rolling Patches with a Downloadable Installer](#)” on page 6-5.

Note: Before you install a rolling patch or a service pack, you must shut down all applications running on WebLogic Server, and then shut down WebLogic Server itself. “Hot installation” of a Service Pack is not supported.

Installing Service Packs and Rolling Patches Using Smart Update

You can use the Smart Update feature to periodically check for available software updates. When you start Smart Update, it checks the version of products installed (associated with the current BEA Home directory), and then connects to the BEA Web site to check for available service packs. The Smart Update window includes three panes:

- **Installed Products**—The left pane of the Smart Update window which contains a tree displaying product and release information for products installed in the target BEA Home directory.
- **Upgrade Options**—The top-right pane, which lists the service packs and rolling patches, if any, that are available for the installed products.

- Downgrade Options—The bottom-right pane, which lists the versions of the product to which you can revert your installation, if applicable. For details about uninstalling maintenance upgrades with Smart Update, see [“Uninstalling a Service Pack or Rolling Patch with Smart Update” on page 8-9](#).

Note: Smart Update only checks for products associated with the current BEA Home directory. If you have multiple BEA Home directories on your system, you must run Smart Update for each one to install available service packs. For more information about BEA Home directories, see [“BEA Home Directory” on page 1-9](#).

To install service packs or rolling patches using Smart Update, follow these steps:

1. Start Smart Update as described in [Table 6-1](#):

Table 6-1 Starting Smart Update

To start Smart Update on this platform . . .	Perform the following steps . . .
Windows	<p>From the Start Menu:</p> <ul style="list-style-type: none"> ■ Choose Start—Programs—BEA WebLogic Platform 8.1—Smart Update <p>From an MS-DOS command prompt window:</p> <ol style="list-style-type: none"> 1. Go to the <i>BEA_HOME</i>/utils directory, where <i>BEA_HOME</i> is the BEA Home directory in which you installed WebLogic Server. 2. Enter the following command at the prompt: bsu.cmd <p>The BEA Smart Update window is displayed.</p>
<p>Note: To run Smart Update on a UNIX system, your console must support a Java-based GUI.</p>	<ol style="list-style-type: none"> 1. Log in to the UNIX system. 2. Open a command shell and change to the <i>BEA_HOME</i>/utils directory. 3. Enter the following command: bsu.sh <p>The BEA Smart Update window is displayed.</p>

2. In the left pane of the Smart update window, select the release for the product you want to update.

Available service packs or rolling patches, if any, are displayed in the Upgrade Options section of the window.

3. In the Upgrade Options pane, select the service pack or rolling patch to install and click OK.

The Enter BEA eSupport Identification dialog box is displayed.

4. Enter your valid username and password and click Verify.

Note: You must have a valid eSupport account to install a service pack or rolling patch using Smart Update. You can register for an account at <http://support.bea.com>.

The BEA Installation Program Welcome window is displayed.

5. Click **Next** to proceed with the installation. You may cancel the installation at any time by clicking **Exit**.

The Downloading Archive Information window is displayed briefly, followed by the Specify Download Options window.

6. Indicate your preferences for downloading the software as follows:

- Specify a storage directory to which you want to download the software upgrade source files.
- Indicate if you want to delete the downloaded files after the installation is complete by selecting the appropriate check box. If you do not select this check box, the downloaded files are saved to the storage directory you specify.
- Indicate if you want to use an HTTP Proxy server for the download by selecting the appropriate check box. To use an HTTP Proxy server, you must provide the following information:

Host—enter the name or IP address of the proxy server

Port—enter the port number of the proxy server

7. Click **Next**.

The Archive Download window is displayed.

8. Indicate whether you want to proceed with the installation automatically after the download is complete by selecting or clearing the appropriate check box. This check box is selected by default. If you clear it, you need to click **Next** when the download is complete to proceed with the installation.

When the download is complete, the Archive Integrity Check window is displayed while it verifies the integrity of the upgrade archive files you downloaded.

When the archive verification is complete, the Confirm Product Directory window is displayed, which contains the path to the BEA home directory and to the product directory in which the WebLogic Server software will be updated.

9. Click Next to proceed with the upgrade installation.

A status window displays the progress of the installation.

10. Click Done on the Installation Complete window.

The Smart Update window is displayed. The Installed Products pane shows the upgraded release level.

Installing Service Packs and Rolling Patches with a Downloadable Installer

When a service pack or rolling patch for WebLogic Server is available, you can download the release from the BEA Customer Support Web site at <http://support.bea.com>.

Note: Service pack and rolling patch updates are available for registered support customers only; the download site is password protected. You will need to log in using your eSupport username and password to download the updates. If you do not have an eSupport account, you can register for one on the BEA Customer Support Web site.

Each release comes with its own installation program which includes update files for WebLogic Server and server samples for installation. However, the upgrade installation program only upgrades components already installed on your system. For example, if you installed the WebLogic Server component without the server samples component, the upgrade installer upgrades the server software and does not install the server samples. You cannot use the upgrade installer to install additional components. To install additional components, you must use either the net or package installers, as described in “[WebLogic Server Distribution Methods](#)” on page 1-4.

You can run the upgrade installation program in the following modes on both UNIX and Windows platforms:

- Graphical mode. See “Installing a Service Pack Upgrade Using Graphical Mode” on page 6-6 for instructions.
- Console mode. See “Installing a Service Pack Upgrade Using Console Mode” on page 6-8 for instructions.

Notes: To run graphical-mode installation, your console must support a Java-based GUI. If the installation program determines that your system cannot support a Java-based GUI, the installation program automatically starts console-mode installation.

The upgrade installer does not support silent-mode installation.

The WebLogic Server installation program for some UNIX platforms includes JVM options bundled in the installation program (filenames ending in `.bin`). The WebLogic Server installation program uses the bundled JVM to install WebLogic Server and then installs the JVM for use with WebLogic Server. For other UNIX platforms, the WebLogic Server installation program does *not* include a JVM in the installation program (filenames ending in `.jar`). To run these installation programs, you must first include the `bin` directory of a supported JVM installed on your system at the beginning of your `PATH` variable definition.

Installing a Service Pack Upgrade Using Graphical Mode

Follow these steps to download and install a service pack or rolling patch in graphical mode on UNIX and Windows systems:

1. Download the service pack upgrade installer specific to your platform from the BEA Customer Support Web site at <http://support.bea.com>.

Note: You will need to log in using your eSupport username and password to download a service pack or rolling patch. If you do not have an eSupport account, you can register for one on the BEA Customer Support Web site.

2. Start the upgrade installer as described in [Table 6-2](#):

Table 6-2 Starting an Upgrade Installer in Graphical Mode

To start the upgrade installer on this platform . . .	Perform the following steps . . .
Windows	<ol style="list-style-type: none">1. Go to the directory where you downloaded the installation program and double-click <i>filename.exe</i>, where <i>filename.exe</i> is name of the installation file you downloaded from the BEA Customer Support Web site, for example, <i>serverXXX_upgrade_win32.exe</i>. The installation program begins to install the upgrade.2. Proceed to step 3 below this table.
UNIX	<p>For installers with filenames ending in .bin</p> <ol style="list-style-type: none">1. Go to the directory where you downloaded the installation program and invoke the installation procedure by entering the following commands: <pre>chmod a+x filename.bin ./filename.bin</pre>where <i>filename.bin</i> is the name of the upgrade installation program you downloaded from the BEA Customer Support Web site, for example <i>serverXXX_upgrade_solaris.bin</i>. The installation program begins to install the upgrade.2. Proceed to step 3 below this table. <hr/> <p>For installers with filenames ending in .jar</p> <ol style="list-style-type: none">1. Include the <code>bin</code> directory of the JVM at the beginning of the <code>PATH</code> variable on the target system. For example: <pre>PATH=JAVA_HOME/bin:\$PATH export PATH</pre>where <i>JAVA_HOME</i> is the full path to the JVM directory.2. Go to the directory where you downloaded the installation file and launch the installation program by entering the following command: <pre>java -jar filename.jar</pre>where <i>filename.jar</i> is the name of the upgrade installation program you downloaded from the BEA Customer Support Web site, for example <i>pj_serverXXX_upgrade_generic.jar</i>. The installation program begins to install the upgrade.3. Proceed to step 3 following this table.

3. Review the text in the Welcome window and click `Next`.

The Choose BEA Home Directory window is displayed.

Note: You may cancel the installation at any time by clicking `Exit`.

4. Select the BEA Home directory containing the release of WebLogic Server you want to upgrade and click `Next`.

The Confirm Product Directory window is displayed, which includes the path to the BEA home directory and to the directory in which the WebLogic Server software will be updated.

5. Click `Next`.

A progress window is displayed during the upgrade installation. When the installation is finished, the Installation Complete window is displayed.

6. Click `Done` on the Installation Complete window to exit the installation program.

Installing a Service Pack Upgrade Using Console Mode

Follow these steps to download and install a service pack or rolling patch in console mode on UNIX and Windows systems:

Note: The sample console text and directory pathnames in this section use UNIX conventions (forward slashes) in pathnames, for example, `/home1/bea/weblogicXXX`. When entering pathnames on a Windows system, use the Windows convention (backward slashes) for pathnames, for example `c:\bea\weblogicXXX`.

1. Download the service pack upgrade installer specific to your platform from the BEA Customer Support Web site at <http://support.bea.com>.

Note: You must log in using your eSupport username and password to download a service pack or rolling patch. If you do not have an eSupport account, you can register for one on the BEA Customer Support Web site.

2. Start the upgrade installer as described in [Table 6-3](#):

Table 6-3 Starting an Upgrade Installer in Console Mode

To start the upgrade installer on this platform . . .	Perform the following steps . . .
Windows	<ol style="list-style-type: none"><li data-bbox="400 395 878 418">1. Open an MS-DOS command prompt window.<li data-bbox="400 434 1194 618">2. Go to the directory where you downloaded the installation program and invoke the installation procedure by entering the following command: <pre data-bbox="438 499 798 522"><i>filename.exe -mode=console</i></pre>where <i>filename.exe</i> is name of the installation file you downloaded from the BEA Customer Support Web site, for example, <i>serverXXX_upgrade_win32.exe</i>. The upgrade installer begins to install the WebLogic Server maintenance release.<li data-bbox="400 699 798 723">3. Proceed to step 3 following this table.

Table 6-3 Starting an Upgrade Installer in Console Mode

To start the upgrade installer on this platform . . .	Perform the following steps . . .
UNIX	<p data-bbox="471 361 924 383">For installers with filenames ending in .bin</p> <ol data-bbox="471 395 1257 687" style="list-style-type: none"><li data-bbox="471 395 1257 614">1. Go to the directory where you downloaded the installation program and invoke the installation procedure by entering the following commands: <pre data-bbox="512 465 897 513">chmod a+x filename.bin ./filename.bin -mode=console</pre>where <i>filename.bin</i> is the name of the upgrade installation program you downloaded from the BEA Customer Support Web site, for example <i>serverXXX_upgrade_solaris.bin</i>. The installation program begins to install the upgrade.<li data-bbox="471 661 870 687">2. Proceed to step 3 following this table. <hr/> <p data-bbox="471 713 924 736">For installers with filenames ending in .jar</p> <ol data-bbox="471 748 1257 1182" style="list-style-type: none"><li data-bbox="471 748 1257 909">1. Include the <code>bin</code> directory of JVM at the beginning of the <code>PATH</code> variable on the target system. For example: <pre data-bbox="512 822 844 871">PATH=JAVA_HOME/bin:\$PATH export PATH</pre>where <i>JAVA_HOME</i> is the full path to the JVM directory.<li data-bbox="471 921 1257 1182">2. Go to the directory where you downloaded the installation file and launch the installation program by entering the following command: <pre data-bbox="512 991 1009 1013">java -jar filename.jar -mode=console</pre>where <i>filename.jar</i> is the name of the upgrade installation program you downloaded from the BEA Customer Support Web site, for example <i>pj_serverXXX_upgrade_generic.jar</i>. The installation program begins to install the upgrade.<li data-bbox="471 1156 870 1182">3. Proceed to step 3 following this table.

Note: To create a verbose log file during installation, include the `-log=/full_path_to_log_file` option in the command line.

For example:

```
serverXXX_upgrade_solaris.bin -mode=console
-log=/home/boa/logs/server_install.log
```

The path can be to a file or folder. All folders in the path must exist before you execute the command or the installation program will not create the log file.

3. At the Welcome prompt, type `next` or press `Enter` to continue with the installation process.

The Choose BEA Home directory prompt is displayed.

4. Select the BEA Home directory associated with the installation of WebLogic Server that you want to update. If you have only one installation of WebLogic Server installed on the current machine, only one BEA Home directory is listed. For details about the BEA Home directory, see [“BEA Home Directory” on page 1-9](#).

The installation program displays the following prompt:

```
Choose BEA Home Directory:
```

```
->1| /nfs/home/user1/bea1  
   2| /nfs/home/user1/bea2
```

```
Enter index number to select OR [Exit][Previous][Next]>
```

Press `Enter` to use the selected BEA Home directory or type the number of the BEA Home directory that you want to select.

Whether you accept the selected BEA Home directory or select a different BEA Home directory, you are prompted to confirm your selection, as shown in the following example:

```
Choose BEA Home Directory:
```

```
->1| Yes, Use this BEA home directory [/nfs/home/user1/bea1]  
   2| No, return to BEA home directory selection
```

```
Enter index number to select OR [Exit][Previous][Next]>
```

Type `1` or press `Enter` to accept your selection. Otherwise, type `2` to return to the Choose BEA Home Directory panel where you can modify your entry.

The Confirm Product Directory panel is displayed.

5. The Confirm Product Directory panel indicates the folder in which the WebLogic Server software will be updated. For example:

```
Confirm Product Directory:
```

```
Product Installation Directory:  
[/nfs/home/user1/bea1/weblogicXXX]
```

6 *Installing WebLogic Server Service Packs and Rolling Patches*

Files in /nfs/home/user1/bea1/weblogicXXX will now be upgraded to the X.X.X.X maintenance level.

Enter [Exit][Previous][Next]>

Press Enter or type next to continue.

6. After you confirm the product directory, the installation program makes a backup copy of specific files from the previous installation and then installs new versions of the files.

When the installation is complete, the following prompt is displayed:

```
Install Complete
```

```
Congratulations! WebLogic Platform X.X.X.X  
has been successfully installed to  
/nfs/home/user1/bea1/weblogicXXX.
```

```
Press any key to continue OR [Exit]>
```

7. Press any key to exit the installation program.

7 Performing Post-Installation Tasks

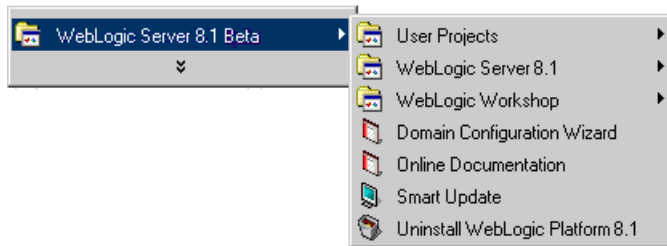
The following sections describe the tasks you perform after installing WebLogic Server:

- [“Understanding the WebLogic Server Windows Shortcuts” on page 7-1](#)
- [“Understanding the WebLogic Server Directory Structure” on page 7-4](#)
- [“Starting the Examples and MedRec Servers” on page 7-6](#)
- [“Starting the Administration Console” on page 7-9](#)

Understanding the WebLogic Server Windows Shortcuts

When you install WebLogic Server on a Windows system, the installation program automatically creates shortcut files on the Start Menu. Options on the Start Menu vary according to options you select during installation. The WebLogic Platform 8.1 folder (Start→Programs→WebLogic Platform) contains the shortcut files shown in [Figure 7-1](#).

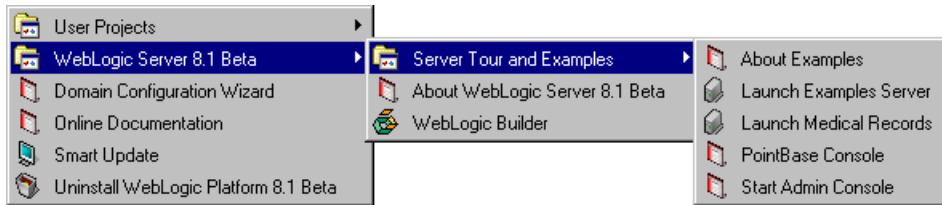
Figure 7-1 BEA WebLogic Platform Start Menu



- *User Projects*—Contains a folder for each domain that you create using the Configuration Wizard and that you choose to create a Start Menu option. You use the shortcuts in these folders to start servers in each domain.
- *WebLogic Server*—Contains shortcuts to launch the Examples and MedRec servers, introductory documentation about WebLogic Server, and so forth. See [Figure 7-2](#).
- *WebLogic Workshop*—Not available with the WebLogic Server Beta release.
- *Domain Configuration Wizard*—Launches the Configuration Wizard to create and configure WebLogic domains and servers. See [Creating Domains and Servers](#) in the *Administration Console Online Help* at <http://e-docs.bea.com/wls/docs81b/ConsoleHelp/createdomain.html>.
- *Online Documentation*—Opens the WebLogic Platform online documentation. WebLogic Server is a component in WebLogic Platform.
- *Smart Update*—Runs Smart Update to check for and install available software updates for installed BEA products. See [“About WebLogic Server Service Packs and Rolling Patches”](#) on page 6-1.
- *Uninstall WebLogic Platform*—Launches the uninstall program to uninstall individual WebLogic Platform components or all of WebLogic Platform.

[Figure 7-2](#) shows the options on the WebLogic Server Start menu (Start→Programs→WebLogic Platform 8.1→WebLogic Server 8.1).

Figure 7-2 WebLogic Server 8.1 Start Menu



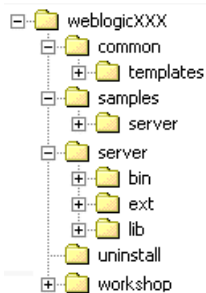
- *Server Tour and Examples*—Contains the following shortcuts:
 - *About Examples*—Opens the *WebLogic Server Examples Guide* in a Web browser.
 - *Launch Examples Server*—Starts the Examples server so you can run example applications installed with WebLogic Server.
 - *Launch Medical Records*—Starts the MedRec server to run the Medical Records sample application.
 - *PointBase Console*—Opens the PointBase Administration Console. The Examples and MedRec domains use an evaluation copy of the PointBase relational database management system.
 - *Start Admin Console*—Opens the WebLogic Server Administration Console for the Examples or MedRec server in a Web browser.
- *About WebLogic Server 8.1 Beta*—Opens *About WebLogic Server* in a Web Browser. The document contains important information about WebLogic Server.
- *WebLogic Builder*—Starts WebLogic Builder, which is a graphical tool for assembling a J2EE application module, creating and editing its deployment descriptors, and deploying it to a WebLogic server. For more information about WebLogic Builder, see the [WebLogic Builder Online Help at `http://e-docs.bea.com/wls/docs81b/wlbuilder/index.html`](http://e-docs.bea.com/wls/docs81b/wlbuilder/index.html).

Understanding the WebLogic Server Directory Structure

WebLogic Server has a new directory structure for WebLogic Server and a new location for your applications that run on WebLogic Server. This new directory structure provides added flexibility and promotes best practices for application development.

Files and Directories Installed

During the WebLogic Server installation, you are asked to select or create a BEA Home directory and a product installation directory. For information about the BEA Home directory, see [“BEA Home Directory” on page 1-9](#). For a typical installation, the installer program creates the following directory structure for WebLogic Platform software, which may or may not be in the BEA Home directory:



The contents of each directory are described in the following table.

This directory . . .	Contains . . .
weblogicXXX	Folders for files shared by all WebLogic Platform components, as well as individual folders for each installed WebLogic Platform component. XXX refers to the version number of Weblogic Platform.
common	Files shared by WebLogic Platform components, including template jar files used by the Configuration Wizard when creating domains. The Configuration Wizard reads the contents of this folder and displays template options based on the jar files in the directory. See “Configuring Domains, Servers, and Clusters with the Configuration Wizard” on page 2-8 for more information about using the Configuration Wizard.
samples	Sample code, resources, and preconfigured domains designed to help you learn how to develop your own applications using WebLogic Platform. Samples are organized by component installed on the system. Each WebLogic Platform component has its own folder within the samples folder. The server folder in the samples folder contains the examples and medrec domains, source code for the examples and Medical Records sample applications, and PointBase evaluation software.
server	WebLogic Server program files.
uninstall	Code required to uninstall the WebLogic Server software.
workshop	WebLogic Workshop application and documentation files and files to support the Workshop sample domain. Note: Weblogic Workshop is not included in the WebLogic Server 8.1 Beta release.

Domain Directories

Each WebLogic domain that you create with the Configuration Wizard has its own root directory. The domain directory can be anywhere you choose. The only limitation is that scripts and applications in the domain must have access to the WebLogic Server installation and the JVM.

This directory structure provides for flexibility when storing application code and configuring server systems. It also promotes best practices for application development. *That is*, application code should not be stored with the application server code.

For more information about domains and domain directories, see [WebLogic Server Domains](http://e-docs.bea.com/wls/docs81b/adminguide/overview.html) in *Configuring and Managing WebLogic Server* at <http://e-docs.bea.com/wls/docs81b/adminguide/overview.html>.

Starting the Examples and MedRec Servers

The examples optionally installed with WebLogic Server demonstrate a variety of features using WebLogic Server. The source files and Javadoc files for the WebLogic Server examples are installed in `SAMPLES_HOME\server\src\examples`. Additional information for configuring and executing the examples server and the example applications is provided in the `SAMPLES_HOME\server\src\examples\examples.html` file.

The following sections provide instructions for starting the Examples and MedRec on a Windows or UNIX system.

- [“Starting the Examples Server on a Windows System” on page 7-7](#)
- [“Starting the Examples Server on a UNIX System” on page 7-7](#)
- [“Starting the MedRec Server on a Windows System” on page 7-8](#)
- [“Starting the MedRec Server on a UNIX System” on page 7-8](#)

Note: You cannot start the Examples, MedRec, and Workshop Examples servers at the same time (as installed) because all of them are configured to use port 7001 as the non-secure listening port and 7002 as the secure listening port. To run them concurrently, you must reconfigure the listening ports as described in “[Setting the Listen Port](http://e-docs.bea.com/wls/docs81b/ConsoleHelp/servers.html#server_listen_port)” in the *Administration Console Online Help* at http://e-docs.bea.com/wls/docs81b/ConsoleHelp/servers.html#server_listen_port.

Starting the Examples Server on a Windows System

To start the Examples server on a Windows system:

- Choose Start→Programs→WebLogic Platform 8.1→WebLogic Server 8.1→Server Tour and Examples→Launch Examples Server.

After the server starts, a Web browser automatically opens. Click the Go to Administration Console text link or enter the following URL in a browser window to start the Administration Console: `http://hostname:7001/console`.

For complete information about starting and stopping WebLogic Server, see “[Starting and Stopping WebLogic Servers](http://e-docs.bea.com/wls/docs81b/ConsoleHelp/startstop.html)” in the *Administration Console Online Help* at <http://e-docs.bea.com/wls/docs81b/ConsoleHelp/startstop.html>.

Note: You cannot start the Examples, MedRec, and Workshop Examples servers at the same time (as installed) because all of them are configured to use port 7001 as the non-secure listening port and 7002 as the secure listening port. To run them concurrently, you must reconfigure the listening ports as described in “[Setting the Listen Port](http://e-docs.bea.com/wls/docs81b/ConsoleHelp/servers.html#server_listen_port)” in the *Administration Console Online Help* at http://e-docs.bea.com/wls/docs81b/ConsoleHelp/servers.html#server_listen_port.

Starting the Examples Server on a UNIX System

To start the examples server on a UNIX system, follow these steps:

1. In a command shell, go to the following directory:

```
SAMPLES_HOME/server/config/examples
```

where `SAMPLES_HOME` represents the location of all examples for the WebLogic Platform—for example, `bea/weblogicXXX/samples`.

2. Enter the following command:

```
startExamplesServer.sh
```

The `startExamplesServer.sh` script sets up the proper `CLASSPATH` variable for the Examples server and loads the configuration in the `SAMPLES_HOME/server/config/examples/config.xml` file.

For complete information about starting and stopping servers, see “[Starting and Stopping WebLogic Servers](http://e-docs.bea.com/wls/docs81b/ConsoleHelp/startstop.html)” in the *Administration Console Online Help* at <http://e-docs.bea.com/wls/docs81b/ConsoleHelp/startstop.html>.

Note: You cannot start the Examples, MedRec, and Workshop Examples servers at the same time (as installed) because all of them are configured to use port 7001 as the non-secure listening port and 7002 as the secure listening port. To run them concurrently, you must reconfigure the listening ports as described in [Setting the Listen Port](http://e-docs.bea.com/wls/docs81b/ConsoleHelp/servers.html#server_listen_port) in the *Administration Console Online Help* at http://e-docs.bea.com/wls/docs81b/ConsoleHelp/servers.html#server_listen_port.

Starting the MedRec Server on a Windows System

To start the MedRec server on a Windows system:

- Choose Start→Programs→WebLogic Platform 8.1→WebLogic Server 8.1→Server Tour and Examples→Launch Medical Records.

The PointBase database server starts with the MedRec server. After the MedRec server starts, a Web browser automatically opens to a page with information about the Avitec Medical Records sample application.

Starting the MedRec Server on a UNIX System

To start the MedRec server on a UNIX system, follow these steps:

1. In a command shell, go to the following directory:

`SAMPLES_HOME/server/config/medrec`

where `SAMPLES_HOME` represents the location of all examples for the WebLogic Platform—for example, `bea/weblogicXXX/samples`.

2. Enter the following command:

```
startMedRecServer.sh
```

The `startMedRecServer.sh` script sets up the proper `CLASSPATH` variable for the Examples server and loads the configuration in the `SAMPLES_HOME/server/config/examples/config.xml` file. It also starts the PointBase server.

Starting the Administration Console

The Administration Console is the Web-based administration tool for WebLogic Server. You must start the server before you can access the Administration Console for a server.

Note: For details about starting the WebLogic Server servers, see “Starting the Examples and MedRec Servers” on page 7-6. For more information about the Administration Console, see the *Administration Console Online Help* at <http://e-docs.bea.com/wls/docs81b/ConsoleHelp/console.html>.

To start the Administration Console, follow these steps:

1. Open the following URL in a supported browser:

```
http://hostname:port/console
```

where:

- `hostname` is the name or IP address of the machine on which you installed the WebLogic Server software.
- `port` is the listening port of the server you want to administer. The default non-secure listen port for WebLogic Server is 7001. For the Examples, MedRec, and Workshop Examples servers, the non-secure listen port is configured as 7001 by default.

2. The Administration Console prompts you for a username and password. Enter a username and password for the server you want to administer. For the Examples and MedRec servers, `weblogic` (username and password) is the default administrative user. For the Workshop Examples server, `installadministrator` (username and password) is the default administrative user.

8 Uninstalling WebLogic Server

The following sections provide platform-specific procedures for uninstalling WebLogic Server:

- [“About the Uninstallation Program” on page 8-1](#)
- [“Uninstalling Service Packs and Rolling Patches with the Uninstallation Program” on page 8-6](#)
- [“Uninstalling a Service Pack or Rolling Patch with Smart Update” on page 8-9](#)
- [“Reinstalling WebLogic Server” on page 8-10](#)

About the Uninstallation Program

On both Windows and UNIX systems, you can uninstall WebLogic Server using either graphical mode or console mode. To run the graphical mode uninstallation program, your console must support a Java-based GUI. If the uninstallation program determines that your system cannot support a Java-based GUI, the uninstallation program automatically starts in console mode.

You can uninstall WebLogic Server examples only, or the entire WebLogic Server installation. When you uninstall the entire WebLogic Server installation, the uninstaller also uninstalls the WebLogic Node Manager Windows service, if it was installed as a Windows service (Windows platforms only).

Uninstalling WebLogic Server does not remove the BEA Home directory associated with the installation, or the JVM. If you choose to uninstall the entire WebLogic Server installation, the uninstallation program also removes the WebLogic Server product directory associated with the installation *unless* one of the following is true:

- The product directory contains customer-created configuration or application files—*the uninstallation program does not delete customer-created configuration or application files or domains.*
- The complete installation was not uninstalled. If an individual component is uninstalled, only the installation directory for that component is removed; the installation directories for other components are unaffected.
- The uninstall was invoked from within the product directory structure—specifically, within the `uninstaller` directory.

If you have installed a service pack or rolling patch, you can also use the uninstallation program to revert to a prior service pack. See [“Uninstalling WebLogic Server in Graphical Mode” on page 8-2.](#)

Uninstalling WebLogic Server in Graphical Mode

Use the following procedure to uninstall WebLogic Server or WebLogic Server examples using the graphical interface:

1. Shut down any servers that are running. If you configured any of the servers as a Windows service, you should stop the service(s) before uninstalling the software.
2. Start the uninstallation program as described in the [Table 8-1](#):

Table 8-1 Starting the Uninstallation Program in Graphical Mode

To start the uninstallation program on this platform . . .	Perform the following steps . . .
Windows	<ul style="list-style-type: none"> ■ From the Windows Start menu, choose Start→Programs→BEA WebLogic Platform 8.1→Uninstall WebLogic Platform 8.1. The WebLogic Server Uninstaller Welcome window is displayed. Proceed to step 3.
UNIX	<ol style="list-style-type: none"> 1. Open a command shell and go to the following directory: <i>WL_HOME</i>/uninstall where <i>WL_HOME</i> represents the directory in which you installed WebLogic Server. 2. Enter <code>uninstall.sh</code> at the prompt. The WebLogic Server Uninstaller Welcome window is displayed. <p>Note: If your system supports a graphical user interface, the uninstallation program starts in graphical mode. If your system does not support a graphical user interface, the uninstallation program starts in console mode. Refer to the “Uninstalling WebLogic Server in Console Mode” on page 8-4 for instructions.</p>

3. Click `Next` to start the uninstall program.

One of the following windows is displayed:

- The Choose Components window—go to step 4.
- The Select Uninstall Type window—If you have installed a service pack or rolling patch, you can roll back your system installation to the previous service pack. To uninstall WebLogic Server, select Uninstall WebLogic Server and continue to the next step. If you want to uninstall a service pack or rolling patch, see [“Uninstalling a WebLogic Server Service Pack or Rolling Patch in Graphical Mode”](#) on page 8-7

4. Select the components to uninstall by selecting or clearing the appropriate check boxes, then click Next. By default, all installed components are selected, indicating that they will be removed.
5. Click Done in the Uninstalling WebLogic Platform 8.1 window to exit the uninstallation program.

Uninstalling WebLogic Server in Console Mode

Use the following procedure to uninstall WebLogic Server or WebLogic Server examples using the command line interface:

1. Shut down any servers that are running. If you configured any of the servers as a Windows service, you must stop the service(s) before uninstalling the software.
2. Start the uninstallation program as described in the [Table 8-2](#):

Table 8-2 Starting the Uninstallation Program in Console Mode

To start the uninstallation program on this platform . . .	Perform the following steps . . .
Windows	<ol style="list-style-type: none">1. Open an MS-DOS command prompt window and go to the following directory: <code>WL_HOME/uninstall</code> where <code>WL_HOME</code> represents the directory in which you installed WebLogic Server, typically <code>c:\bea\weblogicXXX</code>.2. Enter the following command at the prompt: <code>uninstall -mode=console</code> The Welcome text is displayed.

Table 8-2 Starting the Uninstallation Program in Console Mode

To start the uninstallation program on this platform . . .	Perform the following steps . . .
UNIX	<ol style="list-style-type: none"> 1. Open a command shell and go to the following directory: <i>WL_HOME/uninstall</i> where <i>WL_HOME</i> represents the directory in which you installed WebLogic Server. 2. At the prompt, enter the following command: <code>sh uninstall.sh -mode=console</code> The Welcome text is displayed.

3. Press `Enter` or type `next` to proceed to the next panel of the uninstallation program.

One of the following panels is displayed:

- The Choose Components panel—go to step 4.
- The Uninstall Options panel—If you have installed a service pack or rolling patch, you can roll back your system installation to the previous service pack. To uninstall WebLogic Server, type `1` at the prompt and press `Enter`, then continue to the next step. If you want to uninstall a service pack or rolling patch, see [“Uninstalling a WebLogic Server Service Pack or Rolling Patch in Console Mode” on page 8-8](#)

4. Select the components you want to uninstall. The available components are displayed as follows:

```
<----- Weblogic Platform Uninstaller ----->
Choose Components:

Release 8.1
+----WebLogic Server  [0] v
      +----Server      [0.0] v
          +----Server Examples  [0.1] v
```

```
Enter number exactly as it appears in brackets to toggle
selection OR [Exit][Previous][Next]> next
```

By default, all installed components are selected, indicating that they will be removed.

To leave a component installed on your system, type the numeric code for the option on the command line exactly as it appears within the brackets. For example, type 0.0 to deselect the Server and keep it installed on your system.

Dependency checking in the uninstallation program verifies that if you select a component to uninstall, all other components that are dependent on the selected component are also selected for uninstallation. For example, if you choose to uninstall the Server component, the uninstaller also uninstalls the Workshop and Server Examples components.

5. Press `Enter` or type `next`.

You are prompted to confirm your selections, as shown in the following text:

Choose Components:

```
->1| Yes, uninstall these component selections  
  2| No, return to component selection
```

Enter index number to select OR [Exit][Previous][Next]>

6. Press `Enter` or type `next` to proceed with the uninstallation process.
7. When the uninstallation process is complete, press `Enter` or type `done` to complete the uninstallation and exit the uninstallation program.

Uninstalling Service Packs and Rolling Patches with the Uninstallation Program

If you have installed a service pack or rolling patch, you can revert your system installation to an earlier version of the release as follows:

- You can revert to the prior service pack installation on your system. For example, if you installed WebLogic Server 8.1, then installed Service Pack 1 (SP1), you can revert to WebLogic Server 8.1. If you have WebLogic Server 8.1 SP1 installed on your system and you upgrade to WebLogic Server 8.1 SP2

(when available), you can revert only to WebLogic Server 8.1 SP1, you cannot revert to WebLogic Server 8.1.

- You can revert rolling patch upgrades to the prior service pack on which the rolling patch is based. (Rolling patches are cumulative, each rolling patch replaces all earlier rolling patches on a particular service pack base.) For example, if you installed WebLogic Server 8.1 SP1, then installed rolling patches 1 and 2 (RP1 and RP2), you can revert to WebLogic Server 8.1 SP1. You cannot revert to an earlier rolling patch.

For instructions, see [“Uninstalling a WebLogic Server Service Pack or Rolling Patch in Graphical Mode” on page 8-7](#) or [“Uninstalling a WebLogic Server Service Pack or Rolling Patch in Console Mode” on page 8-8](#).

Note: If you install additional WebLogic Platform components after installing a service pack or rolling patch, you cannot roll back to any previous versions of the product.

To revert to a previously installed version of WebLogic Server, you can use the uninstallation program or Smart Update. See [“Uninstalling a Service Pack or Rolling Patch with Smart Update” on page 8-9](#) for instructions to use Smart Update to roll back to a previous installation.

Uninstalling a WebLogic Server Service Pack or Rolling Patch in Graphical Mode

Use the following procedure to uninstall a WebLogic Server service pack or rolling patch. You can also use Smart Update to uninstall a service pack or rolling patch. See [“Uninstalling a Service Pack or Rolling Patch with Smart Update” on page 8-9](#).

1. Shut down any servers that are running. If you configured any of the servers as a Windows service, you must stop the service(s) before uninstalling the software.
2. Start the uninstallation program as described in the [Table 8-1, “Starting the Uninstallation Program in Graphical Mode,” on page 8-3](#).

The WebLogic Server Uninstaller Welcome window is displayed.

3. Click **Next** to start the uninstall program.

The Select Uninstall Type window is displayed.

4. Select the service pack to which you want to roll back your system installation and click `Next`.

A status window displays the progress of the uninstallation. A message is displayed when the rollback is complete.

5. Click `Done` on the status window.

Uninstalling a WebLogic Server Service Pack or Rolling Patch in Console Mode

Use the following procedure to uninstall a WebLogic Server service pack or rolling patch. You can also use Smart Update to uninstall a service pack or rolling patch. See [“Installing Service Packs and Rolling Patches Using Smart Update”](#) on page 6-2.

1. Shut down any servers that are running. If you configured any of the servers as a Windows service, you must stop the service(s) before uninstalling the software.
2. Start the uninstallation program as described in the [Table 8-2, “Starting the Uninstallation Program in Console Mode,”](#) on page 8-4.

The Welcome text is displayed.

3. Press `Enter` or type `next` to proceed to the next panel of the uninstallation program.

The Uninstall Options panel is displayed:

4. At the prompt, type the number of the option for the service pack to which you want to roll back your system installation and press `Enter`.

Text messages indicate the progress of the uninstallation.

Uninstalling a Service Pack or Rolling Patch with Smart Update

You can use Smart Update to revert your system installation to an earlier version of the release as follows:

- You can revert to the prior service pack installation on your system. For example, if you installed WebLogic Server 8.1, then installed Service Pack 1 (SP1), you can revert to WebLogic Server 8.1. If you have WebLogic Server 8.1 SP1 installed on your system and you upgrade to WebLogic Server 8.1 SP2 (when available), you can revert only to WebLogic Server 8.1 SP1, you cannot revert to WebLogic Server 8.1.
- You can revert rolling patch upgrades to the prior service pack on which the rolling patch is based. (Rolling patches are cumulative, each rolling patch replaces all earlier rolling patches on a particular service pack base.) For example, if you installed WebLogic Server 8.1 SP1, then installed rolling patches 1 and 2 (RP1 and RP2), you can revert to WebLogic Server 8.1 SP1. You cannot revert to an earlier rolling patch.

Note: If you install additional WebLogic Platform components after installing a service pack or rolling patch, you cannot roll back to any previous versions of the product.

You can also uninstall a service pack or rolling patch using the standard uninstallation process. For more information, see [“Uninstalling WebLogic Server in Graphical Mode” on page 8-2](#).

To uninstall a service pack or rolling patch, follow these instructions:

1. Start Smart Update as described in [Table 6-1, “Starting Smart Update,” on page 6-3](#).
2. In the left pane, select the release for the product you want to roll back.

Service packs and rolling patches that you can uninstall (or roll back) are displayed in the Downgrade Options section of the window.
3. In the Downgrade Options pane, select the service pack or rolling patch to uninstall and click OK.

The BEA Uninstaller Program opens.

4. Click Next to proceed.

A status window displays the progress of the uninstallation. A message is displayed when the rollback or uninstallation is complete.

5. Click Done on the status window.

The Smart Update window is displayed.

Reinstalling WebLogic Server

In most cases, you cannot reinstall WebLogic Server or any of its components over a previous WebLogic Server installation of the same components—in the same BEA Home directory or in the same file location. You can, however, add components to an existing installation. For example, you can install WebLogic Server during one installation, and Server Examples or Workshop Examples during separate installations.

To reinstall the same version of one of the product components or the entire WebLogic Server distribution in the same location, you must first uninstall the previous installation.

If you attempt to install a copy of the same version of WebLogic Server in the same BEA Home, the installation program displays the following message:

```
A complete installation of WebLogic Platform 8.1 exists in this BEA Home. Please select another BEA Home or uninstall the product.
```

Type or click OK to return to the Choose BEA Home directory prompt.

Choose one of the following options:

- To continue installing the software using a different BEA Home directory, select an existing BEA Home directory that does not contain a WebLogic Server installation or create a new BEA Home directory.
- Exit the installation program. If you want to reinstall WebLogic Platform 8.1 in the same BEA Home, you must uninstall the previous installation. You can

invoke the uninstall program appropriate for your platform as described in one of the following sections:

- [“Uninstalling WebLogic Server in Graphical Mode”](#) on page 8-2
- [“Uninstalling WebLogic Server in Console Mode”](#) on page 8-4

Then reinstall the software as described in one of the following sections:

- [Chapter 2, “Installing WebLogic Server Using Graphical-Mode Installation”](#)
- [Chapter 3, “Installing WebLogic Server Using Console-Mode Installation”](#)
- [Chapter 4, “Installing WebLogic Server Using Silent-Mode Installation”](#)

Index

Numerics

128-bit encryption 5-4

A

Administration Console
starting 7-9

Administrator privileges 1-7

B

BEA Home directory

about 1-9

component descriptions 1-10

multiple 1-11

sample structure 1-9

selection 2-6

C

cluster

configuring 2-8

components

choosing 2-6

config.xml 7-6

Configuration Wizard 2-8

about 2-8

in silent mode 4-5

options 2-9

running 2-8, 2-9

shortcut 7-2

starting 7-2

templates 2-8

console mode 1-3

console-mode installation 3-3

running 3-5

custom installation 1-12, 2-6

customer support contact information ix

D

directory structure 7-4

distribution

CD-ROM 1-4

Web 1-4

documentation, where to find it viii

domain

configuring 2-8

directory structure 7-6

download site 2-3

E

enabling 128-bit encryption

special considerations 1-8

evaluation license 1-8, 5-2

examples

installing 2-6

examples server

starting 7-6

starting on UNIX 7-7

starting on Windows 7-7

G

graphical mode 1-3

I

installation

- console-mode 3-3

- silent 4-2, 4-3

- starting console-mode installation on a

 - UNIX system 3-3

- starting GUI-mode installation on a

 - UNIX system 2-3

- starting GUI-mode installation on a

 - Windows system 2-3

installation methods 1-3

installation program

- console-mode description 3-5

- window descriptions 2-5

installation type 1-12, 2-6

installer.properties

- modifying 4-4

L

license

- 128-bit encryption 5-4

- about 1-8, 5-1

- converting 5-5

- evaluation 5-2

- non-expiring 5-2

- updating 5-2

- upgrading 5-5

license agreement window 2-5

license.bea

- about 1-11, 5-1

logs directory 1-10

M

migrating 1-16

N

net installer 1-4

non-expiring license 5-2

P

package installer 1-4

Pet Store server

- starting 7-6

printing product documentation viii

product installation directory 1-12, 2-7, 7-4

R

registry.xml

- about 1-11

reinstall WebLogic Server 8-10

requirements

- software 1-7

- system 1-5

- temporary storage 1-6

running 2-8

S

server

- configuring 2-8

server samples and examples

- installing 1-12

service pack

- checking availability 6-1

- installation process 6-1

silent installation

- about 4-1, 4-2

- creating template file 4-3

- options 4-4

- process 4-3

- starting the installation on a UNIX

 - system 4-13

- starting the installation on a Windows

 - system 4-11

- template 4-8
- silent mode 1-3
- silent.xml 4-3, 4-8
 - data values 4-4
- Smart Update
 - installing service packs 6-1
- smart update
 - using 6-2
- software requirements 1-7
- special considerations
 - enabling 128-bit encryption 1-8
- SSL
 - 128-bit encryption 5-4
- Start menu 7-1
- support
 - technical ix
- system password
 - setting during silent installation 4-5
- system requirements 1-5

T

- template
 - silent installation 4-3, 4-8
- temporary storage requirements 1-6
- typical installation 1-12, 2-6

U

- uninstall
 - short cut 7-2
- UNIX
 - starting WebLogic Platform installation 2-3, 3-3
- update
 - license 5-2
- UpdateLicense tool
 - about 1-11
- Upgrade
 - license 5-5
- upgrading 1-16

- User Projects
 - short cut 7-2
- utils directory 1-10

W

- WebLogic Express, installing 1-3
- weblogicXXX directory 1-12, 7-4
- window descriptions
 - Choose BEA Home Directory 2-6
 - Choose Components 2-6
 - Choose Install Type 2-6
 - Choose Product Directory 2-7
 - License Agreement 2-5
 - Run Configuration Wizard 2-8
 - Welcome 2-5
- Windows
 - Start menu short cuts 7-1
 - starting WebLogic Platform installation 2-3
- Windows service
 - requirements 1-7
- WLS Domain template 2-8
- WLS Examples template 2-8
- WLS Petstore template 2-8