



BEA WebLogic Server®

Using Web Server Plug-Ins with WebLogic Server

Version 9.2
Document Revised: June 27, 2007

Contents

1. Introduction and Roadmap	
Document Scope and Audience	1-1
Guide to this Document	1-1
Related Documentation	1-2
New and Changed Features in This Release	1-2
2. Understanding Using Web Server Plug-Ins With WebLogic Server	
What Are Plug-Ins?	2-1
Plug-Ins Included with WebLogic Server	2-2
3. Installing and Configuring the Apache HTTP Server Plug-In	
Overview of the Apache HTTP Server Plug-In	3-1
Keep-Alive Connections in Apache Version 2.0	3-2
Proxying Requests	3-2
Apache 2.2	3-2
Certifications.	3-3
Installing the Apache HTTP Server Plug-In	3-3
Installing the Apache HTTP Server Plug-In as a Dynamic Shared Object	3-3
Configuring the Apache HTTP Server Plug-In	3-6
Editing the httpd.conf File	3-6
Including a weblogic.conf File in the httpd.conf File.	3-9
Creating weblogic.conf Files.	3-9

Sample weblogic.conf Configuration Files	3-11
Template for the Apache HTTP Server httpd.conf File	3-13
Setting Up Perimeter Authentication	3-14
Using SSL with the Apache Plug-In	3-15
Configuring SSL Between the Apache HTTP Server Plug-In and WebLogic Server	3-15
Issues with SSL-Apache Configuration	3-16
Connection Errors and Clustering Failover	3-17
Possible Causes of Connection Failures	3-17
Tuning to Reduce Connection_Refused Errors	3-17
Failover with a Single, Non-Clustered WebLogic Server	3-19
The Dynamic Server List	3-19
Failover, Cookies, and HTTP Sessions	3-19

4. Installing and Configuring the Microsoft IIS Plug-In

Overview of the Microsoft Internet Information Server Plug-In	4-2
Connection Pooling and Keep-Alive	4-2
Proxying Requests	4-2
Certifications	4-3
Installing and Configuring the Microsoft Internet Information Server Plug-In	4-3
Proxying Requests from Multiple Virtual Websites to WebLogic Server	4-9
Sample iisproxy.ini File	4-10
Creating ACLs Through IIS	4-11
Setting Up Perimeter Authentication	4-11
Using SSL with the Microsoft Internet Information Server Plug-In	4-13
Proxying Servlets from IIS to WebLogic Server	4-13
Testing the Installation	4-14
Connection Errors and Clustering Failover	4-15
Possible Causes of Connection Failures	4-15

Failover with a Single, Non-Clustered WebLogic Server	4-15
The Dynamic Server List	4-15
Failover, Cookies, and HTTP Sessions	4-16

5. Installing and Configuring the Netscape Enterprise Server Plug-In

Overview of the Netscape Enterprise Server Plug-In	5-1
Connection Pooling and Keep-Alive	5-2
Proxying Requests	5-2
Installing and Configuring the Netscape Enterprise Server Plug-In	5-3
Guidelines for Modifying the obj.conf File	5-8
Sample obj.conf File (Not Using a WebLogic Cluster)	5-9
Sample obj.conf File (Using a WebLogic Cluster).	5-11
Setting Up Perimeter Authentication.	5-13
Using SSL with the NES Plug-In	5-14
Connection Errors and Clustering Failover	5-15
Possible Causes of Connection Failures.	5-15
Failover with a Single, Non-Clustered WebLogic Server	5-15
The Dynamic Server List	5-15
Failover, Cookies, and HTTP Sessions	5-16
Failover Behavior When Using Firewalls and Load Directors	5-16

6. Proxying Requests to Another Web Server

Overview of Proxying Requests to Another Web Server	6-1
Setting Up a Proxy to a Secondary Web Server	6-1
Sample Deployment Descriptor for the Proxy Servlet	6-3

7. Parameters for Web Server Plug-Ins

Entering Parameters in Web Server Plug-In Configuration Files	7-1
---	-----

General Parameters for Web Server Plug-Ins	7-2
SSL Parameters for Web Server Plug-Ins	7-14

Introduction and Roadmap

This section describes the contents and organization of this guide—*Using Web Server Plug-Ins with WebLogic Server*.

- [“Document Scope and Audience”](#) on page 1-1
- [“Guide to this Document”](#) on page 1-1
- [“Related Documentation”](#) on page 1-2
- [“New and Changed Features in This Release”](#) on page 1-2

Document Scope and Audience

This document explains use of plug-ins provided for proxying requests to third party administration servers. This document is intended mainly for system administrators who manage the WebLogic Server[®] application platform and its various subsystems.

Guide to this Document

- This chapter, [“Introduction and Roadmap,”](#) introduces the organization of this guide.
- [Chapter 2, “Understanding Using Web Server Plug-Ins With WebLogic Server,”](#) describes the plug-ins available for use with WebLogic Server.
- [Chapter 3, “Installing and Configuring the Apache HTTP Server Plug-In,”](#) explains how to install and configure the WebLogic Server Apache plug-in.

- [Chapter 4, “Installing and Configuring the Microsoft IIS Plug-In,”](#) explains how to install and configure the WebLogic Server plug-in for the Microsoft Internet Information Server.
- [Chapter 5, “Installing and Configuring the Netscape Enterprise Server Plug-In,”](#) explains how to install and configure the Netscape Enterprise Server proxy plug-in.
- [Chapter 6, “Proxying Requests to Another Web Server,”](#) describes the use of WebLogic Server as a proxy, forwarding HTTP requests to other Web servers.
- [Chapter 7, “Parameters for Web Server Plug-Ins,”](#) discusses the parameters for Web server plug-ins.

Related Documentation

This document contains information on using Web server plug-ins.

For information on using a proxy plug-in, see the following document:

- [Using WebLogic Server Clusters](#) for information on load balancing servlets and JSPs using a proxy plug-in.

New and Changed Features in This Release

There are no new or changed features for using Web server plug-ins in version 9.2 of WebLogic Server. For information about new features in version 9.0, see [What's New in WebLogic Server 9.0](#).

Understanding Using Web Server Plug-Ins With WebLogic Server

The following sections describe the plug-ins provided by BEA Systems for use with WebLogic Server:

- [“What Are Plug-Ins?” on page 2-1](#)
- [“Plug-Ins Included with WebLogic Server” on page 2-2](#)

What Are Plug-Ins?

Plug-ins are small software programs that developers use to extend a WebLogic Server implementation. Plug-ins enable WebLogic Server to communicate with applications deployed on Apache HTTP Server, Netscape Enterprise Server, or Microsoft’s Internet Information Server. Typically, WebLogic Server handles the application requests that require dynamic functionality, the requests that can best be served with dynamic HTML pages or JSPs (Java Server Pages).

WebLogic Server Plug-Ins do not support two-way SSL. However, the Plug-Ins can be set up to require the client certificate and pass it on to WebLogic Server. For example:

```
apache ssl
SSLVerifyClient require
SSLVerifyDepth 10
SSLOptions +FakeBasicAuth +ExportCertData +CompatEnvVars +StrictRequire
```

Plug-Ins Included with WebLogic Server

WebLogic Server includes plug-ins for the following Web servers:

- Apache HTTP Server
- Microsoft Internet Information Server
- Netscape Enterprise Server

Note: These libraries are available if you custom install WebLogic Server and explicitly select the plug-ins.

Installing and Configuring the Apache HTTP Server Plug-In

The following sections describe how to install and configure the Apache HTTP Server Plug-In:

- [“Overview of the Apache HTTP Server Plug-In” on page 3-1](#)
- [“Installing the Apache HTTP Server Plug-In” on page 3-3](#)
- [“Configuring the Apache HTTP Server Plug-In” on page 3-6](#)
- [“Setting Up Perimeter Authentication” on page 3-14](#)
- [“Sample weblogic.conf Configuration Files” on page 3-11](#)
- [“Setting Up Perimeter Authentication” on page 3-14](#)
- [“Using SSL with the Apache Plug-In” on page 3-15](#)
- [“Issues with SSL-Apache Configuration” on page 3-16](#)
- [“Connection Errors and Clustering Failover” on page 3-17](#)

Overview of the Apache HTTP Server Plug-In

The Apache HTTP Server Plug-In allows requests to be proxied from an Apache HTTP Server to WebLogic Server. The plug-in enhances an Apache installation by allowing WebLogic Server to handle requests that require the dynamic functionality of WebLogic Server.

The plug-in is intended for use in an environment where an Apache Server serves static pages, and another part of the document tree (dynamic pages best generated by HTTP Servlets or JavaServer Pages) is delegated to WebLogic Server, which may be operating in a different

process, possibly on a different host. To the end user—the browser—the HTTP requests delegated to WebLogic Server still appear to be coming from the same source.

HTTP-tunneling, a technique which allows HTTP requests and responses access through a company's firewall, can also operate through the plug-in, providing non-browser clients access to WebLogic Server services.

The Apache HTTP Server Plug-In operates as an Apache module within an Apache HTTP Server. An Apache module is loaded by Apache Server at startup, and then certain HTTP requests are delegated to it. Apache modules are similar to HTTP servlets, except that an Apache module is written in code native to the platform.

For information on configurations on which the Apache HTTP Server Plug-In is supported, see http://edocs.bea.com/platform/supponfigs/configs92/92_over/add-ons.html.

Keep-Alive Connections in Apache Version 2.0

Version 2.0 of the Apache HTTP Server Plug-In improves performance by using a reusable pool of connections from the plug-in to WebLogic Server. The plug-in implements HTTP 1.1 keep-alive connections between the plug-in and WebLogic Server by reusing the same connection in the pool for subsequent requests from the same client. If the connection is inactive for more than 30 seconds, (or a user-defined amount of time) the connection is closed and returned to the pool. You can disable this feature if desired. For more information, see “KeepAliveEnabled”.

Proxying Requests

The plug-in proxies requests to WebLogic Server based on a configuration that you specify. You can proxy requests based on the URL of the request (or a portion of the URL). This is called proxying by *path*. You can also proxy requests based on the *MIME type* of the requested file. Or you can use a combination of the two methods. If a request matches both criteria, the request is proxied by path. You can also specify additional parameters for each type of request that define additional behavior of the plug-in. For more information, see “[Configuring the Apache HTTP Server Plug-In](#)” on page 3-6.

Apache 2.2

Although this document refers to Apache 2.0, you can apply the same instructions to use Apache 2.2 with the libraries shown in [Table 3-2](#).

Certifications

The Apache HTTP Server Plug-In is supported on Linux, Solaris, Windows, and HP-UX11 platforms. For information on support for specific versions of Apache, see http://edocs.bea.com/platform/suppconfigs/configs92/92_over/add-ons.html.

Installing the Apache HTTP Server Plug-In

You can install the Apache HTTP Server Plug-In as an Apache module in your Apache HTTP Server installation and link it as a Dynamic Shared Object (DSO).

A DSO is compiled as a library that is dynamically loaded by the server at run time, and can be installed without recompiling Apache.

Installing the Apache HTTP Server Plug-In as a Dynamic Shared Object

The Apache plug-in is distributed as a shared object (.so) for Solaris, Linux, Windows, and HP-UX11 platforms. BEA WebLogic supplies versions of shared object files that vary according to platform, whether or not SSL is to be used between the client and Apache, and the SSL encryption strength (regular or 128 bit—128 bit versions are only installed if you install the 128 bit version of WebLogic Server).

[Table 3-1](#) shows the directories of your WebLogic Server installation that contain shared object files for various platforms (where WL_HOME is the top-level installation directory for the WebLogic platform).

[Table 3-2](#) identifies the WebLogic Server Apache Plug-In modules for different versions of Apache HTTP Server and different encryption strengths.

Table 3-1 Locations of Plug-In Shared Object Files

Operating System	Shared Object Location
Solaris	WL_HOME/weblogic92/server/plugin/solaris/sparc WL_HOME/weblogic92/server/plugin/solaris/x86
Linux	WL_HOME/weblogic92/server/plugin/linux/i686 WL_HOME/weblogic92/server/plugin/linux/ia64 WL_HOME/weblogic92/server/plugin/linux/s390 WL_HOME/weblogic92/server/plugin/linux/x86_64
Windows (Apache 2.0 only)	WL_HOME\weblogic92\server\plugin\win\32 or WL_HOME\weblogic92\server\plugin\win\64 WL_HOME\weblogic92\server\plugin\win\x64
HPUX11	WL_HOME/weblogic92/server/plugin/hpux11/IPF64 WL_HOME/weblogic92/server/plugin/hpux11/PA_RISC

WARNING: If you are running Apache 2.0.x server on HP-UX11, set the environment variables specified immediately below before you build the Apache server. Because of a problem with the order in which linked libraries are loaded on HP-UX, a core dump can result if the load order is not preset as an environment variable before building. Set the following environment variables before proceeding with the Apache configure, make, and make install steps, (described in Apache HTTP Server documentation at <http://httpd.apache.org/docs-2.1/install.html#configure>):

```
export EXTRA_LDFLAGS="-lstd -lstream -lCsup -lm -lcl -ldld -lpthread"
```

Choose the appropriate version of the plug-in shared object from the following table:

Table 3-2 Apache Plug-In Shared Object File Versions

Apache Version	Regular Strength Encryption	128-bit Encryption
Standard Apache Version 2.0.x	mod_wl_20.so	mod_wl28_20.so
Standard Apache Version 2.2.x	mod_wl_22.so	mod_wl28_22.so

To install the Apache HTTP Server Plug-In as a dynamic shared object:

1. Locate the shared object directory for your platform using [Table 3-1](#).
2. Identify the plug-in shared object file for your version of Apache in [Table 3-2](#).
3. Verify that the WebLogic Server Apache HTTP Server Plug-In `mod_so.c` module is enabled.

The Apache HTTP Server Plug-In will be installed in your Apache HTTP Server installation as a Dynamic Shared Object (DSO). DSO support in Apache is based on a module `mod_so.c`, which must be enabled before `mod_wl_20.so` is loaded. If you installed Apache HTTP Server using the script supplied by Apache, `mod_so.c` is already enabled. Verify that `mod_so.c` is enabled by executing the following command:

```
APACHE_HOME\bin\apache -l
```

(Where `APACHE_HOME` is the directory containing your Apache HTTP Server installation.)

This command lists all enabled modules. If `mod_so.c` is not listed, you must rebuild your Apache HTTP Server, making sure that the following options are configured:

```
...
--enable-module=so
--enable-rule=SHARED_CORE
...
```

See *Apache 2.0 Shared Object (DSO) Support* at <http://httpd.apache.org/docs/2.0/dso.html>.

4. Install the Apache HTTP Server Plug-In module for Apache 2.0.x by copying the `mod_wl_20.so` file to the `APACHE_HOME\modules` directory and adding the following line to your `APACHE_HOME/conf/httpd.conf` file manually:

```
LoadModule weblogic_module    modules/mod_wl_20.so
```

5. Define any additional parameters for the Apache HTTP Server Plug-In.

The Apache HTTP Server Plug-In recognizes the parameters listed in [“General Parameters for Web Server Plug-Ins” on page 7-2](#). To modify the behavior of your Apache HTTP Server Plug-In, define these parameters:

- In a `Location` block, for parameters that apply to proxying by *path*, or
 - In an `IfModule` block, for parameters that apply to proxying by *MIME type*.
6. Verify the syntax of the `APACHE_HOME\conf\httpd.conf` file with the following command:

```
APACHE_HOME\bin\apachectl -t
```

The output of this command reports any errors in your `httpd.conf` file or returns:

```
Syntax OK
```
 7. Restart Weblogic Server.
 8. Start (or restart if you have changed the configuration) Apache HTTP Server.
 9. Test the plug-in by opening a browser and setting the URL to the Apache Server + `“/weblogic/”`, which should bring up the default WebLogic Server HTML page, welcome file, or default servlet, as defined for the default Web Application on WebLogic Server. For example:

```
http://myApacheserver.com/weblogic/
```

Configuring the Apache HTTP Server Plug-In

After installing the plug-in in the Apache HTTP Server, configure the WebLogic Server Apache Plug-In and configure the server to use the plug-in. This section explains how to edit the Apache `httpd.conf` file to instruct the Apache server to load the WebLogic Server library for the plug-in as an Apache module, and to specify the application requests that should be handled by the module.

Editing the `httpd.conf` File

Edit the `httpd.conf` file in your Apache HTTP server installation to configure the Apache HTTP Server Plug-In.

This section explains how to locate and edit the `httpd.conf` file, to configure the server to use the WebLogic Server Apache Plug-In, to proxy requests by path or by MIME type, to enable HTTP tunneling, and to use other WebLogic Server plug-in parameters.

1. Open the `httpd.conf` file.

The file is located at `APACHE_HOME\conf\httpd.conf` (where `APACHE_HOME` is the root directory of your Apache HTTP server installation). See a sample `httpd.conf` file at [“Setting Up Perimeter Authentication” on page 3-14](#).

2. Ensure that the WebLogic Server modules are included for Apache 2.0.x, manually add the following line to the `httpd.conf` file:

```
LoadModule weblogic_module    modules/mod_wl_20.so
```

3. Add an `IfModule` block that defines one of the following:

For a *non-clustered* WebLogic Server:

The `WebLogicHost` and `WebLogicPort` parameters.

For a *cluster* of WebLogic Servers:

The `WebLogicCluster` parameter.

For example:

```
<IfModule mod_weblogic.c>
  WebLogicHost myweblogic.server.com
  WebLogicPort 7001
</IfModule>
```

4. To proxy requests by MIME type, add a `MatchExpression` line to the `IfModule` block. Note that if both MIME type and proxying by path are enabled, proxying by path takes precedence over proxying by MIME type.

For example, the following `IfModule` block for a non-clustered WebLogic Server specifies that all files with MIME type `.jsp` are proxied:

```
<IfModule mod_weblogic.c>
  WebLogicHost myweblogic.server.com
  WebLogicPort 7001
  MatchExpression *.jsp
</IfModule>
```

You can also use multiple `MatchExpressions`, for example:

```
<IfModule mod_weblogic.c>
  WebLogicHost myweblogic.server.com
  WebLogicPort 7001
  MatchExpression *.jsp
  MatchExpression *.xyz
</IfModule>
```

Installing and Configuring the Apache HTTP Server Plug-In

If you are proxying requests by MIME type to a cluster of WebLogic Servers, use the [WebLogicCluster](#) parameter instead of the `WebLogicHost` and `WebLogicPort` parameters. For example:

```
<IfModule mod_weblogic.c>
  WebLogicCluster wls1.com:7001,wls2.com:7001,wls3.com:7001
  MatchExpression *.jsp
  MatchExpression *.xyz
</IfModule>
```

5. To proxy requests by path, use the `Location` block and the `SetHandler` statement. `SetHandler` specifies the handler for the Apache HTTP Server Plug-In module. For example the following `Location` block proxies all requests containing `/weblogic` in the URL:

```
<Location /weblogic>
  SetHandler weblogic-handler
  PathTrim /weblogic
</Location>
```

The `PathTrim` parameter specifies a string trimmed from the beginning of the URL before the request is passed to the WebLogic Server instance (see [“General Parameters for Web Server Plug-Ins”](#) on page 7-2).

6. Optionally, enable HTTP tunneling for t3 or IIOP.
 - a. To enable HTTP tunneling if you are using the t3 protocol and `weblogic.jar`, add the following `Location` block to the `httpd.conf` file:

```
<Location /HTTPClnt>
  SetHandler weblogic-handler
</Location>
```

- b. To enable HTTP tunneling if you are using the IIOP, the only protocol used by the WebLogic Server thin client, `wlclient.jar`, add the following `Location` block to the `httpd.conf` file:

```
<Location /iiop>
  SetHandler weblogic-handler
</Location>
```

7. Define any additional parameters for the Apache HTTP Server Plug-In.

The Apache HTTP Server Plug-In recognizes the parameters listed in [“General Parameters for Web Server Plug-Ins”](#) on page 7-2. To modify the behavior of your Apache HTTP Server Plug-In, define these parameters either:

- In a `Location` block, for parameters that apply to proxying by *path*, or
- In an `IfModule` block, for parameters that apply to proxying by *MIME type*.

Including a `weblogic.conf` File in the `httpd.conf` File

If you want to keep several separate configuration files, you can define parameters in a separate configuration file called `weblogic.conf` file, by using the Apache Include directive in an `IfModule` block in the `httpd.conf` file:

```
<IfModule mod_weblogic.c>
  # Config file for WebLogic Server that defines the parameters
  Include conf/weblogic.conf
</IfModule>
```

The syntax of `weblogic.conf` files is the same as that for the `httpd.conf` file.

This section describes how to create `weblogic.conf` files, and includes sample `weblogic.conf` files.

Creating `weblogic.conf` Files

Be aware of the following when constructing a `weblogic.conf` file.

- If you are using SSL between the Apache HTTP Server Plug-In and WebLogic Server, you cannot define parameters in a file accessed, as the `weblogic.conf` file is, via the Apache Include directive.
- Enter each parameter on a new line. Do not put '=' between a parameter and its value. For example:

```
PARAM_1 value1
PARAM_2 value2
PARAM_3 value3
```

- If a request matches both a MIME type specified in a `MatchExpression` in an `IfModule` block and a path specified in a `Location` block, the behavior specified by the `Location` block takes precedence.
- If you define the `CookieName` parameter, you must define it in an `IfModule` block.
- If you use an Apache HTTP Server `<VirtualHost>` block, you must include all configuration parameters (`MatchExpression`, for example) for the virtual host within the `<VirtualHost>` block (see [Apache Virtual Host documentation](#)).
- If you want to have only one log file for all the virtual hosts configured in your environment, you can achieve it using global properties. Instead of specifying the same `Debug`, `WLogFile` and `WTempDir` properties in each virtual host you can specify them just once in the `<IfModule>` tag

Installing and Configuring the Apache HTTP Server Plug-In

■ Sample httpd.conf file:

```
<IfModule mod_weblogic.c>
    WebLogicClusteragarwalp02:8005,agarwalp02:8006
    Debug          ON
    WLogFile       c:/tmp/global_proxy.log
    WTempDir       "c:/myTemp"
    DebugConfigInfo    On
    KeepAliveEnabled ON
    KeepAliveSecs  15
</IfModule>
<Location /jurl>
    SetHandler weblogic-handler
    WebLogicCluster agarwalp01:7001
</Location>
<Location /web>
    SetHandler weblogic-handler
    PathTrim      /web
    Debug         OFF
    WLogFile      c:/tmp/web_log.log
</Location>
<Location /foo>
    SetHandler weblogic-handler
    PathTrim      /foo
    Debug         ERR
    WLogFile      c:/tmp/foo_proxy.log
</Location>
```

- All the requests which match `/jurl/*` will have Debug Level set to ALL and log messages will be logged to `c:/tmp/global_proxy.log` file. All the requests which match `/web/*` will have Debug Level set to OFF and no log messages will be logged. All the requests which match `/foo/*` will have Debug Level set to ERR and log messages will be logged to `c:/tmp/foo_proxy.log` file
- BEA recommends that you use the `MatchExpression` statement instead of the `<files>` block.

Sample `weblogic.conf` Configuration Files

The following examples of `weblogic.conf` files may be used as templates that you can modify to suit your environment and server. Lines beginning with `#` are comments.

Example Using WebLogic Clusters

```
# These parameters are common for all URLs which are
# directed to the current module. If you want to override
# these parameters for each URL, you can set them again in
# the <Location> or <Files> blocks. (Except WebLogicHost,
# WebLogicPort, WebLogicCluster, and CookieName.)

<IfModule mod_weblogic.c>
  WebLogicCluster wls1.com:7001,wls2.com:7001,wls3.com:7001
  ErrorPage http://myerrorpage.mydomain.com
  MatchExpression *.jsp
</IfModule>

#####
```

Example Using Multiple WebLogic Clusters

In this example, the `MatchExpression` parameter syntax for expressing the filename pattern, the WebLogic Server host to which HTTP requests should be forwarded, and various other parameters is as follows:

```
MatchExpression [filename pattern] [WebLogicHost=host] |
[paramName=value]
```

The first `MatchExpression` parameter below specifies the filename pattern `*.jsp`, and then names the single `WebLogicHost`. The `paramName=value` combinations following the pipe symbol specify the port at which WebLogic Server is listening for connection requests, and also activate the Debug option. The second `MatchExpression` specifies the filename pattern `*.http`

Installing and Configuring the Apache HTTP Server Plug-In

and identifies the `webLogicCluster` hosts and their ports. The `paramName=value` combination following the pipe symbol specifies the error page for the cluster.

```
# These parameters are common for all URLs which are
# directed to the current module. If you want to override
# these parameters for each URL, you can set them again in
# the <Location> or <Files> blocks (Except WebLogicHost,
# WebLogicPort, WebLogicCluster, and CookieName.)

<IfModule mod_weblogic.c>
    MatchExpression *.jsp WebLogicHost=myHost|WebLogicPort=7001|Debug=ON
    MatchExpression
*.html WebLogicCluster=myHost1:7282,myHost2:7283|ErrorPage=
    http://www.xyz.com/error.html
</IfModule>
```

Example Without WebLogic Clusters

```
# These parameters are common for all URLs which are
# directed to the current module. If you want to override
# these parameters for each URL, you can set them again in
# the <Location> or <Files> blocks (Except WebLogicHost,
# WebLogicPort, WebLogicCluster, and CookieName.)

<IfModule mod_weblogic.c>
    WebLogicHost myweblogic.server.com
    WebLogicPort 7001
    MatchExpression *.jsp
</IfModule>
```

Example Configuring Multiple Name-Based Virtual Hosts

```
# VirtualHost1 = localhost:80
<VirtualHost 127.0.0.1:80>
    DocumentRoot "C:/test/VirtualHost1"
    ServerName localhost:80<IfModule mod_weblogic.c>
    #... WLS parameter ...
    WebLogicCluster localhost:7101,localhost:7201
    # Example: MatchExpression *.jsp <some additional parameter>
    MatchExpression *.jsp PathPrepend=/test2
```

```

        </IfModule>
</VirtualHost>

# VirtualHost2 = 127.0.0.2:80
<VirtualHost 127.0.0.2:80>
    DocumentRoot "C:/test/VirtualHost1"
    ServerName 127.0.0.2:80
    <IfModule mod_weblogic.c>
        #... WLS parameter ...
        WebLogicCluster localhost:7101,localhost:7201
        # Example: MatchExpression *.jsp <some additional parameter>
        MatchExpression *.jsp PathPrepend=/test2
        #... WLS parameter ...
    </IfModule>
</VirtualHost><IfModule mod_weblogic.c>

```

You must define a unique value for 'ServerName' or some Plug-In parameters will not work as expected.

Template for the Apache HTTP Server httpd.conf File

This section contains a sample `httpd.conf` file for Apache 2.0. You can use this sample as a template and modify it to suit your environment and server. Lines beginning with `#` are comments.

Note that Apache HTTP Server is not case sensitive.

```

#####
APACHE-HOME/conf/httpd.conf file
#####

LoadModule weblogic_module    libexec/mod_wl_20.so

<Location /weblogic>
    SetHandler weblogic-handler
    PathTrim /weblogic
    ErrorPage http://myerrorpagel.mydomain.com
</Location>

<Location /servletimages>
    SetHandler weblogic-handler

```

Installing and Configuring the Apache HTTP Server Plug-In

```
    PathTrim /something
    ErrorPage http://myerrorpage1.mydomain.com
</Location>

<IfModule mod_weblogic.c>
    MatchExpression *.jsp
    WebLogicCluster wls1.com:7001,wls2.com:7001,wls3.com:7001
    ErrorPage http://myerrorpage.mydomain.com
</IfModule>
```

Setting Up Perimeter Authentication

Use perimeter authentication to secure WebLogic Server applications that are accessed via the Apache Plug-In.

A WebLogic Identity Assertion Provider authenticates tokens from outside systems that access your WebLogic Server application, including users who access your WebLogic Server application through the Apache HTTP Server Plug-In. Create an Identity Assertion Provider that will safely secure your Plug-In as follows:

1. Create a custom Identity Assertion Provider on your WebLogic Server application. See [How to Develop a Custom Identity Assertion Provider](#) in *Developing Security Providers for WebLogic Server*.
2. Configure the custom Identity Assertion Provider to support the Cert token type and make Cert the active token type. See [How to Create New Token Types](#) in *Developing Security Providers for WebLogic Server*.
3. Set `clientCertProxy` to True in the `web.xml` deployment descriptor file for the Web application (or, if using a cluster, optionally set the `Client Cert Proxy Enabled` attribute to true for the whole cluster on the Administration Console Cluster-->Configuration-->General tab). The `clientCertProxy` attribute can be used with a third party proxy server, such as a load balancer or an SSL accelerator, to enable 2-way SSL authentication. For more information about the `clientCertProxy` attribute, see [context-param](#) in *Developing Web Applications, Servlets and JSPs for WebLogic Server*.
4. Once you have set `clientCertProxy`, be sure to use a connection filter to ensure that WebLogic Server accepts connections only from the machine on which the Apache Plug-In is running. See [Using Network Connection Filters](#) in *Programming WebLogic Security*.
5. Web server plug-ins require a trusted Certificate Authority file in order to use SSL between the plug-in and WebLogic Server. Use Sun Microsystems' keytool utility to export a trusted

Certificate Authority file from the DemoTrust.jks keystore file that resides in BEA_HOME/weblogic92/server/lib.

- a. To extract the wlsdemoca file, for example, use the command:
- ```
keytool -export -file trustedcafile.der -keystore DemoTrust.jks -alias wlsdemoca
```

Change the alias name to obtain a different trusted CA file from the keystore.

To look at all of the keystore's trusted CA files, use:

```
keytool -list -keystore DemoTrust.jks
```

Press enter if prompted for password.

- b. To convert the Certificate Authority file to pem format: java utils.der2pem trustedcafile.der

See [Identity Assertion Providers](#) in *Developing Security Providers for WebLogic Server*.

## Using SSL with the Apache Plug-In

You can use the Secure Sockets Layer (SSL) protocol to protect the connection between the Apache HTTP Server Plug-In and WebLogic Server. The SSL protocol provides confidentiality and integrity to the data passed between the Apache HTTP Server Plug-In and WebLogic Server.

The Apache HTTP Server Plug-In does *not* use the transport protocol (`http` or `https`) specified in the HTTP request (usually by the browser) to determine whether or not the SSL protocol is used to protect the connection between the Apache HTTP Server Plug-In and WebLogic Server.

Although two-way SSL can be used between the HTTP client and Apache HTTP server, note that one-way SSL is used between Apache HTTP Server and WebLogic Server.

## Configuring SSL Between the Apache HTTP Server Plug-In and WebLogic Server

To use the SSL protocol between Apache HTTP Server Plug-In and WebLogic Server:

1. Configure WebLogic Server for SSL. For more information, see [Configuring SSL](#).
2. Configure the WebLogic Server SSL listen port. For more information, see [Configuring SSL](#).
3. In the Apache Server, set the `WebLogicPort` parameter in the `httpd.conf` file to the WebLogic Server SSL listen port configured in [step 2](#).
4. In the Apache Server, set the `SecureProxy` parameter in the `httpd.conf` file to `ON`.

5. Set any additional parameters in the `httpd.conf` file that define information about the SSL connection. For a complete list of the SSL parameters that you can configure for the plug-in, see [“SSL Parameters for Web Server Plug-Ins”](#) on page 7-14.

## Issues with SSL-Apache Configuration

These known issues arise when you configure the Apache plug-in to use SSL:

- To prepare the plugin configuration, double click the lock and go to the certificates path:
  - \* Select the root CA (at the top)
  - \* Display it
  - \* Detail and then copy this certificate to a file using the Coded "Base 64 X509" option
    - \* Save the file, for example, to `MyWeblogicCAToTrust.cer` (which is also a PEM file)
- The `PathTrim` parameter (see [“General Parameters for Web Server Plug-Ins”](#) on page 7-2) must be configured inside the `<Location>` tag.

The following configuration is **incorrect**:

```
<Location /weblogic>
 SetHandler weblogic-handler
</Location>

<IfModule mod_weblogic.c>
 WebLogicHost localhost
 WebLogicPort 7001
 PathTrim /weblogic
</IfModule>
```

The following configuration is the **correct** setup:

```
<Location /weblogic>
 SetHandler weblogic-handler
 PathTrim /weblogic
</Location>
```

- The `Include` directive does not work with Apache SSL. You must configure all parameters directly in the `httpd.conf` file. Do not use the following configuration when using SSL:

```
<IfModule mod_weblogic.c>
 MatchExpression *.jsp
```

```

 Include weblogic.conf
</IfModule>

```

- The current implementation of the WebLogic Server Apache Plug-In does not support the use of multiple certificate files with Apache SSL.

## Connection Errors and Clustering Failover

When the Apache HTTP Server Plug-In attempts to connect to WebLogic Server, the plug-in uses several configuration parameters to determine how long to wait for connections to the WebLogic Server host and, after a connection is established, how long the plug-in waits for a response. If the plug-in cannot connect or does not receive a response, the plug-in attempts to connect and send the request to other WebLogic Server instances in the cluster. If the connection fails or there is no response from any WebLogic Server in the cluster, an error message is sent.

[Figure 3-1 “Connection Failover” on page 3-20](#) demonstrates how the plug-in handles failover.

## Possible Causes of Connection Failures

Failure of the WebLogic Server host to respond to a connection request could indicate the following problems:

- Physical problems with the host machine
- Network problems
- Other server failures

Failure of all WebLogic Server instances to respond could indicate the following problems:

- WebLogic Server is not running or is unavailable
- A hung server
- A database problem
- An application-specific failure

## Tuning to Reduce Connection\_Refused Errors

Under load, an Apache plug-in may receive CONNECTION\_REFUSED errors from a back-end WebLogic Server instance. Follow these tuning tips to reduce CONNECTION\_REFUSED errors:

## Installing and Configuring the Apache HTTP Server Plug-In

- Increase the `AcceptBackLog` setting in the configuration of your WebLogic Server domain.
- On Apache 2.0.x, set the `KeepAlive` directive in the `httpd.conf` file to `On`. For example:

```
KeepAlive: Whether or not to allow persistent connections (more than
one request per connection). Set to "Off" to deactivate.
#
KeepAlive On
```

See Apache HTTP Server 2.0 documentation at <http://httpd.apache.org/docs-project/>.

- Decrease the time wait interval. This setting varies according to the operating system you are using. For example:
  - On Windows NT, set the `TcpTimedWaitDelay` on the proxy and WebLogic Server servers to a lower value. Set the `TIME_WAIT` interval in Windows NT by editing the registry key under `HKEY_LOCAL_MACHINE`:

```
SYSTEM\CurrentControlSet\Services\Tcpip\Parameters\TcpTimedWaitDelay
```

If this key does not exist you can create it as a `DWORD` value. The numeric value is the number of seconds to wait and may be set to any value between 30 and 240. If not set, Windows NT defaults to 240 seconds for `TIME_WAIT`.
  - On Windows 2000, lower the value of the `TcpTimedWaitDelay` by editing the registry key under `HKEY_LOCAL_MACHINE`:

```
SYSTEM\CurrentControlSet\Services\Tcpip\Parameters
```
  - On Solaris, reduce the setting `tcp_time_wait_interval` to one second (for both the WebLogic Server machine and the Apache machine, if possible):

```
$ndd /dev/tcp
 param name to set- tcp_time_wait_interval
 value=1000
```

- Increase the open file descriptor limit on your machine. This limit varies by operating system. Using the `limit (.csh)` or `ulimit (.sh)` directives, you can make a script to increase the limit. For example:

```
#!/bin/sh
ulimit -S -n 100
exec httpd
```

- On Solaris, increase the values of the following tunables on the WebLogic Server machine:

- tcp\_conn\_req\_max\_q
- tcp\_conn\_req\_max\_q0

## Failover with a Single, Non-Clustered WebLogic Server

If you are running only a single WebLogic Server instance the plug-in only attempts to connect to the server defined with the `WebLogicHost` parameter. If the attempt fails, an HTTP 503 error message is returned. The plug-in continues trying to connect to that same WebLogic Server instance until `ConnectTimeoutSecs` is exceeded.

## The Dynamic Server List

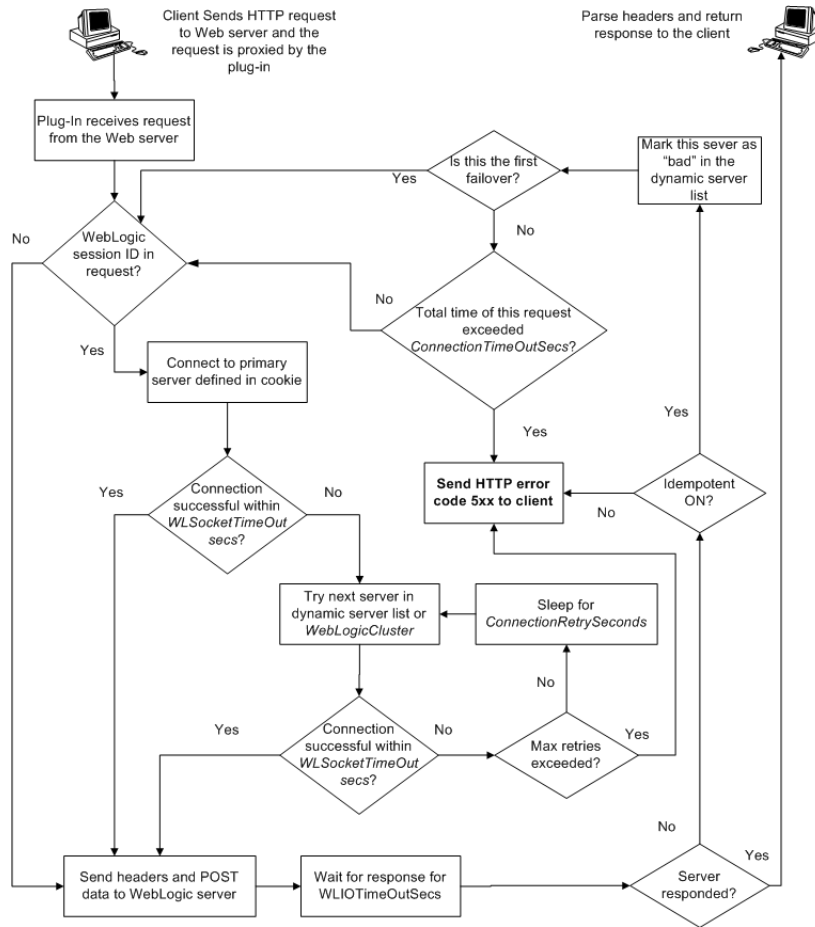
When you use the `WebLogicCluster` parameter in your `httpd.conf` or `weblogic.conf` file to specify a list of WebLogic Servers, the plug-in uses that list as a starting point for load balancing among the members of the cluster. After the first request is routed to one of these servers, a dynamic server list is returned containing an updated list of servers in the cluster. The updated list adds any new servers in the cluster and deletes any that are no longer part of the cluster or that have failed to respond to requests. This list is updated automatically with the HTTP response when a change in the cluster occurs.

## Failover, Cookies, and HTTP Sessions

When a request contains session information stored in a cookie or in the POST data, or encoded in a URL, the session ID contains a reference to the specific server instance in which the session was originally established (called the *primary* server) and a reference to an additional server where the original session is replicated (called the *secondary* server). A request containing a cookie attempts to connect to the primary server. If that attempt fails, the request is routed to the secondary server. If both the primary and secondary servers fail, the session is lost and the plug-in attempts to make a fresh connection to another server in the dynamic cluster list. See [Figure 3-1 “Connection Failover” on page 3-20](#).

**Note:** If the POST data is larger than 64K, the plug-in will not parse the POST data to obtain the session ID. Therefore, if you store the session ID in the POST data, the plug-in cannot route the request to the correct primary or secondary server, resulting in possible loss of session data.

Figure 3-1 Connection Failover



In the preceding figure, the Maximum number of retries allowed is equal to  $\text{ConnectTimeoutSecs} \div \text{ConnectRetrySecs}$ .

# Installing and Configuring the Microsoft IIS Plug-In

The following sections describe how to install and configure the Microsoft Internet Information Server Plug-In.

- [“Overview of the Microsoft Internet Information Server Plug-In” on page 4-2](#)
- [“Certifications” on page 4-3](#)
- [“Installing and Configuring the Microsoft Internet Information Server Plug-In” on page 4-3](#)
- [“Proxying Requests from Multiple Virtual Websites to WebLogic Server” on page 4-9](#)
- [“Sample iisproxy.ini File” on page 4-10](#)
- [“Creating ACLs Through IIS” on page 4-11](#)
- [“Setting Up Perimeter Authentication” on page 4-11](#)
- [“Using SSL with the Microsoft Internet Information Server Plug-In” on page 4-13](#)
- [“Proxying Servlets from IIS to WebLogic Server” on page 4-13](#)
- [“Testing the Installation” on page 4-14](#)
- [“Connection Errors and Clustering Failover” on page 4-15](#)

## Overview of the Microsoft Internet Information Server Plug-In

The Microsoft Internet Information Server Plug-In allows requests to be proxied from a Microsoft Internet Information Server (IIS) to WebLogic Server. The plug-in enhances an IIS installation by allowing WebLogic Server to handle those requests that require the dynamic functionality of WebLogic Server.

You use the Microsoft Internet Information Server Plug-In in an environment where the Internet Information Server (IIS) serves static pages such as HTML pages, while dynamic pages such as HTTP Servlets or JavaServer Pages are served by WebLogic Server. WebLogic Server may be operating in a different process, possibly on a different host. To the end user—the browser—the HTTP requests delegated to WebLogic Server still appear to be coming from IIS. The HTTP-tunneling facility of the WebLogic client-server protocol also operates through the plug-in, providing access to all WebLogic Server services.

### Connection Pooling and Keep-Alive

The Microsoft Internet Information Server Plug-In improves performance using a pool of connections from the plug-in to WebLogic Server. The plug-in implements HTTP 1.1 keep-alive connections between the plug-in and WebLogic Server by re-using the same connection for subsequent requests from the same client. If the connection is inactive for more than 30 seconds, (or a user-defined amount of time) the connection is closed. The connection with the client can be reused to connect to the same client at a later time if it has not timed out. You can disable this feature if desired. For more information, see [“KeepAliveEnabled” on page 7-12](#).

### Proxying Requests

The plug-in proxies requests to WebLogic Server based on a configuration that you specify. You can proxy requests based on either the URL of the request or a portion of the URL. This is called proxying by *path*.

You can also proxy a request based on the *MIME type* of the requested file, which called proxying by file extension.

You can also enable both methods. If you do enable both methods and a request matches both criteria, the request is proxied by path.



You can also specify additional parameters for each of these types of requests that define additional behavior of the plug-in. For more information, see [“Installing and Configuring the Microsoft Internet Information Server Plug-In”](#) on page 4-3.

## Certifications

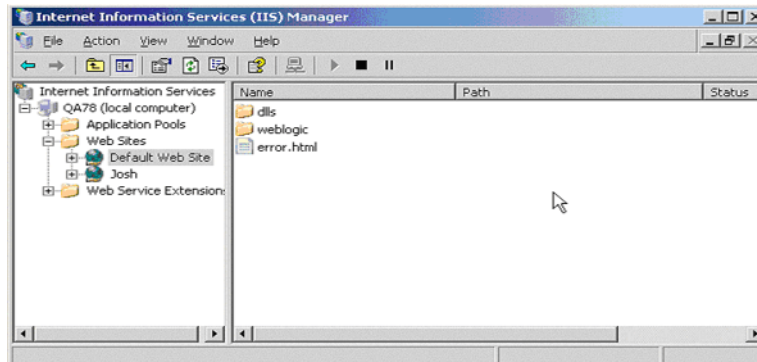
For the latest information on operating system and IIS version compatibility with the Microsoft Internet Information Server Plug-In, see the [platform support page](#) in *Supported Configurations for WebLogic Platform 9.2*.

## Installing and Configuring the Microsoft Internet Information Server Plug-In

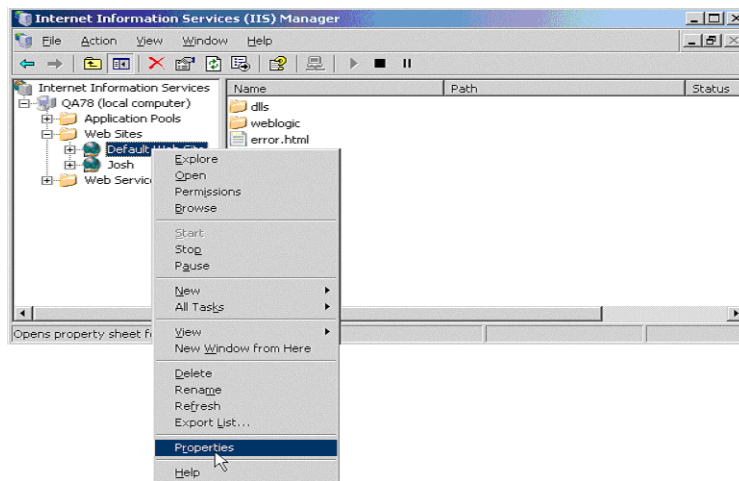
To install the Microsoft Internet Information Server Plug-In:

1. Copy the `iisproxy.dll` file from the `WL_HOME/server/plugin/win/32` or `WL_HOME/server/plugin/win/64` directory of your WebLogic Server installation (where `WL_HOME` is the top-level directory for the WebLogic Platform and Server and contains the WebLogic Server installation files into a convenient directory that is accessible to IIS). This directory must also contain the `iisproxy.ini` file that you will create in step 4. Set the user permissions for the `iisproxy.dll` file to include the name of the user who will be running IIS. One way to do this is by right clicking on the `iisproxy.dll` file and selecting Permissions, then adding the username of the person who will be running IIS.
2. If you want to configure proxying by file extension (MIME type) complete this step. (You can configure proxying by path in addition to or instead of configuring by MIME type. See [step 3](#) )
  - a. Start the Internet Information Service Manager by selecting it from the Start menu.
  - b. In the left panel of the Service Manager, select your website (the default is “Default Web Site”).

## Installing and Configuring the Microsoft IIS Plug-In

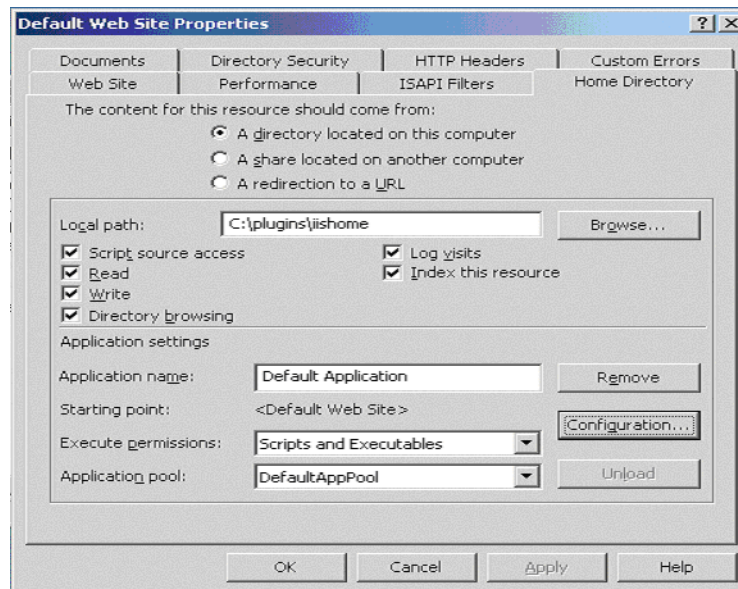


- c. Click the “Play” arrow in the toolbar to start.
- d. Open the properties for the selected website by right-clicking the website selection in the left panel and selecting Properties.



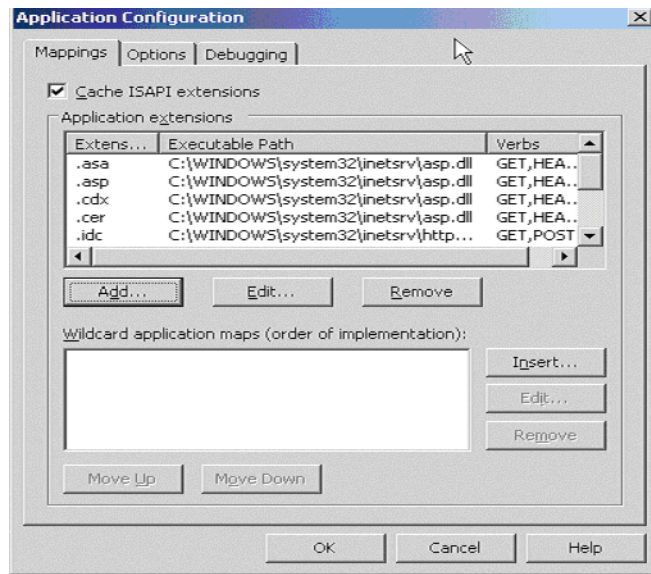
- e. In the Properties panel, select the Home Directory tab, and click the Configuration button in the Applications Settings section.

## Installing and Configuring the Microsoft Internet Information Server Plug-In



- f. On the Mappings tab, click the Add button to add file types and configure them to be proxied to WebLogic Server.

## Installing and Configuring the Microsoft IIS Plug-In



- g. In the Add dialog box, browse to find the “iisproxy.dll” file.
- h. Set the Extension to the type of file that you want to proxy to WebLogic Server.
- i. If you are configuring for IIS 6.0 or later, be sure to deselect the “Check that file exists” check box. The behavior of this check has changed from earlier versions of IIS: it used to check that the `iisproxy.dll` file exists; now it checks that files requested from the proxy exist in the root directory of the Web server. If the check does not find the files there, the `iisproxy.dll` file will not be allowed to proxy requests to the WebLogic Server.
- j. In the Directory Security tab, set the Method exclusions as needed to create a secure installation.
- k. When you finish, click the OK button to save the configuration. Repeat this process for each file type you want to proxy to WebLogic.
- l. When you finish configuring file types, click the OK button to close the Properties panel.

**Note:** In the URL, any path information you add after the server and port is passed directly to WebLogic Server. For example, if you request a file from IIS with the URL:

```
http://myiis.com/jspfiles/myfile.jsp
```

it is proxied to WebLogic Server with a URL such as

## Installing and Configuring the Microsoft Internet Information Server Plug-In

```
http://mywebLogic:7001/jspfiles/myfile.jsp
```

**Note:** To avoid out-of-process errors, do not deselect the "Cache ISAPI Applications" check box.

3. If you want to configure proxying by path complete this step. (In addition to proxying by file type, you can configure the Microsoft Internet Information Server Plug-In to serve files based on their *path* by specifying some additional parameters in the `iisproxy.ini` file.) Proxying by path takes precedence over proxying by MIME type.

You can also proxy multiple websites defined in IIS by path. For more information, see ["Proxying Requests from Multiple Virtual Websites to WebLogic Server"](#) on page 4-9.

To configure proxying by path:

- a. Start the Internet Information Service Manager by selecting it from the Start menu.
- b. Place the `iisforward.dll` file in the same directory as the `iisproxy.dll` file and add the `iisforward.dll` file as a filter service in IIS (WebSite *Properties* →ISAPI Filters tab →Add the `iisforward.dll`). Set the user permissions for the `iisforward.dll` file to include the name of the user who will be running IIS. One way to do this is by right clicking on the `iisproxy.dll` file and selecting Permissions, then adding the username of the person who will be running IIS.
- c. Register `.wlforward` as a special file type to be handled by `iisproxy.dll` in IIS.
- d. Define the property `WlForwardPath` in `iisproxy.ini`. `WlForwardPath` defines the path that is proxied to WebLogic Server, for example: `WlForwardPath=/weblogic`.
- e. Set the `PathTrim` parameter to trim off the `WlForwardPath` when necessary. For example, using

```
WlForwardPath=/weblogic
PathTrim=/weblogic
```

trims a request from IIS to Weblogic Server. Therefore, `/weblogic/session` is changed to `/session`.
- f. If you want requests that do not contain extra path information (in other words, requests containing only a host name), set the `DefaultFileName` parameter to the name of the welcome page of the Web Application to which the request is being proxied. The value of this parameter is appended to the URL.
- g. If you need to debug your application, set the `Debug=ON` parameter in `iisproxy.ini`. A `c:\tmp\iisforward.log` is generated containing a log of the plug-in's activity that you can use for debugging purposes.

## Installing and Configuring the Microsoft IIS Plug-In

4. In WebLogic Server, create the `iisproxy.ini` file.

The `iisproxy.ini` file contains name=value pairs that define configuration parameters for the plug-in. The parameters are listed in [“General Parameters for Web Server Plug-Ins” on page 7-2](#).

Use the example `iisproxy.ini` file in this section ([“Sample iisproxy.ini File” on page 4-10](#)) as a template for your `iisproxy.ini` file.

**Note:** Changes in the parameters will not go into effect until you restart the “IIS Admin Service” (under *services*, in the control panel).

BEA recommends that you locate the `iisproxy.ini` file in the same directory that contains the `iisproxy.dll` file. You can also use other locations. If you place the file elsewhere, note that WebLogic Server searches for `iisproxy.ini` in the following directories, in the following order:

- a. in the same directory where `iisproxy.dll` is located
  - b. in the home directory of the most recent version of WebLogic Server that is referenced in the Windows Registry. (If WebLogic Server does not find the `iisproxy.ini` file in the home directory, it continues looking in the Windows Registry for older versions of WebLogic Server and looks for the `iisproxy.ini` file in the home directories of those installations.)
  - c. in the directory `c:\weblogic`, if it exists
5. Define the WebLogic Server host and port number to which the Microsoft Internet Information Server Plug-In proxies requests. Depending on your configuration, there are two ways to define the host and port:

- If you are proxying requests to a single WebLogic Server, define the `WebLogicHost` and `WebLogicPort` parameters in the `iisproxy.ini` file. For example:

```
WebLogicHost=localhost
WebLogicPort=7001
```

- If you are proxying requests to a cluster of WebLogic Servers, define the `WebLogicCluster` parameter in the `iisproxy.ini` file. For example:

```
WebLogicCluster=myweblogic.com:7001,yourweblogic.com:7001
```

Where `myweblogic.com` and `yourweblogic.com` are instances of Weblogic Server running in a cluster.

6. Optionally, enable HTTP tunneling by following the instructions for proxying by path (see step 8 above), substituting the WebLogic Server host name and the WebLogic Server port number, or the name of a WebLogic Cluster that you wish to handle HTTP tunneling requests.
  - a. If you are using `weblogic.jar` and the T3 protocol, set `WlForwardPath` to this URL pattern:

```
WlForwardPath=*/HTTPClnt*
```
  - b. If you are using IIOP, which is the only protocol used by the WebLogic Server thin client, `wlclient.jar`, set the value of `WlForwardPath` to `*/iiop*`:

```
WlForwardPath=*/iiop*
```

You do not need to use the `PathTrim` parameter.
7. Set any additional parameters in the `iisproxy.ini` file. A complete list of parameters is available in the appendix [“General Parameters for Web Server Plug-Ins”](#) on page 7-2.
8. If you are proxying servlets from IIS to WebLogic Server and you are not proxying by path, read the section [“Proxying Servlets from IIS to WebLogic Server”](#) on page 4-13.
9. The installed version of IIS with its initial settings does not allow the `iisproxy.dll`. Use the IIS Manager console to enable the Plug-In:
  - a. Open the IIS Manager console.
  - b. Select Web Service Extensions.
  - c. Set “All Unknown ISAPI Extensions” to Allowed.

## Proxying Requests from Multiple Virtual Websites to WebLogic Server

To proxy requests from multiple websites (defined as virtual directories in IIS) to WebLogic Server:

1. Create a new directory for the virtual directories. This directory will contain `dll` and `ini` files used to define the proxy.
2. Copy `iisforward.dll` to the directory you created in step 1.
3. Register the `iisforward.dll` for each website with IIS.

4. Create a file called `iisforward.ini`. Place this file in the same directory that contains `iisforward.dll`. This file should contain the following entry for each virtual website defined in IIS:

```
vhostN=websiteName:port
websiteName:port=dll_directory/iisproxy.ini
```

Where:

- *N* is an integer representing the virtual website. The first virtual website you define should use the integer 1 and each subsequent website should increment this number by 1.
- *websiteName* is the name of the virtual website as registered with IIS.
- *port* is the port number where IIS listens for HTTP requests.
- *dll\_directory* is the path to the directory you created in step 1.

For example:

```
vhost1=strawberry.com:7001
strawberry.com:7001=c:\strawberry\iisproxy.ini
vhost2=blueberry.com:7001
blueberry.com:7001=c:\blueberry\iisproxy.ini
...
```

5. Create an `iisproxy.ini` file for the virtual websites, as described in [step 4 in “Proxying Requests”](#). Copy this `iisproxy.ini` file to the directory you created in step 1.
6. Copy `iisproxy.dll` to the directory you created in step 1.
7. In IIS, set the value for the Application Protection option to high (isolated). If the Application Protection option is set to Medium(pooled), the `iisproxy.dll` that registered as the first website will always be invoked. In this event, all the requests will be proxied to the same WebLogic Server instances defined in the `iisproxy.ini` of the first website.

## Sample `iisproxy.ini` File

Here is a sample `iisproxy.ini` file for use with a single, non-clustered WebLogic Server. Comment lines are denoted with the “#” character.

```
This file contains initialization name/value pairs
for the IIS/WebLogic plug-in.

WebLogicHost=localhost
WebLogicPort=7001
```



```
ConnectTimeoutSecs=20
ConnectRetrySecs=2
```

Here is a sample `iisproxy.ini` file with clustered WebLogic Servers. Comment lines are denoted with the “#” character.

```
This file contains initialization name/value pairs
for the IIS/WebLogic plug-in.

WebLogicCluster=myweblogic.com:7001,yourweblogic.com:7001
ConnectTimeoutSecs=20
ConnectRetrySecs=2
```

**Note:** If you are using SSL between the plug-in and WebLogic Server, the port number should be defined as the SSL listen port.

## Creating ACLs Through IIS

ACLs will not work through the Microsoft Internet Information Server Plug-In if the Authorization header is not passed by IIS. Use the following information to ensure that the Authorization header is passed by IIS.

When using Basic Authentication, the user is logged on with local log-on rights. To enable the use of Basic Authentication, grant each user account the *Log On Locally* user right on the IIS server. Two problems may result from Basic Authentication's use of local logon:

- If the user does not have local logon rights, Basic Authentication does not work even if the FrontPage, IIS, and Windows NT configurations appear to be correct.
- A user who has local log-on rights and who can obtain physical access to the host computer running IIS will be permitted to start an interactive session at the console.

To enable Basic Authentication, in the Directory Security tab of the console, ensure that the Allow Anonymous option is “on” and all other options are “off”.

## Setting Up Perimeter Authentication

Use perimeter authentication to secure your WebLogic Server applications that are accessed via the Microsoft Internet Information Server Plug-In.

A WebLogic Identity Assertion Provider authenticates tokens from outside systems that access your WebLogic Server application, including users who access your WebLogic Server

## Installing and Configuring the Microsoft IIS Plug-In

application through the Microsoft Internet Information Server Plug-In. Create an Identity Assertion Provider that will safely secure your Plug-In as follows:

1. Create a custom Identity Assertion Provider on your WebLogic Server application. See [How to Develop a Custom Identity Assertion Provider](#) in *Developing Security Providers for WebLogic Server*.
2. Configure the custom Identity Assertion Provider to support the "Cert" token type and make it the active token type. See [How to Create New Token Types](#) in *Developing Security Providers for WebLogic Server*.
3. Set the `clientCertProxy` attribute to `True` in the `web.xml` deployment descriptor file for the Web application (or, if using a cluster, optionally set the `Client Cert Proxy Enabled` attribute to `true` for the whole cluster on the Administration Console Cluster-->Configuration-->General tab). See [context-param](#) in *Developing Web Applications for WebLogic Server*.
4. Once you have set `clientCertProxy`, be sure to use a connection filter to ensure that WebLogic Server accepts connections only from the machine on which the Microsoft Internet Information Server Plug-In is running. See [Using Network Connection Filters](#) in *Programming WebLogic Security*.
5. Web server plug-ins require a trusted Certificate Authority file in order to use SSL between the plug-in and WebLogic Server. Use Sun Microsystems' `keytool` utility to export a trusted Certificate Authority file from the `DemoTrust.jks` keystore file that resides in `BEA_HOME/weblogic92/server/lib`.
  - a. To extract the `wlsdemoca` file, for example, use the command:

```
keytool -export -file trustedcafile.der -keystore DemoTrust.jks -alias wlsdemoca
```

Change the alias name to obtain a different trusted CA file from the keystore.  
To look at all of the keystore's trusted CA files, use:

```
keytool -list -keystore DemoTrust.jks
```

Press enter if prompted for password.
  - b. To convert the Certificate Authority file to pem format: `java utils.der2pem trustedcafile.der`

See [Identity Assertion Providers](#) in *Developing Security Providers for WebLogic Server* for more information about Identity Assertion Providers.

## Using SSL with the Microsoft Internet Information Server Plug-In

You can use the Secure Sockets Layer (SSL) protocol to protect the connection between WebLogic Server and the Microsoft Internet Information Server Plug-In. The SSL protocol provides confidentiality and integrity to the data passed between the Microsoft Internet Information Server Plug-In and WebLogic Server.

The Microsoft Internet Information Server Plug-In does not use the transport protocol (`http` or `https`) to determine whether the SSL protocol will be used to protect the connection between the proxy plug-in and the Microsoft Internet Information Server. In order to use the SSL protocol with the Microsoft Internet Information Server Plug-In, configure the WebLogic Server instance receiving the proxied requests to use the SSL protocol. The port on the WebLogic Server that is configured for secure SSL communication is used by the Microsoft Internet Information Server Plug-In to communicate with the Microsoft Internet Information Server.

To use the SSL protocol between Microsoft Internet Information Server Plug-In and WebLogic Server:

1. Configure WebLogic Server for SSL. For more information, see [Configuring SSL](#).
2. Configure the WebLogic Server SSL listen port. For more information, see [Configuring SSL](#).
3. Set the `WebLogicPort` parameter in the `iisproxy.ini` file to the listen port configured in step 2
4. Set the `SecureProxy` parameter in the `iisproxy.ini` file to `ON`.
5. Set additional parameters in the `iisproxy.ini` file that define the SSL connection. For a complete list of parameters, see [“SSL Parameters for Web Server Plug-Ins”](#) on page 7-14.

For example:

```
WebLogicHost=myweblogic.com
WebLogicPort=7002
SecureProxy=ON
```

## Proxying Servlets from IIS to WebLogic Server

You can proxy servlets by path if the `iisforward.dll` is registered as a filter. You would then invoke your servlet with a URL similar to the following:

```
http://IISserver/weblogic/myServlet
```

## Installing and Configuring the Microsoft IIS Plug-In

To proxy servlets if `iisforward.dll` is not registered as a filter, you must configure servlet proxying by file type. To proxy servlets by file type:

1. Register an arbitrary file type (extension) with IIS to proxy the request to the WebLogic Server, as described in [step 2](#) under “Installing and Configuring the Microsoft Internet Information Server Plug-In” on page 4-3.
2. Register your servlet in the appropriate Web Application. For more information on registering servlets, see [Configuring Servlets](#).
3. Invoke your servlet with a URL formed according to this pattern:

```
http://www.myserver.com/virtualName/anyfile.ext
```

where `virtualName` is the URL pattern defined in the `<servlet-mapping>` element of the Web Application deployment descriptor (`web.xml`) for this servlet and `ext` is a file type (extension) registered with IIS for proxying to WebLogic Server. The `anyfile` part of the URL is ignored in this context.

### Note:

- If the image links called from the servlet are part of the Web Application, you must also proxy the requests for the images to WebLogic Server by registering the appropriate file types (probably `.gif` and `.jpg`) with IIS. You can, however, choose to serve these images directly from IIS if desired.
- If the servlet being proxied has links that call other servlets, then these links must also be proxied to WebLogic Server, conforming to the pattern described in step 3.

## Testing the Installation

After you install and configure the Microsoft Internet Information Server Plug-In, follow these steps for deployment and testing:

1. Make sure WebLogic Server and IIS are running.
2. Save a JSP file into the document root of the default Web Application.
3. Open a browser and set the URL to the IIS + `filename.jsp` as shown in this example:

```
http://myii.server.com/filename.jsp
```

If `filename.jsp` is displayed in your browser, the plug-in is functioning.

## Connection Errors and Clustering Failover

When the Microsoft Internet Information Server Plug-In attempts to connect to WebLogic Server, the plug-in uses several configuration parameters to determine how long to wait for connections to the WebLogic Server host, and, after a connection is established, how long the plug-in waits for a response. If the plug-in cannot connect or does not receive a response, the plug-in attempts to connect and sends the request to other WebLogic Servers in the cluster. If the connection fails or there is no response from any WebLogic Server instance in the cluster, an error message is sent.

[Figure 4-1 “Connection Failover” on page 4-17](#) demonstrates how the plug-in handles failover.

### Possible Causes of Connection Failures

Failure of the WebLogic Server host to respond to a connection request could indicate problems with the host machine, networking problems, or other server failures.

Failure of any WebLogic Server instance in the cluster to respond, could indicate that WebLogic Server is not running or is unavailable, a hung server, a database problem, or other application failure.

### Failover with a Single, Non-Clustered WebLogic Server

If you are running only a single WebLogic Server, the plug-in only attempts to connect to the server defined with the `webLogicHost` parameter. If the attempt fails, an HTTP 503 error message is returned. The plug-in continues trying to connect to WebLogic Server until `connectTimeoutSecs` is exceeded.

### The Dynamic Server List

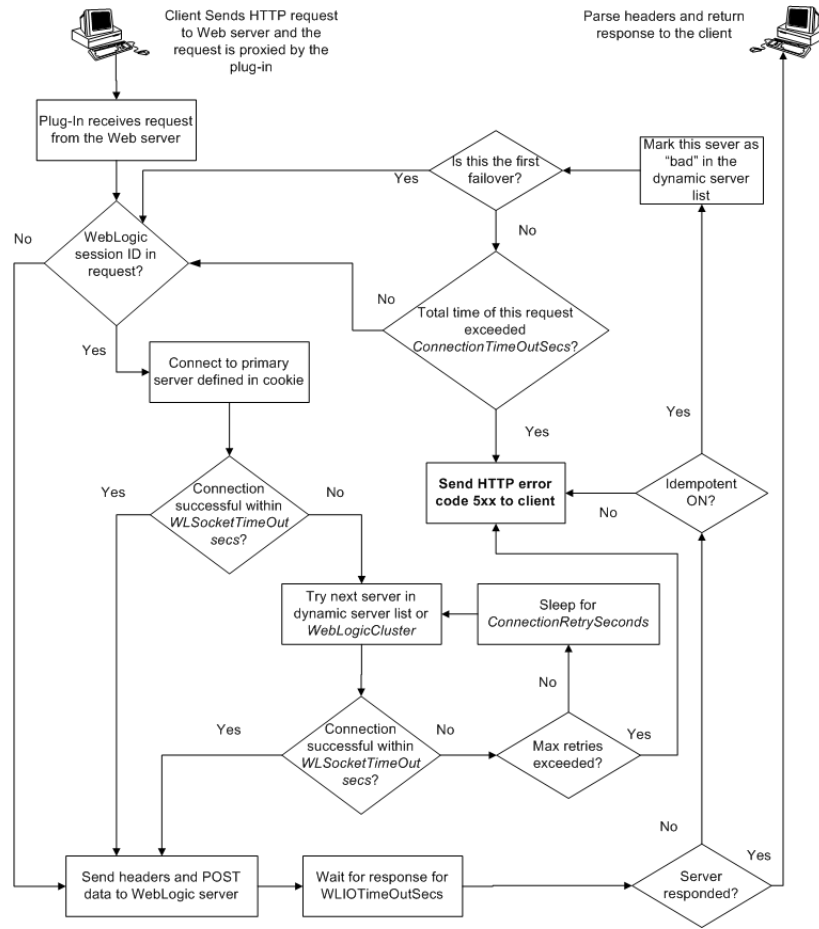
When you specify a list of WebLogic Servers in the `webLogicCluster` parameter, the plug-in uses that list as a starting point for load balancing among the members of the cluster. After the first request is routed to one of these servers, a dynamic server list is returned containing an updated list of servers in the cluster. The updated list adds any new servers in the cluster and deletes any that are no longer part of the cluster or that have failed to respond to requests. This list is updated automatically with the HTTP response when a change in the cluster occurs.

## Failover, Cookies, and HTTP Sessions

When a request contains a session information stored in a cookie, in the POST data, or by URL encoding, the session ID contains a reference to the specific server in which the session was originally established (called the *primary* server) and a reference to an additional server where the original session is replicated (called the *secondary* server). A request containing a cookie attempts to connect to the primary server. If that attempt fails, the request is routed to the secondary server. If both the primary and secondary servers fail, the session is lost and the plug-in attempts to make a fresh connection to another server in the dynamic cluster list. For more information see [Figure 4-1 “Connection Failover” on page 4-17](#).

**Note:** If the POST data is larger than 64K, the plug-in will not parse the POST data to obtain the session ID. Therefore, if you store the session ID in the POST data, the plug-in cannot route the request to the correct primary or secondary server, resulting in possible loss of session data.

Figure 4-1 Connection Failover



In the preceding graphic, the Maximum number of retries allowed is equal to  $\text{ConnectTimeoutSecs} \div \text{ConnectRetrySecs}$ .

## Installing and Configuring the Microsoft IIS Plug-In



# Installing and Configuring the Netscape Enterprise Server Plug-In

The following sections describe how to install and configure the Netscape Enterprise Server (NES) proxy plug-in:

- [“Overview of the Netscape Enterprise Server Plug-In” on page 5-1](#)
- [“Installing and Configuring the Netscape Enterprise Server Plug-In” on page 5-3](#)
- [“Setting Up Perimeter Authentication” on page 5-13](#)
- [“Using SSL with the NES Plug-In” on page 5-14](#)
- [“Connection Errors and Clustering Failover” on page 5-15](#)
- [“Failover Behavior When Using Firewalls and Load Directors” on page 5-16](#)
- [“Sample obj.conf File \(Not Using a WebLogic Cluster\)” on page 5-9](#)
- [“Sample obj.conf File \(Using a WebLogic Cluster\)” on page 5-11](#)

## Overview of the Netscape Enterprise Server Plug-In

The Netscape Enterprise Server Plug-In enables requests to be proxied from Netscape Enterprise Server (NES, also called iPlanet) to WebLogic Server. The plug-in enhances an NES installation by allowing WebLogic Server to handle those requests that require the dynamic functionality of WebLogic Server.

The Netscape Enterprise Server Plug-In is designed for an environment where Netscape Enterprise Server serves static pages, and a Weblogic Server instance (operating in a different

process, possibly on a different machine) is delegated to serve dynamic pages, such as JSPs or pages generated by HTTP Servlets. The connection between WebLogic Server and the Netscape Enterprise Server Plug-In is made using clear text or Secure Sockets Layer (SSL). To the end user—the browser—the HTTP requests delegated to WebLogic Server appear to come from the same source as the static pages. Additionally, the HTTP-tunneling facility of WebLogic Server can operate through the Netscape Enterprise Server Plug-In, providing access to all WebLogic Server services (not just dynamic pages).

The Netscape Enterprise Server Plug-In operates as an [NES module](#) (see <http://home.netscape.com/servers/index.html>) within a Netscape Enterprise Server. The NES module is loaded by NES at startup, and then certain HTTP requests are delegated to it. NES is similar to an HTTP (Java) servlet, except that an NES module is written in code native to the platform.

For more information on supported versions of Netscape Enterprise Server and iPlanet servers, see the [BEA WebLogic Server Certifications Page](#).

## Connection Pooling and Keep-Alive

The WebLogic Server Netscape Enterprise Server Plug-In provides efficient performance by using a re-usable pool of connections from the plug-in to WebLogic Server. The NES plug-in automatically implements “keep-alive” connections between the plug-in and WebLogic Server. If a connection is inactive for more than 30 seconds or a user-defined amount of time, the connection is closed. You can disable this feature if desired. For more information, see “[KeepAliveEnabled](#)” on page 7-12.

## Proxying Requests

The plug-in proxies requests to WebLogic Server based on a configuration that you specify. You can proxy requests based on the URL of the request (or a portion of the URL). This is called proxying by *path*. You can also proxy request based on the *MIME type* of the requested file. Or you can use a combination of both methods. If a request matches both criteria, the request is proxied by path. You can also specify additional parameters for each of these types of requests that define additional behavior of the plug-in. For more information, see “[Installing and Configuring the Netscape Enterprise Server Plug-In](#)” on page 5-3.

## Installing and Configuring the Netscape Enterprise Server Plug-In

To install and configure the Netscape Enterprise Server Plug-In:

1. Copy the library.

The WebLogic NES plug-in module is distributed as a shared object (.so) on UNIX platforms and as a dynamic-link library (.dll) on Windows. These files are located in the *WL\_HOME/server/plugin/OperatingSystem/Architecture* directory of your WebLogic Server distribution. *WL\_HOME* represents the top level installation directory for your WebLogic platform. The server directory contains installation files for WebLogic Server. *OperatingSystem* refers to the operating system, such as UNIX or Windows.

Choose the appropriate library file for your environment from the [Certifications table](http://e-docs.bea.com/wls/certifications/certifications/index.html) at <http://e-docs.bea.com/wls/certifications/certifications/index.html> and copy that file into the file system where NES is located.

2. Read "[Guidelines for Modifying the obj.conf File](#)" on page 5-8, then modify the NES `obj.conf` file as described in the following steps. The `obj.conf` file defines which requests are proxied to WebLogic Server and other configuration information.
3. Locate and open `obj.conf`.

The `obj.conf` file for your NES instance is in the following location:

```
NETSCAPE_HOME/https-INSTANCE_NAME/config/obj.conf
```

Where *NETSCAPE\_HOME* is the root directory of the NES installation, and *INSTANCE\_NAME* is the particular "instance" or server configuration that you are using. For example, on a UNIX machine called `myunixmachine`, the `obj.conf` file would be found here:

```
/usr/local/netscape/enterprise-351/
https-myunixmachine/config/obj.conf
```

4. Instruct NES to load the native library (the .so or .dll file) as an NES module.

To use iPlanet 4.x or earlier, add the following lines to the beginning of the `obj.conf` file.

```
Init fn="load-modules" funcs="wl_proxy,wl_init"
shlib=/usr/local/netscape/plugins/SHARED_LIBRARY
Init fn="wl_init"
```

Where *SHARED\_LIBRARY* is the shared object or dll (for example `libproxy.so`) that you installed in [step 1](#) under "[Installing and Configuring the Netscape Enterprise Server Plug-In](#)" on page 5-3. The function "load-modules" tags the shared library for loading

## Installing and Configuring the Netscape Enterprise Server Plug-In

when NES starts up. The values “wl\_proxy” and “wl\_init” identify the functions that the Netscape Enterprise Server Plug-In executes.

To use iPlanet 6.0, add the following lines to the beginning of the `magnus.conf` file. These lines instruct NES to load the native library (the `.so` or `.dll` file) as an NES module:

```
Init fn="load-modules" funcs="wl_proxy,wl_init"\
shlib=/usr/local/netscape/plugins/SHARED_LIBRARY\
Init fn="wl_init"
```

Where `SHARED_LIBRARY` is the shared object or `dll` (for example `libproxy.so`) that you installed in [step 1](#) under “Installing and Configuring the Netscape Enterprise Server Plug-In” on [page 5-3](#). The function “load-modules” tags the shared library for loading when NES starts up. The values “wl\_proxy” and “wl\_init” identify the functions that the Netscape Enterprise Server Plug-In executes.

5. If you want to proxy requests by URL, (also called proxying by *path*.) create a separate `<Object>` tag for each URL that you want to proxy and define the `PathTrim` parameter. (You can proxy requests by MIME type, in addition to or instead of proxying requests by path. See [step 6](#) Proxying by path supersedes proxying by MIME type.) The following is an example of an `<Object>` tag that proxies a request containing the string `*/weblogic/*`.

```
<Object name="weblogic" ppath="*/weblogic/*">
Service fn=wl_proxy WebLogicHost=myserver.com\
WebLogicPort=7001 PathTrim="*/weblogic"
</Object>
```

To create an `<Object>` tag to proxy requests by URL:

- a. Specify a name for this object (optional) inside the opening `<Object>` tag using the `name` attribute. The `name` attribute is informational only and is not used by the Netscape Enterprise Server Plug-In. For example:

```
<Object name=myObject ...>
```

- b. Specify the URL to be proxied within the `<Object>` tag, using the `ppath` attribute. For example:

```
<Object name=myObject ppath="*/weblogic/*">
```

The value of the `ppath` attribute can be any string that identifies requests intended for Weblogic Server. When you use a `ppath`, every request that contains that path is redirected. For example, a `ppath` of “\*/weblogic/\*” redirects every request that begins “`http://enterprise.com/weblogic`” to the Netscape Enterprise Server Plug-In, which sends the request to the specified Weblogic host or cluster.

- c. Add the `Service` directive within the `<Object>` and `</Object>` tags. In the `Service` directive you can specify any valid parameters as `name=value` pairs. Separate multiple `name=value` pairs with *one and only one* space. For example:

```
Service fn=wl_proxy WebLogicHost=myserver.com\
WebLogicPort=7001 PathTrim="/weblogic"
```

For a complete list of parameters, see [“General Parameters for Web Server Plug-Ins” on page 7-2](#). You *must* specify the following parameters:

For a *non-clustered* WebLogic Server:

The `WebLogicHost` and `WebLogicPort` parameters.

For a *cluster* of WebLogic Server instances:

The `WebLogicCluster` parameter.

Always begin the `Service` directive with `Service fn=wl_proxy`, followed by valid `name=value` pairs of parameters.

Here is an example of the object definitions for two separate `ppaths` that identify requests to be sent to different instances of WebLogic Server:

```
<Object name="weblogic" ppath="*/weblogic/*">
Service fn=wl_proxy WebLogicHost=myserver.com\
WebLogicPort=7001 PathTrim="/weblogic"
</Object>

<Object name="si" ppath="*/servletimages/*">
Service fn=wl_proxy WebLogicHost=otherserver.com\
WebLogicPort=7008
</Object>
```

**Note:** Parameters that are not required, such as `PathTrim`, can be used to further configure the way the `ppath` is passed through the Netscape Enterprise Server Plug-In. For a complete list of plug-in parameters, see [“General Parameters for Web Server Plug-Ins” on page 7-2](#).

6. If you are proxying requests by MIME type, add any new MIME types referenced in the `obj.conf` file to the `MIME.types` file. You can add MIME types by using the Netscape server console or by editing the `MIME.types` file directly.

To directly edit the `MIME.types` file, open the file for edit and type the following line:

```
type=text/jsp exts=jsp
```

**Note:** For NES 4.0 (iPlanet), instead of adding the MIME type for JSPs, change the existing MIME type from

```
magnus-internal/jsp
```

## Installing and Configuring the Netscape Enterprise Server Plug-In

to

```
text/jsp.
```

To use the Netscape console, select **Manage Preferences**→**Mime Types**, and make the additions or edits.

7. All requests with a designated MIME type extension (for example, `.jsp`) can be proxied to the WebLogic Server, regardless of the URL. To proxy all requests of a certain file type to WebLogic Server:

- a. Add a `Service` directive to the existing default `Object` definition. (`<Object name=default ...>`)

For example, to proxy all JSPs to a WebLogic Server, the following `Service` directive should be added *after* the last line that begins with:

```
NameTrans fn=...
```

and *before* the line that begins with:

```
PathCheck.
```

```
Service method="(GET|HEAD|POST|PUT)" type=text/jsp fn=wl_proxy\
 WebLogicHost=192.1.1.4 WebLogicPort=7001 PathPrepend=/jspfiles
```

This `Service` directive proxies all files with the `.jsp` extension to the designated WebLogic Server, where they are served with a URL like this:

```
http://WebLogic:7001/jspfiles/myfile.jsp
```

The value of the `PathPrepend` parameter should correspond to the context root of a Web Application that is deployed on the WebLogic Server or cluster to which requests are proxied.

After adding entries for the Netscape Enterprise Server Plug-In, the default `Object` definition will be similar to the following example:

```
<Object name=default>
NameTrans fn=px2dir from=/ns-icons\
 dir="c:/Netscape/SuiteSpot/ns-icons"
NameTrans fn=px2dir from=/mc-icons\
 dir="c:/Netscape/SuiteSpot/ns-icons"
NameTrans fn="px2dir" from="/help" dir=\
 "c:/Netscape/SuiteSpot/manual/https/ug"
NameTrans fn=document-root root="c:/Netscape/SuiteSpot/docs"
Service method="(GET|HEAD|POST|PUT)" type=text/jsp\
 fn=wl_proxy WebLogicHost=localhost WebLogicPort=7001\
 PathPrepend=/jspfiles
PathCheck fn=nt-uri-clean
```

```

PathCheck fn="check-acl" acl="default"
PathCheck fn=find-pathinfo
PathCheck fn=find-index index-names="index.html,home.html"
If a required parameter is missing from the configuration, when the
object is invoked it issues an HTML error that notes the missing
parameter from the configuration.

ObjectType fn=type-by-extension
ObjectType fn=force-type type=text/plain
Service method=(GET|HEAD) type=magnus-internal/imagemap\ fn=imagemap
Service method=(GET|HEAD) \
 type=magnus-internal/directory fn=index-common
Service method=(GET|HEAD) \
 type=~magnus-internal/* fn=send-file
AddLog fn=flex-log name="access"
</Object>

```

- b. Add a similar `Service` statement to the default object definition for all other MIME types that you want to proxy to WebLogic Server.
- c. To configure proxy-by-MIME for the JSP, you must add the following entry to the `mime.types` file

```
type=text/jsp exts=jsp
```

For proxy-by-MIME to work properly you need to disable JAVA from the Sun One Web Server otherwise SUN One will try to serve all requests that end in `*.jsp` and will return a 404 error as it will fail to locate the resource under `$doc_root`.

To disable JAVA from the Sun One Web Server, comment out the following in the `obj.conf` file under the name=`"default"` `#NameTrans` `fn="ntrans-j2ee"` `name="j2ee"` and restart the webserver.

8. Optionally, if you are proxying by path, enable HTTP-tunneling:
  - a. If you are using `weblogic.jar` and tunneling the t3 protocol, add the following object definition to the `obj.conf` file, substituting the WebLogic Server host name and the WebLogic Server port number, or the name of a WebLogic Cluster that you wish to handle HTTP tunneling requests.
 

```

<Object name="tunnel" ppath="*/HTTPlnt*">
Service fn=wl_proxy WebLogicHost=192.192.1.4\ WebLogicPort=7001
</Object>

```
  - b. If you are tunneling IIOP, which is the only protocol used by the WebLogic Server thin client, `wlclient.jar`, add the following object definition to the `obj.conf` file, substituting the WebLogic Server host name and the WebLogic Server port number, or the name of a WebLogic Cluster that you wish to handle HTTP tunneling requests.

## Installing and Configuring the Netscape Enterprise Server Plug-In

```
<Object name="tunnel" ppath="*/iio*">
Service fn=wl_proxy WebLogicHost=192.192.1.4\ WebLogicPort=7001
</Object>
```

9. Deploy and test the Netscape Enterprise Server Plug-In
  - a. Start WebLogic Server.
  - b. Start Netscape Enterprise Server. If NES is already running, you must either restart it or apply the new settings from the console in order for the new settings to take effect.
  - c. To test the Netscape Enterprise Server Plug-In, open a browser and set the URL to the Netscape Enterprise Server + `/weblogic/`, which should bring up the default WebLogic Server HTML page, welcome file, or default servlet, as defined for the default Web Application as shown in this example:

```
http://myenterprise.server.com/weblogic/
```

For information on how to create a default Web Application, see [Developing Web Applications, Servlets and JSPs for WebLogic Server](#).

## Guidelines for Modifying the obj.conf File

To use the Netscape Enterprise Server Plug-In, you must make several modifications to the NES `obj.conf` file. These modifications specify how requests are proxied to WebLogic Server. You can proxy requests by URL or by MIME type. The procedure for each is described in “[Installing and Configuring the Netscape Enterprise Server Plug-In](#)” on page 5-3.

The Netscape `obj.conf` file is very strict about the placement of text. To avoid problems, note the following regarding the `obj.conf` file:

- Eliminate extraneous leading and trailing white space. Extra white space can cause your Netscape server to fail.
- If you must enter more characters than you can fit on one line, place a backslash (`\`) at the end of that line and continue typing on the following line. The backslash directly appends the end of the first line to the beginning of the following line. If a space is necessary between the words that end the first line and begin the second line, be certain to use *one* space, either at the end of the first line (before the backslash), or at the beginning of the second line.
- Do not split attributes across multiple lines. (For example, all servers in a cluster must be listed in the same line, following `WebLogicCluster`.)



## Sample obj.conf File (Not Using a WebLogic Cluster)

Below is an example of lines that should be added to the `obj.conf` file if you are not using a cluster. You can use this example as a template that you can modify to suit your environment and server. Lines beginning with `#` are comments.

**Note:** Make sure that you do not include any extraneous white space in the `obj.conf` file. Copying and pasting from the samples below sometimes adds extra white space, which can create problems when reading the file.

You can read the full documentation on Enterprise Server configuration files in the Netscape Enterprise Server Plug-In documentation.

```
----- BEGIN SAMPLE OBJ.CONF CONFIGURATION -----
(no cluster)

The following line locates the NES library for loading at
startup, and identifies which functions within the library are
NES functions. Verify the path to the library (the value
of the shlib=<...> parameter) and that the file is
readable, or the server fails to start.
Init fn="load-modules" funcs="wl_proxy,wl_init"\
 shlib=/usr/local/netscape/plugins/libproxy.so
Init fn="wl_init"

Configure which types of HTTP requests should be handled by the
NES module (and, in turn, by WebLogic). This is done
with one or more "<Object>" tags as shown below.

Here we configure the NES module to pass requests for
"/weblogic" to a WebLogic Server listening at port 7001 on
the host myweblogic.server.com.
<Object name="weblogic" ppath="*/weblogic/*">
Service fn=wl_proxy WebLogicHost=myweblogic.server.com\
 WebLogicPort=7001 PathTrim="/weblogic"
</Object>

Here we configure the plug-in so that requests that
match "/servletimages/" is handled by the
plug-in/WebLogic.
```

## Installing and Configuring the Netscape Enterprise Server Plug-In

```
<Object name="si" ppath="*/servletimages/*">
Service fn=wl_proxy WebLogicHost=192.192.1.4 WebLogicPort=7001
</Object>

This Object directive works by file extension rather than
request path. To use this configuration, you must also add
a line to the mime.types file:
#
type=text/jsp exts=jsp
#
This configuration means that any file with the extension
".jsp" are proxied to WebLogic. Then you must add the
Service line for this extension to the Object "default",
which should already exist in your obj.conf file:

<Object name=default>
NameTrans fn=pfx2dir from=/ns-icons\
 dir="c:/Netscape/SuiteSpot/ns-icons"
NameTrans fn=pfx2dir from=/mc-icons\
 dir="c:/Netscape/SuiteSpot/ns-icons"
NameTrans fn="pfx2dir" from="/help" dir=\
 "c:/Netscape/SuiteSpot/manual/https/ug"
NameTrans fn=document-root root="c:/Netscape/SuiteSpot/docs"
Service method="(GET|HEAD|POST|PUT)" type=text/jsp fn=wl_proxy\
 WebLogicHost=localhost WebLogicPort=7001 PathPrepend=/jspfiles
PathCheck fn=nt-uri-clean
PathCheck fn="check-acl" acl="default"
PathCheck fn=find-pathinfo
PathCheck fn=find-index index-names="index.html,home.html"
ObjectType fn=type-by-extension
ObjectType fn=force-type type=text/plain
Service method=(GET|HEAD) type=magnus-internal/imagemap\ fn=imagemap
Service method=(GET|HEAD) \
 type=magnus-internal/directory fn=index-common
Service method=(GET|HEAD) type=*-magnus-internal/* fn=send-file
AddLog fn=flex-log name="access"
</Object>

The following directive enables HTTP-tunneling of the
WebLogic protocol through the NES plug-in.
```

```
<Object name="tunnel" ppath="*/HTTPClnt*">
Service fn=wl_proxy WebLogicHost=192.192.1.4 WebLogicPort=7001
</Object>

#
----- END SAMPLE OBJ.CONF CONFIGURATION -----
```

## Sample obj.conf File (Using a WebLogic Cluster)

Below is an example of lines that should be added to `obj.conf` if you are using a WebLogic Server cluster. You can use this example as a template that you can modify to suit your environment and server. Lines beginning with `#` are comments.

**Note:** Make sure that you do not include any extraneous white space in the `obj.conf` file. Copying and pasting from the samples below sometimes adds extra white space, which can create problems when reading the file.

For more information, see the full documentation on Enterprise Server configuration files from Netscape.

```
----- BEGIN SAMPLE OBJ.CONF CONFIGURATION -----
(using a WebLogic Cluster)
#
The following line locates the NES library for loading at
startup, and identifies which functions within the library are
NES functions. Verify the path to the library (the value
of the shlib=<...> parameter) and that the file is
readable, or the server fails to start.
Init fn="load-modules" funcs="wl_proxy,wl_init" \
 shlib=/usr/local/netscape/plugins/libproxy.so
Init fn="wl_init"

Configure which types of HTTP requests should be handled by the
NES module (and, in turn, by WebLogic). This is done
with one or more "<Object>" tags as shown below.

Here we configure the NES module to pass requests for
"/weblogic" to a cluster of WebLogic Servers.

<Object name="weblogic" ppath="*/weblogic/*">
Service fn=wl_proxy \
 WebLogicCluster="myweblogic.com:7001,yourweblogic.com:7001,\
```

## Installing and Configuring the Netscape Enterprise Server Plug-In

```
 theirweblogic.com:7001" PathTrim="/weblogic"
</Object>

Here we configure the plug-in so that requests that
match "/servletimages/" are handled by the
plug-in/WebLogic.

<Object name="si" ppath="*/servletimages/*">
Service fn=wl_proxy \
WebLogicCluster="myweblogic.com:7001,yourweblogic.com:7001,\
 theirweblogic.com:7001"
</Object>

This Object directive works by file extension rather than
request path. To use this configuration, you must also add
a line to the mime.types file:
#
type=text/jsp exts=jsp
#
This configuration means that any file with the extension
".jsp" is proxied to WebLogic. Then you must add the
Service line for this extension to the Object "default",
which should already exist in your obj.conf file:

<Object name=default>
NameTrans fn=px2dir from=/ns-icons\
 dir="c:/Netscape/SuiteSpot/ns-icons"
NameTrans fn=px2dir from=/mc-icons\
 dir="c:/Netscape/SuiteSpot/ns-icons"
NameTrans fn="px2dir" from="/help" dir=\
 "c:/Netscape/SuiteSpot/manual/https/ug"
NameTrans fn=document-root root="c:/Netscape/SuiteSpot/docs"
Service method="(GET|HEAD|POST|PUT)" type=text/jsp fn=wl_proxy\
 WebLogicCluster="myweblogic.com:7001,yourweblogic.com:7001,\
 theirweblogic.com:7001",PathPrepend=/jspfiles
PathCheck fn=nt-uri-clean
PathCheck fn="check-acl" acl="default"
PathCheck fn=find-pathinfo
PathCheck fn=find-index index-names="index.html,home.html"
ObjectType fn=type-by-extension
```

```

ObjectType fn=force-type type=text/plain
Service method=(GET|HEAD) type=magnus-internal/imagemap\ fn=imagemap
Service method=(GET|HEAD) \
 type=magnus-internal/directory fn=index-common
Service method=(GET|HEAD) type=~magnus-internal/* fn=send-file
AddLog fn=flex-log name="access"
</Object>

The following directive enables HTTP-tunneling of the
WebLogic protocol through the NES plug-in.

<Object name="tunnel" ppath="*/HTTPCInt*">
Service fn=wl_proxy WebLogicCluster="myweblogic.com:7001,\
 yourweblogic.com:7001,theirweblogic.com:7001"
</Object>

#
----- END SAMPLE OBJ.CONF CONFIGURATION -----

```

## Setting Up Perimeter Authentication

Use perimeter authentication to secure your WebLogic Server applications that are accessed via the Netscape Enterprise Server Plug-In.

A WebLogic Identity Assertion Provider authenticates tokens from outside systems that access your WebLogic Server application, including users who access your WebLogic Server application through the Netscape Enterprise Server Plug-In. Create an Identity Assertion Provider that will safely secure your Plug-In as follows:

1. Create a custom Identity Assertion Provider on your WebLogic Server application. See [How to Develop a Custom Identity Assertion Provider](#) in *Developing Security Providers for WebLogic Server*.
2. Configure the custom Identity Assertion Provider to support the "Cert" token type and make it the active token type. See [How to Create New Token Types](#) in *Developing Security Providers for WebLogic Server*.
3. Set the `clientCertProxy` attribute to `True` in the `web.xml` deployment descriptor file for the Web application (or, if using a cluster, optionally set the `Client Cert Proxy Enabled` attribute to `true` for the whole cluster on the Administration Console Cluster-->Configuration-->General tab). See [context-param](#) in *Developing Web Applications, Servlets and JSPs for WebLogic Server*.

## Installing and Configuring the Netscape Enterprise Server Plug-In

4. Once you have set `clientCertProxy`, be sure to use a connection filter to ensure that WebLogic Server accepts connections only from the machine on which the Netscape Enterprise Server Plug-In is running. See [Using Network Connection Filters](#) in *Programming WebLogic Security*.
5. Web server plug-ins require a trusted Certificate Authority file in order to use SSL between the plug-in and WebLogic Server. Use Sun Microsystems' `keytool` utility to export a trusted Certificate Authority file from the `DemoTrust.jks` keystore file that resides in `BEA_HOME/weblogic92/server/lib`.
  - a. To extract the `wlsdemoca` file, for example, use the command:

```
keytool -export -file trustedcafile.der -keystore DemoTrust.jks -alias wlsdemoca
```

Change the alias name to obtain a different trusted CA file from the keystore.  
To look at all of the keystore's trusted CA files, use:

```
keytool -list -keystore DemoTrust.jks
```

Press enter if prompted for password.
  - b. To convert the Certificate Authority file to pem format: `java utils.der2pem trustedcafile.der`

See [Identity Assertion Providers](#) in *Developing Security Providers for WebLogic Server* for more information about Identity Assertion Providers.

## Using SSL with the NES Plug-In

You can use the Secure Sockets Layer (SSL) protocol to protect the connection between the Netscape Enterprise Server Plug-In, and WebLogic Server. The SSL protocol provides confidentiality and integrity to the data passed between the Netscape Enterprise Server Plug-In and WebLogic Server.

The Netscape Enterprise Server Plug-In does *not* use the transport protocol (`http` or `https`) specified in the HTTP request (usually by the browser) to determine whether or not the SSL protocol will be used to protect the connection between the Netscape Enterprise Server Plug-In and WebLogic Server.

To use the SSL protocol between Netscape Enterprise Server Plug-In and WebLogic Server:

1. Configure WebLogic Server for SSL. For more information, see [Configuring the SSL Protocol](#).

2. Configure the WebLogic Server SSL listen port. For more information, see [Configuring the SSL Protocol](#).
3. Set the `WebLogicPort` parameter in the `Service` directive in the `obj.conf` file to the listen port configured in [step 2](#).
4. Set the `SecureProxy` parameter in the `Service` directive in the `obj.conf` file to ON.
5. Set additional parameters in the `Service` directive in the `obj.conf` file that define information about the SSL connection. For a complete list of parameters, see [“SSL Parameters for Web Server Plug-Ins” on page 7-14](#).

## Connection Errors and Clustering Failover

When the Netscape Enterprise Server Plug-In attempts to connect to WebLogic Server, the plug-in uses several configuration parameters to determine how long to wait for connections to the WebLogic Server host, and, after a connection is established, how long the plug-in waits for a response. If the plug-in cannot connect or does not receive a response, the plug-in attempts to connect and send the request to other WebLogic Servers in the cluster. If the connection fails or there is no response from any WebLogic Server in the cluster, an error message is sent.

[Figure 5-1 “Connection Failover” on page 5-17](#) demonstrates how the plug-in handles failover.

### Possible Causes of Connection Failures

Failure of the WebLogic Server host to respond to a connection request could indicate possible problems with the host machine, networking problems, or other server failures.

Failure of all WebLogic Server instances to respond, could indicate that WebLogic Server is not running or is unavailable, a hung server, a database problem, or other application failure.

### Failover with a Single, Non-Clustered WebLogic Server

If you are running a single WebLogic Server instance, the plug-in attempts to connect to that server which is defined with the `WebLogicHost` parameter. If the attempt fails, an HTTP 503 error message is returned. The plug-in continues trying to connect to WebLogic Server until `ConnectTimeoutSecs` is exceeded.

### The Dynamic Server List

When you specify a list of WebLogic Servers in the `webLogicCluster` parameter, the plug-in uses that list as a starting point for load balancing among the members of the cluster. After the

first request is routed to one of these servers, a dynamic server list is returned containing an updated list of servers in the cluster. The updated list adds any new servers in the cluster and deletes any that are no longer part of the cluster or that have failed to respond to requests. This list is updated automatically with the HTTP response when a change in the cluster occurs.

## Failover, Cookies, and HTTP Sessions

When a request contains session information stored in a cookie, in the POST data, or by URL encoding, the session ID contains a reference to the specific server in which the session was originally established (called the *primary* server) and a reference to an additional server where the original session is replicated (called the *secondary* server). A request containing a cookie attempts to connect to the primary server. If that attempt fails, the request is routed to the secondary server. If both the primary and secondary servers fail, the session is lost and the plug-in attempts to make a fresh connection to another server in the dynamic cluster list. For more information, see [Figure 5-1 “Connection Failover” on page 5-17](#).

**Note:** If the POST data is larger than 64K, the plug-in will not parse the POST data to obtain the session ID. Therefore, if you store the session ID in the POST data, the plug-in cannot route the request to the correct primary or secondary server, resulting in possible loss of session data.

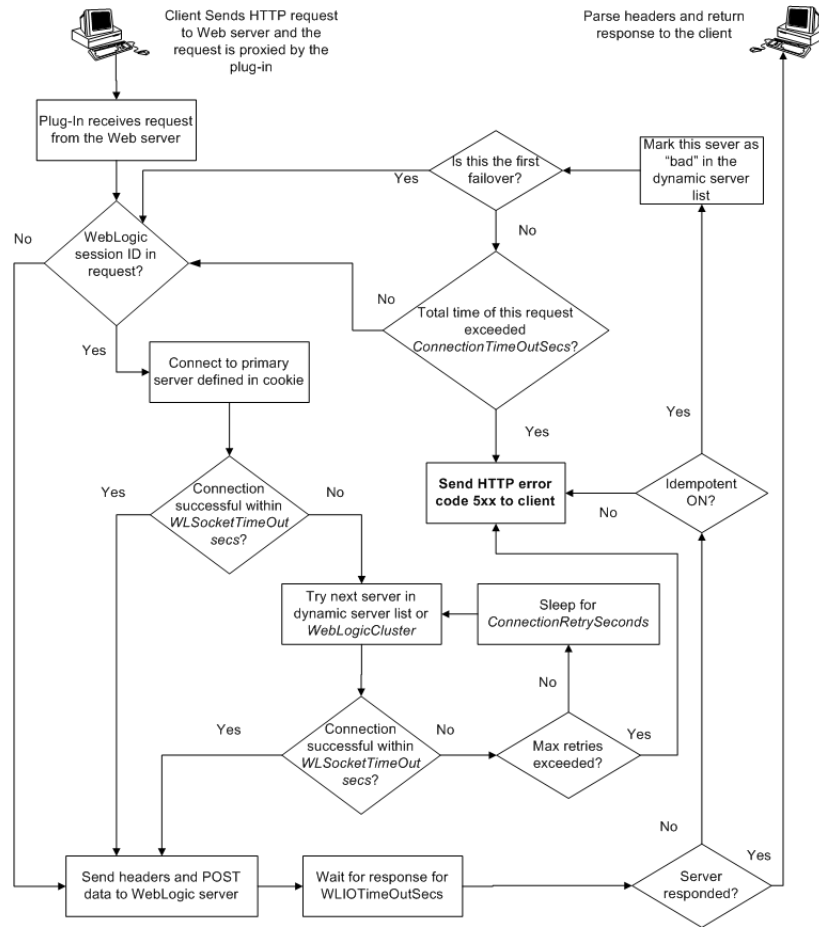
## Failover Behavior When Using Firewalls and Load Directors

In most configurations, the Netscape Enterprise Server Plug-In sends a request to the primary instance of a cluster. When that instance is unavailable, the request fails over to the secondary instance. However, in some configurations that use combinations of firewalls and load-directors, any one of the servers (firewall or load-directors) can accept the request and return a successful connection while the primary instance of WebLogic Server is unavailable. After attempting to direct the request to the primary instance of WebLogic Server (which is unavailable), the request is returned to the plug-in as “connection reset.”

Requests running through combinations of firewalls (with or without load-directors) are handled by WebLogic Server. In other words, responses of `connection reset` fail over to a secondary instance of WebLogic Server. Because responses of `connection reset` fail over in these configurations, servlets must be idempotent. Otherwise duplicate processing of transactions may result.



Figure 5-1 Connection Failover



The Maximum number of retries allowed is equal to  $ConnectTimeoutSecs \div ConnectRetrySecs$ .

## Installing and Configuring the Netscape Enterprise Server Plug-In

# Proxying Requests to Another Web Server

The following sections discuss how to proxy HTTP requests to another Web server:

- [“Overview of Proxying Requests to Another Web Server” on page 6-1](#)
- [“Setting Up a Proxy to a Secondary Web Server” on page 6-1](#)
- [“Sample Deployment Descriptor for the Proxy Servlet” on page 6-3](#)

## Overview of Proxying Requests to Another Web Server

When you use WebLogic Server as your primary Web server, you may also want to configure WebLogic Server to pass on, or proxy, certain requests to a secondary Web server, such as Netscape Enterprise Server, Apache, or Microsoft Internet Information Server. Any request that gets proxied is redirected to a specific URL. You can even proxy to another Web server on a different machine. You proxy requests based on the URL of the incoming request.

The `HttpProxyServlet` (provided as part of the distribution) takes an HTTP request, redirects it to the proxy URL, and sends the response to the client's browser back through WebLogic Server. To use the `HttpProxyServlet`, you must configure it in a Web Application and deploy that Web Application on the WebLogic Server that is redirecting requests.

## Setting Up a Proxy to a Secondary Web Server

To set up a proxy to a secondary HTTP server:

## Proxying Requests to Another Web Server

1. Register the `proxy` servlet in your Web Application deployment descriptor (see “[Sample web.xml for Use with ProxyServlet](#)” on page 6-3). The Web Application must be the default Web Application of the server instance that is responding to requests. The class name for the proxy servlet is `weblogic.servlet.proxy.HttpProxyServlet`. For more information, see [Developing Web Applications, Servlets, and JSPs for WebLogic Server](#).
2. Define an initialization parameter for the `ProxyServlet` with a `<param-name>` of `redirectURL` and a `<param-value>` containing the URL of the server to which proxied requests should be directed.
3. Optionally, define the following `<KeyStore>` initialization parameters to use two-way SSL with your own identity certificate and key. If no `<KeyStore>` is specified in the deployment descriptor, the proxy will assume one-way SSL.
  - `<KeyStore>` – The key store location in your Web application.
  - `<KeyStoreType>` – The key store type. If it is not defined, the default type will be used instead.
  - `<PrivateKeyAlias>` – The private key alias.
  - `<KeyStorePasswordProperties>` – A property file in your Web application that defines encrypted passwords to access the key store and private key alias. The file contents looks like this:

```
KeyStorePassword={3DES}i4+50LCKenQ08BBv1sXTrg\=\=
PrivateKeyPassword={3DES}a4TcG4mtVVBKRtZwH3p7yA\=\=
```

You must use the `weblogic.security.Encrypt` command-line utility to encrypt the password. For more information on the `Encrypt` utility, as well as the `CertGen`, and `der2pem` utilities, see [Using the WebLogic Server Java Utilities](#) in the *WebLogic Server Command Reference*.
4. Map the `ProxyServlet` to a `<url-pattern>`. Specifically, map the file extensions you wish to proxy, for example `*.jsp`, or `*.html`. Use the `<servlet-mapping>` element in the `web.xml` Web Application deployment descriptor.

If you set the `<url-pattern>` to `/`, then any request that cannot be resolved by WebLogic Server is proxied to the remote server. However, you must also specifically map the following extensions: `*.jsp`, `*.html`, and `*.html` if you want to proxy files ending with those extensions.
5. Deploy the Web Application on the WebLogic Server instance that redirects incoming requests.

## Sample Deployment Descriptor for the Proxy Servlet

The following is an sample of a Web Applications deployment descriptor for using the Proxy Servlet.

### Listing 6-1 Sample web.xml for Use with ProxyServlet

---

```
<!DOCTYPE web-app PUBLIC "-//Sun Microsystems, Inc.
//DTD Web Application 2.3//EN"
"http://java.sun.com/j2ee/dtds/web-app_2_3.dtd">

<web-app>

<servlet>
 <servlet-name>ProxyServlet</servlet-name>
 <servlet-class>weblogic.servlet.proxy.HttpProxyServlet</servlet-class>

 <init-param>
 <param-name>redirectURL</param-name>
 <param-value>server:port</param-value>
 </init-param>

 <init-param>
 <param-name>KeyStore</param-name>
 <param-value>/mykeystore</param-value>
 </init-param>

 <init-param>
 <param-name>KeyStoreType</param-name>
 <param-value>jks</param-value>
 </init-param>

 <init-param>
 <param-name>PrivateKeyAlias</param-name>
 <param-value>passalias</param-value>
 </init-param>

 <init-param>
 <param-name>KeyStorePasswordProperties</param-name>
 <param-value>mykeystore.properties</param-value>
 </init-param>

</web-app>
```

## Proxying Requests to Another Web Server

```
</servlet>
<servlet-mapping>
 <servlet-name>ProxyServlet</servlet-name>
 <url-pattern>/</url-pattern>
</servlet-mapping>
<servlet-mapping>
 <servlet-name>ProxyServlet</servlet-name>
 <url-pattern>*.jsp</url-pattern>
</servlet-mapping>
<servlet-mapping>
 <servlet-name>ProxyServlet</servlet-name>
 <url-pattern>*.htm</url-pattern>
</servlet-mapping>
<servlet-mapping>
 <servlet-name>ProxyServlet</servlet-name>
 <url-pattern>*.html</url-pattern>
</servlet-mapping>
</web-app>
```

---

# Parameters for Web Server Plug-Ins

The following sections describe the parameters that you use to configure the Apache, Netscape, and Microsoft IIS Web server plug-ins:

- [Entering Parameters in Web Server Plug-In Configuration Files](#)
- [General Parameters for Web Server Plug-Ins](#)
- [SSL Parameters for Web Server Plug-Ins](#)

## Entering Parameters in Web Server Plug-In Configuration Files

You enter the parameters for each Web server plug-in in special configuration files. Each Web server has a different name for this configuration file and different rules for formatting the file. For details, see the following sections on each plug-in:

- [“Installing and Configuring the Apache HTTP Server Plug-In” on page 3-1](#)
- [“Installing and Configuring the Microsoft IIS Plug-In” on page 4-1](#)
- [“Installing and Configuring the Netscape Enterprise Server Plug-In” on page 5-1](#)

## General Parameters for Web Server Plug-Ins

Parameters are case sensitive.

**Table 7-1 General Parameters for Web Service Plug-Ins**

Parameter	Default	Description
WebLogicHost (Required when proxying to a single WebLogic Server.)	none	WebLogic Server host (or virtual host name as defined in WebLogic Server) to which HTTP requests should be forwarded.  If you are using a WebLogic cluster, use the <code>WebLogicCluster</code> parameter instead of <code>WebLogicHost</code> .
WebLogicPort (Required when proxying to a single WebLogic Server.)	none	Port at which the WebLogic Server host is listening for connection requests from the plug-in (or from other servers). (If you are using SSL between the plug-in and WebLogic Server, set this parameter to the SSL listen port (see <a href="#">Configuring the SSL Protocol</a> ) and set the <code>SecureProxy</code> parameter to ON).  If you are using a WebLogic Cluster, use the <code>WebLogicCluster</code> parameter instead of <code>WebLogicPort</code> .



**Table 7-1 General Parameters for Web Service Plug-Ins**

Parameter	Default	Description
WebLogicCluster (Required when proxying to a cluster of WebLogic Servers.)	none	<p>List of WebLogic Servers that can be used for load balancing. The server or cluster list is a list of host:port entries. If a mixed set of clusters and single servers is specified, the dynamic list returned for this parameter will return only the clustered servers. The method of specifying the parameter, and the required format vary by plug-in. See the examples in:</p> <ul style="list-style-type: none"> <li>• <a href="#">Installing and Configuring the Netscape Enterprise Server Plug-In (NSAPI)</a></li> <li>• <a href="#">Installing and Configuring the Microsoft Internet Information Server (ISAPI) Plug-In</a></li> <li>• <a href="#">Installing and Configuring the Apache HTTP Server Plug-In</a></li> </ul> <p>If you are using SSL between the plug-in and WebLogic Server, set the port number to the SSL listen port (see <a href="#">Configuring the SSL Protocol</a>) and set the <a href="#">SecureProxy</a> parameter to ON.</p> <p>The plug-in does a simple round-robin between all available servers. The server list specified in this property is a starting point for the dynamic server list that the server and plug-in maintain. WebLogic Server and the plug-in work together to update the server list automatically with new, failed, and recovered cluster members.</p> <p>You can disable the use of the dynamic cluster list by setting the <a href="#">DynamicServerList</a> parameter to OFF</p> <p>The plug-in directs HTTP requests containing a cookie, URL-encoded session, or a session stored in the POST data to the server in the cluster that originally created the cookie.</p>

**Table 7-1 General Parameters for Web Service Plug-Ins**

Parameter	Default	Description
PathTrim	null	<p>As per the RFC specification, generic syntax for URL is:  <code>[PROTOCOL]://[HOSTNAME]:{PORT}/{PATH}/{FILENAME};{PATH_PARAMS}/{QUERY_STRING}...</code></p> <p>PathTrim specifies the string trimmed by the plug-in from the <code>{PATH}/{FILENAME}</code> portion of the original URL, before the request is forwarded to WebLogic Server. For example, if the URL <code>http://myWeb.server.com/weblogic/foo</code> is passed to the plug-in for parsing and if PathTrim has been set to strip off <code>/weblogic</code> before handing the URL to WebLogic Server, the URL forwarded to WebLogic Server is: <code>http://myWeb.server.com:7001/foo</code></p> <p>Note that if you are newly converting an existing third-party server to proxy requests to WebLogic Server using the plug-in, you will need to change application paths to <code>/foo</code> to include <code>weblogic/foo</code>. You can use PathTrim and <a href="#">PathPrepend</a> in combination to change this path.</p>
PathPrepend	null	<p>As per the RFC specification, generic syntax for URL is:  <code>[PROTOCOL]://[HOSTNAME]:{PORT}/{PATH}/{FILENAME};{PATH_PARAMS}/{QUERY_STRING}...</code></p> <p>PathPrepend specifies the path that the plug-in prepends to the <code>{PATH}</code> portion of the original URL, after <a href="#">PathTrim</a> is trimmed and before the request is forwarded to WebLogic Server.</p> <p>Note that if you need to append File Name, use <a href="#">DefaultFileName</a> plug-in parameter instead of PathPrepend.</p>
ConnectTimeoutSecs	10	<p>Maximum time in seconds that the plug-in should attempt to connect to the WebLogic Server host. Make the value greater than <a href="#">ConnectRetrySecs</a>. If ConnectTimeoutSecs expires without a successful connection, even after the appropriate retries (see <a href="#">ConnectRetrySecs</a>), an HTTP 503/Service Unavailable response is sent to the client. You can customize the error response by using the <a href="#">ErrorPage</a> parameter.</p>

**Table 7-1 General Parameters for Web Service Plug-Ins**

Parameter	Default	Description
ConnectRetrySecs	2	<p>Interval in seconds that the plug-in should sleep between attempts to connect to the WebLogic Server host (or all of the servers in a cluster). Make this number less than the ConnectTimeoutSecs. The number of times the plug-in tries to connect before returning an HTTP 503/Service Unavailable response to the client is calculated by dividing <a href="#">ConnectTimeoutSecs</a> by ConnectRetrySecs.</p> <p>To specify no retries, set ConnectRetrySecs equal to ConnectTimeoutSecs. However, the plug-in attempts to connect at least twice.</p> <p>You can customize the error response by using the <a href="#">ErrorPage</a> parameter.</p>

**Table 7-1 General Parameters for Web Service Plug-Ins**

Parameter	Default	Description
Debug	OFF	<p>Sets the type of logging performed for debugging operations. The debugging information is written to the /tmp/wlproxy.log file on UNIX systems and c:\TEMP\wlproxy.log on Windows NT/2000 systems. Override this location and filename by setting the <a href="#">WLogFile</a> parameter to a different directory and file. Ensure that the tmp or TEMP directory has write permission assigned to the user who is logged in to the server. Set any of the following logging options (HFC, HTW, HFW, and HTC options may be set in combination by entering them separated by commas, for example “HFC, HTW”):</p> <p>ON The plug-in logs informational and error messages.</p> <p>OFF No debugging information is logged.</p> <p>HFC The plug-in logs headers from the client, informational, and error messages.</p> <p>HTW The plug-in logs headers sent to WebLogic Server, and informational and error messages.</p> <p>HFW The plug-in logs headers sent from WebLogic Server, and informational and error messages.</p> <p>HTC The plug-in logs headers sent to the client, informational messages, and error messages.</p> <p>ERR Prints only the Error messages in the plug-in.</p> <p>ALL The plug-in logs headers sent to and from the client, headers sent to and from WebLogic Server, information messages, and error messages.</p>

**Table 7-1 General Parameters for Web Service Plug-Ins**

Parameter	Default	Description
WLogFile	See the <a href="#">Debug</a> parameter	Specifies path and file name for the log file that is generated when the <a href="#">Debug</a> parameter is set to ON. You must create this directory before setting this parameter.
WLDNSRefreshInterval	0 (Lookup once, during startup)	Only applies to NSAPI and Apache. If defined in the proxy configuration, specifies number of seconds interval at which WebLogic Server refreshes DNS name to IP mapping for a server. This can be used in the event that a WebLogic Server instance is migrated to a different IP address, but the DNS name for that server's IP remains the same. In this case, at the specified refresh interval the DNS<->IP mapping will be updated.
WTempDir	See the <a href="#">Debug</a> parameter	Specifies the directory where a <code>wlproxy.log</code> will be created. If the location fails, the Plug-In resorts to creating the log file under <code>C:/temp</code> in Windows and <code>/tmp</code> in all Unix platforms. Also specifies the location of the <code>_wl_proxy</code> directory for post data files. When both <code>WTempDir</code> and <code>WLogFile</code> are set, <code>WLogFile</code> will override as to the location of <code>wlproxy.log</code> . <code>WTempDir</code> will still determine the location of <code>_wl_proxy</code> directory.
DebugConfigInfo	OFF	Enables the special query parameter “ <code>__WebLogicBridgeConfig</code> ”. Use it to get details about configuration parameters from the plug-in. For example, if you enable “ <code>__WebLogicBridgeConfig</code> ” by setting <code>DebugConfigInfo</code> and then send a request that includes the query string <code>?__WebLogicBridgeConfig</code> , then the plug-in gathers the configuration information and run-time statistics and returns the information to the browser. The plug-in does not connect to WebLogic Server in this case. This parameter is strictly for debugging and the format of the output message can change with releases. For security purposes, keep this parameter turned OFF in production systems.

**Table 7-1 General Parameters for Web Service Plug-Ins**

Parameter	Default	Description
StatPath (Not available for the Microsoft Internet Information Server Plug-In)	false	<p>If set to true, the plug-in checks the existence and permissions of the translated path (“Proxy-Path-Translated”) of the request before forwarding the request to WebLogic Server.</p> <p>If the file does not exist, an HTTP 404 File Not Found response is returned to the client. If the file exists but is not world-readable, an HTTP 403/Forbidden response is returned to the client. In either case, the default mechanism for the Web server to handle these responses fulfills the body of the response. This option is useful if both the WebLogic Server Web Application and the Web Server have the same document root.</p> <p>You can customize the error response by using the <a href="#">ErrorPage</a> parameter.</p>
ErrorPage	none	<p>You can create your own error page that is redirected to, when your Web server is unable to forward requests to WebLogic Server.</p> <p>The plug-in redirects to an error page when the back-end server returns an HTTP 503/Service Unavailable response and there are no servers for failover.</p>
WLSocketTimeoutSecs	2 (must be greater than 0)	Set the timeout for the socket while connecting, in seconds.
WLIOTimeoutSecs (new name for HungServerRecoverSecs)	300	<p>Defines the amount of time the plug-in waits for a response to a request from WebLogic Server. The plug-in waits for HungServerRecoverSecs for the server to respond and then declares that server dead, and fails over to the next server. The value should be set to a very large value. If the value is less than the time the servlets take to process, then you may see unexpected results.</p> <p>Minimum value: 10 Maximum value: Unlimited</p>

**Table 7-1 General Parameters for Web Service Plug-Ins**

Parameter	Default	Description
Idempotent	ON	<p>When set to ON and if the servers do not respond within <a href="#">WLIOTimeoutSecs</a> (new name for <a href="#">HungServerRecoverSecs</a>), the plug-ins fail over.</p> <p>If set to “OFF” the plug-ins do not fail over. If you are using the Netscape Enterprise Server Plug-In, or Apache HTTP Server you can set this parameter differently for different URLs or MIME types.</p>
CookieName	JSESSIO NID	<p>If you change the name of the WebLogic Server session cookie in the WebLogic Server Web application, you need to change the <code>CookieName</code> parameter in the plug-in to the same value. The name of the WebLogic session cookie is set in the WebLogic-specific deployment descriptor, in the <code>&lt;session-descriptor&gt;</code> element.</p> <p><b>Note:</b> The <code>CookieName</code> parameter has been renamed as <code>WLCookieName</code>. A warning message is issued if you continue to use the old parameter name.</p>
DefaultFileName	none	<p>If the URI is “/” then the plug-in performs the following steps:</p> <ol style="list-style-type: none"> <li>1. Trims the path specified with the <a href="#">PathTrim</a> parameter.</li> <li>2. Appends the value of <code>DefaultFileName</code>.</li> <li>3. Prepends the value specified with <a href="#">PathPrepend</a>.</li> </ol> <p>This procedure prevents redirects from WebLogic Server.</p> <p>Set the <code>DefaultFileName</code> to the default welcome page of the Web Application in WebLogic Server to which requests are being proxied. For example, If the <code>DefaultFileName</code> is set to <code>welcome.html</code>, an HTTP request like “<code>http://somehost/weblogic</code>” becomes “<code>http://somehost/weblogic/welcome.html</code>”. For this parameter to function, the same file must be specified as a welcome file in all the Web Applications to which requests are directed. For more information, see “<a href="#">Configuring Welcome Pages</a>”.</p> <p>Note for Apache users: If you are using Stronghold or Raven versions, define this parameter inside of a <code>Location</code> block, and not in an <code>IfModule</code> block.</p>

**Table 7-1 General Parameters for Web Service Plug-Ins**

Parameter	Default	Description
MaxPostSize	-1	Maximum allowable size of POST data, in bytes. If the content-length exceeds MaxPostSize, the plug-in returns an error message. If set to -1, the size of POST data is not checked. This is useful for preventing denial-of-service attacks that attempt to overload the server with POST data.
MatchExpression (Apache HTTP Server only)	none	<p>When proxying by MIME type, set the filename pattern inside of an IfModule block using the MatchExpression parameter.</p> <p>Example when proxying by MIME type:</p> <pre>&lt;IfModule mod_weblogic.c&gt;   MatchExpression *.jsp   WebLogicHost=myHost paramName=value &lt;/IfModule&gt;</pre> <p>Example when proxying by path:</p> <pre>&lt;IfModule mod_weblogic.c&gt;   MatchExpression /weblogic   WebLogicHost=myHost paramName=value &lt;/IfModule&gt;</pre> <p>It is possible to define a new parameter for MatchExpression using the following syntax:</p> <pre>MatchExpression *.jsp PathPrepend=/test PathTrim=/foo</pre>



**Table 7-1 General Parameters for Web Service Plug-Ins**

Parameter	Default	Description
FileCaching	ON	<p>When set to ON, and the size of the POST data in a request is greater than 2048 bytes, the POST data is first read into a temporary file on disk and then forwarded to the WebLogic Server in chunks of 8192 bytes. This preserves the POST data during failover, allowing all necessary data to be repeated to the secondary if the primary goes down.</p> <p>Note that when FileCaching is ON, any client that tracks the progress of the POST will see that the transfer has completed even though the data is still being transferred between the WebServer and WebLogic. So, if you want the progress bar displayed by a browser during the upload to reflect when the data is actually available on the WebLogic Server, you might not want to have FileCaching ON.</p> <p>When set to OFF and the size of the POST data in a request is greater than 2048 bytes, the reading of the POST data is postponed until a WebLogic Server cluster member is identified to serve the request. Then the Plugin reads and immediately sends the POST data to the WebLogic Server in chunks of 8192 bytes.</p> <p>Note that turning FileCaching OFF limits failover. If the WebLogic Server primary server goes down while processing the request, the POST data already sent to the primary cannot be repeated to the secondary.</p> <p>Finally, regardless of how FileCaching is set, if the size of the POST data is 2048 bytes or less the plugin will read the data into memory and use it if needed during failover to repeat to the secondary.</p>
FilterPriorityLevel (Microsoft Internet Information Server only)	2	<p>The values for this parameter are 0 (low), 1 (medium), and 2 (high). The default value is 2. This priority should be put in iisforward.ini file. This property is used to set the priority level for the iisforward.dll filter in IIS. Priority level is used by IIS to decide which filter will be invoked first, in case multiple filters match the incoming request.</p>

**Table 7-1 General Parameters for Web Service Plug-Ins**

Parameter	Default	Description
WLExcludePathOrMimeType	none	<p>This parameter allows you make exclude certain requests from proxying.</p> <p>This parameter can be defined locally at the Location tag level as well as globally. When the property is defined locally, it does not override the global property but defines a union of the two parameters.</p>
WlForwardPath (Microsoft Internet Information Server only)	null	<p>If WlForwardPath is set to "/" all requests are proxied. To forward any requests starting with a particular string, set WlForwardPath to the string. For example, setting WlForwardPath to /weblogic forwards all requests starting with /weblogic to Weblogic Server.</p> <p>This parameter is required if you are proxying by path. You can set multiple strings by separating the strings with commas. For example: WlForwardPath=/weblogic,/bea.</p>
KeepAliveSecs	20	<p>The length of time after which an inactive connection between the plug-in and WebLogic Server is closed. You must set KeepAliveEnabled to true (ON when using the Apache plug-in) for this parameter to be effective.</p> <p>The value of this parameter must be less than or equal to the value of the Duration field set in the Administration Console on the Server/HTTP tab, or the value set on the server Mbean with the KeepAliveSecs attribute.</p>
KeepAliveEnabled	true (Netscape and Microsoft IIS plug-ins) ON (Apache plug-in)	<p>Enables pooling of connections between the plug-in and WebLogic Server.</p> <p>Valid values for the Netscape and Microsoft IIS plug-ins are true and false.</p> <p>Valid values for the Apache plug-in are ON and OFF.</p>

**Table 7-1 General Parameters for Web Service Plug-Ins**

Parameter	Default	Description
QueryFromRequest (Apache HTTP Server only)	OFF	<p>When set to ON, specifies that the Apache plug-in use <code>(request_rec *)r-&gt;the request</code> to pass the query string to WebLogic Server. (For more information, see your Apache documentation.) This behavior is desirable in the following situations:</p> <ul style="list-style-type: none"> <li>• When a Netscape version 4.x browser makes requests that contain spaces in the query string</li> <li>• If you are using Raven Apache 1.5.2 on HP</li> </ul> <p>When set to OFF, the Apache plug-in uses <code>(request_rec *)r-&gt;args</code> to pass the query string to WebLogic Server.</p>
MaxSkipTime	10	<p>If a WebLogic Server listed in either the <a href="#">WebLogicCluster</a> parameter or a dynamic cluster list returned from WebLogic Server fails, the failed server is marked as “bad” and the plug-in attempts to connect to the next server in the list.</p> <p><code>MaxSkips</code> sets the amount of time after which the plug-in will retry the server marked as “bad.” The plug-in attempts to connect to a new server in the list each time a unique request is received (that is, a request without a cookie).</p>
DynamicServerList	ON	<p>When set to OFF, the plug-in ignores the dynamic cluster list used for load balancing requests proxied from the plug-in and only uses the static list specified with the <a href="#">WebLogicCluster</a> parameter. Normally this parameter should remain set to ON.</p> <p>There are some implications for setting this parameter to OFF:</p> <ul style="list-style-type: none"> <li>• If one or more servers in the static list fails, the plug-in could waste time trying to connect to a dead server, resulting in decreased performance.</li> <li>• If you add a new server to the cluster, the plug-in cannot proxy requests to the new server unless you redefine this parameter. WebLogic Server automatically adds new servers to the dynamic server list when they become part of the cluster.</li> </ul>

**Table 7-1 General Parameters for Web Service Plug-Ins**

Parameter	Default	Description
WLProxySSL	OFF	<p>Set this parameter to ON to maintain SSL communication between the plug-in and WebLogic Server when the following conditions exist:</p> <ul style="list-style-type: none"> <li>• An HTTP client request specifies the HTTPS protocol</li> <li>• The request is passed through one or more proxy servers (including the WebLogic Server proxy plug-ins)</li> <li>• The connection between the plug-in and WebLogic Server uses the HTTP protocol</li> </ul> <p>When WLProxySSL is set to ON, the location header returned to the client from WebLogic Server specifies the HTTPS protocol.</p>
WLLocalIP	none	<p>Defines the IP address to bind to when the plug-in connects to a WebLogic Server instance running on a multihomed machine.</p> <p>If WLLocalIP is not set, a random IP address on the multi-homed machine is used.</p>
WLSendHdrSeparately	ON	<p>When this parameter is set to ON, header and body of the response are sent in separate packets.</p> <p><b>Note:</b> If you need to send the header and body of the response in two calls, for example, in cases where you have other ISAPI filters or programmatic clients that expect headers before the body, set this parameter to ON.</p>

## SSL Parameters for Web Server Plug-Ins

**Notes:** SCG Certificates are not supported for use with WebLogic Server Proxy Plug-Ins. Non-SCG certificates work appropriately and allow SSL communication between WebLogic Server and the plug-in.

KeyStore-related initialization parameters are not supported for use with WebLogic Server Proxy Plug-Ins.

Parameters are case sensitive.

**Table 7-2 SSL Parameters for Web Server Plug-Ins**

Parameter	Default	Description
<code>EnforceBasicConstraints</code>	Strong	<p>This parameter closes a security hole which existed with SSL certificate validation where certificate chains with invalid V3 CA certificates would not be properly rejected. This allowed certificate chains with invalid intermediate CA certificates, rooted with a valid CA certificate to be trusted. X509 V3 CA certificates are required to contain the BasicConstraints extension, marked as being a CA, and marked as a critical extension. This checking protects against non-CA certificates masquerading as intermediate CA certificates.</p> <p>The levels of enforcement are as follows:</p> <p><b>OFF</b></p> <p>This level entirely disables enforcement and is not recommended. Most current commercial CA certificates should work under the default STRONG setting.</p> <pre>EnforceBasicConstraints=off EnforceBasicConstraints=false</pre> <p><b>STRONG</b></p> <p>Default. The BasicConstraints for V3 CA certificates are checked and the certificates are verified to be CA certificates.</p> <pre>EnforceBasicConstraints=strong EnforceBasicConstraints=true</pre> <p><b>STRICT</b></p> <p>This level does the same checking as the STRONG level, but in addition it also strictly enforces IETF RFC 2459 which specifies the BasicConstraints for CA certificates also must be marked as "critical". This is not the default setting because a number of current commercially available CA certificates don't conform to RFC 2459 and don't mark the BasicConstraints as critical. Set this if you want to strict conformance to RFC 2459.</p> <pre>EnforceBasicConstraints=strict</pre>

**Table 7-2 SSL Parameters for Web Server Plug-Ins**

Parameter	Default	Description
SecureProxy	OFF	<p>Set this parameter to ON to enable the use of the SSL protocol for all communication between the plug-in and WebLogic Server. Remember to configure a port on the corresponding WebLogic Server for the SSL protocol before defining this parameter.</p> <p>This parameter may be set at two levels: in the configuration for the main server and—if you have defined any virtual hosts—in the configuration for the virtual host. The configuration for the virtual host inherits the SSL configuration from the configuration of the main server if the setting is not overridden in the configuration for the virtual host.</p>
TrustedCAFile	none	<p>Name of the file that contains the digital certificates for the trusted certificate authorities for the plug-in. This parameter is required if the <a href="#">SecureProxy</a> parameter is set to ON.</p> <p>The filename must include the full directory path of the file.</p>
RequireSSLHostMatch	true	<p>Determines whether the host name to which the plug-in is connecting must match the Subject Distinguished Name field in the digital certificate of the WebLogic Server to which the proxy plug-in is connecting.</p> <p>When specifying SecureProxy=ON and RequireSSLHostMatch=true in the plug-in, then the value specified in the ListenAddress property should exactly match the hostname value specified in the certificate.</p> <p>When using the ExternalDNSName property for WebLogic Server and setting SecureProxy=ON and RequireSSLHostMatch=true in the plug-in, then the value specified in the ExternalDNSName property should exactly match the hostname value specified in the certificate.</p>

**Table 7-2 SSL Parameters for Web Server Plug-Ins**

Parameter	Default	Description
SSLHostMatchOID	22	The ASN.1 Object ID (OID) that identifies which field in the Subject Distinguished Name of the peer digital certificate is to be used to perform the host match comparison. The default for this parameter corresponds to the <code>CommonName</code> field of the Subject Distinguished Name. Common OID values are: <ul style="list-style-type: none"> <li>• Sur Name—23</li> <li>• Common Name—22</li> <li>• Email—13</li> <li>• Organizational Unit—30</li> <li>• Organization—29</li> <li>• Locality—26</li> </ul>
KeyStore	none	For generic proxy servlets, the key store location in a Web application when using two-way SSL to create a user-defined identity certificate and key.
KeyStoreType	none	The key store type when using two-way SSL with a generic proxy servlet. If it is not defined, the default type will be used instead.
PrivateKeyAlias	none	The private key alias when using two-way SSL with a generic proxy servlet.
KeyStorePasswordProperties	none	A property file in a Web application that defines encrypted passwords to access the key store and private key alias when using two-way SSL with a generic proxy servlet. The file contents looks like this: <pre>KeyStorePassword={3DES}i4+50LCKenQ08BBvlsXTrg\=\ \= PrivateKeyPassword={3DES}a4TcG4mtVVRKtZwH3p7yA \=\=</pre> <p>You must use the <code>weblogic.security.Encrypt</code> command-line utility to encrypt the password. For more information on the <code>Encrypt</code> utility, as well as the <code>CertGen</code>, and <code>der2pem</code> utilities, see <a href="#">Using the WebLogic Server Java Utilities</a> in the <i>WebLogic Server Command Reference</i>.</p>