



BEA WebLogic Server^R Lightweight Installer

Version: 10.3 Tech Preview

Document Date: October 2007

Table of Contents

The WebLogic Server Lightweight Installer	3
Net Installer Choices	3
Lightweight Installer Options	3
The WebLogic Server Installation Process using the Lightweight Installer.....	5

The WebLogic Server Lightweight Installer

The WebLogic Server installer has been enhanced to provide fine grained options to pick and choose software components during installation. For example, a fully functional Java EE5 (JEE5) compliant “Core Application Server” component is now available as separate installable option.

This functionality provides better flexibility to experienced users who want to install only the software components in which they are interested thus reducing the disk footprint and improving runtime. For example, a developer more familiar with the WLS command-line tools may not use Administration Console. He could choose not to install Administration Console thus reducing the installation footprint. Since the Administration Console is not installed, it will also not be deployed when the server starts thus improving the server memory consumption.

In GA release of WebLogic Server 10.3, the following types of Lightweight Installer will be available.

Net Installer Choices

The Net installer existed for WebLogic Server 8.1 and is being made available again in this release.

The Net installer involves initially downloading small software piece on the computer (in the range of 10 MB) and then running the Net installer to actually download and install WebLogic Server components. The Net installer eliminates the need of actually downloading a huge single executable binaries file before actually installing the product. The following options will be available:

- **Generic Net Installer**

The generic Net installer does not include the Java Runtime. Anyone downloading the generic Net installer is expected to have Java Runtime available in his environment.

- **OS specific Net Installer**

An operating system (OS) specific installer which includes the Java Runtime for a specific operating system. A user can exercise his option to download the OS specific Net installer based upon his environment.

Lightweight Installer Options

The Lightweight installer offers the following installation options:

- **Core Application Server**

A complete JEE 5 compliant application server.

- **Administration Console**

The WebLogic Server web application used to configure, administer, and monitor WebLogic domains. If you choose not to install Administration Console, the console will not be available when you start Administration Server.

- **Configuration Wizard and Upgrade Framework**

The software component used to create new configuration domains and upgrade prior domains. If you choose not to install this component, you will not be able to create new domains or upgrade pre-9.0 domains. However, you can update existing domains without having this component installed. For example, you can create a new server in your existing domain without this component being installed.

- **Web 2.0 HTTP Publish-Subscribe Server**

The WebLogic implementation of the Bayeux HTTP Publish-Subscribe server. If this option is not installed, you will not be able to take advantage of Web 2.0 HTTP Publish-Subscribe functionality.

- **BEA WebLogic JDBC Drivers**

The JDBC drivers available in WebLogic Server. If this option is not installed, any of your applications which make use of the WebLogic JDBC drivers will fail.

- **Third-Party JDBC Drivers**

The Third-Party JDBC drivers bundled with WebLogic Server. If this option is not installed, any of your applications which make use of Third-Party JDBC drivers (for example, the Oracle driver) will fail.

- **WebLogic Server Clients**

The JARs for the Web Services, JMS, Store and Forward, Weblogic RMI, JMS .NET and JMX clients. Not selecting this option and installing has no effect on the server runtime or your deployed application. However, if you have a thin client and need to distribute a smaller set of JARs instead of all Weblogic JARs, you need to choose this installation option.

- **WebLogic Web Server Plug-Ins**

The WebLogic plug-ins for the Apache, Sun One and IIS web servers. Not choosing this option does not affect server runtime or your application runtime.

- **Beehive and Struts Libraries**

The Beehive runtime and Struts libraries packaged with WebLogic Server. Not choosing this option does not affect server runtime.

- **WSRP Producer Support**

Provides Web Service Remote Portal producer support in WebLogic Server. Not choosing this option does not affect server runtime.

- **UDDI and Xquery Support**

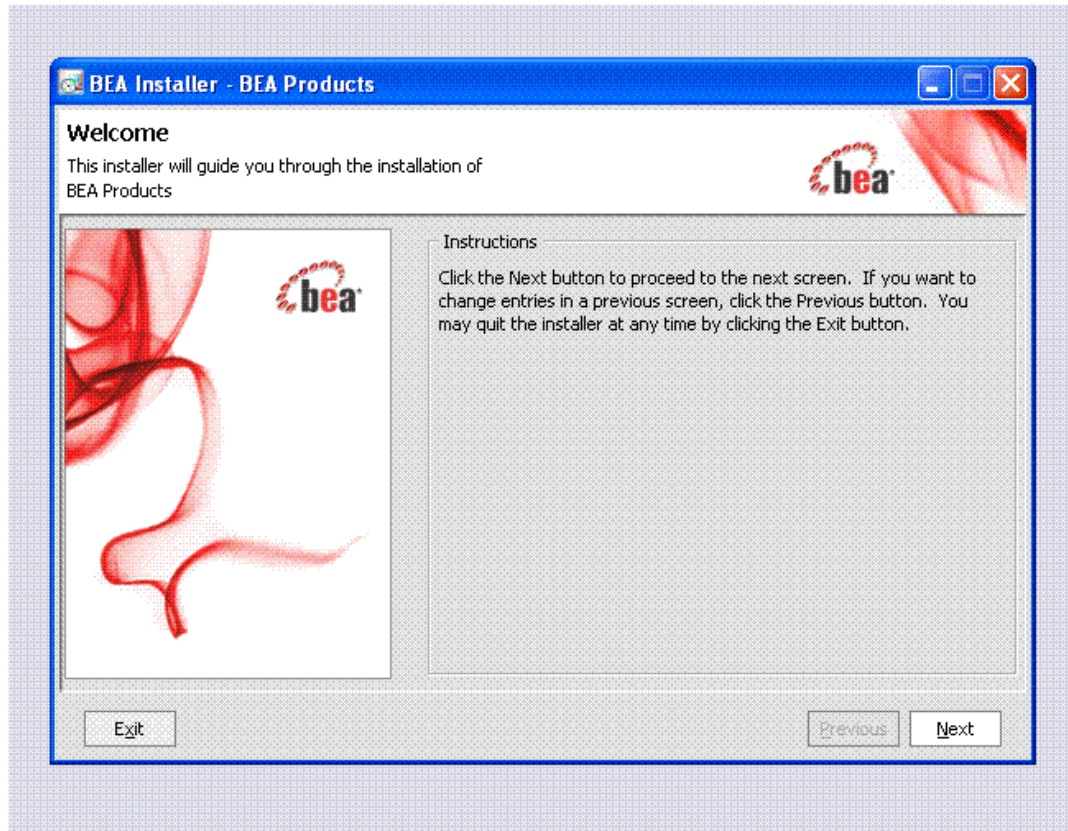
The WebLogic UDDI and UDDI Explorer applications. This option also includes the WebLogic Xquery implementation JARs. If you choose not to select this option, the WebLogic UDDI and UDDI Explorer applications will not be available at server runtime. If your application depends on the UDDI and UDDI Explorer applications, you need to choose this installation option. You will also need this option if you are using WebLogic Xquery libraries within your application.

- **Server Examples**

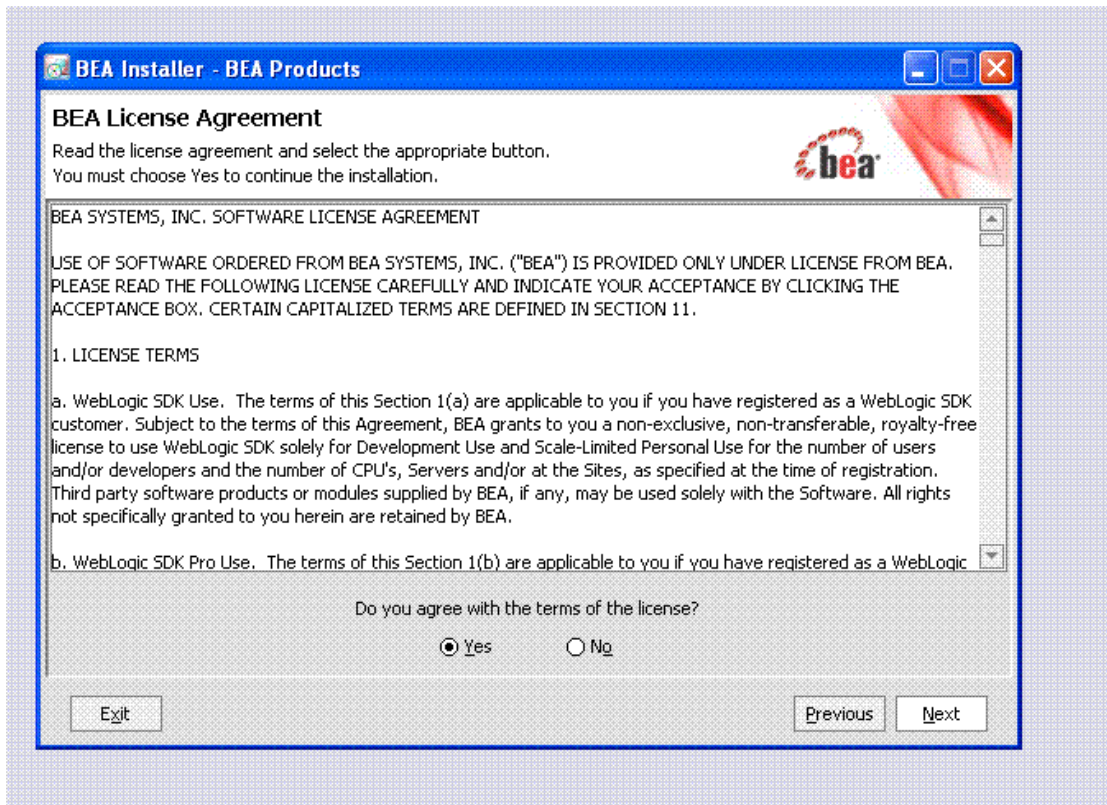
The WebLogic Server examples.

The WebLogic Server Installation Process using the Lightweight Installer

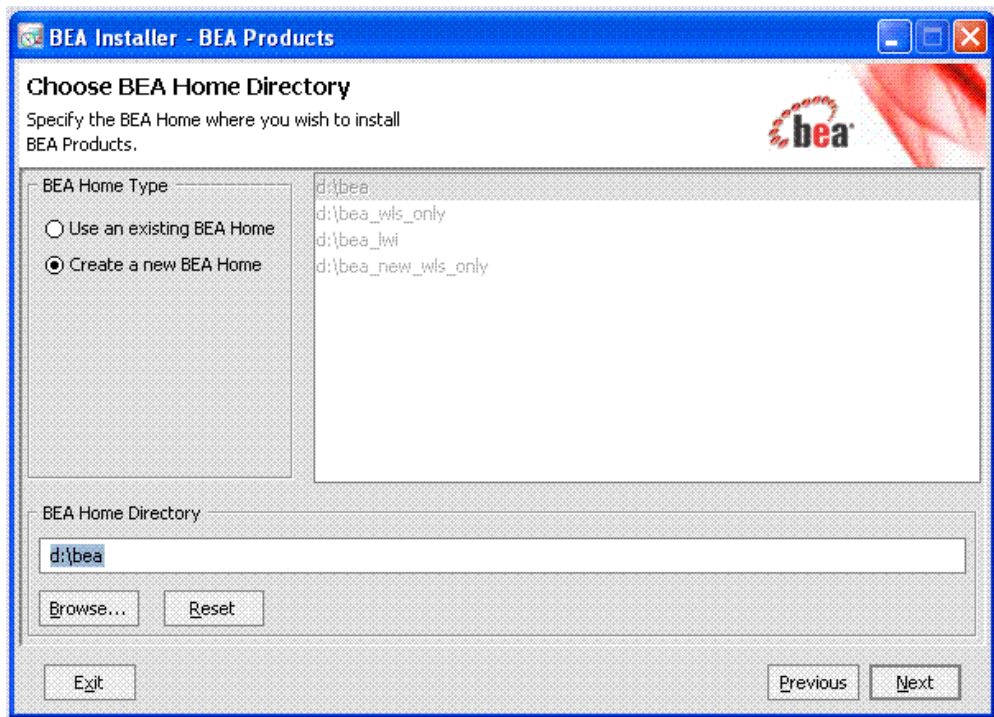
Start the WebLogic Server installer by double clicking on the installer executable file. The Welcome Screen appears.



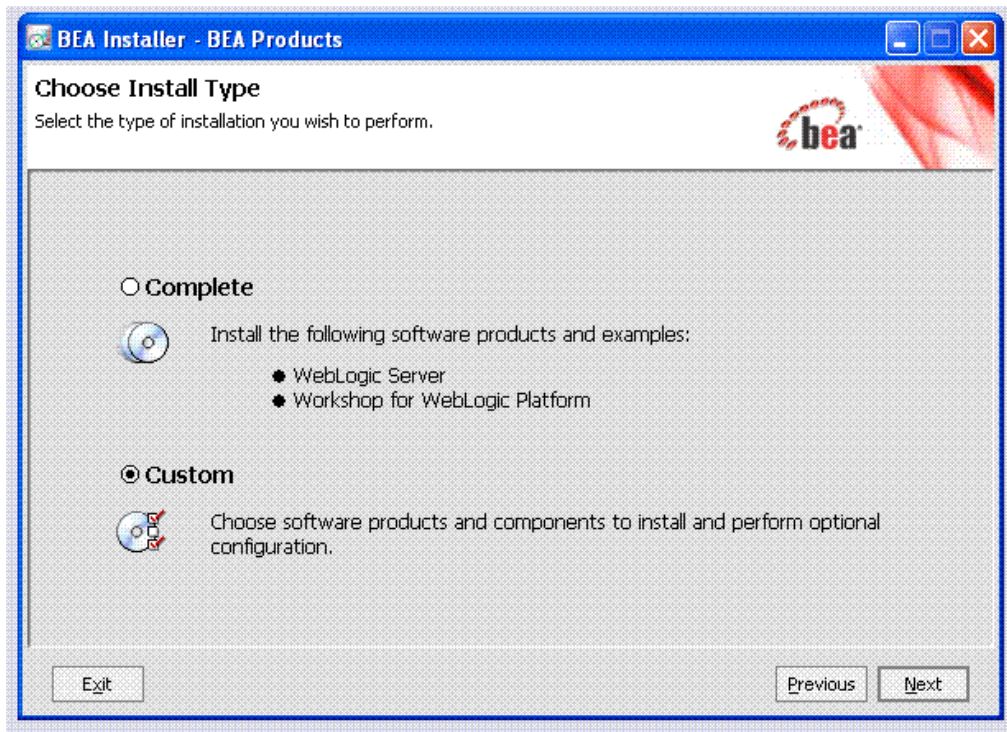
Click Next on the Welcome screen.



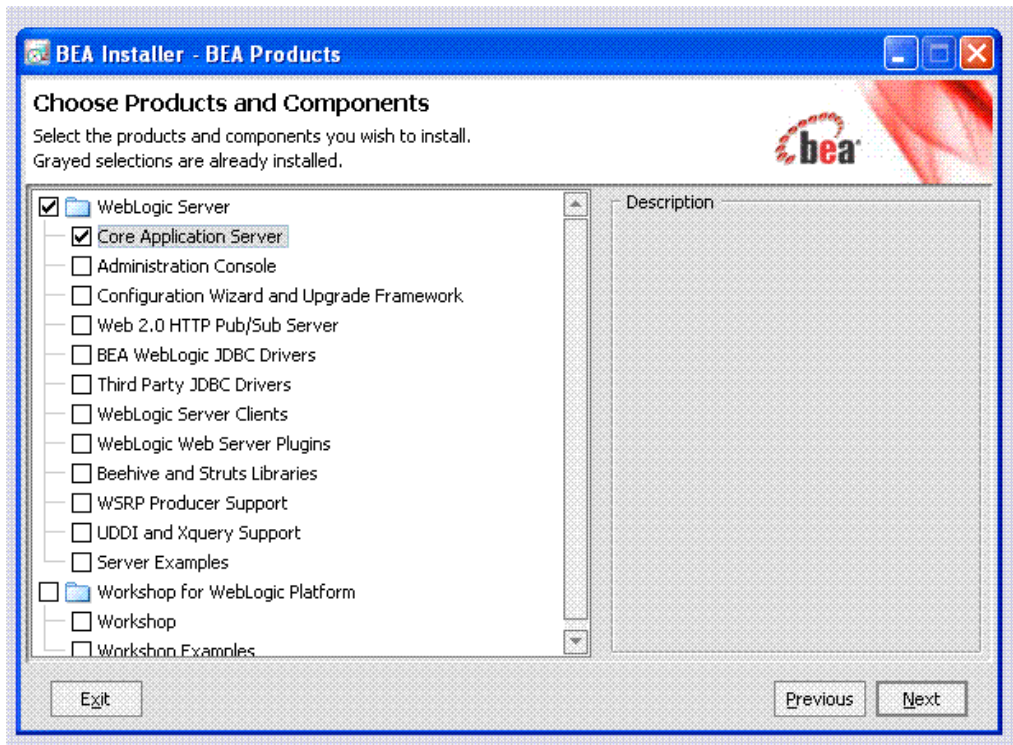
Accept the Web Logic Server license by clicking Yes and click Next to continue.



Choose the BEA Home directory for your installation and then click Next.



Choose Custom and click Next.



Choose the components you intend to install and click Next.

Only components you choose will be installed. In the GA release of WebLogic Server 10.3, a subsequent screen will show the disk size requirement for the chosen components.

The GA release of WebLogic Server will also have an option to pick and choose the Java virtual machines (VMs) to be bundled with the WebLogic installation.

