



BEA WebLogic XML/Non-XML Translator

Installation and Configuration Guide

BEA WebLogic XML/Non-XML Translator 1.0
Document Edition 1.0
January 2001

Copyright

Copyright © 2001 BEA Systems, Inc. All Rights Reserved.

Restricted Rights Legend

This software and documentation is subject to and made available only pursuant to the terms of the BEA Systems License Agreement and may be used or copied only in accordance with the terms of that agreement. It is against the law to copy the software except as specifically allowed in the agreement. This document may not, in whole or in part, be copied photocopied, reproduced, translated, or reduced to any electronic medium or machine readable form without prior consent, in writing, from BEA Systems, Inc.

Use, duplication or disclosure by the U.S. Government is subject to restrictions set forth in the BEA Systems License Agreement and in subparagraph (c)(1) of the Commercial Computer Software-Restricted Rights Clause at FAR 52.227-19; subparagraph (c)(1)(ii) of the Rights in Technical Data and Computer Software clause at DFARS 252.227-7013, subparagraph (d) of the Commercial Computer Software--Licensing clause at NASA FAR supplement 16-52.227-86; or their equivalent.

Information in this document is subject to change without notice and does not represent a commitment on the part of BEA Systems. THE SOFTWARE AND DOCUMENTATION ARE PROVIDED "AS IS" WITHOUT WARRANTY OF ANY KIND INCLUDING WITHOUT LIMITATION, ANY WARRANTY OF MERCHANTABILITY OR FITNESS FOR A PARTICULAR PURPOSE. FURTHER, BEA Systems DOES NOT WARRANT, GUARANTEE, OR MAKE ANY REPRESENTATIONS REGARDING THE USE, OR THE RESULTS OF THE USE, OF THE SOFTWARE OR WRITTEN MATERIAL IN TERMS OF CORRECTNESS, ACCURACY, RELIABILITY, OR OTHERWISE.

Trademarks or Service Marks

BEA, ObjectBroker, TOP END, and Tuxedo are registered trademarks of BEA Systems, Inc. BEA Builder, BEA Connect, BEA Manager, BEA MessageQ, BEA Jolt, M3, eSolutions, eLink, WebLogic, WebLogic Enterprise, WebLogic Commerce Server, and WebLogic Personalization Server are trademarks of BEA Systems, Inc.

All other company names may be trademarks of the respective companies with which they are associated.

BEA WebLogic XML/Non-XML Translator Installation and Configuration Guide

Document Edition	Part Number	Date	Software Version
1.0	870-001046-001	January 2001	BEA WebLogic XML/Non-XML Translator 1.0

Contents

About This Document

What You Need to Know	v
e-docs Web Site	v
How to Print the Document.....	vi
Related Information.....	vi
Contact Us!	vi
Documentation Conventions	vii

1. Installing BEA WebLogic XML/Non-XML Translator

Preinstallation Considerations	1-2
Installing on UNIX in Console Mode	1-2
Uninstalling on UNIX in Console Mode.....	1-7
Installing on Windows NT or UNIX in Graphics Mode	1-9
Installing Your Software License	1-16
Uninstalling on Windows NT or UNIX in Graphics Mode	1-18
Distribution Libraries, Executables, and Sample Files	1-19
Sample Files	1-20

2. Configuring BEA WebLogic XML/Non-XML Translator

Necessary XML Translator jar Files	2-2
Setting the Class Path	2-2
Using the -classpath runtime option with the Java Compiler and Java Interpreter.....	2-3
Setting the CLASSPATH Environment Variable	2-3



About This Document

This document covers the following topics:

- Chapter 1, “Installing BEA WebLogic XML/Non-XML Translator,” covers the installation of BEA WebLogic XML/Non-XML Translator in both the console-based and graphics-based mode.
- Chapter 2, “Configuring BEA WebLogic XML/Non-XML Translator,” covers the configuration of BEA WebLogic XML/Non-XML Translator for both stand-alone and integrated usage.

What You Need to Know

This document is intended mainly for application developers needing to translate binary data files into XML documents and XML documents into binary data files. They do this using the BEA WebLogic XML/Non-XML Translator application (hereafter referred to as XML Translator). This capability provides for easier integration of third party applications into the BEA WebLogic Server environment.

e-docs Web Site

BEA product documentation is available on the BEA corporate Web site. From the BEA Home page, click on Product Documentation or go directly to the “e-docs” Product Documentation page at <http://e-docs.bea.com>.

How to Print the Document

You can print a copy of this document from a Web browser, one file at a time, by using the File—>Print option on your Web browser.

A PDF version of this document is available on the XML Translator documentation Home page on the e-docs Web site (and also on the product CD). You can open the PDF in Adobe Acrobat Reader and print the entire document (or a portion of it) in book format. To access the PDFs, open the XML Translator documentation Home page, click the PDF files button and select the document you want to print.

If you do not have the Adobe Acrobat Reader, you can get it for free from the Adobe Web site at <http://www.adobe.com>.

Related Information

The following XML Translator documents contain information that is relevant to using a data translating Java application.

For more information in general about Java applications, refer to the following source:

- The Sun Microsystems, Inc. Java site at <http://java.sun.com>

For more information about Java, refer to the Bibliography at <http://edocs.bea.com>.

Contact Us!

Your feedback on the XML Translator documentation is important to us. Send us e-mail at **docsupport@bea.com** if you have questions or comments. Your comments will be reviewed directly by the BEA professionals who create and update the XML Translator documentation.

In your e-mail message, please indicate that you are using the documentation for the XML Translator 1.0 release.

If you have any questions about this version of XML Translator, or if you have problems installing and running XML Translator, contact BEA Customer Support through BEA WebSupport at **www.bea.com**. You can also contact Customer Support by using the contact information provided on the Customer Support Card, which is included in the product package.

When contacting Customer Support, be prepared to provide the following information:

- Your name, e-mail address, phone number, and fax number
- Your company name and company address
- Your machine type and authorization codes
- The name and version of the product you are using
- A description of the problem and the content of pertinent error messages

Documentation Conventions

The following documentation conventions are used throughout this document.

Convention	Item
boldface text	Indicates terms defined in the glossary.
Ctrl+Tab	Indicates that you must press two or more keys simultaneously.
<i>italics</i>	Indicates emphasis or book titles.

Convention	Item
monospace text	<p>Indicates code samples, commands and their options, data structures and their members, data types, directories, and file names and their extensions. Monospace text also indicates text that you must enter from the keyboard.</p> <p><i>Examples:</i></p> <pre>#include <iostream.h> void main () the pointer psz chmod u+w * \tux\data\ap .doc tux.doc BITMAP float</pre>
monospace boldface text	<p>Identifies significant words in code.</p> <p><i>Example:</i></p> <pre>void commit ()</pre>
<i>monospace italic text</i>	<p>Identifies variables in code.</p> <p><i>Example:</i></p> <pre>String <i>expr</i></pre>
UPPERCASE TEXT	<p>Indicates device names, environment variables, and logical operators.</p> <p><i>Examples:</i></p> <pre>LPT1 SIGNON OR</pre>
{ }	<p>Indicates a set of choices in a syntax line. The braces themselves should never be typed.</p>
[]	<p>Indicates optional items in a syntax line. The brackets themselves should never be typed.</p> <p><i>Example:</i></p> <pre>buildobjclient [-v] [-o name] [-f <i>file-list</i>]... [-l <i>file-list</i>]...</pre>
	<p>Separates mutually exclusive choices in a syntax line. The symbol itself should never be typed.</p>

Convention	Item
...	Indicates one of the following in a command line: <ul style="list-style-type: none">■ That an argument can be repeated several times in a command line■ That the statement omits additional optional arguments■ That you can enter additional parameters, values, or other information The ellipsis itself should never be typed. <p><i>Example:</i></p> <pre>buildobjclient [-v] [-o name] [-f file-list]... [-l file-list]...</pre>
. . .	Indicates the omission of items from a code example or from a syntax line. The vertical ellipsis itself should never be typed.



1 Installing BEA WebLogic XML/Non-XML Translator

This chapter describes the steps required to install the BEA WebLogic XML/Non-XML Translator (hereafter referred to as XML Translator). The following topics are discussed:

- Preinstallation Considerations
- Installing on UNIX in Console Mode
- Uninstalling on UNIX in Console Mode
- Installing on Windows NT or UNIX in Graphics Mode
- Installing Your Software License
- Uninstalling on Windows NT or UNIX in Graphics Mode
- Distribution Libraries, Executables, and Sample Files

Preinstallation Considerations

The following actions are necessary before installing XML Translator:

- Review the platform support and software requirements sections of the *BEA WebLogic XML/Non-XML Translator Release Notes* and make sure that the computer upon which you are installing XML Translator satisfies the listed requirements.
- Install a Java Environment that meets the software requirements listed in the *BEA WebLogic XML/Non-XML Translator Release Notes*.
- Set the `JAVA_HOME` environment variable to the directory containing your Java runtime environment. The default on UNIX is the `bin/jre` directory under your Java Development environment root directory.

Installing on UNIX in Console Mode

To install the XML Translator software on UNIX, you run the `install.bin` BEA standard installation program. You have the option of using console mode. A console mode installation installs all the necessary software components without displaying a graphical user interface.

Note: The installation procedure used in a console mode installation is the same as the procedure used in a graphics mode installation. The same installation steps and options are presented in the same order. The only difference between installation modes is that in the graphics mode you are led through the installation by a graphical user interface.

Also, the Format Builder (XML Translator design tool) is not installed or configured on UNIX.

Perform the following steps to install the XML Translator software in console mode on a certified UNIX platform:

1. Log on as root to install the XML Translator software.

```
$ su -  
Password:
```

2. Access the CD-ROM device.

```
# ls -l /dev/cdrom  
  
total 0  
  
brw-rw-rw-    1 root    sys      22,    0 April 14 10:55 clb0t010
```

3. Mount the CD-ROM. Mount commands vary depending on your system configuration. Refer to your System Administrator for the specific command for your system. Use a command similar to the following command to mount the CD-ROM on any UNIX system, **except** HP-UX.

```
# mount -r -F cdfs /dev/cdrom/clb0t010 /mnt
```

If you are installing on an HP-UX system, use a command similar to the following command:

```
# mount -r -F cdfs -o cdcase /dev/cdrom/clb0t010 /mnt
```

4. Change the directory to the `unix` directory on your CD-ROM device. For example,

```
# cd /mnt/unix
```

5. List the CD-ROM contents.

```
# ls  
  
install.bin
```

6. Execute the installation program in character-based mode.

```
# sh install.bin -i console
```

7. The installation program runs and prompts you for responses (see Listing 1-1 for an example).

Note: Listing 1-1 provides an example of a default console mode installation. For an explanation of and more information on the various installation options, see “Installing on Windows NT or UNIX in Graphics Mode.”

Listing 1-1 Console Mode Installation Example

```
Preparing to install...

Preparing CONSOLE Mode Installation...

=====

BEA WebLogic XML/non-XML Translator 1.0(created with
InstallAnywhere by Zero G)

-----

=====

Introduction

-----

This installer will guide you through the installation of 'WebLogic
XML/non-XML Translator'. On each step, answer the questions
provided. Type "quit" at any time to exit the installer.

PRESS <ENTER> TO CONTINUE: <ENTER>

=====

License Agreement

-----

Please read before installing:

BEA Software License

The Software and accompanying documentation (respectively
"Software" and "Documentation") ...

      .
      .
      .

User Count means the number of users specified on the uniform
product code label provided on the outside packaging of the Product.

PRESS <ENTER> TO CONTINUE: <ENTER>

Connection Management Software means the computer programs ...
```

•
•
•
... internally within your organization, up to

PRESS <ENTER> TO CONTINUE: **<ENTER>**

the User Count number of copies of the Client Software. The ...

•
•
•
... shall also automatically terminate if you breach

PRESS <ENTER> TO CONTINUE: **<ENTER>**

any of the terms or conditions. You agree to destroy the original
and all ...

•
•
•
writing and signed by a duly authorized representative off the party
to be

PRESS <ENTER> TO CONTINUE: **<ENTER>**

bound. No waiver of any past or present right arising from any
breach or ...

•
•
•
U.S. Government Restricted Rights. Use, duplication, or disclosure
by the

PRESS <ENTER> TO CONTINUE: **<ENTER>**

United States Government is subject to restrictions as set forth in
FAR ...

```

      .
      .
      .

... countries

Copyright 2000, 1996-1999 BEA Systems, Inc., or its suppliers, as
applicable.

All Rights Reserved.

DO YOU AGREE WITH THE TERMS OF THE LICENSE? (Y/N): Y

=====

Choose Install Set

-----

Please Choose the Install Set to be installed by this installer.

->1- Typical Install
    2- Minimal Install

ENTER THE NUMBER FOR THE INSTALL SET, OR <ENTER> TO ACCEPT THE
DEFAULT  1

=====

Choose BEA Home Directory

-----

    1- Create a New BEA Home
    2- Use Existing BEA Home

Enter a number:  1

Specify a New BEA Home: /usr/bea

=====

Choose Product Directory

-----

    1- Modify Current Selection (/usr/bea/wlxt1.0)
    2- Use Current Selection (/usr/bea/wlxt1.0)

```

```

Enter a number: 2

=====

Installing...

-----

[=====|=====|=====|=====]
[-----|-----|-----|-----]
=====

Install Complete

-----

Congratulations. 'WebLogic XML/non-XML Translator' has been
successfully installed to:

    /usr/bea/wlxtl.0

PRESS <ENTER> TO EXIT THE INSTALLER: <ENTER>

```

Note: The single-dash bar just beneath the double-dash bar in Listing 1-1 is a progress indicator. When the single-dash bar becomes the same length as the double-dash bar, installation is complete.

Uninstalling on UNIX in Console Mode

If you install XML Translator in console mode (see “Installing on UNIX in Console Mode”), you must uninstall it in console mode.

To uninstall XML Translator in console mode:

1. Change directories to your UninstallerData directory under your root directory (default is /usr/bea/wlxtl.0/UninstallerData) with the following command:


```
> cd /usr/bea/wlxtl.0/UninstallerData
```

-
2. Start the uninstallation program with the following command:

```
/usr/bea/wlxt1.0/UninstallerData> sh Uninstall -i console
```

Listing 1-2 displays a XML Translator uninstallation.

Listing 1-2 Console Mode Uninstallation Example

```
Preparing CONSOLE Uninstall...

=====

BEA WebLogic XML/non-XML Translator 1.0 (InstallAnywhere
Uninstaller by Zero G)

-----

About to uninstall...

    BEA WebLogic XML/non-XML Translator 1.0

This will completely remove all components installed by
InstallAnywhere. It will not remove files and folders created after
the installation.

PRESS <ENTER> TO BEGIN THE UNINSTALL, OR 'QUIT' TO EXIT THE
UNINSTALLER: <ENTER>

=====

Uninstall...
-----

[=====|=====|=====|=====]
[-----|-----|-----|-----]
=====

Uninstall Complete

-----

All items were successfully uninstalled.

PRESS <ENTER> TO EXIT THE UNINSTALLER: <ENTER>
```

Note: The single-dash bar just beneath the double-dash bar in Listing 1-2 is a progress indicator. When the single-dash bar becomes the same length as the double-dash bar, uninstallation is complete.

Installing on Windows NT or UNIX in Graphics Mode

Perform the following steps to install the XML Translator software:

1. Insert the XML Translator CD-ROM.

On Windows:

Click **Run** from the **Start menu**. The **Run** window displays. Click **Browse** to navigate to the CD-ROM drive. Select the `winnt` directory and select the `setup.exe` program. Click **Open** to make the path and executable appear in the **Run** dialog box, then select **OK** to run the executable and begin the installation. The **Introduction** screen (see Figure 1-1) is displayed.

On UNIX:

- a. Log on as root to install the XML Translator software.

```
$ su -  
Password:
```

- b. Access the CD-ROM device.

```
> ls -l /dev/cdrom  
  
total 0  
  
brw-rw-rw-    1 root    sys      22,   0 April 14 10:55 clb0t010
```

- c. Mount the CD-ROM. Mount commands vary depending on your system configuration. Refer to your System Administrator for the specific command for your system. Use a command similar to the following command to mount the CD-ROM on any Unix system, **except** HP-UX.

```
> mount -r -F cdfs /dev/cdrom/clb0t010 /mnt
```

If you are installing on an HP-UX system, use a command similar to the following command:

```
> mount -r -F cdfs -o cdcase /dev/cdrom/clb0t010 /mnt
```

- d. Change the directory to the `unix` directory on your CD-ROM device. For example,

```
> cd /mnt/unix
```

- e. List the CD-ROM contents.

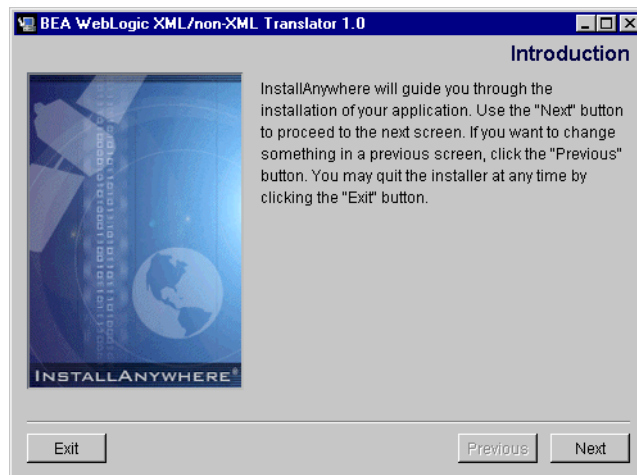
```
/mnt/unix> ls  
install.bin  hp  sun5x  aix43
```

- f. Execute the installation program.

```
/mnt/unix> sh install.bin
```

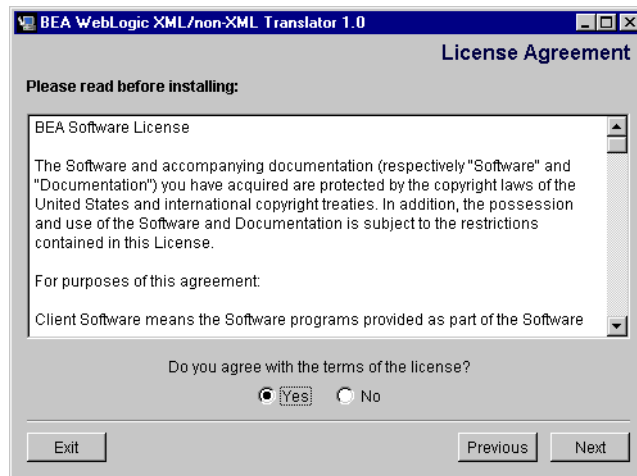
The **Introduction** screen (see Figure 1-1) is displayed.

Figure 1-1 Introduction Screen



2. Click **Next** on the **Introduction** screen to continue with the installation. The **License Agreement** screen is displayed (see Figure 1-2).

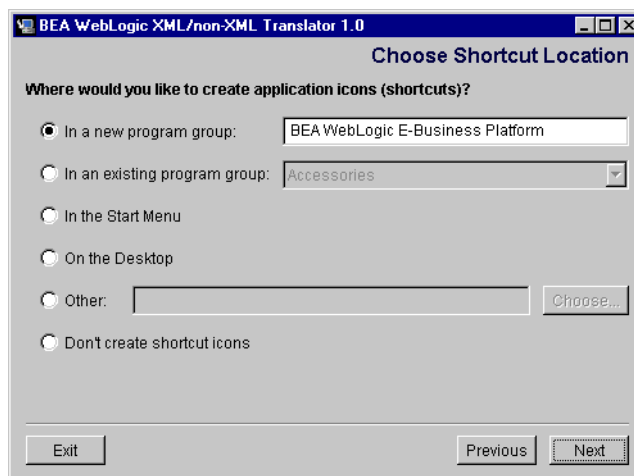
Figure 1-2 License Agreement Screen



3. Click the **Yes** radio button to accept the license agreement, then click **Next** to proceed with the installation. The **Choose Shortcut Location** screen is displayed (see Figure 1-3).

Note: If you click the **No** radio button, you will not be able to continue with the installation. You must either exit the installation or go back to the **Introduction** screen.

Figure 1-3 Choose Shortcut Location Screen



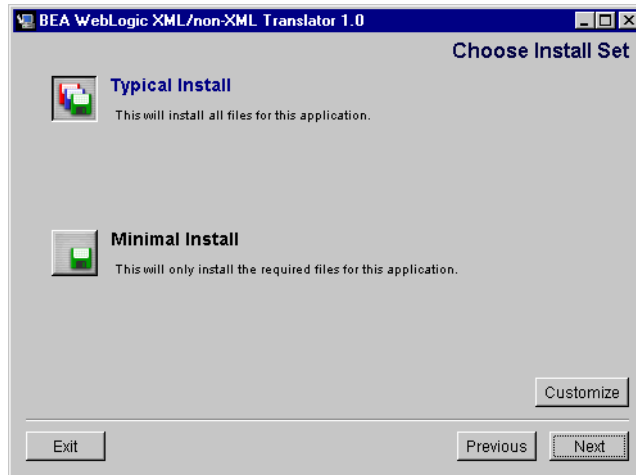
Note: The following step and the screen with which it is associated (see Figure 1-3) apply only to Windows installations.

4. Select the location where you would like to create shortcuts to the XML Translator software, then click **Next**. You can select from the following option buttons:
 - In a new program group. You can enter a name of your choice in the text box or use the default. The shortcut icons are created in the selected Program group accessible from the Start menu.
 - In an existing program group. To add the XML Translator shortcuts to an existing program group, select the desired Program group from the drop-down list.
 - In the Start Menu. The XML Translator shortcuts are added directly to the Start Menu and are not included in a Program group.
 - On the Desktop. The XML Translator shortcuts are added to your Desktop and are not accessible from the Start Menu.
 - Other. You can enter a folder name in the text box or click Choose and select an existing folder on your system. The shortcuts are placed in the specified folder. You can access them through My Computer or using the Windows Explorer.

- Don't create shortcut icons. If you choose this option, you will only be able to access the software using scripts or commands.

The **Choose Install Set** screen is displayed (see Figure 1-4).

Figure 1-4 Choose Install Set Screen

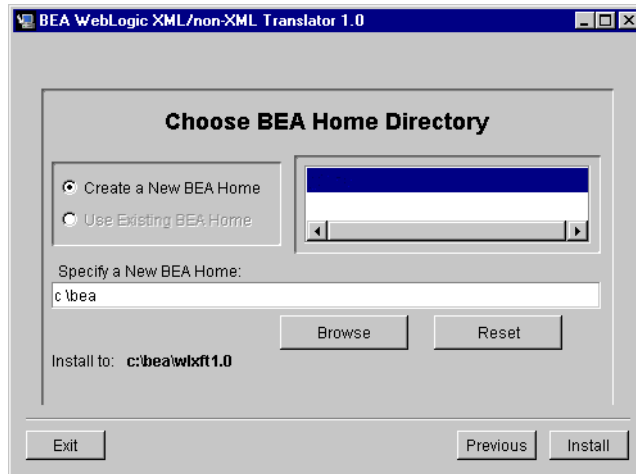


5. Select the install set that you want to install on your system. You can select from the following options:

- **Typical Install:** This option installs the complete XML Translator application.
- **Minimal Install:** This option installs only the files required by XML Translator.
- **Customize:** This option installs any combination of **XML Translator Runtime**, **Format Builder**, **Online Help**, **Documentation**, or **Samples** that you select. If you click **Customize**, a screen appears allowing you to select from these options.

Click **Next** to proceed with the installation. The **Choose BEA Home Directory** screen is displayed (see Figure 1-5).

Figure 1-5 Choose BEA Home Directory Screen



6. Create or select a BEA Home directory. The BEA Home directory is the root directory in which you install all BEA products. If you do not already have a BEA Home directory (default is `c:\bea` on Windows NT and `/usr/bea` on UNIX), you will have the option of creating a new BEA Home directory. You can create a new BEA Home directory as follows:

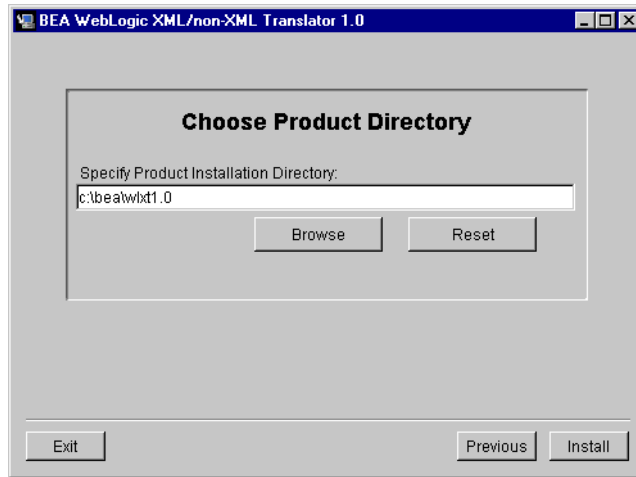
- a. Select the **Create a New BEA Home** radio button.
- b. Accept the default location for your BEA Home directory or click **Browse** to specify a different location. If you accept the default location, your BEA Home directory will be `c:\bea`, and your XML Translator software default installation directory is `c:\bea\wlxt1.0`. If you do not want to install XML Translator in this default location, you will have the opportunity, in Step 7, to choose another directory in which to install the software. Click **Next** to proceed with the installation. The **Choose Product Directory** screen is displayed (see Figure 1-6).

If you already have one or more BEA Home directories on your system, you can use one of those directories as follows:

- a. Click on the **Use Existing BEA Home** radio button.
- b. Select a BEA Home directory from the scrolling list displayed to the right of the radio buttons. All of the valid BEA Home directories will be displayed in the scrolling list, and only valid BEA Home directories can be used to install

XML Translator. Valid BEA Home directories are directories where BEA products have been installed using BEA's standard installation program. Click **Next** to proceed with the installation. The **Choose Product Directory** screen is displayed (see Figure 1-6).

Figure 1-6 Choose Product Directory Screen



7. In the **Specify Product Installation Directory** text entry field, specify an installation directory for XML Translator by:
 - Accepting the default installation directory
 - Typing your desired installation root directory directly into the text entry field
 - Clicking **Browse**, navigating to your desired installation root directory, then clicking **OK** to make the directory path appear in the **Specify Product Installation Directory** text entry field
8. Click **Install** to install the software. Upon installation completion, the **Install Complete** screen is displayed (see Figure 1-7).

Figure 1-7 Install Complete Screen



9. Click **Done** to complete the installation.

Installing Your Software License

The XML Translator requires licensing. Your XML Translator licensing information must be contained in `license.bea` which is in the BEA Home directory (`c:\bea` is the default on Windows NT, `/usr/bea` is the default on UNIX).

If you do not currently have a `license.bea` file in your BEA Home directory, copy the license file that you received from distribution for XML Translator to your BEA Home directory and rename it `license.bea`. If you do have a `license.bea` file in your BEA Home directory, copy your XML Translator license file that you received from distribution to your BEA Home directory, then run the Update License Utility to append `license.bea` with the licensing information in the XML Translator license file.

To append an existing `license.bea` file with the XML Translator licensing information:

-
1. Make sure that your XML Translator license file is copied into the BEA Home directory.
 2. Open a Command Prompt window.
 3. Change directories to your BEA Home directory.

On Windows:

If your BEA Home directory is `c:\bea`, the default BEA Home directory and you are presently on the c drive, you would do this as follows:

```
c:\> cd bea
```

On UNIX:

If your BEA Home directory is `/usr/bea`, you would do this as follows:

```
> cd /usr/bea
```

4. Run the Update License Utility.

On Windows:

```
c:\bea> UpdateLicense <XML Translator license file>
```

For example, if your XML Translator license file is named `license1.bea`, then you would run the `UpdateLicense` utility as follows:

```
c:\bea> UpdateLicense license1.bea
```

On UNIX:

```
/usr/bea> sh updatelicense.sh <XML Translator license file>
```

For example, if your XML Translator license file is named `license1.bea`, then you would run the `updatelicense` utility as follows:

```
/usr/bea> sh updatelicense.sh license1.bea
```

The `license.bea` file will now be appended with the XML Translator licensing information.

Uninstalling on Windows NT or UNIX in Graphics Mode

Perform the following steps to uninstall the XML Translator software:

1. On Windows NT:

Choose Start—>Programs—>BEA WebLogic E-Business Platform—>WebLogic XML non-XML Translator 1.0—>Uninstall XML Translator from the Start menu. The screen in Figure 1-8 is displayed.

On UNIX:

- a. Change directories to your UninstallerData directory under your XML Translator root directory (default is /usr/bea/wlxt1.0/UninstallerData) with the following command:

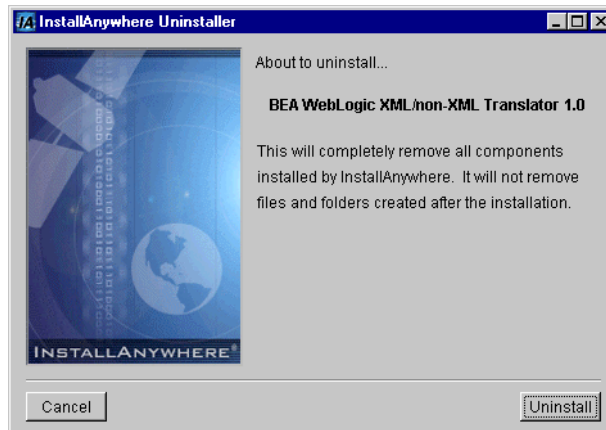
```
> cd /usr/bea/wlxt1.0/UninstallerData
```

- b. Start the uninstallation program with the following command:

```
/usr/bea/wlxt1.0/UninstallerData> sh Uninstall
```

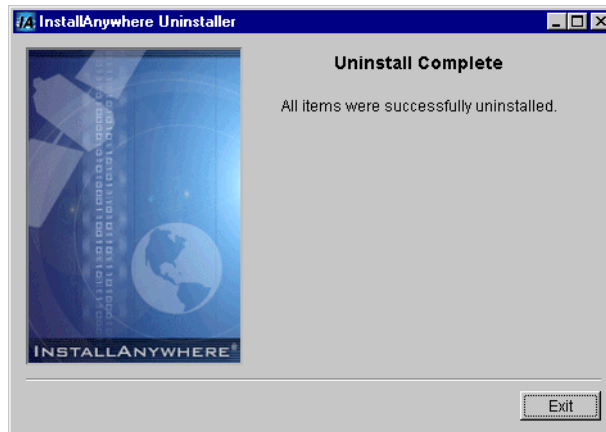
The screen in Figure 1-8 is displayed.

Figure 1-8 XML Translator Uninstall Start Screen



2. Click **Uninstall** to start uninstalling **XML Translator**. When the uninstallation of **XML Translator** is complete, Figure 1-9 is displayed.

Figure 1-9 XML Translator Uninstallation Complete Screen



3. Click **Exit** to complete the uninstallation.

Distribution Libraries, Executables, and Sample Files

The XML Translator CD-ROM contains the following libraries and executable programs. After installing the XML Translator software, verify that these libraries and programs are installed on your system. Verify that the files listed in Table 1-1 and Table 1-2 are installed by the XML Translator software.

Note: Files contained in the `apidoc`, `doc`, `help`, and `UninstallerData` directories or their sub-directories are not listed in either Table 1-1 or Table 1-2.

Table 1-1 Distribution Libraries and Executables

Directory	Files
<root directory>	dom2.jar
<root directory>	ebase.jar
<root directory>	fb.cmd
<root directory>	FormatBuilder.config
<root directory>	FormatBuilder.exe
<root directory>	FormatBuilder.lax
<root directory>	FormatBuilderHelp.properties
<root directory>	format_builder.ico
<root directory>	jamdmd41.jar
<root directory>	lax.jar
<root directory>	pallet.xml
<root directory>	sax2.jar
<root directory>	wlxt.jar
<root directory>	xmlx.jar

Sample Files

The Sample Application files listed in Table 1-2 are included in the <XML Translator Root Directory>\samples directory.

Table 1-2 Sample Application Files

Sub-Directory	Files
COBOL	emprec5.cpy
COBOL	emprec5.data
po	po.dtd

Table 1-2 Sample Application Files

Sub-Directory	Files
po	po.mfl
po	po_01.data
po	po_02.data
wlpi\ejb	Autopay.cmd
wlpi\ejb	Autopay.sh
wlpi\ejb	HR.mfl
wlpi\ejb	Makefile
wlpi\ejb	Payroll.mfl
wlpi\ejb	WLXTEExample.xml
wlpi\ejb\lib	WLXTEJB.jar
wlpi\ejb\source	AutoPay.java
wlpi\ejb\source	EmployeeRecord.java
wlpi\ejb\source	HexDump.java
wlpi\ejb\source	HR.java
wlpi\ejb\source	HRBean.java
wlpi\ejb\source	HRHome.java
wlpi\ejb\source	Payroll.java
wlpi\ejb\source	PayrollBean.java
wlpi\ejb\source	PayrollHome.java
wlpi\ejb\source	XMLnonXMLTranslator.java
wlpi\ejb\source	XMLnonXMLTranslatorBean.java
wlpi\ejb\source	XMLnonXMLTranslatorHome.java
wlpi\servlet	Makefile
wlpi\servlet	readme.txt

Table 1-2 Sample Application Files

Sub-Directory	Files
wlpi\servlet	SampleData.data
wlpi\servlet	SampleData.mfl
wlpi\servlet	SampleWorkFlow.xml
wlpi\servlet	WLPI_sample.war
wlpi\servlet\images	bealogo.jpg
wlpi\servlet\source	WLPI_sample.java
wlpi\servlet\WEB-INF	hello.html
wlpi\servlet\WEB-INF	web.xml
wlpi\servlet\WEB-INF	weblogic.xml
wlpi\servlet\WEB-INF\classes\bea \wlxt\samples\wlpi\servlet	WLPI_sample.class
wlpi\servlet\WEB-INF\lib	cos.jar
wlpi\servlet\WEB-INF\lib	dom2.jar
wlpi\servlet\WEB-INF\lib	ebase.jar
wlpi\servlet\WEB-INF\lib	HtmlScreen.jar
wlpi\servlet\WEB-INF\lib	sax2.jar
wlpi\servlet\WEB-INF\lib	wlxt.jar
wlpi\servlet\WEB-INF\lib	xmlx.jar

2 Configuring BEA WebLogic XML/Non-XML Translator

In order to build and run applications that use BEA WebLogic XML/Non-XML Translator (hereafter referred to as XML Translator), you must set your class path to include the XML Translator `jar` files and the path to your license file (`license.bea`).

This section discusses the following topics:

- Necessary XML Translator `jar` Files
- Setting the Class Path

Necessary XML Translator jar Files

The following XML Translator `jar` files are needed to build and run applications that use XML Translator:

- `dom2.jar`
- `ebase.jar`
- `sax2.jar`
- `wlxt.jar`
- `xmlx.jar`

Setting the Class Path

You can set your class path in one of two ways:

- Use the `-classpath` runtime option when you invoke the Java compiler (`javac`) or the interpreter (`java`)
- Set the `CLASSPATH` environment variable.

The class path setting is different for UNIX and Windows platforms. On Windows NT, semicolons separate each entry in the class path. On UNIX, colons separate each entry in the class path.

Using the -classpath runtime option with the Java Compiler and Java Interpreter

The examples below illustrate using the Java compiler (`javac`) and the Java interpreter (`java`), to build and run a Java application that uses XML Translator. The examples that run the application include an additional directory that contains the license file (`license.bea`).

Note: The following examples apply to a default installation. In a default installation, your BEA Home directory is `c:\bea` on Windows and `/usr/bea` on UNIX. Your XML Translator root directory is `c:\bea\wlxt1.0` on Windows and `/usr/bea/wlxt1.0` on UNIX. Your software will be installed in these directories if you accept all defaults when installing it (see “Chapter 1, “Installing BEA WebLogic XML/Non-XML Translator,” for more information).

On Windows:

```
javac -classpath "C:\bea\wlxt1.0\dom2.jar;  
C:\bea\wlxt1.0\ebase.jar;C:\bea\wlxt1.0\sax2.jar;  
C:\bea\wlxt1.0\wlxt.jar;C:\bea\wlxt1.0\xmlx.jar" MyApp.java  
  
java -classpath "C:\bea;C:\bea\wlxt1.0\dom2.jar;  
C:\bea\wlxt1.0\ebase.jar;C:\bea\wlxt1.0\sax2.jar;  
C:\bea\wlxt1.0\wlxt.jar;C:\bea\wlxt1.0\xmlx.jar" MyApp
```

On UNIX:

```
javac -classpath "/usr/bea/wlxt1.0/dom2.jar:  
/usr/bea/wlxt1.0/ebase.jar:/usr/bea/wlxt1.0/sax2.jar:  
/usr/bea/wlxt1.0/wlxt.jar:/usr/bea/wlxt1.0/xmlx.jar" MyApp.java  
  
java -classpath "/usr/bea:/usr/bea/wlxt1.0/dom2.jar:  
/usr/bea/wlxt1.0/ebase.jar:/usr/bea/wlxt1.0/sax2.jar:  
/usr/bea/wlxt1.0/wlxt.jar:/usr/bea/wlxt1.0/xmlx.jar" MyApp
```

Setting the CLASSPATH Environment Variable

An alternative to using the command line classpath option, is to set the environment variable `CLASSPATH`. Below are examples of setting this variable on both the Windows and UNIX platforms.

On Windows:

```
set CLASSPATH="C:\bea\wlxtl1.0\dom2.jar;C:\bea\wlxtl1.0\ebase.jar;  
C:\bea\wlxtl1.0\sax2.jar;C:\bea\wlxtl1.0\wlxt.jar;  
C:\bea\wlxtl1.0\xmlx.jar"
```

On UNIX:

```
CLASSPATH=/usr/bea:/usr/bea/wlxtl1.0/dom2.jar:/usr/bea/wlxtl1.0/eba  
se.jar:/usr/bea/wlxtl1.0/sax2.jar:/usr/bea/wlxtl1.0/wlxt.jar:/usr/b  
ea/wlxtl1.0/xmlx.jar
```

```
export CLASSPATH
```