

**Oracle® Documaker**

# **Internet Document Server Installation Guide**

version 2.2

Part number: E14902-01

October 2009

Copyright © 2009, Oracle and/or its affiliates. All rights reserved.

The Programs (which include both the software and documentation) contain proprietary information; they are provided under a license agreement containing restrictions on use and disclosure and are also protected by copyright, patent, and other intellectual and industrial property laws. Reverse engineering, disassembly, or decompilation of the Programs, except to the extent required to obtain interoperability with other independently created software or as specified by law, is prohibited.

The information contained in this document is subject to change without notice. If you find any problems in the documentation, please report them to us in writing. This document is not warranted to be error-free. Except as may be expressly permitted in your license agreement for these Programs, no part of these Programs may be reproduced or transmitted in any form or by any means, electronic or mechanical, for any purpose.

If the Programs are delivered to the United States Government or anyone licensing or using the Programs on behalf of the United States Government, the following notice is applicable:

#### **U.S. GOVERNMENT RIGHTS**

Programs, software, databases, and related documentation and technical data delivered to U.S. Government customers are "commercial computer software" or "commercial technical data" pursuant to the applicable Federal Acquisition Regulation and agency-specific supplemental regulations. As such, use, duplication, disclosure, modification, and adaptation of the Programs, including documentation and technical data, shall be subject to the licensing restrictions set forth in the applicable Oracle license agreement, and, to the extent applicable, the additional rights set forth in FAR 52.227-19, Commercial Computer Software--Restricted Rights (June 1987). Oracle USA, Inc., 500 Oracle Parkway, Redwood City, CA 94065.

The Programs are not intended for use in any nuclear, aviation, mass transit, medical, or other inherently dangerous applications. It shall be the licensee's responsibility to take all appropriate fail-safe, backup, redundancy and other measures to ensure the safe use of such applications if the Programs are used for such purposes, and we disclaim liability for any damages caused by such use of the Programs.

The Programs may provide links to Web sites and access to content, products, and services from third parties. Oracle is not responsible for the availability of, or any content provided on, third-party Web sites. You bear all risks associated with the use of such content. If you choose to purchase any products or services from a third party, the relationship is directly between you and the third party. Oracle is not responsible for: (a) the quality of third-party products or services; or (b) fulfilling any of the terms of the agreement with the third party, including delivery of products or services and warranty obligations related to purchased products or services. Oracle is not responsible for any loss or damage of any sort that you may incur from dealing with any third party.

Oracle, JD Edwards, and PeopleSoft are registered trademarks of Oracle Corporation and/or its affiliates. Other names may be trademarks of their respective owners.

### THIRD PARTY SOFTWARE NOTICES

This product includes software developed by Apache Software Foundation (<http://www.apache.org/>).

THIS SOFTWARE IS PROVIDED "AS IS" AND ANY EXPRESS OR IMPLIED WARRANTIES, INCLUDING, BUT NOT LIMITED TO, THE IMPLIED WARRANTIES OF MERCHANTABILITY AND FITNESS FOR A PARTICULAR PURPOSE ARE DISCLAIMED. IN NO EVENT SHALL THE AUTHOR OR CONTRIBUTORS BE LIABLE FOR ANY DIRECT, INDIRECT, INCIDENTAL, SPECIAL, EXEMPLARY, OR CONSEQUENTIAL DAMAGES (INCLUDING, BUT NOT LIMITED TO, PROCUREMENT OF SUBSTITUTE GOODS OR SERVICES; LOSS OF USE, DATA, OR PROFITS; OR BUSINESS INTERRUPTION) HOWEVER CAUSED AND ON ANY THEORY OF LIABILITY, WHETHER IN CONTRACT, STRICT LIABILITY, OR TORT (INCLUDING NEGLIGENCE OR OTHERWISE) ARISING IN ANY WAY OUT OF THE USE OF THIS SOFTWARE, EVEN IF ADVISED OF THE POSSIBILITY OF SUCH DAMAGE.

Copyright © 2000-2009 The Apache Software Foundation. All rights reserved.

---

This product includes software distributed via the Berkeley Software Distribution (BSD) and licensed for binary distribution under the Generic BSD license.

THIS SOFTWARE IS PROVIDED BY THE COPYRIGHT HOLDERS AND CONTRIBUTORS "AS IS" AND ANY EXPRESS OR IMPLIED WARRANTIES, INCLUDING, BUT NOT LIMITED TO, THE IMPLIED WARRANTIES OF MERCHANTABILITY AND FITNESS FOR A PARTICULAR PURPOSE ARE DISCLAIMED. IN NO EVENT SHALL THE COPYRIGHT OWNER OR CONTRIBUTORS BE LIABLE FOR ANY DIRECT, INDIRECT, INCIDENTAL, SPECIAL, EXEMPLARY, OR CONSEQUENTIAL DAMAGES (INCLUDING, BUT NOT LIMITED TO, PROCUREMENT OF SUBSTITUTE GOODS OR SERVICES; LOSS OF USE, DATA, OR PROFITS; OR BUSINESS INTERRUPTION) HOWEVER CAUSED AND ON ANY THEORY OF LIABILITY, WHETHER IN CONTRACT, STRICT LIABILITY, OR TORT (INCLUDING NEGLIGENCE OR OTHERWISE) ARISING IN ANY WAY OUT OF THE USE OF THIS SOFTWARE, EVEN IF ADVISED OF THE POSSIBILITY OF SUCH DAMAGE.

Copyright © 2009, Berkeley Software Distribution (BSD)

---

This product includes software developed by the JDOM Project (<http://www.jdom.org/>).

THIS SOFTWARE IS PROVIDED "AS IS" AND ANY EXPRESSED OR IMPLIED WARRANTIES, INCLUDING, BUT NOT LIMITED TO, THE IMPLIED WARRANTIES OF MERCHANTABILITY AND FITNESS FOR A PARTICULAR PURPOSE ARE DISCLAIMED. IN NO EVENT SHALL THE JDOM AUTHORS OR THE PROJECT CONTRIBUTORS BE LIABLE FOR ANY DIRECT, INDIRECT, INCIDENTAL, SPECIAL, EXEMPLARY, OR CONSEQUENTIAL DAMAGES (INCLUDING, BUT NOT LIMITED TO, PROCUREMENT OF SUBSTITUTE GOODS OR SERVICES; LOSS OF USE, DATA, OR PROFITS; OR BUSINESS INTERRUPTION) HOWEVER CAUSED AND ON ANY THEORY OF LIABILITY, WHETHER IN CONTRACT, STRICT LIABILITY, OR TORT (INCLUDING NEGLIGENCE OR OTHERWISE) ARISING IN ANY WAY OUT OF THE USE OF THIS SOFTWARE, EVEN IF ADVISED OF THE POSSIBILITY OF SUCH DAMAGE.

Copyright (C) 2000-2004 Jason Hunter & Brett McLaughlin. All rights reserved.

---

This product includes software developed by the Massachusetts Institute of Technology (MIT).

THE SOFTWARE IS PROVIDED "AS IS", WITHOUT WARRANTY OF ANY KIND, EXPRESS OR IMPLIED, INCLUDING BUT NOT LIMITED TO THE WARRANTIES OF MERCHANTABILITY, FITNESS FOR A PARTICULAR PURPOSE AND NONINFRINGEMENT. IN NO EVENT SHALL THE AUTHORS OR COPYRIGHT HOLDERS BE LIABLE FOR ANY CLAIM, DAMAGES OR OTHER LIABILITY, WHETHER IN AN ACTION OF CONTRACT, TORT OR OTHERWISE, ARISING FROM, OUT OF OR IN CONNECTION WITH THE SOFTWARE OR THE USE OR OTHER DEALINGS IN THE SOFTWARE.

Copyright © 2009 MIT

---

This product includes software developed by Jean-loup Gailly and Mark Adler. This software is provided 'as-is', without any express or implied warranty. In no event will the authors be held liable for any damages arising from the use of this software.

Copyright (c) 1995-2005 Jean-loup Gailly and Mark Adler

---

This software is based in part on the work of the Independent JPEG Group (<http://www.ijg.org/>).

---

This product includes software developed by the Dojo Foundation (<http://dojotoolkit.org>).

THIS SOFTWARE IS PROVIDED BY THE COPYRIGHT HOLDERS AND CONTRIBUTORS "AS IS" AND ANY EXPRESS OR IMPLIED WARRANTIES, INCLUDING, BUT NOT LIMITED TO, THE IMPLIED WARRANTIES OF MERCHANTABILITY AND FITNESS FOR A PARTICULAR PURPOSE ARE DISCLAIMED. IN NO EVENT SHALL THE COPYRIGHT OWNER OR CONTRIBUTORS BE LIABLE FOR ANY DIRECT, INDIRECT, INCIDENTAL, SPECIAL, EXEMPLARY, OR CONSEQUENTIAL DAMAGES (INCLUDING, BUT NOT LIMITED TO, PROCUREMENT OF SUBSTITUTE GOODS OR SERVICES; LOSS OF USE, DATA, OR PROFITS; OR BUSINESS INTERRUPTION) HOWEVER CAUSED AND ON ANY THEORY OF LIABILITY, WHETHER IN CONTRACT, STRICT LIABILITY, OR TORT (INCLUDING NEGLIGENCE OR OTHERWISE) ARISING IN ANY WAY OUT OF THE USE OF THIS SOFTWARE, EVEN IF ADVISED OF THE POSSIBILITY OF SUCH DAMAGE.

Copyright (c) 2005-2009, The Dojo Foundation. All rights reserved.

---

This product includes software developed by W3C.

Copyright © 2009 World Wide Web Consortium, (Massachusetts Institute of Technology, Institut National de Recherche en Informatique et en Automatique, Keio University). All Rights Reserved. (<http://www.w3.org/Consortium/Legal/>)

---

This product includes software developed by Mathew R. Miller (<http://www.bluecreststudios.com>).

Copyright (c) 1999-2002 ComputerSmarts. All rights reserved.

---

This product includes software developed by Shaun Wilde and distributed via Code Project Open License (<http://www.codeproject.com>).

THIS WORK IS PROVIDED "AS IS", "WHERE IS" AND "AS AVAILABLE", WITHOUT ANY EXPRESS OR IMPLIED WARRANTIES OR CONDITIONS OR GUARANTEES. YOU, THE USER, ASSUME ALL RISK IN ITS USE, INCLUDING COPYRIGHT INFRINGEMENT, PATENT INFRINGEMENT, SUITABILITY, ETC. AUTHOR EXPRESSLY DISCLAIMS ALL EXPRESS, IMPLIED OR STATUTORY WARRANTIES OR CONDITIONS, INCLUDING WITHOUT LIMITATION, WARRANTIES OR CONDITIONS OF MERCHANTABILITY, MERCHANTABLE QUALITY OR FITNESS FOR A PARTICULAR PURPOSE, OR ANY WARRANTY OF TITLE OR NON-INFRINGEMENT, OR THAT THE WORK (OR ANY PORTION THEREOF) IS CORRECT, USEFUL, BUG-FREE OR FREE OF VIRUSES. YOU MUST PASS THIS DISCLAIMER ON WHENEVER YOU DISTRIBUTE THE WORK OR DERIVATIVE WORKS.

---

This product includes software developed by Chris Maunder and distributed via Code Project Open License (<http://www.codeproject.com>).

THIS WORK IS PROVIDED "AS IS", "WHERE IS" AND "AS AVAILABLE", WITHOUT ANY EXPRESS OR IMPLIED WARRANTIES OR CONDITIONS OR GUARANTEES. YOU, THE USER, ASSUME ALL RISK IN ITS USE, INCLUDING COPYRIGHT INFRINGEMENT, PATENT INFRINGEMENT, SUITABILITY, ETC. AUTHOR EXPRESSLY DISCLAIMS ALL EXPRESS, IMPLIED OR STATUTORY WARRANTIES OR CONDITIONS, INCLUDING WITHOUT LIMITATION, WARRANTIES OR CONDITIONS OF MERCHANTABILITY, MERCHANTABLE QUALITY OR FITNESS FOR A PARTICULAR PURPOSE, OR ANY WARRANTY OF TITLE OR NON-INFRINGEMENT, OR THAT THE WORK (OR ANY PORTION THEREOF) IS CORRECT, USEFUL, BUG-FREE OR FREE OF VIRUSES. YOU MUST PASS THIS DISCLAIMER ON WHENEVER YOU DISTRIBUTE THE WORK OR DERIVATIVE WORKS.

---

This product includes software developed by PJ Arends and distributed via Code Project Open License (<http://www.codeproject.com>).

THIS WORK IS PROVIDED "AS IS", "WHERE IS" AND "AS AVAILABLE", WITHOUT ANY EXPRESS OR IMPLIED WARRANTIES OR CONDITIONS OR GUARANTEES. YOU, THE USER, ASSUME ALL RISK IN ITS USE, INCLUDING COPYRIGHT INFRINGEMENT, PATENT INFRINGEMENT, SUITABILITY, ETC. AUTHOR EXPRESSLY DISCLAIMS ALL EXPRESS, IMPLIED OR STATUTORY WARRANTIES OR CONDITIONS, INCLUDING WITHOUT LIMITATION, WARRANTIES OR CONDITIONS OF MERCHANTABILITY, MERCHANTABLE QUALITY OR FITNESS FOR A PARTICULAR PURPOSE, OR ANY WARRANTY OF TITLE OR NON-INFRINGEMENT, OR THAT THE WORK (OR ANY PORTION THEREOF) IS CORRECT, USEFUL, BUG-FREE OR FREE OF VIRUSES. YOU MUST PASS THIS DISCLAIMER ON WHENEVER YOU DISTRIBUTE THE WORK OR DERIVATIVE WORKS.

---

This product includes software developed by Erwin Tratar. This source code and all accompanying material is copyright (c) 1998-1999 Erwin Tratar. All rights reserved.

THIS SOFTWARE IS PROVIDED "AS IS" WITHOUT EXPRESS OR IMPLIED WARRANTY. USE IT AT YOUR OWN RISK! THE AUTHOR ACCEPTS NO LIABILITY FOR ANY DAMAGE/LOSS OF BUSINESS THAT THIS PRODUCT MAY CAUSE.

---

This product includes software developed by Sam Leffler of Silicon Graphics.

THE SOFTWARE IS PROVIDED "AS-IS" AND WITHOUT WARRANTY OF ANY KIND, EXPRESS, IMPLIED OR OTHERWISE, INCLUDING WITHOUT LIMITATION, ANY WARRANTY OF MERCHANTABILITY OR FITNESS FOR A PARTICULAR PURPOSE.

IN NO EVENT SHALL SAM LEFFLER OR SILICON GRAPHICS BE LIABLE FOR ANY SPECIAL, INCIDENTAL, INDIRECT OR CONSEQUENTIAL DAMAGES OF ANY KIND, OR ANY DAMAGES WHATSOEVER RESULTING FROM LOSS OF USE, DATA OR PROFITS, WHETHER OR NOT ADVISED OF THE POSSIBILITY OF DAMAGE, AND ON ANY THEORY OF LIABILITY, ARISING OUT OF OR IN CONNECTION WITH THE USE OR PERFORMANCE OF THIS SOFTWARE

Copyright (c) 1988-1997 Sam Leffler

Copyright (c) 1991-1997 Silicon Graphics, Inc.

---

This product includes software developed by Guy Eric Schalnat, Andreas Dilger, Glenn Randers-Pehrson (current maintainer), and others. (<http://www.libpng.org>)

The PNG Reference Library is supplied "AS IS". The Contributing Authors and Group 42, Inc. disclaim all warranties, expressed or implied, including, without limitation, the warranties of merchantability and of fitness for any purpose. The Contributing Authors and Group 42, Inc. assume no liability for direct, indirect, incidental, special, exemplary, or consequential damages, which may result from the use of the PNG Reference Library, even if advised of the possibility of such damage.

---

This product includes software components distributed by the Cryptix Foundation.

THIS SOFTWARE IS PROVIDED BY THE CRYPTIX FOUNDATION LIMITED AND CONTRIBUTORS "AS IS" AND ANY EXPRESS OR IMPLIED WARRANTIES, INCLUDING, BUT NOT LIMITED TO, THE IMPLIED WARRANTIES OF MERCHANTABILITY AND FITNESS FOR A PARTICULAR PURPOSE ARE DISCLAIMED. IN NO EVENT SHALL THE CRYPTIX FOUNDATION LIMITED OR CONTRIBUTORS BE LIABLE FOR ANY DIRECT, INDIRECT, INCIDENTAL, SPECIAL, EXEMPLARY, OR CONSEQUENTIAL DAMAGES (INCLUDING, BUT NOT LIMITED TO, PROCUREMENT OF SUBSTITUTE GOODS OR SERVICES; LOSS OF USE, DATA, OR PROFITS; OR BUSINESS INTERRUPTION) HOWEVER CAUSED AND ON ANY THEORY OF LIABILITY, WHETHER IN CONTRACT, STRICT LIABILITY, OR TORT (INCLUDING NEGLIGENCE OR OTHERWISE) ARISING IN ANY WAY OUT OF THE USE OF THIS SOFTWARE, EVEN IF ADVISED OF THE POSSIBILITY OF SUCH DAMAGE

Copyright © 1995-2005 The Cryptix Foundation Limited. All rights reserved.

---

This product includes software components distributed by Sun Microsystems.

This software is provided "AS IS," without a warranty of any kind. ALLEXPRESS OR IMPLIED CONDITIONS, REPRESENTATIONS AND WARRANTIES, INCLUDING ANY IMPLIED WARRANTY OF MERCHANTABILITY, FITNESS FOR A PARTICULAR PURPOSE OR NON-INFRINGEMENT, ARE HEREBY EXCLUDED. SUN AND ITS LICENSORS SHALL NOT BE LIABLE FOR ANY DAMAGES SUFFERED BY LICENSEE AS A RESULT OF USING, MODIFYING OR DISTRIBUTING THE SOFTWARE OR ITS DERIVATIVES. IN NO EVENT WILL SUN OR ITS LICENSORS BE LIABLE FOR ANY LOST REVENUE, PROFIT OR DATA, OR FOR DIRECT, INDIRECT, SPECIAL, CONSEQUENTIAL, INCIDENTAL OR PUNITIVE DAMAGES, HOWEVER CAUSED AND REGARDLESS OF THE THEORY OF LIABILITY, ARISING OUT OF THE USE OF OR INABILITY TO USE SOFTWARE, EVEN IF SUN HAS BEEN ADVISED OF THE POSSIBILITY OF SUCH DAMAGES.

Copyright (c) 1998 Sun Microsystems, Inc. All Rights Reserved.

---

This product includes software components distributed by Dennis M. Sosnoski.

THIS SOFTWARE IS PROVIDED BY THE COPYRIGHT HOLDERS AND CONTRIBUTORS "AS IS" AND ANY EXPRESS OR IMPLIED WARRANTIES, INCLUDING, BUT NOT LIMITED TO, THE IMPLIED WARRANTIES OF MERCHANTABILITY AND FITNESS FOR A PARTICULAR PURPOSE ARE DISCLAIMED. IN NO EVENT SHALL THE COPYRIGHT OWNER OR CONTRIBUTORS BE LIABLE FOR ANY DIRECT, INDIRECT, INCIDENTAL, SPECIAL, EXEMPLARY, OR CONSEQUENTIAL DAMAGES (INCLUDING, BUT NOT LIMITED TO, PROCUREMENT OF SUBSTITUTE GOODS OR SERVICES; LOSS OF USE, DATA, OR PROFITS; OR BUSINESS INTERRUPTION) HOWEVER CAUSED AND ON ANY THEORY OF LIABILITY, WHETHER IN CONTRACT, STRICT LIABILITY, OR TORT (INCLUDING NEGLIGENCE OR OTHERWISE) ARISING IN ANY WAY OUT OF THE USE OF THIS SOFTWARE, EVEN IF ADVISED OF THE POSSIBILITY OF SUCH DAMAGE.

Copyright © 2003-2007 Dennis M. Sosnoski. All Rights Reserved

It also includes materials licensed under Apache 1.1 and the following XPP3 license

THIS SOFTWARE IS PROVIDED "AS IS" AND ANY EXPRESSED OR IMPLIED WARRANTIES, INCLUDING, BUT NOT LIMITED TO, THE IMPLIED WARRANTIES OF MERCHANTABILITY AND FITNESS FOR A PARTICULAR PURPOSE ARE DISCLAIMED. IN NO EVENT SHALL THE COPYRIGHT OWNER OR CONTRIBUTORS BE LIABLE FOR ANY DIRECT, INDIRECT, INCIDENTAL, SPECIAL, EXEMPLARY, OR CONSEQUENTIAL DAMAGES (INCLUDING, BUT NOT LIMITED TO, PROCUREMENT OF SUBSTITUTE GOODS OR SERVICES; LOSS OF USE, DATA, OR PROFITS; OR BUSINESS INTERRUPTION) HOWEVER CAUSED AND ON ANY THEORY OF LIABILITY, WHETHER IN CONTRACT, STRICT LIABILITY, OR TORT (INCLUDING NEGLIGENCE OR OTHERWISE) ARISING IN ANY WAY OUT OF THE USE OF THIS SOFTWARE, EVEN IF ADVISED OF THE POSSIBILITY OF SUCH DAMAGE.

Copyright © 2002 Extreme! Lab, Indiana University. All Rights Reserved

---

This product includes software components distributed by CodeProject. This software contains material that is © 1994-2005 The Ultimate Toolbox, all rights reserved.

---

This product includes software components distributed by Geir Landro.

Copyright © 2001-2003 Geir Landro (drop@destroydrop.com) JavaScript Tree - [www.destroydrop.com/hjavadscripts/tree/version 0.96](http://www.destroydrop.com/hjavadscripts/tree/version0.96)

---

This product includes software components distributed by the Hypersonic SQL Group.

THIS SOFTWARE IS PROVIDED BY THE COPYRIGHT HOLDERS AND CONTRIBUTORS "AS IS" AND ANY EXPRESS OR IMPLIED WARRANTIES, INCLUDING, BUT NOT LIMITED TO, THE IMPLIED WARRANTIES OF MERCHANTABILITY AND FITNESS FOR A PARTICULAR PURPOSE ARE DISCLAIMED. IN NO EVENT SHALL THE COPYRIGHT OWNER OR CONTRIBUTORS BE LIABLE FOR ANY DIRECT, INDIRECT, INCIDENTAL, SPECIAL, EXEMPLARY, OR CONSEQUENTIAL DAMAGES (INCLUDING, BUT NOT LIMITED TO, PROCUREMENT OF SUBSTITUTE GOODS OR SERVICES; LOSS OF USE, DATA, OR PROFITS; OR BUSINESS INTERRUPTION) HOWEVER CAUSED AND ON ANY THEORY OF LIABILITY, WHETHER IN CONTRACT, STRICT LIABILITY, OR TORT (INCLUDING NEGLIGENCE OR OTHERWISE) ARISING IN ANY WAY OUT OF THE USE OF THIS SOFTWARE, EVEN IF ADVISED OF THE POSSIBILITY OF SUCH DAMAGE

Copyright © 1995-2000 by the Hypersonic SQL Group. All Rights Reserved

---

This product includes software components distributed by the International Business Machines Corporation and others.

THE SOFTWARE IS PROVIDED "AS IS", WITHOUT WARRANTY OF ANY KIND, EXPRESS OR IMPLIED, INCLUDING BUT NOT LIMITED TO THE WARRANTIES OF MERCHANTABILITY, FITNESS FOR A PARTICULAR PURPOSE AND NONINFRINGEMENT. IN NO EVENT SHALL THE AUTHORS OR COPYRIGHT HOLDERS BE LIABLE FOR ANY CLAIM, DAMAGES OR OTHER LIABILITY, WHETHER IN AN ACTION OF CONTRACT, TORT OR OTHERWISE, ARISING FROM, OUT OF OR IN CONNECTION WITH THE SOFTWARE OR THE USE OR OTHER DEALINGS IN THE SOFTWARE.

Copyright (c) 1995-2009 International Business Machines Corporation and others. All rights reserved.

---

This product includes software components distributed by the University of Coimbra.

University of Coimbra distributes this software in the hope that it will be useful but DISCLAIMS ALL WARRANTIES WITH REGARD TO IT, including all implied warranties of MERCHANTABILITY or FITNESS FOR A PARTICULAR PURPOSE. In no event shall University of Coimbra be liable for any special, indirect or consequential damages (or any damages whatsoever) resulting from loss of use, data or profits, whether in an action of contract, negligence or other tortious action, arising out of or in connection with the use or performance of this software.

Copyright (c) 2000 University of Coimbra, Portugal. All Rights Reserved.

---

This product includes software components distributed by Steve Souza.

THIS SOFTWARE IS PROVIDED BY THE AUTHOR AND CONTRIBUTORS "AS IS" AND ANY EXPRESS OR IMPLIED WARRANTIES, INCLUDING, BUT NOT LIMITED TO, THE IMPLIED WARRANTIES OF MERCHANTABILITY AND FITNESS FOR A PARTICULAR PURPOSE ARE DISCLAIMED. IN NO EVENT SHALL THE COPYRIGHT OWNER OR CONTRIBUTORS BE LIABLE FOR ANY DIRECT, INDIRECT, INCIDENTAL, SPECIAL, EXEMPLARY, OR CONSEQUENTIAL DAMAGES (INCLUDING, BUT NOT LIMITED TO, PROCUREMENT OF SUBSTITUTE GOODS OR SERVICES; LOSS OF USE, DATA, OR PROFITS; OR BUSINESS INTERRUPTION) HOWEVER CAUSED AND ON ANY THEORY OF LIABILITY, WHETHER IN CONTRACT, STRICT LIABILITY, OR TORT (INCLUDING NEGLIGENCE OR OTHERWISE) ARISING IN ANY WAY OUT OF THE USE OF THIS SOFTWARE, EVEN IF ADVISED OF THE POSSIBILITY OF SUCH DAMAGE.

Copyright © 2002, Steve Souza (admin@jamonapi.com). All Rights Reserved.

---

This product includes software developed by the OpenSymphony Group (<http://www.opensymphony.com/>.)"

Copyright © 2001-2004 The OpenSymphony Group. All Rights Reserved.

---





# Contents

## Chapter 1, Introduction

---

- 2 System Requirements
  - 2 Docupresentment Workstation
  - 2 Docupresentment Server
  - 5 Web Server

## Chapter 2, Installing Docupresentment on Windows

---

- 8 Overview
- 9 Installing Docupresentment Server
  - 10 Installation Steps
- 15 Installing Shared Objects
- 18 Installing Docupresentment Client
  - 18 Installing from a CD
  - 18 Installing from the Internet
  - 21 Selecting a Queueing Method
    - 25 Testing Your Connection
- 27 Testing Your Installation
- 30 Setting Up the System as a Service
  - 31 Verifying Docupresentment was Installed as a Service
  - 33 Uninstalling Docupresentment as a Service
- 34 Uninstalling the System
- 35 Troubleshooting the Client
  - 35 Checking the DOCCLIENT.XML File
  - 36 Checking the CLASSPATH and other Environment Variables
  - 37 Installing Third-Party JAR Files

## Chapter 3, Installing Docupresentment on UNIX/Linux

---

- 40 Overview

41	Hardware Test Environments
42	Checking the Software Requirements
42	Creating the Required User and Directories
43	Installing a New System
44	Scenario 1: New Installation of Version 2.2
44	Installing Docupresentment 2.2 RTE
46	Installing the Documaker Bridge Shared Objects RTE
47	Scenario 2: Upgrading From a Version 1.x Environment (overlay)
47	Installing the Docupresentment 2.2 RTE
51	Scenario 3: Upgrading from Version 2.1 to Version 2.2
51	Installing the Docupresentment 2.2 RTE
54	Scenario 4: Modified Upgrade from Version 1.x
54	Installing Docupresentment 2.2 RTE
56	Installing Documaker Bridge Shared Objects
56	Testing Your System
57	Customizing Your Docupresentment 2.2 Environment
58	Scenario 5: Modified Upgrade from Version 2.x
58	Installing Docupresentment 2.2 RTE
60	Installing Documaker Bridge Shared Objects
60	Testing Your System
61	Customizing Your Docupresentment 2.2 Environment
62	Scenario 6: Patch Upgrade of a Version 2.2 Environment
63	Testing the Installation
67	Uninstalling the System

## Chapter 1

# Introduction

This manual provides instructions for installing Docupresentation on computers running 32-bit Windows, such as Windows 2000, Windows XP, Windows 2003 Server, and UNIX/Linux.

This table will help you find the information you need:

To install	See
Docupresentation on Windows	<a href="#">Installing Docupresentation on Windows on page 7</a>
Docupresentation on UNIX/Linux	<a href="#">Installing Docupresentation on UNIX/Linux on page 39</a>

A summary of the system requirements follows.

## SYSTEM REQUIREMENTS

Your computer must have certain software and hardware components to run Docupresentment. Depending on your software license and operating environment, these requirements vary.

### Docupresentment Workstation

For a Docupresentment workstation, you must have a personal computer equipped with the following:

- Microsoft Internet Explorer version 6.0 or later for Windows 2000 or Windows XP or higher
- Adobe ® Acrobat Reader version 7.0 or higher

### Docupresentment Server

You can run Docupresentment on the following operating systems:

- Windows
- AIX
- Linux
- Solaris

---

**NOTE:** For Docupresentment Workstation and Server, you must have Java 1.5 or higher.

---

These tables provide more detailed information on our minimum platform requirements for testing Docupresentment implementations.

#### On Windows systems

	Tested on
Operating system	Windows 2000 or Windows 2003 or higher.
CPU*	Intel Core 2 Duo @ 1.33 GHz
Memory*	1 GB
Hard disk (RTE)	2 GB
Hard disk (MRL)**	2 GB

\*Additional memory and a faster CPU is not required, but will improve performance.

\*\* Additional space required for your customized forms

---

## On AIX systems

	Requirements
<b>Operating system</b>	AIX version 5.2 or higher
<b>Model*</b>	pSeries - Power RISC
<b>Compiler</b>	(Only necessary if adding custom code to the system) IBM Visual Age C/C+ version 6
<b>Runtime library</b>	C Set ++ Runtime for AIX 5.0 or higher

	Tested on
<b>Model*</b>	pSeries p650
<b>CPU</b>	6 x 1.45GHz Power4+ processors
<b>Memory*</b>	12GB
<b>Hard disk**</b>	Two 36.4GB 10,000RPM Ultra3 SCSI drives

\*Additional memory and a faster CPU is not required, but will improve performance.

\*\* Additional space required for your customized forms

## On Solaris systems

	Requirements
<b>Operating system</b>	Sun Solaris 9/SunOS 5.9 (SPARC based) or higher
<b>Model*</b>	UltraSPARC based
<b>Compiler</b>	(Only necessary if adding custom code to the system) Sun Workshop C/C++ v5.0
<b>Runtime library</b>	Core Solaris 9

	Tested on
<b>Model*</b>	Sun Fire v240 Server
<b>Operating system</b>	Solaris 9/SunOS 5.9 (SPARC based)
<b>CPU</b>	2 x 1.28GHz UltraSPARC IIIi Cu
<b>Memory*</b>	2GB
<b>Hard disk**</b>	Four 36GB SCSI drives

\*Additional memory and a faster CPU is not required, but will improve performance.

\*\* Additional space required for your customized forms

On Linux systems

	Requirements
<b>Operating system</b>	GNU/Linux distributions RedHat Enterprise Linux (RHEL) version 5.1 or higher SuSE Linux Enterprise Server (SLES) version 9.3 or higher
<b>Model</b>	Intel/AMD based systems
<b>Compiler</b>	(Only necessary if you are adding custom code to the system) GNU C/C++ compiler: gcc-3.3.5-5 v3.3.5 or higher, gcc-c++-3.3.5-5 v3.3.5 or higher
<b>Runtime library</b>	libgcc-3.3.5-5 v3.3.5 or higher or compatibility module libstdc++-3.3.5-5 v3.3.5 or higher or compatibility module
<b>Additional requirements</b>	- The installer requires the sharutil package for the uudecode applet. - RedHat Enterprise Linux version 5.1 or higher needs these compatibility modules for the C++ runtimes: compat-libstdc++-33 compat-libstdc++-296 (required to use the current ORA native DBHandler for Oracle 10g in Documaker) - Any other utilized third-party software required packages, such as Oracle, DB2, MySQL, and so on.

	Tested on
<b>Model*</b>	Dell PWS450
<b>Operating system</b>	RedHat Enterprise Linux (RHEL) v5.1 VMWare guest SuSE Linux Enterprise Server (SLES) v9.4 VMWare guest
<b>CPU</b>	2 x 2.40GHz Xeon processors
<b>Memory*</b>	3GB
<b>Hard disk**</b>	70GB SCSI drive

\*Additional memory and a faster CPU is not required, but will improve performance.  
\*\* Additional space required for your customized forms

## Web Server

This table outlines the web server requirements for each operating system:

Operating system	Web server
Windows	2000 Server or 2003 Server (or higher), such as Microsoft Internet Information Server 4.0 (or higher).
AIX	Web server for AIX 5.2, such as IBM's HTTP Server for AIX version 1.3.3.1 or higher with the Java Runtime Environment and/or JDK for AIX, version 1.4.0 or higher.
Linux	Web server for Linux, such as Apache 1.3.12 or higher or IBM HTTP Server 1.3.9 or higher.
Solaris	Web server for Sun Solaris 7 or higher on SPARC, such as Java Web Server 2.0 or Apache 1.3.9 with the Java Runtime Environment and/or JDK for Solaris, version JRE 1.4.0 or higher. IBM HTTP Server 1.3.9 or higher can also be used.

---

**NOTE:** We test DocuPresentment version 2.2 and iDocumaker version 3.2 implementations on WebSphere Application Server (WAS) version 6.1.x and Tomcat 6.x Application Server.

---





## Chapter 2

# Installing Docupresentation on Windows

This chapter provides information on installing Docupresentation on Windows-based machines.

You'll find this information:

- [Overview on page 8](#)
- [Installing Docupresentation Server on page 9](#)
- [Installing Shared Objects on page 15](#)
- [Installing Docupresentation Client on page 18](#)
- [Testing Your Installation on page 27](#)
- [Setting Up the System as a Service on page 30](#)
- [Uninstalling the System on page 34](#)
- [Troubleshooting the Client on page 35](#)

---

**NOTE:** For information on system requirements, see [System Requirements on page 2](#).

---

**OVERVIEW**

The files that make up Docupresentation and its bridges include:

- Java programs executed by a Java Runtime for your operating system
- Dynamically Shared Objects (DSOs)

In Windows environments, DSOs are typically named *\*.dll*. In UNIX environments, DSOs are often named *lib\*.so* or *lib\*.sl*.

- HTML content pages
- HTML templates

There are several Java components that run on a server machine, including a server that handles back-end processing and communicates with installed bridge products from Skywire Software, Java client components that can be run from a J2EE application server, and a CGI client for older clients. The bridge products let you...

- Read Documaker archives
- Search and retrieve documents from Documanager via the Internet
- Convert Metacode and AFP print streams created by the Documerge and Documaker systems and stored in a Documanager database into PDF files
- Use Docuflex as a composition engine for Docupresentation on Windows

**Enterprise Web  
Processing Services**

Docupresentation version 2.2 for Windows includes Enterprise Web Processing Services (EWPS). EWPS makes it easier to integrate applications, providing a set of web services for accessing the Documaker forms library and initiating real-time publishing operations. This helps you deliver the information requested by your clients, prospects, employees, and business partners.

When you install Docupresentation on Windows, the installation routine creates the following directory and copies into it the ewps-axis2.war file:

```
..\docserv\webservices  
ewps-axis2.war
```

For more information on EWPS, see [Introduction to Enterprise Web Processing Services](#).

---

**NOTE:** EWPS is not available on the UNIX platforms.

---

## INSTALLING DOCUPRESENTMENT SERVER

Docupresentation is available for download from the Internet, or can be supplied on a CD. The installation contains the server (including the SDK), bridges, client, and documentation.

To get Docupresentation from the Internet, go to the E-Delivery site at:

<http://edelivery.oracle.com/>

After you log in, search Oracle Insurance Applications for Oracle Documaker on the appropriate platform. Then choose Docupresentation to download. This downloads the latest version of Docupresentation, which includes the Internet Document Server (IDS), Internet Document Client, and any bridges you need to run.

---

**NOTE:** If you do not already have a JRE already installed, JRE 1.6 is installed with Docupresentation Server 2.2.

---

After installing the J2SE Java Runtime Environment (JRE) version 1.5 or higher and Docupresentation, you will need to install a version of Shared Objects - Documaker Bridge.

---

**NOTE:** Having separate installations for the required components lets you pick the version of Documaker components separately from Docupresentation. The latest version of Documaker is version 11.4. Generally, you would want the latest version and patch level of the software. You will find links to the latest patch levels of previous versions of Documaker at:

<http://metalink.oracle.com>

Installing the correct version of Shared Objects - Documaker Bridge is especially important if you plan to use Docupresentation to run Documaker. The installation of other bridges, such as the Documanager Bridge, is optional.

---

The Adobe Acrobat Reader is available from Adobe's web site.

Before you start the installation...

- Be familiar with how your web server is set up. You will need to know if the Docupresentation site uses Secured Socket Layer (SSL) and the IP address of the client PC
- Exit all programs currently running. The setup routine also lets you install various other components required to run the Internet Document Server. If these files are already installed *and in use* when the setup routine runs, conflicts will arise.

---

**NOTE:** Be aware that when you update an existing installation, your existing configuration files *are not* changed. This lets you preserve any customizations you have made in those files. Furthermore, keep in mind that if you uninstall the system, *all* configuration files *are removed*.

---

## INSTALLATION STEPS

You can install Docupresentation Server on Windows from a CD or by downloading it from the Internet. Follow these steps to install Docupresentation Server:

### Installing from a CD

If you are installing from a CD, insert the Docupresentation CD in your CD drive. Click Start, Run and enter this command:

```
(CD-ROM drive letter):IDSServer22p $xx$ w32.exe
```

where  $xx$  is the patch number.

The setup wizard starts.

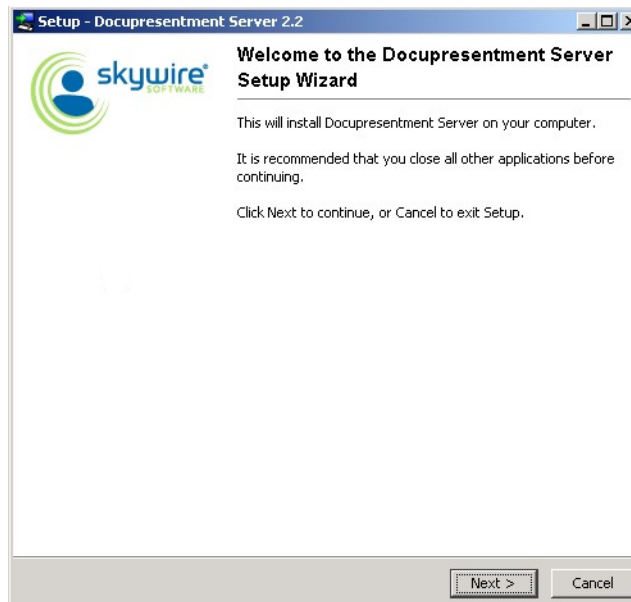
### Installing from the Internet

To download from the Internet, go to the E-Delivery site at:

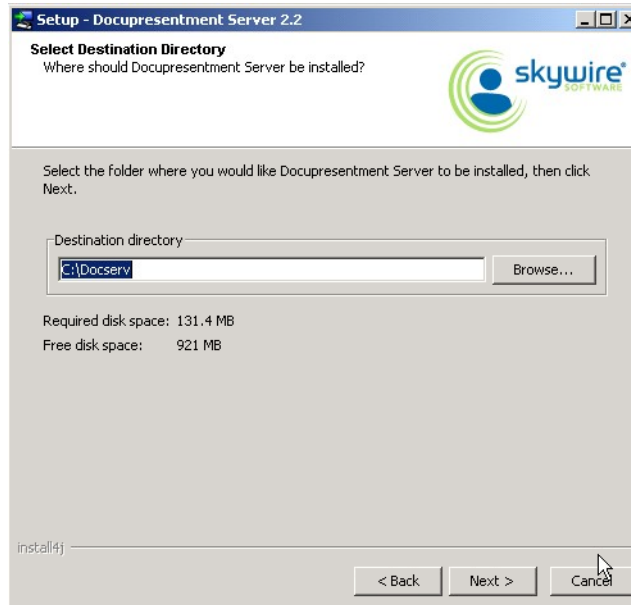
<http://edelivery.oracle.com/>

After you download and save the Docupresentation installation to the proper location, start the Docupresentation Server setup wizard (IDSServer22p03w32.exe).

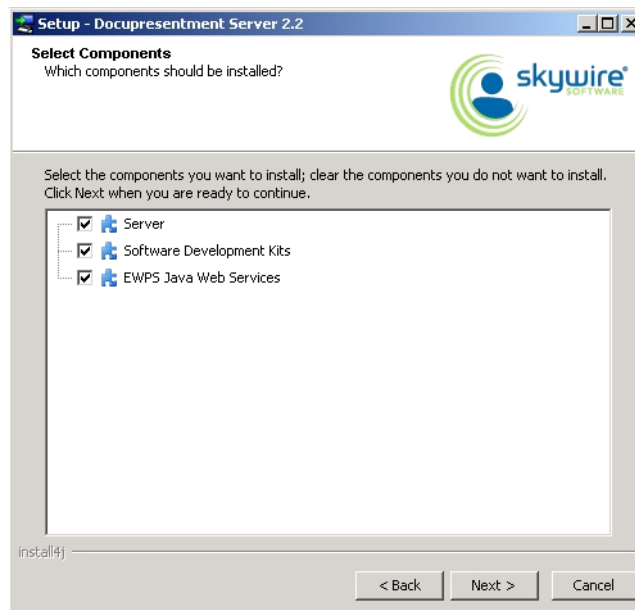
Once the setup routine starts, follow the instructions which appear on your screen.



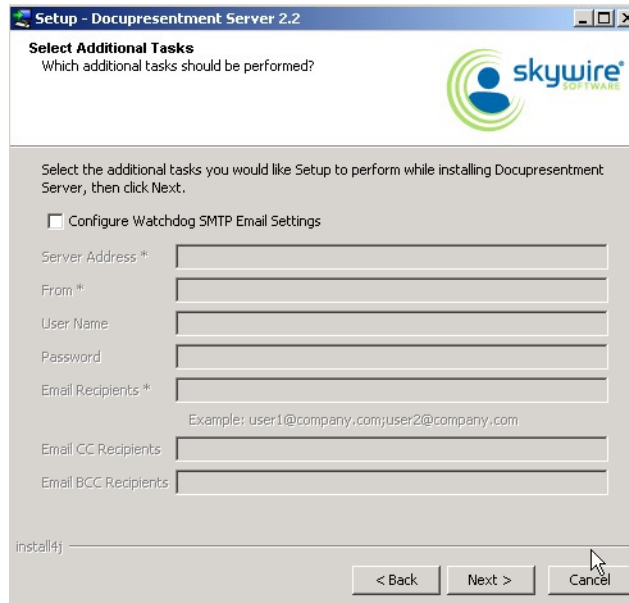
- 1 Close all open applications then click Next to continue. The Select Destination Directory window appears.



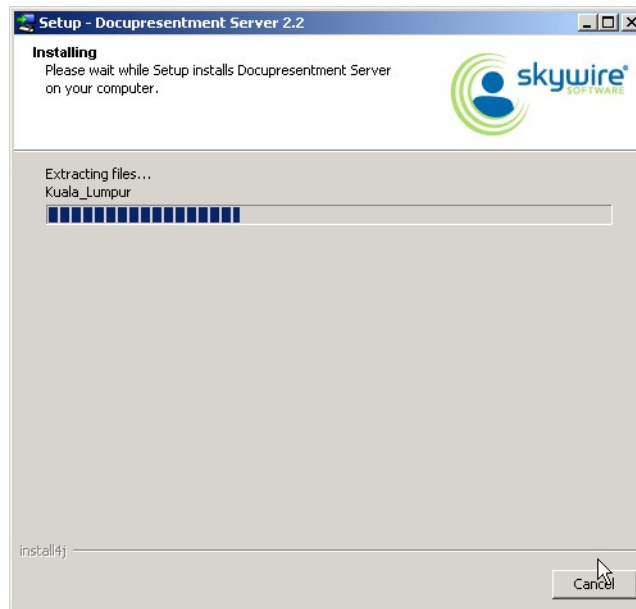
- 2 Click Browse to select the directory into which you want to install Docupresentation. Click Next to continue. The Select Components window appears.



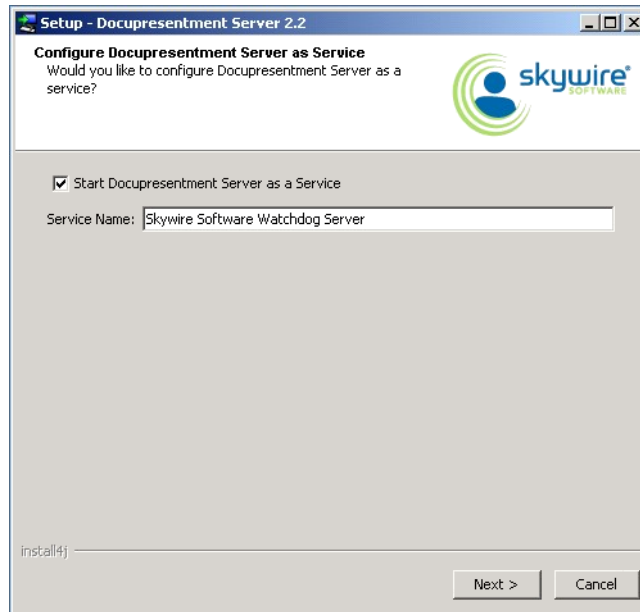
- 3 Choose the components you want to install. Click Next to continue. The Select Start Menu Folder window appears. The Select Additional Tasks window appears.



- 4 Use the Select Additional Tasks window to optionally configure your Watchdog SMTP email settings. Click Next to continue when you are finished. The Installing window appears. This window tracks the setup wizard's progress as it installs Docupresentation on your computer.



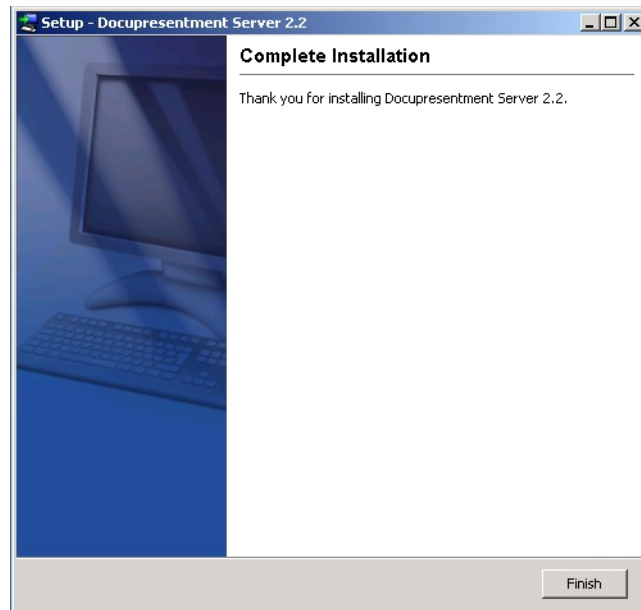
- 5 Once the basic installation finishes, the Docupresentation Server setup wizard asks if you want to configure Docupresentation Server as a service.



Click the Start Docupresentation Server as a Service option and enter a name for the service. You can accept the default name, *Skywire Software Watchdog Server*.

Click Next. The Complete Installation window appears.

- 6 Click Finish to complete the installation process.



Congratulations, you have installed DocuPresentation Server. Now proceed to the next topic, [Installing Shared Objects on page 15](#).



## INSTALLING SHARED OBJECTS

### Installing from a CD

As mentioned above, installation of the Shared Objects - Documaker Bridge component is required to install Documaker Server components, even if your installation does not use Documaker Bridge.

If you are installing from a CD, insert the Docupresentation CD in your CD drive. Click Start, Run and enter this command:

```
(drive letter):SharedObjectsW32Re1113pxx.exe
```

where xx is the patch number.

The Setup wizard starts.

### Installing from the Internet

To download shared objects from the Internet, go to the E-Delivery site at:

<http://edelivery.oracle.com/>

After you download and save the shared objects installation to the proper location, start the shared objects installation routine by clicking Start, Run and entering this command:

```
(drive letter):SharedObjectsW32Re1113pxx.exe
```

where xx is the patch number.

The Setup wizard starts.

### Using the Setup wizard

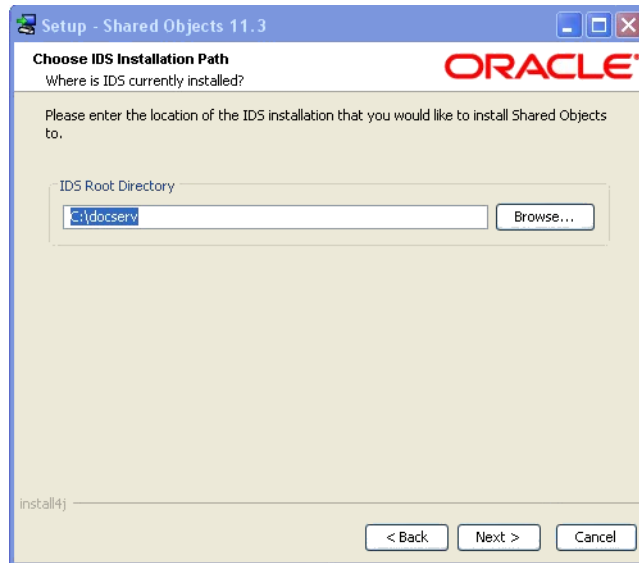
Follow these steps to install shared objects using the Setup wizard

- 1 Once the Setup wizard starts, click Next to continue.



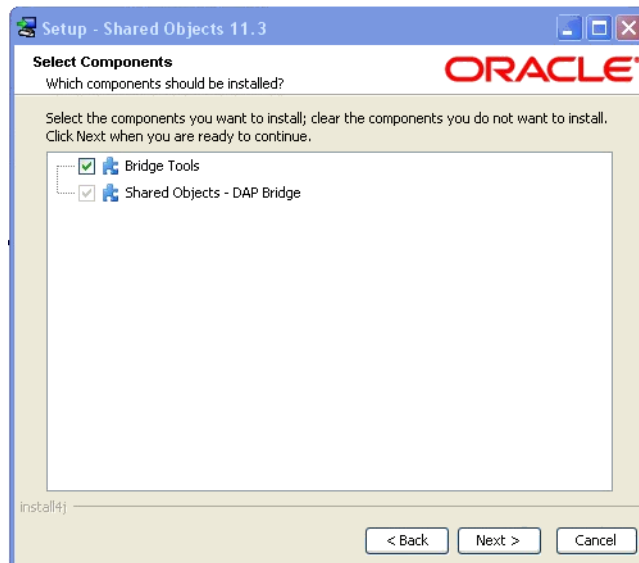
The Choose IDS Installation Path window appears.

- 2 Click Browse to specify the directory path of the Docupresentation installation to which you want to add Shared Objects.

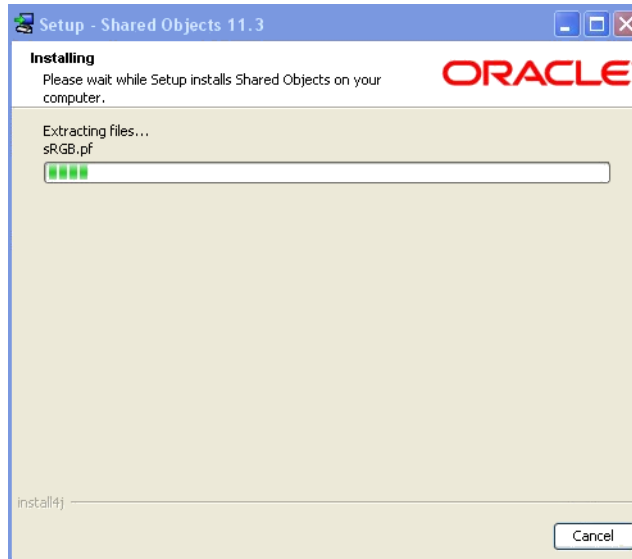


Click Next to continue. The Select Components window appears.

- 3 Choose the components you want to install.



Click Next to continue. The Installing window appears. This window tracks the setup wizard's progress as it installs the Shared Objects you selected on your computer.



- 4 Click Finish to exit the setup wizard once the installation finishes.



Congratulations, you have installed the Internet Document Server and the Shared Objects. Now proceed to the next topic, [Installing DocuPresentment Client](#).

## INSTALLING DOCUPRESENTMENT CLIENT

You can install the Docupresentation Client on Windows from a CD or by downloading it from the Internet. Follow these steps to install Docupresentation Client:

### Installing from a CD

If you are installing from a CD, insert the Docupresentation CD in your CD drive. Click Start, Run and enter this command:

```
(CD-ROM drive letter):IDSCClient22pxxw32.exe
```

where ~~xx~~ is the patch number.

The setup wizard starts.

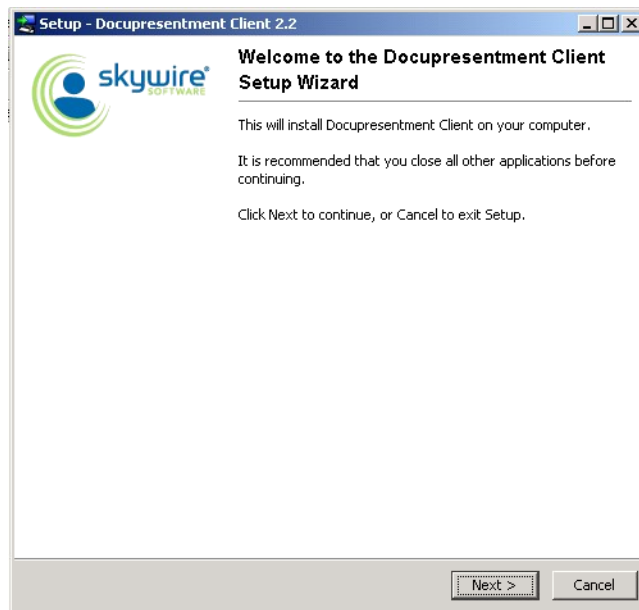
### Installing from the Internet

To download shared objects from the Internet, go to the E-Delivery site at:

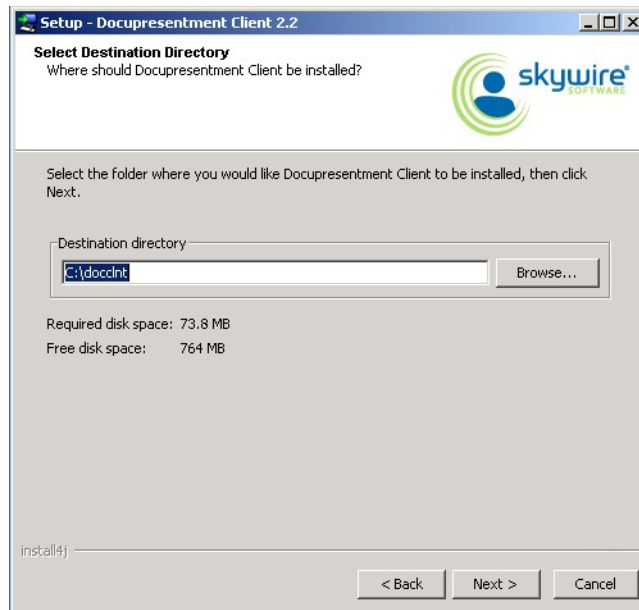
<http://edelivery.oracle.com/>

After you download and save the Docupresentation Client installation to the proper location, start the Docupresentation Client setup wizard (IDSCClient22p~~xx~~w32.exe).

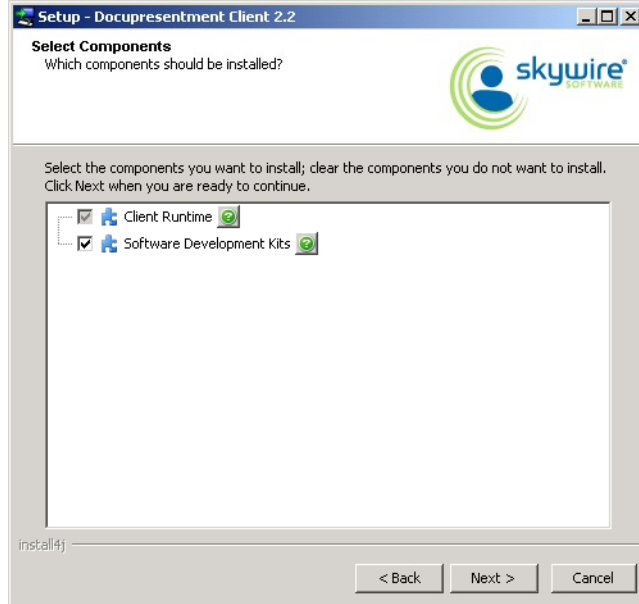
- 1 Once the setup routine starts, follow the instructions which appear on your screen.



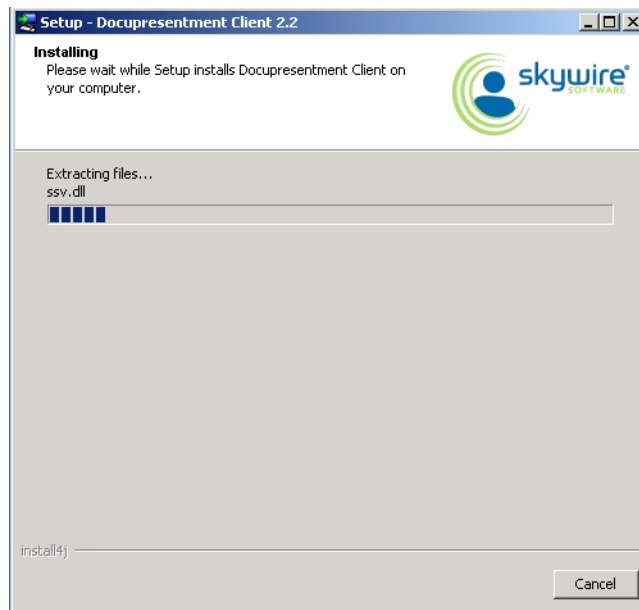
- 2 Close all open applications then click Next to continue. The Select Destination Directory window appears.



- 3 Click Browse to select the directory into which you want to install the Docurepresentation Client. Then click Next to continue. The Select Components window appears.



- 4 Choose the components you want to install. Then click Next to continue. The installation routine installs the Docurepresentation Client, showing its progress on this window:



## SELECTING A QUEUEING METHOD

Use the Select a Queueing System window to optionally configure your Docupresentation Client queueing method. The wizard modifies the Docupresentation Client to communicate with one of these queueing systems:

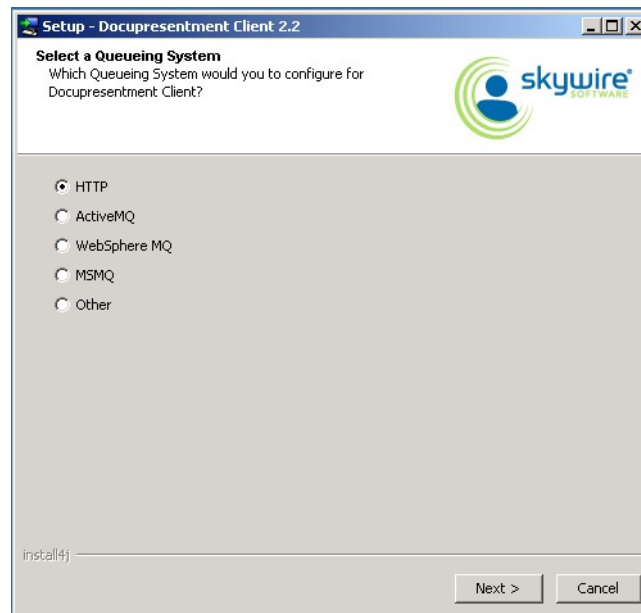
- HTTP
- ActiveMQ
- WebSphere MQ
- MSMQ

---

**NOTE:** You can also choose to set up a queueing system other than the ones pre-defined in the installer. Be aware that if you choose this option, you must make sure the queueing system is accessible by the Docupresentation Client.

---

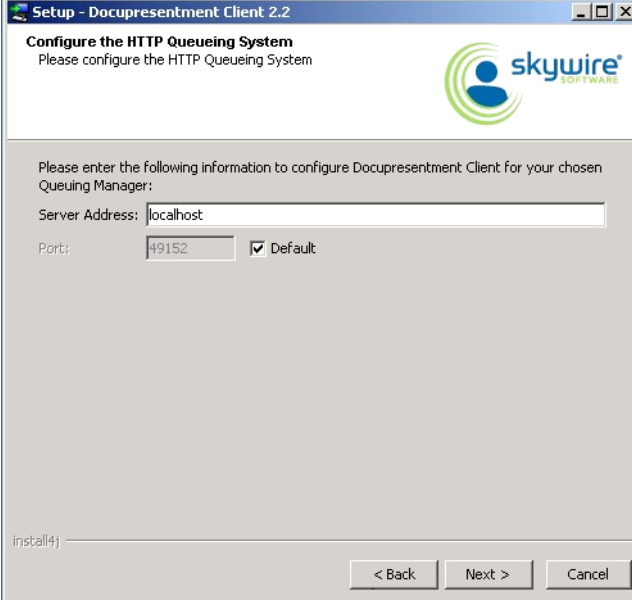
Choose the queueing method you want to use on the Select a Queueing System window:



Then click Next.

A configuration wizard lets you enter queue-specific information for each queueing method. The default queue is HTTP.

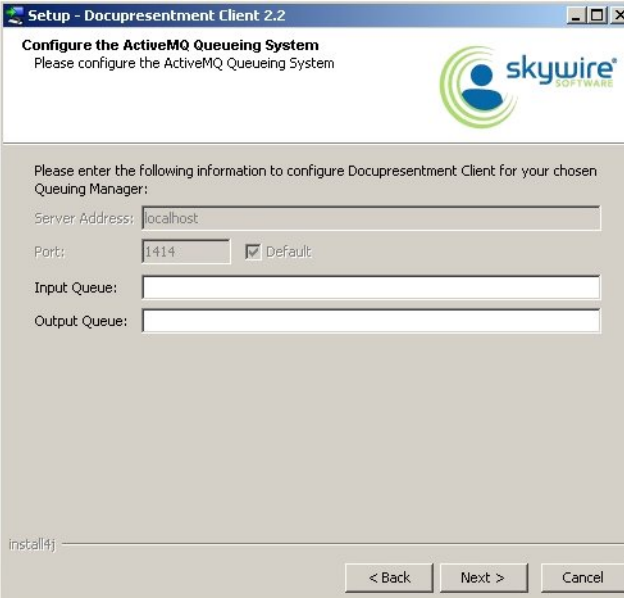
Using HTTP If chose HTTP queues, the Configure the HTTP Queueing System window appears:



The screenshot shows a Windows installation window titled "Setup - Docupresentation Client 2.2". The main heading is "Configure the HTTP Queueing System" with the subtext "Please configure the HTTP Queueing System". The Skywire Software logo is in the top right. Below the heading, it says "Please enter the following information to configure Docupresentation Client for your chosen Queueing Manager:". There are two input fields: "Server Address:" containing "localhost" and "Port:" containing "49152". A "Default" checkbox is checked. At the bottom, there are three buttons: "< Back", "Next >", and "Cancel".

For HTTP queues, enter the Server Address and Port Number of the Docupresentation Server and click Next.

Using ActiveMQ If you chose ActiveMQ, the Configure the ActiveMQ Queueing System window appears:



The screenshot shows a Windows installation window titled "Setup - Docupresentation Client 2.2". The main heading is "Configure the ActiveMQ Queueing System" with the subtext "Please configure the ActiveMQ Queueing System". The Skywire Software logo is in the top right. Below the heading, it says "Please enter the following information to configure Docupresentation Client for your chosen Queueing Manager:". There are four input fields: "Server Address:" containing "localhost", "Port:" containing "1414", "Input Queue:", and "Output Queue:". A "Default" checkbox is checked. At the bottom, there are three buttons: "< Back", "Next >", and "Cancel".

For ActiveMQ queues, enter the Input Queue and Output Queue for the ActiveMQ Server and click Next.



Using WebSphere MQ      If you chose WebSphere MQ, the Configure the WebSphere MQ Queueing System window appears:

**Setup - Docurepresentation Client 2.2**

**Configure the WebSphere MQ Queueing System**  
Please configure the WebSphere MQ Queueing System

Please enter the following information to configure Docurepresentation Client for your chosen Queueing Manager:

Bindings Mode

Server Address: 127.0.0.1

Port: 1414

Queue Channel: SYSTEM.DEF.SVRCONN

Input Queue: \_\_\_\_\_

Output Queue: \_\_\_\_\_

Queue Manager: \_\_\_\_\_

install4j

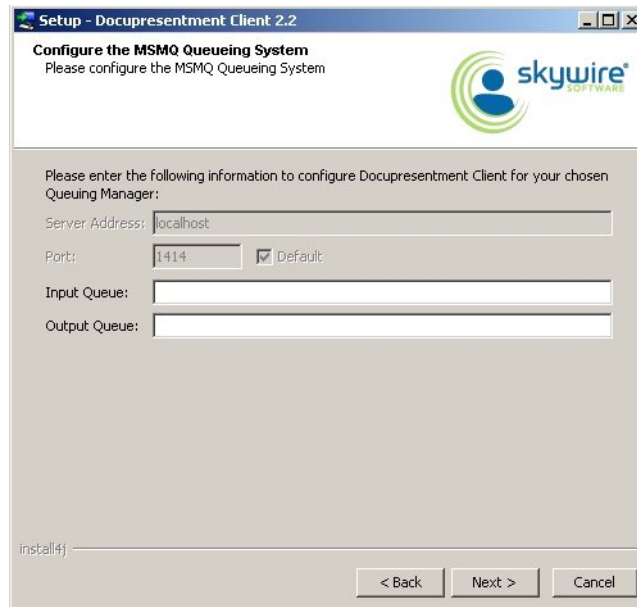
< Back    Next >    Cancel

For WebSphere MQ queues, you can choose to use Bindings Mode.

To	Then
Use Bindings Mode	Make sure the Bindings Mode field is checked, then specify the Input Queue, Output Queue, and the Queue Manager for the WebSphere MQ Server.
Not use Bindings Mode	Uncheck the Bindings Mode field and specify the Server Address, Port, Queue Channel, Input Queue, Output Queue, and the Queue Manager for the WebSphere MQ Server.

When finished entering the necessary fields, click Next.

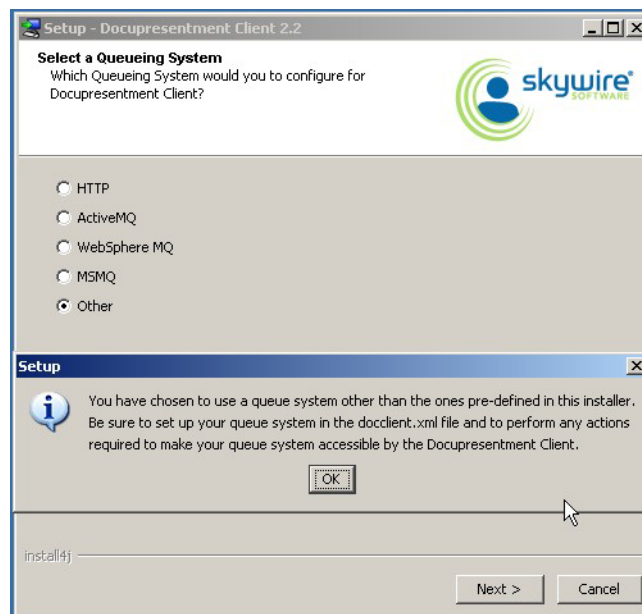
Using MSMQ If you chose MSMQ, the Configure the MSMQ Queuing System window appears:



For MSMQ queues, enter the Input Queue and Output Queue for the MSMQ Server and click Next.

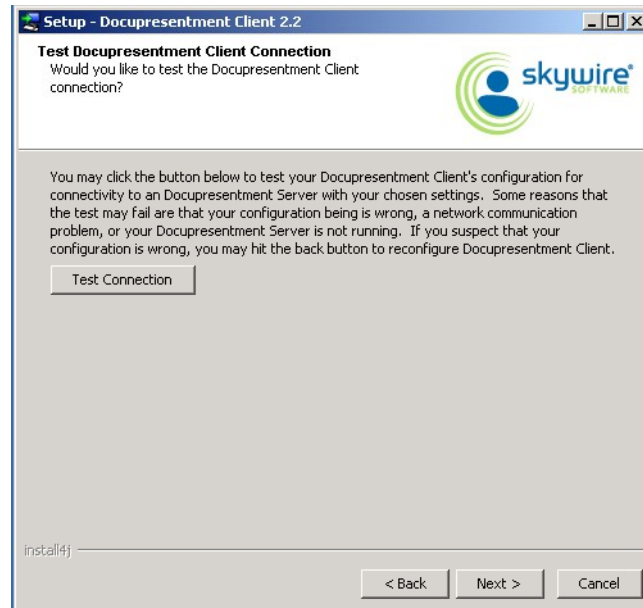
Setting up another queue

If you choose to set up another queuing system, the following message appears to remind you to take the steps necessary to make your queuing system accessible by the Docupresentation Client.



## Testing Your Connection

To make sure the Docupresentation Client can connect to the Docupresentation Server, click the Test Connection button.

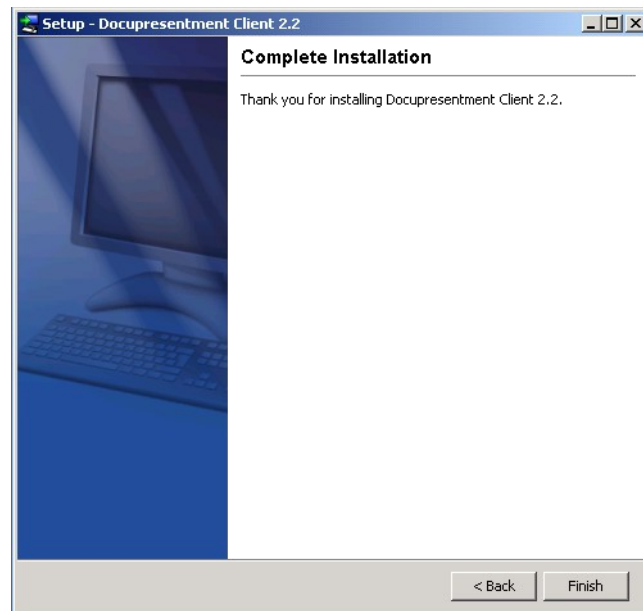


---

**NOTE:** Docupresentation Server and the queuing system you chose have to be running to test the Docupresentation Client.

---

If the test is successful, the Complete Installation window appears.



This window indicates that the Docupresentation Client is configured correctly and is successfully communicating with the Docupresentation Server. Click Finish.

Congratulations, you have installed the Docupresentation Server, Shared Objects, and Docupresentation Client Now proceed to the next topic, [Testing Your Installation](#).

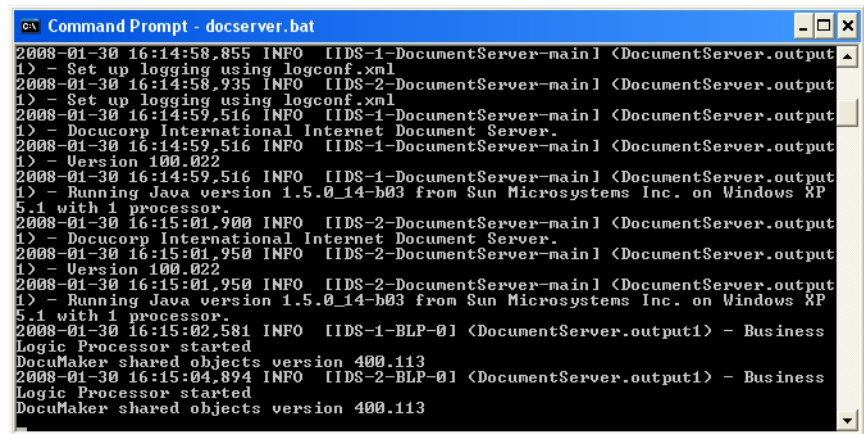
## TESTING YOUR INSTALLATION

To test your Docupresentation installation, open a command window and follow these steps.

- 1 Start Docupresentation Server by entering this command in the c:\docserv directory:

```
docserv.bat
```

You should now see a window similar to the following window:



```

C:\> docserv.bat
2008-01-30 16:14:58,855 INFO [IDS-1-DocuServer-main] <DocumentServer.output
1> - Set up logging using logconf.xml
2008-01-30 16:14:58,935 INFO [IDS-2-DocuServer-main] <DocumentServer.output
1> - Set up logging using logconf.xml
2008-01-30 16:14:59,516 INFO [IDS-1-DocuServer-main] <DocumentServer.output
1> - Docucorp International Internet Document Server.
2008-01-30 16:14:59,516 INFO [IDS-1-DocuServer-main] <DocumentServer.output
1> - Version 100.022
2008-01-30 16:14:59,516 INFO [IDS-1-DocuServer-main] <DocumentServer.output
1> - Running Java version 1.5.0_14-b03 from Sun Microsystems Inc. on Windows XP
5.1 with 1 processor.
2008-01-30 16:15:01,900 INFO [IDS-2-DocuServer-main] <DocumentServer.output
1> - Docucorp International Internet Document Server.
2008-01-30 16:15:01,950 INFO [IDS-2-DocuServer-main] <DocumentServer.output
1> - Version 100.022
2008-01-30 16:15:01,950 INFO [IDS-2-DocuServer-main] <DocumentServer.output
1> - Running Java version 1.5.0_14-b03 from Sun Microsystems Inc. on Windows XP
5.1 with 1 processor.
2008-01-30 16:15:02,581 INFO [IDS-1-BLP-0] <DocumentServer.output1> - Business
Logic Processor started
DocuMaker shared objects version 400.113
2008-01-30 16:15:04,894 INFO [IDS-2-BLP-0] <DocumentServer.output1> - Business
Logic Processor started
DocuMaker shared objects version 400.113

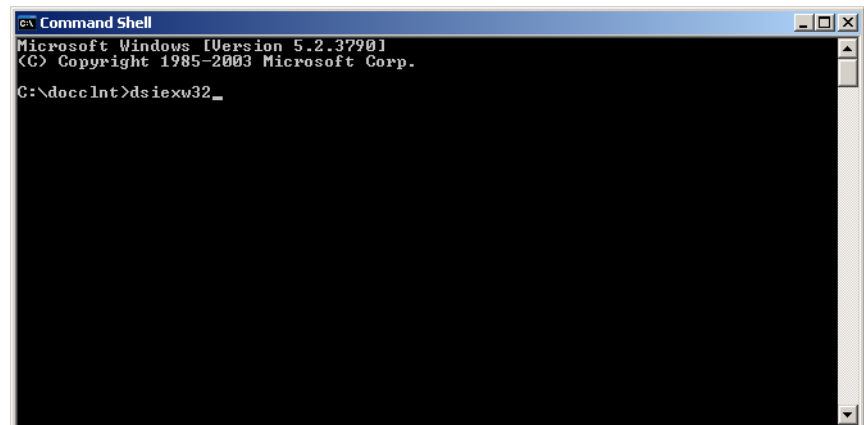
```

Docupresentation Server has started when you see the following:

```
'Business Logic Processor started'
DocuMaker shared objects version 400.113
```

- 2 By default, two instances of Docupresentation Server 2.2 will start. Go to the Docupresentation Client Box and open a command prompt. Then go to the Docupresentation Client directory, such as c:\docclnt, and enter this command:

```
dsiexw32.exe
```

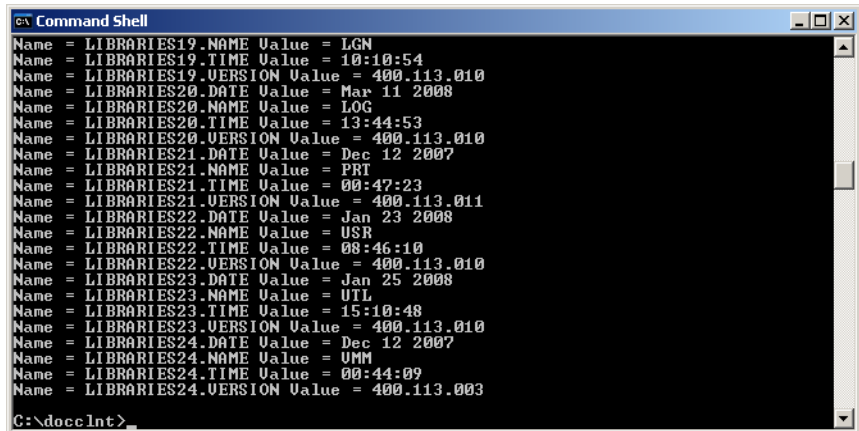


```

C:\> dsiexw32.exe
Microsoft Windows [Version 5.2.3790]
(C) Copyright 1985-2003 Microsoft Corp.
C:\docclnt>

```

- 3 You should now see a window similar to the following window:

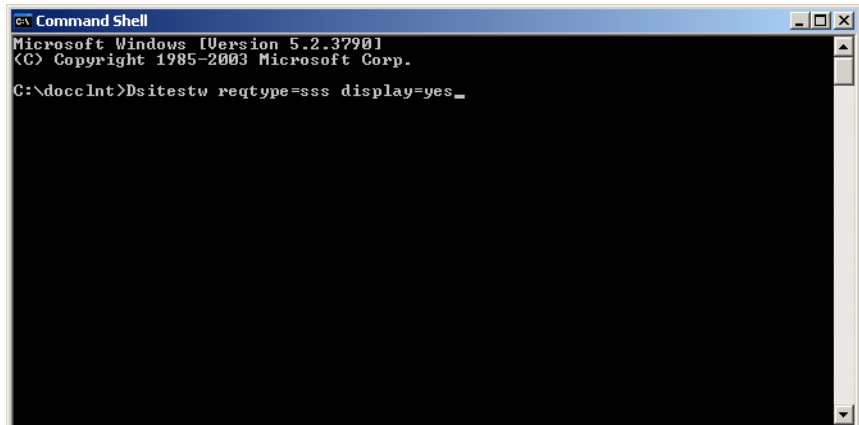


```
Command Shell
Name = LIBRARIES19.NAME Value = LGN
Name = LIBRARIES19.TIME Value = 10:10:54
Name = LIBRARIES19.VERSION Value = 400.113.010
Name = LIBRARIES20.DATE Value = Mar 11 2008
Name = LIBRARIES20.NAME Value = LOG
Name = LIBRARIES20.TIME Value = 13:44:53
Name = LIBRARIES20.VERSION Value = 400.113.010
Name = LIBRARIES21.DATE Value = Dec 12 2007
Name = LIBRARIES21.NAME Value = PRI
Name = LIBRARIES21.TIME Value = 00:47:23
Name = LIBRARIES21.VERSION Value = 400.113.011
Name = LIBRARIES22.DATE Value = Jan 23 2008
Name = LIBRARIES22.NAME Value = USR
Name = LIBRARIES22.TIME Value = 08:46:10
Name = LIBRARIES22.VERSION Value = 400.113.010
Name = LIBRARIES23.DATE Value = Jan 25 2008
Name = LIBRARIES23.NAME Value = UTL
Name = LIBRARIES23.TIME Value = 15:10:48
Name = LIBRARIES23.VERSION Value = 400.113.010
Name = LIBRARIES24.DATE Value = Dec 12 2007
Name = LIBRARIES24.NAME Value = UMM
Name = LIBRARIES24.TIME Value = 00:44:09
Name = LIBRARIES24.VERSION Value = 400.113.003
C:\doccInt>
```

If you receive these results, Docuement is installed and running properly.

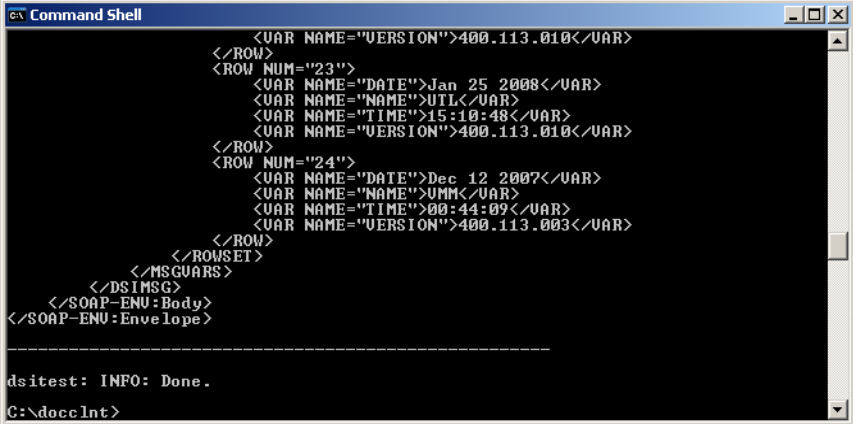
- 4 You can run another verification test using `dsitestw.exe` by typing the following command at the command prompt:

```
Dsitestw reqtype=sss display=yes
```



```
Command Shell
Microsoft Windows [Version 5.2.3790]
(C) Copyright 1985-2003 Microsoft Corp.
C:\doccInt>Dsitestw reqtype=sss display=yes_
```

You should now see a window similar to the following window:



```
Command Shell
<VAR NAME="VERSION">400.113.010</VAR>
</ROW>
<ROW NUM="23">
  <VAR NAME="DATE">Jan 25 2008</VAR>
  <VAR NAME="NAME">UTL</VAR>
  <VAR NAME="TIME">15:10:48</VAR>
  <VAR NAME="VERSION">400.113.010</VAR>
</ROW>
<ROW NUM="24">
  <VAR NAME="DATE">Dec 12 2007</VAR>
  <VAR NAME="NAME">UMM</VAR>
  <VAR NAME="TIME">00:44:09</VAR>
  <VAR NAME="VERSION">400.113.003</VAR>
</ROW>
</ROWS ET>
</MSGUARS>
</DSIMSG>
</SOAP-ENU:Body>
</SOAP-ENU:Envelope>
-----
dsitest: INFO: Done.
C:\docclnt>
```

If you receive these results, Docupresentment is communicating via HTTP queues and the system is able to process request types successfully.

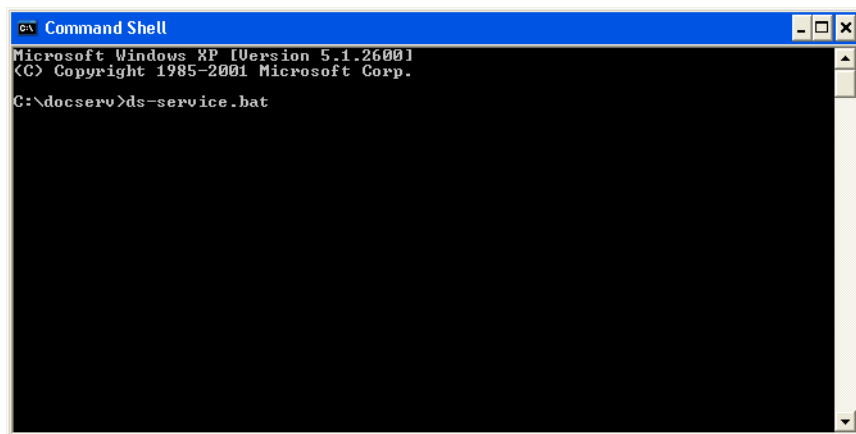
## SETTING UP THE SYSTEM AS A SERVICE

**NOTE:** You cannot run Docupresentment version 2.2 as a service using HTTP queues. To run Docupresentment as a service, you must use WebSphere MQ, ActiveMQ, or MSMQ.

To install Docupresentment as a service, open a command shell window and go to the directory into which you installed Docupresentment, such as `c:\docserv`.

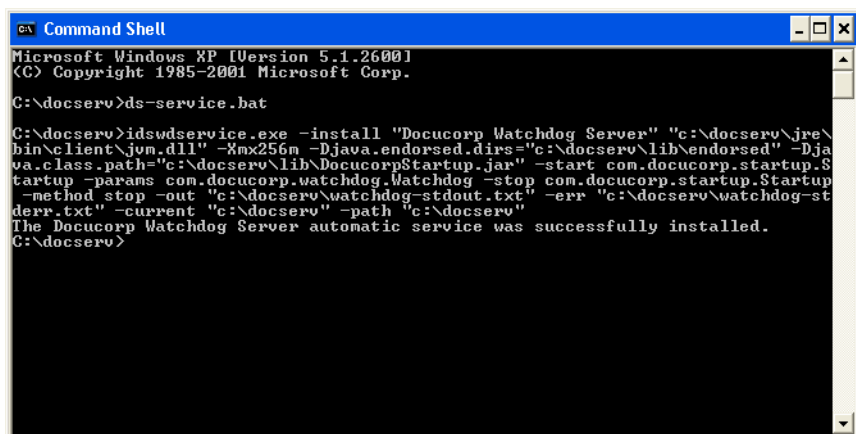
Next, enter this command in the `c:\docserv` directory:

```
Ds-service.bat
```



```
Command Shell
Microsoft Windows XP [Version 5.1.2600]
(C) Copyright 1985-2001 Microsoft Corp.
C:\docserv>ds-service.bat
```

You should now see a window similar to the following window:



```
Command Shell
Microsoft Windows XP [Version 5.1.2600]
(C) Copyright 1985-2001 Microsoft Corp.
C:\docserv>ds-service.bat
C:\docserv>idswdservice.exe -install "Docucorp Watchdog Server" "c:\docserv\jre\bin\client\jvm.dll" -kmx256m -Djava.endorsed.dirs="c:\docserv\lib\endorsed" -Djava.class.path="c:\docserv\lib\DocucorpStartup.jar" -start com.docucorp.startup.Startup -params com.docucorp.watchdog.Watchdog -stop com.docucorp.startup.Startup -method stop -out "c:\docserv\watchdog-stdout.txt" -err "c:\docserv\watchdog-stderr.txt" -current "c:\docserv" -path "c:\docserv"
The Docucorp Watchdog Server automatic service was successfully installed.
C:\docserv>
```

Docupresentment has been installed as a service on Windows when you see this message:

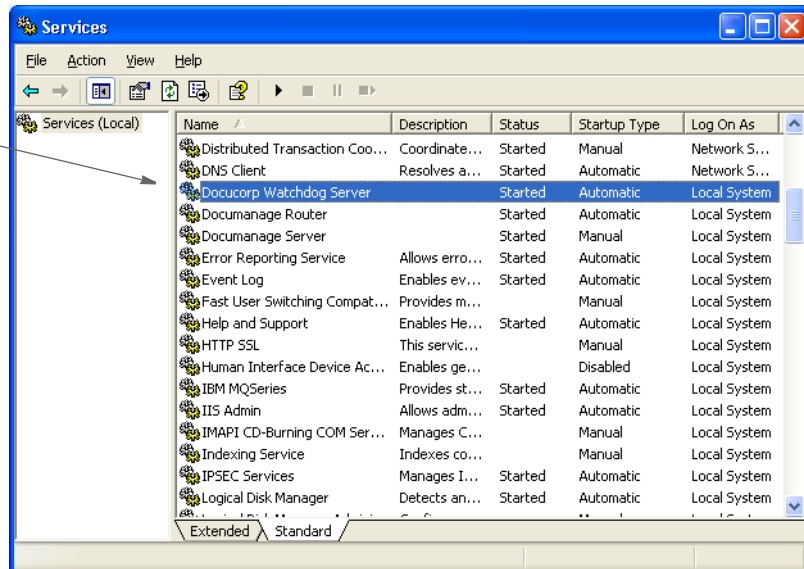
```
The Docucorp Watchdog Server automatic service was successfully installed
```



## VERIFYING DOCUPRESENTMENT WAS INSTALLED AS A SERVICE

- 1 Open Control Panel and choose Administrative Tools. Then open the Services Console.

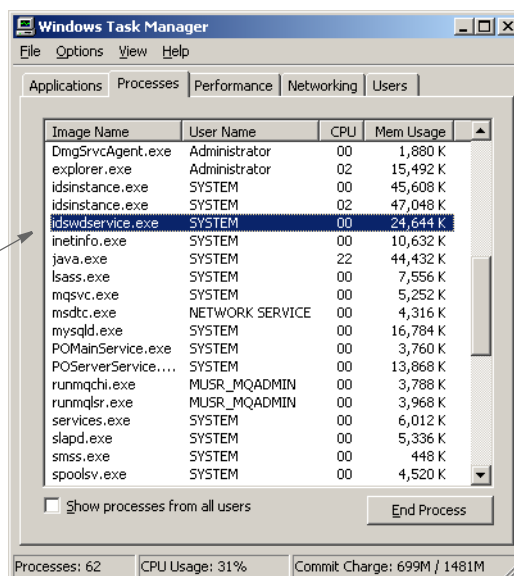
The Docupresentment service is listed as Docucorp Watchdog Server.



The Services Console lets you start and stop Docupresentment as a service.

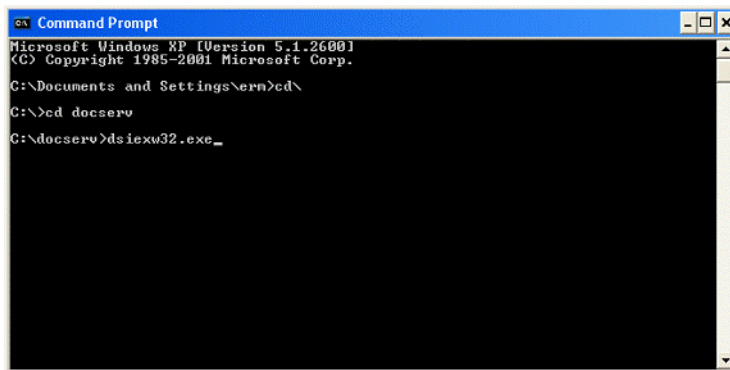
- 2 When you start Docupresentment via the Services Console, you can make sure the service is running by going to Task Manager.

Here is the Docupresentment service in the Processes list.



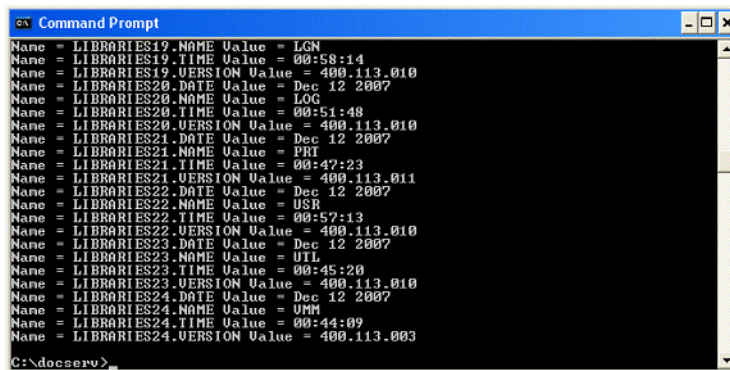
- 3 Open another command prompt and go to the installation directory, such as c:\docserv, and enter this command:

dsiexw32.exe



```
Command Prompt
Microsoft Windows XP [Version 5.1.2600]
(C) Copyright 1985-2001 Microsoft Corp.
C:\Documents and Settings\ern>cd\
C:\>cd docserv
C:\docserv>dsiexw32.exe_
```

You should now see a window similar to the following window:



```
Command Prompt
Name = LIBRARIES19.NAME Value = LCN
Name = LIBRARIES19.TIME Value = 00:58:14
Name = LIBRARIES19.VERSION Value = 400.113.010
Name = LIBRARIES20.DATE Value = Dec 12 2007
Name = LIBRARIES20.NAME Value = LOG
Name = LIBRARIES20.TIME Value = 00:51:48
Name = LIBRARIES20.VERSION Value = 400.113.010
Name = LIBRARIES21.DATE Value = Dec 12 2007
Name = LIBRARIES21.NAME Value = PRI
Name = LIBRARIES21.TIME Value = 00:47:23
Name = LIBRARIES21.VERSION Value = 400.113.011
Name = LIBRARIES22.DATE Value = Dec 12 2007
Name = LIBRARIES22.NAME Value = USR
Name = LIBRARIES22.TIME Value = 00:57:13
Name = LIBRARIES22.VERSION Value = 400.113.010
Name = LIBRARIES23.DATE Value = Dec 12 2007
Name = LIBRARIES23.NAME Value = ULL
Name = LIBRARIES23.TIME Value = 00:45:20
Name = LIBRARIES23.VERSION Value = 400.113.010
Name = LIBRARIES24.DATE Value = Dec 12 2007
Name = LIBRARIES24.NAME Value = UMM
Name = LIBRARIES24.TIME Value = 00:44:09
Name = LIBRARIES24.VERSION Value = 400.113.003
C:\docserv>_
```

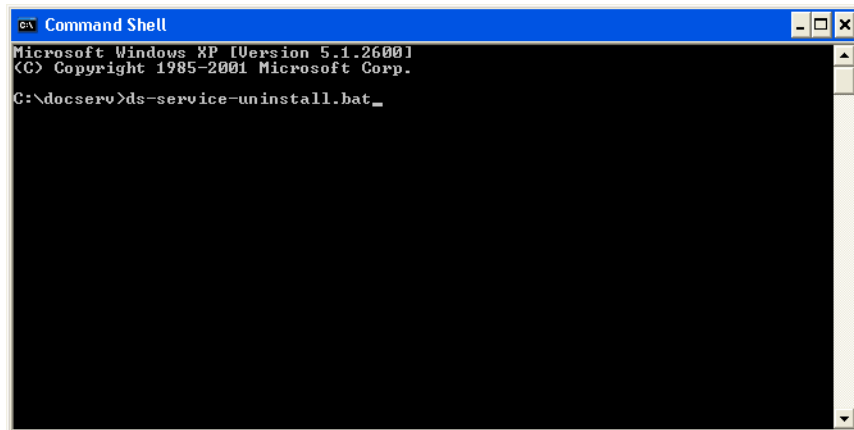
If you receive these results, Docuement is installed and running properly as a service.

## UNINSTALLING DOCUPRESENTMENT AS A SERVICE

To uninstall Docupresentment as a service, open a command window and go to the directory into which you installed Docupresentment, such as `c:\docserv`.

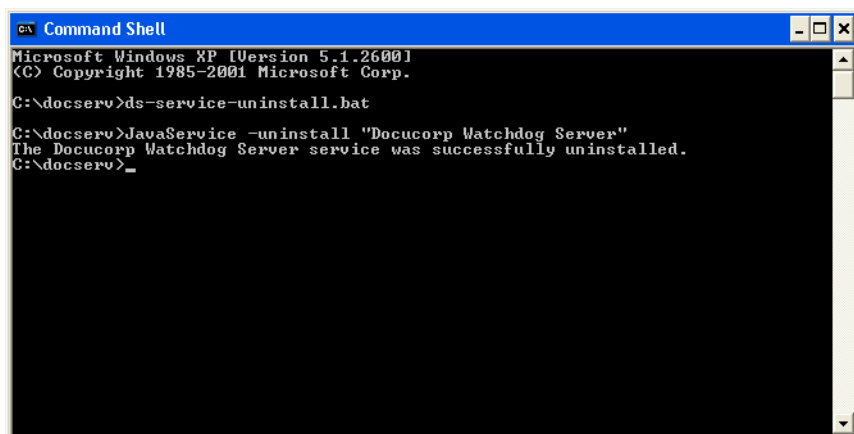
Next, enter this command in the `c:\docserv` directory:

```
Ds-service-uninstall.bat
```



```
Command Shell
Microsoft Windows XP [Version 5.1.2600]
(C) Copyright 1985-2001 Microsoft Corp.
C:\docserv>Ds-service-uninstall.bat_
```

You should see a window similar to this one:



```
Command Shell
Microsoft Windows XP [Version 5.1.2600]
(C) Copyright 1985-2001 Microsoft Corp.
C:\docserv>Ds-service-uninstall.bat
C:\docserv>JavaService -uninstall "Docucorp Watchdog Server"
The Docucorp Watchdog Server service was successfully uninstalled.
C:\docserv>_
```

Docupresentment has been uninstalled as a service on Windows when you see this message:

```
The Docucorp Watchdog Server automatic service was successfully
uninstalled
```

The *Docucorp Watchdog Server* entry will no longer appear in the Services Console. The Docupresentment Service has been uninstalled.

## UNINSTALLING THE SYSTEM

Use the Control Panel, Add/Remove Programs option in Windows to remove Docupresentation. This option removes Docupresentation, the various bridges, and sample files.

Data files saved after you installed Docupresentation are preserved.

If necessary, you must remove the required Microsoft components separately.

## TROUBLESHOOTING THE CLIENT

Here are some things to check if the Docupresentation Client is not communicating with Docupresentation Server.

### Checking the DOCCLIENT.XML File

First, make sure the docclient.xml file is set up correctly. Here is an example docclient.xml file, including all of the queue sections with ActiveMQ active:

```
<?xml version="1.0" encoding="UTF-8"?>
<configuration>
  <section name="DocumentClient" version="2.2">
    <section name="messaging">
      <!--JMS / ActiveMQ Section-->
      <!--Remove 'DISABLE-' to enable this section. Only one
queue section can exist at a time.-->
      <section name="queue">
        <entry
name="marshaller.class">com.docucorp.messaging.data.marshaller.SOAP
MIMEDSIMessageMarshaller</entry>
        <entry
name="queuefactory.class">com.docucorp.messaging.jms.DSIJMSJNDIMess
ageQueueFactory</entry>
        <entry name="jms.inputqueue.connectstring">resultq</
entry>
        <entry name="jms.outputqueue.connectstring">requestq</
entry>
        <entry name="jms.qcf.name">queueConnectionFactory</
entry>
        <entry
name="jms.initial.context.factory">org.apache.activemq.jndi.ActiveM
QInitialContextFactory</entry>
      </section>
      <!--HTTP Section-->
      <!--Remove 'DISABLE-' to enable this section. Only one
queue section can exist at a time.-->
      <section name="DISABLE-queue">
        <entry
name="marshaller.class">com.docucorp.messaging.data.marshaller.SOAP
MIMEDSIMessageMarshaller</entry>
        <entry
name="queuefactory.class">com.docucorp.messaging.http.DSIHTTPMessag
eQueueFactory</entry>
        <entry name="http.url">http://localhost:49152</entry>
        <entry name="http.reuse.ports">15</entry>
        <entry name="inputqueue.maxwaitseconds">30</entry>
      </section>
      <!--MQSeries Section-->
      <!--Remove 'DISABLE-' to enable this section. Only one
queue section can exist at a time.-->
      <section name="DISABLE-queue">
        <entry
name="marshaller.class">com.docucorp.messaging.data.marshaller.SOAP
MIMEDSIMessageMarshaller</entry>
        <entry
name="queuefactory.class">com.docucorp.messaging.mqseries.DSIMQMess
ageQueueFactory</entry>
        <entry name="mq.queue.manager"></entry>
        <entry name="mq.inputqueue.name">RESULTQ</entry>
        <entry name="mq.inputqueue.maxwaitseconds">5</entry>
      </section>
    </section>
  </section>
</configuration>
```

```

        <entry name="mq.outputqueue.name">REQUESTQ</entry>
        <!-- Remove 'DISABLE-' from the following line to use
in TCP/IP 'client' mode. -->
        <!-- Leave disabled to use in 'bindings' mode. -->
        <entry name="DISABLE-mq.tcpip.host">127.0.0.1</entry>
        <entry name="mq.queue.channel">SYSTEM.DEF.SVRCONN</
entry>
        <entry name="mq.tcpip.port">1414</entry>
    </section>
    <!--MSMQ Section-->
    <!--Remove 'DISABLE-' to enable this section. Only one
queue section can exist at a time.-->
    <section name="DISABLE-queue">
        <entry
name="marshaller.class">com.docucorp.messaging.data.marshaller.SOAP
MIMEDSIMessageMarshaller</entry>
        <entry
name="queuefactory.class">com.docucorp.messaging.msmq.DSIMSMQMessag
eQueueFactory</entry>
        <entry name="msmq.server.name">localhost</entry>
        <entry name="msmq.inputqueue.name">private$\RESULTQ</
entry>
        <entry name="msmq.outputqueue.name">private$\REQUESTQ</
entry>
        <entry name="msmq.timeout">30000</entry>
        <entry name="msmq.expiry">1800000</entry>
    </section>
</section>
<!-- messaging section -->
</section>
<!-- DocumentClient -->
</configuration>

```

## Checking the CLASSPATH and other Environment Variables

The following values are added to the CLASSPATH variable when you install the Docupresentation Client:

```

CLASSPATH=C:\docclnt\clientlib\DocucorpMsg.jar;C:\docclnt\clientlib
\DocumentServer.jar;C:\docclnt\clientlib\commons-
collections.jar;C:\docclnt\clientlib\commons-
fileupload.jar;C:\docclnt\clientlib\commons-
pool.jar;C:\docclnt\clientlib\DocuCorpUtil.jar;C:\docclnt\clientlib
\DSIJavaMsg.jar;C:\docclnt\clientlib\IDSJSP.jar;C:\docclnt\clientli
b\jdom.jar;C:\docclnt\clientlib\xerces.jar;C:\docclnt\clientlib\log
4j.jar;

```

The following values are added to the PATH variable when you install the Docupresentation Client:

```

PATH=C:\docclnt;C:\docclnt\jre\bin\client;C:\docclnt\jre\bin;e:\doc
clnt\.\install4j

```

These values are added to the following variables when you install the Docupresentation Client:

```

ids_client_configuration=C:\docclnt\docclient.xml
java_endorsed_dirs=C:\docclnt\clientlib\endorsed
logging_client_configuration=C:\docclnt\logclientconf.xml

```

## Installing Third-Party JAR Files

Skywire Software does not ship third-party jar files, so you must find and install the appropriate third-party jar files for ActiveMQ and WebSphere MQ. Add these third-party jar files to the c:\docclnt\clientlib\ directory and also to the CLASSPATH.

Here are some examples:

For ActiveMQ 4.0.2, you would add the following to the CLASSPATH:

```
c:\docclnt\clientlib\incubator-activemq-4.0.2.jar;c:\docclnt\clientlib
```

For WebSphere MQ, you would add the following to the CLASSPATH:

```
c:\docclnt\clientlib\com.ibm.mq.jar;c:\docclnt\clientlib\connector.jar
```





## Chapter 3

# Installing Docupresentment on UNIX/Linux

This chapter provides information on installing Docupresentment on UNIX-based machines, such as those running AIX, Linux, and Solaris.

You will find this information:

- [Overview on page 40](#)
- [Installing a New System on page 43](#)
- [Scenario 1: New Installation of Version 2.2 on page 44](#)
- [Scenario 2: Upgrading From a Version 1.x Environment \(overlay\) on page 47](#)
- [Scenario 3: Upgrading from Version 2.1 to Version 2.2 on page 51](#)
- [Scenario 4: Modified Upgrade from Version 1.x on page 54](#)
- [Scenario 5: Modified Upgrade from Version 2.x on page 58](#)
- [Scenario 6: Patch Upgrade of a Version 2.2 Environment on page 62](#)
- [Testing the Installation on page 63](#)
- [Uninstalling the System on page 67](#)

---

**NOTE:** For information on system requirements, see [System Requirements on page 2](#).

---

**OVERVIEW**

This topic describes how to install Docupresentation version 2.2 with shared objects using the default installation options. The steps in this topic tell you how to:

- Set up the basic infrastructure to support Docupresentation 2.2
- Install Docupresentation 2.2
- Make sure the system is working correctly

Docupresentation 2.2 is designed to work with third party applications, such as WebSphere Application Server, Apache, or Tomcat, and queuing managers such as WebSphere MQ. This topic does not provide installation instructions on non-Oracle Insurance products. Please consult the specific product manuals for installation and configuration instructions for your particular UNIX environment.

Docupresentation version 2.2 and Shared Objects - Documaker Bridge 11.3 are packaged as installation scripts in the UNIX/Linux environments. Typically, the file suffix identifies the target OS of the installer. For example, a script with an extension of *lnx* is for the Linux operating system.

After you get the appropriate installation scripts, make sure the scripts have the *execute* permission on the file. The files must be installed as a *user* — not as *root*.

## HARDWARE TEST ENVIRONMENTS

Docupresentment 2.2 was tested on various UNIX/Linux platforms. This table lists the configurations that have been tested.

### AIX systems

Model*	pSeries p650
CPU	6 x 1.45GHz Power4+ processors
Memory*	12GB
Hard disk**	Two 36.4GB 10,000RPM Ultra3 SCSI drives

\*Additional memory and a faster CPU are not required, but will improve performance.

\*\* Additional space required for your customized forms.

### Linux systems

Model*	Dell PWS450
CPU	2 x 2.40GHz Xeon processors
Memory*	3GB
Hard disk**	70GB SCSI drive

\*Additional memory and a faster CPU are not required, but will improve performance.

\*\* Additional space required for your customized forms.

### Solaris systems

Model*	Enterprise 250
CPU	2 x 400MHz UltraSPARC-II processors
Memory*	2GB
Hard disk**	Four 36GB SCSI drives

\*Additional memory and a faster CPU are not required, but will improve performance.

\*\* Additional space required for your customized forms.

## CHECKING THE SOFTWARE REQUIREMENTS

Docupresentation 2.2 requires JRE 1.5 or higher. Check the server's installed Java version by typing the following command in a terminal window:

```
java -version
```

If you see an error, check your PATH environment variable to see if Java is in your path. You can use the *which java* command to see if Java is installed.

---

**NOTE:** Docupresentation 2.2 supports the 32-bit version of Java. Docupresentation 2.2 does not operate properly in 64-bit versions of the JRE.

---

## CREATING THE REQUIRED USER AND DIRECTORIES

Oracle Insurance recommends that you install and run Docupresentation as a *user*— not as *root*. Create the user account you will use to run Docupresentation 2.2.

When you execute the installation script, it prompts you for a directory location for the full installation. Typically, Docupresentation is installed in the home directory of the user you created.

## INSTALLING A NEW SYSTEM

There are several installation and upgrade scenarios for Docupresentment version 2.2.

If you...	Follow...
Are installing Docupresentment for the first time	<a href="#">Scenario 1: New Installation of Version 2.2 on page 44</a>
Have Docupresentment 1.x installed	Either: <a href="#">Scenario 2: Upgrading From a Version 1.x Environment (overlay) on page 47</a> or <a href="#">Scenario 4: Modified Upgrade from Version 1.x on page 54</a>
Have Docupresentment 2.1 installed and would like to upgrade to version 2.2	<a href="#">Scenario 6: Patch Upgrade of a Version 2.2 Environment on page 62</a>
Have Docupresentment 2.2 installed and would like to perform a patch upgrade	<a href="#">Scenario 6: Patch Upgrade of a Version 2.2 Environment on page 62</a>

---

**NOTE:** If you are using MQSeries for the queuing methodology, you must locate the `com.ibm.mq.jar` and `connector.jar` files that correspond to the MQSeries server version being used and copy those jar files to the `.../docserv/lib` directory for the Docupresentment installation.

---

## SCENARIO 1: NEW INSTALLATION OF VERSION 2.2

Installing the system for the first time involves these tasks:

- [Installing Docupresentment 2.2 RTE on page 44](#)
- [Installing the Documaker Bridge Shared Objects RTE on page 46](#)

### INSTALLING DOCUPRESENTMENT 2.2 RTE

Follow these steps to install Docupresentment 2.2 RTE:

- 1 Download the Docupresentment 2.2 RTE and the Shared Objects - Documaker Bridge 11.3 Pxx installation scripts from the E-Delivery site to a directory where you have execute permissions.
- 2 Execute the Docupresentment 2.2 RTE installation script.  
  
Enter the installation path. Either override the default installation directory location or press ENTER to accept the default of /home/docc/int022.

**NOTE:** The following example screens show what you would see if you logged in as *docc* and were installing patch level 02 for Docupresentment version 2.2.

```
*** Docupresentment 2.2 (Patch Level 02) (Type RTE) Installation/Update ***
      Loading, Please Wait ...
```

```
Please select an Installation/Update Directory:
Press <Enter> to accept default: </home/docc/int022>
{y or n}?>y
```

- 3 Confirm the installation directory or correct it if a mistake was made when overriding the default.

```
Install Docupresentment 2.2 (RTE) to </home/docc/int022>?
{y or n}?>y
```

```
Install/Update in progress. Please wait...
Updated Base Components ...
```

- 4 Define the path of the 32-bit JRE directory (64 bit JRE systems will not correctly install) or accept the default detected by the installation:

```
Where is your 32-bit Java Run-time (JRE) Location?
Press <Enter> to accept default: </usr/java5/jre>?>
```

```
JRE Version=java version "1.5.0"
```

## Setting up error email notifications

- 5 The installation script asks if you want to set up Watchdog error SMTP email notifications.

```
Option for WatchDog Error SMTP Email Notifications:
Do you want to configure this option now?
(Note: You can manually configure it later in the log4j logconf.xml file)
{y or n}?>
```

- 6 If you enter yes, the SMTP setup prompts appear:

```
SMTP Server ?>
SMTP User Account ?>
SMTP Password ?>
Send emails FROM user ?>
Send emails TO user(s)
(Note: Can be a semicolon delimited list of email addresses)
?>
Send emails CC user(s)
(Note: Can be a semicolon delimited list of email addresses)
?>
Send emails to BCC user(s)
(Note: Can be a semicolon delimited list of email addresses)
?>
```

Make the appropriate entries, as described in this table:

For this prompt	Enter...
SMTP Server	Enter the name of the SMTP server.
SMTP User Account	Enter the user ID for the SMTP account.
SMTP Password	Enter the password for the user ID you set up as the SMTP User Account.
Send emails FROM user	Enter the email address from which the email will be sent.
Send emails TO user(s)	Enter the email addresses of the recipients you want to receive emails. Separate the email addresses with semicolons.
Send emails CC user(s)	Enter the email addresses of the recipients you want to receive courtesy copies (CC) of the emails. Separate the email addresses with semicolons.
Send emails to BCC user(s)	Enter the email addresses of the recipients you want to receive blind courtesy copies (BCC) of the emails. Separate the email addresses with semicolons.

After you answer the prompts or if you enter no to indicate you do not want to set up the error email notifications, the installation script finishes.

```
Installing Setup Files ...
Please Wait ...
New Installation Components Installed ...
RTE Installation Complete.
```

## INSTALLING THE DOCUMAKER BRIDGE SHARED OBJECTS RTE

Follow these steps to install the Documaker Bridge shared objects:

- 1 Enter the installation path. Either override the default installation directory or press enter to accept the default of `</home/docc/int022/docserv>`. Please note that you must enter the same path (through the `.../docserv` level) that was supplied during the Docupresentation 2.2 RTE installation. For this example, use Shared Objects - Documaker Bridge 11.3.

```
*** Documaker RP Shared Objects Bridge 11.3 (Level 02) Installation/Update ***
Loading, Please Wait ...

Please identify your Docupresentation Installation/Update
Directory: Note: Docupresentation directory must already exist.
Press <Enter> to accept default:
</home/docc/int022/docserv>
?>
```

- 2 Confirm the installation directory path or correct, if necessary.

```
Install Documaker RP Shared Objects Bridge 11.3 (Level 02) to
</home/docc/int022/docserv>?
{y or n}?>y

Installation/Update in progress. Please wait...
Updated Base Components ...

Installing Setup Files ...
Please Wait ...
New Documaker RP Shared Objects Installation Components Installed ...

Setting up docserv.xml to use jre located at </usr/java5/jre> ...

Installation Complete.
```

Docupresentation installs the base system with default HTTP queues. The system should function without additional modification.

Please see [Testing the Installation on page 63](#) for instructions to test a simple request using the base Docupresentation system.



## SCENARIO 2: UPGRADING FROM A VERSION 1.X ENVIRONMENT (OVERLAY)

When planning a Docupresentment 2.2 upgrade it is important to note the path name to the installation. If the previous version included *int018* or some other semblance of a version number in the path, you must decide to keep the naming convention or rename the directory to *int022* or some similar name.

Docupresentment 2.2 will correctly run in a directory path with a prior version name, such as */home/docc/int018*. However, accepting this naming convention could cause confusion during future support calls, so be sure to properly report your current version, revision, and patch level during conversations with support.

If you decide to modify the installation path, such as to */home/docc/int022*, you must modify the following INI files in the docserv directory to reflect the new naming convention:

- Docserv.xml (any request types that might call attachments)
- Bridge configuration INI and/or XML files (Documanager bridge configuration files such as *dmg\_brs.ini*)
- Documaker Bridge and Documaker Server RPDRunRP configuration files such as *dap.ini*, *rpex1.ini*, *rpex1rpd.ini*, and *RPDRunRP fsiuser* and *fsisys* INI files)
- Any client specific INI or XML (*docclnt.ini*, *docclient.xml*, *dsi.ini*) files which reference the directory location.

### INSTALLING THE DOCUPRESENTMENT 2.2 RTE

- 1 Download the Docupresentment 2.2 RTE and the Shared Objects - Documaker Bridge 11.3 Pxx installation scripts from the E-Delivery site to a directory where you have execute permissions.

---

**NOTE:** The Shared Objects - Documaker Bridge version must match the Documaker Server system installed on the host system in both version and patch level.

---

- 2 Execute the Docupresentment 2.2 RTE installation script.

Enter the installation path: You must point the installation to the existing *int0xx* directory or the user-specified directory name.

```
*** Docupresentment 2.2 (Patch Level 02) (Type RTE) Installation/Update ***  
Loading, Please Wait ...
```

```
Please select an Installation/Update Directory:  
Press <Enter> to accept default:  
</home/docc/int022>  
?>
```

- 3 The system detects that a previous version of Docupresentment is resident. You must choose to back up and upgrade, upgrade, or quit. Oracle Insurance highly recommends that you choose option 1 for back up and upgrade. When doing so, the installation script will create a backup directory under the docserv directory.

```
Docupresentation installation </home/docc/int022>  
for version <1.8> already exist.
```

```
Please select a upgrade type  
1 = Backup and Upgrade Installation  
2 = Upgrade Installation  
3 = Quit  
?>1
```

- 4** Confirm the chosen path or edit if necessary. Once correct, enter **Y** to complete the installation:

```
Install Docupresentation 2.2 (RTE) to  
</home/docc/int022>?  
{y or n}?>y
```

```
Upgrade in progress. Please wait...  
Updated Base Components ...
```

- 5** Define the path of the 32-bit JRE directory (64-bit JRE systems will not correctly install) or accept the default that is detected by the installation:

```
Where is your 32-bit Java Run-time (JRE) Location?  
Press <Enter> to accept default: </usr/java5/jre>  
?>  
JRE Version=java version "1.x.x"  
Installing Setup Files ...  
Please Wait ...  
New Installation Components Installed ...
```

## Setting up error email notifications

- 6 The installation script asks if you want to set up Watchdog error SMTP email notifications.

```
Option for WatchDog Error SMTP Email Notifications:
Do you want to configure this option now?
(Note: You can manually configure it later in the log4j logconf.xml file)
{y or n}?>
```

- 7 If you enter yes, the SMTP setup prompts appear:

```
SMTP Server ?>
SMTP User Account ?>
SMTP Password ?>
Send emails FROM user ?>
Send emails TO user(s)
(Note: Can be a semicolon delimited list of email addresses)
?>
Send emails CC user(s)
(Note: Can be a semicolon delimited list of email addresses)
?>
Send emails to BCC user(s)
(Note: Can be a semicolon delimited list of email addresses)
?>
```

Make the appropriate entries, as described in this table:

For this prompt	Enter...
SMTP Server	Enter the name of the SMTP server.
SMTP User Account	Enter the user ID for the SMTP account.
SMTP Password	Enter the password for the user ID you set up as the SMTP User Account.
Send emails FROM user	Enter the email address from which the email will be sent.
Send emails TO user(s)	Enter the email addresses of the recipients you want to receive emails. Separate the email addresses with semicolons.
Send emails CC user(s)	Enter the email addresses of the recipients you want to receive courtesy copies (CC) of the emails. Separate the email addresses with semicolons.
Send emails to BCC user(s)	Enter the email addresses of the recipients you want to receive blind courtesy copies (BCC) of the emails. Separate the email addresses with semicolons.

After you answer the prompts or if you enter no to indicate you do not want to set up the error email notifications, the installation script finishes.

```
Installing Setup Files ...
Please Wait ...
mv: 0653-401 Cannot rename docserver.sh to docserver.sh_20080416114612:
    A file or directory in the path name does not exist.
mv: 0653-401 Cannot rename docserver_simple.sh to
docserver_simple.sh_20080416114612:
    A file or directory in the path name does not exist.
New Installation Components Installed ...

RTE Installation Complete.
```

---

**NOTE:** The errors shown in this step occur because the version 1.8 installation does not include the two version 2.x files the system is trying to rename. You can ignore these two error messages.

---

Docupresentation installs the base system with default HTTP queues. The system should function without additional modification.

Please see [Testing the Installation on page 63](#) for instructions to test a simple request using the base Docupresentation system.

## SCENARIO 3: UPGRADING FROM VERSION 2.1 TO VERSION 2.2

When planning a Docupresentment 2.2 upgrade it is important to note the path name to the installation. If the previous version included *int021* or some other semblance of a version number in the path, you must decide to keep the naming convention or rename the directory to *int022* or some similar name.

Docupresentment 2.2 will correctly run in a directory path with a prior version name, such as `/home/docc/int021`. However, accepting this naming convention could cause confusion during future support calls, so be sure to properly report your current version, revision, and patch level during conversations with support.

If you decide to modify the installation path, such as to `/home/docc/int022`, you must modify the following INI files in the docserv directory to reflect the new naming convention:

- Docserv.xml (any request types that might call attachments)
- Bridge configuration INI and/or XML files (Documanager bridge configuration files such as `dmg_brs.ini`)
- Documaker Bridge and Documaker Server RPDRunRP configuration files such as `dap.ini`, `rpex1.ini`, `rpex1rpd.ini`, and `RPDRunRP fsiuser.ini` and `fsisys.ini` files)
- Any client specific INI or XML (`docclnt.ini`, `docclient.xml`, `dsi.ini`) files which reference the directory location.

### INSTALLING THE DOCUPRESENTMENT 2.2 RTE

- 1 Download the Docupresentment 2.2 RTE and the Shared Objects - Documaker Bridge 11.3 Pxx installation scripts from the E-Delivery site to a directory where you have execute permissions.

---

**NOTE:** The Documaker Bridge Shared Objects version should match the Documaker Server system installed on the host system in both version and patch level.

---

- 2 Execute the Docupresentment 2.2 RTE installation script.

Enter the installation path: You must point the installation to the existing `int0xx` directory or the user-specified directory name.

```
*** Docupresentment 2.2 (Patch Level 02) (Type RTE) Installation/Update ***
Loading, Please Wait ...

Please select an Installation/Update Directory:
Press <Enter> to accept default: </home/docc/docupresentment>
?>
```

- 3 The system detects that a previous version of Docupresentment is resident. You must choose to back up and upgrade, upgrade, or quit. Oracle Insurance highly recommends that you choose option 1 for back up and upgrade. When doing so, the installation script will create a backup directory under the docserv directory.

```
Docupresentation installation </home/docc/docupresentation> for version <2.1> already
exist.
```

```
Please select a upgrade type
 1 = Backup and Upgrade Installation
 2 = Upgrade Installation
 3 = Quit
?>2
```

- 4** Confirm the chosen path or edit if necessary. Once correct, enter **Y** to complete the installation:

```
Install Docupresentation 2.2 (RTE) to </home/docc/docupresentation>?
{y or n}?>y

Upgrade in progress. Please wait...
Updated Base Components ...
```

- 5** Define the path of the 32-bit JRE directory (64-bit JRE systems will not correctly install) or accept the default that is detected by the installation:

```
Where is your 32-bit Java Run-time (JRE) Location?
Press <Enter> to accept default: </usr/java5/jre>
?>/usr/java5/jre
JRE Version=java version "1.x.x"
```

#### Setting up error email notifications

- 6** The installation script asks if you want to set up Watchdog error SMTP email notifications.

```
Option for WatchDog Error SMTP Email Notifications:
Do you want to configure this option now?
(Note: You can manually configure it later in the log4j logconf.xml file)
{y or n}?>
```

- 7** If you enter yes, the SMTP setup prompts appear:

```
SMTP Server ?>
SMTP User Account ?>
SMTP Password ?>
Send emails FROM user ?>
Send emails TO user(s)
(Note: Can be a semicolon delimited list of email addresses)
?>
Send emails CC user(s)
(Note: Can be a semicolon delimited list of email addresses)
?>
Send emails to BCC user(s)
(Note: Can be a semicolon delimited list of email addresses)
?>
```

Make the appropriate entries, as described in this table:

For this prompt	Enter...
SMTP Server	Enter the name of the SMTP server.
SMTP User Account	Enter the user ID for the SMTP account.
SMTP Password	Enter the password for the user ID you set up as the SMTP User Account.
Send emails FROM user	Enter the email address from which the email will be sent.
Send emails TO user(s)	Enter the email addresses of the recipients you want to receive emails. Separate the email addresses with semicolons.
Send emails CC user(s)	Enter the email addresses of the recipients you want to receive courtesy copies (CC) of the emails. Separate the email addresses with semicolons.
Send emails to BCC user(s)	Enter the email addresses of the recipients you want to receive blind courtesy copies (BCC) of the emails. Separate the email addresses with semicolons.

After you answer the prompts or if you enter no to indicate you do not want to set up the error email notifications, the installation script finishes.

Installing Setup Files ...  
 Please Wait ...  
 New Installation Components Installed ...

Docupresentment installs the base system with default HTTP queues. The system should function without additional modification.

Please see [Testing the Installation on page 63](#) for instructions to test a simple request using the base Docupresentment system.

## SCENARIO 4: MODIFIED UPGRADE FROM VERSION 1.X

This scenario assumes the following criteria:

- You have an existing implementation of Docupresentation installed and configured on the host system.
- Docupresentation 2.2 will be installed into a fresh installation directory and you will manually move any existing INI files and custom code specific to your installation to the Docupresentation 2.2 installation directory.
- If you are using Docupresentation IDSRUNRP functionality, this scenario also assumes that Documaker Server is installed and configured on the host system.

To perform a modified upgrade from IDS version 1.x, you will complete these tasks:

- [Installing Docupresentation 2.2 RTE on page 54](#)
- [Installing Documaker Bridge Shared Objects on page 56](#)
- [Testing Your System on page 56](#)
- [Customizing Your Docupresentation 2.2 Environment on page 57](#)

## INSTALLING DOCUPRESENTMENT 2.2 RTE

Follow these steps to install Docupresentation 2.2 RTE:

- 1 Download the Docupresentation 2.2 RTE and the Shared Objects - Documaker Bridge 11.3 Pxx installation scripts from the E-Delivery site to a directory where you have execute permissions.

---

**NOTE:** The Shared Objects - Documaker Bridge version must match the Documaker Server system installed on the host system in both version and patch level.

---

- 2 Execute the Docupresentation 2.2 RTE installation script.

Enter the installation path: Either override the default installation directory location or press ENTER to accept the default of /home/docc/int022.

```
*** Docupresentation 2.2 (Patch Level 02) (Type RTE) Installation/Update ***  
Loading, Please Wait ...
```

```
Please select an Installation/Update Directory:  
Press <Enter> to accept default:  
</home/docc/int022>  
?>
```



- 3 Confirm the installation directory or correct it if a mistake was made when overriding the default.

```
Install Docupresentment 2.2 (RTE) to  
</home/docc/int022>?  
{y or n}?>y
```

Install/Update in progress. Please wait...

Updated Base Components ...

- 4 Define the path of the 32-bit JRE directory (currently Docupresentment Bridges will not run correctly with a 64-bit JRE). Accept the default detected by the installation:

```
Where is your 32-bit Java Run-time (JRE) Location?  
Press <Enter> to accept default: </usr/java5/jre>?  
JRE Version=java version "1.5"  
Installing Setup Files ...  
Please Wait ...  
New Installation Components Installed ...  
RTE Installation Complete
```

## INSTALLING DOCUMAKER BRIDGE SHARED OBJECTS

Follow these steps to install the Documaker Bridge shared objects:

- 1 Enter the installation path. Either override the default installation directory or press ENTER to accept the default of </home/docc/int022/docserv>. Please note you must enter the same path (through the .../docserv level) that was supplied during the Docupresentation 2.2 RTE installation. For this example, use Shared Objects - Documaker Bridge 11.3.

```
*** Documaker RP Shared Objects Bridge 11.3 (Level 02) Installation/Update ***
Loading, Please Wait ...

Please identify your Docupresentation Installation/Update
Directory: Note: Docupresentation directory must already exist.
Press <Enter> to accept default:
</home/docc/int022/docserv>
?>
```

- 2 Confirm the installation directory path or correct, if necessary.

```
Install Documaker RP Shared Objects Bridge 11.3 (Level 02) to
</home/docc/int022/docserv>?
{y or n}?>y

Installation/Update in progress. Please wait...
Updated Base Components ...

Installing Setup Files ...
Please Wait ...
New Documaker RP Shared Objects Bridge Installation Components Installed ...

Setting up docserv.xml to use jre located at </usr/java5/jre> ...

Installation Complete.
```

## TESTING YOUR SYSTEM

Docupresentation installs the base system with default HTTP queues. The system should function without additional modification.

Please see [Testing the Installation on page 63](#) for instructions to test a simple request using the base Docupresentation system.

## CUSTOMIZING YOUR DOCUPRESENTMENT 2.2 ENVIRONMENT

Once the base system has been installed and tested, you can begin the process of moving customizations from the existing Docupresentation installation to the Docupresentation 2.2 directories.

---

**NOTE:** Client customizations and configurations can vary greatly in both complexity and degree of customization. Therefore, it is highly recommended that you contact your Professional Services representative for help in planning the transition properly. The following steps deal with the basic INI and XML configuration files that are shared among all client installations.

---

- 1 Rename or move the following INI and XML files in the new installation's docserv directory. These are the base Docupresentation files and will be replaced with the client configuration files: dap.ini, dsi.ini, docclnt.ini, docserv.ini, docclient.xml, and docserv.xml.
- 2 Copy the following files from the existing installation's docserv directory to the new installation's docserv directory: dap.ini, dsi.ini, docclnt.ini, docserv.ini, and any client specific INI files.
- 3 Modify any directory references in the copied INI files to correctly reference the new Docupresentation installation location.
- 4 Copy the client MRL to the new installation. Typically, the client MRL will be located in the docserv/mstrres directory.
- 5 Create the docserv.xml and docclient.xml files using the iniconvert.sh utility. The following are the steps to perform the conversion:

- At the docserv directory of the new installation, enter:

```
./iniconvert.sh docserv.ini DocumentServerConvert.xml Docserv.xml
```

- At the docserv directory of the new installation, enter:

```
./iniconvert.sh dsi.ini DocumentClientConvert.xml Docclient.xml
```

These steps create the docserv.xml and docclient.xml files that Docupresentation 2.2 uses for processing. These files replace the docserv.ini and the docclient.ini files used in previous versions of Docupresentation.

Once you move all client components to the new installation directories, see [Testing the Installation on page 63](#) to test the installation again.

## SCENARIO 5: MODIFIED UPGRADE FROM VERSION 2.X

This scenario assumes the following criteria:

- You have an existing implementation of Docupresentment installed and configured on the host system.
- Docupresentment 2.2 will be installed into a fresh installation directory and you will manually move any existing INI files and custom code specific to your installation to the Docupresentment 2.2 installation directory.
- If you are using Docupresentment IDSRUNRP functionality, this scenario also assumes that Documaker Server is installed and configured on the host system.

To perform a modified upgrade from IDS version 2.x, you will complete these tasks:

- [Installing Docupresentment 2.2 RTE on page 58](#)
- [Installing Documaker Bridge Shared Objects on page 60](#)
- [Testing Your System on page 60](#)
- [Customizing Your Docupresentment 2.2 Environment on page 61](#)

## INSTALLING DOCUPRESENTMENT 2.2 RTE

Follow these steps to install Docupresentment 2.2 RTE:

- 1 Download the Docupresentment 2.2 RTE and the Shared Objects - Documaker Bridge 11.3 Pxx installation scripts from the E-Delivery site to a directory where you have execute permissions.

---

**NOTE:** The Shared Objects - Documaker Bridge version must match the Documaker Server system installed on the host system in both version and patch level.

---

- 2 Execute the Docupresentment 2.2 RTE installation script.

Enter the installation path: Either override the default installation directory location or press ENTER to accept the default of /home/docc/int022.

```
*** Docupresentment 2.2 (Patch Level 02) (Type RTE) Installation/Update ***  
Loading, Please Wait ...
```

```
Please select an Installation/Update Directory:  
Press <Enter> to accept default:  
</home/docc/int022>  
?>
```

- 3 Confirm the installation directory or correct it if a mistake was made when overriding the default.

```
Install Docupresentment 2.2 (RTE) to  
</home/docc/int022>?  
{y or n}?>y
```

Install/Update in progress. Please wait...

Updated Base Components ...

- 4 Define the path of the 32-bit JRE directory (currently Docupresentment Bridges will not run correctly with a 64-bit JRE). Accept the default detected by the installation:

```
Where is your 32-bit Java Run-time (JRE) Location?  
Press <Enter> to accept default: </usr/java5/jre>?  
JRE Version=java version "1.5"  
Installing Setup Files ...  
Please Wait ...  
New Installation Components Installed ...  
RTE Installation Complete
```

## INSTALLING DOCUMAKER BRIDGE SHARED OBJECTS

Follow these steps to install the Documaker Bridge shared objects:

- 1 Enter the installation path. Either override the default installation directory or press ENTER to accept the default of </home/docc/int022/docserv>. Please note you must enter the same path (through the .../docserv level) that was supplied during the Docupresentation 2.2 RTE installation. For this example, use Shared Objects - Documaker Bridge 11.3.

```

*** Documaker RP Shared Objects Bridge 11.3 (Level 02) Installation/Update ***
Loading, Please Wait ...

Please identify your Docupresentation Installation/Update
Directory: Note: Docupresentation directory must already exist.
Press <Enter> to accept default:
</home/docc/int022/docserv>
?>

```

- 2 Confirm the installation directory path or correct, if necessary.

```

Install Documaker RP Shared Objects Bridge 11.3 (Level 02) to
</home/docc/int022/docserv>?
{y or n}?>y

Installation/Update in progress. Please wait...
Updated Base Components ...

Installing Setup Files ...
Please Wait ...
New Documaker RP Shared Objects Bridge Installation Components Installed ...

Setting up docserv.xml to use jre located at </usr/java5/jre> ...

Installation Complete.

```

## TESTING YOUR SYSTEM

Docupresentation installs the base system with default HTTP queues. The system should function without additional modification.

Please see [Testing the Installation on page 63](#) for instructions to test a simple request using the base Docupresentation system.

## CUSTOMIZING YOUR DOCUPRESENTMENT 2.2 ENVIRONMENT

Once the base system has been installed and tested, you can begin the process of moving customizations from the existing Docupresentation installation to the Docupresentation 2.2 directories.

---

**NOTE:** Client customizations and configurations can vary greatly in both complexity and degree of customization. Therefore, it is highly recommended that you contact your Professional Services representative for help in planning the transition and executing the migration.

---

These steps deal with the basic XML configuration files that are shared by all client installations:

- 1 Create a backup copy of the following INI and XML files in the new installation's docserv directory (these are the base Docupresentation files and will be modified): dap.ini, dsi.ini, docclient.xml, and docserv.xml.
- 2 Modify any directory references in these INI and XML files to correctly reference the new Docupresentation installation location.
- 3 Copy the client MRL to the new installation. Typically, the client MRL will be located in the docserv/mstrres directory.
- 4 Modify the base Docupresentation 2.2 docserv.xml and docclient.xml files to include these changes:
  - Queuing systems. Modify the existing queuing settings to use the queuing methodology your environment uses. Also modify the dsi.ini file to include the queuing changes.
  - Customized client request types. The base Docupresentation system includes only base client request types. Client specific customized request types should be copied and pasted to the new docserv.xml file. If any of the request types include a pathing that includes the new Docupresentation installation path, be sure to modify those paths in the request types.
  - Configurations. You can copy the dap.ini file from your existing Docupresentation 2.x environment to the newly-created Docupresentation 2.2 environment (be sure to create a backup copy first in the docserv directory). This makes sure the configuration information is available to the Docupresentation 2.2 installation.

Once you move all client components to the new installation directories, see [Testing the Installation on page 63](#) to test the installation again.

## SCENARIO 6: PATCH UPGRADE OF A VERSION 2.2 ENVIRONMENT

Follow these steps to apply a patch to an Docupresentment 2.2 installation:

- 1 Download the Docupresentment 2.2 RTE script to a directory where you have execute permissions.
- 2 Execute the Docupresentment 2.2 RTE installation script.

Enter the installation path: You must point the installation to the existing directory or the user-specified directory name.

```
*** Docupresentment 2.2 (Patch Level 02) (Type RTE) Installation/Update ***
Loading, Please Wait ...
```

```
Please select an Installation/Update Directory:
Press <Enter> to accept default:
</home/docc/int022>
?>
```

- 3 The system detects that a previous version of Docupresentment is resident. You must choose to back up and update, update, or quit. Oracle Insurance highly recommends that you choose option 1 for back up and update. When doing so, the installation script will create a back up directory under the docserv directory.

```
Docupresentment installation </home/docc/int022>
for version <2.2> already exist.
```

```
Please select a upgrade type
1 = Backup and Upgrade Installation
2 = Upgrade Installation
3 = Quit
?>1
```

- 4 Confirm the chosen path or edit if necessary. Once correct, enter **Y** to complete the installation:

```
Update Docupresentment 2.2 (RTE) to
</home/docc/int022>?
{y or n}?>y
```

```
Install/Update in progress. Please wait...
Updated Base Components ...
```

```
RTE Installation Complete
```

Docupresentment installs the base system with default HTTP queues. The system should function without additional modification.

Please see [Testing the Installation on page 63](#) for instructions to test a simple request using the base Docupresentment system.



## TESTING THE INSTALLATION

Follow these steps to test your installation:

- 1 Start the Docupresentation 2.2 sever by navigating to the ../docserv directory for the installation and enter:

```
./docserver.sh start
```

---

**NOTE:** Note that the shell script to start Docupresentation changed from *docserv.sh* to *docserver.sh*. There are also additional use suffixes of: start, stop, and status that must be appended to the end of the docserver.sh script commands. Previously, to stop the Docupresentation server, you would issue the CTRL+C command. Beginning with version 2.2, you must issue the command *docserver.sh stop* to end the session.

---

- 2 Enter this command:

```
./dsitest.sh display=yes reqtype=SSS
```

- 3 The following output should be directed to the Docupresentation console screen. The error count should be zero (0) and the results variable should be SUCCESS:

```
<?xml version="1.0" encoding="UTF-8"?>
<DSIMSG VERSION="200.020.0">
<CTLBLOCK/>
<MSGVARS>
<ROWSET NAME="LIBRARIES">
<ROW NUM="1">
<VAR NAME="DATE">Aug 4 2005</VAR>
<VAR NAME="NAME">dsicrule</VAR>
<VAR NAME="TIME">14:55:36</VAR>
<VAR NAME="VERSION">200.020.001</VAR>
</ROW>
<ROW NUM="2">
<VAR NAME="DATE">Feb 2 2006</VAR>
<VAR NAME="NAME">DSIOS2</VAR>
<VAR NAME="TIME">10:19:20</VAR>
<VAR NAME="VERSION">200.020.002</VAR>
</ROW>
<ROW NUM="3">
<VAR NAME="DATE">Feb 2 2006</VAR>
<VAR NAME="NAME">dsijava</VAR>
<VAR NAME="TIME">10:19:28</VAR>
<VAR NAME="VERSION">200.020.001</VAR>
</ROW>
<ROW NUM="4">
<VAR NAME="DATE">Feb 2 2006</VAR>
<VAR NAME="NAME">jexec</VAR>
<VAR NAME="TIME">10:19:30</VAR>
<VAR NAME="VERSION">200.020.001</VAR>
</ROW>
<ROW NUM="5">
<VAR NAME="DATE">Mar 31 2006</VAR>
<VAR NAME="NAME">ARC</VAR>
<VAR NAME="TIME">15:45:27</VAR>
<VAR NAME="VERSION">400.110.020</VAR>
```

```
</ROW>
<ROW NUM="6">
<VAR NAME="DATE">Mar 31 2006</VAR>
<VAR NAME="NAME">CAR</VAR>
<VAR NAME="TIME">15:39:36</VAR>
<VAR NAME="VERSION">400.110.010</VAR>
</ROW>
<ROW NUM="7">
<VAR NAME="DATE">Mar 31 2006</VAR>
<VAR NAME="NAME">DAL</VAR>
<VAR NAME="TIME">15:45:51</VAR>
<VAR NAME="VERSION">400.110.010</VAR>
</ROW>
<ROW NUM="8">
<VAR NAME="DATE">Mar 31 2006</VAR>
<VAR NAME="NAME">DB2</VAR>
<VAR NAME="TIME">15:50:34</VAR>
<VAR NAME="VERSION">400.110.010</VAR>
</ROW>
<ROW NUM="9">
<VAR NAME="DATE">Mar 31 2006</VAR>
<VAR NAME="NAME">DB5</VAR>
<VAR NAME="TIME">15:39:24</VAR>
<VAR NAME="VERSION">400.110.010</VAR>
</ROW>
<ROW NUM="10">
<VAR NAME="DATE">Mar 31 2006</VAR>
<VAR NAME="NAME">DB</VAR>
<VAR NAME="TIME">15:39:12</VAR>
<VAR NAME="VERSION">400.110.015</VAR>
</ROW>
<ROW NUM="11">
<VAR NAME="DATE">Mar 31 2006</VAR>
<VAR NAME="NAME">DPR</VAR>
<VAR NAME="TIME">15:49:33</VAR>
<VAR NAME="VERSION">400.110.001</VAR>
</ROW>
<ROW NUM="12">
<VAR NAME="DATE">Mar 31 2006</VAR>
<VAR NAME="NAME">DS</VAR>
<VAR NAME="TIME">15:38:43</VAR>
<VAR NAME="VERSION">400.110.013</VAR>
</ROW>
<ROW NUM="13">
<VAR NAME="DATE">Mar 31 2006</VAR>
<VAR NAME="NAME">DXM</VAR>
<VAR NAME="TIME">15:37:35</VAR>
<VAR NAME="VERSION">400.110.004</VAR>
</ROW>
<ROW NUM="14">
<VAR NAME="DATE">Mar 31 2006</VAR>
<VAR NAME="NAME">FAP</VAR>
<VAR NAME="TIME">15:38:19</VAR>
<VAR NAME="VERSION">400.110.010</VAR>
</ROW>
```

```
<ROW NUM="15">
<VAR NAME="DATE">Mar 31 2006</VAR>
<VAR NAME="NAME">FNT</VAR>
<VAR NAME="TIME">15:42:06</VAR>
<VAR NAME="VERSION">400.110.010</VAR>
</ROW>
<ROW NUM="16">
<VAR NAME="DATE">Mar 31 2006</VAR>
<VAR NAME="NAME">GRF</VAR>
<VAR NAME="TIME">15:39:41</VAR>
<VAR NAME="VERSION">400.110.010</VAR>
</ROW>
<ROW NUM="17">
<VAR NAME="DATE">Mar 31 2006</VAR>
<VAR NAME="NAME">INI</VAR>
<VAR NAME="TIME">15:37:03</VAR>
<VAR NAME="VERSION">400.110.020</VAR>
</ROW>
<ROW NUM="18">
<VAR NAME="DATE">Mar 31 2006</VAR>
<VAR NAME="NAME">LBY</VAR>
<VAR NAME="TIME">15:46:07</VAR>
<VAR NAME="VERSION">400.110.011</VAR>
</ROW>
<ROW NUM="19">
<VAR NAME="DATE">Mar 31 2006</VAR>
<VAR NAME="NAME">LOG</VAR>
<VAR NAME="TIME">15:40:49</VAR>
<VAR NAME="VERSION">400.110.010</VAR>
</ROW>
<ROW NUM="20">
<VAR NAME="DATE">Mar 31 2006</VAR>
<VAR NAME="NAME">MTC</VAR>
<VAR NAME="TIME">15:49:46</VAR>
<VAR NAME="VERSION">400.110.001</VAR>
</ROW>
<ROW NUM="21">
<VAR NAME="DATE">Mar 31 2006</VAR>
<VAR NAME="NAME">PDF</VAR>
<VAR NAME="TIME">15:44:37</VAR>
<VAR NAME="VERSION">400.110.020</VAR>
</ROW>
<ROW NUM="22">
<VAR NAME="DATE">Mar 31 2006</VAR>
<VAR NAME="NAME">PRT</VAR>
<VAR NAME="TIME">15:38:55</VAR>
<VAR NAME="VERSION">400.110.011</VAR>
</ROW>
<ROW NUM="23">
<VAR NAME="DATE">Mar 31 2006</VAR>
<VAR NAME="NAME">TIF</VAR>
<VAR NAME="TIME">15:40:05</VAR>
<VAR NAME="VERSION">400.110.010</VAR>
</ROW>
<ROW NUM="24">
```

```
<VAR NAME="DATE">Mar 31 2006</VAR>
<VAR NAME="NAME">USR</VAR>
<VAR NAME="TIME">15:39:32</VAR>
<VAR NAME="VERSION">400.110.010</VAR>
</ROW>
<ROW NUM="25">
<VAR NAME="DATE">Mar 31 2006</VAR>
<VAR NAME="NAME">UTL</VAR>
<VAR NAME="TIME">15:37:23</VAR>
<VAR NAME="VERSION">400.110.010</VAR>
</ROW>
<ROW NUM="26">
<VAR NAME="DATE">Mar 31 2006</VAR>
<VAR NAME="NAME">VMM</VAR>
<VAR NAME="TIME">15:36:44</VAR>
<VAR NAME="VERSION">400.110.003</VAR>
</ROW>
<ROW NUM="27">
<VAR NAME="DATE">Mar 31 2006</VAR>
<VAR NAME="NAME">XER</VAR>
<VAR NAME="TIME">15:43:01</VAR>
<VAR NAME="VERSION">400.110.010</VAR>
</ROW>
<ROW NUM="28">
<VAR NAME="DATE">Mar 31 2006</VAR>
<VAR NAME="NAME">XMC</VAR>
<VAR NAME="TIME">15:41:56</VAR>
<VAR NAME="VERSION">400.110.010</VAR>
</ROW>
</ROWSET>
<VAR NAME="ERRORCOUNT">0</VAR>
<VAR NAME="LASTRESTART">Apr 19, 2006 12:28:07 PM EDT</VAR>
<VAR NAME="RESTARTCOUNT">0</VAR>
<VAR NAME="RESULTS">SUCCESS</VAR>
<VAR NAME="SERVERTIMESPENT">0.310</VAR>
<VAR NAME="SUCCESSCOUNT">67</VAR>
<VAR NAME="TOTALTIMESPENT">0.772</VAR>
<VAR NAME="UPTIME">Apr 19, 2006 12:28:07 PM EDT</VAR>
</MSGVARS>
</DSIMSG>
```

## UNINSTALLING THE SYSTEM

To uninstall Docupresentment on UNIX/Linux, just remove the base installation directory and all its sub-directories. It may also be necessary to remove any HTML and CGI-BIN directories if they are external to the base installation directory.

