

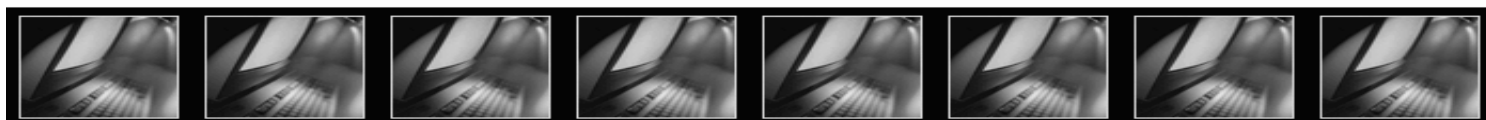
Oracle® Insurance Rules Palette

Web Application Utility Installation Guide

Release 9.0.1.0.0

Part Number: E15494_01

August 2009



Oracle® Insurance Rules Palette

Copyright © 2009, Oracle. All rights reserved.

License Restrictions & Warranty Disclaimer

The Programs (which include both the software and documentation) contain proprietary information; they are provided under a license agreement containing restrictions on use and disclosure and are also protected by copyright, patent, and other intellectual and industrial property laws. Reverse engineering, disassembly, or decompilation of the Programs, except to the extent required to obtain interoperability with other independently created software or as specified by law, is prohibited.

The information contained in this document is subject to change without notice. If you find any problems in the documentation, please report them to us in writing. This document is not warranted to be error-free. Except as may be expressly permitted in your license agreement for these Programs, no part of these Programs may be reproduced or transmitted in any form or by any means, electronic or mechanical, for any purpose.

Restricted Rights Notice

U.S. GOVERNMENT RIGHTS

Programs, software, databases, and related documentation and technical data delivered to U.S. Government customers are "commercial computer software" or "commercial technical data" pursuant to the applicable Federal Acquisition Regulation and agency-specific supplemental regulations. As such, use, duplication, disclosure, modification, and adaptation of the Programs, including documentation and technical data, shall be subject to the licensing restrictions set forth in the applicable Oracle license agreement, and, to the extent applicable, the additional rights set forth in FAR 52.227-19, Commercial Computer Software--Restricted Rights (June 1987). Oracle USA, Inc., 500 Oracle Parkway, Redwood City, CA 94065.

The Programs are not intended for use in any nuclear, aviation, mass transit, medical, or other inherently dangerous applications. It shall be the licensee's responsibility to take all appropriate fail-safe, backup, redundancy and other measures to ensure the safe use of such applications if the Programs are used for such purposes, and we disclaim liability for any damages caused by such use of the Programs.

Third Party Web Sites, Content, Products, and Services Disclaimer

The Programs may provide links to Web sites and access to content, products, and services from third parties. Oracle is not responsible for the availability of, or any content provided on, third-party Web sites. You bear all risks associated with the use of such content. If you choose to purchase any products or services from a third party, the relationship is directly between you and the third party. Oracle is not responsible for: (a) the quality of third-party products or services; or (b) fulfilling any of the terms of the agreement with the third party, including delivery of products or services and warranty obligations related to purchased products or services. Oracle is not responsible for any loss or damage of any sort that you may incur from dealing with any third party.

Trademark Notice

Oracle, JD Edwards, and PeopleSoft are registered trademarks of Oracle Corporation and/or its affiliates. Other names may be trademarks of their respective owners.

Table of Contents

| | |
|--|---|
| Introduction | 4 |
| Downloading the Latest Release | 4 |
| Deploy File on Application Server | 4 |
| Access the Application | 5 |
| Create Rules Palette Environment Properties..... | 5 |
| Web Application Utility Screenshot..... | 6 |

Introduction

The Web Application Utility allows a Build Manager or Server Administrator to configure the Rules Palette environment properties information and remote debugging Web Service URL. Once this information has been saved, the host and port are sent to the Rules Palette users. This information is used in the first step of the Rules Palette environment creation wizard to access the environment properties, which will be automatically populated from the Web Application Utility. The user will only need to enter a database user ID and password to complete the environment creation process.

Downloading the Latest Release

The latest release of the Web Application Utility is available via a .zip file, which can be accessed at Oracle E-Delivery <http://edelivery.oracle.com/>. After you log into the E-Delivery site, the Media Pack Search screen will appear. Make the following search selections:

- Product Pack: Oracle Insurance Application
- Platform: Microsoft Windows (32 bit)

Once you select the **Go** button, a list of Oracle's Insurance Applications will display. Select **Oracle Insurance Rules Palette V9.0.1 for Windows**. The applications will display with a download button. Select the download button.

Open the Web Application Utility folder. Extract the contents of the .zip file and save them to: *C:\Program Files\Oracle\WebApplicationUtility*. There are three files included in the .zip file:

- palletteconfig.war
- palettewebapplication.properties
- RP_v9_P1_readme_utility

Deploy File on Application Server

You need to deploy the palletteconfig.war file on the application server of your choice.

The application.properties file should be placed in the class path of the application server. The file contains a property called "download.dir". This file specifies the location on the application server where you should place application related files.

Access the Application

Once the application has been deployed, you can access it through the following URL:

<http://host:port/PaletteConfig/>

The default log-in ID is admin and the default password ID is admin. Reset your log-in ID and password immediately using the Administration tab at the top of the utility.

Create Rules Palette Environment Properties

The following steps allow the build manager to set-up the Rules Palette environment properties.

Steps for Build Manager to Set-up Environment Properties

1. Log into the Palette Configuration Web Application.
2. Enter the information for the environment:
 - a. PaletteVersion – enter the version of the palette that will be used. This is used to ensure the corresponding OIPA version is used.
 - b. PaletteBuildNumber – enter the build number of the palette that will be used.
 - c. ApplicationType – either OIPA or NBUW
 - d. ApplicationEnvType – either Development or Production
 - e. DebuggerWebserviceUrl – URL for the Web Service used to connect for remote debugging. The host and port information must match the host and port information for the application you are using.
 - f. ApplicationDatabaseType – SqlServer2005, SqlServer, Oracle or DB2
 - g. ApplicationDatabaseServer – server where the database is located.
 - h. ApplicationDatabasePort – port for database
 - i. ApplicationDatabaseName – name of the database. Only needed for SqlServer and DB2.
 - j. ApplicationDatabaseSchema – schemas of the database. Only needed for DB2 and Oracle.
3. Select the **Yes** radio button for IVS if you will be using an IVS environment.
4. Enter the IVS environment information.
 - a. IVSDatabaseType – SqlServer, Oracle or DB2
 - b. IVSDatabaseServer – server where the database is located.
 - c. IVSDatabasePort – port of the database.
 - d. IVSDatabaseName – name of the database.
 - e. IVSDatabaseSchema – schema of the database.
 - f. IVSEnv – name of the IVS environment that will be used.
 - g. IVSTrackNumber – track number of the IVS environment that will be used.
5. Select **Save**.
6. Send the host and port information to the Rules Palette users so that they can set-up the environment.

Web Application Utility Screenshot

ORACLE®

Palette Versions Environment Options Administration

PaletteVersion: 9.0.0.0.5

PaletteBuildNumber: 42

ApplicationType: PAS

ApplicationEnvType: Development

DebuggerWebServiceUrl: http://redhat-qav9pas:9

ApplicationDatabaseType: SQLServer2005

ApplicationDatabaseServer: win2003-netsit1

ApplicationDatabasePort: 1433

ApplicationDatabaseName: V9QA

ApplicationDatabaseSchema:

IVS

☒ Yes ☐ No

IvsDatabaseType: SQLServer2005

IvsDatabaseServer: win2003-netsit1

IvsDatabasePort: 1433

IvsDatabaseName: V9IVS

IvsDatabaseSchema:

IvsEnv: V9-QA

IvsTrackNumber: 1

Save Cancel